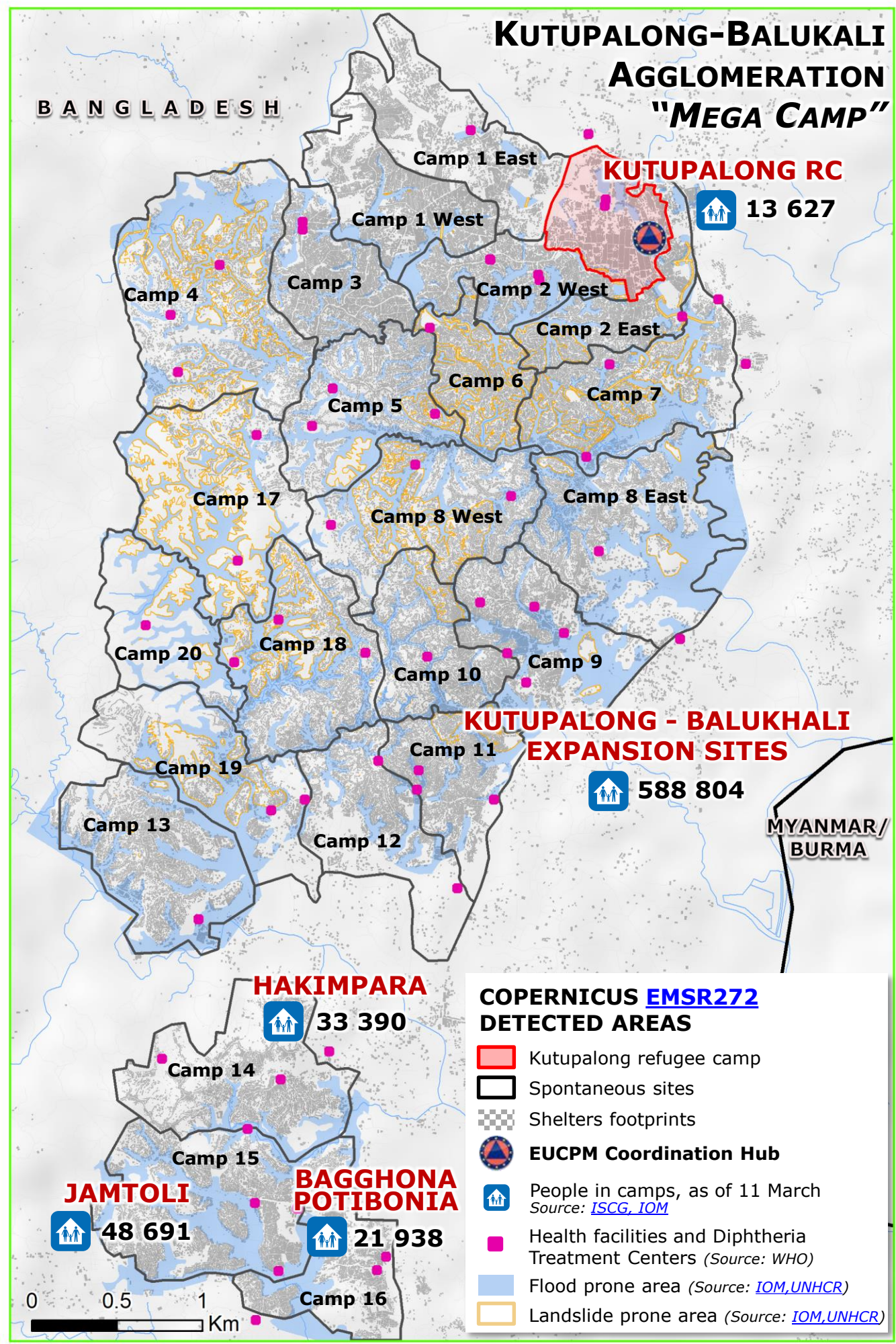


# Myanmar/Burma and Bangladesh | Rohingya Crisis



### SITUATION OVERVIEW as of 21 March

- Close to **700 000 Rohingya refugees** have entered Bangladesh since 25 August 2017 (at least 90% of the total Rohingya population of northern Rakhine).
- The vast majority of new arrivals are located in the densely populated **Kutupalong-Balukali agglomeration**, known as the "Mega Camp". There is a **serious risk of flooding and landslides**, due to the fast approaching cyclone and monsoon season.
- The **Diphtheria outbreak** in camps continues, although from the number of new cases being reported, a flattening trend has been observed. Until 23 February, a total of **5 764 suspected cases** were reported.
- Since 2012, **120 000 Rohingya** have been displaced in **Central Rakhine IDP sites** and another 200 000 Rohingya are living in villages with highly restricted movement.

Source: DG ECHO

