

337

*Visits + Staff Studies*

SECRET

*16 Dec 50 thru 31 Dec 50.*

SECURITY INFORMATION

SECRET

GENERAL HEADQUARTERS, FAR EAST COMMAND  
ADJUTANT GENERAL'S OFFICE  
RADIO BRANCH

*337  
Mintz*

INCOMING MESSAGE

*RESTRICTED*  
RESTRICTED  
PRIORITY

|             |                    |
|-------------|--------------------|
| G-4 ROUTING |                    |
| AC/SG4      | <i>[Signature]</i> |
| DC/SG4      | <i>[Signature]</i> |
| PT          | <i>[Signature]</i> |
| C+RE        |                    |
| SURPLY      |                    |
| TLD/reg     |                    |
| KEA         |                    |
| ADMIN       |                    |
| 31 Dec 50   |                    |

*[Handwritten initials]*

FROM : TRAVPAC TRAVIS AFB CALIF  
TO : HICPAC HICKAM AFB TH, CINCPAC TOKYO JAPAN  
NR : TRAVPAC 203

Departing Travis AFB at 300025 Z aboard SBW flt 301-29 acft 9065 are Lt Gen Sarit Dhanarachata, Maj Gen Swai Sanyakain, Capt Kanes Atrapadung, Thai Army personnel, enroute Tokyo Japan as guests of Dept of Army. Request all courtesies be extended. ETA Hono 301225 Z. ETA Haneda 311229 Z.

NO SIG

ACTION : LN SEC UNC

INFORMATION : COMMANDER IN CHIEF, CHIEF OF STAFF, VISITORS BUREAU, G-1, G-2, G-3, G-4, AG, JSPOG, SIGNAL, TRANS

18020

PRIORITY

T00 : 300215 Z  
MCN : NONE

*RESTRICTED*

CONSULT CRYPTO CENTER BEFORE DECLASSIFYING

Paraphrase not required. Handle as correspondence of classification carried hereon per paragraphs 17a(1)(2) and 41c(2)(3) and g(1), AR 380-5, 15 November 1949.

COPY No.



GENERAL HEADQUARTERS THE EAST COMBAT  
AVIATION GROUP  
HONOLULU

# INCOMING MESSAGE

TID/leg

*RESTRICTED*  
PRIORITY

31 Dec 50

FROM : THAVAC TRAVIS AFB CALIF

TO : HICPAC HICKAM AFB HI, CINCPAC TOKYO JAPAN

NR : THAVAC 203

Departing Travis AFB at 3000Z & aboard SBW F11 301-29  
Capt Rance Atzpadung, Thai Army personnel, enroute Tokyo  
Japan as guests of Dept of Army. Request all courtesies be  
extended. ETA Hono 30122Z & ETA Hanaeda 31222Z

NO SIG

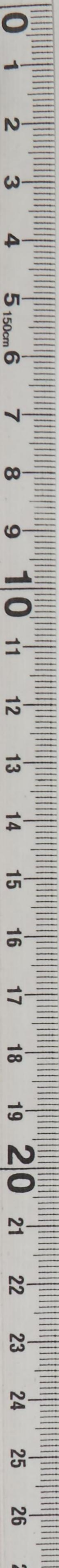
ACTION - IN SEC UNO

INFORMATION - COMMANDER IN CHIEF, STAFF OR STAFF VISITORS  
EXCEPT G-2, G-3, G-4, G-5, G-6, G-7, G-8, G-9, G-10, G-11, G-12, G-13, G-14, G-15, G-16, G-17, G-18, G-19, G-20, G-21, G-22, G-23, G-24, G-25, G-26, G-27, G-28, G-29, G-30, G-31, G-32, G-33, G-34, G-35, G-36, G-37, G-38, G-39, G-40, G-41, G-42, G-43, G-44, G-45, G-46, G-47, G-48, G-49, G-50, G-51, G-52, G-53, G-54, G-55, G-56, G-57, G-58, G-59, G-60, G-61, G-62, G-63, G-64, G-65, G-66, G-67, G-68, G-69, G-70, G-71, G-72, G-73, G-74, G-75, G-76, G-77, G-78, G-79, G-80, G-81, G-82, G-83, G-84, G-85, G-86, G-87, G-88, G-89, G-90, G-91, G-92, G-93, G-94, G-95, G-96, G-97, G-98, G-99, G-100, G-101, G-102, G-103, G-104, G-105, G-106, G-107, G-108, G-109, G-110, G-111, G-112, G-113, G-114, G-115, G-116, G-117, G-118, G-119, G-120, G-121, G-122, G-123, G-124, G-125, G-126, G-127, G-128, G-129, G-130, G-131, G-132, G-133, G-134, G-135, G-136, G-137, G-138, G-139, G-140, G-141, G-142, G-143, G-144, G-145, G-146, G-147, G-148, G-149, G-150, G-151, G-152, G-153, G-154, G-155, G-156, G-157, G-158, G-159, G-160, G-161, G-162, G-163, G-164, G-165, G-166, G-167, G-168, G-169, G-170, G-171, G-172, G-173, G-174, G-175, G-176, G-177, G-178, G-179, G-180, G-181, G-182, G-183, G-184, G-185, G-186, G-187, G-188, G-189, G-190, G-191, G-192, G-193, G-194, G-195, G-196, G-197, G-198, G-199, G-200, G-201, G-202, G-203, G-204, G-205, G-206, G-207, G-208, G-209, G-210, G-211, G-212, G-213, G-214, G-215, G-216, G-217, G-218, G-219, G-220, G-221, G-222, G-223, G-224, G-225, G-226, G-227, G-228, G-229, G-230, G-231, G-232, G-233, G-234, G-235, G-236, G-237, G-238, G-239, G-240, G-241, G-242, G-243, G-244, G-245, G-246, G-247, G-248, G-249, G-250, G-251, G-252, G-253, G-254, G-255, G-256, G-257, G-258, G-259, G-260, G-261, G-262, G-263, G-264, G-265, G-266, G-267, G-268, G-269, G-270, G-271, G-272, G-273, G-274, G-275, G-276, G-277, G-278, G-279, G-280, G-281, G-282, G-283, G-284, G-285, G-286, G-287, G-288, G-289, G-290, G-291, G-292, G-293, G-294, G-295, G-296, G-297, G-298, G-299, G-300, G-301, G-302, G-303, G-304, G-305, G-306, G-307, G-308, G-309, G-310, G-311, G-312, G-313, G-314, G-315, G-316, G-317, G-318, G-319, G-320, G-321, G-322, G-323, G-324, G-325, G-326, G-327, G-328, G-329, G-330, G-331, G-332, G-333, G-334, G-335, G-336, G-337, G-338, G-339, G-340, G-341, G-342, G-343, G-344, G-345, G-346, G-347, G-348, G-349, G-350, G-351, G-352, G-353, G-354, G-355, G-356, G-357, G-358, G-359, G-360, G-361, G-362, G-363, G-364, G-365, G-366, G-367, G-368, G-369, G-370, G-371, G-372, G-373, G-374, G-375, G-376, G-377, G-378, G-379, G-380, G-381, G-382, G-383, G-384, G-385, G-386, G-387, G-388, G-389, G-390, G-391, G-392, G-393, G-394, G-395, G-396, G-397, G-398, G-399, G-400, G-401, G-402, G-403, G-404, G-405, G-406, G-407, G-408, G-409, G-410, G-411, G-412, G-413, G-414, G-415, G-416, G-417, G-418, G-419, G-420, G-421, G-422, G-423, G-424, G-425, G-426, G-427, G-428, G-429, G-430, G-431, G-432, G-433, G-434, G-435, G-436, G-437, G-438, G-439, G-440, G-441, G-442, G-443, G-444, G-445, G-446, G-447, G-448, G-449, G-450, G-451, G-452, G-453, G-454, G-455, G-456, G-457, G-458, G-459, G-460, G-461, G-462, G-463, G-464, G-465, G-466, G-467, G-468, G-469, G-470, G-471, G-472, G-473, G-474, G-475, G-476, G-477, G-478, G-479, G-480, G-481, G-482, G-483, G-484, G-485, G-486, G-487, G-488, G-489, G-490, G-491, G-492, G-493, G-494, G-495, G-496, G-497, G-498, G-499, G-500, G-501, G-502, G-503, G-504, G-505, G-506, G-507, G-508, G-509, G-510, G-511, G-512, G-513, G-514, G-515, G-516, G-517, G-518, G-519, G-520, G-521, G-522, G-523, G-524, G-525, G-526, G-527, G-528, G-529, G-530, G-531, G-532, G-533, G-534, G-535, G-536, G-537, G-538, G-539, G-540, G-541, G-542, G-543, G-544, G-545, G-546, G-547, G-548, G-549, G-550, G-551, G-552, G-553, G-554, G-555, G-556, G-557, G-558, G-559, G-560, G-561, G-562, G-563, G-564, G-565, G-566, G-567, G-568, G-569, G-570, G-571, G-572, G-573, G-574, G-575, G-576, G-577, G-578, G-579, G-580, G-581, G-582, G-583, G-584, G-585, G-586, G-587, G-588, G-589, G-590, G-591, G-592, G-593, G-594, G-595, G-596, G-597, G-598, G-599, G-600, G-601, G-602, G-603, G-604, G-605, G-606, G-607, G-608, G-609, G-610, G-611, G-612, G-613, G-614, G-615, G-616, G-617, G-618, G-619, G-620, G-621, G-622, G-623, G-624, G-625, G-626, G-627, G-628, G-629, G-630, G-631, G-632, G-633, G-634, G-635, G-636, G-637, G-638, G-639, G-640, G-641, G-642, G-643, G-644, G-645, G-646, G-647, G-648, G-649, G-650, G-651, G-652, G-653, G-654, G-655, G-656, G-657, G-658, G-659, G-660, G-661, G-662, G-663, G-664, G-665, G-666, G-667, G-668, G-669, G-670, G-671, G-672, G-673, G-674, G-675, G-676, G-677, G-678, G-679, G-680, G-681, G-682, G-683, G-684, G-685, G-686, G-687, G-688, G-689, G-690, G-691, G-692, G-693, G-694, G-695, G-696, G-697, G-698, G-699, G-700, G-701, G-702, G-703, G-704, G-705, G-706, G-707, G-708, G-709, G-710, G-711, G-712, G-713, G-714, G-715, G-716, G-717, G-718, G-719, G-720, G-721, G-722, G-723, G-724, G-725, G-726, G-727, G-728, G-729, G-730, G-731, G-732, G-733, G-734, G-735, G-736, G-737, G-738, G-739, G-740, G-741, G-742, G-743, G-744, G-745, G-746, G-747, G-748, G-749, G-750, G-751, G-752, G-753, G-754, G-755, G-756, G-757, G-758, G-759, G-760, G-761, G-762, G-763, G-764, G-765, G-766, G-767, G-768, G-769, G-770, G-771, G-772, G-773, G-774, G-775, G-776, G-777, G-778, G-779, G-780, G-781, G-782, G-783, G-784, G-785, G-786, G-787, G-788, G-789, G-790, G-791, G-792, G-793, G-794, G-795, G-796, G-797, G-798, G-799, G-800, G-801, G-802, G-803, G-804, G-805, G-806, G-807, G-808, G-809, G-810, G-811, G-812, G-813, G-814, G-815, G-816, G-817, G-818, G-819, G-820, G-821, G-822, G-823, G-824, G-825, G-826, G-827, G-828, G-829, G-830, G-831, G-832, G-833, G-834, G-835, G-836, G-837, G-838, G-839, G-840, G-841, G-842, G-843, G-844, G-845, G-846, G-847, G-848, G-849, G-850, G-851, G-852, G-853, G-854, G-855, G-856, G-857, G-858, G-859, G-860, G-861, G-862, G-863, G-864, G-865, G-866, G-867, G-868, G-869, G-870, G-871, G-872, G-873, G-874, G-875, G-876, G-877, G-878, G-879, G-880, G-881, G-882, G-883, G-884, G-885, G-886, G-887, G-888, G-889, G-890, G-891, G-892, G-893, G-894, G-895, G-896, G-897, G-898, G-899, G-900, G-901, G-902, G-903, G-904, G-905, G-906, G-907, G-908, G-909, G-910, G-911, G-912, G-913, G-914, G-915, G-916, G-917, G-918, G-919, G-920, G-921, G-922, G-923, G-924, G-925, G-926, G-927, G-928, G-929, G-930, G-931, G-932, G-933, G-934, G-935, G-936, G-937, G-938, G-939, G-940, G-941, G-942, G-943, G-944, G-945, G-946, G-947, G-948, G-949, G-950, G-951, G-952, G-953, G-954, G-955, G-956, G-957, G-958, G-959, G-960, G-961, G-962, G-963, G-964, G-965, G-966, G-967, G-968, G-969, G-970, G-971, G-972, G-973, G-974, G-975, G-976, G-977, G-978, G-979, G-980, G-981, G-982, G-983, G-984, G-985, G-986, G-987, G-988, G-989, G-990, G-991, G-992, G-993, G-994, G-995, G-996, G-997, G-998, G-999, G-1000

TOO : 300515 Z  
MON : NONE

*RESTRICTED*  
PRIORITY





G-4 ROUTING  
AC/S  
DAG  
EXE  
P+  
C+RE  
SUPPLY  
PETS/LSUA  
KRA  
ADMIN *CO-7*

①  
②  
③

GENERAL HEADQUARTERS  
FAR EAST COMMAND

OUTGOING MESSAGE

BCA RFG/dc

UNCLASSIFIED

30 DECEMBER 1950

**300441**

FROM: CINCFC TOKYO JAPAN

TO: DEP GOVERNOR US CIVIL ADM RYUKYUS OKINAWA .....ROUTINE

**Z-31551**

MISTER BENNETT OSOB HUGHES CMA VISITING FORESTRY  
EXPERT CMA STD TOKYO ZERO THREE ZERO ZERO HOURS TWO JANUARY ONE NINE  
FIVE ONE REQST BILLETING ARRANGEMENTS BE MADE AND TRANSPORTATION MEET  
PLANE

OFFICIAL:

*337*  
*US*

APPROVED:

K. B. BUSH  
Brigadier General USA  
Adjutant General

ROBERT F. GLIM  
Colonel ARTY  
Chief, Ryukyus CA Section

COPIES TO:

G-1

MEMO FOR RECORD:

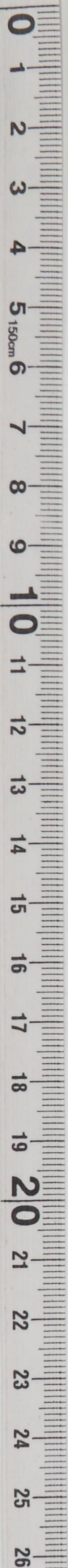
Inst msg advises Deputy Governor Ryukyus of arrival of Mr.  
B. O. Hughes of the US Forest Service, Department of Agriculture, who  
is requested visiting expert who will assist US Civil Administration of  
the Ryukyu Islands in forestry survey technique.

D. COBEN  
26-7904



UNCLASSIFIED

G-1



G-1

GENERAL HEADQUARTERS  
FOR THE EAST COMMAND  
OUTGOING MESSAGE  
UNCLASSIFIED  
NOV 29/68  
30 DECEMBER 1968

Handwritten notes and signatures in a grid-like structure, possibly a routing slip or administrative form.

300441

FROM: DIRECTOR TOKYO JAPAN  
TO: THE GOVERNOR US CIVIL AVM KYUKYUO GIMARA ..... ROUTINE  
MISTER BENNETT GORR HUGHES AND VISITING FORESTRY  
EXPERT ONE AND TOKYO JAPAN THREE ZERO HOURS TWO JANUARY ONE NINE  
NINE ONE EAST HILLINGHO ARRANGEMENTS BE MADE AND TRANSPORTATION MEANS

5-31551

OFFICIAL: [Signature]  
APPROVED: [Signature]

ROBERT V. GELIN  
Colonel ARMY  
Chief, Kyukyus CA Section

E. D. BUSH  
Adjutant General  
Brigadier General USA

COPIES TO:

G-1

MEMO FOR RECORD:

Last msg advise Deputy Governor Kyukyus of arrival of Mr. B. O. Hughes of the US Forest Service, Department of Agriculture, who is requested visiting expert who will assist US Civil Administration of the Kyukyus Islands in forestry survey techniques.



D. CORNER  
26-2904

UNCLASSIFIED

*MB* *337 Visits*

VISIT OF TURKISH OFFICERS TO GHQ, Friday, 29 December 1950:

Lt. Gen. Sahap Gurler, Inspector General, Turkish Army  
Colonel Sirri Oktem, Chief, Turkish Liaison Group, Tokyo.  
Colonel Fay Smith, U.S. Army JUSAG, Ankara, Turkey.  
1st Lt. Ragip Ulugbay, Turkish Liaison Group, Interpreter

-----

- 1415 - Brigadier General Wright, G-3
- 1430 - Major General Allen, DCofS, UNC
- ✓ 1515 - Major General Eberle, G-4
- 1700 - Major General Beiderlinden, G-1

*E. E. F.*  
E. E. F.

GENERAL HEADQUARTERS, FAR EAST COMMAND  
ADJUTANT GENERAL'S OFFICE  
RADIO AND CABLE CENTER

|                   |                                     |
|-------------------|-------------------------------------|
| G 4 ROUTING       |                                     |
| A C / S G         | <i>[initials]</i>                   |
| D C / S G         | <i>[initials]</i>                   |
| EXECUTIVE         | <i>[initials]</i>                   |
| P + O             | <input checked="" type="checkbox"/> |
| C + R E           |                                     |
| S U P P L Y       |                                     |
| P E T R O L E U M |                                     |
| K E A             |                                     |
| MIN               | <i>[initials]</i>                   |

TER/mrb *[initials]*

28 Dec 50

# INCOMING MESSAGE

*Confidential*  
ROUTINE

FROM : CG RYCOM OKINAWA  
TO : CINCPE TOKYO JAPAN  
NR : Y 23426

*337 Inits*

In compliance with Z 30695, Gens Beightler and Gen Hinds, Dep Gov and Civil Administrator of the Ryukyus respectively, expect to proceed to Tokyo on 22 Jan with 7 advisors. Total in party 9. Compl names of party will be furn later.

NO SIG

ACTION : RYUKYUS CA  
INFORMATION : COMMANDER IN CHIEF, CHIEF OF STAFF, VISITOR'S BUREAU, G-1, G-4, AG, CTV I & E, COMPTROLLER, PUBLIC H & W, ECON & SCI

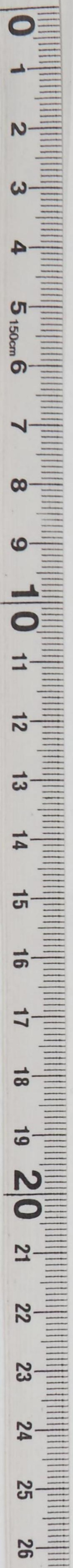
16155

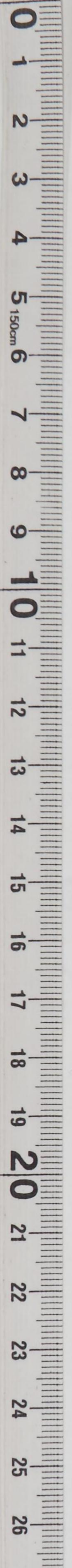
ROUTINE  
*CONFIDENTIAL*

TOO : 280130 Z  
MCN : 54805

Paraphrase not required. Handle as correspondence of classification carried hereon per paragraphs 17a(1)(2) and 41c(2)(3) and g(1), AR 380-5, 15 November 1949.

COPY No.





GENERAL HEADQUARTERS FAR EAST COMMAND  
ADJUTANT GENERAL'S OFFICE  
RADIO AND CABLE CENTER

# INCOMING MESSAGE

TER/arp

*Confidential*  
ROUTINE

28 Dec 50

FROM : CG RYON OKINAWA

TO : CIMPUS TOKYO JAPAN

NR : Y 23420

In compliance with S 3062, Gen's Belcher and Gen Bisco  
Gov and Civil Administrator of the Ryukyu respectively, expect to  
proceed to Tokyo on 28 Jan with 7 advisors. Total in party 8.  
Some names of party will be furnished later.

NO SIG

ACTION : RYUKYU-CA

INFORMATION : COMMANDER IN CHIEF, CHIEF OF STAFF, VISITOR'S BUREAU,  
D-1, G-4, AD, CIV I & R, COMPTROLLER, PUBLIC R & W,  
BOM & SCI

RECEIVED  
29 DEC 1950  
G-4  
GH O

*Confidential*  
ROUTINE

1015

Reference not required. Handle as correspondence  
unless noted herein for special instructions (a)(2) and (a)(3)  
AS 300-2, 13 November 1949



337 Visits

le

CONFIDENTIAL

Lt Col Anderson 26-6044

and Etajima  
Staff Visit to Ordnance Installations in Nagoya  
Ord 28 Dec 50

G-4

3

The deficient procedures and conditions listed under Parts III and IV of the attached report of a staff visit to Nagoya and Etajima are considered of sufficient import to warrant further examination to determine the propriety of formal remedial action by GHQ. Accordingly it is requested that each item be made the subject of further study and that corrective action where appropriate be initiated by the Ordnance Officer.

2 Incls  
n/c

G. L. S.

M/R: 1. C/N (1), 26 Dec 50, Ord O to G-4, subj: Staff Visit to Nagoya and Etajima, forwards a report of above staff visit for notation and return. Four pertinent recommendations to eliminate present undesirable conditions are made. Action taken to implement these recommendations consists of verbal advice to JLCCM to take any possible corrective action.

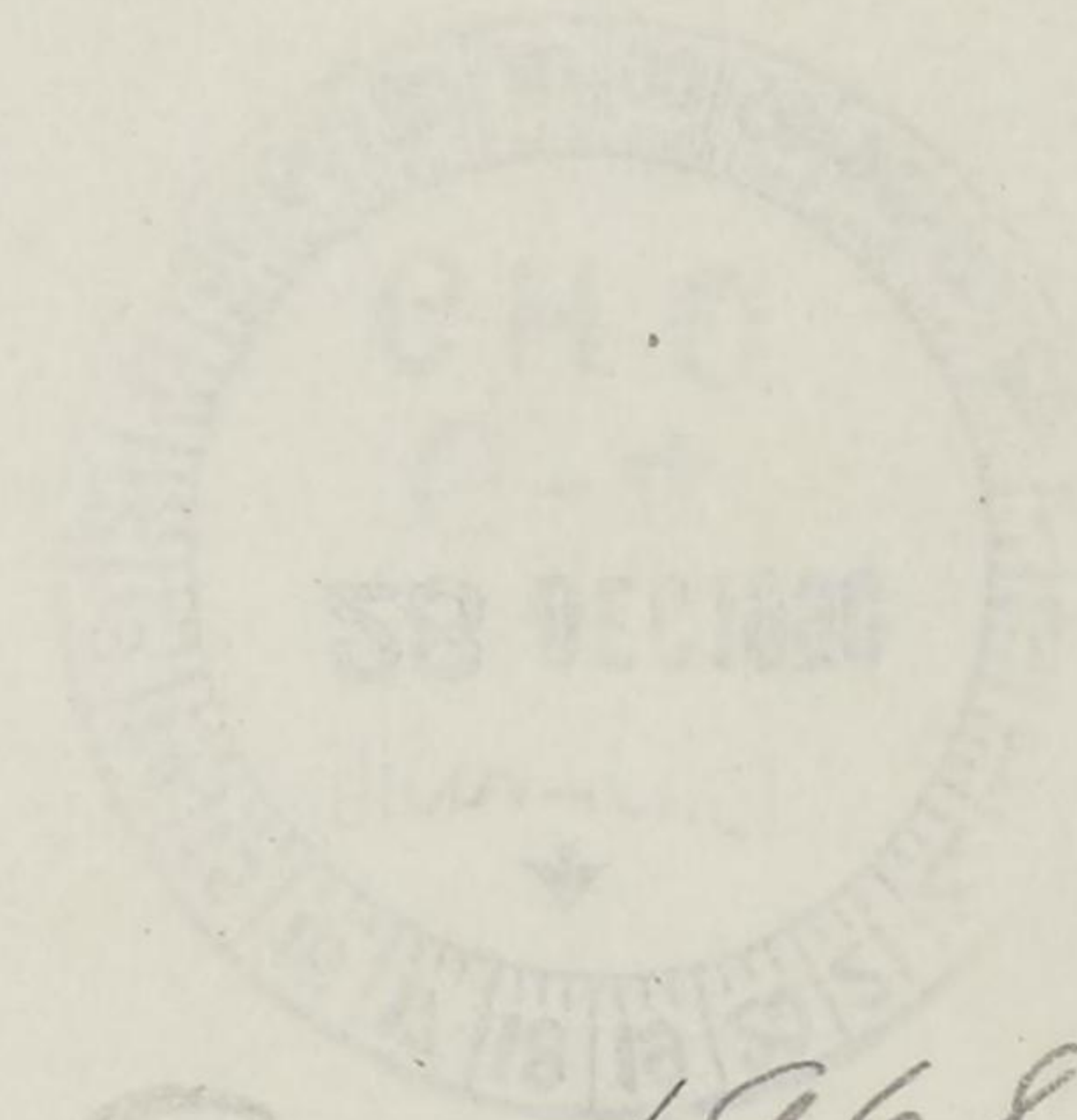
2. This appears to be a rather haphazard method of concluding the matter and should be accepted only as a minimum interim effort to correct deficient procedures.

3. Instant C/N advises Ord O to study problems further ~~and~~  
~~and~~ ~~action~~ recommended.

4. Coordination not necessary.

5. Action complete on G-4 JN 19683.

RHA            26-6044 JHFB            26-6456 BK            26-6043 (Div Chief)



CONFIDENTIAL

19683  
Sup  
ES

G-4 File



*le*

*W  
M  
M*

CONFIDENTIAL

Staff Visit to Ordnance Installations in Nagoya and Saigon  
28 Dec 50

The deficient procedures and conditions listed under Part III and IV of the attached report of a staff visit to Nagoya and Saigon are considered of sufficient importance to warrant further examination to determine the propriety of formal remedial action by G-4. Accordingly it is requested that each item be made the subject of further study and that corrective action where appropriate be initiated by the Ordnance Officer.

2 Encls  
n/a

1. C/N (1), 28 Dec 50, Ord O to G-4, subj: Staff Visit to Nagoya and Saigon, forwards a report of above staff visit for notation and return. Four pertinent recommendations to eliminate present undesirable conditions are made. Action taken to implement these recommendations consists of verbal advice to JICOM to take any possible corrective action.

2. This appears to be a rather haphazard method of conducting the matter and should be accepted only as a minimum interim effort to correct deficient procedures.

3. Instant C/N advises Ord O to study problems further ~~and report thereon as recommended.~~

4. Coordination not necessary.

5. Action complete on G-4 14 1963.

RHA 28-6044 JHRB 28-6486 BH 28-6043 (Div CHAF)



*20  
21  
22  
23  
24  
25  
26*

CONFIDENTIAL

G-4 File



337

*[Handwritten mark]*

Staff Visit

Capt Alford 26-6174

G-4

G-1

26 Dec 50

Thru: COM

1 Request approval and issuance of orders to send Lt Colonel James M. Clark, 05221, USMC, on TDY to the 1st Marine Division in Korea for approximately three (3) days, on or about 3 January 1951, in connection with G-4 activities pertaining to logistic support of the U.S. Marine Corps. Request travel by military aircraft be authorized.

----- G. L. E. -----

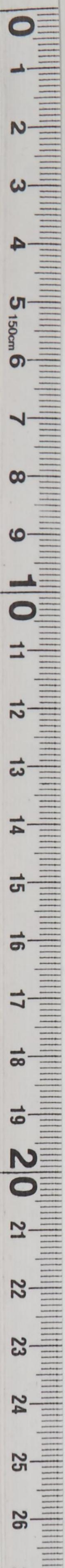
MEMORANDUM FOR RECORD

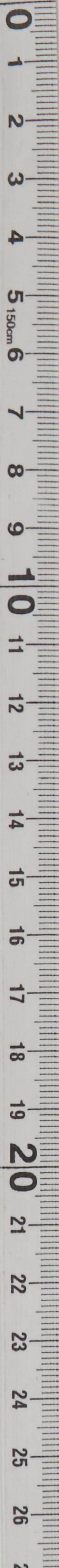
- 1. This staff visit authorized by Colonel Hamlett to enable Col Clark to observe the status of supply of the Marine Corps in Korea.
- 2. G-4 action complete.

*[Handwritten signature]*  
 B.M.A. \_\_\_\_\_ 26-6174  
 J.E.C. \_\_\_\_\_ 26-6026



*[Handwritten signature]*  
19665  
*[Handwritten initials]*





*10*  
Capt Alfred B. 56-6174  
Sd Pac 30

*Staff Visit*  
*10-1*  
*Thru: COM*

Request approval and issuance of orders to send Lt Colonel James M. Clark, USMC, on TDY to the 1st Marine Division in Korea for approximately three (3) days, on or about 7 January 1951, in connection with G-4 activities pertaining to logistical support of the U.S. Marine Corps. Request travel by military aircraft be authorized.

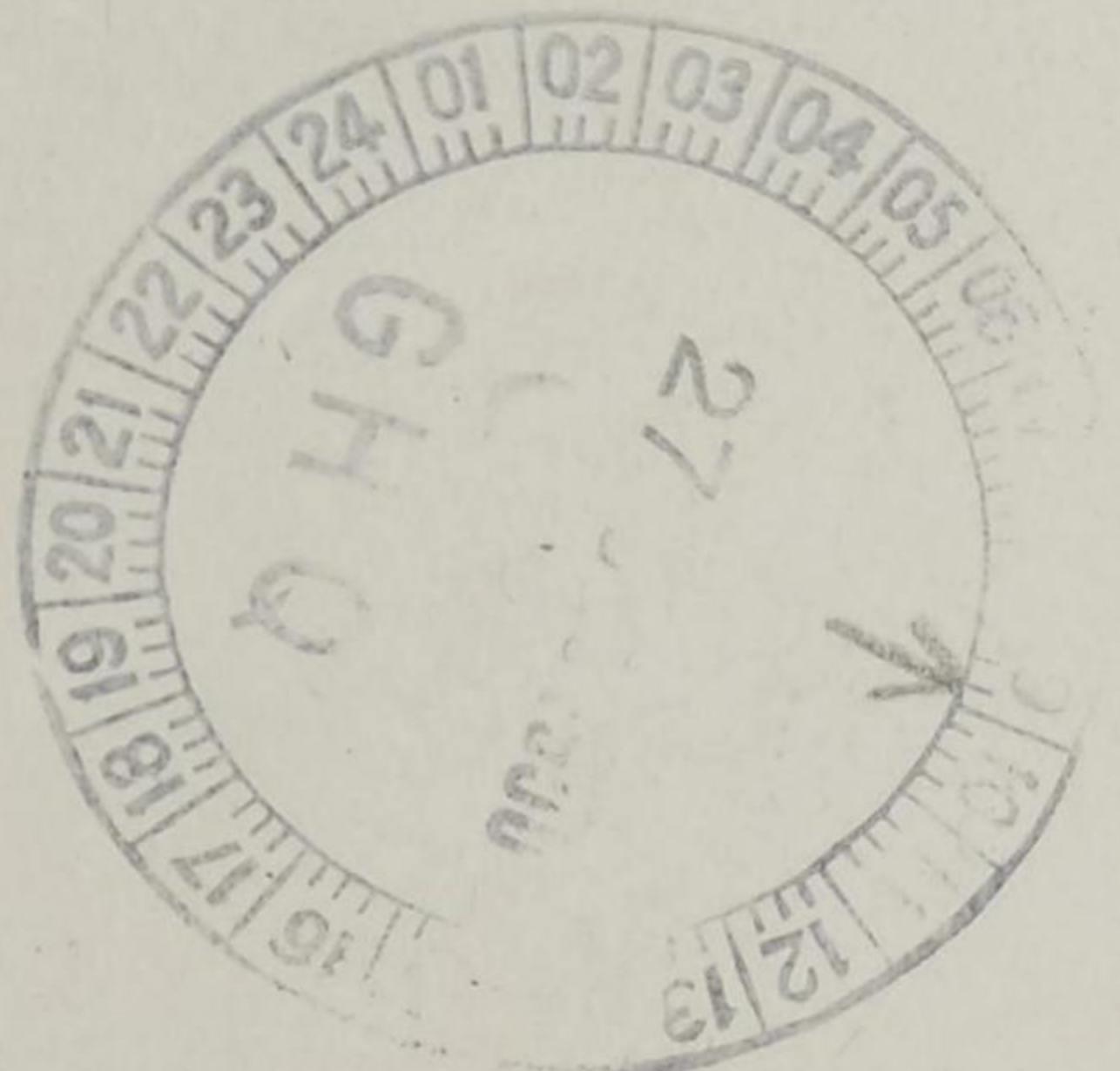
----- G. I. E. -----

MEMORANDUM FOR RECORD

1. This staff visit authorized by Colonel Hamlett to enable Col Clark to observe the status of supply of the Marine Corps in Korea.

2. G-4 action complete.

*10-1*  
P.M.A. \_\_\_\_\_ 56-6174  
J.S.C. \_\_\_\_\_ 56-6086



*10-1*  
10882

GD P&O NMW/JA/bc

G-4 PLANS AND OPERATIONS DIVISION

*337 Visits*

22 December 1950

MEMO FOR RECORD:

SUBJECT: Report of Staff Visit to Civil Affairs Regions

1. By C/N 1, 22 Nov 50, IG forwards to G-1, G-3 and G-4 for information a report of a staff visit to Civil Affairs Regions.
2. IG states that all problems noted within the report have been brought to the attention of the appropriate technical services.
3. No action is required by G-4.
4. Recommend that G-4 initial C/N 1 to indicate that the report has been noted.
5. Within established policy.
6. Completes action on JN 19435.

*JJA* 26-6033

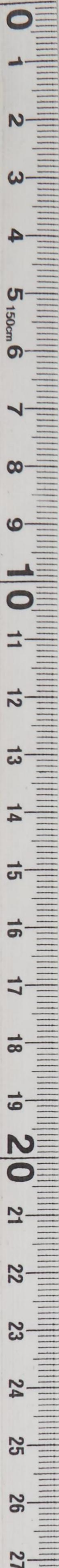
NMW 26-6444

*nmw*

JN 19435

*So* *Pro*

G-4 FILE



SECRET

Col. Hartman  
26-6390

Report of Staff Visit to Civil Affairs Regions

IG

G1  
G3 (in turn)  
G4

22 November 1950

1. 1. Attached is copy of approved report of Staff Visit to Civil Affairs Regions and Other Installations in Southwestern Japan, dated 14 November 1950, submitted for your information at the direction of the Chief of Staff.
2. Summary. This report is divided into two parts. Part I deals with Civil Affairs Regions and National Police Reserve Activities (Annex). Part II deals with other installations.

PART I

- a. Staff visits were made to Tokai-Hokuriku, Kinki, Kyushu, Chugoku, and Shikoku Civil Affairs Region Headquarters and to 14 NPR camps and two selected sites assigned to these regions.
- b. No major problems were reported by any of the regions with regard to their normal Civil Affairs functions other than the problem of medical support and evacuations which concerned the Chugoku and Shikoku Regions at Kure and Takamatsu, respectively. This problem, always troublesome, had been aggravated by the withdrawal of tactical units from the area and the presence of American personnel in isolated NPR camps.
- c. The general impression of Annex camps and field activities is that American personnel have done an outstanding job of improvisation. The attitude of Japanese personnel was that of complete cooperation and intense interest. Camps could profit by clearer understanding of the mission and by more positive supervision by a higher headquarters. The former, it is said, cannot be given at this time; the latter is in process of correction by provision of skeletal staffs at region level. Present training program extends only 13 weeks. Failure to carry on into advanced training can lead to loss of interest and ultimate lowering of American prestige which at present is believed to be high in the group.
- d. Deficiencies noted in the Annex program include need for better fire protection, need for policy on operation of post exchanges, need for extra allowance of fatigues, need for distribution of training aids, lack of uniformity in camp standards of cleanliness, discipline, and the like, and inequality of distribution of medical supplies.
- e. Informal verbal report to the Chief, Civil Affairs Section, and to his Executive on all matters reported above has been made. Corrective action has been initiated where appropriate.

G4 COPY

SECRET

SECRET

Col. Hartman  
25-6390

Report of Staff Visit to Civil Affairs Regions

22 November 1950

GI  
G3 (in turn)  
G4

I. Attached is copy of approved report of Staff Visit to Civil Affairs Regions and Other Installations in Southwestern Japan, dated 14 November 1950, submitted for your information at the direction of the Chief of Staff.

2. Summary. This report is divided into two parts. Part I deals with Civil Affairs Regions and National Police Reserve Activities (Annex). Part II deals with other installations.

PART I

a. Staff visits were made to Tokai-Hokuriku, Kinki, Kyushu, Chugoku, and Shikoku Civil Affairs Region Headquarters and to 14 NFR camps and two selected sites assigned to these regions.

b. No major problems were reported by any of the regions with regard to their normal Civil Affairs functions other than the problem of medical support and evacuations which concerned the Chugoku and Shikoku Regions at Kure and Takamatsu, respectively. This problem, always troublesome, had been aggravated by the withdrawal of tactical units from the area and the presence of American personnel in isolated NFR camps.

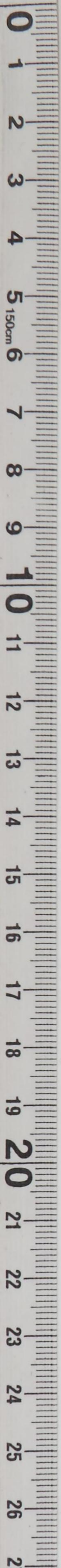
c. The general impression of Annex camps and field activities is that American personnel have done an outstanding job of improvisation. The attitude of Japanese personnel was that of complete cooperation and intense interest. Camps could profit by clearer understanding of the mission and by more positive supervision by a higher headquarters. The former, it is said, cannot be given at this time; the latter is in process of correction by provision of skeletal staffs at region level. Present training program extends only 13 weeks. Efforts to carry on into advanced training can lead to loss of interest and ultimate lowering of American prestige which at present is believed to be high in the Group.

d. Deficiencies noted in the Annex program include need for better fire protection, need for policy on operation of post exchanges, need for extra allowance of fatigues, need for better distribution of training aids, lack of uniformity in camp standards of cleanliness, discipline, and the like, and inequality of distribution of medical supplies.

e. Informal verbal reports to the Chief, Civil Affairs Section, and to his Executive on all matters reported above has been made. Corrective action has been initiated where appropriate.

G4 COPY

1497  
16 SECTION  
GHO FEC



SECRET

Report of Staff Visit to Civil Affairs Regions

IG

G1  
G3 (in turn)  
G4

22 November 1950

1.  
(Cont'd)

PART II

f. Staff visits were made to the 395th, 35th, and 118th Station Hospitals, to the major Army units in the Sasebo area as well as to the 3912th U. S. Fleet Activity at Sasebo, to the 3d Infantry Division, Headquarters, Camp Chickamauga, Ashiya AFB, 8156th Service Unit at Moji, and the Kure Signal Service Detachment.

g. The principal problem raised by the 35th and 395th Station Hospitals was the slowness of personnel records on patients to come through. The 35th reported that only ten of the 800 patients in the hospital at the time of the visit had pay cards; approximately 40 had service records. The 395th reported that of 500 patients, approximately 150 had service records.

h. The 118th Station Hospital reported inadequacy of latrine facilities; 267 men were using one latrine with only eight shower heads. There was noted also a bad fire hazard in the tent camp in rear of the hospital due to inadequacy of fire fighting equipment such as buckets.

i. Six Army units and one Navy activity were found to be operating in the Sasebo area. Closest headquarters exercising overall command of Army units is JLCOM. No major conflict has developed during the rush of the summer due to spirit of cooperation prevailing among the several commanders concerned. Operations could have been simplified and expedited had Army and Navy port staffs been combined under one head. Other problems which concerned Army commanders include the discontinuance of welfare funds, the non-receipt of orders by mail on men transferred from hospitals, the number of LWC's carried by the Replacement Battalion at Sasebo, and need for determination of capacity for Sasebo hospital and the provision of men and equipment.

j. Headquarters, 3d Infantry Division, was concerned about the provision of winter clothing for some 5,500 ROK troops assigned to the division. A telephone call to the IG Section, GHQ, established that the clothing would be available.

k. Problems at Camp Chickamauga concerned post accounts not in condition for audit and plans for expansion of troop housing which involved conversion of existing recreational facilities.

SECRET



SECRET

Report of Staff Visit to Civil Affairs Regions

IG

G1  
G3 (in turn)  
G4

22 November 1950

1.  
(Cont'd)

1. The problems recounted above have been discussed with the Medical, Quartermaster, Special Services, and Engineer Sections and with the Office of the Comptroller, as appropriate.

3. Request return to this office for file.

1 Incl  
Cpy of Rpt of  
Staff Visit

----- E. A. Z. -----



SECRET

SECRET

Report of Staff Visit to Civil Affairs Regions

22 November 1950  
GI  
G3 (in turn)  
G4

1. The problems recounted above have been discussed with the Medical, Quartermaster, Special Services, and Engineer Sections and with the Office of the Comptroller, as appropriate.

(Cont'd)

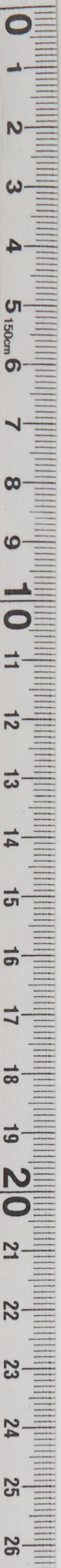
2. Request return to this office for file.

I Incl  
Copy of Rpt of  
Staff Visit

H. A. S.



SECRET



*337 visits*

*le*

Staff Visit

Capt Alford 26-6174

G-4

G-1  
COM

22 Dec 50

Thru:

1 Request approval and issuance of orders to send the following officers on TDY for approximately four (4) days to Pusan and Seoul, Korea and such other points in the Eighth Army area as necessary to accomplish their mission, on or about 27 December 1950, in connection with Korean Economic Aid, G-4, activities. Request travel by air be authorized.

Lt Colonel Harry A. Berger, Inf, O-305287  
Lt Colonel Melvin A. Goers, GSC, O-25265

----- G. L. E. -----

MEMORANDUM FOR RECORD

15 Dec 50

1. Above staff visit has been requested by Colonel Hensey.

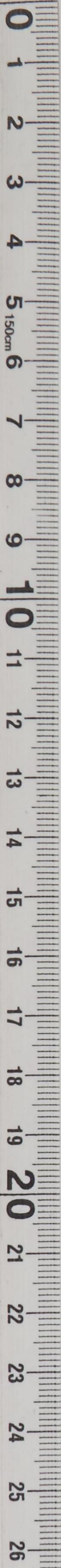
2. Purpose of this trip is to visit Civil Assistance Section, 8th Army and field agencies in Korea in order to assist in establishment of reporting system for KEA civilian supply transactions, as directed in GHQ UNC letter AG 400(14 Nov 50)GD, dated 14 Nov 1950; coordination with ECA Mission in Korea with respect to ECA - Army program.

3. G-4 action complete.

B.M.A. *le* 26-6174

J.E.C. *le* 26-6026

*Admin*  
*19474*  
*ES*



*Staff Visit*

*Capt Alfred 25-6174*

*Staff Visit*

*22 Dec 50*

*0-1  
Thru: COM*

*0-1*

Request approval and issuance of orders to send the following officers on TDY for approximately four (4) days to Pusan and Seoul, Korea and other points in the ROK Army area as necessary to accomplish their mission, on or about 27 December 1950, in connection with Korean Economic Aid, G-4 activities. Request travel by air be authorized.

*1st Colonel Harry A. Berger, Inf, O-302887  
1st Colonel Edwin A. Gares, GSC, O-32862*

----- *O. I. B.* -----

*22 Dec 50*

MEMORANDUM FOR RECORD

1. Above staff visit has been requested by Colonel Henney.
2. Purpose of this trip is to visit Civil Assistance Section, 8th Army and field agencies in Korea in order to assist in establishment of reporting system for KRA civilian supply transactions, as directed in GHO UNC Letter AG 100 (11 Nov 50)GD, dated 11 Nov 1950; coordination with ECA Mission in Korea with respect to ECA - Army program.
3. G-4 action complete.

*B.M.A. 25-6174*  
*J.E.C. 25-6056*



G-4 ROUTING

|           |  |
|-----------|--|
| AC/SG-4   |  |
| AC/SS-4   |  |
| EXECUTIVE |  |
| O         |  |
| C+RE      |  |
| SUPPLY    |  |
| PETROLEUM |  |
| KEA       |  |

*[Handwritten initials]*  
ADMIN FROM *[Handwritten initials]*

GENERAL HEADQUARTERS  
FAR EAST COMMAND

OUTGOING MESSAGE

CE JCC/MCH/AHM/bmc

UNCLASSIFIED

*337 Units*  
**211149**

CINCPAC TOKYO JAPAN

TO: CG MARBO GUAM. . . . . PRIORITY

**Z-30488** Reference your message C 10672 MBXAG, DTG 192300 Z.  
Lt Col Frank Gilchrist and party departed Tokyo 201430 Z. ETA  
Guam 212200 Z.

OFFICIAL:

APPROVED

K. B. BUSH  
Brigadier General, USA  
Adjutant General

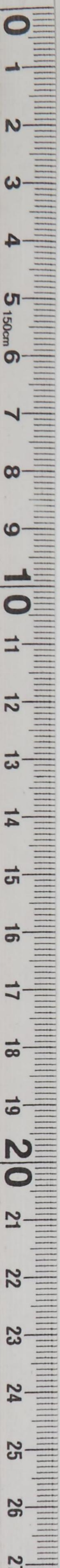
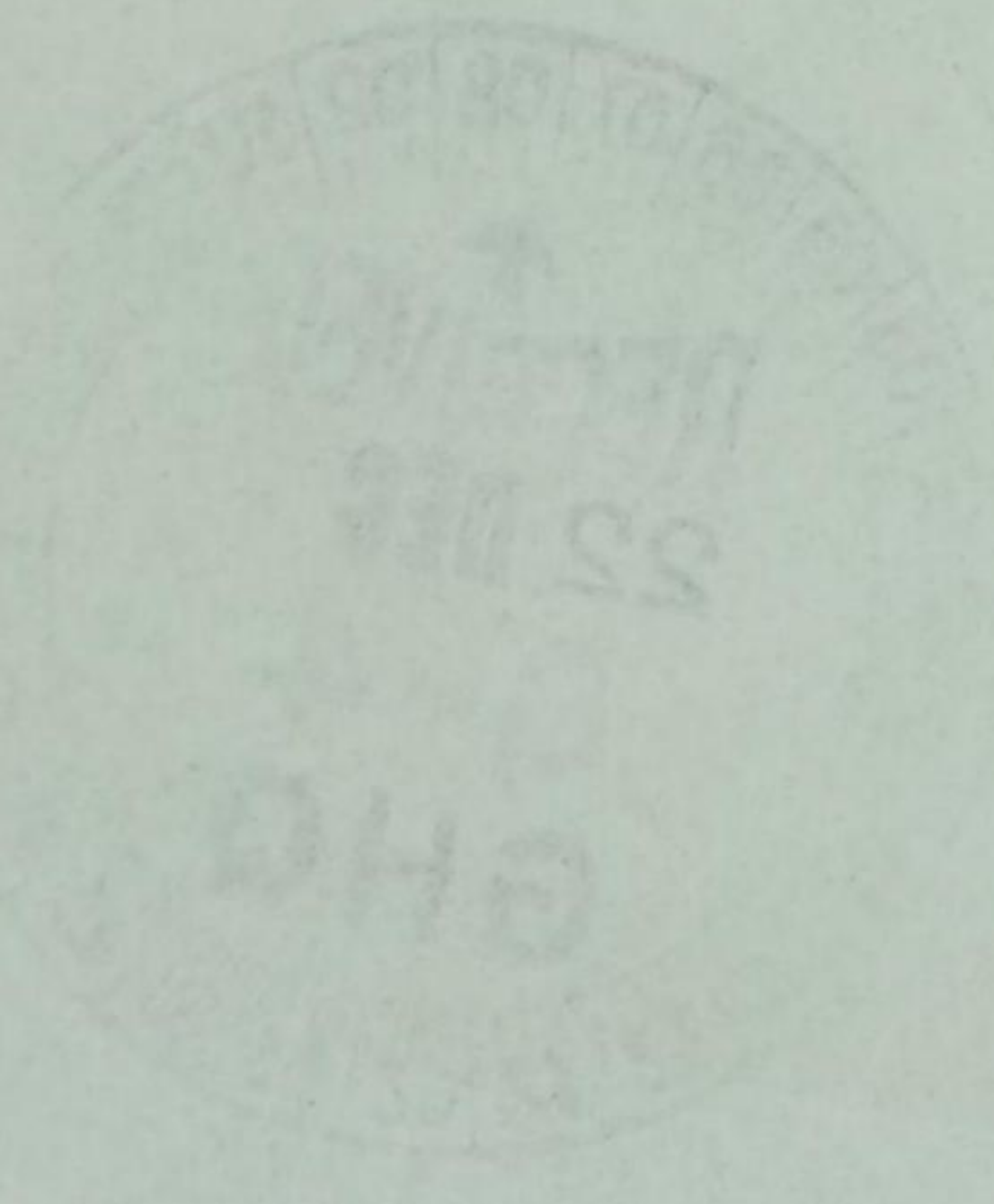
J. G. CHRISTIARSEN  
Major General, USA  
Engineer

Copies to:  
G-1  
G-4  
Engr (return)

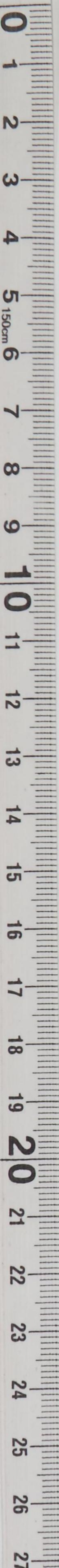
Memorandum for Record:

1. Referenced message requests confirmation of ETD Tokyo and ETA Guam of Lt Col Frank Gilchrist and party.
2. Instant message accomplishes above.

A.H. McG.



G-4



|         |
|---------|
| ROUTING |
|         |
|         |
|         |
|         |
|         |
|         |
|         |
|         |
|         |

*Handwritten signature*  
211149

TO: **2-3048**  
FROM: **211149**  
Reference your message of 10/25/50, HQ USAF, and Col Frank Elliptical and party departed Tokyo 20/10/50.

APPROVED

J. G. CHRISTIANSEN  
Major General, USAF  
Colonel

K. B. BARK  
Major General, USAF  
Major General

Section 501  
5-1  
5-2  
5-3 (return)

Instructions for Record:

1. Referenced message requests confirmation of HQ USAF and HQ USAF of Col Frank Elliptical and party.
2. Latest message accomplished above.

A. H. HOG



GENERAL HEADQUARTERS, FAR EAST COM. AND  
ADJUTANT GENERAL'S OFFICE  
RADIO AND CABLE CENTER

| G-4 ROUTING      |                                     |
|------------------|-------------------------------------|
| AC/SG4           |                                     |
| AG/SG4           |                                     |
| ADJUTANT GENERAL | <i>dl</i>                           |
| PRO              | <input checked="" type="checkbox"/> |
| C+RE             |                                     |
| SUPPLY           |                                     |
| PETROLEUM        |                                     |
| SEA              |                                     |
| ② MAIN           | <i>J</i>                            |

*337*  
*units*

# INCOMING MESSAGE

*BFF/lan*

UNCLASSIFIED  
PRIORITY

20 Dec 50

FROM : CG MARBO GUAM  
TO : CINCPAC TOKYO JAPAN  
NR : C 10872 MBKAG

URNIG Z 30095. Rqst confirmation departure and arrival  
Lt Col Frank Gilchrist and party.

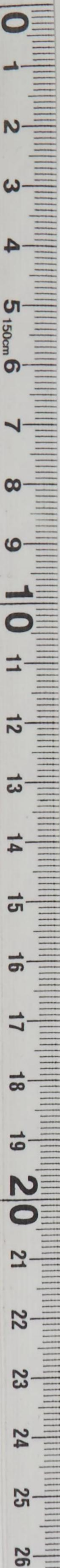
NO SIG

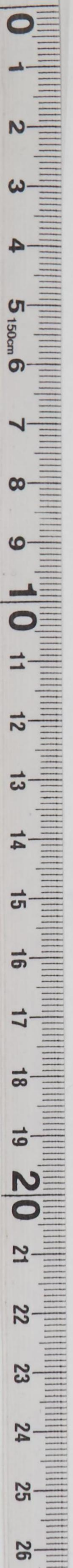
ACTION : ENGINEER  
INFORMATION : G-1, G-4, AG

10984

PRIORITY  
UNCLASSIFIED

TOO : 192300 Z  
NCH : AUB 113/20





GENERAL HEADQUARTERS, FAR EAST COMMAND  
ADJUTANT GENERAL'S OFFICE  
RADIO AND CABLE CENTER

INCOMING MESSAGE

FM/Jan

UNCLASSIFIED  
PRIORITY

30 Dec 50

FROM : DE BRNO GEAR  
TO : CHINESE TOWNS JAPAN  
INFO : C LOGS MESSAGE

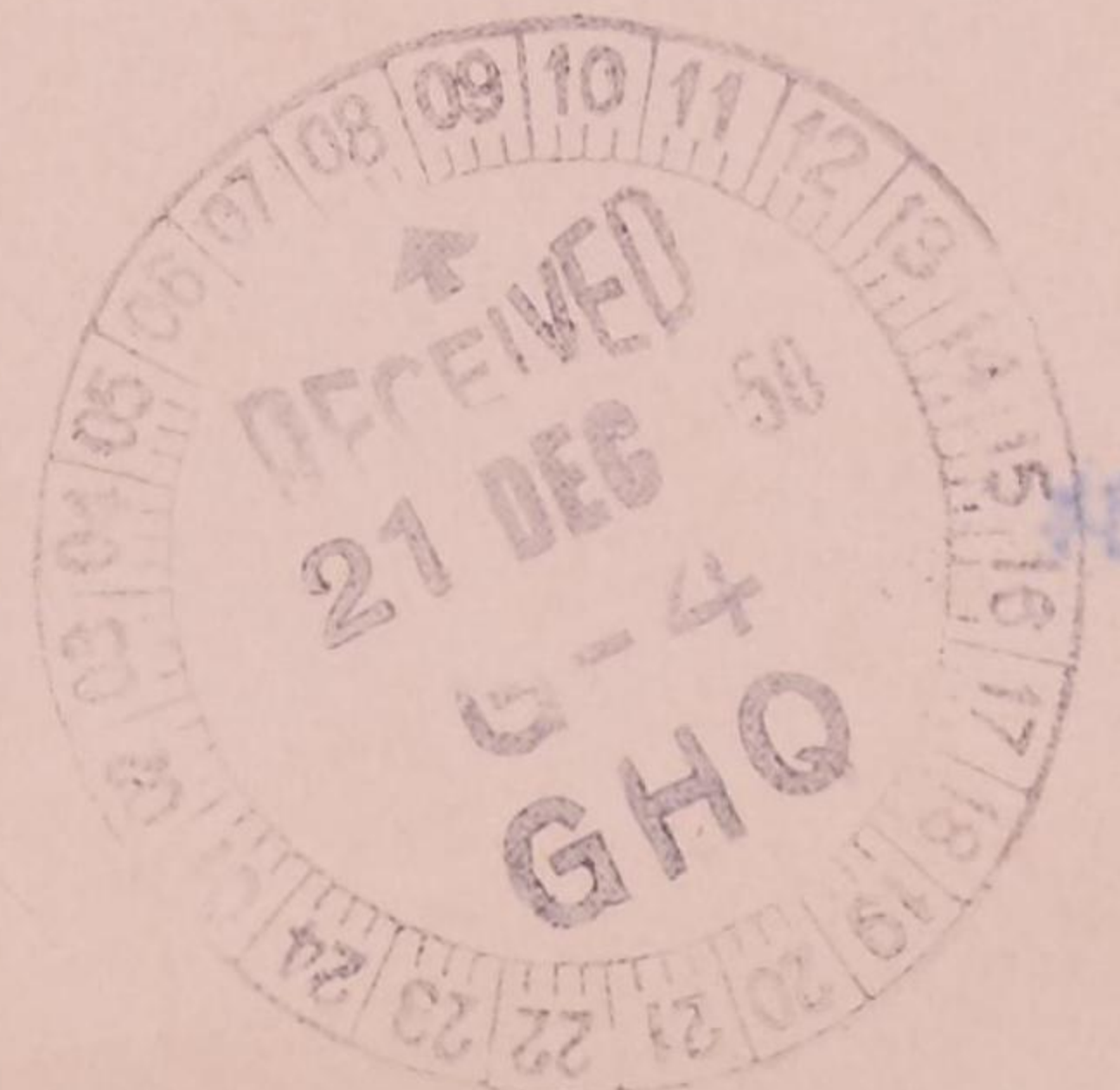
RE: C-47, 2005. Has confirmed departure and arrival  
in Cal. from Okinawa and back.

NO BIZ

ACTION : ENGINEER  
INFORMATION : G-1, G-4, AG

TOO : 102300 Z  
MOE : AUG 123/50

UNCLASSIFIED  
PRIORITY



102300



GENERAL HEADQUARTERS, FAR EAST COMMAND  
ADJUTANT GENERAL'S OFFICE  
RADIO BRANCH

| G-4 ROUTING |                                     |
|-------------|-------------------------------------|
| AGS G-      |                                     |
| DAC G-      |                                     |
| EXECUTIVE   | <i>M</i>                            |
| P+O         | <input checked="" type="checkbox"/> |
| C+RE        |                                     |
| SUPPLY      | <input checked="" type="checkbox"/> |
| PETROLEUM   |                                     |
| KEA         |                                     |
| JDT         | <i>h</i>                            |

*337  
Minutes*

# INCOMING MESSAGE

*Secret*  
PRIORITY

20 Dec 50

*Print*

FROM : CHIEF JAMMAT ANKARA TURKEY  
 TO : CINCPC (CINCUNC) TOKYO JAPAN  
 INFO : DEPTAR (G-3) WASH DC  
 NR : DAP 8344

REURAD CX 51465.  
It Gen Sahap Gurler and Col Fay Smith, TUSAG, will depart  
 Ankara 23 Dec. ETA Tokyo 29 Dec 0500 hours. Major Cevdet Xeybek,  
 Turk AF, will accompany as interpreter.

ARNOLD

ACTION : G-1

INFORMATION : COMMANDER IN CHIEF, CHIEF OF STAFF, VISITORS BUREAU,  
 G-2, G-3, G-4, AG, JSPOG, SIGNAL, LN SEC UNC

10501

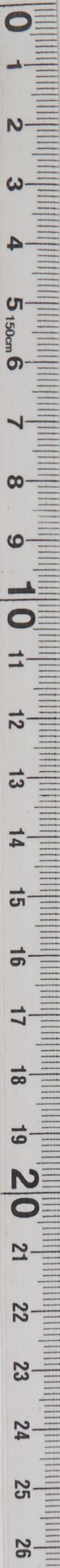
PRIORITY  
*Secret*

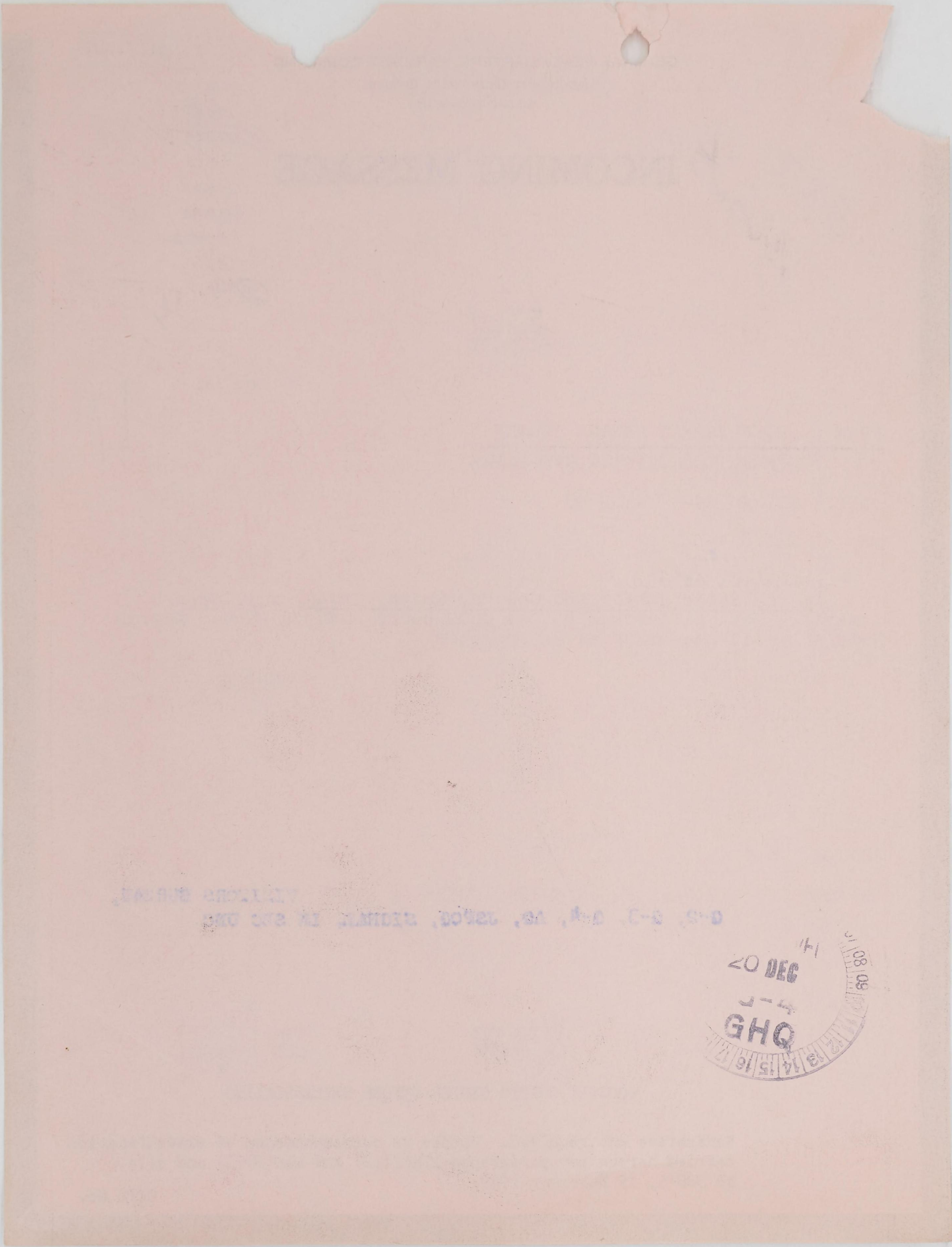
TOO : 181515 Z  
MON : 52911

CONSULT CRYPTO CENTER BEFORE DECLASSIFYING

Paraphrase not required. Handle as correspondence of classification  
 carried hereon per paragraphs 17a(1)(2) and 41c(2)(3) and g(1),  
 AR 380-5, 15 November 1949.

COPY No.





Faint, illegible markings on the paper, possibly bleed-through from the reverse side.

20 DEC 1947  
GHQ  
Circular stamp with a date and location. The date is 20 DEC 1947 and the location is GHQ. The stamp also includes a circular scale with numbers 1 through 17.

GENERAL HEADQUARTERS, FAR EAST COMMAND  
ADJUTANT GENERAL'S OFFICE  
RADIO AND CABLE CENTER

G 4 ROUTING

|           |                                     |
|-----------|-------------------------------------|
| AC/SG-4   |                                     |
| OAC/SG-4  |                                     |
| EXECUTIVE |                                     |
| P+O       | <input checked="" type="checkbox"/> |
| C+RE      |                                     |
| SUPPLY    | <input checked="" type="checkbox"/> |
| PETROLEUM |                                     |
| SEA       |                                     |
| 19 03 50  | <i>ES</i>                           |

# INCOMING MESSAGE

*Restricted*  
ROUTINE

FROM : DEPTAR (G-4/P-2) WASH DC  
 TO : CINCPAC TOKYO JAPAN (FOR COL N I FOCKS G-3)  
 NR : W 99129

*337 Visits*

At reqst of Dr Johnson, Torreson, Boyce, and Metzner being shipped to FECOM, ETD 27 Dec. Assumed that shpmt has necessary military approval by your hqs.

NO SIG

ACTION : G-3

INFORMATION : COMMANDER IN CHIEF, CHIEF OF STAFF, VISITOR'S BUREAU,  
G-1, G-2, G-4, AG

09831

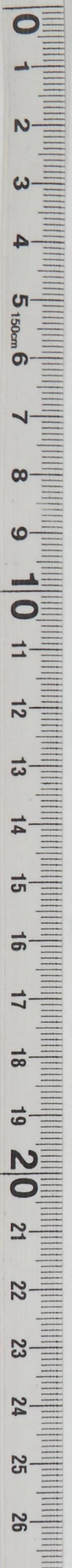
ROUTINE  
*Restricted*

TOO : 182047 Z  
MCN : 52704

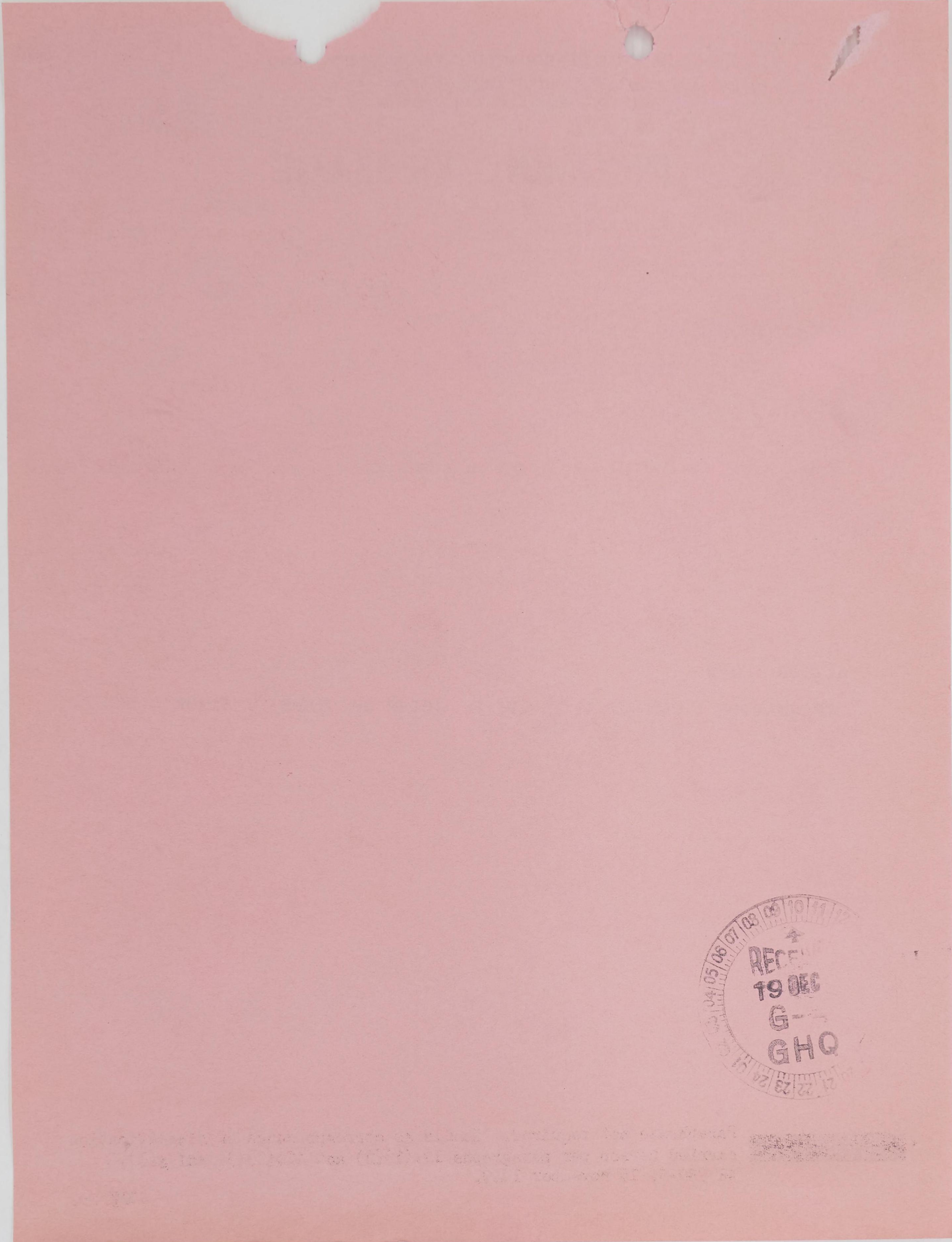
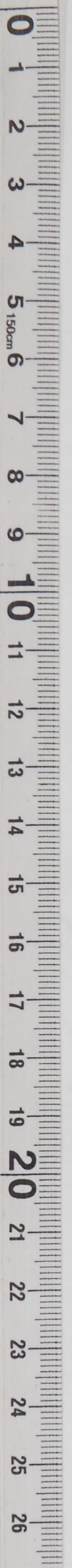


Paraphrase not required. Handle as correspondence of classification carried hereon per paragraphs 17a(1)(2) and 41c(2)(3) and g(1), AR 380-5, 15 November 1949.

COPY No.

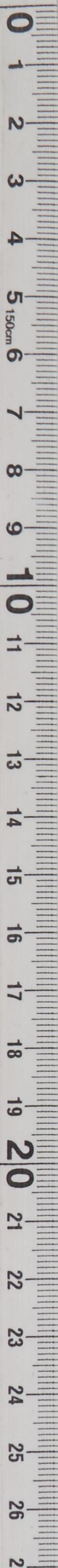


DECLASSIFIED  
Authority *1110975029*



RECEIVED  
19 DEC  
G-  
GHQ

*[Faint, illegible text at the bottom of the page, possibly bleed-through from the reverse side.]*



| G-4 ROUTING |                           |
|-------------|---------------------------|
| AC/SG-4     |                           |
| DAC/SG-4    |                           |
| EXECUTIVE   | <i>[Handwritten mark]</i> |
| P+O         |                           |
| C+RE        |                           |
| SUPPLY      |                           |
| PETROLEUM   |                           |
| KEA         |                           |
| ADMIN       | <i>[Handwritten mark]</i> |

*Restricted*

180919

GENERAL HEADQUARTERS  
FAR EAST COMMAND

OUTGOING MESSAGE

GC-0 JHK/jyn

December 1950

FROM: *(3)* CINCFC TOKYO JAPAN

TO: DA WASH DC . . . . . ROUTINE

INFO: CG ARMY EIGHT KOREA . . . . . ROUTINE

CG JCOM YOKOHAMA JAPAN . . . . . ROUTINE (COURIER)

CG SECOND LOG COMD . . . . . ROUTINE

C x 51537

For G-3, W 99028 DTG 152314Z. Concur. Request ETA's

of off observers be furnd when aval.

OFFICIAL:

APPROVED:

K. B. BUSH  
Brigadier General, USA  
Adjutant General

*Carl H Jark*  
for E. K. WRIGHT  
Brigadier General, GSC  
Assistant Chief of Staff, G-3

*G-4*

DISTRIBUTION:

M/R:

18 Dec 50

- ROK
- QM
- Sig
- Eng
- Chem
- Med
- Trans
- FM
- Ord

1. DA radio W 99028 DTG 152314Z Dec 50 notified CINCFC DA contemplated sending 2 off observers from 3d Army and 2 fr 5th Army to observe opn of Log Commands in Japan if CINCFC concurred.
2. Instant action self-explanatory.
3. COMPLETION: This completes G-3 action.

*King*  
King, 26-5951

*Restricted*

Paraphrase not required. Consult crytocenter before  
decias. Handle ascorr of clas carried hereon per pars  
1730(12) and 116 2(3) and (1) AR 380-5.15 Nov 49.

GENERAL HEADQUARTERS, FAR EAST COM AND  
ADJUTANT GENERAL'S OFFICE  
RADIO BRANCH

# INCOMING MESSAGE

*Restricted*  
ROUTINE

|             |                                     |
|-------------|-------------------------------------|
| G-4 ROUTING |                                     |
| ACSG        | <i>Not Seen</i>                     |
| DAC/SG-1    |                                     |
| EXECUTIVE   | <i>MB</i>                           |
| PCO         | <input checked="" type="checkbox"/> |
| C+R/TLD/ghf | <input checked="" type="checkbox"/> |
| SUPPLY      | <input checked="" type="checkbox"/> |
| PETROLEUM   |                                     |
| KEA         | 16 Dec 50                           |
| ADMIN       | <i>W J</i>                          |

*33 visits*

FROM : DEPTAR (G-3) WASH DC

TO : CINCFE TOKYO JAPAN

INFO : CHF AFF, CG THIRD ARMY FT MCPHERSON GA, CG FIFTH ARMY CHICAGO ILL

NR : W 99028

With your concurrence contemplate sending 2 off observers fr Third Army and 2 fr Fifth Army to observe the organization and opn of logistical commands in Japan and Korea to further training and opn of this type command here. Pd of obsn dependent on opns but estimate apprx 2 weeks. ETA's will be furnished.

BOLTE

ACTION : G-3

INFORMATION : COMMANDER IN CHIEF, CHIEF OF STAFF, G-1, G-2, G-4, AG, JSPOG, SIGNAL

08660

ROUTINE

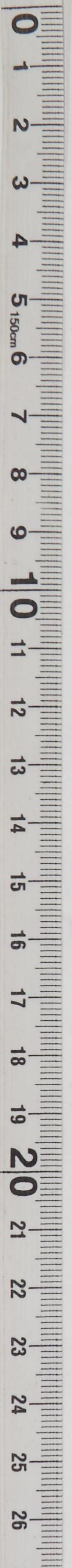
TOO : 152314 Z  
MCN : 52218

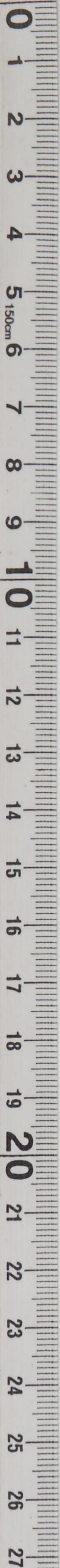
*Restricted*

CONSULT CRYPTO CENTER BEFORE DECLASSIFYING

Paraphrase not required. Handle as correspondence of classification carried hereon per paragraphs 17a(1)(2) and 41c(2)(3) and g(1), AR 380-5, 15 November 1949.

COPY No.





INCOMING MESSAGE

*[Handwritten signature]*

16 Dec 50

FROM: DIRECTOR (3-3) WASH DC

TO: DIRECTOR TOKYO JAPAN

INFO: CIB AFY, OR THIRD ARMY FT MONROE VA, GO RIFTH ARMY  
CHICAGO ILL

RE: M 3000

When your reconnaissance companies are sent to the  
front lines and 2 or 3 days to observe the organization  
and control of the enemy's command in Japan and Korea to further  
training and one of this type command here. It is of great importance  
to you for estimates report to be made. This will be furnished.

NOTE

THE ORGANIZATION OF THE COMMANDER IN CHIEF, THIRD ARMY, FT MONROE, VA, IS  
AS FOLLOWS:



TO: 15374  
FROM: 15374

*[Handwritten signature]*

PLEASE CHECK ON THE STATUS OF THE MESSAGE

Enclosure not to be used for the purpose of the message  
unless it is specifically mentioned in the message.

GENERAL HEADQUARTERS, FAR EAST COMMAND  
ADJUTANT GENERAL'S OFFICE  
RADIO BRANCH

*337 Visits*

# INCOMING MESSAGE

| G-4 ROUTING |  |
|-------------|--|
| AC/SG4      |  |
| AG/SG4      |  |
| ADJUTANT    |  |
| INFO        |  |
| C+RE        |  |
| SUPPLY      |  |
| PETROLEUM   |  |
| KEA         |  |
| ADMIN       |  |
| WAP         |  |

*Secret*

EFM/jjc

PRIORITY

16 Dec 50

FROM : DEPTAR (G-3) WASH DC

TO : CINCFE TOKYO JAPAN

NR : W 98994

Ref TAP 8334 and TAP 8336 from JAMMAT Turkey and OURAD W 98891. Include comment on Col Fay Smith in reply OURAD.

NO SIG

ACTION : G-1

INFORMATION : COMMANDER IN CHIEF, CHIEF OF STAFF, VISTOR'S BUREAU  
G-2, G-3, G-4, AG, JSPOG, SIGNAL, LN SEC UNC

08220

PRIORITY

*Secret*

TOO : 152200 Z

MCN : 52106

CONSULT CRYPTO CENTER BEFORE DECLASSIFYING

Paraphrase not required. Handle as correspondence of classification carried hereon per paragraphs 17a(1)(2) and 41c(2)(3) and g(1), AR 380-5, 15 November 1949.

COPY No.







GENERAL HEADQUARTERS, FAR EAST COMMAND  
ADJUTANT GENERAL'S OFFICE  
RADIO BRANCH

# INCOMING MESSAGE

*337  
Visits*

*Secret*  
PRIORITY

|             |                                     |
|-------------|-------------------------------------|
| G-4 ROUTING |                                     |
| AC/SG-4     | <i>W</i>                            |
| DAC/SG-4    | <i>W</i>                            |
| SEC/SG-4    | <i>W</i>                            |
| P+O         |                                     |
| EFF/bgn     | <input checked="" type="checkbox"/> |
| SUPPLY      |                                     |
| PETROLEUM   |                                     |
| KEA         |                                     |
| 16 Dec 50   | <i>91</i>                           |
| ADMIN       |                                     |

FROM : JAMMAT  
 TO : DEPTAR (G-3) WASH DC  
 INFO : CINCPE TOKYO JAPAN  
 NR : TAP 8336

REMY TAP 8334 1<sup>st</sup> Dec.  
 Gen Yamut earnestly desires Col Fay Smith, TUSAG, accompany Gen Gurler Korea trip. View of my current friendly relations with Yamut and as courteous gesture invaluable to future close understanding and cooperation, urge approval Smith accompanying Gurler. Further rqst you cite appropriation tvl of US officer chargeable.

ARNOLD

INFORMATION : COMMANDER IN CHIEF, CHIEF OF STAFF, VISITOR'S BUREAU,  
 G-1, G-2, G-3, G-4, AG, JSPOG, SIGNAL, LN SEC UNC

08015

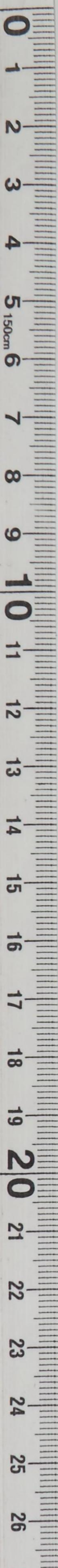
PRIORITY  
*Secret*

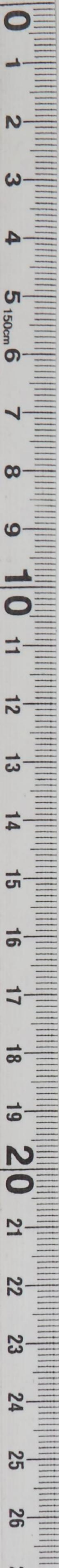
TOO : 151533 Z  
MCN : 52062

CONSULT CRYPTO CENTER BEFORE DECLASSIFYING

Paraphrase not required. Handle as correspondence of classification carried hereon per paragraphs 17a(1)(2) and 4lc(2)(3) and g(1), AR 380-5, 15 November 1949.

COPY No.





INCOMING MESSAGE

*Beard*  
PRIORITY

ERS/OTR

16 Dec 50

FROM : JAPAN  
TO : DEPTAR (G-3) WASH DC  
INFO : CINCPAC TOKYO JAPAN  
NR : JWP 8335

REPLY JWP 8335 15 Dec.  
Gen Yamazaki earnestly desires Col Fay Smith, USAF, accompany  
Gen (Major) James Fair. View of my current friendly relations with  
Yamato and an courteous gesture inviolable to future close  
understanding and cooperation, urge approval Smith accompanying  
Gen Fair. Further rest you also appreciation of US officer  
and general.

ASACED

THE COMMANDER IN CHIEF, OFFICE OF STAFF, VISITOR'S BUREAU,  
4-1, G-2, G-3, G-4, 2200, 2200, 2200, IN BOX 200

RECEIVED  
16 DEC  
G.H.

TOP SECRET  
NON SECRET

PRIORITY  
*Beard*

03025

DECLASSIFIED  
Authority *NND975029*

