

TA 681
T8

1928

LIBRARY OF CONGRESS



0 029 942 598 8

Hollinger Corp.
pH 8.5

TA 681
.T8
Copy 1

REPRODUCTIONS

from PHOTOGRAPHS *of*
REPRESENTATIVE

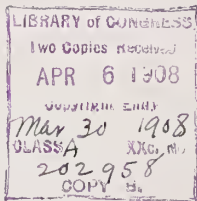
CONCRETE STRUCTURES

Built by

TUCKER & VINTON

TERMINAL BUILDING—41st ST. & PARK AVE.

NEW YORK



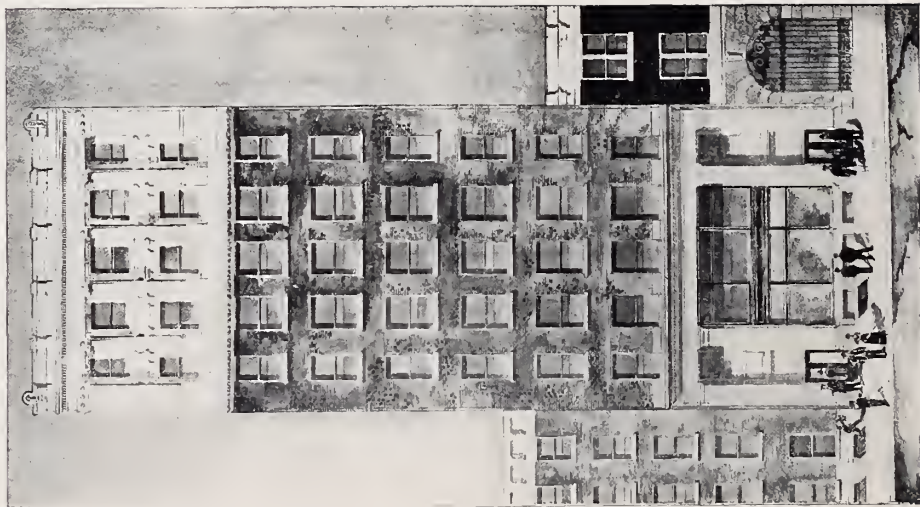
T. H. 681
112

Copyright 1908
TUCKER & VINTON
New York



THE following illustrations cover some of the more prominent structures erected by us in the past ten years, during which time we have devoted ourselves exclusively to concrete construction of every type.

TUCKER & VINTON
New York



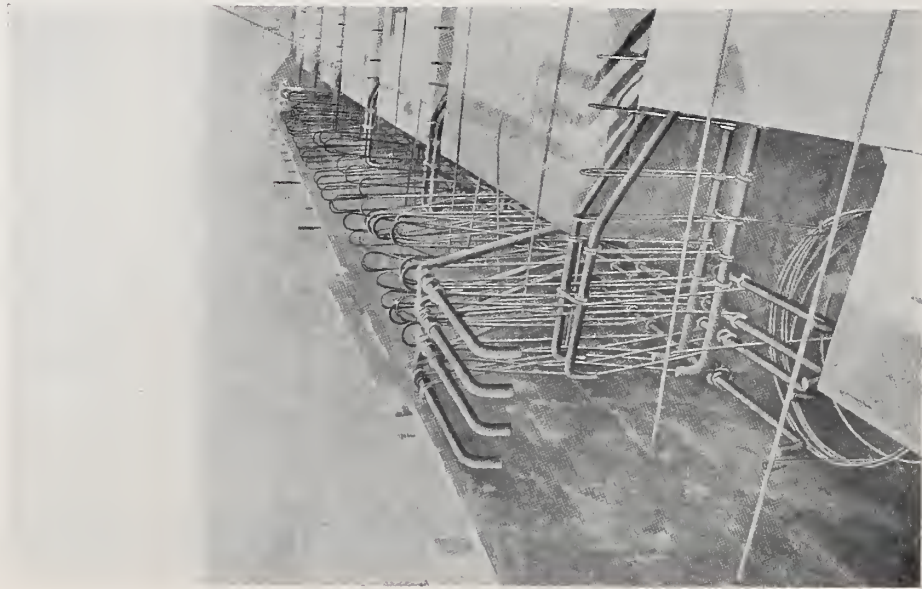
THE McNULTY BUILDING,
549-551 WEST 52D STREET, NEW YORK.
The first 10-story concrete loft building on Man-
hattan Island.

TUCKER & VINTON
New York



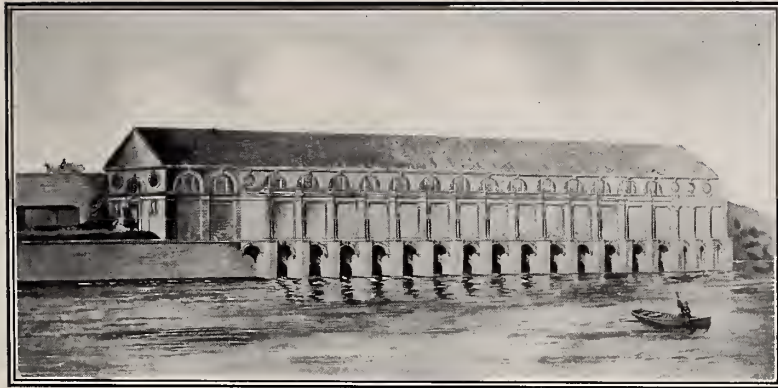
McNULTY BUILDING.
Tenth floor finished and the roof forms being set.

TUCKER & VINTON
New York



McNULTY BUILDING.
Reinforcement 10th floor.

TUCKER & VINTON
New York



MAIN POWER HOUSE, ST. LAWRENCE POWER CO., MASSENA, N. Y.

The entire exterior of this building is Cement Béton Construction. The ornamental work is of an elaborate character and is subject to a yearly range of temperature of 140 degrees.

TUCKER & VINTON
New York



HODGMAN RUBBER CO. FACTORY, TUCKAHOE, N. Y.

Showing under side of first floor.

TUCKER & VINTON
New York



HODGMAN RUBBER CO. FACTORY, TUCKAHOE, N. Y.
Test of floor shown on opposite page.

TUCKER & VINTON
New York



BOWLING GREEN BUILDING.
246-248 WEST 65TH STREET,
NEW YORK.

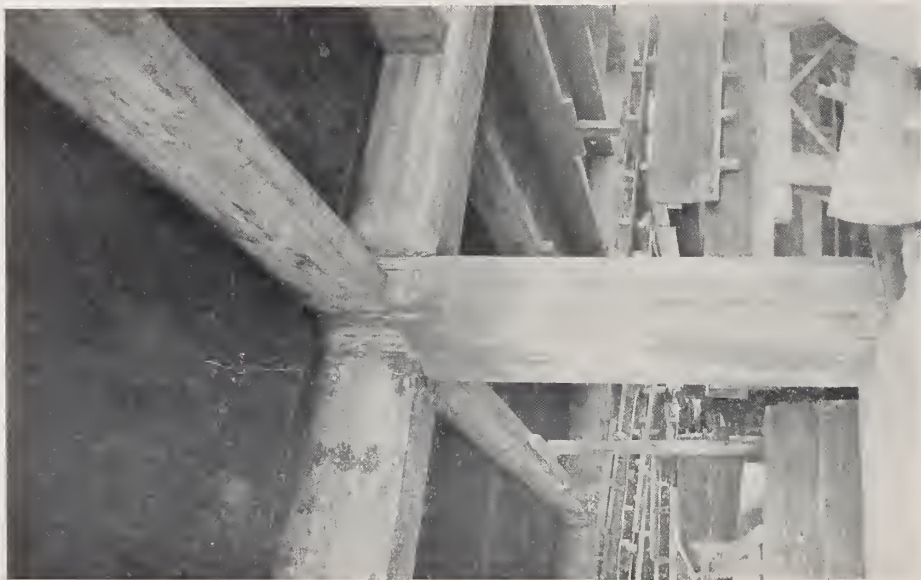
TUCKER & VINTON
New York



BOWLING GREEN BUILDING.
REAR AND SIDE ELEVATION.

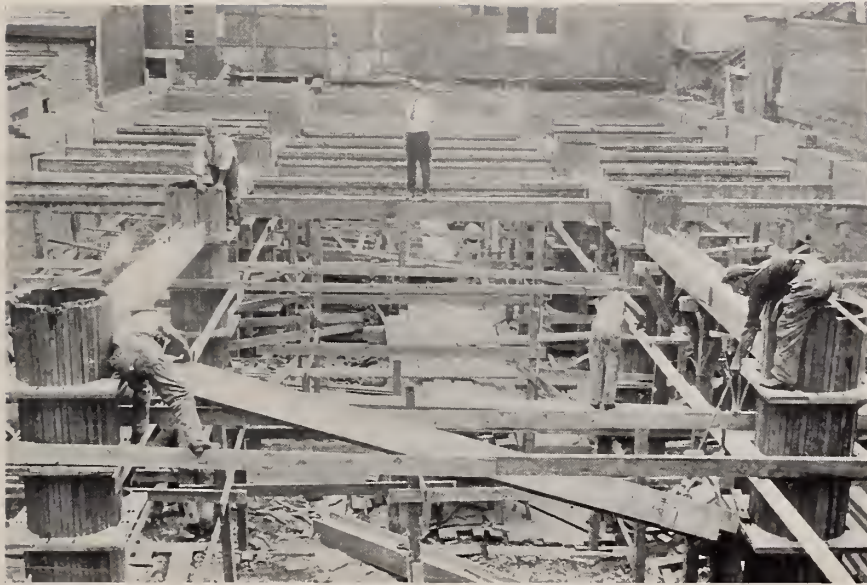
Note how closely the brick panels follow the reinforced concrete structural work.

TUCKER & VINTON
New York



BOWLING GREEN BUILDING.
Interior—Centers drawn.

TUCKER & VINTON
New York



BOWLING GREEN BUILDING.
Showing manner of placing first floor centers.

TUCKER & VINTON
New York



FACTORY, RUSHMORE DYNAMO WORKS,
PLAINFIELD, NEW JERSEY.

TUCKER & VINTON
New York



FACTORY, RUSHMORE DYNAMO WORKS,
PLAINFIELD, NEW JERSEY.
Showing methods of centering.

TUCKER & VINTON
New York



POWER HOUSE, RUSHMORE DYNAMO WORKS,
PLAINFIELD, NEW JERSEY.

TUCKER & VINTON
New York



STOLLWERCK BROS. CHOCOLATE FACTORY, STAMFORD, CONN.
The building is 500 feet long and 100 feet wide.

TUCKER & VINTON
New York



EXTERIOR OF STOLLWERCK FACTORY.
Showing saw-tooth roof on fifty foot spans.

TUCKER & VINTON
New York



STOLLWERCK FACTORY.

An example of concrete molded in place. The cantilever is 9 feet 6 inches.

TUCKER & VINTON
New York



STOLLWERCK FACTORY.
Showing hollow roof construction.

TUCKER & VINTON
New York



INTERIOR STOLLWERCK FACTORY.
Showing saw-tooth on fifty foot span.

TUCKER & VINTON
New York



FILTRATION PLANT FOR ITHACA WATERWORKS CO.,
ITHACA, N. Y.

Clear Water Basin, during construction of walls.

TUCKER & VINTON
New York



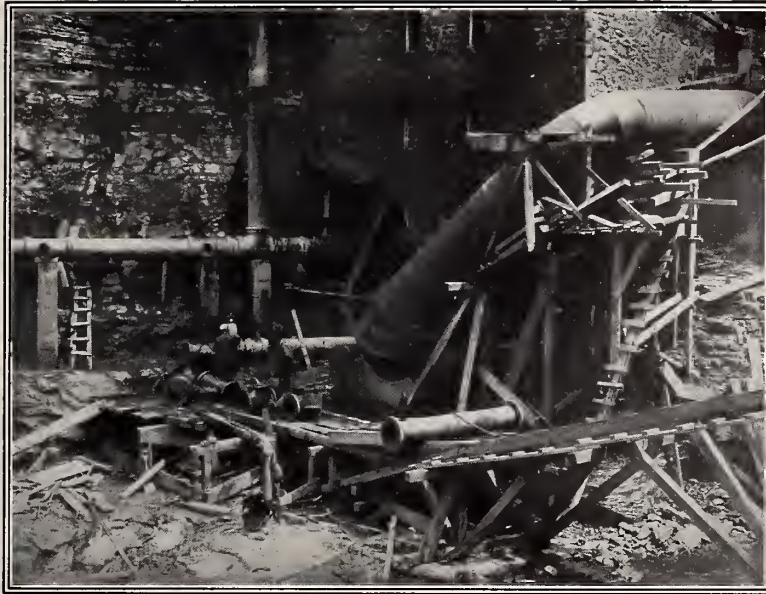
FILTRATION PLANT FOR ITHACA WATERWORKS CO.,
ITHACA, N. Y.
Interior of Coagulating Basin, showing method of laying concrete in bottom.

TUCKER & VINTON
New York



FILTRATION PLANT FOR ITHACA WATERWORKS CO.,
ITHACA, N. Y.
Interior of Clear Water Basin.

TUCKER & VINTON
New York



FILTRATION PLANT FOR ITHACA WATERWORKS CO.,
ITHACA, N. Y.
Pumping Station—showing heavy piping and connections.

TUCKER & VINTON
New York



DAM AT SCHUYLERVILLE, NEW YORK.

Length of overflow, 250 feet; height of overflow, 26 feet; total length over 400 feet.

TUCKER & VINTON
New York



SCHUYLERVILLE DAM.
View of interior.

TUCKER & VINTON
New York



SCHUYLERVILLE DAM.
Showing method of construction.

TUCKER & VINTON
New York



SCHUYLERVILLE DAM.
Showing method of centering.

TUCKER & VINTON
New York



BRIDGE AT DERBY, CONN.
Length, 284 feet: width of roadway, 54 feet.

TUCKER & VINTON
New York



DERBY BRIDGE.
Showing centering and reinforcement in place ready for concrete.

TUCKER & VINTON
New York



DERBY BRIDGE.
Excavating for west abutment.

TUCKER & VINTON
New York



REINFORCED CONCRETE BRIDGE AT MAMARONECK, N. Y.

TUCKER & VINTON
New York



BRICK FACED STEEL-CONCRETE DAM, ITHACA, N. Y.



General View—showing Gate House and Intake Tower



Showing method of construction.

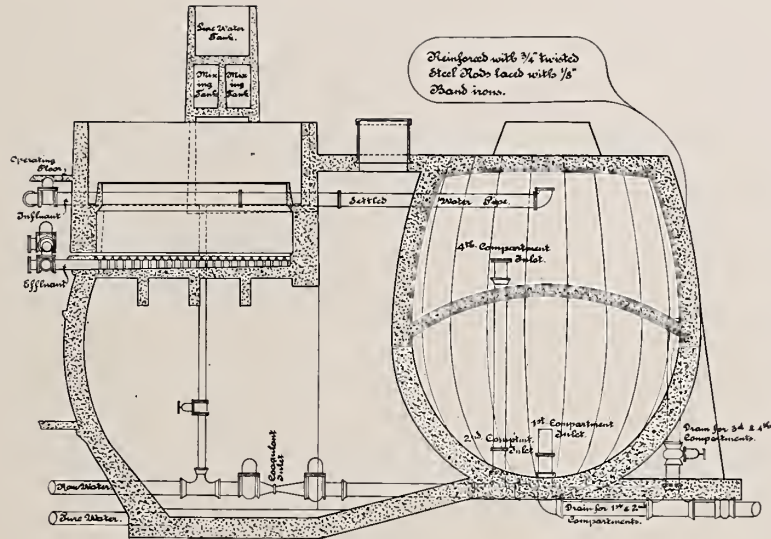
The longitudinal reinforcement consists of $3 \times \frac{3}{16}$ inch steel bands spaced 4 feet center to center, interlaced with wire on intrados and extrados of arch and connected transversely with $\frac{5}{8}$ inch tie rods. Height, 40 feet; length on crest, 130 feet.

TUCKER & VINTON
New York



STEEL-CONCRETE MECHANICAL FILTER, CORNELL UNIVERSITY.
General View—before construction of outside walls.

TUCKER & VINTON
New York



STEEL-CONCRETE MECHANICAL FILTER, CORNELL UNIVERSITY.
Sectional View—showing main walls, etc., of reinforced concrete monolithic
and water tight.

TUCKER & VINTON
New York



SLOW SAND FILTRATION PLANT, YONKERS N. Y.

TUCKER & VINTON
New York



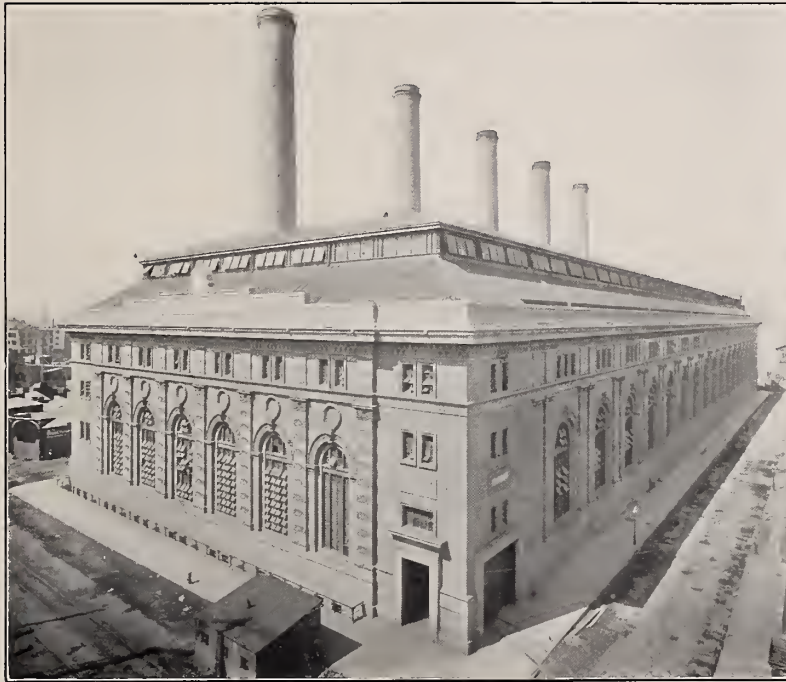
SLOW SAND FILTRATION PLANT, YONKERS N. Y.
Interior of Clear Water Basin.

TUCKER & VINTON
New York



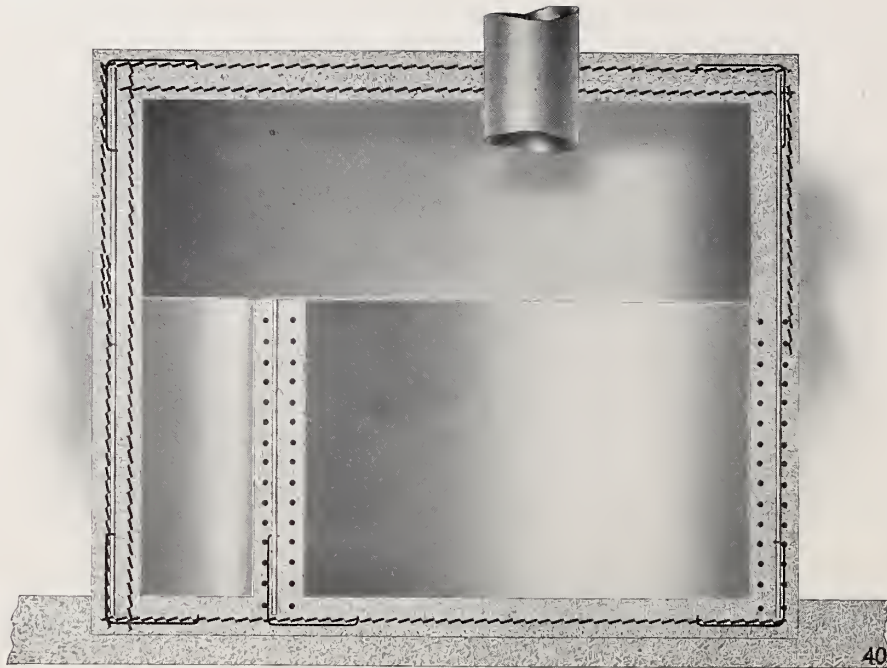
BRIDGE ON ATLANTIC AVENUE FOR LONG ISLAND RAILROAD CO.

TUCKER & VINTON
New York



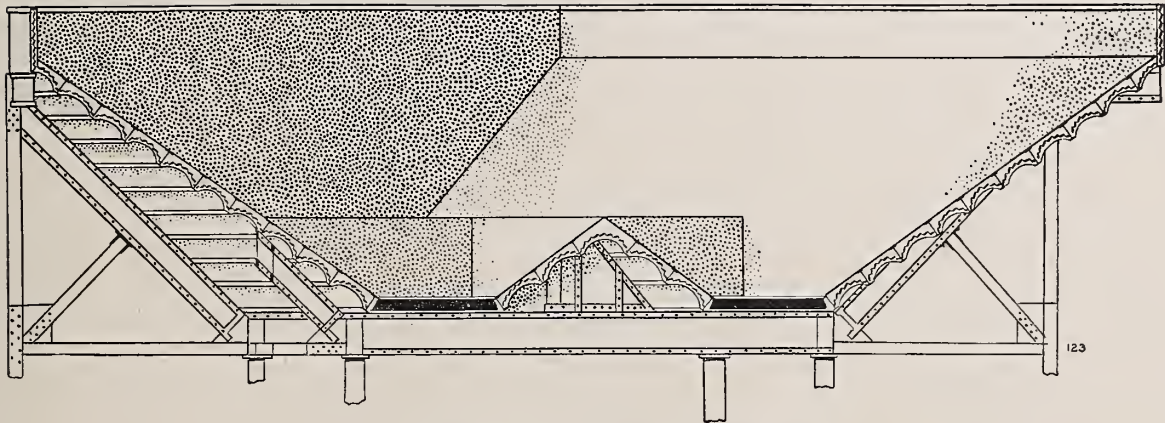
MAIN POWER HOUSE—INTERBOROUGH R. R.
Floor Construction, Hot Wells, Coal Pockets, etc., constructed in reinforced concrete.

TUCKER & VINTON
New York



ONE OF 18 HOT WELLS IN 59TH STREET POWER HOUSE.

TUCKER & VINTON
New York



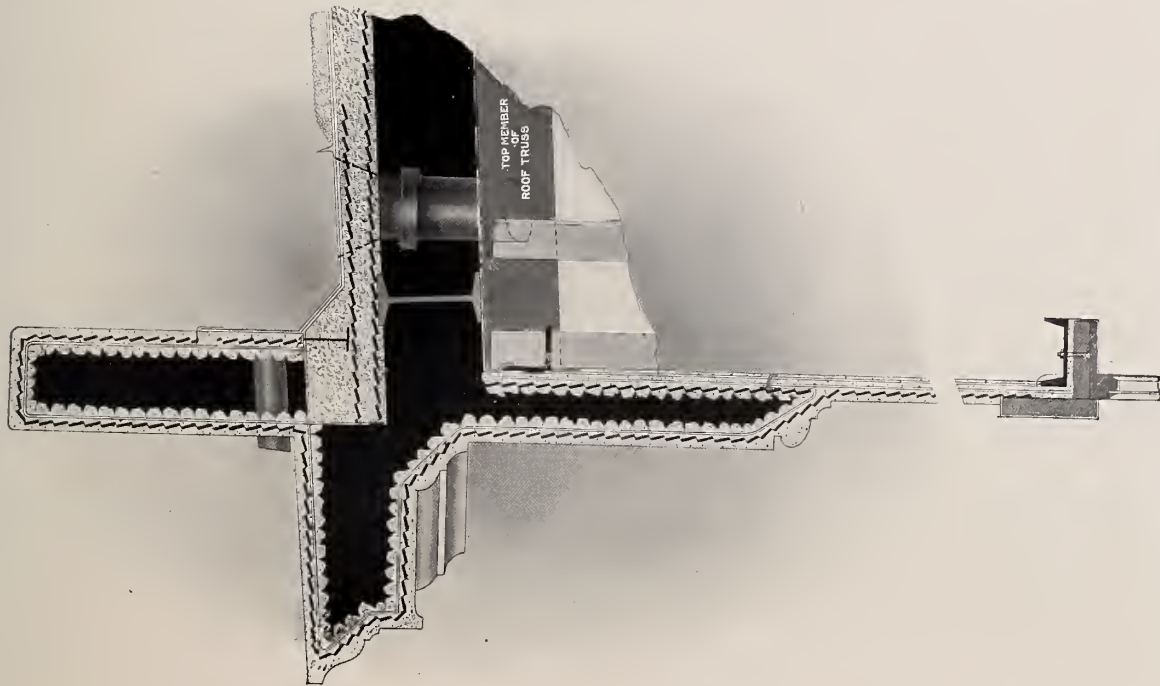
COAL POCKET IN 59TH STREET POWER HOUSE.

TUCKER & VINTON
New York



CAR BARN, 148TH STREET AND 7TH AVENUE, NEW YORK.
FOR INTERBOROUGH R. R. CO.

TUCKER & VINTON
New York



DETAIL OF CONSTRUCTION USED IN 148TH STREET
REPAIR SHOP OF THE INTERBOROUGH R. R. Co.

TUCKER & VINTON
New York



DWELLING FOR J. A. SCRYMSER, SEABRIGHT, N. J.

TUCKER & VINTON
New York



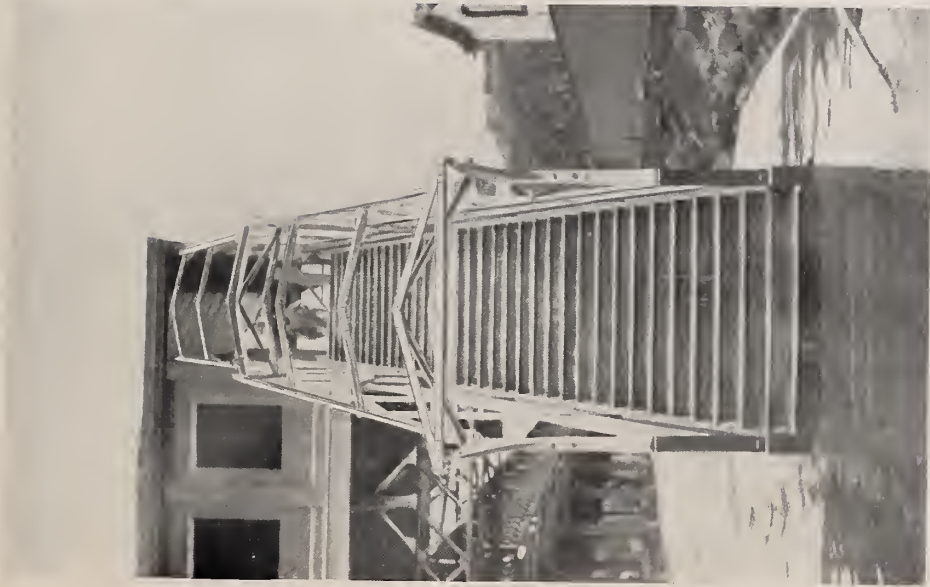
DETAIL OF ENTRANCE, SCRYMSER HOUSE, SEABRIGHT, N. J.

TUCKER & VINTON
New York



NOSTRAND AVENUE STATION OF LONG ISLAND RAILROAD CO.

TUCKER & VINTON
New York



STAIRS FOR STATION ON LONG ISLAND RAILROAD.

TUCKER & VINTON
New York



AVENUE H STATION ON THE BRIGHTON BEACH LINE
OF THE BROOKLYN RAPID TRANSIT SYSTEM.

TUCKER & VINTON
New York



AVENUE H STATION ON THE BRIGHTON BEACH LINE
OF THE BROOKLYN RAPID TRANSIT SYSTEM.

TUCKER & VINTON
New York



DETAIL OF FENCE ON AVENUE H STATION.
This fence is molded in place and the panels are but $2\frac{1}{4}$ inches thick.

TUCKER & VINTON
New York



SOUTH SIDE OF NEWKIRK AVENUE STATION ON BRIGHTON BEACH LINE
OF THE BROOKLYN RAPID TRANSIT SYSTEM.

L. O. C.

TUCKER & VINTON
New York



NORTH SIDE OF NEWKIRK AVENUE STATION ON BRIGHTON BEACH LINE
OF THE BROOKLYN RAPID TRANSIT SYSTEM.

TUCKER & VINTON
New York



DETAIL OF BRIDGE AND WAITING ROOM OF NEWKIRK AVENUE STATION.

TUCKER & VINTON
New York



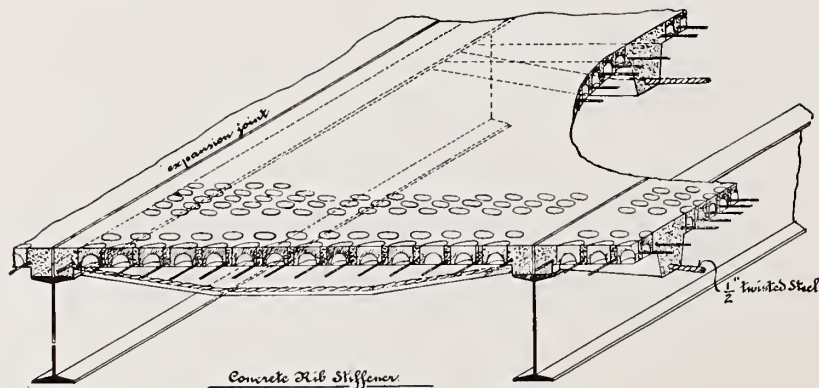
PERGOLA FOR STANFORD WHITE, ST. JAMES, LONG ISLAND.

TUCKER & VINTON
New York

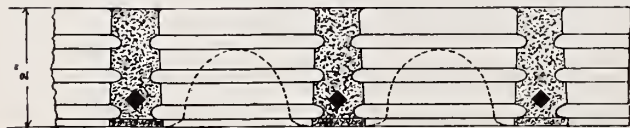


DETAIL OF CAPITAL AND BASE OF COLUMNS SHOWN
ON OPPOSITE PAGE.

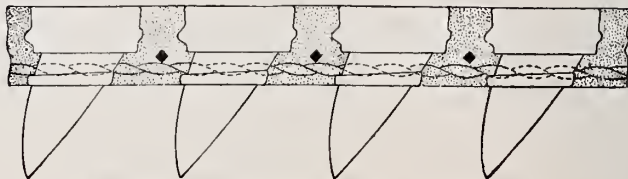
TUCKER & VINTON
New York



Section—showing typical details.

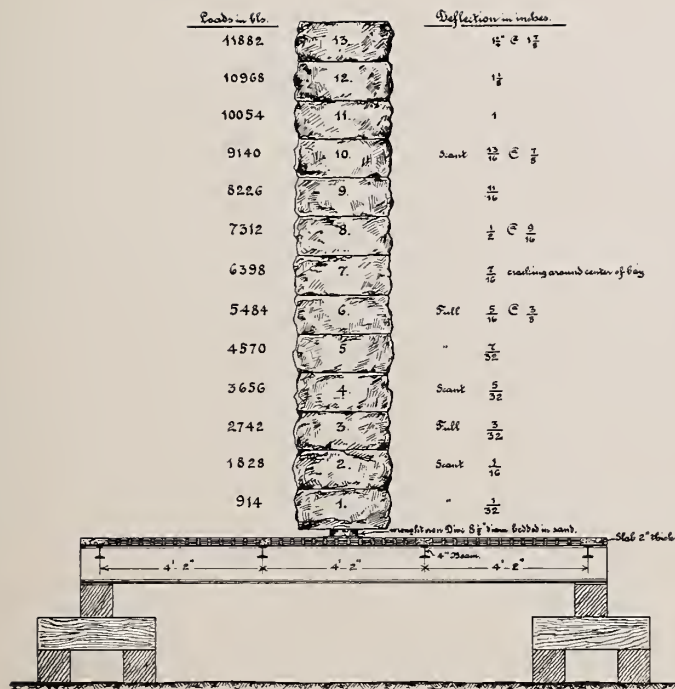


Section, through vault light slab. Bullseye lens.



Section through vault light slab. Luxfer lens.

STEEL-CONCRETE VAULT LIGHTS.
Showing method of construction.



TEST OF STEEL-CONCRETE VAULT LIGHTS SHOWING
LOADS AND DEFLECTIONS.

TUCKER & VINTON
New York



STEEL-CONCRETE VAULT LIGHTS AT 59TH STREET
STATION, NEW YORK SUBWAY.

TUCKER & VINTON
New York



CAR BARN, 9TH AVENUE AND 20TH STREET, BROOKLYN, FOR THE BROOKLYN
RAPID TRANSIT CO.
Length. 230 feet; width. 200 feet.

TUCKER & VINTON
New York



CAR BARN, 179TH STREET AND BOSTON ROAD, FOR THE INTERBOROUGH R. R. CO.

TUCKER & VINTON
New York



CONCRETE FENCE AT 14TH STREET, FOR INTERBOROUGH R. R. Co.



LIBRARY OF CONGRESS



0 029 942 598 8

APR 6 1908

✓