

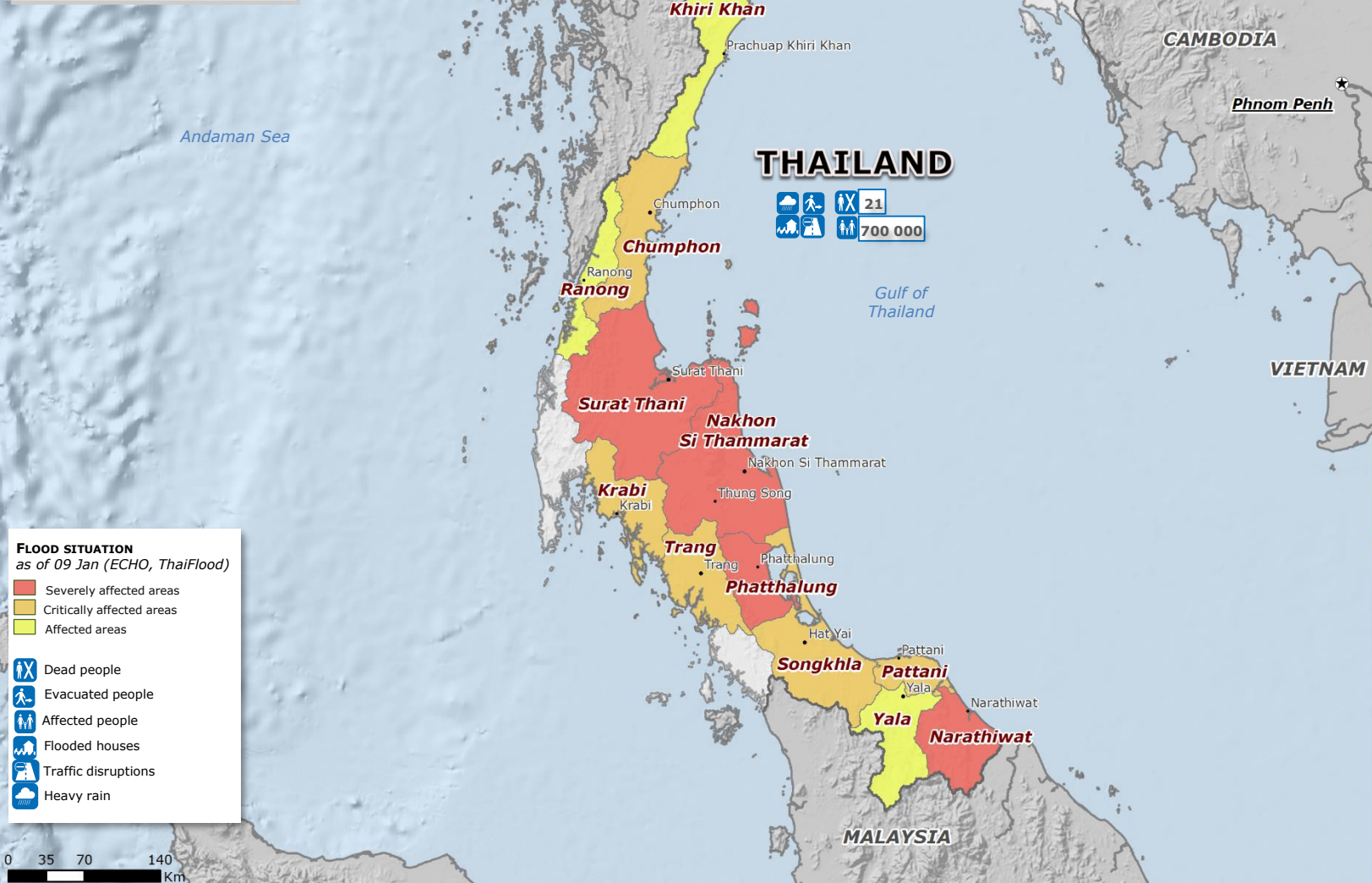
**Impact due to severe weather**

- 21 people dead**
- 700 000 people affected**

**SITUATION**

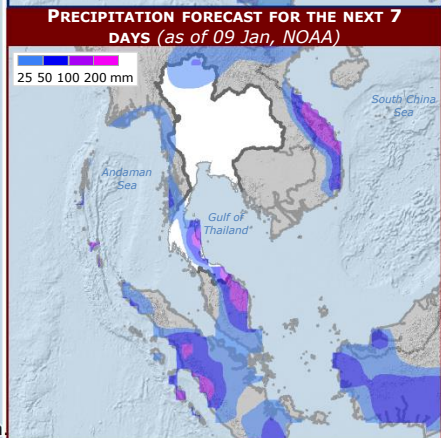
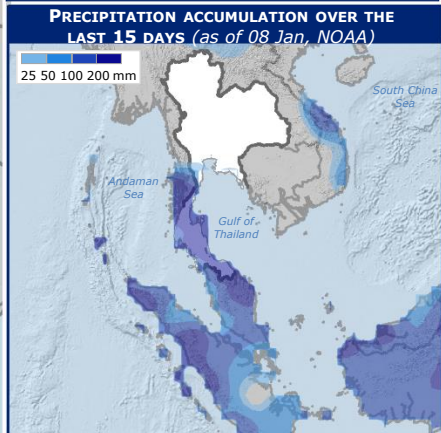
- Unseasonably heavy rain, the worst in 30 years, has hit 12 out of 67 provinces, mainly in southern Thailand. Widespread flooding has affected an estimated 700 000 people and 21 people are reported to have died.
- The floods have cut off roads, rail services, forced the closure of airports, damaged bridges, and left thousands stranded in their homes. Military assets are being deployed to provide assistance. People are being evacuated to higher ground.
- Southern Thailand is a major rubber-producing area, and the flooding may have a serious impact on the livelihoods of farmers.

Sources: ECHO, Local Media



**THAILAND**

- 21**
- 700 000**



**FLOOD SITUATION as of 09 Jan (ECHO, ThaiFlood)**

- Severely affected areas
- Critically affected areas
- Affected areas

- Dead people
- Evacuated people
- Affected people
- Flooded houses
- Traffic disruptions
- Heavy rain

