



Heft 85-90 mit je 24 Kupfern
mit je 1 Textblatt
coll. yale. 1881 22/11.50

Alto

von Meiner Hand





OL
482
G3
P19
1796
[v. 15]
Hf 25.90
SCHRRB

Inhalt

des fünf und Achtzigsten Hefts.

- Tab. 1. *Carabus granulatus* Linn.
— 2. *Carabus nitens* Fabric.
— 3. *Cicindela campestris* Fabric.
— 4. *Cicindela hybrida* Fabric.
— 5. *Cicindela sylvatica* Fabric.
— 6. *Cantharis melanura* Fabric.
— 7. *Cantharis pallida* Fabric.
— 8. *Coccinella sexlineata* Fabric.
— 9. *Codrus niger* Jurine.
— 10. *Vrocerus Dromedarius* Jurine.
— 11. *Astutus tabidus* Jurine.
— 12. *Astutus Satyrus* Panzer.
— 13. *Omalus aeneus* Panzer.
— 14. *Myrmota atra* Panzer.
— 15. *Andrena Flessae* Panzer.
— 16. *Apis mellifica* Mas. Fabric.
— 17. *Apis mellifica Femina* Fabric.
— 18. *Apis mellifica Operaria* Fabric.
— 19. *Bremus sylvorum* Jurine.
— 20. *Bremus agrorum* Jurine.
— 21. *Bremus truncorum* Panzer.
— 22. *Aranea purpurata* Panzer.
— 23. *Bombyx Pini* Mas. Fabric.
— 24. *Bombyx Pini Femina* Fabric.





Carabus granulatus Linn.



CARABVS granulatus.

Der körnigte Laufkäfer, mit ganz schwarzen Fühlhörnern.

Carabus granulatus: apterus, elytris longitudinaliter convexe punctatis. *Linn.*
System. Natur. n. 2. p. 668. ed. XIII. n. 2. p. 1960. Faun. Suec. n. 781.
(non 780.)

Carabus granulatus. *Illiger* Kugel. Käf. Preuf. I. n. 17. p. 154.

Carabus cancellatus: apterus supra cupreus, elytris striatis: lineis tribus elevatis
concatenatis, antennis totis nigris. *Fabric.* System. Eleuther. I. n. 37. p. 176.

Bubrestis chalybaeus. *Voet.* Coleopt. I. tab. 37. fig. 31. p. 81. n. 31.

Habitat haud infrequens in sylvaticis.

Iam tabulae nomen insculptum fuerat, cum *Fabric.* System. Eleuther. T. I.
acceperim, in quo Cl. auctorem distinctionem egregiam Cl. *Illiger* utriusque *C.*
olim *granulati* adoptasse legi.

Fünf und Achtzigstes Heft.





Carabus nitens Fabr.



CARABVS nitens.

Der glänzende Laufkäfer.

Carabus nitens: apterus elytris porcatis scabris viridibus, margine aureo pedibus nigris. *Fabric.* System. Eleuth. I. n. 40. p. 177. Ent. syst. T. I. n. 30. p. 131. Syst. Entom. n. 17. p. 239. Spec. Inf. T. I. n. 22. p. 302. Mant. Inf. T. I. n. 30. p. 197.

Carabus nitens. *Linn.* Syst. Nat. n. 6. p. 669. ed. XIII. n. 6. p. 1963. Fn. Suec. n. 785. It. Oel. p. 96.

Carabus nitens. *Illiger* Kugel Käf. Preuss. I. n. 22. p. 158.

Paykull Mon. Car. n. 12. p. 24.

Baprestis marginatus. *Voet.* Coleopt. I. n. 41. p. 87. tab. 33. fig. 41.

Sulzer abgek. Gesch. d. Inf. tab. 7. fig. 3.

Schäffer Ic. Inf. Ratisb. tab. 51. fig. 1.

Harrer Beschr. d. Schäf. Inf. n. 197. p. 125.

Funzer Entom. germ. I. n. 20. p. 48.

Habitat in editoribus.

Carabus nitens Scopol. n. 262. omnino ad *Calosoma Sycophanta* Fabric.
referendus, ut iam bene monuit Cl. Illiger l. e.



Cicindela campestris Fabr.

CICINDELA campestris.

*Der Feldsandkäfer. Der Feldläufer. Der Courir. Le Velours vert
à douze points blancs. Geoffr.*

Cicindela campestris: viridis, elytris punctis quinque albis, *Fabric.* System. Eleuth.

I. n. 11. p. 233. Ent. syst. T. I. n. 9. p. 170. Syst. Ent. n. 1. p. 224. Spec.

Inf. T. I. n. 3. p. 283. Mant. Inf. T. I. n. 5. p. 185.

Cicindela campestris. *Linn.* Syst. Nat. n. 1. p. 657. ed. XIII. n. 1. p. 1920. Faun.

Suec. n. 746.

Geoffr. Inf. T. I. n. 27. p. 153.

Degeer Inf. T. IV. n. 3. p. 69. tab. 4. fig. 1.

Scop. Carn. n. 181. ic. 181. et 181.

Schrank austr. n. 357.

Cicindela austriaca. *Eiusd.* Beytr. n. 77. p. 69.

Arenarius viridis. Voet. Coleopt. I. n. 4. p. 96. tab. 40. fig. 4:

Schaeffer Ic. Inf. Ratisb. tab. 34. fig. 8. 9. tab. 228. fig. 3.

Harrer Besch. d. Schäff. Inf. I. n. 220 p. 138.

Illiger Kugel. Käf. Preus. I. n. 3. p. 220.

Panzer Ent. germ. I. n. 2. p. 67.

Habitat primo vere in hortis. Variat punctorum numero et figura.



Cicindela hybrida Fabr.

J. St. jerr.

CICINDELA hybrida.

Der Bastardsandkäfer. Der gefleckte Sandkäfer. Le Bupreste à broderie blanche. Geoffr.

Cicindela hybrida: subpurpurascens, eiytris fascia lunulisque duabus albis, corpore aureo nitido. *Fabric.* Syst. Eleuth. I. n. 13. p. 234. Ent. syst. T. I. n. 10. p. 171. Syst. Ent. n. 2. p. 224. Spec. Inf. T. I. n. 4. p. 283. Mant. Inf. T. I. n. 6. p. 185.

Cicindela hybrida. Linn. Syst. Nat. n. 2. p. 657. ed. XIII. n. 2. p. 1920. Faun. Succ. n. 747.

Geoffr. Inf. T. I. n. 28. p. 155.

Degeer. Inf. IV. n. 3. p. 70. tab. 4. fig. 8.

Scop. carn. n. 183. ic. 183.

Arenarius variegatus, cinereus. *Voet.* Coleopt. I. n. 1. p. 93. et n. 4. p. 95. tab. 39. fig. 1. tab. 40. fig. 3.

Schaeffer Ic. Inf. Ratisb. tab. 35. fig. 10.

Harrer Besch. d. Schäf. Inf. I. n. 221. p. 138.

Illiger Kugel. Käf. Preuf. I. n. 2. p. 219.

Panzer Ent. germ. I. n. 3. p. 67. tab. III.

Habitat frequens in locis apricis fabulosis.



Cicindela sylvatica Fabr.

J. St. fec.



CICINDELA sylvatica.

Der Waldsandkäfer. Cicindele des forets. Degeer.

Cicindela sylvatica: nigra, elytris fascia undata, punctisque duobus albis. *Fabric*
System. Eleuth. I. n. 15. p. 235. Ent. syst. T. I. n. 11. p. 171. Syst. Ent.
n. 3. p. 224. Spec. Inf. T. I. n. 5. p. 184. Mant. Inf. T. I. n. 7. p. 185.
Cicindela sylvatica. *Linn.* Syst. Nat. n. 8. p. 658. ed. XIII. n. 8. p. 1922. Faun.
Suec. n. 748.

Degeer Inf. IV. n. 2. p. 114. tab. 4. fig. 7.

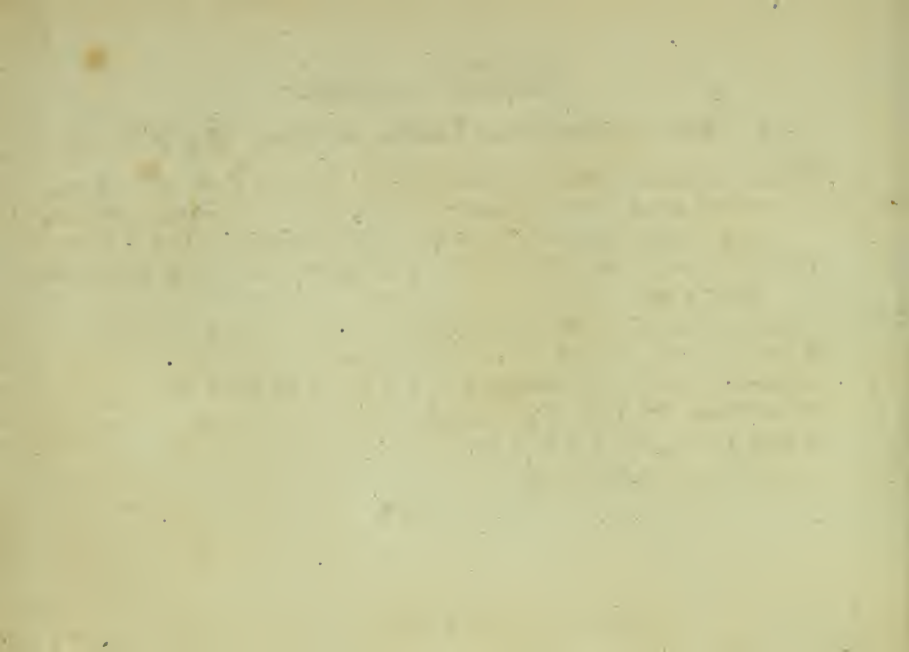
Herbst im Archiv. IV. n. 3. p. 115. tab. 27. fig. 13.

Arenarius fuscus. *Voet.* Coleopt. I. n. 2. p. 95. tab. 40. fig. 2.

Illiger Kugel. Käf. Preuf. I. n. 1. p. 219.

Panzer Entom. germ. I. n. 4. p. 67,

Habitat in sylvis acerofis.





Cantharis melanura Fabr.

J. St. Jec.



Faint, illegible text at the bottom of the page, possibly a signature or a title.

CANTHARIS melanura.

Der rothgelbe Afticleuchtkäfer mit an der Spitze ſchwarzen Flügeldecken. La Cicindele à etuis tachés de noir. Geoffr.

Cantharis melanura: thorace rotundato, corpore luteo, elytris apice nigris, pedibus rufis. *Fabric. System. Eleuth. I. n. 43. p. 302. Ent. ſyſt. T. I. n. 26. p. 219. Syſt. Ent. n. 9. p. 206. Spec. Inf. T. I. n. 16. p. 260. Mant. Inf. T. I. n. 19. p. 168.*

Cantharis melanura. Linn. Syſt. Nat. n. 27. p. 651. ed. XIII. n. 27. p. 1897. Faun. Suec. n. 719.

Geoffr. Inf. T. I. n. 5. p. 173.

Donacia lutea ano nigro. Voet. Coleopt. I. n. II. p. 126. tab. 46. fig. II.

Illiger Kugel. Käf. Preuß. I. n. 6. p. 229.

Panzer Entom. germ. I. n. 14. p. 91.

Habitat frequens in plerisque plantis absque omni fere exceptione. Inter millena specimina, quae quotannis hactenus vidi omnia, antennis nigris fuerant, articulo primo rufo. *Geoffr.* l. c. omnino huc pertinet: *Cantharis fulva Scop.* vero minus. Inter *Schaefferi* figuras nullam invenio, quae nostram representet.

a Magnitudo naturalis. b Eadem aucta.



Cantharis pallida Fabr.

J. St. fée.

CANTHARIS pallida.

*Der bleichfarbige Afterleuchtkäfer. La Cicindele noire à etuis
jaunes. Geoffr.*

Cantharis pallida: thorace marginato atro, elytris pedibusque pallidis, testaceis.

Fabric. System. Eleuth. I. n. 27. p. 299. Ent. syst. T. I. n. 16. p. 217.

Mant. Inf. T. I. n. 12. p. 167.

Geoffr. Inf. T. I. n. 6. var. α . p. 173.

Illiger Kugel. Käf. Preuss. I. n. 9. p. 301.

Panzer Entom. germ. I. n. 10. p. 90.

Habitat in floribus.

a Magnitudo naturalis. b Eadem aucta.





Coccinella sexlineata Fabr.

J. St. fec.



COCCINELLA sexline ata.

Der sechsstreifigte Marienkäfer.

Coccinella sexlineata: coleoptris flavis: lineis sex punctisque tribus nigris. *Fabric.*
System, Eleuterat. I. n. 28. p. 360. Ent. syst. T. I. n. 20. p. 270. Spec.
Inf. T. I. n. 9. p. 94. Mant. Inf. T. I. n. 15. p. 54.

Coccinella hebraea. *Linn.* Syst. Nat. n. 10. p. 580. ed. XIII, n. 10, et n. 61.
p. 1646-47. Faun. Suec. n. 473.

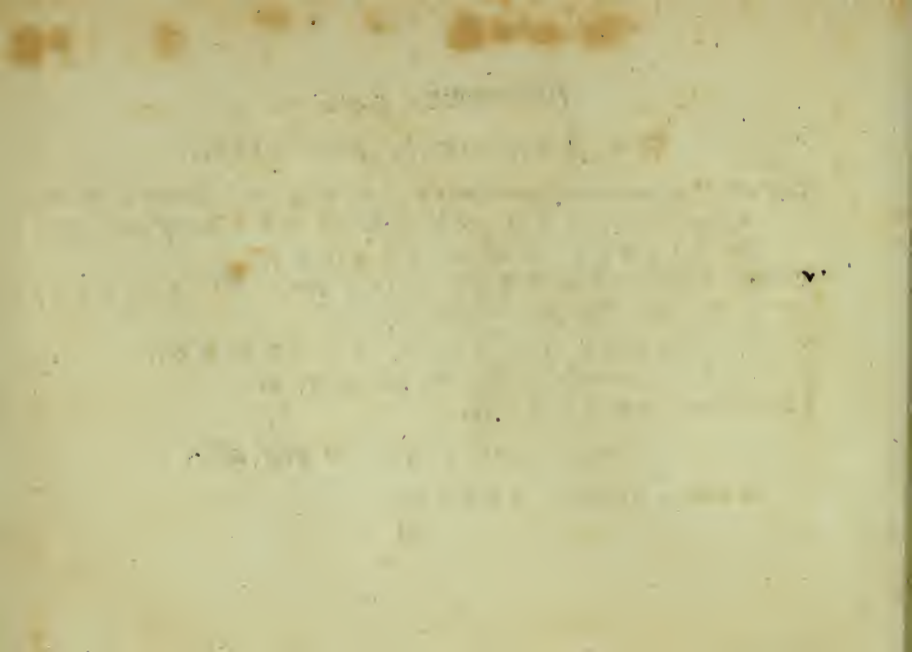
Coccinell. ocellat. var. e. *Illiger* Kugel. Käf. Preuf. I. n. 25. p. 437.

Coccinell. ocellat. var. β. *Paykull.* Fn. Suec. II. 14. 13.

Panzer Entom. germ. I. n. 8. p. 134.

Habitat raro in borealibus. *Mus. Dn. Prof. Esper.*

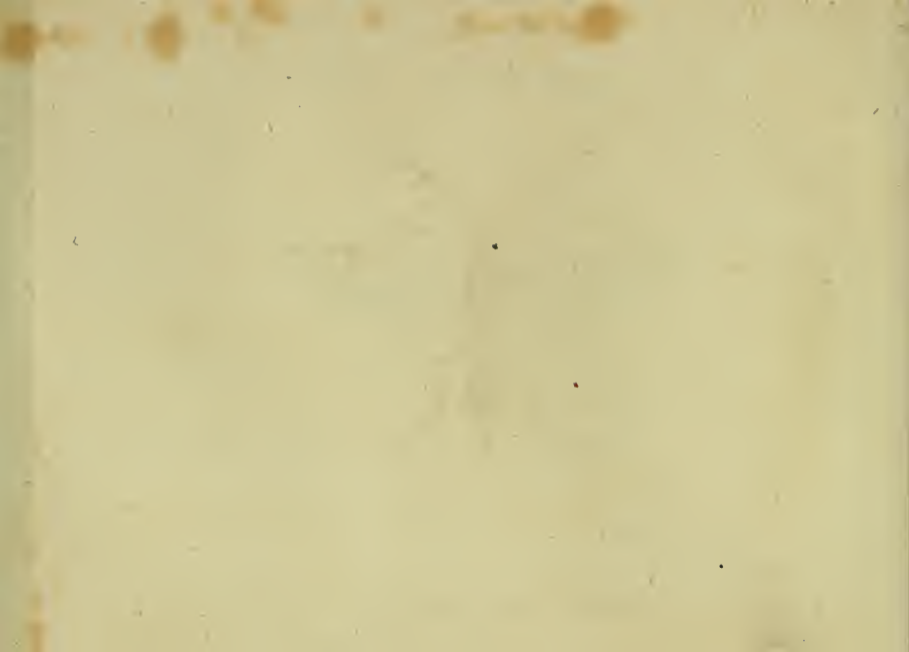
a Magnitudo naturalis. b Eadem aucta.





Codrus niger Jurine.

J. St. fec.



CODRVS niger.

Die schwarze Spitzwespe.

Codrus niger: totus ater nitidus, antennarum articulo primo pedibusque flavis.

Habitat in floribus.

Caput parvum atrum immaculatum. Antennae nigrae corpore subbreviares: articulo primo flavo. Thorax gibbus ater nitidus immaculatus. Abdomen atrum nitidissimum ovatum, pedunculo brevi insidens. Anus bifetofus. Pedes flavi. Alae hyalinae venis raris: macula marginis antici fusca triangula.

Ichneum. gravidator Fabr. cum aliis huc referendus: omnes alarum vasorum anastomasi, abdominisque apice spinuloso distincti.

a Magnitudo naturalis. b Eadem aucta.

Fünf und Achtzigstes Heft.





Aylatus Dromedarius Turine.

J. St. fec.



VROCERVS Dromedarius.

*Die schwarze Schwanzwespe, mit schwarzen in der Mitte rothem
Unterleib.*

Vrocerus Dromedarius: abdomine atro medio rufo: puncte utrinque albo, tibiis
basi albis.

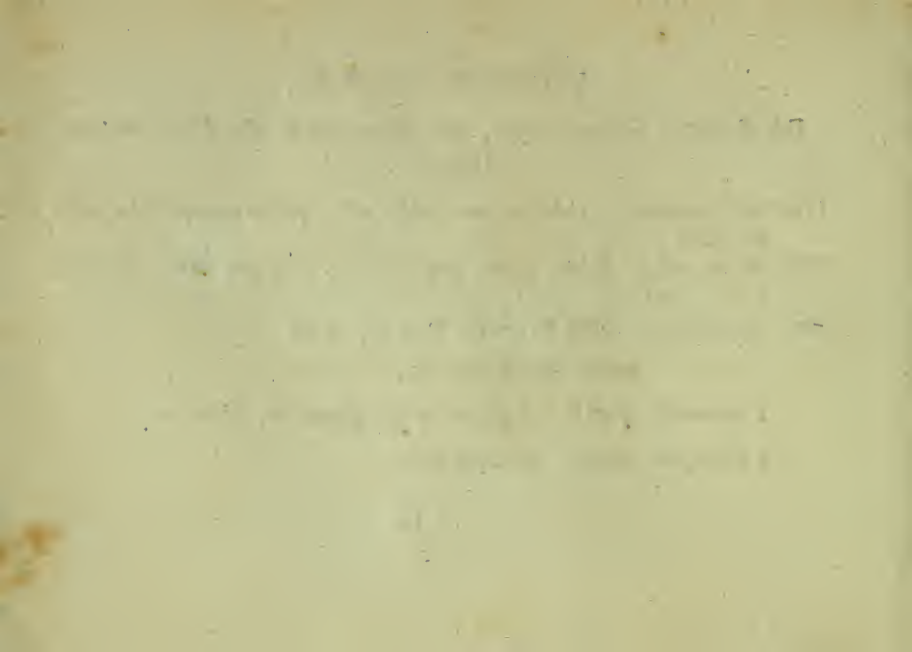
Sirex Dromedarius. *Fabric.* Entom. syst. T. III. n. 16. p. 128. *Mant. Inf.* T. I.
n. 14. p. 258.

Sirex Dromedarius. *Rossi* Fn. etrusc. II. n. 737. p. 34.

Habitat raro in sylvaticis.

Specimen *Cl. Rossi* fere duplo maius est, quamvis vix distinctum.

a Magnitudo naturalis. b Eadem aucta.





Astatus tabidus Jurine.



ASTATVS tabidus.

Die schlanke Schwebwespe.

Astatus tabidus : niger abdominis lateribus flavo punctatis , tibiis anticis testaceis.

Sirex tabidus. Fabric. Entom. syst. T. III. n. 26. p. 131. Syst. Entom. n. 8.

p. 326 Spec. Inf. T. I. n. 13. p. 420. Mant. Inf. T. I. n. 19. p. 259.

Sirex tabidus. Rossi Fn. etrusc. II. n. 739. p. 35.

Habitat in sylvaticis.

Bambus spinipes. Faun. LXXII. 17. inter *Astatos* iure referendus.

a Magnitudo naturalis. b Eadem aucta.

1872

1873

1874

1875



Astatulatus satyrus. Michx.

2. et. f. 1.

ASTATVS Satyrus.

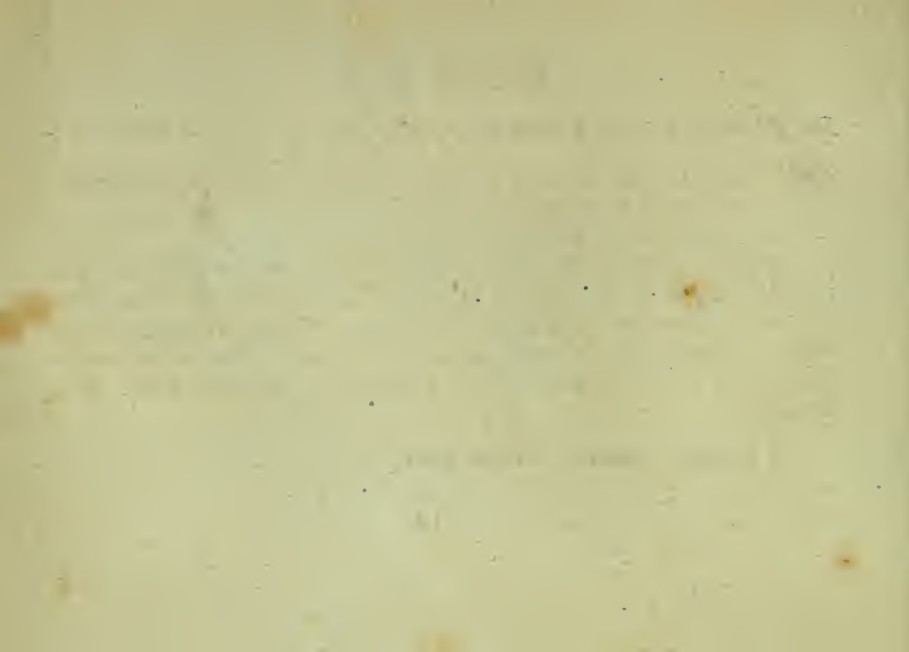
Die schwarze grössere Schwebwespe, mit weiss geringeltem Unterleibe.

Astatus Satyrus: niger abdomine compresso, segmento secundo utrinque puncto, tertio, quinto, sexto postice fascia flavis.

Legi raro in floribus: a. 1800. Mense Jun.

Statura et habitus *Ast. tabid.* et *pygm.* ast triplo maior et distinctus. Caput pubescens, atrum, immaculatum. Os atrum, palpi testacei. Antennae nigrae corpore triplo breviores. Thorax ater immaculatus. Abdomen compressum atrum nitidum, segmento secundo utrinque puncto laterali, tertio, quinto et sexto postice fascia angusta flavis. Corniculus brevis. Pedes testacei, femoribus nigris. Alae flavicantes.

a Magnitudo naturalis. b Eadem aucta.





Omalus acneus Michx.



OMALVS aeneus.

Die dunkelgrüne Glanzwespe.

Omalus aeneus: glaber viridis nitens, thorace postice utrinque acuminato, ano integro, alis apice fuscis.

Legi in argillofis: mens. Iul. 1807.

Caput viride punctis plurimis impressis. Vertex cyaneus. Mandibulae fuscae. Antennae nigrae, articulo primo cyaneo. Oculi atrii. Thorax viridis punctis impressis plurimis scaber: antice glaber obscure cyaneus: postice utrinque acuminatus. Abdomen subfornicatum, ovatum, longitudine thoracis viride, dorso obscuro nitidissimo, segmento ultimo subaurato: ano emarginato. Corpus subtus viridi-aeneum nitidum. Pedes viridi aenei, tarsis fuscis. Alae apice late fuscae.

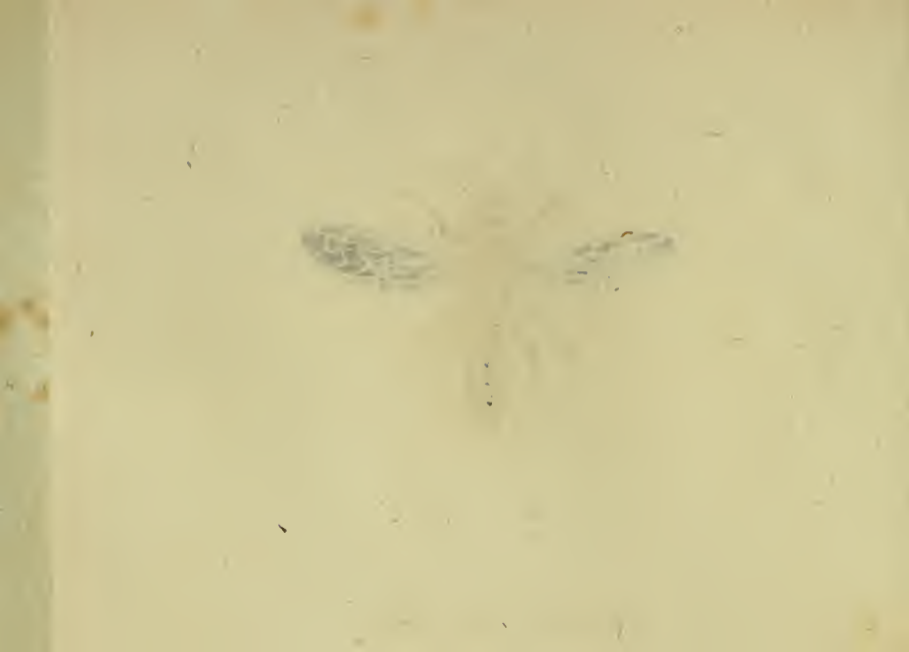
a Magnitudo naturalis. b Eadem aucta.





Myrmosa atra Nihé.

J. St. fer.



MYRMOSA atra.

Die schwarze Aemsenwespe.

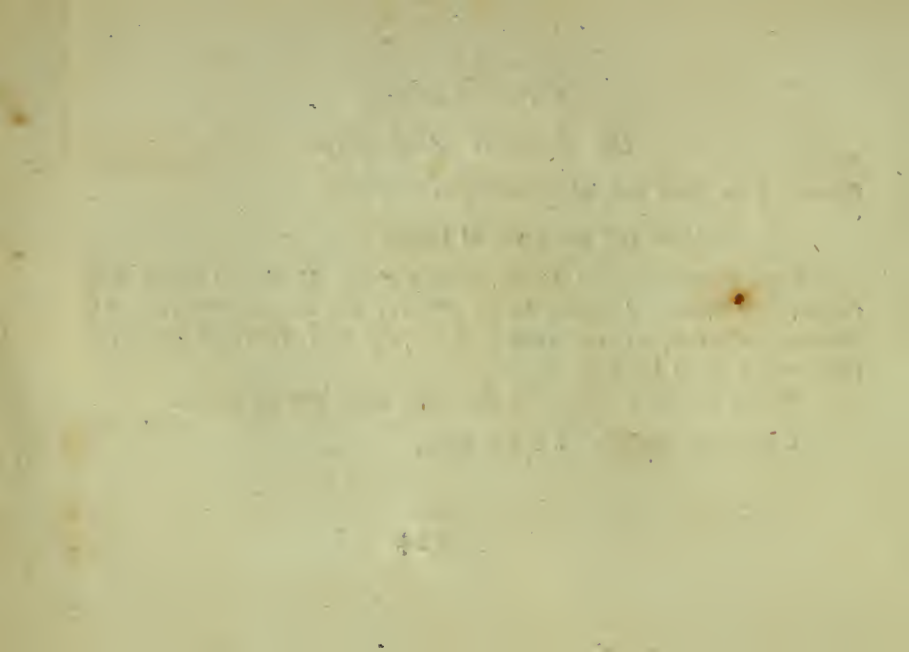
Myrmosa atra: hirta atra, abdominis segmentis elevatis.

Legi haud raro primo vere in floribus.

Caput atrum punctatum hirtum, vertice plano. Mandibulae nigrae. Palpi elongati valde exserti. Antennae nigrae. Thorax ater immaculatus hirtus. Abdomen atrum hirtum, segmentis elevatis. Pedes nigri hirti, tibiis tarsisque cinereo pubescentibus. Alae hyalinae.

Hylaeus thoracicus Fabric. ad *Myrmosae* genus nunc relegendus.

a Magnitudo naturalis. b Eadem aucta,





Andrena Flossae Miki.

Jac. Sturm fec.



ANDRENA Fleßae.

Die Fleßaische Waldbiene.

Andrena Fleßae: atra hirta, abdomine obscure cyaneo apice utrinque barbato, tibiis posticis hirsutis, alis fuscis.

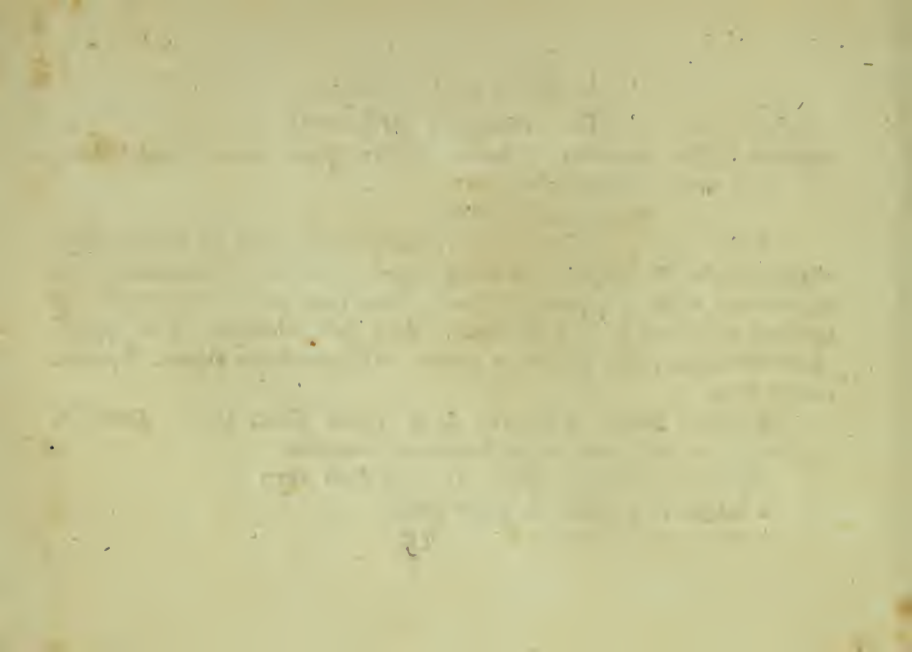
Habitat in editioribus.

Caput atrum punctatum opacum, utrinque ante oculos sub antennis striga cinereo-villosa. Oculi fusci. Antennae nigrae. Thorax ater immaculatus, postice utrinque albido pubescens. Abdomen compressum atro violaceum glabrum, lucidum, apice utrinque albo-barbatum. Alae fusco-violaceae. Pedes quatuor antici hirti nigri: postici extus flavo lanatae. Abdomen subtus nigrum, segmentis cinereo hirtis.

Dixi hanc speciem in honorem *I. P. Fleßae Theol. Candid. Baruthini*, comitis olim amicissimi per campos nemoraque franconica.

Andrena hirtipes Faun. XLVI. 15. huius sexus alter.

a Magnitudo naturalis. b Eadem aucta.





Apis mellifica Mas Fabr.

J. St. fec.



APIS mellifica. Mas.

Die Honigbiene. Die Drohne. Dröhne. Threnne. Das Männchen.
L'abeille domestique. Le Male ou Bourdon. Faux-Bourdon.
Κηφτῶσις Hesiod. Fucus.

Apis mellifica: pubescens thorace subgriseo, abdomine fusco, tibiis posticis ciliatis
intus transverse striatis. *Fabric.* Entom. system. III. n. 58. p. 327. System.
Ent. n. 30. p. 383. Spec. Inf. T. I. n. 37. p. 480. Mant. Inf. T. I. n. 24. p. 302.
Apis mellifica. *Linn.* System. Nat. n. 22. p. 955. ed. XIII. n. 22. p. 2774. Faun.
Suec. n. 1697.

Apis gregaria. *Geoffr.* Inf. T. II. n. 1. p. 407.

Schwammerd. bibl. nat. tab. 17. fig. 1.

Reaumur Inf. V. t. 21-22. fig. 2.

Merian. Inf. europ. II. tab. 1.

Griesinger Bienen-Magaz. tab. I. fig. B.

Apis cerifera. *Scopol.* ann. hist. nat. IV. n. 16. p. 17.

Non habitat apud nos, sed hospitatur et colitur: spontanea est in arborum
cavis in Poloniae sylvis.

Fuci crassiores quam operariae et villosiores, inermes, otiosi, Reginae ma-
riti et comites, generantur ab operariis intra proprias et ampliores cellas, absoluto
vero saecundationis Reginae munere occiduntur, eiiciuntur. *Scop.* carn. p. 304.

Fuci pro reginae maritis communiter habentur, etsi quidam putent, eos operariis famulari. Quis vero copulam vidit in alveis? Scop. ann. hist. nat. IV. p. 17.
a Magnitudo naturalis. b Eadem aucta.

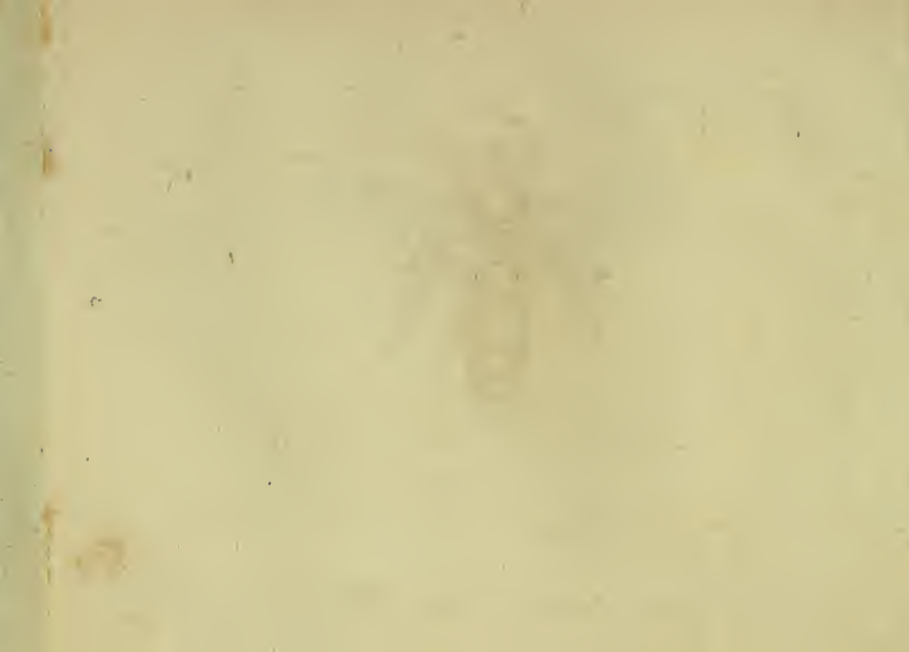
Namque aliae victu invigilant, et foedere pacto.
Exercentur agris: pars intra septa domorum
Narcissi lacryman, et lentum de cortice gluten,
Prima favis ponunt fundamina, deinde tenaces
Suspendunt ceras: aliae spem gentis adultos
Educunt foetus: aliae purissima mella.
Stipant, et liquido distendunt nectare cellas.
Sunt, quibus ad portas cecidit custodia forti,
Inque vicem speculantur aquas et nubila coeli
Aut onera accipiunt venientum, aut agmine facto
Ignavum fucos pecus a praesepibus arcent.
Fervet opus, redolentque thymo fragrantia mella.

Virg. Georg. IV. 158.



Apis mellifica Femina Fabr.

J. St. fec.



APIS mellifica. Femina.

Die Bienenkönigin. Der Weisel. Das Weibchen. L'Abeille Mere.

Apis mellifica. Fabric. l. l. c. c.

Apis mellifica. Linn. l. l. c. c.

Schwammerd. bibl. nat. tab. 17. fig. 3.

Reaumur. Inf. V. tab. 21-23. fig. 3.

Scop. earn. n. 811. ic. 811.

Griesinger Bienenmagaz. Tab. I. fig. A.

Foemina. Regina, aculeata, raro feriens, ictu sibi non lethali, spadonum mater, antennis articulis decem, tibiis ferrugineis: margine breviter ciliato, abdomine supra fusco, subtus rufescente, fucorum centuriis aliquot stipata evolat, fecundatur in aere volans, crabronis insidiis in itinere, morti vero in reditu exposita, si alienum subierit alveare. Haec iunior, per triduum, omni horae quadran-

Fünf und Achtzigstes Heft.

te, stridonem quemdam edit, eoque admonet emigraturum gregem; propagatur ab operariis seorsim propriis in cellulis ad favorum latera exstructis. Initio Februarii ova ponit, et opus hoc continuat usque ad finem caniculae. *Scopol.*

a Magnitudo naturalis. b Eadem aucta.

Sin autem ad pugnam exierint, nam saepe duobus
Regibus incessit magno discordia motu:
Continuoque animos vulgi, et trepidantia bello
Corda licet longe praesciscere, namque morantes
Martius ille aeris rauci canor inerepat, et vox
Audiatur fractos sonitus imitata tubarum.
Tum trepidae inter se coeunt, pennisque coruscant:
Spiculaque exacunt rostris, aptantque lacertos:
Et circa regem atque ipsa ad praetoria densae
Miscentur - - -

Virgil Georg. IV. 67. sqq.



Apis mellifica Operaria Fabr.

J. St. fr.



APIS mellifica Operaria.

*Die gemeine Honigbiene. Die Arbeitsbiene. L'Abeille domestique.
L'Abeille ouvriere.*

Apis mellifica. Fabric. l. l. c. c.

Apis mellifica. Linn. l. l. c. c.

Schwammerd. l. c. tab. 17. fig. 1.

Reaumur l. c. tab. 21-23. fig. 1.

Griesinger l. c. fig. C.

Sulzer Kennz. tab. 19. fig. 123.

Delectatur Fagopyro, Tilia, Erica, Caltha, Taraxaco, Lamio, Thymo, Salicibus, Orchide, Rosmarino, Echio, Borrachine aliisque.

Operariae neutrae, minores, propolim, mel, ceram, escam, colligunt, temperatum calorem et siccum amant; solitudinem, suaves odores, et munda loca diligunt; vigiles indefessae, purae, odoratu imprimis excellunt, cellulas cereas hexagonas construunt, easque modo nectare florum vitibus vitae propriae modificato replent, modo vero ibidem depositas sororum ac imprimis novarum matrum proles

fovent et nutriunt. Fucos inutiles factos interimunt, eiiciunt; senio confectas, debiles, aut aegras sorores expellunt; sordes eliminant; advenas pellunt, nec ullam fugiunt laborem, ut nova familia incolumis prodeat in lucem. Scop.

a Magnitudo naturalis. b Eadem aucta.

- - - - ubi pulsam hyemem sol aureus egit.

Sub terras, coelumque aestiva luce reclusit,
Illae continuo saltus silvasque peragrant,
Purpureosque metunt flores, et flumina libant
Summa leves: hinc nescio qua dulcedine laetae
Progeniem nidosque fovent: hinc arte recentes
Excudunt ceras, et mella tenacia figunt.
Hinc ubi iam emissum caveis ad sidera coeli
Nare per aestatem liquidam suspexeris agmen,
Obscuramque trahi vento mirabere nubem,
Contemplator - - -

Virgil. Georg. IV. 51.



Bremus sylvarum Turinc.

J. St. fec.

B R E M V S fylvarum.

Die Wald-Hummel.

Bremus fylvarum: hirsuta pallida, thoracis fascia abdomineque postice nigris, ano rufo.

Apis fylvarum. *Fabric.* Ent. Syst. T. III. n. 27. p. 321. Syst. Ent. n. 15. p. 381. Spec. Inf. T. I. n. 18. p. 477. Mant. Inf. T. I. n. 21. p. 301.

Apis fylvarum. *Linn.* Syst. Nat. n. 45. p. 960. ed. XIII. n. 45. p. 2782. Faun. Succ. n. 1713.

Bombylius medius niger, ano fulvo seu rufo, cum duplici transversa area lutea, altera supra scapulas, altera per medium abdomen. *Rai* Inf. n. 10. p. 247. Habitat in nemoribus, et in collibus apricis.

Neque *Scopol.* Ap. fylvar. neque *Roff.* et *Schrank* huc spectant, quamvis non dubito Ap. fylv. *Fabr.* et *Linn.* hic delineasse,

THE HISTORY OF

THE UNITED STATES OF AMERICA

The history of the United States of America is a story of growth, struggle, and triumph. From the first European explorations to the present day, the nation has evolved through various stages of development. The early years were marked by the search for a permanent home, leading to the establishment of colonies. These colonies, though initially dependent on Britain, gradually asserted their independence, culminating in the American Revolution of 1776. The new nation faced numerous challenges, including the struggle for a unified government, the expansion of territory, and the fight against slavery. The Civil War (1861-1865) was a pivotal moment in the nation's history, as it resolved the issue of slavery and preserved the Union. Following the war, the United States experienced rapid industrialization and territorial expansion, becoming a global superpower. The 20th century saw the nation's involvement in two world wars, the rise of the Cold War, and the civil rights movement. Today, the United States remains a leading nation in the world, facing new challenges and opportunities in the 21st century.

By [Author Name]



Bremus agrorum Twine.



B R E M V S agrorum.

Die Feld-Hummel.

Bremus agrorum: hirsuta atra, thorace toto anoque ferrugineis.

Apis agrorum. Fabric. Ent. syst. T. III. n. 29. p. 321. Mant. Inf. T. I. n. 23.
p. 301.

Habitat in sylvaticis.

RECEIVED 1977 1 13

1977 1 13

THE UNIVERSITY OF MICHIGAN LIBRARY

1977 1 13



Bremus truncorum Mihi.

J. St. fcc.



BREMVS truncorum.

*Die Stock-Hummel. L'Abeille noire, à couronne du corcelet citron,
et extrémité du ventre fauve. Geoffr.*

Bremus truncorum : hirsuta atra, capite thoracisque antico flavis, ano rufo.
Geoffr. Ins. T. II. n. 22. p. 417.

Apis pratorum. Schrank. austr. n. 798. excluso Synonym. Linn.
Apis collaris. Scopol. carn. n. 818. absque icone.

Legi in saxosis editioribus in floribus.

THE HISTORY OF THE

... of the ...
... of the ...
... of the ...
... of the ...
... of the ...
... of the ...
... of the ...
... of the ...
... of the ...
... of the ...

(to)



Aranea purpurata Miki.

Tab. Sturm. f. 60.

ARANEA purpurata.

Die bleichgelbe Spinne mit der purpurrothen Rückenmakel.

Aranea purpurata: pallida, abdomine ovato flavo, dorso late purpureo.

Legi in argillaceis.

Caput et thorax pallida. Thorax cordatus lineola dorsali obscuriori. Abdomen ovatum pubescens margine laterali subinaequali, macula dorsali inaequali late purpurea, punctisque aliquot nigris. Pedes elongati pallidi immaculati. An *Aranea myopa* Fabric.?

a Magnitudo naturalis. b Eadem aucta. c Situs oculorum.



Bombyx Pini Mas Fabr.

J. St. fec.



BOMBYX Pini. Mas.

Der Föhrenspinner. Der Fichtensspinner. Das Männchen.

Bombyx Pini: alis reversis griseis: fascia ferruginea punctoque triangulari albo.

Fabric. Entom. System. T. IV. n. 62. p. 426. System. Entom. n. 32. p. 565.

Spec. Inf. T. II. n. 48. p. 177. *Mant. Inf.* T. II. n. 56. p. 113.

Phalaena Bombyx Pini. *Linn.* System. Nat. n. 24. p. 814. ed. XIII. n. 24. p. 2419.

Fn. Suec. n. 1104.

Syst. Verz. d. W. Schm. n. 4. p. 56.

Rösel *Inf. Bel.* T. I. p. 297. tab. 59.

Esper *eur. Schmett.* T. II. tab. XII. fig. 1 - 6. tab. XIII. fig. 1.

Merian. *pap. eur.* tab. 22.

Frisch *Inf.* P. X. tab. 10.

Schaeffer *Ic. Inf. Ratisb.* tab. 86. fig. 1 - 3.

Hennert über den Raupenfras. p. 22 tab. I. fig. 6. 7.

Borkhausen *europ. Schmett.* T. III. n. 20. p. 78.

Die einzige Nahrung dieser Raupe ist die Fohre (*Pinus sylvestris* L.) Alle Versuche, sie mit einer andern Nadelholzart zu nähren, sind bisher fruchtlos gewesen. Sie ist sehr gefräßig, und scheint die Nadeln der Fohre nur zum Maul hinein zu schieben. Da sie sich außerordentlich stark vermehrt, so ist sie schon sehr oft den Fohrenwaldungen schädlich geworden. Gewöhnlich aber wenden die Spechte und andere Insektentreffende Waldvögel, welche sie des Winters in ihren Schlupfwinkeln, wo sie sich gegen die Kälte zu schützen wissen, aufsuchen und sie zu tausenden verzehren, den Schaden ab. Zur Verwandlung bereitet sich die Raupe ein länglichtes Gewebe, welches zwar dichte aber nicht hart ist. Es ist entweder an einem Zweig, oder an dem Stamm in eine Ritze der Rinde befestigt. Die Chrysalide ist länglicht, gerundet und von schwärzlicht grauer Farbe. Der Spinner entwickelt sich nach Verschiedenheit der Witterung in drei bis vier, auch sechs Wochen. Bey Tage sitzt er gewöhnlich an den Stämmen der Fohren.

Borkhausen.



Bombyx Pini Fem. Fabr.

J. St. fec.



BOMBYX Pini. Femina.

Der Föhrenspinner. Der Fichtensspinner. Das Weibchen.

Bombyx Pini. Fabric. l. l. c. c.

Phalaena Bombyx Pini. Linn. l. l. c. c.

Das Weibchen unterscheidet sich auſſer den Fühlhörnern vom Männchen durch ſeine beträchtlichere Größe, gewichtigeren Hinterleib, geſtrektere Flügel und hellere Farbe. Kein Spinner dieſer Abtheilung varirt ſo ſehr, als dieſer. Der Abwechſlung der Farbe, welche nach der Höhe und Tiefe faſt bey keinem Stück wie bey dem andern iſt, nicht zu gedenken, ſo ſind auch die Zeichnungen und die Abtheilungen der Felder nicht immer einerley. *Borkhäuſen.*





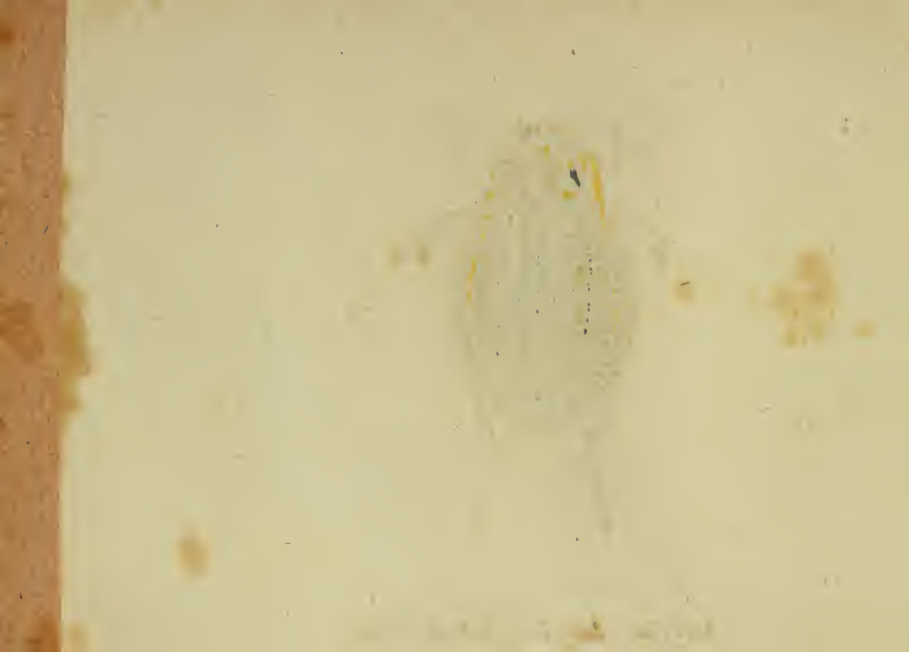


- Tab. 1. *Dytiscus latissimus* Mas. Fabric.
— 2. *Dytiscus latissimus* Fem. Fabric.
— 3. *Dytiscus marginalis* Mas. Fabric.
— 4. *Dytiscus marginalis* Fem. Fabric.
— 5. *Dytiscus striatus* Mas. Fabric.
— 6. *Dytiscus transversalis* Mas. Fabric.
— 7. *Stigmus pendulus* Panzer.
— 8. *Cephalcia nemorum* Panzer.
— 9. *Cephalcia arvensis* Panzer.
— 10. *Pompilus exaltatus* Fabric.
— 11. *Pompilus bifasciatus* Fabric.
— 12. *Pompilus punctum* Jurinc.
— 13. *Bembex sinuata* Panzer.
— 14. *Trachusa strigata* Panzer.
— 15. *Trachusa serratulae* Panzer.
— 16. *Lafus Salviae* Panzer.
— 17. *Bremus regelationis* Panzer.
— 18. *Bremus pomorum* Panzer.
— 19. *Syrphus quadrimaculatus* Panzer.
— 20. *Syrphus globulus* Panzer.
— 21. *Aranea Eriaceus* Tross.
— 22. *Aranea annulata* Panzer.
— 23. *Phalaena dolabraria* Fabric.
— 24. *Lithosia irrosata*, Fabric.





Dytiscus laticornis Mas Fabr.



DYTISCVS latissimus. Mas.

Der breiteste Wasserkäfer. Das Männchen. Grand Ditisque
--- large. Degeer.

DYTISCVS latissimus : niger elytrorum marginibus delatatis: linea flava. *Fabric.*
Syft. Eleuth. T. I. n. 1. p. 257. Syft. Entom. n. 1. p. 230. Spec. Inf. T. I.
n. 1. p. 290. Mant. Inf. T. I. n. 1. p. 189. Entom. system. T. I. n. 1. p. 187.
DYTISCVS latissimus. *Linn.* System. Nat. n. 6. p. 665. ed. XIII. n. 6. p. 1944.
Fn Suec. n. 768.

Illiger Kugelann. Käf. Preus. I. n. 1. p. 251.

Degeer Inf. IV. n 1. p. 390.

Frisch Inf. P. II. tab. 7. fig. 1. 2.

Bergstraeß. Nomencl. I. 28. tab. 5. fig. 1.

Schaeffer Ic. Inf. Ratisb. tab. 217. fig. 1.

Sechs und achtzigstes Heft.

Harrer Beschreib. d. Schäff. Inf. T. I. n. 179. p. 111.

Panzer Entom. germ. I. n. 1. p. 73.

Habitat in aquis, piscinis: piscibus admodum infestus: in propriam speciem
laevit. Mas glaber, patellatus.



Dytiscus latissimus Fem. Fabr.



DYTISCVS latissimus Femina,

Der breiteste Wasserkäfer. Das Weibchen.

DYTISCVS latissimus. Fabric. l. l. c. c. Linn. l. l. c. c.

Bergstraeffer Nomencl. I. 28. tab. 5. fig. 2.

Sulzer abgek. Gesch. d. Inf. p. 59. tab. 6. fig. 19.

Schaeffer Ic. Inf. Ratisb. tab. 217. fig. 2.

Dytiscus amplissimus. Müll. Zool. dan. prodr. n. 662.

Harrer. Besch. d. Schäff. Inf. T. I. n. 150. p. 112.

Habitat cum mare. Femina fulcata, absque patellis.



Dytiscus marginalis Mas Fabr.



DYTISCVS marginalis Mas.

Der gelbgefäumte Wasserkäfer. Das Männchen. Le Ditisque noir à bordure. Geoffr. Grand Ditisque à bordure complete. Degeer.

DYTISCVS marginalis: niger, thoracis marginibus omnibus elytrorumque exte-
riori flavis. *Fabric. Syst. Eleuth. T. I. n. 3. p. 258. Syst. Entom. n. 3.*
p. 230. Spec. Inf. T. I. n. 3. p. 291. Mant. Inf. T. I. n. 3. p. 189. En-
tom. system. T. I. n. 3. p. 187.

Dytiscus marginalis. Linn. System. Nat. n. 7. p. 665. ed. XIII. n. 7. p. 1944.
Fn. Suec. n. 769.

Geoffr. Inf. T. I. n. 2. p. 186.

Degeer Inf. T. IV. n. 2. p. 223. tab. 16. fig. 1 2.

Scop. carn. n. 294.

Ulliger Kugelann. Käf. Preuf. I. n. 3. p. 253.

Rossi Faun. etrusc. T. I. n. 488. p. 229.

Bergstraeß Nomencl. I. n. 1. tab. 1. fig. 1.

Rösel Inf. Bel. II. 21. tab. 1. fig. 9.

Schaeffer Ic. Inf. Ratisb. tab. 8. fig. 8.

Harrer Besch. d. Schäf. Inf. T. I. n. 181. p. 112.

Panzer Entom. germ. I. n. 2. p. 73.

Habitat in aquis, piscinis.



Dytiscus marginalis Fem. Fabr.



DYTISCVS marginalis. Femina.

Der gelbfäumte Wasserkäfer. Das Weibchen.

DYTISCVS marginalis. Fabric. l. l. c. c.

Dytiscus semistriatus. Linn. Syst. Nat. n. 8. p. 665, ed. XIII, n. 3. p. 1945. Fn.

Suec. n. 772.

Dytiscus semistriatus. Schrank. inf. austr. n. 374.

Geoffr. Inf. T. I. n. 3. p. 187. tab. III. fig. 2.

Bergstræess. Nomencl. I. n. 2. tab. I. fig. 2.

Rösel Inf. Bel. II. 21. tab. I. fig. 10.

Schäffer Ic. Inf. Ratisb. tab. 8. fig. 7.

Harrer Besch. d. Schäff. Inf. T. I. n. 182. p. 113.

Habitat cum mare.

STORY OF THE

THE HISTORY OF THE

THE HISTORY OF THE

THE HISTORY OF THE

THE HISTORY OF THE

THE HISTORY OF THE

THE HISTORY OF THE

THE HISTORY OF THE

THE HISTORY OF THE

THE HISTORY OF THE



α



Dytiscus striatus Fem. Fabr.

Sturm. f. 30



DYTISCVS striatus Mas.

*Der gestreifte Wasserkäfer. Das Männchen. Ditisque à stries
transverses. Degeer.*

DYTISCVS striatus: fuscus thorace flavo: fascia abbreviata nigra, elytris trans-
versim subtilissime striatis. *Fabric.* Syst. Eentherat. T. I. n. 16. p. 261. Syst.
Ent. n. 7. p. 231. Spec Inf T. I. n. 8. p. 293. Mant. Inf. T. I. n. 9.
p. 190. Ent syst. T. I. n. 10 p. 189.

Dytiscus striatus. *Linn.* Syst. Nat. n. 9. p. 665. ed. XIII. n. 9. p. 1946. Faun.
Suec. n. 770.

Degeer Inf T. IV. n. 5. p. 399. tab. 15. fig. 16.

Illiger Kugel Käf. Preuf. I. n. 7. p. 257.

Rossi Faun. etrusc. T. I. n. 494 p. 233.

Panzer Entom. germ. I. n. 6 p. 74

Habitat in aquis. Maris patellae exiguae.

a Elytron magnitudine auctum.



Dytiscus transversalis Mas Fabr.

Jac. Sturm fec.



DYTISCVS transversalis Mas.

Der braune Wasserkäfer mit der gelben Querstreife.

DYTISCVS transversalis: ater thorace antice ferrugineo, elytrorum margine, striaque baseos abbreviata flavis. *Fabric.* Syst Eleuth. T.I. n. 38 p. 265. *Spec. Inf.* T. I. n. 18. p. 294. *Mant. Inf.* T. I. n. 23. p. 191. *Entom. syst.* T. I. n. 26. p. 192.

Illiger Kugel. Käf. Preuf. l. n. 8. p. 257.

Panzer Entom. germ. l. n. 17. p. 76.

Habitat in aquis,

a Tibia antica patellata magnitudine aucta, a parte inferiori.



Stigmus pendulus Mithi.

J. St. fec.

S T I G M V S pendulus.

Die gestielte Spitzwespe.

STIGMVS pendulus : ater nitens , abdomine petiolato , antennis tibiisque flavis.

Habitat in floribus umbelliferar.

Caput atrum transversum. Antennae flavae, articulo primo maiori. Thorax scutellum atra immaculata. Abdomen atrum nitidum petiolatum apice acuminatum. Tibiae flavae, posticae annulo nigro. Femora nigra. Alae hyalinae nervo antico crassiori flavo , puncto fusco.

a Magnitudo naturalis. b. Eadem aucta.

THE UNIVERSITY OF CHICAGO
LIBRARY

100 East 57th Street
New York 22, New York

Library of The University of Chicago
540 East 58th Street
Chicago 37, Illinois



Cephalcia nemorum Michx.



CEPHALCIA nemorum.

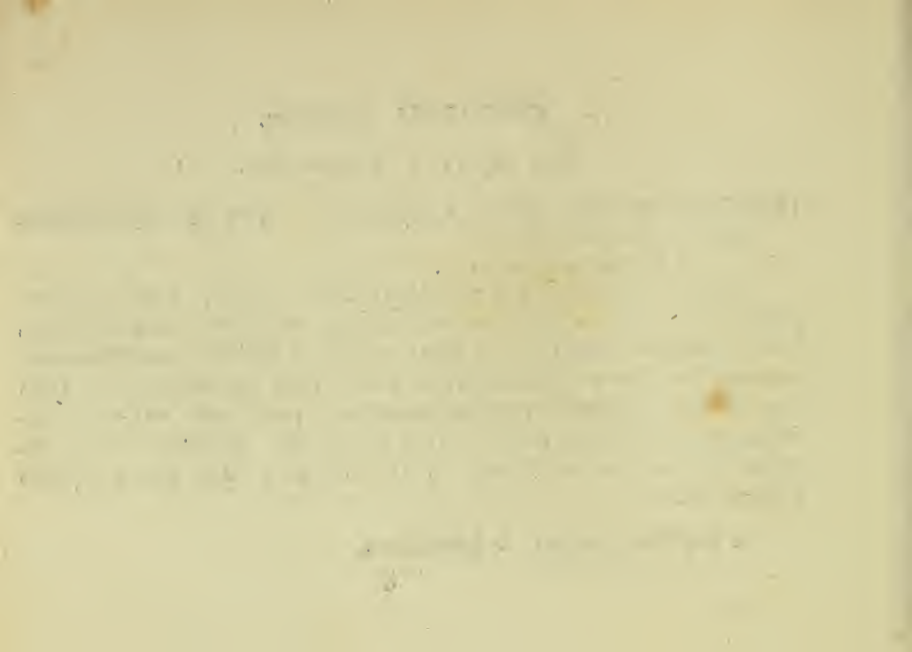
Die Hainen Blatwespe.

CEPHALCIA nemorum: antennis multiarticulatis: corpore nigro capite maculis, antennis tibiisque flavis.

Habitat in sylvaticis.

Media. Caput atrum nudum nitidum: clypeo tenuissime flavo marginato, lineaque angusta ante oculos interdum interrupta, maculisque duabus verticalibus flavis. Instrumenta cibaria omnia flava: mandibulae exsertae acutae bidentatae. Antennae fere corporis longitudine flavae, articulo primo supra macula nigra. Oculi prominuli fusci. Thorax ater nitidus immaculatus, puncto ante alas calloso scutelloque flavis, punctisque duobus aliis sub scutello albis. Abdomen sublineare depressum atrum nitidum immaculatum. Pedes omnes flavi. Alae hyalinae, puncto marginali nigro.

a Magnitudo naturalis. b Eadem aucta.





Cephalcia arvensis Miki.

C E P H A L C I A arvensis.

Die Akker-Blattwespe.

CEPHALCIA arvensis: antennis multiarticulatis nigra, corpore depresso antennis pedibusque flavis.

Habitat in sylvaticis.

Habitus et statura. *Cephalc. erythroceph.* Caput atrum transversum, punctis plurimis excavatis nitidum; clypeo ferrugineo marginato, oculorum orbita, maculisque duabus verticalibus lineolisque duabus occipitalibus ferrugineis. Oculi fusci prominuli. Antennae flavae apice fuscae. Os palpis mandibulisque flavum. Thorax ater nitidus punctatus: lineola antice transversa, punctisque duobus dorsalibus, utrinque calloso ante alas rufis. Scutellum atrum immaculatum. Abdomen ferrugineum nitidum depresso dorso fusco. Pedes omnes rufis, femoribus posticis supra nigris. Alae flavicantes puncto marginali nigro.

a Magnitudo naturalis. b Eadem aucta.

Sechs und achtzigstes Heft.

THE NEW YORK PUBLIC LIBRARY

ASTOR LENOX AND TILDEN FOUNDATIONS

1895

1895

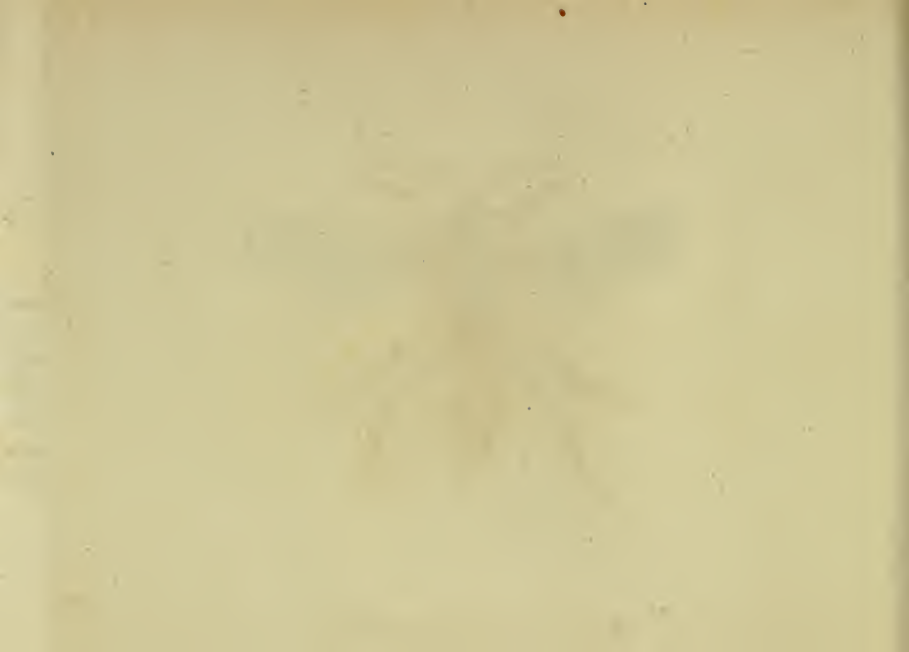
1895

1895



Pompilus exaltatus Fabr.

W. St. fec.



POMPILVS exaltatus.

Die halbsehwarz-halbrothe Grabwespe mit den weissen Flügelflecken.

POMPILVS exaltatus: niger abdomine rufo apice atro, alis apice fuscis: puncto albo. *Fabric. Entom. system. Supplem. n. 31. p. 251.*

Sphex exaltata. Fabric. Syst. Ent. n. 31. p. 151. Spec. Inf. T. I. n. 42. p. 449. Mant. Inf. T. I. n. 49. p. 277. Entom. syst. T. III. n. 69. p. 214.

Habitat in sabulosis, interdum floribus infidet.

a Magnitudo naturalis. b Eadem aucta.

THE UNIVERSITY OF CHICAGO

The following is a list of the names of the members of the
Committee on the History of the University of Chicago
who have been elected to the office of Secretary of the
Committee for the year 1912-1913. The names are
listed in alphabetical order of their surnames.
The names of the members of the Committee who have
been elected to the office of Secretary of the
Committee for the year 1912-1913 are as follows:



Pompilus bifasciatus Fabr.

J. St. fec.

POMPILVS bifasciatus.

Die auf den Flügeln zweygebänderte Grabwespe. L'Ichneumon noir à deux bandes sur les ailes. Geoffr.

POMPILVS bifasciatus: ater immaculatus alis albis: fasciis duabus nigris. *Fabric.*
Entom. syst. Supplem. n. 16. p. 248.

Spbex bifasciata. *Fabric.* Entom. syst. T. III. n. 58. p. 212.

Ichneumon niger, alis fascia duplici transversa nigra. *Geoffr.* Inf. T. II. n. 37.
P. 337.

Habitat in argillofis.

a Magnitudo naturalis. b Eadem aucta.

PROCEEDINGS

of the ...

...

...

...



Pompilus punctum Turine.

J. St. fec.



POMPILVS punctum.

Die schwarze Grabwespe mit dem weissen Afterpunkt.

POMPILVS punctum: niger ano puncto albo.

Evania punctum. Fabric. Entom. syst. T. III. n. 6. p. 194.

Spbex punctum. Fabric. Spec. Inf. T. I. n. 33. p. 448. Mant. Inf. T. I. n. 39. p. 276.

Habitat in sabulosis, in floribus.

a Magnitudo naturalis. b Eadem aucta.

THE HISTORY OF THE

REIGN OF KING CHARLES THE FIRST

BY JOHN BURNET

IN TWO VOLUMES

LONDON, Printed by J. Sturges, in the Strand, 1724.

Vol. I.

1685.



Bombex sinuata Michx.

J. St. fec.



BEMBEX sinuata.

Die buchtig gelbbandirte Schnabelwespe.

BEMBEX sinuata: labioconico flavo nigra, abdomine atro fasciis flavis repandis, prima interrupta.

Habitat in editioribus. *Dn. Iurine.*

Habitus et statura *Bemb. rostrata*, quamvis omnino diversa. Caput fuscum albido pubescens. Orbita interrupte rufa: lineola utrinque ante oculos, alia duplici verticali, alique transversa ante clypenm rufis. Clypens os labiumque flava. Antennae supra nigrae subtus flavae: articulo primo longiori toto flavo. Oculi fusci. Thorax pubescens antice lineola utrinque curvaturam emittente flava; basi tinctura rufa. Scutellum immaculatum. Abdomen atrum subnitidum, segmentis omnibus fascia flava sinuata, primo interrupto. Anus acutus flavus punctis duobus nigris. Pedes omnes flavi: femora flava supra nigra. Alae subflavicantes hyalinae.

ANNALS OF THE

The following is a list of the
members of the Society for
the year 1911.
The names are arranged in
alphabetical order of
surnames.

ALICE B. [unclear]
ANNE M. [unclear]
ARTHUR W. [unclear]
BARBARA S. [unclear]
BEATRICE E. [unclear]
BESSIE L. [unclear]
BETTY J. [unclear]
BRUCE H. [unclear]
CARRIE K. [unclear]
CHARLES F. [unclear]
CLARA G. [unclear]
CORDELIA I. [unclear]
DORIS M. [unclear]
EDITH N. [unclear]
ELIZABETH O. [unclear]
ETHEL P. [unclear]
FLORENCE Q. [unclear]
FRANK R. [unclear]
GEORGE T. [unclear]
GRACE U. [unclear]
HARRIET V. [unclear]
HELEN W. [unclear]
HUGH X. [unclear]
IDA Y. [unclear]
IRVING Z. [unclear]



Trachusa strigata Niki.



TRACHVSA frigata.

Die gestrichelte Biene.

TRACHVSA frigata: nigra thorace maculato, abdomine maculis utrinque quinque transversis flavis, primis duabus marginalibus, reliquis dorsalibus.

Habitat in floribus verticillatar.

Habitus statura et magnitudo *Trachus lituratus*. *Fn. Inf. germ. XXC.* aff. distincta. Caput atrum punctatum opacum pubescens, maculis duabus frontalibus, duabusque verticalibus pone oculos flavis. Os nigrum. Antennae breviusculae nigrae. Oculi fusci. Thorax ater punctatus pubescens, striga antica interrupta, puncto utrinque bascos marginali, et alio calloso ante alas flavis. Scutellum quadrimaculatum, maculis anticis marginalibus minoribus. Abdomen atrum punctatum gibbum: maculis utrinque quinque transversis flavis: primis duabus marginalibus: altera maiori; reliquis tribus dorsalibus subaequalibus: tegmento ultimo nigro immaculato,

tertio et quarto utrinque puncto marginali flavis. Pedes omnes flavi: femoribus posticis supra infraque macula nigra. Alae fuscescentes. Abdomen subtus lana flava.

Variat scutello bimaculato, segmento tertio et quarto punctis marginalibus nullis.

Variat fronte immaculata, punctis loco maculis verticalibus flavis: scutello bipunctato: abdomine maculis utrinque septem: quatuor marginalibus, tribus dorsalibus: segmento ultimo semper immaculato.

Ad *Trachus. maculat.* omnes illae species cum suis varietatibus adeo accedunt, ut varietatum more cum ea tantum coniungi posse videantur.

a Magnitudo naturalis. b Eadem aucta.



Trachusa Serratulae Mihi.

J. St. fec.

TRACHVSA Serratulae.

Die Schar ten - Biene.

TRACHVSA Serratulae: fusca thorace cinereo hirto, abdomine segmentis margine albido ciliatis, labio mandibulisque flavis.

Habitat in *Serratula arvensi* Linn.

Caput atrum cinereo pubescens. Frons albido villosa, labio maculaque utrinque sub antennis flavis. Mandibulae tridentatae flavae apice fuscae. Oculi cinerei. Antennae nigrae. Thorax ater cinereo tomentosus immaculatus. Abdomen subovatum atrum segmentorum marginibus albido pubescentibus. Alae obscuro-fuscescentes. Pedes nigri albido pubescentes.

a Magnitudo naturalis. b Eadem aucta. c Caput antice visum auctum.

THE UNIVERSITY OF CHICAGO

PHYSICS DEPARTMENT

MEMORANDUM FOR THE RECORD

DATE: [illegible]

TO: [illegible]

FROM: [illegible]

SUBJECT: [illegible]

[The following text is extremely faint and illegible due to the quality of the scan.]



Lasius Salviae Muhl.

J. St. fœe.



L A S I V S S a l v i a e.

Die Salbey-Biene.

LASIVS Salviae: cinereo villosus, abdomine globofo atro, segmentorum marginibus albis, tarsis flavis.

Habitat in hortis in *Salviae officin.* floribus.

Caput atrum cinereo pubescens. Frons sub antennis labiumque flava. Antennae nigrae. Oculi fusci. Thorax ater cinereo-villosus immaculatus. Abdomen globosum atrum, segmentorum marginibus albis. Pedes nigri cinereo pubescentes, tarsis omnibus flavis. Alae albae apice fuscescentes.

a Magnitudo naturalis. b Eadem aucta. c Caput antice visum auctum.

THE LIFE OF

THE

REV. JOHN W. B. ...

...

...

...



Bremus regelationis Miki.

J. St fec.

BREMVS regelationis.

Die Frühlings - Hummel.

BREMVS regelationis: hirsuta nigra: frönte thoraceque flavis fascia nigra: abdomine atro ano fulvo.

Habitat primo vere in hortis et pratis.

Media. Caput atrum. Frons flava. Thorax ater antice posticeque flavo marginatus. Abdomen atrum ano late fulvo. Pedes nigri rufo pubescentes. Alae hyalinae.

THE UNIVERSITY OF CHICAGO

PHYSICS DEPARTMENT

REPORT ON THE PROGRESS OF WORK
DURING THE YEAR 1957

BY

ROBERT S. SHULL, JR.
AND

WALTER B. RITCHIE



Bremus pomorum Michx.

J. S. G.



B R E M V S - p o m o r u m .

Die Obst-Hummel.

BREMVS pomorum: hirsuta nigra, thorace pallido fascia nigra, abdomine fulvo primo segmento pallido.

Habitat in pomariis.

Caput atrum hirsutum, fronte atro barbata, clypeo calvo atro nitida. Thorax albido canescens medio nigrofasciatus. Abdomen rufum, basi pallidiore, segmento primo albido. Pedes nigri tarsi tibiisque posticis rufo ciliatis. Alae hyalinae apice obscuriores.

THE UNIVERSITY OF CHICAGO

PHYSICS DEPARTMENT

REPORT OF THE PHYSICS DEPARTMENT
FOR THE YEAR 1957-1958

CHICAGO, ILLINOIS

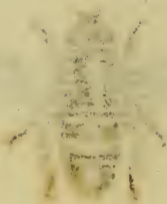
Published by the University of Chicago Press
Chicago, Illinois
1958

Price \$10.00



Syrphus quadrimaculatus Michx.

J. St. fœc



SYRPHVS quadrimaculatus.

Die viergeflekte Schwebfliege.

SYRPHVS quadrimaculatus: antennis setariis subtomentosus, thorace caerulescente, abdomine nigro maculis pellucidis quatuor.

Habitat in floribus.

Caput atrum nitidum pubescens. Antennae fuscae seta nigra. Oculi fusci cupreo-marginati. Thorax atro caerulescens subtomentosus immaculatus. Clava halterum flava. Abdomen depressum marginatum atrum s. atro-caerulescens nitidum subtomentosum, segmento secundo et tertio maculis duabus albidis pellucidis. Pedes nigri pubescentes. Corpus subtus albidum. Alae nigricantes.

a Magnitudo naturalis. b Eadem aucta.

THE UNIVERSITY OF CHICAGO

PHILOSOPHY DEPARTMENT

PHILOSOPHY 101: INTRODUCTION TO PHILOSOPHY

LECTURE 1: THE PHENOMENON OF CONSCIOUSNESS

1.1 THE PROBLEM OF CONSCIOUSNESS

1.2 THE HARD PROBLEM OF CONSCIOUSNESS

LECTURE 2: THE PHENOMENON OF FREEDOM

10



Syrphus globulus Müll.

J. St. fec.



SYRPHVS globulus.

Die kuglichte Schwebfliege.

SYRPHVS globulus: antennis setariis subnudus, thorace subgloboso nigro, abdomine flavo globoso inflato basi fusco fasciato, apice punctis duobus fuscis.

Habitat in floribus. *Dn. Patricius Trost.*

Habitus et statura *S. gibbi* et *gibbosi*. Caput exiguum orbiculatum. Oculi connati fusci. Antennae in vertice approximatae breves, seta brevissima. Thorax ater subpubescens nitidus gibbus elevatus suborbiculatus, antice et postice utrinque interrupte albido marginatus. Scutellum atrum nitidum. Abdomen globosum inflatum flavum, segmento primo fusco, maculis duabus flavis, secundo antice fusco marginato, tertio maculis marginis antici tribus, punctisque dorsalibus duobus fuscis, quarto flavo punctis duobus minoribus fuscis. Pedes flavi, unguibus fuscis. Alae hyalinae. Squama halterum magna hyalina concava.

a Magnitudo naturalis. b Eadem aucta.



Aranea Erinaceus Trost.

J. St. f.



ARANEAE Erinaceus.

Die Stachel-Spinne.

ARANEAE Erinaceus: pallida hispida, abdomine subgloboso fusco.

Phalangium Erinaceus. *Trost* Beitr. I. n. 645.

Habitat locis obscuris subhumidis. *Dn. Patr. Trost.*

a Magnitudo naturalis. b Eadem aucta.

THE UNIVERSITY OF CHICAGO

PHYSICS DEPARTMENT

REPORT ON THE PROGRESS OF WORK

FOR THE YEAR 1957

BY THE FACULTY

CHICAGO, ILLINOIS



Aranca annulata Mihi.

J. St. fec.



A R A N E A a n n u l a t a .

Die Ringel-Spinne.

ARANEA annulata: cinerea nuda, abdomine orbiculato cinereo, strigis duabus abbreviatis punctatis: pedibus posticis fusco annulatis.

Habitat in editoribus argillofis.

Parva. Caput et thorax albida. Palpi albidi. Abdomen orbiculatum globosum cinereum fusco marginatum, punctis minutissimis adpersum, strigiisque duabus fuscus e punctis approximatis. Pedes citrini: postici fusco annulati.

a Magnitudo naturalis, b Eadem aucta.

OFFICE OF THE SECRETARY

MEMORANDUM FOR THE SECRETARY

DATE: [illegible]

TO: [illegible]

FROM: [illegible]

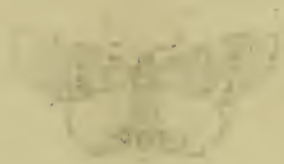
SUBJECT: [illegible]

[The following text is extremely faint and illegible due to the quality of the scan. It appears to be a memorandum detailing a report or action.]



Phalaena dolabraria Fabr.

J. St., 1792.



PHALAENA dolabraria.

*Der Wintereichenspanner. Der Eichenmesser. Der Birkenmesser.
Der Brandvogel. Der Hobelspanner.*

PHALAENA dolabraria : pectinicornis alis angulatis flavis; strigis ferrugineis, angulo ani violaceo. *Fabric.* Ent. system. T. V. n. 32. p. 138. *Syst.* Ent. n. 17. p. 621. *Spec. Inf.* T. II. n. 26. p. 187. *Mant. Inf.* T. II. n. 21. p. 245.

PHALAENA Geometra dolabraria. *Linn.* *Syst. Nat.* n. 207. p. 861. ed. XIII. n. 207. p. 2451.

Syst. Verz. d. W. Schmett. n. 16. p. 104.

Sulzer abgek. Geschichte der Insekten p. 161. tab. 22. fig. 9.

Die Raupe nährt sich von Eichenlaube vorzüglich, doch soll sie auch auf Birken angetroffen werden. Im Juni und im September soll man sie schon völlig ausgewachsen angetroffen haben. Der Schmetterling ist in ebendemselben Jahre schon mehrmals zweymal angetroffen worden: im April und im Julius.

THE HISTORY OF THE

... ..

... ..

... ..

... ..

... ..

... ..

... ..



Lithosia irrorata Fabr.



LITHOSIA irrorata.

*Die Baumflechteneule. Die Pomeranzenmotte. Die gelbe schwarzpunk-
tirtte Motte. Phalene jaune à points noires. Degeer.*

LITHOSIA irrorata: alis luteis: anticis punctis nigris trifariis, thorace antice
posticeque fulvo. *Fabric. Ent. syst. Supplem. n. 12. p. 461.*

*TINEA irrorella. Fabric. Ent. Syst. T. V. n. 18. p. 291. Syst. Ent. n. 9. p.
657. Spec. Inf. T. II. n. 11. p. 291. Mant. Inf. T. II. n. 14. p. 241.*

*PHALENA Tinea irrorella. Linn. Syst. Nat. n. 354. p. 885. ed. XIII. n. 354.
p. 2588. Fn. Suec. n. 1361.*

Verz. d. W. Schm. n. 6. p. 68.

Sulzer. abgek. Gesch. d. Inf. p. 162. tab. 23. fig. 10.

Degeer Inf. T. II. P. 1. p. 342. tab. 5. fig. 12.

Die Larve soll sich nicht nur von der *Wandflechte*, sondern auch von meh-
rern ähnlichen Arten dieser Gewächse nähren.

1877

1877

1877

1877

1877

1877

1877



des sieben und achtzigsten Hefts.

- Tab. 1. *Aphodius elevatus* Fabric.
- 2. *Carabus scabrosus* Fabric.
- 3. *Carabus caelatus* Fabric.
- 4. *Carabus eatenatus* Megerleſ.
- 5. *Carabus striolatus* Fabric.
- 6. *Chrysomela globosa* Megerleſ.
- 7. *Curculio Megerlei* Fabric.
- 8. *Forficula auricularia* Fabric.
- 9. *Forficula minor* Fabric.
- 10. *Forficula bipunctata* Fabric.
- 11. *Gryllus caeruleſcens* Fabric.
- 12. *Gryllus stridulus* Fabric.
- 13. *Hemerobius Perla* Fabric.
- 14. *Hemerobius albus* Fabric.
- 15. *Hemerobius phalaenoides* Fabric.
- 16. *Cynips ediogaster* Panzer.
- 17. *Pteronus Pini* Panzer.
- 18. *Cephalcia Betulae* Panzer.
- 19. *Sapyga cylindrica* Panzer.
- 20. *Sapyga quadripunct.* Panzer.
- 21. *Pompilus hircana* Fabric.
- 22. *Rhingia rostrata* Fabric.
- 23. *Papilio Satyr.* *Sybilla* Fabric.
- 24. *Papilio Satyr.* *Camilla* Fabric.





Aphodius elevatus Fabr.



APHODIVS elevatus.

Der gewölbte Dungkäfer.

APHODIVS elevatus: muticus gibbosus ater, elytris crenato-friatis, clypeo emarginato. *Fabric. Syst. Eleuth. T. I. n. 46. p. 79.*

SCARABAEVS elevatus. Fabric. Ent. syst. T. I. n. 118, p. 37.

Habitat in stercore.

a Magnitudo naturalis. b Eadem aucta.



Carabus scabrosus Fabr.



CARABVS scabrosus.

Der größte runzeldeckichte Laufkäfer.

CARABVS scabrosus: apterus ater, thorace rugoso, elytris connatis; punctis elevatis concatenatis. *Fabric. Syst. Eleuth. T. I. n. 1. p. 163.*

CARABVS gigas. Creuz. Versuche n. 1. p. 107. tab. 2. fig. 13.

Habitat in Carniolia.

Carabus scabrosus Olivier, ab nostro *C. scabroso* longe diversa est species:

THE HISTORY OF

THE CITY OF BOSTON

FROM THE FIRST SETTLEMENT TO THE PRESENT TIME
BY SAMUEL JOHNSON
IN TWO VOLUMES

VOLUME I

BOSTON: PUBLISHED BY T. & J. NEASE, 1790.



Carabus caelatus Fabr.



CARABVS caelatus.

Der schwarze warzendeckichte Laufkäfer.

CARABVS caelatus: apterus ater thorace varioloso, elytris connatis, punctis intricatis rugosis: margine cyaneo nitido. *Fabric. Syst. Eleuth. T. I, n. 3.*
p. 169.

Habitat in Carniolia.

THE UNIVERSITY OF CHICAGO

PHYSICS DEPARTMENT

REPORT OF THE PHYSICS DEPARTMENT

FOR THE YEAR 1954-1955

1955

PHYSICS DEPARTMENT



Carabus caterinatus Megerlei.



CARABVS catenatus.

Der kettenstreifige Laufkäfer.

CARABVS catenatus: apterus ater, thoracis elytrorumque margine violaceo, elytris striatis, punctis interiectis elevatis longitudinalibus triplici serie.

CARABVS catenulatus. Scop. carn. n. 264.

Habitat in Carniolia. Dn. de Megerle.

Habitus et statura *Carab. catenulati* Fabr. (Faun. Inf. IV. 6.) cui affinis, sed maior et omnino distinctus. Caput exsertum atrum nitidum, fronte glabra transverse striata, margine laterali elevato. Antennae articulis primis quatuor glabris atris, reliquis villosis-fuscis. Thorax cordatus ater glaber, medio linea impressa, dorso transversim rugosus, margine laterali violaceo, subsinuato reflexo, angulis posticis dentiformibus. Scutellum cordatum transverse subtiliter striatum. Coleoptera oblonga atra nitida glabra striata, pone apicem obsolete subexcisa, margine

lateralis argute elevata, utrinque violacea, striis in singulo tribus masculis e punctis longitudinalibus concatenato elevatis, interiectis striis tribus moniliformibus s. obtuse crenatis. Pedes nigri glabri nitidi; femora clavata; tibiae ferrulatae apice bispinosae. Corpus subtus atrum glabrum nitidum.]

a Magnitudo naturalis. b Elytrum auctum.



Carabus striolatus Fabr.



CARABVS striolatus.

Der zartgestrichelte Laufkäfer.

CARABVS striolatus: apterus ater, thorace utrinque subimpresso, elytris laeviusculis. *Fabric. Syst. Eleuth. T.I. n. 101. p. 188.*

Habitat in Carniolia. *Dn. de Megerle.*

THE UNIVERSITY OF CHICAGO

DEPARTMENT OF CHEMISTRY

REPORT ON THE PROGRESS OF WORK DURING THE YEAR 1911

BY

ROBERT M. HARRIS

AND

WALTER H. C. S. S. S.



Chrysomela globosa Megertci.



CHRYSOMELA globosa.

Das kugelrunde Goldhähnchen.

CHRYSOMELA globosa: globoso-haemisphaerica, supra aenea, subtus testacea.
Habitat in Austria. *Dn. de Megerle.*

Corpus gibbum globosum haemisphaericum nitidum, glabrum, supra obscure cupreo-aeneum, subtus testaceum. Antennae pubescentes testaceae. Caput aeneum nitidum punctulatum. Thorax marginatus, margine laterali haud reflexo, magis cupreus, punctis minutissimis confertis impressus. Coleoptera obscure cupreo aenea nitida, punctis maioribus rarioribus, cum in strias abbreviatis, tum sine ordine digestis. Scutellum futuraque cuprea. Pedes testacei nitidi: femora valida crassa. Corpus subtus nitidum testaceum.

a Magnitudo naturalis. b Eadem aucta.

a

A vertical scale bar consisting of a thin vertical line with short horizontal ticks at both ends, positioned to the left of the beetle.

Curculio Megerlei Fabr.



CVRCVLIO Megerlei.

Der Megerlesche Rüsselkäfer.

CVRCVLIO Megerlei: fasciis, thorace elytrisq[ue] scabris cinereo-lineatis, elytris ante apicem unidentatis. *Fabric.* System. Eleutherat. T. II. n. 84. p. 521.

Habitat in Austria. *Dn. de Megerle.*

Femora omnia dentata. Antennarum clava cinerea.

a Magnitudo naturalis. b Eadem aucta.

התקשרות

התקשרות

התקשרות

התקשרות

התקשרות

התקשרות



Forficula auricularia Fabr.



FORFICVLA auricularia.

Der gemeine Ohrkäfer. Der grosse Ohrwurm. Le grand Perce oreille.
Geoffr.

FORFICVLA auricularia: forcipe arcuata basi dentata, antennis quatuordecim articulatis. *Fabric.* Entom. syst. T. III. n. 1. p. 1. Syst. Ent. n. 1. p. 269. Spec. Inf. T. I. n. 1. p. 340. Mant. Inf. T. I. n. 1. p. 224.

FORFICVLA auricularia. *Linn.* Syst. Nat. n. 1. p. 686. ed. XIII, n. 1. p. 2038. *Geoffr.* Inf. T. I. n. 1. p. 375. tab. 7. fig. 3.

Degeer Inf. T. III. n. 1. p. 353. tab. 25. fig. 16.

Schaeffer Ic. Inf. Ratisb. tab. 144. fig. 3. 4.

Harrer Besch. d. Schäff. Inf. n. 408. p. 247.

Habitat in ligno antiquo: flores saepius adit, Dipsaci, Cirsii oleracei: fructus saepe rodit maturos: aures dormientium interdum intrare fertur.

a Magnitudo naturalis. b Antenna aucta.

CHAPTER 1

The first part of the book is devoted to a general introduction to the subject. It discusses the scope and objectives of the study, and outlines the structure of the book. The author also discusses the importance of the subject and the need for a systematic approach to its study.

The second part of the book is devoted to a detailed study of the subject. It discusses the various aspects of the subject, and provides a comprehensive overview of the field. The author also discusses the current state of research in the field, and identifies areas for further study.

The third part of the book is devoted to a study of the subject in its historical context. It discusses the development of the subject over time, and identifies the key figures and events that have shaped the field. The author also discusses the influence of the subject on other areas of study.

The fourth part of the book is devoted to a study of the subject in its practical context. It discusses the application of the subject to real-world problems, and provides a detailed analysis of the various methods and techniques used in the field. The author also discusses the challenges and opportunities associated with the practical application of the subject.

The fifth part of the book is devoted to a study of the subject in its philosophical context. It discusses the philosophical foundations of the subject, and provides a detailed analysis of the various philosophical issues that arise in the field. The author also discusses the relationship between the subject and other areas of philosophy.



Forficula minor Fabr.



FORFICVLA minor.

Der kleinere Ohrkäfer. Le petit Perce-oreille. Geoffr.

FORFICVLA minor: elytris testaceis immaculatis, antennis decemarticulatis,
Fabric. Ent. syst. T. III n. 7. p. 3. Syst. Ent. n. 2. p. 269. Spec. Inf.
T. I. n. 3. p. 340. Mant. Inf. T. I. n. 5. p. 224.

FORFICVLA minor. Linn. Syst. Nat. n. 2. p. 686. ed. XIII. n. 2. p. 2039.
Geoffr. Inf. T. I. n. 2 p. 376

Degeer Inf. T. III. n. 2. p. 553. tab. 25. fig. 25. 26.

Schäffer Ic. Inf. Ratisb. tab. 41. fig. 12. 13.

Harrer Besch. d. Schäff. Inf. n. 409. p. 240.

Habitat in sylvaticis, locis obscuris, sub foliis deciduis, in ligno exeso.

a Magnitudo naturalis. b Eadem aucta.

1877

...

...

...

...

...

...

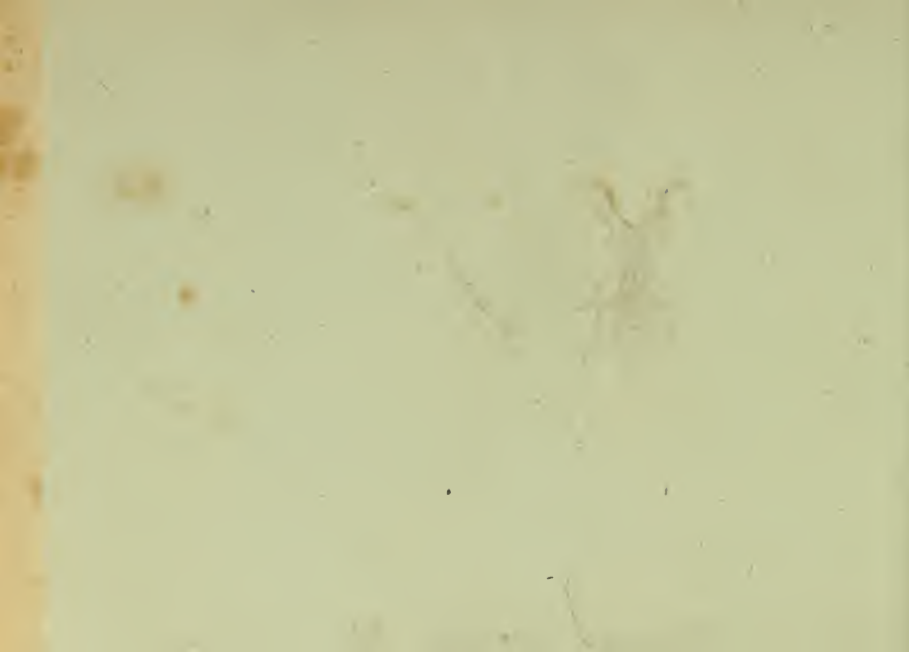
...

...



Forficula bipunctata Fabr.

J. St. fec.



FORFICVLA bipunctata.

Der zweypunktirte Ohrkäfer.

FORFICVLA bipunctata: nigra capite postice pedibusque rufis, elytris macula alba. *Fabric.* Ent. syst. T. III. n. 3. p. 2.

Habitat in Austria. *Dn. de Megerle.*

Variare videtur forcipe lunata medio dentata, et subrecta apice tantum incurva. Elytrorum maculae in nostris speciminibus rufae. Alarum apices albae, quae elytris non teguntur, hinc eorum maculas mentiuntur.

a Magnitudo naturalis. b Antenna aucta.

THE HISTORY OF

THE

REIGN OF

CHARLES

THE SECOND

BY

J. H. BURTON

ESQ.

LONDON



Gryllus coeruleescens Fabr.



GRYLLVS caerulefcens.

Die ſchwarzbandirte Heuſchrecke. Die blaueflügelte Schnarrheuſchrecke. *Le Criquet à ailes bleues et noires.* Geoffr.

GRYLLVS caerulefcens: thorace ſubcarinato, alis viſcente caeruleis: fascia nigra. *Fabric.* Ent. ſyſt. T. III. n. 50. *Syſt.* Ent. p. 23. p. 292. *Spec.* Inf. T. I. n. 37. p. 369. *Mant.* Inf. T. I. n. 43 p. 239.

GRYLLVS caerulefcens. *Lin.* *Syſt.* Nat. n. 44. p. 700. ed. XIII. n. 44 p. 2077.

Geoffr. Inf. T. I. n. 2. p. 392.

Roefel Inf. Bel. T. II. p. 133. tab. 21. fig. 4. 5.

Schäffer Ic. Inf. Ratiſb. Tab. 27. fig. 6. 7.

Harrer Beſchr. d. Schäf. Inf. n. 428. p. 264.

Habitat in ſabuloſis, apricis frequens.

The following are the names of the persons who have been elected to the office of Justice of the Peace for the year 1877.

WILLIAM J. BROWN, Justice of the Peace for the first district, and JOHN D. SMITH, Justice of the Peace for the second district, were elected to the office of Justice of the Peace for the year 1877.

WILLIAM J. BROWN, Justice of the Peace for the first district, and JOHN D. SMITH, Justice of the Peace for the second district, were elected to the office of Justice of the Peace for the year 1877.



Gryllus stridulus Fabr.



GRYLLVS stridulus.

Die roth und schwarzgeflogelte Heuschrecke. Le Criquet à ailes rouges Geoffr.

GRYLLVS stridulus: thorace carinato, alis rubris extimo nigris. *Fabric.* Ent. syst. T. III. n. 37. p. 56. Syft. Ent. n. 17. p. 290. Spec. Inf. T. I. n. 26. p. 366. Mant. Inf. T. I. n. 31. p. 238.

GRYLLVS stridulus. *Linn.* Syft. Nat. n. 47. p. 701. ed. XIII. n. 47. p. 2078. Fn. Suec. n. 872.

Geoffr. Inf. T. I. n. 3. p. 393.

Roesel Inf. Bel. T. II. tab. 21. fig. 1.

Schäffer Ic. Inf. Ratisb. tab. 27. fig. 10. 11.

Harrer Besch. d. S. Inf. n. 425. p. 261.

Habitat in ficcis arenosis cum antecedent. frequens,

THE HISTORY OF THE

REIGN OF CHARLES THE FIRST

BY JOHN BURNET

IN TWO VOLUMES

LONDON

Printed by J. Sturges, in the Strand

1724



Hemerobius Perla Fabr.

J.S.: fec

HEMEROBIVS Perla.

Der stinkende Perlhaft. Die Stinkfliege. Le Lion de Pucerons.

HEMEROBIVS Perla: luteo viridis alis hyalinis: vasis viridibus. *Fabric.* Ent. syst. T. III. n. 2. p. 82. Syst. Ent. n. 2. p. 309. *Spec. Inf.* T. I. n. 2. p. 392. *Mant. Inf.* T. I. n. 2. p. 246.

HEMEROBIVS Perla. *Linn.* Syst. Nat. n. 2. p. 911. ed. XIII. n. 2. p. 2639. *Fn. Suec.* n. 1504.

Geoffr. *Inf.* T. II. n. 1. p. 253. tab. 13. fig. 6.

Schüffer *Ic. Inf. Ratisb.* tab. 5. fig. 7. 8.

Roesel *Inf. Bel.* T. III. tab. 5. fig. 7.

Habitat in hortis, dumetis: ad instar excrementorum factorem spargit, hinc apud veteres Entomol. *Musca merdam olens* audit. Ova stipiti apillari infidentia aggregata.

a Magnitudo naturalis. b Ala magnitudine aucta.



Hemerobius albus Fabr.

J. St. fec



HEMEROBIVS albus.

Der weise Perlhaft. Die weise Stinkfliege.

HEMEROBIVS albus: albus alis hyalinis, oculis æneis. *Fabric. Ent. Syst. T. III. n. 4. p. 82. Syst. Ent. n. 3. p. 309. Spec. Inf. T. I. n. 3. p. 392. Mant. Inf. T. I. n. 4. p. 247.*

HEMEROBIVS albus. Linn. Syst. Nat. n. 3. p. 911. ed. XIII. n. 3. p. 2640. Fn. Suec. n. 1506.

Habitat in plantis, hortis.

MEMORANDUM

TO THE PRESIDENT

MEMORANDUM FOR THE PRESIDENT: This memorandum is submitted to you for your information and guidance.

It is the policy of the United States to support the free people of the world in their struggle for freedom.

Very truly yours,

MEMORANDUM FOR THE PRESIDENT: This memorandum is submitted to you for your information and guidance.

Very truly yours,

John F. Kennedy



Hemerobius phalaenoides Fabr.

HEMEROBIVS phalaenoides.

Der falterartige Perlhaft.

HEMEROBIVS phalaenoides: testaceus alis basi mucronatis postice excisis.

Fabric. Ent. syst. T. III. n. 8. p. 83. Syst. Ent. n. 5. p. 310. Spec. Inf.

T. I. n. 5. p. 393. Mant. Inf. T. I. n. 7. p. 247.

HEMEROBIVS phalaenoides. *Linn.* Syst. Nat. n. 5. p. 912. ed. XIII. n. 5. p.

2640. Fn. Suec. 1508.

Degeer Inf. T. II. P. II. n. 4. p. 73. tab. 22. fig. 12. 13.

Reaumur. Inf. T. III. tab. 32. fig. 8.

Sulzer abgek. Gesch. d. Inf. tab. 25. fig. 2.

Schäffer Ic. Inf. Ratisb. tab. 3. fig. 11. 12.

Habitat in silvaticis.

THE HISTORY OF THE

REIGN OF

CHARLES THE FIRST
BY JOHN BURNET
ESQ.
OF LINCOLN'S INN
IN TWO VOLUMES
THE SECOND VOLUME
LONDON, Printed by J. Sturges, at the Sign of the Gun, in St. Dunstons Church-yard, 1704.



Cynips edicogaster Miki.



CYNIPS ediogaster.

Die breitbauchigte Gallwespe.

CYNIPS ediogaster : nigra, thoracis dorso rubro, postice loco scutelli acuminato, pedibus ferrugineis.

EVANIA ediogaster. *Rossi* Faun. etrusc. T. I. n. 801. p. 57.

Habitat in *Citro medica* Linn.

Descriptioni Cl. *Rossi* l. c. addendum: Antennae nigrae subtus ferrugineae. Thorax dorso rufus striis tribus longitudinalibus carinato elevatis. Scutellum rufum basi dilatatum, medio foveolis duabus impressum, apice in acutissimum mucronem atrum desinens. Abdomen ovatum subcompressum nigrum lucidum vix petiolatum. Pedes rufi: femora antica nigra: tarsi postici nigri. Alae basi medioque flavae. Pectus et abdomen subtus nigra.

a Magnitudo naturalis. b Eadem aucta. c Scutellum auctum,

1847

The following is a list of

the names of the persons who have been

admitted to the

membership of the Society, from the year 1847 to 1850.

1847

1848

1849

1850

1851

1852

1853

1854

1855



Pteronus Pini Mihi.

PTERONVS Pini.

Die Fichten-Federwespe. La Mouche-à scie noir à antennes pectinées.
Geoffr.

PTERONVS Pini: antennis pennatis lanceolatis, thorace subvillosa, pedibus flavis.

TENTHREDO Pini. Fabric. Ent. syst. T. III. n. 28. p. 112. Syst. Entom.
n. 11. p. 319. Spec. Inf. T. I. n. 17. p. 409. Mant. Inf. T. I. n. 18. p.
254.

TENTHREDO Pini. Linn. Syst. Nat. n. 14. p. 922. ed. XIII. n. 14. p. 2657.
Fn. Suec. n. 1540.

Geoffr. Inf. T. II. n. 33. p. 286.

Degeer Inf. T. II. P. 2. n. 10. p. 247. tab. 36. fig. 13—18.

Vadm. diss. n. 90 fig. 13.

Habitat in Pinetis.

a Magnitudo naturalis. b Eadem aucta. c Antenna aucta.

Sieben und achtzigstes Heft.

THE HISTORY OF

THE CITY OF BOSTON

FROM THE FIRST SETTLEMENT TO THE PRESENT TIME

BY

JOHN B. HENNING

NEW YORK

1850

Published by

JOHN B. HENNING

NEW YORK

1850



Cephalcia Betulae Mihi.

J. G. f. c.

CEPHALCIA Betulae.

Die Birken - Fadenwespe.

CEPHALCIA Betulae: corpore rubro. thorace ano oculisque nigris, alis flavis apice fuscis.

TENTHREDO Betulae. *Fabric.* Ent. syst. T. III. n. 72. p. 122. Syst. Ent. n. 38. p. 324. Spec. Inf. T. I. n. 57. p. 417. Mant. Inf. T. I. n. 60. p. 256.

TENTHREDO Betulae. *Linn.* Syst. Nat. n. 47. p. 927. ed. XIII. n. 47. p. 2669. Fn. Suec. n. 1565.

TENTHREDO ferruginea. *Degeer.* Inf. T. II. P. 2. n. 34. p. 291. tab. 40. fig. 21.

Habitat in Betula, Corylo, Carpino.



Sapyga cylindrica Miki.



SAPYGA cylindrica.

Die walzenförmige Moderwespe.

SAPYGA cylindrica: atra pubescens, abdomine segmentis trifariam albo maculatis, primo immaculata.

Habitat in floribus.

Habitus et statura *Sapyg.* (Scoliae) *Prismae*. Caput atrum, opacum, rotundatum, pubescens, punctis plurimis impressis. Oculi cinerei. Antennae nigrae cylindricae apice subclavatae longitudine abdominis. Thorax ater immaculatus cinereo pubescens punctis plurimis impressis. Scutellum immaculatum. Abdomen petiolatum filiforme, atrum, pubescens, punctatum, lucidum; segmento primo subglobofo immaculato, reliquis omnibus postice macula dorsali transversali, duabusque marginalibus albis: ultimum macula tantum anali, nullisque marginalibus. Pedes omnes nigri cinereo pubescentes, omnes corpore breviores. Tarsi fusci. Corpus subtus atrum immaculatum cinereo pubescens. Alae immaculatae.

a Magnitudo naturalis. b Eadem aucta.

[Faint, illegible text, possibly bleed-through from the reverse side of the page.]



Sapyga quadripunctata Mihi.



SAPYGA quadripunctata.

Die vierpunktige Moderwespe.

SAPYGA quadripunctata: atra, abdominis segmento tertio quartoque utrinque macula alba.

Habitat in editioribus, argillofis.

Caput atrum transversum pubescens punctis plurimis scabrum, fronte inter antennas macula rotunda alba. Oculi obscuro cineri reniformes. Antennae supra nigrae subtus rufae cylindricae, apice incrassatae. Thorax ater pubescens scaber, angulis anticis acutis prominulis. Scutellum atrum immaculatum. Abdomen sessile nigrum pube rara et brevi vestitum, subcylindricum, lucidum: segmentis tertio et quarto utrinque macula marginali albis: reliquis immaculatis. Pedes nigri pubescentes corpore breviores: tarsi fusci. Alae immacolatae.

a Magnitudo naturalis. b Eadem aucta,



Pompilus hircana Tabr.



POMPILVS hircana.

Die schwarze Grabwespe mit braungefleckten Flügeln.

POMPILVS hircana: niger alis apice fuscis: puncto albo. *Fabric. Supplem.*
Ent. Syst. n. 30. p. 251.

Habitat primo fere in umbelliferis.
a Magnitudo naturalis. b Eadem aucta.

Handwritten title or header, possibly a name or date, located at the top center of the page.

Main body of handwritten text, consisting of several lines of cursive script. The text is significantly faded and difficult to decipher, but appears to be a continuous paragraph or list of entries.



Rhingia rostrata Fabr.

J. St. f.



RHINGIA rostrata.

Die pomeranzenfärbige Schnabelfliege.

RHINGIA rostrata: thorace sublineato, rostro abdomine pedibusque testaceis.

Fabric. Entom. syst. T. VI. n. 1. p. 374. Syst. Ent. n. 1. p. 791. Spec.

Inf. T. II. n. 1. p. 460. Mant. Inf. T. I. n. 1. p. 357.

CONOPS rostrata. Linn. Syst. Nat. n. 1. p. 1004. ed. XIII. n. 8. p. 2892.

MYSCA rostrata. Degeer Inf. T. XI. n. 19. p. 130. tab. 7. fig. 21. 22.

Habitat frequens ruri pecoribus admodum molesta.

a Magnitudo naturalis. b Eadem aucta.

1870

Received of the Treasurer of the
Board of Education the sum of
\$100.00 for the year ending
June 30, 1870.

2



Papilio S. Sibilla Fabr.



PAPILIO Satyrus Sybilla.

Der Heckenkirschenfalter. Der Schleier. Der weisse Admiral. Der kleine Eisvogel. Le petit Sylvain. The white Admiral.

PAPILIO Satyrus Sybilla: alis dentatis supra fuscis, subtus ferrugineis nigro maculatis: fascia utrinque maculari alba. *Fabric.* Ent. syst. T. IV, n. 766. p. 246. Syst. Ent. n. 294. p. 512. Spec. Inf. T. II. n. 451. p. 102. Mant. Inf. T. II. n. 547. p. 55.

PAPILIO Nymph. Phal. Sybilla Linn. syst. Nat. n. 186. p. 781. ed. XIII, n. 186. p. 2321.

Roefel Inf. Bel. T. III. tab. 70. fig. 1. 2. 3.

Verz. d. W. Schmet. n. 2. p. 172.

Esper eur. Schmet. T. I. tab. 14. fig. 2. 3.

Schaeffer Ic. Inf. Ratisb. tab. 153. fig. 1. 2.

Borkhausen eur. Schmet. T. I. n. 20. p. 24.

Die Raupe dieses Falters lebt einsam auf den Heckenkirschen (*Lonicera Xylosteum* L.); sie ist gelbgrünlich mit weissen Härchen und karminrothen Dornen von ungleicher Grösse, mit herzförmig getheiltem dunkelrothen Kopf und weissen Füßen. Ihre eckigte Chrysalide ist grün, und wird nahe an der Entwicklung braun. Rösel vergleicht ihre Gestalt, wenn man sie umgekehrt betrachtet, mit dem Bilde eines Haafens, welcher ein Männchen macht. Der Falter entwickelt sich in vierzehn Tagen, bis drey Wochen. Er fliegt im Junius, Julius und August in Wäldern, vorzüglich gern an Wasserbächen.



Papilio S. Camilla Fabr.



PAPILIO Satyrus Camilla,

*Der oben blaulichtschwarze unten zimmtbraune Falter. Le Devil.
Geoffr.*

PAPILIO Satyrus Camilla: alis dentatis atris caeruleo micantibus: fascia utrinque maculari alba, posticis subius basi argentea immaculata, *Fabric. Ent. syst. T. IV. n. 767. p. 246.*

Syst. Verz. d. W. Schmet. n. 3. p. 172.

Geoffr. Inf. T. II. n. 45. p. 73.

Scop. carn. n. 443. ic. 443.

Fuesly Magaz. I. p. 257. tab. II.

Roefel Inf. Bel. T. III. tab. 33. fig. 3.

Esper eur. Schm. T. I. tab. 38. fig. 2.

Borkhausen eur. Schm. T. I. n. 21. p. 25.

Die Raupe dieses Falters lebt auf der *Lonicera tartarica* L. dem Caprifolio und Periclymeno, wird aber nicht wie die vorhergehende auf dem Xylosteo gefunden. Die jungen Räumchen überwintern in einem Gespinste, und werden im Junius ausgewachsen gefunden.

Man darf diese *Camilla* nicht mit derjenigen, welche *Linné* angezeigt hat vereinigen: denn nach sichern Erfahrungen gehören die Linnésche *Sybilla* und *Camilla* zu einerlei Art, und letztere ist der weibliche Falter.



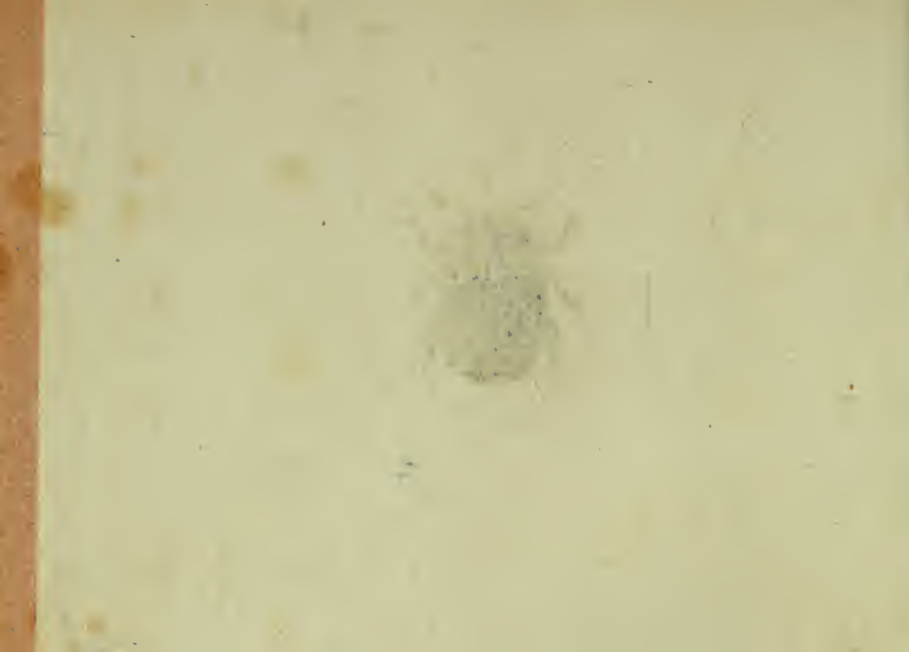


- Tab. 1. *Cassida atrata* Fabric.
— 2. *Crioceris quadripustulata* Fabric.
— 3. *Brachinus mutillatus* Fabric.
— 4. *Astrapaëus Vlmi* Gravenhorst.
— 5. *Acheta Gryllotalpa* Fabric.
— 6. *Acheta domestica* Mas. Fabric.
— 7. *Acheta domestica* Fem. Fabric.
— 8. *Acheta campestris* Mas. Fabric.
— 9. *Acheta campestris* Fem. Fabric.
— 10. *Cynips (Chalcis) adscendens* Fabric.
— 11. *Cynips Quercus folii* Fabric.
— 12. *Cynips (Chalcis) Quercus inferus* Fabric.
— 13. *Cynips Quercus terminalis* Fabric.
— 14. *Chelorus dentatus* Panzer.
— 15. *Chalcis violacea* Panzer.
— 16. *Tenthredo sylvarum* Fabric.
— 17. *Crypta segmentarius* Panzer.
— 18. *Allantus lateralis* Panzer.
— 19. *Libellula quadrimaculata* Fabric.
— 20. *Libellula aenea* Fabric.
— 21. *Aeshna forcipata* Fabric.
— 22. *Reduvius personatus* Fabric.
— 23. *Reduvius annulatus* Fabric.
— 24. *Reduvius crueatus* Fabric.





Cassida atrata Fabr.



CASSIDA atrata.

Der schwarze Schildkäfer.

CASSIDA atrata: atra, clypeo antice sanguineo. *Fabric. Syst. Eleuth. T. I. n. 13.*
p. 390. Ent. syst. T. I. n. 8. p. 294.

Habitat in Austria.

Striga gemina obliqua brevis rufa in antico thoracis. Coleoptera longitudinaliter rugosa.

a Magnitudo naturalis. b Eadem aucta.



Crioceris quadripustulata Fabr.



CRIOCERIS quadripustulata.

Der vierfleckigte Spring-Schnurkäfer. L'Altise à points rouges. Geoffr.

CRIOCERIS quadripustulata: saltatoria, nigra, colcoptis lineolis quatuor flavescenibus. *Fabric. Syst. Eleuth. T. I. n. 72. p. 464.*

GALLERVCA quadripustulata. Fabric. Ent. syst. T. II. n. 93. p. 32.

Geoffr. Inf. T. I. n. 15. p. 250.

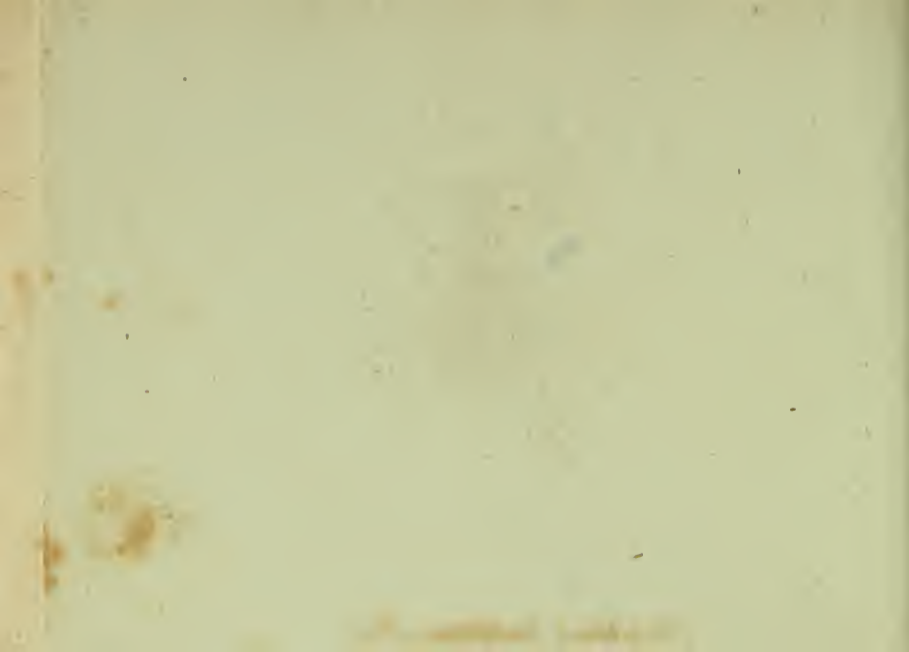
Payk. Fn. Suec. T. II. n. 17. p. 99.

Habitat frequens in *Cynoglossō officinali Linn.*

a Magnitudo naturalis. b Eadem aucta.



Brachinus mutilatus Fabr.



BRACHYNVS mutilatus.

Der verstümmelte Kurzdeckkäfer.

BRACHYNVS mutilatus: ater antennis pedibusque ferrugineis, alis nullis. *Fabric.*

Syst Eleuth T. I. n. 7. p. 18.

CARABVS Bombarda. Illiger im *Wiedemann*. Zool. Archiv. II. 112. 9.

Habitat in Austra.

Thorax punctis plurimis impressus. Litura parva ferruginea ad elytrorum basia saepius deest.

a Magnitudo naturalis. b Eadem aucta.

THE UNIVERSITY OF CHICAGO

DEPARTMENT OF CHEMISTRY

RESEARCH REPORT NO. 100

1955

BY

ROBERT M. HAYES

PH.D. THESIS

1955



Astrapaeus ulmi Gravenhorst.



ASTRAPAEVS Vlmi

Der Rüster - Gurtkäfer.

ASTRAPAEVS Vlmi: niger, nitidus; antennarum basi, ore, elytris et segmenti penultimi margine rufis. *Gravenhorst* Coleopter. micropt. n. 1. p. 199.

STAPHYLINVS ulmineus. *Fabric.* Syst. Eleuth. T. II. n. 28. p. 595.

STAPHYLINVS Vlmi. *Rossi* Faun. etrusc. T. I. n. 611. p. 248. tab. 5. fig. 6.

Habitat sub cortice Vlmi.

a Magnitudo naturalis. b Eadem aucta.

THE UNIVERSITY OF CHICAGO

PHYSICS DEPARTMENT

RECEIVED
MAY 10 1954

CHICAGO, ILL.

1954



Acheta Gryllotalpa Fabr.



ACHETA Gryllotalpa. .

Die Würre. Die Maulwurfsgrille. Le Taupe-Grillon. La Courtilliere.

ACHETA Gryllotalpa: alis caudatis elytro longioribus, pedibus anticis palmatis.

Fabric. Ent. syst. T. III. n. 1. p. 28. Syst. Ent. n. 1. p. 279. Spec. Inf.

T. I. n. 1. p. 353. Mant. Inf. T. I. n. 1. p. 231.

GRYLLVS ACHET. gryllotalpa. Linn. Syst. Nat. n. 10. p. 693. ed. XIII. n. 10.

p. 2059. Fn. Suec. n. 866.

Geoffr. Inf. T. I. n. 1. p. 387. tab. 8. fig. 1.

Roefel Inf. Bel. T. II. p. 89. tab. 14. 15.

Schaeffer Ic. Inf. Ratisb. tab. 37. fig. 1.

Harrer Besch. d. S. Inf. I. Th. n. 420. p. 257.

Habitat in cultis hortorum arborumque, eorum pestis, plantarum radices consumens. Allicitur fimo equino, pellitur porcino. *Scop.*

THE UNIVERSITY OF CHICAGO

THE UNIVERSITY OF CHICAGO LIBRARY

100 EAST EAST

CHICAGO, ILLINOIS

1900

...

...

...

...

...

...



Acheta domestica Mas Fabr.



ACHETA domestica. Mas.

Die Hausgrille. Das Hausheimchen. Die Zirse. Das Männchen.
Le Grillon domestique.

ACHETA domestica: alis caudatis elytro longioribus, corpore glauco. *Fabric.*
Ent. syst. T. III. n. 3. p. 29. Syft. Ent. n. 2. p. 280. Spec. Inf. T. I. n. 3.
p. 353. Mant. Inf. T. I. n. 3. p. 231.

GRYLLVS ACHET. domesticus. *Linn.* Syft. Nat. n. 12. p. 694. ed. XIII. n. 12.
p. 2060. Fn. Suec. n. 868.

Geoffr. Inf. T. I. n. 2. p. 389.

Degeer Inf. T. III. p. 509. tab. 24. fig. 1.

Roefel Inf. Bel. T. II. p. 73. tab. 12.

Hospitatur in muris domesticis, tota nocte stridens, praesertim instante pluvia. Vescitur sanie et liquore carniū; laetatur calore fornacum.

THE HISTORY OF THE

REIGN OF CHARLES THE FIRST

BY JOHN BURNET

IN TWO VOLUMES

LONDON, Printed by J. Sturges, at the Black-Swan in St. Dunstons Church-yard, in the Year 1724.



Acheta domestica Fem. Fabr.



ACHETA domestica. Femina.

Die Hausgrille. Das Hausheimchen. Das Weibchen &c. &c.

ACHETA domestica: Fabr. l. l. c. c.

GRYLLVS ACHETA domesticus. Linn. l. l. c. c.

Habitat cum mare.

THE UNIVERSITY OF CHICAGO

PHYSICS DEPARTMENT

PHYSICS 350

LECTURE 1

1950

7



Achetia campestris Mas Fabr.



[Faint, illegible text, possibly a signature or date]

ACHETA campestris. Mas.

Die Feldgrille. Die Feldheime. Die Stoppelheime. Das Männchen.
Le Grillon des champs. Geoffr.

ACHETA campestris: alis elytro brevioribus, corpore nigro: stylo lineati. *Fabric.*
Ent. syst. T. III. n. 11. p. 31. Syst. Ent. n. 7. p. 281. Spec. Inf. T. I.
n. 10. p. 355. Mant. Inf. T. I. n. 10. p. 232.

GRYLLVS ACHET. campestris. Linn. Syst. Nat. n. 13. p. 695. ed. XIII. n. 13.
p. 2061.

Geoffr. Inf. T. I. p. 389.

Rösel Inf. Bel. T. II. p. 81. tab. 13.

Schaeffer. Ic. Inf. Ratisb. tab. 157. fig. 2. 3. 4.

Harrer Besch. d. Sch. Inf. 1. Th. n. 421. p. 258.

Habitat in arvis et collibus sabulosis. Stridet a primo die Maii ad aequinoctium: domestica facta pellit *Achet. domesticam*.



Achetia campestris Fem. Fabr.



ACHETA campestris Femina.

Die Feldgrille. Die Feldheime. Die Stoppelheime &c. Das Weibchen.

ACHETA campestris. Fabric. l. l. c. c.

GRYLLVS ACHETA campestris. Linn. l. l. c. c.

Habitat cum mare. ,

THE UNIVERSITY OF CHICAGO

DEPARTMENT OF CHEMISTRY

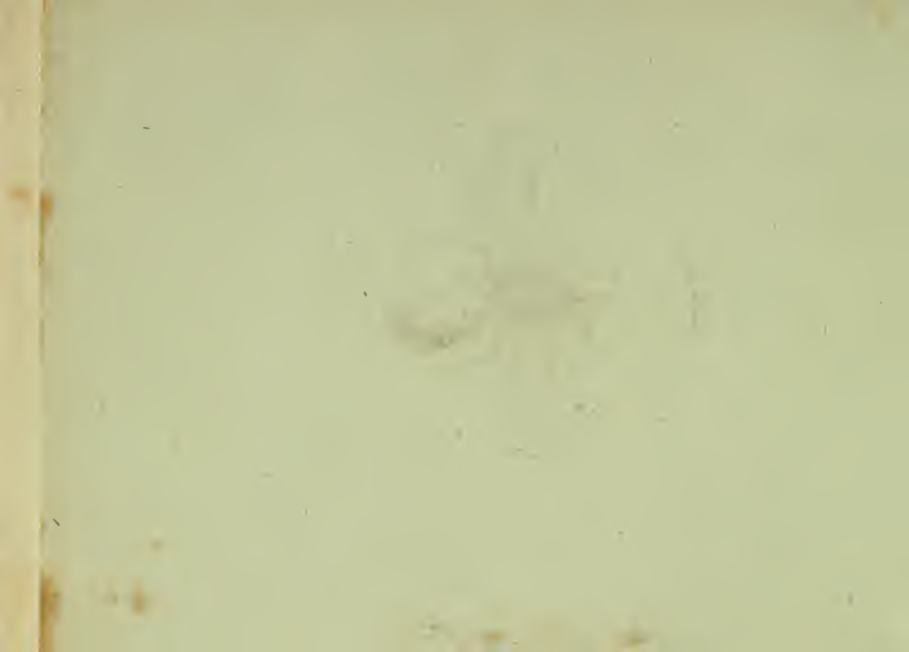
PH.D. THESIS

1954

BY



Cynips adscendens Fabr.



CYNIPS adscendens.

Die große grüne Gallwespe.

CYNIPS adscendens: aenea abdomine petiolato conico adscendente. *Fabric.*

Ent. Syst. T. III. n. 1. p. 100.

Thorax elevatus caeruleo aeneo nitidus. Scutellum in altero sexu acuminatum, in altero obtuse productum. Antennae tarforumque unguis nigrae. Rectius ad *Chalcides* transferatur.

a Magnitudo naturalis. b Eadem aucta.

1872

1872

1872

1872

1872



Cynips, Quercus folii Fabr.



CYNIPS Quercus folii.

Die Gallwespe auf den Eichenblättern.

CYNIPS *Quercus folii*: nigra thorace lineato, pedibus griseis, femoribus subtus nigris. *Fabris* *Enr. Syst. T. III. n. 5. p. 101. Syst. Ent. n. 4. p. 315. Spec. Inf. T. I. n. 4. p. 403. Mant. Inf. T. I. n. 5. p. 252.*

CYNIPS *Quercus folii*. *Linn. Syst. Nat. n. 5. p. 918. ed. XIII. n. 5. p. 2650. Fn. Suec. n. 1521.*

Vix ulla figurarum huius Cynipidis, ab auctoribus plerumque citatis allatarum equidem mihi satisfacit, hinc quamlibet excludere malui: praestat potius ex b. *Linnei* descriptione in *Faun. Suec. l. c.* communicata, animalculum caeterum nouissimum eruere, cui addendum: Caput transversum nudum fusco-rufum. Antennae thoracis longitudine nigrae. Thorax pubescens fusco rufus, lineolis duabus lateralibus, et unica dorsali nigris nitidis. Scutellum productum pubescens rufum. Abdomen nigrum nitidum. Pedes rufo-fusci.

Habitat in gallis foliorum *Quercus* paginae inferioris. Insectum utile ob gallam, quae atramento conficiendo inservit.

a Magnitudo naturalis. b Eadem aucta.



Cynips Quercus inferus Fabr.



CYNIPS Quercus inferus.

Die Gallwespe in den rothen Gallen auf der untern Seite der Eichenblätter.

CYNIPS Quercus inferus: atra antennis pedibusque pallidis. *Fabric.* Ent. syst. T. III. n. 6. p. 101. *Syst.* Ent. n. 5. p. 316. *Spec. Inf.* T. I. n. 5. p. 403. *Mant. Inf.* T. I. n. 6. p. 252.

CYNIPS Quercus inferus. *Linn.* *Syst. Nat.* n. 6. p. 918. ed. XIII. n. 6. p. 2650. Alae hyalinae omnino venosae potius Chalcidibus adnumeranda. Abdomen apice corniculo recto brevi.

Habitat in Gallis globosis opacis rubris, foliorum Quercus paginae inferiori innatis.

a Magnitudo naturalis. b Eadem aucta. c Abdomen magnitudine auctum.

THE [illegible]

[The following text is extremely faint and illegible due to the quality of the scan. It appears to be a list or a series of entries.]



Cynips Quercus terminalis Fabr.



CYNIPS *Quercus terminalis*.

*Die Gallwespe in den an der Spitze der Zweige an der Eiche
sitzenden Gallen.*

CYNIPS Quercus terminalis : ferrugineo flava, alis hyalinis immaculatis, *Fabris*.

Ent. syst. Supplem. 10—11 p. 213.

Reaumur Inf. T. III, tab. 41, fig. 1—5.

Habitat in Galla magna fungosa rotundata polythalamia, ramulos *Quercus*
terminante.

a Magnitudo naturalis. b Eadem aucta,



Chelonus dentatus Mihi.



CHELONVS dentatus.

Die gezähnte Hohlbauchwespe.

CHELONVS dentatus: ferrugineus, abdomine apice nigro, ano tridentato, tib. posticis fuscis, albo annulatis.

Legi in pratis editionibus Mense August 1801.

Habitus et statura *Chelon. oculator*. (72. tab. 3.) sed duplo minor. Caput rotundum ferrugineum punctatum, pubescens. Oculi rotundi nigri. Antennae ferrugineae apice fuscae, articulo primo longissimo. Thorax ferrugineus certo situ aurulentus, immaculatus, muticus. Scutellum triangulare. Abdomen inane vix thorace longius pallide ferrugineo-aurulentum, apice fuscum. Anus tridentatus. Pedes flavi: tibiae mediae denticulo medio brevi: posticae albo annulatae. Femora postica subclavata. Alae submaculatae.

a Magnitudo naturalis. b Eadem aucta.

1870

IN THE

...

...

...



Chalcis violacea Miki.



CHALCIS violacea.

Die violette Schenkelwespe.

CHALCIS violacea: capite thoraceque obscuro aeneis, abdomine angulato nitido violaceo apice emarginato, pedibus simplicibus.

Lecta in argillofis Mense April. 1802.

Caput obscure aeneum punctatum, fronte sub antennis foveolata. Oculi fusci. Antennae breves fulcae. Thorax opacus obscure aeneus, punctis plurimis scaber: scutellum elevatum apice parum productum. Abdomen nitidum violaceum angulatum apice emarginatum. Pedes flavi, femoribus tibiisque posticis violaceis, tarsis tamen flavis.

a Magnitudo naturalis, b Eadem aucta.

OFFICE OF THE

SECRETARY OF THE

NAVY DEPARTMENT

WASHINGTON, D. C.

1914

NAVY DEPARTMENT

WASHINGTON, D. C.

1914

NAVY DEPARTMENT

WASHINGTON, D. C.



Tenthredo sylvarum Fabr.



TENTHREDO sylvarum.

Die Wald - Blattwespe.

TENTHREDO sylvarum: antennis clavatis luteis nigra, abdomine ferruginèo basi apiceque atro, alis margine postico fusco. *Fabric.* Ent. syst. T. III. n. 4. p. 105.

Habitat rarior in sylvaticis editoribus.

DEPARTMENT OF THE ARMY
OFFICE OF THE ADJUTANT GENERAL
WASHINGTON, D. C.

ADJUTANT GENERAL'S SCHOOL
CAMP BUNNELL, VIRGINIA

OFFICE OF THE ADJUTANT GENERAL



Cryptus segmentarius Michx.

CRYPTVS segmentarius.

Die schmalgebänderte Dickhornwespe.

CRYPTVS segmentarius: ater, abdomine segmentis apice tenuissime pallidis, pedibus albis, alis margine antico fusco.

Habitat in hortis, dumetis, rarior.

Habitus et statura *Crypt. enodis*. Caput atrum, vertice nudo nitido, fronte albido pubescente. Palpi pallidi. Antennae inarticulatae clavatae nigrae, articulo primo longiori subtus albido pubescente. Thorax ater nudus nitidus. Scutellum gibbum apice obtusum. Abdomen cylindrico-conicum nitidum nigrum apice albido pubescens, segmentis omnibus apice tenuissime albido marginatis. Pedibus omnibus albis, femoribus nigris. Alae ferrugineae, margine antico inprimis apicem versus late fuscae.

a Magnitudo naturalis. b Eadem aucta.

Acht und achtzigstes Heft.

1870

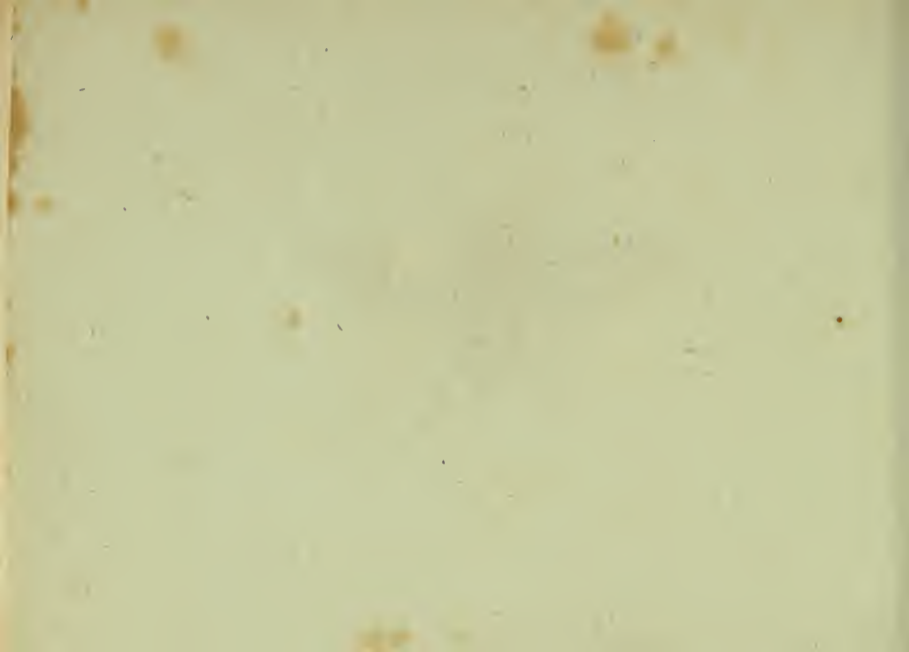
...

...

...



Allantus lateralis Michx.



ALLANTVS lateralis.

Die seitwärts gezeichnete Bohrwespe.

ALLANTVS lateralis: nigra, dorso medio rufo lateribusque albis.

TENTHREDO lateralis. *Fabric.* Entom. syst. T. III. n. 53. p. 118. Spec. Inf.

T. I. n. 36. p. 413. Mant. Inf. T. I. n. 38. p. 255.

Fabric. It. norweg. p. 33.

Legi in dumetis inter aphides.

a Magnitudo naturalis, b Eadem aucta.

THE UNIVERSITY OF CHICAGO

PHYSICS DEPARTMENT

PHYSICS 309

PHYSICS 309



Libellula quadrimaculata Fabr.



LIBELLVLA quadrimaculata.

Die vierfleckigte Wasser-Iungfer. La Francoise. Geoffr.

LIBELLVLA quadrimaculata : alis posticis basi omnibusque medio antico macula nigricante, abdomine depresso tomentoso. *Fabric.* Ent. Syst. T. III. n. 1. p. 373. Syst. Ent. n. 1. p. 420. Spec. Inf. T. I. n. 1. p. 519. Mant. Inf. T. I. n. 1. p. 336.

LIBELLVLA quadrimaculata. *Linn.* Syst. Nat. n. 1. p. 901. ed. XIII. n. 1. p. 2619. Fn. Suec. n. 1459.

Geoffr. Inf. T. II. n. 6. p. 224.

Reaum. Inf. T. VI. tab. 35. fig. 1. 2.

Schäffer Ic. Inf. Ratisb. tab. 9. fig. 13.

Habitat ad aquas.

THE HISTORY OF THE

REIGN OF KING CHARLES THE FIRST

BY JOHN BURNET

IN TWO VOLUMES



Libellula aenea Fabr.

LIBELLVLA aenea.

Die metallgrüne Wasser-Iungfer. L'Aminthe. Geoffr.

LIBELLVLA aenea: alis hyalinis, thorace viridi aeneo. *Fabric.* Ent. Syst. T. III. n. 35. p. 381. Syst. Ent. n. 21. p. 423. Spec. Inf. T. I. n. 27. p. 524. Mant. Inf. T. I. n. 29. p. 338.

LIBELLVLA aenea. *Linn.* Syst. Nat. n. 8. p. 902. ed. XIII, n. 8. p. 2622. Fn. Succ. n. 1466.

Geoffr. Inf. T. II. n. 10 p. 226.

Degeer Inf. T. II. p. 52. tab. 19. fig. 8.

Schaeffer Ic. Inf. Ratisb. tab. 113. fig. 4. tab. 182. fig. 1.

Habitat ad aquas.

THE UNIVERSITY OF CHICAGO
LIBRARY

100 EAST EAST
CHICAGO, ILL. 60607

1980



Aeshna forcipata Fabr.



Dragonfly

AESHINA forcipata.

Die Scheer-Schmahliungfer. La Caroline. Geoffr.

AESHINA forcipata: thorace nigro: characteribus variis flavescentibus, cauda unguiculata. *Fabric.* Entom. syst. T. III. n. 1. p. 383. *Syst.* Ent. n. 1. p. 424. *Spec. Inf.* T. I. n. 1. p. 525. *Mant. Inf.* T. I. n. 1. p. 339.

LIBELLULA forcipata. *Linn.* *Syst. Nat.* n. 11. p. 903. ed. XIII. n. 11. p. 2625. *Fn. Suec.* n. 1469.

Geoffr. *Inf.* T. II. n. 13. p. 228.

Reaumur. *Inf.* T. IV. tab. 10. fig. 4. et T. VI. tab. 35. fig. 5.

Schaeffer *Ic. Inf. Ratisb.* tab. 160. fig. 1. tab. 186. fig. 1.

Habitat ad aquas.

THE [illegible] [illegible]

[illegible text]

[illegible text]



Reduvius personatus Fabr.



REDVVIVS personatus.

Die maskirte Fliegenwanze. La Punaise mouche. Geoffr.

REDVVIVS personatus: antennis apice capillaribus, corpore subvillosa fusco.
Fabric. Ent. Syst. T. VI. n. 2. p. 195. Syst. Ent. n. 2. p. 730. Spec. Inf.
T. II. n. 2. p. 377. Mant. Inf. T. II. n. 2. p. 309.

CIMEX personatus. *Linn.* Syst. Nat. n. 64. p. 724. ed. XIII. n. 64. p. 2196.
Fn. Suec. n. 942.

Geoffr. Inf. T. I. n. 4. p. 436. tab. 9. fig. 3.

Scop. carn. n. 379. ic. 379.

Stoll. Cimic. tab. V. fig. 38.

Schaeffer Ic. Inf. Ratisb. tab. 13. fig. 6. 7.

Wolff. Cimic. II. n. 76. tab. 8. fig. 76.

Habitat in quisquiliis, locis immundis suffocatis.

Larva horrida personata consumit *Acanthiam lectulariam*;

1870

The following is a list of the names of the persons who have been admitted to the membership of the Society since the last meeting.

- Mr. J. H. Smith
- Mr. W. D. Jones
- Mr. T. E. White
- Mr. R. G. Black
- Mr. C. F. Green
- Mr. A. B. Brown
- Mr. M. N. Gray
- Mr. P. Q. Red
- Mr. S. T. Blue
- Mr. U. V. Yellow
- Mr. X. Y. Purple
- Mr. Z. A. Pink
- Mr. B. C. Orange
- Mr. D. E. Silver
- Mr. F. G. Gold
- Mr. H. I. Iron
- Mr. J. K. Lead
- Mr. L. M. Tin
- Mr. N. O. Copper
- Mr. P. Q. Zinc
- Mr. R. S. Nickel
- Mr. T. U. Cobalt
- Mr. V. W. Manganese
- Mr. X. Y. Magnesium
- Mr. Z. A. Calcium
- Mr. B. C. Strontium
- Mr. D. E. Barium
- Mr. F. G. Radium
- Mr. H. I. Uranium
- Mr. J. K. Thorium
- Mr. L. M. Actinium
- Mr. N. O. Polonium
- Mr. P. Q. Astatine
- Mr. R. S. Tellurium
- Mr. T. U. Selenium
- Mr. V. W. Arsenic
- Mr. X. Y. Antimony
- Mr. Z. A. Bismuth
- Mr. B. C. Lead
- Mr. D. E. Tin
- Mr. F. G. Copper
- Mr. H. I. Silver
- Mr. J. K. Gold
- Mr. L. M. Platinum
- Mr. N. O. Palladium
- Mr. P. Q. Rhodium
- Mr. R. S. Iridium
- Mr. T. U. Osmium
- Mr. V. W. Rhenium
- Mr. X. Y. Molybdenum
- Mr. Z. A. Vanadium
- Mr. B. C. Chromium
- Mr. D. E. Manganese
- Mr. F. G. Iron
- Mr. H. I. Cobalt
- Mr. J. K. Nickel
- Mr. L. M. Copper
- Mr. N. O. Zinc
- Mr. P. Q. Cadmium
- Mr. R. S. Mercury
- Mr. T. U. Thallium
- Mr. V. W. Lead
- Mr. X. Y. Tin
- Mr. Z. A. Antimony
- Mr. B. C. Bismuth
- Mr. D. E. Arsenic
- Mr. F. G. Selenium
- Mr. H. I. Tellurium
- Mr. J. K. Polonium
- Mr. L. M. Astatine
- Mr. N. O. Francium
- Mr. P. Q. Radium
- Mr. R. S. Actinium
- Mr. T. U. Thorium
- Mr. V. W. Uranium
- Mr. X. Y. Neptunium
- Mr. Z. A. Plutonium
- Mr. B. C. Americium
- Mr. D. E. Curium
- Mr. F. G. Berkelium
- Mr. H. I. Californium
- Mr. J. K. Einsteinium
- Mr. L. M. Fermium
- Mr. N. O. Mendelevium
- Mr. P. Q. Nobelium
- Mr. R. S. Lawrencium
- Mr. T. U. Rutherfordium
- Mr. V. W. Dubnium
- Mr. X. Y. Seaborgium
- Mr. Z. A. Bohrium
- Mr. B. C. Hassium
- Mr. D. E. Meitnerium
- Mr. F. G. Darmstadtium
- Mr. H. I. Roentgenium
- Mr. J. K. Copernicium
- Mr. L. M. Nihonium
- Mr. N. O. Flerovium
- Mr. P. Q. Livermorium
- Mr. R. S. Tennessine
- Mr. T. U. Oganesson



Reduvius annulatus Fabr.



REDVVIVS annulatus.

*Die geringelte Fliegenwanze. La Punaise mouche à pattes rouges.
Geoffr.*

REDVVIVS annulatus: antennis apice capillaribus, corpore nigro subtus sanguineo maculato. *Fabric.* Ent. Syst. T. VI. n. 16. p. 197. Syst. Ent. n. 5. p. 730. *Spec. Inf.* T. II. n. 9. p. 379. *Mant. Inf.* T. II. n. 13. p. 310.

CIMEX annulatus. *Linn.* Syst. Nat. n. 71. p. 725, ed. XIII. n. 71. p. 2198. *Fn.* *Suec.* n. 943.

Geoffr. *Inf.* T. I. n. 5. p. 437.

Schäffer *1c. Inf.* Ratisb. tab. 5. fig. 11.

Wolff. *Cimic.* II. n. 78. tab. 8. fig. 78.

Habitat haud infrequens in Corylo Avellana Linn.

STATE OF NEW YORK

In SENATE, January 11, 1900.

REPORT

OF THE COMMISSIONERS OF THE LAND OFFICE,
IN ANSWER TO A RESOLUTION PASSED BY THE SENATE,
APRIL 11, 1899, CONCERNING THE LANDS BELONGING TO THE STATE.

ALBANY:

WHELAN & COMPANY, PRINTERS, 1899.

THE STATE OF NEW YORK.

THE COMMISSIONERS OF THE LAND OFFICE.

ALBANY: WHELAN & COMPANY, PRINTERS, 1899.



Reduvius cruentus Fabr.

REDVVIVS cruentus.

Die blutige Fliegenwanze.

REDVVIVS cruentus: rufus capite pectore abdominisque striis macularibus nigris. *Fabric.* Ent. Syst. T. VI. n. 18. p. 198. Mant. Inf. T. II. n. 14. p. 310.

Schaeffer Ic. Inf. Ratisb. tab. 5. fig. 9, 10.

Sulzer Gesch. d. Inf. tab. 10. fig. 13.

Wolff. Cimic. I. n. 37. tab. 4. fig. 38.

Habitat in dumetis.

THE HISTORY OF

THE CITY OF

THE HISTORY OF THE CITY OF

THE HISTORY OF THE CITY OF

THE HISTORY OF THE CITY OF





des neun und achtzigsten Hefts.

- Tab. 1. *Manticorae instrumenta cibaria.*
— 2. *Manticora pallipes* Jurine.
— 3. *Manticora fuscoaenea* Jurine.
— 4. *Carabus Hellwigii* Megerle.
— 5. *Carabus Hoffmannseggii* Megerle.
— 6. *Carabus Illigeri* Megerle.
— 7. *Carabus Jurine* Panzer.
— 8. *Carabus Panzeri* Megerle.
— 9. *Carabus Sturmii* Panzer.
— 10. *Pfelaphus impressus* Panzer.
— 11. *Pfelaphus mucronatus* Panzer.
— 12. *Eumolpus Vitis* Fabric.
— 13. *Larra pompiliformis* Panzer.
— 14. *Profopis colorata* Panzer.
— 15. *Lasius difformis* Panzer.
— 16. *Bremus aestivalis* Panzer.
— 17. *Bremus italicus* Panzer.
— 18. *Locusta viridissima* Mas, Fabric.
— 19. *Locusta viridissima* Fem, Fabric.
— 20. *Locusta verrucivora* Mas, Fabric.
— 21. *Locusta verrucivora* Fem, Fabric.
— 22. *Libellula depressa* Fabric.
— 23. *Papilio Nymphalis Antiopa* Fabric.
— 24. *Papilio Nymphalis Polychloros* Fabric.



Manticorae instrumenta cibaria.



MANTICORAE instrumenta cibaria.

Die Fresswerkzeuge der Gattung Kneipkäfer.

Manticorae genus Entomologis parum incognitum est, quippe speciebus in praesentia duntaxat duabus, iisque exoticis, innixum. Verum aliis, nec patrium solum spernentibus, illud amplificari posse, quum animadverteret *Cl. Jurine*, Entomologus acutissimus Genevensis, videritque oris fabricam, quam summa, qua excellit fide atque industria inquisivit, iis quoque communem esse, haud temere hinc actum fore arbitratus est, si *Manticoris* eas hactenus cognitis amandaret. Communicavit benevole mecum partium oris *Manticorae* suae picturas egregias, amicissimeque concessit, ut Faunae meae insector, german. infererentur, praecipue cum sciret, nullibi eas, neque in *Oliverii* opere, tanta fide et diligentia, perscrutatas atque delineatas fuisse. Meum itaque putabam, hanc *Cl. Jurine* observationem, entomologiae cultoribus, succincte et absque ulla additione tradere, ut quivis ipse eam possit denuo curatius rimari: neque enim mihi adhuc contigit, *Manticorae* os diffecare, huiusque fabricam cum affinibus comparare.

Neun und achtzigstes Heft.

Negandum attamen non est, cum speciebus iis, quas cum *Manticoris* nunc *Cl. Jurine* coniungit, mihi a longo iam tempore intercedere familiaritatem, beneque mihi esse notum, harum fabricam oris, a nonnullis entomologis, iam tanti aestimatam fuisse, ut facile proprium genus, propterea constitui posse, putaretur. Huius periculum haud spernendum fecit *Cl. Frölich*, et characteres novi generis, sub quo militare eae possent species in *Naturforscher* XXVIII. p. 1. tab. 1. descripsit, adumbravit, delineavit. Sub genere *Leisti* iam prius comprehendit species nonnullas, quas *Cl. Fabricius* inter Carabos suos enumeravit, *Carabum* nempe *rufescentem*, eiusdemque varietates alibique a me memoratas atque adductas et *Carabum spinibarbem*, quibus etiam aliae addi possent. Patet eo, patebit imprimis illi, qui anatonem oris partium generis *Leisti Fröl.* cum ea generis *Manticorae Jurin.* comparabit, vix ac ne vix differre utrumque genus; id quod etiam haud aliter fieri potuit, propterea quod ex iisdem speciebus, ad genera haec condenda, characteres desumebantur.

a Labium superius integrum ciliatum. b Labium inferius trifidum, cum palpis posterioribus quadriarticulatis. c Maxilla apice articulo acuto uncinato mobili, palpis anterioribus biarticulatis, et mediis triarticulatis. d Mandibula apice curvata acuta, margine interiori inaequaliter dentata.



Manticora pallipes Jurine.

MANTICORA pallipes.

Der bleichfüsichte Kneipkäfer.

MANTICORA pallipes Jurine.

CARABUS spinibarbis. Fabric. Syst. Eleuth. T. I. n. 61. p. 181.

Panzer Faun. Inf. germ. XXX. 6.

Habitat in alpibus helveticis.

a Magnitudo naturalis. b Eadem aucta.

DEPARTMENT OF THE INTERIOR

Geological Survey

Washington, D. C.

Report of the Director

for the year 1880

Part I

General Report



Manticora fuscoaenea Turine.



MANTICORA fuscoaenea.

Der braunmetallglänzende Kneipkäfer.

MANTICORA fuscoaenea Jurine.

CARABUS rufescens. Fabric. Syst. Eleuth. T. I. n. 191. p. 205.

LEISTUS testaceus. Frölich Naturforsch. XXVIII. 8-1. tab. I. fig. 1. 9.

CARABUS spinilabris. Panzer Faun. Inf. germ. XXXIX. 11.

Habitat in alpibus helveticis.

a Magnitudo naturalis, b Eadem aucta.

THE UNIVERSITY OF CHICAGO

PHYSICS DEPARTMENT

PHYSICS 311

LECTURE 10

PROBLEMS

1. A particle of mass m moves in a circular path of radius r with constant speed v . Find the magnitude of the centripetal force.

2. A particle of mass m moves in a circular path of radius r with constant speed v . Find the magnitude of the centripetal force.

3. A particle of mass m moves in a circular path of radius r with constant speed v . Find the magnitude of the centripetal force.



Carabus Hellwigii Megerle.

CARABUS Hellwigii.

Der Hellwigsche Laufkäfer.

CARABUS Hellwigii: apterus ater, elytris striatis, capite, antennis elytrorum futura, pedibusque ferrugineis.

CARABUS Hellwigii. Megerle Catal. Inf. Vien. 1802. n. 182.

Habitat in Austria.

Habitus et statura Car. brevicoll. Fabr. ast duplo minor. Corpus atrum nitidum. Clypeus, mandibulae, palpi rufi. Caput antice fuscum, occipite rufo. Antennae ferrugineae, apicem versus pubescentes. Thorax exacte cordatus postice utrinque profunde sinuatus, angulis anticis prominentibus, posticis acutis reflexis: supra obsolete transverse striatus, medio linea impressa. Elytra atra nitida, subtiliter punctato striata, futura ferruginea. Pedes omnes elongati ferruginei, matici, tarsis posticis elongatis ciliatis.

a Magnitudo naturalis. b Eadem aucta.

Journal of the

Board of Directors

of the

Company

for the year ending

at

the

of

the

of

the

of



Carabus Hoffmannseggii Megerle.

CARABUS Hoffmannseggii.

Der Hoffmannsegg'sche Laufkäfer.

CARABUS Hoffmannseggii : apterus ater, thorace cordato, elytris striatis apice subacuminatis.

CARABUS coffyphoides. Megerle Catal. Inf. Vien. 1802. n. 161. Monitu Cl. Megerle haec Carabi species, nunc nomen *Generosiff. Comit. de Hoffmannsegg* servat.

Habitat in Austria.

Corpus totum atrum nitidum. Caput exsertum atrum, antice subdepressum, postice obsolete transverse rugosum. Antennae nigrae tenues apice fuscescentes. Thorax exacte cordatus, marginibus lateralibus reflexis, angulis anticis prominentibus, posticis obtusis, supra obsolete transversim rugosus, linea dorsali impressa. Elytra thorace duplo latiora apice subacuminata, subquadrata, striata, striis confertis, vix

nisi sub lente obsolete punctatis, margine laterali stria elevata, interiectis punctis excavatis. Pedes omnes nigri, tarsis anticis brevibus rufis: femora omnia clavata: tibiae spinuloso-ciliatae, anticae apice spinosae, medio spinoso-excisa: tarsi obscuro fusci.

a Magnitudo naturalis. b Eadem aucta.



Carabus Illigeri Megerte.

CARABUS Illigeri.

Der Illigersche Laufkäfer.

CARABUS Illigeri: apterus ater nitidus, coleoptris ovatis striatis, striis laevibus, antennis pedibusque ferrugineis.

CARABUS Illigeri. Megerle Catal. Insect. Vien. 1802. nr. 187.

Habitat in Austria.

Habitus et statura *Carab. pumicat.* ast omnino distinctus. Caput atrum nitidum, mandibulis palpisque rufescentibus. Antennae breves ferrugineae. Thorax subrotundatus nitidus, obscuro rufus, supra transversim obsolete rugosus, postice utrinque late impressus, linea dorsali media impressa, marginibus lateralibus elevatis rufescentibus. Elytra atra nitida, striata, striis omnino laevibus: margine laterali rufescenti. Pedes omnes ferruginei: femora omnia clavata, tibiae spinulosae, anticae dente medio excisae, apice spinosae.

a Magnitudo naturalis. b Eadem aucta.

THE UNIVERSITY OF CHICAGO

DEPARTMENT OF CHEMISTRY

RESEARCH REPORT NO. 100

BY

DR. J. H. VAN VAN NEST

AND

DR. R. M. WATSON

CHICAGO, ILLINOIS

1950

CHICAGO, ILLINOIS

CHICAGO, ILLINOIS

CHICAGO, ILLINOIS

CHICAGO, ILLINOIS

CHICAGO, ILLINOIS



Carabus Turine Mihi.

CARABUS Jurine.

Der Jurinesche Laufkäfer.

CARABUS Jurine: alatus ater thorace quadrato, oblongus, elytris obscuro aeneis, stria pone futuram punctis quatuor impressis.

CARABUS cupripennis. Megerle Cat. Insect. Vien. 1807. nr. 166. Dixi in honorem et memoriam Cl. Jurine Entomologi acutissimi Genevensis.

Habitat in Austria.

Habitus *Carab. oblongopunct. Fab.* Corpus atrum nitidum depressum. Caput atrum nitidum. Os atrum. Antennae nigrae apice fusciscentes. Thorax quadratus, angulis anticis acutis parum prominulis, supra planus, linea dorsali, posticeque transversim impressus. Elytra atra cupreo micantia striata, striis argutis obsolete impunctatis, excepta stria pone futuram confluenta punctis quatuor aut quinque impressis. Pedes omnes nigri: femora clavata laevia; tibiae spinuloso ciliatae, antice dente medio laterali excisae. Tarsi omnes obscuro fuscii.

a Magnitudo naturalis. b Eadem aucta.

CHIEF OF POLICE

City of New York

Office of the Chief of Police
100 City Hall
New York, N.Y.

Dear Sir:

I have the honor to acknowledge the receipt of your letter of the 10th inst. regarding the matter mentioned therein. The same has been referred to the appropriate authorities for their consideration.

I am, Sir, very respectfully,
Your obedient servant,

J. J. [Name]



Carabus Panzeri Megerle.

CARABUS Panzeri.

Der Panzersche Laufkäfer.

CARABUS Panzeri: apterus ater thorace cordato, elytris striatis, unica dorsali punctis quinque impressis, pedibus nigris.

CARABUS Panzeri. Megerle Catal. Inf. Vien. 1802. nr. 200.

Habitat in Austria.

Habitus et statura *Carab. cassid. Fabr.* sed nitidus et alius. Corpus atrum nitidum depressum. Caput exsertum atrum nitidum. Os atrum. Antennae atrae pilosae apice fuscescentes. Thorax cordatus margine laterali reflexo, angulis anticis obtusis prominentibus, supra planus nitidus obsolete transversim rugosus, linea dorsali, posticeque utrimque impressus. Elytra depresso-plana atra nitida striata, striis laevibus, unica dorsali excepta, punctis quatuor vel quinque, mediis subcontiguis impressis. Pedes nigri: femora clavata nuda: tibiae spinuloso ciliatae, anticae apice spinosae, dente medio-laterali ordinario excisae. Tarsi omnes rufescentes.

a Magnitudo naturalis. b Eadem aucta.

THE HISTORY OF THE

REIGN OF KING CHARLES THE FIRST

BY JOHN BURNET

IN TWO VOLUMES

LONDON, Printed by J. Sturges, at the Black-Swan in St. Dunstons Church-yard, 1724.

1724

THE HISTORY OF THE REIGN OF KING CHARLES THE FIRST

BY JOHN BURNET

IN TWO VOLUMES

LONDON, Printed by J. Sturges, at the Black-Swan in St. Dunstons Church-yard, 1724.

1724

THE HISTORY OF THE REIGN OF KING CHARLES THE FIRST

BY JOHN BURNET

IN TWO VOLUMES

LONDON, Printed by J. Sturges, at the Black-Swan in St. Dunstons Church-yard, 1724.



Carabus Sturmii Miki.

CARABUS Sturmii.

Der Sturmsche Laufkäfer.

CARABUS Sturmii: alatus viridiaeneus, elytris punctato striatis, lineolis abbreviatis, macula ante apicem, apiceque flavis.

Habitat ad Rheni ripas. *Mus. Dn. Baader* Entomologi eximii Mannhemensis. Dixi in honorem et memoriam *Dn. Jacobi Sturm* Faunae insectorum germanic. pictoris praestantissimi.

Habitus et statura *Carab. guttula Fabr.* Caput viridi aeneum nitidum. Antennae fuscae, basi flavae. Thorax viridi aeneus nitidus subcordatus marginatus, linea tenui dorsali impressa. Elytra obscuro viridi aenea punctato striata nitida, lineolis dorsalibus abbreviatis, macula ante apicem lata, apiceque ipso distincte flavis. Pedes omnes flavi laeves nudi.

a Magnitudo naturalis. b Eadem aucta.

THE STATE OF NEW YORK

IN SENATE,

January 10, 1894.

REPORT

OF THE

COMMISSIONERS OF THE LAND OFFICE

IN ANSWER TO A RESOLUTION PASSED BY THE SENATE

APRIL 18, 1893.

ALBANY: J. B. WOODCOCK, STATE PRINTER, 1894.



Pselaphus impressus Michx.

PSELAPHUS impressus.

Der eingedruckte Fühlkäfer.

PSELAPHUS impressus: ater, elytris abbreviatis rufis, thorace globoso puncto utrinque impresso, pedibus fuscis.

Habitat Mannhemii. *Mus. Dn. Baader.*

Minutus. Caput rotundatum atrum, occipite puncto gemino impresso. Antennae nigrae. Thorax ater globosus puncto utrinque laterali impresso. Elytra rufa basi subplicata laevia impunctata, basi latiora. Abdomen atrum nitidum. Pedes breves fuso rufescentes.

a Magnitudo naturalis. b Eadem aucta.

THE UNIVERSITY OF CHICAGO

PHYSICS DEPARTMENT

RECEIVED

APR 15 1954

PHYSICS DEPARTMENT

CHICAGO, ILLINOIS



Pselaphus mucronatus Miki.

PSELAPHUS mucronatus.

Der Stachefüsichte Fühlkäfer.

PSELAPHUS mucronatus: fuscus, elytris abbreviatis ferrugineis, antennis pedibusque rufis, femoribus posticis apice mucronatis.

Habitat Mannhemii. *Mus. Dn. Baader.*

Habitus et statura praecedentis. Caput inflexum fuscum. Thorax gibbus fusco rufus. Elytra abbreviata ferruginea basi bisplicata, punctata, ante apice stria transversa obscura, apiceque ipso latiora. Corpus fuscum. Pedes omnes elongati: femora clavata, postica apice subtus mucrone incurvo: tibiae elongatae tenues.

a Magnitudo naturalis, b Eadem aucta. c Pes posticus.

THE UNIVERSITY OF CHICAGO

PHILOSOPHY DEPARTMENT

PHILOSOPHY DEPARTMENT
1100 EAST 58TH STREET
CHICAGO, ILLINOIS 60637
TEL: 773-936-3300
WWW.PHIL.DEP.UCHICAGO.EDU



Eumolpus Vitis Fabr.

EUMOLPUS Vitis.

Der Wein - Gleitkäfer.

EUMOLPUS Vitis. Fabric. Syft. Eleuth. T. I. n. 20. p. 422.

CRYPTOCEPHALUS Vitis. Fabric. Ent. Syft. T. II. n. 36. p. 60. Syft. Ent. n. 15. p. 108. Spec. Inf. T. I. n. 23. p. 142. Mant. Inf. T. I. n. 27. p. 81.

Habitat in *Vite vinifera Linn.*

Quam in Faun. Inf. germ. LXVIII. 5. sub nomine *Criptoceph. Vitis Fabr.* enumeravi, aliam et ab hac alienam speciem sistit. In praesentia verum *Cryptoc. Vitis Fabric.* depinxisse, non est dubium.

a Magnitudo naturalis. b Eadem aucta.

STANDARD FORM NO. 64

THE UNITED STATES GOVERNMENT

OFFICE OF THE SECRETARY OF DEFENSE
WASHINGTON, D. C. 20301-6000
ATTENTION: DIRECTOR, OFFICE OF THE SECRETARY OF DEFENSE
MAIL ROOM
MAIL STOP 0100
WASHINGTON, D. C. 20301-6000



Larra pompiliformis Mihi.

LARRA pompiliformis.

Die Grabwespenartige Drehwespe.

LARRA pompiliformis: nigra, abdomine nigro basi ferrugineo.

Habitat in floribus. *Mus. Dn. Baader.*

Parva statura Pompilii, ast omnino huius generis. Caput atrum transversum pube tenuissima vestitum, fronte inter oculos et antennas sericeo-argentea. Oculi magni oblongi glauci. Thorax ater immaculatus leviter pubescens opacus, puncto calloso ante alas flavo. Scutellum nigrum. Abdomen ovatum nigrum, segmento primo secundoque ferrugineis. Pedes nigri breves, tarsi fuscis.

a Magnitudo naturalis, b Eadem aucta.

1875

...

...



Profopis colorata Mihi.



PROSOPIS colorata.

Die bunte Masken-Wespe.

PROSOPIS colorata: thorace maculato, abdomine rufo apice fusco segmentorum marginibus cinereis, tibiis albo annulatis.

Habitat in floribus. *Mus. Dn. Bander.*

Caput nigrum punctatum opacum leviter pubescens, fronte inter oculos sub antennis utrinque macula oblonga nivea. Antennae breves fuscae, subtus ferrugineae. Thorax ater opacus punctatus antice lineola elevata, puncto calloso ante alas, et alio sub alis, punctisque duobus ante scutellum niveis. Abdomen ovatum, segmento primo secundoque rufis, reliquis fuscis, segmentorum marginibus cinereis. Pedes omnes breves fusci, tibiis albo annulatis.

a Magnitudo naturalis, b Eadem aucta. ;

THE HISTORY OF THE
CITY OF BOSTON

From the first settlement in 1630 to the present time
the city has grown from a small fishing village to one of the
largest and most important in the world. The early years were
marked by hardship and struggle, but the spirit of enterprise
and industry which characterized the first settlers has
been maintained and increased through the centuries. The
city has become a center of commerce and industry, and
its influence is felt throughout the world. The history of
the city is a record of the progress of the human race,
and a study of it will give us a better understanding
of our own position in the world.



Lasius difformis Miki.



LASIUS difformis.

Die ungestaltete Listbiene.

LASIUS difformis: pubescens ater, scutello bidentato, abdomine segmentorum marginibus albis, femoribus posticis crassissimis apice denticulatis, tibiis posticis difformibus.

Habitat Mannhemii. *Mus. Dn. Baader.*

Species admodum prodigiosa. Caput atrum, vertice punctato leviter pubescente, fronte cinereo villosa. Antennae breves supra fuscae, subtus ferrugineae, articulo primo longissimo, secundo brevissimo globoso, penitus nigris. Oculi magni fusci, nitidi. Thorax ater nitidus, punctis plurimis impressus, villositate cinerea imprimis antice tectus. Puncti callosi ordinarii ante alas loco, squama semilunatis convexa adest, centro fusco calloso, extremitatibus membranaceis pallidis, cuius ope origines alarum custodiuntur. Scutellum atrum transversum punctatum, utrinque

denticulo acuto nigro, apice rufo. Abdomen cylindricum atrum, leviter cinereo pubescens, punctis plurimis impressum, segmentorum marginibus albido villosis, exceptis primo et ultimo: abdominis segmentum ultimum integrum. Pedes flavi pubescentes tibiis anticis parum dilatatis. Femora postica nigra, cinereo villosa, gibba, angulata crassissima, apice argute denticulato, subtus subexcavata. Tibiae posticae breves, incurvae, compresso-dilatatae, apice excisae, lobo singulari exserto pendulo, compresso clavato. Tarsi omnes flavi. Abdomen subtus nigrum nitidulum: denticulis duobus in regione genitalium.

a Magnitudo naturalis. b Eadem aucta. c Pes posticus auctus.



Bremus aestivalis Mich.

BREMUS aestivalis.

Die Sommer - Hummel.

BREMUS aestivalis: hirsutus ater, thorace antice fascia fulva, abdomine nigro, postice supra fasciam albam maculis duabus flavis.

Habitat Mannhemii. *Mus. Dn. Baader.*

Habitus et statura *Brem. terrestris*, tamen distinctus. Caput atrum, fronte villosa atra. Thorax antice fascia fulva. Abdomen atrum, fascia ante segmentum penultimum alba, et supra hanc maculis duabus flavis, s. fascia interrupta flava, ano tamen nigro calvo nitido. Pedes hirsuti nigri.

THE HISTORY OF

THE CITY OF BOSTON

FROM THE FIRST SETTLEMENT TO THE PRESENT TIME
BY SAMUEL JOHNSON
IN TWO VOLUMES
VOL. I.
BOSTON: PUBLISHED BY S. JOHNSON, 1786.



Bremus italicus Mihi.

BREMUS italicus.

Die einfärbige rothgelbe Hummel.

BREMUS italicus: hirsutus fulvus, capite pedibusque atris.

APIS italica, Fabric. Ent. syst. T. III. n. 30. p. 321.

Habitat in Austria.

THE UNIVERSITY OF CHICAGO

DEPARTMENT OF CHEMISTRY

RESEARCH REPORT

NO. 100

1954

1954

THE UNIVERSITY OF CHICAGO



Locusta viridissima Mas Fabr.

LOCUSTA viridissima. Mas.

Die grosse grüne Singheuschrecke. Der größte grüne Baumsprecugel. La
Sauterelle à coutelas. Geoffr. Das Männchen.

LOCUSTA viridissima: alis viridibus immaculata, antennis longissimis. Fabric.
Ent. Syst. T. III. n. 32. p. 41. Syst. Ent. n. 22. p. 286. Spec. Inf. T. I.
n. 23. p. 359. Mant. Inf. T. I. n. 26. p. 234.

GRYLLUS LOCUSTA viridissimus. Linn. Syst. Nat. n. 31. p. 698. ed. XIII.
n. 31. p. 2067. Fn. Succ. n. 869.

Geoffr. Inf. T. I. n. 2. p. 398. tab. 8. fig. 3.

Rösel Inf. Bel. T. II. p. 65. tab. 11. fig. 6.

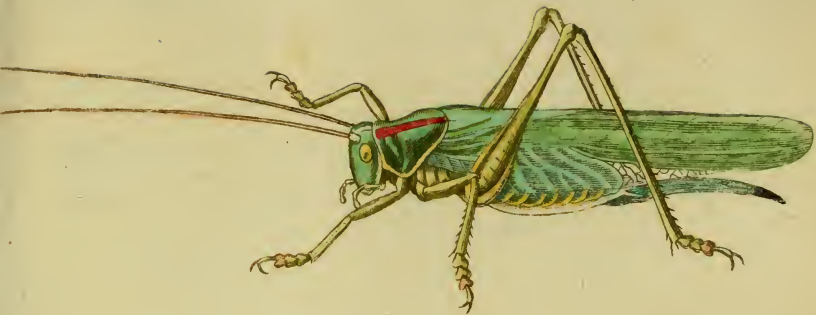
Scop. carn. n. 320. ic. 320.

Schäffer Icon. Inf. Ratisb. tab. 139. fig. 4. 5. tab. 247. fig. 4. 5.

Harrer Besch. d. S. Inf. T. I. n. 432. p. 269.

Habitat in pratis, graminosis.

[The text on this page is extremely faint and illegible. It appears to be a list or a series of entries, possibly related to a historical record or a collection of documents. The content is too blurry to transcribe accurately.]



Locusta viridissima Fem. Fabr.

[*LOCUSTA viridissima*. Femina.

Die große grüne Singheuschrecke. Der größte grüne Baumsprengel. La Sauterelle à coutelas. Geoffr. Das Weibchen.

LOCUSTA viridissima. Fabric. l. l. c. c.

GRYLL. LOCUST. viridissim. Linn. l. l. c. c.

Rösel Inf. Bel. T. II. tab. 11. fig. 7.

Schaeffer Ic. Inf. Ratisb. tab. 91. fig. 6. tab. 139. fig. 3.

Harrer Besch. d. S. Inf. T. I. n. 432. p. 269.

Habitat iisdem locis cum mare.

SECRET, 1/17/51

TO: SAC, NEW YORK (100-100000) FROM: SAC, PHOENIX (100-100000) (P)

RE: [Illegible]



Locusta verrucivora Mas Fabr.



LOCUSTA verrucivora. Mas.

Die warzenfressende Heuschrecke. Der Warzenfresser. La Sauterelle rouge verrues. Degeer. Das Männchen.

LOCUSTA verrucivora. Fabric. Ent. syst. T. III. n. 33. p. 42. Syst. Ent. n. 23. p. 286. Spec. Inf. T. I. n. 24. p. 359. Mant. Inf. T. I. n. 27. p. 234.

GRYLLUS LOCUSTA verrucivorus. Linn. Syst. Nat. n. 34. p. 698, ed. XIII. n. 34. p. 2067. Fn. Suec. n. 870.

Degeer Inf. T. III. n. 2. p. 279. tab. 21. fig. 1. 2.

Scop. carn. n. 321. ic. 321.

Rösel Inf. Bel. II. tab. 8. fig. 1.

Schaeffer Ic. Inf. Ratisb. tab. 236. fig. 3. 4.

Harrer Besch. d. S. Inf. T. I. n. 433. p. 270.

Habitat in pratis, graminosis.

Rustici suecici huic insecto verrucas manus admovent, quas praemordet, et evomit in vulnus liquorem, unde verruca contabescit.

WILLIAMS COMPANY

The following is a list of the names of the persons who have been appointed to the various committees of the Board of Directors of the Williams Company for the year 1910.

Committee on Finance: J. H. Williams, Chairman; J. B. Williams, Secretary; J. C. Williams, Treasurer; J. D. Williams, Member.

Committee on Management: J. E. Williams, Chairman; J. F. Williams, Secretary; J. G. Williams, Treasurer; J. H. Williams, Member.

Committee on Sales: J. I. Williams, Chairman; J. J. Williams, Secretary; J. K. Williams, Treasurer; J. L. Williams, Member.

Committee on General Affairs: J. M. Williams, Chairman; J. N. Williams, Secretary; J. O. Williams, Treasurer; J. P. Williams, Member.



Locusta verrucivora Fem. Fabr.

LOCUSTA verrucivora. Femina.

Die warzenfressende Heuschrecke. La Sauterelle rouge verrues. Das Weibchen.

LOCUSTA verrucivora. Fabric. l. l. c. c.

GRYLL. LOC. verrucivor. Linn. l. l. c. c.

Rösel Inf. Bel II tab. 8. fig. 2.

Schaeffer Ic. Inf. Ratisb. tab. 62. fig. 5.

Harrer Besch. d. S. Inf. T. I. n. 433. p. 270.

Habitat iisdem locis cum mare.

THE UNIVERSITY OF CHICAGO

PHYSICS DEPARTMENT

CHICAGO, ILL.

1950

1951

1952

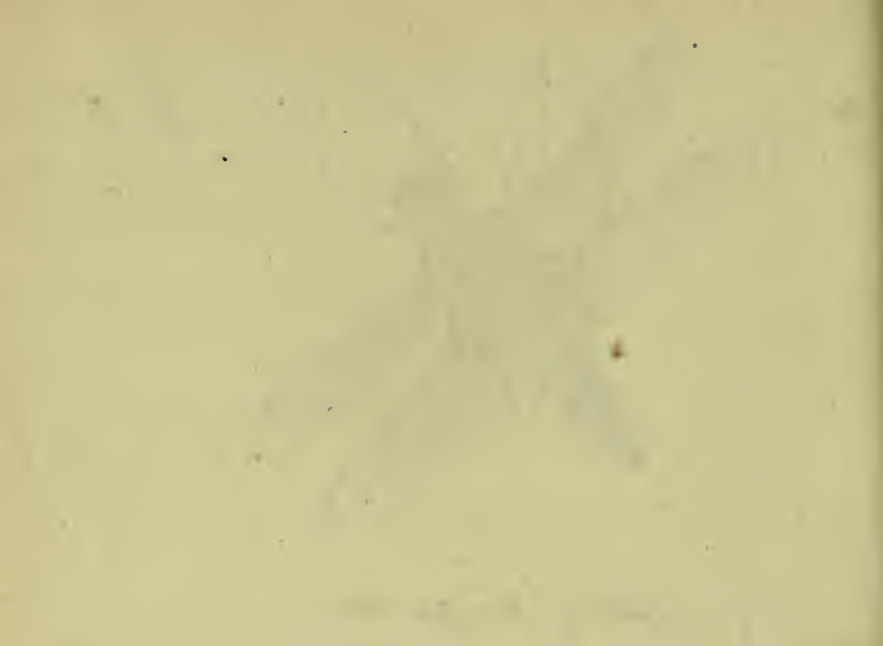
1953

1954

1955



Libellula depressa Fabr.



LIBELLULA depressa.

Die braune breitbauchigte Wasserjungfer. L'aplatie. La Sylvie.

LIBELLULA depressa. Fabric. Ent. Syst. T. III. n. 2. p. 373. Syst. Ent. n. 2.
p. 420. Spec. Inf. T. I. n. 2. p. 519. Mant. Inf. T. I. n. 2. p. 336.

LIBELLULA depressa. Linn. Syst. Nat. n. 5. p. 902. ed. XIII. n. 5. p. 2621.
Geoffr. Inf. T. II. n. 9. p. 226.

Rösel Inf. Bel. T. II. tab. 6. fig. 4. tab. 7. fig. 3.

Habitat ad Aquas.

THE HISTORY OF THE

... of the ...
... of the ...
... of the ...
... of the ...
... of the ...
... of the ...
... of the ...
... of the ...
... of the ...
... of the ...



Papilio N. Antiopa Fabr.

PAPILIO Nymphalis Antiopa.

*Der Trauermantel. Der Palmweidenfalter. Der Wasserweidenfalter.
Der Pleureusenvogel. Le Morio.*

PAPILIO NYMPH. Antiopa. Fabric. Ent. Syst. T. IV. n. 355. p. 115. Syst. Ent.
n. 256. p. 503. Spec. Inf. T. II. n. 394. p. 89. Mant. Inf. T. II. n. 476. p. 48.

PAPIL. NYMPH. PHALERAT. Antiopa. Linn. Syst. Nat. n. 165. p. 776.
ed. XIII. n. 165. p. 2311. Fn. Suec. n. 1056.

Syst. Verz. d. W. Schm. n. 4. p. 175.

Geoffr. Inf. T. II. n. 1. p. 35.

Degeer Inf. T. I. n. 694. tab. 21. fig. 8. 9.

Rösel Inf. Bel. T. I. tab. I.

Esper eur. Schm. T. I. tab. 12. fig. 2. et tab. 29. fig. 2.

Bergsträff. Nomenclat. tab. 39. fig. 3. 4. tab. 112. fig. 1.

Sulzer Kennz. d. Inf. tab. 14. fig. 65.

Schaeffer Ic. Inf. Ratisb. tab. 70. fig. 1. 2.

Eorkhaus. eur. Schm. T. 1. n. 3. p. 11.

Die Raupe dieses grossen Falters ist ganz schwarz mit vielen kleinen weissen Pünktchen besetzt; über den Rücken hat sie ziegelrothe Flecken und ist über den ganzen Körper mit scharfen Dornen besetzt. Sie lebt in grossen Gesellschaften auf den Weiden, Birken, Bellen, Pappeln und Espen. Man findet sie im Sommer und Herbst. Die Puppe ist aschgrau, eckigt, mit mehrern kleinen Spitzen auf der Brust und über den Bauch und zwey scharfen Spitzen am Kopf. Der Falter kommt bey gutem Wetter in drei Wochen aus. Spätlinge überwintern und erscheinen in den ersten warmen Frühlingstagen.



Papilio N. polychloros Fabr.



PAPILIO Nymphalis Polychloros.

Der grosse Frühlingsherold. Der grosse Fuchs. Der Kirschenfalter.
Der Rüsterfalter. La grande Tortue. The great tortoisé shell But-
terfly. De groote Aurelia.

PAPILIO NYMPHAL. Polychloros. Fabric. Ent. Syst. T. IV. n. 372. p. 121.
Syst. Ent. n. 262. p. 505. Spec. Inf. T. II. n. 404. p. 92. Mant. Inf. T. II.
n. 488. p. 49.

PAPILIO NYMPH. phalerat. Polychloros. Linn. Syst. Nat. n. 166. p. 777. ed.
XIII. n. 166. p. 2312. Fn. Suec. n. 1057.

Syst. Verz. d. W. Schm. n. 6. p. 175.

Geoffr. Inf. T. II. n. 3. p. 37.

Rösel Inf. Bel. T. I. tab. 2.

Esper eur. Schm. T. I. tab. 13. fig. 1.

Bergstrüff Nomencl. tab. 30. fig. 4. 5.

Scop. carn. n. 420. ic 420.

Schaeffer Ic. Inf. Ratisb. tab. 146. fig. 1. 2.

Borckhaus. eur. Schm. T. I. n. 7. p. 14.

Die Raupe lebt gesellschaftlich auf den Kirschbäumen, Birnbäumen, Weiden und Espen. Gewöhnlich ist sie hellgrau mit gelben Dornen und weißen Härchen. Man findet sie den ganzen Sommer hindurch bis in den späten Herbst. Die Puppe gehört zu den eckigten, hat scharfe Spitzen am Kopf, über den Leib und auf der Brust, und ist bräunlich aschgrau, oft mit einigen Goldpunkten besetzt. Nach vierzehn Tagen bis drey Wochen kommt der Falter aus. Spätlinge überwintern und erscheinen in den ersten warmen Frühlingstagen, oft schon im Februar, wenn die Felder noch mit Eis bedeckt sind.



- Nro. 1. *Dytiscus fenestratus*. Fabricius.
— 2. *Dytiscus agilis*. Fabric.
— 3. *Ripiphorus angulatus*. Panzer.
— 4. *Leptura septempunctata*. Fabric.
— 5. *Leptura aurulenta*. Fabric.
— 6. *Buprestis taeniata*. Fabric.
— 7. *Buprestis austriaca*. Fabric.
— 8. *Buprestis biguttata*. Fabric.
— 9. *Allantus ferrugineus*. Panzer.
— 10. *Nematus luteus*. Panzer.
— 11. *Nematus intercus*. Panzer.
— 12. *Crabro lapidarius*. Fabric.
— 13. *Crabro lituratus*. Panzer.
— 14. *Andrena analis*. Mas. Fabric.
— 15. *Andrena analis* Fem. Fabric.
— 16. *Bremus tibialis*. Panzer.
— 17. *Bremus fasciatus*. Panzer.
— 18. *Syrphus cryptarum*. Fabric.
— 19. *Syrphus apiformis*. Fabric.
— 20. *Syrphus aureus*. Panzer.
— 21. *Bibio rustica*. Panzer.
— 22. *Acarus plumbeus*. Panzer.
— 23. *Noctua Pfl.* Fabric.
— 24. *Noctua tridens*. Fabric.
-

Durch ein unwillkürliches Versehen von mir, wurde unter die Tafel, worauf *Buprestis austriaca*, *Fabric*, vorstellig gemacht worden ist, die ältere *Herbstsche* Benennung dieses Käfers gesetzt, welches ich hier um Verirrung zu vermeiden anzeige und bemerke.
Panzer,





Dytiscus fenestriatus Fabr.



DYTISCVS fenestratus.

Der durchsichtig gefleckte Wasserkäfer.

DYTISCVS fenestratus : subtus ferrugineus supra niger, elytris margine ferrugineo punctisque duobus fenestratis. *Fabric.* Syft. Eleuth. T. I. n. 32. p. 264.
Ent. Syft. T. I. n. 23. p. 192.

DYTISCVS guttatus. *Payk.* Fn. Suec. I. n. 20. p. 211.

DYTISCVS guttatus. *Illiger.* Mag. I. p. 72.

Habitat in aquis.

Si non species hic depicta eadem sit Cl. *Fabricii*, quod negare Cl. *Illigerum* lego, certissime una ac eadem Cl. *Paykullii* est. Verum nollem *Dytiscum aeneum* *Illig.* (Faun. Inf. germ. 38. 16.) cum hac coniungere, cum huus diversa facies aliam speciem indicet.

a Magnitudo naturalis. b Eadem aucta.

Handwritten text at the top of the page, possibly a title or header.

Main body of handwritten text, appearing to be a list or a series of entries.

Handwritten text at the bottom of the page, possibly a signature or a concluding note.



Dytiscus agilis Fabr.



DYTISCVS agilis; Mas.

Der schnellschwimmende Wasserkäfer. Das Männchen.

DYTISCVS agilis: niger ore thorace, elytrorum margine pedibusque ferrugineis.

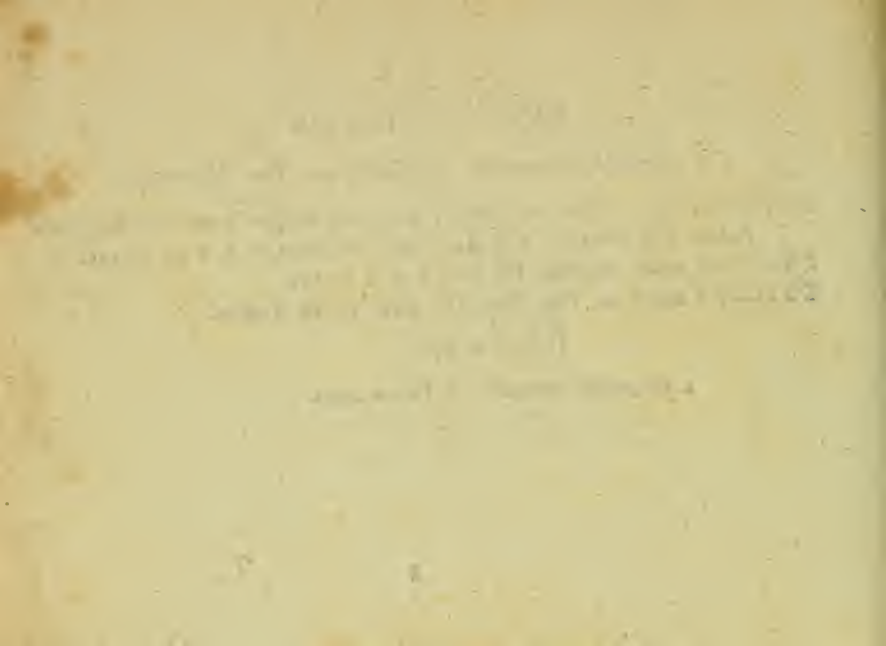
Fabric. Syst. Eleuth. T. I. n. 44. p. 266. Ent. Syst. T. I. n. 33. p. 194.

DYTISCVS agilis. *Paykull.* Fn. Suec. I. n. 8. p. 199.

DYTISCVS adpersus. *Illig.* Faun. Inf. germ. 38. 18. *Femina.*

Habitat in aquis.

a Magnitudo naturalis. b Eadem aucta.





Ripiphorus angulatus Mihi.



RIPIPHORVS angulatus.

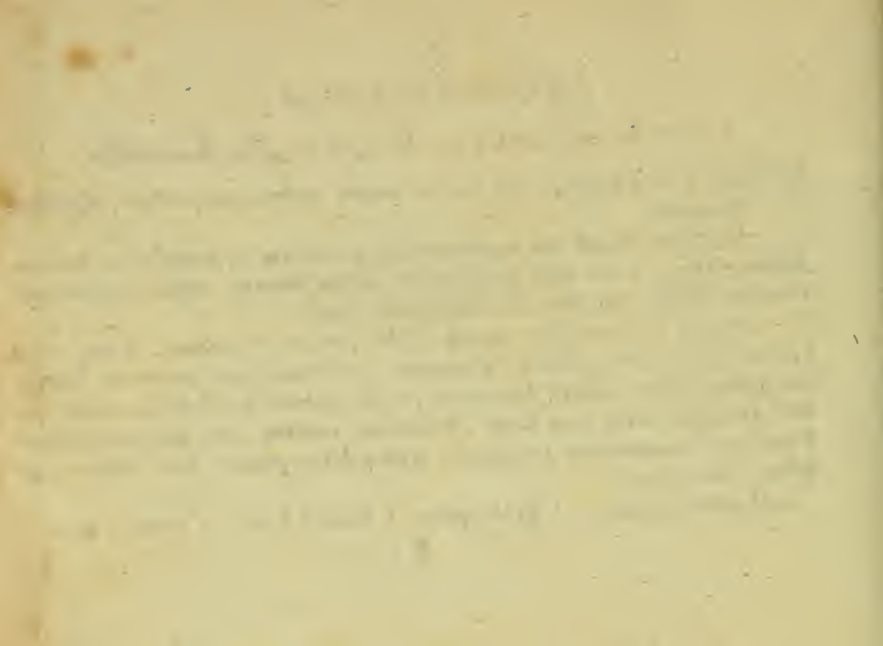
Der an den Hinterecken des Bruststückes gelbe Kammkäfer.

RIPIPHORVS angulatus: ater thoracis angulo postico utrinque flavo, abdomine ferrugineo.

Legi olim cadaver iam capite pedibusque orbatum, in coniugatione foliorum *Dipsaci fullon.* Linn. nunc specimen completum benevole mecum communicavit amicissimus *Flessa*, qui idem *Bauthi-Francor.* legit.

Habitus et statura *Rip. populn. Fabr.*, verum distinctissima. Caput atrum opacum, vertice plano nitidiori vix punctato. Antennae nigrae pectinatae. Thorax ater gibbus margine laterali subpunctato, dorso profunde canaliculatus, angulis posticis lateralibus acutis laete flavis. Elytra atra punctata apice angustata nitidula. Pectus atrum immaculatum punctatum. Abdomen ferrugineum. Pedes nigri. Alae fuscae. Mas videtur.

a Magnitudo naturalis. b Eadem aucta. c Eadem a latere. d Antenna aucta.





Leptura septempunctata Fabr.



LEPTVRA septempunctata.

Der siebenpunktirte Schmalbockkäfer.

LEPTVRA septempunctata: nigra thorace testaceo : puncto nigro, coleoptris testaceis: punctis septem. *Fabric.* Syft. Eleuth. T. II, n. 48. pag. 362. Ent. Syft. T. II. n. 38. p. 346.

Habitat in floribus.

a Magnitudo naturalis. b Eadem aucta.



Leptura aurulenta Fabr.



LEPTVRA aurulenta.

Der goldrandigte Schmalbökkäfer.

LEPTVRA aurulenta: atra thoracis margine antico posticoque aureis elytris re-
fuceis: fasciis quatuor simplicibus, *Fabric. Syst. Eleuth. T. II. n. 57. p. 364.*
Ent. syst. T. II. n. 45. p. 348.

Habitat in Auftria.

a Magnitudo naturalis. b Eadem aucta.

1871

...

...

...

...



Buprestis taeniata Fabr.



BVPRESTIS taeniata.

Der queergestrichelte Prachtkäfer.

BVPRESTIS taeniata: elytris ferratis cinereo villosa, elytris nigris : fasciis duabus ferrugineis. *Fabric.* Syft. Eleuth. T. II. n. 76. p. 199. Ent. Syft. T. II. n. 62. p. 201.

Piller et Mitterb. Iter in Pofegan. p. 84. tab. 7. fig. 12. *minus bona.*

BVPRESTIS taeniata. *Rossi* Faun. Etrusc. I. n. 479. p. 191.

Habitat in Hyperici floribus.

a Magnitudo naturalis. b Eadem aucta.

THE HISTORY OF THE
CITY OF BOSTON

FROM THE FIRST SETTLEMENT
TO THE PRESENT TIME
BY
NATHAN OSGOOD
VOL. I
BOSTON: PUBLISHED BY
J. B. BROWN, 15 NASSAU ST.
1846



Buprestis Quercus Fabr.



BVPRESTIS austriaca.

Der oestereichische Prachtkäfer.

BVPRESTIS austriaca: elytris integris fulcatis aeneis, capite thoraceque viridibus.

Fabr. Syst. Eleuth. T. II. n. 96. p. 203. Syst. Ent. n. 26. p. 221. Spec. Inf.

T. I. n. 36. p. 279. Mant. Inf. T. I. n. 53. p. 181. Ent. syst. T. II. n. 77. p. 204.

BVPRESTIS austriaca. *Linn.* Syst. Nat. n. 9. p. 661. ed. XIII. n. 9. p. 1933.

BVPRESTIS Quercus. *Herbst* Archiv. V. n. 13. p. 119. tab. 28. fig. 13.

BVPRESTIS Quercus. *Herbst* Nat. G. d. K. T. IX. n. 66. et n. 114.

BVPRESTIS aurulenta. *Roffi* Faun. Etrusc. T. I. n. 462. p. 186.

Schaeffer Icon. Inf. Ratisb. tab. 35. fig. 6.

Harrer Besch. d. S. Inf. n. 88.

Habitat in Austria.

REVISED

THE NEW YORK PUBLIC LIBRARY

ASTOR LENOX AND TILDEN FOUNDATIONS
455 N. 5TH ST. N. Y. C.

1911

J



Buprestis biguttata Fabr.



BVPRESTIS biguttata.

Der grüne zweygetropfte Prachtkäfer.

BVPRESTIS biguttata: elytris integris linearibus viridibus: puncto albo, abdomine cyaneo: punctis utrinque tribus albis. *Fabric.* Syst. Eleuth. T. II. n. 144. p. 212. Syst. Ent. n. 55. p. 281. Spec. Inf. T. I. n. 55. p. 281. Mant. Inf. T. I, n. 82. p. 184.

Herbst Archiv. V. tab. 28 fig. 22.

Payk. Fn. Suec. T. II. n. 11. p. 224.

Rossi Fn. Etrusc. T. I. n. 473. p. 191.

Schaeffer Ic. Inf. Ratisb. tab. 279. fig. 6. a, b.

Harrer Beschr. d. S. Inf. n. 97.

Habitat in truncis Quercuum cariosis.

a Magnitudo naturalis. b Eadem aucta.



Allantus ferrugineus Niti.



ALLANTVS ferrugineus.

Die Rostfärbige Bohrwespe.

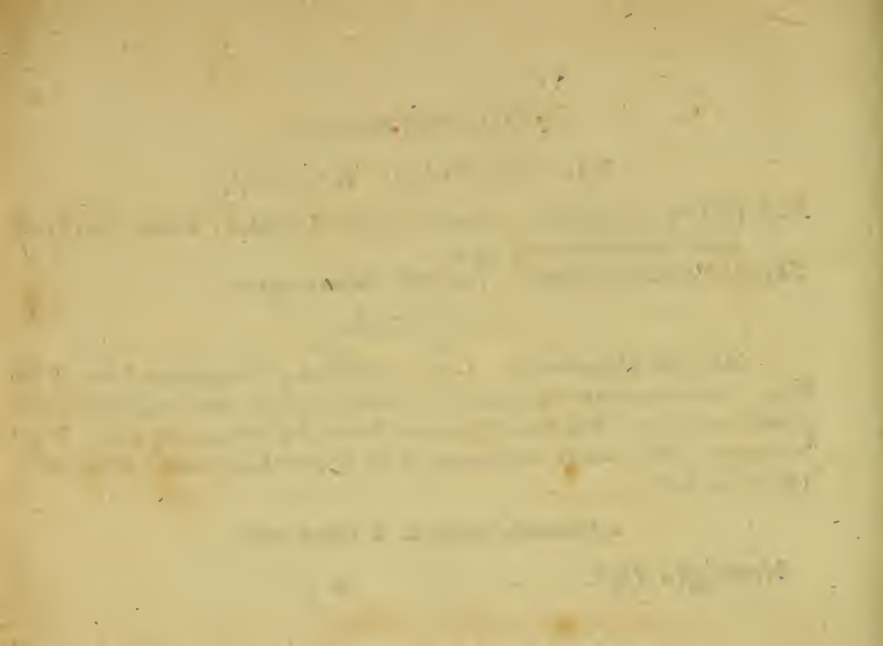
ALLANTVS ferrugineus: corpore ferrugineo flavescente, thorace antice posticeque abdomineque basi nigris.

TENTHREDO ferruginea. Fabric. Syst. Piezator. inedit.

Habitat in floribus.

Minoribus adnumerandus. Caput ferrugineum, ore palpisque flavis. Oculi nigri. Antennae breves flavescentes. Thorax nigricans, dorso ferrugineo. Scutellum ferrugineum. Abdomen cylindricum flavum, segmento primo nigro. Pectus ferrugineum. Pedes omnes flavescentes. Alae hyalino-flavescentes, nervo marginali antico flavo.

a Magnitudo naturalis. b Eadem aucta.





Nematus luteus Mihi.



NEMATVS luteus.

Die wachsgelbe Hainenwespe.

NEMATVS luteus: corpore ferrugineo, pectore subtus maculis duabus nitidis nigris, alis basi flavescens.

TENTHREDO lutea. *Fabric. Syst. Piezator. inedit.*

Habitat in sylvaticis et pratis editoribus.

Caput ferrugineum transversum nitidum, ore palpisque concoloribus. Antennae flavae basi supra fuscae. Thorax ferrugineus nitidus. Scutellum concolor. Abdomen ventricosum ovatum ferrugineum nitidum immaculatum, segmento primo punctis duobus obsolete fuscis. Pectus ferrugineum, apice subtus maculis duabus oppositis nigris nitidis. Abdomen subtus ferrugineum. Pedes ferruginei. Alae basi flavescens, nervo antico crassiori punctoque marginali flavo.

a Magnitudo naturalis. b Eadem aucta.

REVISED

THE HISTORY OF

THE HISTORY OF THE

REVISED

THE HISTORY OF THE

REVISED

THE HISTORY OF THE

THE HISTORY OF THE

THE HISTORY OF THE

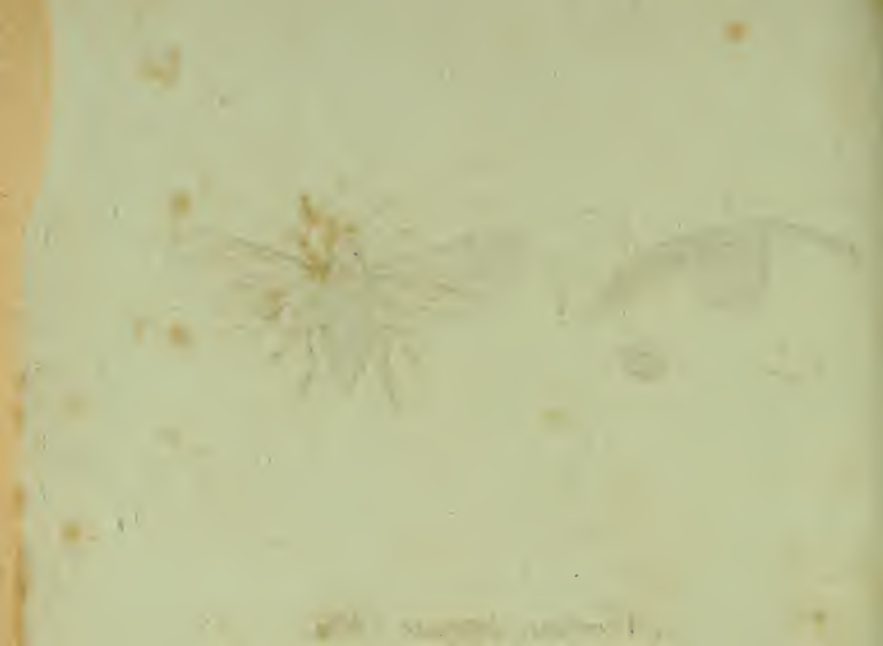
THE HISTORY OF THE

THE HISTORY OF THE

THE HISTORY OF THE



Nematus intercus Michx.



NEMATVS intercus.

Die Gallen - Hainenwespe.

NEMATVS intercus nigra pedibus flavis.

TENTHREDO intercus. Linn. Syst. Nat. n. 50. p. 927. ed. XIII. n. 60. p. 2670.

Fn. Suec. n. 1568.

Habitat larva in Gallis globosis nitidis rubris, foliis *Salic. fragilis, monandr. vitellin.* cet. innatis.

Allanto Morio duplo minor. Caput transversum nigrum, labio mandibulisque flavescens. Antennae breves nigrae. Thorax ater immaculatus nitidus. Alae hyalinae, puncto calloso ante alas flavo, nervo antico crassiori, punctoque marginali flavescens. Abdomen ventricosum ovatum nigrum nitidum immaculatum. Pedes omnes flavescens, femoribus basi nigricantibus. Corpus subtus nigrum immaculatum nitidulum.

a Galla globosa rubra folii Salicis paginae inferiori adnata. b Larva. c Chrysalis folliculata pilosa ferruginea. d Imaginis magnitudo naturalis. e Eadem aucta.



Crabro lapidarius Fabr.



CRABRO lapidarius.

Die Stein - Hornseife.

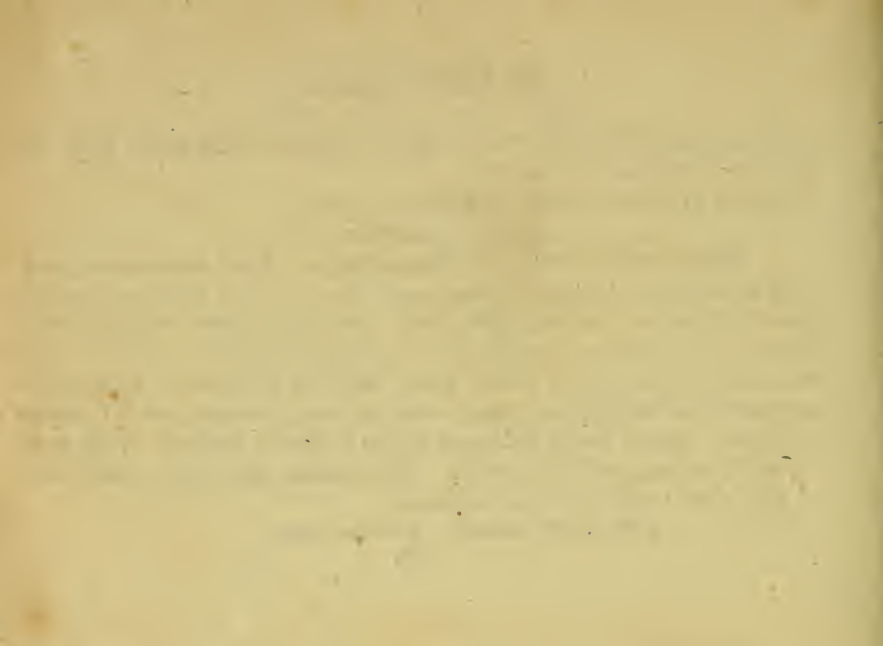
CRABRO lapidarius: niger thorace maculato, abdomine fasciis quinque flavis omnibus plerumque interruptis.

CRABRO lapidarius. *Fabric. Syst. Piezator. inedit.*

Habitat in editioribus.

Habitus et statura *Crabr. vag. Fabr.* ast minor. Caput atrum opacum pubescens punctulatum. Antennae ferrulate breves nigrae, articulo primo flavo margine laterali fusciscente. Lacium pube argentea. Mandibulae nigrae basi puncto flavo. Thorax ater opacus cinereo pubescens antice punctis duobus flavis, punctoque alio ad marginem anticum lateralem utrinque flavo. Scutellum immaculatum. Abdomen ovatum nigrum nitidum segmento primo immaculato, reliquis utrinque macula flavescente triangulari, quarum anticae posticaeque saepius in fasciam conflunt. Pedes flavescens, femoribus posticis nigricantibus. Alae hyalinae nervo antico crassiori fusco. Corpus subtus nigrum nitidum immaculatum.

a Magnitudo naturalis. b Eadem aueta.





Crabro lituratus Mihi.

CRABRO lituratus.

Die gelbgestrichelte Horneise.

CRABRO lituratus: ater thorace maculato, abdomine fasciis quinque continuis, prima lobata flavis.

Habitat in montibus. *Cl. Farine* benevole mecum communicavit.

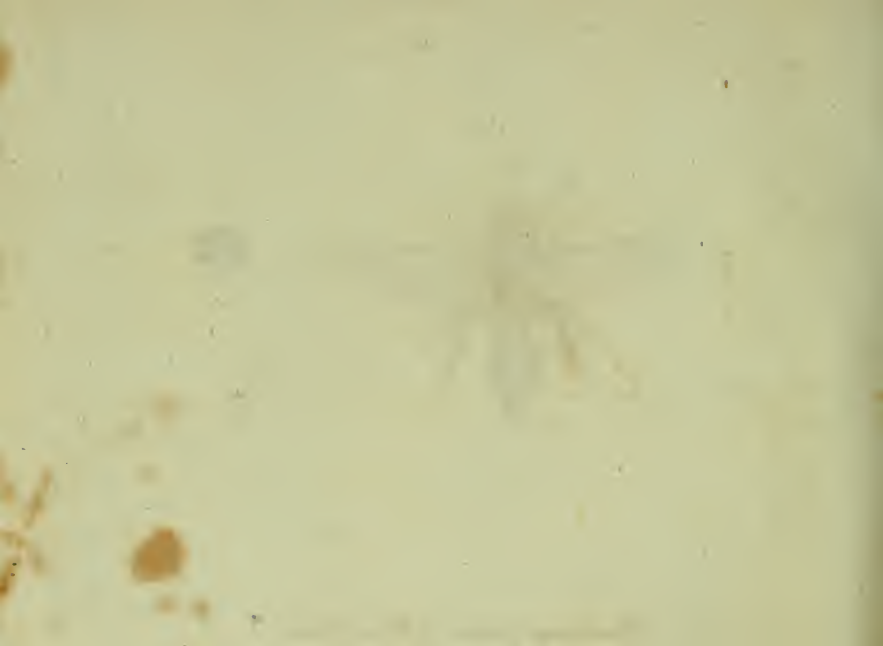
Habitus et statura *Crabr. sexinct. Fabr.* Caput atrum opacum punctatum vertice plano pubescente. Oculi magni fusci. Frons inter antenas calva canaliculata. Labium pube argentea, quae genas etiam circumvestit. Mandibulae flavae apice bidentatae fuscae. Antennae nigrae articulo primo toto flavo. Thorax elevatus ater opacus pubescens subtilissime striatus et inter strias punctis minutissimis: margine antico lineola elevata interrupta, punctisque duobus aliis utrinque marginalibus elevatis flavis. Scutellum flavum, punctisque duobus aliis distinctis lateralibus, lineo-

laque pono scutellum flavis. Lobus posticus thoracis valde elevatus maculisque duabus oppositis irregularibus flavis. Abdomen ovatum nigrum nitidum, fasciis quinque subaequalibus latis flavis, prima lobata. Apex abdominis pilosus flavus. Pedes omnes flavi, femoribus posticis crassioribus nigris. Tibiae omnes dilatatae. Tarsi fusci. Alae hyalinae nervis omnibus flavescens.

a Magnitudo naturalis. b Eadem aucta.



Andrena analis Mas Fabr.



ANDRENA analis. Mas.

Die rothafterichte Waldbiene. Das Männchen.

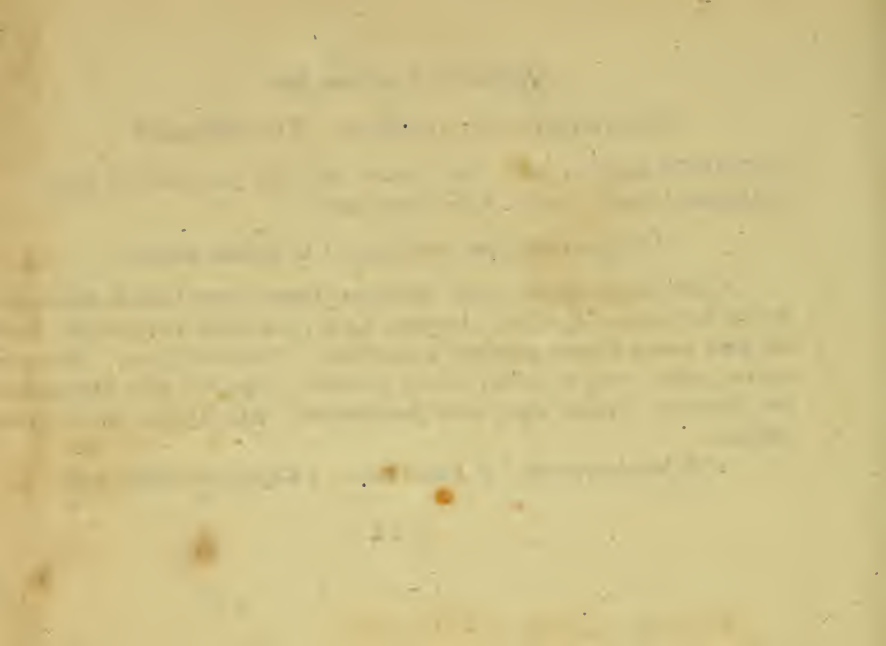
ANDRENA analis: cinereo pubescens atra, labio albo punctis duobus nigris.

ANDRENA analis. Fabric. Syst. Piezat. inedit.

Legi quotannis primo vere frequens in Salicum amentis.

Caput nigrum opacum cinereo pubescens: fronte cinereo barbata, labio albo punctis duobus oppositis nigris, Antennae supra nigrae subtus cinerascens. Thorax niger opacus cinereo pubescens immaculatus. Scutellum nigrum. Abdomen nigrum lucidum margine laterali cinereo pubescens, segmentis apice albescentibus ano concolore. Femora nigra, tarsis flavescentibus. Alae hyalinae nervis flavescentibus.

a Magnitudo naturalis. b Eadem aucta. c Caput antice visum, auct.





Andrena analis Fem. Fabr.



ANDRENA analis. Femina.

Die rothafterichte Waldbiene. Das Weibchen.

ANDRENA analis: cinereo pubescens atra, ano pedibusque flavis.

ANDRENA analis. *Fabric.* Syst. Piezat. inedit.

Habitat cum mare.

Caput atrum cinereo pubescens, labio immaculato. Antennae, thorax, scutellum ac in mare. Abdomen nigrum lucidum segmentis apice fuscantibus: ano flavo. Femora nigra, tibiis tarsisque flavis.

a Magnitudo naturalis. b Eadem aucta. c Caput antice visum auctum.

THE UNIVERSITY OF CHICAGO

PH.D. THESIS

Submitted by [Name]

in partial fulfillment of the requirements for the degree of Doctor of Philosophy

in the Department of [Department]

Chicago, Illinois, [Date]

Approved by [Name]

[Name]

[Name]



Bremus tibialis Mihi.



BREMVS tibialis.

Die Klappenfuss - Hummel.

BREMVS tibialis: hirsuta nigra thorace griseo abdomine nigro ano albo, tarsorum articulo primo basi lobato.

Habitat in saxosis.

Habitus et statura *Brem. muscor.* Caput nigrum nitidum hirsutum, labio apice rufo ciliato. Thorax griseo-villosus. Abdomen atrum pilosum, pilis apice canis. Anus albido-villosus. Alae obscurae, nervis et venis fuscis. Pedes hirsuti fusco nigri nitidi. Tibiae apice spinosae, ibidemque excisae, ad lobum primi tarsorum articuli apicis excipiendum.

a Magnitudo naturalis. b Pes posticus auctus.

THE UNIVERSITY OF CHICAGO

PH.D. THESIS

Submitted by [Name] in partial fulfillment of the requirements for the degree of Doctor of Philosophy

Department of [Department Name]

Chicago, Illinois, U.S.A.

19[Year]



Bremus fasciatus Nihl.



BREMVS fasciatus:

Die gebänderte Hummel.

BREMVS fasciatus: hirsutus ater, thorace flavo fascia dorsali nigra, abdominis basi flavo, fascia media nigra, ano albo.

Habitat in editioribus.

Habitus et statura Brem. caespit. Faun. 81. 19, cui affinis, sed diversa videtur. Caput nigrum hirsutum, fronte dilute flavescente barbata. Os rufè-fetosum. Antennae nigrae. Thorax flavus fascia media nigra. Abdomen basi fascia flava, medio nigra: ano albo. Pedes nigri fusco pilosi, tarsis piceis. Alae obscurae nervis et venis sordide flavescensibus.



Syrphus cryptarum Fabr.



SYRPHVS cryptarum.

Die Minier - Schwebefliege.

SYRPHVS cryptarum: antennis setatis tomentosus abdomine fusco cingulis tribus albis: primo segmento lateribus luteo, scutello pedibusque testaceis.
Fabric. Ent. syst. T. VI. n. 26. p. 285.

Habitat in pratis humentibus.

a Magnitudo naturalis. b Eadem aucta.



Syrphus vespiformis Fabr.



SYRPHVS vespiformis.

Die wespentartige Schwebefliege.

SYRPHVS vespiformis: antennis setariis nudus thorace maculato, abdomine cingulis flavis utrinque connatis. *Fabric.* Ent. syst. T. VI. n. 82. p. 800. *Syst.* Ent. n. 33. p. 769. *Spec. Inf.* T. II. n. 46. p. 430. *Mant. Inf.* T. II. n. 53. p. 339.

MUSCA vespiformis. *Linn.* *Syst. Nat.* n. 44. p. 986. ed. XIII. n. 44. p. 2873. *Fn.* *Suec.* n. 1811.

Habitat raro in sylvaticis editoribus.

a Magnitudo naturalis, b Eadem aucta.

THE UNIVERSITY OF CHICAGO

DEPARTMENT OF CHEMISTRY

RESEARCH REPORT NO. 1072
BY
J. H. GOLDSTEIN AND
R. F. W. WILSON

DEPARTMENT OF CHEMISTRY
UNIVERSITY OF CHICAGO
CHICAGO, ILLINOIS

RECEIVED

APRIL 10, 1957



Syrphus aureus Mihi.

SYRPHVS aureus.

Die goldhaarigte Schwebefliege.

SYRPHVS aureus: antennis plumatis tomentosus aureus, scutello, segmento abdominis primo secundoque macula utrinque marginali flavis, pedibus nigris albo annulatis.

Legi raro in pratis.

Habitus et statura *Syrph. mistac. Fabric.* Oculi hirsuti nigri. Frons hirsuta flava, ore regioneque sub antennis calva nigra nitidissima. Antennarum clava basi nigra apice sordide fulva: seta plumata ferruginea. Thorax dense aureo tomentosus. Scutellum flavo tomentosum. Abdomen aureo tomentosum, segmenti primi et secundi maculis flavis marginalibus translucentibus. Corpus subtus nigrum cinereo tomentosum. Pedes nigri, femoribus apice tibiisque basi albo annulatis, tibiis posticis acutatis, tarsis aureo tomentosis. Alae albo hyalinae, macula baseos obscura.
a Magnitudo naturalis. b Eadem aucta.

1875

1875

Faint, illegible text, possibly bleed-through from the reverse side of the page.



Bibio rustica Mhi.



BIBIO rustica.

Die Land - Markusfliege.

BIBIO rustica: hirta atra, thorace cinereo lineato, abdominis segmentis maculis cinereis marginalibus, pedibus flavis.

Legi in dumetis haud frequens.

Habitus et statura *Bib. pleb. Fabr.* sed distinctissima. Caput cinereum, fronte inter oculos argentea. Occipite setoso. Oculi obscuri virides. Antennae basi hirtae nigrae, apice cinereo fuscae. Thorax ater lineis quatuor cinereis: margine laterali hirta. Scutellum cinereum. Abdomen elongatum conicum atrum, segmento primo apice cinereo, reliquis margine laterali maculis trigonis cinereis: anus immaculatus. Pectus et abdominis antica pars, cinerea. Femora simplicia nigra cinereo irrorata, tibiis flavis apice nigris. Tarsi nigri, primo articulo flavo.

a Magnitudo naturalis. b Eadem aucta.

MEMORANDUM

TO : [Illegible]

[Illegible text]



Acarus plumbeus Mihi.

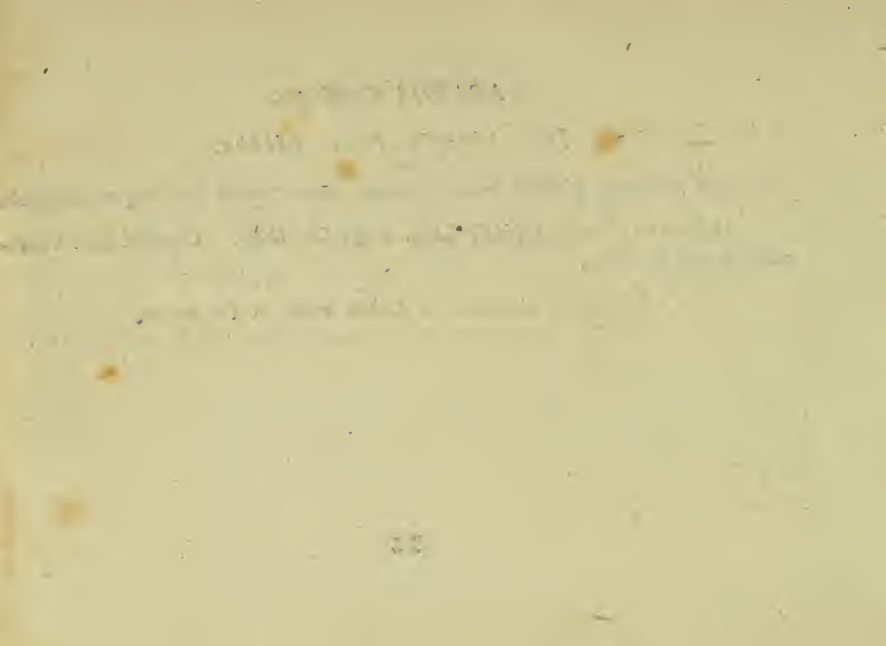
ACARVS plumbeus.

Die bleyfarbige Milbe.

ACARVS plumbeus: globoso ovatus plumbeus laevis, capite pedibusque ferrugineis.

Habitat in *Alauda trivialis* Linn. Legit Cl. Wolf, Ornithologiae francicae auctor et editor.

a Magnitudo naturalis, b Eadem aucta, c Pes auctus.





Noctua Psi Fabr.

NOCTVA Pfi.

*Die Schleheneule. Das griechische Pfi. Le Pfi. La Phalene
de l'Abricotier.*

NOCTVA Pfi: cristata alis deflexis cinereis: anticis lineola baseos characteribus
nigris, pedibus immaculatis. *Fabric.* Ent. syst. T. V. n. 315. p. 105. Syst.
Ent. n. 104. p. 614. Spec. Inf. T. II. n. 129. p. 235. Mant. Inf. T. II. n. 255.
p. 174.

PHAL. NOCTVA Pfi. Linn. Syst. Nat. n. 135. p. 846, ed. XIII. n. 135. p. 2559.
Fn. Suec. n. 1181.

Syst. Verz. d. W. Schm. n. 2. p. 67.

Geoffr. Inf. T. II. n. 91. p. 155.

Esper eur. Schm. T. II. tab. 115. fig. 3--4.

Rösel Inf. Bel. T. I. Tab. 7.

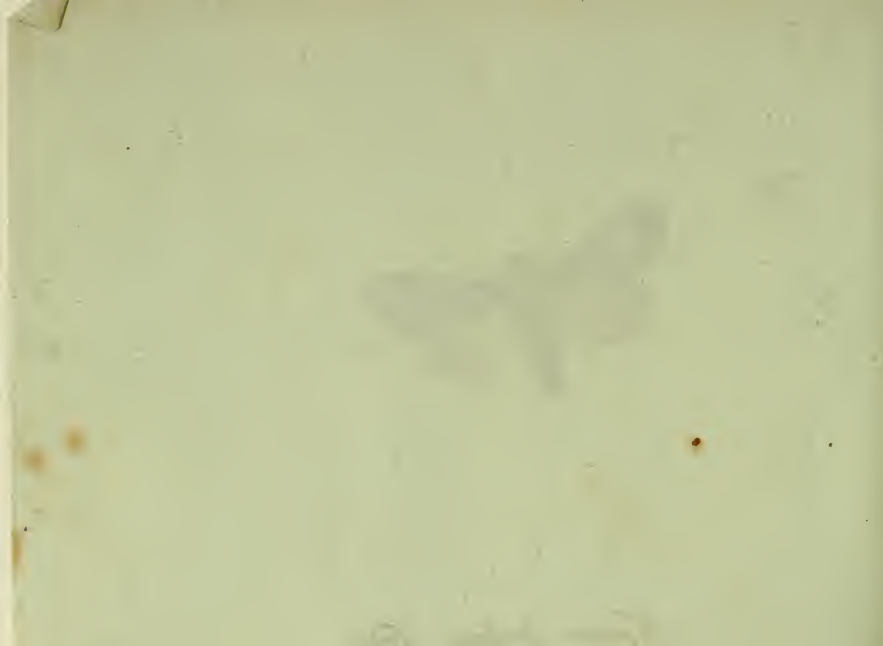
Borkhaus, eur. Schm. T. IV. n. 106. p. 238.

Die Raupe lebt an allen Arten der Pflaumen, an Aepfeln, Birn, Buchen, Linden, Eichen, Weiden, Pappeln, Erln, Weisdorn, und Hainbuchen. Man findet sie zweymal im Jahr, nemlich im Junius, und dann wieder vom August an bis in den späten Herbst. Sie ist nicht völlig zwey Zoll lang. Wenn die Verwandlungszeit herannahet, so wird sie sehr unruhig, lauft hin und her, und suchet und wählet so lange, bis sie einen zum Anlegen ihres Gespinnstes tauglichen Ort findet. Im Freyen geschieht dieses gewöhnlich an den Stamm oder den Ast eines Baumes. Sie beisset eine Höhlung in die Rinde und die abgezognen Späne leimt sie in ihr Gespinnst, wodurch dasselbe eine große Härte und die Farbe der Rinde erhält. Die Chrysalide ist schlank und geschmeidig, ganz rothbraun, und hat am Hintern eine kurze Endspitze. Bey irgend welcher Berührung äussert sie eine lebhaftere Bewegung.

Borkhaus.



Noctua tridens Fabr.



NOCTVA Tridens.

Die Abrikosencule. Der Pfeilnachtflalter. La Phale de l'Aubepine.

NOCTVA tridens: cristata alis deflexis cinereis: maculis atris trifidis, posticis albidis. *Fabric.* Ent. syst. T. V. n. 314. p. 105. *Mant.* Inf. T. II. n. 254. p. 173.

Syst. Verz. d. W. Schm. n. 1. p. 67.

Esper eur. *Schm.* II. tab. 115. fig. 5--8.

Rösel Inf. *Bel.* I. tab. 8.

Borkhaus. eur. *Schm.* T. IV. n. 107. p. 244.

So sehr sich beyde Falter gleichen, so sehr sind doch ihre Raupen verschieden. Man trifft sie gleich iener auch auf allen Arten der Pflaumengattung an, auf Weisdorn, und vorzüglich auch auf Weiden. Auch sie erscheint zweymal im Jahr, das erstemal im Junius, und das zweitemal im August. Sie fertigt sich auch auf gleiche Art ein Gespinste, und wird darinn eine schlanke braune Chrysalide, deren Endspitze mit Borstenhaaren versehen ist. *Borkhausen.*









