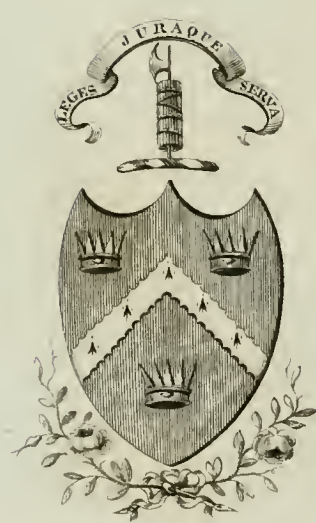


162/RC/

Abbey type 48
Paris Cat 2305



C.T.C. GRANT

Like 1509 Catalogue
of the British Museum





Digitized by the Internet Archive
in 2010 with funding from
Research Library, The Getty Research Institute

<http://www.archive.org/details/fermeorneorrura00plaw>

FERME ORNÉE;

OR

Rural Improvements.

A SERIES OF

Domestic and Ornamental Designs,

SUITED TO

PARKS, PLANTATIONS, RIDES, WALKS, RIVERS, FARMS, &c.

CONSISTING OF

FENCES, PADDOCK HOUSES, A BATH, A DOG-KENNEL, PAVILIONS,
FARM-YARDS, FISHING-HOUSES, SPORTING-BOXES, SHOOTING-
LODGES, SINGLE AND DOUBLE COTTAGES, &c.

CALCULATED FOR LANDSCAPE AND PICTURESQUE EFFECTS.

ENGRAVED ON THIRTY-EIGHT PLATES.

With Appropriate Scenery, Plans, and Explanations.

BY JOHN PLAW, ARCHITECT.

LONDON:

PUBLISHED BY I. AND J. TAYLOR,
AT THE ARCHITECTURAL LIBRARY, HOLBORN.

MDCXCVI.

A D V E R T I S E M E N T.

WHEN the scheme of this work was first arranged, I intended to have comprised it in thirty-one plates; but not being able to explain the number of articles proposed to my satisfaction, I have been under the necessity of extending the work to thirty-eight plates: this addition will I hope be accepted for any variation from the original plan. To my numerous Friends and Subscribers I beg leave to observe, the designs here given possess advantages beyond mere fancy sketches; many of them having been carried into execution in various parts of the kingdom, and of most of them I have small models which completely shew their effect in execution; these I shall be happy to explain to any Gentleman who may wish to inspect them.

In addition to the customary method of making Mud-Walls, as practised in Devonshire and other counties of England, I beg to notice the new method of building Walls for Cottages, &c. as practised in France; of which an account is given in a little work lately published at Paris, under the title of *Maison de Pisé*. The method there proposed and on experience recommended, is to construct the Walls of dry earth, well rammed, or beaten together in a mould, like a case: the advantage attending this method is by the author M. *Gointeraux* spoken of in the highest terms, and as applicable to buildings of considerable extent, with upper stories, &c. That this method is practicable on a small scale, I am well assured by some Gentlemen, who have really built with success in this manner. It certainly is cheap; for, the mould or case once formed, it is easily shifted, and the whole process may be performed by common labourers. It may be proper to observe, the several pieces of the mould must be made to fit properly, and the whole must be well braced or tied together, to resist the percussion of the beating. This method has some advantages over that usually practised; for, being worked dry, the building is habitable as soon as formed, no danger being likely to arise to the inhabitants from damp walls.

Spring-Place,
Near Southampton,
1795.

F E R M E O R N É E, &c.

EXPLANATION OF THE PLATES.

PLATE I. ENTRANCE GATES.

DESIGNS for two hunting gates; one executed for Lieutenant-Colonel Thornton, at Thornville Royal, Yorkshire; the other designed for the late John Morant, Esq. in the New Forest, Hampshire. The letters are painted of a colour different from the gate, and give a general idea of the hunt to which they belong: they also shew the extent of the proprietor's domain.

The second figure is a design for a field gate, in the same manner.

The third figure shews the entrance gates to the front of Selfdon farmhouse, in Surry; executed by me some time since. The dotted lines shew the manner in which the oak posts, &c. are framed under ground; the piers are of wood, well painted and fanded: the convenience and effect of the whole have been much approved.

The fourth figure shews the gates leading to the farm-yard at Thornville Royal, executed by me in 1791; one side is here shewn open railing, the other close park paling. I have sometimes made these gates to open in two divisions, so that one serves for a foot gate, when it is not necessary to open the whole for a carriage.

PLATE II. FENCES.

SECTIONS of two specimens for Ha ha's! or funk fences; the first shews an excavation below the dotted line, which marks the level of the adjoining ground; the sod is packed up to the rails inclining inwards; the posts and rails are fixed at an angle of about forty-five degrees; the earth is thrown on the top and planted with low shrubs, which entirely conceal this slope-fence; and which no cattle will attempt to oppose. The second section is a funk fosse, planted on both sides, with perpendicular rails in the middle; a hedge, hurdles, or stack-bars might be substituted.

The third section is a funk Ha ha! wall, in the common way; when the ditch will hold water, this is a safe and an agreeable fence, as at Richmond Gardens, next the river, &c.

Figure 4.—If it happens that an approach, ride, walk, or hill commands a side view of a straight Ha ha! such as figure 2, the ditch-like appearance is not pleasant, and, at some points, this cannot be avoided; a serpentine or waved funk fence is here designed to remedy that evil: by waving the line and planting the promontories, the disagreeable appearance is completely obviated.

The next figure shews two designs for box gates, and one for a turnstile. The construction of these is obvious; either of the box gates may be so contrived as to lead a horse through, by making one of the side pannels with hinges and a lock, similar to the hunting gate locks.

The last figure exhibits a drop stile, one side down, the other up: the post in the middle serves as a centre on which the bars swing; the weight at the end recovering them to their horizontal position.

PLATE III. THE WOOD PILE HOUSE.

THIS building is intended for a convenience in a park or plantation where the walks or rides are extensive; or for a situation where it is difficult to conceal those of common construction; it preserves the *equivoque*, under the character and appearance of a wood pile. It is built with the arms and boughs of
oaks

oak trees, not too large, cut into regular lengths, and bedded in tempered clay, mixed up with straw ; the roof is thatched, and the inside, above the lining, is stuck with moss. The construction is such as to have the properties of a water closet ; by means of a well of water at the back, as shewn in the section, a trunk or pipe from the seat is sunk about six inches in the water, so that no air can draw up. This construction may be adapted in most privies ; but care must be taken that it is not too near the water for general uses, as it may contaminate.

This *Cabinet* was executed by me some years ago, in the plantations of the late Right Honourable Richard Rigby, Esq. at Mitley Thorn, in Essex, and also for the Reverend E. T. Bridges, at Wooton's Court in Kent, in an inner court, overlooked by a stair-case window.

PLATE IV. GARDEN SEAT.

THIS building is supposed to be situated on an eminence, commanding an extensive prospect, and by the side of a plantation ; it has open seats to three aspects, so that the visitor may be screened from sun or wind, if troublesome : the side next the edge of the plantation has a door for admision to a garden convenience, perfectly secret, receiving light from the top.

PLATE V. CATTLE SHED, or PADDOCK HOUSE.

THIS paddock shed has a small room on each side, one for hay, the other for green meat, when pasturage is scarce, &c. The plan will admit of either of the three elevations here designed : whichever character may best accord with the adjoining buildings, or whichever shall best please the fancy of the builder. The grotesque or fancy character may be adopted, to commemorate some favourite animal for past services. The building is supported by trunks
of

of trees, forming naturally a rude pointed arch. The skull of a horse may be placed over a mural tablet, where may be recorded the feats of that noble animal, and the water-trough may represent the sarcophagus. The plantation which environs the paddock is seen in the back ground.

PLATE VI. CATTLE SHED *and* FOSTERING HOUSE.

THIS building is suitable to a paddock, lawn, or park; the front is simple and pleasant, as a façade to the fostering or sheep-house; the surrounding eaves of which are so low, that the sheep cannot be disturbed, or their fodder destroyed by other cattle; it will protect from cold or heat in extreme weather, and is a good shelter in the season of lambing; a hay-rack is fixed in the shed, for the use of the larger cattle.

I am indebted for this useful and ingenious idea to the Earl of Clanbrassil.

PLATE VII. CATTLE SHED, *or* Paddock HOUSE.

PLAN, elevation, and section of a cattle shed, calculated for a right-angle division of a meadow, or grass land, appropriated for breeding mares, or mares and foals: the shed may be divided into four apartments, and either of the partitions may be removed at pleasure; there is a rack and manger to each division, and a floor above for hay, green meat, &c. This polygon building may be constructed with shafts or trunks of trees, or small timber of any sort, weeded from the woods, where they may be found straight and too close to be properly left for large timber. The building may be raised round a large shady tree, or a stout pole set in the ground, and terminated with a ball, or weather-cock. The spaces between the columns or trunks may be lath and plaster, rough cast, slabs of timber, or furze wattle, as fancy shall direct.

PLATE

PLATE VIII. POULTRY HOUSE *and* AVIARY.

THIS design was made for a Lady in the New Forest, and intended to be erected on a lawn, in front of a neat cottage villa. The plan shews four coops for young poultry, each having an opening, occasionally to feed them in the pavilion, by which they become very familiar and tame. The dotted line within the plan of the building, shews the wire cages for breeding and rearing birds.

PLATE IX. DOG KENNELS.

THIS design for Fox-hound Kennels was made for Lieutenant Colonel Thornton, in the year 1791; and intended to be erected at Thornville Royal, Yorkshire. The dotted line marks the approaches to the centre, and to the porticos, where a stranger may visit the hounds with safety. The three octagon cells are for entered hounds, bitches, and whelps; the centre for couples, whips, &c. between the walks are the airing grounds; the boiling and feeding house is at the extremity. I suggested an idea to the Colonel, to form an encampment of his spaniels and pointers on an eminence, in a stately grove of oaks, accompanied occasionally by his Hawks and Falconers, which would have had a very picturesque effect in the park.

PLATE X. FISHING BRIDGE *and* BARRIER.

THIS structure serves as a Bridge of communication, or as a Barrier; it swings on a pivot in the centre, and may with ease be turned to answer either purpose across a canal, brook, &c. in a garden or plantation: when not wanted as a bridge, it may be swung round, and fastened by a padlock and chain. It will make a pleasing object to terminate the view of a garden walk, &c. The railing or lattice work in front may be executed in a very cheap and agreeable style of ropes, in the manner of net-work, and when painted will be durable. The uses of this construction are applicable to any form or appearance.

PLATE XI. FISHING LODGE *and* KEEPER'S DWELLING.

THIS design was made for the late John Morant, Esq. New Forest, Hants; and was intended to have been executed with roots and trunks of trees, near the river in his park. The plan in front contains accommodations for Tea-drinking parties, Fishing-tackle, &c. In the back part are accommodations for a Keeper, who would have the care of the waters and fishery, and his family.

PLATE XII. SHEPHERDS' HUTS, *or* COTTAGES.

THE plan at bottom is intended to be a square, or a parallelogram, with or without a fire-place. If this building is constructed uniform at both ends, the appearance will be more interesting, if proposed as an object, from any point of view. The façade is formed of rough trunks of trees, and the walls built with the arms of trees, cut to equal lengths, &c. as before described. The lining of the door jambs, &c. may be of oak or beech slabs; and the building covered with reed flag, straw, or heath thatch. The upper elevation is supposed to be built of slabs, and covered with thatch; the plan circular. The one hinted at in the distance, is octangular on the plan.

PLATE XIII. COTTAGER'S LODGE.

THIS design was made for a Gentleman in the county of Hants, and intended to be inhabited by a Cottager, and to serve as a Lodge near the entrance gates of his park: it may be observed by the plan, the building will have an uniform appearance viewed from every point; it is therefore well calculated for any situation, where the roads or access are winding, or where it may be viewed from high ground. This cottage, if properly built on wheels, might be moved at pleasure, by having a stove suitably constructed.

PLATE

PLATE XIV. A BATH.

THIS bath was designed for John Morant, Esq. Brockenhurst-House, New Forest. A circular duck pond, within a clump of beautiful fir trees, gave rise to this idea, which was ordered to be carried into execution: it is situate a small distance from the brew-house and reservoir, by which it is supplied with hot and cold water, sufficient to make a full tepid bath: there are provisions also for a shower bath occasionally. The dressing-room is furnished with a couch and stove.

PLATE XV. SECTION *and* SIDE VIEW *of the* BATH.

THE section and side view shew the complete effect of this building; the character of which, within, is light and lively; without, close and secluded.

PLATE XVI. TWO COTTAGES IN ONE BUILDING.

THIS design for Double Cottages has the advantage of two regular elevations; of course their appearance is uniform, which is a pleasant thing on a Gentleman's estate, where neatness and regularity are proposed. These also will be agreeable objects in most points of view, from the windings of roads or footways. Of Double Cottages the advantages, besides those above mentioned, are, I think, considerable; neighbourly assistance in illness, &c. may be then given with ease and effect; advantages by no means small to a benevolent mind.

PLATE XVII. AMERICAN COTTAGES.

THESE Double Cottages are built (on the plan and in the style of some in America) at Throwley near Faversham in Kent, by Colonel Montresor. I saw them soon after they were completed, and for their extreme singularity have introduced them in this work: the East, West, and South aspects have a piazza round them; and the major part of the external appearance, together with the roof, is covered with plain tiles. The general declivity of the roof is well calculated to throw off rain or snow.

PLATE

PLATE XVIII. HUNTING *or* SHOOTING LODGE IN THE
COTTAGE STYLE.

THIS building is calculated for a small family to reside in, or occasionally resort to: the front is intended to be rough cast, or peretto work; the roof thatched or slated.

PLATE XIX. A SMALL VILLA IN THE COTTAGE STYLE.

THIS building is calculated for a family, and might serve for a sporting-lodge: the accommodations are numerous and convenient. It is proposed the roof should be thatched, and the front stuccoed, with an arcade or portico of trillage work, fronting the South: the general appearance, ancient or gothic.

PLATE XX. VILLA IN THE COTTAGE STYLE.

THE design of this building is in the style of Mr. Drummond's fishing cottage, on the river Avon, near Ringwood; except that the offices in that building are detached. After arranging this design, an Attic story was added, which produces a good effect, and abundant conveniences. This design is intended to be built by a Gentleman in Wales.

PLATE XXI. A LODGE, *or* COTTAGE.

THIS design is applicable in an approach to a Gentleman's house: the walls of this building are proposed to be built with a mixture of clay and straw, usually called mud-walling, and which is practised in Devonshire with great success. This sketch, with several others introduced in this work, was originally designed for a great Personage.

PLATE XXII. KEEPER'S LODGE, *or* DAIRY.

THIS building, supposed to be situated in a park, is constructed of
branches

branches of trees, cut to an equal length, and bedded in loam, &c. The rustic columns are trunks of trees in the rough; the floor may be paved with the ends of branches, cut regularly smooth, laid in loam, and the interstices filled with the same. This building would make a convenient dairy; for which purpose, some time ago, I gave the drawings to a Gentleman in Yorkshire.

PLATE XXIII. COTTAGE *or* FARM HOUSE.

PLANS, elevation, and section calculated for a dwelling-house, on a small farm, or for a Keeper's lodge: the construction is cheap, the character simple and interesting. The front should be white, and the roof thatched.

PLATE XXIV. A FARM HOUSE.

THIS farm house I built for Lieutenant Colonel Thornton, on his estate in Yorkshire, on a large dairy farm: the situation is in a small village.

PLATE XXV. A FARM HOUSE.

PLAN and elevation of another farm house, built for Lieutenant Colonel Thornton, Yorkshire: the front and back are regular façades. It is seen at a distance from the Boroughbridge Road, and from Knaresborough.

PLATE XXVI. SECTION *and* CHAMBER PLAN *of the same*.

BY consulting the section and the plans, the distribution of the apartments in this dwelling will, I think, appear to contain all the conveniences requisite in such a building, for a respectable Farmer and a numerous Family. As this design has been carried into execution, I am the better enabled to recommend the œconomy of the plan. The Dairy is sunk, which in Yorkshire is considered as very advantageous.

PLATE XXVII. FARM HOUSE *and* OFFICES UNDER ONE ROOF.

THIS design originated from reading Mr. Marshall's idea of a complete Farm house and offices under one roof, in his *Yorkshire Tour*. At first it may appear whimsical, yet it is very applicable in certain situations, where Gentlemen, fond of rural occupations, choose to hold a small quantity of land in their own hands. This floor is even with the farm yard, and has conveniences for the residence of the Manager, with a dairy, stables, cow house, &c. In this front, towards the farm, the character is plain and neat.

PLATE XXVIII. GARDEN FRONT *of the same*.

THIS front, more adorned than the other, with great propriety and effect might terminate a vista, or row of trees; or, if shaded by lofty elms, the monastic appearance would then become peculiarly interesting. This floor, which is the upper one of the building, is level with the walk or plantation which connects with the dwelling of the Principal: on this floor are the barn, granary, &c. with the sleeping-rooms of the Looker, or Manager.

PLATE XXIX. DESIGN *for a* FARM HOUSE *and* OFFICES, HAVING THE APPEARANCE OF A MONASTERY.

THIS design is calculated to ornament an extensive domain, and to unite the useful with the agreeable. In many cases, where a Farm yard and Offices are originally planned on an extensive scale, this design might be adopted with peculiar effect. The whole accommodations are contained within a quadrangle of one hundred and fifty feet: the entrance gates, with the turrets and towers, have a monastery-like appearance: these, embosomed with stately trees, give an air of antiquity, consequence, and grandeur, which would form a leading feature on an estate of considerable extent; the idea is suitable to many possessions and counties in this country. The farm yard would be snug and warm, and the dung or other litter not liable to incommodate or disorder a park. Something similar to this has been executed at
Kingsgate

Kingsgate near Margate, in the castle style. Grose, or any other book of English antiquities, will furnish abundant variety of façades applicable to this plan.

PLATE XXX. FARM YARD STABLING.

THE design and plan of these Stables are much approved in the county of Norfolk; they may be continued for the accommodation of any number of teams the farm may require. The upper elevation is for extending the plan to accommodate three, four, or more teams, when the chaff house will be in the back, as shewn by the faint part of the plan. The Second elevation is adapted for two teams, with the requisite accommodations, as the plan underneath will shew.

PLATE XXXI. BARNS.

THE First design is in the manner of what is usually called a Dutch barn: there is a threshing floor in the middle, with four enclosures for grain adjoining: the whole is framed on rick stones, to prevent damp, and keep out vermine. The Second design is for a barn with a single threshing floor: the same idea may be continued, if the barn is required larger, or an additional floor wanted: the roof towards the farm yard may be continued down, and enclosed for a piggery, or for straw. Sheds for cattle, carts, waggons, plough geers, &c. may be erected against the enclosure wall of the farm yard: the rick yard is supposed to be at the back of the barn.

PLATE XXXII. COW *or* OX HOUSE.

THIS design is for a double cow house, with a passage in the middle for a barrow to supply the cribs with turnips, or other green meat. A floor is intended over the cribs with boards or hurdles to deposit straw, &c. which is open in the front; the roof continues below the wall plates, as is shewn by the section, to keep out wet. This kind of loft is common in Devonshire,
and

and is called a *linbay*. When local or other circumstances will not admit of a double building, this plan may be adopted single, to any length, still preserving the passage at the head of the cattle, to supply the food.

PLATE XXXIII. PLAN FOR A VILLAGE.

THIS design for a Village through which a public road passes, is intended to unite symmetry and utility: the houses may be built on any scale of magnitude, either for Labourers and their families, or for Persons of more independent circumstances. It is proposed to build them in couples, with a portion of garden ground to each: the centre of the parallelogram may be inclosed, forming an oval plat, in the middle of which a Church or Chapel would be both convenient and picturesque. A pump is placed in each angle of the square for the use of the inhabitants. The streets or roads at right angles may be occupied with building to any extent, still preserving the uniformity of the whole.

This design was made for a Gentleman in Yorkshire, and was intended to have been built in the vicinity of lead mines in that county.

A good idea for building a Village of one continued street is, to place the houses, either single or in couples, facing the opening or space allowed for Garden ground to those opposite. The views would thereby be preserved, and the air circulate more freely.

PLATE XXXIV. VILLAGE COTTAGES.

THE design of these Cottages is applicable to the plan above described: they may be built of brick or other materials, and covered with slates, tiles, thatch, &c. If thatch is used, a steeper pitch of the roof will be necessary.

PLATE XXXV. VILLAGE BUILDINGS or COTTAGES.

THESE Cottages are calculated for situations similar to the above: the conveniences are greater, and there are rooms in the roofs. The sections of the roof will shew the quantity of inclination, or pitch, necessary for tiles, or thatch. They also shew the ashling, or frame-work, which forms the rooms within.

PLATE

PLATE XXXVI. PLAN *for a* FOLD-YARD.

THIS plan for a Fold-Yard is proposed to be enclosed with a wall built of rough or old materials, producing a monastic character. If necessary the Barn may be enlarged, or others may be built on the vacant sides; this enclosure will be very useful to fold sheep in, in severe weather. It is also well calculated for a straw-yard, or for cattle or horses requiring extra feed. In the centre is a shed with a rack and manger to each division, and a place for corn, &c. On the sides of the gateway are accommodations for lookers or servants having the care of the cattle.

PLATE XXXVII. A HUNTING BOX.

THE principal floor of this design contains a good common Parlour, Dining-Hall, and Dressing-Room, with sleeping rooms over. The servants' sleeping rooms are under the colonnade. Some of these rooms are intended for saddle and harness rooms, water-closet, and other purposes. The offices are in part under ground. The colonnades lead to the stable and coach house. The court is circular, with two small lodges at the entrance.

PLATE XXXVIII. CATTLE YARD, *with* FATTING STALLS *for* OXEN.

THE principles of this design originated from seeing a building for similar purposes, near Blackheath in Kent, erected by ——— Campbell, Esq. which is, I think, altogether the most convenient for the purpose I ever saw. Every stall has a gate, which answers the purpose of shutting the bullock close up, and also of shutting the passage of communication one from the other, and leaving a way open to the water-troughs. The sections shew one side as open, the other as shut. A walk communicates all round from the fodder-houses, wide enough for a barrow to supply the cribs, and a pump at each angle to supply the water-trough. One side shews a continued trough, level, to be supplied by the pump. The other side shews one trough to two stalls, as better calculated to situations where water is scarce. The dotted line marks the sweep of the gates. This plan shews only half of the area proposed. The obelisk is merely ornamental.

F I N I S.



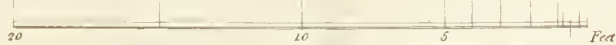
Hunting Gate



Field Gate



ENTRANCE GATES



Ha! Ha's or Sunk Fences



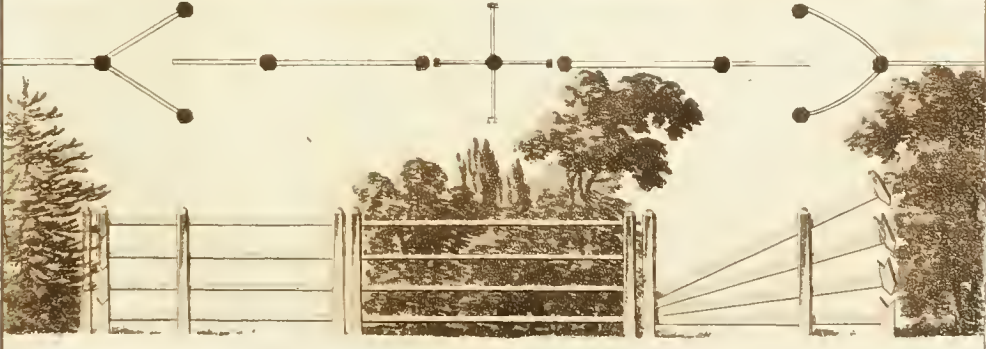
A Sunk Fence planted to conceal a Ditch like appearance



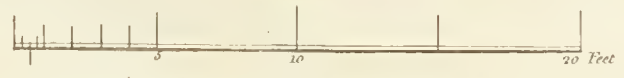
Box Gate

Turn Stile

Box Gate



Drop Stile





Section

Elevation

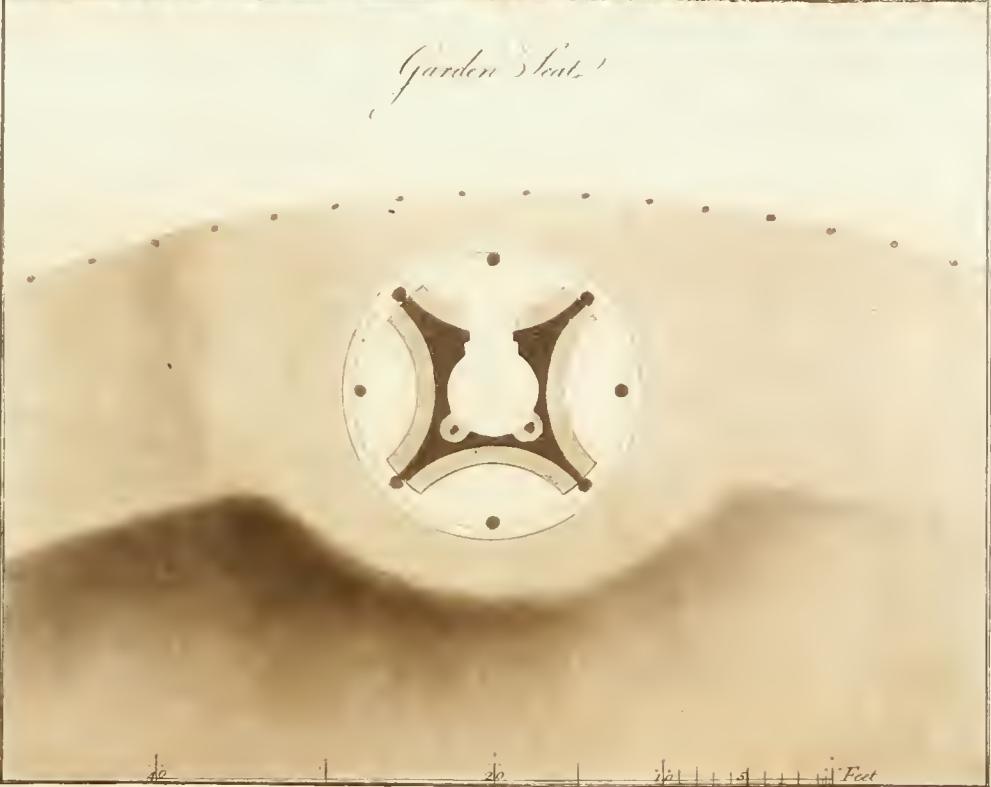
Plan

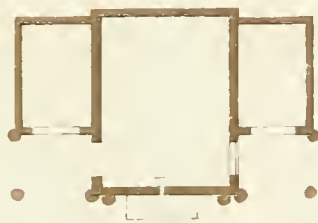
Wood Pile House

20 Feet

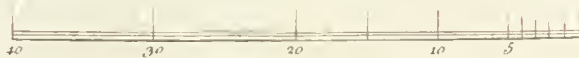


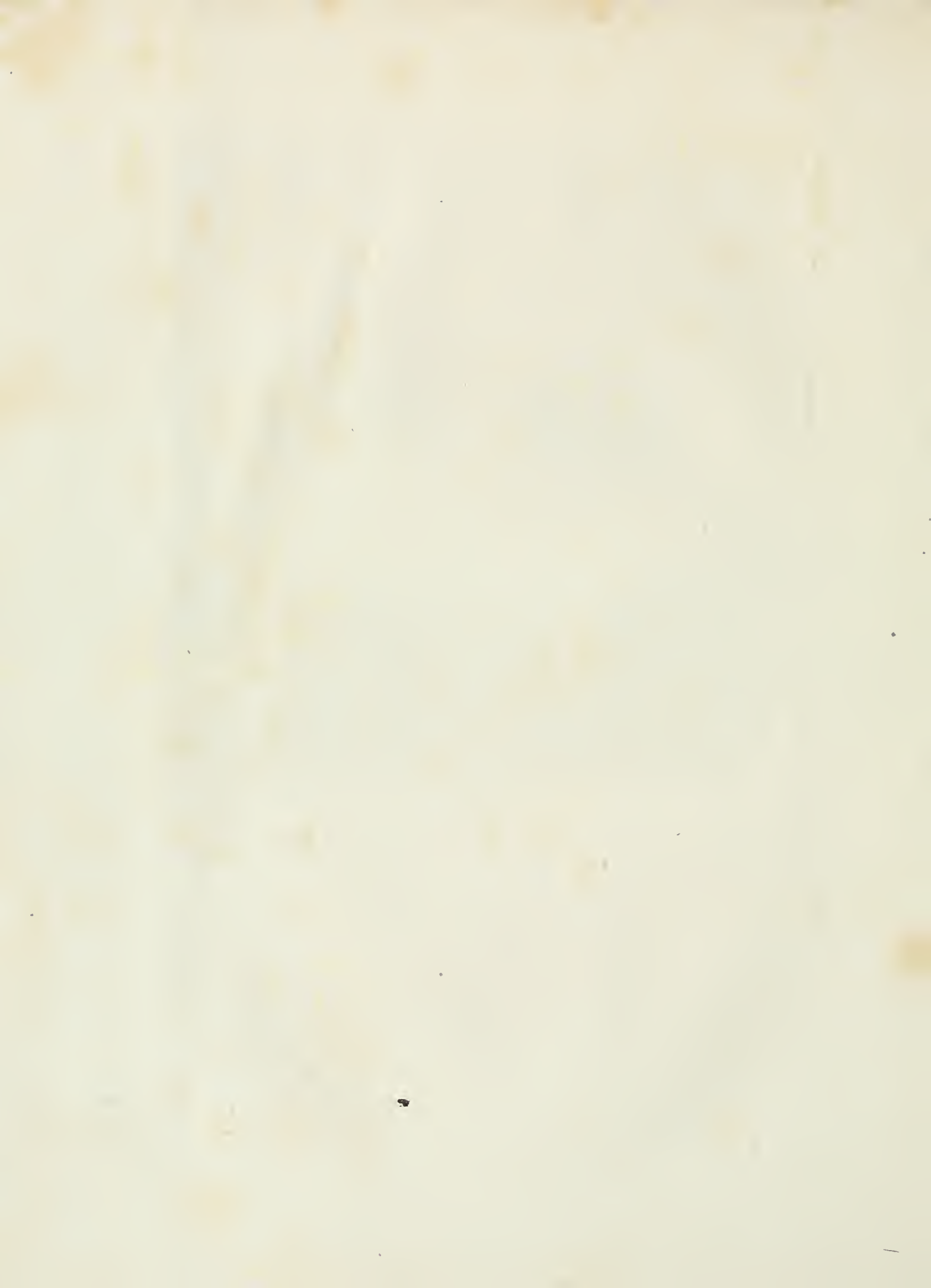
Garden Seat.





Cattle Shed







Sheep

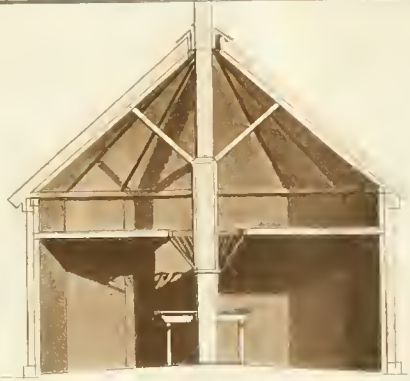


Cattle Shed
& Sheep House



Section



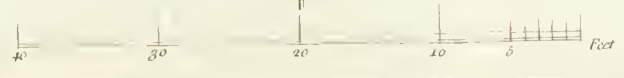
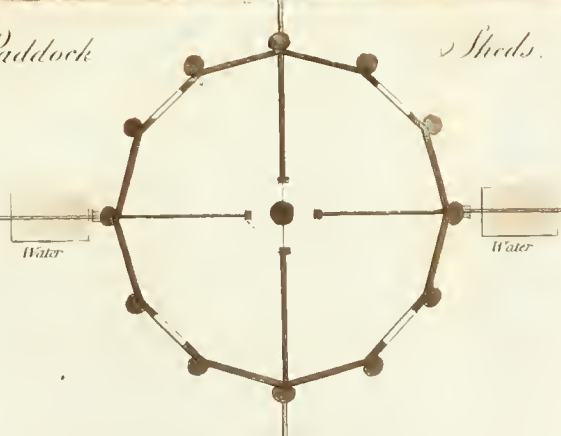


Section



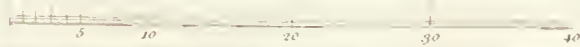
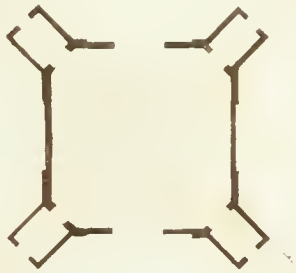
Paddock

Sheds.





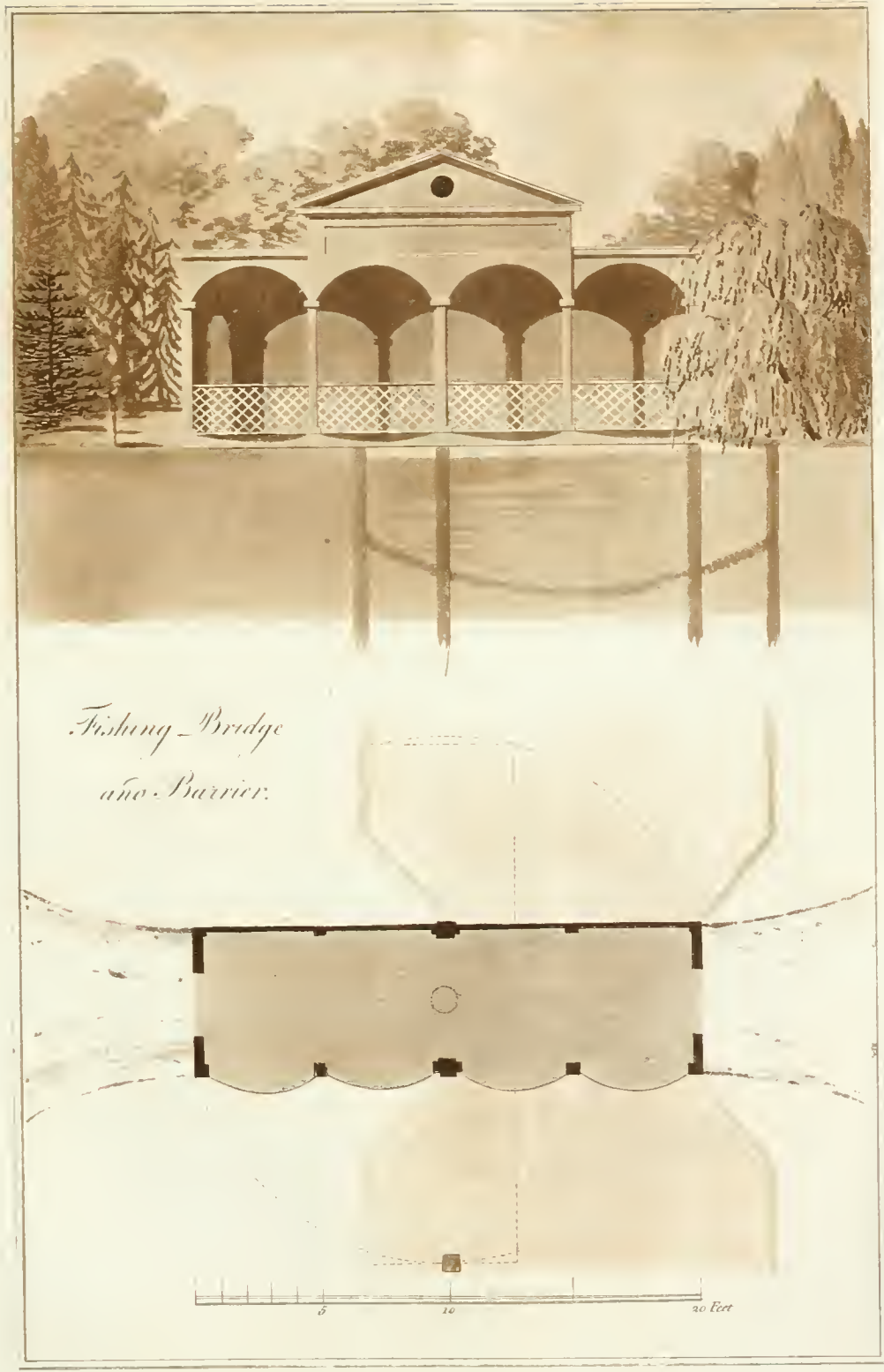
Poultry House.





Log. Herods

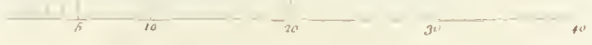
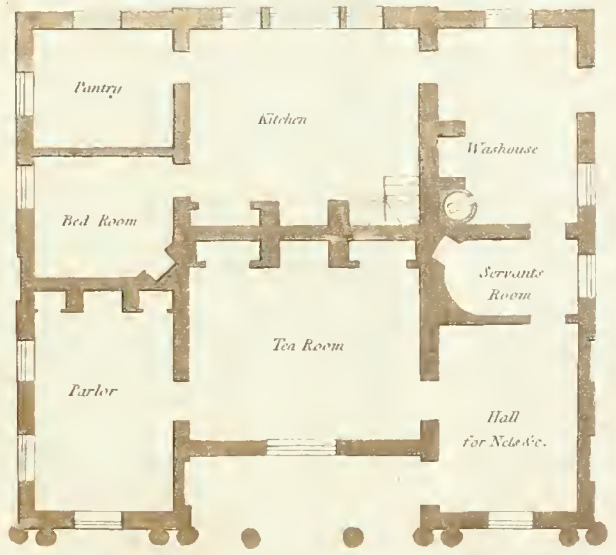
10 20 30 40 50 60



*Fishing-Bridge
à la Barrière.*

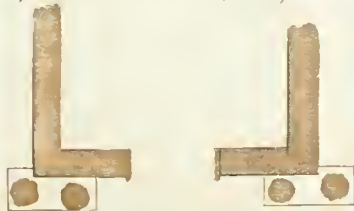


Fishing Lodge with a Cottage or Sweepers House.



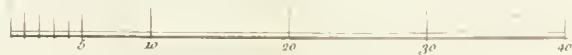
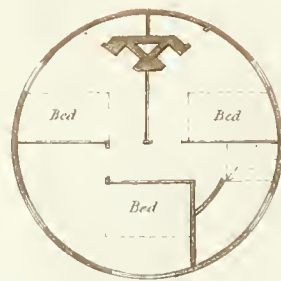


Shepherd's Huts or Cottages.





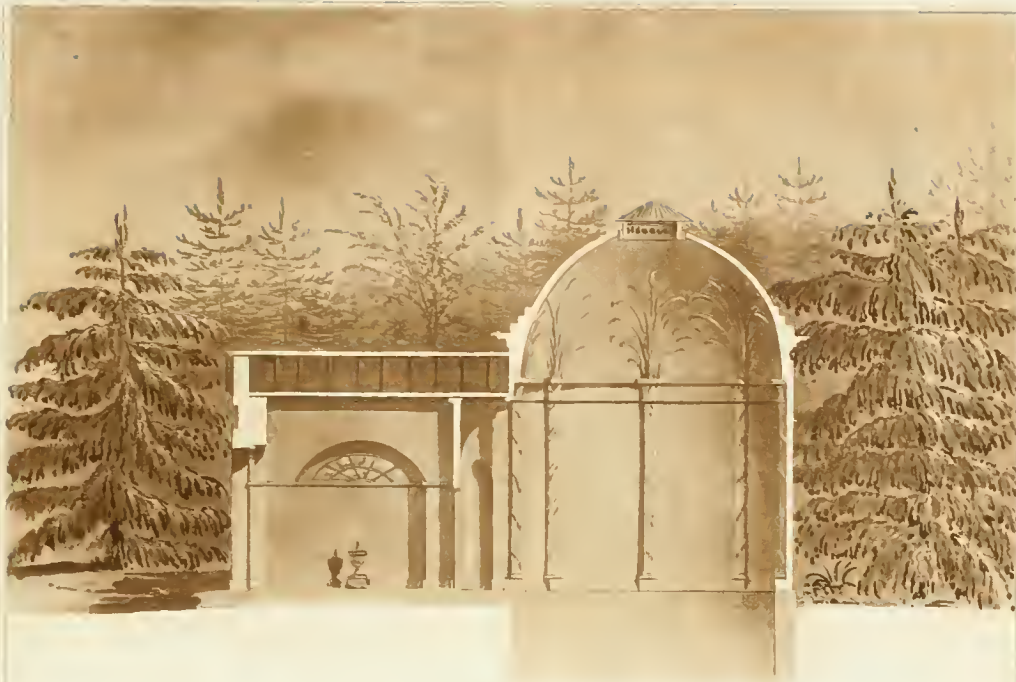
Lodge or Cottage.





A Bath





Section of the Bath.



Side View

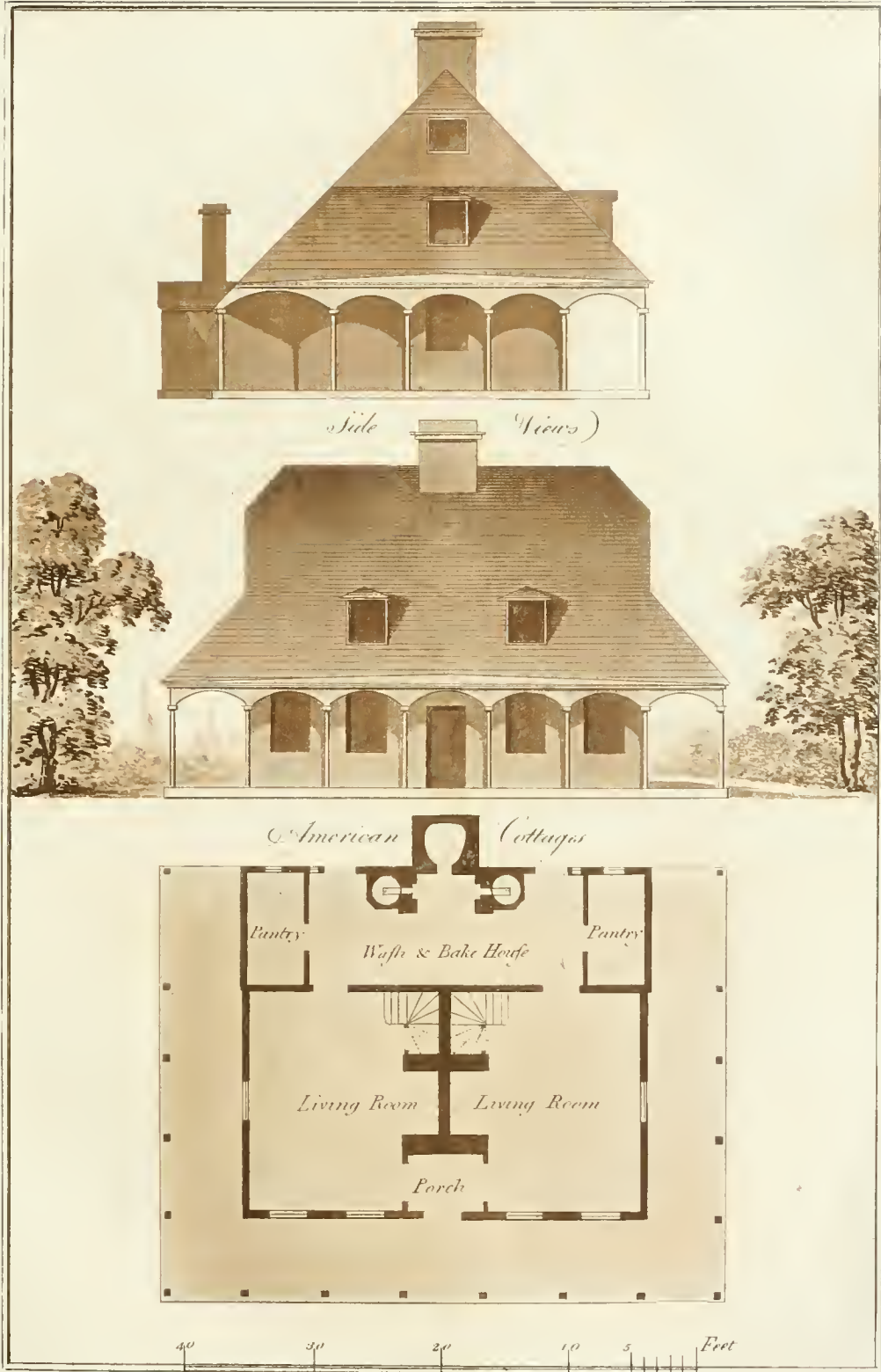
5 10 20 30 40 feet

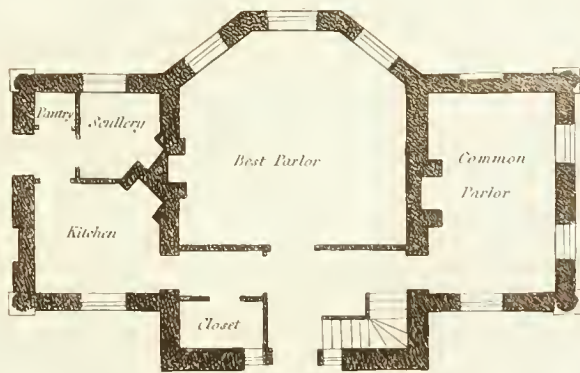


Double Cottages

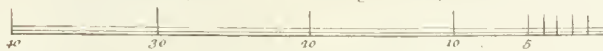
40 30 20 10 5 Feet

London: Published Jan^r. 1793.



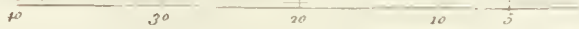
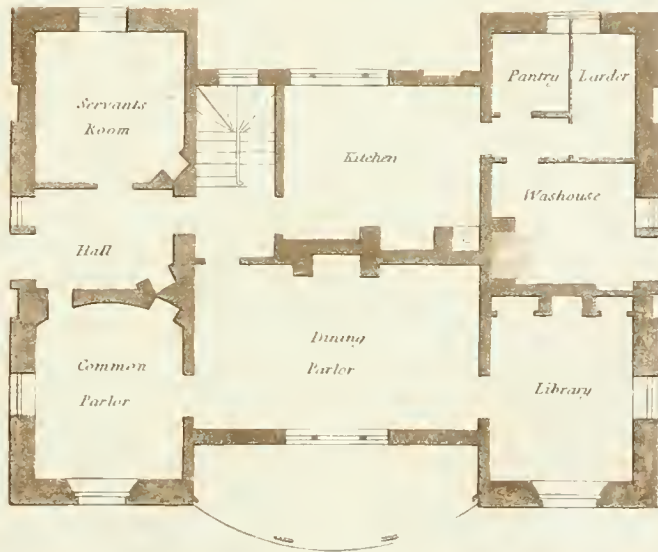


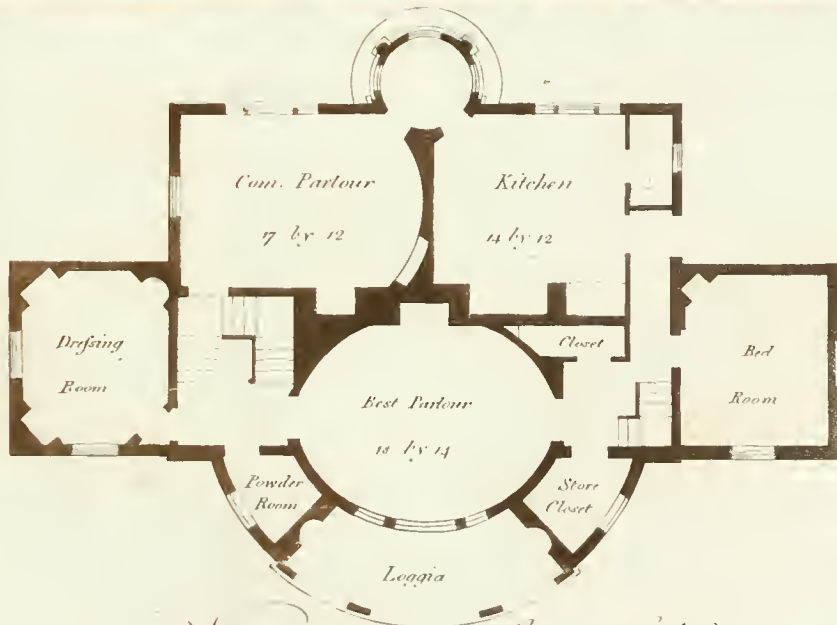
Hunting or Shooting Lodge.





Cottage



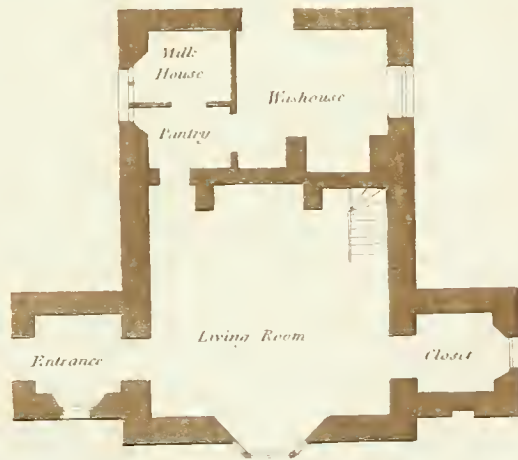


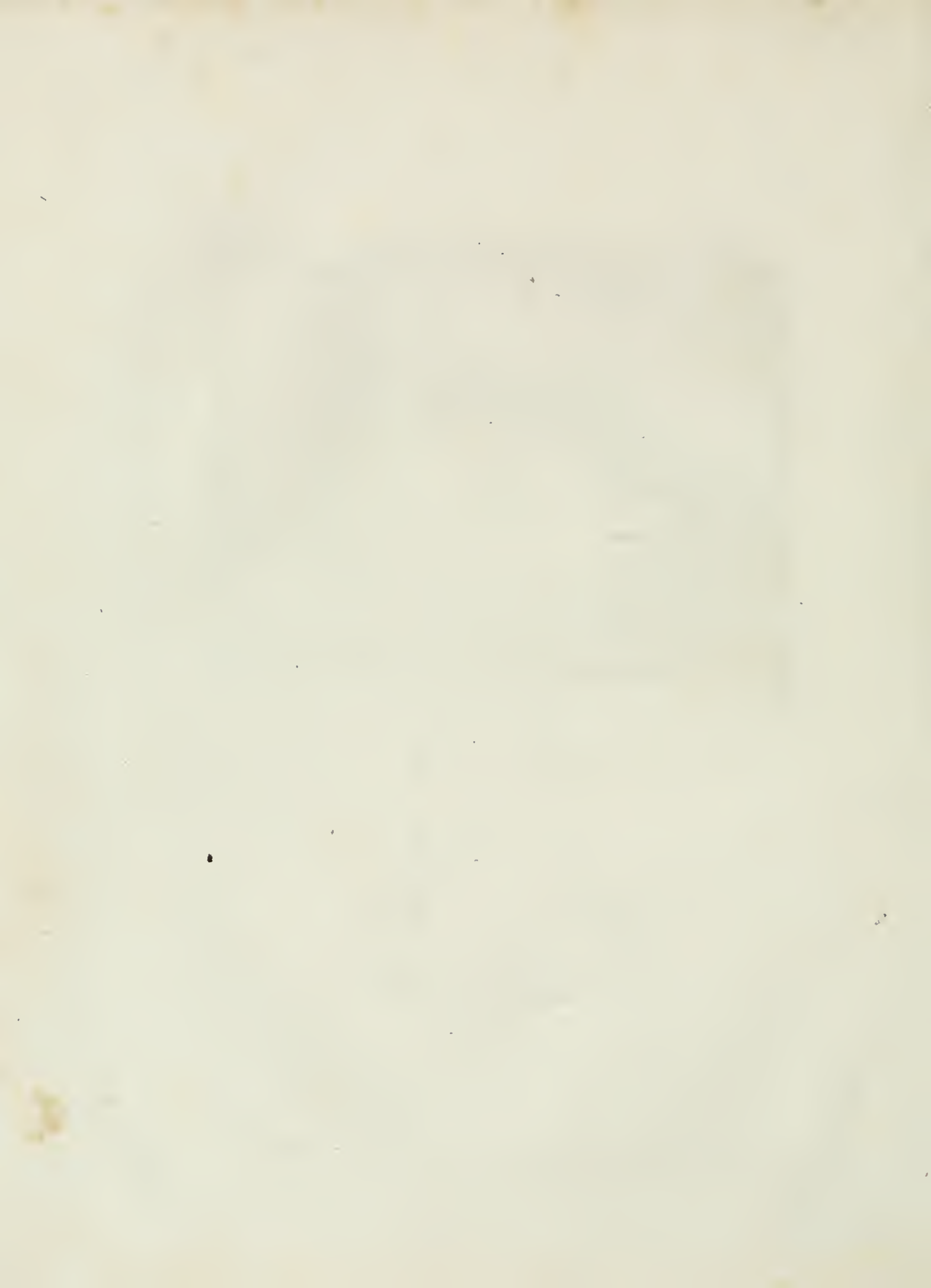
Villa in the Cottage Style.

40 30 20 10 5 Feet



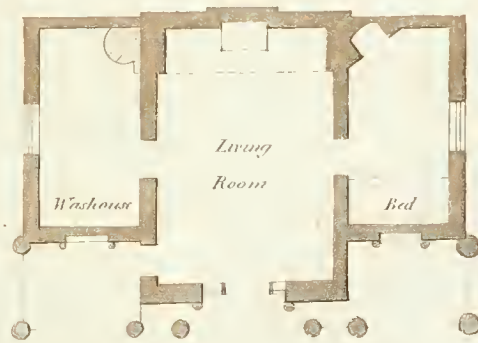
Lodge or cottage.

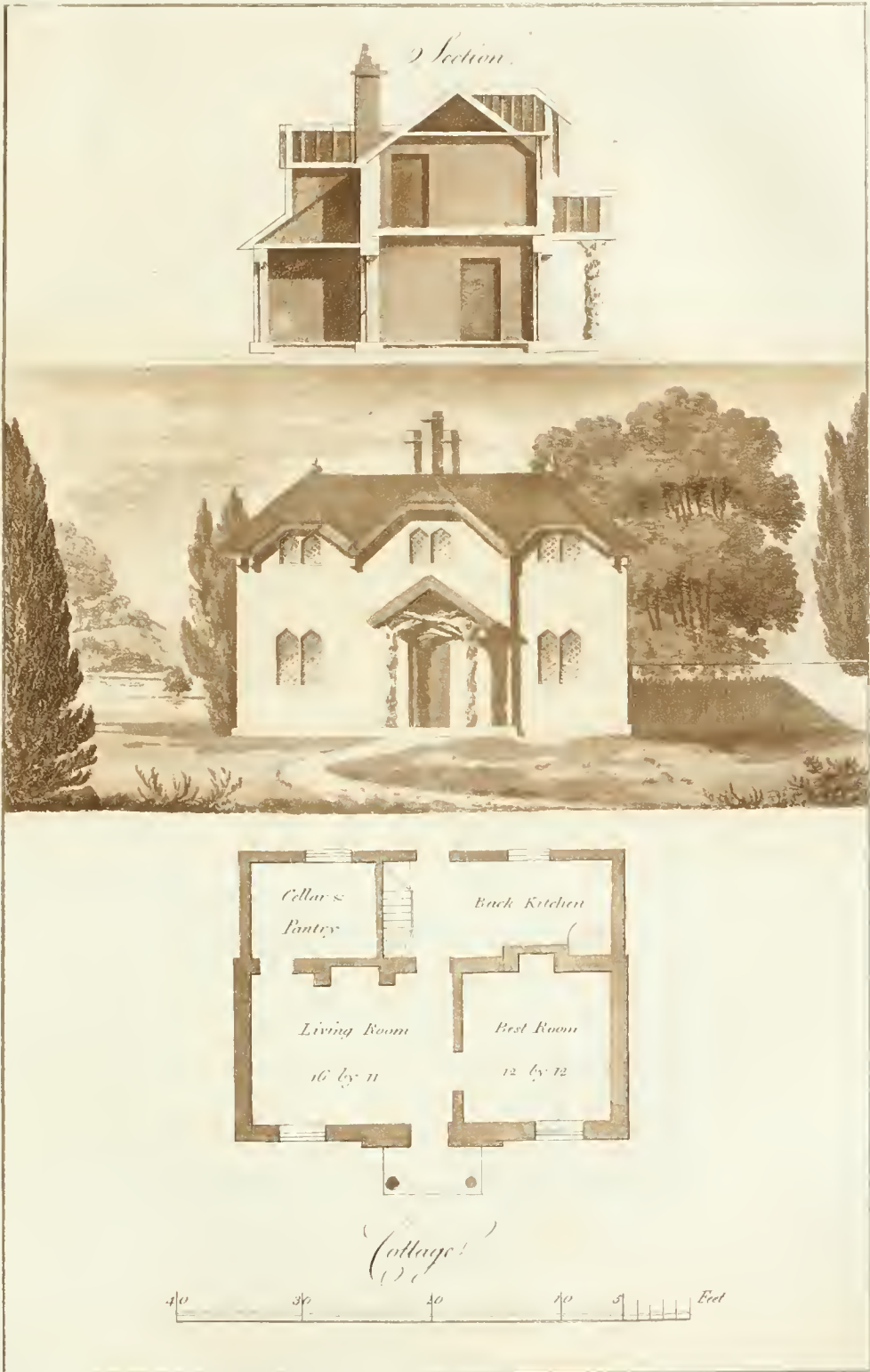


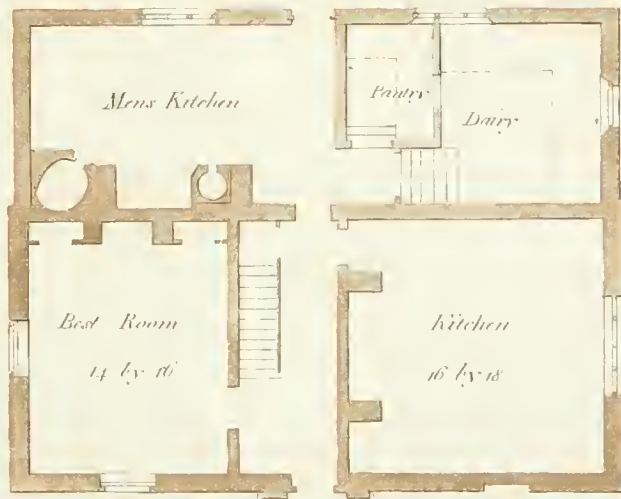




(*Kiepers Lodge*)

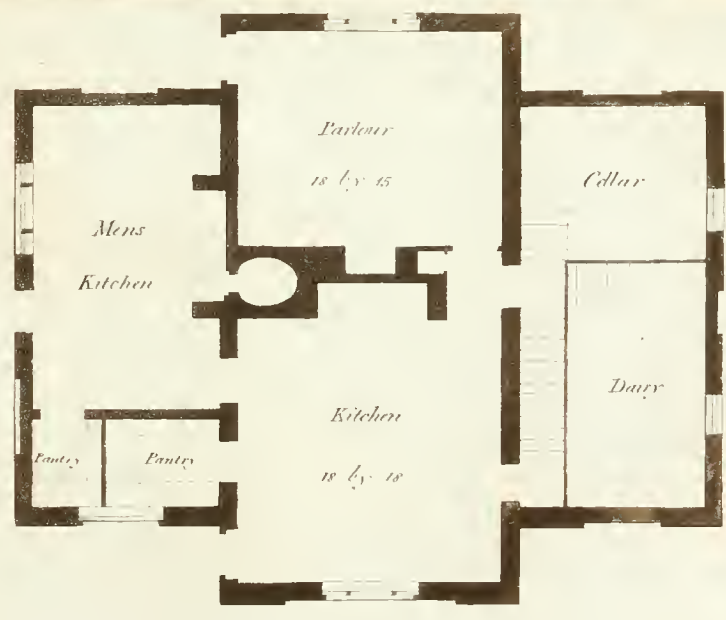




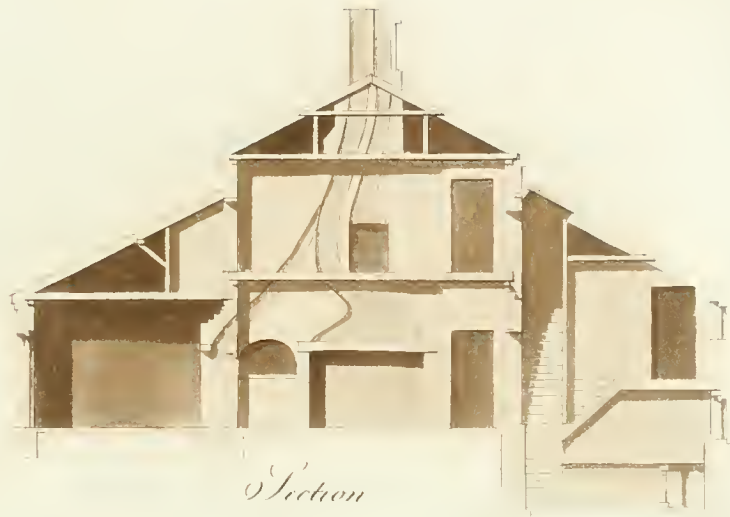


Farm House

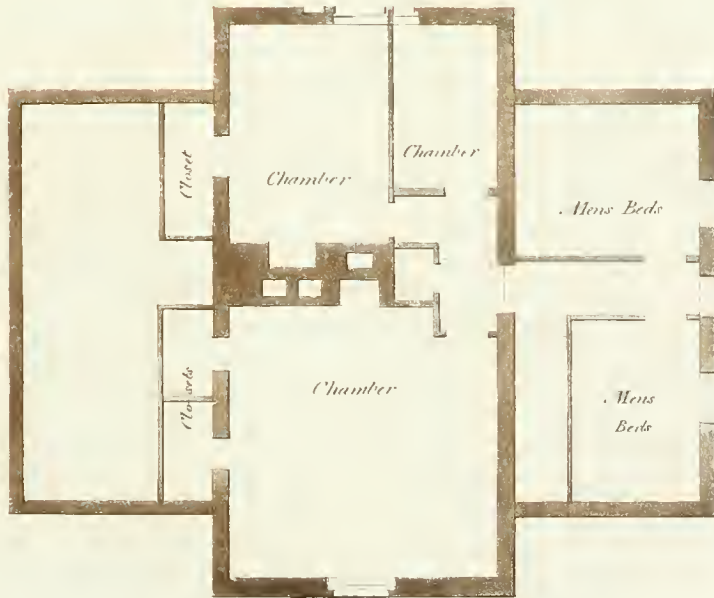
40 30 20 10 5



Farm House



Section



Chamber Plan



1 in. = 10 feet and 1/2 in.



Garden Front

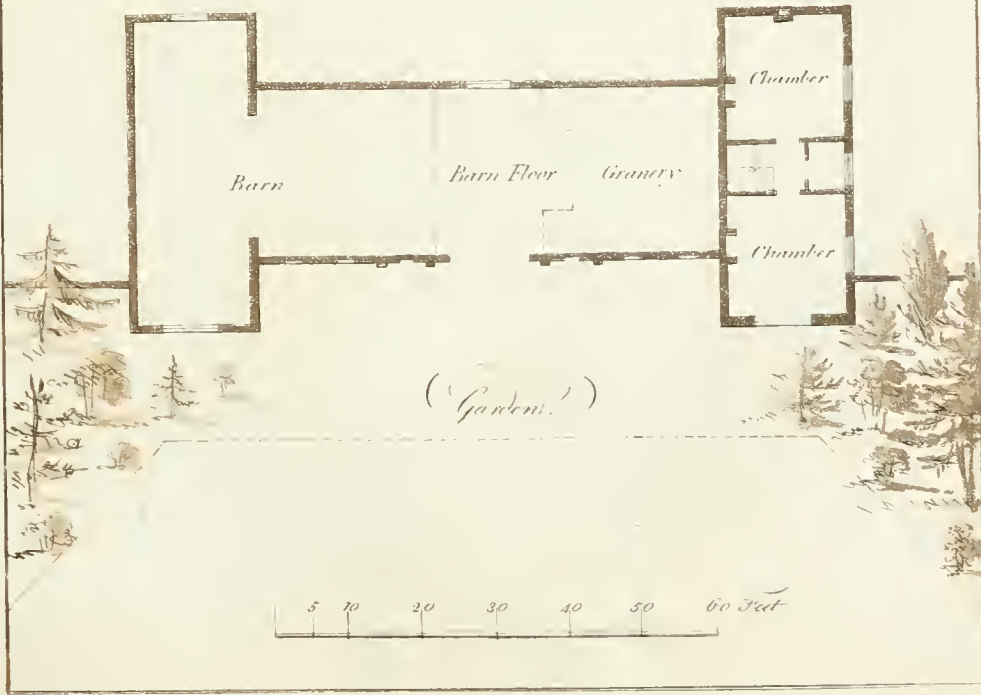


Farm Yard

5 10 20 30 40 50 60 Feet



(Farm Yard.)







Monastic Farm



As taken at June 11/20

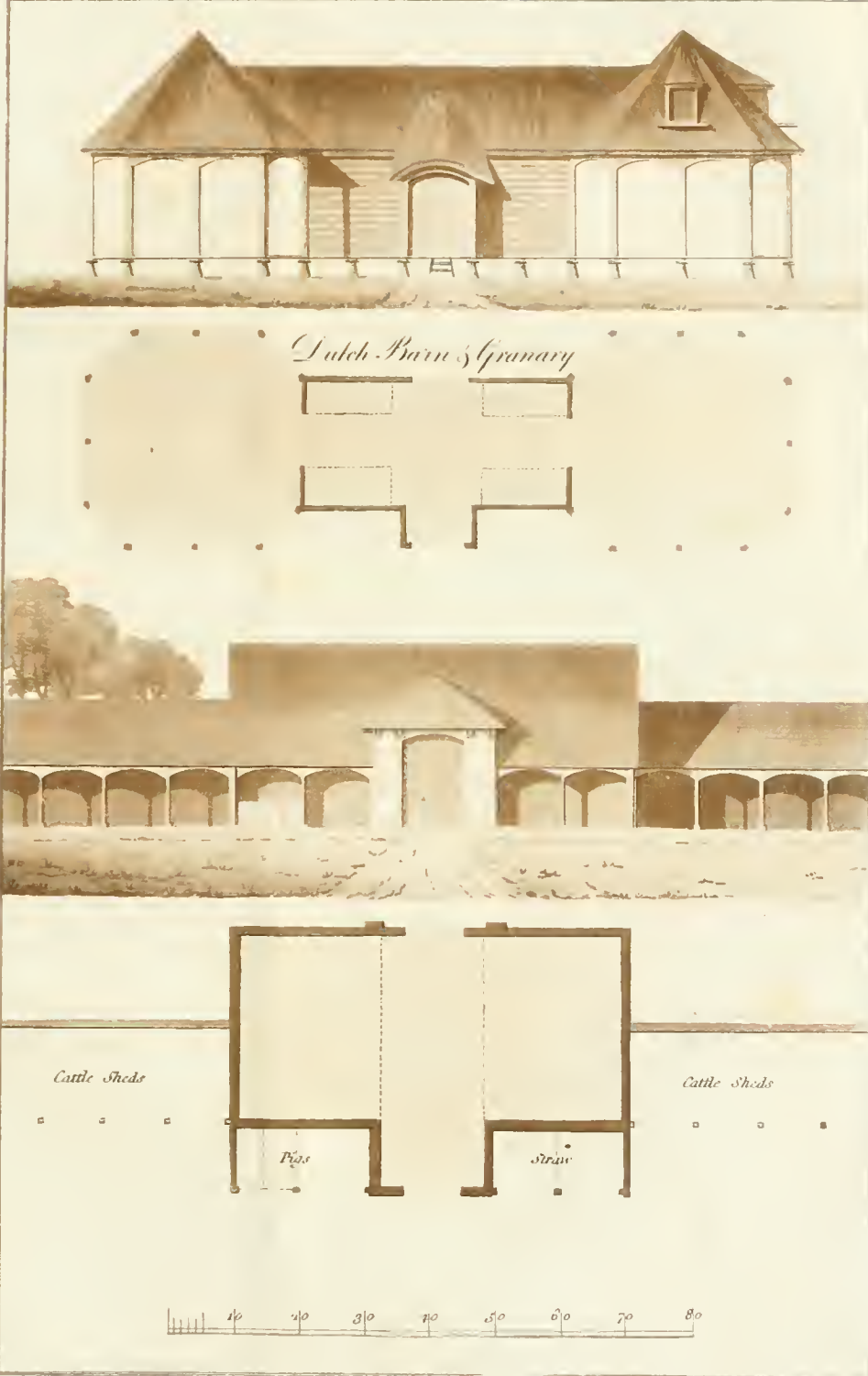


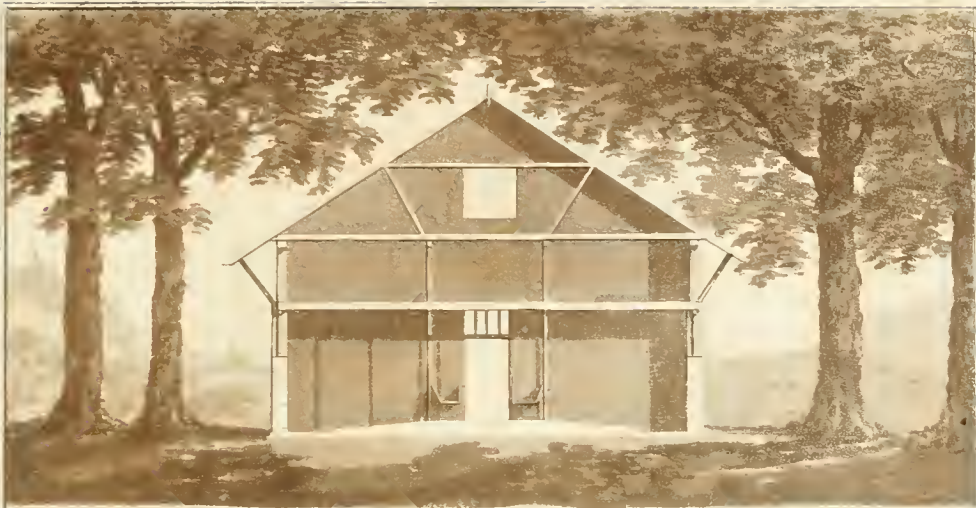
Farm Yard Stabling

Feet 60 50 40 30 20 10 5

London Published Jan^r 1797







Section.

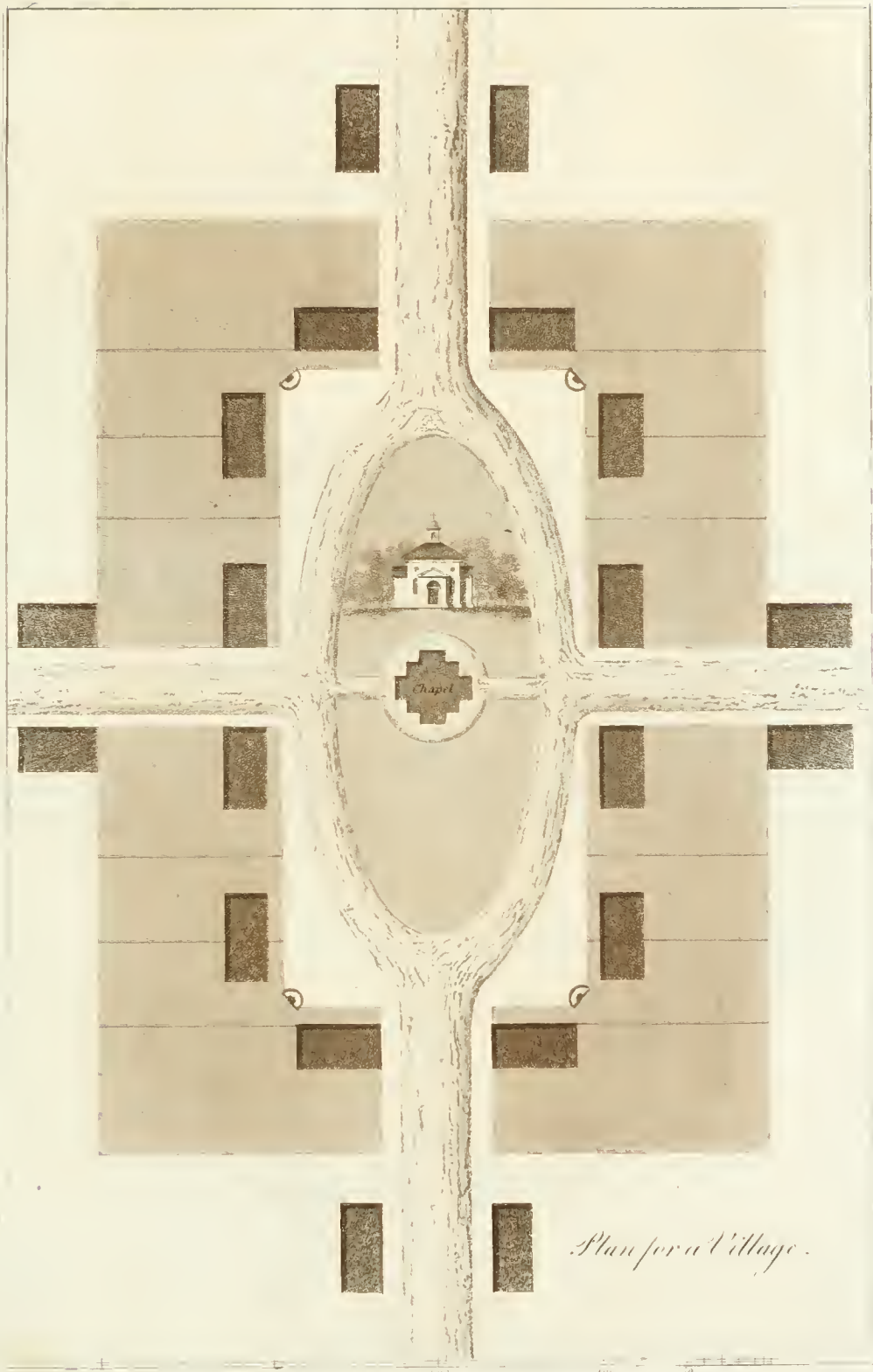


Cow or Ox House.

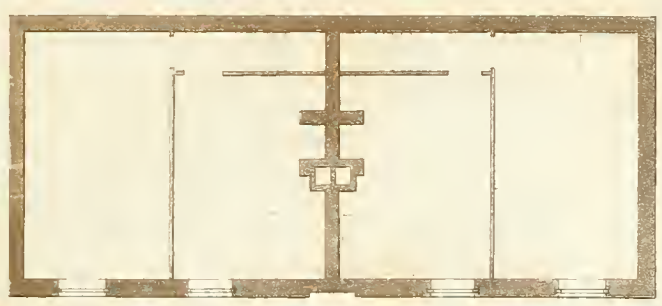


Passage to Supply the Cribs.





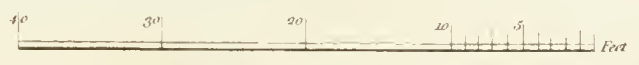
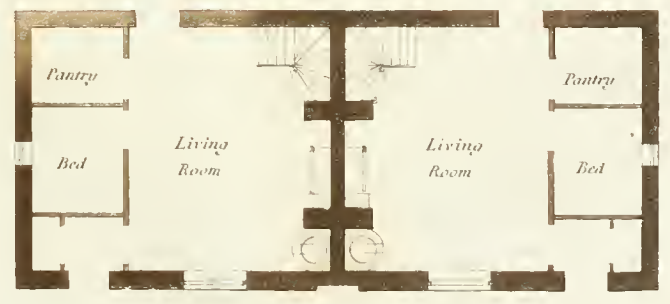
Plan for a Village.

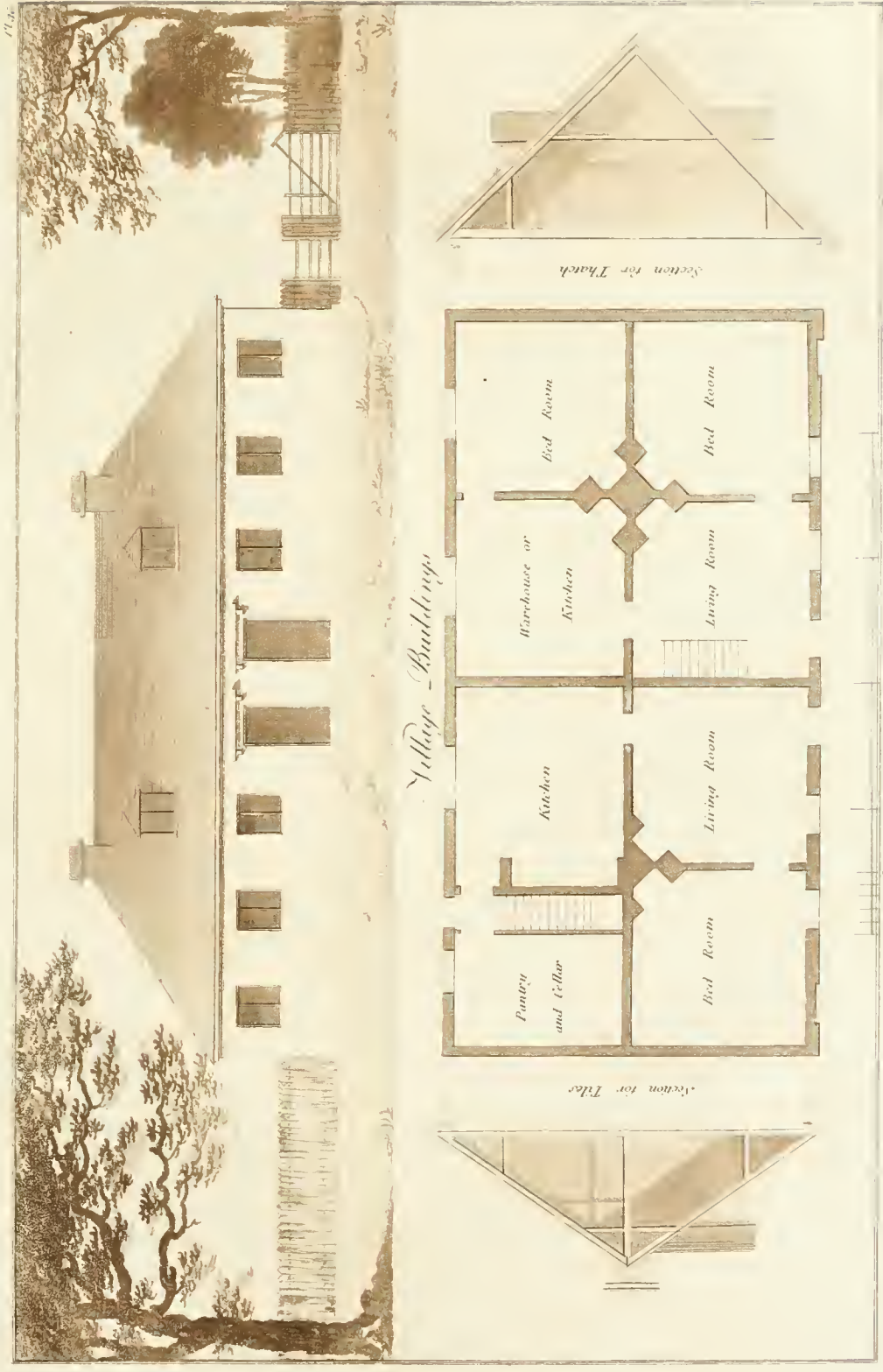


Chamber Plan



Cottages





Village Buildings

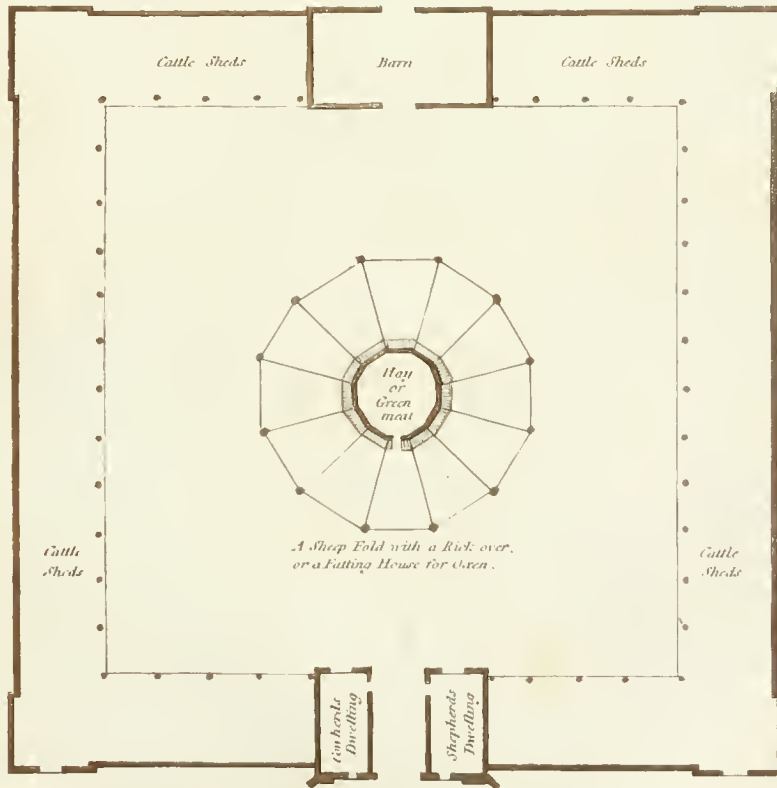
Section for Thatch

Section for Tiles

London Published Jan 1 1870



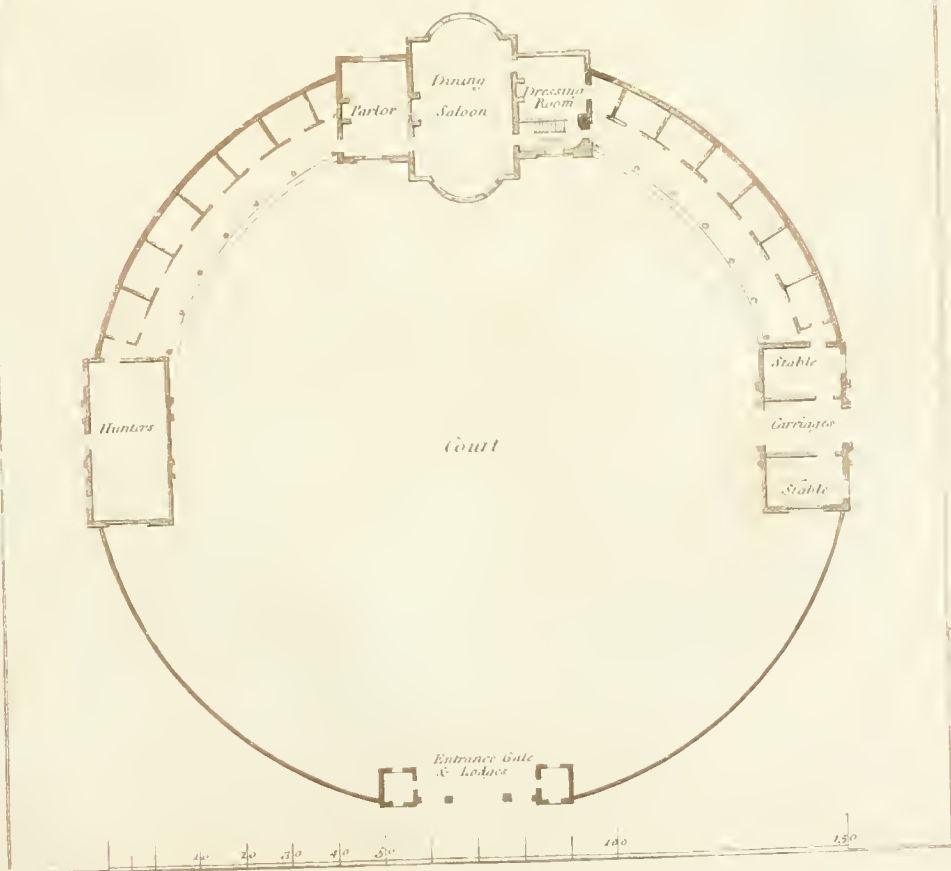
A Fold Yard.



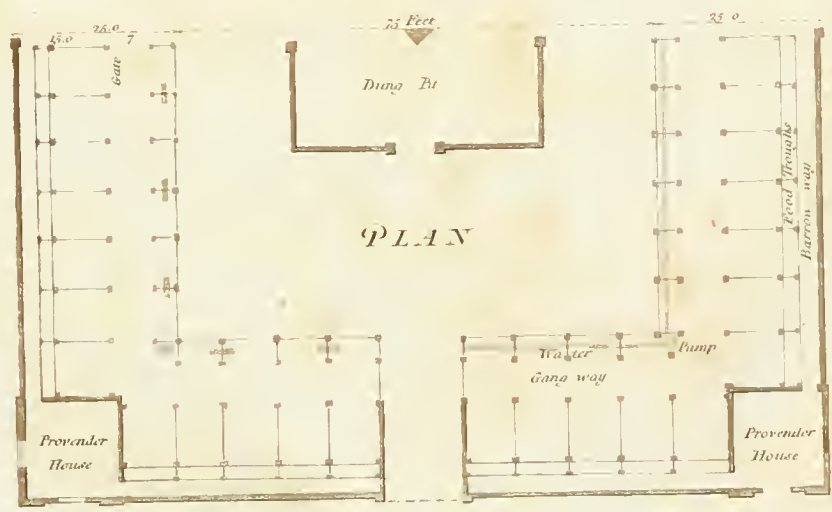
A Sheep Fold with a Rick over, or a Fattening House for Oxen.



A Hunting Box.



London Published Jan 1 1795



Cattle Yard with Fattling Stalls for Oxen.



A CATALOGUE of Modern Books on *Architecture*;

THEORETICAL, PRACTICAL, AND ORNAMENTAL;

VIZ.

Books of Plans and Elevations for Houses, Temples, Bridges, &c.

Of Ornaments for Internal Decorations, Foliage for Carvers, &c.

On Perspective:

Books of Use to Carpenters; Bricklayers, and Workmen in general, &c. &c.

Which; with the best Ancient Authors, are constantly on Sale

At I. and J. TAYLOR's Architectural Library, No. 56, High Holborn, London:

Where may be had the Works of the most celebrated *French Architects and Engineers*.

PLANS, Elevations, Sections and Views of the Church of *Batalba*, in the Province of *Estremadura*, in *Portugal*, with an History and Description by Fr. Luis de Sousa, with Remarks; to which is prefixed, An Introductory Discourse on the Principles of *Gothic Architecture*, by *James Murphy*, Architect. Illustrated with 27 plates: Elegantly printed on imperial folio, and hot pressed, price 4l. 14s. 6d.

The Architecture of this Structure is of the best Gothic, and one of the most chaste and magnificent specimens of the style existing; and well deserves the attention of the Antiquary and the Artist, for its purity of design and elegance of ornament.

Specimens of Gothic Architecture, selected from the Parish Church of *Lavenham*, in *Suffolk*, on 40 Plates, quarto, 18s. half bound, and on large paper, 1l. 5s. half bound.

THE Ancient Buildings of *Rome*, accurately measured and delineated; by *Antony Desgodetz*, with Explanations in French and English; the Text translated, and the Plates engraved, by the late *Mr. George Marshall*, Architect, 2 vols. imperial folio, with 137 plates, price 5l. 5s. half-bound, or 4l. 14s. 6d. sewed.

Desgodetz's Antiquities has ever been highly valued by Amateurs and Professors, for the Accuracy of the Measurements, and the Choice of elegant Subjects. The Work includes Designs at large of the following celebrated Structures, viz. the Pantheon, Temple of Bacchus; Temple of Vesta at Rome; Temple of Vesta at Tivoli; Temple of Fortuna Virilis, Temple of Antoninus and Faustina, Temple of Concord, Temple of Jupiter Stator, Temple of Jupiter Tonans, Temple of Mars the Avenger, Frontispiece of Nero, Basilica of Antoninus, Forum of Nerva, Portico of Septimius Severus, Arch of Titus, Arch of Septimius, Arch of the Goldsmiths; Arch of Constantine, The Coliseum, The Amphitheatre at Verona, The Theatre of Marcellus, The Baths of Diocletian, and The Baths of Paulus Emilius.

Thirty Capitals of Columns, with Six Friezes, from the *Antique*. Engraved in Aqua-tinta by *G. Richardson*, on 18 Plates. Quarto, 15s.

Designs for *Shop-Fronts and Door-Cases*, on 27 plates, quarto, 10s. 6d.

Designs for *Monuments*, including *Grave-Stones, Compartments, Wall-Pieces, and Tombs*. Elegantly engraved on 40 quarto Plates, half bound, 16s.

Designs for *Chimney Pieces*, with Mouldings and Bases at large, on 24 quarto Plates, 10s. 6d.

The Ruinments of Ancient Architecture: containing an Historical Account of the five Orders, with their Proportion, and Examples of each from Antiques: Also, Extracts from *Vitruvius, Pliny, &c.* relative to the Buildings of the Ancients; calculated for the Use of those who wish to attain a summary Knowledge of the Science of Architecture; with a Dictionary of Terms: illustrated with eleven Plates, boards, 6s.

Sketches for Cottages, Villas, &c. with their Plans and appropriate Scenery, by *John Soane*; to which is added, Six Designs for improving and embellishing Grounds, with Explanations, by an *Amateur*, on 54 Plates elegantly engraved in aqua-tinta, 2l. 12s. 6d. half bound.

Plans, Elevations, and Sections, of Buildings, executed in the counties of *Norfolk, Suffolk, Yorkshire, Wiltshire, Warwickshire, Staffordshire, Somersetshire, &c.* By *John Soane*, Architect. On forty-seven folio plates, 2l. 2s.

The same on imperial paper, 2l. 12s. 6d.

Plans, Elevations, and Sections, of Noblemen and Gentlemen's Houses; Stabling, Bridges public and private, Temples, and other Garden Buildings, executed in the Counties of *Derby, Durham, Middlesex, Northumberland, Nottingham, York, Essex, Wilts, Hertford, Suffolk, Salop and Surry*; by *James Paine* Architect, Joint Architect in the Board of Works: 2 vols. with 176 very large folio Plates, 6l. 16s. 6d. half-bound.

The Designs of *Inigo Jones*, consisting of Plans and Elevations for Public and Private Buildings; including the detail of the intended Palace at *Whitehall*; published by *W. Kent*, with some additional Designs, 2 vol. imperial folio, 4l. 4s. in sheets; or half-bound, 4l. 12s.

Plans, Elevations, and Sections, of the *House of Correction* for the County of *Middlesex*, erected in *Old Bath Fields, London*; together with the Particulars of the several Materials to be contracted for, and manner of using the same in building.

N. B. This Work is engraved from the original designs, and published with the authority of the Magistrates, by *Charles Middleton*, Architect. Engraved on 53 plates, imperial folio, half bound, 2l. 12s. 6d.

The Cabinet-Maker and Upholsterer's Guide; or Repository of Designs for every article of Household Furniture, in the newest and most approved taste: displaying a great variety of patterns for Chairs, Stools, Sofas, Confidante, Duchesse, Side Boards, Festivals and Vases, Cellarers, Knife Cases, Desk and Book Cases, Secretary and Book Cases, Library Cases, Library Tables, Reading Desks, Chests of Drawers, Urn Stands, Tea Caddies, Tea Trays, Card Tables, Pier Tables, Pembroke Tables, Tambour Tables, Dressing Glasses, Dressing Tables and Drawers, Commodes, Rudd's Tables, Bidets, Night Tables, Basin Stands, Wardrobes, Pot Cupboards, Brackets, Hanging Shelves, Fire Screens, Beds, Field Beds, Sweep Tops for ditto, Bed Pillars, Candle Stands, Lamps, Pier Glasses, Terms for Busts, Cornices for Library Cases, Wardrobes, &c. at large. Ornamented Tops for Pier Tables; Pembroke Tables, Commodes, &c. &c. in the plainest and most enriched styles, with a scale to each, and an explanation in letter-press. Also the Plan of a Room, shewing the proper distribution of the furniture. The whole exhibiting near three hundred different designs, engraved on one hundred and twenty-eight folio plates: from drawings by *A. Heppelwhite & Co.* Cabinet-Makers, bound, 2l. 2s.

The Builder's Price Book; containing a correct List of the Prices allowed by the most eminent surveyors in *London* to the several artificers concerned in building; including the *Journeymen's Prices*. A new edition, corrected, with great additions, by an experienced surveyor, sewed, 2s. 6d.

Ferme Ornée, or Rural Improvements, a Series of Domestic and Ornamental Designs, suited to Parks, Plantations, Rides, Walks, Rivers, Farms, &c. consisting of Fences, Paddock Houses, a Bath, Dog-Kennels, Pavilions, Farm-Yards, Fishing-Houses, Sporting-Boxes, Shooting-Lodges, Single and Double Cottages, &c. calculated for Landscape and Picturesque Effects. By *John Plaw*, Architect, engraved in aqua-tinta on 38 plates, with appropriate Scenery, Plans, and Explanations, quarto, boards, 1l. 11s. 6d.

Rural Architecture, or Designs from the simple Cottage to the Decorated Villa, including some which have been executed, by *John Plaw*, on 62 Plates, with Scenery, in aqua-tinta, in boards, 2l. 2s.

Familiar Architecture: consisting of original Designs of Houses for Gentlemen and Tradesmen, Parsonages and Summer Retreats; with Back-Fronts, Sections, &c. together with Banqueting-Rooms, and Churches. To which is added, the Masonry of the Semicircular and Elliptical Arches, with practical Remarks. By the late *Thomas Raulins*, Architect. On fifty-one plates, royal quarto, 1l. 1s.

Crundin's Convenient and Ornamental Architecture; consisting of original designs for plans, elevations, and sections, beginning with the farm-house, and regularly ascending to the most grand and magnificent villa; calculated both for town and country, and to suit all persons in every station of life; with a reference and explanation in letter-press, of the use of every room in each separate building, and the dimensions accurately figured on the plans, with exact scale for the measurement; elegantly engraved on seventy copper-plates, bound, 16s.

- A Series of Plans for Cottages or Habitations of the Labourer*, either in Husbandry, or the Mechanic Arts, adapted as well to Towns, as to the Country. To which is added, an Introduction, containing many useful Observations on this Class of Building, tending to the Comfort of the Poor and Advantage of the Builder—with Calculations of Expences. By the late Mr. J. Wood, of Bath, Architect. A new Edition, with 30 Plates, large quarto, 15s. in boards.
- The Country Gentleman's Architect*, in a great variety of new designs for cottages, farm-houses, country-houses, villas, lodges for park or garden entrances, and ornamental wooden gates; with plans of the offices belonging to each design; distributed with a strict attention to convenience, elegance, and economy. Engraved on thirty-two quarto plates, from designs drawn by J. Miller, Architect, sewed, 10s. 6d.
- Vitruvius Britannicus*, 3 vols. half bound, 6l. 6s.
- The Continuation to Ditto, 2 vols.
- Chambers's (Sir William) Treatise on the Decorative Parts of Civil Architecture, 3d edit. half bound, 3l. 13s. 6d.
- Buildings and Views of Kew Gardens, half bound, 2l. 10s.
- Designs for Chinese Buildings, &c.
- Inigo Jones's Designs*, by Kent, 2 vols. folio.
- Lewis's Designs in Architecture*, half bound.
- Paine's Plans, Elevations, &c. of Noblemen's Seats, &c.* folio, 2 vols. half-bound, 6l. 16s. 6d.
- Plans and Elevations of Helkham-Hall in Norfolk.*
- Ruins of Athens*, by Stuart, 3 vols. of Balbec, Palmyra, Pœstum, Ionia, de la Grèce, par Le Roy, &c. &c.
- Richardson on the Five Orders*, folio, boards, 1l. 11s. 6d.
- Plans, Elevations, &c. folio, 3l. 13s. 6d.
- Nutshell's, Plans for Houses*, octavo, boards, 5s.
- Newton's Translation of Vitruvius*, 2 vols. folio.
- A Treatise on Theatres, including some Experiments on Sound* by G. Saunders, with plates, quarto, boards, 10s. 6d.
- Perronet sur les Ponts*, 2 tom.
- Belidor l'Architecture Hydraulique*, 4 tom. quarto.
- Nouvelle Arch. Hydraulique, par de Prony, tome premier.*
- Leupold Theatrum Machinarum*, 9 parts, in 5 vols. folio.
- Ludwig's German and English Dictionary*, 2 vols.
- Piranesi's Works*, compleat, 20 vols. large folio.
- Dictionnaire D'Architecture, Civile, Militaire et Navale, par Roland*, 3 tom. quarto, with 100 Plates, 2l. 12s. 6d.
- Dr. Brook Taylor's Method of Perspective made easy, both in Theory and Practice*; in two Books; being an attempt to make the Art of Perspective easy and familiar, to adapt it entirely to the Arts of Design, and to make it an entertaining Study to any Gentleman who shall choose so polite an amusement. By Joshua Kirby. Illustrated with thirty-five copper-plates, correctly engraved under the Author's inspection. The third edition, with several Additions and Improvements. Elegantly printed on imperial paper, half bound, 1l. 10s.
- The same Work in two Volumes quarto, sewed, 1l. 1s.
- The Perspective of Architecture*, a work entirely new: deduced from the principles of Dr. Brook Taylor, and performed by two rules of universal application: illustrated with seventy-three plates. Begun by command of his present Majesty when Prince of Wales. By Joshua Kirby. Elegantly printed on imperial paper, 1l. 16s. half bound.
- The Description and Use of a new Instrument called the Architectonic Sector*, by which any part of architecture may be drawn with facility and exactness. By Joshua Kirby. Illustrated with twenty-five plates. Elegantly printed on imperial paper, half bound, 1l. 1s.
- Kirby's Works on Perspective, 3 vol. complete, uniformly half-bound, 4l. 4s.
- The two Frontispieces, by Hogarth, to Kirby's Perspective, may be had separate, each 5s.
- The Student's Instructor*, in drawing and working the five Orders of Architecture; fully explaining the best methods for striking regular and quirked Mouldings, for diminishing and gluing of Columns and Capitals, for finding the true Diameter of an Order to any given height, for striking the Ionic Volute circular and elliptical, with finished examples on a large Scale of the Orders, their Planceers, &c. and some Designs for Door Cases, by Peter Nicholson, engraved on 33 plates octavo. Price 6s. bound.
- The Carpenter's New Guide*, being a complete Book of Lines for Carpentry and Joinery, treating fully on Practical Geometry, Soffits, Lines for Roofs and Domes, with a great variety of Designs for Roofs, Trussed Girders, Floors, Domes, Bridges, &c. Stair-Cases and Hand-Rails of various constructions, Angle-Bars for Shop Fronts, and Raking Mouldings, with many other things entirely new. The whole founded on true Geometrical Principles; The Theory and Practice well explained and fully exemplified on 78 Copper-Plates, including some Practical Observations and Calculations on the Strength of Timber, by Peter Nicholson, bound, 12s.
- Nicholson's Carpenter and Joiner's Assistant, an entire new work, quarto.
- The Carpenter's and Joiner's Repository*; or, a new System of Lines and Proportions for Doors, Windows, Chimneys, Cornices, and Mouldings, for finishing of Rooms, &c. &c. A great variety of Stair-Cases, on a plan entirely new, and easy to be understood. Circular circular Soffits, flewing and winding in straight and circular Walls, Groins, Angle Brackets, circular and elliptical Sky-Lights, and the method of squaring and preparing their circular Bars, Shop Fronts, &c. By W. Pain, Joiner. Engraved on sixty-nine folio copper-plates, bound, 16s.
- Pain's British Palladio, or the Builder's General Assistant*; demonstrating, in the most easy and practical method, all the principal rules of Architecture, from the ground plan to the ornamental finish. Illustrated with several new and useful designs of houses, with their plans, elevations, and sections. Also clear and ample instructions annexed to each subject in letter-press; with a list of prices for materials and labour, and labour only. *This work will be universally useful to all carpenters, bricklayers, masons, joiners, plasterers, and others, concerned in the several branches of building, &c.* comprehending the following subjects, *viz.* Plans, elevations, and sections of gentlemen's houses. Designs for doors, chimneys, and ceilings, with their proper embellishments, in the most modern taste. A great variety of mouldings, for base and surbase architraves, imposts, friezes, and cornices, with their proper ornaments for practice, drawn to half size: to which are added, scales for enlarging or lessening at pleasure, if required. Also, great variety of stair-cases; shewing the practical method of executing them, in any case required, *viz.* groins, angle-brackets, circular circular flewing and winding soffits, domes, sky-lights, &c. all made plain and easy to the meanest capacity. The proportion of windows for the light to rooms. Preparing foundations; the proportion of chimneys to rooms, and sections of flews. The principal timbers properly laid out on each plan, *viz.* the manner of framing the roofs, and finding the length and backing of hips, either square or bevel. Scantlings of the timbers, figured in proportion to their bearing. The method of trussing girders, scarfing plates, &c. and many other articles, particularly useful to all persons in the building profession. The whole correctly engraved on forty-two folio copper-plates, from the original designs of William and James Pain, bound, 16s.
- The Practical House Carpenter; or, Youth's Instructor*: containing a great Variety of useful Designs in Carpentry and Architecture; as Centering for Groins, Niches, &c. Examples for Roofs, Sky-Lights, &c. The Five Orders laid down by a New Scale. Mouldings, &c. at large, with their Enrichments. Plans, Elevations and Sections of Houses for Town and Country, Lodges, Hot-Houses, Green-Houses, Stables, &c. Design for a Church, with Plan, Elevation, and two Sections; an Altar-Piece, and Pulpit. Designs for Chimney-Pieces, Shop-Fronts, Door Cases. Section of a Dining-Room and Library. Variety of Stair-Cases, with many other important Articles, and useful Embellishments. To which is added, a List of Prices for Materials and Labour, Labour only, and Day Prices. The whole illustrated, and made perfectly easy, by 148 Copper-Plates, with Explanations to each. By William Pain, Author of the Practical Builder, and British Palladio. The Fourth Edition, with large Additions. Price 15s. bound.

- The Practical Builder, or Workman's General Assistant*; shewing the most approved and easy methods for drawing and working the whole or separate part of any building; as, the use of the trammel for groins, angle brackets, niches, &c. semicircular arches on skewing jambs, the preparing and making their soffits; rules of carpentry, to find the length and backing of straight or curved hips, trusses for roofs, domes, &c. Trussing of girders, section of floors, &c. The proportion of the five orders in their general and particular parts: gluing of columns; stair-cases, with their ramp and twisted rails, fixing their carriages, newels, &c. Frontispieces, chimney-pieces, ceilings, cornices, architraves, &c. in the newest taste; with plans and elevations of gentlemen's and farm houses, barns, &c. By *W. Pain*, Architect and Joiner. Engraved on eighty-three quarto plates, bound, 12s.—A new edition, with improvements by the Author.
- The Carpenter's Pocket Directory*; containing the best methods of framing timbers of all figures and dimensions, with their several parts; as floors, roofs in ledgments, their length and backings; trussed roofs, spires, and domes; trussing girders, partitions, and bridges, with abutments; centering for arches, vaults, &c. cutting stone ceilings, groins, &c. with their moulds: centres for drawing Gothic arches, ellipses, &c. With the plan and sections of a barn. Engraved on twenty-four plates, with explanations. By *W. Pain*, Architect and Carpenter, bound, 4s.
- The Builder's Complete Assistant; or, a Library of Arts and Sciences*, absolutely necessary to be understood by Builders and Workmen in general, viz. 1. Arithmetick, vulgar and decimal, in whole numbers and fractions. 2. Geometry, lineal, superficial, and solid. 3. Architecture, universal. 4. Mensuration. 5. Plain trigonometry. 6. Surveying of land, &c. 7. Mechanic powers. 8. Hydrostaticks. Illustrated by above thirteen hundred examples of lines, superficies, solids, mouldings, pedestals, columns, pilasters, entablatures, pediments, imposts, block cornices, rustic quoins, frontispieces, arcades, porticos, &c. proportioned by modules and minutes, according to *Andrea Palladio*; and by equal parts. Like-wise great varieties of trussed roofs, timber bridges, centerings, arches, groins, twisted rails, compartments, obelisks, vases, pedestal for bustos, sun-dials, fonts, &c. and methods for raising heavy bodies by the force of levers, pulleys, obelisks, vases, trochio, screws, and wedges; as also water by the common pump, crane, &c. wherein the properties and pressure of the air on water, &c. are explained. The whole exemplified on 77 large quarto copper-plates, by *Batty Langley*. The fourth edition, 2 vol. royal octavo, bound, 12s.
- Designs in Architecture*; consisting of plans, elevations, and sections for temples, baths, cassines, pavilions, garden seats, obelisks, and other buildings: for decorating pleasure-grounds, parks, forests, &c. &c. By *John Soane*. Engraved on thirty-eight copper-plates, imperial octavo, sewed, 6s.
- Grotesque Architecture, or Rural Amusement*, consisting of plans, elevations, and sections, for huts, summer and winter hermitages, retreats, terminaries, Chinese, Gothic, and natural grottos, cascades, rustic seats, barns, mosques, moreque pavilions, grotesque seats, green-houses, &c. many of which may be executed with flints, irregular stones, rude branches and roots of trees; containing twenty-eight new designs, with scales to each. By *W. Wright*, Architect. Octavo, sewed, 4s. 6d.
- Ideas for Rustic Furniture*, proper for Garden Chairs, Summer Houses, Hermitages, Cottages, &c. engraved on 25 Plates, Octavo. Price 4s.
- The Temple Builder's most useful Companion*: containing original designs in the Greek, Roman, and Gothic taste. By *C. T. Overton*. Engraved on fifty copper-plates, octavo, sewed, 7s.
- The Carpenter's Treasure*; a collection of designs for temples, with their plans; gates, doors, rails, and bridges, in the Gothic taste, with centres at large for striking Gothic curves and mouldings, and some specimens of rails in the Chinese taste, forming a complete system for rural decorations. By *N. Wallis*, Architect. Sixteen plates, octavo, sewed, 2s. 6d.
- Gothic Architecture improved by Rules and Proportions* in many grand designs of columns, doors, windows, chimney-pieces, arcades, colonnades, porticos, umbrellas, temples, pavilions, &c. with plans, elevations and profiles, geometrically exemplified. By *B. & T. Langley*. To which is added, an Historical Discourse on Gothic Architecture. On 64 plates, quarto, bound, 15s.
- The Modern Joiner*; or, a Collection of original Designs, in the present taste, for chimney-pieces and door-cases, with their mouldings and enrichments at large; friizes, tablets, ornaments for pilasters, bases, sub-bases and cornices for rooms, &c. with a Table, shewing the proportion of chimneys, with the entablatures, to rooms of any size. By *N. Wallis*, Architect, quarto, 8s.
- Outlines of Designs for *Shop Fronts and Door Cases*, with the Mouldings at large, and Enrichments to each Design. Engraved on 24 Plates, quarto, 5s.
- Currus Civilis, or Genteel Designs* for coaches, chariots, post-chaises, vis-à-vis, road and park phaetons, whiskies, single horse chaises, &c. Engraved on thirty plates, quarto, sewed, 10s. 6d.
- An Essay on the Construction and Building of Chimneys*, including an enquiry into the common causes of their smoking, and the most effectual remedies for removing so intolerable a nuisance; with a Table to proportion chimneys to the size of the room. Illustrated with proper figures. A new edition. By *Robert Clavering*, Builder, sewed, 2s. 6d.
- Observations on *Smoky Chimneys*, their Causes and Cure, with Considerations on Fuel and Stoves, illustrated with proper Figures, by *B. Franklin*, LL. D. 2s. sewed.
- This Work, with Clavering's Essay, may be had together, in boards, 4s. 6d.*
- The Manner of securing all Sorts of Buildings from Fire*; a treatise upon the construction of arches made with bricks and plaster, called flat arches; and of a roof without timber, called a brick roof: with some Letters that passed between the Count D'Espie, Peter Wyche, and William Beckford, Esqrs. on this subject. Octavo, sewed, 2s.
- The Builder's Pocket Treasure*, in which not only the Theory but the Practical Part of Architecture are carefully explained and correctly engraved on fifty-five Copper-plates, with printed Explanations to each, by *William Pain*. Octavo, bound 6s.
- Langley's Builder's Director, or Bench Mate*; being a pocket treasury of the Grecian, Roman, and Gothic orders of Architecture, made easy to the meanest capacity, by near 500 examples, engraved on 184 copper-plates, 12mo. bound, 4s.
- Langley's Builder's Jewel*, bound, 4s. 6d.
- Hawney's Complete Measurer*, 3s.
- Hoppus's Measurer*. Tables ready cast, 2s. 6d.
- Plate Glass Book*, 4s.
- Every Man a Complete Builder*; or easy Rules and Proportions for drawing and working the several parts of Architecture. In which are given a plan, elevation, and section of the curious trussed carpenter's work erected to support the centre arch of Black-Friars Bridge, from an exact measurement. Compiled by *Edward Oakley*. Octavo, sewed, 4s. 6d.
- The Joiner and Cabinet Maker's Darling*; containing sixty different designs for all sorts of frets, friezes, &c. sewed, 3s.
- The Carpenter's Companion*; containing thirty-three designs for all sorts of Chinese railing and gates. Octavo, sewed, 2s.
- The Carpenter's Complete Guide to the whole System of Gothic Railing*; containing thirty-two new designs, with scales to each. Octavo, sewed, 2s.
- The Carpenter's and Joiner's Vade Mecum*. By *Robert Clavering* and Company, sewed 2s.
- A Geometrical View of the Five Orders of Columns in Architecture*, adjusted by aliquot parts; whereby the meanest capacity, by inspection, may delineate and work an entire order, or any part, of any magnitude required. On a large sheet, 1s.

- Elevation of the New Bridge at Black-Friars*, with plan of the foundation and superstructure. By *R. Baldwin*. 12 inches by 48 inches, 5s.
- Plans, Elevations and Sections of the Machines and Centering used in erecting Black-Friars Bridge*; drawn and engraved by *R. Baldwin*, clerk of the work; on seven large plates, with explanations 10s. 6d. or with the elevation 15s.
- Elevation of the Stone Bridge built over the Severn, at Shrewsbury*; with plan of the foundation and superstructure, elegantly engraved by *Rooker*. 1s. 6d.
- A Treatise on Building in Water*. By *G. Semple*. Quarto, with 63 plates, sewed, 12s.
- Plans, Elevations, and Section of the Gaol, Bridewell, and Sheriff's Ward*, lately built at *Bodmin*, in the county of Cornwall, by *John Call, Esq.* upon the plan recommended by *John Howard, Esq.* On a large sheet, 2s. 6d.
- London and Westminster improved*. Illustrated by plans. To which is prefixed, a Discourse on public Magnificence; with observations on the state of arts and artists in this kingdom; wherein the study of the polite arts is recommended as necessary to a liberal education: concluded by some proposals relative to places not laid down in the plans. By *John Gwynn, Architect*. Boards, 5s.
- Plans, Elevations, and Sections, presented to the corporation of Bath*, for the improvement of the baths in that city; intending to make the whole one grand, uniform, elegant, and convenient structure of the Ionic order. By the late *R. Dingley, Esq.* Engraved on nine folio plates, by *Rooker, &c.* sewed, 6s.
- Encaustic, or Count Caylus's Method of painting in the manner of the Ancients*. By *J. H. Muntz*. Octavo; bound, 5s.
- The Young Draftsman's Guide to the true Outline of the Human Figure*; or a great variety of easy examples of the Human Body; calculated to encourage young beginners, and thereby lead to the habit of drawing with accuracy and facility on true principles. By an *eminent Artist*, deceased. Engraved on eighteen copper-plates, folio, sewed, 5s.

BOOKS OF ORNAMENTS, &c.

- Ornaments Displayed*, on a full size for working, proper for all Carvers, Painters, &c. containing a variety of accurate Examples of Foliage and Friezes, elegantly engraved in the manner of Chalks, on 33 large folio plates, sewed, 15s.
- A New Book of Ornaments*; containing a variety of elegant designs for modern pannels, commonly executed in stucco, wood, or painting, and used in decorating principal rooms. Drawn and etched by *P. Columbani*. Quarto, sewed, 7s. 6d.
- A Variety of Capitals, Friezes, and Cornices*; how to increase or decrease them, still retaining the same proportion as the original. Likewile, twelve designs for chimney-pieces, drawn an inch and a half to a foot. On twelve plates, drawn and etched by *P. Columbani*. Folio, sewed, 6s.
- The Principles of Drawing Ornaments made easy*, by proper examples of leaves for mouldings, capitals, scrolls, husks, foliage, &c. engraved in imitation of drawings, on sixteen plates. With instructions for learning without a master. Particularly useful to carvers, cabinet-makers, stucco-workers, painters, smiths, and every one concerned in ornamental decorations. By an *Artist*. Quarto, sewed, 4s. 6d.
- Ornamental Iron Work*; or designs in the present taste, for fan-lights, stair-case railing, window guard irons, lamp irons, palisades and gates. With a scheme for adjusting designs with facility and accuracy to any slope. Engraved on 21 plates, quarto, sewed, 6s.
- A new Book of Ornaments*, by *S. Aiken*. On six plates, sewed, 2s. 6d.
- Twelve new Designs of Frames for Looking-Glasses, Pictures, &c. by *S. H. carver*, sewed, 2s.
- A Book of Tablets*, done to the full size commonly used for chimney-pieces. Designed and etched by *J. Peiber*, on six plates, sewed, 3s. 6d.
- Ornaments in the Palmyrene Taste*; engraved on twelve quarto plates. By *N. Wallis*, sewed, 4s. 6d.
- Law's new Book of Ornaments*, sewed, 2s.
- A Book of Vases*, by *T. Law*, sewed, 2s.
- A Book of Vases*, by *P. Columbani*, sewed, 2s.
- A new Book of Eighteen Vases*, Modern and Antique, 2s.
- A Book of Vases from the Antique*, on twelve plates, sewed, 2s.
- Coard's new Book of Foliage*, sewed, 2s.
- A small Book of Ornaments*, on six leaves, by *G. Edwards*, 1s.
- A new Book of Designs for Girandoles and Glass Frames*. By *B. Pastorini*, on ten plates, sewed, 4s.
- An Interior View of Durham Cathedral*, and a View of the elegant *Gothic Shrine* in the same. Elegantly engraved on two large Sheets, size 19 and a half by 22 and a half; the pair, 12s.
- An Exterior and Interior View of St. Giles's Church in the Fields*, elegantly engraved by *Walker*, size 18 inches by 15; the pair, 5s.
- A Plan and Elevation of the King of Portugal's Palace at Mafra*, on two large sheets, 6s.
- A north-west View of Greenwich Church*, 1s.
- An elegant engraved View of Shoreditch Church*, 2 feet 4 inches by 1 foot 8 inches, 3s.
- An elegant engraved View of the Monument at London*, with the parts geometrically; size 21 by 33 inches; from an original by *Sir C. Wren*; and an Historical Account in letter press, 7s. 6d.
- Sir Christopher Wren's Plan for rebuilding the City of London after the great Fire 1666*, 1s.
- Plan and Sections of a curious Sailing Machine*, neatly coloured, 5s.
- The Art of Practical Measuring by the Sliding Rule*; shewing how to measure timber, stone, board, glass, painting, &c. also gauging, &c. By *H. Coggeshall*. A new edition, by *J. Ham*, bound, 1s.
- The Building Act of the 14th Geo. III.* With plates, shewing the proper thickness of party walls, external walls, and chimneys. A complete index, list of surveyors and their residence, &c. In a small pocket size, sewed, 2s. 6d.
- N. B.* The notice and certificate required by the above act, may be had printed with blank spaces for filling up, price 2d. each, or 13 for 2s.
- Animals drawn from Nature*, and engraved in Aquatinta, by *Charles Catton*, on 36 plates folio, 2l. 17s. in boards.
- Smeaton's Experiments on Under-shot and Over-shot Water Wheels, &c.* Octavo, with 5 Plates, boards 4s. 6d.
- A General History of Inland Navigation, Foreign and Domestic*; containing a complete Account of the Canals already executed in England; with Considerations on those projected. To which are added, Practical Observations. Illustrated with four Plates of Locks, Bridges, &c. and a large Map of England coloured, shewing the Lines of the Canals executed, those proposed, and the Navigable Rivers. A new Edition, with Two Addendas which complete the History to 1795. Boards, 1l. 8s.
- N. B.* The Addendas may be had separate, by former purchasers of the work. Also, The Map may be had separate, price 5s. coloured.
- A Treatise on the Improvement of Canal Navigation*, exhibiting the numerous advantages to be derived from Small Canals; and Boats of two to five feet wide, containing from two to five tons burthen; with a description of the machinery for facilitating conveyance by water, through the most mountainous countries, independent of locks and aqueducts; including observations on the great importance of water communications; with thoughts on, and designs for, aqueducts and bridges of iron and wood. By *R. Fulton*, Engineer, with 17 Plates, quarto, 18s. boards.
- Antiquities and Scenery of the North of Scotland*, by the *Rev. C. Cordiner*, in a Series of Letters to *T. Pennant, Esq.* with 2 plates, 13s. boards.
- Remarkable Ruins and Romantic Prospects of North Britain*, with Ancient Monuments and singular subjects of Natural History, by the *Rev. C. Cordiner*, of Banff, with 100 plates elegantly engraved by *Mazell*, 2 vols. quarto, 5l. 5s. bc and with the Natural History coloured, 6l. 6s.
- Leonardo da Vinci's Treatise on Painting*, octavo, many cuts, a new edit.

