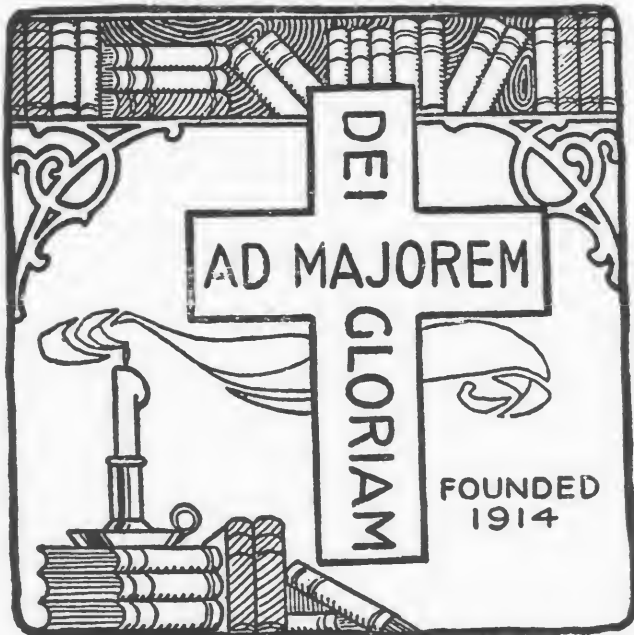


CANDLER SCHOOL OF THEOLOGY
EMORY UNIVERSITY, GA.



DATE
ACCESSION

15494

NATIONAL
LIBRARY BINDERY
CO.
WEST SPRINGFIELD
EAST CLEVELAND
INDIANAPOLIS
ATLANTA

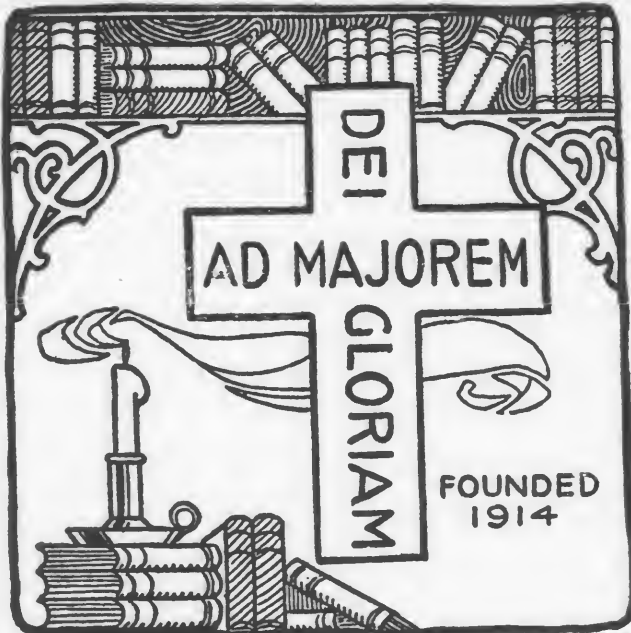
02

EMORY UNIVERSITY



15233646

CANDLER SCHOOL OF THEOLOGY
EMORY UNIVERSITY, GA.



DATE
ACCESSION

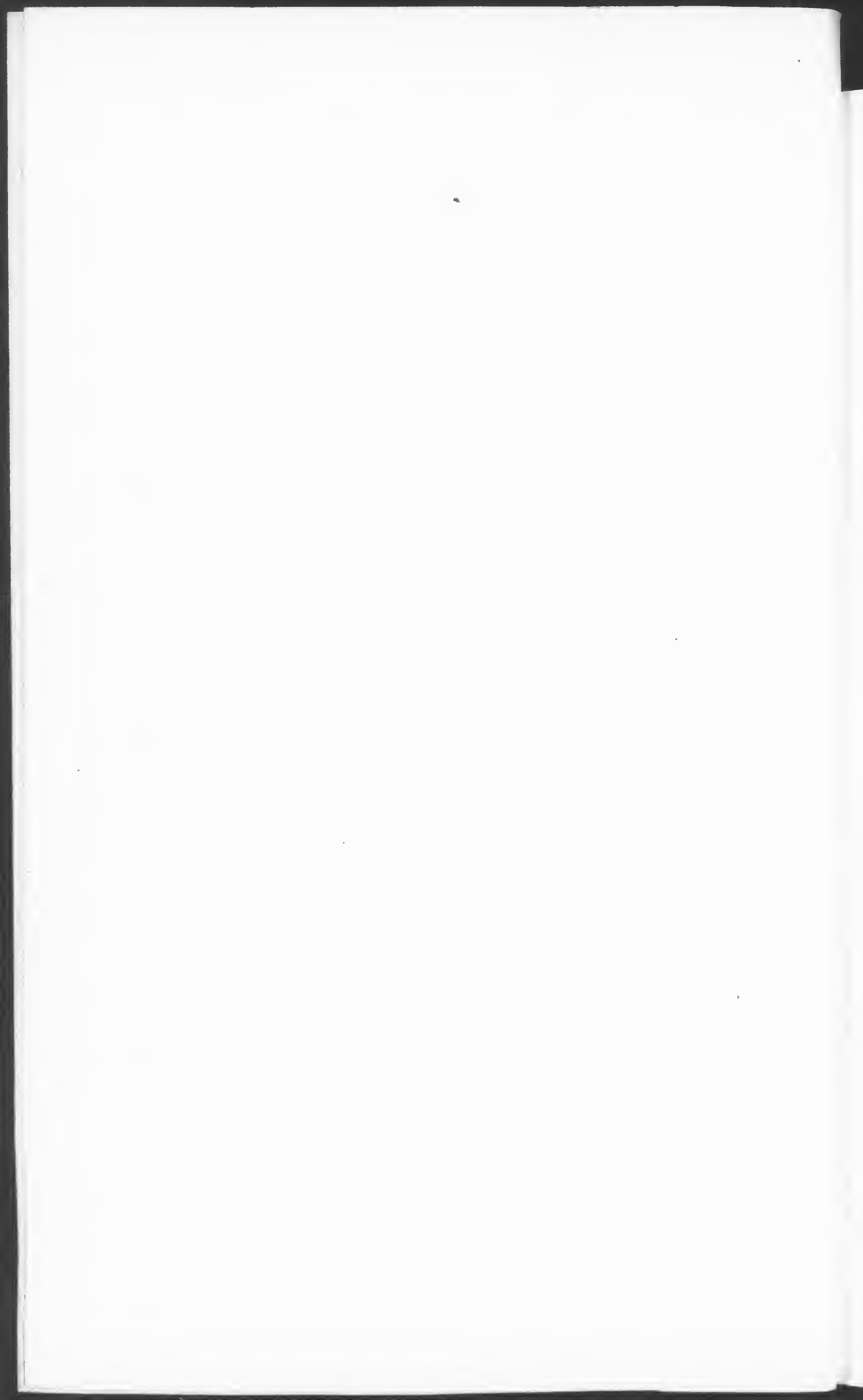
15494

NATIONAL
LIBRARY BINDERY
CO.
WEST 5TH AVENUE D
EAST TATUM BLVD
INDIANAPOLIS
ATLANTA

EMORY UNIVERSITY



15233646



THE
JOURNAL

AND

181
27

YEAR BOOK

OF THE

FLORIDA CONFERENCE

Fifty-fifth Annual Session,

HELD AT

Gainesville, Florida, Dec. 14-19, 1898.

EDITOR.
FREDERICK PASCO.

ST. AUGUSTINE, FLA.:
INSTITUTE BOOK JOB OFFICE,
1898.

INDEX.

	Page.
1. Conference Sessions.....	4.
2. Conference Register.....	6.
3. Boards and Committees.....	9.
4. Bishops and Connectional Officers.....	11.
5. Appointments.....	12.
6. Resolutions.....	15.
7. General Minutes.....	20.
8. General Reports.....	23.
9. Financial Reports.....	32.
10. Memoirs.....	44.
11. Conference Brotherhood.....	47.
12. Statistical.....	50.
13. Advertisements.....	59.

THE
JOURNAL



AND

* YEAR BOOK

OF THE

FLORIDA CONFERENCE

Fifty-fifth Annual Session,

HELD AT

Gainesville, Florida, Dec. 14-19, 1898.

EDITOR.
FREDERICK PASCO.

ST. AUGUSTINE, FLA.:
INSTITUTE BOOK JOB OFFICE.
1898.

INDEX.

	Page.
1. Conference Sessions.....	4.
2. Conference Register.....	6.
3. Boards and Committees.....	9.
4. Bishops and Connectional Officers.....	11.
5. Appointments.....	12.
6. Resolutions.....	15.
7. General Minutes.....	20.
8. General Reports.....	23.
9. Financial Reports.....	32.
10. Memoirs.....	44.
11. Conference Brotherhood.....	47.
12. Statistical.....	50.
13. Advertisements.....	59.

THE _____

JOURNAL _____ *

AND

* _____ YEAR BOOK

OF THE

FLORIDA CONFERENCE

Fifty-fifth Annual Session,

HELD AT

Gainesville, Florida, Dec. 14-19, 1898.

EDITOR.

FREDERICK PASCO.

ST. AUGUSTINE, FLA.:
INSTITUTE BOOK JOB OFFICE,
1898.

8X8391
.M45F5
1898-1901

**EMORY UNIVERSITY
THEOLOGY LIBRARY
ORGANIZATION.**

Conference Officers.

PRESIDENT.

Bishop W. A. CANDLER, D. D., Oxford, Georgia.

SECRETARY

FREDERICK PASCO, St. Augustine, Florida.

ASSISTANTS.

C. F. BLACKBURN. E. F. LEY. S. W. LAWLER.

Officers of Legal Conference.

J. C. SALE,	President
FREDERICK PASCO,	Secretary
J. C. COOPER,	Treasurer

JOURNAL:

ORGANIZATION,

APPOINTMENTS,

MINUTES,

REPORTS.

MEMOIRS.

15494

SESSIONS OF THE FLORIDA CONFERENCE.

	PLACE	DATE	PRESIDENT	SECRETARY
1	Tallahassee, Florida	February 6, 1845	Bishop J. Soule	T. C. Benning
2	Monticello, Florida	February 9, 1846	Bishop J. O. Andrew	P. P. Smith
3	Quincy, Florida	February 10, 1847	Bishop W. Capers	P. P. Smith
4	Waynesville, Georgia	February 9, 1848	Bishop J. O. Andrew	P. P. Smith
5	Albany, Georgia	January 32, 1849	Bishop W. Capers	P. P. Smith
6	Madison, Florida	February 6, 1850	Ira L. Potter	P. P. Smith
7	Thomasville, Georgia	January 22, 1850	Bishop R. Paine	P. P. Smith
8	Tallahassee, Florida	January 28, 1852	Bishop J. O. Andrew	P. P. Smith
9	Quincy, Florida	January 1853	Bishop W. Capers	P. P. Smith
10	Monticello, Florida	December 1853	R. H. Howren	P. P. Smith
11	Madison, Florida	December 1854	Bishop W. Capers	P. P. Smith
12	Bainbridge, Georgia	December 1855	{ S. P. Richardson } Bishop J. O. Andrew	T. N. Gardner
13	Alligator, Florida	December 24-30, 1856	Bishop J. O. Andrew	P. P. Smith
14	Thomasville, Georgia	December 1857	Bishop J. Earley	P. P. Smith
15	Jacksonville, Florida	December 15-20, 1858	Bishop J. O. Andrew	J. C. Ley
16	Micanopy, Florida	Dec. 28 1859, Jan. 3, 1860	Bishop H. H. Kavanaugh	P. P. Smith.
17	Monticello, Florida	December 12-17, 1860	Bishop G. F. Pierce	P. P. Smith.
18	Quincy, Florida	December 12-15, 1861	Bishop G. F. Pierce	P. P. Smith.
19	Tallahassee, Florida	December 11, 1862	Bishop J. O. Andrew	P. P. Smith.
20	Thomasville, Georgia	December 16-19, 1863	Bishop J. O. Andrew	F. A. Branch,
21	Monticello, Florida	December 14-18, 1864	S. P. Richardson	F. A. Branch.
22	Madison, Florida	Nov. 29, Dec. 1, 1865	Bishop G. F. Pierce	F. A. Branch.
23	Quincy, Florida	December 13-15, 1866	Bishop H. N. McTyeire	F. A. Branch.
24	Monticello, Florida	December 6-9, 1867	Bishop G. F. Pierce	F. A. Branch.
25	Jacksonville, Florida	January 13-17, 1869	Bishop W. M. Wightman	F. A. Branch.

26	Lake City, Florida	December 20-23, 1869	Bishop D. S. Doggett	J. P. DePass
27	Tallahassee, Florida	January 4-9, 1871	Bishop W. M. Wightman	U. S. Bird
28	Madison, Florida	January 1872	Bishop W. M. Wightman	U. S. Bird
29	Fernandina, Florida	January 8-12, 1873	Bishop E. M. Marvin	U. S. Bird
30	Jacksonville, Florida	January 7-11, 1874	Bishop G. F. Pierce	Frederick Pasco
31	Live Oak, Florida	December 16-20, 1874	Bishop W. M. Wightman	F. Pasco
32	Quincy, Florida	January 5-9, 1876	Bishop W. M. Wightman	F. Pasco
33	Monticello, Florida	January 11-15, 1877	Bishop G. F. Pierce	F. Pasco
34	Tampa, Florida	November 15-18, 1877	Bishop G. F. Pierce	F. Pasco
35	Gainesville, Florida	November 13-18, 1878	Bishop H. H. Kavanaugh	F. Pasco
36	Tallahassee, Florida	December 17-21, 1879	Bishop D. S. Doggett	F. Pasco
37	Ocala, Florida	December 16-19, 1880	Bishop G. F. Pierce	F. Pasco
38	Monticello, Florida	January 18-23, 1882	Bishop H. N. McTyeire	Frederick Pasco
39	Jacksonville, Florida	January 3-8, 1883	Bishop H. H. Kavanaugh	Frederick Pasco
40	Madison, Florida	January 8-14, 1884	Bishop J. C. Keener	Frederick Pasco
41	Gainesville, Florida	January 7-13, 1885	Bishop Linus Parker	Frederick Pasco
42	Orlando, Florida	January 6-11, 1886	Bishop R. K. Hargrove	Frederick Pasco
43	Tallahassee, Florida	December 16-21, 1886	Bishop E. R. Hendrix	Frederick Pasco
44	Leesburg, Florida	December 14-19, 1887	Bishop J. S. Key	Frederick Pasco
45	Bartow, Florida	January 9-13, 1889	Bishop C. B. Galloway	Frederick Pasco
46	Gainesville, Florida	January 8-13, 1890	Bishop J. C. Keener	Frederick Pasco
47	Monticello, Florida	January 7-12, 1891	Bishop W. W. Duncan	Frederick Pasco
48	Tampa, Florida	January 6-11, 1892	Bishop J. C. Granbery	Frederick Pasco
49	Ocala, Florida	January 4-9, 1893	Bishop O. P. Fitzgerald	Frederick Pasco
50	Palatka, Florida	January 3-8, 1895	Bishop A. G. Haygood	Frederick Pasco
51	Jacksonville, Florida	January 9-14, 1894	Bishop W. W. Duncan	Frederick Pasco
52	Orlando, Florida	Dec. 18-23, 1895	Bishop J. C. Granbery	Frederick Pasco
53	Tallahassee, Florida	December 9-13, 1896	Bishop C. B. Galloway	Frederick Pasco
54	Tampa, Florida	December 17-20, 1897	Bishop W. W. Duncan	Frederick Pasco
55	Gainesville, Florida	December 14-19, 1898	Bishop W. A. Candler	Frederick Pasco

Conference Register.

NAME.	POST OFFICE.
R. V. Atkisson.....	Jacksonville
Josephus Anderson	Leesburg
W. F. Alexander	Jacksonville
T. S. Armistead	Anthony
J. S. Barnett	Woodville
R. H. Barnett.....	Leesburg
J. Beers, D*.....	Tavares
J. F. Bell.....	Apalachicola
T. Bishop.....	Mt. Tabor
T. R. Blue D	Green Cove
H. W. Baker *	Matanzas
I. Barredo *	Havana
F. R. Bridges	Fernandina
T. C. Bradford	Jasper
C. F. Blackburn.....	Miami
J. T. Coleman.....	Miccosuki
J. S. Collier.....	Carabelle
W. C. Collins*.....	Concord
D. A. Cole.....	Arcadia
C. S. Claridy.....	Volusia
W. J. Carpenter.....	Tallahassee
J. L. Cleckler D	Kissimmee
John Dodwell.....	Tampa
M. F. Dukes.....	Wankeenah
J. P. DePass	Key West
A. M. Daiger.....	Mayo
H. Dutil.....	Marion
J. P. Durrance	Palmetto
R. A. Edmonson D	Madison
R. M. Evans	Webster
M. E. Diaz*	Tampa
H. B. Frazee.....	Dade City
C. A. Fulwood, P. E	Tampa
E. F. Gates, Sd*.....	Mantae
E. J. Gates.....	Plant City
George W. Gatewood.....	Caloosahatchee
E. H. Giles.....	Punta Gorda
W. J. Gray, Sy*.....	Crawfordville
T. Griffith *	Jacksonville
C. H. Greer*.....	Nashville, Tenn
J. A. Hendry.....	Lakeland
R. L. Honiker.....	Palatka
J. A. Howland.....	Clear Water
J. P. Hilburn, P. E	Dade City
A. E. Householder, P. E.....	Tallahassee
E. J. Hardee.....	Maitland
S. Hardin.....	Umatilla
George K. Heydriek, Sy*.....	Oviedo
E. J. Holmes, Sd*.....	Carrabelle
H. Hice	Jacksonville

C. W. Inman	Newansville
A. Johnson, Sd*	Live Oak
G. J. Kennelly	Martel
E. F. Ley	Citra
J. B' Ley	Tampa
J. C. Ley, Sd	Micanopy
T. G. Lang	Leesburg
S. W. Lawler	Melrose
J. H. D. McRae	Jacksonville
H. S. Miller	Hermitage
B. F. Mason	Brooksville
W. E. H. Mabry	Quincy
G. W. Mitchell	Homeland
J. E. Mickler	Micanopy
L. W. Moore P. E.	Live Oak
T. W. Moore	Lake City
W. S. McMannin	Midway
A. M. Mann	Welborn
W. C. Norton *	Alafia
W. F. Norton	Leesburg
T. J. Nixon	Ocala
G. N. MacDonell	Havana
J. H. Owens D.	Inverness
W. H. Parker	Key Largo
F. Pasco	St. Augustine
H. E. Partridge	Bartow
A. D. Penny	Titusville
H. W. Penny	Key West
S. E. Phillips	Fort White
T. J. Phillips	Apopka
J. S. Pattillo D.	Oviedo
J. C. Pace	Fruitland
I. S. Patterson	Manatee
F. Pixton	Leesburg
W. M. Poage	Orlando
W. S. Richardson	Key West
W. H. F. Robarts, *Sy	Fort White
J. D. Rogers, Sd*	Clear Water
I. Ryder	Live Oak
F. W. Shoemaker, Sd.	Anthony
S. Scott	Bronson
H. B. Someillan	Santiago
C. A. Saunders. P. E.	Geneva
W. H. Steinmeyer	Starke
F. E. Shipp	Monticello
J. C. Sale, P. E.	Bronson
G. W. Sellers *	Manatee
J. F. Shands	Myers
F. L. Stokes	Largo
T. H. Sistrunk	Seffner
R. L. Sprinkle	DeSoto
B. K. Thrower	Gainesville
J. R. Taylor	White Spring
F. A. Taylor	High Spring
T. W. Tomkies P. E.	Bartow
W. B. Tresca	Sarasota

G. T. Turner Sy.....	Lake City
I. A. Vernon.....	Orange Springs
J. T. Waters, Sy*	Welborn
William A. Wier.....	Midway
T. M. White.....	Fort Bassenger
R. M. Williams.....	Concord
R. O. Wier.....	Newnansville
E. Wilson, Sd.....	St. Augustine
R. J. Wells.....	Volusia

Preachers on Trial.

CLASS OF SECOND YEAR.

NAME.	POSTOFFICE,
E. A. Harrison.....	DeLand
M. F. Bell.....	Interlachen
M. DeLofeu.....	Ybor City

CLASS OF FIRST YEAR

J. N. Weatherford.....	Blanton
Geo. H. York.....	Lake Butter
F. E. Steinmeyer.....	Summerfield
T. I. Hess.....	Moultrie
Jas. T. Mitchell.....	Bowling Green

Lay Delegates.

PRESENT AT CONFERENCE.

TALLAHASSEE DISTRICT.—R. L. Williams, A. W. McLeran, R. A. Cloud, V. A. Herlong.

GAINESVILLE DISTRICT.—J. M. Barco, W. R. White, H. W. Long, W. K. Zowadski.

JACKSONVILLE DISTRICT.—A. O. MacDonell, T. I. Hess.

ORLAND DISTRICT,—W. N. Boswell, Geo. A. Edmonston, S. G. Wilson.

TAMPA DISTRICT.—R. F. Webb, N. A. Carter, J. C. Carter.

*Not present at Conference. Sd, Superannuated, Sy, Supernumerary.
D, Deacon.

Conference Boards and Committees.

BOARD OF MISSIONS.

T. W. Moore, President; T. W. Tomkies, Secretary; Frederick Pasco, Treasurer; J. P. Hilburn, R. H. Barnett, W. H. Steinmeyer, J. F. Shands, W. M. Boswell, J. M. Barco, A. O. MacDonell, R. F. Webb, J. T. Bernard, J. R. Lites.

BOARD OF CHURCH EXTENSION.

C. A. Fulwood, President, I. S. Patterson, Secretary, Chas. W. White, Treasurer, G. W. Mitchell, F. Pixton, W. F. Norton, I. Ryder, D. W. Stanley, H. W. Long, G. I. Davis, T. Strickland, A. W. McLeran, W. N. Boswell.

JOINT BOARD OF FINANCE.

J. B. Ley, W. M. Poage, T. W. Moore, W. F. Norton, F. R. Bridges, W. S. Richardson, W. J. Carpenter, C. T. Carroll, A. W. McLeran, H. W. Long, A. O. MacDonell, S. G. Wilson, R. T. Webb, C. F. Kemp.

BOARD OF EDUCATION.

J. P. DePass, President, R. L. Honiker, Secretary, F. E. Shipp, Treasurer, B. K. Thrower, J. E. Mickler, J. F. Bell, H. E. Partridge, Jas. A. Howland, L. E. Robinson, H. J. Davis, W. P. Ward, F. A. Edmonson, W. N. Sheats.

SUNDAY SCHOOL BOARD.

J. Anderson, S. Scott, J. P. Durrance, T. M. White, W. E. H. Mabry, M. F. Dukes, C. B. Tomkins, F. C. Gaffney, F. A. Curtis, A. M. C. Russell, A. L. Woodward, A. L. Morrison.

COMMITTEE ON MEMOIRS.

R. L. Honiker, C. A. Fulwood, T. Griffith.

TRUSTEE OF FLORIDA CONFERENCE COLLEGE.

A. E. Householder, President: E. F. Ley, Secretary; R. L. Honiker, T. J. Nixon, R. H. Barnett, J. F. Shands, W. F. Norton, J. C. Sale, C. A. Fulwood. C. A. Sanders, Geo. M. Lee, C. N. Hildreth, J. C. Cooper, C. W. White, J. H. Dorsey, E. H. Swain, W. H. Cassaday.

TRUSTEES OF PREACHERS' RELIEF FUND.

C. A. Fulwood, President, E. F. Ley, Secretary, C. S. Carroll, W. S. Richardson, T. W. Moore, C. W. White, H. W. Long.

COMMITTEES OF EXAMINATION.

On Admissions.—W. M. Poage, T. J. Nixon, J. P. Hilburn.

On Trial.—F. Pixton, J. B. Ley, H. E. Partridge.

First Year.—J. F. Shands, E. F. Ley, J. E. Mickler.

Second Year.—F. R. Bridges, I. S. Patterson, W. J. Carpenter.

Third Year.—F. E. Shipp, T. G. Lang, D. A. Cole.

Fourth Year.—T. W. Moore, R. L. Honiker, J. Anderson.

SPECIAL FOR ONE YEAR.

Public Worship.—J. C. Sale, E. K. Thrower, J. M. Barco.

Temperance.—T. C. Bradford, T. S. Armistead, G. J. Kennelly, S. W. Lawler, W. F. Norton.

District Conference Records.—F. R. Bridges, J. E. Mickler, H. S. Miller, H. Dutill, I. S. Patterson, J. H. D. McRae.

Epworth Leagues.—W. J. Carpenter, J. F. Bell, C. W. Inman, E. F. Ley, T. G. Lang, R. L. Honiker, S. Hardin, R. M. Williams.

Books and Periodicals.—J. P. DePass, B. K. Thrower, J. A. Howland, H. B. Frazee, W. S. Richardson, T. J. Phillips, W. L. Scott, W. K. Zewadski, C. N. Hildreth.

Bible Cause.—T. S. Armistead, M. F. Dukes, R. O. Wier, G. W. Gatewood, E. J. Hardee.

Conference Relations.—W. H. Steinmeyer, R. H. Barnett, E. H. Giles, T. Bishop, S. E. Phillips, G. W. Mitchell, H. Hice, B. F. Mason, S. Scott.

VISITING COMMITTEES.

To Florida Conference College.—F. E. Shipp, B. K. Thrower, W. N. Boswell.

To Emory College.—T. W. Moore, W. E. H. Mabry, C. W. White.

To Wesleyan Female College.—J. B. Ley, W. M. Poage, H. W. Long.

BISHOPS OF THE METHODIST EPISCOPAL CHURCH, SOUTH.

Rev. John C. Keener, D. D. New Orleans, La.
 Rev. Alpheus W. Wilson, D. D. Baltimore, Md.
 Rev. John C. Granbery, D. D., Ashland, Va.
 Rev. Robert K. Hargrove, D. D. Nashville, Tenn.
 Rev. Wallace W. Duncan, D. D. Spartansburg, S. C.
 Rev. Charles B. Golloway, D. D. Jackson, Miss.
 Rev. Eugene R. Hendrix, D. D. Kansas City, Mo.
 Rev. Joseph S. Key, D. D. Sherman, Texas.
 Rev. Oscar P. Fitzgerald, D. D. San Francisco, Cal.
 Rev. Warren A. Candler, D. D. Oxford, Ga.
 Rev. Henry C. Morrison, D. D. Atlanta, Ga.

CONNECTIONAL OFFICERS.

Board of Missions.—Rev. W. R. Lambuth, D. D., and Rev. J. H. Pritchett, Secretaries, Nashville, Tenn. J. D. Hamilton. Treasurer, Nashville, Tenn.

Board of Education.—Rev. J. D. Hammond, D. D., Secretary, Nashville, Tenn.

Secretary of Epworth Leagues and Editor of Epworth Era—Rev. H. M. DuBose, Nashville, Tenn.

Board of Church Extension.—Rev. P. H. Whisner, D. D., Secretary, Louisville, Ky.

Editor Quarterly Review and Book Editor—Rev. J. J. Tigert, D. D., Nashville, Tenn.

Sunday School Editor and Secretary—Rev. J. Atkins, D. D., Nashville, Tenn.

Book Agents—Barbee & Smith, Nashville, Tenn.

Appointments for 1899.

Figures indicate consecutive appointment of incumbent to the charge.

TALLAHASSEE DISTRICT—A. D. HOUSEHOLDER, P. E. 2.

Tallahassee.....	W. J. Carpenter	1
Monticello.....	F. E. Shipp	4
Leon Circuit.....	J. T. Coleman	1
Quincy.....	W. E. H. Mabry	1
Gadsden Circuit.....	H. S. Miller	1
Waukeenah Circuit.....	M. F. Dukes	2
Midway Mission.....	W. S. McMannen	2
Concord Circuit.....	W. C. Collins	1
Liberty Mission.....	To be Supplied by D. Lee Switzer	1
Aucilla Circuit.....	W. A. Wier	1
Madison.....	R. A. Edmondson and one To be Supplied by G. W. Walker	1
Madison Circuit.....	R. O. Wier	2
Taylor Mission.....	To be Supplied by B. T. Rape	1
Apalachicola.....	J. F. Bell	2
Carabelle and Crawfordville Circuit }.....	J. S. Collier	1
Woodville Mission.....	W. J. Gray, Supernumerary	1
	J. S. Barnett	1

LIVE OAK DISTRICT—L. W. Moore, P. E. 3.

Live Oak.....	I. Ryder	1
Jasper.....	T. C. Bradford	1
Hamilton Mission.....	To be Supplied	1
White Springs Circuit.....	J. R. Taylor	2
Welbom Circuit.....	A. M. Mann	1
Pine Mount Mission.....	To be Supplied by W. A. Brown	1
Fort White Circuit }.....	S. E. Phillips	1
	W. A. H. Roberts, Supernumerary	1
La Fayeth Mission.....	A. M. Daiger	2
Nemnansville Circuit.....	C. W. Inman	2
Columbia Circuit.....	Thurlo B'shop	1
Lake City }.....	T. W. Moore	1
	G. D. Turner, Supernumerary	1
Lake Butler Circuit.....	George H. York	2
M Clenny Mission.....	To be Supplied by J. B. Mann	1
Starke.....	W. H. Steinmeyer	1
Waldo.....	To be Supplied by A. L. Woodward	1
High Springs.....	F. A. Taylor	1
Melrose.....	S. W. Lawler	2

GAINESVILLE DISTRICT—J. C. SALE, P. E. 3.

Gainesville.....	B. K. Thrower	4
Bronson.....	S. Scott	2
Rachelle and Oranffe Springs.....	I. A. Vernon	3

Citra	E. F. Ley	2
Micanopy Circuit	J. E. Mickler	1
Marion Circuit	H. Dutil	1
Ocala	T. J. Nixon	1
Summerfield Mission	F. E. Steinmeyer	1
Cotton Plant Circuit	G. J. Kennelly	3
Wildwood Circuit	W. F. Norton	1
Anthony Circuit	T. S. Armistead	1
Inverness Circuit	J. H. Owens	1
Sumter Circuit	To be supplied by E. K. Whidden	1
Stewarts Chapel Circuit	R. M. Evans	2
Brooksville and Mission	B. F. Mason	1 and one to be supplied.
Leesburg	F. Pixton	2
Tavares	John Beers	1
Citronelle Mission	To be supplied by C. D. Parkerson	1
Levy Mission	To be supplied.	
Editor Florida Christian Advocate	Josephus Anderson	12
President Florida Conference College	T. G. Lang	2
Conference Colporter	R. H. Barnett	8
Conference Secretary of Education	T. G. Lang	1

JACKSONVILLE DISTRICT—C. A. SAUNDERS, P. E., 4.

Jacksonville McTyeire Memorial	R. V. Atkisson	1
Jacksonville City Mission	T. Griffith	1
Jacksonville Riverside	H. Hice	1
Jacksonville Saint Mathews	J. H. D. McRae	1
Fernandina	F. R. Bridges	2
Kings Ferry Circuit	To be supplied	
Callahan	J. R. Wells	1
Green Cove and Middleburg	T. G. Blue	3
Mandarin Mission	To be supplied.	
Saint Augustine Mission	W. F. Alexander	Supernumerary
Palatka	T. I. Hess	2
Interlachen	R. L. Honiker	1
Volusia Circuit	M. T. Bell	2
Fruitland Circuit	C. S. Claridy	1
New Smyrna Mission	J. C. Pace	3
Sanford	To be supplied by J. H. McDowell	3
Oviedo	R. M. Williams	1
Titusville and Cocoa	James L. Pattillo	2
Fort Pierce Circuit	G. K. Heydrick	Supernumerary
DeLand Mission	A. D. Penny	11
Superintendent State Institute for Deaf and Blind	To be supplied by W. T. Lane	2
	E. A. Harrison	3
	Frederick Pasco	2

ORLANDO DISTRICT—T. W. TOMKIES P. E., 2

Orlando rnd Fairview	W. M. Poage	1
Apopka	T. J. Phillips	1
Umatilla	Smith Hardin	2
Kissimmee Mission	R. C. Cleckler	2 and one to be supplied
Baitland Mission	E. J. Hardee	2
Martow	H. E. Partridge	2
Fort Meade and Homeland	G. W. Mitchell	2

Bowling Green Circuit and Mission	{	R. L. Sumner	1
Arcadia		J, T, Mitchell	1
DeSoto Circuit		D, A, Cole	1
Myers		R, L, Sprinkle	1
Caloosahatchie		J, F, Shands	2
Fort Bassenger		G, W, Gatewood	2
Punta Gorda and Charlotte Harbor		T, M White	2
Lakeland		E, H, Giles	2
Chuckaluskie and San Marco Mission		J, A, Hendry	1
		To be supplied by D. W, Black	1

TAMPA DISTRICT—J, P, HILBUM P, E, I

Tampa		J, B, Ley	1
Port Tampa City Mission		J. Dodwell	2
Seffner		T. H. Sistrunk	1
Hillsborough Mission		To be supplied by J, C, Green	1
Alafia		W, J, Norton	3
Manatee and Braidentown	{	I, S, Patterson	1
		G. W, Sellers Supernumerary	
Palmetto and Mission		J. P, Durrance	2
Sarasota		W, B, Tresca	2
Clear-water and St. Petersburg		J. A. Howland	1
Largo Circuit		F. C. Stokes	1
Blanton		J. N. Weatherford	1
Pasco Mission		To be supplied by J. M. Mitchell	1
Dade City		H. B. Frazee	1
Plant City		E. J. Gates	1
Kathleen Mission		To be supplied by J. D. Martin	1

KEY WEST MISSION DISTRICT—C. A. FULWOOD P. E. I
AND SUPERINTENDENT CUBAN MISSIONS.

Key West First Charge		J. P. DePass	2
Key West Sparks Chapel		W. S. Richardson	2
Key West Memorial Church		C. W. White	1
Key West La Trinidad Cuban Church		H. W. Penny	1
Ybor City and West Tampa Cuban Mission	{	M. DeLaoue	1
		M. E. Diaz	4
Key Largo		W. H. Parker	1
Miami		C. F. Blackburn	2
Biscayne Bay		To be supplied.	
West Palm Beach		J. R. Walker	2
Cuba, Havana		George N. MacDonell	1
Cuba, Havana		Isidore Barredo	1
Cuba, Matanzas		H. W. Baker	1
Cuba, Cardenas and Caibarien		To be supplied.	
Cuba, Nienfuegos		To be supplied.	
Cuba, Santiago and Manzanillo Mission		H. B. Someillan	1
Por o Rico, Ponce		To be supplied	1
		H. W. Baker Missioary Secretary for Missinns in Cuba	1

TRANSFERRED.

To White River Confernece		R. A. Holloway	
To Indian Mission Conference		M. H. Outland	
To South Georgia Conference		S. G. Meadows	
To South Carolina Conference		T. B. Reynolds	
To South Carolina Conference		N. L. Wiggins	
To North Alabama Conference		J. H. Vann	
To North Alabama Conference		J. L. Jones	

Resolutions of this Conference.

WHEREAS, Many of the godly men and women whose heroic lives have been the glory of our common Methodism, have received their intellectual training and been started upon a life of high religious developement under and through the cultured Christian influence prevailing at Emory College, Oxford Geo. and Wesleyan Female College, Macon, Geo., and

WHEREAS, the Florida Conference as the owner of a chartered right, in lack of said Colleges contemplates with laudable pride, the great good wrought by them within its own borders, and reaching beyond until the whole earth is compassed thereby, therefore;

Resolved, That the Florida Conference commends the work done and being done by each of said Colleges, and asks for them a stronger support from their constituency; we particularly recommend to the Methodists of Florida who send their children out of the State for College training, the said two Colleges and declare that their high literary and religious standards preeminently mark them as the schools to which such children should be sent.

Resolved, That we have heard with pleasure the Presidents of these Colleges at this session of our Conference and will always be glad to welcome them at our sessions.

C. A. Fulwood.

H. E. Partridge.

J. B. Ley.

A resolution was adopted entitled "A plan for the systematizing of our Conference finances," offered by J. B. Ley. It provides the election or appointment of a financial secretary and assistant whose duties shall be,

1st. To receive money for all purposes from the preachers, issuing therefor to each an itemized credit slip.

2nd. To furnish a duplicate slip to statistical secretary.

from which his tables are to be completed.

3rd. To deposit each day in some reliable banking institution, all money as received.

4th. To pay out the same to treasurers of several Boards or Committees for usual disposition of Conference funds.

5th. To make a report to the Conference of his work for the session in the form of a balance sheet.

J. B. Ley was elected as the Financial Secretary.

Resolved, That the Presiding Elders be requested to raise one percent of their salaries for the Preachers Relief Fund and this matter be brought to the attention of first Quarterly Conferences and the official Boards be requested to favor this good cause.

Note. The above resolution was amended and adopted, but the intent was that one percent of each preachers salary should be assessed on the Charges and the Presiding Elders should see that the provisions of the resolution were carried out. Conference Secretary.

Resolved, That the thanks of this Conference are due and are hereby tendered to the kind people of Gainesville for the handsome entertainment accorded to us during our delightful sojourn among them and to the pastors of the evangelical Churches of the city for courtesies to this body and to the transportations companies for reduced rates to members and visitors and to the local press for extensive reports of our proceedings.

J. P. Hilburn.

D. A. Cole.

WHEREAS Rev. Josephus Anderson D. D. has been an itinerant preacher for fifty years therefore be it resolved that he is hereby requested to preach a semi-centennial sermon before this body next Sunday at 3 P. M.

(The above request was complied with and Dr. Anderson preached an impressive sermon, on Sunday afternoon Dec. 18 followed by the ordination of elders. Secretary.)

WHEREAS. The board of Trustees of the Florida Conference College has re-appointed Rev. R. H. Barnett agent of the Special fund for the support of the President of the College, and,

WHEREAS, It will be necessary for said agent to travel through the Conference in the performance of his duties as agent, be it,

Resolved, That our pastors be requested to co-operate with the agent, and render such assistance as they may be able.

A. E. Householder

President.

Edw. F. Ley,

Secretary.

Resolutions of Former Conferences.

WHEREAS, We have had trouble, and the work of the Secretaries delayed and greatly hindered from year to year relative to getting in the reports.

Resolved, therefore, That hereafter preachers be required to have all their reports in during the first day of the Conference session.

Resolved, That this Annual Conferences be and is hereby asked to accord the right to the President of the College to visit the District Conferences and other meetings of our church, and present the claims of the college and take collections for the use of the Board for college purposes, and that he is authorized to collect all notes now in favor of the college.

Resolved, That the agent of the Orphan Home, Macon, Ga., be requested to co-operative exclusively through our pastors in raising funds for that institution.

Resolved That no preacher's official character shall pass unless he can report that the collections ordered have been taken up.

WHEREAS, We believe that the regular proceeding of our Methodist law for "licensing" of proper persons to preach, is both right and proper; and

WHEREAS, The assuming to preach without license is a violation of the spirit of Methodist law;

Therefore be it Resolved, That we, as members of this Conference, protest against the recognizing or the employing of such persons to preach for us or to our people.

Resolved, Second, That in the violation of our discipline in this way, he is liable to the censure of the Conference and is an offender against the church.

Resolved, That we express our confidence in the Board of Trustees of our college, and hereby endorse their management of the trust reposed in them and pledge them our hearty support for the future, and our earnest co-operation in their great work.

Resolved, That Thursday night of each Conference session be observed as anniversary of our Florida Conference Brotherhood.

COMMITTEE ON CONFERENCE ENTERTAINMENT.

Resolved, That it is the sense of this Committee that the collection for the entertainment of the sessions of the Annual Conference be discontinued, and the amount now left in the hands of the Treasurer of the Joint Board of Finance, subject to the disposal of the Conference, to be applied to the expense of entertainment at such times as it may deem expedient.

CHURCH PROPERTY.

"It is recommended that in every case where the Church is about to acquire property, either by purchase or donation, that a lawyer be employed or solicited to make out the deed and obtain an abstract of the title, and thus be assured of the validity of the same. We recommend also that the trustees of such property be required, as soon as possible after they are put in possession of the deed and abstract, to make a copy of the abstract and forward it to the Secretary of the Conference, in order that it may be properly filed in the archives of the Conference, so that at any time required any desired information may be had of the title to Church property,"—Report of Committee on Church Property at session of December, 1886. Adopted.

LAY REPRESENTATION IN DISTRICT CONFERENCE.

Resolved, That in addition to those whom the Discipline declares members of the District Conference, four delegates from each pastoral charge should be elected to the Quarterly Conference.

Resolved, That hereafter on Wednesday night of Conference, the services close with the Sacrament of the Lord's Supper.

General Minutes.

QUESTION 1.—Who are admitted on trial? F. E. Steinmeyer, G. I. Hess, Jas. T. Mitchell, Geo. H. York, J. Weatherford.

QUESTION 2.—Who remain on trial? M. T. Bell, E. A. Harrison, M. DeLofeu.

QUESTION 3.—Who are discontinued? None.

QUESTION 4.—Who are admitted into full connection? W. A. Wier, J. L. Pattillo, I. E. Barredo, H. W. Baker, M. E. Diaz, R. L. Sumner, R. L. Sprinkle, T. R. Blue, Chas. W. White, J. R. Walker, J. Beers.

QUESTION 5.—Who are re-admitted? A. D. Penny, J. C. Pace.

QUESTION 6.—Who are received by transfer from other Conferences? E. J. Gates, East Texas Conference; J. L. Cleckler, R. V. Atkisson, North Georgia; R. A. Edmonson, North Georgia; J. L. Stokes, South Georgia; G. N. MacDonell, South Georgia.

QUESTION 7.—Who are the deacons of one year? J. Beers, J. H. Owen, R. C. Cleckler, R. L. Edmonson.

QUESTION 8.—What traveling preachers are elected deacons? Robt. L. Sprinkle, Thos. G. Blue, Robt. L. Sumner.

QUESTION 9.—What traveling preachers are ordained deacons? Robt. L. Sprinkle, Robt. L. Sumner, Thos. G. Blue.

QUESTION 10.—What local preachers are elected deacons? Milton C. Brown, J. H. Mitchell.

QUESTION 11.—What local preachers are ordained deacons? Milton C. Brown, J. H. Mitchell.

QUESTION 12.—What traveling preachers are elected elders? Joseph F. Bell, Smith Hardin, Eugene J. Hardee, H. W. Baker.

QUESTION 13.—What traveling preachers are ordained elders? Eugene J. Hardee, Joseph F. Bell, Smith Hardin.

QUESTION 14.—What local preachers are elected elders? E. A. Harrison.

QUESTION 15.—What local preachers are ordained elders? E. A. Harrison.

QUESTION 16.—Who are located this year? J. G. Graham, A. W. J. Best, G. P. Parker,

QUESTION 17—Who are supernumerary? W. F. Alexander, G. D. Turner, W. H. F. Roberts, G. K. Heydrick, G. W. Sellers, W. J. Gray.

QUESTION 18—Who are supernannuated? A. Johnson, J. B. Ley, E. F. Gates, W. F. Shoemaker. E. Wilson, J. T. Waters, E. J. Holmes, J. D. Rogers.

QUESTION 19.—What preachers have died during the past year? W. F. Jordan, (see memoirs.)

QUESTION 20—Are all the preachers blameless in their life and official administration? Their names were called and characters passed one by one.

QUESTION 21—What is the number of local preachers and members in the several circuits, stations and missions of the Conference? Local preachers 136. Members 20333.

QUESTION 22—How many infants have been baptized during the year? 645.

QUESTION 23—How many adults have been baptized during the year? 410.

QUESTION 24—What is the number of Epworth Leagues? 188.

QUESTION 25—What is the number of Epworth League members? 2557.

QUESTION 26.—What is the number of Sunday Schools? 271.

QUESTION 27—What is the number of Sunday School teachers? 1725.

QUESTION 28—What is the number of Sunday School scholars? 12164.

QUESTION 29—What amount is necessary for the supernannuated preachers, and the widows and orphans of preachers? 3,000.00.

QUESTION 30—What has been collected on the foregoing account, and how has it been applied? 1,893.75 Collection. 400.00 Publishing House. Total. 2,293.75. (See report of Joint Board for distribution.)

QUESTION 31—What has been contributed for missions? Foreign, \$2,341.23 Domestic, \$2,436.83.

QUESTION 32—What has been contributed for Church Extension? \$650.61.

QUESTION 33—What has been done for the American Bible Society? \$117.50.

QUESTION 34—What has been contributed for the support of presiding elders and preachers in charge? Presiding Elders, \$4,590.93. Preachers in Charge, \$42,057.44.

QUESTION 35—What has been contributed for the support of Bishops? \$532.95.

QUESTION 36—What is the number of Societies and of houses of worship owned by them? Societies 358. Houses of worship 289,

QUESTION 37—What is the value of houses of worship and what is the amount of indebtedness thereon? Value \$375,841.00. Indebtedness \$15,533.66.

QUESTION 38—What is the number of pastoral charges and of parsonages owned by them? Charges 112. Parsonages 90.

QUESTION 39—What is the value of parsonages and what is the amount of indebtedness thereon? Value \$88,835.00. Indebtedness \$7,882.00.

QUESTION 40—What is the number of Districts and of District parsonages? Districts 6, District Parsonages 5.

QUESTION 41.. What is the value of District parsonages and the amount of indebtedness thereon? Value \$10,000.00. Indebtedness \$100.00.

QUESTION 42.. What number of Churches have been damaged or destroyed during the year by fire or storm? Damaged 5. Amount \$522.00.

QUESTION 43.. What are the Insurance statistics? Insurances \$58,850.00. Premiums \$715.77.

QUESTION 44.. What are the Educational Statistics? Florida Conference College. Value of Property \$14,000.00. Professors 6. Pupils 50. Emory College. Value of Property \$50,000.00. Endowment \$200,000.00. Wesleyan Female College. Value of Property \$150,000.00. Endowment \$200,000.00.

QUESTION 45.. Where shall the next session of Conference be held? Monticello.

QUESTION 46.. Where are the preachers stationed this year? (See appointments.)

REPORTS.

Annual Report of the Tampa Cuban Mission for the year ending Dec. 14th, 1898.

BISHOP AND DEAR BRETHREN:—The year now closing has been graciously blessed under God in the development of this field. We began our work immediately after the adjournment of our last Conference session with a protracted meeting in San Marco's church. The results were most satisfactory and the influence of the meeting has had a salutary effect throughout the entire year.

We have received nineteen new members and fifteen have removed by letter. One of our Stewards Bro. J. Volmey, whose christian character and consecrated life was a benediction to all who knew him, fell asleep in Jesus on the 15th day of October.

We have had several bright conversions during the year. That of Ygnacio Riera, a young man of twenty years of age, should be briefly noted. His parents are Roman Catholics and he was a student of theology in the Havana Seminary, preparing for the priesthood. A sermon on the text "He that believeth not is condemned already," made a deep impression on his mind and heart. At the close of the service an invitation was given to those who felt the need of pardon and would then surrender their lives to Christ, to signify the same by giving their hand to the preacher.—This was unhesitatingly acceded to and four days after, while relating his religious experience in the love feast, he said with deep feeling: "Brethren, once I was in darkness but now I see light all around me. I can see Jesus and am happy in His love." Thank God for such clear testimony.—

On the 16th day of June, we organized an Epworth League, "La Esperanza de Cuba," (The Hope of Cuba,) with twenty-five members. The results achieved through this branch have been most pleasing and satisfactory. The religious feature of the League has received our special and most careful attention, to which fact, is due, we believe, the wonderful success attained. The meetings are conducted by the young people and other members of the League. The services are very spiritual and well attended. We have a Bible class of young people which meets weekly at the Mission House and is faithfully taught by Miss Bruce. We have two Sunday Schools with fourteen teachers and one hundred and fifty pupils. Both the Wolff and San Mateo Mission Day Schools, under the wise and

judicious management of Miss Bruce, Supt., are in a flourishing and prosperous condition. The Boy's School is now taught in the Wolf building to which two spacious and comfortable rooms have been added during the year.

The West Tampa School House which is also used as a chapel, has been completed. The Woman's Home Missionary Society deserves great praises for its generous gifts and noble efforts in behalf of the Cuban School work. It is to be hoped that the Island of Cuba being now open to the Gospel, our Woman's Missionary Societies will enter the field at once and establish their most excellent School Work in connection with such missionary movements as the General Board of Missions may inaugurate.

My recent visit through some of the principal cities and towns of Cuba, and especially my labors in Santiago for more than two months, have brought to light wonderful possibilities, the existence of which I had not dreamed before. For instance, the establishment of a free republican government in the Province of Santiago resulting in the steady growth and rapid development of its interests, has caused an earnest desire and disposition in the hearts of our people to readily accept that form of religion which, though not clearly specified, is suggested and encouraged both in the letter and spirit of its laws. There are many other encouraging features that might be mentioned showing very plainly the most favorable auspices and conditions under which our Mission work in Cuba can be successfully inaugurated. God grant that we may see these wonderful possibilities and providential openings, and, realizing our duty, may we in His name enter and conquer the beautiful Island of Cuba for our blessed Lord and King.

Thank God the door which for more than 400 years had been bolted against the glorious Gospel of His Son, is now open wide and, with floating banners and joyful hearts our beloved Methodism may enter in and occupy till Christ shall come in the glory of His Power!

As far back as I can remember, the M. E. Church, South, has been on her knees praying that the day might speedily come when "a great door and effectual" should be open to the Gospel and the pure Word of God preached "without let or hindrance" to the inhabitants of Cuba. Thank God for such earnest pleadings, many of which have ascended the Throne of Grace from the Florida Conference! The great giver has graciously heard and in due time answered your petitions. Blessed be God, the shackles of a most abject political slavery have been brok-

en. The minds and consciences of a million and half of human souls over whom the scepter of proud Rome has swayed more than four centuries, have been set free and gloriously liberated by the Stroke of that Omnipotent (though unseen) hand that rules the world! Brethren:—Your prayers are answered. The whole Island of Cuba is open to the Gospel and your own great and noble country has been the instrument chosen of God for the accomplishment of these blessed results. Women of America:—the redemption of Cuba was, under God sealed by the shedding of your loved one's blood on the beautiful green hills of Santiago:—will you not help finish the noble work by them begun? Shall the sacrifice of the precious lives of those who fell on San Juan Hill and the unselfish efforts of those who survive, have been made in vain because of your indifference and lack of sympathy and energy in the prosecution of one of the grandest movements that shall ever be recorded in the future history of the Christian Church? Let me say to one and all that the freedom of Cuba is but fairy begun and will not be completed without the liberal help and co-operation of the Christian Churches of America.—I care not how proudly the flag of national independence may wave over the Queen of the Antilles; as long as Cuban consciences remain under the yoke of spiritual slavery and oppression, and until the radiant light of Jesus' love shall have illumined the minds and hearts of our benighted people, there will be sadly lacking in the Cuban home that Christian influence which is the only element of its real happiness and our country will be deprived of the highest civilization that is the privilege of every nation to enjoy. May God help you and me and every true Methodist to do our whole duty and it shall not be long when "the wilderness and the solitary place shall be glad and the desert shall rejoice and blossom as the rose"

Respectfully Submitted.

H. B. SOMEILLAN.

WAR CLAIM.

Your Committee beg leave to submit the following. In view of some of the methods used for the collection of the claim of own Publishing House against the United States Government pending the consideration of the matter in the Senate, and in view of the well established rule that the acts

of an agent become the acts of the principal unless they are disavowed, and of the fact that the Florida Annual Conference, is in the position of principal in this transaction hereby resolves.

1st. That the conduct of E. B. Stahlman in this case is in our judgment entirely indefensible.

2nd. That we disavow the evasion and misleading statements made by our Book Agents to certain Senators, although said statements in no wise effected the justness of our claim, believing as we do that the Church of God should not secure its rights by any methods not entirely candid and open.

3rd. In the interest of the peace of the church and that the future settlement of the matter may be free from all embarrassment, we believe that the Book Agents should resign and also those members of the Book Committee who voted to approve the conduct of the Book Agents.

4th. We approve the proposal of the Bishops that the money be tendered back to the Government, and we trust them to protect the good name of our Church by such farther steps that may be necessary.

J. C. Sale
 J. Anderson
 W. M. Poage
 R. H. Barnett
 J. B. Ley.

EPWORTH LEAGUE REPORT.

The report of the General Secretary shows an exceedingly healthy condition of the Epworth League work. The League occupies a large place among the working forces of the church. The more than 200,000 young people associated together in this organization should be a potent agency for good. The church cannot too carefully train, or to jealously watch over over, this young and growing child.

It is gratifying to note the enlargement and improved character of the "Epworth Era." It now has a circulation of almost 13,000 copies. We earnestly commend it to our preachers and people.

Your committee cannot too strongly urge the pastors to make as large a use of the League as possible. It is loyal to the pastor and the church. Use it to help you in your work. In securing your collections, looking up strangers, visiting and

caring for the sick, it may be made exceedingly useful. Some Leagues are dying for want of some special work to do. We commend to you the living and vital questions of missions and education, in which the young people can be interested to the good of the church. Upon these question our young people should take advanced ground. Our work in this conference has moved forward with satisfactory results during the past year. The State Conference, at Lake City last year, was an occasion of great profit. Only one District Meeting has been held within our bounds. Your committee feel safe in saying that the District Meeting is worth much more than it costs to thou who attend, and to the place where it is held. We urge these meetings upon your consideration.

The reading course furnished by the general Board should be in the possession of every league in the State. To keep this work on a permanent basis it must be well furnished with proper mental food and training.

The minutes of the last State meeting contain much valuable information which should be in the hands of our young people. We trust the pastors will aid us in circulating this publication thereby increasing the efficiency of the League.

W. J. CARPENTER,

For the Com.

BOOKS AND PERIODICALS.

We recognize the successful labour of Rev. R. H. Barnett as Colporteur and commend him for his good work.

Our central organ, "The Christian Advocate" we commend to our Church and her People, as well as the Quarterly Review. They are both able, and doing a good work, helpful to preachers and layman.

We also commend the Epworth Era, a good paper, for a good cause.

It is gratifying to learn that our Sunday Schools are using our own Sunday School literature very generally. It is certainly the best, as well as the cheapest, and we hope to see the time, when none other be used in our Sunday Schools, except that which we furnish. The "Sunday School Visitor" is commended as a Young People's Paper, and trust that it will be brought up to as high a standard as others of like publications.

It is a matter of regret that we find in the Christmas Cat-

atalogue of our Publishing House, books offered for sale, which we can not commend to the Public, and while we omit the titles and authors of same we deplore the fact that they are offered, and trust that our Publishing House in the future, will be very careful in making up such catalogues.

We recognize that the Florida Christian Advocate has been of great service to the Church, and we recommend our people to patronize it, and our preachers to work for it. And that the Conference select Dr. J. Anderson as editor for the ensuing quadrennial.

We further recommend that the Presiding Elders of the several districts of the Conference be constituted a Committee on Publication of the Florida Christian Advocate, that by reason sickness, resignation or death of the editor, that then, and in that event the said committee be empowered to continue the publication of the Advocate, by appointing an editor and publisher, who shall continue in said office until the ensuing Annual Conference.

W. K. Zowadski
Secretary.

J. P. DePass
Chairman.

REPORT ON TEMPERANCE.

We believe the Methodist Church to be a temperance society than which there is none better we devoutly thank God for every victory won, but so long as body mind and soul are wrecked, home blighted, society contaminated, and nation corrupted by this dread enemy so long are we called upon to put forth our best energies for its extermination.

Therefore, Resolved, 1st. That we as a church rejoice that light or wine counties of our State have gone dry this conference year and, congratulate those brethren who have laboured so diligently for the success achieved.

2nd. That we pledge ourselves to a more diligent and systematic warfare upon this foe of God and man.

3rd. Believing the seeds of intemperance to be sown largely in the home by use of domestic wines and such like drinks, we will do all in our power to discourage the manufacture and use of such liquors.

4th. That we hereby request the pastors and laymen of our church to circulate among the people for the purpose of getting as many signatures thereto as possible to a petition,

directed to the Legislature of the State of Florida requesting proper legislation to submit to the election of the State of Florida an amendment to the constitution of the State so as to prohibit the manufacture and sale of alcohol or intoxicating liquors within the State of Florida.

5th That a committee of three be appointed to prepare and have printed a sufficient number of petitions for the purpose aforesaid and distribute the same among the pastors of our Conference.

S. W. LAWLER,
Secretary.

T. C. BRADFORD,
Chairman.

DISTRICT CONFERENCE RECORDS.

We find that the Record Books of the Orlando, Tallahassee Live Oak, and Jacksonville Districts have been well kept. The minutes of the Gainesville District Conference have not been recorded, which indicates gross neglect. A lengthy report has been pasted in the Record Book of Tampa District, which, in the judgment of your Committee, is a serious defect.
Committee.

ON COMMUNICATION FROM PROTESTANT EPISCOPAL CHURCH.

While we deeply deplore the lax Divorce laws of our country it is the opinion of your committee to whom was referred the petition sent to this Conference for its consideration by the Protestant Episcopal Church that no real good would be accomplished by the enactment of the proposed amendment to our State law.

C. A. Sanders,
F. R. Bridges,
W. E. H. Mabry.

REPORT BOARD OF EDUCATION.

Resolved, That the Treasurer of the Board of Education be authorized to pay \$500. out of the seventy-five per cent of moneys to be collected in 1899 on the Educational assessment to

the Treasurer of the Board of Trustees of the Florida Conference College for the use of the Faculty of the College.

Resolved, That our preachers be requested to take the Educational collection as early in the year as practicable and forward the money to the Treasurer of this Board.

F. E. Shipp.

SUNDAY SCHOOL BOARD.

Our Board has helped during the present year 33 schools, at an expense of \$121.74. Many schools which formerly contributed to this cause are now being aided by us, and though the outlook is hopeful for help from them for several years, the belief is cherished that eventually they will resume their contributions to this work.

The observance of Childrens' Day is becoming more regular, and the pastors and Superintendents are beginning to realize the importance of the work this day is designed to help and forward.

We congratulate our Conference on the work this fund is enabling the Board to do among the needy in our bounds, and we respectfully urge our pastors and Sunday school workers to make the annual celebration of Children's Day an occasion of great interest and profit to all concerned.

We commend the excellent publications of our Church for Sunday schools, and urge our people everywhere to introduce our own literature wherever it is practicable to do so.

We are gratified to announce that programmes for the observance of Childrens' Day will be furnished gratuitously by our Publishing House to all schools needing this aid, and we trust our needy schools. Total collection, \$128.83.

Respectfully,

G. D. Turner,

Chairman,

The Board of Education of the Florida Annual Conference submit the following report:

The present administration of the Florida Conference College has made a record during the year for a happy discipline and thorough instruction most creditable to our church in Florida. We are happy to be able to commend the College to the patronage of our people. We thank God and take courage when we review the record of the year.

More than a third of the college debt has been paid off. All of our obligations have been met, and the faculty tided through a year of great financial depression. The outlook for the college seems brighter than ever in its history. We are happy to report also that the institution is now being placed upon a solid financial foundation and commend the plans of President Long to the confidence of our people.

The treasurer of the Board has received \$980.54 from the various charges of the Conference as follows:

Tallahassee District	- - - - -	203.50
Live Oak	" - - - - -	124.45
Jacksonville	" - - - - -	152.84
Gainesville	" - - - - -	172.19
Orlando	" - - - - -	155.20
Tampa	" - - - - -	172.36
		\$980.54

The Board request the Conference to levy an assessment of \$3750. for educational purposes. The Board requests the appointment Rev. G. T. Lang as President of the Florida Conference College for the ensuing year, also as Conference Sec'y of Education and his appointment as Manager of the 20th Century Fund of the Florida Conference.

We request that also the Bishop appoint Rev. F. Pasco as Supt. of the Institute of the Blind and Deaf; also Rev. John Beers as student in the Florida Conference College.

Financial Reports.

MISSIONARY ASSESSMENTS.

Districts.	Foreign M.	Domestic M.	S. S. Special.
Tallahassee	\$775.00	\$675.00	\$100.00
Live Oak	500.00	400.00	100.00
Gainesville	750.00	650.00	100.00
Orlando	650.00	525.00	75.00
Jacksonville	700.00	650.00	100.00
Tampa	625.00	500.00	75.00
Key West and H.	200.00	200.00	50.00
Total	\$4200.00	\$3600.00	\$600.00

MISSIONARY APPROPRIATIONS.

Tallahassee District.

Meidway Mission	\$ 50.00	
Taylor "	50.00	
Woodville "	50.00	
Total		\$150.00

Live Oak District.

Prisiding Elder	80.00	
Hamilton Mission	40.00	
Pine Mt "	40.00	
LaFayette "	50.00	
McClenny "	50.00	
High Springs Mission	60.00	
Waldo "	50.00	
Total		\$370.00

Gainesville District.

Brooksville Mission	\$50.00
Citrouelle "	50.00

M. E. CHURCH, SOUTH.

33

Levy "	50.00	
Summerfield "	\$100.00	
Total		\$250.00

Jacksonville District.

St. Augustine Mission	\$50.00	
New Smyrna "	50.00	
DeLand "	200.00	
Total		\$300.00

Orlando District.

Kissimmee Mission	\$75.00	
Maitland "	75.00	
Bowling Green Mission	50.00	
Fort Bassenger "	100.00	
Total		\$300.00

Tampa District.

Port Tampa Mission	\$ 200.00	
Hillsboro "	50.00	
Halmetto "	50.00	
Pasco "	50.00	
Kathleen "	50.00	
Total		\$400.00

Key West Mission District.

Miami Mission	\$ 200.00	
Biscayne Bay Mission	200.00	
West Palm Beach Mission	50.00	
Key West Memorial "	125.00	
Total	\$2345.00	\$575.00

T. W. Tomkies, Secretary.
Conf. Board of Missions

REPORT OF FREDERICK PASCO, TREASURER CONFERENCE BOARD OF
MISSIONS.

1898	Dr.	Foreign Missions.
Dec. 18--	So amount from charges....\$	2258.55
	To amount from Sunday Schools "Rally day.".....	39.51
	To amount from Anniversay Coll.....	38.86
	To amount balance from 1897	4.31—\$2341.23.
	Cr.	
March 30—	By amount paid Treasurer Parent Board of Missions.	77.56
May 5—	By amount paid Treasurer Parent Board of Missions.	130.45
June 8—	By amount paid Treasurer Parent Board of Missions.	32.75
July 11—	By amount paid Treasurer Parent Board of Missions.	52.05
Aug. 8—	By amount paid Treasurer Parent Board of Missions.	53.00
Oct. 12—	By amount paid Treasurer Parent Board of Missions.	43.20
Dec. 10—	By amount paid Treasurer Parent Board of Missions.	129.71
" 17--	By amount paid Editor of Minutes.....	60.00
" 31	By amount paid Treasurer Parent Board of Missions.	1762.51 \$2341.23.

N. B. I have reported as received from Rally Day only the amounts sent to me as Treasurer.

1897	Dr.	Domestic Mission
Dec. 17	To balance... ..	811.66
Oct. 15	" 10p dividend from Bank	126.76
1897		
Dec. 19	" amount from Charges ...	2057.39
	" " " Sunday Schools.....	332.58
	To amount from anniversay Collection Cash.....	28.86
	Subscription.....	10.00
	Special donation	5.00 \$3372.25

Cr.		
By drafts of presiding elders 3 quarters 1898.....	1695.00	
By drafts presiding elders 1st quarter 1899.....	586.25	\$2281.25
To Balance.....		\$1091.00
Treasurer.		

STATEMENT.

Joint Board of Finance in account with Florida Conference.

Dr		
To amounts from charges for Confclamis'ts	\$1886.75	
" " " unnamed cash items..	7.00	
" " " Publishing House.....	400.00	
" " " last year.....	35.00	\$2,328.75
Bishop's Fund.		
To amounts from charges.....	\$532.95	\$532.95
P. and L. Institute.		
To amount from charges.....	\$87.39	87.39
		\$2949.09

Cr.		
By amounts to claimants (See apportion- ment.).....	\$2262.00	
By amount to Minute Fund.....	60.00	
" " " Postage and Incidental....	6.75	\$2328.75
Bishops Fund.		
By check to Barbee and Smith agents...	532.95	532.95
P. and L. Institute.		
By check to Chas. Goodrich Treasurer..	87.39	87.39
		.949.09
Bal. Over to next years Bishops Fund..	5.55	5.55
Wm. Poage Chairman.	J. B. Ley Secretary,	

APPORTIONMENTS.

NAME	POSTOFFICE	TRANSMITTER	AMOUNT
Blake Mrs. E. L. T.	Tallahassee	Mail	150.00
Rogers Rev. J. D.	Clear Water	"	75.
Johnson Rev. A.	Live Oak	"	70.
Cooper Mrs. T. W.	Flemington	"	100.
Scott Mrs. Wm.	Starke	"	50.
Robinson Mrs. L. B.	Manatee	"	30.
Munden Mrs. A. E.	Ocala	Self	100.
Pelot Mrs. C. E.			20.
Taylor Mrs. T.	Boston Ga.	Mail	25.
Stokes Mrs. J. M.	Live Oak Fla	"	60.
Rhodes Mrs. L. M.	Monticello "	J. Anderson	100.
Leavel Mrs. G. C.	Wildwood "	Mail	90.
Eady Mrs. O.	St. Petersburg,	F. J. Dovell	70.
Davies Mrs. Wm.	Webster Fla	Mail	40.
Morris Mrs. W. J.	Waldo "	J. E. Mickler	45.
Tydings Mrs. R. M.	Ocala "	Mail	90.
Capers Mrs. T. H.	Crescent City	"	55.
McCook Mrs. S. A.	Coleman Fla	"	55.
Barnett Mr. A. A.	Jacksonville	"	100.
Wilson Rev. E.	St. Augustine	"	60.
Sweatt Mr. J. M.	Key West	Mail	100.
Williams Mrs. M.	Panama Park	"	55.
Penny Mrs. J. E.	8250 Monroe St, Augusta Ga.	Mail	100.
Child of R. Martin		C. T. Carroll	40.
Sharpe John R.	Starke	Mail, J. M. Alvarry	20.
Boothe Mrs. S. E.	Montgomery Ala.		30.
Parker Rev. W. A.		Self	75.
Ley Rev. J. C.	Micanopy	"	300.
Gates Rev. E. F.	Tampa	Mail	25.
Shoemaker Rev. W. F.	Anthony	Self.	25.
Holmes Rev. T. J.	Key Ga.	Mail	60.
Waters Rev. J. T.		W. F. Alexander	50.
Total			\$2265.00
Wm. Poage,	Chairman,	J. B. Ley,	Secretary.

REPORT OF TREASURER BOARD OF CHURCH EXTENSION FLORIDA
CONFERENCE M. E. CHURCH SOUTH

1897.

Dec. 12—To amount on hand from 15th
assessment Fund of Florida
Conference \$422.88
Fund of General Conference 322.33
To Receipts on 15th assesment
after Conference session 1897 28.60

1898. To Loan repaid by Ozona
Church 50.

Dec 17—Collections Reported by Districts on 19th assessment
as follows.

Tallahassee	District	\$135.53	
Live Oak	"	73.15	
Jacksonville	"	65.53	
Gainesville	"	126.10	
Orlando	"	93.08	
Tampa	"	137.36	—\$ 630.75
			\$1,474.75

1897 Cr.

Dec. —By payment to General Board
from 15th Assessment 325.30

1898.

Mar. 20—By payment to General Board
from 15th Assesment..... 11.37
By Church Extension Bul-
letin..... 15.
By amount paid F. Pasco for
Pulication Minutes..... 10.
By amount paid Jan. 28th 1896
(Not previously charged)
act of voucher of D. Morton
Sec..... 2.01
By Donations paid from 15th
assessment as follows.
St. Johns Church Marion Co
Gainesville District..... 40.
Orange Lake Church Marion
Co Gainesville District... 55.
Judson Church Alachua Co
Gainesville Distinct..... 30.
Tustenooga Church Colum-
bia Co. Live Oak District 50.

Biscayne Bay Church Brevard Co. Jacksonville District	60.	
De Land Church Volusia Co Jacksonville District	150.	
Glen Julia Church Gadsden Co Tallahassee District .	35.	
By amount paid General Board on 16th assessment	2.97	
By amount on hand to Balance	688.	—\$1,474.65
Dec. 17--To Fund on hand of Fla. Conference	375.60	
To Fund on hand of General Board	312.40	
	<hr/>	
Total	\$688.00	
	Chas. W. White,	Treasurer.

CHURCH EXTENSION.

Board of Church Extension of the Florida Annual Conference M. E. Church South.

Treasurers Report,	Payments for 1898
Tallahassee District	\$135.53
Live Oak "	73.15
Jacksonville "	65.53
Gainesville "	126.10
Orlando "	93.08
Tampa "	137.37
	<hr/>
Total	\$630.76

Assessments for 1899	
Tallahassee District	250.
Live Oak "	140.
Jacksonville "	125.
Gainesville "	240.
Orlando "	175.
Tampa "	175.
Key West "	95.
	<hr/>
Total	\$1200.

Report of Woman's Home Mission Society of the Florida Annual Conference. 1898.

OFFICERS.

President	Mrs. E. K. Griffith	Jacksonville.
Vice President	Mrs. Charles Harrison	Tampa.
" "	" D. A. Cook	Jacksonville.
Cor. Sec'y "	" E. K. Griffith, Pro Tem,	"
Rec. " "	" J. F. Shands,	Ft. Myers
Treasurer,	Miss Corrinne Trice	Tampa
Auditor	Mr. Chas. Harrison	"
Editor	Mrs. G. C Warner	Leesburg

DISTRICT SECRETARIES.

Tallahassee	Mrs. C. T. Carroll	Monticello
Jacksonville	" W. A. Mahony	Fernandina
Live Oak	" Madge Webb	High Springs
Gainesville	Miss Byrd Wartman	Citra,
Orlando	Mrs. I. K. Perry	Orlando
Tampa	" C. A. Fulwood	Tampa.

No Auxiliaries	68
" Members	1070
" Visits to Sick and Strangers	3225
" Garments distributed	1326
" Papers and Leaflets distributed	2784
" Cottage Prayer Meetings or Bible readings	254
" Subscribers to our Homes	185

Mrs. E. K. Griffith, Secretary Pro Tem.

SECRETARY'S REPORT.

Applications for aid, to the amount of 700.00, were before the Board, and carefully considered. The following appropriations were made.

Floral City	40.
West Palm Beach	100.
Lochloosa	40.
Linden	55.
Dunn Creek	30.
Hudson	35.
Macon	55.
Publishing Minutes	10.

The following resolutions were passed.

1st. Resolved, That we, The Conference Board of Church

Extension, in future, will consider, no application for aid from this Board, either by loan or donation, unless the application is in the hands of the Secretary of this Board, by the evening of the "First Day of our conference session.

2nd. *Resolved*, A copy of, or the original Deed to the property upon which, aid is sought, must accompany said application to insure or receive consideration by us.

3rd. The Secretary is instructed to procure blank applications to The Home and General Board and to furnish the same to applicants, who will be expected to enclose stamps for postage, when writing for same.

The New Board organized for the ensuing term by the election of the following.

OFFICERS.

President, Rev. W. S. Richardson, Key West.

Vice-President, G. W. Mitchell

Secretary, Ira. S. Patterson, Manatee,

Treasurer, Mr. C. W. White, Citra.

Adjourned to meet in Citra upon the call of the President not later than March 10th, 1898,

Ira. S. Patterson
Secretary.

W. S. Richardson
President.

PREACHERS' RELIEF.

C. T. Carroll, Treasurer in account with Preachers' Relief Fund, 1897.

Dec. 21.—To Balance on hand	\$711.27
Dec. 21 To Conference Fund Mrs. Blake	50.00
1898	
Sept. 7 —T. W. Moore balance on Note	50.00
Paid amount from Interest	1.25
Sept 29 To Proceed of Bond No. 39	100.00
	\$912.49

1898

Cr.

By Notes and Mortgages	\$500.00
Balance	412.49
Amount Interest disbursed by Board	65.98

FREDERICK PASCO AND J. B. LEY.

Report of Editors of Minutes.

1897.	Cr.	
Dec. 17.	---To amount on hand	3.40
	“ “ from Boards of Missions	85.00
	“ “ “ Joint Board of Finance	60.00
	“ “ “ Board of Church Extension..	10.00
		<hr/> \$158.40
1898.	Cr.	
By amount paid for printing 1600 copies of Minutes		\$126.00
1000 Conference envelopes		3.75
Express on box of envelopes and minutes for Confuse		85
Mailing, wrapping etc minutes		5.00
Statistical blanks.....		5.00
Postage and Express		32.40
		<hr/> \$173.50
Deficit.....		\$15.10

BIBLE CAUSE.

We are glad to report the financial condition of the American Bible Society better than last year, but still not enough to maintain the work which is continually expanding.

The society is not endowed but depends upon gifts to maintain the work. From last years report, we find that the total amount from the living is \$86,536.63, Of this amount \$30,148.84 was contributed by the churches. With Cuba, Puerto Rico and the Philippines now open to us, it it will require at last \$300,000 to successfully carry on the work. We would, therefore urge upon our pastors to bring this cause before their people and take this collection. Rev. T. H. Law of Spartanburg, S. C. field agent for the society, will gladly send any information needed. The society now has field agents in place of District Superintendents who will work directly with churches, thus leaving responsibility of support entirely on church contributions.

As we are dependent upon the Bible for religious freedom and true civilization, we feel that it is obligatory upon us to do all we can to supply all the people with this precious Word of God.

The following moments have been paid by our conference
this year:

Tallahassee District	\$23.51
Live Oak	7.81
Jacksonville	10.55
Gainesville	9.25
Orlando	18.46
Tampa	23.84
Total amount	\$93.42

Respectfully Submitted

T. S. ARMISTEAD,
Chairman.

MEMOIRS.

MEMOIRS.

REV. WM. C. JORDAN.

Rev. William C. Jordan was born in the State of Alabama in the year 1833, and was spiritually born in the seventeenth year of his age; became a minister in 1855, and died in Polk county, Florida, June 20, 1898.

The last charge which he served before his translation to the joy of his Lord was the Kissimmee station. Entering upon the work with great hopefulness and zeal, at the beginning of the year, he prosecuted his labors with fidelity and success until a short time before the meeting of his district conference, when he was prostrated with the illness which closed his useful and devoted life, terminating a ministry of forty years, blamelessly and honorably.

The greater part of his ministerial life was spent in southern Florida, serving the Church as pastor on missions, circuits, stations, and as presiding elder. In every sphere in which he labored he met the demands of his position and fulfilled the expectations of his brethren. To few men is it given to make larger increase in the wisdom of God than did he, and it may be said that he improved his talents to the good of his fellowmen and the glory of God.

He was an earnest-spirited man and Christian. Believing heartily the great cardinal doctrines of the Bible he preached clearly and forcibly on the themes which move men. His style was sententious—packing his thoughts in good plain English words—he delivered the truths upon which he descanted with a vigor and insistence which arrested the thought, inspired the mind and stirred the conscience of the listener. It is not strange, therefore, that his ministry was fruitful in saved and sanctified souls.

His faith was simple and beautiful. There were no "caves of gloom" in the book which was his mentor and comfort. He knew how to draw water from the wells of salvation. Often, in private conversation, his face would shine with the soft luminance betokening the presence of the Holy Spirit in his heart. The wrangling voices of higher critics did not mar the deep and abiding peace his soul possessed.

God has His uplands: only there do elect spirits walk, and there our departed comrade found his highest and holiest companionships. He underwent the crucifying of his fleshy nature, and as "gold is tried by fire and the heart is made pure by pain," so he experienced the blessedness of those worthy ones "who walk in white raiment."

His family life was even, consistent and beautiful. While other lives are conspicuous by the brilliancy of some elements, his was as the clear shining of the sun—"shining more and more unto the perfect day." He cherished humble views of his attainments in grace, but so luminous was his life that all beholding him, realized that he had been with Jesus and had learned of Him.

He loved to converse with his brethren on the subject of personal religion. His talk was of God and His goodness, and he expatiated with tear-dimmed eye and tremulous voice upon the salvation which delighted his soul and enabled him to realize his heirship with our Lord in the kingdom of His love.

Of course, he passed away in holy triumph! A life of lowly devotion was crowned with a victorious ending, and while we mourn his departure from the militant Church, we rejoice that he was faithful even unto death, and has entered into "the rest which remains for the people of God."

The closing years of his life were marked by great and sore troubles. Failing eyesight interfered with the freedom of his movements, but he used all the light his enfeebled eyes received in pursuing the vocation into which he had been called. He often said that he "rejoiced that, while he could see material objects only with difficulty, the eyes of his soul were so clear that he could gaze upon Jesus." The death of his wife was a sore grief to him, but he believed that heaven held in store greater joys in the reunion which he felt would not long be denied him. And so he waited until the Master he loved and served called him to the glad surprises of His heavenly home, conscious that for him to die was to gain Christ, and thus we would be "ever with the Lord."

While he think of the words of the apostles, "Blessed are the dead who die in the Lord," the Sun of our souls struggles out from behind the clouds of sorrow, and picks out every letter of the apocalypse in gold?

R. L. HONIKER.

MRS. SUSAN HICE.

Mrs. Susan Hice, second daughter of the celebrated Judge Doak, the beloved wife of our brother and fellow-laborer, Rev. Henry Hico, was born in Shelbyville, Kentucky, in 1859: was born again and received into the Church in her twelfth year; married in 1880, and departed this life at Jasper, Florida, November 12, 1898. Such is the brief record of an ascended saint whose life among us only the recording angel can reveal.

Modest and reserved in demeanor, her presence was, nevertheless, felt in every sphere in which her influence was exerted. As President of the local aid society, and Vice President of the Womans' Foreign Missionary Society of her Church, her labors and her counsels were recognized and respected. Filling a delicate position as the wife of the pastor, her ready intelligence was at all times competent to aid and guide in the work of the Church. She was never obtrusive, but always gentle, womanly, and discreet; never allowing the work she loved to lag through any indifference on her part.

It is a comfort to her bereaved household to remember that no harsh word ever proceeded out of her mouth. No unkind thought of others found utterance through her lips. The memory of her quiet and gentle nature remains like fragrant perfume to cheer the hearts made sad by her departure.

Loving God supremely, she delighted in the work of the Church. Just one week before she left these earthly scenes, she was kneeling at the altar, during a revival in her husband's pastoral charge, praying with, and pointing penitent souls to, the Lamb of God which taketh away the sin of the world. Ready to labor or to rest, her only wish was that she might be spared to guide her household, comfort and cheer her husband, and rear her boy, if it were God's will for her. But, not so! Her work was done, and in the vigor and beauty of her mature womanhood she laid down the Cross that she might wear the Crown. No doubt, she rests in the Paradise of God.

There are no words our lips can utter that can soothe the broken hearted, but in our helplessness a voice divine may be heard, saying, "Let not your heart be troubled: where I am there also shall my servants be." Safe and blest are the dead who die in the Lord, and they die to earth that they may live with Christ forevermore.

The Florida Conference Brotherhood.

Constitution and By Laws.

ARTICLE. I

SECTION 1. This association shall be called The Florida Conference Brotherhood.

SEC. 3. Its object shall be to aid the families of deceased traveling preachers of the Florida Conference, Methodist Episcopal Church, South.

SEC. 3. Any traveling preacher of this Conference may become a participating member of this Brotherhood upon having his name enrolled on the Secretary's book and paying the sum of three (\$3) dollars as an advance mortuary fee.

SEC. 4. Any person may become an associate member by having his or her name enrolled and paying an advance mortuary fee of one (\$1) dollar.

SEC. 5. Participating members alone may have financial benefits in the Brotherhood. In other matters all members shall have the same privileges.

SEC. 6. Any participating member who transfers to another Conference may retain his membership by keeping up his fees.

ARTICLE II.

SECTION 1. The amount paid on one death shall be limited to \$800—called the Benefit Fund.

SEC. 2. Each participating member shall file with the Secretary a statement designating the party or parties to whom the Benefit Fund shall be paid. This he may change on due notice given to the Secretary,

SEC. 3. Upon the death of a participating member the Secretary shall issue a draft on the Treasurer in favor of designated beneficiaries, equal to one mortuary fee, from each member, but not exceeding the limit named in Section 1. Provided that there is no dependent relative of the deceased, the claim shall be referred to the Executive Committee, and its action subject to the order of the Brotherhood at its annual meeting.

SEC. 4. The Secretary shall, upon the death of a partici-

pating member, issue a call upon every member of the Brotherhood for one advance mortuary fee, to be remitted within sixty days to him, and by him remitted to the Treasurer.

SEC. 5. Should a participating member fail to pay his mortuary fee within the prescribed time, he must secure from the Secretary an extension of time, otherwise he must be dropped from the roll.

SEC. 6. It shall be the duty of every member to promote the aims of the Brotherhood especially by bringing it before the laity of the Church and canvassing for members.

SEC. 7. All funds not applied on claims of beneficiaries shall be invested by the Treasurer under direction of the Executive Committee as a permanent fund, called the Reserve Fund, the interest on which shall be applied as ordered by the Brotherhood at its annual meeting.

BY LAWS.

1. The officers of the Brotherhood shall be President, Vice-President, Secretary, Treasurer, and Executive Committee consisting of the foregoing officers and three other members, to be elected annually.

2. The officers shall perform the duties usually incumbent on such offices, with such other as elsewhere are specified.

3. The Secretary shall keep a record of proceedings and a register of members. The register shall contain a list of associate members, their post office address, date of joining, and amount and date of payment of each call; a list of participating members, date of joining, and each call of payment of same, of death, amount paid in during membership, and amount paid to beneficiaries.

4. The Executive Committee shall settle cases where claimants on Benefit Fund are not dependent relatives, shall direct the Treasurer in the investment of unapplied funds, and take such means to advance the interests of the Brotherhood as deemed practicable. It shall meet at the call of the President.

5. This Constitution and By Laws may be changed by a two-third vote of the members present and voting.

OFFICERS FOR 1899.

J. B. Ley, President; C. W. Inman, 1st. Vice-President; D. A. Cole, 2nd. Vice-President; F. R. Bridges, Secretary; F. Pasco, Treasurer.

EXECUTIVE COMMITTEE.

G. W. Mitchell, I. S. Patterson, B. F. Mason.



STATISTICAL TABLES.



STATISTICAL TABLE NO. 1.

NAME OF CHARGE.	MEMBERSHIP.										CHURCH PROPERTY.															
	Local Preachers.	Members.	Total Members this year.	Total Members last year.	Addition on Prof. of faith	Additions by Certif. etc.	Removals by death, etc.	Infants Baptized	Adults Baptized	No. of Societies in Charge.	No of Churches	Value of Churches.	Indebtedness on.	No. Parsonages	Value of Parsonages.	Indebtedness on.	Value of.	Value of Other Church Property.	Money Expended for Churches and Parsonages.	No of	Amount of Damage.	Insurance Carried.	Premiums Paid.			
TALLAHASSEE DISTRICT.																										
Tallahassee	1	351	351	351	10	21	31	3	5	1	1	\$15,000	100	2	\$4,500	\$2,000	\$200	\$ 50				5,000				
Monticello		210	210	208	3	8	9	3		1	1	10,000		1	2,500	485		340				6,500	150			
Leon Circuit		202	202	157		2	4			3	3	3,600		1	800											
Quincy	2	133	133	126	2	25	18	9	2	1	1	6,000	382	2	1,200			354	36	1	9	1,500	2			
Gadsen Circuit	4	421	421	410	2	9	5	5	2	5	5	3,200		1	600			585								
Wankeenah Circuit	2	300	300	292	12	5	9	2		4	4	1,600		1	600											
Wakulla Mission	1	270	270	260	9	6	5	4	6	4	4	800		1	50			100								
Concord Circuit	1	309	309	361	4	2	58	1	4	3	3	1,900		1	625		180	200								
Midway Mission		157	157	170		3	16	5		5	5	2,000		1	550		150	140								
Liberty Circuit		139	139	145	5	2	11	1	1	8	6	1,400		1	325	97		25								
Aucilla Circuit	1	240	240	236	9	7	12	10	8	7	7	3,135		1	800			40								
Madison	2	452	452	414	44	11	15	15	30	5	5	3,600		1	1,000			40				600	10			
Madison Circuit	1	303	303	316	5	7	25	2	1	5	5	2,500		1	250			35								
Taylor Mission	1	205	205	133	58	15	22	23	24	6	3	600		1	360		150	60								
Apalachicola		157	157	146	4	11	4	15		1	1	3,000		1	1,000			35				1,500	7	85		
Carabelle Mission		108	108	121		2	14			1	1	1,500		1	325		50	72								
Total	16	3957	3957	3846	167	133	260	63	38	60	55	59,835	482	92	17	15,485	582	2,000	730	2090	36	1	9	15100	176	85
LIVE OAK DISTRICT.																										
Live Oak	1	165	165	150	7	13	5	2	2	1	1	1,500		2	32,00	2,000										
Jasper	1	178	178	156	23	12	13	7	7	1	1	1,250		1	1,000			280								
Hamilton Mission	1	142	142	141	1	6	6		1	4	3	1,150		1	400			26	75							
White Springs Circuit	2	240	240	230	7	6	16	6	3	8	7	2,400		1	400			261	16							
Wellborn Circuit	4	359	359	344	11	4		1	2	5	5	2,500		1	700			11	85							
Pine Mount Mission		225	225	224	8	2	9			6																
Fort White Circuit	2	200	200	179	24	9	12	5	12	3	3	1,950	65	1	1,250	175	200	20								
Lafayette Mission	3	197	197	206	5	12	23	2	3	6	4	875		1	400		40	50								
Newnansville Circuit	5	235	235	208	19	7	9	4	6	5	5	5,350		1	50		200	1,800				750	18	75		
Columbia Circuit		464	464	468	1	15	21	2		6	6	1,700		1	450		185	10								
Lake City	1	174	174	152	5	26	9		5	1	1	2,000		1	1,000			161	55							

Lake Butler Circuit	2	238	238	208	17	13	15	5	19	5	5	2,000		1	800				445 25				
McClenny Mission	1	85	85	95	7	1	13	7	6	4	3	800		1	1,000				80	2	200	2,000	8 50
Starke	2	140	140	141	1	10	11	2		1	1	1,000		1	1,000								
Waldo	4	101	101	90	1	23	26	1		3	3	1,000	150				200						
High Springs	2	184	184	173	10	6	5	8	6	3	3	1,600	100										
Total	31	3227	3227	3135	147	165	190	52	72	62	53	27,675	315	13	10,050	175	2,000	825	3,146 50	2	200	2,750	27 25

GAINESVILLE DISTRICT.

Gainesville	1	299	299	287	15	34	30	3	14	1	1	15,000		2	5,000	2,500	250		550			2,200	
Bronson Circuit	2	248	248	247	5	7	11	3		4	4	4,000		1	250								
Rochelle and Orange Springs	1	200	200	184			8	2		5		4,000		1	1,200								
Melrose Circuit	1	310	310	330	20	18	58	10	2	5	5	4,500		1	1,200		200		326 10				
Citra		97	97	96	3		2	1	1			1,000		1	1,800	300			25			1,000	6 67
Micanopy Circuit		156	156	160		16	20	1		4	3	2,570		1	1,000		20		107 90				
Ocala	1	205	205	240	1	10	44	2	1	1	1	10,000	4,500		2,000		2,000		200			1,000	17 00
Summerfield		117	117	104	19	5	11	3	11	4	3	450							6 50				
Cotton Plant Circuit	3	204	204	181	4	19	12		1	4	2	2,700		1	1,000		500		170				
Wildwood Circuit	2	302	302	302		5				4	3	3,000		1	1,000				10				
Anthony Circuit	3	284	284	301		17																	
Inverness Circuit		139	139	173	3	14	34	1		4	3	2,700	65	1	400				240 22			800	10
Sunter Circuit		187	187		8	16	14	13	3	3	3	1,150		1	300								
Stewarts Chapel		15	15	150	10	11	12	6	3	5	3	2,100		1	600		180						
Brooksville	2	251	251	250	3	5	9	7			5	6,500		1	100				50				
Leesburg	11	195	195	208		27	40	5	1	1	1	3,000		1	2,000				21 80				
Lady Lake Circuit		105	105	136	6		14			4			5	1	600	250							
Marvin Circuit		132	132	148	4	4	24	8	2	3	3	3,700		1	250	30			181 22			1,000	5
Dunnellon		50	50		18		1	1	2	3	1	856 50							37 80				
Levy Mission	4	239	239	243	18	15	15	24	13			1,325							100				
Total	31	3879	3879	3735	137	206	374	90	53	61	47	68,531	4,570	16	16,700	2580	2,500	3,195	2,026 01			6,000	38 67

JACKSONVILLE DISTRICT.

Jacksonville McTyeire Mem.		282	282	262	19	45	44	5	5	1	1	40,000	5,000	1	4,000				281			7,000	
" Riverside		118	118	122		9	13	2		1	1	3,300	500	1	1,350				31				
" St. Matthews		122	122	157		9	46	1		1	1	3,500		1	2,800	1500	200		150			1,000	13
Fernandina		121	121	94	1	30	4	5		1	1	3,000		1	1,800				267 17	1	300	1,500	43
King's Ferry Circuit		79	79	73	6		3		3	4	3	1,500		1	500				58				
Callahan	2	168	168	170	2	5	7	4		4	4	1,400		1	500				250				
Mandarin Mission		75	75	73	4		2	7	1	3	2	1,300							4				
St. Augustine Mission	1	114	114	112	12	1	11	5	9	4	3	1,400							5				
Green Cove and Middleburg		122	122	95	5	27	5	3		3	2	3,600	33	1	200		50		147 60				
Palatka	1	209	209	217	7	12	27	4	3	1	1	5,000		1	1,000				150				
Interlachen		36	36	33						3	2	2,000										600	
Volusia Circuit		160	160	200	15	7	13	3	11	4	5	2,000							11				
Fruitland Circuit		156	156	166	4	7	21	2	1	4	4	2,000		1	500		500		9 75				

STATISTICAL TABLE NO. 1--CONTINUED.

NAME OF CHARGE.	Local Preachers.	MEMBERSHIP.										CHURCH PROPERTY.										
		Members.	Total Members this year.	Total Members last year.	Addition on Prof. of faith	Additions by Certif. etc.	Removals by death, etc.	Infants Baptized	Adults Baptized.	No. of Societies in Charge.	No of Churches	Value of Churches.	Indebtedness on.	No. Parsonages	Value of Parsonages.	Indebtedness on.	Value of.	Value of Other Church Property.	Money Expended for Churches and Parsonages.	No of Amount of Damage.	Insurance Carried.	Premiums Paid.
New Smyria Mission	2	95	95	75	15	10	5	35	12	4	2	950					125	75				
Sanford		135	135	170	2	8	45	3	1	1	1	4,150	1400 00	1	1500	45		224 07		\$3500	30	
Oricedo		163	163	165	4	9	15	4	4	3	3	2,800		1	1500		75	31 60				
Titusville and Cocoa		118	118	120			2			3	3	4,600		1	450		400	37		1000		
Indian River	2	57	57	45	4	8				3	3	600	150 00	1	450		1000	25 80				
West Palm Beach		45	45	31	15	11	3	5	4	3	2	1,500						1000				
DeLand Mission	1	75	75	64	8	9	5		3	2	2	2,800	650 00				658	1588 08		1000	43 50	
Biscayne Bay Mission		99	99	38	24	40	3	6	6	4	2	1,500	225 00				1200	185				
Total	10	2549	2549	2398	149	249	274	64	53	57	48	88,300	7958 00	14	10650	1545	4318	4531 16	1	300	15600	120 50
ORLANDO.																						
Orlando	1	327	327	370	12	28	39	5	4	2	1	4,000		1	2500	250		85		3000	94 30	
Apopka	1	190	190	177	1	4	12			0	5	5,000		1	600	24	400	38				
Umatilla	1	220	220	211	10	6	7	4	2	6	4	4,100		1	150		100					
Kissimmee	2	124	124	117	1	18	4		1	1	1	4,000		1	1000			76		1500	41 50	
Maitland Mission		130	130	115	10	5	6	11	0	5	5	2,500		1	500	98						
Lakeland and Plant City	4	283	283	308	10	32	67	2	5	2	2	3,000		1	500		1200	205		1400	43	
Bartow		226	226	216	22	17	29	11	11	1	1	3,000		2	4000	500	2000	172 18		1000	30	
Fort Meade	2	225	225	254		9	38	10	1	0	4	4,000		1	800	18		60				
Bowling Green Circuit	7	232	232	244	12	17	24	1	11	5	3	1,450		1	300		55	40				
Arcadia	2	181	181	131	20	28	6	24		1	1	5,000	1000 00	1	1000							
DeSoto Circuit	1	217	217	204	19	32	15	4	6	6	2	900						20				
Myers	1	91	91	89	1	14	13	1		1	1	1,200		1	800		75	155				
Caloosahatchie		118	118	112	12	8	16	2	3	4	1	250						175				
Fort Bassenger		62	62	62	2		2	2		3	1	250	20 00									
Kathleen Greenwood	4	142	142	142	1	1	5	1		5	4	2,100		1	600		100	34 50				
Punta Gorda Charlotte Harbor		144	144	125	6	13	8		2	4	2	2,000		1	600			100				
Total	26	2912	2912	2877	139	232	291	80	54	56	38	42,750	1020 00	14	13350	890	2300	1920	1160 68		6900	208 80

TAMPA

Tampa	4	627	627	615	53	57	71	4	23	1	1	\$20,000	1120	1	5000	1500							1680	81		4000	59	
St Petersburg and Port Tampa		72	72	88		12	36	4	2	2	1	1,000		1	350								80					
Seffner Circuit	2	219	219	260	13		3	8	3	5	5	2,150		1	550								121					
Hillsboro Circuit		60	60							4	2	500																
Alafia Circuit	1	396	396	351	27	10	10	17	17	7	7	2,900		1	700								150					
Manatee and Braidentown	2	153	153	158		17	13			2	2	5,500		1	600			300					1146	33		800	18	
Palmetto	1	125	125	125		15	15			1	1	1,200		1	750								208	70				
Sarasota	3	124	124	128	1	1	6	1	5	5	3	1,700		1	250			60					106					
Clear Water and Belle Air	1	74	74		3	7	1	3	1	2	1	2,000		1	800								25					
Largo Circuit	2	279	279	220	56	9	6	7	14	6	6	4,000	60	1	500			15					150			1200	12	
Blanton	1	239	239	209	4	2	10	7	2	6	5	2,150		1	350			25					81	50				
Pasco Mission	2	138	138	120	23	4	14	4	4	5	4	1,200																
Dade City		220	220	191	3	11	10	3	2	3	3	3,000		2	1500			1500	100				211			2500	25	
Key Largo		83	83	8	1	1	4	2		4	2	1,000		1	250								24	75				
Chuckahuskee	1	37	37	44		2	8			3				1	250								12	75				
Key West 1st Charge		321	321	305	3	5	40	13		1	1	28,650		1	5050											2000	10	
Key West Spaleras Chapel		379	379	376	15	23	19	70	1	1	1	5,000		1	2500								22					
Key West Memorial Chapel																												
Key West Cuban Mission		80	80	88	1	5	17	80	1	2	1	2,000		1	1000			3000					21	1	13	2000	10	
Tampa Cuban	1	74	74	93	19	7	19	37	19	2	2	4,200	98	74														
Havana Cuban																												
Total	22	3700	3700	3531	233	197	314	266	90	62	48	88750	1187	74	16000	2110	1500	3485				4049	84	1	13	12500	134	

NAME OF DISTRICT.

RECAPITULATION.

Tallahassee	16	3957	3957	3846	167	136	260	93	88	60	55	59,835	482	92	17	15485	582	2000	730	2090	26	1	9	15100	176	85	
Live Oak	31	3327	3327	3135	147	165	190	52	72	62	53	27,075	315	13	10650	175	2000	825	3146	56	2	200			2756	27	25
Gainesville	31	3879	3879	3739	137	206	374	90	73	61	47	68,531	4570	16	16700	2580	2500	3195	2026	61				6000	38	67	
Jacksonville	10	2549	2549	2398	149	249	274	64	53	57	48	88,300	7958	14	16650	1545		4318	4531	16	1	300		15000	129	50	
Orlando	26	2912	2912	2877	139	232	291	80	54	56	38	42,750	1020	14	13350	800	2000	1930	1160	68				6900	208	80	
Tampa	22	3700	3700	3531	233	197	314	266	90	62	48	88,750	1187	74	16000	2110	1500	3485	4049	84	1	13		12500	134		
Total	136	20333	20333	19526	972	1185	1703	645	410	358	289	375,841	15533	66	90		7882	10000	14483	17005	11	5	522	58850	715	07	
Total Last Year	132	21255	21255	20306	1335	1126	1760	767	508	385	294	388,850			93	88835			15025	70				15335	01		
Increase	4					59										9385									1670	10	
Decrease		922	922	780	363		57	122	98	27	5	13,009		3	5150				542	70							

TAMPA.																						
Tampa.....	\$225	\$225	1500	1500	25	25	90	90	130	130	120	138	40	-40	65	65	86 57	555 50	2	542 71	4682 27	
St Petersburg & Port Tampa	60	36 85	540	331 68	7 50	4	25	14	40	16	35	22	14	8	20	'8	24 60	2	1		
Seffner Cir...	40	29 10	400	289 56	6 50	3	20	10 27	32	10	25	10	7 50	5	15	25 17	29 60	50	535 77	
Hillsboro Cir.....	22 06	22 06	50	50	1	50	50	25	25	27 65	
Alafia Circuit	45	31	410	311	6	2	20	7	32	11 30	30	12	12 50	3	16	5	381	
Manatee and Braidentown	60	60	500	313 31	7 50	2 50	25	9 60	40	34 74	35	12 90	14	5	16	7 40	17	1011 50	
Palmetto.....	60	60	500	500	6	3	16	8	24	7	20	8	8	2	12	5	1	164 35	
Sarasota.....	40	40	350	322	6	6	17	17	24	24	20	24	8	8	8	12	1 25	1	573 25	
Clear Water & Belle Air.....	60	32 93	400	306 91	7 50	3 50	25	11 41	40	26 55	35	11 68	14	6 50	20	10	2 34	412 32	
Largo Circuit	60	60	500	500	7 50	7 50	25	25	40	40	35	40	14	14	18	20	30	1	2	738 50	
Blanton.....	50	16	400	184	6	2	25	8	36	8	30	8	12 50	4	5 55	'8	1	240	
Pasco Mis.....	15 75	10 77	175	120 52	2 25	1 70	7 65	5 78	11	8 31	9	7 43	4 60	3 48	15	4 20	160 85	
Dade City.....	60	48	500	402	7	4	30	15	40	14	35	35	12	3	12 50	5	15 10	135	676 16	
Key Largo.....	40	35 42	300	262 02	4	4 22	20	15 50	28	14 71	25	15 63	8	4 88	2	7 24	1 14	360 76	
Chuckaluskie	10	6 58	130	126	1 50	1 05	8	4 25	8	3 90	10	4 75	2	1	50	136 28	
Key West 1st Charge.....	140	127 75	1000	912 75	20	9 96	60	55 82	80	56 24	75	60 18	25	12	40	13 88	59 60	41 35	9 50	7 69	1601 37	
Key West Spark's Chapel..	140	90	780	644	20	9	60	23 84	72	22	70	25	25	8	12	57 40	46 55	2 50	386 19	1308 98	
Key West Memorial	10	14 48	
Key West Cuban Mis..	20	20	23	23	1	1	3	3	5	5	5	5	2	2	1	1	1	1	1	21	64	
Tampa Cuban Mission.....	25	25	2	2	10	3	20	5 91	15	4 50	5	3	7	2 50	46 91	
Total.....	\$1150 75	976 16	8448	6870 84	144 25	87 93	486 65	306 97	702	448 66	620	450 05	298 10	125 36	341 05	212 73	246 52	804 31	24 59	1803 24	13270 82	
ORLANDO.																						
Orlando.....	175	\$175	\$1200	1200	\$25	25	\$75	76	100	101 68	85	100	25	25	50	50	34 95	83 16	7 31	4	2532 44	
Apopka.....	75	43	600	350	10	5	35	15	55	9 80	45	15	15	4	30	7	452 66	
Umatilla.....	50	50	400	380	5	5	25	25	40	29	25	30	10	5	20	20	1	1	746	
Kissimmee.....	65	47	500	437	7	7	25	12 32	40	21 55	35	24 80	15	6 50	20	8 65	14 70	65 37	1 68	128 65	795 22	
Maitland M..	4	38 75	300	272 63	5	2 50	25	12 50	30	15	25	17	10	5	15	8 55	6 10	1	50	550 91
Lakeland and Plant City..	7 ⁵	75	700	700	12	12	55	25	55	38	45	47	15	8	30	10	1	92	1008 06	

STATISTICAL TABLE NO. 2--CONTINUED.

NAME OF CHARGE.	Presiding Elder.		Preachers In Charge.		Bishops		Conference Claimants		Foreign Missions.		Domestic Missions.		Church Extension.		Education.		W F Mission ary Society Paid.	W H Mission ary Society Total.	Am. Bible Society Paid.	Other Objects.	Total from all Sources.
	Assessed.	Paid.	Assessed.	Paid.	Assessed.	Paid.	Assessed.	Paid.	Assessed.	Paid.	Assessed.	Paid.	Assessed.	Paid.							
Bartow	35	70	150	330 37	12	3	35	16	33	23	45	19	15	5	30	4	1 7 81	118 78
Fort Meade C Bowling	90	47 29	700	412 01	7	4	25	15	50	21	40	25	10	6	2	1 88	549 18
Green Cir..	50	33	355	240 83	7	2	25	10	35	5	25	8	10	...	2)	298 33
Arcadia.....	50	40	400	325	5	5	25	22	30	25 80	30	25 94	10	7	15	10	1	1	452 47
De Soto Cir...	50	42	325	281 43	5	5	20	14	30	15	30	25	25	5	416 51
Myers.....	70	60 92	600	520 07	10	5	35	15	50	29 8	45	25	15	5 50	15	10	1	176 5	84 84
Caloosahat- chie.....	40	40	335	291 27	5	3 35	20	13	20	13	20	17	5	3	10	5	50	264 67	646 79
Fort Bassing- er.....	50	15	280	139 55	5	2	20	5 50	20	5	20	5	5	1	10	2	6 25	181 30
Kathleen and Greenwood.	50	29 50	270	160	5	1	20	1	20	1	20	2	10 50	213
Punta Gorda and Charlotte Harbor.....	75	40	650	400	10	5	35	15	50	25	45	12	15	10	20	15	0	178 55	1	1	...
Total	1102	856 46	7335	6749 16	135	91 85	480	292 32	680	375 74	530	387 74	175	91	319	155 20	100 75	327 08	17 49	866 76	10878 79
GAINESVILLE																					
Gainesville ..	\$150	\$15	\$1000	\$1000	\$11	15	\$65	\$65	\$50	\$50	\$60	\$70	20	20	30	30	30	...	2	659 32	2061 32
Bronson Cir.	85	8 25	800	426 85	15	7	35	23	50	37 15	40	30	14	10	20	8	30 4	3 25	675 81
Rochelle and Orange Spr- ings.....	50	46 85	470 4	350	6	3	20	10	25	8	20	11 50	7 8	3	13	3 57	447 42
Melrose Cir..	75	69 41	670	400	8	5	30	30	35	23	30	30	10	7	17	17	22 40	8	...	86	1241 21
Citra.....	78	70 03	600	530 21	8	5	35	17 50	40	22	30	16	10	10	17	15	52 43	5 3	1	29 67	783 22
Micanopy C..	52	40 81	450	326 16	6	2 70	25	11 30	25	8 70	20	11 38	8	3	13	4 62	44	611 79
Ocala.....	91	73	700	560	12	8	35	30	45	33	40	37	16	11	20	19	25	100	1	...	124 70
Summerfield.	30	25 26	235	180 60	5	3	10	6	15	9 35	12	10	5	2	6	3	60	298 21
Cotton-Plant Circuit.....	52	43 85	450	377 20	6	2	25	11 25	25	11	20	14	8	...	13	3	50	472 65

Wildwood C.	63	31 10	450	293 19	8	6	20	18	26	26	23	16	12	11	...	1	...	95	
Anthony Cir.	63	...	500	...	6	3 57	25	15	25	12 50	20	12 62	8	5	13	6 50	1 54	56 73	
Inverness C.	50	37 05	400	296 24	6	4 95	20	16 85	20	13 92	20	14 85	8	6 60	13	10 75	9 80	90	21 35	529 36	
Sunter Cir.	50	41 50	450	363 91	8	5	25	16 23	25	22	20	17 31	8	4	13	6 50	10 15	...	1	477 61	
Steward's Chapel	45	30 35	350	233 74	5	5	25	25 50	20	20 07	20	24 50	7	7 25	12	12 25	...	7	51 28	418 54	
Brooksville	50	31	450	200	4	3	23	13 60	20	12	20	13	9	5	7	5	373 37	
Leesburg	78	78	600	600	8	8	35	35	40	40	30	35 30	10	10	17	57	33 33	19 45	1	1100	
Lady Lakd C.	30	18 75	300	138 65	3	1	18	5	15	...	15	13 15	5	1	2	177 50	
Marvin Cir.	60	60	500	433 35	8	8	30	30	25	25	25	30	10	10	17	55	25	...	1 50	847 88	
Dunnellon	30	21 25	200	163 22	5	5	10	10	14	14	12	12	5	3	8	4	75	234 47	
Levy. Mis.	30	18 75	235	133 25	3	...	50	10	1	14	1	12	3 25	5	1	6	233 52	
Total.....	\$1215	959 75	\$9810 46	\$7225 57	141	100 72	521	335 29	554	404 29	483	421 86	174	117 85	\$260	262 19	238 57	239 05	4 75	914 10	13527 71
JACKSONVILLE																					
McTyler Memorial	\$150	150	\$1000	\$1075	17 50	14 50	62 50	52	87 50	72 60	75	74 75	18 75	15 50	43 75	34 60	92 60	384 30	1	365 71	2756 51
Riverside	90	33 73	700	306	10 50	3 50	37 50	12	52 50	19 35	45	7	11 25	3	26 25	5 75	1	...	391 53
St. Matthews	60	30 95	500	257 10	7	5	25	12	30	12	30	13	7 50	5	17 50	5	4 30	5 85	...	125 85	681 13
Fernandina	85	85	700	700	11	9	39	32 50	55	30	47	30	11	9	27	9	13 06	212 29	...	130 18	1312 35
King's Ferry Circuit	70	70	500	423 39	5 83	4	20 80	14 50	29 12	18 50	24 96	22	6 24	4	14 55	10	19	665 39
Callahan	35	30	270	250	4 09	2 40	14 60	9	20 44	12	17 52	12 92	4 40	2 18	10 22	5	50	185 20
Mandarin M.	35	25	175	135	4 08	...	50	14 55	2	20 37	2 50	17 46	2 50	4 36	1	10 19	2	...	7 16	50	1 10
St Augustine Mission	35	31 27	200	178 72	4 67	2	16 65	7	23 31	7 30	19 98	9 70	5	2	11 66	4	1 15	...	280 33
Green Cove & Middleburg	40	35	240	222	4 66	1	16 65	1	23 31	2 80	19 98	4	5	294 30
Palatka	115	98	850	725	13 41	9	47 90	33	67 06	43	57 48	48 50	14 37	9	33 53	23	15 25	...	1	...	391 74
Interlachen	30	30 05	175	179	3 50	1	12 50	4	17 50	4	...	15	...	3 75	1	8 75	1 75	225 80
Volusia Cir.	50	42 26	400	317	5 65	...	20 85	5	29 19	...	25	5	6 25	...	14 59	5	404 42
Fruitland Cir	50	45	400	332 58	5 83	1	20 85	6 50	29 19	5	...	25 12	7 75	6 25	...	14 59	2	9 10	6 84	1	440 92
New Smyrna	40	40	365	340	6	1	22	5	16	3	16	3	12	1	6	1	501
Sanford	80	80	720	712 28	9 35	9 35	33 35	33 35	40 10	43 10	40 05	46 75	10	10	23 35	20	15	174 28	1	113 57	1472 90
Oviedo	50	47	425	309 41	5 83	5 83	20 85	33 35	29 19	30	...	20 02	29 19	6 25	15 59	14 59	1 45	623 90
Titusville & Cocoa	50	44 31	450	211 58	5 85	3	20 34	20 45	29 19	9	...	25 02	16 70	6 25	...	14 59	274 74
Indian River	30	17 75	250	180	3 50	...	12 20	5	17 50	...	15	...	4 79	3 75	...	8 75	202 52
West Palm Beach	30	30	250	250	3 50	3 50	12 50	3	17 50	10	12 50	10	6 28	...	14 50	395 75
DeLand	20	20 10	200	218 61	2 34	2 34	8 35	8 35	11 69	11 69	10 22	11 89	2 50	2 50	5 85	5 85	1 90	...	233 81
Biscayne Bay	30	26 50	300	319 10	3 50	2	12 50	2 50	17 50	3	15	3 73	3 75	3 35	8 75	2 50	1	58	508 74
Total.....	\$1125	\$1011 92	9070	1666 49	128 59	79 92	491 45	265 55	674 16	341 84	583 31	331 15	144 90	75 53	329 66	152 04	140 31	793 56	9 55	821 34	12654 04

STATISTICAL TABLE NO. 2--CONTINUED.

TALLAHASSEE																					
Tallahassee	\$23)	\$230	\$1200	1200	22	22	75	75	112	112	106	121	35	\$35	54	\$54	\$95	\$48			2824
Monticello	200	190	1000	921 25	18	18	65	65	95	95	82	115 84	31	31	43	43			5 10	419 32	2065 46
Leon Circuit	55	46 21	275	315 12	5	4	14 01	11 60	27	27	8 75										
Quincy	90	81 14	800	706 36	12 12	10 12	36 36	36 36	45	45	42	42 06	12	12	21	21	35	280 90	10 50	103	1384 90
Gadsden Cir.	72	60	600	504	12	6	8	25	56	30	51	25	19	7	27	5					1262
Waukeenah Circuit	55	38 53	390	288	5	2	21	21	31	31	27	27	10		15	15	31 60				441 53
Wakulla Miss	50	26	450	215	10	4	21	10	22	5	21	5	9	5	14	5			1	80	349
Concord Cir.	70	36	530	275	10	8	33	15	49	20	44	18	18	5	24	5					382
Midway Miss.	45	31 60	335	195 25		1		7		6		6		1 03		2					401 23
Liberty Cir.	40	30	300	200	2	2	11	8	16	8	14	8 25	6		8	50					315
Aucilla Cir.	55	42 30	375	287 77	6	4	19	16	28	19	25	25	9	3	13	7	33 77	17 10	1		520 24
Madison	90	77 10	660	702 51	11	11	38	38	50	56	50	58	18	18	27	27	60 43	160 70	1 51	43	1138 15
Madison Cir.	75	48 35	600	323 13	9	4	34	22	50	24	45	20	17	8	13	7					458 63
Taylor Mis.	44	17 50	400	138 07	4	1	16	7 00	23	9	21	11	8	2 50	7	2			2		283 67
Apalachicola	72	60 85	517 50	432 82	11	4	38	11	56	20 06	50	19	19	4	27	8	3 60	128 20		118 53	925 22
Carrabelle M.	44	23 34	300	159 16	5	2	16	6 70	22	4	20	6	8	1 50	12	2				1	301 75
Total	\$1287	\$1038 92	8732 59	6864 44	142 12	105 12	475 37	375 50	688	492 81	598	508 15	219	133 03	305	203 50	250 40	635 50	21 11	859 10	13538 41
LIVE OAK, D.																					
Live Oak	\$100	\$100	600	600	15 40	10	52	31	56	23	44	30 41	17 65	9	35 30	\$16 70				3 55	826 31
Jasper	95	95	650	625	12	6	41	21	45	20	35	23	14 10	3	26 25	13	15	61 93	1 50	1	1253 53
Hamilton M.	35	32	200	180 58	4 35	3	15 50	10	17	13	13	15 50	5 25	3 50	10 55	5					250 08
White Spring Circuit	60	47 25	420	337 74	7 20	3	26 15	11	28	9	22	8	8 80	3 20	17 65	7	7 17			1	711 20
Welborn Cir.	75	55	500	388 88	8 65	4 50	31	15 50	34	31	21	16 55	10 60	6	21 20	30			1 00		576 94
Pine Mt. Miss	35	23 49	300	203 25		3		10 17		10		4 50		2 90		3			1 07		261 38
Fort White C.	60	51 36	500	407 20	7 20	2 10	26 65	8	28	8 40	24	12 21	8 80	2 65	17 65	5 20	11		1 20	50	509 97
Lafayette M.	31	22	200	144 54	4 35	2	15 55	7 50	17	7 50	13	7 50	5 30	2 50	10 55	3 85	1		1	50	270
Newnansville Circuit	75	65 15	675	586 43	7 95	7 95	28 60	28 60	34	34	24	30 45	9 70	9 70	19 40	19 40	18 91	13 25		1 95	2769 63
Columbia Cir	90	75 28	575	480 46		5		10		20		20		6 50		10					627 24
Lake City *	119	70	700	500	13 20	4	48 40	30 25	52 27	10	41 25	30 10	16 50	85	33 33						651 60
Lake Butler C	40	28 12	335	245	4 35	2	14 50	7	17	7	13	8	5 80	2 10	10 50	6				1	832 97
McClenny M.	30	16 47	235	108	3 60	50	13	1 50	14	1 50	11	6	4 45	1 50	8 05						133 47
Starke	75	65	450	436 13	9 40	3	35 75	12 50	36	8	28	12 50	11 45	5	22 85	16 41	31 47	39 86	25		605 63
Waldo	40	28 25	300	228 85	4 55	3 85	15 50	11 85	17	16 32	13	12 30	5 30	4 75	10 55	10 55		8 30		14 85	380 70
High Springs	45	44	375	300	5	3	20	15	22	16	20	12	10		12			30		1	466
Total	995	818 37	7015	5832 11	107 20	62 96	384 60	230 87	417 27	234 72	322 25	249 02	133 70	63 15	256 73	146 20	83 55	153 34	6 02	25 32	11126 65

* \$60 paid on pastor's salary in 1897 not reported last year.

STATISTICAL TABLE NO. 2--CONTINUED.

RECAPITULATION.

NAME OF DISTRICT.	Presiding Elder.		Preachers in Charge.		Bishops		Conference. Clergymen.		Foreign Missions.		Domestic Missions.		Church Extension.		Education.		W F Mission ary Society Paid.	W H Mission ary Society. Paid.	Am. Bible Society. Paid.	Other Objects.	Total from all Sources.
	Assessed.	Paid.	Assessed.	Paid.	Assessed.	Paid.	Assessed.	Paid.	Assessed.	Paid.	Assessed.	Paid.	Assessed.	Paid.	Assessed.	Paid.					
Tallahassee ..	\$1287	\$1038 92	\$732 50	\$686 44	142 12	\$105 12	\$475 37	\$375 56	\$6 50	\$492 81	\$508 00	\$508 15	\$219 00	\$133 03	\$305 00	\$208 50	\$259 40	\$635 40	\$21 11	\$759 10	13538 41
Live Oak	995	818 37	7015 00	5832 11	107 20	62 96	384 60	230 87	417 27	234 72	322 25	249 02	133 70	63 15	256 73	146 20	83 55	153 34	6 02	25 32	11126 65
Gainesville...	1215	959 75	9810 46	7225 57	141 00	100 72	521 00	395 29	554 00	404 29	489 00	421 86	174 00	117 85	269 00	262 10	238 57	239 05	4 75	914 10	13527 71
Jacksonville.	1125	1011 92	9070 00	7666 49	128 59	79 92	491 45	265 55	674 16	341 84	583 31	367 15	144 90	75 53	329 66	152 04	149 31	793 56	9 55	821 34	12654 04
Orlando	1102	856 46	7365 00	6749 16	135 00	91 85	480 00	292 32	680 00	375 74	560 00	387 00	175 00	91 00	310 00	155 20	100 75	327 08	17 49	866 76	10878 79
Tampa	1150	976 16	8448 00	6870 84	144 25	87 93	486 65	306 97	702 00	448 66	620 00	459 05	298 10	132 36	341 05	212 73	246 52	864 31	24 59	1808 24	13270 82
Total	\$6874 75	\$5661 58	50440 96	41208 61	798 16	528 50	2830 07	1866 56	3715 43	2298 00	3172 56	2392 97	1144 70	\$612 92	1811 44	1131 77	1078 10	2952 84	83 51	5289 86	74996 42
Total last yr	6868 75	5590 93	50192 00	42057 44	951 46	597 72	2918 05	1834 55	3948 59	2366 24	3433 24	2520 76	1159 00	668 09	1873 79	872 33	119 92	5346 80	76823 02
Increase..	6 00	70 65	32 01	259 44
Decrease	251 04	848 83	153 30	60 22	78 98	233 16	68 18	260 68	127 79	14 30	55 17	62 35	36 41	56 94	1826 60

STATISTICAL TABLE NO. 3.

NAME OF CHARGE.	SUNDAY SCHOOLS.									
	No. Epworth Lgs.	No. League Mbs.	No. of Schools.	No. of Officers and Teachers.	No. of Scholars	Am't. Collected for Sunday Schools.	Am't. Collected for Missions.	Am't. Collected on Children's Day.	Am't. Collected for Other objects.	Total Amount raised in Sunday schools.
TALLAHASSEE DISTRICT.										
Tallahassee	1	50	1	30	175	86 73	15	10	227	338 73
Monticello	1	20	1	19	95	30	54 69	7 69	30	122 38
Leon Circuit	1	...	2	11	26	3 20	3 20
Quincy	1	54	1	10	77	28	10	8 65	...	36 65
Gadsden Cir.	4	18	125	15	...	1 27	...	15
Waukeenah Circuit	1	20	2	16	94	15 01	2 60	...	3 30	22 21
Wakulla Mission	1	26	4	12	100	8	1	9
Concord Cir.	4	20	160	25	25
Midway Mission	5	...	132	9	2 68	2 35	...	14 03
Liberty Cir.	3	15	60	25	2 50	27 50
Aucilla Cir.	5	24	172	16 70	2	23 70
Madison	2	25	4	25	174	57 50	8	65 50
Madison Cir.	1	16	1	3	20	10
Taylor Mis.	1	6	20	10	10
Apalachicola	1	10	60	32 66	18 57	51 23
Carrabelle M.	1	7	92	13 85	1	4 50	...	24 05
Total	9	211	38	223	1582	375 68	118 04	34 46	205 30	788 81
LIVE OAK DISTRICT										
Live Oak	1	17	85	...	8 41	8 41
Jasper	1	42	1	12	128	37	4	41
Hamilton M.	4	19	117	14 50	...	1 35	3 60	17 80
White Spring Circuit	1	31	5	28	150	20 53	20 53
Welborn Cir.	6	36	240	38 11	3 55	...	11 85	59 51
Pine Mt. Miss.	3	17	103	9 29	9 29
Fort White C.	2	10	109	13	5 01	18 01
Lafayette M. Circuit	2	12	86	31	1 23	1	65	98 23
Newnansville
Columbia Cir.	1	45	4	...	20
Lake City	1	70	1	12	98	44 51	9 63	...	17	6 16
Lake Butler Circuit	1	40	2	14	82
McClenny Mission	2	45	4	12	65	6	...	2	...	8
Starke	1	...	1	8	75	15	5 51	...	15	35 51
Waldo	1	15	3	13	100	20	6 61	3	11	40 61
High Springs	1	30	3	18	165	48	...	3	...	59
Total	10	318	42	228	1629	296 94	43 95	10 35	123 45	483 06
GAINESVILLE DISTRICT.										
Gainesville	1	35	1	6	130	25	17	42
Bronson Circuit	1	20	3	15	125	35	7 70	2	...	44 70
Rochelle & Orange Springs	1	18	5	18	250	25	...	3	...	28
Melrose Circuit	3	75	5	31	200	65 65	10	1 65	...	77 30
Cultra	1	25	1	7	52	30	7 14	...	25	32 14
Micanopy Circuit	1	40	1	13	56	48 29	160	4 01	52 30	106 20
Ocala	2	124	1	20	201	56 13	24 16	3 90	40	92 73
Summerfield	1	19	3	12	75	20	1	...	10	31
Cnotton Plant Circuit	2	40	3	15	125	13	7 62	...	25	45 63
Wildwood Circuit	4	12	90	25	19	44
Anthony Circuit	5	37	265
Inverness Circuit	4	23	146	46 28	15 76	6 79	6 07	74 90
Sunter Circuit	1	31	2	13	120	23 09	6 31	10	7 50	46 90
Stewarts Chapel	2	51	5	32	157	26 56	12 46	2 95	5	35 51
Brooksville	4	30	200	30	9	1 52	...	40 52
Leesburg	1	41	1	17	137	41 32	17	2 58	19 50	80 90
Lady Lake Circuit	2	10	36	12 86	12 86
Marvin Circuit	2	16	106	20 76	7 39	7 89	2 77	38 61
Lunnellon	1	16	2	10	61	12 98	2	14 98
Levy Mission	4	18	138	8 62	2 03	...	8	18 65
Total	18	535	58	358	2670	565 54	303 96	46 29	223 14	967 13

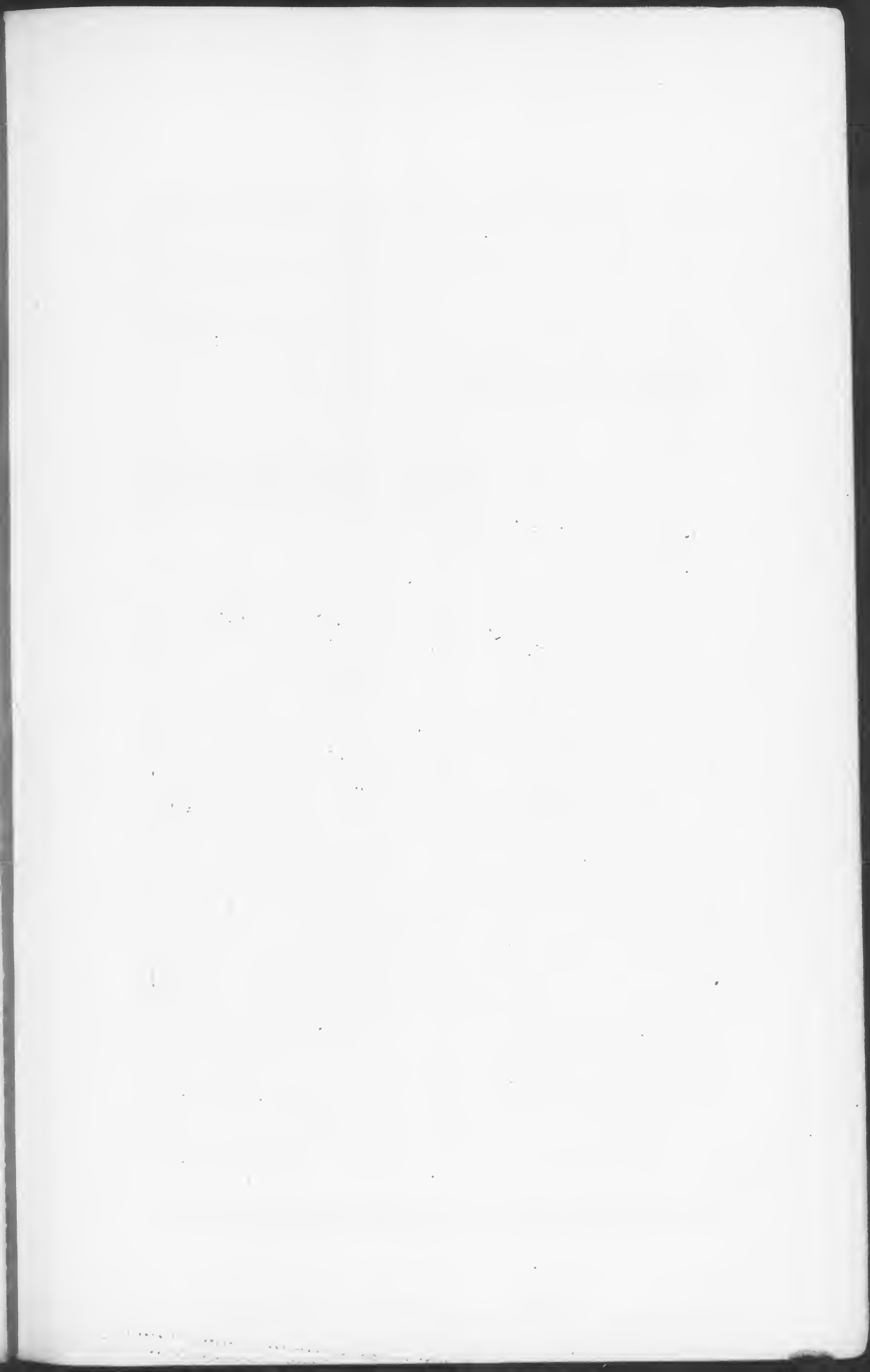
STATISTICAL TABLE NO. 3—CONTINUED.

NAME OF CHARGE.	SUNDAY SCHOOLS.									
	No. Epworth Lgs.	No. League Mbs.	No. of Schools.	No. of Officers and Teachers.	No. of Scholars	Amt. Collected for Sunday Schools.	Amt. Collected for Missions.	Amt. Collected on Children's Day.	Amt. Collected for Other objects.	Total Amount raised in Sunday schools.
JACKSONVILLE DISTRICT.										
JacksonvilleMcTyeireMem	2	75	1	15	125	78 70	21 13	99 83
" Riverside.....	1	...	1	8	60	...	11 20	11 20
" St. Matthews.	1	14	1	10	60	21 65	10	4 13	...	35 78
Fernandina.....	1	25	1	10	87	42 32	10	52 32
King's Ferry Circuit.....	1	20	3	14	100	27	4	2 85	...	33 85
Callahan.....	1	14	4	24	120	20	7	27
Mandarin Mission.....	1	4	25	6	6
St. Augustine Mission.....	2	46	2	10	54	10	1 70	1 69	27	40 80
Green Cove & Middleburg.	3	13	110	38	1	80	2 80	5 90
Palatka.....	1	13	100	60	8 50	...	6	74 50
Interlachen.....	1	12	2	10	42	...	1	1
Volusia Circuit.....	2	22	150	25	92	4 24	...	30 16
Fruitland Circuit.....	1	2	3	14	105	12 75	2	2 26	5 50	22 51
New Smyrna Mission.....	4	20	200	35	2	1	...	35
Sanford.....	2	53	1	3	64	40 23	18 16	...	66 54	124 93
Oviedo.....	2	12	75	18 32	2 15	4 68	2	27 15
Titusville and Cocoa.....	3	14	2	13	68	21 14	21 14
Indian River.....	1	23	2	7	66	25
West Palm Beach.....	1	27	1	6	50	25	17 48
DeLand Mission.....	2	45	1	6	45	6 40	7 91	1 50	1 67	26
Biscayne Bay Mission.....	4	20	162	26	26
Total.....	20	425	44	248	1918	518 51	108 67	28 15	11 51	717 70
ORLANDO.										
Orlando.....	2	136	1	24	201	259 45	155 42	3 80	10 06	314 97
Apopka.....	2	30	5	28	145	30	27 69	1	8	67 69
Umatilla.....	3	94	4	20	138	30	15 74	35 74
Kissimmee.....	1	26	1	12	100	33 54	10 03	43 57
Maitland Mission.....	2	3	4	19	95	30 04	2 50	32 54
Lakeland and Plant City	2	110	2	27	240	77 30	31 65	2 59	15	111 54
Bartow.....	1	15	1	11	97	29 37	10 85	40 22
Fort Meade.....	3	101	1	21	170	53	5	58
Bowling Green Circuit.....	1	20	158	16 20	2	1 70	...	19 90
Arcadia.....	1	...	1	10	95	45 50	46 70	95 20
DeSoto Circuit.....	1	3	7	2	125	28	6	34
Myers.....	1	52	1	10	79	46 64	10 77	57 41
Caloosahatchie.....	4	19	110	84 68	10 61	2 83	36 58	131 87
Fort Bassenger.....	1	2	18	...	5 50	5 50
Kathleen Greenwood	3	9	75	6 38	6 38
Punta GordaCharlotteHarbor.	1	15	2	17	125	55	25	1	...	81
Total.....	20	662	47	283	1977	825 10	355 46	12 92	69 64	1135 53
TAMPA										
Tampa.....	2	68	1	25	210	135 57	20	25	...	180 57
St Petersburg&Port Tampa	2	...	2	16	152	48	14 52	2 20	...	64 72
Seffner Circuit.....	1	53	5	23	118	19 58	8 19	5	...	32 57
Hillsboro Circuit.....	4	10	90	2	...	2
Alafia Circuit.....	5	30	175	30	10	4 25	...	44 25
Manatee and Braidentown	2	21	105	37 07	19 99	1 02	...	48 08
Palmetto.....	1	20	1	7	84	18 25	3 20	1 25	...	22 70
Sarasota.....	4	20	61	12	4	16
Clear Water and Belle Air.	1	6	64	...	3 68	...	14 25	17 93
Largo Circuit.....	1	30	6	42	250	40	40	4 20	12	96 30
Blanton.....	2	53	3	21	99	53 32	2 57	1 20	...	57 18
Pasco Mission.....	3	15	60	15	8 12	18 12
Dade City.....	1	40	2	15	100	...	7 50	85	20 19	27 50
Key Largo.....	4	18	70	5 90	3 40	9 35
Chuckaluskee.....	1	6	50	...	2	...	9 70	11 70
Key West 1st Charge.....	1	81	1	44	209	18 40	38 41	6	6	168 81
Key West Spark Chapel.....	1	75	1	33	206	70 72	...	4 40	1 40	78 72
Key West Memorial Chapel	2	10	85	6
Key West Cuban Mission.....	2	14	140	7 41
Tampa Cuban.....	1	16	2	14	140
Havana Cuban.....
Total.....	11	496	50	335	2388	609 86	186 99	30 46	90 44	809 82

STATISTICAL TABLE NO. 3—CONTINUED.

RECAPITULATION.

NAME OF DISTRICT.	No. Epworth Lgs.	No. League Mbs.	SUNDAY SCHOOLS.							
			No. of Schools.	No. of Officers and Teachers.	No. of Scholars	Amt. Collected for Sunday Schools.	Amt. Collected for Missions.	Amt. Collected on Children's Day.	Amt. Collected for Other objects.	Total Amount raised in Sunday schools.
Tallahassee	9	211	33	233	1582	374 08	118 04	34 46	265 30	788 18
Live Oak	18	318	42	228	1629	296 93	48 95	10 35	123 41	483 06
Gainesville.....	18	535	58	358	2670	565 54	303 98	46 29	223 15	907 13
Jacksonville.....	20	425	44	248	1918	518 51	108 67	23 15	11 51	717 70
Orlando	20	662	47	283	1977	825 10	355 46	12 92	69 64	1135 53
Tampa.....	11	406	50	385	2388	609 86	186 99	30 46	90 44	809 82
Total	88	2557	279	1725	12164	3191 63	1117 09	157 63	783 48	4031 42
Total Last Year.....	100	2846	289	1932	12784	3378 49	882 30	218 05	1070 31	5541 64
Increase							234 79			
Decrease	12	287	10	207	620	185 86		60 42	286 83	610 22





State Institute ❧ ❧ ❧

—FOR THE—

❧ ❧ ❧ **Blind and the Deaf**

FOUNDED 1885

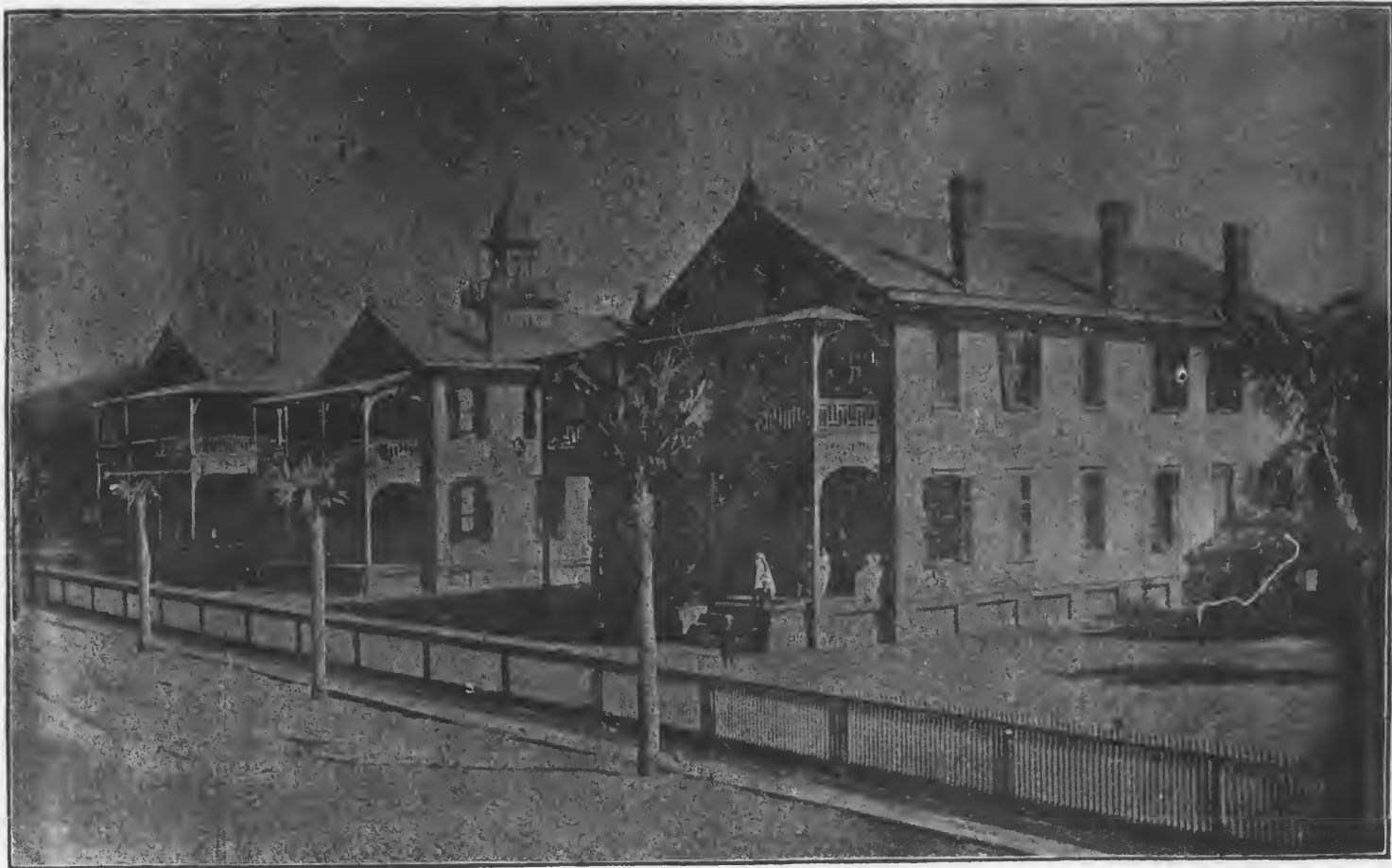
Open to all deaf or blind children in the State of Florida between the ages of six and twenty-one years.

Tuition free, and everything else furnished by the State when required, except first transportation which must be paid by the parents or the County where they reside. Blank forms will be sent upon application which must be filled out before the admission of a pupil.

The Superintendent will be glad to receive information concerning deaf or blind children in the State not in attendance at the Institute, that he may open correspondence with the parent or guardian.

Address all communications to
FREDERICK PASCO,
Superintendent,
St. Augustine, Fla.







State Institute ♪ ♪ ♪

—FOR THE—

♪ ♪ ♪ **Blind and the Deaf**

FOUNDED 1885

Open to all deaf or blind children in the State of Florida between the ages of six and twenty-one years.

Tuition free, and everything else furnished by the State when required, except first transportation which must be paid by the parents or the County where they reside. Blank forms will be sent upon application which must be filled out before the admission of a pupil.

The Superintendent will be glad to receive information concerning deaf or blind children in the State not in attendance at the Institute, that he may open correspondence with the parent or guardian.

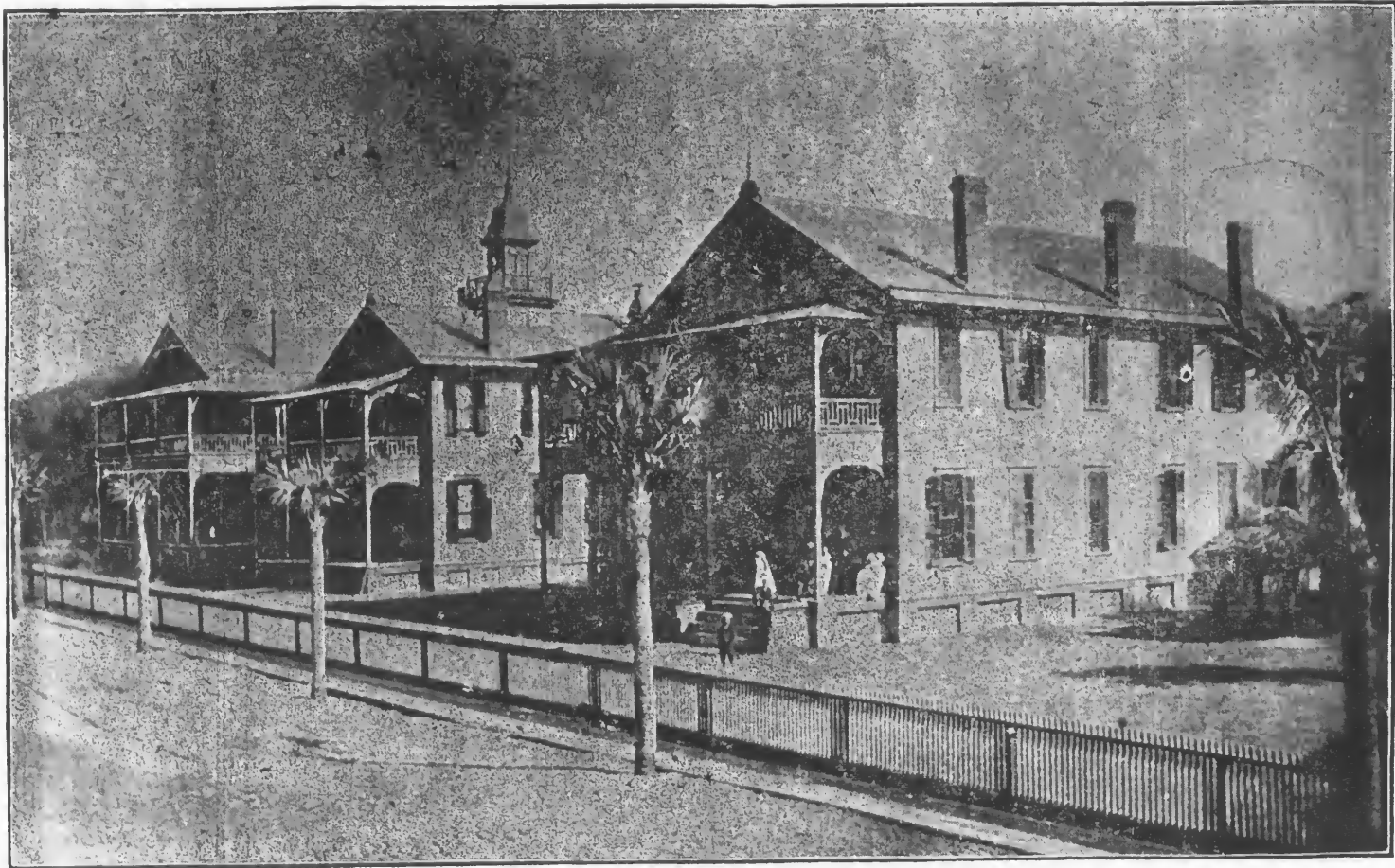
Address all communications to

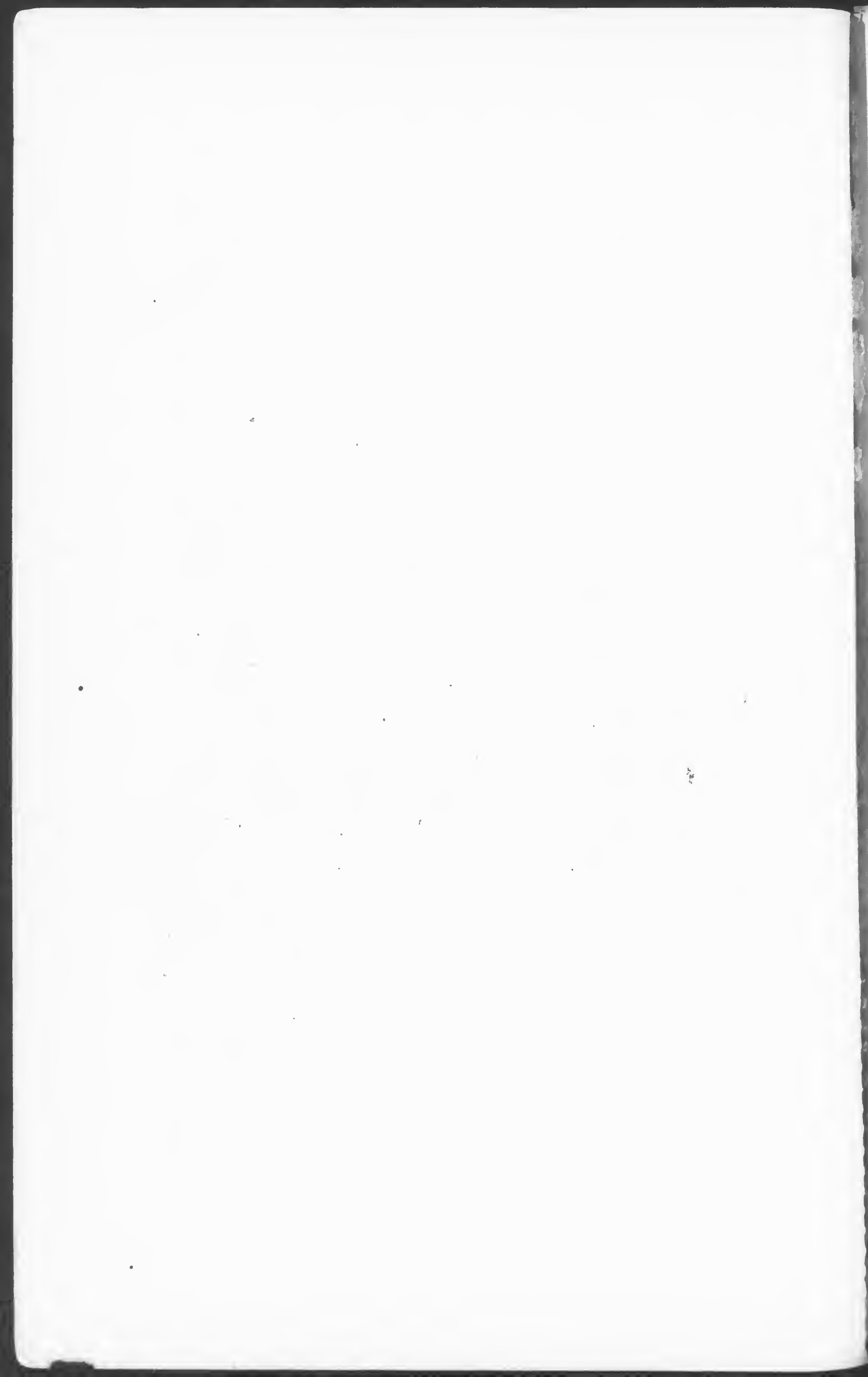
FREDERICK PASCO,

Superintendent,

St. Augustine, Fla.







NATIONAL CHURCH

Mutual Fire Insurance Association

~OF~

Lisbon, Iowa

INSURES _____

Churches, Parsonages Minister's Dwellings and
Personal effects at cost,

Company is highly recommended

Write for Circulars.

Every Pastor or Officer of any Church will be interested in

This Advertisement.

35 Per-Cent. Saved

.... IN COST OF

Fire Insurance on Church Property.

Southern Stock-Mutual and Underwriters Insurance Co's. of Greensboro, N. C.

THE PLAN. 1. In North and South Carolina where the business is under the personal supervision of the Managers and local agents of the companies, a general business is done, subject to rigid restrictions.

2. In other Southern States the churches are dealt with directly and church property exclusively is insured, that is, church buildings and furniture, parsonages, ministers' furniture and library. In these States the assured (the church) receives a cash discount of 15 per cent commission, and this with the policy-holders annual dividend of 20 per cent. (see below) makes a saving of 35 per-cent on every church policy. (3) The usual established rates of insurance are charged.

(4) All profits except the Charter Reserves and fixed stock-holders percentage are returned annually to policy-holders. (5) Policy-holders assume no liability whatever, are exempt from liability by charter.

Combined assets to policyholders \$219,162.78, \$2,410.72 in Dividends to Policy-holders on business of 1895-96-97, being 20per-cent. each year.

Five Thousand Testimonials like the following can be Furnished.

We are personally acquainted with most of the officers and directors of the Southern Stockmutual and Underwriters Ins. Companies and know them to be, not only prominent as citizens, but recognized financiers and successful business men. The Companies have had a remarkably successful history, and so far as we have been able to learn, have given great satisfaction to their policy holders.

North Carolina Christian Advocate.

Editorial Oct. 26, 1898.

20 Per-Cent Dividends to Policy-Holders.

Greensboro, N.C. July 25th, 98. We have been carrying since Jan'y, 1896 on our church building, a policy in the Southern Stock-Mutual Insurance Company of Greensboro, N. C. We believe that our insurance is as good as the best and it is costing us much less than other companies charge. This is a strong, safe, solvent, successful company. The people of Greensboro think there is no better.

G. T. Glascock.

Trus.-Centenary M. E. Church.

Greensboro, N. C. Feb'y 1898.

We have been carrying for the past three years a policy on our banking house in the Southern Stock-Mutual Ins. Company. Our dividends amounted to \$21.00.

We commend this excellent Company as strong, safe and deserving the patronage of our people.

The Greensboro National Bank.

By Neil Ellington, President.

Propmt Payment of Losses.

Newton, N. C. March 10, 96.

On March 5th 1896, the Presbyterian Manse at this place was destroyed by fire. The building was insured in the Southern Stock-Mutual Ins. Company and we have to-day received a check for the amount of our policy without deduction or discount.

We have never known an insurance loss to be settled more promptly or more satisfactorily.

Trustees-Presbyterian Church.

By A. J. Seagle.

For our eight page circular and other information address.

Wharton & McAlister, Managers,
Greensboro, N. C.