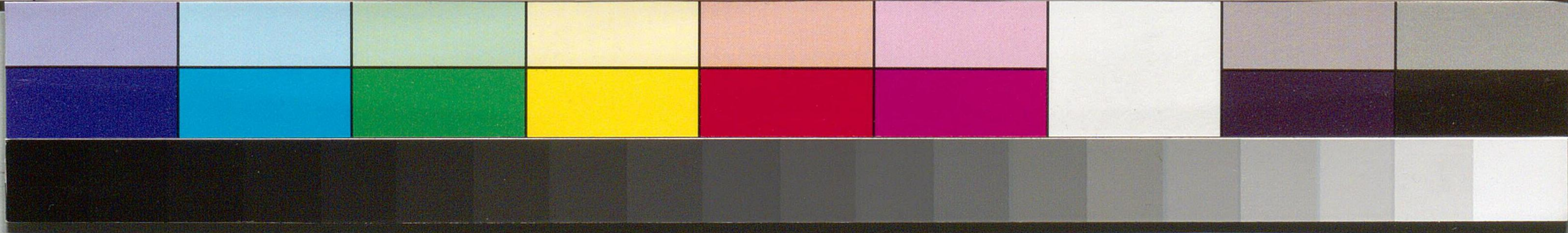
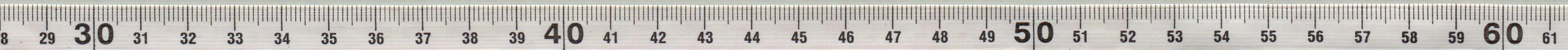
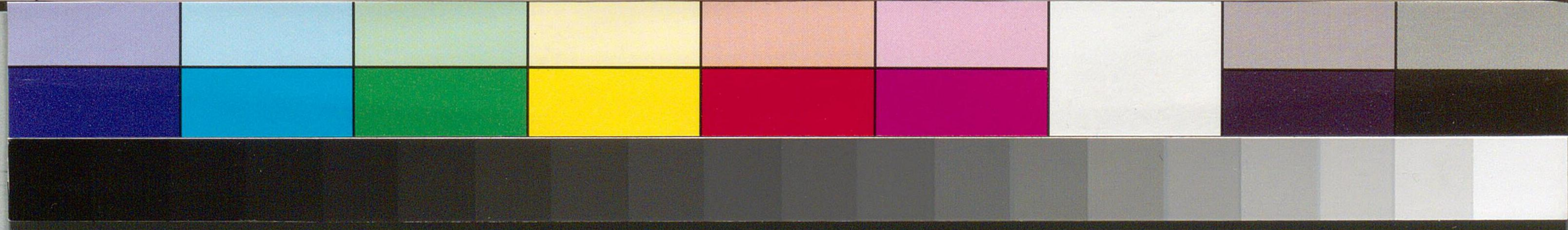
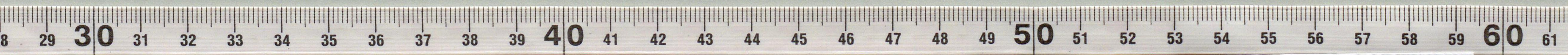
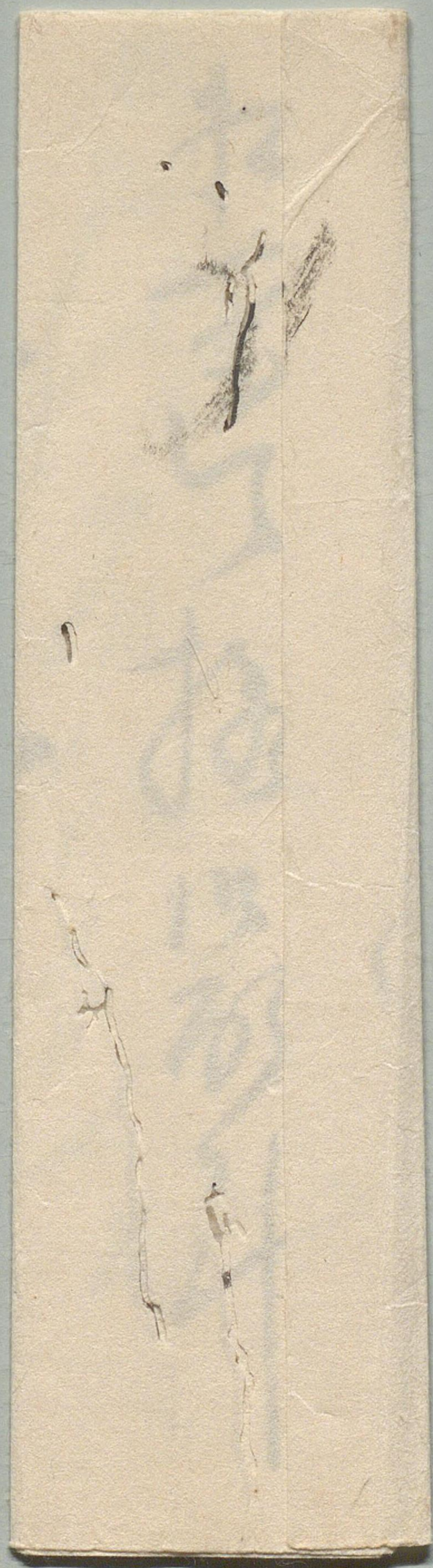


尾崎三良







国立国会図書館 尾崎三良関係文書 23-7



尾崎三良

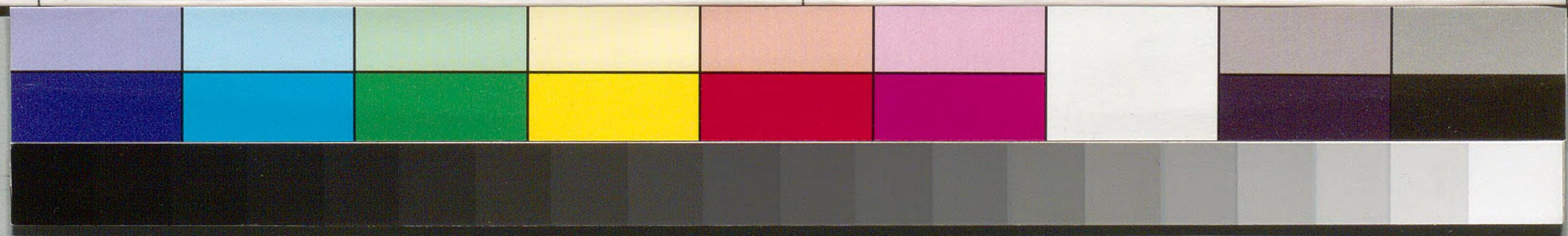
尾崎三良

尾崎三良

尾崎三良

尾崎三良

尾崎三良





Handwritten Japanese text in cursive style (sōsho) on aged, stained paper. The text is arranged in vertical columns, likely representing a list or a series of entries. The characters are dark ink, and the paper shows signs of wear, including tears and discoloration.

