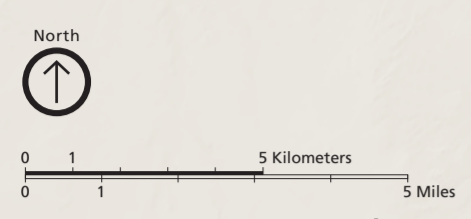


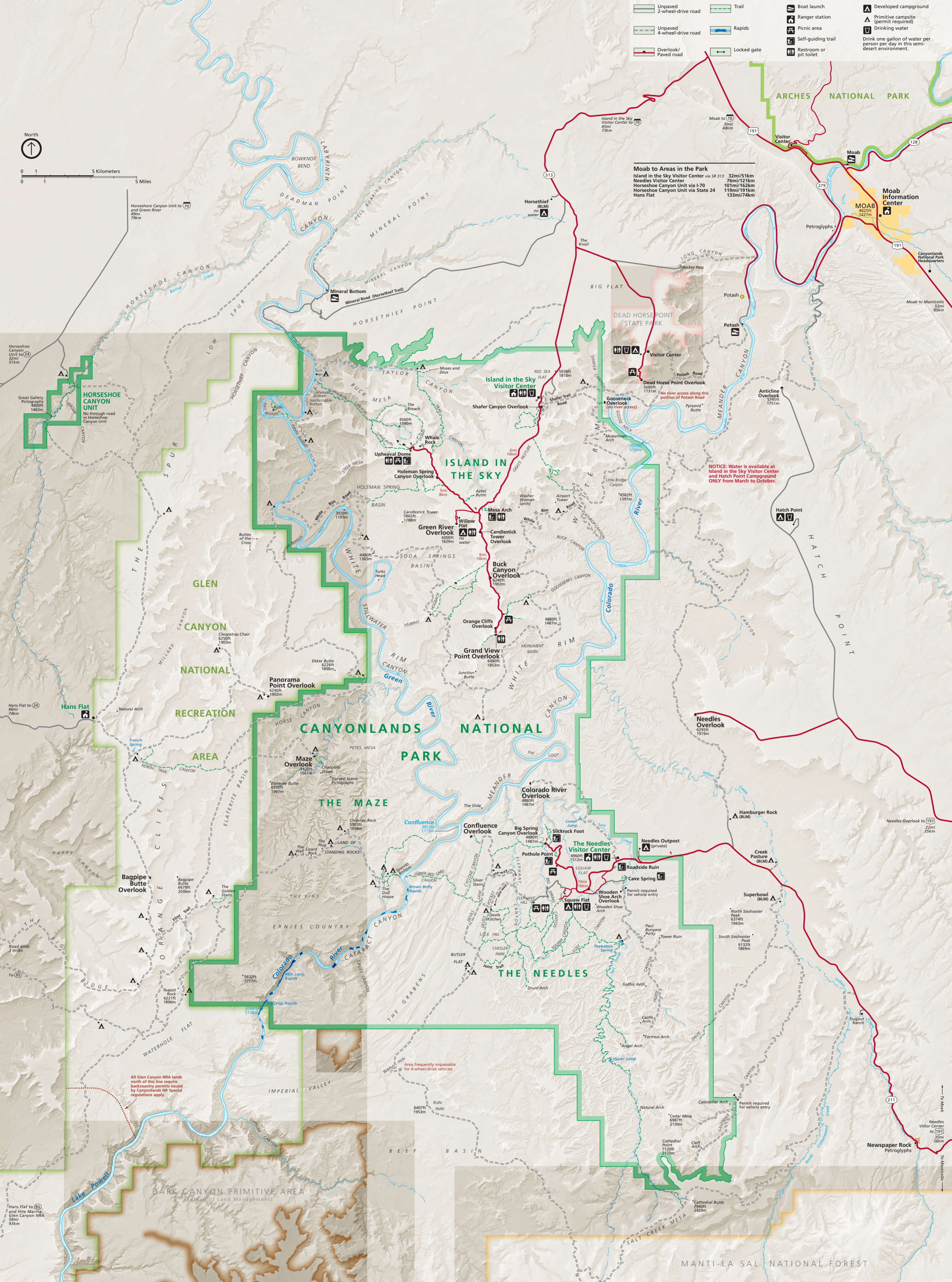
- Unpaved 2-wheel-drive road
- Unpaved 4-wheel-drive road
- Overlook/Paved road
- Trail
- Rapids
- Locked gate
- Boat launch
- Ranger station
- Picnic area
- Self-guiding trail
- Restroom or pit toilet
- Developed campground
- Primitive campsite (permit required)
- Drinking water
- Drink one gallon of water per person per day in this semi-desert environment.



**Moab to Areas in the Park**

Island in the Sky Visitor Center via SR 313	32mi/51km
Needles Visitor Center	76mi/121km
Horseshoe Canyon Unit via I-70	101mi/162km
Horseshoe Canyon Unit via State 24	119mi/191km
Hans Flat	133mi/214km

**NOTICE: Water is available at Island in the Sky Visitor Center and Hatch Point Campground ONLY from March to October.**



Horseshoe Canyon Unit to 70  
49mi/79km

Horseshoe Canyon Unit to 24  
21mi/34km

Hans Flat to 24  
46mi/74km

Bagpipe Butte Overlook

All Glen Canyon NRA lands north of this line require backcountry permits issued by Canyonlands NP. Special regulations apply.

Hans Flat to 95  
land Hite Marina, Glen Canyon NRA  
58mi/93km

Island in the Sky Visitor Center to 70  
45mi/73km

Moab to 70  
30mi/48km

Moab to Monticello  
33mi/53km

Moab to Monticello  
53mi/85km

Needles Overlook to 191  
22mi/35km

Needles Visitor Center to 191  
25mi/40km

To Monticello

DARK CANYON PRIMITIVE AREA  
(Bureau of Land Management)

MANTI-LA SAL NATIONAL FOREST