



19
OAK LEAVES



CARLYLE CAMPBELL LIBRARY

CLASS
A
376.8

BOOK
M54V
1949

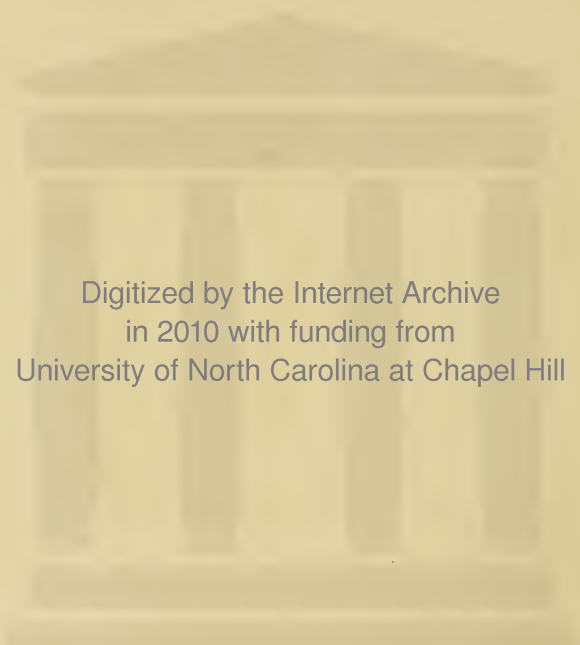
ACCESSION
33210

MEREDITH COLLEGE
RALEIGH, N. C.

The background of the cover is a light beige color with a dark teal line drawing. The drawing is abstract and modern, featuring a central figure that appears to be a woman in a long, flowing dress, possibly in a dynamic pose. To the left, there are several circular shapes that look like stylized faces or profiles. The overall style is reminiscent of mid-20th-century graphic design.

CARLYLE
CAMPBELL
LIBRARY

Meredith College
Raleigh, NC 27607-5298



Digitized by the Internet Archive
in 2010 with funding from
University of North Carolina at Chapel Hill

<http://www.archive.org/details/oakleaves1949bapt>

O

ak Leaves of '49



MAGDALENE CREECH-----*Editor*
JOSEPHINE SNOW-----*Business Manager*

THIS BOOK WAS PRINTED BY EDWARDS AND BROUGHTON OF RALEIGH, NORTH CAROLINA. THE PAPER USED WAS SATIN PROOF AND THE TYPE BODONI. ENGRAVINGS WERE MADE BY THE LYNCHBURG ENGRAVING COMPANY OF VIRGINIA; THE ART WORK WAS DONE BY THE STUDENTS OF MEREDITH COLLEGE UNDER THE DIRECTION OF BETTY JANE HEDGEPEETH, AND THE PHOTOGRAPHY BY FRANCIS LAVERGNE JOHNSON OF CHAPEL HILL, HARRY E. COOPER, AND BY MEREDITH STUDENTS AND FACULTY.

Meredith College Library
Raleigh, N. C.







THE

YEARBOOK OF

Meredith
College



33210



A Pictorial History of Our Years





t School

And now let us remember—

Nor shall we soon forget—

because here,

at Meredith,

We've found an Art in

Living .



Dedication

We sought for Art in Living;
We found the key with you,
For you symbolize
That which is highest and best in life.
Therefore, because of the inspiration
Which you have quietly given to each of us,
We dedicate this, our OAK LEAVES of '49

To you

DR. L. E. M. FREEMAN





Under your guidance, we made the decisions that shaped the patterns of our lives for the future.



THE ADMINISTRATION





TO MEREDITH COLLEGE STUDENTS:

We treasure the OAK LEAVES as a record of happy fellowship and worthy achievement. This volume, covering the fiftieth year of life at Meredith, should be particularly appealing and memorable.

I am grateful for the privilege of stimulating association with you, for your cordial and responsive attitude towards the leadership which Meredith has endeavored to provide. It is my earnest hope that through the coming years your experiences here will seem to you "the fair beginning of a time."

CARLYLE CAMPBELL,
President.

December 7, 1948

Never has a period of history so needed educated women with high ideals as the decade before us. Well-informed, unprejudiced, and understanding women must continuously exert their influence for peace and progress. Your Alma Mater challenges her graduates of '49 to such leadership in the march of human progress.

DEAN PEACOCK.

LEISHMAN A. PEACOCK, Ph.D.

Dean



LILLIAN GRANT, A.M.

Dean of Women

Through the pages of this book may you live again the happy year we have spent together at Meredith. Thank you for your friendship and your splendid cooperation.

LILLIAN GRANT.



ZENO MARTIN, A.B.
Bursar and Treasurer



BOARD OF TRUSTEES

1948-1949

H. Pat Taylor, President.....Wadesboro
Beth Carroll Taylor, Vice-President.....Raleigh
Zeno Martin, Secretary-Treasurer.....Raleigh

Terms Expire 1949

Carroll Abbott.....Elizabeth City
Walter Roy Chambers.....Marion
Buna Lawrence Clark.....Asheville
Robert G. Deyton.....Raleigh
W. H. Plemmons.....Chapel Hill
Edwin Walker Yates.....Raleigh

Terms Expire 1950

Annie Ruth Caldwell Baker.....Lumberton
O. Max Gardner, Jr.....Shelby
Robert L. Humber.....Greenville
Broadus E. Jones.....Raleigh
Mary P. Lethco.....Charlotte
L. E. Spikes.....Burlington

Terms Expire 1951

Howard J. Ford.....Elkin
J. Rufus Hunter.....Raleigh
Jack M. Kesler.....Winston-Salem
Winnie Rickett Pearce.....Durham
Thos. P. Pruitt.....Hickory
Beth Carroll Taylor.....Raleigh
H. Pat Taylor.....Wadesboro

Terms Expire 1952

Claude U. Broach.....Charlotte
Maude Davis Bunn.....Raleigh
H. M. Roland.....Wilmington
James B. Turner.....Laurinburg
W. H. Weatherspoon.....Raleigh
Eph Whisenhunt.....Clayton

THE MIND OF THE FACULTY

Who knows the mind of the faculty? (Nay, with all the marriages and other changes, who knows the names of the members of the faculty?) It's a case of many men many minds, to be sure, but also a case of many minds in one man—or woman. With income tax right around the corner, and in the offing term papers, a talk to the missionary society, a faculty meeting, basketball practice, et cetera et cetera ad infinitum, who could work with a single mind?

In one way the Ph.D.'s are like the M.D.'s; their dicta are often inconclusive because science has not yet provided material for all the answers. Should a student take, for an elective, a course in home economics or a course in philosophy? Should she drop a course she is failing or learn perseverance by continuing it? When should she be encouraged and when should she be scolded? Who knows enough to make accurate decisions on questions like these? To use an old figure, we are working on the wrong side of the tapestry, with knots, broken threads, and indistinct colors trying to weave a pattern on the right side. Sometimes the threads become inextricably snarled and there is no pattern; but sometimes the pattern becomes a living, breathing reality: a busy physician working unerringly in the adjustment of her instruments; a high school instructor guiding a too active boy through irregular French verbs; or a young mother illustrating for a three-year-old the intricacies of handling a fork. Then the teacher takes heart and returns with gratitude to the knots and broken threads, to the logarithms and gerunds, to the uncertainties and et ceteras, happy to be at work in the greatest of all arts, the art of living.



ENGLISH

HARRIS, JULIA H., Ph.D., *Professor*; JOHNSON, MARY LYNCH, Ph.D., *Professor*; LANHAM, LOUISE, Ph.D., *Assistant Professor*; ROSE, NORMA Ph.D., *Assistant Professor*; HILDERMAN, CATHERINE, A.M., *Instructor in English and speech.*

RELIGION

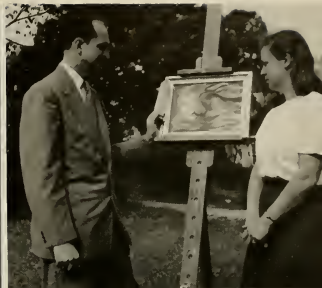
MCLAIN, RALPH E., Ph.D., *Professor*; FREEMAN, L. E. M., Th.D., *Professor*; CURRIN, BILLIE RUTH, A. M., *Instructor.*



SOCIOLOGY AND ECONOMICS

PARKER, CLYDE N., Ph.D., *Professor*; SYRON, LESLIE W., A.M., *Instructor*; STREET, BETTY E., A.B., *Instructor.*





CHEMISTRY AND PHYSICS

YARBROUGH, MARY, Ph.D., *Professor*; COLLINS, HELEN JO, M.S., *Instructor*.

ART

REYNOLDS, DOUGLAS W., B.F.A., *Associate Professor*; REAM, MARY A., A.M., *Instructor*.

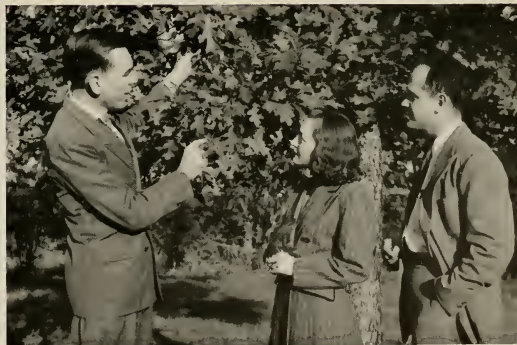
BUSINESS

POPHAM, ESTELLE, Ph.D., *Professor*; ELLIS, MABEL, A.M., *Instructor*.



BIOLOGY

YARBROUGH, JOHN A., Ph.D., *Professor*; PARKER, HELEN, A.M., *Instructor*.





MUSIC

COOPER, HARRY E., Mus.D., F.A.G.O.,
Professor; PRATT, STUART, Mus.M.,
Professor; DONLEY, BEATRICE, B.M.,
Associate Professor; WILMOT, DAVID
 L., A.M., *Assistant Professor*; ROSEN-
 BERGER, RACHEL, M.Mus., *Instructor*;
 ASHLEY, HELEN, M.Mus., *Instructor*;
 WOODMAN, RUTH S., A.M., *Instructor*;
 WELLS, CYNTHIA, M. S., *Instructor*.



EDUCATION

TYNER, B. Y., A.M., *Professor*; DORSETT,
 HARRY K., A.M., *Assistant Professor*;
 BELL, LILA, M. Ed., *Assistant Professor*.

HISTORY

WALLACE, LILLIAN PARKER, Ph.D., *As-
 sociate Professor*; KEITH, ALICE B.,
 Ph.D., *Associate Professor*; LEMMON,
 SARAH, A.M., *Assistant Professor*.

PSYCHOLOGY AND PHILOSOPHY

PARK, DOROTHY G., Ph.D., *Associate
 Professor*.



MODERN LANGUAGES

MCALLISTER, QUENTIN O., Ph.D., *Professor*; NEBLETT, LUCY ANN, A.M., *Assistant Professor*; FREUND, SUSANNE H., Ph.D., *Instructor*; HUCKABEE, ELIZABETH R., A.B., *Instructor*.



HOME ECONOMICS

BREWER, ELLEN, A.M., *Professor*; HANYEN, JENNIE M., A.M., *Associate Professor*.



ANCIENT LANGUAGES

PRICE, HELEN, Ph.D., *Professor*.

MATHEMATICS

CANADAY, ERNEST F., Ph.D., *Professor*.





PHYSICAL EDUCATION

PETERSON, DORIS, A.M., *Associate Professor*; CUNNINGHAM, PHYLLIS, B.S., *Instructor*; WHITE, PEGGY ANN, *Instructor*; DUGGER, DOT T., B.S.P.E., *Assistant in Physical Education*.



MARSH, VERA TART, *Registrar*; PRATT, EDITH G., A.M., *Assistant Dean of Women*; GRIMMER, MAE, A.B., *Secretary of Alumnae Association*; REID, ELIZABETH D., A.B., *Director of Publicity*; RHODES, LATTIE, *Secretary to the President*.



BAITY, HAZEL, A.B. in L.S., *Librarian*; HIGGS, E. LUCILLE, B.S. in L.S., *Assistant Librarian*; GREENE, JANE, A.B. in L.S., *Assistant Librarian*.

Not pictured: EGERTON, MARY McCOY, *House Director*; COVINGTON, ESTHER T., *Assistant House Director*.

LANE, A.B., M.D., *College Physician*; BAR-
NETTE, MYRTLE, R.N., *Nurse*; TEAGUE, JANET,
R.N., *Assistant Nurse*.



SMITH, LOIS, B.S., *Dietitian*; WATTS, LULA B.,
Dining Room Hostess; RHYNE, JANET, B.S.,
Assistant Dietitian.



JERNIGAN, JEAN, B.S., *Secretary to the Dean*; SCOTT,
LILLIAN N., B.S., *Secretary to Dean and Registrar*;
FLEMING, JULIA, A.B., *Secretary to the Bursar*;
SWAIN, ANNE, B.S., *Bookkeeper-Secretary*; YEAGER,
BETTY JEAN, A.B., *Secretary to the Dean of Women*.

EDWARDS, FRED J., *Superintendent of
Buildings and Grounds*.



And here we found the knowledge to shape our lives anew.



CLASSES





And so another year is past and over.

"There never can be another one like it," we say, and we are right. It was a magic year; it cannot repeat itself. No, it will not come round again; there will never be one like it, ever.

This was the year which changed freshmen into sophomores, which brought sophomores almost to the threshold of the senior year, which saw one class go forth, and another come in to renew the cycle.

No, the year can never come again, except as a memory—a picture in our minds. A picture of living at Meredith has many lines and colors, many patterns and the fragments of many scenes. It is a kaleidoscopic mosaic made up of more than just things seen.

Perhaps we can give the outlines of a picture of this year; each must fill it in from her hoard of memories.

* * * * *

The first sight of Meredith—all the new names and faces—the lines to be stood in and the questions crowding to be asked—all these are part of the first few days. Patterns evolved from the dizziness of those days, and those patterns became the background for the picture.

But those lines! After looking at pictures of registration at Chapel Hill and at those of other neighbors we felt we weren't doing *quite* so badly. The thought wasn't so much comfort at the time we were standing, however. There is probably an art to standing in lines, and if we go to school long enough, we may catch on to it. In the meantime we are looking up a portable chess set and one of those dog-gimusses you stick in the ground and sit on at Ascott.

The parties and receptions and other get-togethers were a welcome relief from the schedule of Orientation Week. The week was invaluable in acquiring bearings. However, and when one could box the Meredith campus, it became less a collection of buildings and more one's home for the next several years, the frame for the picture which the year has painted.



The standing in line bore its fruit, and there we were in class. Our vines had tender grapes at times.

Classes had just gotten under way which Rush Week was upon us. Rush, that is. For a week gold and purple vied, and the newcomers certainly stood to gain, what with dinnertime entertainment and light-bell snacks. They may understand next year, however, how it is just as well that Rush Week is just one in fifty-two. The Phil were the winners, but it was neck to neck down the home stretch.

That wasn't the only way Meredith made the paper, of course. Clippings from newspapers all over everywhere were displayed in the News Bureau showcase. 'Twas pleasant to see Meredith in print. Publicity hounds—that's us.

All sorts of things happened in the fall. There were football games, epochal or tragical depending on which brain factory the b. f. patronized. Football meant the rallies, of course, out in the front drive.

The Corn Husking Party cannot be overlooked, of course, especially in view of the sore muscles resulting from the square dancing, and the sore throats resulting from encouraging the contestants in the ruralized competitions. The faculty team—we won't mention names—certainly flunked the corn husking, but the hog calling would have gotten a C, say.

Then there was the week end the place was depopulated for the BSU convention. It was more than just the good time had by all, though certainly that entered into it.

And the State Fair—it would not have been fall without it. Popcorn and ferris wheels and spun candy and exhibitions and miles of walking and more to see and hear than could possibly be absorbed—that was the Fair. Something else happened that week with which we can regale our nieces and nephews. *We saw the President!* In fact he went right past our front door. Of course, he was on his way to open the Fair and was late anyhow and so did not stop for tea, but aside from such considerations, it sounds like quite the event. As it was an election year, let us pass on.





Founders' Day, our movable natal feast brought forth the seniors capped and gowned, and the rest of the college holiday attire to observe Meredith's half-century mark. It was a half holiday, but was more than that as well.

In the midst of all this came Palio and Stunt. The Italian originators should see it now! We have the horse race (won by the seniors), the vehicle-bicycle-race (won by the seniors), song singing (won by the seniors). The seniors also won the attendance prize, and, as sort of shortcake under the whipped cream, won the Palio banner for their procession. It is probably just as well they did not win Stunt as well or they might not have been allowed to live to see their graduation.

They made very good forty-niners, though as a history major pointed out a trifle nastily, Daniel Boone and the gold rush got somewhat confused. As she was a junior, the source may be considered and the remark ignored. The judges were not fussy about their chronology anyhow.

The freshmen gave riding at Meredith another hand into the stirrup. They had some hectic moments the night before, trying to find jodphurs for everyone, a project they were forced to abandon. The sophomores wistfully contemplated a trip to Mars, while the juniors spent the next several days explaining their Palio which had to do with a nursery rhyme about pigs to market, and the world situation—not the astronomical value of meat as one might have supposed.

The juniors had their innings that night, however, when they and their chickens made off with the cup, hotly pursued by the Little Brown Lady. With well-chosen digs at Wallace and others, and puns of a hybrid variety, the "Fowl Play" laid 'em in the aisles. (Bunny did *not* pay us to say that.)

The sophomore birthday party for Meredith boasted such attractions as talking candles and peripatetic candy cups. The freshmen chose a flower and then, almost as quickly, Palio and Stunt were over for another year. One might add, "Thanks be!"

The latter comment is scarcely intended as disparagement of Palio and/or Stunt—it's that the whole thing is rather strenuous, involving as it does, marching practice in the foggy, foggy dew, play practice in the dim nocturnal hours, and the struggles of non "home-ec" majors with the intricacies of needle and thread and buttons and bows. But despite the toils and trials attendant upon the big day, Palio is one of those unexpendables like the Bee Hive and week ends. We lack a football team, but we still have our home-coming. The weather man has not been able to discourage us, anyway, though he froze us like little ice cicles last year, and roasted us like little marshmallows this year.



It is problematical whether Dr. Campbell's ideal will ever be realized when week ends and vacations are a distressing interruption of the pursuit of scholarship. They are an interruption, all right, but distressing only when they come to an end.

And so the roads continue to lead away from and back to Meredith. Week ends drained off the excess population through the year, but with Thanksgiving, some members and the faculty and about eight from a distance residents were left to rattle around in the echoing dorms. Scarcely was everyone settled down again when all of a sudden the trees were up in the dining hall and parlors, and term papers were due, and State came over to carol—and then we went carolling and it was the last night and the last day, and then it was Christmas, unbelievable as it seemed.

Coming back was even worse than usual; there was an inhuman mountain of work leering at everyone. The few days zipped past like telephone poles from a train window, and then one of them fell over and hit us on the head, and exams were upon us. That week is better forgotten—forgotten as completely as the information the exams demanded.

Then there was another long (but too short) week end, and lo! game point in the offing.

* * * * *



At this point our chronology breaks down—what chronology there has been, that is. Not only did the second semester pass so rapidly that events are blurred and topsy-turvy, but also, because of the whims of the editor and the necessity of having the copy at the printer's some little time before the book goes to press, the second semester, at this writing, has not yet come to pass.

With due reference to our crystal ball, and to the safe assumption that time brings all things, let us continue our picture of the year.

If the first semester is multiplied by two, one has an approximation of the second. Everything seems to happen, and to happen all at once. Then too, it is harder to keep one's mind on absorbing learning when spring is everywhere.

There were the notable events of the spring, like Play Day, when faculty and students disported themselves at volleyball, hopscotch, croquet, archery, and, most strenuous of all, Chinese checkers. (Play Day always presents a nice problem in apple shining: is it better to allow one's professor to win the game or to defeat him and excite admiration for one's prowess? It is more of a problem when only colored bands distinguished faculty and students. One can evade the issue by challenging some department one sees only in passing through the buildings. That's not half so sporting, though.)

Then there was, of course, May Day. The fair Queen of the May from Florida (did you expect us to pass up that chance to aid the C of C?) presided regally over her court and the festivities. The weather, of course, had to be unusual in one way or another.



There was Religious Emphasis Week, too, back at the beginning of the semester. (We have completely dispensed with chronology; there are fewer thought processes involved this way.) Through the devotional programs, the talks, the discussion groups, and even the parties and fun, the way of life which Meredith seeks to point out became a vital and meaningful force. But if the week had failed in all else it would not have been useless, for it probably induced more thinking than any other occurrence through the year, examinations not excepted.

Somewhere in all this, came the spring recess, a too brief but exceedingly welcome breathing space. Second semester also brought the plays—society and freshman as well as the Little Theatre productions. The latter group was off to a brilliant start back in dim. old '43 with "Little Women." Elsie's invariable demand, "Did you cry?" was usually answered affirmatively.



But what of all the little and big things, chips in our mosaic, which were confined to neither half of the year? The plays and concerts, the socializing; the games and the dances and the parties in the Hut—we cannot forget them (hardly!) nor leave them out of our picture. The excitement of rings (wedding, engagement, and telephone) the library, and term papers—church and BTU and chapel—society meetings, and parties, and confaculations—teaching, and Soph Day Off and Big and Little Sister doings—the publications—the P. O.—the Bee Hive—these are all parts of the year, repeated in different shapes and colors, with different meaning to each person who knew them.

It was a full and brief year, one which brought change and growth, and was gone again. Sooner than seemed possible, the seniors had begun the final mad whirl of teas and parties, and everything else. Then came examinations again; the year was over, and for one more class, so were the “happy college days.”

We turn to the new auditorium. It started this year as less than a hole in the ground. Slowly, inevitably, it took form and shape and became what it is. So, too, did the year grow from a welter of impressions, and took form and moulded itself into the pattern of this magic year which cannot return again.

E.C.G.





As freshmen, in '45, we were quite gay,
And looking forward to the next four
years.

See us now as lively sophomores,
Making our daisy chain.



The Junior-Senior Banquet in the spring
Assured us a successful Junior year.

And here's our final bow. May
the spirit of our Palio Keep us
ever marching onward.



SENIOR CLASS OFFICERS

MAXINE BISSETTE
President

EUNICE ANDREWS
Vice-President

MARIANNA MORRIS
Secretary

IDALIA OGLESBY
Treasurer

MISS MARY YARBROUGH
Sponsor



MAXINE BISSETTE
President



Bottom: Bissette, Miss Yarbrough, Morris. *Top:* Oglesby, Andrews.



MARTHA RUTH ALLEN
Rockingham, N. C.

Astro Education

"The smiles that win."

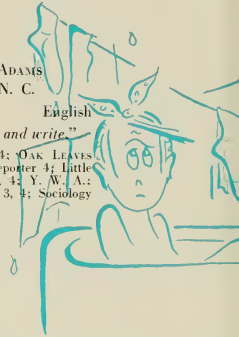
A. A. Board 4; Monogram Club
President 4; Choir 3; Y. W. A., Officer
2, 4; Softball 2, 3; Soccer 2; Education
Club 4.

ELLA ROSE ADAMS
Bunnlevel, N. C.

Phi English

"Look in thy heart and write."

Sigma Pi Alpha 3, 4; OAK LEAVES
Senior Editor; *Twig Reporter* 4; Little
Theater pledge 1, 2, 3, 4; Y. W. A.;
Colton English Club 2, 3, 4; Sociology
Club 2, 4; Dean's List.



EUNICE MELBA ANDREWS
Chalybeate Springs, N. C.


Phi Chemistry

*"The floating clouds their state
shall lend to her."*

A. A. Board 3, 4; Basketball Man-
ager 3; College Health Chairman 4;
Phi Marshal 3; Chief Phi Marshal 4;
Sophomore Class Secretary; Hockey 1,
2; Swimming 3; Soccer 2, 3; Band 1,
2, 3, 4; Barber Science Club 1, 2, 3, 4;
Freeman Religion Club 1; Helen Hall
Law Club Secretary-Treasurer 2; Dean's
List.



CLASS OF '49



HARRIET ELIZABETH ASHCRAFT
Charlotte, N. C.

Phi Sociology
*"Her merry spirit seems our com-
rade yet."*

A. A. Board Social Chairman 4;
Freshman Counsellor 3; Phi Society
Secretary 3; Little Theater 3, 4; Folk
Dance Club 3, 4; Basketball 1; Hockey
1; Equitation Group 2; Education Club
3, 4; Sociology Club 3, 4.



JUANITA BALLENGER
Raleigh, N. C.

Home Economics

*"Only a sweet and virtuous soul
like seasoned timber, never
gives."*

Campbell College 1, 2, 3; Meredith
College 4.



MAXINE BISSETTE
Spring Hope, N. C.

Phi Chemistry

*"The reason firm, the temperate
will, endurance, foresight,
strength, and skill."*

Silver Shield 4; Nominating Com-
mittee 4; OAK LEAVES Sophomore
Business Manager; Twig Staff, Reporter
2, Managing Editor 3; Senior Class
President; Junior Class Vice-President;
Little Theater Pledge; House Council
2; Barber Science Club; Colton Eng-
lish Club 2, 3, 4.



MEREDITH COLLEGE



ELIZABETH ANNE BOYKIN
Raleigh, N. C.

Astro Business

*"A rose with all its sweetest leaves
yet folded."*

Sigma Pi Alpha 2, 3, 4, Vice-President 3, President 4; *Twig* Business Staff 1, 2, Advertising Manager 4; *Acorn* 2, 3; Sophomore Editor, Business Manager 3; Transfer Counsellor 3, 4; Little Theater Pledge; Folk Dance Club 3, 4; I. R. C. 3, 4; Tomorrow's Business Women, Pledge 2, Reporter 3, 4; Dean's List.



EUGENIA ELIZABETH BRADLEY
Sanford, N. C.

Astro Education

"It is the generous spirit."

Campbell College 1, 2; Meredith College 3, 4; Choir 3, 4; Y. W. A. Circle Leader 3; Colton English Club 3; Education Club 3, 4.



RITA EVELYN BRITT
Durham, N. C.

Astro Mathematics

"A pearl of great price."

B. S. U. Council 3, 4, Sunday School Representative 3, Y.W.A., President 4; Freshman Counsellor 3; Greater B. S. U. Council 2; Little Theater Pledge 1, 2, 3, 4; Folk Dance Club 3, 4; Badminton; Canaday Mathematics Club 2, 3, 4; Sociology Club 3.





BETTY GRAY BROOKS
Charlotte, N. C.

Phi Sociology

"She with sunny, floating hair."

Mars Hill College 1, 2; Meredith College 3, 4; B. S. U. Council Social Vice-President 3; Silver Shield 4; *Twig* Managing Editor 4; Choir 3; Phi Marshal 4; Greater B. S. U. Council 4; Y. W. A.; Freeman Religion Club 3, 4; Sociology Club 3, 4, Secretary 4; Dean's List.



ANNIE MILDRED BULLARD
Chadbourne, N. C.

Phi Home Economics

"Still and quiet as a closed flower."

Greater B. S. U. Council 2; Y. W. A., Publicity Chairman 2; Home Economics Club 1, 2, 3, 4.

LELA BUTTS
Angier, N. C.

Astro Education

"She shall be sportive as the fawn."

A. A. Board 3, 4; Monogram Club 4; Y. W. A.; Basketball 2, 3, 4; Hockey 3; Softball Varsity 2, 3; Soccer Varsity 2, 3; Education Club 3, 4.





MELBA LOU BYRD
Lumberton, N. C.

Phi History
*"A personality as sparkling as dew
in the sunlight."*

Campbell College 1, 2; Meredith Col-
lege 3, 4; Y. W. A.; Education Club
3, 4; Sociology Club 3, 4; Student
League of Women Voters Reporter 4.



ELIZABETH COLVARD CANTRELL
Millbrook, N. C.

Astro Religion
*"Whose life was like the violet
sweet, as climbing jasmine
pure."*

Y. W. A.; B-Hive Manager 3, 4;
Freeman Religion Club 3; Sociology
Club 3.

HELEN VIRGINIA CARR
Plymouth, N. C.

Astro Public School Music
*"Personality is an ever-enduring
quality."*

Campbell College 1, 2; Meredith Col-
lege 3, 4; Choir 3, 4; Y. W. A., Sec-
retary 4; Education Club 4; MacDowell
Music Club 4.



CLASS OF '49

ETHEL LAUGHLIN CASEY

Raleigh, N. C.

Astro

English

*"She takes the breath of men away
who gaze upon her unaware."*

Virginia Intermont 1; Greensboro
College 2; University of North Carolina
3; Meredith College 4.



ELIZABETH CHERRY

Rich Square, N. C.

Astro

Education

*"A rose set with little wilful
thorns."*

Mars Hill 1, 2; Meredith College 3, 4;
Education Club 3, 4.

OPAL MERLE CLEMMONS

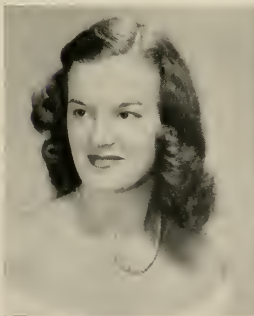
Myrtle Beach, S. C.

Phi

English

*"'Twas her thinking of others that
made her radiant."*

S. C. Council 3, 4; Sigma Phi Alpha
2, 3, 4; Freshman Councillor 3; Choir
2, 3; Little Theater Pledge 3, 4;
Y. W. A., Secretary 2; Band 2, 3;
House Council 3, 4; Colton English
Club 3, 4; Freeman Religion Club 3,
4; MacDowell Music Club 1, 2, 3.



MEREDITH COLLEGE



MADELYN MARIE CLINARD
Winston-Salem, N. C.

Astro History

*"That unencumbered loveliness
which is a poet's secret treasure."*

Twig Reporter 4; Choir 3, 4; Little Theater Pledge 2, 3, 4; Equitation Group 1; Modern Dance Club 1; Education Club 3, 4; I. R. C. 4; Sociology Club 3, 4.



PAULINE ELIZABETH CONE
Middlesex, N. C.

Astro History

"A jovial smile, a loving heart has she."

Alpha Psi Omega 4; Choir 2, 3; Greater B. S. U. Council 1; Little Theater 3, 4; Y. W. A.; Equitation Group 2, 3; Colton English Club 2, 3; I. R. C. 4; Sociology Club 2, 3; Student League of Women Voters 3, 4; Junior Archivist 3.



EDITH GRAY COOPER
Falcon, N. C.

Phi Religion

"A lovely apparition sent to be a moment's ornament."

B. S. U. Council Secretary 3; May Court Attendant 2, Maid of Honor 4; Choir 3, 4; Greater B. S. U. Council 1, 2, 3; Little Theater Pledge; Y. W. A.; Freeman Religion Club 2, 3, 4.





B. ELSIE CORBETT
Wilmington, N. C.

Astro History

"A daughter of the gods, divinely tall and most divinely fair."

B. S. U. Council, Summer School; Nominating Committee 4; Alpha Psi Omega 1, 2, 3, 4, Vice-President 2, 3, Treasurer 3, President 4; Astro Society Sergeant-at-Arms 3; Little Theater 1, 2, 3, 4, Treasurer 2, President 4; Y. W. A.; Equitation Group; Education Club; I. R. C. 3, 4; District Leader of CCUN; Student League of Women Voters 2, 3; State Student Legislature Convention Delegate 2, 3.



PHOEBE IRENE COVINGTON
Rockingham, N. C.

Astro Religion

"Spontaneous wisdom breathed by health, truth breathed by cheerfulness."

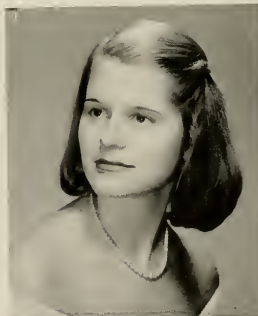
Sigma Pi Alpha 2, 3, 4; Greater B. S. U. Council 2, 3, 4; Little Theater Pledge 2, 3, 4; Y. W. A. Community Missions Chairman 3, Vice-President 4; House Council 3; World Fellowship, Director of Sunday School at Jail 2; Colton English Club 4; Freeman Religion Club 2, 3, 4; Dean's List.

LAURA WATTS CRAWFORD
Marion, N. C.

Astro English

"Give me a look, give me a face, that makes simplicity a grace."

Maryville College 1, 2, 3; Meredith College 4; Little Theater Pledge 4; Colton English Club 4.





SUSIE MAGDALENE CREECH
Wilson, N. C.

Astro English

"The heart to conceive, the understanding to direct, and the hand to execute."

S. G. Council 3; Silver Shield Secretary-Treasurer 4; Nominating Committee 4; OAK LEAVES Editor 4; Twig Reporter 3; Acorn Junior Editor; Little Theater Pledge 1, 2, 3, 4; Colton English Club 2, 3, 4; Education Club 3, 4; *Who's Who Among Students in American Universities and Colleges.*



MARY LOU CULLER
High Point, N. C.

Astro Education

"And ever the maiden lovable and fair."

Little Theater Pledge 3, 4; Folk Dance Club 4; Equitation Group 2, 3; Education Club 3, 4; I. R. C. 3, 4.

EVELYN BETHEA DANFORD
Bolivia, N. C.

Phi Home Economics

"Sweet as dew shut in lily's golden care."

Choir 3, 4; Y. W. A.; Equitation Group 1, 2, 3, 4; Education Club 4; Home Economics Club 1, 2, 3, 4, Treasurer 4.



LUCY ARNOLD CURRIN
Rocky Mount, N. C.

Astro History

*"Well versed in all the art of
friendship and of life."*

W.C.U.N.C. 1, 2; Meredith College
3, 4; I. R. C. 3, 4, President 4.



JEAN WILSON DANIEL
Raleigh, N. C.

Astro Public School Music

*"Ah! The gracious tyrannies of
her fingertips."*

Choir 2, Secretary 3.

MARTHA MARIE DAVIS
Hyattsville, Maryland

Astro Psychology

*"All things that love the sun are
out of doors."*

A. A. Board, Representative 1, Secretary 2, Vice-President 3, President 4; Nominating Committee 4; Monogram Club 1, 2, 3, 4; Folk Dance Club 3, 4; Basketball 1, 2; Hockey Varsity 1, 2, 3, 4; Soccer Varsity 1, 2, 3; Badminton 1, 2, 3, 4; Softball 1, 2, 3, 4; Equestrian Group 1, 2, 3, 4; Archery Varsity 2, 3, 4; Art Club 4; Superlative.



MEREDITH COLLEGE



SARAH ELIZABETH DAVIS
Inez, N. C.

Phi Home Economics

"Here is a dear and true industrious friend."

Little Theater Pledge 1, 2, 3, 4; Folk Dance Club 3; Equitation Group 1, 2; Education Club 3, 4; Home Economics Club 2, 3, 4, President 4; Dean's List.



MARY LOU DAWKINS
Mount Gilead, N. C.

Astro Mathematics

"From out her loving heart came deeds of kindness."

Twig Reporter 2, 3, 4; Acorn Senior Editor 4; Freshman Counsellor 3; Little Theater Pledge 1, 2, 3, 4; Folk Dance Club 1, 2, 3, 4; Barber Science Club 1, 2; Helen Hull Law Club 1, 2; Canaday Mathematics Club 1, 2, 3, 4; Dean's List.

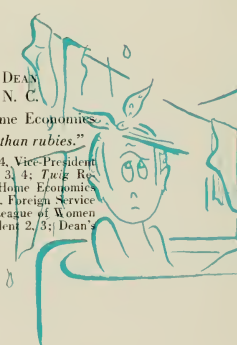


ROSEMARY DEAN
Louisburg, N. C.

Astro Home Economics

"Wisdom is better than rubies."

Kappa Nu Sigma 3, 4, Vice-President 4; Sigma Pi Alpha 2, 3, 4; Twig Reporter 3; Choir 3, 4; Home Economics Club 2, 3, 4, Reporter 2; Foreign Service Chairman 4; Student League of Women Voters 2, 3, Vice-President 2, 3; Dean's List.





EDITH ANNE DEATON
Hoffman, N. C.

Phi Religion
"Words cannot express her infinite sweetness."

Little Theater Pledge 2; Y. W. A. Hall Devotional Leader 4; B-Hive Summer Manager 3; Education Club 4; Freeman Religion Club 2, 3, 4.



JEANNE ANNETTE DICKENS
Delray Beach, Florida

Astro Art
"All that is beautiful shall abide."

A. A. Board, Golf Manager 3; Nominating Committee 4; May Court Attendant 2; May Queen 4; *Acorn* Art Editor 4; College Marshal 4; Choir 4; Alpha Rho Tau 3, 4; President 3; Astro Society Marshal 2; Little Theater Pledge 4; Folk Dance Club 2, 3; Education Club 4.

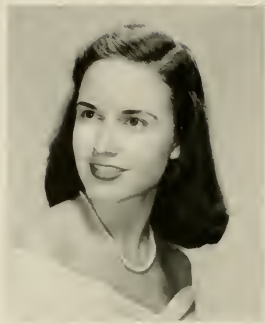


CHRISTINE HELEN DUNN
Kannapolis, N. C.

Phi History
*"But a smooth and steadfast mind,
gentle thoughts and calm desires."*

Mars Hill College 1, 2; Meredith College 3, 4; Greater B. S. U. Council 3; Y. W. A.; Education Club 3, 4; I. R. C. 3, 4.





ISABEL BLANCHE DUPRE
Southern Pines, N. C.

Astro English

*"Faithful in whatso'er her hand
findeth to do."*

Mars Hill College 1, 2; Meredith
College 3, 4; Basketball 3, 4; Equita-
tion Group 3, 4; Colton English Club
3, 4; I. R. C. 3, 4; Student League of
Women Voters 3, 4.



EVA KITCHIN EDWARDS
Scotland Neck, N. C.

Astro Education

*"She deserves the best and purest
love the heart of man can
offer."*

S. C. Council 4; Y. W. A.; House
Council 4; Colton English Club 3, 4;
Education Club 3, 4; Sociology Club
3.

HAZEL GILL ELLINGTON
Kittrell, N. C.

Phi Business

*"A merry heart doeth good like
a medicine."*

Acorn Typist 3; Little Theater Pledge
1, 2, 3, 4; Y. W. A.; Basketball 2, 3;
Softball 2; Badminton 3; Equitation
Group 3; Education Club 3, 4; To-
morrow's Business Women 3, 4.





JEAN MARIE FEREBEE
Shawboro, N. C.

Astro Education

"Is she not passing fair?"

Peace College 1, 2; Meredith College
3, 4; May Court 3; Education Club
3, 4.



VIVIAN JEAN FLEMING
Middlebury, N. C.

Astro Piano

*"Her smile is the fresh breath of
a spring morning."*

Choir 2, 3, 4; I. R. C. 2; MacDowell
Music Club 2, 3, 4.

BARBARA JANE FRANCIS
Waynesville, N. C.

Astro Sociology

"Onward and upward."

Twig Circulation Manager 4; Greater
B. S. U. Council 3; Little Theater
Pledge I, 2, 3, 4; Y. W. A.; Band 2, 3;
I. R. C. 3, 4; Sociology Club 2, 3, 4.
Reporter 3, President 4.



MEREDITH COLLEGE



JEAN GADDY FREEMAN
Raleigh, N. C.

Astro Education

*"Her life is a summer rose open
to the morning sky."*

S. G. Council, Treasurer 3; Nominating Committee 1; Freshman Counsellor 2; Astro Marshal 2; Freshman Class President; Little Theater 3, 4; Education Club 3; Granddaughters' Club 1, 2; Dean's List.

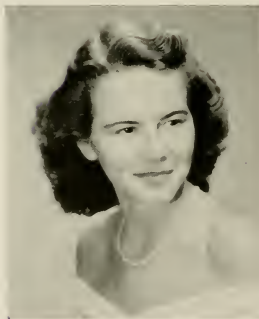


LOUISE SWICEGOOD FRITTS
Raleigh, N. C.

Phi Business

*"A quiet mind is richer than a
crown."*

Appalachian State Teachers' College 1; Meredith College 2, 3, 4; Kappa Nu Sigma Reporter 4; Sigma Pi Alpha 3, 4, Secretary 4; *Acorn* Assistant Business Manager 4; Education Club 4; Tomorrow's Business Women 3, 4, Vice-President 4; Dean's List; Superlative.



LILLIAN EILEEN GADDY
Raleigh, N. C.

Phi Business

"The very pink of perfection."

S. G. Council 4; Nominating Committee 4; May Court 4; Sigma Pi Alpha 3, 4, Secretary 3; *Twig* Business Manager 3; *Acorn* Assistant Business Manager 3; Freshman Counsellor 2; Day Students' President 4; Tomorrow's Business Women 2, 3, 4.





VIRGINIA GEROCK
Maysville, N. C.

Astro Home Economics

"Her life was full of calm beauty."

Freshman Counsellor 3; Y. W. A.;
Education Club 3, 4; Home Economics
Club 2, 3, 4.



SUSAN GRAHAM
Enfield, N. C.

Astro Piano

*"Thou smilest and art still, out-
topping knowledge."*

Sigma Pi Alpha 2, 3, 4; Choir 2, 3, 4;
MacDowell Music Club 2, 3, 4, Treas-
urer 2.



ESTHER CLARK GREEN
St. Petersburg, Florida

Astro English

*"The seeds of godlike power are
in us still."*

St. Petersburg Junior College 1, 2;
Meredith College 3, 4; Nominating
Committee 4; OAK LEAVES Associate
Editor 3; Acorn Junior Class Editor,
Editor 4; Greater B. S. U. Council 3, 4;
Colton English Club 3, 4; Freeman
Religion Club 3, 4; Dean's List.



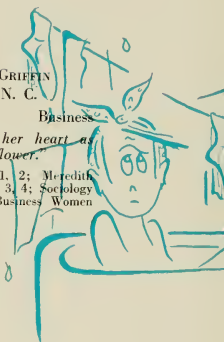


JANE ELLEN GRIFFIN
Woodland, N. C.

Astro Business

*"Sincerity was in her heart as
perfume in the flower."*

Mars Hill College 1, 2; Meredith
College 3, 4; Y. W. A. 3, 4; Sociology
Club 4; Tomorrow's Business Women
4.



NANCY IRENE HALL
Oxford, N. C.

Phi Voice

*"Short swallow-flights of song,
that dip their wings in tears,
and skim away."*

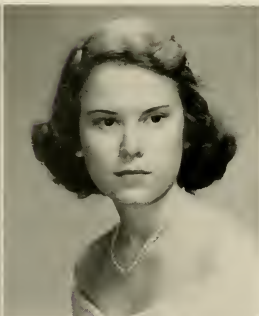
Nominating Committee 4; Choir 2-
3, 4; Glee Club 2, 3, 4; Sigma Alpha
Iota 4; Group of Nine 4; Phi Society
Secretary 2, President 4; Little The-
ater 4; Granddaughters' Club 1, 2, 3, 4.

RUTH GRAY HANNON
Moncure, N. C.

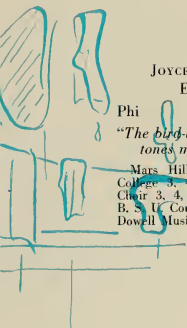
Astro Education

*"Friendship's smiles, like gleams
of sunlight, shed their feeling
o'er her heart."*

Choir 3, 4; Education Club 3, 4;
Sociology Club 4.



CLASS OF '49

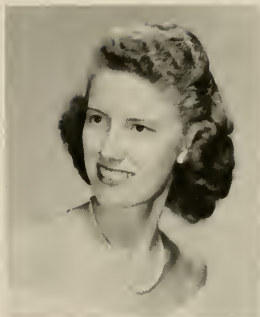


JOYCE LORINE HARRELL
Edenton, N. C.

Phi Public School Music

"The bird-like voice, whose joyous tones make glad the scenes."

Mars Hill College 1, 2; Meredith College 3, 4; Transfer Counsellor 4; Choir 3, 4, Vice-President 4; Greater B. S. U. Council 3, 4; Y. W. A.; MacDowell Music Club 3, 4.



VICTORIA ESTELLE HARRELL
Burgaw, N. C.

Astro Mathematics

"The fairest garden in her looks."

S. C. Council 4; OAK LEAVES Business Staff 3; Astro Society Treasurer 4; Folk Dance Club 3, 4; House Council 4; Colton English Club 3, 4; Canaday Mathematics Club 2, 3, 4, President 3.

RACHEL PHYLLIS HARRINGTON
Portsmouth, Virginia

Astro Education

"—And bring with thee jest and youthful jollity—"

A. A. Board 2, 3; Badminton Manager 3; Choir 2, 3, 4; Y. W. A.; Education Club 3, 4; I. R. C. 4; Sociology Club 4.



MEREDITH COLLEGE



BILLIE LEE HART
Salemberg, N. C.

Astro Piano

*"As sweet and musical as bright
Apollo's lute, strung with his
hair."*

S. G. Council 3; Sigma Pi Alpha
2, 3, 4; Choir 2, 3, 4; President 4; Choir
Accompanist 3, 4; Little Theater Pledge
1, 2, 3, 4; Y. W. A.; Folk Dance Club
3, 4; Sigma Alpha Iota Vice-President
4; Group of Nine Accompanist 3; Mac-
Dowell Music Club 2, 3, 4; Superlative.



DOROTHY ELEANOR HARVELL
Varina, N. C.

Astro Education

*"Thine eyes are springs, in whose
serene and silent waters heaven
is seen."*

Peace College 1, 2; Flora Macdonald
College 3; Meredith College 4;
Y. W. A.; Education Club 4; I. R. C.
4.



BETTY JEAN HEFNER
Greer, S. C.

Astro Art

*"Her rosy steps in th' eastern clime
advancing, sow'd the earth with
orient pearl."*

B. S. U. Council 4; Choir 3, 4; Little
Theater 3, 4; Alpha Rho Tau 3, 4;
Folk Dance Club 3; Colton English
Club 2; Freeman Religion Club 4;
Superlative.



MEREDITH COLLEGE



LENA GLENN HIGHFILL
Winston-Salem, N. C.

Astro Business

"For softness she and sweet attractive grace."

S. G. Council 3; Freshman Counsellor 3; Greater B. S. U. Council 3, 4; Y. W. A.; Creative Rhythms 2; House Council 3, 4; Sociology Club 4; Tomorrow's Business Women 3, 4.



EVELYN HUNTER HODGES
Washington, N. C.

Astro Business

"The bright consummate flower."

Acorn Typist 3, Business Manager 4; Little Theater Pledge 1, 2, 3, 4; Folk Dance Club 4; Basketball 1, 2; Equitation Group 2; House Council 3; Education Club 4; Tomorrow's Business Women 2, 3, 4, President 4; Dean's List.

FRANCES HOLLIS
Laurinburg, N. C.

Phi Religion

"A doer, not a dreamer."

Sigma Pi Alpha 2, 3, 4; Little Theater Pledge 1, 2, 3, 4; Y. W. A., Recreational Chairman; Freeman Religion Club 3, 4.





MARTHA ELIZABETH HOOKS
Dublin, Georgia

Astro Chemistry
"Silence sweeter is than speech."

A. A. Board Golf Manager 4; Equitation Group 1, 2; Barber Science Club 2, 3, 4; Secretary 3; President 4; I. R. C. 3, 4; Sociology Club 4; Student League of Women Voters 3.



FRANCES MULL HUFFMAN
Drexel, N. C.

Phi Education
"A merry life with joy and sunshine."

Campbell College 1, 2; Meredith College 3, 4; Transfer Counsellor 4; Greater B. S. U. Council 3, 4; Y. W. A.; Band 3, 4; Education Club 3, 4.

MARY EMMA HUMPHREY
Wilmington, N. C.

Astro English
"A head where wisdom mysteries did frame."

Kappa Nu Sigma 3, 4; Secretary-Treasurer 4; Sigma Pi Alpha 2, 3, 4; Alpha Psi Omega 3, 4; OAK LEAVES Associate Editor 4; Twig Reporter 2; Acorn Class Editor 3; Assistant Editor 4; Little Theater 2, 3, 4; Vice-President 2, 4; Y. W. A.; B-Hive Manager 3; Colton English Club 2, 3, 4; Dean's List.



MARY LOUISE HUNT
Oxford, N. C.

Phi Business

*"A lovely lady, garmented in light
from her own beauty."*

OAK LEAVES Copyist 4; Twig Chief
Typist 4; Greater B. S. U. Council 1, 2;
Y. W. A.; Colton English Club 3;
Education Club 3, 4; Tomorrow's Busi-
ness Women 2, 3, 4, Program Chairman
4; Dean's List.



BONNIE SUE JARVIS
Hickory, N. C.

Astro Piano

*"Those graceful acts, those thou-
sand decencies that daily flow
from all her words and ac-
tions."*

S. G. Council 3, 4; B. S. U. Council
Music Chairman 2; Freshman Coun-
sellor 3; Choir 2, 3; Glee Club 3;
Y. W. A.; House Council 3, 4; Mac-
Dowell Music Club 4; Sigma Alpha
Iota Secretary 4; Dean's List.

BETTY JEAN JOHNSON
Lillington, N. C.

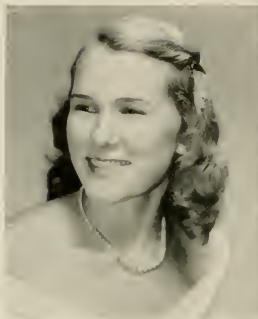
Astro Psychology
"But to see her was to love her."

A. A. Board 2, 3, 4, Individual Sports
Manager 4; Twig Sports Editor 3;
Choir 3; Astro Society Secretary 3,
Vice-President 4; Monogram Club 3, 4;
Little Theater Pledge 1, 2, 3, 4;
Y. W. A.; Folk Dance Club 4; Hockey
2, 3, 4; Soccer 2, 3; Equitation 2, 3, 4,
President 2, 3; Barber Science Club 2;
Freeman Religion Club 2, 3; Sociology
Club 2, 3; Dean's List.



MEREDITH COLLEGE

CLASS OF '49



LESLIE GRACE JOHNSON
Nesmith, S. C.

Astro Home Economics
*"A loving heart is the beginning
of all knowledge."*

Mars Hill College 1, 2; Meredith
College 3, 4; Y. W. A.; Home Econ-
omics Club 3, 4; Sociology Club 4.



OSEE MAC JOHNSON
Enfield, N. C.

Phi Psychology
*"True wit is Nature to advantage
dress'd."*

S. G. Council 4; Barber Science Club
3, 4, Reporter 4; Colton English Club
3, 4; MacDowell Music Club 1; Super-
lative.



SARA LIVERMORE KINGSBURY
Raleigh, N. C.

Art
"Beauty is truth, truth beauty."

Central College, Missouri 1, 2, 3;
Meredith College 4.

Handwritten notes in blue ink, including a box containing the text "M.C. 17" and another box containing "M.C. 18".



Laura Elizabeth Kiser
Raleigh, N. C.

Astro Education
*"How doth the little busy bee
improve each shining hour."*

Salem College 1; Peace College 2;
University of North Carolina 3; Mere-
dith College 4; OAK LEAVES Business
Staff 4; Education Club 4.



Jacqueline Catherine Knott
Clayton, N. C.

Astro Biology
*"O, so light a foot will ne'er wear
out the everlasting flint."*

Twig Business Staff 4; Astro Society
Reporter 4; Little Theater 2, 3, 4,
Treasurer 4; Y. W. A.; Class Cheer-
leader 4; Folk Dance Club 3, 4;
Equitation 2, 3, 4; Barber Science Club
2, 3, 4, Vice-President 4; Superlative.



Pollyanna Langston
Four Oaks, N. C.

Phi Sociology
*"Officious, innocent, sincere, of
every friendless name the
friend."*

Little Theater Pledge 4; I. R. C.
2, 3, 4; Sociology Club 3, 4; Student
League of Women Voters 2, 3, 4.





ANNE LAURA LASSITER
Lasker, N. C.

Astro Education

"And the sands are bright as the stars that glow."

S. G. Council 4; Sigma Pi Alpha 2, 3, 4; Treasurer 4; Little Theater Pledge 1, 2, 3, 4; Y. W. A.; House Council 4; Education Club 3, 4; I. R. C. 3, 4; Sociology Club 2.

DEC 17

FLORINE JANE LASSITER
Raleigh, N. C.

Astro English

"In youth and beauty, wisdom is but rare!"

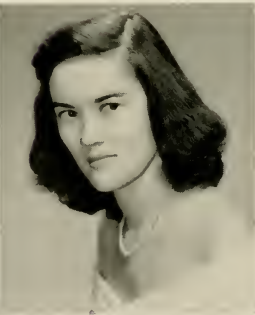
Nominating Committee 4; May Court 3; OAK LEAVES Class Editor 3; *Twig* Exchange Editor 3, Editor 4; Little Theater Pledge; Y. W. A.; Equitation Group 2, 3; Creative Rhythms 1, 2; Modern Dance Club 1, 2; Colton English Club 3, 4; I. R. C. 1, 2, 3, 4; Superlative.

DORIS JANE LEE
Raleigh, N. C.

Astro Sociology

"The noblest mind the best contentment has."

A. A. Board 3, 4; *Twig* Reporter 1, Feature Editor 3, Associate Editor 4; *Acorn* Sophomore Editor, Assistant Editor 3; Freshman Counsellor 2; I. R. C. 1; Sociology Club Vice-President 4; Dean's List.



KATHERINE SUSAN LEWIS
Mount Olive, N. C.

Astro Voice

*"A singing voice and eyes to take
earth's wonder with surprise."*

S. G. Council 4; B. S. U. Council,
Music Director 3; Sigma Pi Alpha 2, 3,
4; *Twig* Music Editor 4; Choir 2, 3, 4;
Glee Club 2, 3, 4, Secretary-Treasurer
3, President 4; Greater B. S. U. Council
2, 3; Little Theater Pledge; Y. W. A.;
House Council 4; Granddaughters' Club
1, 2, 3, 4, Secretary 3, 4; Sigma Alpha
Iota 4; Dean's List.



HARRIETTE LITTLEJOHN
Greer, S. C.

Phi Religion

*"God's rarest blessing is, after all,
a good woman."*

B. S. U. Council 3, 4; *Twig* Reporter
4; Choir 3, 4, Librarian 4; Glee Club
2; Greater B. S. U. Council; Little
Theater 2, 3, 4; Y. W. A.; Freeman
Religion Club 2, 3, 4, Vice-President
4; Dean's List.



ELEANOR GERTRUDE LOCKAMY
Jacksonville, N. C.

Astro Public School Music

"Soft peace she brings."

S. G. Council 3; Choir 3, 4; Greater
B. S. U. Council 3; Y. W. A.; Equita-
tion 3; MacDowell Music Club 1, 2,
3, 4.



MEREDITH COLLEGE



BETTY KATHERINE LUTZ
Shelby, N. C.

Astro Education

"Smiling and lovable always."

Peace College 1, 2; Limestone College 3; Meredith College 4; May Court 4.



NORMA JEAN McLAMB
Clinton, N. C.

Phi Home Economics

"Diamond cut diamond."

Sigma Pi Alpha 3, 4, Vice-President 4; Choir 2, 3, 4; Greater B. S. U. Council 3; Y. W. A.; Folk Dance Club 2, 3, 4; Home Economics Club 1, 2, 3, 4, Vice-President 4.

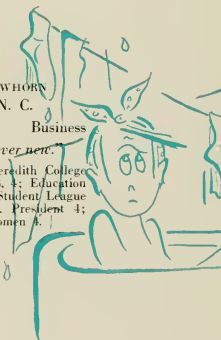


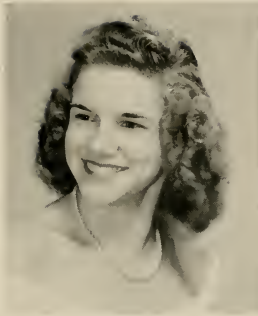
DAPHNE McLAWHORN
Winterville, N. C.

Astro Business

"Ever charming, ever new."

Sullins College 1; Meredith College 2, 3, 4; Little Theater 3, 4; Education Club 4; I. R. C. 2, 3; Student League of Women Voters 3, 4, President 4; Tomorrow's Business Women 4.





OREA MAUNEY
Shelby, N. C.

Astro Sociology
"Infinite riches in a little room."

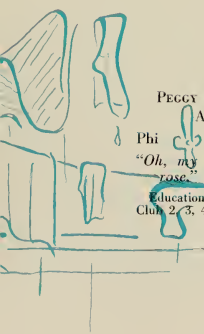
Gardner-Webb College 1, 2; Meredith College 3, 4; Sigma Pi Alpha 3, 4; Greater B. S. U. Council 4; Y. W. A.; Education Club 3, 4; Sociology Club 3, 4.



GERALDINE WOODARD MILLER
Raleigh, N. C.

Phi Home Economics
"Earth's noblest thing—a woman perfected."

S. G. Council, Day Students Secretary 1, 2nd Vice-President 2, 1st Vice-President 3; *Twig* Typist 1, 2, 3, Advertising Manager 4; Sophomore Class Secretary; Greater B. S. U. Council 1, 2, 3; Little Theater Pledge; Y. W. A.; Folk Dance Club 2, 3, 4; Education Club 4; Home Economics Club 1, 2, 3, 4, Reporter 2, 4; Tomorrow's Business Women 4.



PEGGY JEANETTE MITCHELL
Asheboro, N. C.

Phi Sociology
"Oh, my love's like a red, red rose."

Education Club 2, 3, 4; Sociology Club 2, 3, 4.





MARIANNA MIZELLE
Newport, N. C.

Astro Home Economics
*"Thy sober aid and native charm
infuse."*

Y. W. A.; Folk Dance Club 2; Edu-
cation Club 4; Home Economics Club
1, 2, 3, 4; Student League of Women
Voters 3.



FRANCES DURHAM MOORE
Raleigh, N. C.

Phi English
*"Good sense, which only is the
gift of heaven."*

Acorn Senior Editor 4; Colton Eng-
lish Club 2, 3, 4; Secretary-Treasurer
3; President 4; Dean's List.

JOYCE STEELE MOORE
Morganton, N. C.

Astro Education
*"The grass stoops not, she treads
on it so light."*

Mars Hill College 1, 2; Meredith
College 3, 4; Education Club 3, 4;
President 4.



CLASS OF '49



HARRIET ELIZABETH MORRIS
Jackson, N. C.

Astro Spanish

*"Few things are impossible to
diligence and skill."*

Sigma Pi Alpha 3, 4; Basketball 3, 4;
Education Club 3, 4. Treasurer 4;
I. R. C. 3; Student League of Women
Voters 3, 4.



MARIANNA MORRIS
Fremont, N. C.

Phi Home Economics

*"The applause, delight, the wonder
of our stage!"*

A. A. Board 4; *Twig* Typist 4; Choir
2, 3; Senior Class Secretary; Monogram
Club 2, 3, 4; Little Theater 4; Y. W. A.;
Basketball 1, 2, 3, 4; Softball Varsity
3; Soccer 2; Equitation Varsity 2;
Education Club 4; Home Economics
Club 1, 2, 3, 4. Treasurer 3.

DOROTHY GRADY MURRAY
Cary, N. C.

Astro Chemistry

*"Of manners gentle, of affections
mild."*

Mars Hill College 1, 2; Meredith
College 3, 4; Barber Science Club 3, 4.



MEREDITH COLLEGE



NATALIE GRACE NEAL
Raleigh, N. C.

Phi Psychology
"Whose little body lodg'd a mighty mind."

Peace College 1, 2; Meredith College 3, 4; Sigma Pi Alpha 3, 4; Dean's List.



JENNIE LOU NEWBOLD
Elizabeth City, N. C.

Phi Voice
*"Then I saw her eye was bright,
a well of love, a spring of light."*

S. G. Council 4; Alpha Psi Omega 3, 4; Freshman Counsellor 3; Choir 2, 3, 4; Glee Club 2, 3, 4. Librarian 3; Group of Nine 3, 4; Sigma Alpha Iota 4; Greater B. S. U. Council 2, 3, 4; Little Theater 2, 3, 4; Y. W. A.; House Council 4; Granddaughters' Club 1, 2, 3, 4, Vice-President 3, President 4.



LILY WHITE OATFIELD
Raleigh, N. C.

Psychology
"Twilight, a timid Fawn, went glimmering by."

American University, Washington, D. C. 1; Meredith College 2, 3, 4; Dean's List.

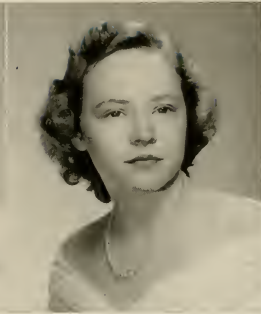




IDALIA LEE OGLESBY
Hamilton, N. C.

Astro Religion
"Of toil unsevered from tranquility."

OAK LEAVES Photography Editor 4; Choir 2, 4; Senior Class Treasurer; Little Theater Pledge 2, 3, 4; Y. W. A.; Freeman Religion Club 1, 2, 3, 4, Reporter 3; Superlative.



SARAH ELEANOR PADGETT
Charlotte, N. C.

Phi Religion
"And gay as soft, and innocent as gay!"

Mars Hill College 1, 2; Meredith College 3, 4; Choir 3; Y. W. A.; Education Club 4; Freeman Religion Club 3, 4; Sociology Club 3, 4.



NELL BRITT PARKER
Enfield, N. C.

Astro Education
"She with a subtle smile in her mild eyes."

Choir; Y. W. A.; Education Club 4; I. R. C. 4.





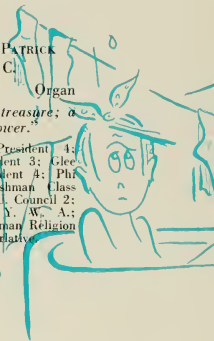
DOROTHY LUCILLE PATRICK
Charlotte, N. C.

Phi

Organ

"A witty woman is a treasure; a witty beauty is a power."

Sigma Alpha Iota, President 4; Choir 2, 3, 4, Vice-President 3; Glee Club 2, 3, 4, Vice-President 4; Phi Society Marshal 2; Freshman Class Secretary; Greater B. S. U. Council 2; Little Theater Pledge; Y. W. A.; Equitation Group 2; Freeman Religion Club 2; I. R. C. 2; Superlative



PEGGY JEAN PATRICK
Washington, D. C.

Astro Psychology

"Sphere-descended maid, friend of pleasure, wisdom's aid!"

A. A. Board 4; Monogram Club 1, 2, 3, 4; Little Theater Pledge 1, 2, 3, 4; Folk Dance Club 3, 4; Basketball 4; Hockey Varsity 4; Softball 4; Badminton 4; Soccer 4; Equitation Group 1, 2, 3, 4, President 4; Equitation Varsity 4; Superlative.

SARAH KATHERINE PERRY
Wingate, N. C.

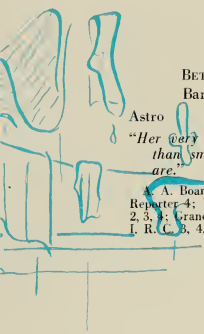
Phi Education

"Wise to resolve, and patient to perform."

Wingate Junior College 1, 2; Meredith College 3, 4; Greater B. S. U. Council 3; Y. W. A.; Education Club 4.



CLASS OF '49



BETTY JO PITMAN
Barnesville, N. C.

Astro Education

"Her very frowns are fairer far than smiles of other maidens are."

A. A. Board, Vice-President 4; Twig Reporter 4; Y. W. A.; Education Club 2, 3, 4; Granddaughters' Club 1, 2, 3, 4; I. R. C. B. 4.



SHIRLEY VIRGINIA POWELL
Virginia Beach, Va.

Astro Psychology

"A dancing shape, an Image gay."

Nominating Committee 4; May Court 1; Twig Reporter 4; Astro Society President 4; Little Theater Pledge; Hockey 2, 3, 4; Badminton 3; Equitation Group 1, 2, 3, 4; Creative Rhythms 3; Modern Dance Club 3; I. R. C. 2, 3, 4; Student League of Women Voters 1, 2, 3, 4.

JULIA FENNEL POWERS
Wallace, N. C.

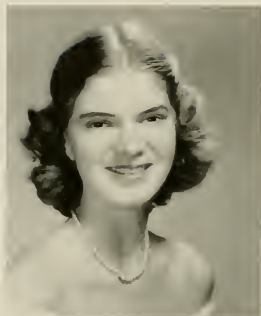
Phi Religion

"She hath a heart with room for every joy."

B. S. U. Council 3, 4, Publicity Editor 3, Treasurer 4; Kappa Nu Sigma 3, 4, President 4; Sigma Pi Alpha 4; Glee Club 2; Y. W. A.; Folk Dance Club 3, 4; Equitation Group 2; Freeman Religion Club 2, 3, 4, Vice-President 3, President 4; Dean's List; Snperlative.



MEREDITH COLLEGE



MARY LOU PRESSLY
Raleigh, N. C.

Astro Education

"She was good as she was fair."

Peace College 1, 2; Meredith College
3, 4; Sigma Pi Alpha 3, 4; Education
Club 3, 4.



EDYTHE MARIE REINHARDT
Jamaica, N. Y.

Astro Sociology

*"Eyes glad with smiles, and brow
of pearl."*

Queen's College, New York 1, 2;
Meredith College 3, 4; Barber Science
Club 3, 4; Sociology Club 3, 4.



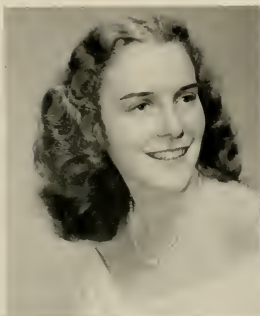
BARBARA CAROLYN RICHARDSON
Seagrove, N. C.

Astro Business

*"She doeth little kindnesses which
most leave undone, or despise."*

S. C. Council 3, 4; Freshman Coun-
sellor 3; Little Theater Pledge;
Y. W. A.; Basketball 2; Hockey 2;
House Council 2, 3, 4; I. R. C. 3, 4;
Tomorrow's Business Women 3, 4.





ELEANOR BROWN ROBERSON
Washington, N. C.

Astro Mathematics

"Small, but how dear to us God knoweth best."

Greater B. S. U. Council 3; Y. W. A.; Education Club 3, 4; Mathematics Club 2, 3, 4, Secretary-Treasurer 4; Sociology Club 3, 4.



ADA BESS RUPPELT
Charlotte, N. C.

Phi Sociology

"And all that life is love."

Mars Hill College 1, 2; Meredith College 3, 4; S. G. Council 4; Greater B. S. U. Council 3, 4; Y. W. A.; House Council 4; Freeman Religion Club 3, 4; Granddaughters' Club 3, 4; Sociology Club 3, 4; Dean's List.



DORIS DAY RUSSELL
Raleigh, N. C.

"Preserving the sweetness of proportion and expressing itself beyond expression."



DOROTHY ROSE SADLER
Anderson, S. C.

Phi Education

"As merry as the day is long."

Greater B. S. U. Council 1, 2, 3, 4;
House Council 3; Colton English Club
2; Education Club 2, 3, 4; Grand-
daughters' Club 1, 2, 3, 4.



MARY LOU SAWYER
Tom's River, New Jersey

Phi Chemistry

"Oh marvel of bloom and grace."

Freshman Counsellor 3; Folk Dance
Club 2, 3, 4; Class Health Chairman
2; Barber Science Club 2, 3, 4. Treas-
urer 4.

IRIS GRAY SCARBOROUGH
Mount Gilead, N. C.

Phi Public School Music

*"They are never alone that are
accompanied with noble
thoughts."*

Acorn Class Editor 3, Typist 4; Choir
2, 3, 4; Y. W. A.; Sigma Alpha Iota
4; Helen Hull Law Club 1, 2; Mac-
Dowell Music Club 2, 3, 4; Student
League of Women Voters 3.



CLASS OF '49

H. JEAN SEAGROVE
Clinton, N. C.

Astro Education
*"Thou wert a beautiful thought
and softly bodied forth."*

Montreat College 1, 2; Meredith College 3, 4; Education Club 3, 4. Vice-President 4.



ELLA MAY SHIRLEY
Weldon, N. C.

Phi Chemistry
*"The glory of a firm, capacious
mind."*

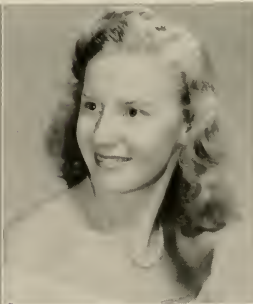
S. G. Council 2, 4, Sophomore Representative, Vice-President 4; Nominating Committee 4; *Twig* Reporter 3, 4; Junior Class President; Little Theater Pledge 1, 2, 3, 4; Barber Science Club 2, 3, 4, Reporter 3; I. R. C. 3, 4; Dean's List; *Who's Who Among Students in American Colleges and Universities.*



MARY LOIS SHUFFLER
Raleigh, N. C.

Phi Business
*"A little warmth, a little light of
love's bestowing."*

S. G. Council 4; *Acorn* Typist 4; Day Students 3rd Vice-President 4; Basketball 1, 3, 4; Softball 3, 4; Tomorrow's Business Women, Secretary 4; Dean's List.



MEREDITH COLLEGE



BETTY SUE SINCLAIR
East Flat Rock, N. C.

Phi English

"When love was loveliest."

Mars Hill College 1, 2; Meredith College 3, 4; Colton English Club 3, 4; Browsing Room Chairman 4; Education Club 4.



FRANCES A. SMITH
Gastonia, N. C.

Astro Public School Music

"Sport, that wrinkled care de-rides."

Sigma Pi Alpha 3, 4; Twig Photography Editor 4; Choir 2, 4; Astro Society Secretary 4; Little Theater Pledge 1, 2, 3, 4; Y. W. A.; Folk Dance Club 3, 4; MacDowell Music Club 2, 3, 4; Vice-President 3, President 4.

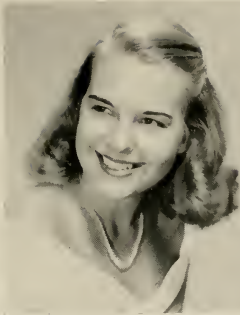


MARGARET HOPE SMITH
New Bern, N. C.

Astro History

"But oh, she dances such a way!"

Monogram Club 2, 3, 4; Folk Dance Club 2, 3, 4; Soccer; Education Club 3, 4.



MARIE BLACKWELL SNELLING
Charlotte, N. C.

Phi Education

"She is pretty to walk with, and witty to talk with."

Sigma Pi Alpha 2, 3, 4; OAK LEAVES 2, Business Manager 3; Phi Society Vice-President 3; Little Theater Pledge 3, 4; Folk Dance Club 1, 2, 3; B-Hive Representative 1, 2, 3, 4; Education Club 3, 4; Dean's List.



REBECCA ANN SPAKE
Shelby, N. C.

Astro Mathematics

"Her smile is the sweetest that ever was seen."

OAK LEAVES Junior Business Manager 3; Y. W. A.; Education Club 4; Freeman Religion Club 4; Canaday Mathematics Club 2, 3, 4. Vice-President 3, President 4.

FRANCES STELL SPRUILL
Plymouth, N. C.

Astro Public School Music

"A comrade blithe and full of glee, who dares to laugh with me."

S. G. Council, President Summer School 3; Choir 2, 3; Little Theater Pledge 1, 2, 3, 4; Folk Dance Club 4; Basketball 1, 2; Equitation Group 2; Band 4; Education Club 4; MacDowell Music Club 2, 3, 4, Secretary-Treasurer 3.



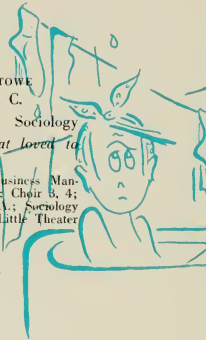


BARBARA SNOW SWANSON
Pilot Mountain, N. C.

Astro Sociology

"Some are born great, some achieve greatness, and some have greatness thrust upon 'em."

S. G. Council, Sophomore Representative, Secretary 3, President 4; Silver Shield, Vice-President 4; Nominating Committee 4; Choir 2; Astro Society Treasurer 2; Monogram Club 4; Basketball 2, 3; Softball 3; Sociology Club 3, 4; Dean's List; Superlative; *Who's Who Among Students in American Universities and Colleges.*



JAMIE ANNE STOWE
Goldsboro, N. C.

Astro Sociology

"Possessing a wit that loved to play."

OAK LEAVES Senior Business Manager 4; Twig Reporter 4; Choir 3, 4; Glee Club 3, 4; Y. W. A.; Sociology Club 3, 4, Treasurer 4; Little Theater Pledge.

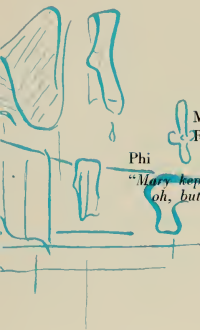
DOROTHY MARIE SWARINGEN
Albemarle, N. C.

Phi English

"I trust in Nature for the stable laws of beauty and utility."

S. G. Council 1, 3, Freshman Representative; Chief Counsellor 4; Silver Shield 4; Nominating Committee, Chairman 4; Alpha Psi Omega 4; Sigma Pi Alpha 3, 4; Freshman Counsellor 2, 3; Choir 3; Greater E. S. U. Council 2; Little Theater 2, 3, 4; Folk Dance Club 2, 3, 4; House Council 3; Colton English Club 3, 4; Dean's List; *Who's Who Among Students in American Universities and Colleges.*

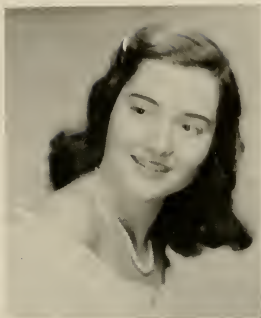




MARIE TAYLOR
Raleigh, N. C.

Phi Education

"Mary kept the belt of love, and oh, but she was gay!"



MILDRED ELOISE THOMAS
Weldon, N. C.

Phi Education

"Strong is the soul, and wise and beautiful."

Sigma Pi Alpha 2, 3, 4; Greater B. S. U. Council 3; Little Theater Pledge 3, 4; Y. W. A.; Education Club 3, 4, Secretary 4; I. R. C. 3; Student League of Women Voters 3, 4, Secretary-Treasurer 4.

DORIS THOMASSON
Bryson, N. C.

Astro Biology

"For beauty lives with kindness."

Choir 2, 3; Greater B. S. U. Council 2; Little Theater Pledge; Y. W. A.; Equitation Group 2; Barber Science Club 3, 4, Secretary 4; Granddaughters' Club 1, 2, 3, 4; MacDowell Music Club 2.



MEREDITH COLLEGE



ANNE HARDY TONGUE
Raleigh, N. C.

Astro Education

"An ounce of wit is worth a pound of sorrow."

Peace College 1, 2; Meredith College 3, 4; Twig 3; Education Club 3, 4; Sociology Club 4.



JOY JUNE VINSON
Clayton, N. C.

Astro Sociology

"A sunbeam in a winter's day."

Little Theater Pledge 1, 2, 3, 4; Y. W. A.; Basketball 1, 2; Softball 1, 2; Swimming 1; Education Club 4; Freeman Religion 2, 3, 4; I. R. C. 3, 4; MacDowell Music Club 3, 4; Sociology Club 3, 4; Student League of Women Voters 3, 4; Dean's List.

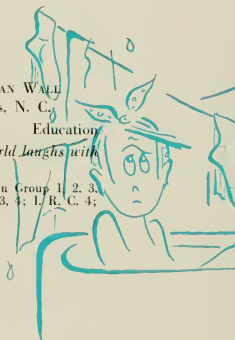


MARJORIE JEAN WALL
Blewitt Falls, N. C.

Phi Education

"Laugh and the world laughs with you."

Y. W. A.; Equitation Group 1, 2, 3, 4; Education Club 1, 3, 4; I. R. C. 4; Sociology Club 3, 4.

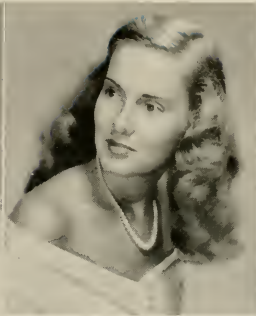




FRANCES RUTH WARD
High Point, N. C.

Phi Art
"With step as light as summer
air."

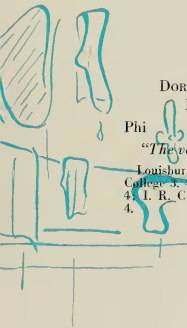
A. A. Board, Folk Dance Manager 4;
Alpha Rho Tau 3, 4, Secretary-Treasurer
4; *Acorn* Assistant Art Editor 2; Choir
2, 3, 4; Little Theater 2; Y. W. A.;
Folk Dance Club 2, 3, 4; Colton Eng-
lish Club 3, 4; Canaday Mathematics
Club 2, 3, 4.



ELIZABETH PATTERSON WESTON
Warrenton, N. C.

Phi Business
"And so lovely her face."

Little Theater Pledge 1, 2, 3, 4;
Y. W. A.; Folk Dance Club 3; Basket-
ball 2, 3; Softball 2; Education Club
3, 4; Sociology Club 3, 4; Tomorrow's
Business Women.



DOROTHY FAYE WHITE
Hertford, N. C.

Phi Education
"The veriest school of Peace."

Louisburg College 1, 2; Meredith
College 3, 4; Y. W. A.; Education Club
4; I. R. C. 4; MacDowell Music Club
4.





JOYCE McCANN WILLIAMS
Rose Hill, N. C.

Astro Education
"A true friend is forever a friend."

Greater B. S. U. Council 3; Choir 2, 3; Little Theater 1, 2, 3, 4; Y. W. A.; Education Club 3, 4; MacDowell Music Club 4; Sociology Club 4; Dean's List.



MARJORIE LEE WILLIAMS
Miami, Florida

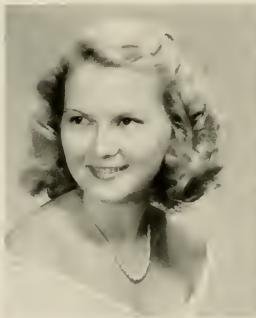
Phi Art
"Fine Art is that in which the hand, the head and the heart go together."

University of Miami 1; Mars Hill College 2; Meredith College 3, 4; OAK LEAVES Art Editor 3; Choir 3, 4; Equitation Group; Alpha Rho Tau; Dean's List.

DORIS ELINOR WILLIAMSON
Clarksville, Va.

Astro Mathematics
"And care as light as a feather."

Freshman Counsellor 3; Choir 2, 4; Glee Club 3, 4; Greater B. S. U. Council 3; Little Theater 2, 3, 4; Y. W. A.; Education Club 4; Helen Hull Law Club 1, 2, Reporter 2; I. R. C. 2; Canaday Mathematics Club 1, 2, 3, 4, Reporter 3, Vice-President 4; Dean's List.



CLASS OF '49



GWENDOLYN ROSE WOODARD
Raleigh, N. C.

Phi History
"My heart is like a singing bird."
I. R. C. 3, 4; Sociology Club 3, 4;
Junior Archivist.



MARIANNA WORTH
Florence, Alabama

Phi Biology
"The mirror of all courtesy."
S. G. Council 4; Twig Business Staff
3; Freshman Counsellor 3, 4; Junior
Class Treasurer; Little Theater Pledge;
House Council 2, 4; Barber Science
Club 2, 3, 4; Treasurer 3; I. R. C. 4.



ROSE MARIE YARBROUGH
Burlington, N. C.

Phi Sociology
*"Fairest of stars, last in the train
of night."*
Choir 2, 3, 4; Equitation Group 1;
Modern Dance Club 1; Freeman Rel-
igion Club 3; Granddaughters' Club
1, 2, 3, 4; Treasurer 2, Vice-President
4; Sociology Club 3, 4; Student League
of Women Voters 4; Dean's List.

Not pictured: Mrs. Eloise Wilbur Brittain, Florence Rushing Moore, Mary
Alice Riddle, Barbara Elaine Stone, Janie Frances Nance.







Sue has two big sisters in the Junior Class.



Bunny and Betty are leading their "little pigs."



Bunny and Lib—stunt cup winners.



Let's decorate the dining hall and give a banquet for the seniors.

JUNIOR CLASS OFFICERS

LAVERNE HARRIS
President

BETTY MOORE
Vice-President

BERTHA WILSON
Secretary

ELLEN GOLDSTON
Treasurer

ALICE KEITH
Sponsor



LAVERNE HARRIS
President



Left to right: Goldston, Miss Keith, Harris, Moore, Wilson.



JUNIOR CLASS

CAROLYN LAVERNE AUSTIN, *Phi*, Charlotte, N. C.

DORIS VIRGINIA BARNETT, *Phi*, Gastonia, N. C.

NAOMI LORRAINE BENNETT, *Phi*, Conetoe, N. C.

MARTHA BERRY, *Phi*, Raleigh, N. C.

CHARLOTTE MAE BOWMAN, *Astro*, Boones Mill, Va.

VIRGINIA PAIGE BOWMAN, *Astro*, Boones Mill, Va.

BETTIE MAJETTE BRICKHOUSE, *Phi*, Warronton, N. C.

DOROTHY MAE CHILDRESS, *Astro*, Raleigh, N. C.

DORIS EMILY CONCHA, *Phi*, Amityville, N. Y.

ESTHER CAROLYN COVINGTON, *Phi*, Raleigh, N. C.



JUNIOR CLASS

JEAN ELIZABETH DAUGHTRIDGE

Phi

Rocky Mount, N. C.



CAROLYN DIXON

Phi

Reidsville, N. C.



NANCY RUTH DUCKWORTH

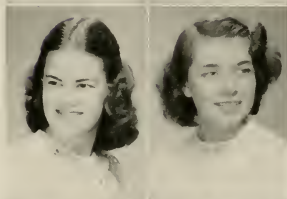
Phi

Arlington, Va.

ADDIE SHANNONHOUSE ELLIOTT

Phi

Huntsville, Ala.



WINNIE MAY FITZGERALD

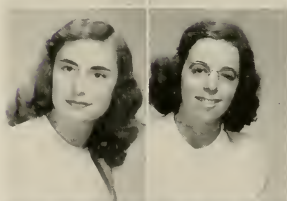
Phi

Gretna, Va.

MARY KATHRYN FLOYD

Phi

Hazellhurst, Ga.



ANITA THOMAS FREEMAN

Astro

Gates, N. C.

ELLEN LOUISE GOLDSTON

Astro

Scottsbluff, Neb.



KITTY GRAHAM

Phi

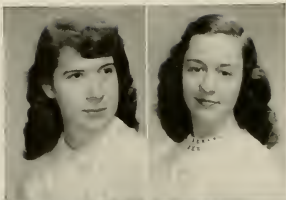
Hopewell, Va.

GLADYS IRENE GREENE

Astro

Raleigh, N. C.

JUNIOR CLASS



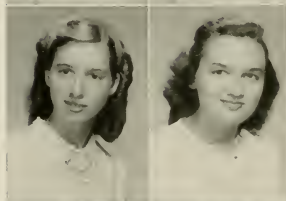
ELVA LIGEIA GRESHAM
Astro
Chinquapin, N. C.

JUNE HARMON
Phi
Ahoskie, N. C.



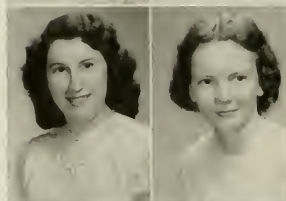
LAVERNE HARRIS
Phi
Cary, N. C.

ELBA RAYE HAWES
Astro
Shallotte, N. C.



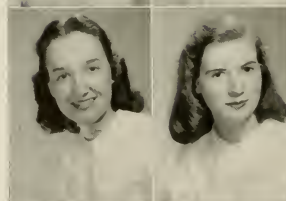
ROBERTA MARGARET HOLCOMBE
Astro
St. Petersburg, Fla.

MARY ELIZABETH HOLDFORD
Phi
Wilson, N. C.



BETTIE ANN HORTON
Astro
Ellerbe, N. C.

VIVIAN ORLENA JAMERSON
Phi
Pensacola, N. C.



HANNAH ELIZABETH JONES
Phi
Arlington, Va.

JOYCE ROSS KENNEDY
Phi
Statesville, N. C.



JUNIOR CLASS

GLADYS AURELIA LASSITER, *Phi*, Four Oaks, N. C.

MARGUERITE LEATHERMAN, *Phi*, Lincolnton, N. C.

HELEN JANE McDANIEL, *Phi*, Raleigh, N. C.

ELIZABETH MINA MACHEN, *Phi*, Greenville, N. C.

MINA CHARLOTTE MAYTON, *Astro*, Durham, N. C.

FRANCES LEIGH MEADOWS, *Phi*, Kernersville, N. C.

MELLIE ANNETTE MILLER, *Astro*, New Bern, N. C.

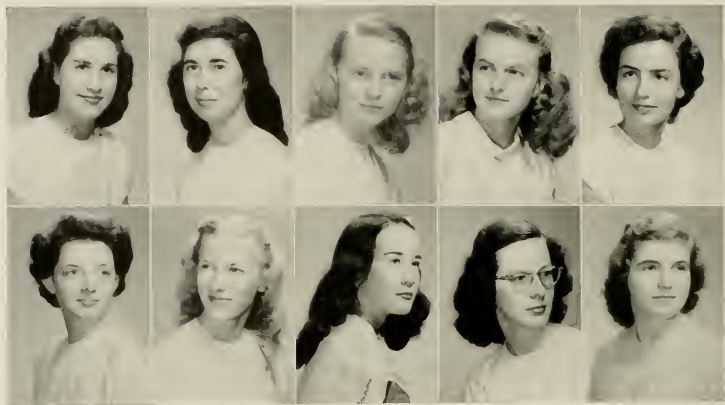
BETSY MARIE MILLS, *Phi*, Concord, N. C.

BETTY MOORE, *Phi*, Myrtle Beach, S. C.

FRANCES CAROLYN MOORE, *Astro*, Reidsville, N. C.

BETSY ANN MORGAN, *Phi*, Benson, N. C.





JUNIOR CLASS

ANN IMOGENE NARRON, *Phi*, Middlesex, N. C.

MARY SUE PAGE, *Phi*, Rome, Ga.

KATHLEEN HICCS PERRY, *Astro*, Raleigh, N. C.

EMILY SPEIGHT POOL, *Phi*, Greenville, S. C.

JOSEPHINE FIDELIA SNOW, *Astro*, Raleigh, N. C.

EMILY MILDRED STACY, *Astro*, Washington, D. C.

MYBA RUTH STONE, *Astro*, Raleigh, N. C.

VIRGINIA SNYDER BUTCHART, *Phi*, Denton, N. C.

SALLY LOU TAYLOR, *Phi*, Portsmouth, Va.

MARJORIE ANN TRIPPEER, *Astro*, Roanoke, Va.



JUNIOR CLASS

PATSY TRULL

ALICE GORDON TUTTLE

Astro

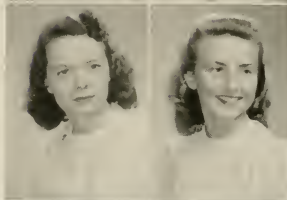
Hamlet, N. C.



BETTY JO TYSINGER

Phi

Denton, N. C.



ELSIE LYWOOD VANN

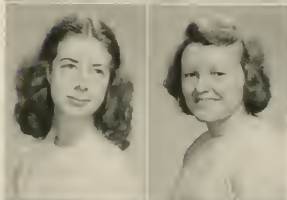
Astro

Raleigh, N. C.

HILDA LOMINAC WALLER

Phi

Raleigh, N. C.



HELEN LEE WILHELM

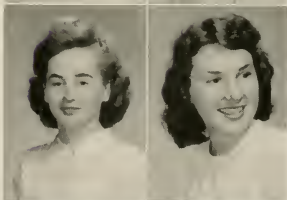
Phi

Sparrows Point, Md.

FRANCES LORENA WILLIAMS

Phi

Waynesville, N. C.



HAZEL MARIE WILLIAMSON

Phi

Durham, N. C.

MARY CHRISTINE WILLIAMSON

Astro

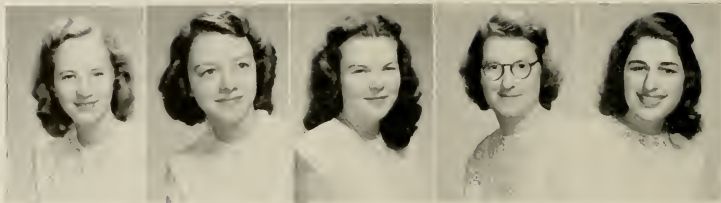
Chadbourn, N. C.



ANNIE GWENDOLYN WILSON

Phi

Churchville, Va.



JUNIOR CLASS

BERTHA EVANS WILSON, *Astro*, Henderson, N. C.

ANN McRAE WOOTEN, *Astro*, Chadbourn, N. C.

JO ANNE WYATT, *Phi*, Winston-Salem, N. C.

EMILY LOUISE YARBROUGH, *Phi*, Roxboro, N. C.

ELIZABETH ZULALIAN, *Phi*, Brookline, Mass.

Not pictured: Mary Ann Beale, Ann Louise Brown, Betsy Anne Edwards, Pollyanna Gibbs, Helene Klingbeil, Gazelle Hudgins Moore, Martha Lou Stevenson, Roxanne George Vallas.







Thrills! chills! sunburns of our Freshman year.

Two's a couple, three's a crowd, four???



Let's get away from it all"—we tried hard enough!!.

"Happy birthday"—big party even if we didn't win.



SOPHOMORE CLASS OFFICERS

EMMA LEE HOUGH
President

BETTY JANE HEDGEPEETH
Vice-President

ANN McRACKAN
Secretary

MARGARET SWANN
Treasurer

MISS SARAH LEMMON
Sponsor



EMMA LEE HOUGH
President



Hough, Swann, Hedgpeth, McRackan.

Dorothy Allen, Cherryville, N. C.
 Frances Almond, Salisbury, N. C.
 Frances Altman, Dunn, N. C.
 Jeanette Atkins, Cary, N. C.



Betsy Aushon, Tarboro, N. C.
 Joyce Bailey, Plymouth, N. C.
 Evelyn Barden, Rose Hill, N. C.
 Barry Barefoot, Angier, N. C.



Beverly Batchelor, Nashville, N. C.
 Peggy Benbow, Winston-Salem, N. C.
 Jane Biggs, Florence, S. C.
 Pat Blackman, Durham, N. C.



Beth Boggs, College Park, Ga.
 Eileen Bone, Rocky Mount, N. C.
 Shirley Bone, Nashville, N. C.
 Daphne Bordeaux, Wallace, N. C.



Mickey Bowen, Asheville, N. C.
 Jeanette Bramble, Fayetteville, N. C.
 Annie Pearl Brantley, Spring Hope, N. C.
 Helen Brewer, Holly Springs, N. C.



Louise Britt, Elizabethtown, N. C.
 Helen Brunson, Florence, S. C.
 Jane Earl Burch, Charlotte, N. C.
 Katherine Busbee, Norfolk, Va.



Nell Caison, Roseboro, N. C.
 June Carter, Charlotte, N. C.
 Betty Compton, Burlington, N. C.
 Carolyn Crook, Albemarle, N. C.



SOPHOMORE CLASS

SOPHOMORE CLASS



Sylvia Currin, Oxford, N. C.

Dot Cutts, Oxford, N. C.

Lydia Davis, Rock Hill, S. C.

Ruby Lee Davis, Durham, N. C.

Betty Lou Dean, Louisburg, N. C.

Kathleen Deane, Akron, Ohio

Barbara Dennis, Durham, N. C.

Mary DeVane, Fayetteville, N. C.

Jean Dickerson, Louisburg, N. C.

Millicent Elliott, Amityville, N. Y.

Patsy Emory, Northside, N. C.

Frances Anne Estridge, Florence, S. C.

Norma Fagan, Jamesville, N. C.

Anne Fouche, Rock Hill, S. C.

Elaine Futrell, Murfreesboro, N. C.

Mary Ann Goodwin, Atlanta, Ga.

Verdie Graves, Pageland, S. C.

Ina Gresham, Chinoquin, N. C.

Ruth Griffin, Charlotte, N. C.

Le Grace Gupton, Raleigh, N. C.

Betty Ann Hall, Winston-Salem, N. C.

Martha Hare, Holly Springs, N. C.

Alice Harrell, Tarboro, N. C.

Martha Harrelson, Tabor City, N. C.

Christine Hayes, Elkin, N. C.

Betty Jane Hedgepeth, Boundbrook, N. J.

Nancy Hefner, Greer, S. C.

Virginia Henry, Hendersonville, N. C.

Anna Leigh Hicks, Oxford, N. C.
 Hope Hodges, Washington, N. C.
 Fleda Hooten, Grifton, N. C.
 Beth Hord, Kings Mountain, N. C.



Emma Lee Hough, Charlotte, N. C.
 Lois Johnson, Clayton, N. C.
 Betsy Jordon, Raleigh, N. C.
 Virginia Jones, Norfolk, Va.



Mary Bland Josey, Tarboro, N. C.
 Marjorie Joyner, Winston-Salem, N. C.
 Marcine Kinkead, Rocky Mount, N. C.
 Sheila Knapp, Washington, D. C.



Edriel Knight, Roxboro, N. C.
 Rebecca Knott, Oxford, N. C.
 Rosalind Knott, Oxford, N. C.
 Emilia Kutschinski, Raleigh, N. C.



Pat Lawrence, Raleigh, N. C.
 Margaret Leach, Kinston, N. C.
 Sarah McLelland, Garland, N. C.
 Ann McRackan, Southport, N. C.



Joanne Mason, Portsmouth, Va.
 Carolyn Massey, Zebulon, N. C.
 Stella Matthews, Nashville, N. C.
 Marilyn Mills, Charlotte, N. C.



Kathryn Mims, Raleigh, N. C.
 Sandra Moore, Florence, S. C.
 Drake Morgan, Spring Hope, N. C.
 Anne Marie Morton, Raleigh, N. C.



SOPHOMORE CLASS

SOPHOMORE CLASS



Sarah Jane Newbern, Ahsokie, N. C.

Diane Newton, Manhattan, N. Y.

Faye Nichols, Wilmington, N. C.

Jean Olive, Southern Pines, N. C.



Carol Parker, Winston-Salem, N. C.

Julia Parker, Norfolk, Va.

Barbara Pearson, Elizabeth City, N. C.

Ellen Peeler, Belwood, N. C.



Betty Penny, Laurinburg, N. C.

Jamie Perry, Pelham, N. C.

Joanne Pittard, Oxford, N. C.

Betty Proffitt, High Point, N. C.



Betty Love Raines, Raleigh, N. C.

Jane Reid, Asheville, N. C.

Betty Roberts, Reidsville, N. C.

Janet Roberts, Gastonia, N. C.



Betty Lou Rogers, Creedmore, N. C.

Jessie Sapp, Greensboro, N. C.

Elaine Saunders, Reidsville, N. C.

Lolita Saunders, Reidsville, N. C.



Patsy Schnibben, Florence, S. C.

June Short, Florence, S. C.

Betty Jean Shuler, Bowman, S. C.

Billie Smith, Pilot Mountain, N. C.



Martha Smith, New Hill, N. C.

Mary Louise Snyder, Denton, N. C.

Rebecca Straughan, Siler City, N. C.

Rebecca Stevens, Raleigh, N. C.

Martha Stough, Raleigh, N. C.

Jane Stroup, Cherryville, N. C.

Margaret Swann, Madison, N. C.

Daphne Yelverton, Fountain, N. C.

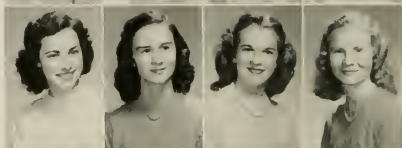


Bettie Yates, Rockingham, N. C.

Marion Winston, Nelson, Va.

Lenora Wilson, Rocky Point, N. C.

Evelyn Wilson, Raleigh, N. C.



Elsie Wicker, Sanford, N. C.

Peggy White, Tarboro, N. C.

Betty Whichard, High Point, N. C.

Margaret Washburn, High Point, N. C.



Marilyn Ware, Lee Hill, Va.

Donna Walston, Barberton, Ohio

Nancy Walker, Hendersonville, N. C.

Margaret Walker, South Hill, Va.



Helen Walker, Sparta, N. C.

Rosalyn Varn, Walterboro, N. C.

Mary Jane Utley, Greer, S. C.

Bettie Tolson, Henderson, N. C.



Marjorie Tolson, Belhaven, N. C.

Barbara Todd, Raleigh, N. C.

Jean Taylor, Raleigh, N. C.



SOPHOMORE CLASS



FRESHMAN CLASS OFFICERS

ROSALYN POOLE, *President*

BARBARA COX, *Vice-President*

CECILE WARD, *Secretary*

ASHA FARRIOR, *Treasurer*

MISS DORIS PETERSON, *Sponsor*



ROSALYN LUCILLE POOLE
Freshman Class President



Barbara Cox, Miss Doris Peterson, Asha Farrior, Cecile Ward, Rosalyn Poole.

FRESHMAN CLASS

Adock, Lynette

Atkins, Dorie Ann

Bales, Pat

Ballentine, Carolyn



Barker, Shirley Sealey

Bolling, Betsy Ruth

Bone, Barbara Cecile

Bostic, Nellie Marie



Britt, Molly Jeanette

Brown, Mary Evelyn

Brown, Allene

Buckner, Virginia Deane



Bunn, Polly Sue

Burleson, Lila Ann

Cannady, Anne Carter

Cannady, Betty Jane



Carlton, Frances

Carr, Fannie

Carroll, Elizabeth

Castelloe, Emily Burden



Cheek, Nancy Ann

Chriscoe, Kathleen

Clark, Sally Sue

Cowan, Jessie Van



Cox, Barbara Jean

Crech, Kathryn Anne

Creef, Jacqueline Marie

Cross, Barbara Bernice



Davenport, Roberta

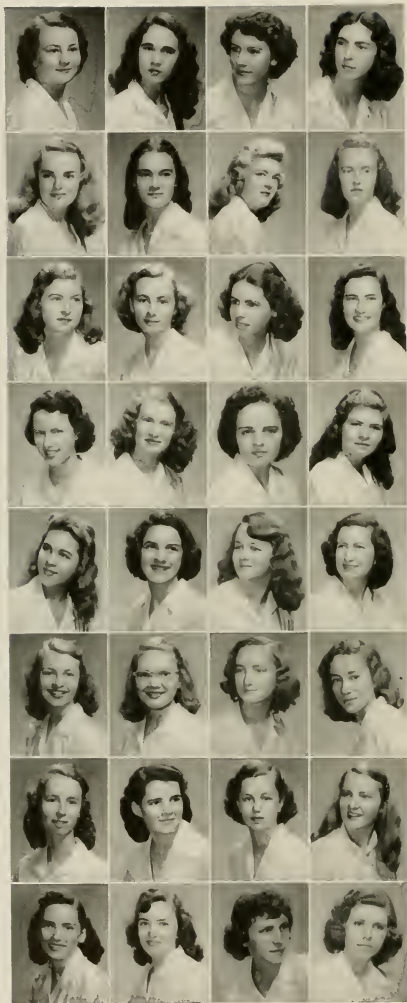
Day, Bernice Benthall

Dixon, Joanne

Dixon, Rachel



FRESHMAN CLASS



Dozier, Mavourneen

Edwards, Frances

Edwards, Marie Louise

Farrior, Asha

Fisher, Dorothy

Fitzgerald, Frances Sue

Furtado, Grace

Gardner, Janette

Garrett, Clara Dean

Guthrie, Sarah Curtis

Haight, Dorothy Irene

High, Melissa

Holland, Margaret

Holland, Martha Jean

Holt, Velma Elizabeth

Hood, Barbara Deems

Horn, Mary Louise

Jackson, Julia Josephine

Johnson, Frances

Johnson, Jean Causey

Johnson, Nancy Elizabeth

Joyner, Jeannette Whitfield

Kelley, Irene Antoinette

King, Francene

King, Leatrice Elizabeth

Kinlaw, Carlene

Leatherwood, Helen Ann

Lee, Bonnie Barbara

Liddy, Lucyann

Luther, Jane

McNeill, Elizabeth

Mason, Jean

FRESHMAN CLASS

Massey, Sally

Miller, Dott

Miller, Jean Annette

Mills, Dorothy

Mitchell, Nell Bobbitt

Moor, Valeida Marie

Morton, Zeta Elizabeth

Murphy, Jane Webb

Murray, Elizabeth Smith

Murray, Norma Lee

Newman, Sharon

Newsome, Glenn Mary

Oliver, Dolores

Palmer, Mary Ann

Pate, Marianne Duncan

Phillips, Evelyn

Poole, Peggy Jeanne

Poole, Rosalyn Lucille

Presson, Julia

Pritchett, Lois Odell

Ray, Irma

Rittenhouse, Florence

Roberson, Lane

Roberts, Eris Arline

Robinson, Martha Suzanne

Rodwell, Virginia

Rodwell, Mary Pryor

Royal, Matel

Schettler, Barbara Carol

Sharpe, Dorothy Jane

Simmons, Ruth Ann

Simpkins, Martha Oneida



FRESHMAN CLASS



Simpson, Mildred Wallace

Slate, Jane

Smith, Betty Jo

Spence, Metta May



Spiers, Martha Powell

Stallings, Barbara Elaine

Staton, Jerry

Sutton, Dorothy



Swindell, Dwan Ann

Tatum, Janet

Taylor, Elizabeth

Thomas, Dorothy



Travis, Betty Lou

Walker, Ellen Byrd

Wallace, Evelyn Madelon

Ward, Mary Cecile



White, Mary Faye

Williams, Elsie Joyce

Wood, Ada



Not pictured: Abell, Elinore Irene; Boone, Emily Parker; Byrum, Dorothy Neal; Caddell, Patricia; Harrelson, Martha; Hilliard, Geneva Nevelle; Nance, Ernestine; Peele, Laura Frances; Peele, Lola; Phillips, Dorothy Glynn; Shaw, Mary Jo; Thompson, Nalene; Yao, Vida.



Through you we gained a breadth of experience and set our goals for living.



ACTIVITIES



STUDENT GOVERNMENT ASSOCIATION

The Student Government Association of Meredith College endeavors to acquaint each member of the student body with the experience of practicing democracy through self-governing. A Student Council composed of twenty-six members elected by popular vote make up the legislative body of the organization. Working with the Council are the Advisory Committee and the Faculty Committee on Student Government. Together the three groups strive to keep Meredith conduct standards at the highest possible level. Through the years the Student Government Association has passed on the renewed challenge for a campus life which will lead to a place of responsibility in the world of tomorrow.



BARBARA SWANSON
President



Student Government Council.



DOROTHY SWARINGEN
Chief Counsellor

FRESHMEN AND TRANSFER COUNSELLORS

"Where is she? Someone said she's here!" A breathless counsellor, name-tag awry, rushed madly into Dean Grant's office.

"Where is who?" a voice queried mildly.

"Why, Nancy Montgomery!" the counsellor exclaimed. "She's one of my girls!"

Yes, they're our girls—these eager freshmen and sometimes skeptical transfers—ours to guide and love throughout the year. But who are we to flaunt such influence, you ask? Just counsellors. And what are we for?

Last year's high school senior arriving at college and wondering why she ever came to this strange, lonely-looking place and whether she can "stick it out" until Christmas, the junior transfer wondering why she didn't stop after two years, the transfer from a big university wondering what this place will have to offer—all these the counsellor welcomes to Meredith and guides through the various matriculation processes. She also arranges for the heavy trunks and suitcases to be carried up to the rooms, and helps her charges transform the bare, lifeless rooms they

enter into the living reality of their dreams. During the first days, she visits them often to answer their numerous questions and to help ward off homesickness.



Freshman and Transfer Counsellors.

BAPTIST STUDENT UNION

"This one thing I do . . . I press toward the mark for the prize of the high calling of God in Christ Jesus." We always look for a set of directions to live by, but actually we live by only one *direction*. Embodied in the spirit that should breathe through the Baptist Student Union is a direction which offers an abundant life to any person who will accept it and unwaveringly follow it. On the campus and in the local churches, guided by the Executive Council, are offered many opportunities that give expression to a faith rooted in the spirit of *the direction*. Among these are Religious Focus Week and Religious Emphasis Week that seek to direct the attention of the student body to God's demand on life, mass meetings of the Baptist Student Union which create a spirit of fellowship in a common purpose; discussion groups which stimulate ideas, and Y. W. A. which seeks to create a world vision. All of the activities are striving to present to the students the challenge offered within the Christian faith and to guide a development of mature Christian thinking so that every individual may see the implication the Christian direction has for life and commit herself to it.



MARJORIE WILSON
President



B. S. U. Council

B.S.U. STAFF

MARJORIE WILSON
President
 EMILY POOL
First Vice-President
 CHARLOTTE BOWMAN
Second Vice-President
 BETSY ANN MORGAN
Third Vice-President
 BETH BOGGS
Secretary
 JUDY POWERS
Treasurer
 RITA BRITT
Y.W.A. President

HARRIET LITTLEJOHN
S. S. Director
 ROSALIND KNOTT
B.T.U. Director
 BETTY MOORE
Publicity Editor
 BETTY HEFNER
Publicity Artist
 FRANCES ANNE ESTRIDGE
Music Chairman
 JANIE NANCE
Program Chairman
 ELAINE SAUNDERS
Arrangements Chairman

REV. F. O. MIXON
Pastor Adviser





Shirley Powell, President
 Betty Jean Johnson, Vice-President
 Frances Ann Estridge, Sergeant-at-Arms

Frances Smith, Secretary
 Victoria Harrell, Treasurer
 Phyllis Cunningham, Adviser



ASTROTEKTON



SHIRLEY POWELL
President

Hop a bus to the printers; call Jimmy Capps for our Stars of Beauty program; listen to the "dead" microphone; start the Collegiate Party in ten minutes; in the midst of all hear from Miss Cunningham the prize statement of Rush Week. "I have cut out so many goats that I'm seeing stars." Planning, visiting, and cramming for the next day's classes, with no way of finding out who was rushed the most—the freshmen and transfers or the old members. Decision Day may not have brought quantity, but the Astros had new share in quality. The hilarious fright of initiation followed by the forever cherished moments of installation was like a beautiful dream after a busy day. Plans, parliamentary procedure, play revues, laughs, ordering pins, the surprise of our Baby Party. Next, we hammered our fingers instead of the scenery and laughed at the actors in gaudy make-up for Society Play Night. The suspense of waiting for the decision. Elections week and installation while the eyes of the old officers glistened with retrospection and the eyes of the new officers were bright and eager for the coming year. The close of a successful year on Society Night with our motto, "He builds too low who builds beneath the stars."



Nancy Hall, President
 Marguerite Leatherman, Vice-President
 Elizabeth Holdford, Secretary

Kathleen Deane, Treasurer
 Virginia Jones, Sergeant-at-Arms
 Lucy Ann Neblett, Adviser

PHILARETIAN



Be a Phi! Be a Phi! This was the ringing chant of all Phis as they rushed to the annual bonfire, where songs, food, and a golden moon ushered in Rush Week on our campus. Silently in the early morning light, all Phis tiptoed to the windows and burst forth with a serenade for those indoors. Throughout Phi days, the girls waited on tables, carried trays for the student body, and provided entertainment at dinner. In the evening of the last Phi Rush Day, a special candlelight service in the court featured the Phi shield. Finally the long awaited Decision Day arrived, and each new girl marched down the aisle to join the society of her choice.

During Rush Week, or any time for that matter, no Phi betrays her society, for she maintains a spirit of friendship and love, having deeply implanted in her heart the Phi motto, "Plain living and high thinking." The society meetings mean fun and fellowship for all its members; the thrill of giving the Phi play and of Society Night can never be forgotten. Only a Phi can know the sense of pride and love that comes as she sings the beautiful words, "Lead on, O Philaretia fair, Lead upward day by day."



NANCY HALL
 President



ASTRO MARSHALS

Betty Hefner, Virginia Bowman, Beverly Batchelor, Florence Moore.



PHI MARSHALS

Eunice Andrews, Daphne Bordeaux, Betty Brooks, Hazel Williamson.

THE OAK LEAVES

Announcements made in chapel . . . notices on the bulletin board . . . a roving photographer . . . pleas for copy . . . a period of waiting . . . finally the finished product. These are what the average person remembers when he thinks of the OAK LEAVES. But there were also things going on behind the scenes. The editor was tearing her hair trying to supervise the whole job, making last minute shifts in the dummy, drawing up schedules and hoping that they would work out. The business manager and her helpers were tramping the streets of Raleigh soliciting ads to provide the money that the editorial office was spending. The staffs were going about their business, doing all those little odd jobs necessary for any publication. We worked and worked hard, but we feel that the results are worth the effort. We have tried to bring to you the art of living as it was practiced for a year at Meredith. We hope you like the finished picture.



Magdalene Creech, Editor
Josephine Snow, Business Manager



Editorial Staff

EDITORIAL STAFF



Magdalene Creech.....	Editor	
Mary Humphrey.....	Associate Editor	
Ella Adams.....	Senior Editor	
Ellen Goldston.....	Junior Editor	
Betty Ann Hall.....		Sophomore Editor
Marie Edwards.....		Freshman Editor
Betty Jane Hedgepeth.....		Art Editor
Miss Phyllis Cunningham.....		Photography Manager
Peggy Benbow }.....		Photography Editors
Idalia Oglesby }		

BUSINESS STAFF

Josephine Snow.....	Business Manager	
Anne Stowe }.....	Senior Assistants	
Elizabeth Kiser }		
Elizabeth Holdford.....	Junior Assistant	
Marjorie Joyner }.....	Sophomore Assistants	
Martha Stough }		
Louise Hunt.....	Copy Editor	



Business Staff

THE TWIG



Jane Lassiter, Editor
Jane McDaniel, Business Manager

Working on a student publication is a unique experience in itself which is unusually stimulating if that publication is a newspaper. Those of us who have worked on the TWIG this year can verify this statement with a brief recollection of a few of the situations and problems which have confronted us.

In order to "put the paper to bed" on time for each of the fifteen issues of the TWIG, it has been necessary for us to follow a rigid schedule and to meet many deadlines which we thought could *never* be met. All the anxiety and thrill of newspaper work came to each of us when things didn't go just right. For example, lost articles, money worries, forgotten news events, late write-ups, and countless other minor details which were so annoying at times were just a few of the headaches that caused many an anxious moment to the staff.


All told, these problems take a back-seat in our minds today as we remember chiefly the many pleasures of our work and the happiness we found in giving you the TWIG. We worked hard and long because we truly enjoyed what we were doing and wanted you to share with us the product of hard work and perseverance.

It was very pleasant knowing and working with many different people, both on and off campus. These friends and acquaintances we shall long remember, for they were indispensable to us in the involved processes of getting out a newspaper.

If the TWIG has not lived up to all expectations, then don't say our work was in vain; if it has meant to you one half what it has meant to us, then our deepest wish has been fulfilled and our sincerest efforts rewarded.



EDITORIAL STAFF

Jane Lassiter.....	<i>Editor</i>	
Betty Brooks.....	<i>Managing Editor</i>	
Marjorie Joyner.....	<i>Associate Editor</i>	
Doris Lee.....	<i>Associate Editor</i>	
Beverly Batchelor.....	<i>Feature Editor</i>	
Betty Jane Hedgepeth.....	<i>Art Editor</i>	
Nancy Walker.....	<i>Alumnae Editor</i>	
Katherine Lewis.....	<i>Music Editor</i>	
Sue Page.....	<i>Sports Editor</i>	
Frances Smith.....	<i>Photo Editor</i>	
Shirley Bone.....	<i>Exchange Editor</i>	
Sally Lou Taylor.....	<i>Make-Up-Editor</i>	
Donna Walston.....	<i>Columnist</i>	
<i>Reporters—Ella Adams, Madelyn Clinard, Mary Lou Dawkins, Beth Boggs, Rebecca Knott, Rosalind Knott, Mary Bland Josey, Harriet Littlejohn, Betty Anne Hall, LeGrace Gupton, Anne Stowe.</i>		
<i>Chief Typist—Louise Hunt.</i>		
<i>Typists—Ellen Goldston, Elva Gresham, Emma Lee Hough, Marianna Morris, Frances Altman.</i>		

BUSINESS STAFF

Jane McDaniel.....	<i>Business Manager</i>
Ann Boykin.....	<i>Advertising Manager</i>
Barbara Francis.....	<i>Circulation Manager</i>
Betsy Jordon, Martha Hare, Jackie Knott.....	<i>Members of Business Staff</i>
Dr. Norma Rose.....	<i>Faculty Adviser</i>
Dr. Harry E. Cooper.....	<i>Photographer</i>



THE ACORN




Esther Green, Editor
Evelyn Hodges, Business Manager

result—the forty-first volume—was abundantly worth it all. Yes, worth the agonized hours over the typewriter, racing with a deadline—worth trudging back and back again for three inches of advertising—worth india ink all over the place—worth the midnight hours with the dummy and trotting back and forth to the printer—worth *everything*. Why? Well, we can't say exactly, but it had something to do with the satisfaction of giving our best to a labor of love which did not go unappreciated.



THE STAFF

Esther C. Green.....	Editor	
Mary Humphrey.....	Assistant Editor	
Jeanne Dickens.....	Art Editor	
Mary Lou Dawkins, Frances Moore, Sally Lou Taylor, Christine Williamson, Peggy Benbow, Barbara Todd.....	Class Editors	
Betty Moore.....	Assistant Art Editor	

BUSINESS STAFF

Evelyn Hodges.....	Business Manager
Louise Fritts, Betty Jo Tysinger.....	Assistant Business Managers
Bertha Wilson.....	Circulation Manager
Ellen Goldston, Iris Scarborough, Lois Shuffler.....	Typists
Dr. Mary Lynch Johnson.....	Faculty Adviser



NOMINATING COMMITTEE



Dorothy Swaringen.....	Chief Counsellor
Barbara Swanson.....	Student Government Council President
Marjorie Wilson.....	Baptist Student Union President
Martha Davis.....	Athletic Association President
Shirley Powell.....	Astrotekton Society President
Nancy Hall.....	Philaretian Society President
Magdalene Creech.....	OAK LEAVES Editor
Jane Lassiter.....	Twig Editor
Esther Green.....	Acorn Editor
Elsie Corbett.....	Little Theater President
Lillian Gaddy.....	Day Student President
Maxine Bisette.....	Senior Class President
La Verne Harris.....	Junior Class President
Emma Lee Hough.....	Sophomore Class President
Rosalyn Poole.....	Freshman Class President

With the exception of class officers, the nominating committee nominates the candidates for campus offices that carry twenty or more points and appoints election officials to conduct the elections. Nominations may also be made by petitions presented the Nominating Committee by a specified number of students.

The chairman of the Nominating Committee is the Chief Counsellor, and the members are the presidents of the major organizations, the editors-in-chief of the publications, the college marshal, the Dean of Women, and three faculty members chosen by the committee.

MEREDITH LITTLE THEATRE

Back stage at Meredith an actress, ordinarily a fellow student, loses her identity in grease paint. The stage crew stumble over the complication of changing the stage for scene two, the prompter flips through a dog-eared copy of the play to oblige another frantic actress, and, finally, the curtain opens upon the production—the Little Theater play.



This year the major productions were in the fall, "Little Women," an old favorite, and in the spring an unpublished comedy, "Whistler's Mother" by Stephen Porter, a young playwright recently graduated from the Yale Drama School. In addition to the plays, lectures and other programs were planned to continue the interest for those who, through Stunt Night, Society plays, and the Little Theater plays, had found work with plays a delightful excitement. Little Theater membership is open to all those who participate in such activities and thus gain Little Theater points.



ELSIE CORBETT
President

OFFICERS

ELSIE CORBETT.....	<i>President</i>
MARY HUMPHREY.....	<i>Vice-President</i>
ELIZABETH ZULALIAN.....	<i>Secretary</i>
JACQUELINE KNOTT.....	<i>Treasurer</i>
VIRGINIA JONES.....	<i>Reporter</i>
CATHERINE HILDERMAN.....	<i>Faculty Sponsor</i>



EDUCATION CLUB



The purpose of the Meredith College Education Club is to have a part in raising the standards of modern education and to become better acquainted with aims, objectives, and accomplishments of modern education. The club has a large membership which is open to all those taking courses in education.

EDUCATION CLUB MEMBERS

Harriet Ashcraft, Eugenia Bradley, Lela Butts, Melba Byrd, Elizabeth Cherry, Madelyn Clinard, Mary Lou Culler, Mag Creech, Bethea Danford, Sara Davis, Jeanne Dicken, Christine Dunn, Eva Kitchin Edwards, Frances Ann Estridge, Jean Ferebee, Jean Gaddy Freeman, Louise Fritts, Virginia Gerock, Ruth Hannon, Phyllis Harrington, Dorothy Harvell, Evelyn Hodges, Frances Huffman, Louise Hunt, Anne Lassiter, Mina Mayton, Jerry Miller, Betsy Mills, Peggy Mitchell, Orea Mauney, Joyce Moore, Harriet Morris, Marianna Morris, Nell Parket, Sara Katherin Perry, Betty Jo Pitman, Mary Lou Pressley, Brownie Robertson, Dot Saddler, Jean Seagrove, Margaret Hope Smith, Marie Snelling, Rebecca Spake, Eloise Thomas, Anne Tongue, Lib Weston, Dorothy White, Joyce Williams.



MEREDITH STUDENT LEAGUE OF WOMEN VOTERS

The Meredith Student League of Women Voters became an active campus organization in 1930. The purpose of the club is to give the students a better understanding of national and local government and to encourage the students to become more intelligent and better citizens.



Most of the programs of the Student League are presented by the club members. The presidential campaign gave an opportunity for the presentation of a skit on a political campaign rally. Another program brought the members up to date on the participation of women in government and politics. Among our speakers were guests from outside, some of whom are prominent government officials.

The League sponsors the Student Legislature for Meredith and keeps the topic before the club for discussion and reports on the progress of the Legislature during the year.

The club is non-partisan and open to any student interested in better government and citizenship.



I. R. C.



LUCY ARNOLD CURRIN.....*President*

CHRISTINE WILLIAMSON.....*Vice-President*

MARILYN MILLS.....*Secretary-Treasurer*

What should the United Nations do about Palestine? Should we keep Russia in the UN? These are just two of the many problems discussed by the Meredith International Relations Club's members and their guests. The organization gives students an opportunity to enjoy timely discussions of world affairs and promotes among the students of this country and other countries a feeling of friendship and coöperation. The International Relations Club is under the auspices of the Carnegie Endowment for International Peace.



CANADAY MATH CLUB

REBECCA SPAKE.....*President*
DORIS WILLIAMSON.....*Vice-President*
BROWNIE ROBERSON.....*Secretary-Treasurer*
ELLEN GOLDSTON.....*Reporter*



The Canaday Mathematics Club was organized in the spring of 1945 to promote greater interest in mathematics through a knowledge of its application in both vocational and leisure activities. At some of the monthly programs, guest speakers tell of the use of mathematics in their positions and in other fields in which mathematicians are needed today; at other programs Dr. Canaday or a student shows how mathematics may be used for recreation. Students who have completed six hours in college mathematics may be members, and those who have completed three hours may be associate members.



BARBER SCIENCE CLUB



MARTHA HOOKS.....	<i>President</i>
JACQUELINE KNOTT.....	<i>Vice-President</i>
MARIANNA WORTH.....	<i>Secretary</i>
MARY LOU SAWYER.....	<i>Treasurer</i>

The Barber Science Club is one of the most effective clubs on the Meredith Campus; it provides an opportunity to learn of current scientific findings and of problems supplementary to material covered in the curriculum. Programs are given by students, members of the faculty, and guest speakers. For activity the members plan exhibits such as "Science Fair" and participate in an out-of-town field trip. But of all the features, the spirited scientific discussions which follow the meetings during the social hour probably are the most attractive to the members.



FREEMAN RELIGION CLUB

Just one college generation ago students of religion on our campus were saying, "Something new has been added!" That something new was the Freeman Religion Club. With the unifying purpose of studying ideas, problems, and current trends in the field of religion, the club has moved steadily forward. It has become a closely-knit organization functioning to meet a need for vital fellowship and intellectual stimulation in the Christian life.



With this purpose clearly in view, the planning and guiding of the programs are the product of student initiative. The programs this year were planned to cover discussions of the following: Christian interpretation of vocations, the Jewish-Arab problem—led by a United Nations' representative, the relation of Roman Catholicism and Protestantism, the problem of religion in the public schools, summer field work experiences and possibilities. All these centered in a concern for the growth of the individual member in creative Christian living.



COLTON ENGLISH CLUB



The members of the Colton English Club were so fortunate this year as to make a trip to Scotland to trace the path taken by Dorothy and William Wordsworth on their journey through that country. This trip was taken by proxy, it is true, but how we enjoyed it! Dr. Mary Lynch Johnson gave us an entertaining account of her pilgrimage last summer in which she did trace the path of the poet and his sister. Our other programs were based on the study of Southern literature, a subject we were all very much interested in because of our certain pride in the products of the South.

This year we have for the first time elected to the club students not majoring or electing courses in English. We welcome them and look forward with pleasure to our associations with them.



TOMORROW'S BUSINESS WOMEN'S CLUB



This year has found the members of the Tomorrow's Business Women's Club learning about the positions which they will fill next year. The programs (thanks to Louise Hunt, the program chairman) were especially adapted to our purpose. Panel discussions were led by teachers of business who had been graduated from Meredith, by business graduates who are working at State College, and by former business graduates from various positions in the state.

Things were kept running smoothly throughout the year by the president, Evelyn Hodges; the treasurer, Imogene Narron, got her reports in on time, and the reporter, Elva Gresham looked after the publicity; Louise Fritts provided entertainment and refreshments at our meetings. Most enjoyable of all our activities were our Christmas dinner at the S & W and our annual trip to down town offices.

Membership is open to all juniors and seniors majoring, or taking an elective, in business. Sophomores are invited to attend all meetings and become pledges the second semester.



BEE HIVE



For the tired and hungry the Bee Hive is a haven of relaxation and refreshment; no better place can be found to purchase school supplies, ice cream, drinks, sandwiches, fruit, and other sundries.

The profits made by the Bee Hive, which is run for the convenience of the students, are put into projects beneficial to the student body. A share of the profits each year, for example, is contributed to the Baptist Student Union.

The executive board or Bee Hive Committee is made up of one representative from each class, in addition to the manager and faculty adviser. The clerks are Meredith girls who have proved themselves dependable and interested in making the store more efficient and more enjoyable.

ALPHA RHO TAU

Between the diagonal lines of easels and under the glaring lights of gallery exhibitions, the Alpha Rho Tau members have banded together with a common interest in art—an interest in the basic assumptions reflected in a painting or piece of sculpture as well as in a fascinating color or a design. It is our purpose to stimulate an intelligent appreciation for art among our fellow students. Through exhibitions, lectures, and practical work in this chosen realm we enrich our own knowledge and skill, and we invite others to join us in our projects.



GRANDDAUGHTERS' CLUB



The Granddaughters' Club, composed of girls whose mothers were Meredith students—this year we have a great-granddaughter—has as its motto "Uni en Distinction." When Miss Ida Poteat suggested this motto she certainly designated us as a club apart from all others. For our activity we sponsor on the campus each year some sort of collection for the Needlework Guild, the one this year being a display of baby clothes for the guild. Usually in the spring we have a mother-daughter luncheon, using this as one of the ways in which we further our objective, the promotion of the feeling of love between "granddaughters" and the alumnae.

HOME ECONOMICS CLUB



With "Rays from the Betty Lamp" as the theme for the Home Economics Club during the year, the members have varied their programs with talks by guest speakers, demonstrations, dress reviews, and other activities. As "torch-bearers" of the Betty Lamp they engaged in many projects, one of which included the packing of Christmas boxes for the home economics girls in an "adopted" school in Germany. The club sends delegates to state, province, and national meetings. Any home economics major is eligible for membership in the club.

SARA DAVIS.....*President*

JEAN McLAMB.....*Vice-President*



SOCIOLOGY CLUB



People are funny! But we like people, and we enjoy working with them and for them. The Sociology Club affords an opportunity for those taking courses in sociology or economics to become better informed in the field. Discussions are led by leaders well known in the field of sociology, and members share experiences in social work which they have had either during the summer or as part of their course in introductory social work. Incidentally, we have few "cases" due to lack of nourishment—thanks to the refreshment committee!

We like people, and we enjoy working with them and for them. In the summer some of us may be found in camps, some in training schools, some in public welfare offices. During the fall seniors in the social work class are busy in local health and welfare agencies. Through the Sociology Club we share these hilarious or sobering experiences. To learn more about people and about our field of interest we invite sociologists and social workers to speak and to discuss current issues with us.

HOOF-PRINT GROUP

Nothing could be finer than to be in Carolina in the morning—about six o'clock, cantering away on a charging steed. In addition to the "Breakfast Rides," there are "Moonlight Rides," and there is no better place to get a good moon tan than on a moonlight ride. For further information on our fun, just ask a "rough rider" about our annual over-night trip to Crabtree.

We also have a Palio parade, and it is a stately and majestic sight to behold the Meredith Knights, who lead the processional, riding up the drive on homecoming day! As a climax to our year's fun we have the horse show in the spring.

Even with its "ups and downs," it is exciting to learn to ride with "heads up and heels down" instead of vice-versa—thanks to our teacher, Miss Peggy White! We are indeed a clan of horse-loving riders.



THE CHOIR



Between the altoes and the train whistles, we can't decide who gives whom the most competition. With Dr. Cooper's wit, personality, and fine musicianship, the choir has had some very good times, and has accomplished a maximum of good work. The first performance for the choir this year was given on Founders' Day. Our Christmas concert, the second major work, was given first in collaboration with the State College Glee Club and later recorded by station WPTF to be heard on Christmas morning (And what a thrill it was to hear our own program on the air!) During Religious Emphasis Week the choir assisted each morning with the music: the last performance of the Choir for the year was the cantata "Pan's Flute," which was used for the Graduation Exercises.



GLEE CLUB

KATHERINE LEWIS	<i>President</i>
DOROTHY PATRICK	<i>Vice-President</i>
JO SNOW	<i>Secretary-Treasurer</i>
ADDIE ELLIOTT	<i>Librarian</i>
CHARLOTTE BOWMAN	<i>Accompanist</i>
BEATRICE DONLEY	<i>Director</i>



Meredith girls find in the Glee Club an opportunity to cultivate and develop a taste for the finest in song literature—both sacred and secular—and a chance to realize together the high artistic achievement which the club has set for its goal. Auditions are held in the fall, and membership is open to all students.

We uncovered all sorts of talents in members of our group this year . . . second sopranos who could trill along with the firsts almost like born coloraturas; linguists who didn't hesitate when we sang Bachelet's "Chere Nuit" and a German lullaby; and those with a feeling for syncopation who finally carried us through our group of Negro spirituals. And there were those budding young conductors, straight out of conducting class, who accepted opportunities to direct portions of rehearsals, and discovered that choral directing is a difficult, yet enjoyable experience.

Our activities extended beyond the two weekly meetings; we performed on the campus during Religious Emphasis Week, gave a broadcast, presented programs for various civic organizations in Raleigh and in several nearby towns, and ended the year with our annual spring concert.





THE MACDOWELL MUSIC CLUB



SIGMA ALPHA IOTA

THE MACDOWELL MUSIC CLUB

Under the leadership of Mr. Stuart Pratt the MacDowell Music Club has fostered a greater appreciation of music on our campus. Through its diversified programs and activities the club offers to its members an opportunity to become acquainted with the many phases of music and with the leaders in its various fields.

Membership in the club, which is a member of the North Carolina Federation of Music Clubs, is open to any student who is interested in maintaining the ideals and purposes of the club.

GROUP OF NINE

Jennie Lou Newbold
Dorothy Patrick
Katherine Lewis
Josephine Snow
Jean Wilson

Nancy Hall
Jane Stroup
Addie Elliott
Jean Olive
Bettie Compton, *Accompanist*



And some of us aimed higher to get the most from life.



FEATURES





JEANNE DICKENS

COLLEGE MARSHAL



BARBARA SWANSON

MISS MEREDITH

MOST POPULAR

MAXINE BISSETTE



FRIENDLIEST

IDALIA OGLESBY





BETTY HEFNER

MOST VERSATILE



BILLIE HART

MOST ORIGINAL



JACQUELINE KNOTT

CUTEST

WITTIEST

OSEE MAC JOHNSON



MOST ATTRACTIVE

JANE LASSITER





DOROTHY PATRICK

MOST STYLISH



JULIA POWERS

MOST INTELLECTUAL



MARTHA DAVIS and PEGGY PATRICK

MOST ATHLETIC



LOUISE FRITTS

BEST ALL 'ROUND TOWN STUDENT



JEANNE DICKENS
May Queen

EDITH COOPER
Maid of Honor

MAY QUEEN AND MAID OF HONOR—1949



LILLIAN GADDY
BETTY LUTZ
Senior Representatives

BETTY YATES
NORMA FAGAN
(not pictured)
Sophomore Representatives

MAY
COURT

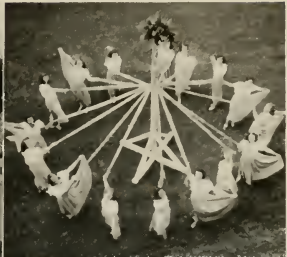
ELIZABETH HOLDFOLD
MARGUERITE LEATHERMAN
Junior Representatives

ELIZABETH SMITH MURRAY
ASHA FARRIER
Freshman Representatives

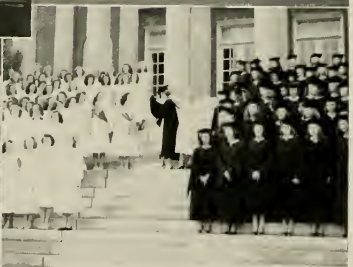
MAY QUEEN AND MAID OF HONOR—1948

MARY DELL FALES
May Queen

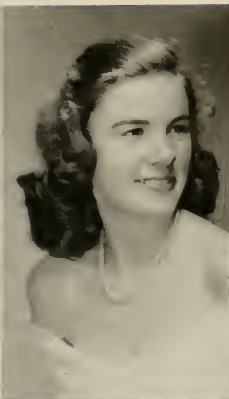
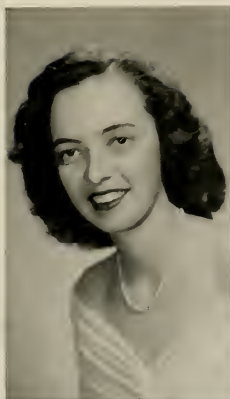
REBECCA BALLENTINE
Maid of Honor



ALICE IN WONDERLAND SNAPSHOTS



PALIO AND STUNT NIGHT SNAPSHOTS



WHO'S WHO

MAXINE BISSETTE

MAGDALENE CREECH

ELLA MAY SHIRLEY

BARBARA SWANSON

DOROTHY SWARINGEN

MARJORIE WILSON

SILVER SHIELD

Moving on our campus is a spirit which desires for the students at Meredith the highest in creative living. This is the spirit which characterizes the Silver Shield, the honorary leadership society, as it seeks to create right attitudes and to promote devotion to the ideals of Meredith. Membership is limited to nine senior members, seven of whom are chosen in the spring of the junior year and two in the spring of the senior year. Two associate members are chosen every fall from the junior class. A genuine Christian concern for others as it relates itself to campus life, a dedication to the Christian purpose which gives Meredith meaning, together with attainments in scholarship are the criteria by which students are elected to membership in the Silver Shield.



OFFICERS

MARJORIE WILSON
President

BARBARA SWANSON
Vice-President

MAGDALENE CREECH
Secretary

Sponsors: Dr. L. E. M. Freeman, Dr. Julia Harris.

Members: Maxine Bissette, Betty Brooks, Magdalene Creech, Ella May Shirley, Barbara Swanson, Dorothy Swaringen, Marjorie Wilson.

Associate Members: Winnie Fitzgerald, Marguerite Leatherman.

Faculty Member: Dr. Norma Rose.

Not Pictured: Esther Greene, Osemac Johnson.

KAPPA NU SIGMA

KALLOS NOUS SOPHIA

These Greek words which mean beauty, soundmindedness, and intelligence are the words from which the Kappa Nu Sigma Honor Society takes its name. The qualities for which these words stand are embodied in the kind of scholarship which the Kappa Nu Sigma, since its organization in 1923, has sought to encourage. Accordingly, its membership is composed of students who have maintained a high scholastic standing over a period of at least two years. Its activities include the sponsoring of an annual spring banquet and lecture and the awarding of a scholarship to the freshman having the highest scholastic standing in her class.



ROSEMARY DEANN

LOUISE FRITTS

JULIA POWERS

MARY HUMPHREY

ALPHA PSI OMEGA

The Alpha Psi Omega represents perhaps a whole picture of the total of enthusiastic work for the Meredith dramatic productions. It is the honorary dramatics fraternity which honors Little Theater members who have earned fifty or more points. The members are those who have tried the heavy greasepaint, acted a few extra lines, hammered a few extra nails, painted an extra flat or two; they finally have been recognized and thus they are the ones who, as Alpha Psi Omega members, continue to work along with the Little Theater, showing that the interest in playmaking is a growing proposition at Meredith.



*Back row: Moore, Humphrey, Newbold.
Front row: Swaringen, Williamson, Cone, Corbett, Taylor.*

SIGMA PI ALPHA

Throughout the year the Phi Kappa Chapter of Sigma Pi Alpha, National Honorary Fraternity for students interested in modern languages, presents programs pertaining to the life and culture of the French, German, and Spanish speaking countries. The December meeting was held in conjunction with the State College chapter for celebration of the "Piñata." Dr. Gifford Davis of Duke University lectured informally on his 1947 summer in Spain. Other programs consisted of choral readings in French, Spanish, and German, and a presentation of a one-act play in Spanish. Such programs are designed to promote a better understanding and a greater feeling of unity between nations.

Student membership is determined on the basis of achievement in foreign language courses, general scholastic average in college, and active interest in matters concerning foreign areas and cultures. Faculty members who have personal or professional interest in foreign languages or foreign countries are invited to associate membership.



First row: Boykin, Walker, Almond, Fritts. Second row: Hulle, Swaringen, Mauney, Lassiter, Covington. Third row: Holdford, Snow, Hure.

Here we united our minds and bodies in hard, fair play.



ATHLETICS





The Monogram Club is the club to which the outstanding athletes of the school belong. The members this year were M. Allen, President; E. Andrews, L. Butts, D. Concha, M. Davis, H. Hodges, B. J. Johnson, M. Morris, P. Patrick, S. Powell, B. J. Schuler, M. H. Smith, and B. Swanson.

ATHLETIC ASSOCIATION

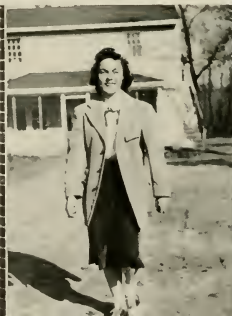
The Athletic Association has as its aims the development of a sound body for a sound mind, the promotion of health and happiness, and of a spirit of fair play among the students of Meredith College. All of these goals, once achieved, make Meredith girls better students with stronger characters and more attractive personalities.

The membership of the Athletic Association consists of the entire student body led by a board of twenty members chosen for knowledge of and proficiency in the various sports. Each member of the board acts in the capacity of student coach in her particular sport.

For the pleasure of the entire college community, the Athletic Association sponsors the Corn Huskin' Bee, the Faculty-Student Play Day, Palio, Stunt Night, May Day, the Spring Folk Dance Concert, and Posture Week.

The Board of the Athletic Association is composed of the officers of the Association and the managers of the seasonal sports and activities. Pictured are Davis, President; Pitman, Vice-President; Hodges, Secretary; Josey, Treasurer; Walston, Publicity Chairman; Andrews, College Health Chairman; Ashcraft, Social Chairman; Miss Doris Peterson, Miss Phyllis Cunningham, Miss Peggy White and Mrs. Dot Dugger, Faculty Advisers.

Each year the Athletic Association Board presents the Meredith All-Round Athletic Trophy to the student who has contributed most to athletics through sportsmanship service to the association, character, teamwork, and proficiency and versatility in athletics. In 1943, the Board presented the trophy to Naomi Pugh.





The Corn Huskin' Bee was the time for contests in corn huskin', chicken calling, hog calling, and original songs.
Everyone had a grand time on Play Day when the faculty and the students competed in sports.



Palio is the Meredith Homecoming Day. Palio includes in addition to the stunts, a parade of the classes, a horse race, a bicycle race, and singing. This year the Forty-Niners won the Palio Banner. In the evening the Junior Class won the silver loving cup for their original stunt, *Fowl Play*.

On May Day, sponsored by the Athletic Association, Beauty reigns and the Folk Dance Group entertains the May Queen and her court.

In addition to its activities on May Day the Folk Dance Group gave a Spring Dance Concert under the direction of the manager, Frankie Ward.





The sports managers had good seasons this year. The managers of the team sports—Louise Yarbrough, basketball; Virginia Bowman, softball; Lela Butts, soccer; and Drake Morgan, hockey—led many enthusiasts to fun in their sports.

The managers of the individual sports—Marianna Morris, tennis; Cora Lee Sawyer, archery; Marilyn Mills, swimming; Betty Jean Johnson, individual





sports; Martha Hooks, golf and Phyllis Harrington, badminton—made arrangements for their sports and assisted their followers in becoming proficient. Peggy Patrick, equitation manager, and the horseback devotees enjoyed many rides on the trails.

The winner of Freshman Hockey Stick this year was Sue Fitzgerald.





To you, we give our thanks.



ADVERTISEMENTS

Meredith College Library
Raleigh, N. C.

W. H. KING DRUG CO.

WHOLESALE DRUGGISTS

RALEIGH, N. C.

•
*“The House of Friendly and
Dependable Service”*
•

MANUFACTURERS OF
PAGE'S CRU-MO

MOTHER
and
DAUGHTER
FASHIONS

. . . *Highlight every
Campus Activity . . .*

IN RALEIGH IT'S

MOTHER DAUGHTER
FASHIONS
INSURANCE BUILDING

We
Appreciate
Your
Patronage

. . . During the school year just
ending — and look forward to
serving you again during the
coming year.

Hudson-Belk
"EASTERN CAROLINA'S LARGEST"

MARTIN MILLWORK COMPANY

RALEIGH, N. C.

*Jean's
of Raleigh*

FIRST IN FASHIONS
IN THE CAROLINAS

PERFECT PROTECTION

OCCIDENTAL LIFE INSURANCE COMPANY

Home Office

RALEIGH, NORTH CAROLINA

A GOOD MOTTO

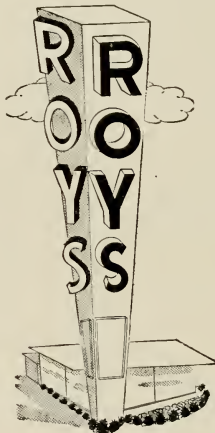
From a pamphlet:

"Once upon a time a man of business hung a motto on his office wall, which read: **'No man is greater than his thoughts.'**

"To him it looked like good wisdom and sound reasoning. One day a friend dropped in, and seeing the motto said, 'That's a good motto you have there, Bill, but I know a better one: **"No man is greater than his decisions"**.'

"And so the 'Thoughts' motto was replaced with the 'Decisions' motto and Bill's thinking moved up a step."

Now then, both mottoes are good, but I believe that if the last one were replaced by: **"No man is greater than his faith,"** Bill's thinking would take another step upward. For after all, according to our faith so are our decisions. We cannot make great decisions without great faith.





Compliments

of

**TAYLOR FOOD
COMPANY**



Raleigh, N. C.

**HOOD-GARDNER
HOTEL SUPPLY CORP.**

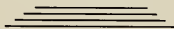
CHARLOTTE, N. C.

**EQUIPMENT AND SUPPLIES
for the
PREPARATION AND SERVICE
OF FOOD**



JOHN CALDWELL, *Manager*
2214 Circle Drive
RALEIGH, N. C.

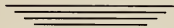
Phone 4554



**HOTEL
CAROLINA**



Raleigh, N. C.



JOB P. WYATT & SONS CO.



HARDWARE
SEEDS
FARM IMPLEMENTS



325-331 South Wilmington Street

BOYLAN-PEARCE

Raleigh's Shopping Center

NATIONALLY KNOWN
COSMETICS

You Can Always Find at

EFIRD'S

"ELIZABETH ARDEN"

"COTY"

"YARDLEY"

"EVENING IN PARIS"



EFIRD'S DEPARTMENT STORE

208 Fayetteville Street

Raleigh, N. C.

*When You Are Interested in
BEAUTIFUL SHOES*

Always Remember

ADLER'S in Raleigh

First in Style
Finest in Quality and Fitting

SERVICE ALWAYS AT ITS BEST

We Appreciate Your Patronage

Ellisberg's

*Raleigh's
Smartest Shop*

126 Fayetteville Street

RALEIGH, N. C.

**MAKE THE MOST OF YOUR OPPORTUNITIES,
STUDENTS OF MEREDITH COLLEGE**

**We
Protect**



**The
Family**

DURHAM LIFE INSURANCE COMPANY

HOME OFFICE : RALEIGH, NORTH CAROLINA

J. J. FALLON CO., INC.

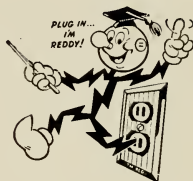
FLORISTS



205 Fayetteville Street
RALEIGH, N. C.

ALWAYS YOUR PAL . . .

Reddy Kilowatt (your electric service) has helped you through good lighting, food preservation, radio, and in countless ways through your school days. In the years to come he will continue to be your pal. Whether you enter the professions or business or become a housewife he will always be at your side to make your work easier, increase your ability to produce, and to make your home more comfortable and convenient. You can depend on it.



CAROLINA POWER & LIGHT COMPANY

NORTH CAROLINA EQUIPMENT COMPANY

Construction, Industrial and Logging Equipment
Contractors' and Municipal Supplies
"International Diesel Power"

RALEIGH

--

WILMINGTON

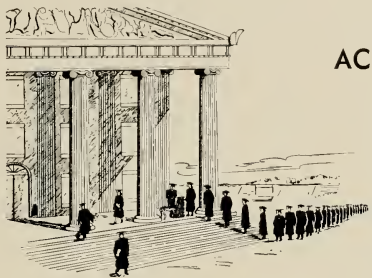
--

GUILFORD

CHARLOTTE

--

ASHEVILLE



ACHIEVEMENT

Never gained easily — the graduate's diploma is a symbol of a truly great Achievement — one in which every graduate may take pride for all his life.

The Achievement of gaining the confidence and friendship of students and faculty is one in which we not only take pride, but which we cherish and guard with constant vigilance.

Taylor's

The Showplace of the Carolinas

C. H. STEPHENSON MUSIC CO.

- ★ Radios
- ★ Steinway Pianos
- ★ Sheet Music
- ★ Records
- ★ Hammond Organs

•
121 Fayetteville Street
RALEIGH, N. C.



Compliments
of
PINE STATE CREAMERY



RALEIGH, N. C.

Compliments of
P. H. Hanes Knitting Co.
WINSTON-SALEM, N. C.



Manufacturers of
UNDERWEAR SPORTSWEAR
MERRICHILD SLEEPERS

Brittains 
Shoes of Distinction

EXCLUSIVELY AT
BRITTAI N'S



SPALDING
SADDLES AND
LOAFERS

BROGDEN PRODUCE COMPANY, INC.

Wholesale

FRUIT AND PRODUCE

409-415 WEST MARTIN STREET

We Specialize in Religious Books,
Bibles, and the Best in Fiction
for Adults and Children

BUT

We Can Secure Any Book in Print

BAPTIST BOOK STORE

121 West Hargett Street

Phone 2-3483

Raleigh, N. C.

Summer Fashions

For the College Girl
Her Mother, "Sisters
Cousins and Aunts"

This Season Take Another Look at

Preston's
THE STORE AHEAD WITH FASHIONS AHEAD

"CREATORS OF REASONABLE DRUG PRICES"

E C K E R D ' S
D R U G S T O R E

222 Fayetteville Street

CHAMBLEE INSURANCE AGENCY

711 Insurance Building

RALEIGH, N. C.

"COMPLETE INSURANCE SERVICE"

*WE WRITE YOUR STUDENTS' ACCIDENT
INSURANCE*

BYNUM PRINTING COMPANY

RALEIGH, N. C.

You cannot patent it
or copyright it

You cannot install it
like a piece of machinery

You cannot accurately measure it
or the lack of it.

Yet it is your most important consideration when you choose
your Yearbook Photographer.

IT IS —

“KNOWING HOW”

EXPERIENCE . . .

is the one thing that will meet the unusual emergency with the comforting statement — “We know just what to do — we’ve been through this before.”

Our complete organization offers you this background of experience in creative photography and consultation on all problems relating to Yearbook Photography.

It costs nothing to talk it over with us.

ZECCA STUDIOS

of

1634 WALNUT STREET, PHILADELPHIA 3, PA.

For Information Call or Write:

FRANCIS LAVERGNE JOHNSON

Post Office Box 878

Telephone 6362

CHAPEL HILL, N. C.

HOWARD HOUSE

Delicious Food in a Home-like Atmosphere

2404 Hillsboro

Raleigh, N. C.

Compliments

of

ROYAL BAKING COMPANY

Bakers of BAMBY BREAD

WILMONT CLEANERS

DEPENDABLE DRY CLEANING

3015 Hillsboro

Phone 2-2071

Raleigh, N. C.

Compliments of

N. C. THEATRES, INC.

Operators of

AMBASSADOR : STATE : PALACE : CAPITOL
AND VARSITY THEATRES





