

CA2ALID 15 Business Development

59 R35  
c.2

opment Branch

CA2 ALID 15 1959R35  
Survey of Rimbe<sup>y</sup>.

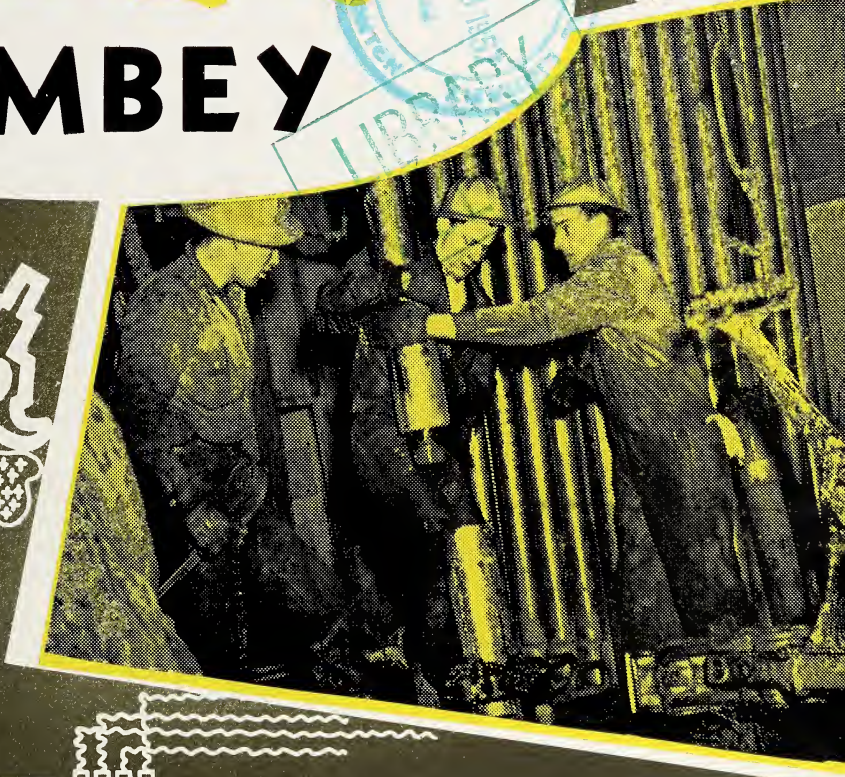


3 3398 00300 0949

2

# Survey of


# RIMBEY



*Prepared By*

INDUSTRIAL DEVELOPMENT BRANCH  
DEPARTMENT OF ECONOMIC AFFAIRS  
Government of the Province of Alberta





Digitized by the Internet Archive  
in 2017 with funding from  
Legislative Assembly of Alberta - Alberta Legislature Library

# Town of Rimbey

## 1. LOCATION

N.W.  $\frac{1}{4}$  of section 28-42-2-W5 in Census Division No. 9. This location is on the Edmonton-Lacombe branch line of the Canadian Pacific Railway.

## 2. ALTITUDE

2970                      Latitude 52/45                      Longitude 114/15

## 3. TEMPERATURE

Mean Summer temperature 54.6°F.

Mean Winter temperature 22.4°F.

Mean Annual temperature 36. °F.

## 4. RAINFALL

Average annual rainfall 13.07 inches

Average annual snowfall 39.3 inches

Average annual precipitation 17.00 inches

Note: This report was taken from the nearest weather station and covers a period of 32 years.

## 5. GEOLOGY

The underlying rocks in the Rimbey district are shale and sandstone which were deposited by streams in lakes and deltas. They are thus fresh water in origin and are several hundred feet thick in that area. The rocks are grouped together by geologists who call them the Paskapoo formation. They give them an early Tertiary Age, which began some fifty million years ago. Since these rocks were deposited, the North American Continent has been uplifted. Consequently, the rocks have eroded and only a fraction of their original thickness remains.

## 6. SOILS

### Profile

The normal soil profile has a black to very dark brown surface that averages about 12 to 14 inches in depth. Immediately beneath this black soil is a more compact horizon which is brown to dark brown. The lime layer is usually found at 30 to 40 inches below the surface.

### Fertility

Soils in this zone are the most fertile in the Province. They have in the top 12 inches about 3 to 4 times as much nitrogen and organic matter, as there is in the average brown or grey wooded soil.

### Vegetation

Grassland which has been partially invaded by wood growth, mainly of deciduous trees, often referred to as parkland.

### Land Use

A high percentage of the land is arable, used for mixed farming and the production of cereals.

## 7. HISTORY

The first bona fide settlers to take up homesteads in the Rimbey district were led by the Abner Raymond family from South Dakota, who arrived in the summer of 1899. This party included the Raymonds, McLaughlins, Ashtons, Bill Kerney and his brother Jim, Angus McKay and Ed Snyder, making a total of 13 covered wagons and 88 horses.



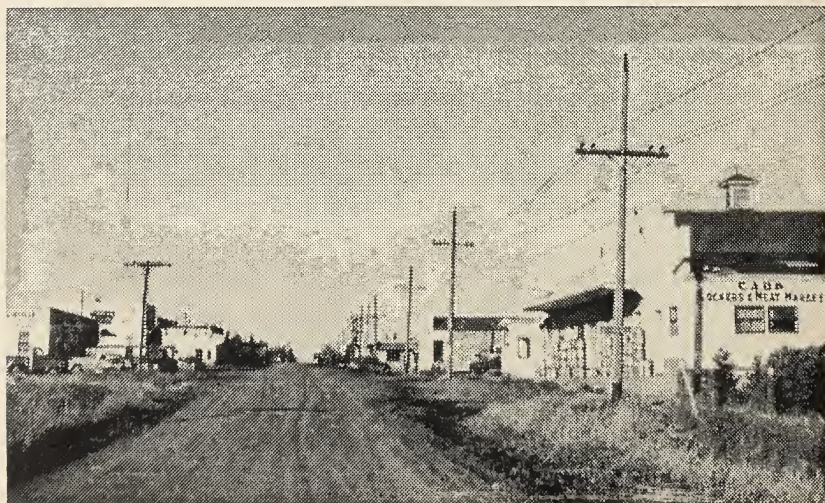
They left South Dakota in June and arrived in the district two months later. They had brought all their settlers' effects and machinery and settled on their homesteads during the autumn. Ole Boode of Lacombe, his father, and Mr. Cook had squatted in the district the previous year.

In 1900, Shelby Reed, who had been a neighbor of the Raymonds, also arrived with a party of seven. Other settlers during the year were Ben, Jim and Sam Rimbey and their nephew, Oscar Rimbey, C. Townsend, Samuel M. Gwin and W. A. Tolman. Many of these early settlers filed on homesteads in the Rimbey district but lived in or near Lacombe until the area was developed sufficiently for them to live there permanently.

Following these early settlers in 1899-1900, there was a rush of immigrants, mostly from the United States. The first commerce in the district was carried on in a makeshift shop opened in 1900 by Charlie Townsend in Jim Rimbey's house. However, the first store was opened on the present townsite in 1902. Jim Cox bought two acres of land from Sam Rimbey and on this plot built a general store. This was the nucleus of the town and operated under Mr. Cox until 1905, when he sold out to Putland and Thorpe.

Mail service to the settlement started in 1903, with Mr. Cox first postmaster. At that time, the name of Rimbey was chosen because the settlement was located on his original homestead. Other names suggested were Cox, Rimbeyville, Thompson and Reed. During the next few years, a blacksmith shop was opened by J. Long, a boarding house was run by Mrs. Peabody, a livery barn opened in 1906 by Mr. Thorpe, the Jamaica House opened as the town's first hotel in 1907, and other commercial establishments commenced business.

Soon after the first settlers arrived, the Methodist church held regular services in Jim Rimbey's house. In 1903, when the first school was built, this was used for services until 1908, when a church was built. The first wedding took place there on July 12, 1909, when Harry Brownlow and Caroline Damant were married. The next religious institution was the Church of the Nazarene,



A view of a section of the business portion of the town.

built in 1915. In 1932 the Sisters of St. Joseph came to operate St. Paul's Hospital. An attached chapel served as a Roman Catholic church until 1940 when the basement to the present church was constructed. The hospital is now the Three-Way Chronic Convalescent Hospital, and is operated by the municipality and county.

Rimbey became incorporated as a village on July 11, 1919, with the postmaster, Frank Symonds, becoming the Reeve, and William Brooks and Marquis Frizzell as Councillors. Joseph Renshaw was first Secretary-Treasurer. It was in the same year that Rimbey received train service, after a line was laid from Lacombe. The town of Rimbey was inaugurated on January 1, 1949, at that time having a population of 757.

## 8. LIVING CONDITIONS

Rimbey is located along the Canadian Pacific Railway branch line from Edmonton to Lacombe. It is 28 miles west of Lacombe on Highway No. 12. The town is a social, cultural, educational, health and business centre for the trading area. It is situated in rolling country and in a good mixed farming district.

Oil and gas were discovered in the district but as yet natural gas is not installed in the town.

School facilities consist of two school buildings and two temporary huts. There are 23 teachers teaching grades 1 to 12, plus vocational subjects. There is instruction in typing, bookkeeping, home economics, and shopwork. There are eight school buses to provide transportation for rural students.

Health facilities consist of a Municipal Hospital and a Chronic Hospital which is owned and operated jointly by the Municipal District of Lacombe No. 64 and the County of Ponoka. This hospital is also assisted by the Department of Health of the Provincial Government.

One bank and a branch of Alberta Treasury, together with a credit



A section of one of the many residential areas.



union, furnish financial facilities. Six churches take care of the community's spiritual welfare.

Numerous lodges, societies and associations provide ample scope for public services. For the sportsman, golf, curling, hockey, baseball, hunting and fishing are available in the town and district.

## 9. ADMINISTRATION

The town is governed by a mayor and six councillors. The mayor is elected for a two year term, and two councillors are elected each year for a three year term.

The Secretary-Treasurer administers the town's affairs in accordance with the policy set by the Council.

There is also a public works foreman and helper.

## 10. LAW ENFORCEMENT

The town hires its own police constable. There is a Police Committee, the chairman being a member of the town council.

The Royal Canadian Mounted Police provide district policing, with one resident constable attached to the Ponoka Detachment.

## Building Regulations

There is a zoning by-law that takes precedence over the building by-law. The building by-law requires the approval of the Council before any building is erected, altered or removed. There is a building inspector as well as a plumbing inspector.

Electrical installations must comply with the requirements of the Alberta Electrical Protection Act.

Sanitary installations must comply with the requirements of the Provincial Health Regulations.

## 11. FIRE PROTECTION

The Fire Brigade consists of a chief and 15 volunteer firemen.

### Equipment

One pumper with a rated capacity of 500 gallons per minute and a 500 gallon water tank.

One 150 gallon Foamite Tank.

400 feet 2½ inch hose.

400 feet 1½ inch hose.

40,000 gallon Elevated Water Tower.

3 horse power siren.

19 fire hydrants.

Gas mask, boots, coats, axes, ladders, etc.

## 12. TAX STRUCTURE

	Net Assessment, 1955
Land value (100% of value)	\$152,550
Improvements (100% of value)	\$635,030
Business	\$157,980
Power	\$ 29,800
Total net assessments	\$975,360

## Mill Rate

Municipal	23
School	21
Hospital	10
	—
Total	54 mills.

## 13. AREAS

Total area of town	306.20 acres
Streets and roads	67.82 acres
Parks	5.00 acres

There are 4.1 miles of concrete sidewalks.

## Mileage of streets and lanes

	Gravel	Ungravelled	Total
Provincial Main	1.50		1.50
Roads and streets	4.79	.75	5.54
Public lanes and alleys		1.69	1.69
			—
Total Miles			8.73

## 14. SEWER AND WATER MAIN MILEAGE

Storm sewers	nil
Sanitary sewers	5 miles
Water mains	4 miles

## 15. POWER

Three phase 60 cycle power is supplied by the Calgary Power Limited under a franchise.

### Rates

Domestic service is available only for lighting, heating and cooking, domestic power and ordinary uses in private houses and apartments, used exclusively for residential purposes.

First 20 kwh (or less) per month \$2.60 gross minimum.

Subject to 30c prompt payment discount making \$2.30 net minimum.

All over 20 kwh's used per month 1c net per kwh.

Note: Discount of 30c applies on all bills paid within discount period.

The foregoing rate applies where the maximum demand does not exceed 5 kilowatts. Where the demand exceeds 5 kilowatts, an additional monthly demand charge of 50c per kilowatt will be made.

Connection charge for new consumers \$1.00.

Reconnection charge \$4.60.

Commercial service is available where other rates listed do not apply.

Service charge for first 500 watts of installed capacity, 60c per month. Each additional 250 watts of installed capacity, 20c per month.

Energy charge for first 50 KWH per month per KW of installation, 10c per KWH. Next 150 KWH's per month per KW of installation, 5c per KWH. All over 200 KWH's per month per KW of installation, 2½c per KWH.

Discount — 10% if paid within discount period, based on the even dollars only of total bill, with a minimum discount of 30c

Minimum charge \$1.80 gross, \$1.50 net per month. Minimum deposit \$3.60. Reconnection charge \$3.00.

### Power Service

(A.C.) Available for motors, rectifiers, commercial heating apparatus, etc., in commercial establishments.

### Service Charge

\$1.00 per month per kilovolt-ampere (KVA) of installation (one motor horse power or one kilovolt in heating apparatus to be considered equivalent to one KVA).

### Energy Charge

First 50 KWH's per month per KVA of installation, 5c per KWH; next 50 KWH's per month per KVA of installation, 3 1/3c per KWH; and over 100 KWH's per month per KVA of installation, 1 2/3c per KWH.

Discount — 10% if paid within discount period, based on the even dollars only of total bill, with a minimum discount of 30c.

Minimum charge \$3.30 gross, \$3.00 net per month. Minimum deposit \$2.00 per H.P. with a minimum of \$6.00. Reconnection charge \$6.00.

## 16. WATER

Water is obtained from two wells 202 and 204 feet deep. The water is pumped into a 40,000 gallon elevated water tower.

### Rates

First 2500 gallons cost \$3.00 per month; next 7500 gallons cost 10c per gallon; and all over 10,000 gallons cost 2 1/2c per gallon.

Plus 50c per month per meter.

### Sewerage Charges

Domestic	\$ 2.00 per month
Restaurants and cafes	6.00 per month
Theatres	6.00 per month
Laundries and public baths	5.00 per month
Hotels and hospitals	50.00 per month - including water
Schools	75.00 for 12 months

### Water Analysis

	Parts per million
Total solids	560
Ignition loss	90
Hardness	154
Sulphates	40
Chlorides	2
Alkalinity	430
Nature of alkalinity—carbonate of soda, lime and magnesium	
Nitrites	—
Free ammonia	—
Iron	.7
Flourine	.3

### Remarks:

There is a heavy sediment of clay.



## 17. GAS

Gas is not installed but a plebiscite will be held shortly. A gas field is adjacent to the town.

## 18. PROPANE

Heat value 2521 b.t.u. per cu. ft. at 60° F. Bulk 16c per gallon.  
Propane is trucked into the district from Ponoka.

## 19. DIESEL FUEL

Heat value 135,000 to 140,000 b.t.u. per gallon at 60° F. Summer grade 18c; Winter grade 23c.  
Storage capacity 20,000 gallons.

## 20. COAL

Coal is secured from the Drumheller, Halkirk and Warburg coal fields.

### Rates

Lump \$9.20 to \$9.60 per ton plus cartage.  
Nut \$6.25 to \$8.25 per ton plus cartage.

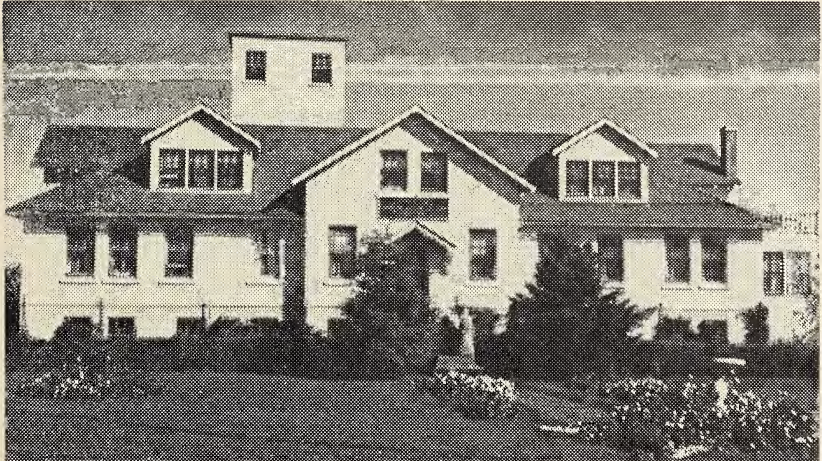
## 21. RESOURCES

Wheat and coarse grains.  
Livestock, cattle, sheep, hogs, horses.  
Dairy products.  
Poultry products.  
Honey.  
Gas (natural).  
Oil.  
Gravel (road building only).

## 22. GOVERNMENT OFFICES AND SERVICES

### Federal

Post Office  
A resident V.L.A. officer operates an office in Rimbeiy.



The fine hospital building at Rimbeiy, used for chronic and aged patients.

## Provincial

Alberta Government Telephones  
Treasury Branch  
District Agriculturist (calling)  
Police Magistrate  
Driver Testing

Rimbey is a government Driver Examination point and a mobile examination unit visits Rimbey every fourth Friday.

## Municipal

Town Office  
Secretary Treasurer  
Public Works (foreman)  
Welfare Department  
Health Inspector  
Fire Department  
Garbage collected weekly.

Community services include a Rest Room for the use of women and children.

## 23. HEALTH SERVICES

Doctors	3
Dentist	1
Optometrists	2 (calling)
Ambulance	1
Drug Stores	2
Funeral Director	1
Veterinarian	1

The Rimbey Municipal Hospital No. 52 has a capacity of 18 beds, mostly semi-private.

### Rates

Ratepayers	\$1.00 per day
Non-ratepayers	\$6.50 per day

There is also a chronic hospital owned and operated by the Municipal District of Lacombe No. 64 and the County of Ponoka. This hospital is operated under an agreement with the Department of Health of the Provincial Government. The hospital is available to the Old Age Pensioners, rates being \$1.50 per day.

## 24. PROFESSIONAL AND SKILLED PERSONAL SERVICES

(excluding health services)

Type of Service	Number of Establishments
Auditors	calling
Barristers	calling
Barber shops	3
Watch repairs	2

## 25. TRANSPORTATION

Canadian Pacific Railway branch line, Edmonton to Lacombe via Rimbey.

Canadian Coachways bus service.  
Daily truck service to Edmonton.  
Taxi stand (1 cab).

**26. NEWSPAPERS**

Rimbey Record (weekly). Circulation 1206.

**27. COMMUNICATIONS**

Post office  
Alberta Government Telephones  
Canadian Pacific Telegraph  
Nearest radio station — Lacombe CBX; Red Deer CKRD

**28. FINANCIAL FACILITIES**

Bank of Montreal  
Treasury Branch  
Credit Union

**29. HOTELS**

	No. of Rooms	Single Rate	Beer License
Grand	16	\$2.50 up	yes
Old Cottage	rented as suites		no

**30. TOURIST CAMPS**

Cabin Court for transit workers, rate \$7.00 per month.  
Trailer Court for trailers of all sizes. Sewer and water and power facilities. Trailer court is operated by the town of Rimbey.

**31. CHURCHES**

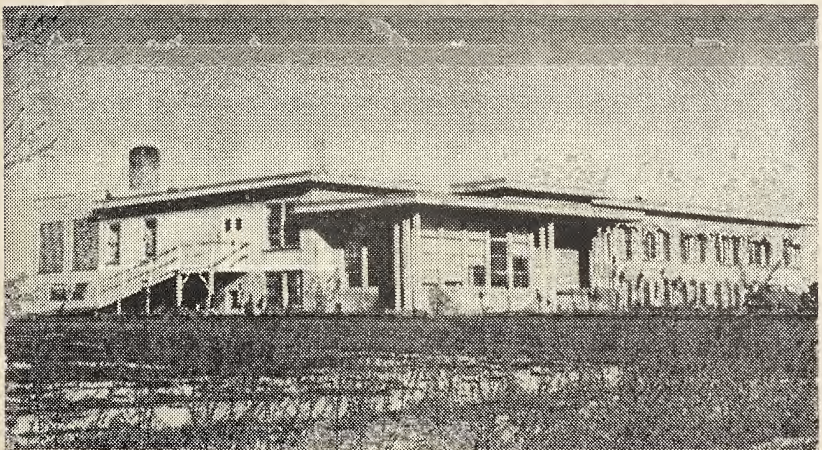
Roman Catholic, Anglican, United, Nazarene, Lutheran (2).

**32. FRATERNAL ORGANIZATIONS**

Masons, Eastern Star.

**33. SERVICE CLUBS**

Chamber of Commerce, Canadian Legion, Ladies' Auxiliary Canadian Legion, Lions.



This modern new hospital is an asset to the community.



### 34. SOCIETIES AND ASSOCIATIONS

Home and School Association, Rest Room Society, Alberta Teachers' Association, Fish and Game Association, Library Association, Curling Club, Hockey Club, Golf Club.

### 35. SCHOOLS

Within the town there are two permanent school buildings and two temporary huts, giving instruction to grades 1 to 12, inclusive, with the following optional subjects — typing, bookkeeping, home economics and complete workshop. There is a large auditorium in the school where stage presentations and sports are held. 23 teachers are employed and 8 vans bring the rural students to the town school.

### 36. THEATRES AND HALLS

	Capacity	Stage	Piano
Empress	200	no	no
Legion	350	yes	yes
Community	1500	yes	yes

### 37. CULTURAL ACTIVITIES

The Rimbey Public Library is sponsored by the Home and School Association with added funds from the Provincial Government, the Town and from membership fees. There are over 2000 volumes in the library which is open Thursdays from 7:30 P.M. to 9:00 P.M. and Saturdays from 2:30 P.M. to 4:00 P.M. and 7:30 P.M. to 9:30 P.M.

Rimbey has a local band with 70 members. The band is sponsored by the Chamber of Commerce with a grant from the town.

Drama is taught at school.

Eleven music teachers practice in the town.

Local orchestra is available.

### 38. YOUTH ACTIVITIES

Boys	Girls
Scouts	C.G.I.T.
Army Cadets	Explorers
Teen-age	Teen-age
4-H Club	4-H Club

### 39. SPORTS

Hockey, baseball, softball, basketball, badminton, tennis, golf—nine hole golf course with sand greens, covered curling rink—3 sheets natural ice, open air skating and hockey rink, playgrounds and parks.

### 40. FAIRS

Agricultural fair and annual rodeo operated jointly by the Agricultural Society and the Lions Club.

### 41. HISTORIC SITES

Nil.

### 42. CO-OPERATIVES

U.F.A. Co-operative Store, Saving & Credit Union, Alberta Wheat Pool, Central Alberta Dairy Pool, Blindman Valley Co-op, Maple Leaf Oil Distributor, United Grain Growers.

### 43. INDUSTRY AND BUSINESS

Type of Industry or Business	Number of Establishments			Retail	Type of Industry or Business	Number of Establishments			Retail
	Producer or Manufacturer	Wholesale	calling			Producer or Manufacturer	Wholesale	calling	
Accountant .....			calling		Hardware .....	2	—	—	2
Ambulance .....	1	—	—	—	Hotels .....	2	—	—	—
Apartments .....	1	—	—	—	Implement Dealers .....	5	—	—	5
Auto Camps .....	1	—	—	—	Insurance and Real Estate	3	—	—	—
Auto Repairs .....	6	—	—	—	Jewellers .....	2	—	—	2
Bakeries .....	1	—	1	1	Lumber Yards .....	2	—	2	2
Banks .....	2	—	—	—	Livestock Dealers .....	4	—	—	—
Barbers .....	3	—	—	—	Milk Distributor .....	see	creamery		
Barristers .....	calling				Music Teachers .....	8	—	—	—
Books & Stationery .....	see	drug	store		Newspapers .....	1	—	—	—
Butchers .....	3	—	3	3	Optometrists .....	2	calling		
Building Contractors .....	3	—	—	—	Oil Companies .....	7	—	—	—
Building Supplies .....	3	—	3	3	Oil Distributors .....	3	—	3	3
Blacksmith .....	3	—	—	—	Office Supply .....	1	—	—	1
Cartage Delivery .....	2	—	—	—	Painters and Decorators ..	2	—	—	—
Clothing (men's) .....	2	—	—	2	Photographers .....	2	—	—	—
Clothing (women's) .....	1	—	—	1	Plumbers .....	1	—	—	—
Confectionery .....	4	—	—	4	Pool Hall .....	2	—	—	—
Cold Storage Locker .....	1	—	1	1	Printers .....	see	newspaper		
Creameries .....	1	1	1	1	Propane Gas Dealers .....	3	—	3	3
Dentists .....	1	—	—	—	Radio Repairs .....	1	—	—	—
Department Stores .....	3	—	—	3	Radiator Repairs .....	1	—	—	—
Doctors, M.D. ....	3	—	—	—	Restaurant .....	4	—	—	—
Drug Stores .....	3	—	—	3	Seed Cleaning .....	1	—	—	1
Egg Grading Station .....	1	—	1	1	Shoe Repairs .....	1	—	—	—
Electrical Appliances .....	2	—	—	2	Sand and Gravel .....	2	—	—	—
Electrical Contractors .....	2	—	—	—	Sash and Door .....	2	2	2	2
Credit Union .....	1	—	—	—	Trucking .....	4	—	—	—
Furniture Store .....	1	—	—	1	Theatres .....	1	—	—	—
Funeral Parlor .....	1	—	—	—	Trailer Court .....	1	—	—	—
Garages and Service Stations .....	11	—	—	11	Veterinary .....	1	calling		
Grain Elevators .....	3				Welding and Machine .....	5	—	—	—
Groceries .....	1	—	—	1					

### 44. SITES

The town has no property for sale but lots can be purchased at a reasonable price from private owners, for both residential and industrial property.

### 45. INDUSTRIAL DEVELOPMENT

Rimbeys first industry was farming and then the lumbering business. Oil was discovered in the district, and an oil gathering pipe line pipes the oil to a railway spur where it is loaded into tank cars. The area has a large supply of natural gas.

This year a crude oil buying and pumping station was set up in Rimbeys and crude oil is brought to this station by pipeline from Joffre, Bentley, Gilby and West Gilby oil producing fields by 12" pipeline. It is pumped to Edmonton via a 12" pipeline where it enters the Trans-Canada Oil pipeline. Oil

gathered by pipeline in the Rimbey oil producing field is also sold to the pumping station or is shipped by tank car from a railway spur. Oil from the Alhambra, Eckville and Willisden Green oil producing fields is trucked to Rimbey to enter the pumping station facilities.

Natural gas recoverable reserves of the Homeglen-Rimbey gas field adjoining Rimbey are estimated at 1,226 billion C.F.

Businesses required in the town are — beauty parlor, resident accountant and a resident barrister.

#### 46. TRADING AREA

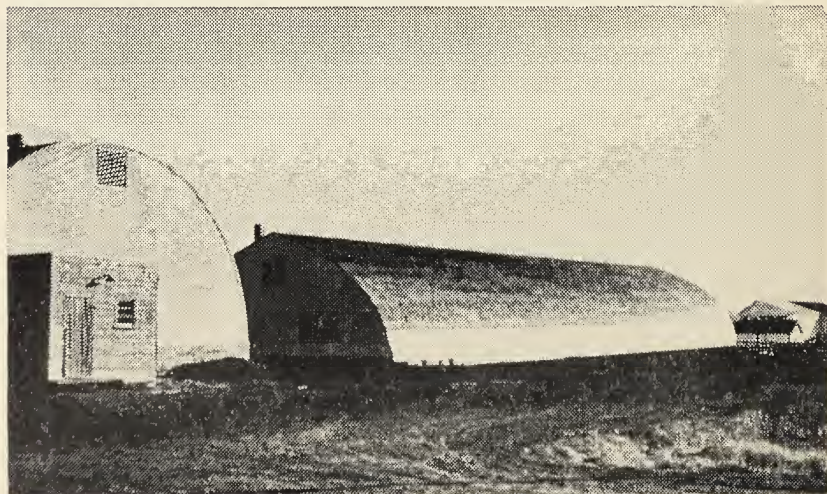
On the north, 33 miles; on the west, to the rockies; on the south, 12 miles; on the east, 12 miles.

#### 47. POPULATION

Trading area population, 1956 census 3,041

Town population, 1956 Census 959

Transient population averages 200 persons additional.



Curling enthusiasts and skaters have covered rinks at Rimbey.





