

Angga Pratyangga Vibhaagam

Harinivas .S

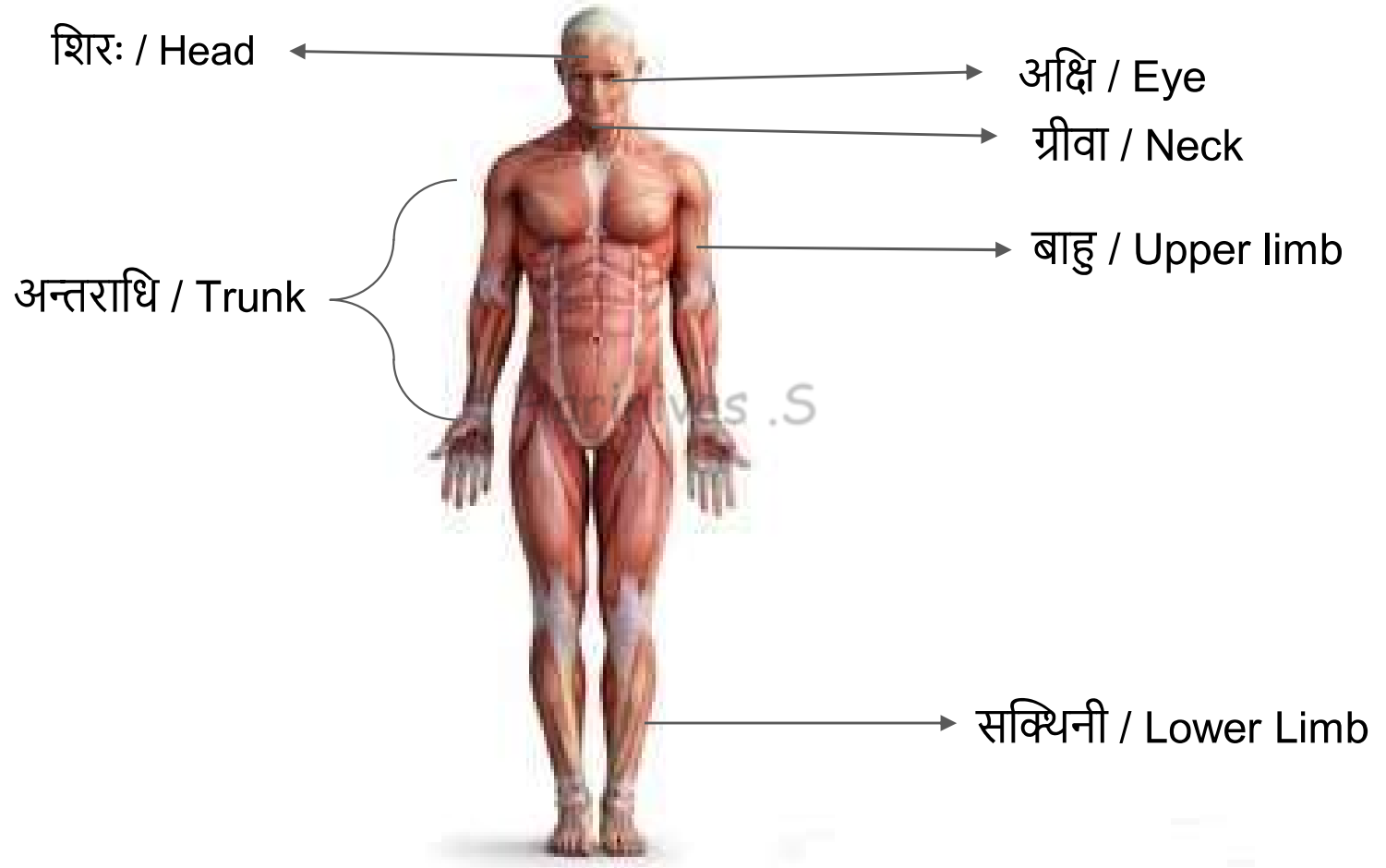
Organs of the body and subdivisions



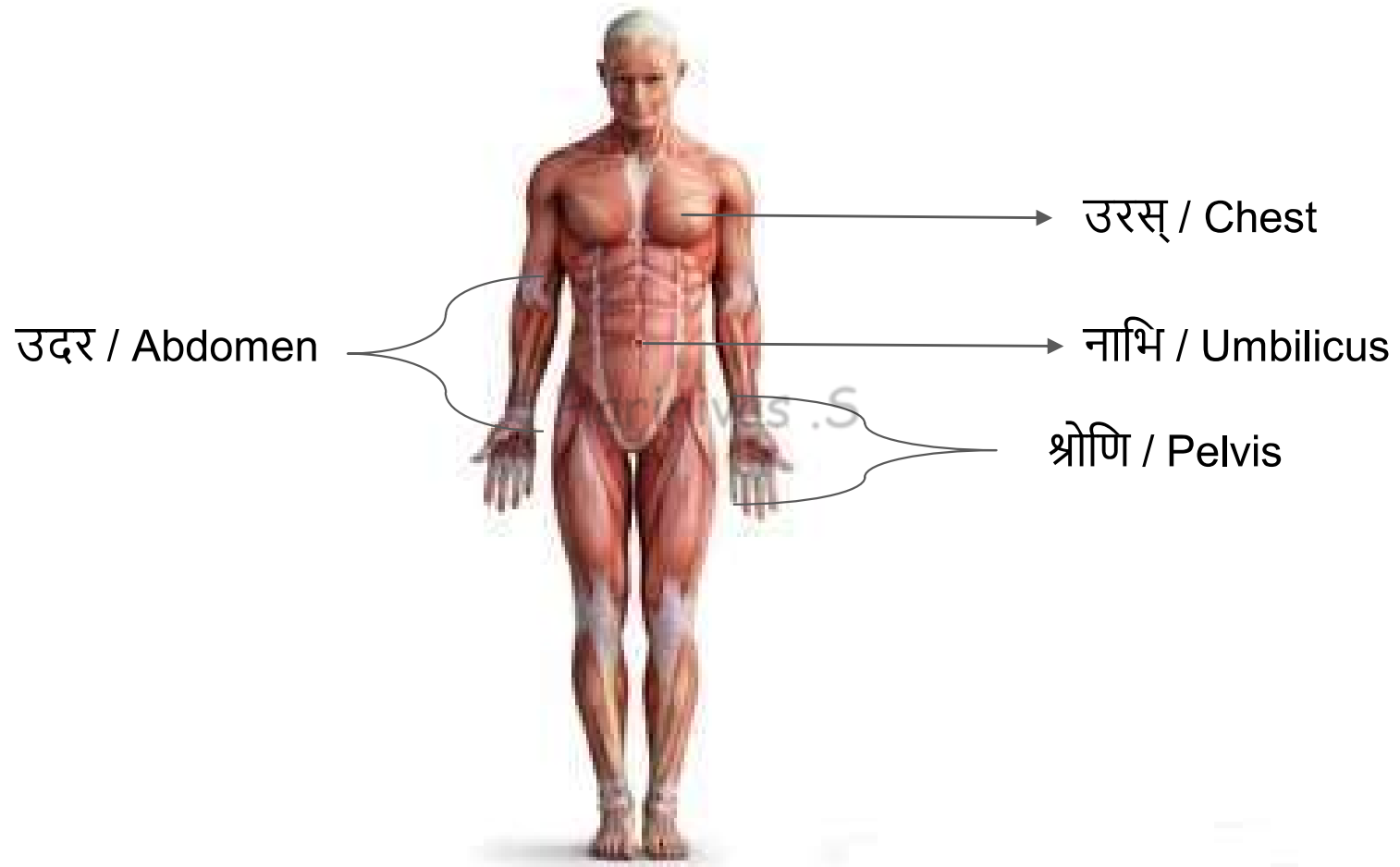
Organs according to Caraka-Samhitaa

तद्यथा - द्वे जह्नापिण्डिके, द्वे ऊरुपिण्डिके, द्वौ स्फिचौ, द्वौ वृषणौ, एकं शेफः,
द्वे उखे, द्वौ वंक्षणौ, द्वौ कुकुन्दरौ, एकं वस्तिशीर्षम्, एकमुदरम्, द्वौ स्तनौ, द्वौ
श्लेष्मभुवौ, द्वे बाहुपिण्डिके, चिबुकमेकं, द्वावोष्ठी, द्वे स्पृक्षण्यो द्वौ दन्तवेष्टकौ,
एकं तालु, एका गलशुण्डिका, द्वे उपजिहिके, एका गोजिहिका, द्वौ गण्डौ, द्वे
कर्णशष्कुलिके, द्वौ कर्णपुत्रकौ, द्वे अक्षिकूटे, चत्वार्यक्षिवर्तमानि, द्वे अक्षिकनीनके,
द्वे भ्रुवौ, एकावटुः, चत्वारि पाणिपादहृदयानि। (C.Saa.7.11.)

Anterior View :



Anterior View :



Upper Limb

बाहु / प्रगण्डा



Hunivas .S

कूर्परा / Elbow Joint

मणिबन्ध / Wrist

हस्त / Hand

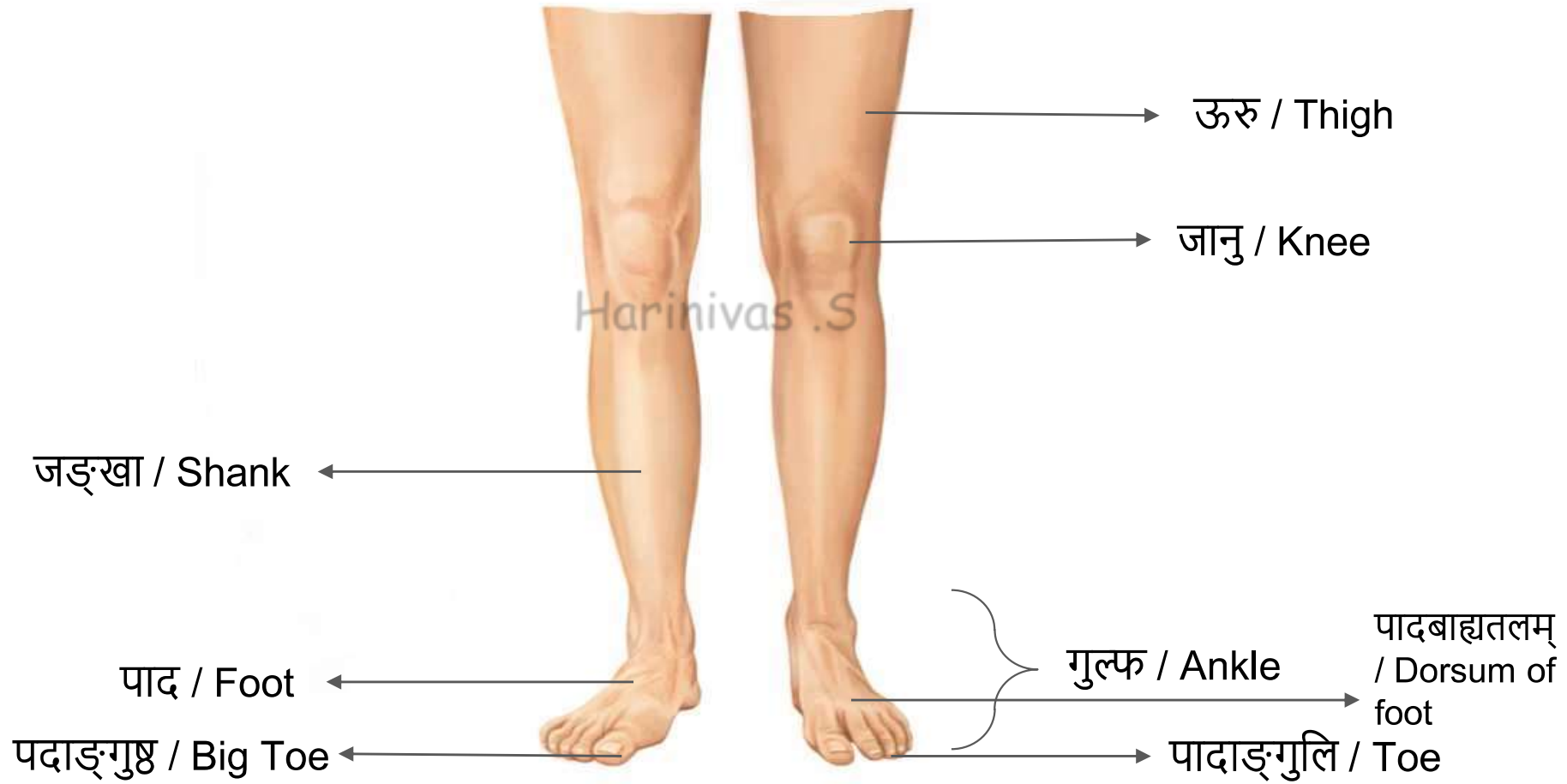
पानि बाह्य तलम् / Dorsum
of Hand

नख / Nail

अङ्गुली / Finger

अङ्गुष्ठ / Thumb

Lower limbs



Posterior View :

जत्रु / Connection of
head and neck with
trunk

कक्षः / Axilla

सन्धि / Joint

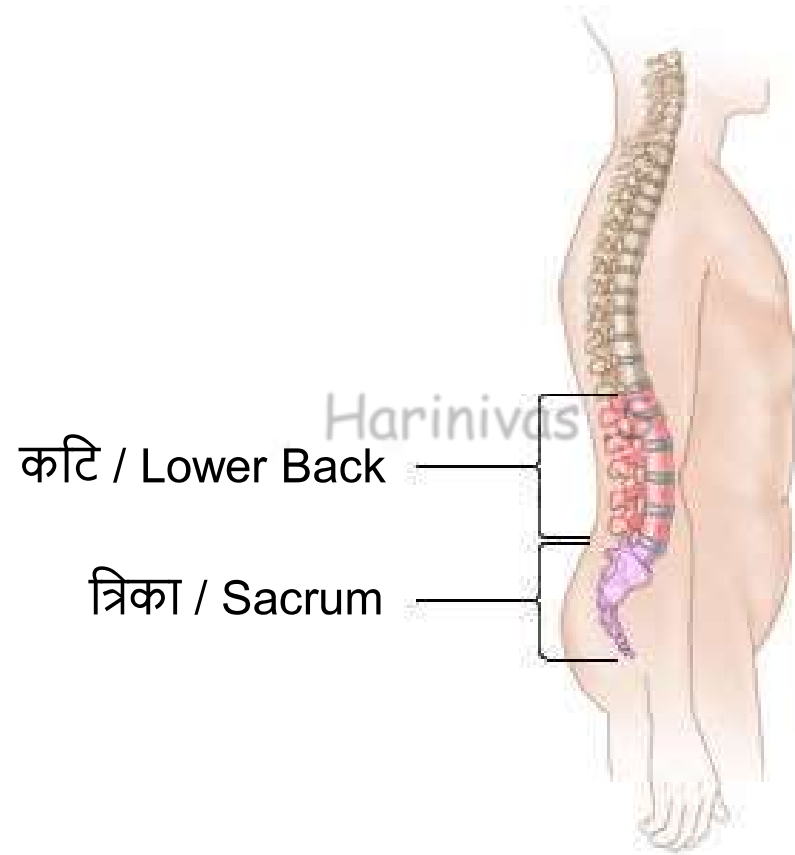


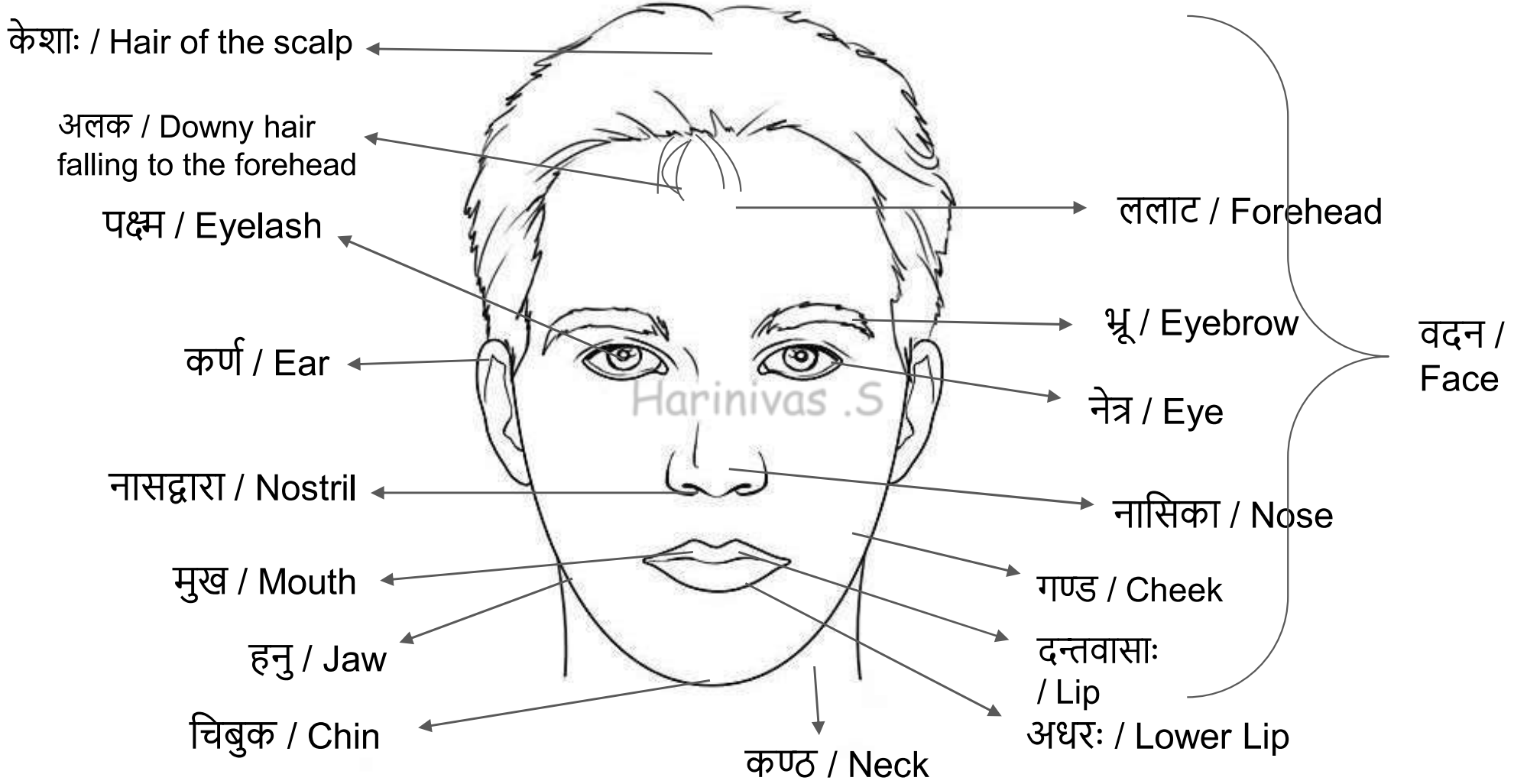
अंस / Shoulder

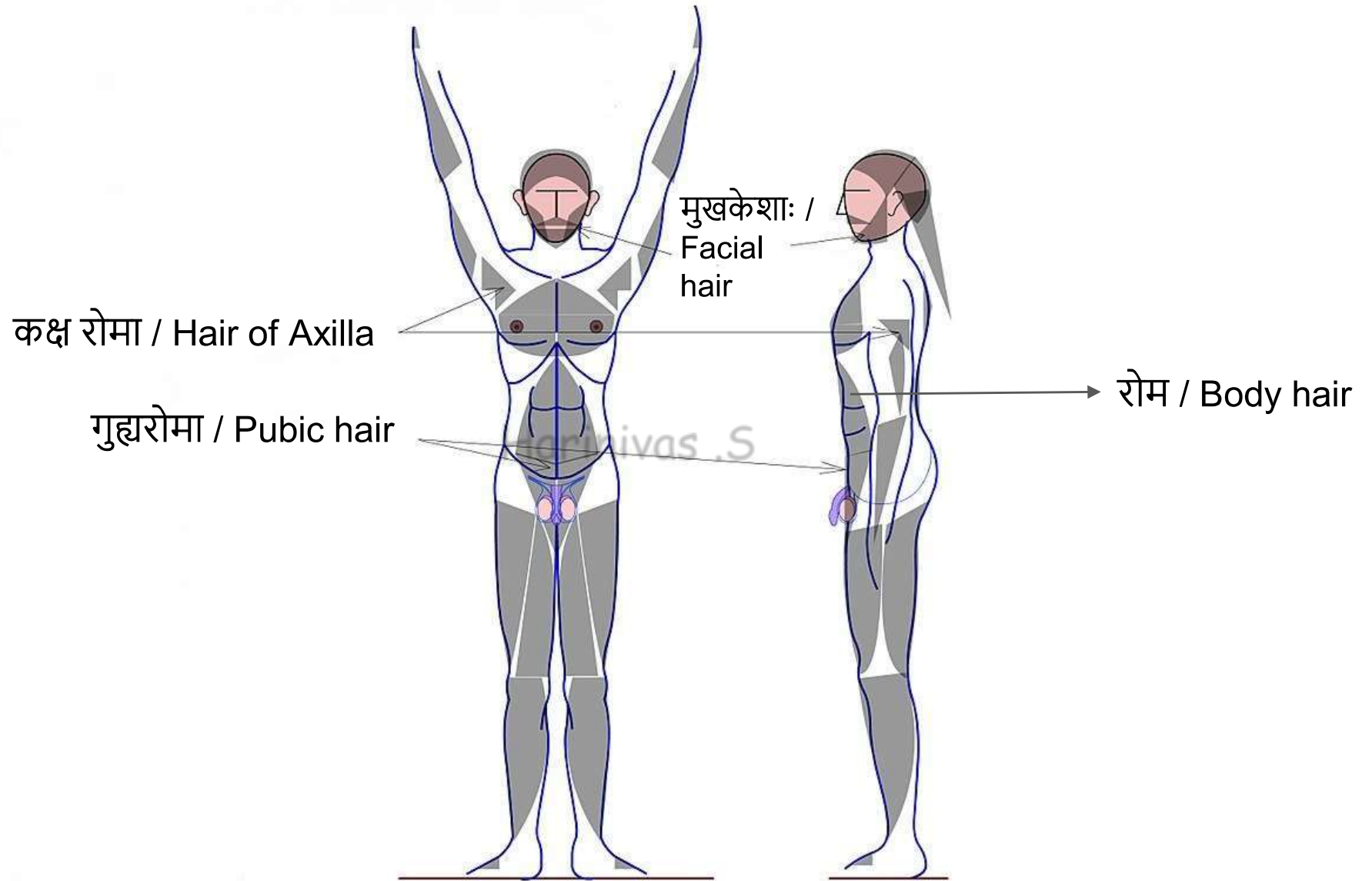
वंक्षण / Loin

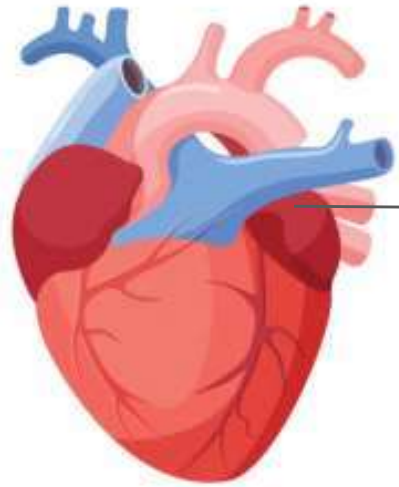
नितम्ब / Buttock

पृष्ठ / Posterior view :

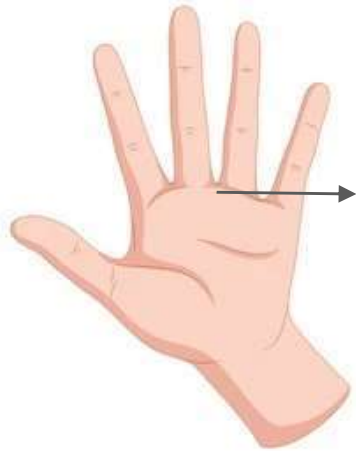








हृदय / Heart

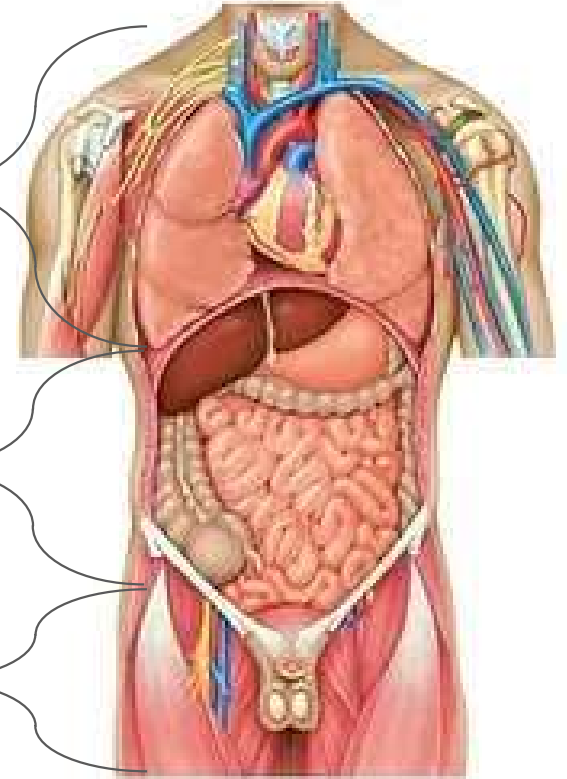


पानितल / Palm

उरोगुहा /
Thoracic
cavity

उदरगुहा /
Abdominal
cavity

श्रोणिगुहा /
Pelvic
cavity



Harinivas S



पादतलम् /
Sole

वदनगुहा / Oral cavity

दन्तमांस / Gum

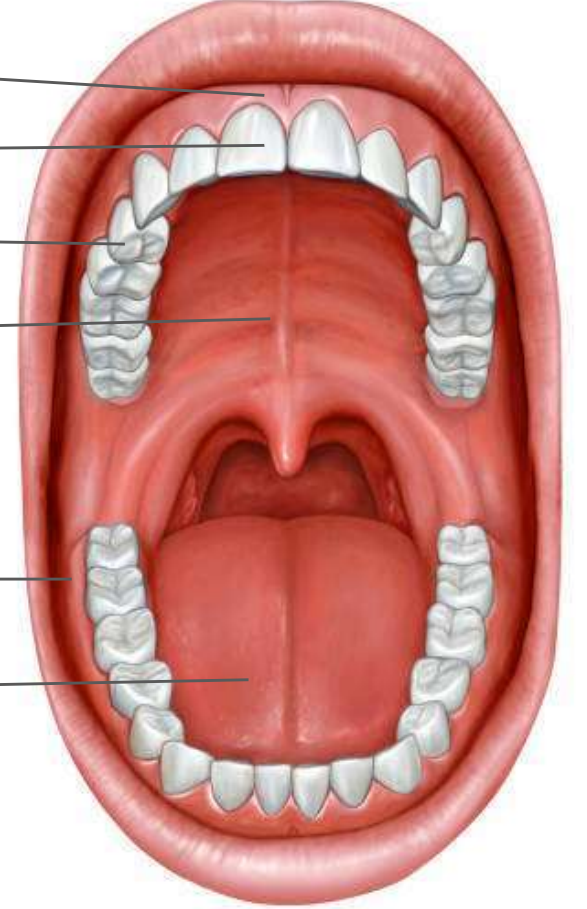
दन्त / Tooth

ऊर्ध्वहनु / Upper Jaw

तालु / Palate

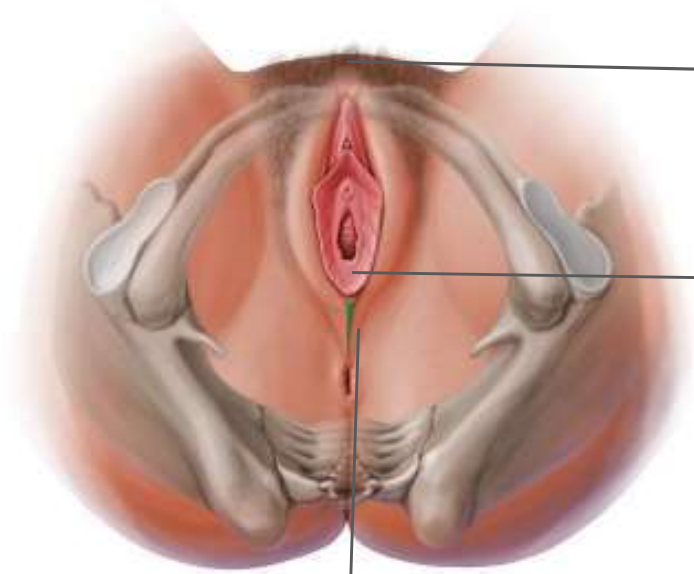
अधोहनु / Lower Jaw

जिह्वा / Tongue



Harinivas .S

गुह्यदेश / External genital organs and their area :



भगशैल / Pubic Mount

योनी / Vagina

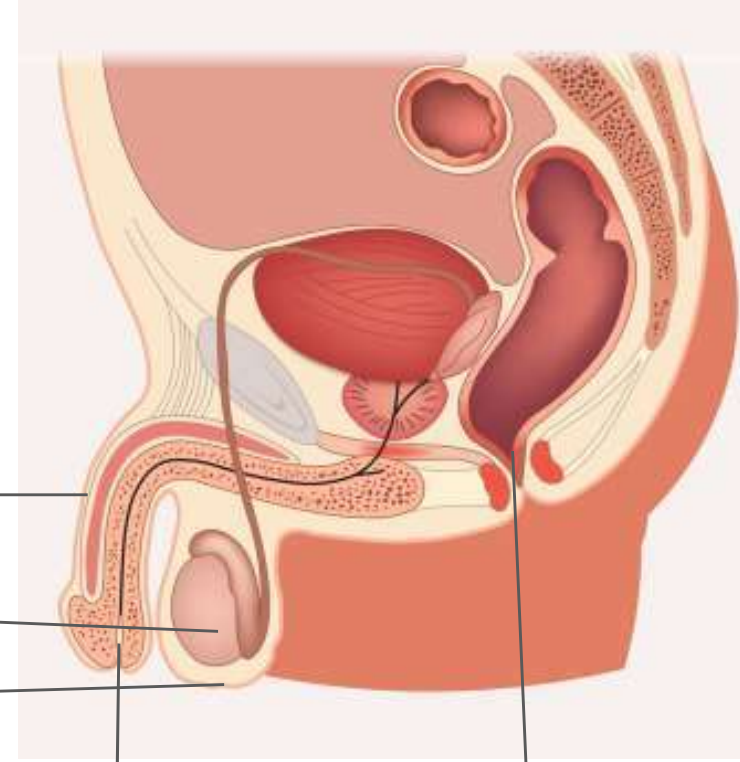
भग / Perineum

Harinivas .S

शेप / Penis

वृषण / Testis

मूत्रकोश / Scrotum



मूत्रद्वारा / Urinary Opening

गुद / Anus