

~~Ma-5~~

327

75
-9

HARVARD UNIVERSITY



LIBRARY

OF THE

Museum of Comparative Zoölogy



Schreber, J. C. D.,
plates 166-280 + suppl.
plates

Hollis # 5381299

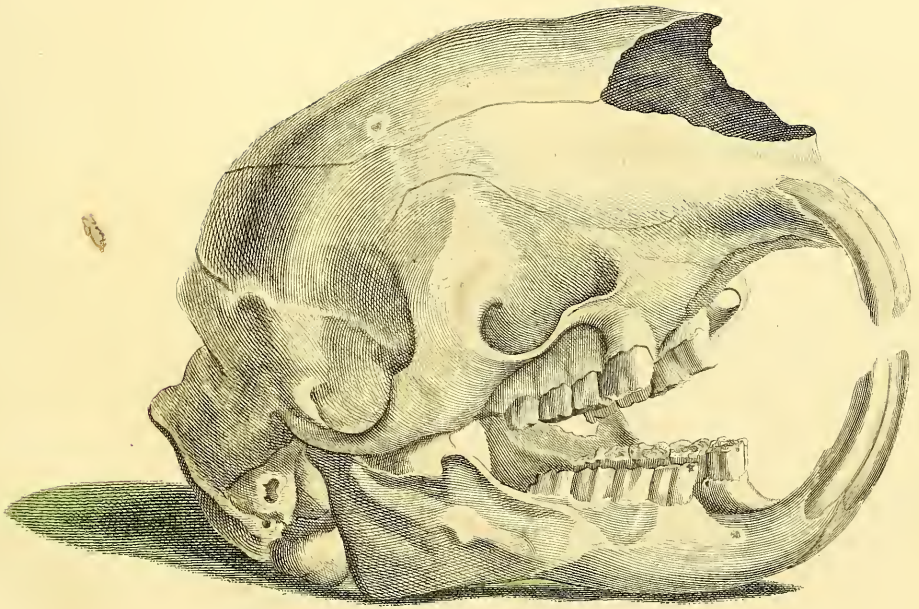


Ma-S

240 p^o
1872

1872, March 6.
Hainot Friend.

175
10



J.E. Ihle del.

c

J.E. Folckart sc.

X 5nd



Hystrix cristata Linn.



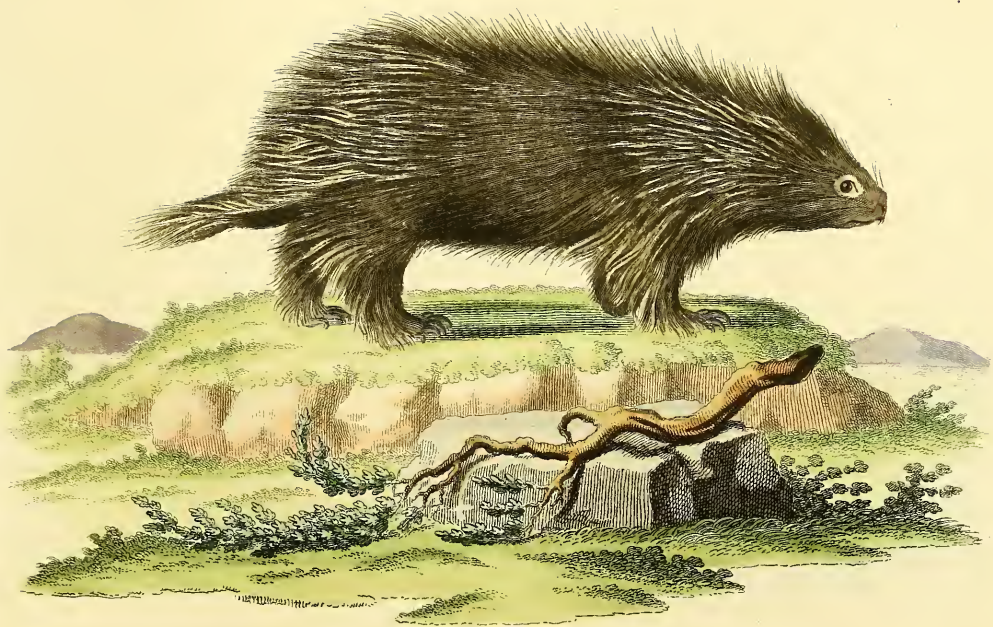
Hystrix prehensilis Linn.

I. F. Ihle del.

J. Neßbittel sc.



Hystrix insidiosa Lichtenst.



Hystrix dorsata Linn.



Hystrix macroura Linn.

J. Nupfbergd. sc.



Hystrix Chrysiuros.

de Bakker delin.

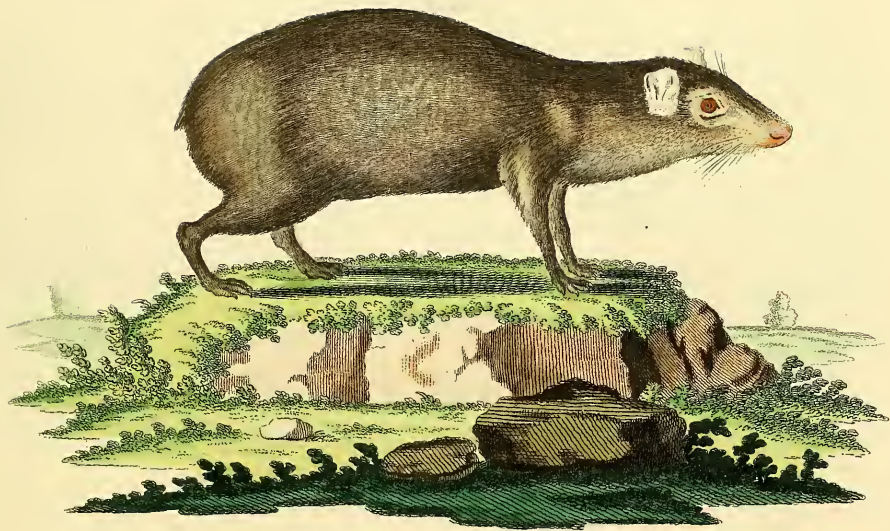
I. Naisbiegel sc.



Cavia Paca Pall.

De Sive del.

J. Nishida del. sc.



Cavia Aguti Pall.

De Sève del.

J. A. Fischer del. sc.



Dasyprocta Aguti Jllig .



Dasyprocta croconota Wgr.



Dasyprocta prymnolopa Wglr.



Cavia Cobaya Pall.

Fig. 1.



Fig. 2.

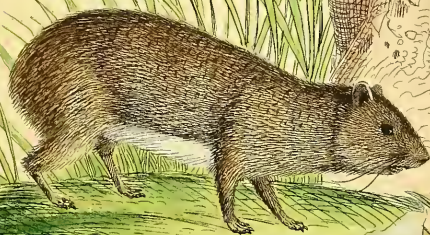


Fig. 3.

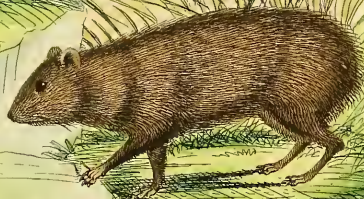
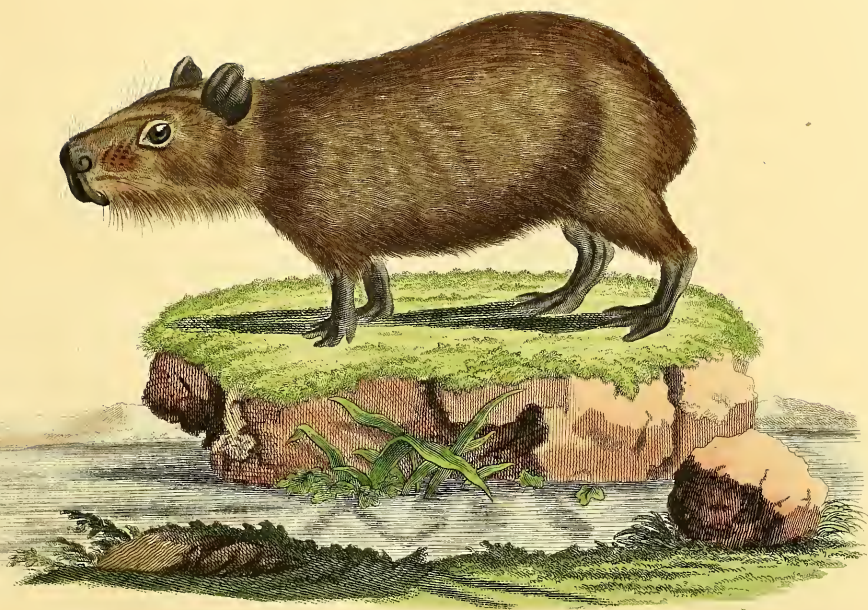


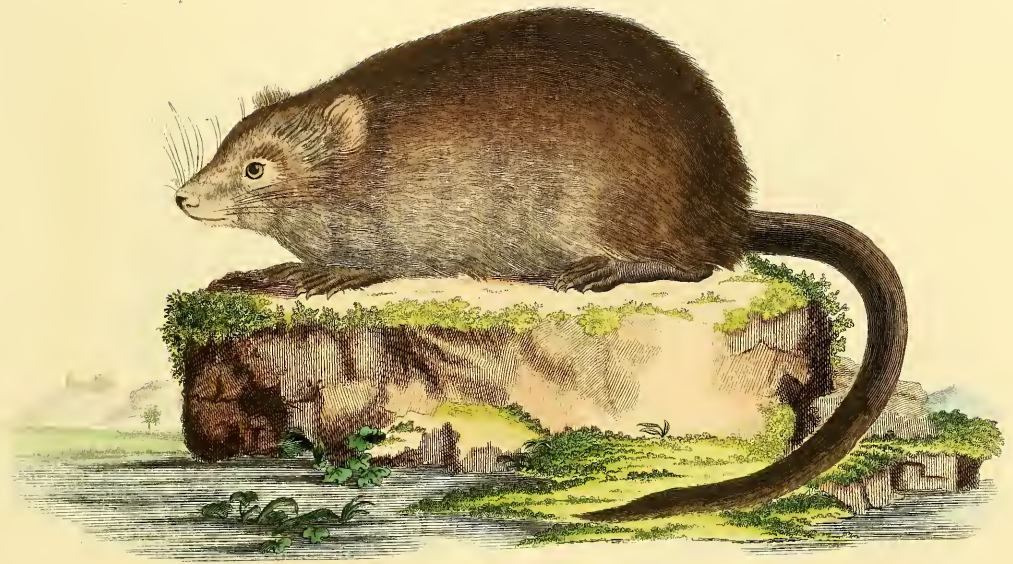
Fig. 1. *Cavia rupestris* Neuw. Fig. 2. *Cavia Spixii* Wagl. Fig. 3. *Cavia Aperia* Erxl.



Cavia Capybara Pall.



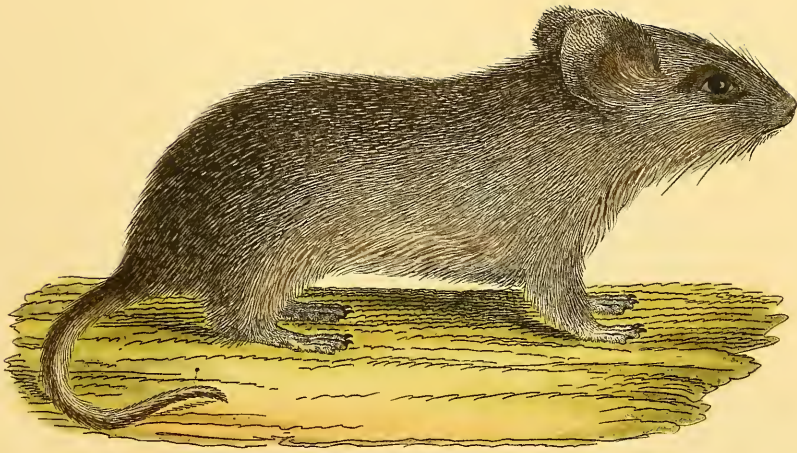
Castor Fiber Linn.



Mus zibethicus.



Sminthus loriger Nordm.



Mystromys albipes Wagn.



Fig.1. *Hesperomys rostellatus* Wagn.

Fig.2. *H. bimaculatus* Wat.



Mus Caraco Pall.



Mus decumanus Pall.



Mus Rattus Linn.



Mus silvaticus Linn.

Ihle del.

LNisfeld sc.



Mus sylvaticus Linn.



Mus Musculus Linn.



1. *Mus modestus* Wagñ. 2. *Mus silaceus* Wagñ.



Mus agrarius Pall.



Mus Pumilio Sparrm.



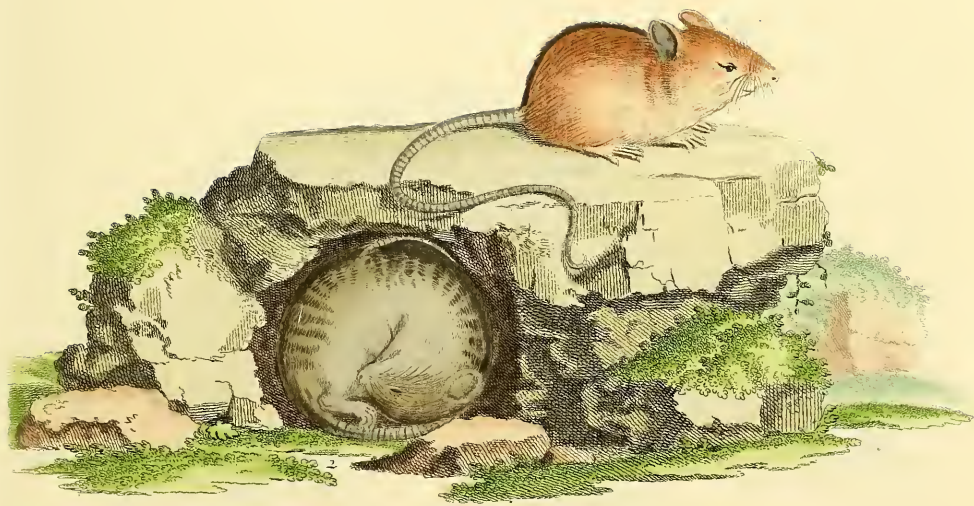
Mus minutus Pall.

Nischmann del.

J. Nussbiegel sc.



Mus forficatus Hermann.



1. *Mus betulinus* Pall.
2. *Mus vagus* Pall.

Nitzschmann del.

L. Schöner del. sc.



Mus faxatilis Pall.



Mus amphibius Linn.

L. B. Ihle del.

L. N. S. Vogel sc.



Mus alliaris Pall.



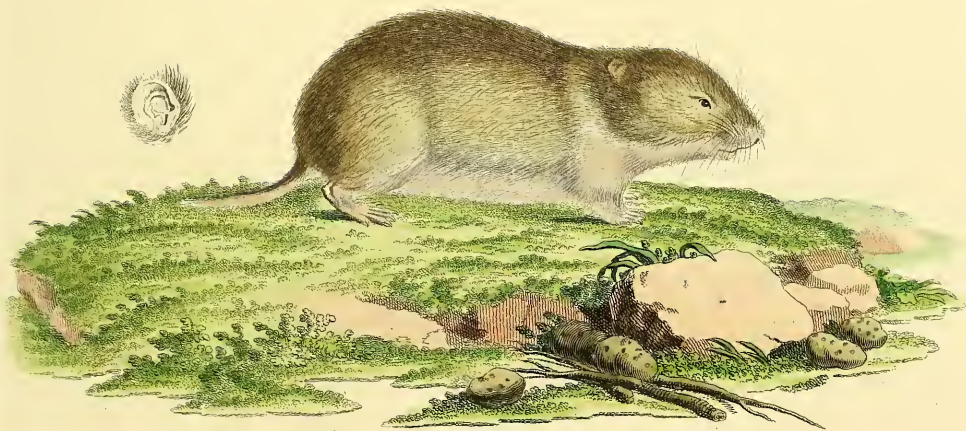
Mus rutilus Pall.

L. Deshayes del.



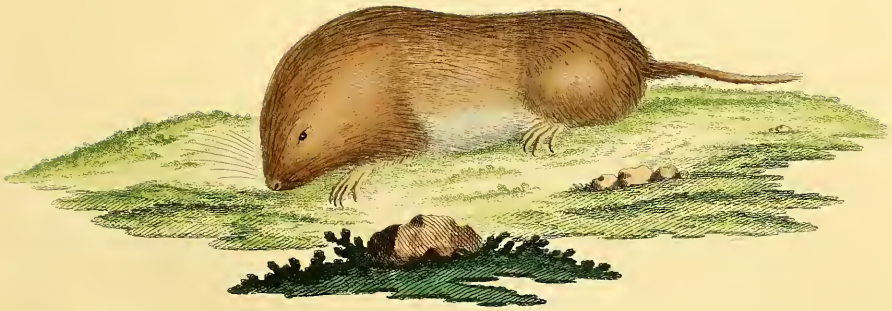
Mus gregalis Pall.

J. Nupbuegel sc.



Mus oeconomus Pall.

L. N. s. f. biogel. sc.



Mus Glareolus.



Mus arvalis Linn.



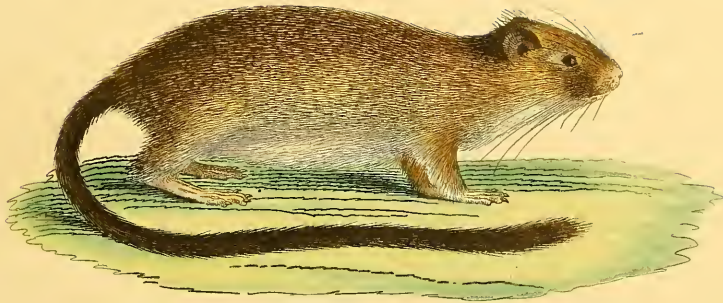
Hypudaeus hercynicus Melhis .



Hypudaeus alpinus Wagñ.



Mus focialis Pall.



Loncheres(Nelomys)Blainvillei Jourd .



Mus Lagurus Pall.



Mus torquatus. Pall.





Mus Lemmus Linn. α .



Mus Lemmus. β .



Mus hudsonius Pall.



Mus Accedula Pall.

Nitzschmann del.

L. Nupfbiel. sc.



Mus Cricetus Linn.



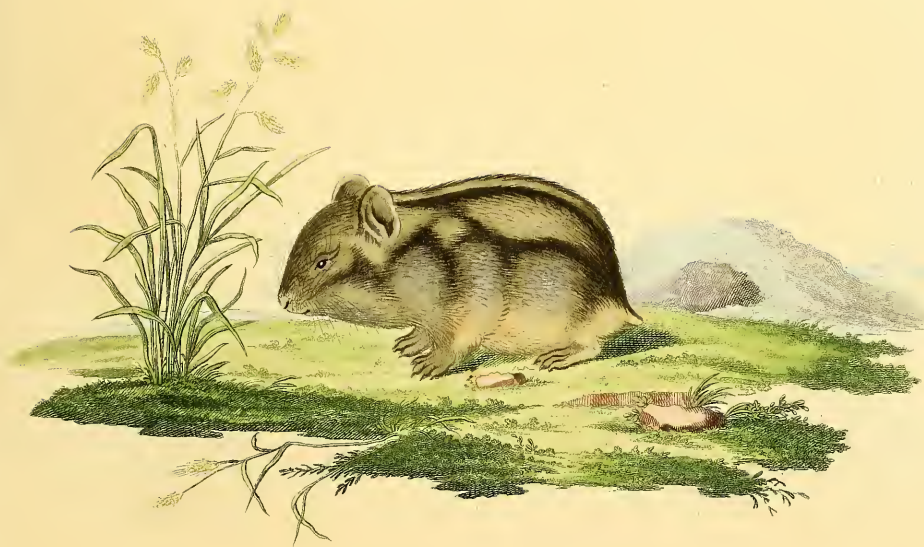
Mus Cricetus Linn.
niger.



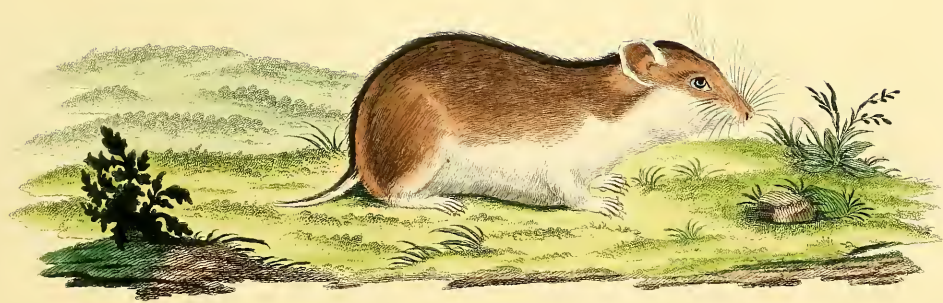
Mus arenarius Pall.



Mus phaeus Pall.



Mus songarus Pall.



Mus fuscus Pall.

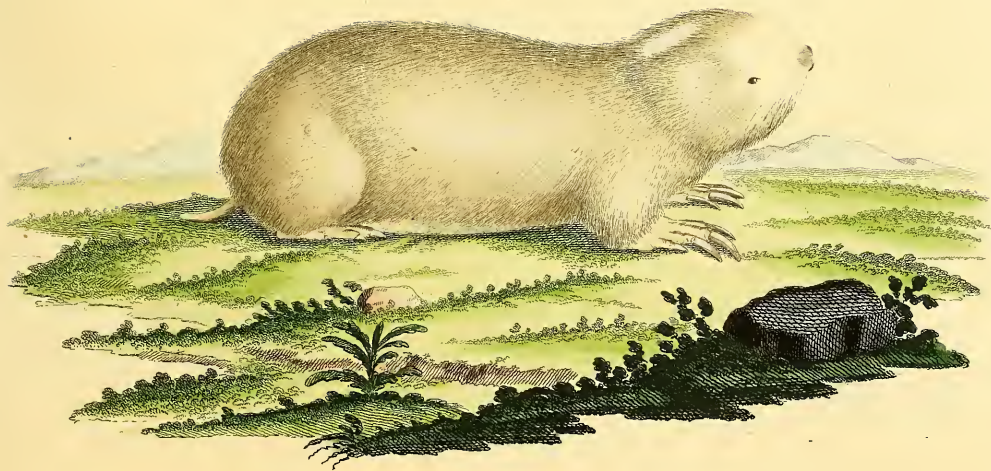


Mus capensis Pall.

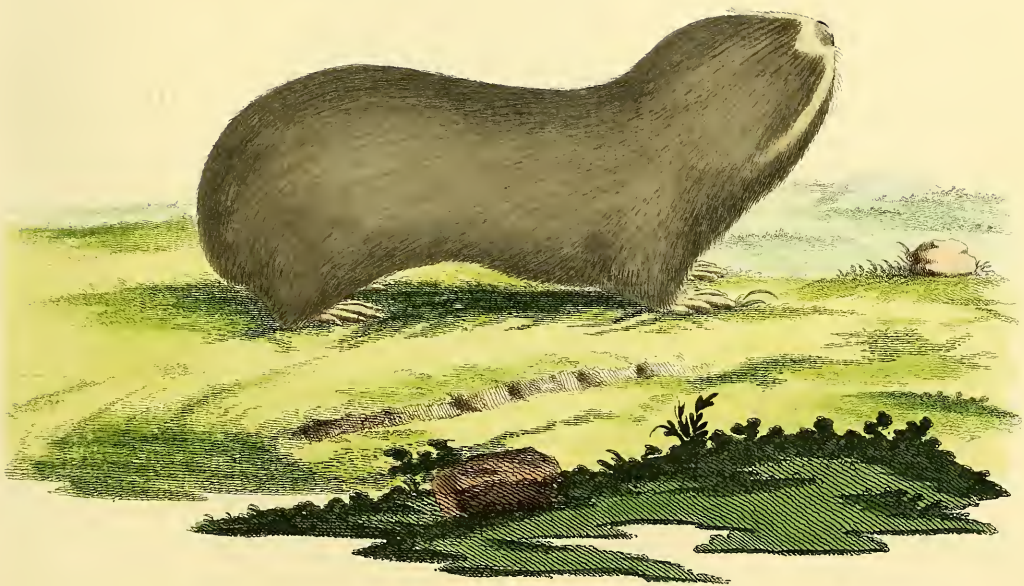


Mus sylvicus.

— 27 —



Mus Aspalax.Pall.



Mus Typhlus. Pall.

D. R. Nitzschmann del.

J. N. Schiigel sc.

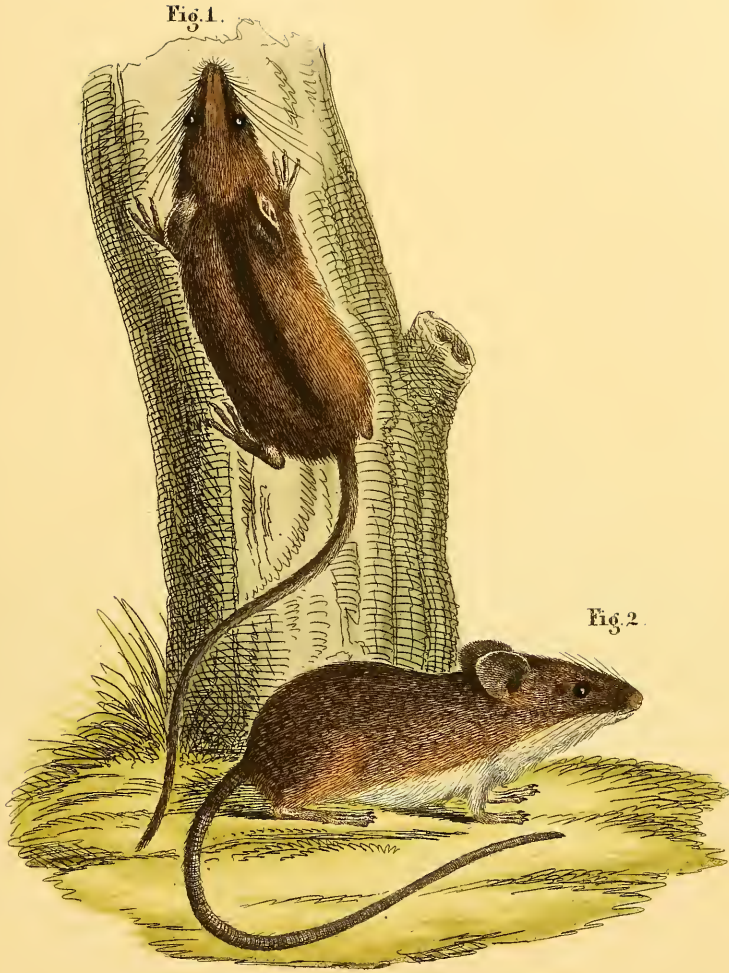
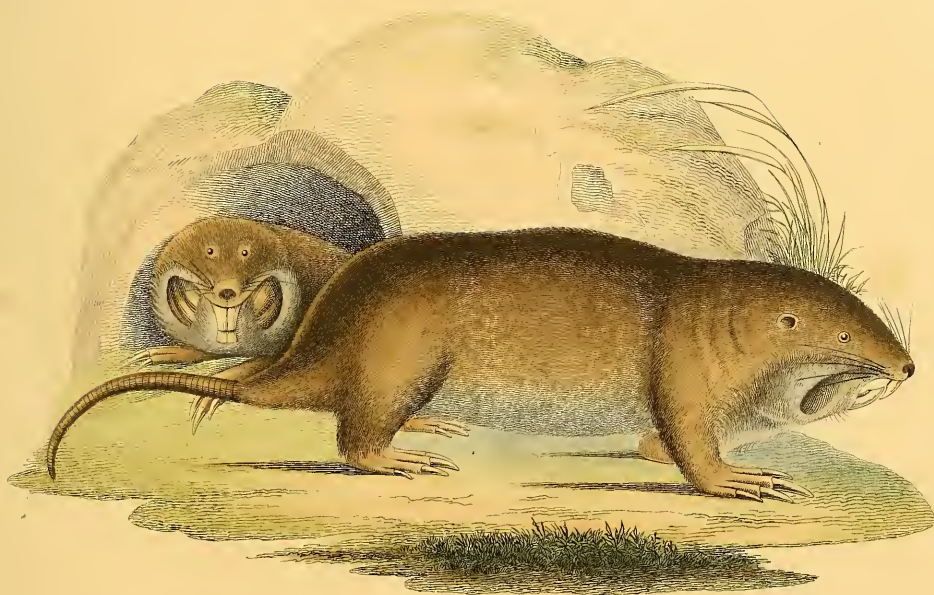


Fig. 1. *Dendromys mesomelas* Brants. — Fig. 2. *D. pumilio* Wagn.



Ascomys mexicanus Licht .



Schizodon fuscus Wat.



Arctomys Marmota.



Arctomys Monax.

De Sève del.

Stern



Arctomys Bobac

D.R. Nishimura del.

J. Nishibeig / G.



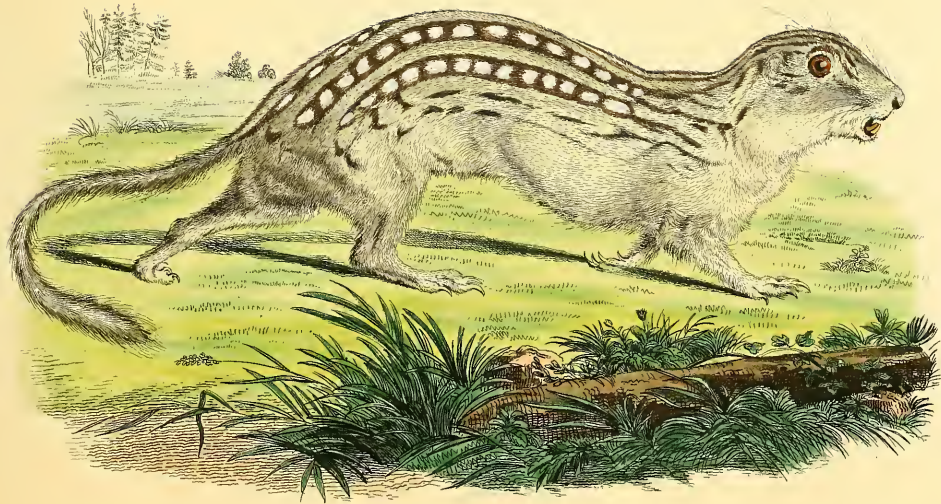
Arctomys Fampetra.



Arctomys Franklinii Sabine .



Arctomys richardsonii Sabine .



Arctomys Hoodii Sabine.

Arctomys tridecemlineata Harl.



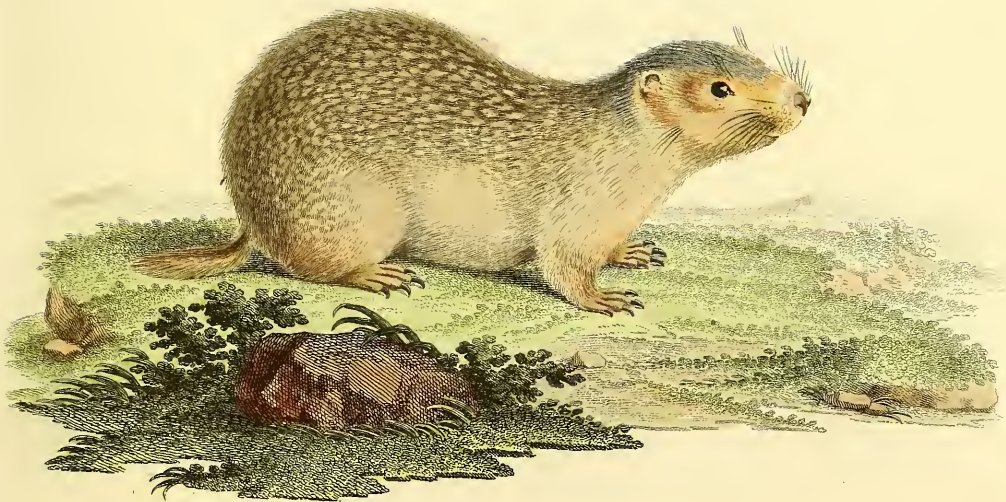
Arctomys Parryi Richards.
Spermophilus Parryi Lesson.



Arctomys Beecheyi Sabine.



Arctomys Citillus. α .



Arctomys Citillus β .

L.E. Ihte del.

J.N. Schindel fec.





Sciurus vulgaris Linn.
rufus.





Sciurus vulgaris Linn.
niger

File pine.

Boek sc.



Sciurus cinereus Linn.

De Sève del.

J. Neufbiedel sc.



Sciurus capistratus Linn.

File ad viv. pinx.

J.C. Beck sc.



Sciurus hypopyrius Wagl.



Sciurus albipes Mus. Monac.



Sciurus hudsonius Pall.

I. E. Ihle del.

L. Nupf-biegel sc.



Sciurus quadrivittatus Say.
Tamias quadrivittatus Richards.



Sciurus lateralis Say.
Arctomys lateralis Richards.



Sciurus Lysteri Ray.

Tamias Lysteri.



Sciurus niger Linn



Sciurus vulpinus Lawfon.

I. E. Ihle del.

I. Nussbärgel sc.



Sciurus anomalus Guddenst.

Ihle del.

Talbot sculp.



1. *Sciurus russatus* Wagn. 2. *Sciurus caucasicus* Pall.



Sciurus Langsdorffii Brandt.
Var. rufa.



Sciurus bicolor Sparrm.

Sciurus javensis Schreb.



Sciurus macrourus Exrl.

L. Nuf. bic. p. 1.





Sciurus maximus.



Sciurus Plantani Ljuigh.



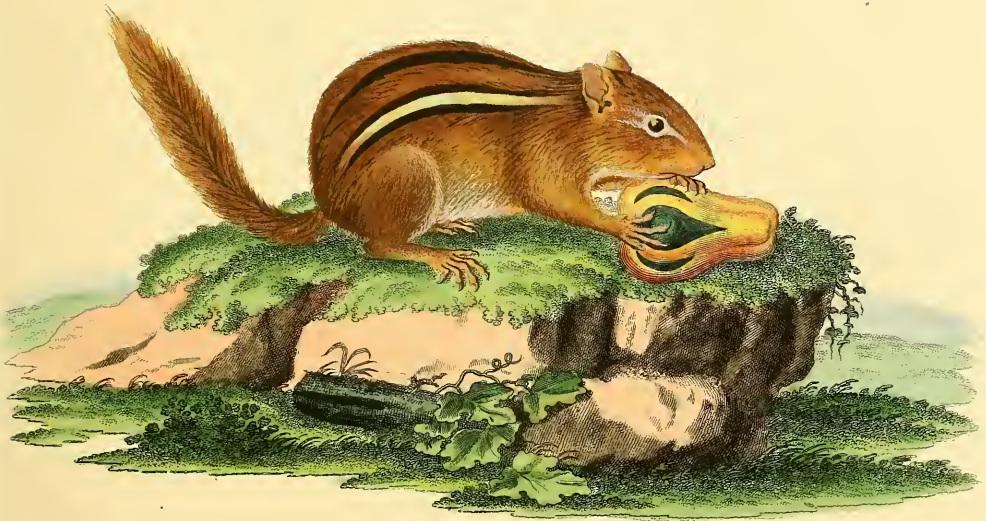
Sciurus variegatus Penn.

De Sève del.

J. Neesbøgel sc.



Sciurus setosus Forst.



Sciurus striatus Linn.





Sciurus palmarum Linn.

L. Nupshiolz sc.



Sciurus getulus Linn.



Sciurus Volucella Pall.



Sciurus aërobat Linn.

J. V. Vogel sc.



Sciurus volans Linn.



Sciurus Petaurista Pall.



Sciurus Petautifla Pall.
var.



Pteromys nitidus Geoffr.



Pteromys Sagitta Geoffr.

Scurus Sagitta Linn.



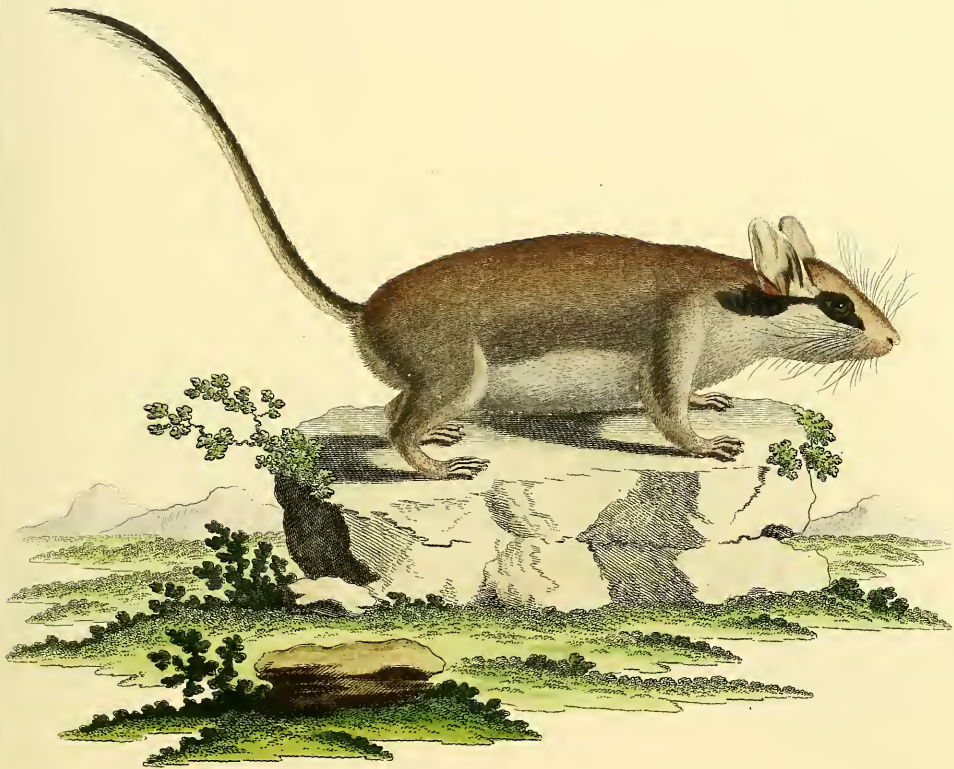
Myoxus Glis.

L. E. Ihle del.

L. Nussbiegel sc.



Myoxus Dryas.



Myoxus Nitela.

Kretsch del.

J. Neuberger sc.



Myoxus Muscardinus.



Myoxus Drummondii Richards.

Neotoma Drummondii.



Dipus Jaculus.



Dipus Sagitta.

V. Schwan del.

L. X. G. sculp.



Dipus cafer.



Dipus meridianus.

Nitzschmann del.

J. Nustriegel sc.



Meriones Labradorius Richards.
Nov. Labradoricus Sabine.



Dipus tamaricinus.



Meriones myosuroides Wagn.



Lepus timidus Linn.



Lepus timidus Linn.
cornu.



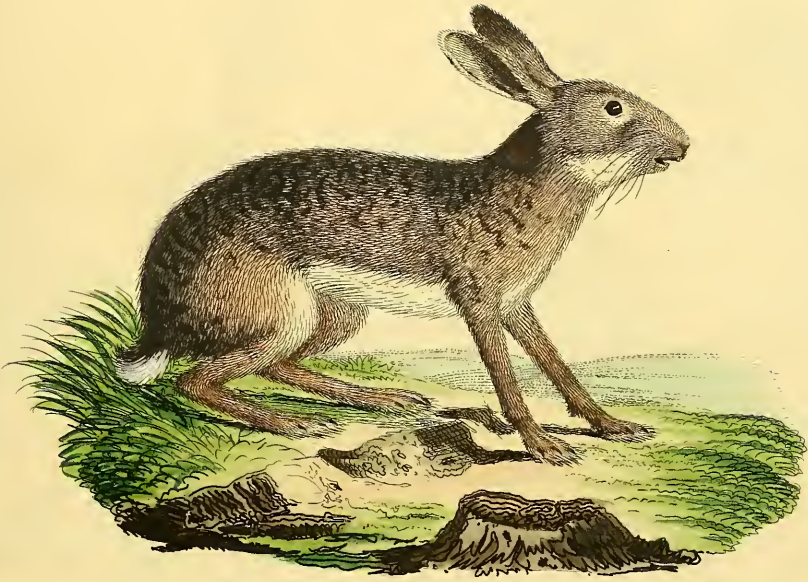
Lepus mediterraneus Waçn .



Lepus isabellinus Cretzschm.



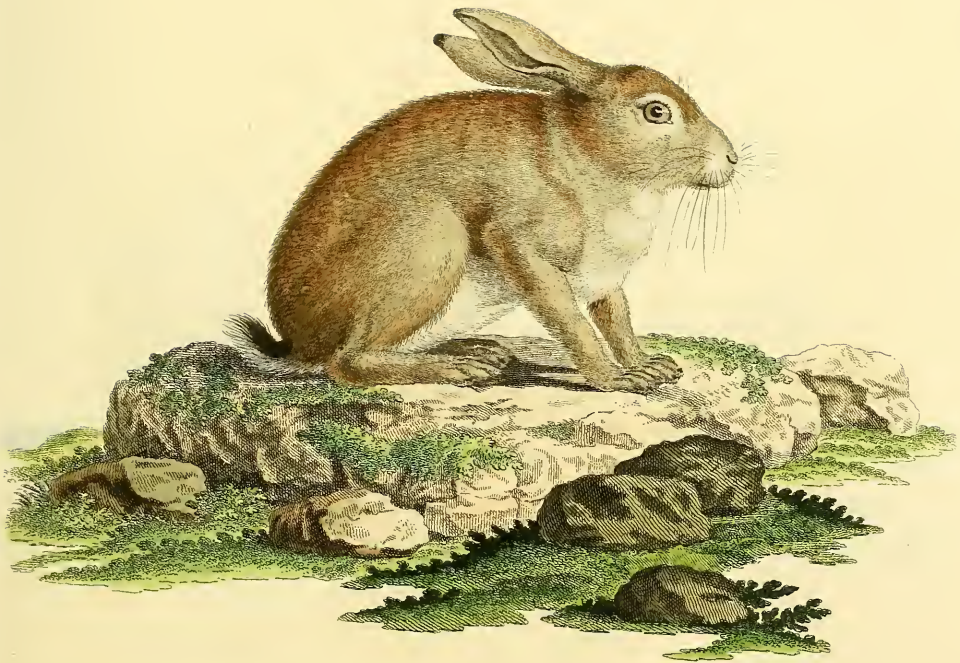
Lepus callotis Wagl.



Lepus nigricollis Fr. Cuv.



Lepus rufinucha Smith.



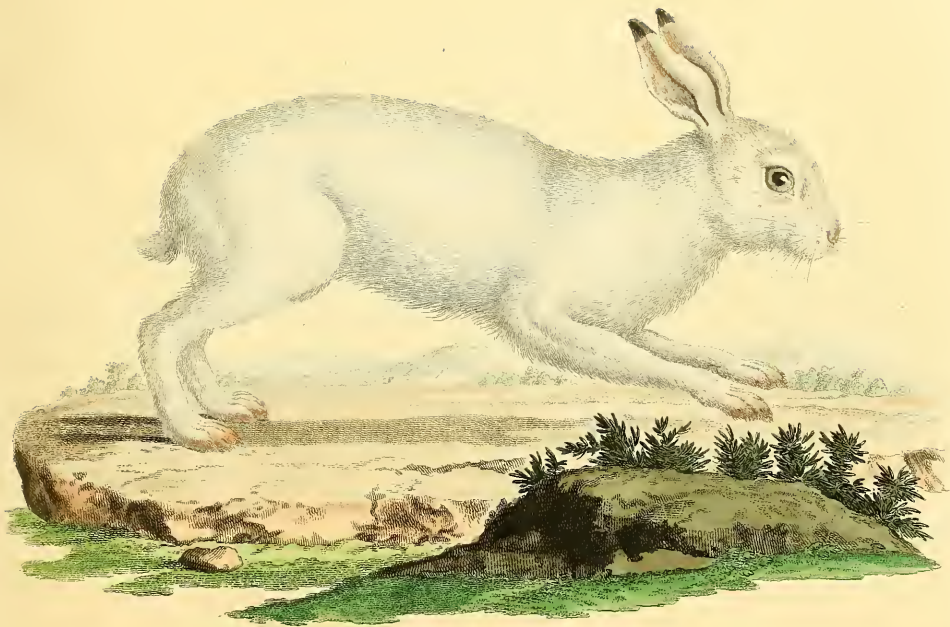
Lepus 'Golai Pall.



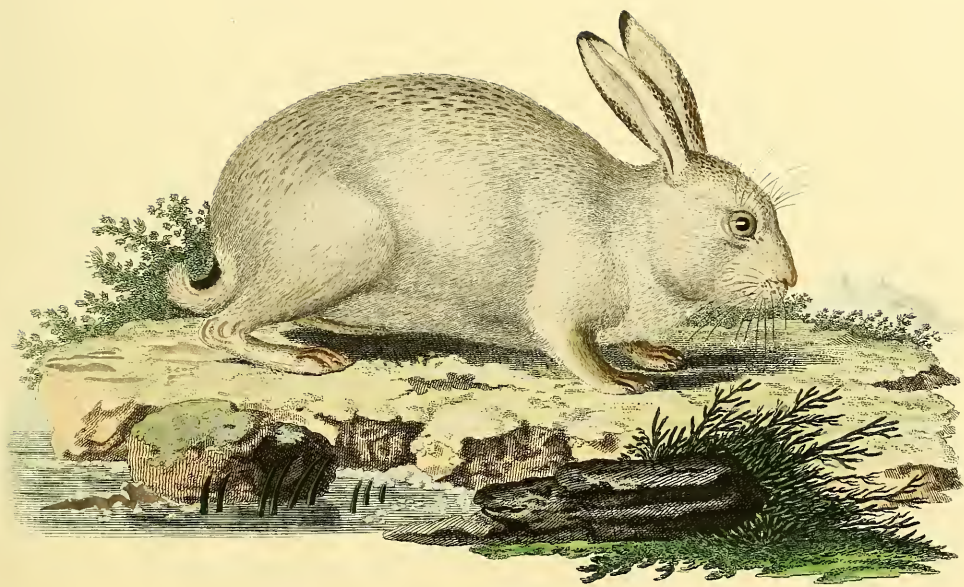
Lepus nanus.



Lepus variabilis Pall.
aestivus



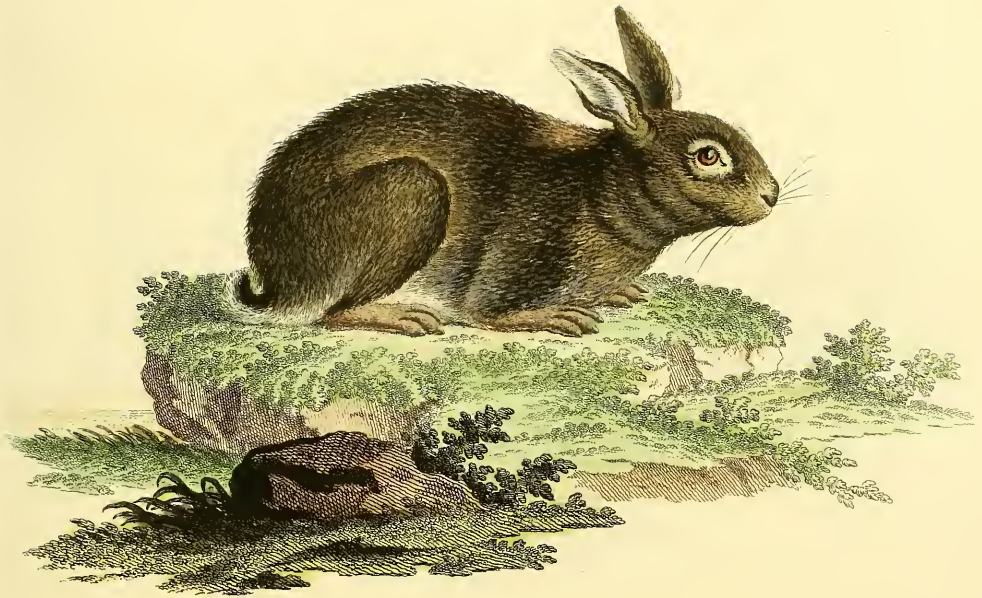
Lepus variabilis Pall.
hibernus.



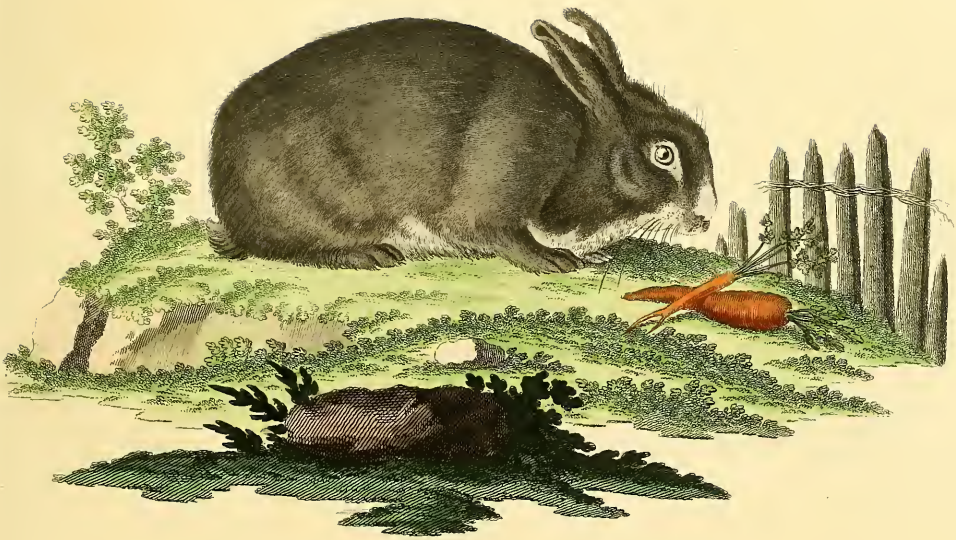
Lepus variabilis Pall.
hybridus.



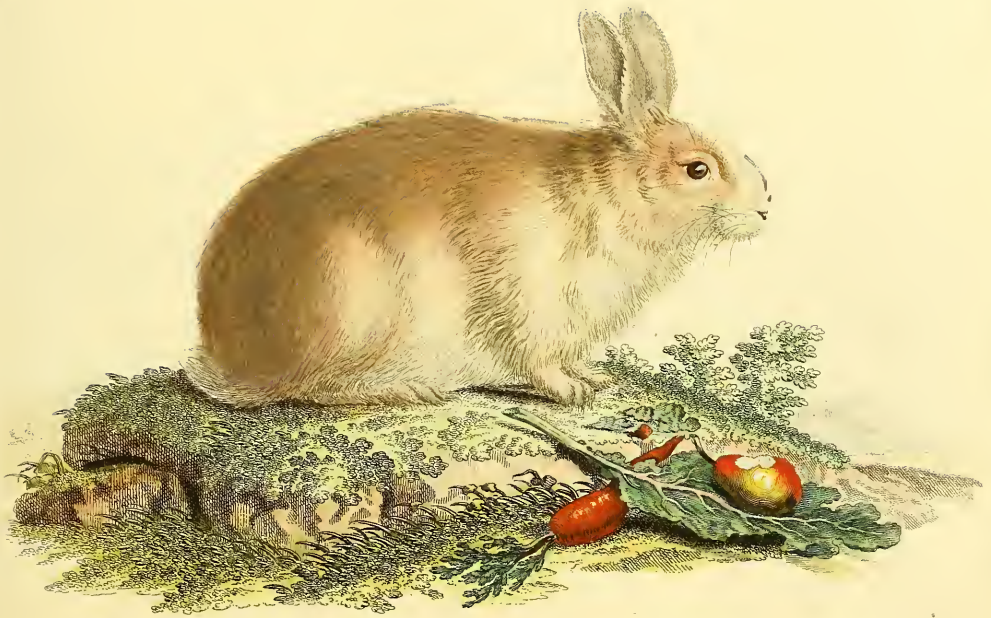
Lepus glacialis Leach.



Lepus Cuniculus Linn.



Lepus Cuniculus Linn.
domesticus.



Lepus Cuniculus Linn.
angorensis.



Lepus minutus Pall.

Joh. Nupfbiigel sc. Norimb.



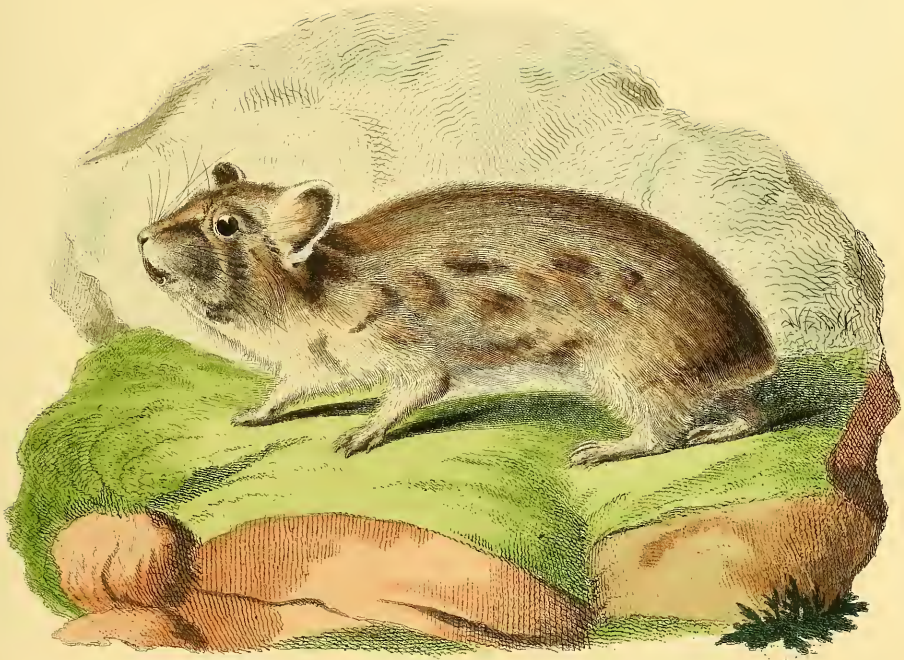
Lepus alpinus Pall.



Lepus Ogotona Pall.

Nischmann del.

J. Neisbiegel sc.



Lagomys princeps Richards.

Suppl.

CCXXXIX.B



Eriomys laniger Wiegman.

Weber ad nat. sc.



Dendrobis Değus Meyen .
(*Octodon Cumingii* Benn.)

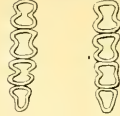
1. Dendrobius .



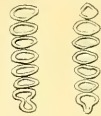
2. Habrocoma



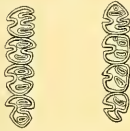
3. Psamoryctes .



4. Schluzodon .



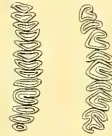
5. Mesomys bistriatus .



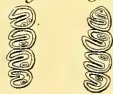
6. Mes. pagurus . 7. Loncheres macrura .



8. Lonch Blainvillei .



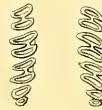
9. Echinomys fuliginosus .



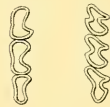
10. Dactylomys .



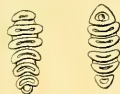
11. Petromys .



12. Ctenodactylus .



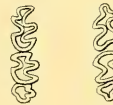
13. Meriones caffer .



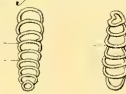
14. Psamomys .



15. Mystromys .



16. Euryotis unisulcata .



Dentes molares Glirium .

Pteromys nitidus.



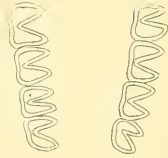
Dipus hirtipes.



Macrocolus haiticus.



Pedeles.



Spalax.



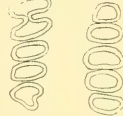
Georchichus capensis.



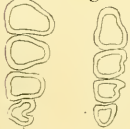
Siphiomys.



Ascomys mexicanus.



Bathyergus.



Hydromys chrysogaster.



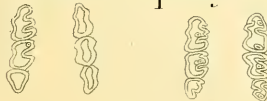
Holochilus.



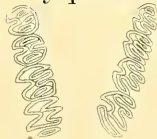
Sigmodon.



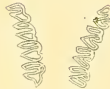
Oxyrveterus. Hesperomys Anguaya.



Myopotamus.



Cavia.



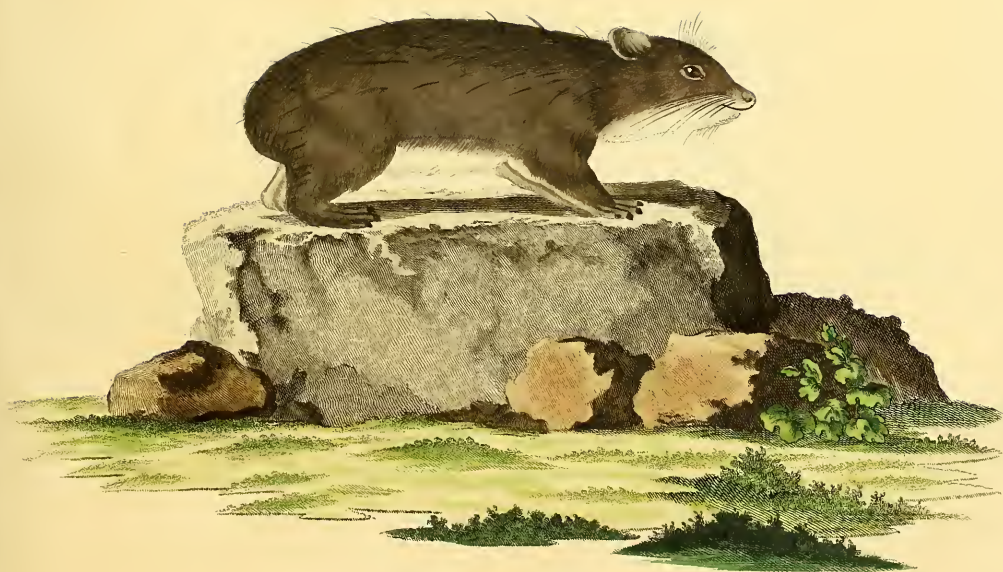
Cerodon.



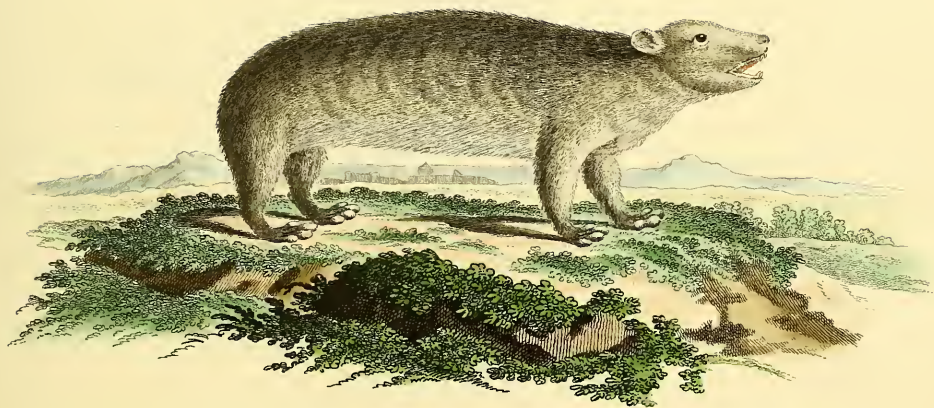
Dentes Glirium.



Hyrax capensis.



Hyrax lyriacus.

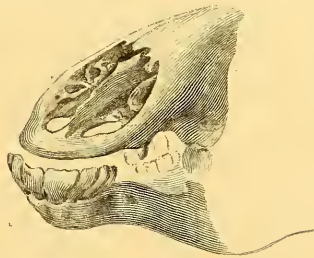


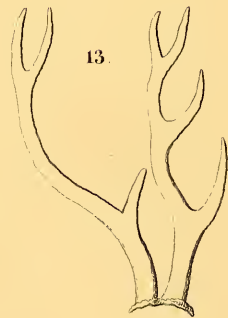
HYDRAX hudsonius

Mos. Griffiths del.

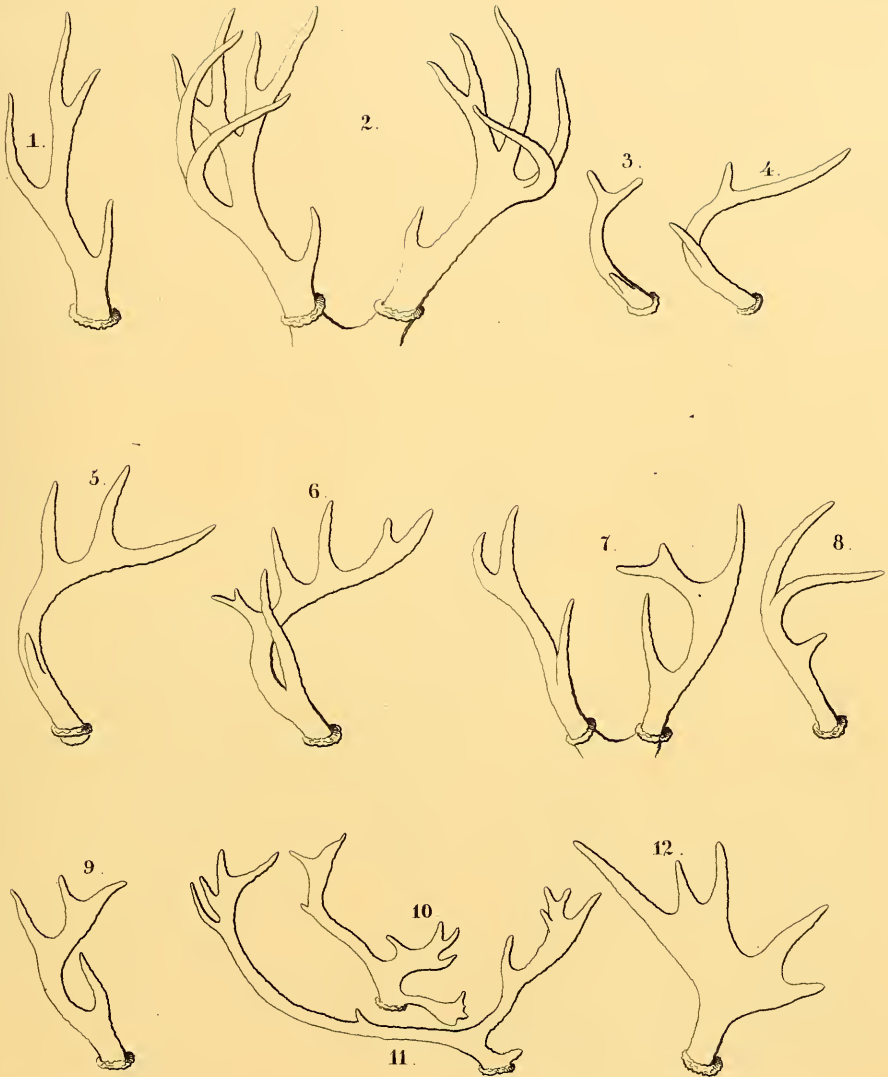
L. Nodding sculp. jr.







Cervorum cerata (Suppl. II. p. 397.)



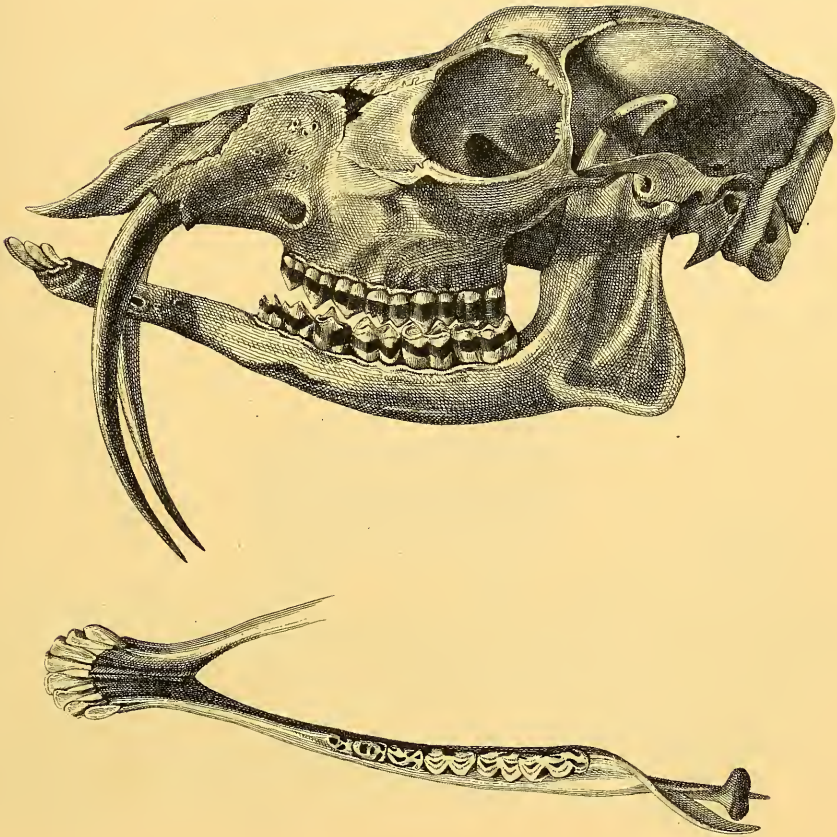
Cervorum cerata (Suppl. IV. p. 398.)



Moschus moschiferus Linn.



Moschus moschiferus Linn.



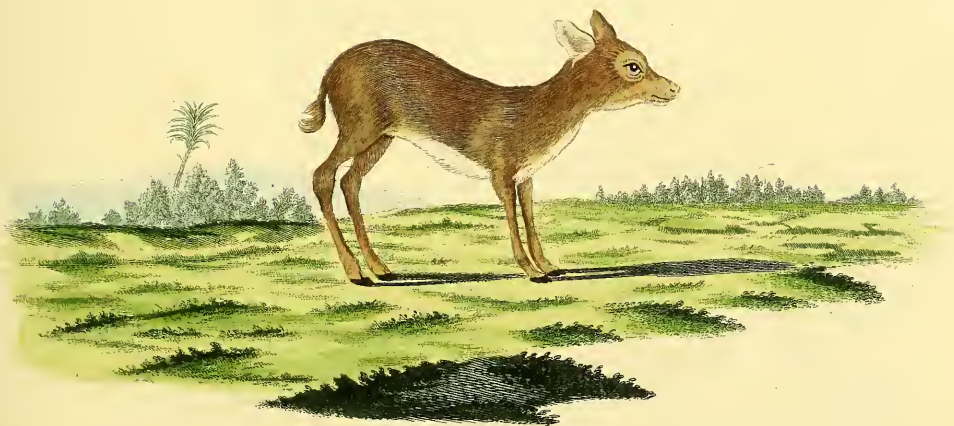
Moschus moschiferus .



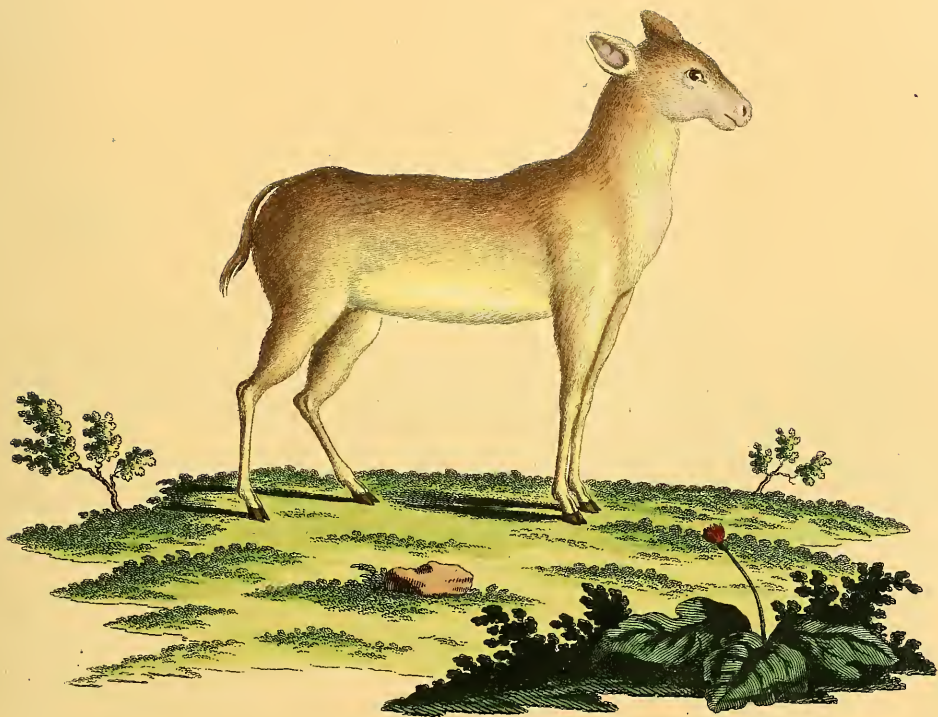
Mofchus Meminna Erxl.

Kreych del.

I. Nussbiegel sc.



Moschus pygmaeus Linn.



Mofchus indicus.

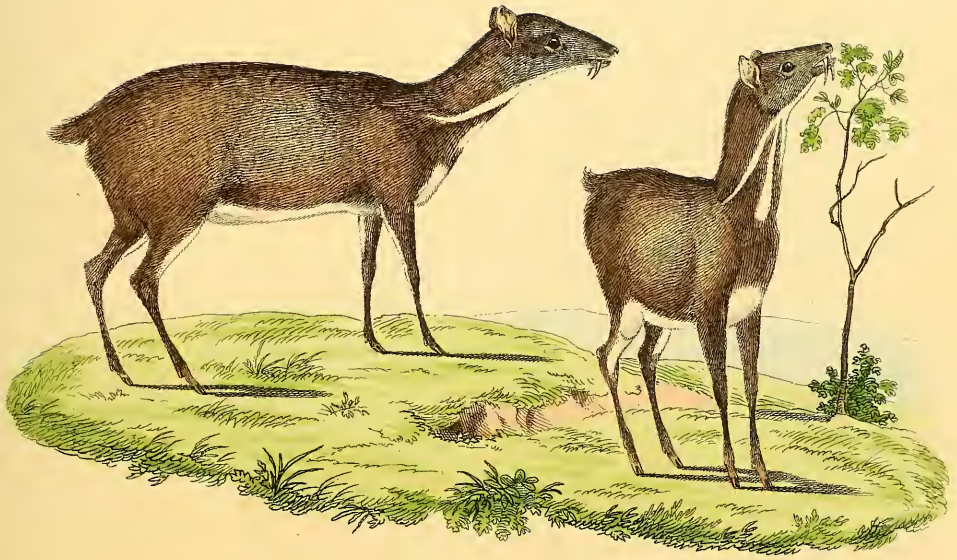
I. Nufsbiedel, sc.



Mofchus delicatulus Shaw

Riley del.

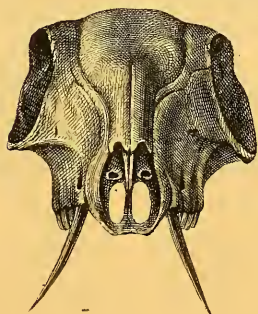
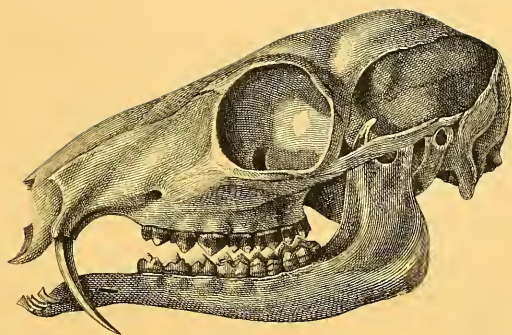
Boock sc.



Moschus Kanchil Raffl.



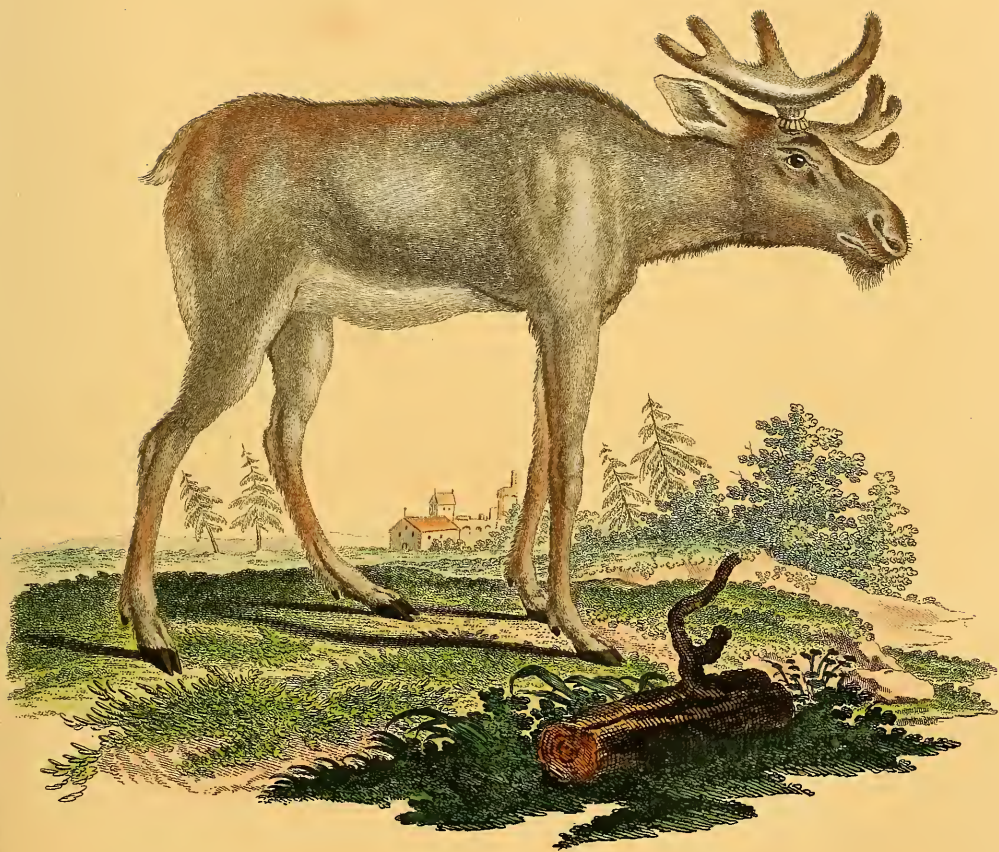
Moschus aquaticus Og.



Moschus javanicus s. Kanchil .



Cervus Pudu Gerv.



Cervus Alce Linn.

I. F. Thle del.

I. Nufsbiegel sc.



1



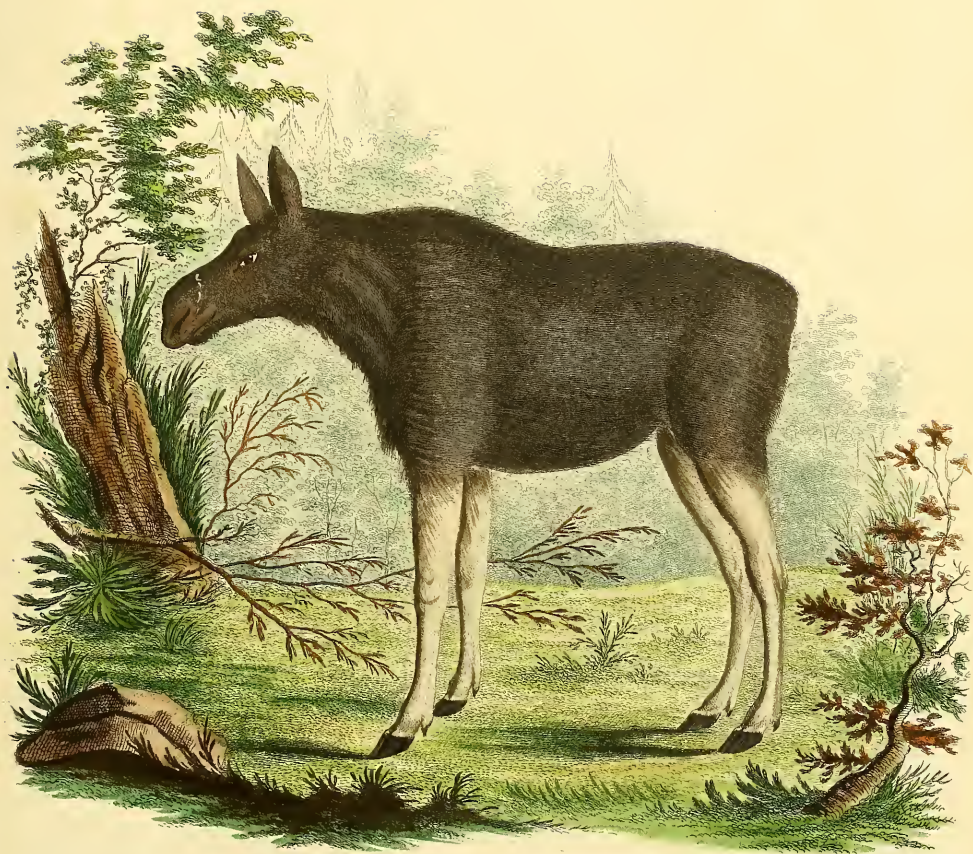
2



Cervus Alce Linn.
Moose

Hügel del.

Beck sc.



Cervus Alce Linn.

Femina.

Kügel del.

Boeck sc.



Cervus canadensis Briff.



Cervus Elaphus Linn.
Alas.



Cervus Elaphus Linn.

A. W. Comus a Mellin ad viv. pinx.

J. Nustb. del. G.



Cervus Elaphus Linn.
Femina.



Cervus Elaphus Linn.
Femina.

A. W. Comes a Melin del.

J. Neufbiegel sc.



Cervus Elaphus Linn.
Pullus.



Cervus Strongyloceros.



Cervus Strongyloceros.
Cornu



Cervus virginianus.



Cervus gymnotis Wiegman.



Cervus gymnotis Wiegm.
fem.



Cervus Tarandus Linn.
Mas.

A. 1775 Comes a Millin ad viv. pinx.

J. Nauborn del.



Cervus Tarandus Linn.
Femina.

A. W. Cuvier a. Mellin del.

J. Nafziger sc.



Cervus Tarandus Linn.
fibiricus.

L. Nustbiedel. sc.

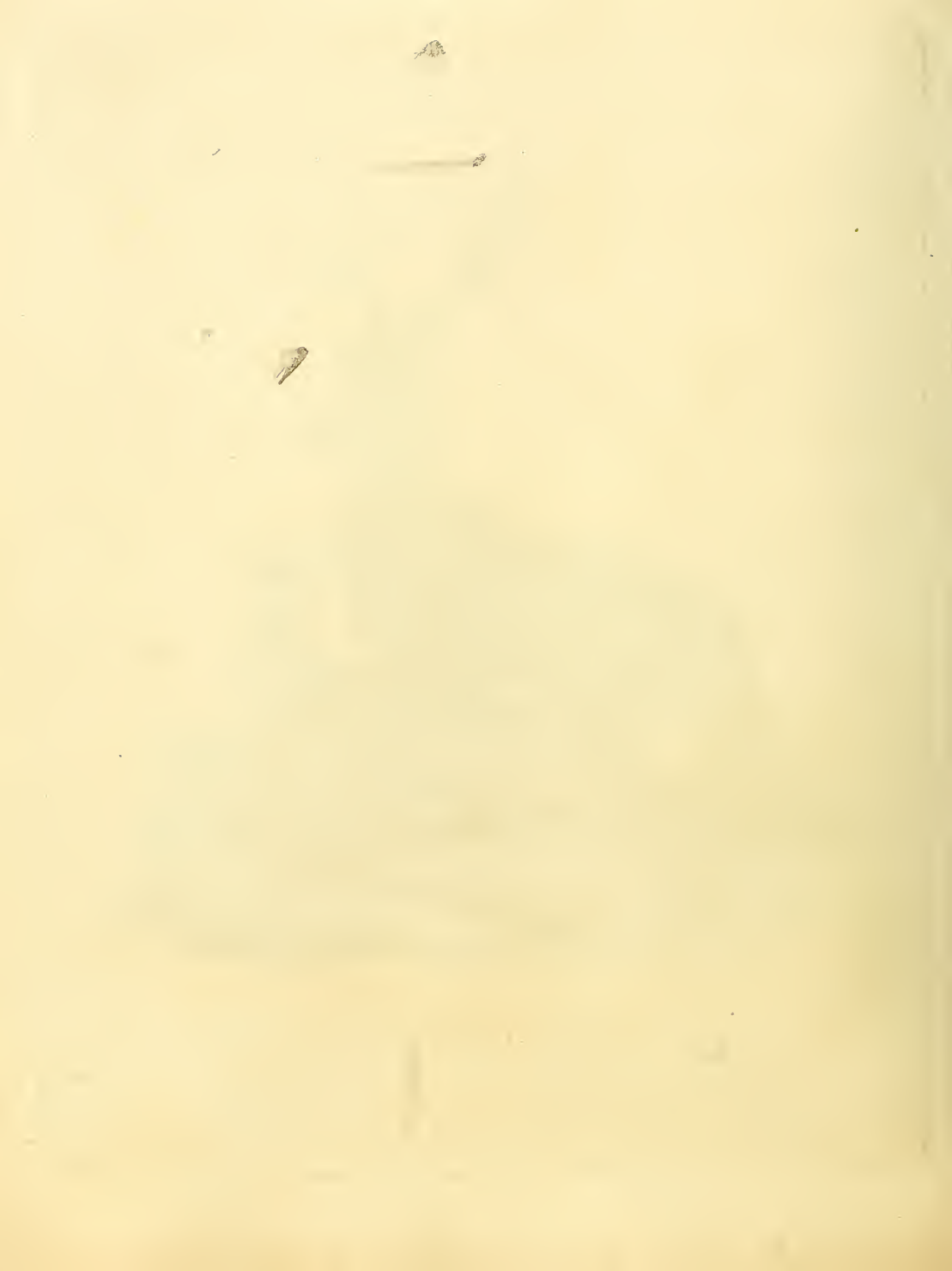


Cervus Tarandus Linn.
Pullus.





Cervus macrotis Say.

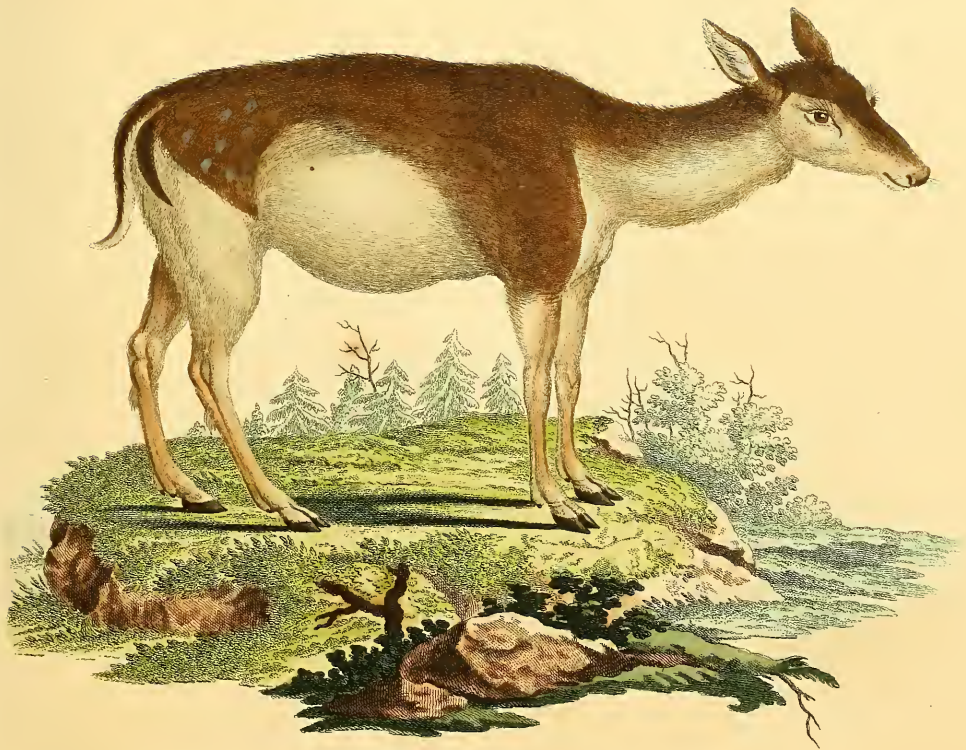




Cervus Dama Linn.
Mas.

A. W. Gemes a. Mellin ad viv. pinx.

J. F. Neuberger sc.



Cervus Dama Linn.
Femina.

A. W. Conroy a. Mellin ad viv. pinx.

L. Nufsbach sculp.





Cervus Axis.



Cervus Hippelaphus Mus. Monac.



Cervus porcinus. Penn.

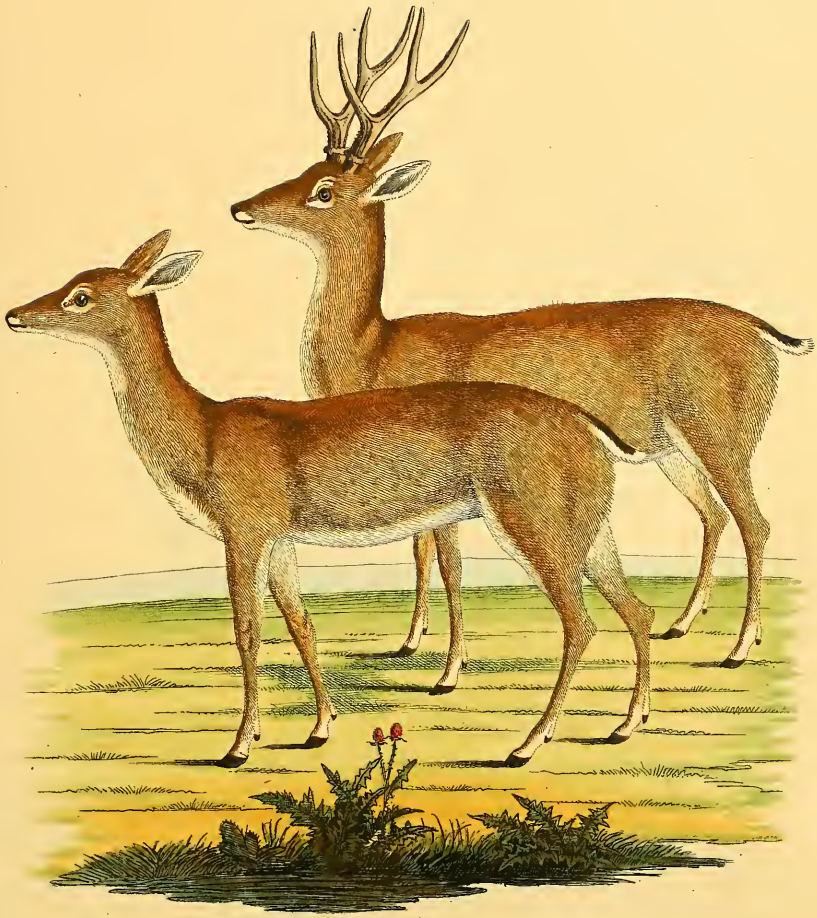


Cervus Aristotelis Cuv.





Cervus Mexicanus Desmar.



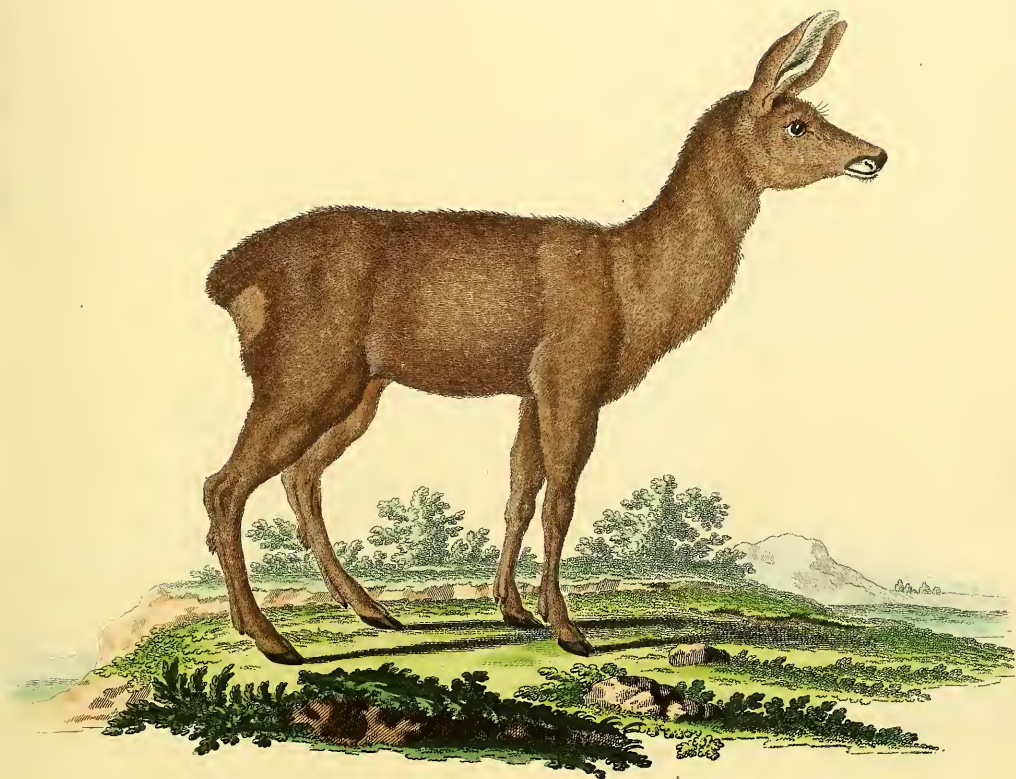
Cervus campestris Cuv.



Cervus Capreolus Linn.
Alas.

A. W. Comes a Mellin del.

J. N. S. bicard. sc.



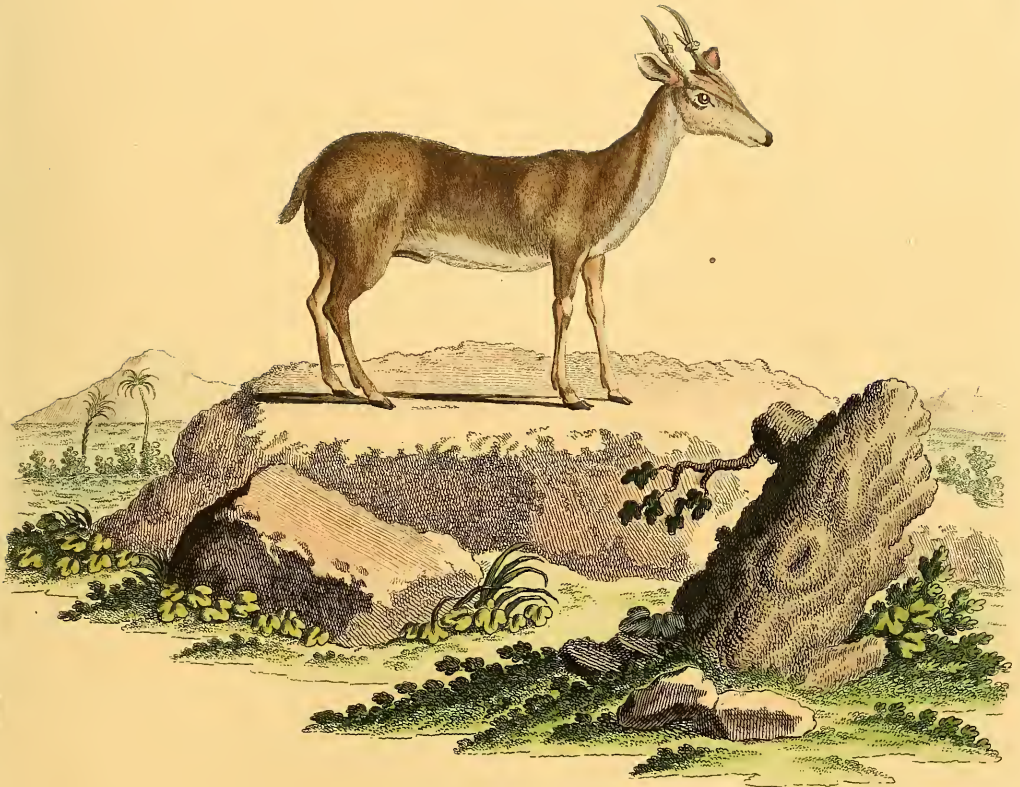
Cervus Capreolus Linn.
Femina.



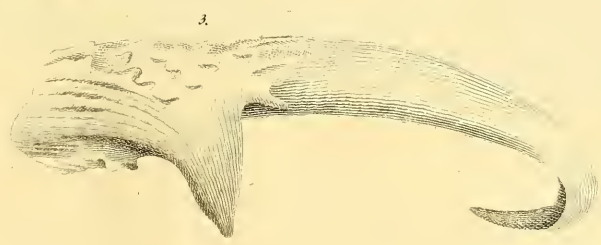
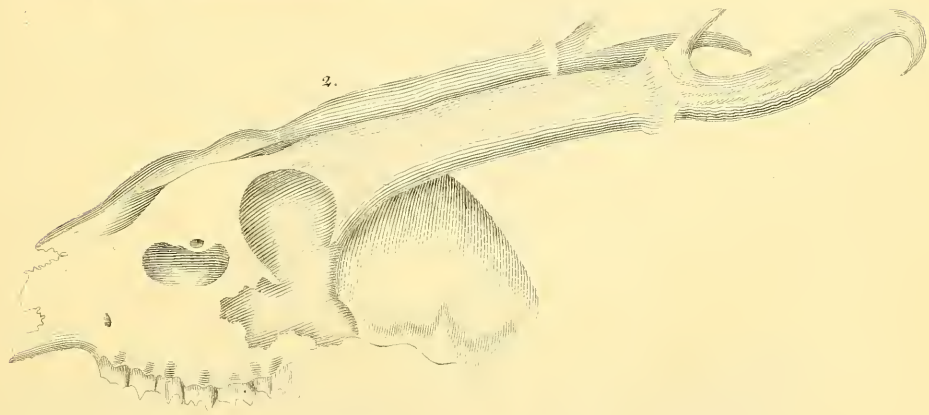
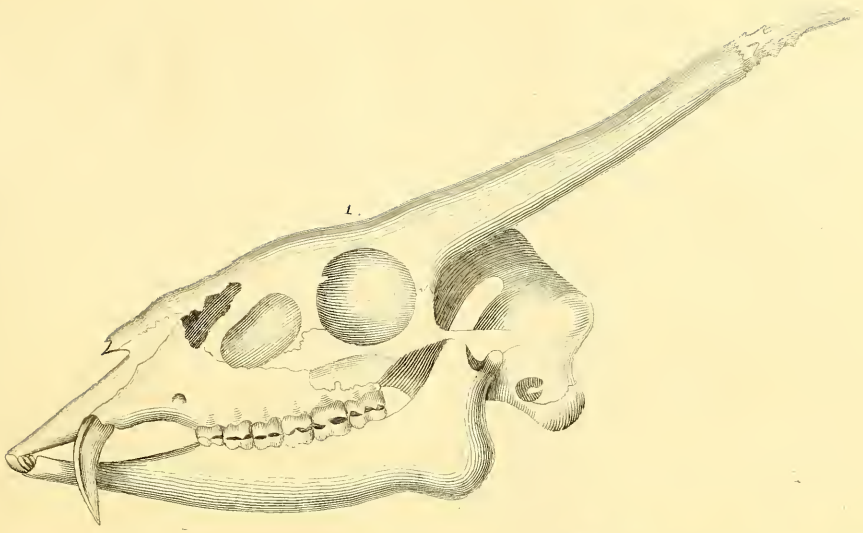
Cervus Pygargus Pall.

I. E. Ihle del.

I. Nießbiedel sc.



Cervus Muntjac Zimm.



1. *Cervus moschatus*
2. *C. sibiricus*. 3. *C. hamatus*.



Camelopardalis Giraffa .



Antilope Oreas. Pall.



Antilope Leucoryx Pall.

Thle pinr.

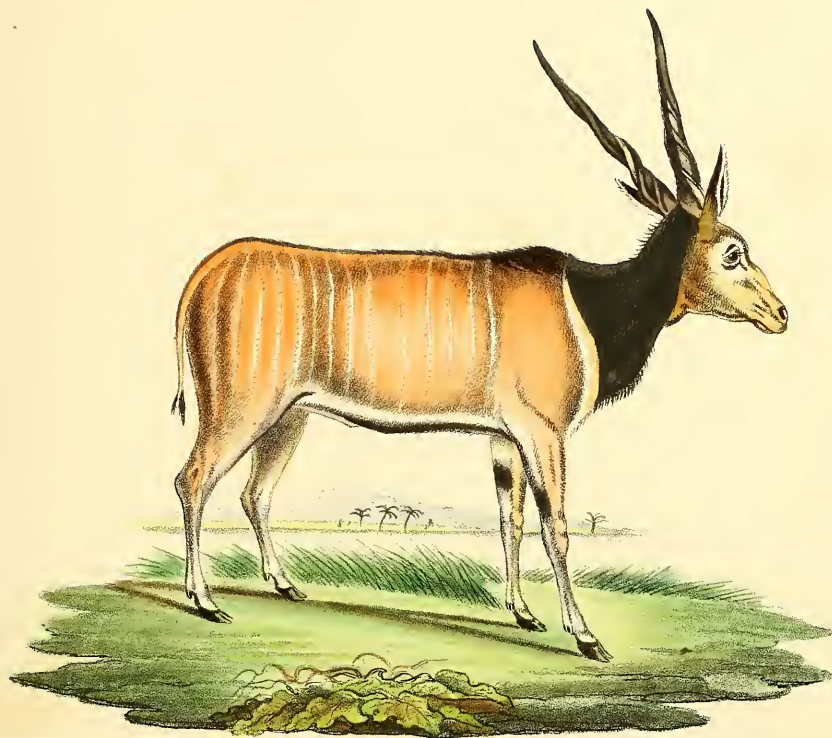
Boek fe.



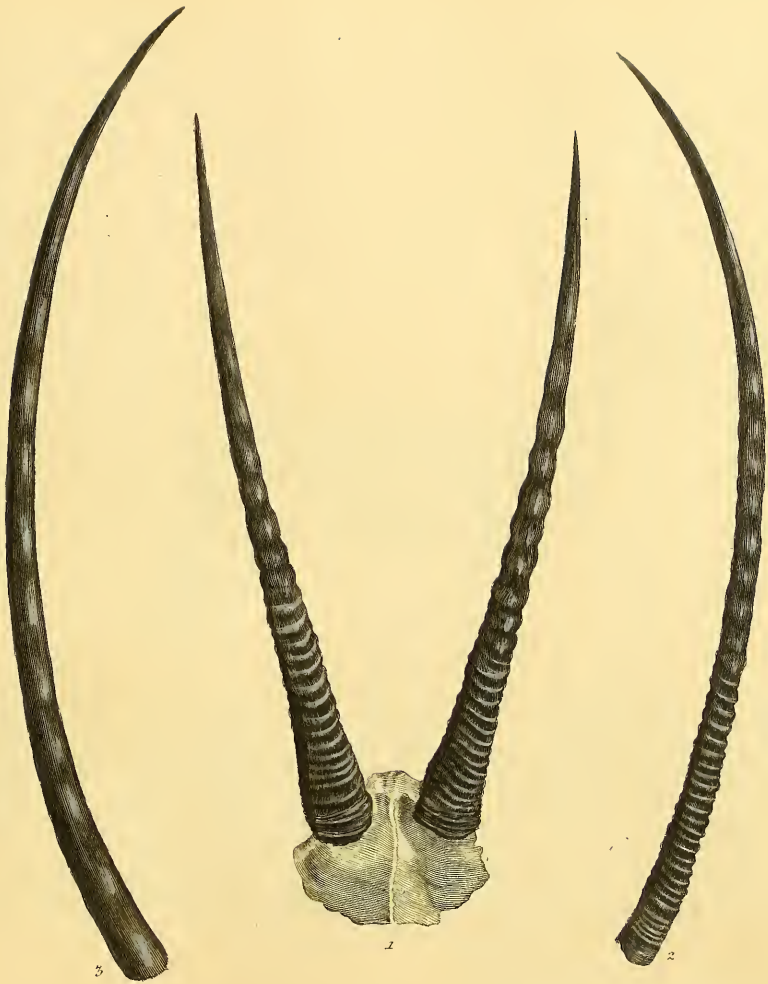
Antilope Oryx Pall.

De Sève del.

J. Nupströmer sculpsit.



Antilope Derbyana Gray.



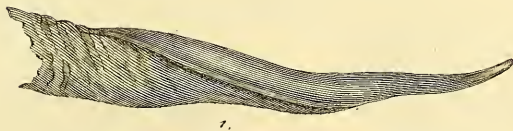
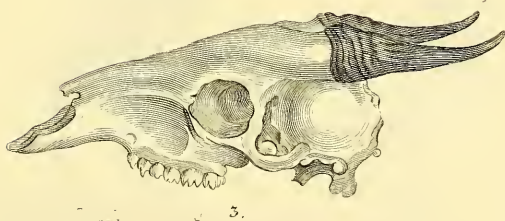
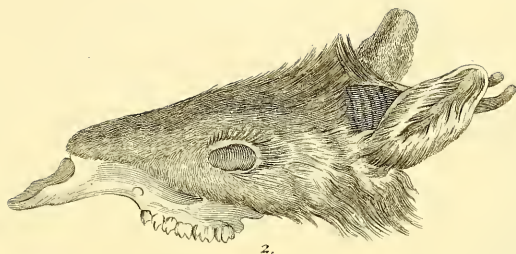
Antilope 1. Oryx. 2. Gazella. Pall.
Cervina.



Antilope silvatica Sparrm.



Antelope scripta Pall.

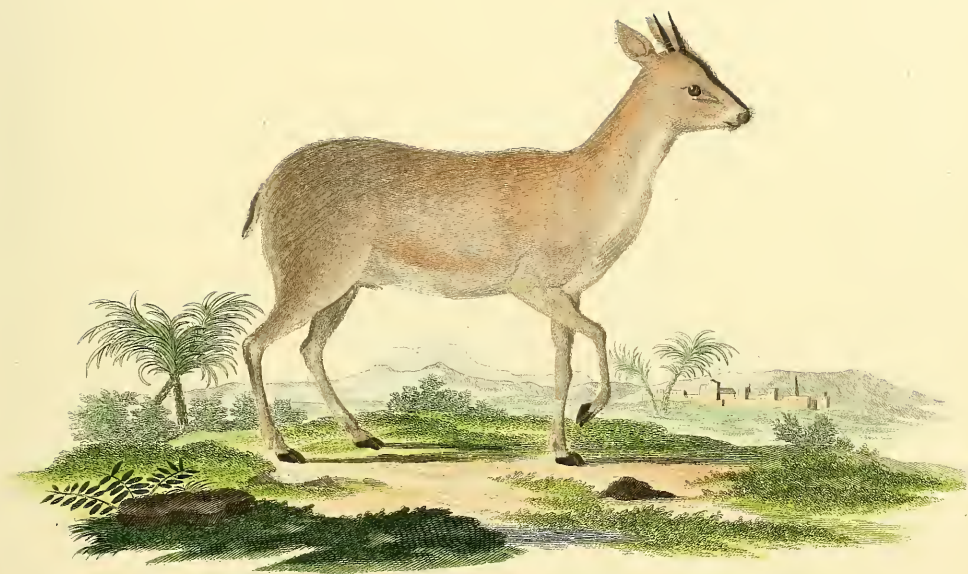


Antilope 1. scripta .2. 3. pygmaea. Pall.



Antilope Oreotragus Forster.

L. Naeſbigeſt. ſc.



Antilope Grimmia Pall.

J. F. Ihle del.

J. F. G. lekart. sc.



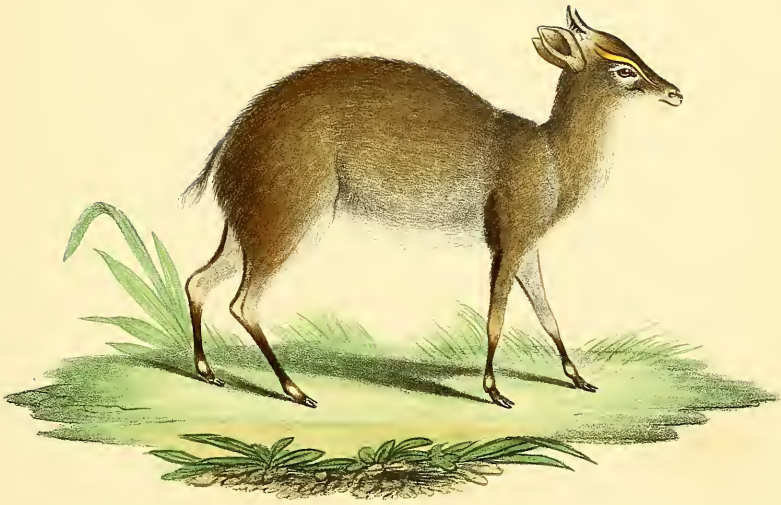
Antilope pygmaea Pall.



Antilope Saltiana Blainv.



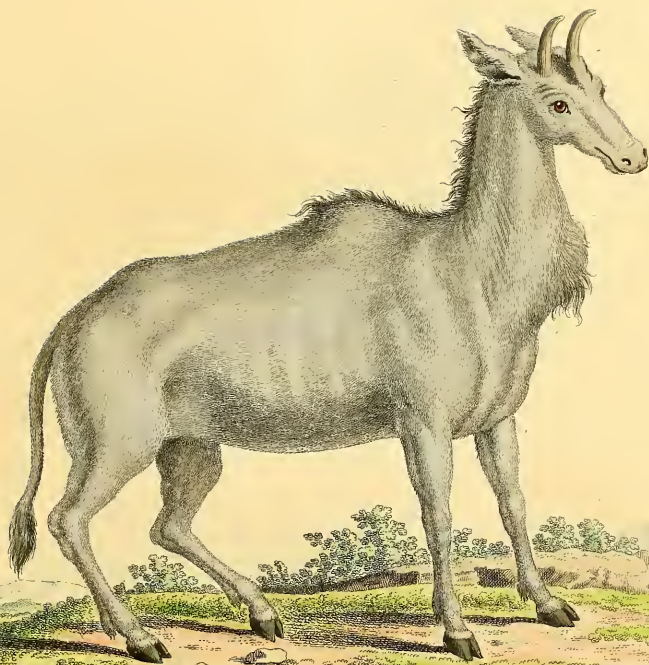
Antilope koba Erxl.



Antilope Maxwelli H. Smith



Antilope leoparica.



Antilope Tragocamelus Pall.



Antilope picta Pall.



Antilope picta Pall.
Femina.



Antilope Dama Pall.



Antilope redunca Pall.



Antilope Tragulus Forst .



Antilope Eleotragus



Antilope melanotis Afzel .



Antilope Strepsiceros Pall.

Volkart sc.

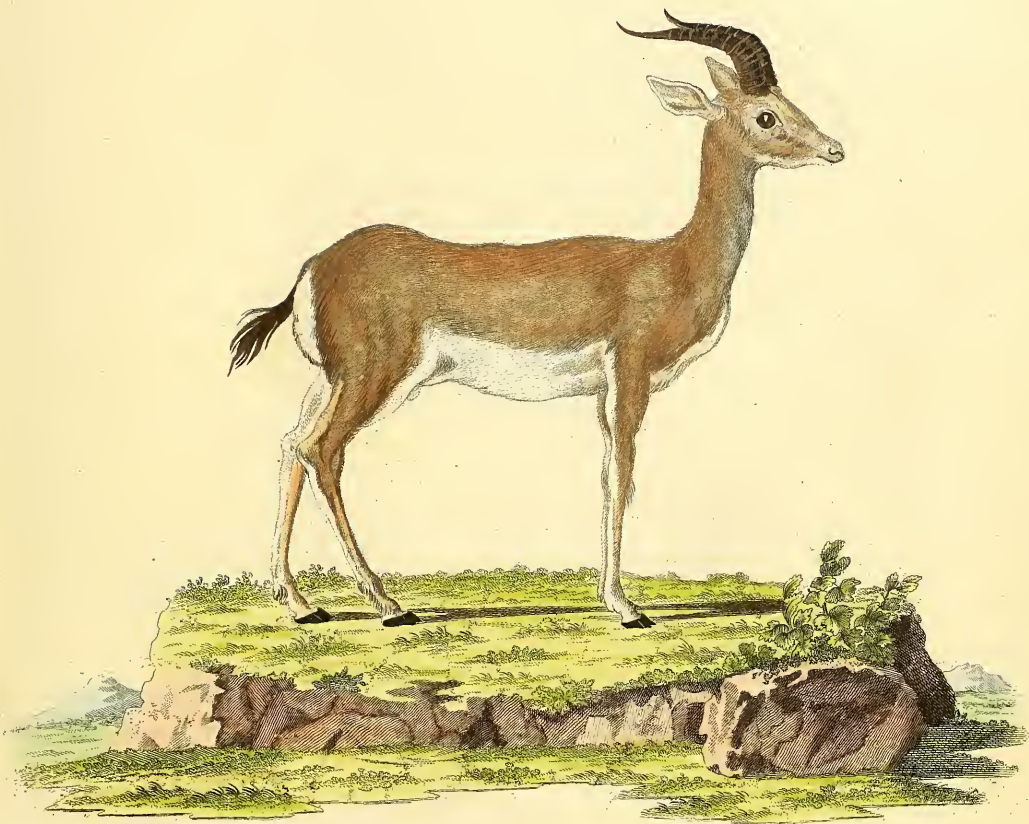


Antilope Cervicapra Pall.

J.C. Sturm. fec.



Antilope Dorcas Pall.



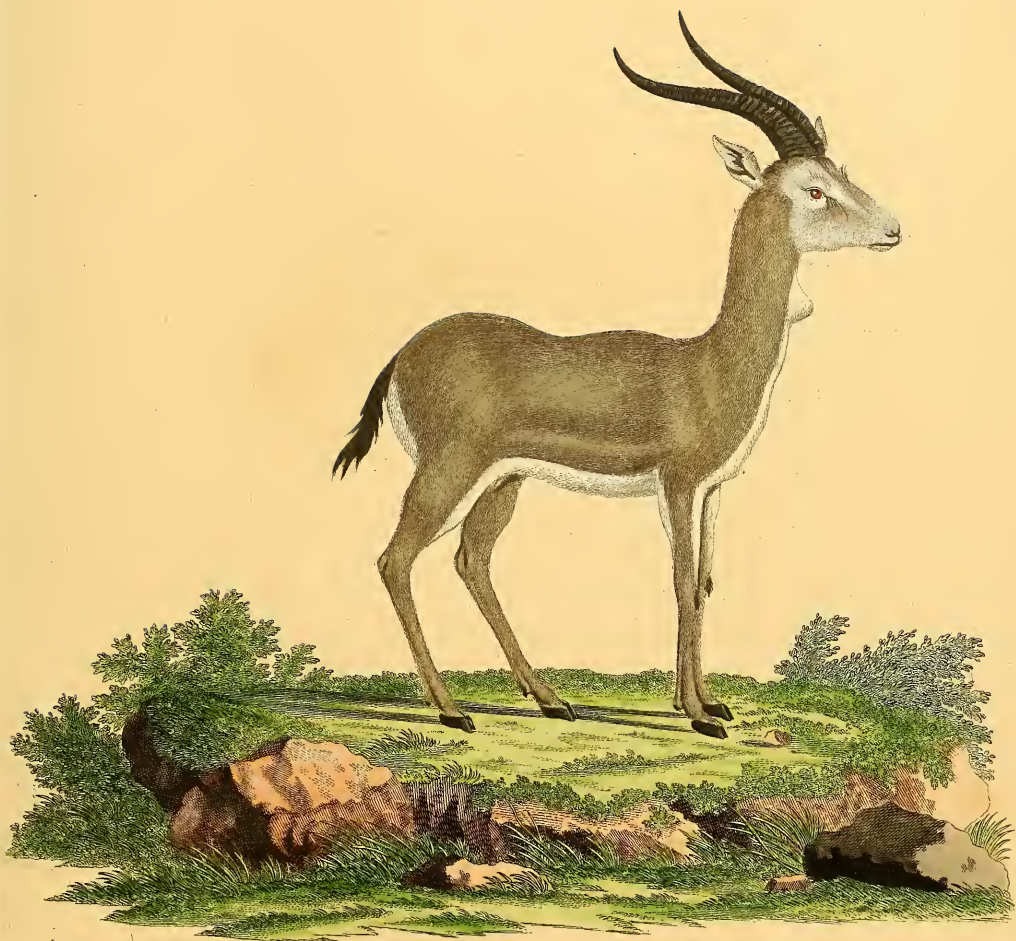
Antilope Kevella Pall.

Desjardins del.

J. B. T. Colclough sculp.



Antilope Mhorr Bennet.



Antilope subgutturosa GÜldenast.



Antilope Angasii Gray.



Antilope Corinna Pall.



Antilope Euchore Forst.

De Saxe del.

J. G. Leach sculp.



Antilope Pygarga Pall.

T. E. The pinx.

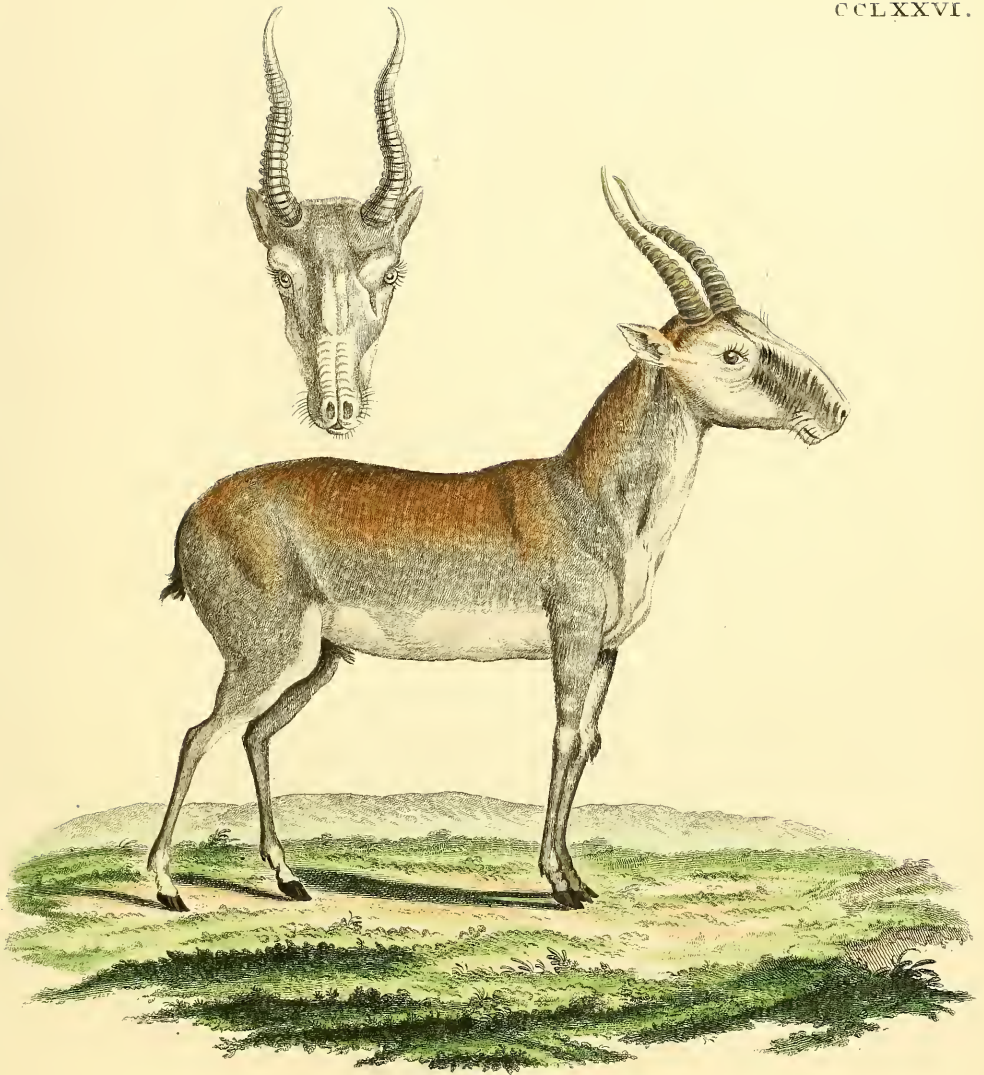
L. Nussbiel. sc.



Antilope melampus Lichtenst.



Antilope gutturosa Ball.

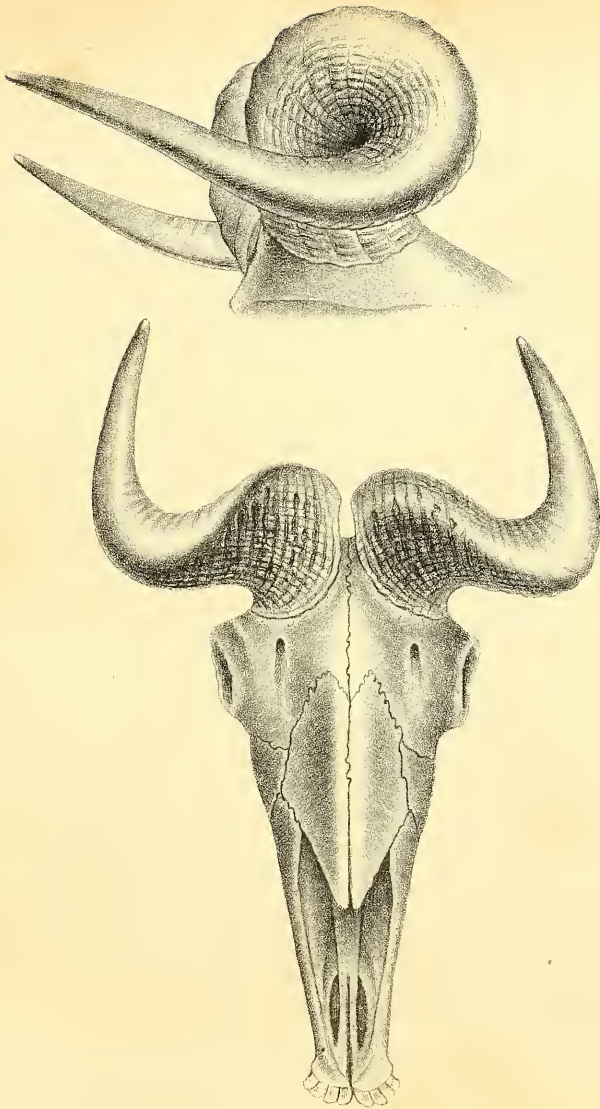


Antilope Saïga Pall .

J. G. Sturm sc.



Antilope Addax Licht .



Antelope taxicolor Hodgs.





Antilope Bubalis Pall.



Antilope Bubalis.



Antilope leucophaea Pall.

L. E. Ihle pinx.

L. Nussbiegel sc.

Suppl.

CCLXXVIII. A.



Antilope ellipsiprymna.

Harris del.

Fleischmann sc.



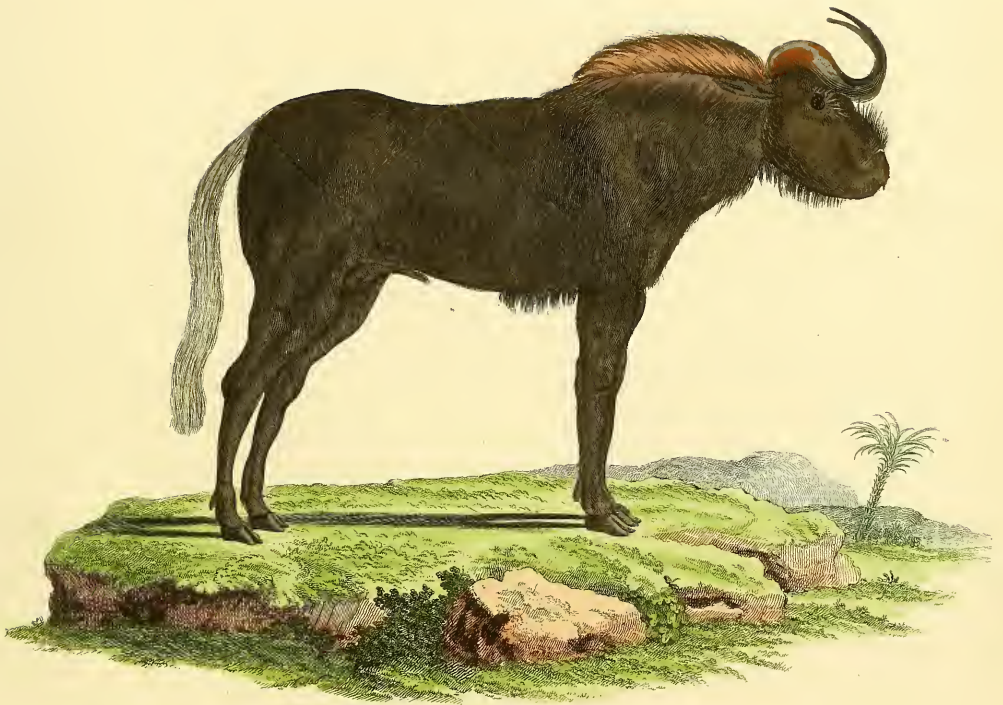
Antilope Rupicapra Pall.



Antilope Rupicapra Pall.
Hiberna.



Antilope furcifer Smith.



Antilope Gnou Zimm.

J. G. Sturm. sc.



Date Due

Date Due	

