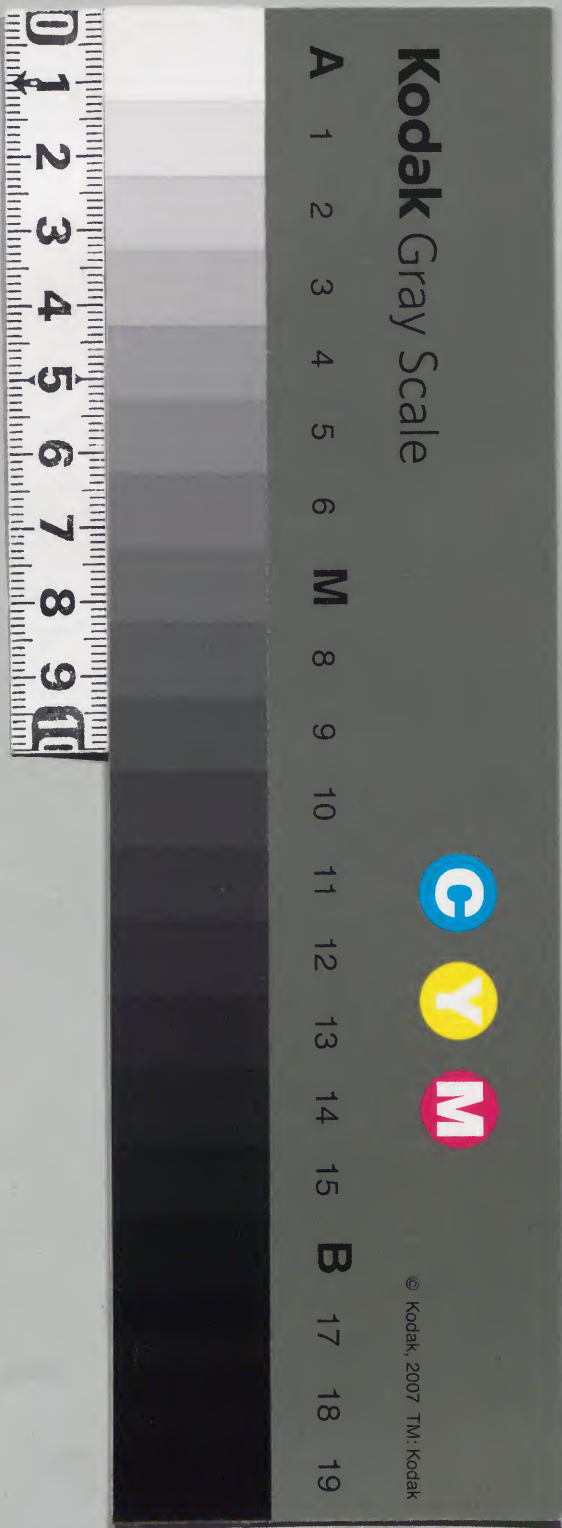




丁亥つも夜

内閣文庫			
二〇三	二四八	五九	和書
函	架	冊	類

五 一 冊	二四八	和書門
	九三	
	三	
	一	
内閣文庫		
番號	和 24893	
冊數	51 (5)	
函號	203	1

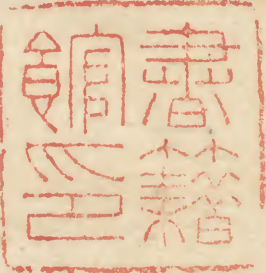


綴じ部(喉部分)の文字など開きが不鮮明な箇所あり

藍書名度雲之字

Faint, illegible vertical text bleed-through from the reverse side of the page.

Handwritten text in a cursive script, likely Mongolian or Tibetan, arranged in vertical columns. The text is written on aged, yellowed paper. Several red rectangular stamps are visible, containing characters in a different script, possibly Chinese or Japanese, used for authentication or archival marking.



Handwritten text in a cursive script, likely Arabic or Persian, with several lines of text. Some characters are highlighted in red ink.

Handwritten text in a cursive script, likely Arabic or Persian, with several lines of text. Some characters are highlighted in red ink.

Handwritten text in a cursive script, likely a historical document or letter. The text is written in black ink on aged paper. There are several lines of text, with some red ink markings and corrections interspersed throughout. The script is dense and characteristic of early modern European cursive.

Handwritten text in a cursive script, continuing from the previous page. The text is written in black ink on aged paper. There are several lines of text, with some red ink markings and corrections interspersed throughout. The script is dense and characteristic of early modern European cursive.

Handwritten text in Arabic script, likely a religious or historical document. The text is written in black ink on aged paper. There are several lines of text, with some words or phrases highlighted in red ink. The script is a cursive style, possibly Maghrebi or Andalusian. The text is arranged in approximately 15 lines, starting from the top left and moving downwards.

Handwritten text in Arabic script, continuing from the previous page. The text is written in black ink on aged paper. There are several lines of text, with some words or phrases highlighted in red ink. The script is a cursive style, possibly Maghrebi or Andalusian. The text is arranged in approximately 15 lines, starting from the top left and moving downwards.

Handwritten text in a cursive script, likely a historical document or letter. The text is written in black ink on aged paper. There are several red ink markings, including small circles and lines, interspersed throughout the text, possibly indicating specific points of interest or corrections. The script is dense and flows across the page in a single column.

Handwritten text in a cursive script, similar to the text on the opposite page. This page also features red ink markings, including small circles and lines, which appear to be part of the original document's annotations or corrections. The handwriting is consistent with the other page, suggesting a continuous text or a related document.

Handwritten text in Arabic script, likely a religious or historical document. The text is written in black ink on aged paper. There are several lines of text, with some words or phrases highlighted in red ink. The script is a cursive style, possibly Maghrebi or similar. The text is arranged in approximately 12 horizontal lines across the page.

Handwritten text in Arabic script, continuing from the previous page. The text is written in black ink on aged paper. There are several lines of text, with some words or phrases highlighted in red ink. The script is a cursive style, possibly Maghrebi or similar. The text is arranged in approximately 12 horizontal lines across the page.

Handwritten text in Arabic script, likely a religious or historical document. The text is written in black ink on aged paper. There are several lines of text, with some words or phrases highlighted in red ink. The script is dense and cursive, characteristic of medieval Islamic manuscripts.

Handwritten text in Arabic script, continuing from the previous page. The text is written in black ink on aged paper. There are several lines of text, with some words or phrases highlighted in red ink. The script is dense and cursive, characteristic of medieval Islamic manuscripts.

Handwritten text in a cursive script, likely Arabic or Persian, with red ink used for decorative elements and some characters. The text is arranged in approximately 15 horizontal lines across the page.

Handwritten text in a cursive script, likely Arabic or Persian, with red ink used for decorative elements and some characters. The text is arranged in approximately 15 horizontal lines across the page.

Handwritten text in Arabic script, likely a religious or historical document. The text is written in black ink on aged paper. There are several lines of text, with some words or phrases highlighted in red ink. The script is a cursive style, possibly Maghrebi or Ottoman. The text is arranged in approximately 15 horizontal lines across the page.

Handwritten text in Arabic script, continuing from the previous page. The text is written in black ink on aged paper. There are several lines of text, with some words or phrases highlighted in red ink. The script is a cursive style, possibly Maghrebi or Ottoman. The text is arranged in approximately 15 horizontal lines across the page.

Handwritten text in a cursive script, likely a form of Japanese calligraphy (sōsho). The text is written in black ink on aged paper. There are several red markings, including small red dots and lines, interspersed throughout the writing, possibly indicating specific characters or corrections. The text is arranged in approximately 15 horizontal lines.

Handwritten text in a cursive script, similar to the left page. It features black ink on aged paper with red markings. The text is organized into about 15 horizontal lines. A vertical red line is visible on the left side of this page, possibly serving as a margin or a section separator. The script is highly stylized and fluid.

Handwritten text in a cursive script, likely a form of Arabic or Persian. The text is written in black ink on aged paper. There are several red markings, possibly initials or corrections, interspersed throughout the lines. The script is dense and flowing, characteristic of historical manuscripts.

Handwritten text in a cursive script, likely a form of Arabic or Persian. The text is written in black ink on aged paper. There are several red markings, possibly initials or corrections, interspersed throughout the lines. The script is dense and flowing, characteristic of historical manuscripts.

Handwritten text in a cursive script, likely a historical document or letter. The text is written in black ink on aged paper. There are several lines of text, with some red markings interspersed. The script is dense and characteristic of historical East Asian calligraphy.

Handwritten text in a cursive script, continuing from the previous page. The text is written in black ink on aged paper. There are several lines of text, with some red markings interspersed. The script is dense and characteristic of historical East Asian calligraphy.

Handwritten text in a cursive script, likely a historical document or letter. The text is written in a fluid, connected style across approximately 12 lines on the left page.

Handwritten text in a cursive script, likely a historical document or letter. The text is written in a fluid, connected style across approximately 12 lines on the right page. There are some red markings or corrections visible in the lower portion of the text.

Handwritten text in a cursive script, likely a historical document or letter. The text is written in a fluid, connected style across approximately 15 lines. The ink is dark, and the paper shows signs of age and wear.

Handwritten text in a cursive script, continuing from the previous page. The text is written in a fluid, connected style across approximately 15 lines. The ink is dark, and the paper shows signs of age and wear.

Handwritten text in a cursive script, likely a historical document or letter. The text is written in black ink on aged paper. There are some red markings or corrections visible within the script.

Handwritten text in a cursive script, continuing from the previous page. The text is written in black ink on aged paper. There are some red markings or corrections visible within the script.

Handwritten text in a cursive script, likely a historical document or letter. The text is written in black ink on aged, yellowish paper. It consists of approximately 15 lines of text, starting from the top left and moving downwards. There are some red markings or corrections visible within the script.

Handwritten text in a cursive script, likely a historical document or letter. The text is written in black ink on aged, yellowish paper. It consists of approximately 15 lines of text, starting from the top left and moving downwards. There are some red markings or corrections visible within the script.

Handwritten text in a cursive script, likely a historical document or letter. The text is written in a fluid, connected style across approximately 15 lines.

Handwritten text in a cursive script, likely a historical document or letter. The text is written in a fluid, connected style across approximately 15 lines.

Handwritten text in Arabic script, likely a religious or historical document. The text is written in a cursive style and spans the width of the page. There are several lines of text, with some words or characters highlighted in red ink.

Handwritten text in Arabic script, continuing from the previous page. The text is written in a cursive style and spans the width of the page. There are several lines of text, with some words or characters highlighted in red ink.

Handwritten text in a cursive script, likely a historical document or manuscript, spanning two pages. The text is written in a dark ink on aged, yellowish paper. The script is dense and continuous across both pages, with some variations in line thickness and character shapes characteristic of historical cursive. The right page shows a slight indentation at the top, possibly from a binding or another page. The overall appearance is that of an old, well-preserved manuscript.

Handwritten text in a cursive script, likely a historical document or manuscript, spanning two pages. The text is written in a dark ink on aged, yellowish paper. The script is highly stylized and continuous across lines. The right page contains approximately 14 lines of text, while the left page contains approximately 12 lines. The text appears to be a single continuous passage, possibly a letter or a record. The ink is dark, and the paper shows signs of age and wear, including some staining and discoloration. The handwriting is consistent throughout, suggesting a single scribe. The overall appearance is that of a well-preserved historical document.

Handwritten text in a cursive script, likely a historical document or manuscript. The text is written in black ink on aged, yellowish paper. It consists of approximately 15 lines of text, with some red ink used for initials or corrections. The script is dense and characteristic of early modern Japanese writing.

Handwritten text in a cursive script, likely a historical document or manuscript. The text is written in black ink on aged, yellowish paper. It consists of approximately 15 lines of text, with some red ink used for initials or corrections. The script is dense and characteristic of early modern Japanese writing.

Handwritten text in a cursive script, likely a historical document or letter. The text is written in a dark ink on aged, yellowish paper. It consists of approximately 15 lines of text, starting with a long horizontal stroke at the top. The script is dense and flowing, characteristic of historical cursive writing.

Handwritten text in a cursive script, continuing from the previous page. The text is written in a dark ink on aged, yellowish paper. It consists of approximately 15 lines of text, starting with a long horizontal stroke at the top. The script is dense and flowing, characteristic of historical cursive writing.

Handwritten text in Arabic script, likely a religious or historical document. The text is written in a cursive style and spans the width of the page. Several words are written in red ink, possibly indicating specific names or titles. The text is arranged in a single column, reading from right to left.

Handwritten text in Arabic script, continuing from the previous page. The text is written in a cursive style and spans the width of the page. Several words are written in red ink, possibly indicating specific names or titles. The text is arranged in a single column, reading from right to left.

Handwritten text in a cursive script, likely a form of Arabic or Persian. The text is arranged in approximately 12 horizontal lines. Several characters are highlighted in red ink, possibly indicating specific words or markers. The script is fluid and connected, characteristic of medieval Islamic calligraphy.

Handwritten text in a cursive script, likely a form of Arabic or Persian. The text is arranged in approximately 12 horizontal lines. Several characters are highlighted in red ink, possibly indicating specific words or markers. The script is fluid and connected, characteristic of medieval Islamic calligraphy.

Handwritten text in a cursive script, likely a form of Arabic or Persian calligraphy, written on the left page of an open manuscript. The text is arranged in approximately 15 horizontal lines, flowing from right to left across the page.

Handwritten text in a cursive script, likely a form of Arabic or Persian calligraphy, written on the right page of an open manuscript. The text is arranged in approximately 15 horizontal lines, flowing from right to left across the page.

Handwritten text in Arabic script, consisting of approximately 12 lines. The script is dense and cursive. There are several small red markings or initials interspersed within the text, notably in the 4th, 6th, and 8th lines.

Handwritten text in Arabic script, consisting of approximately 12 lines. The script is dense and cursive. There are several small red markings or initials interspersed within the text, notably in the 4th, 6th, and 8th lines.

Handwritten text in a cursive script, likely a historical document or letter. The text is written in a fluid, connected style across approximately 15 lines. There are some red ink markings, possibly corrections or highlights, scattered throughout the text.

Handwritten text in a cursive script, continuing from the previous page. The text is written in a fluid, connected style across approximately 15 lines. There are some red ink markings, possibly corrections or highlights, scattered throughout the text.

Handwritten text in a cursive script, likely Arabic or Persian, consisting of approximately 14 lines of text.

Handwritten text in red ink, likely a marginal note or a section header, located between the two pages.

Handwritten text in a cursive script, likely Arabic or Persian, consisting of approximately 14 lines of text.

Handwritten text in a cursive script, likely a historical document or manuscript. The text is written on aged, yellowed paper and is oriented vertically on the right page of the open book. The script is dense and difficult to decipher without specialized knowledge of the language or dialect used.

