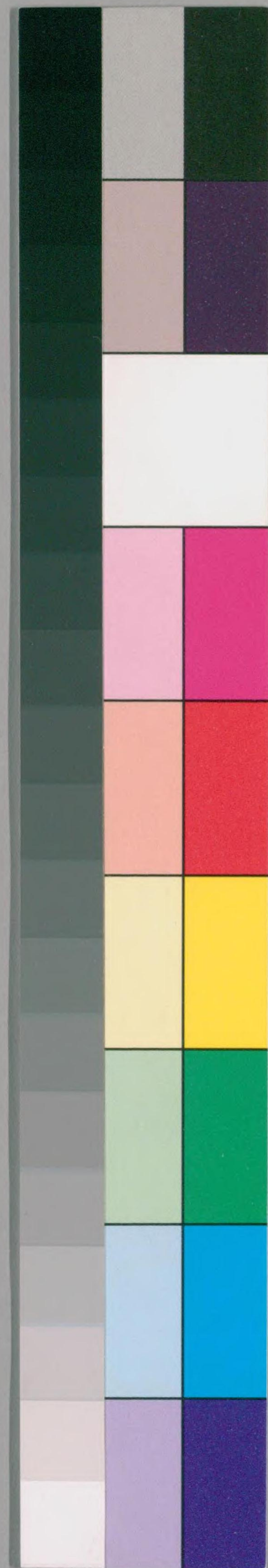
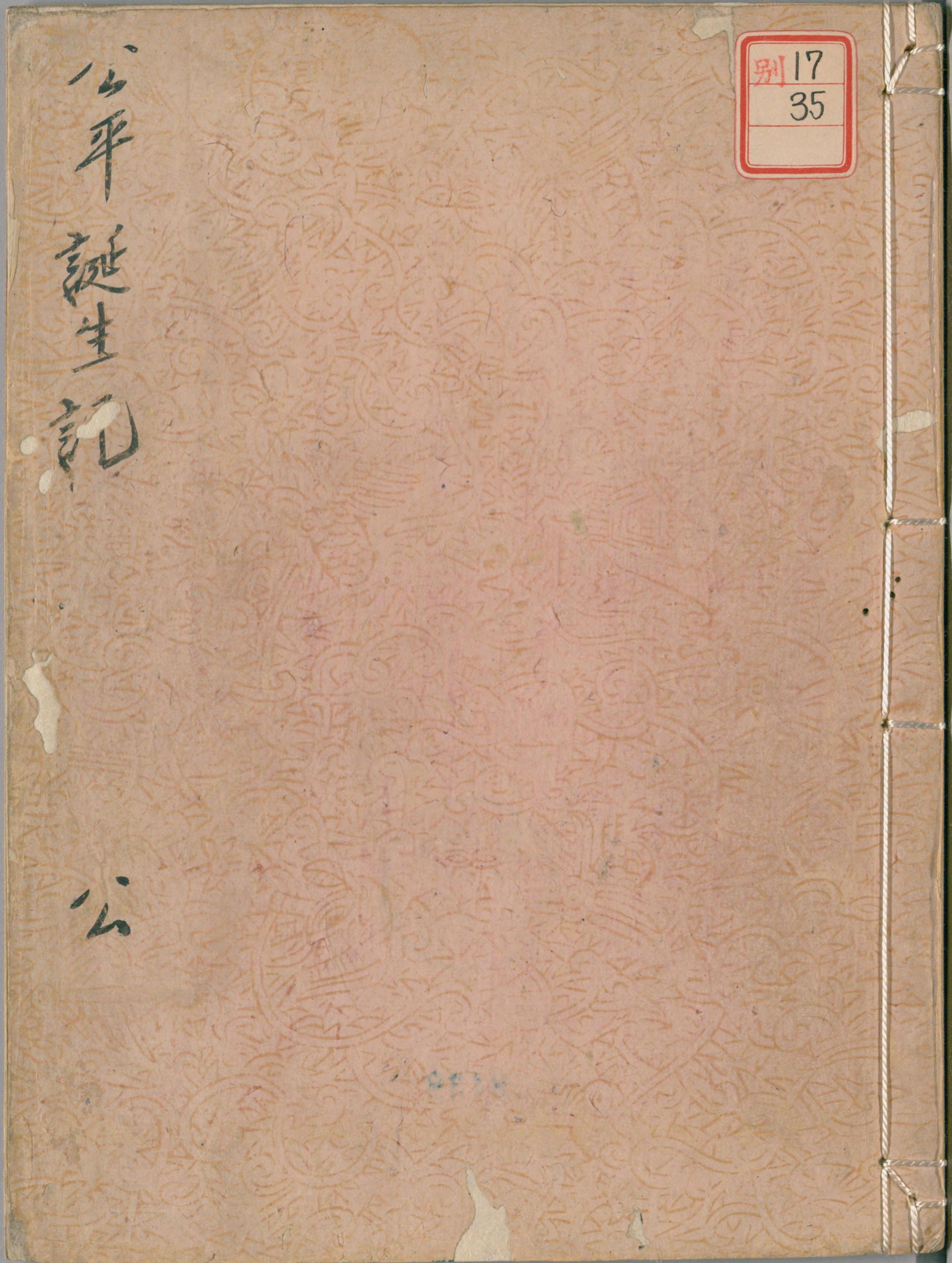


別 17
35~39

古刻淨瑠璃 五種 繪入細字也

公平誕生記
公平大酒論
源氏菟紫合我
換置北國志
公平最期

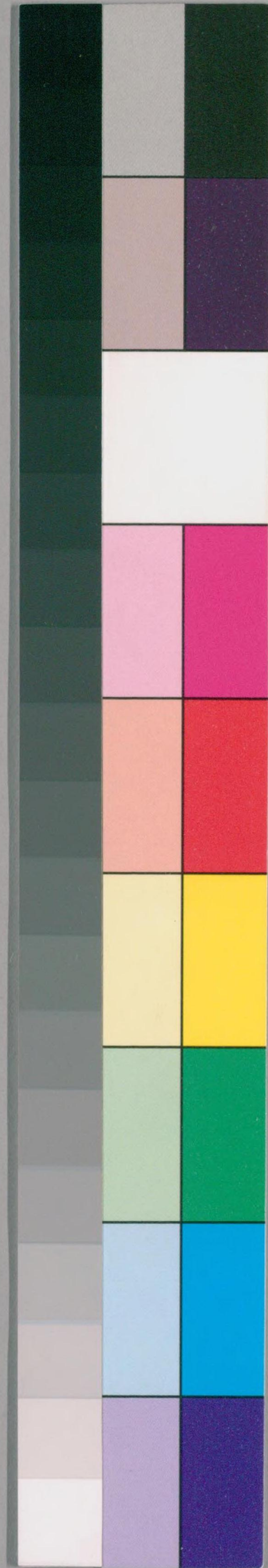




別17
35

公平誕生記

公



国立国会図書館 タイトル『公平たんじやうき』 請求記号 本別17-35

ガラス使用



U 9439



公平たんじやうき
物販

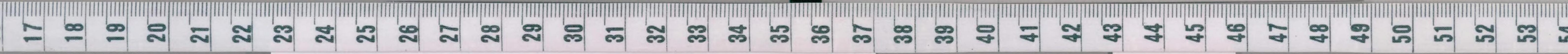


Handwritten text in a cursive script, likely a form of Japanese calligraphy (sōsho), enclosed in a rectangular border. The text is densely packed and spans approximately 15 lines.

貞徳氏

Handwritten text in a cursive script, likely a form of Japanese calligraphy (sōsho), enclosed in a rectangular border. The text is densely packed and spans approximately 15 lines.

貞徳氏





Handwritten text in a cursive script, likely a historical document or manuscript. The text is densely packed and covers most of the page area.

Handwritten text in a cursive script, likely a historical document or manuscript. The text is densely packed and covers most of the page area.



Handwritten text in a cursive script, likely a historical document or manuscript, written on aged paper. The text is contained within a rectangular border.

9439

Handwritten text in a cursive script, likely a historical document or manuscript, written on aged paper. The text is contained within a rectangular border.



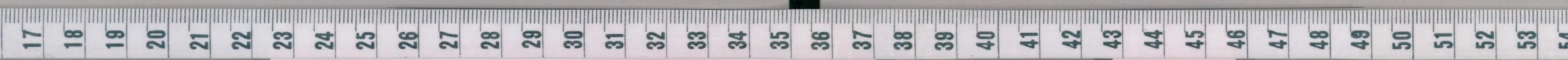
Handwritten text in a cursive script, likely a historical document or manuscript, written on aged paper. The text is contained within a rectangular border.

Handwritten text in a cursive script, likely a historical document or manuscript, written on aged paper. The text is contained within a rectangular border.



Handwritten text in a cursive script, likely a historical document or manuscript, written on aged paper. The text is densely packed and covers most of the page area.

Handwritten text in a cursive script, likely a historical document or manuscript, written on aged paper. The text is densely packed and covers most of the page area.

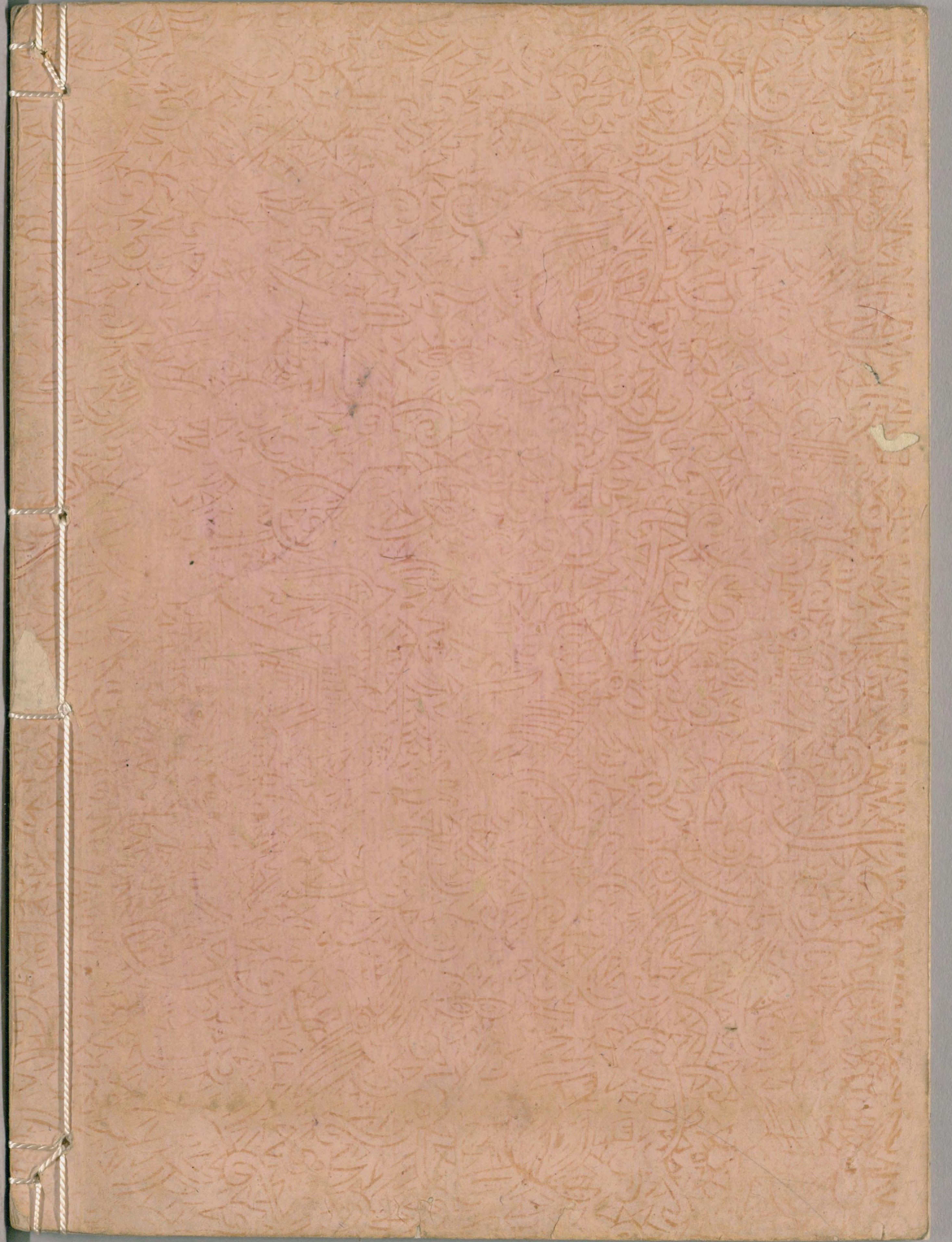




別 17
35

Handwritten text in a rectangular frame, likely a transcription of a document. The text is written in a cursive style and is mostly illegible due to fading and bleed-through from the reverse side. It appears to be a list or a series of entries.

Handwritten notes or corrections at the bottom right of the page, including the characters "おぼしめし" and "もたらぬ" written vertically.



国立国会図書館 タイトル『公平たんじやうき』 請求記号 本別17-35

ガラス使用