

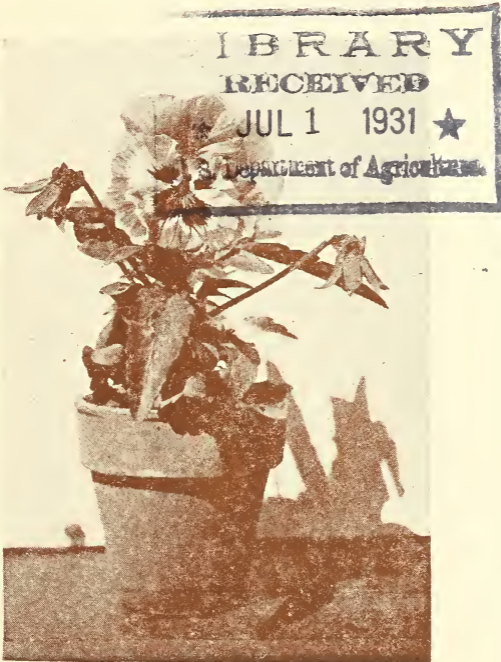
## **Historic, Archive Document**

Do not assume content reflects current scientific knowledge, policies, or practices.



6271

# PEDIGREED PANSIES



HARROLD'S PEDIGREED POT PANSY  
IN A STANDARD 3 INCH CLAY POT.

WHOLESALE

JUNE 1, 1931

TO

JUNE 1, 1932

## HARROLD'S PANSY GARDENS

P. O. BOX 264    GRANTS PASS, ORE.

## JUST BETWEEN FRIENDS

Again the beginning of a new **Pansy** season is here, and we are called upon to make an attempt to draw a word picture of the many varieties composing the 1931 **Harrold's Pedigreed Line**. You have but little idea, unless faced by the same problem, how difficult it can be. It is a difficulty not in the Pansies themselves, but in the command of a vocabulary that will adequately describe their true beauty. We doubt whether such a vocabulary is existant.

The descriptions found in this little booklet we have endeavored to make as accurate and concise as possible, and wherever doubt existed, endeavored to take the conservative side. We realize that it is not "bunk" that you want but some idea of the actual results that may be expected from this stock. And that it is through our ability to supply you with stock that will show you a profit in its growing that we must expect the continued growth and stability of our trade.

1931 again finds us on an increased production schedule. The 1930 season was another "sell out" and we wish to apologize to the several patrons to whom we were compelled to return orders. Order a little earlier next season! We feel the fact that continually year after year we are unable to supply much of our late demand, is one of the most sincere ways the trade could put its stamp of approval on our stock. It is indeed a pleasure in checking over the order files, to find so many familiar names appearing year after year. We take this opportunity to thank our many fiends for the expresion of their confidence, shown through reordering year after year. We promise you that we shall bend every effort to justify this confidence. And to our new patrons, we offer the assurance that in ordering from this catalogue every effort will be made to place Harrold quality, and service at your command in the same manner that has gained us so many patrons in the past.

To the many friends of past years who have been so kind as to take time to write us, whether to praise, criticise, or ask for information, we extend our special thanks. You have no idea the value we have found in these many letters. We also wish to extend an invitation to anyone interested in Pansies desiring information relative to them, to write us. We will gladly offer suggestions to the extent of our ability and experience, gained through more than a quarter century of highly specialized Pansy culture.

Let's co-operate this year and make this your best year for bigger and better Pansies. With our best wishes for a most prosperous and successful year for you ,we are.

Yours to command

**HARROLD'S PANSY GARDENS**

*C. W. Harrold, general manager.*

## PRO AND CON

These few paragraphs we will devote to a discussion of several of the most commonly ask questions. We trust you will find them of interest.

### What size of flowers?

This is without doubt one of the most commonly asked questions among our American friends. Growers in other countries having learned that size alone is not always the paramount consideration, and usually express as much concern in color and texture as in size. Personally we believe all three factors should be given equal consideration.

As in past seasons, we prefer to follow our conservative policy on the question of size. There were several reasons for our adoption of this policy. The main one being the belief that any statement made regarding size should be based on average conditions and care, rather than on maximum results obtained in experimental work. Past experience has taught us that when mention is made of results, which owing to the small percentage of stock reaching such a maximum mentioned size; should be considered as mutable rather than as a fixed characteristic, many growers are lead into the formation of erroneous ideas of actual results, often causing disappointment. Invariably such disappointment leads to controversy or the loss of patronage. We prefer slower expansion with the confidence of our patrons.

Under average conditions we feel safe in stating that the high quality, specialized strains of today are capable of producing a reasonably high percentage of flowers 3 inches and over in diameter. Many of these strains are capable of producing a moderate percentage of flowers in excess of 3½ inches. However, it is also well to remember that regardless of the care taken by the grower of the seeds, a percentage of the plants will only produce 2 to 3 inch flowers. Nearly invariably the percentage of exceptionally large flowers vary in proportion to the price ask for the seeds. This is owing to the added labor involved, as well as the restricted production encountered in the growing of strains capable of producing a large percentage of really large flowers.

Varied conditions of soil, climate, moisture, and care also all have their bearing on final results. And owing to the wide variations of these conditions throughout the Pansy growing sections of the globe, we restrain ourselves with the assertion that the various varieties composing "**The Harrold's Pedigreed Strain,**" line will uphold the reputation they have built. They will produce a maximum number of plants, flowering to maximum size in competition with any existing commercial strain or variety of their price. **We court comparison!**

### **Is texture important?**

Very! Texture is the governing factor of all flower form in Pansies. It is through proper texture that the flower has the ability to stand up and look one in the face; displaying its wonderful coloring to best advantage. Our hardest problem in the breeding of extreme size has been as much in maintaining texture as in obtaining super-giant size, thus preventing the flowers from becoming floppy and ill shaped. This applies to the plants also, and we believe that if much larger flowers in Pansies are to be obtained, plant size and form must be improved first.

### **Of what importance color?**

Color we believe must hold equal place with size and texture. Any one of this trio without the other two is of but little value. With the increased interest in garden education of recent years, color is becoming more important every year. In an endeavor to keep our thumb on the pulse of color demand, we sell thousands of blooming plants at our gardens every year. These are sold to the retail trade, many of the purchasers driving more than a hundred miles from their homes to visit our gardens. At frequent intervals certain beds are opened for sale and our customers are permitted to choose any plants from these beds. While entailing much added labor, this enables us to check the colors in most demand. Those in poor demand are reduced in number in our mixtures of the succeeding season. The more costly mixtures of course receive the newer novelties, and colors first, and for that reason are often more economical to use.

### **How do Harrold's Pedigreed Pansies compare with other strains?**

Naturally we are strong believers in our own strains so that our opinion might be too high. It also might not be good manners to express ourselves too freely on this point. However we are growing test stock from practically every Pansy specialist on both sides of the Atlantic. Using these as a check on our own stock, grown under identical conditions, we do not hesitate to say that Harrold varieties are outstanding values in both quality and price. As an added protection to our patrons and ourselves, we offer only seeds that have been viability tested, as well as garden tested to make sure they are as near right when shipped to you as it is humanly possible to make them.

### **How many seeds will I need?**

This is problematical. Some specialists recommend the planting of 1 ounce of seed for each 5,000 plants wanted. In our own plantings we allow 8,000 to the ounce and have obtained 15,000 per ounce on several occasions. Quite often our patrons report productions of 10,000 or more. We recommend that sufficient seed be planted to allow for contingencies and if a surplus is obtained better stock will be obtained by grading for size of plant at transplanting time.

## **What advantage is gained in using seeds supplied by a specialist?**

The paramount advantage is that you are assured receiving fresh, live seeds of the most advanced varieties. A quality of seeds upon which the specialist expects to build and maintain his reputation, and a demand for his particular strain and varieties. You also benefit from the elimination of many things that may happen to impair the quality of seeds when handled through the usual channels of commerce. But few specialists care to offer their seeds to the trade through dealers unless these seeds are supplied to the consumer in the original packets as packed by the specialist. It is only in this manner you are assured of receiving genuine seeds grown by certain specialists. If you order "Harrold's Pedigreed Strain" Pansy seeds from your dealer, insist that he supply them in the original Harrold packet, as this insures your receiving what you are paying for, and costs the dealer nothing as we packet the seeds for him free of charge.

## **American vs., Imported seeds.**

Our own experience in this matter has been that while in some cases prices are higher, almost invariably quality is much superior and the American grown stock proves to be the most economical to use. Several factors are in the American growers favor, not the least of which is his ability to cure the early part of his seed crop sufficiently early to supply absolutely fresh seeds instead of filling early orders from year old stock. These fresh seeds give quicker and higher percentage germination. The European grower is handicapped by being unable to get new crop seeds into the hands of his American dealers before late July or early August, at which time much American grown seeds are already in the hands of the consumer and planted.

While at one time imported Pansy seeds were the major source of supply, simply because domestic stock was not available, recent years has seen the development of several domestic varieties that have entered into direct competition with imported stock in cost of seed but producing plants of such superior quality that they are fast coming into universal use with the commercial plant grower. Many varieties imported today show no improvement over the same varieties of 30 or more years ago, while the American specialist is usually making improvements from year to year. Our own line would hardly be recognized as the product of the same varieties of 5 years ago. Fashion in Pansies change and we endeavor to keep abreast of, or a little ahead of fashion.

## **Pansies for the Rock Garden.**

Pansies adapt themselves well to rock garden culture, supplying desirable color both before and after many of the usual rock garden plants have flowered.

## GRADED SEEDS

**Harrold's Pedigreed Grade:** It will be noted that several varieties are offered in this grade only, while others are offered in two grades. The *Pedigreed Grade* seeds are all that the name implies, being harvested from plants that are individually pedigreed, and seeds saved from each plant separately. Mixture of color being made up from these pedigreed units and a lot pedigree giving the average characteristics of the individual lot and variety, drafted. A copy of this lot pedigree is supplied with each packet of *Harrold's Pedigreed grade seeds*. It is your assurance of peerless quality.

**Harrold's standard grade:** This is offered as the standard commercial quality of which the bulk of our production consists. It will be found entirely satisfactory in every respect for all but unusual requirements for bedding stock. In fact it is upon this grade of seeds that our large trade has been built, as the 1930 season was the first time that any but *standard grade* seeds were offered. The plants from which this seed is harvested, are grown exclusively from *pedigreed grade seeds*, and plants are rigidly rogued for seed production. In fact the *standard grade seeds* are of a quality that will compare most favorably with any commercial stock offered; while the *pedigreed grade* is of a quality usually hoarded by the plant breeder for his own use. It is only through our extensive experimental work and large production that we are able to offer the two grades.

## OUTSTANDING NOVELTIES

These varieties aside from being new are also mostly adapted to special requirements. In each case they are outstanding; and in the case of several they have been bred to special requirements, to many of which the Pansy has never before been adapted. The Pot Pansy being a case in point.

### Harrold's Azure Giants

1931

This new giant variety is the largest of the blues. Its color, while deeper than an azure blue, contains that indefinable depth of color the artist so often associates with a summer sky. The depth of color as found in the world famous Crater Lake more nearly describes its color. The center of the flower is nearly invariably that rich blue-black seldom seen in flowers, making a most pleasing color for home plantings. It is a color that is especially adapted for park and cemetery plantings. A few of these were released last season in our



Harrold's Improved Swiss mixture, and those to whom we supplied that mixture will nodoubt recall this wonderful blue.

*Standard grade seeds*; packet \$2.00;  $\frac{1}{8}$  oz., \$3.00;  $\frac{1}{4}$  oz., \$5.00;  $\frac{1}{2}$  oz., \$9.50; 1 oz., \$18.00.

*Pedigreed grade seeds*; one thousand seeds, per packet \$2.50; three packets, \$6.00.

### **Harrold's Pedigreed Novelties**

#### **1931 Series**

This mixture is composed of the surplus seeds from our experimental department. Much of it comes from novelties not yet released to the trade. Owing to the very limited quantity it is only offered in the *Pedigreed grade*, and in packets of five hundred seeds at \$2.50 per packet.

### **Harrold's Pedigreed Duplex Pansy**

This double ruffled, novelty type was listed in our 1930 fall plant list, for 1931 release. Through an unfortunate accident we are compelled to withhold its release for a later date but we assure you it will be a real novelty.

### **Harrold's Pedigreed Pot Pansies**

#### **1930**

The success and possibilities of this variety will be found told in part on pages 7 and 8. It should prove of interest.

### **Harrold's Pedigreed Cut Flower Pansies**

#### **1930**

This variety has been breed and was introduced to meet the demand for a Pansy adaptable to cut flower growing, especially inside. While not of really super-giant type, it produces large quantities of flowers usually ranging from 2 inches and up, on long stiff stems, making them especially useful for bouquets. When grown inside, stems of 6 inches or over are quite the rule. Color mixture is designed to meet the requirements made by the cut flower trade. Our own experience has proven these not to be the best bedding type, owing to the tall growing habit of the plants. Cultural suggestions supplied with each packet fo seeds. We offer *Pedigreed Grade* seeds only, of this variety at \$2.00 per packet; three packets \$5.00.

## **Novelty Sales**

Given a little thought in arrangment, pots, pans or boxes of well grown Pansies are a nice change for early spring holiday stock and their novelty lends ease to their sale.

**Growers throughout the world, in 1930 used sufficient seeds originating from our gardens to produce at least ten million plants. Did you get your share of the buisness that these plants represented?**



# HARROLD'S PEDIGEEED POT PANSIES

## ONE GROWERS EXPERIENCE

Box 766  
Leucadia, California  
25 February 1931

My Dear Mr. Harrold,-

By this mail I am forwarding a copy of the "Broadcaster" marked to show that pot pansies were immediately granted recognition upon being shown here.

These were grown from the seed you sent me last fall and were really not quite ready for showing (or at least I felt they were not). Larry Beers, the San Diego wholesale florist asked if he could have a bank of them to dress his booth. As there was no particular class in which to enter them, they were placed there for decoration but the judges immediately spotted them and gave them an award of merit.

As a result, I sold the entire lot (about 500 plants) and have an inquiry for seed from a Glendale, California, grower, which I am passing on to you.

Incidentally, having no 4-inch pots, I shifted them into 5's and while the plants remained compact and symmetrical, the root systems filled the pots to overflowing.

If I raise them next winter, I would like information on best soil mixture in detail in order that a 4-inch will suffice to bring them to maturity.

The address of the grower who desires seed is appended and I would be obliged if, when writing him, you inform him that I sent you his address.

Very truly yours,

  
H.R. Jackson

*The show mentioned by Mr. Jackson in the above letter is held annually at Encinitas, California and is known as "The National Mid-Winter Flower Show." Restricted to commercial growers, entries.*

## THE PANSY



*The above specimen is in a 7 inch  $\frac{3}{4}$  pot. This plant is one year from seed.*

*Below, is a smaller specimen in a 3 inch pot. Pot has an outside diameter over rim, of  $3\frac{1}{2}$  inches.*



We offer Harrold's Pedigreed Pot Pansies as the best adapted variety for this method of culture. The letter and photos reproduced above will give some idea as to their possibilities. Many of our patrons are finding them profitable

Their culture is quite simple, as they are best grown in a cool house or cold frame. Seeds should be planted in summer or early fall and may be potted off as soon as they will handle nicely. Keep in oversize pots and do not permit them to become root bound. Give them plenty of room between plants so as to promote symmetric form. Give a night temperature of 40° to 45° with day temperature as near 65° as can readily be maintained. Keep well moist, and plunge pots. Soil that is half loam and half compost - manure and sod or manure and leaf mold - should prove satisfactory. A three inch pot full of blood and bone per bushel, may prove a good addition to the mixture.

**Pedigreed grade seeds only:** Per packet, 1000 seeds \$2.50; three packets \$6.00.

**Quality stock well grown is always in demand. Grow more of it!**

## OUTSTANDING MIXTURES

### Harrold's Ruby Giants

1930

With our rigid reselection of this strain, this season, it should prove still more outstanding than last. It is to be classed among the super-giant varieties and is of the blotched type. The name is derived from the predominance of red in the color mixture; as but few flowers are found in the mixture that do not contain some shade of red. Red, wine, maroon, pink, salmon, and orange with many intermediate shadings are all found in this color mixture; while a few yellow and blue flowers are also produced. Nearly invariably the center of the flower is a contrasting dark shade. The high percentage of specimen stock produced by this variety makes practically 100% desirable sales stock.

*Standard grade seeds*; \$2.00 per packet;  $\frac{1}{8}$  oz., \$3.00;  $\frac{1}{4}$  oz. \$5.00;  $\frac{1}{2}$  oz., \$9.50; 1 oz., \$18.00; 2 ozs., \$30. ; 4 ozs., \$55.

*Pedigreed grade seeds*; per packet, one thousand seeds, \$2.50; 3 packets \$6.00.

### Harrold's Pedigreed Giants

1929

Without exception, we believe this variety capable of producing the largest possible average size of flowers, and that the percentage of flowers of exceptional size will be found extremely high in comparison with average varieties. Plant form is exceptionally compact, with flowers born well above the giant foliage. It is a strain, that while flowering early will hold well in sales beds and not over develop. Extreme hardiness, and exceptional texture makes this variety most desirable for bedding purposes. Color mixture is of the bright, clear colors showing so well in mass setting, and with the attractive zoned type of flower marking, these are sure to prove winners wherever shown. The combination of super-giant size, coloring, and texture as exemplified by this variety we are sure will prove highly profitable to you. The 1931 strain of this, is a complete re-selection of this variety as previously offered.

*Standard grade seeds*; \$1.50 per packet;  $\frac{1}{8}$  oz., \$2.00;  $\frac{1}{4}$  oz., \$3.50;  $\frac{1}{2}$  oz., \$6.50; 1 oz., \$12. ; 2 ozs., \$22. ; 4 ozs., \$40.

*Pedigreed grade seeds*; per packet, one thousand seeds, \$2.25; three packets \$6.00.

### Grade your pansies

**Sow an abundant supply of Pansies this season preferably in several types; and grade your next spring sales stock. You will find it to pay, as you will receive the highest possible price for extra fancy specimens, while average stock will move almost as readily, and second quality stock will find a ready sale with the few of your patrons with whom price is a consideration.**

## Harrold's Improved Swiss 1929



A quite usual size and one of the many novel types that have made the Harrold's Improved Swiss variety so popular.

As the name implies, this is a variety of the "Swiss" type. Flowers of exceptional giant size; usually of the blotched type of marking, in the most unusual colors and color combinations makes this pansy much admired wherever grown. Our 1931 color mixture of these have been reselected to conform with modern color demand, and the advantages offered by American grown seeds are too numerous to detail in the very restricted space offered here, Red, blue and the darker shades while predominating in this mixture, is tempered by sufficient lighter colors to contrast well and show all colors to their best advantage. Every grower of Pansies should have some of this type to supply that demand for unusual colors.

*Standard grade seeds;* per packet \$1.25;  $\frac{1}{8}$  oz., \$1.75;  $\frac{1}{4}$  oz., \$3.00;  $\frac{1}{2}$  oz., \$5.25; 1 oz., \$10. ; 2 ozs., \$18. ; 4 ozs., \$34.

*Pedigreed grade seeds;* per packet, one thousand seeds \$2.00; 3 packets \$5.00.

*Aside from a slight additional cost of the seeds, it is no more costly to grow the finest Pansies, than inferior ones. Don't let a few cents per thousand plants stand between you and quality.*

## Harrold's All-American Bedding Mixture

1931

In accord with its name, this mixture is the absolute cream of all types of Pansies now being extensively grown by American specialists. 80% of the mixture is composed of Harrold varieties; namely Harrold's Azure Giants, Ruby Giants, Pedigreed Giants, Improved Swiss, Sunshine Pansies, and Greater American Perfection. The other 20% is seeds harvested from specimen plants carefully selected from varieties originated by other American specialists and grown each year in our test gardens. Without question this mixture offers the widest range of type, and color to be obtained in any mixture available in the Pansy world today.

*Standard grade seeds;* packet \$1.25;  $\frac{1}{8}$  oz., \$1.75;  $\frac{1}{4}$  oz., \$3.25;  $\frac{1}{2}$  oz., \$6.00; 1 oz., \$11. ; 2 ozs., \$20. ; 4 ozs., \$36.

## Harrold's Sunshine Pansies

1929

While not of super-giant size, this variety has become moderately popular, owing to its novel coloring. The zones of contrasting coloring instead of being in concentric rings about the center of the flower, radiate at right angles to the center giving a most pleasing and novel ray effect. The coloring is mostly in the lavender, purple, apricot, orange, and cream shades, contrasted with many poly-chrome combinations. This variety prefers a semi-shaded position as a few of the flowers tend to sunburn when give full all day sunlight.

*Standard grade seeds;* packet \$1.25;  $\frac{1}{8}$  oz., \$1.50;  $\frac{1}{4}$  oz.,  $\frac{1}{2}$  oz., \$5.00; 1 oz., \$9.00.

## Greater American Perfection

1925

This has been one of our most popular varieties since its introduction in 1925, and continues to enjoy increased sale year after year. In coloring and varied types, but few strains will compete with it, while none excel it at the price ask. Re-selection work, along with the addition of newer types and colors from year to year is constantly improving this variety, and for plants to supply the demands of a moderate priced market we are sure you will find it ideal. In size it will prove most satisfactory although the percentage of extremely large flowers are naturally not as large as in the more costly and recently developed varieties. We feel safe in stating however, that with average care, size will prove very satisfactory in comparison with much seed for which higher prices are ask.

*Standard grade seeds;* packet \$1.00;  $\frac{1}{4}$  oz., \$2.00;  $\frac{1}{2}$  oz., \$4.00; 1 oz., \$7.00; 2 ozs., \$13.50; 4 ozs., \$25.00.

*Pedigreed grade seeds;* per packet, 1500 seeds \$2.00; 3 packets \$5.00.

## Oregon Miracle Mixed

This variety is offered as our lowest priced competitive variety. It will compare in size, coloring and texture quite favorably with many varieties selling at higher prices. Where price is a prime consideration it is to be recommended. And, as this mixture is quite well known, lengthy descriptions will not be entered into. Seed quality in every way conforms with the Harrold high standard, and where such a strain as this may be used, we know it will give the best of satisfaction.

*Standard grade seeds;* packet \$1.00;  $\frac{1}{4}$  oz., \$1.75;  $\frac{1}{2}$  oz., \$2.75; 1 oz., \$5.00; 2 ozs., \$9.50; 4 ozs., \$18.

### Separate Colors

We are discontinuing the listing of these owing to the restricted demand for them. We can supply many however, and will be glad to supply them with your order or quote on your requirements for them. Price schedule on these are the same as on the Greater American Perfection.

### Special Discount

To encourage the planting of a wider variety of Pansies, so the public will become better acquainted with the more modern types, we will allow a discount of 5% on all orders for two or more varieties listed herein at a price greater than \$8.50 an ounce.

### Quantity Prices

We are in a position to quote most attractive prices on any of the varieties listed herein by the pound. Growers that are using quantities of 8 ounces or over should write for these prices before placing their seasons requirements. Our dealers and wholesale growers list will be gladly sent on request. This list does not quote on less than  $\frac{1}{2}$  pound of a variety.

### Pansy Plants

We grow for the wholesale trade, well over a million of these annually. Our vast experience in growing and shipping, along with the best varieties and an ideal climate, enables us to offer many advantages on these. Our fall plant list is mailed September first to all firms on our mailing list in states west of the Mississippi River. Outside that district we will gladly mail you a copy on request.

Our plant shipping season begins about September 20th, and is continuous, uninterrupted throughout the entire fall, winter, and as late into the spring as our stock lasts. Our mild winters permits the shipment of field grown stock any time throughout the winter. The quality of our field grown plants, both seedlings and transplanted sizes, are sure to please you as they have so many others.

## A FEW CULTURAL SUGGESTIONS

No plant so well repays good care as the Pansy. Beginning with the seeds and continuing throughout its entire life a little added care will make a great difference in the stock produced, yet such care is simple and not exacting.

During the period the seeds are germinating, great care must be taken to see that seed bed does not become dry. This does not mean that they should be kept soaked. The higher the temperature during the germinating period the greater the care that will be required on this score as any dryness for even a short period will prove fatal.

Plantings should be carried slightly on the dry side as soon as seeds are sprouted, and ahold of the soil. This is to prevent damping off, which might otherwise appear. Should damp fungus make an appearance, reduce water and dust affected portion of bed with sulphure.

For best results, the commercial grower should never transplant Pansies over one time. Added transplanting will not only result in no benefit, but will tend to reduce maximum flower size.

From the time seeds are sown, throughout its entire life the Pansy is quite partial to moderate temperature. Best germination is obtained at from 65° to 70°. When grown as an indoor crop, either as cut flower or pot stock, a temperature of 40° at night; and a day temperature of 55° to 65° will prove most satisfactory. Moderate temperature and usual good moisture conditions throughout the spring months outdoors are the principal reasons for the Pansy making such a wonderful display from early spring to mid-summer.

## FERTALIZERS

Unquestionably, compost, or decomposed cow or horse manure are generally best for Pansies. Animal manure composted with heavy sod cannot be excelled. Chicken manure is not to be recommended under average conditions.

The commercials:- In recent years we have had excellent results in obtaining accelerated growth with Ammonium Sulphate. One ounce in 3 gallons of water, applied to 30 or 40 square feet of bed is about right. Wash plants off with the hose after application. Do not use too often, or too many times during a season. Three weeks between applications should be the minimum.

Bone meal is benifical to many soils. Commercial compounded fertalizers may be of benifit, although we do not fully recommend them. For exhibition stock, blood and bone or blood meal may be found quite good, although their use must be accompanied with caution.

With each order of seeds, we supply a cultural leaflet with many more suggestions that should prove of value.



## Conditions of sale.

**Prices** as quoted are net, on a basis of cash with order and subject only to the special discount as noted on page 11. Orders for future, as well as immediate delivery will be accepted for shipment C. O. D. without deposit.

**Remittance** may be made by any of the usual commercial methods, excepting that we do not accept stamps. Patrons outside the U. S. A. should make full remittance with order by postal or bank draft.

**All orders** are accepted subject to supply on hand, and to crop and other conditions that are beyond our control.

**Shipment** will be made by insured mail; free.

**Our responsibility;** Owing to the many contingencies that may occur to stock after leaving our gardens, shall be definitely restricted to an amount not to exceed the original purchase price of the goods.

Ordering from this list will be considered as acceptance of the above terms.

**Our reference:** The First National Bank of Southern Oregon; Grants Pass, Oregon. Or either of the four major trade journals.

# PUSH PANSIES

**Push Pansies** for setting in mass as well as for border

**Push Pansies** for filling porch and window boxes in early spring before softer, less hardy stock may be set in them. Boxes may be set to flower during March, April, and May with Pansies, and then the same boxes may be reset in May with the usual bedding stock, giving your patrons two months more flowers from their boxes, and you, double sales.

**Push Pansies** in pots, pans, or boxes for the late winter and early spring holidays. For this use Harrold's Pedigreed Pot Pansies - see pages 7 and 8.

**Push Pansies** for rock gardens. They are quite well adapted to these conditions and offer an abundance of color both before and after many of the alpines quit flowering.

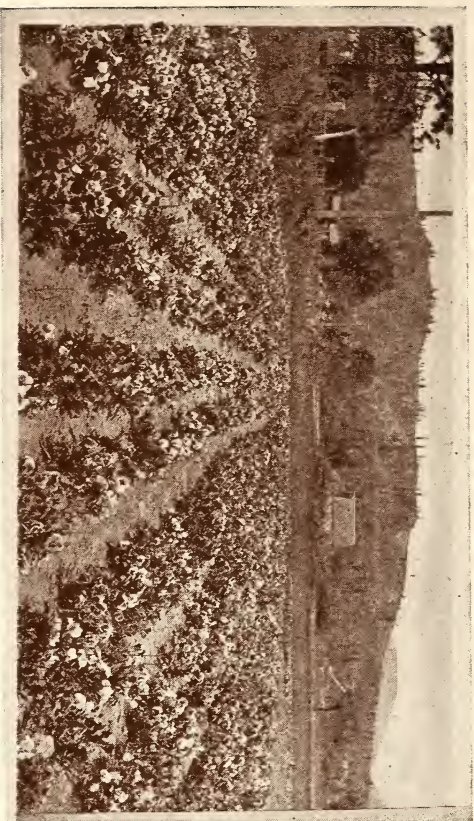
**Push Pansies** for every type of planting. They will not only give the most possible satisfaction at reasonable cost to your patrons, but will show you a very, very handsome profit.

**Price is not always an index of quality, but quality is invariably an index to price. Our efforts are all toward the production of Pansy seed grown to a quality not a price.**

**Order early, giving thought to possible delays and shortage. They seldom happen but best be safe.**

**We endeavor to maintain same day shipping service on seeds as nearly as possible.**

**Use the enclosed orderblank and let us have your order early. We will make shipment at any date.**



Above is pictured a one acre field of our Harrold's Pedigreed Giants. The plants are set in alternant rows 17 and 24 inches. Note giant flowers and robust, compact plant habits. Photograph taken May 25, 1930.

### Specialize in fine Pansy plants

In every community in America, there is a profitable market for Pansy plants of quality. We dedicate this little booklet to the professional Florists and Gardeners, trusting that it will justify its publication from an informative standpoint, if for no other reason, but with the better acquaintance of the trade with modern American Pansies as our goal.