

Historic, Archive Document

Do not assume content reflects current scientific knowledge, policies, or practices.

62.61

1923

LIBRARY
RECEIVED
★ JAN 21 1925 ★
U. S. Department of Agriculture



GOLD MEDAL AWARDED US
BY THE
HOLLAND BULB EXPORTERS' ASSOCIATION
OF HAARLEM, HOLLAND
1921

BEAUTY FROM BULBS

*I placed it in the earth—this bulb of mine—
And from its narrow prison-house of night
It struggled forth to reach the air and light;*

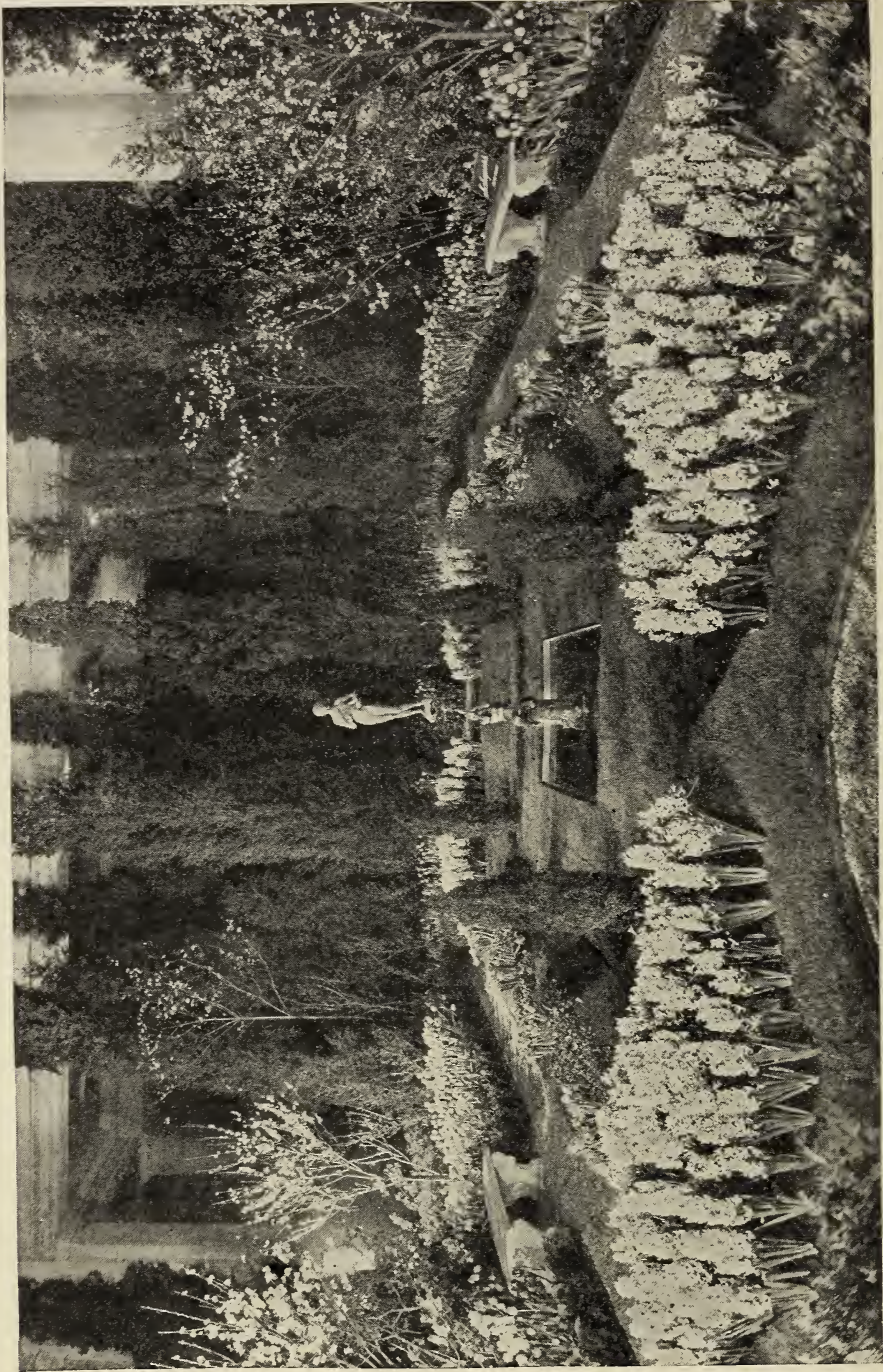
*And as it rose and blossomed to the sight,
Its absolute perfection seemed divine!*

I. G. ASCHER in "105 Sonnets"

JOHN SCHEEPERS, INC.

Flower Bulb Specialists

522 FIFTH AVENUE
NEW YORK



OUR SPRING GARDEN, INTERNATIONAL FLOWER SHOW, NEW YORK CITY, MARCH 14, 1921
Awarded Grand Sweepstakes Prize and Special Gold Medal

Introduction

FEW are gifted with the power to call to life the dreams and strivings of the spirit by means of brush, or pen, or sculptor's tools, to compose a noble sonata or to design a cathedral, yet within the most of humanity lives, vehement and persistent, the desire for self-expression—the need to give visible substance to visions and ideals: To such as these a garden offers a joyous sphere of activity.

In the hand of the gardener is neither brush nor pen, but a magic wand wherewith he may conjure from out the brown earth forms of beauty and rare colors in infinite variety, may fill the air with exquisite fragrances, may invoke sunshine or shadow, bird-song, or the sound of falling water. Within his given area, large or small, he may see materialized, in even greater beauty than he dreamed, the children of his brain, for “a garden is the only form of artistic creation that is bound by the nature of things to be more lovely than in the designer's conception.” Every true gardener knows the thrill of creative energy and the serenity of realization.

IN ORDERING

We take pleasure in announcing more favorable prices for many of the bulbs listed in this catalogue, including the finer varieties of Narcissus and Tulips. These were formerly obtainable only at higher prices, due to their scarcity.

Our business career has been dedicated to supplying American Gardens with bulbs of the highest quality procurable. Our ability to serve you in this regard depends on your making known your planting requirements at the earliest possible date. This enables us to make the necessary reservations in Holland, as your bulbs are imported especially for you.

OUR GUARANTEE

As Bulb Specialists of a quarter of a century experience in this country and in Holland, we supply only bulbs of the finest quality. We guarantee to replace gratis any bulb, purchased from us, which does not produce a perfect bloom under ordinary care.

BULBS FOR EARLY FORCING

AMARYLLIS

HIPPEASTRUM. Seedlings from our Exhibition Collection; awarded Highest Honors at the International Flower Show of 1917 and a *Special Gold Medal* at the International Flower Show of 1921. The seed which created these varieties was produced by Mr. J. Pringe, of the Missouri Botanical Gardens, St. Louis, Mo., who is an eminent authority on this beautiful genus. Here our collection was on view for two years, during which time Mr. Pringe made the crossings from the finest varieties resulting in the stock we now offer. \$5 each, \$49 for ten, \$480 per 100.

CALLA

ÆTHIOPICA (White Calla). Heaviest roots, \$48 per 100.

ELLIOTTIANA (Yellow Calla). Heaviest roots, \$48 per 100.

GODEFROYANA. Heaviest roots, \$40 per 100.

GLADIOLUS

Dwarf early varieties invaluable for pot culture and for border planting South of Philadelphia, Penna.

BLUSHING BRIDE. White, flaked crimson. \$7 per 100.

PEACHBLOSSOM. Delicate pink, very charming in color and marking. \$7 per 100.

THE BRIDE. Very lovely pure white. \$7 per 100.

TRISTIS. Novel and pretty; very lovely sweet scented yellow flowers; very distinct. \$25 per 100.

GLADIOLUS-RETARDED

For flowering just at the time when flowers are scarce, immediately after the Chrysanthemums have finished. Plant in August; treat like you would tulips; get the corms well rooted before attempting forcing; do this easily.

ALICE TIPLADY. The finest large flowering Primulinus; beautiful orange saffron, wide open flower; many open at one time. Case of 50, \$18; \$35 per 100.

PRIMULINUS HYBRIDS. In a beautiful range of artistic colors. \$12 per 100.

HYACINTHS

ROMAN, WHITE. French. Size 15 centimeters and over. \$14 per 100, \$65 for 500, \$125 per 1,000.

ROMAN, FINEST PINK. French. Size 15 centimeters and over. \$14 per 100, \$65 for 500, \$125 per 1,000.

ROMAN, FINEST LIGHT BLUE. French. Size 15 centimeters and over. \$14 per 100, \$65 for 500, \$125 per 1,000.

TREATED DUTCH HYACINTHS in pure white, pink and light blue which force very easily and flower very early, having been especially treated for this purpose. \$25 per 100.

IRIS TINGITANA

TINGITANA. Beautiful tall Iris producing deep rich blue and yellow flowers; a grand plant. The bulbs must be well rooted and be grown cool for perfect result. Those of our clients who allowed the plants to come slowly under a cool atmosphere during the past season, were very successful. Selected flowering bulbs, \$15 per 100.

DUTCH IRISES

A large-flowered and very early strain of Spanish Irises.

DAVID TENIERS. Standards soft lavender, Falls primrose-yellow. \$8.50 per 100.

FRANS HALS. Standards pale blue, Falls soft yellow with orange spot, \$8.50 per 100.

HART NIBBRIG. The finest in the collection; brilliant clear blue. \$8.50 per 100.

HOBBEEMA. Standards white, tinted lavender with pale yellow Falls. \$8.50 per 100.

SPANISH IRISES

CAJANUS. Fine golden yellow. \$8 per 100.

FLORA. White and light lilac. \$8 per 100.

KING OF THE BLUES. Fine, clear blue. \$8 per 100.

KING OF THE WHITES. Large, pure white. \$8 per 100.

PRINCE HENRY. Beautiful bronze, very large flower; the finest of all bronze-colored Iris. \$8 per 100.

LILIES

CANDIDUM SPECIOSUM. From southern France. For forcing only. \$21 per 100.

HARRISII. Special. Our well-known stock. Size 9 to 11 inches. \$43 for 50, \$85 per 100.

HENRYI, retarded (from cold storage). Size 13 inches; \$24 for case of 25, \$45 for case of 50, \$85 per 100.

LONGIFLORUM FORMOSUM. Our prize-winning type. Size 10 to 12 inches, \$43 for 50, \$85 per 100; size 12 to 14 inches, \$58 for 50, \$115 per 100.

During the past few years our Lilies have been awarded *First Prize* successively at the *International Flower Show*, New York City.

LONGIFLORUM GIGANTEUM. Size 11 to 13 inches, \$39 for 50 \$75 per 100.

LONGIFLORUM GIGANTEUM, retarded (from cold storage). Size 11/13 inches; \$22 for case of 25, \$39 for case of 50, \$75 per 100.

SPECIOSUM ALBUM, retarded (from cold storage). Special Stock. Size 13 inches. \$24 for case of 25, \$45 for case of 50, \$85 per 100. Size 11 inches: \$17 for case of 25, \$32 for case of 50, \$60 per 100.

SPECIOSUM MAGNIFICUM, retarded (from cold storage). Special Stock. Size 13/15 inches; \$24 for case of 25, \$45 for case of 50, \$85 per 100. Size 11/13 inches; \$17 for case of 25, \$32 for case of 50, \$60 per 100.

SPECIOSUM MELPOMENE, retarded (from cold storage). Special Stock. Size 13/15 inches; \$24 for case of 25, \$45 for case of 50, \$85 per 100. Size 11/13 inches; \$17 for case of 25, \$32 for case of 50, \$60 per 100.

LILY OF THE VALLEY

"EXCELLENTA" PIPS. This celebrated strain is so well known to exhibitors and judges alike that it requires no introduction, always having carried off *First Prize* in competition at Flower Shows. Delivery at any time throughout the year from cold storage. Case of 250 pips, \$19; case of 500 pips, \$37.

TULIPS

CLUSIANA. The Lady Tulip. \$8 per 100, \$75 per 1,000.
For other Tulips, see pages 40 to 75.

NARCISSI

CHINESE SACRED "LILIES." Heaviest roots, \$30 per 100.

CHRISTMAS GLORY. Earliest trumpet Narcissi; primrose trumpet, creamy perianth. \$10 per 100, \$48 for 500, \$95 per 1,000.

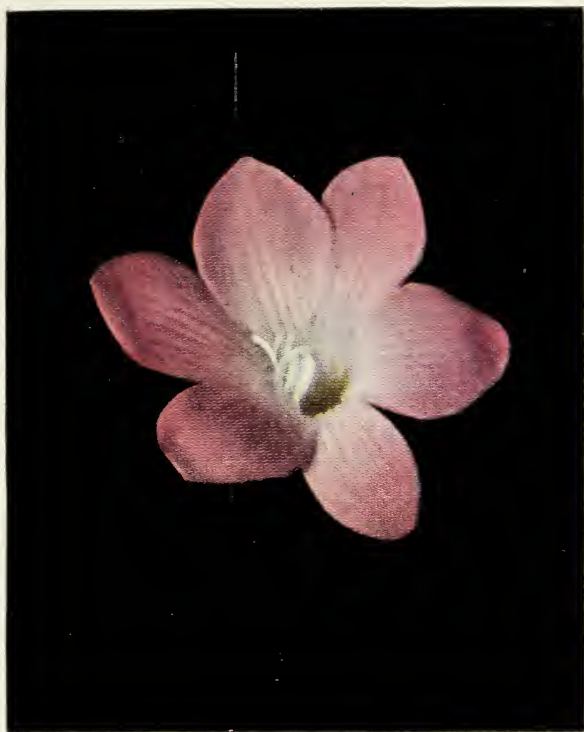
GOLDEN SPUR. French. Our Special Strain. Round bulbs. \$10 per 100, \$48 for 500, \$95 per 1,000.

GRAND SOLEIL D'OR. French. Our Special Strain. Size 16 centimeters and over, \$12 per 100, \$49 for 500, \$98 per 1,000.

PAPER-WHITE GRANDIFLORA. French. Size 15 centimeters and over, \$7.50 per 100, \$36 for 500, \$70 per 1,000.



FREESIAS



SEEDLING
NUMBER ONE



SEEDLING
NUMBER TWO

FREESIAS

The home of the Freesia is South Africa. From there came *Freesia refracta* in the early years of last century, and from there, between eighty and ninety years afterward, came *F. Armstrongii*, a rosy pink, which is the source from whence have come the new colored race of roses, pinks, mauves, purples, and coppery reds. If to these we add *F. aurea*, a small rich yellow which was sent to Messrs. Wallace & Company, of Colchester, England, in 1901, and *F. Leichtlinii*, a beautiful pale yellow with a conspicuous orange blotch, which was found by Max Leichtlin, of Baden, in the botanical garden at Genoa, we have the four original varieties from whence have sprung all the American and European hybrids which are now taking flower-lovers by storm.

Although the culture of Freesias is simple and easy, there are rocks ahead which it is to be hoped we will be able to avoid, or at any rate, to minimize with longer and more varied experience.

The individual blooms in the mauve, blue, and reddish shades sometimes become striped, or, if we may use a tulip term, become "broken." The two flowers have this peculiarity in common, and, as yet, we are just as much at sea as to its cause in the one as in the other.

The other rock is the irritating way the corms have of going on a strike. You may plant a nice plump one which looks the picture of health and from which you expect great things, but for a whole twelve months it gives no sign of life, then after that it will start away as if nothing had happened.

A great advance has been made at the Arcadia, Calif., establishment owned and operated by Rudolph Fischer, the originator of "Purity," toward widening the range of color in these most desirable flowers for decorative purposes. The same object is still being pursued, and, with it, the enlargement of the blooms.

Already there are some most interesting seedlings of distinct color and of much larger size and better constitution. Some of these seedlings, a few of which are now accessible to the public, surpass anything heretofore seen, in color as well as in size of blooms. We are offering some decided acquisitions, of splendid constitution, with strong branching stems.

RUDOLPH FISCHER'S FAMOUS FREESIA PRODUCTIONS

PURITY. We offer this variety in three sizes: Number One, \$6.50 per 100, \$60 per 1,000; Number Two, \$5.50 per 100, \$50 per 1,000; Number Three, \$4.50 per 100, \$40 per 1,000. We recommend the medium-size bulb as the most satisfactory.

FISCHERII. The largest and finest pure white available today being of branching habit and a strong grower; plant twice as far apart as Purity. \$10 for 100, \$90 for 1,000.

Fischer's named varieties of Colored Freesias are unquestionably the finest in existence

CALIFORNIA. Fine, clear yellow on strong, stiff stems. Very good, \$3.50 for 10, \$30 per 100.

DOROTHY SCHEEPERS. Salmon-pink, deepens as it matures; very large wide-open flower, tall grower; requires good support and an even temperature with plenty of light. An exceedingly beautiful Freesia. \$3.50 for 10, \$30 per 100.

ELIZABETH HASKELL. Fine light pink, large flower, strong healthy grower. \$3 for 10, \$25 per 100.

KATHERINE WATKINS. The flower of this variety is not so large but it is the Freesia "Par Excellence" for color. Beautiful salmon buff; from four to six buds open at one time; grows nearly two feet tall. A great keeper, highly fragrant. A wonderful flower. \$3 for 10, \$25 per 100.

MARIE LOUISE FISCHER. Dark, violet-blue, of the shade of Marie Louise violet; tall, strong, healthy grower, making large, wide-open flowers; a very fine variety. \$3.50 for 10, \$30 per 100.

MRS. CHAS. HAMILTON. Most pleasing shade of soft, pinkish lavender which reaches well down the throat; very large flowers, seven to eight carried on long, stiff stems, holding flowers erect; fragrant. \$2.50 for 10, \$20 per 100.

MRS. CHAS. PIKE. Remarkably fine, large, wide-open white flower, with a 1½-inch band of reddish lavender running around the edge; strong grower, stems 18 to 20 inches long; stands up well; carries from 8 to 10 buds; very fragrant; luxuriant foliage coming well up the stem. Splendid keeper, \$3.50 for 10, \$30 per 100.



SEEDLING
NUMBER THREE

SEEDLING
NUMBER FOUR



ROBERT CRAIG. Fine large flowering introduction named after the noted horticulturist of that name; wide open flower which stands up well carrying from 8 to 10 buds on stems from 18 to 20 inches long, luxuriant foliage coming well up the stem. Splendid keeper. Beautiful violet-lavender. \$3.50 for ten, \$30 per 100.

SPLENDENS. Very good violet shade; good grower with large flowers; highly recommended to grow in quantity. \$10 per 100, \$75 per 1,000.

SUNSHINE. Light yellow, overlaid with silvery sheen; very tall, strong grower with large wide-open flowers; the buds have upon opening a gray appearance, but when finally open the flowers are of a beautiful yellow. \$3.50 for 10, \$30 per 100.

TREMONT. Beautiful bronze-yellow flowers on long, stiff stems; a very fine variety. \$3.50 for 10, \$30 per 100.

COLORED FREESIAS FROM OTHER PRODUCERS

GENERAL PERSHING. Extra good; large open flowers of a pinkish lavender with yellow lip, suffused bronze, produced on stems often 3 feet tall, with several side laterals; strong grower; liberal producer. \$1 for 10, \$7.50 per hundred selected bulbs.

VIOLA. Not as robust a grower as the foregoing but also of spreading habit, producing laterals bearing flowers, not so large but of a good color; like a wood violet; lower petals deeper violet-blue. \$1 for \$10, \$7.50 per hundred selected bulbs.

YELLOW PRINCE (Improved). Unusually sturdy easy grower; extra long wiry stems supporting open flowers of a deep yellow, about the size of Purity. \$1 for 10, \$7.50 per hundred selected bulbs.

We do not recommend Freesias in mixture and therefore do not offer the same.

When planting Freesia bulbs in pots or pans, they may be spaced 2 to 2½ inches apart and must be staked as they grow; if planted in benches they may be set four inches in rows 2 inches apart.

The soil should be a light, sandy loam; old soil is the best in which some other crop has been grown during the previous season. This may be enriched with well decayed stable or sheep manure. The best time to plant is August; if planted earlier they will come up uneven for the reason that the bulbs will not have had sufficient rest.

To produce the largest and finest flowers they should be grown **COOL**; a day temperature of 60 degrees and night temperature of 45 to 50 degrees suits them best; they like plenty of water at all times and especially so if they are subjected to high temperature.

If one must have the blooms very early, bottom heat should be used to force the bud up early; in such case plenty of overhead ventilation should be given otherwise they will grow soft and will stretch too much. When ready to push the bud through, which can be noticed by the spreading of the center of the leaves or the parting of the leaves, they should always have plenty of water. If insufficient water is given at this stage of growth, the bud will dry up in the sheath.

AFTER THE BUD APPEARS they may be given a slightly higher temperature, say 5 degrees which brings out the color better; enriching the soil will also bring this about providing this is not overdone; if too much fertilizer is used, especially commercial fertilizer, the roots will decay and the crop will be a failure.

Forcing Freesias so as to have very early blooms, subjecting them to greater heat, is invariably done at the expense of size and stiffness of flower.

FISCHER'S WONDERFUL NEW SEEDLINGS

The color reproductions shown here are as near true to nature as it has been possible to make them with the limitations of mechanical coloring processes; one flower has been used on which the colors have been carefully matched as taken from the original seedlings.

These varieties will not be available until 1923 and then only in limited number at the price of \$4.50 for 10, \$40 per 100; as orders will be filled in the rotation in which they are received, we would urge you to make reservations now for delivery in July 1923. This refers to the seedlings only.



SEEDLING
NUMBER FIVE



SEEDLING
NUMBER SIX

BULBS FOR THE HARDY BORDERS

Here in this sequestered close
Bloom the Hyacinth and Rose;
Here beside the modest stock,
Flaunts the flaring Hollyhock;
Here without a pang, one sees
Ranks, conditions and degrees.

AUSTIN DOBSON

An argument occasionally brought forward against growing quantities of bulbs in the hardy borders is that, when they have blossomed and died down, distressing bare places are left at a time when the garden should be most floriferous. This difficulty is, however, easily disposed of and, indeed, turned toward charming and useful ends by the employment of a little thought and trouble.

Nearly all bulbs are tolerant of a lightly rooting ground-cover grown above them. There are many little plants to use for this purpose, and they play a double and often a triple rôle in the life of the border. For small bulbs in particular, these little creepers are a real boon, for they shield the delicate blossoms from the mud spattered by spring rains, and in winter provide a covering that keeps them from being thrown out of the ground by the frost. Some of them bloom with the bulbs and others later, providing a second crop of flowers from the same piece of ground. And, meanwhile, there are no blanks left by the departed bulbs.

Plants to grow above small bulbs are *Thymus Serpyllum lanuginosus*, *T. Serpyllum coccineus*, *Sedum glaucum*, *S. album*, *S. anglicum*, *Linaria Cymbalaria*, *L. hepaticæfolia*, *Herniaria glabra*, *Veronica repens*, and *V. prostrata*. One of the very prettiest and most satisfactory plants for the purpose, particularly in the half-shaded places enjoyed by Scillas and Snowdrops, is our small, sweet white Violet, *Viola blanda*, that gives its tiny, sweet blossoms with the earliest bulbs, and thereafter maintains a fresh green carpet above their heads.

For the larger bulbs the ingenious gardener will work out many happy associations. Plants suitable to use for the purpose are Arabis, Forget-me-nots, Wallflowers, Aubrietia, creeping Phloxes, *Linum perenne*, *Nepeta Mussinii*, *Cheiranthus Allionii*, *Stachys lanata*, Heucheras, Thrifts, *Viola cornuta*, and many Pinks.

Mauve Tulips are charming grown among the sky-blue Flax flowers; scarlet Tulips with white Flax; purple Tulips above

the grey velvet leafage of *Stachys lanata*; pink ones with *Nepeta Mussinii*. Daffodils are lovely with *Viola cornuta*, Aubrietias in tones of lavender or purple, or with the creeping Phloxes, such as the white *Nelsonii* or the silvery G. F. Wilson. Hyacinths may be grown with Forget-me-nots or among tufts of Thrift or Arabis.

For bulbs in shady borders, nothing is prettier than small ferns or *Viola blanda*, but *Corydalis lutea* may be used, or *Dicentra eximia* and *Thalictrum minus*.

Bulbs planted in borders should be kept toward the front. If planted back among the sturdy perennials, they are apt to be forgotten during the summer and injured or dug out. Moreover, they require the heat of the sun to fully ripen them, and must not be shaded by heavy foliage.

Show me a garden where lilies grow
I'll show you a house where the
Plague may not go.

—ROUMANIAN SUPERSTITION.



A GOLDEN DRIFT OF CROCUSES

CROCUSES

SPRING-FLOWERING VARIETIES

- BIFLORUS** (Scotch Crocus). White with lilac stripe. 50 cts. for 10, \$3.50 per 100, \$30 per 1,000.
- CAROLINE CHISHOLM**. Spotless white. 50 cts. for 10, \$3 per 100, \$25 per 1,000.
- DOROTHY**. Beautiful mauve. 50 cts. for 10, \$3 per 100, \$25 per 1,000.
- GRAND YELLOW**. Golden yellow for outdoor planting. 50 cts. for 10, \$3.50 per 100, \$30 per 1,000.
- IMPERATI**. Fine shade of mauve; exterior of the three outside segments a rich fawn. \$1 for 10, \$6.50 per 100, \$60 per 1,000.
- JULIA CULP**. Large purple-blue; late. Beautiful. 60 cts. for 10, \$4 per 100, \$35 per 1,000.
- KATHLEEN PARLOW**. Pure white; large flower; fine substance. 60 cts. for 10, \$4 per 100, \$35 per 1,000.
- MME. MINA**. Very fine violet, striped. 60 cts. for 10, \$4 per 100, \$35 per 1,000.
- PURPUREA GRANDIFLORA**. Very large; purple-blue. 50 cts. for 10, \$3.50 per 100, \$30 per 1,000.
- SIEBERI**. A gem; lavender flowers with bright orange stigmata. 60 cts. for 10, \$4 per 100, \$35 per 1,000.
- SIR WALTER SCOTT**. White with pale lilac stripes. 50 cts. for 10, \$3 per 100, \$25 per 1,000.
- SUSIANUS**. Most attractive, deep, rich yellow with dark rich brown flames on exterior of segments. 50 cts. for 10, \$3 per 100, \$25 per 1,000.
- TILLY KOENEN**. Very fine pure white; bright orange anthers; of splendid substance. 60 cts. for 10, \$4 per 100, \$35 per 1,000.
- TOMMASINIANUS**. Flower varies from a pale mauve to a rich purple. 60 cts. for 10, \$4 per 100, \$35 per 1,000.

AUTUMN-FLOWERING VARIETIES

- SPECIOSUS**. Lovely blue-lilac—the Tyrian blue; petals veined like butterflies' wings with fine pencilings of deeper color and its brilliant bunch of central saffron wide open to the sun. 50 cts. for 10, \$3.50 per 100, \$30 per 1,000.
- ZONATUS**. Large pale rosy lilac, tinted orange. 50 cts. for 10, \$3 per 100, \$25 per 1,000.



AN IDEAL WAY OF NATURALIZING DAFFODILS

DAFFODILS

The writer of this article has been asked so often if there is any difference between a Daffodil and a Narcissus; or, put somewhat differently, "What is a Daffodil?" and, "What is a Narcissus?" that he thinks it may be well to try and explain the meanings of the two words.

Fundamentally, they both mean the same thing. Daffodil is the English name for a large family of plants, which, in botanical classification, are placed in the natural order of Amaryllidaceæ, and Narcissus is the Latin name. In other words, a Daffodil and a Narcissus are the same thing. Custom, however, has decreed that in popular usage they do not mean the same thing, and it is in consequence of this that the difficulty and confusion has arisen.

The word Narcissus is generally confined to that beautiful, pure white-petaled division, of which the old-as-the hills Sweet Nancy, or Poet's Narcissus, is a type, and to those bunch-flowered varieties of which, perhaps, Soleil d'Or or the early-flowering "Paper-White" are well-known examples. All other members of the family are in popular language Daffodils.

The grand, large, yellow trumpet Emperor is a Daffodil; so is *Barrii* conspicuus; so is pale-flowered Mrs. Langtry; so is the quaint petticoat-shaped *Corbularia*, or "hoop-petticoat" Daffodil; and so is the long-lost cyclamen-shaped *Cyclamineus*.

This, however, has not always been so. If we turn the pages of the famous "Paradisus," which was written by John Parkinson in 1629, a man who seemingly made a specialty of the family and collected and cultivated in his own garden in London all the different varieties he could get together, we will find that he took as his typical Daffodil one of those with a cup or chalice, like *Barrii* conspicuus, but that when "the middle cup is altogether as long and sometime a little longer than the outer leaves that doe encompassse it, so that it seemeth rather like a trunke or long nose" he calls the flower a "*Pseudo narcissos*" or a bastard Daffodil. These are the varieties which we now think of as being Daffodils—the real Simon-pure sorts.



“A host of golden Daffodils,
Beside the lake, beneath the trees
Fluttering and dancing in the breeze.”

NARCISSI (DAFFODILS)

In our list we use the classification adopted by the Royal Horticultural Society of England; we omit varieties of which the bulbs do not travel well and which therefore only cause disappointment to our clients.

DIVISION I. TRUMPET DAFFODILS

Trumpet or Crown as Long as or Longer than the Perianth Segments

CLASS A. ALL YELLOW

CLEOPATRA. Magnificent, large, very broad, imbricated perianth; long, bold, deep yellow trumpet. \$7.50 for 10.

EMPEROR. Rich, full, yellow trumpet; deep primrose perianth. Splendid for forcing or outside planting. Extra-heavy, double-nosed bulbs. \$1 for 10, \$8.50 per 100; strong, single-nosed bulbs, 70 cts. for 10, \$5 per 100.

GLORY OF LEIDEN. One of the largest and most perfect golden yellow trumpets; soft yellow perianth splendid for pots. \$1 for 10, \$8.50 per 100.

GOLDEN SPUR. Deep golden yellow; splendid for forcing. Extra-heavy, double-nosed bulbs, 90 cts. for 10, \$8.50 per 100; strong, single-nosed bulbs, 70 cts. for 10, \$5 per 100.

KING ALFRED. Remarkably handsome Daffodil; unrivaled in size and beauty. Large, bold, golden yellow flower with deeply frilled mouth; elegantly recurved. Of lasting quality. Extra-heavy, double-nosed bulbs, \$3.50 for 10, \$30 per 100; strong, single-nosed bulbs, \$2 for 10, \$19 per 100; Special Stock for Exhibition, only limited quantity available, \$5 for 10, \$48 per 100.

OLYMPIA. Bold, large yellow trumpet; pale-yellow perianth. An enormous flower; splendid for pots. Extra-heavy, double-nosed bulbs, \$3.50 for 10, \$28 per 100; strong, single-nosed bulbs, \$2.30 for 10, \$20 per 100; Special Stock for Exhibition, only limited quantity available, \$5 for 10, \$48 per 100.

TRESSERVE. Beautiful light-yellow Trumpet Daffodil, extra large flower; splendid exhibition variety. Fine for forcing or planting out. Extra heavy double-nosed bulbs, \$3.50 for 10, \$28 per 100; strong single-nosed bulbs, \$2 for 10, \$19 per 100; Special Stock for Exhibition, only limited quantity available \$5 for 10, \$48 per 100.

VAN WAVEREN'S GIANT. The largest of all Trumpet Daffodils; flowers of huge dimension; bright yellow trumpet with primrose perianth of campanulate form. Very tall and vigorous grower. Extra heavy, double-nosed bulbs, \$3.50 for 10, \$30 per 100; strong, single-nosed bulbs, \$2 for 10, \$19 per 100. Special Stock for Exhibition, only limited quantity available \$5 for 10, \$48 per 100.

CLASS B. ALL WHITE OR ALMOST WHITE

ALICE KNIGHTS. Elegantly formed Daffodil; creamy white trumpet, with white perianth; very early. \$3 for 10, \$28 per 100.

LOVELINESS. Very large flower of remarkable beauty; bold, stiff, snow-white perianth; broad, smooth, and very elegant white trumpet, expanding at the mouth. \$5 for 10, \$36 per 100.

MADAME DE GRAAFF. One of the largest and finest in this class; perianth pure white; trumpet very pale primrose, passing into pure white; a refined, delicate flower. \$1 for 10, \$8.50 per 100.

MRS. ERNEST KRELAGE. Fine distinctive flower, with well-shaped petals; the finest and best pure white Trumpet Daffodil. Stands 18 inches high. \$11 each.

MRS. H. D. BETTERIDGE. Very refined and beautiful pure white flower; well-formed perianth, broad and imbricated; trumpet of beautiful form with elegantly flanged and fluted brim. \$4.50 for 10, \$40 per 100.

MRS. ROBERT SYDENHAM. A most refined and elegant variety; perianth and trumpet pure white, beautifully recurved at the mouth. One of the best white Trumpet Daffodils. \$1.50 each.

PETER BARR. Beautiful bold flower; perianth pure white, very large trumpet ivory-white. A very fine variety that should be in every collection. \$7.50 for 10, \$65 per 100.

W. P. MILNER. Splendid free-flowering variety; creamy white perianth and trumpet; exquisite for the rock-garden. Very distinct; very pretty in pots. 65 cts. for 10, \$5.60 per 100.

CLASS C. BICOLOR

DUKE OF BEDFORD. Magnificent flower, measuring $4\frac{1}{2}$ inches across; perianth pure white, broad and of great size; trumpet clear, soft yellow. Very early. \$3 for 10, \$28 per 100.

EMPRESS. Rich yellow trumpet with sulphur-white perianth. Splendid for the garden and one of the best for naturalizing. Extra-heavy, double-nosed bulbs, 90 cts. for 10, \$8 per 100, \$75 per 1,000; strong, single-nosed bulbs, 70 cts. for 10, \$5 per 100, \$45 per 1,000.

GLORY OF NOORDWIJK. Gigantic flower; large yellow trumpet with a long creamy white perianth. Very beautiful and a great "Show" Daffodil. Extra-heavy, double-nosed bulbs, \$2 for 10, \$18 per 100; strong, single-nosed bulbs, \$1.30 for 10, \$11 per 100. Special Stock for Exhibition, only limited quantity available, \$4 for 10, \$35 per 100.

SPRING GLORY. Long chrome-yellow trumpet with reflexed brim; clear white perianth. Very large flower of beautiful form. Extra-heavy, double-nosed bulbs, \$3 for 10, \$23 per 100; strong, single-nosed bulbs, \$1.70 for 10, \$15 per 100; Special Stock for Exhibition, only limited quantity available, \$5 for 10, \$48 per 100.

VICTORIA. Bold, erect flower; rich yellow trumpet with creamy white perianth; excellent for forcing. Extra-heavy, double-nosed bulbs, 90 cts. for 10, \$8 per 100, \$75 per 1,000; strong, single-nosed bulbs, 70 cts. for 10, \$5 per 100, \$45 per 1,000.

WEARDALE PERFECTION. Exceedingly handsome Daffodil for forcing; sulphur trumpet and white perianth. The flowers last a long time and possess a charm seldom met with in other varieties. To secure the choicest flowers with long stems the bulbs should be forced slowly and with only moderate heat. Otherwise this variety will produce a weak stem. Extra-heavy, double-nosed bulbs, \$5 for 10, \$48 per 100; strong, single-nosed bulbs, \$3 for 10, \$28 per 100.



A SLOPE OF GOLDEN DAFFODILS

DIVISION II. INCOMPARABILIS

LARGE CHALICE-CUPPED DAFFODILS

Cup measuring from one-third to nearly the length of the perianth segments.

BEDOIN. This grand exhibition variety measures more than 4 inches across, has a large white perianth, broad and spreading, and a large and expanded cup of glowing fiery orange-scarlet, elegantly fluted and crinkled at the brim. \$8 for 10, \$75 per 100.

BERNARDINO. Grand flower with very large, creamy perianth and widely expanded cup heavily stained deep orange. \$9 for 10, \$85 per 100.

CROESUS. A magnificent flower of great substance with large rounded and imbricated primrose perianth and a wide expanded crown of deep red. Each, \$4.50.

GREAT WARLEY. The largest of this class; remarkably striking flower; broad, massive white perianth; clear yellow crown measuring $1\frac{1}{2}$ inches across. Very beautiful. \$7.50 for 10, \$70 per 100.

HOMESPUN. Perfectly shaped flower of a soft primrose-yellow; exceedingly beautiful. \$1.85 for 10, \$16 per 100.

LUCIFER. Large, handsome white perianth; cup intense glowing orange-red; splendid for the garden. 90 cts. for 10, \$7 per 100, \$60 per 1,000.

SIR WATKIN. Bold, handsome flower; sulphur perianth; yellow cup, tinged bright orange. Extra-heavy, double-nosed bulbs, \$1 for 10, \$8 per 100, \$75 per 1,000; strong, single-nosed bulbs, 75 cts. for 10, \$5 per 100, \$45 per 1,000.

WHITEWELL. Extra-fine, large flower; perianth creamy white; large, deep yellow cup, much expanded. \$3.75 for 10, \$35 per 100.

WILL SCARLETT. One of the most striking Daffodils; fiery, orange-red cup, very broad and wide open; creamy white perianth. \$2.50 for 10, \$23 per 100.

DIVISION III. BARRII

SHORT-CUPPED DAFFODILS

Cup or crown measuring less than one-third the length of the perianth segments.

ALBATROSS. Large, handsome flower; perianth white; cup pale citron-yellow, prettily frilled and conspicuously edged orange-red; very beautiful. 75 cts. for 10, \$6.50 per 100.

CONSPICUUS. Very free-flowering and a wonderfully strong grower; large, soft yellow perianth; short cup, edged orange-scarlet. Splendid for naturalizing. Extra-heavy, double-nosed bulbs, 65 cts. for 10, \$5.50 per 100, \$50 per 1,000; strong, single-nosed bulbs, 45 cts. for 10, \$4 per 100, \$37 per 1,000; 10,000 bulbs, specially selected for naturalizing, \$350.

COSSACK. Remarkably beautiful and striking flower; broad, white perianth slightly reflexing; spreading cup of intense dark orange-red. \$4 for 10, \$38 per 100.

LADY GODIVA. Very lovely; elegant form; white perianth; broad, bright orange-scarlet cup, edged yellow. Plant with *Barrii conspicuus*. \$1 for 10, \$8 per 100, \$75 per 1,000.

MASTERPIECE. Perfectly formed flower; creamy white perianth; flat, spreading orange crown. Very beautiful. \$4 for 10, \$38 per 100.

RED BEACON. A most lovely flower which immediately attracts one by its brilliantly colored cup; the perianth is ivory-white, broad and of great substance, slightly shaded sulphur at the base; the cup is prettily fluted and of the most intense fiery orange-red. We should like to have this wonderfully striking flower better known and therefore will make the price very reasonable. \$3.50 for 10, \$33 per 100.

SEAGULL. Very beautiful flower; large, spreading pure white perianth; cup canary-yellow, with apricot edge. 90 cts. for 10, \$7.50 per 100.

SUNRISE. A very beautiful and distinct daffodil; perianth white with a broad primrose bar through the center of each petal; expanded and elegantly fluted crown, bright orange-yellow with fiery scarlet margin. \$10 for 10.

DIVISION IV. LEEDSII

EUCHARIS-FLOWERED DAFFODILS

Large Chalice-cupped and Short-cupped Daffodils, which have white perianth segments and cup or crown of white, cream, buff-orange, apricot, or pale citron.

ARIADNE. A flower of refined beauty; perianth white; cup ivory-white, very large, saucer-shaped, wide and spreading, prettily frilled at margin. A striking flower, lasting long in bloom. \$1.50 for 10, \$12 per 100.

CANARY EYE. Creamy white perianth; white cup with green eye. Very lovely. \$3 for 10, \$22 per 100.

CZARINA. The largest and handsomest of the Giant Leedsii. A grand flower of immense size, measuring 5 inches across; broad, white perianth, elegantly twisted, and very large, delicate citron crown, $1\frac{1}{2}$ inches long, with bold, open mouth. Tall, robust grower. An exquisite decorative variety, splendid in pots and for the garden. We should like this fine Daffodil to become more generally known and shall therefore make the price very special—\$1.25 each.

DUCHESS OF WESTMINSTER. Very fine, large, pure white perianth; long, soft canary-yellow cup, tinged orange. 90 cts. for 10, \$7.50 per 100.

EVANGELINE. Very large, beautiful flower; pure white perianth; lemon-yellow cup. \$1 for 10, \$7 for 100.

KATHERINE SPURRELL. Large, well-shaped flower; very broad, sulphur-white perianth; canary-yellow cup. Excellent for the garden. 70 cts. for 10, \$6 per 100.

LORD KITCHENER. Flower of great size with very broad, flat, pure white perianth of firm substance; crown very large, of a delicate pale primrose, well open at the mouth and elegantly crimped at the brim. To have this beauty better known, we are offering it at very special price, \$4 for 10, \$36 per 100.

MERMAID. Very large and exceedingly beautiful variety; very tall; white perianth, large and well imbricated; crown very large and bold, elegantly flanged at the mouth, opening cream and passing off almost white. \$4 for 10, \$36 per 100.

MRS. LANGTRY. Remarkable, free-flowering variety; broad crimson perianth, with large white cup, edged bright yellow. Excellent for mass planting. Extra-heavy, double-nosed bulbs, 60 cts. for 10, \$5.50 per 100, \$50 per 1,000; strong, single-nosed bulbs, 45 cts. for 10, \$4 per 100, \$34 per 1,000.

QUEEN OF THE NORTH. Extremely lovely, large flower; very broad white perianth, with lemon cup, prettily fluted; very pure color. We wish you would all try this so lovely variety; to make it better known we shall make the price \$3.50 for 10, \$33 per 100.

SIRDAR. A grand flower with broad, imbricated, silvery white perianth and large bold, straight crown of a delicate cream color, deeply fluted and elegantly frilled at the mouth. Very tall grower. A wonderful exhibition variety, also still scarce, which we should like to become better known and shall therefore offer at the very special price of \$4.50 for 10, \$38 per 100.



On meadow green, by leafy hedge
In woodland shade, and rushy sedge,
By little lowly rills;
While yet the north wind blows his blast,
Before the storm and sleet are past,
Laugh out the Daffodils.

ST. OLAF. Of remarkable beauty, measuring 4 inches across; pure white perianth, well imbricated, and wide, flattened crown, very prettily fluted, measuring $1\frac{1}{4}$ inches across. Color cream, delicately margined sulphur and with sulphur-shaded center. This is again a splendid exhibition variety that should be included in every fine collection; we shall therefore offer it at the very special price of \$6.50 for 10, \$60 per 100.

WHITE LADY. Exquisite flower. Broad, white perianth of perfect form; dainty cup prettily crinkled and of a beautiful pale canary shade; chaste. Extra-heavy, double-nosed bulbs, \$1 for 10, \$9 per 100, \$85 per 1,000; strong, single-nosed bulbs, 65 cts. for 10, \$5.50 per 100, \$48 per 1,000.

WHITE QUEEN. A most refined flower; splendid, sturdy grower; broad, glistening white perianth; soft lemon crown. \$3 for 10, \$25 per 100.

DIVISION V. TRIANDRUS HYBRIDS

THE CYCLAMEN-FLOWERED DAFFODILS

QUEEN OF SPAIN. Elegantly formed, distinct flower; delicate yellow trumpet and perianth; splendid for rock-garden work and very pretty for pots. \$1.50 for 10, \$14 per 100.

TRIANDRUS ALBUS (The Angel's Tears Daffodil). Dainty little species, quite hardy, easily grown in rockeries and in pots; reflexing perianth, creamy white; drooping flowers, \$1 for 10, \$9 per 100, \$87 per 1,000.

DIVISION VI. CYCLAMINEUS HYBRIDS

CYCLAMINEUS MAJOR. Small yellow trumpet; reflexed perianth. Very fine dwarf species for the rock-garden. \$2.50 for 10, \$22 per 100.

DIVISION VII. JONQUILLA HYBRIDS

ODORUS RUGULOSUS. Rich yellow; broad perianth and cup. 50 cts. for 10, \$4.80 per 100, \$45 per 1,000.

ODORUS RUGULOSUS FLORE-PLENO. Very fragrant, double, rich yellow. 50 cts. for 10, \$4.80 per 100, \$45 per 1,000.

ODORUS RUGULOSUS MAXIMUS. Beautiful flower of ideal form, twice the size of the old *Rugulosus*; color a rich golden yellow. \$9 for 10.

DIVISION VIII. TAZETTA HYBRIDS

Includes the new Poetaz varieties and the old Polyanthus Narcissus.

ADMIRATION. Sulphur-yellow perianth; sulphur-yellow eye with scarlet-red border; beautiful in every way. \$1.50 for 10, \$11 per 100.

ALSACE. Pure white petals; yellow eye, slightly edged reddish; very fine. \$1 for 10, \$7 per 100.

ASPASIA. Pure white perianth; yellow cup; fine flower on tall stem. 70 cts. for 10, \$6 per 100.

ELVIRA. Three to four large flowers of great substance, borne on long, graceful stem; broad white petals and a golden yellow cup, edged orange; delicately fragrant. Makes a splendid combination in the garden when planted among the earliest Darwin Tulips; is also fine for forcing. Extra-heavy, double-nosed bulbs, 90 cts. for 10, \$8 per 100, \$75 per 1,000; strong, single-nosed bulbs, 50 cts. for 10, \$4.50 per 100, \$40 per 1,000.

IRENE. Very fine flower; sulphur-yellow perianth, changing to light yellow; orange cup. 90 cts. for 10, \$6 per 100.

KLONDYKE. Yellow perianth; deep golden yellow cup; one of the deepest and finest yellows. \$1.50 for 10, \$14 per 100.

MIGNON. Very distinct; white perianth, cup creamy white, with deep orange-scarlet edge. \$1.50 for 10, \$14 per 100.

ORANGE CUP. Splendid variety; yellow perianth with orange cup. \$1 for 10, \$7 per 100.

SUNLIGHT. Most effective; perianth dark creamy yellow; dark orange cup. \$1 for 10, \$7 per 100.

DIVISION IX. POETICUS VARIETIES

A rich, pure white perianth is the essential characteristic of this variety.

ALMIRA (King Edward VII). Snow-white petals; beautifully shaped canary-yellow cup, bordered red. Fine for forcing and of vigorous growth in the garden. Extra-heavy, double-nosed bulbs, 90 cts. for 10, \$8 per 100; strong, single-nosed bulbs, 65 cts. for 10, \$5.50 per 100.

CASSANDRA. Very fine, perfectly shaped, wide-spreading pure white perianth; crown rimmed dark red. \$2 for 10, \$18 per 100.



NARCISSUS NATURALIZED

GLORY OF LISSE. The improved *Poeticus ornatus*: far superior in shape, substance and color. Large, snow-white perianth; cup rimmed red. 75 cts. for 10, \$6.50 per 100.

HOMER. Very late variety pure white perianth with scarlet cup. \$1.25 for 10, \$10 per 100.

HORACE. Most beautiful, snow-white perianth; dark red cup. \$1.75 for 10, \$16 per 100.

ORNATUS. Pure white perianth; broad cup, margined scarlet; very early. Fine for forcing and splendid for massing in the garden. Extra-heavy, double-nosed bulbs, 65 cts. for 10, \$5.50 per 100; strong, single-nosed bulbs, 50 cts. for 10, \$4 per 100.

RECURVUS (The Old Pheasant's Eye). Pure white perianth; cup deep orange-red. The best for massing and naturalizing. Extra-heavy, double-nosed bulbs, 60 cts. for 10, \$5 per 100; strong, single-nosed bulbs, 45 cts. for 10, \$3.75 per 100, \$32 per 1,000, \$300 for 10,000.

THELMA. Snow-white perianth of good substance; large overlapping petals; broad cup margined scarlet; a noble flower; fine for pots. \$1.50 for 10, \$13 per 100.

DIVISION X. DOUBLE VARIETIES

STELLA SUPERBA, BUTTERFLY. Large, graceful flower; white perianth with very pretty double cup. \$1 for 10, \$9 per 100.

SULPHUR PHENIX. Large, double white, rose-shaped flowers with sulphur center; very chaste and beautiful; much prized for cutting. 65 cts. for 10, \$5.50 per 100.

VAN SION (*Telamonius plenus*). Golden yellow; the large, old Double Yellow Daffodil; valuable for forcing and for groupings in the garden. Extra-heavy, double-nosed bulbs, \$1 for 10, \$9 per 100, \$85 per 1,000; strong, single-nosed bulbs, 70 cts. for 10, \$6.50 per 100, \$60 per 1,000.

MIXED DAFFODILS

A splendid mixture of many varieties, all suitable for successful naturalization in extra heavy bulbs, \$29 per 1,000, \$285 per 10,000, \$2,800 for 100,000. The price has been put so low, to induce liberal planting of these lovely flowers; this offer is only for orders covering thousand bulbs or multiples thereof.



DETAIL OF OUR EXHIBIT, MARCH 14, 1921, AT THE INTERNATIONAL
FLOWER SHOW, NEW YORK CITY

Received Grand Sweepstakes Award and Gold Medal

HYACINTHS

Long ago the Dutch people illustrated for us, in their quaintly patterned gardens, the fitness of the Hyacinth for filling geometrical beds with even surfaces of pure color. And so perfectly does the symmetrical flower play its stereotyped rôle of "bedder" that the idea of putting it to a more gracious and graceful usage seldom arises.

Yet Hyacinths are lovely planted in irregular drifts along the edges of the shrubbery, or in the garden borders, among such other spring flowers as arabis, aubrietia, forget-me-nots, alyssum, pansies, wallflowers, and English daisies. The clear, opaque colors of the bulbous plants are of great value in creating spring color harmonies; especially is this true of the clean porcelain-blues that are not shown by any other plant of the season. Plant lavishly such a porcelain-blue variety as Grand Maitre in irregular colonies against a long line of golden forsythia and early-flowering spirea (*Spiræa Thunbergii*). And crowd between the groups of Hyacinths mats of snowy *Arabis alpina*, tufts of wallflower, purple pansies, and some long-stemmed, early-flowering yellow tulips, and one has created a spring picture worth coming far to see.

Even ordinary bedding may be rendered much less stiff and commonplace if the Hyacinth bulbs are set about nine inches apart and the spaces between planted with such spring-flowering plants as will bloom at the same time as the bulbs. A bed of great gaiety and beauty may be made with the fine pink Hyacinth, Jacques, and forget-me-nots. Other good combinations are dark blue Hyacinths (all of one variety) and pink English daisies; yellow Hyacinths and purple pansies; light blue Hyacinths with yellow alyssum; and white Hyacinths with forget-me-nots or any pretty spring flower.

Another happy use to which Hyacinths may be put is for filling the stone or concrete pots and jars used for decoration upon terraces and porches. Pots of blue Hyacinths on terrace run with ribbons of early yellow tulips and wallflowers seem to express the very spirit of spring itself; or plant the pots with pink Hyacinths and paint the rest of the picture in pink and white early tulips, mounds of lavender aubrietia and purple pansies. In cold climates, if the pots are left in the open it must be seen to that they have very sharp drainage, for while the Hyacinth bulb is hardy, it will rot if surrounded by standing moisture. The pots should also be wrapped in straw and given a covering of leaves or manure.

In Virginia and southward the graceful little Roman Hyacinth is hardy in the open; and the white ones are most delightful scattered through beds or borders carpeted with sweet-scented violets and daffodils. This combination creates a rarely lovely ground-cover for borders of early-flowering shrubs.

Akin to the Roman Hyacinth, but much more delicately and daintily fashioned, are the novel little Jacinthes de Paris. These are also hardy in the open in mild districts of the country, and beds of them in white, pale blue, pink, or yellow will be an added pleasure to those who go to meet the spring in the Southland.

Miniature Hyacinths are splendid for forcing. They are distinguished from the ordinary Dutch Hyacinth by a looser flower-spike and small, neat bells. The colors are delightful and when planted in low pots or pans, one color to a pan, the effect is light and graceful, and no more charming decoration could be found for rooms or conservatories.

Just as you come to us for your bulbs, because we are specialists and have been for over twenty years, so do we go for our Hyacinths to one of Holland's oldest and most responsible bulb-growers, who has made a specialty of Hyacinths for three generations. The cream of his stock is selected for us during flowering time and this we furnish to our clients under the name of

"SUPREME" HYACINTHS FOR FORCING

Long lists of varieties only tend to confuse, therefore we offer below only those sorts that careful selection has proven to be the best. Our Hyacinths have been awarded highest honors at important flower shows.

BLUE SHADES

CZAR PETER. Fine truss with large waxy bells of a light lavender-blue. \$3 for 10, \$25 per 100.

DR. LIEBER. Very early; lavender-blue; heavy, perfect spike. \$3 for 10, \$25 per 100.

DUKE OF WESTMINSTER. Large, deep purplish-blue bells with white center. \$3 for 10, \$25 per 100.

ENCHANTRESS. Full, long truss with large bells of a pale porcelain, tinted lilac, with lighter center. \$3 for 10, \$25 per 100.

IVANHOE. The bluest and most satisfactory of the dark shades; late-flowering. \$3 for 10, \$25 per 100.

KING OF THE BLUES. Splendid compact truss with fine, bright dark blue bells; flowers late. \$3 for 10, \$25 per 100.

MENELIK. Large, well-formed truss, deep, black-blue bells. \$3 for 10, \$25 per 100.

PERLE BRILLANTE. Short, fat spike; a very pretty deep blue shade on the exterior of the bells. \$3 for 10, \$25 per 100.

SCHOTEL. Long, perfect truss; large bells of forget-me-nots blue. \$3 for 10, \$25 per 100.

ORANGE

ORANJEBOVEN. Prettiest and daintiest of all Holland Hyacinths; a true ladies' flower; resembles very much the Roman Hyacinth; this beauty is of a ruddy apricot color which appeals to all but those who worship at the shrine of the great god "Size." One of the most charming of the rose-colored sorts. \$4 for 10, \$35 per 100.

ROSE SHADES

LADY DERBY. Long, splendid truss, with large bells of a fine rose-pink. \$3 for 10, \$25 per 100.

QUEEN OF THE PINKS. The pink form of King of the Blues; a lovely bright rosy pink. \$3 for 10, \$25 per 100.

LA VICTOIRE. Well-filled truss, medium-sized bells of fine dark pink; magnificent exhibition variety. \$3 for 10, \$25 per 100.

WHITE

CORREGGIO. Short, fat spike, with large waxy white bells. Very fine. \$3 for 10, \$25 per 100.

LA GRANDESSE. The finest and most showy pure white; long, full truss of perfect form, with fine waxy bells. Grand exhibition flower. \$3 for 10, \$25 per 100.

L'INNOCENCE. Great truss, with large, pure white bells. \$3 for 10, \$25 per 100.

YELLOW

CITY OF HAARLEM. Large, well-formed truss of a bright golden yellow. Fine exhibition flower. \$3 for 10, \$25 per 100.

After these Hyacinths of "Supreme" Quality have been selected by our grower from his "top-root mother bulbs," the balance of this top-size stock is sold to us at a special rate. This fine material we offer in the forcing varieties as specified in foregoing list at \$15 per 100.

HYACINTHS FOR FORCING

“TREATED” OR “PREPARED”

By a process of artificial ripening, these bulbs will produce flowers two to three weeks in advance of the others and are therefore invaluable for early forcing. We offer in this class only three varieties that have proven eminently satisfactory.

LADY DERBY. Fine rose-pink. \$3 for 10, \$25 per 100.

L'INNOCENCE. Large; pure white. \$3 for 10, \$25 per 100.

SCHOTEL. Beautiful forget-me-not blue. \$3 for 10, \$25 per 100.

FRENCH ROMANS

We ask our patrons to use the finest and largest bulbs of this family only, as they are the most satisfactory; we therefore offer only the 15 centimeter size. White, light pink or light blue Romans. \$14 per 100, \$125 per 1,000.

JACINTHES DE PARIS

It is the first time that we offer you these Hyacinths which are so popular in France and we hope that you will try them.

LA VIERGE. Pure white. \$10.50 per 100.

BLEU CÉLESTE. Fine light blue. \$10.50 per 100.

JAUNE SUPRÈME. Soft Naples yellow. \$10.50 per 100.

ROSE PARFAITE. Dainty soft pink. \$10.50 per 100.

MINIATURE

This unusually attractive class of Hyacinths for growing in pots or pans and so valuable for cutting, we offer in the three varieties which our experience has taught us to be the most satisfactory.

ARENTE ARENDSSEN. Snow-white. \$7.50 per 100.

LAURA. Violet-blue. \$7.50 per 100.

NIMROD. Delicate rose. \$7.50 per 100.

May we suggest that you grow Hyacinths in deep pots or pans, such as are commonly called “azalea pans”; to bring forth perfect flowers, the bulbs must have the best possible root-growth which the deeper pans insure; plant only one variety in a pan and allow about ten weeks for the development of the so-essential full set of roots. Never use new pots or pans.

HYACINTHS FOR THE GARDEN

Our Hyacinth specialist provides us with Select Quality bulbs most suitable for planting in the garden in varieties, producing flower-spikes not quite so long and "top-heavy," so that they will stand up in rough weather. Those with weak stems have been eliminated, and the following sorts have been carefully selected, having strong stems and being in every way most desirable for this purpose.

BLUE SHADES

- GRAND MAITRE.** Strong well-filled spike with large, deep porcelain-blue bells. \$1.75 for 10, \$15 per 100.
- KING OF THE BLUES.** Splendid compact truss with fine, bright dark blue bells. \$1.75 for 10, \$15 per 100.
- QUEEN OF THE BLUES.** Clear porcelain-blue; strong stem. \$1.75 for 10, \$15 per 100.
- SCHOTEL.** Long truss, large bells of forget-me-not blue. \$1.75 for 10, \$15 per 100.

ROSE SHADES

- LADY DERBY.** Long, splendid truss, with large bells of a fine rose-pink. \$1.75 for 10, \$15 per 100.
- LA VICTOIRE.** Strong, stout spike, with medium-sized bells of a bright carmine-rose. \$1.75 for 10, \$15 per 100.
- MARCONI.** Short spike on stout stem, with fine, bright deep rose bells; exquisite for groups. \$2 for 10, \$18 per 100.
- ORNAMENT ROSE.** Great beauty; deep blush, waxy bells. \$1.75 for 10, \$15 per 100.
- QUEEN OF THE PINKS.** A lovely bright rosy pink. \$2 for 10, \$18 per 100.

WHITE

- LA GRANDESSE.** Strong spike, with large, pure white bells. \$1.75 for 10, \$15 per 100.
- L'INNOCENCE.** Strong truss with large, pure white bells. \$1.75 for 10, \$15 per 100.

YELLOW

- CITY OF HAARLEM.** Strong, large truss of bright golden yellow. \$1.75 for 10, \$15 per 100.

When you order Hyacinths, kindly state whether for forcing or for garden planting, so that the correct material may be selected and packed for you by our specialist in Holland.

THE SWEETEST LIFE IN THE WORLD

If the Tulips should be made common, the civilest Dealing that is in the World would thereby be taken away from Men, and they would be deprived of the sweetest Communication that is among honest Men. How much acquaintance doth their Rarity not afford to knowing Artists? How many pleasant Visits? How many friendly Conversations? And how many solid Discoursings? Certainly it is the sweetest Life in the World, and a very pleasant Entertainment of our Thoughts, to be thus busie with the Contemplation of Flowers, with the wonderful Elaboration of Nature, and to consider the Power of its Maker.—H. VAN OOSTEN in "The Dutch Gardener," English translation, 1703.



DARWIN TULIP
CITY OF HAARLEM
See page 66

TULIPS—ANCIENT AND MODERN

We all have favorite flowers round whose past we weave legends from our brain. The hard matter-of-fact history seems so full of gaps that it is the most natural thing in the world to try to fill them up and bridge, in imagination, the unknown silence. Whence came the Tulips to Constantinople that graced the gardens outside that famous city years—generations—centuries, possibly (for who knows?)—before Busbequius, the Ambassador of the Emperor Ferdinand, first saw them there in the year 1554? That it must have been so, we know, for when their seed was sown in western European gardens it was discovered that they were all a motley hybrid race whose beginning must be sought in the distant past.

What a sensation they caused! How they must have been talked about! What nice presents they made for one lover of flowers to send to another! Just what John Evelyn might have sent William Penn along with that—

“aloe, rife

With leaves sharp pointed like an Aztec knife
Or Carib Spear.”

—WHITTIER in “The Pennsylvania Pilgrim.”

Then that wonderful mania time in Holland in 1635 to 1637, when speculation in Tulip bulbs ran as high as it has ever done in “futures” on the New York Exchange; and when it was possible to buy so many pennyweights of a fine bulb of *Semper Augustus* or *Admiral van der Eyck*, so completely had the speculators forgotten the nature of the wares in which they were dealing. I was once told that the beautiful deep yellow *Cottage* variety, *Avis Kennicott*, came from some garden in New England. I have never made inquiries if that is really the case or not, for I love to think of some *Priscilla* bringing over the first few bulbs in the *Mayflower* and planting them in some Massachusetts garden where they have grown all unnoticed by the great public until the whirligig of time made these old-fashioned flowers the popular Tulips of the day, along with the newer race of *Darwins*. I have never made inquiries, for if it were otherwise it would spoil the innocent romance of some aged settler receiving a few bulbs which, when they bloomed, he would discover to be old friends of his childhood.

EARLY TULIPS

“Bright tulips, we do know,
You had your coming hither,
And fading time do's show,
That ye must quickly wither.

“Your sisterhoods may stay,
And smile here for your houre;
But dye ye must away,
Even as the meanest flower.

“Come, Virgins, then and see
Your frailties, and bemone ye,
For lost like these, 't will be
As time had never known ye.”
—R. HERRICK in “Hesperides.”

The early Dutch Tulips are charming bits of conventional decoration. They are fashioned to serve formal ends in the garden—to march strictly along garden paths, to outline gaily the quaint patterns of beds and borders, to mound with pure color the squares and circles and half-moons set in the fresh green sod, and to stand in seemly array in our garden pots and our window-boxes. They have a charm all their own, these early Tulips, and their quiet old-fashioned primness is a large part of it. For the rest there is a peculiar delicacy of texture, a fine purity of color, often a rare fragrance, and the endearing fact that they, like the bluebird, belong to the first ecstatic days of the real spring, and are instinct with its glow and freshness and zest. It must have been of these that Parkinson wrote, “Tulips do carry so stately and delightful a form, and do abide so long in their bravery that there is no Lady or Gentleman of any worth that is not caught with their delight.”

To plan beds of these crisp, shining things is the most refreshing of occupations. Think of the wonderful golden salmon Tulip, *De Wet*, rising from a sea of tremulous forget-me-nots! or the bright pink cups of *Flamingo* held above mats of grey-leaved, double arabis! And one might plant *Goldfinch* with purple velvet pansies, *Pink Beauty* with lavender *Viola cornuta*, or make a burnished show of some fine scarlet sort among brown wallflowers.

These beds are far more lovely than the sharply defined arrangements of Tulips in crude primary colors that have for so long been in favor in parks and other public places. Far better a bed of one variety to make a splendid glow of color

than these, so often, harsh mixtures. It is, however, quite possible to make fine beds of two or more varieties of early Tulips if great care is taken in the selection of the colors.

Many of the early Tulips are fine for forcing and may be brought on quite early in the winter, so that window-ledges may be lined, while winter still holds sway, with these gay forerunners of the spring, and quantities of fine multicolored flowers may be cut for house decoration or for gifts to friends or institutions and hospitals during the dreary months of winter, when flowers are at a premium.

In order that you may select the right varieties that are most satisfactory for forcing, we have marked such sorts in the following list with an asterisk (*).

SINGLE EARLY TULIPS

***BRILLIANT STAR.** Large; bright vermilion-scarlet; a most beautiful Tulip for forcing. \$1.35 for 10, \$11 per 100.

***CARDINAL RAMPOLLO.** Gay yellow of fair size, with orange-scarlet edge. Height 11 inches. 85 cts. for 10, \$6 per 100.

COULEUR CARDINAL. A warm red Tulip with a plum-colored bloom on the outer petals. Handsome, globular form and a strong stem that makes it particularly fine for bedding. Creates a rich effect planted among purple pansies. Its place is essentially in the open where it produces an effect both rich and satisfying. Height, 13 inches. \$1 for 10, \$7.75 per 100.

***DE WET.** Of a glorious orange color, with unusual golden salmon effect produced by scarlet veining on a deep orange ground. One of the most beautiful of early Tulips. Makes gorgeous beds interplanted with forget-me-nots. Has a fine fragrance and is adapted for forcing; splendid under artificial light. Height 17 inches. Very special offer, \$3 for 10, \$24 per 100.

ENCHANTRESS. A most unusual blending of salmon-orange and rare yellow tones. Brilliant, sturdy variety for outdoor planting. Height 10 inches. \$1.10 for 10, \$8.50 per 100.

***FLAMINGO.** A most beautiful Tulip, much the color of an American Beauty rose, with a white stripe through each delicately crinkled petal. Makes beautiful beds planted with white arabis, or is most effective with purple pansies in window-boxes or in the garden. Height 13 inches. 95 cts. for 10, \$7.25 per 100.

- ***FRED MOORE.** Very handsome bright orange, shaded with scarlet; splendid for forcing. 75 cts. for 10, \$5 per 100.
- ***GOLDEN QUEEN.** Large, pure yellow flower of unusually fine form. Makes a lovely bed with forget-me-nots and may be forced early. Height 14 inches. 75 cts. for 10, \$5 per 100.
- ***GOLDFINCH.** Another fine pure yellow Tulip that lasts long in perfection. Makes fine beds or may be successfully forced. Height 14 inches. 75 cts. for 10, \$5 per 100.
- ***IBIS.** A beautiful rose-colored Tulip, with white markings; resembles Flamingo, but of deeper color. A magnificent flower. Height 14 inches. \$1.45 for 10, \$12 per 100.
- ***KEIZERSKROON.** Large, scarlet flower, edged with bright yellow. A good forcer. Height 16 inches. 75 cts. for 10, \$5 per 100.
- ***LADY BOREEL.** The finest pure white Tulip, either for beds or forcing. Flower of beautiful form, long and slender. Height 16 inches. 85 cts. for 10, \$6 per 100.
- ***LA REINE MAXIMA.** A lightly flushed white Tulip of large size. Makes charming beds with lavender violas. Splendid for forcing. Height 13 inches. 75 cts. for 10, \$5 per 100.
- ***LE RÈVE.** Most effective blending of soft rose and buff; handsomely rounded flower with a strong stem. A beautiful variety for outdoor planting and magnificent for careful forcing. Flowers outdoors somewhat later than the other early Tulips. Its beautiful mauve-pink coloring is very attractive. Might be planted in front of or around White Swan Tulips. Height 13 inches. \$1.25 for 10, \$10 per 100.
- ***McKINLEY.** Large orange-red flower, shaded carmine on exterior of petals, on strong, tall stem; fine early forcer. 85 cts. for 10, \$6 per 100.
- ***MAX HAVELAAR.** A remarkable rich-toned Tulip which is especially beautiful under artificial light. Long flower of warm salmon-orange. Good for forcing and lovely massed among brown and orange wallflowers. Height 12 inches. \$1 for 10, \$7.50 per 100.
- ***MON TRÉSOR.** The best yellow bedding Tulip; color deep and clear; very handsome form; splendid for forcing. Height 13 inches. 85 cts. for 10, \$6 per 100.

MOONBEAM. A beautiful open flower in tender tones of yellow. A fine and scarce novelty. Height 14 inches. \$2 for 10, \$18 per 100.

*PELICAN. Large, long flower of pure white; excellent exhibition variety; grand for forcing, and would recommend it for this purpose only. \$1.15 for 10, \$9 per 100.

*PINK BEAUTY. Large and beautifully formed, vivid pink flower, carried on a strong, erect stem. Makes beds of remarkable brilliance and beauty when interplanted with forget-me-nots. Fine for late forcing, lasting a long time in bloom. Height 12 inches. 95 cts. for 10, \$7 per 100.

PRESIDENT TAFT. A lovely white flower with a gay cherry-colored edge that spreads over the segments as the flower ages. Is most effective with interplanting of silver-grey foliaged *Phlox subulata*. Height, 14 inches. \$1.45 for 10, \$12.50 per 100.

*PRINCE OF AUSTRIA. A warmly fragrant, bright orange-scarlet Tulip with a yellow base. Makes lovely beds with forget-me-nots. It is splendid in pots, fine outdoors, and highly attractive in its orange-red coloring, wiry, strong stems, and long-lasting flowers. Height, 15 inches. 75 cts. for 10, \$5 per 100.

*PRINCESS JULIANA. Very large, magnificent flower of a delightful pink; splendid forcer. \$1.50 for 10, \$12 per 100.

*PROSERPINE. An enormous, globular flower of carmine, shaded rose; delightfully scented. Plant among pink forget-me-nots. One of the earliest to force. Height, 14 inches. \$1.15 for 10, \$9 per 100.

*PROSPERITY. A lovely delicate rosy pink, exclusively offered for very early forcing. 75 cts. for 10, \$5 per 100.

*RISING SUN. A very large, golden yellow Tulip of fine form and sturdy habit. Exceptional exhibition Tulip and splendid for the border. Height, 16 inches. \$1 for 10, \$7.50 per 100.

*ROSE LUISANTE. Splendid, large, rose-pink of great substance. Lovely for edging borders of evergreens. May be used for late forcing. Height, 12 inches. \$1.20 for 10, \$9.50 per 100.

*SIR THOMAS LIPTON. Warm red, yellow base, cup-shape, of great substance. Valuable both for outdoor planting and for forcing. Height, 13 inches. 90 cts. for 10, \$7.25 per 100.

VAN DER NEER. Large, brilliant violet-purple flower of fine form; splendid for outdoors, interplanted with forget-me-nots. Height, 12 inches. \$1 for 10, \$7.50 per 100.

*VERMILION BRILLIANT. Large, dazzling, vermilion-scarlet flower of fine form; extra good for early forcing. \$1.10 for 10, \$8.50 per 100.

WHITE BEAUTY. One of the finest white bedding Tulips and delightful for window-boxes and garden pots interplanted with yellow pansies. Height, 12 inches. \$1.35 for 10, \$11 per 100.

*WHITE HAWK. Beautiful pure white of globular form, delicately crinkled petals. One of the finest white Tulips for beds or forcing. Lovely massed against Japanese quince bushes and inter-planted with *Viola cornuta Papilio*. Height, 13 inches. 80 cts. for 10, \$5.50 per 100.

WHITE SWAN. One of the most graceful early Tulips, delightful for cutting. Large, oval, pure white on long stem. Charming planted with yellow Tulips near wistaria, or with the lovely mauve-pink Tulip, *Le Rève*. Height, 15 inches. 75 cts. for 10, \$5 per 100.

DOUBLE EARLY TULIPS

For effective planting in beds or borders, located in exposed situations where the taller-growing kinds are unsuitable, and for growing in pots or pans, for substance and lasting qualities, these Tulips are invaluable. We offer below the most recommendable sorts only.

BLEU CÉLESTE. Large, violet-purple Tulip, flowering later than other double sorts. It is very fine for indoor decoration. Height, 16 inches. \$1 for 10, \$7.50 per 100.

*BOULE DE NEIGE. Large, pure white flower, resembling a white Peony. Valuable for bedding and forcing. Height, 10 inches. 75 cts. for 10, \$5 per 100.

*COURONNE D'OR. Full, deep yellow, flushed orange. A good bedding variety and splendid for forcing and cutting. Height, 11 inches. 90 cts. for 10, \$6.50 per 100.

*ÉLECTRA. Magnificent, enormous flower; beautiful rose, feathered violet; a handsome novelty, unexcelled for exhibition purposes. \$2.50 for 10, \$21 per 100.

*EL TORÉADOR. Striking orange-scarlet Tulip, edged with yellow. Makes a splendid bed and forces well. Height, 12 inches. \$1.10 for 10, \$8.50 per 100.

- ***GOLDEN KING.** A beautiful full variety in two tones of yellow. Lovely for cutting and for massing in the borders against early white-flowering shrubs. Height, 13 inches. \$1.15 for 10, \$9 per 100.
- ***LA GRANDESSE.** Large; soft rose, shaded white; one of the best for forcing. 85 cts. for 10, \$6 per 100.
- ***MURILLO.** Exquisite soft pink, with white markings. Makes beautiful beds and is the most easily forced. Height, 11 inches. 75 cts. for 10, \$5 per 100.
- ***MR. VAN DER HOEF.** This is, without doubt, the finest golden yellow Double Tulip for forcing. It is an exquisite flower, very full and large, and is excellent for forcing. This variety outlasted any of the others in our exhibits and should be grown as a pot-plant *par excellence* by all. \$1.10 for 10, \$8.50 per 100.
- ***PEACH BLOSSOM.** Large, very double, bright pink flowers, flushed white. This magnificent variety created a sensation when first exhibited by us at the International Flower Show and well deserves the most careful attention. It is most effective for indoor decoration and lasts a long time cut or in pots. Height, 12 inches. Such gorgeous varieties should be purchased at any price by those flower enthusiasts who can well afford to do so. Just to encourage a larger distribution of such beautiful things, we shall offer several of them, throughout this book at special prices. \$1.75 for 10, \$15 per 100.
- ***TEA ROSE.** The same lovely blending of pale yellow and soft rose as seen in many tea roses. Fine for forcing and splendid for planting out. Height, 11 inches. 75 cts. for 10, \$5 per 100.
- ***VUURBAAK.** Splendid scarlet Tulip, opening to brilliant orange-scarlet. Fine forcer and good for beds. Height, 11 inches. 90 cts. for 10, \$6.50 per 100.

Single Early Tulips should be planted about 5 inches deep and from 5 to 6 inches apart. To obtain the best results, both when forcing and when planting in your garden, the very finest select quality, heaviest top-size mother bulbs should be used.

It is this very scarce quality of bulbs that we furnish exclusively and upon such quality our prices have been based.

Our Tulips have been repeatedly awarded Gold Medals at the most important flower shows.



MAY FLOWERING TULIPS AMONGST THE ROSES

TULIP DAYS

The inundation of Spring
Submerges every soul.

—EMILY DICKENSON

It would seem that no season of the garden year could be so entirely entrancing as that when the long-stemmed Breeder, Cottage, and Darwin Tulips are at the height of their beauty. Then is such gracious color, such grace of form, such gleaming freshness as never at any other time. Hundreds of beautiful spring blossoms offer themselves as foils for the loveliness of the Tulips,—May irises, iberis, dicentras, camassias, *Nepeta Mussinii*, horned pansies, flax, primroses, wallflowers, to name but a few; and overhead are the waving, fragrant plumes of lilacs, the rose-wrapped branches of Japanese crab-apples, the pinky mauve bouquets of the Judas trees, and a wealth of flowering shrubs. It is the festival moment of the young year,

“And earth unto her leaflet tips
Tingles with the spring.”

MAY TULIPS

There is a considerable difference in the general appearance and habit of the several groups of Tulips that make up the May-flowering section. Those we call Cottage Tulips, which have lived in gardens for so long a time that their exact origin is not known, in the main exhibit the fine form and graceful characteristics of *T. gesneriana*. The flowers are long and slender, oval or vase-shaped, the segments narrow and often pointed and reflexed; the stem long, slender, and willowy. Their effect is as distinctly informal as that of the early Tulips is prim and conventional. The color range of these Tulips is wide, running from gleaming, pure white through blush and all the pink tones to rose-scarlet and vermilion, and on to the richer shades of red; and from cream through an enchanting scale of yellows to deep orange and tawny hues. Many have clearly defined stripes or margins of white or a contrasting color. Their pure, clean color is a conspicuous quality.

The Darwins, on the other hand, are distinguished for esthetic blendings of several nearly related color-tones—rose, lilac, and heliotrope; lavender, grey, and violet; scarlet, salmon, and white, to give a few examples. The yellow scale is entirely absent in this class, but in its place we have a wide choice of lavender and purple tones of inestimable value in the spring

color-scheming, and beautiful for house decoration. The stems of the Darwins are taller and stronger than those of the Cottage varieties, and the flowers cup-shaped or globular and of greater substance.

To describe the Breeders were to attempt the impossible. One must see to have any appreciation of these remarkable creations. Rare color-tones, strange and beautiful color associations, bizarre effects, not to be found elsewhere in the floral kingdom, are the common possession of this most interesting class of Tulips. We have ruddy apricot overlaid with bronze, tender dove-color shot with gold, combinations of buff and terra-cotta, mauve and tawny orange, plum-color and brown, crushed strawberry and chocolate, old-rose and orange, and innumerable others, all merged and blended with such matchless delicacy as to make each flower a masterpiece of which Nature, even with all her wondrous works, must be proud. Like the Darwins, the Breeders have strong, tall stems and thick-fleshed flowers of cup or globular form.

A border backed by lilacs, laburnums, and other May-flowering trees and shrubs offers a fine setting for these May Tulips. In the border should grow many clumps of irises—Florentina, Kochii, the Germanicas in rich purple tones and the paler Intermediates—bleeding-hearts, columbines, and thalictrums for the sake of their beautiful foliage; broad growths of lyme grass and lavender cotton with their fine grey leafage. Among these the Tulips should be set in drifts of fifty or a hundred of a variety; the tawny orange varieties passing through yellow and cream to the cool grey-lavender sorts, and on to rosy mauve, heliotrope, and purple. Against these may begin the paler pink and white sorts, deepening to salmon and rose-scarlet, to blood-red, claret, and blackish maroon. Borders of Tulips in the lavender and heliotrope shades, interspersed with plants having grey foliage, are very lovely, as are a selection of pink varieties grown against the purple-leaved shrubs and trees.

If short, twiggy branches are set among the long-stemmed Tulips just before the buds unfold, the heavy-headed flowers will not be overthrown and spoiled by beating rains and winds. The branches should be arranged so that they are as inconspicuous as possible.

As seeding weakens the bulbs, it is important that the pods be removed from choice varieties as soon as the flower fades.

BREEDER, COTTAGE, DARWIN, AND OTHER LATE-FLOWERING TULIPS

OUR GREAT SPECIALTY

For many years we have made a special study of these exquisitely beautiful flowers, by testing and comparing in the nurseries of the greatest specialists abroad, and by growing all varieties worth planting, for our information and guidance, in our Experimental Gardens.

To be most successful with these wonderful Tulips, it is essential to procure the very finest quality, heaviest mother bulbs. We furnish these selected bulbs exclusively, as produced by a Holland firm of growers whose family has been growing bulbs for over two hundred and twenty-five years, generation after generation. They have made a specialty of Tulips for a great many years, own enormous bulb farms, are in a position to select the best soil for the cultivation of these Tulips and financially able to control the stocks of the finer and rarer varieties.

After prolonged negotiations, we have succeeded in contracting with this firm for the supply of the finest bulbs from their stock of the choice varieties, in order that we may make them more widely known in this country.

Our Tulips have been repeatedly awarded the Gold Medal of the Horticultural Society of New York.

For your convenience we offer the various types in alphabetical order.

BIZARRE AND BYBLOEMEN TULIPS

These flower about the same time as the Darwins. They are not quite so tall nor so large and show off to best advantage planted by themselves or with the Rembrandt Tulips. We offer but the finer varieties for your consideration.

BIZARRES

BLACK BOY. Fine, medium-sized flower, with dark brown penciling on golden yellow ground. Height 21 inches. 95 cts. for 10, \$7 per 100.

BONAPARTE. Light bronze, flamed yellow and mahogany. Height 21 inches. 95 cts. for 10, \$7 per 100.

JUPITER. Large, well-formed golden yellow flowers, flushed and flecked a deep mahogany; very beautiful. Height 23 inches. \$2 for 10, \$18 per 100.

LE DUEL. Very beautiful, large flower of a clear yellow, feathered dark coffee-brown. Height 20 inches. \$1 for 10, \$7.50 per 100.

ZEBRA. Very showy, large flower; clear yellow ground with almost black markings. Height 23 inches. \$2 for 10, \$18 per 100.

ROSE BYBLOEMEN

ADMIRAAL VAN KINSBERGEN. A large, beautiful flower on strong stem; pure white pencilings on a bright crimson field. Height 23 inches. \$1.75 for 10, \$15 per 100.

CERISE PRIMO. Very fine flower; pure white with delicate pink markings; very distinct. Height 23 inches. \$1 for 10, \$7.50 per 100.

HEBE. Attractively marked pure white with flames of pale rose. Height 21 inches. \$1 for 10, \$7.50 per 100.

PERLE SCHAAP. One of the most beautiful; clear rose, flamed white. Height 23 inches. \$2 for 10, \$18 per 100.

ROSE RIANTE. Exquisitely shaped, good-sized flower; white ground, feathered rose. Height 21 inches. \$1.15 for 10, \$9 per 100.

VIOLET BYBLOEMEN

AMPHION. Striking Tulip; the color is violet, with brown and creamy white pencilings. Height 21 inches. \$1.15 for 10, \$9 per 100.

KING ARTHUR. Most attractive flower, showing a yellow ground with violet and lilac markings. Height 21 inches. \$2 for 10, \$18 per 100.

LA VICTORIEUSE. Magnificent, large flower on stout stem; the field is of a creamy white, flamed and feathered violet-purple. Height 24 inches. \$2 for 10, \$18 per 100.

PRINS HENDRIK. Extremely beautiful, though small, flower; creamy white ground, with violet stripe through the center of each petal. Height 24 inches. \$6.50 for 10.

TABLEAU DE RUBENS. A beautifully colored, good-sized flower, showing a field of clear violet with a deep brown edge. Height 23 inches. \$1.50 for 10, \$12 per 100.

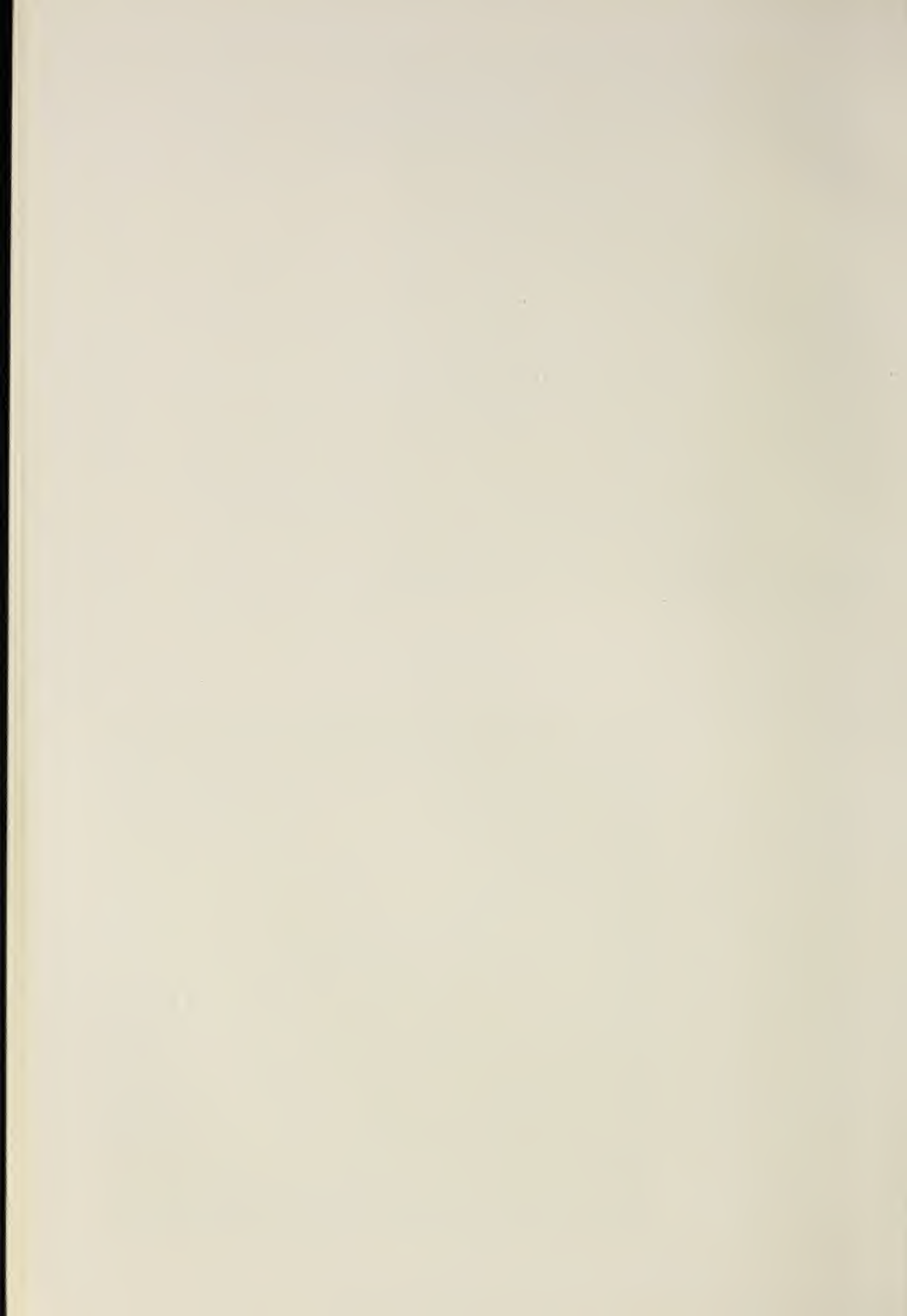
BIZARRES AND BYBLOEMEN TULIPS in ten fine named varieties, selected by us. \$8.50 per 100, \$80 per 1,000; in beautiful varieties mixed, \$6 per 100, \$55 per 1,000. Gorgeous borders and beds may be created with these mixtures.



BREEDER TULIP
BACCHUS
See page 52

TULIPA GREIGH
AUREA
See page 51





BOTANICAL TULIPS AND SPECIES

The general characteristics of the various species, all of which are natives of Asia Minor and Central Asia, are bright colors and recurved petals. These Tulips do not always feel happy in their new surroundings and after two, or possibly three, seasons, they will disappear. With care and the provision of suitable quarters they will flower quite satisfactorily. They feel best contented in rock-gardens and borders. The list we offer contains the varieties that have proven most satisfactory.

CLUSIANA. Charming, sprightly flower; glistening white, with a carmine flame on each petal; erect stem 9 to 12 inches tall and glaucous leaves. Likes a warm, sheltered corner in deep vegetable soil. Delightful for forcing. \$1.25 for 10, \$8 per 100, \$75 per 1,000.

GREIGII AUREA. Brilliant orange scarlet, with deep yellow goblet-shaped flower, pointed, slightly reflexing petals, and broad, thick leaves flushed with purple. Flowers in late April and May and is one of the most gorgeous of Tulips. Lovely with a groundwork of chionodoxa. Hot, dry situation. While a wonderful tulip when it flowers well, the bulbs will sometimes produce no bloom. \$4.50 for 10, \$42 per 100.

KAUFMANNIANA. One of the most beautiful of all Tulips. Large, creamy flower, brilliantly marked with carmine, yellow center. Flower opens flat and is carried on a stem usually less than a foot in height. Blooms early in April out-of-doors and is delightful for forcing. The bulbs should be planted at least 6 inches deep. Plant large masses of these under trees or evergreens. \$1 for 10, \$8.50 per 100.

PERSICA. A charming dwarf for narrow borders or the rock-garden. Fragrant yellow flowers, bronze on the exterior, are borne in twos or threes on a slender, curving stem. \$1 for 10, \$7.50 per 100.

PRÆSTANS. A gay scarlet beauty often bearing two or more flowers to a stem. It appears above ground so early that it is best to plant it among dwarf shrubs that will protect it from frosts. Flowers large and borne on 8-inch stems. \$2 for 10, \$18 per 100.

SAXATILIS. Earliest Tulip to bloom. Flowers mauve, shot with rose, carried on 8-inch stems. Frequently two-flowered. Easily forced. \$1.75 for 10, \$15 per 100.

SPRENGERI. The latest of all Tulips to flower. Makes a handsome group in the rock-garden or border. The flowers are large and bright orange-scarlet. Grows from 8 to 10 inches tall and when established self-sows freely. \$3.15 for 10, \$29 per 100.

SYLVESTRIS. Deliciously fragrant, butter-yellow blossoms, often two to a stem, with bronze exteriors, carried on slender, arching stem. A charming species that increases rapidly when once established. Interplant with grape hyacinths. 95 cts. for 10, \$7 per 100.

VIRIDIFLORA PRÆCOX. Pale green, edged with creamy yellow; large, fine open flower with pointed petals. Very nice to cut with yellow or pink Tulips. Height, 20 inches. \$1.75 for 10, \$15 per 100.

VITELLINA. A beautifully shaped flower of a creamy yellow tint opens with the earliest of the May Tulips. Dwarf, sturdy habit. Fragrance like that of oranges. 75 cts. for 10, \$5 per 100.

BREEDER TULIPS

These aristocrats of the Tulip family, with their immense blooms, borne on strong, stiff stems, frequently exceeding a height of 40 inches, have become, of recent years, the most sought after of all the Tulips.

The Rembrandtesque tone in their deep coloring and the artistic blending of shades, as well as the great possibilities offered in combinations of color, have made them especially valuable to the critical garden enthusiast. The following list contains all most beautiful, most fascinating sorts—I would have all in my garden; the rarest in small groupings, the better-known sorts in extensive plantings.

Varieties that may be successfully forced are marked with an asterisk (*).

ABD-EL-KADER. Large flower; dark bronze, shaded lighter at edge of petals, inside bronzy brown, olive-green base. Height, 30 inches. \$2.50 for 10, \$23 per 100.

APRICOT. Dull, bronzy buff, shaded ruddy apricot, yellow-chrome base; inside chestnut-red. Fine flower; good substance. Height, 25 inches. \$1.15 for 10, \$9 per 100.

BACCHUS. Large, long flower on a graceful stem; dark violet-blue, with darker bloom on outside of petals, inside violet-blue, white base. The bluest of all Tulips; a magnificent specimen. Height, 33 inches. \$2.25 per 10, \$20 per 100.



BREEDER TULIP
VELVET KING
See page 57



BREEDER TULIP
LOUIS XIV
See page 55

***BRONZE QUEEN.** Large, strong flower, stout stem; fine form; purplish fawn, interior buff-yellow, bright lemon chrome base; filaments olive above, yellow below. May be forced. Height, 28 inches. 80 cts. for 10, \$6 per 100.

CARDINAL MANNING. Very large, egg-shaped flower; bishop's purple, flushed rosy bronze, changing to an almost pure orange at the extreme edges of the petals; the base is tinged yellow; filaments blue at apex. Height, 34 inches. 80 cts. for 10, \$5.50 per 100.

CHERBOURG. Exceedingly beautiful, large, egg-shaped flower; golden feathered and streaked purple-brown; the base is slightly stained. We have only a few bulbs of this extraordinary variety to offer at \$6 each. Those who would like to see all the strangely wonderful varieties should include a bulb or two of Cherbourg in their order.

COPERNICUS. Dark coppery bronze, flushed old-rose, interior warm brown with yellow base. A splendid, large flower. Height, 27 inches. \$1.75 for 10, \$15 per 100.

CORIDION. Clear yellow, overlaid with stripe of lilac through center of petals. Height, 28 inches. \$1.45 for 10, \$12 per 100.

***DOM PEDRO.** Morocco-red on a cadmium-yellow ground, interior dark reddish mahogany, yellowish base streaked olive; filaments olive. A beautiful, large, fragrant flower. Combines wonderfully with lighter varieties. Height, 28 inches. \$1.45 for 10, \$12 per 100.

DRYAD. Lilac, old rose, shaded bronze-yellow. Very beautiful. Scarce. \$3 for 10, \$28 per 100.

DUKE OF EDINBURGH. Enormous, well-shaped flower on stiff stem; one of the giants of this family; beautiful deep violet with large white base. Height, 33 inches. \$4 for 10, \$38 per 100.

GARIBALDI. Long flower of fine form on tall stem; pale lilac-bronze with pale yellow border; a pale form of Bronze Queen, with a bluish tinge. Height, 32 inches. \$2.75 for 10, \$25 per 100.

GODET PARFAIT. Very large flower of striking color—deep purple-violet with white base and blue halo. Height, 29 inches. \$1.50 for 10, \$12 per 100.

*GOLDEN BRONZE. Very attractive light brownish yellow, slightly flushed heliotrope, interior deep mahogany-brown, base deep chrome; filaments yellow. Height, 24 inches. \$1.15 for 10, \$9 per 100.

GOLDFINCH. Well-formed, large, pointed flower on tall, strong stem. Golden chestnut, interior mahogany-brown, shaded golden brown, yellow base streaked olive. Height, 30 inches. \$2.75 for 10, \$25 per 100.

HELOISE. Enormous flower of especially fine form; purplish red, with yellow center edged olive. Height, 25 inches. \$3.25 for 10, \$30 per 100.

INDIAN CHIEF. A most artistic flower carried on a very tall, stiff stem; reddish purple flushed coppery brown. Height, 32 inches. \$9 for 10, \$87.50 per 100.

JAMES WATT. Magnificent, large flower of fine, round form; slaty violet, with few yellow streaks. Interior dark mahogany, slightly shaded brown, fine green base starred white. Height, 25 inches. \$8 for 10, \$77.50 per 100.

*JAUNE D'ŒUF. Well-formed, large flower on tall stem; bright, deep lemon-chrome, with a slight flush of pale purple on the outer segments, large, pale green base; filaments greenish. Height, 28 inches. 85 cts for 10, \$6 per 100.

JUPITER. Glossy reddish violet, shading to rosy violet at edges; large white base. Enormous, beautiful flower. Height, 30 inches. \$5 for 10, \$47.50 per 100.

KLOPSTOCK. A very handsome Tulip; bishop's purple, margined with purplish lilac, inside rosy lilac, edged rosy white, large, pale yellow base, with blue star. Height, 24 inches. \$2.85 for 10, \$26 per 100.

LA TOURQUOISE. Large flower of exquisite form on a strong, straight stem; of great substance, keeping for a long time. A fine light brick-red, with broad edge of deep yellow. \$4 for 10, \$37.50 per 100.

LE MIROIR. Brilliant violet-blue, large white base margined blue; most attractive flower. Beautiful novelty. Height, 25 inches. \$4.85 for 10, \$46 per 100.

LE MOGOL. Pale, silvery lilac, passing into white, interior deep mauve-lilac with fine white base and blue halo. Not a large flower but exquisitely colored. Height, 29 inches. \$1.05 for 10, \$8 per 100.

***LOUIS XIV.** Very large, goblet-shaped, magnificent flower. Dark, dull, bluish violet, with tawny margin, circular dull blue base starred yellow. A wonderful Tulip of striking beauty. Just think of a large border of these giants springing out of masses of forget-me-nots or yellow pansies. We shall make a special price for these just to encourage the planting of hundreds for effect. We have exhibited flowers of this variety with stems which measured 42 inches from the top of the bulb to the top of the flower, grown from the special select stock we supply. Height 32 inches. \$2.25 for 10, \$20 per 100.

LUCIFER. Very fine large flower on a tall stem; dark orange with rosy bloom, interior scarlet-orange with more or less circular yellow base, ringed with pale olive; filaments olive. Height 30 inches. \$1.75 for 10, \$15 per 100.

MADAME LETHIERRY. Well-formed, fine flower of a deep rose-pink, flushed with salmon at the outside margin and on the whole of the inside of each segment; the base is yellowish near the ovary, passing to a greenish black ring. Height 25 inches. 95 cts. for 10, \$7 per 100.

MADRAS. Very beautiful dark bronzy yellow, shaded old-gold, heliotrope stripe on outer petals, yellow base starred green. Height 28 inches, 95 cts. for 10, \$7 per 100.

MARÉCHAL VICTOR. A wonderful new variety. Large flower of a clear blue with brown border and yellow base. Should be in every collection. Height 30 inches. \$5 for 10, \$47.50 per 100.

MARIE LOUISE. Very handsome flower of old-rose, flushed orange-salmon, edged bronzy orange; olive base. Height 24 inches. 90 cts. for 10, \$6.50 per 100.

NEWTON. The tallest of all late-flowering varieties. Dark purple with plum bloom on outer petals; very fine amongst arabis or forget-me-nots. Height 36 inches. \$8.25 for 10, \$80 per 100.

OLD TIMES. Extremely handsome novelty. Fine form and substance; light yellow, flamed outside with dull purple, interior lightly flushed with purple; filaments streaked with black. Splendid for borders. Height 22 inches. \$2.65 for 10, \$24 per 100.

PANORAMA. Large, goblet-shaped flower; rich chestnut-red; base and filaments chestnut-brown. Height 26 inches. \$1.35 for 10, \$11 per 100.

PINK PEARL. A wonderfully effective novelty offered by us for the first time in very limited quantity. Beautiful flower, of fine form; lilac-pink with rosy bloom, interior rose; shaded creamy white. \$1.50 each, \$14 for 10.

PLUTARCHUS. Very handsome Tulip of good form and substance; flamed dull purple, interior lemon-yellow, with greenish base and filaments. Height 25 inches. \$1.45 for 10, \$12 per 100.

PRINCE ALBERT. Glowing mahogany-brown, shaded dull bronze, green base. Splendid variety for the border. Height 30 inches. \$2 for 10, \$18 per 100.

PRINCE OF ORANGE. Large, very showy, well-formed flower of great substance; terra-cotta, edged orange-yellow, base indefinite yellow, streaked with olive; filaments olive. Height 26 inches. 90 cts. for 10, \$6.50 per 100.

PRINCE OF WALES. Large, open flower; dark bronze, shaded red, interior coppery brown, with black base, starred yellow. Height 28 inches. \$2.75 for 10, \$25 per 100.

ROI SOLEIL. A magnificent Tulip of striking beauty. A wonderful combination of dark violet-blue and shades of bronze. Fine, large, well-formed flower. Plant with yellow pansies or light-colored wallflowers. Many of these gorgeous varieties are still extremely scarce, and they should not yet be listed by us as stock is so limited, but we are very anxious to have you try some of them, knowing that they will give you great pleasure and be a source of much pride. We shall make the price of these, \$4.45 for 10, \$42 per 100.

SALOMON. Very long, well-formed flower, carried on a graceful tall stem. The color of this fine Tulip is a beautiful lilac, shaded silvery white, with a large white base. Height 30 inches. \$2.05 for 10, \$18 per 100.

*SANS PAREIL. Medium-sized flower on strong stem; glowing purplish violet, yellow and white base; brilliant flower. Height 33 inches. \$4.75 for 10, \$45 per 100.

SAPHO. Large flower of a most graceful habit and exquisite color—dark violet shaded purple, white base. Height 25 inches. \$6.45 for 10, \$62 per 100.



BREEDER TULIP
"LUCIFER"
See page 55



DARWIN TULIP
"LA TULIPE NOIRE"
See page 68

***ST. JAMES.** Large flower on tall stem; globular form; chestnut-brown, flushed bronze, passing into gold, interior ruddy mahogany, edged golden brown, with yellow and green base. Strikingly beautiful Tulip that we should like you to try among forget-me-nots or white pansies or arabis. Will make a superb display. Height 30 inches. Very scarce. \$3 for 10, \$28 per 100.

SUPERBA. Medium-sized flower of perfect form; shining velvety black, tinted golden brown, yellow base, starred green. Flower and stem are covered with an ashy bloom, making this variety exceedingly attractive. Height 30 inches. \$1.05 for 10, \$8 per 100.

TURENNE. Fine, large, egg-shaped flower; nigrosin-violet, intensifying with age, heavily flushed bronze margin. Base baryta-yellow, irregular blue margin. Height 25 inches. \$1.05 for 10, \$8 per 100.

***VELVET KING.** Immense flower on extra-strong stem. Its robust growth makes it one of the showiest and most conspicuous; fine cup-shaped form; bright, dark, royal purple, small, white, sharply defined base. A giant. Magnificent planted in masses of yellow pansies, or dotted through a large planting of the fine pale heliotrope Darwin Tulip, Dream. Height 31 inches. \$1.75 for 10, \$15 per 100.

VIOLET QUEEN. Long flower of splendid form and substance; segments somewhat pointed. Rich reddish purple, white base, tinged yellow; filaments blue above the middle. Height 25 inches. \$1.05 for 10, \$8 per 100.

***VULCAN.** Beautifully shaped flower of a color unlike any other—reddish apricot, with broad margin of bright buff-yellow, interior dark apricot, edged yellow, with dark green base starred yellow. Extremely pretty when forced. A great acquisition. Height 24 inches. \$3.75 for 10, \$35 per 100.

WILBERFORCE. Extremely pretty flower of a buff-orange, flushed cherry-rose, edged yellow; medium-sized flower on tall stem. Height 27 inches. \$2 for 10, \$17.50 per 100.

WILLIAM THE SILENT. Enormous, well-formed flower, on tall, strong stem; dark purple-blue, with darker bloom on outer petals, white base. One more scarce variety that we should like to see in the garden of every lover of Tulips. An exceptionally fine novelty. Height 26 inches. We shall make a special price of \$1.25 each, \$10 for 10.

***YELLOW PERFECTION.** A large flower of remarkable beauty. Light bronze-yellow, edged golden yellow, interior bronzy brown, yellow base starred green. Height 26 inches. 90 cts. for 10, \$6.50 per 100.

A Superb collection of twenty varieties, packed and labeled separately. Ten bulbs of each, total 200 bulbs, \$20.

We gladly give you the benefit of our long experience if you find it difficult to make a selection. Advise us of the amount you wish to spend, the quantity of bulbs required or the size of bed or border in which you wish to plant; we shall make up a collection for you of which the shades will harmonize, and which will give you complete satisfaction together with great value.

He who becomes impassioned of a flower, a blade of grass, a butterfly's wing, a nest, a shell, wraps his passion around a small thing that always contains a great truth.—**MÆTERLINCK.**



COTTAGE TULIP—*GESNERIANA IXIOIDES*
See page 60



COTTAGE TULIPS

All the Tulips offered in our list are very beautiful, presenting a great variety in form and coloring. They are prized for cutting on account of their long stems and graceful habit, and are especially adapted for permanent hardy flower-borders, where they should be freely planted in large clumps and in masses.

Plant 6 inches deep and not less than 5 inches apart. To insure proper drainage, sand, to the depth of an inch, should be put underneath the bulb.

For successful forcing we recommend deep pots or pans, such as are commonly called azalea pans. The bulbs must be set farther apart than is the case with the early Tulips, and they must be given plenty of light when brought into the conservatory. They should be grown slowly under moderate temperature.

Some of the varieties may be had in bloom in pots with gentle forcing; the best of these we have indicated with an asterisk (*).

AVIS KENNICOTT. Very large, chrome-yellow flower, with striking black base and anthers. Effective grown near *Iris Kochii*. Height, 23 inches. 80 cts. for 10, \$7.75 per 100.

BEAUTY OF BATH. Soft, rosy lilac, bordered canary-yellow. Most effective, very beautiful tulip. \$4 for 10, \$37.50. per 100.

CORONATION SCARLET. Bright scarlet flower with reflexing petals, often giving three flowers to the bulb. Fine for cutting. Height, 21 inches. 80 cts. for 10, \$5.50 per 100.

DAYBREAK. Fine long flower of a pale mauve; with broad, creamy margin and soft green base. Height, 19 inches. 95 cts. for 10, \$7 per 100.

DORIS. Esthetic combination of rosy lilac and silver-grey; beautiful long flower, good for cutting or for border planting. Height, 24 inches. 75 cts. for 10, \$5 per 100.

***ELEGANS ALBA.** A delightful creamy white Tulip with narrow carmine margin that does not spread as the flower ages. A bed of this is very pretty edged with the old-fashioned green-and-white striped funkia. Height, 22 inches. \$1.05 for 10, \$8 per 100.

ELEGANS LUTEA MAXIMA (syn., Golden Spire). A large, pale yellow flower with pointed, reflexing petals, flushed scarlet. Handsome border Tulip. Height, 15 inches. \$1 for 10, \$7.50 per 100.

ELEGANS LUTEA PALLIDA (syn., Leghorn Bonnet). Pale yellow with slightly reflexing petals. Fine for cutting and lovely grown among the young bronze foliage of astilbe. Height, 16 inches. 75 cts. for 10, \$5 per 100.

***FAIRY QUEEN**. Effective association of lilac and amber; beautiful silvery heliotrope shade when forced. Large flower, one of the most lovely of Cottage Tulips. Height, 20 inches. 75 cts. for 10, \$5 per 100.

FLAVA. A canary-yellow Tulip of satiny texture. Leaves silvery green. Lovely planted against Persian lilacs. The blossoms last a full fortnight after other border varieties are past. Height, 25 inches. \$1.65 for 10, \$14 per 100.

FULGENS. Flowers rich crimson, borne on tall, slender stems. A most graceful variety for cutting or growing in the borders among wallflowers. May be forced slowly. Height 25 inches. 70 cts. for 10, \$5 per 100.

FULGENS LUTEA MAXIMA (syn., Mrs. Moon). One of the best tall yellow Tulips. Beautiful vase-shaped flowers, carried on sturdy stems. Splendid among the rich purple irises of the Germanica section. Height, 25 inches. \$1 for 10, \$7.50 per 100.

FULGENS LUTEA PALLIDA. Pale yellow, large, reflexing flower. Plant behind mounds of purple aubrietia. Height, 18 inches. \$1 for 10, \$7.50 per 100.

GESNERIANA AURANTIACA (syn., Globe of Fire). Graceful, long, narrow orange-scarlet flower. Beautiful against blue spruces. Height, 22 inches. 75 cts. for 10, \$5 per 100.

GESNERIANA IXIODES. Charming oval flower of soft canary-yellow, with a black base. Lovely for borders among sky-blue flax. Height 24 inches. \$1 for 10, \$7.50 per 100.

GESNERIANA LUTEA. Warm yellow flower of fine form. Fine for herbaceous borders among clumps of creamy Intermediate iris. Height, 24 inches. 75 cts. for 10, \$5 per 100.

GESNERIANA LUTEA PALLIDA. Pale yellow, sweet-scented, fine form. Height, 24 inches. 75 cts. for 10, \$5 per 100.

GESNERIANA SPATHULATA. The finest of the Gesneriana group. Rich ruby crimson flower with a blue base, and long, slender segments. Makes magnificent beds or is splendid massed against evergreens. Height, 24 inches. 75 cts. for 10, \$5 per 100.

GLARE OF THE GARDEN. One of the finest red Tulips; long, pointed flower; crimson-red, with black base. Height, 23 inches. 85 cts. for 10, \$6 per 100.



COTTAGE TULIP
JOHN RUSKIN
See page 61

DARWIN TULIP
LA TRISTESSE
See page 68



GOLD DUST. Large, chrome-yellow flower, with dull orange-colored edge. Height, 24 inches. 85 cts. for 10, \$7 per 100.

GRENADIER. A grand, large Tulip of fine form and good substance borne on strong stem; dazzlingly brilliant orange-red. yellow base. Height, 21 inches. \$2.05 for 10, \$18 per 100.

HAMMER HALES. Very long flower; remarkable blending of bronze, old-rose, apricot, and fawn-color. Beautiful flower of marked distinction. Very scarce. Height, 24 inches. \$1.25 for 10, \$10 per 100.

ILLUMINATOR. Warm-toned flower of deep yellow, flushed with scarlet. Lovely planted among sky-blue flax. Height, 24 inches. \$2.25 for 10, \$20 per 100.

INGLESCOMBE PINK (syn., Salmon Queen). A beautiful salmon-pink Tulip that is most effective grown among clumps of Florentine iris, with a foreground of *Nepeta Mussinii*. Height, 24 inches. 75 cts. for 10, \$5 per 100.

INGLESCOMBE SCARLET. A glowing vermilion-red Tulip that is very handsome grown in the shrubbery border. Height, 20 inches. 75 cts. for 10, \$5 per 100.

INGLESCOMBE YELLOW. Perfectly formed, beautiful flower, carried on a sturdy stem. Very good canary-yellow; occasionally shows a crimson edge. Plant with forget-me-nots. Height, 21 inches. 75 cts. for 10, \$5 per 100.

***INNOCENCE.** A very beautiful, pure white Tulip with a yellow base, borne on a tall, strong stem. A group of these Tulips shows finely near Paul's scarlet thorn. Forces well if brought on late and slowly. Height, 20 inches. \$2.25 for 10, \$21 per 100.

INNOVATION. Gay pink and white flower, particularly pretty in the bud. Charming among purple-horned pansies. Height, 20 inches. 95 cts. for 10, \$7 per 100.

JOHN RUSKIN. Long, oval flower of apricot-orange, shaded with rose and lilac, with a soft yellow margin. A beautiful variety to grow against any grey-leaved shrub or plant. One of the most striking of the entire Tulip family; splendid for massed borders. Height, 16 inches. 95 cts. for 10, \$7 per 100.

KINGFISHER. Quaint combination of creamy yellow and brownish violet. Large flower, carried on a strong stem. Height, 18 inches. \$2.85 for 10, \$26 per 100.

LA CANDEUR (syn., Parisian White). Opalescent flower of lovely form. Charming for bedding among forget-me-nots. Height, 16 inches. 75 cts. for 10, \$5 per 100.

LA MERVEILLE. Rich blend of terra-cotta and orange-red a lovely, long, fragrant flower. Shows splendidly against evergreens and is beautiful massed behind *Iris albicans*. A large mass-planting of this variety made by us in the New York Botanical Gardens was considered one of the most effective displays, long to be remembered. Height, 30 inches. 75 cts. for 10, \$5 per 100.

MISS ELLEN WILLMOTT. A beautiful and distinct light yellow Tulip with reflexing petals; deliciously fragrant. Is effective when grown with the Darwin Euterpe against a background of grey lyme grass. Height, 18 inches. 85 cts. for 10, \$6 per 100.

***MOONLIGHT.** The best pale yellow Tulip; a lovely color and the flower is very long and of fine oval shape. Beautiful in the borders among early irises, bleeding-heart and *Nepeta Mussinii*. Height, 25 inches. 95 cts. for 10, \$7 per 100.

MRS. KERRELL. Soft rose-colored Tulip with amber lights. Extremely beautiful; lasts a long time. Fine open flower with pointed segments. A remarkably distinct variety. Height 18 inches. \$2.75 for 10, \$25 per 100.

ORANGE KING. A lovely merging of rose with orange and orange with scarlet characterizes this variety, the whole set off by the touch of black in the anthers. Sweet-scented and of globular form. Height 23 inches. 75 cts. for 10, \$5 per 100.

PICOTEE (syn., Maiden's Blush). Lovely pointed white flower with carmine edges that suffuse the flower as it ages. Makes gay beds with forget-me-nots. Height 20 inches. 75 cts. for 10, \$5 per 100.

PICOTEE YELLOW. A yellow counterpart of the above. Of fine form and graceful habit. Height 20 inches. \$1 for 10, \$7.50 per 100.

PLUTO. A rose-colored Tulip with violet lights. A good new Tulip of the Picotee type. Height 23 inches. 75 cts. for 10, \$5 per 100.

PRIDE OF INGLEScombe. A long, finely formed, beautiful creamy Tulip of satin-like texture, turning carmine with age. A new variety of the type of Picotee. Height 23 inches. \$1.10 for 10, \$8.50 per 100.

QUAINTNESS. Golden brown, overlaid with rose, the interior mahogany-brown, with yellow base. A remarkable color scheme to be found among the Cottage Tulips. A fine pointed flower. Height 20 inches. \$3.45 for 10, \$32 per 100.

RETROFLEXA SUPERBA. Most effective on account of its severe and simple beauty. The form is particularly impressive; the corolla in its lower part fills out roundly and delicately like an urn; then is somewhat contracted upward and again curved outward at the point of the three outer and narrower sepals. The stem has that slight amount of curvation which would redeem it from the appearance of formality. The color is a fresh honey-yellow, extremely beautiful; one of the most elegant of the family. Should be planted in groups of 12 to 25 among other plants and they will impress us as no other Tulip can. Very effective if grown in masses against purple Persian lilacs and white flowering shrubs. Height 18 inches. \$1.05 for 10, \$8 per 100.

ROYAL WHITE. Beautiful, globular flower of good substance; pure white with light primrose on center of petals; base with a diffused yellow blotch. Height 17 inches. 85 cts. for 10, \$6 per 100.

SIR HARRY. Fine mauve-pink, broad base, lightly waved petals. Fine for cutting and for planting among grey-leaved plants. Height 26 inches. \$1 for 10, \$7.50 per 100.

SOLFERINA. A fine oval Tulip of a paler yellow than Moonlight. Beautiful grouped beside some of the warm purple Darwins. Height 24 inches. \$1.45 for 10, \$12 per 100.

STRIPED BEAUTY (syn., Summer Beauty). Lilac-rose flower streaked with carmine. Bright and unusual in color. Height 18 inches. \$1 for 10, \$7.50 per 100.

***THE FAWN.** This fine oval Tulip exhibits a lovely blending of rose and fawn-color. Lovely for cutting. Height 20 inches. 75 cts. for 10, \$5 per 100.

THE LIZARD. A fantastic color scheme. A blood-red flower with a purple bloom on the petals that are also feathered yellow and white. Height 24 inches. 90 cts. for 10, \$6.50 per 100.

TWILIGHT. A soft-toned violet Tulip with a white base and midrib. Fine form. Plant among light yellow irises and *Iberis sempervirens*. Height 23 inches. \$2 for 10, \$18 per 100.

UNION JACK (syn., *Distinction*). Lighter shade of violet than the foregoing. Good for late forcing and for border planting among yellow and white flowers. Height 20 inches. \$1 for 10, \$7.50 per 100.

VITELLINA. Sweet-scented creamy flower of large size. Looks well planted with some clear pink variety. Forces well. Height 20 inches. 75 cts. for 10, \$5 per 100.

WALTER T. WARE. The best deep golden yellow Tulip. Superb among rich purple Irises or massed against evergreens or Lilacs. Has extraordinary lasting qualities. Beautiful globular flower with reflexing segments. We should like you to try some of these beautiful darkest yellow Tulips as they lend themselves for superb combinations. Height 18 inches. \$4 for 10, \$37.50 per 100.

ZOMERSCHOON. The oldest Tulip in cultivation. Lovely old Dutch Tulip with a color-scheme of old ivory and carmine, warmed by the golden glow from the heart of the flower. Best seen in full sunshine. Height 20 inches. \$4 for 10, \$37.50 per 100.

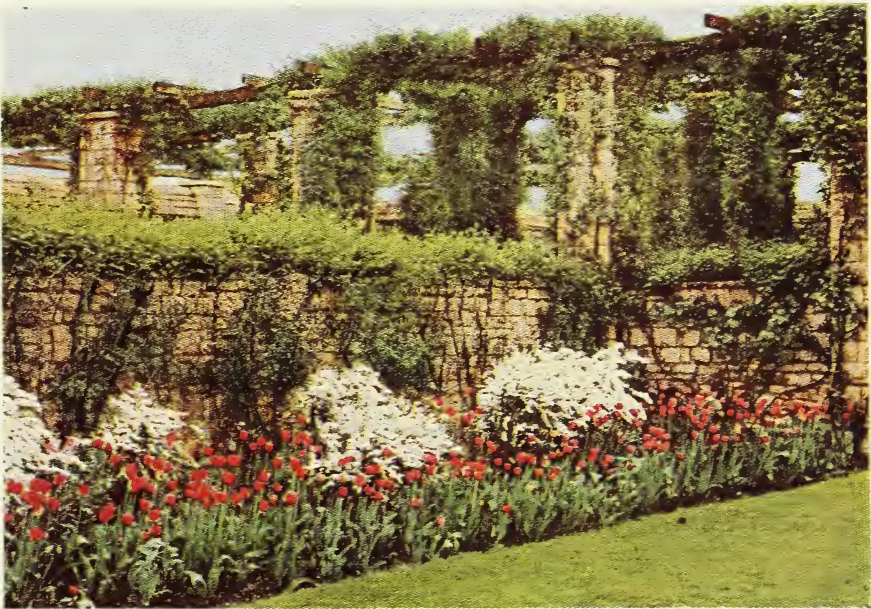
Beautiful collection of 25 varieties, ten bulbs each, total 250 bulbs, each variety packed and labeled separately, \$20.

We recommend that garden-lovers always secure the heaviest "mother bulbs" for most successful Tulip planting. Our Holland growers have frequently told us that less than 5 per cent of the entire Holland bulb crop consists of that extra-high grade which we demand from them. We pay them well for giving us this select stock. Our prices in these lists are based upon delivery of such supreme quality only.

To make as wide a distribution as possible of the finer varieties we offer one thousand May-flowering Tulips, ten each of one hundred varieties, including all types, each variety packed separately and carefully labeled, for \$78 on orders received up to July first only.



DARWIN TULIP LA FIANCEE
See page 68



DARWIN TULIPS

The varieties named in our list have been specially selected as being distinct, showy, and beautiful, so that you need have no hesitation in choosing the colors you require, as all are good.

With gentle forcing, these grand Tulips may be had in bloom late in February; one or two sorts may be successfully forced for January flowering. Varieties that may be successfully forced we have marked with an asterisk (*); a few that are exceptionally fine forcers we have indicated with a dagger (†) for your guidance.

Awarded several Gold Medals by the Horticultural Society of New York.

For culture, the same suggestions obtain as are made for the Cottage Tulips.

AFTERGLOW (syn., Katherine Havemeyer)

The first six flowers of this unusually showy variety were exhibited by us a few years ago in the New York Botanical Gardens, under the auspices of the Horticultural Society of New York. Here we christened this beautiful variety "Katherine Havemeyer," in honor of Mrs. T. A. Havemeyer, wife of the eminent horticulturist of that name. Later, the stock of this Tulip was purchased by one of the large Holland bulb-growers, who gave it the name "Afterglow."

The beautiful color is a striking association of rose and orange, with salmon lights. It is a sport of *Baronne de la Tonnaye*, which is of great interest in that it is the first instance of a Darwin sporting to the Breeder tones. Height 28 inches.

As the discoverers and introducers of this superb novelty, knowing the gorgeous effect it creates in the garden, we urge all to order some of the bulbs. Though stock is still scarce, we shall make the price \$2.75 for 10, \$25 per 100.

***ANDRÉ DORIA.** A warm, reddish maroon with a darker base. Splendid flower of satiny texture. Fine for borders among the early irises or for forcing. Height 29 inches. 95 cts. for 10, \$7 per 100.

***ANTON MAUVE.** Enormous, well-formed flower of good substance. Violet, bordered soft grayish white. This fine variety should be planted in semi-shade. Height 25 inches. \$1.75 for 10, \$15 per 100.

*ANTON ROOZEN. A darker shade of bright rose than Baronne de la Tonnaye, paler at the edges. Plant with white Tulips near wistaria. Height 28 inches. 95 cts. for 10, \$6.50 per 100.

APHRODITE. An exquisite new Darwin of clear silvery pink, deeper within. Very large flower on tall stem. Height 32 inches. \$2.05 for 10, \$18 per 100.

†ARIADNE. Enormous, cup-shaped flower of great substance; striking crimson color, with large violet base. Splendid for border planting or for pot culture. Height 28 inches. 95 cts. for 10, \$7 per 100.

BARONNE DE LA TONNAYE. Bright rose-colored Tulip, paling at the edges. Makes splendid beds with blue or white forget-me-nots. Height 30 inches. 75 cts. for 10, \$5 per 100.

†BARTIGON. A very showy, shapely flower of good substance on strong stem; fiery crimson, with pure white base, broadly ringed deep blue. It is splendid for forcing. Height, 28 inches. \$1.15 for 10, \$9 per 100.

BLEU AIMABLE. Small, distinctly formed flower of bluish heliotrope; blooms late. Height, 26 inches. \$1.25 for 10, \$10 per 100.

BLEU CÉLESTE. Violet-blue flower of fine form. Handsome near Tulips of clear pink tones. Height, 30 inches, \$2.75 for 10, \$25 per 100.

*CARL BECKER. Beautiful rose-pink, conspicuous blue base. A splendid variety for the border. Plant among bushes of grey Cantolina or lavender cotton. Height, 30 inches. 85 cts. for 10, \$6 per 100.

CARMEN. Enormous flower on a very long stem; carmine-rose, shaded salmon-rose, base stained green; filaments, black. Height 30 inches. \$2 for 10, \$17.50 per 100.

*CENTENAIRE. Large, well-formed, striking rosy violet flower; blooms early and is one of the best to force. Height, 30 inches, \$1.45 for 10, \$12 per 100.

CITY OF HAARLEM. Fine cup-shaped flower of rich, warm red, with steel-blue base, ringed white. One of the finest and largest of the red Darwins. A huge, deep, dark-looking scarlet flower. Height, 30 inches. \$2.55 for 10, \$23 per 100.

*CLARA BUTT. Lovely pure pink Tulip that looks well with some of the maroon varieties; striking when massed against purple barberry. One of the best to force. Height, 28 inches. 75 cts. for 10, \$5 per 100.

- *CRÉPUSCULE. Lilac, with rosy flush. A charming variety for cutting and forces well. Height, 28 inches. \$1.45 for 10, \$12 per 100.
- DAL ONGARO. A graceful large flower of lavender-blue, deeper within, pure white base. Height, 28 inches. \$1 for 10, \$7.50 per 100.
- *DREAM. A beautiful Darwin in tones of warm, light heliotrope. Most effective planted near *Cercis canadensis* (Judas tree) with gray lyme grass as background. Height, 28 inches. 85 cts. for 10, \$6 per 100.
- *DUCHESS OF HOHENBERG. Most lovely association of grey-lilac and rosy heliotrope. A magnificent flower of perfect form, borne on a stiff stem. Makes lovely beds with white Violas. Height, 29 inches. \$2.25 for 10, \$20 per 100.
- ÉCLIPSE. Bold, imposing flower of open form; warm blood-red, with blue base. Makes glowing patches of color in the borders. Height, 26 inches. \$2.05 for 10, \$18 per 100.
- *EDMÉE (syn., Beauty). The brightest cherry-pink Tulip of this type. Plant among grey foliage, near wistaria. Height, 28 inches. \$1 for 10, \$7.50 per 100.
- *ERGUSTE. One of the best of the lilac Darwins; lovely interplanted with sky-blue flax; most graceful form. Good for forcing. Height, 28 inches. 85 cts. for 10, \$6 per 100.
- *EUTERPE. Silvery lilac with rosy tone; dainty, coy, incurving of the edges of its outer petals. This charming variety makes a beautiful bed planted with *Stachys lanata*. Height, 29 inches. 95 cts. for 10, \$7 per 100.
- *FAUST. One of the best dark purple Darwins. A fine variety for planting among pink kinds, or between clumps of bleeding-heart. Height, 31 inches. \$1.35 for 10, \$11 per 100.
- *FLAMINGO. One of the most beautiful pink Tulips. Exquisite pure color and satin sheen. Lovely pointed flower. Beautiful in border among camassias, *Nepeta Mussinii*, and bleeding-heart. Height, 28 inches. \$1 for 10, \$7.50 per 100.
- *FRANS HALS. Finely formed, very large flower; bright bluish violet, base blue, with white halo. Height, 28 inches. \$1.85 for 10, \$16 per 100.
- *GIANT. A superb glowing reddish purple Darwin, with a white base. Flower of enormous size. Height, 30 inches. \$1.85 for 10, \$16 per 100.

*GLOW. There is no more brilliant Darwin Tulip than this. Vermilion-scarlet, of fine form. Unrivalled for massing in borders of shrubs. Makes fine beds carpeted with lavender *Viola cornuta*. Height, 26 inches. 85 cts. for 10, \$6 per 100.

*GRYPHUS. A fine, warm-toned, velvety purple Tulip of unusually fine form, borne on graceful stem, and with base stained yellow. Height, 27 inches. \$1.45 for 10, \$12 per 100.

JUBILEE. Stands out among the blue-violet Tulips as a variety of great merit. The color is rich and deep; the flower enormous, of open form and fine lasting qualities. Height, 31 inches. \$1.85 for 10, \$16 per 100.

†KING GEORGE V. Immense flower of unusual substance carried on a strong stem. Brilliant cherry-red, base slightly starred blue, with white halo. Unsurpassed for forcing. Height, 26 inches. \$3.25 for 10, \$30 per 100.

*LA CANDEUR (syn., White Queen). The nearest to a white Darwin. Delicate opalescent tints and effective black anthers. Charming with *Anchusa myosotidiflora*. Height, 27 inches. 75 cts. for 10, \$5 per 100.

*LA FIANCÉE. A most beautiful and distinct pink Tulip with a blue base. Plant near purple barberry or purple plum, with camassias and bleeding-hearts. Height, 30 inches. \$3.25 for 10, \$30 per 100.

*LA TRISTESSE. A tall, slaty violet Tulip with grey rim of medium size but good form. Effective grouped among yellow Tulips in light tones. Height, 30 inches. Record height in our trials, 40 inches. 85 cts. for 10, \$6 per 100.

*LA TULIPE NOIRE. The darkest of the Tulips. A very large, rich velvety blackish maroon flower. Height, 28 inches. 85 cts. for 10, \$6 per 100.

†LE NÔTRE. A grand new Tulip, excellent for forcing for exhibition purposes. Beautiful pink, with large, dull base, rayed blue and white. Height, 26 inches. \$1.45 for 10, \$12 per 100.

†L'INGENUE. A lovely flushed flower, large, and well adapted for border culture. Combines well with the Darwin, Euterpe. Height, 28 inches. \$1 for 10, \$7.50 per 100.

LOUISE DE LA VALLIERE. A variety of conspicuous beauty. A clear tone of cherry-pink with no hint of mauve. Scarce. Height, 24 inches. \$2.50 for 10, \$22.50 per 100.



BREEDER TULIP
BRONZE QUEEN

See page 53



DARWIN TULIP
GIANT

See page 63

*MADAME KRELAGE. Tender pink with lilac tones. Beautiful in the borders and one of the most reliable for pot-culture. Height, 32 inches. Record height in our trials, 38 inches. 90 cts. for 10, \$6.50 per 100.

MARCONI. Low-toned blue-purple. Tulip that shows its color best in the late afternoon or in partial shade. Height, 27 inches. 90 cts. for 10, \$6.50 per 100.

†MARGARET. Very pale pink of fine globular form. Makes dainty beds with forget-me-nots and is very fine for forcing. Height, 24 inches. 75 cts. for 10, \$5 per 100.

MASSACHUSETTS. A stately, vivid pink Tulip and one of the best of its class for border planting. Height, 26 inches. 85 cts. for 10, \$6 per 100.

MASSENET. Rarely lovely blending of pale rose and white, thrown into relief by a bright blue base. Good-sized flower of delicate beauty. Height, 30 inches. \$1.45 for 10, \$12 per 100.

*MAUVE CLAIR. One of the palest of the lilac group. Very beautiful. Height, 26 in. \$1.10 for 10, \$8.50 per 100.

MELICETTE. A very pure tone of lavender, deeper in the interior. A charming flower with reflexing petals. Plant among grey-leaved plants with a pale yellow Tulip like Moonlight. Height 28 inches, \$1.05 for 10, \$8 per 100.

MISS HELEN UNDERWOOD (syn., Ascanio). Very large and beautiful flower of uniform lilac. Shows to advantage in shade. Height 28 inches. \$1.25 for 10, \$10 per 100.

†MR. FARNCOMBE SANDERS. A vivid, rose-scarlet flower of superb form and great size. Splendid for distant effects against evergreens; one of the very best for borders or forcing. Height 32 inches. 95 cts. for 10, \$7 per 100.

MRS. POTTER PALMER. Fine, large, well-formed flower of great substance; bright purplish violet-blue base, streaked white. Outer segments reflexed with age and having an almost orange blotch. Height 30 inches. 95 cts. for 10, \$7 per 100.

MYSTERY. Very large and beautiful shiny black flower with circular blue base. A most effective variety. Height 23 inches. \$6.50 for 10, \$62.50 per 100.

*NAUTICUS. Unusual tone of dark cherry-pink. Very beautiful grouped near *Malus floribunda* and white wistaria with fore-ground of *Iberis sempervirens*. Height 32 inches. Record height in our trials 39 inches. 75 cts. for 10, \$5 per 100.

OLIPHANT. Faint, smoky lavender with silver sheen and bluish lights. The best of its color and among the earliest Darwins to open. Immense flower. Height 32 inches. \$5 for 10, \$47.50 per 100.

*PAINTED LADY. A creamy white flower of open form, faintly tinted heliotrope, and carried on dark stem. Height 28 inches. 80 cts. for 10, \$5.50 per 100.

*PENSÉE AMÈRE. Low-toned violet with broad rose flush. Fine oval flower of medium size. Very beautiful. Height 26 inches. 85 cts. for 10, \$6 per 100.

PETRUS HONDIUS. A brilliant carmine-rose flower with a blue base. Looks well planted with Philippe de Commines. The most brilliant color in Darwins. Height 30 inches. \$1 for 10, \$7.50 per 100.

*PHILIPPE DE COMMINES. Velvety blackish maroon. A large flower on a sturdy stem, and equally good for borders and for forcing. Height 26 inches. 80 cts. for 10, \$5.50 per 100.

†PRIDE OF HAARLEM. Sweet-scented and without a rival in its vivid cherry-red coloring, this Tulip is unsurpassed for borders and massing among shrubs. It is also one of the most reliable when forced. Height 30 inches. 80 cts. for 10, \$5.50 per 100.

PRINCE OF THE NETHERLANDS. A vivid carmine flower of unusual charm. Very large, handsome Tulip borne on a strong, erect stem. Plant with intermediate iris, Dorothée. Height 32 inches. \$1.15 for 10, \$9 per 100.

*PRINCE OF WALES. Brilliant new variety. Enormous flower of bright rose-pink with scarlet flush and bright blue base. Height 28 inches. \$8.50 for 10, \$82.50 per 100.

*PRINCESS ELIZABETH. A charming clear pink flower, deepening in color with age. A beautiful border variety and very conspicuous against dark evergreens. Height 28 inches. \$1.05 for 10, \$8 per 100.

PRINCESS JULIANA. Great splendor of color is embodied in this dazzling orange-scarlet Tulip. Very handsome against blue spruces. Height 26 inches. 85 cts. for 10, \$6 per 100.

*PRINCESS MARY. Beautiful brilliant pink; very fine form of good substance. One of the largest and best Darwins in the entire family. Still scarce, but we can accept a few orders for this very lovely variety. Height 35 inches. \$1.25 each, \$12 for 10.

†PROFESSOR RAUWENHOF. A magnificent cherry-red Tulip of great size, borne on a stiff stem. Makes a rich-hued picture combined with *Iris Kochii*. Height 28 inches. \$1.05 for \$10, \$8 per 100.

*PSYCHE. Charming silvery pink Tulip to plant among grey-leaved shrubs and plants. One of the best for forcing. Height 28 inches. 85 cts. for 10, \$6 per 100.

RAPHAEL. Great richness of tone is exhibited in this maroon-colored Tulip. It is one of the best of the dark varieties. Height 30 inches. \$1.25 for 10, \$10 per 100.

*REMEMBRANCE. One of the grey-lilac varieties with silvery lights; has a stripe of deeper color. Very effective interplanted with *Cheiranthus Allionii*. Height 25 inches. 95 cts. for 10, \$7 per 100.

†REVEREND EWBANK. Plant this lovely mauve Tulip with sky-blue flax for an exquisite effect. It is one of the best of its type. Forces well. Height 28 inches. Record height in our trials 34 inches. 75 cts. for 10, \$5 per 100.

REVEREND HARPER CREWE. A slender flower similar in color to Centenaire; warm amaranth-red. Height 25 inches. 95 cts. for 10, \$7 per 100.

*ROI D'ISLANDE. A rare shade of old-rose that shows very well in partial shade. Plant among white flowers and grey leaves. Height 27 inches. \$1.05 for 10, \$8 per 100.

*RONALD GUNN. Clear, cold blue-violet, coming closer to blue than any other Tulip. A unique variety, fine in the border and one of the best when forced. Height 26 inches. \$1.25 for 10, \$10 per 100.

*SIR TREVOR LAWRENCE. Very desirable warm claret-colored variety with smoky markings. Very effective planted near Margaret. Height 34 inches. \$1.15 for 10, \$9 per 100.

SOPHROSYNE. Esthetic blending of silvery lilac and white, soft rose interior. Large flower of delicate beauty. Height 29 inches. \$1.15 for 10, \$9 per 100.

SPRING BEAUTY. Glittering red Tulip, superb for distant effects against green. The finest red Tulip. Height 26 inches. \$1.15 for 10, \$9 per 100.

*SUZON. A very fine light rose-colored Tulip. Mass against lyme grass. Height 28 inches. 85 cts. for 10, \$6 per 100.

THE BISHOP. Finest deep violet, blue base, white halo. Beautiful form. Plant in a carpet of yellow pansies. Height 29 inches. \$3.75 for 10, \$35 per 100.

*VALENTIN. A most desirable heliotrope variety of fine form and erect carriage. Beautiful against white lilacs with such a light yellow iris as Helge. Height 34 inches. \$1.25 for 10, \$10 per 100.

*VENUS. Large, pure silvery rose, white base, marked with a pale blue ring; very lovely color; good form and substance. Very beautiful. Height 28 inches. \$4 for 10, \$37.50 per 100.

*VIKING. Rich violet of noble form. Very lovely planted with *Alyssum citrinum*. Height 28 inches. \$1.15 for 10, \$9 per 100.

*WALLY MOES. A flower of great charm; very pale lavender, lightly marked with deeper color. Height 24 inches. \$1.25 for 10, \$10 per 100.

WASHINGTON. Striking carmine-pink Tulip with white base. Very gay in the borders among candytuft and bleeding-heart. Height 28 inches. \$1.05 for 10, \$8 per 100.

WHISTLER. Beautiful transparent color like a "blown ruby," plum-like bloom on the petals. One of the finest. Plant near *Pyrus ioensis*, among clumps of iris Charmant. Height 25 inches. \$1 for 10, \$7.50 per 100.

WILLIAM COPLAND. Well-formed flowers of a fine lilac tone. The best and finest early forcing Darwin Tulip, and therefore invaluable for cutting. Very fine for the border. Height 28 inches. 90 cts. for 10, \$6.50 per 100.

WILLIAM PITT. Large, fine, dark velvety flower with a purple bloom on the petals. Forces well and is a beautiful garden variety. A distinct color and a great beauty. Height 24 inches. \$1.05 for 10, \$8 per 100.

YOLANDE (syn., Duchess of Westminster). An exceedingly beautiful full pink Tulip with a buff-colored base. Extremely effective in the garden. Plant with white irises and *Phlox divaricata*. Height 29 inches. \$2.05 for 10, \$18 per 100.

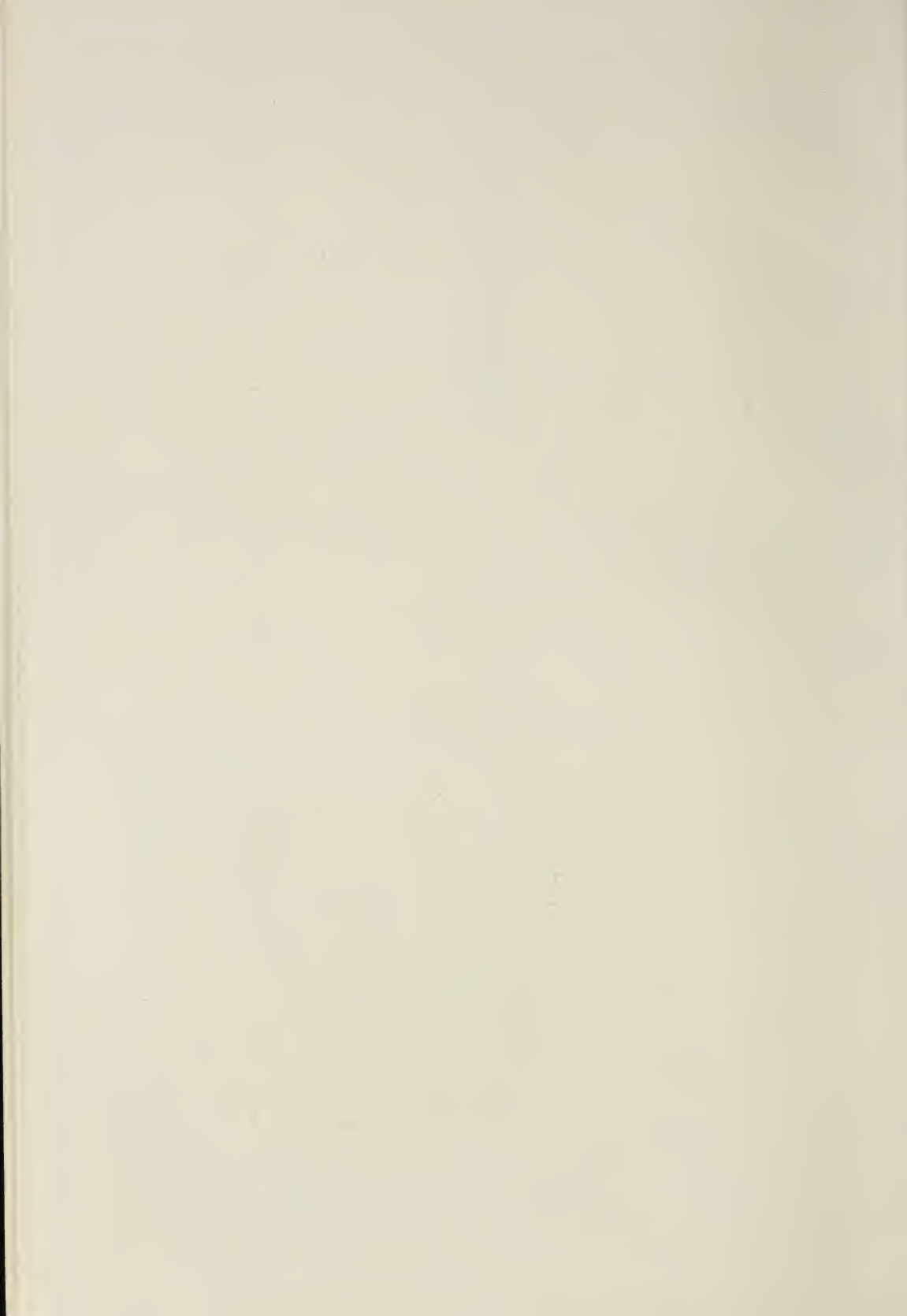
ZANZIBAR. The earliest to flower among the dark varieties. Handsome blackish maroon, open flower of good size. Height 24 inches. \$1.05 for 10, \$8 per 100.



DARWIN TULIP
YOLANDE
See page 72



BREEDER TULIP
DOM PEDRO
See page 55



*ZULU. Shining blackish purple flower with distinct violet edge. A graceful variety with pointed petals. Equally fine as a border plant or forced. Height 29 inches. \$1.05 for 10, \$8 per 100.

A fine collection of 30 varieties, packed and labeled separately, ten bulbs of each, total 300 bulbs, for \$20.

We gladly give you the benefit of our long experience if you find it difficult to make a selection. Advise us of the amount you wish to spend, the quantity of bulbs required or the size of bed or border in which you wish to plant; we shall make up a collection for you of which the shades will harmonize, and which will give you complete satisfaction together with great value.

REMBRANDT TULIPS

A variegated strain of Darwin Tulips that is very decorative. They should be planted by themselves or in combination with the Bizarres and Bybloemen. They require the same cultural treatment as the other May-flowering Tulips. In our list we offer what we consider the finest varieties.

BOUGAINVILLE. Light violet, blue base. Height, 26 inches. 80 cts. for 10, \$7 per 100.

CARACALLA. White, flamed and feathered carmine-red, markings very heavy, blue base. Height, 23 inches. 70 cts. for 10, \$6 per 100.

CAROLUS DURAND. Purplish violet, blue base. Height, 29 inches. \$1.50 for 10, \$12 per 100.

COSETTE. Light rose, feathered red, grayish base. Height, 20 inches. \$1 for 10, \$8 per 100.

EROS. Pale purplish lilac, marked violet, white base. Height, 25 inches. 75 cts. for 10, \$5 per 100.

GRETCHEN. Pomegranate-purple, heavily feathered white base. 23 inches. 95 cts. for 10, \$7 per 100.

PIERRETTE. Large; pale violet, streaked blackish violet. Height, 24 inches. 95 cts. for 10, \$7 per 100.

ROSY GEM. Rosy lilac, feathered carmine-red. Height, 27 inches. \$1.15 for 10, \$9 per 100.

SEMELE. Large, distinct, vivid rose and white, feathered old-rose, base deep blue. 26 inches. 95 cts. for 10, \$7 per 100.

SUZON. White, flamed and striped rose. Height, 28 inches.
\$1.50 for 10, \$12 per 100.

THETIS. Deep cherry-rose on creamy ground. Very beautiful.
Height, 22 inches. 95 cts. for 10, \$7 per 100.

VICTOR HUGO. Heavily marked cherry-rose, white base ringed
blue. Height, 24 inches. \$1.05 for 10, \$8 per 100.

PARROT TULIPS

We urge you to grow some of these quaintly shaped flowers particularly for house decoration. The artistic forms and colorings make them especially suitable for cut-flower purposes, while, in the garden, for outdoor effect, they are not always satisfactory. They are, however, extremely effective planted in long drifts in front of evergreens.

AMIRAL DE CONSTANTINOPLE. Deep scarlet, streaked with yellow. 75 cts. for 10, \$5 per 100.

CRAMOISIE BRILLIANTE. Rich blood-crimson with blackish markings; very large and handsome. 75 cts. for 10, \$5 per 100.

LUTEA MAJOR. Yellow, lightly suffused scarlet; very large.
75 cts. for 10, \$5 per 100.

PERFECTA. Golden yellow, blotched deep scarlet. 75 cts. for 10, \$5 per 100.

LILY-FLOWERING TULIPS

As the result of crossing the dainty pointed petaled *Tulipa retroflexa* with a pink Darwin, we have here a new, very beautiful, and distinct race of Tulips having graceful, slightly reflexing flowers on tall, sturdy stems.

ADONIS. Long, fine-shaped flower of a vivid rosy red. \$2.75 for 10, \$25 per 100.

ARTEMIS. Bright carmine-rose, pure white base. \$2.75 for 10 \$25 per 100.

*SIREN. A very beautiful flower. Rich cerise-pink with pale pink at the margins of segments, white base. Fine forcer. Great exhibition flower. \$2.75 for 10, \$25 per 100.

We urge you to send early orders for these wonderful Tulips. They are very scarce; we wish to have them more generally known and have made the price moderate.

NEW LATE-FLOWERING HYBRID TULIPS

A highly decorative and exceedingly beautiful new class, the result of crossing Darwin with Cottage Tulips.

ALASKA. Beautiful, long yellow flower. \$9 for 10, \$87.50 per 100.

ALCMENE. A very fine soft cerise-red. \$9 for 10, \$87.50 per 100.

DIDO. Orange-red, edged orange-yellow, interior orange with yellow base bordered black. Very large flower. \$1.50 each, \$12.50 for 10.

ORIENT. Light carmine-rose, edged clear orange, interior salmon-carmine, shaded rose. Very fine. \$7 for 10, \$67.50 per 100.

Our Tulips have been repeatedly awarded Gold Medals at the most important Flower Shows.





THE MADONNA LILY

FRENCH LILIES

LILIUM CANDIDUM (Ascension or Madonna Lily)

Maeterlinck refers to this loveliest of Lilies when he says:

“The great white Lily, the old lord of the gardens, the only authentic prince among all the commonalty issuing from the kitchen-garden, the ditches, the copses, the pools and the moors, among the strangers come from none knows where, with his invariable six-petaled chalice of silver, whose nobility dates back to that of the gods themselves, the immemorial Lily raises his ancient sceptre, august, inviolate, which creates around it a zone of chastity, silence and light.”

Be very careful that you plant the right type of this beautiful Lily in your garden. There is an early-flowering variety which is grown in the south of France. These should be used exclusively for forcing; if planted in the garden, they are prone to disease and are unsatisfactory. In Europe this type is called *L. candidum speciosum*. This variety is only too often planted out-of-doors and produces very inferior plants.

The true type to use for the garden is the *L. candidum* from the north of France. This bulb is easily recognized by its composition of white, fleshy scales, while the southern France sort has pink, loose scales.

Plant in a rather stiff loam, surrounding the bulb with sharp sand and placing it somewhat on its side. An open, fully exposed place is best for it. After it has become established leave it alone as it much resents disturbance at the roots. If necessary to transplant, do so as soon as the flower-stems die down.

This Lily of all Lilies should be planted in quantity in every garden—emblem of purity, the inspiration of poet and painter for centuries, and a benediction in the garden when June is melting into July—their delicious fragrance is not equaled by any other Lily.

LILIUM CANDIDUM. True “Northern France” type; original French hamper of 100 heaviest bulbs, \$30; hamper of 50 heaviest bulbs, \$18.

LILIUM CANDIDUM SPECIOSUM for *forcing* exclusively, from *Southern France*. Extraordinary bulbs, \$21 per 100.

OLD-WORLD LILIES

MARTAGON ALBUM. There are few more beautiful things than the White Martagon Lily when seen in its best form and thriving in such a way as to reveal its full beauty. The appearance of these Lilies is graceful and delightful in the extreme. Rising on slender stems, 4, 5, and sometimes nearly 6 feet high, the numerous, drooping, wax-like, white Turk's-Cap flowers, with yellow-tipped stamens, look inexpressibly fascinating. The small flowers are symmetrical in shape, with reflexed petals and are borne in terminal pyramidal-shaped clusters. The white Martagon appears to flourish best where its lower growths have the benefit of the partial shade afforded by herbaceous plants or shrubs, and never looks better than when springing through and towering over some of moderate vigor. The Martagon Lily does wonderfully well in the shade of trees, and the white variety is no exception in this respect. Few, if any, stem roots; fall planting; June flowering. Extra-strong bulbs. \$9 for 10, \$87.50 per 100.

MONADELPHUM SZOVITZIANUM. One of the finest Lilies and easiest to grow. It reaches a height of 4 to 6 feet and more. The stems are stout and the numerous leaves are pale green. As many as thirty flowers are sometimes borne on one stem of established bulbs, forming pyramidal-shaped clusters. The flowers are drooping, with the segments of a thick wax-like texture, regularly recurved. They vary from a pale citron-yellow to deep yellow. The first season after planting it seldom shows much growth above the ground, but the following season it will grow freely. Base-roots; fall planting; early June flowering. Extra-strong bulbs, \$12.50 for 10, \$118 per 100. Extremely scarce.

TESTACEUM. (This beautiful Lily is also known as "Excelsum" and as the Nankeen Lily.) One of the choicest border Lilies and absolutely hardy. The dull apricot tone, set off by orange anthers, puts it in a color class by itself. The most graceful of all Lilies. It often grows from 6 to 7 feet high when established, and the horizontally poised heads of drooping flowers wave in a breeze in a graceful way. It is a good Lily for pot culture. It has the texture of *L. candidum*, with reflexed petals. Base-roots; fall planting; June—July flowering. Extra-strong bulbs, \$12.50 for 10, \$118 per 100. Extremely scarce.



LILIUM MONADELPHUM
SZOVITZIANUM
See page 78



LILIUM TESTACEUM
See page 78

CHINESE, JAPANESE AND OTHER LILIES AURATUM

There is a lingering charm about the garden in September. One feels the sense of departing beauty and hurries to enjoy what color and fragrance kind Summer has left in her flight. Best of all her legacies is *L. auratum*, that magnificent Lily which sometimes has such a treacherous way of disappointing us.

When grown to perfection, they are, perhaps, the grandest of all Lilies. Unfortunately, they are very capricious in their requirements. They are perfectly hardy and the conditions most favorable are a well-drained soil, consisting of peat or leaf-mold and sand, and a position where they will be partially protected from cold winds during early spring and from the direct rays of the sun later on.

They do well planted among low-growing shrubs, like azaleas, kalmias, rhododendrons, and vacciniums. Being stem-rooters, they must be planted very deep—from 8 to 10 inches. Arriving from Japan usually when the ground is frozen, the bulbs should be potted up into extra-sized deep pots containing a compost consisting of loam, leaf-soil, coarse sand, charcoal, and a little peat, the drainage holes at the bottom of the pots being made much larger. The pots might then be put in a coldframe or similar place, and, as the plants grow, a little more soil should be added as a top-dressing for the stem-roots. When the Lilies have thrown up spikes some 6 to 8 inches high, they are planted out, in their pots, in a place specially prepared to receive them.

SPECIAL STOCK. Case of 25 bulbs \$24, case of 50 bulbs \$46, 100 bulbs \$90.

SELECTED BULBS. Size 11 to 13 inches; case of 25 bulbs \$16, case of 50 bulbs \$30, case of 100 bulbs \$58.

STRONG BULBS for large masses, which will not give an immediate effect but will flower beautifully the following season. 100 bulbs \$25, 1,000 bulbs \$240.

AURATUM PLATYPHYLLUM. Also called "Macranthum." This is a robust growing form; the stem is stouter and attains a greater height; the leaves are much broader; enormous flowers, white, richly spotted yellow. Undoubtedly the choicest of all and, in our opinion, superior to the type. Extra-selected bulbs, \$22 for case of 25, \$43 for case of 50, \$85 for case of 100.

HANSONII. In every way most desirable, being not particular in its cultural requirements and extremely handsome in flower; does well in light loam. Plant among shrubs and low plants to protect young shoots, this being one of the earliest Lilies to appear in spring. Protect from the full sun as the flowers bleach easily. The stem reaches a height of 4 to 5 feet, carrying blossoms 2 inches across, regularly reflexed, the petals being of a bright orange spotted more or less with brown, of a waxy texture. Admirable for pot culture. Stem-roots; fall or very early spring planting; June flowering. Extra-selected bulbs, \$7 for 10, \$65 per 100.

HENRYI. An invaluable garden plant, vigorous in its growth, failing but very seldom. One of the best border Lilies, reaching over 8 feet and more in height when established, and bearing more than twenty flowers of a rich, deep, orange-yellow. Fine foliage. Does well in both light and heavy loam, but prefers soil with a mixture of peat. Plant very deep. A partially shaded place, sheltered from high winds, suits it best. It is a beautiful Lily to grow under glass, where it has produced flowers measuring over 8 inches in diameter. Not growing as tall and heavy as it does in the garden and of a finer shade. Retarded in cold storage the bulbs may be easily and quickly brought into flower under glass. Stem-roots; late fall or early spring planting; August-September flowering. Extra-selected bulbs, \$21 for case of 25, \$41 for case of 50; strong bulbs \$14 for case of 25, \$26 for case of 50, \$50 per 100; retarded bulbs from cold storage, \$24 for case of 25, \$45 for case of 50.

KRAMERI. Unique for its color and grows from 2 to 4 feet high. The funnel-shaped finely formed flowers are 6 inches or more in length and as much across, of a beautiful clear pink color, often shaded blush. One of our most beautiful Lilies with which we have been very successful, though growers often find difficulty in bringing them into flower. If they are grown in pots, three in a 6-inch pot, and then, pot and all plunged in the rhododendron bed, there seems no reason why they should not succeed very well. Use light, rich sandy loam or peat and give good drainage. Plant deep—it makes stem-roots. Arrives from Japan late in December and should be planted then or in early spring. Exceptionally fine Lily. Splendid for forcing. Extra-strong bulbs, 65 cts. each, \$6 for 10, \$55 per 100.



LILIUM KRAMERI
See page 80

REGALE. Also called "Myriophyllum." One of the most beautiful Lilies. A vigorous grower with sturdy stems 3 to 4 feet high, densely covered with long, linear-lanceolate foliage. Center of flower flushed with yellow, shading to white at the outer edges; externally the flowers are streaked with brown, shaded through the almost translucent petals with a delightful pearly tint. Very distinct. Thrives in any good peaty soil. Stem-roots; plant fall or early spring; July flowering. Extra-selected bulbs, \$137.50 per 100; a good smaller size at \$9 for 10, \$87.50 per 100.

RUBELLUM. An extremely beautiful small Lily. The color varies from a deep rose-pink to almost white, with yellow anthers; very fragrant, small, funnel-shaped flowers; grows 1½ feet high. It does best in light soil; surround the bulb with rubble so that it is never in direct contact with the soil and, if possible, plant them deeply in pots because they are stem-rooting. Give partial shade. Plant in late fall or earliest spring; flowers in early June. Splendid for forcing. Extra-strong bulbs, 65 cts. each, \$6 for 10, \$55 per 100.

SPECIOSUM. One of the most satisfactory Lilies to grow, both for open-air culture and for growing in pots. Absolutely hardy and of strongest constitution. A deep sandy loam, with an admixture of leafmold and peat, is best suited to the requirements of this variety. The young shoots should be protected from the cold cutting winds of early spring. By a process of cold storing (retarding) the bulbs may be had in bloom under glass at any time during the year. Stem-roots; late fall or early spring planting; August-September flowering. The following varieties are the most distinct:

SPECIOSUM ALBUM KRAETZERI. Pure white, brown anthers. Special stock, \$22 for case of 25, \$43 for case of 50, \$85 for case of 100; extra-selected bulbs, size 11 x 13 inches, \$17 for case of 25, \$32 for case of 50, \$60 for case of 100; retarded bulbs from cold storage, \$24 for case of 25, \$45 for case of 50, \$85 for case of 100.

SPECIOSUM ALBUM NOVUM. Pure white, bright yellow anthers. Special stock, \$22 for case of 25, \$43 for case of 50, \$85 for case of 100; extra-selected bulbs, size 11 x 13 inches, \$17 for case of 25, \$32 for case of 50, \$60 for case of 100; retarded bulbs from cold storage, \$24 for case of 25, \$45 for case of 50, \$85 for case of 100.

SPECIOSUM MAGNIFICUM. Rich ruby-carmine, margined white; stout of substance and broad of petal. This variety is by far the most magnificent in color, form, and size. Special stock, \$22 for case of 25, \$43 for case of 50, \$85 for case of 100; extra-selected bulbs, size 11 x 13 inches, \$17 for case of 25, \$32 for case of 50, \$60 for case of 100; retarded bulbs from cold storage, \$24 for case of 25, \$45 for case of 50, \$85 for case of 100.

SPECIOSUM MELPOMENE. Deep carmine-crimson, intensified by a narrow margin of white; flowers freely. Special stock, \$22 for case of 25, \$43 for case of 50, \$85 for case of 100; selected bulbs, size 13 inches, \$17 for case of 25, \$32 for case of 50, \$60 for case of 100; retarded bulbs from cold storage, \$24 for case of 25, \$45 for case of 50.

For large planting we furnish strong but smaller bulbs that will produce a splendid effect, both in the white and deep pink form of the *Speciosum* varieties at \$42 per 100.

For growing under glass we recommend that you use the largest bulbs exclusively for best success.

TENUIFOLIUM. Charming little early-flowering Lily with strongly recurved petals of waxy texture; deep scarlet. Likes a cool, moist, loamy soil and partial shade; hardy. Stem-roots; late fall or early spring planting; June flowering. Extra-selected bulbs, \$2 for 10, \$18 per 100.

TENUIFOLIUM, GOLDEN GLEAM. Beautiful, more robust, and more floriferous hybrid of this type, bearing numerous flowers of pure apricot-yellow. Very elegant and fine plant. Flowers splendidly every year and is always much admired. Extra-selected bulbs, \$5 for 10, \$48 per 100.

TIGRINUM. Hardy, robust plant. Flowers large, with reflexed petals of a light orange-red, more or less heavily spotted deep purple. Friable, sandy loam and peat or leaf-mold is best for them. The best varieties of this type are:

TIGRINUM SPLENDENS. Has finer flowers than the type and is more highly colored; very reliable. Stem-roots; late fall or early spring planting; August-September flowering. Extra-selected bulbs, \$2.50 for 10, \$18 per 100.

TIGRINUM FLORE-PLENO. The double form. The best example of a double Lily we have. Extra-selected bulbs, \$2.50 for 10, \$18 per 100.

AMERICAN LILIES

CANADENSE. Broadly funnel-shaped, drooping flowers, varying from yellow to orange, spotted inside; graceful and pretty. Fine among azaleas, in moist peat-beds or leaf-mold. Hardy; excellent for naturalizing. Base-roots; fall planting; June-July flowering. Selected bulbs, \$3 for 10, \$28 per 100.

CANADENSE FLAVUM. The golden yellow form, richly spotted; effective. Selected bulbs, \$3.50 for 10, \$32 per 100.

CAROLINIANUM. Showy Lily with slender stems, bearing reflecting orange-red flowers, heavily spotted maroon, with white throat. Hardy and fragrant; will thrive in well-drained situation. Base-roots; fall planting; July-August flowering. Extra-selected bulbs, \$5 for 10, \$45 per 100.

PARDALINUM (Panther Lily). Stately Lily with whorls of dark green leaves. The flowers begin to expand from the base of the clusters upward, producing a succession of expanded and opening flowers for two or three weeks. They are large, petals strongly recurved, bright red, lower parts of petals orange with red spots; variable in color. Hardy and robust; does well in good garden loam, well drained, but prefers moist, peaty soil in sun or partial shade. Give plenty of light and air and protection from high winds. Does not flower well the first season; when established, produces fine flowering plants; do not disturb. Base-roots; fall planting; July. Selected bulbs, \$4 for 10, \$35 per 100.

PHILADELPHICUM. A gem. Cup-shaped flowers of yellow, dotted maroon, tips of petals scarlet; very narrow segments. Hardy but rather uncertain, unless it receives watchful care. Requires good soil, preferably with leaf-mold. Grows naturally in thin woods. Base-roots; fall planting; July. Selected bulbs, \$4 for 10, \$35 per 100.

SUPERBUM. Hardy. Color varies from pale yellow to deep crimson, more or less spotted on the inner surface of the petals. Valuable as a late-flowering Lily. Fine established specimens often reach a height of 8 feet and more, bearing from twenty to thirty elegantly reflexed flowers, arranged in large, cone-like clusters. Does well in ordinary garden soil if given good drainage, partial shade and a ground-cover; prefers swampy soil. Plant in large clumps or masses. Base-roots; fall planting; August. Selected bulbs, \$4 for 10, \$35 per 100.

In conclusion, let us urge all who love the beautiful in nature to try to cultivate the Lily. We are bound to have our disappointments and failures, but these should only make us more determined to try again; and when we do have success, we are amply repaid for all our trouble, for what flower can compare with the stately habit and noble outline of the Lily? And what are more effective in the garden than the various fine forms, well established, standing out in all their graceful beauty against the dark background of tree and shrub?

List of rare Lilies for growing in conservatory gladly submitted upon request.

LILY-OF-THE-VALLEY

No dweller in the country should be without a generous bed of Lilies-of-the-Valley. In high and in lowly gardens these simple, fragrant flowers have ever been among the most welcomed of the year. In early times the dried or distilled blossoms were deemed a cure for many "griefs" of the flesh, and while our faith in their potency may be less firm today, surely it is true that when we come unexpectedly upon the slender stems of frosted, scented bells hiding among the bright green leaves we receive refreshment for the mind and the spirit.

The Lily-of-the-Valley is essentially a shade-loving plant. Beds should be given a northern or northwestern exposure if possible, and the most desirable soil is a rich, sandy loam. In planting, the crowns should be set about three inches apart and about two inches below the surface. A dressing of well-rotted manure and leaf mold in the autumn after the leaves have died down will insure more and finer flowers in the spring. The roots of this fair flower are poisonous.

LILY-OF-THE-VALLEY CLUMPS. Their importation having been forbidden, they are very scarce. Extra-heavy clumps for immediate effect, \$7.50 for 10, \$30 for 50, \$58 per 100.

"EXCELLENTA," LILY-OF-THE-VALLEY PIPS. This celebrated strain is so well known to flower show exhibitors and judges alike that it requires no introduction, always having carried off First Prize in competition. For the past few years this special stock has not been available, and we have consistently refrained from handling any other. We can again accept orders for this stock for delivery at any time of the year from cold storage. Case of 250 pips, \$19, case of 500 pips, \$37.



GOLD MEDAL EXHIBIT OF LILIES AND EREMURUS



EREMURUS (FOXTAIL LILY)

EREMURUS

FOXTAIL LILY; GIANT ASPHODELS

These astonishing plants of the Lily order are just beginning to find their way into American gardens. They come from the desert areas of northern India, Persia, and Central Asia, and are among the noblest of bulbous plants. A well-grown clump of Eremuri may justly be regarded as an achievement to be proud of. The great flower-stalk, often eight feet tall and more, rises from a crowded tuft of long, narrow leaves, and is crowned by a flower-spike two to three feet long, composed of closely set bell-shaped flowers, star-like in effect, in soft tones of rose, yellow, and white.

When the gigantic flowering is over, the plant disappears entirely, but reappears very early in the spring, when it is advisable to protect the young flower-spike from late frosts. To fill the great bare space left when the plant goes to rest, gypsophilas may be planted near at hand and kept staked until the Eremurus dies down, when they may be allowed to fall forward in its place. Some of our clients have most successfully planted them on the north side of evergreens.

In winter a mulch of wood-ashes over the crown is a safeguard, or a box may be filled with leaves and inverted over it. These plants enjoy a rich soil with an admixture of sharp sand, and a well-drained, sunny situation. Once established they should never be moved, for the roots are exceedingly brittle and liable to injury.

Due to the fact that these clumps cannot be imported any longer, they are of course extremely scarce, and we can only take care of early orders.

BUNGEI SUPERBUS. Vigorous, deep yellow, reaching 6 feet in height. Extremely handsome; flowers in July. \$6.50 each.

ELWESII. Enormous soft pink spike; broad green foliage. A vigorous, distinct form of *E. robustus*. Height 10 to 12 feet. June. \$5 each.

ELWESII ALBUS. Same habit as above; pure white. Very beautiful; flowers in late June. \$6.50 each.

HIMALAICUS. Pure white, close-furnished spike. Height 6 to 8 feet. June. \$5 each.

HIM-ROB. A seedling from *E. himalaicus*, crossed with *E. robustus*. In vigor close to the latter parent, but a paler silvery pink. June. \$5 each.

ROBUSTUS. Rosy pink. A beautiful, vigorous species; glaucous foliage. \$5 each.

SHELFORD. Coppery yellow or orange, deeper in color than *E. Warei* and later. Grows 6 feet tall, nearly half of the spike being clothed with the flowers and coppery tinted buds. A grand plant. \$6 each.

WAREI. The general color effect of the densely clothed spikes is salmon-buff, but a close inspection reveals shades of yellow, pink, and orange. An unusually vigorous habit, a good increaser, a reliable flowerer, a splendid spike up to 8 feet in height, a rich color scheme—these qualities render this a great favorite. \$7 each.

HEMEROCALLIS

There are no more useful and handsome flowers in the summer garden than the Hemerocallis. They will grow in any position, whether damp or dry, rich or poor, shady or sunny. The foliage is green and slightly throughout the growing season, and the great "lilies" are beautiful in their burnished colors—yellow, saffron, cream, citron, orange, and tawny. They are hardy in the coldest climates, and if the different species and varieties are planted, they may be had in bloom from late May through August.

Groups of these strong-growing, sturdy plants are fine for growing in the borders of early flowering shrubs. With the addition of a few clumps of helenium and Michaelmas daisies, bloom may be continued in these regions until late autumn. These Day Lilies are also most effective planted boldly by the waterside, among great clumps of male fern, or the splendid flowering fern, *Osmunda regalis*. For this purpose the old Brown Day Lily, *H. fulva*, with its great tawny blossoms, is effective, as are also *H. Florham*, Indian-yellow, and *H. aurantiaca major*, orange.

In the flower borders, grown among baby's breath, white musk mallows, and slender, dim blue campanulas, some of the more slender-growing kinds are lovely. A good selection is *H. flava*, *H. Thunbergii*, Apricot Day Lily, *H. luteola*, and *H. Dumortieri*. These also are lovely for cutting. The flowers, if picked just before expanding, will keep for several days.

APRICOT. Soft shade of orange. July. Height 2 to 3 feet.
10 clumps \$3, 100 clumps \$28.

AURANTIACA MAJOR. Pleasing orange, reverse of petals bright Indian-yellow; sweet-scented. Height 3 to 4 feet. June and July. 10 clumps \$4, 100 clumps \$30.

DUMORTIERI Rich yellow, reverse of petals bronze-yellow; very dwarf grower. Height 18 inches. June. 10 clumps \$3.50, 100 clumps \$28.

FLAVA. The best yellow Day Lily. Deep lemon-yellow; very fragrant. Height 2 to 3 feet. June and July. 10 clumps \$3.50, 100 clumps \$28.

FLORHAM. Rich golden yellow, marked Indian-yellow. Height 3½ feet. June and July. 10 clumps \$4, 100 clumps \$30.

FULVA. The old Brown Day Lily. Orange with dark brown shadings. Height 4½ feet. June and July. 10 clumps \$2.50, 100 clumps \$22.

LUTEOLA. Bright golden yellow, shaded Indian-yellow. June and July. 10 clumps \$4, 100 clumps \$30.

THUNBERGII. Rich, buttercup-yellow; the latest to flower. Very pleasing color. Height 4 feet. July. 10 clumps \$3.50, 100 clumps \$28.

We send, of course, extra-heavy clumps, insuring immediate effect.

I should like to inflame the whole world with my taste for gardening. There is no virtue that I do not attribute to the man who loves to project and execute gardens.—PRINCE DE LIGNE, 1735.

JAPANESE IRISES

Iris Kämpferi takes the stage with a brazen flourish of trumpets; there is nothing like it in the garden for arrogance, for subtlety, for obviousness, for sheer insolence of beauty.—REGINALD FARRIER, in "Alpines and Bog-Plants."

The best skill of the ingenious Japanese hybridists has been expended in bringing this, their most splendid creation, to a high state of perfection. Today the great blossoms, which seem variously to be fashioned of delicate crêpe, of lustrous satin, or rich velvet, exhibit an amazing range of hues, from gleaming white through tender grey to many tones of lavender and blue and violet, from mauve through rose and claret to regal crimson-purple, many of them flushed, or dappled, veined or margined with contrasting colors, creating an infinite variety of effects and beauty that has no peer in the world of the garden.

From our very comprehensive collection, we draw attention to the following few as representative of the best forms in color and habit:

CRANE'S FEATHERS. Large, pure white, single flower. Strong clump, 75 cts.

CLOSE OF DAY. Royal purple-blue, small yellow throat. Strong clump, 75 cts.

DEEP BLUE WATERS. Rich deep blue; double. One of the tallest and most floriferous. Strong clump, 75 cts.

GEISHA. Soft purplish rose, finely veined. A large flower of fine form; single. Strong clump, \$1.

IMPERIAL QUEEN. White ground, delicately veined with blue; most distinct; double. Strong clump, \$1.

MANDARIN. Rich lavender, with some white veining; tall; very large; double; one of the finest. Strong clump, \$1.50.

MORNING MISTS. Pure white, with a faint mist of pale blue at the throat that deepens in color and spreads as the flower reaches its zenith; immense size. Strong clump, \$1.50.

MOONLIGHT WAVES. The loveliest double white; very large. Strong clump, \$1.

PEACE IN THE BAY. Large, rich deep red-purple; very handsome. Strong clump, \$1.

POWDER BLUE. Lavender, with white netting; double. Strong clump, \$1.

ROYAL ROBE. Immense flower of a light purple; single. Strong clump, \$1.

ROSY DAWN. Soft purplish rose; fine single. Strong clump, \$1.

SILVER STARS. Pure white; large petals; double. Strong clump, \$1.

STARRY HEAVENS. Rich dark blue flowers with yellow blotches. Strong clump, \$1.

STILL WATERS. Lavender, softly veined; single. Strong clump, \$1.

VIEW FROM HIGH PLACES. Six-petaled white flower, with yellow blotches at base; creamy stigmas. Strong clump, \$2.

WHITE WATERFALL. Very fine double white. Strong clump, \$1.

These Japanese Irises were awarded the Coronation Cup at the Holland House Show in 1914.

Kindly note that we offer extra heavy clumps for immediate effect only.

The Germanica and other Iris are offered in a separate catalogue, denoted to the finer Iris and Peonies. We issue this book in June,





DELPHINIUM HARDY LARKSPUR

We have much pleasure in offering our unrivaled collection of Delphiniums in extra heavy clumps that will produce immediate effect; they have been produced from seed selected from the finest varieties in the famous English Blackmore & Langdon collection, which collection have been repeatedly awarded Highest Honors at important Flower Shows and which has no peer.

UNRIVALED ENGLISH DELPHINIUMS: \$1, \$2, and \$3, each according to size of clump, respectively, \$9, \$18 and \$27 per dozen.

BELLA DONNA. Light sky blue; most effective planted with Madonna Lilies; extra heavy clumps for immediate result, \$1 each, \$9 for 12, \$70 per 100.

MISCELLANEOUS BULBS AND ROOTS

For planting in accord with the natural surroundings of your gardens, expressive of perfect harmony and good taste; along the woodland path, in wild flower sanctuaries, along rivulets, brooks or ponds or wherever naturalistic planting is wanted. For planting of banks or ground-cover amongst Daffodils, Hyacinths or tulips; in the border in drifts or as edging for flowerbeds.

CYPRIPEDIUM ACAULE (Lady's slipper). Grows about one foot high producing a large, showy, rosy-purple flower. \$4 for 10, \$38 per 100.

CYPRIPEDIUM PUBESCENS (Yellow Lady's slipper). Large showy yellow flowers produced on leafy stems about one foot high; very fragrant; plant in a rich, shady spot where leaf-mold has been added. \$4 for 10, \$38 per 100.

DODECATHEON MEADIA (Shooting Star). Very pretty perennial bearing rose colored, often white, flowers in May and June; sometimes called "American Cyclamen." Thrives in rich, moist woods as well as in the open border. Extra strong roots, \$3 for 10, \$28 per 100.

ERYTHRONIUM AMERICANUM (Dog's Tooth Violet). Sometimes called the "Adder's Tongue;" grows about 10 inches high, bearing in early Spring bright yellow, lily-like flowers about one inch broad. \$2 for 10, \$18 per 100.

FUNKIA VARIEGATA (Variegated-leaved Day Lily). The green leaves are beautifully variegated with white. \$2.50 for 10, \$23 per 100.

GALANTHUS (Giant Snowdrops). American grown; very scarce. \$8 per 100, \$75 per 1000.

MERTENSIA VIRGINICA (Virginia Blue Bell). This plant grows from one to two feet high bearing a panicle of beautiful blue or sometimes white flowers in spring; most effective planted in front of or amongst Mayflowering tulips. We urge all garden lovers to use quantities of this delightful plant which is permanent and so helpful to create beautiful pictures. Extra strong clumps, \$3 for 10, \$28 per 100.

MUSCARI HEAVENLY BLUE (Grape Hyacinths). Strong growing light blue variety producing large flower trusses. American grown; very scarce. \$8 per 100, \$75 per 1000.

SCILLA SIBIRICA (Blue Bell). American grown; very scarce
\$8 per 100, \$75 per 1000.

SCILLA SIBIRICA ALBA. The white form; American grown, very
scarce. \$8 per 100; \$75 per 1000.

TRILLIUM GRANDIFLORUM. The prettiest of all Trilliums; grows
8 to 15 inches high producing large, white flowers, often $2\frac{1}{2}$
inches long and 2 inches wide, turning to lilac shade with age.
Extra strong clumps, \$3 for 10. \$28 per 100.



NOTE

When the Spring flowering bulbs are in full bloom, the woods are alive with a variety of naturalized flowers; when the banks and the walks are aglow with golden Daffodils and the borders are gay with multicolored tulips, it is then that you have the best opportunity to choose your favorite colors and forms, select the more unusual and finer varieties which it is so difficult to adequately describe in a catalogue; while you are enthusiastic about your own or your friend's garden display, is the best time to prepare your list of varieties that you will want in your garden next Spring, to be planted this coming Fall. May we urge you to send in your orders at this time which will help us so much to furnish you the Fine Quality Bulbs that we have always supplied.

We carry no large stocks in Fall from which late orders might be filled; all bulbs are selected to order by specialists abroad with whom we have had close connections for many years; they know that our dealings are with discriminating garden lovers who require the best out of their crops. This stock is reserved for us and, being limited, must be secured with early orders.

All prices are for this quality and include all charges excepting those for parcel post or express delivery from New York. They are NET, subject to no discount; bills are payable within thirty days from date of invoice.

In case you have no charge account with us we shall be glad to arrange for the opening of an account at your request; please do not ask us to do this unless order amounts to twenty dollars or more.

We cannot entertain an order for less than ten bulbs of one variety except where price is quoted by the single bulb, nor can we accept orders amounting to less than \$10; we shall gladly arrange for combination or club orders.



GOLD MEDAL AWARDED US
BY THE
HOLLAND BULB GROWERS' ASSOCIATION
OF HAARLEM, HOLLAND

