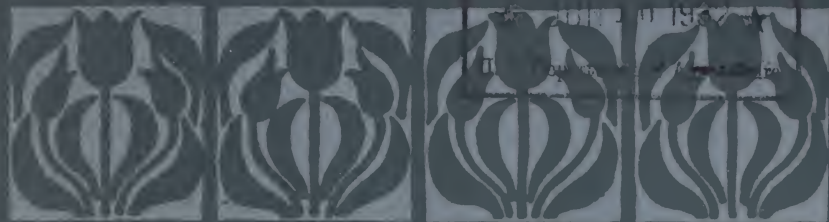


Historic, Archive Document

Do not assume content reflects current scientific knowledge, policies, or practices.



THE BLUE BOOK
OF
BULBS
1932

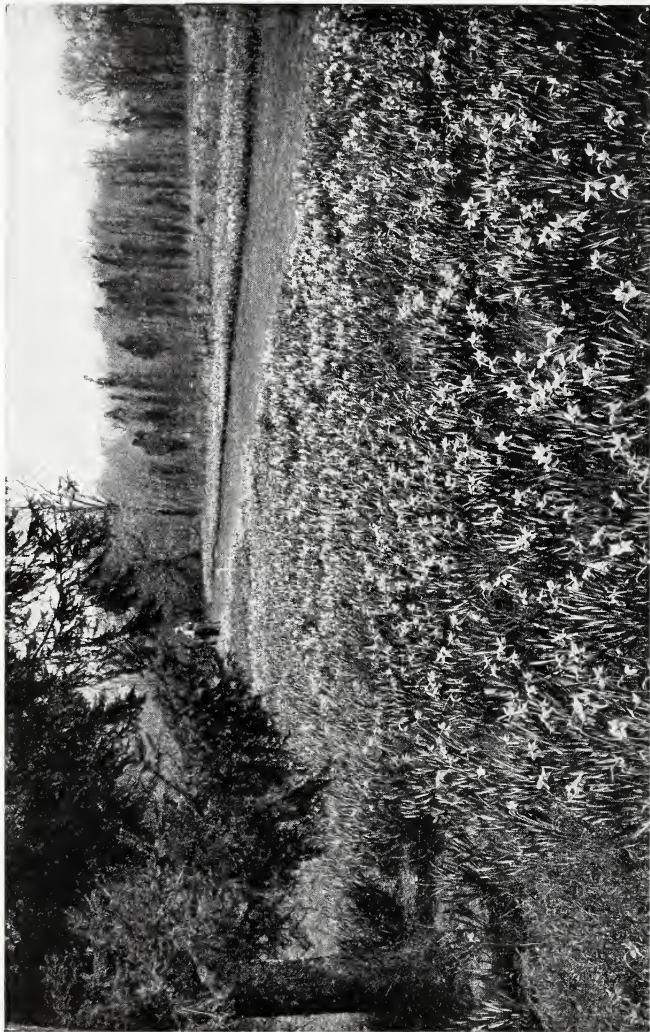
CHESTER JAY HUNT INC.
LITTLE FALLS NEW JERSEY

READ PAGES 6 TO 15 AND ORDER BEFORE
JUNE 25

CANCELLATION OF ORDERS CANNOT BE
ARRANGED AFTER JULY 15



OUR INDIVIDUAL ORDERS ARE NOT SENT OUT IN ORIGINAL
PACKAGES FROM HOLLAND. WE EXAMINE ALL BULBS
TO ENSURE ONLY SOUND BULBS BEING SHIPPED
TO OUR CUSTOMERS



The Daffodil Walk at Mayfair

THE BLUE BOOK OF BULBS

1932



CHESTER JAY HUNT^{INC.}
LITTLE FALLS NEW JERSEY

As the subject matter and the descriptions contained in The Blue Book have been used in other catalogues, attention is called to the fact that the contents are protected by copyright, and that the use of any part of the same constitutes an infringement thereof.



We have no connection with any other firm of similar name.



Copyright 1932 by Chester Jay Hunt, Inc.,
Little Falls, New Jersey



PREFACE

For the current season *The Blue Book* is as complete as ever and includes some new things over which any gardener should become as wholly enthusiastic as I was when I first saw the blooms last spring. In the interest of economy it lacks its usual color pages, but I am sure our friends will appreciate this attempt to add nothing to the costs of our bulbs for this trying year.

I know that the garden must be even more of a solace to many of us now that our worries and our problems are so greatly increased. If we can forget these troubles for the brief hour or two that we can spend among the flowers, we shall most certainly regain the courage to contend with them anew.

To strive and yet to win is the real gardening spirit, after all, and to find the inspiration for success in the answer the bulbs always give to our efforts to bring them to perfection is surely going to be a reward wholly worth while.

Come, let's go out in the garden and forget.

From *Mayfair*
May 15th, 1932.



Chester Jay Hunt



Caution—We regret we cannot accept orders amounting to less than \$2.50. Please read the Sections, "Orders," "Shipments" and "Prices" on pages 9 and 10.

Spring-Flowering Bulbs for Fall Planting

No class of plants provides more useful material for the garden than do the spring-flowering bulbs. In the first place, they bloom at a time when the long winter has grown to be most irksome without the comforting beauty of the garden; then again, the requirements for success are few and simple, and one may be almost positive of satisfactory results. All these good points make them a most welcome addition to the comparatively limited number of herbaceous plants which the enthusiast may use to ensure a successful beginning of the gardening year.

In beds or borders, in sheltered nooks among shrubbery, or in broad, irregular patches on the edges of woodland, the bulbs afford a profusion of bloom from earliest spring until well into June.

Success with most bulbous plants is principally a question of providing suitable conditions for the development of the flower, which has been formed in the bulb during the previous growing season. If a Tulip bulb, for instance, be cut open at planting time, the tiny flower will be found perfectly formed within the protecting scales of the bulb. To ensure the May blossom, it is necessary only to perform properly the autumn planting. Our leaflet containing cultural directions is delivered to our customers when the bulbs are forwarded.

Cream Quality

To sell the best bulbs produced in Holland and to describe them fully and accurately, has been our business policy ever since our first catalogue was dropped in the mail box. The many compliments we constantly re-



ceive about our catalogue justify us, we believe, in calling it The Blue Book of Bulbs, while the increasing number of our satisfied customers is still our warrant for printing The Cream of Holland on our bag labels.

Strict adherence to this policy, combined with Mr. Hunt's intimate and discriminating knowledge of the spring-flowering bulbs, is responsible for the reputation we have established in this country and in Holland as the acknowledged leader in the distribution of Cream Quality bulbs and the marketing of the finer varieties.

All the bulbs we send out are the top size of the season's crop. Our growers reserve for us their choicest stocks, many of them being obtainable only in limited quantities. For this reason we must place our orders with our growers early, and our orders are generally mailed abroad during the last week in June.

Furthermore, a Cream Quality list nowadays bears little resemblance to any of the lists of a dozen years ago, for the improvement in all classes of bulbs has been so marked that a great many of the older favorites are unworthy of a place in the modern garden. This Blue Book retains only the cream of the older kinds, and adds the best of the newer sorts. In making selections from our list, then, there is no chance of being misled by attractive color descriptions into choosing varieties of which the growers have large stocks, and which are in demand solely because of their low price, without regard to quality. Many of the varieties we offer are our exclusive introductions, and will not be found in other American or foreign catalogues.

An additional advantage our list possesses is that, as we import our bulbs only to order and carry no large stocks, we are able to offer a far wider range of varieties than if we had to assume the risk of bulbs remaining unsold at the end of the season.

Our unvarying policy of shipping no orders in original packages as they arrive from Holland and of examining and repacking every bag of bulbs, ensures our customers the satisfaction of planting bulbs that are ready to root at once and so make the necessary growth before freezing weather sets in.

The descriptions of varieties in The Blue Book will be found unusually elaborate in their detail; in every case they have been taken from flowers actually grown in our trials, except where it is stated that we give the growers'



descriptions. All the illustrations are photographs of the gardens at Mayfair, or of flowers grown here and cut for this purpose. As the subject-matter and the descriptions contained in The Blue Book have been used in other catalogues, attention is called to the fact that the contents are protected by copyright, and that the use of any part of the same constitutes an infringement thereof.

In all lists, the figures following the variety names indicate the relative time of flowering of any given variety as compared with others in the same class. Of the Tulips the Single Early varieties are the first to bloom, followed closely by the double sorts. Generally speaking, the Cottage Tulips come into flower next, and the earlier Darwins and Breeders along with them; while the Bybloems, Bizarres and Parrots are in flower together with the later Darwins and Breeders.

The Bulb Market for 1932

The principal factor entering into the bulb market abroad for the current season is undoubtedly a part of the condition existing in every line of business. Decreased demand for bulbs last season has resulted in an over supply for the coming year, with a consequent sharp drop in prices quoted by all growers.

This decrease in original cost is not confined to what has always been grown in huge quantities, but includes, as well, a number of the newest sorts. This means that our customers are going to buy a great many of the finest novelties at prices not much greater than those for which the standard kinds sold last year.

We expect a large increase in the sale of these fine things and have already reserved what we think necessary to take care of the demand we shall have for our choice varieties. No other American dealer is, we believe, in such close touch with the Holland markets as we are, and this knowledge of just what is going on enables us to secure ample supplies of many varieties which are not generally available in large quantities.

We again call attention to the added Daffodils which The Blue Book describes this year. Our Virginia bulbs continue to give us splendid results and we are delighted to find that we can offer some of the very newest and most beautiful varieties for this season.



Introductions for 1932

HYACINTHS—Pride of Holland. SINGLE EARLY TULIPS—Superlative. COTTAGE TULIPS—Marceline, Marjorie Bowen, White Duchess. DARWIN TULIPS—Camelia, President Hoover. BYBLOEM TULIPS—Bianca, Violet Pale. PARROT TULIPS—Lady Derby, Therese. NARCISSUS—Fortune, Mountain Maid, Nannie Nunn, Orange Glow, Pax, Phyllida, President Viger, Sunrise. SCILLA SIBIRICA—Spring Beauty.

Orders

As all our bulbs are imported to order, customers should send us their orders on or before June 25th to be sure of obtaining their full requirements in all varieties they may wish us to procure for them. We shall be glad to quote prices on any bulbs not included in this list. No order for less than five bulbs of one variety will be entered, except where prices are quoted by the single bulb, nor can we accept orders amounting to less than \$2.50. After July 15, it is impossible for us to arrange for the cancellation of orders, as the bulbs are then about to be shipped from Holland, and it must be understood that bulbs will be shipped as ordered when they arrive from abroad, and that we require a remittance in full therefor. It is advisable in addressing mail to write New Jersey in full, as otherwise letters may go to Little Falls, New York.

Shipment

All our shipments go forward by Express or Parcel Post, except local orders to be called for on notification. We do not deliver any shipments free of charge. Shipments are insured but we are not responsible for transportation in any respect, and our customers should not expect us to replace bulbs lost in transit. Please note that our bulbs are received from Holland in bulk and repacked for our customers. We do not approve of individual shipments direct from abroad, since the bulbs are frequently damaged by the long voyage. We sort by hand every order, and our packers are instructed to be very careful to use only sound bulbs.



Prices

All prices quoted are for Cream Quality bulbs, and include all charges except for express or parcel post delivery from Little Falls. The price per 1,000 will apply where not less than 250 bulbs of the same variety are ordered; the price per 100 will apply where not less than 25 bulbs of the same variety are ordered. Five bulbs or more will be sold at the ten rate. All bulbs will be invoiced at catalogue prices.

A discount of 5% will be allowed on orders accompanied by remittance, if received before July 1st; we give no other discounts or commissions of any kind, and the cash discount will not be given later than the date noted above. This discount applies to bulbs only.

Bills are payable in ten days after date of invoice. References are desired from persons unknown to us.

Note

It is impracticable, owing to contingencies of soil, climate, season or faulty planting, to give complete assurance that all bulbs we send out will flower satisfactorily. Each season we make tests of all the varieties we sell, taking bulbs out of the very bags from which our customers are supplied. It is understood that any complaint will be entertained only on the basis of the results shown in our trial-gardens. We do warrant our bulbs to be as represented, and that they are all true to name, except in the case of those varieties for which we give the grower's descriptions.

The Gardens at Mayfair

Our spring gardens typify in the most practical manner the principles on which our whole business is based. Here we show what we are selling not as the mere promise of the brown bulbs set forth on the shop counter, but in the full fruition of the matured flower. To select for one's own garden here becomes the delightful task of choosing from an embarrassment of riches, for spring awakes at Mayfair among meadows glorious with golden Daffodils and stays joyously contented throughout the lavish beauty of Tulip time.



A personal study of the color and habit of growth from the flowers themselves must always be the surest way to make the successful garden, and at Mayfair the opportunities for such study are unsurpassed. During the spring of 1932 we shall have in flower six hundred varieties of Early and Late Tulips and over one hundred and fifty varieties of Daffodils. We plan each season to show flowers of everything listed in *The Blue Book*; there are also many novelties and rare things which we are trying out for future use.

Best of all, each display may be seen in the ideal setting which each class requires. The Scillas and other shade-loving bulbs are used in masses in woodland or on the edges of shaded lanes; the Daffodils are at home in secluded meadows where the background of grove or hedgerow gives them the partial shade in which they revel, and provides delightful glimpses of gold and white through the feathery branches of shrubs and trees.

In the more formal gardens, the Early Tulips blaze in the spring sunlight, while the softer tones of the Darwins and Breeders show to advantage against groupings of spring-flowering shrubs. In every case the attempt is made to show the individual flower to best advantage, as well as to give a harmonious sense of color in each garden. The benefit of this kind of actual garden setting is evident, and we would urge every one of our friends to visit the gardens as often as possible, and to use them as a guide to the spring garden they are themselves making.

Dates for Visitors

In a normal season, the Daffodils should be at their best during the last of April and early in May. The Early Tulips will be in full bloom during the first week in May; the Late Tulips about mid-May.

Notice of exact dates will be given upon request. Personal appointments should be made not less than three days in advance. Little Falls is reached by the Erie Railroad; stations at Great Notch and Little Falls are equally convenient, but more frequent service is to be had through the former station. Good service is afforded by the railroads to Paterson. From Paterson the Singac bus line brings passengers to Little Falls in about twenty minutes. The gardens are also easily reached by motor. A map showing the local roads leading to Little Falls will be mailed on application.



Color Schemes and Planting Plans

As an outgrowth of the greater knowledge and keener appreciation of gardening, both as to its objects and the materials with which the gardener works, there has spread an increasing desire to realize the gardener's own personality and ideals in the prospects he creates. Our gardens reflect ourselves, as it were, in the harmonies of color and form which they present, and the color schemes of modern landscape design are justified only in so far as they do thus express the author of them. Our beds and borders are no longer meant to exhibit the fashionable mood of a moment, but to evoke a permanent expression of the ideal surroundings among which we choose to live.

We believe no flowers can give more enjoyment as continual companions, or are better fitted to the happy spring days, than are the Daffodils and Tulips. These rightfully belong in our borders at this time, and lacking them we lack the true keynote of the spring garden.

How well they lend themselves to the purposes of a color scheme is known best by those who have so used them. Whether planted in the border in conjunction with hardy perennials, or given a situation by themselves, the bulbs can be made by wise arrangement to contribute lavishly to the beauty of the color design which the spirit of May calls forth.

To encourage the greater use of spring bulbs, in gardens where these flowers have not been thus employed, and to assist the amateur who desires to obtain harmony of tones in his planting, the accompanying lists will provide suggestions of value in working out effective color schemes.

In **Hyacinths**, an attractive gradation in tones of lavender and blue would shade from the pale color of Dr. Lieber, through Schotel, Perle Brillante, General van der Heyden, and Grand Maitre, to King of the Blues. If it be desired to add yellow to the planting, then Primrose Perfection, City of Haarlem and Buff Beauty should precede the blues or be mingled with them, while white might begin the scheme by using Arentine Arendsen and La Grandesse. A similar arrangement of Hyacinths General de Wet, Lady Derby, Pink Perfection and Marconi will provide a handsome scheme in shades of pink.

In **Early Tulips** an exquisite pink border planting can be made by using, in the order named, the following



varieties: Cullinan, Queen of the Netherlands, La Riante, Pink Delight, Diadem, Progression and Queen Alexandra. Yellow and violet will combine artistically in Diana, L'Unique, Moonbeam, Rising Sun, Wouwerman, Van der Neer, President Lincoln. A handsome combination of white with orange can be formed with Lady Boreel, Queen of the Whites, Jaune Aplat, Leopold II, Cardinal Rampollo, Golden Lion, De Wet and Queen of Orange.

Cottage Tulips Honeymoon, Solfatara, Mrs. Moon, Fairy Queen, Ilias and Twilight give a very beautiful scheme in yellow and violet. Picotee, The Fawn, Mrs. Kerrell, John Ruskin, Inglescombe Pink and Sir Harry shade through pink and deep rose most effectively.

Darwin Tulip combinations formed as below will prove decidedly beautiful, especially if situated in partial shade: Pink and red—Flamingo, Madame Barrois, Edmee, Galatea, Mattia, Mr. Farncombe Sanders, Professor Francis Darwin, Harry Veitch, William Pitt and Eclipse; purple and lavender—Plumbago, Melicette, Euterpe, Blue Aimable, Ronald Gunn, Pensee Amere, Marconi, Viking, Jubilee and Gryphus; pink and cerise—Sanchia, Suzon, Clara Butt, George Maw, Princess Elizabeth, Nauticas and Louise de la Valliere.

The soft colors of the **Breeder Tulips** will appear to advantage in the following arrangement of brown and purple—Mr. Groenewegen, Plutarchus, Lord Cochrane, Apricot, Jules Favre, Dom Pedro, Paladin, St. James, Louis XIV, Godet Parfait, Vertumnus, James Watt, Salomon and Garibaldi.

A very beautiful blending of soft tones may be developed in a long border planting to include, in the order given, these Tulips; Miss Willmott, Plutarchus, Euterpe, Melicette, Duchess of Hohenberg, Viking, Jubilee, Louis XIV, Copernicus, Prince Albert, Bronze Queen, Massachusetts, La Fiancee, Aphrodite, Princess Elizabeth, May Queen, Queen Mary.





HYACINTHS

Caution—We regret we cannot accept orders amounting to less than \$2.50. Please read the Sections, “Orders,” “Shipments” and “Prices” on pages 9 and 10.

The Hyacinths bring into the garden color tones seldom obtained from other flowers. The soft, pastel shades are most valuable in the perennial border where delicacy of color is desired. Not many varieties have strong stems, however, and it may be necessary in formal plantings to give some support to the heavier spikes. For house culture the Hyacinths are especially suitable and we recommend our Cream Quality bulbs for this purpose.

Please note that we offer only top-size or exhibition bulbs, which cannot be compared with the ordinary bedding sizes usually sold in America.

For carefully studied arrangements of Hyacinths, the color schemes on page 12 should be consulted. Detailed planting directions will be included with the shipment of the bulbs. The figure following each name indicates the relative time of flowering of that variety.

ARENTEINE ARENSEN. 1. Pure snowy white with large bells and narrow, well-filled spike. 10 bulbs, \$1.80; 100 bulbs, \$15.

BEAUTY. 2. Clear rose-pink; very full spike of large bells giving the effect of double flowers. A splendid variety for bedding, in color intermediate between Lady Derby and Marconi. 10 bulbs, \$1.80; 100 bulbs, \$15.

BUFF BEAUTY. 2. Pale buff, striped dark straw-yellow, with flush of rosy flesh on back of bells. Long, narrow truss, with good bells and stem. Fine for pot culture or bedding. 10 bulbs, \$1.80; 100 bulbs, \$15.

CITY OF HAARLEM. 2. Soft Naples yellow, shaded deeper; large, well-formed truss and good stem. One of the best of the yellows. 10 bulbs, \$2; 100 bulbs, \$17.



- CORREGGIO.** 2. A magnificent, pure white variety, with large, fleshy bells of wonderful substance, and perfect truss of great size. Unexcelled for pot culture. 10 bulbs, \$2; 100 bulbs, \$17.
- CZAR PETER.** 2. Light lavender-blue; splendid spike, with large, waxy bells. An old variety, rather scarce, but one of the finest. 10 bulbs, \$2; 100 bulbs, \$17.
- DAYLIGHT.** 2. Primrose-yellow, heavily flushed salmon-rose; loosely built spike, with rounded top and large bells. A fine bedding sort. 10 bulbs, \$1.80; 100 bulbs, \$15.
- DR. LIEBER.** 2. Pale lavender-blue, with faint tinge of dark violet; large spike, well filled out. A handsome variety for bedding, and a very early forcer. 10 bulbs, \$1.80; 100 bulbs, \$15.
- DUKE OF WESTMINSTER.** 2. Bright, dark blue, a very clear tone; full spike with large bells having a white center. A fine new variety for combining with the paler blues. 10 bulbs, \$2; 100 bulbs, \$17.
- GARIBALDI.** 1. Deep crimson-red, with a splendid, large spike. The best red for early forcing. 10 bulbs, \$1.90; 100 bulbs, \$16.
- GENERAL DE WET.** 2. Soft light pink; a fine spike with large bells. A pink Grand Maitre, and like this variety giving several secondary spikes. Very fine for pots or bedding. 10 bulbs, \$1.80; 100 bulbs, \$15.
- GENERAL VAN DER HEYDEN.** 1. Dark grayish lavender, with mauve shading; large bells, compactly arranged on large spike. A distinct color. 10 bulbs, \$1.80; 100 bulbs, \$15.
- GOUNOD.** 2. Soft lavender-blue; large bells on rather loose truss. A flower somewhat deeper in tone than most of the so-called light blues. 10 bulbs, \$2; 100 bulbs, \$17.
- GRAND MAITRE.** 2. Dark lavender-blue; large bells, and very long, well-filled truss, on an unusually strong stem. Equally good forcer and bedding variety, usually throwing a number of secondary spikes. 10 bulbs, \$1.70; 100 bulbs, \$14.
- HEIN ROOZEN.** 1. Snowy white; splendid big bells, and long, loose spike of great elegance. A superb early sort for forcing, and the best white for the border. 10 bulbs, \$1.90; 100 bulbs, \$16.



- IVANHOE.** 4. Dark indigo-blue, shaded black, with white center; long, narrow spike, with bells closely set. 10 bulbs, \$1.80; 100 bulbs, \$15.
- JACQUES.** 3. Very pale pink; enormous truss, with large bells set rather loosely along the stem. Fine for bedding. 10 bulbs, \$1.90; 100 bulbs, \$16.
- KING OF THE BLUES.** 4. Bright dark blue; splendid spike and bells. Excellent for late forcing or for bedding. 10 bulbs, \$1.80; 100 bulbs, \$15.
- KING OF THE LILACS.** 2. Soft lilac, with large spike of compact form; a distinct shade and attractive with the yellow kinds. 10 bulbs, \$1.90; 100 bulbs, \$16.
- LADY DERBY.** 1. Clear rose-pink; fine spike with large bells. A splendid forcing variety and unexcelled for bedding, because its strong stem holds the truss erect to the end. The finest of all the rose-pink Hyacinths. 10 bulbs, \$1.70; 100 bulbs, \$14.
- LA GRANDESSE.** 3. Pure white; long, full spike of perfect form, with waxy bells. Splendid for bedding or late forcing. 10 bulbs, \$1.80; 100 bulbs, \$15.
- LA VICTOIRE.** 1. Bright, glistening, carmine-rose; under glass the color is a fine dark pink; long spike of medium-sized bells. Brilliant bedding sort and a lasting color. 10 bulbs, \$1.90; 100 bulbs, \$16.
- L'INNOCENCE.** 1. Pure white; fine truss, with large bells of great substance. A fine Hyacinth for pots or bedding. 10 bulbs, \$1.70; 100 bulbs, \$14.
- LORD BALFOUR.** 1. Lilac-rose, tinged dark violet; distinct color; long spike and large bells. The best Hyacinth of this color; well suited for planting with the yellow shades. 10 bulbs, \$1.90; 100 bulbs, \$16.
- MARCONI.** 2. Bright, deep rose, flushed white; a full spike of fine form, carried on a stout stem. A slightly deeper shade than Lady Derby. Splendid for any outdoor purpose. 10 bulbs, \$1.70; 100 bulbs, \$14.
- MENELIK.** 2. Deep black-blue; large and well-formed truss with bells of good size. The best of the so-called "blacks." 10 bulbs, \$1.80; 100 bulbs, \$15.
- MYOSOTIS.** 2. Pale blue, shaded soft violet; loosely built spike with good-sized bells of lovely color. 10 bulbs, \$1.90; 100 bulbs, \$16.
- ORANJEBOVEN.** 3. Pale salmon-flesh, tinged bright rose; medium spike; a distinct variety because of its unique color. Especially beautiful in pots. Never makes a large bulb. 10 bulbs, \$2; 100 bulbs, \$17.



- PERLE BRILLANTE.** 2. Light blue, tinged lavender; big bells on a large, finely formed, stiff spike. Superb for bedding or pots. 10 bulbs, \$1.90; 100 bulbs, \$16.
- PINK PERFECTION.** 2. Soft mauve-rose; long, graceful spike with large bells. Splendid for pots or bedding. 10 bulbs, \$1.90; 100 bulbs, \$16.
- PRIDE OF HOLLAND.** 2. Very pale ashy lavender; fine spike of large bells. A distinct shade in the Hyacinths and a variety which gives more than one good spike to each bulb. 10 bulbs, \$2; 100 bulbs, \$17.
- PRIMROSE PERFECTION.** 3. Soft primrose-yellow; medium spike, but the largest bells among the yellow sorts. A strong stem for bedding. 10 bulbs, \$2; 100 bulbs, \$17.
- QUEEN OF THE BLUES.** 3. Beautiful light porcelain-blue of a very clear color; large compact spike with bells of medium size. A strong stem for bedding. 10 bulbs, \$1.80; 100 bulbs, \$15.
- QUEEN OF THE PINKS.** 3. Very bright rose-pink of unusually clear tone; large spike with large bells. A sport of King of the Blues. 10 bulbs, \$1.80; 100 bulbs, \$15.
- SCHOTEL.** 1. Soft light blue; very long and perfect truss, with large bells. Very easily forced, and splendid for bedding. 10 bulbs, \$1.80; 100 bulbs, \$15.
- YELLOW HAMMER.** 1. Creamy yellow; fine compact spike and large bells. The best standard yellow for pot culture. 10 bulbs, \$2; 100 bulbs, \$17.

Miniature or Dutch-Roman Hyacinths

The Miniature Hyacinths are unusually handsome for growing in pots. They come into flower earlier, and the bells are more graceful. Miniature Hyacinths will be furnished at 30 per cent less than the prices quoted for Cream Quality bulbs.

Roman Hyacinths

Roman Hyacinths are invaluable for early forcing. The spikes and bells are smaller than other Hyacinths, but are far more graceful. Not hardy.

BLUE. 12-15 centimeters. 10 bulbs, \$1.60; 100 bulbs, \$14.

ROSE. 12-15 centimeters. 10 bulbs, \$1.70; 100 bulbs, \$15.

WHITE. 13-15 centimeters. 10 bulbs, \$2; 100 bulbs, \$18.



TULIPS

Caution—We regret we cannot accept orders amounting to less than \$2.50. Please read the Sections, “Orders,” “Shipments” and “Prices” on pages 9 and 10.

Single Early Tulips

The Single Early Tulips comprise a group of Tulips which are far more valuable for garden use than most people realize. Flowering, as they do, along with the Daffodils, they come at a time when their brilliant tones are most welcome and provide a range of colors not duplicated in the latest types. Some exquisitely beautiful things are to be found among them and it is to be regretted that they are so neglected by the discriminating gardener.

Because of their earliness, they are the best suited for beds to be planted with annuals when the bloom is past, for they ripen in time to be removed and allow the summer plants to make an effective display by midsummer. In the border they give color at a time when little else is available, while they are best fitted of all for forcing.

In the following list the handsomest varieties are represented, and we urge our customers to include some of them in the season's order and learn how attractive these early kinds can be.

For carefully studied arrangements of the Tulips, the color schemes on page 13 should be consulted. Detailed planting directions will be included with the shipment of the bulbs. The figure following the name indicates the relative time of flowering.

APOLLO. 1. Dull blood-red, changing with age to dull claret-red, edged amber-brown; very large flower with greenish base; quite distinct and having something of the Breeder quality of color. Height 14 in. 10 bulbs, 80 cts.; 100 bulbs \$7.

AURORA. 2. Pale straw-yellow, with very faint flush of rose as the flower ages; large, long bloom of beautiful shape. A Tulip of dainty color for combining with rose and pale yellow kinds. Height 13 in. 10 bulbs, \$1.60; 100 bulbs, \$14.



A Bit of Early May at Mayfair





Mr. Hunt Selects Hyacinths



HERE are six varieties in the full range of colors, all equally good out-of-doors or for pot growing in the house. If you like the soft pastel tones of the Hyacinths, this short list will give you just what you are looking for.

Order Recommendation AA

Ten bulbs of each for \$10.70

Five bulbs of each for \$5.35

GRAND MAITRE	MARCONI
LADY DERBY	PRIMROSE PERFECTION
LA GRANDESSE	SCHOTEL



- CARDINAL RAMPOLLO. 1. Clear yellow, bordered bright orange-red; a good-sized flower of very showy character. Forces very easily. Height 11 in. 10 bulbs, 80 cts.; 100 bulbs, \$7.
- CHRYSOLORA. 2. Clear golden yellow; large, globular flower. A splendid Tulip for beds. Height 12 in. 10 bulbs, 70 cts.; 100 bulbs, \$6; 1,000 bulbs, \$56.
- COMTE DE VERGENNES. 3. White, striped and feathered bright cherry-red; large flower of perfect shape. A very handsome Tulip, and easily the best in this color. Fine for forcing or bedding. Height 13 in. 10 bulbs, \$1.20; 100 bulbs, \$10.
- COTTAGE BOY. 2. Canary-yellow, edged light orange-red; medium-sized flowers of good form. A fine variety for bedding or midseason forcing. Height 12 in. 10 bulbs, 75 cts.; 100 bulbs, \$6.50; 1,000 bulbs, \$60.
- COTTAGE MAID. 3. Creamy white, with broad margin of rose-pink. Rounded flower, of value for bedding. Height 12 in. 10 bulbs, 65 cts.; 100 bulbs, \$5.50; 1,000 bulbs, \$50.
- CRAMOISI BRILLIANT; syn., CARMINE BRILLIANT; SPARKLER. 4. Glowing scarlet, with yellow base; long, narrow flower. Extra fine for bedding. Height 13 in. 10 bulbs, 60 cts.; 100 bulbs, \$5; 1,000 bulbs, \$46.
- CRIMSON QUEEN. 2. Cherry-red, slightly paler at edges with age; medium-sized flower. Being a sport of La Reine, it is unexcelled for forcing. Height 12 in. 10 bulbs, 70 cts.; 100 bulbs, \$6.
- CULLINAN. 2. Creamy white, with edge of very pale rose. A large flower of delicate color. Very beautiful outdoors and extra fine for forcing. Height 13 in. 10 bulbs, 75 cts.; 100 bulbs, \$6.50.
- DE WET. 3. Golden yellow, flushed and stippled deep orange; large, sweet-scented flower of erect habit. A new Tulip of a color unlike any other variety, well adapted for forcing or bedding. Height 17 in. 10 bulbs, 80 cts.; 100 bulbs, \$7; 1,000 bulbs, \$65.
- DIADEM. 1. Opening soft old rose, changing to salmon-pink, shaded pale rose, as the flower ages; inside deeper with white base, starred yellow. A large flower and an unusual color in Early Tulips, having a decided salmon tone. Height 15 in. 10 bulbs, \$1.80; 100 bulbs, \$16.
- DIANA. 3. Pure glistening white, with yellow base; long flower of handsome shape, growing more beautiful as it ages. In our opinion the best white variety. Height 14 in. 10 bulbs, 65 cts.; 100 bulbs, \$5.50; 1,000 bulbs, \$50.



- DRAPEAU ROUGE.** 2. Bright cerise-red; tall flower of medium size and sturdy habit. A fine variety for borders. Height 15 in. 10 bulbs, 80 cts.; 100 bulbs, \$7.
- DUCHESS DE PARME.** 2. Deep, orange-scarlet, with an irregular border of deep orange-yellow; very large, globular flower. Showy bedding Tulip, and a fine early forcer. Height 13 in. 10 bulbs, 75 cts.; 100 bulbs, \$6.50; 1,000 bulbs, \$60.
- DUKE OF ALBANY.** 1. Soft rose, edged deeper with broad white stripe through outer petals and white base; large cup-shaped flower of soft and beautiful coloring. Height 14 in. 10 bulbs, \$1.10; 100 bulbs, \$9.
- DUSART.** 2. Deep crimson; large flower of fine form. A good variety for bedding. Height 14 in. 10 bulbs, 65 cts.; 100 bulbs, \$5.50; 1,000 bulbs, \$50.
- ELEANORA; syn., LAC ELEANORA.** 3. Purple-violet; good-sized flower of showy character. A handsome bedding Tulip. Height 14 in. 10 bulbs, 75 cts.; 100 bulbs, \$6.50.
- ENCHANTRESS.** 3. Salmon-red, with broad, creamy white border; inside fiery salmon-red, with pale buff-yellow edge and yellow base. A showy flower quite unlike any other Tulip. Height 10 in. 10 bulbs, 85 cts.; 100 bulbs, \$7.50.
- FABIOLA; syn., GRAND DUC DE RUSSIE; JACHT VAN ROTTERDAM.** 2. Rosy violet, striped white; large, full flower; very showy, and the best of the violet-striped Tulips. Fine for bedding or forcing. Height 12 in. 10 bulbs, 85 cts.; 100 bulbs, \$7.50.
- FLAMINGO; syn., CARNATION.** 2. Carmine-rose, shaded lighter, with white stripe through petals; large, crinkled flower of beautiful shape. A dark pink sport of White Hawk. Splendid either for forcing or bedding. Height 13 in. 10 bulbs, 60 cts.; 100 bulbs, \$5; 1,000 bulbs, \$50.
- FORTUNA.** 2. Satiny old-rose, with distinct suffusion of fawn; with age the flower develops a wide margin of soft rose; large, long flower with white base somewhat resembling the beautiful *Le Reve* in color. Height 14 in. 10 bulbs, \$1.50; 100 bulbs, \$13.
- FRANZ HALS.** 2. Creamy white; large flower of fine form, carried on a long, graceful stem. A very beautiful bedding sort. Height 15 in. 10 bulbs, \$1; 100 bulbs, \$8.
- GOLDEN LION; syn., GOLDEN LION OF HILLEGOM.** 2. Deep primrose-yellow, edged fire-red; broad, orange-red margin inside. Large flower of globular form, on stiff stem. A very handsome bedding Tulip. Height 13 in. 10 bulbs, 85 cts.; 100 bulbs, \$7.50.



- GOLDFINCH.** 2. Clear chrome-yellow, retaining the color until the petals drop; large flower. One of the best for bedding, and fine for forcing. This is the pure yellow Yellow Prince. Height 12 in. 10 bulbs, 80 cts.; 100 bulbs, \$7.
- HECTOR.** 3. Dull orange-red, with narrow edge of light yellow; large, bold flower having a distinct lemon perfume. Height 12 in. 10 bulbs, \$1; 100 bulbs, \$8.
- IBIS.** 2. Carmine-rose and white, with yellow base. A large flower of exceptionally brilliant coloring for outdoors or forcing. Height 14 in. 10 bulbs, 65 cts.; 100 bulbs, \$5.50; 1,000 bulbs, \$50.
- JAUNE APLATI.** 3. Sulphur-yellow, flushed pale rose; a short, flattened flower, not very large, but a most refined Tulip resembling Double Tulip Safrano in color. Height 11 in. 10 bulbs, 80 cts.; 100 bulbs, \$7.
- JEANNETTE.** 2. Claret-red, edged deep old-rose; good-sized flower. This is a fine sport of Cottage Maid and very effective planted in masses. Height 12 in. 10 bulbs, 80 cts.; 100 bulbs, \$7.
- JENNY.** 2. Silky carmine-rose, with faint white flush through middle of petals; white base starred yellow. A Tulip that should be better known for outdoor planting. Height 12 in. 10 bulbs, \$1; 100 bulbs, \$8.
- JOOST VAN VONDEL.** 2. Dark cherry-red, irregularly striped and flaked white, with white base; long, large flower of exquisite shape. A superb variety for bedding. Height 14 in. 10 bulbs, 70 cts.; 100 bulbs, \$6; 1,000 bulbs, \$56.
- KEIZERKROON;** syn., **GRAND DUC.** 1. Bright crimson-scarlet, edged clear, rich yellow; fine, large flower on long stem. A fine bedding variety, and splendid for early or late forcing. Height 16 in. 10 bulbs, 70 cts.; 100 bulbs, \$6; 1,000 bulbs, \$56.
- LADY BOREEL;** syn., **JOOST VAN VONDEL WHITE.** 2. Snowy white; large, long flower of perfect shape. A fine white for bedding, and superb for pots if not forced too early. Height 14 in. 10 bulbs, 75 cts.; 100 bulbs, \$6.50; 1,000 bulbs, \$60.
- LA REMARQUABLE.** 3. Dark claret-red, edged and tipped old-rose; large flower of beautiful reflexing form. An exquisite flower, fine for bedding or midseason forcing. Height 13 in. 10 bulbs, 85 cts.; 100 bulbs, \$7.50.
- LA RIANTE.** 2. Bright rosy pink, tipped with white; large flower of great beauty. We recommend this Tulip as the best light pink for bedding. Height 12 in. 10 bulbs, 80 cts.; 100 bulbs, \$7. See illustration.



- LE MATELAS. 2. Glistening pink, tipped and flushed creamy white, with yellow base. Medium-sized flower of beautiful form. One of the finest pinks for early forcing. Height 12 in. 10 bulbs, 80 cts.; 100 bulbs, \$7.
- LEOPOLD II. 2. Creamy yellow with band of orange-scarlet and narrow rim of deep yellow. A distinct and very refined flower of good size. Height 12 in. 10 bulbs, \$1; 100 bulbs, \$8. See illustration.
- L'ESPERANCE. 2. Dark garnet with purple bloom, edged very pale old-rose; a rather new Tulip of unusual color. Combines well with the purple and claret shades. Height 14 in. 10 bulbs, 75 cts.; 100 bulbs, \$6.50.
- LITTLE DORRIT. 2. Primrose yellow with heavy margin of ruddy orange, deepening with age; a long, large flower of clear color. Height 14 in. 10 bulbs, 85 cts.; 100 bulbs, \$7.50.
- LORENZELLI. 2. Deep reddish violet with broad margin of clear white; unusually large flower likely to prove the best of all varieties in this color. A splendid bedding Tulip. Height 12 in. 10 bulbs, \$1.60; 100 bulbs, \$14.
- L'UNIQUE; syn., BRUNHILDE. 2. White, striped cream-yellow; large flower of full, round form. A very distinct and handsome Tulip for bedding, and good for late forcing. Height 14 in. 10 bulbs, \$1.20; 100 bulbs, \$10.
- MADAME GEEVAERTZ. 3. Soft sulphur-yellow, deepening to lemon-yellow at edges of petals; inside clear lemon-yellow. A large, open flower in the pale shades of yellow, fine for combining with the purple and violet varieties. Height 13 in. 10 bulbs, \$1.20; 100 bulbs, \$10.
- MAX HAVELAAR. 2. Blood-orange, flushed salmon-rose; the general tone is close to a watermelon-red; large, well-formed flower of brilliant color. A fine bedding and unusually handsome forcing Tulip. Height 12 in. 10 bulbs, 75 cts.; 100 bulbs, \$6.50.
- MON TRESOR. 1. Rich, deep yellow; very long, large flower of handsome shape. One of the best yellow bedding Tulips and fine for early forcing. Height 13 in. 10 bulbs, 75 cts.; 100 bulbs, \$6.50; 1,000 bulbs, \$60.
- MOONBEAM. 2. Deep primrose-yellow, shading to soft canary at edges; very large flower of graceful, open form. This fairly new variety is one of the finest tulips in our list. Height 14 in. 10 bulbs, \$1.60; 100 bulbs, \$14.
- MOTHER O' PEARL. 2. Very pale rose, with broad flame of creamy yellow through center of petals; large flower of loose form. An exquisite variety which we are glad to offer again. Height 14 in. 10 bulbs, \$1.60; 100 bulbs, \$14.



- MR. BURGER. 3. Clear, bright lemon-yellow; very large sturdy flower of exceptional value for bedding. Height 14 in. 10 bulbs, \$1.50; 100 bulbs, \$13.
- NEREUS. 2. White, with broad margin of clear carmine-rose; flowers of good size and striking color. A great improvement over Princess Wilhelmina in color and form. Height 14 in. 10 bulbs, \$1.90; 100 bulbs, \$17.
- PINK BEAUTY. 3. Opening white with narrow edge of soft pink, with age becoming vivid cherry-rose; white base starred yellow. Enormous flower of superb shape, carried on stiff, strong stem. The handsomest dark pink bedding Tulip, and a fine late forcer. Height 12 in. 10 bulbs, 85 cts.; 100 bulbs, \$7.50.
- PINK DELIGHT. 1. White, with broad edge of pure, bright rose-pink, the color suffusing the flower with age. This is the finest pink Early Tulip in our collection, having great size and substance, and a clear color unique in its class. Height 13 in. 10 bulbs, \$1.30; 100 bulbs, \$11.
- PRESIDENT LINCOLN; syn., QUEENS OF THE VIOLETS. 2. Clear magenta-violet; large flower; very effective when grown beside a light yellow Tulip. Height 12 in. 10 bulbs, 80 cts.; 100 bulbs, \$7.
- PRIMROSE QUEEN; syn., HERMAN SCHLEGEL; PRIMROSE DAME. 3. Primrose, edged canary-yellow; inside clear yellow; medium-sized flower. Height 10 in. 10 bulbs, 65 cts.; 100 bulbs, \$5.50; 1,000 bulbs, \$50.
- PRINCE DE LIGNY. 2. Rich deep yellow; a pointed flower on a tall stem. A fine yellow Tulip for bedding. Height 18 in. 10 bulbs, 85 cts.; 100 bulbs, \$7.50.
- PRINCE OF AUSTRIA. 2. Brilliant orange-scarlet, yellow base; large showy flower, deliciously scented. A fine bedding variety and unsurpassed for forcing. Height 15 in. 10 bulbs, 65 cts.; 100 bulbs, \$5.50; 1,000 bulbs, \$50.
- PROGRESSION. 3. White with broad edge of bright carmine-rose, the color spreading with age throughout the whole flower; yellow and white base. A finer flower than Ibis for borders. Height 16 in. 10 bulbs, 75 cts.; 100 bulbs, \$6.50; 1,000 bulbs, \$60.
- PROSERPINE. 1. Rosy carmine, with white base marked slate-blue; an enormous flower of full, globular shape; deliciously scented. An extremely handsome bedding Tulip. Height 14 in. 10 bulbs, 75 cts.; 100 bulbs, \$6.50.
- QUEEN ALEXANDRA. 2. Bright silky carmine of glowing character, without a trace of magenta; large flower of handsome form and striking white and dark green base, which we recommend highly for outdoors. Height 13 in. 10 bulbs, \$1.10; 100 bulbs, \$9. See illustration.



- QUEEN OF ORANGE. 3. Glowing dark orange, stippled flame; large flower of glorious coloring. A darker sport of Early Tulip De Wet and a most interesting novelty. Height 17 in. 10 bulbs, 85 cts.; 100 bulbs, \$7.50.
- QUEEN OF THE NETHERLANDS. 2. Very soft, pale rose, flushed white, with yellow base; very large, egg-shaped flower of superb form. A good pale pink Tulip for borders. Height 14 in. 10 bulbs, 80 cts.; 100 bulbs, \$7.
- QUEEN OF THE WHITES. 2. Pure white, with pointed petals and strong stem. A distinct white Tulip for bedding purposes. Height 10 in. 10 bulbs, 75 cts.; 100 bulbs, \$6.50; 1,000 bulbs, \$60.
- RED ADMIRAL. 3. Deep orange-scarlet, with narrow edge of pale orange-yellow; clear yellow base. A huge flower of fine habit with noticeably fringed petals. Height 15 in. 10 bulbs, 80 cts.; 100 bulbs, \$7.
- RISING SUN. 2. Very deep golden yellow; long, huge flower of very handsome form and habit. A sport of Duchesse de Parme, which excels all dark yellow Tulips for bedding or forcing. Height 16 in. 10 bulbs, 75 cts.; 100 bulbs, \$6.50; 1,000 bulbs, \$60.
- ROSE APLATI. 2. Blush-white, edged pale salmon-rose, with darker rose tone toward base of petals; good sized flower of flattened shape. A fine pink Tulip for bedding, and very daintily beautiful when forced. Height 10 in. 10 bulbs, 75 cts.; 100 bulbs, \$6.50.
- ROSE DE HOLLANDE. 2. Creamy white, with pure white edge, which turns with age to a fine penciling of bright pink. Very large, globular flower of fine habit, and splendid stem. An extra-fine bedding variety. Height 14 in. 10 bulbs, 85 cts.; 100 bulbs, \$7.50.
- ROSE QUEEN. 2. Cherry-red, with broad stripe of white; a pointed flower of deeper tone than Princess Wilhelmina. Height 12 in. 10 bulbs, 75 cts.; 100 bulbs, \$6.50.
- SIR THOMAS LIPTON; syn., CARLISLE. 2. Bright crimson, with yellow base, marked olive-green; large, cup-shaped flower of great substance. A very fine variety, the best of all reds for bedding and good for forcing. Height 13 in. 10 bulbs, \$1; 100 bulbs, \$8.50.
- STANLEY; syn., CRAMOISI POURPRE; ROSE SUPERBE. 3. Rich American Beauty rose of brilliant tone; a flower of very attractive color. Good forcing and bedding variety. Height 10 in. 10 bulbs, \$1; 100 bulbs, \$8.50.
- SUPERLATIVE. 3. Crimson red, shaded cherry; extra-large flower of a very clear color and a new variety which should be a leading one where a bright Tulip is wanted in the border. Height 13 in. 10 bulbs, \$1.80; 100 bulbs, \$16.



1—La Riante
3—Queen Alexandra

2—Yellow Swan
4—Leopold II



So That You Will Appreciate the Early Tulips



WE STILL believe that the Early Tulips should not be disregarded, as seems to be the tendency now that so many novelties are brought out each year. Some of the loveliest Tulips we know are in this group and the gardener who grows this collection will echo our praise, we are sure.

Order Recommendation BB

Ten bulbs of each for \$11.70

Five bulbs of each for \$5.85

DIADEM

FORTUNA

LA REMARQUABLE

L'UNIQUE

MOONBEAM

PINK DELIGHT

PROGRESSION

QUEEN ALEXANDRA

QUEEN OF ORANGE

RISING SUN



- THE PEARL.** 3. Pale heliotrope, flushed white at base of petals, and white base. Not a large-flower, but of a color hitherto unknown in the Early Tulips. Height 12 in. 10 bulbs, \$1.20; 100 bulbs, \$10.
- THE PIRATE.** 2. Dull watermelon-red, edged pale bronzy orange, with yellow base. This splendid novelty is a sport of Queen of the Netherlands with all the fine qualities of that variety. Offered only in the Blue Book. Height 13 in. 10 bulbs, \$5.
- THOMAS MOORE.** 2. Dull, rosy terra-cotta, shading at edges of petals to dull orange-yellow; center marked olive-green. A medium-sized flower, sweet-scented. Fine for forcing. Height 15 in. 10 bulbs, 65 cts.; 100 bulbs, \$5.50; 1,000 bulbs, \$50.
- VAN DER NEER.** 2. Dark magenta-purple of brilliant tone; large and beautifully formed flower. A superb bedding Tulip and a good midseason forcer. Height 12 in. 10 bulbs, 80 cts.; 100 bulbs, \$7.
- VENUS.** 3. Opening white with faint pink markings which deepen, as the flower ages, to form a Picotee edge; yellow base. A fine new Early Tulip, which might well be called the Picotee of the Early Tulips. Height 15 in. 10 bulbs, 75 cts.; 100 bulbs, \$6.50.
- WAPEN VAN LEIDEN; syn., ARMS OF LEIDEN.** 2. Creamy white, with stripe of carmine-rose through center of petals, and slightly feathered dark rose; a medium-sized flower and very distinct. Fine either for bedding or forcing. Height 15 in. 10 bulbs, 70 cts.; 100 bulbs \$6.
- WHITE BEAUTY.** 3. Pure white; of great size and substance. A fine sport of Pink Beauty coming into bloom later than other white Tulips in this section. Height 12 in. 10 bulbs, 85 cts.; 100 bulbs, \$7.50.
- WHITE HAWK.** 2. Beautiful, pure white; very large globular flower of great substance, exquisitely formed, with crinkled petals. A superb Tulip for beds, and the finest white forcing variety, lasting a long time in good condition. Height 13 in. 10 bulbs, 70 cts.; 100 bulbs, \$6; 1,000 bulbs, \$56.
- WOUVERMAN.** 2. Rich claret-purple; large flower. Very handsome when bedded with a white variety like Lady Boreel. Height 13 in. 10 bulbs, 80 cts.; 100 bulbs, \$7.

Later Single Tulips

Among the Tulips generally included with the Single Early sorts there are a few varieties which bloom from five to six days after the others, or just enough later to



mar the bedding effect where they are planted with the early kinds. These varieties are here grouped together with the purpose of suggesting that they should be grown by themselves, and not with the early sorts. They are all extremely beautiful, and serve to fill in a gap between the April-blooming Tulips and the first of the Cottage Tulips.

ADMIRAL REINIER. 2. White ground, striped and feathered carmine-rose, with yellow base; long, large flower of handsome form. Excellent for bedding. Height 12 in. 10 bulbs, \$1.20; 100 bulbs, \$10.

CERISE GRIS-DE-LIN. 4. Soft carmine-rose, shaded fawn and margined creamy white, with yellow base; large flower of globular form. A handsome bedding and late forcing variety. Height 13 in. 10 bulbs, 75 cts.; 100 bulbs, \$6.50.

COULEUR CARDINAL. 4. Brilliant crimson-scarlet, with a purplish bloom on the outer petals and yellow base; fine, large flower on a very strong stem. Superb for beds or late forcing. Height 13 in. 10 bulbs, 65 cts.; 100 bulbs, \$5.50; 1,000 bulbs, \$50.

GOLDEN HORN. 4. Pale primrose-yellow, bordered orange; large flower of very beautiful shape. Fine for bedding and very late forcing. Height 11 in. 10 bulbs, 85 cts.; 100 bulbs, \$7.50.

LE REVE; syn., AMERICAN LAC; HOBBEWA; SARAH BERNHARDT. 4. Old-rose, flushed buff; a very large, globular flower with rounded petals and carried on a strong stem. Very beautiful when grown out-of-doors. Fine for late forcing; if forced early the color is not so clear. Height 13 in. 10 bulbs, 75 cts.; 100 bulbs, \$6.50.

L'INTERESSANTE. 4. Dark mauve-violet, edged glistening white, with broader white margin inside; yellow base. A variety remarkable for the high quality of its coloring. Height 13 in. 10 bulbs, 80 cts.; 100 bulbs, \$7.

ROSE LUISANTE. 4. Brilliant, deep rose-pink; large flower of great substance. Splendid for bedding or late forcing. Height 12 in. 10 bulbs, 70 cts.; 100 bulbs, \$6.

WHITE SWAN. 4. Pure white; large, oval flower of handsome form. Superb for cutting, bedding or late forcing. Height 15 in. 10 bulbs, 65 cts.; 100 bulbs, \$5.50; 1,000 bulbs, \$50.

YELLOW SWAN. 4. Very soft lemon-yellow, changing to primrose and tinged palest rose as the flower ages; a long flower of lovely color and shape. Height 15 in. 10 bulbs, \$1; 100 bulbs, \$8. See illustration.



Double Tulips

The great value of the Double Tulips lies chiefly in their showy and lasting qualities. For beds and borders, where a display of color may be desired, they are very satisfactory, though lacking in the grace of form and habit which single Tulips possess to such a marked degree. During heavy rains the huge blooms are apt to be broken off, and it is best to plant where they may have some protection from heavy winds. Double Tulips generally come into flower a trifle later than the Single Early Tulips.

AURORA. 3. Cherry-red, overlaid with bright rose; very large flower with rounded petals on a fine, tall stem. A splendid bright color for the garden. Height 14 in. 10 bulbs, \$1.10; 100 bulbs, \$9.

BLEU CELESTE; syn., **BLUE FLAG.** 5. Soft violet-purple; large flowers of very pleasing color. A beautiful Tulip for cutting or late forcing. A variety much later than other Double Tulips. Height 16 in. 10 bulbs, \$1.40; 100 bulbs, \$12.

BOULE DE NEIGE. 2. Pure white; large, full flower, resembling a white peony. Splendid for bedding or forcing. Height 10 in. 10 bulbs, 80 cts.; 100 bulbs, \$7.

CHERRY RIPE. 3. Cherry-crimson, a very handsome color; large flower which lasts a long time and is exceedingly showy. Height 11 in. 10 bulbs, 80 cts.; 100 bulbs \$7.

COURONNE D'OR. 2. Deep yellow, flushed orange-red; large flower. A splendid bedding Tulip and a good forcer. Height 11 in. 10 bulbs, 80 cts.; 100 bulbs, \$7.

EL TOREADOR. 2. Bright orange-scarlet, broadly margined buff-yellow; large. Fine for beds or forcing. Height 12 in. 10 bulbs, 85 cts.; 100 bulbs, \$7.50.

EPICURE. 5. Orange-brown, shaded and suffused old-gold; a very large flower, coming into bloom with the late Tulips and having the color of a Breeder Tulip. Height 18 in. 10 bulbs, \$1.60; 100 bulbs, \$14.

GOLDEN KING. 1. Soft canary-yellow, shaded deeper yellow with black anthers; very beautiful flower for bedding. Height 13 in. 10 bulbs, 85 cts.; 100 bulbs, \$7.50.

LA CITADELLE. 3. Dull garnet with purple bloom and edged bright amber-yellow; a showy Tulip of a color combination like some types of stained glass. Height 13 in. 10 bulbs, 80 cts.; 100 bulbs, \$7.

LA JOLIE. 2. Deep rose lilac; a loosely built flower of moderate size, with pointed petals, very decorative in character. A fine bedding variety, the best of this color. Height 12 in. 10 bulbs, 85 cts.; 100 bulbs, \$7.50.



- LE MATADOR. 3. Rich, glowing scarlet, with purple bloom on the outside of the petals; large, globular flower. Very effective in beds, and fine for forcing. Height 11 in. 10 bulbs, 85 cts.; 100 bulbs, \$7.50.
- LORD BEACONSFIELD. 3. Brilliant carmine-rose; large flower of distinct shape, and very double. A good variety for bedding or forcing. Height 12 in. 10 bulbs, 85 cts.; 100 bulbs, \$7.50.
- LUMINOSA. 2. Brilliant orange-scarlet, almost the color of an oriental poppy; very large, full flower of extremely showy character. A superb bedding variety. Height 12 in. 10 bulbs, 80 cts.; 100 bulbs, \$7.
- MR. VAN DER HOEF. 3. Golden yellow; large full flower and a sport of Murillo with all the good qualities of that well-known favorite for both forcing and bedding. Height 11 in. 10 bulbs, 70 cts.; 100 bulbs, \$6.
- MT. EVEREST. 5. Rosy lilac; a very double flower on an enormously thick stem. A splendid flower to use with Bleu Celeste. Height 22 in. 10 bulbs, 85 cts.; 100 bulbs, \$7.50.
- MURILLO. 3. Delicate rose-pink, flushed white; fine for bedding, and the easiest forcer of all Doubles. Height 11 in. 10 bulbs, 60 cts.; 100 bulbs, \$5; 1,000 bulbs, \$46.
- MYSTERY OF INDIA. 3. Bronze yellow, shaded deeper bronze with flush of old rose; large flower, quite full, on a good stem. A double Tulip with much of the Breeder tones in its unique color. Height 18 in. 10 bulbs, 80 cts.; 100 bulbs, \$7.
- PEACH BLOSSOM. 3. Bright rose-pink, flushed white, deepening with age to carmine-rose; large double flower of very handsome color. A new sport of Murillo, which will be a favorite variety for forcing in the near future. Height 12 in. 10 bulbs, 70 cts.; 100 bulbs, \$6.
- PRINCE OF ORANGE. 2. Light yellow, broadly edged fiery orange; when fully open, clear orange-yellow, with yellow base. A large, full flower of most intense color for outdoors. Height 11 in. 10 bulbs, \$1.30; 100 bulbs, \$11.
- QUEEN EMMA. 3. White, with wide border of bright cerise-scarlet; medium-sized bloom of very lively tone. Height 11 in. 10 bulbs, \$1; 100 bulbs, \$8.
- ROSE D'AMOUR. 3. Pale flesh-rose, deepening with age to soft salmon-rose; distinct shape and very lovely color. An especially beautiful Tulip for bedding or forcing. Height 12 in. 10 bulbs, 85 cts.; 100 bulbs, \$7.50.
- RUBRA MAXIMA. 2. Deep red; a large full flower and one of the best for bedding or forcing. Height 14 in. 10 bulbs, 75 cts.; 100 bulbs, \$6.50.



- SAFRANO; syn., BRIMSTONE BEAUTY; TEA ROSE. 2. Soft pale yellow, tinged light rose. A very distinct color in Double Tulips. Fine for bedding or forcing. Height 11 in. 10 bulbs, 60 cts.; 100 bulbs, \$5; 1,000 bulbs, \$46.
- SALMONETTA. 3. Opening peach-rose, flushed and edged rosy buff, changing to pure rose-pink with salmon-pink edge; flower of good size and delightful color. This new sport of Murillo is a distinct shade in the double types and is a fine color for garden use. Height 12 in. 10 bulbs, \$1.10; 100 bulbs, \$9.
- SWEETHEART. 2. White, slightly tinged pale rose with age; very large and very double flower, carried on a stiff stem. Superb for bedding, as the foliage adds much to the beauty of the flower. Height 12 in. 10 bulbs, 85 cts.; 100 bulbs, \$7.50.
- TRIUMPHATOR. 3. White, heavily flushed rose-pink; very double flower on strong stem. A new variety which we consider the best soft pink in the Double Tulips. Height 14 in. 10 bulbs, 80 cts.; 100 bulbs, \$7.
- VUURBAAK. 2. Fiery scarlet, tinged orange when open; large flower. Very showy for beds and fine for forcing. Height 11 in. 10 bulbs, 70 cts.; 100 bulbs, \$6.
- YELLOW ROSE. 5. Beautiful, deep yellow; large and very fragrant. Most valuable for bedding and cutting. Blooms very late. Height 14 in. 10 bulbs, 80 cts.; 100 bulbs, \$7.

Cottage Tulips

(Including, also, New Hybrid and Triumph Tulips)

The Cottage Tulips, as a class, consist of the many splendid kinds which passed out of the hands of the wealthier English landowners and into the gardens of the cottagers when the former began to lose interest in the flower which had been fashionable for many years. It is surprising that so many of them survived until the modern search for spring flowers brought the Tulip back into favor again.

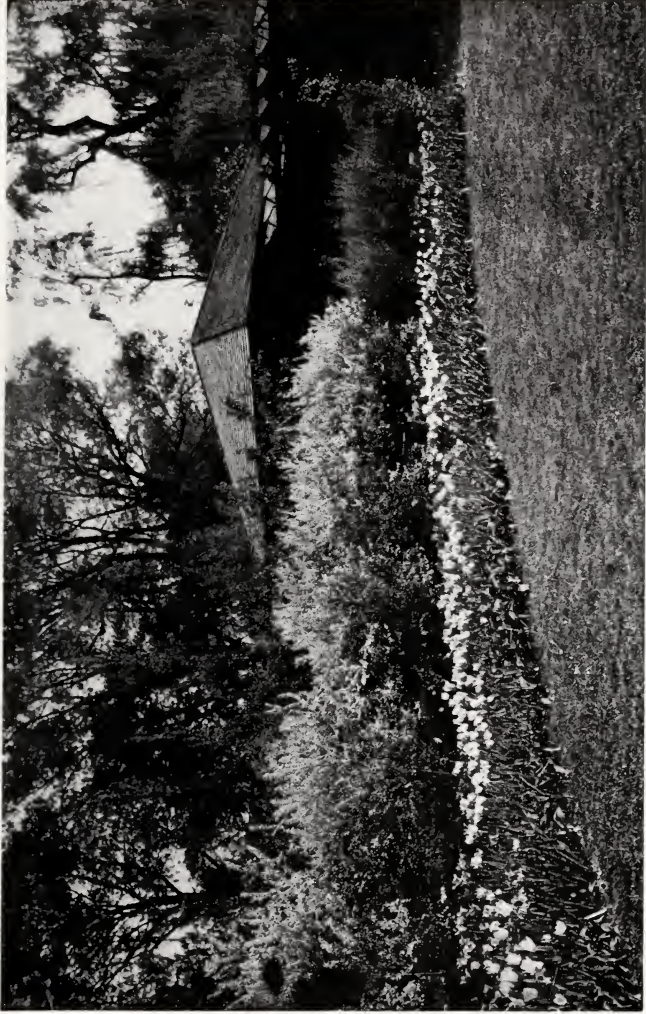
They are, to speak generally, the most permanent of all Tulips and include a range of colors missing, in large part, in the other classes of late Tulips. For planting in borders, or for grouping among shrubbery they are unsurpassed, while their graceful forms and habit of growth give a distinctive touch to the border where they may be planted.



With this group we have included the new types of seedlings such as the race called in Holland *Triumph Tulips* and the new hybrids of all classes which do not readily fall into the more well-defined groups already formed. These are noted in parentheses in the descriptive matter immediately below.

For carefully studied arrangements of the Tulips, the color schemes on page 13 should be consulted. Detailed planting directions will be included with the shipment of the bulbs. The figure following the name indicates the relative time of flowering.

- ADVANCE. (New Hybrid). 3. Fiery scarlet, with purple bloom on outer petals and brilliant blue base. This new seedling variety is almost identical in color with the well-known *Gesneriana Spathulata*, but is almost half again as large. For the Tulip fancier or for shows this is a specimen variety. Height 24 in. Single bulb, \$1; 10 bulbs, \$8.
- AEGIS. (New Hybrid). 3. Self-colored cherry-rose, with slightly ruffled petals and white base with faint blue halo. Large flower on very strong stem. Height 20 in. 10 bulbs, 70 cts.; 100 bulbs, \$6.
- ALCMENE. (New Hybrid). 3. Glowing cherry-red, edged soft rose with white base and blue halo; large, loosely built flower of graceful habit. Height 23 in. 10 bulbs, 75 cts.; 100 bulbs, \$6.50.
- AMBER. (New Hybrid). 2. Soft amber-yellow, flushed very light rose; as the flower ages the yellow becomes a pale cream slightly tinged rose. A rather small flower, but a novel color among the Cottage Tulips. Height 25 in. 10 bulbs, 75 cts.; 100 bulbs, \$6.50.
- AMBER CROWN. 3. Pale buff-yellow, with broad stripe of soft lilac-brown; beautiful green base. A low-growing variety of unusual color among the Cottage Tulips. Height 18 in. 10 bulbs, \$1; 100 bulbs, \$8.
- AMBERGRIS. (New Hybrid). 3. Rosy crimson, edged and shaded orange; inside pure orange with yellow base; a small flower of very bright and attractive color. Height 24 in. 10 bulbs, 85 cts.; 100 bulbs, \$7.50.
- AMBROSIA. (New Hybrid). 3. Lilac-rose, with broad tan edge; inside bright orange changing to tan; yellow base and green halo. An interesting and very beautiful combination of colors, one of the finest of the new Cottage Tulips. Height 24 in. 10 bulbs, \$1.10; 100 bulbs, \$9.



In the Cottage Tulip Garden





Mr. Hunt Chooses for You



A COLLECTION of moderate-priced varieties in the Cottage and New Hybrid Tulips, in a full range of colors in this class. A collection sure to give satisfaction to the beginner.

Order Recommendation CC

Ten bulbs of each for \$7.05

Five bulbs of each for \$3.55

AEGIS	JOHN RUSKIN
AVIS KENNICOTT	ORANGE KING
GOLDEN SPIRE	PICOTEE
HAMMER HALES	ROSABELLA
HONEYMOON	THE FAWN

The De Luxe List

Contains the finest varieties in the new forma belonging to this section of the Tulips.

Order Recommendation DD

Ten bulbs of each for \$16.85

Five bulbs of each for \$8.45

AMBROSIA	MADAME BUYSENS
ARETHUSA	MARJORIE BOWEN
CARRARA	MAYFAIR VANITY
ILIAS	SUNRISE
LEDA	TANGERINE



- ARETHUSA. (New Hybrid). 2. Pale primrose, edged lemon yellow; inside pale lemon yellow. Tall, loosely built flower of graceful habit. A splendid variety and perhaps the best of all light yellow Tulips. Height 30 in. 10 bulbs, \$1.10; 100 bulbs, \$9.
- ASTORIA. (Triumph). 3. White broadly edged rosy lilac, with white base; long, large flower, quite distinct in color. Height 20 in. 10 bulbs, \$1; 100 bulbs, \$8.50.
- AVIS KENNICOTT. 2. Rich chrome-yellow, with black base and anthers; long flower of immense size. The best bright yellow Cottage Tulip for the garden. Height 25 in. 10 bulbs, 75 cts.; 100 bulbs, \$6.50.
- BOUTON D'OR; syn., IDA; GOLDEN BEAUTY. 2. Deep chrome-yellow, with black anthers; medium-sized, cup-shaped flower. Fine for late forcing. Height 20 in. 10 bulbs, 60 cts.; 100 bulbs, \$5; 1,000 bulbs, \$46.
- BRIGHTNESS. 2. Bright crimson with pointed petals and clear white base; inside brilliant scarlet. A rather small flower but an unusually bright bit of color in the garden. Height 20 in. 10 bulbs, \$1; 100 bulbs, \$8.
- CARRARA. (New Hybrid). 3. Glistening, snowy white with yellow stamens; a large flower with very broad, round petals of great substance. Height 20 in. 10 bulbs, \$1.10; 100 bulbs, \$9.
- CELIA. 2. Soft rosy lilac, edged pale amber-yellow, with brilliant starry blue base, which turns to almost an azure blue; long flower with pointed petals and open form. A Tulip noteworthy because of the fine blue base. Height 16 in. 10 bulbs, \$1.50; 100 bulbs, \$13.
- COTTAGER. 4. Soft cherry-rose, with yellow base and bright green star; loosely built and of graceful shape. Height 22 in. 10 bulbs, 85 cts.; 100 bulbs, \$7.50.
- DIDO. (New Hybrid). 2. Deep coral-pink, edged light orange; inside glowing flame color, with broad margin of light orange; yellow base with bright green halo. Long, large flower of very showy color, tall and vigorous. A very striking Tulip. Height 28 in. 10 bulbs, \$1.10; 100 bulbs, \$9.
- DUCHESS OF YORK. (New Hybrid). 3. Brilliant burnt-orange with narrow golden flush on edges of petals; inside orange-red with yellow base. A large flower of very showy character and unique color. Height 20 in. 10 bulbs, \$2; 100 bulbs, \$18.
- EURYDICE. (New Hybrid). 3. Soft creamy yellow, with rose pink margin, blue base and black anthers. A flower of medium size but a charming combination of color. Height 22 in. 10 bulbs, \$1.30; 100 bulbs, \$11.



- FAIRY QUEEN.** 3. Soft rosy lilac, broadly margined amber-yellow, large flower of perfect form; effective planted with John Ruskin. Height 20 in. 10 bulbs, 60 cts.; 100 bulbs, \$5; 1,000 bulbs, \$46.
- FLAVA.** 5. Creamy canary-yellow; large, handsomely formed flower on stiff stem. An ideal Tulip for borders, and is usually in good condition after most of the late Tulips have gone. This variety has become very scarce; we offer the true variety, for which inferior stocks are frequently substituted. Height 25 in. 10 bulbs, \$1.80; 100 bulbs, \$16.
- FULGENS.** 2. Clear crimson with yellow and white base; long flower with reflexing petals carried on tall, stiff stem. Very striking in borders. May be forced slowly. Height 30 in. 10 bulbs, 85 cts.; 100 bulbs, \$7.50.
- GENERAL FRENCH.** (New Hybrid). 2. Soft carmine, flushed cerise with blue base, large flower of loosely built form and silky texture. A useful color for the border or among evergreens. Height 24 in. 10 bulbs, 85 cts.; 100 bulbs, \$7.50.
- GEORGIA.** (Triumph). 1. Creamy yellow with narrow crimson edge; inside soft primrose with yellow base. An attractive color combination. Height 20 in. 10 bulbs, 85 cts.; 100 bulbs, \$7.50.
- GESNERIANA LUTEA.** 4. Deep yellow; a flower of perfect form, and large size; handsome for growing among shrubbery. Height 24 in. 10 bulbs, 65 cts.; 100 bulbs, \$5.50; 1,000 bulbs, \$50.
- GESNERIANA SPATHULATA;** syn., **GESNERIANA MAJOR.** 3. Rich crimson-scarlet, with brilliant blue base; large flower; very effective when seen from a distance against a background of evergreens. Height 24 in. 10 bulbs, 70 cts.; 100 bulbs, \$6; 1,000 bulbs, \$55.
- GLARE OF THE GARDEN;** syn., **MACULATA GLOBOSA GRANDIFLORA.** 4. Rich crimson-red, with black center edged yellow; long, large flower of exceedingly handsome appearance. One of the best red Cottage Tulips. Height 21 in. 10 bulbs, 85 cts.; 100 bulbs, \$7.50.
- GOLDEN SPIRE;** syn., **ELEGANS LUTEA MAXIMA.** 3. Soft canary-yellow, slightly flushed orange-red as the flower ages; large flower, with pointed reflexing petals. A splendid Tulip for outdoor planting. Height 15 in. 10 bulbs, 85 cts.; 100 bulbs, \$7.50. See illustration.
- GRAND YELLOW.** 3. Pure chrome yellow with orange-yellow base. A long, large flower of rich color, keeping in good condition in bright sunlight. Height 25 in. 10 bulbs, \$1.80; 100 bulbs, \$16.



- GREGOR MENDEL.** (New Hybrid). 3. Rosy buff, shaded cerise; inside bright fawn, with yellow base. Medium-sized flower of entirely new color. Height 20 in. 10 bulbs, \$1.10; 100 bulbs, \$9.
- HAMMER HALES.** 3. Golden brown, flushed old-rose; inside bright apricot, edged bronze-yellow with yellow base and green halo. A very long flower. Height 24 in. 10 bulbs, 70 cts.; 100 bulbs, \$6.
- HAUTAIN.** 3. Bright salmon-rose with orange glow; inside pure coral with enormous white anthers and yellow base starred green; long flower of attractive form. A very clear color in the new Tulips. Height 20 in. 10 bulbs, \$1.60; 100 bulbs, \$14.
- HERAUT.** (Triumph). 2. Violet-mauve with broad edge of rosy lilac; large flower on stiff stem. Resembles L'Interessante in color but has a more vigorous habit. Height 24 in. 10 bulbs, \$1.80; 100 bulbs, \$16.
- HONEYMOON.** (New Hybrid). 1. Soft primrose, growing paler as the flower ages. A large flower very much like Moonlight in color, but finer in every respect. Height 28 in. 10 bulbs, 85 cts.; 100 bulbs, \$7.50.
- HYDRAS.** (Triumph). 3. Old rose with yellow edge, becoming soft crimson with age; inside gold with yellow base and black anthers. Height 22 in. 10 bulbs, 85 cts.; 100 bulbs, \$7.50.
- ILIAS.** (New Hybrid). 3. Soft blue-purple, changing to heliotrope with age; white base. A large flower of silky texture, quite distinct in color. Effective when planted with the paler yellow varieties. Height 24 in. 10 bulbs, 85 cts.; 100 bulbs, \$7.50.
- ILLUMINATOR.** 3. Deep yellow, flamed and flushed dark orange; large flower of striking tone. Splendid for planting among shrubbery with the orange shades. Height 25 in. 10 bulbs, 85 cts.; 100 bulbs, \$7.50.
- INGLESCOMBE PINK;** syn., **SALMON QUEEN.** 2. Soft rosy pink, with salmon flush, changing with age to rose. Large, globular flower of distinct form. Height 24 in. 10 bulbs, 60 cts.; 100 bulbs, \$5; 1,000 bulbs, \$46.
- INGLESCOMBE SCARLET.** 4. Intense vermilion-red, with black base; large, showy flower on a graceful stem. Fine for borders and shrubbery. Height 20 in. 10 bulbs, 70 cts.; 100 bulbs, \$6; 1,000 bulbs, \$56.
- INGLESCOMBE YELLOW.** 4. Glossy canary-yellow; large, globular flower of perfect form, on sturdy stem, in some seasons showing a narrow crimson edge. Very fine for borders or among shrubs and evergreens. Height 21 in. 10 bulbs, 50 cts.; 100 bulbs, \$4; 1,000 bulbs, \$36.



- INNOVATION. 3. White, tipped and feathered soft carmine; wonderful dark blue base; large flower of fine shape. The markings are very striking when the flower is closed. Height 18 in. 10 bulbs, 85 cts.; 100 bulbs, \$7.50.
- JEANNE DESOR. (New Hybrid). 3. Brilliant deep yellow suffused and edged crimson. A very long flower of brilliant color. Height 16 in., \$2.60; 100 bulbs, \$24.
- JOHN RUSKIN. 3. Salmon-rose, edged soft lemon-yellow; inside deep rosy lilac, with broad margin of yellow and a yellow base; long flower. A beautiful variety of opalescent character. Height 16 in. 10 bulbs, 65 cts.; 100 bulbs, \$5.50; 1,000 bulbs, \$50. See illustration.
- KALEIDOSCOPE. 3. Soft rose, flushed pale lemon-yellow, striped and feathered at edge bright crimson; long flower of interesting color. A sport of John Ruskin. Height 24 in. 10 bulbs, \$1; 100 bulbs, \$8.
- KINGFISHER. 2. Creamy yellow ground, with age turning whiter, irregularly striped and feathered maroon and violet; blue-green base; large flower. Height 18 in. 10 bulbs, \$1.70; 100 bulbs, \$15.
- LA MERVEILLE. 4. Orange-scarlet, flushed rose, with yellow base; very long, large flower of exquisite form, deliciously scented. Height 20 in. 10 bulbs, 60 cts.; 100 bulbs, \$5; 1,000 bulbs, \$46.
- LEDA. (New Hybrid). 3. Bright luminous cherry-pink, slightly paler at margins, inside deep cherry with large white base and blue halo. Large, egg-shaped flower of most glowing character. One of the new Tulips which should be in every collection. Height 24 in. 10 bulbs, \$1.60; 100 bulbs, \$14.
- LEMON QUEEN. (New Hybrid). 3. Soft lemon-yellow, shading to white in center of petals; deep fawn-colored base. A very beautiful flower with long petals and very strong stem. A Tulip something like Flava. Height 26 in. 10 bulbs, \$1; 100 bulbs, \$8.
- LORD CARNAVON. (Triumph). 1. Soft rose-pink with broad white margin, the color feathered on the edge; inside bright rose-pink with white edge and white base starred yellow. A rather pointed flower and one of the earliest in this class to bloom. Height 25 in. 10 bulbs, 70 cts.; 100 bulbs, \$6; 1,000 bulbs, \$56.
- MADAME BUYSSENS. (New Hybrid). 2. Primrose-yellow, inside clear canary-yellow with yellow base and anthers; large flower on very tall stem. This is one of the most beautiful of the new Tulips because of its soft, yet clear color and its graceful form and habit of growth. Height 28 in. 10 bulbs, \$2.60; 100 bulbs, \$24.



1—Yellow Picotee

2—Golden Spire

3—Quaintness

4—Walter T. Ware

5—John Ruskin





The Mayfair Collection of Triumph Tulips



TO discover how distinct a class of Tulips the Triumph Tulips comprise, the gardener can do no better than try this representative group chosen by Mr. Hunt.

Order Recommendation EE

Ten bulbs of each for \$12.30

Five bulbs of each for \$6.15

HERAUT	RED FLAME
HYDRAS	REGULUS
LORD CARNAVON	SAGITTARIUS
MEMPHIS	SIRIUS
MIZAR	SNOWDRIFT



- MADAME MOTTET.** 2. Clear carmine-rose, growing paler as the flower ages. A sport of Monsieur Mottet with the same branching habit, giving many stems of bloom from each bulb. Height 24 in. 10 bulbs, \$1.30; 100 bulbs, \$11.
- MANDARIN.** 3. Deep terra-cotta shading lighter at the edges; inside dark orange, with yellow base; a flower of peculiarly artistic tone and very beautiful when used for cutting. Offered only in the Blue Book. Height 26 inch. 10 bulbs, \$1.40; 100 bulbs, \$12.
- MARCELINE.** 3. Salmon-pink with rose shading on outside of petals; a flower of good size. One of the newer lily-flowering Tulips and a better color than the well-known variety Sirene. Height 20 in. 10 bulbs, \$3; 100 bulbs, \$28.
- MARJORIE BOWEN.** (New Hybrid). 3. Soft salmon-rose shaded flesh-pink at edges of petals; inside bright salmon with yellow base. A large flower of beautiful shape and clear color. Height 22 in. 10 bulbs, \$2.20; 100 bulbs, \$20.
- MARVEL.** (New Hybrid). 2. Amber yellow, with rosy lilac flush at center of petals; inside bright yellow, shaded brown toward base with green star. Medium-sized flower, becoming quite yellow with age. Height 25 in. 10 bulbs, 75 cts.; 100 bulbs, \$6.50; 1,000 bulbs, \$60.
- MAYFAIR PEACHBLOW.** (New Hybrid). 3. Soft primrose, shaded at edges light peach-pink; inside pale canary-yellow, deepening towards the bottom of the cup with olive black base and black anthers. This novelty is of good size and is one of the most delicately beautiful color combinations we have ever seen. Offered only in the Blue Book. Height 26 in. 10 bulbs, \$2.70; 100 bulbs, \$25.
- MAYFAIR VANITY.** (New Hybrid). 3. Milky white, flushed and shaded bright navy blue; inside white with dark blue base and black anthers; large, cup-shaped flower. This is a very interesting novelty unlike any other flower we have seen; some flowers have more color than others, but all are rarely beautiful. Offered only in the Blue Book. Height 26 in. 10 bulbs, \$2.70; 100 bulbs, \$25.
- MEMPHIS.** (Triumph). 1. Dull mulberry rose at base, with lemon yellow on upper part of petals; inside same with yellow base and black anthers. A very large flower of unusual color combination. Height 24 in. 10 bulbs, 85 cts.; 100 bulbs, \$7.50.
- MENTOR.** (New Hybrid). 3. Rich blood-red, with yellow base, starred black. Large cup-shaped flower of glorious color for planting among evergreens. Height 22 in. 10 bulbs, 80 cts.; 100 bulbs, \$7.



- MINERVA.** (New Hybrid). 3. Opening pale buff with flush and stippling of crimson through center of petals, the edge changing to white with age: inside white, faintly marked crimson with most regularly formed blue-black base; long, narrow flower somewhat pointed at tip. This is a most interesting novelty, as it clearly shows Kaufmanniana to be one of its parents. Height 20 in. Single bulb, 75 cts.; 10 bulbs, \$6.
- MISSOURI.** (Triumph). 2. Dark garnet, becoming paler with age; beautiful yellow base. A flower of Darwin shape and size, on a tall stem. Height 30 in. 10 bulbs, 85 cts.; 100 bulbs, \$7.50.
- MISS WILLMOTT.** 4. Soft primrose-yellow, passing with age into a darker tone; long, large flower with slightly reflexing petals on a sturdy stem. Height 18 in. 10 bulbs, 70 cts.; 100 bulbs, \$6; 1,000 bulbs, \$56.
- MIZAR.** (Triumph). 1. Purplish rose, edged faint amber, changing to pure rose-pink with flesh-pink edge; inside same with pale yellow base and light green halo; a large flower of fine shape on the sturdiest of stems. This new Tulip is sure to become as much of a favorite as *Baronne de la Tonnay* among the Darwins. Height 28 in. 10 bulbs, \$1.40; 100 bulbs, \$12.
- MONA LISA.** 3. Clear, flaming orange with coral flush; flower of medium size and marked pointed shape. A novelty of distinct form and color which has a typical Cottage habit of growth. Height 25 in. 10 bulbs, \$1.70; 100 bulbs, \$15.
- MONSIEUR S. MOTTET.** 2. White, faintly flushed shell-pink as the flower ages; round flower with rather pointed petals. This interesting novelty is of branching habit, giving six or more flowers from a single stem; splendid for combining with *Madame Mottet*. Height 24 in. 10 bulbs, 80 cts.; 100 bulbs, \$7.
- MOONLIGHT.** 1. A soft, but luminous canary-yellow; very long, oval-shaped flower with outer petals reflexing at the tip. This is a standard variety among the paler yellow Cottage sorts. Superb for any outdoor purpose, and fine for late pot culture. Height 25 in. 10 bulbs, 65 cts.; 100 bulbs, \$5.50; 1,000 bulbs, \$50.
- MR. DAMES.** (New Hybrid). 3. Bright lemon yellow; long, large flower on tall, strong stem. One of the newer Tulips which we can introduce at a moderate price. Height 27 in. 10 bulbs, 80 cts.; 100 bulbs, \$7.
- MRS. C. B. WARD.** (New Hybrid). 2. Crimson, with orange edge flamed yellow; inside flushed white. Very large flower on strong stem. Height 24 in. 10 bulbs, \$1.80; 100 bulbs, \$16.



- MRS. H. A. ASTLETT. (New Hybrid). 2. Soft canary yellow, edged rosy orange, the color suffusing the flower as it ages; inside pale yellow with yellow anthers. Height 23 in. 10 bulbs, \$1.80; 100 bulbs, \$16.
- MRS. KEIGHTLY; syn., GESNERIANA LUTEA PAL-LIDA. 3. Pale yellow; large flower, finely shaped and sweet-scented; a beautiful variety. Height 24 in. 10 bulbs, 75 cts.; 100 bulbs, \$6.50; 1,000 bulbs, \$60.
- MRS. KERRELL. 3. Opening salmon-rose, with age becoming rose, edged soft salmon, with blue and white base; pointed flower of open form. A rather small flower, but one of the brightest and most distinct colors among the Cottage Tulips. Height 18 in. 10 bulbs, 80 cts.; 100 bulbs, \$7.
- MRS. MOON; syn., FULGENS LUTEA MAXIMA. 4. Rich golden yellow; large flower of great beauty and substance, with pointed petals carried on stout stem. A handsome Tulip for out-of-doors. Height 25 in. 10 bulbs, 75 cts.; 100 bulbs, \$6.50; 1,000 bulbs, \$60.
- MR. ZIMMERMAN. (Triumph). 2. Clear, fine rose-pink; inside paler rose with beautiful big white base and yellow anthers. A flower of very clear color, something like early tulip Rose Luisante. Height 23 in. 10 bulbs, \$1.90; 100 bulbs, \$17.
- NECTARINE. (New Hybrid). 3. Primrose-yellow suffused at margin with rosy apricot; inside clear lemon-yellow with olive-black base and black anthers; a flower of good size and most attractive color. Offered only in the Blue Book. Height 26 in. 10 bulbs, \$3; 100 bulbs, \$28.
- ORANGE KING. 4. Glistening deep orange, shaded rose, inside deep orange-scarlet with yellow base; sweet-scented; a globular flower of good size and brilliant coloring. Most attractive for beds or borders. Height 23 in. 10 bulbs, 60 cts.; 100 bulbs, \$5; 1,000 bulbs, \$46.
- ORIANA. 2. Deep rose-red, shading at edge to dull burnt orange; inside dull carmine, edged and suffused orange brown, and greenish yellow base. A large flower of an unusual color. Height 24 in. 10 bulbs, \$1; 100 bulbs, \$8.50.
- PARISIAN YELLOW; syn., ANNIE. 5. Bright yellow; large, pointed flower. Very attractive among shrubbery. Height 20 in. 10 bulbs, 65 cts.; 100 bulbs, \$5.50; 1,000 bulbs, \$50.
- PERDITA. 2. Dark crimson with rosy bloom and narrow edge of clear yellow stippled with red; inside bright scarlet with broad yellow edge stippled red on upper half of petals, black and yellow base. Height 18 in. 10 bulbs, 75 cts.; 100 bulbs, \$6.50; 1,000 bulbs, \$60.



- PICOTEE**; syn., **MAIDEN'S BLUSH**. 3. White, margined deep rose, the color suffusing the whole flower as it ages; good-sized flower, reflexing. A very graceful Tulip for the border. Height 20 in. 10 bulbs, 55 cts.; 100 bulbs, \$4.50; 1,000 bulbs, \$40.
- PLUTO**. 3. Self-colored rose-pink; good-sized flower of beautiful color and shape, with white base and blue star; well suited for planting with any of the pale yellow shades. Height 25 in. 10 bulbs, 70 cts.; 100 bulbs, \$6.
- PRIDE OF INGLEScombe**. 3. White, edged deep carmine-rose, with age becoming suffused carmine-rose; white base starred blue. A long, beautifully shaped Tulip of Picotee type, but a darker and brighter color. Height 23 in. 10 bulbs, 75 cts.; 100 bulbs, \$6.50; 1,000 bulbs, \$60.
- PROFESSOR NOBEL**. (Triumph). 2. Glistening Indian red with broad buff edge; inside buff yellow shading to orange red, and yellow base; large blooms of striking color. A most unusual color in Tulips. Height 22 in. 10 bulbs, \$1.20; 100 bulbs, \$10.
- PROFESSOR TENDELOO**. (Triumph). 3. Soft carmine, broadly edged light yellow, growing paler as it ages; white base and blue star. Enormous flower on a good stem. Height 22 in. 10 bulbs, 85 cts.; 100 bulbs, \$7.50.
- QUAINTNESS**. 4. Golden brown, flushed on center of petals dull old-rose; inside golden brown, deepening to mahogany-brown at the yellow base; long, large flower, of pointed form. A strange color in Cottage Tulips. Fine for outdoors. Height 20 in. 10 bulbs, 85 cts.; 100 bulbs, \$7.50. See illustration.
- RED AND SILVER**. 3. White ground, edged and flamed clear cherry red; inside brilliant cherry with yellowish base. A flower of good size and enchantingly clear color. Height 20 in. 10 bulbs, \$1.20; 100 bulbs, \$10.
- RED FLAME**. (Triumph). 2. Canary yellow, flushed crimson, changing to rosy apricot shaded fawn; green base and black anthers. A tall, well-formed Tulip of remarkable beauty, perhaps the finest of the new Triumph class. Height 24 in. 10 bulbs, \$1; 100 bulbs, \$8.50.
- REGULUS**. (Triumph). 2. Opening garnet purple, changing to blue purple; inside same with yellow base and bright blue halo. A long, large flower, with noticeable ruffled petals, of fine color and sturdy habit which will become a standard variety in a short time. Height 22 in. 10 bulbs, \$1.50; 100 bulbs, \$13.
- RETROFLEXA**. 1. Light yellow; very decorative, urn-shaped Tulip, with recurving petals, giving a lily-like effect; fine for cutting. Height 16 in. 10 bulbs, 75 cts.; 100 bulbs, \$6.50.



- ROSABELLA. (New Hybrid). 3. Shell-pink, flushed white through center of petals; inside shell-pink with an unusually large white base. Large flower with very broad petals quite pointed at tips. A most delicately beautiful flower, sure to become a favorite among those who can appreciate a fine Tulip. Height 26 in. 10 bulbs, 80 cts.; 100 bulbs, \$7.
- ROSAMUNDE. (Triumph). 2. White, faintly lined and dotted with carmine. A tall flower of very dainty character and interesting markings. Height 22 in. 10 bulbs, \$1.20; 100 bulbs, \$10.
- ROSE RIANTE. 3. Self-colored clear carmine-rose of very clean tone; inside carmine-rose with white base margined bright steel-blue. A large flower and tall grower. Height 28 in. 10 bulbs, \$1; 100 bulbs, \$8.
- SAGITTARIUS. (Triumph). 2. Opening white, with age becoming tinged and finally self-colored flesh-pink of very soft tone; a globular flower of exquisite color which we recommend without hesitation. Height 22 in. 10 bulbs, \$1; 100 bulbs, \$8.50.
- SIRENE. 3. Soft lilac-rose, slightly paler at edges; a fine seedling with recurving petals; splendid for planting with Retroflexa. Height 16 in. 10 bulbs, 70 cts.; 100 bulbs, \$6; 1,000 bulbs, \$56.
- SIR HARRY. 4. Pale lavender-pink of an unusual tone, with yellow base and dull blue halo; large flower of pointed shape very broad at base, with waved petals. A fine flower for combining with creamy yellow varieties. Height 26 in. 10 bulbs, 75 cts.; 100 bulbs, \$6.50.
- SIRIUS. (Triumph). 2. Soft old-rose, shaded darker in center of petals, with soft yellow base. A large flower on a splendid stem, very much like a tall Le Reve. Height 24 in. 10 bulbs, \$1.50; 100 bulbs, \$13.
- SNOWDRIFT. (Triumph). 2. Pure white. A long, loosely built flower of beautiful form, with pure white anthers. This is the best white Tulip we have yet seen. Height 26 in. 10 bulbs, \$1.70; 100 bulbs, \$15.
- SOLFATARA; syn., FULGENS LUTEA PALLIDA. 2. Pale sulphur-yellow; large, reflexing flower of very graceful habit. A beautiful Tulip for borders. Height 18 in. 10 bulbs, 85 cts.; 100 bulbs, \$7.50.
- SOUVENIR. (New Hybrid). 3. Light yellow with broad dark scarlet edge; inside yellow flushed cherry at edges of petals. A flower of good size and attractive color, which has won a high reputation abroad. Height 22 in. Single bulb, 75 cts.; 10 bulbs, \$6.



- STRIPED BEAUTY**; syn., **SUMMER BEAUTY**. 3. Silvery rose, blotched and striped dark carmine and white; large, showy flower on a graceful stem. Height 18 in. 10 bulbs, \$1.60; 100 bulbs, \$14.
- SUNRISE**. (New Hybrid). 3. Creamy yellow, shaded violet-rose on edge of petals; inside the deeper shading almost covers the petals; large creamy yellow base and black anthers. A flower of moderate size but an interesting and attractive color among the newer seedling Darwins. Height 25 in. 10 bulbs, \$1.60; 100 bulbs, \$14.
- TANGERINE**. (New Hybrid). 3. Coral-pink, with edge of bright orange, changing to self-colored pale orange; inside glowing flame, with brighter edge and yellow and green base. A wonderful flame-colored Tulip of fine shape and vivid coloring. Height 22 in. 10 bulbs, \$2; 100 bulbs, \$18.
- THE FAWN**. 4. Pale rosy fawn, changing to cream, flushed blush-rose; large, egg-shaped flower. Height 20 in. 10 bulbs, 60 cts.; 100 bulbs, \$5; 1,000 bulbs, \$46.
- THE PRESIDENT**. (New Hybrid). 3. Soft orange-yellow; inside glowing orange with green base, starred yellow; a flower of medium size with narrow pointed petals. Height 20 in. 10 bulbs, \$2.20; 100 bulbs, \$20.
- TWILIGHT**. 2. Dull violet-mauve, edged warm brown, irregularly striped and flamed dark violet; white base with blue halo, and striking white midrib; long, good-sized flower of perfect shape. A Tulip of very rich color, and best seen in late afternoon. Height 23 in. 10 bulbs, \$1.50; 100 bulbs, \$13.
- UNION JACK**; syn., **DISTINCTION**. 1. Light violet, feathered purple, with a few markings of white; blue base; large flower. A very striking variety for borders or late forcing. Height 20 in. 10 bulbs, \$1.20; 100 bulbs, \$10.
- VESTA**. (New Hybrid). 3. Creamy white when first open, turning to pure white; yellow base with black anthers; long flower on tall stem. One of the newer white Tulips of moderate price. Height 29 in. 10 bulbs, 80 cts.; 100 bulbs, \$7.
- WALTER T. WARE**. 4. Deep golden yellow, the deepest and richest color among late Tulips; broad, globular flowers, reflexing at the top. A variety remarkable for its lasting qualities and color. Height 18 in. 10 bulbs, \$1; 100 bulbs, \$8. See illustration.
- WHITE DUCHESS**. 2. The best white among the lily-flowered forms; good-sized bloom on strong stem. Height 18 in. 10 bulbs, \$3.40; 100 bulbs, \$32.



YELLOW GIANT. (New Hybrid). 3. Bright golden yellow of clearest tone; large, cup-shaped flower on a strong stem. From its shape the variety has come to be called a Darwin Tulip, but we believe no yellow kind belongs anywhere but in the Cottage Classes. Height 26 in. 10 bulbs, \$2; 100 bulbs, \$18.

YELLOW PICOTEE. 3. Soft canary-yellow, with narrow edge of crimson which suffuses the flower as it ages; large flower of sturdy, graceful habit. Though not a sport of Picotee, it is a yellow counterpart of the variety from which it takes its name. Height 20 in. 10 bulbs, 70 cts.; 100 bulbs, \$6. See illustration.

ZOMERSCHOON. 4. White, feathered and striped deep cherry-pink, white base. The color suffuses the flower with age. Large, beautifully formed flower of very clean color. Height 20 in. 10 bulbs, \$4.

Darwin Tulips

Darwin Tulips are a race developed by crossing the brilliant Cottage Tulips with the old Breeder types. They have a vigor of growth and substance of flower and brilliance in color which make them easily the finest of all the late Tulips.

For any garden purpose the Darwins are adapted. For the borders, among other hardy flowers, for isolated groupings against a background of shrubs, or for combinations of delicate colors for effects of contrast in the flower garden, the Darwins are matchless. Their beauty is maddening, whether they are seen wide open in the strong glare of midday, or in the quieter light just before dusk, when the closed flowers best show the grace of their charmingly distinct shapes and the softness of their pale colors. It is this very softness of color which, at first sight, fastens the spell of the Darwins upon the lover of garden beauty. The colors have the quality of true pastel shades, and all the varieties (with the possible exception of the scarlet-red tones) combine in the border so harmoniously that the danger of a jarring note in the most haphazard planting is quite negligible.

For carefully studied arrangements of the Tulips, the color schemes on page 13 should be consulted. Detailed planting directions will be included with the shipment of the bulbs. The figure following the name indicates the relative time of flowering.



- AFTERGLOW**; syn., **KATHERINE HAVEMEYER**. 4. Deep, rosy orange, with salmon shading at edges of petals; inside deep orange with yellowish base. A sport of *Baronne de la Tonnaye* of interest because it is the first instance of a Darwin sporting to the Breeder tones. A showy Tulip for outdoors. Height 26 in. 10 bulbs, 60 cts.; 100 bulbs, \$5; 1,000 bulbs, \$46.
- ANDRE DORIA**. 1. Velvety reddish maroon, shading to bright blood-red, with black base; fine, large flower of satiny texture. One of the finest varieties for borders and superb for planting with cerise shades. Height 28 in. 10 bulbs, 85 cts.; 100 bulbs, \$7.50.
- ANTON MAUVE**. 1. Violet purple, shaded dull garnet, slightly paler at edges; inside dark heliotrope with white base and faint blue markings. Long, large flower with wavy petals. Height 30 in. 10 bulbs, \$1.10; 100 bulbs, \$9.
- ANTON ROOZEN**. 2. Vivid rose-pink, edged pale rose, with white base marked blue; a slightly darker shade than *Baronne de la Tonnaye*. Large, cup-shaped flower of great beauty. Height 28 in. 10 bulbs, 60 cts.; 100 bulbs, \$5; 1,000 bulbs, \$46.
- APHRODITE**. 3. Clear, silvery rose-pink with white base; a good-sized round flower of exquisite color on a very tall, stiff stem. Superb for any situation. Height 34 in. 10 bulbs, 85 cts.; 100 bulbs, \$7.50.
- ARIADNE**. 2. Brilliant rosy crimson, shaded scarlet with blue base; large flower of great substance. This is one of the best red Darwin Tulips for outdoor planting. Height 28 in. 10 bulbs, 65 cts.; 100 bulbs, \$5.50; 1,000 bulbs, \$50.
- BARONNE DE LA TONNAYE**. 4. Bright rose margined blush-rose; medium-sized, cup-shaped flower, retaining its color well. A sturdy variety for bedding. Height 26 in. 10 bulbs, 50 cts.; 100 bulbs, \$4; 1,000 bulbs, \$36.
- BERTHOLD SCHWARTZ**. 2. Bright garnet, flushed rose at extreme edge of petals; large flower of very bright character and novel color. Height 25 in. 10 bulbs, 85 cts.; 100 bulbs, \$7.50.
- BLEU AIMABLE**. 4. Lavender with white base, starred blue; a beautiful flower of very distinct shape. Height 25 in. 10 bulbs, 60 cts.; 100 bulbs, \$5; 1,000 bulbs, \$46.
- BLEU CELESTE**. 2. Bright violet-purple; inside dark violet-purple, with white base and blue halo; a handsome Tulip of large size. Height 30 in. 10 bulbs, \$2.20; 100 bulbs, \$20.



- CAMELIA.** 3. Satiny rose of very soft tone shaded pale rose at margin; large flower of oval form with white base and carried on a tall, stiff stem. A new seedling Darwin which will become a leading variety. Height 30 in. 10 bulbs, \$4; 100 bulbs, \$36.
- CARL BECKER.** 2. Soft rose, flushed salmon when opening; large flower with wonderful greenish blue base. A very handsome Darwin for the border and beautiful when forced, though paler in color. Height 30 in. 10 bulbs, 75 cts.; 100 bulbs, \$6.50.
- CATTLEYA.** 3. Opening pure mauve-rose, becoming light mauve as the flower ages; inside the color is the same, with blue-toned base; large flower and a strong stem. This novelty is a splendid variety with a color like the orchid after which it is named. Height 25 in. 10 bulbs, \$2.20; 100 bulbs, \$20.
- CENTENAIRE.** 1. Rich violet-rose, with large blue base; enormous flowers of perfect shape; a magnificent early Darwin for the border, and one of the best forcing varieties. Height 30 in. 10 bulbs, 60 cts.; 100 bulbs, \$5; 1,000 bulbs, \$46.
- CHERRY BLOSSOM.** 1. Self-colored soft rose-pink with blue base; large flower on a tall, strong stem. This is a sport of Pride of Haarlem and a flower of refined color, with all the good qualities of its parent. Height 25 in. 10 bulbs, 85 cts.; 100 bulbs, \$7.50.
- CITY OF HAARLEM.** 3. Intense dark scarlet, with darker bloom; large steel-blue base and white halo; wonderful cup-shaped flower, with petals incurving slightly at the tips. One of the finest brilliant red Darwins. Height 27 in. 10 bulbs, 80 cts.; 100 bulbs, \$7.
- CLARA BUTT.** 4. Clear pink, flushed salmon-rose; inside much deeper, with blue base and white halo; good-sized flower of very handsome shape. A bright clear color out-of-doors, and one of the best forcing varieties. Height 21 in. 10 bulbs, 45 cts.; 100 bulbs, \$3; 1,000 bulbs, \$28.
- DAL ONGARO.** 4. Pale lavender-violet; inside dark bluish violet shading off into paler violet; large flower with pure white base and showy white midrib. Height 28 in. 10 bulbs, 70 cts.; 100 bulbs, \$6.
- DREAM.** 2. Pale heliotrope, with darker flush of heliotrope; inside deep violet, with blue base. Handsome in combination with the dark lavender and purple shades. Height 27 in. 10 bulbs, 50 cts.; 100 bulbs, \$4; 1,000 bulbs, \$36.



- DUCHESS OF HONENBERG. 2. Pale slaty lilac-mauve, with stripe of rosy heliotrope; inside pale lilac, with white base. Enormous, long flower on a tall, stiff stem. Height 29 in. 10 bulbs, \$2; 100 bulbs, \$18.
- E. A. BOWLES. 3. Pale heliotrope, shading to lilac-white at edges of petals; inside soft heliotrope with white base and black anthers. This is a large Darwin on a tall stem and one of the loveliest flowers in the paler lavender tones. Height 28 in. 10 bulbs, \$2.60; 100 bulbs, \$24.
- ECLIPSE. 2. Self-colored glowing blood-red, with steel-blue base. A huge flower of open form, often having an extra number of petals. The finest dark red Tulip. Height 25 in. 10 bulbs, \$1.90; 100 bulbs, \$17.
- EDMEE; syn., BEAUTY. 4. Vivid shade of cherry-rose, edged soft old-rose; the brightest and strongest color in this type. Large flower of very great beauty. Handsome in the border and fine for late forcing. Height 25 in. 10 bulbs, 65 cts.; 100 bulbs, \$5.50; 1,000 bulbs, \$50.
- ERGUSTE. 1. Pale heliotrope, flushed silvery white; inside dark violet with white base; medium-sized flower on tall stem. Splendid for borders and one of the best Darwins for forcing. Height 26 in. 10 bulbs, 75 cts.; 100 bulbs, \$6.50.
- EROS. 3. Clear salmon-pink with slightly paler edge; inside glistening salmon with white base. A flower of Clara Butt color and with ruffled edges to petals. Height 24 in. 10 bulbs, \$2; 100 bulbs, \$18.
- ESATO. 1. Bright blood-red, with rich purple bloom on outer petals; showy blue-black base starred white; open, cup-shaped flower of fine form. A very early variety for borders and fine for early forcing. Height 30 in. 10 bulbs, 75 cts.; 100 bulbs, \$6.50.
- EUTERPE. 2. Silvery mauve-lilac, edged paler lilac, white base with blue halo; a long flower of exquisite color and seen to best advantage when planted with a buff Breeder like Bronze Queen. A most useful lavender Darwin for every purpose. Height 28 in. 10 bulbs, 70 cts.; 100 bulbs, \$6; 1,000 bulbs, \$56.
- FAUST. 2. Dark satiny purple-maroon, with blue base; very large flower of fine form and glistening sheen. The best of this color. Splendid for the border. Height 30 in. 10 bulbs, 80 cts.; 100 bulbs, \$7.
- FLAMINGO. 4. A uniform, soft shell-pink; medium-sized, pointed flowers of most refined form. A Tulip of distinct color and unsurpassed beauty for border planting. Height 28 in. 10 bulbs, 60 cts.; 100 bulbs, \$5; 1,000 bulbs, \$46.



- FLORIZEL.** 2. Pure rose-pink, with white base; a rather long flower of very clear color and distinct from any other pink Darwin. A decided acquisition which is offered exclusively in The Blue Book. Height 26 in. 10 bulbs, \$1.80; 100 bulbs, \$16.
- FRAULEIN VON AMBERG.** 2. Dark violet, edged tawny gray; inside dull violet-purple, with white base; open flower of peculiar flattened form. The whole flower has a brownish cast, which changes the ground color in great degree. Height 30 in. 10 bulbs, \$1; 100 bulbs, \$8.
- GALATEA.** 4. Bright carmine-rose, with glistening blue base. A large flower of very glowing color, exceptionally brilliant in the bright sunlight. A fine border variety. Height 26 in. 10 bulbs, 80 cts.; 100 bulbs, \$7.
- GEORGE MAW.** 2. Deep carmine-rose, edged pale rose; inside bright rose, with white base marked blue. The petals have the unique habit of not opening wide, giving a rose-like appearance to the flower. Height 26 in. 10 bulbs, 70 cts.; 100 bulbs, \$6; 1,000 bulbs, \$56.
- GIANT.** 2. Deep reddish purple, shaded dark violet with white base and blue star; a very handsome flower of enormous size on long stem and of sturdy habit. Height 29 in. 10 bulbs, \$1.10; 100 bulbs, \$9.
- GRYPHUS.** 2. Brilliant, dark violet-purple, with white base marked blue; large flower, beautifully formed, on long, graceful stem. A remarkably handsome flower. Height 26 in. 10 bulbs, \$1.20; 100 bulbs, \$10.
- GUSTAVE DORE.** 4. Soft pink, edged silvery rose, with white base and striking white midrib; long flower on graceful stem. Very handsome for pots. Height 25 in. 10 bulbs, 80 cts.; 100 bulbs, \$7; 1,000 bulbs, \$65.
- HARRY VEITCH.** 2. Rich blood-red, with brighter edge and blue base; very brilliant in the sunlight; medium-sized flower. Very fine for borders and an early sort for forcing. Height 23 in. 10 bulbs, 65 cts.; 100 bulbs, \$5.50; 1,000 bulbs, \$50.
- HELEN WILLS.** 2. Soft lilac, flushed and tinged lavender blue, with white base and bright blue halo; huge flower of perfect form and unsurpassed in this color. A novelty of great merit which is surely one of the Darwins for the future. Height 25 in. 10 bulbs, \$2.20; 100 bulbs, \$20.
- ISIS.** 3. Fiery crimson-scarlet with blue base and white halo; very large flower of striking beauty. A variety of the most intense color. Showy for borders or among shrubbery, and extra fine for forcing. Height 26 in. 10 bulbs, 70 cts.; 100 bulbs, \$6; 1,000 bulbs, \$56.



- JOHN MALCOLM.** 2. Smoky lavender-rose, shaded pale French purple; white base with blue halo. Large flower of artistically blended tones. Height 23 in. 10 bulbs, 85 cts.; 100 bulbs, \$7.50.
- JUBILEE.** 3. Bright blue-purple, slightly paler at the edges, with white base marked blue. Huge flower of superb, open form and rich color, with splendid lasting qualities. The finest Darwin of this color. Height 29 in. 10 bulbs, 85 cts.; 100 bulbs, \$7.50.
- KATHLEEN PARLOW.** 3. Silvery rose-pink, slightly paler at edge; inside soft old-rose with creamy white base; long flower of splendid size and color. This new Darwin is of quite a distinct shade among the light rose-pink varieties. Height 30 in. 10 bulbs, \$2; 100 bulbs, \$18.
- KING GEORGE V.** 2. Glowing salmon-scarlet, shaded bright rose, inside brilliant orange-scarlet, with blue base. A flower of immense size, splendid stem and intense color for outdoors. Height 25 in. 10 bulbs, \$1; 100 bulbs, \$8.
- KING HAROLD.** 3. Deep oxblood-red, with purple-black base; large flower of fine form, on a sturdy stem. Superb for the border, and effective in partial shade. Height 24 in. 10 bulbs, 65 cts.; 100 bulbs, \$5.50; 1,000 bulbs, \$50.
- KING MAUVE.** 3. Soft lavender, with silvery sheen; a huge flower of a tone intermediate between the paler shades and the deeper ones such as Melicette. Height 27 in. Single bulb, \$1.50; 10 bulbs, \$12.
- LA CANDEUR;** syn., **WHITE QUEEN.** 2. Almost pure white when mature, at first tinged pale rose, with effective black anthers; medium size. Fine for borders or pots. Height 24 in. 10 bulbs, 60 cts.; 100 bulbs, \$5; 1,000 bulbs, \$46.
- LA FIANCEE.** 2. Deep rose, shading to old-rose and delicate pink at edges, with blue base. Handsome large flower on a tall, straight stem. Very effective when planted with mauve and dark lavender varieties. Height 30 in. 10 bulbs, 70 cts.; 100 bulbs, \$6; 1,000 bulbs, \$55.
- LA FRANCE.** 3. Clear rose pink, a self-colored flower with a white base; large blooms of great beauty on tall stems. A new Darwin which is sure to become a leading variety among the pinks. Height 28 in. Single bulb, \$1; 10 bulbs, \$8.
- LA TRISTESSE.** 3. Dull slaty violet with white base; large flower; a Tulip of very distinct color. Handsome in combination with the primrose sorts among the Cottage Tulips. Height 26 in. 10 bulbs, 75 cts.; 100 bulbs, \$6.50; 1,000 bulbs, \$60.



Red Darwins against a green background



Three Groups of Darwin Tulips

STANDARD, inexpensive varieties for those who are going to have Tulips in their garden for the first time.

Order Recommendation FF

Ten bulbs of each for \$5.85

Five bulbs of each for \$2.95

BARRONE DE LA	EUTERPE
TONNAYE	MARCONI
BLEU AIMABLE	NAUTICAS
CLARA BUTT	PRIDE OF HAARLEM
DREAM	PRINCESS ELIZABETH
	ZULU

Select List of Better Kinds

Mr. Hunt considers this the best selection for standard moderate-priced Darwin Tulips.

Order Recommendation GG

Ten bulbs of each for \$8.15

Five bulbs of each for \$4.10

AFTERGLOW	MELICETTE
APHRODITE	REMEMBRANCE
FAUST	SANCHIA
LA FIANCEE	VALENTIN
LOUISE DE LA	VILLAGE MAID
VALLIERE	

The De Luxe List

Order Recommendation HH

Ten bulbs of each for \$15.85

Five bulbs of each for \$7.95

EROS	MADAME BARRIOS
HELEN WILLS	PLUMBAGO
JUBILEE	PRINCESS MARY
KATHLEEN PARLOW	THE BISHOP
KING GEORGE V	VENUS



- LA TULIPE NOIRE. 3. Very dark maroon-black, the blackest of all the Tulips, having a velvety sheen in the sunlight; large flower. Height 25 in. 10 bulbs, 55 cts.; 100 bulbs, \$4.50; 1,000 bulbs, \$40.
- LILAC WONDER. 3. Pale lavender with distinct porcelain blue tone; inside same with white base. A new Darwin with a color not seen as yet in this class and one that should be given a trial by every Tulip fancier. Height 25 in. 10 bulbs, \$2; 100 bulbs, \$18.
- LOUISE DE LA VALLIERE. 3. Brilliant cherry-rose, with blue base starred white. A very clear color and a magnificent Tulip of beautiful form, always a favorite with visitors to our gardens. Height 24 in. 10 bulbs, 85 cts.; 100 bulbs, \$7.50.
- LOUISIANA. 3. Dark purplish maroon, with slightly paler edge; black base. An open flower of fine size and form, and distinct in color. Height 29 in. 10 bulbs, \$1.10; 100 bulbs, \$9.
- MADAME BARROIS. 3. Soft old-rose, with pale rose margin, changing to pale flesh-white; bluish base. A fine Darwin of delicately beautiful color and most attractive form. Height 25 in. 10 bulbs, \$1.20; 100 bulbs, \$10.
- MARCONI. 3. Blue-purple, with maroon shading on opening, changing to ashy purple with age; white base. Unusually large flower, and most useful moderate-priced dark Tulip. Height 27 in. 10 bulbs, 65 cts.; 100 bulbs, \$5.50; 1,000 bulbs, \$50.
- MARGARET; syn., GRETCHEN. 3. Silvery pale rose, flushed white, inside soft pink, with white base marked blue; large, globular flower on stiff stalk. A flower of delicate color. Extra fine for forcing. Height 22 in. 10 bulbs, 50 cts.; 100 bulbs, \$4; 1,000 bulbs, \$36.
- MASSACHUSETTS. 2. Vivid pink, edged rosy white, with tawny hue toward the white base; large flower of beautiful color and form. Superb for outdoor planting. Height 26 in. 10 bulbs, 60 cts.; 100 bulbs, \$5; 1,000 bulbs, \$46.
- MASSENET. 3. Opening deep rose with edge of paler rose, fading to pale rose, with broad margin of creamy white; inside creamy white, with triangular base of deep, bright blue, edged violet. Height 30 in. 10 bulbs, 80 cts.; 100 bulbs, \$7.
- MATTIA. 1. Clear rosy carmine, with blue base; very large and beautifully shaped flower; sweet-scented. A wonderful Tulip for borders, holding its color to the end. Height 24 in. 10 bulbs, 75 cts.; 100 bulbs, \$6.50.



- MAUVE CLAIR. 3. Soft lilac-mauve, slightly paler at edges of petals; inside lilac-mauve with white base. Height 26 in. 10 bulbs, \$1; 100 bulbs, \$8.
- MAYA. 3. Soft heliotrope with rosy flush; inside rosy violet; a very large flower carried on a stiff stem. We can recommend this as one of the best novelties in the Darwin Tulips. Height 30 in. 10 bulbs, \$2.30; 100 bulbs, \$21.
- MAY QUEEN; syn., ARENTINE ARENDSSEN. 3. Deep lilac-rose, with white base, marked blue; very long, large flower. One of the handsomest Darwins of this color. Height 26 in. 10 bulbs, 70 cts.; 100 bulbs, \$6; 1,000 bulbs, \$56.
- MELICETTE. 3. Soft lavender; inside dark lavender-violet, shading to pale lavender at edges, with beautiful blue base. The purest lavender Darwin; large flower with reflexing outer petals. Height 25 in. 10 bulbs, \$1; 100 bulbs, \$8.50.
- MESDAG. 3. Lilac, shading lighter at edge of petals; inside deeper in tone. An enormous flower on a very strong stem. 10 bulbs, \$2; 100 bulbs, \$18.
- MISS HELEN UNDERWOOD. 3. Pale lavender-mauve, with whitish base. A beautiful flower of uniform soft color; most effective in partial shade. Height 25 in. 10 bulbs, \$1; 100 bulbs, \$8.
- MR. FARNCOMBE SANDERS. 2. Scarlet, with rosy bloom; inside vivid cerise-scarlet with white base; large, broad-petaled flower of perfect shape. One of the best sorts, if not the best, among the reds, either for borders or forcing. Height 25 in. 10 bulbs, 50 cts.; 100 bulbs, \$4; 1,000 bulbs, \$36.
- MRS. MANDEL; syn., VEILCHENBLAU. 2. Blue-violet shaded lavender with white base; large flower of great substance and pure color. Height 26 in. 10 bulbs, \$1.60; 100 bulbs, \$14.
- MRS. STANLEY. 3. Silvery purple-rose of a very bright, clear shade, edged rose-pink, blue base; large, long flower. Of great value for bedding or pot culture. Height 25 in. 10 bulbs, 70 cts.; 100 bulbs, \$6; 1,000 bulbs, \$56.
- MYSTERY. 3. Very dark velvety maroon-black; a beautiful, big flower with good stem. Though not quite so dark as La Tulipe Noire, the size and habit of growth is so superior that it is sure to replace the older variety. Height 27 in. 10 bulbs, \$2; 100 bulbs, \$18.



- NAUTICAS. 2. Silky carmine-rose, base dark violet shaded bronze; large flower; a very handsome Tulip for outdoors, and splendid for early or late forcing. Height 30 in. 10 bulbs, 70 cts.; 100 bulbs, \$6; 1,000 bulbs, \$56.
- ORANGE PERFECTION. 3. Brilliant salmon-orange when first opening, shaded scarlet with age, and bright blue base; large flower of most intense color. Splendid for borders or among evergreens. Height 26 in. 10 bulbs, \$1.60; 100 bulbs, \$14.
- OUIDA. 2. Crimson-scarlet, with slight purplish bloom, and white base starred dull blue; valuable for massing in the border or among shrubbery. Height 29 in. 10 bulbs, 65 cts.; 100 bulbs, \$5.50; 1,000 bulbs, \$50.
- PAINTED LADY. 3. Creamy white, faintly tinged soft heliotrope when opening; good-sized flower on dark stem; a very beautiful flower; the best moderate-priced white Darwin for outdoors or late forcing. Height 27 in. 10 bulbs, 60 cts.; 100 bulbs, \$5; 1,000 bulbs, \$46.
- PALISA. 2. Brilliant garnet-purple, with reddish glow, white base with blue star. A unique color seen best in the sunlight. Height 29 in. 10 bulbs, 75 cts.; 100 bulbs, \$6.50; 1,000 bulbs, \$60.
- PENSEE AMERE. 3. Slaty violet, with broad flush of rosy lilac; inside deeper lilac, with white base. Egg-shaped flower of medium size. Height 26 in. 10 bulbs, 80 cts.; 100 bulbs, \$7; 1,000 bulbs, \$65.
- PETRUS HONDIUS. 2. Bright carmine-rose, with dull blue base starred white. An unusually brilliant variety in this color even when planted in the shade. Height 28 in. 10 bulbs, 75 cts.; 100 bulbs, \$6.50; 1,000 bulbs, \$60.
- PLUMBAGO. 3. Pale silvery lavender, shaded almost blue at margins; inside lavender with blue base; large flower of delicate color and noticeable blue tone. Height 30 in. 10 bulbs, \$1.40; 100 bulbs, \$12.
- PRESIDENT HARDING. 3. Purple, edged and shaded reddish lilac; inside slightly deeper in tone with white base. A large, cup-shaped flower of novel color. Height 27 in. 10 bulbs, \$1.40; 100 bulbs, \$12.
- PRESIDENT HOOVER. 3. Light plum-violet shaded old rose with gray-violet edge; inside rosy violet with white base. Large flower of splendid substance and distinct in color. Height 28 in. 10 bulbs, \$3; 100 bulbs, \$28.
- PRIDE OF HAARLEM. 1. Brilliant rosy carmine, with blue base; very large flower of superb form, borne on tall, strong stem; sweet-scented. Unsurpassed for borders, and a sure and early forcing Darwin. Height 25 in. 10 bulbs, 50 cts.; 100 bulbs, \$3.50; 1,000 bulbs, \$32.



- PRINCE OF THE NETHERLANDS.** 3. Glowing cerise-scarlet, edged rose, with blue base, and showy white midrib; extra-large flower of vigorous habit. A flower of striking color and great size, carried on a tall stem; splendid for forcing. Height 31 in. 10 bulbs, 70 cts.; 100 bulbs, \$6.
- PRINCE OF WALES.** 1. Very bright rosy crimson with scarlet flush and bright blue base; a very tall, enormous flower of remarkably brilliant tone, Height 28 in. 10 bulbs, 85 cts.; 100 bulbs, \$7.50.
- PRINCESS ELIZABETH.** 2. Beautiful clear deep pink, changing with age to rose-pink, white base. Large flower of perfect shape, quite like a rose when first open. Splendid for border planting. Height 26 in. 10 bulbs, 55 cts.; 100 bulbs, \$4.50; 1,000 bulbs, \$40.
- PRINCESS JULIANA.** 3. Orange-scarlet, flushed salmon; inside vivid scarlet, with blue base starred white. A color of dazzling brilliancy. Height 24 in. 10 bulbs, 75 cts.; 100 bulbs, \$6.50.
- PRINCESS MARY.** 3. Bright carmine-rose, with margin of rose-pink; inside clear carmine-rose with blue and white halo; huge flower on a splendid stem. One of the finest of the Darwins, and a magnificent variety for any purpose. Height 28 in. 10 bulbs, \$2.20; 100 bulbs, \$20.
- PROFESSOR FRANCIS DARWIN.** 2. Crimson-scarlet, with blue base, a color unique among the reds; large flower of bold character. Splendid for borders. Height 22 in. 10 bulbs, 85 cts.; 100 bulbs, \$7.50; 1,000 bulbs, \$70.
- PROFESSOR RAUWENHOF.** 3. Bright cherry red, with scarlet glow inside and remarkably brilliant blue base; enormous flower of great substance on a strong stem. Superb for borders. Height 28 in. 10 bulbs, 55 cts.; 100 bulbs, \$4.50; 1,000 bulbs, \$40.
- PSYCHE.** 1. Silvery rose, edged soft rose; inside shaded silvery rose with pale blue base; large, handsome flower on a somewhat drooping stem. Very beautiful for borders. Height 26 in. 10 bulbs, 65 cts.; 100 bulbs, \$5.50; 1,000 bulbs, \$50.
- PURPLE PERFECTION.** 2. Glossy claret-purple; large, broad-petaled flower, lasting long in condition. A variety of very great beauty for outdoors. Height 23 in. 10 bulbs, 85 cts.; 100 bulbs, \$7.50.
- QUEEN MARY.** 2. Deep cherry rose, shading to deep rose; inside brilliant salmon-pink, with bright blue base; a large flower of very clear color. Effective in any outdoor situation. Height 27 in. 10 bulbs, 85 cts.; 100 bulbs, \$7.50.



- RAPHAEL. 2. Deep maroon-purple of rich tone, with blue base starred white. Very tall, big flower of sturdy character. The best reddish purple. Height 30 in. 10 bulbs, 85 cts.; 100 bulbs, \$7.50.
- REMEMBRANCE. 2. Pale slaty lilac, of a peculiar silvery tone, with flush of violet; inside dull violet, flushed brown at base. A large and handsome variety. Height 25 in. 10 bulbs, 75 cts.; 100 bulbs, \$6.50; 1,000 bulbs, \$60.
- REVEREND EWBANK. 2. Soft lavender-violet, with silver-gray flush, darkening toward the white base; good-sized flower. Fine for borders. Height 22 in. 10 bulbs, 50 cts.; 100 bulbs, \$4; 1,000 bulbs, \$36.
- REVEREND HARPUR CREWE. 2. Dull amaranth-red, edged rose; inside brilliant crimson-carmine, with blue base; similar in color to Centenaire, but more slender. Height 25 in. 10 bulbs, 85 cts.; 100 bulbs, \$7.50.
- ROI D'ISLANDE. 3. Soft old-rose, with narrow whitish border, inside soft violet-rose with blue base; a large flower of perfect shape and strong growth. A color not found in other Darwins and beautiful in partial shade. Height 22 in. 10 bulbs, 70 cts.; 100 bulbs, \$6.
- RONALD GUNN. 2. Deep bluish violet, edged light lavender, white base marked blue. A superb variety, showing a shade of blue found in no other Darwin. Fine for the border and magnificent when forced. Height 26 in. 10 bulbs, 85 cts.; 100 bulbs, \$7.50.
- SANCHIA. 3. Pale rose-pink, shading to pale flesh-pink at edges of petals; inside blush pink, with very large white base; flower of medium size. A very lovely type of the softer pink Darwins. Offered only in The Blue Book. Height 28 in. 10 bulbs, \$1.10; 100 bulbs, \$9.
- SIR TREVOR LAWRENCE. 1. Violet-maroon, with flush of ashy purple; inside violet-maroon with white base; large, cup-shaped flower, on tall stem. Splendid in every respect. Height 33 in. 10 bulbs, \$1.10; 100 bulbs, \$9.
- SOPHROSYNE. 2. Soft lilac-rose, edged silvery white; inside deep rose, with striking, dull blue base. A large flower of very delicate beauty. Height 29 in. 10 bulbs, 75 cts.; 100 bulbs, \$6.50; 1,000 bulbs, \$60.
- SPRING BEAUTY. 2. Clear scarlet, with blue-black base and white star; large flower of most refined form. Height 23 in. 10 bulbs, 80 cts.; 100 bulbs, \$7.
- SUNDEW. 4. Soft crimson; inside dark crimson with white base, starred blue. A Tulip of medium size but especially interesting because the petals have a narrow fringed edge, yet are quite unlike that of the Parrot Tulips. Height 16 in. 10 bulbs, 80 cts.; 100 bulbs, \$7.



- SUZON.** 2. Soft buff-rose, shading to blush at margin of petals; inside deep rose, with white base marked blue; large, erect flower. Very handsome for the border where a pale tone is desired. Height 25 in. 10 bulbs, 75 cts.; 100 bulbs, \$6.50; 1,000 bulbs, \$60.
- SYLVIA; syn., TAUNUS.** 2. Bright cerise; very tall big flower with white base and blue halo. Height 28 in. 10 bulbs, \$1; 100 bulbs, \$8.
- THE BISHOP.** 3. Soft bluish heliotrope, with ashy bloom; inside deep heliotrope with blue base. The purest heliotrope of any of the Darwins. Height 28 in. 10 bulbs, \$1.80; 100 bulbs, \$16.
- VALENTIN.** 1. Soft heliotrope, shaded light violet; inside heliotrope with blue base; long, large flower on tall stem. A magnificent Tulip both for outdoors and for forcing. Height 22 in. 10 bulbs, 70 cts.; 100 bulbs, \$6; 1,000 bulbs, \$55.
- VENUS.** 3. Deep lilac-rose of silvery shade; inside clear rose with white base. A large flower of very pleasing color. Height 30 in. 10 bulbs, \$1.20; 100 bulbs, \$10.
- VERSAILLES.** 3. Ashy purple, shaded blue; inside dark violet blue, with white base and blue halo. Large flower on good stem. Height 30 in. 10 bulbs, \$1; 100 bulbs, \$8.
- VIKING.** 4. Deep violet, shading at edges of petals to delicate lavender; inside violet, flushed brown, with blue base; a large, open flower of exquisite beauty and especially beautiful with purple varieties. Height 27 in. 10 bulbs, 85 cts.; 100 bulbs, \$7.50.
- VILLAGE MAID.** 1. Soft old-rose with whitish base. A very large cup-shaped flower on a tall stem. An attractive color for combining with other rose-pink varieties. Height 30 in. 10 bulbs, 80 cts.; 100 bulbs, \$7.
- WILLIAM COPLAND; syn. SWEET LAVENDER.** 1. Rosy lilac; not a large flower but of merit because under glass it may be brought into flower as easily as the Early Tulips, while the color becomes a most beautiful lavender. Height 25 in. 10 bulbs, 65 cts.; 100 bulbs, \$5.50; 1,000 bulbs, \$50.
- WILLIAM PITT.** 2. Very dark crimson, with purplish bloom on the outer petals and white base starred blue; large flower of distinct color and great beauty. Fine for borders and for forcing. Height 22 in. 10 bulbs, 70 cts.; 100 bulbs, \$6.
- YOLANDE; syn., DUCHESS OF WESTMINSTER.** 2. Soft rose; inside brilliant salmon-rose with yellowish base; good-sized flower of wonderful color on a tall stem. Height 27 in. 10 bulbs, 85 cts.; 100 bulbs, \$7.50.



- ZULU. 2. Rich, velvety purple-black, with shining purple edge; large, egg-shaped flower, with pointed petals. Fine for the border and splendid in pots. Height 27 in. 10 bulbs, 70 cts.; 100 bulbs, \$6; 1,000 bulbs, \$56.
- ZWANENBERG. 3. Creamy white with black anthers; a flower of medium size and splendid substance. A good white Tulip which is now available at a fairly reasonable price. Height 29 in. 10 bulbs, \$1; 100 bulbs, \$8.

Rembrandt Tulips

The broken Darwins are now classed as Rembrandt Tulips, and the best varieties seem likely to attain a moderate share of the popularity which all the Late Tulips now enjoy. For garden purposes these striped forms have an oddity of character in which there are positive decorative possibilities. If kept by themselves, or used with the rose and violet Bybioems, in the seclusion of hedging or evergreens, and planted in groups of about twenty-five bulbs, the Rembrandts retain the quaint fascination which they must have had in the bygone days, when the passion for these broken forms ruled in the old gardens of northern France. Several varieties are well adapted to pot culture, though they appear to best advantage in outdoor situations.

The figure following the name indicates the relative time of flowering.

- Prices of all varieties, 10 bulbs, \$1.20; 100 bulbs, \$10.
- BOUGAINVILLE. 2. Pale rosy lilac, broadly striped deep violet and flaked maroon; fine, large flower of distinct markings. Height 26 in.
- BUTTERFLY. 3. Soft lilac, striped deep carmine; medium-sized flower. Height 20 in.
- CARACALLA. 3. White, flamed and feathered carmine-red; a good deal of white makes the flower light up well; good-sized flower. Height 21 in.
- LA COQUETTE. 2. Violet, flamed dark purple and white; medium-sized flower. Handsome for pots. Height 20 in.
- MARCO SPADO. 3. White, flamed bright carmine-red; large flower of fine markings. Height 22 in.
- PROCLES. 2. White, with broad flames of dark maroon and violet-purple; a long flower of beautiful shape. One of the most evenly marked of all the Rembrandt Tulips. Height 25 in.
- SEMELE. 2. White, heavily striped and feathered dull old-rose, with white base starred blue-green. A Tulip of quaint, old-fashioned effect. Height 25 in.



Breeder Tulips

The Breeders are unbroken forms of the old-time florists' Tulip, the race which has held the favor of the English fanciers for over a century. They are of vigorous growth and have characteristic, large, self-colored flowers (generally dull-toned or bronze-shaded); many of them are deliciously scented. They are especially valuable Tulips for the garden, in spite of the neutral shades, as they possess such refined colors and such artistic blending of tones that it is impossible not to admire their somber beauty. In size and height they frequently surpass even the largest and tallest Darwins.

No better advice can be given to the lover of the Tulip than to make the acquaintance of this handsome race. Colors without a counterpart in any other class of Tulips are to be found among them, as well as combinations of color which can scarcely be imagined by one who does not know the possibilities of the Breeders. Their quiet tones, in contrast with the livelier colors of the Cottage and Darwin kinds, give a comforting feeling of repose which everyone who is sensitive to garden atmosphere so often requires of his garden flowers.

When we first introduced the Breeder Tulips to the American public, they were comparatively unknown, but the enthusiastic approval shown in our trials has induced us to search throughout Holland to obtain a complete selection of these fascinating Tulips, with the result that the following list contains many strangely beautiful varieties that cannot be obtained elsewhere.

For carefully studied arrangements of the Tulips, the color schemes on page 13 should be consulted. Detailed planting directions will be included with the shipment of the bulbs. The figure following the name indicates the relative time of flowering.

ABD-EL-KADER. 3. Dull bronze-yellow, shading to light bronze at edge of petals; inside bronze-brown, with olive-green base; good-sized flower. A splendid variety to use with other bronze and brown Breeders. Height 26 in. 10 bulbs, \$1; 100 bulbs, \$8.

ADELINA PATTI. 2. Self-colored French purple with lighter bloom; huge flower of loose, open form; white base and brilliant blue star. One of the largest Breeders in our collection. Height 31 in. 10 bulbs, \$1.70; 100 bulbs, \$15.



- APRICOT.** 3. Ruddy apricot, edged bronzy buff, with yellow base and olive halo. A large flower on strong stem, tending to be double when large bulbs are planted. Height 25 in. 10 bulbs, 70 cts.; 100 bulbs, \$6.
- BACCHUS;** syn., **RASONIA.** 3. Dark violet-blue, with darker bloom on outside of petals; inside violet-blue, with white star at base; the nearest approach to dark blue in the late Tulips; large, long flower. Height 28 in. 10 bulbs, 80 cts.; 100 bulbs, \$7. See illustration.
- BRONZE QUEEN;** syn., **BISCUIT;** **CLIO.** 4. Soft buff, shaded bronze; inside tinged golden bronze, with yellow base; large flower of sturdy habit. Very fine out-of-doors, and of a most refined color when forced. Height 28 in. 10 bulbs, 55 cts.; 100 bulbs, \$4.50; 1,000 bulbs, \$40.
- CARDINAL MANNING;** syn., **GOLIATH;** **KINGSCOURT.** 4. Dull wine-red, flushed rosy bronze, changing to rosy violet, shaded bronze. A very large flower. Height 30 in. 10 bulbs, 65 cts.; 100 bulbs, \$5.50; 1,000 bulbs, \$50.
- CHERBOURG.** 3. Brilliant amber yellow, slightly flushed apricot toward the base. A very large, cup-shaped flower on a tall stem. One of the newer Breeder Tulips remarkable for its great size and bright color. Height 30 in. 10 bulbs, \$2.60; 100 bulbs, \$24.
- CHESTER JAY HUNT.** 1. Opening reddish violet, with white base, soon changing to blue-purple with ashy bloom; a loosely formed, large flower of most graceful habit and exquisite color. Height 28 in. 10 bulbs, \$1.20; 100 bulbs, \$10.
- CHESTNUT.** 3. Chestnut-brown, with faint purplish bloom; inside deep mahogany, with black base starred yellow; a variety of very distinct color. Height 24 in. 10 bulbs, 65 cts.; 100 bulbs, \$5.50; 1,000 bulbs, \$50.
- COPERNICUS.** 3. Light coffee-brown, with slight flush of bronzy old-rose; inside warm brown, with yellow base. A large flower on sturdy stem. A fine example of the brown Breeders. Height 27 in. 10 bulbs, 70 cts.; 100 bulbs, \$6.
- CORIDION.** 1. Clear yellow, overlaid with stripe of lilac through center of petals. A flower of very clear color among the Breeders. Fine for shrubberies. Height 24 in. 10 bulbs, \$1.70; 100 bulbs, \$15.
- DILLENBERG.** 3. Bronzy yellow with deep orange flush; inside darker in tone with yellow base and showy black anthers. A new Breeder of perfect shape and distinct color. Somewhat brighter and deeper than Dido. Height 26 in. 10 bulbs, \$4.00; 100 bulbs, \$36.



- DOM PEDRO.** 3. Coffee-brown, with very narrow edge of golden brown; inside dark reddish mahogany, olive base; large, fragrant flower. Superb when planted with lighter Breeders. Height 24 in. 10 bulbs, 70 cts.; 100 bulbs, \$6.
- DRYAD.** 2. Lilac old-rose, margined bronzy yellow, shading to buff with age; broader margin inside with bright apple-green base. A flower of very distinct character. Height 22 in. 10 bulbs, \$1.10; 100 bulbs, \$9.
- GARIBALDI.** 2. Pale lilac-bronze, broadly edged soft primrose-yellow; inside bronze tinged primrose. A long flower of beautiful reflexing form on a very tall stem. One of the finest Breeders ever introduced into our list. Height 31 in. 10 bulbs, \$2; 100 bulbs, \$18.
- GLORIA.** 2. Dull dark lilac, edged soft amber-yellow; inside bronzy lilac with large yellow base. Medium-sized flower of distinct coloring. Height 21 in. 10 bulbs, 80 cts.; 100 bulbs, \$7.
- GODET PARFAIT.** 3. Dark blue-purple, with white base and blue halo; very large flower of striking color. One of the best Breeders for the border. Height 30 in. 10 bulbs, 80 cts.; 100 bulbs, \$7. See illustration.
- GOLDEN BRONZE;** svn.. **TOISON D'OR.** 3. Light brownish yellow, with faint flush of heliotrope outside; deep mahogany-brown within, shading to golden brown at tip of petals, yellow base. Height 24 in. 10 bulbs, 75 cts.; 100 bulbs, \$6.50.
- GOLDFINCH;** syn., **GOUDVINK.** 2. Golden brown, with dull lilac flush through center of petals; inside mahogany-brown, edged golden brown, yellow base starred olive. Large flower on tall, stiff stem. Height 29 in. 10 bulbs, 85 cts.; 100 bulbs, \$7.50. See illustration.
- GROOTE SAMSON.** 4. Dark violet with edge of bright bronze-yellow, and purple bloom; inside dull lilac-bronze with greenish blue base starred yellow. A flower of very soft color for planting with the paler Darwins. Height 25 in. 10 bulbs, 65 cts.; 100 bulbs, \$5.50.
- HAMLET.** 2. Dull coffee-brown, with faint flush of rosy purple through center of petals; inside dark brown with yellow base; a flower of good size, with slightly reflexing outer petals. A distinct color and splendid for contrast with the paler late Tulips. Height 26 in. 10 bulbs, 75 cts.; 100 bulbs, \$6.50.
- HELOISE.** 1. Van Dyck brown, shaded old-rose; inside Van Dyck brown, edged plum, with yellow base marked olive-green; large, reflexing flower of wonderful color and form. Height 28 in. 10 bulbs, \$1.20; 100 bulbs, \$10. See illustration.



1—Wilberforce

4—Godet Parfait

2—Goldfinch

5—Bacchus

3—Heloise





A Set of Breeder Tulips of Moderate Cost



TO give the keen gardener an idea' of how attractive the Breeder Tulips can be, we recommend the following ten varieties—all good and 'not expensive.

Order Recommendation JJ

Ten bulbs of each for \$6.90

Five bulbs of each for \$3.45

APRICOT	MADAME LETHIERRY
BRONZE QUEEN	PRINCE ALBERT
CARDINAL MANNING	SALOMON
JAUNE D'OEUF	ST. JAMES
LOUIS XIV	SUPERBA

Rare and Unusual Types

The choice and rarely beautiful things among this interesting class of Tulips.

Order Recommendation KK

Ten bulbs of each for \$15.85

Five bulbs of each for \$7.95

ABD-EL-KADER	HELOISE
CHERBOURG	INDIAN CHIEF
CHESTER JAY HUNT	MARECHAL VICTOR
GARIBALDI	PINK PEARL
GOLDFINCH	VERTUMNUS



HERMES. 3. Very large, brilliant Indian red, with huge yellow base and black star; loosely built flower of enormous size and fine substance. A very showy new Tulip of great value for borders. Height 30 in. 10 bulbs, \$1; 100 bulbs, \$8.50.

INDIAN CHIEF. 2. Reddish mahogany flushed purple, edged warm brown with age; yellow base. A huge flower of wonderful substance and most artistic shape, carried on a very tall stem. Height 33 in. 10 bulbs, \$2.20; 100 bulbs, \$20.

JAMES WATT. 3. Black-purple, edged rich, dark brown, with ashy bloom; inside purple, shading to brown at edges, with wonderful green base starred white. A rather small, round flower of a color seen in no other variety. Height 24 in. 10 bulbs, \$1.20; 100 bulbs, \$10.

JAUNE D'OEUF. 3. Lively yellow, with broad stripe of lilac; inside golden bronze, with dark apple-green base; splendid, large flower of distinct shape on a tall stem. A fine variety to use with lavender Darwin Tulip. Height 26 in. 10 bulbs, 65 cts.; 100 bulbs, \$5.50.

JULES FAVRE. 3. Warm brown, with purple flush in center of petals; inside reddish brown, with dark green base. With age the flower has a noticeable yellow-brown edge. Good-sized, cup-shaped bloom. Height 27 in. 10 bulbs, 75 cts.; 100 bulbs, \$6.50.

LA SINGULIERE; syn., LORD CURZON. 3. Opening silvery white, heavily flushed and flaked with dark maroon-crimson; with age the color tinges the whole flower; very large. Height 25 in. 10 bulbs, 85 cts.; 100 bulbs, \$7.50.

LE MOGOL. 3. Pale lavender-mauve, flushed white; inside deep mauve-lilac, with beautiful white base and blue halo. A flower of medium size but of exquisite color. Height 26 in. 10 bulbs, 80 cts.; 100 bulbs, \$7.

LORD COCHRANE. 4. Soft golden brown, with narrow margin of amber yellow; inside warm brown with yellow base. A distinct flower because of the clear shade of yellow on the margin and a peculiar lilac bloom on the outside of the flower. Height 28 in. 10 bulbs, 85 cts.; 100 bulbs, \$7.50.

LOUIS XIV. 3. Dark purple, flushed bronze, with broad margin of golden brown; very large, globular flower, with green-black base starred yellow. Combines well with either Darwin or Breeder varieties. The most wonderful Tulip in existence. Height 28 in. 10 bulbs, 65 cts.; 100 bulbs, \$5.50; 1,000 bulbs, \$50.



- LUCIFER.** 5. Dark orange, with rosy bloom and scarlet-orange edge; inside scarlet-orange, with yellow base and olive halo; enormous flower on tall stem. This is generally the last Tulip to bloom in our garden. Height 28 in. 10 bulbs, \$1; 100 bulbs, \$8.50.
- MABEL.** 2. Cerise-pink with white flush through center of petals; inside brilliant cerise-pink with pure white base. A flower of medium size but a most lovely pure color. 10 bulbs, 85 cts.; 100 bulbs, \$7.50.
- MADAME LETHIERRY.** 2. Dark crushed strawberry, edged and flushed salmon, a unique color; medium size, very distinct. Height 26 in. 10 bulbs, 75 cts.; 100 bulbs, \$6.50.
- MADRAS.** 3. Golden bronze, with dull heliotrope stripe on outer petals, yellow base starred green. Height 26 in. 10 bulbs, 65 cts.; 100 bulbs, \$5.50.
- MAITRE PARTOUT.** 4. Cerise-scarlet, with rosy bloom and blue base; small flower not opening wide and retaining a rosebud shape. A bright color and one of the very latest to flower. Height 21 in. 10 bulbs, \$1; 100 bulbs, \$8.50.
- MARECHAL VICTOR.** 3. Pale lavender-violet, with broad edge of buff shaded bronze; inside violet faintly flushed mahogany with beautiful green base; a flower of open, graceful form. A wonderful color combination which we have seen in no other Tulip. Height 28 in. 10 bulbs, \$2.40; 100 bulbs, \$22.
- MARGINATA.** 3. Clear chrome yellow, with broad flush of rosy orange; inside bright orange, shading to yellow at edges of petals, and yellow base. A tall Breeder of most showy character and unusual color. Height 28 in. 10 bulbs, \$1; 100 bulbs, \$8.
- MARIE LOUISE.** 3. Old-rose, margined orange-salmon with purple bloom and olive base. Not a large flower but a very beautiful variety when used as a background for Cottage Tulip John Ruskin. Height 23 in. 10 bulbs, 65 cts.; 100 bulbs, \$5.50.
- MELVA.** 3. Slaty violet with broad edge of creamy buff changing to white and primrose yellow base; cup-shaped flower with slightly flattened top and good stem. An unusual color but a most interesting flower and attractive with the dark purple varieties. Height 24 in. 10 bulbs, \$2.40; 100 bulbs, \$22.
- MON TRESOR.** 3. Indian red, with orange tone at edge of petals; inside dull blood-red, with yellow base marked bronze; a medium-sized flower, quite distinct. Height 25 in. 10 bulbs, 65 cts.; 100 bulbs, \$5.50.



- MONT VESUVE.** 3. Chestnut-brown, edged soft amber-yellow, with greenish base; not a large bloom but a good color for planting with paler yellow tones. Height 26 in. 10 bulbs, 70 cts.; 100 bulbs, \$6.
- MR. GROENEWEGEN;** syn., **BRONZE KING.** 3. Soft tan-yellow, flushed bronze-lilac and edged coppery old-rose; inside bronze-lilac, with yellow base and broad green halo. Large flower, often having extra petals. A beautiful Breeder for combining with lavender shades. Height 27 in. 10 bulbs, 70 cts.; 100 bulbs, \$6.
- OLD TIMES.** 3. Garnet, edged primrose-yellow, with greenish base; rather long flower of somewhat pointed form; an English Breeder of most unusual color. Height 24 in. 10 bulbs, 80 cts.; 100 bulbs, \$7.
- PALADIN.** 3. Deep old-rose, edged soft tan; inside apricot, shading to purple with tan edge; yellow base starred green. A large flower of bold habit and a showy color combination. Height 27 in. 10 bulbs, 80 cts.; 100 bulbs, \$7.
- PANORAMA;** syn., **FAIRY;** **THE MONUMENT.** 2. Deep orange, shaded mahogany; extra-large, globular flower of brilliant color. Needs to be planted with other orange varieties. Height 26 in. 10 bulbs, 65 cts.; 100 bulbs, \$5.50; 1,000 bulbs, \$50.
- PINK PEARL.** 3. Bright old rose, suffused white at base of petals; inside old rose at tips of petals with large white base. An enormous, egg-shaped flower of distinct character. Height 28 in. 10 bulbs, \$1.20; 100 bulbs, \$10.
- PLUTARCHUS.** 3. Bronze, overlaid with dull lilac: inside shaded terra-cotta toward the olive-green base. A flower of great beauty and handsome among evergreens and for borders. Height 26 in. 10 bulbs, 80 cts.; 100 bulbs, \$7.
- PRINCE ALBERT.** 2. Golden brown, with purple flush through center of petals, which disappears as the flower ages. Large loosely formed flower, with slightly reflexing petals and a green base. This is undoubtedly the finest of the yellow-brown Tulips. Height 32 in. 10 bulbs, 75 cts.; 100 bulbs, \$6.50.
- PRINCE OF ORANGE.** 3. Terra-cotta, edged orange-yellow, with yellow base starred black; large, showy flower for the border. Height 27 in. 10 bulbs, 75 cts.; 100 bulbs, \$6.50.
- PRINCE OF WALES.** 2. Warm maroon-brown, edged coffee-brown; inside coppery brown, with black base, starred yellow. Long flower of open form; fine for planting with paler bronze Breeders. Height 28 in. 10 bulbs, \$1.80; 100 bulbs, \$16.



- SALOMON.** 3. Silvery lilac, flushed buff when opening; inside slightly deeper tone, with large, white base; very long loosely formed flower, carried on a graceful stem, the most beautiful lavender Breeder in our collection. Height 30 in. 10 bulbs, 80 cts.; 100 bulbs, \$7.
- ST. JAMES.** 2. Dark rosy lilac, edged bronzy tan, with coppery rose flush at tips of petals; inside ruddy mahogany, edged golden brown with yellow and green base. A large flower on tall stem. A superb Breeder which should be in every collection. Height 28 in. 10 bulbs, 65 cts.; 100 bulbs, \$5.50; 1,000 bulbs, \$50.
- SUPERBA.** 3. Glistening chestnut-brown, with narrow golden brown edge, and yellow base starred green; large flower of graceful, open shape, on tall stem. A Breeder of extremely high quality. Height 27 in. 10 bulbs, 75 cts.; 100 bulbs, \$6.50.
- TRICOLOR.** 3. Shining blue-purple, shaded soft lilac and edged a soft amber yellow which changes to creamy white with age; dark green base. A rather small, low-growing Tulip, but a most bizarre and interesting combination of colors and markings; very distinct for show purposes. Height 18 in. 10 bulbs, \$1.20; 100 bulbs, \$10.
- TURENNE;** syn., **MACMAHON.** 1. Purplish brown, with broad margin of amber-yellow and yellow base; very large and beautiful flower, especially effective in the border. Height 30 in. 10 bulbs, 70 cts.; 100 bulbs, \$6.
- VELVET KING.** 3. Dark, glossy purple-maroon, with yellowish base marked blue; an enormous flower of splendid lasting qualities, often having an extra number of petals. Height 25 in. 10 bulbs, 75 cts.; 100 bulbs, \$6.50.
- VERTUMNUS.** 2. Rosy purple, with age becoming grayish lilac, tinged purple; white base. A large flower of loose habit on tall stem. Height 28 in. 10 bulbs, \$1.20; 100 bulbs, \$10.
- VIRGILIUS.** 2. Rich purple, shaded lighter purple at the very edge, with dull blue base starred white; long, egg-shaped flower of silky texture, with frilled edge to the petals. Height 28 in. 10 bulbs, \$1; 100 bulbs, \$8.
- VULCAIN.** 2. Reddish apricot, with broad margin of bright buff-yellow; inside dark apricot, edged yellow, with dark green base starred yellow. Height 25 in. 10 bulbs, 85 cts.; 100 bulbs, \$7.50.
- WILBERFORCE.** 4. Soft apricot, edged a clear tone of primrose-yellow, with broader yellow margin inside and green base; a medium-sized flower of distinct color, on very tall stem. Splendid for the border. Height 32 in. 10 bulbs, 85 cts.; 100 bulbs, \$7.50. See illustration.

YELLOW PERFECTION; syn., **OLD GOLD**. 2. Light bronze-yellow, edged golden yellow; inside bronzy brown, with yellow base starred green. Very effective planted with Darwin Tulip Clara Butt. Height 24 in. 10 bulbs, 70 cts.; 100 bulbs, \$6; 1,000 bulbs, \$56.

Bybloem and Bizarre Tulips

Bybloem and Bizarre Tulips are "rectified" Breeder types. These Tulips are an old race, having been grown in Holland long before the modern sorts were known. They are tall growers and have large flowers particularly noteworthy for their beautiful shape.

The Bybloems are striped and feathered rose or violet, on a white ground; the Bizarres have dark brown or maroon-red stripes and feathering on a yellow ground, the markings varying in individual flowers. The new varieties in this class are far finer than the older, smaller kinds, and are very attractive in the herbaceous border. They come into flower about the same time as the later Darwins, and should have the same cultural treatment. They do not grow quite so tall, however, and show off to best advantage by themselves or with the Rembrandt Tulips. The bulbs of these Tulips are never very large.

The figure following the name indicates the relative time of flowering.

BIANCA. 2. Bybloem. White, flamed most regularly with dark purple; large flower of fine shape and one which is more uniformly marked than most others in this class. Height 25 in. 10 bulbs, \$1.80; 100 bulbs, \$16.

BLACK BOY. 2. Bizarre. Yellow ground, flamed and feathered dark brown; medium-sized flower. A very striking Tulip for borders or among low evergreens. Height 21 in. 10 bulbs, \$1; 100 bulbs, \$8.

DR. HARDY. 3. Bizarre. Bright yellow, edged and tinged carmine-red; an English variety of fair size and strikingly attractive color, particularly for indoor decoration. Height 18 in. 10 bulbs, \$2.40; 100 bulbs, \$22.

FLAMBOYANTE. 3. Violet Bybloem. Dark violet, striped and flamed purple and white; a fine combination of color tones. Height 24 in. 10 bulbs, \$1; 100 bulbs, \$8.50.

GLORY OF HOLLAND. 2. Violet Bybloem. Pure white, bordered and profusely feathered violet-purple. A fine example of the old florist's Tulip. Height 20 in. 10 bulbs, \$2; 100 bulbs, \$18.

LA BOHEMIENNE. 3. Bizarre. Light yellow, flamed purple maroon and yellow base. A showy Tulip for borders. Height 24 in. 10 bulbs, \$1.80; 100 bulbs, \$16.





LA VICTORIEUSE. 3. Violet Bybloem. Creamy white ground, flamed and feathered violet-purple; many flowers have only a narrow feathered edge. Huge flower on stiff stem. A very fine Bybloem Tulip. Height 24 in. 10 bulbs, \$2.40; 100 bulbs, \$22.

L'UNION. 3. Bizarre. Yellow ground, heavily flamed and striped madder-brown. A large, tall Bizarre of very showy character. Height 24 in. 10 bulbs, \$1; 100 bulbs, \$8.

SANG DE BOEUF. 3. Bizarre. Dark purple striped yellow; greenish black base. Height 24 in. 10 bulbs, \$1.40; 100 bulbs, \$12.

VIOLET PALE. 2. Bybloem. Pure, deep violet flamed dark purple; a long, large flower of fine color. Height 26 in. 10 bulbs, \$1.60; 100 bulbs, \$14.

Parrot Tulips

Parrot Tulips are May-flowering sorts having lacinated or slashed edges. They take their name from a supposed similarity of the flower in the bud state to the head of a parrot. The flowers are large and of striking color, growing about 14 or 15 inches high, but a tendency to weak stems makes them unsuited for bedding purposes. They are best grown in the border or among shrubs, where their habit of growth is not so great a disadvantage.

Parrots are notoriously shy bloomers, but in this respect the stock offered below will be found unusually satisfactory. To offset this characteristic, the bulbs should be planted not more than 4 or 5 inches apart. The Parrot Tulips will come into flower along with the midseason Darwin Tulips.

ADMIRAL VON CONSTANTINOPLE. Bright scarlet, shaded orange; very showy. 10 bulbs, 70 cts.; 100 bulbs, \$6; 1,000 bulbs, \$55.

CAFE BRUN. Deep yellow, striped and stippled orange-brown. An unusually large flower of distinct color. 10 bulbs, 70 cts.; 100 bulbs, \$6; 1,000 bulbs, \$55.

CRAMOISI BRILLANT. Rich blood-crimson, with black markings; very large and brilliantly effective. A very free bloomer in this class. 10 bulbs, 70 cts.; 100 bulbs, \$6; 1,000 bulbs, \$55.

FANTASY. 4. Clear rose-pink of the same tone as Darwin Tulip Clara Butt, of which this striking novelty is a sport. Unlike other Parrot Tulips it has a fairly good stem. Height 24 in. 10 bulbs, \$1.80; 100 bulbs, \$16.



GEMMA. 1. Glistening white; flower of medium size. This novelty is a sport in the Single Early class and will flower with that group; it is a very beautiful flower and has the unusual advantage among Parrot Tulips of having a strong stem. Height 15 in. 10 bulbs, \$1; 100 bulbs, \$8.

LADY DERBY. 3. Light violet, somewhat paler at edges; a fine large flower and a distinct novelty in the Parrot Tulips. Height 20 in. Single bulb, 60 cts.; 10 bulbs, \$4.

LUTEA MAJOR. Clear yellow, with a few crimson and green blotches and stripes. 10 bulbs, 70 cts.; 100 bulbs, \$6; 1,000 bulbs, \$55.

MARKGRAAF VON BADEN. Orange, shaded and feathered reddish purple and green, inside orange-yellow. The most striking of the Parrots. 10 bulbs, 70 cts.; 100 bulbs, \$6; 1,000 bulbs, \$55.

SUNSHINE. 2. Pure golden yellow, without markings of any other color; very large flower with wavy petals deeply fringed. This glorious new Parrot Tulip was discovered by Mr. Hunt in our gardens at Mayfair four years ago, and from the one bulb then sent to our growers in Holland, our present limited stock has been grown. It is as wonderful a break as is Fantasy, which made such a stir when first introduced some years ago. We are able to offer only a very few bulbs this year and we advise early ordering for those who may wish to own this fine novelty. Single bulb, \$5.

THERESE. 2. Bright rosy-scarlet with blue base; a large flower of an unusual color. Another of the novelties in Parrot Tulips which we are introducing this year. Height 24 in. Single bulb, \$5.

Tulip Species

The various species of botanical Tulips are natives of Asia Minor and Central Asia; indeed, the ancestors of all our garden Tulips have had their home in parts of Turkey and Asia Minor. These species show an almost endless variety of color, shape, height and season of bloom, though the general characteristics are bright colors and pointed or recurved petals. Only a few of the sorts retain a robust constitution when transferred from their habitat, yet for rock-gardens or spring borders many kinds are fairly well adapted, and will be contented for two or possibly three seasons, if care is taken to provide suitable quarters for them. Those who desire to have a fairly representative collection of Tulips will not fail to plant at least some of these.



- AUSTRALIS.** An April-flowering species with yellow flowers tinged ruddy bronze on outside of petals. Also known as *Celsiana* and though scarce, a very interesting type. Height 16 in. 10 bulbs, \$1.20; 100 bulbs, \$10.
- CLUSIANA.** Outer petals bright cherry-red, inner petals creamy white, with violet base; small flower, but very distinct and beautiful. It should be planted in light soil 6 to 9 inches deep in the rock-garden in a sheltered place or among stones in the front of the herbaceous border. Later April. Height 8 in. 10 bulbs, \$1; 100 bulbs, \$8; 1,000 bulbs, \$75.
- EICHLERI.** Bright scarlet; a very large flower on good stem. Height 11 in. 10 bulbs, \$1; 100 bulbs, \$8.
- FOSTERIANA.** Brilliant vermilion-scarlet, center marked yellow or black; enormous flowers with long, pointed petals. A very striking species from Bokhara. Late April. Height 9 in. Single bulb, 60 cts.; 10 bulbs, \$5.
- GREIGI.** Orange-scarlet, sometimes showing a tone of deep yellow; foliage spotted dark brown. A very wonderful Tulip when it flowers well, but it is not always a good grower, and frequently some of the bulbs will not bloom at all. Late April or early May. Height 9 in. 10 bulbs, \$2.60; 100 bulbs, \$24.
- KAUFMANNIANA.** Creamy white, more or less tinged rosy red on the outside; among a number of bulbs there will be a difference in the character of the markings. Large flower of handsome form, with broad, reflexing petals. The earliest of all Tulips, flowering late in March or early in April. Height 12 in. 10 bulbs, \$1; 100 bulbs, \$8.50.
- KUSCHKENSIS.** Vermilion-scarlet with showy black base and broad petals narrowing sharply at the tips. A novel species from Turkestan, the bulbs being covered with a woolly coating of the old skins. Height 14 in. 10 bulbs, \$2.60; 100 bulbs, \$24.
- MARJOLETTI.** Soft primrose, shaded carmine-red, green star at base of petals; small flower of very attractive color. A Tulip from Savoy, flowering about the second week in May. Height 14 in. 10 bulbs, \$1.20; 100 bulbs, \$10.
- OCULUS-SOLIS.** Crimson, with black center; large flower. Early May. Height 14 in. 10 bulbs, \$1.20; 100 bulbs, \$10.
- PERSICA.** Glowing orange-yellow, with black base; deliciously scented and frequently bearing two or more flowers on each stem. An especially useful Tulip for rock-garden. Height 4 in. 10 bulbs, \$3; 100 bulbs, \$28.



PRAESTANS. Dazzling orange-scarlet; very long, large flowers sometimes coming four or five to a stem. A very showy Tulip from Bokhara and superb for bedding. Late April. Height 14 in. 10 bulbs, \$2.20; 100 bulbs, \$20.

SYLVESTRIS; syn., **FLORENTINA.** Pure yellow, medium-sized, drooping flowers. The sweet-scented wild English Tulip. Fine for naturalizing, but must become established before it flowers freely. Height 16 in. 10 bulbs, \$1; 100 bulbs, \$8.

VIRIDIFLORA. 2. Known as the Green Tulip. Pale green, edged creamy yellow; very open flower, with narrow petals. Height 20 in. 10 bulbs, \$1.20; 100 bulbs, \$10.

VIRIDIFLORA PRAECOX. Similar to *Viridiflora*, but earlier, larger, and finer in every respect. Height 20 in. Single bulb, 60 cts.; 10 bulbs, \$5.

Tulip Mixtures

Although the planting of mixed bulbs seems to be in rather poor taste, there are some occasions where the use of named varieties is inadvisable. To meet the requirements of those who may wish to plant mixtures of Tulips, we are able to supply a superior quality of bulbs, in a varied assortment of colors, which will give the highest satisfaction. **CREAM QUALITY** will be as evident in all of our mixtures as in any other bulbs we shall send out.

Price of all varieties: 100 bulbs, \$3.50; 1,000 bulbs, \$32.

No order accepted for less than 25 bulbs of any one of these mixtures.

SINGLE EARLY TULIPS—Cream Quality Mixture.

DOUBLE EARLY TULIPS—Cream Quality Mixture.

COTTAGE TULIPS—Cream Quality Mixture.

DARWIN TULIPS—Cream Quality Mixture.

BREEDER TULIPS—Cream Quality Mixture.

PARROT TULIPS—Cream Quality Mixture.





DAFFODILS

Caution—We regret we cannot accept orders amounting to less than \$2.50. Please read the Sections, "Orders," "Shipments" and "Prices" on pages 9 and 10.

NARCISSI, or Daffodils, are probably the most popular of spring-flowering bulbs. Blooming before the winter snows are quite forgotten, they bring to the garden its first lavish display of color, spreading out their hoard of yellow beauty in response to the coaxing of the April sun. From March until well into May the Daffodils are in bloom, and by a judicious selection of varieties the borders may be kept bright for over a month. Whether the great trumpets of the new monsters are handsomer than the dainty elegance of the small-crowned sorts must be a question of individual taste, but there are no Daffodils without the charm of shape or color. Its ease of culture makes the Daffodil the flower for every garden.

In 1909 the Royal Horticultural Society of England adopted a revised classification of the Daffodils, which, as below, is followed in this list:

- I. TRUMPET DAFFODILS. Trumpet or crown as long as or longer than the perianth segments.
AJAX YELLOW. Perianth and trumpet yellow.
AJAX BICOLOR. Perianth white, trumpet yellow.
AJAX WHITE. Perianth and trumpet white.
- II. INCOMPARABILIS DAFFODILS. Cup or crown measuring from one-third to nearly equal the length of the perianth segments.
- III. BARRII DAFFODILS. Cup or crown measuring less than one-third the length of the petals.
- IV. LEEDSII DAFFODILS. Comprising all the short-cupped Narcissi having white perianth, and cup or crown of white, cream or pale primrose.
- V. TRIANDRUS HYBRIDS.
- VI. CYCLAMINEUS AND THEIR HYBRIDS.
- VII. JONQUILS AND THEIR HYBRIDS.
- VIII. TAZETTA AND THEIR HYBRIDS.
POETAZ. Hybrids of Poeticus and Polyanthus.



IX. POETICUS DAFFODILS. All with snowy white perianth and flattened yellow crown more or less deeply colored with scarlet or crimson.

X. DOUBLE DAFFODILS.

The following list of Daffodils is composed of varieties we are able to secure in American-grown bulbs. We believe this to be the most representative collection of Daffodils offered to the American public, as well as that the bulbs we are able to supply come from the best source in this country. Although we have been rather doubtful in the past about what might be expected of American-grown bulbs, the results we have obtained in our own gardens and the reports we have had from a great many of our customers indicate that in many respects the bulbs we deliver are the equal of, or superior to those we knew before Quarantine No. 37 shut out the Holland stock. However, if used for house culture, more time must be given for root-growth, and at no stage can the growth be hurried.

It must be kept in mind that quantities of all varieties are limited, and we can guarantee delivery only on early orders. In no case can we supply, on any one order, a larger quantity than that for which we quote prices.

We wish to call attention to the number of novelties and rare varieties of which we can offer only a very few bulbs. It is our wish to supply Daffodil fanciers with the very finest introductions of the English and Dutch hybridists. Among the varieties of which we are able to sell only a bulb or two there are a number of rarely beautiful things. Our customers may be assured that our Blue Book will continue to reflect Mr. Hunt's discriminating knowledge of what is fine in Daffodils.

Please note that we offer only mature, double-nosed bulbs and our prices should not be compared with quotations on first size or round bulbs.

Detailed planting directions will be included with the shipment of the bulbs. The figure following the name indicates the relative time of flowering.

ADMIRATION. Poetaz. 3. Perianth sulphur-yellow; sulphur-yellow eye, edged scarlet-red; a beautiful variety in this class. Height 14 in. 10 bulbs, \$2.20; 100 bulbs, \$20.



- AEOLUS. Bicolor Trumpet. 2.** Snowy white perianth of good form; large yellow trumpet with well-frilled and recurved brim. A fine exhibition variety because of its huge size and perfect form. Height 16 in. 10 bulbs, \$3.70; 100 bulbs, \$35.
- ALBATROSS. Barrii. 4.** Large, flat, white perianth; cup pale citron, with a ribbon edge of bright madder-red and beautifully frilled brim; a fine, large flower and a good garden variety. Height 20 in. 10 bulbs, \$1.30; 100 bulbs, \$11.
- ALCESTE. Incomparabilis. 3.** Wide white petals of massive texture, overlapping and quite round; large cup of rich yellow frilled at edge. A beautiful new variety, distinct in form which we can recommend highly as a garden or show flower. Height 20 in. Single bulb, 60 cts.; 10 bulbs, \$4.
- ALICE KNIGHTS. White Trumpet. 1.** White perianth and creamy white trumpet passing to pure white and slightly recurving at brim. A flower of moderate size, but the earliest white trumpet for outdoors or for pot culture. Height 14 in. 10 bulbs, \$2.60; 100 bulbs, \$24.
- ARGENT. Double Incomparabilis. 3.** Creamy white perianth with double row of petals and chrome yellow cup. A fine double Daffodil with a strong stem. Height 14 in. 10 bulbs, \$1.30; 100 bulbs, \$11.
- ARTEMIS. Incomparabilis. 1.** Well-formed sulphur-white perianth of good substance; cup deep primrose-yellow, edged deeper yellow and very broad at mouth. A flower of marked character, and one of the earliest of this class. Height 14 in. 10 bulbs, \$1.40; 100 bulbs, \$12.
- AUTOCRAT. Incomparabilis. 3.** Broad perianth of primrose-yellow, tending to reflex; aureolin yellow cup, widely expanded at the mouth. A very handsome, free-flowering variety for the border, and the best of its type for pots. Height 20 in. 10 bulbs, \$1.30; 100 bulbs, \$11.
- BEAUTY. Incomparabilis. 3.** Perianth sulphur-yellow; cup deep yellow, margined orange-scarlet. A striking flower for the border. Height 17 in. 10 bulbs, \$1.70; 100 bulbs, \$15.
- BEDOUIN. Incomparabilis. 4.** Perianth glossy white, with broad, overlapping petals; cup chrome-yellow with deep band of orange-scarlet, broad and well expanded. A flower of wonderful substance and lasting qualities. Height 20 in. 10 bulbs, \$2.20; 100 bulbs, \$20.



1—Castile 2—Thelma 3—Bedouin



Daffodils for Naturalizing



FOR those who know how well the Daffodils behave when grown in the grass, we suggest the collection noted below as consisting of the most permanent kinds among the small cup types. In our opinion, these are the most effective for this purpose.

Order Recommendation LL

50 bulbs of each variety for \$28.25

100 bulbs of each variety for \$56.50

No collection offered in quantities of less than a total of 250 bulbs.

GLITTER

AUTOCRAT

LUCIFER

EDRIN

SEAGULL

For larger plantings we offer equal quantities of these varieties at \$100.00 per 1000.

Daffodils for Everybody



THE ten varieties noted below are Mr. Hunt's selection of the best for the beginner's garden. This group represents all types and consists of good growing kinds.

Order Recommendation MM

Ten bulbs of each for \$14.00

Five bulbs of each variety for \$7.00

BLOOD ORANGE

GLORY OF LISSE

EDRIN

LADY ARNOTT

EMPEROR

LUCIFER

EMPRESS

MASTERPIECE

GLITTER

WHITE LADY



- BEERSHEBA.** White Trumpet. 3. Pure white petals, long but well over-lapping at base and with distinct ribs through center; the long trumpet opens pale cream, quickly changing to pure white, of fine form and nicely fluted at brim. A flower of large size and perfect form which has a great reputation among Daffodil fanciers. We can offer a few bulbs this season. Height 18 in. Single bulb, \$6.
- BERNARDINO.** Incomparabilis. 3. Very large, creamy white perianth of great substance; large cup of pale lemon-yellow, flushed and edged pinkish apricot, and very heavily frilled. A telling bit of color for the garden. Height 20 in. 10 bulbs, \$1.60; 100 bulbs, \$14.
- BLOOD ORANGE.** Barrii. 3. Broad, overlapping perianth of a peculiar creamy yellow; cup sunflower-yellow. A variety of interesting color and a good grower. Height 16 in. 10 bulbs, \$1.20; 100 bulbs, \$10.
- BONFIRE.** Barrii. 4. Very flat perianth of palest sulphur yellow; rather short cup of glowing orange-scarlet shading to a golden yellow at the very centre. A finely formed flower which holds its color in most seasons. Height 18 in. 10 bulbs, \$2; 100 bulbs, \$18.
- BRILLIANCY.** Barrii. 2. Perianth deep golden yellow; cup yellow, edged with deep scarlet. A very large flower measuring 5 inches across, which might be called a glorified Conspicuous. The color does not burn, making it an invaluable flower for the garden or for exhibition. Height 16 in. 10 bulbs, \$2.20; 100 bulbs, \$20.
- BULBODIUM CONSPICUUS.** Species. See page 99.
- CASTILE.** Barrii. 4. Sulphur-white perianth, with rather starry petals; cup bright yellow, slightly darker at rim, with greenish eye and marked fluting. A splendid flower of vigorous growth and fine color. Height 16 in. 10 bulbs, \$1.90; 100 bulbs, \$17.
- CHEERFULNESS.** Double Poetaz. 3. Three to four double white flowers on a stem, shaded deep yellow at the center. A new type in this section and a most distinct and beautiful flower. Height 14 in. 10 bulbs, \$1.90; 100 bulbs, \$17.
- CIRCLET.** Barrii. 2. Sulphur-white perianth, with very large, broad, overlapping petals, well rounded and slightly reflexing chrome-yellow eye, quite flat and very regularly fringed and crimped. A perfectly modeled variety, valuable for show purposes. Height 13 in. 10 bulbs, \$5.



- C. J. BACKHOUSE. *Incomparabilis*. 2. Starry perianth, soft yellow, of medium size; long cup of orange-yellow suffused orange-red. A variety which does best in cool soil or partial shade; fine for naturalizing. Height 18 in. 10 bulbs, \$1.70; 100 bulbs, \$15.
- CONSPICUUS. *Barrii*. 4. Large, broad, spreading perianth of soft yellow; short yellow cup, edged bright orange-scarlet. One of the most useful of all Daffodils. Splendid for the border or naturalizing. Height 21 in. 10 bulbs, \$1.10; 100 bulbs, \$9.
- CORAL QUEEN. *Leedsii*. 4. White perianth with well-expanded cup of soft citron and broad margin of pale coral-buff. A flower of moderate size but very novel color. Height 16 in. 10 bulbs, \$3; 100 bulbs, \$28.
- CORNELIA. Yellow Trumpet. 4. A uniform soft yellow, with broad, smooth perianth and large, well-expanded trumpet. A flower of fine form blooming later than Emperor. Height 18 in. 10 bulbs, \$1.90; 100 bulbs, \$17.
- COSSACK. *Barrii*. 3. Milk-white perianth, with broad, overlapping petals of great substance, slightly reflexing; frilled, open cup with broad margin of bright crimson. A very handsome Daffodil of perfect form. Height 18 in. Single bulb, 50 cts.; 10 bulbs, \$3.50.
- CROESUS. *Incomparabilis*. 3. Pale primrose perianth with thick, overlapping petals; wide expanded crown of great size, heavily suffused and stained deep orange-red. A flower of great substance, superb color and one of the very finest things of recent introduction. Height 17 in. 10 bulbs, \$2.70; 100 bulbs, \$25.
- CYCLAMINEUS. Species. See page 99.
- CZARINA. Giant *Leedsii*. Pure white perianth with long, pointed petals beautifully twisted but overlapping at base; pale lemon crown, rather whiter outside and exquisitely frilled. A very decorative flower and superb in the garden. Height 15 in. Single bulb, \$1; 100 bulbs, \$8.
- DUCHESS OF WESTMINSTER. *Leedsii*. 3. Pure white perianth; cup soft canary-yellow with darker edge, passing into ivory-white; large star-like flower of exquisite beauty. Fine for borders or naturalizing. Height 16 in. 10 bulbs, \$3.
- EDRIN. *Incomparabilis*. 2. Primrose yellow perianth, with starry petals slightly folded-in along edges: very large open cup of deep canary-yellow, beautifully fluted at edges. Very tall and one of the best growers we have: a fine variety for the garden or for exhibition, and the finest of all for naturalizing. Height 22 in. 10 bulbs, \$1.60; 100 bulbs, \$14.



- ELIZABETH RYAN.** Barrii. 3. Perianth snow-white with round overlapping petals; small cup of primrose yellow. A small flower, but perfect in form and a gem for the rock-garden. Height 10 in. 10 bulbs, \$2; 100 bulbs, \$18.
- ELVIRA.** Poetaz. 3. Perianth pure white, eye bright yellow. Three or four flowers on a stiff stem. Fine for forcing. Height 20 in. 10 bulbs, \$1.20; 100 bulbs, \$10.
- EMPEROR.** Yellow Trumpet. 3. Perianth deep primrose-yellow, broad at base; trumpet rich yellow. A large flower of remarkable substance; fine for borders or forcing. Height 20 in. 10 bulbs, \$1.60; 100 bulbs, \$14.
- EMPRESS.** Bicolor Trumpet. 3. Sulphur-white perianth, with rather narrow petals; trumpet rich chrome-yellow. A very useful Daffodil for the border. Height 18 in. 10 bulbs, \$1.70; 100 bulbs, \$15.
- EPIC.** Poeticus. 4. Substantial, white perianth of great size; cup canary-yellow, rimmed bright red. One of the newer Poeticus varieties which we note every season as being the best in our trial-gardens. Height 17 in. 10 bulbs, \$2.60; 100 bulbs, \$24.
- EPICURE.** Incomparabilis. 3. Milk-white perianth with very broad overlapping petals of fine substance; open cup of canary-yellow, beautifully fluted at edges. A fine exhibition variety and equally good in the garden. Height 14 in. Single bulb, \$1; 10 bulbs, \$8.
- EVANGELINE.** Leedsii. 4. Broad, pure white perianth, with smooth, overlapping petals of remarkable substance; large, expanding cup of citron-yellow. A Daffodil of great beauty and one of the best for naturalizing. Height 18 in. 10 bulbs, \$1.30; 100 bulbs, \$11.
- EXPECTATION.** Leedsii. 3. Very large milk-white perianth of wonderful substance with broad, round petals well overlapping and of remarkable substance; small cup of deep chrome yellow, crimped and frilled in a most interesting fashion. A very large flower of faultless form and a perfect exhibition variety which should be in every collection. Height 20 in. Single bulb, \$1; 10 bulbs, \$8.
- FAIRY QUEEN.** Leedsii. Pure white perianth, with slightly incurving petals; straight cup of pure white, prettily frilled. An improved Mrs. Langtry, as it does not become wingy with age. Height 14 in. 10 bulbs, \$1.30; 100 bulbs, \$11.
- FIREBRAND.** Barrii. 4. Perianth creamy white, shaded soft yellow at base; cup intense fiery red, prettily fluted. This is one of the brightest of all Daffodils. Splendid for shaded borders, where the bright color retains its intensity. Height 17 in. 10 bulbs, \$1.40; 100 bulbs, \$12.



- FIRETAIL.** Barrii. 3. Large creamy white perianth with broad petals overlapping at base; medium-sized cup broadly edged deep orange, the color keeping well in the sun. A very fine show variety. Height 20 in. 10 bulbs, \$4; 100 bulbs, \$36.
- FORTUNE.** Giant Incomparabilis. 1. Flat, overlapping perianth of purest golden yellow; large bold crown of glowing copper-orange, neatly ruffled at brim. This famous flower justly deserves its reputation for its bright color and perfect form. One of the earliest to bloom and a good grower. Height 15 in. Single bulb, \$20.
- FRANK MILES.** Incomparabilis. 3. Pale yellow perianth, of starry form and elegantly waved; cup bright yellow. Large, handsome flower, fine for massing in borders and for cutting. Height 21 in. 10 bulbs, \$1.60; 100 bulbs, \$14.
- G. H. VAN WAVEREN.** Yellow Trumpet. 2. Deep primrose perianth with large, smooth petals, showing no tendency to spread; long, large trumpet of deep golden yellow, flaring at mouth and nicely fluted. One of the huge new trumpets which will appeal to all who admire size. Height 18 in. 10 bulbs, \$4; 100 bulbs, \$36.
- GLINT O' GOLD.** Incomparabilis. 2. Bright yellow perianth with broad petals pointed at the tips and well overlapping; very large cup of deep chrome yellow. A flower of unusual character in this class. Height 16 in. Single bulb, 50 cts.; 10 bulbs, \$4.
- GLITTER.** Barrii. 3. Chrome-yellow perianth with round petals; small yellow cup, with narrow margin of orange-red. A rather small flower something like a yellow Poeticus; one of the best for naturalizing. Height 14 in. 10 bulbs, \$1; 100 bulbs, \$8.50.
- GLORIA MUNDI.** Incomparabilis. 3. Perianth primrose-yellow, with broad petals; crown dark chrome at base, deepening to brilliant orange-red at brim, large and well frilled and fluted. A flower altogether beautiful for its fine proportion, good substance and striking color. Height 18 in. 10 bulbs, \$1.60; 100 bulbs, \$14.
- GLORY OF LISSE.** Poeticus. 4. Large, snow-white perianth, with well-defined midrib through the overlapping petals; cup margined red. A very beautiful flower, and the best of the moderate-priced Poeticus. Height 16 in. 10 bulbs, \$1.30; 100 bulbs, \$11.
- GOLDEN SPUR.** Yellow Trumpet. 1. Self-colored a deep rich yellow. Perianth large and spreading; large trumpet with broad, open mouth. Splendid for early forcing, but not very permanent in the garden. Height 17 in. 10 bulbs, \$1.80; 100 bulbs, \$16.



- HELIOS. Incomparabilis. 2.** Perianth light chrome yellow with stiff overlapping petals of remarkable texture; very large, open cup of deepest yellow. A large flower of beautiful color and outstanding merit. Height 20 in. Single bulb, \$1; 10 bulbs, \$8.
- HENRIETTE. Giant Incomparabilis. 3.** Primrose perianth of very clear color with rather pointed, spreading petals; large, very open chrome-yellow cup, funnel-shaped and beautifully frilled at brim. A soft yellow counterpart of Her Grace, which is one of our favorite blooms. Height 16 in. Single bulb, \$1.25.
- HER GRACE. Giant Leedsii. 2.** Milk-white perianth with long, pointed petals noticeably ribbed; cup soft primrose-yellow passing to white at edges and exquisitely frilled. A flower of almost transparent quality and erect habit. Height 12 in. Single bulb, 60 cts.; 10 bulbs, \$4.50.
- HOLBEIN. Incomparabilis. 3.** Perianth pure white, with very long petals of star-like form and thick substance; large cup chrome-yellow. An unusually beautiful flower for the border and especially recommended for show purposes. Height 15 in. Single bulb, \$1.50.
- HORACE. Poeticus. 3.** Snowy white perianth with round, overlapping petals. Small eye broadly edged crimson. Height 16 in. 10 bulbs, \$1.40; 100 bulbs, \$12.
- IVORINE. Leedsii. 3.** Glistening ivory-white perianth with round, overlapping petals; pale primrose eye, perfectly flat, with pale green center. A small, rather low-growing variety, but exquisitely beautiful and a gem for the rock-garden. Height 12 in. Single bulb, 60 cts.; 10 bulbs, \$4.
- JASPER. Barrii. 3.** Perianth of palest primrose changing to creamy white, with very pointed petals. Large crown of pure buff with flush of orange at margin when first opening. A wholly distinct variety of very novel color; offered exclusively in the Blue Book. Height 14 in. Single bulb, \$1.75.
- JOCONDE. Poetaz. 3.** Yellow perianth and deep golden cup, bearing four to five large blooms of pure color. A splendid new variety for the garden. Height 15 in. 10 bulbs, \$2.20; 100 bulbs, \$20.
- JOHN EVELYN. Incomparabilis. 3.** White perianth with large petals of fine substance; large cup of soft orange yellow, beautifully frilled. A fine new variety which will become a standard among the so-called red-cups. Height 16 in. Single bulb, \$6.



KING ALFRED. Yellow Trumpet. 2. Perianth and trumpet rich chrome-yellow; broad perianth petals of great substance; trumpet of medium size, widely expanding, with brim rolled back one-half inch and beautifully fluted. A glowing flower of lasting quality. Height 20 in. 10 bulbs, \$2.20; 100 bulbs, \$20.

LADY ARNOTT. *Incomparabilis*. 1. Perianth bright primrose-yellow, with long almond-shaped petals; large crown, very heavily stained bright orange. A flower of fine substance and a telling bit of color. Height 15 in. 10 bulbs, \$1.70; 100 bulbs, \$15.

LEONIE. *Incomparabilis*. 4. Deep primrose perianth, with broad petals; very wide cup of light golden yellow, well opened at the mouth. A striking variety because the cup is so large in proportion to the perianth. Height 15 in. 10 bulbs, \$1.80; 100 bulbs, \$16.

LORD KITCHENER. Giant Leedsii. 3. Large, snowy white perianth, broad and flat, of great substance; big crown of the palest primrose, widely open at mouth and elegantly crimped and fluted at the brim. A flower of perfect quality, one of the most desirable in its class. Height 21 in. 10 bulbs, \$2.40; 100 bulbs, \$22.

LUCIFER. *Incomparabilis*. 3. Perianth sulphur-white, with long, well-rounded petals, rather star-like in effect; cup chrome-yellow edged bright orange. A bold, showy flower for outdoors as it holds its color splendidly. Height 18 in. 10 bulbs, \$1.30; 100 bulbs, \$11.

LUCINIUS. *Incomparabilis*. 3. Deep yellow perianth with almond-shaped petals of fine texture and perfect form; cup deep chrome yellow with orange flush toward the frilled edge. A variety we have watched with great interest for two seasons and one which all lovers of the Daffodil will admire. Height 18 in. Single bulb, \$1; 10 bulbs, \$8.

MACEBEARER. *Incomparabilis*. 3. Large perianth of creamy white, with round, overlapping petals; large cup of deep yellow, in some seasons showing a red rim. A flower of great substance and perfect form; a beautiful variety for the garden or exhibition. Height 15 in. Single bulb, 60 cts.; 10 bulbs, \$4.

MARINA. *Incomparabilis*. 5. Creamy white perianth, with large petals; primrose-yellow cup, rather shallow, broad at brim and slightly crimped. A superb flower of great substance and unusually pure color. One of the last Daffodils to open. Height 16 in. Single bulb, \$4.



The Standard List of Garden Daffodils



THESE are the best of the older kinds and the less expensive of the newer ones. Together the varieties make up an unusually valuable collection for the gardener who desires to have a really good set of Daffodils.

Order Recommendation NN
Ten bulbs of each for \$17.20
Five bulbs of each variety for \$8.60

AUTOCRAT	THELMA
BEAUTY	QUEEN OF THE NORTH
KING ALFRED	VAN WAVEREN'S GIANT
RED BEACON	WHITEWELL
SCUTHERN GEM	WILL SCARLET

For the Corner of Your Garden Where Your Choicest Treasures Are



MR. HUNT has chosen these varieties as being some of the very rare and especially beautiful kinds for the gardener who wishes to have some very choice things. For Show this is a prize-winning collection.

Order Recommendation QQ
One bulb of each for \$20.80

BEERSHEBA	NANNIE NUNN
COSSACK	NOBILITY
EXPECTATION	PEDESTAL
HELIOS	PRESIDENT VIGER
HER GRACE	WARLEY SCARLET
MACEBEARER	WHISTLER



Mrs. Chester J. Hunt



- MASTERPIECE. Barrii. 4.** Perianth sulphur-white, with broad round petals; flat cup, orange-scarlet throughout and well fluted at brim. A small flower but one of the few varieties having an all red cup in our climate. Height 22 in. 10 bulbs, \$1.50; 100 bulbs, \$13.
- MERMAID. Leedsii. 1.** Large, white perianth, with smooth, overlapping and rather pointed petals; very large, bold crown, elegantly recurving and fluted at brim, of pale creamy primrose turning to creamy white. The most daintily beautiful Giant Leedsii and the earliest to flower. Height 15 in. 10 bulbs, \$3; 100 bulbs, \$28.
- MIGNON. Poetaz.** Well-formed perianth of clear white; deep yellow cup, with tiny edge of bright orange-red. Three or four flowers to a stem. Height 14 in. 10 bulbs, \$2.20; 100 bulbs, \$20.
- MINIMUS. Species.** See page 99.
- MITYLENE. Leedsii. 3.** Pure white perianth with rounded petals, overlapping, and of good substance; rather open cup of soft yellow with incurving edge of distinct type. A flower of perfect form and fine color. Height 15 in. Single bulb, \$5.
- MOUNTAIN MAID. Leedsii. 2.** Silvery white perianth and cup; a beautifully formed flower, very attractive because of its gracefully nodding habit, and a gem for the rock-garden. Height 12 in. 10 bulbs, \$2.40; 100 bulbs, \$22.
- MR. R. M. TOBIN. Incomparabilis. 3.** Long, rather narrow petals, slightly twisted, of snowy white; straight cup, quite large, of brilliant orange red. A flower somewhat like Lucifer but larger and of much greater size and substance. Height 14 in. Single bulb, \$2.50.
- MRS. CHESTER JAY HUNT. Barrii. 5.** Snowy white perianth of wonderfully smooth texture, with pointed petals, very broad at base; large, flat, yellow eye, margined madder-red. A Barrii closely resembling the Poeticus types. A flower of wonderful symmetry and pure coloring. Height 15 in. 10 bulbs, \$1.60; 100 bulbs, \$14.
- MRS. ERNEST KRELAGE. White Trumpet. 3.** Perianth pure white; trumpet pure white when fully developed. This is still one of the finest white trumpet varieties and exquisitely beautiful when seen in late afternoon. Height 16 in. Single bulb, \$2.70; 100 bulbs, \$25.
- NANNIE NUNN. Barrii. 5.** Pale sulphur yellow perianth with rounded petals nicely overlapping at base; large, open cup of deep yellow with very broad edge of orange-scarlet. A large, perfectly balanced bloom of striking character and a good garden variety. Height 15 in. Single bulb, \$2.



- NOBILITY.** Barrii. 3. Large creamy white perianth with overlapping petals; large, flat cup, suffused deep orange-red. A splendid addition to this class because of its glowing cup. Height 16 in. Single bulb, \$3.50.
- OLYMPIA.** Yellow Trumpet. 3. Twisted perianth of deep primrose-yellow; huge, straight trumpet of slightly deeper color, frilled at brim; an enormous flower, splendid for the garden or pot culture. Height 15 in. 10 bulbs, \$2; 100 bulbs, \$18.
- ORANGE BUFFER.** Incomparabilis. 1. Deep primrose perianth with long, oval, spreading petals; chrome-yellow cup, edged orange-yellow. A very striking and satisfactory garden Daffodil of most sturdy growth; tall and early. Height 17 in. 10 bulbs, \$2.20; 100 bulbs, \$20.
- ORANGE CUP.** Poetaz. 3. Creamy white, with brilliant orange cup, usually giving 6 to 8 flowers to each stem; a nice color contrast. Height 15 in. 10 bulbs, \$1.60; 100 bulbs, \$14.
- ORANGE GLOW.** Incomparabilis. 3. Large, broad perianth petals of deep yellow, smooth and overlapping wide, open crown of deep orange, exquisitely frilled at brim. Another of the new red-cups which is bound to be a winner at any show. Height 15 in. Single bulb, \$10.
- ORANGEMAN.** Incomparabilis. 3. Sulphur-white perianth, with spreading, star-like petals; chrome-yellow crown, deepening at brim to yolk-yellow, distinct because of its oval, rather than round form. A striking variety and a good grower. Height 16 in. 10 bulbs, \$2.30; 100 bulbs, \$21.
- ORANGE PHOENIX.** Double Incomparabilis. 3. Creamy white petals with orange center. A very double flower. Height 17 in. 10 bulbs, \$1.40; 100 bulbs, \$12.
- ORNATUS.** Poeticus. 4. Perianth pure white; cup margined bright crimson. A splendid variety for massing, and the best of the inexpensive sorts for forcing. Height 14 in. 10 bulbs, \$1; 100 bulbs, \$8.50.
- PAPER-WHITE GRANDIFLORA.** Tazetta. For pots or bowls. See page 99.
- PAX.** Leedsii. 4. Pure white perianth with round petals of most solid substance; large cup of pale primrose, in some seasons tinged apricot at edge. A very distinct and lasting flower. Height 14 in. Single bulb, \$2.
- PEDESTAL.** Incomparabilis. 3. Pale primrose perianth, overlapping, of splendid substance; clear yellow cup, stained red and beautifully crinkled. A splendid new Daffodil for any purpose. Height 13 in. Single bulb, 75 cts.; 10 bulbs, \$6.



- PETER BARR.** White Trumpet. 4. White perianth of rather loose and spreading form; long trumpet of pale ivory-white, beautifully recurved at brim. A flower of exquisite symmetry, fine substance and noble character. Height 15 in. 10 bulbs, \$3.40; 100 bulbs, \$32.
- PHYLLIDA.** Giant Leedsii. 3. Flat, perfectly smooth perianth of pure white; large, expanded crown opening soft canary yellow and passing to creamy white. A splendid garden variety and a fine specimen of this attractive section. Height 16 in. 10 bulbs, \$4; 100 bulbs, \$36.
- PRESIDENT VIGER.** Incomparabilis. 2. Primrose yellow perianth with large, broad petals nicely overlapping; large crown so frilled and fringed that it seems to lie close to the perianth. A wholly distinct and exquisitely beautiful flower which should be in every collection. Height 14 in. Single bulb, 60 cts.; 10 bulbs, \$5.
- PRIMROSE PHOENIX.** Double Incomparabilis. 3. Pale primrose yellow, very double; a large flower on fairly good stem. This is a fine double Daffodil, especially valuable for cutting. Height 20 in. 10 bulbs, \$1.70; 100 bulbs, \$15.
- QUEEN OF SPAIN.** Species. See page 99.
- QUEEN OF THE NORTH.** Leedsii. 3. Broad, large perianth of clear, glistening white and remarkable texture; cup soft primrose-yellow, with narrow rim of sulphur-white, irregularly fluted. A flower of the highest quality. Height 18 in. 10 bulbs, \$1.40; 100 bulbs, \$12.
- RECURVUS.** Poeticus. 6. The old Pheasant's Eye. Perianth pure white, somewhat reflexing; cup margined deep scarlet; sweet-scented. Fine for massing in borders or in grass. Height 15 in. 10 bulbs, \$1.10; 100 bulbs, \$9.
- RED BEACON.** Barrii. 3. Perianth ivory-white shading to sulphur at base of petals; cup broadly edged brilliant orange-scarlet and beautifully frilled. A striking flower easily distinguished by the conspicuous mid-ribs on the petals. Almost the showiest of the older red-cupped varieties. Height 17 in. 10 bulbs, \$1.60; 100 bulbs, \$14.
- ROBERT SYDENHAM.** Yellow Trumpet. 2. Spreading perianth of sulphur-yellow; deep yellow trumpet beautifully frilled; large flower of great vigor and splendid for garden purposes. Height 17 in. 10 bulbs, \$2.50; 100 bulbs, \$23.
- RUGULOSUS.** Jonquil. 2. Self-colored rich yellow; very fragrant; three or four flowers on a stem; the best form of the single Campernelle Jonquil. Fine for borders, naturalizing or pot culture. Height 17 in. 10 bulbs, \$1.40; 100 bulbs, \$12.



- RUGULOSUS PLENUS.** Double Jonquil. 2. Clear golden yellow. Sweet-scented. Height 13 in. 10 bulbs, \$1.60; 100 bulbs, \$14.
- SEAGULL. Barrii.** 3. Broad perianth of the purest white and splendid substance; cup pale lemon-yellow, usually with tiny edge of light orange; an exquisitely beautiful flower. Fine for outdoors or pot culture. Height 17 in. 10 bulbs, \$1.40; 100 bulbs, \$12.
- SILVER PHOENIX;** syn., **SULPHUR PHOENIX.** Double *Incomparabilis*. 3. Large, creamy white flower, with sulphur-yellow center. Height 18 in. 10 bulbs, \$1.40; 100 bulbs, \$12.
- SINGLE SWEET-SCENTED JONQUIL.** Jonquil. 3. Tiny yellow flowers on slender stem, most often giving two or three flowers to a stalk. A very small flower which has always been a favorite in old-fashioned gardens. Height 11 in. 10 bulbs, \$1.40; 100 bulbs, \$12.
- SIRDAR. Giant Leedsii.** 3. Perianth pale sulphur-white, with broad petals; large cup of very pale primrose, deepening at brim, which is widely open and very beautifully frilled. A flower of wonderful substance and a strong grower. Height 16 in. 10 bulbs, \$3; 100 bulbs, \$28.
- SIR ERNEST SHACKLETON.** Bicolor Trumpet. 2. Glistening white perianth with somewhat pointed petals; pure golden yellow trumpet, very long and broad. A new variety of great size and noteworthy because of the vivid contrast in color which makes it stand out in the border among any number of rivals. Height 22 in. 10 bulbs, \$3; 100 bulbs, \$28.
- SIR WATKIN. Incomparabilis.** 2. Perianth primrose-yellow; large and well-formed yellow cup; tinged deep yellow. A giant among the medium-crowned Daffodils. Height 21 in. 10 bulbs, \$1.60; 100 bulbs, \$14.
- SOLEIL BRILLIANT.** *Poetaz*. 3. Buttery yellow with deep orange cup. This is a superb variety for those who like the bunch flowered types, for it gives at least 12 or 14 flowers to a well-grown spike and, when cut, two or three stems in full bloom make a bouquet all by themselves. Height 15 in. 10 bulbs, \$2; 100 bulbs, \$18.
- SOLEIL D'OR.** *Tazetta*. For pots and bowls, See page 99.
- SOUTHERN GEM.** *Giant Leedsii*. 2. Clear white perianth with three broad and three narrow petals; the cup opens pale primrose, soon turning to milky white and is long and beautifully frilled. A distinct flower and a good grower. Height 16 in. 10 bulbs, \$1.50; 100 bulbs, \$13.



- SPARKLER.** *Incomparabilis*. 2. Primrose-yellow perianth with long spreading petals; large cup of chrome-yellow edged clear orange and beautifully frilled. A good grower with strong stem. Offered exclusively in *The Blue Book*. Height 15 in. Single bulb, 50 cts.; 10 bulbs, \$3.
- SPRING GLORY.** *Bicolor Trumpet*. 1. Clear white perianth, with long petals of fine form; long trumpet of deep chrome-yellow, well reflexing at brim. A large flower of fine character. Height 16 in. 10 bulbs, \$2; 100 bulbs, \$18.
- ST. OLAF.** *Leedsii*. 5. Very broad, well rounded perianth, of unusually clear white; wide crown, quite flattened, of soft creamy yellow with sulphur margin. A daffodil of much character and one of the very latest to bloom. Height 16 in. Single bulb, 50 cts.; 10 bulbs, \$3.
- ST. VINCENT.** *Giant Leedsii*. 3. Milk-white perianth with pointed petals well overlapping at base; long crown opening pale sulphur and changing to soft creamy white. A large, upstanding flower of bold character well-suited to any garden purpose. Height 18 in. Single bulb, 60 cts.; 10 bulbs, \$4.
- SUNRISE.** *Barrii*. 2. Pure white perianth with pale primrose flush through center of each petal; open crown of deep yellow, often having a broad margin of clear orange-scarlet. A fine Daffodil for exhibition and for the garden. Height 16 in. 10 bulbs, \$2.40; 100 bulbs, \$22.
- THELMA.** *Poeticus*. 4. Snowy white perianth, with almond-shaped petals, overlapping at base; large eye, light yellow, with narrow edge of bright crimson. A very large flower, noteworthy for the fine color in the cup; one of the finest *Poeticus* varieties in our list. Height 15 in. 10 bulbs, \$1.80; 100 bulbs, \$16.
- TRIANDRUS ALBUS.** *Species*. See page 99.
- UNDINE.** *Leedsii*. 4. Snowy white perianth with narrow, straight crown of pure white. A rather small variety, usually giving two flowers on a stem, of exceptional beauty especially in small clumps in the rock-garden. Height 12 in. 10 bulbs, \$2.60; 100 bulbs, \$24.
- VAN WAVEREN'S GIANT.** *Bicolor Trumpet*. 1. Broad primrose perianth of companulate form; bright yellow trumpet, with very large, open mouth, flanged at brim. A huge flower of vigorous habit and very showy character. Height 17 in. 10 bulbs, \$2.20; 100 bulbs, \$20.
- WARLEY SCARLET.** *Barrii*. 4. Creamy white perianth with round, well-formed petals; large yellow cup, expanding and daintily fluted with wide band of orange-red. A medium-sized flower but a very handsomely colored cup. Height 17 in. Single bulb, \$1.50.



- WEARDALE PERFECTION.** Bicolor Trumpet. 3. Solid, companulate perianth of milk-white, with broad, overlapping petals; long, bold trumpet of soft creamy yellow, well fluted at the mouth. An old variety but distinct in color and absolute refinement of form and habit. Height 22 in. 10 bulbs, \$3; 100 bulbs, \$28.
- WHISTLER.** Yellow Trumpet. 3. Soft chrome-yellow perianth of great size with wide, overlapping petals; huge trumpet of deep chrome-yellow, flaring at the brim. A giant among the novelties which has refined form. Height 20 in. Single bulb, 75 cts.; 10 bulbs, \$6.
- WHITE LADY.** Leedsii. 3. Broad, white perianth of perfect form; small cup of pale canary, beautifully crinkled; free blooming, and well suited to outdoor planting or to pot culture and superb when used as a cut-flower. Height 20 in. 10 bulbs, \$1.10; 100 bulbs, \$9.
- WHITE QUEEN.** Giant Leedsii. 2. Broad, overlapping perianth of glistening white, with pointed petals; bold, straight crown of soft lemon, passing into white with age. A large but refined flower of great substance. Height 15 in. 10 bulbs, \$3.
- WHITEWELL.** Incomparabilis. 2. Flat creamy white perianth with very broad overlapping petals; large open cup of deep chrome-yellow. A very large flower of sturdy growth and wonderful substance. Height 18 in. 10 bulbs, \$1.70; 100 bulbs, \$15.
- WILL SCARLETT.** Incomparabilis. 5. Creamy white perianth somewhat loosely put together; widely expanded cup of brilliant orange-scarlet, elegantly frilled. A noteworthy variety, owing to the dazzling scarlet of the cup; a very good grower. Height 18 in. 10 bulbs, \$1.80; 100 bulbs, \$16.
- W. P. MILNER.** White Trumpet. 2. Creamy white perianth and trumpet; small flowers and narrow foliage. An exquisite little Daffodil for the rock-garden or for naturalizing, and a gem for pot culture. Height 11 in. 10 bulbs, \$2.40; 100 bulbs, \$22.
- YELLOW POPPY.** Incomparabilis. 3. Soft primrose yellow with round petals of good substance; primrose cup, beautifully frilled and fluted. A flower of uniform, soft color carried on a good stem and most graceful in symmetry of form. Height 16 in. Single bulb, \$2.
- YELLOW QUEEN.** Yellow Trumpet. Perianth canary-yellow with rather narrow petals; rich yellow trumpet of enormous size and much frilled at the mouth. Height 17 in. Single bulb, 50 cts.; 10 bulbs, \$3.



1—White Lady 2—Beauty 3—Blood Orange
4—Artemis



A Purple and Lavender Color Scheme in Crocuses for Early April



OUR friends who have not used Crocus bulbs in the border, do not know how much finer they are than when merely dotted about on the lawn. Fifty bulbs of these eight varieties, planted in broad patches among the low-growing perennials in the front of your border, will delight you with their blending of soft shades.

Order Recommendation RR

50 bulbs of each for \$22.50

25 bulbs of each for \$11.25

ANTIGONE

DOROTHEA

EDINA

ENCHANTRESS

JULIA CULP

MIKADO

POTTER

TILLY KOENEN



Mayfair Mixture of Inexpensive Daffodils

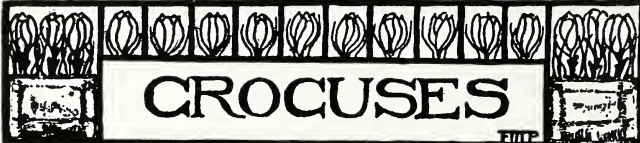
MIXED DAFFODILS. We are offering a mixture of all classes of Daffodils with the idea of being able to provide bulbs of these popular flowers at a price which will be comparable to those formerly obtained for Holland grown stocks. These are all strong varieties and where large quantities are needed this mixture will prove valuable. No order accepted for less than 50 bulbs. 50 bulbs, \$4.50; 100 bulbs, \$8; 1,000 bulbs, \$75.

For Growing Indoors in Bowls

- PAPER-WHITE GRANDIFLORA.** Tazetta. Pure white; very fragrant. We offer only the largest size obtainable, as satisfactory results cannot be had from small bulbs. For forcing only. 10 bulbs, \$1.10; 100 bulbs, \$9.
- SOLEIL D'OR.** Tazetta. Perianth golden yellow, with deep, brilliant orange eye; several flowers on a stem. Not hardy out-of-doors. 10 bulbs, \$1.70; 100 bulbs, \$15.

Small-Flowered Types for Rock Gardens

- BULBOCODIUM CONSPICUUS.** Rich golden yellow with trumpet of hoop-petticoat form and foliage resembling that of a jonquil. A tiny gem for sandy soil where the bulbs may remain dry when not in active growth. Height 6 in. 10 bulbs, \$3; 100 bulbs, \$28.
- CYCLAMINEUS.** A tiny flower with tube-like trumpet of rich yellow; yellow perianth reflexing like a Cyclamen. Prefers damp spot in rock garden. Height 6 in. 10 bulbs, \$3.
- MINIMUS.** Tiny little trumpet flowers of rich yellow. The smallest and dwarfest of all Daffodils. Height 3 in. 10 bulbs, \$4.
- QUEEN OF SPAIN.** Canary yellow trumpet and perianth, the latter reflexing. Fine for naturalizing under trees. Height 12 in. 10 bulbs, \$4.
- TRIANDRUS ALBUS.** (Angels Tears Daffodil.) Elegant little creamy white flowers with globular cup and reflexing perianth. Height 7 in. 10 bulbs, \$2; 100 bulbs, \$18.
- The following varieties noted in the body of our catalogue are dwarf in growth and have small flowers for planting in rock gardens. Alice Knights, Blood Orange, Coral Queen, Elizabeth Ryan, Glitter, Ivoryine, Rugulosus, Rugulosus Plenus, Single Sweet-scented Jonquil, Undine, W. P. Milner.



CROCUSES

Caution—We regret we cannot accept orders amounting to less than \$2.50. Please read the Sections, "Orders," "Shipments" and "Prices" on pages 9 and 10.

Crocuses will always find a place in every garden because of their earliness. It is enough merely to see their cheerful blue and white and yellow in March or early April; the garden has indeed begun to be a thing of beauty. Whether Crocuses are planted as an edging to beds, in irregular breadths throughout the border, in careless patches in the grass, in masses among trees and shrubs, or, best of all, perhaps, on the slopes of terraces, their attractiveness is unchanged. In pots, planting twelve to fifteen corms in a 6- or 7-inch pan, they are very lovely and a revelation to those who have not grown them in this way. Named sorts should be chosen, for mixtures are never satisfactory.

The named varieties in the following list are all new seedlings far superior to most of the older kinds in size or color.

Detailed planting directions are included with the shipment of the bulbs.

No order accepted for less than 25 bulbs of any one of the following varieties:

- AGNES. Very pale pinkish lavender. 25 bulbs, \$1.75; 100 bulbs, \$6.
- AMETHYST. Very pale lavender-blue with white edge. 25 bulbs, \$1.75; 100 bulbs, \$6; 1,000 bulbs, \$55.
- ANTIGONE. Lavender-blue with white edge. Large flower. 25 bulbs, \$2; 100 bulbs, \$7.
- DOROTHEA. Very soft lavender-blue; a fine self-color for pots; not a large flower. 25 bulbs, \$1.50; 100 bulbs, \$5.
- EDINA. Striped mauve, on white ground, with white margin and purple base and stem; fine, large flower. 25 bulbs, \$1.50; 100 bulbs, \$5.
- ENCHANTRESS. Porcelain-blue with purple base. 25 bulbs, \$1.75; 100 bulbs, \$6; 1,000 bulbs, \$55.



- EXCELSIOR.** Pure lavender blue; enormous flower almost as large as a Tulip and the finest Crocus we have ever seen. 25 bulbs, \$5; 100 bulbs, \$16.
- JULIA CULP.** Dark purple, with tiny white edge. Fine large flower. 25 bulbs, \$1.50; 100 bulbs, \$5.
- KATHLEEN PARLOW.** Purest white; of fine substance; large flower. 25 bulbs, \$1.75; 100 bulbs, \$6.
- MASTERPIECE.** Glistening dark purple with slightly paler edge. 25 bulbs, \$1.75; 100 bulbs, \$6.
- MIKADO.** Lilac-white, striped dark lilac. Very striking, large flower. 25 bulbs, \$1.50; 100 bulbs, \$5.
- PALLAS.** White ground, with fine stripes of light lilac; large flower. 25 bulbs, \$1.50; 100 bulbs, \$5.
- PRINCESS LOUISE.** Soft purple-blue, faintly striped dark purple. 25 bulbs, \$1.50; 100 bulbs, \$5.
- POTTER.** Glistening reddish purple, with dark stem. 25 bulbs, \$1.75; 100 bulbs, \$6.
- REMEMBRANCE.** Clear lavender-blue. 25 bulbs, \$2; 100 bulbs, \$7.
- TILLY KOENEN.** Very fine, pure white, with bright orange anthers; flowers of good substance, with dark stem. 25 bulbs, \$1.75; 100 bulbs, \$6.
- LARGE YELLOW.** Golden yellow. Better outdoors than when grown in pots. Particularly good for growing in the grass on the lawn. Extra-size corms. 25 bulbs, \$1.50; 100 bulbs, \$5; 1,000 bulbs, \$45.
- CREAM QUALITY MIXTURE.** 25 bulbs, \$1; 100 bulbs, \$3; 1,000 bulbs, \$26.

Crocus Species

- BIFLORUS.** White with dark stripes. 25 bulbs, \$2; 100 bulbs, \$7.
- IMPERATI.** Silvery-gray with dark stripes; inside soft violet. 25 bulbs, \$1.75; 100 bulbs, \$6.
- KOROLKOWII.** Sulphur yellow, shaded bronzy terracotta; some variation will be found in the shades of yellow in this species. 25 bulbs, \$1.75; 100 bulbs, \$6.
- SIEBERI.** Pale lilac. 25 bulbs, \$1.75; 100 bulbs, \$6.
- TOMASINIANUS.** Soft lavender-blue. 25 bulbs, \$1.50; 100 bulbs, \$5.



MISCELLANEOUS BULBS

Caution—We regret we cannot accept orders amounting to less than \$2.50. Please read the Sections, "Orders," "Shipments" and "Prices" on pages 9 and 10.

Chionodoxa, Glory of the Snow

An early-flowering spring bulb for borders or rockwork. The bulbs are small and should be planted closely for effect. The flowers are borne loosely on a small spike 4 to 5 inches high.

No order accepted for less than 25 bulbs of any one of the following varieties:

GIGANTEA. Soft lavender-blue with whitish center. 25 bulbs, \$1.50; 100 bulbs, \$5; 1,000 bulbs, \$45.

LUCILIAE. Deep blue with white center. 25 bulbs, \$1.25; 100 bulbs, \$4.50; 1,000 bulbs, \$40.

LUCILIAE ALBA. Beautiful flowers of snowy white; a rare variety. 25 bulbs, \$2.75; 100 bulbs, \$10.

LUCILIAE ROSEA. A beautiful pink form. 25 bulbs, \$2.75; 100 bulbs, \$10.

Eranthis, Winter Aconite

Very early-blooming tubers, producing spreading cushions of finely cut foliage and gay blossoms somewhat like buttercups. Splendid for naturalizing in grass or under trees where the leaves carpet the bare earth for a considerable period. Needs to become well-established before it blooms freely

HYEMALIS. Bright yellow. 25 bulbs, \$1.25; 100 bulbs, \$4.

CILICICA. A distinct type from Asia Minor with larger flowers than the ordinary form and more finely cut foliage which is bronze-shaded as well. 25 bulbs, \$1.75; 100 bulbs, \$6.



Freesia

Tender bulbs, with racemes of graceful flowers of delicious fragrance. Plant six to eight bulbs in 5- or 6-inch pot, keep slightly shaded until growth begins, then bring to full sunlight and grow on in a rather cool temperature. Bulbs should all be potted by the middle of October.

ELDER'S GIANT WHITE. Huge flowers on strong, wiry stems. A great improvement on existing types. 10 bulbs, \$1; 100 bulbs, \$8.

GOLDEN DAFFODIL. Deep yellow. Strong stem of very large flowers; a fine novelty. 10 bulbs, \$1.30; 100 bulbs, \$11.

PURITY. White. Extra size bulbs. 10 bulbs, 70 cts.; 100 bulbs, \$6.

Fritillaria

Very graceful bell-shaped pendent flowers on wiry stems and curiously marked. Very effective when planted in the grass among the Daffodils.

No order accepted for less than 25 bulbs of any one of the following varieties:

MELEAGRIS ALBA. White. 25 bulbs, \$1.75; 100 bulbs, \$6; 1,000 bulbs, \$55.

MELEAGRIS MIXED. 25 bulbs, \$1.50; 100 bulbs, \$5; 1,000 bulbs, \$45.

Galanthus, Snowdrop

Very early-flowering bulbs, splendid for permanent planting in borders or grass. They often bloom in early March before the snow is off the ground. A bed of Snowdrops is a desirable addition to the garden. The bulbs should lie very close together, and be set 3 to 4 inches deep in unfertilized soil.

No order accepted for less than 25 bulbs of any one of the following varieties:

BYZANTINUS. The largest and tallest of all the Snowdrops, and best for growing in pots. 25 bulbs, \$2; 100 bulbs, \$6.50; 1,000 bulbs, \$60.

ELWESII. Very large and round, pure white flowers, marked green. Fine for naturalizing. 25 bulbs, \$1.50; 100 bulbs, \$5.50; 1,000 bulbs, \$50.

NIVALIS. White, drooping flowers, with apple-green tips on the petals. 25 bulbs, \$1.25; 100 bulbs, \$4.50; 1,000 bulbs, \$35.

NIVALIS DOUBLE. Double Snowdrops. Very pretty but rather scarce. 25 bulbs, \$2.25; 100 bulbs, \$7.50; 1,000 bulbs, \$70.



Iris Hispanica

Spanish Irises belong to the bulbous section of the Irises, a group which includes some of the handsomest flowers of the genus. The combinations of color are in some instances so unusual as to rival the orchid, and indeed a common name given to the Spanish Iris is that of "the poor man's orchid." They are very useful for the border or for cutting. Needs protection over winter.

We are able once more to offer, in limited quantities, bulbs of this beautiful class of Irises. Since Quarantine No. 37 has been in effect, salable bulbs have generally been taken from stocks used to produce cut flowers for the market, a procedure which produces weakened bulbs. We feel sure our customers will appreciate the high quality of a stock which is grown solely for the bulb itself.

Price of all named varieties, 10 bulbs, \$1; 100 bulbs, \$8.

CAJANUS. Canary yellow, with orange blotches. Tall.

FLORA. Blue and white with cream yellow lip. Tall.

LA CITRONNIERE. Soft lemon yellow with ruffled petals.

PEARSON. Sky blue, with dark blue standards.

PRINCE HENRY. Large purplish bronze.

QUEEN WILHELMINA. Pure white with small yellow blotch; the best white variety.

FILIFOLIA IMPERATOR. Dark blue with orange blotch.

CREAM QUALITY MIXTURE. A fine range of colors in bulbs of real quality size. 25 bulbs, \$2; 100 bulbs, \$6.

Ixia, African Corn Lily

Spikes of buttercup-like flowers with dark centers on wiry stems about 18 in. high. Very lovely for cutting, but require some protection against severe frost. Plant about 3 inches deep and cover at once with very light straw or salt hay, which should be removed early in April. Ixias are very useful for growing in pots for winter bloom.

CREAM QUALITY MIXTURE. 25 bulbs, \$1.25; 100 bulbs, \$4.50.

Leucojum, Snowflake

VERNUM. A white flower resembling the Snowdrop but much larger. Plant in clumps 3 inches deep. 25 bulbs, \$2.50; 100 bulbs, \$9; 1,000 bulbs, \$80.



Lilium

For delivery in September or October.

- CANDIDUM.** The Madonna Lily. Extra large bulbs. Single bulb, 60 cts.; 10 bulbs, \$4; 100 bulbs, \$36.
REGALE. The Regal Lily. Largest bulbs. Single bulb, 60 cts.; 10 bulbs, \$5; 100 bulbs, \$40.

Lily-of-the-Valley

For delivery in Spring.

Spikes of drooping bell-like flowers splendid for planting in partial shade.

- MAYFAIR QUALITY PIPS.** Per 25, \$2.25; per 100, \$8; per 1,000, \$75.

Muscari, Grape Hyacinths

Small round flowers, growing on the stem like small Hyacinths. Flowering in late April.

No order accepted for less than 25 bulbs of any one of the following varieties:

- AMPHIBOLIS.** Light blue, shaded darker at tips. 25 bulbs, \$1.75; 100 bulbs, \$6.50.
ARMENIACUM. Deep cobalt-blue; very large flowers of fine color. 25 bulbs, \$1.75; 100 bulbs, \$6.
AZUREUM. Light lavender-blue. The first of the Grape Hyacinths to flower. 25 bulbs, \$1.50; 100 bulbs, \$5.50; 1,000 bulbs, \$50.
BOTRYOIDES ALBUM. Pure white, 25 bulbs, \$1.75; 100 bulbs, \$6; 1,000 bulbs, \$55.
HEAVENLY BLUE. Bright blue and very fragrant. 25 bulbs, \$1.50; 100 bulbs, \$5; 1,000 bulbs, \$45.

Scilla, Wood Hyacinth

Spikes of bell-like flowers, 15 inches high, during early June. Plant 5 or 6 inches deep in shady situations. They will grow under fir or pine tree.

No order accepted for less than 25 bulbs of any one of these varieties:

- CAMPANULATA ALBA MAXIMA.** Pure white with large bells. 25 bulbs, \$1.50; 100 bulbs, \$5.50; 1,000 bulbs, \$50.
CAMPANULATA EXCELSIOR. Beautiful porcelain blue bells. 25 bulbs, \$1.50; 100 bulbs, \$5.50; 1,000 bulbs, \$50.
CAMPANULATA ROSE QUEEN. Soft lilac-rose. 25 bulbs, \$1.75; 100 bulbs, \$6; 1,000 bulbs, \$55.



Scilla, The Siberian Squill

Spikes of small, drooping bell-like flowers 3 to 4 inches in height. Fine for naturalizing under trees or in open woodland, and very successful in the rock-garden. Flowers in early April.

No order accepted for less than 25 bulbs of any one of the following varieties:

SIBIRICA BLUE. Bright blue flowers. 25 bulbs, \$1.75; 100 bulbs, \$5.50; 1,000 bulbs, \$50.

SIBIRICA SPRING BEAUTY. Intense blue; much larger and taller than the older type. This variety throws many flower spikes and is a great acquisition to the early spring border. 25 bulbs, \$3; 100 bulbs, \$10; 1,000 bulbs, \$90.

SIBIRICA WHITE. Pure white. 25 bulbs, \$2; 100 bulbs, \$6; 1,000 bulbs, \$50.

For bulbs of Gladioli, see our
seed catalogue.

· Grow plants from our Fine English Flower Seeds and see for yourself how our superior strains help to make your garden distinctive. Our Blue Book of Flower Seeds will be mailed to you on request.



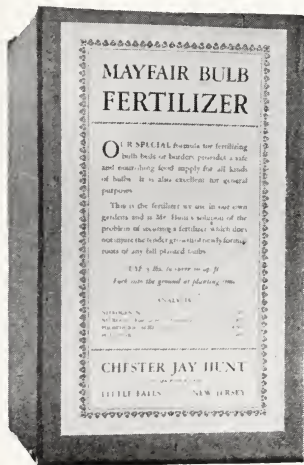
Mayfair Bulb Fertilizer

The Safest Food for All Spring Bulbs

Tulips and Daffodils dislike organic manures and many failures are due to the burning of young root growth through contact with heating stable manures. Since bulbs do not need the food until spring, any fertilizer that is to be dug into the ground at planting time must last until growth begins in the spring.

Mr. Hunt's formula, which we use in our own gardens, avoids root injury and stays in the ground until needed. Further, the use of our fertilizer will intensify the color in tulips and do much to bring out the red in all red-cupped daffodils.

Use at the rate of 5 lbs. for 10 square feet and dig into the ground at planting time.



5 lbs. Mayfair Bulb
Fertilizer . . at 65 cts.

10 lbs. Mayfair Bulb
Fertilizer . . at \$1.20

25 lbs. Mayfair Bulb
Fertilizer . . at \$2.50

50 lbs. Mayfair Bulb
Fertilizer . . at \$3.50

100 lbs. Mayfair Bulb
Fertilizer . . at \$6.00

Quotations on larger
quantities on request.



Mayfair Garden Implements

All of our tools are of extra heavy steel with handles painted in bright colors so that they may readily be seen and not left lying about or lost after being used.

Garden Labels

A strong garden label, 8 inches long, 1 inch wide, dipped in white paint. Our label gives plenty of room for writing the longest plant name. Will last a year or more. With indelible pencil for writing names.

- 701 Wooden Labels, per 20 with pencil.....\$.40
702 Wooden Labels, per 100 with pencil..... 1.25

Our Special Trowel

A broad heart-shaped trowel for planting bulbs and transplanting. Big enough to take up young plants with plenty of soil about the roots.

- 710 Trowel, Orange and Blue..... 2.00
711 Trowel, Orange and Yellow..... 2.00
712 Trowel, Orange and Red..... 2.00
713 Trowel, Orange and Green..... 2.00

Digging Fork

Our hand fork with the long handle is the most convenient tool we know for all garden work except deep spading of new soil.

- 730 Digging Fork, 15" handle, Orange and Blue... 2.00
731 Digging Fork, 15" handle, Orange and Yellow. 2.00
732 Digging Fork, 15" handle, Orange and Red... 2.00
733 Digging Fork, 15" handle, Orange and Green.. 2.00
750 Digging Fork, 4½" handle, Orange and Blue.. 1.50

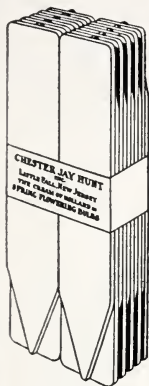
Short Handle Spades

Like our digging forks, the length of handle of these spades makes a handy tool to work with when kneeling or bending over the closely planted border. The round spade will dig, while the square shape is excellent for loose soil. Either is a splendid thing to keep in your automobile.

- 760 Spade, Round, Orange and Blue..... 1.50
763 Spade, Square, Orange and Blue..... 1.50

Novel Hose-holder for Sprinkling

Our new design of hose-holder takes the place of any sprinkler we have tried. A turn of one screw clamps fast the hose nozzle while the other enables the nozzle to be



701



730



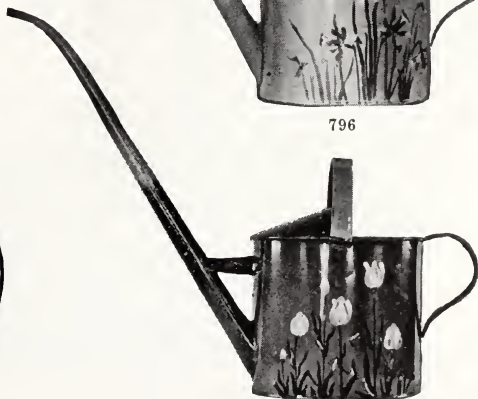
760



796



710



797





Mayfair Garden Implements

(Continued)

elevated or depressed at any angle. The sharp point can be easily set in the hardest ground and the implement may be turned to sprinkle in any desired direction.

770 Hose Holder, Red and Green.....	\$2.25
771 Hose Holder, Red and Yellow.....	2.25
772 Hose Holder, Red and Orange.....	2.25

Scissors and Pruning Tool

The flower gathering scissors not only cuts the bloom but holds it after it is cut. A great time saver when many blossoms are to be cut.

780 Flower Gathering Scissors.....	2.25
------------------------------------	------

A small but exceptionally strong tool for pruning. Will cut all but heavy wood. Ideal for use in the rose-garden.

781 Secateurs.....	2.50
--------------------	------

Watering Pots

A decorative accessory for the garden or sun-parlor. Two quart size, hand-painted.

790 Yellow decorated with Purple Iris.....	1.75
791 Yellow decorated with Clematis.....	1.75
792 Maroon Red decorated with Japanese Design.....	1.75
793 Light Blue decorated with Orange Daisies....	1.75
794 Light Blue decorated with Pink Chrysanthemums.....	1.75
795 Apple Green decorated with Crocuses.....	1.75
796 Apple Green decorated with Daffodils.....	1.75
797 Apple Green decorated with Pink Tulips.....	1.75

Garden Baskets

Strong, hand-made baskets for hard use in the garden, painted in attractive, contrasting colors.

830 Chinese Red, trimmed Green.....	3.00
831 Willow Green, trimmed Orange.....	3.00
832 Mauve, trimmed Primrose Yellow.....	3.00
833 Mauve, trimmed Blue.....	3.00
834 Gray, trimmed Salmon.....	3.00
849 Unfinished.....	1.50

Garden Kneeling Pad

A padded, water-proof cushion for those who actually get down to work in the garden. A splendid imported article.

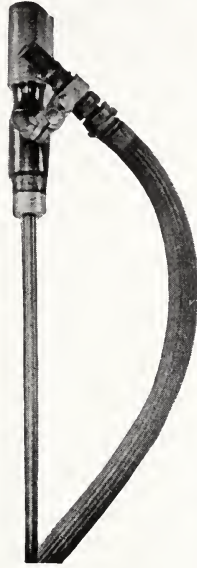
900 Natural finish Rattan.....	\$1.50
--------------------------------	--------



780



781



770



830

M E M O R A N D A

UNTIL JULY 1ST WE ALLOW A DISCOUNT OF 5% WHEN REMITTANCE IS MADE WITH YOUR ORDER FOR BULBS. THIS DISCOUNT DOES NOT APPLY TO SEEDS, GLADIOLI, TOOLS, OR FERTILIZERS, BUT TO SPRING BULBS ONLY.

IT WILL BE TO YOUR ADVANTAGE TO ORDER EARLY ENCLOSING YOUR CHEQUE AND DEDUCTING THIS 5% FROM THE AMOUNT OF YOUR ORDER.

CHESTER JAY HUNT, Inc.
LITTLE FALLS, NEW JERSEY

TO CHESTER JAY HUNT, Inc.
LITTLE FALLS, NEW JERSEY

PLEASE SEND A COPY OF YOUR BULB CATALOGUE WITH MY COMPLIMENTS TO

NAME.....

ADDRESS.....

(in full)

(No.)

(Street)

(City)

(State)

SIGNED.....

ADDRESS.....

CHESTER JAY HUNT INC.

LITTLE FALLS NEW JERSEY

THE CREAM OF HOLLAND IN SPRING-FLOWERING BULBS

Please enter my order for the following articles, to be delivered this autumn:

Name _____

Mail Address _____
(Street, City, State)

Shipping Address _____

Ship by _____ Date of Order _____

It is impracticable, owing to contingencies of soil, climate, season or faulty planting, to give complete assurance that all bulbs we send out will flower satisfactorily. Each season we make tests in our trial gardens of all the varieties we sell, taking bulbs out of the very bags from which our customers are supplied. It is understood that any complaint will be entertained only on the basis of the results shown in our trial gardens.

A discount of 5% will be allowed on orders accompanied by remittance, if received before July 1st; we have no other discounts or commissions of any kind, and the cash discount will not be given later than the date noted above.

After July 15 it is impossible for us to arrange for the cancellation of any order

QUANTITY	ARTICLES	PRICE

<p>QUANTITY</p>	<p>[Faint, illegible text]</p>	<p>[Faint, illegible text]</p>
-----------------	--------------------------------	--------------------------------

After July 1st it is impossible for us to
 arrange for transportation of any order.

TOTAL

When remittance is not with order, postal charges
 should be added if delivery is desired.

We find that order over £1 in value carry more
 weight if forwarded by air mail, charge collect.

QUANTITY

ARTICLES

PRICE

Amount brought forward

