

# CATALOG OF PICTURES AND STATUARY



Beckley-Cardy Company  
C H I C A G O



LAST ISSUE ONLY

IS KEPT ON SHELVES

Do not Stamp or Perforate

When new issue comes, forward this  
one to ORDER DIVISION for  
Reserve Storage Collection



ca18-652

N 8640

B 4

# PICTURES

and

## Plastic Reproductions from Sculpture

For School, Library and Home Decorations

ALSO MANOPHONES



*"Whatsoever things are lovely,—  
think on these things"*

BECKLEY-CARDY COMPANY

*"The House of  
Better Material"*

312 West Randolph Street, Chicago

## FOREWORD

**D**URING the past few years we have supplied enough pictures and plastic art offerings to schools, and our trade has grown large enough to demand special attention for this department. The present catalog aims therefore, at a convenient grouping of a selected list of worthy pictures and plastic reproductions of classic and modern sculpture.

Our Photogravures, Artotypes and Carbons especially have done much to beautify schools in America, and that, too, at very moderate cost. We have equipped many many-roomed school buildings, and thousands of one-room schools alike. It is no longer a rare thing to see the walls of the schoolroom—even the humble rural one—hung with fine copies of the masters. And it is well. In our efforts to teach our children to enjoy literature and music we are succeeding. Why should they not learn to love good pictures as well?

In selecting pictures we would recall a few facts to your mind, *namely:*

1 We have made it our business to discover the best pictures, and to get the best possible reproductions of them at the lowest possible price. They are rich in tone, correct in values and absolutely fadeless.

2 The demand for colored pictures has been met by such excellent publications as the Artotypes and Carbons, hand-colored. They are permanent and true to the originals in color and values. The hand painting is best adapted to bring out the lights and shades of the original painting. A few such pictures make the schoolroom appear happy and joyful.

3 From the first an intelligent effort has been made to frame these reproductions tastefully, with due consideration for the appropriateness of the schoolroom. Our framing combines pleasingly and fittingly with the picture.

With regard to Statuary: Educators are unanimous in recommending that at least a few reproductions of the great masters shall be placed in appropriate niches in every hall and classroom of every building devoted to the training of the young. We offer hundreds of casts from the best models, classic and modern.

A few standard books on Art will also be found described, designed to meet a popular demand from art lovers, schools and libraries.

In addition, a third art, that of Music, is represented by THE MANOPHONE, "The Music Master of Phonographs."

"WITHOUT PAINTING, SCULPTURE, MUSIC, POETRY AND THE EMOTIONS PRODUCED BY NATURAL BEAUTY OF EVERY KIND, LIFE WOULD LOSE HALF ITS CHARM."—*Herbert Spencer*

Copyright 1918 by Beckley-Cardy Company  
All rights reserved

MAY 4 1918

© Cl. A 494896

# ARTOTYPES

Size, 22x28 inches

Comprising the most celebrated and best-known paintings of the old masters and modern painters as well

Price, each (unframed), 90 cents; any two, \$1.60; any five, \$3.75, postpaid. Any of these subjects supplied beautifully hand-colored at: Each (unframed), \$1.50; any two, \$2.70; any five, \$6.50, postpaid.

(For Framed Artotypes, see pp. 9, 10, 11)

These artotypes are the product of the most improved methods of reproduction, combined with the best materials obtainable and the highest grade of skilled labor. They are reproduced from negatives made direct from the originals and all the feeling and expression of the paintings is preserved with photographic fidelity. The first artotype prints were almost exclusively facsimile reproductions of steel engravings. The later discoveries in photography made it possible to make a negative direct from the canvas that would preserve in the printed picture nearly all the relative color values of the original canvas. When this became possible the decadence of the steel engraving began.

We would call particular attention to the hand-colored artotypes. We can furnish any subject hand-colored that is listed in the plain artotypes, and in no other form can such good results be secured and such a large number of subjects be furnished in colored pictures as in the hand-colored artotypes.

The subjects have been carefully selected and cannot fail to appeal to all teachers who understand the educational value of good pictures in the school-room. However, in addition to those listed, we have access to hundreds of other subjects, comprising most of the celebrated paintings of the old masters and of modern painters as well, and will quote prices on any list sent us.

We give size of plate print. The sheet on which it is printed is best quality plate paper, 22x28 inches, with India tint plate mark.

No.	Title	Artist	Finish	Plate Size
4747	Age of Innocence	Reynolds	Sepia	14x17 inches
3465	Along the River Bank	Lerolle	"	10¾x17
3744	Alpine Stream, An	Rose	"	12x15
3474	American Mustangs	Bonheur	"	10¾x17
988	Angels' Heads	Reynolds	"	13x16
952	Angelus, The	Millet	"	14x17
1522	Ann Hathaway's Cottage	Wilfred Ball	"	9x17
906	Arab, An	Schreyer	Black	13¾x17
954	Arabian Cavalry	Schreyer	"	10x17½
3076	Arrival of the Shepherds	Lerolle	Sepia	13x17
584	Art Wins the Heart	Paul Thumann	Black	14x17
2257	Ascension, The	Caletti	Sepia	10½x17
5409	At Break of Day	Corot	"	13½x17
4365	At the Pasture Bars	Van Merken	"	13x17
369	Aurora	Guido Reni	Black	7½x18
5229	Autumn Time	H. Darnaut	Sepia	13x17
4208	Autumn Woodland	Lambert	Black	9x17
3406	Avenue, The (Middelbarnis)	Hobbema	Sepia	12⅝x17
5213	Avenue of Birches, An	Sorensen	"	12x17
2655	Baby Stuart	Van Dyck	"	13x17
5109	Battle of Bunker Hill	Trumbull	Black	11x17
4107	Beethoven's Sonata	Balestrieri	"	8½x17
4997	Boy and Rabbit	Raeburn	Sepia	13½x17
5114	Boyhood of Lincoln	Johnson	"	13⅝x17
2415	Bridge of Sighs, The		Black	13x17
4900	Brightness of the Sea	Kurzwelly	Sepia	11x17
2494	Brittany Cattle	Bonheur	Black	12x18
2495	Brittany Sheep	Bonheur	"	12x18
1634	Calling the Ferryman	Knight	"	13x16
2952	Canal in Venice, A		"	13x17¼
413	Can't You Talk?	Holmes	"	11¼x15
4833	Ceaseless Tide, The (Marine)	Harders	Green	9x17
485	Challenge, The	Landseer	Black	6½x16
1952	Chariot Race from Ben Hur, The	Checa	"	10¼x17¼
2962	Children of the Shell	Murillo	Sepia	13¾x17



The upright subjects are shown in numerical order on this page  
 The oblong subjects are shown in numerical order on pages 6 and 8  
 Framed Artotypes are illustrated on pages 9, 10, 11



## ARTOTYPES, 22 x 28—Continued

For prices of unframed Artotypes, see page 3; framed Artotypes, page 9

No.	Title	Artist	Finish	Plate Size
2576	Christ and the Fisherman	Zimmermann	Sepia	13x18 inches
1717	Christ and the Rich Ruler	Hofmann	"	13x17
1300	Christ Before Pilate	Munkacsy	Black	11¾x18
2077	Christ Blessing Little Children	Schmid	"	11x18
1960	Christ Entering Jerusalem	Plockhorst	"	11¾x17¾
2862	Christ Head at Twelve Years	Hofmann	"	13x17 (oval)
1796	Christ Head at Thirty-three Years	Hofmann	Sepia	13x17
1799	Christ in Gethsemane	Hofmann	"	12½x17
1223	Christ in the Temple	Hofmann	"	13x18
3262	Christ on Calvary	Munkacsy	Black	11½x18
1961	Christ Preaching by the Sea	Hofmann	"	11x18
2566	Christ Taking Leave of His Mother	Plockhorst	"	12¾x17
5158	Christ the Good Shepherd	Zabateri	Sepia	12¾x17
2723	Christmas Bells (Chimes)	Blashfield	"	11½x17
2405	Church of Santa Maria, The	Salute	Black	13x17
3087	Close of Day, The	Adan	Sepia	11x17
4393	Coliseum, The Roman		"	10x17¾
2328	Countess Potocka		Black	13x16
4884	Crags of Tyrol, The	Rose	Sepia	11¾x17
2258	Crucifixion, The	Ittenbach	Black	10½x17¼
2854	Dance of the Nymphs	Corot	Sepia	12¾x17
3699	Daniel in the Den of Lions	Riviere	"	11x17
5016	Day is Done, The	Saulien	"	11¾x17
5094	Distinguished Member of the Humane Society, A	Landseer	Black	13x17
2425	Doctor, The	Fildes	Black and Sepia	13x18¼
5290	Dupre's Setting Sun	Dupre	Sepia	13x17⅛
4827	Early Autumn	Fontaine	"	11x17
4783	Early Spring Days (Sheep)	Riecke	Black	11¼x17
216	Ecce Homo	Guido Reni	"	10x12 (oval)
5242	Evening	Dupre	Sepia	11¾x17
2722	Evening Hour, The	De Preydour	"	12x17
675	Family Cares	Barnes	Black	11¾x15½
4744	Favorites	Landseer	"	13¾x17
3195	Feeding Her Birds	Millet	Sepia	14x17
3462	First Step, The	Corot	"	13¾x17
3193	Flock of Sheep	Bonheur	"	12x17
3631	Forest Pool, The	Lambert	Black	10½x17
3632	Forest Road, The	Lambert	"	10½x17
4392	Forum, The Roman		Sepia	10x17¾
5216	Frugal Meal, The	Artz	"	11¾x17
5594	Gen. Robt. E. Lee at Headquarters		Black	13½x17
3463	Girl with the Apple	Greuze	Sepia	13x17
604	Glad Tidings of Great Joy	Plockhorst	"	13x18
2983	Gleaners, The	Millet	"	13x17
5601	Glory of the Springtime	Weber	Green	11x17
2949	Golden Stairs	Burne-Jones	Sepia	8⅛x19⅛
2966	Good Shepherd, The	Murillo	"	13½x17
607	Good Shepherd, The	Plockhorst	"	12⅞x17
2951	Grand Canal, The		Black	13x18
2408	Grand Canal and Franchette's Palace		"	12x18
5622	Grape-Sellers, The	Murillo	Sepia	13x17
5160	Guardian Angel, The	Plockhorst	"	11x17
2038	He is Risen	Plockhorst	Black	11½x17
606	Help, Lord, or I Perish	Plockhorst	Sepia	11x17
993	Helping Hand, A	Renouf	"	11½x16¾
2215	High Sea, A	Eschke	Green	12x18
4965	Historic Venice		Black	13x17
3760	Holland Fish Mart, A	Wagner	"	12¾x17
5062	Holland Morning	Hitchcock	Sepia	9¾x17¼
2261	Holy Family, The	Knaus	"	13x17¼
2750	Holy Family	Van Dyck	"	14x17
2035	Holy Night, The	Feuerstein	Black	12x17
4351	Home Again	Bahieu	Sepia	12x17
5157	Home Scene (Holland)	Artz	"	12¾x17
2950	Hope	Burne-Jones	"	6½x19
1429	Horse Fair, The	Bonheur	Black	8x17
3200	Horse Shoer, The	Landseer	Sepia	13¾x17
2973	Hosea (Full Figure)	Sargent	Black	7½x18¼
4205	Hush of Winter, The	Lambert	"	9x17
433	Immaculate Conception	Murillo	"	11x16
5080	In Bonny Scotland	Watson	Sepia	11¾x17
5081	In Scottish Highlands	Watson	"	11¾x17
5021	In the Farm Yard	Kaufman	"	12x17
4808	Indian Reservation	Schreyvogel	"	10⅞x17
2845	Infant St. John, The	Murillo	"	14x16¾
4147	Infant St. John, The	Murillo	"	11x17



The oblong subjects are shown in numerical order on pages 6 and 8  
 The upright subjects are shown in numerical order on page 4  
 Framed Artotypes are illustrated on pages 9, 10, 11

## ARTOTYPES, 22 x 28—Continued

For prices of unframed Artotypes, see page 3; framed Artotypes, page 9

No.	Title	Artist	Finish	Plate Size
3467	Infant Samuel	Reynolds	Sepia	13x17 inches
4737	Innocence	Bouguereau	"	8 <sup>7</sup> / <sub>8</sub> x17
2043	Jesus and the Woman of Samaria	Hofmann	Black	13 <sup>1</sup> / <sub>4</sub> x17 <sup>1</sup> / <sub>4</sub>
3223	June Morning, A	Loveridge	"	12x17
905	Kabyle, A	Schreyer	"	14x17
3118	Lake, The	Corot	Sepia	13 <sup>3</sup> / <sub>4</sub> x17
3479	Landscape	Van Ruysdael	"	12x17
4250	Last Meeting of Lee and Jackson	Julio	Black	13x17
240	Last Supper, The	Da Vinci	Sepia	11x17
3351	Leaving the Hills	Farquharson	Black	11x17
3245	Lorna Doone	Wontner	Sepia	11 <sup>3</sup> / <sub>4</sub> x14
3678	Lost (Sheep)	Schenck	Black	9 <sup>3</sup> / <sub>4</sub> x17
2841	Madame Le Brun and Daughter (Morning)	Painted by Herself	Sepia	13x17
2842	Madame Le Brun and Daughter (Evening)	Painted by Herself	"	13 <sup>1</sup> / <sub>2</sub> x17
1711	Madonna	Bodenhausen	"	11x17
3072	Madonna	Ferruzzi	"	14x17
3203	Madonna	Sichel	"	12 <sup>1</sup> / <sub>2</sub> x17
1850	Madonna and Child	Bouguereau	"	13x17
3469	Madonna and Child	Correggio	"	13 <sup>3</sup> / <sub>4</sub> x17
2792	Madonna and Child	Murillo	"	13x17
5418	Madonna and Child (Cowper)	Raphael	"	12 <sup>1</sup> / <sub>2</sub> x17
5428	Madonna del Granduca (of the Grand Duke)	Raphael	"	11x17
1891	Madonna della Sedia (Madonna of the Chair)	Raphael	Black	14 (cir.)
450	Madonna di San Sisto (full figure)	Raphael	"	12 <sup>1</sup> / <sub>2</sub> x17
2265	Madonna di San Sisto	Raphael	"	14x17 (oval)
5010	Market Place, The	Bahieu	Sepia	12x17
2769	Mary Magdalene	Hofmann	"	10x13 <sup>1</sup> / <sub>2</sub>
236	Mater Dolorosa	Dolci	Black	10x12 (oval)
1660	Mater Dolorosa	Guido Reni	"	11x16
1650	Meadow, The	Dupre	Sepia	10 <sup>3</sup> / <sub>4</sub> x17
3224	Meadow Pool, The	Riecke	Black	11x18
481	Monarch of the Glen, The	Landseer	"	11 <sup>3</sup> / <sub>4</sub> x12 <sup>1</sup> / <sub>4</sub>
3452	Morning (Marine)	Schutz	Green	13x17
5241	Morning	Dupre	Sepia	11 <sup>3</sup> / <sub>4</sub> x17
4353	Mountain Pasture, The	Bahieu	"	12x17
3745	Mountain Torrent, A	Rose	"	12x15
2848	Mrs. Siddons	Gainsborough	"	13 <sup>3</sup> / <sub>4</sub> x17
2015	Niagara Falls		Green	13 <sup>1</sup> / <sub>4</sub> x16 <sup>1</sup> / <sub>2</sub>
3453	Night (Marine)	Mesdag	"	13x17
3654	Off Shore Breeze	Rose	Black	13x17
5013	Off the Reefs (Marine)	Sheppard	Green	11x17
3824	Old Mansc, The	Scherrin	Sepia	12x18
3362	Old Monarch, An	Bonheur	Black	12x14
2967	Paysage (Spring)	Corot	Sepia	13x18
4743	Penelope Boothby	Reynolds	"	10 <sup>7</sup> / <sub>8</sub> x13 <sup>1</sup> / <sub>4</sub>
536	Pharaoh's Horses	Herring	Black	15 <sup>1</sup> / <sub>4</sub> (cir.)
242	Pilgrim Exiles	Boughton	"	10x17
4614	Pilgrims Going to Church	Boughton	Sepia	9x17
3394	Pompeii	Forti	Black	10x17
4651	Portrait of Whistler's Mother	Whistler	"	14x16
5068	Prayer at Valley Forge, The	Breuekner	Sepia	12x17
2693	Priscilla and John Alden	Fredericks	Black	11x17
1632	Queen Louise	Richter	"	10x17
1419	Reading from Homer	Alma-Tadema	Sepia	8 <sup>1</sup> / <sub>2</sub> x17
2846	Rembrandt (from National Gallery)	Painted by Himself	"	13 <sup>3</sup> / <sub>4</sub> x17
5338	Restless Sea, The	Jensen	Green	10 <sup>1</sup> / <sub>2</sub> x17
286	Return of the Mayflower	Boughton	Black	11x17
2968	Return to the Farm	Troyon	Sepia	11 <sup>3</sup> / <sub>4</sub> x17 <sup>3</sup> / <sub>4</sub>
5282	Road through the Woods	Farquharson	"	11 <sup>1</sup> / <sub>2</sub> x17
3395	Rome	Forti	Black	10x17
2791	Rubens	Painted by Himself	Sepia	12 <sup>3</sup> / <sub>4</sub> x17 <sup>1</sup> / <sub>4</sub>
2492	Ruth		"	11x17
5161	Ruth and Naomi	Calderon	"	12 <sup>1</sup> / <sub>2</sub> x17
455	Sacred Heart of Jesus	Grellet	Black and Sepia	13x17
456	Sacred Heart of Mary	Grellet	"	13x17
2853	Saint Anthony of Padua and the Christ Child	Murillo	Sepia	14x17
2270	St. Cecilia	Naujok	Black	13 <sup>1</sup> / <sub>2</sub> x17
535	St. Joseph	Frere Athanese	"	13x18
2412	St. Mark's Church		"	13 <sup>3</sup> / <sub>4</sub> x17
2410	St. Mark's Square with Bell Tower		"	13x18
5310	St. Rita		Sepia	12 <sup>3</sup> / <sub>4</sub> x17
486	Sanctuary, The	Landseer	Black	6 <sup>1</sup> / <sub>2</sub> x16
5427	Saved	Landseer	"	11x17

## ARTOTYPES, 22 x 28—Continued

For prices of unframed Artotypes, see page 3; framed Artotypes, page 9



No.	Title	Artist	Finish	Plate Size
4909	Schubert in the Home	Ulreich	Sepia	13½x17 inches
3348	Shady Pool, A	Fox	Black	11x17
4894	Sheltered Cliff, The	Bahieu	Sepia	11x17
3194	Shepherd and His Flock, The	Bonheur	"	11½x17
3477	Shepherd Boy, The	Millet	"	12¾x17¼
2984	Shepherdess, The	Millet	"	14x17
2981	Shepherdess and Sheep	Lerolle	"	11x18
5001	Simplicity	Reynolds	"	14x17
2970	Sir Galahad	Watts	"	10¼x19
450	Sistine Madonna (full figure)	Raphael	Black	12¼x17
2265	Sistine Madonna (detail)	Raphael	"	14x17 (oval)
3074	Song of the Lark	Breton	Sepia	13x17
3476	Sower, The	Millet	"	14x17
5147	Spirit of '76	Willard	"	12¾x17
2967	Spring (Paysage)	Corot	"	13x18
406	Stag at Bay	Landseer	Black	10x18
4845	Stratford-on-Avon	Landseer	Sepia	13x17
576	"Suffer Little Children to Come Unto Me"	Plockhorst	"	12¾x17
4784	Summer Days	Riecke	Black	11⅜x17
3049	Summer Evening	Adan	Sepia	12x17¾
1933	Three Members of a Temperance Society	Herring	Black	11¾x16
241	Two Farewells, The	Boughton	"	10¼x17
5391	Up the Hill	Corot	Sepia	13½x17
3288	Venetian Garden, A	Sheppard	Black	11x17
4967	Venetian Waterway, A	"	"	13x17
4966	Venice Along the Grand Canal	"	"	13x17
940	Victor of the Glen, The	Landseer	"	9x16¾
4887	Village in Flanders	Barbarini	Sepia	13½x17
5334	Village Street, The	Barbarini	"	13⅞x17
4531	Washington Crossing the Delaware	Leutze	Black	10x17
4847	Washington on Horse	Faed	"	13x17
3286	Water Mill, The	Hobbema	Sepia	11¾x17
3201	Windmill, The	Van Ruysdael	"	14x17
2785	Young Handel	Dicksee	"	13½x18

## Framed 22 x 28 Artotypes

A good picture, like a precious stone, requires an appropriate and artistic setting, or much of its beauty is lost. The two should unite to form one harmonious whole. The molding must be of a design and color to harmonize with the general tone of the picture. It must be built in a thorough and substantial way.

We have made a careful study of picture framing especially as it pertains to schoolroom decoration, and believe ourselves better equipped for doing this work than any other house in the country. We use only the highest quality of straight and quarter-sawed white oak, which is put together in the most thorough manner. All of our corners are firmly glued and nailed (while many frames are nailed only), so that the joints will not open. The frames are stained and finished to match the prevailing tone of the picture, and first-grade clear picture glass free from imperfections is used.

Artotypes are framed best with margin, in 2-inch and 3-inch frames. We are pleased to quote them as follows, *the prices including cost of picture (uncolored), complete with frame, glass, dustproof back, wire and hooks, all ready for hanging:*

Regular 2-inch selected Solid Oak frame, black or brown, to match the tone of the subject, each \$2.25.



Pilgrims Going to Church—Boughton  
2-inch Solid Oak Frame



Song of the Lark—Breton  
3-inch Quartered Oak Frame

Specially fitted 2-inch Solid Oak frame, black or brown, each, \$2.60.

Specially fitted 2-inch Quarter-sawed Oak frame, black or brown, each, \$3.00.

Specially fitted 3-inch Solid Oak frame, black or brown, each, \$3.25.

Specially fitted 3-inch Quarter-sawed Oak frame, black or brown, each, \$3.90.

(If hand-colored artotypes are ordered, add 60 cents to the cost of each.)

Casing charges are additional. Add 35 cents to cover the cost of casing one picture; 10 cents for each additional picture.

We supply annually to schools all over the country thousands of framed pictures. We do our own framing and, quality and workmanship considered, we do not believe that our prices can be equaled. We deliver a strictly first-class product at a price *considerably lower* than at which commonplace picture-framing can possibly be done by others. *Quantity with us makes quality for you.* Read what others have to say:

T. V. Tormey, Prin. High School, Arnot, Pa.: "The dozen framed pictures bought of you last year were *very* satisfactory."

L. W. Price, Pana, Ill.: "Pictures reached us in good condition and we are much pleased."

C. A. Dille, Prin. Glen Oak School, Peoria, Ill.: "We have just received our framed 'Sir Galahad.' It is splendid and we are pleased and proud of it. It is an exceptional value. We will order more very soon."



The Angelus—Millet  
3-inch Quartered Oak Frame

## ARTOTYPES

Size, 26x32 inches

Price, each (unframed), \$1.75; any two, \$3.20; any five, \$7.50, postpaid. Any of these subjects supplied beautifully hand-colored at: Each (unframed), \$3.00; any two, \$5.50; any five, \$12.50, postpaid.

This series presents the same high-class pictures as the 22x28 reproductions. A careful selection of subjects has been made.

Artotype pictures are faithful in reproduction, of good-carrying power, and permanent. They are absolutely fadeless, and artistically satisfactory, at a very reasonable price.

No.	Title	Artist	Finish	Plate Size
952	Angelus, The	Millet	Black	16 $\frac{3}{4}$ x19 $\frac{1}{4}$ inches
954	Arabian Cavalry	Schreyer	"	13x22
3807	Autumn Stillness	B. Lambert	"	13 $\frac{3}{4}$ x22
4107	Beethoven's Sonata	Balestrieri	"	11x22
4824	Broad Atlantic, The	Schnars Alquist	Green	14x22
1634	Calling the Ferryman	Ridgway Knight	Black	16 $\frac{3}{4}$ x21 $\frac{1}{4}$
1952	Chariot Race from Ben Hur, The	Checa	"	13 $\frac{1}{2}$ x23
3699	Daniel in the Den of Lions	Breton Riviere	Sepia	14x22
4126	Daniel's Answer to the King	Breton Riviere	"	14x22
4739	Dante and Beatrice	Holiday	"	15x22
4740	Dante's Dream	Rossetti	"	15x22
2425	Doctor, The	Luke Field, R. A.	Black	16 $\frac{1}{8}$ x22
5571	Doge's Palace (Venice)	Bronet	Sepia	15 $\frac{3}{4}$ x22
4770	Dutch Mill	Thaulow	"	17 $\frac{1}{2}$ x22
4220	Familiar Scene in Flanders	Barbarini	"	14x22
3792	Forest Solitude	B. Lambert	Black	13 $\frac{1}{2}$ x22
1056	Halt at the Oasis, A	Schreyer	"	14x22
3760	Holland Fish Mart, A	Wagner	Black	16x22
5062	Holland Morning	George Hitchcock	Sepia	12x22
3761	Holland Port, A	Wagner	Black	14 $\frac{3}{4}$ x22
1429	Horse Fair, The	Rosa Bonheur	"	11x22
3675	Nero at the Circus	H. Siemiradzki	"	10 $\frac{3}{4}$ x22
4820	November Day in Normandy	Thaulow	Sepia	17x22
536	Pharaoh's Horses	Herring	Black	19 (cir.)
242	Pilgrim Exiles	G. H. Boughton	"	13 $\frac{3}{4}$ x22
3394	Pompeii	E. Forti	"	13x22
286	Return of the Mayflower	G. H. Boughton	"	14x22
5282	Road through the Woods	Farquharson	Sepia	14 $\frac{7}{8}$ x22 $\frac{1}{8}$
3395	Rome	E. Forti	Black	13x22
455	Sacred Heart of Jesus	Grellet	Sepia	17x22
456	Sacred Heart of Mary	Grellet	"	17x22
2270	St. Cecilia	Naujok	Black	16 $\frac{1}{4}$ x21 $\frac{1}{4}$
4858	Schubert's Serenade	H. de Saint Privet	Sepia	14 $\frac{3}{4}$ x22
4565	Silent Majesty	J. J. McAuliffe	Black	14x22
5321	Switzerland Mountain Stream	Rose	Sepia	17 $\frac{1}{8}$ x22 $\frac{1}{8}$
4219	Village Road at Flanders	Barbarini	"	14x22
3793	Winter Solitude	B. Lambert	Black	13 $\frac{1}{2}$ x22

### Framed 26 x 32 Artotypes

Artotypes are framed best with margin, the 26x32 size requiring a 3-inch frame. Our prices include cost of picture (uncolored), complete with frame, glass, dust-proof back, wire, and hooks, all ready for hanging. We quote:

Specially fitted 3-inch selected Solid Oak black or brown frame, to harmonize with the tone of the subject, each, \$5.50.

Specially fitted 3-inch Quarter-sawed Oak, black or brown, each, \$6.40. (If hand-colored artotypes are ordered, add \$1.25 to the cost of each.)

Casing charges are additional. Add 50 cents to cover the cost of casing one picture; 15 cents for each additional picture.

## ARTOTYPES

Size, 28x38 inches

Price, each (unframed), \$3.00; any two, \$5.50; any five, \$12.50, postpaid. Any of these subjects supplied beautifully hand-colored at: Each (unframed), \$5.00; any two, \$9.00; any five, \$21.00, postpaid.

No.	Title	Artist	Finish	Plate Size
4954	Atalanta's Race	E. J. Pointer, R. A.	Black	9x25 $\frac{7}{8}$ inches
369	Aurora	Guido Reni	"	10 $\frac{1}{2}$ x26
5109	Battle of Bunker Hill	J. Trumbull	"	17x26
5215	Blessed Damozel, The	Rossetti	Sepia	14x26
5561	By the River	Lerolle	"	20x26
4833	Ceaseless Tide, The	Harders	Green	14x26
3087	Close of Day, The	Emile Adan	Sepia	16 $\frac{5}{8}$ x26
4951	Convent of the Cappuccini (Amalfi)	N. Barduci	"	18x26
2854	Dance of the Nymphs	Corot	Black	19x26
4905	Declaration of Independencce, The	John Trumbull	"	17x26
2425	Doctor, The	Luke Field, R. A.	"	17x24 $\frac{1}{2}$
4185	Early Morning in Holland	Wagner	"	17x26
4783	Early Spring Days	George Riecke	"	17x26
5070	Embarkation of the Pilgrims	Robert Weir	"	17 $\frac{1}{2}$ x26
2949	Golden Stairs	Burne-Jones	"	11x26
3698	Harvest Moon	George Mason	Sepia	9 $\frac{7}{8}$ x26
2950	Hope	Burne-Jones	Black	9 $\frac{1}{4}$ x26
5313	In the Adirondacks	R. M. Decker	Sepia	19x26
5069	Landing of the Pilgrim Fathers	Robert Weir	Black	18 $\frac{7}{8}$ x26
5193	Little Children of the Sea	J. Israels	Green	14 $\frac{7}{8}$ x25 $\frac{7}{8}$
3203	Madonna	N. Sichel	Black	18 $\frac{3}{4}$ x25 $\frac{3}{4}$
450	Madonna di San Sisto (Sistine Madonna)	Raphael	"	19x26
1693	Madonna di San Sisto (Detail, Square)	Raphael	"	20x26
4568	Old Ironsides	J. J. McAuliffe	"	17x25 $\frac{3}{4}$
2967	Paysage (Spring)	Corot	"	18 $\frac{3}{4}$ x26
4614	Pilgrims Going to Church	G. H. Boughton	Sepia	14x25 $\frac{3}{4}$
1419	Reading from Homer, A	Alma-Tadema	Black	13x26
5063	Richard Wagner's Dream	C. Schweninger	Sepia	16x26
3823	Seeking Shelter	Bahieu	Black	17 $\frac{1}{2}$ x25
3822	Sheltered Fold, The	Battiquant	"	17 $\frac{1}{2}$ x25
2981	Shepherdess and Sheep	Lerolle	"	16x26
2970	Sir Galahad	Frederick Watts	"	13 $\frac{3}{4}$ x26 $\frac{1}{4}$
5147	Spirit of '76, The	A. M. Willard	"	19 $\frac{3}{4}$ x26
2967	Spring (Paysage)	Corot	"	18 $\frac{3}{4}$ x26
4826	Springtime	Carl Weber	"	13 $\frac{1}{2}$ x26
5101	Stairs of the Bargello, Florence	E. Bensa	Sepia	17x26
4845	Stratford-on-Avon		"	19x26
4873	Summer Day in Switzerland, A	Rose	"	17x26
4531	Washington Crossing the Delaware	Leutze	Black	16x25 $\frac{3}{4}$

## Framed 28 x 38 Artotypes

Framed best with margin in 3-inch frames, the same as the 26x32 size. Prices include cost of picture (uncolored), complete with frame, glass, dustproof back, wire, and hooks, all ready for hanging. We quote:

Specially-fitted 3-inch selected Solid Oak, black or brown frame, to harmonize with the tone of the subject, each \$7.90.

Specially-fitted 3-inch Quarter-sawed Oak, black or brown, each \$8.75.

(If hand-colored artotypes are ordered, add \$2.00 to the cost of each.)

Casing charges are additional. Add 60 cents to cover the cost of casing one picture; 20 cents for each additional picture.

Our frames are made of selected solid and quarter-sawed white oak, thoroughly joined and fitted, and are the best that can be produced. First-quality selected picture glass only is used.



The Spirit of '76—Willard  
3-inch Quartered Oak Frame

## U. S. CARBONS

### Large Size

A comprehensive line of high art creations, embracing historical, architectural, and Biblical subjects, also landscapes and marines—all made to sell at one popular price

Price, each (unframed), \$1.75; any two, \$3.10; any five, \$7.25, postpaid. Any of these subjects supplied beautifully hand-colored at: Each (unframed), \$2.75; any two, \$5.00; any five, \$11.50, postpaid.



The Roman Forum

The U. S. Carbons are furnished in the richest brown tones and represent a new achievement in art productions at moderate cost. They are not approached in quality by any other series at anywhere near our prices. These pictures have no white margin or border. The actual size of the picture itself is given after each subject.

No.	Title	Artist	Plate Size
5057	Acropolis		17 3/4 x 26 inches
3084	Alhambra, The—Court of Lions		20 x 26
3079	Amiens Cathedral		18 1/4 x 26
952	Angelus, The	Millet	19 x 23
5205	Appian Way, The		17 7/8 x 26
5291	Appian Way Looking toward Rome		19 x 26
3136	Arch of Constantine, The		20 x 26
4954	Atalanta's Race	E. J. Poynter, R. A.	9 x 26
369	Aurora	Guido Reni	11 1/2 x 26
3406	Avenue, The (Middelharnis)	Meindert Hobbema	19 x 26
4952	Bargello, The	Ernesto Bensa	14 x 26
5360	Birdseye View of Jerusalem		8 5/8 x 23 1/4
5561	By the River	Lerolle	20 x 26
4823	Calling the Flock	Y. Mauve	15 x 26
5605	Canterbury Cathedral	Russell	20 x 25
5108	Capitol at Washington		16 3/4 x 26
4953	Captive Andromache	Sir Fredk. Leighton	12 1/4 x 26
4324	Castle St. Angelo		13 1/4 x 26
3153	Cathedral of Notre Dame, The (Paris, France)		19 x 26
3172	Cathedral of Rheims		19 x 25 7/8
4390	Cathedral Place (Milan)		17 x 24
3169	Choir of Amiens, The		20 x 25 1/2
1717	Christ and the Rich Ruler	Hofmann	20 x 26
4955	Christ at Twelve Years (3/4 length)	Hofmann	16 3/4 x 26
2077	Christ Blessing Little Children	J. Schmid	16 x 26
5574	Christ Going Through the Wheat Field	Rumpel	19 x 26
1223	Christ in the Temple	Hofmann	19 x 26
3087	Close of Day, The	Emile Adan	16 3/4 x 26
5207	Coliseum and the Arch of Constantine		13 1/2 x 26
5606	Cologne Cathedral	Russell	20 x 26
4951	Convent of Cappuccini	N. Barduci	17 3/4 x 26
5087	Crosswalk of the Dominicans	N. Barduci	18 x 26
4613	Dance of the Muses, The	Wandsbeck	12 1/2 x 26
2854	Dance of the Nymphs	Corot	19 x 26
4126	Daniel's Answer to the King	Riviere	17 x 26
2416	Duchess of Devonshire	Gainsborough	19 x 26
4159	Fighting Temeraire, The	Joseph Turner	19 x 26
2983	Gleaners, The	Millet	19 x 26
2949	Golden Stairs	Burne-Jones	11 x 26
2966	Good Shepherd, The	Murillo	19 x 26
5238	High Wind, A	Corot	19 3/4 x 25
2948	Homer (from Bas Relief)	Bates	11 1/8 x 26
2950	Hope	Burne-Jones	9 1/4 x 26
1429	Horse Fair, The	Rosa Bonheur	12 7/8 x 26
433	Immaculate Conception	Murillo	17 3/4 x 26
3088	Joan of Arc	Bastien Lepage	20 x 22 3/4
3118	Lake, The	Corot	19 x 24 3/4
3117	Landscape	Corot	18 x 26
240	Last Supper, The	Da Vinci	17 x 26



## U. S. CARBONS—Continued

No.	Title	Artist	Plate Size
1711	Madonna	Bodenhausen	16½x26 inches
5428	Madonna del Granduca (of the Grand Duke)	Raphael	17x26
450	Madonna di San Sisto (Sistine Madonna) (Full figure)	Raphael	18¾x26
1693	Madonna di San Sisto (Detail)	Raphael	20x26
5660	Milan Cathedral		18x26
4405	Mill, The	Van Marcke	19x26
5206	Monreale		17x26
5366	Mount Olivet		17⅞x23
4389	Old Bridge, The (Florence)		17x24
3145	Parthenon, The		19x26
2967	Paysage (Spring)	Corot	18¾x26
4614	Pilgrims Going to Church	G. H. Boughton	14x25¾
2969	Ploughing	Bonheur	13x26
3189	Portal of Amiens Cathedral		20x25
1419	Reading from Homer, A	Alma-Tadema	13x26
2968	Return to the Farm	Troyon	17x25¾
4741	Roll on in Silent Majesty (green)	Schnars Alquist	16x26
4393	Roman Coliseum		12x26
4392	Roman Forum, The		12x26
5161	Ruth and Naomi	Calderon	19x26
2853	Saint Anthony of Padua and the Christ Child	Murillo	20x25⅞
2412	St. Mark's Church		20x26
3152	St. Peter's and Vatican		19x25
2981	Shepherdess and Sheep	Lerolle	16x26
2984	Shepherdess, The	Millet	19x26
2970	Sir Galahad	Watts	14x26
4821	Sir Lancelot	K. Y. Razynski	19x26
3074	Song of the Lark	Jules Breton	19x26
2967	Spring (Paysage)	Corot	18¾x26
5101	Stairs of the Bargello (Florence)	E. Bensa	17x26
4845	Stratford-on-Avon		19x26
3135	Temple of Jupiter		19x26
3147	Temple of Neptune, The	Paestum	19x26
4531	Washington Crossing the Delaware	Leutze	16x25¾
3085	Westminster Abbey		18x26
3201	Windmill, The	VanRuysdael	20x24

## Framed U. S. Carbons

U. S. Carbons are framed best in 3-inch brown frames. We are pleased to quote them as follows, *the prices including cost of picture (uncolored), complete with frame, glass, dustproof back, wire and hooks, all ready for hanging.*

Specially fitted 3-inch selected Solid Oak Brown frame, to match the tone of the subject, fitted close in, each \$5.25; or with 2½-inch bevel-edge mat, \$6.75.

Specially fitted 3-inch Quarter-sawed Oak Brown frame, fitted close in, each, \$5.90; or with 2½-inch bevel-edge mat, \$7.40.

(If hand-colored U. S. Carbons are ordered, add \$1.00 to the cost of each. Gold bronze lining, when desired, will be supplied at 75 cents additional for each picture.)

Casing charges are additional. Add 50 cents to cover the cost of casing one picture, 15 cents for each additional picture.

We supply framed pictures to thousands of schools annually—from one to fifty pictures to each—and are equipped to handle the work with facility and satisfaction. Our framed pictures are the best on the market to-day, fit to adorn and embellish the walls of the best schoolrooms. Our prices will be found extremely reasonable considering the quality of product we offer.



The Gleaners—Millet  
Framed in 3-inch Solid Oak

## EUREKA CARBONS

### Extra Large Size



Sir Galahad—Watts  
unframed

Price, each (unframed), \$4.00; any two, \$7.50; any five, \$17.50, postpaid. Any of these subjects supplied beautifully hand-colored at: Each (unframed), \$6.00; any two, \$11.25; any five, \$26.00, postpaid.

To those desiring extra large pictures for assembly halls, corridors, etc., we offer the Eureka series of carbons, which in quality, richness of brown tones and finish are the same as the U. S. Carbons, differing only in size.

No.	Title	Artist	Plate Size
2107	Angelus, The	Millet	26x36 inches
1975	Castle St. Angelo		20x40
2109	Close of Day, The	Adan	26x40
1949	Coliseum, The Roman		20x40
2105	Dance of the Nymphs	Corot	26x36
1948	Forum, The Roman		20x40
2104	Gleaners, The	Millet	26x36
2102	Horse Fair, The	Bonheur	20x40
2101	Last Supper, The	Da Vinci	20x40
2108	Paysage (Spring)	Corot	26x36
2111	Pilgrims Going to Church	Boughton	20x40
1956	Reading from Homer, A.	Alma-Tadema	20x40
2103	Shepherdess and Sheep	Lerolle	26x40
2100	Sir Galahad	Watts	20x40
2110	Spirit of '76, The	Willard	26x36
2106	Stratford-on-Avon		26x36

## Framed Eureka Carbons

Eureka Carbons appear most artistically when framed without margin, in 3-inch brown frames. These are supplied as follows, *the prices including cost of picture (uncolored), complete with frame, glass, dustproof back, wire and hooks, all ready for hanging:*

Specially fitted 3-inch selected Solid Oak Brown frame, to match the tone of the subject, fitted close in, each \$9.50.

Specially fitted 3-inch Quarter-sawed Oak Brown frame, fitted close in, each \$10.50.

(If hand-colored Eureka Carbons are ordered, add \$2.00 to the cost of each. Gold bronze lining, where desired, will be supplied at \$1.50 additional for each picture.)

Casing charges are additional. Add 60 cents to cover the cost of casing one picture; 20 cents for each additional picture.

The hand-colored pictures are to be recommended. These follow the originals in every detail and supply an enjoyment of the harmony of color which very often forms the strong feature of the picture.

When you buy pictures for your school, buy good pictures. This does not necessarily mean expensive pictures. All of our pictures are guaranteed absolutely fadeless, and reproductions of the highest merit. They are all moderate and reasonable in cost, the price being regulated largely by the size of the pictures.

(We do not sell solar prints, bromides, or any other prints made by the silver process or any other process which cannot be relied upon as being fadeless.)



Shepherdess and Sheep—Lerolle  
3-inch Quartered Oak Frame

## MOTHER GOOSE PICTURES IN COLORS

(Using motives from Mother Goose and other familiar old rhymes)

By Lucy Fitch Perkins. Size, 14x19 inches (printed without margin). Price, each (unframed), 40 cents; four for \$1.50, postpaid.



No. 5



No. 10

These pictures are beautiful color reproductions from original water color drawings. Every kindergarten or primary room should have some of these subjects as a part of its working equipment, as well as for the sake of their attractiveness for classroom decoration. The complete series of ten pictures makes a beautiful frieze for any room devoted to children's work or play. (It will be noticed that Nos. 1 and 2 are meant to be companion pieces; Nos. 3, 4, and 5 also constitute a set. The other subjects are complete, each in itself.)

No.	Title	No.	Title
1	The Queen of Hearts	6	My Mary, She Minds Her Dairy
2	The King of Hearts	7	There Was a Girl in Our Town
3	The King Was in His Counting-House	8	Blow, Wind, Blow, and Go, Mill, Go
4	The Queen Was in the Parlor	9	One Misty, Moisty Morning
5	The Maid Was in the Garden	10	Dance to Your Daddy

### Framed Mother Goose Pictures

These pictures appear to best advantage framed in 2-inch green frames. They are supplied as follows, *the prices including cost of picture, complete with frame, glass, dustproof back, wire and hooks, all ready for hanging:*

Specially fitted 2-inch green selected Solid Oak frame, each \$1.80; with 2-inch bevel-edge mat, \$2.55.

Specially fitted 2-inch green Quarter-sawed Oak frame, each \$2.10; with 2-inch bevel-edge mat, \$2.85.

Twenty-five cents must be added to price to cover cost of casing one picture; 10 cents for each additional picture.

### KINDERGARTEN COLOR PRINTS

Plate size, 13 $\frac{1}{8}$ x27 $\frac{3}{4}$  inches, printed on sheet, 16x30 $\frac{1}{2}$  inches. Price, each (unframed), \$2.00; three for \$5.25, postpaid.

The beautiful imported auto-lithographs are unquestionably the most artistic pictures in color available for school and home decoration at a moderate price. The pictures are broad and simple in treatment and include the three subjects:

Red Riding Hood      The Sleeping Beauty  
Hansel and Gretel

### Framed Kindergarten Color Prints

We frame these in 2-inch green frames. *The prices include cost of picture, complete with frame, glass, dustproof back, wire and hooks, all ready for hanging:*

Specially fitted 2-inch green selected Solid Oak frame, each \$4.75.

Specially fitted 2-inch green Quarter-sawed Oak frame, each \$5.25.

Thirty-five cents must be added to price to cover cost of casing one picture; 15 cents for each additional picture.

## THE PHOTOGRAVURE PORTRAITS

Size, 22x28 inches. Price, each (unframed), 60 cents;  
two for \$1.00; three for \$1.50, postpaid.



Abraham Lincoln  
unframed

These are good, fadeless photogravures, reproduced on heavy, white art paper with French-India-tone plate marks. They are very high-grade productions offered at a low price to insure a large sale.

**George Washington.** Painted by Gilbert Stuart. Athenaeum portrait (Museum of Fine Arts, Boston). A portrait which pleased Washington, and undoubtedly the best likeness of him we have.



George Washington  
2-inch Quartered Oak Frame

Oval, plate size, 13x17 inches. Black tone. On sheet 22x28 inches.

**Abraham Lincoln.** Painted by William E. Marshall. Considered a most faithful and admirable portrait. Black tone. Oval, plate size, 13x17 inches. On sheet 22x28 inches.

**Woodrow Wilson.** From an authorized photograph. An intimate friend of the President writes of this photogravure: "It is a wonderful picture of the President—to my mind, the finest I have ever seen." Sepia tone. Oblong, plate size, 13x17 inches. On sheet 22x28 inches.

*We also issue a De Luxe edition of the above subjects, done on fine Art Photogravure Bristol, with French-India tone plate marks, embossed, each \$1.00; two for \$1.75; three for \$2.50, postpaid.*

### Framed Photogravure Portraits



Woodrow Wilson  
3-inch Quartered Oak Frame

Portraits are framed best with margin in 2-inch and 3-inch frames. We are pleased to quote them as follows, *the prices including cost of picture, complete with frame, glass, dustproof back, wire and hooks, all ready for hanging:*

Regular 2-inch selected Solid Oak frame, black or brown, to match the tone of the subject, each, \$1.95.

Specially fitted 2-inch Solid Oak frame, black or brown, each, \$2.25.

Specially fitted 2-inch Quarter-sawed Oak frame, black or brown, each, \$2.55.

Specially fitted 3-inch Solid Oak frame, black or brown, each, \$2.95.

Specially fitted 3-inch Quarter-sawed Oak frame, black or brown, each, \$3.45.

(If De Luxe edition portraits are ordered, add 40 cents to the cost of each.)

Casing charges are additional. Add 35 cents to cover the cost of casing one picture; 10 cents for each additional picture.

## ARTOTYPE PORTRAITS

Size, 22x28 inches. Price, each (unframed), \$1.20; any three, \$3.00, postpaid. Any of these supplied beautifully hand-colored at: Each (unframed), \$2.00; any three, \$5.00, postpaid.

Made from original negatives of the most reliable photographs. The likenesses are entirely accurate and faithful. Average plate size, 14x17 inches.

Title	Finish	Title	Finish	Title	Finish
Bach .....	Black	Handel .....	Sepia	Milton .....	Black
Beethoven .....	Sepia	Hawthorne .....	Black	Mozart .....	Sepia
Bryan, William J.....	Black	Haydn .....	Sepia	Poe .....	Black
Bryant .....	Black	Holmes .....	Sepia	Raphael .....	Sepia
Burns .....	Black	Irving, Washington ...	Black	Roosevelt .....	Sepia
Byron .....	Black	Jackson, Gen. T. J. (Stone-		Schiller .....	Black
Clay, Henry .....	Black	wall) .....	Sepia	Schubert .....	Sepia
Chopin .....	Sepia	Jackson, Andrew .....	Black	Scott, Sir Walter.....	Black
Columbus .....	Sepia	Jefferson, Thomas .....	Black	Shakespeare .....	Black
Davis, Jefferson .....	Black	Lafayette .....	Black	Sherman, William T....	Black
Emerson .....	Sepia	Lee, Robert E.....	Black	Tennyson .....	Black
Franklin, Benjamin (oval)		Lincoln .....	Sepia	Wagner .....	Black
.....	Black	Liszt .....	Sepia	Washington .....	Sepia
Garfield, James A.....	Black	Longfellow .....	Sepia	Washington, Martha ....	Sepia
Goethe .....	Black	Lowell .....	Black	Webster, Daniel .....	Black
Grant .....	Sepia	McKinley .....	Black	Whittier .....	Sepia
Hamilton, Alexander ..	Black	Mendelssohn .....	Sepia	Woodrow Wilson .....	Sepia

### Framed Artotype Portraits

Artotype Portraits are furnished framed in the same way as the Photogravure Portraits (p. 16), and at the same prices *with the difference of the cost of the unframed pictures added*. That is to say add 60 cents to the price of each framed Photogravure portrait for every uncolored Artotype portrait ordered; add \$1.40 for each hand-colored Artotype portrait ordered. The same charge for casing is made.

## A GRADED LIST OF PICTURES For Schoolroom Decoration

Based upon recommendations of the Illinois State Course of Study (\*), by the New York State Education Department (\*\*), or by both (\*\*\*)

### Grades 1 and 2

Title and Artist	Listed on Page	Title and Artist	Listed on Page
Age of Innocence, Reynolds**	3	Good Shepherd, The (St. John and the Lamb), Murillo***	5, 12
Angels' Heads, Reynolds**	3	Helping Hand, The, Renouf*	5
Brittany Sheep, Bonheur*	3	Madonna della Sedia (Madonna of the Chair), Raphael*	7
Children of the Shell, The, Murillo***	3	Pilgrims Going to Church, Boughton*	7, 11, 13, 14
Feeding the Birds, Millet*	5		
Gleaners, The, Millet*	5, 12, 14		

### Grades 3 and 4

Aurora, Reni***	3, 11, 12	Saint Anthony of Padua and the Christ Child, Murillo***	8, 13
Christ in the Temple, Hofmann*	5, 12	Shepherdess and Sheep, Lerolle**	8, 11
Return of the Mayflower, Boughton*	7, 10	Sower, The, Millet*	8

### Grades 5 and 6

Arrival of the Shepherds, Lerolle*	3	Ploughing, Bonheur**	13
Distinguished Member of the Humane Society, Landseer***	5	Queen Louise, Richter**	7
Embarkation of the Pilgrims, Weir*	11	Reading from Homer, A, Alma-Tadema**	7, 11, 13, 14
Immaculate Conception, Murillo**	5, 12	Windmill, The, Ruysdael*	8, 13
Madonna del Granduca (of the Grand Duke), Raphael**	7, 13		

### Grades 7 to High School

Along the River Bank, Lerolle*	3	Fighting Temeraire, The, Turner***	12
Avenue, The (Middelharnis), Hobbema**	3, 12	Hope, Burne-Jones**	5, 11
Blessed Damozel, The, Rossetti**	11	Last Supper, The, Da Vinci**	7, 12, 14
Captive Adromache, Leighton**	12	Mrs. Siddons, Gainsborough**	7
Coliseum, The Roman*	5, 12, 13, 14	Portrait of Herself (Madame Le Brun and Daughter), Le Brun**	7
Dance of the Nymphs, Corot*	5, 11, 12, 14	Rembrandt (from National Gallery), Painted by Himself**	7
Dante and Beatrice, Holiday**	10	Sistine Madonna, Raphael*	8
Dante's Dream, Rossetti**	10		

## PHOTOGRAVURES OF FAVORITE GROUPS

Six portraits on each sheet, size 8½x29 inches. Price, each group (unframed), 25 cents; two for 45 cents; five for \$1.00, postpaid.

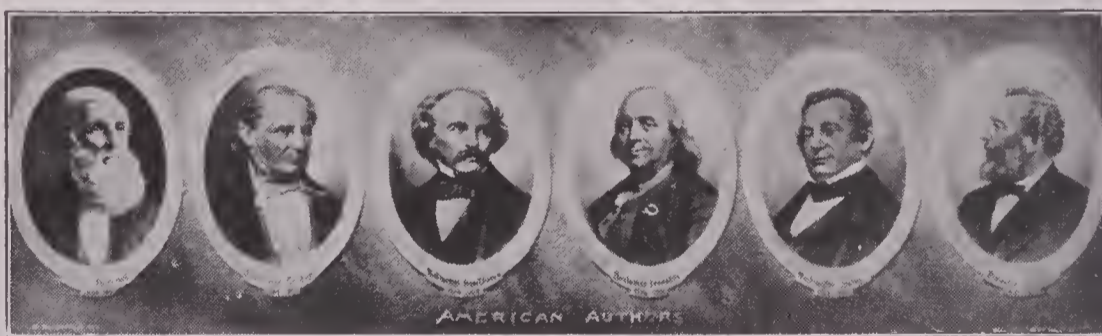
These are large, photo-gelatin photogravures of the highest quality, printed on heavy toned paper, with soft, transparent effect and requiring no mat in framing. The heads are large, the features clear and distinct in detail. The pictures are the finest collections of portraits of these men, whose names are household favorites, ever offered at so low a price. Every schoolroom and every home should contain them. Finished in a beautiful soft photo-brown tone.



**No. 1—American Poets—Framed**  
Longfellow, Whittier, Lowell, Holmes, Bryant, Emerson



**No. 2—American Poets (later)**  
Riley, Field, Carleton, Harte, Poe, Whitman



**No. 3—American Authors**  
Bancroft, Cooper, Hawthorne, Franklin, Irving, Taylor



**No. 4—British Poets**  
Tennyson, Byron, Burns, Milton, Pope, Shakespeare

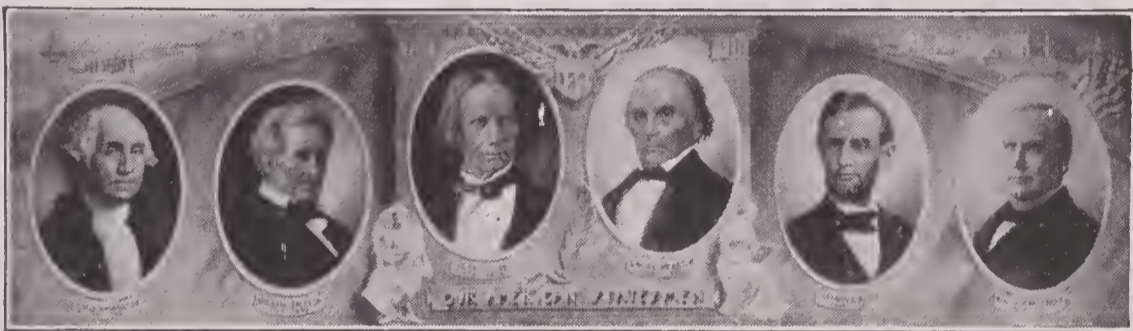
**PHOTOGRAVURES OF FAVORITE GROUPS—Cont'd**



**No. 5—British Authors**  
Dickens, Macaulay, Scott, Carlyle, Ruskin, Thackeray



**No. 6—Great Musicians**  
Mozart, Beethoven, Liszt, Gounod, Chopin, Wagner



**No. 7—American Statesmen**  
Washington, Andrew Jackson, Henry Clay, Daniel Webster, Lincoln, McKinley

**No. 8—Great Preachers**  
Beecher, Spurgeon, Brooks, Hall, Moody, Parker

**No. 9—Our Lord Jesus Christ**  
From Bethlehem to Calvary. Raphael's Sistine Madonna, Hofmann's The Christ Child, and The Christ by Scheffer, Munkacsy, Reni, and Hofmann.

**No. 10—Great Artists**  
Rubens, Titian, Raphael, Rembrandt, Michael Angelo, Van Dyke

**No. 11—Heroes of the Bible**  
Moses, David, Isaiah, John, Peter, Paul

**No. 12—Women of the Bible**  
Rebecca, Miriam, Ruth, Martha, Mary Magdalene, Mary (mother of Jesus)

**No. 13—Missionary Heroes**  
John G. Paton, William Carey, David Livingstone, J. Hudson Taylor, Robert Morrison, Adoniram Judson

**No. A—Founders of Modern Science (7x24 inches)**  
Darwin, Agassiz, Audubon, Pasteur, Spencer, Huxley

**No. B—American Inventors (7x24 inches)**  
Howe, Bell, Fulton, Edison, Morse, McCormick

**No. C—Women of Achievement (7x24 inches)**  
Clara Barton, Jane Addams, George Eliot, Rosa Bonheur, Frances Willard, Susan B. Anthony

**Framed Photogravures of Favorite Groups**

We have all of the sixteen groups framed in 1¼-inch art-brown selected Solid Oak frames, that match well the sepia tones of the pictures.

Price, including cost of picture, complete with frame, glass, dustproof back, wire and hooks, all ready for hanging, each, \$1.20.

Twenty-five cents must be added to price to cover cost of casing one picture; 10 cents for each additional picture.

## SMALL PHOTOGRAVURES OF FAVORITE GROUPS

Six portraits on each sheet, size 4 $\frac{3}{4}$ x16 inches. Price, each group (unframed), 12 cents; two for 20 cents; six for 50 cents, postpaid.

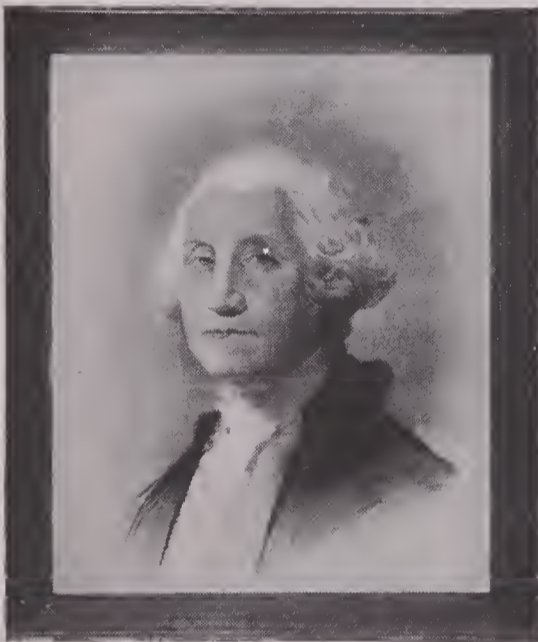
A series of beautiful little photogravures of the famous groups shown on pages 18 and 19, printed in the same soft brown tone on special paper—large enough to be framed for odd wall spaces, small enough to be handled in passepartout. Also desirable for desk use, study purposes, etc. The following have been issued:

No. 1, American Poets                      No. 4, British Poets                      No. 6, Great Musicians  
No. 3, American Authors                  No. 5, British Authors                  No. 9, Our Lord, Jesus Christ

## CRAYON LITHOGRAPH PORTRAITS

Size, 22x28 inches. Price, each (unframed), 20 cents; six for \$1.00, postpaid.

This series of crayon lithographs is ordered extensively for schoolroom decoration. Good likenesses, printed in black on excellent white paper. At the price they are unequalled.



George Washington  
2-inch Solid Oak Frame

### Eminent Men and Women

515	Grant	672	Robert E. Lee
519	Lincoln	907	Frederick Froebel
599	Washington	1000	Stonewall Jackson
600	Martha Washington	704	Columbus
626	Jefferson	731	Daniel Webster
627	Andrew Jackson	765	William McKinley
643	Franklin	902	Patrick Henry
649	Group Picture of all the Presidents	1006	Roosevelt
654	Lafayette	1007	Woodrow Wilson
		1070	William H. Taft

### Poets and Authors

520	Longfellow	804	Holmes
684	Bryant	826	Mark Twain
696	Whittier	831	Lowell
708	Goldsmith	838	Emerson
719	Moore	839	Irving
723	Shakespeare	895	Hawthorne
757	Scott	906	Eugene Field
758	Tennyson	125B	James Whitcomb Riley (25c)
761	Dickens		

## Framed Lithograph Portraits

We supply all of the above framed in 2-inch black or brown selected Solid Oak frames.

Price, including cost of picture, complete with frame, glass, dustproof back, wire and hooks, all ready for hanging, each, \$1.75.

Thirty-five cents must be added to price to cover cost of casing one picture; 10 cents for each additional picture.

These frames are of a new pattern, specially designed, well made and handsomely finished. We guarantee our frames to be not only satisfactory, but the best on the market for the money.

### PLEASED AND BETTER PLEASED

From Julia L. Earle, Leolyn, Pa.: "I am *very* much pleased with the pictures received from you a few days ago, and everyone else who sees them thinks they are fine. I got pictures from your house last year but am even better pleased this time."

From Marian B. Twinam, Prin. Ione School District No. 5, Ione, Wash.: "The bust of Lincoln which we ordered from you reached us in perfect condition and we are well pleased with it."

From C. E. Roudabush, Supervising Principal, Mountjoy, Pa.: "The bust of Shakespeare was received in good shape. It is fine. You may expect orders for more."

From Lillian Troy, Newtown, Conn.: "Our pictures arrived to-day. We are more than pleased with them, as they surpass our expectations in every way."

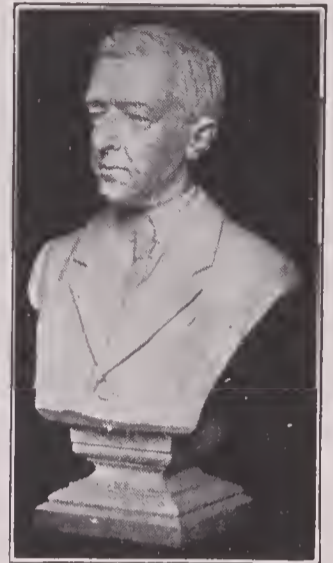


## MASTERPIECE MARBLOID STATUARY

Plastic reproductions of masterpieces of classic and modern sculpture

This series of statuary has been pronounced by critics far superior to anything previously offered. It is made up of reproductions of the work of the greatest sculptors from all parts of the globe—reproductions which are as perfect in every detail as the models from which they were made.

Furnished in either White Marble, Ivory or Bronze Finish. (If Bronze Finish is desired, add 20% to printed prices.) The beautiful ivory tint is especially recommended, as the surface treatment closes the pores of the cast, makes it hard and smooth, and impervious to water, so that it may be cleansed and washed without injury.



Nos. 709B to 712B

### What Critics Say of Marbloid Statuary

Lorado Taft, Instructor in Sculpturing at Art Institute, Chicago: "The casts made by your establishment seem to be unusually good. The surface treatment makes a much better article for home and school decoration than the ordinary plaster cast."

Marie Letitia Ingram, Secretary National Society of Fine Arts: "The Masterpiece Marbloid reproductions are decidedly the most beautiful and most exquisitely finished of any work of the kind I have yet seen."

### Busts—Statesmen and Patriots



No. 502B			No. 500B		No. 506B		No. 504B	
No.	Subject	Height	Price	No.	Subject	Height	Price	
500B	Washington (with coat)	12 in.	\$ 1.00	522B	Caesar, Julius	27 in.	\$ 6.50	
501B	Washington. By Kyle (military)	18	2.50	778B	Cicero	30	8.00	
605B	Washington (with coat)	20	3.00	779B	Cleveland	30	12.00	
502B	Washington (not draped)	24	4.50	625B	Columbus	9	1.00	
715B	Washington. By Houdon (military)	24	4.50	609B	Columbus	14	1.50	
503B	Washington. By Crawford (draped)	30	7.00	620B	Columbus	30	8.00	
606B	Washington. By Kyle (military)	34	12.00	780B	Douglas	29	8.00	
504B	Lincoln (coat and beard)	12	1.00	510B	Franklin	19	2.50	
505B	Lincoln (coat and beard)	18	2.00	701B	Franklin	24	4.50	
700B	Lincoln (coat and beard)	20	3.00	621B	Franklin	30	8.00	
506B	Lincoln (draped)	24	4.50	781B	Garfield	30	9.00	
507B	Lincoln. By Volk (not draped, without beard)	30	7.00	782B	Gladstone	22	4.50	
617B	Lincoln (coat and beard)	34	12.00	512B	Grant	18	2.50	
709B	Woodrow Wilson	12	1.00	513B	Grant	30	8.00	
710B	Woodrow Wilson	16	2.00	777B	Joan of Arc. By Charpu	24	4.50	
711B	Woodrow Wilson	22	4.00	725B	McKinley. By Trentanove	15	1.50	
712B	Woodrow Wilson	30	12.00	726B	McKinley. By Trentanove	32	10.00	
				519B	Napoleon	12	1.00	
				521B	Napoleon	18	3.00	
				622B	Napoleon	24	5.50	
				783B	Sheridan, General	32	20.00	
				624B	Webster, Daniel	30	8.00	

**Busts—Authors and Poets**



Nos. 531B, 636B,  
637B, 638B

No. 526B

No. 730B

Nos. 529B, 530B

No.	Subject	Height	Price
523B	Longfellow (with coat) ..	12 in.	\$ 1.00
524B	Longfellow (with coat) ..	14	1.50
525B	Longfellow (draped) ....	17	2.00
630B	Longfellow (draped) ....	20	3.50
526B	Longfellow, in Westminster Abbey .....	34	12.00
527B	Whittier .....	17	2.50
529B	Emerson, by Morse.....	17	2.00
530B	Emerson, by Morse.....	30	8.00
531B	Shakespeare, by Roubilliac	12	1.00
636B	Shakespeare, by Roubilliac	17	2.00

No.	Subject	Height	Price
532B	Shakespeare .....	20 in.	\$3.00
637B	Shakespeare, by Roubilliac	24	4.50
638B	Shakespeare, by Roubilliac	30	7.00
537B	Sir Walter Scott.....	12	1.00
730B	Charles Dickens .....	16	2.00
543B	Schiller .....	17	2.00
544B	Goethe .....	12	1.00
545B	Goethe .....	17	2.00
591B	Dante .....	17	2.00
640B	Milton .....	30	7.00
740B	Froebel .....	16	2.00

**Busts—Great Musicians**



No. 547B-549B,  
751B

No. 556B-558B,  
752B

No. 562B, 563B  
750B

No. 553B

No.	Subject	Height	Price
546B	Bach .....	18 in.	\$2.00
547B	Beethoven .....	12	1.00
548B	Beethoven .....	18	2.00
751B	Beethoven .....	21	3.00
549B	Beethoven .....	24	4.50
551B	Chopin .....	18	2.00
553B	Liszt .....	12	1.00
650B	Mendelssohn .....	12	1.00
555B	Mendelssohn .....	18	2.00
651B	Mendelssohn .....	24	4.50

No.	Subject	Height	Price
556B	Mozart .....	12 in.	\$1.00
557B	Mozart .....	18	2.00
752B	Mozart .....	21	3.00
558B	Mozart .....	24	4.50
559B	Paderewski .....	15	2.00
560B	Schubert .....	18	2.00
561B	Schumann .....	18	2.00
562B	Wagner (with cap).....	12	1.00
652B	Wagner (without cap)...	20	3.00
750B	Wagner (with cap).....	23	4.50

Greek and Roman Busts

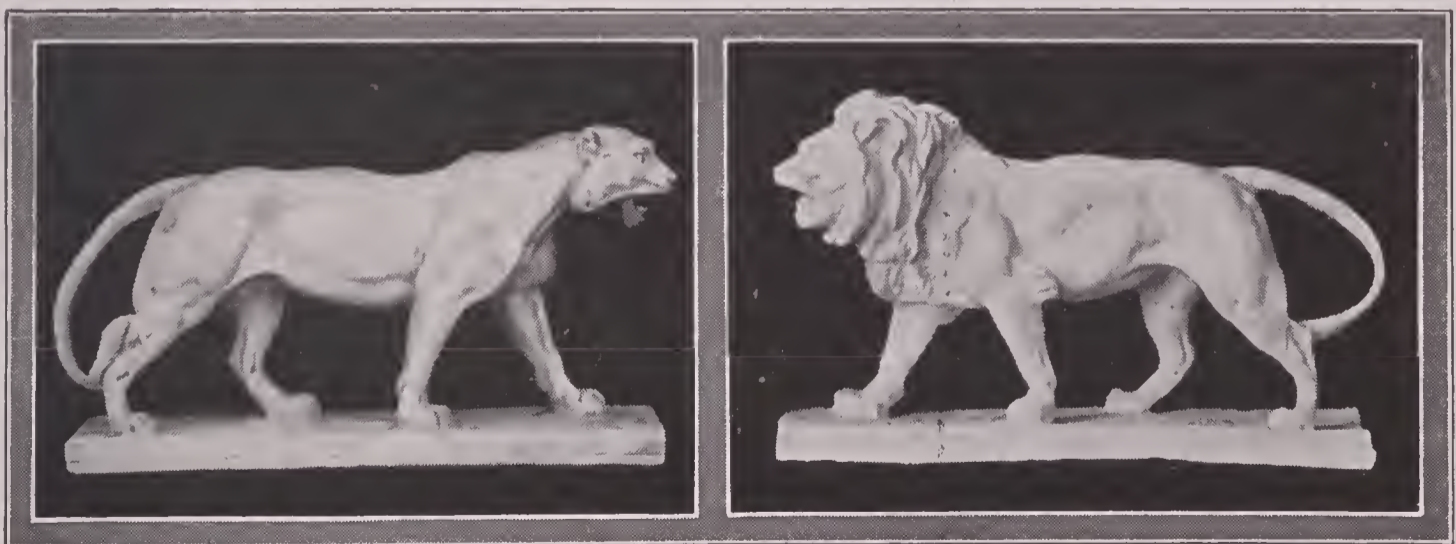


No. 236B			No. 286B		No. 278B			No. 282B	
No.	Subject	Height	Price	No.	Subject	Height	Price	No.	Subject
215B	Ajax. In the Loggia de Lanzi, Florence.....	27 in.	\$ 7.00	283B	Diana. As No. 282B...	20 in.	\$ 3.00	284B	Diana. As No. 282B...
278B	Apollo Belvedere. From statue in the Vatican..	32	10.00	264B	Hermes. From the statue at Olympia.....	33	12.00	265B	Hermes. As No. 264B...
279B	Apollo. As No. 278B...	23	4.50	236B	Homer. In the Naples Museum .....	27	7.00	262B	Minerva Giustiniani. From statue in the Vatican..
280B	Apollo. As No. 278B...	14	1.50	263B	Minerva. As No. 262B..	21	3.00	257B	Socrates .....
286B	Julius Caesar. In Louvre.	26	6.50	268B	Venus of Melos. From statue in the Louvre..	34	12.00	269B	Venus. As No. 268B...
221B	Cicero .....	30	8.00	270B	Venus. As No. 268B...	14	1.50	292B	Virgil .....
205B	Clytie. In the British Museum .....	27	10.00						
206B	Clytie. As No. 205B...	23	5.00						
226B	Demosthenes .....	24	5.00						
261B	Diana, Robing. From statue in the Louvre..	12	1.50						
282B	Diana of Versailles. From statue in the Louvre..	30	9.00						

Renaissance Busts

275B	Dante. In Naples Museum.	13 in.	\$ 2.50	287B	Laughing Boy. By Donatello .....	13 in.	\$ 2.50
276B	Dante. As No. 275B....	7½	1.00	290B	St. John as a Child. By Donatello .....	9	1.00
288B	Infant Christ. By Settignano .....	11	2.00				

Animals—By Barye



No. 394B				No. 389B					
No.	Subject	Base	Height	Price	No.	Subject	Base	Height	Price
370B	Bear, Dancing.....	5x3 in.	9 in.	\$1.00	686B	Panther, Reclining.	18x6 in.	9 in.	\$1.50
371B	Two Bears, Fighting	5x5	8	1.50	688B	Rabbit, Sitting Up.	8x4½	8½	1.00
372B	Elephant, Walking.	15½x7½	6	1.50	394B	Tiger, Walking....	16x4	9	1.50
389B	Lion, Walking.....	16x4	9	1.50					



### Greek and Roman Statues—Continued

No.	Subject	Height	Price	No.	Subject	Height	Price
982B	Venus de Medici. In the Uffizi Gallery, Florence	63 in.	\$40.00	986B	Venus of Melos. Reduction of No. 984B.	35 in.	\$ 7.00
983B	Venus de Medici. Reduction of No. 982B.	26	5.00	987B	Venus of Melos. Reduction of No. 984B.	26	3.50
984B	Venus of Melos. In the Louvre	85	56.00	988B	Venus of Melos. Reduction of 984B.	19	1.50
985B	Venus of Melos. Reduction of No. 984B.	42	10.00	989B	Venus of Melos. Reduction of No. 984B.	12	1.00

### Full Figures—Renaissance and Modern Statues



No. 926B

No. 972B

No. 920B

No.	Subject	Height	Price	No.	Subject	Height	Price
900B	Columbus	32 in.	\$ 8.00	920B	Lincoln. By Volke.	29 in.	\$12.00
901B	Cupid, or Vici, with Bow. By Aug. Moreau.	26	3.00	921B	Mercury, Flying. By Giovanni da Bologna. In the National Museum, Florence	72	48.00
902B	Cupid. Reduction of No. 901B	18	2.00	922B	Mercury, Flying. Reduction of No. 921B.	36	12.00
903B	Cupid. Reduction of No. 901B	12	1.50	923B	Mercury, Flying. Reduction of No. 921B.	28	6.00
904B	Cupid and Psyche. By Canova	16	4.00	924B	Mercury, Flying. Reduction of No. 921B.	22	5.00
905B	Dancing Girl.	17	2.00	925B	Michelangelo in Youth.	24	7.00
906B	David. By Mercie. In the Luxembourg, Paris.	36	8.00	926B	Minute Man, The (Concord). By D. C. French.	35	15.00
907B	David. By Mercie. Reduction of No. 907B.		6.00	927B	Moses. By Michelangelo	24	10.00
908B	Devil. From Notre Dame, Paris	15	2.50	928B	Moses. Reduction of No. 927B	8	1.00
909B	Gargoyle	14	1.50	929B	Singing Cherub (one figure)	13	2.00
910B	Hebe. By Thorwaldsen. In Copenhagen.	63	30.00	930B	Singing Cherubs (two figures)	13	2.50
911B	Hebe. Reduction of No. 910B	39	14.00	931B	Singing Cherub (with mandolin)	13	2.00
912B	Hebe. Reduction of No. 910B	19	2.50	932B	Statue of Liberty.	36	15.00
913B	Hebe. Reduction of No. 910B	16	2.00	940B	Study (girl with book).	12	1.50
914B	Indian Chief. By McNeil	23	2.50	941B	Study. As No. 940B.	8	1.00
915B	Indian Chief. Reduction of No. 914B.	18	2.00	933B	Three Dancing Girls. By Canova	16	5.00
916B	Indian Chief. Reduction of No. 914B.	10	.80	934B	Three Graces, The. By Canova	14	4.50
917B	Joan of Arc. By Chapu. In the Luxembourg, Paris	46	48.00	935B	Three Graces, The. Reduction of No. 934B.	12	2.00
918B	Joan of Arc. Reduction of No. 917B.	18	7.00	936B	Uncle Sam.	30	12.00
919B	Joan of Arc. Reduction of No. 917B.	7	1.50	937B	Whistler, The (Whistling Boy)	18	2.00
				938B	Whistler, The. Reduction of No. 937B.	9	1.00

## Supports for Busts and Statues Brackets

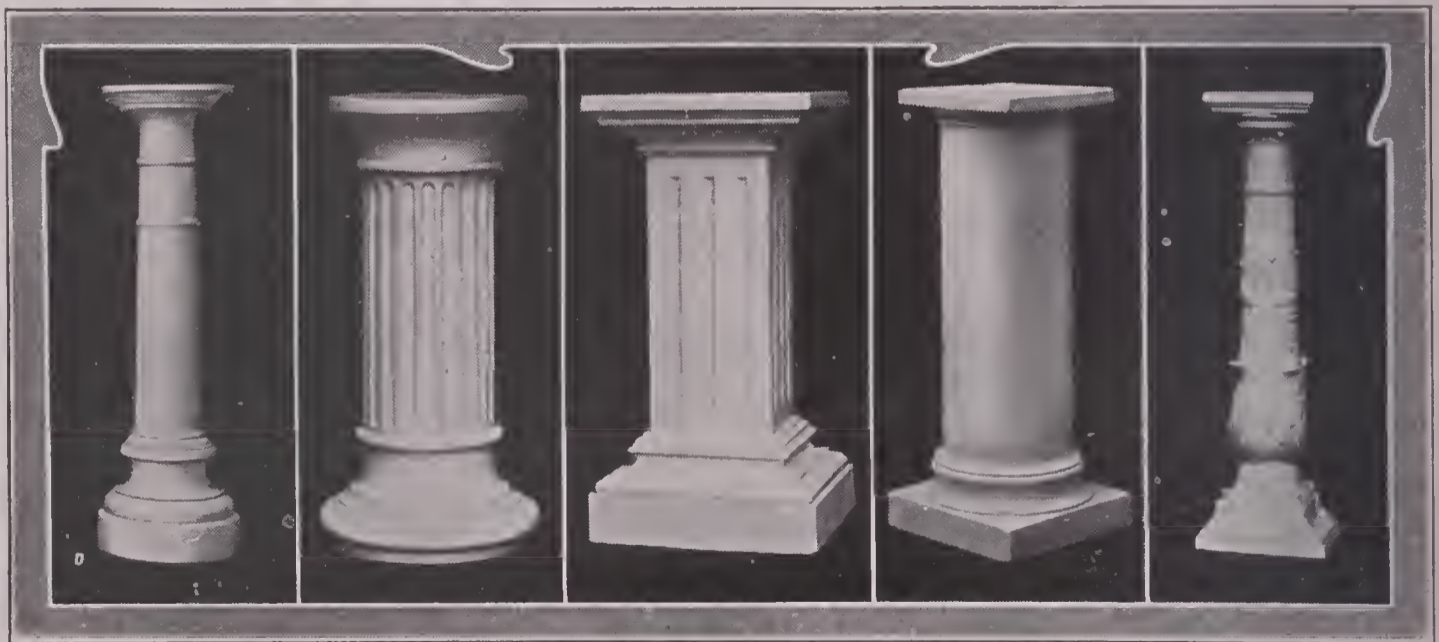


No. 681B      No. 678B      Benjamin Franklin      No. 679B      No. 682B  
on Bracket No. 680B

First dimension is top projection; second, width; third, height.

No.	Subject	Size	Price
678B	Bracket, with Angel Head (for supporting bust or figure to 12 inches)	5x7x7 in.	\$1.00
679B	Bracket, Gothic (for supporting bust or figure to 24 inches)	12x9x9	2.50
680B	Bracket (for supporting bust or figure to 30 inches)	16x10x11	4.00
681B	Bracket, Gothic (for supporting bust or figure to 36 inches)	15x14x14	5.00
682B	Bracket, Renaissance (for supporting bust or figure to 36 inches)	9x11½x11½	5.00

## Pedestals



No. 567B      No. 720B      No. 721B      No. 722B      No. 568B

No.	Subject	Height	Price
567B	Pedestal, Colonial. Diameter of top, 10 inches	37 in.	\$ 5.00
568B	Pedestal, Antique (in the Louvre, originally designed for a candelabrum). Top, 10x10 inches	40	7.00
720B	Pedestal, fluted. Diameter of top, 15 inches	34	8.00
721B	Pedestal, fluted. Top, 19x19 inches	36	12.00
722B	Pedestal, Tuscan. Top, 18x18 inches	42	12.00

### Modern Reliefs



No. 804B

No. 806B

No.	Subject and Size, Inches	Price
804B	Paul Revere's Ride, 22x30.....	\$7.00
807B	The Arrest of Paul Revere, 22x30.	7.00
806B	Signing the Declaration of Independence. Modeled from Trumbull's painting. 32x38.....	9.00
805B	Flight of Night. By William M. Hunt. Originally designed for the Capitol, Albany, N. Y. 19½x29½ .....	9.00

No.	Subject and Size, Inches	Price
821B	Cupids Singing. By Potacelli. 11x42½ .....	\$5.00
836B	Morning. By Thorwaldsen. 35x35.	8.00
837B	As No. 836B. 14x14.....	1.00
840B	Night. By Thorwaldsen. 35x35..	8.00
841B	As No. 840B. 14x14.....	1.00
857B	Madonna. By Donatello. 14x11½.	2.00
835B	Madonna and Child. By Settignano. 28x22.....	4.00

### Renaissance Reliefs

Cantoria Frieze. In six panels. By Luca della Robbia. A frieze of children singing and playing instruments. From the Cantoria, in the Museum of Santa Maria del Fiore, Florence.



No. 818B

No. 808B

No. 811B

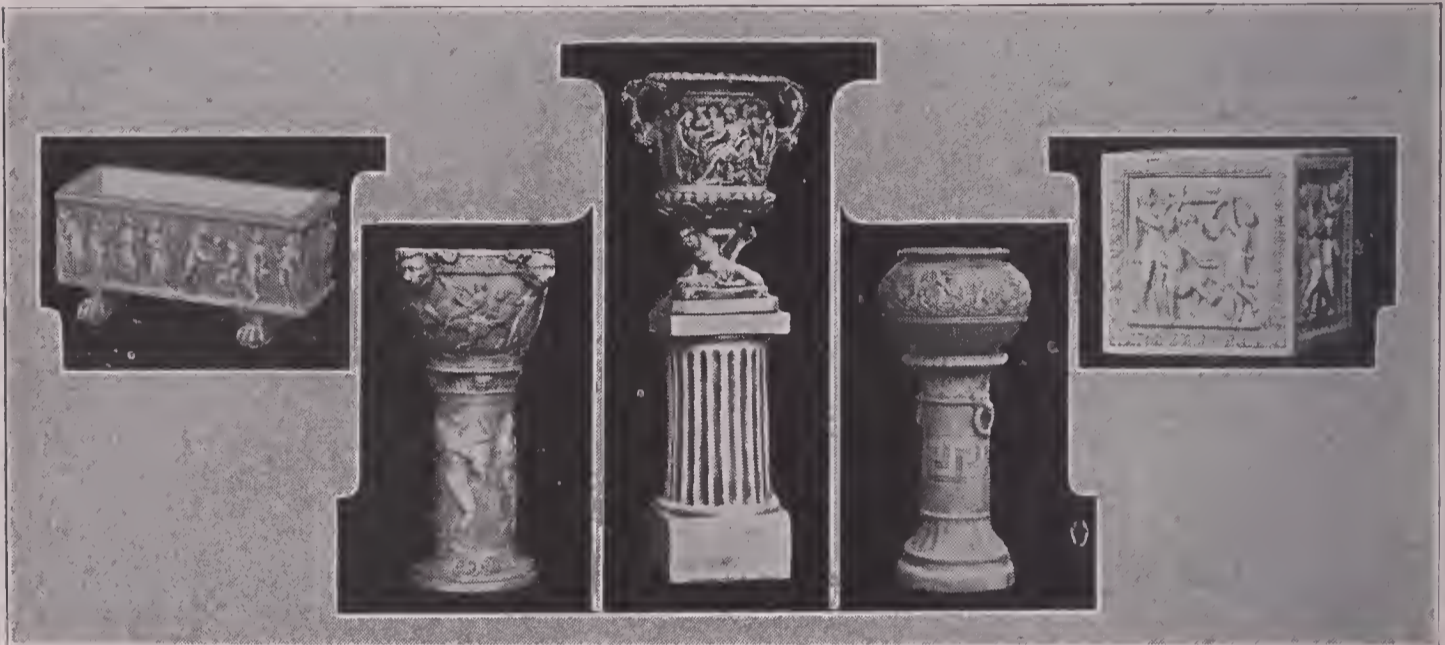
No.	Subject and Size, Inches	Price
808B	Boys Singing from Book, 42x36.	\$ 9.50
809B	As No. 808B, 20x15.....	3.50
810B	As No. 808B, 10¾x7.....	1.20
811B	Children Dancing, 42x38.....	16.00
812B	Boys Singing from Scroll, 42x26.	9.00
813B	As No. 812B, 20x15.....	3.50
814B	As No. 812B, 10¾x7.....	1.30
815B	Boys Playing on Drums, 42x38..	11.00
816B	As No. 815B, 20x18½.....	5.00
817B	As No. 815B, 10¾x10.....	1.50
818B	Boys Playing on Trumpets, 42x38	11.00
819B	As No. 818B, 20x18½.....	5.00

No.	Subject and Size, Inches	Price
820B	As No. 818B, 10¾x10.....	\$ 1.50
867B	Girls Playing on Lyres, 42x38...	10.00
832B	Four groups of the Cantoria Frieze cast in one panel (Nos. 809B, 813B, 816B, 819B), 22x67	20.00
833B	As No. 832B, 11x35.....	5.00
844B	Bambino. By Andrea della Robbia, 40x32.....	7.00
845B	As No. 844B. 12x10.....	1.00
849B	Musical Notes (seven), 8½x27½	2.00
852B	Chariot Race (Roman), 16x22...	2.00

## WINDOW BOXES, VASES AND FERNERIES

Made of Special Composition Material

These are made of a very strong and durable composition material. They are artistic and attractive in appearance, and by the use of a metal lining\* may be made into receptacles for growing plants. Carried in stock in ivory and terra cotta finishes, or will be colored to order without extra charge. We also furnish these pieces in gray or colored Portland cement for outdoor use at an added cost of 50 per cent.



No. 578B

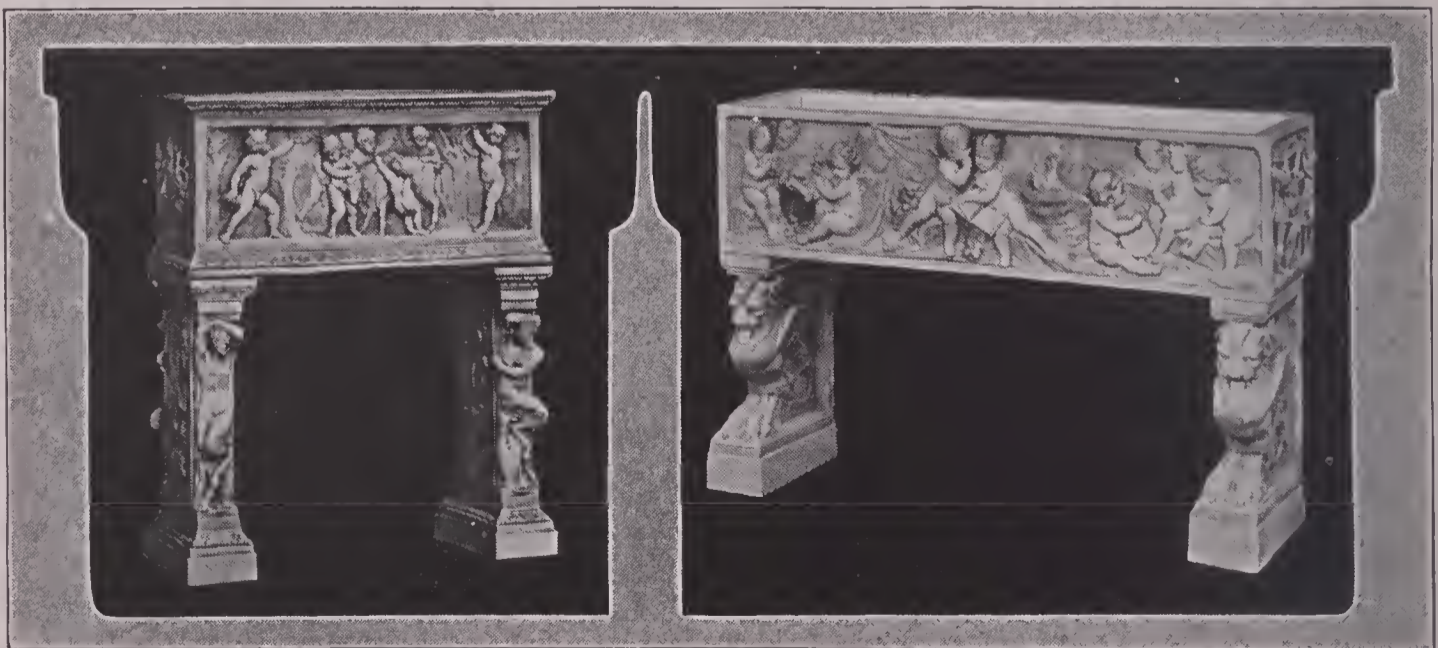
No. 583B

No. 584B

No. 585B

No. 579B

No.	Subject	Length	Width	Height	Price
578B	Flower Box, Florentine.....	15½ in.	7 in.	6½ in.	\$3.00
579B	Flower Box, Renaissance.....	14	14	13¼	5.00
583B	Vase with Pedestal, Grecian. Complete.....		22 diam.	38	8.00
	(Furnished separately: Vase, \$4.00; Pedestal, \$4.00)				
584B	Vase with Pedestal, Roman. Complete.....		15 diam.	47	9.50
	(Furnished separately: Vase, \$6.00; Pedestal, \$3.50)				
585B	Vase with Pedestal, Grecian. Complete.....		15 diam.	34	6.00
	(Furnished separately: Vase, \$3.00; Pedestal, \$3.00)				
581B	Fernery, Renaissance. Complete .....	24	10	28	10.00
586B	Fernery, with reliefs of Cherubs. Complete.....	43	13	28	20.00



No. 581B

No. 586B

\*Metal linings may be procured of any tinsmith. However we will quote prices upon request.



## THE MANOPHONE

### "The Music Master of Phonographs"

In the Manophone we present an instrument designed to meet the demands of the most discriminative purchasers; a talking machine whose superior tone quality will instantly appeal to the ears of the most critical listeners.

The Manophone was brought out by a company who, for 67 years have been makers of world famous musical instruments. It was designed by experts having a knowledge of the finest principles of acoustics, resulting in a machine which, for beauty and fidelity of tone production is rivalled only by nature itself.

By virtue of a special arrangement, as exclusive educational distributors for the Manophone, we are enabled to offer these instruments for introduction to schools and school people at discounts consistent with the high purpose for which the machines are to be used—namely the instruction, refinement, pleasure and entertainment of the child.

We ask you to hear this superb phonograph played. Listen to your favorite pieces. Prove to yourself that the Manophone is in a class exclusively its own—the one ideal instrument that will lend itself most highly to your pleasure and entertainment. *Then if you are not thoroughly satisfied, return the machine in ten days and your money will be refunded.*



Manophone Style No. 300

Regular Price, \$45.00. Our Special Price, \$23.50

Mahogany, Golden Oak or Fumed Oak Finish. Size: 17 inches wide, 18½ inches deep, 13 inches high, 12-inch turntable. Brake and Speed Regulator. Universal Tone Arm. Heavy Double-spring Worm Gear Motor. Can be wound while playing. All metal parts highly nickel-plated.

Shipping weight, 50 lbs.

The cabinet work of the Manophone is unexcelled. It is produced by skilled workmen trained in the making of highest grade piano cases. The designs are of unusual refinement and beauty, and each coat of finish is hand-rubbed. Besides all four sides of every Manophone case are finished, while the back of most other machines is not finished. Therefore you can stand the Manophone in the center of a room, and its appearance is pleasing from all sides.

*Each machine is supplied with two hundred steel needles.*



Manophone Style "AA"

Regular Price, \$85.00  
Our Special Price, \$49.75

Mahogany, Fumed Oak or Golden Oak case. Dimensions: Height 42¼ inches, width 19 inches, depth 19 inches.

Universal Tone Arm; Twelve-inch Turntable; Tone Modifier; Heavy Double-spring Motor, can be wound while playing. All metal parts highly nickel-plated. Equipped with five shelves for record albums.

Shipping weight, 120 lbs.

## THE MANOPHONE

“The Music Master of Phonographs”



**Manophone Style "A"**  
Regular Price, \$110.00. Our Special  
Price, \$59.75

Equipped with electric motor, cord and socket plug, \$22.50 extra.

Furnished in Mahogany, Fumed Oak or Golden Oak case. Dimensions: Height 45 inches, Width 19½ inches, Depth 21 inches.

Universal Tone Arm; Twelve-inch Turntable; Tone Modifier; Heavy Double-spring Motor, can be wound while playing. All metal parts highly nickel-plated. Equipped with five shelves for record albums.

Shipping weight, 150 lbs.



**Manophone Style "B"**  
Regular Price, \$140.00. Our Special  
Price, \$76.50

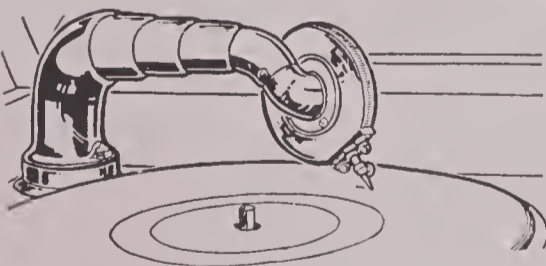
Equipped with electric motor, cord and socket plug, \$22.50 extra.

Furnished in Mahogany, Fumed Oak or Golden Oak case. Dimensions: Height 47 inches, Width 20½ inches, Depth 22 inches.

Universal Tone Arm, Twelve-inch Turntable; Tone Modifier; Heavy double-spring Motor with bevel gear wind; can be wound while playing. All metal parts highly nickel-plated. Equipped with five shelves for record albums.

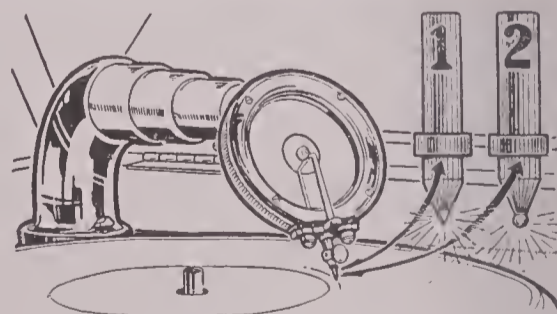
Shipping weight, 160 lbs.

### THE MANOPHONE PLAYS ALL DISC RECORDS



Position of Reproducer playing Victor and Columbia Records

These illustrations show the advantage of the Universal Tone Arm, which needs no adjustment, no extra attachment, and no special needles or points to play any style of record manufactured.



Position of Reproducer playing Edison and Pathe Records

No. 1 represents the Edison style needle equipped with Diamond Point.

No. 2 represents the Pathe style needle equipped with sapphire ball point.

The Manophone plays all records made for jewelled points with the same rich melody that it plays the steel needle records. Simply change the position of the tone arm as shown in the illustrations.

## THE MANOPHONE

### "The Music Master of Phonographs"

#### Manophone Style "D"

Regular Price, \$175.00; Our Special Price, \$99.75

Equipped with electric motor, cord and socket plug \$22.50 extra.

Mahogany, Fumed Oak or Golden Oak case. Walnut case \$10.00 extra.

Special Filing Device with four vertical files for twenty records each.

Dimensions: Height 50 inches, Width 21½ inches, Depth 23½ inches.

Universal Tone Arm; Twelve-inch Turntable; Tone Modifier; Strong Double-spring Motor with bevel gear wind. Can be wound while playing and plays six 10-inch records.

All metal parts highly nickel-plated.

Shipping weight, 175 lbs.

Style "D" Manophone is impressive in size, beautiful in design and ornamentation, with a large sound chamber, giving splendid resonance as well as clearness of tone.

#### Some Points Worth Considering

The Manophone motor is a marvel of silence and smoothness, holding the tone absolutely true at all times.

The perfected and patented resonant sound chamber is a piece of fine built-up cabinet work which assures reproduction satisfying to the most exacting connoisseur of music.

The cabinets are examples of design and finish of the best American craftsmanship. They are very substantial and wholly satisfying.

Machines equipped with an electric motor, insulated cord, and plug which screws into any electric light socket, operate on any standard current, whether direct or alternating. With an electric motor there remains nothing to do except change the records, turn on and off the current, and enjoy the flow of music.

the flow of music.

#### READ WHAT ONE GREAT ARTIST SAYS OF THE MANOPHONE

Miss Lawrence needs no introduction. Her name is known throughout the musical world as one of the leading Prima Donna sopranos of the age. After beginning her professional career as a member of the Metropolitan Opera House she studied the Wagner operas at Bayreuth and made a brilliant debut at Breslau. Her success was sensational. She was selected to be the first American interpreter in Europe of the American role, "The Girl of the Golden West." Through her triumph in this and other later leading roles, she has risen to high fame throughout both Europe and America. Her tribute to the Manophone follows:

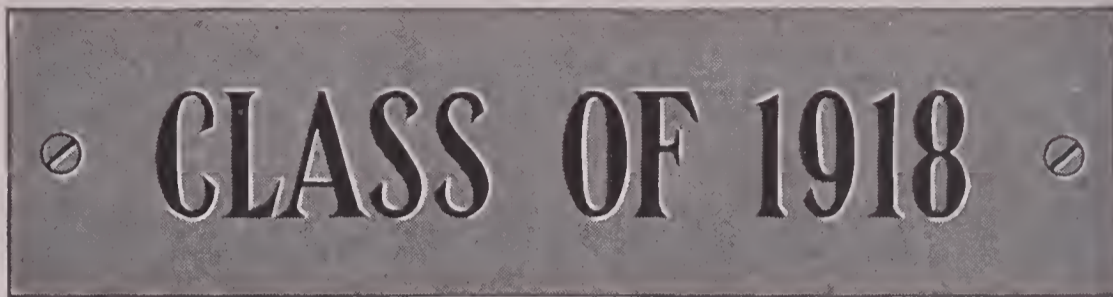
"I am so delighted with my Manophone that I am impelled to pen you a few lines of appreciation. The perfection with which the Manophone reproduces all types of music, both vocal and instrumental, is really astonishing. It preserves the sweetness and quality of tone, reproducing it with a charm beyond expression. I am in love with the cabinet itself. The lines are so graceful and the beautiful finish makes it as great a delight to the eye as its musical quality is to the ear.

Cordially,  
Lucille Lawrence"



## BRASS PLATES FOR CLASS MEMORIALS

We furnish class plates of polished brass, with letters engraved and filled in with black enamel, for attaching to pictures and statuary intended for class memorials, as follows:



Actual size. Price, \$1.00, postpaid. (Any year desired may be had at the same price.)

Also PRESENTED BY CLASS OF 1918 (or any year desired), same width as the above but two inches longer, \$1.50, postpaid.

Brass plates with special inscriptions are also furnished. Prices, one-line, 3½-inch plate, \$1.75; two-line plate, \$2.25, postpaid.

## A FEW STANDARD WORKS ON ART

MASTERPIECES IN ART. By William C. Casey. With thirty-seven full-page reproductions. 272 pages. Cloth. Price, \$1.25, postpaid.

A comprehensive treatment of the masterpieces usually selected for study in the common schools, with critical comments, questions, and biographies of the artists.

STUDIES IN ART. By Anna von Rydingsvard, A. M. Illustrated. 185 pages. Cloth. Price, 75 cents, postpaid.

Contains eighty-nine reproductions of the world's famous artists, each illustration occupying a page. On the opposite page is a vivid description of the artist, his pictures in general, and the one shown in particular.

A SHORT HISTORY OF ART. By Julia B. De Forest. Illustrated with 289 superb illustrations. 758 pages. Cloth. Price, \$2.25, postpaid.

The most modern and comprehensive single volume of the history of Art yet issued. Adapted as a text book for High Schools, Art Schools, Normal Schools and Colleges.

TWELVE GREAT PAINTINGS. By Henry Turner Bailey. Full-page reproduction of each picture. Quarto. 64 pages. Cloth. Price, \$1.50, postpaid.

Unequaled in the interpretation of beauty and the significance of Art. This book reveals the meaning of twelve of the world's most famous paintings.

HOW TO VISIT THE GREAT PICTURE GALLERIES. By Esther Singleton. 492 pages. Cloth. Price, \$2.00, postpaid.

Explains and describes the principal pictures in each of the famous galleries of Europe, the date when painted, their significance, etc.

HOW TO ENJOY PICTURES. By Mabel S. Emery. 58 illustrations. 290 pages. Cloth. Price, \$1.50, postpaid.

An excellent volume for all who are interested in pictures and picture study.

ART FOR LIFE'S SAKE. By Charles H. Caffin. 287 pages. Cloth. Price, \$1.35, postpaid.

Presents an interpretation of Art from the standpoint of the relation of Art to ethics, industry and the home.

# FLAGS AND FLAG POLES

For Outdoor and Indoor Decoration

## U. S. STANDARD WOOL BUNTING FLAGS

Made of best quality wool bunting. Seams are all double stitched and hems are reinforced. Full number of stars are arranged according to the new design authorized by the Government, and shown both on the field and on all flags. The small and medium sizes have curved hoistings and hand-printed grommets. The large size, which includes several large brass canvas hoistings, with double poles. Vitrinized lacquer.



Size	Price Each	Weight Lbs.	Size Feet	Price Each	Weight Lbs.	Size Feet	Price Each	Weight Lbs.
12x18	\$4.00	1/2	12x18	\$13.00	1 1/2	18x24	\$24.00	2 1/2
14x20	5.00	3/4	14x20	17.00	2 1/4	20x28	30.00	3 1/2
16x24	7.50	1 1/4	16x24	27.00	3 1/4	24x32	42.00	4 1/2
24x36	15.00	2 1/4	24x36	50.00	6 1/4			

## FEDERAL MOTHI-PROOF U. S. BUNTING FLAGS

Made of best quality wool bunting, of standard size. "Federal" flags are made of specially and chemically treated wool bunting which has the reputation of moth proofing. They wear equally well, with the added advantage of being moth proof.

Size	Price Each	Weight Lbs.	Size Feet	Price Each	Weight Lbs.	Size Feet	Price Each	Weight Lbs.
12x18	\$4.00	1/2	12x18	\$13.00	1 1/2	18x24	\$24.00	2 1/2
14x20	5.00	3/4	14x20	17.00	2 1/4	20x28	30.00	3 1/2
16x24	7.50	1 1/4	16x24	27.00	3 1/4	24x32	42.00	4 1/2
24x36	15.00	2 1/4	24x36	50.00	6 1/4			

## FAST COLOR COTTON U. S. BUNTING FLAGS

Made of a very heavy weight, double cotton bunting.

Size	Price Each	Weight Lbs.	Size Feet	Price Each	Weight Lbs.
12x18	\$1.50	1/2	12x18	\$1.50	1/2
14x20	1.50	3/4	14x20	2.00	1 1/4
16x24	1.75	1 1/4	16x24	2.40	1 3/4

The weight is given for the size of the Federal flag.

## PRINTED MUSLIN U. S. FLAGS ON STICKS

Classed by quality, weight, fast colors, mounted on sticks.

Size	Price Each	Weight Lbs.	Size Feet	Price Each	Weight Lbs.
12x18	\$1.00	1/2	12x18	\$1.00	1/2
14x20	1.00	3/4	14x20	1.00	3/4
16x24	1.25	1 1/4	16x24	1.25	1 1/4
24x36	2.00	2 1/4	24x36	2.00	2 1/4

The sticks are made of wood and are of standard size.

## SECTIONAL STEEL FLAG POLES

Each pole is mounted with a pointed section, which is driven into the ground and secured into the ground, while the pole itself is removable by will. The pole is made of galvanized heavy carbon steel tubing, aluminum plated, and is stiff with concrete. The following table, according to the rigidity of the steel. The sections are simply and the flagpole is quickly put together. Prices include safeguards of the best kind of steel and all accessories necessary for hanging the flag.

Size	Price Each	Weight Lbs.
20-foot pole, made of 1 1/2 inch diameter	\$12.00	100
15-foot pole, made of 1 1/2 inch diameter	8.00	75
10-foot pole, made of 1 1/2 inch diameter	5.00	50
8-foot pole, made of 1 1/2 inch diameter	3.00	35
6-foot pole, made of 1 1/2 inch diameter	2.00	25

Price F. O. B. Chicago, Illinois

BECKLEY-CARDY COMPANY, CHICAGO





# A LIST OF BOOKS

for schools and teachers de-  
siring the best attainable

## SUPPLEMENTARY READERS

Title	Author	Grade	Per Copy (Grade material)
Bow-Wow and Mew-Mew	Craik-Sindelar	1-2	32¢
A Child's Robinson Crusoe	Nida	2-3	40¢
Nixie Bunny in Manners-Land	Sindelar	2-3	45¢
Nixie Bunny in Workaday-Land	Sindelar	2-3	45¢
Nixie Bunny in Holiday-Land	Sindelar	2-3	45¢
Nixie Bunny in Faraway-Lands	Sindelar	2-3	45¢
The Teenie Weenies	Donahay-Baker	2-3	45¢
The Progressive School Classics (16 numbers)		3-U.S.	5¢

## MUSIC

New Common-School Song Book	Smith-Schuckai	40¢
Songs We Like Best		10¢
Weaver's New School Songs	Weaver	30¢

## FOR TEACHERS

Number Games for Primary Grades	Harris-Waldo	60¢
Number Stories	Deming	60¢
Language and Composition by Grades	Hammond	85¢
Language Games for All Grades with Cards	Deming	75¢
Primary Language Stories	Deming	36¢
Morning Exercises for All the Year	Sindelar	75¢
Simplex Class Record		30¢
Best Memory Gems	Sindelar	20¢

Request a copy of BOOKS WE CAN RECOMMEND..  
mailed free

## BECKLEY-CARDY COMPANY

PUBLISHERS

CHICAGO