

MSS
Vol 16



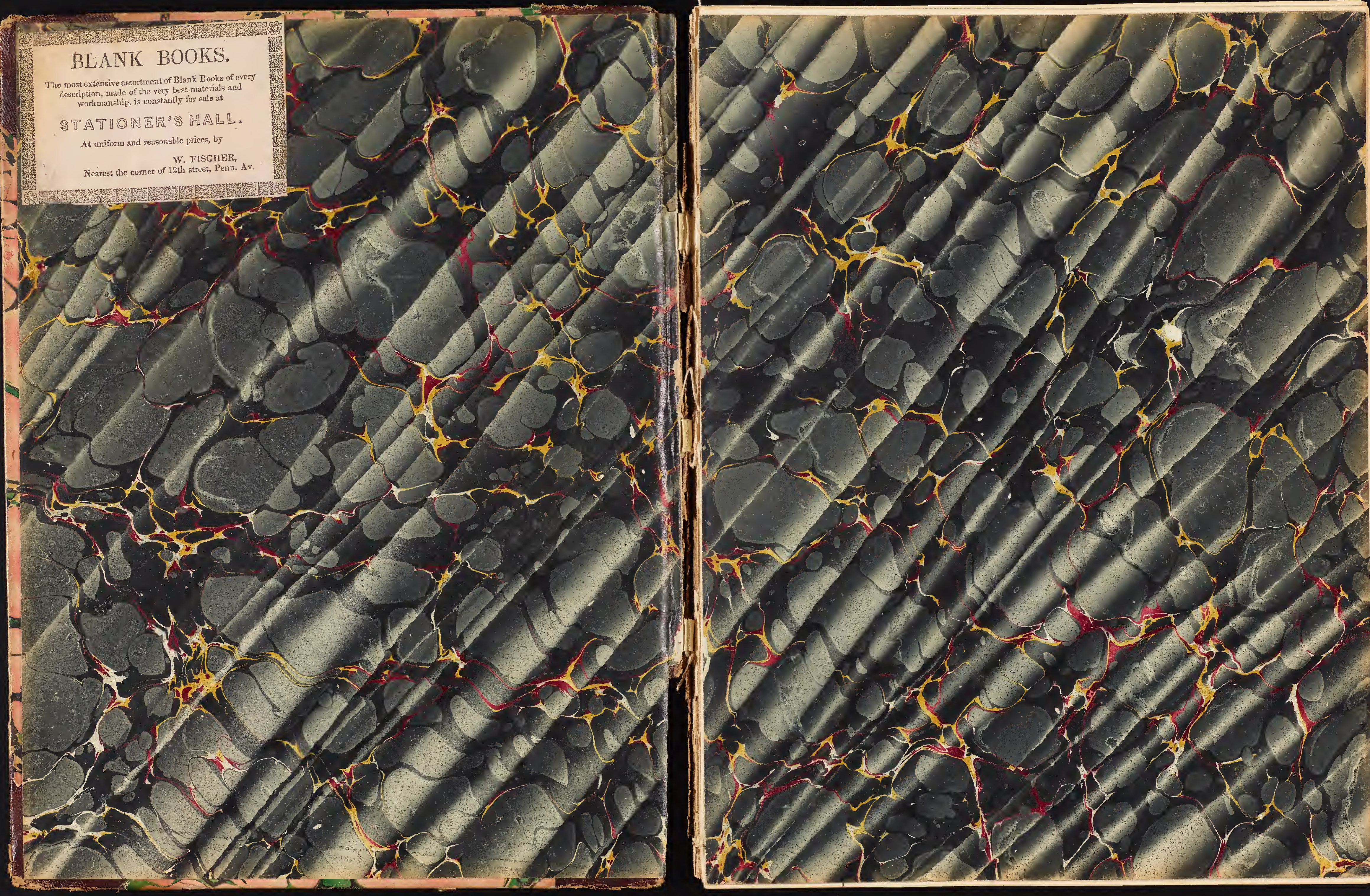
BLANK BOOKS.

The most extensive assortment of Blank Books of every description, made of the very best materials and workmanship, is constantly for sale at

STATIONER'S HALL.

At uniform and reasonable prices, by

W. FISCHER,
Nearest the corner of 12th street, Penn. Av.



20p 19
125
ma

Manuscript
case

✓
W. S. Exploring Expedition, 1838-42

Catalogue of Specimens Received or Deposited at
the Philadelphia Museum, from the W. S. Ex-
ploring Expedition, with receipts for the same, signed
by Franklin Peale.

Begins with "List 3".

128150

(List - No. 3)

"The specimens belonging to the Botanical & Horticultural Department, ready to send to the U. States, are packed in five Tin Cases; each enclosed in a wooden Box.

- No. 1. Contains - 677 specimens of plants collected on the Island of Madeira.
 - 200 do " do " " do
- No. 2. Contains -
 - 280 do " do " " Island of St. Jago.
 - 200 do " do " in the vicinity of Rio de Janeiro
 - 100 do " Mosses & Lichens collected on Madeira.
- No. 3. Contains - 600 do - " plants from the vicinity of Rio de Janeiro.
 - 530 do " do collected on the Organ Mountain
- No. 4. contains -
 - 50 do " Coralines & Hydrophytes, from N. Atlantic.
 - 44 do " Hydrophytes, collected at Madeira.
 - 20 do " do " " St. Jago.
- No. 5. contains -
 - 43 papers of seeds, from the Island of Madeira.
 - 17 do do " Island of St. Jago.
 - 53 do do " vicinity of Rio de Janeiro.

Also, dry roots of Gesnerias, Anagallis, Cattleya Korbesii, Begonia sp from the Organ Mountains. Cactus sp - Vanilla aromatica, &c. &c.

Total number of specimens from Madeira - 1011
 do from St. Jago - 320
 do from vicinity of Rio de Janeiro - 800
 do from Organ Mountains - 530
 Total 2661

"The specimens are packed in bundles, and the Station where they were collected wrote on the cover; also the number of specimens in each bundle. - The seeds are all named and the locality given."

Geological Specimens in Box No. 1. Sent from Rio de Janeiro, Decr. 1838.
(Signed) James D. Dana

From Porto Santo

- Nos. 1. 16. 17. Limestone from P. S. obtained on the Island of Madeira, where it is brought to burn for lime.
2-26. - The same limestone, containing fossils. Nos. 14 & 24, contain pebbles of the volcanic rock of P. S. indicating the recent origin of the limestone.

From Madaira

- Nos. 28-35. - From a recent limestone formation on the eastern extremity of Madeira, near Carriceol.
Nos. 32-35. - Contain several specimens of recent land & sea shells. *Helix nitidiuscula*, & *H. turriculata* of Bowditch, also a small *Cerithium*, *trocha* & *Littorina*.
Nos. 36-41. - From the same formation
" 42-45. - Scoriaeous basalt, encrusted with carb. of lime: from the cliffs between the mouth of the River Secorridos & Camara de Lobos.
Nos. 46-47. - Red Tufa, containing Carb. of Lime; from same locality, where it forms a layer of 2 to 3 ft. between the solid basalt. This layer contains also concretions of carb. lime.
Nos. 48-50. - Red Tufa, from the valley of the River Secorridos.
Nos. 51-52. - Pieces of Pumice; from a layer of pumiceous Tufa, 3 ft. thick, at the Brazen Head.
Nos. 53-55. - Prismatic specimens of Tufa, from a layer 6 to 7 ft. thick; the upper part hard and prismatic; the lower soft and yellow. - Brazen Head.
Nos. 56, 57, 59. - Yellow Tufa. - Brazen Head.
No. 60-63. - Scoriaeous basalt, of a brownish color, from the upper surface of the lower basaltic layer at the Brazen Head.
Nos. 64, 65, 67. - Similar scoria, encrusted with globular concretions of carb. lime. (arragonite)
No. 69. - More scoriaeous than the preceding, similarly encrusted.
" 70. - Brick red scoria - from the Coural.
" Nos. 71, 72, 74. - Compact basalt, from the Brazen Head.
" 76 & 78. - Yellow Tufa, containing yellowish green crystals of *Chrysolite*.
No. 97. - The same Tufa, in contact with the superincumbent rock.

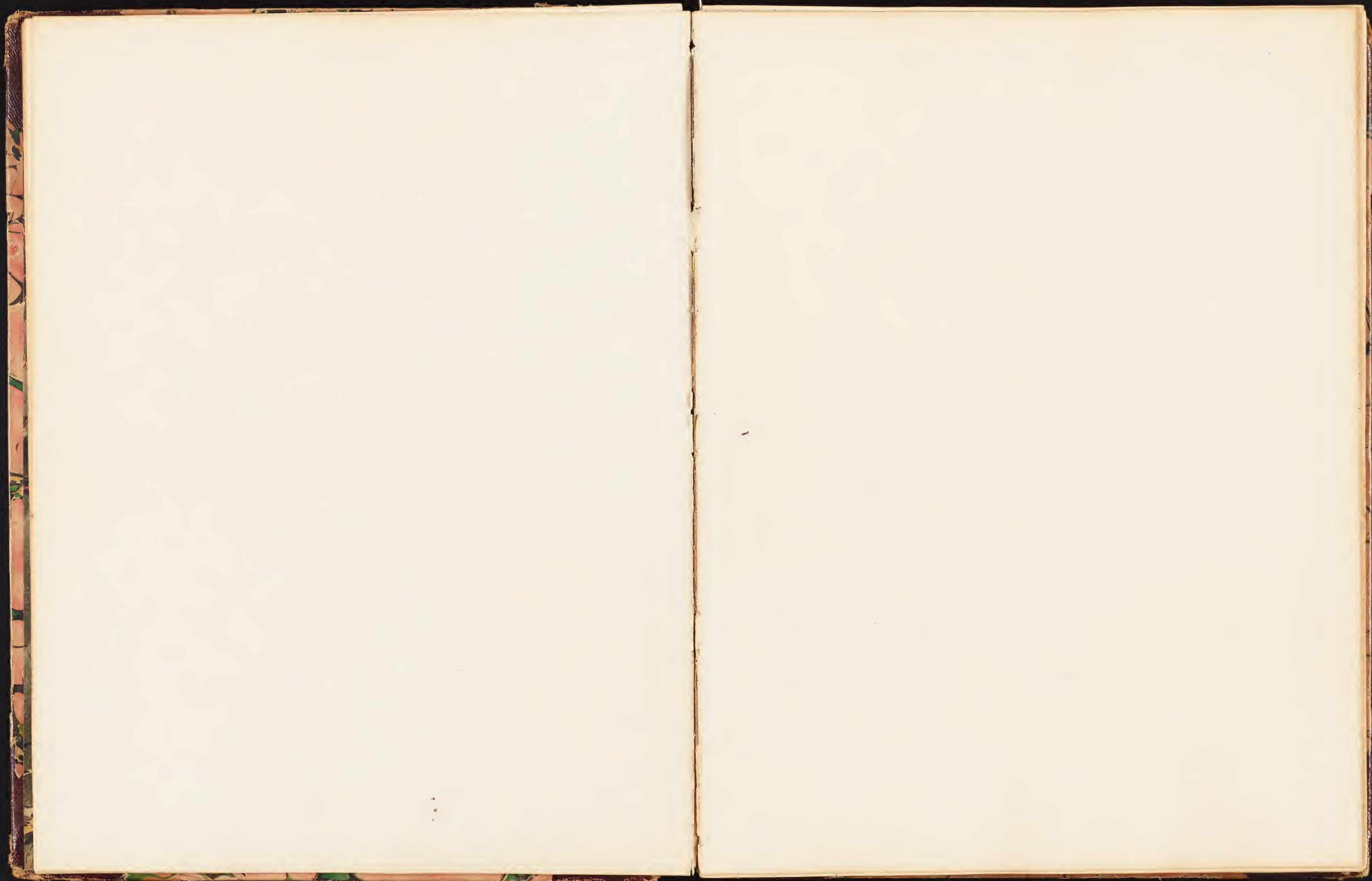
- No. 79-82. - Trachyte - couval
- " 84-86. - Basalt, containing large crystals of Hornblende - ^{Couval}
- " 88. - Basalt, containing Olivine - Couval.
- " 89. - Brownish red Scoria, encrusted with lime. - Brazen Head.
- " 90-93. - Grayish Basalt. - couval.
- " 94-96. - Vesicular Trachyte, containing hornblende, feldspar, and decomposing Olivine.
- " 98-101. - Incrustation of specular Iron; from Cape Giram.
- " 102-105. - Compact Basalt, containing Olivine
- " 128-129. - Scoriaous basalt, containing a few microscopic circular Crystals. - Brazen Head.
- " 123-125. - Scoria, from the Summit of Pico Anuro, the highest peak of Madeira; 6240 feet above the sea.
- " 126. - Pico Anuro - Madeira
- " 127. - Vesicular basalt. - Couval
- " 128. - Brick red Tufa, containing regular crystals of Augite from Santiago (one of the Cape Verde Islands)
- No. 108. - Basalt, from Porto Praya
- " 109. - Imperfect Pitchstone
- " 110-111. - Gray Basalt, from the cliff fronting the harbor of Porto Praya.
- " 112, 114, 115. - The same, containing minute crystals of Natrolite.
- " 113, 116, 117, 118. - Pitchy scoria, with infiltrated carb. of lime.
- " 119-122. - Yellow Tufa, containing Augite in Crystals - from the West side of Porto Praya.
- From Rio de Janeiro
- No. 130-131. - Gneiss, from the Floria quarries near R. Janeiro.
- " 132-133. - Granite, from veins in the gneiss of the same quarries.
- " 134-136. - Porphyritic gneiss, from the quarries just back of Rio, towards Matapora. - This is the prevailing character of the gneiss about R. Janeiro.
- " 137-138. - Granite, from veins in this quarry.
- " 139. - Coarse Granite from the same quarries, containing Iron Pyrites, Crystallized Mica, and feldspar.
- " 140. - ¹³⁹ Distorted Crystal of Iron Pyrites, from the same quarry.
- " 141-144. - The same, with mica and crystals of feldspar. - The small crystals of the latter mineral are transparent.
- " 145. - Crystals of feldspar - from same quarries.

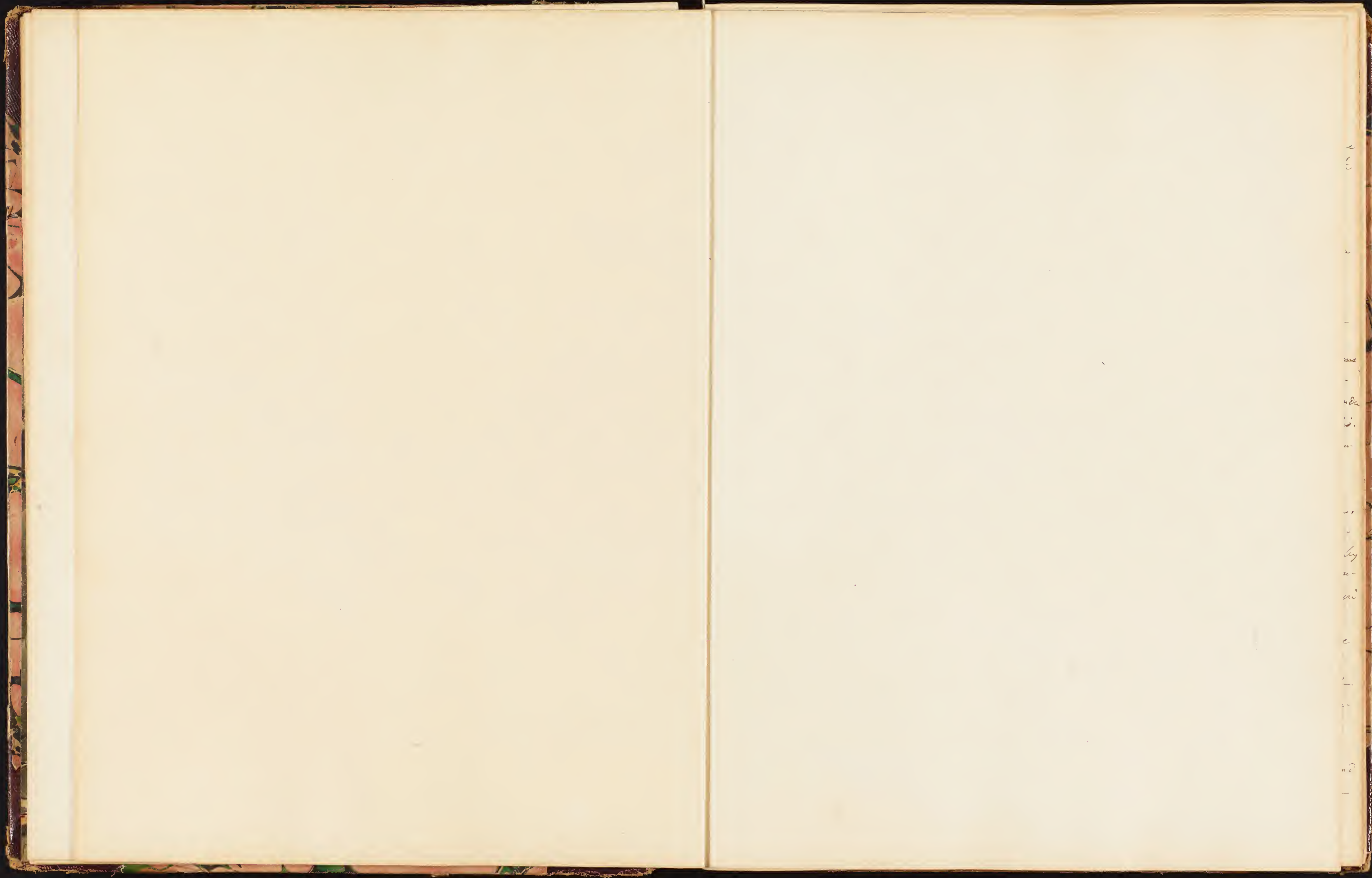
- No. 146. — Feldspar.
 " 147. — The same, with crystals of quartz.
 " 148. — The same, with a small crystal of Apatite.
 " 149. — The same, with a cruciform crystal of mica.
 " 150-153. — Decomposing gneiss. — from the hills back of Rio, — color brick red, resulting from the iron in the decomposed mica.
 " 154-155. — From a very narrow vein of quartz, intersecting the gneiss near the Rio, just to the East of Praya Grande
 " Specimens of Crustacea, sent to the U. States, Decr. 1838
 (Signed), James D. Dana

From Rio de Janeiro

- No. = LXV* (265). — Lupa. — Color dull olive green. Four posterior pair of legs, mostly blue, anterior purplish; verging towards fine blue along the anterior margin. — 4 Specimens
 " = XLII (342) — Lupa spinimona. — Extremities of 4 posterior pair of legs, reddish, verging towards purple. — Anterior legs mostly olive green above, with the extremity of the hand brownish red. — Spines white at base, with brownish red tips. — 3 Specimens.
 " — LIII. — Penaeus. — Color mostly grayish blue, or greenish, somewhat clouded. — 3 Specimens.
 " = XXV (325) — Uca. — Color varying — olive green yellow — never bright. — 3 Specimens.
 " = XLIV. — Penaeus. — Light olive green along the back, sides verging to white, with some brown and lake. — Outer leaflets of tail, fine deep blue. — along the inner margin Antenna, with alternate oblong rings of white & brown. — 3 Specimens.
 " — LIV. — Squilla. — Nearly colorless. Spines on the margins of the 3 posterior joints of abdomen, rose-colored. — 2 Specimens.
 " — LXVI. — Squilla. — Nearly colorless. — ridge, on the segments, bluish copper green. — 4 Specimens.
 " = VI (306) — Pagurus. — Yellowish brown, somewhat reddish in abdomen, and verging to rufous brown, and blackish brown in anterior feet. — 1 Specimen.
 " — I. — Hepatus. — 2 Specimens.
 " — LV. (255). — Cerypeda. — 2 Specimens. Burrows in a beach near Boca
 (man numbered, stand for hundred, is = LXX-265, &c.)

* N.B. In the labels attached to the specimens of Crustacea, the horizontal marks, preceding the No.





e
r
u

e

da

i.

u

o

-

by

n-

ni

e

l.

-

n2

-

Bottle No. 2.

- Ligia*. — 8 specimens. Common about the Harbor.
Alpheus. — 3 do. Found in cavities among the *Serpulas*, &c. near
Praça Grande.
Hippa-emerita. — From the sand beaches near (Botu Laga. — also, more
abundantly, on the N. side of the Harbor of Rio, near the
entrance. more than 10 specimens.
Albuan. — Found on the N. side of the Harbor, with the above
Hippa's — 1 specimen.
Geladonius. — 5 specimens. — 3 Males, 2 Females. Found along a
brushy, nearly fresh swamp, back of the City of
Rio Janeiro, near the Alameda.

Bottle No. 3. Several minute specimens of *Gammarus*,
—, *Nimfithoe*, &c., from sea weed in the Harbor.

- Idotea*. — Length $\frac{1}{2}$ to $\frac{3}{4}$ inch. — found in the Harbor off the City. 3 specimens.
Helina, (Dana) a new genus, allied to *Idotea*. 1 specimen. Found a-
mong the sea weed, along the shores of the Harbor near Praça Grande.
Philoscia. — 3 specimens. Found under stones in the woods near Rio.
Hippolyta — (or allied to it) 10 specimens. Found with the above *Gam-*
marus, &c., among the sea weed along the shores, near
Praça Grande.

Ectodelphys (Dana) *gracilis*, a new genus of the family Schizopoda,
remarkable for carrying the embryo in a pouch un-
der the posterior part of the abdomen, which is formed by
the meeting of a pair of concave lamella. Very abun-
dant in the Harbor of Rio, near Hospital Island, and in
various other parts. Upwards of 20 specimens.

Caprella. — *robusta* (Dana) — Found with the *Gammarus*, &c. above
referred to, near Praça Grande. Very abundant.

Caprella — *catenata* (Dana) Found with the above: not abundant.

Caprella — *cornuta* (Dana) — The same locality as above. Abun-
dant, both Male & Female.

Caprella — *gracilis*. (Dana) With the above. Not abundant.

Caprella — *elongata*. (Dana) Very long & slender. Abundant: found
at the same place with the above species. —

In all these are about 36 specimens of the
above species of *Caprella* preserved in the bottle.

The Contents of Box No 3. Ornith. Dept. per Relief, corresponds with the catalogue; but in Box No 2 per Relief there were 13 Ornith. Spec. with an envelope stating that they belonged to ~~the~~ Box No 3. (some probably No 4? in part?) Box No 4 in very ~~bad~~ bad condition, with only 13 instead of 17 specimens, perhaps a part of the above 13 being here. There was but 72 Ornithological Specimens in No 5. instead of 77; the other articles were as stated in the Catalogue.

No Box No 1 per Relief could be found; there was one with the Relief label No 9 containing the articles called for in this Box. No Box No 2 per Relief could be found. There was one No 10 with 59 Bird Skins. No Box No 3 per Relief could be found; there was one No 11 with 5 Albatross Skins.

Box No 9 of the Botan. Collection, presented its contents in an entire state of decomposition.

"List of Boxes and Breakers containing Specimens of Zoology, Mineralogy, Botany, &c. &c. Collected by the Exploring Expedition, and placed on board the U.S. Ship Relief, for transportation to the U. States. viz:—"

- Box No. 3 } — 1 Cigar Box of Shells, 1 Deer's head & Horns, 1 Skin of
 Contains } Luna Patagonica, 2 Latuscia Minutia, 40 Skins of
 Birds.
- Box No. 4 } — 17 Ornithological Specimens.
- Box No. 5 } — 6 Packages of Shells, 4 Cigar Boxes of do. 2 packages of Star Fish, 3 Ratone Skins, 1 Opossum Rat Skin, 1 Lizzard, 1 Small box of Insects, and 77 Ornithological Specimens.
- Breaker No. 6 } — 1 Guano's Skin, (and 1 Deer do contains }
- Breaker No. 7 } — 1 Guano's Skin, and 2 Fox do contains }
- Box No. 8, contains — 1 Porpoise Skin, & 1 Young do do
- Box No. 1, contains — 6 Albatross Skins, 3 Wolf do, 1 Armadillo do, 24 Bird do, and 1 Porpoise Skull.
- Box No. 2, contains — 52 Bird Skins
- Box No 3, do — 5 Albatross do
- One Breaker do — A Sea Leopard Skin
- One Bundle do — 14 Lances from the Savage Islands.

"The foregoing list of Specimens were collected by Mr. J. R. Peale, Naturalist of the Exploring Expedition. The Boxes are marked "Exploring Expedition, Zoological Dept. No. 2c. and are sealed with the Seal of the Expedition."

Breaker No. 1. — Contains Crustacea
 do " 2 do do
 Boxes Nos. 2, 3, 4, 5 do Minerals, Collected by Mr. J. D. Dana, Mineralogist, Marked, the Keys, "Crustacea", and the Boxes, "Mineralogy, Exploring Expedition", and are sealed with the Seal of the Expedition.

Boxes Nos. 1 to 8, — Contain Botanical Specimens: Box No 9, seeds and Plants. "Collected by Messrs. Wm. Reich, Botanist, and Wm. D. Brackenridge, Naturalist; Marked "Botanical Specimens, Exploring Expedition", and sealed with the Seal of the Expedition.
 Box No 2: contains Zoological Specimens.

Breaker No 3. & 4. Contain Zoological Specimens

Boxes, 1, 3, 4, 5, 6, 7, 8, 9, 10, 11, 12, 3. — Ditto

" Collected by Messrs. J. P. Coathony and C. Pickering, Naturalists; marked "Exploring Expedition, Zoological Specimens" and are sealed with the seal of the Expedition.

One Box marked "Mummies, Exploring Expedition."

One do do "Sea Water in Bottles, from different depths, Exploring Expedition."

(Signed) Charles Wilkes
Command. Explor. Exped.

Note: "On page 1st. the two checked Boxes, and Breakers are not to be found, but there are 3 extra Boxes on board, marked "Zoological" Nos. 9, 10 & 11, which are not on the list, and are probably the articles missing. — Some of the marks were altered by the Scientific Gentlemen, after they had been received on board at Callao, with the original list, which list was not altered, and this may account for the discrepancy. —

In addition, we find among the collection one box of Artificial Curiosities, and one do of Crustacea — No. 8, on page 1st. it is presumed is intended for a Breaker, and not a Box. —

- 1 Package in Canvas, marked shells from Ship Relief.
- 2 War Clubs and Staff, from Marquess Island
- 1 Dagger, from Kingmill group.

I acknowledge to have received on deposit the foregoing articles to be held subject to the order of the Hon. the Secretary of the Navy, or the Commander of the Explor. Expedition, at the risk of the Government.

(Signed) Franklin Peale

for the Museum Company

"There is some confusion in the number and marking of the boxes, and one or two not included in the foregoing list: all of which were received on the 1st. of April 1840, from Lieut. J. B. Dale.

(Signed) Franklin Peale

Invoice of sundry packages received from the Exploring Squadron, and shipped by Leonard Jarvis, Navy Agent, at the Port of Boston, on board the Brig Acorn, Capt. Howes, bound for Philadelphia, and consigned to Michael W. Ash, Navy Agent, at the latter port, for account of the U. States, viz:-

	#12	1 Box	Mineralogical.	Porpoise.
		16	1 do	do
		14	1 do	do
X	C	3	1 do	Shells
	M	14	1 do	Spongia. From Major Barney. Vincennes
		9	1 do	Mineralogy
		17	1 do	Botanical
	⊕	9	1 do	Ornithological. Vincennes
		21	1 do	Botanical
	⊕	8	1 do	Ornithological. Vincennes
	⊕	10	1 do	Curiosities. do
		22	1 do	Botanical
		10	1 do	Mineralogy
		5	1 do	Coral
	⊕	11	1 do	Shells from Remote Group
		13	1 do	Ornithological
	WR	16	1 do	Botanical
	WR	15	1 do	do
		4	1 do	Coral. Peacock
	no number	1 do	Specimens.	U.S. Brig Porpoise
		13	1 do	Minerals
		12	1 do	Ornithological
		3	1 do	Coral
		10	1 do	Ornithological
	E	5	1 do	Shells
		18	1 do	Min. Dept.
		15	1 do	ditto
		11	1 do	Mineralogy
		1	1 do	Coral (large Box)
		6	1 do	do (do)
		2	1 do	do (do)
		19	1 do	Botanical
	D#	4	1 do	Shells
		4	1 do	Crustacea. Peacock

over

	7	1 Box.	Mineralogical.	Peacock
	8	1 Do	Do	Do
	17	1 Do	Min. Dept.	
+	A.	1	1 Do	Shells
	B	2	1 Do	Do
	9	1 Do	Ornithological.	Peacock
	no number	1 Do	Philological Dept.	Do
+	M X	13	1 Do	Shells
	no number	1 Do	Sea Water at various depths	Kineenies
	12	1 Do	Dried Echini & Asteria	
	18	1 Do	Botanical	
	no number	1 Do	Ornithological	
	6	1 Do	Mineralogical.	Peacock
	23	1 Do	Botanical	
	1	1 Do	Seeds	
	2	1 Do	Do	
	8	1 Do	Mineralogical Dept.	
	no number	1 Do	Coral	
	6	1 Bbl.	Shells	
	* V	1 Dr. Cask.	Zoological.	Kineenies
	5	1 Bbl.	Shells	
	no number	1 Do	Specimens -	Brij Ponpoise
	6	1 Do	Native Implements.	Peacocks
	no number	1 Do	Coral	
	1	1 Half Bbl.	Do	
	4	1 Do	Do	
	3	1 Do	Do	
	2	1 Do	Do	
G	7	1 Keg.	Muriate Ammonia	
	4	1 Bundle,	Tapa	
	10	1 Do	Ponpoise	
	16	1 Do	Do	
	1	1 Do	Tapas and mats	
	2	1 Do	Do	
	3	1 Do	Do	
	no number	1 Do	11 Spears. 1 Paddle	
	8	1 Do	Ponpoise	
	no number	1 Do	3 Clubs from Mr. Heath.	

over

9	1 bundle	6 spears.	Tootoovilla.	Porpoise
no. no.	1 do.	1 bow, 1 adze,	4 small spears.	
3	1 do.	War Clubs.	Tootoovilla.	
1	1 do.	6 spears, 3 Clubs.	Tootoovilla	
no. no.	1 do.	7 do.	do	
do	1 do.	6 do. 2 Clubs.	Jeli Manna	
2	1 do.	Botanical Department		
no. no.	1 do.	(Small) Series.	Manna Navigator	

80 Boxes, Barrels, Halves of Barrels, & Bundles.

Navy Agents' Office
 Boston. 10th June 1840
 (Signed) Leod. Jarvis

"Rec^d. June 18th. 1840 of the Navy Department, Two Boxes
 of Seeds from the Exploring Expedition, Marked No. 1 & 2.
 (Signed) John W. A. Rann

"I acknowledge to have received this, the 10th day of
 June 1840, Eighty Boxes, Barrels, Half Barrels, and
 Bundles, agreeable to the foregoing list, being articles
 sent to this Country by the Exploring Expedition, under
 the command of Lieut. Wilkes, all of which (with
 the exception of 2 boxes of seeds, delivered to John W.
 A. Rann) are held subject to the order of the Secretary
 of the Navy of the U. States, at the risk of the Govern-
 ment.

(Signed) Franklin Peale

Catalogue of Boxes, Barrels, &c. Shipped on board the American Ship
 L'Anse-au-Loup, and consigned to the Navy Agent at New York

- + Box I. No. 20. Shells Tongataboo.
- + " U. " 21 " "
- " V. " 22 Ornithological Specimens
- " W. " 23 Curiosities from Hege
- " X. " 24 " "
- " Y. " 25 Deep Sea Water
- + " Z. " 26 Shells from New Zealand, &c.

7 Boxes.

- + Box No. 1 to 19 contain Shells from Hege Islands.
- + Box No. 20. Shells ~~and~~ Curiosities
- " " 21 Skulls from Mani. & Ranai
- " " 22 Shells and Curiosities
- " " 23 Hege Earthenware
- " " 24 Shells and Curiosities
- " " 3 Seeds and Roots
- " " 25 to 30. Botanical Specimens
- " " 18, 19, 21. to 26, and 31 to 33. Ornithological Specimens
- " " 20 to 26. Mineralogical do.
- " " 1, 2, 3, 4, 6, 7. and Sub. 8, contain Coral from Hege Islands
- Barrels Nos. 1 to 6 and 17 to 20, contain Shells from do.
- Do " 6. Zoological Specimens
- Bundles " 1 to 28 - Curiosities from various places
- Do " 20, 27, 28, 29, 30, 35. Curiosities collected by the Peacock
- Boxes " 1 to 4. - Shells collected by the Porpoise from Hege Islands
- Do " 5. - Spears. W. Ship Peacock
- 1 Hege Drum
- 1 Box containing a Sleigh from Kamohatoka
- 1 Do No. 4. Flower seeds
- 1 Do Sandwich Island Wheat
- 3 Bundles War Clubs. Hege Islands
- 1 Box Philological Department

1730
 115

List of living Plants in Case —

- No 1. — *Epidendrum* Species — 2 plants
- " 2. — *Dactylum* Sp. (Sandalwood)
- " 3. — *Dylophyllum* " 2 plants
- " 4. — *Terminalia* " 2 do
- " 5. — *Carica* *Papaya*
- " 6. — *Cerbera* *Paniculata*. 2 plants
- " 7. — " Species
- " 8. — *Catsetum* "
- " 9. — *Hamandia* *forosa*
- " 10. — *Java* Sp.
- " 11. — *Dioscorea* " *Large Sweet Potatoe*. (2 plants)
- " 12. — *Solanum* " " *Tomatoe*. 3 do
- " 13. — *Passiflora* " 2 plants
- " 14. — *Mamantia* *Arundinacea*
- " 15. — *Tumnie*, with several sorts of seeds not yet germinated.

List of Boxes, Packages, &c. containing Specimens collected by the Exploring Expedition and shipped to Boston, per *Barge Shepherd*.

- Boxes A. B. C. D. E. numbered from 1 to 5. contain shells from the Islands of the Pacific.
- Barrel F. No. 6. — do do
- Bag G. " 7. — *Muriate Antimony* from *S. Shetland*
- Boxes H & I. " 8 & 9. — Ornithological Specimens
- " J " 10. — Curiosities 192
- " K & L. " 11 & 12. — Specimens of dried *Echini*, *Asterias*, shells.
- " M. " 13. — Small boxes of Mineral Shells
- " N. " 14. — *Spongia*. *N. Holland*
- Bundles from 1 to 9. — Native Supplements from Islands of the Pacific
- Do from 1 to 4. — Tapes & Mats from Navigator Islands
- Tubs. from 1 " 4. — Specimens of Coral
- Boxes. No. 5 & 6. — Ditto
- Do " 1 to 4. — *M. S. Ex. Ex. Coral* No. 1 to 4
- Do " 1. — *Crustacea* (*M. S. Ex. Ex.*)
- Do — *M. S. Ex. Ex. Philological*

All the shells
See each

- 3 Boxes Nos. 6, 7 & 8. U.S. Geol. Surv. Mineralogical
- 1 Do " 9. Ornithological
- 1 Barrel " 6. Native Implements
- 1 Do " 5. Shells
- 2 Boxes marked "Specimens, M.A. Brig Parsoni"
- 3 Bundles Native Implements etc etc
- Boxes from 15 to 20 Botanical Specimens
- 1 Bundle Do do
- 1 Small Box Seeds.

All numbered
 accurate

Catalogue of Specimens collected in Madeira, M. Fago, and Rio de Janeiro, by St. Charles Pickering & Joseph P. Coutherny - and forwarded to the U.S. from Rio de Janeiro. Decr. 1838.

Reg. No. 1 contains -

- 1 - Caranx with 3 dorsal fins - 2 specimens. Port Praya, Cape de Verde
- 2 - Pagellus (Greenish Cur?) ditto
- 3 - Smaris ditto
- 4 - Carcinonotus ditto
- 5 - Polynemus 2 specimens ditto
- 6 - Lebia 2 do ditto
- 7 - Vomer ditto
- 8 - Muraena ditto
- 9 - Echeneis Oct. 9, 1838. 3 days South of Port Praya
- 10 - Caranx. August 38 6 day, from the States
- 11 - Head of Eucetis sciliens Oct. 2. 2 Mign. E. of C. de K. Island
- 12 - Rana temporaria - Madeira. Introduced from England
- 13 - Halittis - Madeira
- 14 - Patella Lentellaris - Do
- 15 - Do smaller of the two. New, appeared rare at Madeira
- 16 - Animal of P. Lentellaris, Madeira
- 17 - 2 Chitons Letiferous. Camora de Lobo, & Punchal rocks. (scarce)
- 18 - Pagurus. San Vicente. Rocks at low water
- 19 - Aleyonurus. Gulse Bay, Port Praya. Abundant
- 20 - Mammillifera - do do do
- 21 - Patella do do do
- 22 - Buccina do do (new)
- 23 - Littorina Strigata Ring do do
- 24 - do gracilis Coutherny do fig'd by Mr. Drayton.

- | | | | |
|-------|-----------------------------|---|---|
| ✓ 51. | <i>Sactylopterus</i> | Sold in Market at Rio. | Common |
| ✓ 52. | <i>Alosa</i> | | ditto |
| ✓ 53. | <i>Tetraodon</i> | | ditto |
| ✓ 54. | <i>Hemirhamphus</i> | | ditto |
| ✓ 55. | <i>Rana</i> | Aqueduct | 2 Specimens |
| ✓ 56. | <i>Anguilla</i> | Sold in Market at Rio | |
| ✓ 57. | <i>Priscanthus</i> | | ditto |
| ✓ 58. | <i>Alosa</i> | | ditto |
| ✓ 59. | Genus like <i>Batrachus</i> | | ditto |
| ✓ 60. | <i>Myripristis</i> | | ditto fig. by Mr. Dayton |
| ✓ 61. | <i>Sciæna</i> | | ditto |
| ✓ 62. | <i>Tetraodon</i> | 2 Specimens larger from Praya Grande, smaller | (found in Market) |
| ✓ 63. | <i>Serranus</i> | | Sold in Market at Rio |
| ✓ 64. | <i>Sphyræna</i> | | ditto |
| ✓ 65. | <i>Phycis</i> | | ditto |
| ✓ 66. | <i>Sargus</i> | | ditto |
| ✓ 67. | <i>Glyphisodon</i> | | ditto |
| ✓ 68. | <i>Pereis</i> | | ditto |
| ✓ 69. | <i>Hæmulon</i> | | ditto |
| ✓ 70. | <i>Gobius</i> | | ditto |
| ✓ 71. | <i>Chatodon</i> | Common in Market at Rio | |
| ✓ 72. | <i>Raia</i> | | Sold in Market at Rio |
| ✓ 73. | <i>Belone</i> | | ditto |
| ✓ 74. | <i>Hæmulon</i> | | ditto |
| ✓ 75. | <i>Do</i> | | ditto |
| ✓ 76. | <i>Leombridae</i> | | ditto |
| ✓ 77. | <i>Argocheilus</i> | | ditto |
| ✓ 78. | <i>Percopsis</i> | | ditto |
| ✓ 79. | <i>Cyprinodon</i> | | ditto |
| ✓ 80. | <i>Labridæ</i> | from Mr Breckenridge | Coast near Rio. |
| ✓ 81. | <i>Alosa</i> | Market | |
| ✓ 82. | <i>Pomelodes</i> | do | |
| ✓ 83. | <i>Hyla</i> | Tijica - (Blackmouth Frog) | |
| ✓ 84. | <i>Amblystoma</i> | Mr. Breckenridge | |
| ✓ 85. | <i>Trygon</i> | Market Rio | Also 34 Specimens of 17 different |
| ✓ 86. | <i>Aluterus</i> | do | species of <i>Crustacea</i> , and a large |
| ✓ 87. | Birds | Vicinity of Tijica. | number of <i>Paguri</i> in various |
| ✓ 88. | <i>Gerres</i> | Market of Rio. | shells, vicinity of Rio de Janeiro, |
| | | | described by Mr. Sona, in separate |
| | | | etc catalogues. <i>quæ vide</i> |

- No.
 ≡ IV (304). — *Lupa*. — Carapax dark olive green. 1 Specimen.
 = XC VIII. — *Pagurus*. — Several Specimens, in Univalve shells.
 - XXXVIII. (138). — *Pagurus*. — ditto ditto
 X. (10). — Do. a third species.
 ≡ III. (303) — *Cancer*. — Abundant on the Islands and shores of the Har-
 bor of Rio. 2 Specimens.
 - LXXIII. (173). — *sea Arma*. — From Lake Petenunga, about 7 miles from Rio.
 3 Specimens.
 - XXIV. — *Cantho*. — 1 Specimen.

Bottle No. 1

- No. LXXXVII. — *Cymothoa compressa* (Dana). — 1 Specimen
 " - LXXXV. — Do. 20 Specimens or more. Abundant on species of
 Fish of the genus *Suna*, and other genera.
 " = IX. — *Cymothoa*. — (Should probably form a new genus). Taken from a
 Flying Fish, (*Exocoetus exilis*) in Lat. 6° 1' S. and Long 29°
 3' W. — It was attached to the inside of the mouth.
 " XXI. — *Ichthyophilus*. — (Dana). — 1 Specimen. Obtained in the
 Rio Fish Market.
 " - LXXIX. — *Ichthyophilus*. — (Dana). — 1 Specimen.
 " XXXVIII. — *Ichthyophilus tenuipes* (Dana). — 1 do
 " XXXIII. — Do. one or two specimens
 " XIX. — Do. do do
 " XCVII. — *Canolisa emarginata* (Dana). — 1 Specimen
 " - XCVII. — *Canolisa pallida* (Dana). — 10 or more Specimens
 " ≡ X. — *Porcellana*.
 " = XCIV. — Do. a 2nd. Species.
 Do a 3rd. do
 " = VIII. — *Grapsus*. — 2 Specimens
 " XII. III. — Do — 2nd Species
 Do — 3rd. do. 3 Specimens
Cantho. — Same as - XXIV.
 Do — 2nd. Species — 2 Specimens
 Do. (Dana) 3 Species. — 2 Specimens
 " - LXXII. — *Telphusa* — 3 Specimens
 " = XI. — *Aesarma rubra ventris* (Dana) From Lake Petenunga, 7 miles
 from Rio. 1 Specimen
Pagurus. — 18 Specimens.
Nelocera. — 2 do.

✓ Jar No. 1. contains, *Dynamene disticha* with ovaries. com-
mon on Sargassum. N. Atlantic.

Plumularia. ditto
Campanularia - simple alternate branched. ditto

Hydrophyte - Resembling *Boerhaavia* from Sargassum.
Annelide - from Sargassum. winds itself about with a sort of
Hydrophyte. - do

✓ Jar No. 2. contains, *Palaemon*. common among Sargassum.
Genus allied to *Palaemon* - Sargassum. - some specimens ^{ocular} ~~traces~~
Plumularia - with ovaries attached

✓ Aluteres. Stomach of *Coryphaena*. Aug. 24th.
Campanularia. with ovaries developed. Sargassum

✓ Minute Salpa - Lat. 36° 38' N. Long. 40° 54' W.
✓ Yew? Stomach of *Coryphaena*. Aug. 24. 1838

✓ Another small fish. do do
Grapsus Abundant on Sargassum
Hydrophyte. Sargassum. Lat. 37° N. Long. 59° 38' W.
do do resembling coralline

✓ Gammarida do Lat. 37° N. Long. 59° 38' W.
Annelide do common. Same as in No. 1

✓ Small Annelide - floating Bamboo. Aug. 24. 1838.
Hydrophyte. Sargassum (like *Ceramium*) Middle Atlantic
do do

✓ *Litiopa maculata*. Rang. do everywhere
✓ *Spin. bisulcatus*. Conthony. do do
✓ *Palaemon* (?) pelagicus - Box Sargassum one specimen

Hydrophyte. Sargassum Lat. 37° 48' N. Long. 54° 37' W.
do do

✓ Jar No. 3 contains, *Alcyope*? floating Bamboo. Aug. 24. 1838
✓ *Anatifa dentata*. do do

✓ *Cheironectes* - Sargassum
✓ Jar No. 4. contains, *Alcyope*? floating Bamboo. Aug. 24. 1838

✓ *Lupa eticantha* - Edm? young. Abounds on Sargassum
✓ *Palaemon*. Sargassum everywhere

Genus allied to ditto. do do (of Azores, Sept. 1838)
✓ Jar No. 5. contains, *Salpa cristata* var. some half grown, vicinity
✓ *Phoronida* inhabiting general cavity of preceding Mollusc.

Jar No. 6. - contains, *Pelagia appendiculata* (med. pel-
 agica Bose) Lat. 36° 38' N. Long 40° 54' W.
 Gammaridae - Floating Tree. Sept. 6. 1838
 Jar No. 7. - Palamon - Pools left by tide. Funchal.
Actinocyclus? do do
 Hiruda - under wet turf. - outlet of the Coural
 Nalus. - Outlet of the Coural
 Lumbraeids. - ditto
 Ligia. - On stones within tide marks. Funchal & St. Vicente
 Armadillo - Outlet of Coural of Rio Nuevo
Strebella. - do do
 Minute Gammaridae - Corallines. - Coast near Funchal
Siphonculus? do do
 Paguri. - Sea shore, San Vicente
 Nereid. - do do
 Grapsus. - Within tide marks on stones. - Coast near Funchal
 Jar No. 8. - Scutigera. - Coural, Madeira near 2nd outlet.
 Julus. - large knotted species, with young. - same locality
 do. - smooth & dark colored. - Rio Nuevo
Thouhidium. -
 Aphasus? Outlet of the Coural (6240 feet)
 Epeira. - the large fasciated species. Rio Nuevo, summit
 Lycosa. - the largest species. do do
 Phalangium. - do do
 Several Araneids, precise localities not recollected
 Geophilus. - Rio Nuevo (Others from Rio Nuevo)
 Jar No. 9. - Forficulæ. - largest specimens from the Coural.
 Forficulæ. - Another species, black, large, with short appendages. Coural
 Blapsidæ. - Outlet of the Coural
 Gyrinus. - 2 specimens. do
Psephenon? large, green. - Coural
 Several Carabidæ. do
 Alydus? do
 Ciccinella, 7 points Rio Nuevo
 Blatta - variegata do. - very common
 Acheta. - large Santa Anna - Madeira
 Termites. - do
 Locusta. - do

Ferris. - Santa Anna - Madeira
 Hormica - 2 species Do
 Elms. - bottom of a torrent betweenunchale St Anna
 Pentatoma. - 2 species
 Curculionidae. Pico Ruivo
 Calathus? several specimens. Do. summit
 Scarites - large species. Near St. Anna
 A number of other carabida. &c. Do
 Mar No. 10. - Actinia *refulgens*. South. Kalse Bay, St. Jago.
 Cape de Verde. - brilliant crimson. Figured by Mr. Drayton.
 Sipunculus? Among corallines. vicinity of St. Jago (Jago)
 Sabella. - forming extensive beds within tide mark on rocks. St.
 Annelide. Port Praya. (Jago)
 Scalopenthera. with young, very common under stones in St.
 Cincinnela. - common on beaches. vicinity of Port Praya
 Scutellera. - vicinity of Port Praya
 Pentatoma. - Larva Do
 Locusta. - large green species. Do
 Achea. - Do
 Gryllus. - Do
 Heteris. - Do under stones
 Cimicidae. - Do
 Carabida. - Do
 Xanthidium. - Do
 Epeira. - large, body yellow. Do. beach.
 Araneid. - small species. Do. (under stones, &c.)
 Coleoptera. - Do. several specimens.
 Mar No. 11. - *Anatipalavis*. - Lat. 36° N. Long. 22° W. drift log.
Tereos navalis. " 37° " " 46° " large floating log.
 " *bipalmulata*. - ditto ditto
 Gammarus. - small. ditto ditto
Planus Forsteri auct. (Hexapterygiid Rang) several specimens. all
 N. Atlantic, to 18° North.
 Larva of Ferris. - N. Atlantic, from Equator to 30° N. Lat.
 Sipunculi. - Near Port Praya, among corallines
 Cephalopis. Dana. Parasitic on Pelagia & Salpa. N. Atlantic.
 Eucastus. - young. Lat. 4° N. Long. 21° W. (Drayton)
 Mar No. 12. - Pelagic, from Equator to 15° N. Long. 18 to 22° W. fig. by Mr.

Cyrtosoma rubripunctata. - Couth. 3°43' N. 16° W. ^(dip of Pelagia?)
Phormisina sedentaria? Lat. 6° N. Long. 20° W. parasitic, inside
Hyalaea, parasitica. Couth. minute. 9° N. 24° W. do. do
Planaria. - *velox*. Couth. Equatorial seas, Long. 19° W. frequent
Salpa dolioformis. Couth. Lat. 7° N. Long. 23° W. note Book no 2, p. 1.
Glaucus, Cymosomata. Couth. Equatorial seas. "
Diphyes serrulata. Couth. Equator. Long. 17° W. Note Book no 2, p. 1. ⁽⁹⁵⁾
Plethosoma. Lesson - portions, Lat. 3° N. Long. 20° W.
Hyperida, from preceding - parasitic
Vesicle of Anthuria fragilis (light winds)
 Small Bomberoid - Equator, Long. 16° to 19° W. followed the ship in
Atlante umbilicata, Couth. Stomach of *Thynnus*. Lat. 3° S. Long. 20° W.
do membranacea. do. do do do ^(by part)
 Star No 13. - *Actinia refulgens*. Couth. near Port Praya. rocks washed ^(by part)
Actinia pustulata. - Couth. do do do ^(by part)
 " *multistriata*. " do do do ^(by part)
 " *florida*. " do do do ^(by part)
 " *arenata*. " do do do ^(small spots)
 " *coxiacea*. " do do do ^(Book no 1, p. 140)
Anthuria vesicle (becker Lesson) Equator, 17° W.
 " *lata*. Couth. do fig. by Mr. D.
Glaucus - Port Praya. Rocks washed by the surf. 7 pieces with it.
 Star No. 14. - *Cyrtosoma atlanticum*, Le Sueur. Lat. 4° S. Long. 20° W. sea
Cephalopode - Stomach of *Thynnus*. Lat. 3° S. Long. 20° W.
Aspirula. do do (tonal sea)
Vesicle Yova of Anthuria communis. Lat. 10° N. Long. 17° W. & Equator
Glaucus. Rocks exposed to surf at Port Praya
Kidderella. *apra*. Duoy & Gaim. with animal. Port Praya
 " *opalma*. Couth. Table Bay, near Port Praya
Chilomenoid. do do
Littorina. do do
Salpa violacea. Couth. Lat. 4° S. Long. 22° W. fig. by Mr. Drayton
 Star No. 15. - *Vitina Lamarkii* - Ferruss. Mountains of Madecira
 " *Russensis*. Couth. Summit of Pied Rousso, 6240 ft. above sea.
 " *deprimata*. do. mountain near St. Anna. 4600 " "
 " *major*. do. " " Arco de San, ^(Madecira) 3700 ft.
Limax - 2 species - new described by Mr. Couthony, Note Book 1 - from Madecira
Helix nitidiuscula. New. Madecira

Several other small helices. - Madeira / (Green Tenerife)
 Anceylus. mountain streams. Madeira. possibly a striata Quoy &
 Lat. No. 16. Lacerta dugesii. 2 species. Madeira. Common
 Anolis. 2 specimens. Oct. 9. near Cape de Verde.
 Glaucus hircapterygius Rang. Equatorial Seas. Long. 18° W. Nov. 5. } 1838
 Palaeomonidae. do do
 Eocetis - young Oct. 27.
 Blennius? young, 300 miles N.E. of Cape Verde. Nov. 21.
 Small scombridae. Oct. 18. between Cape de Verde & Equator
 Caligus. Tropical Atlantic. Stomach of Echeuis. Oct. 19.
 Lat. No. 17. Blennius. 2 species. Madeira
 Megalops. Equator Nov. 5. Long. 18° W.
 Pyllosoma. do " 8.
 Salpa violacea. Couth. do " 5. & 12. 1838
 Euphausia. (Dana) Equatorial Seas. Atlantic
 Hyperida - on Salpa Pelagia. do do
 Blennius - Several specimens from Madeira. Pools left by the tide.
 Syngnathus - from Sargassum. - Atlantic Ocean. (Tropical Seas)
 Fragments of a singular crustacean. Stomach of a Pyllosoma - Equator
 Hyperida; from Salpa - medusa, do Equatorial Seas
 Lat. No. 19. - Hydrophyte, like Fucoides - San Vicente - Sea
 Coast. North side of Madeira
 Ferris. Common from C. de Verde to the Equator, on surface
 Fruit of Jatropha Curcas. Cape de Verde & St. Jago
 Hydrophyte - like Tremella - San Vicente
 Spongia - Cylindrical - Madeira, near Funchal
 do sessile - encrusting. ditto
 Hydrophyte - mucilaginous - lobulate - San Vicente
 Lat. No. 20. - Lacerta dugesii - several specimens. Madeira
 Platydaetylus, with the tail detached. St. Jago
 Hemidaetylus do
 Simus do
 Lat. No. 21. Collected by Mr. Rich. (the 8th.)
 Cheironectes - Sargassum. One, Sept. 1. - 33° 16' N. 60° 42' W. the other on
 Lupa. Dicranthus Edw. Sargassum. do do
 Palamon do do do
 Syngnathus do 33° 19' N. 49° 19' W. Sept. 8.
 Pyrosoma. Nov. 12. Lat. - 1° 28' N. Long. 23° 51' West

Siomon. Sept. 17. Lat. 32° 19' N. Long. 41° 42' West

Eutrozoa. 2 Specimens. large - dark red. Stomach of *Aphyrona*.

Lat. 33° 2' N. Long. 41° 12' West

Qstracion. - 2 Specimens. Small - Stomach of Dolphin (*Coryphæna*)

Exocetus - young.

Mar No. 22. - Objects all from Rio de Janeiro

Tetraodon. very small. Sea beach

Dargastum. among refuse in the Fish Market

Genus allied to *Batrachus*. Market of Rio

Tetraodon Do

Centrisca & sea coast. pools left by the tide (weather)

Batrachia - yellow. *Tijuca*. among leaves at roots of trees, in wet

Eggs of *Hemidaetylus* - among dried leaves of *Bromelia*, near Bota

Toga - young animal hatched from 2 of them, under the observa-
tion of Mr. Courthorn.

Agama - young - common

Scincus - Do

Lebias. - lineated. Stream of fresh water beyond Bota Togo.

Do - fasciated. mud pools & stagnant marshes near Rio. abundant

Sparida. - Market

Rana - with black occipital spot. Small wood near *Tijuca*

Solea. - Fish Market

Syngnathus. - Do 2 specimens

Hemidaetylus

Rana. Small

Percoides? Young. Beach near Praya Grande. 2 specimens

Gobius. Bay of Rio. (Midshipman Elliot) 2 specimens

Blennius - Do (do) Do

Haipracampus. Do (do) Do

Prylus. - Praya Grande

Aluterus. Young. Fish Market

Gobius Do

Plagusia Do

Perret Do

Caranx Do

Hyla. Bed of Torrent in Organ Mountain. 2 specimens

Bufo. Estralla - opposite side of Bay. (fishes.)

Leptocephalus. Bay of Rio. (Mr. J. W. W. Dyer) See Yambel's Brit.

Keyla = small. Woods of Tijuca.

✓ Lar No. 23.

Hydrophyte, resembling *Tucoides*. May of Riv. Common

Do full of globular vesicles. Do

✓ Lar No. 24 - All objects from the Organ Mountains.

✓ *Polydesmus*. 2 Specimens

Gryllus.

Careulis imperialis

Copris

✓ *Gonoleptis* 2 Specimens

✓ *Blatta* 2 Species

Elater - phosphorescent

Megacephala - Rio Pambanka. 2 Specimens

Cassida

Do brilliant species

Galeruca 2 Specimens

Pentatomia

Pangonia? (see jar 23 - large herb.)

Triplax

Amelida

Cassida

Triplax

Pentatomia

Lettigonia

Altica

Triplax 2 Species

Garysomela

Adourius (red thorax)

Altica

Do

Trichius?

Leptellera

Mylabris?

Lygus?

Araneis

Do - resembling *Formica*

✓ Larva of *Geometra*

✓ Do " *Lepidoptera* Rio Pambanka

Corvici? Rio Piambauha

Hornica

Altica - 2 small species

Passalus & acurata parasitical on it

Rutila 3 species

Curculionadae . 8 species

Var No. 25. Insects from Rio.

Gryllus. larva gregarius. Shouldered & spotted. Bota Hoga. Hedge

Blatta? 2 species. Woods near Bota Hoga

Coccinella. Small. Sea beach

Chrysomela. Woods near Bota Hoga

Phaleria 2 specimens. Sea beach

Acheta ♀♂ woods near Bota Hoga

Julus. Small. Road side beyond Bota Hoga

Hornica? near sea shore

Curculionidae. 3 species. Bota Hoga

Passalus. Marshes West of Rio

Libellula Larva. do

Palistes

Termites

Notonecta Stagnant pools of fresh water - 12 specimens.

Hydrophilus do do

Eggs of Mantis Aqueduct

Larva Pools of fresh water

Altica vicinity of City

Chrysomela do

Tenebrio do

Ceocypis do

Stenocorus do

Bombus do

Polydorus? Margined. Rocks near the sea

do do do

Bacillus Bota Hoga.

Acheta do green

Loensta do

Cassida do

Tenebrio do

Curculionidae do

Lygæus Bota Fogo
Melolontha Praya Grande
Cicindela - Beach near do 5 specimens
Passalus Praya Grande
Lamprocygus do
Cleridæ do
Cerambyx do green
Calandra do
Curculionidæ do
Lebia? do fresh water stream
Lycus do
Chrysomela do
Elater do small
Hornica - winged - large do
Hydrophilus do do
Scolopendra - small - verdigris green. Hotel, front of landing } Rio Janeiro }
Phasi Corcovado Mountain
Passalus do large species
Gryllus do green-red & black under } wings?
Lytta do
Altica 2 specimens do black, with red head & thorax
Julus Woods of Fijuca
do do large
Car No. 26. - Araneids from Rio and vicinity
Epeira abdomen 5 lobed, silvery. Beach of Bota Fogo. fig. by Mr. Drayton
do do Aqueduct, near city
do large one. Webs on trees, near sea shore
Salticus Bota Fogo
Epeira long one Trees & coffee bushes
do orange back Bota Fogo fig. by Mr. Drayton
Dolomedes? large. Fields & houses. 3 specimens & quantity of young ^{in sacks}
Epeira? very small. Aqueduct
Theridium abdomen like a silver drop. Aqueduct. 3 specimens
Tubitelis Bota Fogo (Drayton)
Epeira large. Abdomen green & yellow. elongated fig. by Mr. Drayton
attains an inch and a half in length. Webs on trees by sea coast
Tubitelis - Lagoa de Peteninga
Salticus - Praya Grande

Epeira: abdomen downy. subconical back, yellow underneath, rosy. Hotel.

Star No. 27.

(see Note Book 2. p. 139)

- Octopus speciosus. South Beach near Bota Togo. viv. descri-
be Elliott. " Hospital Is. by Mr. Elliott. (p. 156. do do
Personica involens. " do among Serpula. (p. 143. do do
Notarchus lacinalatus. " Entrance of Harbor of Rio. (p. 136. do do
Bulla. like B. striata (shell) Outside of do. 2 Specimens
Monodonta. 2 packages. Common on Rocks in Harbor
Venus. - bottom of Harbor. Sandy beaches. 2 Specimens.
Mytili. - Rocks near entrance to Harbor covered with them.
Lentilla. Harbor of Rio, at low water among rocks. (p. 140. do do
Helix? Chrysomata. South. Woods near Fijica. fig. by Mr. D. (p. 140. do do
Bulla. Small corneous shell. Low water among stones near mouth of
Bulinus leporis. South. (formerly considered as an amiaula.
from the shell alone. fig. by Mr. Drayton. Described Note Book
2. page 162.

Star No. 28.

(see of Rio)

- Nereis. (Eurynome South.) described Note Book 2. p. 134. Bar
Aphiusa aurilimata. South. Harbor of Rio. do do page 127
Hesione vittata. South. Hosp. Island. " " " " 154
Lyllis? Congenerie. Hosp. Is.
Annelid. allied to Alciops. 2 ranges of setiferous tuber-
cles. Hospital Island.
Serpuloidea? do described Note Book 2. p. 146
Inus. Wood, vicinity of Fijica
Bulla. Corneous test. Bay of Rio de Janeiro. Rocks at low water.
Polynoe olivacea. South. Hosp. Is. described Book 2. p. 148. fig. by
Helicina spurea. " Woods near sea coast. Book 2. p. 142. fig. by Mr.
Young Bulinus do
Pupa abbreviata. South. do vicinity of Bota Togo. 2 Specimens
Planorbis cerisina. " Pools at foot of mountains near Rio. 4 Specimens
do variety 4 species. both fig. by Mr. D. I described. Note
Book No 2. page 157. et seq.
Coronula - from Tortoise. Caught off Rio. 6 Specimens
Star No. 29. Pyrasoma. large, 5 Specimens. (P. smaragdina. South.)
Equatorial seas of Atlantic. fig. by Mr. Drayton. Described Book 2. p. 63.
Pyrasoma atlantica. Le Secur. 2 Specimens. Lab. 10. N. Long. 20 West.

- Echinis. (in Cotton wrapper) from Port Payne, St. Jago, common
- Chelasthuria - body rufous brown, with bright yellow tubercles beneath
- appendages crimson. Hosp. Island. Harbor of Rio.
- Aplysia Gemmulata. Couth. Harb. of Rio. fig. by Mr. D.
- described State Book 2^o page 129
- Aplysia - undescribed species - 2 specimens (opercle perforate in middle) sea shore at entrance of Rio de Janeiro.
- Obeyoum. Hospital Is. Rio.
- Helioscopus. do
- Asteris. Grayed. fig. by Mr. Drayton. (1 spec. undescribed)
- Bufo. from Organ Mountains
- Lichia. - sold in market at Rio
- Trigla. do

Part. 1. 2. 3. of Crustacea. contain over 200 specimens of 50 species of small crustacea, collected in the Harbor of Rio - described by Mr. James D. Dana, in separate catalogue. q. vis.

" Besides the articles here catalogued, about an hundred animals have been described & figured, of which either from their perishable nature or minute size it was impossible to preserve specimens - and in addition to these, as many more which are not yet (or) sufficiently cured to be sent away - "

Rio de Janeiro Decr. 23^o 1838

(signed) Joseph P. Couthony
 Box No. 1 contains

- Patella. from Madeira. several specimens. whole coast.
- Trochus. do do (Monodonta Lam.)
- Littorina. do do whole coast
- Scalaria. do do only met at San Vicente
- Purpura. do do vicinity of Camera de Lobos.

Box No. 2. contains

- Patellae. - from Madeira. Coast near San Vicente
- Monodonta. do " vicinity of Camera de Lobos
- Littorinae do coast near Funchal - (those in a paper -

Perna difformis, Coult. Port Praya several. Described and figured by Mr. Coult. Note Book No. 2, page 39 & 43. a remarkable species, on account of the great variety of conformation it exhibits.

Hessurella *afra*. Guoy & Gaim. Rocks near Port Praya. low water. (ter)

Do opalina. Coult. St. Jago. Described Note Book 2, p. 59. *Do* *do* *do* 56.

Siphonaria *caerulescens*. Coult. *Do* *Do* *Do* 56.

Littorina (*Atriatia* King? Zool. Jour.) Rocks near P. Praya. abundant. *Do* *gracilis*. Coult. (Phasia. Uniform) also described Book 2, p. 48 and fig. by Mr. Drayton. tab. xii. f. 4. not so common as the preceding species.

Buccinum nubesculatum. Coult. Rocks washed by the surf near Port Praya - the oval one - olivaceous with brown & white cloudings. Last revolution nodulous - aperture white, canal purple. fig. 2 described by Mr. Coult. Book 2, p. 51. obseq.

Monodonta *tuturalis*. Coult. Same locality. Shell pyramidal, sutures grooved - dusky black - with small white spots near sutures and on base. fig. 3 by Mr. Drayton. tab. xii. fig. 3. Described Note Book No. 2, page 45.

Nerita *spec. nov?* black. Rocks near Port Praya.

Buccinum *Cribrasium* Lam. *Do* did not seem common

Turritella *imbricata*. Lam. *Do* common (specimen only)

Purpura *spec. nov?* small, violet aperture. Same locality 1

Bulla (dead specimens only found in) vicinity of P. Praya

Arca. *Do* *Do*

Box No. 3. Contents.

Purpura *meritoides*. Reier. Rocks washed by surf near P. Praya

Do *bituberculata* varj - *Do*

Serpula every where on rocks, coast of St. Jago.

Natica - 2 species. beach near P. Praya (Morse)

Cypraea *picta*. Gray - said by him to be African - probable - only worn ones here seen - Beach near P. Praya.

Valves of *Venus* Same locality

Purpura *meritoides* Rr. Rocks 3 miles N. of P. Praya

Corallina *Do*
Planorbis *Do*
Cerithia - only found worn. Port Praya
Patella - numerous on rocks West of Port Praya

Minute Cephalopods (Vestæ) found among rocks, coast of St. ^{Jago.}
Box No. 5 contains -

Corticifera - Rocks West of Port Praya
Sabellaria? tubes - form extensive beds, at low water marks
same locality.

Box No. 6, contains -
Corallines from the Coast of Madeira

Box No. 7 contains - (fig. by Mr. S.)
Shells of Vitrina Lamerckii - Terr. Mountains of Madeira.
" vitrina Ruivensis. Couth. fig. by Mr. S. described Book 1.
" " deprinata - " Empena Madeira - do do
" " major " St. Anna. do do do
" " dubia " near do do do do
Uneylus striatus 2 V9? mountain streams Madeira.
described Note Book 2^d page 7.

Box No. 8 contains - (tab. 6.)
Mondonta. Spec. nov. Coast near Cama de Lobos fig. by Mr. S.
Littorina do do do
Venus pardalis. Couth. 3 specimens. do. described Book 2^d p. 16.
Venerupis purpurascens. Couth. do 3 spec^{ies}. " " 12

Box No. 9, contains - (in Book 1st
Littorina fuscigula. Couth. Rocks near Madeira, described
Murex - several small species - Coast of Madeira.
Calyptraea, asperella. Couth. Port Praya. only 2 specimens

Box No. 10, contains -
Helix cellaria. mult. (glaphyra Say?) under stones Madeira
" nitidiuscula. Bowd. Common in Madeira
" several other species - betweenunchal of the N. coast
Anatifa fucicola. Couth. Gulf weed. Atlantic - described Book 1. p. 6.
Santolina communis. Lat. 36 N.

Box No. 11 contains - (Book 2^d p. 10.
Helix rugella. Couth. 1 spec^{ies} only. Corral. Madeira, described
" fuscicollata. " " " " " " " p. 106.
Three other new species - various localities - Madeira
Astraea, with flustra upon them - deep water off do

Box No. 12, contains -
Sub fossil terrestrial shells, limetone concretions. Ma-
chico. Island of Madeira

Box No. 13, contains.

Calcareous concretions with sub-fossil shells - *Machia* -
Dendrophylla - given to Mr. Dana by a gentleman in Madeira
who said it was brought up from deep water off the island.
I do not feel by any means certain this statement is to
be relied upon - it has the appearance of an E. I. spe-
cies. (Signed) J. P. Couthoury

Monodonta - Coast of Madeira

Purpura - log at sea 37° N. Long. 22 West

Box No. 14 contains. - (off Rio Janeiro, common, 12)

Buccinum polygonatum Kr. var. (Nassa) Bay of

Purpura - Patagonia? maculated black & brown, with a brown

Bucc. annulatum - Coast of Brazil. 1 spec. in

B. politum - vary. do do

B. scalariformis - Boc. igrot. picked up in streets of Rio

Turbonella - 3 specimens - Praya Grande, on rocks, low water

Caprea Praticentris - Harbor of Rio

Venus flexuosa - vary. do

Prepidula oculata. do - (beaches) only worn specimens met with on

Bulla (like *B. striata*) do Fish Market Rio, among Penaei.

Conus fuscus epidermis - shells yellow at summit, with a yellow
zone on middle of the last volution.

Balanus Statactiferus - Coast every where at low water Rio

Patella - 6 specimens - Rocks in Harbor of Rio de Janeiro

Purpura - small tuberculati - violet mouth. Entrance of Rio

Cancellaria - 1 spec. probably from Indian Ocean - from a friend at

Cardium - 1 " Beach at Ponta Roza

Mytili - encrusts rocks in Harbor of Rio

Astrea - found in old shells, &c do (with red

Littorina - Rocks in Harbor of Rio. 20 spec. white, speckled

do same locality - smaller, black with white flammulae. 17 specimens

Amphidiesma - 1 spec. Beach at Praya Grande

Helix pellis serpentis. 3 spec. Hills woods near Figueira

Lithodoma - 2 spec. Praya Grande, rocks at low water

Monodonta moniliferus. Couth. 5 spec. Hospital J. et al. fig. by Mr. D.

Arca barbata - Beach near entrance of Harbor (a friend at Rio

Purpura (capilli form) large corbicular - probably Magellanic, from

Plicatula - very large, single valve. Ponta Roza.

Box No 15. contains.

Astrea, upon dead shells, from Ponta Praya
Monodonta moruliferens, Couth. Harbor of Rio (by Mr. D.
Helicis chrysomata, Couth. Woods near Fijica. 8 Specimens
described Note Book 2^d. page 140
Planorbis cerisina, Couth. Pools at foot of mountains, near Rio,
Fijica? by Mr. Drayton, described Note Book 2^d. pa 157. 14 Specimens
Melcagnia. Beach near Ponta Praya. 1 Specimen.
Auricula. Do (young) "
Thracia similis, Couth. 1 Specimen found among penaei, Fish
Market Rio. described & fig^d. Journ. East. Socy. Nat.
Vol. 11. part 2^d. monograph of the Genus.
Bulinus leprosis, Couth. animal fig^d. by Mr. Drayton, described
Book 2^d pa. 159. Woods & coffee trees, Fijica. has heretofore
been clasped as Auricula from the shell alone - animal
is a true Bulinus.

Box No. 16. contains. - (singly near Fijica. 14 spec^{imens})

Pupa elongata. Spix. (megaspina Lea.) Interior of Brazil, ocean
Bulinus Poniostomas. Rang. Do Do 1 Specimen
Corallium Sea Coast near Ponta Grande
Helicina Apurea, Couth. 4 Specimens. Woods near Ponta Praya.
fig^d. by Mr. Drayton. described Note Book. page 142.

Box No. 17. - contains

Corallium, coast near Rio.

Box No. 18. contains.

Maps of Sabellaria tubes, Ponta Praya, 5 Specimens of Serpula, Do.
Specimens of Balani, Madeira. Small Echini - purple
and olive colored. Madeira. Larger Echini. Harbor of
Rio - Scutella, quadrifora? Ponta Grande. four

Box 19. - contains.

A map of Suidiophylla, belonging to Specimens in No. 13.

(List No. 1.)

"List of Boxes and Kegs of Specimens Shipped by the American Brig L'Orient, Capt. Hull, bound to Philadelphia, and consigned to the Navy Agent there, subject to the order of the Honorable Secretary of the Navy."

Five Boxes Botanical Specimens, No. five, 1 to 5, including 1 Box of "Seeds of Plants, No. 5"

Four Boxes Zoological Specimens, 1 to 4, C. P. & J. P. C.

Two Kegs Do Do Do

Two Boxes Do Do 1 to 2 T. B. Peale

One Do Mineralogical Do 1 J. D. Dana

Collected by the Naturalists of the U.S. Exploring Expedition

All sealed & stamped "U.S. Exploring Expedition"

U. S. Ship Vincennes

Rio de Janeiro

December 25th. 1835

(Signed) R. R. Madden
Lieut.

(List No. 4.)

"List of the contents of two boxes of Zoological Specimens, sent to the U. States from Rio de Janeiro, on board the Brig L'Orient, by Titian R. Peale, Dec. 24th. 1838."

No. 1 contains. —

3 Small Boxes of Insects

28 Birds Skins

1 Bat.

No. 2 contains. —

1 Mycteria

1 Simandoua

1 Dicotyles labiatus

1 Brazilian Otter

1 Bearded Monkey

1 Cavia.

(Copy)

U. S. Ship Vincennes
Rio de Janeiro

Sir,

I have requested the Honorable Secretary of the Navy to direct the Navy Agent at Philad. to deliver you a box presented by me to the latter, marked "Seeds & Plants No. 5, Exploring Expedition" which contains the following seeds & plants collected by our Botanists, viz.

43 Papers of seeds from the Island of Madeira

17 " " " St. Jago

53 " " from the vicinity of Rio de Janeiro

Also dry roots of Guenerias, Amaryllis, Cattley or Fort-
besa, Begonia, Specimens from the Orgua Mountains,
of Brazil Cactus, &c.

Vanilla Aromatica &c. &c. —

On receiving which, I trust it will afford you pleasure to make the best possible use of, by cultivation &c. with a view of introducing them into our own Country.

I am Sir

Very Respectfully

Your Obedt. Servt.

(Signed) Charles Wilkes
Commandr U. S. Exp. Exp.

To Mr Buist
Glorist
Philad^{ca}

U. S. Ship Vincennes
 Rio de Janeiro
 Decr. 25th. 1838

Sir,

At the suggestion of your brother Mr. T. A. Peale, of the Peacock, I have requested the Honorable the Secretary of the Navy to place in your charge (and keeping certain boxes of Specimens in Natural History, Botany, Mineralogy, &c. which have been collected by the Scientific Corps of the Exploring Expedition, and forwarded by the Brig L'Orient to the Navy Agent at Philadelphia

I enclose herewith lists of the contents and numbers of each box and have to request that on receiving instructions from the Navy Department you will take charge of the same and keep them in a proper and secure place, until the return of the Expedition to the United States.

I request particularly that none of the boxes be opened or disturbed at any time, except those marked as containing Specimens in glass and spirits, which will require examination and filling up in the event of leaking, but there should be great care that none of the wrappers or labels be removed.

Any services rendered in regard to these will confer a particular obligation, and any expenses incurred be cheerfully repaid, and the assurances of your brother induce the belief that no exertions will be spared on your part in complying with our wishes in regard to the Specimens.

I am respectfully
 Sir,

(Signed) Wm. A. D. Scott
 Charles Wilkes
 Command. Exp. Exp.

Yr

Mr Franklin Peale
 Philadelphia

U. S. Ship *Terceiras*
Harbour of Rio de Janeiro
Decr. 25th. 1838

Sir,

I have the honor to enclose herewith lists of about 5000 specimens in Natural History, Botany, Mineralogy, &c. which have been collected and prepared by the Scientific Corps of the Exploring Expedition, since we left the United States, which affords satisfactory evidence of their industry and application in the various duties assigned them.

I have had these specimens carefully packed in boxes, marked and sealed with the seal of the Expedition, and put on board the American Brig *L'Orient*, Capt. Hull, for Philadelphia, and consigned to the Navy Agent there, subject to your order, and given directions that they should not be opened or distributed, but stored in a proper place until required by you.

Among the boxes is one marked "No 5. Seeds & Plants," in relation to which I take leave to enclose a letter to Mr. Quist, the Florist of Philadelphia, requesting him to take and cultivate its contents, and if it seems your approbation, I request the letter may be forwarded to him with an order on the Navy Agent for the box.

I would strongly recommend Mr. Franklin Peale of Philadelphia, brother of Mr. J. R. Peale, one of our Naturalists, as a suitable person to take charge of all the specimens except the box of seeds & plants, and to keep them safely until our return, and take leave to enclose a letter to him to be forwarded with copies of the lists & an order from you on the Navy Agent for the boxes.

I have addressed a letter to the Honorable the Secretary of the Treasury & one to the Collector of Philadelphia, stating the contents of the boxes, & requesting that they may be passed through the Custom House without being opened or disturbed.

The freight of the same to Philadelphia has been paid here.

To Hon. J. R. Paulding
Secy of Navy

I have the honor to be
Sir
(Signed) Charles Wilkes, Esq.
Command. Exp. Exp.

No. 62.

(Copy)

U. S. Ship *Fouquieria*
Sydney Cove
December 26th 1840

Sir: I have the honor to enclose herewith a list of
Boxes, &c. containing specimens collected since leaving
Callao.

These specimens have been forwarded to Boston per
Barque *Shepherd*, and consigned to the Navy Agent at
that place, subject to your order.

I have addressed letters to the Hon. the Secy^r
of the Treasury, and the Collector at Boston, relative
to them.

I have the honor to be
Sir, Most Respectfully
Yours Obedt Servt.
(Signed) Charles Wilkes
Command. Ex. Ex.

Hon.
James K. Paulding
Secy. of the Navy
Washington
City

(Copy)

I acknowledge to have received of Michael M. Ash, Navy Agent of the U.S. 12 boxes, 2 kegs of articles collected by the Scientific Corps of the U.S. Sea & Land Expedition - which are to be kept subject to the orders of the Secretary of the Navy

(Signed) Franklin Peale

Chairman of Committee
on the Collections of the
Philadelphia Museum

Philadelphia, April 28th. 1899

Duplicate list retained with the articles.

(Copy)

Philadelphia

January 9th 1899

To Honl.

J. D. Paulding

Acty. of the U.S. N.

Sir,

I have the honor to transmit herewith, the receipt of Franklin Peale Esq., Chairman of Committee on the Collections of the Philadelphia Museum, together with Lists of Specimens, numbered 1 to 5 inclusive.

I am Sir

with Great Respect

Yrs. Obedt Servt

(Signed) Michael M. Ash.
N. A.

U. S. Ship *Vincennes*
 Oahu, Sandwich Islands
 November 9th, 1840

Sir,
 The Specimens that have been collected by the Exploring Expedition and shipped at different times to the U. States, have been preserved and packed with the utmost care under the immediate supervision of the Gentlemen to whose Departments they respectively belong; equal care has been taken to seal the boxes, and mark legibly, on their contents, and Catalogues including the most minute Specimen have from time to time been placed in my possession.

I would impress upon the Board, Sect^y of the Navy, that in order to keep them in a state of preservation, and thereby ensure success to this branch of the enterprise, it is of the highest importance, that they be moved as little as possible, and kept unopened, in a safe and dry Depository, until the return of the Squadron, when with the assistance of the Catalogues, they can be arranged in order, without difficulty.

I have the honor to be

Sir,
 Most Respectfully
 (Signed) Charles Wilkes
 Command. Ex. Ex.

Sd. Servt.
 J. K. Paulding
 Sect^y of the Navy
 Washington

U. S. Ship Vincennes
 Oahu, Sandwich Islands
 November 9th 1840

Sir,

I have the honor to enclose you a list of
 Boxes, Barrels, Bundles, &c. containing specimens
 collected since we left New Zealand.

I have shipped these specimens to New York
 by the ship Lausanne, and consigned them to the Navy
 Agent at that place. Great care has been taken in their
 collection and preservation, and among them, there are
 many rare and valuable. I must therefore request
 that you will instruct the Navy Agent at New York
 to receive and retain them with care, until you
 shall think proper to have them removed.

I have the honor
 to be

Sir

Most Respectfully
 Your Obedt. Servt

(Signed) Charles Wilkes
 Command
 U. S. S.

To
 The Honble
 James K. Paulding
 Secy. of the Navy
 Washington

U. S. Ship Vincennes
Oahu, Sandwich Islands
November 28th. 1840

Sir,

I have the honor to inform you, that I have sent to New York per Ship Lousanne, One of Ward's boxes with living plants from the Fiji Islands, a list of which you will find herewith, and have requested the Navy Agent there to hold them subject to your order.

I regret to learn that the seeds sent to you from Rio de Janeiro were lost by being placed in the hands of irresponsible person, and I trust that those sent from this place and the box of plants will not share the same fate.

Much time has been consumed in gathering and preserving these seeds, and it will be a loss of credit to the expedition if it should fail to benefit the country by the introduction of the many rare and valuable plants among this collection.

I would recommend Feast Senior of Baltimore as a suitable person with whom to intrust them, but he should be made to give assurances that proper care will be given to their cultivation.

I have the honor
to be Sir
Most Respyly
Yr. Obedt. Servt
(signed) Charles Wilkes
Commandr.
Esq. Esq.

To The Honorable
Jas. H. Paulding
Secy of the Navy

(Copy)

Mr. S. Ship Relief

New York, 3rd. April 1840

Sir,

I have the honor to enclose you the receipt of Mr. Peale for the specimens returned by this ship, in conformity with your order.

Very respectfully

Your Obedt. Servt.

(Signed) A. H. Long

St. Commr.

To
Charles Melker Esq
Commandr
Expt. Exped.

