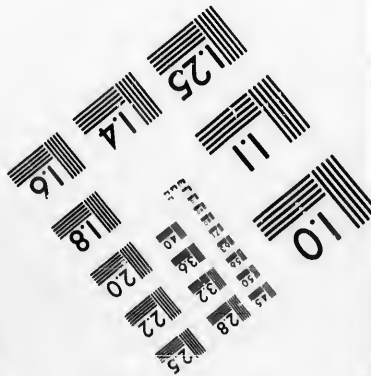
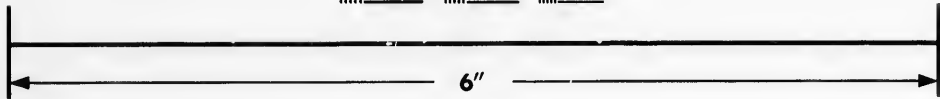
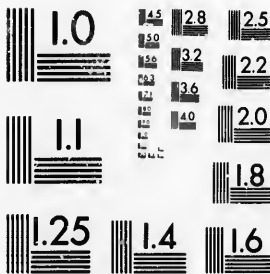


**IMAGE EVALUATION
TEST TARGET (MT-3)**



**Photographic
Sciences
Corporation**

23 WEST MAIN STREET
WEBSTER, N.Y. 14580
(716) 872-4503

**CIHM/ICMH
Microfiche
Series.**

**CIHM/ICMH
Collection de
microfiches.**



Canadian Institute for Historical Microreproductions / Institut canadien de microreproductions historiques

© 1987

Technical and Bibliographic Notes/Notes techniques et bibliographiques

The Institute has attempted to obtain the best original copy available for filming. Features of this copy which may be bibliographically unique, which may alter any of the images in the reproduction, or which may significantly change the usual method of filming, are checked below.

L'Institut a microfilmé le meilleur exemplaire qu'il lui a été possible de se procurer. Les détails de cet exemplaire qui sont peut-être uniques du point de vue bibliographique, qui peuvent modifier une image reproduite, ou qui peuvent exiger une modification dans la méthode normale de filmage sont indiqués ci-dessous.

- Coloured covers/
Couverture de couleur
- Covers damaged/
Couverture endommagée
- Covers restored and/or laminated/
Couverture restaurée et/ou pelliculée
- Cover title missing/
Le titre de couverture manque
- Coloured maps/
Cartes géographiques en couleur
- Coloured ink (i.e. other than blue or black)/
Encre de couleur (i.e. autre que bleue ou noire)
- Coloured plates and/or illustrations/
Planches et/ou illustrations en couleur
- Bound with other material/
Relié avec d'autres documents
- Tight binding may cause shadows or distortion along interior margin/
La reliure serrée peut causer de l'ombre ou de la distorsion le long de la marge intérieure
- Blank leaves added during restoration may appear within the text. Whenever possible, these have been omitted from filming/
Il se peut que certaines pages blanches ajoutées lors d'une restauration apparaissent dans le texte, mais, lorsque cela était possible, ces pages n'ont pas été filmées.
- Additional comments:/
Commentaires supplémentaires:

- Coloured pages/
Pages de couleur
- Pages damaged/
Pages endommagées
- Pages restored and/or laminated/
Pages restaurées et/ou pelliculées
- Pages discoloured, stained or foxed/
Pages décolorées, tachetées ou piquées
- Pages detached/
Pages détachées
- Showthrough/
Transparence
- Quality of print varies/
Qualité inégale de l'impression
- Includes supplementary material/
Comprend du matériel supplémentaire
- Only edition available/
Seule édition disponible
- Pages wholly or partially obscured by errata slips, tissues, etc., have been refilmed to ensure the best possible image/
Les pages totalement ou partiellement obscurcies par un feuillet d'errata, une pelure, etc., ont été filmées à nouveau de façon à obtenir la meilleure image possible.

This item is filmed at the reduction ratio checked below/
Ce document est filmé au taux de réduction indiqué ci-dessous.

10X	14X	18X	22X	26X	30X
<input type="checkbox"/>	<input type="checkbox"/>	<input type="checkbox"/>	<input checked="" type="checkbox"/>	<input type="checkbox"/>	<input type="checkbox"/>
12X	16X	20X	24X	28X	32X

The copy filmed here has been reproduced thanks to the generosity of:

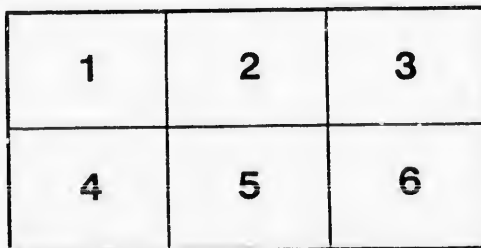
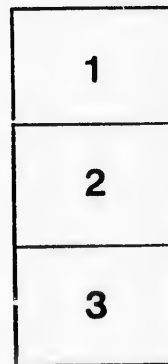
Metropolitan Toronto Library
Canadian History Department

The images appearing here are the best quality possible considering the condition and legibility of the original copy and in keeping with the filming contract specifications.

Original copies in printed paper covers are filmed beginning with the front cover and ending on the last page with a printed or illustrated impression, or the back cover when appropriate. All other original copies are filmed beginning on the first page with a printed or illustrated impression, and ending on the last page with a printed or illustrated impression.

The last recorded frame on each microfiche shall contain the symbol \rightarrow (meaning "CONTINUED"), or the symbol ∇ (meaning "END"), whichever applies.

Maps, plates, charts, etc., may be filmed at different reduction ratios. Those too large to be entirely included in one exposure are filmed beginning in the upper left hand corner, left to right and top to bottom, as many frames as required. The following diagrams illustrate the method:



L'exemplaire filmé fut reproduit grâce à la générosité de:

Metropolitan Toronto Library
Canadian History Department

Les images suivantes ont été reproduites avec le plus grand soin, compte tenu de la condition et de la netteté de l'exemplaire filmé, et en conformité avec les conditions du contrat de filmage.

Les exemplaires originaux dont la couverture en papier est imprimée sont filmés en commençant par le premier plat et en terminant soit par la dernière page qui comporte une empreinte d'impression ou d'illustration, soit par le second plat, selon le cas. Tous les autres exemplaires originaux sont filmés en commençant par la première page qui comporte une empreinte d'impression ou d'illustration et en terminant par la dernière page qui comporte une telle empreinte.

Un des symboles suivants apparaît sur la dernière image de chaque microfiche, selon le cas: le symbole \rightarrow signifie "A SUIVRE", le symbole ∇ signifie "FIN".

Les cartes, planches, tableaux, etc., peuvent être filmés à des taux de réduction différents. Lorsque le document est trop grand pour être reproduit en un seul cliché, il est filmé à partir de l'angle supérieur gauche, de gauche à droite, et de haut en bas, en prenant le nombre d'images nécessaire. Les diagrammes suivants illustrent la méthode.



CATALOGUE,

&c.

707.2 1839

3.

CATALOGUE
TORONTO PUBLIC LIBRARY
OF THE

FIRST EXHIBITION

OF THE

SYDNEY

Society of Artists & Amateurs

OF

TORONTO.

1834.

ADMISSION, 1s. 3d.—CATALOGUE, 71d.

TORONTO:

PRINTED AT THE OFFICE OF THE PATRIOT, BY T. DALTON

1834.

901373



942. SEP 27 1932

His Exc

The Hon

Captain I

PATRON.

His Excellency Sir JOHN COLBORNE, K. C. B., Lieutenant-Governor of
Upper Canada, &c. &c. &c.

VICE-PATRON.

The Honourable and Venerable John Strachan, D. D., Archdeacon of York,
&c. &c. &c.

PRESIDENT:

Captain Bonnycastle, R. E., Member of the Geological Society of France
and of the Philosophical and Literary Societies of Quebec,
Toronto, and Montreal.

COMMITTEE.

Mr. Castle.

Mr. Gilbert.

Mr. Hamilton.

Mr. Howard.

Mr. Laing.

Mr. Linnen.

Honorary Secretary—Charles Daly.

ASSOCIATED ARTISTS.

Captain Bonnycastle, R. E.

Mr. Castle

Mr. Craig

Mr. Daly.

Mr. Fothergill.

Mr. Gilbert.

Mr. Hamilton.

Mr. Howard.

Lieut. Jones.

Mr. Kane.

Mr. Laing.

Mr. Linnen.

Mr. Overend.

Mr. Popplewell.

Mr. Steers.

Mr. Tazewell.

Mr. S. B. Waugh.

The N
Those
Prices
obt

1
2 R
3 S
4 B
5 F
6 L
7 C
8 S
9 M
10 G

11 S
12 C
13 A
14 I
15 A
16
17
18
19
20
21
22
23
24
25

The Names of the Associated Artists are printed in Roman Capitals.

Those who follow the Profession are distinguished by an asterisk.

Prices of the Pictures, if for Sale, and the Residences of the Artists, may be obtained by application to the Keeper of the Rooms.

SOUTH WEST ROOM.

1		CHARLES FOTHERGILL
2	Royal College of Elizabeth, Guernsey,	Master Hurd
3	Shrine at Thiers	Henry Bonnycastle
4	Brecon Castle	HENRY J. CASTLE
5	Fishermen on a coast—after Tenkins	CHARLES DALY
6	Lower Canadian Costume	George D. Wells
7	Coast Scenery, storm coming on	CHARLES DALY
8	Study from Canova's Helen	Henry Bonnycastle
9	Moorland Scene—Moorland scene in the Highlands, ebb Tide, Dutch Galliot	William Kay
10	Group of Natural History—Brown headed Grill, Common English Trout, Minute Blenny	CHARLES FOTHERGILL
11	Grey Salmon, Saunlet, Red Eye	CHARLES FOTHERGILL
11	Sketch of the ruins of the ancient Pictish Fort at Culswick in Zetland	HENRY J. CASTLE
12	Chepstow Castle	CHARLES DALY
13	A Breeze, after Copley Fielding	George D. Wells
14	Lower Canadian Costume	CHARLES DALY
15	A Sketch	Master Tazewell
16	Two Sketches	CHARLES FOTHERGILL
17	A nondescript species of Godwit	Henry Bonnycastle
18	Canal diggers pumping	* Thomas Dixce
19	A Sketch of an old mill near Carnaerwon in Wales	Capt. BONNYCASTLE Prest.
20	Whirlpool Niagara, from below	* William Connell
21	Four Gems	A Lady
22	Flowers	Master Hurd
23	Roses	JOHN LAING
24	Kildare Abbey, from a Print	CHARLES FOTHERGILL
25	View of the celebrated cradle of Noss	

26 Entrance to a Cathedral with Beggars, from a print	JOHN LAING
27 Flowers from nature	*JOHN POPPLEWELL
28 Street views in Schaffhausen on the Rhine, from a print	CHARLES DALY
29 Bewerston rocks, Devon, from a print	JOHN LAING
30 Torquay, Devon, from a print	JOHN LAING
31 Interior of Tintern Abbey	Capt. BONNYCASTLE, Prest
32 Five Miniatures	*William Lockwood
33 Two Miniatures	*William Lockwood
34 The Beggars from a print	*SAMUEL B. WAUGH
35 View in Devonshire from a print	JOHN LAING
36 View in Devonshire from a print	JOHN LAING
37 Coast Scenery	CHARLES DALY
38 Flowers	*JOHN POPPLEWELL
39 Saint Marc's Square, Venice, from a print	*JOHN G. HOWARD
40 L'Amore, a market place in France, from a print,	*JOHN G. HOWARD
41 Cards	Master Hurd
42 Flowers	*JOHN POPPLEWELL
43 Interior of Tintern Abbey from a print	JOHN LAING
44 Bird-catching on the North Western coast of Fula	CHARLES FOTHERGILL
45 The Sun Fish	Master Hurd
46 A Sketch	Master Tazewell
47 A Landscape	George D. Wells
48 A Design for a Church	*JOHN G. HOWARD
49 A Landscape	George D. Wells
50 High Road to Rhayardagowy	HENRY J. CASTLE
51 Thane Market, Oxford, from a print	HENRY J. CASTLE
52 Waltham Abbey	HENRY J. CASTLE
53 Sketch,	An Amateur.
54 Sketch,	An Amateur.
55 Six Lithographs from Canadian Stone,	S. O. TAZEWELL.
56 Flowers,	An Amateur.
57 A Butterfly,	An Amateur.
58 Design for a Mansion for a Military Nobleman,	*JOHN G. HOWARD.
59 Winchelsea Gate,	Henry Bonnycastle.
60 Fall of the Mynach from the Devil's Bridge,	HENRY J. CASTLE.
61 Sketch,	Master Tazewell.
62 A Lady,	George D. Wells.
63 Residence of Chief Justice Robinson, Toronto,	JOHN LAING.
64 A Calm,	*JOHN G. HOWARD.
65 The Percé Bay of Chaleurs,	Capt. BONNYCASTLE, Pres.
66 Lake Lakes,	HENRY J. CASTLE.
67 Wild Duck Shooting,	A Lady.
68 Perspective view of the U. C. College, Toronto,	*JOHN G. HOWARD.
69 White Fronted Tern,	CHARLES FOTHERGILL.
70 Street View in England from a Print,	*JOHN POPPLEWELL.
71 The Wall Creeper from the life,	CHARLES FOTHERGILL
72 Interior of Tintern Abbey,	HENRY J. CASTLE.
73 View in Venice after Prout,	JOHN LAING.
74 Bay of Aberystwith,	HENRY J. CASTLE.

75 Sea
76 Ph
77 Fal
78 Flo
79 No
80 Ch
81 Bol
82 Ma
83 Ba
84 W
85 De
86 Sk
87 Re
88 Tr
89 An
90 Pe
91 Ca
92 En
93 Es
94 Pa
95 TH
96 No
97 Ro
98 Fr
99 De
100 Ar

101 Pe
102 Pe
103 Pe
104 In
105 In
106 T
107 P
108 M
109 E
110 T
111 P
112 H
113 L
114 F
115 F

116 Residence of John Gamble, Esq. Mimicoke Creek	PAUL KANE
117 Landscape	<i>William Kay</i>
118 An Abbey in Ruins	JAMES HAMILTON
119 Sketch in Oil	*G. S. GILBERT
120 Sketch from Shakespeare's Henry 6th	CAPT. BONNYCASTLE, Pres.
121 Elm Park, from a Print	PAUL KANE
122 Fruit from Nature	* <i>Thomas Dixce</i>
123 A Ruin	JAMES HAMILTON
124 Dutch Toper	S. O. TAZEWELL
125 Landscape after Hobbima	* <i>William Connell.</i>
126 Study after Cuypp	* <i>Thomas Dixce</i>
127 Sketch after Berghem	* <i>Thomas Dixce</i>
128 Sea Shore	JAMES HAMILTON
129 Pointe a la Croix & narrows of the Radstigouche Lower Canada	CAPT. BONNYCASTLE Pres.
130 The Disconsolate	*G. S. GILBERT
131 Indian Settlement on Cold Water	JAMES HAMILTON
132 Ruins of Hauton Conquest House from a print	*SAMUEL B. WAUGH
133 View of the Falls of Niagara from the old Bathing House	Capt. BONNYCASTLE Prest.
134 J. P. Kemble as Hamlet from a print	* <i>Nelson Cooke</i>
135 The Parthenon Athens from a print	*JOHN G. HOWARD.
136 Lioness and Whelps	S. O. TAZEWELL
137 Lady and Child	*SAMUEL B. WAUGH
138 White Trout River, Trinity Cove, Labrador Coast	Capt. BONNYCASTLE, Prest.
139 The Souvenir, from a print	*G. S. GILBERT
140 View of the falls of Niagara, from a print	PAUL KANE
141 Design for a Guild Hall to fill the space between the Court House & Gaol Toronto	*JOHN G. HOWARD
142 Design for the South Front of a Government House	*JOHN G. HOWARD
143 Landscape	JAMES HAMILTON.
144 Design for a Theatre	*JOHN G. HOWARD
145 The tired Soldier	<i>A Lady</i>
146 The Falls of Niagara	S. O. TAZEWELL
147 Ruins in Greece	*JOHN G. HOWARD
148 Ruins in Greece	*JOHN G. HOWARD

NORTH ROOM

149 Portrait of a Gentleman	* <i>Nelson Cooke</i>
150 Portrait of a Gentleman	*SAMUEL B. WAUGH
151 Falls of Tivoli, from a print	PAUL KANE
152 A Mamluke, from a print	PAUL KANE
153 Portrait of a child	*SAMUEL B. WAUGH
154 Female Head, from a print	*G. S. GILBERT
155 Portrait of a Gentleman	*SAMUEL B. WAUGH
156 Portrait of a Gentleman	*G. S. GILBERT
157 Portrait of a Gentleman	*SAMUEL B. WAUGH
158 Magdalen from a sketch after Carracci	* <i>Nelson Cooke</i>
159 Portrait of an Artist	* <i>Nelson Cooke</i>
160 Portraits of Twins	*JOHN LINNEN
161 Portrait of a Gentleman	* <i>Thomas Dixce</i>

162 Lib
163 Po
164 Po
165 Po
166 Po
167 Po
168 P
169 P
170 P
171 P
172 I
173 I
174 I
175 I
176 I
177 I
178 I
179 I
180 I
181 I
182 I
183 I
184 I
185 I
186 I
187 I
188 I
189 I
190 I
191 I
192 I
193 I
194 I
195 I
196 I
197 I
198 I
199 I
200 I

II

L. KANE
 diam Kay
 MILTON
 ILBERT
 LE, Pres.
 L. KANE
 as Dixce
 MILTON
 EWELL
 Connell.
 as Dixce
 as Dixce
 MILTON
 LE Pres.
 ILBERT
 MILTON
 WAUGH
 LE Pres.
 son Cooke
 OWARD.
 ZEWELL
 WAUGH
 LE, Pres.
 ILBERT
 UL KANE
 HOWARD
 HOWARD
 MILTON.
 HOWARD
 A Lady
 ZEWELL
 HOWARD
 HOWARD
 Nelson Cooke
 WAUGH
 UL KANE
 UL KANE
 WAUGH
 GILBERT
 WAUGH
 GILBERT
 B. WAUGH
 Nelson Cooke
 Nelson Cooke
 N LINNEN
 mas Dixce;

- 162 Liberation of the Prisoners from the Bastile
- 163 Portrait of a Gentleman,
- 164 Portrait of a Gentleman,
- 165 Portrait of a Gentleman,
- 166 Portrait of a Gentleman,
- 167 Portrait of a Gentleman,
- 168 Portrait of a Lady,
- 169 Portrait of a Gentleman,
- 170 Portrait of a Lady,
- 171 Portrait of a Gentleman.
- 172 Landscape,
- 173 Hardraw Force, from a Print,
- 174 Landseape from a Print,
- 175 Spanish Toper, after Velasquez,
- 176 Portrait of a Gentleman,
- 177 Portrait of a Lady,
- 178 Portrait of a Gentleman,
- 179 Portrait of a Gentleman,
- 180 Portrait of a Gentleman,
- 181 Portrait of a Gentleman,
- 182 Portrait of a Lady,
- 183 Portrait of a Lady,
- 184 Mercury setting Argus asleep from a print after Salvator Rosa,
- 185 Portrait of a Gentleman,
- 186 Portrait of a Gentleman,
- 187 Portrait of a Lady,
- 188 Portrait of a Lady,
- 189 Portrait of a Lady,
- 190 Portrait of a Lady,
- 191 Sir Walter Scott from a Print,
- 192 Portrait of a Gentleman,
- 192 Portrait of a Gentleman,
- 194 Sea Piece,
- 195 Sea Piece.
- 196 Holy Family, after Gulio Romano,

*JOHN G. HOWARD.
 *G. S. GILBERT.
 *SAMUEL B. WAUGH.
 *SAMUEL B. WAUGH.
 *JOHN LINNEN.
 do.
 do.
 do.
 do.
 do.
 *Thomas Dixce
 PAUL KANE.
 PAUL KANE.
 *G. S. GILBERT.
 *JOHN LINNEN.
 do.
 do.
 do.
 do.
 do.
 *SAMUEL B. WAUGH.
 *G. S. GILBERT.
 JAMES HAMILTON.
 *G. S. GILBERT.
 do.
 *SAMUEL B. WAUGH.
 *G. S. GILBERT.
 do.
 *SAMUEL B. WAUGH.
 *Nelson Cooke.
 JOHN LINNEN.
 *SAMUEL B. WAUGH.
 *William Connell.
 do.
 *Thomas Dixce.

Bonnyc
Castle,
Daly, C
Fotherg
Gilbert,
Hamilton

Howard

148

Kane, E

Laing, J

Linnen,

181

Popplew

Tazewe

Waugh,

Amateur

Bonnyc

Connell,

Cooke, J

Dixcee,

Hurd, M

Kay, W

Lady, a

Lockwo

Tazewel

Wells, G

ASSOCIATED ARTISTS.

Bonnycastle, Capt. D. 20 31 65 92 95 100 106 110 120 129 133 138
Castle, Henry J., 4 12 50 51 52 60 66 72 74 82 93
Daly, Charles, 5 7 13 15 28 37 75 83
Fothergill, Charles, 1 10 11 17 25 44 69 71 86 88
Gilbert, G. S., 107 111 119 130 139 154 156 163 175 183 185 186 188 189
Hamilton, James, 108 109 118 123 128 131 143 184
Howard, John G., 39 40 48 58 64 68 77 85 89 90 99 135 141 142 144 147
148 162
Kane, Paul, 112 113 116 121 140 151 152 173 174
Laing, John, 24 26 29 30 35 36 43 63 73 81 87 91 97
Linnen, John, 102 103 160 166 167 168 169 170 171 176 177 178 179 180
181 192
Poppewell, John, 27 38 42 70 78 80 98
Tazewell, S. O , 55 114 124 136 146
Waugh, Samuel B., 34 101 132 137 150 153 155 157 164 165 182 186 190 193

HONORARY EXHIBITORS.

Amateur, an, 53 54 56 57
Bonnycastle, Henry, 3 8 18 59
Connell, William, 21 125 194 195
Cooke, Nelson, 134 149 158 159 191
Dixce, Thomas, 19 115 121 126 127 161 172 196
Hurd, Master, 2 23 41 45
Kay, William, 9 117
Lady, a, 22 67 76 84 94 104 105 145
Lockwood, William, 32 33
Tazewell, Master, 16 46 61
Wells, George D., 6 14 47 49 62 79 96

FINIS



