

Services and Facilities

Check the park website www.nps.gov/yell or newspaper for seasonal dates of services and facilities.

Accessibility Guide
Entrance stations and visitor centers offer a free guide, *Accessibility in Yellowstone*, describing wheelchair-negotiable facilities.

Emergencies: Call 911

- Medical clinic

Services and Facilities Legend:

- Ranger station
- Campground
- Lodging
- Food service
- Picnic area
- Store
- Gas station (some have auto repair)
- Recycling
- Self-guiding trail or boardwalk
- Horseback riding
- Boat launch

Mammoth Hot Springs 6239 ft 1902 m

Mammoth Hot Springs Hotel
Upper Terrace Drive
No buses, trailers, or RVs; closed in winter
UPPER TERRACES AREA
LOWER TERRACES AREA
Albright Visitor Center
Historic Fort Yellowstone
Chapel
Park Headquarters
Post Office
To Old Faithful via Norris and Madison
To Tower-Roosevelt

Old Faithful 7365 ft 2245 m

Old Faithful Lodge
Visitor Education Center
Snow Lodge
To Madison
To Tower-Roosevelt
To West Thumb and Grant Village
No camping or overnight recreational vehicle parking

Canyon Village 7918 ft 2413 m

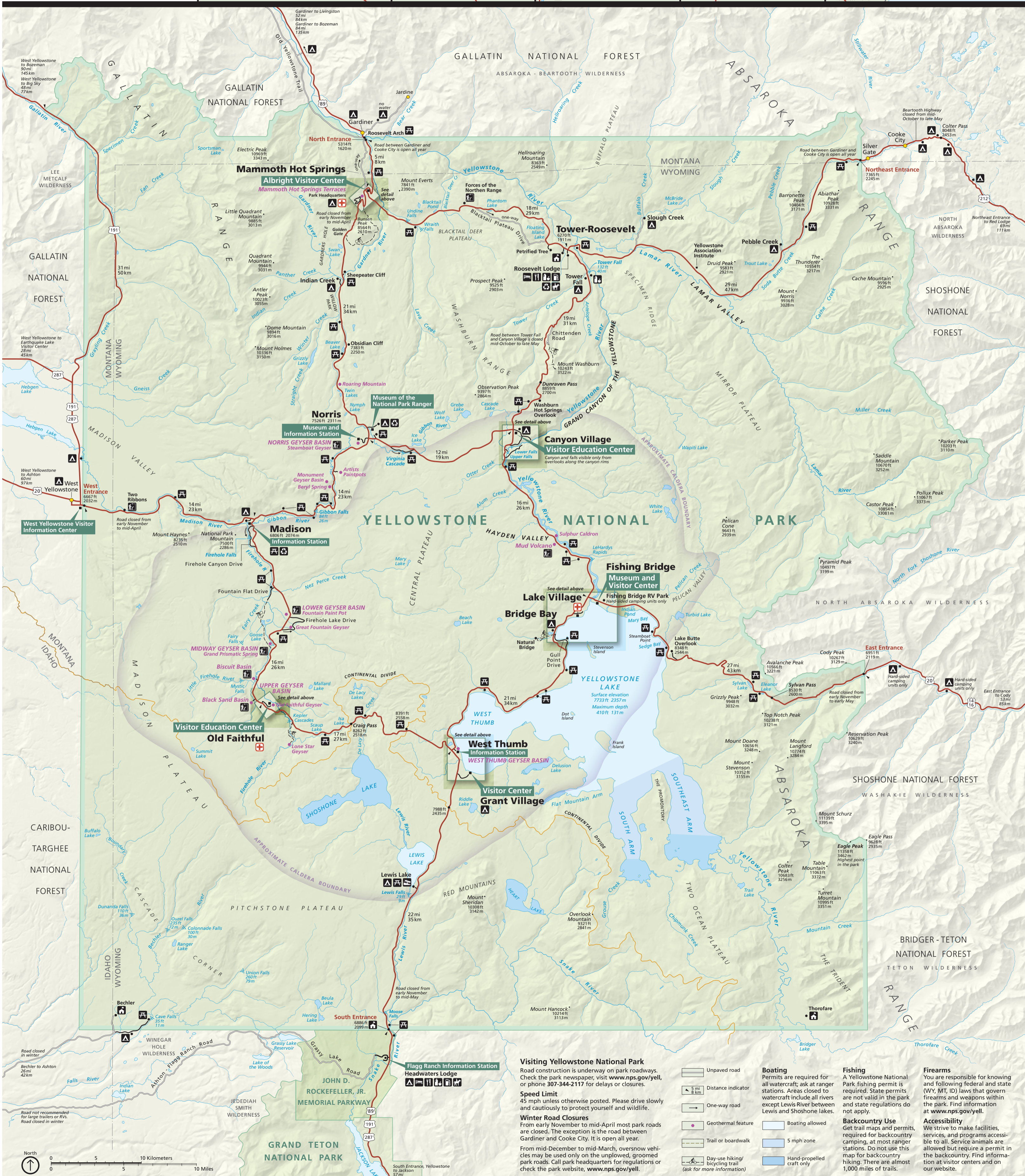
Visitor Education Center
Canyon Lodge
Post Office
To Norris
To Tower-Roosevelt
To West Thumb and Grant Village
To Old Faithful
To Lake Village and Grant Village
To Norris
To Tower-Roosevelt
To West Thumb and Grant Village
To Old Faithful

West Thumb and Grant Village 7770 ft 2368 m

West Thumb Information Station
Grant Village Visitor Center
Post Office
Lodge Registration
To Lake Village
To Old Faithful
To Norris
To Tower-Roosevelt
To West Thumb and Grant Village
To Old Faithful

Fishing Bridge and Lake Village and Bridge Bay 7735 ft 2358 m

Fishing Bridge Museum and Visitor Center
Lake Village
Bridge Bay
Lake Lodge
Lake Hotel
Fishing Bridge RV Park
To Canyon
To Norris
To Tower-Roosevelt
To West Thumb and Grant Village
To Old Faithful



Visiting Yellowstone National Park

Road construction is underway on park roadways. Check the park newspaper, visit www.nps.gov/yell, or phone 307-344-2117 for delays or closures.

Speed Limit

45 mph unless otherwise posted. Please drive slowly and cautiously to protect yourself and wildlife.

Winter Road Closures

From early November to mid-April most park roads are closed. The exception is the road between Gardiner and Cooke City. It is open all year.

From mid-December to mid-March, oversnow vehicles may be used only on the unplowed, groomed park roads. Call park headquarters for regulations or check the park website, www.nps.gov/yell.

- Unpaved road
- Distance indicator
- One-way road
- Geothermal feature
- Trail or boardwalk
- Day-use hiking/bicycling trail (ask for more information)
- Boating allowed
- 5 mph zone
- Hand-propelled craft only

Fishing

Permits are required for all watercraft; ask at ranger stations. Areas closed to watercraft include all rivers except Lewis River between Lewis and Shoshone lakes.

Firearms

You are responsible for knowing and following federal and state (WY, MT, ID) laws that govern firearms and weapons within the park. Find information at www.nps.gov/yell.

Accessibility

We strive to make facilities, services, and programs accessible to all. Service animals are allowed but require a permit in the backcountry. Find information at visitor centers and on our website.

