

Historic, Archive Document

Do not assume content reflects current scientific knowledge, policies, or practices.



7192330

NEW HAVEN NURSERIES



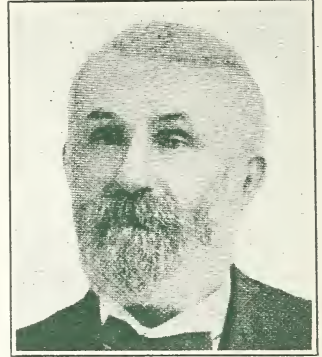
Spring
1931

J. BAGBY AND SONS COMPANY
NEW HAVEN, MISSOURI

The Bagby Family has served fruit growers all over the nation for almost sixty years

"Growing things well" has been the guiding star of the Bagby family for nearly sixty years. From the humble beginning of a few fruit trees, grown by Julian Bagby in 1872 for his neighbors, this business has been growing steadily, branching out each year as new friends are made through the trees we have supplied to others, until now 250 acres are required for growing the nursery stock for which we have a steady demand.

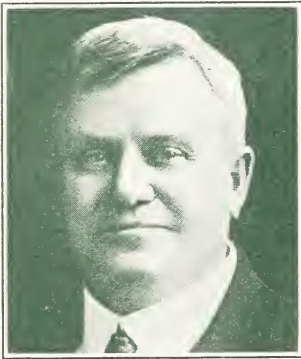
So, the name of the New Haven Nurseries is an honored one, with a high place among the finest nurseries in America, and enjoys the confidence of thousands who have learned by their own experience, as well as that of their neighbors, that we conduct our business honestly and are square in all our dealings. These are the policies that have helped to make us nationally known, and a warranty of satisfaction or your money back.



JULIAN BAGBY
Founder
1838-1913

Many employes have been with us a quarter century

It requires the help of many experienced men the year round to care for the stock being grown. One of these men has been with us for over 40 years, and our foreman has a record of 35 years in our service. Several others have been with us for more than 20 years. So, they know our ways and can carry on the work to be done from a ripe experience. Men working together for so long, and seeing constant improvements as a result of their teamwork, are inspired with a desire to excel, and the fruits of their labor have for many years won the unstinted praise of those who know how to judge the earmarks of a tree that has been properly cultured. We have no hesitancy in promising those who buy our trees the very best results, and assure you that everything you order from us will be true-to-name, and exactly as we represent it.



J. L. BAGBY
1868-1929

R. S. Bagby devotes his entire time to the business

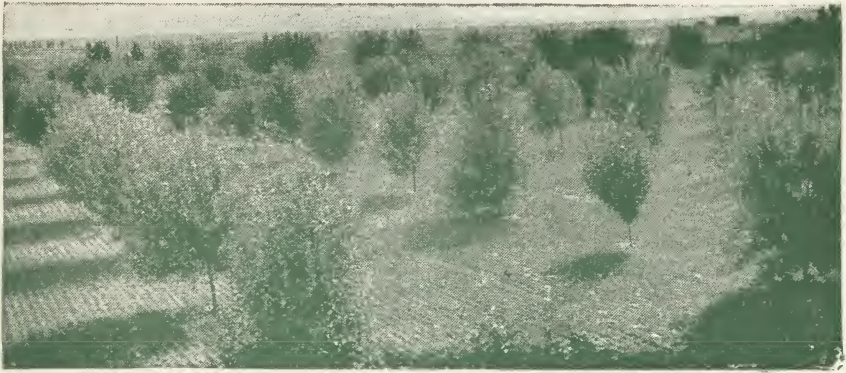
And through all these years, someone in the Bagby family has been at the helm of the business, keeping abreast of the times in nursery development, so that those who depend upon us for their nursery needs might always secure anything that had been sufficiently well established so that it could be sold with the rigid warranty required of everything we sell.

And at this time, the writer, R. S. Bagby, born and raised you might say in the New Haven Nurseries, stands squarely behind the policies made in the years gone by, and pledges his most earnest endeavor to carry out the time honored practices of his ancestors.

His most recent contribution to nursery selling is an easy payment plan which makes it possible to buy a family orchard on the easiest terms. The plan is explained in the back of this catalog, on the Payment Plan Order blank. I take this opportunity to thank you for your many favors of the past, and hope we may continue to serve you. R. S. BAGBY, Sec'y.-Manager.



R. S. BAGBY
Secretary-Manager



A Money-Making Orchard

“What Shall I Plant?”

We wish to say that the small-size trees are strictly first-class and well-rooted, and by many will be preferred to the larger ones. So many ask, “What should I plant in my locality?” that we will here name a few of the popular and profitable sorts for general planting.

APPLES

Jonathan, Delicious, Mammoth Black Twig, York Imperial, Winter Banana, Stayman Winesap, Rome Beauty, Winesap, Grimes' Golden, Maiden Blush and Yellow Transparent. This is our Commercial List. Others would add, perhaps, Ben Davis, Duchess of Oldenberg, Early Harvest, etc. All of the above are good, profitable sorts, both for home use and market.

PEACHES

If you want to market your fruit, avoid planting too many early sorts. Elberta, J. H. Hale, Carman, Champion, Captain Ede, Heath Cling, Krummel, Gold Dust, Belle Ga. and Crawford are all profitable for market. Should early sorts be desired, Mayflower, Greensboro, Alexander and Red Bird Cling are what you should plant. Plant October Beauty for best late yellow cling. If for home use, plant general assortment, including above, for a succession. The peach tree should have shoots and branches shortened every year or two. The land should be kept in a high state of cultivation.

PEARS

The fact is more and more apparent that Kieffer and Garber will stay in the lead for profit in the Mississippi Valley states. Duchess and Bartlett can be profitably planted farther west. Koonce is the best early Pear.

CHERRIES

Early Richmond, Montmorency, English Morello (Sour), Governor Wood and Magann (Sweet) do very well and are profitable.

PLUMS

Wild Goose (Native), Shropshire Damson, German Prune (European), Abundance and Burbank (Japanese), are all good bearers and profitable. We consider the Abundance and Burbank the best of the well-known Japanese sorts. **BLACK BEAUTY IS THE BEST OF ALL.**

WHOLE ROOT TREES

All our Apple, Pear, Peach, Plum and Cherry trees are grown on “whole roots.” Our Apples are grafted and planted so that the scion also roots. Don't pay extra prices for “trade-marks.” We give our customer the very best, and we don't ask two prices. A trial order will convince you. In planting our trees, you set the best that experience and skilled labor can produce.

Distances for Planting

Standard Apples	30 to 35 feet apart each way
Standard Pears and Strong-growing Cherries.....	20 feet apart each way
Duke and Morello Cherries.....	18 feet apart each way
Standard Plums, Apricots.....	18 to 20 feet apart each way
Peaches, Nectarines	18 to 20 feet apart each way
Dwarf Pears	10 to 20 feet apart each way
Grapes	rows 10 to 16 feet apart, 7 to 16 feet in rows
Currants and Gooseberries.....	3 to 4 feet apart
Raspberries and Blackberries.....	.3 to 4 by 5 to 7 feet apart
Strawberries for field culture.....	.1 to 1½ by 3 to 4 feet apart
Strawberries for garden culture.....	.1 to 2 feet apart

Number of Trees on an Acre

30 feet apart each way.....	50	18 feet apart each way.....	135
25 feet apart each way.....	70	15 feet apart each way.....	205
20 feet apart each way.....	110		

Rule—Multiply the distance in feet between the rows by the distance the plants are apart in the rows, and the product will be the number of square feet for each plant or hill; which, divided into the number of square feet in an acre (43,560), will give the number of plants or trees to the acre.

Proper planting and cultivation with correct pruning and spraying is the best insurance on an orchard.

The Way We Do Business With You

Terms Cash, unless otherwise agreed upon. All orders to be sent C. O. D. must be accompanied by one-fourth the amount in cash. Remit by Money Order, Cash or Check. When cash is sent be sure to Register the letter.

Order Early It is important that you order early. For the benefit of customers who wish to order early, but do not care to spare all of the money when the order is sent, we will accept early orders if 10 per cent of the amount is sent with order, and we will reserve the stock for you. Balance to be sent when you order the stock shipped.

Directions for Ordering Write name and address plainly. Always state distinctly the sizes and grades of stock ordered as per the grades given in this list. When varieties named cannot be furnished, we reserve the right to substitute such varieties as will fill the season as nearly as possible, unless prohibited in the order. Persons unacquainted with the different varieties will generally get a much better selection by leaving the assortment to us. Keep a correct copy of the order, so that when stock arrives you will know exactly whether or not you get what you have ordered. If we make mistakes, they are accidental, and we wish to right them.

Prices The prices are for the quantities named, but five, fifty and five hundred will be supplied at ten, hundred and thousand rates respectively—i. e., five at half the price of ten; fifty at half the price of one hundred, and so on.

The prices in this list are for the goods F. O. B. New Haven, Missouri.

15% additional must be sent when you wish your stock shipped by parcel post or by truck. Any amount not used for prepaying packages will be refunded.

Easy Payments See page 29 for details.

Packing All goods are packed free. Notwithstanding this fact, we use the utmost care and pack all orders, large or small, according to the distance and our customers' best interests. Everything is correctly labeled.

Our Guaranty The fact that nurserymen, planters and fruit growers of the country have ordered of us year after year, is as good a guaranty as can be given by any other nursery of fifty-nine years' standing. If a mistake occurs we will cheerfully correct it. We use the greatest care possible to have our stock true-to-name, and should any prove not true, we stand ready to replace it free of charge, or to refund the purchase price, but it is mutually agreed between the purchaser and ourselves that we shall not at any time be held responsible for any sum greater than the amount originally paid for said stock. We guarantee stock to reach customers in good condition.

All shipments will be accompanied by Certificate of Inspection of the State Entomologist. Good stock, true-to-name, sold direct to the planter at reasonable prices is our aim.

We solicit correspondence and personal inspection of our stock, confident that it will compare favorably with the best.

Our Location NEW HAVEN is on the Missouri Pacific Railroad and also on the Missouri River, sixty-seven miles west of St. Louis. Our soil is the very best for producing well-ripened stock with splendid roots. Our facilities for prompt shipments are first class. Daily Truck Service to St. Louis via Highway No. 66.

Our Shipments Our shipments go to practically every State in the Union. We do not claim you should plant "Bagby-grown stock or none at all," but we do want to impress on you the fact that there is NONE BETTER.

Complete planting directions will be sent with each order.

APPLES

The first fruit, both in importance and general culture, is the Apple. Its period, unlike that of all other fruits, extends nearly or quite through the year. By planting judicious selections of summer, fall and winter sorts, a constant succession of this most desirable fruit will be obtained. Apple planting can never be overdone.

Our apples are all grown on Missouri river upland, on well-branched, whole roots, smooth, clean and well grown in every respect. No better trees can be found anywhere.

	Each	10	100	1000
2 year, 5 to 6 feet, well branched, select.....	\$0.45	\$4.00	\$35.00	\$275.00
2 year, 4 to 5 feet, well branched, first class.....	.40	3.50	30.00	225.00
2 year, 3 to 4 feet, select.....	.35	3.00	25.00	200.00
1 year, 3 to 4 feet, select.....	.30	2.50	20.00	150.00
1 year, 2 to 3 feet.....	.25	2.00	15.00	100.00

Summer Apples

BENONI—One of the best summer sorts. Red striped. Flesh yellow, tender, pleasant. Core small. Tree vigorous and upright.

CAROLINA RED JUNE (Red June)—Medium size; red, flesh white; last of June. Tree is very vigorous, upright, an early and abundant bearer.

DUCHESS OF OLDENBURG (Russian)—Medium to large size; skin yellow, streaked with red, somewhat blushed. Productive. August.

EARLY HARVEST—Medium to large, bright straw color; flesh white. Tree moderately vigorous and productive. First of July.

LIVELAND RASPBERRY—Fruit good sized, clear, waxy, white striped and marbled crimson; flesh snow-white, often tinged pink next to the skin, a very popular early summer variety. Blooms late, is blight-resistant, bears early, makes a good filler.

RED ASTRACHAN—Fruit is nearly covered with light and dark red stripes. Large, roundish and very juicy. A good general purpose apple for home use or local market.

YELLOW TRANSPARENT—One of the best early apples. It is extremely hardy. Fruit is yellow with a smooth brilliant skin. Flesh is white, fine grained, sub-acid. Tree is a straight compact grower and is often used as a filler.

Fall Apples



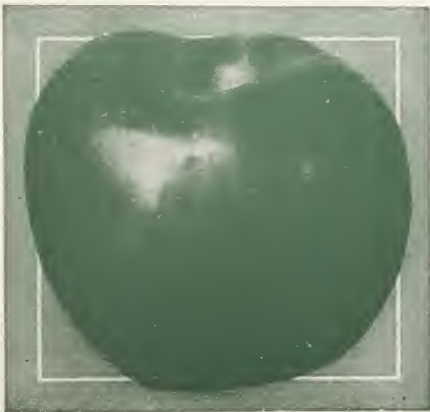
Grimes' Golden

GRIMES' GOLDEN—Medium to large; rich golden-yellow; flesh tender, mild, sub-acid. Should be gathered before turning yellow and put in a cool place. Often keeps until February. Tree hardy, vigorous; an early and abundant bearer. October to January.

GOLDEN SWEET—Large pale yellow. Very sweet.

MAIDEN'S BLUSH—Rather large, evenly shaded red cheek or blush on a clear pale yellow ground; bears large crops. August and September.

WEALTHY—An apple of fine appearance and quality; an early and profuse bearer; a good market apple of its season. Tree hardy. Ripens here in August. Winter apple North.



Carolina Red June



Delicious

Winter Apples

BLACK BEN DAVIS—Ben Davis type. Dark red color.

BEN DAVIS—Fruit medium to large; red striped; flesh white; an excellent variety. Tree very hardy; a free-grower, coming into bearing early and very productive. December to March.

DELICIOUS—A remarkably popular variety, and rapidly taking first rank both for commercial and home orchards in all the apple-growing sections of the country. Fruit large, nearly covered with dull dark red; fine-grained, crisp, juicy; quality best; a splendid keeper and shipper; vigorous grower.

GANO—This apple was introduced to the public in 1886. Tree very hardy; it bears very young. Fruit bright red on yellow ground, no stripes; large; oblong, tapering to the eye; surface smooth, takes a very high polish, making it valuable as a stand fruit; flesh white. Annual, early, prolific bearer.

GENETON (Rawles' Janet)—Medium, roundish, greenish-yellow, striped with red; rich and juicy; one of the best and longest keepers in the South and Southwest; valuable for its high quality and its late blooming; moderate grower. January to March.

HUNTSMAN'S FAVORITE—Originated in Johnson county, Missouri. Very large; golden-yellow, with bright red cheek; nearly sweet, fine flavor, very aromatic. One of the best and highest selling market apples; tree very healthy and productive. November to January.

Winter Apples—Continued

INGRAM—Very similar to Geneton, but tree is more upright grower and apple is not subject to crack. Size medium; striped bright red in the sun. Flesh greenish-yellow; agreeable, sub-acid flavor. Good keeper. Tree hardy, late bloomer, very productive.

JONATHAN—One of our earliest and best bearers. Brings fancy prices. Extra long-life tree. Fruit a brilliant glossy red, with spicy rich acid flavor. Succeeds everywhere. A firm apple, crisp, tender and juicy. A great commercial apple and a splendid family sort.

KING DAVID—Handsome red apple. Some what deeper in color than Jonathán. Snappy flavor. Productive.

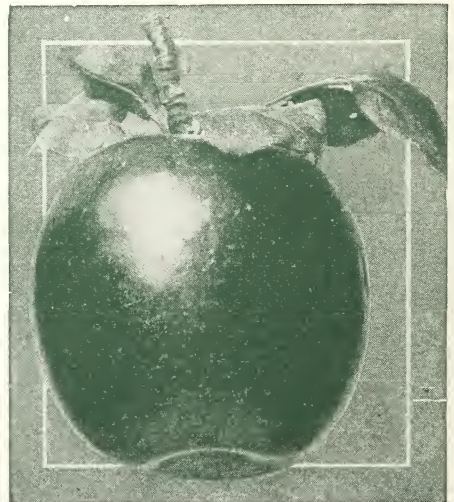
MAMMOTH BLACK TWIG—Closely related to the Winesap, but fruit is very much larger and has a very deep red skin. It is an excellent shipper. Its keeping qualities are equal to the Winesap. The tree is a fine upright spreading grower, thriving in almost any soil or climate.

MINKLER—Bright red cheek. One of the very best late keepers. Seedling of Little Red Romanite.

RAMBO—Medium; flat, streaked red and yellow. Very tender and juicy. Hardy and productive.

ROME BEAUTY—Large, yellow shaded with red; tender, juicy, sub-acid. October to February.

STAYMAN WINESAP—Fruit is very large, and of a deep red color. Flesh firm, tender and juicy. It is a wonderful apple for both the home and commercial orchard. Tree is a strong grower and very heavy producer. We recommend this as one of the finest of the winter apples.



Jonathan

Winter Apples—Continued



Winesap

WILLOW TWIG—Large, pale green, mottled, striped and blushed with red. Tree spreading. Latest winter sort. Bears young.

WINESAP—Few apples have enjoyed the popularity of the Winesap. It is deep red in color, fine flavor and keeps exceedingly well in storage. Fruit is medium size, but takes a high polish and is always in

demand. It is an exceptionally heavy and regular bearer. The tree will succeed in almost every soil and climate.

WINTER BANANA—Fancy market fruit; large, pale yellow, pink blush. Tree a strong grower.

YORK IMPERIAL—This apple has been gaining favor, and is being planted largely as a commercial sort. Large, smooth, yellow, shaded red, with indistinct red stripes.

Crab Apples

Prices for Crab Apples are the same as for other apples.

HYSLOP—Deep crimson. Very popular on account of its large size, beauty and hardiness. Keeps well into the winter.

TRANSCENDENT—Remarkably vigorous, growing to a good size, and immensely productive. Bears a little the second year from planting, and every year after, and produces good crops by the fourth year. The best of its class for cooking and eating; juicy and crisp. Skin yellow, striped with red. September to October.

WHITNEY—Large, averaging 1½ to 2 inches in diameter; skin smooth, glossy green, splashed with carmine; flesh firm, juicy and rich. Very hardy, vigorous, handsome.

YELLOW SIBERIAN—Fruit large, very juicy and excellent for preserves, jelly or pickles.

VISIT OUR NURSERIES during growing, digging or storage season. We welcome you at any time.



A Plate of New Haven Apples

Peaches



Three-Year-Old Peach Trees from our Nursery in an Indiana orchard.

We are "Headquarters" for True-to-Name Peach Trees, and can supply the best up-to-date market sorts. Our Peaches are stocky, nicely headed, smooth, straight bodies, well rooted, on healthy peach stocks and free from any disease. Remember this when comparing prices with other establishments.

	Each	10	100	1000
Extra Select, 5 to 6 feet.....	\$0.40	\$3.50	\$27.50	\$225.00
First class, 3½ to 5 feet, nicely headed.....	.35	3.00	25.00	200.00
Medium, 2½ to 4 feet, nice, well branched.....	.25	2.00	15.00	120.00
2 to 3 feet, part branched.....	.20	1.50	10.00	80.00
1 to 2 feet, whips.....	.15	1.20	8.00	60.00

Early Varieties

ALEXANDER (White Free)—Large size, handsome and regular in form, with deep maroon shade; adheres to stone; should remain on the tree until fully ripe. Early in July.

CARMAN (White Semi-cling)—Large with beautifully mottled red cheek. A valuable home or market sort. Season about fourteen days later than Alexander and about three weeks earlier than Elberta. Our stock came from the originator, and is true to name.

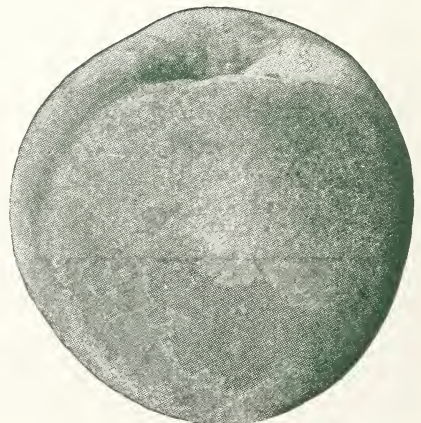
GREENSBORO (White Free)—Large, oblong. Tree vigorous, prolific; grown largely in Georgia and the South for Northern markets. One of the best early sorts. Ripe June 25th.

MAMIE ROSS (White Free)—Large, white, almost covered with carmine; juicy, and of good quality. One of the best for family use and probably the best early commercial variety.

MAYFLOWER (Red Semi-cling)—A beautiful "red-all-over" peach; handsome and of splendid quality. Extremely early. Tree hardy and healthy. Ripens here June 20th.

RED BIRD CLING (Early Wheeler) (White Cling)—One of the very best of the early peaches. The tree is hardy, a good grower and very productive. Fruit is a creamy white with a red blush. A splendid shipper, and commands good market prices.

SNEED (White Cling)—Ripens earlier than Alexander, and belongs to an entirely different type. It is very distinct in tree and fruit, belonging to the Chinese Cling type. July.



Carman

Mid-Season Varieties



Champion

BELLE OF GEORGIA (White Free)—Very large; skin white with red cheek; flesh white, firm and of excellent flavor. Tree a rapid grower, very prolific; fine shipper. Ripens with Early Crawford.

CAPTAIN EDE (Yellow Free)—Originated on farm of Capt. Ede in Illinois. Splendid yellow freestone variety. In appearance is very much like Elberta, its equal in every way, except not quite so large; better quality.

CHAMPION (White Free)—Originated at Nokomis, Illinois. Fruit large, beautiful in appearance; flavor delicious, sweet, rich and juicy; skin creamy-white, with red cheek. August 15.

CRAWFORD'S EARLY (Yellow Free)—This beautiful yellow peach is highly esteemed for market purposes. Fruit medium, oblong; skin yellow, with fine red cheek; flesh yellow, juicy, sweet and excellent. Last of July.

CRAWFORD'S LATE (Yellow Free)—Fruit of the largest size; skin yellow, or greenish-yellow, with dull red cheek; flesh yellow; productive; one of the best freestones. August and September.

CHINESE CLING (White Cling)—A most popular peach; shape is oblong, has creamy skin with faint flashes of red. August.

EARLY ELBERTA (Yellow Free)—Resembles Elberta in appearance, but ripens about ten days earlier. Flesh is fine grained and sweet. Excellent for home use or market. August.

ELBERTA (Yellow Free)—A Georgia cross between Crawford Early and Chinese Cling; very large; well colored; all things considered, the finest yellow freestone in cultivation; no one can go amiss by planting it; the fruit is perfectly free from rot, and is one of the most successful shipping varieties. August and September.

ELBERTA CLING (Yellow Cling)—Flesh firm; excellent shipper. Tree strong grower and productive. Looks just like Elberta, but a perfect cling stone.

J. H. HALE (Yellow Free)—Similar in shape to the Elberta, but averages a little larger. Flesh fine grained of excellent flavor and a perfect free stone. Ripens a few days after Elberta. It is a wonderful peach for either home or commercial orchard, as it is very productive and a good shipper.

HILEY (White Free)—Ripens last of July. Yellowish-white skin with deep red cheek. Flesh is white and very juicy. Large size.

MATTHEW'S BEAUTY (Yellow Free)—Fully as large as Elberta, but about two weeks later. A splendid shipper and home orchard variety. September.

MILLER CLING (White Cling)—An extra large clingstone. Hardy, productive, and of best quality. Earlier than Heath Cling, but larger and better color.

OLD MIXON CLING (White Cling)—Large, white flesh, with deep red cheek; rich and good; one of the best. August.

ROCHESTER (Yellow Free)—Ripens ahead of Early Crawford, but is of the same type. Long season and an excellent home orchard variety. Flesh firm, juicy and rich.

SOUTH HAVEN (Yellow Free)—Fruit large, round and of uniform size. Color deep yellow with red cheek. Very hardy.

YELLOW ST. JOHN (Yellow Free)—Medium size. Yellow free with red blush. Flesh tender; juicy and very good quality. Tree strong grower and heavy bearer. Middle of August.

WHEATLAND (Yellow Free)—Large, roundish, skin golden yellow, shaded with crimson on the sunny side. Flesh yellow and of fine quality. Ripens just ahead of Elberta. August.



Elberta



Late Varieties

GOLD DUST—Large yellow clingstone; juicy, productive and of best quality. September 1st to 10th.

HEATH CLING (White Cling)—Large oblong, creamy-white, slightly tinged with red in the sun; very tender, juicy, melting; very rich and luscious. September 15th.

HENRIETTA (Levy) (Yellow Cling)—Magnificent yellow cling, large size, slightly covered with bright crimson; hardy, productive, always commands fancy prices. September 25th.

KRUMMEL (Yellow Free)—Skin yellow, overlaid with a crimson blush. The fruit

is nearly round and quite large. Flesh is fine grained and has a delicious flavor. September 10th to 25th.

OCTOBER BEAUTY (Yellow Cling)—Late yellow cling. Originated on the grounds of Judge Hugo Muench of St. Louis. We recommend it as the best late yellow cling.

PICQUET'S LATE (Yellow Free)—A variety of large size, yellow, with red cheek; flesh yellow. September.

RINGGOLD CLING (White Cling)—Much larger than Heath, and in every way an improvement on that popular kind. A very valuable peach. September.

STUMP (White Free)—Late freestone of very fine quality. September.



Showing Different Sizes of Peach Trees.



Burbank

Plums

	Each	10	100
First class trees, 5 to 6 ft.	\$0.60	\$5.00	\$40.00
First class trees, 4 to 5 ft.	.50	4.00	30.00
First class trees, 3 to 4 ft.	.40	3.00	20.00

ABUNDANCE—A hardy, productive Japanese sort. Large, purplish-red; quality very best. Season, early in July.

AMERICA—Large, glossy red. Tree large and vigorous; hardy; bears young. Enormous cropper. Does well anywhere.

BLACK BEAUTY—The best Japan sort we have ever grown. Large, very dark purple, almost black. Persimmon shape. Quality and size of Abundance. Originated with us.

BURBANK—Large, varying less in size than the other Japanese plums; it is nearly globular; clear cherry-red with a thin lilac bloom; flesh deep yellow, firm and meaty; tree vigorous and productive. Last of July.

GERMAN PRUNE—Very profitable and will succeed wherever Common Damson can be grown. Very large. We consider it the best of European sorts. August and September.

GONZALES—Large red plum. Midseason.

HANSKA (Hansen Hybrid)—Good eating bright plum. Bright red.

RED JUNE—One of the largest Japanese varieties; ripens before Abundance. Tree upright, vigorous and hardy.

SHROPSHIRE DAMSON—A plum of fine quality, sprightly. In market it has commanded nearly double the price of the Common Damson; enormously productive. Last of September.

WANETA (Hansen Hybrid)—Dark purplish red. Delicious flavor. Trees small.

WILD GOOSE—Large, rich, crimson, beautiful; flesh soft, melting delicious, with a full fruity flavor. Tree a strong grower, prolific.

For the Home Orchard, plant Abundance, Burbank, Black Beauty and Shropshire Damson.



Shropshire Damson

Pears

Our pears are especially clean, smooth and well rooted, grown on XX French imported stocks.

	Each	10	100
Leading sorts, first class, 5 to 7 feet, 2 years.....		\$0.75	\$6.50 \$50.00
Leading sorts, 4 to 5 feet, 2 year60	5.00 35.00
Leading sorts, 3 to 4 feet, 1 year, very fine.....		.50	4.00 30.00

For Kieffer in Quantities, Write for Special Low Prices.

Summer Pears

BARTLETT—Large, skin very thin, clear lemon-yellow, with soft blush on the sunny side; flesh white, buttery, very juicy and highly flavored. The best summer pear in existence for quality.

KOONCE—The handsomest, best and most valuable; very early pear; tree vigorous, upright grower, free from blight; magnificent foilage, which it retains late in the season; fruit medium to large; skin yellow, does not rot at the core, juicy, sweet. Is an excellent shipper.

SECKEL (Little Sugar Pear)—Small, rich, yellowish brown with bright red cheek. Juicy, buttery and melting.

Autumn Pears

FLEMISH BEAUTY—Large, beautiful, juicy, melting, rich and fine; strong grower and good bearer; hardy everywhere. September and October.

GARBER — Originated in Pennsylvania. Fruit is large and beautiful; color bright yellow, with red; juicy and good; delicious canned.

KIEFFER—Tree a remarkable grower, with so vigorous a constitution that it rarely blights. Fruit of fine size, rich color and good quality. Brings high prices in competition with other varieties. Best when picked at maturity and house-ripened. October and November.

Ballard, Co., Ky., April 4, 1930.
Trees shipped March 22, 1930, arrived all right. Look good. H. N. SANFORD.

Jasper Co., Ind., February 16, 1930.
I have good luck with your trees. Of the 2,000 trees in this neighborhood that are from your nursery, there are not over 100 trees to be replaced in five years.

CHAS. E. MARSHALL.
Lincoln Co., Mo., April 7, 1930.
Plants reached me in fine shape, and I think they are the best I ever saw.
C. P. WARD.

Kearney Co., Kans., May 2, 1930.
Trees and shrubbery arrived in good condition. S. E. WOOD.

Bernalillo Co., N. Mex., April 14, 1930.
The trees you sent me three years ago are growing fine and this year they are blooming. Some of them are ten feet high and I am proud of them. FRED GRINER.



Kieffer

Cherries



There are few more desirable fruits than Cherries, and they can be grown for market with great profit. Along the street or avenue as ornamentals; they are strong, vigorous growers, with large, glossy leaves and open, spreading heads, making a fine shade. Cherries thrive in almost any well-drained soil. The fruit is equally delicious whether eaten from the tree or preserved, and it will always find a ready market at profitable prices.

	Each	10	100
Leading sorts, extra select, 2-year, 4½ to 6 feet.....		\$0.85	\$7.50 \$65.00
Leading sorts, first-class, 2-year or 1-year, 3½ to 5 feet75	6.50	50.00
Leading sorts, first-class, 2-year or 1-year, 3 to 4 feet60	5.00	40.00

BLACK TARTARIAN—Sweet. Large size, meaty and good. Productive. Last of June.

ENGLISH MORELLO—Medium to large, blackish-red; acid; juicy. Very productive. Short lived. July.

EARLY RICHMOND (Kentish Virginian or Early May)—Medium size; red; melting, juicy, sprightly, acid flavor. This is one of the most valuable and popular of the acid cherries, and is exceedingly productive. First of June.

GOV. WOOD—One of the best sweet cherries, very large, white with pink cheek. Juicy, rich and delicious. Tree healthy and a great bearer. May and June.

MAGANN—A sweet cherry. Fruit large, almost black when fully ripe, growing in large clusters. It will pay you to include some of these in your order for other stock.

MONTMORENCY—One of the finest acid cherries; tree very hardy and an immense bearer; commences to fruit while young and is loaded annually thereafter with fine crops; fruit of good size, fine flavor, and of bright, clear, shining red; valuable everywhere, especially for Northern latitudes; larger than Early Richmond, and fully ten days later. Season, end of June.

Home Orchard Collection

LOT No. A, for \$8.50 (Regular price \$10.80).

5 APPLE, Extra Select, 2 yr., 5 to 6 ft.

- 1 Benoni 1 Grimes Golden
- 1 M. B. Twig 1 Stayman Winesap
- 1 Jonathan

5 PEACH, Extra Select, 4½ to 6 ft.

- 1 Mayflower 1 Carman
- 1 Gold Dust Cling 1 Ringgold Cling
- 1 Elberta

3 CHERRY, Extra Select, 4½ to 6 ft.

- 1 Early Richmond 1 Montmorency
- 1 Magann

2 PLUM, Extra Select, 5 to 6 ft.

- 1 Black Beauty 1 Wild Goose

2 PEAR, Extra Select, 5 to 6 ft.

- 1 Kieffer 1 Garber

3 GRAPE, 2 yr., No. 1.

- 1 Concord (black) 1 Catawba (red)
- 1 Niagara (white)

10 Early Harvest BLACKBERRY.

10 Cumberland RASPBERRY.

2 Houghton GOOSEBERRY.

Apricots

Each 10 100

4 to 6 feet, extra select...\$1.00 \$8.50 \$70.00
 3 to 4 feet, first-class..... .75 6.00 50.00

EARLY GOLDEN—Medium. Golden-yellow. Moderately juicy and sweet. First of July.

MOORPARK—One of the largest. Orange with red cheek. Firm and juicy. Very productive. July.

ROYAL—Large. Light yellow with red cheek. Rich and juicy. Last of July.

Quince

Each 10

3 to 4 feet, 2 year, extra select...\$1.00 \$9.00

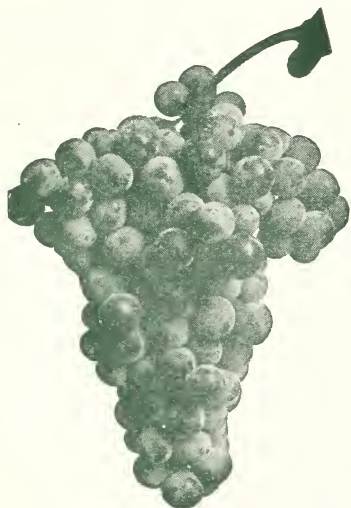
CHAMPION—Large; oval; firm and of excellent quality. Ripens late and good keeper.

ORANGE—Large; round; bright golden-yellow. Fine for preserving. Good market sort.

Nut Trees

BUTTERNUTS—Large shapely tree. Nuts are long with hard black shells. Kernels very sweet and rich. Each 10

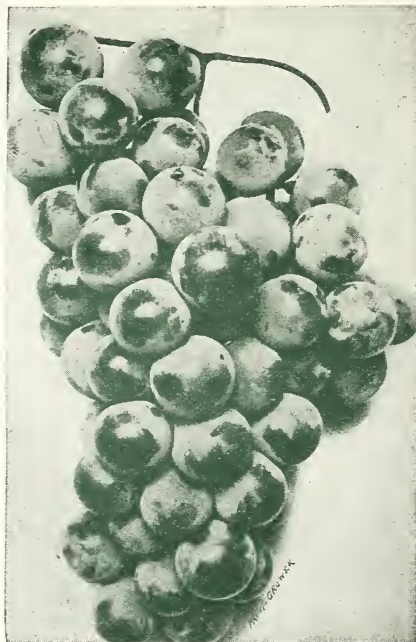
3 to 4 feet,.....\$0.60 \$5.00



Moore's Early

To cover season for succession, plant Moore's Early, Niagara, Concord, Worden, Catawba.

For Arbor, plant strong-growing sorts: Norton's Virginia, Concord, Niagara.



Concord

Grape Vines

2 yr., No. 1

CONCORD—Black. The standard black grape. Largely planted in vineyards and gardens. It is firm; a good keeper and shipper. Fine for table use and for grape juice. Each 10 100
 Price\$0.20 \$1.50 \$ 8.00

MOORE'S EARLY—Black. Ripens early. Large sweet and good. Each 10 100
 Price\$0.30 \$2.00 \$15.00

NORTON'S VIRGINIA—Black. Clusters medium; berry small. Very juicy. Best variety for arbor planting. Late. Each 10 100
 Price\$0.35 \$3.00 \$28.00

WORDEN—Black. Bunch and berries large. Excellent quality. Vine a strong, healthy and vigorous grower. Each 10 100
 Price\$0.25 \$1.50 \$12.00

CATAWBA—Red. Thin skin and tender flesh. Very sweet and of fine quality. Each 10 100
 Price\$0.20 \$1.50 \$12.00

DELAWARE—Red. Bunch small but very productive. Very sweet and juicy. Each 10 100
 Price\$0.25 \$1.75 \$12.00

NIAGARA—White. The standard white grape. Bunch and berry large and well formed. Juicy, without much pulp. Flavor the very best. Each 10 100
 Price\$0.25 \$1.50 \$12.00

Small Fruits and Berries

Strawberry Plants

Prices of Strawberry Plants, for spring shipment only: Selected plants \$1.50 per 100, by parcel post, prepaid. \$8.00 per 1,000, by express, f. o. b., New Haven, Mo.

Large orders must be sent by express. Small orders carry safely by mail. They do not carry well by freight.

AROMA (Per.)—Plants large, very vigorous and perfectly healthy. Fruit large to very large, roundish, smooth and perfect in form, of a beautiful bright glossy red in color, very firm, and of excellent quality. Late.

SENATOR DUNLAP (Per.)—A well-tested, wonderfully productive variety. Fruit of good size, regular form, beautiful bright red, glossy, firm, splendid keeper and shipper, excellent quality. Mid-season.

DR. BURRILL (Per.)—Dark red berry. Ripens with Senator Dunlap, but season much longer.

GIBSON (Per.)—Large, even shape; glossy, dark red. Firm and high quality, ripening over a long season. Medium to late.

PREMIER (Per.)—Early. Large, bright glossy berry. Very productive

Dewberry

	10	100
Price	\$0.60	\$4.00

LUCRETIA—Large berry. Early. Plant strong grower. Very productive.



Strawberries

Black Raspberry

	10	100
Price	\$0.50	\$3.00

CUMBERLAND—Black. Mid-season. The best blackcap.

KANSAS—Black. Early. A strong vigorous grower. Berries jet black and almost free from bloom.

PLUM FARMER—Black. Ripens very early and quickly.

Red Raspberry

	10	100
Price	\$0.50	\$4.00

CUTHBERT—Red. Very large and firm. Strong grower. Hardy.

MILLER—Red. Medium size. Early. Hardy and productive.

Blackberry

EARLY HARVEST—The earliest blackberry. Very valuable for market. Strong, upright grower and very productive.

	10	100
Price	\$0.60	\$4.00

MERSEREAU—Early. Large berry with small seed. Very strong grower.

	10	100
Price	\$0.60	\$5.00

SNYDER—Late. Extremely hardy. Very productive. Sweet and juicy.

	10	100
Price	\$0.60	\$4.00

Gooseberries

	Each	10	100
Two-year, No. 1,	\$0.25	\$2.00	\$16.00

DOWNING—Fruit large and of fine appearance. Bush a good grower and heavy cropper. Pale green color.

HOUGHTON—Heavy producer. Fruit small. Fine quality. Pale red.

Currants

	Each	10
Two-year, No. 1,	\$0.25	\$2.00

FAY'S PROLIFIC—Fruit large. Bright red. Excellent flavor.

RED DUTCH—Berries medium. Bright red. Good flavor.

Rhubarb

VICTORIA—Large stalks of bright red color.

	Each	10	100
Price	\$0.10	\$0.80	\$6.00

Asparagus

WASHINGTON—1 year.
Price.....\$2.00 per 100

Shade and Ornamental Trees

CATALPA BUNGEI (Umbrella Catalpa)—Grafted on straight stems, it makes an umbrella-shaped top without pruning. Perfectly hardy, and flourishes in all soils and climates. Each 10

5 to 7 feet.....\$1.00 \$3.00
 4 to 5 feet......80 7.00
 3 to 4 feet......70 5.00

CATALPA (Speciosa)—Hardy Catalpa. Has very large, broad leaves and fragrant purplish white blossoms. Excellent for post timber as it is very resistant to rot. Each 10

6 to 8 feet.....\$0.50 \$4.00

ELM (American)—A native tree of large size. Wide spreading head and graceful drooping branches. A hardy grower. One of the best park and street trees. Each 10

6 to 8 feet.....\$0.80 \$6.50
 8 to 10 feet..... 1.00 8.00

ELM (Chinese)—A hardy, rapid grower. Slender branches, compact habit of growth with small attractive leaves. Highly recommended for dry climates. Each 10

8 to 10 feet.....\$1.00 \$8.00

MAPLE (Soft)—A native tree of very rapid growth. Hardy everywhere and easily transplanted. Leaves are finely cut, bright green on upper and whitish on lower side.



Soft Maple

8 to 12 feet.....Each 10
 \$1.00 \$8.50
 6 to 8 feet......75 6.00

POPLAR (Chinese)—Hardy, pyramidal tree. Habits similar to Lombardy. Foliage not as dense and lighter color. Each 10

6 to 8 feet.....\$0.75 \$6.00

POPLAR (Lombardy)—A tall, rapid grower. Always makes a striking feature in any landscape. For tall screens and back-grounds, this tree is admirable.

Each 10
 6 to 8 feet.....\$0.60 \$5.00
 4 to 6 feet......50 4.00

PUSSY WILLOW—Very popular for ornamental purposes because of the attractive catkins formed on the branches early in the Spring. Each 10

3 to 4 feet.....\$0.60 \$5.00

RUSSIAN MULBERRY. Each 10

4 to 6 feet.....\$0.60 \$5.00

SYCAMORE—One of the tallest of our native trees. Very shapely and much admired because of its white spotted bark. One of the best trees for cities.

Each 10
 5 to 6 feet.....\$1.00 \$8.00

TULIP TREE—A tall, robust tree of magnificent appearance. Leaves of unusual form. The blossoms are tulip-like in shape. Each 10

5 to 6 feet.....\$0.80 \$7.00

WILLOW, WEEPING (Wisconsin)—The hardiest of all Weeping Willows. Beautiful form. Grows to very large size.

Each
 4 to 6 feet.....\$1.50



Lombardy Poplar

Ornamental Shrubs



Spiraea Van Houtti

ALTHEA (Hibiscus, or Rose of Sharon)— Handsome, late, summer-flowering shrub. Assorted colors. Each 10
2 to 3 feet.....\$0.40 \$3.50

BARBERRY (Thunbergii)—A very valuable low growing shrub; perfectly hardy. Small green leaves changing to red in fall. Twigs thorny and covered with red berries in the Fall and Winter. Each 10
18 to 24 inches.....\$0.35 \$3.00

BARBERRY (red leaf)—Similar to the green leaved Barberry but the foliage is of a rich, lustrous, bronzy-red, which becomes even more brilliant as the season advances. Each 10
18 to 24 inches.....\$0.75 \$6.00

BUTTERFLY BUSH—Very fast growing shrub; is valued for its dark purple flowers, borne in long spikes on tip end of each branch, in late July and August. Each 10
2 to 3 feet.....\$0.40 \$3.50

COTONEASTER—A handsome fruiting shrub, with brilliant foliage. Grows well in any well drained soil, but needs plenty of sunlight. Each 10
18 to 24 inches, balled and burlapped, each\$1.00

DEUTZIA (Crenata)—Foliage light green; flowers double white, outside tinged with rose. Each 10
2 to 3 feet.....\$0.40 \$3.50

DEUTZIA (Pride of Rochester)—Flowers pure white, double, tinged with pink. Profuse bloomer. Tall shrub. Each 10
2 to 3 feet.....\$0.40 \$3.50

DEUTZIA, ROSEA—Double white, tinged with pink. Each 10
2 to 3 feet\$0.40 \$3.50

DOGWOOD (Coral)—Free growing, 6 to 8 feet; hardy, white berries in the fall. Stems are red which make a very valuable plant for winter effect. Each 10
2 to 3 feet.....\$0.50 \$4.00

DOGWOOD (Sanguinea)—Flowers greenish white followed by white berries. Deep red bark. Low branching shrub. Broad foliage. Each 10
2 to 3 feet.....\$0.50 \$4.00

FORSYTHIA (Golden Bell)—A spreading bush with dark, shining foilage. Deep yellow flowers appear before the leaves. Each 10
3 to 4 feet.....\$0.50 \$4.50

HYDRANGEA (Arborescens Grandiflora) (Hills of Snow)—Blossoms large, snow white. Blooms from June to September. Each 10
2 to 3 feet.....\$0.45 \$4.00

HYDRANGEA (Paniculata Grandiflora)— Blooms early in August and continues until freezing weather. White, turning to pink. Each 10
2 to 3 feet.....\$0.50 \$4.50

LILAC (White)—When planted with purple makes a very desirable contrast. Each 10
2 to 3 feet.....\$0.60 \$5.00

LILAC (Purple)—A good grower. Flowers and young wood fragrant. Each 10
2 to 3 feet.....\$0.60 \$5.00

Ornamental Shrubs—Continued

- MOCK ORANGE (Philadelphus)**—Flowers white. Deliciously perfumed. Flowers resemble orange blossoms. Each 10
 2 to 3 feet.....\$0.40 \$3.50
- PRIVET (California)**—A vigorous-growing variety of fine habit; thick; glossy. The finest of ornamental hedge plants. Each 10 100
 2-yr. No. 1—2 to 3 ft., heavy. \$0.80 \$7.00
 2-yr.—18 to 24 inches, first class60 5.00
- PRIVET (Ibodium)**—A new variety. Similar to California Privet in growth and appearance. Perfectly hardy. Each 10 100
 2-yr.—2 to 3 feet.....\$0.80 \$7.00
 2-yr.—18 to 24 inches..... .60 5.00
- SNOWBERRY (White)**—An old-time shrub. Delicate pink flowers which produce clusters of pure white berries, which remain practically all winter. Each 10
 2 to 3 feet.....\$0.40 \$3.00
- SNOWBERRY (Red) (Indian Currant) (Coral Berry)**—Berries red, somewhat smaller than White Snowberry. Each 10
 2 to 3 feet.....\$0.30 \$2.50
- SPIREA (Anthony Waterer)**—Flowers bright red in flat clusters. Blooms nearly all summer. Dwarf variety, growing 2 to 3 ft. Each 10
 18 to 24 inches.....\$0.50 \$4.50
- SPIREA (Billiardi)**—Bears pink flowers in spikes in July and August. Upright grower. Each 10
 2 to 3 feet.....\$0.40 \$3.50
- SPIREA (Douglasi)**—Upright in growth, with reddish-brown branches and narrow oblong leaves. Bears spikes of beautiful rose colored flowers. Each 10
 2 to 3 feet.....\$0.40 \$3.50



Catalpa Bungei (See Page 15)



Hydrangea

- SPIREA (Prunifolia) (Old Fashioned Bridal Wreath)**—Very graceful shrub. Is covered with small white flowers in April. Foliage bright green turning to orange red in fall. Each 10
 2 to 3 feet.....\$0.45 \$4.00
- SPIREA (Van Houtti)**—An extremely graceful shrub with long, drooping branches completely covered with clusters of white flowers in May and June. Makes a beautiful hedge. Perfectly hardy. Each 10 100
 2 to 3 feet.....\$0.30 \$2.50 \$20.00
 18 to 24 inches..... .25 2.00 15.00
- SNOWBALL (Common)**—Flowers white, in clusters; very attractive. May to June. Each 10
 2 to 3 feet.....\$0.60 \$5.00
- TAMARIX (Africana)**—Beautiful feathery foliage, light pink flowers. A tall graceful shrub growing 8 to 12 feet. Each 10
 2 to 3 feet.....\$0.40 \$3.00
- WEIGELIA (Floribunda)**—Flowers are very numerous and are a beautiful crimson when fully opened. A tall growing shrub. Each 10
 2 to 3 feet.....\$0.50 \$4.00
- WEIGELIA (Rosea)**—An elegant shrub, with fine rose-colored flowers. Erect, compact growth. Blooms in June. Each 10
 2 to 3 feet.....\$0.50 \$4.00
- WEIGELIA (Eva Rathke)**—A large upright shrub with crimson trumpet shaped flowers. Each 10
 2 to 3 feet.....\$0.50 \$4.00

Shrubbery—Continued



Hedging

For Description—See Shrubbery

		10	100
Privet, Amoor River North.....	2- 3 feet	\$1.00	\$ 9.00
Privet, Amoor River North.....	18-24 inches80	7.00
Privet, California	2- 3 feet80	7.00
Privet, California	18-24 inches60	5.00
Privet, Ibolium	2- 3 feet80	7.00
Privet, Ibolium	18-24 inches60	5.00
Spirea, Van Houtti	2- 3 feet	2.50	20.00
Spirea, Van Houtti	18-24 inches	2.00	15.00

Climbing Vines



BOSTON IVY—A very hardy vine with foliage turning brilliant red in autumn. Clings very tightly to any wall.

	Each	10
2-yr. No. 1.....	\$0.50	\$4.00

CLEMATIS PANICULATA—Fast grower. White flowers are borne in clusters completely covering the foliage. September.

Each.....	\$0.40	10.....	\$3.50
-----------	--------	---------	--------

CLEMATIS (Jackmanii)—Large purple flowers. A successful bloomer.

	Each	10
2-yr. No. 1.....	\$0.80	\$7.00

HONEYSUCKLE (Hall's Japan)— Pure white flowers changing to yellow.

	Each	10
2-yr. No. 1.....	\$0.40	\$3.00

WISTERIA (Chinese Purple)— Strong climber.

	Each	10
2-yr. No. 1.....	\$0.50	\$4.00

Evergreens

BALLED AND BURLAPPED

- AMERICAN ARBOR VITAE**—One of the most popular evergreens. Very easy to transplant, and is very attractive as a hedge plant. Stands trimming better than any other evergreen.
2 to 3 feet.....\$3.00 Each
- AMERICAN GLOBE ARBOR VITAE**—Forms a dense, low natural globe.
12 to 18 inches.....\$2.50 Each



Arbor Vitae

- CHINESE DWARF ARBOR VITAE**—Dwarf and dense. Color is luminous dark green.
12 to 18 inches.....\$2.50 Each
- CHINESE PYRAMIDAL ARBOR VITAE**—A densely columnar type, admirable for ornamental purposes. Very hardy.
2 to 3 feet.....\$3.50 Each
- DOUGLAS FIR**—Popular for its hardiness and great beauty; large conical form; branches spreading horizontally.
2 to 3 feet.....\$4.25 Each
- PFITZER JUNIPER**—One of the handsomest of the semi-dwarf Junipers. Its habit of growth, its pendulous branches and attractive foliage are strikingly beautiful.
18 to 24 inches.....\$4.00 Each
- MUGHO PINE**—Very dwarf in habit, having a ball like form that is greatly admired. Excellent in foundation groups or as individual specimens.
12 to 15 inches.....\$3.50 Each
- COLORADO BLUE SPRUCE**—One of the most valuable evergreens grown. Becomes a tree of upright conical form. Foliage is a bluish green.
18 to 24 inches.....\$6.00 Each

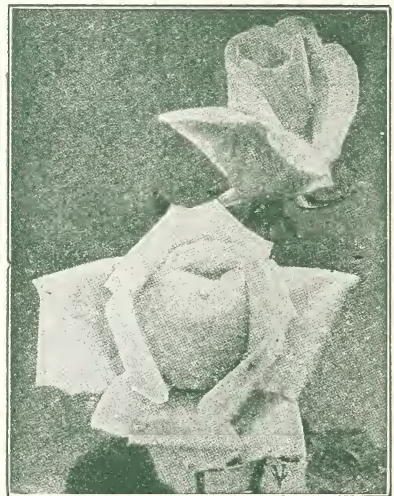
- NORWAY SPRUCE**—Becomes a tall tree of majestic conical shape. One of the most rapid growing and shapely of the tall dark green spruces.
2 to 3 feet.....\$3.00 Each
- WHITE SPRUCE**—A very hardy evergreen. Compact upright grower, retaining its branches to the ground. Elegant silvery foliage. Long lived.
2 to 3 feet.....\$3.50 Each

Roses

Hybrid Perpetuals and Teas

Cut back severely when planted, for best results.

- Each 10
- 2-year, extra select.....\$0.60 \$5.00
- KAISERIN AUGUSTE VICTORIA**—H. T. Pure White.
- HELEN GOULD**—H. T. Watermelon-red.
- PAUL NEYRON**—H. P. Deep rose.
- RADIANCE**—H. T. Pink.
- RADIANCE**—H. T. Red.
- GRUSS AN TEPLITZ**—H. T. Crimson.
- SUNBURST**—H. T. Yellow.



Climbing

- Each 10
- 2-year, extra select.....\$0.50 \$4.00
- CLIMBING AMERICAN BEAUTY**—Pink.
- SILVER MOON**—White.
- CRIMSON RAMBLER**.
- DOROTHY PERKINS**—Pink.
- PAUL'S SCARLET**.
- DR. VAN FLEET**—Pink.
- AMERICAN PILLAR**—Pink.

Vegetable Seeds

All Seeds Shipped Prepaid

Beans

Per pkt., 10c; $\frac{1}{2}$ lb., 25c; lb., 45c.
Improved Golden Wax



Plants are small, compact, erect and very prolific. Pods borne well off ground which prevents rust and rot. Golden yellow color, brittle, fleshy and solid with wax-like texture, are ready to pick in 45 days after planting. A good shell bean for winter use.

Pencil Pod Black Wax

Improved Golden Wax about 15 inches high, very productive, with straight pods about 6 or 7 inches long, light golden yellow color, round, meaty, and deeply crease-backed, extremely brittle, without fiber and of excellent quality.

Burpee's Stringless Green Pod

Very popular and widely grown. Plant large-medium, very erect when young, and very hardy. Pods are variable in size, about 5 in. long, generally more or less curved, extremely brittle, absolutely stringless.

Kentucky Wonder

Moderately branched, good climbing plant of medium height. Pods about ten inches long, extremely brittle. Bears abundantly.

Kentucky Wonder Wax

Produces a very large, handsome yellow pod, brittle, meaty and of splendid quality. One of the finest looking beans and as good as it looks.

Fordhook Bush Lima

Grows stiffly erect, and keeps its bean pods off the ground. Plants are about thirty inches high and bear an immense crop of very large pods. Pods are medium green, smooth surface, about five inches long, and are borne in clusters of five to eight. The beans are delicious and from eight to ten days earlier than other bush limas.

Per pkt., 10c; oz., 15c; $\frac{1}{4}$ lb., 40c.

Beets

Early Blood Turnip

Carefully selected strain of Turnip beet. Very early, with a round and half-flattened root, only half buried in the soil. Skin dark violet-red. Leaves broadly marbled and veined with brown-red. Very fine.

Extra Early Egyptian

Beet is small, but is exceptionally early and this entitles it to a place in every

garden. The top is rounded but the base is flat; dark red in color, flesh zoned a lighter shade or a shade of pinkish white.

Detroit Dark Red

Choice strain of dark red turnip beet. It has a round, somewhat ovoid root, very smooth, and a fine deep blood-red color. The flesh is bright red, tender and good in quality. Foliage very erect, of green color with red veinings.

Mangel

Roots attain an enormous size, are smooth, uniformly straight and thick. Fine for feeding.

Swiss Chard

A very popular plant for greens. It belongs to the beet family but is cultivated for its foliage instead of its root. It is prepared for the table like spinach. The tender stems are frequently cooked and served like asparagus. Leaves are thick and broad and the leaf stalks large and fleshy. Nitrate of Soda is a good fertilizer for this vegetable.

Cabbage

Per pkt., 10c; $\frac{1}{2}$ oz., 15c; 1 oz., 25c.

Early Dwarf Flat Dutch, 100 Days

Popular because of its heat-resisting qualities. Medium early. Short stemmed variety. Heads are round, solid and sometimes brown on top. Outer leaves are small and curled.

Early Jersey Wakefield, 75 Days

Heads evenly from latter part of June to first of July. Leaves yellow tint, stiff texture. Outer leaves pale green, rounded in shape, faintly undulated at edges, and hollowed like a spoon. Head, very pale green; short; blunt and conical; sometimes tinged with red. Very early, productive, and a good keeper.

Late Flat Dutch, 115 Days

A tall stemmed variety, the leaves are large and glaucous; head is big, flattened, full and solid.

Carrots

Per pkt., 10c; oz., 15c; $\frac{1}{4}$ lb., 40c.

CHANTENAY



Chantenay or Model

A Guerande of considerably longer size. Inner part of root a little lighter than the outer. It is delicate in flavor, juicy and sweet. Largely planted as a medium early variety.

Danvers Half Long

Fine for table use and best of all for the stock breeder, since it is a wonderful producer. It is a slender half-long root, very well colored, and has a blunt end. Leaves are short, finely cut and somewhat bronze.

Improved Long Orange

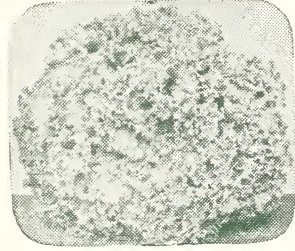
For stock feeding and table use. Fed to milch cows gives butter a beautiful golden color. Pale orange on the underground portion, and quite green above ground. It is a good keeper.

Cauliflower

Per pkt., 10c; ¼ oz., 50c; ½ oz., 85c.

Early Snowball

Produces a very large compact head which is snowy white, which forms quickly and will not discolor easily. The outer leaves are very erect, while the inner



leaves lap over the head, protecting it from the sun.

Celery

Per pkt., 10c; ½ oz., 50c; 1 oz., 80c.

Golden Self-Blanching

A very fine variety of French Origin. Half dwarf, compact, with well-developed leaves of light green with golden tints. The ribs are thick, broad, fleshy, and naturally ivory-white. It needs very little blanching to fit it for the table.

Cucumbers

Per pkt., 10c; oz., 20c; ¼ lb., 40c.

Early Short Green Pickling

Most prolific and widely grown by home gardeners and market growers. Fully developed fruits are over 6 inches long and 2½ inches thick. They are somewhat cylindrical, of a bright green color, and perhaps a trifle shorter and thicker than other varieties.

Early White Spine

Very hardy, vigorous, and also very productive, each plant carrying eight or ten fruits if they are allowed to ripen and many more if gathered young. When young they are green, short, and stout; and as they grow they become paler and marked with four or five white longitudinal lines. This variety is particularly recommended for market-garden culture.

Improved Long Green

The most popular for general use. The flesh is thick, firm and crisp, and on this account is highly valued for use in salads before it is ripe, generally when only half or three-quarters grown. The fruit is slender and narrowed and pointed at both ends, and remains dark green in color until ripe, when it is a brown-yellow. When matured the fruit is 9 to 12 inches long.

Egg Plant

Per pkt., 10c; ½ oz., 30c; oz., 50c.

Black Beauty

The earliest large-fruited variety. The

fruits are set freely and develop quickly, so the entire crop can be harvested before frost. They are large, thick, and of a rich lustrous purplish-black. The calyx is entirely free from spines.

Endive

Per pkt., 10c; oz., 15c; ¼ lb., 45c.

Green Curled

A plant of rapid growth, highly esteemed for table use and is grown all the year round. The leaves are eaten boiled or in salad. Before being gathered the plants are usually blanched.

Kale

Per pkt., 10c; oz., 15c; ¼ lb., 45c.

Dwarf German Curled

Low growing, compact, with finely curled deep green leaves. A hardy, productive variety of most excellent flavor.

Lettuce

Per pkt., 10c; oz., 20c; ¼ lb., 50c.

Big Boston

A splendid shipper, sure header, reliable and hardy, and is a good late summer or autumn variety. Mature plants are very compact and form a well-defined broad, slightly pointed head well balanced.

Early Curled Simpson

Used widely, which is probably due to its reliability, as it is certain, even under hard treatment, to make good leaves. Plant spreading and forming a rounded to low V-shaped, well balanced, fairly dense cluster of leaves, more or less open or spread out at the center and never cabbage-like, though sometimes very dense.

Iceberg

A beautiful lettuce, with large curly leaves of a bright, light green, with a very slight reddish tinge at the edges. Handsome heads, unusually solid because of the natural tendency of the large, strong leaves to turn in, which also causes thorough blanching. Crisp, tender and fine flavor. Very satisfactory.

Prizehead

This lettuce forms a large tender, crisp, loose head of bright green crimped leaves which are tinged with red. It is of superior flavor, long remaining sweet and slow to run to seed.

Kohl Rabi

Per pkt., 10c; ½ oz., 20c; oz., 35c.

Early White Vienna

Very delicately formed, early variety, having only a few small leaves, which are seldom more than 8 or 10 inches in length. The ball forms quickly in this variety and is ready to be eaten about two months and a half from time of sowing.

Leek

Per pkt., 10c; ½ oz., 15c; oz., 25c.

Large London Flag

Sow the seed and care for the young plants as for Onions, but they need more room in order to develop. Of quick, strong growth, producing long stems of uniform shape and size; blanching beautifully white.

Mustard

Per pkt., 10c; oz., 15c; ¼ lb., 45c.

Southern Giant Curled

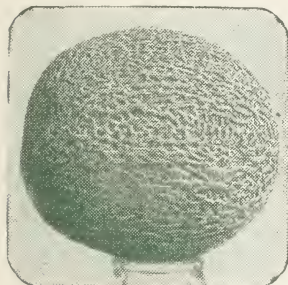
Leaves are twice the size of the ordinary White Mustard and the flavor is sweet. Highly esteemed for salads.

Muskmelon

Per pkt., 10c; oz., 15c; ¼ lb., 45c.

Hearts of Gold

Melons are of medium size, round and distinctly ribbed, and are of attractive appearance. Flesh is very firm; of a deep orange color, fine grained; of remarkable sweetness and spicy flavor,



and the skin is thickly netted, which makes it a good shipper.

Rocky Ford

The most important type commercially. It is of small size, oval shape, average weight is less than 2¾ pounds; skin is thin, netted, first green then a peculiar gray when ripe; flesh is pale green and very sweet.

Okra

Per pkt., 10c; oz., 15c; ¼ lb., 45c.

Dwarf Green

Of dwarf, stocky growth, very early and prolific. Excellent for general crop.

Onions

Per pkt., 10c; oz., 25c; ¼ lb., 75c.

Improved Yellow Giant

Globe, of a bright clear straw color, with white flesh, which is firm and solid and of mild flavor. No sets are required, as the large onions grow the first year from seed sown in the spring. This makes it desirable for the home and market.

Large Red Globe

The skin is of deep red color, and the bulbs are ideally globe-shaped, with very smooth surface, reach full size within 110 days. They are of strong flavor, very firm and of superior quality.

Large Red Wethersfield

Grows to full size in 95 days from seed, good drought resister. The onions are large, flat, fine grained, and of pleasant flavor. The skin is thick and of a deep red color. A heavy yielder and good keeper.

White Silverskin

Bulb silvery white, flattened, and about 2 to 3 inches in diameter. It does not keep so well as some of the dark-skinned varieties, but is an excellent medium early sort.

Parsley

Per pkt., 10c; oz., 20c; ¼ lb., 50c.

Extra Curled or Double

A very compact, curly, fine cut, bright

green variety. The market gardener's favorite.

Parsnip

Per pkt., 10c; oz., 20c; ¼ lb., 50c.

Hollow Crowned

The roots, which are creamy white, grow 10 to 12 inches long, and are smooth, tender sweet and of excellent flavor. This variety is very easily raised and is very productive.

Peas

Per pkt., 10c; ½ lb., 25c; 1 lb., 40c.

Alaska Extra Early

A remarkably early variety, and a good yielder. Foliage and pods are of light green. Pods 2½ inches long, round, straight and square ended, containing 6 light green peas. Uniform in maturing. Plant is 2½ feet high. We advise market gardeners to give this variety a trial.

Telephone

Very robust and vigorous growing plant, producing pods of very large size, averaging 4½ to 5 inches in length, pointed at the end, and well filled with large peas of most excellent flavor. Vines reach from 3½ to 4 feet in length.

Nott's Excelsior

It stands drought better than most other varieties. The vines are about 14 inches high, which permits close planting in rows, and they are self-supporting.

Little Marvel

An early, dwarf variety of excellent qualities. Fine for both home garden and market gardener. Vines will average 15 inches in height.

Peppers

Per pkt., 10c; ½ oz., 25c; oz., 45c.

Long Red Cayenne

Fruit is a brilliant coral red, conical, and from two to three inches long and about one inch thick. Very hot to the taste.

Large Bell or Bull Nose

A thick-set plant of light green color, branches short and stiff, seed vessels blunt and squared at ends, with four deep furrows and four corresponding ridges along the sides. Flesh is very thick with few seeds. Usually mildly flavored, but occasionally will produce fruits which are hot.

Pumpkins

Per pkt., 10c; oz., 15c; ¼ lb., 45c.

Kentucky Field

A large variety, hardy, late and very prolific. Fruit is rounded, flattened, with sweet yellow flesh. Has thick meat of very fine quality and is excellent for canning.

Early Sugar

Most desirable variety for making pies. Smaller than the field pumpkin, round, flattened, fine grained, sweet and very prolific. Matures in 65 days and is an excellent keeper.

Radishes

Scarlet Turnip
White Tipped

An exceedingly early variety. The root swells quickly, but it also quickly becomes hollow at the center and should be pulled as soon as fully grown.

Long Scarlet

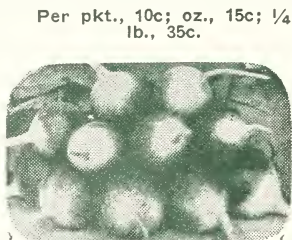
Root extremely long and slender, five or six inches in length, and about a half inch in diameter, and forms in about a month; of bright scarlet color.

White Icicle

An entirely distinct long, white variety. It is ready for use fully as early as Long Scarlet Top, with less foliage, rendering it most desirable for forcing.

Early White Turnip

A small, round, white, turnip shaped radish, with a small top and of very quick growth.



Rhubarb

Per pkt., 10c; oz., 20c; ¼ lb., 50c.

Victoria

A little later than Linnaeus. Stalks red, very thick, considerably longer than the blade of the leaf; leaves broader than long, heart-shaped or rounded.



Rutabaga

Per pkt., 10c; oz., 15c; ¼ lb., 35c.

Purple Top

The best variety of the Swedish turnip. Solid texture, well flavored; color deep purple above the ground and bright yellow beneath; leaves are small, light green, with little or no neck.

Sweet Corn

Per pkt., 10c; ½ lb., 25c; lb., 40c.

Country Gentleman

A late main crop variety. The kernels are plump, pearly white, tender and milky, and are crowded together on the cob instead of forming in defined rows. Ears are 8 or 9 inches long and the plant is very prolific, often producing three ears to one stalk.

Golden Bantam

Early variety with golden yellow grain, very tender and sweet, with rich flavor. Stalks grow about 4 feet high. The ears are eight-rowed and 6 to 7 inches long.

Stowell's Evergreen

This is the standard main-crop variety, much used for the home garden, market and canning. The ears are about seven to eight inches long, 14 to 20-rowed, with very white grain.

Spinach

Per pkt., 10c; oz., 15c; ¼ lb., 45c.

Bloomsdale Savoy

Fairly large, much crumpled, glossy dark green leaves. Produces nearly twice the bulk of crop that the ordinary sorts do, is fully as hardy.

New Zealand

A plant of branching growth. One single plant will grow to dimensions of six feet across, producing an abundance of thick, fleshy, juicy stems and leaves, which make an excellent spinach.

Giant Thick Leaf

Follows Bloomsdale and stands longer without going to seed.

Squash

Per pkt., 10c; oz., 15c; ¼ lb., 45c.

Early White Bush Scallop

Also known as the Patty-Pan squash. Very productive, very early to mature. Not so large as the Mammoth White Bush.

Hubbard's Winter

A good winter squash for table use. Fruits are large, somewhat warted, with hard shell. Flesh is rich yellow, thick, fine grained, dry, and of excellent flavor.

Yellow Summer

A small crooknecked summer squash; fruit of a very bright, orange color, elongated, curved in the part next to the stalk.

Tomatoes

Per pkt., 10c; ½ oz., 30c; oz., 50c.

Marglobe (Rust Resistant) (Long Keepers)

The Marglobe fruits are smooth, globular, meaty, almost coreless. They ripen uniformly, even around the stem, and resist cracking well.

Ponderosa

This variety is unsurpassed in size. The immense fruits often weigh 1½ to 2 pounds, are meaty, and of delicious flavor. They are very solid.

Turnip

Per pkt., 10c; oz., 15c; ¼ lb., 30c.

Purple Top Globe

Root large, quite round, white underground, and purple on the upper part.

Purple Top Strap-Leaved

The standard for this part of the country. The root is small or medium-sized, very flat, quite smooth, pure white on the underground part, sown for early or late planting.

Watermelons

Per pkt. 10c; oz., 15c; ¼ lb., 45c.

Kleckley Sweet

Well named for the flesh of this melon is sweet as honey. The rind is dark green, and only about one-half inch thick. Seeds are white, lying close to the rind leaving a large solid heart, which does not crack open when ripe.

Tom Watson

The flesh is rich red, crisp and tenderly melting. The average size fruit of this variety reaches the size of 24 to 28 inches in length, and 12 to 14 inches in diameter. Rind thin, but tough enough to stand shipping.

ALL OUR FLOCKS ARE BLOOD-TESTED FOR BACILLARY WHITE DIARRHOEA

**B
A
B
Y**



CHICKS from SUPER-CULLED and BLOOD-TESTED Flocks

SOLD FOR CASH ONLY

Value of Chicks From Blood-Tested Flocks

We have spared no expense or effort to give our customers not only the very best quality of chicks possible, but give them chicks that are strong and healthy and free from the dreaded disease of Bacillary White Diarrhoea.

White Diarrhoea is a disease of the ovary of the breeding female and is transmitted from the parent stock to the chicks through the egg, and its presence can only be detected by the Blood-Test.

This costs approximately 15c each, to test the thousands of birds supplying us eggs from which our chicks are hatched, but it is worth dollars to our customers, and our chicks cost no more than ordinary chicks from untested flocks.

Contract Early for Our
BLOOD-TESTED CHICKS

At These Low Prices

Super Bred Blood-Tested Chicks

The chicks are produced from select blood-tested hens from flocks that are outstanding in the production of eggs and have been very closely culled for type, color and health. All the males that are mated to these hens are First Grade "Specials" of outstanding character, coming from blood lines of maximum egg production. We are offering you in these chicks what took us years of expensive breeding to produce.

PRICES ON SUPER BRED BLOOD-TESTED CHICKS

VARIETY	25	50	100	300	500	1000
Barred Plymouth Rocks.....	\$4.00	\$7.50	\$14.00	\$41.00	\$65.00	\$125.00
White Plymouth Rocks.....	4.00	7.50	14.00	41.00	65.00	125.00
S. C. Rhode Island Reds.....	4.00	7.50	14.00	41.00	65.00	125.00
White Wyandottes.....	4.00	7.50	14.00	41.00	65.00	125.00
S. C. (Eng.) White Leghorns.....	3.75	7.00	13.00	38.00	60.00	115.00

Standard Bred Blood-Tested Chicks

These chicks are produced from blood-tested flocks that have been carefully culled for type, color, and health and will produce about twice as many eggs as the average farm flock. These flocks are mated to male birds from extra high producing dams.

PRICES ON STANDARD BRED BLOOD-TESTED CHICKS

VARIETY	25	50	100	300	500	1000
Barred Plymouth Rocks.....	\$3.50	\$6.50	\$12.00	\$35.00	\$57.50	\$110.00
White Plymouth Rocks.....	3.50	6.50	12.00	35.00	57.50	110.00
S. C. Rhode Island Reds.....	3.50	6.50	12.00	35.00	57.50	110.00
White Wyandottes.....	3.50	6.50	12.00	35.00	57.50	110.00
S. C. (Eng.) White Leghorns.....	3.25	6.00	11.00	32.00	52.50	100.00
Assorted (All breeds).....	3.00	5.50	10.00	29.00	47.50	90.00

Our Guarantee

Nothing but good, strong, healthy chicks from blood-tested flocks are shipped. We pay all postage or express charges and deliver the chicks to you 100 per cent alive.

How to Order

Send full amount with order if possible. If this is not convenient, send one-fourth the amount and remainder 10 days prior to date of shipment, or balance C. O. D. as you prefer. Give second choice if possible.

Note

Prices on this page are for delivery of Baby Chicks during February, March and April. If you order Baby Chicks for delivery any time from May 1st to November 1st, deduct \$2.00 per 100 from the above prices.

Spraying

Spraying is a vital necessity if you want GOOD Fruit. It doesn't pay to miss one season, even if enemies are not visible. Spraying has an invigorating effect on trees, besides controlling enemies.

Spraying during the dormant period is distinctly different from spraying on foliage. Materials several times as strong can be used and are needed to control the scales.

On account of the life habits of enemies, often only two to seven days are available for any one spraying. Do the work then. Put the material on with force and cover every inch of bark and leaf.

Get a sprayer that is big enough, that will give one hundred to two hundred and fifty pounds of air pressure, that is adapted to your land and trees, and that is durable. Get a power outfit, if possible, for it does better work than a hand pump can.

The Spraying program ordinarily resolves itself into two, three or four applications, one while trees are dormant with SCALECIDE, and the others on blossoms and fruit with SULFOCIDE. All applications must be guided by careful study.

Spraying will pay bigger dividends than anything you can do. Anything that is worth having is certainly worth taking care of.

BORERS WILL ATTACK FRUIT TREES IN SPITE OF ALL WE CAN DO, and will kill many trees if left alone. Trees must be gone over several times each year, and should be gone over each April and August.

Spray Materials

SCALECIDE
---THE COMPLETE DORMANT SPRAY---
 Costs More Per Gallon - but Costs No More Per Tree

SULFOCIDE
A Better Summer Spray

Scalecide is truly the complete dormant spray. Applied in the fall it controls scale of all kinds, bud-moth, pear psylla, peach leaf-curl, and fungous cankers. The delayed dormant spray with Scalecide controls scale, aphids, pear thrips, leaf miner, case bearer, leaf roller European red mite, bud-moth, and fungous cankers. And in addition year after year use of Scalecide invigorates the trees. Scalecide is guaranteed to make a better orchard than lime-sulfur.

Scalecide is pleasant to use; it does not injure even the eyes. It is non-poisonous. It saves half the labor of spraying—a tankful of dilute Scalecide goes as far as two tankfuls of dilute lime-sulfur. Scalecide saves the cost of nicotine; saves the cost of spreader; saves more than three-fourths the freight and haulage. A fifteen-gallon drum of Scalecide covers the same trees as a fifty-gallon barrel of lime-sulfur.

PROPORTIONS

For small quantities of spray solution, these figures will help you to get the proper mixture. Be accurate.

MATERIAL

Scalecide—Dilution recommended, 1 gallon to 15 gallons of water. 3 cupsful (1½ pints), equivalent for 3 gallons of water.

Sulfocide—Dilution recommended, 1 gallon to 200 gallons of water. 4 tablespoonsful (2 ounces), equivalent for 3 gallons of water.

PRICES

Sold for Cash Only

Scalecide	Sulfocide
50-gal. bbls.....\$35.00	50-gal. bbls.....\$60.00
30-gal. bbls..... 25.00	30-gal. can..... 39.00
15 gals. ..\$11.50	10-gal. can..... 15.00
Drum re- turnable 2.00 } 13.50	5-gal. can..... 8.75
10-gal. can..... 10.60	1-gal. can..... 2.75
5-gal. can..... 6.25	1-qt. can..... 1.00
1-gal. can..... 1.75	1-pt. can..... .70
1-qt. can..... .75	

Pints, quarts and gallons shipped by express or parcel post only.

F. O. B. NEW HAVEN, MO.

Sulfocide is a highly concentrated non-poisonous liquid sulfur fungicide—entirely distinct from lime-sulfur. Within a few minutes after the spray is applied and before it is dry, Sulfocide is decomposed by the action of the air leaving a film of extremely fine sulfur in its most active fungicidal form.

Briefly these are the reasons why Sulfocide is a better summer spray; it does not russet apples (bordeaux does); it does not devitalize foliage and dwarf the fruit (lime-sulfur does); it can be used on both peaches and apples and on all kinds of fruits and vegetables (no other fungicide can). It imparts to fruit a beautiful luster and finish. It costs no more than home-made bordeaux.

AMOUNTS OF DILUTE SPRAY REQUIRED.

These figures will be fairly accurate for both Scalecide as a dormant spray and Sulfocide as a summer spray.

2 to 5-year-old trees.....	1/8 to 1/4 gal.
6 to 8-year-old trees.....	3/4 to 1 gal.
9 to 13-year-old trees.....	1 to 1 1/2 gal.
14 to 18-year-old trees.....	2 to 2 1/2 gal.
19 to 24-year-old trees.....	3 to 3 1/2 gal.
25 to 30-year-old trees.....	3 1/2 to 4 gal.

Spray Pumps

Sold for Cash Only

We are agents for the well-known Myers Pumps.

If sizes quoted do not meet your requirements, send for full information and quotations on larger sizes.

No. 1296	2 1/2 Gal. Galvanized Tank	\$ 5.50
No. 1296B	2 1/2 Gal. Brass Tank	8.75
No. 1297	4 1/2 Gal. Galvanized Tank	6.75
No. 1297B	4 1/2 Gal. Brass Tank	10.50
3/8-inch Three-Ply Hose		.15c per foot

The above are Compressed Air Sprayers with Shoulder Straps.

Cog Gear Barrel Pumps

(Barrel not included)

No. R305B—Spray Pump with one lead of 15-ft. 1/2-inch, 5-ply discharge hose; graduating Vermorel Nozzle, and both jet and mechanical agitators.

Each	\$15.00
5-ply hose	.20c per foot

ORDER BLANK
KEEP A COPY OF YOUR ORDER

NEW HAVEN NURSERIES

NEW HAVEN, Franklin County, Mo.

Name
Mr., Mrs. or Miss. Write Plainly

Post Office

Street, P. O. Box or R. F. D.

County State

Express or Freight Office
if different from Post Office

Forwarded by About.....
Mail, Express or Freight

Date Amount Enclosed.....

We use the greatest care possible to have our stock true-to-name, and should any prove not true, we stand ready to replace it free of charge, or to refund the purchase price, but it is mutually agreed between the purchaser and ourselves that we shall not at any time be held responsible for any sum greater than the amount originally paid for said stock.

Quantity	Varieties of Trees, Etc., Wanted	Size	Price	Amount

(OVER)

USE OUR EASY PAYMENT PLAN

IT¹ ENABLES YOU TO GET THOSE TREES AND PLANTS WHICH YOU NEED TO MAKE YOUR LAND PAY YOU BIGGER DIVIDENDS

HERE IS OUR PLAN

All of our stock is priced on a cash basis, and the extra charge made for Easy Payments is to cover our extra expense. We handle our own accounts, as this enables us to reduce the extra charge to a minimum. When you buy anything on time payments, you are paying the carrying charge one way or another. When you buy from us, you know exactly what this charge will be in advance. In most cases our easy payment prices are much less than the usual cash prices of other concerns.

All we require is your signature on an installment note, which we will send you.

NO ORDER FOR LESS THAN TWENTY-FIVE DOLLARS ACCEPTED ON OUR TIME PAYMENT PLAN

TERMS OF PAYMENT

Simply add the low carrying charge shown below to the cash amount of your order. Send deposit as shown with order and then the monthly payment each month until payment is completed.

PLEASE Answer the following questions as it will save much time.	Amount of Order Cash Price	Add for Time Payment	Deposit With Order	Monthly Payments
	\$25.00 to \$30.00	\$3.00	\$5.00	\$5.00
	30.01 to 35.00	3.50	8.50	5.00
Age	35.01 to 40.00	4.00	10.00	6.00
	40.01 to 45.00	4.50	10.00	6.50
Married—(Yes or No).....	45.01 to 50.00	5.00	12.00	7.00
	50.01 to 60.00	5.50	15.00	8.00
Occupation	60.01 to 70.00	6.50	18.00	9.00
	70.01 to 80.00	7.50	21.00	10.50
Monthly Earnings.....	80.01 to 90.00	8.50	25.00	12.00
If Farmer how	90.01 to 100.00	9.50	30.00	13.00
Large is Your Farm.....				

Write for Easy Payment Terms on orders over \$100

How Long Have You Lived in Present Location.....

Name of Your Employer.....Address.....

Name of Your Bank.....Address.....

Do Your Own or Rent Your Home..... Do Your Own or Rent Your Farm.....

Sign Name Here.....

TIME PAYMENT

ORDER BLANK

NEW HAVEN NURSERIES

NEW HAVEN, MISSOURI

Name
Mr., Mrs. or Miss. Write Plainly.

Post Office.....

Street, P. O. Box or R. F. D.

CountyState

Express or Freight Office
if Different from Post Office.....

Forward by.....About

Mail, Express or Freight

Date.....Amount Enclosed \$..... Balance due \$.....

Quantity	Varieties of Trees, etc., Wanted	Size	Price	Amount

Add For Easy Payment Plan.....

Total Amount of Order.....

General Information

Club Orders

We shall be pleased to have you secure orders from your neighbors on Club Lot basis. On Club Orders amounting to \$25.00 or more, on orders at the single, ten and hundred rates, we will allow you 10% additional in stock. It should be very easy for you to get the stock you want absolutely free by getting your neighbors to let you send us their orders. We put up each order in a separate package, so that upon receipt of goods you have only to hand out the different lots as ordered. Special prices will be made on larger quantities than indicated in this list.



View of Our Storage Sheds

References

We refer to any bank or business house in New Haven, Mo., as to our responsibility and standing in the community. We do our local business with the Bank of New Haven, New Haven, Mo.

Special Collections

LOT No. 1:

- 12 APPLE, 1-yr., extra select, 3 to 4 ft., for.....\$3.00
- 2 Stayman Winesap 2 Winesap
- 2 Delicious 2 Grimes Golden
- 1 Red Astrachan 1 Benoni
- 2 Jonathan

LOT No. 2:

- 12 PEACH, extra select grade, 4½ to 6 ft., for.....\$3.50
- or
- 12 PEACH, first-class, 3½ to 5 ft., for\$3.00
- 2 Elberta 1 Ringgold Cling
- 1 Rochester 1 Carman
- 1 Gold Dust Cling 1 Mayflower
- 1 Greensboro 1 October Beauty
- 1 Champion Cling
- 2 Belle Georgia

LOT No. 3:

- 6 PLUM, extra select, 5 to 6 ft., for...\$2.50
- or
- 6 PLUM, first-class, 4 to 5 ft., for...\$2.00
- 1 Black Beauty 1 Wild Goose
- 1 Burbank 1 Gonzales
- 2 Abundance

LOT No. 4:

- 3 PEAR, 4 to 5 ft., for.....\$1.50
- 1 Kieffer 1 Garber
- 1 Seckel

LOT No. 5:

- 4 CHERRY, extra select grade, 4½ ft. to 6 ft., for.....\$3.00
- or
- 4 CHERRY, first-class, 3½ to 5 ft., for\$2.50
- 1 Montmorency 1 Early Richmond
- 1 Magann 1 Gov. Wood

LOT No. 6:

- 8 GRAPE VINES, 2-yr., No. 1, for...\$1.40
- 2 Concord 2 Niagara
- 2 Moore's Early 2 Catawba

LOT No. 7:

- 40 RASPBERRY, for\$1.80
- 10 Cumberland 10 Plum Farmer
- (Black) (Black)
- 10 Miller (Red) 10 Cuthbert (Red)

THE MISSOURI STATE BOARD OF AGRICULTURE

Office of the Plant Commissioner
Jefferson City

CERTIFICATE OF NURSERY INSPECTION

No. 47

Issued July 29, 1930.

THIS IS TO CERTIFY that, in accordance with the provisions of the Missouri Plant Act of 1929, the nursery and premises thereof belonging to New Haven Nurseries of New Haven, Mo., have been inspected by a duly authorized inspector and were found to be apparently free of injurious insect pests and plant diseases.

This certificate is not transferable and may be revoked for cause. This certificate expires September 1, 1931.

K. C. SULLIVAN, Plant Commissioner.

We are prepared to fumigate all consignments to states requiring fumigation. No Scale or Yellows has ever been found in our establishment, and we take pride in sending out only clean, healthy stock.

It Pays to Plant

BAGBY GROWN FRUIT TREES

They Grow and Bear True To Name

When you buy Fruit Trees, you want the best that can be produced. **BAGBY GROWN** trees have been on the market for fifty-nine years. When you buy them you are getting the best money can purchase, and you know what the crop will be. Our varieties are correct, our grades full, and all culls go on the brush pile. High quality and

ABSOLUTE SATISFACTION GUARANTEED

with a record of over fifty-nine years' square dealing to back the guaranty.

VISITORS ALWAYS WELCOMED AT OUR NURSERIES.

It will be a pleasure to show you our stock.

NEW HAVEN NURSERIES, New Haven, Missouri

J. BAGBY & SONS COMPANY

**BAGBY Trees are Full of Vitality Because They Are Grown Right
They Bring Results**

