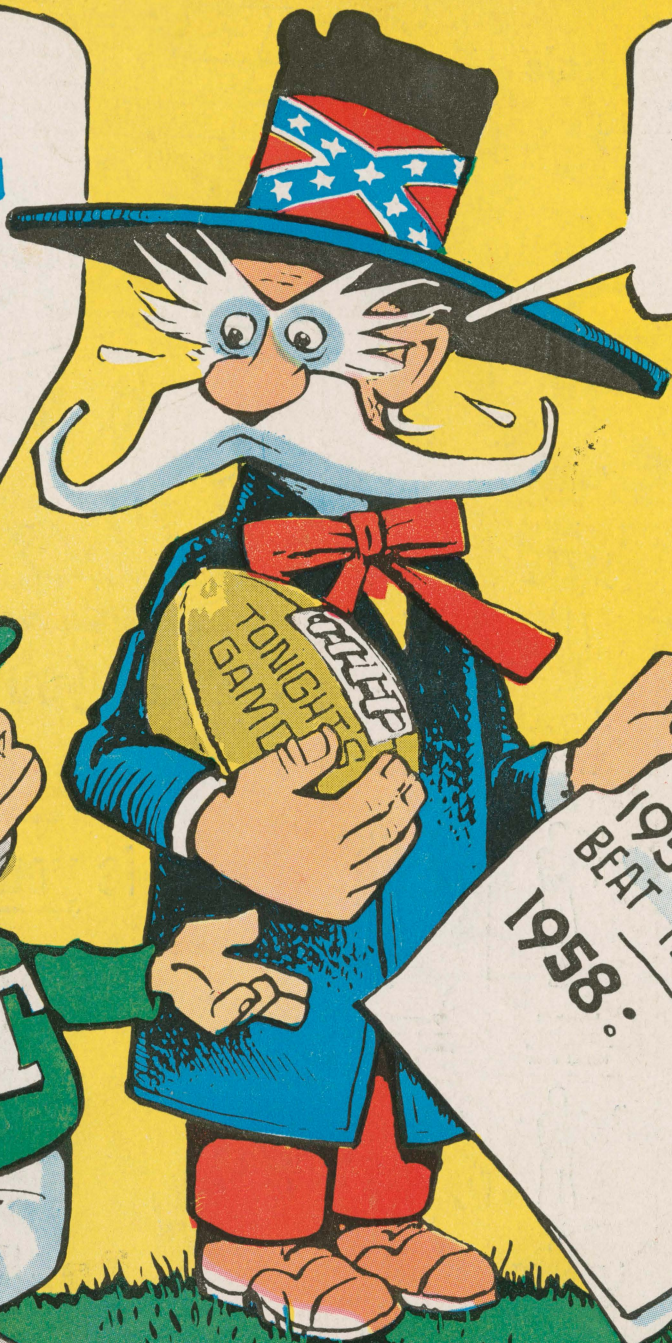


BEND OVER,
COLONEL .. YOU
CAN SEE IT'S
MY TURN!



HOME COMING
ZIP!



1956: TULANE
BEAT OLE MISS..
1957: OLE MISS
BEAT TULANE..
1958:

CHASE

The OLE MISS Game

TULANE STADIUM • SAT. OCT. 11, 1958

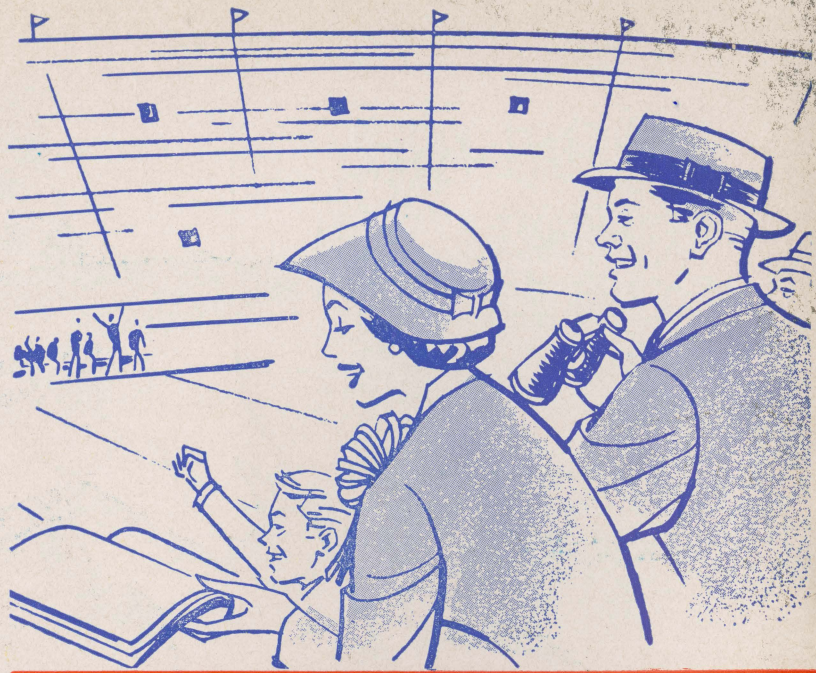
HOME COMING SOUVENIR PROGRAM - 50¢

JAX

Official 1958 Signals and Penalties



Offside (Infraction of scrimmage or free kick formation) —5 yds.



Illegal Procedure, Position, or Substitution —5 yds.



Illegal Motion —5 yds.



Illegal Shift —15 yds.



Crawling—5 yds. Helping the Runner, or Interlocked Interference —15 yds.



*Delay of Game —5 yds. or 15 yds.



*Illegal use of Hands and Arms —15 yds. If ball free, offended team's ball at spot of foul



Incomplete Forward Pass, Penalty Declined, No Play, or No Score



Roughing the Kicker or Holder —15 yds.

Sure as you like thrilling football

JAX

is your kind of beer



Clipping —15 yds.



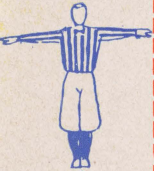
Illegally Passing or Handling Ball Forward —5 yds. Also loss of down



Intentional Grounding —5 yds. Also loss of down



*Personal Foul —15 yds. Also possible to expel player



*Unsportsmanlike Conduct —15 yds. Also possible to expel player



First Down



*Forward Pass or Kick Catching Interference—Offended team's ball at spot of foul; 15 yds. Also loss of down



Ineligible Receiver Down Field on Pass —15 yds.



Excitement makes you thirsty . . . makes you long for the golden tingle of a friendly glass of JAX. So after the game, join the millions of sports fans from coast to coast who say,

“Hello mellow **JAX** . . . you're the beer for me.”



*Ball Illegally Touched, Kicked, or Batted—5 yds. or 15 yds. Also loss of down or offended team's ball at spot of foul



Ball Dead; If Hand is Moved from Side to Side: Touchback



Touchdown or Field Goal



Safety

*Variable Penalty, Referee's Decision



Time-Out



Illegal Return —15 yds.



Ball Ready-for-Play



Start the Clock or No More Time-Outs Allowed



JACKSON BREWING COMPANY, NEW ORLEANS, LA.

Famous for
**FINE FOOD
and DRINK**



*Enjoy the Specialties of These
Noted Restaurants:*

ANTOINE'S

. . . Since 1840

713 St. Louis St. • MAgnolia 2554

12 Noon to 9 P.M. Closed Sundays

ARNAUD'S

. . . Carnival Room

813 Bienville St. • MAgnolia 5433

11 A.M. to 12:30 A.M. Daily

BROUSSARD'S

. . . Napoleon Patio

819 Conti St. • MAgnolia 4800

11:30 A.M. to 11:30 P.M.

Closed Wednesdays.

*The Lights
Speak*

Another Good Job

by

NOLA ELECTRIC

824 BARONNE

Call JA. 5-1201

**The Sign
of GOODNESS
for 53 Years!**



**Quality Dairy Products
and
Frozen Foods**

"A GOOD DEAL"

DEPENDS ON THE DEALER

Largest Used Foreign-Sports
Car Dealer South

We Buy — Trade — Finance

SERVICE MOTOR CO.

2645 TULANE AVE.

Earle P. Abadie "A. J." Johnson

TUlane 7071

Open 8 A.M. - 9 P.M.

MEET YOUR FRIENDS

at

MONKEY HILL DRIVE INN

**Audubon Park Stand 6 —
Tchoupitoulas Street Entrance**

CHICKEN IN A BASKET

French Bread Sandwiches

Hamburgers — Hot Dogs

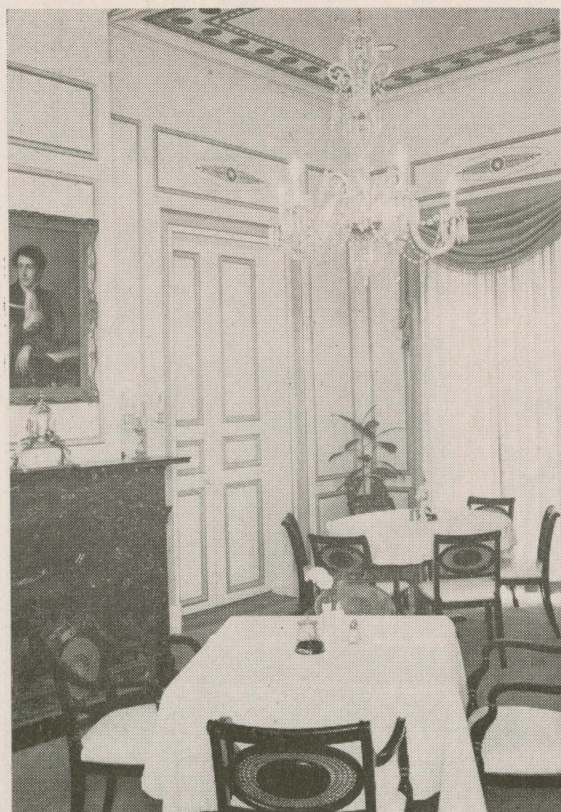
SPECIAL

"Submarine" Sandwiches

Plate Lunches 11 a.m. - 2 p.m.

Open Daily - Sunday 9 a.m. - 12 Midnight

Justin D. Douglass, Manager



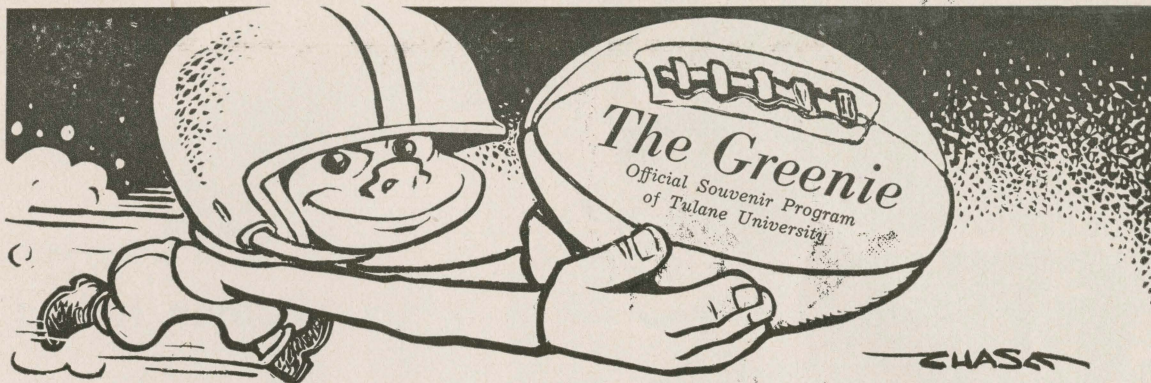
before or after the game—

Dinner at Brennan's

You've read about Brennan's in national magazines . . . now come and see why the food rates raves from top columnists. Drop in for dinner before or after the games, or for late supper. Come as late as midnight.

Brennan's

**FRENCH RESTAURANT
417 ROYAL ST., NEW ORLEANS**



LARRY KARL, Editor

Division of Athletics, Tulane University, New Orleans 18, La.

National Advertising Representative: Spencer Advertising Company, Inc., 271 Madison Avenue, New York, N. Y.

Vol. 28

October 11, 1958

No. 2

Tulane Vs. Ole Miss

Tonight's grid game is the highlight of Tulane's Annual Homecoming festivities—a Homecoming that marks the 60th Anniversary of The Tulane Alumni Association.

The Old Grads here for the week end, have already noticed many physical changes on the campus. In tonight's game they will see a new style football team. Two weeks ago on this home field the Greenies thrilled an enthusiastic crowd with Coach Andy Pilney's new offense. An offense that has the Wave airborne often, but also boasts a strong running attack.

Although this young band of Tulane gridders has not yet tasted victory, it has shown improvement in some phases of the game in each outing.

Coach Pilney has said, "We are young and learning and just haven't jelled completely yet."



MISS PATRICIA VAN SCOY
1958 Homecoming Queen

The Wave has shown enough sparks in early starts to warrant close attention, for when things do jell it promises to be worth seeing.

On the basis of games to date, watch closely tonight for Percy Colon No. 33, Tom McClell-

lan No. 47, Leo Young No. 86, Phil Hefington No. 84, Don Lockwood No. 77, Dan Egan No. 76, Tommy Mason No. 44, Richie Petitbon No. 17 and Boo Mason No. 20.

Ole Miss of course brings a powerful aggregation here for this game. Despite losses from the Reb team that started in the Sugar Bowl, Coach John Vaught still has a wealth of talent in such established stars as Bobby Franklin No. 10, Charles Flowers No. 41, Milton Crain No. 51, Billy Templeton No. 82 and Larry Grantham No. 88.

Following tonight's game the Wave goes on the road for two straight weeks meeting Navy, then Kansas. The Greenies come back Oct. 31 to meet Texas Tech and Nov. 7 for Alabama.

REMAINING 1958 SCHEDULE

Oct. 18—Navy, Norfolk	*2 P.M.
Oct. 25—Kansas, Lawrence	2 P.M.
Oct. 31—Texas Tech, home	8 P.M.
Nov. 7—Alabama, home	8 P.M.
Nov. 15—Vanderbilt, Nashville	8 P.M.
Nov. 22—L.S.U., home	2 P.M.

(All games C.S.T. except those marked * Eastern Standard)

TICKET OFFICES


Stadium, 6401 Willow St. UNIVERSITY 1-3661
Werlein's, 605 Canal St. MAGNOLIA 6201



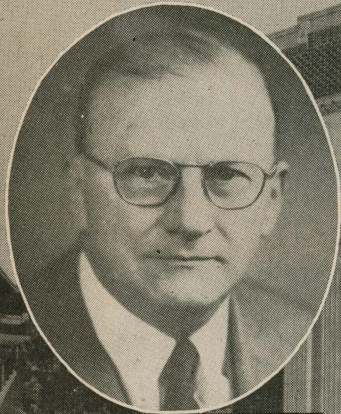
if
men talked
about
clothes as
much as
women do

... (and who's to say they don't!) ... you'd probably hear this across a luncheon table: "Good-looking suit, Joe, where'd you get it?" "Thanks, Bill ... Maison Blanche ... wasn't too expensive, either. Of course, Sue helped me pick it out. Do you really think it looks OK?" and Bill has to say "yes" (not only because Sue went along with Joe, but because MB just won't let you buy a suit unless it fits — and looks — well. Next time you're in the market for one ... come on in, see what we mean.

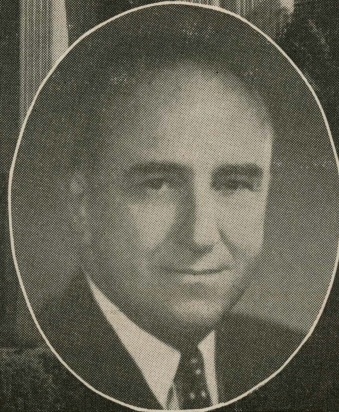
Store for Men,
MB First Floor

MAISON BLANCHE
— Store for —  men

Tulane University



DR. RUFUS C. HARRIS
President



RICHARD O. BAUMBACH
Director Of Athletics



ANTON (ANDY) PILNEY
Head Football Coach

Mc ALISTER
AUDITORIUM

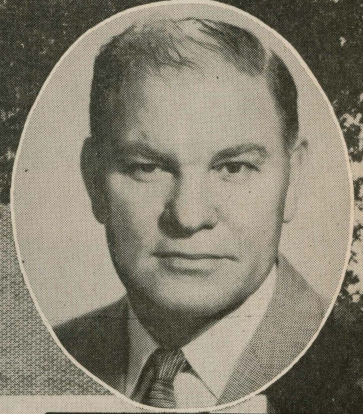
University of Mississippi



DR. JOHN D. WILLIAMS
Chancellor

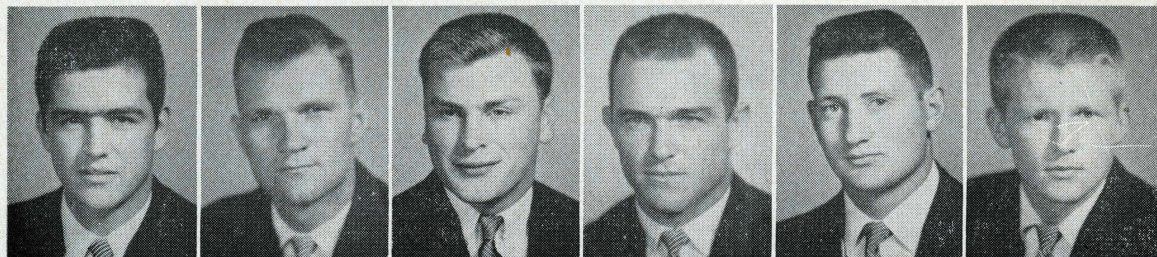


C. M. SMITH
Director Of Athletics



JOHN H. VAUGHT
Head Football Coach

1958 TULANE GREEN WAVE



Abadie

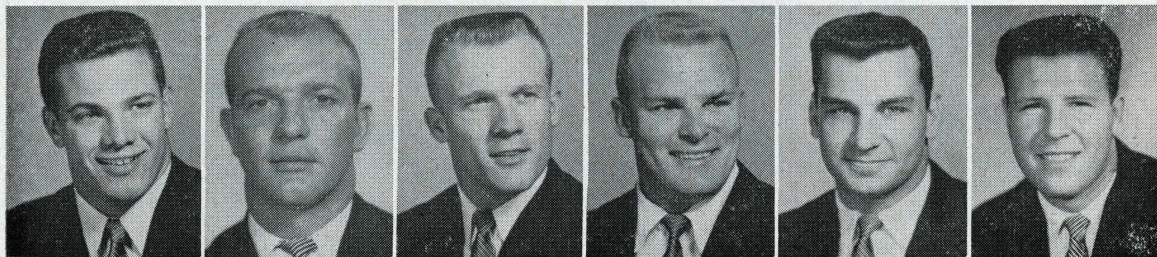
Andrews

Ary

Blount

Brabham

Bratton



Bunger

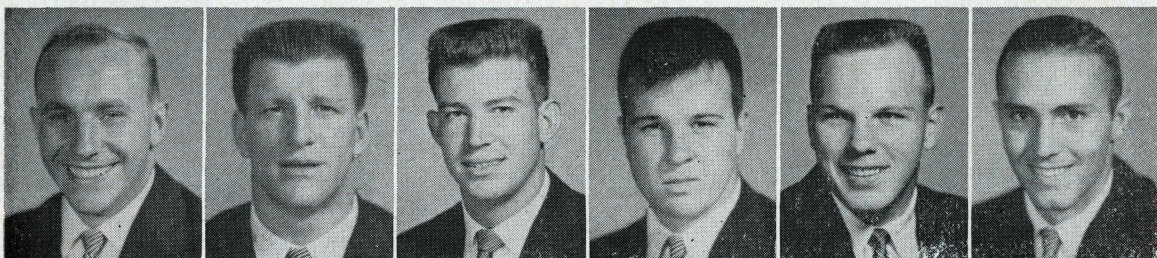
Clements

Colon

Cornett

Cosse

Darre



Dickerson

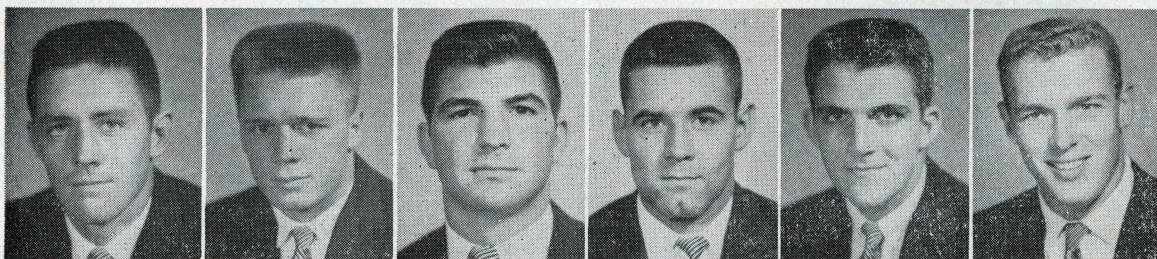
DiVietro

Dunn

D. Egan

J. Egan

Ellzey



Fleming

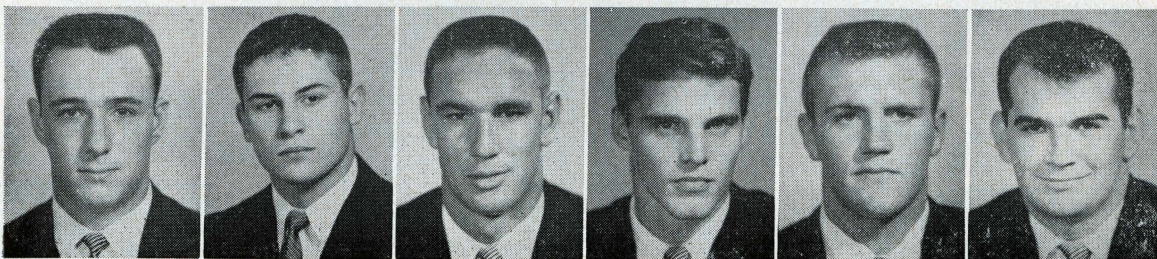
Gamble

Guillot

Hawley

Heffington

Johnston



Jones

Kisner

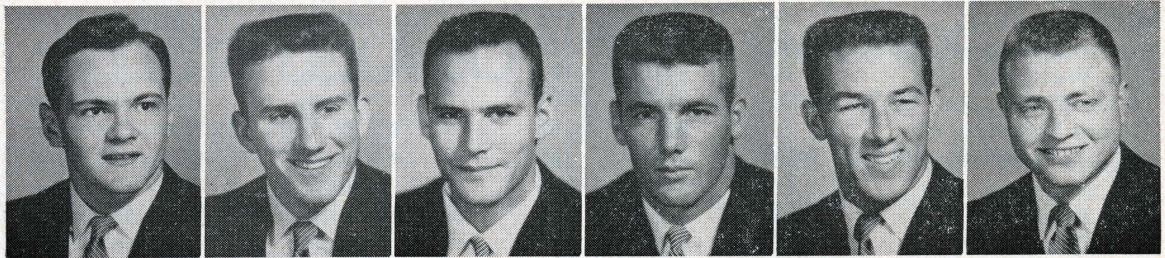
Klock

LeGendre

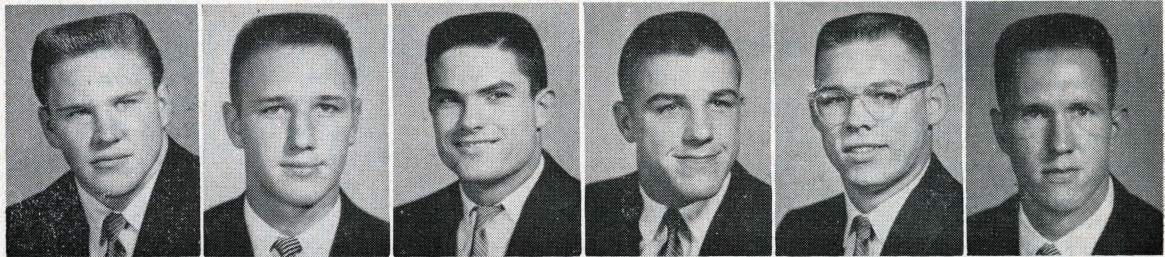
Lesage

Lockwood

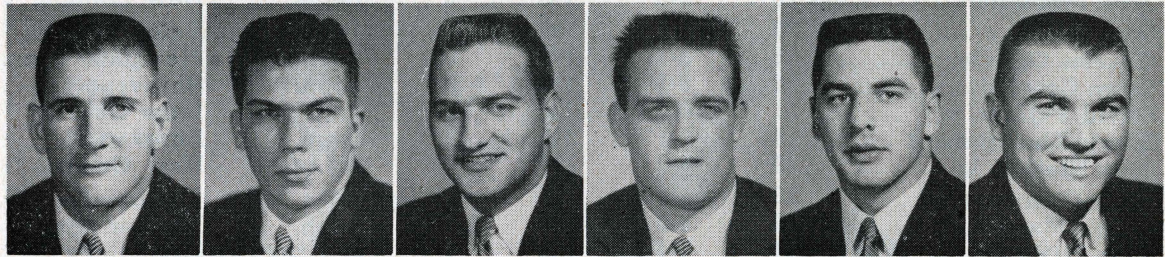
1958 TULANE GREEN WAVE



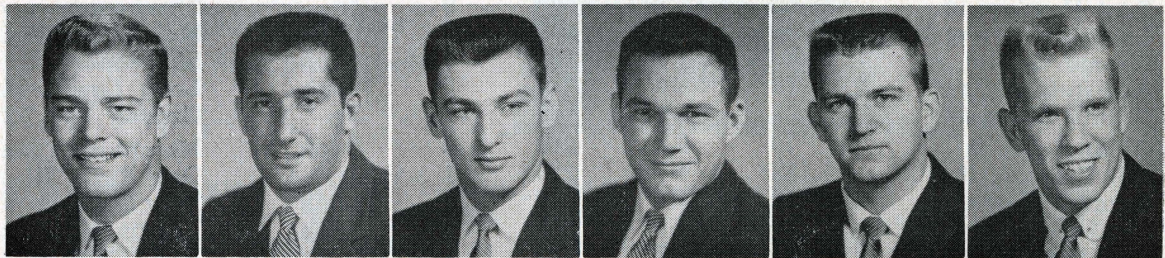
McClellan McLean Magee C. Mason T. Mason Massey



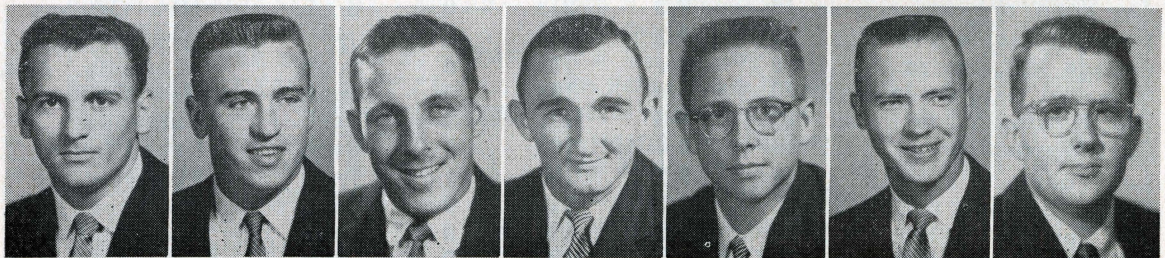
Michiels Nielsen Nugent Ogilvie Osteen Painter



Passman Petitbon Price Rawson Ridgway Sciortino



Scott Siciliano Summerlin Sweeney Thompson Warden



Wattigny Whitworth Williamson Young McCreary
Ass't Trainer Ogletree Hoffa
Student Mgr. Ass't Student Mgr.

TULANE ROSTER—1958

No.	Name and Pos.	Age	Ht.	Wt.	Ltrs.	Class	Hometown
10	Phil Nugent, qb	19	6-1	175	0	Soph.	Lafayette
11	Carlton Sweeney, qb	20	5-9	170	1	Jr.	Lake Charles
12	Don Wattigny, qb	19	5-9	165	0	Soph.	New Orleans
15	Mike Williamson, qb	20	6-1	185	0	Soph.	Bay City, Tex.
17	Richie Petitbon, qb	20	6-3	198	1	Jr.	New Orleans
20	Claude "Boo" Mason, rh	21	5-10	165	2	Sr.	Lake Charles
22	Joe Sciortino, fb	19	6-0	195	0	Soph.	New Orleans
23	Bob Price, rh	19	5-11	185	0	Soph.	Memphis, Tenn.
25	Bob Cornett, rh	19	5-10	175	0	Soph.	Hattiesburg, Miss.
26	Will Ellzey, lh	19	6-0	185	0	Jr.	Metairie
29	William Ary, rh	19	5-10	175	0	Soph.	Metairie
32	Fred Dickerson, lh	25	5-10	175	0	Jr.	Antioch, Calif.
33	Percy Colon, lh	19	5-11	185	0	Soph.	Norco
34	King Fleming, lh	22	6-0	175	1	Jr.	Lake Charles
35	Howard Kisner, lh	19	5-9	170	0	Sopt.	Natchez, Miss.
38	James Magee, rh	20	6-0	190	0	Soph.	Morgan City
39	Jimmy LeGendre, rh	21	6-1	180	0	Jr.	New Orleans
40	Connie Andrews, fb	21	6-1	190	1	Jr.	Magnolia, Ark.
41	Jeff Bratton, rh	21	6-0	190	1	Jr.	Camden, Ark.
42	Charles Passman, fb	20	5-9	185	0	Jr.	Franklinton
43	Eddie Dunn, fb	19	6-3	210	0	Soph.	Shreveport
44	Tommy Mason, fb	19	6-1	190	0	Soph.	Lake Charles
45	Bill Osteen, rh	19	5-11	180	0	Soph.	Millington, Tenn.
47	Tom McClellan, fb	20	6-0	195	0	Soph.	New London, Tex.
50	Neal Jones, c	20	6-2	195	1	Jr.	Baton Rouge
51	Charles Ogilvie, c	19	5-11	190	0	Soph.	Memphis, Tenn.
52	Spiro Cosse, c	20	6-1	195	0	Soph.	Shreveport
53	David Painter, c	21	6-7	220	1	Jr.	Lake Charles
54	Larry Thompson, c	19	6-1	215	0	Soph.	Shreveport
59	Jens Nielsen, lg	20	6-0	180	0	Jr.	New Orleans
60	Billy Clements, rg	20	5-9	185	1	Jr.	Shelbyville, Ky.
61	Frank Massey, rg	19	6-0	190	0	Soph.	Menden Hall, Miss.
62	John DiVietro, rg	21	5-11	195	1	Jr.	Easton, Pa.
63	David Michiels, lg	19	5-11	205	0	Soph.	Alexandria
64	Chris Bunger, lg	19	5-11	185	0	Soph.	New Milford, Conn.
65	Paul Hawley, lg	20	5-10	200	0	Jr.	Shreveport
66	George Whitworth, lg	19	5-11	195	0	Soph.	Memphis, Tenn.
67	George Guillot, rg	20	5-10	185	0	Soph.	Shreveport
68	Ray Ridgway, rg	19	6-0	210	0	Soph.	Long Beach, Miss.
69	Jimmy Blount, lg	21	5-9	190	2	Sr.	Groves, Tex.
71	Glenn Scott, lt	19	6-4	210	0	Soph.	Memphis, Tenn.
72	Bill Rawson, lt	22	6-1	220	1	Jr.	Oak Park, Ill.
73	Bernard Darre, rt	19	6-1	200	0	Soph.	New Orleans
74	Joe LeSage, lt	20	6-4	214	0	Soph.	Beaumont, Tex.
76	Dan Egan, rt	21	6-2	220	1	Sr.	New Orleans
77	Don Lockwood, lt	21	6-0	215	1	Sr.	Beaumont, Tex.
78	Bill Klock, rt	21	6-1	210	0	Jr.	New Orleans
79	Jay Egan, rt	19	6-3	215	0	Soph.	New Orleans
81	Pete Abadie, le	21	6-3	200	1	Jr.	New Orleans
82	George McLean, re	19	6-1	185	0	Soph.	Magnolia, Ark.
83	Cameron Gamble, le	20	6-0	185	0	Soph.	New Orleans
84	Phil Heffington, re	20	6-3	195	0	Soph.	Shreveport
85	Carl Warden, re	19	6-0	180	0	Soph.	Lake Charles
86	Leo Young, re	21	6-2	190	1	Jr.	Ferriday
87	Frank Siciliano, re	20	6-2	210	0	Soph.	Brooklyn, N. Y.
88	Jim Summerlin, le	19	6-2	190	0	Soph.	Mansfield
89	Bill Brabham, le	19	6-2	195	0	Soph.	Greensburg
95	Bill Johnston, lt	19	6-4	240	0	Soph.	Franklin

**YOUR TEXACO
DEALER**



... the best friend
your car
has ever had!

Brings You

**TULANE
GAMES
ON RADIO!**

.....

Complete Broadcasts
of all games

with

AL WESTER

DeALTON NEHER

WDSU

1280 on your dial
Originating Station

For The Greenie Network

.....



DAN'S SERVICE STATION.....	801 S. Rampart at Julia St.....	JA 5-2284
FLOYD FORET'S TEXACO SERVICE.....	4000 Fourth St., Marrero, La.....	FI 1-6991
GOGARTY'S TEXACO SERVICE.....	706 Metairie Road, Metairie, La.....	VE 5-7961
JAKIE'S TEXACO SERVICE.....	2549 Esplanade Ave.....	AU 3546
JOE'S TEXACO SERVICE.....	4237 Paris Ave.....	FA 9220
P & M TEXACO SERVICE CENTER.....	1139 N. Rampart St.....	JA 2-5255
PHILIBERT'S TEXACO SERVICE.....	2946 Gentilly Blvd.....	WH 7-9233
POCHE'S SUPER SERVICE STATION.....	3738 Airline Hwy.....	VE 5-7731
ROUSSEL'S TEXACO SERVICE.....	504 Peters Road, Harvey, La.....	FO 6-9621
SCHOENHARDT'S TEXACO SERVICE.....	4301 S. Claiborne Ave.....	TW 5-9561
SIDNEY'S TEXACO SERVICE.....	Barataria Blvd., Marrero, La.....	FI 1-1222
ST. CHARLES SERVICE.....	7701 Maple St.....	UN 1-9574
TAYLOR'S TEXACO SERVICE.....	1430 Franklin St., Gretna, La.....	FO 1-9377
WAHL & NATAL.....	3435 S. Carrollton Ave.....	GA 9276
WEBER'S TEXACO SERVICE.....	5213 Airline Hwy.....	VE 3-9384

1958 Green Wave Co-Captains



Halfback Claude "Boo" Mason 5-10, 175-pounds from Lake Charles, La. A two-year letterman was best back on the '57 eleven. An excellent runner and receiver he also excells at pass defense. Boo gained 470 yards in '57 to rank as second among the Greenies. Scored 18 points on three TDs last year.

Left Guard James "Jimmy" Blount 5-10, 190-pound senior from Groves, Texas. Also a two-year letterman, Jimmy's hustle in defensive pursuit last year made him one of the Wave's top linemen. Small but rugged he has skill and determination that keeps him going against larger opponents.

shopping

at *Holmes*

is traditional in New Orleans



suits

jackets

sport coats

slacks

HOLMES YOUNG MEN'S SHOP adds new excitement!

For men with young ideas . . .

For clothes with casual good looks . . . HOLMES YOUNG MEN'S SHOP kicks off the season in perfect style. Ivy League Suits, Luxurious Sport Coats, Fine Tailored Slacks . . .

The Young in Heart, with Traditional Good Taste go to

HOLMES new YOUNG MEN'S SHOP

Holmes Men's Store — First Floor

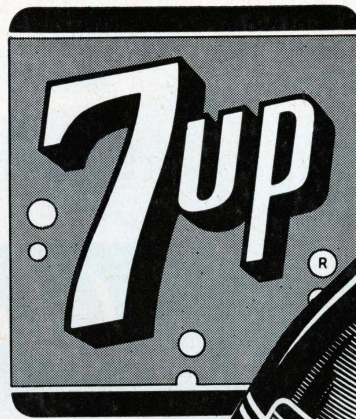
before the game

• • • **dine at HOLMES**

May we suggest a wonderful way to start the evening . . . a delicious seafood dinner in HOLMES' beautiful air-conditioned restaurant—then on to the game! HOLMES features special seafood dinners on Friday nights and moderate prices prevail.



*Cheered by
Millions!*



NOTHING DOES IT LIKE SEVEN-UP!

COMPLETE INVESTMENT SERVICES

- *Tax-free Louisiana Municipal Bonds*
- *Trading in all markets –
national exchanges and over-the-counter*
- *Quotations and research on any security*
- *Portfolio appraisals*

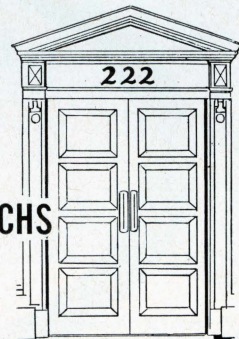
Direct wire service to the nation's financial centers

HOWARD, WEIL, LABOUISSSE, FRIEDRICHS

AND COMPANY

Investment Securities

222 Carondelet St. — Tulane 2711
New Orleans, La.



Branches at MONROE ● ALEXANDRIA ● LAKE CHARLES ● COVINGTON ● NATCHEZ



Today is Homecoming Day at Tulane, a day held in honor of the 30,000 alumni of the University. Highlight of each Homecoming football game is the crowning of the Homecoming Queen. Shown here is Miss Jean Wiggins, the 1957 Queen, receiving her crown from Harry P. Gamble, Jr., past president, Tulane Alumni Association.

Cam-
CAMPUS PICTURES
pix
A MEDLEY OF

© TULANE UNIVERSITY 1958



Tulane's first Homecoming Queen reigned in 1937. She was Miss Laura Williams who is now Mrs. A. R. Martin, Jr., Houston. She is shown third from left in this picture. Prior to 1938, the University had sponsors for Homecoming, which was equivalent of Queen and Court of today.

TULANE HOMECOMING

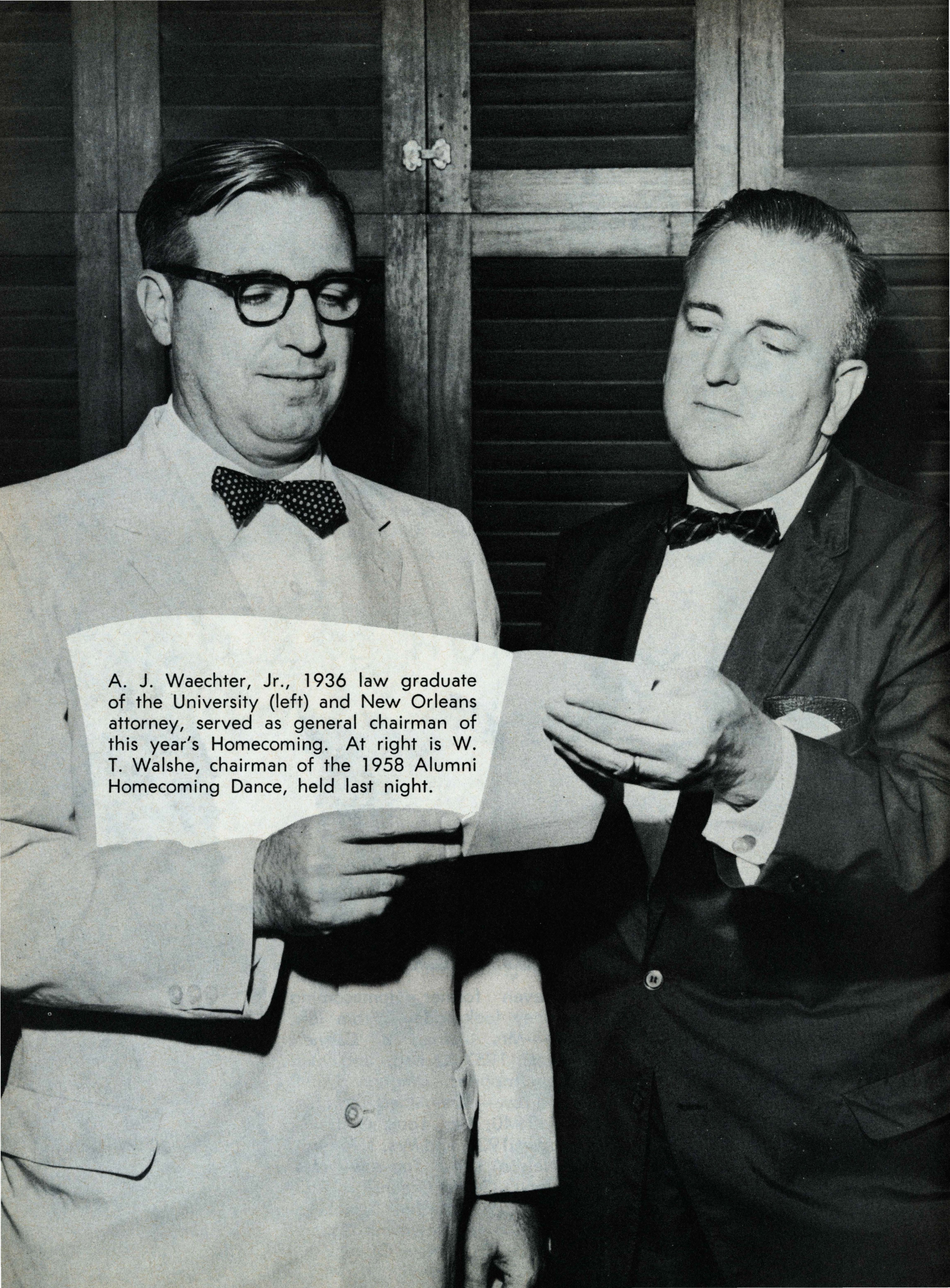
Greatest in Tulane's history was this year's Homecoming—the Beauty Court was snapped at the game, (left to right), Charlotte Hawkins, Boutine Tobin, Peggy Jones, Laura Williams (Queen) Miriam Scales, Jessie Kline, and Marjorie Staubitz



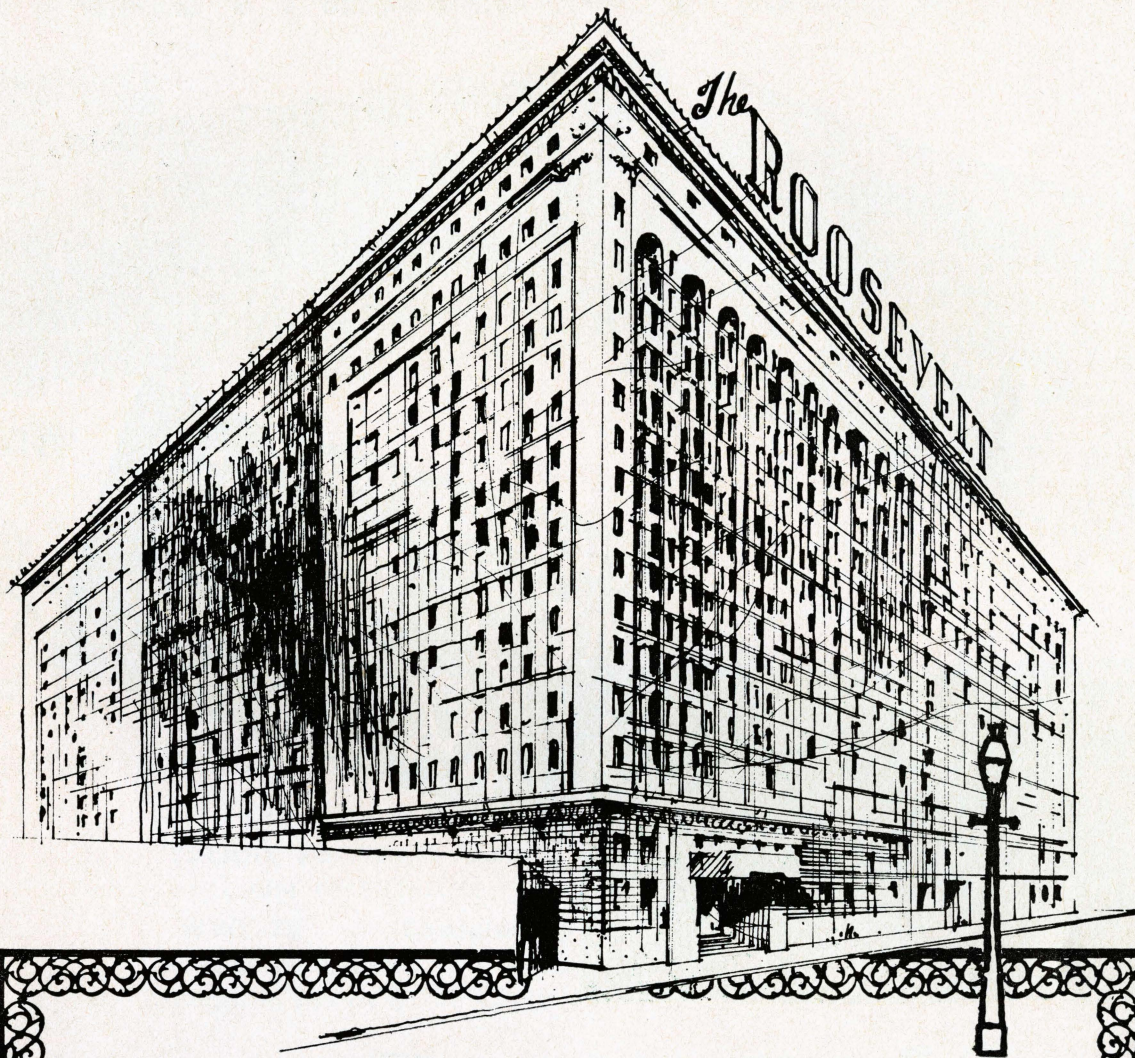
This is a picture with captions taken from the 1938 Jambalaya, the University year-book, showing the first Homecoming Queen and her Court. Alabama won the Homecoming football game. Score: 9 to 6.



Here are seven former Homecoming Queens as they look today. From left, bottom row—Mrs. Adrian B. Cairnes, (Jean Wiggins) 1957 Queen; and Mrs. William D. Humphries, (Mignon Faget) 1953. Second row—Mrs. Albert Terkuhle, (Elsa Hoehn) 1940; Mrs. Louis G. Davis, (Carolyn Robbert) 1938; and Mrs. J. P. Ewin, Jr., (Louise Nelson) 1941. Top row—Mrs. Guthans Reynoir, (Diane Greenslit) 1952; and Mrs. D. H. H. Chaffee II, (Nancy McIver) 1954. All are Newcomb College graduates and are from New Orleans.



A. J. Waechter, Jr., 1936 law graduate of the University (left) and New Orleans attorney, served as general chairman of this year's Homecoming. At right is W. T. Walshe, chairman of the 1958 Alumni Homecoming Dance, held last night.



New Orleans' Finest . . .

In the center of business and social activities, The Roosevelt is designed to afford you the utmost in comfort and convenience. It offers a complete selection of suites and individual accommodations, each with thermostat temperature control. Luxurious convention halls and meeting rooms are available for your business or organization's requirements. And seven dining rooms and taverns provide the finest in food and entertainment.

900 ROOMS WITH BATH
MODERATE RATES

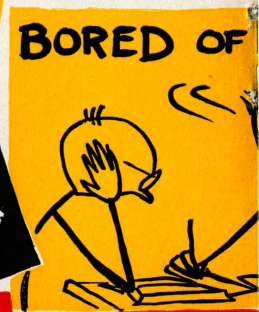
SEYMOUR WEISS
*President and
Managing Director*

A. C. BELLANDE
Manager

The **ROOSEVELT**

PRIDE OF THE SOUTH
UNIVERSAL TRAVEL CARDS ACCEPTED

A WINNING D



MAN ALIVE - POUR

TULANE

PROBABLE STARTING LINEUP

No.	Name	Position
84	PHIL HEFFINGTON	LE
77	DON LOCKWOOD	LT
69	JIMMY BLOUNT	LG
50	NEAL JONES	C
60	BILLY CLEMENTS	RG
73	BERNARD DARRE	RT
86	LEO YOUNG	RE
17	RICHIE PETITBON	QB
33	PERCY COLON	LH
20	CLAUDE MASON	RH
47	TOM McCLELLAN	FB

THE GREEN WAVE SQUAD

10 Nugent, qb	43 Dunn, fb	69 Blount, lg
11 Sweeney, qb	44 Mason, T., fb	71 Scott, lt
12 Wattigny, qb	45 Osteen, rh	72 Rawson, lt
15 Williamson, qb	47 McClellan, fb	73 Darre, rt
17 Petitbon, qb	50 Jones, c	74 Lesage, lt
20 Mason, C., rh	51 Ogilvie, c	76 Egan, D., rt
22 Sciortino, fb	52 Cosse, c	77 Lockwood, lt
23 Price, rh	53 Painter, c	78 Klock, rt
25 Cornett, rh	54 Thompson, c	79 Egan, J., rt
26 Ellzey, lh	59 Nielsen, lg	81 Abadie, le
29 Ary, rh	60 Clements, rg	82 McLean, re
32 Dickerson, lh	61 Massey, rg	83 Gamble, le
33 Colon, lh	62 DiVietro, rg	84 Heffington, re
34 Fleming, lh	63 Michiels, lg	85 Warden, re
35 Kisner, lh	64 Bunger, lg	86 Young, re
38 Magee, rh	65 Hawley, lg	87 Siciliano, re
39 Legendre, rh	66 Whitworth, lg	88 Summerlin, le
40 Andrews, fb	67 Guillot, rg	89 Brabham, le
41 Bratton, rh	68 Ridgway, rg	95 Johnston, lt
42 Passman, fb		

DIXIE ELEVEN



See the complete pictures of all
TULANE FOOTBALL GAMES
ON TELEVISION
WWL-TV Channel 4
Sunday afternoons at 4 p.m.
 Brought to you by DIXIE 45 BEER

R THAT DIXIE 45

OLE MISS

PROBABLE STARTING LINEUP

No.	Name	Position
88	LARRY GRANTHAM	LE
77	RUDOLPH SMITH	LT
67	HAROLD COOPER	LG
51	MILTON CRAIN	C
63	MARVIN TERRELL	RG
74	AUBREY SANDERS	RT
85	WARREN JENKINS	RE
10	BOBBY FRANKLIN	QB
24	JIMMY HALL	LH
30	KENT LOVELACE	RH
41	CHARLES FLOWERS	FB

THE OLE MISS SQUAD

10 Franklin, qb	43 Partridge, fb	71 Smith, lt
12 Gibbs, qb	45 Laird, fb	74 Sanders, rt
15 Robinson, fb	50 Alford, c	76 Khayat, g-t
16 Brewer, qb	51 Crain, c	77 Benton, rt
20 Rittman, rhb	52 Green, c	78 Owens, rt
21 C. Taylor, lhb	53 Kirk, c	79. Robertson, lt
22 Blair, lhb	60 Terry, lg	80 Daniels, re
24 Hall, lhb	61 Basham, rg	82 Templeton, le
25 Champion, lhb	62 Kempinska, rg	84 Ball, le
30 Lovelace, rhb	63 Terrell, rg	85 Jenkins, re
31 Crespino, rhb	64 Churchwell, lt	86 Cavin, re
32 Woodruff, lhb	65 Roberson, rg	87 Gregory, re
33 T. Taylor, rhb	67 Cooper, lg	88 Grantham, le
41 Flowers, fb	69 Price, lg	89 Holston, le
42 Anderson, fb		

OFFICIALS—Charles W. Bowen (Ga. Tech), referee; W. W. Lutrell (Tennessee), umpire; Harry B. Sharp (Tennessee), head linesman; Ewell Pope, Jr. (Ga. Tech), field judge; John M. Raine (Ga. Tech), back judge; Gordon Pettus (Alabama), E.C.O.



**The Roosevelt offers
New Orleans Best in Dining and
Entertainment Facilities**

THE EXQUISITE

Blue Room

Presenting the Nation's finest in dance music and entertainment, and famous New Orleans cuisine from a complete menu of dining delights. Star-studded floor shows nightly except Monday, at dinner and supper.

the Fountain Lounge

Open each evening except Tuesday for cocktails from 5. Dance music from 8. Spend an evening of enjoyment in the intimate atmosphere of New Orleans' favorite rendezvous. Luncheon daily from 11. Music by Albert Kirst ensemble.



THE SAZERAC BAR

A New Orleans tradition for over a century. Enjoy your favorite beverages prepared by experts. Ladies invited.

THE SAZERAC COCKTAIL and RAMOS GIN FIZZ

are served, in New Orleans, exclusively in all Roosevelt facilities.



The ROOSEVELT

PRIDE OF THE SOUTH



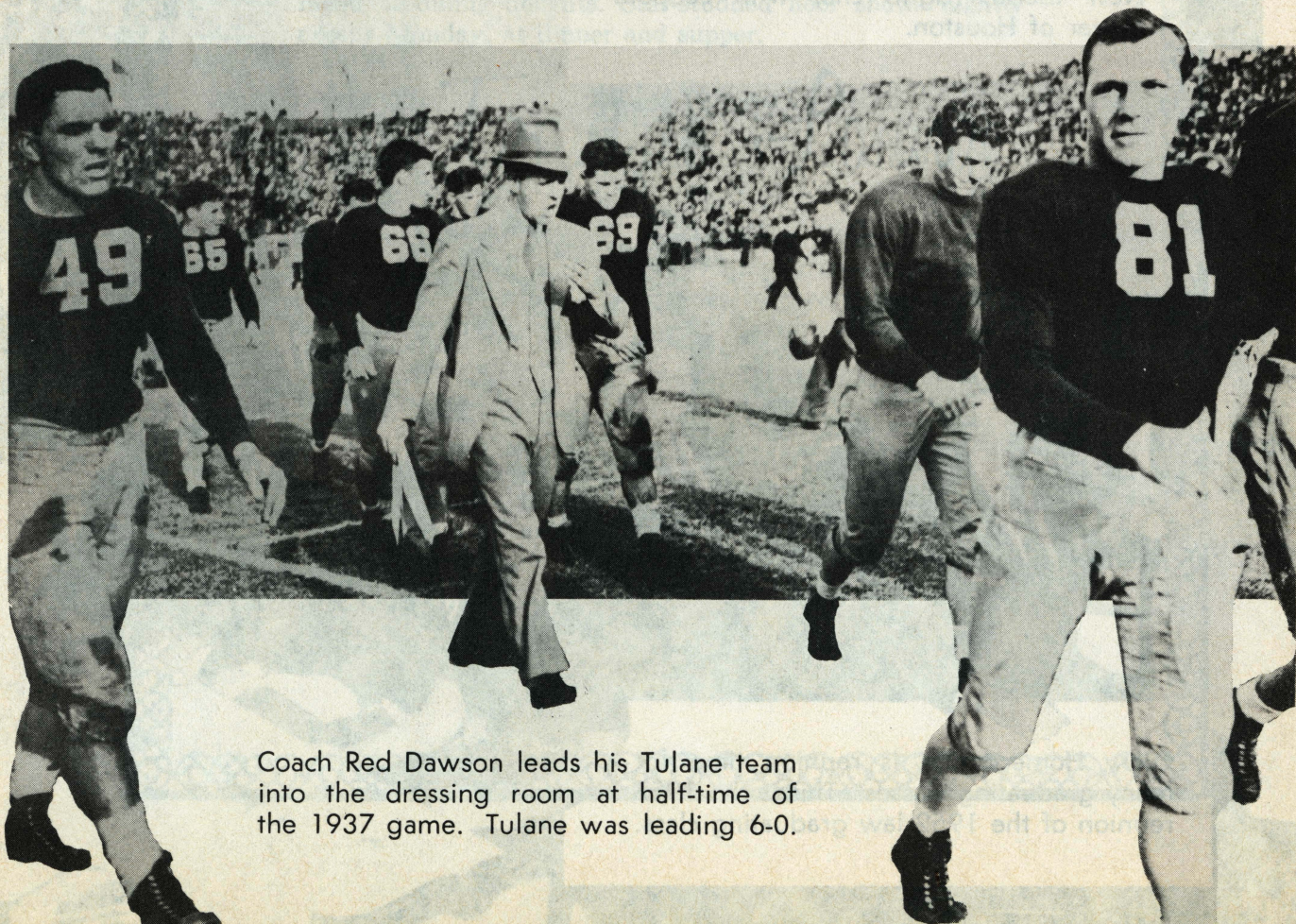
This year marks the 60th anniversary of the Tulane Alumni Association, the organization which is composed of some 30,000 former students. Here two past presidents of the Association, Harry P. Gamble, Jr., New Orleans, (left) and Jacob S. Landry, New Iberia, (right) chat with Leopold Meyer of Houston.



Every Homecoming is reunion time for many graduating classes. This is the 1957 reunion of the 1952 law graduating class.



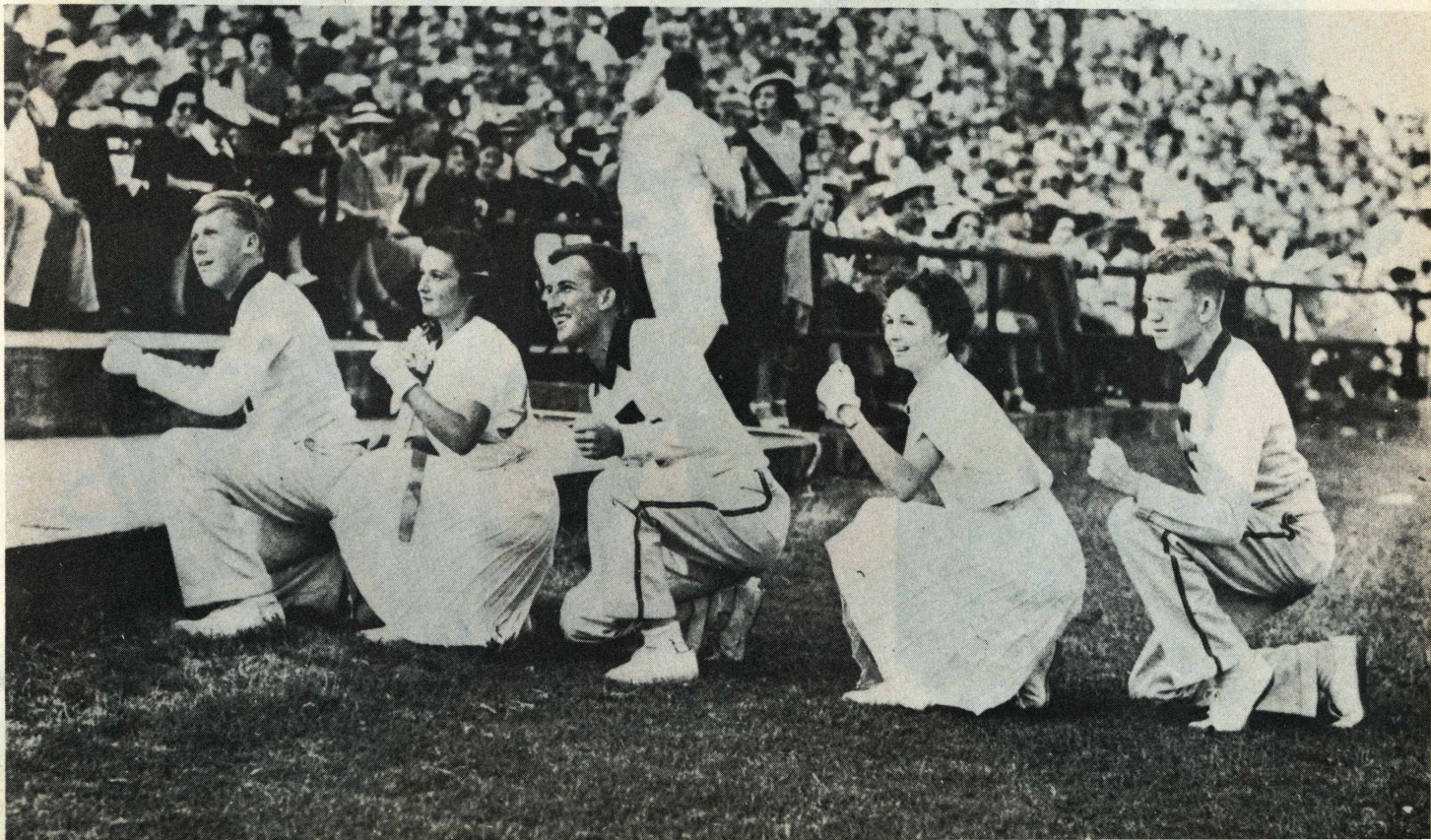
Here is a tense moment of the 1937 Homecoming football game with Alabama. Shown are, from left: Glenn Seidel, assistant coach; Ralph Bond, halfback; Paul Krueger, back; Red Dawson, head coach; and Bill Bevan, assistant coach. The 9-6 Alabama victory was the result of a last quarter field goal. Films of the game showed that Alabama had five men in the backfield but officials did not see the fifth man. Official score: 9-6.



Coach Red Dawson leads his Tulane team into the dressing room at half-time of the 1937 game. Tulane was leading 6-0.



Above is a scene of the card display of the Tulane cheering section during the 1937 Homecoming Game. Below are the 1937 cheerleaders in action. From left: Albert Tebo, Margie Schwarz, "Squeaky" Lacorgne, Peggy Roemer and Ford Reese.



NEXT HOME
GAME THESE
TEXAS TECH
STARS WILL
APPEAR HERE
FRIDAY NIGHT
8 P M
OCT. 31



RONNIE RICE HB



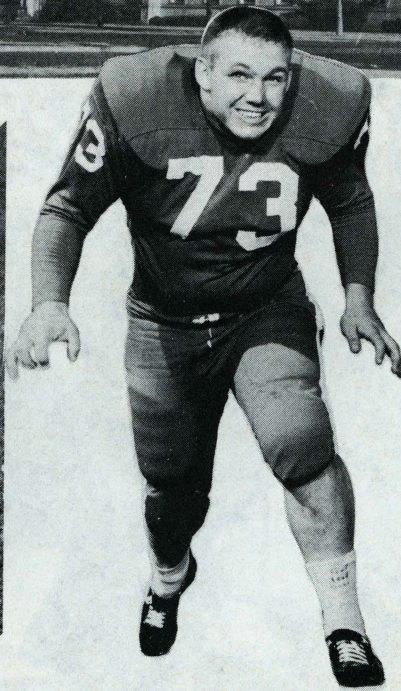
JERRY SELFIDGE LE



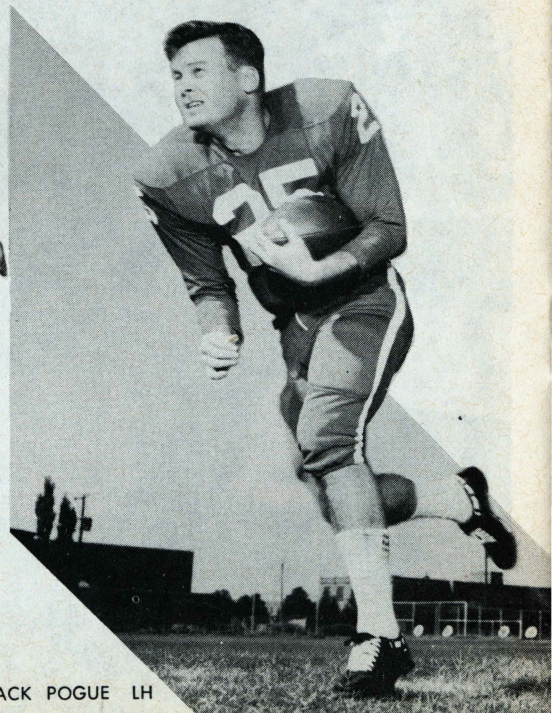
ADMINISTRATION BUILDING



JERRY BELL QB



PHIL WILLIAMS RT



MACK POGUE LH

it's the

performances

that scores!

Hickey-Freeman

In the business world, as on the playing field, it's the performance that counts. And a man does a better job of work when he possesses the assurance that comes of faultless appearance. That's why top men everywhere are to be seen wearing suits customized* by Hickey-Freeman! They look better . . . feel better . . . do better . . . in Hickey-Freeman.

men's clothing • second floor

EXCLUSIVE WITH

Godchaux's

*Reg. U. S. Pat. Off.



Tulane's
All-Americans

ENDS

Jerry Dalrymple (1930-31)*
Ralph Wenzel (1939)

TACKLES

Harley McCollum (1939)
Ernie Blandin (1941)
Paul Lea (1948)
Jerome Helluin (1950)

GUARDS

Tony Sardisco (1955)

CENTERS

Lester Gatewood (1943)

BACKS

"Peggy" Flournoy (1925)
Bill Banker (1929)
Don Zimmerman (1931-32)
Claude Simons, Jr. (1934)
W. A. "Dub" Jones (1944)
Eddie Price (1949)

* National Football Hall of Fame

Best Wishes To

The Green Wave

For Many Successful
Seasons

~*~

**CHALMETTE LAUNDRY
and CLEANERS**
2801 TULANE AVENUE

For Excellent Work and Rapid Service
Call GALvez 2161



BEFORE OR AFTER THE GAME.....

OUTRIGGER

BAR & LOUNGE

- ★ Spectacular exotic drinks!
- ★ Palate pleasing Polynesian tid-bits!
- ★ All your cocktail favorites!

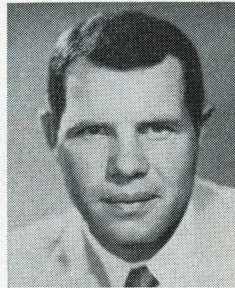
OPEN FROM 9 A.M.
ENTERTAINMENT FROM 4 P.M.

the st. charles hotel
NEW ORLEANS

TULANE STAFF



Anton (Andy) Pilney
Head Football Coach



Jack Green
Assistant
Coach-Line



Bob Whitman
Assistant
Coach-Backs



Mike Karmazin
Assistant
Coach-Line



Jim Root
Assistant
Coach-Backs



Bill Maginnis
Head Freshman
Coach



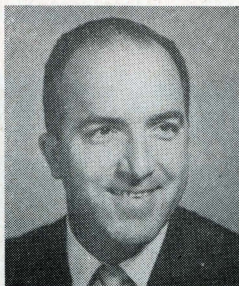
Ray Prats
Assistant Freshman
Coach



Earl (Bubba) Porche
Trainer



Homer Dedeaux
Assistant to Athletic
Director



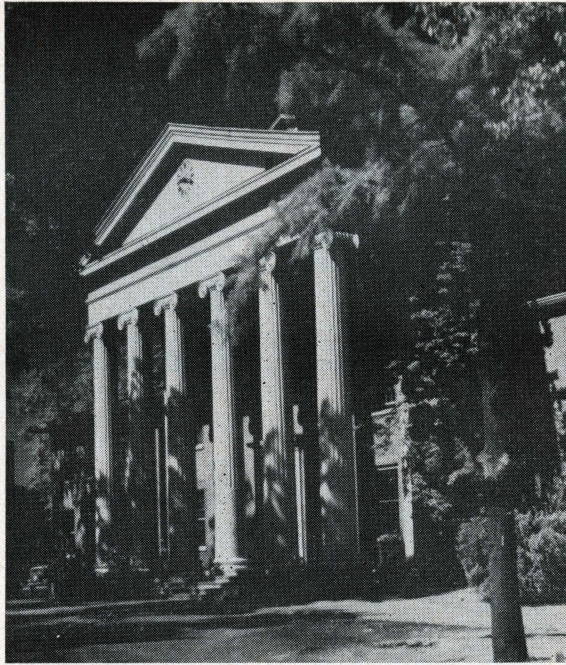
G. J. (Buddy)
deMonsabert
Business Manager



Larry Karl
Assistant to Athletic
Director
Sports Publicity



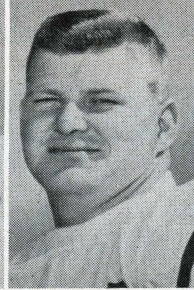
Dr. Lloyd Kuhn
Team Physician



Lyceum Building (1848)



Anderson



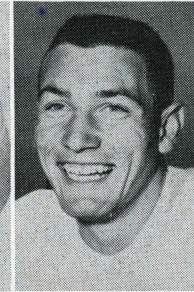
Benton



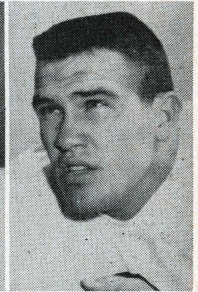
Brewer



Cavin



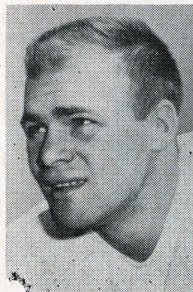
Champion



Churchwell

Ole Miss Roster

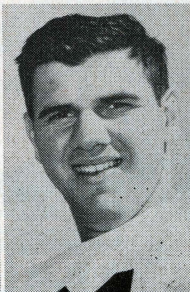
No	Name and Position	Age	Height	Weight	Letters	Class	Hometown
50	Warner Alford, c	20	6-0	185	0	Soph.	McComb
42	James Anderson, fb	19	6-0	198	0	Soph.	Clinton
84	Warren Ball, le	20	6-1½	185	0	Soph.	Fayette
61	Bill Basham, rg	20	6-2	220	0	Soph.	Paducah, Ky.
77	Bob Benton, rt	21	6-0	215	0	Soph.	E. St. Louis, Ill.
22	George Blair, lhb	20	6-0	190	0	Soph.	Pascagoula
16	Billy Brewer, qb	24	6-0	183	1	Jr.	Columbus
86	Jack Cavin, re	21	6-1½	210	0	Jr.	Crosby
25	Jimmy Champion, lhb	21	5-10	182	1	Jr.	Whitehaven, Tenn.
64	Hanson Churchwell, lt	22	6-0	233	1	Sr.	Lucedale
67	Harold Cooper, lg	21	6-0	195	2	Sr.	Bolivar, Tenn.
51	Milton Crain, c	20	6-5	218	2	Sr.	Memphis, Tenn.
31	Bobby Crespino, rhb	20	6-4	195	1	Soph.	Greenville
80	Jerry Daniels, re	19	6-1½	195	0	Soph.	Long Beach
41	Charles Flowers, fb	21	6-0	197	1	Jr.	Marianna, Ark.
10	Bobby Franklin, qb	22	5-10	169	1	Ja.	Clarksdale
12	Jerry Gibbs, qb	19	5-11	175	0	Soph.	Grenada
88	Larry Grantham, le	20	6-0	195	1	Jr.	Crystal Springs
52	Allen Green, c	20	6-1	210	0	Soph.	Hanceville, Ala.
87	George Gregory, re	21	6-½	190	0	Jr.	Birmingham, Ala.
24	Jimmy Hall, lhb	20	5-9	175	1	Jr.	Tupelo
89	John Holston, le	19	6-2½	205	0	Soph.	Poplarville
85	Warren Jenkins, re	22	6-1	195	1	Sr.	Washington, D. C.



Cooper



Crain



Crespino



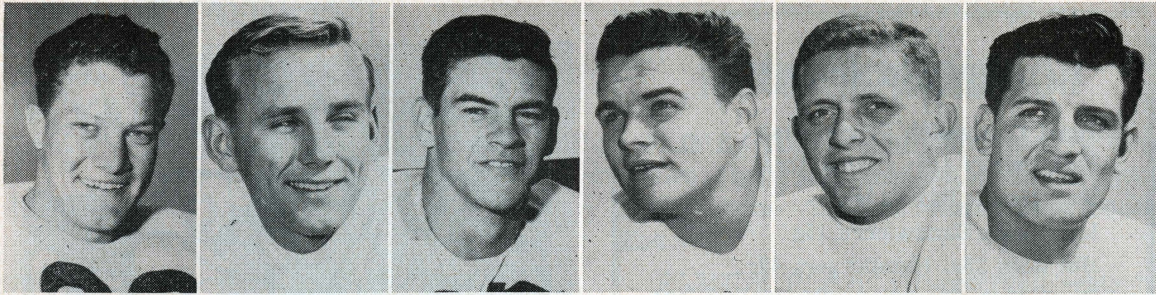
Daniels



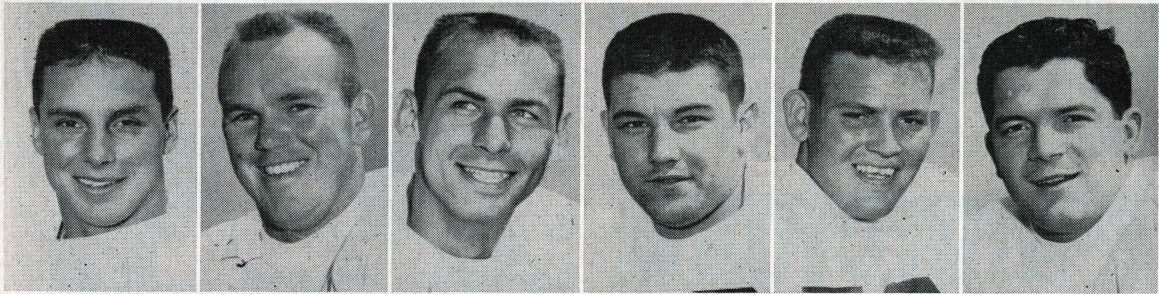
Flowers



Franklin



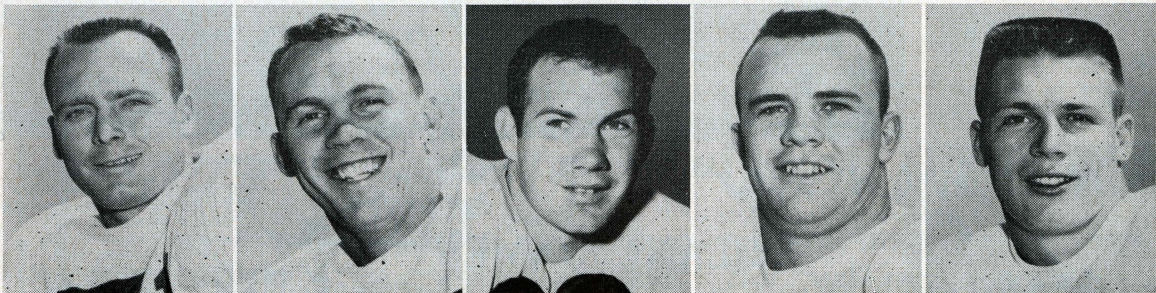
Grantham Hall Jenkins Kempinska Khayat Kirk



Lovelace Owens Partridge Price Robertson Sanders

Ole Miss Roster

No	Name and Position	Age	Height	Weight	Letters	Class	Hometown
62	Charles Kempinska, rg	19	5-11½	205	1	Jr.	Natchez
76	Robert Khayat, g-t	20	6-2	215	1	Jr.	Moss Point
53	Ken Kirk, c	20	6-1	212	1	Jr.	Tupelo
45	Charles Laird, fb	18	6-1	190	0	Soph.	Holly Springs
30	Kent Lovelace, rhb	22	5-11	187	1	Sr.	Indianola
78	Robert Owens, rt	20	6-2	220	1	Jr.	Charleston
43	Dewey Partridge, fb	21	5-11	187	1	Jr.	Philadelphia
69	Richard Price, lg	19	6-1	200	0	Soph.	Vicksburg
20	Billy Rittman, rhb	21	5-11	175	0	Jr.	Stuttgart, Ark.
65	Shed Roberson, rg	20	6-1	200	0	Soph.	Clarksdale
79	Joe Robertson, lt	20	6-1	220	0	Soph.	Crosby
15	John Robinson, fb	19	5-11	180	0	Soph.	Meridian
21	Charles Taylor, lhb	19	6-2	180	0	Soph.	Jackson
33	Tommy Taylor, rhb	21	5-11	177	2	Sr.	Jackson
82	Billy Templeton, le	22	6-3	205	2	Sr.	Utica
60	Decker Terry, lg	21	6-½	195	1	Jr.	Greenville
63	Marvin Terrell, rg	20	6-0	210	1	Jr.	Indianola
74	Aubrey Sanders, rt	21	6-2	210	1	Jr.	Picayune
71	Rudolph Smith, lt	22	6-2	215	2	Sr.	Philadelphia
32	Cowboy Woodruff, lhb	20	5-10½	181	1	Jr.	Batesville



Smith Taylor Templeton Terrell Woodruff

Pay No More!

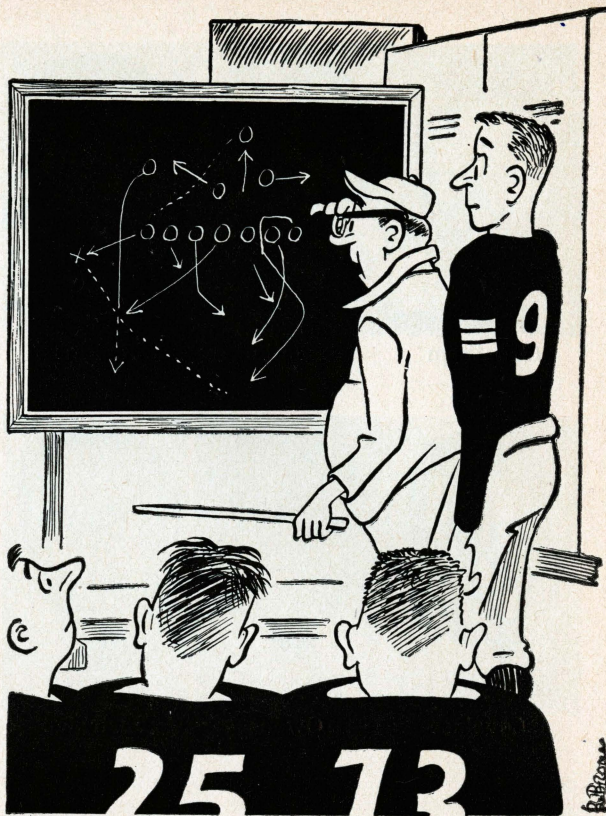
Official Concession Prices Are:

- Soft Drinks 10¢; Coffee 15¢
- Ice Cream Bars 10¢
- Ice Cream Sandwiches 15¢
- Hot dogs 25¢; Hamburgers 45¢
- Tuna Fish Sandwich 40¢; Cheese 40¢
- Cigarettes 35¢; Candy Floss 15¢
- Popcorn 15¢

A Great Name in Clothing

SCHWOBILT
CLOTHES REG. U.S. PAT. OFF.

"SUITS THE SOUTH"



"You're right, Miller—according to that it looks like a cold front moving south with strong westerly winds with a choppy sea in the early afternoon!"

OFFICIAL WATCH
FOR THE



U. S. OLYMPIC
COMMITTEE



OLYMPIC WINTER
GAMES 1960



PAN-AMERICAN
GAMES 1959



NAT'L AERONAUTIC
ASSN.



NAT'L
SKI ASSN.



AMERICAN
POWERBOAT ASSN.



NAT'L HORSE
SHOW ASSN.



NAT'L FOOTBALL
LEAGUE



MAJOR LEAGUE
BASEBALL



NAT'L COLLEGIATE
ATHLETIC ASSN.

LONGINES

THE WORLD'S MOST HONORED WATCH

Longines, first watch of sport, is recognized as official for timing world records and international events by all international sports and contest associations. Every Longines watch, for whatever its use, is made to be the best of its kind. For yourself, or as a gift, no other name on a watch means so much as Longines, the world's most honored watch.

OFFICIAL WATCH FOR THE

TULANE GAMES



ILLUSTRATED
Longines Starlight Serenade
"B", elegant 14K gold watch
with 6 diamonds, \$175;
Longines Presidency "E",
14K gold case, \$125.
Other models from \$71.50.
Federal tax included.

LONGINES-WITTNAUER WATCH COMPANY

World's Best BAR-B-QUE

The Meet here after
the game

**S
M
O
K
E
D
H
O
U
S
E**



BAR-B-Q

5243 CANAL BLVD.



INFORMALLY WESTERN

BAR-B-Q AVAILABLE
ALSO AT ALL



ICE • BEER • SNACKS

TICKET INFORMATION

HOME GAMES (Individual)—First four games \$4.00, sidelines; \$2.50 South Side. L.S.U. Game—\$5.00, Sidelines; \$4.00 South End.

"FAMILY PLAN" (Unreserved seats in North stands)—First Four Games, \$2 (adults); 50 cents High School age and under. L.S.U. Game—\$3.50, (adults) and \$1.00 High School age and under.

GAMES AWAY—(Seats in special Tulane sections)—\$5.00 Georgia Tech; \$4.50, Navy; \$4.00, Kansas; \$4.00, Vanderbilt.

TICKET OFFICES—Tulane Stadium, 6401 Willow Street (UNiversity 1-3661 and UNiversity 1-9381); Werleins Box Office 605 Canal Street (MAGNOLIA 6201).

MAIL REQUESTS—Include check or money order payable to Tulane University, with 25 cents added for postage and handling. Address: TULANE TICKET OFFICE, 6401 WILLOW STREET, NEW ORLEANS 18, LA.

UNIVERSITY - FROSTOP

3100 Calhoun at S. Claiborne

Call UN 1-3113 To Place Orders
Ready For Your Arrival

SERVING Icy Cold Root Beer and Orange
... King Size Hamburgers ...
Milk Shakes ... Hot Dogs ...
Hickory Smoked Barbecue.

Across from Stadium on Claiborne

Gus Mayer
CO. LTD.
CANAL ST. GENTILLY

Tulane Printing Office

CAMPUS PRINTERS



PLUM near
AUDUBON ST.

UNiversity 6-2741
Ext. 344

For Your Convenience

PUBLIC TELEPHONES

are located at several positions on the ground level walkways underneath both East and West Stands.

*Compliments
of*
A FRIEND

THE GREATEST EXTERMINATOR

"Miller the Killer"

Is Located At The
A and M PEST CONTROL

4812 Prytania St.
New Orleans

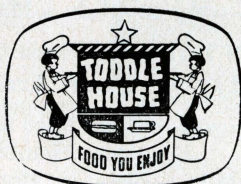
Service Offices in
ALGIERS - BOGALUSA - BILOXI, MISS.

SIX LOCATIONS

No. 1
611
S. Carrollton

No. 2
1521
Aline St.

No. 3
2718
Canal



No. 4
2567
Metairie Rd.

No. 5
6307
S. Miro St.
(opp. TU
Stadium)

No. 6
2952
Tulane Ave.

OPEN 24 HOURS

SUGAR BOWL COURTS

4303 Airline Highway

On Highways U. S. 51, 61, 65

Metairie, New Orleans, Louisiana

Coffee Shop, swimming pool, Beauty-Rest mattresses, steam heated, air conditioned, television and telephones.

Phone: VERNON 3-7333

FOOT BALL



Benny, the Shutterbug Says:

games are more fun with your camera along and I know a place that has the most terrific selection of cameras and photo supplies in the South. Not only that, every purchase is guaranteed by 49 years of service and dependability.

Did you say where? BENNETT'S, ole buddy, BENNETT'S, 320 Baronne

WILMER A. SIMPSON
President

EDWIN A. STOUTZ
Secty-Treas.

Simpson-Stoutz Sporting Goods Co.
INCORPORATED
The Sporting Goods Store
1332 SOUTH CARROLLTON AVENUE
NEW ORLEANS 18, LA. UNIVERSITY 6-6301

For Your Convenience

FIRST AID STATIONS

are located at the Northwest
and Southeast corners of the Stadium

CRESCENT TILE COMPANY

4006 Eden St.

UN 6-3400 UN 6-4800

Wood Blocks, Asphalt, Rubber and Vinyl
Tile, Plastic Wall Tile and a
Complete Line of Carpeting

DELMONICO
RESTAURANT

ESTABLISHED 1895

1300 ST. CHARLES

JACKSON 5-4937 MAGNOLIA 9307

garden
of eatin'...
please your palate
in our patio... fabulous food
flavored with a floral flourish or, if you
like, come indoors beneath
the crystal chandelier,
truly dining in
the grand
manner

since 1880
Commander's
Palace
Dining in the Grand Manner
WASHINGTON AVE. at COLISEUM

PAN-AMERICAN FILMS

Producers of 16 mm Industrial, Educational and Special Events
Motion Pictures

Editing, Titling and Color Film Duplicating — Sound Recording

Producers of the Sugar Bowl Movies in Color and Sound Since 1945

Bell & Howell 735 POYDRAS STREET
Motion Picture Equipment Dealers JA 5-4895

THE TULANE ALUMNI ASSOCIATION

60 YEARS OF SERVICE TO ALUMNI AND THE UNIVERSITY

1898-1958

The Tulane Alumni Association was incorporated in 1898, dedicated to the broad principles of loyalty and service to the University and its Alumni. During the past sixty years it has grown from a few local Alumni to a world-wide organization of 30,000 members living in each of the forty-nine states and in many foreign countries.

The Alumni Fund, inaugurated twelve years ago, has provided \$1,353,154 for needs of the University.

The Association's contributions to higher

education have been equally important. Alumni clubs provide scholarships to deserving students in their areas. The annual Tulane Conferences, presented by the Association and Alumni clubs, bring to many Southern cities programs in the specialized fields of science, the humanities, law, medicine, engineering, social work, etc.

Much of the growth and success of the Association can be attributed to the organizational leadership of the presidents and secretaries (directors) who have guided Alumni activities through the years.

PAST PRESIDENTS OF THE TULANE ALUMNI ASSOCIATION

1898 - 1901	John Dymond, Jr.	1938 - 1939	Clifford F. Favrot
1901 - 1903	Johnston Armstrong	1939 - 1940	Walter M. Barnett, Jr.
1903 - 1904	Charles Rosen	1940 - 1941	Alva P. Frith
1904 - 1907	Dr. William M. Perkins	1941 - 1942	Gen. Edward S. Bres
1907 - 1910	Dr. I. I. Lemann	1942 - 1943	Frank S. Cannon
1910 - 1911	Warren B. Reed	1943 - 1944	Richard O. Baumbach
1911 - 1912	J. Blanc Monroe	1944 - 1945	George T. Walne
1912 - 1914	Dr. Douglas S. Anderson	1945 - 1946	Lester J. Lautenschlaeger
1914 - 1915	George H. Terriberry	1946 - 1947	Dr. Walter O. Moss
1915 - 1917	Frank William Hart	1947 - 1948	E. Claggett Upton, Jr.
1917 - 1918	Michel Provosty	1948 - 1949	A. Watson Chapman
1918 - 1919	Dr. J. Phares O'Kelley	1949 - 1950	Clayton L. Nairne
1919 - 1921	Henry W. Robinson	1950 - 1951	Dr. Francisco L. Figueroa
1921 - 1923	Dr. J. Birney Guthrie	1951 - 1952	Gerald L. Andrus
1923 - 1925	Charles E. Dunbar	1952 - 1953	Dr. Arthur F. Hoge
1925 - 1927	Dr. Lucian H. Landry	1953 - 1954	G. Shelby Friedrichs
1927 - 1928	S. Walter Stern	1954 - 1955	Dr. J. T. Littleton
1928 - 1930	Rudolph J. Weinmann	1955 - 1956	D. B. H. Chaffe, Jr.
1930 - 1932	Cuthbert S. Baldwin	1956 - 1957	Jacob S. Landry
1932 - 1934	Dr. Edmond L. Faust	1957 - 1958	Harry P. Gamble, Jr.
1934 - 1936	Louis L. Rosen	1958 - 1959	To be elected
1936 - 1938	Joseph L. Killeen		

PAST SECRETARIES (DIRECTORS) OF THE TULANE ALUMNI ASSOCIATION

1923 - 1924	Lewis F. Wakeman	1934 - 1937	Charles M. Rucker
1924 - 1927	John Randolph Foote	1937 - 1941	T. Hale Boggs
1927 - 1930	G. Fred Lamprecht	1941 - 1942	Kendall H. Cram
1930 - 1934	Francis X. Armstrong	1942 -	Beatrice M. Field

I prefer the bread
of finest quality!



- ✓ First in popularity
- ✓ Stays fresher longer
- ✓ Enriched with vitamins,
minerals,
milk protein

Model is wearing

- French leather gloves
- Dress by Tina Leser
- Hat by Sally Victor

HOLSUM

Sunbeam

" BEST BREAD IN TOWN "

A new idea in smoking!

Salem refreshes your taste



★ **menthol
fresh**

Salem brings a wholly new quality to smoking...Spring-time-softness in every puff. Salem refreshes your taste the way a Spring morning refreshes you.

★ **rich tobacco
taste**

Smoking was never like this before! You taste that rich tobacco...then, surprise!... there's an unexpected softness that gives smoking new comfort and ease.

★ **modern filter,
too**

Through Salem's pure-white, modern filter flows the freshest taste in cigarettes. You smoke refreshed, pack after pack, when you buy Salems by the carton.

