

## **Historic, Archive Document**

Do not assume content reflects current scientific knowledge, policies, or practices.



6205  
**1937 CATALOGUE**

# Martin E. RANDIG



*- One of the Most  
Complete Collections of*  
**WATERLILIES**

## *Water Gardens*

2240 Sierra Way, San Bernardino, California



ROSE STAR AND PURPLE STAR

# WATER LILIES

*Everything for the Water Garden  
Pool Construction  
Gold Fish and Fish Food*

~~~~~  
Visit Our Gardens. Visitors Always Welcome. We Are Always Open  
~~~~~

---

---

# INTRODUCTORY

WE are the successors to the C. A. Randig Apiary and Nurseries. Mr. C. A. Randig was engaged in the Apiary and Nursery business in Europe from 1870 to 1881, emigrating to the United States in 1881, settling in Taylor, Texas, where he resumed the same business. In 1899 he moved to Bloomington, Calif., and continued along those same lines until the time of his death.

After my father's death we lost practically everything through severe freezes and adverse business conditions. After losing everything there we moved to San Bernardino, Calif. Here in 1918 I established what is now known as the Martin E. Randig Apiary and Water Gardens.

We have steadily grown so that we are now again one of the leading growers and distributors in this line.

As before, we strive to give you the best service and plants possible. You will find our prices reasonable. These lilies are not raised in swamps, they are raised in modern concrete pools, with the best of care, assuring you good strong plants and bulbs,—the best money can buy. Varieties are true to name.

We have in the past year doubled our propagating plant, enabling us to have on hand unlimited numbers of good strong plants in all varieties.

Our exhibit was awarded the First Prize for being the best collection of waterlilies shown at The Southern California Los Angeles County Fair, held at Pomona, September 13 to 29, 1935 and 1936.

Our advanced packing methods and years of experience assure the safe arrival of all plants. Our many repeat orders speak for themselves.

---

---

We will answer any questions concerning  
water gardening.

We do this gladly and are always willing to  
help you in any way when asked—  
free of charge

## POOL

The pool may be of any size desired. The depth should be about 24 inches for large and formal pools where boxes are used to plant lilies in, and 18 inches deep for small pools, or where lilies are planted loose in the bottom. Pools are stronger if basin-shaped and sides sloped at about a 60-degree angle to the bottom.

## LOCATION

The pool should be built where it will get all the sunshine possible, or at least six or seven hours each day during the summer months. Do not build pool near walnut, pepper, fig or any similar tree whose leaves have strong acid content, because the falling leaves will get into the water and poison the gold fish.

## PREPARATION OF POOL FOR PLANTING

After pool has been cemented, fill with water and let it soak for one week. Then drain and scrub pool, after which it is ready for planting. Any good garden soil is suitable for water gardens. Mix soil with about one-fourth well-rotted cow manure. If boxes are used, in the 24-inch deep pools, use those made of pine, metal or stone, about 10 to 12 inches deep and 24-inches square for each plant. Set boxes about three to four feet apart on bottom of pool, then fill to within one inch of the top with prepared soil, then cover with one inch of coarse sand, leaving plant open. After that it is ready to refill with water.

In the 18-inch deep pools, cover bottom to a depth of six inches with prepared soil. Set lilies three to four feet apart with growing points just emerging from soil. Then cover one inch deep with coarse sand, leaving plant open. It is now ready to refill. Place end of hose in a sack and tie around hose so water will not stir up mud. Fill slowly until two or three inches of water are in the pool before turning on stronger. In this manner the pool will be kept clear. Do not add more water than is necessary to keep up evaporation, as too much fresh water chills the lilies and retards their blooming.

## WHEN WE SHIP

Hardy lilies start growing here the latter part of January, and we ship to the Western and Southern states from then on until October 1st. Most of the tropical lilies are tender and should not be set out until April 15, and farther north, six weeks later.

The star lilies and the leaf propagators are more hardy than the other tropicals, and can be set a month earlier, i.e., March 1, for Western and Southern states, May 1 for Central and June 1 for Northern states and Canada.

Make all checks or money-orders payable to Martin E. Randig Water Gardens. On all California orders include 3% for sales tax.

## HOW WE SHIP

All shipments are made by parcel post, which gives you the fastest possible delivery right to your home. We guarantee safe arrival of all plants. Our advanced methods of packing and years of experience assure the arrival of plants in as good condition as when they leave our nurseries. After unpacking bulbs, place immediately in water until you are ready to plant them. All complaints must be made within ten days after receipt. We pay postage on all orders of \$1.00 or over.

### TUB GARDEN COLLECTION NO. 1

Aurora orange red                      Marliac yellow  
Your choice of Marliac white or Marliac shell pink  
Four aquatic plants  
Four marginal plants.  
Four pairs snails. Postpaid.....\$2.50

### COMPLETE LARGE POOL COLLECTION NO. 11

Sunrise, giant yellow.  
Comanche, orange red.  
Gloriosa, brilliant red.  
Attraction, crimson mottled with white.  
Gonnere, double white.  
Aquatic collection, 10 plants.  
Border collection, 6 plants.  
Six pairs snails. Postpaid .....\$7.00

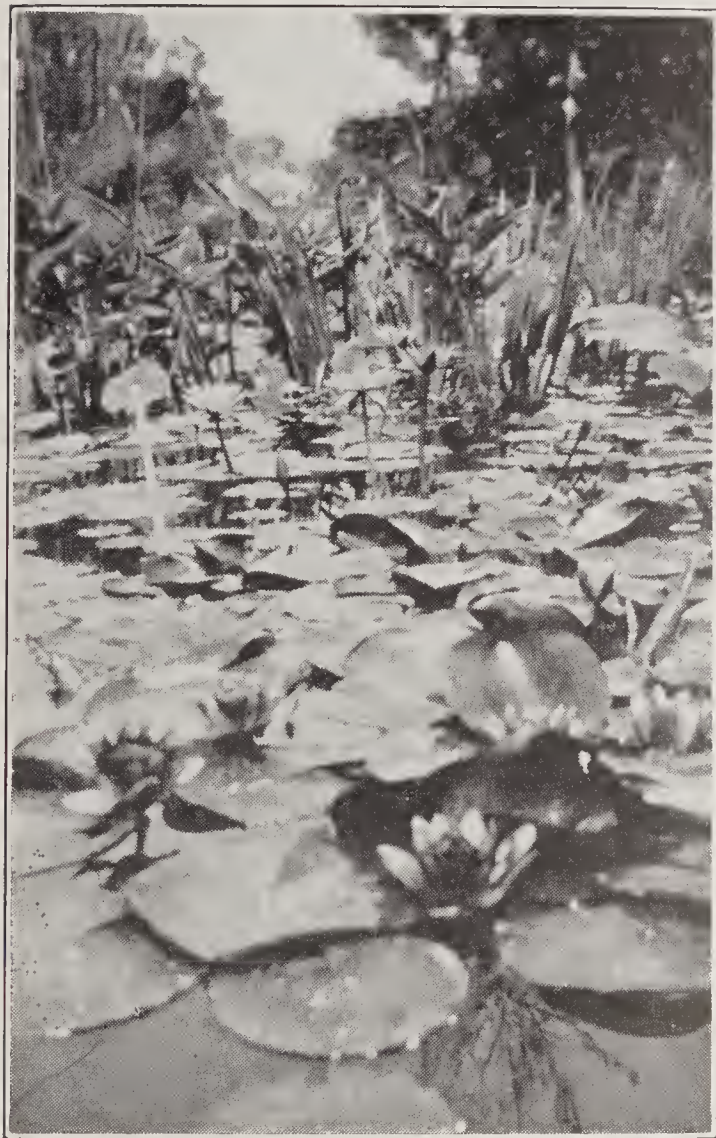
### COLLECTION NO. 5—MARLIAC TRIO

Marliac Red, Marliac Shell Pink  
Aurora, orange, changing to red.  
Six aquatics, four border plants, three pairs snails. Postpaid, price \$2.75

---

WE SHIP EVERYWHERE

# Hardy Water Lilies



Attraction Lilies in foreground, Star Lilies in center, Water Iris and Thalia Dealbata in background

The Hardy lily is the lily which has the blossoms floating on or directly above the water. They are the best for beginners in water gardening in the colder regions as they need very little winter care.

## Red and Vermilion

### Attraction

This lily is truly an attraction in any pool. Blossoms are a deep crimson, yellow center with a slight touch of white on the edges of the outer petals. Leaves are a bright shining green. You will like Attraction.....\$2.00

### Gloriosa

This is without doubt the best all around red lily on the market. Of all the reds it is the most popular, being a gorgeous, deep blood red,

quite double and of good size. From early Spring till late Fall it is constantly blooming. You will be thrilled with Gloriosa at.....\$1.75

### Escarboucle

The brightest red of the hardy lilies. Blossoms are deep fiery red, mahogany stamens, with dark yellow centers. A very good bloomer. Large deep green leaves or pads add to the beauty of this variety.....\$2.00

### Picciola

One of the very dark reds, being almost as dark as William Falconer, but a much better bloomer. Blossoms are large, dark red with mahogany stamens .....\$1.75

### Flammea

A beautiful dark red lily somewhat resembling Escarboucle. A trifle deeper in color, petals appear to be slightly crumpled.....\$2.50

**Conqueror**

One of the largest and best blooming red lilies. A deep crimson with deep yellow centers. Outer petals are flecked with white. This lily prefers partial shade, but will do well out in the open same as the others. Large deep green pads. This lily is often confused with Attraction. It is, however, much lighter in color.....\$1.50



Chromatella

**Marliac Red**

A medium dark red lily of medium growth. This is a good red lily for small pools or tub gardens. Leaves green, slightly mottled with maroon. A fair bloomer .....\$1.75

**James Brydon**

A beautiful crimson resembling a large cactus blossom. Quite double. This lily should be included in every collection .....\$1.75

**Newton**

One of the novel red lilies. Blossoms are bright red. The petals are very narrow and pointed, very much different from any other variety....\$2.25

**Robinsoni**

One of the oldest and most striking of the red lilies. Bright, gleaming red blossoms with yellow centers. Tips of petals are orange colored and have a pinched effect. Pads deep green, with maroon spots. An old favorite .....\$1.75

**Red Laydeker**

A bright red dwarf, and a very good bloomer. Blossoms are of good size and form, much larger than the other Laydekers. Pads are deep green mottled with maroon.....\$2.25





Gloriosa

**Lucida**

Crimson blossoms with yellow center. Has beautiful green pads, mottled with maroon .....\$1.50

**William Falconer**

The deepest red of all red water lilies, being a very dark satiny red. A very shy bloomer .....\$3.50

**YELLOW SHADES**

**Sunrise**

This beautiful lily has enormous crepe-like blossoms measuring ten inches or more across, of a bright, sulphur yellow. The blossoms of this variety are often held on slender stems quite a distance above the water. A very good bloomer; here in California it blooms almost the year around .....\$1.75

**Chromatella, or Marliac Yellow**

The best and still the most popular yellow water lily. It will bloom even under the most adverse conditions. Flowers are of good size and bright canary yellow. Pads are light green, heavily spotted with maroon....\$1.00

**Sulfura Odorata**

A sharp petaled yellow of the Odorata type. A good bloomer, resembling a small Sunrise. Blossoms are held well above the water.....\$1.00

**Chinese Pigmy**

A little jewel for the tub garden. Perfect in form, resembling the larger types in form of blossoms. A remarkably good bloomer for so small a lily .....\$ .75

**Mexicana**

The wild yellow lily of Mexico and Florida. It blooms only in the early Spring and Summer. Increases by runners like strawberry plants.....\$ .25

**SUNSET COLORS**

**Comanche**

The best bloomer of them all. Like Chromatella, it will bloom even under most adverse conditions. Largest of the sunset colors. Blossoms are deep orange red.....\$1.35



Comanche

**Aurora (Apricot colored)**

A very good, colorful lily. Opens amber overlaid with pink, deepening to red on the third red. Leaves of moderate size, heavily spotted with maroon .....\$1.00

**Paul Hariot**

A delicate apricot pink, with tulip shaped blossoms. A very good bloomer of moderate size.....\$1.00

**Chrysanta**

This is an ideal lily for a small pool or tub garden. Small, compact blossoms of deep amber; compact in growth. Has small beautifully mottled pads .....\$1.00

**Sioux**

This lily resembles Comanche very much, being much smaller in growth and flower and much lighter in color.....\$1.25

**LIGHT PINK SHADES**

**Marliac Shell Pink**

Similar to Marliac white, of a delicate shell pink color. A wonderful bloomer .....\$ .75

**William Dougue**

A very good bloomer, very much like Marliac Shell Pink, petals being a trifle longer and more staggered.....\$1.00

**DEEP PINK AND ROSE**

**Marliac Rose**

A beautiful, fragrant rose-colored variety. A vigorous grower and a good bloomer. Blossoms are of good size, suitable for cut flowers....\$1.25

Randig Water Gardens, 2240 Sierra Way, San Bernardino, California

---

**Formosa**

One of the best deep pink hardy lilies. Free blooming and quite fragrant .....\$2.50

**Neptune**

A novel pink lily, being a deep pink fading to white at the tips of the petals; mahogany stamens. The blossoms are starry in appearance; petals are very sharp pointed. Bronzy green pads.....\$1.50

**Somptuosa**

One of the most double of the deep pink varieties. A very good bloomer; good for cut flowers. Pads slightly mottled.....\$1.35

**Splendida**

A rich strawberry red with deep pink outer petals. One of the most satisfactory deep pink sorts. A very consistent bloomer. Pads are deep green, appearing to curl up slightly at the edges.....\$1.25

**Harlequin Esmeralda**

This lily quite different from the rest; has pink blossoms, speckled with white and rose. A very unique variety.....\$2.50

**Pink Laydeker**

This is a little jewel in the dwarf varieties. A good companion for Chinese Pigmy .....\$1.50

**Mme. Julian Chiffot**

A beautiful La France pink; its star-shaped blossoms often attain nine inches or more in diameter. One of the best show lilies.....\$2.50

**Rene Gerard**

One of the prettiest and best blooming large, deep pink show lilies. Blooms from early Spring till late Fall.....\$2.25

**Eugenia De Land**

One of the sweet-scented Odorada types. Narrow petaled shell pink .....\$1.25

**Rosary**

A very beautiful deep rose, sweet scented Odorada.....\$1.50

**Masaniello**

One of the most popular pink hardy lilies. Blooms freely, having good sized tulip-shaped blossoms. Beautiful pea-green pads make this a combination which is hard to beat.....\$1.00

**Wilfon Gonere**

One of the recent additions to the pink class. It is very double, almost like Gonere, a fair bloomer and very prolific. Very good for cut flowers .....\$2.00

**Pink Opal**

One of the wild Cape Cod lilies. A fair bloomer, the flowers resembling a small rose. Opens early in the morning and closes in the early afternoon .....\$ .50

**Amabilis**

A large, dark pink, very much like Mme. Julian Chiffot.....\$2.50

**WHITE**

**Gonere**

This is without doubt the most showy, and the most double of the white water lilies. It is well worth the difference in price, as you will agree after seeing this beautiful lily. The huge white globular blossoms nestling among the soft pea-green pads is a beautiful combination....\$1.75

**Wild White Native**

Large eastern white.....\$ .50

**Marliac White**

One of the oldest and most popular whites. A good bloomer and vigorous grower .....\$1.00

**Marliac Albida**

This lily resembles Marliac White in habit, but is much larger in blossom. This is the best of the more common white lilies.....\$1.25

**Virginalis**

Of all the white Water Lilies this is the purest white, being the first to blossom in the Springtime and the last one to stop in the Fall. This lily will never be common as it propagates very slow.....\$8.00



Formosa

**Hermine**

Pure starry white, sharp petaled blossoms. One of our favorite white lilies.....\$1.25

**Alba Plenissima**

One of the largest whites. Blossoms are of a very large cup shape. A vigorous grower with large deep green pads .....\$1.25

**White Laydeker**

A very pretty dwarf lily. Snow-white blossoms with yellow centers, having a strong tea fragrance.....\$2.00

**Loose**

A very good tub garden variety: Blossoms are pure white with yellow centers, beautiful soft pea-green pads .....\$1.00

Randig Water Gardens, 2240 Sierra Way, San Bernardino, California

---

# Complete List of Tropical Water Lilies



~~STAR LILIES~~  
~~Rose Star and Purple Star~~

MRS. MARTIN E. RANDIG, (Described on Page 13)  
(Patent applied for)

# Tropical Star Lilies

## THE MOST HARDY TROPICAL LILY

These lilies are the easiest grown of all Tropical lilies and give you the most bloom. They are the easiest to keep over winter as they will go completely dormant before the heavy freezes come. When they are dormant merely take the bulbs and bury them in a can of moist soil or sand and set them in the basement away from frost. Protect them against rats or mice as they will destroy them if they get to them. Set them back in your pool again in Spring when danger of frost is over.

Early orders of Star Lilies are sent as started tubers, later they are sent as plants.



Tropical Star Lilies give a profusion of bloom

### Rose Star

The beautiful starry blossoms of this lily are a brilliant rose, having a very strong spicy fragrance. They are borne on strong stems well above the water and are the most ideal for cut flowers. You can expect from three to seven open blossoms on a plant all through the long summer months .....\$1.25

### Pink Star (Stella Gurney)

A beautiful silver pink, with a purplish cast toward the tips of the petals. This is one of the largest flowered and strongest growers of the Star Lilies. All the Star Lilies are very much alike, the difference being mostly in color. This variety has large pale green leaves with scalloped edges turning up slightly.....\$1.25

**Red Star (Mrs. Ward)**

Somewhat smaller in leaf and blossom than its sister lilies. Blossoms are a claret red, and very fragrant. Pads are bronzy green with scalloped edges .....\$1.50

**Purple Star, or (William Stone)**

One of the darkest of all Tropical lilies, being an intense purple the first day of opening, changing to blue as the blossoms age. As the other Star Lilies, it is a splendid cut flower, lasting from three to five days after cutting. A very free bloomer.....\$1.25

**Blue Star**

This beautiful lily is very much like the other Star Lilies in description, being clear true blue in color, with a yellow center, a characteristic of all day-blooming Water Lilies. A very good bloomer and cut flower....\$1.25

**VIVAPARIOUS, OR LEAF PROPAGATORS**

**Mrs. Martin E. Randig (Patent applied for)**

This gorgeous lily, illustrated on page 11, is one of our own creations, and although we have shown this lily in our display pond since 1931, where it has been admired by thousands of people, we have not had sufficient stock to put it on the market.

We introduced this lily for the first time last season. This is undoubtedly the most colorful of all the blue or purple Water Lilies and one of the most fragrant. It is a wonderful cut flower, lasting five or six days after cutting. The blossoms are well formed, with broad spreading petals attaining a spread of from seven to nine inches in diameter. We have tested this lily for winter hardiness and it has more than fulfilled our expectations. It will stand much lower temperatures than many of the others. The pads are a beautiful rich deep green.

We have a patent applied for on this lily, which means that it is not to be propagated or distributed by anyone other than our Water Gardens or assigns .....For only \$2.50

**Patricia**

A dark rose, of moderate growth. This is a very good variety for tub gardens or small pools.....\$2.25

**Panama Pacific**

A beautiful royal purple, one of the most popular purples. Very sweet scented. The outer sides of buds and septals are speckled with maroon .....\$1.50

**August Koch**

This beautiful blue lily was developed by August Koch, of Garfield Park, Chicago. It is a beautiful true blue with broad uniform petals. It is very fragrant, and blooms very freely. It is one of the most popular blue lilies and one of the most hardy.....\$1.50

**Dauben**

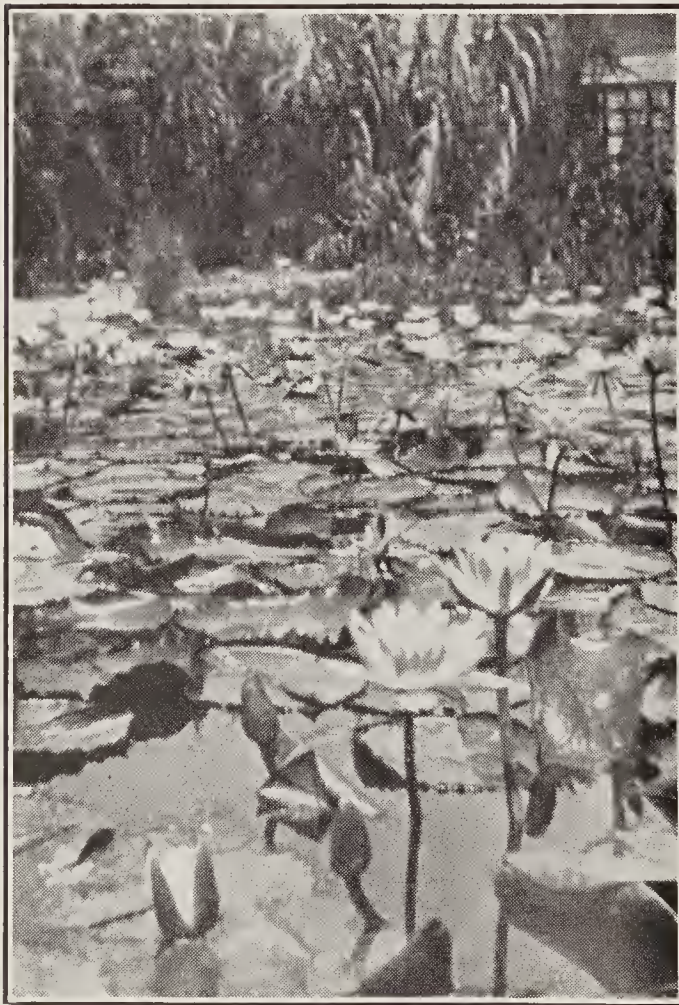
A light pale blue leaf propagator, the original leaf propagating lily. Very prolific .....\$1.25

**Amethyst.** A very good tub garden lily. It is a pale lavender or amethyst in color; a very good bloomer and leaf propagator.....\$1.50

**KEEP THIS IN MIND**

We do not ship old kept-over Tropicals. We ship fine, vigorous young Tropical Lilies. These lilies are in bud and bloom when sent. They are raised in outdoor pools.

A vigorous plant of this type will pass and eclipse any two-year-old Tropical Lily in size of bloom and vigor before a third of your blooming season is over. From then on it will never be overtaken by the former. Instead of having a bunch of small blossoms you will have prize winners for size and color. We use this stock for all prize winning display purposes.



Tropical Lilies

**General Pershing**

The best pink day bloomer on the market at the present time. The blossoms are large basin-shaped, very broad petals, and very fragrant. The outer buds and septals are speckled and striped with maroon. This lily should not be planted until water in the pond averages 65 or 70 degrees.....\$2.00

**Whitaker (Gigantha)**

If you want a giant blue that not everybody has, this is a good one to choose. The queen of the light blue Water Lilies. Blossoms of this lily are often 10 to 12 inches in diameter. It is a soft light blue with a yellow center, stamens tipped with blue. This lily is very fragrant. Give this plant plenty of room as it is a very vigorous grower. Leaves of this lily will attain over 15 inches in diameter.

Postpaid .....\$2.00

**Mrs. Edward Whitaker (Marmarata)**

A beautiful large lavender blue variety. In color it is very much like Whitaker Gigantha; the petals are more pointed and not so broad. It is very fragrant and free blooming. The leaves are beautifully marbled with maroon. Buds and septals of flowers of this variety are speckled deep green .....\$1.75

**Colonel Lindbergh.** A large pale blue similar to the Whitakers. The buds and septals are speckled with maroon. Large light green leaves which are heavily speckled with maroon.....\$1.75



**Pennsylvania (Blue Beauty)**

This gorgeous true blue lily is one of the oldest blue Water Lilies and still one of the most popular. Its giant blue flowers are very fragrant; they have a yellow center, stamens are tipped with blue. Buds and septals are speckled and lined with maroon. If given plenty of root room, this variety will give you an endless display of flowers over ten inches in spread, all Summer long. It is a real Blue Beauty, being sold by some water gardens under that name. You can't go wrong with this one \$1.50



**Blue Triumph**

A gorgeous blue lily, almost identical with Pennsylvania; it has the same maroon speckled buds and septals, and its other characteristics .....\$1.50

Pennsylvania, or Blue Beauty

**JUNE 1 to 12 SPECIALS—No. 3 (Tender Tropicals)**

These Tropical Lilies are the aristocrats of the Water Lily kingdom. They are the ones that give brilliance and beauty to your pool. Blossoms of all shades—red, white, blue and purple standing high out of the water. Grown in our outdoor pools.

Pennsylvania .....	\$1.00
Blue Triumph .....	1.00
Mrs. George Pring .....	1.00
General Pershing .....	1.25
Mrs. Edward Whitaker.....	1.00
Night Blooming Red, George Huster.....	1.00
Night Blooming Rubra Rosea.....	1.00
Night Blooming White Juno.....	1.00
Night Blooming Pink Dean.....	1.00

Any of the above at the reduced prices.

**NO. 7—SUNRISE TRIO**

Sunrise Blue Triumph, Gonere.....	\$4.25
-----------------------------------	--------

## WHITE DAY BLOOMING TROPICALS

### Mrs. George Pring

A large, fragrant, creamy white, with heavily mottled pads. This has for many years been the best white Tropical. A very good bloomer \$1.25

### Gracillis

The original white Tropical Lily of Mexico. Used mostly for hybridization. Blossoms freely, but not very double.....\$2.00

## A NEW WHITE DAY BLOOMER

### San Bernardino

A new pure white day bloomer; our introduction for 1936. This lily is a seedling of Whitaker Gigantha, crossed with Mrs. George Pring. Blossoms are much whiter than those of Mrs. George Pring. Buds and septals are striped and speckled with maroon. The outer row of petals also bears this marking. It is very fragrant, and blossoms are held much higher above the water than those of Mrs. George Pring. Pads are oval shaped and deep green in color, with the maroon stripes and speckles characteristic of Whitaker Gigantha. Only a few at.....\$2.00

### Fred Rossiter

One of our most pleasing blue lilies. A clear, heavenly blue, with base of petals pure white. Buds and septals lined and speckled maroon. Very double and delightfully fragrant. The pads of this lily are maroon, speckled brown, edges are scalloped, turning up at the points. One of our new introductions for 1937.....\$3.00

### Zanzibar Lilies

This is a strain of lilies originally growing wild on the Zanzibar Islands. They are quite hardy and are very good bloomers. Some of our best large Tropical Lilies were developed from these wild lilies. The blossoms are large, and they seed profusely, making them very good varieties for hybridizing. We have these lilies in the following colors:

Zanzibar Blue .....	\$1.25
Zanzibar Purple .....	1.25
Zanzibar Powder Blue .....	1.50
Zanzibar Rose .....	1.25
Zanzibar Pink .....	1.25
Zanzibar Rubra .....	1.35

### Caerulea

The wild blue lily of Egypt. This is a very hardy lily, of medium growth; it reseeds very profusely. The buds and septals of this variety are speckled with deep green. The ancient Egyptians worshiped this lily, being shown very prominently in many of their old paintings and temple decorations .....

\$1.00

# Night Blooming Lilies

These lilies, termed as Night Blooming Lilies, are not strictly night blooming, as they will remain open until almost noon before closing, and as the season progresses and the days get cool they remain open day and night.

These lilies originally come from two sources, the red ones are found in India and the white ones in Africa. These varieties have been taken by hybridists and crossed, so that now they are obtainable in all shades of red, pink, and white.

We have selected what we think are the best in each color and are listing those, as it is almost impossible to list them all.



Devonese  
(Dark rose night bloomer)

## Devonese

This is an old variety but is a good bloomer and still one of the best in the dark rose section. Blossoms do not open quite as far as most of the other night bloomers, remaining slightly basin-shaped .....\$1.35

## La France

This beautiful soft La France pink night bloomer was developed in our gardens (1930). Its giant spreading blossoms make it a much sought after variety. We offered it to the public for the first time last year. Our stock in this lily is still short, as it is a slow propagator. It is a very good bloomer. We have tested it for five years and are very much pleased with it. The pads are thick bronze with beautifully scalloped edges. Postpaid.....\$1.50

## Emily Grant Hutchings

A good sized light pink, being a good bloomer and strong grower. The pads of Hutchings are light bronze.....\$1.50

## Bissit

One of the best in the rose colored night bloomers. The gorgeous broad petaled blossoms of this variety make a hit with everybody.....\$1.50

## Dean

A dainty shell pink of moderate growth; a good bloomer. Pads are dark bronze in color.....\$1.35

## H. C. Haarstick

This is the largest and best dark red night bloomer at the present time. Its dazzling dark red blossoms attract instant attention; blossoms are open from sundown till next day noon, opening again in the evening. Blossoms



H. C. Haarstick, best dark red night bloomer

are often ten inches across. The pads are dark red or mahogany. Stamens are tipped with mahogany.....\$1.75

**Mrs. Hitchcock**

A very good dark rose of moderate growth. Pads are light bronze .....\$1.50

**Rubra Rosea**

One of the oldest crimson varieties. A very good bloomer. Blossoms are broad petaled, basin-shaped ..\$1.35

**George Huster**

Still the most popular of the crimson night bloomers. One of the best bloomers and hardiest of its class. Pads are dark bronze in color .....\$1.35

**Mars**

A dark crimson, very much like George Huster .....\$1.50

**Frank Trelease**

The darkest red night bloomer and one of the most consistent bloomers of the night bloomers. Not quite as large as Haarstick, but quite a bit darker red. Stamens are tipped with mahogany. Pads are likewise. The darkest red of them all. A very satisfactory variety.....\$1.75

**Dawn**

This beautiful giant pearl, the only one in this class, has large broad petaled blossoms measuring from eight to ten inches in diameter. A very free bloomer. Large light bronze pads with scalloped edges. Postpaid \$1.50

**Missouri**

The best of the white night blooming varieties. A giant for bloom and leaf spread. Postpaid .....\$2.50



Dawn, developed and introduced by us in 1928, the best pearl.

**Juno**

This is a good companion for one of the crimson or red varieties. The pure, dazzling white blossoms are a magnificent sight. It is a very good bloomer and is very hardy. Pads are bright green.....\$1.50

**Tanganyika**

This is one of the original White African night blooming lilies. Starry, short-petaled white blossoms with yellow stamens, make this a unique variety. Pads are deep green.....\$1.50

**Omarana**

An old favorite. A light pink, fading to white at the center of the petals. This gives it the effect of a white stripe in the center of each petal. Blossoms are large and borne freely. Pads are light bronze in color .....\$1.50



White Night Bloomer (Missouri)

**NIGHT BLOOMING COLLECTION NO. 10**

Juno, white; George Huster, red; Dean, pink, Postpaid.....\$3.00

Randig Water Gardens, 2240 Sierra Way, San Bernardino, California

---

### NO. 6—STAR TRIO COLLECTION

1 Rose Star, 1 Purple Star, 1 Blue Star, 6 Aquatics, 3 border plants,  
Postpaid .....\$2.50

### COLLECTION NO. 4

Comanche Giant, orange red.

Conqueror, deep red, mottled with white.

Marliac, white. Price postpaid.....\$3.00

### SIERRA TRIO NO. 8

Gloriosa, blood red, Conqueror, deep red, mottled with white. Marliac  
yellow .....\$3.75

### THE SACRED LOTUS



Sacred Lotus

**Lotus.** This majestic flower has been cultivated for thousands of years by the Egyptians and Orientals, being their symbol of purity. All the Lotus are similar in growth and habit.

**Sacred Lotus.** The most common and most popular. A beautiful pale pink flower, standing high above the large, umbrella-like leaves, which likewise stand high above the water.....\$1.50

**Double Chinese Red Lotus.** A beautiful double red variety.....\$3.50

**Flavesens.** Beautiful sulphur yellow flower.....\$1.50

**Shiroman.** Double, white,, Japanese Lotus. Giant double white flowers .....\$2.00

Plant California grown lilies for extra hardiness. Our long summers produce stronger plants more capable of resisting cold weather. They are ready to grow long before eastern lilies can be dug up for shipment, giving you a much longer blooming period. Our lilies are guaranteed to be true to name.

## TROPICAL WATER LILY SEED

Owing to the warm summers, many of the tropical lilies bear seed here, although they do not in other localities. We have seed of quite a few, some of which we are listing for anyone wishing to experiment in raising them from the seed. These seeds must be planted early in the spring as soon as the water averages a temperature of 50 degrees. Use a heavy loam without fertilizer or leaf mold. Sow in pot and cover lightly with soil. Then submerge pot under water to a depth of from four to six inches. In about ten days little green threads will come through the soil, followed in a few days by a leaf. Soon floating leaves will appear. Pot plants in separate pots when third floating leaf appears.

### DAY BLOOMERS

Panama Pacific, royal purple \$ .20  
 August Koch, blue ..... .20  
 Independence, pink ..... .20  
 Zanzibar Rubra ..... .20  
 Zanzibar pink ..... .20  
 Zanzibar blue ..... .20  
 Zanzibar purple ..... .20  
 Caerulea light blue ..... .20  
 Capensis bright blue ..... .20  
 Randig hybrids mixed, day and night bloomers.....\$.20  
 Bluebird, pkt. .... .20

### NIGHT BLOOMERS

Juno white .....\$ .20  
 Dentata white ..... .20  
 George Huster, deep red.. .20  
 Omarana type, deep pink.. .20  
 Tanganyika ..... .20  
 Rubra Rosa red ..... .20  
 Dean flesh colored ..... .20  
 Mrs. Hutchings, pink ..... .20  
 Mars crimson ..... .20

Randig hybrids mixed, day and night bloomers.....\$.20  
 Bluebird, pkt. .... .20

Seven packetes for \$1.00—The set of twenty for only \$2.25

### NIGHT BLOOMING COLLECTION C

H. C. Haarstick, dark red

Juno, white.

Devonese, rose. Postpaid .....\$3.25

### COLLECTION NO. 2

**Panama Pacific Special.** This beautiful lily, one of the most popular purple lilies, and one of the most fragrant, blooming from early Spring until the Fall. A leaf propagator. Postpaid to you for.....\$1.25

**Blue Triumph Special.** This beautiful lily, fully described in Tropical lily list, is one of the most popular large blue lilies. Postpaid to you for only .....\$1.25

# Plants to Complete the Pool



Hardy Fountain Grass

**Chinese Water Chestnut.** Grows stems somewhat like porcupine rushes, about twelve inches high. In the Fall it makes small bulbs, something in appearance to medium sized Gladiolus bulbs. Needs shallow water. These bulbs are used very much as an article of diet by the Chinese. Each.....\$.20

**Double Flowering Japanese Arrowhead.** Leaves are identical to the other Arrowhead, but the flowers are perfectly double. Only a few .....\$.50

**Spotted Lance Leaf.** Similar to Lance Leaf, but has maroon markings on lower leaves and stems. Each .....\$.35

## BOG PLANTS

**Pickerel Plant.** Purple, bearing purple spikes of blossoms borne on the center of deep green, heart-shaped leaves, from 18 to 24 inches tall....\$.25

**Azure Pickerel.** Similar to purple pickerel in growth, only much larger and a bright blue in color. Grows from 3 to 4 feet tall....35c, 3 for \$1.00

**Egyptian Paper Plant (or Papyrus).** One of the most graceful water grasses. Grows native along the Nile river.....35c, 3 for 75c

**Imperial Black Leaf Water Caladium.** A very beautiful foliage plant for the pool background or corner.....each \$.50

**Porcupine Grass.** Tall, quill-like stems, growing two to three feet tall. Stems are alternately banded white and green.....\$.25

**Giant Arrowhead.** A large, rare variety, growing three to five feet tall. Large arrowhead-shaped leaves. White butterfly-like blossoms with a maroon spot at the base of each petal.....35c, 3 for \$1.00

**Japanese Arrowhead.** Sharp, arrowhead-shaped leaves.....\$.20

**Thalia Dealbata or Water Canna.** Tall, graceful bog plants. Large spear-like leaves .....\$.50

**Primrose Willow.** Willow-like water shrub, bearing bright yellow primrose blossoms.....35c, 3 for \$1.00

**Water Iris.** A giant yellow water flag growing four to six feet tall..\$.20

**Cattail Plants** .....\$.20

**Purple Water Iris.** Three to four feet tall.....\$.20

**Blue Water Iris.** Three to four feet tall.....\$.20

**(Blue Cross Pickerel Rush.** A giant specimen, the result of our cross between the blue and purple pickerel. Leaves resemble the broad heart-shaped leaves of the purple parent. Flowers blue. Each.....\$.50



## SHALLOW WATER PLANTS

<b>Water Poppy.</b> A water creeper having bright canary yellow poppy blossoms .....	\$.10
<b>Water Snow Flake</b> .....	\$.25
<b>Water Buttercup or Floating Heart</b> .....	\$.10
<b>Water Hawthorne.</b> Snow white blossoms with very strong, spicy fragrance .....	\$.50
<b>Water Hyacinth.</b> A floating plant having spikes of lavender blossoms. Each .....	\$.10
<b>Azure Hyacinth.</b> A deep blue and flowering. Forms runners instead of plants .....	\$.35
<b>Shell Plant or Water Lettuce.</b> A pretty green floating plant.....	\$.10

## OXYGENATING GRASSES

<b>Anachrus or Fish Grass.</b> The most useful variety for either pool or aquarium. Per bunch .....	\$.10
<b>Coontail.</b> A very good oxygenating plant. Bunch.....	\$.10
<b>Cabomba.</b> A very good oxygenating grass. Per bunch.....	\$.10
<b>Eel Grass.</b> A very satisfactory plant for the aquarium. Three for .....	\$.10
<b>Primrose Creeper.</b> A strong growing creeper with yellow blossoms .....	\$.15
<b>Parrot Feather or Water Fern</b> .....	\$.15
<b>Four-leaf Water Clover.</b> A fine plant for covering shallow parts of your pool. Each leaf is a perfect four-leaf.....	\$.15
<b>Giant Eel Grass.</b> Broad grass-like blades, about one-half inch wide and from two to three feet in length. Each.....	\$.15
<b>Ludwigia.</b> A very good aquarium plant.....	\$.10

## MOUNTAIN VIEW COLLECTION

### (Hardy and Tropical)

Panama Pacific, royal purple.....	Tropical
Pennsylvania, true blue .....	Tropical
Mrs. George Pring, white .....	Tropical
Gloriosa, red .....	Hardy
Comanche, orange .....	Hardy
Chromatella, yellow .....	Hardy
Price .....	\$6.75

### COLLECTION A (Tropicals)

August Koch, blue.	
Rose Star, rose.	
Mrs. George Pring, white. Postpaid.....	\$3.00

### COLLECTION B (Tropicals)

Blue Triumph, true blue.	
General Pershing, pink. Postpaid.....	\$3.00

## BORDER GRASSES AND PLANTS

- Hardy Fountain Grass.** Bears millet-like plumes, purplish in color. Grows about two feet tall.....\$.25
- Eulalia Gracillima.** One of the most graceful of border plants. Bears feathery plumes and grows about four feet tall. Each.....\$.25
- Umbrella Plant.** Umbrella-like leaves. A very good border plant..\$.25
- Pampas Grass.** A good specimen for large pools. Grows large—eight to ten feet tall, having large feathery plumes in the fall.....\$.50
- False Dragon-Head.** Purple spikes of flowers in late summer. A good border flower. Each.....\$.20
- Torch Lily.** An excellent border lily. Has torch-like stems covered with blossoms the greater part of the summer. Each.....\$.20
- Ribbon Grass.** A low, variegated grass. Grows about six to eight inches tall. Makes a very attractive edging for the pool.....\$.20
- Winter Asters.** One of the best flowering perennial shrubs for background of pool. Has clusters of deep blue flowers late in summer. Grows two to three feet tall. A bunch.....\$.25
- Red Leaf Canna.** Flowers deep red. A beautiful specimen for background of pools. Each.....\$.25
- Caladiums or Elephant Ears.** Each.....\$.25



Water Poppy

## SCAVENGERS

**Snails. African Spotted.**  
Six for .....\$.15

**Trap-door Snails. Pair** \$.25

## FISH

- Common straight tails, two to three inches in length. Each.....\$.10
- Japanese Fantails, one year old. Pair.....\$.75
- Chinese Moons, telescope eyes, one year old. Pair.....\$1.00
- We raise our own fish. They are free from lice, anker worms or any other fish parasites.

**Baby Fish Feed.** Per pound.....\$1.25

Dry shrimp is regarded as the best all-around feed available for gold fish. We have it in 5c, 10c, 25c, 50c and \$1.00 packages. Pound.....\$.85

We have many other aquatics that we do not list, but can furnish if desired.

We have many varieties of lilies in bloom all summer long. Visit our nurseries and look around. You will enjoy it. Visitors are always welcome.

We do not pay transportation charges on goldfish;  
also add 25c for shipping can when ordering fish