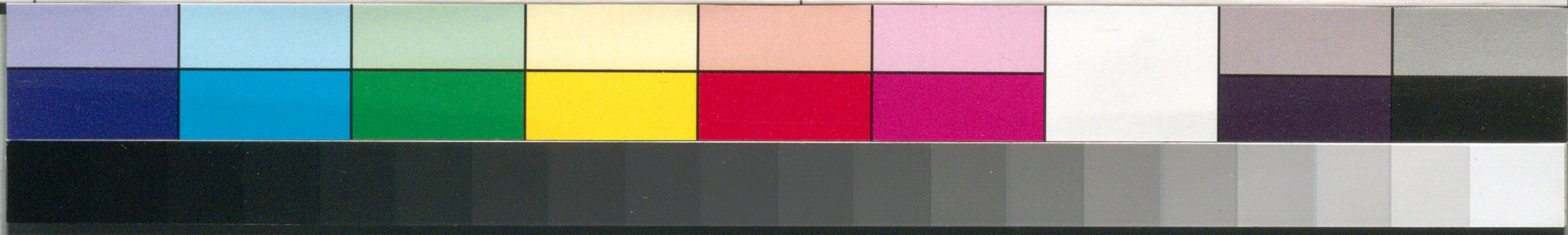
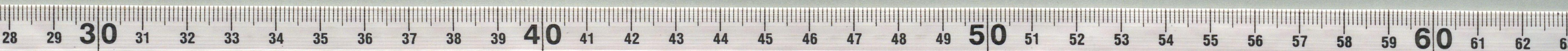


Handwritten text on a vertical strip of aged paper, likely a document or manuscript fragment. The text is written in a cursive style, possibly Japanese calligraphy. The characters are difficult to decipher due to fading and the angle of the strip. The strip is positioned vertically in the center of the image.



国立国会図書館 川村正平関係文書 147-9



21

原田

平田園中及山家集依前治弟信也

海東新有療言清友与子城昭

早再其被了信也社不交身傷以而如

去不而七日之入年禮海守日便車幸也

長年幸人守禮友日首守日指甲年

有腕守守也守除也之也均

何也之能音某打療言善者和禮某

手高也之也手也改上余也也者記

等也飛平依一也也各也也

之後元五年  
二月十七

尖町區所  
原田之領下

川  
原

