

Historic, Archive Document

Do not assume content reflects current scientific knowledge, policies, or practices.



6241
B. V. Lake
Rok
INDEX
MAY 17
3-2

ROKELY'S

Small Fruit Plants

1915

1915



Americus Everbearing

J. N. ROKELY NURSERIES

EST. 1892
Strawberry Specialists

BRIDGMAN, MICHIGAN



GENERAL INSTUCTIONS.

READ CAREFULLY.

WHEN WRITING, please be sure to sign your name **plainly**, also give your Postoffice, County and State.

Substitution. We will not substitute one variety for another without your permission, unless order is received too late in season to permit correspondence. In this case, some variety having same season and variety will be substituted.

Terms. Cash with order or part cash and the balance any time before shipment is made. We give references as to our liability which all are at liberty to investigate. For information as to our standing and reliability, please refer to the Postmaster or Express Agent of Bridgman, or the Farmers and Merchants Bank, Benton Harbor, Michigan. (In writing to any of the above please enclose stamp for reply.)

How to Send Money. Chicago or New York draft, express order, postoffice money order, registered mail.

Time to Order. Order early—the earlier the better. If anything more is needed it can be added later. If not prepared to send the full amount, send part and the order will be booked; the balance may be sent any time before shipment is made.

Methods of Shipping. By express; this is the safest, and, all things considered, the best way to ship plants, especially strawberry plants. Large orders of cane plants may be shipped by freight, and as a rule they arrive in good condition. Certificate of nursery inspection goes on every package of plants we send out. We have the Adams Express Co.

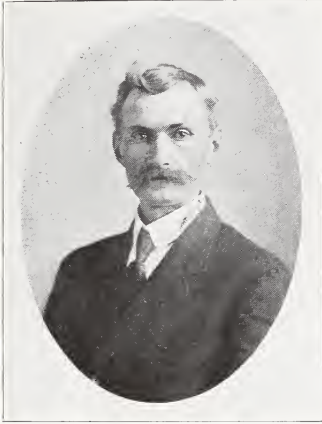
Season of Shipping. We commence to ship the last of March or first of April, according to season.

We do not issue a Fall Catalog, but we will supply you with what plants you may want at any time during October or November, at prices quoted in this catalog.

1915

TO OUR PATRONS

1915



IN AGAIN presenting our annual Catalog and price list, we will take this opportunity to thank our customers for their patronage, and to solicit a continuance of the same.

I wish to state right here, that our business has more than doubled each year since we have been in the nursery business, and we can justly account for this by our fair treatment, promptness, and by supplying you with first-class plants at prices much lower than you would have to pay at many other places for inferior stock.

We are located in the great fruit belt of Michigan, where the soil and climate are especially adapted to the growth of small fruit plants.

We are located two miles from Lake Michigan, twelve miles from the Indiana State line, and seventy-seven miles from Chicago.

The past season has been very dry, and in some parts of the country plant growth has been a failure, but we are glad to say that with our method of continuous cultivation we have a fine stock of Strawberry plants, much better than last year, and we expect to be able to supply all demands, but please do not lose sight of the fact that it is to your interest to place your order **early** (January or February is what we call early), as later in the season some varieties are liable to be exhausted.

All plants are trimmed, tied in bunches of 25, and packed in damp moss.

Our Guarantee We guarantee our stock to be first class, true to name, and packed to reach you in good growing condition. But we can not guarantee plants to grow under all conditions. Oft' times drouth or floods come at planting time and injure the plants. In such cases we are not at fault, and we could hardly expect to replace stock under such conditions.

If plants are not as represented, or arrive in bad condition, we ask that you notify us at once, and we will give you our prompt attention.

Wishing you all a prosperous season, I am,

Very truly yours,

J. N. Rokely



Gibson



Strawberry Plants

Aroma (S.)—Late. This is one of our best and most popular varieties. Berry is very large and showy, very firm and one of the best shippers, always selling at top prices owing to its large size and fine appearance. Plant is healthy and puts out plenty of runners. The demand for Aroma plants is very heavy. \$2.50 per 1,000.

August Luther (S.)—Extra early. Where a very early strawberry is wanted, we know of no other variety that will compare with it. Ripens early and continues to bear till practically every berry reaches a good size. Fruit is very uniform in shape and size; plants are healthy and good plant makers. It succeeds best on rather light soil. \$2.00 per 1,000.

Bederwood (S.)—Aipens early, only a few days later than August Luther, and continues to bear heavy pickings of berries till the late varieties are practically gone. The Bederwood is about as firm as Bubach. It is a great favorite with us owing to the enormous quantity of fruit it will produce. Plants are healthy, deep rooted and a great drouth resister. \$2.00 per 1,000.

Bubach (P.)—This is one of the old standard varieties. The plant is very large and showy, the berries are among the largest. Yields large crops of fancy berries. We recommend this variety for home use or near-by market. \$3.00 per 1,000.

Charles I. (S.)—The earliest strawberry grown; ripens nearly a week before any other variety and is very productive. It is a strong fertilizer and a strong grower. Berries are large, regular in form and of good color and quality. We want you to include some Charles I. in your order this spring, sure. \$4.00 per 1,000.

Gandy (S.)—Late. This has been one of the leading late varieties with fruit growers all over the country for many years. Berry is large and firm, a good market variety, ripens a few days later than Aroma. It resembles the Aroma very much. \$2.50 per 1,000.



Senator Dunlap

a very hardy berry, having good-sized, even fruit of a very beautiful dark red color. It is a berry to grow for home use or market. The Senator Dunlap is now one of the greatest all around varieties under cultivation today. We sell as many of these plants every year as we do of all other varieties put together. \$2.00 per 1,000.

Warfield (P.)—This is the one great standard variety that has been the leader all over the country before the Senator Dunlap was introduced. It resembles Dunlap, but has an imperfect blossom. You will make no mistake by planting Warfield and using Senator Dunlap along with them. \$2.00 per 1,000.

Lovett (S.)—One of the well tested varieties. A great plant maker, produces a quantity of fruit, firm and good quality. Berries are of good size if not allowed to set plants too thickly, as they are a great plant maker. A good fertilizer for pistillate varieties. \$2.00 per 1,000.

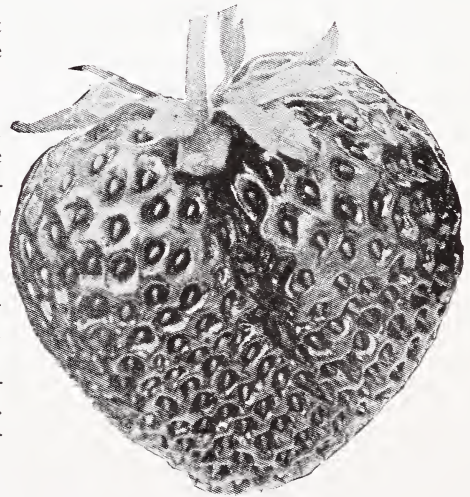
Baldwin's Pride of Michigan (S.)—One of the very best in quality, dark,

Wm. Belt (S.)—The plant is very large, a most luxuriant grower and remarkably productive. Berry is very large, conical and uniform in shape. Color of Wm. Belt is extra fine, being a brilliant glossy red and ripening all over at once. This valuable late variety should be planted on well drained land, as it sometimes rusts on wet soil. Wm. Belt is a profitable late variety. \$2.50 per 1,000.

Glen Mary (S.)—Large, medium late, fine flavor, vigorous and productive. Plants are very large, with long, heavy roots; very popular with many growers. \$3.00 per 1,000.

Haverland (P.)—Medium early, very productive, fruit large and fine, one of the most popular and well tested varieties; one of our heavy croppers; an all around profitable kind. Demand for this variety is very heavy. \$2.50 per 1,000.

Senator Dunlap (S.)—This berry is one of the Warfield type, has a perfect blossom, is hardy, productive, a splendid keeper, and is able to hold its own under most any rough and tumble methods of cultivation to which it is likely to be subjected. Senator Dunlap is



Gandy



Haverland Strawberry

glossy red all through. A good berry for home use or market; large size, firm and fine flavor. A good plant maker. Berries will stand on vines several days after they are ripe without spoiling. \$2.50 per 1,000.

Gibson (S.)—This is a new variety that is coming to the front very fast. Gibson commences to ripen with Senator Dunlap, but owing to its great productiveness it continues till quite late. It is a strong grower, with long roots that withstand dry weather; has dark green foliage and lots of it. Berry is extra large and the vines are loaded with fruit. We advise all to try a few Gibson this spring; you will be delighted with them. \$2.50 per 1,000.

Norwood (S.)—The plants are strong and healthy, very large and beautiful in appearance, light green leaves, makes a liberal number of runners for so large a plant. Berries are claimed to be the largest size of any. We sell out of this variety of plants every spring and are obliged to refuse orders for them long before the shipping season is over. \$1.00 per 1,000.

Brandywine (S.)—Late. Large size, good quality, good shape, firm and productive. Dark red, fine flavor and a good market variety. We can recommend them as a good all around berry. \$2.50 per 1,000.

Pocomoke (S.)—One of the best varieties in existence, not only for its enormous productiveness, but on account of its beauty, adaptability to all soils, its foliage, enduring the dry, hot weather, its large size, its deep color, its firmness and high flavor. The plant is a strong, robust grower, with deep roots and lots of them. Perfect blossoms, and is an enormous yielder of large red berries. It ripens evenly and is one of the best shippers yet introduced. You will make no mistake in planting Pocomoke. \$2.50 per 1,000.

Sample (P.)—Season medium late. The Sample is a great favorite with us. Very productive. We have fruited it for many years, and we like it better each year. It is our choice for table and canning, yet it is hard to choose between Sample, Dunlap and Pride of Michigan. All three of them are splendid berries for home use and for market. The Sample is a very heavy yielder at top prices. It is a good

plant maker and the plants are large and thrifty. \$2.50 per 1,000. (See full Price List in back of catalog.)

✓ **Joe Crampton** (S.)—A new, promising variety. We have not fruited them on our grounds, but they have been grown here by some of our best fruit growers for several years and they claim they are the best berry they have. Plants are large and showy, and a good plant maker. Berries are very large and very heavy yielders. Bright red and very attractive. \$3.00 per 1,000.

Everbearing Strawberries.



Progressive Everbearing

R. J. K. NURSERIES

We have fruited the Everbearing Strawberry on our grounds for the two past seasons, and we find them to be all that is claimed for them. They are simply loaded with fruit from June till November, or till freezing weather stops them. There is more money in everbearing strawberries than there is in the June varieties, because you will get a good crop of fruit the same season they are planted, and the next season they will produce a big crop in June, and continue to bear abundantly all summer. The Everbearing Strawberry is a great success, and they are here to stay. We are listing the Americus, Iowa, Progressive and Superb. The Americus is our favorite, while some others claim that some other variety is the best, but we will not dictate as to which is the best, they are all good varieties and you will make no mistake in choosing any of these four varieties, but be sure to include at least a hundred Everbearing Strawberries in your order this spring. \$2.00 per 100. \$15.00 per 1,000.

How to Prepare the Soil for Strawberries.



Strawberry Plants From
Bridgeman, Mich.

We often have manured our plants in this way, and the results are excellent. In fact, it is an ideal way.

In some localities stable manure cannot be had, and in such cases commercial fertilizers may be used. A fertilizer best adapted to the needs of the strawberry should contain the three principal plant-food ingredients in about the following proportions: Nitrogen, 3 per cent; Potassium, 9 per cent; Phosphorus, 7 per cent.

A commercial fertilizer should be applied and thoroughly worked into the soil before the plants are set.

One important and advantageous feature of the strawberry business not always appreciated is the fact that the strawberry in any ordinary soil yields large harvests of fruit. As to fertilizer, we prefer stable manure over anything else. If the soil is strong enough to produce a large crop of corn or potatoes, it will grow a fine crop of strawberries without the application of any fertilizer.

The best time to apply the manure is in the winter, just when the soil tiller has ample time at his command in which to do the work. It should be spread evenly over the entire surface, so that it will mulch the ground. Not only does it enrich the ground when thus applied, but it also keeps the soil from puddling, and in the spring it will plow up loose and mellow as a garden. After the plowing is done go over the field with harrow or disc until the soil and manure are thoroughly mixed together. It should be pulverized finely to the depth of the plowing.

If your soil is sandy, or loose black soil, it should be rolled firmly, but if it be clay or stiff black soil, roll it only enough to crush the clods. If the harrow follows directly after the breaking plow, before the clods have time to dry out and become hard the clods will crumble and it will be unnecessary to roll at all. We recommend that this course be followed if you have but one team; plow awhile and then harrow thoroughly the newly plowed ground.

If for any reason you cannot haul manure during the winter, then wait until spring, plow your ground as outlined above, then set the plants. After this is done you may spread the fine manure between the rows and the cultivator will mix the manure into the soil.

Wholesale dealers should submit their lists of Strawberry Plants needed to us for estimates and special prices. We grow quantity and quality.



Cumberland

Black Raspberries

Fifty at 100 rate, and 500 at 1,000 rate.

Raspberries will grow and do well on any ground that will produce good field crops. Soil must be comparatively dry or well drained. We generally set raspberries about four feet apart in the row and the rows six feet apart.

Cumberland—The largest black raspberry in existence. This raspberry is placed upon the market with the full assurance that it is the most profitable market variety yet known because of its immense size, firmness and great productiveness. Cumberland is very hardy, having withstood a temperature of sixteen degrees below zero without injury. Extra productive. Fruit is jet black and of fine quality. Ripens before Gregg. \$7.00 per 1,000.

Gregg—Fruit very fine and covered with bloom. Gregg has been the leading market variety all over the country. A good all around late black cap. In quality they are hard to beat. They are large and productive. \$7.00 per 1,000.

Conrath—This is a very profitable variety; very productive; fruit large; good flavor; firm; nearly coal black and parts readily from core. Although early, it has a long season and holds its size well to the end. \$6.00 per 1,000.

Kansas—This variety is a general favorite with growers all over the country. Ripens just after Soughegan. Firm, handsome and of the best quality. Bush a strong grower; stands drouth and cold. Very productive. It is about as large as Gregg. Strong, healthy canes. \$6.00 per 1,000.

Early Ohio—A good extra early variety. A favorite with some growers. A good yielder of medium sized fruit. \$6.00 per 1,000.

Rokely plants are dependable and true to name. Your orders will have careful attention



Columbian

Purple Raspberries

Columbian (Purple Cap)—The Columbian is a variety of the Shaffer type; of remarkable vigor and productiveness. It is very hardy and a rank, thrifty grower; propagates from the tips, same as black caps. Fruit very large and grows abundantly; very rich flavor, tarty, a splendid berry for jelly, pies and for canning. \$9.00 per 1,000.

Red Raspberries

Cuthbert—Leading late variety, all over the country. A very rank grower. Very productive. Fruit large and of good quality. If you want a good, all around late red raspberry, plant the Cuthbert. Price, \$5.50 per 1,000.

Miller—Early; very hardy and does not winter kill. The Miller is for an early berry what the Cuthbert is for a late one. The very best shipping qualities. Price, \$5.00 per 1,000.



Cuthbert

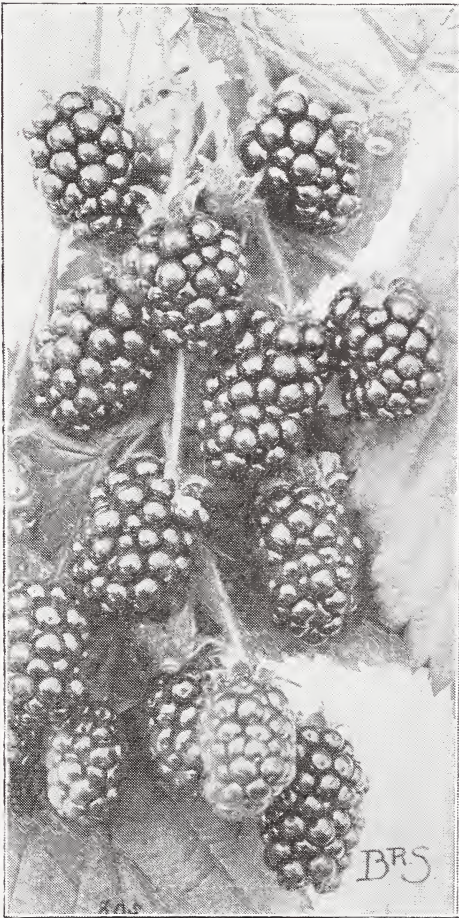
King—This is a new red raspberry of beautiful color; firm and having a high quality of fruit. Very early. Large and attractive, bright red berries. Several of our best growers consider this the best of the early red raspberries. \$5.50 per 1,000.

Thompson's Earl—This variety is very profitable. The fruit is of extra good quality and ripens very early, bringing top prices. These are being set extensively in this locality for the Chicago market. \$5.00 per 1,000.

Blackberries

Fifty at 100, and 500 at 1,000 rates.

Wilson—This is the best blackberry under cultivation today. The fruit is the largest, produces double the bushels per acre and the best quality of any. Holds its color well after picking. It is the best shipper there is. Very profitable in spite of the fact that the Wilson requires protection in Michigan. There are about ten acres of the Wilson variety grown to one acre of any other variety of blackberry. It always sells at a premium over the other varieties on the Chicago market and the quotations on them are always the highest. The berry is jet black and holds its color after picking, never turning red. The Wilson is a money maker. \$8.00 per 1,000.



Eldorado Blackberry

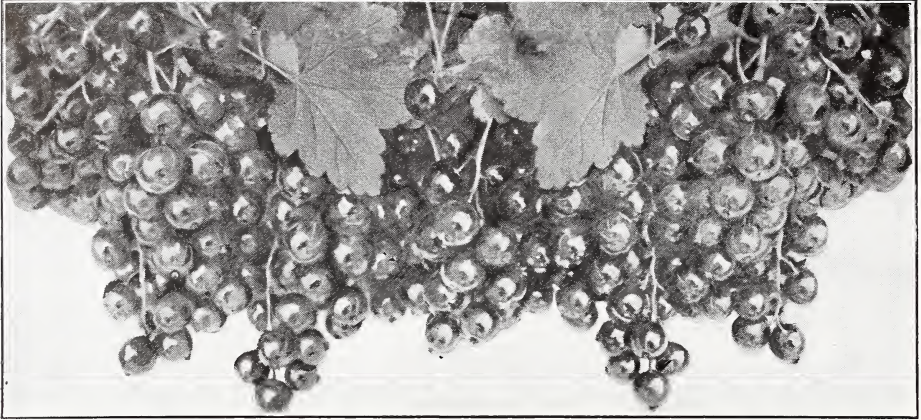
Eldorado—This berry is as hardy as the Snyder, twice as large and better quality. It has never been known to winter kill even in Northern Michigan and Wisconsin. Very profitable, as it needs no protection in winter. \$10.00 per 1,000.

Lucretia Dewberry—The best of the blackberry family. Berries are far larger and better than any blackberry; of unequalled excellence; sweet and luscious throughout, of brightest glossy black color. Its trailing habit renders it less liable to winter-kill. Propagates from the tips. Plant in rows six feet apart and plants three feet apart in the row. \$7.00 per 1,000.

Currants

Red Cross—Very strong, vigorous, enormously productive. Clusters long, well filled; berry deep red, large, high flavored, sweet.

Fay's Prolific (Red)—Well known and popular currant, grown in every state in the Union. Color deep red, great bearer, large bunches. Fine flavor, not so sour as some.



. Perfection

London Market—Strong grower, large fruit and very productive; holds its foliage late and is not liable to attack of worms and borers. Plant is extremely vigorous.

Cherry—Bush vigorous, stocky and compact; clusters rather short with short stems; fruit averages large; color fine, bright red; berry thin skinned, juicy, fine flavored.

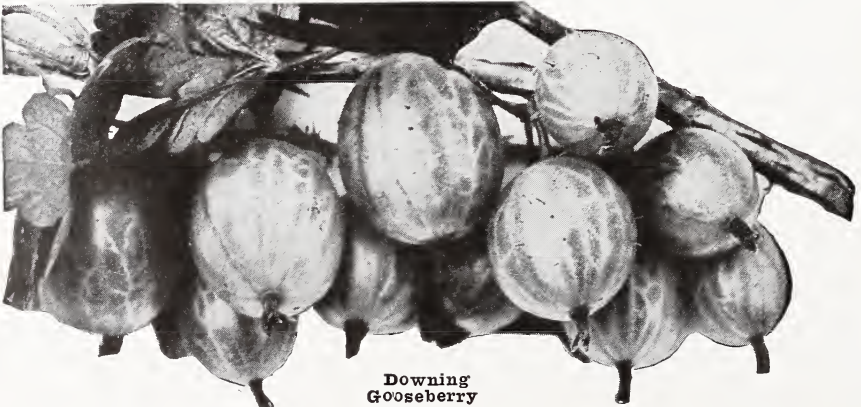
Perfection (Red)—This truly wonderful new currant has both large size and extra good quality. Perfectly healthy, a vigorous grower, and in fact an extra fine red currant in every way. Widely advertised all over the country. \$10.00 per 100.

White Grape (White)—Very large, yellowish white, excellent quality and valuable for the table. The finest of the white sorts. \$4.50 per 100.

Gooseberries

Downing—We are offering this variety with the full assurance that it is the best gooseberry under cultivation. Berry is yellowish green when ripe, one of the very largest varieties, and they will produce more fruit than any variety we have ever grown. \$8.00 per 100.

Houghton—An enormously productive and always reliable old sort; of vigorous yet rather slender, spreading growth, not subject to mildew. Fruits of medium size; smooth; pale red; tender and good. "Best of all well tested sorts for general planting."—South Dakota Horticultural Society. "Steady, regular bearer; very productive, free from mildew."—Illinois Horticultural Society.



Downing
Gooseberry

PRICE LIST FOR 1915

STRAWBERRY PLANTS

If by mail, add 25 cents per 100 for postage.
Fifty of one variety at hundred rates, and 500 at 1,000 rates.

	100	250	1,000
August Luther, earliest (S)	\$0.40	\$0.75	\$2.00
Aroma (S)	.50	.85	2.50
Bederwood (S)	.40	.75	2.00
Bubach (P)	.50	.85	3.00
Brandwine (S)	.50	.85	2.50
Charles I	.75	—	4.00
Gandy (S)	.50	.85	2.50
Gibson (S)	.50	.85	2.50
Glen Mary (S)	.50	.85	3.00
Haverland (P)	.50	.85	2.50
Joe Crampton (S)	.50	.85	3.00
Lovett (S)	.40	.75	2.00
Norwood (S)	1.00	2.25	8.00
Pride of Michigan (S)	.50	.85	2.50
Pocomoke (S)	.50	.85	2.50
Senator Dunlap (S)	.40	.75	2.00
Sample (P)	.50	.85	2.50
Stevens Late Champion (S)	.50	.85	2.50
Uncle Jim (S)	.50	.85	3.00
Warfield (P)	.40	.75	2.00
Wm. Belt (S)	.50	.85	2.50

EVERBEARING STRAWBERRIES

	Doz.	100	1,000
Americus (S)	\$0.50	\$2.00	\$15.00
Iowa (S)	.50	2.00	15.00
Superb (S)	.50	2.00	15.00
Progressive (S)	.50	2.00	15.00

RED RASPBERRIES

	100	250	1,000
Cuthbert	\$0.75	\$1.50	\$5.50
King	.75	1.50	5.50
Miller	.75	1.40	5.00
Thompson's Early	.75	1.40	5.00
St. Regis (Everbearing)	2.00	—	—

BLACK RASPBERRIES

Cumberland	\$0.80	\$2.00	\$6.50
Gregg	.80	2.00	6.50
Eureka	.80	—	—
Kansas	.80	1.75	6.00
Conrath	.75	1.75	6.00

PURPLE RASPBERRIES

Columbian	\$1.00	\$2.50	\$9.00
Hay Maker	1.00	2.50	9.00

BLACKBERRIES

	100	250	1,000
Eldorado	\$1.25	\$2.75	\$10.00
Wilson	1.80	2.25	8.00
Giant Himalaya Berry	Doz. 50c	2.00	—
Lucretia (Dewberry)	.80	—	7.00

CURRANTS

	Doz.	25	100
Fay's Prolific	\$0.60	\$1.15	\$4.00
Red Cross	.60	1.15	4.00
Cherry	.60	1.15	4.00
London Market	.60	1.15	4.00
Perfection	1.50	—	10.00
White Grape	.75	—	4.50

GOOSEBERRIES

Downing	\$1.00	\$2.25	\$8.00
Houghton	1.00	2.00	7.00

GRAPE VINES

Concord	\$0.60	\$0.75	\$2.50
Moore's Early	.75	1.25	3.75
Worden	.75	1.25	3.75
Campbell's Early	1.25	2.50	8.00
Niagara (White)	.75	1.25	3.75

Varieties of Strawberry plants marked (P) are pistillate and must have staminate varieties set every third or fourth row. Those marked (S) are staminate and fertilize themselves; they may be set in large patches alone with best results. If you expect to plant several thousand plants write us about it, giving us a list of what you want. We will make it an object to you. We quote special prices to dealers and large planters.

We are connected with long distance telephone and telegraph offices. Prompt attention given to all inquiries.



POCOMOKE