

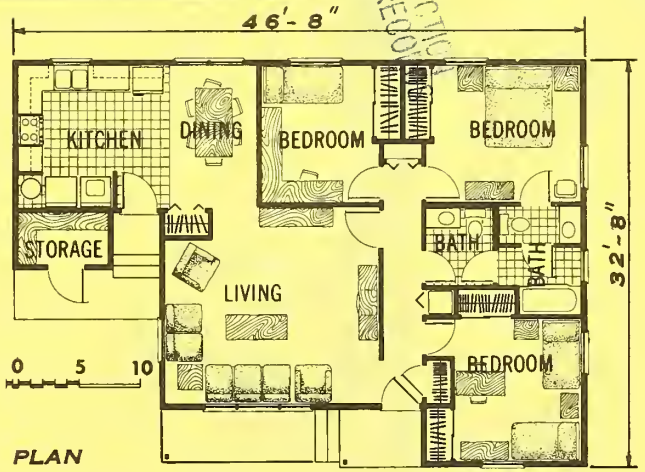
984M

3-Bedroom House with split bath

COOPERATIVE FARM BUILDING
Plan No 7203
 (3 SHEETS)
PLAN EXCHANGE



PERSPECTIVE



Although compact in appearance, this well proportioned house provides very spacious bedrooms focusing on a conveniently sized living area. The secondary bedrooms are large enough to be used for homework or hobbies.

The kitchen is more than adequate for the service of a family of five or six persons, and coupled with the dining area, the combined space is even larger.

Ample closet space is integrated in the design to provide the needed storage and also to act as noise barriers between the different parts of the house. Additional storage close to the kitchen, but accessible from the outside, is available for the storage of miscellaneous items, such as lawn chairs, gardening tools, and equipment.

Considering the size of the family, the bathrooms were designed to allow multiple-use without sacrificing privacy: A person can take a shower and still allow two others to use the other facilities. Note the ease of access of one of the washrooms to the master bedroom.

Simple and standard construction allow the house to be as economical as possible. The roof is of 4 in 12-slope

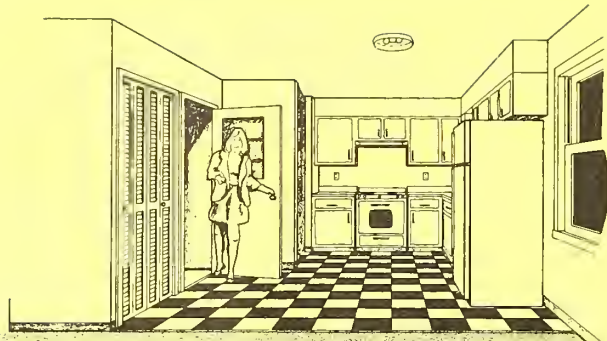
engineered commercial trusses anchored on 2x4 stud walls. The foundation wall is composed of standard concrete block. While the exterior shown is horizontal siding, other options are possible with minor structural changes. By providing ample insulation as shown appreciable savings in operating expenses can be realized.

Complete working drawings may be obtained from the extension agriculture engineer at your State university. There may be a small charge to cover cost of printing.

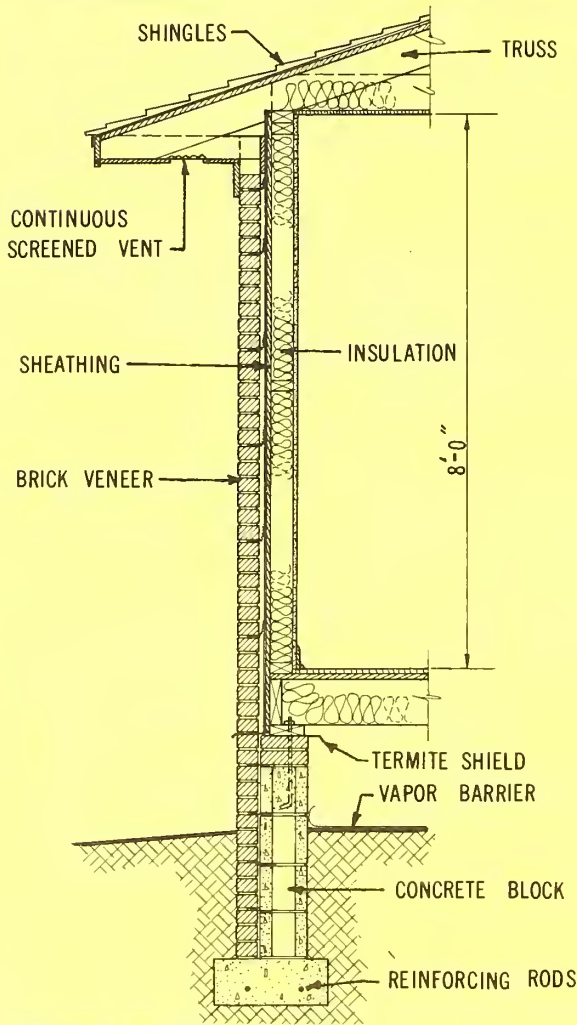
Washington, D.C.

Issued April 1975

UNITED STATES DEPARTMENT OF AGRICULTURE **Miscellaneous Publication No. 1298**



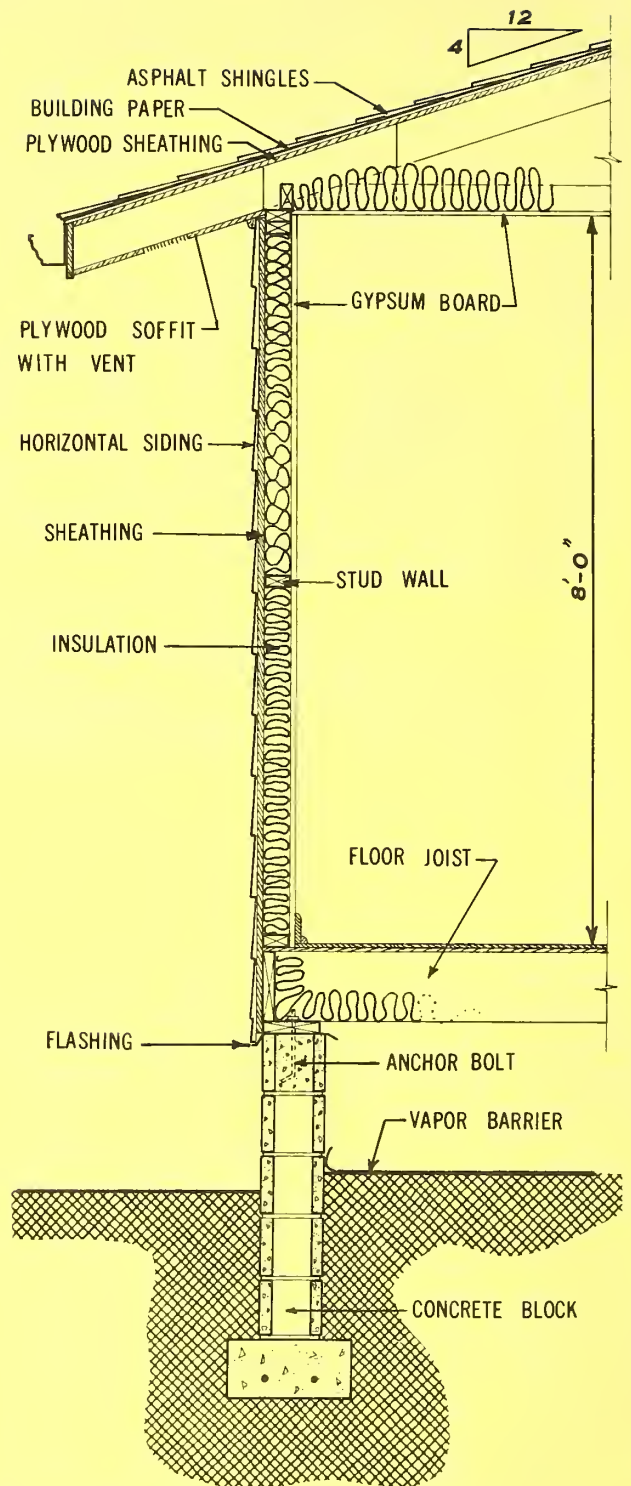
INTERIOR PERSPECTIVE (KITCHEN)



ALTERNATE WALL SECTION

If you do not know the location of your State university, send your request to Agriculture Engineer, Extension Service, U.S. Department of Agriculture, Washington, D.C. 20250. He will forward your request to the correct university.

ORDER PLAN NO. 7203, THREE-BEDROOM HOUSE with Split Bath.



TYPICAL WALL SECTION

