

Historic, archived document

Do not assume content reflects current scientific knowledge, policies, or practices.

1936

KEMP'S CATALOGUE

Wonder
Exhibition

Gladiolus and Dahlias



J. A. KEMP,
Breeder and
Grower

Little Silver,
New Jersey
Telephone 2876 Red Bank

TO OUR FLOWER LOVING FRIENDS AND PATRONS

GREETING:

It gives us much pleasure to hand you our 1936 catalog of Dahlias, Gladiolus and Japanese Irises, and to extend to all our appreciative thanks for your generous patronage in the years that have passed.

Dahlias, Gladiolus and Japanese Irises have been our hobby and pleasure for many years, and our breeding work with these wonder-flowers has always been the most interesting part of our long years of labor in the horticultural world. We have originated many varieties of high class Dahlias, Gladiolus and Japanese Irises, and we are much gratified to know many of our originations and introductions have found their way into the best gardens in almost every section of the world where they can be grown.

If you have never grown Dahlias, Gladiolus, Japanese Irises, try them this year. They are not difficult to grow, and will thrive in soil that will grow a good crop of corn or potatoes. If you have no room for the large flowered, tall growing Dahlias, try a few Pom Poms and miniatures. They are dwarf and require but little room, and you will be more than delighted with the marvellously beautiful colored blooms they will produce in such great abundance from July until cut down by frost. If you have a corner where a few clumps of Japanese Irises can be planted, they will lighten up your garden and supply marvellously beautiful flowers for cutting the latter part of June or early July, just at a time when they will be most appreciated. No garden should be without one or more plantings of Gladiolus. They will brighten the corners and vacant spots in the hardy border, and provide the very choicest cut blooms for the home.

Our originations and introductions were again big prize winners the past season, everywhere; and to our long list of winnings in past years, they added to the list two golden medals, one golden cup, and a dozen or more cash and merchandise prizes. They win for us and will win for you.

Due to the very favorable growing conditions last season, we are prepared to offer our customers exceptionally high quality stock for 1936 planting, and you can rest assured your order will be filled with only the very best stock it is possible to produce.

Please do not lay this catalog aside until you have examined every page. You are almost sure to find something listed therein that you will wish to have in your garden this year, and at prices as reasonable as is consistent with the production of high quality stock.

Bespeaking a liberal share of your 1936 business, for which we are pleased to thank you in advance, we remain,

Yours for better flowers,

KEMP'S GARDENS, Breeders and Growers,

Little Silver, New Jersey.

December, 1935

When you think of better Dahlias, Gladiolus and Japanese Irises, think of KEMP, we have them.

TERMS OF SALE—PLEASE READ CAREFULLY

The following offers are made subject to prior sale, and on the following conditions.

Our quotations are for strictly first-class, true to name goods, and we guarantee its quality to please you. Any stock that should prove otherwise, we will cheerfully replace it free of charge. Beyond that our responsibility ceases. There always has, and always will be a limited number of failures in every line of gardening endeavor, most of which are usually due to causes beyond our control, such as soil conditions, too deep or too shallow planting, lack of proper cultivation, unfavorable weather, etc., which renders it impossible for us to guarantee your success; but we do guarantee to fill your orders with good healthy stock, and to deliver them to you in growing condition. With each order we send printed cultural directions for your guidance, which if followed carefully should be very helpful in guiding you to success.

CANADIAN REGULATIONS—To import Dahlias and Gladiolus into Canada, a special permit must be obtained from the Secretary of the Destructive Insect and Pest Act Advisory Board, Department of Agriculture, Ottawa, Ont. We must know the number of your permit so it can be mentioned upon the parcels and invoices, and require the white mailing tags, issued by the Board to affix to parcels, one for each parcel.

If you should have just cause for complaint, do not hesitate to let us hear from you, and we will make every reasonable effort to adjust the complaint to your satisfaction.

TERMS—Cash with order, or satisfactory bank reference bearing the endorsement of your Banker.

SPECIAL REQUEST—If you should receive an extra copy of this catalog kindly hand it to a friend or neighbor who is interested in growing flowers. Thank you.

We ship plants to all parts of the United States and Canada, and guarantee their safe arrival. Our long experience in growing and shipping Dahlia plants under the most approved methods, insures them against damage in transit.

They who are constantly shopping around wanting the best of every bargain, usually get the worst end of it.

WHY YOU SHOULD PLACE YOUR ORDER EARLY

In the first place you get first choice of stock, you are reasonably sure of getting the varieties you want, and as there will be a shortage of some of the newer varieties, this is an important consideration, so please place your order early.

KEMP'S WONDER DAHLIAS

Reports coming to us from all parts of the United States, Canada and overseas countries all tell the same story of sweepstakes and class prize winnings. Sensational successes everywhere.

This year we are privileged to offer you other varieties that we feel sure will take their place in the ranks of the great Dahlias that have been the greatest prize winners throughout the country the past few years.

For many years, KEMP'S WONDER DAHLIAS have been consistent prize winners wherever exhibited in competition, and better still, they are wonderful doers, which prove the real worth of a Dahlia. You never go wrong when you buy Kemp grown Dahlias.

Full and comprehensive instructions HOW TO GROW GOOD DAHLIAS sent free with each order, when so requested. To all others a copy will be sent for 5 cents in stamps to defray cost of printing and postage.

NEW WONDER DAHLIAS FOR 1936

Abbreviations: F.D.—Formal Decorative; I.D.—Informal Decorative; Str.C.—Straight Cactus; I.C.—Incurved Cactus; S.C.—Semi-Cactus; P.—Paeony.
Divisions, mean one or more roots (tubers) to each.



CLARA CARDER—1936

CLARA CARDER—Dec. One of the greatest pink decorative dahlias we have ever grown. Its formation is on the border line between formal and informal decorative, and is in a color class by itself, it being a beautiful shade of clear Cyclamen pink, the only dahlia we know of this color. The absolutely perfect stems makes this dahlia ideal staging in the shows, and for decorative purposes. The blooms are produced in the greatest profusion from early season until cut down by frost, and can be grown to 10 to 12 inches without forcing. Plant is a vigorous grower, medium in height (4 to 4½ ft.) wide spreading and many branched, each branch producing a great bloom without special disbudding or disbranching. We predict a great future for this exceptional dahlia. First prize winner in the undisseminated seedling class at the 1935 Detroit and Michigan state shows. Johnston's Honor roll. Certificate of Merit at the Fairmont, W. Va. Trial Gardens.

Divisions, each \$10.00, Plants, each \$5.00

1936 Introductions (Continued)

KITTY MAC—I. D. Here is another sensational dahlia of exceptional merit. The color is a reddish purple (Petunia Purple). Flowers are 10 to 12 inches in diameter, and 6 to 7 inches in depth, and are held facing upward on stems as rigid as a cane. Flowers recurve toward the stem similar to the Lord of Autumn and America's Sweetheart. Plant 6 feet and over in height, foliage thick and leathery like toughness, making it practically immune to injury by sucking insects. This fine dahlia should be in every high class collection. Root stock limited. Hart's Honor Roll.

Plants, each \$5.00



KITTY MAC

COLUMBIA—I. D. (No. 4-33) Color of this attractive dahlia is a deep orange rufous, cadmium yellow at base of petals, reverse shaded pink, which is reflected through tips of petals, making an unusually attractive and pleasing effect. Maximum size of bloom about 10 inches in width, with corresponding depth, facing upward on long stiff stems. Height of plant $3\frac{1}{2}$ to 4 feet, wide spreading and exceedingly prolific of large blooms from early season until cut down by frost. Foliage very resistant to injury by sucking insects. Vigorous, healthy grower.

Divisions, each \$7.50, Plants, each \$3.75

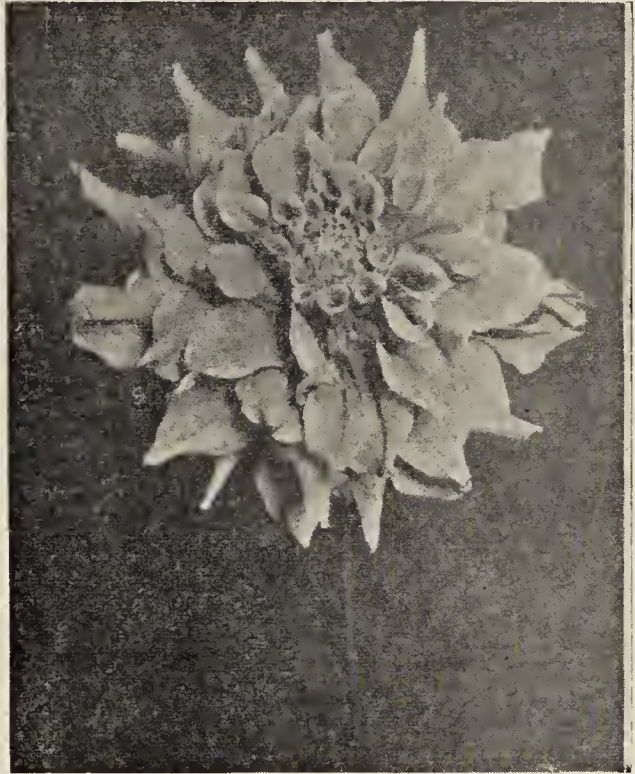
SELKIRK—F. D. (No. 11-33) Color of this fine dahlia is white with faint suffusion of light pink and yellow, making it one of the most attractive white dahlias ever introduced. Flowers 10 in. and over in diameter, of good depth, and are mostly facing upward on long stiff stems high above the foliage. Plant 4 to $4\frac{1}{2}$ feet in height, wide spreading, many branched and a most profuse bloomer from early season until cut down by frost. We are proud to offer this fine white to our customers and friends.

Divisions, each \$7.50, Plants, each \$3.75

KEMP'S 1935 INTRODUCTIONS

EDITH A. LEHMAN—I. D. (No. 11-33). This beautiful dahlia was named for the wife of the Governor of New York, at the fall flower show held in the 14th Regiment Armory, September 26th. Her consent had been granted previous to its christening. The color of this beautiful dahlia is a brilliant old rose, with tawny sheen overlying the middle rear half of the petals which very materially enhances the beauty of the flower. Flowers attain to a width of 12 inches and over, having good depth, and are held high above the foliage on long stiff stems. The tall stately plant has great vigor, and is an early and generous producer of large blooms from early season, until frost. On Harts 1934 Honor Roll.

Plants only \$5.00



EDITH A. LEHMAN



EDITH MENCKE

EDITH MENCKE—I. D. (No. 29-31). This large, attractive dahlia is orange buff in color, with slight sheen of pink on the older petals. Blooms are 10 inches and over in diameter, and 6-7 inches in depth and are produced very freely on plants of strong growth. Stems are long, stiff and hold the flowers high above the glossy foliage. A fine dahlia we can unreservedly recommend to our friends and customers as it is well worth growing in any one's garden. A splendid exhibition variety that is hard to beat. It will easily score 85, so says one of the expert eastern growers who had it on trial the last season. You will make no mistake in adding this fine dahlia to your list.

Roots each \$6.00

Plants each \$3.00

Kemp's 1935 Introductions (Continued)



DADDY KEMP

DADDY KEMP—I. D. (No. 3-32)
 This is every inch a man's flower, and one of the most spectacular dahlias introduced in recent years. In color it is a rich purplish red, the flowers attain to an immense size, often 14 inches and over in diameter and 5 to 7 inches in depth. The plant is a rampant grower, many branched and tremendously prolific in bloom. It should be grown to not over four stalks to the plant to insure good stems, which are long, slender and the great size and weight of the blooms may cause them to be somewhat pendulous in unfavorable situations. In Canada, Rhode Island and Northern New Jersey, where it was tested out the past season, the stems were faultless. Whatever fault it may have in stem, is more than offset by its great size and spectacular beauty. Stock is limited and reservations should be made early. On Hart's 1934 Honor Roll.

Divisions, each \$6.00

Plants, each \$3.00

BLACK KNIGHT—I. D. (No. 7-W)

We are unable to find a color in Ridgeway's color chart that matches the color of this giant dahlia. The nearest we can come to it is dark, velvety maroon, almost black. The flowers are of great size, often up to 14 inches in diameter, and are held high above the foliage on thick stiff stems. In the early part of the season, most of the blooms face upward, later most of them face front. Plant is a very strong grower, attaining to a height of 6 to 7 feet, wide spreading and prolific of bloom, from early season until frost. A spectacular dahlia of unusual interest and attracted as much attention in our garden the past season as any dahlia among the dozens we had on trial.

Divisions, each \$5.00

Plants, each \$2.50



BLACK KNIGHT

1935 & 1934 Introductions from Other Sources

LORD OF AUTUMN—I. D. (1934)

We are very pleased to again recommend this great yellow dahlia to our customers and friends. We were privileged to introduce this sensational dahlia jointly with the originator in 1934, and what we said about it then and again in 1935 still holds good with us. We have grown it for four years, and it has made good every claim we made for it. The giant blooms, often 12 inches and over across and 8 inches and over in depth, have been the sensation in the shows throughout the country the past two years. It has been awarded more class and sweepstakes prizes the past two years than any dahlia ever won in the same length of time. A well grown bloom of the Lord of Autumn is well nigh unbeatable in the show room. We are building up a very superior strain of this great dahlia, and believe we have as good stock of it as can be had from any growers in the country, and far better stock than is being offered by some growers at cut rate prices. Our stock has been carefully handled to guard against weakening its vitality by over propagation. By careful selection of only the choicest clumps for propagating purposes, we are in a position to offer the highest quality plants obtainable anywhere. Stock quite limited.



Divisions, each \$6.00
Plants, each \$3.00

LORD OF AUTUMN

AMERICA'S SWEETHEART—I. D. (1935)

Another great yellow dahlia introduced in 1935. Its type of bloom is about the same as the Lord of Autumn, flowers equally large, habit of plant about the same, and about the only difference lies in the color of the flower which is of a slightly lighter shade of yellow. It has been grown over a wide section of the country the past season, and in some sections it is reported to have made a better showing than the Lord of Autumn, while in many other sections it has been slightly inferior to that variety. We have not yet been able to fully determine its comparative quality, but will say its action with us was very satisfactory in every way. It is unquestionably a great dahlia and those who have not been successful with the Lord of Autumn should give this variety a trial. Maybe it will be better suited to your soil and climatic conditions.

We exhibited it at the N. J. Dahlia Society and the American Dahlia's Society shows the past season, in the class for the best-dahlias of N. J. origin never before exhibited in these shows, where it was given the Honorary President's Medal of the N. J. Dahlia Society. Two of these medals are offered annually and this past season America's Sweetheart won both. On 1935 Honor Roll.

Divisions, each \$10.00, Plants, each \$5.00

CALIFORNIA IDOL—I. D. This giant self colored yellow ranks in size and finish with the largest and best dahlias introduced to date. In size it is truly a monster, producing blooms up to 14 inches in width and of great depth, and in spite of its huge size it has a very refined appearance. The past season it was awarded many medals and other prizes throughout the country. Plant is a strong sturdy grower, attaining to a height of 5 to 6 feet and over. A good root maker that insures good returns to the commercial grower.

Plants only \$5.00 each

Special offer. One plant each of the three greatest yellow dahlias for \$11.00

1935 Introductions from Other Sources

CAVALCADE—F. D. Groll, 1935. This is another good dahlia of the Jersey Beauty Type that bids fair to become very popular for exhibition, home decoration, or florists' use. The flower is larger, and two or three shades darker than Jersey's Beauty. Stems are almost identical. Bush 5 to 5½ feet in height, foliage good. Good root maker.

Plants, only \$3.50 each

OAKLEIGH MONARCH—(Oakleigh 1936). Oakleigh Monarch is a big broad leaved informal decorative of a clear brilliant cerise red. Flowers 8-11 inches in size, strong stems, and are borne on plants 4-5 feet in height. Scored 86.9 at Lansing, Mich. Trial grounds. A good keeper and fine for exhibition and house decoration.

Plants, only, net \$5.00 each

HUNTS VELVET WONDER—I. D. Hunt, 1935. The color of this dahlia is a bright violet burgundy. Flower very large, and judging from what we saw of it at Norfolk, Va., last October, it seems especially well adapted to the more southerly sections of the country. The plants were at least two feet taller and the stems longer than any we saw growing in the more northerly sections. The plants we are offering are propagated from stock procured from the garden in which we saw it growing at Norfolk.

Plants, only \$3.50 each

CHARMER—I. D. (Lloyd). The description of this 1936 introduction is by the originator. Blooms 10-12 inches across by 5 inches deep. Apricot yellow, blending to maize yellow. The entire flower is overlaid with a lovely sheen of apricot yellow that glistens and reflects in the sunlight. Plant growth ideal, height 5-6 feet, profuse bloomer, with stiff, but not heavy stems that hold the huge blooms facing. Seedling of the famous Jane Cowl. Scored 85 at Storrs, 86 at Ohio trial grounds.

Plants, only, \$5.00 each

JUDGE SAMUEL SEABURY—I. D. (Ethington). Color of this fine, large dahlia is amaranth pink shading to creamy white in the center. It is uniform in color and form and those who like the soft pastel shades will be pleased with this dahlia. Plant is a rugged grower, stems good. Height about 6 feet.

Plants, only \$3.50 each

MRS. GEO. LE BOUTILLIER—I. D. (Ruschmoor). This huge dark red dahlia is a close competitor of Murphy's Masterpiece, as it grows fully as large, is of a brighter hue of red, but plant is not as tall and robust a grower as Murphy's, and stems with us not quite as good as Murphy's, but nevertheless it is a great red dahlia and has proven superior to all other reds in some sections of the south. It withstands heat well, and is a good root maker which keep well in storage.

Plants, only \$3.75 each

TOWERS EMPIRE—I. D. (T-P). This is one dahlia you will like, and one that we can unhesitatingly recommend. The very large, clear golden color, with amber shadings in the center present a picture of such great beauty, it instantly attracts and holds the attention of all who see it. Plant grows up to 7-8 feet, and is enormously prolific of large bloom. Stems long and stiff, holding the flowers high above the foliage.

Plants, only \$5.00 each

ROYAL OURCHASE—(Nuenviller 1936). Originator's description. An immense incurved cactus in a deep straw yellow, with outer petals suffused with pink; petals twist and turn, giving the bloom a shaggy appearance. Bloom high out of a clean growing bush on long straight stems. Shown three times, three firsts. Maximum size of bloom about 11 inches.

Plants, only, \$7.50 each

1934 INTRODUCTIONS

BARBRA HAWKS—I. D. (No. 22-B). This distinctive dahlia is light phlox purple in color, flowers up to 10 inches and over in diameter, and are held well above the luxuriant foliage on stiff stems. The plant is an unusually robust grower, attaining to a height of 7 feet, many branched and wide spreading, is very prolific of large blooms, that can be cut with stems up to three feet or longer. Good keeper when cut. All in all, it is a fine dahlia with much merit to recommend it

Roots, each \$3.50, Plants, each \$1.75

CROYDON GLORY—F. D. (No. 20-B). Formation similar to Monmouth Queen, slightly deeper hue of yellow, and blooms somewhat larger. The color is a buff yellow with gradation of light sulphur and creamy yellow effect as the flower ages. Flowers are full centered, 10-12 inches in diameter, and 4-5 inches in depth, and are held high above the foliage on long stiff stems. Height of plant, 5-6 feet. Liberal producer of large exhibition blooms from early to late season. Fine exhibition variety.

Roots, each \$4.00, Plants, each \$2.00

CROYDON SUPREME—F. D. The color of this splendid dahlia is orange buff, shading to lighter hue at the tips of petals. Reverse rose pink, reflecting through to surface of the flower giving the flower the unique appearance of pink shading, fused with the orange buff ground color. Flowers average 9 inches and over in diameter, and four to five inches in depth, and are held well above the foliage on long stiff stems. Plant 4½ feet, wide spreading and a very healthy, sturdy grower. Early bloomer. Root stock very limited.

Roots, each \$3.50, Plants, each \$1.75

1934 Introductions (Continued)

DOKOUPIL'S TRIUMPH—I. D. This in our opinion is the best decorative dahlia that Europe has sent us. The color is light straw yellow shaded light lavender pink in the center of the flower. In the early part of the season a few blooms will come with hard centers, but those that follow are the finest of exhibition blooms that are held well out of the foliage on stems 12-18 inches long. Plant grows to a height of 4 feet and over, is wide spreading, with many branches, each crowned with a fine bloom 12 inches and over in diameter by 5 to 8 inches in depth. The plant is the most beautiful we have ever grown. Its bright glossy foliage is a picture in itself.

Roots, each \$3.00, Plants, each \$1.50

MONMOUTH QUEEN—F. D. (No. 10-32). This fine light yellow made good all over the country the past season, and those who had it in their collection, report it as being greatly admired by the many visitors at their gardens. The color effect of this dahlia is most pleasing, it being a pirc yellow in the center of the flower, with gradation of light primrose to creamy yellow rear petals. Flowers are full centered and are held facing front, and are 10-12 inches in width by 4-5 inches in depth. Stems are long and stiff, holding the flowers high out of the foliage. Plant a robust grower, and good root maker. Not subject to insect attacks.

Roots, each \$3.00, Plants, each \$1.50

MONMOUTH RADIANCE—I. D. (X 100). This wonderfully beautiful dahlia was introduced by us last year. It was the winner of the American Home sweepstakes medal at the Camden, N. J., show, in the class for the best new variety not then in commerce. In this beautiful flower is presented a color combination of light coral pink, with primrose suffusion on rear half of petals, giving the flower a brilliant coral pink effect, with deep primrose background, that radiates throughout the entire flower. It is beautiful from whatever angle the flower is viewed. Flowers 11 inches and over in width, by a depth of 5-6 inches, are borne on a very tall stately plant 6-7 feet in height, with stems that can be cut up to 4 feet in length. Owing to the heavy demand for it last season, we had only a few plants left for our own planting, and are unable to offer it in roots this year. It is naturally a late bloomer, and should be planted early, and be allowed to grow without pinching back.

Roots, each \$5.00, Plants, each \$2.50

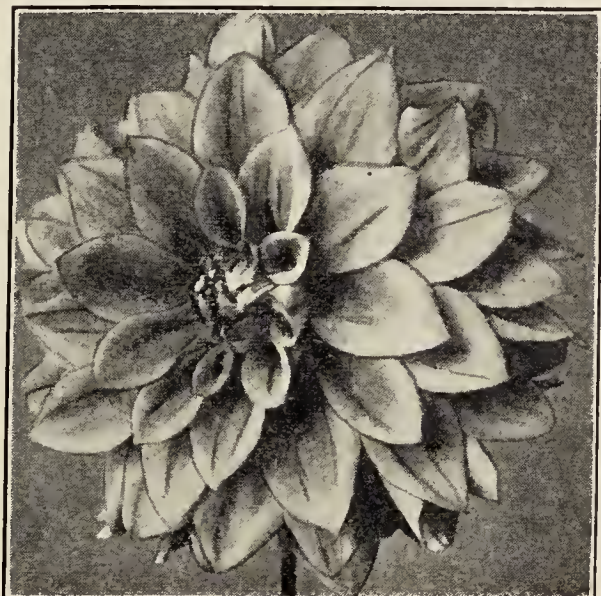
MONMOUTH SUNBURST—F. D. (28-30). The colors of this beautiful dahlia are brilliant lemon center with salmon orange background, producing a realistic sunburst effect. The flowers face both upward and front on long stiff stems well above the foliage, and reach a maximum size of about 9 inches wide and 7 inches in depth. The plant attains to a height of 4½ to 5 feet, is many branched, and exceedingly prolific of blooms from early to late season. AN HONOR ROLL DAHLIA of much merit. A prime favorite with the many visitors to our gardens the past three years.

Roots, each \$3.00, Plants, each \$1.50

ORANGE BRILLIANT—I. D. (No. 19-34). A golden orange of exceptional brilliancy. The flower can be easily grown to 11 inches in diameter, and the depth is always just right to properly balance the blooms, whether grown to large exhibition size or intermediate size for house decoration or for florists' use. The plant attains to a height of 6 feet and over, and has the same habit as Jersey's Beauty, flower stems are long, stiff, and hold the flower high out of the foliage. Blooms can be cut with stems up to 4 feet long. A remarkably good keeper when cut.

Roots, each \$3.00

Plants, each \$1.50



1934 Introductions (Continued)

ORINGO—I. D. (32-19). This is one of the most unique and distinctive dahlias in color and formation we have seen in many years. The color effect is a gradation of golden orange to rich salmon orange from front to rear petals of flower, and the petals are curled and twisted in a manner to bring out its brilliant colors much more effectively than is usually noticeable in a flat petaled flower. The flowers attain to 10 to 12 inches across by 5 to 6 inches in depth, and are held on stiff stems well above the foliage. Plant grows to medium height, well branched and a prolific bloomer. A splendid exhibition variety. Stock very limited.

Strong divisions, each \$3.00. Plants, each \$1.50

ROSETTA—I. D. (15-32). The predominating color effect of this fine dahlia is old rose shading to yellow radiation at base of petals, which greatly enhances its beauty. The flowers are 10 inches and over in width, and 6 to 7 inches in depth, and are held well above the dark leathery foliage, on stiff stems. Plant is of medium height, wide spreading and unusually prolific of large beautiful bloom, from early season until killed down by frost. The thick, tough foliage is very resistant to injurious insects. A good dahlia for exhibition, and for garden and house decoration.

Roots, each \$3.00, Plants, each \$1.50

1932 & 1933 INTRODUCTIONS

AMELIA EARHART—S. C. (Cordes-Eastman, 1933). This great dahlia becomes more popular each year because of its great prize winning achievements. It has been a great winner from coast to coast, and will continue to be one of the leaders for some years to come. The type is of semi-cactus form, and the color is a most charming apricot-buff. Flowers large, and are borne on long stiff stems on a medium tall plant. Very prolific of bloom.

Roots, each \$4.00, Plants, each \$2.00

CHAUTAUQUA SUNSET—I. D. (Wallace). We tested out this beautiful dahlia in our trial garden, 1932 and 1933, and of the numerous varieties in the Garden, none was more generally admired than this fine variety. No more exquisitely beautiful dahlia was ever originated. The coloring is a magnificent combination of sunset colors,—gold, orange, and peach red. Flowers are large full-centered and are held on strong stems, well above the dark green foliage. Plant medium high and wide spreading. A magnificent dahlia for garden and house decoration and a most excellent exhibition variety. Root stock quite limited.

Roots, each \$2.00, Plants, each \$1.00

EAGLE ROCK SUPERBA—Dec. (Broomall-Success, 1933). Mr. Broomall considers this to be one of his very best originations. The color is difficult to define as there is no color in the color chart that matches it; the nearest being a light Amaranth Pink. The originator considers it a better dahlia than Eagle Rock Fantasy. It is about the same size as Fantasy, and habits of bush about the same. In fact it is a duplicate of Fantasy in every particular excepting color. This fine dahlia undoubtedly has a great future.

Roots, each \$3.00, Plants, each \$1.50

GOLDEN HEART—F. D. (Kemp). The purest golden yellow dahlia we have ever seen. Blooms very large, frequently up to 12 inches across and 5 inches and over in depth, and are held high above the foliage on good stems. Plants 7 to 9 feet in height, many branched and branching from the ground up makes it possible to cut the bloom with stems 4 to 6 feet in length.

Roots, each \$3.50, Plants, each \$1.75

JERSEY'S MAJESTIC—I. D. (Waite). With good cultivation and liberal feeding this dahlia will grow to very large size. The color is quite distinct from all other dahlias, as it is a pleasing blend of salmon, old gold and rose. The almost bronze color of the foliage, adds to the beauty of the flower. Plant is of very robust growth.

Roots, each \$2.00, Plants, each \$1.00

1932 & 1933 Introductions (Continued)

MURPHY'S MASTERPIECE—I. D. (Murphy, 1932). This giant red dahlia could have been very appropriately named **SEEK NO FURTHER**, for when it comes to winning in the largest bloom class, it is the recognized leader. It is quite safe to say, it was the largest winner in this class of any dahlia exhibited in the 1933 eastern show. If you expect to carry off the blue ribbon in the largest bloom class you have simply got to have Murphy's Masterpiece to do the trick. The flowers can be grown up to 14 inches and over in size, and it grows large without much encouragement. The color is dark red, shading toward garnet, and it will withstand much sun heat without fading or burning. The plant is a strong grower, and is a generous producer of large, perfectly gorgeous exhibition blooms, that are held high above the top leaves on rigid stems that never go saxophone shape. The greatest red dahlia to date, and the greatest prize winner of all the dahlias of its color.

Plants, each \$1.75

PALO ALTO—S. C. (Ballay-Success, 1933). The color of this fine dahlia is bright salmon with deep primrose shading at the center. The flowers full centered, of good substance, and range in size up to 12 inches across by 6 inches in depth, and are held high above the foliage on straight, stiff stems. Plants are strong healthy growers and good all round doers. An honor roll dahlia of great merit.

Roots, each \$2.50, Plants, each \$1.25

PURPLE WONDER—I. D. The predominating color of this fine dahlia is Pansy Purple, with Rose hued lavender reverse. A seedling of Fort Monmouth, but a taller and somewhat more robust grower. The blooms range up to 11 inches across and 6 inches in depth. Are full centered, and are held facing well above the dark foliage on stiff stems. Height of plant, 6 to 8 feet, with long slender branches, making it possible to cut the blooms with extra long stems. Foliage very thick, dark colored, and so tough in texture insects make but little headway in damaging it. Root stock limited.

Roots, each \$4.00. Plants, each \$2.00

SATAN—S. C. or I. D. (Ballay-Success). This is one of the largest and most spectacular dahlias of the type we have ever grown. It is no uncommon thing to see blooms up to 13 inches in width by 6 inches in depth. The color is scarlet, with yellow on reverse of petals, showing at the center as the petals unfold. The giant blooms are held high above the foliage on long thick stems, which in turn are supported by a very vigorous, sturdy growing bush, 6 feet and over high. It probably won more first prizes in the single bloom classes in the eastern shows the past season than any other dahlia.

Roots, each \$2.25, Plants, each \$1.25

TESTED EXHIBITION DAHLIAS OF EXCEPTIONAL MERIT

Dahlia orders for less than \$1.00 not acceptable

CROWN O'GOLD—F. D. (1932). Very large, deep lemon, chrome color, the richest colored yellow dahlia we have ever grown. Fine garden and exhibition variety.

Roots, each \$1.25, Plants, each 75c

IMPROVED COMMODORE—I. D. Seedling of The Commodore. Flowers same size, type and color, but hold its petals better, and plant is a somewhat taller grower. A better all round yellow dahlia than The Commodore.

Roots, each \$1.50, Plants, each 75c

JIM MOORE—I. D. A most worthy dahlia you will be pleased to have in your garden. Petals are long and regular, and the color is most pleasing, being primrose yellow shaded gold suffused with salmon. Fine garden and exhibition variety.

Roots, each 75c, 3 for \$2.00

WHITE DAHLIAS

CROYDON—I. D. We introduced this fine white, spring of 1932, but were compelled to omit it from our 1933 catalog on account of scarcity of stock. We now have a small stock of good roots to offer and at a price you can afford to pay. The flowers are pure white, and grow to 10 inches and over across, and the flowers are borne on very sturdy stems facing. If the center bud is taken out and the best one of the side buds be allowed to develop, the flower will be held high above the foliage. The plant is a tall sturdy grower, well branched and quite prolific of large exhibition blooms

Divisions, each \$2.00, Plants, each \$1.00

JOAN OF ARC—I. D. (No. 917-30). This fine white dahlia originated with us in 1930, and has been tested in gardens of our friends from Canada to as far south as Tennessee and the reports from the various sections of the country have been so encouraging we have decided to introduce it. The plant is of rather dwarf habit, with many side branches, and is exceedingly prolific of bloom. Fine for garden and house decoration and for exhibition as the blooms can be grown to 11 inches and over in size and it is a remarkably good keeper when cut. Many of the flowers are distinctly marked with an Ox blood blotch or stripe on one or more of the petals, hence the name Joan of Arc.

Roots, each \$2.00, Plants, each \$1.00

WHITE KNIGHT—F. D. (1932). This is another fine white of large exhibition size, averaging 9-10 inches across and 5½ inches in depth. Plant, medium tall, wide spreading and very prolific of large blooms, which are held upright, on cane like stems. A great prize winner. You will like this dahlia.

Roots, each \$2.00, Plants, each \$1.00

WHITE WONDER—I. D. (Black-Kemp). We introduced this wonderful white, Spring of 1933, and it has steadily forged its way to the front throughout the country. Reports coming to us from growers in all parts of the country confirm our claims made for it in 1933 and since. We believed then, and still believe it to be the greatest informal decorative white ever introduced. At the big mid-west dahlia show held in Grand Rapids, Mich., the past season, a bloom of White Wonder received the award for the largest and most perfect bloom in the show. In a letter received from an advanced amateur in Delaware, written November 21st, he stated he had blooms of White Wonder 16 inches in diameter the past season, and from Columbia, S. C. an exhibitor won over everything in the show with White Wonder, and we might go on with coverage of the entire country with similar reports of the action of this wonderful white. This great white dahlia is now available at a very moderate price, and should be included in your order for 1936, if you do not already have it.

Roots, each \$1.00, 3 for \$1.75

PINK AND LAVENDER SHADES

DOROTHY STONE—I. D. (F&M, 1929). This exquisite rose pink dahlia has been a close rival for Kathleen Norris from the very beginning, and is still racing it for first honors. Many like it better than Kathleen Norris. The plant is a vigorous grower, and the large exhibition blooms are produced quite freely on long stiff stems, well above the foliage.

Roots, each \$1.50, Plants, each 75c

GLORY OF MONMOUTH—F. D. (Kemp). This is one of our earlier introductions, and we still grow it because of its great beauty. The colors are eosine pink, shading to strawberry pink at center of petals. Base of petals light orange. A new color combination of great beauty. Plant is of semi dwarf habit, wide spreading, and very sturdy. Its beautiful flowers are produced in profusion, and are from 6-8 inches in diameter by four to five inches in depth. Stems long and very stiff.

Roots, only 50 cents each, 3 for \$1.25

KEMP'S VIOLET WONDER—I. D. Although this beautiful dahlia is numbered among the older introductions no other Violet colored dahlia has come forward to displace it. It is still the best Violet in commerce. A great garden and exhibition dahlia.

Roots, each \$1.00, Plants, each 75c

Pink and Lavender Shades (Continued)

LAWRENCE TIBBETT—F. D. Personally we do not like the color of this dahlia, it being a pale peach color, but many visitors to our gardens last season raved over it, and thought it one of the most beautiful dahlias they had ever seen. The flowers are medium to large and are held well out of the foliage on stiff stems. Plant 6 to 7 feet, with many branches. While our stock lasts, we will fill orders for roots

at \$3.50 each.

VON RUSSWURM—F. D. (Dixie-Kemp, 1932). Color of this fine dahlia is coral pink shaded ochraceous buff in the center and at the base of the petals. Flowers average 9 to 10 inches in width, and are of good depth, and the long stiff stems hold the flowers high above the foliage. Plant, averages about 8 feet in height, permitting the blooms to be cut with stems up to 4 feet in length. A wonderfully fine exhibition dahlia.

Roots, each \$1.50, Plants, each 75c

AUTUMN AND ORANGE SHADES

EAGLE ROCK WONDER—S. C. (Broomall-Success). If you are looking for tremendous size, form, habit of profuse blooming qualities and vigorous growth, you will find all of them in this variety. The color, according to Ridgeway's color chart, is Mars Orange, shading to orange-buff, with tints of coral pink and coral red, the general effect being between orange and apricot. Flowers are of enormous size, and are produced on long stiff stems, holding the flower high above the foliage.

Roots, each \$1.00, Plants, each 75c

GIRL OF HILLCREST—I. D. (Scott, 1932). The color of this fine dahlia is a brilliant Mikado Orange. Flowers average 9-10 inches across, of great depth, and are borne on long stiff stems that hold them high above the foliage. Plant is a strong vigorous grower, attaining to a height of 7 feet and over. A prize winner that you will be glad to have in your garden, and to exhibit in the shows of your community.

Roots, each \$1.50, Plants, each 75c

KEMP'S MONMOUTH CHAMPION—F. D. (1930). No dahlia ever introduced has been a more consistent prize winner than Monmouth Champion. In the reports of shows over the entire country it is always mentioned as being among the winners of sweepstake and class prize winners. Its beautiful, brilliant orange flame color and giant size of bloom, places it in first place as one of the outstanding dahlias of today.

It is a magnificent dahlia, but hard to visualize from a brief description. You will have to see it to understand why it is called great.

The plant is of medium height, wide spreading, and have yet to see its counterpart in prolific production of large, perfect exhibition blooms. Size of blooms are 9 to 13 inches across and of sufficient depth to properly balance them, whether medium to largest size.

Roots, each \$1.00, Plants, each 65c

RED SHADES, ETC.

BAGDAD—I. D. Rich bright scarlet red. Large size and excellent formation. One of the best of its color. Plant is a strong sturdy grower attaining to a height of six feet or more. Good root maker.

Roots, each \$1.25, Plants, each 75c

ENTRUPS SULTAN—I. D. The color of this showy dahlia is clear carmine red. Flowers are very large and are produced in great abundance on long stiff stems and are held facing to front. Bush a strong vigorous grower, wide spreading with many branches, each producing a very large exhibition bloom. Plant about 4 feet high.

Plants only, \$1.50 each

GREAT HARBOR—I. D. (Trossbach-Kemp, 1932). This dahlia is a bold flower as its name indicates. It grows very large, is of a rich carmine color, and is supported on long stiff stems well above the foliage. Plant is of medium height, but of very sturdy growth. A very prolific bloomer. This dahlia does particularly well in the northerly sections of this country, also in Canada.

Roots, each \$1.50, Plants, each 75c

Red Shades, Etc. (Continued)

KARL BONOWITZ—S. C. (Dahliadel). This large brilliant carmine colored dahlia is the best of this type in this color. Sturdy flowers are supported on extra long stiff stems, high above the foliage, and the strong growing plant never fails to develop the numerous exhibition size blooms to perfection.

Divisions, each \$1.50. Plants, each 75 cents; 3 for \$2.00

KEMP'S FT. MONMOUTH—I. D. Of all the red dahlias introduced this has been the greatest prize winner to date. It is the only super dahlia of its color in existence. A rich wine red, with an undertone of bright crimson maroon. Does not burn nor fade under bright, hot sunshine. It has been grown up to 15½ inches in diameter. Plant is a tall, vigorous grower, very prolific of large exhibition blooms, supported by stiff stems high above the dark green foliage.

Roots, each \$1.00. Plants, each 75c

PRINCE OF PERSIA—I. D. (Newsom). This fine red dahlia of California origin is a decided acquisition to the red section. The color is a dark, cardinal red, flower of real giant size both in width and depth, supported on long stiff stems high above the luxuriant dark red foliage. A prize winner of exceptional merit.

Roots, each \$1.00. Plants, each 75c

VARIEGATED DAHLIAS

CHAMPOEG—F. D. (Crites-Kemp). The Dahlia Beautiful. The color of this beautiful dahlia is waxy canary yellow at center, shading to salmon pink. A color combination so beautiful and evenly distributed as though it was the masterpiece of the talented artist's brush. Flowers are supported by strong sturdy stems, that hold 9 to 10 inch blooms well above the foliage. Height of plant about 5 feet.

Roots, each \$1.00. Plants, each 75c

THE DUCHESS—We have had this beautiful bi-colored dahlia on trial for the past two years, and we unhesitatingly recommend it as being the best white tipped, yellow dahlia we have ever grown. The blooms are produced in profusion on long stiff stems that holds them high above the foliage. Maximum size of bloom about 9 inches across and 5 inches in depth. Plant is a tall vigorous grower and an early bloomer. Stock quite limited.

Roots, each \$2.00. Plants, each \$1.00

HARMONY—F. D. (No. 34-W). This tri-colored dahlia is not only very beautiful, but quite unique in its color tones, they being lemon yellow with border of light geranium pink on each edge of the petals, just to the rear of the white tips. Flower is not large, averaging about 6 inches in diameter, but what it lacks in size is certainly more than offset by its beauty. Plant is a tall grower, many branched and a very prolific bloomer.

Roots, each \$2.00. Plants, each \$1.00

HAZEL CHAPMAN—F. D. (Kemp, 1932). In this unique dahlia we have a color combination that is very attractive. The background is ochraceous buff, striped, speckled and splashed brilliant spectrum red. Occasionally a flower will come solid spectrum red, or half red and half variegated. The 8 inch blooms are supported on stiff stems high above the foliage. Plants medium height. Owing to the destruction of most of the plants by the big storm of last August we have no roots to offer this year.

Plants, each 75c

ROTARY—F. D. (Cottam). Medium sized scarlet red, with white tips. A beautiful dahlia for garden and house decoration, and for exhibiting in the bi-colored or fancy bloom classes. You will like this pretty dahlia.

Roots, each \$1.00. Plants, each 75c

RUDY VALLEE—S. C. (Broomall-Success). Of the many fine dahlias of recent introduction, none is more distinct nor outstanding than this one. When the flowers begin opening they show chrome yellow centers, with gradation to grenadine pink as the flower expands, finally becoming grenadine orange red when full bloom. The large, full centered blooms are held well above the foliage on long, straight stems. Plant a strong grower, attaining to a height of about 6 feet. A beautiful flower, and a great prize winner.

Roots, each \$1.25. Plants, each 75c

WILLIAM H. HOGAN—I. D. (Seltsam-Success). This is one of the best variegated red and white Dahlias introduced to date. Color, garnet red with elongated white tips running down the center of the petals. Flower large, on long, stiff stems, is held high above the foliage in pleasing contrast with its dark green foliage. Strong, healthy grower and good root maker.

Roots, each 75 cents, 3 for \$2.00

CACTUS DAHLIAS

AMERICAN TRIUMPH—Cac. We have grown many Cactus dahlias since the introduction of the American Triumph, but have found none to equal this bright red Cactus in size, finish and ability to win in the Cactus classes, wherever exhibited in competition. It is a close rival of the Ambassador, and frequently wins over the Ambassador. No roots to offer this season. Plants from carefully selected stock.

75 cents each

ELLA MAY—(Prentice). In this cactus we have a beautiful and graceful flower. The color is rich violet carmine, shading to prune purple on outer petals. Slightly incurved, and about 5 inches in diameter. Good stiff stems, that hold the flower facing well above the foliage of a strong growing plant.

Divisions, each 50 cents; 3 for \$1.00

LOIS MARION—Inc. Cac. (Ruschmohr). This is a typical incurved cactus, and different in color from any we have seen. It being a light yellow, edged shrimp pink. The flowers are large for a dahlia of the incurved type, and are of very symmetrical formation. Stems are long and stiff, holding the flowers high out of the foliage of a tall robust growing plant. Very free bloomer, when it gets under way which is a little late in the season. For this reason it should be planted as early as weather will permit and not be pinched back.

Divisions, each \$2.00. Plants, each \$1.00

BALL DAHLIAS

CAROLYN BALL—(Bochou). A new dahlia of the true ball type of unusual merit. The color is a clear lavender-pink, flowers 4-6 inches in diameter, perfect centers, and with stems that hold the flowers erect, high above the foliage. Plant a good grower and exceedingly prolific of bloom. If well grown, it is practically unbeatable as an exhibition dahlia of this type.

Roots, each \$1.00, Plants, each 75c

GOLD MEDAL—This is an old dahlia, but to our mind is one of the most beautiful varieties ever introduced, regardless of type. It is a perfect ball, 2½ to 3 inches in diameter, and the color combination of yellow and red is so harmoniously blended, that it would be almost impossible to produce a more exquisite flower. Plant is of rather dwarf habit, but is very prolific of bloom in the late season, and it is exceedingly fine for table and house decoration. Every one likes this exquisite flower.

Divisions, each 50 cents

HIBALL—(No. 49). Color of this fine new ball dahlia is old rose. Flowers are about 4 inches in diameter, of equal depth, and are held high above the foliage on long stiff stems. Plant very vigorous and tall, reaching a height of 7-8 feet, many branched and an early and very profuse bloomer. One of the best ball dahlias introduced in recent years.

Roots, each \$2.00. Plants, each \$1.00

POM POM DAHLIAS

LITTLE NORMAN—One of the best poms we have ever grown. Its exquisite color of flesh pink, slightly tinted lavender, habit of dwarf, compact growth, floriferousness; small size of bloom, which seldom exceed one and one-fourth inches in diameter, good keeping qualities when cut, entitles it to be classed as one of the very best for exhibition and decorative purposes. We have grown a great many Poms, and seen many more, but very few varieties exceed this little Pom for real beauty and value for exhibition and general decorative purposes.

Plants only 50 cents each, 3 for \$1.25

AERIAL—Small, orange buff, very pretty.

BOB WHITE—(Dahliadel). This is the best white Pom we have ever grown. Flowers are small, pure milk white when full bloom, and the plant is exceedingly prolific, being literally covered with long stemmed bloom throughout the season.

BRONZE BEAUTY—A small well formed plant, producing rich golden bronze of great beauty. Free bloomer, good stems.

DARKSOME—The best dark maroon.

ELFIN—Light primrose yellow. A good grower and free bloomer.

FACINATION—Pretty orange buff pom of much beauty. The plant is a good grower, and profuse producer of exhibition and utility blooms. Good stems.

JESSICA—Yellow, suffused rose red. Very free and early. Good stems.

KATHLEEN—A well formed primrose yellow. Plant is a sturdy grower, and a free bloomer. Very desirable for exhibition and table decoration.

LITTLE BELLE—Extra fine mauve pink with long, erect stems.

LITTLE DOROTHEA—Small orange and white flowers of great beauty.

LITTLE EDITH—This free growing and free blooming little Pom is a most profuse producer of small yellow blooms, slightly tipped carmine. One of the best exhibition varieties.

Pom Pom Dahlias (Continued)

ROSALIA—Color old rose. Flowers are produced in the greatest profusion. Fine for exhibition and house decoration.

ROSEA—Rosy lavender, of refined beauty. Fine exhibition variety.

SAN TOY—Color pink, tinted white. Beautiful and desirable for exhibition and decoration purposes.

Strong roots of above pompoms, 35c each, \$3.00 per dozen.

MINIATURE DAHLIAS

BETTY LOU—Min. Dec. This new miniature decorative is bright pink with light center. Flower averages about 3 to 3½ inches in size, with long stiff stem. Plant is a fine grower and attains to a height of three to 4 feet, wide spreading and exceedingly prolific of bright attractive bloom. One of the best for household and florists' use.

Roots, each \$1.00, Plants, each 75c

FAIRY—(Bond, 1934) Miniature Dec. This dainty little dahlia is best described as a miniature Jersey's Beauty, it having the same lovely shade of pink with a slight suffusion of mauve towards the tips of the petals. Perfect decorative 2½ to 3 inches in diameter, with perfect stems, and are produced in great profusion on plants about 3 feet high. It is one of the very best keepers when cut, and we believe it is one of the best miniature for florists' use, ever introduced. A dandy little dahlia that will become as popular and be as extensively grown as the famous Jersey's Beauty.

Roots, each \$1.00, Plants, each 60c

TOOTSIE—(Wallace). Here is another miniature of beauty and promise for the future. In color it is a clear, soft pink, flowers three to 3½ inches in diameter, full centered decorative type. Plant a good grower and prolific bloomer. Good stems.

Roots, each \$1.00, Plants, each 60c

THE GLADIOLUS

The easiest to grow, the least expensive, the widest range of beautiful colors and color combinations of any of the summer flowering bulbs.

The late and much lamented Dr. Van Fleet, who was one of the pioneer Gladiolus breeders in this Country, predicted to the writer more than 30 years ago, that the time would soon come when the Gladiolus would be one of the most popular garden flowers in cultivation.

This prediction has in a great measure come true. At that time they were but little known to the great majority of our people, and comparatively few were grown in American gardens, requiring only a few hundred thousand to meet the demand. Today they are being grown by the millions, and there is room for many millions more, as thousands of Home Gardens are without this wonderful flower. This should not be as they can be had at so little cost, that any garden owner can afford to have them in abundance. If you have never grown the Gladiolus, do so this year by all means, and I venture to say you will be more than delighted with the glorious bloom they will give you.

I know of no other summer flowering bulbs, procurable at so low a cost, that are as attractive and useful for Home and Garden decoration as the Gladiolus. Their large perfect flowers are borne on tall graceful spikes, often having twenty or more buds, and if cut when the first flower opens, and placed in water, every bud will develop into a perfect flower, one or more opening each day, covering a period of twelve to fourteen days before the last flower is gone.

No garden these days is considered complete without its one or more plantings of these queenly, summer flowering bulbs. They are not exacting as to soil and culture. They will grow and bloom under conditions that would discourage most bulbous plants to quit, yet like everything else grown in the garden, they do best in a friable, fertile soil, supplemented with good clean culture, and will respond wonderfully to good nourishment and loving care.

Planting every ten or twelve days, in rows in the garden, or in groups in the border, (covering the bulbs four inches deep), from early April until latter part of June will give a succession of blooms from the middle of July to October. No other species of flowering bulbous plants will give you such great returns in flowers, and satisfaction for so little cost and care.

In the fall, when the foliage turns brown, they should be lifted, the tops cut off close to the bulb, and laid in a dry, airy place two or three weeks to dry and cure, when the old bottoms can be removed from the new bulb, and the bulbs be put into cloth bags or shallow boxes and stored in a dry, cool, but frostproof place for the winter.

Our bulbs are grown under the skillful care of experts who have had years of training in the production of high quality stock, and no better bulbs can be procured than we supply our customers. Every precaution is taken to keep them free from disease, and true to name, and we stand ready to replace any that should prove otherwise.

Full and comprehensive cultural directions sent with each order. This leaflet tells you when and how to plant, how to care for the growing plants, when and how to cut the blooms, when and how to harvest or dig the bulbs in the fall, in fact everything necessary to guide you to entire success.

GLADIOLUS — KEMP'S ORIGINATIONS

No. 1—1½" and up. No. 2—1¼"-1½"



PINK WONDER

	Each	Doz.
ALBANIA —A Pure white, and beautifully fin-flower of great merit. Decidedly the best commercial white, it is also a good exhibition variety.....	No. 1—10c	.75
	No. 2— 8c	.60
AMORET —Shrimp pink, tips of petals shaded peach red. Lower or inferior petals overlaid with scarlet feathering on orange yellow ground. 4½ inches....	No. 1—10c	.75
	No. 2— 8c	.60
ANCORA — Salmon, flaked apricot orange. The two inferior petals blotched maize yellow with ruby feathering. 5½ inches	No. 1—10c	.75
	No. 2— 8c	.60
ARCADIA —Orange pink, base of flower petals light salmon orange, with faint mars orange feathering. 3½ inches	No. 1—10c	.75
AUDUBON —Beautiful shade of salmon pink. Flowers 4-4½ inches in diameter, correctly placed on straight spike.....	No. 1—12c	.80
AVONDALE —This fine variety is of rich ochereous buff, tips of petals splashed with irregular scarlet blotches. Yellow blotch on lower half of inferior petals, overlaid with scarlet feather.....	No. 1—10c	.75
BETTY GRAY —Japan-rose, rose red feathering in the throat. 4 inches. A fine new Glad you will like	No. 1—15c	1.25
CAMEO —Large cameo pink, with greenish yellow blotch on rear half of lower petals. A very fine variety	No. 1—10c	.75
CAVALIER —Large tulip shaped flower of a deep salmon color, with an underlying tone of orange. Edges of petals purple tone.....	No. 1—10c	.75
CLAYTON —Venetian pink, shading to hermosa pink at base of petals. Reddish purple feathering on inferior petals. Many open at once.....	No. 1—15c	1.25
CONISTON —This fine Glad is a clear ochereous salmon with hair lines of rose red in the throat. Strong grower.	No. 1—15c	1.25
DORINE —Salmon-buff, base of lower petals light orange yellow with slight penciling of ruby. Magnificent variety.	No. 1— 8c	.70
GLENDORA —Pale vinaceous pink. Overlapping petals have the appearance of straw color	No. 1—10c	.75
GRENADIER —Upper half of petals grenadine red, shading to salmon pink in the throat. Flowers well placed on straight spike.	No. 1— 8c	.70
IDABEL —Pale congo pink, with pale orange yellow markings on rear of inferior petals. Flowers 4½ inches in diameter	No. 1—20c	1.50
LAURETTA —Orange pink, tips of petals splashed ox-blood red. Lower petals piric yellow blotch, with slight feathering of sulphine yellow.....	No. 1— 8c	.70
LEETONIA —This beautiful Glad attains to a height of 48 inches. Flowers are a beautiful scarlet, shaded salmon orange in the throat. Size of flower 4 inches	No. 1—10c	.90
	No. 2— 7c	.65

Gladiolus – Kemp's Originations (Continued)

	Each	Doz.
MARBLORO—Very pleasing shade of Xanthine orange, pink tone toward the base of petals. Rear half of lower petals shaded pale viridine yellow, overlaid with coral red feathering. Very beautiful	No. 1—10c	.75
MARNIA—Bright grenadine orange, with tyrian rose feathering in the throat. Strong vigorous grower. Best commercial orange	No. 1— 5c No. 2— 4c	.40 .35
NEPTUNE—Coral pink, ruby feathering in the throat. One of the best florists' Glads	No. 1—12c	1.25
NORWOOD—Coral pink, chatenay pink in the throat. Small coral red feathering on lower half of inferior petals. Rear of petals rich coral red. Very fine	No. 1—12c No. 2— 9c	1.25 .90
ONETA—Xanthine orange, shading to rose; grenadine rose at base of petals with feathering of apricot yellow on inferior petals.....	No. 1— 8c	.70
ORAFLEAME—The predominating color of the fine variety is radiant capucine orange, shading to light orange yellow at base of petals. Inferior petals. orange buff	No. 1—20c	1.50
ORANGE WONDER—We believe this is the best orange colored Glad ever offered. The color is a rich orange rufous, practically solid color. Flowers are 4-5 inches in diameter, wide open and well placed on a well built spike 4½ feet high	No. 1—12c No. 2— 9c	1.00 .90
PINK WONDER—Flowers very large, and of pleasing La France pink color, flaked geraneum pink, with chartreuse yellow in the throat, overlaid with rose feathering. Great prize winner, for largest flowered variety....	No. 1—10c No. 2— 7c	.80 .70
PRINCELEY—Color, light flesh pink, almost white and can be exhibited in the white classes. Flowers are very large, wide open, and well placed on a tall well built spike	No. 1—10c No. 2— 7c	.80 .65
QUINTON—One of the earliest to bloom, producing flowers 5 inches in diameter of a pleasing hue of coral pink	No. 1— 5c No. 2— 4c	.40 .35
RICHARD CARVEL—Light La France pink with rose red feathering on light orange background on throat of lower petals. 5½ inches	No. 1—20c	1.50
SELMA—The flowers have a pleasing background of Marguerite yellow, faintly suffused with tyrian-rose	No. 1— 5c No. 2— 4c	.40 .35
TIVONIA—Carrot ret, shaded pale pinkish buff at base of petals. Lower or inferior petals feathered red on orange yellow ground	No. 1— 8c	.70
WHITE WONDER—Very large white and one of the best exhibition Glads....	No. 1— 5c	.40

EXTRA FINE GLADIOLUS for FLORISTS' USE and EXHIBITION

The following varieties are extensively grown for cutting, as all are good keepers, good shippers, and of the colors most popular with the buying public. They are also wonderful exhibition varieties. The bulbs we offer you are as fine as were ever grown. They are absolutely free from disease and thrips. We can supply them in large quantities in Nos. 1 and 2 sizes. Prices for large quantities quoted on application.

TERMS CASH WITH ORDER—Three will be supplied at dozen rate. 50 at 100 rate. We prepay postage on first and second sizes on orders up to 50 bulbs, larger orders sent postage or express charges collect.

	Each	Doz.	100
AFLAME—Large flame rose. One of the finest cut flower Glads in commerce. A beauty	No. 1—5c No. 2—4c	40c 35c	\$3.00 2.50
APRICOT GLOW—A grand, pure apricot colored gladiolus that has a strong appeal to all who are fond of this color. It is a fine grower and a good commercial variety.	No. 1—7c	65c	3.50
BERTY SNOW—The tall straight spike and healthy growing habit of this variety with its very large flowers of beautiful clear lavender, make this one of the finest acquisitions to date. Wonderful exhibition variety.	No. 1—8c	70c	3.75

Extra Fine Gladiolus, Etc. (Continued)

	Each	Doz.	100
BETTY NUTHALL —Fine tall straight grower, producing beautiful salmon pink, yellow throat florets of fine texture and placement. One of the very best	No. 1—7c	60c	3.75
	No. 2—5c	45c	3.00
CARDINAL PRINCE —Early cardinal red of great beauty. A prime favorite with everybody	No. 1—5c	40c	2.50
	No. 2—4c	35c	2.00
CHARLES DICKENS —Tall purple. Flowers large and one of the most desirable in the purple section	No. 1—5c	40c	2.50
	No. 2—4c	35c	2.00
GIANT NYMPH —Very large flower of pleasing La France pink, with creamy yellow throat. A beautiful exhibition and cut flower variety....	No. 1—5c	40c	3.00
	No. 2—4c	35c	2.50
GOLD ELSIE —Deep, rich yellow color, and one of the very best of recent introduction	No. 1—8c	75c	
GOLDEN DREAM —Late standard yellow and one of the very best. Color is a clear golden yellow. Many open at a time.....	No. 1—5c	40c	2.50
	No. 2—4c	35c	2.00
KEMP'S MARNIA —Best commercial orange	No. 1—5c	40c	2.50
	No. 2—4c	35c	2.00
MARMORA —One of the best exhibition Glads to date. The color is a lavender gray, with petunia colored blotch. Large blooms, and spike....	No. 1—7c	60c	3.75
	No. 2—5c	45c	3.00
MINUET —This is one of the best, and most popular lavender gladiolus ever introduced. Flowers are large, wide open and are carried on a tall, well built spike. A fine exhibition variety	No. 1—10c	90c	4.50
MISS JOY —An exceptionally fine early salmon pink, a general purpose gladiolus that will be a JOY to you in the garden, in the home or anywhere it is used for decorative purposes.	No. 1—6c	60c	3.50
MRS. LEON DOUGLAS —Ground color Begonia rose, striped with flame and brilliant scarlet. Lip pale yellow, slightly speckled ruby. Very large	No. 1—8c	75c	
NANCY HANKS —Apricot orange, one of the best of this color introduced to date. Fine exhibition variety	No. 1—5c	45c	3.00
	No. 2—4c	35c	2.50
ORANGE QUEEN —Orange bronze color. One of the very best commercial Glads	No. 1—5c	35c	2.50
	No. 2—4c	30c	2.00
PRIDE OF WANAKA —Fine lavender-rose. Excellent for exhibition.....	No. 1—5c	40c	3.00
	No. 2—4c	35c	2.50
PRIM BEAUTY GRANDIFLORUS —One of the most distinct varieties in existence. Color is La France pink ground, thickly mottled with fine lines and dots or orange rufous	No. 1—6c	45c	2.50
PICK-UP MIXTURE —This fine mixture was offered in our 1925 catalog for the first time when a few thousand were distributed on order to our customers. Its high quality has made it so popular with our customers we are sold out every year long before the shipping season closes. Into this mixture are thrown all unidentified bulbs picked up in the field and from the floor of our bulb house and many small lots of good named varieties are added to it from time to time, worth many times the price you would pay for them if purchased under label. We believe this mixture to be the highest quality ever offered at anywhere near the low price we are charging for it. While the supply lasts, we will fill orders at the following low prices.			

Doz. 35c; 100, \$1.95, by express not prepaid

KEMP'S ORCHID FLOWERED JAPANESE IRIS

These beautiful Japanese Irises were originated from hand pollenized seed, several years ago, and have been pronounced by expert Iris growers to be the most beautiful collection of Japanese Iris in existence. Therefore, I feel confident we are offering a strain of Japanese Iris more beautiful and more desirable than any hitherto procurable.

With these wonderfully beautiful Irises, it is now possible to achieve a color effect quite equal to that produced with the German or Liberty Irises, and at a time of the year when there is a dearth of bright colors in the Garden, which makes them all the more desirable.

The Japanese Irises are very hardy, and free flowering and will grow in almost any situation, where the soil is naturally moist and somewhat acid, their natural habitat being along the margins of ponds and small streams.

We are offering twenty-two varieties here, embracing quite a wide range of color, and the prices at which they are offered have been approved by one of America's leading commercial Iris growers, and are for good strong divisions of two or more leads, with good roots.

TERMS:—Cash with order, to customers without an established credit. In all cases, when credit is desired by persons unknown to us, please give BANK reference.

NOTE:—The color descriptions of several varieties offered in this list, were arrived at by use of Ridgeway's color chart, and are nearly correct as it was possible for me to work them out.

J. A. Kemp

ATLANTA—(No. 11). Rosaline pink, with hue of soft lavender pink. Primrose yellow blotch at back of petals, from which radiates faint longitudinal veins of bluish purple. Pistils greenish white with bluish lips. A very dainty and extremely beautiful variety. 6 petals, size of flower 6 inches, height of stalk 45 inches.

Price, 50c each, \$5.00 per dozen

BOBBY SIPE—(No. 9). Large white overlaid with prominent feathering of bright bluish violet. The violet being heavier at base of petals, surrounding bright orange blotch. The beautiful color contrast of this variety is impossible of accurate description. It will have to be seen to be properly appreciated. 6 petals. Size of bloom 6 inches, height 48 inches.

Price, 50c each, \$5.00 per dozen

CELESTINE—(No. 15). Deep silvery pink hue veined blue. Orange blotch, surrounded with splashes and stripes of light purple. Standards or inferior petals deep silver pink veined deep blue. Pistils bremen blue. 3 petals, size of flower 7 inches, height of stalk 50 inches.

Price, 50c each, \$5.00 per dozen

CHARLOTTE—(No. 18). Violaceous blue on grayish background, in about equal proportions of color. Pistils grayish white, tipped clear violet blue, with broad feathering of Primuline yellow extending about 1¼ inches up the center of the petals. 6 petals, flower 7 inches in diameter. A very showy and beautiful variety that every one likes. Height 42 inches.

Price, 50c each, \$5.00 per dozen

COLLINGWOOD—(No. 10). Lavender pink ground, heavily brushed Pieroma violet. The violet being much deeper on some of the flowers than on others, giving the appearance of two distinct variety colors from the same plant. The standards or inferior petals are upright and long and prominent. The color being petunia violet, lightly edged lavender pink. Pistils, lilac tipped petunia violet. One of the most beautiful color combinations to be seen in the Japanese Iris. 3 petals, size of bloom 7 inches, height 32 inches.

Price, 50c each, \$5.00 per dozen

CONSTANCE—(No. 19). Cerulean blue feathering, overlapping pale forget-me-not background, with orange buff markings at base of petals. Standards medium size, splashed purple on light King's Blue background. Pistils, greenish white, tipped bluish purple. Flower medium to large. 3 petals. Very fine and a prime favorite with those who are fond of parti-colored flowers. Midseason. Height 32 inches.

Price, 50c each, \$5.00 per dozen

CORNELIA—(No. 13). White, prominently veined purplish blue, with cadmium orange blotch at base of petals, edged dull purple. Standards or inferior petals, 3 inches long, 1 inch wide, paris blue, lower half. Upper half white, heavily veined paris blue. Pistils, white tinted lavender, with lighter tinted lips. An extremely fine variety that should find much favor with all Iris lovers. 3 petals, size of flower 7 inches, height of stalk 50 inches.

Price, 50c each, \$5.00 per dozen

Kemp's Orchid Flowered Japanese Iris (Continued)

DAY DREAM—(No. 1). In this variety we have an unusually beautiful and attractive flower. The color is a soft pinkish lilac, lightly veined pale violet blue with heavier shading of the same color surrounding cadmium yellow blotch at base of petals. Short inferior petals of pale violet blue, and pale pink pistils, tipped bright blue. 3 petals, diameter 6-7 inches. Height of flower stalk 30 inches. Stock very limited.

Price, 50c each, \$5.00 per dozen

GRENADIER—(No. 16). White, overlaid with bright lavender sheen. The lavender being more prominent at base of petals, surrounding cadmium orange blotch. The standards or inferior petals are medium long, upright and are of a pleasing hue of lavender edged blue. Pistils clear white. A wonderfully beautiful variety. 3 pistils, size of bloom 7-8 inches. Height of stalk 50 inches.

Price, 50c each, \$5.00 per dozen

HARMONY—(No. 3). A finely ruffled variety of great beauty, and distinct from any other Japan Iris I have ever seen. The flowers are single and medium size, with the exquisite color of oxide blue veined and edged lilac pink. Prominent orange blotch at base of petals. Inferior petals bright berlin blue. Pistils pale lilac pink. Size of flower 4¾ inches, height 42 inches.

Price, \$1.00 each, \$10.00 per dozen

LAWRENCE—(No. 5). Hortense blue, lightening to Ontario violet, as the flower becomes fully blown. Standards are large, prominent, and of a solid, deep full bluish violet. Pistils greenish white, tipped light bluish violet. Rich Primuline yellow blotch extending from base to one-third way up petals in feather like formation. Flowers 8 inches in diameter, with broad rounding petals. A very striking and altogether beautiful variety. Height 42 inches.

Price, 50c each, \$5.00 per dozen

MARTHA KEMP—(No. 8). Deep lilac pink ground, brushed venetian blue. Standards or inferior petals are medium long, stand upright and are almost solid, deep bluish violet. Orange blotch at base of petals. Pistils greenish white tipped bluish violet. A very conspicuous and beautiful variety. Single. Size of flower 7 inches, height 48 inches.

Price, 50c each, \$5.00 per dozen

MARVELLA—(No. 20). Phlox purple, splashed phlox pink. Orange buff blotch at base of petals. Pistils greenish white, tipped lavender pink. Flower large to very large, with three broad, rounded petals. Height 32 inches. Midseason. A marvelously beautiful variety.

Price, 50c each, \$5.00 per dozen

NORMANDY—(No. 7). White, with faint hair lines or veins, radiating from light cadmium yellow blotch at base of petals. Standards or inferior petals are very conspicuous in their contrast of bluish violet color, tipped and edged white. Single. Size of flower 6-7 inches, height 46 inches.

Price, 50c each, \$5.00 per dozen

OCEANA—(No. 12). Deep violet blue, with bright cadmium yellow blotch at base of petals. Pistils striped lavender and purple, lips dull violet. Very handsome and showy. 6 petals beautifully ruffled and fluted. Size of flower 6 inches, height of stalk 55 inches.

Price, 50c each, \$5.00 per dozen

RICHMOND—(No. 23) 1933. The ground color of this marvelously beautiful variety is difficult to define, as it does not exactly match any of the color plates in Ridgeway's Color Chart. Its rich lustrous color closely approaches Royal Purple, and Dark Violet coming about half way between these two colors. Some of the flowers are lightly mottled and splashed with light pink, prominent orange color at base of petals. Richmond is by far the richest colored Japanese Iris I have ever seen. Now being offered for the first time.

Price, \$1.50 each, \$15.00 per dozen

ROMANCE—(No. 2). Cerulian blue, heavily marbled pinkish lilac. Prominent blotch of deep cadmium yellow at base of petals. Short or inferior upright petals of same color and marbling. Single. Size of flower 8 inches, height of flower stalk 40 inches. A very showy variety that will find favor with all lovers of the Iris who are fond of the odd and unusual color combinations.

Price, 50c each, \$5.00 per dozen

SELKIRK—(No. 22). Pure white, with gold band in center of lower half of petals. Flowers large, and beautifully ruffled. Similar to Gold Bound, but pronounced by experts as being better. 6 petals, height of stalk 42 inches.

Price, 50c each, \$5.00 per dozen

TALMANYA—(No. 4). Pale kings blue, irregularly splashed and marbled venetian blue. Bright orange blotch at base of petals. Standards of same pleasing color as falls. Pistils greenish white, tipped pale kings and venetian blue. A splendid variety of great merit. Flowers 7½ inches in diameter, finely ruffled. Height 40 inches.

Price, 50c each, \$5.00 per dozen

Kemp's Orchid Flowered Japanese Iris (Continued)

VENICE—(No. 17). Lavender pink, heavily veined venetian blue, with deep chrome yellow blotch at base of petals. Pistils lavender tipped venetian blue. 6 petals, size of flower 6 inches, height of stalk 50 inches. It is impossible to adequately describe the great beauty of this exquisite variety. You will have to see it to fully appreciate its beauty.

Price, 50c each, \$5.00 per dozen

VERNON—(No. 21). Bright lavender blue on rosaline pink ground. Narrow and of orange rufous on center of lower third of petals. Standards or inferior petals oxide blue, mottled lavender pink. Pistils creamy white, tipped lavender blue. 3 petals. Size of flower 7-8 inches, height of stalk, 30 inches.

Price, 50c each, \$5.00 per dozen

VAN HOESEN—(No. 6) Dull bluish, violet, veined lilac pink. Light orange colored blotch at base of petals. Standards or inferior petals lilac pink tipped bluish violet. Pistils dull greenish white, edged bluish violet, with deeper margin of bluish violet at terminal. A very beautiful variety. Single. Diameter of flower 6 inches, height 48 inches.

Price, 50c each, \$5.00 per dozen

SPECIAL OFFER—1 each of the 22 varieties \$10.00, 3 of each \$25.00, not prepaid

JAPANESE IRIS SEED from KEMP'S ORCHID FLOWERED STRAIN

That many new and beautiful varieties will result from the planting of this strain of seed, there can be no question or doubt. Iris are easily grown from seed, and any one with greenhouse facilities, or a sunny window in the house can succeed with them.

Price per packet of 100 seeds	\$.25
Three packets60
Six packets	1.00
Postpaid	

Full cultural directions printed on each packet.

INSTRUCTIVE GARDEN BOOKS

DAHLIAS.

By F. F. Rockwell

Introduction by Derrill W. Hart, compiler of the annual "Dahlia Roll of Honor."

Popular as they are, dahlias have uses and possibilities which can make them even more universal favorites in American gardens. This handbook indicates these opportunities and tells how the experienced grower and the amateur can realize them.

"Dahlias," which is complete with 65 specially drawn illustrations, provides the beginner with indispensable information on types, varieties, fertilizers, planting, growing, pruning and disbudding, insects and diseases, harvesting, storing, propagating, hybridizing for new varieties and growing for exhibition. Exhibitors, hybridizers and experienced growers will also find much information and many worthwhile suggestions in the book.

Contents. The Great American Flower, Types, Varieties and Uses, Soils and Fertilizers, Planting and Growing, Insects and Diseases, Harvesting and Storing, Propagating and Hybridizing Special Purposes.

84 pages; 65 illustrations; 5 x 7½ inches; Cloth; \$1.10 postpaid.

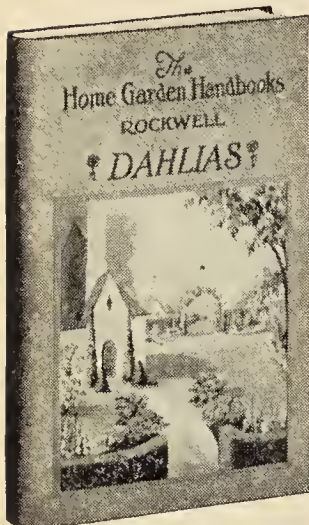
SPECIAL OFFER:—Retail orders for Dahlias amounting to \$10.00 or over, we will include a copy of Rockwell's Dahlias—**FREE**.

GLADIOLUS BREEDING.

By J. A. Kemp.

This little work is intended as a trustworthy guide (for the inexperienced) to successful breeding of the Gladiolus, and its writing was prompted by the numerous requests that came to me from many parts of the country. It is written in plain English, stripped of technical terms: so that any one can comprehend it and with a little practice be able to successfully cross pollenate the Gladiolus. There is nothing difficult to learn about this work, any one can do the mechanical part of it, and this little booklet tells you just how it is done, and how to grow and care for the seedlings until fruition, selection of varieties for further trial, etc. **Price 50 cents per copy.**

Will be given free to all my 1936 customers who order bulbs to the value of \$3.00 or over. But one copy to a customer.



BIG BARGAIN!

Dahlia-Gladiolus-Japanese Iris Collections



These high quality collections are available at much less than they would cost at regular catalog prices, and are made up primarily for those who have space in the garden for only a few dahlias, gladiolus and Japanese Irises, and wish to have the best at very moderate cost. The roots, bulbs and plants offered are of first quality stock and are guaranteed to give satisfactory results to all who give them proper attention. For color descriptions, etc., consult catalog.

DAHLIA ROOTS

COLLECTION NO. 1.

1 Prince of Persia	1 Monmouth Champion	1 White Wonder
1 Champoeg	1 Eagle Rock Wonder	1 Improved Commodore

6 fine exhibition varieties, 1 division of each, value, \$6.00. All sent postpaid for only \$3.00.

COLLECTION NO. 2.

1 White Wonder	1 Croydon	1 Improved Commodore
1 Monmouth Champion	1 Rudy Vallee	1 Champoeg
1 Great Harbor	1 Dorothy Stone	1 Jim Moore

9 fine exhibition varieties, 1 division of each, value \$10.00. all sent postpaid for only \$4.50.

COLLECTION NO. 3. (Beginners' Collection) \$5.50.

This collection is made from the surplus of a number of fine exhibition varieties and from small lots of which there are not enough to warrant catalogueing them. While the supply lasts we will select 12 varieties in as wide a range of colors as possible, and deliver them at your post office for only \$5.50, which is less than half their real value. You will be more than pleased with this great bargain collection of high class dahlias.

POM POM DAHLIAS (Roots)

COLLECTION NO. 4.

1 Elfin	1 Bob White	1 Little Belle
1 Darksome	1 Little Dorthea	1 Bronze Beauty

6 fine Poms, catalog price \$1.50, sent postpaid for only \$1.00.

KEMP'S GARDENS

BOX 181-C

LITTLE SILVER, NEW JERSEY

(Over)

DAHLIA PLANTS

COLLECTION NO. 5.

1 Chautauqua Sunset 1 White Wonder 1 Ft. Monmouth
1 Jersey's Majestic 1 Rotary 1 Palo Alto

6 great exhibition varieties, 1 plant of each, value \$4.50, all sent postpaid for only \$3.00.

COLLECTION NO. 6.

1 White Knight 1 Improved Commodore 1 Monmouth Champion
1 Eagle Rock Superba 1 Jersey's Majestic 1 Karl Bonowitz

6 superb exhibition varieties, 1 plant of each, value \$5.75. All sent postpaid for only \$3.50.

GLADIOLUS BULBS

COLLECTION NO. 7. 36 Large blooming size bulbs for only \$1.25, value, \$2.20.

6 Orange Wonder 6 Tivonia 6 Leetonia
6 Prim Beauty 6 Dorine 6 Amoret

Consult catalog for descriptions and list prices and you will see what a great bargain this really is. Just send us a \$1.00 bill and 25 cents in stamps to help pay packing and postage and the collection will be delivered at your post office postpaid.

JAPANESE IRISES

9 Kemp's Orchid Flowered Japanese Irises for \$2.00

(Your choice of 5 for \$1.25, postpaid)

1 Collingwood 1 Bobby Sipe 1 Day Dream
1 Normandy 1 Martha Kemp 1 Venice
1 Selkirk 1 Grenadier 1 Van Hoesen

The collection consists of 9 beautiful varieties of which we have a small surplus. The divisions of two and three fans each, are strong healthy plants, and for this special sale are priced one-half and less the catalog price. The 9 varieties listed above will be sent you correctly labelled and postpaid for only \$2.00, or you may make your own choice of any 5 of them for only \$1.25, delivered postage free at your post office. Planting time, late April or early May.

The Japanese Irises are very hardy and will endure for many years. If you have a low damp place where nothing else will thrive, or small stream the margins of which you wish to beautify, or hardy border you wish to improve and make more attractive, plant some of these beautiful Japanese Irises.

They come into bloom the latter part of June or early July and provide a wealth of beauty in your garden and for cutting just when flowers of other plants are the scarcest, and when they will be most appreciated. You will be delighted with them.

PRICES OF ALL COLLECTIONS ARE NET CASH WITH ORDER

KEMP'S GARDENS

BOX 181-C

LITTLE SILVER, NEW JERSEY

(Over)

DAHLIA SEED

Dahlias from seed will bloom in 10 or 12 weeks after sowing. The seeds we offer are home grown, and are from many of the very best double varieties listed in this catalog, some from carefully hand pollenized flowers. They are the surplus, over and above our own requirements, and of the same quality we shall plant. No better seed can be procured anywhere, nor at any price, (no matter how much you pay), that will give more double flowers. The past season, out of 300 plants we selected 75 promising double varieties for further trial; an unusual high percentage, that may not be duplicated soon again. Growing dahlias from seed is purely a gamble and we cannot guarantee the results. All who plant dahlia seed, simply take a chance hoping they will get one or more that will be outstanding. Supply is limited, and while it lasts orders will be filled at the popular price of \$5.00 per 100.

SECOND GRADE DAHLIA SEED (Large Flowered) \$2.50 per 100.

MINIATURE DAHLIA SEED—This was saved mostly from the three varieties we listed in this catalog, and we have every confidence that some fine varieties will be gotten from it. The seeds are well developed and fully ripened and should give a very large percentage of germination.

Packet of approximately 100 seeds \$1.00. 3 packets for \$2.50

KEMP'S GIANT ZINNIAS

Full cultural directions on each packet.

The Giant Zinnias are the largest flowered and most gorgeous of all the garden annuals, with a wonderful range of color.

The giant blooms are extremely double, with long stems, and good keeping qualities. This old-fashioned flower is a joy in the garden, and extremely satisfactory for house decoration. If you have room for but one annual, plant the Zinnia. No other annual will give so much in return for so little attention.

It loves a hot, dry Summer and grows with almost no care, although better results are obtained with some loving care. It has no insect or funguous enemies.

DAHLIA-FLOWERED—3-4 feet. The flowers often measure 6 to 8 inches in diameter and 4 inches deep. Mixed in the following colors—primrose yellow, creamy yellow, rich crimson lavender, light rose, rich orange yellow, light rose with center deep rose, golden yellow on brown, old rose, orange and gold, pure white, deep purple and flame scarlet.

Pkt. 15c, 4 pkts. for 50c, 9 pkts. for \$1.00

MARIGOLDS

LEMON QUEEN—These are lemon color, but the formation of the flower is exactly like the Orange Queen. Cultural directions on each packet.

Packet 10 cents, 3 for 25 cents

ORANGE QUEEN—Large, perfect, double quilled flowers of a rich deep, golden orange color. Very attractive.

Packet 10 cents, 3 for 25 cents

SINGLE FRENCH—This dainty little flower is of inestimable value for cutting and table decoration. The colors are dark brown with golden edges, and the blooms hold well when cut. You simply cannot find a prettier little flower than this dainty Marigold. Very profuse bloomer.

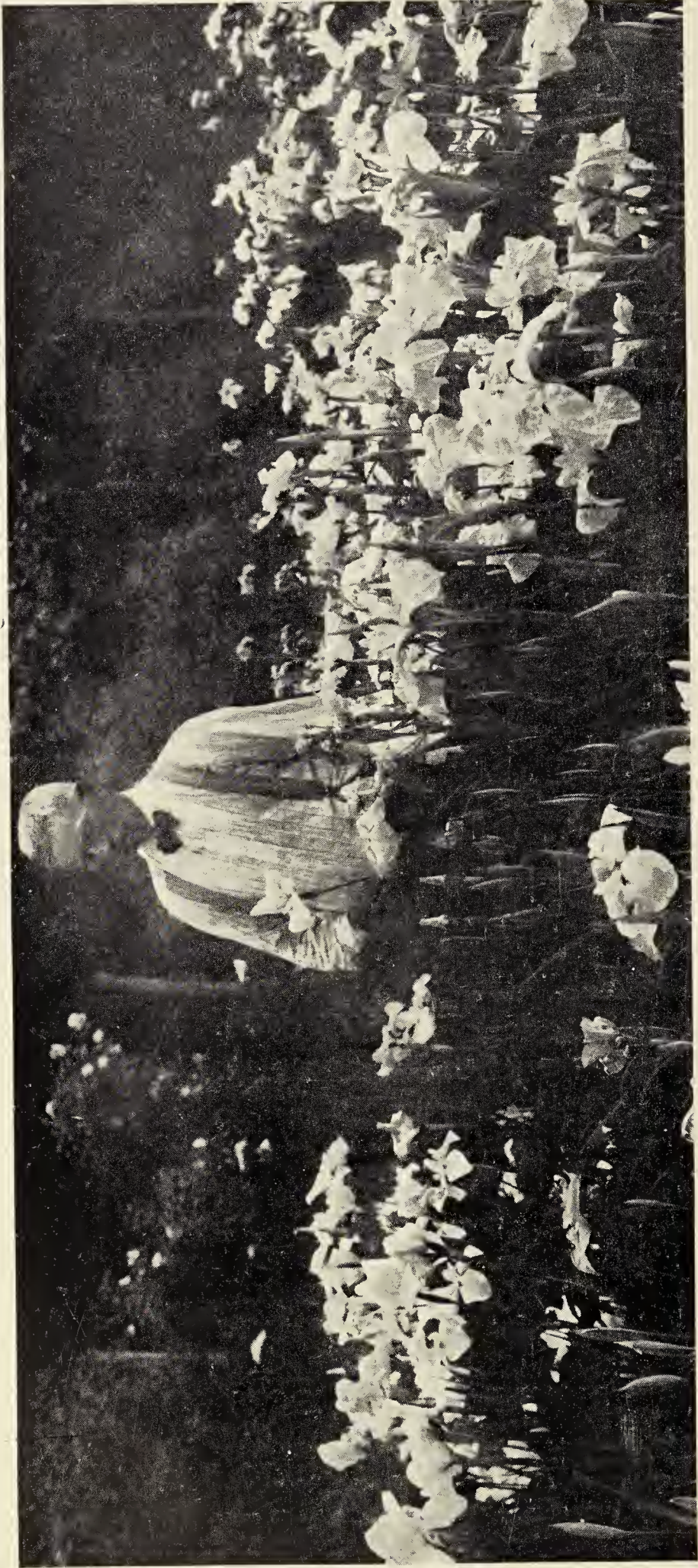
Packet 10 cents, 3 for 25 cents

In late Summer, when many annuals are past their best, the Marigolds afford a wealth of color that is simply invaluable. The large flowered African varieties produce enormous, self colored flowers on tall plants and are indispensable for porch decoration and exhibition. One of the longest keepers of all annuals.

BEAUTIFUL HOLLYHOCKS

These tall stately plants should have a place in every garden. They lend themselves exceptionally well for the back ground of borders, and to screen off unsightly views or fences. They are easy to grow, blooming from July until early September.

EVER BLOOMING—(Mixed). Large packet 15 cents, 2 for 25 cents.



KEMP'S ORCHID FLOWERED JAPANESE IRIS