

Orestes Ciuffo (c. 1880)

Madrigal

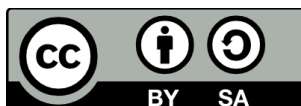
Editoração: Thiago Rocha

piano
(*piano*)

3 p.



9 790696 531049



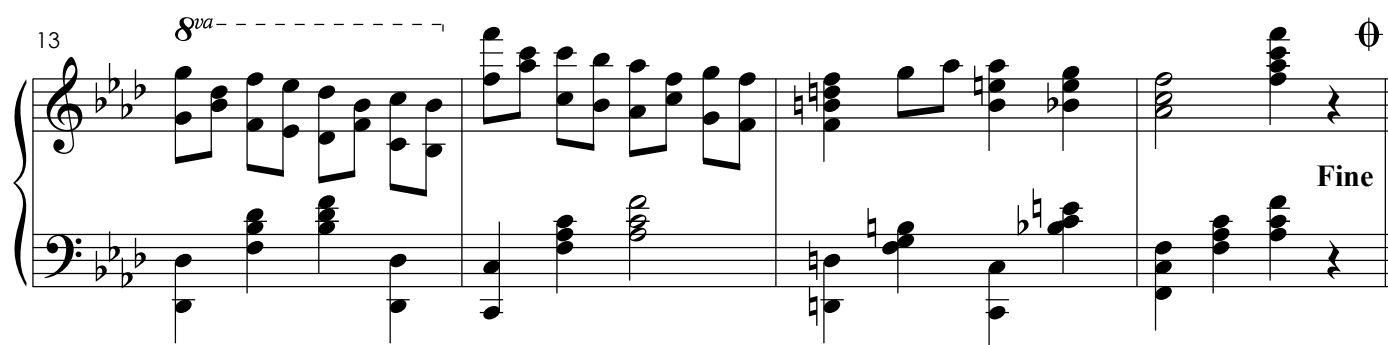
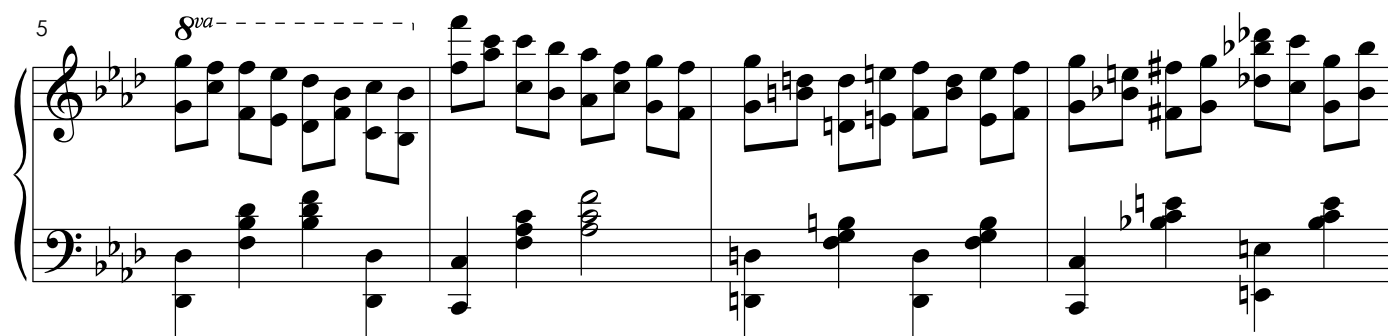
MUSICA BRASILIS

Madrigal

Schottisch

Orestes Ciuffo

Piano



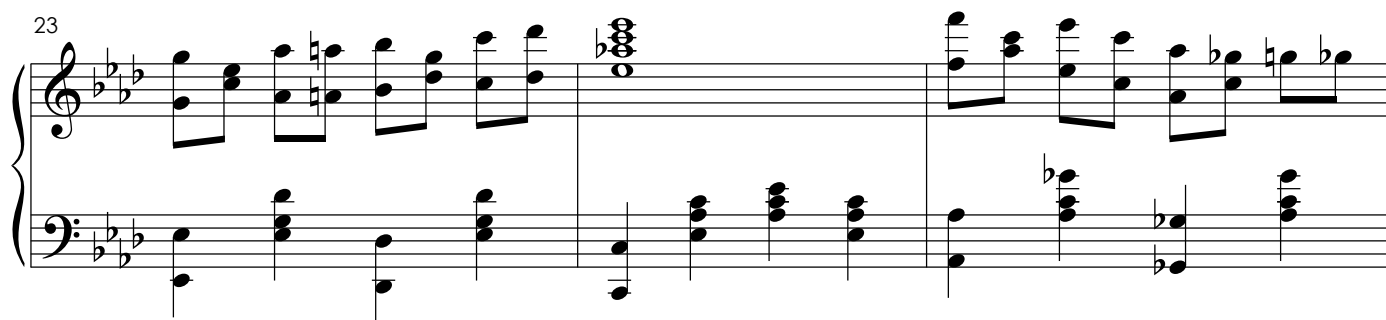
17



20



23



26



29

D.C. al Coda



33 $\text{C}\sharp$

34

35

36

36

39

This block contains measures 39, 40, and 41 of the musical score. Measure 39 features a treble staff with a half note G4, a quarter rest, a half note F#4, and a quarter rest, and a bass staff with a half note G3, a quarter rest, a half note F#3, and a quarter rest. Measure 40 features a treble staff with a half note G4, a quarter rest, a half note F#4, and a quarter rest, and a bass staff with a half note G3, a quarter rest, a half note F#3, and a quarter rest. Measure 41 features a treble staff with a half note G4, a quarter rest, a half note F#4, and a quarter rest, and a bass staff with a half note G3, a quarter rest, a half note F#3, and a quarter rest.

42

45 D.C. al Fine

This musical score segment contains measures 45 through 48. Measure 45 begins with a treble clef and a key signature of one flat (B-flat). The melody in the treble staff starts with a half note G4, followed by a quarter note A4, and then a half note B-flat4. The bass staff provides accompaniment with a half note G3 and a half note B-flat3. Measure 46 continues the melody with a quarter note C5, a quarter note D5, and a half note E5. The bass staff has a half note C4 and a half note E4. Measure 47 features a quarter note F5, a quarter note G5, and a half note A5. The bass staff has a half note F4 and a half note A4. Measure 48 concludes the segment with a quarter note B5, a quarter note A5, and a half note G5. The bass staff has a half note B4 and a half note G4. The piece ends with a double bar line and the instruction 'D.C. al Fine'.