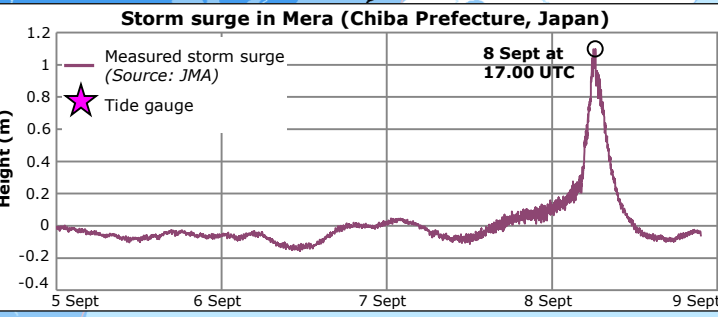


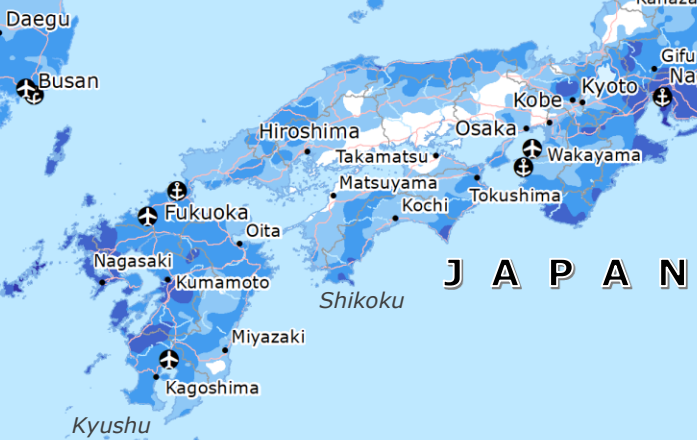
Japan | Tropical Cyclone FAXAI



DEMOCRATIC PEOPLE'S REPUBLIC OF KOREA (DPRK)

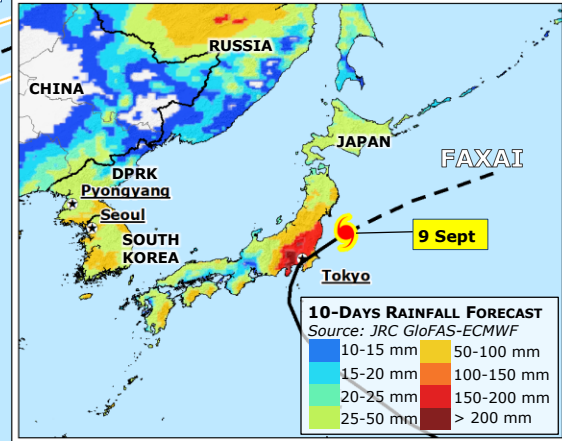
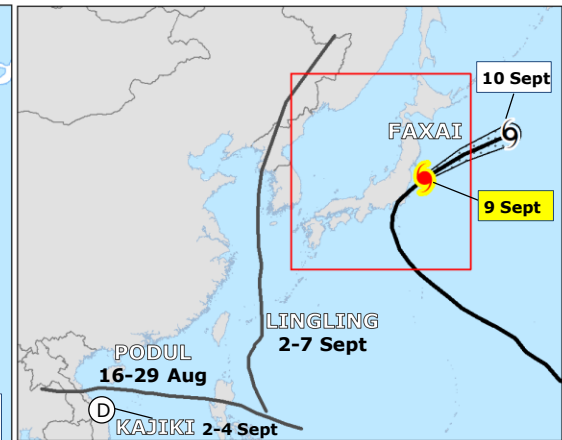
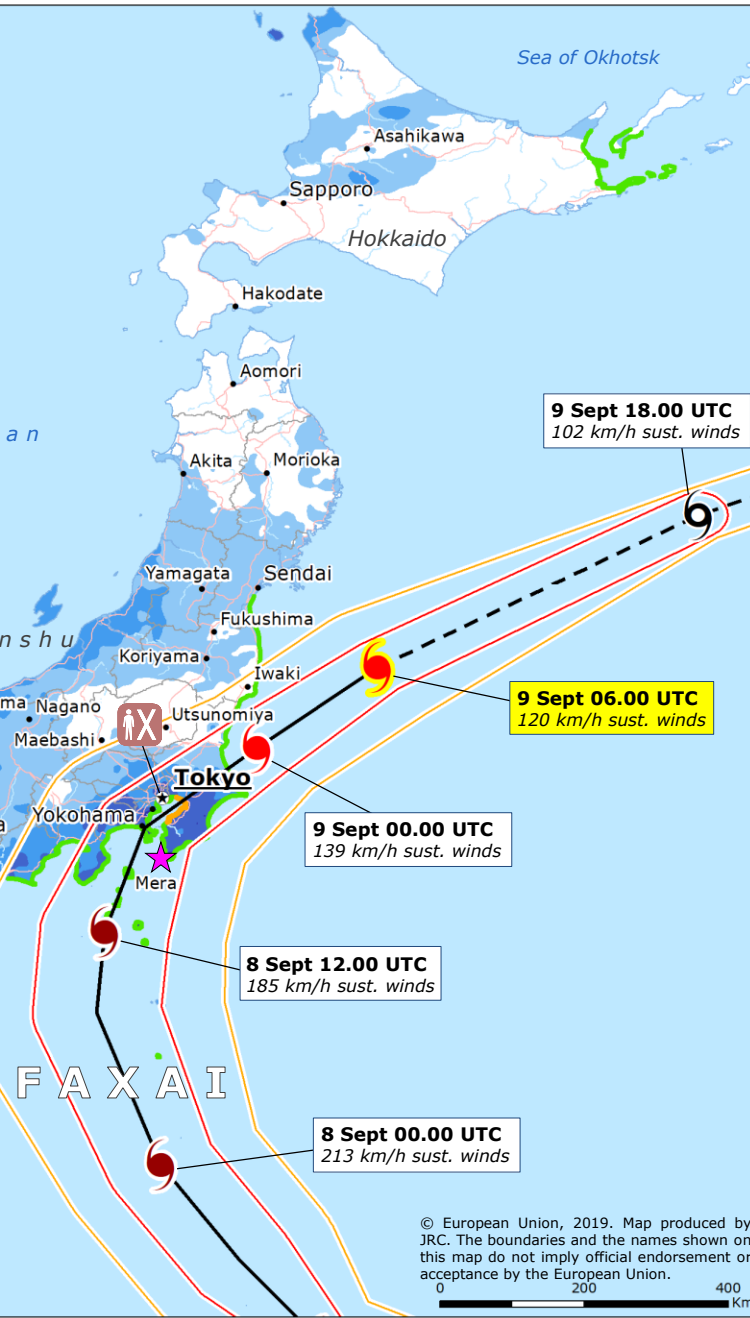
- 1 Fatality
 - 40 Injured people
 - 390,000 People under evacuation advisory
 - 10 Damaged houses
- Source: DG ECHO as of 9 Sept

SOUTH KOREA



Sea of Japan

Philippine Sea



TROPICAL CYCLONE (TC)

Source: GDACS, JTWC

- Current position
- Past track
- Forecast track
- ▨ TC Uncertainty cone

Intensity

- Ⓓ < 63 Km/h (Tropical depression)
- Ⓔ 63-118 Km/h
- Ⓜ 119-177 Km/h
- Ⓝ ≥ 178 Km/h

Wind buffer

- ▭ > 118 Km/h
- ▭ 93-118 Km/h

STORM SURGE

Source: JRC, GDACS

- ▬ 0.1 - 1 m
- ▬ > 1 m

PAST 10-DAYS RAINFALL ACCUMULATION

Source: NASA-GPM

- ▬ 250-500 mm
- ▬ 100-250 mm
- ▬ 50-100 mm
- ▬ 25-50 mm

- Ⓜ Main Port
- Ⓜ Main Airport

© European Union, 2019. Map produced by JRC. The boundaries and the names shown on this map do not imply official endorsement or acceptance by the European Union.

0 200 400 Km