

# N·E·W·S & E·V·E·N·T·S

## Hettie, Ritter Shumway Receive NRS Award

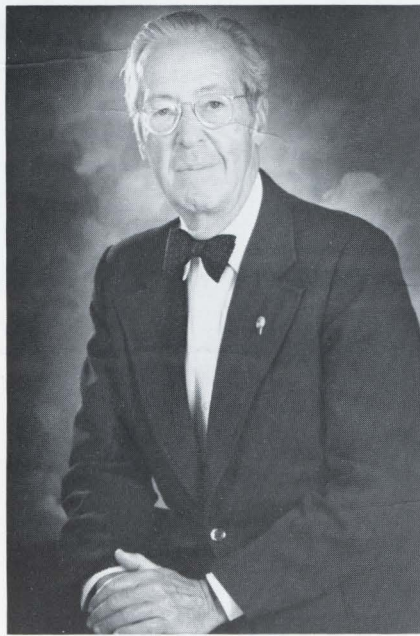
The Nathaniel Rochester Society of RIT will present F. Ritter and Hettie L. Shumway its 1984 Nathaniel Rochester Society Award Friday, April 13.

Given annually to individuals who have contributed to the advancement of RIT in an outstanding and significant manner, the award is the society's highest honor. It will be presented by RIT President M. Richard Rose.

The Shumway name has been a familiar one at RIT for more than 25 years as F. Ritter Shumway and his wife, Hettie, have been keeping alive a family tradition of RIT involvement. Shumway's grandfather, Frank Ritter, was one of the original group of industrialists who established Mechanics Institute, forerunner of RIT, in 1885. Seventy years later Shumway was one of the major donors to the Ritter Clark Memorial Ice Rink and Gymnasium built on Spring Street. On the new campus, the Frank Ritter Memorial Ice Arena was constructed as a separate facility because of Ritter Shumway's generosity.

Hettie and Ritter Shumway each have had a hand in shaping the Institute as we know it today.

It was Hettie Shumway's vision that brought NTID to RIT. Long active in the Rochester community, including the Rochester School for the Deaf, Hettie Shumway learned of plans for a national technical school for the deaf. Believing that RIT was ideal for the planned school, she encour-



aged Institute officials to propose RIT as the site. After a highly competitive selection process, RIT was chosen to host the new school. In 1969 NTID became a reality. Today there is a building at NTID — the Hettie L. Shumway Dining Commons — honoring the energetic woman who first envisioned RIT as home to NTID.

Both Shumways are members of the RIT Board of Trustees. Shumway, elected in

1953, became an honorary trustee in 1976. Presently serving on the Executive Committee and the Awards, Honors and Memorials Committee, he also has served on the Development, Building and Grounds, and New Campus committees.

Mrs. Shumway served on the RIT Board of Trustees from 1959 to 1965 as president of the RIT Women's Council. Elected to the board in her own right in 1966, she has

been an honorary trustee since 1974. As a member of the Steering Committee during planning for the new campus, Mrs. Shumway co-chaired the Student Life Committee, which had responsibility for all aspects of student life on the campus, including housing, fraternities, the College-Alumni Union, recreation and health facilities. She also served on the Education Committee and is currently on the Student Life and Nominating committees of the board. She is a member of the National Advisory Group, NTID.

For many years Mr. and Mrs. Shumway's generous contributions have supported Institute needs. They were major contributors to the New Campus Fund, the 150th Anniversary Campaign and the Interfaith Center. Ritter Shumway is founder and major supporter of the nationally known Genesee Figure Skating Club, which has attracted international skating stars and brought RIT nationwide publicity.

Hettie and Ritter Shumway, charter members of the Nathaniel Rochester Society, have played important roles in making RIT the vital university it is today.

The award was created by Leonard Urso, assistant professor in RIT's School for American Craftsmen. Urso is a distinguished modelmaker and designer specializing in hollowware. The award is permanently endowed through the generosity of Mr. and Mrs. Marcus N. Barbour, charter members of the Nathaniel Rochester Society.

## Task Force Updates Institute's Statement, Outlines Self Study

Since it began five months ago to prepare for the Middle States Association Accreditation visit to RIT in 1986, the RIT Accreditation Task Force has reviewed and updated the 1974 version of the Institute's Philosophy, Mission and Goals Statement.

The statement is being reviewed by the Student Directorate, Faculty Council, Deans Council, Administrative Committee and the Education Committee of the Board of Trustees. After these groups have commented on the draft, the statement will be submitted to the Policy Council for action in May or September 1984.

The Accreditation Task Force also has developed a Plan of Work, outlining the institutional phase of the self-study including sections on finances, student life, etc. This plan will be circulated within the RIT community for comments by May.

Divisional teams will be appointed by fall 1984 to study finances, student life and other areas. Each college is continuing to prepare its Collegiate Self-Study, which is due the end of August. The collegiate and divisional studies will ensure that RIT has completed a review of every phase of its collegiate life. And in the process, RIT will have had the participation of its students, trustees, administrators, faculty and staff.

Members of the Accreditation Task Force are: Dr. Paul Bernstein, chairperson, dean of Graduate Studies; G.E.D. Brady, associate vice president, Institutional Advancement; Hugh Cumming, RIT Board of Trustees; Alinda Drury, assistant professor, Reading Lab Specialist, NTID; Cynthia McGill, director, Office of Minority Affairs; James Myers, chairman, Student Directorate; Joseph Noga, associate professor and coordinator, graduate program, School of Printing, College of Graphic Arts and Photography; V.V. Raman, professor, physics,

College of Science; Lynda Rummel, chairperson Management Development Program and assistant professor, College of Continuing Education; Robert Snyder, professor, mechanical engineering, College of Engineering.

## Benefits Extended For Vietnam Vets

Vietnam-era veterans enrolled at RIT will become eligible for new tuition benefits as a result of a provision in the 1984-85 state budget passed by the legislature last week.

Governor Cuomo's original budget had requested state funding only for Vietnam veterans enrolled at the public universities in New York state. RIT's Office of Veterans Affairs participated actively in a statewide effort to insure that veterans enrolled at independent colleges and universities receive similar benefits.

## Fraternity Pole Sits For Cancer Funds

Theta Xi fraternity will sponsor a "pole sit" again this year. Fund-raising activities for the United Cancer Council of United Way will take place April 21-28.

Steve Yelland, Theta Xi member who chairs the project, said a wine and cheese party at 7 p.m., Saturday, April 21, will precede the beginning of the week-long relay of pole sitting.



**SHARING RESEARCH...THOUGHTS...** Dr. Albert C. Snell, retired ophthalmologist and Professor of Ophthalmology Emeritus at the University of Rochester, told fellow members of the RIT Institute of Fellows he would like to see a special court established to rule on the use of high cost health measures in cases of "limited benefit" in an effort to curtail the rising costs of medical care. Dr. Snell spoke last Thursday at the second symposium of the Institute of Fellows, a group of retired Rochesterians who develop projects of benefit to RIT or the community at large. Dr. Snell, standing at left, is pictured with members of a responding panel, Frank Holley, lecturer, College of Business, front left; David W. Stewart, chairman and chief executive officer of Blue Cross/Blue Shield; and beside Dr. Snell, Dr. Brian P. Barry, associate professor, Social Science Department. At far right is Dr. Frederic Gardner, associate dean, College of Continuing Education, and campus counselor for the RIT Institute of Fellows.

## RIT Offers Degree in Applied Statistics

RIT is responding to a nationwide shortage of statisticians by offering one of the country's few baccalaureate degree programs in applied statistics. The program recently was approved by the New York State Board of Regents and will start in the fall of 1984, according to Dr. John Paliouras, dean of the College of Science.

"Our program was developed because of industry's need for statisticians," explained Dr. George Georgantas, head of RIT's Department of Mathematics. "The National Science Foundation has projected a shortage of 11,000 statisticians into the 1990s. This has been precipitated by the recognition by business, industry and government that a large number of problems can be effectively analyzed and solved through the intelligent use of statistical methodology."

Industry response to RIT's program is positive. Results of a survey indicate that the program will be valuable for training statistical personnel; and both cooperative education and permanent employment prospects for students will be good. Georgantas adds, "The Department of Mathematics continues to have a 100 percent placement rate for our graduates and for cooperative education jobs."

Among the many industries surveyed were the U.S. Department of Commerce, the U.S. Census Bureau, B.F. Goodrich, the Central Intelligence Agency, Cincinnati Bell, New York Telephone, Corning Glass, the U.S. Department of Navy, Educational Testing Service and Eastman Kodak.

According to Georgantas, an applied statistician determines what data is pertinent to solving a problem, how much data to collect, how to collect the data, and how to analyze and draw conclusions from data.

"Our applied statistics program focuses heavily on the technical training of statisticians," says Professor Pat Saeva, who headed

Continued on Page 4

## FOCUS

## Personnel Office Reorganization Provides 'Generalists, Specialists'

To improve its responsiveness to the needs of individual employees as well as those of RIT's colleges and departments, the Personnel Office has been reorganized.

"The reorganization is based on the concept of 'generalists' providing breadth and 'specialists' providing depth of subject matter expertise," said Jeanne Healy, director.

The generalists are called employee relations administrators (ERAs) and respond to issues relating to professional staff recruitment, affirmative action strategy, individual benefits questions, preliminary job evaluations and employee relations issues. Each ERA has been assigned to serve one-third of the Institute.

Supporting the ERA will be specialists. They deal with benefits, compensation, non-exempt (general and hourly) employment and training and development. The secretary to Dale Andrewson, associate director for operations, will handle workers compensation and long and short term disability.

Student Employment, Staff Training and Development, the records and personnel data areas have not been changed.

Charles Hayes is the specialist on benefits and M. Patricia Spinelli, on compensation.

Donna Blanchard is employment specialist who handles non-exempt (general and hourly) employee recruitment and Job Mart.

The ERAs: Katherine Carcaci serves the colleges of Graphic Arts and Photography, Fine and Applied Arts, Liberal Arts, Continuing Education, divisions of Finance and Administration (except for Business Services), Development and Institutional Advancement.

Denise Hess serves the President's Office, NTID, and Business Services, which includes Campus Safety, Purchasing, Special Events, Ice Arena and Food Service.



Personnel staff members include, first row from the left, Terri Quinn, Denise Hess, Leslie Berkowitz, Gloria Jones, Katherine Carcaci, Donna Blanchard, Veronica Hendrie, Jeanne Healy, director; Wendy Benjamin, Pat Lawrence; second row from the left, Geri Curwin, Judy Dodge, Marcia Slutzky, Ida Hardy, Patty Spinelli, Cathy Dittmar, Dale Andrewson, associate director, operations; Beverly Gibson and James Papero, associate director, human resources. Not shown are Charles Hayes, Paula Foster, Carole LaCentra and Sue Wilshaw.

Ida Hardy serves the colleges of Science, Applied Science and Technology, Business, Engineering and the divisions of Academic and Student Affairs.

Except for specialized matters, individual employees needing information should first call the ERA assigned to their area.

Healy plans to survey a cross-section of Institute division, college and department heads in about six months to determine

whether or not the reorganization is successful and to find out how Personnel may improve its service.

### Applications Available For Fall Graduates

Applications are now available for students completing requirements for certificates, diplomas, associates, bachelor's and master's degrees in the fall term of 1984-85.

Students can obtain these applications from their departments. Those students who anticipate graduating in the fall term should submit applications to their college by April 30 1984.

### Unity House Dances Shange Choreopoems

Unity House, a special interest house for black students at the RIT campus, is presenting Ntozake Shange's choreopoems, *For Colored Girls Who Have Considered Suicide When the Rainbow is Unfurled* at 8 p.m. Friday, April 20, in Ingle Auditorium of the College-Alumni Union.

Loren Mercer, resident advisor for Unity House, suggested the production "because the poems make significant statements about being black and being a woman. By presenting it, Unity House wishes to make statements to the black population and to everyone."

Director is Arthur Brown and assistant director, Jacqueline Pelzer. The cast includes Mercer, Ingrid Davis, Stephanie Zinnerman, Carla Grice, Dana Waldon, Kim Sellers and Jeanette Brooks. Support for the production has come from Complementary Education and Dr. William Castle.

The production is free and open to the public.



Learning How...RIT's College of Fine and Applied Arts hosted a one-day workshop at the end of March for selected New York state art teachers to tell them about computer applications in art, design and crafts. Matt Deutscher, seated left, receives first-hand instructions from graduate student Rebecca Rupp. Watching are, from left, Rolf Korstvedt of Tappan Zee High School, Stanley Tucci of Horace Greeley High School, Jack DiMaggio of Lockport Senior High School and Brenda Mossburg, RIT Admissions.

### Energy Study Students Win Scholarships

Barry Reardon and William, (BJ) Howenstein, students in the Energy Engineering Technology program in RIT's College of Applied Science & Technology, have been awarded scholarships by the Rochester chapter of the American Society of Heating, Refrigeration, and Air-Conditioning Engineers.

Presenting the honors at a special awards dinner held to recognize the two outstanding RIT scholars, was Robert Ormsby,

ASHRAE educational chairman and an alumni of the RIT Energy Engineering Technology program in the School of Engineering Technology.

Charles DeRoller, chairman of the Mechanical Engineering Technology Department in SET, congratulated Reardon and Howenstein and thanked the local members of ASHRAE for their continuing support of higher education.

### Arts Festival Celebrates 150th

Kate Gleason, Capt. Henry Lomb and Frank Gannett, portrayed by RIT staff and faculty, will be a part of RIT's Spring Arts Festival tomorrow and Saturday, April 13 and 14.

The weekend is an Institute celebration of the City of Rochester's 150th birthday.

Gleason, Lomb and Gannett, closely connected with the growth of the Institute as well as that of the city, will lead a parade of costumed RIT students, staff and faculty at 11:45 a.m., Friday, and then speak at a rally at noon in the Fireside Lounge, College-Alumni Union. Prizes will be awarded for the best costume.

Marcia Slutzky, RIT Personnel office, will represent Gleason, former treasurer of the Gleason Works for whom an RIT residence hall is named. Dr. Richard Rinehart, director of RIT's Center for Community/Junior College Relations, will be Lomb, a founder of Bausch & Lomb and an RIT benefactor. William Shoemaker, professor in the School of Photographic Arts and Sciences, will be Gannett, who helped establish RIT's School of Printing, College of Graphic Arts and Photography.

The three will speak individually at rallies Saturday at noon, 1:30 p.m. and 3 p.m. in the Fireside Lounge.

City of Rochester nitrate negative photographs, taken between 1920 and 1939, will be displayed in the College-Alumni Union atrium.

Many events are scheduled throughout the weekend. A craft sale will take place from 10 a.m. to 6 p.m., Friday, and from noon to 6 p.m., Saturday. Visitors may view exhibits in the Bevier Gallery, the NTID Gallery, and the galleries of the College of Graphic Arts and Photography.

Music will be featured Friday afternoon and evening.

RIT's Thursday Afternoon consort will sing Renaissance and Baroque "ayres" from 1 to 2 p.m., College-Alumni Union mezzanine, and from 3 to 4 p.m. the group will sing Renaissance madrigals.

From 2 to 3 p.m., RIT's Gospel Ensemble will perform in the Fireside Lounge, College-Alumni Union.

A jazz performance by the Jim Hynes Quartet is set for 4:30 to 6:30 p.m. in the Ritskeller, College-Alumni Union. Trumpeter Hynes, director of RIT's Jazz Ensemble, has played for Paul Anka, Tony Bennett, Mel Torme and Melissa Manchester.

NTID Theatre will present the musical production, "Oklahoma," from 8 p.m. to 10 p.m. Friday and Saturday evenings. Tickets are \$2, available at NTID or call 475-6254, V/TTY, weekdays.

The Talisman film at 8 and 10 p.m. will be "Around the World in 80 Days."

The Burns Sisters will present contemporary rock music in "Magical Moments," from 9:30 p.m. to 1:30 a.m. in the College-Alumni Union cafeteria. Tickets are \$4 per person, \$7 per couple, available at the College-Alumni Union candy counter.

In addition to the craft sale and the rallies, Saturday's program offers two poetry presentations, concerts by the RIT Philharmonia and the RIT Singers and the RIT Jazz Ensemble, a multimedia presentation on the creative arts at RIT and an international evening featuring foods of other countries and ethnic dances.

Choral and orchestral music from Bach to Britten will be performed by the RIT Philharmonia and the RIT Singers at 2 p.m. in Ingle Auditorium. RIT's Jazz Ensemble will play the music of Duke Ellington and Count Basie from 5 to 6 p.m. in Grace Watson Dining Hall.

"Signs of Peace," a sign/voice presentation of poetry selections from "Voices of Peace Anthology," will take place from 1 to 2 p.m. in room A205, College of Liberal Arts.

Poet Hayden Carruth will read his work from 3 to 4 p.m. in room A205, College of Liberal Arts and RIT's creative arts will be the subject of a multimedia show to be screened at 6:45 p.m. in Ingle Auditorium.

RIT International Students Association is sponsoring an international food buffet at 7 p.m., dancing by three dance groups from 9 to 10:30 p.m., and a semi-formal dance from 10:30 p.m. to 2 a.m. in the College-Alumni Union cafeteria. Dinner tickets are \$13; there is a limit of 175 student tickets at \$6.50.

# A First...Computer Animates Reedy Logo



Taking time out from their work animating the logo for the William A. Reedy television series on photographic communication are David Cronister and Steve Wunrow, Instructional Media services, Michael Kaplan, Michael Soluri, Joseph Biegel and Eric Timmerman of the School of Photographic Arts and Sciences.

When someone suggested animating the logo for the William A. Reedy Lecture Series in Photography, it sounded simple enough.

Animating the logo resulted in an effective visual attention grabber, but the project took three faculty members, two directors from Instructional Media Services and four students hundreds of hours. It took one and a half days just to key in the computer program and six hours to print out the 240 frames of the 10-second sequential action.

Michael Soluri, assistant professor in the College of Graphic Arts and Photography and producer and creator of the evolving William A. Reedy Television Series in Photographic Communication, needed graphics for the introduction to the series sponsored by the Eastman Kodak Company and RIT's School of Photographic Arts and Sciences.

He took a copy of the Reedy logo, an Indian thunder bird in a circle, to Erik Timmerman, assistant professor of film and

video, and asked him if animating the logo would be effective. Timmerman transferred the logo to graph paper and plotted points that described the bird to the computer as a series of three-dimensional boxes. Initially, plans called for the symbol to appear as a solid object, but after experimenting with different movements, the line form was chosen for the action segments.

"We're excited about the project because it is the first finished in our new computer animation program," Timmerman said.

Joseph Biegel, faculty member in imaging and photographic science, interfaced Timmerman's 16mm Bolex movie camera and graphic display system to the digital image processing lab's Dunn graphics camera. "We couldn't have done it without Joe Biegel," said Timmerman. "His computer and photographic expertise was invaluable and Joe and his staff gave freely of their time to make the project work."

Several times the group shot film from 10 p.m. until 2 a.m. so it could be processed at Kodak the next morning and viewed at RIT in the afternoon. Software, hardware and color processing problems also had to be solved.

Students Michael Kaplan, fourth-year film and video, Bob McMillan, third-year film and video, Michal Meade, fourth-year photo illustration and Jane Potenzo, third-year film and video, monitored the filming of the animation. It was shot six times. "We drew a frame on the computer and then photographed each frame," said Kaplan.

The completed animation was then given to IMS where David Cronister, television director, and Steven Wunrow, assistant television director who enhanced the tape with color, added graphic type and music. Jeff Arnold, son of Charles Arnold, professor of applied photography, composed, performed and recorded the music specifically for the project.

According to Soluri, "This logo is the first cinematic identity for an ongoing television series with widespread appeal. The logo animation gives visual identity to the programming and to the Institute."



"THE RED ROSE," a 1971 mixed media work by California artist Morris Broderon, is one of the paintings in Broderon's show at the NTID Gallery at RIT, through Friday, April 27. Gallery hours are 8:30 a.m.-4:30 p.m. Monday through Friday. The artist will appear at a reception open to the public on Monday, April 23 from 4:30 to 6:30 p.m.

## Bids Asked on Eisenhower College Recreational Sail and Row Boats

Thirteen boats, including sailboats and rowboats, will be auctioned off by the RIT Purchasing Department to members of the Institute community. The boats are housed at Eisenhower campus and were formerly used as part of the Eisenhower recreational program.

According to William Batcheller, assistant director of Business Services, the boats will be auctioned to the highest bidder through a sealed bid process. "The boats will be available for inspection in the Eisenhower athletic center 1 to 4 p.m. Saturday and Sunday, May 5 and 6. Members of the Institute community may gain access by presenting their RIT identification card," explained Batcheller.

Sealed bids must be submitted to Purchasing by 3:30 p.m. Friday, May 9, and bids will be opened and read at 5 p.m. May 9 in the Alumni Room, RIT College-Alumni Union.

A complete list of boats and minimum bids for each will be published in next week's *News & Events*.

A list of instructions and a bid form may be picked up from Purchasing or mailed to you by calling, 2690.

## Dr. Clark Joins Research Corp

College of Continuing Education's Dean Robert A. Clark has assumed a new position as director of basic sciences with the RIT Research Corporation effective May 1.

"The time is right for the college and my professional life to seek new ways of contributing to RIT's growth and development," Clark said.

Vice President of Academic Affairs Thomas R. Plough said as previously planned a meeting will be held in late April with the College of Continuing Education faculty and staff to discuss mission and future leadership.

An Institute committee has been convened by Dr. Plough to review the mission and planning statements of the college. The committee consists of Dr. Paul Miller, Liberal Arts, Douglas Ford, Academic Affairs, Peter Pere, dean, NTID, Dr. Andrea Wolter, CCE, Dr. John Hromi, CCE, Gladys Abraham, Learning Development Center, Dr. Charles Haines, Engineering, Dr. Larry Belle, Faculty & Program Development, Dr. Richard Harris, CCE, and Dr. Philip Tyler, Business.



Under sunny skies Monday, 50 RIT runners (faculty, staff and students) participated in "Run Day for the United Way." Two races were held, a three-mile run and a one-mile fun run, with net proceeds contributed to the RIT United Way campaign underway this week. At starting line in the Frank E. Gannett Memorial Building courtyard are, left to right, Joseph Spencer (#55), production coordinator, Grace Watson Dining Hall, who finished second in the three-mile run with a time of 16 minutes and 48 seconds; Ray Geary (#57) behind runner #18), United Way's loaned executive to RIT, the winner of the one-mile fun run with a time of nine minutes and eight seconds; and student Tom Jackson (#58) winner of the three-mile run with a time of 16 minutes and 42 seconds. Not pictured is David Drum, mail services, who finished second in the fun run with a time of 10 minutes and 48 seconds.

## Off and Running...Two Runs Give United Fund Campaign Fast Start

This is the week of RIT's 1984 United Way campaign. The goal this year is \$65,675, a 10 percent increase from 1983's successful campaign. Last year 263 RIT employees benefited directly from United Way money, an increase from the previous year. The dollar value of the services received by RIT employees was almost \$10,000.

Key aspects to a successful campaign are the work and dedication of captains and solicitors.

"I look forward to working for the United Way campaign. I get a good feeling being able to help out such a worthwhile cause," says Mary-Jean Reinhart, Communications, and a key captain for three years. "The biggest part of my job is trying to encourage my co-workers to give whatever they can. I tell them about all the good United Way does for the community, both RIT's and Rochester's."

Paula Tormey, Development, also has been a key captain for three years. "I enjoy being a key captain. I'm supportive of what United Way does and stands for—helping each other—which is what the world is all about and what I believe in. The United Way's message needs to get out and I'm glad I'm able to help."

The RIT United Way campaign also receives excellent support from students. Five student organizations are sponsoring a movie to help raise money for United Way.

"Around the World in 80 Days" will be shown at 8 p.m. Friday, April 13, in Ingle Auditorium. Tickets are \$1.50 and can be purchased in the College-Alumni Union.

The organizations involved are Residence Halls Association, Student Directorate, Greek Council, Off Campus Student Association and the College Activities Board. Last year \$500 was raised by RIT students through the showing of a movie.

## Holy Week Services

Services for Holy Week, April 15, through Easter Sunday, April 22, are announced by the RIT Catholic Campus Parish.

Palm Sunday services are scheduled for 4:30 p.m., Saturday, in Kate Gleason Lounge and for 10:30 a.m. Sunday when palms will be blessed in Fireside Lounge and Mass will take place in Ingle Auditorium. Palms will be distributed at both services.

Penance services are scheduled Monday at 12:10 p.m. and at 7:30 p.m. in the 1829 Room.

Mass will be celebrated at 12:10 p.m., Tuesday in Room M-1, College-Alumni Union mezzanine. A communion service only will take place at 12:10 p.m., Wednesday in the 1829 Room.

Holy Thursday services will consist of Mass at 7:30 p.m. in the 1829 Room. On Good Friday, the celebration of the Lord's Passion will begin at 12:10 p.m. in Ingle Auditorium.

Mass of the Easter Vigil will begin at 7:30 p.m. in the Fireside Lounge and continue in Ingle Auditorium. Easter Sunday Mass is at 10:30 a.m. in Ingle Auditorium.

## Gifts to RIT

Development gifts

The following gifts, at or above \$1,000 in value, were received by RIT during the week of March 29th-April 4th.

Scholarship	\$3,500 1,000
Gift-in-Kind (equipment)	11,398

PERSONNEL UPDATE

Over the past year several RIT family members required extensive medical treatment, thus encountering major expenses. RIT Health Insurance covered the major expenses; yet there were a few unexpected surprises.

The Annual Health Insurance Open Enrollment period provides employees with an opportunity to thoroughly review and to become more familiar with their insurance coverage. Even if you are not interested in changing insurance carriers you can maximize your protection by becoming more familiar with your coverage, potentially avoiding some unforeseen future costs. Did you know, for example, that most anesthesiologists' bills are not paid in full under Blue Cross/ Shield? This happens because most anesthesiologists do not participate in the Blue Shield system.

To assist employees in reviewing their coverage the Personnel office will host three informational sessions: April 18, 9 to 11 a.m., College-Alumni Union, Room 1829; April 18, 12 to 2 p.m., City Center, Room 3130; and April 19, 11 to 1 p.m., College-Alumni Union, Room 1829.

Each session will provide a brief summary of individual health insurance plans plus an opportunity for questions and answers.

Listed below is a comparison chart of the more frequently utilized health insurance options. Detailed brochures will be mailed to all full-time and extended part-time employees. Additional brochures are available from the Personnel Office.

If you have any questions please do not hesitate to call the Personnel office, 2424.

RIT HEALTH INSURANCE OPTIONS

QUESTION	RHN	GROUP HEALTH	PREFERRED CARE	BLUE CROSS/ BLUE SHIELD
coverage for dependents	legal dependents to 19 years or 23 if full-time student	legal dependents to 19 years or 23 if full-time student	legal dependents to 19 or 23 if full-time student	legal dependents to 19 years
acute hospital coverage	total coverage for an unlimited time	total coverage for an unlimited time	total coverage for an unlimited time	to 120 days at 100%, then the deductible applies; of the next \$600 you pay 20% then blues pay 100% thru yr.
extended care facility	unlimited	240 days	unlimited	2 days for every unused day of the 120 acute hospital days
routine eye examination	provided on referral at no charge	directly provided at fee of \$3	provided on referral; reimbursed at 80% after deductible	no coverage
emergency care	provided upon referral with a \$25 co-pay	provided upon referral	provided upon referral with a \$25 co-pay	yes
number of physicians and health centers	400 physicians 7 health centers	50 physicians 2 health centers	500 physicians no sites	traditional health insurance
type of plan	private physician or health center HMO	health center HMO	private physician HMO	traditional health insurance
routine doctor visit eg; colds	\$3 per visit	\$3 per visit for all services rendered per day.	\$3 per visit	coverage under major medical after deductible reimbursement at 80%
routine maternity and delivery 1 Mother's Doctor 2 Baby's Doctor 3 Mother's Hospital 4 Baby's Hospital	1 yes 3 yes 2 yes 4 yes total approximate out of pocket cost \$50	1 yes 3 yes 2 yes 4 yes total approximate out of pocket cost \$50	1 yes 3 yes 2 yes 4 \$75 total approximate out of pocket cost \$125	1 yes 3 yes 2 no 4 no total approximate out of pocket cost \$400
referral doctor visit eg: orthopedics cardiologist	services at no charge	\$3 per visit for all services rendered per day.	\$3 per visit	covered under major medical; after deductible, 80% reimbursement
mental health in-hospital care	75 days	45 days	30 days	120 days
mental health out of hospital care per person per year	20 visit limit visit 1-5 no charge, visit 6-20 @ 50%	20 visit limit in house @ \$3 outside @ 50% within the 20 visit limit	20 visit limit 1st visit \$3 2-20 visits @ 50%	after \$100 deductible 50% up to \$1,000
major medical eg: prescriptions	after deductible @ 80%	after deductible @ 80%	no major medical, basic contract covers most major medical areas, eg: prescriptions	after deductible @ 80%
major medical deductible	\$50 per person \$100 family maximum deductible	\$100 per person \$250 family maximum deductible	\$50 per person \$150 family maximum deductible	\$100 per person \$250 family maximum deductible
pathology, lab work physiotherapy, x-rays	upon referral paid in full	\$3 per visit for all services rendered per day	\$3 per visit lab work @ no charge	when rendered and billed by out patient or emergency room hospital unit, 100% paid
appliances eg: hearing aids	no coverage	no coverage	no coverage	after major medical deductible, 80% up to \$200 per appliance
monthly premium costs for full-time employees				
Single	\$ 2.54	\$ 2.22	-0-	-0-
Family	51.67	48.68	42.84	40.94
Sponsor	---	---	30.29	---

Statistics Degree

Continued from Page 1

the program's proposal committee. "In terms of minimum degree requirements, our program is stronger than most schools. We require more mathematics, statistics and computer science courses than others. The program also is unique in that students are encouraged to participate in RIT's nationally known and respected cooperative education program. In co-op, students are able to apply their classroom knowledge to real-world situations, join industry experience or earn money to help finance their education."

Graduates of RIT's BS degree program in applied statistics will be qualified to work in scientific and technical areas with mathematical, statistical, and computer analysis of problems, or pursue graduate study in statistics.



IN THE MOVIES...Vito Russo, New York City author and film critic, right, and Thomas Ciesielka, Talisman director, are shown before Russo's presentation April 5 in Ingle Auditorium. Russo, author of "The Celluloid Closet: Homosexuality in the Movies," showed film clips illustrating how in the earliest silent movies to those of the 30s, gays were "sissies" or comic characters; how they were ignored in the 40s and 50s; and in the 60s and 70s came to tragic ends. Russo feels movies should depict homosexuals as persons with varying personalities who comprise a part of the population, dropping stereotypical characterizations. Russo is a freelance writer whose work has appeared in *New York* magazine, *Rolling Stone*, *Village Voice*, and *After Dark*.

N·E·W·S & E·V·E·N·T·S

Non-Profit Org.  
U.S. Postage  
**PAID**  
Permit 626  
Rochester, N.Y.

R. I. T.  
COLLECTION

M TAYLOR  
Institute Publications

GLADYS  
LIBRARY

**Rochester Institute of Technology**

One Lomb Memorial Drive  
Post Office Box 9887  
Rochester, NY 14623