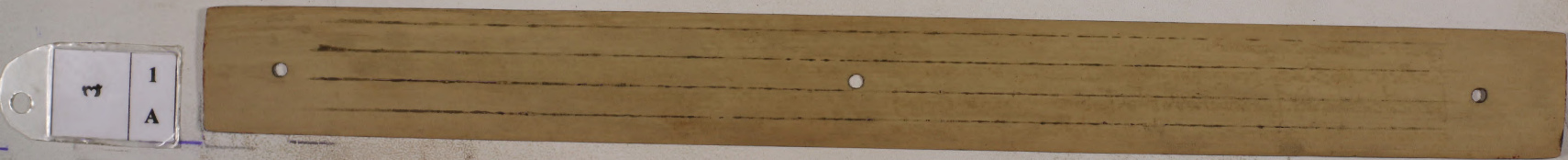


AWIG AWIG DESA KSIMPAR

*Pusat Dokumentasi
Dinas Kebudayaan Provinsi Bali*



Awig-awig desa Ksimpar.
Pnj. 35 cm. Lb. 3,5 cm.
jml 63 lb.



7

I

A

AWIG AWIG DESA KSIMPAR

Pusat Dokumentasi

Dinas Kebudayaan Provinsi Bali

1
B

1. *[Handwritten Balinese text]*

[Handwritten Balinese text]

2
A

[Handwritten Balinese text]

[Handwritten Balinese text]

AWIG AWIG DESA KSIMPAR

*Pusat Dokumentasi
Dinas Kebudayaan Provinsi Bali*

9	5
	B

Handwritten text in Balinese script on a palm leaf, consisting of two columns of text.

9	6
	A

Handwritten text in Balinese script on a palm leaf, consisting of two columns of text.

AWIG AWIG DESA KSIMPAR

*Pusat Dokumentasi
Dinas Kebudayaan Provinsi Bali*

6
B

Handwritten text in Balinese script on a palm leaf, consisting of two columns of text.

7
A

Handwritten text in Balinese script on a palm leaf, consisting of two columns of text.

AWIG AWIG DESA KSIMPAR

Pusat Dokumentasi

Dinas Kebudayaan Provinsi Bali

7
B

Handwritten text on a palm leaf strip, likely containing regulations or community rules. The text is written in Balinese script and is split across two columns.

8
A

Handwritten text on a palm leaf strip, continuing the regulations or community rules. The text is written in Balinese script and is split across two columns.

AWIG AWIG DESA KSIMPAR

Pusat Dokumentasi

Dinas Kebudayaan Provinsi Bali

8
B

Handwritten text in Balinese script on a palm leaf, consisting of two columns of text.

9
A

Handwritten text in Balinese script on a palm leaf, consisting of two columns of text.

AWIG AWIG DESA KSIMPAR

Pusat Dokumentasi
Dinas Kebudayaan Provinsi Bali

ω	9
	B

Handwritten text in Balinese script on a palm leaf manuscript strip, divided into two columns by a central hole.

ω	10
	A

Handwritten text in Balinese script on a palm leaf manuscript strip, divided into two columns by a central hole.

AWIG AWIG DESA KSIMPAR

*Pusat Dokumentasi
Dinas Kebudayaan Provinsi Bali*

10
B

Handwritten text in Balinese script on a palm leaf, consisting of two columns of text.

11
A

Handwritten text in Balinese script on a palm leaf, consisting of two columns of text.

AWIG AWIG DESA KSIMPAR

Pusat Dokumentasi
Dinas Kebudayaan Provinsi Bali

11

11

B

Handwritten text in Balinese script on a palm leaf, consisting of two columns of text.

12

12

A

Handwritten text in Balinese script on a palm leaf, consisting of two columns of text.

AWIG AWIG DESA KSIMPAR

Pusat Dokumentasi

Dinas Kebudayaan Provinsi Bali

12
B

Handwritten text on a palm leaf manuscript strip, likely containing regulations or community rules.

13
A

Handwritten text on a palm leaf manuscript strip, likely containing regulations or community rules.

AWIG AWIG DESA KSIMPAR

*Pusat Dokumentasi
Dinas Kebudayaan Provinsi Bali*

13
B

Handwritten text in Balinese script on a palm leaf, consisting of two columns of text.

14
A

Handwritten text in Balinese script on a palm leaf, consisting of two columns of text.

AWIG AWIG DESA KSIMPAR

Pusat Dokumentasi
Dinas Kebudayaan Provinsi Bali

14
B

Handwritten text in Balinese script on a palm leaf, consisting of two columns of text.

15
A

Handwritten text in Balinese script on a palm leaf, consisting of two columns of text.

AWIG AWIG DESA KSIMPAR

Pusat Dokumentasi
Dinas Kebudayaan Provinsi Bali

15
B

Handwritten text in Balinese script on a palm leaf, consisting of two columns of text.

16
A

Handwritten text in Balinese script on a palm leaf, consisting of two columns of text.

AWIG AWIG DESA KSIMPAR

*Pusat Dokumentasi
Dinas Kebudayaan Provinsi Bali*

16

16

B

Handwritten text in Balinese script on a palm leaf, consisting of two columns of text.

17

17

A

Handwritten text in Balinese script on a palm leaf, consisting of two columns of text.

AWIG AWIG DESA KSIMPAR

*Pusat Dokumentasi
Dinas Kebudayaan Provinsi Bali*

17
17B

Handwritten text in Balinese script on a palm leaf, split into two sections by a hole. The text is written in a traditional style.

18
18A

Handwritten text in Balinese script on a palm leaf, split into two sections by a hole. The text is written in a traditional style.

AWIG AWIG DESA KSIMPAR
Pusat Dokumentasi
Dinas Kebudayaan Provinsi Bali

18
B

18 B

Handwritten text on a palm leaf manuscript strip, consisting of two columns of text in Balinese script.

19
A

19 A

Handwritten text on a palm leaf manuscript strip, consisting of two columns of text in Balinese script.

AWIG AWIG DESA KSIMPAR

*Pusat Dokumentasi
Dinas Kebudayaan Provinsi Bali*

19
B

Handwritten text in Balinese script on a palm leaf, consisting of two columns of text.

20
A

Handwritten text in Balinese script on a palm leaf, consisting of two columns of text.

AWIG AWIG DESA KSIMPAR

*Pusat Dokumentasi
Dinas Kebudayaan Provinsi Bali*

20
B

Handwritten text in Balinese script on a palm leaf, consisting of two columns of text.

21
A

Handwritten text in Balinese script on a palm leaf, consisting of two columns of text.

AWIG AWIG DESA KSIMPAR

Pusat Dokumentasi
Dinas Kebudayaan Provinsi Bali

21
B

Handwritten text in Balinese script on a palm leaf, consisting of two columns of text.

22
A

Handwritten text in Balinese script on a palm leaf, consisting of two columns of text.

AWIG AWIG DESA KSIMPAR

Pusat Dokumentasi
Dinas Kebudayaan Provinsi Bali

22
B

Handwritten text in Balinese script on a palm leaf, consisting of two columns of text.

23
A

Handwritten text in Balinese script on a palm leaf, consisting of two columns of text.

AWIG AWIG DESA KSIMPAR

Pusat Dokumentasi
Dinas Kebudayaan Provinsi Bali

23
B

Handwritten text on a palm leaf manuscript strip, likely containing village regulations (awig-awig) for Ksimpar. The text is written in Balinese script and is arranged in two columns.

24
A

Handwritten text on a palm leaf manuscript strip, continuing the village regulations (awig-awig) for Ksimpar. The text is written in Balinese script and is arranged in two columns.

AWIG AWIG DESA KSIMPAR

Pusat Dokumentasi
Dinas Kebudayaan Provinsi Bali

24
B

Handwritten text in Balinese script on a palm leaf, consisting of two columns of text.

25
A

Handwritten text in Balinese script on a palm leaf, consisting of two columns of text.

AWIG AWIG DESA KSIMPAR

Pusat Dokumentasi
Dinas Kebudayaan Provinsi Bali

25
B

Handwritten text in Balinese script on a palm leaf, consisting of two columns of text.

26
A

Handwritten text in Balinese script on a palm leaf, consisting of two columns of text.

AWIG AWIG DESA KSIMPAR

*Pusat Dokumentasi
Dinas Kebudayaan Provinsi Bali*

26
B

Handwritten text on a palm leaf manuscript strip, likely containing regulations or community rules. The text is written in Balinese script and is arranged in two columns.

27
A

Handwritten text on a palm leaf manuscript strip, continuing the regulations or community rules. The text is written in Balinese script and is arranged in two columns.

AWIG AWIG DESA KSIMPAR

Pusat Dokumentasi
Dinas Kebudayaan Provinsi Bali

27
B

Handwritten text in Balinese script on a palm leaf, consisting of two columns of text.

28
A

Handwritten text in Balinese script on a palm leaf, consisting of two columns of text.

AWIG AWIG DESA KSIMPAR

*Pusat Dokumentasi
Dinas Kebudayaan Provinsi Bali*

28

28

B

Handwritten text in Balinese script on a palm leaf, consisting of two columns of text.

29

29

A

Handwritten text in Balinese script on a palm leaf, consisting of two columns of text.

AWIG AWIG DESA KSIMPAR

*Pusat Dokumentasi
Dinas Kebudayaan Provinsi Bali*

29
B

Handwritten text in Balinese script on a palm leaf, divided into two columns by a central hole. The text is written in a traditional style.

30
A

Handwritten text in Balinese script on a palm leaf, divided into two columns by a central hole. The text is written in a traditional style.

AWIG AWIG DESA KSIMPAR

*Pusat Dokumentasi
Dinas Kebudayaan Provinsi Bali*

30
B

Handwritten text in Balinese script on a palm leaf, consisting of two columns of text.

31
A

Handwritten text in Balinese script on a palm leaf, consisting of two columns of text.

AWIG AWIG DESA KSIMPAR

Pusat Dokumentasi

Dinas Kebudayaan Provinsi Bali

30

31

B

Handwritten text on a palm leaf manuscript strip, split into two columns. The script is Balinese.

31

32

A

Handwritten text on a palm leaf manuscript strip, split into two columns. The script is Balinese.

AWIG AWIG DESA KSIMPAR

Pusat Dokumentasi
Dinas Kebudayaan Provinsi Bali

32
B

Handwritten text on a palm leaf manuscript strip, likely containing village regulations or customary law (awig-awig).

33
A

Handwritten text on a palm leaf manuscript strip, continuing the village regulations or customary law.

AWIG AWIG DESA KSI MPAR

*Pusat Dokumentasi
Dinas Kebudayaan Provinsi Bali*

33
B

Handwritten text on a palm leaf manuscript strip, likely containing village regulations (awig-awig) for Ksimpar. The text is written in Balinese script and is organized into two columns. The left column contains approximately 10 lines of text, and the right column contains approximately 10 lines of text. The script is a traditional Balinese style.

34
A

Handwritten text on a palm leaf manuscript strip, continuing the village regulations (awig-awig) for Ksimpar. The text is written in Balinese script and is organized into two columns. The left column contains approximately 10 lines of text, and the right column contains approximately 10 lines of text. The script is a traditional Balinese style.

AWIG AWIG DESA KSIMPAR

Pusat Dokumentasi
Dinas Kebudayaan Provinsi Bali

34
B

Handwritten text on a palm leaf manuscript strip, likely containing regulations or community rules.

35
A

Handwritten text on a palm leaf manuscript strip, likely containing regulations or community rules.

AWIG AWIG DESA KSIMPAR

Pusat Dokumentasi
Dinas Kebudayaan Provinsi Bali

35

B

Handwritten text in Balinese script on a palm leaf, consisting of two columns of text.

36

A

Handwritten text in Balinese script on a palm leaf, consisting of two columns of text.

AWIG AWIG DESA KSIMPAR

*Pusat Dokumentasi
Dinas Kebudayaan Provinsi Bali*

36
B

Handwritten text in Balinese script on a palm leaf manuscript strip, divided into two columns by a central hole.

37
A

Handwritten text in Balinese script on a palm leaf manuscript strip, divided into two columns by a central hole.

AWIG AWIG DESA KSIMPAR

Pusat Dokumentasi
Dinas Kebudayaan Provinsi Bali

37
B

37

B

Handwritten text in Balinese script on a palm leaf, consisting of two columns of text.

38
A

38

A

Handwritten text in Balinese script on a palm leaf, consisting of two columns of text.

AWIG AWIG DESA KSIMPAR

Pusat Dokumentasi
Dinas Kebudayaan Provinsi Bali

38

38

B

Handwritten text in Balinese script on a palm leaf manuscript, divided into two columns. The text is written in a traditional style with dark ink on a light brown leaf.

39

39

A

Handwritten text in Balinese script on a palm leaf manuscript, divided into two columns. The text is written in a traditional style with dark ink on a light brown leaf.

AWIG AWIG DESA KSIMPAR

Pusat Dokumentasi
Dinas Kebudayaan Provinsi Bali

39
B

Handwritten text in Balinese script on a palm leaf manuscript strip, divided into two columns.

40
A

Handwritten text in Balinese script on a palm leaf manuscript strip, divided into two columns.

AWIG AWIG DESA KSIMPAR

Pusat Dokumentasi
Dinas Kebudayaan Provinsi Bali

30 40
B

Handwritten text in Balinese script on a palm leaf, consisting of two columns of text.

38 44
A

Handwritten text in Balinese script on a palm leaf, consisting of two columns of text.

AWIG AWIG DESA KSIMPAR

Pusat Dokumentasi

Dinas Kebudayaan Provinsi Bali

88	44
	B

Handwritten text on a palm leaf manuscript strip, consisting of two columns of text in Balinese script.

89	41
	A

Handwritten text on a palm leaf manuscript strip, consisting of two columns of text in Balinese script.

AWIG AWIG DESA KSIMPAR

Pusat Dokumentasi

Dinas Kebudayaan Provinsi Bali

43
B

Handwritten Balinese script on a palm leaf, divided into two columns. The script is finely etched and follows the traditional layout of a village regulation document.

45
A

Handwritten Balinese script on a palm leaf, divided into two columns. This leaf appears to be a continuation of the regulations found on leaf 43.

AWIG AWIG DESA KSIMPAR

Pusat Dokumentasi

Dinas Kebudayaan Provinsi Bali

89 45 B

Handwritten text on a palm leaf manuscript. The text is written in two columns, separated by a central binding hole. The script is a form of Balinese or Indonesian.

86 46 A

Handwritten text on a palm leaf manuscript. The text is written in two columns, separated by a central binding hole. The script is a form of Balinese or Indonesian.

AWIG AWIG DESA KSIMPAR

*Pusat Dokumentasi
Dinas Kebudayaan Provinsi Bali*

48
B

...
 ...
 ...
 ...
 ...

49
A

...
 ...
 ...
 ...
 ...

AWIG AWIG DESA KSIMPAR

Pusat Dokumentasi
Dinas Kebudayaan Provinsi Bali

49
B

Handwritten text on a palm leaf manuscript strip, likely containing regulations or community rules.

50
A

Handwritten text on a palm leaf manuscript strip, likely containing regulations or community rules.

AWIG AWIG DESA KSIMPAN

*Pusat Dokumentasi
Dinas Kebudayaan Provinsi Bali*

51
51
B

Handwritten text in Balinese script on a palm leaf, consisting of two columns of text.

52
52
B

Blank palm leaf with three holes, likely a separator or a leaf with text that is not legible in this image.

AWIG AWIG DESA KSIMPAR

*Pusat Dokumentasi
Dinas Kebudayaan Provinsi Bali*

53
B

Handwritten text on a palm leaf manuscript strip, likely containing regulations or community rules. The text is written in Balinese script and is organized into two columns. The left column begins with a small symbol resembling a stylized '3' or a similar character.

54
A

Handwritten text on a palm leaf manuscript strip, continuing the regulations or community rules. The text is written in Balinese script and is organized into two columns.

AWIG AWIG DESA KSIMPAR

Pusat Dokumentasi
Dinas Kebudayaan Provinsi Bali

56
B

Handwritten text in Balinese script on a palm leaf, consisting of two columns of text.

57
A

Handwritten text in Balinese script on a palm leaf, consisting of two columns of text.

AWIG AWIG DESA KSIMPAR

*Pusat Dokumentasi
Dinas Kebudayaan Provinsi Bali*

57
B

Handwritten text in Balinese script on a palm leaf manuscript strip, divided into two columns by a central hole.

58
A

Handwritten text in Balinese script on a palm leaf manuscript strip, divided into two columns by a central hole.

AWIG AWIG DESA KSIMPAR

Pusat Dokumentasi
Dinas Kebudayaan Provinsi Bali

59
B

Handwritten text in Balinese script on a palm leaf, consisting of two columns of text.

60
A

Handwritten text in Balinese script on a palm leaf, consisting of two columns of text.

AWIG AWIG DESA KSIMPAR

Pusat Dokumentasi
Dinas Kebudayaan Provinsi Bali

60
B

Handwritten text on a palm leaf manuscript strip, consisting of two columns of Balinese script.

61
A

Handwritten text on a palm leaf manuscript strip, consisting of two columns of Balinese script.

AWIG AWIG DESA KSIMPAR

Pusat Dokumentasi
Dinas Kebudayaan Provinsi Bali

61
B

Handwritten text in Balinese script on a palm leaf, consisting of two columns of text.

62
A

Handwritten text in Balinese script on a palm leaf, consisting of two columns of text.

AWIG AWIG DESA KSIMPAR

Pusat Dokumentasi
Dinas Kebudayaan Provinsi Bali

62
B

Handwritten text in Balinese script on a palm leaf, consisting of two columns of text.

63
A

Handwritten text in Balinese script on a palm leaf, consisting of two columns of text.

AWIG AWIG DESA KSIMPAN

*Pusat Dokumentasi
Dinas Kebudayaan Provinsi Bali*

၁၆

63

B



AWIG AWIG DESA KSIMPAN

*Pusat Dokumentasi
Dinas Kebudayaan Provinsi Bali*

