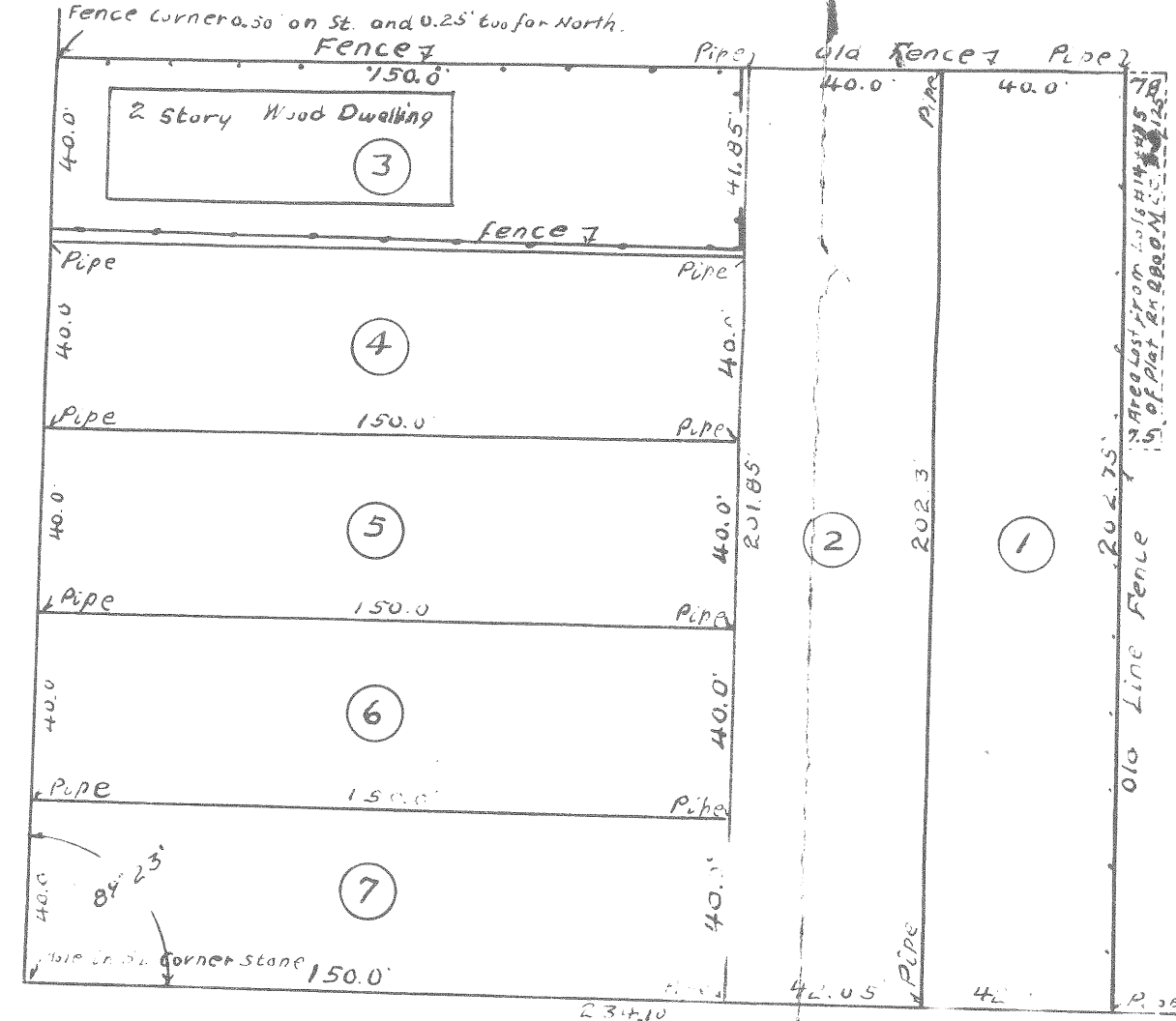


J. H. Steffens



Plat of Two Tracts of Land situate on Grove Street between Rutledge Avenue and King Street, Subdivided into 27 Lots at the request of the Ashley Corporation, now about to be sold as building Lots by Messrs. T. T. Hyde & Sons. #42 Broad Street, Charleston, S.C. February 27th 1919. Surveyed & Platted

By
 G. M. Howe
 Surveyor

Scale 1"=40'

Note:-

Information upon which this survey was based is as follows:-
 Plat of J. Wilson June 20th 1816 R.M.C.O. Bk. Q-8 P. 270.
 Plat 21 Lots NE Corner Grove & Rutledge Sec. 76627 1847 in R.M.C.O. Plat BK D P. 125.
 Plat of Andrew J. Smith, April 14th 1893 R.M.C.O. Plat BK. C. P. 75
 Plat of J. Wilson, March 24th 1811 in City Directories Plat BK Page 42.
 And such other information as I could get from deeds.
 G. M. Howe
 Surveyor.

Copied by Office of City Engineer
 Charleston S.C. 11-20-28

J. H. Steffens

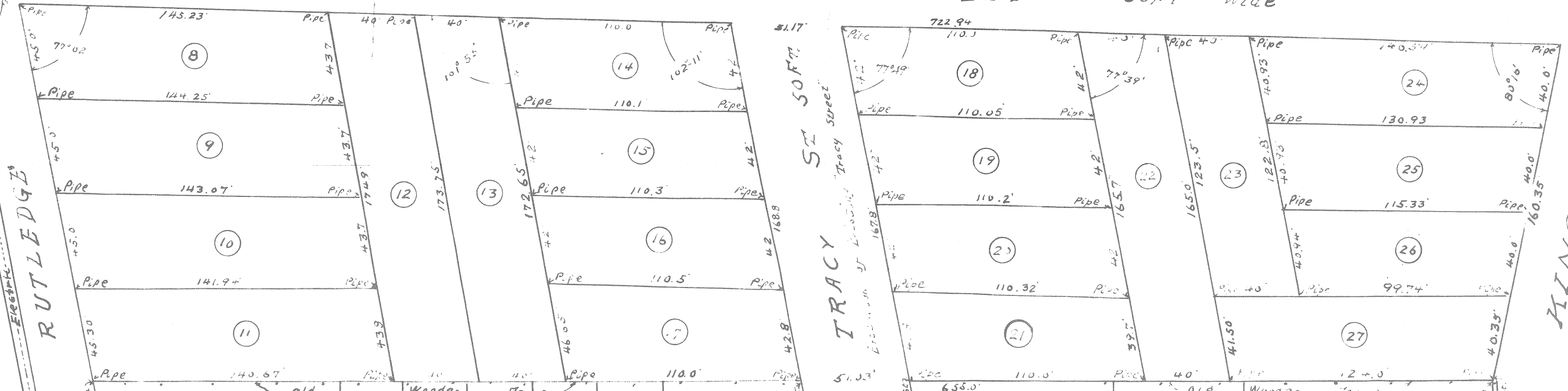
60 FT Wide
 AVENUE

50 FT

GROVE STREET

50 FT Wide
 STREET

50 FT
 KING STREET



Jos. W. Fraser

George T. Trescott

S.P. Anderson

John J. Gratzick

Ethel Brogdon

Jessie West

Johanna L. Daughby

Ellen S. Quinn

Henry S. Peoples

Baptist State Mission Board of South Carolina in Trust