

## **Historic, archived document**

Do not assume content reflects current scientific knowledge, policies, or practices.



62,13

HAY, FEED & SEED DIVISION  
LIBRARY  
RECEIVED  
★ NOV 15 1924 ★  
U.S. DEPARTMENT OF AGRICULTURE



1923  
PLANT  
HARTS  
SEEDS

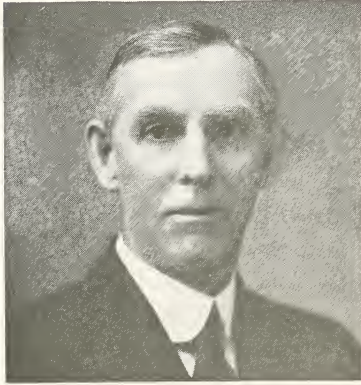
CHAS. C. HART SEED CO.  
WETHERSFIELD, CONN.

# CHAS. C. HART SEED CO.

BIG ENOUGH TO SERVE YOU,  
SMALL ENOUGH TO KNOW YOU,  
STRONG ENOUGH TO PROTECT YOU.

Dear Friends and Customers:

I take pleasure in handing you our Seed Catalog for the season of 1923, and with it extend to you our hearty New Year's Greetings. I trust you will find our Catalog both interesting and instructive, and that it will induce you to favor us with a generous share of your seed orders.



CHAS. C. HART

I am pleased to announce at this time, that my fourth and youngest son, Frederick C. Hart, a graduate of Yale, has entered our firm, and will share with us its responsibilities. My four sons are now associated with me. They have always taken an active interest, and have grown up in the business.

From a very small beginning in 1892, I have seen our business grow from year to year, and now its volume is of considerable importance.

In these business relations of ours, there is more than mere bargaining—there is human friendship, and every one of us is happier today because of your friendship and belief in our purposes. I appreciate your good will, and will try and merit your confidence. For you and yours, I sincerely wish you a New Year of immeasurable happiness.

Sincerely yours, Chas. C. Hart.

It may be of interest to our friends to know something of the history of our business, and of its different Departments:

In 1892, Mr. Chas. C. Hart started a consignment package seed business in a small way, and two years later formed a partnership with Mr. J. Frank Welles, adding at that time the Wholesale and Seed Growing Departments. The business was carried on under the firm name of Hart, Welles & Co., and in 1913 the Mail Order Department was established. In 1916 Mr. Hart purchased the interests of his business associates, and took into partnership with him his three oldest sons, under the firm name of Chas. C. Hart Seed Co. In 1922 the fourth and youngest son, Mr. Frederick C. Hart was admitted to the firm.

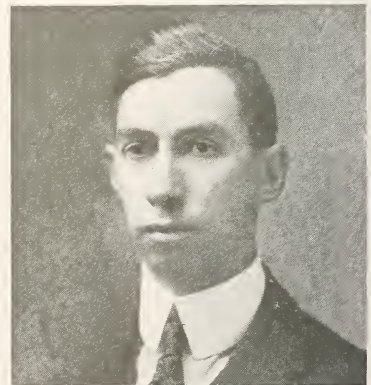
## MAIL ORDER AND RETAIL DEPARTMENT.

In 1913, in response to a steadily growing demand from Gardeners, and truck farmers who had used our seeds with good results, we added a Retail and Mail Order Department to our business.

Starting with a small mailing list, we are this year sending out many thousands of Catalogs. TEN THOUSAND NEW NAMES have been furnished us during the past summer by friends of Hart's seeds—a fact over which we feel proud and pleased.

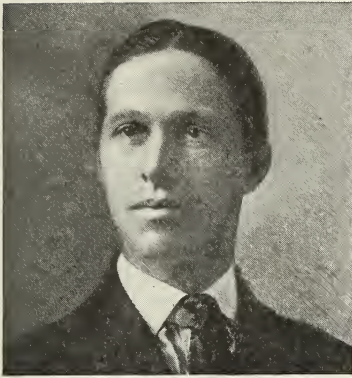
We have tried not only to obtain the best seed stocks for our Customers, but also to aid them in their growing, and marketing problems. Our INFORMATION BUREAU stands ready at all times to answer any question connected with the farm or the garden, and shall consider it a privilege to lend its aid upon any troublesome point. The Bureau and Retail Department work together and combine the two highest services we are able to render—SATISFACTORY SEEDS and RELIABLE INFORMATION.

Our interest does not cease with the sale, for we want your future business, and we value your friendship. To us the two are inseparable and keeping them so, will be to our mutual advantage.



FRANK S. HART  
DEPARTMENT HEAD

## CONSIGNMENT PACKAGE SEED DEPARTMENT.



WILLIAM G. HART  
DEPARTMENT HEAD

In 1892 when our business was first started we placed out a few hundred of the old-fashioned flat seed boxes with nearby stores to sell on a commission basis. This was the beginning of our consignment or Package Seed Department, which today sends out many thousands of attractive display cabinets, packed with Hart's handsomely lithographed seed packages to the General Stores, Hardware and Grocery dealers throughout the east.

These seed packages are filled by machine at the rate of 3,500 per hour, and are packed fresh every year with choice vegetable and flower seeds that retail to the trade at 5c and 10c per package. It requires millions of these packages to supply the demand for Hart's seeds, and not once since we began business have we advanced our price, or reduced the quantity of seeds, but have always given the public a package of seed worth the price we asked for it.

Ordinarily, one package will produce enough for the home garden, but if more is desired, we call your attention to the fact that two of our 5c packages contain more seed than any 10c package on the market. The quality of the seeds in our packages which your Grocer or Hardware dealer sells will be exactly the same as those sent direct, and we are confident they will give entire satisfaction.

## WHOLESALE DEPARTMENT.

In 1894, two years after the founding of our business, with only a small stock of seeds, a local wholesale trade was started, and today we wholesale in large quantities throughout this Country and Canada, to Seed Houses, Hardware dealers and General Stores.

We have, from the start, endeavored to have our customers consider quality with price, and not price alone. Our continued efforts to maintain the highest standard in the quality of our seeds are bringing us many new customers each year, and we are proud to state that we have as our customers today many concerns who started with us years ago.

Although our fertile Connecticut Valley produces some of the best seeds obtainable, we cannot grow all the different varieties we handle, as our soil and climatic conditions are not favorable for the production of certain seeds. Consequently we have seeds grown for us in practically every seed growing state in this Country, and import large quantities from the seed sections of foreign Countries. Our seeds are sold by dealers in many cities and towns throughout the east, and we assure our friends that HART'S SEEDS purchased from dealers, either in bulk or in packages, will be seeds of good quality in every respect.

We present an extract of a letter written to us unsolicited by one of the largest hardware dealers in the east:

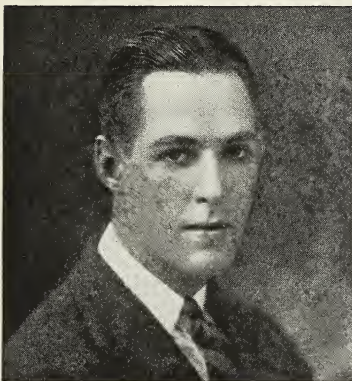
*"We shall be very glad indeed to say a good word for you to anyone who may inquire of us as to our experience in buying seed of you, and are also pleased to say that our dealings with you have been in every instance satisfactory. We wish you continued prosperity, and hope that 1923 will be a record breaking year."*

Such letters are very gratifying to us, as they show that our efforts to sell only GOOD SEEDS AT FAIR

PRICES combined with prompt and courteous service, meet with approval by our customers.



EVERETT H. HART  
DEPARTMENT HEAD



FREDERICK C. HART

CHAS. C. HART SEED CO.

**WE WILL SEND FREE**

With every order amounting to \$3.00 or more, 2 tubers or roots of the famous Chinese Cinnamon Vine, a novelty we know will please every customer.

**BEAUTIFUL FRAGRANT CHINESE CINNAMON VINES**

The easiest grown climbers in the world. They are from China—the land of wonders. Their abundant blossoms perfume the air for a long distance. Their delicious fragrance is indescribable. Perfectly hardy—thriving in all soils, wet or dry, no insects, blight, or disease ever trouble them, and they quickly attain a height of 30 feet or more. Surround your windows, cover your porches, or any unsightly fence or stump with a mass of vines covered with pretty heart-shaped leaves and a profusion of dainty white sweet-scented flowers, making them perfect bowers of beauty. Would you like to try them? With every order amounting to \$3.00 or more we will send FREE 2 tubers safely and carefully packed.

**CLUB OFFER**

During the past season we have received many orders from customers who bulked their orders together, that they might take advantage of reduced prices for large quantities. We are pleased to receive club orders, and as an inducement to encourage customers clubbing together, we offer a discount of 15% on orders amounting to \$50.00 or more, and a discount of 20% on orders amounting to \$100.00.

This discount does not apply to Seed Potatoes, Field Corn Seed or Grass Seed.

Many of the most desirable varieties of seeds are very scarce, and before spring, varieties that everybody wants will be hard to find at any price, so we would advise ordering early before the desirable kinds are sold out. Start your club today. We will fill and ship each order separately, or ship together as you prefer.

**SPECIALTIES AND IMPROVED VARIETIES**

We call especial attention to a few of our improved strains of seeds, grown from selected stocks, for Market Gardeners, Truck Farmers, and which no home garden should be without.

**SWEET CORN**

**Hart's Extra Early Dighton.** One of the earliest Corns grown. Originated in Dighton, Mass, and by careful selection of the planting seed stock, we have perfected this corn, and put it on the Market as Hart's Extra Early Dighton. A splendid early 10 rowed corn. Per ½ lb. 25¢, 1 lb. 40¢, 10 lbs. and over 35¢ lb.

**PEAS**

**World's Record.** An improved type of Gradus. Large pods, more uniform, prolific, and sweeter peas. Market Gardeners are planting more World's Record each season. Per ½ lb. 20¢, 1 lb. 35¢, 2 lbs. 60¢, 5 lbs. \$1.40, 10 lbs. \$2.50.

**BEEF**

**Early Wonder.** We offer the true strain of Early Wonder grown from a selected stock of roots. This beet is an improved type of Crosby's Egyptian, and makes an ideal Market Gardeners sort. Per Pkt. 5¢, oz. 15¢, ¼ lb. 50¢, 1 lb. \$1.40, 5 lbs. and over \$1.25 per lb.

**CABBAGE**

**Copenhagen Market.** This Cabbage is becoming more popular every season. Market Gardeners are using this for their first early in place of Early Jersey Wakefield. Our seed is strictly Danish, grown from selected stock. Per pkt. 5¢, oz. 35¢, ¼ lb. \$1.25, lb. \$4.50.

**CARROT**

**Bagley's Improved Danvers.** An improved strain of Danvers Half Long, grown extensively around Boston by Market Gardeners who desire a uniform carrot for packing in crates. Pkt 5¢, oz. 15¢, ¼ lb. 40¢, lb. \$1.25, 5 lbs. and over \$1.00 per lb.

**CELERY**

**Easy Blanching.** This celery is each year growing in popularity. A splendid blight resister, stalk blanch white. An excellent winter keeper, as well as an early celery. One of the easiest to blanch and one of the best in quality. Pkt. 10¢, oz. 60¢, ¼ lb. \$2.00, lb. \$7.00.

**CUCUMBER**

**Early Fortune.** An improved type of Davis Perfect, about 9 inches in length, color dark green, and will hold its dark green color for a long time after picking, making it a splendid cucumber for market. Pkt. 5¢, oz. 15¢, ¼ lb. 45¢, lb. \$1.60.

**LETTUCE**

**Big Boston.** We offer a selected strain of Big Boston Head, most popular lettuce with Market Gardeners. Pkt. 5¢, oz. 15¢, ¼ lb. 45¢, lb. \$1.50.

**MUSKMELON**

**Osage.** A salmon fleshed melon of luscious flavor, excellent shipping qualities, and a favorite sort with all melon growers. Pt. 5¢, oz. 15¢, ¼ lb. 45¢, lb. \$1.50.

**RADISH**

**Vicks Scarlet Globe.** Our stock of this popular variety is grown from transplanted roots, and will produce radishes of good color, true to type, and uniformity in size. Market Gardeners will be pleased with this seed. Pkt. 5¢, oz. 10¢, ¼ lb. 30¢, lb. \$1.00, 5 lbs. \$4.00.

**TOMATO**

**Bonny Best.** A very early tomato of good size and shape, scarlet red in color. Each year more of this seed is planted in place of other early varieties. We offer selected stock. Pkt. 5¢, oz. 25¢, ¼ lb. 80¢, lb. \$3.00.

# How to Order

It will be to your advantage to **order early**.

**Every inquiry** will receive a **prompt and courteous** reply, and the smallest order will receive the same careful attention as a large one.

**TERMS.** Our terms are strictly cash with orders.

**HOW TO SEND MONEY.** Money may be safely sent by Post Office or Express Money Orders, Registered Letter or Bank Draft. Personal Checks—if you have the money back of them, send them right along; you are the class of customer we want. We will accept postage stamps, if received in good condition, for amounts up to \$1.00.

Seeds may be sent by Parcel Post, up to 50 lbs. in the 1st and 2nd zone limit of 150 miles; and up to 20 lbs. in the 3rd zone limit of 300 miles. See table of postage rates.

**Postage—see note below—**If in large quantities and no shipping instructions are given we will ship cheapest and best way, either by express or freight, but transportation charges must be paid by purchaser.

**Remember, name and address should always be given.** Use our order sheet and envelope, filling out the blank, and signing your name and P. O. address plainly, and your order will receive prompt and careful attention.

**CLOTH BAGS.** We will make no charge for small cloth bags used in packing. A charge of 35 cts. will be made for 2 bushel bags, if Customers wish to return these bags, send them by parcel post, promptly, postage prepaid, and money paid on them will be refunded.

If your local dealer handles our seeds in bulk or in packets, they will be the same good quality seeds as you would get direct from us. If he does not handle them, send to us.

**GUARANTEE.** Our seeds are all tested before they are sent out, and we know they will sprout, and believe they will produce the variety represented, but there are so many contingencies continually arising which prevent the best seeds from always giving satisfaction, and which is in no way the fault of the seeds, that we can give no warranty, express or implied, as to description, quality or productiveness, or any other matter of any seeds, bulbs, plants, roots or trees that we send out, and we will not be in any way responsible for the crop.

Please remember that while we cannot guarantee crops, it is to our interest to give you the best there is, and we trust you will have confidence enough in us to believe we will do so.

If you change your address, kindly notify us. If you have no use for this catalogue please pass it to someone who will be interested in it.

We shall be pleased to hear from you, and with our best wishes, we are,

Sincerely yours,

CHAS. C. HART SEED CO.

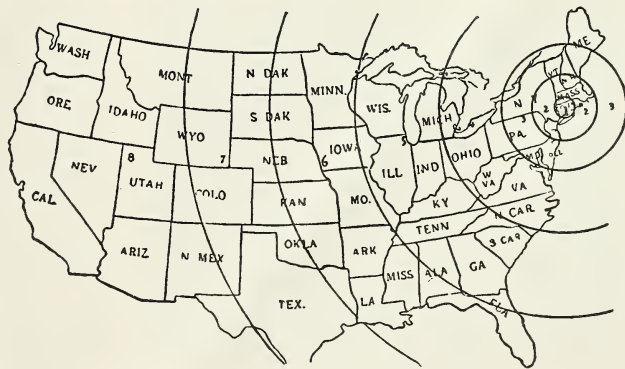
Will you kindly send us the names and address of a few of your neighbors and friends who buy seeds, we would like to send them our Catalog.

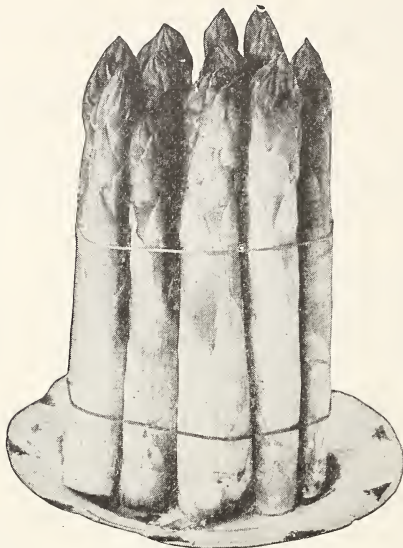
**POSTAGE.** We will pay postage on SEEDS up to 6 lbs., which will be 10 cents on every order sent by parcel post. Each additional pound over the 6 lbs., add 1 cent, to be paid by the purchaser, and added to amount of seed order. Postage on Asparagus Roots, Onion Sets, Potatoes, and all express and freight charges, to be paid by purchaser.

## Parcel Post Rates

Weight limit, 50 lbs. in first and second zones of 150 miles, and 20 lbs. in third zone of 300 miles. Measurement limit around package, both ways, 72 inches in all zones.

Pounds	1st and 2d zones.		3d zone.		1st and 2d zones.		3d zone.		1st and 2d zones.		3d zone.	
	Cts.	Cts.	Cts.	Cts.	Cts.	Cts.	Cts.	Cts.	Cts.	Cts.	Cts.	Cts.
1	5	6	15	19	34	29	33	43	47			
2	6	8	16	20	36	30	34	44	48			
3	7	10	17	21	38	31	35	45	49			
4	8	12	18	22	40	32	36	46	50			
5	9	14	19	23	42	33	37	47	51			
6	10	16	20	24	44	34	38	48	52			
7	11	18	21	25	..	35	39	49	53			
8	12	20	22	26	..	36	40	50	54			
9	13	22	23	27	..	37	41	..	..			
10	14	24	24	28	..	38	42	..	..			
11	15	26	25	29	..	39	43	..	..			
12	16	28	26	30	..	40	44	..	..			
13	17	30	27	31	..	41	45	..	..			
14	18	32	28	32	..	42	46	..	..			





Palmetto Asparagus

## ASPARAGUS

4 to 5 lbs. to the acre.

**Culture.**—Sow the seed as early in Spring as ground can be worked, in drills 12 to 14 inches apart. When two years old, transplant into permanent beds, well and deeply manured. In setting the roots, spread them out well and cover them to the depth of 6 inches. Very little, if any, should be cut the first

year after transplanting, but a fair crop can be cut the second year. Later in the season all the shoots should be allowed to run to seed, and in the Fall all the tops should be cut off, the ground cleaned up, and a good dressing of manure and wood ashes spaded into the bed. An occasional dressing of salt is beneficial and keeps down the weeds.

**Conover's Colossal.** The standard variety, and very tender. Pkt. 5¢, oz. 10¢, ¼ lb. 25¢, lb. 75¢.

**Columbia Mammoth White.** A large, thick variety; very white, even above ground. Pkt. 5¢, oz. 10¢, ¼ lb. 25¢, lb. 75¢.

**Palmetto.** A large, early variety; very popular, and good for shipping. Pkt. 5¢, oz. 10¢, ¼ lb. 25¢, lb. 75¢.

## Asparagus Roots

Strong 1 year old roots of above varieties. Per 50 roots \$1.00, per 100 roots \$1.50, per 500 roots \$6.50, per 1000 roots \$8.50.

Strong 2 year old roots of above varieties. Per 50 roots \$1.80, per 100 roots \$2.75, per 500 roots \$8.50, per 1000 roots \$12.50.

The Bureau of Plant Industry in the United States Department of Agriculture recommends 1 year old roots as the most satisfactory for transplanting.

Our 1 year old roots are good size, and upon the recommendation of Asparagus experts, customers may set out 1 year old roots with confidence.

Asparagus growers in many parts of the country were nearly put out of business by rust this past season, our own roots were lost and we were unable to fill orders. This year we have a fine supply of both 1 year old and 2 year old roots, and will be able to supply all our customers.

## ARTICHOKE

**Culture.**—Sow seeds in April in a prepared bed, in drills a foot apart, and covering seeds an inch deep. When the plants are three inches high, transplant 4 or 5 inches deep in rows 4 feet apart, and 2 feet apart in the row, or a row can be made along side a fence; keep the ground loose by frequent hoeing. In August or September the heads will be fit for use. Before severe cold weather the plants should be protected. Artichokes may also be propagated either by slips or suckers, and should be taken off in May, after they have grown 5 or 6 inches in height and transplanted as before directed.

**Green Globe.** Heads or buds very large nearly round, and with a dusky purplish tint. The scales, or edible parts are thicker and higher flavored than those of any other Artichoke. Requires ample protection during winter. Pkt. 10¢, oz. 35¢, ¼ lb. \$1.00.

## BEANS

**Culture.**—Beans require a light, well-drained soil, and should not be planted too early, as they are very sensitive to cold and wet. Plant usually around the first of May, and at intervals throughout the season for a succession, until the latter part of August. Plant in drills about 2 feet apart, and 5 or 6 plants to the foot. Keep well cultivated.

The new crop of Beans are scarce this year, wholesale prices are advancing, and before spring many of the more desirable varieties will be sold out, or hard to obtain at any price. Many varieties of the other seeds are scarce. It will be to your advantage to order early.

**TRY FARMOGERM**—The High Bred Nitrogen Gathering Bacteria for Lima Beans, Peas and Sweet Peas. Garden Size Bottle 50 cents.

## Dwarf, Green-Podded, Bush or Snap

1 qt. weighs about 2 lbs.

**Burpee's Stringless Green Pod.** An extra early, round-podded, prolific sort, bearing numerous long bright green stringless pods of excellent quality. Very desirable for both the home garden, and for market. Per ½ lb. 20¢, 1 lb. 35¢, 2 lbs. 60¢, 5 lbs. \$1.40, 10 lbs. \$2.50.

**Extra Early Red Valentine.** One of the best of the early green-podded sorts both for the home and the market garden. The pods are medium length, very fleshy, crisp and tender. Per ½ lb. 20¢, 1 lb. 30¢, 2 lbs. 50¢, 5 lbs. \$1.30, 10 lbs. \$2.25.

**Black Valentine.** Follows Red Valentine in earliness, but pods are much longer, and straighter. A large crop can be depended on, and the product is very attractive in the market, and is a very desirable market gardener's sort. Per ½ lb. 20¢, 1 lb. 35¢, 2 lbs. 60¢, 5 lbs. \$1.40, 10 lbs. \$2.50.

**Bountiful.** Vines are vigorous and productive. The pods are very long, straight, round and of handsome appearance, and when young, are stringless. They hold tender and brittle much





Bountiful Stringless Green Pod

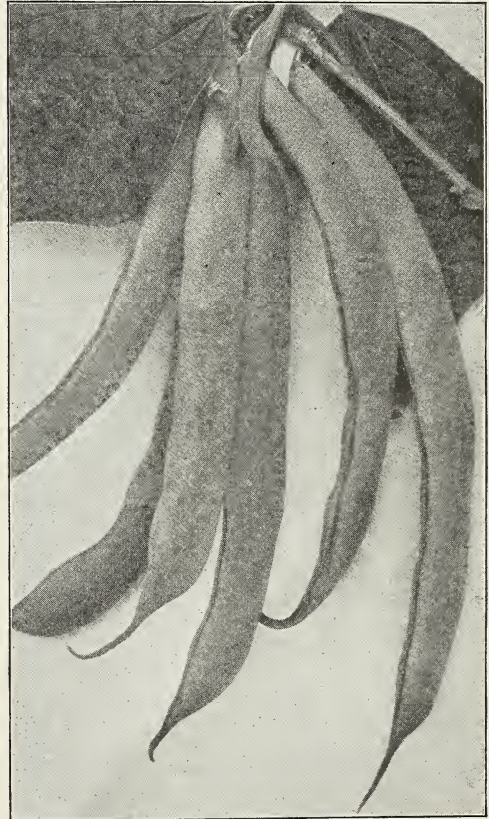
**DWARF, GREEN-PODDED, BUSH OR SNAP BEANS—Continued**

- longer than most sorts, and are one of the best for the home, or market garden. Per  $\frac{1}{2}$  lb. 20¢, 1 lb. 30¢, 2 lbs. 50¢, 5 lbs. \$1.30, 10 lbs. \$2.25.
- Extra Early Refugee.** One of the earliest of the green-podded sorts. Pods are round, fleshy, light green, and medium size. This is an excellent string bean for the early market, and it stands handling well. Per  $\frac{1}{2}$  lb. 20¢, 1 lb. 30¢, 2 lbs. 50¢, 5 lbs. \$1.30, 10 lbs. \$2.25.
- Giant Stringless Green Pods.** Somewhat similar to Burpees Stringless but pods are a little longer, straighter, more slender, and beans lighter in color; early, hardy and of highest quality. Per  $\frac{1}{2}$  lb. 20¢, 1 lb. 35¢, 2 lbs. 60¢, 5 lbs. \$1.40, 10 lbs. \$2.50.
- Late Refugee, or 1000 to 1.** A standard and very productive sort, highly esteemed for late planting, and is extensively used for canning and pickling. Pods are long, round, light green, and good quality. Per  $\frac{1}{2}$  lb. 20¢, 1 lb. 30¢, 2 lbs. 50¢, 5 lbs. \$1.30, 10 lbs. \$2.25.
- Long Yellow Six Weeks.** Early, flat pod; very productive and excellent quality. Per  $\frac{1}{2}$  lb. 20¢, 1 lb. 30¢, 2 lbs. 50¢, 5 lbs. \$1.30, 10 lbs. \$2.25.
- Longfellow.** Extra long, round, straight pods, very early and productive, tender and of excellent flavor. Per  $\frac{1}{2}$  lb. 20¢, 1 lb. 30¢, 2 lbs. 50¢, 5 lbs. \$1.30, 10 lbs. \$2.25.
- White Kidney.** Field Bean for soup and baking. Per  $\frac{1}{2}$  lb. 20¢, 1 lb. 30¢, 2 lbs. 50¢, 5 lbs. \$1.30, 10 lbs. \$2.25.
- White Marrow.** A white field bean for baking. Per  $\frac{1}{2}$  lb. 20¢, 1 lb. 30¢, 2 lbs. 50¢, 5 lbs. \$1.30, 10 lbs. \$2.25.
- White Navy.** A small white field bean for baking. Per  $\frac{1}{2}$  lb. 20¢, 1 lb. 30¢, 2 lbs. 50¢, 5 lbs. \$1.30, 10 lbs. \$2.25.
- Yellow Eye Field.** Excellent for baking. Per  $\frac{1}{2}$  lb. 20¢, 1 lb. 30¢, 2 lbs. 50¢, 5 lbs. \$1.30, 10 lbs. \$2.25.

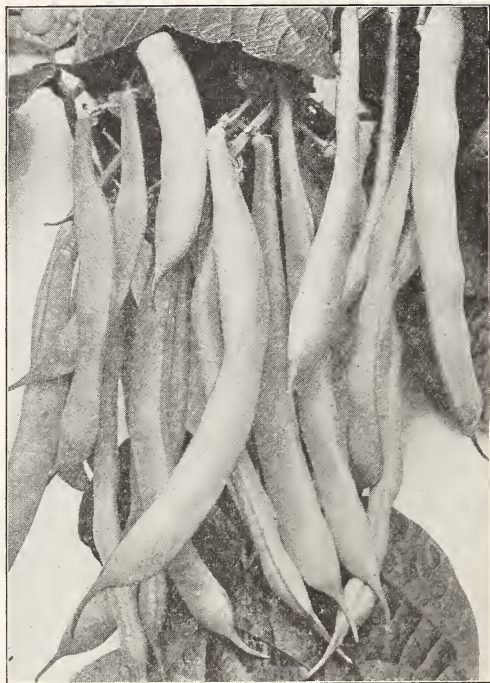
**Red Kidney.** A very rich flavored baking Bean, shaped like White Kidney but deep red in color. Per  $\frac{1}{2}$  lb. 20¢, 1 lb. 30¢, 2 lbs. 50¢, 5 lbs. \$1.30, 10 lbs. \$2.25.

**Dwarf Wax, Yellow-Podded, or Butter Beans**

- Prolific Black Wax.** Early and prolific, pods nearly round; full, stringless and fine quality. Per  $\frac{1}{2}$  lb. 20¢, 1 lb. 30¢, 2 lbs. 50¢, 5 lbs. \$1.30, 10 lbs. \$2.25.
- Davis White Kidney Wax.** Long, white, waxy, flat pods; very prolific. Per  $\frac{1}{2}$  lb. 20¢, 1 lb. 30¢, 2 lbs. 50¢, 5 lbs. \$1.30, 10 lbs. \$2.25.
- Curries' Rust-Proof Black Wax.** Pods long and flat; excellent quality; early and prolific. Per  $\frac{1}{2}$  lb. 20¢, 1 lb. 30¢, 2 lbs. 50¢, 5 lbs. \$1.30, 10 lbs. \$2.25.
- Wardwell's Kidney Wax.** An extremely heavy bearer; pods large and flat, and fine quality. Per  $\frac{1}{2}$  lb. 20¢, 1 lb. 30¢, 2 lbs. 50¢, 5 lbs. \$1.30, 10 lbs. \$2.25.
- Golden-Eyed Wax.** A very desirable variety; early and prolific; pods flat and free from rust. Per  $\frac{1}{2}$  lb. 20¢, 1 lb. 30¢, 2 lbs. 50¢, 5 lbs. \$1.30, 10 lbs. \$2.25.
- Refugee Wax.** Very early, thick, fleshy, round, stringless, wax-like pods, of fine quality. Per  $\frac{1}{2}$  lb. 20¢, 1 lb. 30¢, 2 lbs. 50¢, 5 lbs. \$1.30, 10 lbs. \$2.25.



Long Yellow Six Weeks



Improved Golden Wax

**DWARF WAX, YELLOW-PODDED, or BUTTER BEANS—Continued**

**Improved Golden Wax.** The most popular standard variety; pods are long, tender and meaty, stringless and rust-proof. Per  $\frac{1}{2}$  lb. 20¢, 1 lb. 30¢, 2 lbs. 50¢, 5 lbs. \$1.30, 10 lbs. \$2.25.

**Round Pod Kidney or Brittle Wax.** A fine, round, long pod variety, and entirely stringless. Per  $\frac{1}{2}$  lb. 20¢, 1 lb. 35¢, 2 lbs. 60¢, 5 lbs. \$1.40, 10 lbs. \$2.50.

**Pencil Pod Wax.** Long, round, deep yellow, tender pods; absolutely stringless. Per  $\frac{1}{2}$  lb. 20¢, 1 lb. 30¢, 2 lbs. 50¢, 5 lbs. \$1.30, 10 lbs. \$2.25.

**Dwarf Beans—Varieties for Shelling**

**Dwarf Horticultural, or Cranberry.** One of the best for shelled beans. When nearly ripe pods are striped and splashed with crimson. Per  $\frac{1}{2}$  lb. 20¢, 1 lb. 35¢, 2 lbs. 60¢, 5 lbs. \$1.40, 10 lbs. \$2.50.

**Low's Champion, or Red Cranberry.** Very productive; large, green flat pods. Excellent both as a shell bean and string bean. Pods are tender and stringless. As a shell bean rich and fine flavor. Per  $\frac{1}{2}$  lb. 20¢, 1 lb. 35¢, 2 lbs. 60¢, 5 lbs. \$1.40, 10 lbs. \$2.50.

**French Horticultural Dwarf.** A new and improved variety. Pods are larger and more beautifully splashed with bright crimson than the ordinary Dwarf Horticultural. Vines sometimes inclined to send out runners, but will not climb a pole; this does not affect the bean in any way. Per  $\frac{1}{2}$  lb. 20¢, 1 lb. 35¢, 2 lbs. 60¢, 5 lbs. \$1.40, 10 lbs. \$2.50.

**Goddard, or Boston Favorite.** Similar to Dwarf Horticultural, except beans are longer and pods more highly colored. Per  $\frac{1}{2}$  lb. 20¢, 1 lb. 35¢, 2 lbs. 60¢, 5 lbs. \$1.40, 10 lbs. \$2.50.

**Dwarf, or Bush Lima**

**Culture.**—Plant in drills from 2 to 3 feet apart; drop beans about 3 inches apart in the row. Cover about  $1\frac{1}{2}$  inches deep. They can also be planted in hills 3 feet apart one way and 2 feet the other.

**Burpee's Bush Lima.** A good yielder. Pods are well filled with large beans, identical in size and luscious flavor to the large pole beans. Per  $\frac{1}{2}$  lb. 20¢, 1 lb. 35¢, 2 lbs. 65¢, 5 lbs. \$1.60, 10 lbs. \$3.00.

**Burpee's Improved Bush.** Grows more vigorously than the original Burpee's Bush Lima, is earlier, pods are larger, and beans are same flavor and quality as Pole Lima. Per  $\frac{1}{2}$  lb. 25¢, 1 lb. 40¢, 2 lbs. 75¢, 5 lbs. \$1.85, 10 lbs. \$3.50.

**Fordhook Bush Lima.** An improved variety of the Dreer's, or Potato class of Limas. The shelled beans are thicker and more blocky in shape, and are of luscious flavor, and are considered by many to be the best of the Dwarf Limas. Pods are large and contain 4 or 5 beans. Per  $\frac{1}{2}$  lb. 25¢, 1 lb. 45¢, 2 lbs. 80¢, 5 lbs. \$1.90, 10 lbs. \$3.50.

**Henderson's Bush Lima, or Dwarf Sieva.** A Dwarf form of small, white Lima, early and productive, with small, white, flat beans of luscious flavor. Per  $\frac{1}{2}$  lb. 20¢, 1 lb. 35¢, 2 lbs. 65¢, 5 lbs. \$1.60, 10 lbs. \$3.00.

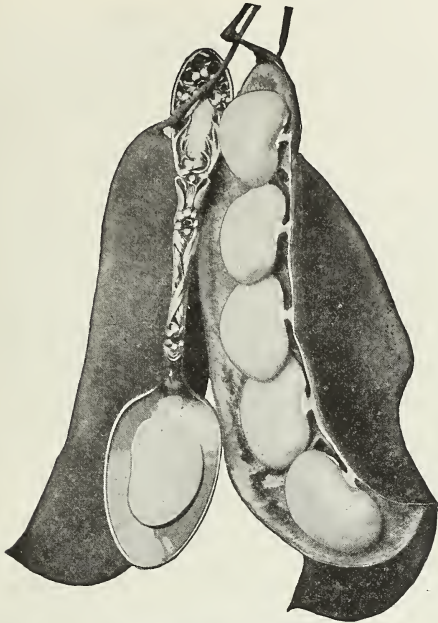
**POLE LIMA BEANS**

**King of the Garden Lima.** A strong grower and uniformly large podded; pods frequently contain 5 to 6 large beans of excellent quality. Per  $\frac{1}{2}$  lb. 20¢, 1 lb. 35¢, 2 lbs. 60¢, 5 lbs. \$1.40, 10 lbs. \$2.50.

**Siebert's Early Large Lima.** One of the earliest Pole Limas. Very vigorous and productive; large, thick pods, and easily opened. Per  $\frac{1}{2}$  lb. 20¢, 1 lb. 35¢, 2 lbs. 60¢, 5 lbs. \$1.40, 10 lbs. \$2.50.



Round Pod Kidney Wax



Early Leviathan Lima Pole

POLE LIMA BEANS—Continued.

**Early Leviathan Lima.** The earliest Pole Lima grown, large-sized pod and bean, and very productive. Per  $\frac{1}{2}$  lb. 20¢, 1 lb. 35¢, 2 lbs. 60¢, 5 lbs. \$1.40, 10 lbs. \$2.50.

**Carpenteria, Large Lima.** A favorite with market gardeners, as it is one of the longest podded and heaviest croppers of all the Pole Limas; beans fat and delicious. Per  $\frac{1}{2}$  lb. 20¢, 1 lb. 35¢, 2 lbs. 60¢, 5 lbs. \$1.40, 10 lbs. \$2.50.

**Other Pole, or Running Varieties**

**King Horticultural.** Pods and beans are larger than any other type of Horticultural Pole and fully equal in quality. Pods are splashed and striped with crimson. Per  $\frac{1}{2}$  lb. 20¢, 1 lb. 30¢, 2 lbs. 50¢, 5 lbs. \$1.30, 10 lbs. \$2.25.

**White-Seeded Kentucky Wonder.** A new pole variety of great merit. Bears long, green, brittle, stringless pods of excellent flavor. It rivals all other pole beans and is destined to become the most popular of all. Per  $\frac{1}{2}$  lb. 20¢, 1 lb. 35¢, 2 lbs. 60¢, 5 lbs. \$1.40, 10 lbs. \$2.50.

**Horticultural, or Cranberry.** Very popular; large yielder; beans unsurpassed for quality, pods splashed and striped with crimson. Per  $\frac{1}{2}$  lb. 20¢, 1 lb. 30¢, 2 lbs. 50¢, 5 lbs. \$1.30, 10 lbs. \$2.25.

**Golden Cluster Wax.** This is the best Yellow Wax String Bean in cultivation; vines are filled with great clusters of long pods the entire length of pole. Per  $\frac{1}{2}$  lb. 20¢, 1 lb. 40¢, 2 lbs. 75¢, 5 lbs. \$1.85, 10 lbs. \$3.50.

**Lazy Wife.** Produces large, stringless pods in great abundance; peculiarly luscious either as string beans or shelling, and are fine baked, when ripe. Per  $\frac{1}{2}$  lb. 20¢, 1 lb. 35¢, 2 lbs. 65¢, 5 lbs. \$1.60, 10 lbs. \$3.00.

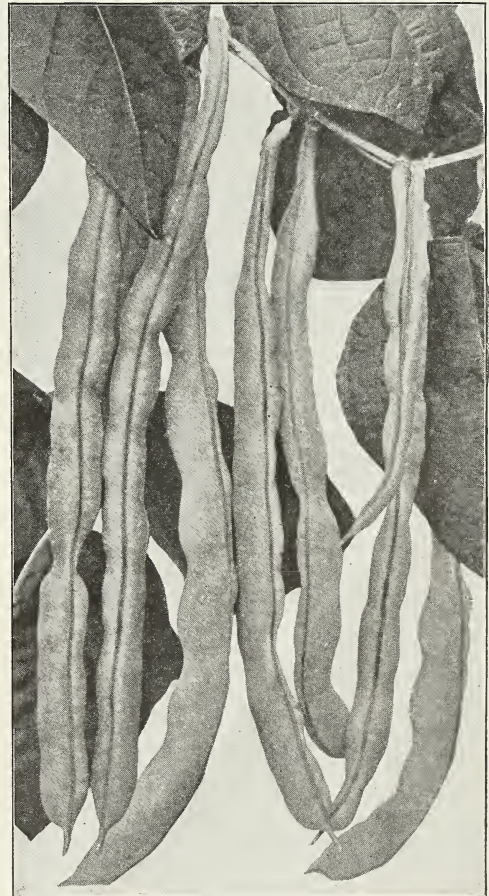
**Kentucky Wonder Wax.** An excellent variety, and one of the best pole beans. The pods are long, very thick, meaty, deeply saddle-backed, entirely stringless and bright yellow in color. The vine is thrifty and very prolific. Per  $\frac{1}{2}$  lb. 25¢, 1 lb. 40¢, 2 lbs. 75¢, 5 lbs. \$1.85, 10 lbs. \$3.50.

**Dutch Case-Knife.** Vines moderately vigorous, climbing well, and excellent for a Corn hill bean. Shell-beans are broad, white, kidney-shaped, early and prolific. Per  $\frac{1}{2}$  lb. 20¢, 1 lb. 30¢, 2 lbs. 55¢, 5 lbs. \$1.35, 10 lbs. \$2.50.

**Scarlet Runners.** Ornamental, and an excellent String Bean. Per  $\frac{1}{2}$  lb. 25¢, 1 lb. 40¢, 2 lbs. 75¢, 5 lbs. \$1.85, 10 lbs. \$3.50.

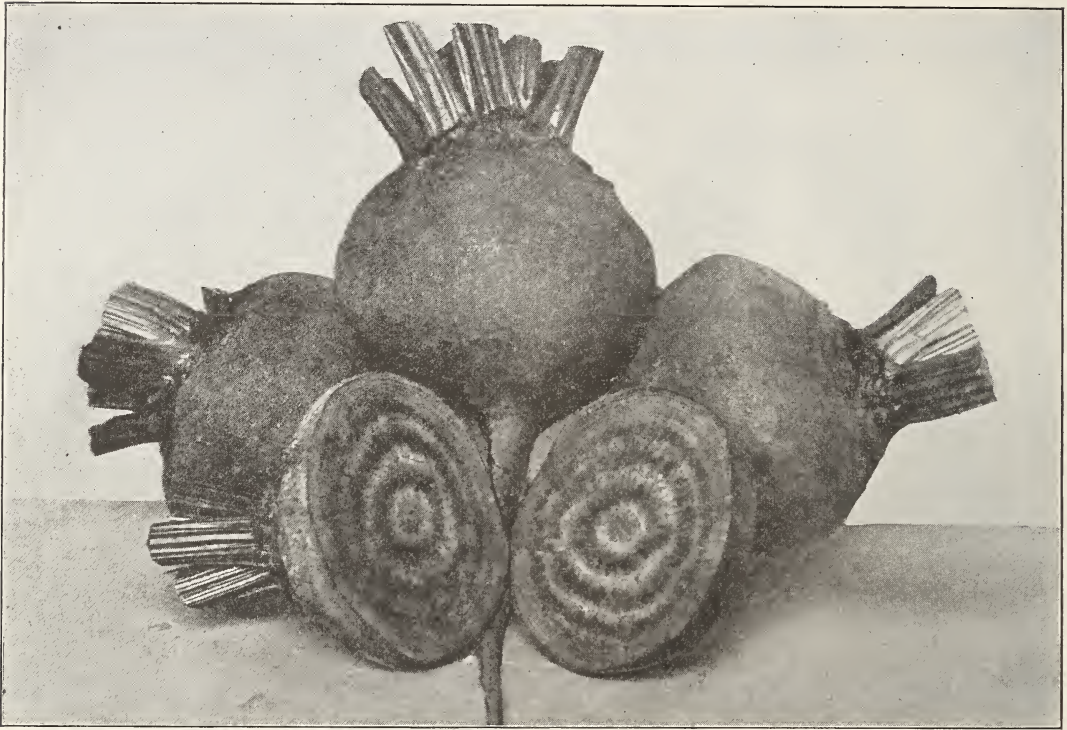
**White Dutch Runners.** Same general habit as Scarlet Runners; flowers and beans white. Beans broad and thick and rich flavored. Per  $\frac{1}{2}$  lb. 20¢, 1 lb. 35¢, 2 lbs. 65¢, 5 lbs. \$1.60, 10 lbs. \$3.00.

**Kentucky Wonder.** Very productive; pods long and hang in clusters from top to bottom of pole; entirely stringless. The best green-podded string bean in cultivation. Per  $\frac{1}{2}$  lb. 25¢, 1 lb. 40¢, 2 lbs. 75¢, 5 lbs. \$1.85, 10 lbs. \$3.50.



Kentucky Wonder

**BEETS** TABLE VARIETIES



Crosby's Egyptian

These are popular in all gardens, and as a rule are a very profitable crop for market gardeners. Beets fresh from the garden are always more tender and delicious than those that are shipped from a distance, or from a peddler's wagon after they have been bunched for three or four days. They can be sown in succession for different seasons and if too many are produced for table use, make excellent use for poultry and stock.

Culture.—The best results are obtained on a deep, rich, sandy loam. Sow as early as ground can be prepared, in drills, 14 to 18 inches apart, and thin out to 3 inches in the row. Always sow in freshly prepared soil, which should be pressed firmly over the seed. For Winter use, sow from last of June to last of July

A large proportion of the beet seed that is used in this country is grown in Europe, but on account of extremely unfavorable growing conditions, the European Beet seed crops were almost a failure, causing a shortage throughout the country.

*Sow at the rate of 5 to 6 lbs. to the acre.*

**Crosby's Egyptian.** One of the earliest and best, either for market or the home garden; round, dark red; flesh tender and sweet. Pkt. 5¢, oz. 15¢, ¼ lb. 40¢, 1 lb. \$1.00, 5 lbs. and over 90¢ per lb.

**Crimson Globe.** Early and smooth; fine dark red color; flesh deep crimson, tender and sweet. Pkt. 5¢, oz. 15¢, ¼ lb. 40¢, 1 lb. \$1.00, 5 lbs. and over 90¢ per lb.

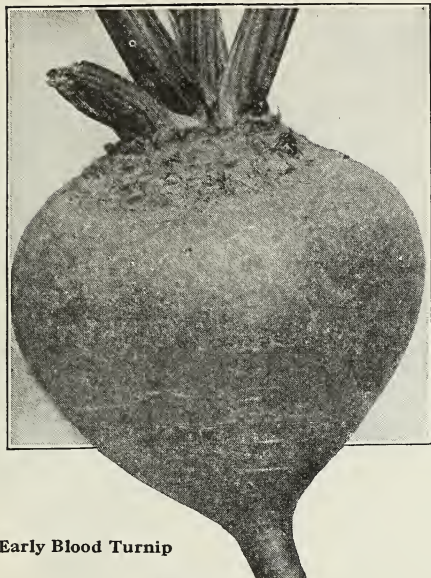
**Early Wonder.** A selected strain of the Crosby type, and one of the earliest and most perfect globe shaped Beet. Its attractive appearance, uniformity of size, shape, and color, and excellent keeping qualities make it a most desirable variety for both the Market Gardner and the Home garden. Per Pkt. 5¢, oz. 15¢, ¼ lb. 50¢, 1 lb. \$1.40, 5 lbs. and over \$1.25 per lb.

**Eclipse.** An early round, dark red variety; very sweet and tender, and one of the best for greens, as the tops seem to be tenderer and richer than other sorts. Pkt. 5¢, oz. 15¢, ¼ lb. 40¢, 1 lb. \$1.00, 5 lbs. and over 90¢ per lb.

**Edmand's Blood Turnip.** One of the best for main crop; round, smooth and deep blood red; tender and sweet. Pkt. 5¢, oz. 15¢, ¼ lb. 40¢, 1 lb. \$1.00, 5 lbs. and over 90¢ per lb.



Early Wonder Beet.



Early Blood Turnip

BEETS—Continued

**Early Blood Turnip.** The leading general crop variety; is Turnip-shaped; color deep red; flesh tender and sweet; a good keeper, and desirable for Autumn and Winter. Pkt. 5¢, oz. 15¢, ¼ lb. 40¢, 1 lb. \$1.00, 5 lbs. and over 90¢ per lb.

**Early Model.** A beautiful dark red globe shaped variety, flesh deep crimson, tender and sweet. Follows Early Wonder in earliness. Pkt. 5¢, oz. 15¢, ¼ lb. 40¢, 1 lb. \$1.20, 5 lbs. and over \$1.00 per lb.

**Extra Early Egyptian.** A rather flat variety; very dark red, and popular for forcing purposes. Pkt. 5¢, oz. 15¢, ¼ lb. 40¢, 1 lb. \$1.00, 5 lbs. and over 90¢ per lb.

**Detroit Dark Red.** One of the best table varieties, and for canning and pickling. Small, dark red, tender and sweet. Pkt. 5¢, oz. 15¢, ¼ lb. 40¢, 1 lb. \$1.00, 5 lbs. and over 90¢ per lb.

**Dewing's Early Blood.** Deep red color, smooth and fine form; one of the leading sorts for market and family garden. Pkt. 5¢, oz. 15¢, ¼ lb. 40¢, 1 lb. \$1.00, 5 lbs. and over 90¢ per lb.

**Arlington Imp. Blood Turnip.** Early, round, dark red, medium size; very tender and sweet. Pkt. 5¢, oz. 15¢, ¼ lb. 40¢, 1 lb. \$1.00, 5 lbs. and over 90¢ per lb.

If large quantities are wanted, write us for prices.

**Mangel and Sugar Beets for Stock**

**Culture.**—Both Mangels and Sugar Beets require deep, well enriched soil. Sow in May or June, in rows 2½ feet apart, and thin to 8 or 10 inches in the row.  
5 or 6 lbs. of seed required to the acre.

**Note.**—The value of Mangels and Sugar Beets for stock feeding is clearly seen in the improved health and condition of animals, the increased flow and quality of milk from cows, and the saving in fodder. Everyone who keeps even one cow should grow a patch of either Mangels or Sugar Beets for Winter feed.

**Giant Long Red.** Largest of all the Mangels and heaviest cropper. Oz. 10¢, ¼ lb. 20¢, 1 lb. 60¢, 5 lbs. and over 50¢ per lb.

**Golden Tankard.** Very heavy cropper; skin and flesh a deep yellow color, and good milk producing

qualities. Oz. 10¢, ¼ lb. 20¢, 1 lb. 60¢, 5 lbs. and over 50¢ per lb.

**Yellow Globe.** Well adapted for shallow soils, and more easily pulled. Yields well, and is an excellent keeper. Oz. 10¢, ¼ lb. 20¢, 1 lb. 60¢, 5 lbs. and over 50¢ per lb.

**Long Yellow.** A fine yellow Mangel; heavy cropper and a good milk producer. Oz. 10¢, ¼ lb. 20¢, 1 lb. 60¢, 5 lbs. and over 50¢ per lb.

**Improved White Sugar.** One of the best stock feeding Beets. It is claimed by many dairy farmers that Sugar Beets produce more and better quality milk than Mangels. Oz. 10¢, ¼ lb. 20¢, 1 lb. 60¢, 5 lbs. and over 50¢ per lb.

We very strongly recommend growing Sugar Beets and Mangels for Stock. Special prices for quantities of 10 lbs. and over.

**BRUSSELS SPROUTS**

The plants are very hardy, and grow from 3 to 2 feet high, bearing a large mass of leaves at the top. The sides of the main stem are covered with small Cabbage heads, which are broken off and cooked the same as Cabbage.

**Improved Half Dwarf.** The standard variety. Pkt. 5¢, oz. 20¢, ¼ lb. 75¢, 1 lb. \$2.75.

**SWISS CHARD**

The Chard Beet is grown for the tops, which are superior to common Beet for greens, and are also fine for feeding to chickens.

**Swiss Chard, or Silver Beet.** This variety has large, thick, plain, pale green leaves. Pkt. 5¢, oz. 10¢, ¼ lb. 30¢, 1 lb. 90¢, 5 lbs. and over 80¢ per lb.

**Green Curled Chard.** Large stalk with green curled leaves. Pkt. 5¢, oz. 10¢, ¼ lb. 30¢, 1 lb. 90¢, 5 lbs. and over 80¢ per lb.

**Lucullus.** A variety of special merit, as two different dishes can be prepared from a single plant. The stalks are thick and broad, and are prepared and served in the same manner as Asparagus. The leaves are used for greens, and are considered by many as superior to Spinach. Pkt. 5¢, oz. 10¢, ¼ lb. 30¢, 1 lb. 90¢, 5 lbs. and over 80¢ per lb.



Lucullus

# CABBAGE

Culture.—To grow Cabbage successfully the ground must be highly manured and thoroughly worked. For very early plants, the seed is often sown last of September, and protected in coldframes through the Winter. But the more common way is to sow in hotbeds in February or March, and while plants are very small, prick them out into coldframes to be transplanted later, when danger of frost is past. For late crops sow in May. Set plants in rows 2 to 2½ feet apart, and 18 inches in the row.

*One ounce of seed will produce about 2000 plants.*



Copenhagen Market Cabbage

**Copenhagen Market.** One of the earliest and most popular varieties, producing large round solid heads of very compact growth, which permits close planting, yielding more in a given space. Best Danish Grown. Pt. 5¢, oz. 35¢, ¼ lb. \$1.25, lb. \$4.50.

**Early Jersey Wakefield.** One of the earliest and best of the pointed head varieties. Pkt. 5¢, oz. 20¢, ¼ lb. 75¢, lb. \$2.50.

**All-Head Early.** One of the earliest of the flat-headed varieties. Is good for both Summer and Autumn. Pkt. 5¢, oz. 20¢, ¼ lb. 75¢, lb. \$2.50.

**Early Winnigstadt.** A very desirable pointed head sort. Pkt. 5¢, oz. 20¢, ¼ lb. 75¢, lb. \$2.50.

**Large Charleston Wakefield.** Same type as Jersey Wakefield, but heads are considerably larger, and is a week later. Pkt. 5¢, oz. 20¢, ¼ lb. 75¢, lb. \$2.50.

**Succession.** A second early, flat head variety, and for a medium early, main crop, or late use, has no superior. Pkt. 5¢, oz. 20¢, ¼ lb. 75¢, lb. \$2.50.

**Henderson's Early Summer.** A desirable early large flat head variety. A good keeper and does well in Summer and Autumn. Pkt. 5¢, oz. 20¢, ¼ lb. 75¢, lb. \$2.50.

**Danish Ball Head.** The great Winter keeper. Heads very heavy, globe-shaped, and keeping qualities unsurpassed. Pkt. 5¢, oz. 25¢, ¼ lb. 85¢, lb. \$3.00.

**Danish Round Head.** Similar to Danish Ball Head but grows more compact. Heads are extremely hard and solid. One of the best keeping varieties. Pkt. 5¢, oz. 25¢, ¼ lb. 85¢, lb. \$3.00.

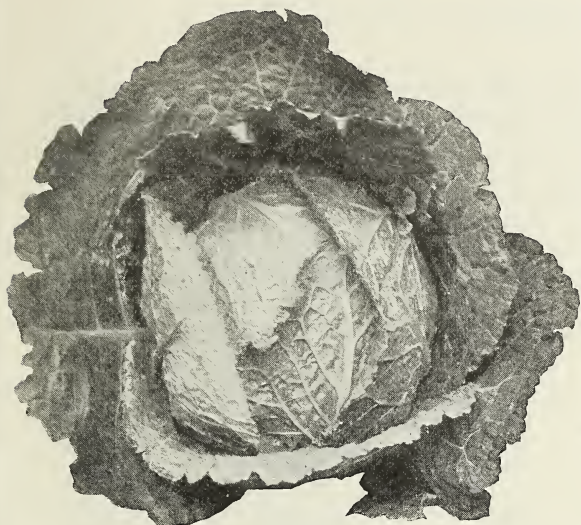
**Surehead.** A large, late, flat-headed sort; hard and firm. Pkt. 5¢, oz. 20¢, ¼ lb. 75¢, lb. \$2.50.

**Mammoth Red Rock.** Excellent for pickling. Head round and hard, and dark red color. Pkt. 5¢, oz. 25¢, ¼ lb. 85¢, lb. \$3.00.

**Premium Late Flat Dutch.** A very popular standard variety. Its keeping qualities are unsurpassed; heads large, tender and fine flavored. Pkt. 5¢, oz. 20¢, ¼ lb. 75¢, lb. \$2.50.



Premium Late Flat Dutch



Perfection Drumhead Savoy

**Perfection Drumhead Savoy.** Large, solid heads; sweet and tender; leaves curled and crumpled. Pkt. 5¢, oz. 20¢, ¼ lb. 75¢, lb. \$2.50.

**All Seasons.** One of the finest of the second early sorts. The heads are hard and solid, and flattened on top. It is called **All Seasons** because it is as good for Autumn and Winter as for early Summer. Pkt. 5¢, oz. 20¢, ¼ lb. 75¢, lb. \$2.50.

**Chinese, or Celery Cabbage**  
(Pe-Tsai)

Grows like Cos-Lettuce and when its outer leaves are stripped off shows a picture of Lettuce and Celery combined. Shredded it makes the finest slaw, and stripped of its mid-ribs which are eaten as Celery, it makes a fine salad, or it may be cooked like Asparagus. It possesses a very mild and pleasant flavor.

Sow the seed like regular Cabbage. If for early planting sow in hotbeds in February or March; if for later planting, sow early in July. It will mature 12 to 15 weeks from time of sowing seed, and will not stand frost.

**Paoting.** Big, compact, tender, and crisp and one of the best for the early Summer months, but does well all the season. It is vigorous, and free from insects. Pkt. 5¢, oz. 35¢, ¼ lb. \$1.25, lb. \$4.00.

**Peking.** Very large and compact, tender and crisp, and is considered one of the best for late Fall and Winter. It is a good keeper, and very attractive appearance. Pkt. 5¢, oz. 35¢, ¼ lb. \$1.25, lb. \$4.00.

## CAULIFLOWER

**Culture.**—The culture of Cauliflower is much the same as that of Cabbage. The soil should be made rich, and be thoroughly cultivated. Sow seed in hotbed early in March, and when sufficiently large, transplant in coldframes, and gradually harden by exposure. As early as weather will permit, set in the open ground in rows 3 feet apart, and 2 feet in the row. For late Fall crops, sow at same time and treat in same manner as for late Cabbage. Cauliflower will not head in hot, dry weather; therefore, planting should be regulated so they will head either in early Summer or Autumn. Keep well watered when they begin to head. If the leaves are drawn up and tied loosely over the head, it will hasten blanching.

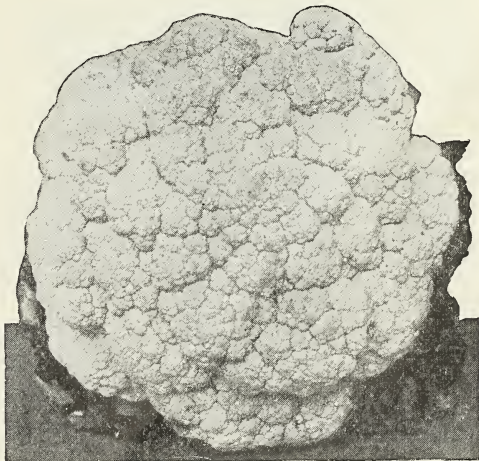
*One ounce will produce about 2000 plants.*

**Early Snowball.** The best and most popular early dwarf variety grown, producing large, white, solid heads and a sure header. Pkt. 15¢, oz. \$2.00, ¼ lb. \$7.50.

**Early Dwarf Erfurt.** An early variety, forming good, solid, white heads. Pkt. 15¢, oz. \$1.75, ¼ lb. \$6.50.

**Autumn Giant.** A valuable late variety; heads are large, white and solid, and remain a long time fit for use. Pkt. 10¢, oz. 50¢, lb. \$1.75.

**Extra Early Paris.** The most dwarf and earliest heading of all. Heads are solid, but rather smaller than the Erfurt type. Pkt. 10¢, oz. \$1.00, ¼ lb. \$3.50.



Early Snowball Cauliflower

## CHIVES

A hardy onion-like plant highly prized by many for use as a salad. The green stems make a very pleasant flavoring for soups, etc. Pkt. 5¢, oz. 25¢, ¼ lb. 80c.

## CELERY

Culture.—Sow the seed in the open ground as early as ground can be worked. The seed is slow to germinate and should be firmed into the soil rather than covered, and the soil where it is planted should be kept moist. If seed is sown in rows where it is intended to remain, the plants should be thinned out when 3 or 4 inches high, to 5 or 6 inches apart, and plants taken up may be transplanted. When transplanting, clip off the tops and the ends of the roots to make the plants stocky. Rows should be 4 or 5 feet apart, and plants 5 or 6 inches apart in the row. After planting is completed cultivate frequently. About the middle of August begin to draw the earth up to the plants to blanch or whiten them. Continue hilling or banking them at intervals until cold weather, when they should be taken up and put in a pit or cellar for Winter use. To get very early plants, seed should be started in boxes or hotbeds, and if grown too large before time to set them out in the open, clip off the tops to make them grow stocky.

*An ounce of seed will produce 3000 plants.*



Golden Self-Blanching Celery

**Paris Golden, French Grown.** The most popular market variety, especially for early crop. It is golden yellow, both stem and leaves, and unlike any other variety, and unless the seed is French grown will not produce the best results. (Our seed is imported direct from the grower.) Pkt. 10¢, oz. 60¢,  $\frac{1}{4}$  lb. \$2.25, lb. \$8.00.

**Golden Self-Blanching, American Grown.** The most popular American variety in use, both as an early and main crop. The plant is naturally golden yellow, but needs to be blanched to make it brittle and fit for table use. Pkt. 10¢, oz. 35¢,  $\frac{1}{4}$  lb. \$1.20, lb. \$4.00.

**Golden Hearted.** A very popular Winter variety. Pkt. 5¢, oz. 25¢,  $\frac{1}{4}$  lb. 75¢, lb. \$2.50.

**Giant White Solid.** Large, solid, pure white stalks of fine appearance and flavor when properly blanched. A good Winter variety. Pkt. 5¢, oz. 25¢,  $\frac{1}{4}$  lb. 75¢, lb. \$2.50.

**Boston Market.** Solid green stalks, blanching white. Pkt. 5¢, oz. 25¢,  $\frac{1}{4}$  lb. 75¢, lb. \$2.50.

**Celeriac, or Turnip-Rooted.** Produces Turnip-like roots which keep well for Winter use. It is highly esteemed either cooked for flavoring soup, or sliced and used as a salad. Pkt. 5¢, oz. 25¢,  $\frac{1}{4}$  lb. 75¢, lb. \$2.50.

**Columbia.** A fine second early sort, of stocky growth with broad, heavy stalks; crisp, nutty flavor, easily blanched. Pkt. 5¢, oz. 25¢,  $\frac{1}{4}$  lb. 75¢, lb. \$2.50.

**Giant Pascal.** A large, long-keeping Winter variety; crisp and fine flavor. Pkt. 5¢, oz. 25¢,  $\frac{1}{4}$  lb. 75¢, lb. \$2.50.

**Winter Queen.** A fine Winter variety; grows large, and is of fine flavor. Pkt. 5¢, oz. 25¢,  $\frac{1}{4}$  lb. 75¢, lb. \$2.50.

**White Plume.** A very desirable, early variety, that can be blanched for use early in the Fall; tender and fine flavor. Pkt. 5¢, oz. 25¢,  $\frac{1}{4}$  lb. 75¢, lb. \$2.50.

**Easy Blanching.** A new variety somewhat resembling Golden Self Blanching in size and shape, but the leaves are green, and the stalks blanch white instead of yellow. Very hardy and less liable to blight. An excellent winter keeper, as well as an early celery. One of the easiest to blanch and one of the best in quality. Pkt. 10¢, oz. 60¢,  $\frac{1}{4}$  lb. \$2.00, lb. \$7.00.

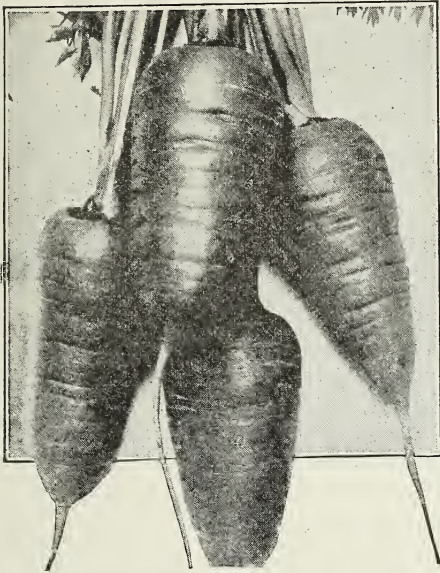
Croton Falls, N. Y.

"The seeds obtained from you have been entirely satisfactory, and I shall doubtless order more next year. I will appreciate your new Catalog and trust you will keep me on your mailing list."

M. A.



# CARROT



Chantenay

**Improved Long Orange.** The standard long variety for garden or field crops. A very heavy yielder. Pkt. 5¢, oz. 10¢, ¼ lb. 30¢, lb. 90¢, 5 lbs. and over 80¢ per lb.

**Oxheart, or Guerande.** One of the best croppers among the short Carrots, and is very desirable for heavy soils. Stump-rooted and about 4 inches long. Pkt. 5¢, oz. 10¢, ¼ lb. 30¢, lb. 90¢, 5 lbs. and over 80¢ per lb.

**St. Valery, or Intermediate.** Scarlet, half-long variety; broad at the shoulder and tapering to a point. Good general cropper. Pkt. 5¢, oz. 10¢, ¼ lb. 30¢, lb. 90¢, 5 lbs. and over 80¢ per lb.

**Danvers Half-Long Stump Root.** The best variety for general purposes, and the most largely used, both for stock feeding and table use. Pkt. 5¢, oz. 10¢, ¼ lb. 30¢, lb. 90¢, 5 lbs. and over 80¢ per lb.

If large quantities are wanted, write for prices.

Hawthorne, N. J. July, 1922.

"I have several friends who are very anxious to get seeds from you next year as we are so well pleased with your seeds they want to try them also".

E. M. H.

Green, R. I. July, 1922.

"I have tried your seeds this year and find them extra good. Am in hopes of obtaining same quality another season."

L. M. T.

**Culture.**—Like all root crops, a rich, deeply cultivated soil that has been well manured for some previous crop, is most suitable for Carrot. Newly manured ground has a tendency to produce forked roots. For early crops sow as early as ground can be worked, and for later crops sow up to the first of June. Sow in rows 14 inches apart, and cover not over half-inch, and thin to 3 inches in the row.

*An ounce will sow 100 feet of drill (3 to 4 lbs. to an acre.)*

**Chantenay.** A very desirable and popular variety, and makes a fine bunching sort; stump-rooted; 5 to 6 inches long. Pkt. 5¢, oz. 10¢, ¼ lb. 30¢, lb. 90¢, 5 lbs. and over 80¢ per lb.

**Early Scarlet Horn.** A good, short variety for table use. Pkt. 5¢, oz. 10¢, ¼ lb. 30¢, lb. 90¢, 5 lbs. and over, 80¢ per lb.

**Bagley's Improved Danvers.** An improved strain of Danvers Half-Long, growing more symmetrical and longer, making a handsome carrot, a favorite variety in the Boston markets. Pkt. 5¢, oz. 15¢, ¼ lb. 40¢, lb. \$1.25, 5 lbs. and over, \$1.00 per lb.



Danvers Half-Long

Colchester, Conn., 1922.

"I was very well pleased with the seeds I received from you this last Spring."

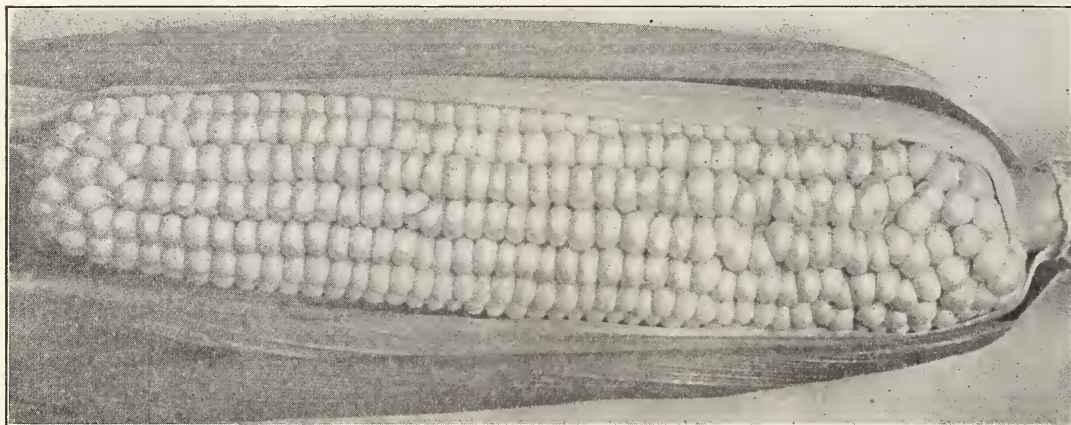
D. H. M.

## SWEET CORN

Much of the Sweet Corn seed that is offered is produced in the West, where it can be grown much cheaper than it can in the East. But the West, with its level country, high winds, and vast areas of Field Corn, which mixes with the Sweet Corn, destroys that luscious sweetness so much prized in our Connecticut-grown seed. Our Sweet Corn seed is all grown here at home, where we make a specialty of growing the choicest strains. Our seed has the reputation of producing the *niciest* and *sweetest* Corn to be found. Our friends will be sure of getting something *nice* if they buy their Sweet Corn from us. Sweet Corn can be raised on any good, ordinary soil, but it should be deeply and thoroughly worked before planting, and cultivated frequently.

*8 to 10 qts. required for an acre, if planted in hills.*

**1 qt. weighs about 2 lbs.**



Extra Early Dighton

**Extra Early Dighton.** A new extra early variety.

Very similar in color, size, and delicious flavor to Hart's Extra Early Dawn, but is ready for the table a few days earlier. The first Corn in the market always brings the highest price, which makes this a most valuable variety.  $\frac{1}{2}$  lb. 25¢, lb. 40¢, 10 lbs. and over, 30¢ lb.

**Golden Giant.** This delicious variety should have

a place in every garden. It is claimed by Dr. DeLue who first introduced it to be the earliest, sweetest, and most delicious Corn grown. We have tried it out in our trial grounds, and although it did not prove to be as early as our Extra Early Dawn, it is all the originator claimed, for yield, and delicious sweetness. The stalks are dwarf, but produce a heavy crop; the ears are quite large, filled with deep creamy yellow kernels, and when served on the table are very attractive, sweet and juicy, and of most delicious flavor.  $\frac{1}{2}$  lb. 20¢, lb. 30¢, 10 lbs. and over, 25¢ lb.

**Golden Rod.** Very similar to Golden Bantam,

following that popular variety in earliness, but is a much larger ear, and has the same sweet, and delicious flavor.  $\frac{1}{2}$  lb. 20¢, lb. 30¢, 10 lbs. and over, 25¢ lb.

**Honey Sweet.** A new and most desirable variety.

Medium early, good sized ears, and as its name implies, is deliciously sweet and fine flavored. A desirable variety for market and home gardens.  $\frac{1}{2}$  lb. 20¢, lb. 30¢, 10 lbs. and over, 25¢ lb.

**Mammoth White Cory.** One of the best of the

extra early white varieties for either the market or the home garden. The ears are quite large, being 7 inches long, and stalks grow about 4 feet high, each generally bearing two good ears, of fine shape, and delicious flavor.  $\frac{1}{2}$  lb. 15¢, lb. 25¢, 10 lbs. and over, 20¢ lb.

**Early Crosby.** One of the best sorts for all pur-

poses.  $\frac{1}{2}$  lb. 12¢, lb. 20¢, 10 lbs. and over, 18¢ lb.

**Howling Mob.** A large eared, second early sort,

very productive, white, and of excellent quality.  $\frac{1}{2}$  lb. 15¢, lb. 25¢, 10 lbs. and over, 20¢ lb.

**White Cory.** Very similar to Red Cory, except it

has white cob and kernel.  $\frac{1}{2}$  lb. 15¢, lb. 25¢, 10 lbs. and over, 20¢ lb.

**Metropolitan.** Second early; large ears.  $\frac{1}{2}$  lb.

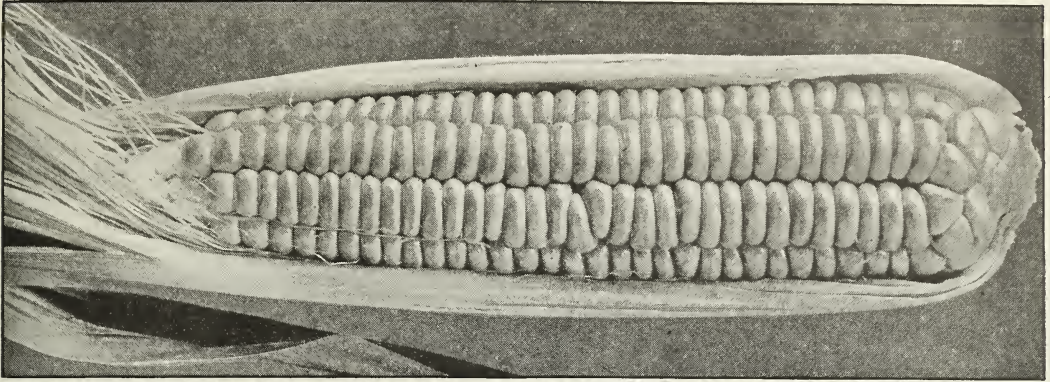
15¢, lb. 25¢, 10 lbs. and over, 20¢ lb.

**Kendal's Early Giant.** Medium early, large; good

quality.  $\frac{1}{2}$  lb. 15¢, lb. 25¢, 10 lbs. and over, 20¢ lb.

**Early Large Champion.** Produces the earliest

large ears, and is the favorite market gardener's variety.  $\frac{1}{2}$  lb. 15¢, lb. 25¢, 10 lbs. and over, 20¢ lb.



Golden Bantam

SWEET CORN—Continued

**Golden Bantam.** Golden yellow in color. This is a general favorite wherever used; is early, very tender, and the sweetest and most delicious corn grown.  $\frac{1}{2}$  lb. 20¢, lb. 30¢, 10 lbs. and over, 25¢ lb.

**Hart's Extra Early Snowflake.** A splendid new extra early variety. Kernels are snow white and as sweet and delicious as the famous Golden Bantam, and when it becomes better known will rival that variety in popularity. We are sure everyone who plants Hart's Early Snowflake will be pleased with it. Supply limited.  $\frac{1}{2}$  lb. 15¢, lb. 25¢, 10 lbs. and over, 20¢ lb.

**Hart's Improved Extra Early Dawn.** Our improved strain of this splendid early Sweet Corn is of better quality, and earlier than any other variety grown, and is the best money maker of them all. It is ready for market so early it always commands fancy prices, and a large piece can be cleaned up at high prices before any other variety is ready. It is deliciously sweet and fine flavored, and for so early a variety produces a large crop.  $\frac{1}{2}$  lb. 20¢, lb. 30¢, 10 lbs. and over, 25¢ lb.

**Early Mayflower.** An extra early variety, sweet and delicious.  $\frac{1}{2}$  lb. 15¢, lb. 25¢, 10 lbs. and over, 20¢ lb.

**Early Red Cory.** Very early; good cropper; delicious flavor.  $\frac{1}{2}$  lb. 15¢, lb. 25¢, 10 lbs. and over, 20¢ lb.

**Early Maine.** Extra early; fine quality.  $\frac{1}{2}$  lb. 15¢, lb. 25¢, 10 lbs. and over, 20¢ lb.

**Early Minnesota.** A standard early variety.  $\frac{1}{2}$  lb. 15¢, lb. 25¢, 10 lbs. and over, 20¢ lb.

**Black Mexican.** Medium early; very sweet. While in its green state the kernels are white, but turn black as they ripen.  $\frac{1}{2}$  lb. 15¢, lb. 25¢, 10 lbs. and over, 20¢ lb.

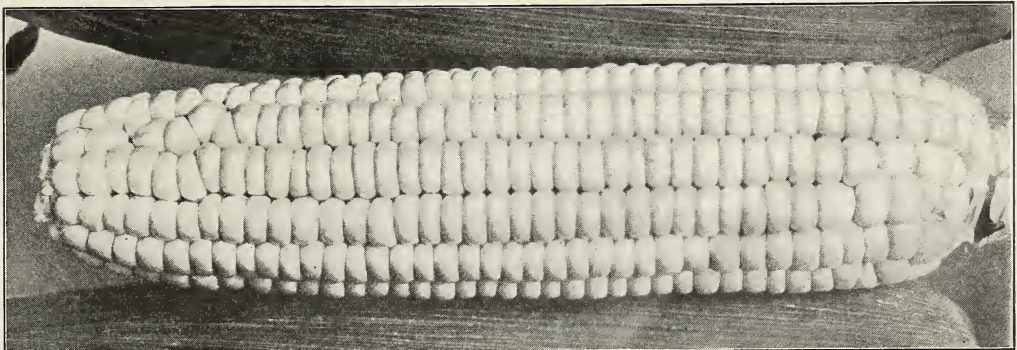
**Stowell's Evergreen.** The standard variety for the home garden, market and canning. The kernels are long, tender and sweet.  $\frac{1}{2}$  lb. 15¢, lb. 25¢, 10 lbs. and over, 20¢ lb.

**Country Gentleman.** The best late sort of all for the home table. Cob is small, and crowded with long, irregular kernels, tender and sweet.  $\frac{1}{2}$  lb. 15¢, lb. 25¢, 10 lbs. and over, 20¢ lb.

**Long Island Beauty.** Most desirable late sort; quality extra good.  $\frac{1}{2}$  lb. 15¢, lb. 25¢, 10 lbs. and over, 20¢ lb.

**Late Mammoth.** Very tall, late sort, with mammoth ears of the best quality; sweet and tender.  $\frac{1}{2}$  lb. 15¢, lb. 25¢, 10 lbs. and over, 20¢ lb.

**Bantam Evergreen.** A cross between Golden Bantam and Stowell's Evergreen, which has resulted in a perfect combination of the qualities of both these well known sorts. It has the attractive flavor and color of Golden Bantam and the large deep kernels of Stowell's Evergreen.  $\frac{1}{2}$  lb. 15¢, lb. 25¢, 10 lbs. and over, 20¢ lb.



Bantam Evergreen

SWEET CORN—Continued

**Squantum, or Potter's Excelsior.** Very sweet; a large, second-early variety.  $\frac{1}{2}$  lb. 15¢, lb. 25¢, 10 lbs. and over, 20¢ lb.

**Early Evergreen.** Very similar to Stowell's Evergreen, but is a week to ten days earlier.  $\frac{1}{2}$  lb. 15¢, lb. 25¢, 10 lbs. and over, 20¢ lb.

If large quantities are wanted, write us for prices.



Field and Ensilage Corn

**Field and Ensilage Corn**

Weight per Bushel 56 lbs.

We have given especial attention to our Field and Ensilage Corn this season; it has been carefully selected, thoroughly cured, of strong germination, and we confidently recommend it.

One bag contains  $2\frac{1}{2}$  bushels. Write for special prices if more than one bag is wanted.

**Improved Leaming.** The most popular and best ensilage Corn. A great yielder; kernels are long and a deep golden yellow. Stalks large and leafy. Per pk. 75¢, per bushel, \$2.50. Bag of  $2\frac{1}{2}$  bushels, \$2.25 per bushel.

**Eureka Ensilage.** A large, leafy sort. One of the best for silos. Per pk. 85¢, per bushel, \$3.00. Bag of  $2\frac{1}{2}$  bushels, \$2.75 per bushel.

**Early Mastodon.** One of the best ensilage sorts, very large and leafy, resembles Leaming, but is earlier. Per pk. 75¢, per bushel, \$2.50. Bag of  $2\frac{1}{2}$  bushels, \$2.25 per bushel.

**90 Day Yellow Field.** An early yellow Flint Corn, matures in about 90 days. Ears, and stalks, smaller than yellow Canada. Per pk. 90¢, per bushel, \$3.00. Bag of  $2\frac{1}{2}$  bushels, \$2.75 per bushel.

**Yellow Canada Field.** The standard yellow Flint variety, grows a good sized stalk, good sized ears, 8 rows, and kernels solid and compact. Matures in from 100 to 110 days. Per pk. 90¢, per bushel, \$3.00. Bag of  $2\frac{1}{2}$  bushels, \$2.75 per bushel.

**Longfellow Flint.** A popular and profitable variety, very long, slim ears, a big yielder, makes a good growth of stalks, matures in 100 to 110 days. Per pk. 90¢, per bushel, \$3.00. Bag of  $2\frac{1}{2}$  bushels, \$2.75 per bushel.

**POP CORN**

**White Rice, for seed**—A popular variety, Per  $\frac{1}{2}$  lb. 12¢, per lb. and over 20¢, per 5 lbs. and over 15¢ per lb.

**Queens Golden.** A new variety, claimed by the originator to be best Pop Corn grown. Per  $\frac{1}{2}$  lb. 15¢, per lb. and over 25¢, per 5 lbs. and over 20¢ per lb.

**Pop Corn for Popping and "Sure Pop".** We have a quantity of dried Pop Corn, splendid for popping. Per lb. 15¢, per 5 lbs. and over 12¢ per lb.

## CRESS or PEPPERGRASS

A popular salad which should be sown early in the Spring in drills, at short intervals for succession, as it soon runs to seed.

**Extra Curled.** The best variety; used for garnishing. Pkt. 5¢, oz. 10¢,  $\frac{1}{4}$  lb. 20¢, lb. 50¢.

## CORN SALAD

Culture.—This excellent salad may be had the year round. For Summer use, plant in early Spring. For Winter and early Spring use, sow in August and September, and protect with a covering of straw on approach of Winter. Sow thickly in shallow drills 12 to 14 inches apart, and press the soil down firmly on the seed.

*One ounce will sow 100 feet of drill.*

**Large Seeded.** The most popular variety. Pkt. 5¢, oz. 15¢,  $\frac{1}{4}$  lb. 50¢, lb. \$1.50.

## DANDELION

Culture.—This is one of the earliest, as well as the best and most healthful Spring greens, or salads. Sow from May to last of June, in drills 14 inches apart, and thin out to 5 or 6 inches in the row. Cultivate frequently, and the following Spring they will be fit for use.

*One ounce will sow 150 feet of drill.*

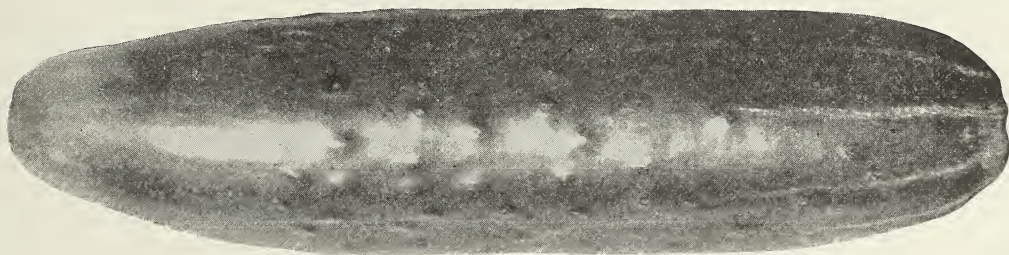
**Improved Broad Leaf.** An improved thick-leaved variety. Pkt. 10¢, oz. 70¢,  $\frac{1}{4}$  lb. \$2.50.

**French Cultivated.** Popular for greens. Pkt. 5¢, oz. 40¢,  $\frac{1}{4}$  lb. \$1.25.

## CUCUMBER

Culture.—Cucumbers succeed best in a rich, loamy soil. To get early vines, start in hotbed, about middle of April. Seed can be sown in pieces of sod, grass side down, and when weather will permit can be placed in the prepared hills, 4 feet apart each way. For a general crop, plant in the open ground in May. When danger of bugs is past, thin out to 4 vines in a hill. For pickles, plant middle of June to middle of July. Sprinkle vines with plaster, or spray them to protect from bugs.

*About 3 lbs. of seed required for an acre.*



Early Fortune

**Early Fortune.** One of the best types of White Spine. Early and very productive, fruits 9 inches long, slightly tapering, color dark green, and does not fade when shipped a long distance. Pkt. 5¢, oz. 15¢,  $\frac{1}{4}$  lb. 45¢, lb. \$1.60.

**Henderson's Perfected.** A very dark colored type of White Spine; fruits about 8 inches long, thick and square ending. Pkt. 5¢, oz. 15¢,  $\frac{1}{4}$  lb. 45¢, lb. \$1.60.

**Early Russian.** A small extra early variety. Pkt. 5¢, oz. 15¢,  $\frac{1}{4}$  lb. 45¢, lb. \$1.60.

**Green Prolific.** Uniform size; fine for pickles. Pkt. 5¢, oz. 15¢,  $\frac{1}{4}$  lb. 45¢, lb. \$1.60.

**Boston Pickling.** Very productive and extensively used for pickling. Medium sized, smooth and symmetrical, crisp and tender. Pkt. 5¢, oz. 15¢,  $\frac{1}{4}$  lb. 45¢, lb. \$1.60.

**Davis's Perfect.** The best and most profitable Cucumber for the market gardener, or the home garden. They are early very long, dark green. Can be produced out of doors, and sell in the market for hothouse grown, and always bring a good price. Pkt. 5¢, oz. 20¢,  $\frac{1}{4}$  lb. 50¢, lb. \$1.75.

**Early Arlington White Spine.** One of the best sorts for forcing; the fruit is long, dark green uniform in size, and crisp, tender flesh of excellent flavor. Pkt. 5¢, oz. 15¢,  $\frac{1}{4}$  lb. 45¢, lb. \$1.60.

CUCUMBER—Continued.

**New Century White Spine.** A new fine strain, 8 to 10 inches in length, rich dark green, smooth and regular. The skin is quite thin and tender, flesh white and crisp. The seed space is firm and solid, making an excellent slicing variety. Pkt. 5¢, oz. 20¢,  $\frac{1}{4}$  lb. 50¢, lb. \$1.75.

**Fordhook Famous White Spine.** One of the largest and most attractive Cucumbers grown. It retains its deep green color longer than any other variety. The flesh is very thick and mild flavor. Vines are of strong, vigorous growth and bear continuously throughout the season. Pkt. 5¢, oz. 15¢,  $\frac{1}{4}$  lb. 45¢, lb. \$1.60.

**Early Cluster.** An early and prolific variety, vines hardy and vigorous, bearing fruits in clusters of two or three. Fruits short, thick, bright green, crisp and tender. It is extensively used for a pickling cucumber as well as for slicing. Pkt. 5¢, oz. 15¢,  $\frac{1}{4}$  lb. 45¢, lb. \$1.60.

**Improved White Spine.** One of the best for table use. The vines are vigorous, fruiting early and abundantly. Fruits are uniformly straight, dark green with white spines and are usually about 7 inches in length, crisp and tender. Pkt. 5¢, oz. 15¢,  $\frac{1}{4}$  lb. 45¢, lb. \$1.60.

**Improved Long Green.** One of the most extensively used cucumbers for the home garden, and market; vines vigorous and productive. Fruits very long, uniformly slender and dark green in color. Splendid for slicing and largely used for pickles. Often used for making sweet pickles. Pkt. 5¢, oz. 20¢,  $\frac{1}{4}$  lb. 50¢, lb. \$1.75.

**Everbearing.** Early and productive. Pkt. 5¢, oz. 15¢,  $\frac{1}{4}$  lb. 45¢, lb. \$1.60.

**Cool and Crisp.** Medium length; tender and crisp. Pkt. 5¢, oz. 15¢,  $\frac{1}{4}$  lb. 45¢, lb. \$1.60.

**Jersey Pickling.** An excellent sort for both table use and pickling. Vines vigorous and productive. Fruit straight, handsome, small at each end, crisp and tender and make excellent pickles. Pkt. 5¢, oz. 15¢,  $\frac{1}{4}$  lb. 45¢, lb. \$1.60.

**Japanese Climbing.** The strong vines throw out numerous tendrils and can be trained upon a trellis, or chicken wire, which ensures earlier ripening and better fruits. It endures Summer heat and drought exceedingly well. The Cucumbers are very long, dark green and flesh is crisp and mild flavored. Pkt. 5¢, oz. 20¢,  $\frac{1}{4}$  lb. 50¢, lb. \$1.75.

## CHICORY

**Culture.**—Sow the seed in May, transplant or thin out to 6 inches apart, and keep the soil well cultivated. The plants form roots which by Oct. 1st will have a thickness of 2 to 3 inches, and stalks of leaves that grow like Cos or Romaine Lettuce. About the middle of October, by which time they should be fully grown, tie the leaves closely together, and blanch like Celery, either by placing boards against them, or by banking up with soil. Two or three weeks are sufficient to whiten the hearts for use. They may be taken up, roots and all, and stored in a cool cellar, or trenched like Celery; in this way the hearts will whiten and they can be kept all Winter to be used as wanted.

*One ounce will sow 100 feet of row.*

**Witloof (French Endive).** This is the choicest of all the Winter salads, and is delicious when served with French dressing, and eaten like Cos Lettuce. It grows in a solid oblong head, and blanches ivory white. When lifting, cut whole head with part of the roots to hold the leaves together. Pkt. 5¢, oz. 20¢,  $\frac{1}{4}$  lb. 60¢, lb. \$2.00.

## EGG PLANT

**Culture.**—This seed germinates slowly and should be started in the hotbed in March or April. When 3 inches high transplant into coldframes, 4 inches apart, or set them into small pots and protect from the cold. After all danger from cold nights is past, gradually harden by exposure and transplant in the open ground, 2 feet apart. Shade, when first transplanted, and protect from the potato bug, which is one of the worst obstacles encountered in Egg Plant culture. Draw earth up to stem when about 1 foot high.

*One ounce will produce about 1000 plants.*

**New York Improved Purple.** One of the best for market and private use. Pkt. 5¢, oz. 35¢,  $\frac{1}{4}$  lb. \$1.25.

**Black Beauty.** An early prolific variety; fruit round; skin black. Pkt. 5¢, oz. 35¢,  $\frac{1}{4}$  lb. \$1.25.

Esopus, N. Y. July, 1922.

"We like your seeds. Those who have seen our Corn tell us it is the nicest in the town. You can expect to hear from us another year with a larger order."

Mrs. C. A. M.

Summit, N. Y. July, 1922.

"The Red Cory Sweet Corn seed I purchased of you germinated well, and is looking finely now."

G. M. P.

## ENDIVE

Culture.—One of the best and most wholesome salads for Fall and Winter use. Sow in April for early use, and in June and July for Fall and Winter use. When leaves are about 8 inches long, tie them together with a string near the top to blanch.

*One ounce will sow 150 feet of drill.*

**Green Moss Curled.** Grows more compact than the other sorts, and the leaves are finer curled, and blanches a creamy white. Pkt. 5¢, oz. 15¢, ¼ lb. 30¢, lb. \$1.00.

**White Curled.** Very tender and easy to blanch. Pkt. 5¢, oz. 15¢, ¼ lb. 35¢, lb. \$1.00.

**Bread-Leaf Batavian, (Escarolle).** Leaves are wide, thick and straight; very tender and crisp. Pkt. 5¢, oz. 15¢, ¼ lb. 35¢, lb. \$1.00.

## GOURDS

Culture same as Squashes. The vines make a rapid growth, and are much used for covering old fences, trellises, stumps, etc. The foliage is ornamental, with curiously shaped fruit of extraordinary markings. They are a tender annual and grow 10 to 20 feet high.

**Mixed Varieties.** Pkt. 5¢, oz. 15¢, ¼ lb. 50¢.

## KALE or BORECOLE

(German Greens)

A species of Cabbage forming a mass of leaves, some varieties being very beautiful and curled. The leaves are cooked as greens. Sow in April for early use, and in August and September for Winter and early Spring use. Sow in drills, 14 inches apart, and thin to 4 inches in the row. Protect with a light covering of straw or litter during the Winter.

*One ounce will sow 150 feet of drill.*

**Green Curled Scotch.** Most popular sort for general use. Pkt. 5¢, oz. 15¢, ¼ lb. 50¢, lb. \$1.50.

**Dwarf Siberian.** The best for Fall sowing. Pkt. 5¢, oz. 15¢, ¼ lb. 50¢, lb. \$1.50.

## KOHL RABI

A plant forming a bulb above the ground and bearing short leaves. The bulb is the edible part, and when cooked combines the virtues of the Turnip and Cabbage, but excels both in nutritive, hardy and productive qualities.

Culture.—Sow in early Spring for Summer use, and in July for Fall use. Plants should be thinned out to 8 inches in the row.

*One ounce will sow 150 feet of drill.*

**Early White Vienna.** The most desirable for general use. Pkt. 5¢, oz. 15¢, ¼ lb. 50¢, lb. \$1.50.

**Early Purple.** An early variety with purple bulb. Pkt. 5¢, oz. 20¢, ¼ lb. 70¢, lb. \$2.00.

## LEEK

A species of Onion which does not form a bulb, but is used for its mild and delicious root, stem and neck.

Culture.—Sow early in Spring, in drills 14 inches apart and thin out to about 4 inches. When well grown, hill up with earth to get a long, white stem.

*One ounce will sow 100 feet of drill.*

**American Flag.** Most popular variety; forms large stems of good flavor. Pkt. 5¢, oz. 20¢, ¼ lb. 70¢, lb. \$2.50.

RAPID GROWTH IS DESIRABLE. Vegetables that are hastened in their growth by the use of fertilizers are usually crisp, succulent and palatable. Slow growth tends to cause a bitter flavor in Lettuce, a sharp flavor in Onion, and a pungent taste in the Radish. Rapid growing Vegetables are always better, and usually bring the highest market prices.

---

Tyringham, Mass., July, 1922.

"The seeds we bought from your House two years ago were very satisfactory, we plan to patronize you another year and will recommend your seeds among our farm neighbors."

C. C.

---

# LETTUCE

Culture.—No vegetable is more universally used than Lettuce, and to be thoroughly appreciated it must be brought to the table fresh and unwilted; quality depends largely upon rapid and vigorous growth. Have the soil well enriched and keep it moist. Give it plenty of water, and you will have delicious, tender Lettuce. Sow in hotbed in March, and transplant, for very early plants. For general use, sow in the open ground, as early as ground can be worked, in drills 14 inches apart; thin out as they grow. To get good heads, plants should be 10 inches apart in the row. For a succession sow every two or three weeks during the season.

*One ounce will sow 150 feet of drill.*

**Boston Curled.** A curled heading sort, crisp, small and medium early. Pkt. 5¢, oz. 15¢,  $\frac{1}{4}$  lb. 45¢, lb. \$1.50.

**Hanson Improved.** A reliable sure heading sort, heads large and late; leaves large and broad, crumpled and frilled at the edges. A fine variety for midsummer planting outside, as it stands the hot season better than most sorts. Pkt. 5¢, oz. 15¢,  $\frac{1}{4}$  lb. 45¢, lb. \$1.50.



Simpson's Early Curled

**Simpson's Early Curled.** One of the earliest and best loose curled heads. Pkt. 5¢, oz. 15¢,  $\frac{1}{4}$  lb. 45¢, lb. \$1.50.

**Simpson's Black Seed.** Loose, curled, light green leaves. Pkt. 5¢, oz. 15¢,  $\frac{1}{4}$  lb. 45¢, lb. \$1.50.

**Grand Rapids.** A good forcing variety; very curly and attractive. Pkt. 5¢, oz. 15¢,  $\frac{1}{4}$  lb. 45¢, lb. \$1.50.

**Prize Head.** Very tender, reddish-brown leaves, curled and attractive. Pkt. 5¢, oz. 15¢,  $\frac{1}{4}$  lb. 45¢, lb. \$1.50.

**Boston Market.** Popular forcing sort, heads crisp and solid. Pkt. 5¢, oz. 15¢,  $\frac{1}{4}$  lb. 45¢, lb. \$1.50.

**Tennis Ball, Black Seed.** Desirable for forcing in Winter, and withstands the Summer heat well. Forms solid, crisp heads. Pkt. 5¢, oz. 15¢,  $\frac{1}{4}$  lb. 45¢, lb. \$1.50.

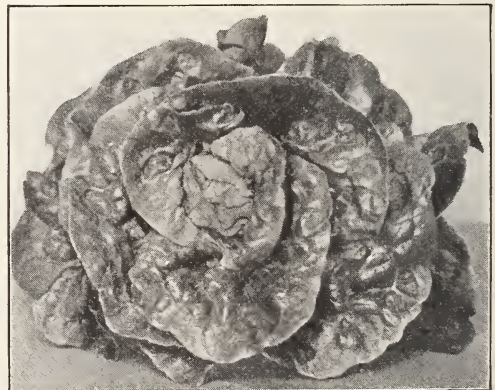
**May King.** A very choice early head Lettuce. One of the best for coldframe, or outdoor culture. Heads are good size, early, solid and tender. Wherever grown it is sure to become very popular. Pkt. 5¢, oz. 15¢,  $\frac{1}{4}$  lb. 45¢, lb. \$1.50.



Big Boston Head

**Big Boston.** A very popular variety with Market Gardeners both north and south for outdoor culture, also for forcing under glass. It makes a large solid head, leaves are light green, slightly tinged with reddish brown and wavy at the edges. The inner leaves blanch to an attractive greenish white, tinged with light yellow. Pkt. 5¢, oz. 15¢,  $\frac{1}{4}$  lb. 45¢, lb. \$1.50.

**Hartford Bronze Head.** Forms large compact heads of a beautiful bronzed red color shading to dark green toward the roots. A distinct variety and has no equal. Pkt. 5¢, oz. 15¢,  $\frac{1}{4}$  lb. 45¢, lb. \$1.50.



Hartford Bronze Head





Iceberg Lettuce

**Iceberg.** Heads compact and solid, with curled, light green leaves, tinged with red at the edges.

Pkt. 5¢, oz. 15¢, ¼ lb. 45¢, lb. \$1.50.



White Paris Cos, or Romaine

**White Paris Cos, or Romaine.** Best of the Cos varieties; leaves should be tied up for a few days to facilitate blanching. Pkt. 5¢, oz. 15¢, ¼ lb. 45¢, lb. \$1.50.

**Wayahead.** A very early, sure heading variety. The inner head blanches a rich buttery yellow; of superior quality. Pkt. 5¢, oz. 15¢, ¼ lb. 45¢, lb. \$1.50.

**Wonderful, or New York Head.** A large, crisp, tight-heading variety; leaves are dark green and curled at the edges. Pkt. 5¢, oz. 30¢, ¼ lb. 75¢, lb. \$2.50.

## MUSKMELON

**Culture.**—A warm, rich, sandy loam is best adapted for Melon culture. The middle of May is early enough for planting in the open ground, but the crop can be forced by starting in hotbed on sods and transplanting same as Cucumbers. Plant in hills 5 to 6 feet apart each way. When danger from bugs is over, thin to 3 or 4 plants in a hill. When the main shoot is a few feet long, pinch off the ends to force the laterals on which the fruit is borne.

*One ounce for 50 hills; 3 lbs. for an acre.*

**Large Late Hackensack.** Fruit large, round, flattened at the ends; deeply ribbed, and heavily netted; flesh green, thick and fine quality. Pkt. 5¢, oz. 15¢, ¼ lb. 45¢, lb. \$1.50.

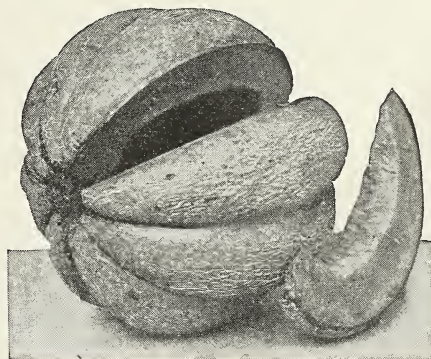
**Grand Rapids Market.** A large, extra early sort, oblong in shape, green, turning to yellow when ripe. The flesh is orange color almost to the rind, skin finely netted. Pkt. 5¢, oz. 15¢, ¼ lb. 45¢, lb. \$1.50.

**Extra Early Hackensack.** Excellent for market or private garden. Heavily ribbed and netted; flesh thick and light green. Pkt. 5¢, oz. 15¢, ¼ lb. 45¢, lb. \$1.50.

**Jenny Lind.** Very early and prolific; small and netted; flesh green and sweet. Pkt. 5¢, oz. 15¢, ¼ lb. 45¢, lb. \$1.50.

**Rocky Ford, or Netted Gem.** One of the earliest and best Melons. Uniform in size and shape, being oval and finely netted; flesh deep green, luscious and sweet. Pkt. 5¢, oz. 15¢, ¼ lb. 45¢, lb. \$1.50.

**Miller's Cream, or Osage.** A large-sized, salmon-fleshed variety. Pkt. 5¢, oz. 15¢, ¼ lb. 45¢, lb. \$1.50.



Emerald Gem Muskmelon

**Emerald Gem.** A salmon-pink variety of delicious flavor, skin generally smooth; deep emerald green color, and ripening to the rind; very sweet. Pkt. 5¢, oz. 15¢, ¼ lb. 45¢, lb. \$1.50.

MUSKMELON—Continued

**Honey Dew.** A new and distinct type of Melon. The skin is perfectly smooth and hard, creamy white in color, turning to a lemon tint when fully ripe; flesh light emerald green, very thick, ripening to the rind, very sweet and juicy, and possesses a peculiar honey flavor found in no other melon. Require a longer season for growing than other melons. Pkt. 5¢, oz. 15¢, ¼ lb. 45¢, lb. \$1.50.

**Tip Top.** A Melon we recommend to every lover of this luscious fruit, and to every gardener who grows for the Market. Yellow fleshed, sweet,

juicy, of finest flavor. Pkt. 5¢, oz. 15¢, ¼ lb. 45¢, lb. \$1.50.

**Paul Rose.** A yellow fleshed sort of excellent quality. Fruits are oval, slightly ribbed and densely netted; flesh is orange yellow, very thick, firm and sweet. Vines vigorous and productive. Pkt. 5¢, oz. 15¢, ¼ lb. 45¢, lb. \$1.50.

**Princess.** A large red fleshed, slightly oblong shaped Melon. Ribs not very prominent, but well netted. One of the best of the red fleshed sorts. Pkt. 5¢, oz. 15¢, ¼ lb. 45¢, lb. \$1.50.

## WATERMELON

**Culture.**—Same as for Muskmelons, except they should be planted 8 feet apart.

*One ounce will plant 25 hills; 4 lbs. to the acre.*

**Harris Early.** Medium size, extra early, oblong, striped and mottled; flesh sweet and solid. Pkt. 5¢, oz. 10¢, ¼ lb. 25¢, lb. 85¢.

**Hungarian Honey.** A superb early variety, globe-shaped, color dark green mottled with darker shade; flesh brilliant red, ripening clear to the rind, and of delicious quality. Pkt. 5¢, oz. 10¢, ¼ lb. 25¢, lb. 85¢.

**Striped Gypsy.** Fruits large and long, striped and mottled; flesh deep scarlet, sweet and delicious. Pkt. 5¢, oz. 10¢, ¼ lb. 25¢, lb. 85¢.

**Dixie.** Very popular; large, striped and oblong shape; flesh red and sweet. Pkt. 5¢, oz. 10¢, ¼ lb. 25¢, lb. 85¢.

**Cole's Early.** Medium size, oblong, striped and mottled; flesh red, solid and sweet. Pkt. 5¢, oz. 10¢, ¼ lb. 25¢, lb. 85¢.

**Ice Cream (White Seed).** Oblong, with dark mottled skin; flesh pink and sweet. Pkt. 5¢, oz. 10¢, ¼ lb. 25¢, lb. 85¢.

**Mountain Sweet.** Large, oval-shaped; skin green; flesh red, solid and sweet. Pkt. 5¢, oz. 10¢, ¼ lb. 25¢, lb. 85¢.

**Phinney's Early.** Oblong-shaped; very early; thin rind; delicious flavor. Pkt. 5¢, oz. 10¢, ¼ lb. 25¢, lb. 85¢.

**Early Fordhook.** Very early and fine quality; nearly round; mottled green. Pkt. 5¢, oz. 10¢, ¼ lb. 25¢, lb. 85¢.

**Kleckley Sweets.** Long; dark green skin; bright red flesh of luscious sweetness. Pkt. 5¢, oz. 10¢, ¼ lb. 25¢, lb. 85¢.

**Tom Watson.** Large, oblong, dark green skin, with thick netting. Flesh bright red, delicious flavor. Pkt. 5¢, oz. 10¢, ¼ lb. 25¢, lb. 85¢.

**Halbert's Honey.** A large, oblong variety, especially sweet and of delicious flavor. Pkt. 5¢, oz. 10¢, ¼ lb. 25¢, lb. 85¢.

**Citron.** Used exclusively for preserves and pickling. Pkt. 5¢, oz. 10¢, ¼ lb. 25¢, lb. 85¢.



Halbert's Honey Watermelon

## MUSTARD

The leaves of Mustard make excellent greens, of sharp, pungent flavor, and are cooked the same as Spinach, or Beet Greens. Sow the seed in early Spring, and at intervals during the Summer.

*One ounce will sow 50 feet of drill.*

**White English.** Oz. 10¢, ¼ lb. 20¢, lb. 50¢.

**Chinese Curled.** Pkt. 5¢, oz. 10¢, ¼ lb. 30¢, lb. 70¢.

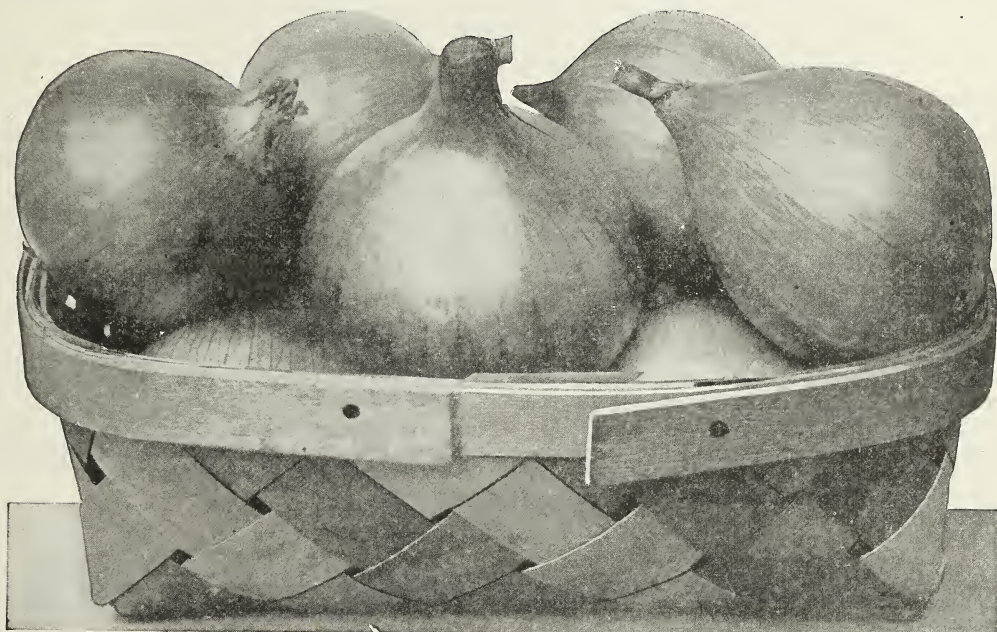
## ONION

**Culture.**—The most important thing in growing Onions is to have good seed—seed that will **come up and produce the variety you want.** Being growers and farmers ourselves we fully appreciate the importance of this item, and our customers may have **perfect confidence** that the seed we send them will **be right** in every particular. The soil for Onions should be a rich loam, thoroughly enriched with well rotted manure, and the soil well pulverized before sowing the seed. Sow the seed as early in the Spring as ground can be worked, in drills 14 inches apart, covering one-quarter to one-half inch. Begin cultivating as soon as rows can be plainly seen, and keep them clean, for if Onions once get choked by weeds they never produce so good, or tull a crop. A top dressing of wood ashes applied after second weeding and, cultivated in, is beneficial.

*One ounce will sow 100 feet of drill; 5 lbs. to the acre.*

**Write for special prices on lots of five pounds and over.**

The best seed, although a little higher in price, may be the cheapest in the end.



**Southport Yellow Globe**

One of our wholesale customers in Canada conducting a Mail Order seed business bought his first order of onion seeds from our House in 1894, and has bought of us every year since. With his order for this season he writes;

*“I have always had good success with your Onion Seed, the stock has always proved to be good, true to name and of strong germination.*

*“Thank you for taking care of my Onion Sets, I am glad to buy of a friendly House.”*  
and in closing he styles himself:

*“A buyer of 30 years standing.”*

**Extra Early Red Flat.** A very early, flat variety, with dark, purplish-red skin; forms a solid, hard bulb. A good keeper. Pkt. 5¢, oz. 20¢,  $\frac{1}{4}$  lb. 60¢, lb. \$2.25.

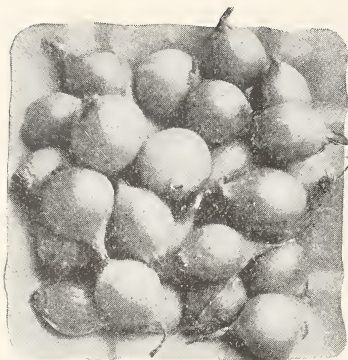
**Wethersfield Large Red.** The best known and most widely used red variety. It is a thick, flattish-shaped Onion with firm flesh; a good keeper and heavy yielder. Pkt. 5¢, oz. 20¢,  $\frac{1}{4}$  lb. 60¢, lb. \$2.25.

**Southport Yellow Globe.** A fine orange-yellow, globe-shaped variety. Is a heavy cropper and

forms a good keeping, hard bulb. Pkt. 5¢, oz. 20¢,  $\frac{1}{4}$  lb. 60¢, lb. \$2.25.

**Danvers Yellow Flat.** A bright orange-yellow flat Onion; yields large crops, and is a good keeper. Is a good variety to transplant to get early Onions. Pkt. 5¢, oz. 20¢,  $\frac{1}{4}$  lb. 60¢, lb. \$2.00.

**Yellow Globe Danvers.** A popular yellow, round Onion for market and shipping. Is almost ball-shaped but a trifle flattened at both ends. It is a heavy cropper and a firm hard-fleshed variety. Pkt. 5¢, oz. 20¢,  $\frac{1}{4}$  lb. 60¢, lb. \$2.25.



Yellow Sets



White Sets



Red Sets

ONION—Continued

**Southport Red Globe.** A large, globe-shaped bright deep red variety; a late sort and excellent keeper. Pkt. 5¢, oz. 20¢, ¼ lb. 60¢, lb. \$2.25.

**Australian Brown.** A half globe-shaped, brown colored, very productive and noted for its good keeping qualities. Pkt. 5¢, oz. 20¢, ¼ lb. 60¢, lb. \$2.00.

**Prizetaker.** A very large, globe-shaped variety, with yellow skin and white flesh of mild flavor. A heavy cropper and a good keeping Onion. Pkt. 5¢, oz. 20¢, ¼ lb. 60¢, lb. \$2.25.

**Southport White Globe.** A pure white, globe-shaped variety. Its pearl-white flesh is fine grained and mild. Pkt. 5¢, oz. 25¢, ¼ lb. 80¢, lb. \$3.00.

**White Portugal, or Silver Skin.** A white, flat Onion, very hard and firm and an excellent keeper. Is used largely for pickles. Pkt. 5¢, oz. 20¢, ¼ lb. 70¢, lb. \$2.50.

ONION SETS

**Culture.**—These are the very small-sized Onions that have been grown from seed and wintered over. Set them out in the open ground as early in the Spring as ground can be worked, in drills 14 inches apart, and 4 inches in the row. Keep well cultivated and they will produce large Onions ready for market much earlier than can be raised from seed, and always command much higher prices. They are ready for use as soon as bulbs are of fair size. They may be used green and for bunching. Weight per bushel, 32 lbs.

8 to 10 bushels (according to size) required for an acre.

Write for special prices on lots of one bushel and over.

**Red Sets** 15¢ per lb. up to 10 lbs.; 10 lbs. and over, 12¢ per lb.

**Yellow Sets.** 15¢ per lb. up to 10 lbs.; 10 lbs. and over, 12¢ per lb.

**White Sets.** 18¢ per lb. up to 10 lbs.; 10 lbs. and over, 16¢ per lb.

**Australian Brown Sets.** 15¢ per lb. up to 10 lbs. 10 lbs. and over 12¢ per lb.

**Japanese Sets.** 20¢ per lb. up to 10 lbs.; over 10 lbs. 18¢ per lb.

If a large quantity is wanted, write for special prices.

OKRA or GUMBO

**Culture.**—The young seed pods are excellent used in soups, stews, catsups, etc. After danger from frost is past, plant in rows about 3 feet apart, cover about 1 inch deep, pressing soil down firmly. Thin to about 1 foot apart in the row. The pods are in best condition to use when from 1 to 3 inches long.

**White Velvet.** Of tall growth; pods white, smooth and tender. Pkt. 5¢, oz. 10¢, ¼ lb. 30¢, lb. 80¢.

**Improved Long Green.** Pods are long, smooth, green in color, and very tender. Pkt. 5¢, oz. 10¢, ¼ lb. 30¢, lb. 80¢.

**Improved Dwarf Green.** Grows very stocky and productive. Pods medium length, quite thick and very tender. Pkt. 5¢, oz. 10¢, ¼ lb. 30¢, lb. 80¢.

PARSLEY

Used for garnishing meats, and for flavoring.

**Culture.**—The seed is very slow to germinate; usually from two to three weeks will elapse after sowing, before the plants make an appearance. To hasten it, soak the seed a few hours in tepid water, and when it swells, sow thickly in shallow drills, about 14 inches apart; cover lightly, and firm the soil on the seed, thin out to 2 or 3 inches in the row. For Winter use, protect in coldframes or a light cellar.

Hamburg Parsley is cultivated for its roots and should be treated in same manner as Carrots.

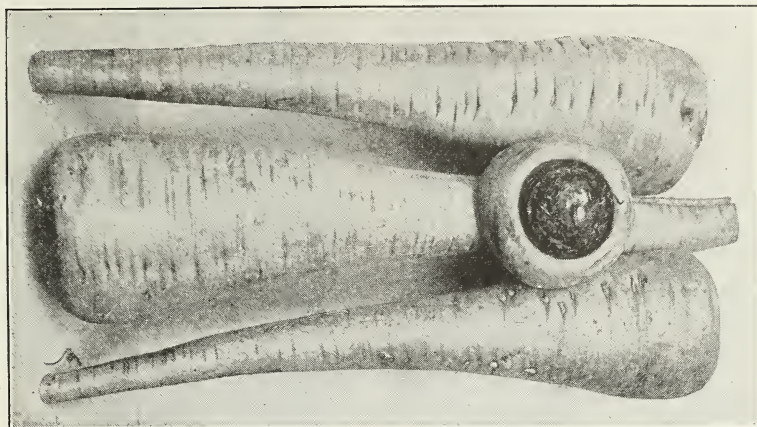
One ounce will sow 150 feet of drill.

**Champion Moss Curled.** The best variety for market and home use; is beautifully crimped and curled. Pkt. 5¢, oz. 10¢, ¼ lb. 30¢, lb. \$1.00.

**Plain-Leaved.** Is stronger in flavor than the curled, and is used for flavoring soups, etc. Pkt. 5¢, oz. 10¢, ¼ lb. 30¢, lb. \$1.00.

**Hamburg, or Turnip-Rooted.** The root, which resembles a small Parsnip, is the edible portion and is used for flavoring soups, etc. Pkt. 5¢, oz. 10¢, ¼ lb. 30¢, lb. \$1.00.

## PARSNIP



Champion Hollow Crown Parsnip

**Culture.**—As this is so slow to germinate, plant only new seed and sow very liberally. Parsnips do best in a deep, rich, sandy loam, but will make good roots on any soil that is deep and mellow and moderately rich. Sow early in Spring in rows 14 to 16 inches apart, cover not over half an inch and press the earth firmly on the seed. Thin out to 4 inches in the rows. Parsnips are improved by frost, therefore part of the crop should be left out in the ground over Winter.

The crop of Parsnip seed was very short both in this Country and in Europe, making the seed scarce, and correspondingly high.

*An ounce for 150 feet of drill; 4 to 5 lbs. for an acre.*

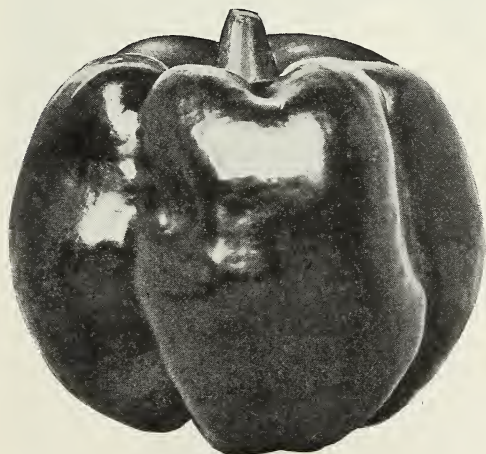
**Champion Hollow Crown.** An improved strain of Hollow Crown. This has been selected for its handsome form, whiteness of skin and flesh, good

size and freedom from tendency to side roots and for its superior quality. Pkt. 5¢, oz. 15¢, ¼ lb. 50¢, lb. \$1.75.

## PEPPER

**Culture.**—Sow seed in the hotbed in April, or in a warm, sheltered spot out of doors in May. When weather becomes settled and warm, transplant into rows 2 feet apart and 18 inches in the row. Cultivate often and draw up the earth a little to support the stems.

*One ounce will produce about 2000 plants.*



Ruby Giant Pepper

**Sweet Italian.** An exceedingly mild sort that matures very early and is very prolific. They resemble Ruby King in shape but are slightly larger; flesh thick, sweet and mild flavored. Pkt. 5¢, oz. 40¢, ¼ lb. \$1.40, lb. \$5.00.

**Neapolitan Large Early.** The most productive of all large Peppers and decidedly the earliest. No other large Pepper develops so quickly. They are borne upright, skin and flesh bright red; they are thick meated and sweet and "mild as an apple." Pkt. 5¢, oz. 40¢, ¼ lb. \$1.40, lb. \$5.00.

**Ruby Giant.** A cross between Chinese Giant and Ruby King; has the good qualities of both and makes a fine market gardener's variety. Pkt. 5¢, oz. 40¢, ¼ lb. \$1.40, lb. \$5.00.

**Pimento.** A very thick-fleshed, heart-shaped, smooth, mild, crimson sort, extensively grown by canners for pimentos and pickles and very desirable for salads. It is a good sort for market gardeners and should be planted in every garden where a delicious sweet-flavored Pepper is wanted both for salads and for stuffing. Pkt. 5¢, oz. 40¢, ¼ lb. \$1.40, lb. \$5.00.

PEPPER—Continued

**Long Red Cayenne.** A strong, pungent variety, having long pointed fruit, which is bright red when ripe. Pkt. 10¢, oz. 40¢, ¼ lb. \$1.40, lb. \$5.00.

**Large Bull Nose, or Bell.** A popular variety for stuffing, fruit large, round and blocky. The color is deep green when young, but when ripe is a glossy red. Pkt. 5¢, oz. 40¢, ¼ lb. \$1.40, lb. \$5.00.

**Chinese Giant.** The appearance of this Pepper is most striking and attractive and it sells on sight. It is of monstrous size and flesh is thick and meaty and extremely mild; color brilliant scarlet. Pkt. 5¢, oz. 40¢, ¼ lb. \$1.50.

**Ruby King.** This variety grows to a large size. When ripe it is a handsome ruby red color. Its flesh is thick and mild. Very desirable for stuffing. Pkt. 5¢, oz. 40¢, ¼ lb. \$1.40, lb. \$5.00.

**Sweet Mountain.** Resembles Bull Nose in size, shape and color, but is hotter in flavor, although pleasant to the taste. Is much esteemed for pickling and stuffing. Pkt. 5¢, oz. 40¢, ¼ lb. \$1.40, lb. \$5.00.

**Red Cherry.** Small round or Cherry shaped peppers, rich scarlet and very hot. Pkt. 5¢, oz. 40¢, ¼ lb. \$1.40, lb. \$5.00.

## PEAS

**Culture.**—For First Early crop sow the Extra Early Smooth Peas and plant as early as land can be worked. Select a rich, light, sandy soil, and cover lightly, and they will mature quicker and can be cleaned up in two pickings. Wrinkled Peas should be planted thicker, as they are not as hardy as the smooth sorts, but are sweeter and better flavored, and do best in a deep, rich loam. Avoid using coarse, rank manure, as it drives the plants to vines without pods. For market crops, sow in rows, 2½ to 4 feet apart, according to the variety. In the private home garden, where they will be cultivated by hand, the tall sorts may be planted in double rows, 6 or 8 inches apart, sticking brush firmly in the ground between the rows, or they may be planted in single rows 3 feet apart and chicken wire used for the vines to run on. The dwarf sorts may be planted 1½ to 2 feet apart. Cover from 2 to 4 inches, according to the character of the soil and time of planting. Lightest on heavy soil and early planting, and deepest on light soil and late planting. Deep planting has a tendency to prevent mildew and prolongs the bearing season, yet on cold, heavy soil the seed is liable to rot if planted deep. If drills are made 5 inches deep and the seed is covered only 1 or 2 inches, the earth can be gradually drawn into the trench as the vines grow. In this way a good stand can be had at a good depth. A succession of the same varieties may be had by sowing every two weeks.

*One quart will plant about 100 feet of drill; 2 to 3 bushels for an acre.*

**One quart will weigh about 2 lbs.**

**Extra Early East Hartford.** This Pea is a favorite with the market gardeners around Hartford. It is a very early, smooth Pea, with vines growing 2½ feet high. Per ½ lb. 15¢, 1 lb. 25¢, 2 lbs. 45¢, 5 lbs. \$1.05, 10 lbs. \$2.00.

**Alaska.** Extensively used by canners and market gardeners for first early. It ripens very uniformly; seed is smooth and blue. Vines 2 feet high. Per ½ lb. 15¢, 1 lb. 25¢, 2 lbs. 45¢, 5 lbs. \$1.05, 10 lbs. \$2.00.

**First and Best.** One of the first earlys. Very productive, and uniform in ripening; seed round and smooth. Vines 2½ feet high. Per ½ lb. 15¢, 1 lb. 25¢, 2 lbs. 45¢, 5 lbs. \$1.05, 10 lbs. \$2.00.

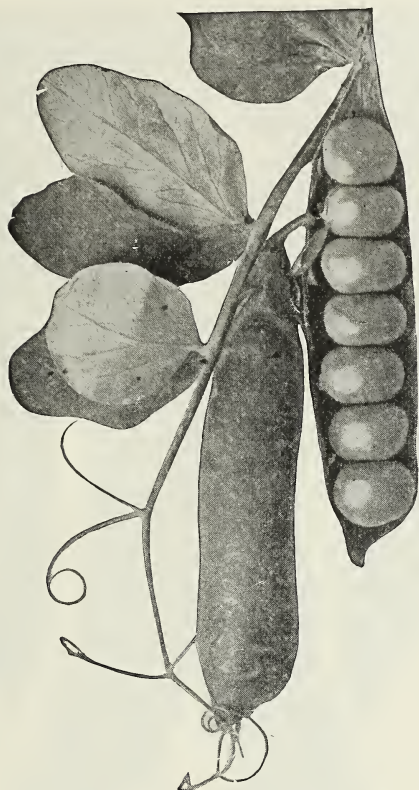
**Premium Gem.** An extra early dwarf wrinkled Pea. An improvement on the Little Gem. Vines 18 inches high. Per ½ lb. 20¢, 1 lb. 30¢, 2 lbs. 50¢, 5 lbs. \$1.20, 10 lbs. \$2.00.

**Nott's Excelsior.** One of the earliest and best of the dwarf wrinkled varieties and the most used. Vines 15 inches high. Per ½ lb. 20¢, 1 lb. 30¢, 2 lbs. 50¢, 5 lbs. \$1.20, 10 lbs. \$2.00.

**Sutton's Excelsior.** A new early, dwarf, wrinkled Pea similar in growth to Nott's Excelsior; a few days later, but the pods are much larger, and well filled with delicious, large Peas. Vines 18 to 20 inches high. Per ½ lb. 20¢, 1 lb. 30¢, 2 lbs. 50¢, 5 lbs. \$1.20, 10 lbs. \$2.00.



**Sutton's Excelsior**



Thomas Laxton

PEAS—Continued

**Little Marvel.** A fine new variety of dwarf wrinkled Peas. Vines average 15 inches in height, and are heavily set with large pods, frequently borne in pairs. They are fully as early as Wonder, or Nott's Excelsior, while pods are larger and vines produce a heavier crop. Per  $\frac{1}{2}$  lb. 20¢, 1 lb. 35¢, 2 lbs. 60¢, 5 lbs. \$1.40, 10 lbs. \$2.50.

**Early Morn.** This new variety is claimed by the grower who introduced it to be an improvement on the Gradus, which it closely resembles in every respect. A desirable variety; wrinkled. Vines 3 feet high. Per  $\frac{1}{2}$  lb. 20¢, 1 lb. 35¢, 2 lbs. 60¢, 5 lbs. \$1.40, 10 lbs. \$2.50.

**Peter Pan.** One of the very finest of the early large podded, dwarf Peas. Vine and foliage very heavy and dark green. Pods large and well filled with large dark green Peas of superb quality. Vines about 15 inches high. Per  $\frac{1}{2}$  lb. 20¢, 1 lb. 35¢, 2 lbs. 60¢, 5 lbs. \$1.40, 10 lbs. \$2.50.

**Gradus, or Prosperity.** One of the best of the early, large-podded, wrinkled Peas; only a few days later than Nott's Excelsior, with pods nearly as large as Telephone, filled with large, handsome Peas, tender and sweet. Vines 3 feet high. Per  $\frac{1}{2}$  lb. 20¢, 1 lb. 35¢, 2 lbs. 60¢, 5 lbs. \$1.40, 10 lbs. \$2.50.

**McLean's Advancer.** A favorite second early; wrinkled. Fine quality. Vines 30 inches high. Per  $\frac{1}{2}$  lb. 20¢, 1 lb. 30¢, 2 lbs. 50¢, 5 lbs. \$1.20, 10 lbs. \$2.00.

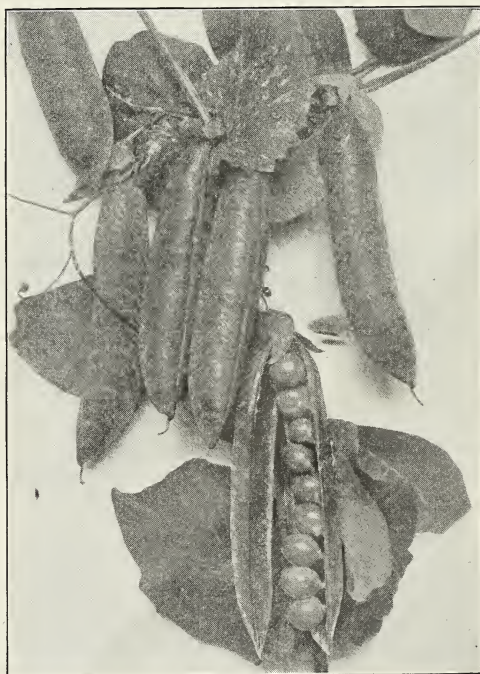
**Laxtonian.** One of the largest podded of the early dwarf Peas. Dark green pods similar to Gradus in shape, and nearly as large in size, and mature a little earlier. Vines vigorous and productive, averaging 15 to 18 inches high. Per  $\frac{1}{2}$  lb. 20¢, 1 lb. 35¢, 2 lbs. 60¢, 5 lbs. \$1.40, 10 lbs. \$2.50.

**American Wonder.** An extra early dwarf wrinkled Pea. Vines 1 foot high. Per  $\frac{1}{2}$  lb. 20¢, 1 lb. 30¢, 2 lbs. 50¢, 5 lbs. \$1.20, 10 lbs. \$2.00.

**World's Record.** A very productive, large podded variety, similar in many ways to Gradus, is slightly earlier, peas tender and sweet. Vines 2  $\frac{1}{2}$  feet. Per  $\frac{1}{2}$  lb. 20¢, 1 lb. 35¢, 2 lbs. 60¢, 5 lbs. \$1.40, 10 lbs. \$2.50.

**Thomas Laxton.** Very similar to Gradus in growth, earliness and foliage. A wrinkled Pea, more hardy and surer cropper than Gradus; pods fully as large, but are blunt at the ends; well filled with large Peas of finest quality. Vines 3 feet high. Per  $\frac{1}{2}$  lb. 20¢, 1 lb. 35¢, 2 lbs. 60¢, 5 lbs. \$1.40, 10 lbs. \$2.50.

**Blue Bantam.** A splendid extra early dwarf variety, with pods nearly as large as Gradus, packed with Peas of most luscious flavor. Vines stout and healthy, and about 15 inches high. Per  $\frac{1}{2}$  lb. 20¢, 1 lb. 35¢, 2 lbs. 60¢, 5 lbs. \$1.40, 10 lbs. \$2.50.



Blue Bantam

PEAS—Continued

**Everbearing.** A large medium early, wrinkled Pea; very prolific and fine quality. Vines 2½ feet high. Per ½ lb. 20¢, 1 lb. 30¢, 2 lbs. 50¢, 5 lbs. \$1.20, 10 lbs. \$2.00.

**Yorkshire Hero.** A hardy and prolific, medium early, wrinkled Pea. Vines 2½ feet high. Per ½ lb. 20¢, 1 lb. 30¢, 2 lbs. 50¢, 5 lbs. \$1.20, 10 lbs. \$2.00.

**Stratagem.** An excellent wrinkled Pea with medium early, large pods. Vines 20 inches high. Per ½ lb. 20¢, 1 lb. 35¢, 2 lbs. 60¢, 5 lbs. \$1.40, 10 lbs. \$2.50.

**Carter's Daisy, or Dwarf Telephone.** A medium early, dwarf, wrinkled Pea, with large pods; very prolific, tender and sweet. Vines 20 inches high. Per ½ lb. 20¢, 1 lb. 35¢, 2 lbs. 60¢, 5 lbs. \$1.40, 10 lbs. \$2.50.

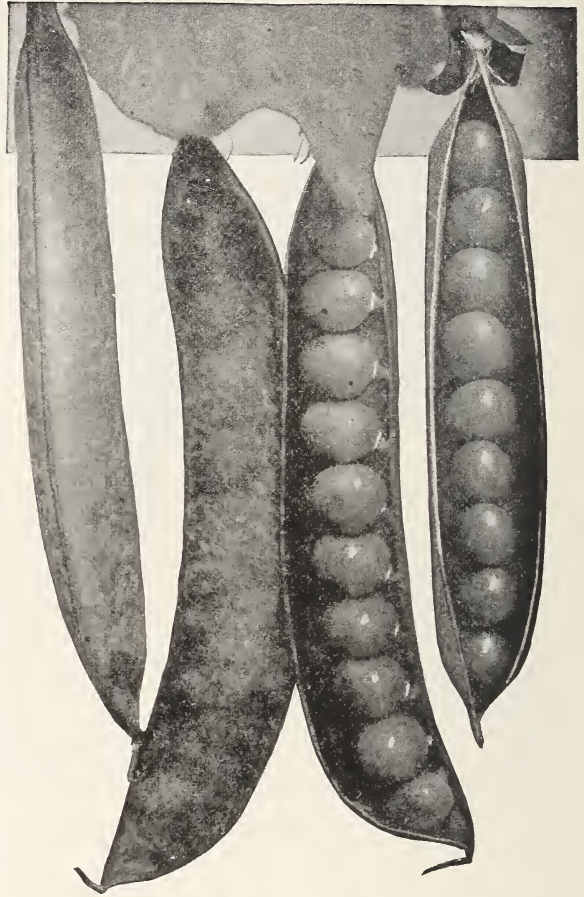
**Telephone.** The leading wrinkled Pea with market gardeners. Follows Gradus in earliness. A great cropper; bears very large, well-filled pods of the best quality. Vines 4 feet high. Per ½ lb. 20¢, 1 lb. 35¢, 2 lbs. 60¢, 5 lbs. \$1.40, 10 lbs. \$2.50.

**Dwarf Champion.** A dwarf variety of the favorite Champion of England, retaining its delicious qualities. A wrinkled Pea, with vines 2½ feet high. Per ½ lb. 20¢, 1 lb. 30¢, 2 lbs. 50¢, 5 lbs. \$1.20, 10 lbs. \$2.00.

**Potlatch.** A superior medium early, dwarf, wrinkled Pea. Pods are large and well filled with large, luscious Peas; a great bearer. Vines 2 feet high. Per ½ lb. 20¢, 1 lb. 35¢, 2 lbs. 60¢, 5 lbs. \$1.40, 10 lbs. \$2.50.

**Alderman.** A very large, podded, wrinkled Pea of the Telephone type. An immense bearer; fine quality; medium early. Vines 4 feet high. Per ½ lb. 20¢, 1 lb. 35¢, 2 lbs. 60¢, 5 lbs. \$1.40, 10 lbs. \$2.50.

**Champion of England.** One of the richest and best flavored Peas grown. A late or main crop variety; wrinkled. Vines 5 feet high. Per ½ lb. 20¢, 1 lb. 30¢, 2 lbs. 50¢, 5 lbs. \$1.20, 10 lbs. \$2.00.



Telephone Pea

**Horsford's Market Garden.** A second early wrinkled Pea. A favorite canning variety; tender and sweet. Vines 30 inches high. Per ½ lb. 20¢, 1 lb. 30¢, 2 lbs. 50¢, 5 lbs. \$1.20, 10 lbs. \$2.00.

**GENERAL CROP FERTILIZERS**—A high grade general Fertilizer, for General Crops, Peas, Grass, etc. Analysis: Ammonia 3%, Avail. Phos. Acid 8%, Actual Potash 4%. Price: Bags of 10 lbs. 65 cents, 25 lbs. \$1.10, 50 lbs. \$1.90, 100 lbs. \$3.50, 500 lbs. \$14.00, 1000 lbs. \$25.50, 2000 lbs. \$47.50.

If large quantities are wanted write for prices.

## POTATOES

**Culture.**—The Potato will thrive in almost any soil or climate. Old sod plowed the previous Fall will produce the most abundant and certain crop. On no other crop are the results from the use of phosphates more manifest than on the Potato. Organic manure promotes rot and other diseases, while commercial fertilizers prevent them, and will grow smooth, fine tubers. Plant as early in Spring as ground can be thoroughly worked, in rows 2½ feet apart, and 15 to 18 inches apart in the row. Cut one or two eyes from the surface to the center of the tuber, and plant in each hill; cover 3 or 4 inches. Cultivate frequently from the time the young plants appear until they blossom. Seed should be renewed every year or two.

*From 8 to 10 bushels required to plant an acre.*

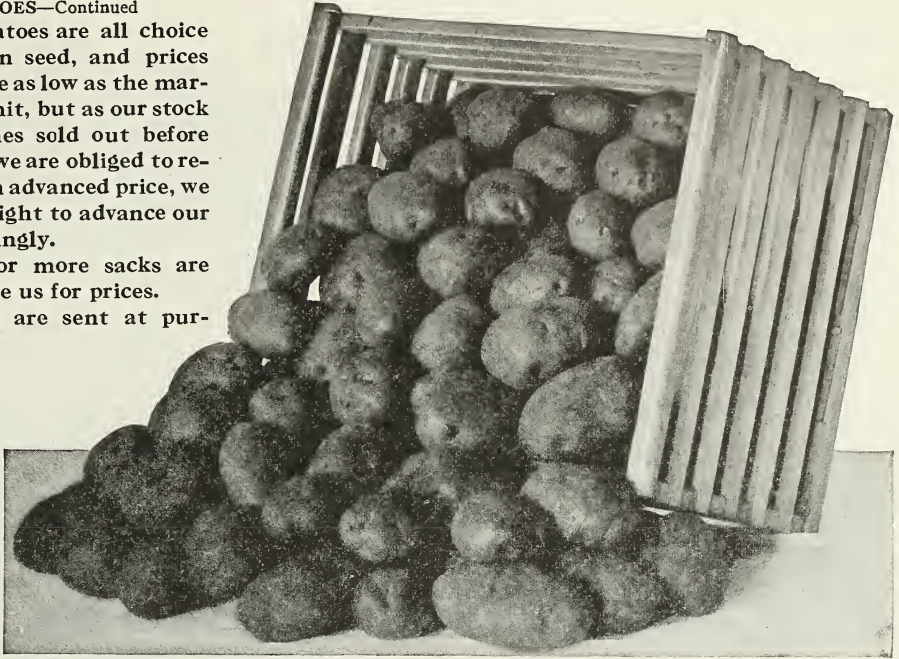


POTATOES—Continued

Our potatoes are all choice Maine grown seed, and prices will always be as low as the market will permit, but as our stock often becomes sold out before Spring, and we are obliged to replenish at an advanced price, we reserve the right to advance our price accordingly.

If two or more sacks are wanted, write us for prices.

Potatoes are sent at purchaser's expense.



Certified Seed Stock

At the time our Catalog goes to press, it is impossible to tell what the price of good seed potatoes will be next spring. Upon application we will be pleased to quote lowest market price.

**Early Spaulding Rose.** An Improved Early Rose. A large early Potato, heavy yielder; fine quality. Write for prices.

**Early Rose.** A large Potato maturing early. The popular market sort. Write for prices.

**Green Mountain.** A leader in the market. One of the best yielders, keepers and sellers ever introduced. A fine Potato for home use, as the quality is unsurpassed. Write for prices.

**Irish Cobbler.** One of the earliest and most popular of the early varieties. It is a splendid keeper, a great yielder, and its cooking qualities, and flavor, unsurpassed. Its strong growth, earliness, productiveness, and handsome appearance, make it a very profitable potato to grow. Write for prices.

**Beauty of Hebron.** One of the most valuable sorts for general use. An excellent keeper. The tubers are large and their flesh is tender. Write for prices.

**Gold Coin.** One of the hardiest, most vigorous in growth, most productive and the best in table quality of all Potatoes; it has proved to be absolutely unequalled for main crop. Write for prices.

**Hustlers.** A large, medium early variety, of excellent quality, and a good keeper. Write for prices.

**Comits.** A medium early, big yielding variety. Quality excellent even before fully grown. Write for prices.

**Carman No. 3.** A splendid main crop variety, excellent quality, and a heavy yielder, and good keeper. Write for prices.

PUMPKIN

Culture.—Pumpkins are easily grown in any section. If planted with Corn, drop 2 or 3 seeds in every third or fourth Corn hill at the time of first hoeing. If planted in fields by themselves, drop 5 or 6 seeds in hills 8 or 10 feet apart each way. Cover about half an inch and thin out to 3 plants after vines are well started.

*One ounce will plant 15 to 20 hills; 3 lbs. to an acre.*

**Connecticut Field.** A large, yellow field variety; very productive and used mostly for feeding stock. Oz. 10¢, ¼ lb. 25¢, lb. 90¢.

**Large Cheese, or Kentucky Field.** Large, flat and round like a cheese; color of skin deep orange; flesh somewhat lighter. Oz. 10¢, ¼ lb. 25¢, lb. 90¢.

**King of the Mammoths.** This is a giant among Pumpkins; sometimes reaching 2 feet or more in diameter, and weighing from 100 to 250 lbs.

Salmon-orange skin, very thick, bright yellow flesh, fine grained and tender and of excellent quality for pies. Pkt. 5¢, oz. 20¢, ¼ lb. 35¢, lb. \$1.25.

**Small Sugar.** This is the Pumpkin from which the celebrated Yankee Pumpkin pie is made. A small, round, very prolific variety; skin and flesh deep orange yellow. Very fine grained and sweet. Oz. 10¢, ¼ lb. 25¢, lb. 90¢.

## RADISH

**Culture.**—Radishes to be mild, crisp and tender must make a steady, rapid growth; therefore a rich, light, sandy soil is best adapted for their culture. Where possible, give them plenty of water, which forces them along. If it is too dry they are apt to be strong, wormy and pithy. For early use sow in hotbeds on gentle heat, in rows 6 inches apart, and thin enough to prevent crowding. They should be large enough to use in four or five weeks from time of planting. Plant in the open ground soon as land can be worked, in rows 10 to 12 inches apart. For succession, sow every week or ten days as long as wanted. The Winter varieties should be sown in July or August, taken up before severe frost and stored in a cool cellar, packed in sand for Winter use.

*One ounce will sow 100 feet of drill.*

**Scarlet Olive-Shaped.** Very early bright scarlet, flesh white and crisp. Excellent for forcing or outdoor culture. Pkt. 5¢, oz. 10¢, ¼ lb. 25¢, lb. 80¢.

**California Mammoth.** A large white Winter Radish. Roots 10 to 12 inches long, and 3 to 4 inches in diameter at the shoulder, tapering regularly to the tip; flesh crisp, firm and decidedly pungent. Pkt. 5¢, oz. 10¢, ¼ lb. 25¢, lb. 80¢.

**Vick's Scarlet Globe.** One of the best Radishes for the Market Gardener or the Home Garden. One of the earliest for forcing and does equally well in the open ground outside. Radishes fair sized, globe shaped with a very small top; always crisp and tender; color bright scarlet. Pkt. 5¢, oz. 10¢, ¼ lb. 30¢, lb. \$1.00.

**French Breakfast.** Excellent for market or forcing. Color bright rose, with white bottom. Pkt. 5¢, oz. 10¢, ¼ lb. 25¢, lb. 80¢.

**Early Scarlet Turnip.** A popular Turnip-shaped variety for forcing or outdoor culture. Color deep red. Pkt. 5¢, oz. 10¢, ¼ lb. 25¢, lb. 80¢.

**Long Scarlet.** Popular long variety. Color red; flesh crisp and firm. Pkt. 5¢, oz. 10¢, ¼ lb. 25¢, lb. 80¢.

**China Rose Winter.** A fine keeper for Winter use. Skin rose colored; flesh white and firm, and quite pungent. Pkt. 5¢, oz. 10¢, ¼ lb. 25¢, lb. 80¢.

**Early White Turnip.** Both skin and flesh white; very mild, tender and crisp. Pkt. 5¢, oz. 10¢, ¼ lb. 25¢, lb. 80¢.

**Icicle.** A quick-growing, long, white variety; very crisp and mild flavor. Pkt. 5¢, oz. 10¢, ¼ lb. 25¢, lb. 80¢.

**White Tipped Scarlet.** One of the most popular and attractive globe-shaped Radishes. Color bright rose carmine, with bottom clear white. Pkt. 5¢, oz. 10¢, ¼ lb. 25¢, lb. 80¢.

**White Strasburg.** A large, white variety for late Summer use. Thick at the shoulder and tapering to about 5 inches in length. Keeps solid a long time. Pkt. 5¢, oz. 10¢, ¼ lb. 25¢, lb. 80¢.



Vick's Scarlet Globe Radishes

**Giant White Stuttgart.** A crisp, late Summer Radish. Very large and top-shaped; both skin and flesh white. Pkt. 5¢, oz. 10¢, ¼ lb. 25¢, lb. 80¢.

**Round Black Spanish.** A Winter Radish. Skin black; flesh white, firm and highly flavored. An excellent sort for Winter. Roots keep a long time. Pkt. 5¢, oz. 10¢, ¼ lb. 25¢, lb. 80¢.

**Long Black Spinach.** One of the latest and best keeping of the Winter Radishes. Roots are long, black and very pungent. Pkt. 5¢, oz. 10¢, ¼ lb. 25¢, lb. 80¢.

## RHUBARB

**Culture.**—Sow the seed early in April in drills ½ inch deep, and thin to 6 inches apart. Transplant to permanent beds the following Spring, or procure single roots by dividing the large roots, and set out 3 or 4 feet apart each way. Ground should be dug and manured well. Do not pull stalks until second year after transplanting roots.

*One ounce will produce several hundred plants.*

**Victoria and Linnaeus.** Two good sorts. Pkt. 5¢, oz. 20¢, ¼ lb. 75¢.

Milldale, Conn., July, 1922.

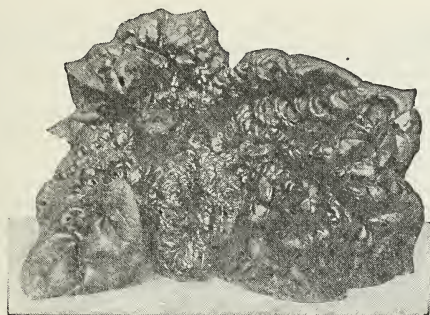
“Enclose some names for your mailing list. I recommend your seeds every time.”

W. S. B.

Ulster Park, N. Y. Aug., 1922.

“I shall be glad to have your seeds another year. I used them last year and they were very satisfactory.”

H. V. S.



Victoria Spinach

## SPINACH

The finest "greens" of any plant in cultivation. Culture.—For Spinach the ground cannot be too rich, yet it will thrive on almost any good soil. Make drills 4 inches apart, use a liberal amount of seed, cover about  $\frac{1}{2}$  inch, pressing the earth firmly on the seed. For early Spring use, sow in August or September, and protect during the Winter with a light covering of litter, which should be removed as soon as plants begin to grow in the Spring. For Summer

use sow as early in Spring as ground can be worked, and for a succession sow every two weeks.

*One ounce will sow 100 feet of drill; 8 to 10 lbs. for an acre.*

**Early Giant Thick Leaf.** Produces large, thick, dark green leaves, somewhat crumpled. Oz. 10¢,  $\frac{1}{4}$  lb. 20¢, lb. 45¢, 5 lbs. \$2.00.

**Large Viroflay.** Large, dark green leaves, slightly crumpled. Suitable for either Spring or Fall sowing. Oz. 10¢,  $\frac{1}{4}$  lb. 20¢, lb. 45¢, 5 lbs. \$2.00.

**Victoria.** Broad, dark green leaves; remains in prime condition long after nearly all other varieties have run to seed. Oz. 10¢,  $\frac{1}{4}$  lb. 20¢, lb. 45¢, 5 lbs. \$2.00.

**Bloomsdale, or Savoy.** Leaves curled and wrinkled. Oz. 10¢,  $\frac{1}{4}$  lb. 25¢, lb. 60¢, 5 lbs. \$2.25.

**Prickly, or Winter.** For Fall sowing. A very hardy variety. Pkt. 10¢,  $\frac{1}{4}$  lb. 20¢, lb. 45¢, 5 lbs. \$2.00.

**New Zealand.** Is a distinct variety. Started early in the Spring, the plants will resist heat and dry weather and make a strong growth during the Summer. Pkt. 5¢, oz. 15¢,  $\frac{1}{4}$  lb. 25¢, lb. 75¢, 5 lbs. \$3.00.

We can supply in any quantity, if 10 lbs. or more are wanted, write for special prices.

## SALSIFY, or VEGETABLE OYSTER

Culture.—Plant and culture same as Parsnips. As it is perfectly hardy, it can remain in the ground during the Winter, but it should be dug in the Spring before it commences to sprout. Store a supply for Winter use in a cool cellar, like other root crops.

*One ounce will sow 100 feet of drill.*

**Mammoth Sandwich Island.** This is an improved type of Salsify, superior in every way to the other sorts. The roots may be served boiled as a vegetable or sliced and fried, or they may be made into fritters. It is almost impossible to distinguish them from the oyster fritter. Pkt. 5¢, oz. 20¢,  $\frac{1}{4}$  lb. 60¢, lb. \$2.25.

## SORREL, or SOUR GRASS

Large leaves grown and cooked like Spinach. Sow in drills early in spring, and thin the seedlings to 6 or 8 inches apart in the row. One may commence cutting in about two months and the plants will continue in full bearing from three to four years. Pt. 5¢, oz. 15¢,  $\frac{1}{4}$  lb. 50¢, lb. \$1.75.

## SQUASH

Culture.—The Squash vine is very tender and so sensitive to cold that it cannot be planted with safety before the middle of May. The hills should be prepared in the same manner as those for Cucumber; the Summer varieties 3 to 4 feet apart each way and the later sorts 6 to 8 feet. Plant 6 or 7 seeds in each hill and cover half an inch; thin to 4 plants after they have obtained their rough leaves and danger from bugs is past.

*Of the early varieties, one ounce will plant 40 hills and 12 hills of the late sorts; 4 lbs. early and 6 lbs. of the late for an acre.*

**Vegetable Marrow.** An English variety for Summer and Fall use; grows about 9 inches long, oblong in form; shell pale yellow, flesh white. Pkt. 5¢, oz. 15¢,  $\frac{1}{4}$  lb. 50¢, lb. \$1.50.

**Marblehead.** Resembles Hubbard in shape, but is earlier, and skin more smooth; shell is blue gray, flesh is orange yellow, sweet and dry. Pkt. 5¢, oz. 15¢,  $\frac{1}{4}$  lb. 50¢, lb. \$1.50.

**Giant Summer Crookneck.** This strain is earlier even than the common small variety and equally tender and sweet, while the Squashes grow to an extra long size. Pkt. 5¢, oz. 15¢,  $\frac{1}{4}$  lb. 45¢, lb. \$1.50.



Giant Summer Crookneck Squash

SQUASH—Continued

**White Bush Scallop.** The old “Patty Pan”; white skin and flesh. Very early. Pkt. 5¢, oz. 10¢, ¼ lb. 30¢, lb. \$1.00.

**Blue Hubbard.** Resembles Green Hubbard in shape and size but in color the shell is blue; flesh orange yellow. Fine grained, dry and sweet, one of the best keepers. Pkt. 5¢, oz. 15¢, ¼ lb. 50¢, lb. \$1.50.

**Golden Hubbard.** The heavily warted skin is of rich orange yellow turning to a deep salmon red when ripened. It is equally as productive and fine in quality as the original Hubbard. Pkt. 5¢, oz. 15¢, ¼ lb. 50¢, lb. \$1.50.

**Boston Marrow.** A popular second early Squash for Autumn use; skin thin, reddish yellow; flesh dry, fine-grained and delicious. Pkt. 5¢, oz. 10¢, ¼ lb. 30¢, lb. \$1.00.

**Common Summer Crookneck.** This is the small Crookneck, very early and tender. Rich golden yellow color; thickly warted. Pkt. 5¢, oz. 15¢, ¼ lb. 35¢, lb. \$1.25.

**Warted Hubbard.** Similar in size and quality to the well-known Hubbard, but is more heavily warted. Pkt. 5¢, oz. 15¢, ¼ lb. 50¢, lb. \$1.50.

**True Hubbard.** This old variety for years has stood the test of all rivals, and is the most popular Winter Squash grown. Hard green shell; flesh bright orange yellow, fine grained, very dry, sweet and of rich flavor. Keeps in perfect condition throughout the Winter. Pkt. 5¢, oz. 15¢, ¼ lb. 50¢, lb. \$1.50.

**Fordhook.** This is a very desirable running variety for both Summer and Winter. Oblong in form slightly ridged, smooth, thin, yellow skin; flesh very thick and light straw yellow. Can be used for cooking, while if allowed to ripen on the vines, they will keep well all Winter. Pkt. 5¢, oz. 15¢, ¼ lb. 50¢, lb. \$1.50.

**Essex Hybrid.** Valuable for Fall and Winter use. An excellent keeper, of good size; bright orange color; flesh thick, dry and delicious. Pkt. 5¢, oz. 15¢, ¼ lb. 50¢, lb. \$1.50.

**Mammoth Chili.** Good for stock and exhibitions; often weighing 100 to 200 lbs. Pkt. 5¢, oz. 15¢, ¼ lb. 50¢, lb. \$1.50.

**Delicious.** A Fall and Winter Squash, being excellent at all seasons though it does not acquire its best quality until Winter, when it is very sweet and rich in flavor. Pkt. 5¢, oz. 15¢, ¼ lb. 50¢, lb. \$1.50.

**Winter Crookneck.** Excellent for Winter; flesh sweet and of fine flavor. Pkt. 5¢, oz. 15¢, ¼ lb. 50¢, lb. \$1.50.

**Italian Vegetable Marrow.** (Cocozelle Longe.) A Summer variety of compact bush growth. Fruits large, oblong in shape, skin dark green, marbled and mottled with yellow and dark green stripes. Pkt. 5¢, oz. 15¢, ¼ lb. 50¢, lb. \$1.50.



True Hubbard Squash

# TOMATO

**Culture.**—Tomatoes do best on a light, warm, not over-rich soil. For early plants sow in March or April in the hotbed, in drills 3 inches apart, 4 or 5 seeds to the inch; cover lightly. Or they may be started in boxes in some sunny window in the house. Transplant when 2 inches high into other hotbeds or into boxes, or single pots, and place in the frames. Avoid crowding the plants; 4 inches is as near as they should stand in the frames. Lift the sash on warm, sunny days, and 2 or 3 weeks before setting outside gradually harden them by exposure to the night air. Set 4 feet apart each way in the open ground in May as soon as danger from frost is past. For later use sow in the open ground in May, and transplant when large enough to handle. By training the vines on trellises, or tying them up to stakes, the fruit will ripen better, be of superior quality, and increase their productiveness.

*One ounce will produce about 1200 plants.*

**Bonny Best.** An early variety and enormously productive. Fruit produced in clusters in center of plant. Color scarlet red; flesh thick, and fine for slicing. Pkt. 5¢, oz. 25¢, ¼ lb. 80¢, lb. \$3.00.

**John Baer.** A splendid Tomato for both the market and home garden. Producing beautiful, large bright red, solid Tomatoes early in the season; flesh is thick and meaty, and will not burst open when dead ripe, and has a mild deliciously sweet flavor. Pkt. 5¢, oz. 25¢, ¼ lb. 80¢, lb. \$3.00.

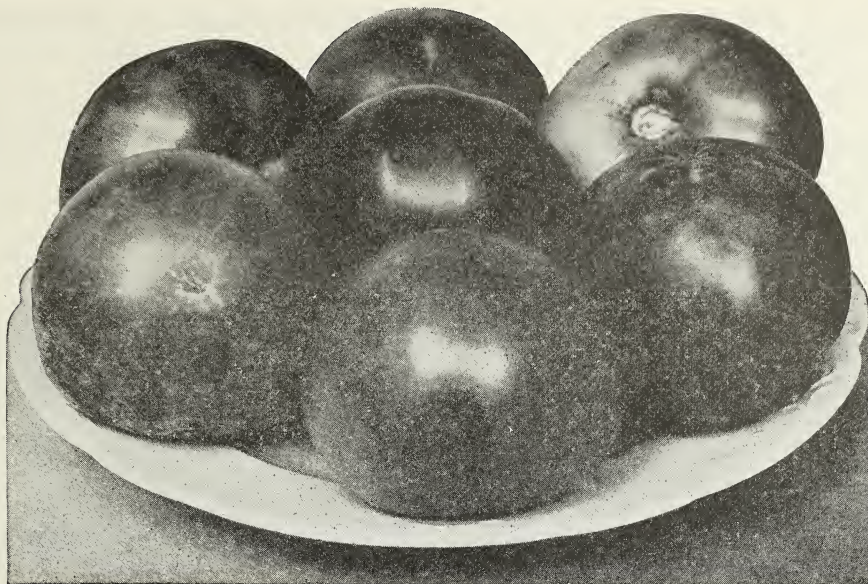
**Chalk's Early Jewel.** Medium early; large, smooth and fine flavor. Pkt. 5¢, oz. 25¢, ¼ lb. 80¢, lb. \$3.00.

**Spark's Earliana.** A popular extra early, large red Tomato. Pkt. 5¢, oz. 25¢, ¼ lb. 80¢, lb. \$3.00.

**Earlibell.** A new extra early; smooth, beautiful, glossy, scarlet Tomato; ripens uniformly all over, and bears continuously until frost. Pkt. 5¢, oz. 25¢, ¼ lb. 80¢, lb. \$3.00.

**Early Acme.** Standard family Tomato; early, solid, and smooth, Pkt. 5¢, oz. 25¢, ¼ lb. 80¢, lb. \$3.00.

**Stone.** A favorite everywhere; large, solid and smooth; color red. Pkt. 5¢, oz. 25¢, ¼ lb. 80¢, lb. \$3.00.



Bonny Best Tomato

TOMATO—Continued

**Dwarf Champion.** Plants grow stiff and upright; early; purplish pink. Pkt. 5¢, oz. 25¢, ¼ lb. 90¢, lb. \$3.25.

**June Pink.** A fine, early pink variety. Pkt. 5¢, oz. 25¢, ¼ lb. 80¢, lb. \$3.00.

**Livingstone's Perfection.** Bright red smooth and good size. Pkt. 5¢, oz. 25¢, ¼ lb. 80¢, lb. \$3.00.

**Golden Queen.** Large, smooth and pure yellow. Pkt. 5¢, oz. 25¢, ¼ lb. 80¢, lb. \$3.00.

**Dwarf Stone.** Plants similar to Dwarf Champion, but fruit is double the size; bright scarlet, solid and smooth. Pkt. 5¢, oz. 25¢, ¼ lb. 90¢, lb. \$3.25.

**Matchless.** A good main crop; cardinal red; solid and smooth. Pkt. 5¢, oz. 25¢, ¼ lb. 80¢, lb. \$3.00.

**Ponderosa.** Very large, coarse ribbed; deep purple. Pkt. 5¢, oz. 25¢, ¼ lb. 90¢, lb. \$3.50.

**Yellow Pear.** Small, pear-shaped. Good for pickling. Pkt. 5¢, oz. 25¢, ¼ lb. 80¢, lb. \$3.00.

**Yellow Plum.** Small and round. Good for pickling. Pkt. 5¢, oz. 25¢, ¼ lb. 80¢, lb. \$3.00.

**Red Plum.** Small, round, pickling sort. Pkt. 5¢, oz. 25¢, ¼ lb. 80¢, lb. \$3.00.

**Strawberry.** Small yellow fruits produced in husks; excellent for preserves. Pkt. 5¢, oz. 25¢, ¼ lb. 90¢, lb. \$3.50.

## TURNIP

**Culture.**—For the main crop the old rule is good; "Sow Turnips the 25th of July, wet or dry." Yet, fine crops of large, smooth Turnips are often grown from seed sown early in August. New land, plowed the previous Spring, thoroughly harrowed, and given a liberal dressing of some good commercial fertilizer, will produce the best crops. Sow broadcast and rake or brush in. For Summer use sow the early flat varieties, as early as the ground can be worked, in drills 14 inches apart; cover lightly and thin to 6 or 8 inches in the row. Avoid using fresh manure, as it produces rough scabby, worthless Turnips.

*One ounce will sow 10 square rods; 1 lb. for an acre.*

**Extra Early Snowball.** Earliest round, white Turnip; fine table quality. Pkt. 5¢, oz. 10¢, ¼ lb. 20¢, lb. 70¢.

**White Egg.** Handsome oval form; skin white. Pkt. 5¢, oz. 10¢, ¼ lb. 20¢, lb. 70¢.

**Early White Flat Strap-Leaf.** A popular early sort. Pkt. 5¢, oz. 10¢, ¼ lb. 20¢, lb. 70¢.

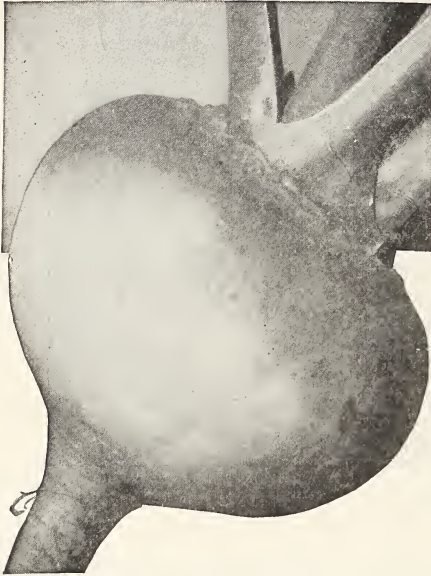
**Early Red, or Purple Top Strap-Leaf.** The standard early. Pkt. 5¢, oz. 10¢, ¼ lb. 20¢, lb. 70¢.

**Long White Cowhorn.** Pure white, except at the top. Pkt. 5¢, oz. 10¢, ¼ lb. 20¢, lb. 70¢.

**White Globe Strap-Leaf.** Early; globe-shaped. Pkt. 5¢, oz. 10¢, ¼ lb. 20¢, lb. 70¢.

TURNIP—Continued

**Red, or Purple Top White Globe.** Fine globe-shaped table Turnip. Pkt. 5¢, oz. 10¢,  $\frac{1}{4}$  lb. 20¢, lb. 70¢.



Yellow Globe Turnip

**Yellow Globe.** Fine for table or feeding; yellow flesh. Pkt. 5¢, oz. 10¢,  $\frac{1}{4}$  lb. 20¢, lb. 70¢.

**Golden Ball.** Very firm and tender; yellow flesh. Pkt. 5¢, oz. 10¢,  $\frac{1}{4}$  lb. 20¢, lb. 70¢.

**RUTA BAGA, or SWEDE  
TURNIPS**

*One ounce will sow 150 feet of drill; one lb. to the acre.*

**White Sweet German.** Flesh white, fine grained sweet and tender. Pkt. 5¢, oz. 10¢,  $\frac{1}{4}$  lb. 25¢, lb. 80¢.

**White French.** Popular white-fleshed variety. Pkt. 5¢, oz. 10¢,  $\frac{1}{4}$  lb. 25¢, lb. 80¢.

**White Rock.** One of the best of the white Swedish sorts. Pkt. 5¢, oz. 10¢,  $\frac{1}{4}$  lb. 25¢, lb. 80¢.

**American Purple Top Yellow.** An improved strain of yellow-fleshed Swede. Pkt. 5¢, oz. 10¢,  $\frac{1}{4}$  lb. 25¢, lb. 80¢.

**Long Island Yellow.** A fine yellow-fleshed sort; sweet and tender. Pkt. 5¢, oz. 10¢,  $\frac{1}{4}$  lb. 25¢, lb. 80¢.

If large quantities are wanted write for prices.

**TOBACCO**

**Connecticut Seed Leaf.** Pkt. 5¢, oz. 30¢,  $\frac{1}{4}$  lb. 80¢, lb. \$3.00.

**Havana.** Pkt. 5¢, oz. 30¢,  $\frac{1}{4}$  lb. 80¢, lb. \$3.00.

**RAPE—Dwarf Essex**

Furnishes excellent pasturage for cattle, sheep and hogs in six weeks from sowing. Its fattening properties are estimated to be twice as great as those of Clover, and for green manuring or for exhausted soils, it has no equal.  $\frac{1}{4}$  lb. 15¢, 1 lb. 25¢, 10 lbs. and over, 20¢ per lb.

Prices for larger quantities upon application.

**HERBS**

**For Culinary and Medicinal Use.**

The garden is not complete without a few Herbs for culinary or medicinal purposes. A small space will give all the Herbs needed in any family.

**Culture.**—The culture is very simple. The best way is to make a little seed-bed in early Spring, and set the plants out as soon as large enough. The Herbs should be harvested on a dry day, just before they come into full bloom, and dried quickly. They may be hung in a dry, cool loft or garret until they are needed for use.

All packets, 5c. each.

**Anise.** For cordials and flavoring. Oz. 25¢.

**Balm.** For culinary purposes. Oz. 25¢.

**Basil, Sweet.** For flavoring. Oz. 25¢.

**Basilicone.** (Italian Herb). For culinary purposes. Oz. 25¢.

**Caraway Seed.** For flavoring. Oz. 25¢.

**Chervil.** Used like Parsley. Oz. 15¢.

**Coriander.** Useful for flavoring. Oz. 25¢.

**Dill.** Used in pickles, soups and sauces. Oz. 10¢,  $\frac{1}{4}$  lb. 25¢.

**Fennel, Sweet.** The leaves boiled used in sauces. Oz. 20¢.

**Horehound.** For tonic and cough remedies. Oz. 25¢.

**Lavender.** Perfume for oil and water. Oz. 25¢.

**Sweet Marjoram.** For seasoning. Oz. 20¢.

**Summer Savory.** Seasoning and flavoring. Oz. 30¢.

**Sage.** Leaves are used in dressings and in sauces. Oz. 50¢,  $\frac{1}{4}$  lb. \$1.50.

**Thyme.** For seasoning. Oz. 50¢.

**Wormwood.** For medicinal purposes; also beneficial for poultry, planted in poultry yards. Oz. 50¢.

**Rosemary.**



CONNECTICUT STATE PRISON—Situated at Wethersfield.

Showing a portion of their beautiful lawn comprising some eight or more acres, which was sown with Hart's Lawn Seed.

## LAWN GRASS SEED

The lawn is the final touch to the finished house. Whether it is planned by a skilled architect, and built at great expense, or whether it is built on the simple plan compelled by economy, a well made lawn will improve the most handsome, and soften the lines of the simplest structure. It is the one necessary touch of nature within the reach of all.

### Take Care of the Soil, We Will Take Care of the Seed

If but one-half the care were bestowed on the preparation of the soil as we devote to the care of the seed, there would be many better lawns. The soil problem is the biggest of all. How often in building a house, the lifeless sub-soil is thrown out from the cellar excavation, covering the good top soil and thus placing it way beyond the reach of the roots. This mistake once made is only remedied at great expense. It is economy, and quite essential to enrich the soil with suitable fertilizers of lasting character before sowing the seed.

### We Do Not Use any Chaff to Cheapen Our Seed as Many Do

Our mixture is composed of only the best evergreen, perennial, thick-swarding grasses, blended in proportions to secure an even turf and a lasting lawn. The quality of the grasses used in our mixture is plainly indicated by the heavy well-developed seed.

Our mixture weighs 20 lbs. to the bushel. One pound will sow about 300 square feet of new ground. 20 lbs. about one-eighth of an acre.

Culture.—April and May are two good months to lay down a lawn and sow the seed. August and September are also good months and give the grass time to make a good growth before winter sets in. Seed does not start well during the hot, dry midsummer months.

After sowing, the ground should be rolled in order to press the seed firmly in the soil, and should be rolled over every Spring as soon as frost is out of the ground. All lawns are benefitted by frequent mowing, but do not cut too close in hot, dry weather, or too late in the Fall.

Pulverized Sheep Manure, as a top dressing for lawns has no equal, about one pound to every 30 square feet should be applied two or three times during the season preferable just before or after a rain. It will stimulate the grass, in fact make a new lawn of it.

Prices: 5 lbs. 35¢, 10 lbs. 60¢, 25 lbs. \$1.00, 50 lbs. \$1.75, 100 lbs. \$2.00, ½ ton \$14.00, 1 ton \$24.00.

Hart's Special Mixture 35c. per lb. up to 5 lbs. Up to 10 lbs. and over, 30c per lb.

Evergreen Choice Mixture 30c. per lb. up to 5 lbs. Up to 10 lbs. and over, 25c per lb.

Shady Place Mixture 45c. per lb. up to 5 lbs. Up to 10 lbs. and over, 40c per lb.

If more than a bushel of Lawn Grass Seed is wanted, write us for prices.



Hay Making

## GRASS SEEDS

We handle only the best grades of grass seeds. The cost to seed down an acre of the best grade is only a very little more than for a poorer grade, possibly 25¢ to 50¢, but the difference in the crop of hay may be many dollars in favor of the better grade. Remember, the *Best* is always the cheapest in the end.

Owing to the variations in market values, we are not always able, at the time our Catalog is printed, to quote fixed Spring prices, but we guarantee our prices will be as low as the market will permit. We shall be glad, however, to quote prices at any time, on any quantity, and invite your correspondence.



Timothy

**Timothy, or Herds Grass.** (Choice Seed.) A favorite and valuable variety and produces large and profitable crops. Is often sown with Red Top and Clover. (Bu. 45 lbs.) Sow about 25 lbs. to the acre. Lb. 14¢, 10 lbs. 12¢ per lb. 1 bu. and over, 10¢ per lb.

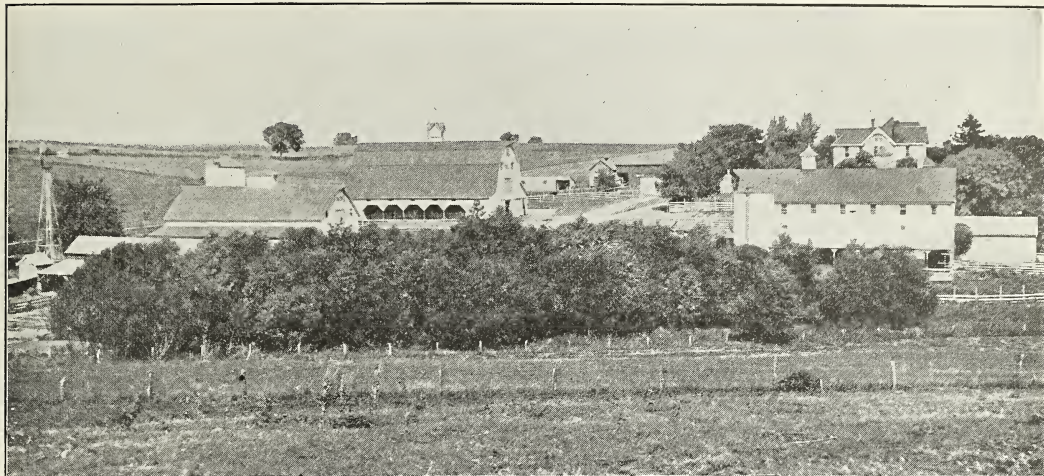
**Red Top.** Fancy Recleaned. Very valuable for both hay and permanent pasture. Will grow well in almost any soil moist or dry; and is a valuable addition to sow with Timothy and Clover. (Bu. 36 lbs.) Sow about 20 lbs. to the acre. Lb. 28¢, 10 lbs. 26¢ per lb. 1 bu. and over, 24¢ per lb.

**Kentucky Blue Grass.** A very valuable pasture grass, and used largely in Lawn Grass Mixtures. It retains its verdure in the hottest weather. Recleaned seed 20 lbs. to the bushel. For pastures sow about 40 lbs. Lb. 40¢, 10 lbs. and over, 36¢ per lb.

**White Clover.** Will thrive well in almost every soil and climate. Is valuable in permanent pastures and in connection with Blue Grass, affords the most nutritious food for sheep and cattle. Also makes a fine mixture for lawns. (Bu. 60 lbs.) Sow about 20 lbs. to the acre. Lb. 65¢, 10 lbs. 60¢ per lb. 1 bu. and over, 55¢ per lb.

**Alsike Clover.** This is perennial and very hardy and thrives well on wet or dry soils. Makes excellent forage for cattle and produces large crops of sweet and fragrant hay. (Bu. 60 lbs.) Sow about 20 lbs. to the acre. Lb. 30¢, 10 lbs. 28¢ per lb. 1 bu. and over, 26¢ per lb.





Farm Scene

GRASS SEEDS—Continued.

**Crimson Clover.** An annual variety, producing large crops of green forage, or if cut while in bloom, makes excellent hay. It is also used as a grass manure and cover crop. Seed should be sown early in August or September. (Bu. 60 lbs.) Sow about 20 lbs. to the acre. Lb. 20¢, 10 lbs. 18¢ per lb. 1 bu. and over, 16¢ per lb.

Windham Conn., July, 1922.

"I am very much pleased with seed I purchased from you this spring. After 40 years of farming, and seed planting, will say that your seed was the best I ever had. Should think they were 100% good on germination, and variety true to name."

C. L.



Medium Red Clover

**Medium Red Clover.** This is the variety most largely sown in all sections and is the most valuable of all the varieties. (Bu. 60 lbs.) Sow about 20 lbs. to the acre. Lb. 30¢, 10 lbs. 28¢ per lb. 1 bu. and over, 26¢ per lb.

**Orchard Grass.** A very desirable pasture grass for stock, and will produce large crops of hay. Grows well in shady places. (Bu. 14 lbs.) Sow about 40 lbs. to the acre. Lb. 28¢, 10 lbs. and over, 25¢ per lb.

**Grimm's Alfalfa.** Renowned the world over for its hardiness, and the mainstay of the dairyman. It closely resembles Clover in habits of growth, and for feeding value it has no equal. It will produce large crops for many years if properly cared for. It should be cut every time it comes into bloom and not be allowed to run to seed. It requires a deep, fertile, well drained soil, rich in lime and free from weeds. One of the best methods of securing a stand is by inoculation. (We recommend Farm-o-Germ for inoculation.) Sow about 25 lbs. to the acre. Lb. 55¢, 10 lbs. 50¢ per lb., per bu. of 60 lbs., 45¢ per lb.

**American Alfalfa.** While not as hardy as Grimm's, it closely resembles it in habits on growth and feeding value, and when a stand has been secured is a most valuable crop. (Bu. 60 lbs.) Lb. 30¢, 10 lbs. 28¢, per lb., one bu. and over, 25¢, per lb.

**Sweet Clover—White Blossom.** Also known as Bokahara Clover and slightly resembles Alfalfa in growth, but is taller, with stiffer stems; branches freely with small fragrant white flowers, which afford an excellent food for bees. It is a most valuable nitrogen gatherer. If cut early, before getting too large, it makes good hay. (Bu. 60 lbs.) Sow 30 lbs. to the acre. Lb. 25¢, 10 lbs. 20¢, one bu. and over 18¢ per lb.

**Mixture per acre recommended for hay.**

Timothy, 18 lbs. Red Top, 5 lbs. Clover, 3 lbs.

## MILLETS

## SEED GRAINS

**Sudan Grass.** While called Grass, it is an annual plant, and answers the same purpose as Millets. It will outyield almost any other annual hay crop, especially in dry weather. It is very nutritious and stock like it. Seed may be sown early in May, and the first cutting made early in July. Other cuttings may be made, or can be used as a pasture. For broadcast sowing, 18 to 25 lbs. to the acre. Very scarce. Write for prices.

**Hungarian Grass.** This well known forage crop can be sown early in June and is ready for cutting in about 60 days. It can also be sown in July and early August, after hay crops have been harvested to help out a short crop. Resists heat and drought well. (Bu. 48 lbs.) Sow 1 bu. to the acre. Lb. 14¢, 10 lbs. 12¢ per lb. 1 bu. and over, 10¢ per lb.

**Japanese, or Barnyard Millet.** A forage plant of great value, growing luxuriantly on most any soil and under indifferent conditions. It will grow in seasons of extreme drought and attain a height of 6 to 12 feet. (Bu. 32 lbs.) Sow 1 bu. to the acre. Lb. 14¢, 10 lbs. 12¢ per lb. 1 bu. and over, 10¢ per lb.

**Golden Millet.** This is a favorite variety for planting on good land to produce a large crop of hay or forage. Matures later than Hungarian and is of stronger growth. (Bu. 50 lbs.) Sow 1 bu. to the acre. Lb. 12¢, 10 lbs. 10¢ per lb. 1 bu. and over, 8¢ per lb.

---

Southbury, Conn., July, 1922.

"We have found all seeds obtained from you to be of a fine quality, and I take pleasure in sending you some names for your mailing list."

D. W. R.

---

Hardwick, Vt., July, 1922.

"It was only through neglect that I did not order seeds of you this spring, as seeds that I have got from you before now made the best garden that I ever had, and the Sweet Peas I grew from your seed were wonderful".

E. H. D.

**Big Four, Seed Oats.** A large and heavy yielding variety. The straw stands up stiff and strong, and heads well. (Bu. 32 lbs.) Sow 1½ bu. to the acre. Per peck, 40¢, per bu. \$1.25. 1 bag and over, \$1.00 per bu.

**Silver Mine, Seed Oats.** A prolific cropper, and one of the most prolific varieties grown. It makes a good growth of straw, which stands up well, and are well filled with plump grains. (Bu. 32 lbs.) Sow ½ bu. to the acre. Per peck 40¢, per bu. \$1.25. 1 bag and over, \$1.00 per bu.

**Barley Oderbrucher.** This may be sown as early in the Spring as possible without danger from frost. The straw is heavy and stands up well under a heavy crop. It is also largely grown in New England as a late fodder crop. It withstands the most severe frost and makes the best of green feed long after other kinds are gone. (Bu. 48 lbs.) Sow about 2 bu. to the acre. Per peck 75¢, per bu. \$2.50.

---

Bangall, N. Y., July, 1922.

"I am glad to recommend your seeds. Mr. K had your seeds for several years and they were satisfactory. intend to buy our seeds next year from your House."

C. E. M.

---

Gorham, N. H., July, 1922.

"I have used your seeds and find them very reliable, and I am glad to send you a list of names."

A. C.

---

Amsterdam, N. Y., July, 1922.

"Am glad to say your seeds germinated O. K."

F. O. G.

---

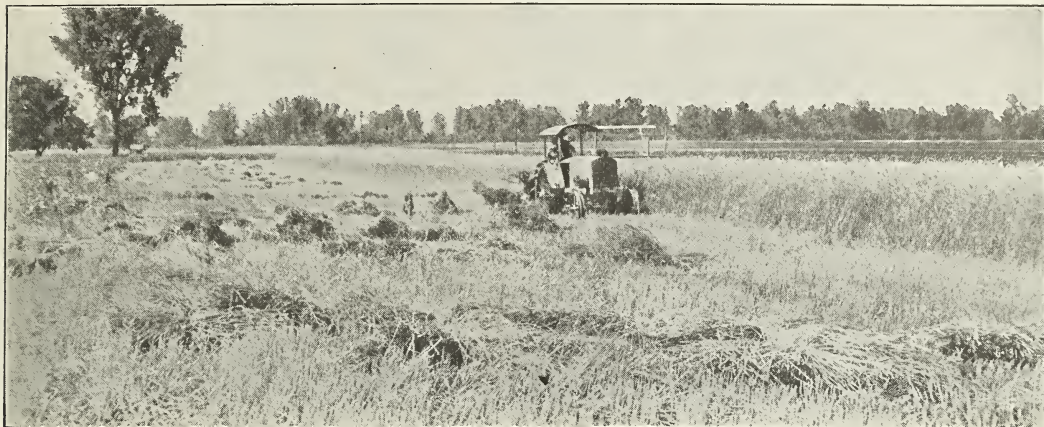
Perksie, Pa., July, 1922.

"The seeds I got last spring from you were very satisfactory."

Dr. A. W.

---

We handle large quantities of Timothy, Red Top and Clovers, also Millets, and Grain Seeds, and if larger quantities than those we have quoted are wanted, be sure and write us stating quantities, and get our special prices.



Harvesting Rye

SEED GRAINS—Continued

**Winter Rye.** The time for sowing is from the middle of August to the last of September. Sow broadcast or with a drill at the rate of one and a half bushels to the acre. This has no equal as a crop to be used for late Fall or early Spring pasture and is one of the best to plow under for green manure. (Bu. 56 lbs.) Write for prices.

**Japanese Buckwheat.** This is the best and most profitable variety. Flour is superior to that from any other variety. Ripens early. Sow 1 bushel to the acre broadcast, or  $\frac{3}{4}$  bushels if in drills. (Bu. 48 lbs.) Per peck 75¢, per bu. \$2.50.

SOY BEANS

**Soja, or Soy Beans.** Plants grow 18 inches in height and are immensely productive. It makes a good forage crop for feeding green. The plant being a legume is valuable as a soil enricher for plowing under. Sow broadcast at the rate of one and a half bushels per acre. Lb. 12¢, 10 lbs. and over, 10¢ per lb.

COW PEAS

**Whippoorwill.** A standard variety. Lb. 12¢, 10 lbs. and over 10¢ lb.

VETCHES

**Hairy Vetches.** A hardy forage plant and very productive. Its extensive root growth and nitrogen-gathering properties make it valuable as a soil fertilizer, also as a cover crop to prevent the land from washing during Winter storms. Seed should be sown broadcast, or drilled in, at the rate of one bushel per acre. If a half bushel of Rye is sown with the Vetch, the straw will furnish a support for the vines to run on, making them easier to mow for feed or to turn under with the plow. (Bu. 60 lbs.) Seed scarce. Write for prices.

FIELD PEAS

**Canada Field Peas.** Entirely different from Cow Peas. A valuable crop for soiling and plowing under as a green manure, being rich in nitrogen, and when sown with Oats or Barley, make a very nutritious fodder and stock will eat it greedily and thrive on it. Sow broad cast (2) bushels per acre —if sown with Oats, use one bushel, with  $1\frac{1}{2}$  bushel of Oats. Per pk. \$1.65, per  $\frac{1}{2}$  bushel, \$3.00, per bushel \$5.50.

If a quantity of any of the above is wanted, write for special prices.

## FLOWER SEEDS

**Sowing the Seed.** Nine-tenths of the failures in flower culture come from improper treatment of the seeds and young plants. **Do not plant any of the seeds when the ground is wet.** Make the surface as fine and smooth as possible. Cover each sort of seed in proportion to its size. The finest seeds should be merely sprinkled on the surface of the ground, and barely covered with finely sifted, light, mellow soil. Press the soil down firmly over the seed; a short piece of board is good for this. For large seeds the depth should be regulated according to the size of the seed. Procure a bit of lath (it would be better if planed smooth), say 2 feet long, press the edge down into the soil evenly, so as to make a groove as deep as the seed is to be planted; scatter the seed along this, allowing 4 or 5 of the larger, to 15 or 20 of the smaller seeds to the space one plant is to occupy when grown; cover the seed by pressing the earth together over it, then turn your lath sideways, and press the soil down firmly and evenly. Shade the rows until after seed is up. It prevents the soil from crusting, and saves the young tender chits from being burned up by the hot sun as they start to come through the ground.

**Annuals** bloom from seed and die the first year.

**Biennials** grow from seed the first year, and bloom and die the next, though some varieties bloom the first season when sown early.

**Perennials** last for several years, blooming annually after the first season, though some varieties will bloom the first season if sown early.

If larger quantities than one ounce is wanted, write for prices.



Mixed Asters

**Acrolinium**, (Everlasting). A pretty half-hardy annual producing white and rose colored double Daisy-like flowers. Pkt. 10¢, oz. 50¢.

**Ageratum, Mixed.** Feathery flowers; suitable for pots in Winter or bedding in Summer. Annual. Pkt. 5¢, oz. 40¢.

**Alyssum, Sweet, Little Gem.** A favorite annual bearing clusters of white flowers. Pkt. 5¢, oz. 40¢.

**Antirrhinum**, or **Snapdragon.** Showy flowers, blooming the first year from seed. Tall mixed Pkt. 10¢, oz. 60¢.



Asters

FLOWER SEEDS—Continued.

**Artemisia.** (Perennial of Hardy Aster). Mixed colors. Pkt. 10¢, oz. \$1.00.

**Asters.** The most popular garden annuals.

Choice Mixed Sorts, Pkt. 10¢, oz. 75¢.

Choice Named Colors

White, Pkt. 15¢, oz. \$1.00;

Crimson, Pkt. 15¢, oz. \$1.00;

Pink, Pkt. 15¢, oz. \$1.00;

Lavender, Pkt. 15¢, oz. \$1.00;

Purple, Pkt. 15¢, oz. \$1.00.

**Balsam (Lady's Slipper).** A favorite garden annual. Camelia-flowered. Choicest mixed. Pkt. 5¢, oz. 50¢.



Cosmos



Gaillardia

**Balloon Vine (Love in a Puff).** A rapid growing annual climber; flowers white. Pkt. 5¢, oz. 40¢.

**Calliopsis.** A showy annual, producing large flowers throughout the summer. Finest mixed. Pkt. 5¢, oz. 50¢.

**Centaurea, or Bachelor's Button (Cornflower).** Fine for bedding, vases, etc. Annual. Choice mixed. Pkt. 10¢, oz. 75¢.

**Canterbury Bell.** Biennial. Single mixed. Beautiful bell-shaped flower. Pkt. 10¢, oz. 75¢.

**Chrysanthemum.** Coronarium Double Mixed. Compact bushy growth, about 18 inches high, flowers quite double, shading in color from white to orange. Per pkt. 10¢, oz. 75¢.

**Calendula.** Hardy Annual. Large double flowers, blossoming all Summer. Pkt. 5¢, oz. 50¢.

**Candytuft.** Well-known dwarf, profuse flowering garden annual. Choicest dwarf mixed. Pkt. 5¢, oz. 40¢.

**Canary Bird Flower.** An attractive climber, with beautiful yellow flowers freely produced with tender green foliage. Annual; height 10 to 20 feet. Pkt. 10¢, oz. 75¢.

**Carnation, Marguerite.** This superb new dwarf is a double, fragrant flower, and blooms fully from seed the first year. Pkt. 10¢, oz. \$1.00.

**Celosia Chilideii.** (Chinese Woolflower). A new annual of great merit. Flowers resemble huge balls of crimson wool. When cut, if hung with heads down until dry, makes a beautiful everlasting flower. Pkt. 10¢, oz. \$1.00.

**Cypress Vine.** For training upon a light, ornamental trellis, the Cypress Vine cannot be excelled. It has a profusion of scarlet and white star-shaped blossoms. Pkt. 5¢, oz. 50¢.

**Clarkia.** Free-blooming annual. Choice mixed. Pkt. 10¢, oz. 75¢.

**Cockscomb.** Produces graceful plumes of bright colors. Annual. Choice mixed. Pkt. 10¢, oz. 75¢.

**Cosmos.** Large single flower; 5 to 6 feet high; fine for cutting. Annual. Mammoth choice mixed. Pkt. 5¢, oz. 35¢.



Tall Mixed Nasturtium

FLOWER SEEDS—Continued.

**Columbine, Perennials.** Very desirable, old-fashioned border flowers, forming large, permanent clumps. Finest Double Mixed. Pkt. 5¢, oz. 50¢.

**Delphinium.** (Perennial or Hardy Larkspur). Very ornamental and attractive for borders or beds. It has long clustered spikes of beautiful flowers, and its beautiful shades of colors are much admired. Seed can be sown early indoors and transplanted, or sown where they are to bloom, thinning out to 1 foot to 1½ feet apart. Height 3 to 4 feet. Pkt. 10¢, oz. 75¢.

**Digitalis, or Foxglove.** Perennial. Producing long spikes of showy flowers. Choice mixed. Pkt. 10¢, oz. 75¢.

**Eschscholtzia, or California Poppy.** Popular garden annuals, bearing large, saucer-shaped flowers. Finest mixed colors. Pkt. 5¢, oz. 50¢.

**Gaillardia (Blanket Flower).** Annual. Will produce a continuous profusion of brilliantly colored flowers from early Summer until late Fall. Mixed colors. Pkt. 5¢, oz. 50¢.

**Godetia.** Very showy large flower. Annual. Choice mixed colors. Pkt. 10¢, oz. 50¢

**Gypsophia.** (Paniculata, or Baby's breath). A hardy annual of easy culture. Grows 2 or 3 feet high and bears a profusion of small star shaped white and pink flowers on such slender stems they appear to be floating in the air. Pkt. 10¢, oz. 75¢.

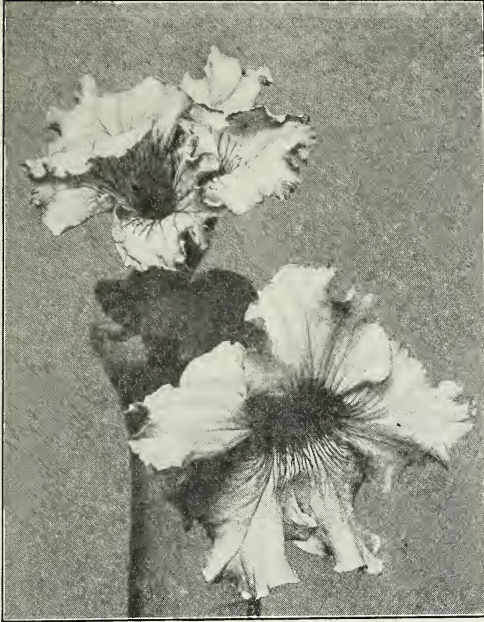
**Heliotrope.** Flowers are borne in graceful clusters, and are very fragrant, blooms the whole season, a splendid bedding or house plant. Mixed colors. Pkt. 10¢.

**Hollyhock.** Beautiful, hardy plants, with immense flowers on spikes 5 to 6 feet high; flowers second year. Finest double mixed, pkt. 10¢, oz. \$1.00. Finest single mixed, pkt. 10¢, oz. 75¢.

**Kochia.** (Mexican Fire Bush.) (Summer Cypress). Ornamental annual plant, grows quickly from seed sown in the open ground when the trees begin to leaf out early in the spring. Early in the fall the ends of the shoots are thickly set with small bright scarlet flowers, the bushy plant resembling balls of fire. Plants may be planted singly, or in rows 30 inches apart. Pkt. 5¢, oz. 40¢.



Larkspur



Petunia

**Larkspur.** Well-known annual, producing long spikes of flowers. Large flowering mixed. Pkt. 5¢, oz. 50¢.

**Marvel of Peru.** (Four O'Clock) Showy free-flowering annuals of quick growth and flowering in great abundance. Flowers have the strange habit of remaining tightly closed until about 4 o'clock in the afternoon, when they open, and become a glowing bank of vivid coloring. Mixed colors. Pkt. 10¢, oz. 50¢.

**Mignonette.** Sweet. Fragrant garden annuals. Perfection, fine selected. Pkt. 5¢. oz. 50¢.

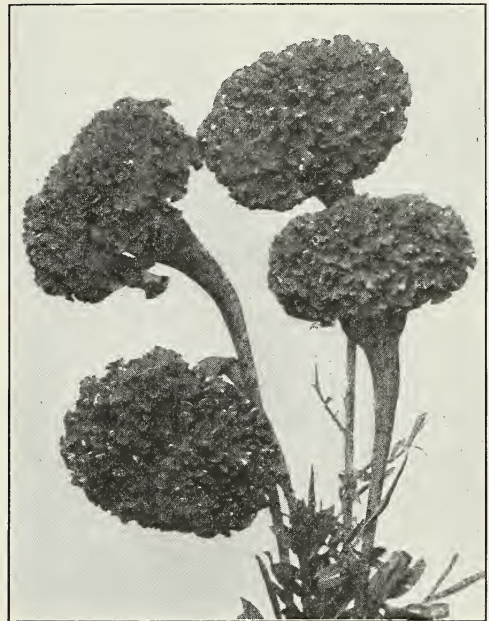


ASSORTED-ZINNIAS

**Morning Glory.** Annual climbers. Tall mixed. Pkt. 5¢, oz. 15¢, ¼ lb. 40¢, lb. \$1.00.

**Marigold.** Well-known annual. Finest French Mixed. Pkt. 5¢, oz. 50¢. Choice Eldorado. Double Mixed. Pkt. 5¢. oz. 50¢.

**Myosotis.** (Forget-Me-Not). Charming little flowers that succeed best in damp, shady places, but do well in almost any soil. Pkt. 10¢, oz. 75¢.



Marigold

**Nasturtium.** Beautiful and valuable flowering Summer plants. They require but little care; seed sown early in Spring will produce a profusion of blooms during all the season. Tall mixed, Pkt. 5¢, oz. 10¢, ¼ lb. 25¢, lb. 75¢. Dwarf, mixed, Pkt. 5¢, oz. 10¢, ¼ lb. 25¢, lb. 75¢.

**Nigella Damascena** (Love-in-a-Mist, or Devil-in-the-Bush). Very showy blue flowers, with the foliage finely cut which surrounds the flower. Pkt. 5¢, oz. 50¢.

**Pansies.** Annual. Most popular flower grown. Large Superb. Choice mixed. Pkt. 15¢, oz. \$1.50. Giant Trimardeau. Pkt. 15¢, oz. \$1.50.



Scabiosa, or Mourning Bride

FLOWER SEEDS—Continued

**Pansy.** Giant Trimardeau. Very showy flowers of enormous size. Mixed colors. Pkt. 10¢, oz. \$1.50.

**Petunia.** Very popular annual. Fine mixed. Pkt. 10¢, oz. \$1.00. Extra choice mixed. Pkt. 15¢.

**Phlox, Drummondii.** Popular garden annual flowering continuously during the Summer. Very choice mixed. Pkt. 10¢, oz. \$1.00.

**Poppy Orientale.** Perennial. Beautiful large brilliant scarlet flowers borne on long stems splendid for cutting, for mixed beds, or for borders. Grows about 2 feet high, seed may be sown out doors either in the spring or fall. Plants about 1 foot to 1½ feet apart. Pkt. 10¢, oz. 75¢.

**Poppy, Shirley.** Brilliant and popular flowering annuals. Beautiful mixed. Pkt. 5¢, oz. 50¢.

**Pinks.** Annuals. Flowers of most brilliant colors, produce freely all Summer. Splendid double mixed. Pkt. 10¢, oz. 75¢.

**Portulaca.** Annual. Adapted for dry, hot situations, producing brilliant flowers all Summer. Choice single mixed. Pkt. 10¢, oz. 75¢.

**Ricinus, or Castor Oil Bean.** Annuals of luxuriant growth with large, Palm-like leaves. Oz. 10¢, ¼ lb. 30¢, lb. 90¢.

**Rhodanthe Maculata.** (Everlasting). Mixed colors. Pkt. 10¢, oz. 75¢.

**Salvia Splendens, or Flowering Sage.** Annual. Bushy plants about 3 feet high, producing dazzling scarlet flowers. Very choice. Pkt. 15¢, oz. \$1.50.

**Salpiglossis.** Beautiful garden annuals, about 18 inches high, bearing gorgeous Petunia-like flowers. Large flowering mixed. Pkt. 10¢, oz. 75¢.

**Scabiosa, or Mourning Bride.** Also called Old Maid's Pincushion. Annual. Beautiful, large, double flowers on long stems; fine for cutting. Pkt. 10¢, oz. 75¢.

**Stock.** Very fragrant annual. Flowers double, and of various colors. Large flowering. Mixed. Extra fine. Pkt. 10¢, oz. 75¢.

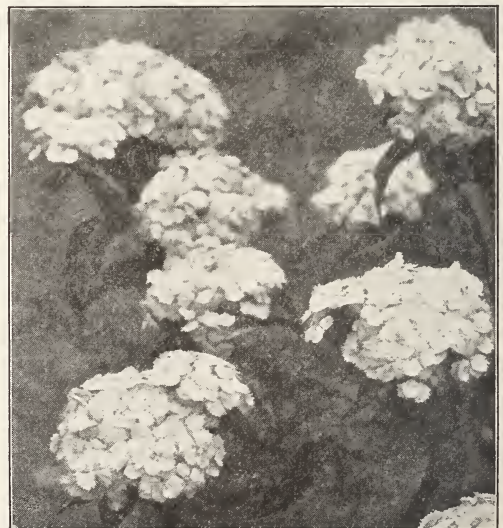
**Sunflower, Mammoth Russian.** Oz. 5¢, ¼ lb. 15¢, lb. 35¢.

**Sweet William.** A favorite garden perennial, bearing heads of fragrant, richly colored flowers. Choice single mixed. Pkt. 10¢, oz. 75¢. Choice double mixed. Pkt. 15¢.

**Verbena.** For beds and massing the Verbena is not equalled by any other plant for profusion of bloom brilliancy and variety of colors. They flower the first season. Choice mixed. Pkt. 10¢, oz. \$1.00.

**Wallflower.** This is a favorite European garden flower, bears long spikes or heads of exquisitely fragrant flowers. It is very ornamental in the border, or in forming groups. Sow thinly in shallow drills in early Spring. Pkt. 15¢.

**Zinnia.** A well-known annual, bearing showy flowers during Summer and Fall. Double mixed. Pkt. 10¢, oz. 75¢. Extra choice double mixed. Pkt. 10¢, oz. \$1.00.

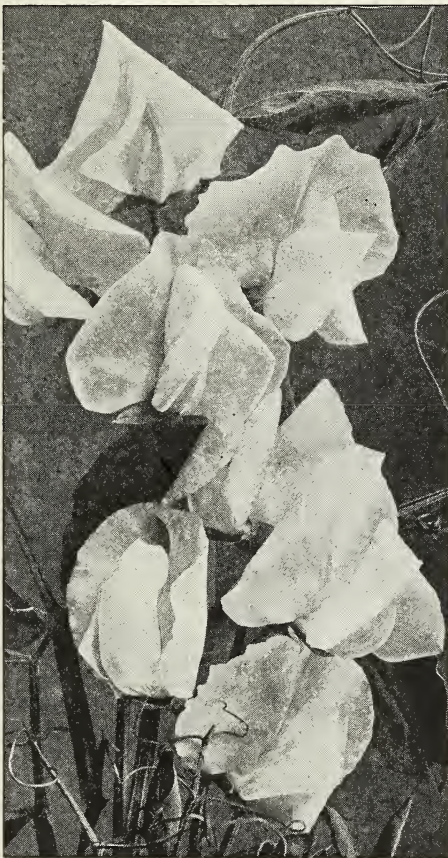


Sweet William



## SWEET PEAS

Culture.—Sweet Peas are, without doubt, the most beautiful and fragrant, and more generally grown than any other flower. They are of easy culture. The best way is to make a drill about 5 inches deep dropping 4 or 5 seeds every 4 inches and covering about 2 inches, working the soil around the plant as it comes up, until it is on a level with the surface; this leaves the roots deep enough not to be affected by dry weather. They require an abundance of water. If water is applied, it should be at the roots, and not sprinkled on the vines. A trellis of brush, strings, or chicken wire is necessary. They bloom better if picked every day. Sweet Peas have been improved and developed to such an extent that there is a long list of names, many being so similar that it is hard to see any difference except slight shades and markings of colors, and forms of hoods, or length of stems. For this reason, we have discarded from our list all duplicates, and offer only the best and distinct varieties of each of the separate colors.



Dorothy Eckford

### Spencer Types

Pkt. 10c., oz. 25c.,  $\frac{1}{4}$  lb. 75c., lb. \$2.50.

Asta Ohn Spencer. Pinkish lavender.

Countess Spencer. Beautiful, clear pink.

King Edward Spencer. Deep red.

Othello Spencer. Rich maroon.

White Spencer. White.

Spencer Mixed. Pkt. 10¢, oz. 25¢,  $\frac{1}{4}$  lb. 65¢, lb. \$2.00.

### Large-Flowering Eckford and Grandiflora Types

Packet 5c., oz. 20c.,  $\frac{1}{4}$  lb. 50c., lb. \$1.50.

Blanche Ferry Extra Early. Pink and white.

Black Knight. Deep maroon.

Countess of Radnor. Lavender.

Dorothy Eckford. Finest pure white.

Duke of Westminster. Purple.

Janet Scott. Pure pink.

King Edward VII. Deep red.

Lord Nelson. Blue.

Lottie Eckford. Lilac, changing to blue.

Mrs. Kenyon. Yellow.

Prince of Wales. Crimson.

Choice Mixed Colors. Our mixture of colors contains all the new and best sorts, as well as every known color and shade, and is the most beautiful blend of colorings to be found in any mixture. Pkt. 5¢, oz. 15¢,  $\frac{1}{4}$  lb. 30¢, lb. \$1.00.

## SPRING BULBS FOR SUMMER FLOWERING

Almost every garden owner appreciates the value of the Summer flowering bulbs, for among them are to be found some of our most beautiful flowers. The select list which we offer, is composed of the very choicest varieties and types of Dahlias and Gladiolus. They are strong, live bulbs, and are far superior to imported bulbs, and we believe every lover of flowers will be pleased with them.

(Order with your seeds. We will send them early in the Spring.)

## DAHLIA

Culture.—There are very few flowers that compare with the Dahlia in charming diversity of form and wide range of brilliant colors, and no other surpasses it for Autumn display. The roots are tender and easily injured by frost. They should be set out 3 feet apart after all danger of frost is over. The soil should be deeply dug, and well drained. A stiff clay should be avoided. A sunny situation is desirable. Place the roots horizontally, covering 2 to 3 inches deep, water well during dry weather. The roots should be supported by tying to stakes. The roots should be placed during Winter in a cool cellar, but not allowed to freeze.



Dahlias

Up to 2 doz. mailed free to any address.

**Golden Age.** Sulphur yellow. Free flowering. Each 20¢, ½ doz. \$1.00, 1 doz. and over, \$1.75 per doz.

**Robert Broomfield.** Pure white. Tall grower. Each 20¢, ½ doz. \$1.00, 1 doz. and over, \$1.75 per doz.

**Stradella.** Beautiful deep purple-crimson. Free flowering. Stems long and wiry. Each 20¢, ½ doz. \$1.00, 1 doz. and over, \$1.75 per doz.

**Achievement.** One of the latest novelties in Dahlias, clear, rich velvety maroon, with a frill or collar of white arranged around the golden yellow center. Each 25¢, ½ doz. \$1.30, 1 doz. or over, \$2.25 per doz.

**Rose Pink Century.** A rose pink shade. Each 20¢, ½ doz. \$1.00, 1 doz. or over, \$1.75 per doz.

**Amber Queen.** Rich clear amber, shaded apricot, extra free flowering. Each 20¢, ½ doz. \$1.00, 1 doz. or over, \$1.75 per doz.

**Countess of Lonsdale.** Chrysanthemum-like flowers of deep salmon-red, in great abundance. Should be in every garden. Each 30¢, ½ doz. \$1.60, 1 doz. or over, \$2.90 per doz.

**Jeanne Charmet.** These flowers are a most exquisite shade of lilac-pink, daintily shading to pure white toward the center, with a tinge of yellow at the margin, and measure 7 to 10 inches in diameter. Each 30¢, ½ doz. \$1.50, 1 doz. or over, \$2.75 per doz.

**J. H. Jackson.** The finest black Cactus Dahlia in existence; superb as an exhibition flower. Color a perfectly gorgeous, deep velvety, blackish maroon. Gigantic in size. Every Dahlia lover should grow this variety. Each 25¢, ½ doz. \$1.30, 1 doz. or more, \$2.25 per doz.

**LeGrande Manitou.** The color of this superb large flower is pure white, artistically striped, splashed and blotched deep violet purple. Each 25¢, ½ doz. \$1.30, 1 doz. or over, \$2.25 per doz.

**Libelle.** Clear deep rose purple; splendid Chrysanthemum-like flowers. Each 20¢, ½ doz. \$1.00, 1 doz. or over, \$1.75 per doz.

**Lucy Faucett.** One of the best of the fancy Dahlias, very large and free-flowering, color pale yellow striped and splashed deep pink, with ball-shaped flowers on long stems. Each 25¢, ½ doz. \$1.30, 1 doz. or over \$2.25 per doz.

**Mina Burgle.** A new introduction of the Decorative type, and one of the finest to date—a champion variety, producing flowers of gigantic size and remarkable beauty. Color a glowing and most brilliant scarlet. Each 25¢, ½ doz. \$1.30, 1 doz. or over, \$2.25 per doz.

**Queen Wilhelmina.** One of the largest and best of the white Peony-flowered Dahlias. Flowers produced upon long graceful stems, well above the foliage; its immense fluffy pure white flower, showing its beautiful golden center very prominently, lends an additional charm to this beautiful flower. Each 30¢, ½ doz. \$1.50, 1 doz. or over, \$2.75 per doz.

**Rene Cayeux.** Very free flowering Chrysanthemum-like flowers of good size, and are a beautiful ruby-crimson, borne on long stems. Each 30¢, ½ doz. \$1.60, 1 doz. or over, \$2.90 per doz.

**Souvenir de Doazon.** The largest Dahlia in existence. The color is a pleasing shade of orange-scarlet. Flowers are full to the center and often measure 9 inches and over in diameter, and can be forced to measure over 12 inches. Plant is a tall, vigorous grower. Should be in every garden. Each 20¢, ½ doz. \$1.00, 1 doz. or over, \$1.75 per doz.

### Separate Colors

Red and Red Shades. Yellow and Yellow Shades. White. Purple and Purple Shades. Pink and Pink Shades. Variegated. Each 18¢, ½ doz. 90¢, per doz. \$1.45. All colors and types as a mixture. ½ doz. 60¢, per doz. \$1.00.

## GLADIOLI

The Gladioli is one of the most decorative plants in the garden, and as a cut flower lends itself readily to any arrangement. If the spikes are cut when the lowest flower is in bloom, the others will open in succession and remain fresh a week or more. No flower has gained more rapidly in public favor than the Gladiolus.

Gladioli will thrive in almost any good soil except a stiff clay. The row or bed should be 8 to 10 inches deep, and then spread a liberal amount of good fertilizer in the bottom of the row or bed, and rake in thoroughly before planting bulbs. Avoid rank manure. Stable dressing, and also hen dressing can be used if applied properly, but it must be put in the bottom, then cover with fully 1 to 2 inches of soil before the bulbs are planted. Plant the bulbs 6 to 8 inches apart, having sprout or eye facing upward, and cover about 4 inches deep. Cultivate frequently until they commence to flower.

Up to 3 doz. mailed free to any address.

**America.** Universally acknowledged "King of Gladiolus." Clear lavender pink. Each 10¢, ½ doz. 50¢, per doz. 90¢.

**Scarsdale.** The finest blue to date. A rich, deep color of indigo blue. Each 15¢, ½ doz. 75¢, per doz. \$1.25.

**Brenchleyensis.** Vermilion scarlet. Each 10¢, ½ doz. 50¢, per doz. 90¢.

**Cracker Jack.** Large flowers of velvety dark red, throats spotted with yellow and dark maroon. Each 10¢, ½ doz. 50¢, per doz. 90¢.

**Halley.** Very large, salmon-rose, with beautiful creamy blotch. Each 10¢, ½ doz. 50¢, per doz. 90¢.

**Klondyke.** An early blooming plant; flowers round, well opened, of clear primrose-yellow, blotched vivid crimson in throat. Each 10¢, ½ doz. 50¢, per doz. 90¢.

**Metropolitan.** Flowers of the largest size and well expanded. The color combination is most fascinating; the flowers are of light crimson scarlet with a deep cherry throat, edged salmon-pink, the whole being beautifully striped rich crimson. Each 10¢, ½ doz. 50¢, per doz. 90¢.

**Meadowvale.** One of the purest of whites, with a touch of crimson in the throat. Each 10¢, ½ doz. 50¢, per doz. 90¢.

**Mrs. E. M. Smith.** A new and attractive variety. Deep pink with bright cherry throat. Each 10¢, ½ doz. 50¢, per doz. 90¢.

**Mrs. Francis King.** A pleasing shade of light scarlet. Each 10¢, ½ doz. 50¢, per doz. 90¢.

**Mrs. Frank Pendleton, Jr.** A new variety. Color is the most exquisite salmon-pink, with a red blotch in throat. Each 10¢, ½ doz. 50¢, per doz. 90¢.

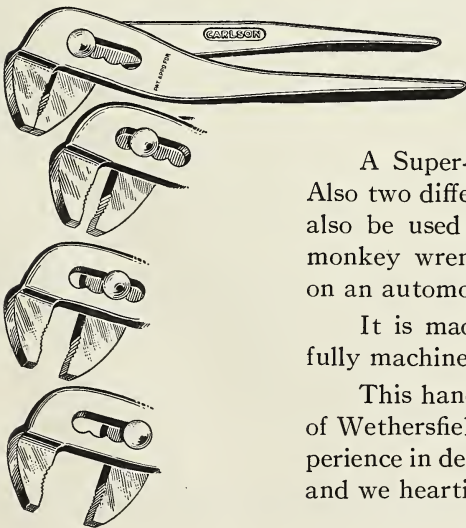
**Nazinscott.** Flaming deep scarlet-red, with white mottlings in throat. Each 10¢, ½ doz. 50¢, per doz. 90¢.

**Niagara.** A beautiful new variety, color a deep cream to primrose-yellow, throat splashed with rich carmine. Each 10¢, ½ doz. 50¢, per doz. 90¢.

**Peace.** Large flowering white, with prominent purple blotch. Each 10¢, ½ doz. 50¢, per doz. 90¢.

**Panama.** Color deep pink; flowers large, and spikes long. Each 10¢, ½ doz. 50¢, per doz. 90¢.

**Mixed Gladioli.** All shades and colors. ½ doz. 50¢, per doz. 90¢.



## Carlson Pliers

A Super-Plier, with four distinct sizes embodied in it. Also two different tools. One of the best Pliers made. Can also be used as a wrench, with equal efficiency as any monkey wrench. A very handy tool to use while working on an automobile, and to use on farm, or garden implements.

It is made of the best quality steel, drop forged, carefully machined, heat treated and hardened.

This handy little tool is manufactured by G. O. Carlson, of Wethersfield, Conn., and is the result of his 25 years experience in designing and manufacturing High Quality Tools, and we heartily recommend them.

Price \$1.00

# FARM<sup>o</sup>GERM and HUMOGERM

## INOCULATING CULTURES

THAT INCREASE CROP PRODUCTION AND GREATLY IMPROVE THE SOIL

Crop and soil experts agree that for best growth, and to put atmospheric nitrogen in the soil, it will pay all farmers to inoculate all legumes, even where they are at present successfully grown. The cost is trivial when compared with the profit it will bring you. Legumes are clovers, peas and beans, alfalfa, soy beans, vetches and other plants that grow their seeds in a pod. Their roots are the home of bacteria that draw fertility-building nitrogen from the air and store it in swellings on the roots, called nodules. These nodules not only feed nitrogen to the crop they are on, but rot away in the ground and supply valuable nitrogen to the soil for future crops of corn, grain and fruits.

### CULTURES AS YOU WANT THEM

Inoculating bacteria may be carried in two ways—on jelly media or on soil media, and we offer what we consider the best of each kind. FARMOGERM has long been recognized as the most virile and biggest result-producing culture on the market. It is in bottles, nitrogen-free jelly media, patented ventilating stopper, guaranteeing it to be fresh, on the acre basis. HUMOGERM contains the high-bred FARMOGERM bacteria carried in a specially prepared humus soil media. It is sold in cans on bushel basis. Both are easy to apply; directions on each package; either will give thorough inoculation.

Specify the kind of seed you wish to inoculate. Order Farmogerm by the acre; Humogerm by the bushel of seed to be planted—and if planting more than one bushel to the acre, the one bushel size contains sufficient inoculation for the amount of seed planted on one acre.

### PRICES

FARMOGERM—Acre Basis		HUMOGERM—Bushel Basis	
1-acre size . . . . .	\$1.00	1/4-bushel size . . . . .	\$0.35
3-acre size . . . . .	2.50	1/2-bushel size . . . . .	.60
12-acre size . . . . .	9.00	1 -bushel size . . . . .	1.00
Garden size, for peas, beans and sweet peas. . . . .	.50	2 1/2-bushel size . . . . .	2.25
		Garden size, for peas, beans and sweet peas. . . . .	.25

# STIM - U - PLANT

Plant Stimulant Tablet  
Trade Mark Registered U. S. Patent Office.

AN ALL-THE-YEAR FERTILIZER FOR GARDEN AND HOUSE PLANTS

## MAKE YOUR GARDEN A WONDER GARDEN.

It is easy. Market growers know the secret. Follow it and you will have the largest crops of fruits and vegetables, and an abundance of the largest and sweetest-scented flowers of the most intense and vivid colors.

- Here is the secret:
- Science has produced a tablet that is rich in plant food, containing 11 per cent Nitrogen, 12 per cent Phosphoric Acid and 15 per cent Potash, and it is odorless and clean. Compare this analysis with that of any other fertilizer.
- Each tablet contains highly concentrated, immediately available plant food and enables the grower to control the development of plants. They increase production, heighten color and improve quality. Their use is highly profitable.
- Simply insert tablets in the soil. Or, four tablets dissolved in a gallon of water is the solution used. Do not spray on the foliage. A tablet every two weeks—until three or four have been used—will make cucumbers, squash and melons fairly jump.
- In hills, for other plants than vines, use one tablet to each hill.
- For crops in drills, use one tablet to each foot of row.
- In flower-beds and borders, place tablets one foot apart.
- Fine also for coldframes, hotbeds, greenhouse benches and pot plants.
- Dahlias will be greatly benefited by inserting 2 or 3 tablets in the ground in a radius about 4 inches from stem.
- Gladioli are greatly improved by inserting the tablets 3 or 4 inches apart along the row, or one near each plant.
- For velvety lawns use dissolved in water, at rate of one or two tablets to the gallon.
- For ferns, hyacinths, geraniums—all potted plants—in 6-inch pots or smaller, insert half a tablet in soil approximately every ten days at first, then as plant needs it; larger pots, 1 tablet; bush shrubs, in buckets, 2 tablets.
- For peonies and iris to do their best, these little tablets should be set in along the rows or around the plants.
- For roses, place two or three tablets in soil every ten days or two weeks during period you wish to stimulate them. The effect will be immediate.
- Tomatoes—tablet or liquid application will cause vines to hold more blossoms for development and improve quality and quantity of fruit.

**STIM-U-PLANT** Tablets are packed in four sizes: Directions with each package.

- Trial Size, 15 cents, containing 10 Tablets
- Medium Size, 75 cents, containing 100 Tablets.
- Small Size, 25 cents, containing 30 Tablets
- Large Size, \$3.50 containing 1,000 Tablets.

## SPRAY-TABS BORDEAUX-ARSENATE TABLETS Insecticide and Fungicide Combined.

PERFECT SPRAY MATERIALS IN TABLET FORM—Safe—Economical—Convenient

Never before has the gardener and plant grower had the advantage of a combined insecticide and fungicide in tablet form. It eliminates much of the danger and risk which come to children, birds and stock from the ordinary loose powders and poisons.

### Use Complete Spray and Reduce Spraying Costs

When you apply insecticide and fungicide in one operation you save much time, labor and money. There is a saving in amount of materials used and an elimination of waste of unused portions when you use tablets and get a uniform solution always.

### Spray-Tabs Are Accurate

These tablets are made carefully according to an exact formula and there is no variation or guesswork. They are great protection for roses, flowers and shrubs.

### Easy to Use

Five SPRAY-TABS to a pint of water makes the correct solution for spraying vegetables and truck crops such as potatoes, beets, beans and similar hardy plants. For tomatoes, vine crops and other tender vegetables use four tablets to one pint of water.

If the solution is applied at intervals of ten days or two weeks during the first half of crop life much injury by leaf-chewing insects and fungi will be avoided.

SPRAY-TABS are packed in one size—30 cts.







FROM .....

.....

**CHAS. C. HART SEED CO.**

**WETHERSFIELD,**

**SEEDSMEN**

**CONN.**





# HIGH GRADE FERTILIZERS

**HIGH GRADE FERTILIZERS**—Potato, and Onion Fertilizers. Analysis: Ammonia 4%, Avail. Phos. Acid 8%, Actual Potash 4%. Price: Bags of 10 lbs., 75 cents; 25 lbs., \$1.25; 50 lbs., \$2.00; 100 lbs., \$3.75; 500 lbs., \$15.00; 1000 lbs., \$26.00; 2000 lbs., \$50.00.

**CORN GROWER FERTILIZER**—Analysis: Ammonia 2%, Avail. Phos. Acid 8%, Actual Potash 2%. Price: Bags of 10 lbs., 60 cents; 25 lbs., \$1.00; 50 lbs., \$1.80; 100 lbs., \$3.25; 500 lbs., \$12.50; 1000 lbs., \$22.50; 2000 lbs., \$41.25.

**GENERAL CROP FERTILIZERS**—A high grade general Fertilizer, for General Crop, Grass, etc. Analysis: Ammonia 3%, Avail. Phos. Acid 8%, Actual Potash 4%. Price: Bags of 10 lbs., 65 cents; 25 lbs., \$1.10; 50 lbs., \$1.90; 100 lbs., \$3.50; 500 lbs., \$14.00; 1000 lbs., \$25.50; 2000 lbs., \$47.50.

## QUICK-AND-SURE PULVERIZED SHEEP MANURE

Natures Best Fertilizer for Lawns, Flowers, Plants, Greenhouses and the Vegetable Garden, Fruit Trees, Berries and Small Fruits.

This is a pure natural manure from the stock yards at Chicago, the best and strongest in fertilizing and enriching elements of all nature's fertilizer, containing nitrogen, phosphoric acid and potash in liberal proportions. As a top-dressing for lawns, it has no equal, and there is nothing better for the vegetable and flower garden. It can be applied any time of the year without injury to the plant or foliage. Its effect is immediate, much more lasting and healthier than commercial fertilizers or any other manure. For mixing with soil and spreading broadcast on the garden, use one part manure to six parts soil; for making a liquid, use one pound manure to five gallons water; this can be used with safety, daily, if necessary. For top-dressing for an old lawn, about one pound to every 30 square feet should be applied two or three times during the season, preferably just before, or after a rain. It will stimulate the grass, in fact make a new lawn of it.

Analysis: Nitrogen 1.23% Equivalent to Ammonia 1.50%. Total Phos. Acid 1.00%. Potash 2.50%. Prices: 5 lbs. 35¢., 10 lbs. 60¢., 25 lbs. \$1.00, 50 lbs. \$1.75, 100 lbs. \$3.00, 5 Bags \$14.00., ½ Ton \$24.00, 1 Ton \$42.00.

If more than One Ton is wanted, write for prices.

## USEFUL TABLES

### Quantity of Seed Usually Sown Per Acre

Barley, broadcast.....2 to 3 bus.  
Beans, dwarf, in drills.....1½ bus.  
Beans, pole, in hills.....20 to 30 qts.  
Beets, in drills.....5 to 6 lbs.  
Buckwheat.....1 bus.  
Cabbage, in beds to transplant..6 oz.  
Carrot, in drills.....3 to 4 lbs.  
Clover, red alone.....15 to 20 lbs.  
Clover, white alone.....12 to 15 lbs.  
Clover, Alsike, alone.....8 to 10 lbs.  
Clover, Lucerne, or Alfalfa.....20 lbs.  
Corn, in hills.....8 to 10 qts.  
Corn, for soiling.....3 bus.  
Cucumber, in hills.....3 lbs.  
Grass, Kentucky Blue.....30 lbs.

Grass, Orchard.....3 bus.  
Grass, English Rye.....2 bus.  
Grass, Fowl Meadow.....2 bus.  
Grass, Red Top, in chaff.....3 bus.  
Grass, Red Top, re-cleaned 10 to 12 lbs.  
Grass, Timothy.....1 bus.  
Grass, Hungarian.....1 bus.  
Grass, Mixed Lawn.....3 bus.  
Melon, Musk, in hills.....3 lbs.  
Melon, Water, in hills.....4 to 5 lbs.  
Millet, Common, broadcast...1 bus.  
Oats, broadcast.....2 to 3 bus.  
Onion, in drills.....4 to 5 lbs.  
Onions, for set, in drills.....50 lbs.  
Onion Sets, in drills....6 to 12 bus.

Parsnips, in drills.....5 to 6 lbs.  
Peas, in drills.....1½ bus.  
Peas, broadcast.....3 bus.  
Potato, (cut tubers).....10 bus.  
Pumpkin, in hills.....4 to 6 lbs.  
Radish, in drills.....8 to 10 lbs.  
Rye, broadcast.....1 to 1½ bus.  
Spinach, in drills.....8 to 12 lbs.  
Squash (bush varieties)....4 to 6 lbs.  
Squash (running varieties). 4 to 6 lbs.  
Tomato, to transplant.....¼ lb.  
Turnip, in drills.....1 lb.  
Turnip, broadcast.....1 lb.  
Wheat, broadcast.....2 bus.

### Quantity of Seed Required for a Given Number of Plants, Number of Hills or Length of Drills

Asparagus.....1 oz. to 40 ft. of drill  
Beet.....1 oz. to 50 ft. of drill  
Beans, dwarf...1 qt. to 100 ft. of drill  
Beans, pole.....1 qt. to 100 hills  
Carrot.....1 oz. to 100 ft. of drill  
Cabbage.....1 oz. to 2000 plants  
Cauliflower.....1 oz. to 2000 plants  
Celery.....1 oz. to 4000 plants  
Cucumber.....1 oz. to 50 hills  
Corn.....1 qt. to 200 hills  
Dandelion.....1 oz. to 100 ft. of drill

Egg Plant.....1 oz. to 1000 plants  
Endive.....1 oz. to 150 ft. of drill  
Leek.....1 oz. to 100 ft. of drill  
Lettuce.....1 oz. to 3000 plants  
Melon, Water.....1 oz. to 15 hills  
Melon, Musk.....1 oz. to 80 hills  
Okra.....1 oz. to 40 ft. of drill  
Onion.....1 oz. to 100 ft. of drill  
Onion Sets, small, 1 qt. to 40 ft. of drill  
Parsley.....1 oz. to 150 ft. of drill  
Parsnips.....1 oz. to 200 ft. of drill

Peas.....1 qt. to 100 ft. of drill  
Pepper.....1 oz. to 2000 plants  
Pumpkin.....1 oz. to 15 hills  
Radish.....1 oz. to 100 ft. of drill  
Salsify.....1 oz. to 100 ft. of drill  
Spinach.....1 oz. to 100 ft. of drill  
Squash, Early.....1 oz. to 40 hills  
Squash, Running....1 oz. to 10 hills  
Tomato.....1 oz. to 1200 plants  
Turnip.....1 oz. to 150 ft. of drill

### Weights of Grass and Field Seeds

Timothy.....per bus., 45 lbs.  
Clover, Red.....per bus., 60 lbs.  
Clover, White.....per bus., 60 lbs.  
Clover, Alsike.....per bus., 60 lbs.  
Clover, Alfalfa.....per bus., 60 lbs.  
Red Top.....per sack, 50 lbs.  
Red Top.....per bus., 10 lbs.  
Red Top, Fancy.....per bus., 36 lbs.

Blue Grass.....per bus., 14 lbs.  
Blue Grass, Fancy...per bus., 24 lbs.  
Fowl Meadow.....per bus., 11 lbs.  
Hungarian.....per bus., 48 lbs.  
Millet.....per bus., 50 lbs.  
Orchard Grass.....per bus., 14 lbs.  
Buckwheat.....per bus., 48 lbs.  
Barley.....per bus., 48 lbs.

Oats.....per bus., 30 lbs.  
Rye.....per bus., 56 lbs.  
Wheat.....per bus., 60 lbs.  
Beans, White.....per bus., 60 lbs.  
Beans, Red Kidney...per bus., 58 lbs.  
Corn, Field.....per bus., 56 lbs.  
Peas, Canada Field...per bus., 60 lbs.  
Peas, Green Wrinkled.per bus., 56 lbs.



CHAS. G. HART  
SEED CO.  
*Growers, Importers and  
Dealers in Garden, Flower  
and Farm Seed.*  
WETHERSFIELD, CONN.