

## **Historic, Archive Document**

Do not assume content reflects current scientific knowledge, policies, or practices.





THE ALFRED BLACKBERRY (Second crop) Photographed September 17, 1925

# South Michigan Nursery

GEORGE STROMER

New Buffalo, BERRIEN  
COUNTY Michigan

*Growers of High Grade Nursery Stock—100 ACRES*

SPRING 1926

# South Michigan Nursery Stock is Guaranteed to be True to Name and Satisfy

---

When you place your order with the South Michigan Nursery you are sure of getting exactly what you order; also that your plants will reach you in good growing condition. We guarantee that all our plants are true to name and free from dangerous diseases. We will replace all plants that arrive in poor condition, providing that claim reaches us within five days after arrival.

We are a member of the Michigan Association of Nurserymen.

## OUR GUARANTY

We guarantee every plant sold by us to be first class in every respect; free from any injurious disease or insect, and true to name, and hold ourselves ready, upon proper proof, to refund or replace any that proves otherwise, providing complaint is received not later than September 1st of second year stock was originally purchased. It is mutually agreed between ourselves and the customer that we shall not be liable for a greater sum than the amount paid us for the plants.

## WE DO NOT SUBSTITUTE

For the last twenty-two years we have been growing strawberry, blackberry, raspberry, and other small fruit plants, both for fruit and plants. All our plants made an excellent growth last summer, so we are able to offer the public the finest lot of plants we have ever grown.

We are located in the GREAT FRUIT BELT in Berrien County, Michigan, one and one-half miles from Lake Michigan, and three miles from the Indiana state line.

**REFERENCE.** New Buffalo State Bank, New Buffalo, Michigan; American Railway Express Agent, and Postmaster.

**REMITTANCE.** Our terms are cash with order. Or, we will book early orders, if one-third of amount is sent with orders, and balance payable April 1st or before plants are shipped. You may remit by Draft, Post Office Money Order, Express Money Order, Registered Letter, or your personal check. Stamps may be sent for small orders. Never send coin by mail.

**HOW TO ORDER.** Always use the order sheet. Write plainly the amount of each variety wanted, name of each variety and price. (Write your name and address plainly).

**MENTION HOW YOU WANT GOODS SENT.** Express or Parcel Post. We do not advise shipping live plants by freight.

**PARCEL POST SHIPMENTS WILL BE MADE C. O. D. FOR POSTAGE.** That is, you may order your plants to be shipped by parcel post, and pay your postman the postage upon arrival of plants. In that way your plants are automatically insured, **SO, DO NOT SEND MONEY, EXTRA, FOR POSTAGE.**

**OUR PRICES** are F. O. B. New Buffalo, Michigan, unless otherwise specified.

**SHIPPING SEASON** begins about March 25 and continues to about May 15, depending upon the weather conditions. We use our own judgment. Always mention the date you want your plants shipped, and we will get them out for you as near as possible to that date. Prompt shipment is our Motto.

**C. O. D. SHIPMENTS.** As a rule we do not make C. O. D. shipments.

**TEN PER CENT DISCOUNT ON ALL ORDERS BEFORE MARCH FIRST.** This applies to catalog rates.

**Distance for planting, and plants required per acre—See page (9).**

## FREE PLANT OFFER—BACK COVER.

---

# STATE DEPARTMENT OF AGRICULTURE

L. Whitney Watkins, Commissioner

No. 4324

## CERTIFICATE OF NURSERY INSPECTION

This is to Certify, that the nursery stock of **GEORGE STROMER, New Buffalo, Michigan,** has been examined and found apparently free from dangerous insects and dangerously contagious tree and plant diseases.

This certificate to be void after July 31, 1926.

Bureau of Agricultural Industry  
A. C. Carton, Director

L. R. TAFT,  
Chief Horticulturist.

Lansing, Michigan, September 16, 1925.

# Alfred - The New Core- less Blackberry

For many years, every Berry Grower, every Nurseryman — in fact everyone at all interested in growing, selling or eating berries, have been patiently waiting, and hoping for a good dependable Blackberry.

Since the passing of the old reliable variety Wilson, many varieties have come and gone. While some of them have given satisfaction in certain localities, not a single one has become a universal favorite. The perfect blackberry must combine quality, size, flavor, appearance, and productivity to a wide range of soils and climates. Growers everywhere have long wanted a Blackberry possessing those qualities.

## Here it is at last THE ALFRED

Lack of space forbids describing in detail the many good points of this variety; however, I wish to call your attention to the outstanding reasons why the ALFRED is superior to all other varieties.

**BEARS SECOND SEASON:** ALFRED is such a healthy, vigorous grower that it produces a good crop of berries the year following planting. It is not unusual to pick 18 to 40 berries from the bush the same year planted.

**IMMENSE SIZE:** The berries are twice as large as Eldorado, Blower, etc. Many



Actual Photograph of the Wonderful ALFRED Blackberry. (Note the enormous size of these berries on one cluster).

of them  $1\frac{1}{2}$  inches long, and the finest flavored of all blackberries. It is one ideal table berry because it is CORELESS, sweet and delicious. It is very small seeded.

**EXTREMELY HARDY:** ALFRED can be grown anywhere without winter protection, having withstood 30 degrees below zero, and not a single tip of a branch injured, while other varieties were frozen to the ground.

**EARLY SEASON.** This is one big feature of this variety. It ripens a week to ten days earlier than Eldorado and in productiveness it is in a class by itself. We have seen them bear a second crop. We picked many cases this year in September. As I watch the ALFRED year after year I am more and more thoroughly convinced that the ALFRED BLACKBERRY WILL HAVE A PROMINENT PLACE IN THE VALUABLE FRUITS HALL OF FAME.

BLACKBERRY plants are different to propagate, and it will be years before there will be a supply of ALFRED plants.

Our plants are much larger this year than last, owing to the fine growing weather that we have had this Fall.

**ROOT CUTTING PLANTS,** with fibrous roots. Plants will be properly pruned and ready for you to set. This saves transportation charges. Per dozen, \$3.00; Per 25, \$4.75; Per 100, \$14.75; Per 1,000, \$85.00. **BEARING AGE** (2 year plants)—Dozen \$5.00; 25 for \$9.00; 100 for \$25.00, less 10% for cash, before March 1, 1926.

# Alfred Blackberries

(CONTINUED)

To the right you see an actual photograph of two specimen ALFREDS. These two berries were found growing on a cluster with two other berries. Not being so full they grew to be better than  $1\frac{1}{2}$  inches long. This is actual size. (We want you to understand that every berry on the bushes will not get to be  $1\frac{1}{2}$  inches long), but a good many will, if you will follow the following instructions. **How to grow  $1\frac{1}{2}$  inch Alfred Blackberries.**

**FIRST.** Be sure to get the GENUINE ALFRED PLANTS.

**SECOND.** Upon arrival of the plants from us, set as soon as possible. If impossible to plant at once, heel them in the ground till you are ready.

**THIRD.** Be sure that the soil where you are going to plant them, is in good condition. DO NOT PLANT THEM IN WET SOIL. Well drained soil is the best. Plenty of well rotted manure plowed under, will bring about the best results.

**FOURTH.** Keep them cultivated all summer. Do not let the weeds get in them. This will hinder them from getting their size, and reduce their fruiting capacity.

**FIFTH.** In the fall place a little manure around them, if handy. (This is not necessary.) A little fertilizer in the spring will do just as well.

**SIXTH.** Early in the spring prune the branches back to about 8 or 9 inches and the main stem according to how much growth it made. Do not let it hang over on the ground.

**SEVENTH.** Keep them well cultivated again the second summer, and if the summer is not severely dry you will get berries  $1\frac{1}{2}$  inches long, as I get them every year. PRUNE OUT THE OLD FRUITING CANES AS SOON AS BERRIES ARE HARVESTED.

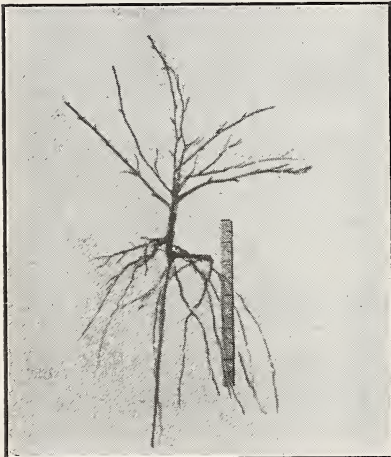


TWO SPECIMEN ALFREDS

## How, and Where I Found the Alfred Blackberry

By GEORGE STROMER

Seven years ago last August, while I was walking along an old abandoned right-of-way, I noticed an unusually large Blackberry bush growing near a former station called ALFRED. (This station was merely a junction.) The ripe berries with which it was loaded were extraordinarily large. The following spring I called my discovery to mind, and thinking it might prove worth while, I dug it up from its native soil, and cut the roots so as to make three plants. These were planted in a rich soil where they grew vigorously all summer.



Showing an ALFRED root cutting plant. A foot rule along side.

That following winter of 1918 was very severe in Michigan, the native state of the plant, but they withstood the heavy frosts, and 14 degrees below zero. Many young plants sprung up from the roots, the next spring I transplanted these, and cultivated them carefully. Year after year of diligent care I have propagated these plants to such an extent that the fruit is now being supplied to the local market, at a fancy price, and is always in good demand. The average price received per 16 quart case was three dollars. I kept a record of one-half acre of these (one year old canes) and they made a return of \$198.00. The one year old canes that bore this crop were only from 18 to 24 inches tall, while the fruiting canes for next year are from 3 to 4 feet tall with wide spreading branches. Many canes are one inch in diameter, thus promising a much better return for next year.

Last year from this record crop I measured a good many berries that were over one and one-half inches long, and three inches around. Several Nurserymen that have seen this half acre patch in fruiting season, claim that the ALFRED is the largest berry they have ever seen.

On our cover page you will see a cluster of ALFREDS, that was photographed on September 17, 1925. The Alfred Blackberry bore their second crop this year, and the berries were of enormous size. Photograph shows actual size.

# About Planting

**DISTANCE OF PLANTING:** For garden culture we advise planting the ALFRED about four feet each way, but for field culture we plant the rows 8 feet apart, and the plants 4 feet apart in the rows. This will give you plenty of room to cultivate them both ways the first year, and the second year you can cultivate them by going through the rows with an ordinary spring tooth harrow. The ALFRED is such a vigorous grower that you will not be able to cultivate them crosswise the second year, providing the ground is in fairly good condition when you plant them.

Union Dale, Penn., April 28, 1925.

George Stromer, New Buffalo, Michigan.

Dear Sir: The Alfred Blackberry and Eaton Strawberry plants arrived. Many thanks for the extras.

Yours very truly, A. J. BAKER.

George Stromer, New Buffalo, Michigan

Dear Sir: This Spring I sent for 1 Alfred Blackberry plant. Hope you received my note thanking you for the two extra ones you sent. In spite of a season so dry that only a half a crop of anything could be grown, two of the three made a fine growth.

Buckfield, Maine, Oct. 3, 1925.

Yours very truly,  
INEZ A. SPAULDING.

## Features of the Alfred

The two big and profitable features of the ALFRED are: **FIRST**—they are from a week to ten days earlier than the ELDORADO, thus you get your berries on the market with the Dewberries, and get the big price.

**SECOND:** On account of their large size you can demand as much money for them as you can for dewberries, because they are as large, and have a much better appearance, being a very glossy jet black. Most other blackberries and dewberries will turn a copper color, after being picked 24 hours, but this is not so with the ALFRED. They hold up longer than any other variety. If the ALFRED is left to set on the bushes for a day or so after they are ripe, they will be CORELESS. They have been known to set on the bushes for over a week after they were ripe, and still spoil.



Showing a 16-quart case of ALFRED Blackberries just picked.

Orting, Washington,  
Oct. 25, 1924.

Mr. George Stromer,  
New Buffalo, Michigan.

Dear Sir: The Alfred plants arrived in fine shape, and made a fine growth.

Yours very truly,  
Mrs. Ruth Wadkins.

**ALFRED BEARS IN CALIFORNIA THE FIRST SEASON THAT IT IS PLANTED.**

Riverside, California, September 22, 1924.

South Michigan Nursery, New Buffalo, Michigan.

Dear Sirs: Last season I purchased from you a dozen Alfred Blackberry plants and they are doing fine. One bush I picked ten large ripe berries from last Sunday. They are everything that you claim them to be.

Respectfully, E. A. KING.

## REMEMBER

The Alfred is a bush variety—Not a vine like a Dewberry. You save the expense of posts and wire.

FREE PLANT OFFER ON BACK COVER.



Champion Everbearing. The Best Everbearing Grown.

## The Champion Everbearing Strawberry

Champion, without doubt, is the best everbearing strawberry grown. It is the most prolific of all. When you plant CHAMPION you are certain of success because three months after planting every plant will commence bearing, and continue all through the summer and late in the fall. The runners will commence to bear even before they have taken root.

We grow several acres every year for fruit, and we know what we are talking about. Make sure that you get the GENUINE CHAMPION. Order from us. We obtained our stock direct from the originator. You do not have to cultivate and care for them a whole year for nothing. You begin to harvest the crop three months after you get the plants from us. For instance if you set them out the middle of April they will begin to bear by the middle of July.

### HOW TO GROW CHAMPION EVERBEARING STRAWBERRIES SUCCESSFULLY—

**FIRST.** Get your plants from a nursery who will guarantee them to be GENUINE CHAMPION. (We do that). We also guarantee that every plant will bear in three months or we will refund the full purchase price of the plants.

**SECOND.** Select a piece of well drained soil, that has been well fertilized (stable manure is the best), with a little acid phosphate 16% applied on top before planting. Five hundred pounds to the acre is about right.

**THIRD.** Only one year old plants should be planted. These can be secured from reliable nursery-men. Our plants are all dug from one year old patches. Plant as early in the spring as possible. If the plants arrive before you are ready for planting, the plants should be "Heeled-in" by opening the bunches and placing them in trenches and packing the soil firmly around them. Do not bury them.

**FOURTH.** The plants should be set 2 feet apart in rows, and the rows  $3\frac{1}{2}$  to 4 feet apart.

**FIFTH.** Cultivation should begin as soon as possible after the plants are set by using a cultivator which does not cut deeply into the soil. Cultivate every ten days, with an occasional hoeing close up to the plants, to keep down the-weeds. This also helps to keep the surface soil loose and prevents drying out.

**SIXTH.** Keep all blossoms removed as they appear until about the last of June. Then leave all blossoms set. By this time the plant has had a chance to get firmly set in the soil, and has made a good growth. By all means do not leave the first blossoms set.

**CHAMPION EVERBEARING** Strawberry plants are very scarce this year. Some patches did not make as many plants as there were set in it. Crop shortage is bound to make prices higher, therefore our prices will be a little higher this year. 25 plants for \$1.00; 50 for \$1.50; 100 for \$2.50; 500 for \$8.00; 1000 for \$15.00.



# 999 Giant Everbearing Strawberry

One of the new varieties of everbearing strawberries. This is a fine everbearer when planted in the hill system. That is, keep all the runners pulled off. They are the greatest plant maker we ever saw. We recommend this variety for garden culture. They are not a good commercial berry, being rather soft. The flavor, however, is delicious. The color is light red. They are extra large in size, with a small calyx. The 999 Giant does not commence to bear quite so young as do the CHAMPION Everbearing, but we believe they are a little larger. I have counted 47 fruit stems on a single plant. This plant was nearly as large as a peck measure. Our prices are far below the originators.

Prices: Per 25, 50c; per 50, 90c; per 100, \$1.50; per 500, \$6.00; per 1000, \$10.00.



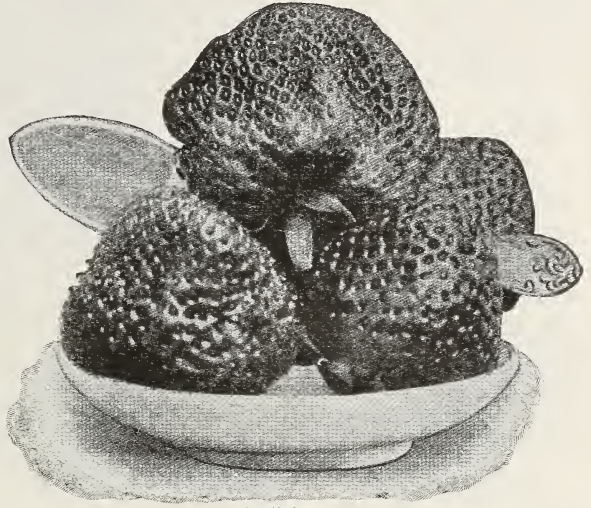
999 Giant

## Delicious

This new mid-season variety is fast becoming a leader because it will thrive on all soils and in all climates.

The berries are very dark red in color, the color going through to the center of the berry. The flavor of the berry named it—DELICIOUS. Delicious is sure a fine canning berry, making a rich, red syrup. For a fine new variety of this sort, our prices are reasonable.

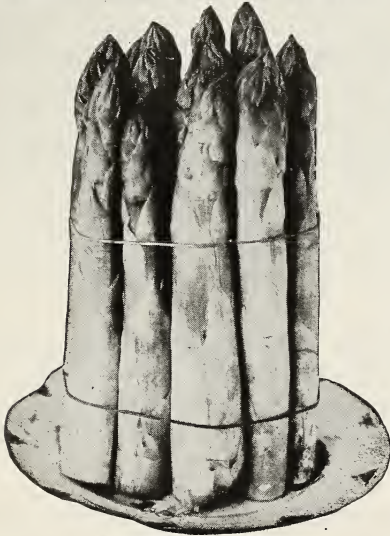
Prices: Per 25, 40c; Per 50, 65c; Per 100, \$1.20; Per 500, \$3.50; Per 1000, \$6.00.



Delicious

### DISTANCE FOR PLANTING AND PLANTS REQUIRED PER ACRE.

	Distance Apart	No. Plants
Strawberries (Commercial) .....	3 ft. 8 in. x 1½ ft.	7,920
Strawberries (Garden) .....	2½ ft. x 1½ ft.	11,600
Everbearing Strawberries .....	2½ ft. x 1½ ft.	11,600
Black Raspberries .....	7 ft. x 3½ ft.	1,777
Red Raspberries .....	6 ft. x 3 ft.	2,420
Blackberries .....	7 ft. x 3½ ft.	1,777
Dewberries .....	6 ft. x 3 ft.	2,400
Currants and Gooseberries .....	5 ft. x 4 ft.	2,200
Grapes .....	8 ft. x10 ft.	540
Grapes .....	8 ft. x12 ft.	440



Washington Asparagus

## Washington Asparagus

There is no variety of Asparagus as good as Washington, and whether you are growing for home use only or for market, you cannot afford to grow any other. This wonderful Asparagus was developed and introduced by the United States Department of Agriculture, and although it is just a recent introduction, it has become famous the country over.

Growers everywhere are discarding all varieties of Asparagus in favor of the famous Washington strain, because it is earlier, the stalks are larger, it is more productive, and last but not least, Washington is rust resistant, which means that one planting will produce profitable crops for many years.

Big Asparagus buyers everywhere now demand Washington and are willing to pay a fancy price for it. Their customers demand Washington, because, when it is once eaten, no other variety will give satisfaction. The stalks are a purplish green color, large tender and juicy; in fact, Washington is the one ideal Asparagus. 2 year old hardy Michigan grown Roots—25 for 75c; \$1.35 for 50; \$2.00 per 100; \$12.50 per 1000.

## A Real Wonder

It is the largest ever-bearing berry grown. Mastodon is the most prolific, the firmest, the most beautiful berry with the real strawberry flavor. It is a berry that bears early and late, one that can be picked all Spring and Summer. Many of the berries grow as large as a silver dollar, and are just as perfect. Mastodon is the real marvel in Strawberries; nothing like it has ever been known. Plants that were set in May this year, have produced as high as three quarts per plant. A field of this Mastodon in bearing is a sight never to be forgotten.

Order your Mastodon from Stromer and you will be sure to get the genuine strain. We obtained our plants direct. We Guarantee Satisfaction.

Philadelphia, Penn.  
Oct. 7, 1925.

Mr. George Stromer,  
New Buffalo, Michigan.  
Dear Sir: Received the 50 strawberry plants O. K. October 5th and thank you very much indeed for such nice, large plants. I did not really expect such nice big plants as the ones you sent.

Yours very truly,  
Mr. Willis Johnson.  
3926 Fairmont Ave.

Directions for planting and care are same as Champion Everbearing.

# Mastodon

## The New Giant Everbearer

MOST SUCCESSFUL COMMERCIAL BERRY ON THE MARKET



A 16 QUART CASE OF MASTODON, PHOTOGRAPHED SEPT. 5, 1925, SOLD FOR \$6.00 PER CASE IN CHICAGO.

Words cannot justly describe this wonderful new Everbearing Strawberry. It will commence bearing three months after being set and continue till killing frosts late in the Fall. You must see it growing yourself. It will be a surprise of your life. Our MASTODONS were set April 10th, and our first picking was July 14th. Just a few days over three months. Our last picking was on October 28th, when the temperature fell to 20 degrees above zero.

The above photograph plainly shows you the size of the berries. The quart boxes are 5 inches square.

We will furnish affidavit to the effect, that the above photograph is of the genuine MASTODON variety, and that it was photographed on the date named.

Our prices on Mastodon are greatly reduced. 12 plants for \$1.50; 25 for \$2.75; 100 plants \$10.00; 500 for \$47.50; 1000 for \$90.00.

## Its Origin

Mastodon was originated several years ago by one George Voer of Northern Indiana, who claims it is a cross between Superb and Kellogg's Prize. Out of many seedlings produced from this cross, only one plant was worth saving, this one being the original Mastodon, from which all others of its name have sprung, and from which source our original planting stock was secured.

You Can Make  
**\$500 to \$1500**

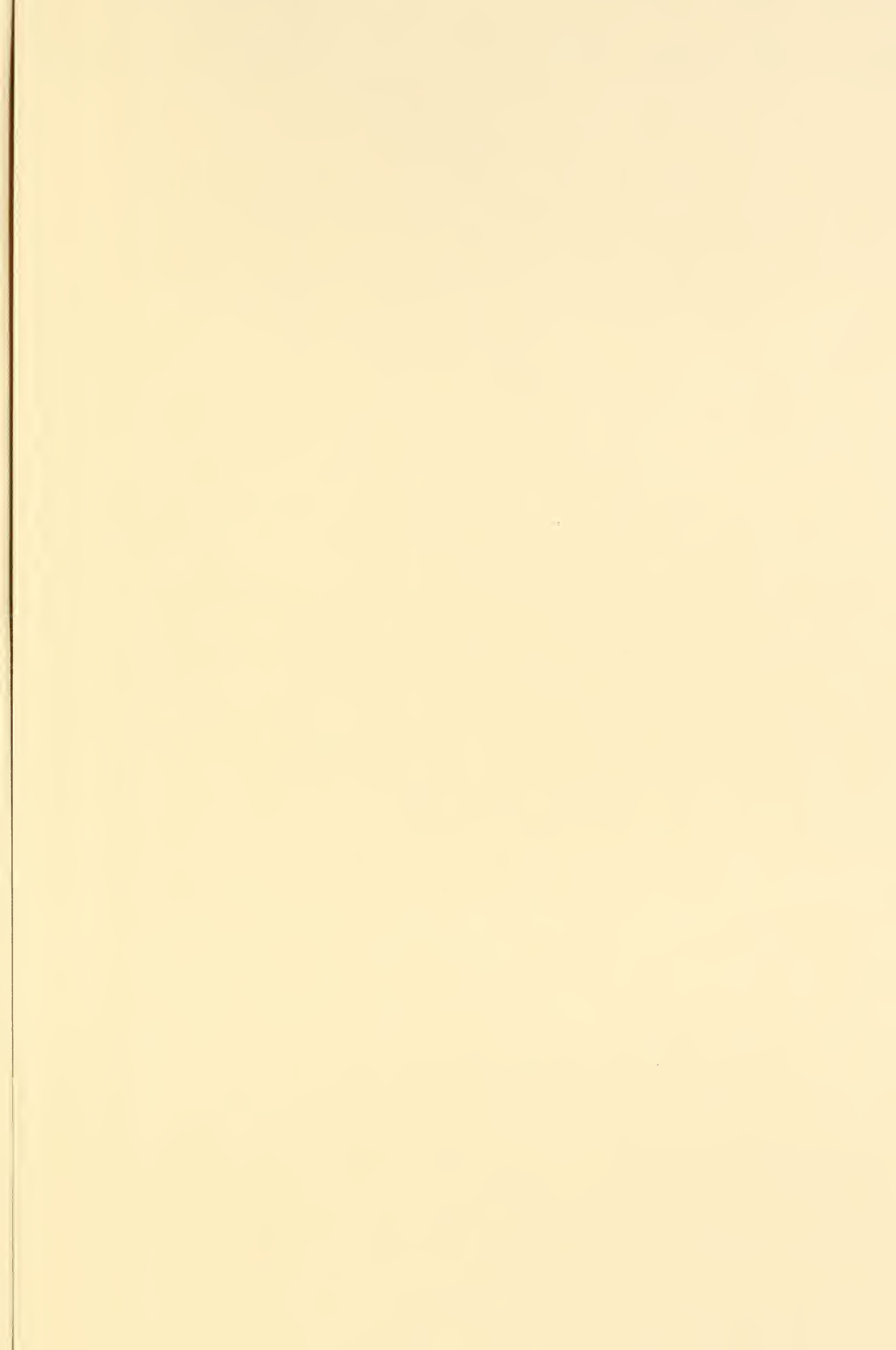
Profit per Acre  
from

**Genuine  
Mastodon  
Everbearing  
Strawberry  
Plants**

within six months  
from the time  
you set them

All Everbearing varieties failed to make many plants, last summer.

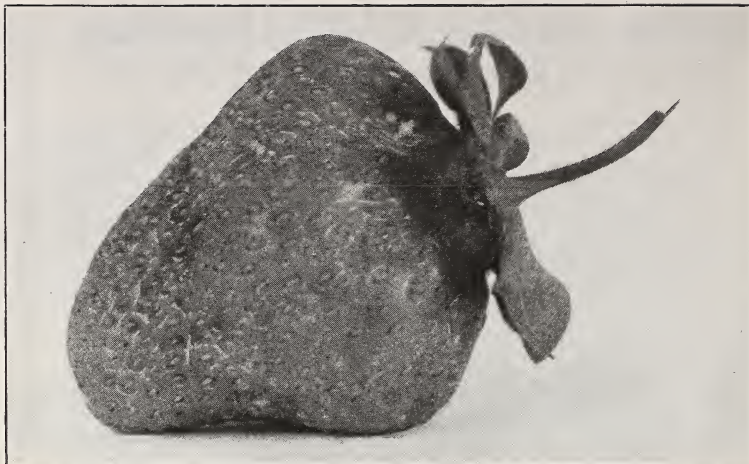
We are listing only "Perfect Flowering" varieties of strawberry, i. e., they can be planted by themselves, and need no other variety to fertilize their blossoms.



## Beaver

This is the description that Mr. Jeff Beaver, of Eau Claire, Wisconsin, (the originator) gives the berry.

This variety was named in honor of the originator, by strawberry growers that inspected this variety while in fruit. The origin of this plant is a cross of Dr. Burrill and Premier, originating on our own farm, and is an early perfect blossom variety; blossoms with Dr. Burrill, but matures fruit three to five days earlier, producing fruit of an unusual size. Color of fruit a few shades darker than Premier, extending clear thru the heart of the fruit, with golden seeds, petals set high on fruit, making a very easy berry to clean. Plant resembles Dr. Burrill in growth, with light colored foliage, long, slender roots, sometimes reaching a depth of 14 inches. Very resistant to leaf spot. A great drought resister, and good runner maker.



Beaver (Actual Size)

We tested this new variety on both light and heavy soil, with both Dr. Burrill and Premier, and has slightly out-yielded its parent plants, having the further superiority of being a better shipping berry. When you take into consideration the fact that this variety combines large size, delicious flavor, beautiful in appearance, enormous yielder, with the ability of standing long distance shipping you will agree with us that it is the greatest early strawberry yet introduced.

Per 25 plants, 75c; 100 for \$3.00; 500 for \$12.00; 1000 for \$20.00. 1000 Limit.

## Cooper

The COOPER is probably the most popular strawberry ever introduced. It was introduced a few years ago by Stevensville Nurseries at Stevensville, Michigan. We obtained our supply from them two years ago. It is a mid-season variety. Ripens with the GIBSON and BUN SPECIAL.

**A GREAT PRODUCER:** Cooper plants are often a foot tall, and each plant has several fruit stems, loaded with those extra large berries. COOPER will produce more berries than any other variety, and they hold their size wonderfully, right up to the last picking. COOPER is so well known by this time that it does not require a lengthy description. Lack of space prevents us from writing several pages on COOPERS good points. By all means order a few for your garden, at least. We have a fine bunch of plants to offer this spring.

Prices: Per 25, \$1.00; per 50, \$1.50; per 75, \$1.90; per 100, \$2.60; per 200, \$4.00; per 300, \$5.50; per 400, \$6.70; per 1000, \$15.00.



The four supreme varieties of the strawberry world—The latest thing in strawberries, new—but thoroughly tested.

## Bliss

### The World's Supreme Quality Strawberry

"NATURE AT HER BEST"

Bliss is a new variety originated by the New York State Experimental Station at Geneva. If this Station had performed no other service than originating the Bliss, its existence would be justified. Apicius wished that he had a neck the length of a stork that he might enjoy the taste of his fruit longer. That is the way you will feel when you first taste the Bliss. The berries are early, very large, dark, glossy red and red to the center, juicy, but firm, sub-acid and delicious. Certainly nature performed a miracle with the soil, sunlight and rain in producing the Bliss strawberry. The Bliss marks the utmost advance in the development of the better-strawberry.



Prices for Bliss, Beacon and Bouquet:  
25 plants for \$1.00; 100 for \$2.75;  
200 plant limit.

## Beacon

### The Longest Season Strawberry Known

"THE SHORTCAKE STRAWBERRY"

The Beacon is another new variety originated by the New York State Experimental Station, particularly valuable for its long bearing season. It bears large quantities of the choicest strawberries for six weeks. No other early Strawberry approaches the Beacon for size, color, quality and productiveness. The berries are dark, glossy red, juicy, firm, extremely highly flavored and very productive.

## Gibson

### The Universal Favorite

This well known variety needs no lengthy description. Year in and year out GIBSON will produce its usual loads of large, dark red berries. The seeds on the GIBSON are light yellow, and green shuck make a beautiful color combination. Gibson is a very vigorous plant. It is the longest rooted variety grown. No other variety will bear as heavy as Gibson. They will send out two and three sets of fruit stems. Include Gibson in your order this spring.

Prices: Per 25, 25c; per 50, 45c; per 75, 65c; per 100, 85c; per 200, \$1.35; per 300, \$1.70; per 400, \$2.20; per 1000, \$5.00.

## Prince

This berry was introduced in the East last Spring. We ordered a few hundred plants for testing. We do not know what they are but hope they are all the originator claims of them. We have only 4000 plants and will sell a few of them at these prices. 25 plants for 60c; 100 plants for \$2.00; 500 for \$4.50, limit.

## Bouquet

### Immense Producer of Enormous Berries

"AS LARGE AS A PEACH"

The Bouquet is another new variety originated at the Experimental Station and is destined to become the great Strawberry of America. It makes a very large plant, produces enormous crops of the largest berries we have ever seen. It is very rich in color, dark red, glossy. The flavor is rich, colored to the center, juicy, firm and delicious, with a wild tang all its own.

## Premier

We picked 96, 16 qt. cases from a patch of Premiers, 20 square rods in June, 1925, and the frost killed one-third of them in blossom.

The very best of all berries for early fancy trade. For big, early money, PLANT PREMIER. If you plant PREMIER you will get the first berries on the market. They will be bearing heavily before other varieties begin. Your biggest picking will be when berries are in good demand and are bringing top prices. Premiers will grow anywhere. The plants are sturdy, and long rooted, a good drought resister. The berries are very large, and hold their size to the last picking. Premier is the only early variety that will do this. The flavor cannot be beaten in any variety. Premier is one of the best shippers that grows, on account of its firmness. **BE SURE TO INCLUDE SOME WITH YOUR ORDER.** Our prices are very reasonable for such a wonderful variety.

Prices: Per 25, 40c; per 50, 70c; per 75, \$1.00; per 100, \$1.20; per 200, \$1.85; per 300, \$2.60; per 400, \$3.10; per 1000, \$6.00.



## Earliana Tomato

Earliana is really the ONLY early tomato. It is not only the earliest, but it is a very heavy bearer. Other varieties are as early, but they do not produce such heavy crops, as Earliana. The fruit is a beautiful scarlet color, smooth and as firm as any early variety. The vines are thrifty growers and resist blight to a certain extent.

Per Pkt. 10c; ½ Oz. 35c; Oz. 60c.

## Eaton

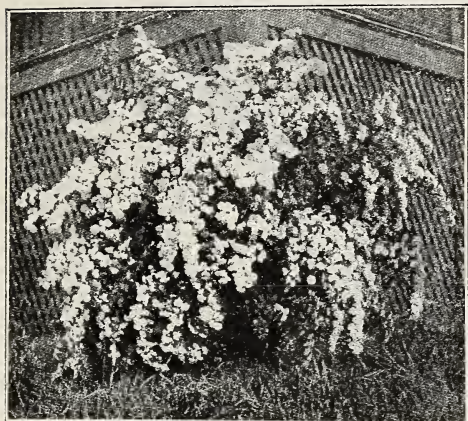
We can recommend this variety to our customers as one of the most prolific and profitable of all mid-summer varieties. We grew the EATON last year for fruit for the first time. It out-classed all our other varieties. The berries are large, dark red, and very glossy. They are absolutely as firm as the Pearl and that is saying something. A case of EATONS is a most beautiful sight. They are an excellent canning berry.

They grow on long stems that are one complete mass of berries. If you order some EATON you will be satisfied that it is the most productive berry that you have ever grown. If you are planning on setting strawberries for home or distant markets, don't fail to plant EATON. Order generously at these reasonable prices.

Per 25, 40c; per 50, 70c; per 75, \$1.00; per 100 \$1.20; per 200, \$1.85; per 300, \$2.60; per 400, \$3.10; per 1000, \$6.00.



# ORNAMENTALS



## Spirea Van Houttei

This is the grandest of all Spireas, and one of the best and most popular shrubs. The branches are very graceful and drooping when in full bloom, making a complete fountain of white blossoms in May and June. The foliage and bushy shape are ornamental all the year.

It will thrive anywhere, in the shade or in the sun, even against the north wall of a house. It likes a wet season, but the driest weather will not kill it. Grows from 6 to 8 feet high in good ground. Pruning should be done right after blooming. One of the very best shrubs known for an ornamental hedge, but equally attractive when planted singly or in groups. Plants 18 to 24 inch.

Each, 20c; 6 for \$1.00; 12 for \$1.75; 100 for \$14.50.

## Purple Lilac

This old-fashioned shrub is too well known to require any description. Adds materially to the attractiveness of the home grounds wherever planted. Excellent for hedging purposes, also individual specimens. The bush is literally filled with large clusters of very fragrant, purple flowers. Blooms in early Spring.

Everybody knows and likes a Lilac—especially a purple one. There is always a place for at least two or three bushes around your yard, and you will count it a real pleasure to have these beautiful shrubs, blooming as they do, with the earliest in the Spring.

Plants 18 to 24 inches. Each, 20c; 6 for \$1.00; 12 for \$1.75. Plants 24 to 36 inches. Each 25c; 6 for \$1.25; 12 for \$2.00.

## Bittersweet

A very beautiful vining shrub, 15 or 20 stems will twine around each other, and will completely cover a fence or trellis. In the fall the year old wood will be covered with orange color berries. If picked and hung in house they will burst open and form a beautiful flower. Each, 25c; 10 for \$2.00; 25 for \$3.50.



Lilac



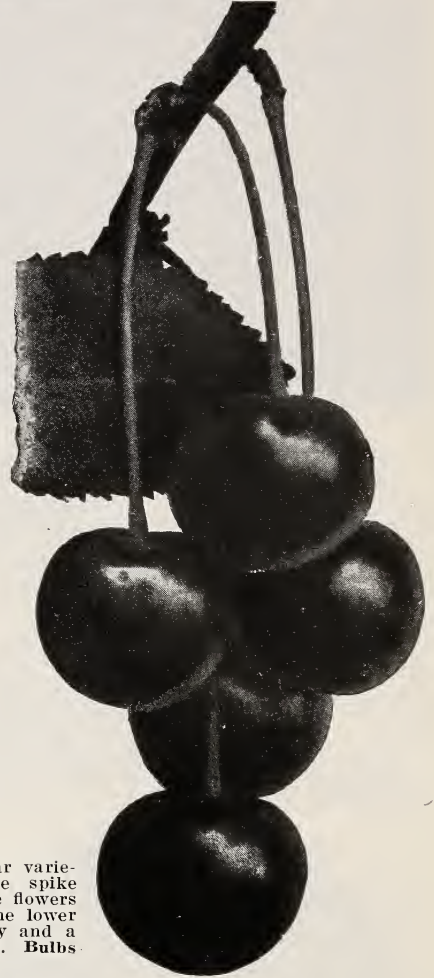
## Colorado Blue Spruce

Glistening silver-blue in color. Here is a combination of Nature's highest effort to produce the beautiful. Foliage is a rich, glistening blue which flashes and sparkles in the sunlight. Of regal grace, stern and unyielding in outline, stands like an oak among the conifers. One of these Colorado Blue Spruce on the front lawn will tone up your landscape wonderfully. 3 to 4 foot trees, \$6.00 each.

# Gladiolus

**Myra** A very beautiful variety, rapidly becoming a prime favorite. The flowers are very large, beautifully formed of pure golden salmon melting to throat of soft primrose yellow overlaid with deep orange. Very early and we know of no other variety like it. Priced to sell. Extra large bulbs. Each 10c; 12 for \$1.00. Large bulbs, 1 inch and up, each, 8c; 12 for 75c; smaller bulbs (will bloom first year.) 12 for 50c; Bulblets \$1.00 per quart. About 2,500 Bulblets per quart.

**Schwaben** A very large variety and if given rich soil and good care will produce wonderful blooms. The spike is unusually large filled with closely crowded large flowers and many buds reaching to the very tip of the stalk. The color is a clear canary yellow with a shading on the lower petals of a deeper yellow and a touch of dark red in the throat. It is one of the best yellow and a favorite wherever seen growing. Bulbs 12c each; \$1.25 per dozen.



Myra and Schwaben

**Mrs. Francis King** One of the most popular varieties in cultivation. The spike grows very tall, frequently branched and covered with large flowers of a rich flame-red or pink with small carmine spots on the lower petals and a darker throat. It is a most beautiful variety and a very strong and rank grower under nearly all conditions. Bulbs 10c each; \$1.00 per dozen.

## Bing Sweet Cherry

One of the best black Cherries. It is unusually large, firm and delicious, having all of the qualities necessary to make it a good shipper. Tree is hardy; an upright grower. Fruit ripens middle of June, Nice, large well branched trees. Each, 75c; 6 for \$4.00; 10 for \$6.00; 100 for \$55.00.

**\$10.00**

## COLLECTION OFFER

**\$10.00**

50 Alfred Blackberry. List Price.....	\$ 7.38
50 Champion. List Price .....	1.50
100 Premier. List Price .....	1.20
12 Mastodon. List Price .....	1.50
3 Spirea. List Price .....	.60

ALL FOR \$10.00 Total .....\$12.18 NO DISCOUNT.



# Honey Sweet Black Raspberry

Honey Sweet Black Raspberry is the ideal variety for home use as the flavor is the finest we have known. This variety is the latest addition to the raspberry family. The berry has an unusually fine flavor. Something different from all other raspberries.

The plant is hardy and a vigorous grower. Ripens a few days earlier than Cumberland. Plant at least enough Honey Sweet for home use this year.

Our Honey Sweet plants are large and fine rooted. Prices are as follows: Per 12 \$1.00; per 25, \$1.75; per 50, \$3.00; per 75, \$4.00; per 100, \$5.00; per 1,000, \$30.00.

---

---

**Don't**

**Forget**

We allow you  
10% discount if  
your order is re-  
ceived before  
March 1st.

---

---



Black Raspberries

## Cumberland

“The “Business Blackcap”

This is without question the most profitable and popular Black Raspberry ever grown. It is the one safe and reliable commercial variety because you can depend on a big crop regularly. We call it the “Business Blackcap” because it succeeds on all soils and produces its big crop year after year.

We have never known Cumberland to fail, and the best proof that it is a profitable variety is the fact that the demand for plants is greater every year and more Cumberlands are planted than all other varieties combined.

Cumberland is perfectly hardy and tremendously productive. The berries are extra large, glossy black, and not equaled by any other variety in quality, flavor or appearance. Whether wanted for market or home use, we can recommend Cumberland to our most exacting customers.

Price 12 for 75c; 25 for \$1.40; 100 for \$3.25; 1,000, for \$22.50; 5,000 for \$100.00.



## PEARL—The Latest Strawberry

This variety is the latest of the June bearing varieties. It starts bearing when all other strawberries are practically gone. If you plant this variety you will lengthen your strawberry season. It fills the space between the last June bearing varieties and the everbearing. For example—Plant PREMIER for the earliest, COOPER, EATON or GIBSON for mid-season and PEARL for the very last. Then plant some of the everbearing strawberries, such as CHAMPION and you are sure to have strawberries from June till November. The PEARL is about as firm as the EATON, and a wonderful keeper. Several grocers in Michigan City, Indiana, will buy no other kind of strawberries when they can get the PEARL. There must be a reason. We are offering the sale of these plants at the following prices:

Per 25, 50c; per 50, 80c; per 75, \$1.20; per 100, \$1.40; per 200, \$2.15; per 300, \$2.95; per 400, \$3.55; per 500, \$4.25; per 1000, \$8.00.

### Free Plant Offer

If your entire order amounts to \$5.00 or over you may select 50c worth of stock FREE.

If your entire order amounts to \$10.00 or over, you may select \$1.00 worth of stock FREE. For every dollar over \$10.00 you may select 10c worth FREE.

If your order is received before March 1st you may deduct 10% more, but your orders must amount to the above amounts, after the discount is deducted.

# South Michigan Nursery

GEORGE STROMER

New Buffalo, Michigan