

Historic, Archive Document

Do not assume content reflects current scientific knowledge, policies, or practices.

62.61

BERGER'S SUPREME QUALITY

Bulbs, Seeds, Plants, Garden and House Requisites



BERGER'S BULB & SEED COMPANY
61 PARK PLACE NEW YORK, N. Y., U.S.A.

Greetings to our Customers

This issue of our catalogue is presented in the hope, that you are still a plant and flower lover, particularly in growing the rare and unusual in plant life as we strive and aim to bring before you. If we are in error, please advise us.

Please Read Before Ordering

To insure against loss in transit via parcel post. Add enough extra to your order and specify, "Send via PARCEL POST INSURED."

Please write plainly on each order sheet, name in full with Post Office, County and State.

Use our order sheet. One enclosed. Additional copies cheerfully sent upon request.

Terms

Our prices are regulated, based, upon cash with your order, by check, money or express order. Please do not send cash or stamps through the mails. We do however accept same but you send them at your own risk.

We do open Charge Accounts with our customers who can furnish satisfactory references. New York City references preferred, due to investigation being of shorter duration.

Please Check Your Order

Utmost care is used to fill orders correctly. Always check your order as soon as received and if everything is not to your entire satisfaction inform us at once, as our aim is to please you and we will reasonably do all in our power to remedy matters.

Guaranty

We assure that our offerings are obtained from the oldest and most dependable producers throughout the World, due to which you may be confident in receiving the very best of selections, as to description and quality.

Order Early and Often

We recommend that you send your specifications into us promptly. All of our offerings are subject to prior sale and market fluctuation against stock in hand. All orders will be filled in their rotation as received.

Delivery

We prepay all shipments of bulbs or seeds via regular mail, express, or freight, if cash accompanies the order, to all points North of the Ohio River and East of the Mississippi River. On all orders from locations, west or south of these points, namely in the 6th and 7th, Parcel Post Zone add 10%. To points in the 8th Parcel Post Zone add 20%.

To Canada and all foreign countries, cost of packing, Consular Invoice or Manifest fees, cartage, or any other required expense, to make shipment must be added.

We do not prepay on Roots, Plants, Bamboos, Fertilizers, or any accessories.

With our increased facilities, you can rely on prompt service. Always allow a reasonable time for your order being filled. If not then received, notify us to trace it.

Non-Warranty

We give no warranty, expressed or implied, as to productiveness or any other matter of Bulbs, Seeds or plants we send out, and will not be responsible for their crops.

Lawn Grass Seeds

Autumn is a good time to tend to your lawn and get that will stay green through the drought of midsummer. Supplied with each order.

"SHADY PLACE" LAWN GRASS SEED composed of a special mixture for shaded places to thrive under shrubs etc.
60c. qt. 4 qts. 2.00; pk. \$3.50; \$12.00 bu. 20 lbs

"VELVET SOD" LAWN GRASS SEED Will produce a close vigorous velvety turf, rich green throughout the season. The best lawn mixture carefully tested for germination and purity
60c. qt. \$2.00 pk. 3.50; \$12.00 bu. 20 lbs

it ready for the Winter and Spring. A good lawn, one is easily made with our Seeds, following our directions.

TERRACE SOD GRASS MIXTURE

Excellent for embankments, slopes, etc. Makes strong roots which hold soil in place. Will withstand drought and thrive in shallow soils.

50c. qt.; 4 qts. \$1.65; pk. \$3.00; \$10.00 bu. 20 lbs.

"TIP TOP" LAWN GRASS SEED

An excellent grade, for general purpose, carefully blended and of a high germination.

45c. qt.; 4 qts. \$1.50; pk. \$2.75; \$9.00 bu. 20 lbs.

Canine and Poultry Specialties

Prepared for us by and guaranteed to give unquestionable results or money refunded.

Ralph's, Vermicidal Capsules for Dog's or Cats.

For the treatment of dogs or cats suffering from intestinal worms.

An unfailing remedy in cases where dogs and cats are infested with round worms. It destroys the worms without injury to the animal.
Price: \$1.00 per bottle. Postage Prepaid.

Ralph's Dog Tonic.

A real conditioner for your dog.
Price: \$1.00 per bottle. Postage Prepaid.

Ralph's Skin Lotion.

An antiseptic lotion for treatment of eczema in dogs.
Price: \$1.00 per bottle. Postage Prepaid.

Ralph's Poultry Specialties.

Ralph's Dry Dip \$1.00 per bottle. Postage Prepaid.

Ralph's Liquid Lice Killer \$1.00 per bottle. Postage Prepaid.

Ralph's Poultry Tonic Powder Stimulates egg production. Price: \$1.00 per bottle. Postage Prepaid.

Ralph's Poultry Worm Tablets. Price: \$1.00 per bottle. Postage Prepaid.

Ralph's Special xx Fowl cholera remedy tablets. Price: \$1.00 per bottle. Postage Prepaid.

These preparations are compounded by one of our foremost veterinarians. We cheerfully solicit your inquiries bearing upon any ills of your Cats, Dogs, Horses, Cattle or Poultry which will be promptly responded to with an adequate diagnosis. Preparations or remedies will be supplied at most reasonable costs.

BOTANICAL TULIPS

What is more alluring and bewitching than these lovely Tulips. They are especially beautiful and indispensable for the lover and collector in "rock gardens" and spring borders.



Australis. Falls yellow, petals tinged reddish bronze outside. Fragrant.

15c. ea.; 3 for 40c.; \$1.25 per doz.; \$8.00 per 100; \$60.00 per 1000.

Billietiana. Yellow flamed scarlet pointed petals. Fine for cutting.

10c. ea.; 3 for 25c.; \$1.00 per doz.; \$7.50 per 100; \$55.00 per 1000.

Jarinata Rubra. Odd tint mulberry. Deep Crimson. Very attractive.

15c. ea.; 3 for 35c.; \$1.10 per doz.; \$7.75 per 100; \$57.50 per 1000.

Ciusiana. 8 ("The Little Lady" Tulip) Outer petals cherry red, inside creamy white with violet base. Loves a warm sheltered corner, in the rock garden or is charming when forced in a bowl or pot.

15c. ea.; 3 for 35c.; 90 c. per doz.; \$5.75 per 100; \$42.50 per 1000.

Corunta Stenopetala. Beautifully formed flower. Long narrow twisted petals. Scarlet and gold, lacinated like a Parrot Tulip, on tall stiff stems. Very odd and interesting.

15c. ea.; 3 for 30c.; \$1.00 per doz.; \$7.50 per 100; \$55.00 per 1000.

Dasystemon. 3 A showy yellow and white specie; several flowers to a stem.

50c. ea.; 3 for \$1.50; \$5.50 per doz.; \$37.50 per 100; \$335.00 per 1000.

Didleri. Bright scarlet with black blotch.

15c. ea.; 3 for 30c.; \$1.10 per doz.; \$7.75 per 100; \$57.50 per 1000.

Didieri. Bright scarlet with black blotch.

15c. ea.; 3 for 30c.; \$1.10 per doz.; \$7.75 per 100; \$57.50 per 1,000.

Eichieri 11 A grand specie from Turkestan. Producing immense crimson scarlet flowers, with glistening black center, marked gold.

40c. ea.; 3 for \$1.15; \$4.50 per doz.; \$30.00 per 100; \$275.00 per 1,000.

Florentina Odorata 18 ("Wild English Tulip") Bright buttercup yellow, bronze exteriors. Sweet scented. Frequently two to a stem.

15c. ea.; 3 for 30c.; \$1.10 per doz.; \$7.75 per 100; \$57.50 per 1,000

Hageri. 16 Dark tile red flower, black and yellow center. Very attractive.

10c. ea.; 3 for 30c.; \$1.00 per doz.; \$7.50 per 100; \$55.00 per 1,000.

Kauffmania. The beautiful "Water Lily Tulip." Blooms in April. Creamy white, with great flames of carmine on the exterior of the petals, yellow base.

35c. ea.; 3 for \$1.00; \$3.50 per doz.; \$25.00 per 100; \$200.00 per 1,000.

Marjoletti 14 Yellow ground, splashed red, edge rosy. Splendid for rockeries in a sheltered place.

15c. ea.; 3 for 35c.; \$1.25 per doz.; \$8.00 per 100; \$60.00 per 1,000.

Mauriana. Brilliant scarlet, yellow basal blotch.

15c. ea.; 3 for 30c.; \$1.10 per doz.; \$7.75 per 100; \$57.50 per 1,000.

Persica 3 Very dwarf. Deep yellow to bronze. Fragrant. Borne in two and threes on slender stems.

10c. ea.; 3 for 30c.; \$1.00 per doz.; \$7.25 per 100; \$55.00 per 1,000.

Praecox Beautiful scarlet flower with a purplish black base.

20c. ea.; 3 for 40c.; \$1.50 per doz.; \$10.50 per 100; \$82.50 per 1,000.

Praestens. 14 Lively light scarlet, with several flowers on a scape. A fine specimen from Bokhara.

50c. ea.; 3 for \$1.35; \$5.00 per doz.; \$47.50 per 100; \$425.00 per 1,000.

Primulina 9 Flowers, creamy white, tinged lilac outside, bronzed colored stems.

25c. ea.; 3 for 50c.; \$1.60 per doz.; \$12.00 per 100; \$95.00 per 1,000.

Pulchella—Charming species from Asia Minor, producing brilliant crocus-like falls, in shades of crimson-carmine to carmine rose.

25c. ea.; 3 for 60c.; \$2.00 per doz.; \$15.00 per 100; \$125.00 per 1,000.

Sylvestris—See "Florentina Odorata"

Viridiflora. (The "Green Tulip") Pale green, edged creamy yellow. Very open flower.

10c. ea.; 3 for 25c.; \$1.00 per doz.; \$7.50 per 100; \$55.00 per 1,000.

Vitel'ina, Dwarf, sturdy habit. Creamy yellow tint. Jasmine fragrance.

10c. ea.; 3 for 20c.; 75c. per doz.; \$5.50 per 100; \$35.00 per 1,000.

⚡ Six are sold at the dozen rate; 25 or 50 at the 100 rate.

TULIPS—DUC VAN THOLS

The gay, bright colors of tulips show to greatest advantage in the winter garden. Give them plenty of room. Use deep pots, leaving an inch of space from the rim to allow for watering, as the roots of tulips are very fine and long, and need a good supply of water. Once allowed to dry out, the buds will blight. We especially recommend the double varieties.

THE GAY LITTLE DUC VAN THOLS

These little dwarf tulips flower very early and can be forced in the ordinary living room, and may be had in bloom before the New Year. They can be grown in pebbles and water about as easily as the Paper White Narcissus. Imagine, only 8 to 9 inches tall but producing good sized blooms in rich colors. Very sweet scented. (Must be kept cool until a strong root growth has developed.) **Cochineal.** Richvermillion. The earliest of all. **Orange.** Orange and red striped. **Rosy Blush.** Very pretty. **Scarlet.** Fine for Xmas forcing. **White.** **Yellow.**

75c. per doz.; \$4.50 per 100; \$32.50 per 1000.

⚡ **Duc Van Thol Maximus.** White and yellow. Beautiful novelty.

\$1.75 per doz.; \$11.00 per 100.

⚡ Six are sold at the dozen rate; 25 or 50 at the 100 rate.



Tulips Growing in Mossfiber

"Joy in Every Bulb"

"BERGER'S SUPREME QUALITY"



**Four Splendid
Giant Darwin Tulips**

Beauty
Le Notre
Remembrance
Viking

THE GIANT DARWIN TULIPS

These gorgeous late or May flowering tulips are very stately and beautiful. Do not fail to plant them, as their beauty is beyond compare. They all produce immense flowers, on tall sturdy stems 2 to 3 feet high. They are perfect in form waxlike substance, in the most brilliant of tints, shades and colors; the only tint not yet produced is a yellow. When that shade is desired, choose it from our Cottage Tulips.

They come into bloom after the Early Tulips are gone, and are at their best the second half of May and well into June. They look superb planted as regiments in massive beds, but most artistic in harmonious colors, as groups in hardy borders, etc. Can you picture a more gorgeous and beautiful sight than a bed of these enchanting flowers adorning your garden after winters' dismal features?

Fail not to include a goodly store of them in your Fall order. You will not regret it, as you will receive the very best Holland offers. Our stock coming from the most reliable and oldest growers there. Most Darwins can be forced easily by the first of March, and many much earlier. They should be placed in pans or bowls as soon as received. They should be grown slowly under moderate temperature.

In the garden, plant them 5 to 6 inches apart and 5 to 6 inches deep.

Do not plant before the middle of October, in the open, and cover them before the ground is well frozen to keep mice out. After once planted, they can be left in the ground undisturbed for years.

In our list, the "Collection DeLuxe" contains the most exquisite and best of best of Darwin Tulips.

The best forces are marked with a star in front of the name. The numeral after the name denotes the height in inches.

"COLLECTION de LUXE"

These are super-Darwins, distinct in color and form, and have taken the highest awards abroad, as well as in this country.

Afterglow 26 Soft apricot or deep rosy orange with salmon shading at edge of petals, inside deep orange with yellowish base. Incomparably beautiful. A very showy sort.

12c. each; \$1.10 per doz.; \$10.00 per 100; \$80.00 per 1,000.

Bleu Celeste 30 A rich dark blue. Fine and distinct. Very effective as a background for Afterglow. A very late bloomer.

40c. each; \$4.00 per doz.; \$30.00 per 100; \$250.00 per 1,000.

City of Haarlem 27 The largest of the bright scarlet Darwins, intense scarlet with darker bloom, large steel blue base and white halo. Should be planted in a well sheltered place as stems break off easily in stormy weather.

20c. each; \$2.00 per doz.; \$15.00 per 100; \$137.50 per 1000.

Duchess of Hohenburg 29 The eye can feast on this lovely blend, reminds one of old draperies, with its lilac-mauve and faint tints of rosy heliotrope.

20c. each; \$1.90 per doz.; \$15.00 per 100; \$127.50 per 1,000.

Eclipse 26 Deep rich glowing blood red with steely blue center.

15c. each; \$1.50 per doz.; \$12.75 per 100; \$101.25 per 1,000.

Flamingo 28 Please do not confuse this with the "Early Single Tulip" of the same name. It is one of the most beautiful, pale shell pink tulips, with a satiny sheen, lovely poluted flower. Distinctive in borders, amongst Camassias, Nepeta or Bleeding Heart.

10c. each; \$1.00 per doz.; \$5.75 per 100; \$41.25 per 1,000.

***Giant 30** Enormous flowers, deep velvety ruby purple, shaded deep violet, center white blue starred. Very handsome.

12c. each; \$1.30 per doz.; \$8.00 per 100; \$62.50 per 1,000.

Glow Dazzler 20 Deep vermilion scarlet, white base, large flower.

10c. each; 75c. per doz.; \$4.50 per 100; \$30.00 per 1,000.

La Fiancee 30 Rich deep rose, shading to old rose. An excellent companion for Dutchess of Hohenburg.

20c. each; \$2.00 per doz.; \$15.00 per 100, \$97.50 per 1,000.

Jubilee 30 Rich deep blue-purple, the deepest blue Darwin. Almost royal purple.

12c. each; \$1.45 per doz.; \$10.00 per 100; \$65.00 per 1000

***Le Notre 26** Beautiful clear rose-pink with large dull base rayed blue. Fine exhibition Tulip. A novelty. The first to bloom.

10c. each; 75c. per doz.; \$4.50 per 100; \$30.00 per 1000

Louise de la Valliere 24 Clear cherry rose pink, within tint of mauve. Unusually beautiful, flowers are extra large. Very scarce.

30c. each; \$2.75 per doz.; \$20.00 per 100; \$167.00 per 1,000.

Mystery 30 Very large, effective and beautiful shiny black flowers, with circular blue base.

35c. each; \$4.00 per doz.; \$24.50 per 100; \$195.00 per 1,000.

Yolande 27 A great beauty of exquisite coloring of beautiful soft rose with a buff base. Extremely effective in the garden.

30c. each; \$3.25 per doz.; \$22.50 per 100; \$185.50 per 1000

Six are sold at the dozen rate; 25 or 50 at the 100 rate.

We will also supply you with a set of one each of these reknown 14 Beauties, at \$2.50 per set.

"The General or Standard List"

Auton Mauve 32 Immense flowers, deep bluish lilac, soft grayish white

15c. each; \$1.35 per doz.; \$8.25 per 100; \$60.00 per 1000

***Baron-de-la-Tonnaye 26** Bright rose margined blush rose, Magnificent large flower, Excellent for bedding.

10c. each; 65c. doz.; \$4.50 per 100; \$37.50 per 1000.

***Bartigon 26** Rare fiery carmine, red, with white base. Charming—Excellent forcer.

10c. each; 60c. per doz.; \$3.75 per 100; \$27.50 per 1000.

Beauty Glowing salmon pink.

10c. each; 75c. per doz.; \$5.00 per 100; \$48.00 per 1000.

***Bleu Aimable 25** Bright violet purple, shaded steel blue, with blue base.

10c. each; \$1.00 per doz.; \$6.00 per 100; \$45.00 per 1000.

***Centenaire 32** Rich violet rose with large base. Fine forcer. Immense flower.

10c. each; 75c. per doz.; \$4.50 per 100; \$30.00 per 1000.

Clara Butt 24 Clear self loved, salmon rosy pink. An exquisite flower on the merits of which there is only one opinion, the finest Darwin.

10c. each; 60c. per doz.; \$4.00 per 100; \$25.00 per 1000.

***Crespuscule 28** Soft rosy lilac, large flower, blue base, edged white.

10c. each; \$1.00 per doz.; \$6.00 per 100; \$45.00 per 1000.

***Dal Ongaro 28** Pale lavender, violet inside, dark violet purple shading off into greyish violet. Very large flower.

10c. each; 75c. per doz.; \$4.50 per 100; \$32.50 per 1000.

Dream 24 Large cup shaped flower of heliotrope, pale uniform lilac, with silvery lilac margin. A charming companion to Yellow Cottage Tulip "Gesneriana lutea, also very attractive if planted in front of Madame Kreeelage.

10c. each; 70c. per doz.; \$4.25 per 100; \$28.75 per 1000.

***Edmee 25** Vivid cherry rose aged soft old rose, the brightest in this type. A large beauty.

10c. each; 80c. per doz.; \$5.00 per 100; \$37.50 per 1000.

***Euterpe 26** Brilliant celar lilac. Exquisite when planted with Bronze Breeder Tulips.

10c. each; 75c. per doz.; \$4.50 per 100; \$30.00 per 1000.

***Farncombe Sanders 25** Intense brilliant rosy scarlet, inside vivid cherry scarlet, white centers, marked blue black anthers, large broad petalled flower of perfect form.

10c. each; 60c. per doz.; \$3.75 per 100; \$25.00 per 1000.

Faust 30 Rich satiny purple with a blue base. A fine tulip.

15c. each; \$1.10 per doz.; \$7.25 per 100; \$60.00 per 1,000.

Frans Hals 28 Very large flower. Bright bluish violet.

15c. each; \$1.10 per doz.; \$7.25 per 100; \$55.00 per 1000.

Harry Veitch Rich dark brownish red, shading to brighter red at the edges.

10c. each; 65c. per doz.; \$4.50 per 100; \$37.50 per 1000.

***Isis 26** A large flowering intense crimson scarlet, with deeper shadings, blue base. Very showy.

10. each; 85c. per doz.; \$5.25 per 100; \$40.00 per 1000.

***La Tristese 26** A tall slaty violet with gray rim, white base. Very distinctive. Large flower.

10c. each; 75c. per doz.; \$4.50 per 100; \$30.00 per 1000.

La Tulip Noire 28 (The Black Tulip) Blackest of all tulips. Very distinctive. Deep dark Maroon black with a velvety sheen.

15c. each; \$1.00 per doz.; \$6.00 per 100; \$47.50 per 1000.

Madam Kreeelage 28 Rosy lilac flushed paler pink at the edges, silvery margined.

10c. each; 60c. per doz.; \$3.75 per 100; \$25.00 per 1000.

Nauticus 30 Unusual tone, glowing cherry pink to rose, center violet shaded bronze. Fragrant.

10c. each; 70c. per doz.; \$4.25 per 100; \$28.75 per 1000.

Petrus Hondius 28 Most brilliant carmine rose, dull blue base. Extra fine, very effective when used in shady situations.

10c. each; 90c. per doz.; \$5.75 per 100; \$42.50 per 1000.

Phillippe-de-Commines 24 Lustrous dark plum with blackish sheen mahogany. Fragrant. Splendid form.

10c. each; 75c. per doz.; \$4.50 per 100; \$30.00 per 1,000.

GIANT DARWIN TULIPS (Cont.)

- *Pride of Haarlem. 26 Glorious deep rose carmine with a brilliant metallic blue base. A huge large flower on tall, strong stem. Sweet scented. Unsurpassed. 10c. each; 60c. per doz.; \$4.00 per 100; \$30.00 per 1,000.
- *Princess Elizabeth 26 Beautiful clear deep rose. Splendid for borders or forcing. 10c. each; 90c. per doz.; \$5.00 per 100; \$33.75 per 1000
- *Professor Rauwenhoff 28 Bright cherry red, brilliant blue base. Enormous flower on strong stem. Our suggestion; be sure to include this in your selection. 10c. each; 60c. per doz.; \$3.75 per 100 \$26.50 per 1000
- *Psyche 26 Rich rosy pink-old rose, edged silvery rose, pale blue base large flower. A beauty 10c. each; 60c. per doz.; \$3.75 per 100; \$26.50 per 1,000.
- Purple Perfection Glossy wine-purple—Blossoms a long time. 10c. each; 90c. per doz.; \$5.00 per 100; \$33.75 per 1000
- Queen Mary 28 Cerise-scarlet, edged deep pink. 15c. each; \$1.10 per doz.; \$7.50 per 100; \$55.00 per 1000
- Remembrance 25 Heliotrope with glistening rose sheen and silvery margin. Very fragrant. 10c. each; 90c. per doz.; 5.75 per 100; \$49.50 per 1000.
- *Rev. H. Ewbank 25 Vivid heliotrope, lilac with silvery gray flush, white base. Very delightful, one of the best shades. 10c. each; 60c. per doz.; \$4.00 per 100; \$30.00 per 1000.
- *Ronald Gunn 26 Unique—Blue violet in tone almost blue, the center of the petals a deep blue heliotrope, edged bluish white. A very unique variety, the shade shown in no other variety. Very best forcer. 10c. each; 90c. per doz.; \$5.75 per 100; \$49.50 per 1000.
- *Suzon 25 Delicate rosy flesh, margined bluish pink. A good forcer. 10c. each; 75c. per doz.; \$4.50 per 100; \$30.00 per 1000.
- Valentine 22 Soft heliotrope, shaded light violet, large flower on tall graceful stem. 10c. each; 90c. per doz.; \$5.75 per 100, \$49.50 per 1,000.
- Viking 23 Wonderful in shape, size, stem and vigor, of a beautiful deep intense violet. 15c. each; \$1.00 per doz.; \$6.00 per 100; \$45.00 per 1000.
- Whistler 26 Vivid maroon scarlet, blue base. Enormous flower. 10c. each; 60c. per doz.; \$3.75 per 100; \$26.50 per 1000.
- White Queen 24 Opens pale rose, quickly changing, as it develops to pure white. 10c. each; 65c. per doz.; \$4.50 per 100; \$30.00 per 1000.
- William Copeland 25 Lavender rose. Nearest to pure lavender. Very effective when mated with Pride of Haarlem. 10c. each; 70c. per doz.; \$4.50 per 100; \$30.00 per 1,000.
- Zulu 27 Rich velvety purple black with shining purple edges. It can be called a "Black Tulip." 10c. each; 90c. per doz.; \$5.75 per 100; \$49.50 per 1,000.

Six are sold at the dozen rate; 25 or 50 at the 100 rate.

OUR IMPERIAL BLENDS

- Berger's beautiful supreme Rainbow Mixture of the choicest selection, all blooming about the same time and giving a great variety of beautiful effect, different from those usually furnished. 60c. per doz.; \$4.00 per 100; \$35.00 per 1,000.
 - Choice mixed. A mixture of a variety of flowering size bulbs. 50c.-per doz.; \$3.50 per 100; \$30.00 per 1000.
- Six are sold at the dozen rate; 25 or 50 at the 100 rate.

TRUE OLD FASHIONED ENGLISH TULIPS

- These beautiful tulips have been grown in English gardens for more than a century. Of the richest coloring except in the bottom of the cup, which is of a clear bright white or yellow, free from stain or tinge.
 - Adonis. Flamed purple on a snowy white ground.. 25c. each; \$2.40 per doz.; \$15.00 per 100; \$120.00 per 1000.
 - Annie McGregor. Rich clear rose scarlet, glistening snow white centre. 30c. each; \$3.00 per doz.; \$18.50 per 100; \$150.00 per 1000.
 - Cyclops. 14 in. Of perfect form. Brilliant scarlet with large pure yellow centre. 15c. each; \$1.50 per doz. \$9.50 per 100; \$75.00 per 1000.
 - Mabel. Beautiful soft rose, dazzling white centre. 25c. each; \$2.40 per doz.; \$15.00 per 100; \$120.00 per 1000.
 - Sulphur. A lovely Art shade of old gold, deliciously scented. Unusually lovely. 15c. each; \$1.50 per doz. \$9.50 per 100; \$75.00 per 1000.
 - The Set of 5 TRUE English Tulips, 1 of each variety, \$1.00.
- Six are sold at the dozen rate; 25 or 50 at the 100 rate.

DOUBLE EARLY TULIPS

They have massive flowers of brilliant and beautiful diversified colors. Are very effective in beds or lawns, terraces as edging to beds of roses or rhodo-dendrons, or shrubberies.

The value of these bright "BLOEMPJES," as the Hollanders call them, lies in their lasting quality and showy display of color.

We especially recommend them for growing in bowls and pans.

- *Azalea 12 A beautiful deep rose, flushed salmon. 10c. each; 80c. per doz.; \$7.25 per 100; \$45.00 per 1000.
- Bleu Celesta. 14 (Blue Flag). Immense violet blue flowers as big as peonies. A late bloomer. 70c. per doz.; \$6.00 per 100; \$45.00 per 1000.
- *Boule-de-Niege 10 Large double flower, glistening white and of fine substance. 70c. per doz.; \$5.50 per 100; \$45.00 per 1000.
- *Couronne d'Or 10 Rich golden yellow shaded copper. Excellent for bedding and winter forcing. 70c. per doz.; \$5.50 per 100; \$45.00 per 1000.
- *El Toreador 12 Bright orange scarlet, bordered buff. Beautiful and recommended for pots. 11c. each; \$1.10 per doz.; \$8.25 per 100; \$65.00 per 1000.
- *Imperatum Rubrorum 10 Bright scarlet yellow base. Excellent forcer. Fine for combining with Couronne d'Or. 75c. per doz.; \$6.75 per 100; \$50.00 per 1000.
- *Murillo 12 Flowers are full double, white shaded rose. Wonderful and a favorite for forcing. 70c. per doz. \$5.50 per 100; \$45.00 per 1000.
- *Mystery of India 12 Large flower. A delightful shade of terra cotta and orange. 11c. each; \$1.00 per doz.; \$8.25 per 100; \$75.00 per 1000.
- *Peach Blossom 12 Large brilliant rosy pink, flushed with white. A glorified Murillo. Excellent for pots. 15c. each; \$1.25 per doz.; \$7.25 per 100; \$60.00 per 1000.
- Rubra Maxima 10 Rich deep brilliant scarlet. A long lasting variety. 70c. per doz.; \$6.00 per 100; \$55.00 per 1000.
- Salvator Rosa 12 Flowers are deep rose. A very early bloomer for a double tulip. 70c. per doz.; \$5.50 per 100; \$50.00 per 1000.
- Schoonoord 12 Pure white blooms, very finely formed. 70c. per doz.; \$5.50 per 100; \$50.00 per 1000.
- *TeaRose 12 Like its namesake, well described. Fragrant as a rose. Sport of Murillo. Soft primrose tinged, rosy apricot yellow. 60c. per doz.; \$5.00 per 100; \$40.00 per 1000.
- Tournesol 12 Red and yellow, scarlet, edged yellow. 80c. doz. \$6.50 per 100; \$60.00 per 1000.
- *Van der Hoef 12 Rich yellow, sport of Murillo. An exquisite, superb new double yellow forcing tulip without a trace of orange. 11c. each; \$1.00 per doz.; \$7.50 per 100; \$70.00 per 1000.
- Vuurbaak 12 Fiery orange scarlet Brilliant and handsome. Very attractive. Excellent for pots. 75c. per doz.; \$6.75 per 100; \$55.00 per 1000.
- Yellow Rose. Pure yellow, sweet scented flowers. 85c. per doz.; \$6.00 per 100; \$55.00 per 1000.

Six are sold at the 12 rate; 25 or 50 at the 100 rate.

OUR IMPERIAL BLENDS

- Berger's beautiful supreme Rainbow Mixture of the choicest selection, in equal proportions. 60c. per doz.; \$4.00 per 100; \$35.00 per 1000.
- Six are sold at the 12 rate; 25 or 50 at the 100 rate.
- Choice Mixed. A mixture of a variety of flowering size bulbs. 50c. per doz.; \$3.50 per 100; \$30.00 per 1000.
- Six are sold at the 12 rate; 25 or 50 at the 100 rate.

STAR TULIPS

- Albus. Lovely Species. 3, 35c.; 12, 85c.
- Amabilis. Golden yellow. Globe tulip. Loves the shady woods. 3, 35c.; 12, 85c.
- Benthamii. Bright yellow. 3, 35c.; 12, 85c.
- Lilacinus. Very pretty species, clear lilac. 3, 35c.; 12, 85c.
- Maveanus. "Pussp's Ears." 4 to 10 in. Several flowers to a stalk, white, filled with silky blue hairs. 3, 35c.; 12, \$1.00.
- White Globe Tulip or Fairy Lantern. A truly lovely species, very floriferous. Pendant globes of pearly white. 3, 35c.; 12, 85c.
- Butterfly Blend. 12, 75c.; 100, \$5.50.

Single May Flowering or Cottage Garden Tulips

OLD ENGLISH

Bouton d'Or 20 Cup shaped, glabular flower, deep rich
In our list, the "Collection De Luxe" we show the
most outstanding varieties, which once seen by you, will
result in your never being without them. The exquisite
tints are planted with the "Darwins" for the effect of
contrast. They multiply rapidly and are perfectly hardy.

"COLLECTION DE LUXE"

- *Amber 24 Beautiful and distinct. Buff and flushed
amber, centre waxy primrose.
20c. each; \$1.70 per doz.; \$10.50 per 100; \$82.50 per 1,000.
 - Argo 26 Golden yellow, mottled red; bronze-salmon
when grown indoors.
20c. each; \$1.70 per doz.; \$10.50 per 100; \$82.50 per 1,000.
 - Boadicea 24 Long flower. Remarkable blending of old
rose, bronze, apricot and fawn. Very scarce.
20c. each; \$1.25 per doz.; \$9.50 per 100; \$75.00 per 1,000.
 - Daybreak 27 Dull mauve, with margin of creamy white
and pale green base. Very beautiful.
15c. each; \$1.10 per doz.; \$8.50 per 100; \$65.00 per 1000.
 - Emerald Gem. Coral red with a deep green base.
Delicious in color and fragrance.
10c. each; 85c. per doz.; \$6.00 per 100; \$55.00 per 1000.
 - Fairy Queen 20 Soft rosy heliotrope, broad yellow
margin. Very large and beautiful.
10c. each; 60c. per doz.; \$4.00 per 100; \$33.00 per 1000..
 - Flava 25 Beautiful velvety, canary yellow.
25c. each; \$2.25 per doz.; \$16.50 per 100; \$131.25 per 1000.
 - Gesneriana ixioïdes 24 Charming oval flower, canary
yellow with black base. Lovely for borders with sky
blue flax.
10c. each; 75c. per doz.; \$5.75 per 100; \$50.00 per 1000.
 - Gesneriana Lutea 24 Pure golden buttercup yellow. Very
large flower.
10c. each; 60c. per doz.; \$4.00 per 100; \$33.00 per 1000.
 - Gesneriana Spatulata -Major 24 Dazzling crimson
scarlet, blue black center. Very showy, the true
tall variety, splendid for cutting.
10c. each; 60c. per doz.; \$4.00 per 100; \$33.00 per 1,000.
 - Grenadier 24 A grand tall tulip, large, well shaped
flowers, dazzling orange scarlet, delicately scented,
with yellow base.
10c. each; 85c. per doz.; \$5.25 per 100; \$37.50 per 1000.
 - Mrs. Kerrell 18 Scarce and very distinct. Beautiful
light rose with amber lights.
20c. each; \$1.25 per doz.; \$8.00 per 100; \$60.00 per 1000.
 - Nectar 22 Unusually fine. Flowers opening out almost
flat. Brilliant deep carmine rose, center white.
20c. each; \$1.70 per doz.; \$10.50 per 100; \$82.50 per 1,000.
 - Primrose Beauty Delicious pale yellow with most en-
chanting fragrance. This we recommend your trying.
So slender, so graceful.
10c. each; 85c. per doz.; \$5.25 per 100; \$37.50 per 1000.
 - Retroflex Superba. A vase shape bloom of soft amber
tone, the petals gracefully recurved and sweetly
scented. A group of them with their lily like chalice
form a picture to remember.
10c. each; 75c. per doz.; \$5.75 per 100; \$50.00 per 1000.
 - John RuskIn 16 Delightful and rare for its beauty of
form and coloring, of an opalescent blending of
apricot, rose and mauve, margined soft canary.
10c. each; 70c. per doz.; \$5.00 per 100; \$45.00 per 1,000.
 - Twilight. Soft toned violet shade with a white base and
midrib. Very impressive if planted amongst yellow
Iris and Iberis Sempervivus.
20c. each; \$2.00 per doz.; \$15.00 per 100; \$135.00 per 1000.
- Six are sold at the dozen rate; 25 or 50 at the 100 rate.
We will also supply you with a set of one each of these
renown 17 Beauties at \$2.00 per set.

ANEMONE PATENS PULSATILLA (Pasque Flower)

With the first days of Spring, often before the snow
is gone, the purplish silky buds of the Pasque flower
greet the eye. The flower is cup-shaped, soft lavender
violet, with a heart of golden stamens. Often a dozen
or more flowers to a clump. Each, 25c.; 12, \$2.50.

CHLOROGALUM POMERIDIAMUM

Quite a novelty. Stalk 3 to 8 ft. high, bearing in-
numerable small white lily-like flowers.
Each, Jumbo size, \$1.00 Selected size, 75c.

The General or Standard List

- *Avis Kennicott 25 So lovely with its long petals,
slightly surved of the richest golden yellow, strictly
black base and anthers.
20c. each; \$1.60 per doz.; \$10.50 per 100; \$82.50 per 1000.
golden yellow, black anthers. Long stemmed, good
for cutting.
 - 15c. each; 60c. per doz.; \$4.00 per 100; \$30.00 per 1000.
 - Caledonia 22 Bright, orange-scarlet, with greenish
black base.
15c. each; 60c. per doz.; \$4.00 per 100; \$30.00 per 1000.
 - Elegans Alba 20 Large creamy white, reflexing petals,
marginal rosy red.
15c. each; \$1.00 per doz.; \$7.00 per 100; \$55.00 per 1000.
 - Hammer Hales 24 Delightful blend of golden brown,
flushed old rose.
10c. each; 85c. per doz.; \$5.25 per 100; \$37.50 per 1000.
 - *Inglescombe, Pink 22 A delicate and vivid salmon pink,
Very pleasing, one of the finest.
10c. each; 60c. per doz.; \$3.75 per 100; \$26.25 per 1000.
 - *Inglescombe, Yellow 22 Glossy, rich, canary yellow,
large globular flower.
10c. each; 60c. per doz.; \$4.00 per 100; \$30.00 per 1000.
 - Isabella 18 (Blushing Bride) (Shandon Bells) Creamy
white with carmine rose.
10c. each; 60c. per doz.; \$4.00 per 100; \$30.00 per 1000.
 - La Merville 20 A long waisted flower of a wonderful
shade, between yellow and red. Sweet scented. Its
delicate perfume floods a room.
10c. each; 60c. per doz.; \$3.75 per 100; \$30.00 per 1000.
 - Lo Reve 22 (Sarah Bernhardt) One of the most artistic.
(Award of Merit, May 1903). The stem is exceedingly
erect, crowned with an egg shaped flower of tapestry
rose, with yellow base.
15c. each; \$1.10 per doz.; \$6.75 per 100; \$50.00 per 1000.
 - *Moonlight 25 Large, bright canary-yellow, elongated
flower.
10c. each; 85c. per doz.; \$5.75 per 100; \$41.25 per 1000.
 - *Mrs. Moon 28 A golden lily-like tulip. The vase shaped
flowers carried on sturdy stems. Very deep yellow.
Plant amongst purple Iris.
15c. each; \$1.00 per doz.; \$7.00 per 100; \$56.50 per 1000.
 - Orange King 23 Large globular flower, glowing orange
shaded scarlet, yellow center and black anthers, and
quite sweet scented.
10c. each; 60c. per doz.; \$4.00 per 100; \$30.00 per 1000.
 - Picotée (Malden's Blush) 20 Graceful reflexed petals,
white with carmine edges, which gradually suffuse
the flower a deep pink as it ages.
10c. each; 60c. per doz.; \$3.75 per 100; \$26.50 per 1000.
 - Scarlet Emperor 22 Glowing scarlet, clean yellow center,
quite extra.
15c. each; \$1.10 per doz.; \$7.25 per 100; \$55.00 per 1000.
 - The Fawn 20 A color not met with in other varieties.
Long graceful stems, perfect flower blended rose
and fawn, merging into peach pink.
10c. each; 65c. per doz.; \$4.50 per 100; \$35.00 per 1000.
 - The Lizard 24 Deep blood red, with purple bloom,
striped and feathered yellow and white.
15c. each; \$1.20 per doz.; \$7.50 per 100; \$56.50 per 1000.
 - Yellow Picotée 20 Pale yellow, carmine rose edges.
10c. each; 85c. per doz.; \$5.25 per 100; \$37.50 per 1000.
- Six are sold at the dozen rate; 25 or 50 at the 100 rate.

OUR IMPERIAL BLENDS

Berger's beautiful supreme Rainbow Mixture of the
choicest selection, all blooming about the same time and
giving a great variety of beautiful effect, different from
those usually furnished.

- 30c. per doz.; \$4.00 per 100; \$35.00 per 1000.
- Choice mixed. A mixture of a variety of flowering
size bulbs.
- 50c. per doz.; \$3.50 per 100; \$30.00 per 1,000.
- Six are sold at the dozen rate; 25 or 50 at the 100 rate.

CALTHA ROTUNDFOLIA (White Marshmarigold)

Thrives in half-shaded spots if well supplied with
moisture. The 2-inch white flowers appear in early
Spring among the rounded basal leaves of dark green.
Flowering clumps, 50c.; 12, \$4.00.

MUSCARI ARGÆÆL, 5in.

An unusually pretty species from Greece, producing
long spikes closely set with bells of a bright blue violet.
3, 40c.; 12, \$1.50.

EARLY SPRING TULIPS

This class of tulips is a dwarf variety 8 to 15 inches. The most inexpensive of tulips and easiest to culture. The earliest to bloom, and are usually all over by May 15th. They can be lifted by Decoration day to make room for our annual and bedding plants.

They should not be planted too early, November or early December if ground is open. Cover over with litter after the first frosts.

Plant 4 inches deep also 4 inches apart.

You must lift them when the leaves turn yellow, allow them to dry. Store in a cool dry airy place until fall when they can be planted again.

Precedents show that the second year they will not bloom as good, therefore, they should each year be replaced with new ones.

A number following names, indicates the height in inches. A star in front of name are forcing sorts.

"WHITE"

Brunhilde (La Unique) White with yellow base, curiously marked.

15c. each; \$1.25 per doz.; \$10.00 per 100; \$85.00 per 1000.

Diana 14 Immense long flower of beautiful form, pure white with yellow base. Especially fine for the garden. 50c. per doz.; \$4.50 per 100; \$30.00 per 1000.

***Lady Boreel 13** The largest and most intense of white early tulips. A splendid forcer and bedder.

75c. per doz.; \$5.50 per 100; \$50.00 per 1000.

La Reine Maxima 12 White flushed to shell pink. Twice the size of the ordinary La Reine. A good forcer and very popular.

60c. per doz.; \$5.25 per 100; \$41.25 per 1000.

Pelican 14 Immense splendid new white sort a fine exhibition variety. An extra good forcer.

70c. per doz.; \$6.00 per 100; \$45.00 per 1000.

White Hawk 12 Pure white egg shaped on a graceful stem delicately crinkled petals. Wonderful when planted in beds with *Violas*.

70c. per doz.; \$5.00 per 100; \$45.00 per 1000.

*Six are sold at the dozen rate; 25 or 50 at the 100 rate.

"WHITE, FLUSHED ROSE TO DEEP PINK AND CRIMSON."

***Blushing Bride 12** Fine rosy pink early forcer.

12c. each; \$1.15 per doz.; \$9.50 per 100; \$71.50 per 1000.

Cottage Maid 9 Exquisite rose with white flush.

70c. per doz.; \$5.00 per 100; \$45.00 per 1000.

***Culliman 13** A beautiful sport from Flamingo middle of petals yellowish white, with a border of delicate rose. A very good forcer and grand bedder.

12c. each; \$1.15 per doz.; \$9.50 per 100; \$71.50 per 1,000.

Enchantress 10 Bright cherry red, bordered creamy white a fine forcer.

80c. per doz.; \$6.00 per 100; \$55.00 per 1000.

***Flamingo 13** Large square flowers with crinkled petals, brilliant carmine rose, shading to bluish, outside silvery white. Very artistic, a pleasing departure from the red and yellows.

70c. per doz.; \$5.00 per 100; \$45.00 per 1000.

Gris de lin 12 Vivid rose, carise bordered white.

60c. per doz.; \$4.50 per 100; \$37.50 per 1000.

***Ibis 14** Glowing rose pink. Splendid forcer. Fine exhibition variety.

12c. each; \$1.10 per doz.; \$8.00 per 100; \$65.00 per 1000.

Joost Van Vondel 12 Cherry red, white feathered.

75c. per doz.; \$5.50 per 100; \$50.00 per 1000.

***Pink Beauty 12** Rosy pink, slightly feathered white. Flowers of unsurpassed size and beauty, almost as large as the Darwin Tulip.

15c. each; \$1.25 per doz.; \$10.00 per 100; \$85.00 per 1000.

***Queen of Netherlands 13** Large globe shaped tulip. Softest rose, flushed white, large flower.

65c. per doz.; \$5.65 per 100; \$42.00 per 1000.

***Rose Lulante 12** A fine bedder. Dark silky rose. The finest of its color.

80c. per doz.; \$6.00 per 100; \$55.00 per 1,000.

*Six are sold at the dozen rate; 25 or 50 at the 100 rate.

Vermillion, Scarlet Carmine, Red

***Belle Alliance 11** A brilliant scarlet. Excellent Bedder.

70c. per doz.; \$5.00 per 100; \$45.00 per 1000.

***Brilliant Star 12** Bright vermilion, scarlet. Splendid early forcer, flowing easily for Christmas.

70c. per doz.; \$5.00 per 100; \$45.00 per 1000.

Conquer Cardinal 12 Rich crimson scarlet. Blooms later than most of the early tulips.

80c. per doz.; \$6.00 per 100; \$55.00 per 1000.

Cramoisi Royal 14 Bright Carmine rose.

12c. each; \$1.15 per doz.; \$9.50 per 100; \$71.50 per 1000.

***Fred Moore 12** Dull rosy terra cotta. Sweet scented.

55c. per doz.; \$4.90 per 100; \$39.50 per 1000.

Golden Lion Immense conspicuous flower. Clear primrose, edged terra cotta.

70c. per doz.; \$5.00 per 100; \$45.00 per 1000.

Max Havelaar Blood orange, flushed salmon rose. A very striking variety.

10c. each; 95c. per doz.; \$7.90 per 100; \$60.00 per 1,000.

*Six are sold at the dozen rate; 25 or 50 at the 100 rate.

Claret, Purple, Rose, Violet, Pink

La Remarquable 13 Brilliant claret, purple.

70c. per doz.; \$5.50 per 100; \$41.50 per 1000.

Le Neve 14 Old rose, flushed buff.

75c. per doz.; \$5.75 per 100; \$51.00 per 1000.

President Lincoln 12 Magenta violet. A rare color in an early tulip.

75c. per doz.; \$5.50 per 100; \$50.00 per 1000.

***Proserpine 14** An enormous globular flower, rich silky carmine rose delightfully scented. This old variety still remains one of the most popular. It is one of the best and earliest forcers and an extremely handsome bedding tulip. Plant among pink forget-me-nots.

10c. each; 90c. per doz.; \$7.50 per 100; \$57.50 per 1000.

Van Der Neer 12 Deep violet. Beautifully formed flowers.

80c. per doz.; \$7.25 per 100; \$45.00 per 1000.

*Six are sold at the dozen rate; 25 or 50 at the 100 rate.

YELLOW-ORANGE

Gold Finch 12 Pure rich yellow, sweet scented. Retains its color to the last.

70c. per doz.; \$5.50 per 100; \$50.00 per 1000.

***Kalzerkroon 15** Bright scarlet, edged clear rich yellow. The most popular for forcing or bedding.

90c. per doz.; \$7.50 per 100; \$60.00 per 1000.

King of Yellows 14 Bright yellow. Early forcer. One of the first to bloom.

85c. per doz.; \$6.50 per 100, \$57.50 per 1,000.

***Marechal Neil 15** A strong stemmed fragrant flower, glittering coppery red with yellow heart.

12c. each; \$1.00 per doz.; \$8.00 per 100; \$75.00 per 1000.

***Mon Tresor 12** Pure golden yellow. Reliable for forcing or bedding.

75c. per doz.; \$6.75 per 100; \$50.00 per 1000.

Moonbeam 14 Deep Primrose Yellow.

15c. each; \$1.25 per doz.; \$10.50 per 100; \$82.50 per 1000.

Primrose Queen 12 Soft Primrose Yellow, lovely in bowls.

85c. per doz.; \$6.00 per 100; \$55.00 per 1000.

*Six are sold at the dozen rate; 25 or 50 at the 100 rate.

OUR IMPERIAL BLENDS

Berger's beautiful supreme Rainbow Mixture of the choicest selection, all blooming about the same time and giving a great variety of beautiful effect, different from those usually furnished.

60c. per doz.; \$4.00 per 100; \$35.00 per 1000.

Choice Mixed. A mixture of a variety of flowering size bulbs.

45c. per doz.; \$3.50 per 100; \$27.50 per 1000.

*Six are sold at the dozen rate; 25 or 50 at the 100 rate.

LAPAROSIA SALMONEA

Ready in September

This is a beautiful novelty for house culture. Most attractive flowers resembling the *Freesia*, only much larger, with broader leaves and to be had in two tones of salmon. You can plant the bulbs in October or November and have them in bloom by January. In two shades. Rich Satiny Salmon or Silky Salmon Pink 3,35c.; 12, \$1.10. You must try some of these.

CHIONONDOXA BOISSERII

A showy species blooming later than *Lucillae*, intense bright blue with large striking snowy white centre. 3, 35c.; 12, 1.25.

CLEMATIS ERIOPHORA

These plants form bushy clumps, 1 to 2 ft. high, bearing deep, soft bluish-violet bell-shaped nodding flowers, followed by feathery seed clusters. With its silky foliage this is a very beautiful species of the bell-flowered group. Each, 75c.; 5 for \$3.50.

BREEDER TULIPS

ROYAL DUTCH (May Flowering)

These Royal Tulips, borne on strong stiff stems, frequently 2 to 3 feet high, with their sumptuous blooms of the rarer tints, have increased in demand in recent years, and are most sought. Fresh from Nature's palette, these are the Tulips of the gods. The number after the name denotes the height in inches.

The General or Standard List

- Bronze Queen** 28 Soft bronze, buff shaded rudy apricot, yellow base. Splendid sturdy habit.
10c. each; 70c. per doz.; \$5.00 per 100; \$37.50 per 1000.
- Cardinal Manning** 28 Wine red, toned with bronze, changing to rosy violet.
15c. each; \$1.00 per doz.; \$7.00 per 100; \$57.50 per 1000.
- Dom Pedro** 21 Coffee brown, shaded maroon, inside rich mahogany, large flower. Very fragrant.
20c. each; \$1.70 per doz.; \$10.50 per 100; \$82.50 per 1000.
- Fairy** 24 Large goblet shaped flowers. Glowing reddish mahogany.
15c. each; \$1.10 per doz.; \$6.75 per 100; \$50.00 per 1000.
- Godet Parfait** 30 Very large flower, rich dark blue purple with white base.
20c. each; \$1.60 per doz.; \$10.50 per 100; \$80.00 per 1000.
- Golden Bronze** 26 Large cup shaped, remarkably handsome, flowers glossy golden bronze. Splendid for growing in bowls, borders or pots.
10c. each; \$1.00 per doz.; \$6.00 per 100; \$45.00 per 1000.
- Goliath** 28 Deep rich mulberry purple flowers, flushed rosy bronze edges tipped orange.
10c. each; \$1.00 per doz.; \$6.00 per 100; \$45.00 per 1000.
- Jaune d' Oeuf** 21 Stately of rich chrome yellow with a soft suffusion of pale Mauve, base and anthers pale green.
15c. each; \$1.10 per doz.; \$6.75 per 100; \$48.75 per 1,000.
- Madam Lethierry** 26 Dark crushed strawberry, flushed salmon. A beauty.
15c. each; \$1.45 per doz.; \$9.00 per 100; \$57.50 per 1000.
- Marie Louise** 23 Old rose, flushed salmon, margined orange, overlaid with purple.
10c. each; \$1.00 per doz.; \$7.00 per 100; \$52.50 per 1,000.
- Medea** Carmine pink, shaded salmon.
10c. each; 85c. per doz.; \$6.00 per 100; \$45.00 per 1000.
- Panorama** 26 Extra large globular flower, deep orange red, shaded mahogany.
10c. each; \$1.00 per doz.; \$6.75 per 100; \$50.00 per 1000.
- Plutarchus** 26 Bronzy yellow, flushed heliotrope. A splendid specimen.
15c. each; \$1.10 per doz.; \$7.50 per 100; \$55.00 per 1000.
- Prince Albert** 32 Glowing mahogany brown shaded bronzy violet.
15c. each; \$1.40 per doz.; \$8.50 per 100; \$65.00 per 1000.
- Prince of Wales** 28 Very appealing maroon-brown.
15c. each; \$1.50 per doz.; \$8.75 per 100; \$67.50 per 1,000.
- Queen Alexandra** 23 Canary-yellow, flushed lilac.
10c. each; 35c. per doz.; \$5.75 per 100; \$41.50 per 1,000.
- Socrates** 30 Stately habit. Deep rosy violet, blue base.
10c. each; 90c. per doz.; \$6.00 per 100; \$45.00 per 1000.
- Superba** Velvety maroon overlaid with tender ashy blooms. Very attractive.
15c. each; \$1.10 per doz.; \$7.50 per 100; \$55.00 per 1000.
- Vulcan** 25 Reddish apricot, margined yellow.
25c. each; \$2.50 per doz.; \$15.00 per 100; \$115.00 per 1000.
Six are sold at the dozen rate; 25 or 50 at the 100 rate.

"COLLECTION De LUXE"

- Abd-el-Kader** 26 Dark bronze yellow, shaded lighter at edge of petals.
20c. each; \$1.60 per doz.; \$9.75 per 100; \$75.00 per 1000.
- Apricot** 25 Dull bronzy buff shaded deep apricot, yellow chrome base. Very full petaled.
15c. each; \$1.35 per doz.; \$9.75 per 100; \$75.00 per 1000.
- Bacchus** 28 The bluest of all. Dark violet. Very scarce and most effective.
20c. each; \$1.60 per doz.; \$12.00 per 100; \$112.50 per 1000.
- Copernicus** 27 Splendid coppery bronze, flushed old rose.
20c. each; \$1.75 per doz.; \$15.00 per 100; \$125.00 per 1000.
- Heloise** 28 Enormous flowers. Purplish brown shaded old rose, yellow base, edged olive.
30c. each; \$2.75 per doz.; \$22.50 per 100; \$200.00 per 1000.
- Le Mogol** 26 Pale silvery lilac, interior deep mauve, white base, blue halo.
15c. each; \$1.25 per doz.; \$8.00 per 100; \$60.00 per 1000.
- Louis XIV** 30 A giant of exceptional magnificence and stately bearing. Very scarce. Deep rich violet with golden bronze margin, goblet shaped flowers, base starred yellow.
20c. each; \$2.00 per doz.; \$12.00 per 100; \$95.00 per 1000.
- Saint James** 28 Chestnut brown, flushed bronze and gold margin.
20c. each; \$1.75 per doz.; \$9.75 per 100; \$75.00 per 1000.
- Salomon** 30 Long flowers carried on tall graceful stems. Beautiful silvery lilac shaded with silvery white.
15c. each; \$1.20 per doz.; \$7.50 per 100; \$65.00 per 1000.
- ⚡ The set of one each of the above \$1.50 per set.
⚡ Six are sold at the dozen rate; 25 or 50 at the 100 rate.

FRITILLARIA



These are bulbous plants of the woodlands, worthy of a place in every garden. The stems are leafy, graceful, with many pendant bell-like flowers.
Each, 20c.; 3, 50c.; 12, \$2.00.

Lanceolato, called "MISSION BELLS." The stems are 1 to 2 ft.. The flowers are bronze colored, prettily mottled green and purple.

Pudica. When planted in the right soil grows and flowers with great freedom. Single clear primrose bell.

Recurva. Resembles a beautiful scarlet lily.
3, 35c.; 12, 85c..

OUR IMPERIAL BLENDS

- Berger's beautiful supreme Rainbow Mixture of the choicest selection, all blooming about the same time and giving a great variety of beautiful effect, different from those usually furnished.
\$1.60 per doz.; \$7.50 per 100; \$60.00 per 1000.
- Choice Mixed**. A mixture of a variety of flowering size bulbs.
60c. per doz.; \$4.00 per 100; \$35.00 per 1000.
- ⚡ Six are sold at the dozen rate; 25 or 50 at the 100 rate.

PARROT OR GARDEN TULIPS



Superbly decorative for both in and out doors. These quaint flowers are very fascinating for house decoration. Words fail to describe their varied and distinctive colorings. They like a light sandy soil, shallow planting and a sunny location. Being small bulbs, they should be planted about 3 inches apart in light soil.

Admiral de Constantinople Large scarlet flowers, shaded with orange.

Cafe Brun Deep yellow, feathered brown, striped scarlet

Cafe Pourpre Coffee color and yellow.

Cramcisi Brilliant Deep red with blackish marks.

Gloriosa Brilliant yellow blotched with Chinese red.

Lutea Major Large golden yellow, with scarlet and green stripes.

Perfecta Golden yellow with deep scarlet blotches.

10c. each; 75c. per doz.; \$5.25 per 100; \$37.50 per 1000.

Mixed finest Parrot Tulips.

75c. per doz.; \$4.50 per 100; \$32.50 per 1000.

25 Six are sold at the dozen rate; 25 or 50 at the 100 rate.

GLADIOLUS TRISTRIS, 2½ ft.

A charming species, bearing long graceful stems, creamy white flowers delicately shaded green. Delightfully fragrant.

35c. each; 3 for 80c.; 12, \$3.00.

HESPEROCALLIS UNDULATA

(The Lily of the Desert)

One of the most lovely of flowers inhabiting the sandy wastes of the Mojave desert, where the large waxy flowers, white tinged green, "waste their sweetness on the desert air."

50c. each; 3 for \$1.00.

EUCHARIS AMAZORICA

Ready Late October-November

The chastest, sweetest of any flower we know. Throws up tall spikes on which are borne several large starry flowers of waxy whiteness and unexcelled fragrance. Being a native of Brazil on the river Amazon, it needs warmth and a certain amount of moisture. Plant the bulbs in either the Mossfiber or well drained pots in good garden soil. They need not be placed in the dark but can be set in warmth and light. Place an inverted glass over the bulb until it has made its first growth of a few inches. Never allow to dry out. Keep a saucer filed with water under pots (unless grown in Mossfiber).

Strong blooming bulbs.

Each, 60c.; 6, \$3.00.

LEUCOCRINUM MONTANUM

Sand Lily or Star Lily

Planted in Fall, these hardy early Spring flowers, springing up like the Crocus, crystal white and fragrant, from a rosette of narrow foliage. One clump will often bear 50 blooms in one season. Most unusual and charming for rock work or grown in any light, well-drained soil. Strong clumps, each, 50c.; 5 clumps, \$2.50.

LEWISIA

(Rock Roses)

These are among the most interesting and beautiful hardy rock plants or for any other partially shaded spot in the garden planted in well-drained gritty soil. All have deep roots and fleshy leaves.

L. Rediviva. Especially adapted for rockeries, thriving in loose, well-worked soil, a mixture of sand, leaf mould and gritty earth. The leaves form a tuft in Autumn of fleshy needle-like leaves. In Spring the flowers appear satiny pink with golden stamens like a Water Lily. Each, 20c.; 3 for 55c.; 12, \$2.00.

L. Pygmaea. A small Alpine with deep rich rose pink flowers, rising from a rosette of narrow leaves. Each, 30c.; 3, 80c.; 12, \$3.00.

NERINE JAPONICA

This beautiful Nerine flowers in late fall from November to January. The flowers are a deep scarlet crimson, the anthers a lighter shade and the whole flower makes the effect of being frosted with silver. It sparkles in the sun or in artificial light. Small bulbs commence to flower, desirable of the Nernes.

and last in bloom a long time. One of the finest and most Extra large bulbs, each, 50c.; 3 for \$1.40.

NEW HYBRID WATSONIAS

These grand new HYBRIDS have large open flowers with broad petals, while others are star shaped. In many and beautiful shades.

Estrella. Creamy primrose, tall and airy in growth.

E. Sturtevant. Orange salmon, of a vivid tone.

Euoice. Light salmon, salmon veins.

Diana. Light rosy mauve, white shading in throat.

Any of the above, each, 25c.

Watsonia Ardenae. The bulb sends up branching stems 3 to 4 ft. high, each stem bearing a dozen or more flowers of pure snowy white. Its great substance and lovely satin white color render it especially valuable for cutting.

Each, 25c.; 12 for \$3.75.

Watsonia Hybrids. Mixed of pink, dark rose, salmon, flesh, coral scarlet, etc.

\$1.50 per doz.; \$9.00 per 100; \$75.00 per 1000.

BULBS THAT USHER IN THE SPRING

ERYTHRONIUMS

(Dog's Tooth Violets)

All have beautifully mottled foliage much like Cyclamen, flowers are like miniature lilies, with recurved petals slightly fragrant.

Perfectly hardy anywhere, thriving best in shady spots, and increase rapidly. Fine for rockeries. Plant 3 inches deep and 3 inches apart.

Americanum. Dog's Tooth Violet. Is rarely a lily; also called Yellow Ader's Tongue. Charming woodland plants. The bell shaped flowers of this little lily are slightly fragrant, cream rose and yellow, thriving in shaded corners and rockwork crevices. Plant the corms 4 to 5 in. deep.

12, \$2.00; 100, \$18.00.

Californicum. Cream to pale yellow. Charming.

Grandiflorum. A superb species, bright buttercup yellow, so showy that it always attracts attention.

Hendersonii. A striking sort, light purple centre almost black, with yellow ring.

Johnsonii. The most exquisite rose pink.

Watsonii. Called the "VICTORIAN EASTER LILY." A charming variety, large creamy white flowers with golden central ring.

White Beauty. Creamy white, richly banded maroon.

Mixed Large Flowered Erythrioniums.

12, 75c.; 100, \$5.00.

ANEMONES

(Windflower)

These popular flowers are exceedingly useful, as a decorative plant for house or garden. If planted outdoors they must be well protected with leaves or other litter; they may also be planted in the spring in well-drained soil, and will flower during the summer, starting in May. When planted in pots, place twelve or more in a cluster and store away, if possible, in a gold-frame until March 15; if carefully watered, when brought into the house they will flower abundantly.

Giant St. Brigid's. A new Irish race bearing profusely magnificent flowers, single, semi-double and double. 3 to 5 inches across; all of the richest tints.

3 for 35c.; \$1.25 per doz.; \$7.50 per 100; \$60.00 per 1000.

⚡Six are sold at the dozen rate; 25 or 50 at the 100 rate.

Giant French Poppy. Anemones in richest mixture, blues with white basis, pink with blue basis, cream and apricot shades—all the wonderful color combinations only to be found in these beautiful flowers. Strong stems. Scarce.

3 for 40c.; \$1.50 per doz.; \$9.00 per 100; \$75.00 per 1,000.

⚡Six are sold at the dozen rate; 25 or 50 at the 100 rate.

Giant French Poppy. Anemones in richest mixture, blues with white bases, pink with blue bases, cream and apricot shades—all the wonderful color combinations only to be found in these beautiful flowers. Strong stems. Scarce.

3 for 40c.; \$1.50 per doz. \$9.00 per 100; \$75.00 per 1000.

⚡Six are sold at the dozen rate; 25 or 50 at the 100 rate.

CHIONODOXA

(Glory of the Snow)

Ranks first amongst the most lovely of spring flowers, splendid for naturalizing, look delightful in masses or in the border. The color is an enchanting sky blue with white center. Admirable for pot culture.

Grows 4 to 6 inches high, perfectly hardy and thrives in most locations.

Luciliae. Intense sky blue with white eye.

Luciliae, Alba. Beautiful white form of the above.

Gigantea. Soft gray blue. Large flowers.

Sardensis. Rich gentian blue.

50c. per doz.; \$3.00 per 100; \$22.50 per 1,000.

⚡Six are sold at the dozen rate; 25 or 50 at the 100 rate.

ERANTHIS HYEMALIS

(Winter Aconite)

Early in spring the golden blossoms of the Winter Aconite look charming, resting on an emerald-green cushion of leaves. They will thrive admirably under trees. The foliage remains long after the flowers, making the plant especially valuable in moist situations.

35c. per doz.; \$2.50 per 100; \$20.00 per 1000.

Cilicica. Beautiful species from Asia Minor with larger flowers, broader petals, the foliage shaded bronze and finely cut.

75c. per doz.; \$6.00 per 100.

FRITILLARIA

(Meleagris)

Singular, dwarf, spring-flowering plants, bearing large, pendant bell-shaped flowers of various colors. They are invaluable for pot culture, and exceedingly pretty when grown in large groups in the garden border or wild garden in a dry situation or as clumps in rock work.

Meleagris (Snake's Head or Guinea Hen Flower). Dusky, rosy claret. Prettily checkered. Drooping bell-shaped flowers.

3 for 35c.; \$1.00 per doz.; \$7.00 per 100; \$60.00 per 1000.

Meleagris, Alba Graceful, pure white. Plant 4 inches deep.

3 for 40c.; \$1.10 per doz.; \$8.00 per 100; \$65.00 per 1000.

Meleagris, Calypso. Splashed white and purple.

3 for 50c.; \$1.50 per doz.; \$9.50 per 100; \$75.00 per 1,000.

Selected mixed colors well blended.

30c. per doz.; 6.00 per 100; \$45.00 per 1000.

⚡Six are sold at the dozen rate; 25 or 50 at the 100 rate.

FRITILLARIA IMPERIALS

(Crown Imperials)

Well known stately, hardy border plants. Attains a height of from 2 to 3 feet, bearing an umbel of bell shaped flowers and over this a crown of pendant leaves, making it one of the most beautiful objects in the garden. Can be left undisturbed for years.

Aurora. Bronze red.

Crown on Crown. Several whorls of red flowers, one above the other.

Orange Brilliant. Snowy orange buff.

Sulphur Beauty. Rich yellow.

25c. each; \$2.50 per doz.; \$19.50 per 100; \$172.50 per 1000.

Mixed. Our special select mixture.

\$1.95 per doz.; \$17.50 per 100; \$160.00 per 1000.

⚡Six are sold at the dozen rate; 25 or 50 at the 100 rate.

AMARYLLIS

(One of the most beautiful flowers for house culture.) We offer the choicest sorts.

Royal Amaryllis Vittata. Giant flowering colors of exotic gorgeousness, the huge petals of richest tropical coloring. The bulbs we send out are very large, bloom surprisingly quickly and call forth admiration wherever seen.

\$1.00 each; 3 for \$2.75; \$10.50 per doz.

Johnsonii (Bermuda Spice Lily). Enormous brilliant crimson with white stripes through each petal.

50c. each; 3 for \$1.40; \$5.00 per doz.

A. Formosissima (Jacobean Lily). A showy flower of deepest scarlet. Can be grown in pebbles and water like a hyacinth, or in fibre.

Each, 25c.; 3, 65c.; 12, \$2.50.

Giant American Hybrid. In color there are selfs and stripes, ranging from purest white ground colors, with rose and red markings to rich orange scarlet.

85c. each; 3 for \$2.25; \$8.50 per doz.

DAFFODILS or NARCISSI



The entry of Holland Daffodils, for commercial sale, has been prohibited since January 1926. Daffodils have flourished in the South of our own Country since the days of the early settlers.

Last season we supplied our patrons, with home grown product of high quality of hardy and sound stock, after making careful tests, with a result that we received many duplicate orders and comments of appreciation. Our supply for this season will be equal in every manner.

GIANT TRUMPET NARCISSI

- Duke of Bedford.** White perianth, deep yellow trumpet. 75c. each; \$6.00 per doz.; \$37.50 per 100; \$312.50 per 1000.
- Emperor.** Clear golden yellow. Monster bulbs 15c. each; \$1.60 per doz.; \$12.00 per 100; \$93.75 per 1000.
- Empress (Bicolor)** Creamy white perianth, yellow trumpet. 20c. each; \$2.00 per doz.; \$13.00 per 100; \$95.00 per 1000
- Glory of Leyden.** Yellow trumpet, pale yellow wings. 20c. each; \$2.10 per doz.; \$13.50 per 100; \$100.00 per 1000.
- Glory of Noordwijk.** Graceful long yellow trumpets, perianth sulphur white. The finest and largest of the bicolors. 20c. each; \$2.00 per doz.; \$12.75 per 100; \$100.00 per 1000.
- Golden Spur.** Pure rich golden yellow. Mammoth bulb, early bloomer an old favorite. 15c. each; \$1.60 per doz.; \$12.00 per 100; \$95.00 per 1000.
- King Alfred.** One of the finest, rich deep, extra large yellow flowers, with fluted trumpet. 30c. each; \$3.00 per doz.; \$22.50 per 100; \$200.00 per 1000.
- Mme. de Graaf.** Pure white, trumpet soft primrose, rolled back at the brim. An exquisite flower. 20c. each; \$2.00 per doz.; \$12.75 per 100; \$95.00 per 1000.

- Olympia.** Perianth light chrome yellow; trumpet deep chrome yellow. It is one of the finest and is a greatly improved Emperor but larger in size and richer in color. 50c. each; \$5.50 per doz.; \$35.00 per 100; \$325.00 per 1000.
 - Robert Sydenham.** Massive flowers, over 5 inches across, clear yellow perianth, very large widely expanded, nicely frilled golden yellow trumpet. Very attractive and choice. 60c. each; \$6.75 per doz.; \$50.00 per 100; \$425.00 per 1000.
 - Trumpet Major.** A deep yellow, with long flaret trumpet. Blooms early. 10c. each; 80c. per doz.; \$3.75 per 100; \$28.75 per 1000.
 - Van Waveren's Giant.** Perianth primrose, trumpet bright yellow. Flowers of gigantic size, a splendid forcer and a fine flower for cutting. 50c. each; \$5.50 per doz.; \$35.00 per 100; \$325.00 per 1000.
 - Victoria.** Creamy perianth, trumpet rich yellow, white wings. Large bulbs, delicately perfumed. 15c. each; \$1.60 per doz.; \$12.00 per 100; \$95.00 per 1000.
- ⚡ Six are sold at the 12 rate; 25 or 50 at the 100 rate.

OUR IMPERIAL BLENDS

This contains a commendable assortment of colors and varieties. Plant where they will not be disturbed until the leaves have turned brown. \$1.25 per doz.; \$17.50 per 100; \$60.00 per 1000. ⚡ Six are sold at the 12 rate; 25 or 50 at the 100 rate.

MEDIUM TRUMPET NARCISSI

"Incomparable Daffodils."

- Autocrat.** Clear yellow with deep yellow crown or wings. Exquisitely shaped perianth. Large chabie cupped daffodils. 20c. each; \$2.00 per doz.; \$12.75 per 100; \$100.00 per 1000.
 - Bernardino.** White perianth, cup pale lemon-yellow. 75c. each; \$8.40 per doz.; \$52.50 per 100; \$500.00 per 1000.
 - Firefly.** Golden yellow crown, suffused orange scarlet. A charming medium sized flower. 20c. each; 2.00 per doz.; \$12.75 per 100; \$100.00 per 1000.
 - Lucifer.** Bold showy flower. Pure white perianth, with cup intense glowing orange red. 15c. each; \$1.50 per doz.; \$9.00 per 100; \$70.00 per 1000
 - Sir Watkins.** Wide sulphur-yellow perianth, large cup slightly deeper in color and tinged with golden crown. Large size bulbs. A grand flower for garden or pot culture and very easily grown. 20c. each; \$1.95 per doz.; \$12.00 per 100; \$95.00 per 1000.
 - Will Scarlet.** Fiery orange scarlet cup, widely expanded, elegantly frilled, creamy white perianth. 45c. each; \$4.00 per doz.; \$30.00 per 100; \$200.00 per 1000.
- ⚡ Six are sold at the 12 rate; 25 or 50 at the 100 rate.

MEDIUM TRUMPET BARRI

"Barri Daffodils or Star Narcissi"

- Albatross.** Large flat white perianth, prettily frilled cup with a brilliant scarlet edge. 20c. each; \$2.00 per doz.; \$15.00 per 100; \$100.00 per 1000.
- Conspicuous.** Large bulbs, broad primrose petals, elegantly expanded crown stained orange scarlet. 15c. each; \$1.35 per doz.; \$9.75 per 100; \$75.00 per 1000.
- Lady Godiva.** The white conspicuous Barri. White wings, cup yellow. 25c. each; \$2.25 per doz.; \$15.00 per 100; \$122.50 per 1000.
- Lady Moore.** Creamy white perianth, large deep yellow cup. An unusually attractive and stately flower. 15c. each; \$1.25 per doz.; \$8.25 per 100; \$62.50 per 1000.
- Masterpiece.** White wings, eye orange scarlet. 75c. each; \$8.40 per doz.; \$52.50 per 100; \$510.00 per 1000.
- Red Beacon.** White perianth, cup orange scarlet. 70c. each; \$7.20 per doz.; \$45.00 per 100; \$425.00 per 1000.
- Seagull.** Large spreading pure white petals, cup canary yellow edged apricot. 25c. each; \$2.25 per doz.; \$13.50 per 100; \$115.00 per 1000.

MEDIUM TRUMPET LEEDSII

"Silver Winged Daffodils"

- Duchess of Manchester.** White, with large delicate citron crown. Starry flowers of a great size. 20c. each; \$2.10 per doz.; \$12.75 per 100; \$100.00 per 1000.
- Lord Kitchener.** White wings, pale primrose cup. 50c. each; \$4.80 per doz.; \$30.00 per 100; \$275.00 per 1000.
- Evangeline.** Perianth white, delicate primrose cup. Exquisite for cutting. 30c. each; \$3.00 per doz.; \$13.50 per 100; \$115.00 per 1000.
- Mrs. Lantry.** Pure white cup, margined yellow. Very free flowering, Splendid for naturalizing. 12c. each; \$1.20 per doz.; \$7.50 per 100; \$57.50 per 1000.

DAFFODIL AND NARCISSUS

Medium Trumpet Leedsii (Cont.)

Queen of the North. Cup soft primrose yellow, with narrow rim of sulphur white. Broad large perianth markable texture. Splendid for culture indoor or outdoor.

20c. each; 1.80 per doz.; \$11.25 per 100; \$87.50 per 1000.
Salmonetta. Cup prettily fluted and suffused with salmony apricot.

15c. each; \$1.50 per doz.; \$9.00 per 100; \$75.00 per 1000.
White Lady. An enchanting flower white perianth, beautifully crinkled pale citron cup.

20c. each; \$1.95 per doz.; \$12.00 per 100; \$95.00 per 1000.

POETICUS NARCISSUS

"Hardy Cluster—Flowered Daffodils"

Apasia. Pure white soft yellow eye, three flowers on a stem.

20c. each; \$1.80 per doz.; \$11.25 per 100; \$87.50 per 1000.

Early Perfection. White with distinct yellow cup, flowers in large clusters. Fine for early forcing.

35c. each; \$3.60 per doz.; \$22.50 per 100; \$205.00 per 1000.

Elvira. Bearing on long graceful stems, heads of three or four large flowers with broad white petals of great substance and a golden yellow cup, edged orange. Fragrant. A cross between "Poeticus Ornatus" and a "Polyanthus."

15c. each; \$1.50 per doz.; \$10.50 per 100; \$90.00 per 1000.

Helios. Large primrose yellow perianth with deep golden cup. Large bulbs.

15c. each; \$1.60 per doz.; \$11.50 per 100; \$100.00 per 1000.

Ideal. ("The Queen of Poetaz") Immense trusses of flowers, brilliant orange cup, pure white, three flowers to a stem.

20c. each; \$1.80 per doz.; \$11.25 per 100; \$87.50 per 1000.

Klondyke. Pure bright yellow, golden yellow eye. Bearing five flowers on a stem.

30c. each; \$3.00 per doz.; \$18.75 per 100; \$175.00 per 1000.

Laurens Koster. Pure white with soft yellow eye, 5 to 6 flowers to a stem.

15c. each; \$1.60 per doz.; \$11.25 per 100; \$87.50 per 1000.

Six are sold at the 12 rate; 25 or 50 at the 100 rate.

POETICUS NARCISSUS

"The Poet's Narcissi

They have snowy white perianth with white flattened yellow cups or crowns margined scarlet. Borne on long stems, all deliciously fragrant. Prized for cutting. They multiply rapidly and grow with almost no care at all.
Horace. Snowy white perianth, canary yellow cup, rimmed bright red.

35c. each; \$3.60 per doz.; \$22.50 per 100; \$200.00 per 1000.

Juliet. Large pure white flowers. A very fine variety.

25c. each; \$2.40 per doz.; \$15.00 per 100; \$110.00 per 1000.

King Edward VII. Broad glistening white perianth, yellow cup margined red.

20c. each; \$1.80 per doz.; \$11.25 per 100; \$87.50 per 1000.

Herrick. Large pure white flowers, cup margined red. An extra fine variety.

25c. each; \$2.70 per doz.; \$18.00 per 100; \$150.00 per 1000.

Ornatus. Pure white, with saffron cup, edged scarlet. Mommouth bulb, forces and blooms earlier out doors especially adapted for pot culture.

10c. each; \$1.10 per doz.; \$7.50 per 100; \$75.50 per 1000.

Poeticus. ("Pheasant's Eye") Pure white, with orange cup, edged red. One of the best for naturalizing in woodlands and wild gardens.

10c. each; \$1.10 per doz.; \$6.75 per 100; \$50.00 per 1000.

Six are sold at the dozen price; 25 or 50 at the 100 rate.

DOUBLE TRUMPET NARCISSUS

"Double Flowering Daffodils"

Excellent for indoor growing. Thrives admirably when planted in grassland undisturbed.

Alba Plena Odorata. ("Double Poet's Narcissus or Garden Daffodil"). Double pure white, very sweet scented. Cannot be forced.

20c. each; \$1.95 per doz.; \$12.00 per 100; \$95.00 per 1000.

Argent. Creamy white petals, with double row of petals, chrome yellow cup. Elegant star shaped flower. Hardy and free flowering.

15c. each; \$1.50 per doz.; \$12.75 per 100; \$101.50 per 1000.

Dubloo. Deep yellow, center shaded orange.

15c. each; \$1.50 per doz.; \$10.50 per 100; \$85.00 per 1000.

Golden Phoenix. Double white with orange nectary.

25c. each; \$2.70 per doz.; \$18.00 per 100; \$155.00 per 1000.

Primrose Phenix. Rose shaped flowers, of soft lemon yellow. Very free flowering.

35c. each; \$3.60 per doz.; \$22.50 per 100; \$200.00 per 1000.

Silver Phoenix. Creamy white, with pale sulphur nectary.

25c. each; \$2.70 per doz.; \$18.00 per 100; \$155.00 per 1000.

Von Sion. (Telemonius Plenus) The true golden yellow. Best for forcing for pot plants or cut flowers.

Selected sizes.

12c. each; \$1.20 per doz.; \$8.25 per 100; \$62.50 per 1000.

Extra selected sizes.

25c. each; \$2.40 per doz.; \$15.00 per 100; \$133.50 per 1000.

Six are sold at the dozen price; 25 or 50 at the 100 rate.

POLYANTHUS NARCISSI

Paper—White Grandiflora

The earliest and easiest grown flower of any for window culture. They grow luxuriantly in our Moss Fibre, in soil or pebbles and water.

A dozen bulbs started at intervals will give a succession of flowers throughout the winter. One of the most loved and satisfactory flowers for the house. Can be had in bloom for your Thanksgiving table and right through the winter. The veriest amateur succeeds with them.

Selected Bulbs.

10c. each; \$1.00 per doz.; \$7.00 per 100; \$57.50 per 1000.

Jumbo Bulbs.

12c. each; \$1.25 per doz.; \$9.00 per 100; \$62.50 per 1,000.

DIRECTIONS FOR GROWING IN PEBBLES AND WATER

Fill a deep dish almost full of pebbles and press the Narcissus bulbs down in the pebbles until they are nearly covered; then add water to the top of pebbles. Put in a dark place for three weeks until bulbs are well rooted, then bring to the light.

Do not keep near steam-pipes or radiators, as excessive heat causes too rapid growth of foliage with no blossoms. Do not cover with too much water as it rots the bulbs.

TAZETTA NARCISSI

(Polyanthus)

These two varieties of Narcissus are deliciously sweet scented, of the easiest culture, very free flowering and continue long in bloom, bearing from six to one dozen flowers each.

Grand Soleil D'Or. Wherever blooming, golden sunshine floods the darkest corner. Heavy clusters of golden flowers with orange cup delight the eye.

Each; 30c.; 12 \$2.50.

CHOICE NOVELTIES AND SPECIALTIES

THE BYZANTINE WONDER LILY

This name was given by us to this really wonderful blossom when we first introduced it years ago. This bulb is a native of Palestine and Asia, where it has been found decking the surrounding country in early winter with its bright blossoms.

...Note carefully: These bulbs can only be furnished from end of August to end of November. It takes from 2 to 3 weeks to bring them out in fine flowers.

When you receive the bulbs place them in any shallow dish you may wish, or on a plate, in a wicker basket, or even just on the surface of table or windowsill. They will anywhere light and warmth is obtainable. We have often been asked what is the exact color of the Byzantine Wonder Lily. Some customers have reported that one bulb flowered bluish white, another rose, the next a lilac rose. The tints vary from bluish to rose and rosy lilac as the flower expands and shows a corolla of golden stamens. The flowers open in succession, as a rule one to three first flowering, when they must be cut off close to the bulb; others will crowd up until as many as from 10 to 20 and more flowers will come up, keeping the bulb in flower for a period of three to four weeks. Every day is a new pleasure watching the flowering.

Place them in a friend's sick room. It is a daily interest to the invalid.

Selected Bulbs.

Each, 40c.; 3, \$1.05; 6, \$2.00

Jumbo Size. Scarce.

Each, 50c.

CHINESE SACRED LILY

(Embellish these with Oriental Pearl pebbles)

The "Shui Sin Far," or Water Fairy Flower. Joss Flower of Flower of the Gods, etc., as it is called by the Celestials, is a variety of Narcissus bearing in profusion chaste flowers of silvery white, with golden yellow cups. They are of exquisite beauty and entrancing perfume.

The bulbs are brought into flower in an incredibly short time, 4 to 6 weeks after planting. You can really see them grow day by day. Each bulb sends up from 5-10 spikes of luxuriant growth. Lovely grown in shallow bowls of water, with enough fancy pebbles to prevent them from toppling over when in bloom. A dozen bulbs started at intervals will give a succession of flowers throughout the winter.

Mammoth Bulbs.

Each, 20c.; 12, \$2.00.

Jumbo Bulbs.

Each, 35c.; 12, \$3.50.

HYACINTHS



"First size, named, Exhibition Hyacinths"
Extra Selected

We list the most desirable, specially selected, for their free flowering qualities, strong spikes, vigorous in growth, with strong sturdy stems.

Culture directions with each order, and if followed, and properly grown, will take prizes at any show.

Single, Pink—Red and Rose Shades.

- Garibaldi** Strong, stout spikes of brilliant red. Very early.
- General de Wet** The soft light pink, Grand Maitre. Good for all purposes.
- Gertrudes** Rosy pink, large truss. Time for indoors and outdoors.
- Gigantea** Large soft pink bells. An old favorite. Good for pots.
- Jacques** Large spike delicate coral pink.
- Kohlnoor.** A bright full semi-double, pink truss.
- Lady Derby** Broad, full spikes of clear rose pink bells. Unexcelled for bedding. A favorite.
- La Victoire** Brilliant carmine rose bells. An excellent bedder.
- Lord Balfour** Lilac rose, tinged dark violet. Very distinct.
- Marconi** Bright satiny rose. Very effective in groups. Large spiked. Very early.
- Nimrod.** Deep rose. One of the earliest. Often 3 spikes to a bulb.
- Roi-des-Belges** Bright clear rosy-red. Extra fine for pots.
- Queen of Pinks** Very bright rosy-pink.
25c. each; \$2.50 per doz.; \$18.00 per 100; \$170.00 per 1000.
Six are sold at the dozen rate; 25 or 50 at the 100 rate.

Single, Blue, Lavender, Purple and Violet Shades

- Dr. Lieber** Pale Lavender blue.
- Electra.** Light silvery blue—Best of its color for pots
- Enchantress** Delicate, light blue. The finest of all light blues. Extra large.
- Grand Maitre** Deep rich porcelain blue bells. Good for all purposes.
- King of Blues** Rich dark blue, compact truss. Good bedder and late forcer.
- Menelik** Deep black blue.
- Perle Brillante** A beautiful light blue.
- Queen of Blues** Clear azure blue, a light silvery blue. Splendid.
- Schotel** Clear porcelain blue. Forces early and easily.
25c. each; \$2.50 per doz.; \$18.00 per 100; \$170.00 per 1000.
Six are sold at the dozen rate; 25 or 50 at the 100 rate.

Single, Pure, Tinted, White or Blush Shades

- Arentine Arendsen.** Spikes of perfect shape, with snowy white, wide-open bells. A superb forcer.
- General Vetter.** Long, graceful spikes, blushing ivory white. Exceptionally large.
- Grande Blanche.** Soft bluishwhite, very large bells, fine spike.
- Grandeur-a-Merville.** Rosy Blush. A charming tint.
- La Grandesse.** Pure white waxy bells of great substance, fine spikes. Fine for late forcing.
- L'Innocence.** Pure white. Extra fine. Good for all purposes.
- Queen of Whites.** Purest white. Splendid new variety.
25c. each; \$2.50 per doz.; \$18.00 per 100; \$170. per 1000.
Six are sold at the dozen rate; 25 or 50 at the 100 rate.

Single, Yellow, Shades.

- City of Haarlem.** Finest pure golden-yellow, large trusses. Excellent for pots.
- Marchioness of Lorne.** A lovely, distinct, salmon buff.
- Prince Henry.** Clear Naples Yellow.
- Yellow Hammer.** One of the finest creamy yellow. Excellent for pots.
25c. each.; 2.50 per doz.; \$18.00 per 100; \$170.00 per 1000.
Six are sold at the dozen rate; 25 or 50 at the 100 rate.

DOUBLE FLOWERING VARIETIES

- Blocksberg.** Light blue.
- Chestnut Blossom.** Rosy pink, like the bloom of the horse chestnut. Large bells and spikes.
- Garrick.** Blue, darker center.
- Isabella.** Finest double bluish white.
- La Grandesse.** The double white form of the single variety of this name.
- President Roosevelt.** A lively rose pink, producing a very large truss.
- Sunflower.** A fine buff yellow.
30c. each; \$3.25 per doz.; \$20.00 per 100; \$175.00 per 1000.
Six are sold at the dozen price; 25 or 50 at the 100 rate.

"Selected, Second Sized, Named Varieties"

These are a little smaller in size, than our Extra Selected, first sized bulbs but are of fine flowering stock and to be found adapted for forcing, for bedding or for pot culture.

These include all those listed in our First Sized Varieties, are true to name and colors.
20c. each; \$2.00 per doz.; \$15.00 per 100; \$125.00 per 1000.
Six are sold at the dozen price; 25 or 50 at the 100 rate.

Superb, Selected, Bedding Hyacinths

These varieties, are without names. They are superior in quality to Mixed Hyacinth, are specially selected. Due to their uniformity of colors and heights, they can be used extensively for outdoor planting, being very satisfactory for bedding.

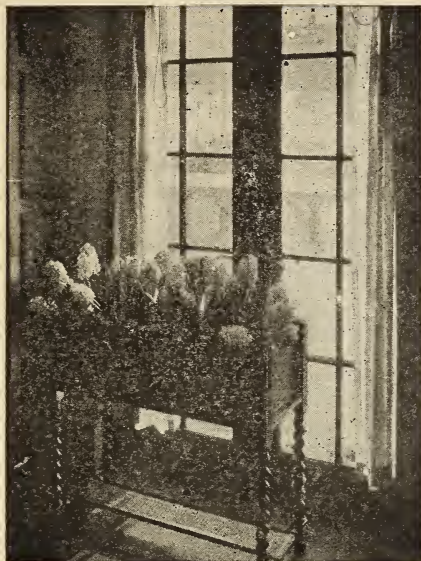
- 12c. each; \$2.00 per doz.; \$12.00 per 100; \$100.00 per 1000.
- | | | |
|----------|------------|----------|
| Dark Red | Pure White | Yellow |
| Pink | Light Blue | or Mixed |
- Six are sold at the dozen price; 25 or 50 at the 100 rate.

MINIATURE HYACINTHS

Dutch Romans

These pretty spring blossoms are excellent for growing in pots, pans or boxes, and for winter flowering in the house, give most satisfactory results. We are offering those varieties which produce the finest flowers for outdoors and force easily for indoors. These specially picked bulbs of even size, will all give large flowers. Also we solicit your patronage, on our "New Prepared Hyacinths," listed in this book.

- Arentine Arendesse.** White.
- City of Haarlem.** Best Naples Yellow.
- Electra.** Silvery Blue.
- Grand Maitre.** Deep Lavender blue.
- General Vetter.** Creamy bluish white.
- Gertrude.** Beautiful dark pink.
- Gigantea.** Blush pink.
- King of Blues.** Dark blue.
- L'Esperance.** Violet.
- L'Innocence.** Large, pure white.
- La Grandesse.** Snow white.
- La Victoire.** A fine, dark rosy-red.
14c. each; \$1.25 per doz.; \$9.75 per 100; \$75.00 per 1000.
Six are sold at the dozen price; 25 or 50 at the 100 rate.



**WINDOW GARDEN COLLECTION
HYACINTHS**
(Fancy Exhibition Size)

Purity. Enormous truss of purest waxy white.
Enchantress. Lovely clear porcelain blue, tinted lilac.
Queen of the Pinks. A beautiful rosy pink.
Orangeboven. The loveliest apricot bells, as light and graceful as the Roman Hyacinths.
Gen. De Wet. Broad spikes, pale pink bells.
Dr. Lieber. Very early. Pale lavender blue, faintly tinged dark violet.
Myosotis. Large bells of Forget-me-not blue.
Etna. Large fleshy bells, bright dark rose.
Distinction. Dark violete.
Obelisque. Yellow large truss.
 Any one bulb on this list, 35c.
 Set of 10 choice fancy bulbs, \$3.00.

THREE ODD BEAUTIES

Ivanhoe. Long narrow spikes filled with large glossy indigo blue bells with white throats resembling a Delphinium flower.
General van der Heyden. Forces very, very easily. Dark grayish lavender with mauve shadings. Most unique, resembling the horse chestnut blossoms.
Kastanjebloem (Chestnut Flower). Exquisite bluish rose
 Each, 30c. The set, 3 bulbs, 80c. 12 any sort, \$3.00.

FRENCH WHITE ROMAN HYACINTHS

These winter flowering bulbs are only surpassed in ease of culture by Paper white Narcissus.
 Their graceful spikes of loosely arranged bells together with their spicy fragrance help to improve your Winter Garden.
 They may be grown in pebbles or moss fibre, in bowls, in pots or in soil, the same as Paper-whites or other Hyacinths.
 Large Bulbs 25c. each; \$2.50 per doz.; \$16.00 per 100.
 Extra Large Bulbs.
 30c. each; \$2.75 per doz.; \$20.00 per 100.

PREPARED "MINATURE" HYACINTHS

These only differ from the above in being younger bulbs. They are very effective grown in low pots and bowls, etc., and can be grown like Roman Hyacinths.
Nimrod. Silvery pink
Dr. Lieber. Pale lavender blue tinged violet.
Hein Roozen. Very early white.
Schotel. Soft silvery blue.
Garibaldi. Deep crimson red.
Yellow Hammer. Creamy yellow.
 15c. each; 3 for 40c.; \$1.75 doz.;
 A set of six bulbs, 1 of each 75c. per set.



JACINTHES

(French Roman Hyacinths)

These are much prized for their ease of culture and earliness of bloom. They are one of the quickest flowering sorts, being in bloom 6 to 8 weeks from time of planting. The bulbs arrive from France in September. If you desire them for Thanksgiving plant in September. They may be had in flower throughout the winter months if potted up at intervals of every two weeks. The flowers are borne in great profusion, each strong bulb producing 3 to 5 graceful stems on which the sweet-scented bells are loosely arranged. A 5 inch pot is sufficient for 3 to 4 bulbs or 6 to 7 to a 6 inch pot or pan. Jacinthos grow splendidly in the Fibre or in pebbles and water.
Perte Blanche. White.
 Each. 25c.; 3, 65c.; 12, \$2.50; 100, \$16.00.
Bleu D'Azur. Azure blue. Each, 15c.; 3, 40c.; 12, \$1.50.
Clor Joli. Tender rose. Each, 15c.; 3, 40c.; 12, \$1.50.

**"DUTCH ROMANS" or
MINATURE HYACINTHS**

These charming flowers are gems for the window garden and are unexcelled when grown in fibre; of the easiest culture, quick blooming, fragrant and effective. If planted on arrival from Holland they may be had in flower in January and throughout the winter. They do not cost half the price of the Roman hyacinths and are equally charming.

They are best grown in deep pots or BULB PANS. 3 bulbs to a 6 inch pot, 6 to 8 to an 8 inch pot (never use new pots or pans). 5 or 6 can be set closely together in a 5 to 6 inch bowl, choosing them preferably all of one color.

NEW PREPARED DUTCH HYACINTHS

What flower graces with greater beauty your rooms and your windows? What flower exhales sweeter perfume than the Hyacinth? They require so little trouble to grow to perfection and come into radiant bloom in our moss fibre. Also grow and bloom magnificently in glasses.

Order EARLY to bloom for the Holidays.

They can be planted as soon as received or delayed until after the first of the year if desired, without affecting the quality of the flower in the least.

These are SPECIALLY prepared bulbs which come into bloom SOONER than any others. Nothing can be lovelier than a pan, bowl, or jardiniere filled with these bright fragrant flowers as a Christmas or New Year's gift. Planted in our PREPARED MOSS FIBRE they last for several weeks in bloom.
Garibaldi. Glossy deep crimson.
Lady Derby. Lovely rose pink.
L'Innocence. Pure white, large bells.
Schotel. Forget-me-not blue.
Yellow Hammer. Creamy yellow.
 30c. each; \$3.00 per doz.; 25, \$5.75.
 The set of 5 bulbs; \$1.25 each set.

THE GARDEN THAT GROWS in the HOUSE

How often you look out and shudder at the wintry chill and dismalness over all, and long for summer climes, not realizing the immeasurable pleasure that can be yours if you grow a few bulbs to bloom during the winter.

Like the philosopher's stone, the pastime of growing flowers is a veritable stepping stone to happiness and joy. A blessing and all the fun of gardening to those obliged to live in city dwellings. With little expense one can enjoy a veritable winter garden. It requires but little labor, expense or experience. A few bulbs, a few bowls, jardinières and glasses. Some of our PREPARED MOSS FIBRE. A little love, a little care, and your trouble will be rewarded a hundred-fold. What can give so much pleasure as a spray of white and golden Narcissi cut from your own "window garden"? What else will bring the happy smile to an invalid friend's lips like a few hyacinths, not those bought in florists shops but raised by yourself? What equals the pleasure experienced in watching the growth of the bulb you planted; the green spear coming up, the bud showing? A study and inspiration for your little ones to learn and love.

NOW that it has been proven by years of trial that bulbs will thrive remarkably well in Specially Prepared Moss Fibre, the one objectionable feature, the handling of soil, is eliminated. Every home can be glorified, the darkest corner brightened with bloom.

Flower lovers were quick to find the vast superiority of this method over the old one of using earthen pots and soil.

Ornamental bowls, vases, jardinières can be used at once to plant the bulbs and have them come into flower instead of having to use unsightly earthen pots which are necessary for any bulbs grown with soil. Bulbs grown in mossfibre or other fibre need no drainage hole, the material keeping indefinitely sweet.

There are a variety of fibres to be had now, and while we do not lay claim that we have the very best, we take pride in declaring that we prepare our fibre from a formula all our own, using a species of moss which contains many of the fertilizing principles needed for the perfect growth of bulbous plants. We introduced this method over 10 years ago and we have since greatly improved it, adding ingredients particularly for plant life and now furnish

Our Improved Carbonated Moss Fibre which we guarantee to be absolutely PURE, SWEET, and FREE from plant disease germs. Any bowl, pan or jardinière, glazed or unglazed, WITHOUT the bottom drainage hole, can be used. The fibre is clean to handle, odorless, and the receptacles containing the flowers can be placed anywhere, even on highly polished surfaces. Many fibres have been put on the market, but we ask for a trial SIDE BY SIDE with others to convince our patrons of the superiority of OUR PREPARED AND IMPROVED CARBONATED MOSS FIBRE. With every order we send clear and concise directions.

PREPARED CARBONATED MOSS FIBRE

1 lb. prepaid35
3 lbs. prepaid85
5 lbs. and over NOT PREPAID, per single lb.20
Pebbles, 2 lb. bag, not prepaid20
Pebbles, 4 lb. bag, not prepaid35
"Oriental Pearl" Pebbles in all the colors of the rainbow. Beautiful as a table decoration or top-dressing for ordinary pebbles.	
2 lb. bag, NOT PREPAID50
1 lb. bag, NOT PREPAID25
"White Pearl" Pebbles. Lustrous and shimmering of real pearl shell.	
2 lb. bag, NOT PREPAID35
1 lb. bag, NOT PREPAID20

SWEET-SCENTED JONQUILA

These bear two or more flowers on long slender stems, and have grassy leaves. Delightfully fragrant perfectly hardy in gardens or naturalized. Ideal for growing in pans or bowls.

- Jonquilla. Clusters of small rich yellow flowers. Single, sweet scented.
 - 10c. each; 85c. per doz.; \$6.00 per 100; \$45.00 per 1000.
 - Odorus Campenelle. Clusters of star shaped of bright yellow fragrant single flowers, with open cut, deeply lobed.
 - 15c. each; \$1.35 per doz.; \$9.75 per 100; \$75.00 per 1000.
 - Odorus Rugulosus. Giant flowered bearing 3 to 4 flowers bright yellow. Double form.
 - 15c. each; \$1.35 per doz.; \$9.75 per 100; \$75.00 per 1000.
 - Trumpet Major. A deep yellow, with long flaring trumpet. Blooms early.
 - 10c. each; 85c. per doz.; \$6.00 per 100; \$45.00 per 1000.
- ⚡Six are sold at the 12 rate; 25 or 50 at the 100 rate.

OUR PREPARED MOSS FIBRE

Grows Bulbs to Perfection for Winter Bloom
DE LUXE BULBS FOR WINDOW GARDENS

The ideal selection of Doffodils, Tulius, etc., to grow in prepared Fibre we have marked especially with a *. We especially recommend the CLUSTER FLOWERED POETAZ NARCISSI.

The Narcissi Poeticus CASSANDRA, EPIC, KING EDWARD VII, and ORNATUS are charming for growing indoors in pots or pans. ALL the JONQUILLAS are a delight with their fragrance and rush-like foliage, and the DOUBLE NARCISSI are admirably adapted for indoor growing.

CALIFORNIA'S FLORAL TREASURES

All of these bulbs thrive just as well in the Eastern States provided they are given care and protection in Winter. They should not be planted earlier than November, and must not be permitted to grow until Spring. Plant in November, in a well drained protected corner, setting the bulbs about 3-4 in. deep in a mixture of rich loam and sand. Mulch well for winter protection. Not only are they exquisite for the garden, but succeed admirably in Our Prepared Fibre in pots or bowls, indoors.

BRODIAEA

All have fine grassy leaves starting from base of plant. The tall flower stems rise between, crowned with rich umbels of waxy blossoms.

- 10c. each; 4 for 35c.; 12 of a kind, 85c.
- Capitata. "Cluster Lily" or Wild Hyacinth. The stem is slender, capped with a cluster of violet-blue flowers. Outdoors they revel in hot, dry places among rocks or in grit, and flower very early.
- Laxa. "Ithurials Spear" Rich umbels of sapphire blue flowers. Splendid for naturalizing.
- Grandiflora. Large glossy purple flowers.
- Lactea. "White Brodiaea." Sometimes pale lilac.

CALOCHORTUS

"Butterfly Tulips"

Floral Butterflies of tropical beauty, so-called by the early settlers who first beheld the gorgeously tinted blossoms.

- Splendens. 1-1½ ft. "Lilac Mariposa Lily." Clear lilac with cobwebby hairs towards the base of the petals. Each 10c.; 12, 85c.
- Oculatus. Large creamy flower with large widely zoned eye. Each, 10c.; 12, 85c.
- Citrinus. Deep rich yellow with black eye. Each, 10c.; 12, 85c.
- Plummerae. Wonderfully beautiful, large rich lavender lined with long silky yellow hairs. Each, 15c.; 12, \$1.60.
- Clavatus. Bowl shaped blooms, 4 to 5 in. across, like a giant petaled Poppy, rich yellow base covered with stiff yellow hairs. Each, 20c.; 3, 50c.; 12, \$1.85.
- Vesta. White flushed lilac or rosy purple on backs of petals, flowers 4-5 in. across, borne on long stems. No orchid could be more beautiful. Each, 15c.; 3, 40c.; 12, \$1.10.
- Venustus. White blotched rose with pencillings of rose. Likes sandy or alkaline soils. Each, 10c.; 12, 85c.

BIZARRE OR BYLBLOEM TULIPS

Striped and Feathered May-flowering These are of an old race, having grown in Holland and France beginning the seventeenth Century. To-day, they are prized by Tulip lovers for varied garden effect, massed in beds and borders, among shrubbery by the waters edge etc.

These are the Tulips which caused the famous craze in the year 1635.

Bizarres have dark brown stripes, feathering on a yellow ground. Bybloems are queerly striped and feathered rose or violet on a white ground.

BIZARRE

- Black Boy Dark Brown, feathered on golden yellow. 10c. each; \$1.00 per doz.; \$7.00 per 100; \$55.00 per 1,000.
 - Emperor du Maroc Bright yellow ground, feathered and flamed dark red. 10c. each; \$1.00 per doz.; \$7.25 per 100; \$55.00 per 1000.
 - Fancy (The Giant) Golden yellow, flamed bronze. 20c. each; \$1.50 per doz.; \$8.50 per 100; \$67.50 per 1000.
 - Le Duel Large golden flower, feathered dark brown. 15c. each; \$1.25 per doz.; \$8.00 per 100; \$60.00 per 1000.
 - Ovidius Reddish brown ground, feathered yellow. 15c. each; \$1.25 per doz.; \$8.00 per 100; \$60.00 per 1000.
 - Romea Bright yellow feathered and bordered orange red. 10c. each; \$1.00 per doz.; \$7.25 per 100; \$55.00 per 1000.
- ⚡Six are sold at the dozen rate; 25 or 50 at the 100 rate. Bizarres mixed \$1.00 per doz.; \$7.00 per 100; \$55.00 per 1000.

GIANT SPRING FLOWERING CROCUS

So easy to enjoy these delightful spring blossoms. Once planted, they can be left undisturbed for years, and affords a recurrent delight. They are entirely hardy, blooming before the snow has vanished. The cost is small, well worth the pleasure we derive.

As edgings to beds, bordering walks, or as undergrowth among other bulbs they are most effective. Give them SUNSHINE and a good light soil, and they will multiply rapidly, increasing yearly in beauty and charm. They bring more color and warmth to the garden in early Spring than any other bulb, frequently blooming while the snow is still on the ground.

Large bulbs for growing in bowls, pots and outdoors. (Do not cover the bulbs more than an inch whether planted outdoors or in pots. They will not flower if planted too deep.)

- Blue Celeste.** Clear porcelain blue, with silvery shading inside. Most charming.
- Caroline Chisolm.** Silky Cream white.
- Dorothy.** Beautiful mauve.
- Fantasy.** ("New") Immense flowers, gray, heavily veined purple, inside glossy purple.
- Golden Yellow.** Pure yellow. For outdoor planting.
- Julia Culp.** Large, purple-blue. Beautiful narrow white edge.
- King of Whites.** Largest pure white.
- Margot.** Clear lavender, outer petals shaded white. Very lovely large flowers.
- Ovidius.** Deep shining purple.
- Pallas.** Pure white, with light lilac stripes. Remarkably snowy.

- 50c. doz.; \$3.75 per 100; \$35.00 per 1000.
- ☞ Six are sold at the dozen rate. 25 or 50 at the 100 rate.
- Mammoth Golden Yellow.** Extra, extra, large bulb. 60c. per doz.; \$4.50 per 100; \$40.00 per 1000.
- ☞ Six are sold at the 12 rate; 25 or 50 at the 100 rate.
- Kathleen Parlow.** White striped lilac. Remarkably showy, large flowers.
- La Majestueuse.** White, striped purple. Large flowers.
- Mont Blanc.** An old favorite. Large, pure white.
- Purpurea Grandiflora.** Best dark blue. 40c. per doz.; \$2.75 per 100; \$25.00 per 1000.
- ☞ Six are sold at the dozen rate. 25 or 50 at the 100 rate.

OUR IMPERIAL BLENDS

Mixed Crocus. A special selection of blends, of all colors and shades. 40c. per doz.; \$3.00 per 100; \$26.00 per 1000.

THE "LILY OF THE FIELD"

A beautiful flowering bulb from Asia Minor, said to be the Lily to which our Lord referred in His sermon. The flowers range from cream to primrose and pure golden yellow. Planted in August, the bulbs produce within a few weeks large crocus-like flowers. They succeed outdoors best, planted in a sheltered spot, in deep rich soil. Protected in winter with litter. They increase rapidly. For the house, these charming bulbs can be planted, like the Chinese Narcissus, in pebbles and water, and make a beautiful effect in room or window garden. Extra strong flowering bulbs. 15c. each; 3 for 40c.; \$1.35 per doz.

BYBLOEM

- Admiral Kingsbergen** (Rose Bybloem) Bright crimson, feathered white. 30c. each; \$2.40 per doz.; \$15.00 per 100; \$120.00 per 1000.
- Amphion** Striking, violet with brown & creamy white pencillings. 15c. each; \$1.25 per doz.; \$8.00 per 100; \$60.00 per 1000.
- Athalia** (Rose Bybloem) White bordered, feathered bright rose. 20c. each; \$1.50 per doz.; \$9.50 per 100; \$75.00 per 1000.
- Cerise Primo** (Rose Sansparielle) Distinct. White penciled and flamed violet, purple. 20c. each; \$1.50 doz.; \$9.50 per 100; \$75.00 per 1000.
- Glory of Holland** (Violet Bybloem). Pure white, feathered and flamed violet, purple. 25c. each; \$2.10 per doz.; \$12.75 per 100; \$105.00 per 1000.
- La Guirlande.** Dark violet and white. 15c. each; \$1.25 per doz.; \$8.00 per 100; \$60.00 per 1000.
- Lady Stanley** (Violet Bybloem). White feathered and striped dark violet. 15c. each; \$1.25 per doz.; \$8.00 per 100; \$60.00 per 1000.
- Rose Riant** Exquisite white and rose. and flamed red. and flowered red.
- Reine de Holland** (Rose Bybloem). White feathered 15c. each; \$1.25 per doz.; \$8.00 per 100; \$60.00 per 1000.
- Vondel** (Violet Bybloem). White ground striped and feathered violet. 30c. each; \$2.40 per doz.; \$15.00 per 100; \$120.00 per 1000.
- ☞ Six are sold at the dozen rate; 25 or 50 at the 100 rate.
- Bybloems, mixed.** \$1.00 per doz.; \$7.00 per 100; \$55.00 per 1000.

CROCUS

Are most interesting for house culture. They can be grown in PREPARED MOSS FIBRE, in pans of soil, in shallow dishes of pebbles and water.

They will not flower if exposed to heat. After potting set flowers in a cool cellar and water well; leave them about 6 weeks until they are thoroughly rooted, then bring to the light. Cover the bulbs about 1/2 inch, not more, as planting too deep causes them not to flower.

MINATURE CROCUSES

Bright gems for the rock garden and window gardens, these species blossom much earlier in the year, delighting the eye with their bright colors, planted in odd nooks in grass, etc. They are all exquisite, vigorous and free flowering. Unusually charming in bowls and pots.

- Biflorus** (Scotch Crocus) White striped lilac. 60c. per doz.; \$4.50 per 100; \$35.00 per 1000.
- Cancellatus Cilacinus.** Large Amethyst flowered. \$1.25 per doz.; \$8.25 per 100; \$62.50 per 1000.
- Nudiflorus.** Rich clear purple. Very rare. \$2.00 per doz.; \$11.50 per 100; \$87.50 per 1000.
- Oochroclenus.** A native of the Lebanon. Creamy White, bright orange base. \$1.25 per doz.; \$8.25 per 100; \$62.50 per 1000.
- Salzmanni.** A native of Tangier. Lilac dark feathered. Loves a moist soil. 85c. per doz.; \$6.00 per 100; \$45.00 per 1000.
- Satavus** ("Saffron Crocus") Purplish blue, feathered violet, orange stigmata. 85c. per doz.; \$6.00 per 100; \$45.00 per 1,000.
- Sieberi.** Early, Lilac, golden base, brilliant orange anthers. \$1.25 per doz.; \$8.25 per 100; \$62.50 per 1000.
- Speciosus Artibir.** Beautiful, large pale-blue flowers, with dark veining. "Very rare." \$1.75 per doz.; \$11.00 per 100; \$82.50 per 1000.
- Speciosus Globosus.** Late. Dark Blue. "Rare." \$2.00 per doz.; \$12.00 per 100; \$93.75 per 1000.
- Susianus.** Most attractive deep rich yellow flamed, rich brown outside. 50c. per doz.; \$3.75 per 100; \$27.50 per 1000.
- Tommasinianus.** Lovely, varying from pale sapphire mauve to violet.
- Vernus.** Pure white. 75c. per doz.; \$5.00 per 100; \$35.00 per 1000.
- Versicolor.** Silvery white feathered, ruby purple outside. 50c. per doz.; \$3.75 per 100; \$27.50 per 1000.
- Zonatus.** Delicate rosy lilac, orange base. Exquisite in coloring. 85c. per doz.; \$6.00 per 100; \$45.00 per 1000.

OUR IMPERIAL BLEND

Excellent for naturalizing, a non-excelled mixture of all colors.

30c. per doz.; \$2.00 per 100; \$17.50 per 1000.

REMBRANDTS

These are odd colorings and variegations, preferred sometimes over the self-colors, and are the offsprings of Darwins which have broken.

- Apollo.** Lilac, striped carmine red. 15c. each; \$1.50 per doz.; \$9.00 per 100; \$57.50 per 1000.
- Caracalla.** White, flamed fiery scarlet, blue base. 15c. each; \$1.25 per doz.; \$8.50 per 100; \$57.50 per 1000.
- Cosette.** Light rose, feathered red. 15c. each; \$1.10 per doz.; \$7.50 per 100; \$55.00 per 1000.
- Eros.** Exquisite. Soft lilac, feathered dark violet. 15c. each; \$1.50 per doz.; \$9.00 per 100; \$57.50 per 1000.
- Julienne.** Rose striped and feathered carmine-purple and white. 15c. each; \$1.50 per doz.; \$9.00 per 100; \$57.50 per 1000.
- La Coquette.** Violet, flamed purple and white. 15c. each; \$1.50 per doz.; \$9.00 per 100; \$57.50 per 1000.
- Marco Spado.** White, flamed bright carmon red. 15c. each; \$1.50 per doz.; \$9.00 per 100; \$57.50 per 1000.
- Pierette.** Violet flamed black and white. 15c. each; \$1.10 per doz.; \$7.50 per 100; \$55.00 per 1000.
- Semele.** Large white, heavily striped and feathered distant vivid rose, deep blue base. 15c. each; \$1.50 per doz.; \$9.00 per 100; \$57.50 per 1000.
- Thetis.** Rich cherry rose on creamy amber. 15c. each; \$1.10 per doz.; \$7.50 per 100; \$55.00 per 1000.
- Victor Hugo.** Brilliant carmine feathered white. 15c. each; \$1.10 per doz.; \$7.50 per 100; \$55.00 per 1000.
- ☞ Six are sold at the 12 rate; 25 or 50 at the 100 rate.
- Rembrandts.** Choice mixed, \$1.00 per doz.; \$7.00 per 100; \$50.00 per 1000.
- ☞ A set of the above 6—60c. per set.
- ☞ A set of the above 11—\$1.00 per set.

LEUCOM VERNUM (Spring Snow Flakes)

Delicately fragrant white bells, tipped green. Once established, they produce enormous quantities of flowers. In the old Herbariums they were called "Giant bulbous Violets."

75c. per doz.; \$5.50 per 100; \$45.00 per 1000.

LILY OF THE VALLEY

Have you ever grown our Magic Lily of Valley Pips? If not, give them a trial—your pleasure will be great, the little trouble taken will seem so slight, you will just wish to repeat it.

We furnish them in time to flower for Thanksgiving, Christmas and Easter on SPECIALLY booked orders.

As the pips are grown in our PREPARED MOSS FIBRE without any drainage, you can use any bowl, jardiniere or receptacle not metal and without a bottom hole. The flowers will be perfect inside of 18 to 20 days. And such flowers! Strong sturdy stems 10 to 15 inches high, with 12 to 14 large bells to each stem, and such perfume! The whole room is filled with it—so delicate, so entrancing.

THESE UNIQUE FLOWERS WILL WIN YOUR HEART

We furnish a specially selected valley pip and with every order send full directions how to grow. Together with the pips we send our specially prepared moss fibre to grow them in.

- 10 Magic Valley Pips, with Fibre to grow.....\$1.35
- 20 Magic Valley Pips, with Fibre to grow..... 2.25
- 50 Magic Valley Pips, with Fibre to grow..... 5.00

Without fibre, for forcing:
250 Pipes \$16.00; 500 Pipes \$30.00; 1000 Pipes \$55.00.

If smaller quantity are wanted than 250 they can be supplied on a 10% advance basis.



Large Clumps for outdoor planting.
Set out in October in Shady location.
Plant about 2 inches deep and protect the first season.
50c. per clump; \$5.00 per doz. clumps.

IXIAS

"The African Corn Lily"

A most beautiful winter flowering bulb from the Cape of Good Hope. Bears on long slender, most graceful stems blossoms of jeweled tints, the base always differing from the color of the petals. Very desirable for pots and bowls. These can also be planted outdoors in well drained soil, in a protected position, and kept well covered during winter.

- Athaca. White with purplish carmine eye.
- Aurantiaca, Major. Golden yellow with large dark eye.
- Mozart Pink. Lovely color.
- 3 for 25c.; 75c. per doz.; \$6.00 per 100; \$45.00 per 1000.
- Azurea. Azure blue with violet centre. Beautiful.
- 3 for 20c.; 12 for 55c.; 25 for \$1.10.
- Beauty of Norfolk. Canary colored flamed crimson, centre black.
- 3 for 20c.; 12 for 55c.; 25 for \$1.00.
- Bucephalus. Rich crimson claret.
- 3 for 20c.; 12 for 55c.; 25 for \$1.00.
- Crateroides. Showy. Early. Rich cerise scarlet.
- 3 for 20c.; 12 for 55c.; 25 for \$1.60.
- Elvira. Choice, very pretty, French grey, black eye.
- 3 for 35c.; 12 for \$1.25.
- Emperor of China. Rich yellow black eye.
- 3 for 25c.; 12 for 60c.; 25 for \$1.10.
- Humbert. Large ruby rose, coppery tinged, distinct.
- 3 for 20c.; 12 for 55c.; 25 for \$1.00.
- Queen of Roses. Large double flowers, beautiful bright rose.
- 3 for 25c.; 12 for 55c.; 25 for \$1.60.
- Viridiflora (The Green Ixia). Beautiful sea green, velvety black eye.
- 3 for 30c.; 12 for \$1.10; 25 for \$2.00.
- Vulcan. Orange red—very showy.
- 3 for 20c.; 12 for 55c.; 25 for \$1.00.
- White Swan. Large pure white, indigo blue eye.
- 3 for 25c.; 12 for 55c.; 25 for \$1.50.
- William the Conqueror. Creamy white flamed rose outside, maroon eye.
- 3 for 25c.; 12 for 55c.; 25 for \$1.50.
- Englishton. Flowers long, rare Old Rose color. Very free.
- 3 for 20c.; 12 for 55c.; 25 for \$1.00.
- Marvellous. Golden yellow with violet centre. Handsome.
- 3 for 20c.; 12 for 55c.; 25 for \$1.00.
- Lady Helen Vincent. Delicate salmon pink.
- 3 for 35c.; 12 for \$1.25.
- Rainbow Blend Selected mixture.
- 50c. per doz.; \$4.00 per 100; \$35.00 per 1000.
- Six are sold at the dozen rate. 25 or 50 at the 100 rate.

IMPROVED PURITY FREESIAS

The sweetest flower of the day, having the fragrance of newly made honey, the foliage bright green, the flowers appearing in a row on tall wiry stems for indoor culture. Through careful selection and painstaking effort, we have maintained a supreme quality in this desirable cut flower, to justify us in stating they excel, those indiscriminately grown and offered by others to-day.

- Full direction information with each order.
- Silvery white, borne in profusion on wiry stems.
- Giant Purity.
- 25c. per doz.; \$1.50 per 100; \$11.25 per 1000.
- Giant Purity. Jumbo Bulbs.
- 50c. per doz.; \$2.75 per 100; \$18.75 per 1000.
- Giant Purity. Monster Bulbs.
- 60c. per doz.; \$3.75 per 100; \$30.00 per 1000.
- Six are sold at the dozen rate. 25 or 50 at the 100 rate.

Choice New and Rare Colored Freesias

For indoor growing. Fragrant and of the loveliest bulbs.

- Amethyst. Lavender Blue.
- 15c. each; \$1.25 per doz.; \$7.50 per 100; \$52.50 per 1000.
- Aurora. Large open flowers. Yellow suffused orange.
- 9c. each; 85c. per doz.; \$6.00 per 100; \$40.00 per 1000.
- California. Bright golden yellow, on strong stems.
- 9c. ea.; 90c. per doz.; \$6.15 per 100 \$45.00 per 1000.
- Carmenita. Lovingly orange. Salmon hue, buff shadings
- 9c. ea.; 85c. per doz.; \$6.00 per 100; \$40.00 per 1000.
- Carrie Budau. Lavender pink, deeper than Gen. Pershing
- 15c. each; \$1.25 per doz.; \$7.50 per 100; \$52.50 per 1000.
- Buttercup. A deep yellow.
- 9c. each; 85c. per doz.; \$6.00 per 100; \$40.00 per 1000.
- Fischerll A pure white.
- Giant Bulbs.
- 9c. each; 85c. per doz.; \$6.00 per 100; \$40.00 per 1000.
- Jumbo Bulbs
- 12c. each; \$1.25 per doz.; \$8.25 per 100; \$70.00 per 1000.
- General Pershing Large, giant, lavender—pink with yellow throat.
- 9c. each; 85c. per doz.; \$6.00 per 100; \$40.00 per 1000.
- Illeña. Deep rosy lavender, white throat, orange blotch on lower petals.
- 15c. each; \$1.25 per doz.; \$8.25 per 100; \$70.00 per 1000.
- JuneMichelsen. Deep rose pink, light blush throat, blotched golden with crimson lines. Very attractive.
- 12c. each; \$1.25 per doz.; \$8.25 per 100; \$70.00 per 1000.
- Mendota. New Giant Yellow. Very large a valuable cut flower.
- 15c. each; \$1.50 per doz.; \$10.00 per 100; \$85.00 per 1000.
- Mrs. Marc Peter Deep rosy salmon, petals blotched orange and yellow
- 15c. ea.; \$1.50 per doz.; \$8.25 per 100; \$85.00 per 1000.
- New Giant Bermuda Strain. All shades of colors. (Rain-bow).
- 85c. per doz.; \$6.00 per 100; \$40.00 per 1000.
- New Giant Lavender. A wonderful variety. The best lavender yet, very strong grower, extra strong stem, large flower.
- Giant Bulbs.
- 9c. each; 85c. per doz.; \$6.00 per 100; \$40.00 per 1000.
- Jumbo Bulbs.
- 15c. ea.; \$1.50 per doz.; \$8.25 per 100; \$70.00 per 1000.
- Olivette. Bright carmine, red with yellow throat.
- 10c. each; \$1.00 per doz.; \$6.75 per 100; \$45.00 per 1000.
- Splendens. Translucent mauve, like the sweet "Wood Violet"; large wide open flowers, tall sturdy stems.
- 10c. each; \$1.00 per doz.; \$6.75 per 100; \$45.00 per 1000.
- Yellow Prince. A deep yellow.
- 9c. each; 85c. per doz.; \$6.00 per 100; \$40.00 per 1000.
- Six are sold at the dozen rate; 50 or 100 at the 100 rate.

OXALIS

An unrivaled winter-flowering pot-plant of the earliest culture, succeeding with everybody.

Plant 6 to 8 bulbs to a 5 inch pot. They are especially charming in hanging pots and baskets. Place in a dark cool position for several days to root thoroughly, and remove to a sunny situation in the window or conservatory. Bermuda Buttercup. Bright buttercup yellow. Bloom constantly for weeks, with the greatest profusion. Bowell. Vivid rosy crimson, large.

- \$1.00 each; \$9.50 per doz.; \$70.00 per 1000.
- Grand Dutchesse. White, lavender, pink. Flowers from November till June.
- 50c. per doz.; \$3.00 per 100; \$22.50 per 1000.

SPIREA

A favorite Eastern plant. Grows 18 inches high and bears large, graceful, plumelike flower heads. Easily forced indoors in a cool room, and perfectly hardy outdoors. Please do not confuse with shrub Spirea.

- America Lilac Rose Gladstone Pure White
- Peach Blossom Pink Queen Alexandra Pale Pink.

CACTI

For the Home Garden or Window

Rare—curious—fascinating plants, now all the craze and rage. All of their own interest. The cactus is a truly American plant. It ranges from British Columbia to the southern countries of South America. Cacti are easy culture.

A little good garden soil mixed with plenty of sand makes a good potting material, though some species require a richer soil.

Among these are the Epiphyllums and Zygococci. As a rule the globular sorts are natives of arid regions and a sandy soil suits them the best. A little broken charcoal should be added to insure good drainage.

They only require a fairly constant supply of water. Not too wet otherwise the plant will rot. They cheerfully stand neglect. In watering do sowth a sponge, from the top, not from the loom through the roots.

At present Cacti is all the rage and in large demand Certain kinds are hard to get any great quantity of. If not in stock, orders are accepted subject to their being sent when available.

We list herewith many species of the Opuntias, known as the edible kinds.

The fruits of the Cacti are far superior to the banana or plum in flavor and contains various salts which are very beneficial. According to experiments two tons of Cactus Fruit yield as much sugar as three tons of sugar cane and its sugar is of an equally good quality.

Enormous quantities of delicious jams, jellies, syrups, etc., are obtained from theirfruits alone, or in combination with other fruits each year.

From the juice of the crimson kind is used to color and flavor ices, confectionery and jelly.

The fruit "Prickly Pear" is common as an orange in all markets of the world

Some of the finest candies are made of cactus.

The leading periodicals and books as well as the Standard Cyclopedia gives numerous other advantages from Cacti. For more than fifty years, cacti has been used as a daily food, for camels, ostriches, horses, mules, oxen, beef stock, cows, pigs and all kinds ofpoultry in North and South America.

Aporocactus

A. Flagelliformis—"Rat-tail Cactus"

A very popular species. Stems numerous, springing from base, pendulous about 1/2 m. in diameter and growing to a considerable length.

Flowers rose.

Often grated on the upright stem of other species to display it to better advantage. Grafted specimens are scarce and will be furnished when possible.

Single stems small size 50c. each; Medium size 75c. each; larger \$1.00 each.

Ariocarpus

A. Fissuratus—"The Living Rock Cactus" sometimes called Dry Whisky. Low flat topped up to 5 inches in diameter, covered with tubercles triangular in outline and tapering into a thick root. Resembles somewhat an aloe.

Flowers, whitish to rose, brilliant orange anthers. A very strong plant, always regarded with curiosity.

Small size 40c. each; Medium 50c. each; Large 75c each.

Cereus

C. Colubrinus.

Tall and slender, up to 6 feet in height and 1 1/2 inches in diameter. Branching from the base.

Flowers white, very fragrant, nocturnal.

Small, 6 to 8 in. \$1.00 each; Medium, 8 to 12 in. \$1.50 each. Larger \$2.00 and up.

C. Spachianus.

A stately, ornamental kind, growing to a height of 4 or 5 feet, 3 or 4 inches in diameter, with a few erect branches.

Very effective for planting for conservatory or outdoor

Small size \$1.50 each; Medium \$1.90 each; Large \$2.00 per foot and up.

Echinocactus.

E. Horizontalonius Globular in form up to 6 inches in diameter and same in height, seven to nine thick rounded ribs, covered with beautifully netted work of stout, curved pink, striped spines.

Flat round shape. Very attractive.

Flowers rose-purple to clear pink.

Small size 35c. each; Medium 45c. each; Larger 65c. to \$1.00 each.

E. Intertextus.

Very fine specimen. Stout cylindrical, six to eight inches high to four inches in diameter, spines short dusky tipped and closely interwoven, practically hiding the body of the plant.

Flowers small light pink.

E. Johnsonii.

Very rare specimen.
Large size only 75c. and up.

E. Lecontei.

One of the real gems of the desert.
Globular in form, covered with long curving and hooked spines.

Flowers, whitish to crimson.
\$1.75 to \$3.00 depending on size, and color of spines.

E. Setispinus.

2 to 3 inches in diameter, 3 to 4 inches high, with long, slender hooked spines.

Flowers yellow and scarlet.
One of the best bloomers of the genus.

Small size 80c. each; Medium \$1.00 each; Larger \$1.50 up.

E. Texensis.

Of flattened, globular form, with dull reddish spines. Flowers scarlet and orange below and white above.

Small size 50c. each; Medium \$1.00 each; Larger \$2.50 up.

E. Simpsoni.

"Pin cushion cactus. 2-3 inches in diameter. Entirely covered with a closely woven lacework of curved spines, varying from dark purple brown to gray.

Flowers, shell pink.

Small size 50c. each; Medium \$1.00 each; Larger \$1.50 up.

E. Viridescens.

Very ornamental.

Of flattened, globular style of growth, ribs prominent, spines stout, 10 inches in diameter.

Small size 80c. each; Medium \$1.00 each; Large 1.50 up.

Echinocereus.

E. Caespitosus.

4 to 6 inches high.

Very pretty, a good bloomer.

Covered with clusters of short silver white spines, almost hiding the plant.

Flowers double bright magna, to bright purple.

Small size 20c. to 40c. each; Medium 50c. to 75c. each.

Ec. Chloranthus.

Short cylindrical, six inches high and two inches in diameter, radial spines pectinate, ball shaped with dark spines, variegated, rising from white and red, in well defined bands, centrals usually white one inch long.

Flowers, greenish yellow and set down to the stem.

Plant solitary.

Small size 35c. each; Medium 50c. each; Larger 75c. up.

Ec. Coccleus.

Short cylindrical, with yellowish spines one inch long sometimes shorter.

Many deep scarlet, showy flowers.

Seldom solitary, mostly in dense clumps.

Small size 40c. each Medium size 65c. each.

Ec. Conoldeus

Apparently a variety similar to the above Coccleus.

Spines longer and darker, seldom forming as large clumps.

Small size 50c. each Medium size 75c. each.

Ec. Cylindraua

Similar to Ec. Chloranthus but more showy.

Small size 40c. each; Medium size 70c. each; Larger 80c. & up.

Ec. Dasyacanthus.

An attractive species up to 8 or 10 inches in height, 3 inches in diameter, densely covered with short, somewhat pectinate spines, varying in color from white to deep pink.

Flowers, large, beautiful lemon yellow over 3 inches across usually solitary though sometimes branching in age.

Small size 50c. each; Medium size 75c. each.

Ec. Enneacanthus.

Three to five inches high, 1 1/2 to 2 inches in diameter, with clusters of short spines.

Flowers, reddish purple, produced freely on old plants branching at the base, forming large clusters.

Single heads, small size, 80c. each; Medium size \$1.00 each; Larger \$1.50 and up.

Ec. Engelmannii.

Very strictly species.

Up to 10 inches in height completely covered with long, stiff spines, varying in color from white to brown and dark purplish.

Flowers, purplish red.

Small size 50c.; Medium size \$1.00; Larger \$1.50 up.

Ec. Fonderli.

A new find. Not much known of it qs yet, but very attractive.

Small size 35c. each; Medium size 50c. each.

Ec. Forsyacanthus.

A new specie just found.

Small size. 50c. each; Medium \$1.00 each; Larger \$1.50 up

CACTI (Cont.)

- Ec. Gonacanthus.**
Stout plants, up to 12 inches high and four inches in diameter, strongly ribbed and with comparatively few, ash grey spines, stiff and nearly two inches long. Flowers, showy, deep reddish orange.
Plants usually come in clusters of 3 to 6.
Single plants, Small Size \$1.00 each; Medium Size \$2.00 up.
- Ec. Pectinatus.**
Cylindrical in growth, up to 10 inches in height, with clusters of short tinted spines. Good bloomers inclined to form clusters.
Flowers, rosy-red.
Small Size 80c. each; Medium \$1.10 each; Larger \$1.50 up.
- Ec. Rigidissimus.** "Rainbow Cactus."
A most attractive of the genus on account of the color of the short spines which are arranged in bands of white, red yellow or brown.
Small size \$1.00 each; Medium \$1.50 each; Larger \$2.00 up.
- Ec. Stramineus.**
Plant 3 to 6 inches high to 3 inches in diameter, thickly covered with long slender straw covered spines. Bears many large, showy, purple flowers.
Forms clumps three feet across with as many as 100 individuals.
Each individual \$1.00 each; Clumps, \$5.00 each and up, according to size.
- Ec. Viridiflorus.** "Rainbow Cactus."
Very beautiful and hardy. Semi-cylindrical, interlaced with vari-colored spines.
Flowers, yellow tinged green.
Small size 35c. each; Medium 50c. each; Larger 75c. up.
- Ec. Urnatus.**
A new find. Very attractive.
Small size 50c. each; Medium 75c. each; Larger \$1.00 up.
- Echinopsis.**
Spherical plants, of easy growth, good bloomers and very desirable for house culture.
- E. Eyriesii.**
Flowers, white, long, tubular.
80c. each.
- E. Mulleri.**
Flowers rose.
80c. each.
- Epiphyllum (Formally Phyllocactus)**
- E. Latifrons.** Queen Cactus.
The largest of the genus, growing up to 8 or 10 feet in height with long, broad leaves 4 to 5 inches wide.
Flowers, 7 to 9 inches across, petals, creamy white.
Nocturnal.
Small plants \$1.00 each; Medium \$1.75; Larger \$2.25 up.
If interested in other Epiphyllum write us which one we will quote.
- Ferocactus.**
Barrel shaped or Globose to short cylindrical.
Grows 4 to 6 feet in height, 20 inches or more in diameter.
If interested write us which and we will quote.
- Hylocereus.**
- H. Tricostatus.**
Climbing up to 10 or 12 feet. Branches three angled, angles thin.
Flowers white, nocturnal.
80c. each.
- Mammillaria**
- M. Gra Hamli**
Covered with short, white spines and numerous long, dark, hooked ones.
Small size 40c. each; Medium size 45c. each; Larger 50c. & up
- M. Dioica**
Similar to M. Grahamii, but longer, branching out from the base forming clusters. Spines dull colored.
Small size 50c. each; Medium size 80c. each; Larger \$1 & up
- M. Macromeri**
Small globose, about two inches in diameter, forming clumps of as many as twenty individuals, armed with many long dusky spines.
Flowers, large as three inches across, light purple in color.
Small size 25c. each; Medium size 50c. each; Larger 75c. & up
- M. Mammillaria Micromeri**
one of the smallest cactus, never being more than 2 inches in diameter and seldom that much in height.
Covered with a closely woven network of fine white spines, and appear as a soft down ball. Solitary or in small clusters.
Flowers small, bright pink.
Small size, 25c. each; Medium size, 50c each and up.
- M. Radiosa**
Small elongate globose, three inches high, spines less than one inch long, tipped with brown.
Flowers light pink, followed with small fruits.
Small size 35c. ea.; Medium size 50c. ea.; Larger 75c. & up
- M. Radiosa Var Neo Mexicana.**
Similar to M. Radiosa in size, flower and fruit, but with much stouter spines. Solitary or in small clumps.
Small size 40c. ea.; medium size, 60c. ea.; larger 90c. & up
- M. Tuberculosa.**
Small elongated plant up to 6 inches high, one and one-half inches in diameter.
Generally in clusters of from three to eight.
Spines small, numerous, ashy gray, usually tipped with purple. One inch pale pink flowers followed by bright red fruit, which persists for some time.
Small size 40c. ea.; medium size, 60c. ea.; larger 90c. & up
- M.—(Species Unknown).**
Yellow spined. A rare sort with glistening yellow spines, branching freely at the base, forming clusters.
Hard to get many of them.
For the present, small sizes only \$1.25 each.
- Opuntias "Prickly Pear Types."**
They grow easily from cuttings. Forces below are for cuttings only. We supply them that way, but if rooted plants are wanted, can furnish them, as they are available any time after June 1st, prices on application.
- Opuntias are divided into two groups. The Indian figs with roundish oval or elongated flattened joints, and the Chollas with cylindrical joints. The real Chollas are variously sharp barbed spines.
- O. Abrescens.**
Joints, cylindrical, light green, sizes up to 6 feet. Spines sheathed, numerous, one and one-half inches long. Large purple flower.
Small size 35c. ea.; medium size 50c. ea.; Larger 75c. & up
- O. Basilaris.**
A low species hardly more than one foot in height, branching from the base. Joints purplish and spineless. Flowers purplish and very attractive.
Small size 60c. ea.; medium size 80c. ea.; larger \$1.00 & up
- O. Chihanhensis.**
Joints dark green about six inches long. Bluish green sometimes tinged with red, spines brown, two inches long. Plants spreading.
Small size 50c. ea.; medium size 75c. ea.; larger \$1.00 up.
- O. Englemani "The Giant of the Opuntias."**
Joints up to twenty inches, light green, spines variable in number, white or yellow. Plant semi-erect.
Small size 70c. ea.; medium size 90c. ea.; larger \$1.25 & up
- O. Erinacea.**
Remarkable for the numerous white bristle-like spines, 2 to 3 inches long, which nearly hide the joints. Flowers pink or yellow.
Small size 80c. ea.; medium size \$1.00 ea.; larger \$1.50 & up
- O. Leptocaulis.**
Joints cylindrical, light green, two to six feet in height. Flowers are greenish yellow, followed by bright red berry like fruit, adding more to the attractiveness of the plant, which are persistent well into the winter.
Small size 50c. ea.; medium size 80c. ea.; larger \$1.00 & up
- O. Lingueformis.** "Cow-tongue Cactus."
A tall, branching species, with joints greatly elongated. A very appealing type.
Small size 75c. ea.; medium size \$1.00 ea.; larger \$1.25 & up
- O. Lindheimeri.**
Joints light green up to 7 inches. Spines clear yellow, one-half inch long and a few to the joint. Plant semi-erect.
Small size 25c. ea.; medium size 50c. ea.; larger 75c. & up.
- O. Macrocentra.**
Joints bluish green conspicuously tinged with red, very thin, about 8 inches long. Spines grow from 2 to 4 inches long, on upper edge on joints only. Plant semi-erect.
- O. Macrocentra, var Cardiacus.**
Joints heart shaped, eight inches long, thin, dark reddish green, spines on outer lobes only in pairs, one of them dark brown, two and a half inches long. The other white, one inch long oppressed parallel to the edge of the joint.
Small size 50c. ea.; medium size 75c. ea.; larger \$1.00 & up
- O. Macrocentra, var. Paucispinus.**
An unlisted variation with very thin joints up to ten inches long, bluish green tinged with red. Spines none on some joints, on others two or three, brown with white tips, one inch long. A very erect clean-cut plant.
Small size 75c. ea.; medium size \$1.00 ea.; larger \$1.25 & up
- O. Microdasys.**
Two to three feet in height. Joints dotted with tufts of yellow bristles. Flower yellowish.
Small size 40c. ea.; medium size 50c. ea.; larger 75c. & up
- O. Microdasys var. Rufida.**
Similar to Microdasys with reddish bristles.
Small size 40c. ea.; medium size 50c. ea.; larger 75c. & up
- O. Phaecantha.**
Joints to 12 inches, dark green, thickly covered with red and white spines, 2 inches or more long. Plant semi-erect.
Small size 35c. ea.; medium size 45c. ea.; larger 50c. & up

CACTI (Cont.)

O. Ployocantha.

Joints dark green, about six inches long, almost concealed by slender light colored spines, sometimes four inches long. Plant spreading. Small size 40c. ea.; medium size 50c. ea.; larger 75c & up

O. Toumeyi.

Joints light green, about 10 inches long, spines about one inch long, yellow with a brown base, mostly on upper half of joint. Plant spreading. Small size 35c. ea.; medium size 45c. ea.; larger 50c. & up

O. Wootoni.

Joints up to 18 inches long, yellowish green, narrowed to the apex and with evenly spaced stout white spines. Plant erect. Very rare and one of the showiest opuntias.

All orders are accepted subject to being sent, at the earliest possible moment, when available.

Prices are subject to fluctuations, and change without notice.

BABY GLADIOLI

Dwarf early varieties for pot and for border.

Excellent for forcing during the winter months.

Blushing Bride. Pink with crimson blotch.

Brilliant. A brilliant warm pleasing red.

Peach Blossom. An exquisite, delicate rosy pink.

The Bride. Pure white.

10c. each; 85c. per doz.; \$6.00 per 100; \$42.50 per 1000.

CALLA LILIES

Aethiopia, or "Lily of the Nile." The old favorite White Calla Lily. Large bulbs.

25c. each; \$2.50 per doz.; \$15.00 per 100; \$135.00 per 1,000.

Mammouth Bulbs—

50c. each; \$5.00 per doz.; \$35.00 per 100; \$315.00 per 1000.

Elliotiana, or "Golden Calla." Rich, golden yellow leaves covered with pelucid spots. Its great size of bloom and brilliant color makes it a beautiful sight.

Large Bulbs—

40c. each; \$4.00 per doz.; \$27.00 per 100; \$175.00 per 1,000.

Mammouth Bulbs—

50c. each; \$5.00 per doz.; \$35.00 per 100; \$315.00 per 1000.

Godfrey or "Everblooming Calla." Most desirable for long and continuous bloom. Quantities of snowy white flowers, slightly fragrant. One bulb, often bear 3 to 5 blooms.

35c. each; \$4.00 per doz.; \$20.00 per 100; \$150.00 per 1000.

⚡ Six are sold at the dozen rate. 25 or 50 at the 100 rate.

TWO DELIGHTFUL WOODLAND BLOSSOMS

Ready October-November.

Arisaema Japonica. A DRY bulb to look at, but a source of delight to watch it grow until the perfect bloom smiles at you. The color is in some a translucent green with white stripes, in others velvety purple, with white lines. Plant 2-3 in a bowl.

Each 15c.; 3, 35c.; 12, \$1.50.

Cypripedium Acaule "Pink Lady Slipper." This charming Orchid can be grown in our Mossifibre, and its flowers are equal to the costliest Orchid. It is a native of this latitude, and can be transplanted outdoors after blossoming through the winter. The color is bright rose pink, shaded to blush.

Each, 50c.; 3, \$1.35.

CAMASSIAS
(Mountain Hyacinths)

Beautiful natives of the mountainous regions of the North Pacific Coast. (Ready in September.) They are perfectly hardy, thrive anywhere, and naturalize with ease. Grow well in sunny as well as partly shaded places. Can remain in same spot for years. All have more or less tall spikes with flowers set closely to the stalk.

Camassia esculenta magnifica. Tall spikes of deep shining blue flowers. Flower fine in house in winter, if planted in early fall.

3 for 25c; 75c per doz. \$4.00 per 100; \$35.00 per 1000.

Blue Leichtlini. A very beautiful variety. Azure blue, starry.

3 for 30c; 85c per doz.; \$5.25 per 100; \$37.50 per 1000.

White Leichtlini. Same as blue, but the flowers creamy white. Beautiful for winter bloom.

3 for 35c.; \$1.25 per doz.; \$8.00 per 100; \$60.00 per 1000.

⚡ Six are sold at the dozen rate; 25 or 50 at the 100 rate.

SCILLAS

VERY SUCCESSFUL IN ROCK GARDENS

APRIL

"With its swords of jade on a thousand hills,
And the warm south wind that whispers—
Of purple Squills."

SCILLA SIBIRICA (Siberian Squills)

Flowers of a rich and brilliant blue appear almost before the snow is off the ground. Lovely grown as undergrowth in Hyacinth beds, etc. Growing in clumps of a dozen to a hundred increase in size and beauty each year.

Blue.

White. Very effective massed with blue.

70c per doz.; \$5.00 per 100; \$37.50 per 1000.

⚡ Six are sold at the dozen rate; 25 or 50 at the 100 rate.

SCILLA PERUVIANA

The "CUBA LILY." Large spikes of pyramidal shaped bright blue flowers. Equally beautiful for pot culture or for planting in the garden.

25c. each; 3 for 60c; \$1.15 per doz.

SCILLA CAMPANULATA (Wood Hyacinth)

Create charming color effects when planted in masses. Increase very rapidly. We recommend them for use in grass, shrubberies, rockwork, etc. Plant 5-6 inches deep in shady situations. Will grow under fir or pine trees.

Alba Maxima. Large, clear white bells.

60c. per doz.; \$4.00 per 100; \$31.50 per 1000.

Blue Queen. Erect spikes porcelain blue.

55c. per doz.; \$3.75 per 100; \$26.50 per 1000.

Rose Queen. Bells soft lilac rose. Very pretty.

\$1.10 per doz.; \$6.50 per 100; \$47.00 per 1000.

⚡ Six are sold at the dozen rate; 25 or 50 at the 100 rate.

SCILLA NUTANS

Alba. White.

65c. per doz.; \$4.35 per 100; \$37.50 per 1000.

Coerulea ("English Bluebell"). Bright blue, drooping flowers. Lovely for borders, in drifts, or for naturalizing.

50c. per doz.; \$3.00 per 100; \$21.00 per 1000.

Rosea. Delicate rose.

65c. per doz.; \$4.35 per 100; \$37.50 per 1000.

Rubra. Dark rose, late blooming.

75c per doz.; \$5.50 per 100; \$42.50 per 1000.

⚡ Six are sold at the dozen rate; 25 or 50 at the 100 rate.

PEONIES

Plant PEONIES in the Fall for Beauty and Fragrance

They bloom early, generally around Decoration Day. Because of this they should not be neglected for the remainder of the summer.

In extreme droughts, plenty of water should be applied. Do not remove the leaves until they have withered.

Festiva Maxima. Old, yes, but it should be in every garden, large or small. Pure lovely white lightly flecked crimson.

50c. each; \$5.00 per doz.

Philomele or the "Nightingale." Bright violet rose, with the delicious odor of mock orange.

50c. each; \$5.00 per doz.

Duchess De Nemours. One of the finest and most fragrant of peonies. Intoxicatingly sweet.

75c. each; \$8.00 per doz.

Mme. Emile Lemoine. Exquisite blush tinting of an oriental pearl.

\$1.00 each; \$11.00 per doz.

EugeneVerdier. Soft shell pink. An exquisite and pleasing peony.

\$1.00 each; \$11.00 per doz.

Marie Jacquin (Water Lily). Glossy rosy lilac, shaded white, in pastel tints. Centre filled with yellow stamens.

\$1.50 each; \$17.00 per doz.

Felix Crousse. Large globular flowers, brilliant, dazzling ruby red.

75c. each; \$14.00 per doz.

Albatre. Milky white shading to ivory. Very free blooming.

75c. each; \$8.00 per doz.

MUSCARI
(Grape Hyacinths)



These delicate and pretty flowers are perfectly hardy, naturalize and multiply rapidly, and grow any where in any sunny place. They lend themselves graciously to forcing in the house and grow, charmingly in our prepared moss fibre. They can remain in the same spot for years, where they form large colonies of lustrous blue and white. As borders they have a charming effect.

Amethystinus. Long stems, loose spikes amethyst blue. 65c. per doz. \$4.35 per 100; \$37.50 per 1000.

Botryoides Alba. Splendid for beds and rockeries. A cluster of white corals. 85c per doz.; \$6.00 per 100; \$45.00 per 1000.

Botryoides Carnea. Light rose. 75c. per doz.; \$5.75 per 100; \$42.50 per 1000.

Commutatus. Deep dark blue, very floriferous. Splendid for pots. 60c. per doz.; \$3.75 per 100; \$27.50 per 1000.

Conicus. Dark violet blue, almost black. 60c. per doz.; \$3.75 per 100; \$27.50 per 1000.

Heidreichi. Lovely lilac blue edged white. Very scarce. 35c per doz.; \$3.25 per 100; \$25.00 per 1000.

Heavenly Blue. Deep sky blue and fragrant. The largest and best. 50c. per doz.; \$3.50 per 100; \$26.00 per 1,000.

Monstrosum. Purple. \$1.00 per doz.; \$7.25 per 100; \$55.00 per 1000.

Neglectus. Deep blue, sweetly scented. 60c. per doz.; \$3.75 per 100; \$27.50 per 1000.

Paradoxum. Very handsome, long spikes, nearly pure black flower. 65c. per doz.; \$4.35 per 100; \$37.50 per 1000.

Plumosum (Feather Hyacinth). Of a beautiful violet blue with feathered petals. Splendid for naturalizing. \$1.00 per doz.; \$7.25 per 100; \$55.00 per 1000.

⚡ Six are sold at the dozen rate; 25 or 50 at the 100 rate.

ALLIUM.



ALLIUM.

Neapolitanum Grandiflorum. 18 in. Can be grown in soil and flourishes finely in our Prepared Mossfibre. The flowers are borne in large umbels, color is a glistening white with green stamens. Flowers from December to April.

Each, 10c.; 12, \$1.00.

DIELYTRA, or "Bleeding Heart"

Ready in November

One of the most ornamental of hardy spring-flowering plants, with elegant green foliage and long drooping racemes of heartshaped pink and white flowers.

Large Roots.
Each, 75c.; 12, \$7.50.

Dodecatheon Meadia (Shooting Star). Very pretty perennial bearing rose colored, often white, flowers in May and June sometimes called "American Cyclamen." Thrives in rich, moist woods as well as in the open border. Extra strong roots. Each 75c.; 12, \$7.50.

Cypripedium Pubescens. Yellow Lady's Slipper. Showy fragrant blooms. About 1 ft. high. Does well in almost any soil in a rich shady spot. 35c. per doz.; \$22.50 per 100.

Cypripedium Spectabile. Showy Lady Slipper. White to rose colored flowered. By far the best. A strong grower in peat soils and shady bogs. 70c. per doz.; \$45.00 per 100.

⚡ Six are sold at the dozen rate; 25 or 50 at the 100 rate.

MERTENSIA VIRGINICA, 1 to 2 ft.

(American Blue Bell)

Absolutely hardy and thrives anywhere. Panicles large drooping shaped flowers, intense blue, changing gradually to soft mauve pink. Plant any time till the Fall. The roots we send should be placed horizontally in the ground 4 inches deep and about 8 inches apart.

Extra Strong Roots. 3, 75c.; 12, \$3.00; 100, \$25.00.

Mertensia Ciliata. (Mountain Bluebells.) A luxuriant plant of graceful habit, glaucous foliage, drooping sprays, pale blueflowers. 35c. each; \$3.50 per doz.

Ornithogalum Arabicum. "Star of Bethlehem." Throws up a tall stem with a cluster of star-shaped flowers; pure white with dark centers. Excellent for cutting, lasting a long time in water. Each, 10c.; 3, 25c.; 12, \$1.00.

RANUCULUS

These oddly shaped little bulbs, resembling spiders, produce some of the finest gorgeously colored flowers, extremely double on strong stems, and flowering freely. Protect well from frost, and remember it does not flourish in intense sunshine.

Giant French Double. Hybrids, mixed. 95c. per doz.; \$6.00 per 100; \$45.00 per 1000.

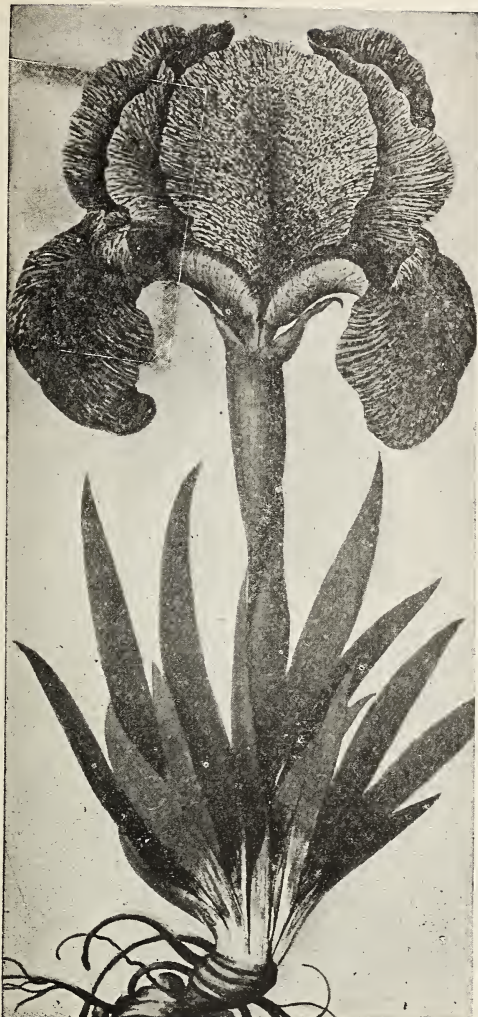
Sanguinaria canadensis (Blood Root). A charming plant for shady situations, producing blue-grey foliage and snowy white flowers with golden anthers. Each, 15c.; 12, \$1.35.

SNOWDROPS (GALANTHUS)

Beloved of all Spring blossoms with their lovely drooping bells. Thrive in any soil or situation. Easily flowered in pots in winter.

Single Selected Bulbs. 12, 60c.; 100, \$3.75; \$27.00 per 1000.

Double Selected Bulbs. 12, 70c.; 100, \$5.00; \$45.00 per 1000.



Iris Susaina

VARIOUS RARE AND BEAUTIFUL IRISES

These various species are all hardy.

Alata (Scorpion Iris). A very pretty Winter-blooming iris with broad leaves, the flowers large in shades of lavender blue with golden keel on the falls which are crimped at margin. (Fine for house growing.)

Each, 75c.; 3, \$2.00.

Iris Susiana (The Mourning Iris). 1½ to 2 ft. A most beautiful species ranking first amongst a class where so much beauty is found. The ground color of this charming flower is a pale rose, over which spreads a network of brown veins like a veil over the rosy face of a lovely maiden. Falls have a darker shading and a large black beard. Flowers in May. Can be grown to perfection in the house. Each, \$1.00.

Pavonia (Peacock or Venus' Iris). 1 ft. Pure white with brilliant blue spot on each petal. Exquisite to grow in the house. Hardy in garden, planted in a warm, sheltered situation in sandy, peaty soil.

Each, 60c.; 3, \$1.50.

Stylosa. Ht., 1 ft. A RARE and lovely iris. Slender, upright leaves. The flowers grow on stems often 8 inches long. The color is a soft lilac, the falls beautifully feathered purple. Very fragrant.

Each, 50c.; 3, \$1.40.

IRIS FILIFOLIA AND TINGITANA

Earliest of all Iris to flower. Succeeds admirably in pots. Brilliant blue violet petals with spear-like foliage, faintly perfumed.

Fillifolia. Deep blue, suitable for forcing.

15c. each; \$1.75 per doz.; \$11.00 per 100.

3 or 6 sold at the dozen rate; 25 or 50 at the 100 rate.

IRISES

(Bearded or Fleur De Lis)

All Iris, do best when planted in the Autumn.

Alcazar. Large bluish violet, with golden bronze throat. Falls rich purple.

40c. each; \$2.40 per doz.; \$15.00 per 100.

Caprice. Early. Clear Cerise. Falls a deeper shade, richly fragrant.

25c. each; \$1.20 per doz.; \$7.50 per 100.

Celeste. The BEST clear azure blue Pallida. Valuable as a foil to darker varieties.

35c. each; \$3.50 per doz.; \$25.00 per 100.

Her Majesty. Beautiful blending of tints. S. lovely rose pink; F. bright crimson.

35c. each; \$3.00 per doz.; \$20.00 per 100.

Lohengrin. S. and F. uniform shade of Cattleya rose.

30c. each; \$2.75 per doz.; \$18.00 per 100.

Loreley. So robust it is a joy to watch it grow. S. canary yellow, F. ultra marine blue.

25c. each; \$2.50 per doz.; \$17.50 per 100.

Mad. Chereau. White, elegantly frilled, with a wide border of clear blue; one of the most charming sorts.

25c. each; \$2.50 per doz.; \$17.50 per 100.

Mother of Pearl Novelty. Has been called the "Perfect Iris." Exceptionally vigorous. S. and F. pale bluish lavender with a pearly iridescence, hence its name.

\$1.50 each; \$16.00 per doz.; \$115.00 per 100.

Mad. Pacquette. An even tone of rosy claret, probably the closest approach to red in our list.

30c. each; \$3.00 per doz.; \$20.00 per 100.

Monsignor. Distinct. Stately in growth and massive in bloom; the sombreness of its darkly veined crimson purple color enlivened by gleaming violet rays in the standards.

25c. each; \$2.50 per doz.; \$17.50 per 100.

Nibelungen. S. fawn; F. violet with fawn margin; handsome.

35c. each; \$3.00 per doz.; \$20.00 per 100.

Pallida Dalmatica. Standards lavender; falls clear, deep lavender.

25c. each; \$2.50 per doz.; \$17.50 per 100.

Rhein Nixe. Very conspicuous. S. White; F. Raspberry purple, edged white.

35c. each; \$3.50 per doz.; \$25.00 per 100.

Sweet Florintine Blue. Lustrous Blue.

20c. each; \$2.00 per doz.; \$14.00 per 100.

Sweet Florentina. White. Ivory tinged with lilac.

20c. each; \$2.00 per doz.; \$14.00 per 100.

Queen Alexandra. Rosy lavender suffused with fawn; the falls deep lilac with bronze reticulations.

35c. each; \$3.50 per doz.; \$25.00 per 100.

Queen of May. Uniform lovely soft rose-lilac.

25c. each; \$2.50 per doz.; \$17.50 per 100.

3 or 6 sold at the dozen rate; 25 or 50 at the 100 rate.

Iris Florentina

One of the most delicate perfumes known is that of Orris.

Sweet Florentina White. Ivory white, tinged with lilac.

Sweet Florentina Blue. Lustrous blue.

25c. each; \$2.50 per doz.; \$17.50 per 100.

3 or 6 sold at the dozen rate; 25 or 50 at the 100 rate.

Queen Alexandra. Rosy lavender suffused with fawn; the falls deep lilac with bronze reticulations.

Rhein Nixe. Very conspicuous. S. white. F. raspberry purple, edged white.

35c. each; \$3.50 per doz.; \$25.00 per 100.

3 or 6 sold at the dozen rate; 25 or 50 at the 100 rate.

DUTCH IRIS (Iris Hollandica)

A giant strain of early flowering Iris. The foliage is broader and of a rich, glaucous green and the flowers are rich in their colorings. Like all bulbous Iris, they are better for a covering of leaves or litter as a protection. **Anton Mauve**. A uniform soft blue; very large and substantial flower.

Brijet. Porcelain-blue, shaded grayish lilac.

Der Kinderen. Bright blue standards, yellow falls.

Franz Hals. Pale blue, with creamy yellow falls.

Hart Nibbrig. Brilliant clear blue. One of the finest.

Hartz. Standards purple-blue; falls greyish lilac.

Hobbema. White, tinged blue, primrose falls.

Van Der Venne. Lilac and creamy white.

10c. each; \$1.00 per doz.; \$6.50 per 100.

3 or 6 are sold at the dozen rate; 25 or 50 at the 100 rate

GERMAN IRIS

(Iris Germanica)

Beautiful for Hardy Borders, making great showy clumps of sturdy, yet graceful flowers, fine for cutting.

Plant, preferably in a dry sunny location, barely covered with soil.

Atropurpurea. Rich deep royal purple. Blooms early. 20c. each; \$2.00 per doz.; \$14.00 per 100.

Florentine Alba. Pure glistening white. Blooms early. 20c. each; \$2.00 per doz.; \$14.50 per 100.

Loreley. Falls deep sea blue; standards creamy yellow. Color exceedingly charming. 25c. each; \$2.50 per doz.; \$17.50 per 100.

Pallida Dalmatica. Deep lavender, standards, lighter falls. Large flowers. 25c. each; \$2.50 per doz.; \$17.50 per 100.

Sherwin Wright. Deep golden yellow. Fine for massing or in borders. 25c. each; \$2.50 per doz.; \$17.50 per 100...

Queen of May. Pure clear rose pink. One of the best pinks. 25c. each; \$2.50 per doz.; \$17.50 per 100.

3 or 6 sold at the dozen rate; 25 or 50 at the 100 rate.

A collection of 2 of each. \$2.00 per set of 12.

Iris Pumila (Pigmy Iris)

The very dwarfest type, the very earliest to bloom. Of quick and easy growth, and enchanting in their beds of dark green foliage.

Coerulea. Azure blue. **Purpurea.** Violet.

Golden Fleece. Yellow. **The Pride.** White. 30c. each; \$3.00 per doz.; \$20.00 per 100.

3 or 6 sold at the dozen rate; 25 or 50 at the 100 rate.

JAPANESE IRIS (Iris Kaempferi)

Amano-Gawa (Milky Way). Lavender with a silky grey sheen, the clear blue haloas as if dusted with silver.

Gekka-No-Nami (Waves on Moonlight). Immense creamy white blooms, peony flowered with a golden halo. Each, \$1.25.

Ho-jo (Frisled Beauty). Large and striking with beautifully frilled and ruffled petals. Color, deep pinkish plum, white pencillings and yellow blotches.

Kamata. Single. New style sky-blue, veined white, very distinct.

Koki No Iro. Double. Purple with yellow throat edged blue, radiating white lines.

Kumo-no-obi (Smiling God). Dark lavender purple shaded blue, radiating into strong white lines.

Oyodo. 6 petals. Shimmering rosy lavender—blue halo and yellow blotches at base of petals. Sumptuous flowers with large waved petals.

Shippo. Great wavy petals of rich tryian blue; conspicuous yellow blotches tipped lilac; veined and feathered purple. Six petals.

Uji-Gawa. 6 petals. Exquisite silky Azure Blue.

Unsu (Clouds). Very double cloudy grey veined violet.

Any variety, except where noted, each, 50c.; 3, \$1.25; 12, \$5.50.

Japanese Iris Seedings. A splendid selection. 12, \$1.50.

THREE FOR ROCK GARDENS

Hardy Iris

Iris Cristata. The dearest Baby iris, amethyst blue. 30c. each; \$2.75 per doz.; \$20.00 per 100.

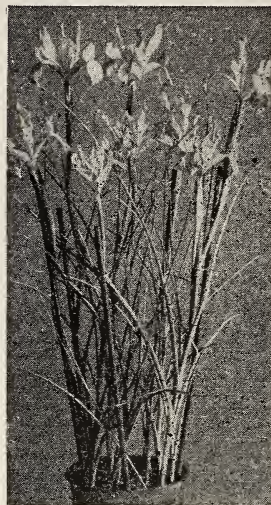
Iris Missouriensis. 1 ft. Large and showy, clumps. Clear lavender blue veined blue ad purple. 35c. each; \$3.50 per doz.; \$25.00 per 100.

Iris Verna. Evergreen, lovely soft lavender. 30c. each; \$2.75 per doz.; \$20.00 per 100.

3 or 6 sold at the dozen rate; 25 or 50 at the 100 rate.

SPANISH IRIS

(Iris Hispanica)



Spanish Iris

One of the most attractive flowers for the house. 6-8 bulbs in a 6-inch bowl planted in Prepared Fibre or in good garden soil will give a wealth of bloom.

Of brilliant colors, blooming profusely the Spanish Iris is at its best during June—perfectly hardy and increases rapidly. Plant in clumps in loose sandy soil about 2 inches apart and 3 inches deep.

Bazaine. Dark bronze with golden blotch.

Belle Chinoise Rich sunny yellow.

Cajanus Deep golden yellow.

Flora. White and light lilac.

Heavenly Blue. Brilliant rich blue.

Imperator. Deep dark blue.

King of the Blues. Deep dark blue.

King of the Whites. Large pure white.

Ophir d' Or. Deep tone of pure yellow.

Prince Henry (new). Rich bronze.

Solfaterre. Deep purplish blue, yellow blotch.

Thunderbolt. Beautiful dark bronze, golden blotch. 10c. each; 90c. per doz.; \$6.00 per 100.

3 or 6 sold at the dozen rate; 25 or 50 at the 100 rate.

STOCKS (Gilliflower) SEEDS

CUT-AND-COME-AGAIN stocks. Sown early, begin blooming in July and continue during September and October.

Abundance. Very early, rose and mallow.

Almond Blossom. Soft Rose and White. Strong spikes.

Beauty of Nice. Delicate flesh pink. Very much required.

Bella-di-Napoli. Antique rose. Early bloomer.

Blanca (White Lady). Pure white. The very earliest.

Creole. Creamy yellow.

Etincelente Bright crimson red.

Mont Blanc Pure white large flowers. Fine for cutting.

Princess Alice Pure white.

Queen Alexander Exquisite shade of lilac-rose. Much required.

Rose of Nice Rose-mallow.

Rose-vif Rose, lilac rouge.

Sapphire Rich deep blue.

Souvenir of Monaco Bright crimson red. Pkt. 15c.; ¼ oz. \$1.50; 1 oz. \$4.00.

Aurora (Golden Gerbe) Rose. Champagne color.

Cote-d'Azur Rich deep blue.

Empress Elizabeth, (Bienniel) Bright rose. Fine color.

La Brilliant Blood red, Half dwarf. Desirable for borders.

Violet of Nice Dark violet.

Violet of Parma Light violet. Pkt. 25c.; ¼ oz. \$2.00; 1 oz. \$5.50.

Brilliant Brick, blood red. Very strong stalks.

Pyramidal A new white. Enormous flower. Very strong plants.

Pkt. 50c.; ¼ oz. \$4.00; 1 oz. \$10.00.

Mrs Edward Tuck A new creation. Mallow glossy flower. Pkt. 75c.; ¼ oz. \$5.50; 1oz. \$12.50.

Gardens Don't Grow Old Like Other Beautiful Things

LILIES (THE GARDEN GLORY)

Plant lilies, they are the glory of the garden. Their matchless beauty is unrivalled by any other flower. It is a most fallacious idea that lilies are hard to grow. Most of the species can be left undisturbed for years in the same place where they increase until taken up and divided. Lilies can be had in bloom from early June until September in the garden, and some sorts can be flowered in the house for Xmas and Easter. Cultural directions are sent out in printed form with every order.

NOTE: Most Lily Bulbs, being of late maturity, do not arrive in our country until October and November, the best time to plant. Where the ground is liable to freeze before late Lilies arrive, it should be mulched with leaves or manure.

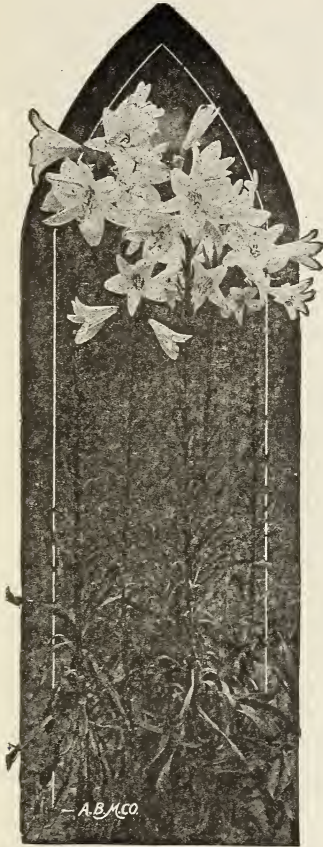
Lilium Candidum (Madonna Lily)

Our Candidum are grown in the NORTH OF FRANCE, and we pride ourselves on their superior quality.

One of the loveliest lilies growing. Height, 4-5 feet, with 15 to 20 snowy white flowers on the stem with golden stamens. Fragrant old-fashioned and well known 'tis true, but unsurpassed in its chaste beauty. Easiest of culture. Can be left for years in same position. It thrives in either sun or shade, preferring the former.

This lily arrives from France in September, and must be planted by November 1.

Directions for success with every order.



Lilium Candidum

Selected bulbs—

35c. each; \$3.50 per doz.; \$25.00 per 100.

Jumbo Bulbs—

50c. each; \$4.50 per doz.; \$35.00 per 100.

Mammoth Bulbs—

60c. each; \$6.00 per doz.; \$50.00 per 1000.

Three Enchanting Lilies

Martagon Album. 4-5 ft. June. (White Turk's Cap Lily). A lily so exquisite it is hard to describe. On the tall, slender but strong stems the numerous waxy white flowers with reflected petals sway and glisten, the golden tipped anthers shimmer, the whole forming a pyramid of delightful beauty.

Each, \$1.25; 12, \$12.75.

Excelsam (I. Testaceum). 3-5 ft. June-July. In grace, form, color and fragrance this noble lily has no equal. The flowers are short trumpets with beautifully reflexed petals, the color is a rich-toned buff, verging on light apricot, with deep golden anthers.

Each, \$2.00.

Szovitzianum. 3-4 ft. The stout, tall stems clothed in jade-green leaves often bear on one stem as many as 30 flowers in a pyramid cluster. Clear waxy citrin yellow, lightly spotted with black dots. It attains its best growth the second season.

Each, \$2.00.



Lilium tenuifolium

THE CORAL LILY

tenuifolium. 20-24 in. June. The lovely Coral Lily of Siberia, the earliest to grace our gardens with its brilliant coral red flowers. Produced in masses of 20 to 30 on slender stems which are beautifully clothed with grass-like foliage. Loves cool, partly shaded location.

HARDY GARDEN LILIES

Requiring three conditions essential to success, namely: A cool rooting medium. Perfect drainage, and shade from hot sun. Many are of the simplest culture such as the Japan Speciosum types. Umbellatum, etc., and most of our native lilies.

THREE RARE AURATUM

Platyphyllum. 6 to 8 ft. Leaves are long and broad. Flowers white, heavily spotted with golden yellow. Petals are very large. The ground is white; dotted richly with bright crimson spots; a band of red with golden halo through center of each petal.

Rubrum Vittatum. Large petals of clear white, through the center of which passes a blood red band.

Each, \$1.00; 12, \$10.00.

One each of these truly magnificent RARE lilies, \$2.75.

RARE PINK LILIES, ETC.

Kramerii. 3 ft. June. A more graceful or charming lily is rarely met. The color varies from shell-pink to a lovely rose-pink, so rare in Lilies; golden anthers. Fragrant short trumpets. Thrives in a well-drained, rather dry soil, composed of gritty loam and leaf-mold. Partial shade suits it best, among low growing shrubs. Plant 6 inches deep.

Each 70c.; 3, \$2.00; 10, \$7.50.

Rubellum. 2 ft. Flowers very early, the end of May. The medium widely expanded trumpets are of a beautiful rosy pink with a silvery sheen, sweet-scented. Thrives among the roots of low growing shrubs and in light sandy compost of leafmold and loam.

Each, 75c.; 3, \$2.00; 12, \$7.50.

L. Washingtonianum. A gorgeous lily, 4 to 5 feet high. Opening pure white they change to blush rosy red and, before fading, into a deep wine color. The perfume is simply entrancing. Plant 6 inches deep. Loves shade and moisture at the roots, blooming best among tall shrubs or trees.

Special. Each, 75c.; 3, \$2.00; 12, \$7.50.

Martagon. (Dalmaticum, Turk's Cap Lily). A handsome Lily, bearing clusters of purple, wax-like flowers. Thrives best in partial shade. June. 5 ft. Each, 50c.; 12, \$5.00; 100, \$40.00.

PINK LILIES (Cont.)

- Bolanderi.** One of the rarest of Lilies with bell shaped, deep crimson flowers, dotted purple. Requires a well-drained situation. July-August. 2 to 3 feet. Each, 75c.; 12, \$7.50; 100, \$60.00.
- Chalcedonicum.** Nothing can be more enchanting than this lovely GRECIAN lily in flower, slender firm stems bearing 5 to 8 brilliant waxy scarlet flowers. Each \$1.50; 3, \$3.75; 12, \$12.50.
- Cordifolium.** Growing 2 to 3 feet high. The beautiful leaves heart-shaped, the lilies creamy white like a Magnolia blossom. Each, \$1.50; 3, \$3.75.
- Kelloggii.** A most graceful lily, 3 to 4 feet high with a slender stem and from 3 to 15 flowers. Soft pink with closely recurved petals. Very fragrant. Each, 75c.; 3, \$2.00.
- Marhan.** A lovely hybrid between L. Martagon Album and L. Hansonii. The color is unique, being a clear orange with red-brown spots and streaks. A vigorous grower. Height, 4 to 5 ft. June-July. Each, \$1.75; 12, \$18.00.
- Regale (Myriophyllum).** 3-4 ft. July. A new and glorious lily from China, most vigorous, with sturdy stems. The short trumpet-shaped flowers are pearly white, almost translucent, the heart suffused yellow, outside petals lightly shaded amber. Each, \$1.00; 3, \$2.80; 12, \$10.00.

PURE WHITE & WHITE GROUND LILIES

- Auratum.** Golden Queen Lily. 4-5 ft. August. Flowers are enormous, 6-12 inches across, pearly white, spotted reddish brown with a golden band down the center of each petal. Thrives best in partial shade, among shrubs, etc. Each, 45c.; 3, \$1.20; 12, \$4.50; Monsters.
- Brownii.** 3 ft. July. Long trumpet-shaped flowers, the inside creamy white, shaded reddish brown. Is of easiest cultivation, requires cool soil, GOOD DRAINAGE, and a warm situation. Winter protection same as for tulips. Each, \$1.00; 3, \$2.50; 12, \$10.00.
- Speciosum Album.** 3 ft. Aug.-Sept. Very sturdy. Reflexed petals of glistening crystal white, feathered green with green anthers. Fragrant. Each, 55c.; 3, \$1.50; 12, \$5.50.
- Speciosum Album Kraetzerei.** A most beautiful Lily. Purest white with narrow band of palest green down the center of each petal, brown anthers. Each, 65c.; 3, \$1.75; 12, \$6.00.
- Speciosum Magnificum.** 3-4 ft. Same as L. Roseum, the flowers are more massive, the stems stouter, the petals flushed ruby carmine, margined white. True to its name, "Magnificent." Each, 55c.; 3, \$1.50; 12, \$5.50.
- Speciosum Melpomene.** A grand variety, strong grower, flowers freely. Dark crimson purple, heavily spotted and margined white. Each, 55c.; 3, \$1.50; 12, \$5.50.
- Speciosum Roseum.** 3 ft. Aug. Petals recurved ground color white flushed, deep rose, all rugged, with rubies and garnets and sparkling with crystal points. Green anthers. Each, 50c.; 3, \$1.40; 12, \$4.50.

YELLOW AND YELLOW GROUND LILIES

- Columbianum.** Like a miniature "Humboldtii." Bright golden yellow, spotted maroon. Each, 40c.; 12, \$4.50.
- Hansonii.** 3-4 ft. June. Bright green foliage, in whorls on stout stems, rich waxy yellow flowers, black spotted. Thrives in sun or shade. Each, 75c.; 3, \$2.00; 12, \$7.50.
- Parryii.** 3-4 ft. July. Of most beautiful form and color, the large trumpet flowers bright citron yellow, deliciously fragrant. Plant in warm, well drained situation 10 inches deep. Strong bulbs. Each, 75c.; 3, \$2.00; 12, \$7.50.
- Parvum.** A charming little Lily with many small, bell-shaped flowers. The color is reddish-orange, shading to orange at the center, with crimson tips at points of petals. Prefers a moist, well-drained situation. July, 3 to 4 feet. Each, 60c.; 12, \$6.00.
- *Philadelphicum.** The plant usually bears 2 to 5 upright flowers which are pale yellow, spotted maroon and tipped with bright scarlet. Each, 30c.; 12, \$3.00.

ORANGE, RED AND SCARLET LILIES

- Batemanni.** 3-4 ft. Aug. Exceptionally fine. Succeeding anywhere. Color a glowing apricot, upright calyx, dark anthers. Each, 25c.; 3, 90c.; 12, \$3.50.
- Canadense.** (Canadian Bell-flower Lily). 2 to 4 feet. One of our most beautiful native lilies, flowers bright yellow, with black spots. Each, 25c.; 12, \$2.50.
- Canadense Rubrum.** Crimson, spotted with black; 2 to 3 ft.; flowers June and July. Each, 25c.; 12, \$2.75.
- Carolinianum.** Showy lily with slender stems, bearing reflecting orange red flowers, heavily spotted maroon with white throat. Very hardy and fragrant; will thrive in well drained situation. July-Aug. 3 ft. Each, 50c.; 12, \$4.50.
- Davuricum.** 3 ft. June-July. Needs hardly any care, multiplies rapidly and can be left undisturbed for years. It forms groups of brilliant tinted flowers, colors ranging through buff, yellow, red, crimson shades. Each, 30c.; 3, 85c.; 12, \$3.00.
- Elegans Fine Mixed.** Bloom in June. Are of easy culture, Grow anywhere in well-drained soil and are a very desirable, cheap sort. 3, 70c.; 12, \$2.00.
- Elegans "Kikak."** Very attractive. Golden yellow flowers with black spots. Each, 35c.; 3, \$1.00; 12, \$3.50.
- E. Leonard Joerg.** Rich apricot, dark spotted. Each, 30c.; 12, \$3.00
- GRAYI.** 3-4 ft. A native lily with deep red flowers. One of the finest for planting in shady places. Each, 35c.; doz.; \$3.50.
- Henryii.** 4-6 ft. August. A vigorous lily. Thrives in ordinary soil, prefers a mixture of peat. Can be left undisturbed for years, without special care, sending up taller flower stalks each season, bearing magnificent yellow lightly spotted with brown. Plant 6 inches deep. Each, 75c.; 3, \$2.00; 12, \$7.50.
- Humboldtii.** 5 to 7 ft. Magnificent with a wealth of large orange colored flowers with bright purple spots, reflexed petals borne on very stout stems. They flower with marvelous profusion; 30 to 40 flowers have been found on one stem. Can remain undisturbed for years. Plant 10 inches deep. Each, 75c.; 3, \$2.00; 12, \$7.75.
- Lilium Willmottiae.** Grows 4 ft. high with about 20 flowers on stem of a vivid orange red, the recurved petals spotted brown. Each, \$1.00; 3, \$2.75.
- Paradalinum (Panther Lily).** 4-6 ft. July. Robust grower of easiest culture. Flowers are borne in abundance, bright orange flushed scarlet, recurving petals. Grows best in well-drained garden loam, partial shade and moisture. Each, 35c.; 3, \$1.25; 12, \$4.50.
- Roetzlii.** Stem slender, leaves crowded, very long and slender; the closely revolute perianth is a clear reddish orange, dotted maroon. Needs to be well massed to get its best effect. As it grows quite tall, it can be planted in low places. A rare lily. Each, 50c.; 3, \$1.40.
- Superbum.** 4-6 ft. (Turk's Cap Lily.) Erect stout stems crowned with clusters of orange red flowers spotted crimson. A sheet of flame when seen in the shrubbery or border. Each, 25c.; 3, 70c.; 12, \$2.60.
- Tigrinum.** 4-5 ft. July-Aug. The old well-known Giant Tiger lily, large pyramids of flowers, orange red with black spots. Each, 25c.; 12, \$2.75.
- Tirginum Flore-pleno.** The double form. Each, 35c.; 12, \$3.00.

PERENNIAL FLOWER SEEDS

- Aconitum. Wilsoni. Light blue. Pkt., 25c.
Fisheri. Dark blue. Pkt., 25c.
- Alyssum Saxatile. Compactum, yellow. Pkt., 15c.
Silver Queen. Soft primrose. Pkt., 15c.
- Alstroemeria. Mixed hybrids. 2 ft. Pkt., 25c.
- Amaryllis Hippeastrum. (New hybrids) Pkt., 25c.
- Anchusa. Italica Dropmore. Deep gentian blue. Pkt., 15c.
- Anemone. St. Brigid. Pkt., 25c.
Sulphurea Alpine. Pale yellow flowers. Pkt., 25c.
Pulsatilla. "Pasque flower." Violet. Pkt., 25c.
- Anomatheca Cruenta Iridaceae. Coral red. Pkt., 15c.
- Aquilegia. Alpine. Rare. Dwarf blue. Pkt., 25c.
Caerulea. Azure blue. Pkt., 15c.
Chrysantha. Fragrant waxy yellow. Pkt., 15c.
Canadensis. Snowy reddish orange. Pkt., 15c.
Clematiquila. Spurless large flowered, rich shades. Pkt., 25c.
Flabellata Dwarf. White flowers. Rockeries. Pkt., 25c.
Delicatissima. Delicate rose and yellow. Pkt., 25c.
Glandulosa. Large blue and white. Pkt., 25c.
Mrs Scott Elliots Long Spurred Hybrids, Pkt., 25c.
Rose Queen. Long spurred pink, white center. Pkt., 25c.
Snow Queen. Long spurred. Pkt., 15c.
Skinneri. Green and gold. Pkt., 15c.
- Aster. Subcaeruleus. Large lilac blue flowers. Pkt., 25c.
Alpinus. Dwarf. Violet blue. Pkt., 15c.
- Aubrieta. 4 in. Eyrel. Rich violet purple. Pkt., 25c.
Leichtlini. Rose. Single. Pkt., 15c.
- Campanula. Medium. Canterbury Bells. Blue, white, mauve, rose, mixed. 1/8 oz., 65c.; pkt., 10c.
Calycanthema. "Cup and Saucer." Deep blue, mauve, rose, white, mixed. 1/8 oz.; 65c.; pkt., 15c.
Pyramidalis. Blue, white or mixed. Pkt., 15c.

RARE VARIETIES

Pkt., 50c.; 1/2 pkt., 30c.; trial, 15c.

- Alliariaefolia. Long nodding white bells.
- Carpatia (Baby Hare-bell). Light violet.
- Longstyla. 3 ft. Bluish violet flowers.
- Latifolia Alba. Olympian Bell Flower.
- Michauxiodes. Delicate porcelain blue.
- Mirabilis New. Masses beautiful pale blue flowers.
- Moerheimi. Stately Camellia-like, pure white.
- Macrostyla. Distinct and lovely. Lilac veined.
- Macrostyla Rosea. Large rose.
- Persicifolia Grandiflora. Blue, white or mixed.
- Pfitzeri Coerulea Piena. Large flowered azure blue.
- Vidalli. Large creamy yellow racemes.
- Glomerata. Dwarf. Clustered. Rich violet.
- Catananche Coerulea. Deep blue. Everlasting. Pkt., 15c.

DELPHINIUM (Hardy Larkspur)

New and Rare Varieties

Pkt., 50c.; 1/2 pkt., 30c.; trial, 15c.

- Brunoianum. Blue and musk-scented flowers.
- Bella Donna. Clear turquoise blue.
- Cardinale. Scarlet, yellow center.
- Ernest. Opalescent blue.
- Fanny Stormonth. Large flowered light azure blue.
- Dusky Monarch. New. Large smoky purple spikes.
- Duke of Connaught. Double bright velvety blue.
- Mrs. Creighton. Semi-double cobalt blue shaded plum.
- Lavenda. Unique blue and lilac rose, black eye.
- The Alake. Enormous deep purple blue flowers.
- Nudicaule. Dwarf scarlet.
- Rev. E. Lascelles. Deep velvety blue, white eye.
- Zalil. Sulphur yellow.
- New Large Flowered Hybrids. In pale blue shades.
- Chinensis. Blue, white or mixed. 10c.
- Digitalis Gloxinioides. Purple, rose or mixed. 10c.
Canariensis. Pure yellow. 15c.
Gloxinioides Rosea. 15c.
Gloxinioides White. 3 ft. 15c.
Monstrosa Mixed, 25c.

EREMURUS

Pkt., 50c.; trial, 25c.

- Himalaicus. 6-8 ft. Pure white flowers.
- Bungel (Himalayan Asphodel). 6-8 ft. Bright citron-yellow blossoms.
- Robustus. Delicate peach color.
- Fragaria Indica. Yellow flowers, scarlet fruits. Ornamental borders, fine for hanging basket. 15c.
- Funkia. Alba. White Plantain Lily. 25c.
Caerulea. Blue. 25c.
- GENTIANA. Acaulis. Blue for edging, etc. 15c.
- Cruciata. Deep blue in clusters. 15c.
- Lutea. Tall and robust, tawny yellow. 20c.
- Helleborus Niger. "Xmas Rose." White and rose. 25c.
- Iris. Aurea. Tall, rich yellow. 15c.
Californian Bracteata. Yellow, netted crimson. 20c.
Tenax. Deep claret to pale lilac, silvery netting. 20c.
Californian Iris. Mixed. 20c.
Kaempferi Japanese varieties. Choice blend. 25c.
"Snow Queen." Petals full, snowy white. Rich golden yellow blotch. 25c.
- Linaria Macedonica Speciosa. Cream color, orange blotch. 1/2 pkt., 30c.; 1 pkt., 50c.
- Linum. Gold Cup. 25c.
Heavenly Blue. 25c.
- Meconopsis cambrica (Welsh Poppy). Pretty yellow flowers. 25c.
- Integrifolia (Yellow Thibet Poppy). 50c.
Wallachi (Himalayan Poppy). 50c.
- Penstemon Gordoni Splendens. Rich dark blue. 25c.
- Isophyllus Hybridus. Gorgeous hybrids. 25c.
- Lupinus. Bronze king. Bronze-colored flowers. 50c.
Kittiwake. Silvery pink to rose. 50c.
Morheimi. Soft rosy peach. 25c.
Nelly. White, tinted rosy mauve. 25c.
Old China. Pale blue, upper petals rosy mauve. 50c.
Queen of Sheba. Violet, bright yellow upper petals. 50c.
Sunshine. Bright golden yellow. 50c.
Taplow Purple. Rich, glowing purple. 50c.
The set of 8 Lupins, \$3.00.
Buff, yellow and flesh shades, 50c.
- Papaver Orientale Hybrids. Orange and scarlet shades. 15c.
Mrs. Perry. Soft shrimp pink. 25c.
Mrs. Stobart. NEW. Exquisite rose cerise. 50c.
- New Pyrethrum. Cactus flowered. Petals, quilled and twisted. 50c.
- Ranunculus. New Giant Florentine. 50c.
- Primula. Vulgaris. Fragrant yellow. Loves cool shaded spot. 15c. Veris. Pale yellow. 20c.
- Beesiana Hybrids. Velvety purple shades. 50c.
- Bullevana Hybrids. Apricot and buff shades. 50c.
- Salvia Splendens. Argentea. White flowers. 50c.
- Farinacea. Azure blue. 25c.
- Sclarea. Effective blue and white. 25c.
- Turkestanica. Silvery rose. 40c.
- Scutellaria Coerulea. Long racemes. Heavenly blue. 50c.
- Thalictrum dipterocarpum. 4 ft. 25c.
- Tritoma Tuckil. "May Queen." 15c.
- Veronica. Spicata blue. 15c.
Incana. 1 ft. Silvery foliage, delicate spires, violet blue. 15c.
- Watsonia Hybrids. Easily raised from seed. 15c.

PANSIES (Giant Early Flowering)

Pkt., 25c.

- Celestial Queen. Azure blue & King. Silvery white, blue eye.
- Hellos. Yellow. blue eye.
- Charm of March. Velvety Botan. Black. blue. Apricot Queen. Coppery rose.
- Triumph of the Giants. Choicest blend.
- Viola cornuta (Tufted Pansies). 25c. pkt.
Nora Marrow. Bluish bluish. White perfection.
- Primrose Dame. Yellow.
- Papilio. Blue and white.

SUPPLEMENTARY LIST
PERENNIAL FLOWER SEEDS

- Pkt. any variety, 50c.; ½ pkt. 30c.; trial pkt., 15c.
- Aethionema Cordifolium.** Alpine. ½ ft. Waxy pink.
- Anchusa Myosotiflora.** Deep ethereal blue.
- Arenaria Balearica.** Splendid in stepping stones, garden walls, crevices, etc. White flowers.
- Campanula Rotundifolia.** "Blue Bells of Scotland."
- Cherianthus Linifolius.** Flowers lilac mauve. Very floriferous. Fine for dry rocky and borders.
- Allioni.** Siberian wallflower. Bright orange.
- Citrus (Rock Roses)** Floriferous, showy with fragrant leaves. For dry sunny spots.
- Colchicum Autumnale.** Autumn crocus.
- Edelweiss Siberian.** The beautiful chaste white velvet Star of the Alps.
- Erinus Alpinus.** A charming little rock-plant with purple flowers.
- Iberis Tenoreana.** For rockeries and old walls.
- Garganica Trailer.** Starlike flowers, blue white centre.
- Morina Longifolia.** Very pretty and unusual. Tubular flowers, opening white inside bright scarlet. Glossy foliage. Blooms June to Sept.
- Myosotideum nobile.** The Giant Forget-Me-Not of the Chatham Islands, bearing large corymbs of beautiful blue flowers edged white. 5 seeds, 40c.
- Portenschlagiana.** Wall bellflower. Dwarf, blue purple flowers.
- Oxalis Corniculata.** Foliage rich purple, flowers yellow, very dwarf habit.
- Floribunda.** Pretty rose-colored flowers, long in bloom, 9 in.
- Sedum Acre.** Mossy stone crop. Rocks stepping stones, etc. Flowers Gold Dust.
- Fabaria.** Beautiful rose.
- Kamchaticum.** Trailing habit. Bright orange flowers.
- Spurium.** Of creeping habit. Umbels pink flowers.
- Stachys Lanata.** Tall silvery stems, the leaves a soft velvety grayish white. Lovely for garde neffects.
- Pardanthus. Chinensis "Giraldi."** Chinese Panther Lily. Orange, spotted red-white.
- Thymus Serpyllum (Wild Mountain Thyme).** A favorite little plant for rockwork and covering sunny banks, foliage hairy and flowers rosy purple. 2 in.
Pkt., 50c. Trial, 25c.

NEW AND RARE LILIES

- Backhouse Hybrid Martagon.** Wonderful Hybrids.
- Columbianum.** Graceful turban-shaped golden flowers
- Dalmaticum Hybrids.** All shades of pale pink, light rosy purple to black purple.
- Giganteum.** The "HIMALAYAN Lily." Long tubular white lilies, flushed purple inside.
- Martagon Album.** 20 to 30 pure white, waxy flowers.
- Regale.** Blooms outdoors early in July.
- Szovitzianum.** 4-5 ft. Color, rich straw yellow, spotted black.
- Paradisea Gigantea.** Liliastrum. "St. Bernard's Lily." Beautiful white, fragrant.
- Lillago.** "St. Bruno's Lily." 1½ ft. White, green spotted petals. Lovely for rock work.
- Tenuifolium.** Coral Lily. **Parryii.**
- Humboldtii.** **Parvum.**
- Agapanthus Umbellatus.** African Lily. Bright blue.

INSECTICIDES

- Aphine.** Destroys aphid, thrip, etc. Excellent cleanser for house plants. Pint, 75c.; quart, \$1.25; ½ pt., 40c.
- Bug Death.** Contains no arsenic to injure vines, birds or bees. 1 lb. pkt., 25c.; 3 lbs., 60c.
- Fungine.** Infallible remedy for mildew, rust, etc. Pt. 65c.
- Sulpho Tobacco Soap.** Quickly exterminates all insect life on plants and flowers. 3 oz. pkt., 20c.; 8 oz. pkt., 25c.
- Bone Meal for General Use.**
5 lbs., 50c.; 10 lbs., 75c.; 25 lbs., \$1.50.
Last for years. Do not decay.

GARDEN REQUISITES
JAPANESE BAMBOO STAKES

Green colored, invisible. Light, strong, for staking lilies, gladioli, dahlias, etc.

1½ ft.	\$0.15	\$0.50	\$0.75	\$1.00	\$2.00	\$3.75	\$ 7.00
2 ft.20	.60	1.00	2.00	2.50	4.75	9.00
2½ ft.25	.75	1.25	2.50	3.75	7.00	13.00
3 ft.30	.80	1.35	2.60	4.75	8.75	17.00
4 ft.35	.90	1.50	3.00	5.75	11.00	20.00
5 ft.40	1.50	2.25	4.50	6.00	11.50	22.00
6 ft.50	1.60	2.50	4.75	9.00	17.50	34.00

EXTRA HEAVY STAKES
6ft. natural color cane

For Dahlias, Young Trees, Tomatoes, Pole Beans, etc.

4 ft.	50	\$2.75	\$4.50
5 ft.	3.25	6.00
6 ft.	3.50	7.00
8 ft.	5.00	9.00
6 ft. long, 1½ in. diam. for Dahliasdoz.	4.50	35.00	

Shipments of Bamboo Stakes are made by Express. If wanted by freight, add, to each order, 50c. for bur-lapping and 50c. for cartage.

JAPANESE BAMBOO RAKE

- Japanese Bamboo Rake.** Light, flexible, durable. Better made than the cheaper kinds. For cleaning lawns and walks, etc. Each \$1.60.
- Nippon Garden Shears.** Attractive and practical; of sturdy steel with bright red handles. Cut the heaviest stems with ease. Each, \$1.50.
- Raffia.** Best material for tying plants.
Lb., 40c.; 5 lbs., \$1.75.
- Raffa Tape.** Nile Green, very strong, 250-yard spool, \$1.25.
- Silkaline.** Strong green thread for plant tying.
Per spool, 40c.
- Yamade Garden Broom.** Excellent for sweeping lawns or putting greens of leaves and cut grass.
Each, \$1.00.
- Neponset Paper Flower Pots.** Made of waterproof paper. Light, clean and unbreakable.

	Doz.	100	1,000
2½ inches	\$0.15	\$0.60	\$5.50
2½ inches18	.70	6.00
3 inches20	1.00	8.00
3½ inches23	1.25	10.00
4 inches25	1.50	12.00
5 inches40	2.20	20.00
6 inches60	3.00	25.00

POT OR GARDEN LABELS

Wooden—	100	1,000
4-inch	\$0.40	\$2.50
5-inch45	2.75
6-inch60	3.25
8-inch	1.25	9.00
10-inch	1.50	11.00
12-inch	2.25	15.00
Copper-Wired—		
3½-inch65	3.50

OYAMA PLANT FOOD

A Wonderful Japanese Food
MAKES PLANTS THRIVE

For house plants or flower and vegetable gardens. It keeps the soil rich but odorless and is economical to use. It contains 17 percent of nitrogen and can be used in dry or liquid form. Full directions on each package. House plant size, 35c.; garden size, \$1.20. Postpaid.

"Stim-u-Plant." A plant food in tablet form for fertilizing all kinds of plants in the home or garden. Tablets should be used in the soil or dissolved in water and applied to the soil. 30 tablets, 25c. (by mail, 30c.); 100 tablets, 75c. (by mail, 85c.).

Sulpho Tobacco Soap. Quickly exterminates all insect life on plants and flowers.
3 oz. pkt., 20c.; 8 oz. pkt. 35c.