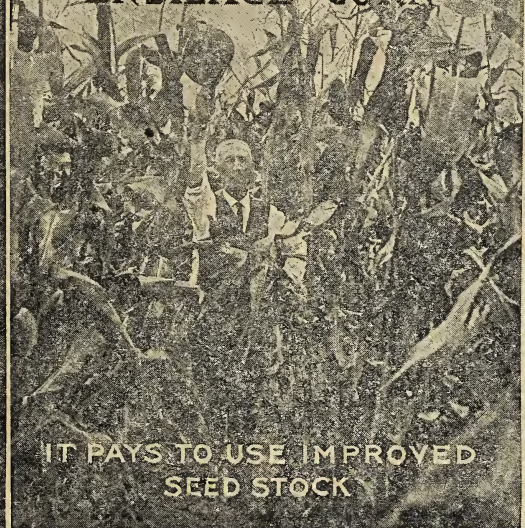


Historic, Archive Document

Do not assume content reflects current scientific knowledge, policies, or practices.

BERRY'S SEED FACTS AND BARGAIN CATALOG

ST. CHARLES WHITE
THE GREAT
ENSILAGE CORN



IT PAYS TO USE IMPROVED
SEED STOCK



FIELD
SEED
OUR
SPECIALTY

A. A. BERRY
SEED CO.
CLARINDA, IOWA

PURE
BRED
GRAIN
AND
GRASS
SEED

THE WORLD'S LARGEST SEED HOUSE
SELLING DIRECT TO THE FARMER

NOW IS THE TIME TO ACT

SEED BUSINESS RUSHING

THE IMPORTANCE OF ORDERING NOW. BY J. F. SINN.

Early in the season during December and January, many thought the farmers were not going to use the usual amount of seed as they were not buying. Now it looks like every farmer and his neighbor are going to seed down part of their farm. We are having an unusual call for grass seeds. Our orders are beyond our expectations. The low prices and special offers we have made are bringing results. In this issue we are making some further inducements for business and it is our sincere belief that this will be the last Seed Facts we will issue until Fall, for if orders multiply in the next thirty days as they have in the past, we will be too busy putting out seeds and will have no time to send out further offers. Remember this and take advantage of the special lots offered in this issue and get your order to us at the earliest possible date.

We have still on hand a big supply of seeds of all varieties and can take care of a vast amount of business, as it is our plan to place all of our help at your service and will work both day and night if necessary, so as to give you the prompt shipments so much desired by the buyer. Since we have the stocks and low prices and can offer you this splendid shipping service, getting your orders to you promptly, we would urge you to favor us with your business. We cannot only save you money, but give you assurance that your order will be filled promptly and correctly with the quality of seed you wish.

It has been our experience that the customer who does not get his seed on time, as a rule, can blame himself, as he keeps putting off ordering from day to day and then late in the season, sends in the order and wants the seed shipped by first freight or mail. Now do not make this mistake. You will need your seed within the next thirty or sixty days, so order today. It is none too soon. If you will send in your order promptly after receiving this bargain catalog, you will receive your seed in plenty of time and be pleased with the quality and service. Don't delay the buying of your seeds longer as the crop is too important and the annoyance of not having seeds on hand at planting time too great. If you will take our advice and do as thousands of other farmers and gardeners are doing, you will sit right down and make out your order the very day you receive this catalog and have it in the mail the next day and by the third day your seeds should be started to you.

The buying of seeds is far different than the buying of other things. Your order for garden seeds does not run into money, but a few dollars wisely spent for seed at the proper time can bring you big results, not only in crops and truck such as you can grow, but real pleasure, for it is a pleasure to make garden during the early spring and watch from day to day the growth of your vegetables which reduces the cost of living so fast and are so appetizing when brought fresh from the garden. We wish to make a special appeal to the garden seed buyers, for our prices are low and our seeds are tested and guaranteed and we know that our varieties are among the best. If you never have bought your garden seeds from us, try us this year as we are sure we can satisfy you and make a pleased customer.

We are recognized as the leading and largest field and grass seed mail order house. Our foremost position has been attained by offering bigger and better values in seed than you could secure elsewhere. Never in the history of our business did we have better quality or a more complete stock of field seeds. We can take care of your order on any of the items quoted on our price list and the more you study our prices the more you will appreciate our values. Our highest grade is extremely high quality and you will find good, dependable seed at very attractive prices on our Choice and Fancy grades. The house that offers more than one grade, as a rule has a higher standard for their best quality than if only one grade was offered, often selecting a Fancy quality as their best. We are proud of our World Brand quality and are glad to offer this grade to those who wish the best.

Our special offers are extra good bargains and are bound to save you money. Read this Seed Facts from beginning to end and see just how much and how many extra good things we have to offer you. Always keep our general seed catalog for reference. If you have lost your copy or destroyed same, be free to write for another. Get up a Club order if you can and rush your order to us. This page has been written with the desire of securing your order and getting the seed to you so as to make a pleased customer. We will do our part, but it is up to you to do the ordering. Delays are costly. Order now while the best can be obtained and have ample time to receive the shipment.

WHY PAY HIGH PRICES WHEN YOU CAN GROW

NITROGEN—YOUR MOST EXPENSIVE PLANT FOOD



Price commercial fertilizers and see if Nitrogen is not the most costly. Not only is it high priced but you cannot afford to do without it. Possibly that is the reason for the high price. It is Nitrogen that gives your crops that beautiful dark green, healthy looking color. It is Nitrogen that forms the protein content in the products you raise. Take any crop you may wish to grow. Put part of it on soil poor in nitrogen and part on a soil containing an abundance of it. When you harvest your crop have it analyzed for feeding value. You will find that the part raised on the poor Nitrogen soil to be lower in protein than the same crop grown on the soil containing plenty of Nitrogen. Furthermore, there will be a bigger yield on the last mentioned soil.

Clovers and other legume crops use more Nitrogen than other crops. That is why they are so rich in protein. Please let it stick in your mind that Clover uses your most expensive plant food in large quantities. How then can Clovers build up soils? Does it not sound reasonable that they would ruin soils if they used such large amounts of this expensive plant food? The fact is they would run down the soil if it were not for the wonderful manner in which nature enables these plants to gather the nitrogen from the air for their own uses. They cannot only take enough for their own use but some to spare besides so that as a result your soil is richer in Nitrogen because you grew clover in spite of the fact that your clover used more Nitrogen than other crops would have required. We mention clover but this applies to all legumes such as Alfalfa, Soy Beans, Cow Peas, etc.

There are exceptions to the above, however. Certain conditions must exist before these legumes can start gathering Nitrogen from the air. If those conditions do not exist, your soil is actually being run down by the crops you sowed to build it up. There must be a certain kind of microbe in the soil to penetrate the roots of these legume plants to enable the plants to gather the Nitrogen from the air. These microbes are exceedingly small. You have to have about ten thousand together in order to see them at all. These little microbes make little lumps or nodules on the roots after they penetrate them. When these nodules are present, you can know that your clover or other legumes are gathering free nitrogen from the air and using it for their growth as well as storing some in the soil for other crops.

It requires a different species of these bacteria for most all different legumes and you cannot be sure the correct ones for the crops you plan to grow are in the soil unless you have grown the same crop a year with good success.

You can apply these bacteria however, in

different ways. The soil from the fields growing the same crop successfully can be dug up and harrowed into your field or mixed with the seed in different ways and sown together. This however, is quite a little task and you run the risk of introducing foreign weeds in this method. The pure culture method on the other hand is economical and can easily be applied.

This pure culture is bred from bacteria taken from the nodules of healthy plants of the same kind you wish to grow. They are developed in laboratories and prepared in modern incubators, packed and ready for use. All you have to do is to add a little water and sugar in the bottle, shake until the culture is dissolved and then add enough water to moisten the seed you want to sow. Full directions accompany each bottle.

There are many brands of this pure culture but it is not an equally satisfactory. Our Superior Nodule Germ is prepared in one of the foremost laboratories. We have arranged for fresh shipments at frequent intervals so that we have a culture that we can positively guarantee to inoculate your seed properly, providing the seed is first sown on sour land as the acid in the soil will kill the bacteria. But if you will sow it on sweet soil according to the simple directions, we positively guarantee satisfactory results or a refund of the purchase price. We know of no other house making such a guarantee on their pure culture but we know our product and can back it up with this absolute guarantee. You may be able to secure cheaper kinds but you cannot afford to take the risk when you are absolutely safe in using Berry's Superior Nodule Germ.

Give your legume crops a fair chance. Buy only guaranteed cultures—use our Superior Nodule Germ and take no chances. Satisfactory results guaranteed.

Prices: $\frac{1}{2}$ acre, 60 c; 1 acre, \$1.00; 5 acres, \$4.00; 10 acres, \$7.50; 20 acres, \$14.00. Postpaid.

SOIL INSURANCE

YOU CAN'T AFFORD TO BE WITHOUT IT

The very life blood of your farm is the fertility of your soil. Fertility is wealth. With it you can produce a golden flow of dollars. Without it you face bankruptcy. The fertility of your soil is a sacred trust. The lives of men and women and children depend upon it. You can waste and destroy it or you can use it intelligently and build it up so as to bring you ever increasing profits. The higher your farm is valued the greater your need of increased fertility. With prices down you must produce more per acre. Fertility brings production. Clovers bring fertility. The farmer who uses Clovers liberally in his rotation insures his soil; he knows he is building up fertility. His acres have ever increasing value because they are increasing their powers of production.

TAKE NO CHANCES

Insure your soil this spring. The longer you put off the regular use of Clovers the more it is going to cost you to put the land back where it ought to be. You may have put off seedings during the past two years because of high prices. This year it may be the tightness of money and the low value of farm products. We know conditions are not favorable for money but at the same time you are damaging yourself and yourself alone if you fail to properly employ the great soil building forces that nature has put at your disposal.

RED CLOVER

Throughout the great corn belt of the United States Red Clover is the great foundation of successful farming. In the most prosperous settlements you will find great fields of this wonderful legume. As you ride in a train in the early summer and see these beautiful acres of dark green foliage tinged with the purple of the blossoms it is indeed a sight that is "good for sore eyes." It reflects more and more the financial standing of the owners for almost without exception you will find such sections to be prosperous. Don't for your own sake fail to sow Clovers liberally this spring. The season for seeding is near at hand. There is no time to delay getting your seed. You can get some big values in Clover seed right now. We have in stock, ready for immediate shipment a lot of extra fine World Brand Seed. We have all three grades ready to go out the same day your order is received. But this World Brand is something extra fine. It is beautifully colored seed, bright and plump and clean. We do not believe that the most critical buyer would find a single point to object to and to many this high grade seed would be an eye-opener for quality. It pays to use the best. Get it. Our price is low. We are making extremely low prices considering the high quality. Why use cheap seeds of doubtful quality. They are frequently an expense that brings no results. High grade stock usually proves to be an investment that pays big dividends. Consider good seeds an investment, not an expense. They cost so little more you can't afford to take chances. Our seeds are all sold on a quality



basis and if you will compare values on this basis you will find that we can make you a big saving on your seed bill. Our Red Clover values are real genuine bargains at present prices and we challenge the world to beat these values. Let us help you with your soil insurance. Send us your order today for immediate shipment.

ALSIKE CLOVER

Get acquainted with this valuable perennial Clover. Lasts several years from one seeding. Fine for wet land. Grows on soils too sour for other Clovers. Matures the same time Timothy does. Excellent in hay and pasture combinations. Also fine to mix with Red Clover. Increases yields and improves the quality. Only six pounds per acre required when sown alone. Add a pound or two to your Red Clover seedlings. Sow it on land seeded to Timothy last fall. Mix it with your spring seedings of grass. Use it in creeks and sloughs and on land where you have trouble in getting Red Clover started.

We have some fine values in Alsike Clover. See price list for low quotations. Our World Brand quality is the cream of our entire stock. It is economical seed to buy. More and more Alsike is being seeded every year. Its value is becoming widely known. Thousands of acres will be seeded to this crop this spring that never knew what Alsike Clover was. Get your start with Alsike Clover this year. Try it out even if only a half a bushel or a quarter bushel. Send your order in promptly. We'll get it right out and guarantee you satisfactory seed at a money saving price. Order Today.

WHY DO THEY DO IT

YOU CAN BENEFIT BY LEARNING THE ANSWER

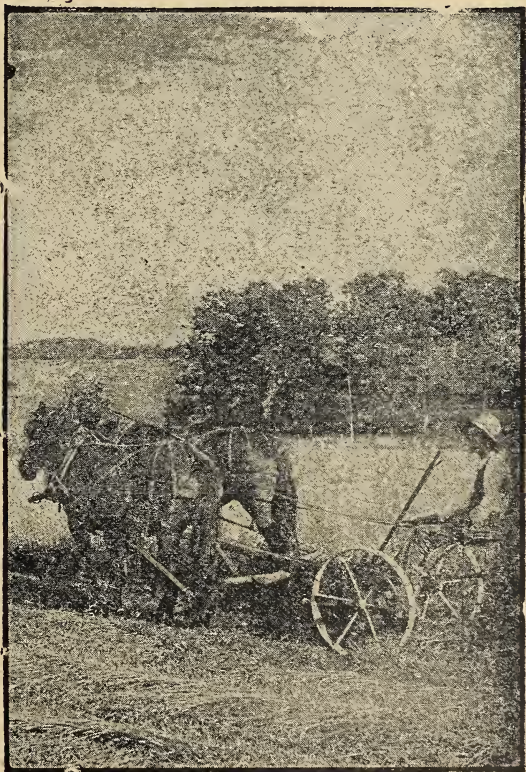
Why do farm papers devote so many articles to Sweet Clover? Why do Agricultural Experiment Stations so generally recommend this crop? Why does the United States Department of Agriculture publish so many bulletins on this crop? Why do farmers who grow Sweet Clover boost it so enthusiastically? Why do they do it? The answer is simple. They do it because the crop has merit that makes it worthy of a place on nearly every farm. You are urged to grow it because you will profit by doing so. This wonderful Clover which is so much like Alfalfa in many ways is one of the most powerful soil building forces that nature has placed at your disposal. It has an almost unbelievable capacity for taking nitrogen from the air and depositing it in your soil. Its roots develop rapidly and with an almost irresistible force. Hard subsoils are broken by their power. Drainage is improved and plant food is brought up from depths untouched by other crops. When this clover has lived its life of two years it dies unless plowed under sooner. These wonderful roots that have worked magic to your soil then quickly decay and add tons of humus to your soil, thus improving its texture and fertility. You now have a piece of land that has been regenerated and is capable of producing bigger and better crops. You have a soil perfectly inoculated for Alfalfa if you wish to grow it.

BUT THE HALF HAS NOT YET BEEN TOLD

While this soil transformation is taking place Sweet Clover will make money for you in many ways. Sow it this spring and you should get a good big hay crop the first year. A crop almost identical in value and appearance to Alfalfa. The second year you should get at least two hay crops or a hay and a seed crop. We have paid as high as \$150 per acre for seed produced. Use it for pasture if you wish. There is nothing finer. It does not bloat stock like other Clovers. Is equal to Alfalfa in feeding value. Cattle readily acquire a taste for it if turned on the crop while it is young. They will then prefer it to all other feed. Will take care of more stock per acre than any other crop and will keep your stock in finest condition and cut down your grain ration. We haven't room to tell you all the good things about Sweet Clover but we urge you, for your own sake to start growing it.

THIS IS A FINE TIME TO GET STARTED WITH SWEET CLOVER

We are able to offer you the biggest and most attractive values in Sweet Clover that we have been able to put out for years. We have secured large stocks of high grade seed at low figures and we have cut our prices to the bone. We can make you a big, substantial saving on your seed bill. The cost of seeding is now extremely low. It is to your advantage to start now while you can secure the seed at these sacrificed prices. See our enclosed price list for quotations on new crop scarified seed that is sold subject to any test that you want to put it to. Your money back if you are not greatly pleased with what you receive. These are bed-rock wholesale quotations that represent a big saving. We still have fine stock of both the White and Yellow Blossom Biennial varieties. Your orders will be shipped out promptly and we guarantee you a satisfactory and money saving purchase. The cost of seeding an acre is very small with seed at these low prices. We advise buying both for spring and fall



WHEN IS A BARGAIN NOT A BARGAIN?

WHAT TO WATCH FOR IN ALFALFA SEED



There are seed dealers today who are offering nice looking, high-testing Alfalfa seed at prices that look low to buyers. They talk about the nice appearance of the seed and send samples to show that it is nice looking seed. The seed is nice looking. We have some of this nice seed ourselves and we are selling it at sacrificed prices. See our quotations on Foreign-grown Alfalfa seed. That is the kind of nice looking seed that can be sold for much less than hardy domestic seed. Why isn't Foreign seed as good? Because it isn't as hardy. It is grown in warmer climates and will not withstand our winters. You probably want to have your Alfalfa field last for a number of years. Can you afford to risk this weak type of seed? Will you save money when you pay \$2.00 or \$3.00 per bushel less and then have to do it all over again in a year or two? You loose your seed, your labor, and your crops because you thought you were saving a lot on your seed bill. This supposed saving rarely amounts to fifty cents on an acre. Will you take a chance for that much?

WHAT TO DEMAND?

When you buy Alfalfa insist on hardy types. Use seed such as our World Brand Nebraska grown. If you are in northern states use our Dakota or Montana grown World Brand. Better still, if you have much trouble with winter killing use Grimm Alfalfa. It pays even though the seed costs much more. When you buy seed you are figuring on the final results and not for seed that just looks nice. You must have seed that can produce the kind of Alfalfa that will withstand your conditions. Seed that carries in the heart of its germ the strong sturdy vital characteristics of hardy parent plants. Don't be fooled by nice looking seed at a low price. Get the kind of seed you need for your section. Then if you can figure a saving in price take it but do not sacrifice quality for a low price. Know what you are getting.

ALFALFA A SPECIALTY WITH US

We have studied this crop from all angles for years. We have investigated the value of this crop and the best ways to use it and to get the most out of it. Methods of seeding and harvesting have been carefully compared. We have searched out the best seed producing sections and are acquainted with all the principal growers and handlers of Alfalfa seed. Our location places us at the door of America's greatest Alfalfa seed producing section. We know when to go to get the kind of seed you ought to have. Our financial condition enables us to pick up snaps that so frequently come to the fellow with the money in his fist. This year we have a finer and better stock of Alfalfa seed than we have had for several years. Large quantities have already been sold but we still have enough for another month's ordinary business.

SEE OUR BED ROCK PRICES

If you want to buy high grade home grown new crop seed and will compare seed values on the quality

basis we will challenge any and all competition. If you cannot see a saving ranging from \$1.00 to \$3.00 per bushel on this seed we don't consider ourselves entitled to your business. These Alfalfa seed values are genuine bargains because the seed is the right kind of stock for American farming; because it is clean and high germination and because the price is right. See our low quotations on World Brand seed. This Nebraska grown dryland non-irrigated seed will fill the average need. Then this still harder Dakota or Montana grown seed is offered at a price that means a big saving. Bear in mind that this is all new crop seed of high germination. It is stock that is guaranteed to please you. Our Dakota grown Grimm is also a big bargain and you will find the saving on this type of seed to run as high as \$5.00 per bushel. Our other grades represent different qualities of home grown seed. If you still think that you want to take a chance on very fancy foreign seed, we have it. See our price list. A lower price, but not as big a value.

WE WANT YOUR ALFALFA SEED BUSINESS

We are asking you for it because we know that we can serve you to advantage and supply you with seed at prices that mean an actual saving. If you can't see it now you'll find out in the long run that the saving is there. The saving will look bigger to you than you may now imagine. We don't expect your business if we can't save you money. In fact we're not entitled to it if we can't do that. But look our offers over again. Take into consideration that we include bags free. We can and will save you money. Send us your order today. We will make a prompt, careful shipment and if you do not consider that you have big value for your money when the seed arrives we'll take it back and promptly refund every cent you paid out. Act now and mail your order today.

HIGH IN PUBLIC FAVOR



CLOVER AND TIMOTHY MIXTURES THAT CUT DOWN GRASS SEED BILLS

"Send me five bushels of that mixed seed like my neighbor Bill Black bought of you a couple of weeks ago." That's the way a good many orders read that we get every day. It's a pretty good sign that Bill Black (or whatever his name might be), is satisfied with his seed and convinced that he had big value for his money. He showed this seed to his neighbor who thought likewise and decided to get some of the same kind at the same place. He took our name down but probably forgot to ask Bill just what the seed was called so he writes as above. We, of course, look up Bill's order and invariably it is one of the four mixtures that we here describe.

MARVELOUS MIXTURE

This combination has become wonderfully popular during the past year. It is an exceptionally fine mixture because it is unusually rich in Clovers. Forty per cent is composed of various Clovers. The balance is Timothy seed. This 40% consists of Red Clover, Alsike Clover, Alfalfa and Sweet Clover and the combination as a whole is well adapted for permanent seedings or at least makes a seeding that will last for several years. This mixture is richer in legumes or Clovers than most but that seems to be just exactly what many of our customers are looking for. It's not a bad plan to have lots of Clovers and especially when you can get them in a combination that enables you to make your seeding at a very low cost. It requires only 12 to 15 pounds per acre of this Marvelous Mixture and the price of the seed as you will see on the enclosed price list is really very low considering the per cent of Clovers. We receive many letters of praise every year on our different seeds but none are more enthusiastic or more emphatic than these from our friends who have grown this mixture and write about "The Whale of a Crop" that they got from their seeding. In our estimation this mixture is one of our biggest grass seed values this year. We have sold more of it than any previous year and in our history. We still have some left all thoroughly cleaned and ready to go the day your order arrives. The quality is guaranteed to show up to your entire satisfaction. Sold subject to any test. Your money back if you are not satisfied that you have good value for your money.

ALSIKE AND TIMOTHY

This mixture has always been a leader with our customers. It is made of a grass and Clover that are naturally adapted to growing together. Mature at the same time and both perennials. When grown together they produce more per acre than when grown separately. The one helps the other and together they make a heavy yielding combination of excellent hay. Can be used either for pastures or meadows. Only takes 12 to 14 pounds per acre. The cost of the seed is low. See price list. This mixture is of high class, thoroughly cleaned seed. Most of our stock is

bought at bargain prices, mixed as it grows. It is difficult to separate the seeds and seed is therefore usually discounted. We have improved the quality of the seed and know that it will please you. It is absolutely guaranteed to satisfy. Many carloads of this seed pass through our hands direct to consumers every year and if you will notice the values we have right at this time we are confident that you will appreciate the bargain. If you have not yet started with our famous Alsike and Timothy mixed do so this year. Mail us your order now for a prompt shipment of this guaranteed seed.

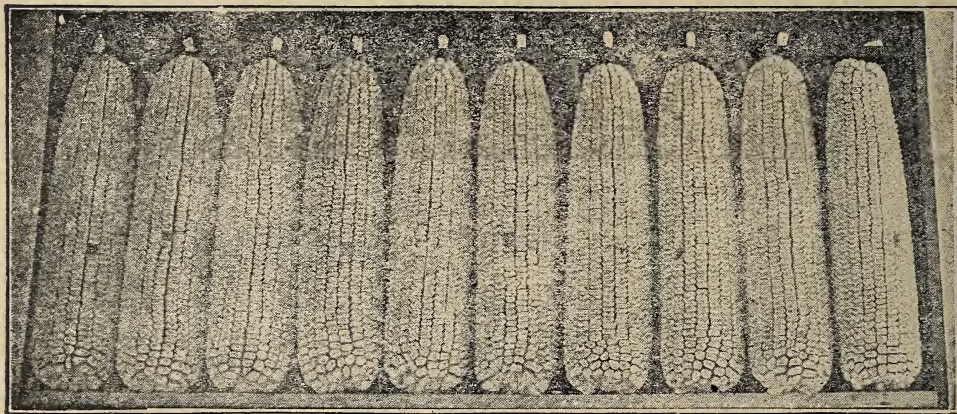
RED CLOVER AND TIMOTHY MIXED

This mixture needs no explanation. Its value is appreciated by nearly every one. It makes a richer feed and more of it. It builds up land instead of running it down. There is more money in growing it. You can buy our ready mixed seed, cleaned and ready to sow at a very attractive price. We cannot see why anyone should sow pure Timothy (excepting for seed) where this more valuable combination can be secured at this low price. The cost of the seed is very little more than cost of pure Timothy and the returns to be secured in the way of yields so much more attractive that we believe it is to your own best interests to use it. Our Red Clover and Timothy mixed, like all our other seeds, must show up to your entire satisfaction. We'll take it back if it doesn't and refund all money plus transportation charges. Your order will have prompt attention. Send it in to us right now.

CLOVER, ALSIKE AND TIMOTHY

This mixture combines Red Clover and Alsike Clover with Timothy and makes a grass seeding that we can certainly recommend to you strongly. Nearly all of the best farmers here combine Red and Alsike Clovers. They find it brings them better yields both from the standpoint of quality and quantity. Personally we are partial to this mixture and we are confident that a trial would make you an enthusiastic booster for this great mixture. Seed guaranteed of satisfactory quality same as all other mixtures. A big value at our present low quotations. See price list. We'll get your shipment out in double quick time. Order Now.

SPECIAL SEED CORN VALUES



SELECTED AND DOUBLE GRADED STOCK AS LOW AS 40c PER ACRE—EXTRA HEAVY YIELDING STRAINS

We are offering you at this time real bargains in Seed Corn. Have big values both in ear and shelled stock. Every pound of our stock has been especially selected for seed purposes from strains that have been bred up for extraordinary yields. Every lot has been tested and shows good germination. Every shipment that goes out is backed by our guarantee of satisfaction. All seed shipped may be retested if desired. You will not be out one cent of the money you spent on your Seed Corn order if the seed does not satisfy you in every way. It pays and pays big to use improved seed and you cannot afford to take any chances with inferior seed when you can get such stock as we now offer at these very low prices.

EXTRA SELECT EAR CORN

We want every critical seed corn buyer to order some of our extra select ear corn. This year we have the finest stock of ear corn that we have had for years. We wish you could see the big beautiful ears that comprise our stock of extra select stock. A good seed corn enthusiast would be in his glory if he could just handle this kind of seed corn all day long. Our seed corn men bragged about this corn so much that they had pretty nearly every one in the office out to look at it. It surely is seed that we can be justly proud of. The ears are nice and straight. Good solid corn well filled on both ends. In short it's just the very best that comes from the fields. If we were to charge you \$10.00 per bushel for this corn we are confident that you would say "it's a bargain" when you opened the crate and saw the corn. We are not asking ten dollars a crate but we are making a special offer on all varieties that we have in stock of \$5.50 per bushel of 70 lbs., shipping weight 80 lbs., no charge for crates.

We have a fine supply of high testing seed, ready to ship out promptly. Increase your corn profits this year by planting the best of seed. It pays and pays big. Now is the time to order. Act today.

One crate of this corn should plant about seven

acres. This will make the seed from extra select ears cost you about 80c per acre. Any man who knows the importance of good seed corn and realizes the influence on yield will see at once that this is a genuine bargain. It is to your interest to use this extra select stock and if you want some speak up in the meetin' and order at once.

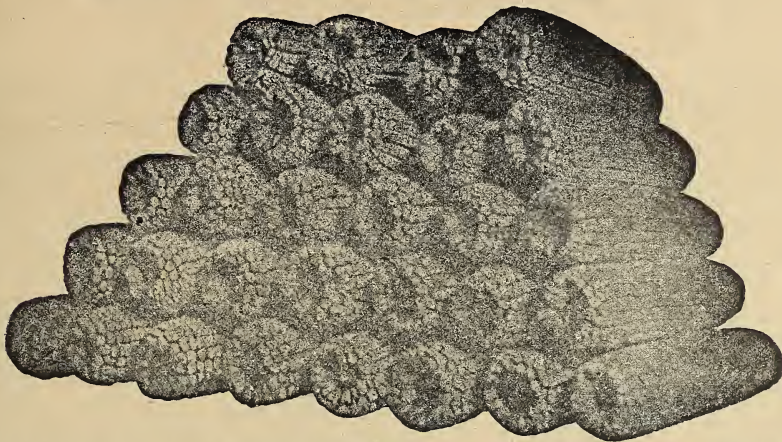
Shipped in strong closed crates, well braced and reinforced with wire bands

HAND SORTED, DOUBLE GRADED SHELLED CORN

Our stock of shelled corn comes from the same fields that produced the extra select ears just described. It is not simply crib run corn shelled up but is made from ears each one of which was selected by hand. Most of these ears would have made extra select ear corn but for becoming rather badly shelled in hauling and elevating to the sorters belt. We then pass these hand selected ears over the sorting belt again to be sure to have good stock. The seed is then shelled. After shelling it is graded twice over a new improved grader that we installed last summer. After passing them through this grading process it is just as uniform as we can possibly make it with improved machinery and careful seed corn men. It comes to you ready for the planter. What you get is seed corn, real seed corn. If for any reason you should not be pleased with what you receive you can get your money back promptly.

See our price list for quotations on all varieties. Figure seven to eight acres per bushel. See what it will cost you to plant an acre to this improved graded stock. Can you afford to risk lower yields at this price? You know you cannot, especially if you understand the influence of the kind of seed on the size of your crop. If all the books and articles that were written on the importance of good seed corn were combined into one book you couldn't read it all in ten years. Yet there are some men who will disregard this all and who go ahead and lose extra profits that they could have if they used improved seed such as this. If you only increased your yield one bushel per acre you would pay the entire cost of the seed. Grow better corn and more of it. Use improved graded seed. Order at once. You can't afford to wait. Will please you or hand your money back. Don't try to save 30c or 40c per acre on your seed. It doesn't pay. Improved Seed Corn can easily double your corn profits.

BERRY'S FAMOUS ENSILAGE CORN



ST. CHARLES WHITE, OUR HEAVIEST PRODUCER

Every day we receive dozens of letters asking us to recommend the best ensilage Corn. We find the demand for good ensilage Corn increasing wonderfully every year and we have been giving special attention to a Corn that would give the maximum results for this purpose. It is necessary in the first place to get a Corn that will make a big growth of forage and at the same time mature sufficiently well even in the northern states to make the highest quality of feed. We have tried a good many different varieties and strains in order to get a Corn that would be the most profitable to grow for this purpose and have found our St. Charles White to be the best all around Corn for this purpose.

GRAIN YIELD HEAVY

The amount of grain that the Corn will produce has, of course, a direct bearing on the feeding value of the ensilage and this St. Charles White has produced remarkable yields which is one of the main reasons for our favoring this variety so strongly. Yields up as high as 100 bushel per acre have been secured from this variety. The ears are large and run quite uniform. It is, of course, a white Corn as the name indicates and is a grain particularly well suited for ensilage purposes. We want to emphasize to you the importance of selecting a Corn that will produce lots of grain rather than nothing but stalks. We know of no variety that will give such a big tonnage of fodder and at the same time will produce so much grain that will practically mature.

A GREAT PRODUCER OF FORAGE

The stalks of this Improved St. Charles White seed corn that we have grown to a large height and produce big broad leaves all the way up the stalks. These leaves do not fall off early in the season but stay with the stalks until gathering time, which is a point of value that should not be overlooked. Yields of fodder and Corn estimated 40 to 50 tons per acre have been produced by this great ensilage corn and we are confident that you would find it necessary to produce very valuable crops for you. It is adapted to practically all kinds of soil and will make much more profitable returns on poorer types of soil than yellow corn would. No matter, however, how rich your soil is we would recommend this St. Charles White to you for ensilage purposes.

You no doubt have a copy of our general catalog and we would refer you to page 57 of same for full description.

SEED CONTROLS YIELD

St. Charles White Ensilage Corn can be secured from many sources, the same as nearly any other type of Corn. Simply because it has this name, however, would not necessarily indicate that you were getting the best type of St. Charles White seed Corn. Our stock has been especially selected for seed purposes and chosen from fields that were bred up for yielding qualities and it is very much to your interest to secure seed of this type. When you go to figure out the cost of planting an acre there would be but a few cents difference one way or the other on the price of the seed and you positively cannot afford to experiment with your yield or to take any chances on your crop just because you might be able to save a few cents per acre on your seed. It has been demonstrated time and again that the proper selection of seed may easily double the yields per acre. Yield is the all important thing, especially when it comes to ensilage Corn.

We are very anxious to start you with our St. Charles White Corn as we are confident that the satisfaction you will secure from our seed will bring you back again whenever you are in need of an additional supply. We have many different varieties of seed Corn, all having some particular merits and suited to various conditions but as an ensilage Corn this St. Charles White stock that we have ready for you is the variety that has proven itself to be beyond all question the greatest producer and is the variety that you should select.

This year we contracted quite a large acreage of St. Charles White and found the yield of seed to exceed our expectations so that we have a surplus of Corn at the present time and in as much as we are interested in seeing all of you who need ensilage Corn to get started with this variety we are going to make a special reduced price on our famous St. Charles White and offer 2000 bushel of our carefully hand selected and graded seed Corn at the following prices:

10 BUSHEL LOTS.....	\$2.00 PER BU.
5 BUSHEL LOTS.....	2.25 PER BU.
1 BUSHEL LOTS.....	2.40 PER BU.

BAGS FREE.

These prices are so low that anyone who wishes high germinating, well prepared seed Corn of the best yielding variety for ensilage purposes can obtain same. Every bushel guaranteed to please on arrival or can be returned and all money will be refunded.

We want to emphasize again the strong outstanding qualities of our St. Charles White as an ensilage corn. A big yielder of grain and a heavy grower of forage. If you intend to use your crop for ensilage purposes be sure to secure some seed of this heavy producer.

GROW SOME REAL CORN THIS YEAR

HEAVIEST YIELDING YELLOW CORN



PRIDE OF IOWA

This new variety has demonstrated beyond a doubt that it is our heaviest yielding variety as well as our best when it comes to quality. Understand, we have been breeding and improving corn for the past twenty years and we consider that our latest introduction, which is a cross of Improved Reid's Dent and Legal Tender, is as near perfection as we can secure in the way of a new variety that has real merit.

The main thing to consider in securing a new variety is the yielding qualities and maturity. In our Pride of Iowa we have both, as it is not a late variety, but will mature wherever Reid's Dent can be grown. In yield it excels any of the other varieties we list. This past season it made a real record. One hundred bushels per acre is an extremely heavy yield for the best varieties of corn, but with our Pride of Iowa it is not hard to surpass one hundred bushels to the acre. It is our belief that 150 bushels of corn can be grown from one acre field run, provided the ground is fertile and well tended, and weather conditions favorable for a corn crop.

If you want to make a record in the way of producing the highest yield of corn in your neighborhood, as well as the best quality, send us your order for our Pride of Iowa.

It has a deep golden kernel, good width, running from 16 to 20 rows to the ear and carries its thickness well to the tip of the ear and fills out unusually well, making a very large percentage of shelled corn. (See page 52 of our Catalog for further description.) It is necessary to see this corn in the ear to fully appreciate its merits. We have at this time sorted out the finest lot of ear seed corn that we have ever had and the variety that shows up best of all is our Pride of Iowa. We have a much larger amount of ear corn suitable for crating out of our Pride of Iowa than any other variety. In fact it is possible that we may have a surplus of this variety and since the corn

is so unusually nice, we are very desirous that every bushel be planted. We are going to make a special price on this variety and will sell 200 crates of our Extra Select grade at \$5.00 per crate. Now if you want something superior in the way of extra good seed corn, now is your opportunity to secure it. The cost of planting an acre is small and there never was a time that we could give you so much seed corn value for your money as today. Don't delay ordering as there is a big demand for seed and when this crate corn is sold, we will have to refuse accepting orders as it cannot be made and buyers must secure their seed while the best is to be had if they want only the best.

If you want shelled corn, see price list. Extra Selected Guaranteed Ear Corn \$5.00 per crate.

RELIABLE SEEDS

Rushville, Ind., 12-27-20.

Dear Sirs—Please send me one of your catalogs when they are out. I have always found your seeds reliable and just what I ordered in every instance.

Wishing you a prosperous New Year, I am
Yours truly, J. W. CAMERON, Route 7.

PROMPT SHIPMENT—FINE SEED

Jefferson, Ohio, 1-17-21.

Dear Sirs—The seed which I ordered from you has arrived O. K. and it looks fine. Thanking you for the way you handled this order and so prompt shipment, I remain, Yours truly,

F. A. STEPHENSON, Route 7.

BETTER THAN RECOMMENDED

Wausa, Nebr., Dec. 22.

Friend Mr. Berry—I sent for seed from you last year and expect to send for more this year for your seed was better than you recommend it to be so I call that good and could enjoy reading your magazine and think it a great help. Ever yours,

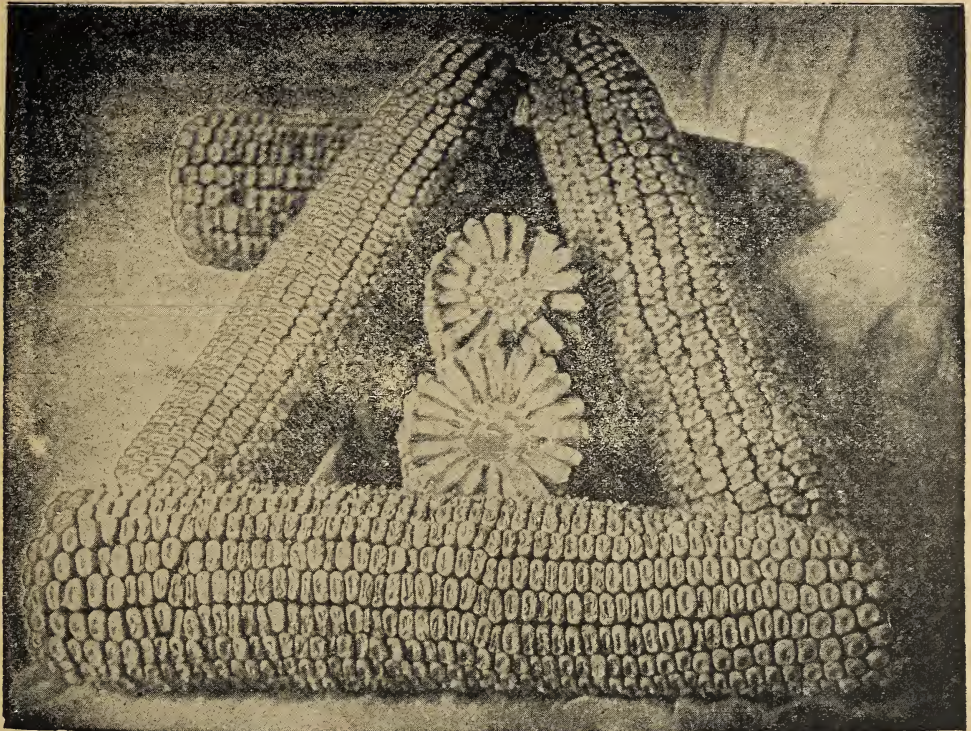
E. J. CLARENOR.

BIG PERFECTION RIPENS IN MICHIGAN

Edwardsburg, Mich., E. No. 2, 1-4-21.

Gentlemen—The Big Perfection Seed Corn you sent me last year got ripe and was fine. I have some fine seed of this kind. Yours,
ORLEY N. WAX.

WHITE WONDER



THE GIANT CORN—EXCELS ALL OTHER VARIETIES

If you want the heaviest yielding variety and the largest eared corn we have ever grown, we would then advise ordering the White Wonder. In all of our tests, the White Wonder has demonstrated that it will yield more bushels per acre than any other variety, and the only objection to it is that it is too large a corn for the northern part of the corn belt. In fact, we cannot recommend White Wonder north of the first tier of counties in Iowa, but for this latitude and south it will yield more bushels per acre than any other variety and will also mature so as to produce good sound merchantable corn that will grade and sell as well as any other variety on the market.

It does seem to us that many farmers are wasting their time and energy, when they plant year after year some runout variety of corn that they know is not the best. Why anyone should want to put a lot of labor on growing a crop, and plant inferior seed simply because he was not willing to invest 75c per acre for the best seed that he might obtain, is beyond our comprehension. You can buy our best selected ear corn that has been tested not only for yielding quality but germination as well and when you plant seed of this character, you then can rest assured that you have done all you can to make the crop a full success, so far as seed is concerned. Then when you tend this crop you can look forward to receiving an increased

yield and better corn at gathering time. We do not know how we can make it plainer to you that it is far more to your interest to plant the best than it is to ours to sell it.

What we wish to convey to you is that our White Wonder is the variety to select if you want the very heaviest yielder you can obtain and are not too far north to grow it successfully. Our Pride of Iowa will mature further north and is our next heaviest yielder. If you are located in Minnesota, Wisconsin and are too far north for the big yielding types of corn, then select Silver King, Golden Dent, White Cap Dent or some other of our improved varieties of earlier Corn. However, this catalog will reach thousand of customers who cannot make money faster than sending us an order for either our shelled and graded White Wonder, or if you prefer, order the Extra select ear corn. Our price on this new variety is only \$6.00 in our best ear corn and if we can not furnish you with a bushel of corn that will increase your yield, we would not want your order. We have the stock that will produce and this is the year to get new improved seed corn.

In order to get good seed corn you must buy it of a year when the best is produced. This is why we urge you to buy now. Never in the history of our business could we supply better seed than what we offer in our White Wonder.

SOY BEANS

GROW YOUR OWN FOOD CONCENTRATES

Why pay high prices for commercial feeds of high protein content when you can grow them on your farm for a fraction of what you would have to pay when buying on the market? You can not only save money but you have the assurance of getting pure stuff. We are speaking of Soy Beans and Cow Peas with special emphasis on the Soy Beans. These two crops are growing to be of vast importance to farmers because they are so valuable. There were thousands of acres sown last year and there will be hundreds of thousands of acres devoted to these crops this season. Not all will be sown to these crops exclusively. Many will put them in with corn thus using no extra land and yet reaping a double profit. This plan is especially advisable when corn is to be hogged down. Or it will add many dollars per acre to the value of your field after the corn has been husked. Your hogs and sheep will find hundreds of pounds of the most valuable food in the field of Soy Beans.

GOOD FOR HAY

Both Cow Peas and Soy Beans make good hay and lots of it if cut after bloom and while the pods are forming. You can harvest as high as four and five tons to the acre that is higher in feeding value than Alfalfa. Or if you want to feed it green as a soiling crop, you can secure ten to fifteen tons per acre. Just think for a moment what a tremendous amount of plantable rich feed this is. Where can you equal it? When it comes to a matter of hay or soiling crop we consider Cow Peas and Soy Beans about equal.

SOY BEANS BEST FOR HOGGING DOWN

When used for this purpose, the plants should be allowed to stand until the beans are quite fully formed. The real rich feed is the beans themselves. While the plant as a whole is higher than Alfalfa in feeding value, the beans actually analyze over 36 percent or more protein and 17 percent fat. Too rich to be fed alone. They are really a food concentrate. Feed that together with grain and you will fatten your hogs quicker and cheaper than any other method. Because they must be fed with grain, it is economical to plant in corn to hog down. However, heavier yields of beans are secured if planted alone and utilized as a pasture in connection with grain ration. You will cut down the grain ration to the minimum by pasturing hogs or sheep on Soy bean pasture.

Soy Beans yield up to 30 and 40 bushels of beans per acre. That means 1800 to 2400 lbs. of feed containing 36 per cent protein, 17 per cent fat. Now if you use commercial feeds, figure out the cost. By using soy beans pasture you practically return all of the fertilizing value direct to the soil thus enriching it.

SOY BEANS ARE SOIL BUILDERS

It is a legume crop and gathers nitrogen from the air and stores it in the soil. While you grow this valuable crop you increase the value of your soil. The texture is also bettered as about one-tenth of the plant is in the ground and this decays and makes your soil more mellow. Add to this the fertilizer deposited in the process of hogging down and you have your soil in shape to grow a bumper crop of corn or small grain next spring.

METHODS OF SEEDING

Soy beans will grow on any good corn land

They are not so sensitive to acid conditions as many legumes, but produce the maximum yields on sweet fertile land. They should not be planted before the ground is thoroughly warm and around corn planting time. If drilled in close rows use 1½ to 2 bushels per acre. When drilled in rows 24 to 30 inches apart use ½ bushel per acre. Some plant in hills with corn using a special attachment. This requires only 6 to 8 lbs. of seed per acre. One inch is about the proper covering altho on looser soils they can be put down two inches.

VARIETIES TO GROW

The kind to use depends upon your location and also the purpose for which you propose to use them. For hay you can use a later variety than for hogging down as the latter varieties produce more foliage and a bigger yield of hay. We give you the approximate dates of maturity so you can judge the kind to grow by the length of your season.

Soy Beans

Ito San.....	95 to 100 days
Black Ebony.....	100 to 115 days
Medium Early.....	115 days
Mammoth Yellow.....	120 to 125 days

We recommend the use of the Ito San and Medium Early Yellow for most of the corn belt. The early black is good for the North and the Mammoth Yellow for the south. We also recommend the Mammoth for hay in all sections. They make a big growth. They also surpass others for soil building purposes and they are used to a large extent for ensilage.

IMPORTANCE OF GOOD STOCK

The seed offered is usually quite clean altho some seed contains a lot of cracked beans that will not grow. Then again the seed may be of low germination on account of age or heating. We have taken particular care in securing our stock of Soy Beans and Cow Peas this year and all stock is guaranteed to be of high germination. The different lots may vary a trifle but each bag will bear a tag showing the exact germination as well as the date of the test. All seed is guaranteed to satisfy you or can be returned.

PRICES LOWEST NOW

The stock we have was secured to good advantage and we can save you money on this select stock. See price list for wholesale quotations.

You are the one to gain by ordering now and we ask that you send us your order promptly as that will enable you to pocket the biggest saving.

DOUBLING PROFITS



COW PEAS

It has been our observation and we believe that it has come to the attention of nearly all of our readers that every year there is an increasing use of legume crops in farming operations. We are realizing more and more the necessity of keeping the fertility of our soil up to the top notch in order to make the land produce paying crops. Fortunately nature helps out wonderfully if we will only follow the simple ways she has and use legume crops, which add the needed elements of nitrogen to the soil. Nearly all clovers do this, but often it is not convenient or advisable to sow clovers under certain conditions. Fortunately they are not the only legume plants.

There are over sixty-five hundred members in this family and clovers are by no means the only important ones. Cow peas rank high in value in the family of legume plants. POUND FOR POUND cow pea hay is equal in feeding value to Red Clover. The amount of digestible protein in cow pea hay is four times that of timothy and on that account is of such high value.

Cow Peas can be grown on land that is producing another crop such as corn. They can be either broadcasted or planted in the corn at the time of the last cultivation, just as many are now doing with rape. They are excellent for this purpose. While they are growing their protein hay, they are storing up nitrogen in the soil and thus assisting the growth of the corn. If desired, they can be used for ensilage purposes and such feed is far superior to that of corn fodder alone. Cow Peas are often grown in mixtures and when grown for hay, we strongly advise this. Cane, Sudan and Millet make excellent combinations. When grown together they are cured more readily and the hay of the two plants gives you an excellent balanced ration that is demanded by stock of all kinds.

Cow Peas are preferred by many in preference to Soy Beans for several reasons. They mature quite early and do not demand the careful seedbed preparation, neither do they require cultivation like Soy Beans. In curing for hay the soy beans have to be handled more carefully as the leaves shatter much easier than those of cow peas.

Cow peas this year are much cheaper than the early types of Soy Beans and this is a big item and the use of cow peas will therefore be greatly increased this season. If you are planning on sowing any forage crops this season, as no doubt most of you are, do not make the mistake of sowing your cane or sudan or millet alone. Use a mixture of cow peas. Your yield

will be increased and the forage will be very much higher in feeding value.

Do not devote a field to the growing of corn alone. Use your land. Cow peas will not run down your land. They build it up and produce feed of the highest quality.

The most satisfactory mixtures are cow peas and sudan or cow peas and cane.

The standard of all cow peas is the Whippoorwill variety. In our estimation it stands head and shoulders above all others and it is a variety that we advise growing under general conditions. It stands up well. It grows vigorously and yields very heavy crops. First seeds mature in about 85 days.

The New Era is the variety, if it is necessary to choose one that matures very early. This variety matures within 70 to 90 days and also produces a heavy crop of both forage and seed. It is the best variety to use in combination with millet. For pasture purposes or for feeding green, we suggest the use of mixed cow peas.

The seed we offer you is of the very best quality. You are safe in ordering from us. Our stock is choice and we have a nice supply, but advise ordering promptly, so that you may be assured of securing some of the seed.

Cow peas should be planted on practically every farm this summer. Open the door to bigger profits, better feed and richer soil by using cow peas.

HOG GROWERS, ATTENTION!

CUT COST OF PORK PRODUCTION 24%

GET YOUR HOGS READY EARLIER—SAVE 45% ON GRAIN

Men, if you raise hogs, give heed to this. Here are some facts and figures that will make you money if you are willing to profit by the experience of others. Every dollar you cut off of the cost of producing a hundred pounds of pork is just that much extra profit. You can cut the expense down just one-third by using Dwarf Essex Rape for pasture, and it is just as good for sheep as for hogs. The expense of the seed is practically nothing.



WHAT RAPE IS

It is somewhat similar to cabbage only it does not form heads but only large broad leaves. The Dwarf Essex variety is a biennial in warm climates but here it is sown in the spring for a quick growing forage crop. It will reach a height of two feet on the average if not pastured and under favorable conditions will grow three feet high.

YIELDS UP TO 30,000 POUNDS PER ACRE

This sounds exaggerated, almost impossible but it is a fact. Of course, this is a heavy yield but the average yield is from 25,000 to 30,000 pounds per acre. A tremendous amount of feed and is very palatable and greatly relished by the hogs and sheep. The big yields might not mean so much were it not for the fact that it analyzes as high as 37 per cent protein.

37 PER CENT PROTEIN

Think what that means. Take an average yield of 30,000 pounds per acre. That means 11,000 pounds of protein per acre. Protein, that expensive food so many of you buy in commercial feeds and pay such high prices for. Why will you do it when Rape pasture will supply such enormous amounts and return the fertility right back to your soil?

WHAT YOU CAN SAVE

Read the heading of this article. Those figures are based on careful tests in comparison with other feeds, including dry lot feeding. The results are based on tests in several states. In South Dakota the hogs on Rape pasture gained a quarter of a pound more a day than others. That means that by using rape pasture

you have hogs ready for market in four-fifths of the time it takes on a straight corn ration. In Iowa they saved \$4.75 in tankage and corn for every hundred pounds of pork produced with Rape pasture in connection with the regular feed. In South Carolina the cost of producing pork was reduced 34.4 per cent by using Rape pasture. In Wyoming the use of Rape pasture reduced the grain ration 46 per cent. It took over 9 bushels of corn to make 100 pounds of pork. With Rape it took less than 5 bushels of corn. In Pennsylvania hogs were fed grain with a combination pasture of Rape, Oats and Peas and made a gain of 45 pounds in fourteen days. And so we might go on if space permitted. No practical farmer can look these facts in the face and then not sow Rape this year.

SOIL AND SEEDING

For best results sow on land that is of good fertility. It will do well on medium soils although not good on sandy land or in sections subject to severe drought. It pays to apply manure if possible. The crop is worth it. The crop does not make very rapid growth in extreme hot or dry weather. Therefore early seeding is advisable for spring and summer pasture and July for fall pasture.

The rate of seeding for straight Rape pasture is about 3 pounds per acre. Some prefer to seed in rows about 30 inches apart as the hogs walk in the rows and are less wasteful. This takes only two pounds to the acre. Others broadcast in corn at the time of the last cultivation, using 4 pounds per acre.

SOME RAPE PASTURE COMBINATION

You can seed Rape on oats in a pasture the Rape after harvesting the oats. Others pasture oats and rape together, using 1 bu. of oats and 5 to 6 pounds of rape. We prefer rye to oats in the same proportion. Would advise seeding the Rape about ten days or so after the grain. Another excellent combination is three-fourths bushel oats or rye, one-half bushel Canada field peas, and 4 to 5 pounds of Rape. If you practice hogging down corn, plant soy beans with your corn by using a special attachment. Then sow 4 pounds of Rape at the last cultivation. That will produce pork quicker and cheaper than any other method you can use.

READY TO PASTURE IN 3 WEEKS

You can turn your hogs on Rape when it attains a growth of about ten inches. Some pasture sooner. Do not pasture too close. The best plan is to have two pastures and alternate them. You can pasture hogs without danger but cattle and sheep should be accustomed to it gradually and not put on while wet.

YOU GAIN IN TWO WAYS

Please understand that Rape pasture will not replace grain but it will cut down on your grain ration from one-third to one-half. That is where the big saving comes in. Then furthermore, you have your hogs or sheep ready for market much earlier than the average and at a time when the market is usually better than when the heavy shipments come in. So you gain both ways. Less cost to produce the pork and better prices for it.

GET PURE SEED AND BUY IT NOW

By all means avoid the use of the cheap annual Rape that makes little or no growth. Demand the genuine Dwarf Essex variety. We have it for you. Fine clean stock, new crop and of high germination. Guaranteed to please you. See our prices. They are rock bottom figures and include bags free. Let us supply you with the seed. You'll save money and get started on Dwarf Essex Rape, a crop that no hog grower can afford to be without.

A GREAT HOG PASTURE MIXTURE

BERRY'S BLUE RIBBON PORK PRODUCER



OUR CHAMPION ANNUAL PASTURE MIXTURE GROWS PORK AND MUTTON AT THE LOWEST POSSIBLE COST

We have no mixture that will make you as much money in such a short time as this Blue Ribbon Pork Producer. It is a mixture that is scientifically prepared. It is all pure seed stock of rich flesh building annuals. It is a mixture that is practical and recommended by our farmers who have grown it during the past year as the quickest hog producer they have ever grown. They are so enthusiastic over the merits of this pasture mixture that we are confident it will take like Wild-Fire with every farmer who raises hogs or sheep. It is adapted to cattle pasture also but is particularly made to produce pork and mutton at the lowest possible cost.

ANNUALS FORMING THE MIXTURES

The crops contained in this mixture have been proportioned with a view to giving the largest amount of flesh building food for the longest possible time during the growing season. We have combined pure seed stock of Peas, Spring Vetch, Spring Rye, Rape, Oats and forage cane. All the seed has been thoroughly re-cleaned and comes to you ready to be sown. You are probably acquainted with many of these crops and know their value. Glance over the list again. They are rich in flesh building foods. When hogs or sheep are pastured on such a mixture practically no grain is required. It can at least be reduced 60 per cent.

MAKES FULL GROWTH IN ONE YEAR

It is astonishing how quickly Berry's Blue Ribbon Pork Producer can be pastured. It can be sown any time during April and May in this latitude. It makes an exceedingly dense growth and withstands grazing well. Hogs and sheep can be turned onto it after it attains a growth of six inches and can remain on it until late in the fall. Some of these crops make their best growth in cool weather, others doing their best during the hot summer. Part are adapted to wet weather and others to dry. The mixture is so proportioned as to give a maximum growth during the entire season.

COST OF SEEDING LOW

In order to acquaint all of our customers with the sterling merit of this crop we are going to put Berry's Blue Ribbon Pork Producer on the market this year on practically a cost basis. We know that all of you are looking for a cheaper method of producing pork and mutton and we want to show you what gratifying results can be obtained by the proper kind of pasture. This mixture will not only cut your grain ration 60 per cent but it will make pork and mutton faster than any similar pasture mixture. We offer them for this season only.

BERRY'S BLUE RIBBON PORK PRODUCER

for only \$2.00 per bu. of 50 lbs. Bags free.

One Bushel Seeds an Acre.

Every farmer who has kept account of the cost of producing pork will immediately appreciate this cost as insignificant in comparison to results to be obtained. The cost of seeding is the only cost. There is no expense of harvesting or cultivation. It is practically an automatic pork producer.

GREAT BENEFIT TO THE SOIL

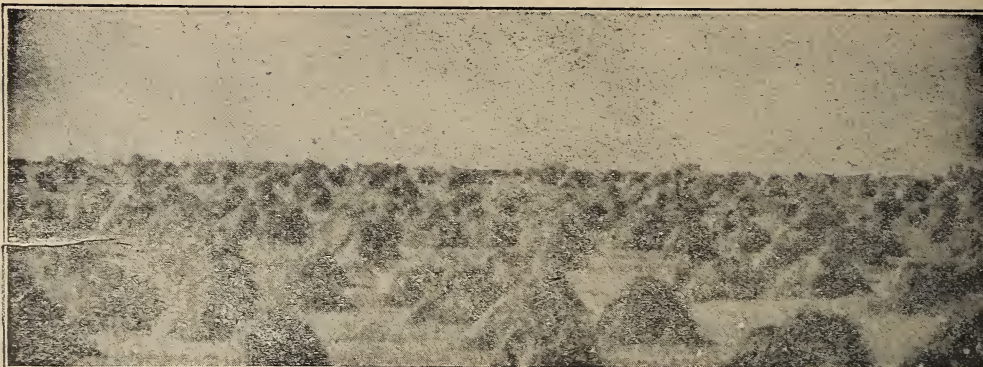
The value of the manure deposited by hogs while grazing can scarcely be over-estimated. In addition a large percentage of the crops contained in this mixture are crops that will add greatly to the fertility of the soil if turned under. They not only increase the fertility but add humus in large amounts that improves the texture of the soil. It becomes better able to return moisture and a fine seed bed can be readily made. This condition releases other plant food in the soil and put it in excellent condition to produce bumper corn or small grain crops.

GET STARTED THIS YEAR

Put in your order now for enough seed to put at least five to ten acres in Berry's Ribbon Pork Producer. Begin now to cut down the cost of producing pork and mutton. The seed is clean pure stock that will satisfy in every respect. If it does not please you when it arrives we will gladly order it returned at our expense and refund all your money. When the seed arrives the heavier smooth seeds such as the Peas, Vetch and Rape may have worked down to the bottom of the bag. Simply turn the bag upside down and shake it and it is ready to sow.

Sow it and you are bound to make big profits. Order Berry's Blue Ribbon Pork Producer--The Big Money Maker. Only \$2.00 per bushel of 50 lbs. Bags free.

A BARGAIN IS A BARGAIN WHEN YOU



HERE IS YOUR LAST CHANCE AT

ALFALFA BARGAIN

LOT 'PURITY' 99½% PURE

A REMARKABLE VALUE. ONLY \$12.90 PER BU. BAGS FREE
HIGHEST QUALITY. NEW CROP—RECLEANED SEED—FACE VALUE

This is hardy, dry-land, non-irrigated seed. We can recommend it to you without reserve as strictly high quality and extra fancy seed. It has fine color and plump berry. Shows excellent laboratory test both for purity and germination. You need this kind of seed in order to get the best results and if you appreciate a real bargain you will buy this Lot Purity Alfalfa both for spring and fall seeding. There is nothing cheap about the lot but the price and that is cut to the bone. Don't overlook your requirements for fall. Order now and save \$2.00 to \$4.00 per bushel on high grade.

YOU CAN MAKE A BIG SAVING ON LOT PURITY

RED CLOVER SPECIAL

LOT "FERTILE" NEARLY 99% PURE

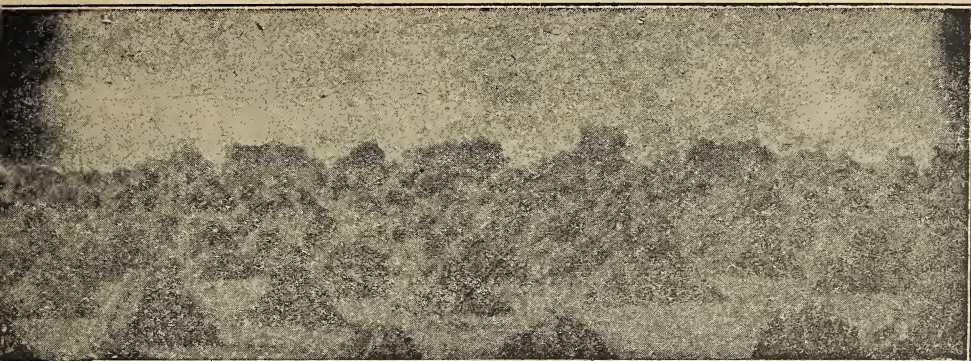
THE CREAM OF OUR STOCK. SACRIFICED FOR QUICK SALE
PRICE OF \$12.60 PER BU. MEANS BIG VALUES

We want some cash quick and to get it are sacrificing one of the finest lots of Red Clover we have ever had in the house. This is new crop, high germinating seed of fine purity. We can recommend this seed to the most critical buyers and positively guarantee it to show up to your entire satisfaction. There is some clover seed being offered for a little less money but it is seed that shows smaller berry and some discoloration while this is the finest of bright plump clean stock. You will find it much the cheapest to sow this kind in the long run. Take the advantage of this extraordinary bargain. Mail your order today. We'll ship the seed the same day your order reaches us.

SAVE MONEY ON LOT FERTILE, IT'S EXTRA FINE

SHIPMENT WILL BE MADE THE SA

GET REAL VALUE FOR YOUR MONEY



THE SEASON'S BIGGEST VALUES

WHITE BLOSSOM SWEET CLOVER

LOT "NORTHERN" 98% PURE

PRICE CUT DOWN TO \$8.40 PER BU. BAGS FREE

GET STARTED WITH THIS BIG MONEY CROP AT LOW COST

This White Blossom Sweet Clover value is the biggest bargain we have been able to offer you for many years. We bought this seed from a grower because he made us an unusually low price on it. We have a surplus on hand and are therefore passing it on to you at practically cost price in order to turn it quickly. This lot is fine seed and must please you in every way. Will refund your money if you are not perfectly satisfied. This bargain offer gives you a chance to start with this big money crop at extremely low seeding cost.

This is scarified seed and worth much more than untreated seed.

Buy now for spring and for fall use. Order early. Satisfaction guaranteed.

LOT NORTHERN IS A GOOD BUY—IT'S EXTRA HIGH GRADE

SUDAN GRASS SACRIFICED

LOT "WONDER" ONLY \$7.00 PER 100 LBS.

PRICES SLASHED TO TURN SEED INTO CASH QUICK

Lot Wonder is a special lot of Sudan grass that we have been able to secure at a reduced figure from a party who needed money quick. While it lasts, we offer it to you at the low price which this purchase made possible. By using Lot Wonder you can certainly get started with this wonderful forage crop at a low cost of seeding. Only \$1.00 to seed an acre. No extra charge for bags. Seed is free from Johnson Grass, thoroughly re-cleaned and guaranteed satisfactory. You can seed this any time from corn planting time till 70 days before frost. Don't do without Sudan Grass another season. Get your seed stock now.

LOT WONDER WILL CUT SEEDING COST TO THE BONE

THE DAY YOUR ORDER IS RECEIVED

MORE FEED FROM FEWER ACRES



GROW SUDAN, THE WONDER FORAGE CROP

Will you need more forage or hay or pasture this year? Sudan Grass will bring it to you quickly and in amazing quantities per acre. It is a grass that is able to solve a lot of your feed problems in a very satisfactory manner. The very nature of the plant itself fits it into your farming operations in an admirable way. We want to emphasize a few of the characteristics of the plant. It is to your interest to bear these in mind for scarcely a season goes by but what you have need of a crop just like this. Learn what Sudan Grass can do for you and then use it. It will pay you.

RAPID GROWER

Probably the fact that creates the most astonishment for those who grow Sudan for the first time is the rapidity of its growth. They cut one crop of hay and remove it and almost before the fact is realized it is big enough to cut again if desired. Thus three and four and as high as five cuttings per season are secured from this valuable forage grass.

PROLIFIC STOOLER

It is a peculiar fact about Sudan that it makes very little difference how much you sow per acre. Whether five pounds or fifty, the yield per acre is about the same. There is a difference in the quality of the hay however, according to the rate of seeding. A light seeding makes coarse hay. Many experiments have been made and it is generally conceded that 15 pounds per acre should be sown to get the best kind of a hay crop.

HEAVY YIELDER

It is to be expected that a rapid growing prolific stooling plant would make good yields. It usually outyields your highest estimate. Fifteen thousand pounds per acre of cured hay has been secured. An average yield can be figured quite safely as ranging between 3 to 5 tons per acre. When you make a good seeding and the crop starts to stool out it is literally as thick as hair on a dog's back. Can be used for hay or pasture. Can be cut for hay like other grasses or cut with binder. Many prefer the latter method.

REMARKABLE DROUGHT RESISTER

The power of Sudan Grass to resist drought is one of the big factors in increasing its ever growing popularity. It fills a special need because it has this power. It flourishes in sections that have a light rainfall. In the average sections it has great value. Some of your biggest forage and pasture troubles come in the hot dry summer. Most of your grasses are not growing yet, with Sudan you will have an abundance. It thrives in hot weather. Just an occasional light shower that would not even change the deadened color of your pastures will send Sudan booming along. Scarcely a

year goes by but what every farmer has need of such a crop. If you don't need it for summer feed you can store away a big tonnage for winter or you can use it for ensilage either alone or with soy beans, cow peas or clover.

HIGH FEED VALUE

Sudan Grass analyzes somewhat higher in feeding value than Timothy, so that you may know that it is not merely a roughage but a valuable feed. It is palatable and relished by all stock. Feed it green, pasture it, make hay out of it or use it for ensilage. It's a crop you can utilize in many ways. One of the fine points about Sudan is that you do not have to cut it just at a certain time or lose the best of the crop. The very best time to cut for hay is when it is in bloom. You lose very little of the value, however, whether you cut it earlier or later. In the rush of farm work this feature will be appreciated by you all.

FAVORABLE YEAR TO START GROWING SUDAN

Conditions have forced the price of Sudan Grass to extremely low levels. A good seeding of this crop can be made for around \$1.00 an acre. Buy a hundred pounds of seed this year and put some of your acres at work on it. A few acres of this wonder forage crop will probably supply you with all the forage and hay that you will need. Consider the value and the heavy yields of this crop and start growing it this year.

We have some very fine, thoroughly re-cleaned stock ready to go out promptly. This seed is guaranteed free of Johnson Grass. It is extra nice seed and the kind it pays you to sow. Get your seed now. Have it ready. Sow when the ground is thoroughly warm or at corn planting time. You need this crop. It fills a definite need on your farm. It is a money making crop. Get your start this year while the seed is cheap. Next year it may be much higher. You can harvest your own seed this fall for next year's seeding. Now is the time to get a favorable start. Take no chances on your seed. It pays to use the best re-cleaned and tested stock. Send us your order promptly. It will be appreciated and will have our prompt and careful attention.

SUDAN GRASS SPEAKS FOR ITSELF

AN AUTOBIOGRAPHY—BY MR. SUDAN GRASS



I am Sudan Grass, a servant of men. I am qualified to do a certain work on farms better than any other similar crop can do it. That is why I am in such great demand. Fortunately, this year you can secure my services for much less than in the past so that I can serve all.

My native home is in Africa. Back in 1907 I was first discovered by agents of the United States Government. They were especially attracted to me because of my ability to withstand dry hot weather. A camel may go eight days without a drink but believe me, boys, he can't hold a candle to me. I am naturally inclined to be a prohibitionist and can go longer without a drink than any of my kind and then I only need water. When the dry hot days of summer come, I can see grasses of all kinds around me lying down and giving up the fight against the heat and drought. That's just the kind of weather for me. Then is when I really pull my coat off and get to work to make the most money for you. Of course the heat and drought may keep up so long that it begins to fag me a little but just the least little shower is a bracer that gives me new life and pep and you can almost see me grow at such times.

When I was brought to this Land of the Free and the Home of the Brave back in 1907, I came in the form of a few handfuls of seed and I was handled very carefully. They brought me principally to help the drought stricken farmers of Texas on their feed problems. Did I help 'em? You tell 'em I did. But I wasn't satisfied with Texas. I wanted to see the whole United States. They thought at first my constitution was too delicate and

that I couldn't stand the climates of the northern states, but I sure did surprise those boys. I've come north and east and west and today I am growing big money-making crops in almost every state. Those who know my merits, claim that I am the Champion forage crop. This year I issue a challenge to all varieties of cane and millets. I claim that I can grow more hay and better hay in a shorter time than any one of these other crops can. Watch my smoke. I have them licked before they start. Fourteen years ago there was just a few rods of me growing in this nation. Last year there were tens of thousands of acres devoted to my production. This year of 1921 is the first time I have ever had a chance to show in a great big way what I can do. There is an ample supply of seed prepared and already enough has been sold to seed millions of acres. By the fall of this year every farmer and every farmer's boy who keeps in touch with times at all, is going to know me personally. He is going to know what I can do and he's going to put me to work. I'm not a boastful critter but if I can't beat Mr. Millet and Mr. Cane when it comes to producing the goods in the forage line, I'll—I'll—I'll, Oh, by golly! there's no use to say what I'll do because I know I can put it all over 'em.

If you want to see some lively competition on your farm this year, just put in a patch of me next to a little patch of Cane or Millet or both. Mister, I tell you I've got the goods and I know how to deliver them. Just give me a fair chance. Get your seed from a reliable source. A. A. Berry Seed Company at Clarinda have me in a pure unadulterated form. All new seed thoroughly re-cleaned with the light stuff taken out. What they have there is sound and solid stock. Sow me on a warm seed bed about the same time you plant Corn. Cover me about an inch. I'll do the rest. You won't have to bother with me only to cut me when you get ready. It doesn't discourage me in the least to be cut off. I'm an optimist and a hard worker and I'll stay on the job for you night and day until frost comes. That puts the finishing touch to me. I won't become a pest in any way. If you want me again a second season, you'll have to issue a special invitation and sow more of my seed.

Let me serve you. I'll grow hay for you I'll grow it in great abundance and grow it quick.

I am Sudan Grass, at your service. For every 15 pounds of my seed that you'll sow, I'll work an acre. Start with me this spring. Don't put me off any longer. You're going to use me sooner or later for the reason that I can and do "bring home the bacon." Start with me now while my seed is cheap and extra good. Let Berry's take care of your order.

GREAT EARLY FORAGE CROPS



CANADA FIELD PEA

WHAT IT IS

The Field Pea is a crop that is to the North what the Soy Bean is to the South. It belongs to the Pea family and should not be confused with the Cow Pea which is really a bean. It produces heavy growths of forage that are very valuable as a soiling crop and it makes excellent hay when sown with a small grain crop.

WHEN TO SOW

They should be sown at the time you put in spring grain crops in your section. Frosts will not hurt it. The heavy yield of this crop will be a big surprise to you if you have not grown it before and the feeding value is very high.

HAY OR PASTURE

The Canada Field Pea makes a high type of pasture. Lambs will fatten on it from 70 to 90 days and 10 to 15 head can be pastured to the acre. Hogs will fatten in from 60 to 90 days, making a gain of a pound a day. If you use Alfalfa and Sweet Clover in connection the gain will be still more rapid. Stock should not be turned on the Field Peas until the seeds are hard. It is usually cut for hay when most of the pods are well formed.

AS A SEED CROP

The vines of the Field Pea plants are quite long and they are simply crowded with pods. These pods are chock full of seed and the yield of seed is very heavy unless conditions should prove very unfavorable. The price that can be obtained for these peas at this time is good and as a cash crop you will find Field Peas to surpass many things you can grow. Yields of Canada Field Peas have been reported as high as 78 bushels to the acre. Figuring only one-fourth of this yield, 25 bushels at \$3.00 per bushel for the peas would bring you \$75.00 per acre. This is not a bad return. And when you stop to think of

the increase in soil fertility that peas bring, the value is still greater.

THREE CROPS A YEAR FROM AN ACRE

Field Peas can be sown with oats as previously stated. You can allow both crops to ripen and thresh both which gives you a crop of peas and a crop of oats. The peas and oats can be readily separated after thrashing. These crops mature early and there is usually time to sow a crop of millet or sudan grass for additional forage, making three crops from the land in one year.

AMOUNT OF SEED

There are several varieties of Field Peas some of which are quite large and heavy seeding is required to get the proper stand as high as three to three and a half bushel to the acre being required. We handle the smaller seeded variety such as the Golden Vine. This only requires one and a half to two bushels to the acre when sown alone and only one when sown with oats. In a combination such as this one and one-half to two bushels of oats are used. In dry sections the amount of oats should be decreased and the amount of peas increased.

Our Stock is guaranteed to satisfy you in every respect. The price given in the enclosed price list includes bags free of charge. We can save you money on good quality stock of the best variety. Give us the chance to show you by sending in your order today.

HAIRY OR SAND VETCH

Here is an opportunity for you—and that is—not only getting a bigger and better crop, but is also a big step in maintaining soil fertility. What this crop has done for others can be accomplished by you.

There is no longer any doubt about the great value of Hairy Vetch. More and more farmers are producing it rather extensively and their results along with trials by Experiment Stations have shown its merits.

This crop not only benefits the soil by adding large quantities of nitrogen when plowed in, but greatly improves the condition of most soils by supplying a large amount of easily decayed organic matter. Besides being a soil builder, it makes an excellent cover crop for ordinary fields and orchards. The Northwest has pronounced it the most satisfactory nitrogen gathering cover crop. The South increases their acreage each year as it fits well in crop rotation. It cuts little figure where you are located, Vetch has its advantages. We consider it an opportunity of big value.

Use it for pasture or Hay. The pasture furnishes excellent forage and the hay is high in protein, making its feeding value alone a great factor. Use it for a cover crop, to prevent leaching and washing. Use it for a soil improver. On account of its many advantages, can you afford to be without an acreage of this wonderful crop? A crop in Vetch will add more to your profits, you cannot improve your soil without legumes. This is one that enriches your land rapidly. It offers an inviting field in the way of soil fertility.

Good, pure Hairy or Sand Vetch is essential. We urge the importance of getting your requirement from a reliable source. Owing to its scarcity through increased acreage Hairy Vetch has been difficult to obtain. You will make no mistake by laying up your supply at this time. Do not confuse the Spring or Common Vetch with the Hairy Vetch which is cheaper but not as hardy.

We have made our price attractive for first class stock which we offer subject to your approval in any way you desire. Get your order for Vetch in early. You cannot hope to obtain any better for less money. The Quality will please you, we are sure. See price list for your low quotation.

HIGH GRADE IMPROVED SEED OATS



ARE AN INVESTMENT, NOT AN EXPENSE BIGGER YIELDS MAKE BIGGER PROFITS

Occasionally a man will write in and say that he cannot afford to buy our Seed Oats. He will cite the market quotations on Oats which of course are lower. This does not, however, make our seed Oats high priced. We are, in fact, selling our Seed Oats on a very close margin. Our Oats are in the first place especially selected for Seed Oats on account of their superior yielding qualities as well as for the fine appearance of the seed. Such Oats cannot be purchased at market prices but command a stiff premium. Another big item of expense is the grading of the seed. It is the amount that we grade out of machine run seed that counts for a big factor in prices. What we take out is practically a loss and has to be added to the expense of the seed. However that is for your benefit, not ours. We could clean them lightly and sell the seed cheaper and probably sell more of it and make more money. We grade this seed thoroughly so that you may have the proper kind of seed to produce thick stands of strong, vigorous Oats. The kind of seed you need for the best results.

Then furthermore our prices include bags free of charge. If you would take ordinary Oats and clean them the way we clean them and sack them you would find your cleaned seed to be about the same price as what we are asking for our improved seed. In your case you would still only have ordinary Oats while if you order from us you get selected seed stock. This kind of seed brings the biggest yields and that means bigger profits. Supposing our seed does cost you more, it only takes but a very small increase in yield to pay back the extra investment. Many a time improved seed has increased yields 25 to 30 bushel per acre. The extra money thus spent for our seed multiplies itself many times over and proves to be one of the most profitable investments you can make. If you sow cheap common stock you are not saving money in the long run but you are throwing profits away. It pays to grow more Oats per acre and better Oats and it takes good improved seed to do it. We guarantee all stock to please. Will take back any that does not satisfy and refund all money paid.

THREE LEADING VARIETIES CANADIAN GROWN REGENERATED SWEDISH SELECT

This is the most popular big heavy white oat with our customers. It is a tremendous yielder and makes an oat of magnificent quality. Big heavy meaty kernels. Straw grows medium tall and stiff. Is early for such a big oat and for that reason is adapted to a wide range of conditions. Our stock is all northern grown and produced under conditions that make the finest seed oats. This stock has been carefully selected for seed purposes, has been thoroughly re-cleaned and is

seed that will please you in every way. It will pay you to grow this heavy yielding oat. You need the right kind of seed to bring you bigger profits. Don't delay. Order today.

GOLDEN RUST PROOF

This variety is the finest of big yellow oats. Not quite as large as the Swedish Select but bigger than the average. We know of no other oat that gives such universal satisfaction as our Golden Rust. It is a wonderful yielder producing up to 128 bushel per acre. Has plump heavy berries, full of meat. Stools well and grows a stiff strong straw. Last year we had more letters of praise on our Golden Rust Proof than any other variety of Oats. The most common yields reported ranged between 85 and 100 bushels per acre. The ability of this variety to resist rust and to withstand unfavorable conditions makes it of special value in many sections. It will often produce very profitably where other varieties are a total failure. Invest in good seed oats. Buy plenty. Don't be like the man who wrote us last fall. Said he ordered 25 bushel and wished he had ordered 100. Our Oats were fine, the best in his section. Local Oats were practically a failure. Play safe. Order Today.

WHITE KERSHON

This fine early white oat is a winner. It is as dandy white oat. Not quite as large as the latter varieties but it is a sure yielder. Stands up fine on rich land. Has a thin hull which makes the percentage of meat high and makes it a fine feeding oat. Our supply is A No. 1. You are safe on this variety for an early oat. Grow bigger crops. Use Better Seed. It Pays.

BARLEY IS A MONEY MAKER

CHAMPION BEARDLESS BARLEY



Champion Beardless is about the earliest barley grown as well as one of the first to mature. Being beardless, means that you can use it for feed which is impossible with the bearded types. The straw of this barley stands up in a remarkable manner, easily harvested and makes the finest barley hay obtainable when cut in the milk stage. The yields of this variety is one point that has much to do with its increasing popularity. From 40 to 50 bushels per acre are frequently reported which means big returns in feeding value for it is very high in protein and you know what this means for cattle, hogs and young stock.

This year we have taken extra care in addition to our usual precaution to secure for our customers the very best seed obtainable. We have had it grown under conditions that tend to develop the most prolific strains. The seed has been thoroughly re-cleaned and is free from disease, with bright plump grains such as you must have in order to reap the biggest possible harvest. There is no question in our opinion but what you will greatly increase your acreage of barley after you find what a profit you can make by using this seed. So strongly has the demand turned to our Champion Beardless Barley that there is no question but that farmers are finding it the most profitable kind to grow. There can be no stronger recommendation for anything than the unqualified endorsements of the users. Such a flood of orders came for our Champion Beardless Barley last season that we could not

supply the demand. Grow it this year, even if only a small acreage and convince yourself that our Champion Beardless Barley is a profitable crop to grow.

LET CHAMPION BEARDLESS BARLEY INCREASE YOUR WEALTH

The increased profits from this barley can be yours. Grow it on your farm this season. You will point with pride to your field of Champion Beardless for it is a beautiful sight indeed to see a fine thick stand, with its gently drooping heads loaded with rich, muscle building, nerve forming, flesh making food. It will be an equal pleasure to handle at harvest but above all, the value you receive, the profits you make are the things that will cause you to sow a larger acreage next year. If there is any doubt try just an acre or two to be convinced. It only takes $1\frac{1}{2}$ to 2 bushels per acre.

Send your order to us today and secure the finest of Champion Beardless Seed Barley. That is guaranteed to please you in every respect. For your bank accounts sake grow Champion Beardless Barley this year.

WHITE HULL-LESS BARLEY

Our improved White hull-less barley is a variety that has neither beard nor hulls. It threshes out just like wheat. The berry is somewhat like wheat in appearance but the color is much lighter and might be described as a pale amber. The grain is heavy like wheat. It makes excellent feed for all kinds of stock. It matures early and yields well and is considered more drought resistant than other barleys. This variety is especially valuable in Western States but our trade throughout the entire United States is becoming heavier every year for this remarkable variety. It is not a new, untried variety. We have handled it for several years and each year we run out of our seed supply before the demand is satisfied. This year we have endeavored to have plenty of stock on hand but, to be safe, order early.

BLUE HULL-LESS BARLEY

Our improved Blue hull-less barley has no glumes or covering on the grain. It threshes out a clean kernel just like wheat only the berry is darker in color, having a bluish tinge. This barley, while it has no hulls, does have beards, differing in this respect from the White Hull-less which has neither beards nor hulls. The grain, however, is all feed. No waste hulls and weighs out like wheat. Makes excellent feed for all kinds of stock. Is very early and a remarkable drought resisting barley. It is early and a good yielder. This barley is worthy of your consideration and we would urge you to at least try out a small acreage to prove its adaptability to your section. We urge you to order promptly

FORAGE CROPS THAT FILL IMPORTANT NEEDS

GRAIN SORGHUMS

It is to the interest of every farmer to figure how many acres of land it will require to raise the necessary forage. It is possible adverse conditions may reduce your yields of grass or hay. A few acres of the following crops can be utilized to advantage on every farm, no matter what circumstances are. For silage, grain sorghums make excellent ranking in this respect to corn. A mixture with such legumes as Alfalfa and Cow Peas makes a first class balanced ration. The harvesting of this crop may be done similar to Cane.



KAFFIR CORN

This type includes one of the most important and best grain sorghums in the United States. Not until the farmers of the Southwest commenced to grow it did it attract attention. During the last years it has gradually received increased recognition and is now considered one of the staple crops in western Nebraska, Kansas, Oklahoma and Texas. In the corn belt states and the arid and semi-arid sections, it yields well for both grain and forage. It is characterized by having little juice in the pith; the stems are fairly thick; the leaves wide and long. A crop that is adapted especially to the hot and dry summers. Its culture and soil requirements are similar to Cane and in seeding 75 to 100 pounds broadcasted is sufficient to sow an acre. We have a large stock of extra fine seed, testing high for germination and can supply you with seed that will make the best yield. Many plant an acreage for poultry and it is excellent for this purpose.

PETERITA

The acreage devoted to this crop has increased. The plants are rather slender, medium tall, having more leaves than Milo, but less than Kaffir. The stalks are more slender than either Kaffir or Milo. It matures earlier than Kaffir, yielding about the same amount of grain but less forage. When late seeding is practiced it matures in a shorter period and is therefore a good crop to plant after wheat or oats. For hogging down or for silage it ranks very high. We have extra fine seed this season and have made our price very reasonable.

MILO

In all respects it compares favorably with Kaffir. Owing to a larger grain production it is preferred in some sections and next to Kaffir, is one of the most widely distributed.

It is closely related to Jerusalem Corn. It stools freely at the base and branches above. It is well suited to the Southern States and can be profitably grown as far north as South Dakota, westward in Colorado and the Great Basin region.

In general, Milo should be sown about three weeks later than corn and after all danger of frost is past. When sown in rows 3½ feet apart, the stalks 3 to 8 inches apart, 4 to 6 pounds to the acre is enough. It is used mostly as a feeding grain on farms fed as thrashed grain, in the head or in the bundle. For feeding it is preferred cracked or ground and when ground, the heads may be included.

The yields of grain vary from 25 to 55 bushels of seed to the acre and the grain can be used similar to corn, being nearly identical in composition.

We have some very fine seed and it will certainly pay you to investigate and see if you cannot raise one of the above crops. Better try a small patch. They are crops worth while.

BUCKWHEAT

Buckwheat has a definite place in American Agriculture, limited when compared to the staple crops but none the less important in a large area of the country. While less exacting as to soil than most any other crop it is more exacting as to climate; therefore its principal product is confined to the north-eastern portion of our country and to high altitudes further south. However, buckwheat can be grown with at least fair success over a much wider range according to a bulletin recently issued by the United States Government of Agriculture.

Buckwheat, according to the bulletin, is in general the best grain crop for poor thin land and succeeds well on acid soils, climatic conditions being favorable. It is a good crop on new land and on old sod land being again bright under the plow. It loosens and makes friable even the hardest soil and therefore it is a good crop preceding potatoes. Because it makes such a dense growth as to keep the soil completely shaded it is valuable as a destroyer of quack-grass and weeds. It has considerable value as a soil renovator, being able to use insoluble phosphorus and potassium to better advantage than other grain crops. It is useful also as a summer cover or green manure crop as well as a source of honey for bees. These benefits are of course in addition to its value as human food and stock feed.

Buckwheat is less frequently used in rotations than most other crops but it is pointed out that good rotations may be devised for soil that is too poor for most accepted rotations. One of the suggested rotations is alsike or crimson clover the first year, buckwheat the second, potatoes the third year, and rye, oats or wheat the fourth year.

You will find Buckwheat a very profitable grain to grow on your farm, especially if you have to use a catch crop of some kind. It grows quickly and makes surprising yields on practically all types of soils. Do not let any space go to waste on your farm. If you do not need a catch crop sow Buckwheat on the odd plots that would otherwise prove worthless to you.

We have a fine stock of re-cleaned Buckwheat seed for you at this time. The Japanese is a standard variety and is mostly used. We also have a limited stock of fine Silver Hull buckwheat. Please don't delay your orders, friends, as we can serve you to the best advantage right now.

See Price List for wholesale quotations.

FORAGE CROPS OF TESTED MERIT

OLD STANDBYS

Quick growing forage and hay crops will be needed in many sections this year. We will be able to care for your needs in a manner that will give you entire satisfaction. We have ready for you selected stocks of new crop Millets and Cane Seed. These are all thoroughly re-cleaned and are seeds of high germination. Be sure to let us have your order for Cane and Millet as we can save you money on seed that will please.

MILLETS

GOLDEN (GERMAN) MILLET

This is the variety that most of you will want to sow for catch crop purposes. It outyields the common type and also makes hay of a better quality. It makes an excellent quality of hay that is relished by practically all kinds of stock although it is not considered the best feed for work horses. It makes a valuable feed for dairy cattle and for sheep. Can be pastured if desired. The feeding value is higher than that of Timothy. Millet is a crop that grows quickly. Use it after floods or when weather conditions delay you in getting your crops in in proper time. We know of a good many farmers who follow their grain crops with Millet thus getting an extra crop from their land. Golden Millet also makes a valuable seed crop yielding up to 40 and 50 bushel per acre. The best time to cut for hay is when it is headed but before it matures the same as with Timothy. For seed, allow it to ripen fully and cut with a binder. We have some fine Golden Millet in store for you ready to ship out the same day your order arrives. Better order seed now and have it ready.



JAPAN MILLET (BILLION DOLLAR GRASS)

This is one of the heaviest yielding of all Millets and is a very valuable forage crop. It is adapted to nearly all sections of the country and for a crop to plant on low wet soils there is no other similar forage crop that can equal it in production. It grows somewhat coarser than most Millets and is quite frequently used for ensilage purposes. Will grow up to six and eight feet tall. The picture shown here was taken by one of our Michigan customers. It is a wonderful seed producer and the demand for the seed is usually much greater than for the ordinary kind. Be sure to get your order in early if you want some of this valuable variety.

FORAGE CANE

Cane has long been recognized as one of the leading forage crops and is used for hay and ensilage purposes. It is also extensively used as a soiling crop and feed green. It is relished by stock and is fattening. For hay it is advisable to sow a good heavy seeding. This makes the finest hay. Fifty to one hundred pounds per acre are often sown. For ensilage less seed per acre can be used. Many combine Cane with Soy Beans or Cow Peas for hay cutting down on the Cane seeding and adding $\frac{1}{2}$ to $\frac{3}{4}$ bushel of Peas or Beans per acre.

The profit from Cane comes from the big yields that it produces. A tremendous tonnage per acre can be secured. It is of course grown quickly and for that reason is a crop that many grow to help out on their feed problem. Cane is a great drought resister and thus causes its adaption by farmers who are apt to run short on feed in the summer. There is hardly a season goes by on any farm but what the need of just such a crop is felt and we want to urge you to buy now either a supply of Cane or of Sudan Grass to help you out on your feed problems. If you want the right kind of stock at the right prices we can supply you with it at this time.

The crop should not be sown until corn planting time as the ground must be warm. Better a little later than earlier. The thing to do, however, is to get your seed now while you can get the best stock and have the seed on hand and ready to sow when you want it. Our prices are on the enclosed price list. These figures are low on this quality of seed. Bags are free. We can certainly serve you to advantage on Cane and all other forage crops.

We have both the Amber and Orange variety. The Amber is by far the most in demand however. Don't let your land lay idle. Produce crops that are big yielders and yet cheap to grow. Forage Cane fills the bill. It is an old stand-by. You may have grown it before you know the importance of good seed. You know what the crop can produce. Send your order in today, before you forget. We'll guarantee you satisfactory seed or take it back and refund your money.

PLANET BRAND CHICK FOOD

A SCIENTIFICALLY COMPOUNDED FOOD FOR YOUNG CHICKS

Little chicks need the right kind of food to stand of chicks are killed because of improper feeds of chicks are killed because of improper food. Give them a chance. Our Planet Brand Chick Food contains the ingredients they need, all ground to the right size and mixed in proper proportion.

Contains grain, seeds, bone, grit, etc. An excellent feed. It will pay you to use it. Price reduced to
500 LBS., \$12.50; 100 LBS., \$2.75; 50 LBS., \$1.50;
25 LBS., 90c.

WORLD POULTRY FOOD

A carefully prepared food. A mixture selected from choice grains, Kafir Corn, Beef Scraps, Bone, Millet, etc. Give your hens a fair chance to do their work by feeding them the proper kind of a balanced ration.

Our World Poultry food makes an economical feed.
50 LBS., \$1.40; 100 LBS., \$2.50; 500 LBS., \$11.00

IMPROVED SEED STOCK



BETTER POTATOES

Seventy-five percent of you who grow potatoes are not getting the yields you should have or the quality that you might have because you do not use good seed stock. The seed has a great influence on quality and yield. It pays to use good stock. We have a very fine supply of two varieties that for all around yield and quality cannot be excelled. This stock has been carefully selected for seed purposes and is much superior to ordinary table stock offered. Get a real start in growing potatoes and get either one or both of these varieties. Find out what improved new seed stock will do.

EARLY RED RIVER OHIO

It is a real early variety which is a big point in its favor. Our seed stock was all grown in the Red River Valley about 500 miles north of us. We can secure the finest seed stock in that section and furthermore this seed proves to make earlier potatoes than the same variety grown from home seed. It pays to get this kind of seed because you get plants that are strong and vigorous and better able to withstand unfavorable conditions. They resist diseases and blight better and will frequently double the yields of your old seed. This Red River stock is the most productive of any we have ever grown. The quality is fine. This seed produces good sized, firm potatoes that cook up into a fine dry flaky meat. A piping hot dish of these on the table will give zest to any lagging appetite. Our Red River Ohios will grow more potatoes and better potatoes. Order now while we can fill your order from our selected stock. See price list for prices.

IRISH COBBLER

This is a wonderful potato, ranging from early to medium early stock. We find this to be a remarkable yielder, surpassing all others of equal quality. They develop into great big fellows similar to those shown above. Their white color gives them an attractive appearance. The skin is smooth and eyes are well set. The Cobbler makes strong, vigorous stalks and vines. Healthy vines make you more potatoes and we are sure the yields at harvest will be very gratifying. There are other varieties that will yield well but they are mostly of inferior quality. Stock that cooks up mushy and soggy. The Irish Cobblers are mealy and almost pure white in color. The quality counts.

The seed supply we have for you has been carefully selected and graded and are northern grown stock. You will find them earlier than southern grown stock and of better quality. We are anxious to have you try this improved seed of this fine potato

GROW A BETTER GARDEN

OUR IMPROVED COLLECTIONS ARE WINNERS
FINE HEAVY YIELDING VARIETIES—SEED GUARANTEED TO GROW



NEW SEED—BIG PACKETS—BEST VARIETIES

37

FULL SIZE PACKETS

\$1⁰⁰

SAME AS USED ON OUR REGULAR ORDERS

BIG VALUE IN VEGETABLE SEEDS

Beans, Best Bush Lima.	Lettuce, Best Head.	Muskmelon, Choice Early Variety.
" Best Pole.	Lettuce, Simpson.	" Rocky Ford.
" Best Wax.	Onion, Imp. Lg. Red Wethersfield.	Watermelon, Mam. Variety, Mixed.
Beets, Early Eclipse.	" Australian Brown.	" Kleckley Sweet.
" Best Turnip.	Peas, Best Early.	" Tom Watson.
Corn, Stowell's Evergreen.	" Stratagem.	Pumpkin, Sweet Pie.
" Early Minnesota.	Carrots, Best Table.	Salsify, Mam. Sandwich Island.
" Early White Cery.	Radishes, Choice Mixed.	Spinach, Bloomsdale, Savoy.
Cucumber, Choice Early Variety.	" White Icicle.	Tomato, Berry's Early Wonder.
" Boston Pickler.	" Rosy Gem.	" Delicious, late variety.
Cabbage, Early Jersey Wakefield.	Squash, Early Summer.	Turnip, Purple Top Strap Leaf.
" Autumn King.	" Hubbard.	Sweet Peas.
		Nasturtium.

SAVE FROM \$1.00 TO \$2.00 ON SEED

Our regular price is \$2.10 for the above seed. Many seedsmen charge over \$3.00 for same varieties. Order this collection and make a big saving.

18 PACKETS 50c

Excellent Vegetable Collection for Garden

One packet each of Wax Beans, Beets, Sweet Corn, Cucumbers, Carrots, Cabbage, Onions, Peas, Turnips, Pumpkins, Spinach, Tomatoes, Lettuce, Muskmelon, Pansy, Mixed Sweet Peas and two packets of Radishes. All regular stock packets. Any seed that does not grow will be replaced free of charge. Our big catalog gives names of varieties. This is a big value for those wanting a small garden.

This collection will save you from 50c to \$1.00

FLOWER SEED COLLECTIONS

14 Popular Flowers, 50c

Consists of one packet each, Sweet Alyssum, Nasturtium, Poppies, Giant Dahlia, Cosmos, Zinnia, Petunia, Aster, Balsam, Hollyhock, Marigold, Sweet Peas, Mignonette, Dianthus, Pansy.

10 Best Sellers, 35c

One packet each of Sweet Alyssum, Carnation, Cosmos, Pansy, Poppies, Cypress Vine, Phlox, Sweet Peas, Nasturtium, and Sweet William.

A Resurrection Plant Free with either collection

A GIANT COLLECTION

OF OUR MOST POPULAR GARDEN SEEDS

FOR THOSE WHO GROW A BIGGER GARDEN

Mac (which stands for John Frank McMannama), the manager of our garden seed department, stopped in my office the other day and we got to talking about the heavy demand we were having for our big garden seed collections that we sell for only \$1.00 postpaid. Mac is proud of his collections and he has cause to be for, so far as we know, our collections are the biggest and best values on the market today. He takes the greatest care in having them put up just so for he knows that the principal thing that counts for future business is your success with this seed. All our collections are made from regular stock packets and must be of high germination and of vigorous growth.

He had something more up his sleeve however, and his real reason for coming in to talk about the big sales of his collection was to arrange to put a new collection before you. An assortment that would give

you plenty of seed for a big garden. Instead of packet of peas and beans and sweet corn he wants you to have a half a pint, and on other seeds he believes you ought to have an ounce instead of a packet. Dump the seeds out of the average seedsman packet and see how many it takes to make an ounce. Yet you really need an ounce of such seeds as Beets, Cucumbers, Onions, Radish, Squash, Melons, etc. If you raise a fairly large garden. Mac has given the matter a lot of thought and planning and has prepared for you a Giant Collection that outshines in size and value anything we have ever before attempted. He has selected the best of everything in the house and if you don't grow the biggest and finest garden you ever had in your life just lay it to the fact that you didn't get in on this New Giant Collection that we have ready to ship to you. If you want to do away with a big part of your seed worries and get something really fine, send us your order for this collection.

BERRY'S GIANT COLLECTION

\$4.40 WORTH OF FINEST VEGETABLES, \$3.00 POSTPAID

<p>Beans— Mam. Str. White Pod Early, ½ pt. 30c Ky. Wonder or Pole..... ½ pt. 20c Hend. Bush Lima..... ½ pt. 20c</p> <p>Carrots— Imp. Danvers, Half-Long.... pkt. 5c</p> <p>Celery— Golden Self Blanching..... pkt. 5c</p> <p>Beets— Early Eclipseoz. 10c</p> <p>Cabbage— Ey. Jersey Wakefield..... pkt. 5c Short Stem Drumh'd Lats. pkt. 5c</p> <p>Cauliflower— Ey. Snowballpkt. 10c</p> <p>Cucumber— Berry's Champion Pickler.oz. 15c</p> <p>Lettuce— Black Seeded Simpson.....pkt. 5c Big Boston Head.....pkt. 5c</p> <p>Onion— Berry's Imp. Red Weatherf.oz. 30c</p> <p>Peas— Berry's First and Best.... ½ pt. 20c Telephone Pole ½ pt. 20c</p> <p>Radish— Icicleoz. 10c Ey. Scarlet Turnipoz. 10c</p>	<p>Sweet Corn— Ey. White Cory½ pt. 20c Stowell's Evergreen½ pt. 20c</p> <p>Water Melon— Kleckley Sweetoz. 10c</p> <p>Turnip— Purple Top White Globe.... pkt. 5c</p> <p>Nasturtium— Major Mixedoz. 10c</p> <p>Musk Melon— Berry's Favoriteoz. 25c Rocky Fordoz. 10c</p> <p>Parsnips— Hollow Crownpkt. 5c</p> <p>Pepper— Ruby Kingpkt. 5c</p> <p>Pumpkin— Kentucky Fieldoz. 10c</p> <p>Squash— Improved Hubbardoz. 15c</p> <p>Tomato— Berry's Ey. Wonder.....2 pkts. 25c Matchlessoz. 25c</p> <p>Pop Corn— White Rice½ pt. 15c</p> <p>Sweet Peas— Eckford Mixtureoz. 15c</p> <p>Total\$4.40 SPECIAL 3.00</p>
--	--

ALL SEED GUARANTEED TO GROW OR WILL BE REPLACED FREE OF CHARGE. THIS IS ALL GOOD SEED

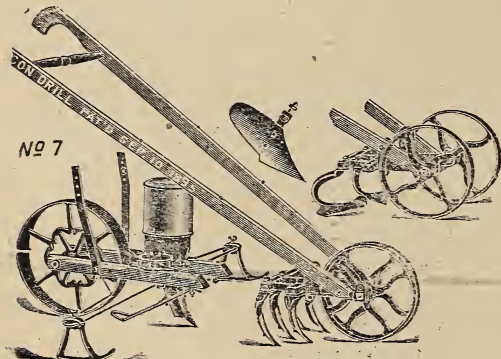
These packets are all regular size stock packets. In case you should only need a few packets you can order them separately at the prices set opposite each and they will be sent to you postpaid. For example we will send you one-half pint of Kentucky Wonder Pole Beans for 20c postpaid, or an ounce of Icicle Radish for 10c postpaid, etc.

Make a Big Saving. Order the whole Giant Collection for \$3.00 postpaid. Save \$1.40. Almost half. Get the best in the line of Garden Seeds and beat the whole neighborhood with your garden. Collections are already to go out to you securely wrapped in an extra strong box. Send today. Your money back if not satisfied.

STRONG AND SUBSTANTIAL TOOLS AND IMPLEMENTS

We have a line of garden tools that will help you in making a better garden with much less work. If you do not have improved implements with which to work you have no idea of the labor you can save yourself. It is not alone the work you save but the increased returns that you get from your garden that makes it pay. Proper planting is one essential. Frequent cultivation is necessary for best results. You can do it properly and quickly with good implements. All our tools are reasonably priced. We list a few of the most popular ones here and refer you to pages 110 of our big catalog for full line and description. Don't overlook our Cyclone Seed Sower. It is the best broadcast seeder for general farm purposes of any we have ever handled for seed.

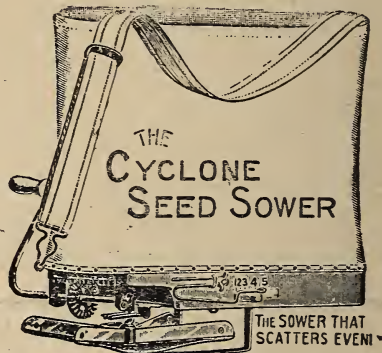
GRAND COMBINATION BACON DRILL



This implement is strongly made. Has an angle steel frame. Is easily adjusted and simple to operate. Our No. 7 is a combined drill and cultivator. It is the best drill we have ever found. Will handle parsnips, carrots, beet, salsify, wrinkled peas and practically every kind of seed the best of any we know of. As a cultivator can be used as a single or double wheel. Has an excellent plow, two hoes and a five tooth cultivator attachment. This is a real value at \$14.50 f. o. b. Clarinda.

Our No. 12 is the same only having a hill dropping attachment that will plow seed in compact hills 9, 12, 18 or 36 inches apart. Price \$15.50.

Our No. 1 is the drill without the cultivator or hill dropping attachment. Price \$11.00.



No. 3 is a single wheel cultivator with one plow, two hoes and a five tooth cultivator attachment. Price \$7.50. No. 5 is the same only can be used as a single or double wheel. Price \$7.75.

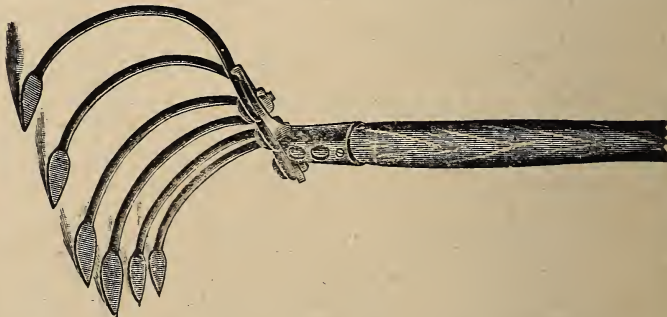
CYCLONE SEED SOWER

Here is a real good hand seed sower. It is strongly built and easy to regulate and simple to operate. Will sow small grain and seeds of all kinds. Full directions to regulate the amount per acre are on the machine. With this substantial machine you can sow 30 to 60 acres per day evenly and save seed. We have sold thousands of these seeders in past years and they give universal satisfaction. We are making a special price of \$2.25 on these, f. o. b. Clarinda. Can be sent by parcel post. Shipping weight 4 pounds. Order our Cyclone Seeder, and get a real seed sower.



EUREKA SEED DRILL

This is a small drill for garden seed and hot bed work. Handles nearly all kinds of seeds very nicely, placing them evenly in the soil. Does work equally as well as many high priced drills. This tool will save seed and time. This can be sent by parcel post. Weight four lbs. Price only \$1.75. Handle is not included.



PULL-EASY CULTIVATOR

No matter what size garden you have, large or small, this is a tool you need. It does its work thoroughly and is easy to operate. Has sharp concave points. Can be quickly adjusted from 7 to 11 inches wide. Center tooth can be removed to straddle rows. Channeled steel teeth, unbreakable. Price complete with four foot, polished straight grain handle. Only \$1.50 Postpaid. A Bargain.

Established 1895

Capital and Surplus. \$650,000.00

Incorporated 1908

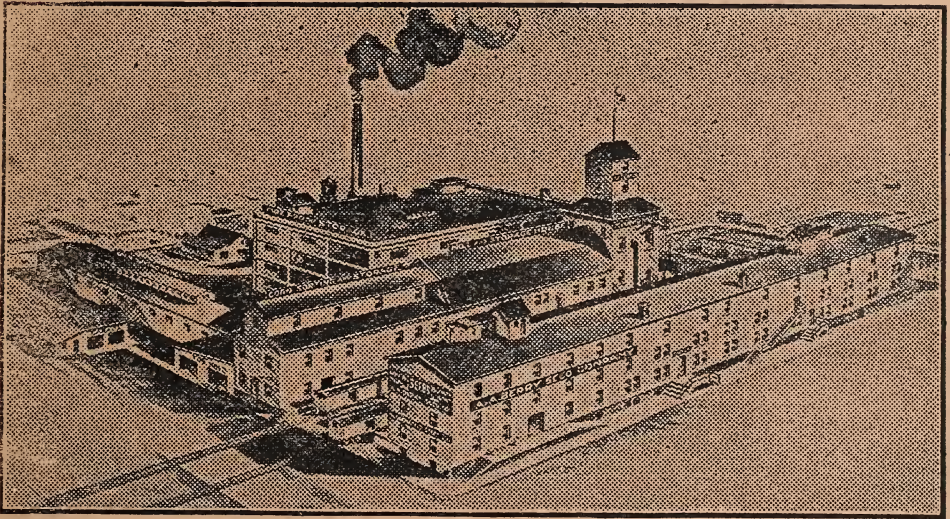
A. A. BERRY SEED COMPANY

CLARINDA, IOWA, MARCH 15, 1921

Special Wholesale Money Saving Price List

ALL SEEDS RELIABLE—TESTED AND GUARANTEED

TO SELL THE BEST QUALITY FOR THE LEAST MONEY, IS OUR AIM



WORLD'S LARGEST MAIL ORDER SEED HOUSE

PRICES REDUCED—LAST CALL—BUY NOW

WE HAVE bought some very fancy lots of Clover in the last few days at real bargain prices. We have reduced our prices, owing to this fact, and are now selling this high-quality seed at prices no higher than are being asked for country run seed in many places. Every lot is carefully tested before we offer it to you, and when shipped, a test tag is attached giving purity and germination. It is worth a great deal to you to know that the seed you are buying is tested and guaranteed satisfactory.

If you need seed of any kind, let us have your order now. We can save you money, not only on Clover, Sweet Clover, Alfalfa and Timothy, but on practically everything in the seed line. Our price list at this time is a real money saver to you. Take advantage of these low prices as this will be our last price list sent out to our list this season. We have cut the prices to bed-rock, so as to clean up our entire stock. If you need seed, now is the time to act. This price list will save you many dollars if you take advantage of the low prices quoted and place your order at this time.

Our prices on everything quoted includes bags for shipping, and the value of bags, in many cases, will pay the freight.

WHY PRICES ARE QUOTED ON PRICE LIST

SPECIAL—As it requires several months to complete a large catalog, such as we issue, it is necessary to start printing it early in the fall, before crops are fully matured or values permanently established, so we are obliged to omit prices on the larger amounts, making our lowest prices in our Price List. The prices quoted in the Price List are our correct and prevailing quotations. Use only these prices, except on smaller amounts which are quoted postpaid in the catalog. Bear in mind that the prices in the Price List do not cover postage on Field Seeds, but Garden Seeds are postpaid, except Peas, Beans, Sweet Corn, Pop Corn and Onion Sets.

Prices subject to change. Order at once and take no chance on paying higher prices. We shall issue this Red Price List from time to time, as occasion demands.

United States Food Administration License No. G32384

Wholesale Prices on Garden Seed

EVERY LOT TESTED—Guaranteed to Grow or Replaced Free of Charge

We are quoting current wholesale prices on seeds in quantities named. You can buy Garden Seeds as cheap as your dealer. These prices are extremely low, all postpaid except on Peas, Beans, Onion Sets, Sweet Corn, Roots and Plants, and include packing.

We have already mentioned the great reduction in prices we have made. Our stocks are large and we can quote Garden Seeds to the best of advantage.

Make out your order plainly, using Order Sheet and latest prices. This will save trouble and delay.

SPECIAL Please Note Prices are Post Paid in 1-2 lb 1 lb and 5 lb lots. Heavy Seeds, Such as Beans, Sweet Corn, Peas, Onion Sets, Roots and Plants are Not Post paid.

State plainly how you wish seeds sent. See Catalog. Terms, CASH with order.

Variety	Price	Variety	Price	Variety	Price
ASPARAGUS	5lb 1lb ½lb	CAULIFLOWER	1lb ½lb ¼lb	MUSKMELON	5lb 1lb ½lb
Columbian.....	\$3 00 75 40	Early Dwarf Erfurt.....	19 00 9 75 5 00	Ed'n G'm (N'tt'dRk) 4 50	1 00 50
Barr's Mammoth.....	3 00 75 40	Early Snowball.....	20 00 10 25 5 50	Rocky Ford, Select.....	4 00 90 50
BEETS		CELERY	5lb 1lb ½lb	Rocky Ford.....	3 50 75 40
Crosby's Egyptian.....	2 50 65 35	White Plume.....	9 00 1 90 1 00	Green Nutmeg.....	4 00 90 50
Crimson Globe.....	2 50 65 35	Gold'n S'lf Bl'nch'g ..	19 00 4 25 2 25	Emerald Gem.....	4 50 1 00 55
Early Eclipse.....	2 50 65 35	Giant Pascal.....	9 00 2 00 1 10	Lg. Yel. Cantaloupe 5 50	1 25 70
Edmands Blood Turnip 2 50	60 75 40	Kalamazoo.....	8 00 1 75 90	Shumway's Giant.....	5 00 1 10 60
Early Blood Turnip.....	2 50 60 35	CUCUMBER		Burrell's Gem.....	5 50 1 25 70
Detroit Dark Red.....	2 60 75 40	Imp. Long Green.....	5 00 1 25 65	Berry's Favorite.....	8 00 1 75 1 00
Long Blood Red.....	2 25 50 30	Early Cluster.....	4 00 90 50	Montreal Market.....	4 00 90 50
Swiss Chard.....	3 75 90 50	Early Frame.....	4 25 1 00 55	Paul Rose.....	4 50 1 00 60
White French Sugar.....	2 50 60 35	Green Prolific.....	4 25 1 00 55	Ex. Ey. Hackens'ck 4 00	90 50
Golden Tankard.....	1 50 40 25	Arlet'n Wh. Spine.....	4 25 1 00 55	Golden Netted Gem 4 00	90 50
Mammoth Long Red.....	1 40 35 20	Chicago Pickling.....	4 25 1 00 60	Grand Rapids.....	4 00 90 50
Golden Globe Mangel.....	1 60 40 25	White Spine Ev'gr'n.....	4 00 90 50	Banana (true).....	6 00 1 40 80
Klein Wanzelbin.....	2 50 60 35	Impr. White Spine.....	4 00 90 50	Tip Top.....	4 00 90 50
Vilmornin Sugar.....	2 50 60 35	Cool and Crisp.....	4 00 90 50	Osage (Miller's Cr.) 4 50	1 00 60
Danish Slud Strup.....	1 60 45 25	Boston Pickle.....	4 25 1 00 65	Honey Dew.....	8 00 1 75 1 00
CABBAGE		New Klondike.....	4 00 90 50	Jenny Lind.....	4 50 1 00 60
Ey. Winingstadt.....	9 00 2 00 1 10	Cumberland.....	4 25 1 00 55	WATERMELON	
Early Flat Dutch.....	9 00 1 90 1 00	Davis' Perfect.....	4 25 1 00 55	Alabama Sweet.....	3 00 75 49
Ey. Jersey Wakefld 9 00	2 00 1 10	Berry's Ch. Pickler.....	6 00 1 40 75	Cuban Queen.....	3 00 75 40
Copenhagen M'k't. 11 00	2 40 1 25	EGG PLANT		Cole's Early.....	3 00 75 40
Express.....	9 00 2 60 1 10	Improv. New York.....	21 00 5 00 2 75	Dixie.....	3 00 75 40
Early Summer.....	10 00 2 25 1 25	Impr. Long Purple.....	20 00 4 75 2 40	Early Honey Drip.....	8 00 1 75 1 00
All Seasons.....	9 00 2 00 1 10	Black Giant Pekin.....	21 00 5 25 2 75	Fordhook Early.....	3 00 75 40
Early All Head.....	9 00 2 00 1 10	KOHL RABI		Florida Favorite.....	3 00 75 40
Sure Head.....	9 00 2 00 1 10	Ey. White Vienna.....	10 00 2 25 1 15	Ga. Rattlesnake.....	3 00 75 40
Danish Ball Head.....	12 50 2 70 1 40	Ey. Purple Vienna.....	10 00 2 25 1 15	Golden Honey.....	4 50 1 10 60
Savoy Am. Drum'd 9 00	2 00 1 10	ENDIVE		Halbert's Honey.....	4 00 1 00 60
Volga.....	11 00 2 40 1 25	Moss Curled.....	4 50 1 15 65	Hungarian Honey.....	4 50 1 10 60
Autumn King.....	9 00 2 00 1 10	White Curled.....	4 50 1 10 65	Harris' Earliest.....	3 75 90 50
Late Flat Dutch.....	8 50 1 90 1 00	LETTUCE		Kleckley Sweet.....	3 75 90 50
Glory of Enk'isen.....	12 50 2 70 1 40	Ey. Curl'd Simpson.....	5 00 1 25 70	Kolb's Gem.....	3 00 75 40
Holland.....	12 50 2 70 1 40	Bl. Seeded Simpson.....	5 00 1 25 70	Kentucky Wonder.....	3 00 75 40
Norsemen.....	12 50 2 70 1 40	Early Tennis Ball.....	5 00 1 25 70	Light Icing.....	3 00 75 40
Large Late Drmh'd 9 00	2 00 1 10	Grand Rapids.....	5 00 1 25 70	Monte Cristo.....	3 00 75 40
BRUSSEL SPR'TS 8 00	1 75 90	Improved Hanson.....	5 00 1 25 70	Mammoth Ironclad 3 00	75 40
CARROT		Butter Cup.....	5 00 1 25 70	McIver's Sugar.....	3 00 75 40
New Chantenay.....	4 50 1 10 65	Prizehead.....	5 00 1 25 70	Mam. Melting Sug. 8 00	1 75 1 00
Oxheart.....	4 00 90 50	Cal. Cream Butter.....	5 00 1 25 70	Peerless or Ice Cr. 3 00	75 40
Early Scarlet Horn 4 00	60 60	May King.....	5 00 1 25 70	Phinney Ex. Early.....	3 00 75 40
Danvers Half Long 3 75	90 55	Iceberg.....	5 00 1 25 70	Pride of Georgia.....	3 00 75 40
French Forcing.....	4 00 1 00 60	Big Boston.....	5 00 1 25 70	Princess.....	9 00 2 00 1 10
Large White Blig'n 3 00	80 45	Crisp as Ice.....	5 00 1 25 70	Sweetheart.....	3 00 75 40
Large Yellow Belg. 3 00	80 45	MUSTARD		Tom Watson.....	3 00 75 40
Mastodon.....	4 00 90 50	Giant Curled.....	3 00 65 40	Triumph.....	3 00 75 40
Long Orange.....	4 00 1 00 55	OKRA		Vick's Early.....	3 00 75 40
Victoria.....	4 00 90 50	White Velvet.....	4 00 90 50	Col. Gr Seed Citron. 3 00	75 40
		Long Green.....	4 00 90 50	Red Seed Citron.....	4 00 90 50
				Apple Pie.....	5 00 1 25 70

VARIETY			PRICE			VARIETY			PRICE			VARIETY			PRICE		
ONION						SALSIFY						BEANS					
5 lb	11b	¼lb	5 lb	11b	¼lb	cwt	30lbs	10lbs									
Early Red Globe... 9 00	2 00	1 10	Long White..... 8 00	1 75	90	Long Yellow Six Wks 17 00	5 40	1 90									
Lea Red Wethers... 8 00	2 00	1 10	Mam. Sandw. Isl... 8 00	1 75	90	Imp. Red Valentine. 18 00	5 70	2 00									
Berry Imp. Rd Weth 12 50	3 00	1 75	SQUASH						Refugee..... 18 00	5 70	2 00						
Danver's Yel. Globe 10 00	2 25	1 25	Wh. Sum. Crookn'. 4 50	1 00	55	String'l'ss Green Pod 18 00	5 70	2 00									
White Queen..... 12 00	2 75	1 40	Yel. Sum. Crookn'. 4 50	1 00	55	Spring Black Wax 20 00	6 30	2 20									
Mam. Silverskin... 12 50	3 00	1 50	Early White Bush. 4 50	1 00	55	Golden Wax..... 20 00	6 30	2 20									
Australian Brown . 8 00	1 75	90	Yel. Bush Scallop.. 4 50	1 00	55	Wardwell's Kd'y Wx 20 00	6 30	2 20									
Southp. Red Globe 10 00	2 25	1 20	Chicago War. Hub.. 6 50	1 40	75	Bountiful..... 18 00	5 70	2 00									
Southp. Wh. Globe 15 00	3 50	1 75	Sibley..... 7 00	1 50	80	Davis' White Wax.. 21 00	6 60	2 30									
Giant Prizetaker.. 12 00	2 75	1 40	Golden Hubbard... 6 00	1 30	70	H'nd'son's B'sh Lim. 20 00	6 30	2 20									
White Barletta.... 11 00	2 50	1 35	Boston Marrow.... 5 50	1 25	65	Burpee's Bush Lima. 24 00	7 50	2 60									
Early Wh Portugal 12 50	2 90	1 50	Banana..... 9 00	2 00	1 10	King of Garden Lima 24 00	7 50	2 60									
Mam. Silver King. 15 00	3 25	1 75	Mammoth Chili... 7 00	1 60	90	Cut Short or CornFld 20 00	6 30	2 20									
Southp. Yel. Globe. 9 00	2 00	1 10	Faxon..... 5 50	1 25	65	Dutch Case Knife.. 20 00	6 30	2 20									
Ohio Yellow Globe 10 00	2 25	1 20	Improved Hubbard 6 50	1 40	75	Kentucky Wonder.. 20 00	6 30	2 20									
Wh. Italian Tripoli 12 50	3 00	1 60	SPINACH						Lazy Wife..... 22 00	6 90	2 40						
Ex. Early Red Flat. 8 00	2 00	1 10	Bloomsdale..... 3 60	75	40	Horticultural Pole.. 20 00	6 30	2 20									
PARSLEY						Thick Leaf..... 3 60	75	40	Prolific Tree..... 12 00	3 90	1 40						
Moss Curled..... 3 50	90	50	Long Standing... 3 60	75	40	White Wonder..... 12 00	3 90	1 40									
Fern Leaf..... 3 50	90	50	TOMATO						Mammoth White Pod 25 00	7 80	2 70						
PARSNIP						Early Michigan... 13 00	2 70	1 50	White Navy..... 11 00	3 60	1 30						
Hollow Crown..... 4 00	1 00	60	New Stone..... 12 00	2 50	1 35	White Teparly..... 10 00	3 30	1 20									
Magnum Bonum... 4 00	1 00	60	Red Trophy..... 14 00	2 90	1 50	Pinto Field..... 10 00	3 30	1 20									
Half Long Guerns.. 4 00	1 00	60	Acme..... 13 00	2 75	1 50	PEAS											
PEPPER						Beauty..... 13 00	2 70	1 40	cwt	33lbs	10lbs						
Sweet Mountain.. 22 50	4 75	2 40	Perfection..... 13 00	2 75	1 50	Little Marvel..... 22 00	6 90	2 40									
Chinese Giant.... 25 00	5 40	2 75	Ponderosa..... 17 50	3 60	1 90	First and Best..... 17 00	5 40	1 90									
Golden Dawn..... 22 50	4 75	2 40	Dwarf Champion . 14 00	3 00	1 60	American Wonder.. 20 00	6 30	2 20									
Lg. Bell or Bull Nose 17 50	3 75	1 90	Yellow Plum..... 16 00	3 25	1 75	Not's Excelsior... 20 00	6 30	2 20									
Ruby King..... 19 00	4 00	2 25	Red Pear..... 16 00	3 25	1 75	Premium Gem..... 18 00	5 70	2 00									
Ceyenne..... 16 50	3 50	1 80	Matchless..... 13 00	2 75	1 50	Alaska..... 15 00	4 80	2 70									
SWEET PEAS						Berry's Tree..... 14 50	3 00	1 60	Stratagem..... 20 00	6 30	2 70						
1b	¼lb	¼lb	Berry's Ey. Wonder 27 50	6 00	3 25	Abundance..... 18 00	5 70	2 00									
Mixed Spencers... 1 75	1 00	60	Golden Queen... 16 50	3 25	1 75	Champ of England.. 22 00	6 90	2 40									
Mixed Eckfords... 90	55	35	Earlbell..... 16 50	3 50	1 85	White Marrowfat.. 12 00	3 90	1 40									
PUMPKIN						Berry's Earlianna. 13 00	2 75	1 50	Telephone..... 22 00	6 90	2 40						
5 lb	11b	¼lb	Alpha Pink..... 16 00	3 35	1 75	Everbearing..... 20 00	6 30	2 20									
Small Sugar..... 4 00	1 00	60	Early June..... 25 00	5 50	3 00	Advancer..... 18 00	5 40	2 00									
Kentucky Field... 2 25	65	35	Jn. Baer [Genuine] 16 00	3 40	1 75	Hors. Mkt. Garden.. 18 00	5 40	2 00									
Common Field.... 2 50	65	35	TURNIP						Gradus..... 24 00	7 50	2 60						
Large Cheese..... 2 25	65	35	Pur. Tp. Strap Leaf 3 00	75	40	Potlatch..... 25 00	7 80	2 70									
Mammoth Prize... 6 50	1 50	88	White Egg..... 4 00	90	50	Pedigree Ex. Early.. 20 00	6 30	2 20									
Mammoth Tours... 6 50	1 50	90	Sweet German... 4 00	90	50	Dawrf Tom Thumb.. 22 00	6 90	2 40									
King of Mammoth. 6 50	1 50	80	Purple Top Milan 4 50	1 00	55	McLean Little Gem. 20 00	6 30	2 20									
RADISH						White Milan..... 3 50	75	40	Thomas Laxton... 25 00	7 80	2 70						
Rosy Gem..... 4 00	1 00	60	White Globe..... 3 00	75	40	Mam. Lucf's Sugar.. 22 00	6 90	2 70									
Ey. Scarlet Turnip. 4 00	1 09	60	Cowhorn..... 3 00	75	40	Alderman..... 24 00	7 50	2 60									
Round Dark Red.. 4 00	1 00	60	Purple Top Globe. 3 00	75	40	Surprise..... 23 00	7 20	2 50									
Long Scar. Sh. Top. 4 00	1 00	60	Mouar. Ruta Baga 3 25	75	40	Sutton's Pioneer... 24 00	7 50	2 60									
French Breakfast.. 4 00	1 00	60	Pur. Top Ruta Baga 3 25	75	50	SWEET CORN											
White Vienna..... 4 00	1 00	60	Following Collect Prices						BU.	¼bu	¼bu						
White Strasburg.. 4 00	1 00	60	ONION SETS	bu.	¼bu.	¼bu.	Early White Cory.. 5 50	2 80	1 50								
Chartier..... 4 00	1 00	60	Yellow Bottom... 2 75	1 50	80	Early Minnesota... 5 50	2 80	1 50									
Ey. White Turnip.. 4 00	1 00	60	Red Bottom..... 2 85	1 60	90	Crosby's Early... 5 50	2 80	1 50									
Mixed..... 4 00	1 00	60	White Bottom... 3 00	1 60	90	Country Gentlem'n 6 00	3 10	1 60									
Long Black Spanish 4 00	1 00	60	Summer Top Sets. 4 50	2 40	1 25	Stowell's Evergre'n 5 50	2 80	1 50									
Icicle..... 4 00	1 00	60	Winter Top Sets.. 2 50	1 40	75	Golden Bantam... 6 00	3 10	1 60									
Chinese Rose..... 4 00	1 00	60	ROOTS & PLANT						Early Evergreen... 5 50	2 80	1 50						
Scarlet Globe..... 4 00	1 00	60	100	1000	5000	Peep O'Day..... 5 50	2 80	1 50									
Scar. Tur. White Tip. 4 00	1 00	60	Strawberry Plants 85	7 50	35 00	Early Sensation.. 8 00	4 25	2 25									
Cincinnati Market 4 00	1 00	60	Rhubarb Roots... 4 00	36 00	----	Late Mammoth... 5 50	2 80	1 50									
Non Plus Ultra... 4 00	1 00	60	Asparagus Roots.. 75	6 00	25 00	Black Mexican.... 6 00	3 10	1 60									
Crimson Giant... 4 00	1 00	60	POP CORN						Zig Zag Evergreen. 6 00	3 10	1 60						
						100lbs	30lbs.	10lbs	Kendall's Giant... 5 50	2 80	1 50						
						White Rice (seed).. 9 00	3 00	1 10									
						Queen's Golden... 10 00	3 30	1 20									

ALFALFA

	Bu.	¼ bu.	½ bu.
Star Brand (Prime).....	\$ 9.00	\$5.00	\$2.60
Planet Brand (Ex. Choice) ..	11.40	5.80	2.95
Dealers Fancy	12.60	6.40	3.25
World Brand (Ex. Fancy).....	13.80	7.00	3.35
Montana Grown (World Br.) ..	15.00	7.60	3.85
Dakota Grown (World Brand) ..	15.60	7.90	4.00
Foreign Grown (World Brand) ..	12.60	6.40	3.25
Turkestan (Fancy)	15.00	7.60	3.85
Grimm (World Brand)	33.00	16.60	8.35
Liscomb (World Brand)	30.00	15.25	7.75

TIMOTHY SEED

	\$3 15	\$1 65	\$ 97
Planet Brand (Ex. Choice) ..	\$3 15	\$1 65	\$ 97
Dealers Fancy	3 69	1 85	1 07
World Brand (Ex. Fancy) ..	4 05	2 10	1 10
Alsike & Tim. Mix. 45 lb bu.	4 95	2 55	1 35
Clo. Als. & Tim. Mix	5 40	3 76	1 45
Clo. & Timothy Mix 45 lb bu	4 95	2 60	1 35

MEDIUM RED CLOVER

	\$10 80	\$5 45	\$2 75
Star Brand (Prime).....	\$10 80	\$5 45	\$2 75
Planet Brand (Ex Choice).....	11 40	5 75	2 90
Dealers Fancy	12 01	6 10	3 10
World Brand (Ex Fancy)	12 90	6 50	3 30

MAMMOTH CLOVER

	\$11 70	\$5 70	\$3 00
Planet Brand (Ex Choice)....	\$11 70	\$5 70	\$3 00
Dealers Fancy	12 90	6 20	3 15
World Brand (Ex Fancy)	13 20	6 65	3 35

SWEET CLOVER

	\$3 11	\$2 11	\$1 11
Fcy. Wh. Bl. Unhd. 30lb bu..	\$3 11	\$2 11	\$1 11
Prime Wh. Bl. Hd. 60lb bu..	7 81	3 75	2 01
Choice Wh. Bl. Hd. 60lb bu..	8 41	4 35	2 15
Fancy Wh. Bl. Hd. 60lb bu..	9 00	4 55	2 31
Ex. Fcy. Wh. Bl. Hd. 60lb bu..	9 91	5 11	2 61
Fcy. Yel. Bl. Annual 60lb bu.	5 41	2 75	1 40
Ex. Fcy. Yel. Bien. 60lb bu ..	5 11	5 11	2 61

ALSIKE CLOVER

	\$14 40	\$7 25	\$3 65
Planet Brand (Ex Choice) ..	\$14 40	\$7 25	\$3 65
Dealers Fancy	15 60	7 85	3 95
World Brand (Ex. Fancy)	6 80	8 45	4 25

Crimson Clover	6 60	3 40	1 75
Giant Incarnate Clover	7 20	3 70	1 90
Wh. Dutch Clover (World Br)	33 00	16 50	8 75
Japan Clover	6 00	3 10	1 60

GRASSES

	Cwt.	50 lb.	25 lb.
Ex. Ecy. Ken. Blue Grass.....	\$28 00	\$14 10	\$7 10
Fancy K. Blue Grass.....	26 00	13 10	6 65
Eng. Blue Grs. (Mead Fscue).	26 00	13 10	6 65
Canadian Blue Grass.....	20 00	10 10	5 70
Fancy Orchard Grass.....	18 00	9 20	4 60
Unhulled Red Top	14 00	7 10	3 60
Fancy Recleaned Red Top	18 00	9 10	4 60
Bromus Inermis (Recleaned)	25 00	12 60	6 40
English Rye Grass	12 00	6 10	3 15
Italian Rye Grass	12 00	6 10	3 15
Billion Dollar Grass.....	6 50	3 30	1 70
Marvelous Perm. Mixture	16 00	8 10	4 10

SEED CORN - Shelled and Graded. Guaranteed 92 per cent or better germination.

	bus.	¼ bu.	½ bu.
Clarinda's Big Perfection	\$3 50	\$1 90	\$1 00
Pride of Iowa	3 50	1 90	1 00
Improved Leaming	3 00	1 65	90
Early Golden Dent	3 50	1 90	1 00
Legal Tender	3 00	1 65	90
Up-to-Date Calico	3 75	2 00	1 10
Improved Reid's Dent	2 75	1 50	85
Iowa King	3 00	1 65	90
Iowa Gold Mine	2 75	1 50	85
St. Charles White	3 00	1 65	90
Snowflake	3 00	1 65	90
Boone County White	3 00	1 65	90
White Wonder	4 00	2 10	1 15
Silver Mine	3 00	1 65	90
Golden Cap	3 25	1 75	95
White Cap Dent	3 25	1 75	90
Pride of the North	3 50	1 90	1 00
Silver King	3 25	1 75	95
Minnesota King	3 25	1 75	95
Early Longfellow	3 25	1 75	95
Early Yellow Dent	3 25	1 75	95
Sil. Triumph & Sanford's W. Fl.	3 25	1 75	95
Select per crate	\$4 50		
Extra Select, per crate	6 00		

Ear Corn

10 bushel lots of corn, 25c per bushel less.

SEED OATS

	25 bus. pr bu.	10 bus. pr bu.	Per 1 bu.
Golden Rust Proof	\$1 00	\$1 05	\$1 15
Canada gr. Reg. Swedish Sel.....	1 15	1 25	1 35
Colo. gr. Reg. Swedish Sel.....	90	1 00	1 10
New Alberta	1 15	1 25	1 35
New Scottish Wonder	1 00	1 05	1 15
Berry's New Sensation	90	1 00	1 10
Silver Mine	90	1 00	1 10
White Kershon	85	90	1 00
Yellow Kershon	85	90	1 00
Early Champion	80	85	95
Iowa 105	90	1 00	1 10
Black Beauty	1 25	1 35	1 45
Great Northern	1 65	1 75	1 85
SPELTZ		1 50	1 60

BARLEY

	10 bus. pr bu.	1 bu. pr bu.	¼ bu.
Champion Beardless	2 00	2 10	1 20
Success Beardless	1 90	2 00	1 10
Improved White Hull-less.....	2 75	2 85	1 50
Berry's Blue Hull-less.....	2 25	2 30	1 25
Oderbrucker	1 50	1 60	90
Manshury	1 40	1 50	80

WHEAT AND RYE

New Marquis Wheat	\$2 75	\$2 85	\$2 50
White Mammoth Spg. RYE.....			
Rosen, RYE			1 25

FORAGE CROPS

MILLET, Japanese	\$2 35	\$2 40	\$1 25
MILLET, Golden Choice	1 90	2 00	1 10
MILLET, Siberian, Choice	2 00	2 10	1 10
MILLET, Broom Corn	1 75	1 80	1 00
CANESEED, Amber	1 50	1 60	90
CANESEED, Orange	1 60	1 70	90
KAFFIR CORN, White	1 75	1 85	1 00
KAFFIR CORN, Red	1 90	2 00	1 10
Feterita	2 00	2 10	1 10
Milo Matze	2 00	2 10	1 10
COW PEAS Whipperwill.....	3 50	3 60	1 90
COW PEAS New Era	3 50	3 60	1 90
COW PEAS, Mixed	3 40	3 50	1 80
COW PEAS, Clay	3 40	3 50	1 80
SOY BEANS, Yellow	3 50	3 60	1 90
SOY BEANS, Ito San	5 70	5 80	3 00
SOY BEANS, Med. Early Yellow	5 70	5 80	3 00
SOY BEANS, Black Ebony	5 70	5 80	3 00
Canadian Field Peas.....	3 50	3 60	1 90
Sand or Winter Vetch.....	10 25	10 50	5 40
Spring Vetch	5 00	5 10	2 60
Broom Corn	2 40	2 50	1 35
Silverhull Buckwheat.....	1 75	1 90	1 00
Japanese Buckwheat	1 75	1 90	1 00

	Cwt.	50 lb.	25 lb.
Sudan Grass	\$8 00	\$4 10	\$2 10
Billion Dollar Grass.....	6 60	3 30	1 70
Dwarf Essex Rape.....	10 00	5 10	2 60

POTATOES

Early White Peachblow.....	4 50	2 35	1 20
Early Red River Ohio	3 50	1 90	1 00
Irish Cobbler	3 50	1 90	1 00
Banner	3 50	1 90	1 00
Improved Bonanza	3 50	1 90	1 00
Carman No. 3	3 50	1 90	1 00
Rural New Yorker	3 50	1 90	1 00
Sir Walter Raleigh	3 50	1 90	1 00
Red Rose	3 50	1 90	1 00

MISCELLANEOUS

Planet Brand Chick Food	\$2 75	\$1 50
World Brand Poultry Food.....	2 50	1 35
Hog Pasture Mixture.....	4 00	2 10

NAME AND ADDRESS HERE

From

PUT A
TWO
CENT
STAMP
HERE

A. A. Berry Seed Co.

The World's Largest Mail Order Seed House

CLARINDA,

IOWA.

Take advantage of our big bargain offers. Special values in each lot. No seed held at these low prices. Save money by acting promptly. SEND THIS IN TODAY.

Our \$1.00 Collection Makes
Elegant Gardens

**Our Seed Facts are Brim Full of
SPECIAL VALUES**

Send in Your Orders

Market Gardeners

Can Save Money Money and get Guaranteed Seeds from us.

Grass and Farm Seeds of all Kinds

Carefully Cleaned - High in Quality, Low in Price

Read our Seed Facts and Bargain Catalog Thru
There is much Valuable Information and Rare Bargains in it.
CHUCK FULL OF THEM!

Zone	Wrapper
Chaser	Parcel Post
Filler	Express
Checker	Warehouse

DO NOT USE ABOVE BLANK SPACE

DO NOT USE ABOVE SPACE

ESTABLISHED 1897

CAPITAL 500,000.00

INCORPORATED 1905

ORDER SHEET. USE IT.

A. A. BERRY SEED COMPANY
Clarinda, Iowa.

Write your Name and Address plainly, and follow instructions on page 9 of Catalog

DATE..... AMOUNT ENCLOSED

Name Cash \$

Post Office..... P. O. Order.....

Rural Route..... State Express Order

County..... Check

Ship to..... State..... Draft.....

(NAME OF TOWN) Stamps.....

Total

MARK HOW TO SHIP, BY MAIL () FREIGHT () EXPRESS ()

If out of variety ordered, can we substitute equal or better in the nearest we can supply?

Please state whether Seeds are to be shipped by Mail, Express or Freight. Prices on larger amounts will be found on Price List. If you do not have our late price list, drop us a card and we will send it promptly. We pay all postage or express on collections. If another catalog is wanted, ask for one and we will send it. **It is easy to order seed by mail.** All you have to do is to make out a list of seeds wanted, attach the price to each and remit by Exp. Order, P.O., Order, Draft or Money by Registered Letter.

YOUR MONEY'S WORTH OR YOUR MONEY BACK.

IF YOU WISH PART OF SHIPMENT BY MAIL AND PART BY FREIGHT BE EXPLICIT

QUANTITY	ARTICLES WANTED		
		DOLLARS	CTS

No difference how often you have written us, always give your FULL ADDRESS, write your Name, Post Office county and state very plainly. By so doing you will save us trouble and possible delay in filling your order

OH BOY! LOOK AT 'EM



STRAWBERRIES

Great big fat ones. Deep dark red. Ripe from tip to tip. Plump and firm and filled with the richest sweetest flavor that nature can crowd into them. Just imagine going right to your own garden and picking these delicious fellows, ripened on the vine. Put a big one in your mouth and bring your teeth down. Can't you taste the flavor? Just the kind that melt away into the sweetest, richest and most delightful syrup that ever tickled your taster.

Then pick a pan full and take them into the house and when you sit down, there at your plate is a heaping dish of these raving beauties bathing in a bath of rich yellow cream. Oh, what a flavor! Can't you just see them there and taste them? But the best is not yet. What is that fragrance that arouses your appetite as you enter the door at supper time? Somehow or other it brings back memories of when you were a kid at home. A peek in the kitchen tells the story—Strawberry Short Cake! There on each plate stands a generous portion. A deep golden layer of cake, then a thick layer of berries, another layer of cake and more berries with sweet delicious red juice trickling down the sides and on top of it all a cap of whipped cream. You can hardly hold your appetite in control. And listen to the yells of delight from the kids—Friend, let me ask you this—when it's strawberry time,—what is home without a shortcake?

You can have 'em and you can have 'em five times as good as you ever had before if you will grow your own and pick them ripe from the vines while they are chuck full of nature's full matured flavor. Why be satisfied with half ripe ones, or soggy ones when a little patch in your garden will bring you all you can use for your table and still have enough left for Friend Wife to can and preserve for winter's use? They are not hard to grow or care for. Plant in rows 3 to 4 feet apart with plants 20 inches

apart in the rows. Keep them clean like any other crop by hoeing. They will bring you a delight that you will long enjoy. Use strong healthy plants. We recommend one or both of the following varieties.

SENATOR DUNLAP

This is the most popular of the spring bearing type. They yield remarkably heavy and make big plump berries. They bear for a long time. This is a variety that gives almost universal satisfaction. There are many types of spring berries but we have selected these as the best of all and are concentrating on the Dunlaps because we believe they will please our customers best both from the standpoint of the quality of the fruit and the amount of the yields. We have arranged for extra nice stock and are having it grown in different sections so as to supply all with the best type of plants for their section. We take special care to have good hardy and vigorous plants and know that you will be pleased with them. We are making a special offer on these fine Senator Dunlap plants and will send you post paid at the following reduced prices: **50 plants, 60c; 100 plants, \$1.00; 300 plants, \$2.40.**

To those desiring larger quantities we offer: **200 plants, \$1.35; 500 plants, \$3.00; 1,000 plants, \$5.70.**

These prices do not include postage but do include good, careful packing without charge. Should you be in the market for large amounts, write for special prices.

PROGRESSIVE EVERBEARING

Every lover of strawberries should have a patch of everbearing variety. It continues to bear and ripen the most delicious fruit after all common kinds have quit for the season. They bear way along into the fall and thus you can relish this fruit fresh from your garden long after they are off the market. You know they will taste all the better when you know that you have them when few others do. If you have never grown the everbearing we are sure you will be amazed at the way this variety keeps on the job. You will delight in your patch of Progressive Everbearing plants. Let us fill your order from special selected stock that is bound to please. Get strong sturdy plants. Our prices on these are also reduced for our March Seed Facts to the following post paid prices: **25 plants, 70c; 50 plants, \$1.20; 100 plants, \$1.60; 200 plants, \$2.75.**

On large amounts, not post paid: **500 plants, \$7.50; 1,000 plants, \$13.80.**

Write for quotations on still larger amounts. Get a strawberry bed started this year. Send in your order now and get the best of plants at reduced prices.

WE CAN PLEASE YOU TOO

SAVED \$14.00 PER BUSHEL

Scottsville, Ark., 1-17-20.

Dear Sirs—Your inquiry about my letter referred to, would say in reply that the seed mentioned is some that I bought of you a few years ago at \$7.00 per bushel. A neighbor bought some seed through a local merchant from a seed house at the rate of \$21.00 per bu. and of the same grade as your \$7.00 seed. You can clearly see the saving on the A. A. Berry Seed Co.'s seed—\$14.00 per bushel.

I induced a neighbor to order some seed with me at that time and he has been a regular customer of the A. A. Berry Seed Co. ever since, when he wanted grass seed.

Wishing you the best of success, I remain,
Very truly yours, W. E. BRACE.

GRANGERS ARE SATISFIED

Mt. Victory, Ohio, Nov. 16, 1920.

Gentlemen—For reference to a square deal, and quality of your seeds, you may use my name, as Secretary, as we bought a car load from you last spring which proved satisfactory to us all. Yours truly,

W. A. PINNEY, Sec'y.
Community Grange No. 2200.

FINE SEED FOR LESS MONEY

Wayne, W. Va., March 15, 1920.

Dear Sirs—I received my grass seed, Order No. 38327, in good shape. Like it fine. Cheaper than I could get it here. Yours truly,

SHERIDAN RIGG,
Route 7 Box 42.

TRUE TO SAMPLE

Dayton, Ohio, April 1, 1920.

Dear Sirs—I received my shipment of seed, Order Number 41698, and found it true to sample and I am pleased with them. Yours respectfully,

E. B. RUBLE, Route 15.

BOUGHT A FARM BECAUSE IT HAD SUCH FINE STAND OF BERRY'S ALSIKE AND TIMOTHY

Girard, Pa., Jan. 20, 1921.

Gentlemen—Received your catalog and price list and am sending for my Grass seed which I know from experience is all of as good quality as you say it is. I have cut the hay on this farm for two seasons which was Alsike and Timothy mixed and I thought it was great, so I bought the farm and I want to try the seed too. Yours truly,

O. E. ERICKSON, Route No. 2.

FOR TWENTY YEARS

Lokeba, Okla., Jan. 22, 1921.

Dear Sirs—Please send me your garden seed catalog as I have changed my post office to Lokeba, Okla. You know I have been getting my garden seed from you for about 20 years as you know I could not make a garden if I did not have your catalog so send me one at once. Yours truly,

ELIJAH NANCE, Route No. 2.

BETTER THAN EXPECTED

Mahnomena, Minn., 1-18-21.

Gentlemen—I would like to have one of your seed catalogs for 1921. All the seeds I got from you last year were fine and everything better than I ever expected. Yours truly,

GEO. E. McDUGALL.

ALFALFA A SUCCESS

Burlington Jct., Mo., B. No. 3, 1-21-21.

Gentlemen—Send me a catalog and samples free. I want to sow some Red Clover and Alfalfa and Timothy. I bought Alfalfa last fall of you and it came good. Yours truly,

MILBURN ARCHER.

BEATS THE WHOLE U. S. A.

Cheat Haven, Pa., B. No. 10, 1-18-21.

Gentlemen—Find enclosed check for \$51.00 for seed. If I did not send the just amount let me know and I will make it satisfactory. I find your seed to be A No. 1, cannot be equalled anywhere in this

U. S. Please notify me when you ship the seed as I live about eight miles from RR. Station. Order No. 16575. Yours truly,
A. C. BOWERS.

FINE STAND OF ALSIKE

Petersburg, Tenn., B. No. 1, 1-18-21.

Dear Sirs—Please send me sample of your Alsike Clover. The seed that I ordered from you last year was all that could be expected, got fine stand.

Very respectfully, W. W. WOOD.

GOOD SEED, WANTS MORE

Ogden, Ia., 1-18-21.

Gentlemen—Please send me catalog of garden seeds for spring of 1921. The seeds I got from you last year were good and I was pleased with them and want more. Yours truly,

JOHN T. S. WILLIAMS.

OUR FRIENDS BRING HIM

Whittier, N. C., 1-8-21.

Gentlemen—Please send me by return mail one of your seed books as I want to buy some grass seed. I have some friends who say your seed is the best they have found. Yours respectfully,

Wm. QUIETT.

KNOWS OUR SEED, NO SAMPLES REQUIRED

Carbella, Mont., 1-7-21.

Dear Sirs—A few years back I used to buy seeds of you and it is possible I will again in the early spring, so would like very much to get your seed catalog. No samples will be required as I know what your seeds are. Yours very truly,

CHAS. H. DAILEY.

FOUR RUTA BAGAS—WEIGH 50 POUNDS

Winthrop, Me., Dec. 27, 1920.

Gentlemen—I showed Ruta Bagas, Mammoth Long Red Mangels, Chantany Carrots and Edmonds Blood Red Beets, grown from seed purchased from your firm at our Kennebec County Fair this last fall and they outclassed everything there in that line. The 4 Ruta Bagas weighed 50 pounds when trimmed. I do not know what they would have been like if I had attended to them as I should have done, but lack of time prevented me cultivating as I should have liked to. Yours truly,

WM. GODFREY.

TOO GOOD TO BE TRUE

Vienna, Ind., 1-7-21.

Gentlemen—I tilled and limed my land well before seeding and I bought your World Brand Seeds and my Clover was too good to be true. Had one bottom field of 24 acres that was in Clover and I could not have laid my hat down without touching Clover in the whole field. Wasn't this good? I have limed both my farm and tilled all of them. Last year the farmers all asked: "Where did you buy your Clover Seed?" I think part of this was caused by lime.

Yours respectfully, S. C. HOUGHLAND.

BEST OF LUCK

Warsaw, Ill., Jan. 7, 1921.

Kind Seedsman—Please send me your Garden Seed Catalog as we had the best luck of garden stuff from your seeds and now we want to send in for another seed order, so send it by return mail. I want flower bulbs and some flower seeds. Yours respectfully,

MRS. WALTER KNOCKE, B. No. 1, Box 109.

WHAT GOOD SEED WILL DO

Algona, Ia., 1-8-21.

Dear Sirs—Two years ago I bought "The Permanent Meadow Mixture," got a fine stand, later sold my farm but owner told me he had never seen a bigger or better crop, also a great variety. Several years ago I got the "Permanent Pasture Mixture" and never saw a finer tame pasture and it got better every year. In 1919 I pastured 10 cows, 3 calves and 2 colts on 15 acres and still had good pasture till late in the fall. Had good success 2 years ago with Sudan Grass. Have you anything besides Sudan Grass that would make a good crop of hay first season?

Hoping to receive catalog soon, I am,

Respectfully yours, F. A. RUSSELL.

YOU CAN SAVE ON BETTER SEEDS

\$5.00 TO \$6.00 PER BU. SAVED

Newburg, W. Va.
Dear Mr. Berry—I read most of your articles and like them well. I like the way it is written. I get articles from others and think yours are the best and your seed is the cheapest, and gives good satisfaction. Last spring when I bought Clover of you for \$13.21 others paid \$25.26 for the same grade. I remain,
Yours, A. F. BOHZARD.

OUR CLOVER MIXTURE SATISFIES

Harrison, Ark., 1-21-21.
Gentlemen—Please send me your special price on Clover and Timothy mixed seed. I have used nothing else for five years. I remain, Yours,
W. C. BAUGHMAN.

WORLD BRAND SATISFIES EVERYONE

Mentor, Ky., R. No. 1, 11-28-20.
Gentlemen—I have great confidence in your Alfalfa seed and as long as I can get your "World Brand" I will look no further. It is a pleasure to do business with people such as you.
Wishing you continued success, I am, Yours truly,
J. L. RIGGLE.

RESULTS COUNT

Bucklin, Mo., R. No. 4, 1-18-21.
Gentlemen—Have been ordering grass seed from you the past three years and am well pleased with results from them. Yours truly,
JNO. M. EARLY.

OUR SERVICE PLEASES

Thorndale, Ont., Casada, R. 1, 12-2-20.
Dear Sirs—Received a shipment of Sweet Clover seed from you last spring and was highly delighted with the service received. You can use my name in your satisfied customers list. Yours truly,
ROWLAND RIDDELL.

SWEET CLOVER DOING FINE

Virginia, Ill., Aug. 21, 1920.
Dear Sirs—I have bought seeds of you for a number of years and all have been O. K. and of the best grades, the Sweet Clover I got last year is doing fine through the drought we are having now. Yours truly,
GEO. W. ARMSTRONG, Route 6.

HONORABLE DEALINGS

Wales, Mass., May 8, 1920.
Gentlemen—The duplicate order of seeds have arrived in fine condition. Please accept my thanks for your honorable dealings. It is a pleasure to deal with so square a firm. I will gladly recommend you to all who buy seeds.
Wishing you best of success, I remain, Yours truly,
C. M. GALE.

ALFALFA STANDS DRY WEATHER

Erie, Pa., March 23, 1920.
Gentlemen—We got seed from you last year and was pleased with it. Last summer was a dry and hot one, but my Alfalfa is good.
Yours truly, A. O. OSTERBURG.

BIG ORDER SATISFIES

Cole Camp, Mo., 9-1-20.
Gentlemen—I bought \$200 worth of seed from you two years ago and was just fine, done well and thanks in advance for reply. Yours truly,
E. W. DOHERTY.

SEEDS DO FINE IN AUSTRALIA

Upper Mongogarie, via Leeville, New So. Wales, Australia, Oct. 1, 1920.
Gentlemen—Enclosed please find Postal Note on Clarinda office for \$12.00 for which please send me the following seeds. Please send seeds to the number of packets ordered even if you have to cut the packets to half quantities to the amount sent and oblige.

The seeds I obtained from you were a wonderful success. Please send me another catalog.
Yours faithfully, JOHN W. FARROW.

SWEET CLOVER PROVES FINE

Scottsbluff, Nebr.
Gentlemen—The Sweet Clover seed which I purchased of you last year proved very satisfactory. I will be in the market for six or eight hundred pounds of Grimm Alfalfa seed next year. Yours truly,
J. B. SCHROCK.

SERVICE APPRECIATED

Earlville, Ia., April 15.
Gentlemen—Received seeds April 10th, all O. K. Thank you a thousand times for your kindness and generosity. Respectfully,
MRS. LAURA C. REEDER.

WILL GET US MORE CUSTOMERS

Ridge, Maryland, April 12, 1920.
Gentlemen—Since I wrote you on the 9th of April, I have received the seed. Were landed at Millers Wharf, Md., the 11th in nice condition. I could not wish any better and I write you as soon as possible so as to save you any worry about them and I expect to order more seed later for the fall work.
Your seed is all O. K. and I expect to get you more customers. Yours truly, JOHN F. WHEATLEY.

FINE TOMATOES

Duluth, Minn., 520 E. 4th St., 8-2-20.
Gentlemen—My garden is fine, your Wonder Tomato is a dandy, my vines are just loaded down with fruit about two inches in diameter. Never seen anything like them up in this part of the country.
Yours truly, FOURTH STREET FEED STORE.

SEED LOOKS FINE

Janesville, Wis., R. No. 8, March 23, 1920.
Dear Sirs—I received seed in good condition and it looks fine. Sorry to have troubled you to trace it. Thanking you for your prompt reply and seed, I remain,
Yours truly, ALBERT STARK.

A CALIFORNIAN SATISFIED

Chino, Calif., R. No. A, Box 274, 6-8-20.
Gentlemen—Yours of the 2nd inst. in reply to mine in regard to nonarrival of seed cern. The full shipment is here and in time and it looks good.
Yours very truly, H. H. WEBSTER.

GOOD SUCCESS

Morris, N. Y., R. No. 1, Nov. 5, 1920.
Gentlemen—Have had very good success with your New Marvelous Mixture grass seed. Yours truly,
M. W. SERGEANT.

SAVED MONEY

Tolono, Ill., Sept. 6, 1920.
Dear Sirs—I have bought seed of A. A. Berry's Company at different times and was well pleased with the service and the seed was O. K. I consider I saved money in buying seed from this firm. I can recommend the company to others. Sincerely,
A. L. HALBERSTADT.

WELL PLEASED

Pedlar Mills, Va., 2-28-20.
Gentlemen—Received other shipment of seeds, was very well pleased with same. Please rush this shipment as I am ready to use them right away.
Yours truly, J. M. RUCKER.

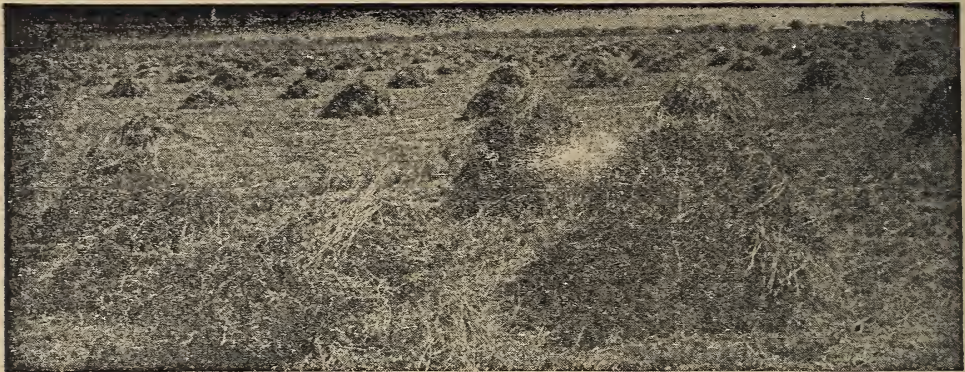
QUALITY AND SERVICE SATISFACTORY

Neillsville, Wis., 12-12-20.
Dear Sirs—We were much pleased with the quality of seeds received a year ago. The same service and quality this year will be satisfactory. Yours truly,
BEECHLER BROTHERS.

SAVED MONEY

Dearborn, Mich., R. No. 3, Box 137, 3-19-20.
Dear Sirs—I have received the Seed O. K. and I have saved some money. Yours truly,
EDW. POBURYSKY.

GRIMM ALFALFA



EXTRA HARDY—EXTRA FINE SEED

Grimm Alfalfa is the type we recommend you to use if you have trouble with winter killing in your section. It is in a class by itself in this respect. The extraordinary hardness of this type of Alfalfa is due largely to its root system. Instead of sending down one long tap root, its roots branch out. The advantage of this will no doubt be clear to you. You have seen some soils heave up in the spring due to the action of the frost. The soil has a good grip on the plants at the top and exerts a tremendous force when it pulls up. Now your one straight root may be able to withstand this force but if it breaks that plant is done for. Its source of life is cut off and it will die. The danger of breaking the many branching roots of the Grimm Alfalfa is not as great. They pull from different directions and can withstand much more force. Even if a few of these roots break you still have enough to supply the plant with food and your stand comes through in better condition and goes on flourishing.

You may not have this trouble with your soil heaving and, therefore, may conclude that there would be no advantage in sowing the more expensive Grimm seed. There is another factor of protection that the Grimm has which you should not overlook. The crown of the plants are somewhat lower than the common. This gives it extra protection. When winters are cold and there is little snow on the ground the crowns of the Alfalfa plants must withstand severe punishment. Of course if you have a hardy type of common Alfalfa these plants will be able to withstand it quite well and much better than the southern grown or irrigated Alfalfa would. These weaker types would perish during the first attack. Our Montana and Dakota grown seed of this common type have great hardness in this respect but they cannot compete with the Grimm because the lower crowns of the latter give it an additional protection that the others do not have. You, therefore, have much less danger of winter killing when you use this Grimm type of Alfalfa.

WHICH IS THE CHEAPEST TO SOW?

The answer to this question depends on your conditions. Many farmers, especially those in southern states have written us asking if they should not sow the Grimm. They were men who wanted the best and like many people judged that simply because the Grimm was higher priced that it was that much better for them to use. When circumstances indicated that they could not be bothered with winter killing, we have always advised them not to use it. We are just as desirous of selling our common types as the Grimm. It is a question with us as to what will be the cheapest for you in the long run. Our success depends on your satisfaction.

In your own particular case we would say that if you are not troubled with winter killing use the common Nebraska grown. If you have a little trouble along this line use our Montana or Dakota grown common type. If it happens quite frequently that your clover is damaged by winter killing then by all means use the Grimm. Under these circumstances we

cannot urge too strongly to sow this variety. Although the seed costs more than twice as much than the common we are confident that in the long run you will find that it means dollars in your pocket.

HOW TO FIGURE IT OUT

You may reason that if the common is less than half the price of the Grimm that you can make two seedings of the common at the price of one Grimm seeding. This is the wrong way of looking at it. If your stand kills out you lose much more than the cost of the seed. You lose your labor and the cost of preparing a good seed bed. But what counts most, you lose big crops. The hay that you could take of an acre of Alfalfa during the year that you had to start all over again with a new seeding can easily be worth from \$75.00 to \$100.00 per acre. Now it takes only about 12 pounds of Grimm to seed an acre as Grimm stools out more. At 55c per pound this would cost you \$6.60 per acre. The hardy Montana grown common costs 25c per pound and should be seeded 15 pounds per acre or \$3.75, a difference of \$2.85 per acre. If you are bothered with winter killing you cannot afford to risk a hay crop worth from \$75.00 to \$100.00 in order to save \$2.85 in the cost of seeding. What is true for one year is true for many years to follow for Grimm variety has stood for many years from one seeding and is still going strong. It is of course impossible to guarantee that Grimm will never kill out but we want to emphasize most emphatically its great superiority over the common in this respect.

Our Grimm Alfalfa is Dakota grown seed. It is fine, bright, plump seed and we will guarantee it to show up to your entire satisfaction. We don't care to sell you Grimm unless you need it but if your conditions indicate that you should use it we want your order. We feel free to ask you for it because we know we can save you money and give you the kind of seed you will want to sow. Send us your Grimm orders for prompt careful shipment. The saving will run from \$3.00 to \$8.00 per bushel. See prices of others and be convinced.