

AIRCRAFT ACTION REPORT

RESTRICTED
(Reclassify when filled out)

~~SECRET~~

I. GENERAL

(a) Unit Reporting VF 49 (b) Based on or at USS SAN JACINTO (c) Report No. 17
 (d) Take off: Date 22 May 1945 Time (LZT) 1540 (I) (Zone); Lat 26° 46' N Long 129° 10' E
 (e) Mission Strike on Shitoko Field, Kikai Shima (f) Time of Return 1730 (I) (Zone)

II. OWN AIRCRAFT OFFICIALLY COVERED BY THIS REPORT.

TYPE (a)	SQUADRON (b)	NUMBER			BOMBS AND TORPEDOES CARRIED (PER PLANE) (f)	FUZE, SETTING (g)
		TAKING OFF (c)	ENGAGING ENEMY A/C (d)	ATTACKING TARGET (e)		
<u>FGF-5</u>	<u>VF 49</u>	<u>8</u>	<u>0</u>	<u>8</u>	<u>Four planes had six five inch A¹ rockets and one 500# GP Bomb Three planes had six 5" rockets. Photo plane had neither bombs or rockets.</u>	<u>.025 and Mk. 146 Nondelay, bombs and rockets respectively. Mk. 146 nondelay.</u>

III. OTHER U. S. OR ALLIED AIRCRAFT EMPLOYED IN THIS OPERATION.

TYPE	SQUADRON	NUMBER	BASE	TYPE	SQUADRON	NUMBER	BASE
<u>TBM-3</u>	<u>VT 49</u>	<u>8</u>	<u>USS San Jacinto</u>				


IV. ENEMY AIRCRAFT OBSERVED OR ENGAGED (By Own Aircraft Listed in II Only).

(a) TYPE	(b) NO. OBSERVED	(c) NO. ENGAGING OWN A/C	(d) TIME ENCOUNTERED	(e) LOCATION OF ENCOUNTER	(f) BOMBS, TORPEDOES CARRIED; GUNS OBSERVED	(g) CAMOUFLAGE AND MARKING
<u>None</u>			(ZONE)			
			(ZONE)			
			(ZONE)			

(h) Apparent Enemy Mission(s) _____
 Did Any Part of _____
 (i) Encounter(s) Occur in Clouds? If so, Describe Clouds _____
(YES OR NO) (BASE IN FEET, TYPE AND TENTHS OF COVER)
 Time of Day and Brilliance _____
 (j) of Sun or Moon _____
(NIGHT, BRIGHT MOON; DAY, OVERCAST; ETC.) (k) Visibility _____
(MILES)

V. ENEMY AIRCRAFT DESTROYED OR DAMAGED IN AIR (By Own Aircraft Listed in II Only).

(a) TYPE ENEMY A/C	(b) DESTROYED OR DAMAGED BY:				(c) WHERE HIT, ANGLE	(d) DAMAGE CLAIMED
	TYPE A/C	SQUADRON	PILOT OR GUNNER	GUNS USED		
<u>None</u>						

ENCLOSURE 

SECRET

AIRCRAFT ACTION REPORT

RESTRICTED
(Reclassify when filled out)

(OMIT THIS SHEET IF NO ATTACK WAS MADE)

REPORT No. 17

XI. ATTACK ON ENEMY SHIPS OR GROUND OBJECTIVES (By Own Aircraft Listed in II Only).

- (a) Target(s) and Location(s) Shitooke Field, Kikai (b) Time Over Target(s) 1640 (I) Zone
(FOR SHIPS INCLUDE ALL IN AREA UNDER ATTACK)
- (c) Clouds Over Target Broken clouds from three to four thousand feet. 6/10 cover.
(BASE IN FEET, TYPE AND TENTHS OF COVER)
- (d) Visibility of Target Clear (e) Visibility 8
(CLEAR, HAZY, PARTIALLY OBSCURED BY CLOUDS, ETC.) (MILES)
- (f) Bombing Tactics: Type Glide Bomb Sight Used Mk. 8 Illuminated Gun sight.
(LEVEL, GLIDE OR DIVE) (TYPE)
- Bombs Dropped per Run 2 Spacing Salvo Altitude of Bomb Release 1,500
(NUMBER) (FEET) (FEET)
- (g) Number of Enemy Aircraft Hit on Ground: Destroyed 0 Probably Destroyed 0 Damaged 0

(h) AIMING POINT	(i) DIMENSIONS OR TONNAGE	(j) NO A/C ATTACKING (k) SQUADRON	(l) BOMBS AND AMMUNITION EXPENDED. EACH AIMING POINT	(m) NO HITS On Aiming Point	(n) DAMAGE (None, slight, serious, destroyed or sunk)
1 Building area		4 with bombs VF 49	4-500# GP	4	Large fire started in building area. Damage not assessed.
2 Northwest of runway		7 with rkts. VF 49	66-5" AR rockets	66	
3					
4					
5					
6					
7					
8					

(o) RESULTS: (For all hits claimed on ship targets and for land targets of special interest, draw diagram, top or side view or both, as appropriate, showing type and location of hits. For all targets give location and effect of hits, and identify by numbers above. Use additional sheets if necessary).

Two photographs of Shitooke field are hereto attached. Photograph number one, marked as Exhibit "A" shows the entire landing strip, with the exception of the southwestern end. Photograph number two, marked as Exhibit "B" shows the southwestern end of the landing strip. The field extends in a Northeasterly-southwesterly direction.

(p) Were Photographs Taken? Yes Photographs of Damage, When Taken, Should Be Attached By Staple.

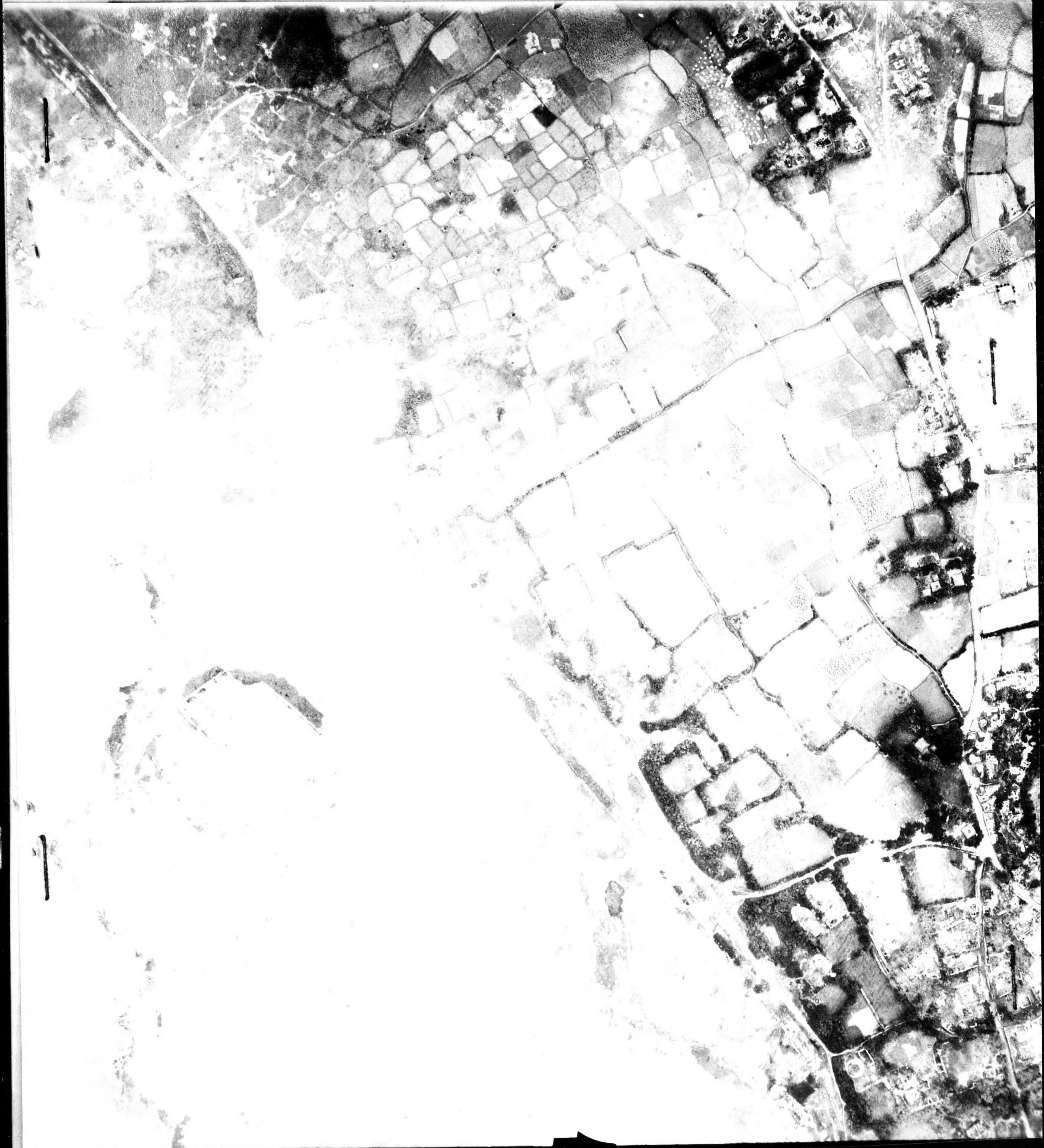


IN JAN 63 VF MAY 22-45 1645(9) K17 12" 2800' SHITOOKE A/F KIKAI JIMA CONF

Exhibit "A"

Photograph number 010

SECRET



SAN JAC 83VF MAY 22-45 1645(9) K17 12" 2800' SHITOOKE A/F KIKAI JIMA CONF

Exhibit "B" Photograph number two

SECRET

REPORT No. **17**

XII. TACTICAL AND OPERATIONAL DATA. (Narrative and comment. Describe action fully and comment freely, following applicable items in check list at left. Use additional sheets if necessary.)

ENGAGEMENT WITH ENEMY

OWN AIRCRAFT

- Disposition
- Altitudes
- Speeds
- Approach Tactics
- Use of Cover, Deception
- Angles of Attack and
Their Effectiveness
- Distance of Opening Fire
- Defense Tactics and
Their Effectiveness

ENEMY AIRCRAFT

- Method of Locating, Distance
- Disposition
- Altitudes
- Speeds
- Approach Tactics
- Use of Cover, Deception
- Angles of Attack
- Distance of Opening Fire
- Defensive Tactics

COMMENTS AND RECOMMENDATIONS

- Own Weaknesses
- Enemy Weaknesses
- Offensive Tactics, Own
" " Enemy
- Defensive Tactics, Own
" " Enemy
- Flexible Gunnery, Own
- Escort Tactics
- Fighter Direction
- Use of Radar
- Night Fighting
- Recognition, Aircraft

ATTACK

OWN TACTICS

- Method of Locating Target
- Approach to Target
- Altitudes, Speeds
- Approach
- Dive
- Pull-Out
- Dive Angle
- Strafing
- Retirement
- Defensive Tactics
- Use of Jamming

DEFENSE, ENEMY

- Evasive Tactics, Ships
- Concealment
- Searchlights
- Night Fighter Tactics
- Use of Jamming

COMMENTS AND RECOMMENDATIONS

- Bombing Tactics
- Torpedo Tactics
- Effectiveness of
Bombs, Torpedoes
- Selection of Targets
- Fuzing
- Strafing Tactics
- Defensive Tactics
- Use of Radar
- Reconnaissance
- Photography
- Briefing

OPERATIONAL

- Navigation
- Homing
- Rendezvous
- Recognition, Ships
- Communications
- Flight Operations
- Search and Tracking
- Base Operations
- Maintenance

Lt. Comdr. G. M. Rouzee led a strike group consisting of eight fighter aircraft and eight torpedo bombers of Air Group Forty-nine from the USS San Jacinto, at 1540 (I), 22 May 1945. The pushover on the target was made from about 3,500 to 4,000 feet and the bombs were dropped at about 1,500 feet. The bombs were dropped on, and all the planes strafed the building and dispersal area on the first run, which was made parallel to the western boundary of the airstrip. A second run was made in support of the photo pilot on about the same course and at the same altitude. The area was strafed and rocketed on this run. The photographic flight was made at about 2,800 feet and the coverage of the field and the immediate building and dispersal area was 100%. (See photographs 1 and 2, XI (p)). The bombs started four fires in the building area, which merged into one fire after the second attack. No operational aircraft, or hangar or other installations were seen on the field. The strip appeared to be unfinished and was not operational. The building area, which included part of the village is very nearly destroyed. No anti-aircraft fire was encountered. Some pill box defenses were seen northwest of the strip. The flight pancaked aboard the USS San Jacinto at 1730 (I).

~~SECRET~~

AIRCRAFT ACTION REPORT

RESTRICTED
(Reclassify when
filled out)

REPORT No. 17

XIII. MATERIAL DATA. (Comment freely on performance or suitability, following check list at left.
Use additional sheets if necessary).

All equipment performed normally.

ARMAMENT

- Guns, Gunsights
- Turrets
- Ammunition
- Bombs, Torpedoes
- Bomb Sights
- Bomb Releases

COMMUNICATIONS

- Radio, Radar
- Homing Devices
- Visual Signals
- Codes, Ciphers

RECOGNITION

- IFF
- Signals
- Battle Lights
- Procedures

PROTECTION

- Armor; Points and Angles
of Fire Needing Further
Protection
- Leak Proofing

EMERGENCY EQUIPMENT

- Parachutes
- Life Belts, Life Rafts
- Safety Belts
- Emergency Kits
- Rations, First Aid

NAVIGATIONAL EQUIPMENT

- Compasses
- Driftsights
- Octants
- Automatic Pilots
- Charts
- Field Lighting

INSTRUMENTS

- Flight
- Power Plant

OXYGEN SYSTEM

**CAMOUFLAGE AND
DECEPTION DEVICES**

STRUCTURE

- Airframe
- Control Surfaces
- Control System
- Dive Flaps
- Landing Gear
- Heating System
- Flight Characteristics
At Various Loadings

POWER PLANT

- Engines
- Engine Accessories
- Propellers
- Lubricating System
- Starters
- Exhaust Dampers

HYDRAULIC SYSTEM

ELECTRICAL SYSTEM

- Auxiliary Plant
- Lights

FUEL SYSTEM

FLIGHT CLOTHING

MAINTENANCE

BASE FACILITIES

- Plane Servicing Equipment
- Personnel Facilities

REPORT PREPARED BY:

APPROVED BY:

R. A. SMYTHE, Lt. (jg), USNR
SIGNATURE RANK AND DUTY
ACI OFFICER

G. M. ROUZEE, Lt. Comdr., USN
SIGNATURE RANK AND DUTY
COMMANDING OFFICER, VF 49

25 May 1945
DATE