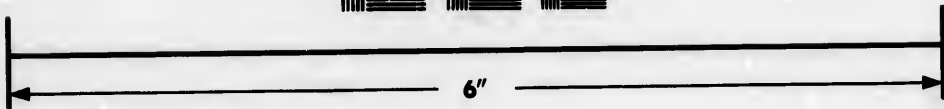
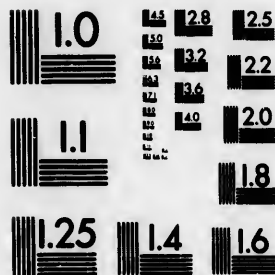


**IMAGE EVALUATION  
TEST TARGET (MT-3)**



**Photographic  
Sciences  
Corporation**

23 WEST MAIN STREET  
WEBSTER, N.Y. 14580  
(716) 872-4503

**CIHM/ICMH  
Microfiche  
Series.**

**CIHM/ICMH  
Collection de  
microfiches.**



**Canadian Institute for Historical Microreproductions / Institut canadien de microreproductions historiques**

**© 1985**

Technical and Bibliographic Notes/Notes techniques et bibliographiques

The Institute has attempted to obtain the best original copy available for filming. Features of this copy which may be bibliographically unique, which may alter any of the images in the reproduction, or which may significantly change the usual method of filming, are checked below.

L'institut a microfilmé le meilleur exemplaire qu'il lui a été possible de se procurer. Les détails de cet exemplaire qui sont peut-être uniques du point de vue bibliographique, qui peuvent modifier une image reproduite, ou qui peuvent exiger une modification dans la méthode normale de filmage sont indiqués ci-dessous.

- Coloured covers/  
Couverture de couleur
- Covers damaged/  
Couverture endommagée
- Covers restored and/or laminated/  
Couverture restaurée et/ou pelliculée
- Cover title missing/  
Le titre de couverture manque
- Coloured maps/  
Cartes géographiques en couleur
- Coloured ink (i.e. other than blue or black)/  
Encre de couleur (i.e. autre que bleue ou noire)
- Coloured plates and/or illustrations/  
Planches et/ou illustrations en couleur
- Bound with other material/  
Relié avec d'autres documents
- Tight binding may cause shadows or distortion along interior margin/  
La reliure serrée peut causer de l'ombre ou de la distorsion le long de la marge intérieure
- Blank leaves added during restoration may appear within the text. Whenever possible, these have been omitted from filming/  
Il se peut que certaines pages blanches ajoutées lors d'une restauration apparaissent dans le texte, mais, lorsque cela était possible, ces pages n'ont pas été filmées.
- Additional comments:/  
Commentaires supplémentaires:

- Coloured pages/  
Pages de couleur
- Pages damaged/  
Pages endommagées
- Pages restored and/or laminated/  
Pages restaurées et/ou pelliculées
- Pages discoloured, stained or foxed/  
Pages décolorées, tachetées ou piquées
- Pages detached/  
Pages détachées
- Showthrough/  
Transparence
- Quality of print varies/  
Qualité inégale de l'impression
- Includes supplementary material/  
Comprend du matériel supplémentaire
- Only edition available/  
Seule édition disponible
- Pages wholly or partially obscured by errata slips, tissues, etc., have been refilmed to ensure the best possible image/  
Les pages totalement ou partiellement obscurcies par un feuillet d'errata, une pelure, etc., ont été filmées à nouveau de façon à obtenir la meilleure image possible.

This item is filmed at the reduction ratio checked below/  
Ce document est filmé au taux de réduction indiqué ci-dessous.

10X	14X	18X	22X	26X	30X
<input type="checkbox"/>	<input type="checkbox"/>	<input checked="" type="checkbox"/>	<input type="checkbox"/>	<input type="checkbox"/>	<input type="checkbox"/>
12X	16X	20X	24X	28X	32X

The copy filmed here has been reproduced thanks to the generosity of:

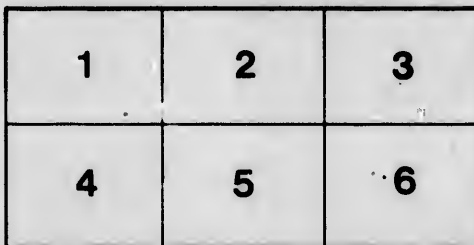
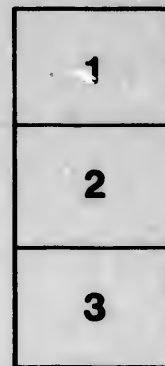
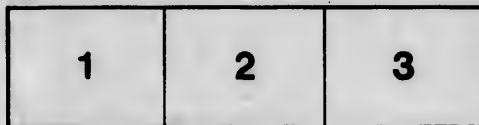
Nova Scotia Public Archives

The images appearing here are the best quality possible considering the condition and legibility of the original copy and in keeping with the filming contract specifications.

Original copies in printed paper covers are filmed beginning with the front cover and ending on the last page with a printed or illustrated impression, or the back cover when appropriate. All other original copies are filmed beginning on the first page with a printed or illustrated impression, and ending on the last page with a printed or illustrated impression.

The last recorded frame on each microfiche shall contain the symbol  $\rightarrow$  (meaning "CONTINUED"), or the symbol  $\nabla$  (meaning "END"), whichever applies.

Maps, plates, charts, etc., may be filmed at different reduction ratios. Those too large to be entirely included in one exposure are filmed beginning in the upper left hand corner, left to right and top to bottom, as many frames as required. The following diagrams illustrate the method:



L'exemplaire filmé fut reproduit grâce à la générosité de:

Nova Scotia Public Archives

Les images suivantes ont été reproduites avec le plus grand soin, compte tenu de la condition et de la netteté de l'exemplaire filmé, et en conformité avec les conditions du contrat de filmage.

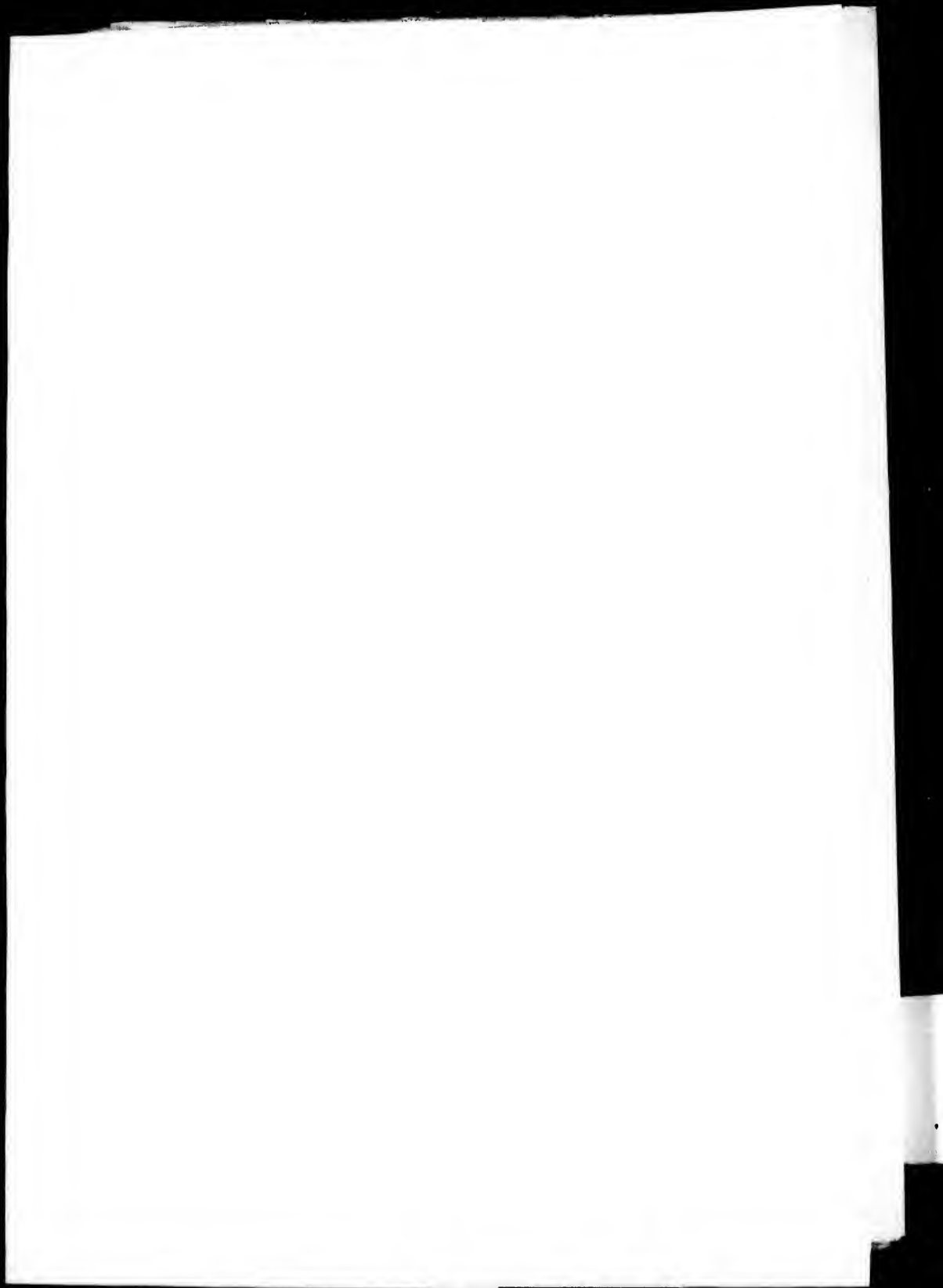
Les exemplaires originaux dont la couverture en papier est imprimée sont filmés en commençant par le premier plat et en terminant soit par la dernière page qui comporte une empreinte d'impression ou d'illustration, soit par le second plat, selon le cas. Tous les autres exemplaires originaux sont filmés en commençant par la première page qui comporte une empreinte d'impression ou d'illustration et en terminant par la dernière page qui comporte une telle empreinte.

Un des symboles suivants apparaîtra sur la dernière image de chaque microfiche, selon le cas: le symbole  $\rightarrow$  signifie "A SUIVRE", le symbole  $\nabla$  signifie "FIN".

Les cartes, planches, tableaux, etc., peuvent être filmés à des taux de réduction différents. Lorsque le document est trop grand pour être reproduit en un seul cliché, il est filmé à partir de l'angle supérieur gauche, de gauche à droite, et de haut en bas, en prenant le nombre d'images nécessaire. Les diagrammes suivants illustrent la méthode.

errata  
to

pelure,  
on à





AA  
BX  
11

THE  
**Newfoundland Almanac.**

FOR THE YEAR OF OUR LORD

**1848:**

BEING LEAP YEAR AND THE ELEVENTH YEAR OF HER  
MAJESTY'S REIGN.

---

COMPILED BY PHILIP TOCQUE.

---

CONTENTS.

Eclipses . . . . .	Page 3	Post-office . . . . .	Page 25
Royal Family . . . . .	4	Transatlantic Steam Na-	
Her Majesty's Ministers . . . . .	5	vigation, . . . . .	25 to 27
Almanac . . . . .	6 to 17	Commissioners of Public	
Reigning Sovereigns of		Boards . . . . .	27 & 28
Europe . . . . .	18 & 19	Rates of Pilotage . . . . .	27
Ditto of England from		Light Houses . . . . .	23
Conquest . . . . .	19	Officers in the several	
LOCAL GOVERNMENT:		Electoral districts . . . . .	29 to 37
Civil Department . . . . .	20	Charitable and other In-	
Customs . . . . .	20 & 21	stitutions . . . . .	37 to 39
Law Department . . . . .	21	Newspapers, Statistics &c.	39
Clergy . . . . .	22 to 24	Governors of Newfound-	
Military . . . . .	24 & 25	land, and other colonies	46 & 47
Naval . . . . .	25		

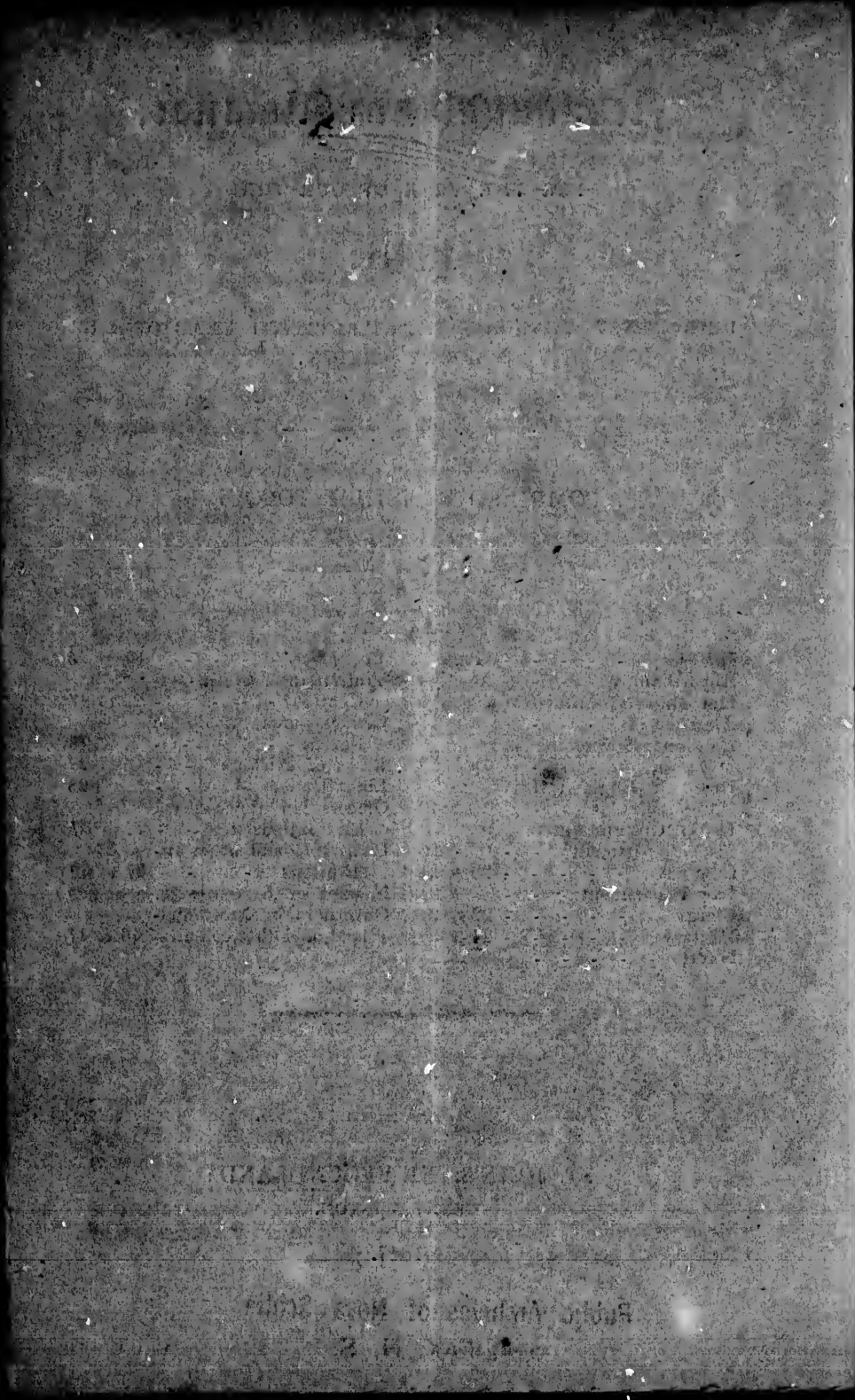
---

ST. JOHN'S, NEWFOUNDLAND:

HENRY WINTON,

1847.

Public Archives of Nova Scotia  
HALIFAX, N. S.





**PRELIMINARY NOTES**

Sunday Letter . . . . . B.A.	Ascension Day (Thursday) . . . . . June 11
Golden Number . . . . . 6	Whit Sunday . . . . . June 11
Epact . . . . . 125	Trinity Sunday . . . . . June 18
Anno Mundi . . . . . 5,851	Corpus Christi . . . . . June 22
Septuagesima Sunday . . . . . Feb. 20	Queen's Accession . . . . . June 20
Ash Wednesday . . . . . Mar. 8	Prince Walter's Birth-day . . . . . Nov. 9
Good Friday . . . . . April 21	Advent Sunday . . . . . Dec. 3
Easter Day . . . . . April 23	
Queen's Birthday . . . . . May 24	

**EXPLANATORY NOTICES.**

The Declinations of the Sun are left as last year, the shortness of the notice not admitting re-calculations. But they are sufficiently near for all practical purposes.

In the Chronological Calendar, the events printed in *italics* are to be understood as local.

The Compiler contemplates getting out the Almanac next year in a superior style, and embracing new and interesting matter.

**ECLIPSES.**

In the year 1848, there will be six Eclipses;—four of the Sun and two of the Moon; of these only three will be visible in Newfoundland—one solar and two lunar.

The Solar Eclipse will take place on the forenoon of Sunday, the 5th of March; but the obscuration in this Island will be very partial, and nearly, if not altogether, imperceptible to the naked eye. It begins on the Earth generally at 52 minutes past 8 o'clock; (mean time at St. John's,) in lon. 86° 28' W., lat. 47° 35' N. and ends at 7 minutes past 11, in lon. 16° 5' E., and latitude 40° 2' N.

The first Lunar Eclipse happens on the evening of Sunday, the 19th of March, when there will be a total obscuration of the Moon's disc, commencing on the eastern division of her lower limb, and terminating on the western division of her upper limb.—Magnitude of Eclipse (Moon's diameter, 1) 1,001 on the northern limb.

First contact with penumbra . . . . .	34 minutes past 2
Ditto ditto with shadow . . . . .	44 " " " " " "
Ditto total immersion in shadow . . . . .	50 " " " " " "
Middle of eclipse . . . . .	40 " " " " " "
Last total immersion in shadow . . . . .	31 " " " " " "
Ditto contact with shadow . . . . .	27 " " " " " "
Ditto ditto with penumbra . . . . .	47 " " " " " "

Total duration of Eclipse—6 hours 13 minutes.

NOTE.—As the Moon will be vertical in lon. 86° 8' E., lat. 37° N., when the Eclipse begins, she will of course be 51° 50' below the horizon, and consequently invisible here; but as our satellite rises that evening about six o'clock she will then (provided there be a clear atmosphere) become visible, and, being at the time totally eclipsed, will present a remarkable appearance.

The second Lunar Eclipse (also total) occurs on the night of Tuesday, the 12th of September, or rather on the morning of Wednesday, the 13th; commencing on the eastern division of the upper limb, and ending on the western division of the lower limb.—Magnitude of Eclipse (Moon's diameter, 1) 1,702 on the southern limb.

First contact with penumbra . . . . .	3 minutes past 12 A.M.
Ditto ditto with shadow . . . . .	60 " " 12 " "
Ditto total immersion in shadow . . . . .	58 " " 1 " "
Middle of Eclipse . . . . .	48 " " 2 " "
Last total immersion in shadow . . . . .	37 " " 3 " "
Ditto contact with shadow . . . . .	35 " " 4 " "
Ditto ditto with penumbra . . . . .	33 " " 5 " "

Total duration of Eclipse—5 hours, 29 minutes.

**ST. JOHN'S.**

Latitude . . . . .	47° 33' 22" North.
Longitude (Meridian of Halifax) . . . . .	10° 52' 31" East.
Longitude (Meridian of Greenwich) . . . . .	52° 45' 29" West.
Magnetic Variation (1828) . . . . .	28° 44' 0" Westerly.

**THE ROYAL FAMILY OF GREAT BRITAIN.**

**THE QUEEN.**

**ALEXANDRINA VICTORIA**, born May 24, 1819; married to Prince Albert Francis Augustus Charles Emanuel, of Saxe Coburg and Gotha, February 10, 1840, and has issue: 1st. Victoria Adelaide Maria Louisa, Princess Royal of England, born 21st. November, 1840; 2d. Albert Edward, Prince of Wales and Duke of Cornwall, born 9th November 1841; 3rd. Princess Alice Maude Mary, born 26th April 1843; 4th. Alfred Ernest Albert, born 6th August, 1844; 5th. Princess Helena, born 26th May, 1846.

**THE QUEEN DOWAGER.**

**Adelaide Amelia Louisa Teresa Caroline**, widow of King William IV., sister of the reigning Duke of Saxe Meiningen, born August 13, 1792.

**ROYAL PRINCES AND PRINCESSES.**

**Ernest Augustus** (King of Hanover) Duke of Cumberland, born June 5, 1771; married May 29, 1815, to Frederica Carolina Sophia, daughter of the Duke of Mecklenburgh Strelitz; and widow of Frederick William, Prince of Solms Braunsfels, born March 2, 1778—issue, George Frederick, born May 27, 1819.

**Adolphus Frederick**, Duke of Cambridge, born February 24, 1774; married May 7, 1818, to Augusta Wilhelmina Louisa, daughter of the Landgrave of Hesse, born July 25, 1797; issue George William, born March 26, 1819; Augusta Caroline, born July 19, 1822; married May 1843; H.S.H. the Duke of Mecklenburgh Strelitz; Mary Adelaide, November 27, 1833.

**Mary Duchess of Gloucester**, born April 25, 1776.

**HER MAJESTY'S MOTHER.**

**Victoria Maria Louisa**, (Princess Dowager of Leinengen) Duchess of Kent, widow of Edward Duke of Kent, and sister of the King of the Belgians, born August 17, 1786.

HER MAJESTY'S MINISTERS.

First Lord of the Treasury . . . . .	Right Hon. Lord John Russell,
Lord Chancellor . . . . .	Lord Cottingham.
Chancellor of the Exchequer . . . . .	Right Hon. Charles Wood,
President of the Council . . . . .	Marquis of Lansdowne.
Privy Seal . . . . .	Earl of Minto.
Secretaries of State {	Home . . . . . Sir George Grey.
	Foreign . . . . . Viscount Palmerston.
	Colonies . . . . . Earl Grey.
First Lord of the Admiralty . . . . .	Lord Auckland.
Master General of the Ordnance . . . . .	Marquis of Anglesey.
President of Board of Control . . . . .	Sir John Hobhouse.
President of the Board of Trade . . . . .	Earl of Clarendon.
Secretary at War . . . . .	Right Hon. Fox Maule.
Treasurer of the Navy and Pay- master of the Forces . . . . .	Right Hon. T. B. Macaulay.
Field Marshal Com. the Forces . . . . .	Duke of Wellington.

[The above form the Cabinet.]

Postmaster General . . . . .	Marquis of Clanricarde.
Chancellor of the Duchy of Lan- caster . . . . .	Lord Campbell.
Woods and Forests . . . . .	Viscount Morpeth.
Vice-president of the Board of Trade . . . . .	Mr. Milner Gibson.
Master of the Mint . . . . .	Right Hon. R. L. Shiel.
Secretary of the Admiralty . . . . .	G. R. Ward, Esq.
Joint Secretaries of Treasury . . . . .	{ Henry Tuffnell, Esq.
	{ John Parker, Esq.
Home Under Secretary . . . . .	Sir W. Somerville.
Foreign ditto . . . . .	Right Hon. E. J. Stanley.
Colonial ditto . . . . .	Mr. B. Hawes.
Attorney General . . . . .	John Jervis, Esq.
Solicitor General . . . . .	David Dundas, Esq.
Judge Advocate General . . . . .	Charles Buller, Esq.
Lord Advocate of Scotland . . . . .	Right Hon. A. Rutherford.

THE QUEEN'S HOUSEHOLD.

Mistress of the Robes . . . . .	Duchess of Sutherland.
Lord Chamberlain . . . . .	Earl Spencer.
Lord Steward . . . . .	Earl Fortescue.
Master of the Horse . . . . .	Duke of Norfolk.

Lord Lieutenant of Ireland . . . . .	Earl of Besborough.
Lord Chancellor . . . . .	Right Hon. M. Brady.
Secretary for Ireland . . . . .	Right Hon. H. Labouchere.

# JANUARY, 31 DAYS.

## THE MOON'S CHANGES.

**New Moon**..... 6th day, 36 minutes past 8 morning.  
**First Quarter**..... 13th " 15 " 8 "  
**Full Moon**..... 20th " 33 " 8 "  
**Last Quarter**..... 28th " 27 " 8 "

Days.	Sundays and Remarkable Days.	Sun's Declination..	Chronological Calendar.
Sa.	1 Circumcision	S 23. 2.22	1. 1st Local Legislature met 1833.
S.	2d Sunday aft. Xmas	22.57.19	2. Supreme Court met under present Charter, 1826.
M.	3	51.47	4. Sun rises 7h. 54m.
Tu.	4	45.49	6. Twelfth day.
W.	5	39.24	7. Clock bef. Sun 6'
Th.	6 Epiphany, Old Xmas [day]	32.32	8. Sun rises 7h. 49m.
F.	7	25.12	11. Sun sets 4h. 24m.
Sa.	8	17.27	13. C. J. Fox b 1740.
S.	9 1st Sun. aft. Epiphany [day]	9.15	14. E. Halley d 1742.
M.	10	0.33	16. Battle of Cogenra 1810.
Tu.	11	21.51.33	19. Clock bef. Sun 9'
W.	12	42. 4	20. Ind. of U. States pro. 1783.
Th.	13	32.10	21. Sun rises 7h. 44m.
F.	14	21.50	23. W. Pitt d. 1806
Sa.	15	11. 6	24. Fred. Gt. d. 1712.
S.	16 2d Sun. aft. Epiphany [day]	20.59.58	27. Sun sets 4h. 48m.
M.	17	48.25	28. Peter the Great d 1725.
Tu.	18	36.29	29. George III. d 1830.
W.	19	24. 9	31. The Pretender d 1786.
Th.	20	11.27	Clock bef. sun. 13' 42"
F.	21	19.53.22	
Sa.	22	44.54	
S.	23 3d Sun. aft. Epiphany	31. 5	
M.	24 Conversion of Saint Paul	16.54	
Tu.	25	2.21	
W.	26	18.47.29	
Th.	27	32.15	
F.	28	16.42	
Sa.	29	0.48	
S.	30 4th Sun. aft. Epiph.	17.44.36	
M.	31	28.53	

# FEBRUARY, 29 DAYS,

## THE MOON'S CHANGES.

New Moon..... 4th day, 11 minutes past 10 afternoon.  
 First Quarter..... 11th " 24 " " 4 " " " "  
 Full Moon..... 12th " 26 " " 12 morning.  
 Last Quarter..... 27th " 49 " " 4 " " "

Days.	Sundays and Remarkable Days.	Sun's Declination.	Chronological Calendar.
Th. 1		S. 17.11.15	1 Sun rises 7h. 31m.
W. 2	Purification.	16.54. 7	2 Candlemas day.
Th. 3		36.41	6 Clock def sun 18. 51"
F. 4		18.57	6 Mary Queen of Scots behd. 1587.
Sa. 5	St. Agatha.	0.57	
S. 6	5th Sun. aft. Epipha-	15.42.40	9 Br. Hooper burnt
M. 7	[ny	24. 8	1555.
Tu. 8		5.19	10 Sun sets 5h. 7m.
W. 9	The Queen & Prince [Albert m. 1840.	14.46.15	12 Lady Jane Grey behd. 1555.
Th. 10		26.56	
F. 11		7.23	12 Capt. Cook & 1770.
Sa. 12		13.47.35	Battle off Cape St.
S. 13		27.34	Vincent 1797.
M. 14	6th Sun. aft. Epiph.	7.20	15 Clock def sun 14. 26"
Tu. 15	[Quinquagesima.	12.46.53	16 Sun rises 7h. Sun.
W. 16	[St. Valentine.	26.14	17 B.I. Society found. ed 1806.
Th. 17		5.23	
F. 18		11.44.20	18 Martin Luther
Sa. 19		23. 7	1546
S. 20	Septuagesima Sun.	1.43	19 Sun sets 5h. 27m.
M. 21		10.40. 8	21 Torbay Church com.
Tu. 22		18.24	1841. Lantern
W. 23		9.56.31	890.
Th. 24		34.28	25 Sir C. Wren & 1725.
F. 25		12.17	26 Bonaparte's escape from Elba, 1815.
Sa. 26		8.49.58	
S. 27	Sexagesima Sun.	27.31	27 Clock def sun 13. 57"
M. 28		4.57	28 Sun rises 6h. 46m.
Tu. 29			

# MARCH, 31 DAYS.

## THE MOON'S CHANGES.

New Moon.....	5th day, 46 minutes past	9	morning.
First Quarter.....	12th " 10 "	1	"
Full Moon.....	19th " 39 "	5	afternoon.
Last Quarter.....	27th " 47 "	9	"

Days.	Sundays and Remarkable Days.	Sun's Declination.	Chronological Calendar.
W. 1	St. David.	S. 7.42.16	1. Spect. comm. 1711
Th. 2		19.28	2. Sun rises 6h.39m.
F. 3		6.56.33	3. Clock bef. sun 12 <sup>h</sup>
Sa. 4		33.33	14 <sup>m</sup> .
S. 5	Shrove Sunday.	10.28	6. Sun sets 5h. 50m.
M. 6		5.47.17	7. Ld Collingwood d
Tu. 7		24. 1	1810.
W. 8	Ash Wednesday.	0.41	9. Rizzio assass. 1566.
Th. 9		4.37.17	10. Mail Coaches es.
F. 10		13.53	1784.
S. 11		3.50.19	12. Chelsea Hospital
S. 12	1st Sunday in Lent.	26.45	founded 1682.
M. 13		3. 9	14. Adm. Byng shot
Tu. 14		2.39.31	1757.
W. 15		15.51	16. Lord Berners d
Th. 16		1.52.10	1532.
F. 17	St. Patrick.	28.28	18. Sir R. Walpole d
Sa. 18		4.44	1745.
S. 19	2nd Sunday in Lent.	0.42	20. Sir I. Newton d
M. 20		S 17.20	1727.
Tu. 21		N 6.21	22. Sun rises 6h.0m.
W. 22		30. 2	Equal day & night.
Th. 23		53.42	24. Q. Eliz. d 1603.
F. 24		1.17.20	25. Lady Day.
Sa. 25	Ann. B. V. Mary.	40.35	26. Vanbrugh d 1726.
S. 26	P. George of Cam-	2. 4.29	27. Peace of Amiens
M. 27	[bridge b 1819.	27.59	1802.
Tu. 28		51.27	29. Clk. bef. sun 4' 59"
W. 29		3.14.51	31. Allied Sovereigns
Th. 30		38.11	enter Paris 1814, sun
F. 31		4. 1.28	rises 5h. 51m.

# APRIL, 30 DAYS.

## THE MOON'S CHANGES.

New Moon ..... 3rd day 32 minutes past 7 afternoon.  
 First Quarter ..... 10th " 18 " " 11 morning.  
 Full Moon ..... 18th " 60 " " 10 "  
 Last Quarter ..... 26th " 49 " " 10 "

Days.	Sundays and Re- markable Days.	Sun's Declination.	Chronological Ca- lendar.
Sa. 1		N. 4.24.39	2 Battle Copenhagen
S. 2	4th Sun. in Lent.	47.46	1801. Bishop Heber
M. 3		5.10.48	d 1826.
Tu. 4		33.45	4 Clock bef. sun 3' 9'
W. 5		56.36	5 Sun rises 5h. 3m.
Th. 6		6.19.20	6 1st abd. Bonaparte
F. 7		41.59	1814.
Sa. 8		7. 4.30	9 Lord Bacon d 1626
S. 9	5th Sun. in Lent.	26.55	10 Sun sets 6h. 39m.
M. 10		49.11	11 G. Canning b 1770
Tu. 11		8.11.21	13 R. C. Eman. 1829
W. 12		33.22	14 Clock bef sun 0' 29"
Th. 13		55.14	15 Sun rises 5h. 14m.
F. 14		9.16.58	16 Battle of Culloden
Sa. 15		38.32	1747.
S. 16	Palm Sunday.	59.57	18 Percussion powder
M. 17		10.21.12	inv. 1803.
Tu. 18		42.17	19 Lord Byron d 1824
W. 19		11. 3.11	20 Spanish fleet des.
Th. 20		23.54	by Blake, 1567.
F. 21	Good Friday.	44.26	21 Bish. Heber b 1783
Sa. 22		12. 4.46	22 Sun sets 6h. 55m.
S. 23	St. George, East. Sun.	24.54	23 Shakspeare b 1564
M. 24	Easter Monday.	44.50	d 1616.
Tu. 25		13. 4.34	24 Inv. Printing 1414
W. 26		24. 4	25 Princess Alice b
Th. 27		43.21	1843.
F. 28		14. 2.25	27 Clock aft sun 0' 27"
Sa. 29		21.15	28 Bish. Feild consec.
S. 30	Low Sunday.	39.51	1844.

## MAY, 31 DAYS.

## THE MOON'S CHANGES.

New Moon.....	3rd day 43 minutes past 3 morning.
First Quarter.....	9th " 25 " " 11 aft.
Full Moon.....	18th " 10 " " 3 morning.
Last Quarter.....	25th " 15 " " 8 aft.

Days.	Sundays and Remarkable Days.	Sun's Declination.	Chronological Calendar.
M. 1	St. Philip & St. James	N 14.58.12	1 Union of England and Scotland 1707.
Tu. 2		15.16.18	
W. 3		34.10	2 D. of Wellington b 1769.
Th. 4		51.46	
F. 5		16. 9. 6	3 <i>Foundation Stone of the new Custom House laid.</i>
Sa. 6		26.11	
S. 7	2d Sunday aft. Easter	42.59	
M. 8		59.31	4 Sun rises 4h. 43m.
Tu. 9		17.15.49	5 Clk. aft. sun. 3' 27"
W. 10		31.43	Napoleon d 1821.
Th. 11		47.23	8 Sun sets 7h. 16m.
F. 12		18. 2.45	9 Corporation & Test Acts rep. 1828.
Sa. 13		17.49	
S. 14	3d Sunday aft. Easter	32.35	11 Earl of Chatham d 1778. S. Percival assas. 1812.
M. 15		47. 2	
Tu. 16		19. 1.10	
W. 17		14.58	13 Sun rises 4h. 29m.
Th. 18		28.27	16 Clock aft. sun. 3' 54"
F. 19	St. Dunstab.	41.37	
Sa. 20		54.26	18 Sun sets 7h. 29m.
S. 21	4th Sund. aft. Easter	20. 6.55	19 Anne Boleyn beh. 1636.
M. 22		19. 3	
Tu. 23		30.51	22 Alex. Pope b 1688
W. 24	H. M. Birthday.	42.17	24 <i>Foundation Stone of new Colonial Building laid.</i>
Th. 25		53.22	
F. 26		21. 4. 6	
Sa. 27		14.28	27 Sun rises 4h. 15m.
S. 28	Rogation Sunday.	24.27	28 Clock aft. sun 3' 7". W. Pitt b 1759
M. 29	Chas. II. restored.	34. 5	
Tu. 30		43.20	30 Genl. Peace 1814.
W. 31		52.13	31 Sun sets 7h. 43m.



JUNE, 30 DAYS.

THE MOON'S CHANGES.

New Moon . . . . .	1st day 8 minutes past 11 morning.
First Quarter . . . . .	8th " 44 " " 1 afternoon.
Full Moon . . . . .	16th " 27 " " 5 "
Last Quarter . . . . .	24th " 36 " " 2 morning.
New Moon . . . . .	30th " 47 " " 6 afternoon.

Days.	Sundays and Remarkable Days.	Sun's Declination.	Chronological Calendar.
Th. 1	Ascen. Holy Thurs-	N 22. 0.43	1 Lord Howe's <i>vict.</i> 1789
F. 2	Day.	8.49	2 Sun rises 4h. 11m.
Sa. 3		16.33	4 W. Wyndham <i>d</i> 1810
S. 4	Sun. aft. Ascension.	23.54	5 Clock <i>aft.</i> sun 2' 8".
M. 5	K. of Hanover <i>born.</i>	30.51	6 Sun sets 7h. 47m.
Tu. 6		37.24	7 1st Lord Bp. of <i>Nfld.</i>
W. 7		43.34	<i>arriv'd.</i> , 1839.
Th. 8		49.20	8 Ed. B. Prince <i>d</i> 1376
F. 9		54.42	9 Town of St. John's
Sa. 10		59.40	<i>dest. by Fire</i> , 1846.
S. 11	Whit Sunday.	23. 4.13	10 New London Bridge
M. 12		8.22	<i>com.</i> 1824.
Tu. 13		12. 7	11 Roger Bacon <i>d</i> 1294
W. 14		15.27	13 Sun rises 4h. 6m.
Th. 15		18.23	15 Equa. of time 0' 0".
F. 16		20.54	17 John Wesley <i>b</i> 1703
Sa. 17		23. 1	18 Otaheite <i>dis.</i> 1765.
S. 18	Trinity Sunday.	24.42	Battle of Water. 1815
M. 19		25.59	19 Mag. Charta signed
Tu. 20		26.51	1215.
W. 21	Queen's Accession.	27.19	21 Sun sets 7h. 56m.
Th. 22		27.21	Longest day.
F. 23		26.59	24 <i>Nfld. dis. by Cabot</i>
Sa. 24	Midsummer Day.	26.12	1497.
S. 25	First Sun. aft. Trinity	25. 0	25 Sun rises 4h. 8m.
M. 26		23.23	26 Geo. IV. <i>d</i> 1830.
Tu. 27		21.22	27 Dr. Dodd <i>ex.</i> 1777.
W. 28	Coron. of H. Majesty	18.56	28 Clock <i>bef.</i> sun 2' 48"
Th. 29	St. Peter. [1838.	16. 6	P. Rubens <i>d</i> 1577.
F. 30		12.51	30 Sun sets 7h. 51m.

# JULY, 31 DAYS.

## THE MOON'S CHANGES.

First Quarter.....	8th day,	59 minutes	past 5 morning.
Full Moon.....	16th	" 52	" 5 "
Last Quarter.....	23rd	" 55	" 7 "
New Moon.....	29th	" 54	" 3 "

Days.	Sundays and Remarkable Days.	Sun's Declination.	Chronological Calendar.
Sa. 1		N. 23. 9.12	2 Abp. Cranm. b 1489
S. 2	2d Sun. aft. Trinity.	5. 8	St. Paul's Church
M. 3	Dog days begin.	0.40	Harbor Grace, con.
Tu. 4		22.55.48	1840.
W. 5		50.32	4 Clock be. sun 3' 55"
Th. 6		44.52	Lord Bp. Field ar.
F. 7	Thomas & Becket.	38.48	1844.
Sa. 8		32.21	7 R. B. Sheridan d
S. 9	3d Sun. aft. Trin.	25.31	1816.
M. 10		18.17	9 Bourbon Dynasty
Tu. 11		10.40	rest 1815.
W. 12		2.40	10 London Bridge dt.
Th. 13		21.54.17	1212.
F. 14		45.32	12 Erasmus d 1536.
Sa. 15	St. Swithin.	36.25	14 Mrs. Siddons b
S. 16	4th Sun. aft. Trin.	26.55	1755.
M. 17		17.14	16 Clk. bef. sun 5' 40"
Tu. 18		6.51	St. John's a Free
W. 19		20.56.17	Port 1828.
Th. 20	St. Margaret.	45.21	18 Sun rises 4h. 26m.
F. 21		34. 4	Hampden b 1643.
Sa. 22	Mary Magdalene.	22.27	21 Union of England
S. 23	5th Sun. aft. Trin.	10.30	and Scotland 1906.
M. 24		19.58.12	Burns d 1796.
Tu. 25	St. James.	45.34	22 Battle of Salamanca
W. 26		32.36	1812.
Th. 27		19.19	23 Gibraltar taken
F. 28		5.43	1704.
Sa. 29		18.51.47	28 Sun sets 7h. 34m.
S. 30	6th Sun. aft. Trin.	37.34	29 Clock bef. sun 6'
M. 31		23. 1	10"

AUGUST, 31 DAYS.

THE MOON'S CHANGES.

First Quarter ..... 6th day, 25 minutes past 11 afternoon.  
 Full Moon ..... 14th " 45 " " " 4 " "  
 Last Quarter ..... 21st. " 38 " " " 12 " "  
 New Moon ..... 29th " 30 " " " 3 " "

Days.	Sundays and Remarkable Days.	Sun's Declination.	Chronological Calendar.
Tu. 1		N. 18. 8.11	1 Battle of the Nile
W. 2		17.53. 2	1798.
Th. 3		37.36	3 Sun rises 4h. 46m.
F. 4		21.53	4 Lord Howe d 1799
Sa. 5		5.53	5 Jonas Hanway d
S. 6	7th Sun. aft. Trin.	16.49.36	1786.
M. 7		33. 2	7 George Canning d
Tu. 8		16.13	1827.
W. 9		15.59. 7	9 John Dryden d
Th. 10		41.47	1631.
F. 11	Dog days end.	24.11	12 Marquis of Londonderry d 1822
S. 12		6.20	
S. 13	Dow. Q. Adelaide b	14.48.13	15 Admiral Blake d
M. 14	[1792]	29.56	1599. Napoleon b
Th. 15	Assumption.	11.23	b 1769.
W. 16		13.52.36	Ad. Blake d 1657
Th. 17	Duchess of Kent b	33.37	18 Fire at H. Grass
F. 18	[1786]	14.24	1832.
Sa. 19		12.54.59	21 B. of Bosworth
S. 20	9th Sun. aft. Trin.	35.29	1435.
M. 21		15.32	22 Sun rises 5h. 10m
Tu. 22		11.55.31	23 St. Thos. Church
W. 23		35.19	(St. John's) con.
Th. 24	St. Bartholemew.	14.55	1840.
F. 25		10.54.21	25 Battle of Cressy
Sa. 26	Prince Albert b 1819.	33.37	1346. D. Hume d
S. 27		12.42	d 1776. James Watt d
M. 28		9.51.38	1819.
Tu. 29		30.24	28 Robespierre guill.
W. 30		9. 1	1794.
Th. 31		8.47.30	30 Sun sets 6h. 38m.

## SEPTEMBER, 30 DAYS.

## THE MOON'S CHANGES.

First Quarter ..... 5th day 12 minutes past 5 afternoon.  
 Full Moon ..... 13th " 47 " " 2 "  
 Last Quarter ..... 19th " 26 " " 6 "  
 New Moon ..... 27th " 4 " " 6 morning.

Days.	Sundays and Remarkable Days.	Sun's Declination.	Chronological Calendar.
F. 1	Giles.	N 8.25.49	1 Light House on C.
Sa. 2		4. 1	Spear open. 1836
S. 3	11th Sun. aft. Trin.	7.42. 4	2 Gt. fire of London
M. 4		20. 0	1666. Gas first
Tu. 5		6.57.49	introduced at St.
W. 6		35.31	John's 1845.
Th. 7		13. 6	5 Malta taken 1800.
F. 8		5.50.35	7 Queen Elizabeth's
Sa. 9		27.58	1533.
S. 10	12th Sun. aft. Trin.	5.16	9 Sun sets 7h. 29m.
M. 11		4.42.28	10 Mungo Park d
Tu. 12		19.35	1771.
W. 13		3.56.38	11 Light exhibited on
Th. 14		33.37	Cape Bonavista
F. 15		10.32	1843.
Sa. 16		2.47.24	13 General Wolfe &
S. 17	13th Sun. aft. Trin.	24.12	1759.
M. 18		0.58	14 Burn. of Moscow
Tu. 19		1.37.41	1812.
W. 20		14.22	18 Geo. I. and II.,
Th. 21		0.51. 1	landed 1714.
F. 22		27.39	19 Violent hurricane
Sa. 23		4.16	1846.
S. 24	14th Sun. aft. Trin.	19. 8	21 St. Tho's. Church
M. 25		42.32	opened 1836.
Tu. 26		1. 5.57	22 Equal day & night
W. 27		29.22	23 Samuel Butler d
Th. 28		52.47	1680.
F. 29	Michaelmas.	2.16.10	25 Porson d 1808.
Sa. 30	St. Jerome.	39.32	30 Clk. aft. sun 9' 52"

## OCTOBER, 31 DAYS.

## THE MOON'S CHANGES.

First Quarter	.....	5th day	29 minutes past 10 morning.
Full Moon	.....	12th " 24 "	" 12 "
Last Quarter	.....	19th " 56 "	" 2 "
New Moon	.....	26th " 15 "	" 11 afternoon.

Days.	Sundays and Remarkable Days.	Sun's Declination.	Chronological Calendar.
S.	1 15th Sun. aft. Trin.	S. 3. 2.53	1 Sun rises 6h. 4m.
M.	2	26.12	3 Clock aft. sun 10'
Tu.	3	49.29	49"
W.	4	4.12.43	6 Peace with United States 1783
Th.	5	35.55	
F.	6	59. 3	8 King of France b
Sa.	7	5.22. 7	1773. His visit to Queen Victoria, 1844.
S.	8 16th Sun. aft. Trin.	45. 7	
M.	9	6. 8. 3	
Tu.	10	30.54	9 Eddystone Light-house comp. 1759.
W.	11	53.40	11 America dis. 1492.
Th.	12	7.16.20	Battle of Camperdown 1797.
F.	13	38.55	
Sa.	14	8. 1.22	13 Murat shot 1816.
S.	15 17th Sun. aft. Trin.	23.43	Canova d 1822.
M.	16	45.57	
Tu.	17	9. 8. 3	14 Battle of Hastings 1066.
W.	18 St. Luke.	30. 2	
Th.	19	51.52	15 Clock aft. sun 14'
F.	20	10.13.33	2"
Sa.	21	35. 5	18 Dean Swift d 1745
S.	22 18th Sun. aft. Trin.	56.28	20 Battle of Navarino 1827.
M.	23	11.17.41	
Tu.	24	38.43	21 Battle of Trafalgar 1805.
W.	25 St. Crispin.	59.36	
Th.	26	12.20.17	26 Hogarth d 1764.
F.	27	40.46	28 Clock aft. sun 16'
Sa.	28 St. Simon & St. Jude	13. 1. 4	28". Royal Exchange opened by her Majesty 1844
S.	29 19th Sun. aft. Trin.	21.10	
M.	30	41. 3	
Tu.	31	14. 0.43	30 Sun rises 6h. 49m.

## NOVEMBER, 30 DAYS.

ESTIMATED FROM THE  
THE MOON'S CHANGES.

First Quarter.....	4th day, 31 minutes past	2 morning.
Full Moon.....	10th " 4 "	10 afternoon.
Last Quarter.....	17th " 15 "	3 "
New Moon.....	23rd " 58 "	5 "

Days.	Sundays and Remarkable Days.	Sun's Declination.	Chronological Calendar.
W. 1	All Saints.	S. 14.20.10	1 Sir. M. Hale b 1600
Th. 2	All Souls.	39.23	3 Clock aft sun 16' 17".
F. 3		58.22	4 Chief J. Norton ar.
Sa. 4		15.17. 6	1844.
S. 5	Gunpowderplot 1606	35.35	5 Sun rises 6h. 55m.
M. 6		53.49	6 Princess Charlotte d
Tu. 7		16.11.47	1817.
W. 8		29.28	7 Fire at St. John's
Th. 9	Prince of Wales b [1841.	46.53	1817.
F. 10		17. 4. 1	8 Cortez entered Mex.
Sa. 11	St. Martin.	20.51	1519.
S. 12	21st Sun. aft. Trin.	37.24	10 Martin Luther b
M. 13		53.38	1483.
Tu. 14		18. 9.33	12 Canute the Great d
W. 15		25. 9	1036.
Th. 16		40.25	14 Source of Nile d.
F. 17		55.22	1770.
Sa. 18		19. 9.58	16 Clock aft sun 15' 6"
S. 19	22nd Sun. aft. Trin.	24.14	17 Lord Erskine d
M. 20	St. Edmund.	38. 8	1825,
Tu. 21	Princess Roy. b 1840	51.42	20 Lord Hawke's vict.
W. 22		20. 4.53	1759. 2nd great
Th. 23		17.42	fire at St. John's
F. 24		30. 9	1817. Harbour
Sa. 25	St. Catherine.	42.13	Grace Lt. House
S. 26	23rd Sun. aft. Trin.	53.54	opened 1887.
M. 27		21. 8.11	25 Dr. Watts d 1748.
Tu. 28		16. 6	28 Cardinal Wolsey d
W. 29		26.34	1530.
Th. 30	St. Andrew.	38.39	30 Sun rises 7h. 30m.

DECEMBER, 31 DAYS.

THE MOON'S CHANGES.

First Quarter..... 3rd day 34 minutes past 5 afternoon.  
 Full Moon ..... 10th " 12 " " 8 morning.  
 Last Quarter..... 17th " 42 " " 7 ..  
 New Moon..... 25th " 50 " " 12 afternoon.

Days.	Sundays and Remarkable Days.	Sun's Declination.	Chronological Calendar.
F.	1	S. 21.46.20	1 Pope Leo. X d 1521
Sa.	2	55.36	2 B. of Austerlitz 1805
S.	3 Advent Sunday.	22. 4.35	3 Clock aft. sun 10' 7"
M.	4	12.50	St. An. Church
Tu.	5	20.48	opd. 1843.
W.	6 Nicholas.	28.21	5 Sun rises 7h. 39m.
Th.	7	35.28	7 Ney shot 1815.
F.	8 Conception B. V.	42. 7	8 Mary Q. of Scots b
Sa.	9	48.21	1542.
S.	10 2nd Sun. in Advent.	54. 7	10 Sun sets 4h. 1m.
M.	11	59.26	11 Chas. XII. k 1718.
Tu.	12	23. 4.17	12 Lord Hood b 1724.
W.	13	8.42	13 Dr. Johnson d 1784
Th.	14	12.38	14 M. M. Brun d 1826
F.	15	16. 7	15 Isaac Walton d 1688
Sa.	16	19. 8	16 Clock aft sun 4' 17".
S.	17 3rd Sun. in Adven	21.41	Cromwell declared
M.	18	23.46	Protector 1653.
Tu.	19	25.22	19 Tycho Brahe b 1546
W.	20	26.31	20 Thos. Gray d 1724.
Th.	21 St. Thomas. Shortest	27.11	21 Shortest day.
F.	22 [day.	27.23	23 James II. fled from
Sa.	23	27. 6	Rochester 1688.
S.	24 4th Sun. in Advent.	26.22	24 Peace with U. States
M.	25 Christmas Day.	25. 9	1814.
Tu.	26 St. Stephen.	23.27	25 Sir I. Newton b
W.	27	21.18	1642. Sir M. Hale
Th.	28 St. John Evangelist.	18.40	d 1676.
F.	29 [Innocents.	15.34	28 Boyle d 1706.
Sa.	30	12. 1	30 Sun rises 7h. 50m.
S.	31 1st Sun. aft. Christ.	7.59	31 W. Gifford d 1827.

## REIGNING SOVEREIGNS OF EUROPE.

ARRANGED ACCORDING TO THE DATE OF THEIR SUCCESSION.

<i>Sovereigns.</i>	<i>Date of Succession.</i>	<i>Age at time of Accession.</i>
1 George William, Prince of Lippe-Schamburg . . . . . }	1787 Feb. 13	2 Years.
2 Leopold, Prince of Lippe Detmold	1802 April 4	5 "
3 Bernard, Duke of Saxe Meiningen	1803 Dec. 24	3 "
4 Gunther, Prince of Schwartzburgh-Rudolstadt . . . . . }	1807 April 28	13 "
5 George, Prince of Waldeck . . . . . }	1813 Sept. 9	23 "
6 Maria Louisa, Duchess of Parma . .	1814 May 30	22 "
7 Francis VI., Duke of Modena . . . .	1815 June 8	35 "
8 William, King of Wurttemberg . . .	1816 Oct. 30	35 "
9 George, Grand Duke of Mecklenburgh Strelitz . . . . . }	1816 Nov. 6	37 "
10 Leopold, Duke of Anhalt-Dessau	1817 Aug. 9	2 "
11 Henry, Prince of Reuss-Schleiz	1818 April 7	32 "
12 Wm. II., Elector of Hesse-Cassel	1821 Feb. 27	43 "
13 Henry, Prince of Reuss-Ebersdorf-Lobenstein . . . . . }	1822 July 12	25 "
14 Charles Louis, Duke of Lucca . . . .	1824 Mar. 13	25 "
15 Leopold II., Grand Duke of Tusc.	1824 June 8	26 "
16 Louis, King of Bavaria . . . . . }	1825 Oct. 13	39 "
17 Nicholas I., Emperor of Russia . .	1825 Dec. 1	29 "
18 Maria II., da Gloria, Queen of Portugal . . . . . }	1826 May 2	6 "
19 Charles Frederick, Grand Duke of Saxe Weimar . . . . . }	1828 June 14	45 "
20 Augustus, Grand Duke of Oldenburgh . . . . . }	1829 May 21	46 "
21 Leopold, Grand Duke of Baden . . .	1830 Mar. 30	40 "
22 Louis II., Grand Duke of Hesse Darmstadt . . . . . }	1830 April 6	53 "
23 Louis Philip, King of the French	1830 Aug. 9	57 "
24 Henry, Duke of Anhalt-Coethen	1830 Aug. 23	52 "
25 Ferdinand II., King of the Two Sicilies . . . . . }	1830 Nov. 8	21 "
26 Pope Gregory XVI . . . . . }	1831 Feb. 2	65 "
27 William, Duke of Brunswick . . . .	1831 April 25	25 "
28 Charles Albert, King of Sardinia	1831 April 27	42 "
29 Leopold, King of Belgium . . . . . }	1831 July 21	41 "
30 Anthony Frederic, Prince of Hohenzollern Sigmaringen . . . . . }	1831 Oct. 17	46 "
31 Otho, King of Greece . . . . . }	1832 Oct. 5	17 "
32 Isabella II., Queen of Spain . . . .	1833 Sept. 29	3 "



## REIGNING SOVEREIGNS OF EUROPE—CONTINUED.

<i>Sovereigns.</i>	<i>Date of Succession.</i>	<i>Age at time of Accession.</i>
33 Alexander, Duke of A. Bernburgh.	1834 Mar. 24	29 Years.
34 Joseph, Duke of Saxe-Altenburgh.	1834 Sept. 29	45 "
35 Ferdinand I., Emperor of Austria.	1835 Mar. 2	42 "
36 Gunthor II., Prince of Schwartz- burgh-Sondershausen.	1835 Aug. 19	34 "
37 Aloys, Prince of Lichtenstein.	1836 April 20	40 "
38 Fred. Augustus, King of Saxony.	1836 June 6	39 "
39 Henry XX., Prince of Reuss-Grreiz.	1836 Oct. 31	42 "
40 Paul Frederick, P. of Meck. Schwer.	1837 Feb. 1	36 "
41 Victoria, Queen of Great Britain.	1837 June 20	18 "
42 Ernest, King of Hanover.	1837 June 20	66 "
43 Frederick, P. Hohenz. Hechingen.	1838 Sept. 12	37 "
44 Philip, Langrave Hesse-Homburgh.	1839 Jan. 19	60 "
45 Abdul Medjid Khan, Sultan Turkey.	1839 July 1	17 "
46 Adolphus, Duke of Nassau.	1839 Aug. 20	22 "
47 Christian VIII., King of Denmark.	1839 Dec. 3	53 "
48 Frederick William IV, King Prussia.	1840 June 7	45 "
49 William II., King of the Netherlands.	1840 Oct. 7	48 "
50 —, Duke of Saxe Cobourg Gotha.	1844 Jan. —	—
51 Oscar II., King of Sweden.	1844 March 8	51 "

## KINGS AND QUEENS OF ENGLAND FROM THE CONQUEST.

<i>Names.</i>	<i>Began to Reign.</i>	<i>Names.</i>	<i>Began to Reign.</i>
William I.	1066 Decem. 2	Mary I.	1553 July 6
William II.	1087 Sept. 20	Elizabeth.	1558 Nov. 17
Henry I.	1100 August 5	James I.	1603 Mar. 24
Stephen.	1135 Decem. 26	Charles I.	1625 Mar. 27
Henry II.	1154 Decem. 19	Commonw <sup>th</sup>	
Richard I.	1189 Sept. 2	from exile of	
John.	1199 May 27	Chas. I.	1649 Jan. 30
Henry III.	1216 Oct. 28	to restoration	
Edward I.	1272 Nov. 28	of Charles II.	
Edward II.	1307 July 8	Charles II.	1660 May 20
Edward III.	1327 Jan. 25	James II.	1686 Feb. 6
Richard II.	1377 June 22	William III &	
Henry IV.	1399 Sept. 30	Mary II.	1689 Feb. 13
Henry V.	1413 March 21	William alone	1694
Henry VI.	1422 Sept. 1	Anne.	1702 Mar. 8
Edward IV.	1461 March 4	George I.	1714 Aug. 1
Edward V.	1483 April 9	George II.	1727 June 11
Richard III.	1483 June 26	George III.	1760 Oct. 25
Henry VII.	1485 Aug. 22	George IV.	1820 Jan. 29
Henry VIII.	1509 April 22	William IV.	1830 June 26
Edward VI.	1547 Jan. 28	Victoria.	1837 June 20

## OFFICERS OF THE CIVIL GOVERNMENT, JUDGES, CLERGY. &c.

Governor, Vice-Admiral, and Commander-in-Chief:  
Sir JOHN GASPARD LE MARCHANT.

Private Secretary :

EDWARD E. RUSHWORTH.

Colonial Secretary and Clerk of Council :

Hon. JAMES CROWDY.

Colonial Secretary's Office :

Clerks—CHRISTOPHER AYRE, JOSEPH W. CROWDY. Office-

Keeper—VALENTINE BORN. Messenger—J. HOWSON.

Colonial Treasurer—Hon. PATRICK MORRIS.

Surveyor-General—Hon. J. NOAD.

### HER MAJESTY'S EXECUTIVE COUNCIL.

The Hon. JAMES CROWDY, Colonial Secretary. Hon. WILLIAM THOMAS. Hon. PATRICK MORRIS, (Colonial Treasurer). Hon. WM. BICKFORD ROW, (Q.C.) Hon. J. NOAD, (Surveyor General). Hon. B. ROBINSON, (Q.C.) Hon. THOMAS BENNETT. Hon. R. JOB. Hon. T. RIDLEY. Hon. L. O'BRIEN. Hon. W. GRIEVE. Hon. the ATTORNEY GENERAL.

### OFFICERS OF THE GENERAL ASSEMBLY.

Usher of the Black Rod—(vacant); Clerk—R. R. WAKEHAM; Assistant Clerk, R. HOLDEN. Solicitor, H. W. HOYLES. Sergeant-at-Arms, E. RENDELL. Door-keeper, G. ANDERSON. Under-ditto, P. BROWN. Messenger, V. BORN. Under-ditto, — POWER.

### CUSTOMS' DEPARTMENT.

Collector, Hon. JAMES M. SPEARMAN. Landing and Tide Surveyor, GEO. J. HAYWARD. Waiters and Searchers, 1st vacant (JAMES BAYLY acting). 2nd, GAWEN MELLERSH. 1st Clerk and Warehouse-keeper, JAMES BAYLY (P. HINDMARSH acting). 2nd Clerk, PERCIVAL HINDMARSH (G. BENNETT acting). 3rd Clerk, GEORGE BENNETT (J. R. MULLINS acting). 4th Clerk, J. R. MULLINS. Lockers, R. FURNEAUX, P. M'KIE. D. P. MARETT, Authorized Broker.

### SUB-COLLECTORS AT THE OUTPORTS.

Twillingate, — SAMUEL PROWSE. Trinity, — ROBERT BAYLY. Carbonear, — DONALD BETHUNE. Harbour Grace, (*sub-collector and warehouse-keeper*) — E. E. BROWN. Brigus, — JOSHUA GREEN; Ferryland, — ROBERT CARTER. Placentia, — W. G. BRADSHAW. Burin, — T. BIRKETT. Little Bay, — T. E. GADEN.

## OFFICERS OF THE COLONIAL REVENUE.

St. John's,—*Landing Waiter*, JOHN CANNING; *Tide Surveyor*, E. L. MOORE; *Clerk to Collector*, JAMES J. HAYWARD. Fogo,—*Sub-collector*, JAMES M. WINTER. Greenspond,—*Ditto*, LORENZO MOORE. La Poile,—*Ditto*, THOMAS READ. Lamaline,—*Ditto*, JAMES WINTER. Galtois,—*Ditto*, THOMAS WINTER. Bay Bulls,—*Preventive Officer*, JOHN L. M'KIE. St. Mary's,—*Ditto*, H. MURCH.

## LAW DEPARTMENT.

## SUPREME COURT.

*Chief Justice*,—Hon. FRANCIS BRADY; *Assistant Judges*,—Honorable A. W. DESBARRES, and JAMES SIMMS.

*Attorney General*,—The Hon. E. M. ARCHIBALD; *Solicitor General*,—Hon. H. A. EMERSON; *Queen's Counsel*,—Hon. W. B. ROW, Hon. B. ROBINSON; *Chief Clerk and Registrar of Supreme and Central Circuit Court*,—J. H. DAWSON; *Ditto ditto Northern Circuit Court*,—JOHN STARK; *Ditto ditto Southern Circuit Court*,—GEORGE SIMMS; *Crier of Supreme Court and Tipstaff*, JOHN HAYSE.

## BARRISTERS OF THE SUPREME COURT.

St. John's,—Hon. ATTORNEY GENERAL, Hon. SOLICITOR GENERAL, Hon. W. B. ROW, Q. C., Hon. B. ROBINSON, Q. C., C. SIMMS, R. R. WAKEHAM, G. H. EMERSON, THEOPHILUS STEWART, H. W. HOYLES, F. B. T. CARTER, J. S. STEPHENS, JAMES SIMMS, Jr., R. R. W. LILLY, P. F. LITTLE, HARCOURT MOONEY.

*Harbor Grace*,—A. MAYNE, R. ANDERSON, J. HAYWARD.

## SHERIFFS.

*Central District*,—BENJAMIN G. GARRETT; *Northern District*,—GARLAND C. GADEN; *Southern District*,—JOHN STEVENSON.

## MASTERS IN CHANCERY.

Hon. B. ROBINSON, Q. C., G. H. EMERSON, C. SIMMS.

## VICE ADMIRALTY COURT.

*Judge*,—The CHIEF JUSTICE for the time being; *Registrar*,—P. W. CARTER; *Marshal*,—CHRISTOPHER AYRE.

## NOTARIES PUBLIC.

St. John's,—C. SIMMS, M. C., Hon. W. B. ROW, Q. C., ROBERT ROBERTS WAKEHAM, JOHN BOYD, Hon. BRYAN ROBINSON, Q. C., G. H. EMERSON, HUGH W. HOYLES, THEOPHILUS STEWART, R. PROWSE, G. F. BOWN, H. DEVEREUX, F. B. CARTER, P. ROGERSON, W. J. WARD, JAMES SIMMS, Jr., R. R. W. LILLY, S. J. DANIEL, K. MCLEA, Jr., E. MORRIS, H. C. WATTS, G. J. HOGSETT.

## NOTARIES PUBLIC.—CONTINUED.

*Outports.*—*Harbor Grace*,—A. DRYSDALE, J. HAYWARD. *Carbonear*,—T. Newell. *Ferryland*,—ROBERT CARTER. *Twillingate*,—THOMAS M. LYTE, JOHN PEYTON. *Burin*,—WILLIAM HOOPER. *Placentia*,—W. G. BRADSHAW.

## CLERGY.—CHURCH OF ENGLAND.

*Lord Bishop of Newfoundland (including the Bermudas)*—The Right Rev. EDWARD FEILD, D.D., late Fellow of Queen's College, Oxford; *Bishop's Commissary and Vicar General*—Rev. T. F. H. BRIDGE, M.A.; *Bishop's Registrar*—Rev. C. BLACKMAN, M.A.; *Bishop's Chaplains*—Rev. T. F. H. BRIDGE, Rev. C. BLACKMAN.

## DEANERY OF AVALON.

*Town of St. John.*—Rev. T. F. H. Bridge, M. A. (*Rector and Rural Dean.*)—Rev. C. Blackman, M. A., (*St. Thomas's Church.*)—Rev. H. Tuckwell, (*South-side.*)  
*Out-harbours of St. John.*—Rev. T. T. Jones, M. A., (*Petty Harbor and Torbay.*)—Rev. T. W. Tremlett, (*Portugal Cove, &c.*)—Rev. S. Addington, (*Pouch Cove.*)  
*Ferryland, &c.*,—Rev. H. H. Hamilton, B. A. *South Shore of Conception Bay*,—Rev. B. Fleet.

## DEANERY OF CONCEPTION BAY.

*Harbor Grace*,—Rev. J. Chapman, (*Rural Dean.*) *Carbonear*,—Rev. J. C. Harvey. *Hearts Content, &c.*,—Rev. H. Lind. *Bay de Verd*,—Rev. O. Rowse. *Bishop's and Island Cove*,—Rev. J. Kingwell. *Spaniard's Bay, &c.*,—Rev. W. Taylor. *Port de Grave, &c.*,—Rev. J. Vicars. *Bay Roberts*,—Rev. J. Rozier. *Brigus, &c.*,—Rev. J. Cunningham.

## DEANERY OF TRINITY BAY.

*Trinity*,—Rev. B. Jones. *Bonavista*,—Rev. T. M. Wood. *Catalina*,—Rev. W. Netten. *King's Cove, &c.*,—Rev. B. Smith. *Greenspond, &c.*,—Rev. J. Gilchrist, M. A. *English Harbour and Salmon Cove*,—(vacant.)

## DEANERY OF NOTRE DAME BAY.

*Twillingate, &c.*,—Rev. T. Boone, (*Rural Dean.*) *Foyo, &c.*,—Rev. N. Hoyles. *Moretons Harbor, &c.*,—Rev. E. A. Sall.

## DEANERY OF PLACENTIA BAY.

*Burin, &c.*,—Rev. J. C. A. Gathercole. *Harbor Beaufit*,—Rev. W. K. White. *Placentia, &c.*,—(vacant.)

## DEANERY OF FORTUNE BAY.

*Harbor Brituin, &c.*—Rev. J. G. Mountain, M.A., (*Rural Dean.*)

*Belloram*,—Rev. J. Marshall. *The Burgeos*,—Rev. M. Blackmore.  
*La Poile*,—Rev. T. Appleby. *St. George's Bay*,—Rev. W. Meek.  
*Hermitage*,—(vacant.)

### THEOLOGICAL INSTITUTION.

*Principal*,—Rev. T. S. Jones, M. A. *Lecturer in Divinity*,—  
 Rev. H. Tuckwell. *Students and Lay Readers*,—Mr. Kingwell, Mr.  
 Bayly, Mr. Blackman, Mr. Johnston, Mr. Brown.

### COLLEGIATE SCHOOL.

*Head Master*,—Rev. H. Tuckwell. *Assistant ditto*,—Mr. Brown.

### NEWFOUNDLAND CHURCH SOCIETY.

*Patron*,—His Excellency the Governor. *President*,—The Lord  
 Bishop of the Diocèse. *Vice-Présidents*,—The Rural Deans,—  
*Treasurer*,—Hon. William Thomas. *Hon. Secretary*,—Rev. T. F.  
 H. Bridge, M. A. *Librarian*,—Mr. Johnston. *Keeper of the Depot*,  
 —Mr. McCoubrey.

### CHURCH OF ENGLAND SCHOOL SOCIETY FOR NEW- FOUNDLAND AND THE COLONIES.

*Visitor*,—The Lord Bishop. *Superintendent*,—Rev. T. F. H.  
 Bridge, M. A.

### ROMAN CATHOLIC.

*District of St. John's, extending from Petty Harbor to Ferry-  
 land*,—Right Rev. M. A. Fleming, *Vicar Apostolic*, &c., Revd.  
 Messrs J. Forristal, — O'Donnell, K. Walsh. *Portugal Cove*,  
 —Rev. T. O'Conner. *District of Brigus*,—Very Rev. D. Mackin,  
 V. G., Rev. E. O'Keefe, (Harbor Main.) *District of Harbor Grace  
 and Carbonear*,—Very Rev. C. Dalton, Rev. Messrs J. Cumming,  
 James Gleeson. *District of Northern Bay*,—Rev. B. Duffy. *Dis-  
 trict of King's Cove*,—Rev. Messrs T. Waldron, J. Scanlan. *Dis-  
 trict of Tilton Harbor*,—Rev. P. Ward. *District of Bay Bulls*,—  
 Rev. P. Cleary. *District of Ferryland*,—Rev. J. Murphy (Fer-  
 reuse,) Rev. P. Burke, (Ferryland.) *District of Trepassey*,—Rev.  
 J. O'Neil. *District of St. Mary's*,—Rev. J. Ryan. *District of Pla-  
 centia*,—Rev. Messrs P. Nowlan, W. Forristal. *District of Mera-  
 sheen*,—Rev. J. Walsh. *District of Burin*,—Rev. Messrs M. Birnie,  
 M. Cullen. *District of Torbay*,—Rev. E. Troy.

### CHURCH OF SCOTLAND.

*St. Andrew's Church, St. John's*,—Rev. ALEX. SINCLAIR.

Minister of the CONGREGATIONAL CHURCH, at St. John's,  
 Rev. D. D. EVANS.

## WESLEYAN MISSIONARIES.

Rev. R. Williams, St. John's, (*Chairman of the Newfoundland District.*) Rev. J. Brewster, (Assistant to ditto.) A. Nightingale, (Grand Bank.) W. Faulkner, (Harbor Grace.) J. Snowball, (Carbonear.) T. Anguin, (Trinity.) James Norris, (Island Cove.) G. Ellidge, (Port-de-Grave.) J. S. Addy, (Brigus.) J. Ingham, (Bonavista.) S. W. Sprague, (Burin.) J. England, (Blackhead.) J. S. Peach, (Twillingate and Green Bay.)

## LAYMEN LICENSED TO CELEBRATE MARRIAGE.

[*Under Colonial Act 3, Wm. 4. cap. 10.*]

W. G. Bradshaw, J. P., (Placentia.) W. Sweetland, J. P., (Bonavista.) J. Tilly, J. P., (Hants Harbor.) T. E. Gaden, J. P., (Harbor Britain.) J. Peyton, J. P., (Twillingate.) John Galton, (Port-aux-Basque,)

## MILITARY ESTABLISHMENT.

Commandant, **P. W.** Lieut.-Col. R. LAW, K. H., Commanding Royal Newfoundland Companies.

Fort-Major,—Lieutenant Jenkins, R. N. C. Assistant Commissary General,—T. C. Weir. Deputy Assistant Commissary General,—William Hewetson.

## ROYAL ARTILLERY.

Captain,—G. R. Kennedy. Lieutenants,—R. W. Brettingham, G. Rotton.

## ROYAL ENGINEERS.

**P.** Lieut.-Col. Commanding, A. W. Robe. Lieut., C. R. Binney.

## ROYAL NEWFOUNDLAND COMPANIES.

**P. W.** Lieutenant-Colonel Commanding, Robert Law, K. H. Captains,—R. Saunders, H. B. Chambers, one vacant. Lieutenants,—J. Nichols, W. Jenkins, J. Gillespie, W. S. Bold, H. C. Marriot, Alan Menzies. Ensigns,—W. C. Coen, M. Petrie, C. H. Martin. Acting Paymaster,—Lieutenant W. S. Bold. Adjutant, and Acting Quarter-Master, Lieutenant Gillespie. Surgeon,—C. C. H. Grant, Assistant ditto, J. C. Martin. Agent,—Sir J. Kirkland, Knt., 80, Pall Mall, London.

NOTE.—**P.** denotes Peninsula; **W.** Waterloo.

## CIVIL DEPARTMENTS OF THE ARMY.

Garrison Chaplain,—Rev. C. Blackman, A. M. Deputy Ordnance Storekeeper and Barrack Master,—T. H. Tunbridge. Ordnance Clerk,—Noel Hanmer. Clerk of the Works,—J. Baker. Respective Officers of the Ordnance,—Commanding Royal Engineer; Commanding Officer of Royal Artillery; Deputy Ordnance Storekeeper. Commissariat Issuer,—J. Stickley, Ditto Conductor,—J. Thompson.

## COMMANDER-IN-CHIEF OF HER MAJESTY'S FLEET,

on the West India and North American Station, Vice-Admiral, Sir F. W. Austen, K.C.B. Commodore at Jamaica,—Captain Daniel Pring.

## MISCELLANEOUS.

## POST OFFICE DEPARTMENT.

Deputy Post Master General,—William L. Solomon. Clerk,—E. Winton.

## NEW MAIL CONTRACT.

A new contract was entered into on the 1st July, 1847, between the Lords Commissioners of the Admiralty and Messrs Cunard, Burns, and McIver, for the conveyance of Her Majesty's Mails between England and North America. The contractors are to provide a vessel to proceed every Saturday during April and the seven following months, and every fourth Saturday during the months of December, January, February and March, from Liverpool to Halifax and Boston, *vice versa*, on every alternate Saturday during May and the seven following months, and on every fourth Saturday during the other four months, from Boston, *via* Halifax, to Liverpool, and that similar voyages alternately with the former are to be made to and from Liverpool and New York.

With a view to the commencement from both sides of the Atlantic of the increased service from and after the 1st of January 1848, the contractors have obtained permission of the Admiralty to dispatch one of their vessels from Liverpool to Halifax and Boston on Saturday the 18th of December. A mail will therefore leave Liverpool on that day, and mails will leave Liverpool for New York, and New York for Liverpool on Saturday the 1st, and Saturday the 29th January, and so on; while on the Boston route, the mails will leave Liverpool for Boston, and Boston for Liverpool on Saturday the 15th January, and Saturday the 12th February next, and so on, until the commencement of the summer service. On each voyage out and home, the Packets will touch at Halifax until further orders.

The Newfoundland Mails are conveyed to and from Halifax by the Royal Mail Steam-packet, *Unicorn*, Captain MEAGHER, (except in the months of January, February, and March, when they may be conveyed in a sailing vessel.) The Steamer leaves Halifax for St. John's immediately after the arrival of the homeward bound Mail (from Boston), and after remaining there seventy-two hours from the time of arrival, proceeds back to Halifax with the return Mails, calling at Sydney, C. B. On the average the passage is performed in about 3½ days.

**TRANSATLANTIC STEAM NAVIGATION.**

The following calculations (copied from the *Liverpool Standard*, and believed to be accurately worked) of the comparative distances between New York and Bristol, and New York and Liverpool; and also between Boston and Liverpool, *via* Halifax, may be valuable to such persons as may be desirous of comparing the length of the passages respectively out and home, of the transatlantic steam-ships running between those ports.

FROM BOSTON TO HALIFAX.		MILES.
From Boston Wharf to Cape Ann	.....	36
" Cape Ann to Cape Sable (course N. 78 deg. E.)	.....	222
" Cape Sable to Sambro Light (N. 55 deg. E.)	.....	111
" Sambro to Halifax	.....	18
		—387
FROM HALIFAX TO LIVERPOOL.		
From Halifax Wharf to Sambro	.....	18
" Sambro to Cape Clear (N. 79 deg. E.)	.....	2207
" Cape Clear to Tuskar	.....	135
" Tuskar to Holyhead	.....	99
" Holyhead to Liverpool	.....	74
		—2524
Total from Boston to Liverpool, <i>via</i> Halifax	.....	2911
FROM NEW YORK TO BRISTOL.		
From New York to Cape Clear (N. 79 deg. 30 min. E.)	.....	2754
" Cape Clear to Lundy Island (S. 85 deg. E.)	.....	182
" Lundy Island to Anchorage, King's-road	.....	74
		—3010
FROM NEW YORK TO LIVERPOOL.		
From New York to Cape Clear	.....	2754
" Cape Clear to Liverpool, as above	.....	299
		—3053
FROM HALIFAX TO LIVERPOOL, <i>via</i> ST. JOHN'S, NEWFOUNDLAND.		
From Halifax to Cape Race (N. 75 E.)	.....	513
" Cape Race to St. John's	.....	55
" St. John's to St. David's Head (N. 82 E.)	.....	1860
" St. David's Head to Liverpool	.....	200
Total from Halifax to Liverpool, <i>via</i> St. John's	.....	—2628
St. John's to Sydney, C. B.	.....	354
Sydney to Halifax	.....	235



Taking therefore, the direct course in each case, as by the calculations given, we have the following results:—

The voyage from New York to Liverpool is 43 miles longer than from New York to Bristol. From New York to Liverpool is longer than from Halifax to the same port by 529 miles. From New York to King's-road, near Bristol, where the Great Western anchors, is 99 miles further than from Boston, *via* Halifax, to Liverpool; and that the voyage from Liverpool to Halifax, *via* St. John's, is only 104 miles longer than the *direct* passage.

## COMMISSIONERS OF PUBLIC BOARDS.

### COLONIAL BUILDING.

Hon. J. Crowdy, Chairman.—Honorables T. Bennett, W. Thomas, W. B. Row, P. Morris, R. Job, L. O'Brien; T. Glen, P. McBride; Clerk, J. W. Crowdy. Architect, James Purcell. Inspector, P. Kough.

### ST. JOHN'S ACADEMY—[CASTLE RENNIE.]

Visitor, His Excellency the Governor. Directors:—Hon. the Chief Justice, Honorables J. Crowdy, W. Thomas, P. Morris, T. Bennett, R. Job, J. Kent, J. Stuart; and J. Rochford, M. D. Senior Master, C. D. Newman. Junior ditto, J. V. Nugent. Secretary, Harcourt Mooney.

### FOR SUPERINTENDING REPAIRS OF GOVERNMENT HOUSE, &c.

Honorables J. Crowdy, M.E.C., W. Thomas, M.E.C.; L. O'Brien, M. E. C., and R. Carter, Esq.

### PILOTS.

J. B. Bulley; Hon. P. Morris, Hon. L. O'Brien, T. Williams, N. Stabb.

### TABLES OF RATES OF PILOTAGE IN AND OUT OF THE PORT OF ST. JOHN'S.

#### *On Merchant Shipping.*

Vessels under 80 tons new, to 100 tons old	£2	0	0
Ditto from 80 to 130 new, or 100 to 150 old	2	10	0
Ditto from 130 to 180 new, or 150 to 200 old	3	0	0
Ditto from 180 to 230 new, or 200 to 250 old	3	5	0
Ditto from 230 to 300 new, or 250 to 300 old	3	10	0
Ditto from 300 new, to 300 old, or upwards	4	0	0

Coasting vessels half the above, in proportion to tonnage.

#### *Her Majesty's Ships of War.*

Under 6th Rate	£2	10	0
4th, 5th, and 6th Rates	3	10	0
Ships of the Line, 1st, 2nd, and 3rd Rates	5	0	0

**BOARD OF CONTROL—OF ROADS, &c.**

Hon. T. Bennett, Chairman; J. B. Bulley, Secretary; H. P. Thomas, Thomas Row, Richard Howley. Surveyor and Inspector, W. Magill.

**RELIEF OF THE POOR.**

Rev. Messrs T. F. H. Bridge, D. D. Evans, R. Williams, John Forristal.

**COMMISSIONERS OF LIGHT HOUSES.**

Hon. T. Bennett, Chairman; H. P. Thomas, Hon. T. Ridley, Hon. P. Morris, N. Stabb, A Shea, Secretary.

**KEEPERS :**

Cape Spear, T. Cantwell. Fort Amherst, P. Roche. Harbor Grace Island, R. Oke. Cape Bonavista, J. White.

**TABLE OF LIGHT DUES.**

Three pence per Ton on all vessels entering any Port or Harbor of the Colony, except Coasting and sealing Vessels; but not to be levied more than twice in any one year.

**COASTING AND SEALING VESSELS.**

Of 90 Tons and upwards . . . . .	£1 0 0	per annum.
Of 60, and under 90 Tons . . . . .	0 15 0	“ “
Under 60 Tons . . . . .	0 10 0	“ “

**DESCRIPTION OF THE LIGHTS.**

*Fort Amherst.*—This is a Stationary Light, on the Southern head of the entrance of St. John's Harbour.

*Cape Spear.*—This is a powerful Revolving Light, burning at an elevation of 275 feet above the level of the sea, and showing a brilliant flash at intervals of one minute. In clear weather it may be seen from sea, in any direction, at the distance of thirty-five miles.

*Harbor Grace.*—This is a powerful Fixed Light, situate on "Harbour Grace Island," in Conception Bay, extending Eastwardly or seaward, in a direction by Compass from North to South West.

*Bonavista.*—This Light revolves every two minutes, showing a red and white flash alternately; and it is elevated 150 feet above the level of the sea.

*St. Peter's.*—A Light House has been erected by the French Government on "Galantry Head," near Cape Noir. The Light is a fixed one. It burns at an elevation of about 210 feet above the level of the sea. It may be seen (in passing by the S.) from W.N.W. to N.N.E. at the distance of 18 or 20 miles in clear weather. In passing by the N., it is shut in by high land from N.N.E. to W.N.W.

It is in contemplation to erect a Light House on Cape Race, with a Fog Bell.

# OFFICERS OF THE SEVERAL ELECTORAL DISTRICTS.

## STIPENDIARY MAGISTRATES.

St. John's,—P. W. Carter; C. Simms, P. Doyle. Bay Bulls,—  
J. L. McKie.

## JUSTICES OF THE PEACE.\*

Hon. T. Bennett, Hon. R. Job, N. Gill, R. Carter, (R.N.) Peter  
McBride, Hon. Walter Grieve, T. B. Job, Hon. L. O'Brien.

Clerk of the Peace and Coroner, A. Hogsett. Coroner (Bay  
Bulls), M. Williams. High Constable, J. Finlay. Gaoler, James  
Fergus. Medical Attendant on Gaol, E. Kielley.

Inspectors of Pickled Fish.—T. Williams, W. Magill, J. Pitts,  
A. Graham, D. Dwyre, W. McPherson, J. Curtis, Jr., (Portugal  
Cove.)

Assayer of Weights and Measures, J. Finlay. District Surgeon,  
Dr. Carson. General Supervisor of Streets, Lieut. R. Carter, R.N.

## BOARD OF ROAD COMMISSIONERS.

James Douglas, Chairman; Honorables Patrick Morris, Joseph  
Noad, C. F. Bennett, John Kent, Bryan Robinson, Robert Job,  
Lawrence O'Brien, Walter Grieve; Messrs Nicholas Gill, Thomas  
Glen, Charles Simms, John Harding, Patrick Kough, Simon Morris,  
Patrick Mullooney, John O'Mara, Patrick L. Power, David Reid.  
Surveyor, T. Byrne. Inspector, Edward Tobin.

## BOARDS OF EDUCATION.

Protestant.—The Rev. T. F. H. Bridge, Rev. Richard Williams,  
Rev. D. D. Evans; Hon. W. B. Row, H. P. Thomas.

Roman Catholic.—The Rev. John Forristal; Honorables P.  
Morris, John Kent, L. O'Brien; J. Dillon, Patrick Kough, R.  
Howley.

## DIRECTORS OF ST. JOHN'S HOSPITAL.

Chairman, Vice-President.

Honorables T. Bennett, W. Grieve, John Stuart, L. O'Brien; Messrs  
N. Stabb, B. Scott, J. Barron, P. McBride, R. Howley, W. Warren,  
Jr. Thomas Row, Thomas Allen. Surgeon, E. Kielley. Secretary,  
A. Shea.

## LUNATIC ASYLUM.

Physician, H. H. Stabb. Manager, J. Stairs. Matron, Mrs. Stairs.

\* The Members of Her Majesty's Council, and the Judges of the  
Supreme Court, are all in the Commission of the Peace for the *Central*,  
*Northern*, and *Southern* Districts of the Island.

### TRUSTEES OF BOTANIC GARDENS.

Hon. W. Thomas, Hon. John Stuart.

### BOARD OF APPRAISERS.

B. Scott, J. Clift, F. R. Rennie, R. Perchard, T. Glen. Secretary,  
John M. Brine.

### DISTRICT OF CONCEPTION BAY.

#### STIPENDIARY MAGISTRATES.

Harbor Grace,—T. Danson, R. Pinsent. Carbonear,—Joseph  
Ryan. Brigus,—C. Cozens.

#### JUSTICES OF THE PEACE.

W. Stirling, J. Green, R. Pack, R. Rankin, T. Hutchings, J. Stark,  
R. Brown, John Munn, Nicholas Molloy, Wm. S. Green, James  
Cormack.

Clerks of the Peace.—Harbor Grace, A. Mayne. Brigus, W. T.  
Stentaforde. Coroners.—Harbor Grace, J. Stark. Brigus, J. Green.  
Western Bay, John Curtis. Fish Constable, A. Webber. Gaoler,  
Richard Brace. Medical Attendant on Gaol, W. Stirling. Deputy  
Surveyor of Crown Lands, J. Green, (Brigus.)

Customs.—Harbor Grace, Sub-collector and Acting Warehouse-  
keeper, E. E. Brown. Brigus, Sub-collector, J. Green. Carbonear,  
ditto, D. Bethune,

Inspectors of Pickled Fish.—Harbor Grace, H. Stowe. Carbo-  
near, Simon Levi. Brigus, G. Bursell.

#### BOARDS OF ROAD COMMISSIONERS.

Harbour Main (from Holyrood to Salmon Cove Bridge.)—John  
Murphy, C., (Holyrood); Peter Ezekiel, Patrick Strapp, James  
Woodford, John Byrne.

Brigus (Salmon Cove Bridge to Spaniard's Bay Gut Bridge.)—  
John Leamon, C., Nathaniel Munden, James Hearn, James Keep-  
ing, James Cormack.

Harbour Grace.—Andrew Drysdale, C., D. Green, R. Hanrahan,  
F. Lynch, M. Goss; Harvey Street:—J. L. Prendergast, R. J.  
Pinsen, W. Stirling.

Carbonear (South Side Main Road to Spout Cove.)—Thomas  
Gamble, C., W. W. Bemister, John McCarthy, John Rorke,  
William Brown, John Casey, G. Forward.

Western Bay (Spout Cove to Main Brook.)—William Bennett, C.,  
David Bransfield, James Penny, Richard Rankin, Henry Thompson.

Main Brook to Bay-de-Verds.—Thomas Hutchings, C., — O'Neil,  
— Moore, Richard Rankin.

## BOARDS OF EDUCATION.

*Brigus.*—Protestant,—Rev. J. Cunningham, Rev. J. S. Addy, Robert Brown, John Leamon, W. S. Mills, Joshua Green. — Well,  
Roman Catholic,—Very Rev. D. Mackin, Dr. Molloy, R. Mackey,  
John Murphy, Patrick Strapp, R. Mandeville, Rev. E. O'Keefe.

*Harbour Grace.*—Protestant, Rev. John Chapman, Rev. W. Faulkner, Hon. T. Ridley, William Sterling, R. Anderson, Alfred Mayne.

Roman Catholic, Very Rev. C. Dalton, Daniel Green, Rodger Hanrahan, William Cormack, Arthur Thomey, Patrick Devereux, F. Lynch.

*Carbonear.*—Protestant, Rev. J. C. Harvey, Rev. J. Snowball, Rev. W. H. Hamilton, Rev. James England, W. W. Bemister, John Rorke, Edward Pike.

Roman Catholic, Rev. B. Duffy, Edward Hanrahan, James Power, John McCarthy, Dr. Wright, Rev. James Gleeson, William Brown.

## COMMISSIONERS OF GRAMMAR SCHOOLS.

*Harbour Grace.*—Hon. Thomas Ridley, John Munn, J. L. Prendergast, W. Sterling, Alfred Mayne, Daniel Green, W. Donnelly. Professor, J. T. Roddick.

*Carbonear.*—Edward Hanrahan, James Power, John McCarthy, W. W. Bemister, Dr. Wright, John Rorke, Thomas Gamble. Professor, A. O'Donavan.

## DISTRICT OF TRINITY BAY.

### STIPENDIARY MAGISTRATE,

B. Sweetland.

### JUSTICES OF THE PEACE,

W. Kelson, J. Regan, J. Quintz, J. Tilly, J. Mew, R. Ollerhead, A. Hackett, F. K. Hepburn, A. Bremner, W. R. Gill.

Clerk of the Peace R. Bayly. Coroner, B. Sweetland. Gaoler, C. Granger. Deputy Surveyor of Crown Lands, B. Sweetland. Sub-collector of Customs, R. Bayly.

Inspectors of Pickled Fish.—Trinity, J. Hart. Hant's Harbour, M. Tilly. Heart's Content, J. Wiseman.

### BOARD OF ROAD COMMISSIONERS.

Old Perlican (from Grates Cove to Hants Harbour.)—Stephen March, C., John Collins, Thomas Cooper, S. Rendell.

Heart's Content (from Hants Harbour to Heart's Delight.)—Robert Ollerhead, C., Richard Underhay, Moses Moores, John Hopkins, George Ayre, John Bemister, John Kelland.

Trinity Bay North,—W. Stoneman, C., W. Gill, F. K. Hepburn, Robert Bayly, William Penny.

Road from New Harbour to Dildo Cove,—Charles Newhook, Andrew Hackett.

## BOARDS OF EDUCATION.

Trinity Bay North,—Protestant, Rev. T. Anguin, F. K. Hepburn, A. Bremner, W. Kelson, B. Sweetland, R. Bayly.

Roman Catholic, Rev. J. Scanlan, M. Brine, John Murphy, P. Murphy, John Eagan, John Power.

Trinity Bay West,—Protestant, Rev. H. Lind, R. Ollerhead, J. Hopkins, R. Underhay, C. Newhook, J. Wiseman, John Bemister.

Trinity Bay South,—Protestant, Rev. H. Lind, Rev. J. Norris, Stephen March, William Meadows, George Ayre, John Tilly.

## DISTRICT OF BONA VISTA BAY.

STIPENDIARY MAGISTRATE,  
William Sweetland.

### JUSTICES OF THE PEACE.

S. Mifflin, N. Smith, J. Cox, J. T. Oakley, W. Brown, J. Skelton, J. Winter, M. D., T. Wells, Lorenzo Moore, Joseph Shears, J. Stewart, D. Candow.

Clerk of the Peace, John Lawrence. Coroner, Dr. J. Winter, (Greenspond.) Deputy Surveyor of Crown Lands, W. Sweetland. Sub-collector of Colonial Revenue, L. Moore, (Greenspond.)

Inspectors of Pickled Fish, N. Smith, Greenspond; J. Connors, King's Cove. Keeper of Light House on Cape Bonavista, J. White.

### BOARDS OF ROAD COMMISSIONERS.

Bonavista to Catalina,—William Sweetland, C., Joseph Shears, Archibald Arnott, Alexander Bremner.

Bonavista to King's Cove,—Archibald Arnott, C., W. Sweetland, Joseph Shears, James Stewart, William Brown.

In and through King's Cove,—James Stewart, William Brown, James Lawton.

Keels to Broad Cove,—Thomas Walley, James Connors, John Murphy.

Greenspond,—J. Winter, M. D., T. Wills, Nathaniel Smith.

Salvage,—James Oldford, T. Baggs.

Tickle Cove to Main Line from King's Cove,—D. Candow, J. Skeffington.

Ticke Cove to Open Hall,—D. Candow, J. Skeffington, T. Fewer.

Ticke Cove,—D. Candow, J. Skeffington.

### BOARDS OF ROAD COMMISSIONERS.

Cape Freels to Cobbler's Island,—J. Ridout, W. Hands, R. Vincent.

Flower Island and Fool's Island,—J. Spurrell, W. Kane.

Swain's Island,—T. Bishop, J. Winsor, W. Tiller.

Deer Island,—J. Pickett, C. Feltham.

Flat Island,—J. Pike, J. Sanson.

Barrow Harbour and towards Salvage,—Wm. Lang, Wm. Doyle, H. Wills.

Broad Cove to King's Cove,— Larkin, — Ryan.  
 Plate Cove to Trinity Bay,—D. Candow, J. Skeffington, W.  
 Palmer.

#### BOARDS OF EDUCATION.

Bonavista Bay North,—Protestant, Rev. J. Gilchrist, John Winter M.D., Thomas Wills, Nathaniel Smith, J. T. Oakley, William Dyer, Archibald Campbell.

Bonavista Bay South,—Protestant, Rev. T. M. Wood, Rev. J. Ingham, Joseph Shears, Archibald Arnott, James Saint, James Stewart, David Candow.

Roman Catholic, Rev. T. Waldron, William Hartery, James Connors, Michael Murphy, John Ryan, John Murphy, John Sullivan.

#### DISTRICT OF FOGO.

##### STIPENDIARY MAGISTRATE,

J. Peyton, (Twillingate.)

##### JUSTICES OF THE PEACE.

S. Lawler, J. Martin, J. Bell, S. Prowse.

Clerk of the Peace, A. A. Pearce. Coroner, William Sterling, Jr., M.D. Sub-collector of Customs, S. Prowse. (Twillingate.) Collector of Colonial Revenue, J. M. Winter, (Fogo.) Deputy Surveyor of Crown Lands, John Peyton.

Inspectors of Pickled Fish,—J. Ludlow, Fogo., J. Hodder, Twillingate.

#### BOARDS OF ROAD COMMISSIONERS.

Twillingate,—S. Prowse, John Pearce.

Fogo,—Stephen Lawler, J. M. Winter, P. Burke.

#### BOARDS OF EDUCATION.

Protestant,—Rev. Thomas Boone, Rev. J. S. Beach, John Peyton, J. Colborne, Samuel Prowse, J. Young.

Roman Catholic,—Rev. P. Ward, John Brine, John Burke, Patrick Burke, Patrick Dwyer, J. Fitzgerald, N. Fitzgerald.

Fogo,—Protestant,—Rev. W. J. Hoyles, Stephen Lawler, James M. Winter, Thomas Humphreys, John Bennett, John P. P., George E. Ridout.

**DISTRICT OF FERRYLAND.**

**STIPENDIARY MAGISTRATE,**  
Robert Carter.

**JUSTICES OF THE PEACE,**

P. Winsor, J. W. Saunders, A. Goodridge, M. Morry.

Clerk of the Peace, H. G. Clow. Coroner, (vacant.) Gaoler,  
F. Geary. Sub-collector of Customs, R. Carter. Deputy Surveyor  
of Crown Lands, R. Carter.

**BOARDS OF ROAD COMMISSIONERS.**

Bay Bulls to La Manche,—Michael Coady, C., Michael Brine,  
Sen., Thomas Driscoll, Thomas Avery, James Carew.

Ferryland (La Manche to Renewes),—M. Morry, C., James H.  
Carter, —Norris, M. Brazil, E. Power:

Renews to Trepassey,—J. W. Saunders, C., A. Goodridge, Owen  
O'Neill.

Trepassey to Renewes,—G. Simms, C., G. Dutton, J. Devereux.

**BOARDS OF EDUCATION:**

Protestant, Rev. H. H. Hamilton, Robert Carter, Matthew Morry,  
J. H. Carter, J. W. Saunders, A. Goodridge, P. P. LeMessurier.

Roman Catholic, Rev. J. Murphy, Michael Devereux, J. Doyle,  
J. Cashin, E. Condon, H. O'Neal, Philip Jackman.

Bay Bulls,—Roman Catholic, Rev. P. Cleary, M. Williams, M.  
Coady, W. Denn, Michael Driscoll, J. Blackler, T. Driscoll.

**DISTRICT OF PLACENTIA AND ST. MARY'S.****STIPENDIARY MAGISTRATES.**

F. L. Bradshaw, Placentia. H. Murch, St. Mary's.

**JUSTICES OF THE PEACE.**

G. Simms, J. Murphy, R. F. Sweetman, W. G. Bradshaw, A.  
Chambers, W. Lush, Patrick Hogan.

Clerk of the Peace, L. Collins. Coroner, (vacant.) Gaoler, L.  
Collins. Sub-collector of Customs, W. G. Bradshaw. Preventive  
Officer of Customs, H. Murch, St. Mary's.

Inspectors of Pickled Fish.—T. Walsh, Placentia, G. LeMes-  
gnier, Isle of Vallen, M. Shea, Little Placentia, E. Hennessey,  
Merashéen, James Murphy, Placentia.

**BOARDS OF ROAD COMMISSIONERS.**

Barré Island,—Alexander Chambers, C., Nicholas Coady, Rich-  
ard Mackay.

Merashéen,—A. Chambers, C., John Movelle, E. Hennessey.



Presque to Oliver's Cove,—A. Chambers, C., J. Masters, T. Lennard.

Isle of Vallen,—A. Chambers, C., G. LeMessurier, P. Lennard.

Great to Little Paradise,—John Power, Joseph Goldsworthy.

Woody Island,—A. Chambers, C., Levi Andrews, R. Walsh.

Oderin,—Thomas Collins, Nelson Bailey.

Great Placentia to Distress Cove,—Luke Collins, C., W. G.

Bradshaw, Patrick Hogan, J. Rielley, (Herring Bay.)

Great to Little Placentia and Pond Head,—James Murphy, John Rielley, Alexander Burke.

St. Mary's Harbour (Holyrood and Point La Hays),—William Lush, Robert Kent, William Fewer.

Harbour Beaufitt,—James Butler, Thomas E. Collett.

Harry Cove Point, and Path from Limber Grass to Harry Cove,

—G. Curtis, Michael Denn, Edward Quigley, and James Whealen.

To open a road from Branch to Distress Cove,—Branch,—T. Nash, N. Power, J. English. Distress Cove,—J. Duffy, W. Walsh, J. Corway.

#### BOARDS OF EDUCATION.

Placentia,—Protestant, Rev. W. K. White, F. L. Bradshaw, W. G. Bradshaw, William Taylor, Thomas E. Collett, Alex. Chambers, G. LeMessurier. Roman Catholic, Rev. Pelagius Nowlan, Rev. W. Forristal, John Rielley, James Furlong, Patrick Hogan, Anthony Whelan, John Rielley, (Herring Bay.)

St. Mary's,—Roman Catholic, Rev. K. Walsh, John Walsh, Thomas Phelan, James Fagan, William Burke, Michael Fagan, Michael Murray.

#### TRUSTEES OF COMMERCIAL SCHOOL AT GREAT

##### PLACENTIA.

Rev. P. Nowlan, F. L. Bradshaw, Patrick Hogan. Master, M. Kelly. Average number of Scholars, 50.

#### DISTRICT OF BURIN.

##### STIPENDIARY MAGISTRATES.

W. Hooper, Burin, J. Blackburn, Grand Bank, S. O. Paek, Lamaline.

##### JUSTICES OF THE PEACE.

C. Benning, J. Thorn, James Moran.

Clerk of the Peace, Edward Morris. Coroner, (vacant.) Gaoler, E. Glynn. Sub-collector, of Customs, T. Birkett. Sub-collector of Colonial Revenue at Lamaline, J. Winter. Deputy Surveyor of Crown Lands, W. Hooper.

Inspectors of Pickled Fish.—T. Darby, Burin, I. K. Moore, St. Lawrence; G. H. Evans, Grand Bank.

## BOARD OF ROAD COMMISSIONERS.

*Burin*.—Edward Morris, C., Clement Benning, Thomas Darby, John Marshall, John Power, Joshua Falle.

*Grand Bank and neighbourhood*.—Ed. Evans, C., George Lake, John Patten, James Hickman.

*St. Lawrence to Lamaline, and from Great to Little St. Lawrence*.—John Thorn, Henry Slaney.

*Lamaline*.—J. Pitman, R. Cake.

## COMMISSIONERS FOR THE ERECTION OF A BREAK-WATER.

*At Fortune*.—George Lake, John Snook, Thomas Rogers, James Handlen, John Keating, John Spence. *Grand Bank*.—John Patten, John Hickman, sen., James Hickman, George Forsey, sen., Wm. Evans, (planter), Henry Nicolle.

## BOARDS OF EDUCATION.

*Protestant*.—Thomas Darby, Phillip Hollett, William Hooper, William Evans, Richard Falle, James Moran.

*Roman Catholic*.—Rev. Michael Berney, Clement Benning, Edward Morris, John Power, Patrick Morris, Henry Slaney, Matthew Marshall.

## DISTRICT OF FORTUNE BAY.

## STIPENDIARY MAGISTRATE.

Thomas E. Gaden.

## JUSTICES OF THE PEACE.

J. Nicholle, T. Read, (La Poile,) R. Anthoine, F. Anthoine, J. B. Cox, Jr., (Burgeo Islands,) Thomas Renouf, (La Poile.)

Clerk of the Peace, P. Tocque. Coroner, T. E. Gaden. Sub-collector of Customs, T. E. Gaden. Sub-collector of Colonial Revenue, (La Poile,) T. Read.

Inspectors of Pickled Fish.—J. Trood, (Harbor Britain.) D. Hardy, (Jersey Harbour.) H. Bagg, (La Poile.) J. Cluitt, (Belloram.) J. B. Cox, senr., (Burgeo Islands,) Matthew Row, (ditto.)

## BOARD OF ROAD COMMISSIONERS:

*Harbour Britain to Connaigre Bay and Hermitage Cove*.—Andrew Ellis, C.; John Chapman, William Gallop, Thomas E. Gaden, John Trood.

*Belloram to St. Jacques*.—Rev. Thomas B. Polden, John Clewitt, John Grandy, Jr., Robert Lee.

*Burgeo*.—Rev. M. Blackmore, J. B. Cox, Jr., W. Henderson, Sen., W. Mathews.

## BOARD OF EDUCATION.

*Protestant*.—Rev. G. J. Mountain, Thomas E. Gaden, John Chapman, William Gallop, Andrew Ellis, John Marshal, Thomas Stevens.

37

*Roman Catholic.*—Rev. M. Berney, Rev. M. Cullen, P. Burke, W. Burke, P. Burke, Jr., T. Kinshela, P. Hearn.

## CHARITABLE INSTITUTIONS.

### BENEVOLENT IRISH SOCIETY.

[*Founded in 1806.*]

Patron, His Excellency Sir John Gaspard Le Marchant. President, Hon. L. O'Brien. Vice President, P. Kough. First Assistant, Edward Morris. Second Assistant, P. F. Little. Treasurer, R. Howley. Secretary, J. Kavanagh. Chairman of Review, G. Hogsett. Chairman of Charity, W. Walsh. Chairman O. A. School P. Brazil. Secretary O. A. School, Randall Green.—[*Elected 1847.*]

### DORCAS SOCIETY.

Treasurer, Mrs. T. Job. Secretary, Mrs. Rogerson. Dispenser, Mrs. C. Winton.

### MECHANICS' SOCIETY.

President, V. Merchant. Vice President, E. Kennedy. First Assistant, John White. Second Assistant, Thomas Ryan. First Treasurer, T. Maher. Second Treasurer, John Coady. Third Treasurer, A. Quirk. Secretary, E. Delaney.

### BRITISH SOCIETY.

President, Edward Warren. Vice-President, G. R. McCoubrey. Treasurer, C. Rankin. Secretary, Henry Emmett. Medical Attendant, Dr. Carson.

### NATIVES' SOCIETY.

President, A. Shea. First Vice-President, H. W. Hoyles. Second Vice-President, James S. Clift. Treasurer, T. G. Morry. Chairman of Charity, P. Duggan. Chairman of Review and Correspondence, H. B. Thomas. Secretary, P. H. Carter. Assistant Secretary, N. Gill, Jr.—[*Elected June, 1847.*]

### CARBONEAR NATIVES' SOCIETY.

President, John Bemister. Treasurer, Edward Pike. Secretary, Moses Wiltshear.

### ST. GEORGE'S SOCIETY.

President, R. Prowse. Vice Presidents, Hon. J. Noad, J. Bayly. Treasurer, Hon. W. Thomas. Secretary, G. Clapp. Chairman of Committee of Charity, J. B. Bulley. Secretary and Treasurer, J. C. Withers.

### ST. ANDREW'S SOCIETY.

President, Hon. John Stuart. Vice-President, John McWilliam. Treasurer, David Steel. Secretary, John Crawford. Medical Attendant, Dr. Carson. Chairman of Committee of Charity, Allan Fraser.

### AGRICULTURAL SOCIETY.

Patron, His Excellency Sir J. Gaspard Le Marchant. President, Charles Simms. Vice Presidents, Hon. B. Robinson, J. Douglas, Hon. Judge Des Barres, P. Kough. Treasurer, Thomas B. Job. Secretary, F. Templeman. Curator of Museum, E. L. Moore.

### FARMERS' MILL COMPANY.

Patron, His Excellency Sir John Gaspard Le Marchant. Provisional Trustees, Hon. James Crowdy, Charles Simms, P. Kough.

### ST. JOHN'S AND NEWFOUNDLAND AUXILIARY BIBLE SOCIETY.

Patron, His Excellency Sir John Gaspard Le Marchant. President, Hon. W. Thomas. Vice Presidents, Hon. Judge Des Barres, Hon. James Crowdy, Hon. W. B. Row, Hon. R. Job, Hon. W. Grieve. Treasurer, N. Stabb. Secretaries, Rev. D. D. Evans, J. B. Bulley.

### TRINITY BENEFIT CLUB.—[Instituted 1838.]

President, F. K. Hepburn. Treasurer, W. Kelson. Secretary, R. Bayley. Stewards, S. A. Gent, P. Murphy.

Total Number of Members, 100.

### LAW SOCIETY.

Hon. Attorney General, Hon. Solicitor General, Hon. W. B. Row, Q. C., C. Simms, R. R. Wakeham, Hon. B. Robinson, Q. C., G. H. Emerson, H. W. Hoyles, F. B. T. Carter, J. Hayward, J. S. Stevens, J. Simms, Jr., R. R. W. Lilly, W. Green, (of Halifax, N. S.), P. F. Little, H. Mooney.

### CHAMBER OF COMMERCE—ST. JOHN'S.

[Elected August, 1847.]

President, Hon. W. Grieve. Vice Presidents, Hon. W. B. Row, N. Stabb. Treasurer and Secretary, R. Prowse. Honorable T. Bennett, J. Stuart, W. Thomas, W. B. Row, W. Grieve, L. O'Brien; Messrs P. McBride, T. B. Job, G. T. Brooking, N. Stabb, K. McLea, R. Prowse, T. Row.

### FOREIGN CONSULS RESIDENT IN THE COLONY.

*Spain*,—A. Hogsett, (V. C.) *Prussia*,—B. Scott. *United States*,—S. G. Archibald, (Consular Agent.)

### CONCEPTION BAY.

*Spain*,—William C. St. John, (V. C.) *United States*,—William C. St. John, (Consular Agent.)

### ASSOCIATION OF UNDERWRITERS—ST. JOHN'S.

Chairman and Treasurer, Hon. W. Grieve. Committee,—Hon. L. O'Brien, R. Prowse, W. Warren, Jr., Hon. W. Thomas, N. Stabb, P. McBride, R. Howley, T. Job, G. H. Brooking, J. B. Hutton. Agent, John Boyd. Commissioners, R. Howley, R. Prowse. Surveyor, J. B. Bulley. Assessors, Hon. L. O'Brien, W. Warren, Jr., P. McBride.

**BRANCH BANK OF BRITISH NORTH AMERICA.**

[Opened for Business February, 1837.]

Local Directors:—Hon. R. Job, P. McBride, G. T. Brooking,  
 Manager, A. Milroy. Accountant, W. Lash. Teller, W. B. Dryer.  
 Clerk and Messenger, Samuel Cowan.

**SAVINGS BANK.**

[Established 1834, by Act 4, W. 4. c. 10.]

Governors.—The Members of Her Majesty's Executive Council,  
 and an equal number of the Members of the General Assembly, in-  
 cluding the Speaker. Cashier, Hon. P. Morris. Clerk, E. Morris.

**ST. JOHN'S GAS LIGHT COMPANY.**

[Incorporated by Act of Legislature, 1844.]

Directors,—President, the Attorney General. Vice President,  
 C. Ayre. Hon. W. Grieve, Hon. L. O'Brien, R. O'Dwyer, Hon.  
 James Crowdy, John O'Mara. Treasurer and Secretary, John M.  
 Brine. Manager, Andrew Thomson.

**ST. JOHN'S WATER COMPANY.**

[Incorporated by Act of the Legislature, 1846.]

Directors.—President, Hon. W. Thomas. Vice Presidents, Hon.  
 C. F. Fennett, Hon. W. Grieve, Hon John Kent; Peter McBride,  
 T. B. Job, G. T. Brooking. Treasurer, A. Milroy. Secretary,  
 W. J. Ward. Engineer and Superintendent, Robert Minto.

**ST. JOHN'S LIBRARY AND READING ROOM.**

President, Kenneth McLea. Vice Presidents, W. Lash, C. Brown,  
 Treasurer, T. McConnan. Secretary, Allen Frazer.

**ST. JOHN'S PHOENIX VOLUNTEER FIRE COMPANY,**

First Director, Samuel Loveys. Second Director, William Coyle,  
 Secretary, R. Hamlin.

**MCCOUBREY BROTHERS' READING ROOM.**

Secretary, R. E. McCoubrey.

**NEWSPAPERS PUBLISHED IN THE COLONY,**

WITH DAYS OF PUBLICATION.

**ST. JOHN'S.***Royal Gazette*, Tuesday.*Public Ledger*, Tuesday and Friday.*Times and General Commercial Gazette*, Wednesday and Saturday.*Newfoundland Patriot*, Wednesday.*Newfoundlander*, Monday and Thursday.*Morning Post*, Tuesday, Thursday, and Saturday.*Morning Courier*, Wednesday and Saturday.**CONCEPTION BAY.***Weekly Herald and Conception Bay Advertiser*, Wednesday.

**TABLE OF COLONIAL DUTIES.**

*Payable on Goods and Merchandise Imported into Newfoundland over and above the Imperial Duties payable thereon. (By Act 9 Vict. cap 1.)*

Articles Imported.	Rate of Duty.
Wines—(in bottles) .....	0 2 6 per gallon.
All other Wines .....	0 1 6 “
Brandy and Gin .....	0 2 6 “
Rum and Whiskey .....	0 0 6 “
Apples .....	0 1 6 per barrel.
Salt Meat .....	0 1 6 per cwt.
Bread .....	0 0 3 “
Butter .....	0 2 0 “
Coals .....	0 1 0 per ton.
Bastard Sugar .....	0 5 0 per cwt.
Flour .....	0 1 6 per barrel.
Oatmeal .....	0 0 6 “
Molasses .....	0 0 1½ per gallon.
Salt, Implements and Materials for the Fisheries, Coin and Bullion, Horses & Cattle, Sheep and Pigs, Corn & Seeds, Vegetables, Manures, Books, Unrefined Sugar, Coffee .....	Free.
Lumber .....	0 2 6 per mille.
Ton Timber and Scantling .....	0 1 6 per ton.
Shingles .....	0 1 0 per mille.
Tea .....	0 0 3 per lb.
Refined Sugar .....	0 5 0 per cwt.
Cigars .....	0 10 0 per mille.
Tobacco .....	0 0 2 per lb.
Stems of ditto .....	0 2 0 per cwt.
Ale, Porter, &c. ....	10 0 0 per cent.
Household Furniture .....	10 0 0 “
Non-enumerated Articles .....	5 0 0 “

**CONCEPTION-BAY PACKETS.**

Harbour Grace and Portugal Cove,—The “EXPRESS,” and the “VICTORIA” sail alternately on the mornings of Monday, Wednesday, and Friday. The “LOTUS” and “NATIVE LASS” ply alternately, on the same mornings, between Carbonear and Portugal Cove. The “RAPID” leaves Portugal Cove for Brigus on the mornings of Tuesday, Thursday, and Saturday.

**LENGTH OF SESSIONS OF THE GENERAL ASSEMBLY  
OF NEWFOUNDLAND.**

YEAR.	FROM.	TO	DAYS IN SESSION.	REMARKS.
1833	January 1	July 9	240	(Includes an ad- journment of 38 days from May 30 to July 9.)
	July 12	August 1		
1834	January 29	June 12	161	
	August 26	Sept. 20		
1835	January 8	May 12	115	
1836	January 7	May 6	111	
1837	July 3	Nov. 18	139	
1838	June 20	August 13	122	
	August 20	October 25		
1839	May 17	October 12	149	
1840	January 3	April 29	118	
1841	January 2	April 26	116	
1842	Nil.		126	
1843	January 17	May 22	111	
1844	January 10	April 29	99	
1845	January 15	April 23	104	
1846	January 15	April 28		
Do.			50	
Special	June 16	August 4		

**ACTS PASSED BY THE GENERAL ASSEMBLY IN 1847.**

- Cap. 1. St. John's Streets—(amendment.)
- " 2. Loan—(for general improvement of Colony.)
- " 3. Sheriffs—(appointment of.)
- " 4. Lunatic Asylum.
- " 5. Revenue—(continuation.)
- " 6. Registration of Deeds—(amendment.)
- " 7. Interest upon Loan—(repeal.)
- " 8. Supply.
- " 9. Legislative Contingencies.

42

**ABSTRACT OF THE TRADE OF THE ISLAND,**  
**SHOWING THE TONNAGE &c. EMPLOYED, AND THE RELATIVE**  
**VALUE OF THE IMPORTS, DISTINGUISHING FOREIGN GOODS**  
**FROM GOODS OF BRITISH PRODUCE AND MANUFACTURE.**

(Year ended 5th January, 1845.)

**INWARDS.**

<i>Countries from and for which the Ves- sels entered.</i>	VESSELS.		IMPORTS.		
	No.	Tonnage.	Value in Pounds stg.		
			<i>British</i>	<i>Foreign</i>	<i>Total.</i>
United Kingdom } British	179	25134	338728	19872	358600
} Foreign	2	518			
Jersey and Guernsey } British	5	633	7877	350	8227
Gibraltar..... "					
Malta..... "					
Zante..... "					
France..... Foreign					
Spain } British	92	14634		8374	8374
} Foreign	26	3162			
Portugal.... British	56	7220		8818	8818
Egypt..... "					
Naples..... "	2	256		235	235
Sardinia.... "	1	147		113	113
Rouman States "					
" "	1	136		1028	1028
Tuscany } Foreign					
Denmark.. British	21	3280		28440	28440
Belgium.. "	1	214		34	34
Hamburg } "	46	7065		66973	66973
} Foreign	1	107		656	656
Port'guese colonies } British					
} Foreign	1	149		218	218
British N. America } British	487	43094	75263	20064	95327
} Foreign					
British W. Indies } British	10	1079	851	14	865
U. States ditto } "	104	11944		137426	137426
} Foreign	19	2869		27344	27344
Brazils } British	1	173		4	4
} Foreign					
French N. American Colonies } British	39	841		32	32
} Foreign	1	20			
Spanish W. Indies } British	15	2052		16302	16302
} Foreign	19	2286		10034	10034
Danish W. Indies } British	1	116		966	966
<b>Totals.....</b>	<b>1130</b>	<b>127129</b>	<b>422719</b>	<b>847297</b>	<b>770016</b>



**ABSTRACT OF THE TRADE OF THE ISLAND,**  
**SHOWING THE TONNAGE &c. EMPLOYED, AND THE RELATIVE**  
**VALUE OF THE EXPORTS, DISTINGUISHING FOREIGN GOODS**  
**FROM GOODS OF BRITISH PRODUCE AND MANUFACTURE.**  
*(Year ended 6th January, 1845.)*

**OUTWARDS.**

Countries for which the Vessels entered:	VESSELS.		EXPORTS.			
	No.	Tonnage	Value in Pounds British	Foreign	Total	
United Kingdom	British	119	15787	375144	892	375836
Jersey and Guernsey	Foreign					
	British	3	423	3034		3034
Gibraltar	"	8	1113	11694		11694
Malta	"	2	200	2498		2498
Zante	"	1	142	1795		1795
France	Foreign	3	313	4154		4164
Spain	British	51	6616	54217		54217
	Foreign	38	4690	52243		52243
Portugal	British	76	10270	129071		129071
Egypt	"	1	68	660		680
Naples	"	10	1285	17831		17831
Sardinia	"					
Roman States	"	10	1222	14823		14823
Tuscany	Foreign	6	950	9932		9932
	British	5	566	6158		6158
Denmark	British					
Belgium	"					
Hamburg	Foreign					
Port'gese Colonies	British	1	71	560		560
British N. America.	Foreign					
	British	513	53478	54228	7429	61657
British W. Indies	Foreign	16	2233			
	British	62	8357	65611	772	70283
U. States ditto	"	26	2917	7974		7974
	Foreign	3	583	542	22	564
Brazil	British	30	5859	47610		47610
	Foreign	1	232	1500		1500
French N. American Colonies	British	56	1244	2070		2070
	Foreign	1	20	47		47
Spanish W. Indies	British	2	306	5674		5674
	Foreign	1	148	1006		1006
Danish W. Indies	British					
<b>Totals</b>		<b>1045</b>	<b>118099</b>	<b>873990</b>	<b>8915</b>	<b>882905</b>

POPULATION, &c., OF THE SEVERAL ELECTORAL DISTRICTS.

Districts.	According to Census of 1836.		According to Census of 1845.		Religion.					No. of Dwelling-houses.	No. of Schools.	No. of Sealing Vessels.	No. of Fishing Boats.	Acres of Land in Cultivation.	Average production			Cattle.	Horses.			
	Males.	Females.	Males.	Females.	Episcopalians.	Churches.	Dissenters.	Meeting-houses.	Roman Catholics						Chapels.	Potatoes.	Oats and other grain.			Hay and Fodder.		
				Increase per cent.												bls.	bush.			tons.		
St. John's.	10239	8689	13177	12119	33	6	122	9	1895	5	110	52	173	77	19059	4834	3437	4315	11807	11307		
Con. Bay.	12642	10373	14896	13127	20	7	8601	13	7845	16	1158	10	4196	54	232	2663	6610	2063	948	1576	1576	
Trin. Bay.	3751	3092	4689	4112	13	2	4753	12	2765	8	1283	2	1363	22	34	1389	1079	29623	8	478	121	967
Bon. Bay.	2898	2282	3942	3281	30	4	4684	11	734	1	1899	2	1039	17	20	43	612	25971	273	266	52	605
Fogo.	2738	2148	3771	2973	38	8	5017	7	3999	2	1128	3	988	10	20	1014	412	13863	14	59	5	276
Ferry'd.	3330	1781	2623	1958			168	1	1		4412	9	780	22	0	804	1003	26596	591	904	176	607
Placen. & St. Mary's.	2644	2057	3578	2892	37	0	971	4	47		5455	9	930	11	4	849	2200	28759	568	1573	46	1618
Burin.	1775	1365	2485	1873	38	7	1221	1	1186	3	1951	2	634	11		703	1047	11081	20	777	85	889
Fortune Bay.	1857	1272	3109	1991	60	3	4640	4	68		392		726	10		1247	220	2050	3	170	5	350

The average increase of the whole population of the Island since 1836 is rather more than 30 per Cent.

\* In this District there is a decrease of 10 per cent.

## A RETURN,

Showing the number of Registered Vessels that entered and cleared at the Port of St. John's, distinguishing the Countries from or for which they Entered or Cleared, in each year during the six years ending 1844.

COUNTRIES.	1839	1840	1841	1842	1843	1844
United Kingdom .....	186	238	226	209	230	203
British Colonies .....	603	665	649	790	796	873
Foreign Europe .....	232	263	268	282	294	301
"    West Indies .....	75	56	71	61	70	63
United States .....	65	140	102	119	135	125
Coast-ways .....	1482	1513	1571	1521	1546	1583
Totals .....	2663	3877	2886	2992	3070	3147

## OF OUTFIT FOR THE SEAL FISHERY IN 1847.

	VESSELS.	TONS.	MEN.
St. John's .....	95	9353	3215
Harbor Grace .....	49	4957	1407
Mosquitto .....	1	72	28
Spaniards Bay .....	4	354	131
Carbonear .....	37	3054	908
Brigus, Cubits, & Port de Grave .....	66	5950	1963
Trinity & Catalina .....	42	3901	1361
New Perlican & Hants Harbor .....	27	2159	740
Greenspond, &c., (no return) .....	—	—	—
Totals .....	321	29800	9751

## COMPARATIVE STATEMENT.

Of the Total Colonial Revenue and Expenditure in the years 1844-5.

	1845.	1844.
Revenue.		
{ Imperial Customs Duties .....	£5540 15 8	£5375 19 3
{ Colonial Duties .....	49522 8 2	49931 7 0
{ Light Dues .....	1715 13 11	1668 1 8
{ From other sources .....	2949 11 0	2702 14 0
	£59728 8 9	£59676 1 9
Expenditure .....	£62703 18 7	£66379 5 6

## SHIPS BUILT IN THE COLONY.

	1840	1841	1842	1843	1844	1845
No. ....	31	33	32	24	25	32
Tons .....	1669	1683	1553	1192	1281	1607

**COMPARATIVE STATEMENT.**  
Of the Quantity and Value of the Staple Articles of produce exported  
in the years 1838, '39, '40, '41, '42, '43, '44, and '45.

	Dried Fish	Oils.	Seal Skins.	Salmon.	Herrings.
	Qtls.	Gallons.	No.	Pieces	Barrels.
Quantity	1838 724,516	2,173,674	375,351	4,408	15,270
	1839 805,370	2,224,262	437,501	2,922	20,808
	1840 915,735	3,206,583	631,385	3,393	14,680
	1841 1,009,720	2,073,574	417,115	3,642	9,965
	1842 1,007,000	2,232,031	344,683	4,715	13,839
	1843 936,202	3,111,312	651,370	4,058	9,649
	1844 852,102	3,607,868	685,530	3,753	13,410
	1845 1,000,333	2,219,301	352,202	3,545	20,903
Value.	1838 £484,649	£249,428	£30,474	£13,310	£10,723
	1839 509,157	243,289	40,336	11,692	13,840
	1840 576,245	305,197	30,408	12,939	9,036
	1841 605,014	266,832	29,961	12,302	6,361
	1842 561,950	233,313	23,200	13,678	7,119
	1843 532,194	335,975	40,497	12,216	4,570
	1844 482,480	315,690	39,648	11,945	6,665
	1845 596,990	243,646	40,123	12,794	11,234

**SHIPS OWNED AND REGISTERED IN THE COLONY.**

On 31st December, 1844.....	844
On 31st December, 1845.....	907

**GOVERNORS OF NEWFOUNDLAND,**

FROM THE EARLIEST PERIOD OF WHICH THERE ARE ANY AUTHENTIC RECORDS IN THE SECRETARY'S OFFICE.

1749.....	Rodney.	1792-93....	King.
1750-52....	Drake.	1794-96....	Sir J. Wallace.
1753-54....	Bonfoy.	1797-99....	Hon. W. Waldegrave
1755-56....	Dorell.	1800-1....	Sir C. M. Pole.
1757-59....	Edwards.	1802-3....	Gambier.
1760.....	Welch.	1804-6....	Sir F. Gower.
1761-63....	Graves.	1807-9....	Holloway.
1764-68....	Palliser.	1810-12....	Sir J. Duckworth.
1769-71....	Hon. J. Byron.	1813-15....	Sir R. G. Keats.
1772-74....	Shuldham.	1816-17....	Pickmore.
1775.....	Duff.	1818-25....	Sir C. Hamilton.
1776-78....	Montagu.	1825-34....	Sir T. Cochrane.
1779-84....	Edwards.	1834-41....	Prescott.
1782-85....	Campbell.	1841-46....	Sir John Harvey.
1786-88....	Elliott.	1847.....	Sir J. G. LeMarchant.
1789-91....	Milbanke.		

**PRESENT GOVERNORS OF THE OTHER NORTH  
AMERICAN COLONIES.**

**CANADA.**

**Governor-Gen., the Rt. Hon. the Earl of ELGIN and KINCARDINE.**

**NOVA SCOTIA.**

**Lieut.-Governor—Lieut.-Gen. Sir JOHN HARVEY, K.C.B. & K.C.H.**

**NEW BRUNSWICK.**

**Lieut.-Governor—Lieut.-Gen. Sir W. M. G. COLEBROOK.**

**PRINCE EDWARD'S ISLAND.**

**Lieut.-Governor—Sir DONALD CAMPBELL.**

