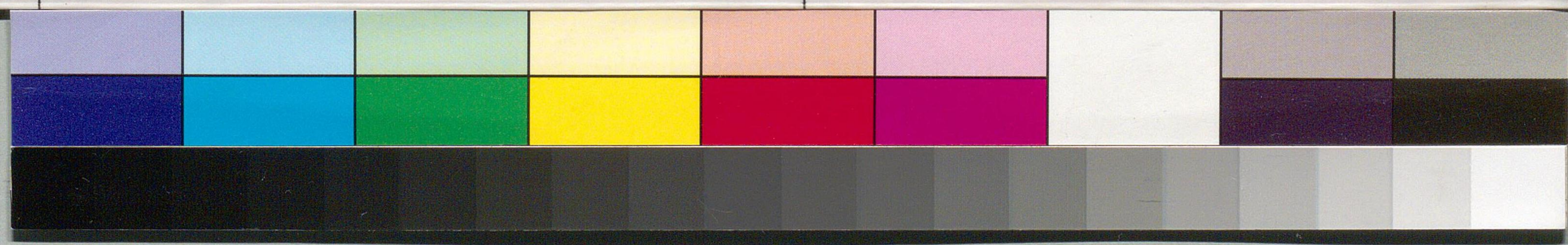
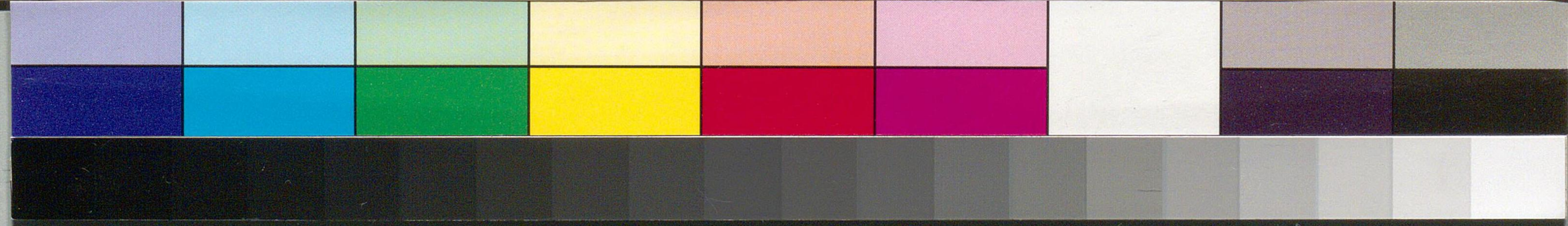
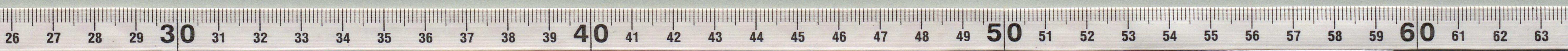


Handwritten Japanese text on a vertical strip of aged paper. The characters are written in a cursive style (sōsho). The text is partially obscured by a vertical crease and some staining. A red horizontal line is visible near the top of the strip.



国立国会図書館 尾崎三良関係文書 21-55

Handwritten Japanese text on a vertical strip of aged paper. The characters are written in a cursive style (sōsho). The text is arranged in two columns, with the right column being more legible than the left. The characters appear to be: 尾崎三良 (Ozaki Sanryū) on the right, and 井ノ口 (Inokuchi) on the left. There is a small red mark near the top of the strip.



国立国会図書館 尾崎三良関係文書 21-55

抄種心之絶
好之先人之也
安月好之也
外之也

毅

