

AIRCRAFT ACTION REPORT

RESTRICTED
(Reclassify when
filled out)

I. GENERAL

CONFIDENTIAL

(a) Unit Reporting VC-91 (b) Based on or at USS SAVO ISLAND (CVE78) (c) Report No. 1
(d) Take off: Date 26 March 1945 Time (LZT) 0930-I (Zone); Lat. 25° 30' N. Long. 127° 20' E.
(e) Mission Direct Support on islands of Kerama Retto (f) Time of Return 1345-I (Zone)

II. OWN AIRCRAFT OFFICIALLY COVERED BY THIS REPORT.

TYPE (a)	SQUADRON (b)	NUMBER			BOMBS AND TORPEDOES CARRIED (PER PLANE) (f)	FUZE, SETTING (g)
		TAKING OFF (c)	ENGAGING ENEMY A/C (d)	ATTACKING TARGET (e)		
TBM-3	VC-91	3	0	3	4 - 500# G.P. Bombs 3 - 5" H.E. Rockets	Inst. Nose, .01 Tail
TBM-3	VC-91	4	0	4	10 - 100# G.P. Bombs	No Delay - Tail

III. OTHER U. S. OR ALLIED AIRCRAFT EMPLOYED IN THIS OPERATION.

TYPE	SQUADRON	NUMBER	BASE	TYPE	SQUADRON	NUMBER	BASE
FM-2	VC-85	8	USS LUNGA POINT (CVE94)				

IV. ENEMY AIRCRAFT OBSERVED OR ENGAGED (By Own Aircraft Listed in II Only).

(a) TYPE	(b) NO. OBSERVED	(c) NO. ENGAGING OWN A/C	(d) TIME ENCOUNTERED	(e) LOCATION OF ENCOUNTER	(f) BOMBS, TORPEDOES CARRIED; GUNS OBSERVED	(g) CAMOUFLAGE AND MARKING
None			(ZONE)			
			(ZONE)			
			(ZONE)			

(h) Apparent Enemy Mission(s) _____
Did Any Part of _____
(i) Encounter(s) Occur in Clouds? _____ If so, Describe Clouds _____
(YES OR NO) (BASE IN FEET, TYPE AND TENTHS OF COVER)
Time of Day and Brilliance _____
(j) of Sun or Moon _____ (k) Visibility _____
(NIGHT, BRIGHT MOON; DAY, OVERCAST; ETC.) (MILES)

V. ENEMY AIRCRAFT DESTROYED OR DAMAGED IN AIR (By Own Aircraft Listed in II Only).

(a) TYPE ENEMY A/C	(b) DESTROYED OR DAMAGED BY:				(c) WHERE HIT, ANGLE	(d) DAMAGE CLAIMED
	TYPE A/C	SQUADRON	PILOT OR GUNNER	GUNS USED		
None						

AIRCRAFT ACTION REPORT

RESTRICTED
(Reclassify when filled out)

CONFIDENTIAL

REPORT No. 1

VI. LOSS OR DAMAGE, COMBAT OR OPERATIONAL, OF OWN AIRCRAFT (of those listed in II only).

(a) TYPE OWN A/C	(b) SQUADRON	(c) CAUSE: TYPE ENEMY A/C, TYPE GUN, OR OPERATIONAL CAUSE	(d) WHERE HIT, ANGLE (List armor, self-sealing tanks, equipment hit)	(e) EXTENT OF LOSS OR DAMAGE, (Give Bureau serial number of planes destroyed)
1	None			
2				
3				
4				
5				
6				
7				
8				
9				
10				
11				
12				
13				
14				

VII. PERSONNEL CASUALTIES (in aircraft listed in II only; identify with planes listed in VI by Nos. at left).

(a) NO.	(b) SQUADRON	(c) NAME, RANK OR RATING	(d) CAUSE	(e) CONDITION OR STATUS
None				

VIII. RANGE, FUEL, AND AMMUNITION DATA FOR PLANES RETURNING

(a) TYPE A/C	(b) MILES OUT	(c) MILES RETURN	(d) AV. HOURS IN AIR	(e) AV. FUEL LOADED	(f) AV. FUEL CONSUMED	(g) TOTAL AMMUNITION EXPENDED				(h) NO. OF PLANES RETURNING
						.30	.50	20MM	MM	
TBM-3	35	35	5.25	330	250	200	400			7

IX. ENEMY ANTI-AIRCRAFT ENCOUNTERED (Check one block on each line).

CALIBER	NONE	MEAGER	MODERATE	INTENSE
HEAVY — Time-fused shells, 75mm and over	X			
MEDIUM — Impact-fused shells, 20mm-50mm	X			
LIGHT — Machine gun bullets, 6.5mm-13.2mm	X			

X. COMPARATIVE PERFORMANCE, OWN AND ENEMY AIRCRAFT (use check list at left).

- SPEED, CLIMB,
at various altitudes
 -
 - TURNS
 - DIVES
 - CEILINGS
 - RANGE
 - PROTECTION
 - ARMAMENT

None

AIRCRAFT ACTION REPORT

RESTRICTED
(Reclassify when filled out)

(OMIT THIS SHEET IF NO ATTACK WAS MADE)

CONFIDENTIAL

REPORT No. 1

XI. ATTACK ON ENEMY SHIPS OR GROUND OBJECTIVES (By Own Aircraft Listed in II Only).

- (a) Target(s) and Location(s) Bldgs. in Town of Tokashiki. (b) Time Over Target(s) 1030-I (Zone)
(FOR SHIPS INCLUDE ALL IN AREA UNDER ATTACK)
- (c) Clouds Over Target Cumulus - 5000 - 4/10
Shima, Kerama Retto
(BASE IN FEET, TYPE AND TENTHS OF COVER)
- (d) Visibility of Target Hazy (e) Visibility 10
(CLEAR, HAZY, PARTIALLY OBSCURED BY CLOUDS, ETC.) (MILES)
- (f) Bombing Tactics: Type Glide Bomb Sight Used _____
(LEVEL, GLIDE OR DIVE) (TYPE)
- Bombs Dropped per Run Varying Spacing None Altitude of Bomb Release 100# - 2000 Ft.
(NUMBER) (FEET) 500# - 2500 Ft.
- (g) Number of Enemy Aircraft Hit on Ground: Destroyed --- Probably Destroyed --- Damaged ---

(h) AIMING POINT	(i) DIMENSIONS OR TONNAGE	(j) NO. A/C ATTACKING (k) SQUADRON	(l) BOMBS AND AMMUNITION EXPENDED, EACH AIMING POINT	(m) NO. HITS On Aiming Point	(n) DAMAGE (None, slight, serious, destroyed or sunk)
1 Central Part of Tokashiki Town. M.T.A. 3969 "J" & 4069 "P" & "L"	----	7 VC-91	8 - 500# G.P. Bombs 36 - 100# G.P. Bombs 52 - 5" H.E. Rockets 400 - Rds. .50 cal. 200 - Rds. . 30 cal.	85% to 90%	Material
3					
4					
5					
6					
7					
8					

(o) RESULTS: (For all hits claimed on ship targets and for land targets of special interest, draw diagram, top or side view or both, as appropriate, showing type and location of hits. For all targets give location and effect of hits, and identify by numbers above. Use additional sheets if necessary).

The bombing was area bombing and not of pin-point targets. Several large buildings were hit and many fires were started. From the area in which the fires appeared and the amount of smoke, approximately 20% of the town was severely damaged, and several buildings were completely destroyed.

(p) Were Photographs Taken? Yes Photographs of Damage, When Taken, Should Be Attached By Staple.

AIRCRAFT ACTION REPORT

RESTRICTED
(Reclassify when
filled out)

CONFIDENTIAL

REPORT No. 1

XII. TACTICAL AND OPERATIONAL DATA. (Narrative and comment. Describe action fully and comment freely, following applicable items in check list at left. Use additional sheets if necessary.)

ENGAGEMENT WITH ENEMY

OWN AIRCRAFT

- Disposition
- Altitudes
- Speeds
- Approach Tactics
- Use of Cover, Deception
- Angles of Attack and Their Effectiveness
- Distance of Opening Fire
- Defense Tactics and Their Effectiveness

ENEMY AIRCRAFT

- Method of Locating, Distance
- Disposition
- Altitudes
- Speeds
- Approach Tactics
- Use of Cover, Deception
- Angles of Attack
- Distance of Opening Fire
- Defensive Tactics

COMMENTS AND RECOMMENDATIONS

- Own Weaknesses
- Enemy Weaknesses
- Offensive Tactics, Own
- " " " Enemy
- Defensive Tactics, Own
- " " " Enemy
- Flexible Gunnery, Own
- Escort Tactics
- Fighter Direction
- Use of Radar
- Night Fighting
- Recognition, Aircraft

ATTACK

OWN TACTICS

- Method of Locating Target
- Approach to Target
- Altitudes, Speeds
- Approach
- Dive
- Pull-Out
- Dive Angle
- Strafing
- Retirement
- Defensive Tactics
- Use of Jamming

DEFENSE, ENEMY

- Evasive Tactics, Ships
- Concealment
- Searchlights
- Night Fighter Tactics
- Use of Jamming

COMMENTS AND RECOMMENDATIONS

- Bombing Tactics
- Torpedo Tactics
- Effectiveness of Bombs, Torpedoes
- Selection of Targets
- Fuzing
- Strafing Tactics
- Defensive Tactics
- Use of Radar
- Reconnaissance
- Photography
- Briefing

OPERATIONAL

- Navigation
- Homing
- Rendezvous
- Recognition, Ships
- Communications
- Flight Operations
- Search and Tracking
- Base Operations
- Maintenance

Seven TBM-3's were launched for direct support work over Kerama Retto at 0930-I. They rendezvoused with eight FM-2's from U.S.S. LUNGA POINT (CVE94), and proceeded to a point north of Tokashiki Shima and reported to Commander Air Support, Control Units. They orbited the point until 1045 at which time they were directed to CASCU to bomb the town of Tokashiki.

They proceeded to the **K** target, and the FM's made their runs first dropping napalm bombs and firing rockets at will at the buildings in the town. The TBM's made five coordinated runs on the town. Each of the runs was made from an altitude of approximately 4500 feet, at an angle of about 45° and from southwest to northwest. The planes bombed in tail-chase formation.

Four buildings near the center of the town were selected as pin-point targets, and on these buildings sixteen of the thirty-two rockets were fired, twenty of their 100# bombs and two of their 500# bombs were dropped. All four houses caught fire and burned briskly.

Additional runs were then made on other houses in the same section of the town, and the remainder of the rockets and bombs dropped on these other buildings. Many other but smaller fires were started. The 100# bombs were released at 2000 feet, and the 500# bombs were released at 2500 feet. The slant range of 1200 yards was average for the rockets which ^{west} were fired at an angle of 35°.

On all of the runs strafing was accomplished.

The four buildings in question were destroyed, and material damage was inflicted to this section of the town. It is thought that 20% of more of the town was destroyed by this attack.

Upon completion of their runs, the TBM's returned to base.

No enemy aircraft was encountered, and no enemy anti-aircraft fire was seen.

The following TBM pilots participated in the strike:

- Lt. R. F. Richards (Flight Leader)
- Ens. H. L. Peebles
- Ens. K. W. Neubauer
- Ens. L. L. Lindquist
- Lt.(jg) A. L. Smith
- Lt.(jg) D. G. Kane
- Lt.(jg) D. K. Butler.

AIRCRAFT ACTION REPORT

RESTRICTED
(Reclassify when
filled out)

CONFIDENTIAL
REPORT No. 1

XIII. MATERIAL DATA. (Comment freely on performance or suitability, following check list at left.
Use additional sheets if necessary).

ARMAMENT

- Guns, Gunsights
- Turrets
- Ammunition
- Bombs, Torpedoes
- Bomb Sights
- Bomb Releases

None.

COMMUNICATIONS

- Radio, Radar
- Homing Devices
- Visual Signals
- Codes, Ciphers

RECOGNITION

- IFF
- Signals
- Battle Lights
- Procedures

PROTECTION

- Armor; Points and Angles
of Fire Needing Further
Protection
- Leak Proofing

EMERGENCY EQUIPMENT

- Parachutes
- Life Belts, Life Rafts
- Safety Belts
- Emergency Kits
- Rations, First Aid

NAVIGATIONAL EQUIPMENT

- Compasses
- Driftsights
- Octants
- Automatic Pilots
- Charts
- Field Lighting

INSTRUMENTS

- Flight
- Power Plant

OXYGEN SYSTEM

**CAMOUFLAGE AND
DECEPTION DEVICES**

STRUCTURE

- Airframe
- Control Surfaces
- Control System
- Dive Flaps
- Landing Gear
- Heating System
- Flight Characteristics
At Various Loadings

POWER PLANT

- Engines
- Engine Accessories
- Propellers
- Lubricating System
- Starters
- Exhaust Dampers

HYDRAULIC SYSTEM

ELECTRICAL SYSTEM

- Auxiliary Plant
- Lights

FUEL SYSTEM

FLIGHT CLOTHING

MAINTENANCE

BASE FACILITIES

- Plane Servicing Equipment
- Personnel Facilities

REPORT PREPARED BY:

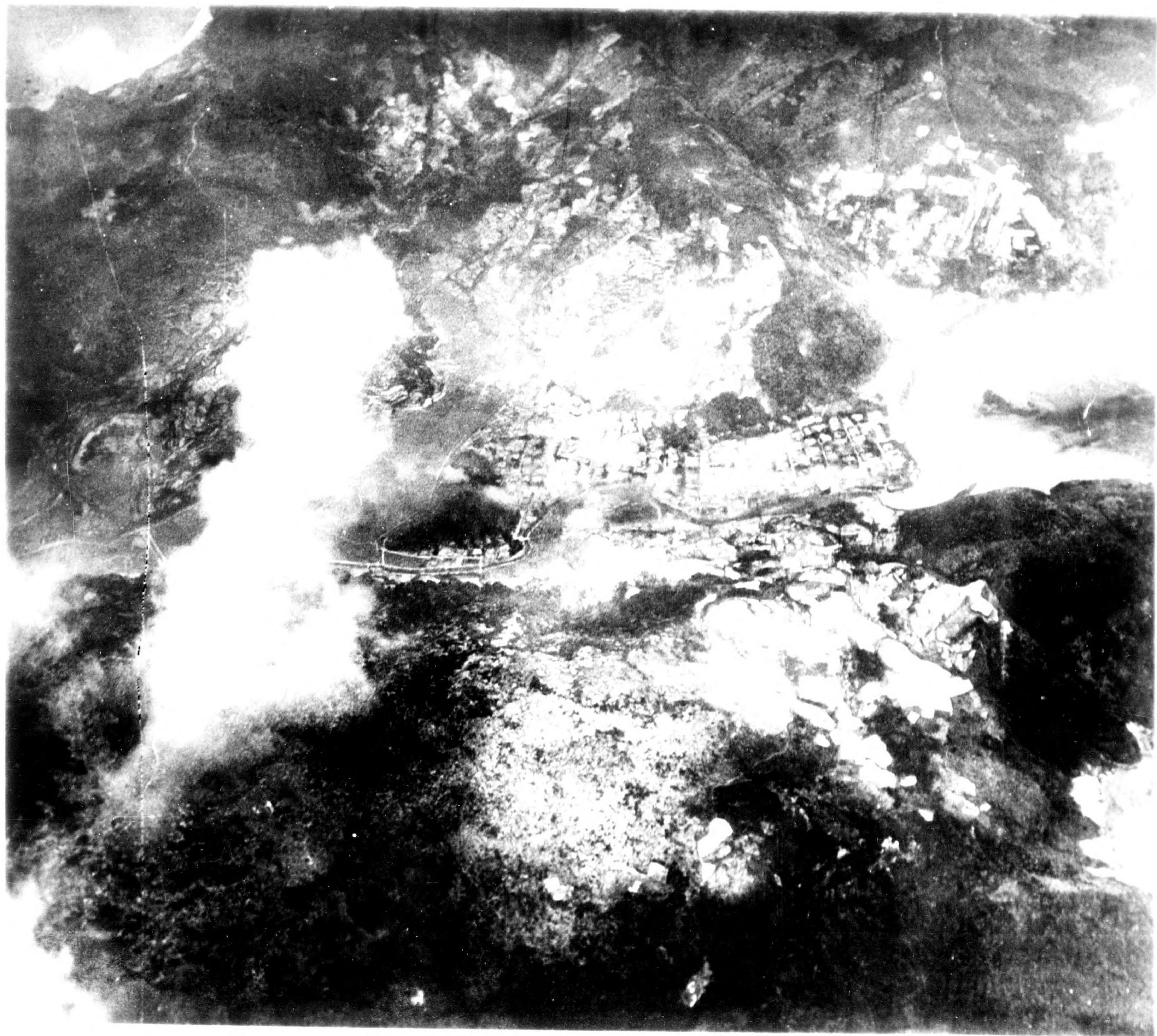
APPROVED BY:

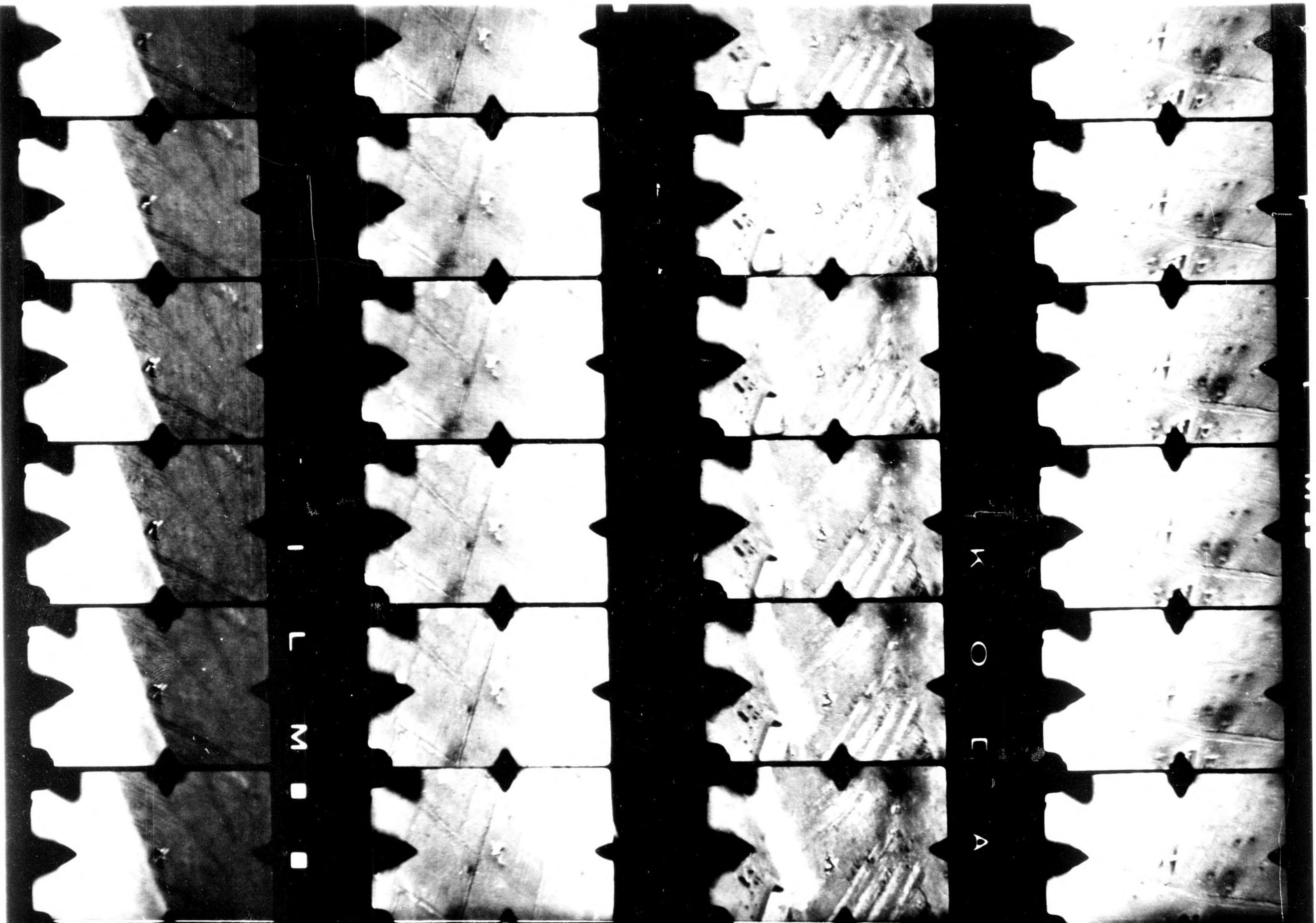
A. W. PARKER, LT., A.C.I. OFFICER
SIGNATURE RANK AND DUTY

F. M. BLANCHARD, LT., C.O.
SIGNATURE RANK AND DUTY

26 Mar 45
DATE

E. H. SPENCER, LT., A.C.I. OFFICER

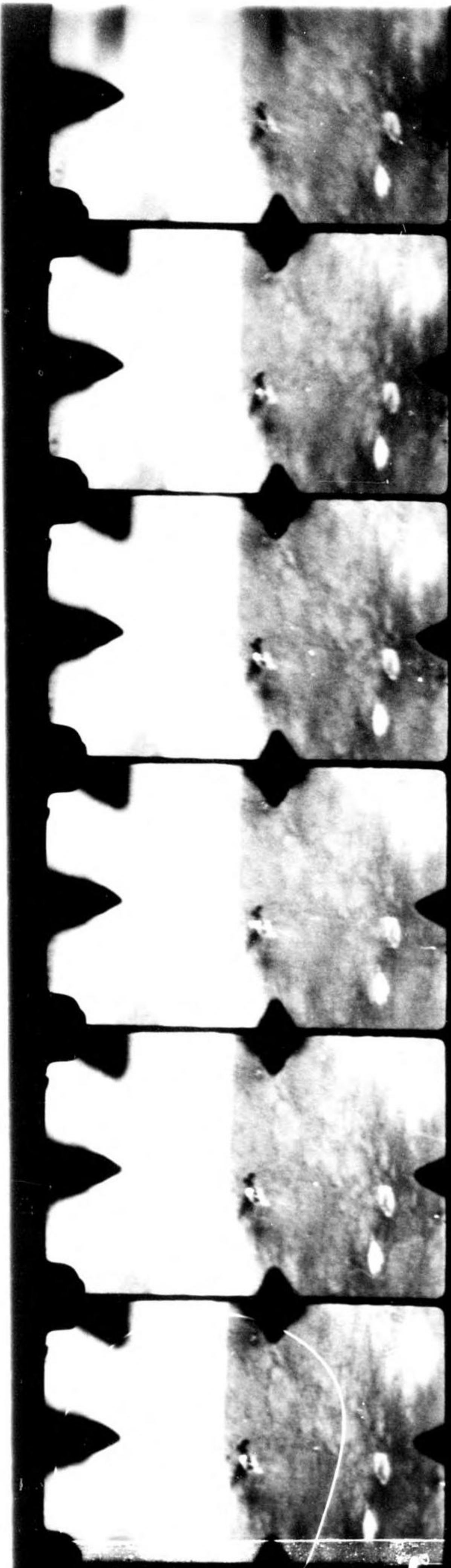




I
L
N
□
□

X
O
L
A

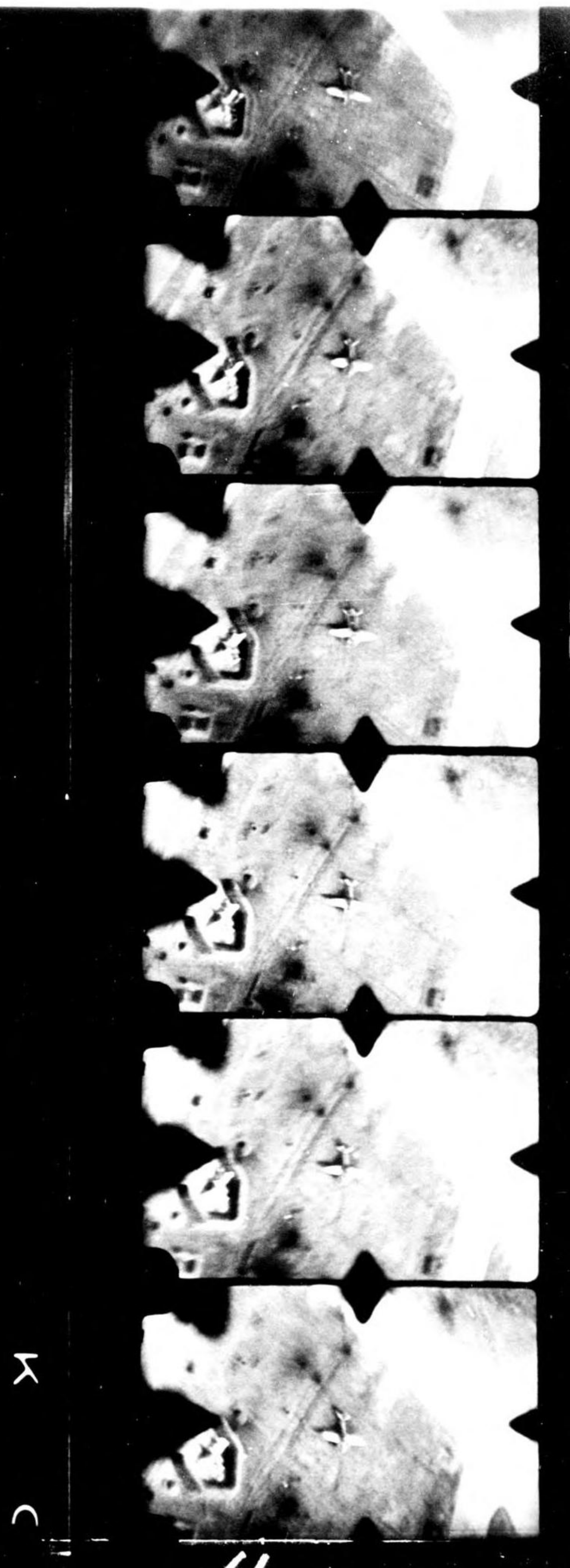
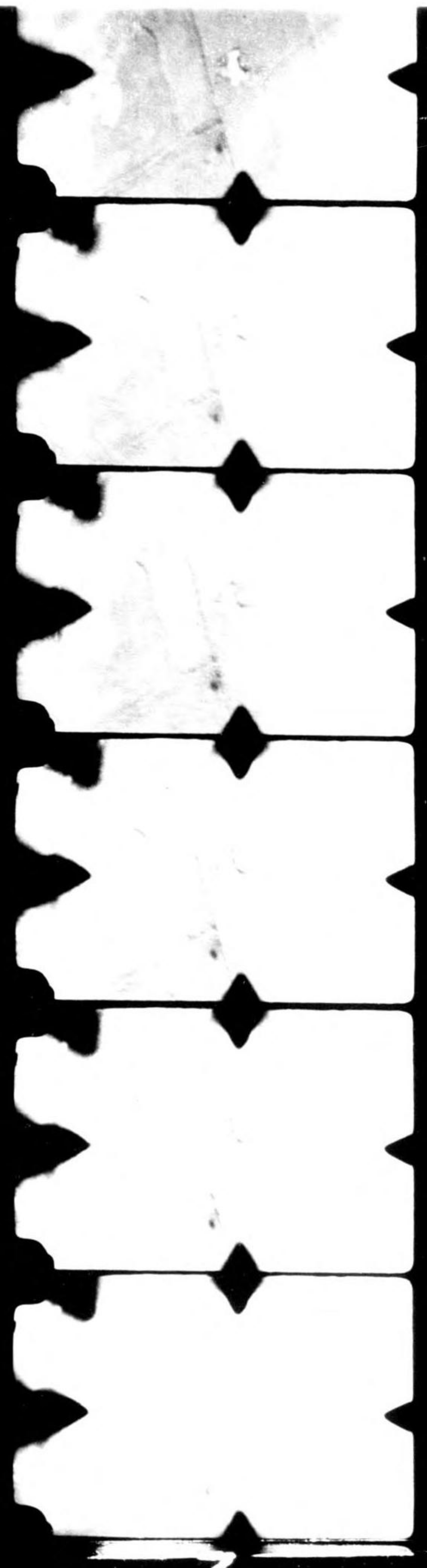
1 OSCAR
2 TONY
3 VAL
4 IRVING
Yontan Airfield, Okinawa, Gun Camera, Ens. Bates 3/29/45



S
A
E
T
Y

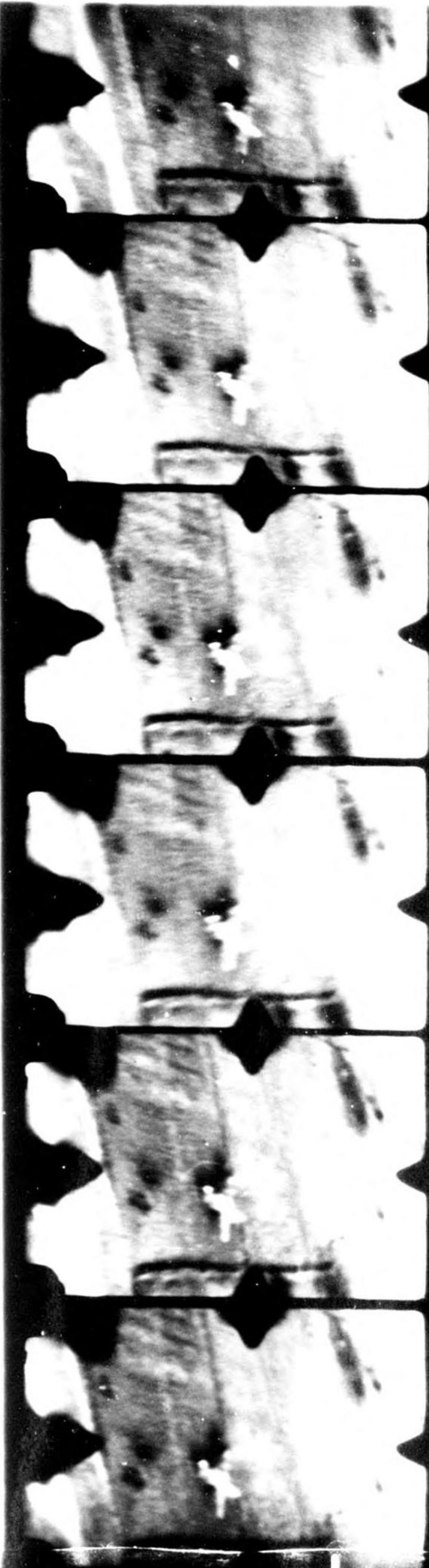


Y
F
I
L
M

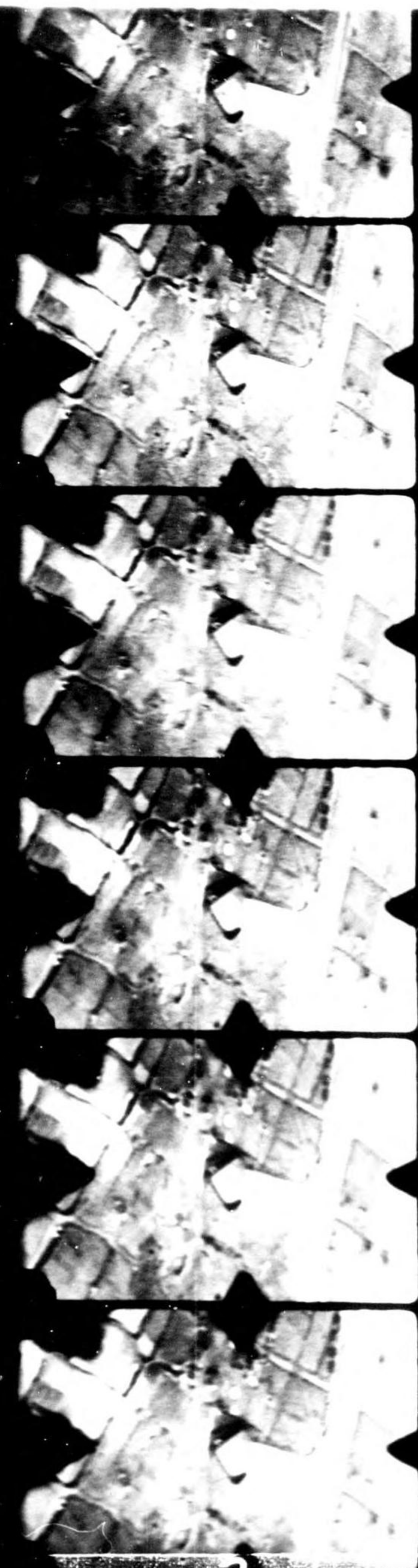


M
A
L

1 TOGO
2 IRVING
3 JUDY
4 TONY
Yontan Airfield, Okinawa, GUN Camera, Ens. Bates 3/29/45



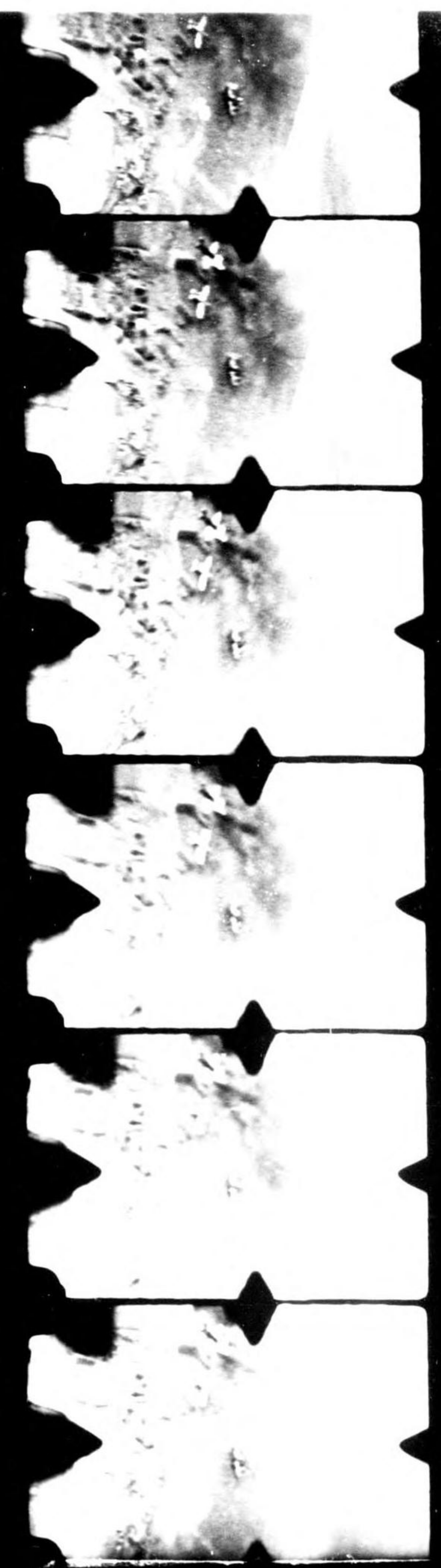
Y
L
M



3
A



3



4

1 JUDY
Yontan Airfield, Okinawa, Gun Camera Lt. (jg.) Gaither 3/29/45
2 JUDY
3 JUDY
4 VAL-TONY-OSCAR