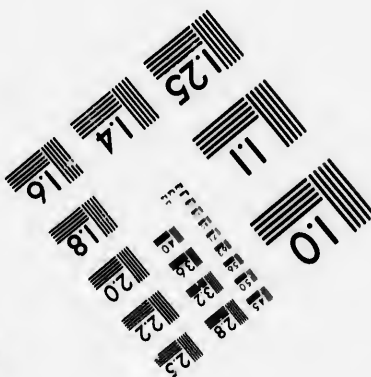
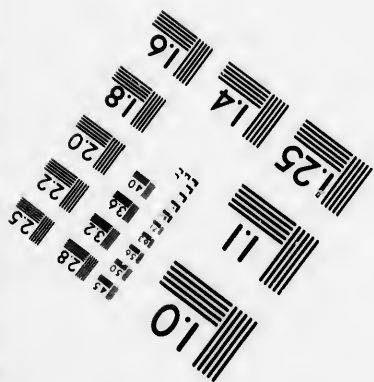
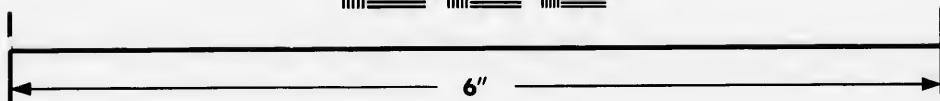
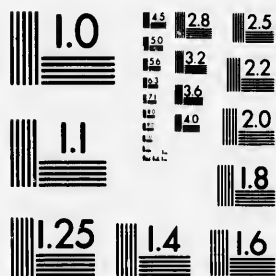


**IMAGE EVALUATION  
TEST TARGET (MT-3)**



**Photographic  
Sciences  
Corporation**

23 WEST MAIN STREET  
WEBSTER, N.Y. 14580  
(716) 872-4503

Can



**CIHM/ICMH  
Microfiche  
Series.**

**CIHM/ICMH  
Collection de  
microfiches.**



Canadian Institute for Historical Microreproductions / Institut canadien de microreproductions historiques



**© 1982**

Technical and Bibliographic Notes/Notes techniques et bibliographiques

The Institute has attempted to obtain the best original copy available for filming. Features of this copy which may be bibliographically unique, which may alter any of the images in the reproduction, or which may significantly change the usual method of filming, are checked below.

L'Institut a microfilmé le meilleur exemplaire qu'il lui a été possible de se procurer. Les détails de cet exemplaire qui sont peut-être uniques du point de vue bibliographique, qui peuvent modifier une image reproduite, ou qui peuvent exiger une modification dans la méthode normale de filmage sont indiqués ci-dessous.

Coloured covers/  
Couverture de couleur

Coloured pages/  
Pages de couleur

Covers damaged/  
Couverture endommagée

Pages damaged/  
Pages endommagées

Covers restored and/or laminated/  
Couverture restaurée et/ou pelliculée

Pages restored and/or laminated/  
Pages restaurées et/ou pelliculées

Cover title missing/  
Le titre de couverture manque

Pages discoloured, stained or foxed/  
Pages décolorées, tachetées ou piquées

Coloured maps/  
Cartes géographiques en couleur

Pages detached/  
Pages détachées

Coloured ink (i.e. other than blue or black)/  
Encre de couleur (i.e. autre que bleue ou noire)

Showthrough/  
Transparence

Coloured plates and/or illustrations/  
Planches et/ou illustrations en couleur

Quality of print varies/  
Qualité inégale de l'impression

Bound with other material/  
Relié avec d'autres documents

Includes supplementary material/  
Comprend du matériel supplémentaire

Tight binding may cause shadows or distortion along interior margin/  
La reliure serrée peut causer de l'ombre ou de la distortion le long de la marge intérieure

Only edition available/  
Seule édition disponible

Blank leaves added during restoration may appear within the text. Whenever possible, these have been omitted from filming/  
Il se peut que certaines pages blanches ajoutées lors d'une restauration apparaissent dans le texte, mais, lorsque cela était possible, ces pages n'ont pas été filmées.

Pages wholly or partially obscured by errata slips, tissues, etc., have been refilmed to ensure the best possible image/  
Les pages totalement ou partiellement obscurcies par un feuillet d'errata, une pelure, etc., ont été filmées à nouveau de façon à obtenir la meilleure image possible.

Additional comments:  
Commentaires supplémentaires:

This item is filmed at the reduction ratio checked below/  
Ce document est filmé au taux de réduction indiqué ci-dessous.

10X	14X	18X	22X	26X	30X
<input type="checkbox"/>	<input type="checkbox"/>	<input checked="" type="checkbox"/>	<input type="checkbox"/>	<input type="checkbox"/>	<input type="checkbox"/>
12X	16X	20X	24X	28X	32X

The co  
to the

The im  
possibl  
of the  
filming

Original  
beginn  
the las  
sion, o  
other c  
first pa  
sion, a  
or illus

The las  
shall c  
TINUED  
whiche

Maps,  
differen  
entirely  
beginn  
right a  
require  
metho

The copy filmed here has been reproduced thanks to the generosity of:

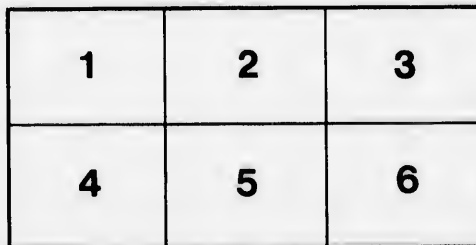
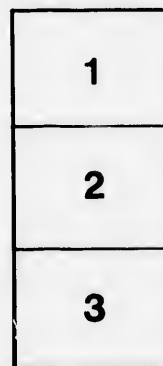
Library of the Public  
Archives of Canada

The images appearing here are the best quality possible considering the condition and legibility of the original copy and in keeping with the filming contract specifications.

Original copies in printed paper covers are filmed beginning with the front cover and ending on the last page with a printed or illustrated impression, or the back cover when appropriate. All other original copies are filmed beginning on the first page with a printed or illustrated impression, and ending on the last page with a printed or illustrated impression.

The last recorded frame on each microfiche shall contain the symbol  $\rightarrow$  (meaning "CONTINUED"), or the symbol  $\nabla$  (meaning "END"), whichever applies.

Maps, plates, charts, etc., may be filmed at different reduction ratios. Those too large to be entirely included in one exposure are filmed beginning in the upper left hand corner, left to right and top to bottom, as many frames as required. The following diagrams illustrate the method:



L'exemplaire filmé fut reproduit grâce à la générosité de:

La bibliothèque des Archives  
publiques du Canada

Les images suivantes ont été reproduites avec le plus grand soin, compte tenu de la condition et de la netteté de l'exemplaire filmé, et en conformité avec les conditions du contrat de filmage.

Les exemplaires originaux dont la couverture en papier est imprimée sont filmés en commençant par le premier plat et en terminant soit par la dernière page qui comporte une empreinte d'impression ou d'illustration, soit par le second plat, selon le cas. Tous les autres exemplaires originaux sont filmés en commençant par la première page qui comporte une empreinte d'impression ou d'illustration et en terminant par la dernière page qui comporte une telle empreinte.

Un des symboles suivants apparaîtra sur la dernière image de chaque microfiche, selon le cas: le symbole  $\rightarrow$  signifie "A SUIVRE", le symbole  $\nabla$  signifie "FIN".

Les cartes, planches, tableaux, etc., peuvent être filmés à des taux de réduction différents. Lorsque le document est trop grand pour être reproduit en un seul cliché, il est filmé à partir de l'angle supérieur gauche, de gauche à droite, et de haut en bas, en prenant le nombre d'images nécessaire. Les diagrammes suivants illustrent la méthode.

laire  
s détails  
ques du  
nt modifier  
iger une  
e filmage

/  
uées

aire

by errata  
ed to

ent  
une pelure,  
açon à

Public Archives Canada  
Archives publiques Canada

P 11

THE  
FARMER'S ALMANACK,  
FOR THE YEAR OF OUR LORD

1826;

Being the second after Bissextile or Leap Year,  
CALCULATED FOR THE MERIDIAN OF HALIFAX IN N. S.  
*But will serve for any part of the Province.*

Containing, besides the large number of Astronomical Calculations and the  
Farmer's Calendar for every month in the year a great  
variety of useful and entertaining matter.



“ ————— Behold, fond man !  
See here thy ————— life ; pass some few years,  
Thy flowering ————— thy Summer's ardent strength  
Thy sober Autumn facing into age,  
And pale concluding Winter comes at last,  
And shuts the scene. ————— ”

---

HALIFAX :

Printed for and Sold by C. H. BELCHER, and at the FREE PRESS Office.

Directions for coming up Halifax Harbour, taken from the printed Directions in the Custom House at Halifax.

**S**AMBRO island and light House is in latitude 44 deg. 30 min. N, and longitude 63 deg. 32 min. W.

From the westward, bring the light to bear N. E. if it bears more easterly, stretch to the southward till it bears N. E. and as much northerly as you please, there being no shoal or ledge to the southward; then keep it open on your larboard bow; give it more than a mile and a half birth as much more as you please.

Note—The western ledges lie from the light S. W. distant two miles, the other W S W about one league; the eastern ledges lie in a range nearly, some above water, the outermost one mile and a half from the light bearing from it E. N. E.

When the light bears north distant about 2 miles, run N E 4 miles, then north will carry you to Chedabucto Head at a proper distance clear of all danger,

When a breast of Chedabucto Head, run N  $\frac{1}{2}$  W for the south point of George's Island.

When within half a mile of George's island you may enter the harbour west of it in 18 fathoms, or east of it in 15.

In passing between Sandwich point and Meagher's beach run nearest the point to shun a shoal which runs off S W from the beach.

There is also a shoal lying one mile south of Sandwich point. Coming from the eastward, run for the light and you cannot fail seeing Chedabucto Head as you open Halifax Harbour; the light being 4 miles distant from the Head to the S W.

### TIDE TABLE for the American Coast.

Amelia Island	add 1	00	Machias	add 3	30
Boston Harbour	add 4	00	Martha's Vineyard	add 0	07
Bell Island Strts.	add 1	45	Nantucket	add 0	07
Bermuda In.	sub 0	30	Narraganset Bay	add 0	07
Cape Fear	add 0	30	New York	add 1	2
Cape Charles	add 0	15	Ocracoke Inlet	add 1	3
Cape May & Henloyn.	add 1	15	Passamaquoddy	add 4	0
Cape Roman	add 0	30	Penobscot Bay	add 3	1
Cape Sable	add 0	30	Philadelphia	add 6	1
Charleston Bar	sub 0	15	Portland	add 3	1
Chedabucto Bay	0	00	Prtsmth & Newbrprt.	add 3	1
Florida Keys	add 1	20	Quebec	add 0	0
Fundy Bay	add 1	15	Sandy Hook	sub 0	0
Hell Gate	add 1	51	Savannah	add 0	0
Kennebec entr	add 3	15			

The times in the above Table are to be added to or subtracted from time of high water at Halifax, according to the directions there given.

Signa

One ball  
vessel  
One ball  
Two balls  
Two balls  
A pendant

[The ab  
quarter the  
of the yard  
ing descrip

An Union  
without  
Do with a  
Two de  
Do with a  
Frigate.  
Do with a  
a small  
A red flag  
A blue Per  
A red Penc  
A white Pe  
or Sloop.  
A blue and  
divided

Made on th  
e  
A red flag  
A red and w  
A red Penc  
rope  
A white an  
Canary c  
A blue Fla  
A blue Per  
or Turk  
A blue and  
white Pl

Signals made at Fort George when vessels are coming up the Harbour.

One ball close for a square rigged vessel	A do under a ball for six do
One ball hoisted for two do	A do over a do half hoisted for 7 do
Two balls close for three do	A do under 2 do close for 8 do
Two balls separated for four do	A do between 2 do separated for 9 do
A pendant of any colour for five do	A flag of any colour for 10 or more do

[The above are hoisted at the east or west yard arm, according to the quarter the vessel first appears in, with the addition of a ball at the centre of the yard until the vessel can be seen, when one or more of the following descriptive colours will be hoisted at the mast head.]

An Union for a Flag Ship, with or without a Squadron.	White and blue Pendant Neutral Man of War
Do with a Red Pendant over it for a Two decker.	Blue Flag Neutral merchant Ship
Do with a blue Pendant over it for a Frigate.	A red white and Blue Flag an Enemy's Fleet
Do with a white pendant over it for a small armed Vessel.	A red flag an Enemy's merchantman
A red flag pierced white for a Packet	An Union Jack over Neutral or Enemy's Signals Vessel is detained or prize.
A blue Pendant for a merchant Ship	A white Flag over any Signal Vessel bears a Flag of Truce
A red Pendant for a Merchant Brig	A ball at the mast head—Vessel is on shore or in distress; should immediate aid be necessary guns to be fired.
A white Pendant for a Topsail schr or Sloop.	
A blue and white flag horizontally divided Neutral Fleet.	

Explanation of Signals.

Made on the Ensign Staff at Fort George to denote the Part which Vessels entering the Harbour of Halifax have arrived from.	
A red flag from Great Britain.	A red and white flag horizontally divided, Quebec or Gulf of St. Lawrence
A red and white do the Mediterranean	A blue and white Flag horizontally divided, New Brunswick or Bay of Fundy.
A red Pendant the Continent of Europe	A white and blue Pendant—Vessel has an English Mail on board
A white and red Pendant. Madeira, Canary or Western Isles	A white Pendant—Coasts of Nova-Scotia and Cape Breton.
A blue Flag, West Indies	
A blue Pendant Bermudas Bahamas or Turk's Islands	
A blue and white flag United States	
A white Flag Newfoundland	

from the  
 far.  
 N. and  
 more east-  
 northerly  
 then keep  
 a half birth  
 two miles,  
 e in a range  
 half from the  
 4 miles, then  
 ce clear of all  
 south point of  
 er the harbour  
 ch run nearest  
 b.  
 cannot fail seeing  
 bt being 4 miles  
 ast.  
 add 3 30  
 add 0 07  
 add 0 07  
 add 0 07  
 add 1 2  
 add 1 3  
 add 4 0  
 add 3 1  
 add 6 1  
 add 3 1  
 add 3 1  
 add 0  
 sub 0  
 add 0  
 r subtracted from  
 ctions there given.



Repeat from Out Posts at Fort George.

For a square rigged vessel—two balls of a size,  
 A ship—A large ball at the end of the yard with a small ball in the centre  
 A brig—a small ball at the end of the yard with a large ball in the centre  
 A lozenge in the centre close up—a sloop or schooner  
 Do do half hoisted—two or more schooners.

Merchants' Private Signals, Port of Halifax

J & M Tobin, A red flag crossed white *RED, &c.*

George Grassie & Co. do crossed white diagonally

Alexander M'Ray. do center a white star

Dablois & Mitchell. do centre a white square

Fraser's & Co. Red & white, white next the mast

John Brown, A Red Burgee, centre letter B

Boggs and Hartshorne, a red & white chequered flag, red uppermost  
*BLUE &c.*

Joseph Allison, Enos Collins & Co A Blue Burgee.

Belcher Binney & Co. a blue flag crossed white

James Fortman jr. ditto crossed white diagonally

S. Canard & Co. do. centre a white star

Wm Pryor a blue and white flag, blue uppermost

M Richardson a blue & red flag, blue next the mast

William Story, a blue flag centre a white square

John Clark, do crossed white diagonally

James Tidmarsh a blue flag

George P Lawson a blue and white chequered flag, (white next the mast)  
 uppermost.

*WHITE, &c.*

John Starr & Son, a white flag centre a blue star

John Tremain do. crossed blue

C. Barris do. centre a red square

James Lyons white & red flag, white uppermost

Wm Strachan white red & white do white next the mast

Reynolds & Co. a white burgee crossed red,

Fiddes May, & Robertson white and red flag, red uppermost

Peter Grant & Son a white flag centre G S

*GREEN &c.*

Lawrence Doyle a green burgee, centre a harp.

*YELLOW &c.*

Temple & Lewis Piers a yellow flag, centre a blue ball.

The foregoing signals are worn at the main. Upon a vessel arriving insight from the Light House so wearing a signal, a similar one is hoisted on the Telegraph Staff, or at the yard arms of the signal Staff at Fort George, with a Pendant under it, descriptive of the class of vessels she belongs to.

Roads

H

Bedford

Rocking

Holland's

Fultz's in

Mitchell's

Hiltz 1/2 w

Fitzmaur

Pence's

M'Lellan

Trevoy's

Spence's

Wilcox,

Falmouth

sters

Chipman

1/2 way in

Gaspere

Horton—

Graham

Horton C

Hamilton

Bragg's

Sharp's i

Aylesford

Harris's

Wilnot—

Leonard'

Hick's B

Kents

Annapoli

Fultz's in

Fletcher

Summer

Hall's

Keys's

M'Keen

Gay's Ri

Field's

Sibley's

Gourley

Roads to the Principal Towns in the Province from Halifax,  
with the names of Innkeepers.

the centre  
the centre

RED, &c.

ermost  
E &c.

(the mast)

E, &c.

N &c.

IV &c.

l arriving  
e is hoist-  
ff at Fort  
essels she

Halifax to	Stewiack—Polly	3	Larkin's, Pubnico	10
Bedford Inn	Clark's	6	Kendrick's Barring-	
Rockingham	Truro—Witter's	6	ton	13
Holland's	Bianchards—6—	62	Powel's Clyde R.	5
Fultz's Inn	Onslow, Gourley's	5	Piits. Shelburne	16
Mitchell's Inn	Londonderry, R. Flem-			
Hiltz ½ way house	ning	7	Whole Distance	164
Fitzmaurice new do.	Lower Village, Yewitt	7	From Halifax to Lunea-	
Pence's	Foot of Cob Mountain		burg.	
M'Lellan's 30m.	Clark's	6	To 9 mile house	9
Trevoys	Sutherland's	4	Hamishe's, head of St.	
Spence's	Top of Cob Mountain		Margarets bay	22
Wilcox, Windsor	J. Purdy	6	Church's, Chester	16
Falmouth bridge Song-	River Philip, Hawson	9	Cradle's, head of	
sters	Stewart's	10	Chester bason	5
Chipman's	Blusk's	2	Zwicker's, head of	
½ way Inn	Amherst, Bents	8	Mahone bay	15
Gaspereau Martin's	Fort Cumberland—		Heckman's	6
Horton—Fowler's } Graham's }	Wetherhead 7—134			
Horton Corner—	From Annapolis to Shel-		Whole distance	73
Hamilton's } Bragg's }	burne.		From Lunenburg to Li-	
Sharp's inn	From Annapolis to		verpool.	
Aylesford—Crane's	Clements Church	9	To Maguir's ferry,	
Harris's	Bear river bridge	8	Lahave river	7
Wilmot—Gibbons	Ruggles, Digby	9	Draw's Inn	7
Leonard's	Everets's, Weymouth		Conrod's ferry, Port	
Hick's Bridge	road	13	Medway	7
Kents	Common's, Weymouth		M'Vicar's Inn,	3
Annapolis, Chandler	Church	6	Ball's Inn, Herring	
	Journie's Sissiboo, R	4	Cove	8
	White's Clare	4	M'Lean's Liverpool	2
	Terrian's, Montagan			
	Cove	15	Whole distance	34
Fultz's inn	Track's, Beaver R.	14	To Cumberland via	
Fletcher's	Parrys, Yarmouth		Parrsboro.	
Summerfield, Shul'z	Lakes	8	Windsor,	45
Hall's	Smith's and Richan's		Parrsboro (by water)	
Keys's	Yarmouth church	5	Crane's	30
M'Keen	Blanvelt's, Tuskett		Fullerton's	11
Gay's River, Corbet	Village	10	Macan bridge, Fur-	
Field's	Nickerson's Apublic		longs	7
Sibley's	River	8	Pugsley's, Napan	9
Gourley	Spinney's Apublic bay	5	Amherst Embree	7

— Bent's	2	Leckie's	13	Archibald's, middle	
Whetherhead & Yandell's, Ft Cunb.	7	Robt Archibald's	4	River Pictou	5
Whole distance	118	Robt Geddes'	4	Campbell's East River Pictou	4
To Pictou,		Heney's	4	Sutherland's	7
Dickson's, Truro	62	Dunbar's W. branch	26	Smith's Merigomish	6
Archibald, Salmon R	14	E. river Pictou	26	Ferguson's	7
Stewarts'	9	W. McKay	8	M Queen's Antigonishe	16
M'Connell's	3	John Fraser's	7	—	—
M'George, Pictou	10	Across the harbour to Walmisly Court house	1	Whole distance	137
—	—		—	Road to the Gulf Shore	121
Whole distance	98	Whole distance	95½	To Fergusons	8
To Pictou via Musquodoboit.		*Cross roads from Archibald's to Scott's	20	Priest M'Donald's	8
Dartmouth Ferry	1½	From Halifax to Antigonishe.		M'Queen's Antigonishe	16
Preston. Bradley's	6	To Blanchard's W. River Pictou.	92	Whole distance	145
Putnam's farm	5				
Hart's	5				
M'Keen's	11				

Should any Gentleman perceive errors in the preceding list, either with regard to the routes distances, or innkeepers' names and would be good enough to acquaint us therewith, as also to furnish us with distances and innkeepers names, not only on the post roads, but also the principal common roads, we shall esteem it a very great favor.

The Parrsborough Packet sails regularly to Windsor and Horton every week, from the first of April to Christmas; leaves Parrsborough on Monday, (wind and weather permitting) so as to be at Windsor on Tuesday, and will sail from thence (for Parrsboro) the first high water that happens at or after 8 o'clock in the morning.—leaves Parrsborough on Thursday, so as to be at Horton on Friday; and will sail from thence for Parrsborough the first high water after 8 o'clock in the morning—The Packet frequently goes to Windsor twice a week.

### Fire Wardens of the Town of Halifax.

Richard Tremain, Esq.—Chairman.

John Albro Esq.—Secretary & Treasurer.

Edward Pryor, James Tremain, C. R. Fairbanks, Esqrs.—South Suburbs.

John Dempster, Law. Hartshorne, Esqrs.—St Matthews ward.

Geo. N Russell, Wm. A Black, Esqrs.—St Paul's ward.

Wm Mims, Thos Boggs, Esqrs.—County Court house ward.

John Liddel, John Clark, Jos. Allison, Esqrs.—St. John's ward.

Michael  
Hon E  
quires—

Commis

Richard  
Pryor, J  
Edwa

First I  
Duncan  
ter, Tho  
M'Leno  
Malcolm  
Seco  
michael,  
Andrew  
John W  
Third  
ny, Hen  
Fourth  
Cabbott,

Wm F  
Hall, J M  
gard, Th  
Graut, V  
Sheffer,  
Lownds,  
phen Hu

Presid  
Secretary

Presid  
Secretary

middle  
 ton 5  
 East Ri- 4  
 7  
 igomish 6  
 7  
 Antigo- 16  
 —  
 ce 137  
 Gulf Shore.  
 s 121  
 nald's 8  
 Antigo- 16  
 —  
 ce 145

list, either  
 would be  
 distances  
 principal

orton every  
 gh on Mon-  
 Tuesday,  
 at happens  
 Thursday,  
 r Parrsbo-  
 he Packet

South Su-

ard.

ard.

Michael Tobin, Stephen W Deblois, Esqrs.—N Barrack ward.  
 Hon Enos Collins, John Starr, James N Shannon, Samuel Cunard, Es-  
 quires—North Suburbs.

**Committee of the Fire Wardens appointed to manage and  
 direct at Fires.**

Richard Tremain, Thomas Boggs, John Albro, John Starr, Edward  
 Pryor, John Clark, and ——— Esqrs.  
 Edward Pryor and John Clark to superintend and direct the Axe men.

**Fire Engine Company for the Town of Halifax.**

Wm. Patterson, Captain.

First Division—David Hutton, Lieutenant, Henry Hill, John Johnston,  
 Duncan Alexander, John Farquhar, Thos. Mackie, John Mitchell, J. Car-  
 ter, Thomas Palster, Wm. J Rogers, Wm Kerr, Wm Calwell, Donald  
 McLennan, Wm Barnett, Wm. Murray, Arthur Oakley, H McLennan, A  
 Malcolm.

Second Division—James Smith, Lieutenant, Joel Martin, James Car-  
 michael, Edw. Stormy, Thos Cassedy, James Irwin, J Drilio, J Harvey  
 Andrew Crawford, Geo. Brockley, James Bell, G S Wilson, D M'Lean,  
 John Winton.

Third Division—James Dechman Lieutenant, Wm Murphy, Rbt Pen-  
 ny, Henry Spike, James Bricken, John Benzie, John Wilson Wm Varge.

Fourth Division.— Lieutenant, Michael Byron, Elias  
 Cabbott, Geo Little, John West, Thos Parker, Robt Norris.

**Axe Fire Men for the Town of Halifax:**

Wm Fennerty Captain, Michael Creamer Lieutenant, Geo Jost, Peter  
 Hall, J M'Neil, Rob Richardson, Colin McKenzie, Errol Boyd, Jno Lon-  
 gard, Thos McKie, Sam. Vickers, John McKinzie, Wm Marvin, James  
 Grant, Wm Johnson, Wm Strickland, John Metzler, Henry Miller, John  
 Sheffer, Geo Booth, James McNutt, Wm Rose, Wm Grant, Matthew  
 Lownds, David Crowl, T Vickers, Nicholas Wright, Thos Lownds, Ste-  
 phen Hull, Edward Longard

**Sun Fire Company.**

President—Joseph Allison, Esqr. Vice President—Samuel Story, Esqr.  
 Secretary—Mr. William Deblois, Treasurer—Mr. Saml. Mitchell,

**Hand and Hand Fire Company.**

President, John Dempster Esqr. Vice President, R. J. Uniacke Esqr.  
 Secretary & Treasurer, Wm B Fairbanks Esq.

**Heart and Hand Fire Company.**

President, John Fairbanks, Vice President, William Stairs. Secretary, Henry L'Epousie, Treasurer, Joseph Austen.

**Phoenix Fire Company.**

President, Mr. Michael Bennett, Vice President, Mr John Albro, Jun. Secretary \_\_\_\_\_, Treasurer, John Stayner, Sen. Esq.

**Fox Fire Company.**

President, Mr E P Wagner, Vice President, Mr. John Duffus.

**NOVA SCOTIA BIBLE SOCIETY.**

President, His Excellency Lt Gen. Sir JAMES KEMPT, G C.B. Lt Gov &c. Vice Presidents, The honble S S Blowers, The Hon. Judge Stewart,

**Committee,**

Hon. Charles Morris  
Thomas N. Jeffery,  
Simon B Robie,  
Lt Col C Beckwith, C B.  
H H Cogswell,  
William Lawson  
John Howe  
John Howe, Jr.  
James Foreman  
Walter Bromley,  
John Starr, } Esquires,

Samuel Head  
David S Clarke, Esquires,  
Revd. Dr. Gray  
Wm Black  
John Burton  
John Martin  
E Renny  
Mr. M. G. Black  
J N Shannon  
David Hare  
J A Barry,

H H Cogswell, Esq. Treasurer ; J W. Nutting Esq. Secretary ; Mr. M G Black, Depository ; Mr. John Fillis, Collector.

Of the M  
sons in  
belong  
John Alt

No 188,  
No 265,

No 1, ca  
No 2, ca  
No 7, ca  
No 10, ca  
No 11, ca  
No 19, ca  
No 22, ca  
No 25, ca

No 26, ca  
No 28, ca  
No 29, ca  
No 31, ca  
No 34, ca

No 35, ca  
No 36, ca

No 37, ca

No 38, cal  
No 39, cal  
No 40, ca

No 41, ca  
No 42, ca  
No 43. ca  
No 44. ca  
No 45 cal  
No 46, ca  
No 47, ca  
No 48, ca  
No 49, cal

## PROVINCIAL GRAND LODGE

Of the Most Ancient and Honorable Fraternity of Free and Accepted M-  
sons in the Province of Nova Scotia, and Masonic Jurisdiction thereunto  
belonging :

John Albro Esq. Grand Master ;—Adolphus Veith Esq. Grand Secretary.

### LODGES ON THE REGISTRY OF ENGLAND.

No 188, called St. Andrew, held at Halifax, first Tuesday in the Month  
No 265, called St John, held at Halifax, first Monday in do.

### ON THE REGISTRY OF NOVA SCOTIA.

- No 1, called Union, held at Halifax, 2d Monday in the month
- No 2, called Virgin, held at Halifax, 4th Monday do.
- No 7, called Temple, held at Guysborough, 1st Tuesday do
- No 10, called Hiram, held at Shelburne 2d Monday do.
- No 11, called St. George, held at Cornwallis 1st Monday do
- No 19, called St. George, held at Maugerville, N. B. 2d Tuesday do
- No 22, called Solomon, at Fredericton N B 1st Tuesday after Full moon
- No 25, called Annapolis Royal, held at Annapolis Royal the 2d Tuesday  
in the month,
- No 26, called St John, held at Charlotte town P E Island 2d Tuesday do.
- No 28, called Harmony, held at Sydney C B 1st Wednesday do.
- No 29 called St. John held at St John N B 1st Tuesday do
- No 31, called Midian, held at Kingston N B 2d Tuesday do
- No 34, called Orphan's Friend, held at St Stephen's N B 2d Wednesday  
after every full Moon
- No 35, called new Caledonia, held at Pictou, 2d Tuesday in the month
- No 36, called Newport, held at Newport, 1st Tuesday af. every full  
moon
- No 37, called Eastern Star, held at St. Andrews, N. B. Wednesday before  
full moon.
- No 38, called Union held at St John N B 2d Tuesday in the month
- No 39, called Royal Standard held at Halifax 2d Tuesday in ditto.
- No 40, called Musquodobit, held at Musquodobit, every Tuesday before  
the Full Moon
- No 41, called Regent, held at Dorchester, first Monday in the Month.
- No 42, called Fortitude, held at Mirimichie N. B. 1st Tuesday do
- No 43. called St. Lawrence, held at Carleton, N B 1st do do
- No 44, called Unity, held at Lunenburg, 1st do do
- No 45 called Fort Edward, held at Windsor, 2d Monday do
- No 46, called Morning Star, at Woodstock, N B Tuesday before full moon
- No 47, called Moira, held at Rawdon, Monday before do.
- No 48, called Colchester Union. held at Truro, 1st Tuesday in the month
- No 49, called Concord, held at Barrington 1st Monday do

Table of the Solar System.

Names.	Mean diameters in Eng. miles	Mean distances from the Sun.	Time of Rotations round their Axis.	Time of Revolutions round the Sun.
The Sun	883,246		25d. 14m. 8m. 0s.	D. H. M. S.
Mercury	3,224	37,000,000	14 24 5 28	87 23 15 43
Venus	7,687	68,000,000	0 23 20 54	224 16 49 10
The Earth	7,912	95,000,000	1 0 0 0	365 6 9 12
The Moon	2,180	95,000,000	29 17 44 3	
Mars	4,189	144,000,000	0 24 39 22	686 23 30 35
Vesta	238	225,000,000		
Juno	1,425	252,000,000		
Ceres	160	263,000,000		1703 16 0
Pallas	116	265,000,000		
Jupiter	89,179	490,000,000	0 9 55 37	4332 14 27 10
Saturn	79,012	900,000,000	0 10 16 2	10759 1 51 11
Herschel	35,112	1,800,000,000		30737 18 0 0

Explanation of the Holidays, observed by the Established Church.

*Circumcision*.—The name of the feast celebrated on the first January in commemoration of the circumcision of our Saviour.

*Epiphany*.—Otherwise called the manifestation of Christ to the Gentiles, a festival observed on the 6th January in honour of the appearance of our Saviour to the three Magi, or wise men, who came to adore him and bring presents.

*Septuagesima*.—Denotes the third Sunday before Lent, or the next to Shrove Sunday, so called as being about 60 days before Easter.

*Quinquagesima*.—Or Shrove Sunday, about 50 days before Easter

*Quadragesima*.—Or first Sunday of Lent

*Lent*.—Is a solemn time of fasting, observed as a time of humiliation before Easter.

*Passion Week*.—The last week in Lent, wherein the Church celebrates the mysteries of our Saviour's death and passion.

*Ash Wednesday*.—The first day of Lent, so called from the ancient custom of sprinkling ashes on the head

*Annunciation*.—Or Lady-Day, kept in commemoration of the glad tidings brought by the angel Gabriel to the Virgin Mary, of the incarnation of Christ.

*Palm Sunday*.—the 6th Sunday after Lent, and the next before Easter, so called, in memory of our Saviour's triumphal entry into Jerusalem, when the multitude strewed Palm Branches in his way.

Good  
and dea  
of the bl  
atory an  
Easter  
the obse  
tles.  
Rogati  
called, fr  
day whic  
supplicat  
judgmen  
Ascens  
mory of  
monly ca  
Whits  
day after  
Apostles,  
them  
Trinit  
sunday, i  
Assump  
the mirac  
All Sain  
faithful d  
Advent  
not on St  
nifies the  
  
Dr. Ad  
orological  
hood I wa  
success de  
ther, I wa  
science he  
of which  
which the  
his late fa  
amazing  
to constru

	H.	M.	S.
of Revolu-i	23	15	43
ound the Sun.	16	49	10
	6	9	12
	23	30	35
	16		0
	14	27	10
	1	51	11
	18	0	0

Established

the first January

ist to the Gen-  
of the appear-  
came to adore

t, or the next  
re Easter.  
before Easter

of humiliation

Church cele-

om the ancient

of the glad ti-  
of the incarna-

ext before Eas-  
try into Jerusa-  
way.

*Good Friday*,—The next before Easter, in memory of the sufferings and death of Jesus Christ, and called *good* by way of eminence, because of the blessed effects of our Saviour's sufferings, which were a propitiatory and expiating sacrifice for the sins of the world.

*Easter Sunday*,—Observed in memory of our Saviour's resurrection; the observation of this festival is as ancient as the very time of the Apostles.

*Rogation Week*,—The week immediately preceding Whitsunday, so called, from the three fasts therein on Monday, Tuesday, and Wednesday which are called rogation days, from the extraordinary prayers and supplications offered to God by devout christians, to deprecate his judgments.

*Ascension Day*,—A festival had ten days before Whitsunday, in memory of our Saviour's ascension into heaven after his resurrection, commonly called Holy Thursday.

*Whitsunday, or Pentecost*—A solemn festival observed on the 50th day after Easter in memory of the descent of the Holy Ghost upon the Apostles, and of those miraculous powers which were then conferred on them.

*Trinity Sunday*—a festival observed on the Sunday next after Whitsunday, in honor of the holy and undivided Trinity.

*Assumption*—A festival observed by the Romish Church in honor of the miraculous ascent of the Virgin Mary's body and soul into heaven.

*All Saints*—A festival observed Nov. 1st, in commemoration of all the faithful deceased.

*Advent Sunday*—They are in number four, the first of which if it fall not on St Andrews day, Nov. 30th, is the next Sunday after it. It signifies the approach or coming on of the feast of the nativity.



Dr. Adam Clarke has lately communicated to the public some meteorological observations, in which he remarks: "From my earliest childhood I was bred upon a little farm, and as I found that much of our success depended on a proper knowledge and management of the weather, I was led to study it ever since I was 8 years of age." In this science he states that he has attained extraordinary success as the result of which he advocates the weather table attributed to Dr. Herschel, but which the son of that gentleman has recently disclaimed on the part of his late father. Dr. Clarke says that the accuracy of this table is truly amazing: and that if Dr. Herschel had lived for no other purpose than to construct it, posterity would have reason to bless his memory.



The following is the Table as arranged by Dr. Clarke.

Moon.	Time of Change.	In Summer.	In Winter.
If the New Moon, the First Quarter, the Full Moon, or the last Quarter happens	Between midnight & two in the morn. }	Fair }	Hard frost, unless the wind be S or W }
	2 & 4 morn. }	Cold with frequent showers }	Snow and Stormy }
	4 & 6 }	Rain }	Rain }
	6 & 8 }	Wind and Rain }	Stormy }
	8 & 10 }	Changeable }	Cold, Rain if wind W Snow if E. }
	10 & 12 }	Frequent Showers }	Cold and high wind }
	At 12 o'clock at noon and 2 P M }	Very rainy }	Snow or Rain }
	Between 2 & 4 P M }	Changeable }	Fair and mild }
	4 & 6 }	Fair }	Fair }
	6 & 8 }	Fair if wind N W }	Fair and Frosty if wind N or N E }
	Rainy if S or S W. }	Rain or Snow if S or S W }	
	8 & 10 }	Ditto }	Ditto }
	10 & midnight }	Fair }	Fair and Frosty }

In general, the nearer the time of the Moon's Change, First Quarter Full, and Last Quarter is to Midnight, the fairer will the weather be during the seven days following : and the nearer to Midday, or Noon, these phases of the moon happen, the more foul or wet the weather may be expected to be during the next seven days.

Moveable Feasts.

Septuagesima Sunday Jany. 22	Low Sunday April 2
Quinq or Shrove Sun. Feb. 5,	Rogation Sunday April 30
Ash Wed. or 1st day of Lent Feb 8	Ascen. Day or Holy Thurs. May 4.
Mid. Lent Sunday March 5	Whit Sunday May 14
Palm Sunday March 19	Trinity Sunday May 21
Easter Day March 26	Advent Sunday Decr. 3

Ember Days.

February 15, 17, and 18,	September 20, 22 and 23
May 17, 19, and 20.	December 20, 22 and 23

Explanation of Astronomical Characters, the Planets, and their Relations.

☉ The Sun	♀ Venus,	♃ Jupiter
☾ The Moon,	♁ The Earth	♄ Saturn,
☿ Mercury,	♂ Mars,	♅ Georgian

γ Ari  
 δ Tau  
 η Gen  
 ε Car  
  
 ι Ma  
 κ Jun  
 λ Oct  
 μ Nov  
 ν Begin  
 11h 27  
 Digit  
 shadow.  
 V Nov.  
 Begin  
 Middle  
 gits eclip  
 The p  
 towards  
 Jupite  
 18th, and

LEFT  
 SECOND.  
 the settin  
 nutes. S  
 real time  
 nation in  
 NINTH, th  
 ELEVENTH  
 Halifax.  
 RIGHT  
 Aspects,

Dominica  
 Lunar Cy  
 Epact

. Clarke.

In Winter.

rost, unless the  
d be S or W

and Stormy

ay  
Rain if wind W

ow if E.  
and high wind

or Rain

and mild

and Frosty if  
nd N or N E

or Snow if S or  
W

and Frosty

, First Quarter  
the weather be  
dday, or Noon,  
the weather may

2  
April 30  
Thurs. May 4.  
14  
ay 21  
ecr. 3

and 23  
nd 23  
Planets, and

upiter  
urn,  
orgian

### Signs of the Zodiac.

♈ Aries, head.		♌ Leo, heart		♐ Saggitarius thighs.
♉ Taurus, neck.		♍ Virgo, belly		♑ Capricorns. knees.
♊ Gemini, arms.		♎ Libra, reins		♒ Aquarius, legs
♋ Cancer, breast.		♏ Scorpio, secrets		♓ Pisces. feet.

### Solar and Lunar Eclipses in the year 1826.

- I May 21. The Moon eclipsed invisible, 8 at 10h 32m morn
- II June 5. The Sun eclpd invisible. 8 at 1h 10m eve D's lat. 1d 5' S
- III Octr. 30. The Sun eclipsed invis.ble, 8 8h 37m ev )'s lat 1d 3½' S
- IV Nov 14. The Moon eclipsed. partly visible. morning

Beginning of the Eclipse 9h 31½m morn Ecliptic 11h 25m middle  
11h 27½m End of the Eclipse 1h 22½m.

Digits Eclipsed, 17 deg 42½' from the northern side of the Earth's shadow.

V Nov. 29 The Sun Eclipsed, partly visible, morning.  
Beginning of the Eclipse, 5h 15m. Greatest obscuration. 6h 20½m,  
Middle 6h 21½m. Visible 6h 21½m. End of the Eclipse 7h 27½m. Di-  
gits eclipsed, 6 37½ on the ☉'s northern Limb.

The planet Venus will be the morning star till March 10th, and af-  
terwards evening star till December 23d,

Jupiter will be the evening star from February 28th, to September  
18th, and then morning star to the end of the year.

### Explanation of the Calendar Pages,

LEFT HAND PAGE FIRST COLUMN shows the days of the month.  
SECOND. the days of the week THIRD. the rising of the Sun. FOURTH  
the setting of the Sun. FIFTH, the length of days in hours and mi-  
nutes. SIXTH. shows how much faster or slower the sun is than the  
real time in minutes—S sun slow. F sun fast. SEVENTH, sun's decli-  
nation in degrees and minutes. EIGHTH. the Moon's age in days.  
NINTH, the Moon's rising or setting. TENTH, the Moon's southing.  
ELEVENTH, the Moon's place in the signs. TWELFTH, high water at  
Halifax.

RIGHT HAND PAGE. FIRST COLUMN, days of the month. SECOND,  
Aspects, Holidays, and Weather. THIRD, Farmer's Calendar.

### Chronological Cycles for 1826,

Domitnal Letter	A	Solar Cycle	15
Lunar Cycle, or Golden Numb.	3	Roman Indiction	14
Epact	22	Julian Period	6539

A very pious man in the Country who was particularly punctual in his devotions, used to call his workmen to attend morning prayers by candle light. At a certain time when returning thanks for being brought to see the light of another day, "Not so fast Sir," interrupted Uncle Joe, "you are not sure of that yet."

Last Qtr.		1st day.		8h 7m morn		New Moon		8th day.		5h 25m morn	
D	M	S	S	Days	S	Sun's	D	D	Moon	D	FULL
M	W	RISES	SETS.	length.	SL	decl. S	A	RIS & SETS	South	PL	SEA
1	A	7 38	4 22	8 44	4 23	2 23		MORN	5 42	2	0 48
2	M	7 38	4 22	8 44	4 22	57 24	1	37	6 34	25	1 40
3	Tu	7 38	4 22	8 44	5 22	51 25	2	49	7 28	m	2 34
4	W	7 37	4 23	8 46	5 22	45 26	3	59	8 24	23	3 30
5	Th	7 36	4 24	8 48	6 22	38 27	5	6	9 23	↑	4 29
6	F	7 35	4 25	8 50	6 22	32 28	6	8	10 21	21	5 27
7	S	7 35	4 25	8 50	7 22	24 29	7	2	11 19	15	6 25
8	A	7 34	4 26	8 52	7 22	16 30	♂	D sets	EVEN 14	19	7 20
9	M	7 33	4 27	8 54	7 22	8	1	6 54	1	5	8 11
10	Tu	7 33	4 27	8 54	8 21	59	2	7 58	1	53	8 59
11	W	7 32	4 28	8 56	8 21	50	3	9 2	2	39	9 45
12	Th	7 31	4 29	8 58	9 21	41	4	10 2	3	22	10 28
13	F	7 31	4 29	8 58	9 21	31	5	11 2	4	4	11 10
14	S	7 30	4 30	9 0	9 21	20	6	0 1	4	45	11 31
15	A	7 29	4 31	9 2	10 21	10	7	0 31	5	23	17 34
16	M	7 28	4 32	9 4	10 20	58	8	morn	6 12	29	1 18
17	Tu	7 28	4 32	9 4	10 20	47	9	1 59	6	57	2 3
18	W	7 27	4 33	9 6	11 20	35	10	2 57	7	46	23 2
19	Th	7 26	4 34	9 8	11 20	23	11	3 54	8	35	3 41
20	F	7 25	4 35	9 10	11 20	10	12	4 48	9	27	18 4
21	S	7 24	4 36	9 12	12 19	57	13	5 39	10	20	5 26
22	A	7 23	4 37	9 14	12 19	43	14	6 25	11	13	13 6
23	M	7 22	4 38	9 16	12 19	29	15	7 rises	morn	27	7 12
24	Tu	7 21	4 39	9 18	12 19	15	16	6 33	0	6	8 0
25	W	7 20	4 40	9 20	13 19	0	17	7 43	0	58	24 8
26	Th	7 19	4 41	9 22	13 18	46	18	8 54	1	48	mg 8
27	F	7 18	4 42	9 24	13 18	30	19	10 6	2	39	23 9
28	S	7 17	4 43	9 26	13 18	15	20	11 17	3	30	2 10
29	A	7 15	4 45	9 30	14 17	59	21	0 29	4	21	22 11
30	M	7 14	4 46	9 32	14 17	43	22	MORN	5 15	m	morn 21
31	Tu	7 12	4 48	9 36	14 17	26	23	1 40	6	10	20 1

First Q

D M A

A 1st  
2  
3  
4  
5  
6  
7  
A 1st  
9  
10  
11  
12  
13  
14  
A 2d  
16  
17  
18  
19  
20  
21  
A  
23  
24  
25  
26  
27  
28  
A  
30  
31

1826.

1826 JANUARY begins on Sunday. Winter.

ly punctual  
ing prayers  
aks for being  
r," interrup-

"Nature! great parent! whose unceasing hand  
Rolls round the Seasons of the changeful year,  
How mighty, how majestic, are thy works!  
With what a pleasing dread they swell the soul,  
That sees astonish'd! and astonish'd sings!"

First Qtr. 16th day 12h 24m morn || Full Moon 23d day 7h 48m even  
|| Last Qtr. 30th day 3h 55m ev

on 25m morn

Day	PL	FULL SEA
42	0	48
34	1	40
28	2	34
24	3	30
23	4	29
21	5	27
19	6	25
14	7	20
5	8	11
53	8	59
39	9	45
22	10	28
4	11	10
45	11	31
28	17	EVEN 34
12	1	18
57	2	3
46	2	52
35	3	41
27	4	33
20	5	26
13	6	19
n	7	12
6	8	0
58	8	4
48	8	54
39	9	45
30	10	36
21	11	27
15	m	morn 21
10	1	16

D	Aspects, Holidays, Weather, &c	Farmer's Calendar.
A	1st Sunday after Christmas.	"Time rolls his ceaseless
2	[circumcision]	course." says the poet. "Tempus
3	☉ perigree clouds which	fugit," says the scholar. "Time
4	☽ rises 6h 24m morn de	is long" says the child. "Time is
5	♃ S 4h 2m mn. note snow	short" says the man of years.
6	Epiphany Wind and	"Time is every thing" says the
7	☿ ☽ ♀ ♃ ♁ ♁ ♁ hail.	busy farmer. "Time is a point"
A	1st Sund. after Epiphany	says the Divine. "Time will show"
9	High tides rough wind-	says the politician. "Time must
10	☽ ☽ ☽ with snow at	be carefully noted" says the doc-
11	♀ stat. this time.	tor. "Time must be gained" says
12	S 9h 24m eve.	the lawyer. "Time never is" says
13	cold as	the philosopher. "Time is bor-
14	Greenland	rowed" says the Almanack makers,
A	2d Sund aft Epip. ☽ apog	and "Time is paid," when this
16	Low tides	figurative production is eagerly re-
17	Dr Franklin born 1706.	ceived, highly approved, and pro-
18	Colder with high	fitably disposed of. It is therefore
19	S 8h 51m eve winds and	evident, that time is a very impor-
20	☽ enters ☽ ☽ ☽ snow	tant personage with all classes of
21	Louis XVI bend. 1793	Adam's race.
A	Septuagesima Sunday	We would remind our readers
23	☽ ☽	of the sacred obligations which
24	High tides	they owe to their families, their
25	Conversion of St. Paul	neighbours, to the world of man-
26	S 2h 28m morn	kind, and to God. Their children
27	D of Sussex, bn 1773	are to be "trained up in the nur-
28	☽ perogee pleasant.	ture and admonition of the Lord;"
A	Sexages Sund Geo IV Acc	the Bible to be faithfully studied
30	K Chas I Martyr [1820	and explained; schools and the
31	K Geo IV procl. Low tides	preaching of the Gospel to be sup-

Some time since a certain lord, in Ireland gave a grand gala to the members of the volunteer corps in the neighbourhood, all of whom attended in full uniform. Among others, his lordship's tailor was present, and the host came up to him, saying "My dear Sir, how d'ye do? I beg your pardon, I have forgot your name, but I perfectly remember seeing you somewhat before." The tailor was a little confounded by his particular notice, and as the best way of ma-

New Moon. 6.h day 8h 8m even || First Q. r. 14.h day 9. 57m even.

D	D	S	S	Days	S	Sun's	☉	☽	Moon	☽	Full
M	W	RISES.	SETS.	length	SL	decl S	A	& SETS	South.	PL	SEA
1	W	7 9 4	51	9 42	14	17 9	21	2 48	7 7	↑	2 13
2	Th	7 8 4	52	9 44	14	16 52	25	3 51	8 5	17	3 11
3	F	7 7 4	54	9 46	14	16 34	26	4 47	9 2	15	4 8
4	S	7 5 4	55	9 50	14	16 17	27	5 34	9 56	15	5 2
5	A	7 4 4	56	9 52	14	16 -59	28	6 15	10 49	28	5 55
6	M	7 3 4	57	9 54	14	15 40	δ	SETS	11 38	☉	6 44
7	Tu	7 2 4	58	9 56	14	15 22	1	6 40	EVEN 25	24	7 31
8	W	7 1 4	59	9 58	15	15 3	2	7 43	1 10	☉	8 16
9	Th	6 59 5	1	10 2 15	14	44 3	8	8 44	1 53	19	8 59
10	F	6 58 5	2	10 4 15	14	24 4	9	9 44	2 35	19	9 41
11	S	6 56 5	4	10 8 15	14	5 5	10	10 43	3 18	13	10 24
12	A	6 55 5	5	10 10 15	13	45 6	11	11 42	4 1	25	11 7
13	M	6 53 5	7	10 14 15	13	25 7	MORN	12 40	4 46	3	11 52
14	Tu	6 52 5	8	10 16 15	13	5 8	0	13 40	5 33	19	EVEN 39
15	W	6 51 5	9	10 18 14	12	44 9	1	14 37	6 23	11	1 28
16	Th	6 49 5	11	10 22 14	12	24 10	2	15 32	7 12	13	2 18
17	F	6 48 5	12	10 24 14	12	3 11	3	16 24	8 4	25	3 10
18	S	6 47 5	13	10 26 14	11	42 12	4	17 12	8 57	☉	4 3
19	A	6 45 5	15	10 30 14	11	20 13	4	18 56	9 50	21	4 56
20	M	6 44 5	16	10 32 14	10	59 14	5	19 34	10 43	☉	5 49
21	Tu	6 42 5	18	10 36 14	10	37 15	6	20 9	11 35	19	6 41
22	W	6 41 5	19	10 38 14	10	16 16	RISES	MORN	12 12	17	7 34
23	Th	6 39 5	21	10 42 14	9	54 17	7	21 47	0 28	18	8 0
24	F	6 38 5	22	10 44 14	9	32 18	9	22 1	1 21	☉	8 27
25	S	6 36 5	24	10 48 13	9	10 19	10	23 16	2 15	17	9 21
26	A	6 34 5	26	10 52 13	8	47 20	11	24 30	3 9	17	10 15
27	M	6 33 5	27	10 51 13	8	25 21	MOR	25 0	4 6	16	11 13
28	Tu	6 31 5	29	10 58 13	8	2 22	0	26 41	5 4	↑	MORN 10

king h  
The no  
turned  
happy  
A m  
ceremo  
you ax

D	M	A
1		b
2		Pa
3		4
4		Qu
A		
6		
7		Sh
8		Ash
9		b
10		4
11		1st
A		
13		
14		Val
15		Low
16		☉
17		
18		☉ e
A		2d s
20		
21		S. G
22		
23		Ver
24		St. M
25		2d S
A		
27		Ear
28		8

1826.

1826. FEBRUARY, begins on Wednesday. Winter.

king himself remembered whispered, "I made your breeches."—  
The noble lord thinking the tailor had informed him of his name,  
turned round and took him by the hand "Major Bridges, I am very  
happy to see you."

A man of the lower class came to town to be married, After the  
ceremony was performed he said to the Minister "How much do  
you ax Mister?" the Minister smiled and told him that some gave a

9h 57m even.

Day	PL.	FULL SEA
7	↑	2 13
5	17	3 11
2	75	4 8
56	15	5 2
49	28	5 55
38	☉	6 44
EN 25	24	7 31
10	⊗	8 16
53	19	8 59
35	7	9 41
18	13	10 24
1	25	11 7
46	3	11 52
33	19	EVEN 39
23	11	1 28
12	13	2 18
4	25	3 10
57	5	4 3
50	21	4 56
43	9	5 49
35	19	6 41
corn	17	7 34
28	13	8 0
21	5	8 27
15	17	9 21
9	11	10 15
6	15	11 13
4	↑	MORN 10

Full Moon, 22d day 8h 11m morn.

D	Aspects, Holidays, Weather. &c.	Farmer's Calendar.
1	h S 7h 55m eve. High	ported; the sabbath to be maintained; and a knowledge of the
2	Purif. of B. V. Mary	Redeemer to be extended to every
3	4 S. 1h. 52m morn. winds	creature. And we recommend to
4	with snow or	every man, if he would promote
A	Quinquagesima Sunday	in the highest degree his own hap-
6	rain.	piness, to contemplate often the
7	Shrove Tuesday	price which has been paid for him
8	Ash Wednesday	by the Son of God, to remember
9	h S. 7h 28m. eve sharp	his obligations, and to consecrate
10	4 S. 1h. 22m. morn. cold	himself, his talents, his possessions,
11	nights.	his efforts, all to the cause of Him
A	1st Sun. in Lent ☾ apogee	Who died for us and rose again."
13	pleasant with	Let a man live for himself, and he
14	Valentine ☉ stat. signs	will be wretched. Let a man live
15	Lowtides. of snow	for Christ, and he will be happy in
16	⊗ ☾ h	prosperity, or in adversity, and
17	pleasant	whether he lives or dies, he will
18	☉ enters ⊗ Luther d. 1546	be the Lord's.
A	2d Sunday in Lent	Give your young cattle and colts
20	Quite fine for the	a few potatoes occasionally, which
21	S. 6h. 37m. even. Season.	will greatly better their appear-
22		ance and growth.—Whatever mul-
23	Very high tides. wet &	plies feed for your Stock enlarg-
24	St. Mat ☽ per. D. of Cam	es the quantity of your hay & en-
25	4 S 0h 17m mn. [b 1771	ables you to increase the quantity
A	3d Sun in Lent disagree-	of your Stock. Whatever enables
27	Earthq. at Lisbon 1798	you to increase the quantity of
28	☽ ☿ ☉ able for the feet	

III. Month. MARCH, 31 Days. 1826.

doubloon some a pound note any thing they pleased ; the fellow produced a dollar, and throwing it on the table, said " there, you may take it or leave it alone." Then turning to his new made bride asked her putting his arms round her waist " Whose gall are you now ? " " Why yours I suppose " replied the blushing bride " Yes you are mine " giving her a hearty smack " didn't I just pay my money for you."

Last Qu. 1st day On 17m morn || New Moon, 8th day On 16m even.

M D	S	S	Days	S	Sun's	D	D	RIS.	Moon	M	FULL
D w	RISES	SETS	length	SL	dec S	A	X	SETS	South	PL	SEA
1	W	6 30	5 30	11 0	13 7	39	23	1 46	6 2	14	1 8
2	Th	5 23	5 32	11 4	12 7	17	24	2 41	6 59	28	2 5
3	F	6 27	5 33	11 6	12 6	51	25	3 33	7 51	29	3 0
4	S	6 25	5 35	11 10	12 6	31	26	4 15	8 47	25	3 53
5	A	6 21	5 36	11 12	12 6	8	27	4 52	9 36	22	4 42
6	M	6 23	5 37	11 14	12 5	44	28	5 24	10 24	20	5 30
7	Th	6 21	5 39	11 18	11 5	21	29	5 52	11 9	16	6 15
8	W	6 19	5 41	11 22	11 4	58	0	SETS	11 52	15	6 58
9	Th	6 18	5 42	11 24	11 4	34	1	7 37	EVE 33	28	7 41
10	F	5 16	5 44	11 28	11 4	11	2	8 36	1 13	24	EVEN 24
11	S	6 15	5 45	11 30	10 3	47	3	9 56	2 2	22	1 8
12	A	6 13	5 47	11 34	10 3	24	4	10 34	2 46	8	1 52
13	M	6 12	5 48	11 36	10 3	0	5	11 31	3 32	15	2 33
14	Th	6 10	5 50	11 40	9 2	37	6	MORN	4 21	27	3 27
15	W	6 9	5 51	11 42	9 2	13	7	0 28	5 10	II	4 16
16	Th	6 7	5 53	11 46	9 1	49	8	1 20	6 0	21	5 6
17	F	5 5	5 55	11 50	9 1	23	9	2 10	6 51	S	5 57
18	S	6 4	5 56	11 52	8 1	2	10	2 54	7 43	16	6 49
19	A	5 2	5 58	11 56	8 0	38	11	3 33	8 34	29	7 40
20	M	5 1	5 59	11 58	8 0	14	12	4 9	9 27	21	8 33
21	Th	5 59	6 1	12 2	7 N	8	13	4 43	10 19	27	9 25
22	W	5 58	6 2	12 4	7 0	32	14	5 15	11 13	mg	10 19
23	Th	5 56	6 4	12 8	7 0	56	15	RISES	MORN 26	11	13
24	F	5 54	6 6	12 12	6 1	19	16	8 0	0 7	△	MORN.
25	S	5 53	6 7	12 14	6 1	43	17	9 17	1 2	26	0 8
26	A	5 51	6 9	12 18	6 2	6	18	10 32	2 1	III	1 7
27	M	5 50	6 10	12 20	6 2	30	19	11 41	3 1	26	2 7
28	Th	5 48	6 12	12 24	5 2	53	20	MORN.	4 1	4	3 7
29	W	5 46	6 14	12 28	5 3	17	21	0 44	5 0	25	4 6
30	Th	5 45	6 15	12 30	5 3	40	22	1 31	5 53	25	5 4
31	F	5 43	6 17	12 31	4 4	3	23	2 24	6 51	22	5 57

1826

First 6

D	M
1	I
2	V
3	2
4	
A	4
6	F
7	
8	
9	
10	
11	
A	5
13	P
14	
15	
16	7
17	L
18	8
A	6
20	O
21	B
22	
23	H
24	G
25	Ar
A	En
27	En
28	En
29	7
30	8
31	Lo

1826.

1826. MARCH, begins on Wednesday. Spring.

the fellow pro-  
ere, you may  
w made bride  
ga'll are you-  
bride. " Yes  
st pay my mo-

SPRING.

'Come gentle spring, ethereal mildness come  
And from the bosom of yon dropping cloud,  
Where wakes around. veil'd in a shower  
Of shadowing roses on our plain descend.'

On 16m even.

First Qtr. 16th day 5h 16m even. Full moon 23d day 6h 28m even.  
Last Qtr. 30th day 9h 49m mor.

Month	PL	FULL SEA
2	14	1 8
59	28	2 5
51	25	3 0
47	25	3 53
36	22	4 42
21	20	5 30
9	16	6 15
52	15	6 58
35	28	7 41
18	22	EVEN 21
2	22	1 8
46	8	1 52
32	15	2 33
21	27	3 27
10	II	4 16
0	21	5 6
51	25	5 57
43	16	6 49
34	29	7 40
27	2	8 33
19	27	9 25
13	ng	10 19
7	26	11 13
2	26	MORN. 0 8
1	11	1 7
1	26	2 7
1	7	3 7
0	25	4 6
58	25	5 4
51	22	5 57

D M	Aspects, Holidays, Weather. &c.	Farmer's Calendar.
1	David. Low tides snow on	your stock increases the value of
2	1/2 S 6h 4m eve. rain	your property directly, and the
3	2/4 S 11h 47m eve. with	subsequent value of your farm m-
4	hail and high	directly by increasing the quanti-
A	4th S in Lent Mid Lent Sun	ty of manure, and thereby the
6	☐ ☉ 1/2 winds	quantity and value of your crops,
7		and thus your potatoe fallows,
8	♂ S 3h 55m morn snow	which do not exhaust the soil, may
9	High tides if you like it	be made the source of great im-
10	⊕ ♀ Sup ⊕ ♂	provement and wealth. Feed your
11	keep the feet dry.	sheep upon potatoes daily; no ar-
A	5th Sund in Lent. apogee	ticle of stock will repay you with
13	Planet Herschel dis 1731	more profit; the wool will be more
14	squally & disagreeable	in quantity, and finer in quality,
15	for the fretful and	they will be free from ticks, unless
16	2/4 S 10h 53m eve gouty	kept in too warm a covering, and
17	Low tides. St. Patrick	too many in a fold; they will never
18	♂ S 3h 26m morn. Wet.	shed their wool, and will seldom
A	6th Sun in Lent Palm Sun.	lose their lambs if thus fed. Much
20	☉ enters ♀	chaff or straw that is often thrown
21	Benedict very fine	away, might with little pains, be
22	for a few days	made in the autumn good fodder
23	High tides Becomes	for cattle, by being mixed with
24	Good Friday cooler and	green corn stalks, or with hay not
25	Annun of B V Mary.	fully dried and sprinkling a little
A	Easter Day	salt throughout the whole: In this
27	Easter Monday rough.	way much of the sweetness of the
28	Easter Tuesday	stalks, or of the hay, is absorbed
29	2/4 S 10h eve more mode-	by the straw and chaff, and with
30	♀ stat rate but cool	the addition of salt, the whole mass
31	Low tides nights.	is converted into good fodder.



A Moving Discourse. When Hugh Peters first visited Salem, Massachusetts in the early settlement of that place, he is said to have frequently preached to the people in the fields and groves. Once in particular, he chose for his pulpit the top of a small pyramical hill on the edge of Wenham pond, near the outlet. He took for the subject of his discourse, the account of the devils entering into the herd of swine, and the effect it had upon them; in the quaint style of

New Moon 7th day 5h 12m morn || First Qtr. 15th day 8h 44m morn

D	M	S	S	Days	S	Sun's	☉	☽	RIS	Moon	☽	Full
		riser	SETS	length	SL	decl N	A	☽	& SETS	South	PL	SEA
1	S	5 42	6 18	12 36	4	4 26	24	3	0	7 42	☾	2 48
2	A	5 40	6 20	12 40	4	4 49	25	3	33	8 30	☾	3 36
3	M	5 39	6 21	12 42	3	5 12	26	4	1	9 15	☾	4 21
4	Tu	5 37	6 23	12 46	3	5 31	27	4	28	9 58	☾	5 4
5	W	5 36	6 24	12 48	3	5 51	28	4	55	10 41	☾	5 47
6	Th	5 35	6 25	12 50	2	6 21	29	5	20	11 24	☾	6 30
7	Fr	5 34	6 26	12 52	2	6 44	☽	SETS	EVEN	8 18	☾	7 14
8	S	5 32	6 28	12 56	2	7 6	1	8 35	0	52	☾	8 58
9	A	5 31	6 29	12 58	2	7 29	2	9 32	1	37	☾	9 43
10	M	5 29	6 31	13 2	1	7 51	3	10 29	2	24	☾	9 30
11	Tu	5 27	6 33	13 6	1	8 13	4	11 22	3	13	☾	10 19
12	W	5 26	6 34	13 8	1	8 35	5	MORN	4	2	☾	11 8
13	Th	5 24	6 36	13 12	1	8 57	6	0 31	4	52	☾	11 58
14	Fr	5 22	6 38	13 16	0	9 19	7	0 56	5	43	☾	EVEN 49
15	S	5 21	6 39	13 18	F	9 40	8	1 37	6	33	☾	1 39
16	A	5 20	6 40	13 20	0	10 1	9	2 14	7	23	☾	2 29
17	M	5 18	6 42	13 21	1/2	10 23	10	2 47	8	13	☾	3 19
18	Tu	5 17	6 43	13 26	1	10 44	11	3 19	9	4	☾	4 10
19	W	5 15	6 45	13 30	1	11 5	12	3 49	9	57	☾	5 3
20	Th	5 14	6 46	13 32	1	11 25	13	4 21	10	52	☾	5 58
21	F	5 13	6 47	13 34	1	11 46	14	4 57	11	50	☾	6 56
22	S	5 11	6 49	13 38	2	12 6	15	RISE	MORN	☾	7 56	
23	A	5 10	6 50	13 40	2	12 26	16	9 27	0	50	☾	8 0
24	M	5 9	6 51	13 42	2	12 46	17	10 36	1	51	☾	8 57
25	Tu	5 7	6 53	13 46	2	13 6	18	11 35	2	51	☾	10 0
26	W	5 6	6 54	13 48	2	13 25	19	MORN.	3	51	☾	11 0
27	Th	5 5	6 55	13 50	2	13 45	20	0 30	4	51	☾	11 57
28	Fr	5 3	6 57	13 54	3	14 4	21	1 6	5	41	☾	MORN
29	S	5 2	6 58	13 56	3	14 22	22	1 40	6	33	☾	1 39
30	A	5 0	7 0	14 0	3	14 41	23	2 11	7	20	☾	2 26

olden  
Devil  
ilship  
swine  
3d, T  
the wa  
" W

Full M  
D  
M  
1  
A  
3  
4  
5  
6  
7  
8  
A  
10  
11  
12  
13  
14  
15  
A  
17  
18  
19  
20  
21  
22  
A  
24  
25  
26  
27  
28  
29  
A

1826.

1826. APRIL, begins on Saturday, Spring.

d Salem, Mas-  
said to have  
ves. Once in  
pyramical hill  
ok for the sub-  
g into the herd  
quaint style of

olden time, drew from them the following inferences. '1st, The Devil entered into the herd of swine.—Hence we infer that his devilship had rather play at small game than not play at all. 2d, The swine ran violently.—They needs must go whom the devil drives. 3d, They ran down a steep place into the sea, and were choaked in the waters.—The devil brought his pigs to a fine market.'

“What harm is there in a pipe?” says young Puffwell. “None

8h 44m morn

Full Moon 22d day 3h 12m morn. || Last Qtr. 28th day 8h 49m even.

Day	PL	Full SEA
42	☾	2 43
30	☾	3 36
15	☾	4 21
58	☾	5 4
41	☾	5 47
24	☾	6 30
8	☾	7 14
52	☾	8 58
37	☾	9 43
24	☾	9 30
13	☾	10 19
2	☾	11 8
52	☾	11 58
43	☾	EVEN 49
33	☾	1 39
23	☾	2 29
13	☾	3 19
4	☾	4 10
57	☾	5 3
52	☾	5 58
50	☾	6 56
43	☾	7 56
50	☾	8 0
51	☾	8 57
51	☾	10 0
51	☾	11 0
51	☾	11 57
41	☾	MORN
33	☾	1 39
20	☾	2 26

D	Aspects, Holidays, Weather &c.	Farmer's Calendar.
1	S 9h 50m eve Wind of	Attend to Cock crowing, rise
A	1st Sund. aft Easter LowS.	early, and get every thing about
3	the second Finland	the farm into order, as preparative
4	St Ambrose knot; don't	to business, finish threshing, com-
5	☾ sets 11h 33m eve. ask	plete the dressing of your flax, cut
6	S 2h 19m morn. any of the	up your wood and pile it neatly
7	High tides third; tho	for next Summer's and Winter's
8	♂ ☾ ♀ we can serve	use. There is great difference in
A	2d Sund aft Easter, apogee	the saving between green, and dry
10	you as well as any	or seasoned wood. It will almost
11	S 9h 11m eve Finlander,	pay the expence of sledding. Look
12		too at the extra trouble in kindling
13	♀ stationary. Foggy &	fires, which is thus avoided. Are
14	☾ ☾ ☾ unpleasant	not these objects worthy of atten-
15	☾ sets 11h eve with rain	tion?—Split rails, point and mor-
A	3d Sund aft Easter	tis posts, and draw them to the han-
17	warmer	dliest places for use. Trim your
18	S 8h 43m eve	orchards and sled off the brush in
19	Cold winds but	season, look to your fences, if down
20	☾ enters ☾ pleasant days	put them up so as to secure your
21	S 1h 14m morning	orchards, grainland, and mowing
22	☾ per. quite high tides	ground from the inroads of your
A	4th Sd. af East St. George	cattle. Bad fences you know will
24	Inf ♂ ♀ [G IV hth d kpt	render all your labours profitless.
25	St Mark. Dch Glouc b 1776	Cut your scions and secure them
26	more sigas of ram	in some dry part of your cellar
27	S 8h 8m even	with the ends in the ground, till
28	☾ stationary	you want them in April. Bleed
29	Lowtides, pleasant	your working cattle to prevent
A	5th Sd aft Easter Rog Sund	their heating; let them have good

V Month.

MAY, 31 Days.

1826.

that I know of," replies his companion except that smoking induces drinking—drinking induces intoxication—intoxication induces the bile—bile induces jaundice—jaundice leads to dropsy—dropsy terminates in death. Put that in your pipe and smoke it."

At a militia muster last summer, a young Captain called to his Serjeant, "How are the men dressed in the rear rank, Serjeant M—?" "Very well indeed Sir" replied the Serjeant, "the most of them have on long coats!"

New Moon 6th day 10h. 2m. even. First Qtr. 14th day 7h 58m even.

D	D	S	S	Days	S	Sun's	(	)	RIS	Moon	(	FULL
M	W	Rises	SETS	length	FA	decl	N	A	& SETS	South	PL	SEA
1	M	4 59	7 1	14 2	3	14 59	24	2	39	8 3	κ	3 9
2	Tu	4 58	7 2	14 4	3	15 17	25	3	4	8 46	21	3 52
3	W	4 56	7 4	14 8	3	15 35	26	3	30	9 29	ϕ	4 35
4	Th	4 55	7 5	14 10	3	15 53	27	3	55	10 11	ϕ	5 17
5	F	4 51	7 6	14 12	4	16 10	28	4	21	10 55	27	6 1
6	S	4 37	7 7	14 14	4	16 27	δ	SETS		11 40	8	6 46
7	A	4 27	8 8	14 16	4	16 44	1	8	29	EVEN 26	21	7 32
8	M	4 51	9 9	14 18	4	17 0	2	9	23	1 15	Π	8 21
9	Tu	4 49	11 11	14 22	4	17 17	3	10	13	2 4	14	9 10
10	W	4 48	12 12	14 24	4	17 33	4	10	59	2 53	27	9 59
11	Th	4 47	13 13	14 26	4	17 48	5	11	40	3 43	ϖ	10 49
12	F	4 45	15 15	14 30	4	18 4	6	MORN	4	3 21	11	11 38
13	S	4 44	16 16	14 32	4	18 19	7	0	30	5 21	ϖ	EVEN 27
14	A	4 43	17 17	14 34	4	18 33	8	0	50	6 9	17	1 15
15	M	4 43	17 17	14 34	4	18 48	9	1	21	6 58	μ	2 4
16	Tu	4 42	18 18	14 36	4	19 2	10	1	51	7 48	14	2 54
17	W	4 40	20 20	14 40	4	19 16	11	2	21	8 40	28	3 46
18	Th	4 39	21 21	14 42	4	19 29	12	2	54	9 34	⊖	4 40
19	F	4 38	22 22	14 44	4	19 42	13	3	29	10 32	28	5 38
20	S	4 37	23 23	14 46	4	19 55	14	4	9	11 32	μ	6 38
21	A	4 36	24 24	14 48	4	20 8	15	RISES	MORN	28	7	41
22	M	4 35	25 25	14 50	4	20 20	16	9	19	0 35	↑	8 0
23	Tu	4 34	26 26	14 52	4	20 31	17	10	14	1 37	28	8 43
24	W	4 33	27 27	14 54	4	20 43	18	11	1	2 37	ϖ	9 43
25	Th	4 32	28 28	14 56	3	20 54	19	11	41	3 31	26	10 40
26	F	4 31	29 29	14 58	3	21 5	20	MORN.	4	27	⊖	11 33
27	S	4 31	29 29	14 58	3	21 15	21	0	13	5 15	23	MORN 21
28	A	4 30	30 30	15 0	3	21 25	22	0	42	6 1	κ	1 7
29	M	4 29	31 31	15 0	3	21 31	23	1	8	6 44	18	1 50
30	Tu	4 28	32 32	15 4	3	21 44	24	1	31	7 27	ϖ	2 33
31	W	4 27	32 32	15 6	3	21 53	25	2	0	8 9	12	3 15

1826.

Early eight, always 121 day nctly te ded to t hours e our bus

Full Mo

D	A
1	St
2	S 7
3	Inv
4	Asc
5	g
6	St
8	8
9	8
10	8
11	8
12	8
13	8
15	Wh
16	Wh
17	Wh
18	8
19	Dur
20	Col
22	Tri
23	Prs
24	8
25	8
26	8
27	8
29	A
30	1st
31	Lo

1826.

oking induces  
duces the hile  
dropsy termi-  
ed to his Ser-  
erjeant M—?  
most of them

7h 58m even.

Mo	PL	FULL	SEA
3	✕	3	9
46	21	3	52
29	☿	4	35
11	15	5	17
55	27	6	1
40	8	6	46
26	21	7	32
15	II	8	21
4	14	9	10
53	27	9	59
43	☽	10	49
32	21	11	38
21	☾	EVEN:27	
9	17	1	15
58	☿	2	4
48	14	2	54
40	25	3	46
34	☽	4	40
32	28	5	38
32	III	6	38
RN	28	7	41
35	♄	8	0
37	28	8	43
37	☿	9	43
34	26	10	40
27	☽	11	33
15	23	MORN:21	
1	✕	1	7
44	18	1	50
27	☾	2	33
9	12	3	15

1826.

MAY begins on Monday.

Spring.

Early Rising.—The difference between rising at six and rising at eight, in the course of forty years supposing a person goes to bed always at the same hour, amounts to 29,000 hours; or three years, 121 days, and 15 hours; which will afford eight hours a day for exactly ten years; which is in fact, the same as if ten years were added to the period of our lives, in which we might command eight hours every day for the cultivation of our minds and the dispatch of our business.

Full Moon 21st day 11h 2m morn. Last Qr. 28th day 9h 32m. morn.

D	Aspects, Holidays, Weather, &c.	Farmer's Calendar.
1	St Philip & St James ☽ st	hay and at times a few potatoes.
2	S 7h 50m. eve Fair	Try to diffuse intelligence. To
3	Invention of the Cross	do this. Train your family up to
4	Asc Day Holy Thursday	reading.—Accustom your children
5	☿ ☽ frequent dashes	to be familiar with books.—take
6	St John, Evlt. ☾ apo. of	some religious periodical work—
A	Sund at Asc Day rain.	endeavour to circulate such works.
8	♄ ☾ ☿	rather cool Look yonder and see Captain
9		for planting Upbetimes with team and boys in
10		the field! He intends to plough as
11	☿ S 11h 22m. eve grows	much as possible while the dew is
12	♀ sets 8h 33m eve much	on. The dew he knows promotes
13		finer. fertilization and contains a great
A	Whit Sunday	deal of nourishment for plants.
15	Whit Monday signs of	But Joe Sluggish, he must have his
16	Whit Tuesday rain cooler	sling and his breakfast, and his se-
17		gar, before he puts a foot forward
18	♀ sets 8h 46m eve.	toward business and he then moves
19	Dunstan. S 10h 41m eve	with as much reluctance as a thief
20	Columbus died 1506 Æ 58	to the gallows. We do not suffi-
A	Trinity Sund. ☉ enters II	ciently consider the benefit of fre-
22	Prs of Stomburg born 1770	quent ploughing. By often plough-
23	[Gr. elon. ☽ H tides	ing, land may be brought to any
24	now look out	degree of richness almost that we
25	for a storm	wish; and if your plough be of
26	♀ S 5h 7m eve	good construction you will destroy
27	II ☽ very fine again	all the weeds thereby. Deep
A	1st Sund aft Trinity for	ploughing is generally beneficial.
29	Lowtides some days	It brings up new mould which is
30	K Chas II restl. ☿ sets 9h	favourable, particularly to clover
31	10m evening	turnips, beans, and potatoes. Now

Many people who read the Scriptures with attention, seem to be more anxious to know who Melchisedec was, or what was Paul's thorn in the flesh, than to know what they must do to be saved.

"Fine growing weather this" (said a Cumberland farmer, to his next neighbour, accosting him as he was crossing his meadows) "fine growing weather: this rain will bring every thing out of the ground." "Heaven forbid!" said the other "for I have just buried my wife."

New Moon 5th day 1h 40m even // First Qr. 13 h day 3h 40m morn.

D	D	S	S	Days	S	Sun's	☉	☽	Moon	☾	Full
M	W	RISES	SETS	length.	F	decl N	A	SETS.	South	PL	SEA.
1	Th	4 27 7	33	15 6	3	22 1	26	2 26	8 52	24	3 58
2	F	4 26 7	31	15 8	2	22 9	27	2 55	9 36	♂	4 42
3	S	4 25 7	35	15 10	2	22 17	28	3 28	10 22	18	5 29
4	A	4 25 7	35	15 10	2	22 24	29	4 6	11 9	♂	6 15
5	M	4 24 7	36	15 12	2	22 31	♂	SETS	11 58	11	7 4
6	Tu	4 24 7	36	15 12	2	22 38	1 8	55	EVEN 48	24	7 54
7	W	4 23 7	37	15 14	2	22 44	2 9	38	1 38	♂	8 44
8	Th	4 23 7	37	15 14	1	2 50	3 10	15	2 27	18	9 33
9	F	4 22 7	38	15 16	1	22 55	4 10	49	3 15	♂	10 21
10	S	4 22 7	38	15 16	1	23 0	5 11	20	4 3	14	11 9
11	A	4 22 7	38	15 16	1	23 4	6 11	50	4 51	27	11 57
12	M	4 21 7	39	15 18	1	23 8	7	MORN	5 40	♂	EVEN 46
13	Tu	4 21 7	39	15 18	1	23 12	8	0 20	6 29	24	1 35
14	W	4 21 7	39	15 18	0	23 15	9	0 50	7 20	♂	2 26
15	Th	4 20 7	40	15 20	0	23 18	10	1 22	8 14	22	3 20
16	F	4 20 7	40	15 20	0	23 21	11	1 59	9 11	11	4 17
17	S	4 20 7	40	15 20	1/2	23 23	12	2 42	10 11	22	5 17
18	A	4 20 7	40	15 20	1	23 25	13	3 32	11 13	♂	6 19
19	M	4 20 7	40	15 20	1	23 26	14	RISES	MORN 21	7	7 21
20	Tu	4 20 7	40	14 20	1	23 27	15	3 46	0 15	♂	8 0
21	W	4 20 7	40	15 20	1	23 27	16	9 29	1 13	20	8 19
22	Th	4 20 7	40	15 20	1	23 27	17	10 5	2 9	♂	9 15
23	F	4 20 7	40	15 20	2	23 27	18	10 37	3 1	18	10 7
24	S	4 20 7	40	15 20	2	23 26	19	11 5	3 49	♂	10 55
25	A	4 20 7	40	15 20	2	23 25	20	11 31	4 34	14	11 40
26	M	4 20 7	40	15 20	2	23 23	21	11 57	5 17	27	MORN.
27	Tu	4 20 7	40	15 20	3	23 21	22	MORN	6 0	♂	1 6
28	W	4 20 7	40	15 20	3	23 19	23	0 33	76 43	21	1 43
29	Th	4 21 7	39	15 18	3	23 16	24	0 53	7 27	♂	2 33
30	F	4 21 7	39	15 18	3	23 12	25	1 24	8 12	14	3 18

Never side and

Full Mo

D	M	☉	☽
1	♂	♂	♂
2	♂	♂	♂
3	♂	♂	♂
4	♂	♂	♂
5	♂	♂	♂
6	♂	♂	♂
7	♂	♂	♂
8	♂	♂	♂
9	♂	♂	♂
10	♂	♂	♂
11	♂	♂	♂
12	♂	♂	♂
13	♂	♂	♂
14	♂	♂	♂
15	♂	♂	♂
16	♂	♂	♂
17	♂	♂	♂
18	♂	♂	♂
19	♂	♂	♂
20	♂	♂	♂
21	♂	♂	♂
22	♂	♂	♂
23	♂	♂	♂
24	♂	♂	♂
25	♂	♂	♂
26	♂	♂	♂
27	♂	♂	♂
28	♂	♂	♂
29	♂	♂	♂
30	♂	♂	♂

1826.

1826.

JUNE begins on Thursday.

Summer.

ion. seem to be  
what was Paul's  
to be saved.  
d farmer, to his  
meadows) "fine  
of the ground."  
uried my wife."

Never hear upon the world, for if you do the world will jump a-side and you will get a tumble.—

SUMMER.

"From brightening fields of ether fair disclos'd,  
Child of the Sun, & fulgent SUMMER comes,  
In pride of youth, and fell through nature's depth:"

3h 40m morn.

Full Moon 19 h day 6:40 n eve || as Q. r. 27 h day 9:11 m morn

Month	PL	Fall SEA.
52	24	3 58
36	6	4 42
22	18	5 29
9	II	6 15
58	II	7 4
EN48	24	7 54
38	8	8 44
27	18	9 33
15	8	10 21
3	14	11 9
51	27	11 57
40	my	EVEN46
29	24	1 35
20	2	2 28
14	22	3 20
11	11	4 17
11	22	5 17
13	7	6 19
PRN	21	7 21
15	8	8 0
13	20	8 19
9	9	9 15
1	18	10 7
49	10	10 55
34	11	11 40
17	27	MORN.
0	1	6
43	21	1 43
27	8	2 33
12	14	3 18

D M	Aspects, Holidays, Weather, etc.	Farmer's Calendar.
1	♂ 8 9h 35m eve very	Let's see if it costs us a pence! there
2	☉ apogee warm days	is no month in the whole year
3	but cool nights	which requires the farmer to be
A	2d Sund aft Trinity	more awake, and hasten to your
5	☽ eclipsed invisible	employment, the best, the most
6	Duke of Camb. born 1772	healthy, and most honourable in
7	High tides	the concerns of men
8	very fine fo	Repair your fences thoroughly;
9	♂ sets 9h 19 n eve the	let your flax ground be ploughed
10	♃ sets midnigh season	repeatedly; soak your seed grain
A	3d Sund aft Trinity St Bar	in a strong pickle of sea-salt or
12	♂ 8 8h 47m eve [tabas	salt-petre, rinse it clean and then
13	☾ stationary Foggy	coll it in live ashes before sowing
14	Low tides	Like Adam and Eve in Eden, in-
15	Great signs of a	structing and in-structed, true phi-
16	storm	losophy and improvement advance
17	St Alban ☾ perigee	arm in arm Experiments elicit
A	11h Sund aft Trinity battle	results, results establish rules—
19	♁ sets 9h 25m ev [Waterloo	What yesterday was fact, to day
20	wind and rain	s doctrine. Be not prejudiced
21	☉ enters ☽ with thunder	then against new modes and prac-
22	♃ sets 11n. 12m eve and	tices in husbandry, but test them
23	♂ 8 8h 4m eve lightning.	fairly ere you condemn them—
24	Nativity of St John Baptist	Visit your barns often, and see that
A	5th Sund alter Trinity	all is orderly conducted, permit no
26	fine growing	waste nor slovenliness in any de-
27	♀ sets 9h 24m eve.	partment of your business or house-
28	Lowtides	hold
29	St Peter	for the See whose cattle are these that
30	☾ apogee	are continually rubbing and scrub-

VII Month.

JULY, 31 Days.

1826.

Critical Punctuation.— A poor woman, whose husband was going to sea, handed by the clerk, to the parson, this public prayer: "A man going to sea, his wife desires the prayers of this congregation." The parson pointing it his own way, read to the tickled ears of his flock, "A man going to see his wife, desires the prayers of this congregation."

A tin pedlar called upon a spindle shanked old gentleman, in small

New Moon 5th day 3h 22m morn. || First Qr. 12th day 9h 10m morn

D	DI	S	S	Days	S	Sun's	☉	☾	M	Moon	☾	Full
M	W	RISES	SETS	length.	S	decl N	A	SETS.	MS.	South	PL	SEA
1	S	4	22 7	38 15	16	3 23	9 26	2 0	8 59	26	4	5
2	A	4	22 7	38 15	16	4 23	5 27	2 41	9 48	II	4	54
3	M	4	22 7	38 15	16	4 23	0 28	3 28	10 37	20	5	43
4	Th	4	23 7	37 15	14	4 22	55 29	4 20	11 27	☽	6	33
5	W	4	23 7	37 15	14	4 22	50 J	SETS	EVEN 18	15	7	24
6	Th	4	23 7	37 15	14	4 22	44 1	8 48	1 8	28	8	14
7	F	4	24 7	36 15	12	4 22	38 2	9 19	1 56	☾	9	2
8	S	4	24 7	36 15	12	5 22	32 3	9 49	2 44	24	9	50
9	A	4	25 7	35 15	10	5 22	25 4	10 18	3 32	☽	10	33
10	M	4	26 7	34 15	8	5 22	18 5	10 48	4 21	21	11	27
11	Th	4	26 7	34 15	8	5 22	10 6	11 19	5 10	☽	EVEN 16	
12	W	4	27 7	33 15	6	5 22	2 7	11 54	6 3	19	1	9
13	Th	4	28 7	32 15	4	5 21	53 8	MORN	6 57	M	2	3
14	F	4	28 7	32 15	4	5 21	45 9	0 33	7 55	17	3	1
15	S	4	29 7	31 15	2	6 21	36 10	1 19	8 54	4	4	0
16	A	4	30 7	30 15	0	6 21	26 11	2 13	9 54	16	5	0
17	M	4	31 7	28 14	58	6 21	16 12	3 14	10 53	☽	5	59
18	Th	4	32 7	28 14	56	6 21	6 13	4 20	11 51	15	6	57
19	W	4	33 7	27 14	54	6 20	55 14	RISES	MORN	29	7	50
20	Th	4	33 7	27 14	51	6 20	44 15	8 30	0 44	☽	8	0
21	F	4	34 7	26 14	52	6 20	33 16	9 1	1 34	26	8	40
22	S	4	35 7	25 14	50	6 20	21 17	9 29	2 22	☽	9	28
23	A	4	36 7	24 14	48	6 20	9 18	9 55	3 8	22	10	14
24	M	4	37 7	23 14	46	6 19	57 19	10 22	3 51	☽	10	57
25	Th	4	39 7	21 14	42	6 19	44 20	10 51	4 35	17	11	41
26	W	4	40 7	20 14	40	6 19	31 21	10 22	5 19	29	MORN	
27	Th	4	41 7	19 14	38	6 19	18 22	11 56	6 4	8	1	10
28	F	4	42 7	18 14	36	6 19	4 23	MORN	6 50	22	1	56
29	S	4	43 7	17 14	34	6 18	51 24	0 35	7 38	☽	2	44
30	A	4	44 7	16 14	32	6 18	36 25	1 19	8 27	16	3	33
31	M	4	45 7	15 14	30	6 18	22 26	2 9	9 17	28	4	23

1826.

clothes, ware?" to the ol them off said he p returning lit you."

Full Moon

D As

M

1 \* se

6th

3

4

5

6

7

8

A

9

1

2

3

4

5

A

7

8

9

20

21

22

A

24

25

26

27

28

29

A

31

High

se

ri

7.h

8 se

9 se

☽

☽

☽

☽

☽

☽

☽

☽

☽

☽

☽

☽

☽

☽

☽

☽

☽

☽

☽

☽

☽

☽

☽

☽

☽

1826.

1826.

JULY, begins on Saturday.

Summer.

husband was going  
e prayer: "A  
s congregation."  
ckled ears of his  
yers of this con-  
tleman, in small  
ay 9h 10m morn

clothes, and tight silk stockings and inquired "do you want any tin ware?" It was dog days and the flies had taking a peculiar liking to the old gentleman's legs, calling for his constant employ to brush them off. "If you have a pair of tin boots, I should like them," said he pettishly, "O yes," said the pedlar, and running to his cart, returning with a pair of candle moulds, "those, sir, will exactly fit you."

Month	PL	Full	SEA
59	26	4	5
48	II	4	54
37	20	5	43
27	15	6	33
18	15	7	24
8	28	8	14
56	∞	9	2
44	24	9	50
32	11	10	38
21	21	11	27
10	≅	16	16
3	19	1	9
57	11	2	3
55	17	3	1
54	4	4	0
51	16	5	0
53	15	5	59
51	15	6	57
29	7	7	50
44	8	8	0
34	26	8	40
22	8	9	28
8	22	10	14
51	∞	10	57
35	17	11	41
19	29	MORN	
4	8	1	10
50	22	1	56
38	11	2	44
27	16	3	33
17	28	4	23

Full Moon 19th day 2h 53m morn || Last Qr 25th day 4h. 49m. even

D	Aspects, Holidays, Weather, &c.	Farmer's Calendar.
1	☾ sets 10h 37m eve. fine	bing against the trees and fences?
2	6th Sun. aft, Trinity. Visit	Oh! they are Squire Pinchem's.
3	☽ ☽ of B. V. Mary	The squire you know is a great
4	Weather for vegetation	sickler for saving, and totally bent
5	High tides cool with	on the Skin-granny plan: so he
6	☽ sets 9h 17m eve. signs	saves his English hay in order to
7	☾ rises 3h 16m morn. of	sell it, and keeps his stock on straw
8	7th Sun. aft, Trinity rain	brush and buttrushes. The poor
9	Good hay weather	creatures of course are continually
10	☽ sets 10h eve. again	covered with vermin, and appear
11	more unsettled	to be in the last stage of consump-
12	☽ ☽ M Low tides for	tion.
13	French Rev. coin. 1789.	Plant more potatoes. Look to
14	☽ per. ☽ ☽ some day	your fences, and see that they are
15	8th Sunday after Trinity	good. Weed early corn and cab-
16	Dr. Watts born, 1731	bage. Plant cucumbers enough
17	☽ sets 9h 5m eve. eighty	both for yourselves and the bugs.
18	Geo IV crowned 1321	Sow radishes—set out cabbages:
19	Margaret. Hightides	let their tops lie first an hour or so
20	degrees of heat	in very cold water—hoe them in
21	Magdalen wake	the morning.—Bleed fattening cattle
22	9th Sun aft Trinity ☽ out	—Don't forget to salt your cattle
23	☽ sets 9h 13m eve hay	often—When the dew is on attend
24	St James while the	to ploughing.—Remember cucum-
25	St Anne sun shines	bers for pickling. LADIES, it is time
26	☽ apogee, very low tides	to muster your forces and open the
27	☽ rises 2h 6m morn	campaign against those inveterate
28	☽ sets 8h 50m eve hazy	foes to comfort and peace and rest
29	10th Sun, after Trinity	the bugs and fleas.
30		Some BACKS OF HORSES.—White
31		head moistened with milk or sweet



VIII. Month. AUGUST, 31 Days. 1820.

In a certain small town, as the clergyman was holding forth in his usual drowsy manner, one of the deacons, probably influenced, by the narcotic qualities of the discourse, fell into a doze. The preacher happening to use these words. What is the price of all these earthly pleasures? the good deacon who kept a small store, thinking in his drowsy state, the inquiry related to some kind of merchandize, immediately answered, seven and six pence a dozen.

New Moon 3d day 3h. 7m even || First Q. tr. 10th day 20 even.

D	D	S	S	Days	S	Sun's	(	)	RIS	Moon	(	FULL
M	W	rises	SETS	length	S	decl N	λ	& SETS		South	PL	SEA
1	Tu	4 46	7 14	14 28	6 18	7 27	10 38	10 8	35	10 8	☾	5 14
2	W	4 47	7 13	14 26	6 17	52 28	11 29	10 59	24	10 59	☾	6 5
3	Th	4 48	7 12	14 24	6 17	36 6	EV 19	11 49	10	11 49	☾	6 53
4	F	4 50	7 10	14 20	6 17	20 1	1 9	EVEN 39	20	11 49	☾	7 45
5	S	4 51	7 9	14 18	6 17	4 2	1 58	1 28	18	11 49	☾	8 30
6	A	4 52	7 8	14 16	6 16	48 3	2 48	2 18	18	11 49	☾	9 20
7	M	4 53	7 7	14 14	6 16	32 4	3 38	3 8	18	11 49	☾	10 10
8	Tu	4 54	7 6	14 12	6 16	15 5	4 29	3 59	16	11 49	☾	11 1
9	W	4 55	7 5	14 10	6 15	58 6	5 23	4 53	14	11 49	☾	11 55
10	Th	4 57	7 3	14 6	6 15	40 7	6 19	5 49	14	EVEN 5	☾	12 50
11	F	4 58	7 2	14 4	6 15	23 8	7 17	6 47	28	12 50	☾	1 5
12	S	4 59	7 1	14 2	6 15	5 9	8 16	7 46	26	12 50	☾	2 55
13	A	5 07	0 14	0 5	14 47	10 9	9 14	8 41	26	12 50	☾	3 50
14	M	5 26	58 13	56 4	14 28	11 10	11 9	9 41	25	12 50	☾	4 44
15	Tu	5 46	56 13	52 4	14 10	12 11	11 5	10 35	24	12 50	☾	5 40
16	W	5 56	55 13	50 4	13 51	13 11	11 57	11 27	23	12 50	☾	6 38
17	Th	5 66	54 13	48 4	13 32	14 11	MORN. 14	MORN. 21	22	12 50	☾	7 2
18	F	5 76	53 13	46 4	13 13	15 0	45 0	15 18	8	12 50	☾	8 1
19	S	5 96	51 13	42 3	12 53	16 1	32 1	2 18	8	12 50	☾	8 55
20	A	5 106	50 13	40 3	12 34	17 2	18 1	18 7	8	12 50	☾	9 50
21	M	5 116	49 13	38 3	12 14	18 3	2 2	32 13	9	12 50	☾	10 45
22	Tu	5 136	47 13	34 3	11 54	19 3	47 3	17 25	10	12 50	☾	11 40
23	W	5 146	46 13	32 2	11 34	20 4	31 4	1 8	11	12 50	☾	12 35
24	Th	5 156	45 13	30 2	11 13	21 5	17 4	47 18	11	12 50	☾	1 30
25	F	5 176	43 13	26 2	10 53	22 6	4 5	31 11	MORN. 1	12 50	☾	2 25
26	S	5 186	42 13	24 2	10 32	23 6	53 6	23 12	1	12 50	☾	3 20
27	A	5 206	40 13	20 1	10 11	24 7	31 7	13 24	2	12 50	☾	4 15
28	M	5 216	39 13	18 1	9 59	25 8	3 8	3 26	3	12 50	☾	5 10
29	Tu	5 226	38 13	16 1	9 29	26 8	21 9	51 19	4	12 50	☾	6 5
30	W	5 246	36 13	12 1	9 7	27 10	14 10	44 10	5	12 50	☾	7 50
31	Th	5 266	34 13	8 0	8 46	28 11	5 11	35 15	5	12 50	☾	8 45

1826

May  
In two  
the cor  
a kind  
thirds

Full M

D	M	Phase
1	Tu	☾
2	W	☾
3	Th	☾
4	F	☾
5	S	☾
6	A	☾
7	M	☾
8	Tu	☾
9	W	☾
10	Th	☾
11	F	☾
12	S	☾
13	A	☾
14	M	☾
15	Tu	☾
16	W	☾
17	Th	☾
18	F	☾
19	S	☾
20	A	☾
21	M	☾
22	Tu	☾
23	W	☾
24	Th	☾
25	F	☾
26	S	☾
27	A	☾
28	M	☾
29	Tu	☾
30	W	☾
31	Th	☾

holding forth in his  
ly influenced. by  
ze The preach-  
price of all these  
alt's ore, thinking  
d of merchandize,  
en.

**Rearing Calves without milk.**

To the Agricultural Board of Trustees.—(England)

I lay before you the following method of rearing cattle without milk. In two or three days after they have calved, I take the calves from the cows, and put them into a house by themselves; I then give them a kind of water gruel, composed of barley about one third and two-thirds of oats, ground together very fine; I then sift the mixture

n day 20 even.

Moon	☾	FULL
South	PL	SEA
10	8 ☾	5 14
10	59 24	6 5
11	49 ☽	6 5
EVEN	39 20	7 4
1	28 ☽	8 3
2	18 18	9 2
3	8 ☽	10 1
3	59 16	11
3	4 53 17	11 5
5	49 14	EVEN 5
7	6 47 28	1 5
6	7 46 7	2 5
8	4 26	3 5
9	41 15	4 4
10	35 21	5 4
11	27 ☽	6 3
MORN	21	7 2
0	15 ☽	8
1	2 18	8
1	18 ☽	8 5
2	32 13	9 3
3	17 25	10 2
4	1 8	11
4	47 18	11 5
5	31 ☽	MORN 1
6	23 12	1 2
7	13 24	2 1
8	3 ☽	3
9	51 19	4
10	44 ☽	4 5
11	35 10	5 4

Full Moon 17th day 1h even. || Last Qtr 25th day 10h 55m morn.

D	Aspects, Holidays, Weather, &c	Farmer's Calendar.
1	Lammas day, ☽ 2 more	oil, is the best remedy for sore
2	☽ rises 1h 55m morn	hay backs of horses, and if applied in
3	☽ sets 8h 46m eve	wea the early stage of the wound is al-
4	High tides	ther for ways efficacious.
5	☽ sets 10h 59m even	Toorn Aena, it is said that this
6	11th Sund. aft Trin. Transfig	afflicting disorder can be immedi-
7	☽ sets 8h 25m ev	[of our Late]ly relieved, by holding in the
8	some days.	month a mixture of Salt, Vinegar,
9	☽ sets 8h 38m eve.	and Spirits, in the proportion of a
10	St Lawrence, ☾ perogee.	table spoonful of spirits, the same
11	Lowtides	cooler with of sharp vinegar, and a tea spoon-
12	Geo IV born 1762	high full of Salt.
13	12th Sund. aft Trinity	Chancoal well pulverized is the
14	☽ ris 1h 10m morn	wind best tooth powder that can be used
15	very fine for the	both to keep the teeth white & to
16	D of York born 1763.	prevent their decay, If you will
17	☽ sets 7h 53m ev	season pulverize it, heat it red hot on a
18	High tides	warm shovel, and then put it in a bottle
19	13th Sund aft Trin	breezes with a tooth brush it is still better.
20	D Char ba 1765 ☽ sets 10h 16m	"Dont you fret."
21	☽ enters ♉	[even O! no Mr. Testy, there is e-
22	☽ enters ♉ with thunder	nough else to do this month. Come
23	St Barth'mew. ☾ apo. and	come suppose now it should so hap-
24	☽ sets 7h. 27m. eve.	cool. pen that your hired man has left
25	Low tides	with high the rake or pitch-fork in the field,
26	14th Sunday after Trinity.	this is no cause for fretting. Should
27	St Augustine.	winds and the cow happen to bite a piece off
28	St. John Bapt. beheaded	the grind-stone, how can fretting
29	Inf. ☽ ☽	rain from replace it? Again, if your good
30	☽ rises 0h 14m morn	N E wife having much to do, should be

IX. Month SEPTEMBER, 30 Days. 1826

through a fine sieve; put it into the quantity of water (mentioned below;) and boil it half an hour—when I take it off the fire, and let it remain till it is milk warm—I then give each calf about a quart in the morning, and the same quantity in the evening, and increase it as the calf grows older. It requires very little trouble to make them drink it. After the calves have had this diet for about a week or ten days, I tie up a bundle of hay, and put in the middle of their pen,

New Moon 24 day 10 28 a moon || First Qu. 8th day 7 31 an even

D	L	S	S	Days	S	Sun's	☉	(RIS	Moon	☽	Foot			
M	W	Rises	SETS	length	F	decl N		X SETS	South	PL	SEA			
1	F	5	27 6	53	13	6	0	8 24	25	5 14	11 2	29	6	31
2	S	5	25 3	3	13	2	1 1/2	8 2	♂	SETS	EVEN	10	7	22
3	A	5	31 6	29	12	58	1	7 40	1	7 29	1	7	27	8 13
4	M	5	32 6	23	12	56	1	7 18	2	8 4	2	0	26	9 6
5	Tu	5	33 6	27	12	54	1	6 56	3	8 42	2	55	26	10 1
6	W	5	35 6	25	12	50	2	6 33	4	9 21	3	51	11	10 57
7	Th	5	36 6	24	12	48	2	6 11	5	10 12	4	49	25	11 55
8	Fr	5	37 6	23	12	46	2	5 48	6	11 7	5	48	↑	EVEN 54
9	S	5	39 6	21	12	42	3	5 26	7	MORN.	6	46	23	1 52
10	A	5	40 6	20	12	40	3	5 3	8	0 37	7	43	23	2 49
11	M	5	42 6	18	12	36	3	4 40	9	1 12	8	37	25	3 43
12	Tu	5	43 6	17	12	34	4	4 17	10	2 19	9	29	26	4 35
13	W	5	45 6	15	12	30	4	3 55	11	3 27	10	18	17	5 24
14	Th	5	46 6	14	12	28	4	3 3	12	4 32	11	5	18	6 11
15	Fr	5	48 6	12	12	24	5	3 8	13	5 36	11	59	18	5 56
16	S	5	49 6	11	12	22	5	2 45	14	RISES	MORN.	26	7	41
17	A	5	51 6	9	12	18	6	2 22	15	7 6	0	35	9	8 0
18	M	5	52 6	8	12	16	6	1 59	16	7 35	1	20	21	8 26
19	Tu	5	54 6	6	12	12	6	1 36	17	8 17	2	5	8	9 11
20	W	5	56 6	4	12	8	7	1 12	18	8 43	2	59	15	9 56
21	Th	5	57 6	3	12	6	7	0 49	19	9 23	3	37	26	10 43
22	Fr	5	59 6	1	12	2	7	0 26	20	10 8	4	25	□	11 31
23	S	6	0 6	0	12	0	8	0 0	21	10 58	5	14	20	MOR. 20
24	A	6	2 5	58	11	56	8	S 20	22	11 53	6	3	26	1 9
25	M	6	3 5	57	11	54	8	0 44	23	MORN.	6	53	14	1 59
26	Tu	6	5 5	55	11	50	9	1 7	24	0 52	7	42	27	2 48
27	W	6	6 5	54	11	48	9	1 31	25	1 55	8	32	28	3 33
28	Th	6	8 5	52	11	44	9	1 54	26	3 2	9	22	21	4 23
29	Fr	6	10 5	50	11	40	10	2 17	27	4 11	10	12	22	5 18
30	S	6	11 5	49	11	38	10	2 41	28	5 20	11	3	21	6 9

1826

which  
meal  
ally;  
man  
they  
them  
Ab

Foot

D	M
1	
2	
A	
4	
5	
6	
7	
8	
9	
A	
11	
12	
13	
14	
15	
16	
A	
18	
19	
20	
21	
22	
23	
A	
25	
26	
27	
28	
29	
30	

water (mentioned of the fire, and let about a quart in and increase it as to make them about a week or riddle of their pen,

which they will by degrees, come to eat. I also put a little of the meal (above mentioned) into a small trough for them to eat occasionally; which I find of great service to them. I keep them in this manner, till they are of a proper age to turn to grass; before which, they must be at least two months old. Therefore, the sooner I get them in the spring the better.

About a quart of the aforesaid meal mixed with three gallons of wa-

ay 7 31to even

Full moon 16 n day 1 n 3 n mor. || Last Q. cr. 24 n day 5 n 18 n mor.

Moon	PL	Foot	SEA
1	27	6	31
2	27	7	22
1	7	8	13
2	0	9	6
2	55	10	1
3	51	10	57
4	49	11	55
5	48	1	54
6	43	2	52
7	43	2	49
8	37	3	43
9	29	4	35
10	18	5	24
1	5	6	11
1	59	5	56
MORN	26	7	41
0	35	8	0
1	20	8	26
2	5	9	11
2	59	9	56
3	37	10	43
4	25	11	31
5	14	MOR.	20
6	3	1	9
6	53	1	59
7	42	2	48
8	32	3	33
9	22	4	23
0	12	5	18
1	3	6	9

D	Aspects, Holidays, Weather &c.	Farmer's Calendar.
1	Gues unsettled to	a little forgetful about the cooking,
2	London burnt 1666, O S	and the pudding should come out
A	15th Sun. aft. Trin. some	rather in the splashy style, or she
4	♀ sets 8h. eve. days	should have tied it with a green
5	♂ per. ♂ ♀. much	string and spoilt it, fret warmly as
6	♂ rises 11h 59m. eve finer	you will it can never remedy it.
7	for some days	If the shower wets your hay, do
8	Nativity of B V Mary 8 stat	the clouds care for your fretting
9	Low tides some showers	about it? But you say that your
A	16h Sun. aft. Trinity.	men will tittle, and thus perplex
11	with thunder	you Now my friend, let me ask,
12	♀ sets 9h 42m. eve	how goes it with yourself in this
13	♀ sets 7h. 49m. eve wind	respect? Do you never touch the
14	Moscow burnt, 1812,	grog bottle, nor the Brandy case?
15	very fine	Have you no sling in the morning,
16	Gr. elong. ♂ cover	nor eleven o'clock nor 4 o'clock
A	17th Sund aft. Trinity.	drams?—the force of example, you
18	♂ ♀ 2 High tides with	know is most powerful. Ardent
19	♂ rises 10h 7m. eve. wind	spirits causes a sort of derange-
20	♂ sets 9h 33m. eve.	ment of the senses, and perhaps
21	St. Matthew ☉ apogee.	this is the very cause of your mo-
22	♀ sets 7h 39m eve	rose and fretful disposition. If so
23	☉ ensers ♀ grows	dash the poison from your lips,
A	18th Sund. after Trinity.	before ruin and death and destruc-
25	Low tides much	tion hath fastened you down in
26	St. Cyprian. finer	their dark and dismal depths. The
27	♂ rises 10h. 49m. eve.	following remedy it attended to,
28	♂ stationery. cloudy	may prove of service to you.—
29	St. Mich Q. of Wirt 6 1766	“ Whenever you feel an inclinati-
30	St. Jerome, ♂ 8 2.	on to drink spirituous liquors drink

X Month.

OCTOBER; 31 Days:

1826

ter, is sufficient for twelve calves in the morning, and the same quantity in the evening. I increase the quantity in proportion as they grow older.

By this method I have reared between fifty and sixty calves within these four years; forty of which I have now in my possession, having sold off the others, as they became of a proper age; and by the same method calves may be reared with a trifle of expence.

I am, gentlemen, your most humble servant, WM. BUDD.

New Moon, 1st day 11h 15m morn|| First Qtr 8th day 2h 56m morn

D	D	S	S	Days	S	Sun's	D	D	RIS.	Moon	M	FULL	
M	W	RISES	SETS	length	F	dec	S	A	& SETS	South	PL	SEA	
1	A	6	13 5	47	11	31	10	3	4	♂	SETS	II 56	7 2
2	M	6	14 5	46	11	32	11	3	28	1	6 46	EVEN 52	21 7 58
3	Tu	6	16 5	44	11	28	11	3	51	2	7 29	I 50	11 8 53
4	W	6	17 5	43	11	26	11	4	14	3	8 17	2 50	20 9 56
5	Th	6	19 5	41	11	22	12	4	37	4	9 11	3 50	10 56
6	F	6	20 5	40	11	20	12	5	0	5	10 11	4 50	19 11 56
7	S	6	22 5	38	11	16	12	5	24	6	11 16	5 48	15 EVEN 54
8	A	6	23 5	37	11	14	12	5	47	7	MORN	6 43	17 1 49
9	M	6	25 5	35	11	10	13	6	9	8	0 30	7 35	22 2 41
10	Tu	6	26 5	34	11	8	13	6	32	9	1 28	8 24	14 3 30
11	W	6	27 5	33	11	6	13	6	55	10	2 33	9 11	27 4 17
12	Th	6	29 5	31	11	2	13	7	18	11	3 37	9 56	27 5 2
13	F	6	30 5	30	11	0	14	7	40	12	4 39	10 40	22 5 46
14	S	6	32 5	28	10	56	14	8	3	13	5 37	11 24	27 6 30
15	A	6	34 5	26	10	52	14	8	25	14	RISES	MORN	17 7 15
16	M	6	35 5	25	10	50	14	8	47	15	6 16	0 9	29 7 40
17	Tu	6	37 5	23	10	46	15	9	9	16	6 59	0 51	8 8 0
18	W	6	38 5	22	10	44	15	9	31	17	7 28	1 40	23 8 46
19	Th	6	40 5	20	10	40	15	9	53	15	8 11	2 27	11 9 33
20	F	6	41 5	19	10	38	15	10	15	19	8 59	3 16	16 10 22
21	S	6	43 5	17	10	34	15	10	33	20	9 51	4 4	28 11 10
22	A	6	44 5	16	10	32	15	10	58	21	10 47	4 53	31 11 59
23	M	6	46 5	14	10	28	16	11	19	22	11 47	5 41	22 MOR 47
24	Tu	6	47 5	13	10	26	16	11	40	23	MORN.	6 29	1 1 35
25	W	6	48 5	12	10	24	16	12	1	24	0 51	7 17	18 2 23
26	Th	6	50 5	10	10	20	16	12	22	25	1 56	8 6	12 3 12
27	F	6	51 5	9	10	18	16	12	42	26	3 4	8 55	15 4 1
28	S	6	53 5	7	10	14	16	13	2	27	4 15	9 46	29 4 45
29	A	6	54 5	6	10	12	16	13	22	28	5 28	10 40	27 5 42
30	M	6	55 5	5	10	10	16	13	42	0	SETS	11 33	29 6 46
31	Tu	6	57 5	3	10	6	16	14	2	1	6 9	EVEN 37	11 7 43

182

dal

Full

D M

A  
2  
3  
4  
5  
6  
7  
A  
9  
10  
11  
12  
13  
14  
A  
16  
17  
18  
19  
20  
21  
A  
23  
24  
25  
26  
27  
28  
A  
30  
31

1826

1826. OCTOBER, begins on Sunday. Autumn.

This intelligence was deemed fully satisfactory, and the gold medal was accordingly adjudged to Mr. Budd.—Lon. Mag.

AUTUMN.

“Crown'd with the sickle and the wheaten sheaf;  
White Autumn, nodding o'er the yellow plain,  
Comes jovial on —————”

and the same quantity as they

ty calves within possession; having; and by the expence.

WM. BUDD.

lay 2h 56m morn

Full Moon, 15m day on 32m even || 23d day 10h 30m even  
|| New Moon 30 h day 9h 7m even

MOON	M	FULL
South	PL	SEA
I 53	△	7 2
VEN 52	21	7 58
I 50	∩	8 56
2 50	20	9 56
3 50	∩	10 56
4 50	19	11 56
5 48	∩	EVEN 54
6 43	17	1 49
7 35	∩	2 41
8 24	14	3 30
9 11	27	4 17
10 56	∩	5 2
11 40	22	5 46
12 24	∩	6 30
MORN 17	7	7 15
1 9	29	7 40
2 51	8	8 0
3 40	23	8 46
4 27	∩	9 33
5 16	16	10 22
6 4	28	11 10
7 53	∩	11 59
8 41	22	MOR 47
9 29	∩	1 35
10 17	18	2 23
11 6	∩	3 12
12 53	15	4 1
13 46	29	4 45
14 40	∩	5 42
15 33	29	6 46
16 37	∩	7 43

D	Aspects, Holidays, Weather. &c.	Farmer's Calendar.
---	---------------------------------	--------------------

1	19th Sun. after Trinity.	cool fresh water." Obey the direction, & even if you are the greatest drunkard, you will become a sober temperate man.
2	very fine weather	This is a happy season in which Divine goodness lavishes all sorts of fruit upon us in abundance. The charms of Summer give place to more solid enjoyments. The boughs of the Apple tree bend under the weight of that golden fruit the beauty of which is still heightened by its purp'e streaks. The melting pear, the plum, sweet as honey, display their charms and seem to unite the hand of the master. Should we not be unpardonable, if the sight of these blessings which we owe, as we do all others, to the munificence of God, did not create in us grateful reflections, and by such means sanctify the pleasures of autumn?
3	☉ per. very high tides	Finish cutting curing and screwing corn-stalks. Muster all hands, and attend vigorously to your potatoe fallows, let digging, housing and marketing be the order of the day. One man with a hook fork can throw out of the hill as many as 5 or 6 hands can pick up and
4	☽ sets 7h 29m eve. signs of rain and	
5	☽ S 5h 40m morn.	
6	☽ sets 9h 21m eve.	
7	20th Sun alt Trin. grows	
8	St Denys, Low tides	
9	cooler	
10	now comes on a heavy storm	
11	Sup. ☉ ☽	
12	Tran of K Ed. Con. Gr el.	
13	☉ sets 7h 23m eve.	
14	21st Sunday after Trinity	
15	pleasant for some days	
16	St Luke, ☉ apo ∩ stat.	
17	Rain may be	
18	☽ S 4h 48m morn now	
19	☽ sets 9h 14m eve.	
20	22d Sun of Trin. expected	
21	☉ enters ∩ frost	
22	Low tides bright	
23	Crisp and cool	
24	∩ sets 7h 17m eve	
25	☽ S 4h 22m morn again	
26	St Simon & St Jude fine	
27	23d Sun alt. Trinity	
28	☉ eclipsed in v. stormy	
29	☉ per. very high tides,	
30		
31		



1826. NOVEMBER, begins on Wednesday Autumn.

1826.

unseller at law  
 uted in Scac-  
 more law than  
 eny. the court  
 ff should have  
 d not declared  
 that if C. had

no bull the scandal was the greater. And it was pronounced per curiam in the same case, that to say of a lawyer that 'he has no more law than a goose,' has been adjudged actionable. — There is a quere added, as to the saying, 'He hath no more law than the man in the moon' (1b 2. Bib. 208 :) the law doubtless contemplating the possibility of their being a man in the moon, and of his being a good lawyer.

11h 55m morn

Last Qtr 22d day 1h 45m eve || New Moon 29h day 7h 23m morn:

Month	PL	FULL SEA
38	29	8 44
41	7	9 47
42	25	10 43
40	15	11 46
31	27	EVEN 10
24	13	1 30
12	21	2 18
57	1	3 3
41	19	3 47
24	7	4 30
8	14	5 14
52	26	5 53
38	8	6 44
20	20	7 30
24	13	8 0
12	21	8 24
0	25	9 6
43	5	9 54
36	19	10 42
23	3	11 29
9	14	morn
56	27	1 2
43	12	1 49
31	23	2 37
21	1	3 27
15	22	4 21
12	11	5 18
12	23	6 18
11	7	7 20
17	22	8 23

Day	Aspects, Holidays, Weather &c.	Farmer's Calendar.
1	All Saints	far
2	All Souls	cold with rain
3	Princess Sophia born 1777	useful here, at least, if no bigger
4	☽ sets 7h 12m eve	than Tom thumb or the men of
5	21h Sun. aft Trinity Pow.	Lilliput; let them be here and in
6	☾ ☽ ☽ [der Plot, 1605]	gathering apples. Get the cider
7	Low tides	mills in order and begin making
8	Prs. Aug Sophia born 1768	early cider, before the apples
9	☉ rises 3h 20m morn	which fall off, are rotted and was-
10	☾ ☽ 3h 25m morn	ted.
11	St Martin	Pshaw, pshaw, Mr. Draggel,
12	☽ sets 7h 12m eve	this is no way to make cider, I
13	25th Sun aft Trinity	would as soon drink from a duck-
14	☽ sets 7h 6m eve	pond as to take a draught of your
15	☉ eclipsed, partly visible	liquor, thus made of rotten apples,
16	☽ apogee	cats' dung and tobacco ends; and
17		your cask too smells as stenchy as
18	☽ sets 9h 7m eve	in her seat! Now the rules laid
19	26th Sunday after Trinity	down by farmer Snug are these;
20	Ed K and Martyr, ☽ ☽ 2h	' see that your mill, press, and all
21	☽ r 2h 52m mor [42m morn	the materials are sweet and clean,
22	Cecilia, ☽ enters ☽ snow	and the straw free from must. The
23	St Clement	fruit should be ripe, but not rotten,
24	☽ sets 6h 47m eve cloudy	and when the apples are ground,
25	Dr Watts died. 1748	let them remain from 12 to 24 hours
26	27th Sunday after Trinity	according to the heat of the wea-
27	☽ sets 9h 5m eve great	ther, and the cider will be richer,
28	Gr elonga ☽ signs of snow	softer and higher coloured. The
29	☽ eclips partly visible, ☽ pe	fruit should be all of one kind.—
30	St Andrew, tides quite high	Place the juice in an open vat as
		it comes from the press for ferment-





ays. 1826.

1826. DECEMBER, begins on Friday. Winter.

All have perished and thou art fled, to add  
 Unto a past eternity — that sea  
 Which swallows in its deep devouring gorge,  
 Days, months, and years; and ravest still for food.  
 Farewell departed year! we too, bid thee,  
 Shall die, and mingle with eternity.  
 Eternity! — It is our only home.

... 7h 18m ...

Month	PL	FULL	SEA
2	13	9	25
3	17	10	23
4	10	11	16
5	0	20	6
5	47	0	51
6	32	1	38
7	1	29	2
7	58	3	4
8	42	3	43
9	27	4	31
10	12	5	19
10	59	6	5
11	47	6	53
MORN	22	7	41
0	35	8	0
1	23	8	29
2	10	9	16
2	57	10	3
3	43	10	49
4	28	11	31
5	14	20	11
6	2	1	8
6	51	1	57
7	44	2	50
8	41	3	47
9	40	4	46
10	42	5	48
11	44	6	50
EVEN	14	7	50
1	42	8	48
2	35	9	41

last Quarter 24 day 2h 2m ... New Moon 28th day 6h 7m ...

Aspects, Holidays, Weather &c	Farmer's Calendar.
1	2 rises 2h 18m.
2	1, S 1h. 47m morn all
4	Advent Sunday. ♀ stat
4	♀ sets 6h. 19m eve sorts
5	♂ sets 9h 3m eve of
6	Nicolas ♀ stat weather
7	Low tides as the old lady
8	Conception of B. V. M said
9	'some kind of weather'
11	2d Sunday in Advent every
11	♂ rises 1h 41m morn day
12	☉ upogee and as good as
13	Lucy the astronomer in
14	Rasselas dealt out
15	High tides Now look
16	Inf ♂ ♀ out for
18	3d Sunday in Adv. a storm
18	h S 0h 32m morn snow
19	♂ sets 9h eve Blustrous
20	♂ rises 1h 8m morn wind
21	St. Thomas more comfort
22	☉ enters ♀ with snow
23	Inf ♂ ♀ or rain
25	4th Sunday in Advent
25	Christmas Day grows finer
26	St. Stephen ♂ stat. very
27	St. John ☉ overtree fine
28	Innocents ♂ ☉ ♀ for
29	High tides day or so
30	♂ S 1h 32m eve cold
A	1st Sunday after Christmas

D

## JUSTICES LAW,

The following information, and forms may not be unacceptable to some of our friends who have not the necessary books to refer to.

Burn's Justice. } In all legal proceedings, the person complained of  
5 vol p 231 } ought to have notice of the charge laid against him  
and to have an opportunity of being heard in his own defence; consequently where a person is accused before the Justices they ought to summon the party to appear or issue their warrant to bring him before them. The manner of conveying the parties is sometimes directed by the acts of Parliament creating the respective officers, which therefore ought to be pursued accordingly.—In other cases, where it is left discretionary in the Justices, it seemeth most agreeable to the mildness of our laws to put the party to no more inconvenience than needs must, and therefore where the case will bear it a summons seems more apposite than a compulsory process. But in case of sureties of the peace, petty larcenies and other felonies, and generally where the king is party, and also in cases between party and party, where the body of the offender is liable, a warrant is the regular process and not a summons.

In the summons it is usual, and upon many accounts convenient to fix not only a day but a particular time of the day for the appearance of the party: but if he shall appear at the time, and the Justice shall not attend, he is not to go away, but must wait during the remaining part of the day, for many things may happen to hinder the Justices immediate attendance.

### General Form of a Summons.

Lunenburg SS.  
To either of the Constables of \_\_\_\_\_ in the said County.

Whereas information and complaint hath been made before me Thomas Rinch, Esq. one of His Majesty's Justices of the Peace for the said county that Patrick Tremble of \_\_\_\_\_ in the county aforesaid, Yeoman on the 10th day of August last past at \_\_\_\_\_ in the county aforesaid did (here set forth the offence as charged in the information )

The  
Pat. T  
said C  
in the  
and co  
you th  
Herein  
of

L

Whe  
Esq on  
that (h  
Truenn  
ness to

Thes  
Truenn  
day the  
forenoc  
premise  
first day

Ki

at-ables  
For a  
said, Y  
one of t  
within  
Doubt  
ed beat

These are therefore to require you forthwith to summon the said Pat Tremble to appear before me at my house in \_\_\_\_\_ in the said County on the \_\_\_\_\_ day of \_\_\_\_\_ next at the hour of 11 o'clock in the forenoon of the same day, to answer to the said information and complaint and to be further dealt with according to Law; and be you then there to certify what you shall have done in the premises. Herein fail you not — Given under my hand and seal the \_\_\_\_\_ day of \_\_\_\_\_ in the year of our Lord, 1826.

THOMAS RINCH (LS)

---

### Summons of a Witness.

Lunenburg. SS.

To either of the Constables of

Whereas information hath been made before me James Dartchorf Esq. one of His Majesty's Justices of the Peace for the said county that (here set forth the substance of the complaint) and that Peter Trueeman of \_\_\_\_\_ in the said county, Yeoman, is a material witness to be examined concerning the same;—

These are therefore to require you to summon the said Peter Trueeman to appear before me at \_\_\_\_\_ in the said county on Tuesday the fifth day of Sept. inst. at the hour of eleven o'clock in the forenoon of the same day to testify his knowledge concerning the premises — Herein fail you not. Given under my hand and seal the first day of September, A D 1826.

JAMES DARTCHORF. (LS)

---

### Warrant of the Peace for good Behaviour.

Kings. SS.

To the Sheriff of the county of Kings or to either of the constables of the said County,—Greeting—

For as much as Jacob Weakhead of \_\_\_\_\_ in the county aforesaid, Yeoman, hath personally come before me Daniel Trusty Esq. one of the Justices of our Lord the King assigned to keep the Peace within the said county and hath taken his corporeal oath, that Joshua Doubtless of \_\_\_\_\_ in the county aforesaid Yeoman hath assaulted beaten and wounded him the said Jacob Weakhead, and is afraid

be unacceptable to  
books to refer to.

as in complained of  
re laid against him  
own defence; con-  
stices they ought  
ut to bring him be-  
asis sometimes dis-  
pective officers,  
—In other cases,  
meth most agree-  
no more inconve-  
case will bear it a  
process. But in  
ther felonies and  
es between party  
, a warrant is the

nts convenient to  
or the appearance  
t the Justice shall  
ng the remaining  
der the Justices

the said County.

made before me  
f the Peace for  
in the county  
st at  
ce as charged in

That the said Joshua Doublehim will beat him (wound, maim, kill or do to him some bodily hurt) and hath therefore prayed surety of the peace against him the said Joshua Doublehim (or if for the good behaviour, that J D— of — in the said county. Yeoman hath threatened to do some bodily hurt to him the said J W— or to burn the house of him the said J. W— as the case appears and hath herebefore prayed surety for the good behaviour against him the said J D).

These are therefore on the behalf and in the name of our said Lord the King to command you jointly and severally that immediately upon the receipt hereof you bring the said Joshua Doublehim before me, to find surety as well for his personal appearance at the next general Sessions of the peace to be holden at Horton in and for the said county, as also for his keeping the peace (or for his being of the good behaviour) in the mean time towards the King and all his liege people, and chiefly towards the said Jacob Weakhead. Given under my hand and seal at Cornwallis in the said County, the ninth day of July, in the seventh year of the reign of King George the fourth, and in the year of our Lord, 1826

DANIEL TRUSTY. (L.S.)

Note.—For other forms or warrants for the peace or good behaviour, see 5th Vol. Burns Justice, pages 257 to 261.

### Recognizances for the Peace or Good Behaviour.

Kings SS:

Be it remembered, That on the ninth day of Sept. in the year of our Lord, one thousand eight hundred and twenty-six, Joshua Doublehim of ——— in the County afore said, Yeoman, Joseph Transit of the same place Yeoman and Timothy Spooner of the same place Trader, came before me George Powerful, Esq. one of the Justices of our Lord the King assigned to keep the peace within the said county, and acknowledged themselves to owe to our said Lord the King, to wit the said Joshua Doublehim the sum of Forty Pounds, and the said Joseph Transit the sum of Ten pounds, and the said Timothy Spooner the sum of Ten pounds, of good and lawful money of Nova Scotia to be respectively made and levied of their several goods and chattels, lands and tenements to the use of our said Lord the King, his Heirs and Successors, if he the said Joshua Doublehim shall fail in performing the condition undermentioned.

Acknowledged before me

GEORGE POWERFUL, J. P.

The  
den Jo  
Session  
do and  
court a  
behavo  
toward  
then th

Releas

Ha  
Be it  
County,  
Lord, or  
Michael  
keep the  
ty, and t  
good beh  
in the sai

Lunc

Where  
is now br  
of our Lor  
County, r  
him to a h  
eral sessi  
and in the  
towards o  
cially to J  
And when  
refuse bef  
name of c

nd. maim. kill or  
ved surety of the  
for the good be-  
oman hath threa-  
— or to burn  
appears and hath  
inst him the said

ame of our said  
ly that immedi-  
shua Doublehim  
pearance at the  
orton in and for  
or for his being  
e King and all  
cob Weakhead.  
said County, the  
of King George

TY. (LS.)  
e or good beha-

Behaviour.

in the year of  
ty-six. Joshua  
oman, Joseph  
pooney of the  
ol, Esq. one of  
e peace within  
we to our said  
e sum of Forty  
pounds, and the  
good and lawful  
levied of their  
the use of our  
the said Joshua  
ermentioned.

The condition of this recognizance is such, that if the above bounden Joshua Doublehim shall personally appear at the next general Sessions of the Peace to be holden in and for the county aforesaid to do and receive what shall then and there be enjoined him by the court and in the mean time shall keep the peace (or be of the good behavior towards the King and all his liege people, and especially towards Jacob Weakhead of — in the said County, Yeoman then the recognizance shall be void, or else remain in its force.

Release of the Surety of the Peace or Good Behaviour:

Hants, SS.

Be it remembered that Jacob Weakhead of — in the said County, Yeoman, on the twentieth day of Octr. in the year of our Lord, one thousand eight hundred and twenty six came before me Michael Fleming, Esq. one of the Justices of our Lord the King to keep the peace within the said County, at — in the said county, and there remised and freely released the surety of the peace (or good behaviour) which he has against Joshua Doublehim of — in the said County, Yeoman. Given under my Hand and Seal,  
MICHAEL FLEMING, (LS)

Mittimus for want of Sureties-

Lunenburg SS.

To the Sheriff of —

Whereas Patrick Terrible of Chester, in the said county, yeoman, is now brought before me, Lewis Churchill, Esq. one of the Justices of our Lord the King assigned to keep the Peace in and for the said County, requiring him to find sufficient sureties to be bound with him in a Recognizance for his personal appearance at the next general sessions of the peace to be holden in and for the said County, and in the mean time to keep the peace (or be of good behaviour) towards our said Lord the King, and all his liege subjects, and especially to James Meanwell of — in the said county, yeoman: — And whereas he the said Pat Terrible hath refused and doth now refuse before me to find such sureties: these are therefore in the name of our said Lord the King to command you the said Sheriff

forthwith to convey the said Pat Tremble to his Majesty's Jail a  
\_\_\_\_\_ in the said county ; and I do in the name of our said Lord the  
King hereby cominand you the said Sheriff to receive the said Pat  
Tremble into your custody in the said jail, and him there safely keep  
until he shall find sufficient sureties as aforesaid.

Given under my hand and Seal at Chester in the said county, this  
twenty fifth day of October, Annoque Domini, 1826.

---

### The form of a Supersedeas.

---

Lunenburg, SS.

Francis Ramsay Esq. one of the Justices of our Lord the King  
assigned to keep the peace within the county aforesaid—To the  
Sheriff, Constables and others, the faithful ministers and subjects of  
our said Lord the King, within the said county, and to every of them  
—Greeting.

Forasmuch as P. T. of \_\_\_\_\_ in the said county, yeoman, hath  
personally come before me at Dublin in the said county, and hath  
found sufficient surety that is to say, M S of \_\_\_\_\_ Yeoman, and  
B S. of \_\_\_\_\_ yeoman, either of the which hath undertaken for  
the said P. T. under the pain of Twenty pounds, and he the said P. T.  
hath undertaken for himself under the pain of Forty pounds,  
that he the said P. T. shall personally appear at the next  
general sessions of the peace, to be holden in and for the said coun-  
ty, then and there to do and receive what shall be enjoined him by  
the said Court, and in the mean time shall well and truly keep the  
peace towards our said Lord the King and all his liege people espe-  
cially towards J. M. of \_\_\_\_\_ Yeoman, therefore on behalf of our  
said Lord the King, I do command you and every of you, that you ut-  
terly forbear and surcease to arrest, take, imprison, or otherwise by  
any means for the said cause to molest the said P. T. and if you have  
for the said occasion and none other, taken and imprisoned him the  
said P. T. that then him you deliver or cause to be delivered and  
set at liberty without further delay—Given at Dublin aforesaid in the  
county aforesaid this thirtieth day of Octr. Annoque Domini 182

FRANCIS RAMSEY (L. S.)

Lib

Jo  
signe

as P.  
at th  
his fi  
Gene  
ty an  
Lord  
said

coun  
under  
taken  
P. T.  
of the  
and to  
King a

The  
that if  
for non  
longer,  
and tha  
Give  
this fir

L  
The

his Maj  
in the y  
that on  
early in

Majesty's Jail a  
our said Lord the  
ve the said Pat  
here safely keep

said county, this

Lord the King  
oresaid—To the  
rs and subjects of  
to every of them

ty. yeoman, hath  
county. and hath  
— Yeoman, and  
undertaken for  
he the said P. T.  
Forty pounds,  
or at the next  
of the said coun-  
joined him by  
truly keep the  
ge people espe-  
n behalf of our  
you, that you ut-  
or otherwise by  
and if you have  
isoned him the  
delivered and  
aforesaid in the  
e Domin 182

SEY (L. S.).

## Liberate to discharge one committed for want of sureties.

Lunenburg, SS.

John Malcolm, Esq. one of the Justices of our Lord the King as-  
signed to keep the peace in the county aforesaid.

To the Sherriff of the said county. Greeting. Forasmuch  
as P. T. in His Majesty's Jail at \_\_\_\_\_ in your custody now being  
at the suit of J. M. of \_\_\_\_\_ in the said county Yeoman for the want of  
his finding sufficient sureties for his personal appearance at the next  
General Sessions of the Peace to be holden in and for the said coun-  
ty and for his keeping the peace in the mean time towards our said  
Lord the King and all his liege subjects and especially towards the  
said J. M. hath found before me sufficient sureties, to wit. M. S. of  
\_\_\_\_\_ in the county aforesaid. yeoman, and B. S. of \_\_\_\_\_ in said  
count y yeoman, either of which hath undertaken for the said P. T.  
under the pain of twenty ponnys and he the said P. T. hath under-  
taken for himself under the pain of Forty pounds, that he the said  
P. T. shall and will personally appear at the next General Sessions  
of the Peace, to be holden in and for the said county, and shall well  
and truly keep the peace in the me oline towards our said Lord the  
King and all his liege people, and especially towards the said J. M.

Therefoe on behalf of our said Lord the King I do command you,  
that if the said P. T. do remain in the said Jail for the said cause and  
for none other, then you forbear to grieve or or detain him any  
longer, but that you deliver him thence and suffer him to go at large  
and that upon the pain that will fall thereon.

Given under my hand and seal at Lunenburg in the said county  
this first day of Novr: Annoque Domini 1826

JOHN MALCOLM, (L S.)

## Information against a Person for Felony:

Lunenburg SS.

The information and complaint of A. J. of \_\_\_\_\_ in the county  
\_\_\_\_\_ Yeoman made on oath before me John Search Esq one of  
His Majesty's Justices for the said county, the tenth day of January,  
in the year of our Lord one thousand eight hundred and twenty six,  
that on the night of Tuesday last the eight day of January last or  
early in the morning of the next day, divers goods of him the said A.



At \_\_\_\_\_ aforesaid in the county aforesaid, and that he hath just cause to suspect and doth suspect A O late of \_\_\_\_\_ Yeoman feloniously did steal take and carry away the same (or otherwise as the case shall be) and thereupon he the said A J. prayeth that justice may be done in the premises.

Before me JOHN SEARCH J P.

### Warrant for Felony.

Lunenburg SS

To the Sheriff of Lunenburg or either of the Constables of said County

Forasmuch as A J of \_\_\_\_\_ in the county of \_\_\_\_\_ Yeoman, hath this day made information and complained upon Oath before me John Search Esq. one of his Majesty's Justices of the Peace for the said county that on the eighth day of January inst divers goods of him the said A J to wit (here enumerate them) have feloniously been stolen taken and carried away from the house of him the said A J at \_\_\_\_\_ aforesaid in the county aforesaid, and that he hath just cause to suspect and doth suspect that A O late of \_\_\_\_\_ Yeoman, feloniously did steal take and carry away the same (or otherwise as the case shall be) These are therefore to command you forthwith to apprehend him the said A O and to bring him before me to answer unto the said information and complaint and to be further dealt with according to law Herein for you not given under my hand and seal the 10th day of January A D 1826.

JOHN SEARCH, J P.

### Form of a warrant of commitment for felony and larcency.

County of \_\_\_\_\_ ) John Search Esq one of the Justices of our  
Lunenburg SS; ) Lord the King assigned to keep the peace within  
the said County. ) To the Sheriff of Lunenburg and to either of  
the Constables of the said County.

These are to command you the said Constables jointly and severally in his Majesty's name forthwith to convey to his Majesty's Jail at Lunenburg and deliver unto the custody of the said Sheriff the body of Peter Terrible charged upon the oath of Andrew Lupey of

Cher  
the  
ceiv  
to re  
G  
the s

NO  
&c. se

I Geo  
Cub  
revere  
or Jus  
such t  
same  
not abo  
3 Geo  
cap xx  
to their  
five pe  
Peace  
debtors  
fore any  
more th  
two J  
upon ex  
proof be  
tice or J  
shall fin  
Debit is

By th  
arresed  
unless th  
that he v  
will be t

The 4  
the Just

Chester in the said County Yeoman, before me with (here set forth the offence) And you the said Sheriff are hereby required to receive the said Peter Terrible into your custody in the said Jail there to remain until he be delivered from thence by the due order of law.

Given under my hand and seal in Lunenburg in the said County the sixth day of March Annoque Domini 1823.

JOHN SEARCH, J. P. LS.

NOTE. For further forms of Warrants &c for Felony, Larcency &c. see Burns Justice 22d edi. 1 vol p 606 & 607 3 vol p 258.

### Forms &c. for Recovery of Debt.

1 Geo 4 ) By the 33d & 83d Sections of the Militia Law of 1820  
Cap 2 ) now in force the fines incurred under that act are to be recovered before any Justice or Justices of the Peace, which Justice or Justices not being an officer or officers of the Company in which such fines shall be incurred shall issue process for collecting the same as in cases of debt not exceeding £5 before two Justices, and not above £3 before one Justice.

3 Geo 4. ) By the 1st section of the act for the summary trials of  
cap xxx ) actions passed in 1822 any persons having debts owing to them where the whole debt or cause of action does not exceed five pounds, can sue for the same before any Justice or Justices of Peace of the county or district where the debtor resides:—if the debtors sum demanded shall not exceed £3 it must be sued for before any one of the Justices, and if the debt or sum demanded is more than £3, but not over £5 then it must be sued for before any two Justices of the county or district where the debtor resides, and upon examination of the merits of the accounts of the parties and the proof brought before them or on confession of the debtor, the Justice or Justices must give judgement and award costs as he or they shall find either for Plaintiff or Defendant, without appeal unless the Debt is twenty shillings or upwards

By the 2d Section of this Act it is provided that no person shall be arrested for less than 20 shillings nor for any debt under three pounds unless the creditor besides the affidavit of the debt, also makes oath that he verily believes unless a writ of Capias be allowed, the debt will be lost.

The 4th Section directs the following forms of writs to be used by the Justices under this Act.

## Summons.

(SS) To either of the Constables of the County of \_\_\_\_\_  
You are hereby required to summon (name of defendant) of (place  
of residence) in the said county (occupation) to appear before \_\_\_\_\_  
on the \_\_\_\_\_ day of \_\_\_\_\_ at \_\_\_\_\_ o'clock in the \_\_\_\_\_ noon of  
the same day to answer to (name of Plaintiff) in the sum of (amount  
sued for) and make return hereof on or before said day.

Witness my hand and seal, the \_\_\_\_\_ day of \_\_\_\_\_ Annoque Domini  
1826.

## Capias.

(SS.)  
To either of the Constables of \_\_\_\_\_  
You are hereby commanded to take (name of defendant) and him  
safely keep so that you may have him before \_\_\_\_\_ at \_\_\_\_\_ on  
the \_\_\_\_\_ day of \_\_\_\_\_ to answer to \_\_\_\_\_ in the sum of \_\_\_\_\_  
Hereof fail not, and have then to re this writ. Given under \_\_\_\_\_  
hand and seal, at \_\_\_\_\_ the \_\_\_\_\_ day of \_\_\_\_\_ Annoque Domini,  
1826.

Note. If the debt sworn to is more than £3. the Capias must be  
signed by the Two Justices who are to hear and determine the mat-  
ter.

The third section directs that the summons or capias must be  
served on any defendant at least three days previous to the day on  
which such writ shall be made returnable.

## Execution.

SS.  
To either of the Constables of \_\_\_\_\_  
Whereas judgment hath been awarded against \_\_\_\_\_ of \_\_\_\_\_ in the said coun-  
ty \_\_\_\_\_ at the suit of \_\_\_\_\_ for the sum of \_\_\_\_\_ and the sum of \_\_\_\_\_ more, for  
costs, these are to command and require you to levy from off the goods and chat-  
tels of the said \_\_\_\_\_ the said sums making together \_\_\_\_\_ by sale of the said

goods a  
the bod  
there to  
he be di  
fail not,  
Witne  
1826.

Note,  
Executio  
By the  
before J  
Jus  
On wit  
On capia  
On Judge  
Justice  
subject to

Black, Co  
1 vol. 35  
make an a  
vertance,  
vided he s  
of it one r  
by a writin  
and residen  
be sued on  
tender with  
the Jury, h

If a Mag  
gratify his  
ished also c  
rannical ab  
recover a v  
tled to dou  
bad view o  
never punis  
party comp

Burns Just  
22d Edition  
3d v p 158  
tice being pr

goods and chattels; and for want thereof you are hereby commanded to take the body of the said \_\_\_\_\_ and him to commit to His Majesty's Jail in \_\_\_\_\_ there to remain until he pay the sum above mentioned with your fees, or that he be discharged by the said \_\_\_\_\_ or otherwise by order of law. Hereof fail not, and make return of this writ to \_\_\_\_\_ within twenty days.

Witness — hand and seal the \_\_\_\_\_ day of \_\_\_\_\_ Annoque Domini, 1826.

Note, If Judgment on which Execution issues is given by two Justices, the Execution must also be signed by both of them.

By the 5th section of the same Act, the following fees are allowed on actions before Justices.

<i>Justices Fees.</i>	On Execution	Is	Travel per mile	3d
On writ of Summons 2s	Subpoena	1	<i>Witnesses.</i>	
On Capias & affidavit 2 6	<i>Constables Fees</i>		Each	2 6
On Judgment 1	On service of writ	1	Travel per mile	3

Justices demanding or receiving any greater or other fees under this act are subject to a fine of £10.

Black. Com. } It behoves every Magistrate to be acquainted with the Law  
1 vol. 354. } and the extent of his authority, and he may be compelled to make an adequate compensation to those who suffer by his ignorance or inadvertance, but to protect him from being harrassed by vexatious actions, it is provided he shall have notice of any action commenced against him and the cause of it one month before the writ is sued out; or a copy of it served upon him by a writing from the attorney of the party, who shall endorse upon it his name and residence; the notice must specify the precise writ or process intended to be sued out;—The Magistrate may afterwards tender amends and plead such tender with any other plea: and if the sum tendered be thought sufficient by the Jury, he shall obtain a verdict with costs.

If a Magistrate abuses the authority reposed in him by the Law in order to gratify his malice or promote his private interest or ambition, he may be punished also criminally, by indictment or information: and any malicious or tyrannical abuse of their office is usually severely punished, and all persons who recover a verdict against a Justice for any wilful or malicious injury are entitled to double costs:—But if a Justice acts honestly and candidly, without any bad view or ill intention whatsoever, altho he should act illegally the Court will never punish him by the extraordinary mode of an information, but will leave the party complaining to the ordinary method of prosecution by action or indictment.

Burns Just. } Regularly Justices of the Peace ought not to execute their of-  
22d Edition } fice in their own case, but cause the offenders to be conveyed or  
3d v p 158 } carried before other Justices, or desire the aid of some other Jus-  
tice being present.\*—By Hatt Chief Justice M. vs W. The Mayor of Hereford

was laid by the heels for sitting in judgment in a cause where he himself was se-  
nior of the Plaintiff in ejection, tho he by the charter was sole judge of the  
Court.

B. Justice 22d edit 3 vol p 159. In the case of Rex vs Turpole, it was de-  
termined that on an appeal to the sessions against an order of removal those Jus-  
tices who are rated to the relief of the poor in either of the contending Parishes  
have not a right to vote, and by the court (in another case) no rule of Law or  
reason is more established than that a Judge ought to stand di in ered. p 160.  
Where two Justices are required to do any judicial act they ought to be toge-  
ther. In summing convictions the party ought to be heard and for that purpose  
ought to be summoned in fact; and if the Justice proceed against a person w<sup>h</sup>o  
is not summoned him, it would be a misdemeanour in him, for which an informa-  
tion would lie. In Rex vs. Harwood the defendant being a Justice of the Peace  
was convicted on an information, for a conviction by him made of an alehouse  
keeper, who was never summoned or heard.

\* Notwithstanding this general position it has been held that an inn-keeper  
may detain a guest's horse, until satisfaction be made for charges; and that any  
person may retake his own goods, if illegally dispossessed of them.

---

### Board of Land Commissioners.

---

His Excellency Sir James Kempt in the year 1821 established the Boards of  
Land Commissioners in each County for the purpose of facilitating the settle-  
ment of emigrants and other poor persons on the Crown Lands in this Province  
with the least possible trouble and expence. By His Excellency's instructions  
the Commissioners are directed to appoint a secretary and fix upon a place of  
meeting; to meet one day at least in every month, and to give written notice  
thereof in the County or District, as also that they are ready to receive petitions  
from all persons desirous of obtaining land within the limits of their commission;  
—such petitions must be addressed to the Lieutenant Governor and must con-  
tain a particular description of the land applied for:—in addition also to the  
usual declarations made in petitions, every petitioner must make oath that he  
has no knowledge of any person being located on the land applied for or hav-  
ing any claim thereto: these petitions are to be taken into consideration at the  
general meeting, and the commissioners are authorised (if upon a careful inquiry  
into their character and circumstances they shall consider them as likely to make  
good settlers and faithful subjects of his Majesty) to grant tickets of Location  
according to the following scale

To unmarried men, 100 acres.—To married men, 200 acres, but not to exceed  
200 acres without special authority from his Excellency the Lieutenant Govern-  
or.—The Commissioners must be satisfied before they grant tickets of Loca-

tion, that t  
verment  
receiving  
them; or  
which they  
thereon.

for 12 mon  
sons or any  
be encourag  
commission  
obtaining

A plan c  
ers by His  
for the use  
are directed  
posited.

Only one  
directed to  
their instruc  
petent assist

Subsequen  
Ticket of L  
six months i  
from grantin  
a longer peri

Therefore  
six months th  
missioners, t  
thereon and  
land as he sh

To His Ex  
nourable Mil  
Chief in and  
&c. &c. &c.

The Petiti  
Husbandman

tion, that the person applying for it has not previously received land from Government and that he does not possess any by purchase or otherwise. Persons receiving Tickets must proceed immediately to cultivate the land allotted to them; otherwise they will not be confirmed in the possession by Grant, and which they will not receive until they are fully settled and have erected houses thereon. Tickets are merely an authority to settle on lands and are only good for 12 months; to make the taking out of Grants as easy as possible, five persons or any smaller number may be included in one grant. Real settlers are to be encouraged and every possible protection and facility afforded to them by the commissioners, but Land-Jobbers of every kind are to be discouraged, persons obtaining possession of lands by land-jobbing will not be confirmed by grant.

A plan of each County and District has been transmitted to the Commissioners by His Excellency, which must always be kept in the same place as well for the use of the public as the Board of Commissioners, and the Commissioners are directed to cause it to be made publicly known where the said plan is deposited.

Only one Deputy Surveyor is allowed for each county and district, who is directed to act under the orders of the Board of Commissioners agreeably to their instructions; such deputy surveyor may employ as occasion requires competent assistants for whose acts he is to be responsible.

Subsequent instructions direct that no person shall be entitled to receive a Ticket of Location from the commissioners, who shall have resided more than six months in the Province, and the Commissioners are expressly prohibited from granting any Ticket of Location to any person who shall have resided a longer period therein.

Therefore natives of this Province and Persons who have resided more than six months therein must forward their Petitions for Land thro the Board of Commissioners, to His Excellency the Lieutenant Governor who will determine thereon and direct warrants of survey to be granted to them for such quantity of land as he shall think fit.

### Form of Petition to Land Board.

To His Excellency Sir James Kempt, Knight Grand Cross of the Most Honourable Military Order of the Bath, Lieutenant Governor and Commander in Chief in and over His Majesty's Province of Nova Scotia and its Dependencies &c. &c. &c.

The Petition of Gilbert Woodcutter of Musquodobit in the County of Halifax, Husbandman. Humbly sheweth,

That your petitioner is a Native of \_\_\_\_\_ and a faithful British subject ; that he is a married man and has a family of \_\_\_\_\_ children and he is \_\_\_\_\_ years of age. That your Petitioner is desirous of settling himself in this Country, and wishes to obtain a grant of the tract of land belonging to the Crown situated in Musquodobit and described as follows, (here insert the description of the land applied for as particularly as possible.) That your petitioner hath never received any Land from Government and that he does not own any by purchase or otherwise, that he has not bargained for the sale or transfer of any land that may be granted to him, neither does he intend so to do, but that he fully intends to settle and cultivate the same ; that he knows of no person being located on or having any claim to the Land described, and by him hereby applied for. Your petitioner therefore humbly prays that your Excellency will be pleased to grant him a warrant of survey for the said tract of Land, or for such quantity thereof as your Excellency shall think sufficient for your Petitioner.— And as in duty bound your petitioner will ever pray &c.

GILBERT WOODCUTTER.

Sworn to the truth of the above by the Petitioner at Musquodobit this day of \_\_\_\_\_ 1826, before me \_\_\_\_\_ GEORGE SWEARALL, JP.

Fees to be paid by the Petitioner to the Secretary of the Land Board.

every person presenting a petition, and receiving a Ticket of Location 2s. 6d.  
 every person presenting a petition to be transmitted for the consideration of the Lieut Governor and Council 1s 6d

To the person having charge of the County or District plan.

For every search 1s

And the following Fees are directed to be paid to the secretary of the Land Board (or such other person as the Commissioners shall appoint to receive them.)

**For the Secretary of the Province.**

Upon every Petition for Land, to be paid before the petition is forwarded for the consideration of His Excellency 11s 8d

Upon every warrant of survey, to be paid before the warrant is given to the Deputy-surveyor to lay out the land 11s 8d

For every p  
 fore the

For travel a  
 For surveys  
 For surveys  
 per day  
 For chainme  
 For ditto in  
 For every se  
 For fair copy

Fees on C

Acres.	(Governor.
100	£ 3
200	3
300	3
400	3
500	3

Fees on G  
 posing the L  
 cluded in the

## For the Surveyor General,

For every precept or order issued by him to his Deputy, to be paid before the precept is acted upon 5s 0d

### Fees to Deputy Surveyors.

For travel and expences to and from the land surveyed per day	7s 6d
For surveys made in the wilderness, finding themselves per day	15s 0d
For surveys made in a settled part of the Country finding themselves per day	10s 0d
For chainmen in the wilderness, finding themselves per day	5s 0d
For ditto in the open country, finding themselves per day	4s 0d
For every search, or inspection of plans	1s 0d
For fair copy of the plan of each lot	2s 6d

*Fees on Grants of Land, if only one Person is included in a Grant.*

Acres.	Governor.	Provincial Secretary.	Surveyor General.	Attorney General.	Audit and Quit Rent.	TOTAL.
	£ s.	£ s. d.	£ s.	£ s. d.	£ s. d.	£ s. d.
100	3 10	3 14 10	2 5	1 3 4	0 13 4	11 6 6
200	3 10	3 14 10	2 5	1 3 4	0 13 4	11 6 6
300	3 10	3 14 10	2 5	1 3 4	1 3 4	11 16 6
400	3 10	3 14 10	2 5	1 3 4	1 13 4	12 6 6
500	3 10	3 14 10	2 5	1 3 4	2 13 4	12 16 6

Fees on Grants if two or more persons are included in the same Grant, supposing the Land granted to be equally divided among them, and the persons included in the same Grant to have Petitioned in the same Petition.



Number of Acres.	Governor's	Provincial Secretary's.	Surveyor General's.	Attorney Genl's.	Audit & Quit Ren	TOTAL.	Number of grants in each grant	Share of the expense to be paid by each grantee.
200	3 10	4 9 6	2 10 1	7 4 0	13 4 12	10 2	2	6 5 1
300	3 10	5 2 2	2 15 1	9 4 0	13 4 13	9 10	3	4 19 11 $\frac{1}{2}$
400	3 10	5 14 10	3 0 1	11 4 0	13 4 14	8 6	4	3 12 4 $\frac{1}{2}$
500	3 10	6 7 6	3 5 1	13 4 0	13 4 15	9 2	5	3 1 10
600	3 10	5 19 0	2 15 1	9 4 1	3 4 15	6 8	2	7 13 4
800	3 10	7 15 4	3 15 1	17 4 0	13 4 17	11 0	4	4 7
1000	3 10	8 15 0	4 10 2	3 4 0	13 4 19	11 8	5	4

The fees paid to the Secretary of Land Board for the Provincial Secretary and Surveyor General, will be deducted from the above when Grants are taken out.

### Province of Nova Scotia.

Lieutenant Governor and Commander in Chief of the Province of Nova Scotia and its Dependencies, and Commander of the Forces in Nova Scotia, New Brunswick, Prince Edward Island &c. &c. &c. His Excellency Lieutenant General Sir JAMES KEMPT, Knight Grand Cross of the Most Honourable Military Order of the Bath, &c. &c. &c.

### His Majesty's Council.

Honourable SAMPSON SALTER BLOWERS, President.

Honourable and Right Rev. John Lord Bishop of Nova Scotia—Hon Michael Wallace—Richard J. Uniacke—Charles Morris—James Stewart—Thomas N. Jeffrey—Breton Halliburton—Hibbert N. Binney—Eros Collins—Simon B Robie—Charles R Prescott and Sir Rupert D. George, Bart Clerk—William Hill Esq. Dep. Clerk—Rev. Robert Willis Chaplain.—Mr. S. Greenwood Messenger.

Co  
S. G. W.  
liam  
and  
Esq  
Cou  
J Campb  
Esq  
Coun  
Thomas  
Coun  
John He  
Esq  
Co  
Wm. A C  
shop  
Q  
Snow Pa  
Esq  
Co  
Wm O'B  
wolf  
Cou  
James Bi  
non  
Co  
Thos Dic  
Coun  
Lawrenc  
J Un  
To  
John Arb  
Esq  
Wm Dic  
Chapla  
at Arms,  
Messeng

## House of Assembly.

S. G. W. ARCHIBALD, Esq. L. L. D.—Speaker!

Number of grantees in each grant	Share of the expense to be paid by each grantee.
2	6 5 1
3	4 19 11 $\frac{1}{2}$
4	3 12 4 $\frac{1}{2}$
5	3 1 10
2	7 13 4
4	4 7
5	4

Provincial Secretary  
Grants are taken

the Province of  
of the Forces  
and &c. &c. &c.  
EMPT, Knight  
of the Bath,

ent.  
Scotia—Hon  
orris—James  
—Hibbert N.  
R Prescott  
ll Esq. Dep.  
wood Mes-

*County of Halifax,*  
S. G. W. Archibald, L. L. D., William Lawson, George Smith and Lawrence Hartshorne Esquires.

*County of Annapolis.*  
J Campbell and Abraham Gesner Esqrs.

*County of Cumberland.*  
Thomas Roach & Esqrs.

*County of Lunenburg.*  
John Heckman and Lot Church Esqrs.

*County of Kings.*  
Wm. A Chipman and Samuel Bishop Esqrs.

*Queens County,*  
Snow Parker and Jos. Freeman Esqrs.

*County of Hants,*  
Wm O'Brien and Benjamin DeWolf Esqrs.

*County of Shelburne,*  
James Bingay and John McKinnon Esqrs.

*County of Sydney,*  
Thos Dickson and J Young Esqs

*County of Cape Breton,*  
Lawrence Kavanagh and Richd J Uniacke Esqrs.

*Town of Halifax,*  
John Aibro and C. R. Fairbanks Esqrs.

*Truro,*  
Wm Dickson Esq.

*Onslow,*  
Robert Dickson Esq.

*Londonderry,*  
James Flemming Esq.

*Annapolis,*  
John Robertson Esq.

*Granville,*  
Timothy Ruggles Esq.

*Digby,*  
William H Roach Esq.

*Lunenburg.*  
Edward James Esq.

*Amherst,*  
James S Morse Esq.

*Horton,*  
Sherman Dennison Esq.

*Corwallis,*  
John Wells Esq.

*Windsor,*  
William Fraser Esq.

*Falmouth,*  
Wm Young Esq.

*Barrington,*  
Wm B Sargeant Esq.

*Liverpool,*  
James R Dewolf Esq.

*Newport,*  
Daniel Wier Esq.

*Shelburne,*  
Thomas Crowell Esq.

*Yarmouth,*  
Samuel S Poole Esq.

Chaplain, Rev J T Twining—Clerk, J B Franklin Esq—Sergeant at Arms, Mr Jao Boyd—Sergeant of the Gallery, Mr M Forroster—Messenger Mr. John Gibbs.

## Provincial Officers.

**Surveyor General of Lands** Hon Charles Morris—**Treasurer**, Hon Michael Wallace—**Secretary**, Sir Rupert D George Bt.

## Court of Chancery.

**Chancellor**, His Excellency Sir James Kempt.—**Master of the Rolls**, Hon Sampson Salter Blowers—**Masters in Chancery**, Hon Brenton Halliburton, Hon James Stewart, Peleg Wiswell and J G Marshall, Esqrs. **Registrar**, H H Cogswell, **Counsellors and Solicitors**, The Attornies of the Supreme Court,

## Courts of Error, and of Marriage and Divorce.

### HIS MAJESTY'S COUNCIL.

**Advocates and Proctors**, the Attornies of the Supreme Court.

## Court of Vice Admiralty.

**Judge**, Hon S S Blowers, **Advocate Genl** Hon R J Uniacke, **Solicitor Genl** Hon Simon B Robie, **Registrar**, L Pennel Esq. **Dep. Registrar**, Hon Charles Morris, **Marshal**, James Putnam Esq. **Dep Marshal**, Stephen Deblois Esq. **Advocates and Proctors**, The Attornies of the Supreme Court—**Messenger** Mr S Greenwood.

## Courts of Escheats and Forfeitures.

**Commissioner**, Honourable Michael Wallace. **Registrar**, Sir Rupert D George, Bt. **Dep Registrar**, William Hill Esq.

## Court for the Probate of Wills.

**And granting Letters of Administration.**  
**Surrogate General** Honourable Charles Morris.

## Supreme Court.

**Chief Justice** Hon Sampson S Blowers, **Puisne Judges**, Hon Brenton Halliburton, Hon James Stewart, Lewis M. Wilkins, Esq. **Associate Judge** Peleg Wiswall Esq. **Atty. Genl** Hon R J Uniacke, **Solicitor Genl**, Hon S B Robie **LL D Kings Counsel** S G W Archibald **LL. D.** Richard J. Uniacke and William Fraser Esqrs. **Clerk of Crown and Prothonotary** throughout the Province, William Thompson Esq. **Deputy**, J W Nutting Esq.

Barr

Halifax  
R J Uniacke  
ston, W  
B Bliss,  
Twining  
W Fleig  
Picou  
son, Jr.  
Truro  
W Gray  
Aunap  
Bronley  
Digby  
Ambe  
D Roach  
Horte  
Winds  
L M Wil  
Shelbo  
Yarmou  
Weeks  
richt—  
F Solom

Comm

Annap  
Cumb  
McFark  
Conv  
Batrik  
son Esq  
bell Esq

Cle

The ho

Halifax  
Garriso  
mans D

## Barristers and Attornies at Law of the Supreme Court

Residing in the Province.

Halifax—H H Cogswell, D S Clarke, S G W Archibald L L D, R J Uniacke, J W Nutting, Willm Hill, C R Fairbanks, J W Johnston, W L Sawers, Alex Prunrose, James Cochran, N W White, W B Bliss, Beamish Murdoch, E Crawley, James S Tremain, Charles Twining, James Uniacke, C D Archibald, J T Sawyer, J F Gray, W Fleiger, James Stewart Clarke, and Wm Young Esqrs

Pictou—N P Oding, Robert Hutton, Thomas Dickson, John Lawson, Jr. Jotham Blanchard, and Henry Blackader, Esqrs.

Truro—Jonathan Masters, James W Chandler, Wm Dickson and W Graves Esqrs.

Annapolis—T C Hallibarton, H Goldsmith, George Grassie & W Bramley Esqrs.

Digby—G K Nichols Esqr.

Amherst Co. of Cumberland—James S Morse, Alex Stewart Chas D Roach and E B Chandler Esqrs

Horton King's County—John Whidden, and John C Hall Esqrs.

Windsor Co Hants—Wm Fraser, D D Stewart, H A Emerson and L M Wilkins Esqrs.

Shelburne—Colin Campbell Esq Antigonishe—John T Hill Esqr Yarmouth—John Forman Esq Gaysboro F W DesBarres and Chas Weeks Esqrs Liverpool—Wm Sterns and S P Fairbanks Esqrs Arichat—Wm C Delaney Esq Lunenburg—John Creighton and G F Solomon Esqrs.

## Commissioners for taking Special Bail in the Country.

On Actions depending in the Supreme Court.

Annapolis—

Cumberland—Chas Baker, Thomas Roach, Silas H Morse and D McFarlane Esqrs.

Cornwallis—S L Allison Esq Horton—S Dennison Esq Mants—Bartick Wright Esq Colchester—J Fulton Esq Pictou—W Patterson Esq Sydney—Alexr McDonald Esq Shelburne—Colin Campbell Esq Lunenburg—F J Rudolf Esq.

## Clergy of the Established Church in Nova Scotia.

The hon and Right Rev John D D Lord Bishop of Nova Scotia New Brunswick and their Dependencies.

Halifax—Rev Robert Willis, rector of St Paul's Rev J T Twining Garrison Chaplain Rev ——— Uniacke, Missionary to the Germans Dartmouth, ——— Sackville, ——— ——— Newport,

Rev C Porter D D Windsor—rev W C King Falmouth rev Wm Cochran D D Cornwallis, Rev Robt Norris Horton, rev Joseph Wright Aylesford rev E Gilpin Wilmot, rev A Gilpin Granville, rev H N Arnold Annapolis, rev J Milledge Digby, rev R Veits Yarmouth, rev T A Grantham Shelburne, rev T Rowland Liverpool, rev Wm Twining Lunenburg, rev R Aitken Manchester, rev Chas Weeks Chester, rev James Shreve Sydney, rev Charles Ingles Cumberland, ——— Rawdon, rev J C Cochran Parrsboro, rev Geo W Morris Principal Academy at Windsor—rev Francis Salt Travelling Missionary, (Truro) revd J Burnyeate, Ecclesiastical Commissary,

**Clergy of the Roman Catholic Church in Nova Scotia.**

Revd J Carrol and J Dunphy Halifax rev James Grant, Antigonishe rev J Layton, Manchester rev C Grant, St Margaret's rev Dennis Geary, Chezencook rev W Sigogne, St Mary's Bay, rev A Doucett Eel Brook—rev T Grace, Prospect rev Pere Vincent, Tracadie.

**King's College Windsor.**

Patron, his Grace the Lord Archbishop of Canterbury.

*Governors,*

His Excellency the Lieut Governor, the right rev the Lord Bishop of Nova Scotia, the hon the Chief Justice, the Judge of the Court of Vice Admiralty, the Speaker of the House of Assembly, the Atty General, the Solicitor General, the Secretary of the Province, the rev the President, the rev the Vice President, the rev the Ecclesiastical Commissary of the Diocese.

Visitor—The Lord Bishop of Nova Scotia,

President rev Chas Porter D D, Vice President, rev Wm Cochran D D Professor of Divinity and Hebrew rev Chas Porter D D Acting Professor of the Moral Sciences and Metaphysics the rev W Cochran DD Acting Professor of Mathematics The rev C Porter D D Professor of Grammar rhetoric and Logic the rev W Cochran D D Steward Mr Roberts.

Academy under the direction of the Governors of King's College, Principal, Rev. Francis Salt.

**Dalhousie College, Halifax.**

Patron. His Majesty the KING,  
Governors;

The Right Hon. George Earl of Dalhousie, His Excellency Sir James Kempt KC B. Hon and Right Rev. John Lord Bishop of Nova Scotia; Hon Sampson Salter Blowers, Hon Michael Wallace, Hon Simon Bradstreet Robie and the President,

Profe  
Profe  
rim

Govern  
teris  
Truste  
Duncan  
Smith. H  
Gray D  
T M'Cul

Ju

Right  
Blowers.  
art, T N  
lins, S B  
Assembly  
Ministers

Halifa

Martin.  
Rev Do  
land—R  
Burns D

Mini

Presl  
Brown.  
Dougl  
Pres  
Rev D

Professors of Greek and Latin Classics,  
 Professors of Mathematics Natural and Experimental Philosophy. } Not filled up.

### Pictou Academy.

Governed by twelve Trustees who are to profess either the Presbyterian system of Religion or that of the Church of England.

Trustees, Hon S B Robie, LL D. S G W Archibald Esq LL D. Duncan Ross, Thomas McCulloch D D. Thomas Davison, George Smith, R Lowden, Wm Patrick, James McGregor D D, Archibald Gray D D, James Roman, and James Robson. Head Master, Rev. T McCulloch D D, Assistant Rev Mr McKinley.

### National School, Halifax.

Abel S Gore Esq —Master,

### Acadian School, Halifax.

(Vacant.)

### Justices of the Peace throughout the Province.

Right Rev John Lord Bishop of Nova Scotia. Hon Sampson S Blowers, Michael Wallace, R J Uniacke, Chas Morris, James Stewart, T N Jeffery, Brenton Halliburton, Hibbert N Binney, Enos Collins, S B Robie, Chas R Prescott, and the Speaker of the House of Assembly.

Ministers of the Established Church of Scotland, in Nova Scotia, N. Brunswick and Prince Edward Island

Halifax, St Matthews—Rev Archibald Gray D D Senior Minister. Junior Minister. St Andrews—Rev John Martin. Pictou (town)—Rev Kenneth J M'Kinzie. East River—Rev Donald A Fraser. West River—Rev Hugh McLeod. P E Island—Rev John McLennan. New Brunswick, St John—Rev Geo Burns D D. St Andrews—Rev Alexander M'Lean.

### Ministers of the Presbyterian Church in Nova Scotia:

Presbytery of Truro—Rev H Graham A M. Stewiack—Rev J Brown. Londonderry—Rev John Waddell Truro—Rev T S Crowe Douglas Rev A Kerr, Economy Rev John Spratt, Mosquodobit.

Presbytery of Pictou—Rev James McGregor D D East River, Rev Duncan Ross West River, Rev Mr M'Kinley Pictou town, Rev

John Mitchell, River John, Rev William Patrick Merigomish, Rev. James Thompson Mirimichi, Rev Thomas Trotter Dorchester, Rev Alex Lewis St Mary's, Rev Wm Miller Mabou and Port Hood.

Presbytery of Halifax—Rev Matthew Dripps Shelburne, Rev Rt. Blackwood Upper Shubenacadie.

### Methodist Missionaries, in the Nova Scotia New Brunswick and P. E. Island Districts.

Halifax, Rev Wm Temple and Wm. Black (Supernumerary). Lunenburg, Rev George Orth, Liverpool Rev R L Lusher, Shelburne and Barrington Rev Geo Miller, Annapolis Rev Sampson Busby Horton and Cornwallis Rev J B Strong, Newport Rev John Snowball and Rev Wm Bennett (Supernumerary) Parrsboro and Meccan Rev Matthew Richey, Remsheg Mr. Thomas Davies a probationer.

#### New Brunswick,

City of St John Revd Rob Alder. Westmorland Rev S Bamford, Frederickton Rev J Marshall. Sheffield Mr A DesBrisay, a probationer, St Stephens, Rev D M'Coll.

#### Prince Edward Island.

Charlotte Town Rev Wm Burt, Tryon and Bedique Rev Geo. Jackson, Murray Harbour Rev R H Crane.

Stephen Bamford, Chairman.

Robert Alder, Secretary.

#### Baptist Ministers.

John Burton, David Harris, Thomas Ashley, Edward Manning, Geo Dimock, James Munro, Samuel McCulley, Thomas H Chipman, Joseph Dimock, Robt Harris, Peter Crandall, Chas Tupper, David Nutter, William Elder, Geo. Richardson, Joseph Henderson, John Craig, Enoch Towner, Harris Harding, Theodore Seth Harding.

---

#### New-Brunswick.

Lieut. Governor, Major General Sir HOWARD DOUGLAS, Bart. K C S. C B. F R S. &c. &c

#### His Majesty's Council.

The Chief Justice, George Leonard, Christopher Billop, John

Coffin, J  
Anthony  
Chief  
Hon Wm  
Ward Ch  
F Odell  
Comm  
ley, Esq  
Parker  
DesBrisa

Chief  
L L D.  
Esq. Se  
Collec  
Havelan  
DesBarr

Gover  
Col Geo  
Chief Ju  
and Moll  
tor Arth  
of the Vi  
Carter E  
ble Esq.

Presic  
Robrt K  
Jas C Es  
Solicitor

Merigomish, Rev.  
Dorchester, Rev  
Port Hood.  
Shelburne, Rev Rt.

New Brunz-  
s.

numerary). Lu-  
isher, Shelburne  
Sampson Busby  
Rev John Snow  
boro and Meccan  
es a probationer.

Rev S Bamford,  
risay, a probati-

dique Rev Geo.

Edward Manning,  
thomas H Chip-  
Chas Topper,  
eph Henderson,  
lore Seth Hard-

s, Bart. K C S.

r Billop, John

Coffin, John M Bliss, John Robinson, William Black, Saml D. Street  
Anthony Lockwood, Geo Shore, William Botsford.

Chief Justice Hon John Saunders. Judges, Hon John M Bliss,  
Hon Wm Botsford, Atty-Genl Thos Wetmore Esq. Solicitor Gen.  
Ward Chipman, jr. Esq. Secty Reg and Clerk of the Council, Wm  
F Odell Esqr,

Commissioner of Crown Lands and Surveyor General Thomas Bai-  
ley, Esqr. Collector of Customs, H Wright Esq Compt of do. Rt  
Parker Esq Naval Officers H W Scott Esq St Johns Thopolis  
DesBrisay Esq. Miramichi, Surv and Searcher, John Kelley Esqr.

---

### Island of Prince Edward.

Lieutenant Governor Colonel John Ready.

Chief Justice and President of the Council, S G W Archibald, Esq  
L L D. Atty Genl. Wm Johnston Esq Solicitor Genl Wm Waller  
Esq. Sec Reg and Clerk of the Council John E Carmichael Esq.

Collector of Quit Rents — Briscoe Esq. Naval Officer, Ths H  
Haveland Esqr. Collector John Stewart Esq. Comptroller James L  
DesBarres Esqr.

---

### Newfoundland.

Governor Sir Thomas J Cochrane. Lieut Gov of Placentia, Lieut  
Col Geo J Reeves. Lt Gov. of St John's Lieut Genl Wm Knollys  
Chief Justice, James Tucker Esq. Puisne Judges A W DesBarres,  
and Molloy, Esqrs. Colonial Secretary E B Brenton Esq. Collec-  
tor Arthur H Brooking Esq. Comptroller Geo Baillie Esqr. Judge  
of the Vice Admiralty Court, William Carter, Esq. Registrar P W.  
Carter Esq. Marshal, John Stewart Esq. Naval Officer, R H Noble  
Esq.

---

### Bermuda.

Governor, Lieutenant Genl Sir H Turner K C B.

President of Council, Wm Smith Esq. Secy and Provost Marshal  
Robrt Kennedy Esq Treasurer, Willm Smith Esq. Chief Justice,  
Jas C Esten Esq. King's Advocate, Dun Stewart Esq. Atty Genl  
Solicitor Genl and Advocate Genl, James Holland Esq Speaker of



the House of Assembly. John N Harvey Esq. Registrar, Thomas Moore Esq. Collector. Gilbert Salton. Esq. Comptroller, Charles Heseltine, Esq. Surveyor, John H Tucker Esqr.

MEMO.—The Sittings of Courts, names of Officers, &c. will be found arranged under the respective Counties to which they belong

## County of Halifax.

Town and District of Halifax Proper.  
High Sheriff of the County. J I Sawyer Esq

Supreme Court sits at Halifax.

On the 2d Tuesday of January, 1st Tuesday of April, 2d Tuesday of July, and 2d Tuesday of October.

### Inferior Court.

On the 2d Tuesday of March, June, September and December.  
Judges, Hon. Michael Wallace, James Foreman, John Howe, and W Lawson, Esqrs.

### Commissioners Court.

Sits the first Monday of every Month.  
Commissioners, James Foreman, James Tobin, Richard Tremaine, William Minns, and John Liddell, Esqrs. Clerk, D. S. Clarke Esq.

### Police Office.

Open every day throughout the year except Holidays:  
Justices, John G Pyke, John Liddeil, and John Howe, sen. Esqrs. Clerk, D S Clarke.

### Sessions of the Peace:

Sits on the 1st Tuesday of March, June, September, and December.

Justices of the Peace of and for the County.

Residing in the district of Halifax  
John G Pyke Custos Rotulorum, James Creighton James Forman

John H  
Richard  
Samuel  
in, M.  
B Y M

Hon R J

Hon R J  
Stayner  
John C

James F

R

Hon H  
Andrew  
Mr Joh  
Mr Rob  
Mr Cha  
Mr Wm  
Mr Edu

Hon T  
John W  
J Purv  
Mr E I  
Mr Ro

Registrar, Thomas  
Comptroller, Charles  
Esq.

Officers, &c. will be  
to which they belong

proper.  
Esq

ifax.

April, 2d Tuesday of  
ber.

er and December.  
an, John Howe, and

onth.  
n. Richard Tremain,  
D. S. Clarke Esq.

pt Holidays:  
n Howe, sen. Esqrs

er, and December.

e County.

x  
ton James Forman

John Howe, Sen. Rufus Fairbanks, Samuel Head, John Liddell,  
Richard Tremain, Henry Yeomans. Peter M'Nab, William Lawson,  
Samuel Albro, Samuel Cunard, John Starr, John Albro, Michael To-  
bin, M. Richardson, John D Hawthorn, Thos Holland, Isaac Rayne  
H Y Mott, John T Walford, Esqrs. D S Clarke C P.

**Commissioners of the Revenue.**

Hon R J Uniacke, Hon Michael Wallace, Hon Simon B Robie, and  
Wm Lawson Esq.—William Newton Clerk.

**Commissioners for Light Houses.**

Samuel Cunard Esq. and Capt Maynard R N.

**Commissioners for visiting the Poor House.**

Hon R J Uniacke, Hon Charles Morris, Hon Thos N Jeffery. John  
Stayner, John Lawson, R Tremain, J G Pyke, Henry Yeomans, and  
John Clark Esqrs.

**Commissioners of the Streets, &c.**

James Forman, John Albro, Michael Tobin, Frederick Major and  
Samuel Cunard, Esqrs.

**Registrar of Deeds, &c. Sir R. D. George, Bt.**

**Officers of the Provincial Revenue:**

Hon H N Binney, Collector of Impost and Excise  
Andrew Richardson Esqr gauger and weigher  
Mr John Rule, shipping officer  
Mr Robert Hodges, land waiter  
Mr Charles Ross and James Barret, waiters  
Mr Wm Cleaveland, collector of license duty  
Mr Edward Duckett, collector of light duty

**Officers of His Majesty's Customs.**

Hon Thomas N Jeffery, Collector  
John Wallace Esq Comptroller  
J Purvis, J W Watson Esqrs weighers and searchers  
Mr E Duckett surveying officer of shipping  
Mr Robert Dimmet and Richard B Young Tide surveyors

Mr W McSweeney, and Errol Boyd, Tidesmen.  
Frederick Saunders Esq warehouse keeper.

### Officers of His Majesty's Naval Yard.

A J Jones Esq Master Shipwright, Mr Douglas, Master Attendant Mr  
James Ritchie, Clerk, Mr Matthews Gate Porter.

### Deputy Post Master General.

John Howe, Esq — Halifax.

### Coroner for the County:

Mr Samuel Greenwood

### Mail Days.

The Eastern and St. John N B. Mails arrive in Halifax on Satur-  
day at 3 o'clock P M, and leaves do on Wednesday at 1 o'clock P M  
Western ditto arrives on Thursday at 2 o'clock P M. and leave  
ditto on Monday at 2 o'clock P M.

---

### Eastern Division.

Includes Counties of Cumberland & Sydney and Districts of Colches-  
ter and Pictou.

Chief Justice of the Inferior Courts of Common Pleas and Presi-  
dent of the Courts of Session in this Division, Jared I Chipman Esq

### COUNTY OF HALIFAX,

#### *Districts of Colchester and Pictou:*

Supreme Court sits at Pictou on the last Tuesday of May, and third  
Tuesday of September.

At Truro on the 1st Tuesday of June, and 4th Tuesday of Sept.

#### Inferior Court.

Sits at Pictou 3d Tuesday of July, and 4th Tuesday of January  
Assistant Judges, Hugh Denoon, A M'Donald, George Smith, Robert  
Lowden, and Andrew M'Cara Esqrs. Mr Walter Patterson, deputy  
Prothonotary.

At Truro on the 2d Tuesday of July and the 3d Tuesday of Jan

Assistant Judges, John Fulton, James Archibald, and Thos J Brown Esqrs. Mr George Dill, deputy Prothonotary.

Sessions of the Peace.

Sits at Truro and Pictou at the same time with the Inferior court,

Justices of the Peace.

Of and for the county residing in the Districts of Colchester and Pictou, James Fulton Hugh Denoon, John Stewart, James Archibald Robert Lowden. Saml Tupper, Wm Cotting, Joshua Marsh, John Dickson, Wm M'Kay, George Roy, Matthew Archibald, Wentworth Taylor, John Allen, James Skinner, Robt Dickson, James M'Curdy, James Kent, George Smith, James Benvie, Adam Archibald, John Fraser, Nathaniel Masters, Thos J Brown, James Flemming, J Mason, W. Currie, W Mattheson, D M'Lean, R M'Kay, Andrew M'Camp, W Field, R S Blanchard, James Carmichael, Jno Olding, Wm Fortimer and Silas H Crane Esqrs.

Surrogate Judges of the Court for the Probate of Wills.

District of Colchester, S G W Archibald Esq.— District of Pictou, George Smith Esq.

Registrars of Deeds.

District of Colchester, Israel Allison, Esq.— District of Pictou, Geo. Smith Esq.

District of Pictou.

Collector Light Duties, R Corbett, Collector of Impost and Excise, and Pro Collector of Customs Hugh Denoon Esq. Ditto for District of Colchester, Robert Dixon Esq.

Deputy Sheriff's.

District of Colchester Israel Allison Esq District of Pictou J W Harris Esq.

Commissioners of Land Board.

District of Pictou—George Smith, Robert Lowden, John Skinner, Robert Patterson. District of Colchester—Robt Dickson, James Flemming, Saml Tupper, Edw Blanchard. Postmasters—Alexr F Esq Pictou. Wm Dickson Esq Truro. Saml Moore Esq Gays

Yard.  
Master Attendant M  
ate Porter-  
al.  
:  
e in Halifax on Satur  
day at 1 o'clock P M  
ock P M. and leave  
d Districts of Colches  
non Pleas and Presi  
ared I Chipman Esq  
AX,  
Pictou:  
eday of May, and thir  
th Tuesday of Sept.  
Tuesday of January  
George Smith, Robt  
alter Patterson, deput  
e 3d Tuesday of Jan

**The Nova Scotia Barristers Society.**

Patrons, His Excellency the Chancellor, The honourable the Chief Justice.

Honorary Members, The Judges of the Supreme Court; Treasurer H H Cogswell Esq. Secretary and Librarian, J W Nutting Esqr. Committee for the years 1825 1826,

J W Johnston Esq }  
W B Bliss Esq } Barristers.  
N W White Esq. }  
Sub Librarian.

**County of Sydney.**

High Sheriff for the County, Kenneth McDonald Esq Deputy for the Lower District, Mr Wm O'Heffernan.

**Supreme Court**

Held at Dorchester Antigonish, on the 2d Tuesday of September Deputy Prothonotary, Alexr McDonald M D

Inferior Court and General Sessions of the Peace for the Upper District sits at Dorchester on the 1st Tuesday of May, and 3d Tuesday of October.

Assistant Judges, J W Hierlihy, John Cunningham & Benj Ogden Esqrs. Deputy Prothonotary Alex McDonald M D.

**Justices of the Peace.**

J W Heisleby John Cunningham, Alexr McDonald M D, John McDonald, Rob Murray & Rob N Henry Esqrs. Clerk of the Peace Mr John Monro.

**Commissioners of Land Board.**

Rev J Trotter, J W Hierlihy, John Cunningham, John M'Donald and Rob N Henry Esqrs. Secretary Mr John Monro, Dep Surveyor Mr Aaron D Harrington.

**Surrogate Judge of the Court for the Probate of Wills**

Alexander Mac Donald M D. Registrar Kenneth Mac Donald Esq Deputy Registrar of Deeds John Cunningham Esq Coroner Mr J G Peabody Postmaster R N Henry Esq.

**Inferior Court and General Sessions of the Peace for the Lower District**

Sits at Guysborough, on the 2d Tuesday of May, and 11th Tuesday of October

Assistant Judges, Thomas Cutler and Joseph Marshall Esqs. Dep Prothonotary, Wentworth Taylor Esq.

**Justices of the Peace.**

Thomas Cutler, Joseph Marshall, Wm Atwater, Christian Miller, Robt M Cutler, Wentworth Taylor, Patrick Lunnigan, C Archibald, Wm M'Keen, T Glencross, D Campbell, Hugh M'Donald, Robert Hartshorne, Jno Newton, Joseph Maxwell & Edward Langley Esqs, Clerk of the Peace Mr W O Heffernan.

**Commissioners of Land Board.**

Robt M Cutler, Joseph Marshall, Rob Hartshorne and John Newton Esqs. Secretary John Newton Esq. Deputy Surveyor Wentworth Taylor Esq. Surrogate Judge of the Court for the Probate of Wills &c, Thos Cutler Esq. Registrar Robt M Cutler Esq. Deputy Registrar of Deeds Thomas Cutler Esq. Postmaster Robt M Cutler Esquire, Corouer, Mr P Hosi.

**County of Cumberland.**

High Sheriff for the County, Joshua Chandler Esq:

**Supreme Court.**

Sits at River Philip on the 2d Tuesday of June.

**Inferior Court,**

Sits at Amherst, on the 1st Tuesday of Jany and last Tuesday of June. Assistant Judges, Chas Baker, Henry Purdy and Thos Roach Esqs. Silas Morse Esq Dep Prothonotary.

**Sessions of the Peace.**

Sits at Amherst, the same time with the Inferior Court.

**Justices of the Peace.**

Chas Baker Esq. Custos Rotolorum Henry Purdy, Gilbert Purdy

Edward Baker, Thomas Roach, C H Chandler, Gabriel Purdy, D M'Farlane, Wm Baker, John Black, Wm White, Gains Lewis, John Morse, George Bergman, James M'Nab, Thomas Cooke, Stephen Oxley, R M'Gowan Dickey Esqs. J S Morse Esq. C P.

Surrogate J of the Court for the Probate of Wills.

Charles Baker Esqr Registrar of Deeds &c. Chas Baker Esq Collector of Impost and Excise Thomas Chapman Pro Collector of Customs, Michael Gordon.

### Commissioners of Land Board.

Alex Stewart, Thos Roach, J S Morse, Danl M'Farlane, and Thos Cooke Esqrs Coroner. John Morse Esq. Postmasters Thos Roach. Esq Fort Lawrence W White Esq Amherst.

---

### Middle Division.

Includes the counties of Hants. Kings, Queens and Lunenburg, Chief Justice of the Inferior Courts of Common Pleas and President of the Courts of Session in this division, W H O Halliburton Esq.

#### County of Hants.

High Sheriff for the County, Terence Cochran Esq.

#### Supreme Court,

Sits at Windsor on the last Tuesday of May, and the 4th Tuesday of September.

#### Inferior Court,

Sits at Windsor on the 1st Tuesday of January, and the 1st Tuesday of July, Assistant Judges, R Cunningham Esq. Rev W Cochran D D Dep Prothy Patrick Wright Esq.

#### Sessions of the Peace

Held at the same time with the Inferior Court.

John Shuba  
Whid  
en, J  
Elder,

W H O  
Smith  
Wm. I  
Dep  
Excise  
ditto to

Held at

Sits at F  
Assistan  
den an  
lison Es

John C  
David V  
Dewolf  
James  
Chipman

Gabriel Purdy, D  
ains Lewis, John  
Cooke, Stephen  
q. C P.

Probate of Wills.

Baker Esq Collec-  
Collector of Cus-

d.

Farlane, and Thos  
asters Thos Roach.

Lunenburg, Chief  
d President of the  
ton Esq.

Chran Esq.

the 4th Tuesday of

ed the 1st Tuesday  
er W Cochran D D.

or Court.

### Justices of the Peace:

John Emerson Custos Rotulorum, Richard Cunningham Wm Smith, Shubal Dimock, W Saiter, J Walker, Calab Smith, W H Shey, Jas Whidden, John Smith, A Scott, Jno Parker, Benj Dewolf, W O'Brien, J Withrow, J McKay, J Allison, J Garby, John Dimock, John Elder, Daniel Wier and Richd Smith Esqrs.

### Commissioners of Land Board.

W H O Halliburton, Jos Sentell, Benj Dewolf, W H Shey, and Richd Smith Esqrs. Surrogate Judge of the Court for the Probate Wills, Wm. Fraser Esq.  
Deputy Registrar of needs W Bowes Esq. Collector of Impost & Excise W Bowes Esq. Pro Collector of Customs W Bowes Esq. ditto for douglass R Dickson Esq.  
Postmaster W Bowes Esq, Windsor:

### County of Kings.

High Sheriff for the County. George Chipman, Esq.

### Supreme Court.

Held at Horton on the 1st Tuesday of June and the 3d Tuesday of September.

### Inferior Court.

Sits at Horton on the 3d Tuesday of May and 2d Tuesday of Novr. Assistant Judges. John Chipman E Dewolf, Wm Campbell D Whidden and Hon C R Prescott Esqrs. Dep Prothonotary Samuel L. Allison Esq.

### Sessions of the Peace.

Held at the same time with the Inferior Court.

### Justices of the Peace.

John Chipman Custos Rotulorum. Elisha Dewolf Wm Campbell, David Whidden James Kerr Wm A Chipman J Ratchford Daniel Dewolf Jas Harris Saml Bishop J Wells Alexr Walker S Dennison James Allison Daniel Lockhart Fullerton J Lewis J D Harris W Chipman jr and H Harrington Esqrs. William Chipman C P.



**Commissioners of Land Board.**

H V Buskirk David Whidden Geo Chipman and I Johnson Esqrs.  
Coroners, W Moore D Dewolf and James Allison Esqrs.

**Surrogate Judge of the Court for the Probate of Wills.**

William Campbell Esq.

**Deputy Registrar of Deeds, &c,**

Horton, Aylesford and Cornwallis. William Campbell Esq. Parrs-  
boro' James Ratchford Esq.

Collector of Impost and Excise—D Whidden Esq. Pro Collector of  
Customs —D Whidden Esq.

Postmasters—Elisha Dewolf Esq Horton. James Ratchford Esq.  
Parrsborough.

---

**County of Queen's.**

**High Sheriff for the County, Nathan Tupper Esq.**

**Supreme Court.**

Held at Liverpool, on the 1st Tuesday of July.

**Inferior Court.**

Sits at Liverpool on the 4th Tuesday of April and 4th Tuesday of Oc-  
tober, Assistant Judges Joshua Newton, Joseph Freeman Snow Par-  
ker Benjamin Knaut and James Dewolf Esqrs. Dep Prothonotary  
James Rogers Esq:

**Sessions of the Peace,**

Held at the same time with the Inferior Court.

**Justices of the Peace,**

Joshua Newton Custos Rotulorum, Joseph Barz, Nathan Tupper, Isaac  
Dexter, Joseph Freeman, Snow Parker, Benjamin Knaut, Robert Barry, Jas.  
Gerhard, J. R. Dewolf, John Barz and James Dewolf, Esqrs.

Jos.

Collecto  
—Jos. I

Sits at  
Assistan  
Esqrs.

Ed Ja  
W Cran  
Millar, V  
F C Ru

John  
Surr

Collecto  
S Bruce

Include  
the info  
Session

### Commissioners of Land Board.

Jos. Freeman Benj. Knaut, Nathan Tupper and James Gorham, Esqrs.  
Surrogate Judge of the Court for the Probate of Wills, &c.

Joshua Newton, Esqr.

Collector of Impost and Excise—Jos. Newton, Esq. Pro Collector of Customs  
—Jos. Newton, Esq. Coroner—Jacob Whitman Esq.  
Postmaster—Benjamin Knaut, Esq.

### County of Lunenburg,

High Sheriff for the County, Henry Kaulbaek, Esq.

#### Supreme Court,

Held at Lunenburg on the last Tuesday of June

#### Inferior Court.

Sits at Lunenburg on the 2d Tuesday of April and 2d Tuesday of October.  
Assistant Judges, John Creighton, J. Pernet, Garret Millar and Ed. James,  
Esqrs. Deputy Prothonotary, Charles Owens, Esq.

#### Sessions of the Peace.

Held at the same time with the Inferior Court.

#### Justices of the Peace.

Ed James Custos Rotolorum, F J Etter, John Creighton, John Pernet, D  
W Crandall, James Walker, John C Rudolf, John Evans, Ed Enright, Garret  
Millar, Wm Alexander, John Heckman, Thos Godfrey and G S Wells Esqrs.  
F C Rudolf C. P.

### Commissioners of Land Board,

John Pernet, D M Crandall Garret Miller and John Heckman Esqs.

Surrogate Judge of the Court for the Probate of Wills.

J Pernet Esq.

Deputy Registrar of Deeds &c. Philip Rudolf Esq.

Collector of Impost and Excise—Thos Godfrey Esq, Preventive Officer, Jno.  
S Bruce Esq. F J Rudolf Esq. Coroner, Postmaster—J C Rudolf Esq. Lu-  
nenburg.

### Western Division.

Includes the Counties of Annapolis and Shelburne, Chief Justice of  
the Inferior Courts of Common Pleas and President of the Courts of  
Session in this division, Thomas Ritchie Esq.

## County of Annapolis.

High Sheriff for the County, ward H Cutler Esq.

### Supreme Court.

Sits at Annapolis on the 2d Tuesday of June and the second Tuesday of September.

### Inferior Court.

Sits at Annapolis on the 3d Tuesday of April and the 1st Tuesday of November; and at Digby on the 1st Tuesday of July and 3d Tuesday of December. Assistant Judges, Josiah Jones E. Morton Andrew Snodgrass C U Jones and Wm F. Bonnell Esqrs. E Cutler Dep Prothonotary.

### Sessions of the Peace.

At the same time with the Inferior Court.

### Justices of the Peace.

J Jones Custos Rotularum. Edward Thorn Simon Jones Stephen Jones Moses Shaw R T Randolph P Lovell sen Benjamin Dodge John Ruggles E Morton S V Bayard John Whitman Phineas Lovett John Morehouse Rubin Hankinson John M Segoyne W Jones Thomas Ritchie Joseph Quequey John Wiswall Jun. Elias Wheelock W F Bonnell C Jones John Reed Chas Jones J F Randolph W Bent Pardor Sankes Wm Delancy Sam Campbell W Roach Chas Hannah Sam I Chesley Sam Hall Timothy Ruggles Jun Jno Ditmars, James Robertson & Robert Neily Esqrs. Ebenezer Cutler C P.

### Surrogate Judge of the Court for the Probate of Wills.

Thomas C Halliburton Esq.

### Registrars of Deeds.

Eastern District, Wm Winniett Esq. Western do S Jones Esq.

Coroners—Silvanus Snow Wm Young and James R Lovett Esqrs.

Collector of Light Duty, of Impost and Excise, and Pro

### Collector of Customs:

Henry Goldsmith Esq.

### Commissioners of Land Board.

Eastern District—Thomas Ritchie, Henry Goldsmith and J Ditman Esqs — Western District—Cerenio U Jones Chas M'Carthy and Sam Cambell Esqrs.

Postmasters—Henry Goldsmith Esq Annapolis—W Muir Esq Digby

Sits a  
on the 4  
J N Bon  
Dep Pr

Sits a  
Sepr.—  
Crowell

Gideo  
D'Entre  
Ebeneze  
V Norde  
Kinnon  
C P.

Easter  
gay and  
G Farish  
Surrog

Pro C  
S Bruce.  
Corone  
burne.

Cutler Esq.

the second Tuesday

the 1st Tuesday of  
July and 3d Tues-  
day. Morton Andrew  
Cutler Dep Pro-

court.

John Jones Stephen  
Amin Dodge John  
neas Lovett John  
V Jones Thomas  
Wheelock W F  
W Bent Pardon  
as Hannah Sam I  
ars, James Ro-  
P.

Probate of Wills.

do S Jones Esq.  
Lovett Esqs.  
cise, and Pro

and J Ditman  
Carthy and Sam

Muir Esq Digby

## County of Shelburne.

High Sheriff for the County, John Bingay Esq.

Supreme Court.

Held at Shelburne on the 2d Tuesday of July.

Inferior Court.

For the district of Yarmouth and Argyle.

Sits at Tusket Village on the 1st Tuesday of May and at Yarmouth on the 4th Tuesday of November Assistant Judges S S Poole J Lent J N Bond B D'Entremont and H G Farish Esqs M Huntington Esq. Dep Prothonotary.

For the District of Shelburne.

Sits at Shelburne on the 2nd Tuesday of May and the 2d Tuesday Sept.—Assistant Judges G White J Sargeant J V Buskirk and T. Crowell Esqs. Robert Bingay Esqr Dep Prothonotary.

Sessions of the Peace.

Held at the same time with the Inferior Court.

Justices of the Peace.

Gideon White Custos Rotulorum, Samuel S Poole B Bernard B D'Entremont Jacob V Buskirk James Dore J N Bond James Lent Ebenezer Crowell H G Farish Thos Crowell John Bingay Gabriel V Norden Anthony Landers J Kelly B Bingay M Huntington J Mc Kinnon Colin Campbell and J Barclay Esqs. Robert Bingay Esq. C P.

Commissioners of Land Board.

Eastern District—Colin Campbell Jacob Van Butkirk John Bingay and B Sargeant Esqs. Western District—Samuel S Poole H G Farish John McKinnon and Gabriel Van Norden Esqs.

Surrogate Judge of the Court for the Probate of Wills.

Gideon White, Esq.

Deputy Registrar of Deeds—Colin Campbell Esq.

Collectors of Impost and Excise,

Yarmouth—H G Farish,

Shelburne—J V Buskirk,

Weymouth—R. Hankison,

Pro Collectors of Customs—Yarmouth, J N Bond. Shelburne, A S Bruce. Weymouth, R Hankinson. Barrington, Joseph Homer. Coroner; George Bingay. Postmaster, William Cox, Esq. Shelburne.

---

## County of Cape Breton.

High Sheriff for the County, Charles R Ward Esq.

**Supreme Court.**

Held at Sydney on the last Tuesday of August and at Arichat on the 1st Tuesday of September.

**Inferior Court.**

Northern District Sits at Sydney on the 2d Tuesday of April and the 4th Tuesday of October. Southern District sits at Arichat on the 4th Tuesday of April and 1st Tuesday of October.

J G Marshall Chief Justice of the Inf Court of Common Pleas, Assistant Judges, Thomas Crawley, Lawrence Kavanagh, John Leaver, Clement Hubert, and B Tupper, Esqrs.—Acting Prothonotary for the County Chas E Leonard Esq. Sydney Deputy Prothonotary at Arichat, Andrew Madden, Esq. at Mabou, John L Tremain Esq. Surveyor General of Lands, Thomas Crawley Esq.

**Surrogate Judge of the Court for the Probate of Wills.**

Thomas Crawley Esqr.

**Sessions of the Peace.**

Held at the same time with the Inferior Court.

**Justices of the Peace.**

John G Marshall Custos Rotulorum, Archd Dodd, Thos Crawley, Richd Gibbons, Clement Hubert, John Leaver, Chas E Leonard, Rowd McKinnon, Peter H Clarke, Lawrnce Kavanagh, John Jones, Chas McNab, John Campbell, James Dodd, Joh Cameron, George Syrett Ford, B Tupper, John B Giles, David Tait, John Higgins, John Leaver, H Ingraham, Angus Grant, Saml Plant Geo Cosset, W Gammet, Wm Watts, Wm Bannerman, James Ball, Geo Brown, Andrew Madden, James Duffus, Theophilus Greenwood, H McDonald, John McKean, Nicholas Paint, Wm Duffus, Nicholas Martin and Thos E Chandler, Esqrs

Acting Collector and Comptroller John Warde Benn.

**Collectors of Impost and Excise and of Light Duty.**

Sydney Chas E Leonard, Arichat James Turnbull, Esqs.

**Superintendent of King's Mines**

Thos Crawley Esq. Coroner John Smith Esq.

Postmasters Chas M Alpine Esq Sidney. Jno Fuller Esq Arichat

**Registrars of Deeds**

Western district John L Tremain Esq. eastern do. John turnbull Esq Southern do. Chas R Ward Esq,

In

Maj  
de C  
Milit  
H. B  
Gene  
Berce  
ter C  
Briga  
um J  
Gener  
Comm  
Georg  
John  
Willia  
G

Lieute  
Major  
Chapla  
Sergea

A Ma  
Master  
pital A

Doctor  
sistant.

Doctor  
Lj. t. S  
paster.

His Exc  
Sir Howa  
Lt. Doug  
Aid de C  
Comy. G

## STAFF OF THE ARMY.

In Nova-Scotia and its Dependencies, under the Command of His Excellency Lieutenant General Sir **JAMES KEMPT, G. C. B. G. C. H. &c. &c.**

Major Yorke, Maj. Horton, Aides de Camp; Lt Colonel Couper, Military Secretary, Lieut Colonel H. B. Harris, Deputy Adjutant General; Lieutenant Colonel W. Beresford, Deputy Quarter master General, Major Bazalgette, Brigade Major; George Damerum Esq. Deputy Commissary General; A Veith Esq. Assistant Commissary General of Accounts George Swinney, James Slade, John Irvine, Oliver Goldsmith, William Lowe, Esqrs. Deputy

Assistant Commissary Generals; A Grant, and P Charlier Esqrs. Deputy Assistant Commissary General of Accounts; Major Blair Barrack Master; J. Q. Short, Esq. Deputy Inspector of Hospitals; A. P. Bradley Esq. M.D. Ordnance Surgeon; John Carter Esq. Apothecary to the forces.

Colonels Wodehouse, Cochran and McDougall, Inspecting Field Officers of Militia.

### Garrison of Halifax.

Lieutenant Mac Colla, Town Major; Rev. J. T. Twining, Chaplain; J. Williams, Town Sergeant

### Windsor

A Mac Dougall Esq. Barrack Master; Doctor T. Brisbane Hospital Assistant.

### Annapolis

Doctor Jas. Wilson, Hospital Assistant.

### Sape Breton

Doctor Doyle, Staff Surgeon; Town Adjutant; Lt. Samuel Rigby, Barrack Master.

### New Brunswick

His Excellency Major General Sir Howard Douglass, Governor; Lt. Douglass 3d Foot Guards, Aid de Camp; Gardner Esq. Asst. Comy. Genl. Chas. A. Clarke, and

H. C. Darling Esqrs. Dep. Asst. Comy. Genls. John E. Woolford Asst. Barrack Master; J. Q. Short Esq. Staff Surgeon; Lieut. Gallagher Town Major; Chaplain at Fredericton, Rev Geo. Best, Rev. Jerome Alley, ditto at St. Andrews. Rev. G. B. Gray at St. John.

### Prince Edward Island

His Excellency Colonel J Ready Lieutenant Governor; J F Holland Esq. Ordnance Storekeeper Lieut. A. Lane Town Major, B. D. St Croix Hospital Mate, Rev. T. Aldin Chaplain.

### Newfoundland

His Excellency Sir Thomas J. Cochran, Governor; Ensign R. Green, Fort Major; C. W Beverley and W. Stevens Esqrs. Dep. Asst. Comy. Genls. Rev. F. W. Carrington, Chaplain.

**BERMUDA.**

Lieutenant General Sir H. Turner, K. C. B. Governor; Lt. E. M. Goldsrick Town Major; W. Tucker Esq. Barrack Master, Lt. Farris commanding Royal Engineers, Lt. Griffin do, Artillery,

Esq. Asst. Comy. Genl. R. Lee and James Reid Esqrs. Dep. Asst. Comy. Genls. J Hutchinson Esq Ordnance Surgeon, J Crawford Esq. Hospital Assistant, Rev. John Lough Chaplain.

**Officers of H. M. Ordnance,**

John W. Tapp Esq. Storekeeper, C. H. Fife, senior clerk, Jas. Forrester, junior clerk, Chas. N. Fife, Master Carpenter, James Plummer, Master Armourer, W. Dalling, Overseer of Labourers, J. Anderson, Gate Porter.—J. E. White and W. H. Tapp, clerks Store Branch.

**Engineer Department.**

Lieut. Col. Nicolls and Lieut. Blackiston Engineers, Mr. Wm Rogers, 1st clerk,—Mr. T. Goudge, 2d clerk,—Mr. Richard Creed clerk of Works, Mr. J. G Toler clerk and draftsman.

**Barrack Office.**

Major Blair, Barrack Master, J. Rigby jr. 1st clerk in the General Barrack Office in this command under the Ordnance Storekeeper, James Ferral, clerk to the Barrack Master,—William Irvine, Barrack Sergeant

**Officers of the Army.**

**Royal Artillery.**  
*Hulifax.*  
Lieut Col. G. Forster  
Major Geo. Cobbe  
*Captains.*  
P. Stewart, Adjt.  
R. C. Molesworth  
*Lieutenants.*  
B. O. Lyster, Act Qr. Master  
L. E. Walsh  
F. A. Griffiths  
J. Hollingworth  
N. T. Lake  
J. Lowe  
Qr Mr Lt B O Lyster  
Adjt Capt P. Stewart  
*Royal Engineers.*  
Lt. Col. Nicolls.

*Lieutenants.*  
T B Blackiston.  
*New Brunswick*  
Captain C. E. Gordon.  
*Lieutenants.*  
J. W. Stokes.  
J. Slade.  
*Newfoundland.*  
Major J. W. Skinner.  
**74th REGIMENT.**  
"The Elephant."  
"Assaye."  
"Seringatam."  
"Busaco."  
"Fuentes d'Onor."  
"Ciudad Rodrigo."  
"Badajoz."  
"Salamanca"  
"Vittoria"

"Pyrenees"  
"Nivelle"  
"Orthes"  
"Toulouse"  
"Peninsula"  
*Colonel.*  
Hq. Sir C. Colville,  
C. B. & G. C. H.  
*Lieut. General.*  
*Lieut. Colonel.*  
John A. Fain  
*Majors.*  
David Stewart,  
William Mool.  
*Captains.*  
D J MacQueen  
G Hillier, m  
Eyre J Crabb  
Francis Ansell d

Joshua  
Thoma  
Thoma  
W M  
Jason  
L  
John A  
Charles  
Wm G  
A Atki  
Robert  
R Dav  
Wm B  
Bart B  
T W Y  
J Camp  
L M Ph  
George  
Annesle  
Ang F  
Ch Ayn  
R Haw  
Luke A  
Cha F  
K A de  
Geo Sch  
Pay.  
Ad A F  
QM Da  
Surg C  
A S R  
Facings  
Ag  
81st F  
" "  
" P  
Sir J K

q. Asst. Comy.  
nd James Reid  
. Comy. Genls.  
q Ordnance Sur-  
l Esq. Hospital  
John Lough

enior clerk, Jas.  
arpenter, James  
r of Labourers,  
H. Tapp, clerks

ineers, Mr. Wm  
c. Richard Creed  
an.

rk in the General  
nce Storekeeper,  
am Irvine, Bar-

"Pyrenees"  
"Nivelle"  
"Orthes"  
"Toulouse"  
"Peninsula"

Colonel.  
Sir C. Colville,  
C. B. & G. C. H.  
nt. General.  
Lieut. Colonel.  
A Rein  
Majors.  
id Stewa  
iam Mook.  
Captains.  
MacQueen  
illier, m  
e J Crabb  
cis Ansell d

Joshua Wilson  
Thomas Jones  
Thomas Mannin  
W M Crawley  
Jason Hassard

*Lieutenants.*  
John Alves  
Charles King  
Wm Graham  
A Atkinson  
Robert Barker  
R Davies  
Wm Black  
Bart Burnett  
T W Yates  
J Campbell  
L M Pherson  
George Gore  
*Ensigns*  
Annesley Eyre  
Ang F Ansell  
Ch Aymer Vallancey  
R Hawthorn  
Luke Allen  
Cha F Colyear  
K A de Koyen  
Geo Schindler Brown  
*Pay.*  
*Ad* A F Ansell  
QM Dan Fraser  
Surg C Grant  
A S R Ranken

*Facings white, Lace*  
*gold*  
*Ag Hopkinson's.*

81st REGIMENT  
"Maida"  
"Corunna"  
"Peninsula"

Colonel  
Sir J Kempt g c b & c  
g h

*Lt Colonel*  
And Creagh  
*Majors*  
P C Taylor  
J M Wardrop

*Captains*  
Rich Cole  
John Duval  
W Horton  
C F Meclean  
K Montgomery  
E Scoones  
David Duval  
Wm Hall  
Jos Sisson  
Percy Pratt

*Lieutenants*  
Tho Manning  
T C Wheat  
George Smyth  
J A Lutman  
E T Thomson  
Henry Dixon  
Chas Oakley  
John Browne  
Wm M'Donald  
James Douglass  
G V Creagh  
J J Hamilton

*Ensigns*  
Geo Reeves  
Abr Splaine  
Wm Hope  
H M Blaydes  
G F de Rottenburg  
Wm Dyer  
J B Creagh  
J U Jeffery  
A M'Donald  
*Pay* A Thompson  
*Ad* A M'Donald  
Q M J Roberts  
Surg Wm Cogan  
A S Jas Ewing

John Bell  
*Facings buff, -Lace*  
*Silver*  
*Ag Lawrie.*

RIFLE BRIGADE  
"Copenhagen"  
"Monte Video"  
"Roleia" "Vimiera"  
"Corunna" "Busaco"  
"Bardosa"  
"Fuentes d'Onor"  
"Cuidad Rodrigo"  
"Badajoz"  
"Salamanca"  
"Vittoria" "Nivelle"  
"Nive" "Orthes"  
"Toulouse"  
"Peninsula"  
"Waterloo,"

*Colonel in Chief,*  
Arthur, Duke of Wel-  
lington, K. G. G. C.  
B. & G. C. H. Field  
Marshall.

*Colonel Comm,*  
Hon. Sir W. Stewart,  
G. . B. lieut. ge nl.

*Lt Colonel*  
Amos Godsil Robert  
Nercott, C. B. col.  
*Majors,*  
J Fullerton, c. B. lt col  
Wm Eeles,

*Captains*  
H G Smith c. B. lt  
W Johnston  
James Perceval  
A W Pemberton  
John Cox  
A Stewart  
J Hope  
J Molloy,



C Ricketts  
 T E Kelly  
*1st Lieutenants*  
 J Kincaid  
 G Simmons  
 John Fry  
 A Milligan  
 F H Byrne *adjt*  
 Rich Irton  
 Wm Warren  
 A Maclachlan  
 Gervas Power  
 Hon C D Blaney  
 Marc J Slade

W. S R Norcott  
 James Maister  
*2d Lieutenants*  
 Hor Stewart  
 J S Cameron  
 J V Shelley  
 C C Vivian  
 Robt Dering  
 John B Groves  
 Chas F Napier  
 Chas P Ainslie  
 J C Clitherow  
 Wm Crosbie  
 Thos W Nesham

Rob Walpole  
 Horatio Shirley  
 Henry Capel  
 W S Tollemache  
 R H E White  
*Pay.* W Holden  
*Adj.* F H Byrne  
*Qr Mr* W Surtees  
*Sur* J Burke M D  
*Ast* J Armstrong  
  
*Regimentals green*  
*facings black,*  
*Ag Greenwood & C*

Officers of His Majesty's Ships.

WILLOUGHBY LAKE, Esq. C. B. Rear Admiral of the Red, and Commander in Chief of His Majesty's Ships and vessels employed, and to be employed at Halifax, or the coast of North America, &c. &c.

JUPITER, 60 Rear Admiral Lake, C B; J B Hutchins Esq Secretary; Captain, Sir W S Wiseman, Bt, Lieutenants, Wm Canton, Edw Plaggenborg, Courtney E Boyle, W Lake, Flag Lieutenant, Capt Marines H Priddle, 2d Lieut George Victor, Master, James Wood, Surgeon, Hamilton Baillie, Assistant Surgeons Thomas Dunn, Wm Doak, Sup. Anderson Angus, Purser, William A Davies. Chaplain, Rev. Rosenburg

MENAI, 26, Captain Houston Stewart, Lieut George Holbeck, Lawford Miles, 2d Lieut Mar Chas Roe, Master Lloyd Edward, Surgeon, Fras Logan, Assistant Surgeon, R Marshall, Purser James Boyle,

NIEMEN, Capt Provo W P Wallis, Lieutenant, And Kennedy, William H Molyneux, Thomas Cole, Lieutenant Marines, Chas Clarke, Master James Hardie, Surgeon Henry Towsey, Assistant Wm Peattie, Purser Alexr Pemprase.

ORESTES, 18—Commander Henry Litchfield, Lieut James Whitelocke, Wm Dickey, Master, Edw Sawkins, Surgeon William Anderson, Asst Chas D Henderson, Purser Thos Nisbett.

RIFLEMAN, 18—Commander Wm Webb, Lieut Chas Gayton, Alex Dawson, Master ——— Surgeon Chas Kennedy, Assistant Wm Thompson, Purser James D Keely.

Rob Walpole  
Horatio Shirley  
Henry Capel  
W S Tollemache  
R H E White  
Pay. W Holden  
Adj. F H Byrne  
Qr Mr W Surtees  
Sur J Burke M D  
Ast J Armstrong

*Regimentals green  
facings black,*  
Ag Greenwood & C

**Ships.**

near Admiral of the  
Majesty's Ships and ve  
Halifax, or the coast

J B Fitchins Esq s  
Lieutenants, Wm Car  
V Lake, Flag Lieu  
Victor, Master, Jam  
Surgeons Thomas  
Purser, William A D

Lieut George Holbec  
Master Lloyd Edward  
R Marshall, Purser

Lieutenant, and Kenned  
Lieutenant Marines, Cha  
y Towsey, Assistan

field, Lieut James  
kins, Surgeon Will  
hos Nisbett  
Lieut Chas Gaytor  
Kennedy, Assistan

