

India (Uttarakhand), Nepal | Recent landslides

Himachal Pradesh

© European Union, 2021. Map produced by the JRC. The boundaries and the names shown on this map do not imply official endorsement or acceptance by the European Union.

PAST 7-DAY RAINFALL ACCUMULATION
Source: NASA-GPM

- 50-100 mm
- 100-250 mm
- 250-500 mm

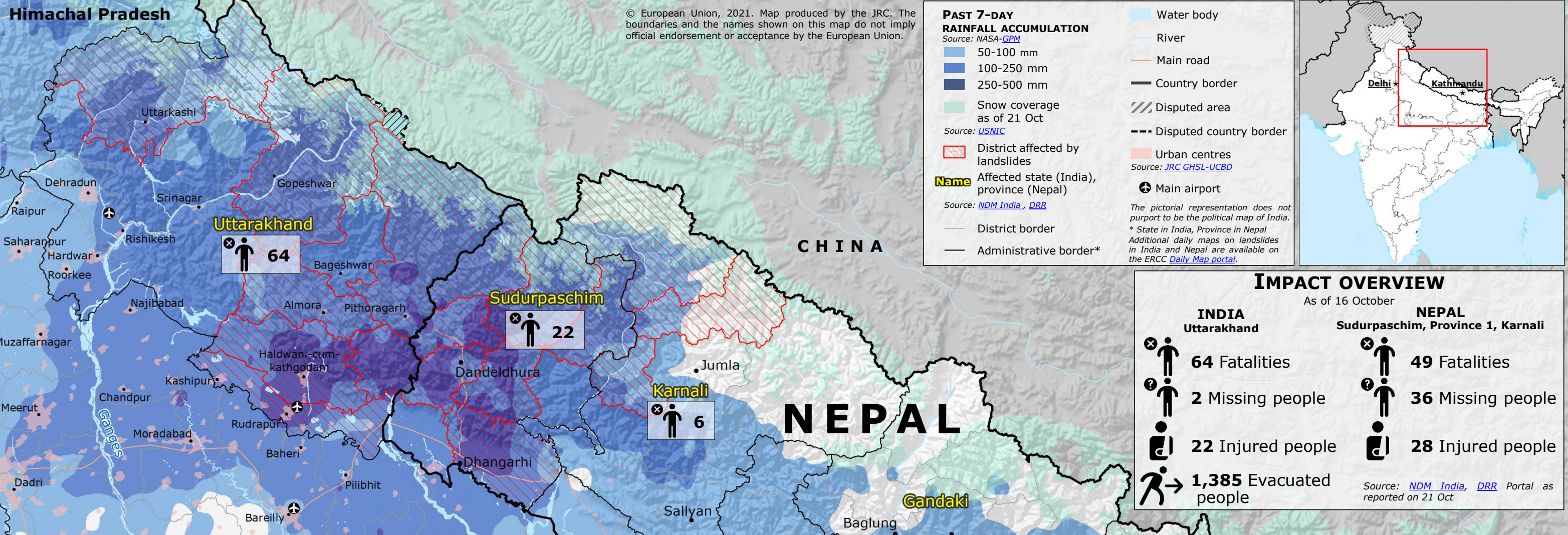
Snow coverage as of 21 Oct
Source: USNIC

District affected by landslides
Name Affected state (India), province (Nepal)
Source: NDM India, DRR

District border
 Administrative border*

- Water body
- River
- Main road
- Country border
- Disputed area
- Disputed country border
- Urban centres
Source: JRC GHSL-UCBD
- Main airport

The pictorial representation does not purport to be the political map of India.
* State in India, Province in Nepal
Additional daily maps on landslides in India and Nepal are available on the ERCC Daily Map portal.



IMPACT OVERVIEW

As of 16 October

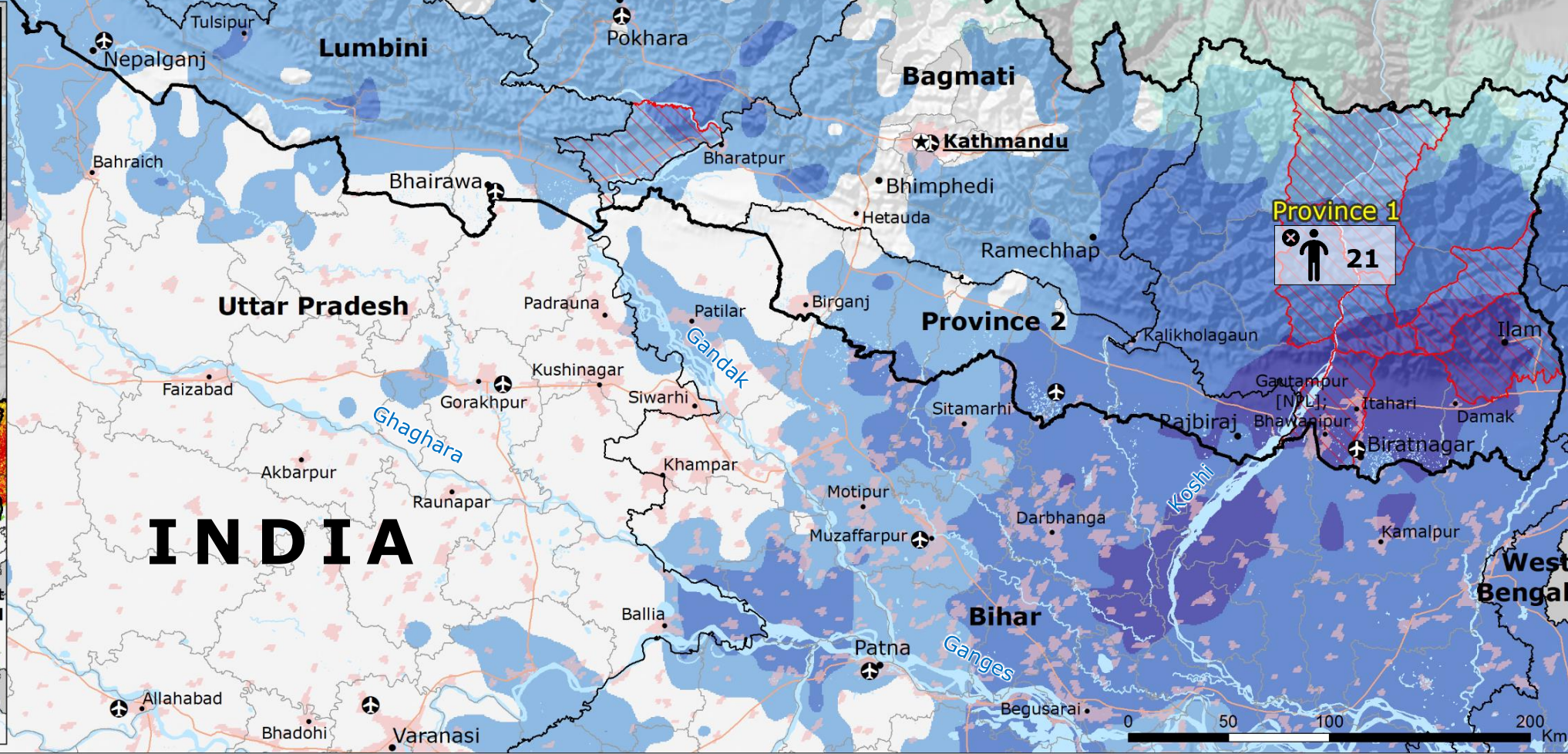
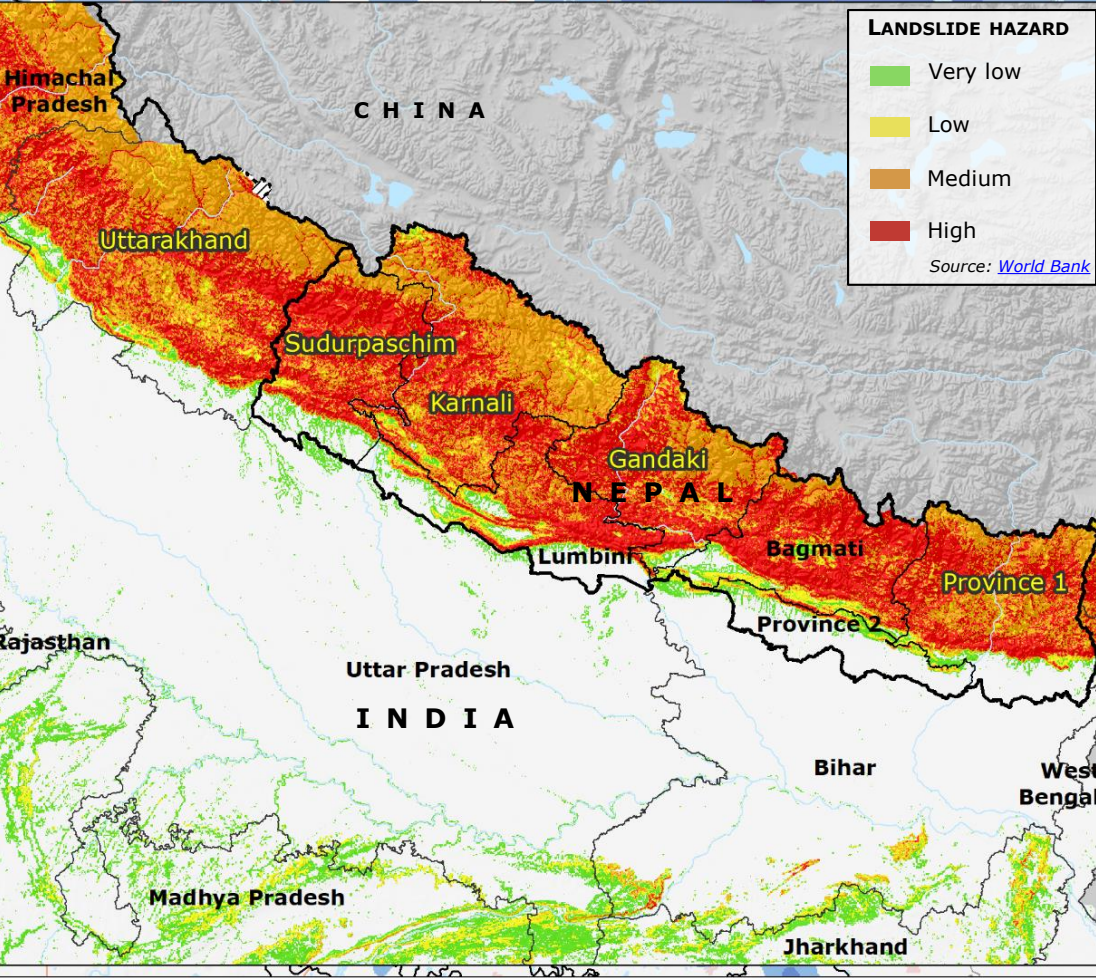
INDIA		NEPAL	
Uttarakhand		Sudurpaschim, Province 1, Karnali	
	64 Fatalities		49 Fatalities
	2 Missing people		36 Missing people
	22 Injured people		28 Injured people
	1,385 Evacuated people		

Source: NDM India, DRR Portal as reported on 21 Oct

LANDSLIDE HAZARD

- Very low
- Low
- Medium
- High

Source: World Bank



0 50 100 200 Km