

F 474  
.S2 J5  
Copy 1

5

LIBRARY OF CONGRESS



0 014 570 369 4



Conservation Resources  
Lig-Free® Type I  
Ph 8.5, Buffered



LIBRARY OF  
73

# Jewish PROGRESS in SAINT LOUIS.

RELIGIOUS,  
CHARITABLE,  
EDUCATIONAL,  
SOCIAL,  
MERCANTILE

TH CALENDAR.  
D DIRECTORY

ILLUSTRATED



# Mississippi Valley Trust Company

N. W. COR. FOURTH AND PINE STREETS  
ST. LOUIS

Capital, Surplus and Profits, \$8,200,000.

*The Business of this Company is conducted in Five Departments, as follows:*

1. **FINANCIAL OR MONEY DEPOSIT**—Receives deposits on time, savings and check accounts and pays interest thereon. Loans money on St. Louis city real estate and listed high-grade securities. Buys and sells domestic and foreign exchange. Issues its own Letters of Credit available everywhere.
2. **TRUST OR FIDUCIARY**—Executes all manner of Trusts. Authorized by law to act as Executor, Administrator, Trustee, Guardian, Curator, Register and Transfer Agent of Bonds and Stocks, Receiver and Financial Agent for non-residents and others, and to become sole surety on all bonds required by law to be given.
3. **BOND OR INVESTMENT**—Buys and sells selected high-grade Investment Securities. List of Bonds for sale mailed on application. Commission orders, at usual rates, executed with promptness.
4. **REAL ESTATE**—Manages, Sells, Rents and Appraises city property. Pays Taxes, places Insurance.
5. **SAFE DEPOSIT OR STORAGE VAULTS**—Rents Safe Deposit Boxes in Fire, Burglar and Flood Proof Vault at \$5 and upward per annum. Stores, at special rates, trunks and boxes containing silverware and other bulky valuables; calls for and delivers same at residence.

CORRESPONDENCE INVITED

ALL BUSINESS STRICTLY CONFIDENTIAL

## OFFICERS

Julius S. Walsh, President	W. Daviss Pittman, Bond Officer
Breckinridge Jones, 1st Vice-Pres. and Counsel	Frederick Vierling, Trust Officer
John D. Davis, 2nd Vice-President	Henry Semple Ames, Assistant Trust Officer
Samuel E. Hoffman, 3rd Vice-President	William G. Lackey, Assistant Trust Officer
James E. Brock, Secretary	Eugene H. Benoit, Real Estate Officer
Hugh R. Lyle, Assistant Secretary	Wilbur B. Price, Safe Deposit Officer
Henry C. Ibbotson, 2nd Assistant Secretary	

## DIRECTORS

Elmer B. Adams, U. S. District Judge	Geo. H. Goddard, Retired
Williamson Bacon, President Tyler Estate	S. E. Hoffman, 3rd Vice-President
Murray Carleton, President Carleton D. G. Co.	Chas. H. Huttig, President Third National Bank
Charles Clark, Retired	Breckinridge Jones, 1st Vice-Pres. and Counsel
John D. Davis, 2nd Vice-President	Wm. F. Nolker, Treas. St. Louis Brewing Ass'n
Harrison I. Drummond, President Drummond Realty and Investment Co.	Wm. D. Orthwein, Pres. Wm. D. Orthwein Grain Co.
Auguste B. Ewing, Retired	H. Clay Pierce, President Waters-Pierce Oil Co.
David R. Francis, President D. R. Francis & Bro. Commission Co.	Joseph Ramsey, Jr., President Wabash R. R. Co.
Johnst. Gehner, Pres. German-American Bank.	Moses Rumsey, President L. M. Rumsey Mfg. Co.
	Julius S. Walsh, President
	Rolla Wells, Mayor of City of St. Louis



## *Introduction.*

---

Although it is over fifty years since the first Jewish settlers took up their abode in the city of St. Louis, no attempt has ever been made to tell of their development and growth, which, while not separate from that of the great city, which is the gateway between the East, West, North and South, of this great United States, has been one of progress commensurate with the advance of the city itself.

Jewish houses of worship dignify and adorn the streets of St. Louis; Jewish charitable institutions co-operate with those of other denominations, in relieving not only Jewish, but general suffering, sickness and want in the municipality; Jewish educational organizations disseminate the great essentials to American citizenship, knowledge and culture; Jewish social bodies assist in maintaining the good name of St. Louis for oprahanded hospitality, and Jewish merchants, financiers, mechanics, artists, and exponents of law, medicine, and the arts, have interwoven their striving with the web and woof of St. Louis, in advancing its standing as a city, known now (not as of old as the *Future Great*,) but as

### **The Great New St. Louis of the World's Fair—1904.**

With a view of partially sketching in word and picture, the present extent and scope of the Jewish community of this new St. Louis today, this book has been prepared.

It is by no means complete. All omissions are, however, unintentional, and pardon is requested in advance.

The book possesses a permanent interest and value, and the Jewish Calendar and Directory it contains, it will make it used for frequent reference.

That it may tend to awaken in them a better realization of their own importance and responsibility, as well as give a better knowledge to the non-Jew of the activity and general life—religious, charitable, social, educational and commercial—of the Jewish people of the World's Fair city—is the hope of

THE PUBLISHER.

January, 1904.

(The majority of the potraits are reproductions from Strauss Studio.)

JOHN WAHL  
President

WM. KOENIG  
Vice-President

RICHARD HOSPES  
Cashier

H. HUNICKE  
Ass't Cashier

ORGANIZED 1853

# German Savings Institution

... DIRECTORS ...

Wm. J. Lemp, Wm. Koenig, Louis Fusz, A. Nedderhut, W. C. Uhri  
Richard Hospes, Chas. A. Stockstrom, Otto F. Meister, John Wahl

**CAPITAL** = = = = **\$500,000.00**  
**Surplus and Undivided Profits** = **\$1,256,952.67**

3% INTEREST PAID ON TIME DEPOSITS

2% INTEREST PAID ON CURRENT ACCOUNTS

S. W. Cor. 4th and Pine Streets, (Planters House Building)  
ST. LOUIS

H. WOOD,  
President.

RICHARD B. BULLOCK,  
Vice-President.

WM. E. BERGER,  
Cashier.

H. W. KROEGER,  
Ass't Cashier



# Jefferson Bank

CORNER FRANKLIN AND JEFFERSON AVENUES,

ST. LOUIS

We solicit your account and extend to you every courtesy.  
Foreign exchange bought and sold.

Letters of credit issued, payable in all parts of Europe.



HIGHEST RATES OF INTEREST ALLOWED ON  
TIME DEPOSITS.

# The Jewish Community of St. Louis.



It is not an easy task to describe in detail the present stage of progress of the Jewish community of St. Louis.

This partial sketch does not presume to give a complete, exhaustive or infallible account of its charitable, educational, social, religious and commercial life, but is merely a surface sketch of these various branches as they exist at the present time.

The most important phase of the Jewish community's life is of course its religious basis.

The Jewish community of St. Louis, as elsewhere, while apparently to the external observer one united denomination, is in reality subdivided in two elements, Orthodox and Reform.

The difference between the two is mainly in the degree of emphasis that is placed upon traditional custom, and the literal or liberal interpretation of the written Law known as the Torah.

In all matters relating to Charity and Education, or public affairs, however the two divisions of the Jewish people always find it possible to co-operate, while otherwise maintaining their differing beliefs as indicated.

The total Jewish population of St. Louis is about 40,000.

The principal congregations of the city are as follows:

The United Hebrew Congregation, Bnai El, Shaare Emeth, Temple Israel, Bnai Amoona, Tereth Israel, Beth Hamedrash Hagodal, Sheerith Sfarad, Chevra Kadisha, Bnai Israel.

The main Charitable endeavors of the Jewish community are expressed in the federated body known as the Jewish Charitable and Educational Union, with its splendid constituent bodies.

The systematic and organized way in which the work of this body is performed, has made the finding of improvident destitute members of the Jewish community a rarity, relieving the city and the Christian denominations of any necessity of furnishing means for the care of such needy ones.

This Charitable and Educational Union is largely officered and administered by leaders of the Reform congregations, although the subscriptions come jointly from Orthodox and Reform Jews.

The Young Men's and Ladies' Hebrew Charity Society is another charitable organization conducted by the Orthodox branch of the Jewish community of St. Louis, and has done good work as its records show.

The Educational features of the Jewish community are largely concentrated in the Jewish Alliance Night School, the Social Settlement, and the Young Men's Hebrew Association. The latter is more than an educational institution, combining social, moral and physical departments, as well.

In the western part of the city there are two organizations that have contributed to the edification, intellectually and aesthetically of the feminine members of the community, namely the "Pioneer" and the "Friday Musical" Societies.

Most of the congregations also have auxiliary young people's societies, the following may be noted: "The U. H. C. Literary Circle and the Bnai El and the Bnai Amoona Young People's Aid Society."

The fraternal work of the community consists of its local lodges of the national fraternal orders, The Independent Order Bnai Brith, Independent Order Free Sons Israel, Independent Order Brith Abraham, Progressive Order of the West, Sons of Benjamin, Knights of Joseph, Western Star and others.

The community has two journals, "The Modern View" and "The Jewish Voice," representing the liberal and conservative elements, respectively.

The leading social life of the Jewish community centers in the Columbian Club, whose elaborate Building on Lindell Boulevard and Vandeventer avenue, is a familiar sight to the fashionable West End.

There is also the Progress Club of the South Side, at 1441 Chouteau avenue, and the Prospect Club, composed of young business men.

The principal burial grounds of the Jewish people are the Mt. Sinai and the Mt. Olive Cemeteries.

The former is maintained jointly by three congregations, Temple Israel, Shaare Emeth and Bnai El.

The Mt. Olive is the burial place maintained by the United Hebrew Congregation.

The Orthodox Congregations have their separate cemeteries.

The St. Louis adherents of Zionism (the movement for the rehabilitation of Palestine) have their several organizations.



STRAUSS PORTRAIT      Elias Michael, Esq.  
 Ex-President Mercantile Club, Ex-President Jewish Alliance,  
 Director Board of Public Education, and World's Fair Director.

Officers and Directors  
 Jewish Charitable and  
 Educational Union

MOSES FRALEY, President  
 MARCUS BERNHEIMER, 1st Vice-Pres.  
 JULIUS LESSER, 2d Vice-President  
 WM. STIX, Treasurer  
 BERNARD GREENSFELDER, Secretary  
 MONTEFIORE BIENENSTOCK, Ass't Sec'y



DIRECTORS

Ben Altheimer	Aaron Haas
Albert Arnstein	Julius Lesser
Marcus Bernheimer	Isaac Meyer
David Eiseman	Elias Michael
August Frank	Emanuel Meyers
Moses Fraley	Sam J. Russack
Louis Glaser	Moses Schoenberg
Morris Glaser	Wm Stix
J. D. Goldman	David Treichlinger
Wm. Goldstein	Aaron Waldheim
	Beruard Greensfelder



ADOLPH ROBI, Superintendent



Constituent Societies

Charitable and Educational Union

United Charities, Comprising,  
 United Hebrew Association, Sisterhood  
 for Personal Service, and Free Employ-  
 ment Bureau.  
 Jewish Hospital and Dispensary,  
 Home for Aged and Infirm Israelites,  
 Jewish Alliance and Hebrew Free School  
 Society,  
 Cleveland Jewish Orphan Asylum,  
 National Jewish Hospital for Consumptives,  
 at Denver, Col.



STRAUSS PORTRAIT      William Stix, Esq.  
 Treasurer Jewish Charitable and Educational Union, and  
 President Cleveland Orphan Asylum

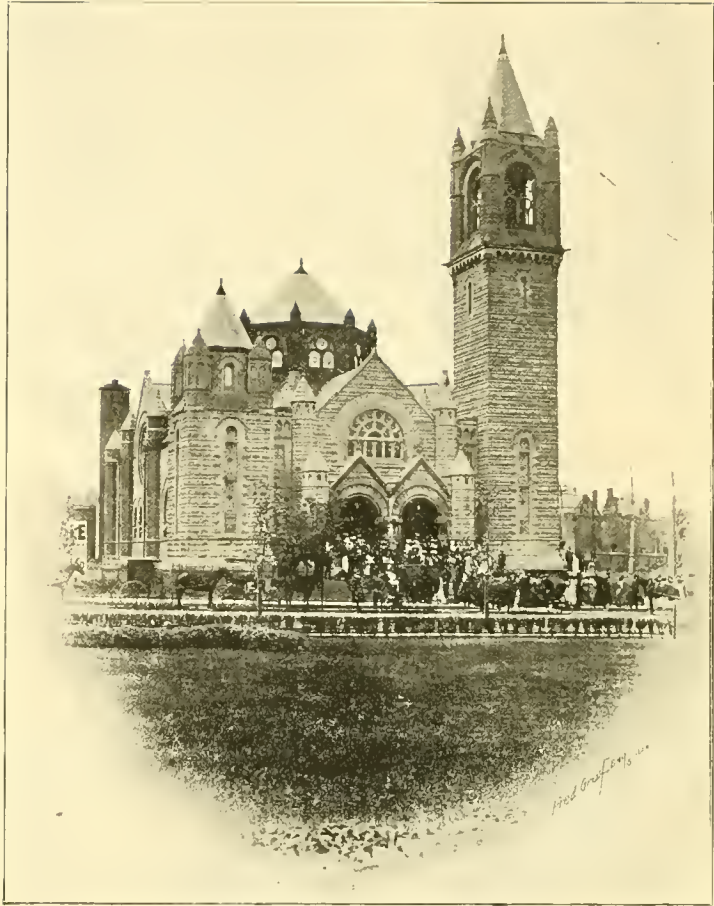




The Columbian Club Building  
N. W. Corner Lindell and Vandeventer Aves



Temple Israel  
N. E. Corner 29th and Pine Sts.



Shaare Emeth Synagogue

"GATES OF TRUTH"

S. E. Corner of Lindell Boulevard and Vandeventer Ave.



STRAUSS PORTRAIT J. J. Wertheimer, Esq.  
World's Fair Director

Officers and Directors  
Jewish Alliance and  
Hebrew Free School

Wm. Goldstein, President  
Elias Michael, 1st Vice-President,  
David Treichlinger, 2d Vice-President  
Julius Glaser, Treasurer  
Dr. H. J. Messing, Recording Secretary  
Emil Meyer, Financial Secretary

*DIRECTORS*

David Eiseman  
Leon Schwab  
Dr. S. Sale  
Dr. L. Harrison  
Dr. M. Spitz  
Dr. H. J. Messing, Hon. Dir

Superintendent and Teachers  
Jewish Alliance

Emil Mayer, Sup't  
Miss B. Sale,  
Miss R. Fishel  
Miss R. Kahn  
Miss M. Kahn  
Miss J. Isaacs  
Miss Silversmith  
Mrs. Moses

Superintendent and Teachers  
Hebrew Free School

Miss B. Sale, Sup't  
Miss A. Gershon  
Miss R. Fischel  
Miss D. Schwarz  
Miss L. Joffe  
Mrs. Moses  
Miss Fannie Wachtel



STRAUSS PORTRAIT Wm. Goldstein, Esq.  
President Hebrew Free and Industrial School.



Strauss Portrait

Rev. Dr. Samuel Sale

Rabbi Congregation "Shaare Emeth" (Gates of Truth)

Schaare Emeth Congregation.

Louis Straus, President  
B. P. Stromberg, Vice-President  
Meyer L. Stern, Treasurer  
M. D. Stern, Secretary  
Leopold Sternberger, Warden

*DIRECTORS*

Dr. M. A. Goldstein	Nicholas Scharff
Aaron Haas	Simon Bass
Max A. Mayer	J. D. Strauss
Henry Sayers	Louis P. Aloe
Bernhard Greensfelder	

Adolph Levy, Sexton





Strauss Portrait

Rev. Dr. Leon Harrison  
Rabbi "Temple Israel"

### "Temple Israel."

M. Fraley, President      Louis Glaser, Vice-President      Adolph Baer, Treasurer  
M. B. Jonas, Secretary      Albert Loth, Fin. Sec'y

#### DIRECTORS

Wm. Stix      B. Eiseman      D. Treichlinger      M. S. Wieder      B. Altheimer  
M. J. Loewenstein      J. Loth      Dr. J. Friedman      M. Schoenberg      H. Ittleson

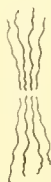


Strauss Portrait

Rev. Dr. M. Spltz  
Rabbi Congregation Bnai El

Congregation Bnai El

Sigmund Stampfer, President  
Sigmund Steiner, Vice-President  
Hertz Kohner, Secretary  
Sol. Bondi, Treasurer



DIRECTORS

Max L. Weiss      Emil Hartmann  
Bernard Loebner      Jos. Stampfer  
Max Weil

S. Weinberg, Sexton



Strauss Portrait

Rev. Dr. Hy. J. Messing  
Rabbi United Hebrew Congregation

### United Hebrew Congregation

Sam'l Marx, President  
M. Lipschitz, Treasurer

A. Plessner, Vice-President  
J. Warner, Secretary

#### TRUSTEES

J. B. Goldsmith  
M. Summerfield  
J. Landau

S. A. Gershon  
S. J. Russack  
J. Warner  
M. P. Silverstone

G. Aronson  
G. Moritz  
S. Zork

A. Gershon, Sexton,



Strauss Portrait

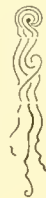
Rev. Dr. Adolph Rosentreter  
Rabbi Bnai Amoona Congregation

**Bnai Amoona Congregation**

L. Freedman, President  
S. Rosenberg, Vice-President  
N. Hesselberg, Secretary  
B. L. Gross, Treasurer

**DIRECTORS**

A. Kohn	S. Epstein
Wm. Nudelman	M. Goldwasser
J. Slupsky	F. Fishlowitz



L. Wohl, Sexton  
M. Friedman, Cantor

**CEMETERY**

S. Siegfried	S. Zuckerman
Morris Maizner,	A. Graber,
Secretary	Treasurer



Home for  
Aged and Infirm  
Israelites

**Officers**

- Morris Glaser, President
- Nathan Bry, Vice-President
- Ben Eiseman, Treasurer
- A. Haas, Secretary



Strauss Portrait      **Morris Glaser, Esq.**  
President of the Home for Aged and Infirm.



Strauss Portrait      **Hon. Moses N. Sale**  
Judge Circuit Court

**Directors**

- Mrs. Hannah Stix
- Mrs L. Steinberger
- Mrs. Louis Straus
- Mrs. Dr. Spitz
- Mrs. Lizzie Baum
- Mrs. Ben Hirschfeld
- Mr. B. Eiseman
- Mr. S. A. Rider
- Mr. H. Lindenbaum
- Mr. A. Haas
- Mr. Nathan Fry
- Mr. Leon Schwab





Strauss Portrait

Julius Lesser, Esq.,  
Chairman of the Coliseum Charity Bazaar.

This Bazaar raised the funds for the building of the  
Charitable and Educational Building



Officers

J. D. Goldman,  
President

Jonathan Rice,  
(Deceased)  
1st Vice-Pres.

Henry Ittleson,  
2d Vice-Pres.

L. Hellman,  
Secretary

M. Schoenberg,  
Treasurer



Directors

M. Bauman

M. Fraley

Louis Glaser

Arthur Lieber

E. Meyers

L. Renard

Sam'l Rosenfeld

Sidney Schiele

B. J. Strauss



Strauss Portrait

J. D. Goldman, Esq.

President of the Columbian Club

The incorporators of the Columbian Club in 1892 comprised:

Jacob Meyer, Jonathan Rice, Gustave Rosenberg, Louis M. Hellman, B. J. Strauss, Moses Fraley, J. J. Wertheimer, Louis Glaser, M. Bernheimer, Morris Skrainka, Elias Michael, Isaac Schwab, Wm. M. Kohn, D. Sommers and Nathan Frank.



*Strauss* Portrait

Moses Fraley, Esq.  
President "Temple Israel,  
and  
President Jewish Charitable and Educational Union



Strauss Portrait.

Hon. Nathan Frank,  
Ex-Member of Congress and World's Fair Director



Strauss Portrait Dr. Herman Tuholske,  
Chief of Staff, Jewish Hospital.

## JEWISH HOSPITAL MEDICAL STAFF.

Herman Tuholske, M. D., Surgeon in Chief.  
Henry Schwarz, M. D., Obstetrician.  
Henry Wolfner, M. D., Ophthalmologist.  
Max A. Goldstein, M. D., Otologist.  
Sidney I. Schwab, M. D., Neurologist,  
E. Meade Bolton, M. D., Pathologist.

Jacob Friedman, M. D., Physician.  
Robert Luedeking, M. D., Paediatrician.  
Hanau W. Loeb, M. D., Laryngologist.  
Philip Hoffmann, M. D., Orthopedist.  
Wm. P. Loth, M. D., Dermatologist.  
Ernst Jonas, M. D., Gynecologist.

### ASSOCIATE VISITING SURGEONS.

John M. Grant, M. D.  
Willard Bartlett, M. D.

Wm. M. Robertson, M. D.  
Wm. S. Deutsch, M. D.

### ASSOCIATE VISITING PHYSICIANS.

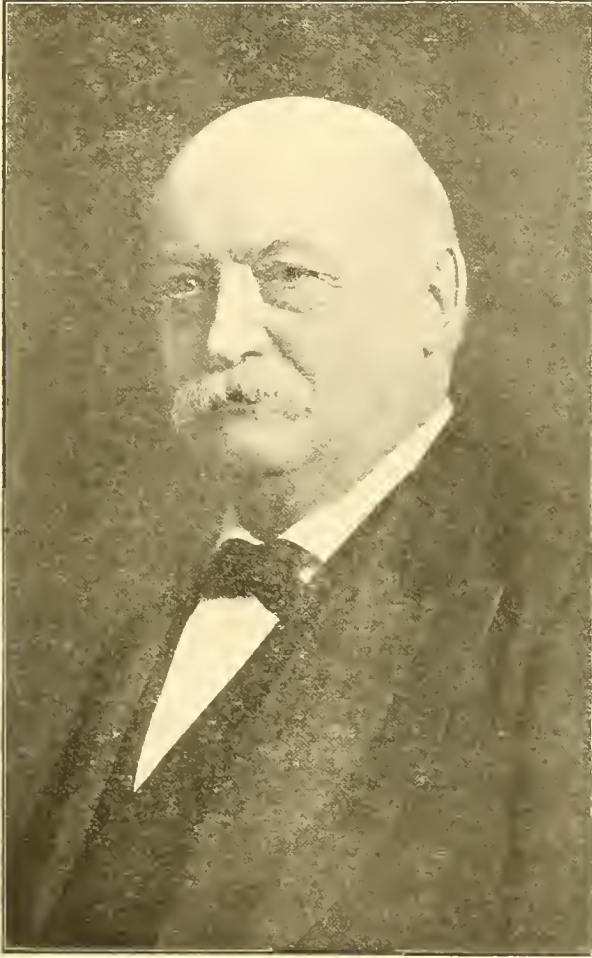
Jesse Meyer, M. D.  
Gustav Lippmann, M. D.  
Albert Faller, M. D.

Louis J. Wolfort, M. D.  
Aaron Levy, M. D.

### DISPENSARY STAFF.

Jesse S. Meyer, M. D., General Medicine.  
Aaron Levy, M. D., Diseases of Children.  
Sidney I. Schwab, M. D., Diseases of the Nervous System.  
Wm. P. Loth, M. D., Diseases of the Skin.  
M. A. Goldstein, M. D., Diseases of the Ear.  
H. W. Loeb, M. D., Diseases of the Nose and Throat.

Willard Bartlett, M. D., Surgery.  
Hugo Ehrenfest, M. D., Gynecology and Obstetrics.  
Meyer Wiener, M. D., Diseases of the Eye.  
M. B. Clopton, M. D., Orthopedic Surgery.



Strauss Portrait

Benj. Eisman, Esq.

.,Treasurer Home for Aged and Infirm.' --



Strauss Portrait.

(The late) Jonathan Rice,  
Mr. Rice was a World's Fair Director.

## Officers and Directors Cemetery Associations.

### MOUNT SINAI CEMETERY.

L. J. Singer, President.      Sol. Boehm, Vice-President.      I. Koperlik, Secretary.  
I. Lieber, Treasurer.

#### DIRECTORS.

M. S. Wieder,	Ch. Steiner,	M. Littman,
S. Bondi,	I. Epstein,	S. Stampfer,
S. Weil,	S. M. Lederer,	L. Steinberger.

### MOUNT OLIVE CEMETERY.

A. Gershon, Superintendent.

#### DIRECTORS.

A. Plessner,	Jacob Warner,	Moses Summerfield.
--------------	---------------	--------------------





Strauss Portrait.

The late Isaac Schwab.



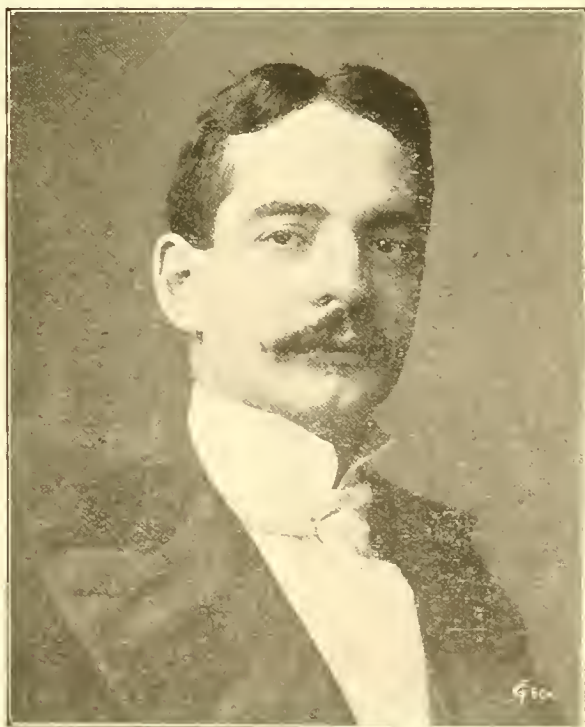
Strauss Portrait      Moses Shoenberg, Esq.  
Treasurer Columbian Club and President of the May Co.



Strauss Portrait      Albert Arnstein, Esq.,  
Ex-Member City Council.    Pres. Jewish Charitable Bldg. Ass'n.



Chas. I. Stix, Esq.,  
World's Fair Director.



Louis P. Aloe, Esq.,  
Election Commissioner.



Strauss Portrait

Louis Glaser, Esq.

Director Columbian Club and Charitable and Educational Union.  
Vice-President "Temple Israel."



Strauss Portrait.

Marcus Bernheimer, Esq.

1st Vice-President Charitable and Educational Union.



# Jewish Hospital.

## Officers and Directors.

### OFFICERS.

August Frank, President  
Julius Lesser, Vice-President.  
William Stix, Treasurer.  
Geo. W. Milius, Secretary.

### DIRECTORS.

Julius Lesser, William Stix,  
Jacques Levy, Nathan Bry,  
David Eisenman, Moses Fraley,  
August Frank, Elias Michael,  
Morris Glaser, M. S. Wieder,  
Nathan Friedman, Lee Sale,  
Aaron Waldheim.



August Frank, Esq., President of the Jewish Hospital.



The Jewish Charitable and Educational Building, N. W. Cor. 9th and Carr Streets.



Emil Mayer, Esq.  
Principal Jewish Alliance Night School



S. H. Frolichstein, Esq.  
Gaide Employment Bureau, United H. Charities  
and Representative Baron De Hirsch Fund



The Jewish Hospital on Delmar Boulevard

# Guides and Volunteer Teachers of Sisterhood for Personal Service.

## KINDERGARTEN.

Mrs. Sophia Ehrenfest, Guide.

Miss S. Altheimer,  
Miss E. Berkson,  
Miss J. Lederer,  
Miss M. Eliel.

Mrs. Acker.  
Miss J. Pitzel,  
Miss G. Haas,  
Miss Ella Haas,  
Miss Edna Haas.

Mrs. A. Krieger, Assistant.

Miss S. Kalter.  
Miss G. Russack,  
Miss H. Renard,  
Miss A. Katz.

## INDUSTRIAL SCHOOL.

Mrs. Albert Arnstein,  
Guide.

Mrs. J. E. Meyer,  
" J. W. Singer,  
" S. Werner,  
" H. Levy,  
" S. Wolff,  
" B. Wasserman,  
" M. Wieder,  
" O. Rosenheim,  
" M. Glaser,  
" E. Myers,  
" F. Sicher,  
Miss H. Seasongood,  
" Alice Sayers,  
" Helen Renard,  
" Irma Heller,  
" Carrie Wolff,  
" Adele Meyer,  
" Corinne Bern-  
heimer,  
" B. Mendel,  
" S. Guggenheim,  
" Rae Wohl,  
" Pauline Schuchat,  
" Rose Pfeiffer,  
" S. Frankenthal,  
" Sheba Harris,  
" N. Sachs,  
" F. Haber.



Mrs. Sarah Bienenstok,

President Sisterhood for Personal Service.

The Sisterhood comprises Kindergarten, Day Nursery, Industrial School,  
Social Settlement, Sewing Section, Sick and Needy, Hospital Visiting.

## BOARD OF S. & N. SECTION.

Mrs. A. K. Altman,  
" L. Baum,  
" Sarah Bienenstok,  
" B. Diamant,  
" A. Epstein,  
" M. J. Epstein,  
" F. S. Freund,  
" L. Glaser,  
" N. Friedman,  
" D. Goldsmith,  
" S. Gutfreund,  
" L. Godlove,  
" K. N. Horwitz,  
" K. Kahu,  
" D. Loewen,  
" S. C. Loewenstein,  
" P. Peltason,  
" J. Kice,  
" J. Rosenbaum,  
" Ed. Sicher,  
" M. Shoenberg,  
" D. Treichlinger,  
" S. Wolf,  
Miss Fannie Wachtel.

## SICK AND NEEDY SECTION.

Mrs. F. L. Solomon,  
Guide.  
Mrs. J. L. Isaacs,  
Assistant.  
Mrs. Henrietta Na-  
than, Sec'y.

## HOSPITAL VISITING.

Mrs. L. Rothschild, Guide.

Mrs. Meier Swope, Assistant.

## SEWING SECTION.

Mrs. M. Sicher, Guide.

Mrs. M. J. Loewenstein, Asst. Guide.

Mesdames:

Lindenbaum, Diamant, Nathan, Jacobs, Jones, S. Loewenstein, Kann, Block, Littman,  
Friedman, Loeb, Katz, Boehm, Guggenheim, Sig. Glaser, Sig. Baer.

## SOCIAL SETTLEMENT.

Mrs. A. Frank, Guide.

Mrs. Florence Meyer, Assistant.

## DAY NURSERY.

Mrs. Elias Michael, Guide.

Miss Freund,  
Mrs. Getz,

Miss Rothschild,  
Miss Guggenheim

Mrs. Julius Glaser,  
Mrs. Fred. Herzog,



Strauss Portrait      Wm. Sacks, Esq.  
President Young Men's Hebrew Association.



Strauss Portrait      Jacob Furth, Esq.  
Vice-President Executive Committee, I. O. B. B.



Strauss Portrait      Samuel Bowman, Esq.  
Ex-President District No. 2 I. O. B. B.



David Rosentreter, Esq.  
President Washington National Bank.



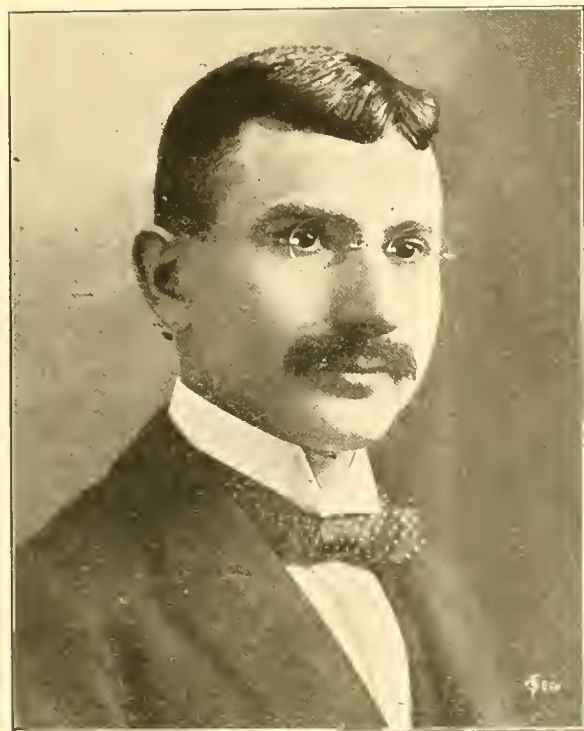


Photo by Strauss.

Louis Straus.  
President of Congregation Shaare-Emeth.



Montefiore Bienenstok, Esq.  
Asst. Sec'y Charitable and Educational Union  
and successful Literary writer.



Lewis Godlove, Esq.,  
Secretary Strauss Studio, and a Pioneer in Jewish  
Journalism.



Photo by Strauss.

David Treichlinger, Esq.  
Ex-President of Temple Israel, and Director  
Charitable and Educational Union



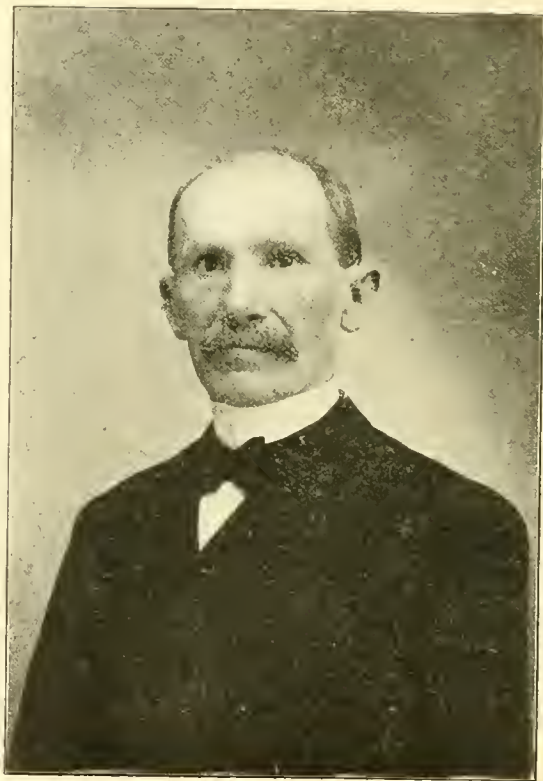
Sigmund Stampfer, Esq.  
President Congregation Bnai-El.



Adolph Isaacs Esq..  
One of the Pioneer Jewish St. Louisians.



Aaron Gershon, Esq.  
Veteran Superintendent Mt. Olive Cemetery.



Samuel Marx, Esq. President U. H. Congregation.



Strauss Photo      Bernard Greensfelder, Esq.  
Secretary Jewish Charitable and Educational Union.



Strauss Portrait      A. Rosenthal,  
Editor and Publisher "The Modern View" and "Jewish Progress."

# The Young Men's Hebrew Association

## Officers and Trustees

Wm. Sacks, President  
Sam. Goldman, Vice-Pres.  
A. Daust, Treasurer  
Morris S. Mayer, Rec. Sec'y  
Karl Vetsburg, Fin. Sec'y  
Albert Nathan, Asst. Fin. Sec'y

### TRUSTEES

Henry Weil  
Ben M. Loewenstein  
Sam. J. Russack

### PAST PRESIDENTS

Abe Rosenthal  
Ben M. Loewenstein  
Sam. J. Russack  
Elkan W. Glauber



Albert Nathan  
Physical Instructor

## Chairmen Committees

Geo. W. Milius,  
New Home Fin. Com.  
Dr. G. Moritz,  
New Home Bld. Com.  
Max A. Mayer, Congregational  
Sam Goldman, Gymnasium  
A. Daust, Purchasing  
H. N. Bregstone, Educ. and Libr.  
Karl M. Vetsburg, Press Com.  
Aaron Pareira, Billiards  
E. H. Wolff, House Com.  
Will Levy, Memorial  
Alb. Freund, Chess & Checkers  
Morris S. Mayer, Membership  
K. N. Horwitz, Resignation Com.  
E. Davidson, Entertainment  
Louis Mayer,  
World's Fair Reception Com.



Men's Class at Y. M. H. A.



Ladies Class at Y. M. H. A.



Rembrandt Photo.

David Sommers, Esq.

Vice-President Fourth National Bank, and Head of  
D. Sommers & Co.

### A St. Louis Artist.

Miss Sadie Meyer, one of the youngest artists in America, was born in St. Louis. After graduating the High School and Normal School in this city, Miss Meyer took a course at the Art School, studying fresco painting under Kumer and Riess. She went to Vienna and there studied under Ferraris and Horowitz, two of the greatest of modern painters in Austria, and finally had her own studio. Returning to St. Louis, Miss Meyers took up, in addition, the profession of teaching, and she now instructs the 6th grade at the Jeffersou School.



## Progress Mfg. Co.

An example of the possibilities of young men in business is afforded by the success of the Progress Mfg. Co., composed of Messrs. J. C., D. T., and S. C. Punch. The business is now in the fifth year of its existence.

The three young gentlemen are well and favorably known in the community, and their success, which is due to their hard work, is the proper reward of their endeavors.



Miss Bertha Sale (Principal Hebrew Free School) and Confirmation Class.



Graff Photo

Major Loewenstein, Esq.  
Business Manager "The Star," and Publisher  
"World's Fair Official Guide."



David May, Esq.  
President of "The May Co."



Strauss Portrait

Jacob Mahler, Esq.  
social Leader and Professor of Dancing and Department of national note.



H. Seligman, Esq.  
Head of H. Seligman & Co., the enterprising  
and progressive Wholesale Jewelry Firm



Strauss Portrait.      Ben Alheimer, Esq.  
Financier,  
Treasurer National Jewish Hospital for Consumptives,  
Director St. Louis and Suburban Railway Co.  
and Vice-President Scottish Rite (Masonic) Cathedral Association

# ZIONIST SOCIETIES.

## OFFICERS OF THE DORSHEI ZION.

Mr. Epstein, Master Zionist; Mr. Zinberg, Vice Master Zionist; Mr. L. Goodman, Recorder; Mr. Yawitz, Financial Secretary; Mr. Wolkowitz, Treasurer; Mr. William Smith, Orator; Dr. Golland, Scharff and Goodman Past Master Zionists.

## OFFICERS OF THE DAUGHTERS OF ZION.

Mrs. Epstein, Lady Zionist; Miss Blank, Vice Lady Zionist; Miss Raskas, Recorder; Miss Siegel, Financial Secretary; Mrs. Landau, Treasurer; Miss F. Silberman, Orator; Mrs. Golland, Past Lady Zionist Miss Seriousky Post.

## YOUNG MEN'S SOCIAL GATE OFFICERS.

Mr. G. Elbert, Master Zionist; Mr. Perlmutter, Vice Master Zionist; Mr. Feinstein, Recorder; Mr. M. Perlmutter, Financial Secretary; Mr. Bull, Treasurer; Mr. D. Weintraub, Orator; Mr. Meyer Perlmutter, Ex-Master Zionist.

## OFFICERS OF THE YOUNG AMERICAN ZIONISTS.

Mr. Bialock, Master Zionist; Miss Daskov, Vice Lady Zionist; Mr. Press, Recorder; Miss Kirschuer, Financial Secretary; Mr. Harris, Treasurer; Mr. Berkowitz, Orator; Mr. Stiffelman, Past Master Zionist Weintraub Post.

Hy. Fishlowitz, Chairman Council of United Zionists.



The Sixth Zionist Congress in Session at Basle, Switzerland.

## OFFICERS OF THE YOUNG ZIONISTS.

Mr. Dubinsky, Master Zionist; Miss Shippert, Vice Lady Zionist; Mr. Smith, Recorder; Miss Carrie Dubinsky, Financial Secretary; Mr. S. Bierman, Treasurer; Mr. Toule, Orator; Mr. Toule, Past Master Zionist.

## OFFICERS OF THE BNAI ZION.

Mr. Holander, Master Zionist; Robt. Horwitz, Vice Master Zionist; Mr. Weber, Recorder; Mr. Abrahamson, Treasurer; Mr. Siegel, Orator.

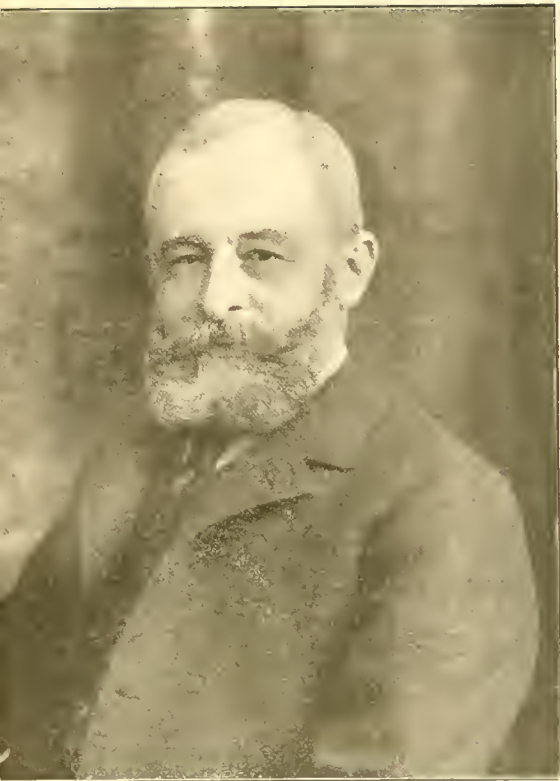
## OFFICERS OF SHARE ZION.

Mr. Z. Feinstein, Master Zionist; Mr. Brandt, Vice Master Zionist; Mr. H. Feinstein, Recorder; Mr. Hornstein, Financial Secretary; Mr. Crystal, Treasurer; Mr. B. Shreiber, Orator; Mr. Ohenhandler, Past Master.

## OFFICERS OF ZION GUARDS.

Mr. Meyer Horwitz, Captain; Mr. Stiffelman, First Lieutenant; Mr. Berkowitz, Quarter Master Lieutenant; Mr. Harris, Sergeant.





Portrait      Leo Levis, Esq.  
Patron of Education, Ethics and Benevolence.  
Head of the Levis-Zukoski Millinery Co.



Strauss Portrait      Max Judd, Esq.  
Ex-U. S. Consul to Vienna, and International Expert  
Chess Player



Strauss Portrait      Ferdinand Bach, Esq.  
Vice-President A. Haas & Son Pants Co., and Director  
Wholesale Clothiers' Association.



Strauss Portrait      Louis B. Singer, Esq.  
Who signally assisted recently in the raising of the  
St. Louis Wise Memorial Fund.  
Mr. Singer is the head of the leading Children's Clothing firm of  
Singer & Hirsch, and is a former director of  
Shaare-Emeth Congregation.



Benj. P. Stromberg, Esq.

Pres. Stromberg-Krauss Trunk Co. Vice-Pres. Cong. Shaare Emeth



Leopold Sternberger, Esq.

A Veteran Member of Shaare Emeth Cong.



Lieut. H. S. Nelson, U. S. N.

A Jewish Naval Veteran of the Spanish-American war. Graduate U. S. Naval Academy, Annapolis. Served with distinction on battleships "Massachusetts," "Newark" and "Oregon" in Cuban and Porto Rican and later in Japanese and Chinese waters. Mr. Nelson is Treasurer Walter A. Zeluicker Supply Co.



Krauss Portrait

Michael B. Jonas, Esq.

Secretary Temple Israel.



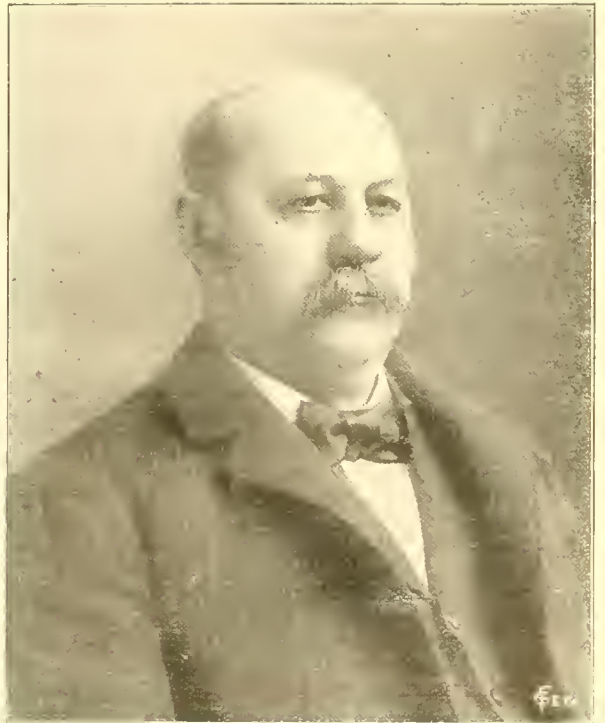
Strauss Portrait  
Max Russack, Esq.  
Prominent Member Order I. O. B. B.



Adolph Daust, Esq.  
Vice-President Washington National Bank, and  
Treasurer Y. M. H. A.



G. Moritz, M. D.,  
Chairman Building Committee Y. M. H. A., and  
Director U. H. Congregation

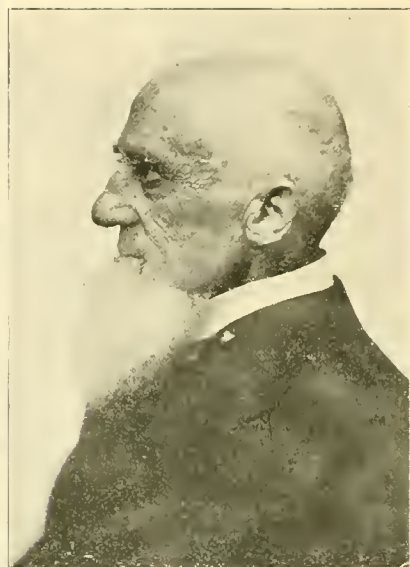


Moses Summerhead, Esq.  
A well known Communal Worker and Expert Fire Arm  
Marksman.



Strass's Portrait

Nathan Kaufman, Esq.  
Shakesperian Scholar.



Strauss Portrait

The late Adolph Loth,  
Founder of the  
A. Loth Sons Jeans Clothing Co.



Maurice Landau, Esq.  
President Globe Shoe and Clothing Co.



Sam. J. Russack, Esq.  
Director Jewish Charitable and Educational Union  
and Ex-President Y. M. H. A.



Capt. Samuel Rosenfeld,  
Pres. Ebn Ezra Lodge, I. O. B. B.



P. Land Lipstadt,  
Business Manager "The Modern View."



Max Koenigsberg,  
the Successful Young Advertising Manager of  
"Famous"



Adolph Robi,  
Superintendent United Hebrew Charities.

# The Ladies' Friday Musical.



Mrs. David Kriegshaber,  
(nee Stella Weiner),  
A Gifted Pianiste.

## Members:

Mrs. Adolph Drey,  
Mrs. Joseph Glaser,  
Mrs. Adolph Bernd,  
Mrs. Carl Loeb,  
Mrs. Lee Sale,  
Mrs. David Kriegshaber,  
Mrs. Max Kaufman,  
Mrs. Henry Nathan,  
Mrs. Joseph Marx,  
Mrs. Marcus Hirsch,  
Miss May Goldman,  
Miss Florence Goldman,  
Miss Carrie Bienenstok,  
Miss Marie Nacio,  
Mrs. Chas. Stix,  
Mrs. David Bauer,  
Miss Carrie Wolff,  
Miss Edith Lazar,  
Mrs. Philip Haberman,  
Mrs. Lonis Harris,  
Miss Cecile Hellman,  
Miss Birdie Swope.

## Miss Laura Hellman.

The only Jewish woman artistic book-binder in America, and a student at Hull House, Chicago.

Miss Hellman's art is distinguished as unique, requiring neatness, skill and patience.



Miss Laura Hellman.  
Artist Book Binder.

# ✻ The Pioneers ✻



Graff Portrait

Mrs. Henry Jacobson,  
Principal U. H. C. Sabbath School and  
Prominent Club Woman,  
Art and Literary Worker,

Miss Selma Altheimer,  
Mrs. Altman  
Mrs. Ferd. Bach,  
Miss Carrie Bienenstok,  
Mrs. Chas. Bienenstok,  
Mrs. A. L. Drey,  
Mrs. Henry Fendler,  
Miss Tillie Friedman,  
Mrs. H. Gleick,  
Mrs. Lewis Godlove,  
Mrs. David Goldsmith,  
Mrs. M. A. Goldstein,  
Mrs. H. H. Heller  
Miss Mathilde Hellman.  
Mrs. Ben Hirschfeld,  
Miss Florence Isaacs,  
Mrs. J. L. Isaacs,  
Mrs. Henry Jacobson,  
Miss Martha Kalter,  
Miss Rosalie Kaufman,  
Mrs. Louis Krieger  
Mrs. Gustave Lippman,  
Mrs. Carl Loeb,  
Mrs. M. J. Loewenstein,  
Mrs. Edward Obermeyer,  
Miss Bert Sale,  
Mrs. Lee Sale,  
Mrs. Chas. Stix,  
Miss Pauline Vetsburg,  
Mrs. Maurice Weil,  
Miss Sara Wiener,  
Mrs. S. Wolff  
Mrs. Henry Wolfner,  
Mrs. Morris Woolf



Miss Rosalie Kaufman,  
Princ. Shaare Emeth S. S. School,  
Assistant Teacher St. Louis Public  
High School.

# The Beethoven Conservatory of Music.



Prof. A. I. Epstein,  
Organist Cong. Shaare Emeth and  
World's Fair Organist.



Prof. Marcus Epstein,  
Director Beethoven Conservatory

The temples of art, education and science of a city are the best evidences of its progress.

St. Louis boasts among its institutions one that has gained and kept a reputation for the best and most artistic in matters musical.

The Beethoven Conservatory of the Brothers Epstein ranks among the first of its kind in this country

and Europe. Students need not go abroad when their musical education may be completed here. It is creditable to St. Louis that such an institution is maintained here. To its founders, the Brothers Epstein, belongs credit of having developed artists through their untiring efforts.

Professors Marcus and Abraham I. Epstein are identified with every musical event of importance in St. Louis. In their artistic labors they are surrounded by a large and talented faculty of instructors of national reputation.



I. L. Schoen,  
Violinist.



Victor Lichtenstein,  
Violinist



Arthur Lieber,  
Organist, Pianist and Composer.



Guido Vogel,  
Leader Orchestra Grand Opera House.



Nathan Sacks,  
Pianist.



William Weil,  
Leader Weil's World's Fair Official Band.



# The Strauss Studio



J. C. Strauss  
Portrait Artist



Exterior Strauss Studio

★ Throughout the United  
★ States and into the  
★ Old World where its  
★ work has been exhibited,  
★ the fame of the Strauss  
★ Studio has penetrated.

★ Portrait Photography  
★ at the Strauss Studio is  
★ not a mechanical profes-  
★ sion, but an art.

★ Mr. J. C. Strauss, the  
★ genial artist, has made  
★ his handsome studio a  
★ rallying point for all that  
★ is most original, attract-  
★ ive and meritorious in  
★ art and artists of the city.

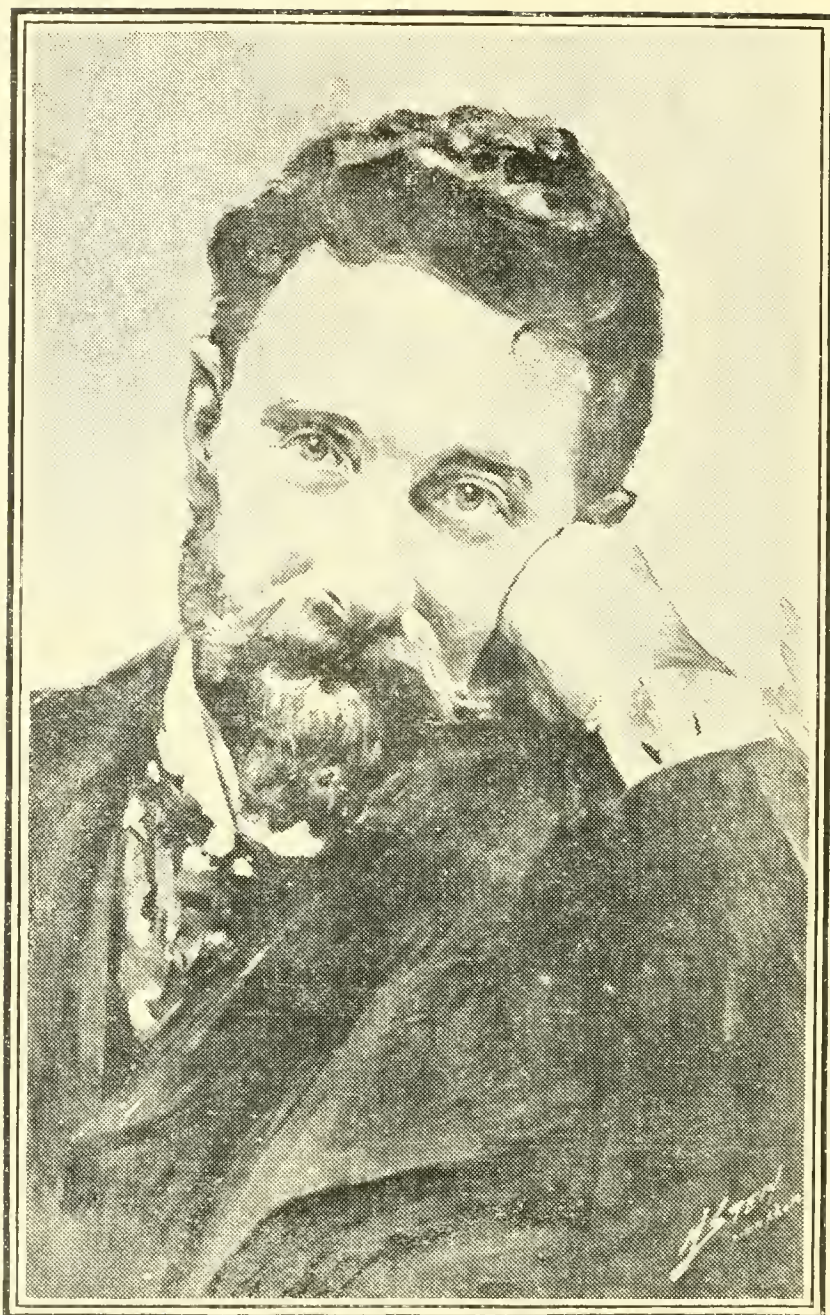
★ St. Louis, and especi-  
★ ally the Jewish commu-  
★ nity, is justly proud  
★ of the work accomplished  
★ by Mr. J. C. Strauss.

★ Mr. Lewis God Love  
★ efficiently conducts the  
★ business and literary side  
★ of the studio.



The "Growlery"

The Unique Artists Rendezvous in the Strauss Studio



JOSEPH PULITZER, ESQ.

Proprietor of the St. Louis "Post-Dispatch" and "New York World," and Founder of American School of Journalism.

Mr. Pulitzer is a conspicuous example of Jewish brilliancy in American Journalism. The foundation of his marvelous career was laid in St. Louis, where he began his journalistic enterprises.



The New Quarters of the  
"ST. LOUIS STAR."

The successful afternoon and evening daily newspaper, the remarkable development of which is due to Jewish enterprise and energy.

Nathan Frank, President. August Frank, Vice-President. M. J. Loewenstein, Business Mgr.  
Alfred Messing, Editor Sunday Edition.



Harold Debrest,  
Successful Writer and Student.  
(The publisher acknowledges cooperation  
of Mr. Debrest in the publication  
of this work.)



Louis E. Anfaenger,  
Original and Successful Advertising Writer  
and Illustrator.



Harry Simon, Esq.  
A Representative of the Younger Element in the Community



I. B. Jacobs, Esq.,  
Vice-President Jacobs Hat and Glove Co., and Member Executive  
Committee St. Louis Branch of National Ass'n of Credit Men.



## RICE-STIX DRY GOODS CO.

**F**OREMOST in the wholesale dry goods district of St. Louis, facing the very center of the business portion of Washington Avenue, stands the firm of Rice-Stix Dry Goods Co.

This gigantic business institution, second to none in its own line in this country, and ranking among the largest of its kind in the world, was organized and is conducted to-day by Jewish brains. It has become throughout its long career and association one of the first landmarks of the city, whose community regard it with rare and respected pride. Rarely a social or municipal function that does not contain the name of at least one of the officers of the Rice-Stix Dry Goods Co., as indeed the leading spirit of that event.

The Rice-Stix Dry Goods Co. came to St. Louis in 1878, having been established in Memphis, Tenn., in 1860 as the Rice-Stix Co., being compelled to leave that city during the yellow fever epidemic. Henry Rice is the President, David Eiseman, Wm. Stix and Elias Michael are Vice-Presidents, Benj. Eiseman, Treasurer, and Chas. A. Stacey is Secretary. The death of Jonathan Rice several months ago, who was first Vice-President of the firm, was a severe shock to the Jewish community and a hard loss to the city, which he served in many ways, prominently as Director of the World's Fair, 1904. Mr. Elias Michael has been elected in his place. Mr. Michael, as the exponent of the Rice-Stix Dry Goods Co., is often called upon in the capacity of chairman in behalf of his fellow citizens. Only recently has he been appointed head of the Terminal Facilities Committee of the Business Men's League, an office which he discharged with amazing exactness, and to the satisfaction of the foremost citizens of St. Louis, members of that grand organization. As a Jewish representative, he lends dignity to his race by his loyalty to Americanism and by his reverence for the Jewish spirit and Jewish institutions.



## Wertheimer-Swartz Shoe Co.

The shoe industry of St. Louis ranks first in the shoe and leather world for the enormous output attributed to it annually, and for the quality of the articles manufactured. Its only other competitor is Boston, and Boston takes second place in view of the commercial record of St. Louis, is somewhat envious of its young western contemporary. Among the first few houses to whom the fame of St. Louis as a shoe market is due is the subject of this sketch. It is noted especially for its modest and judicious advertising, especially in the handling of figures.

The Wertheimer-Swartz Shoe Co. was established in 1883, and its officers are J. J. Wertheimer, President, G. W. Milius, Vice-President, and C. L. Swartz, Secretary and Treasurer. All of these gentlemen are well known to the citizens of St. Louis as charitable, educational and social patrons. Mr. J. J. Wertheimer is a World's Fair Director, and director of the Merchants' Laclede Bank.

# The Grand Leader



The City of St. Louis can boast of no mercantile enterprise that can excel the above concern, for the remarkable success in department store building, and the short time in which it was accomplished.

The Stix, Baer & Fuller Dry Goods Co was established 1892; its first location being 814 N. Broadway. Six years later found them at their present quarters, the well known corner of Broadway and Washington Ave. The "Grand Leader" is truthfully entitled to the phrase by which they are well known to thousands of St. Louis citizens—"The fastest growing store in America."

Nearly a thousand hands are daily employed to handle the crowds of shoppers with the courtesy and respect that characterizes the "Grand Leader." The following are members and officers of the Stix, Baer & Fuller Dry Goods Co.: Chas. A. Stix, President, A. Fuller, 1st Vice-President, James A. Baer, 2d Vice-President and Sigmund Baer, Sec'y-Treasurer. All of the above gentlemen are well known to the Jewish community for their personal interest Jewish, and to the city of St. Louis, for their readiness to participate in all projects for the benefit of its citizens, and in behalf of all worthy communal objects.

# ⇒ Schwab Clothing Co. ⇐



It would be difficult to convey an even partial impression of the magnitude of the Schwab Clothing Co's. establishments, offices, sales-rooms and factory.

The Schwab Clothing Co. is too well known to every business man in the West and South-West, as well as in many other portions of this country, where its fame as a clothing factory has spread. Mr. Leon Schwab is Acting President and Vice-President, Mr. Max Schwab is Treasurer and Mr. I. N. Schwab is Secretary. The Schwab Clothing Co. is recognized as the largest Clothing Manufactory in the West and one of the largest in the country.



## ≡ THE "GLOBE." ≡

Whose popularity as a department store is due to the convincing and up-to-date methods used in its management.



# WERNER BROTHERS.

---

What has been thought an impossible business venture, has been actually accomplished by Werner Brothers, located in the Republic Building, *i. e.*: the possibility of conducting a store artistically, according to advanced ideas and appealing to the best taste, and yet attaining popularity because within the reach of the populace. It has been thought that good taste was synonymous with high prices, experiments usually resulted that way—a gain of the one was a sacrifice of the other.

Werner Brothers have proven such theories false.

Appealing to the highest standard of the Aristocrat, in fact the emporium of the most fashionable of St. Louis, yet they have not sacrificed their position with the masses, for whom Werner Brothers is the most desirable store for men's wear.

The firm is ably conducted by Benjamin, Jacob and Simon Werner. Their father, Morris Werner, and Benjamin Werner established the original "Werner Store" at Cairo, Ill., in October, 1881. Werner Brothers in this city opened at their present location October 15th, 1899, and in that short time have won a remarkable following of patrons and friends, extending to every part of the city and its most exclusive circles. They are well known as patrons of Social, Charitable and Educational affairs in Jewish and non-Jewish interests.

## Levis-Zukoski Millinery Co.

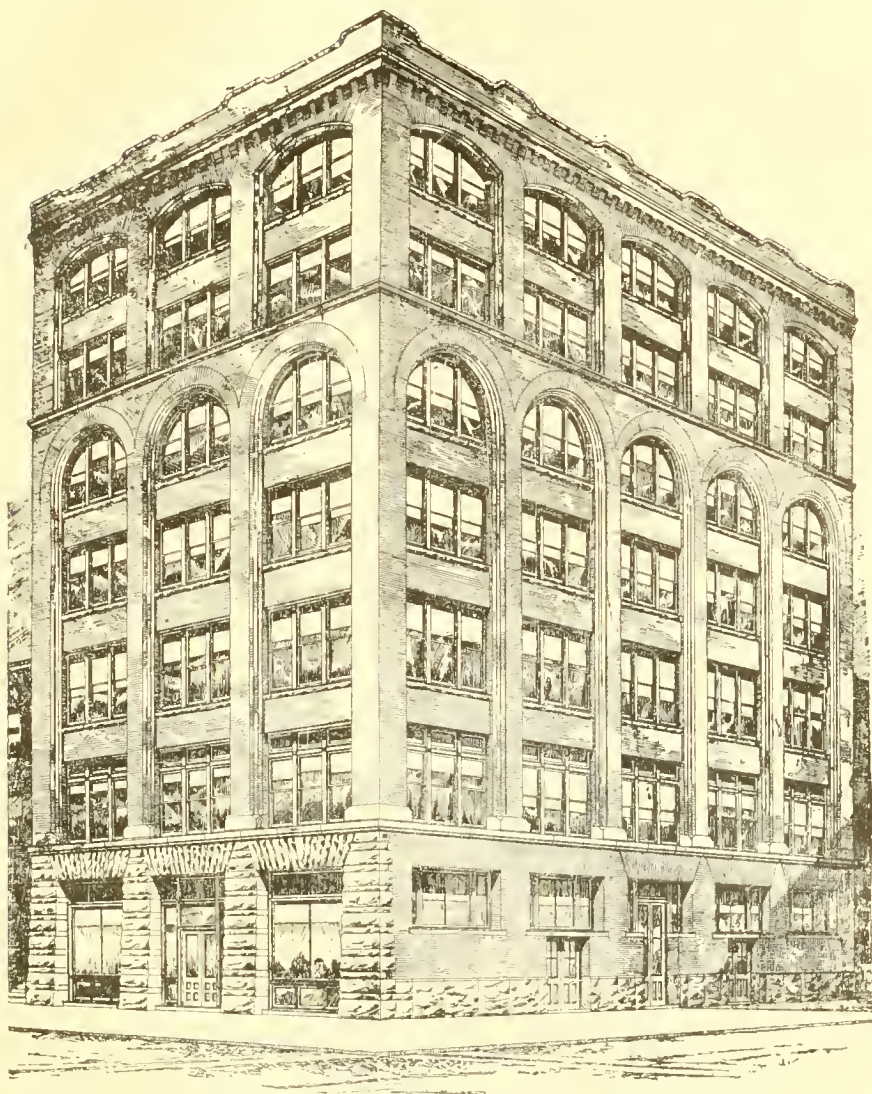
---

---

The exponent of the wholesale millinery world in St. Louis, and according to Kargon the foremost establishment of its kind in the United States, is the well known firm of Levis-Zukoski. Established in 1854, it is the oldest wholesale millinery house in the city. Mr. Leo. Levis is president and Mr. W. A. Zukoski secretary and treasurer. Mr. Levis, identified with numerous organizations, charitable and social, is one of the most public spirited men in the country, ever ready to lend his moral and financial aid in behalf of every good purpose, irrespective of creed or denomination. With a regular force of 200 employees, and with a special force of 500 additional hands during the busy season, the Levis-Zukoski Millinery Co. supplies the South and West with a great deal of its Millinery. Mr. W. A. Zukoski, the Secretary and Treasurer of the firm, is likewise a very benevolent gentleman. Messrs. George, Walter and Edgar Levis most capably cooperate in the conduct of the large establishment.



## DREY & KAHN GLASS CO,

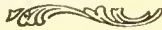


The above named firm was established in 1867 by the late Albert Drey, and has in that time accomplished the feat of climbing to the foremost place in its own line. The solid foundation laid down by its founder was made more firm in the hands of his sons who now conduct the business of Drey & Kahn, Mr. Kahn having sold his interest to the Drey family. The energy and successful management displayed by these young merchants is commented upon in all leading business circles in the city, as is also their stern interpretation of business principles. The present officers are: Adolph Drey, President; Leo Drey, Vice-President; Eugene Drey, Treasurer; Walter Drey, Secretary.

The firm occupies an office Building and two factories, and employ a regular force of 200 hands. Mr. Albert Drey, the father, and founder of the business, was one of the foremost representative in Judaism of St. Louis. He was an active member of the Columbian Club and other social and charitable organizations.

# Rosenthal-Sloan Millinery Co.

---



THE millinery market of St. Louis has a world-wide reputation, being the largest wholesale millinery distributing center in the world. The Rosenthal-Sloan Millinery Co. has contributed as large a share as any one house in the city to that representation.

Its factory and offices on Washington Avenue occupies the largest number of square feet, and employs as many hands as any millinery house doing business anywhere. The firm has a national reputation for enterprise and up-to-date business management, and holds a position of dignity in the commercial world.

Mr. I. B. Rosenthal is an active member of charitable and philanthropic organizations and a patron of the arts and educational institutions.

---

## FISCHLOWITZ & FRANK.

A progressive and enterprising business establishment is that of Fischlowitz & Frank, the well known manufacturers of neckwear in St. Louis.

Its product is distributed throughout the entire country—North, South, West, with the exception of portions of the extreme East. The members of the firm are Henry Fischlowitz and Julius Frank.

Mr. Frank is an American Jew, loyal to his country and his race, and a member of Temple Israel. Mrs. Frank is a former Miss Michael, a sister of Mr. Elias Michael.

Mr. Fischlowitz is a native of Cracow, Austria, where he was educated in the Talmud and Rabbiinical law. Mr. Fischlowitz is a man of energy and executive ability and an orthodox Jew. He is the leading spirit of several movements for the betterment of the East Side Jew. A member of the Bnai Amoona Congregation, Chairman of the Executive Order of the P. O. W., Chairman of the Council of the United Zionists, and one of the original workers of the Jewish Hospital.

---

## ..West End Bazaar..

(Vandeventer and Finney Aves.)

This is the largest and oldest department store in the up-town or West End section of the city. The proprietors, Messrs. Cohn & Ittleson, are pioneer merchants of Colorado, where they were established in business for twenty years. Mr. Oscar Ittleson, the senior partner, is a well-known character in the Jewish community, as is also his son, Mr. Henry Ittleson, now of Morris Glaser & Co.

Mr. Moses M. Cohn is the son-in-law of Mr. Ittleson and his partner in the West End Bazaar. They are large contributors to Jewish and non-Jewish charities, and members of Temple Israel. Mr. Cohn is a Talmudist of reputation, being frequently consulted for his thorough knowledge of Jewish law.

# Adler, Goldman Commission Co.

THE Adler, Goldman Commission Co. and the Lesser Cotton Co. are almost identical. The officers of the first are J. D. Goldman, Pres't; Julius Lesser, Vice-Pres't and Ben. Adler, Secretary. All these gentlemen are among the most conspicuous dealers in cotton in the United States. The cotton business is mainly conducted by Wm. Lesser, who is a recognized head and expert in the cotton world. Mr. Goldman is a leading figure in the commission world and is equally distinguished in the financial world, having served as a director for several years of the Fourth National Bank. He is also identified with mercantile, social and charitable Institutions, of Jewish and non-Jewish interests. Mr. Lesser is a familiar figure of the Cotton Exchange of St. Louis, having served as its president. Mr. J. D. Goldman is a resident of Hortense Pl., one of the most fashionable sections of the city, which is named after his daughter, Miss Hortense Goldman.

Walter A.  
Zelnicker  
Supply  
Co.



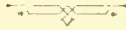
The observer views with astonishment the remarkable spread of this house established but a few years ago in 1898. The impression of the company's quarters shown herewith, will give an idea of the constant growth of this concern beginning with the small building in the corner of the cut and now in its present proportion. The firm ranks as one of the largest in the west. Walter A. Zelnicker is President, Edward Elson, Vice-Pres., W. D. Biggers, formerly of the Simmons Hardware Co., is Secretary and Gen'l. Manager. Mr. H. J. Elson is Treasurer. Mr. Zelnicker is a member of various organizations, among them the Mercantile Club, and Columbian Club, and is a native of Mobile, Alabama. Mr. Edward Elson came with Mr. Zelnicker from Meridian, Miss., and has, until his recent election to the Vice-Presidency, been the manager of the New Orleans offices for the Company.

---

|| Strauss-Samish Millinery Co. ||

---

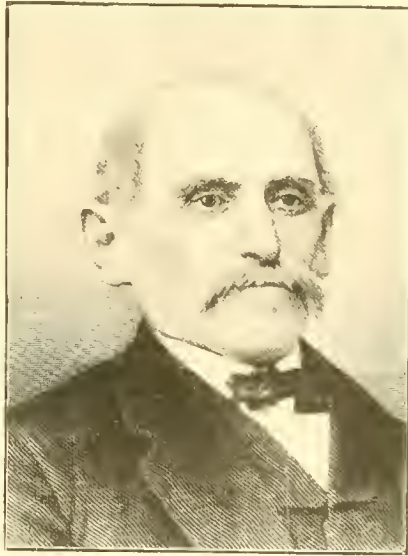
**A** VERY interesting house in the Millinery world is the subject of this sketch, originally S. Strauss & Co., as far back as 1860. As the Strauss-Samish Millinery Co., it has a capital stock of \$150,000, which places it among the leading millinery houses in St. Louis. The St. Louis millinery market can well compare with that of any other city in this country, and the Strauss-Samish Millinery Co. has contributed a considerable share towards gaining the present reputation of St. Louis as a millinery center. Messrs. Benj J. Strauss and Adolph Samish are the present heads of the house. In the wholesale business world it occupies the position of one of the first pioneers in the millinery field, having moved to Washington Ave. cor. 8th Street (the present location) when that portion of the city was considered extreme for a business location, when grass and trees surrounded it. Mr. Strauss was the first president of the Interstate Merchants Association, which started five years ago.



# The L. Bauman Jewelry Co.

Merchant princes are numerous in every city and country of this Globe, but nowhere is there a more distinguished family of successful Jewish business men than that which composes the firm of L. Bauman Jewelry Co. The L. Bauman Jewelry Co. also bears the distinction of being the oldest Jewelry house in St. Louis, and among the oldest in the country, having been established in 1844 by L. Bauman. From father to son, and from son to grandson, is the history of the firm's presidency.

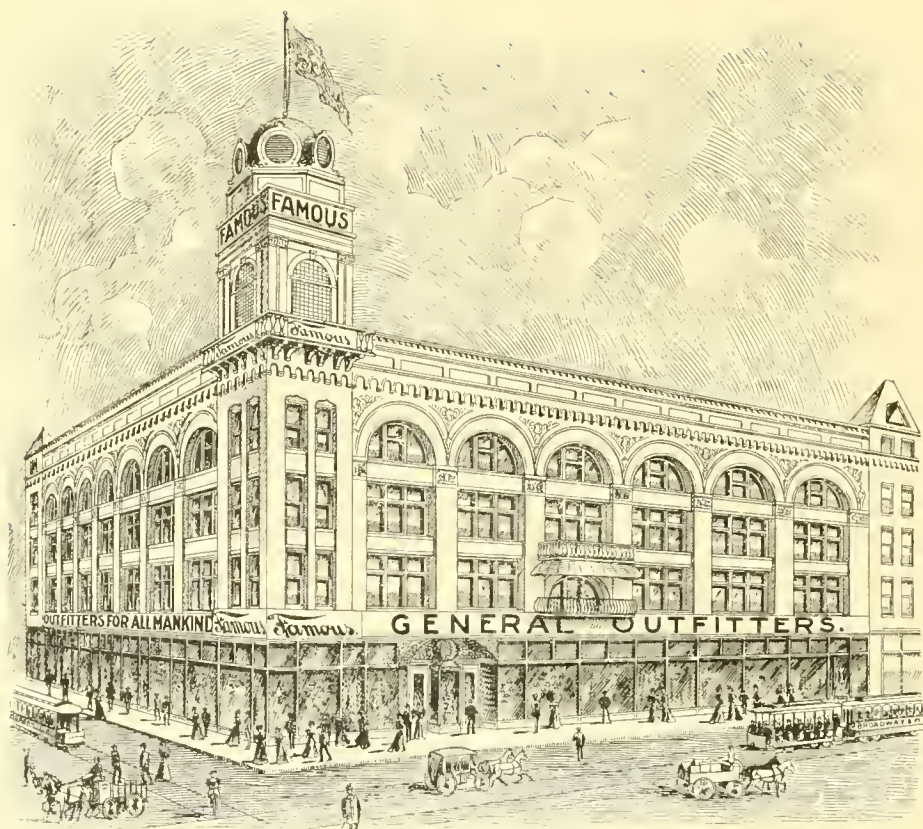
Mr. Meyer Bauman, the son of the founder, having retired from the presidency in favor of his son Alvin L. Bauman, the grandchild of the first president, who is now the presiding genius of that vast commercial enterprise. Mr. Alvin L. Bauman is a graduate of Yale, which profession he gave up in order to take care of his present responsibilities as president of the L. Bauman Jewelry Co.



Louis Bauman,  
Founder of the L. Bauman Jewelry Co.

To Mr. Adolph Lehman, a member of the illustrious New York family of that name, a large share of the present success of this house is due. For nearly twenty years engaged in the cotton exporting business in the South Mr. Lehman, who is now a young man of thirty - eight, came to St. Louis some four years ago to take an active part in the progress of the firm, and is now its Secretary and Treasurer. Though not a Bauman, he is

the next thing to it, as will be seen, being doubly related to that family, by blood and by marriage, having married the daughter of the late Sol. Bauman, brother of Meyer Bauman. All of the members of the firm are well known, socially and charitably, their names appearing on almost every worthy charitable list of subscribers. They are members of Shaare-Emeth Temple and various other organizations. The present Vice-President, Mr. Louis Bauman, has been connected with the firm for the past fifteen years, and is a nephew of the founder of the concern.



## FAMOUS.

The Department store is a modern commercial giant, which has become in their thirty years a colossal possibility. Strange as it may seem, this country, where department stores have had their origin and where department stores are as numerous as its newspapers, can boast of but a limited few individuals whose undertakings and achievements in their line outrank and outdo all precedent established by pioneers in that work. Among the careers of department store builders, there is none more remarkable, from the enormous growth of its interests and the comparatively short time in which it was accomplished, than that of "Famous" of St. Louis, Denver and Cleveland. When we recall that eighteen years ago this present gigantic corporation was but an ordinary country store in Leadville, Colorado, the reality of their present position as leaders in the front rank of American industry—the fact becomes a mystery to the observer, and a valuable source of analysis to the student and historian.

What is the cause for the Famous success? The quest for one particular

attribute proves that it isn't there alone; that many combined qualities, energies, conditions and labors are compositely fundamental in the history of Famous. The remarkable character of Mr. David May, its founder, allied to the peculiarities that made the Famous what it is to-day, have placed that company side by side with three, four, or probably five other companies or individuals of similar attainments in the United States, with no competitors anywhere in the world.

Pioneering, flash-like engineering, financeering, liberality, foresight and silence—in one word—"I never let any one know what I intend to do until I do it." This may serve as a penned flashlight of David May. Combine that to a tireless capacity for hard labor, a mastery of details, an ability to surround himself with good men; (you know what Napoleon said "Give me the lieutenants and I'll win the victory,") that combination, an outlined description of the Messrs. May and Shoenberg and you have the foundation of The Famous' successful career.





"The May Co's." Store.



One of St. Louis' Leading Department Stores.

Branches in Cleveland and Denver.

Marx & Haas Clothing Co.



Marx & Haas Clothing Co.—An Establishment of National Reputation.  
One of the Largest in the United States.

# THE MODEL.

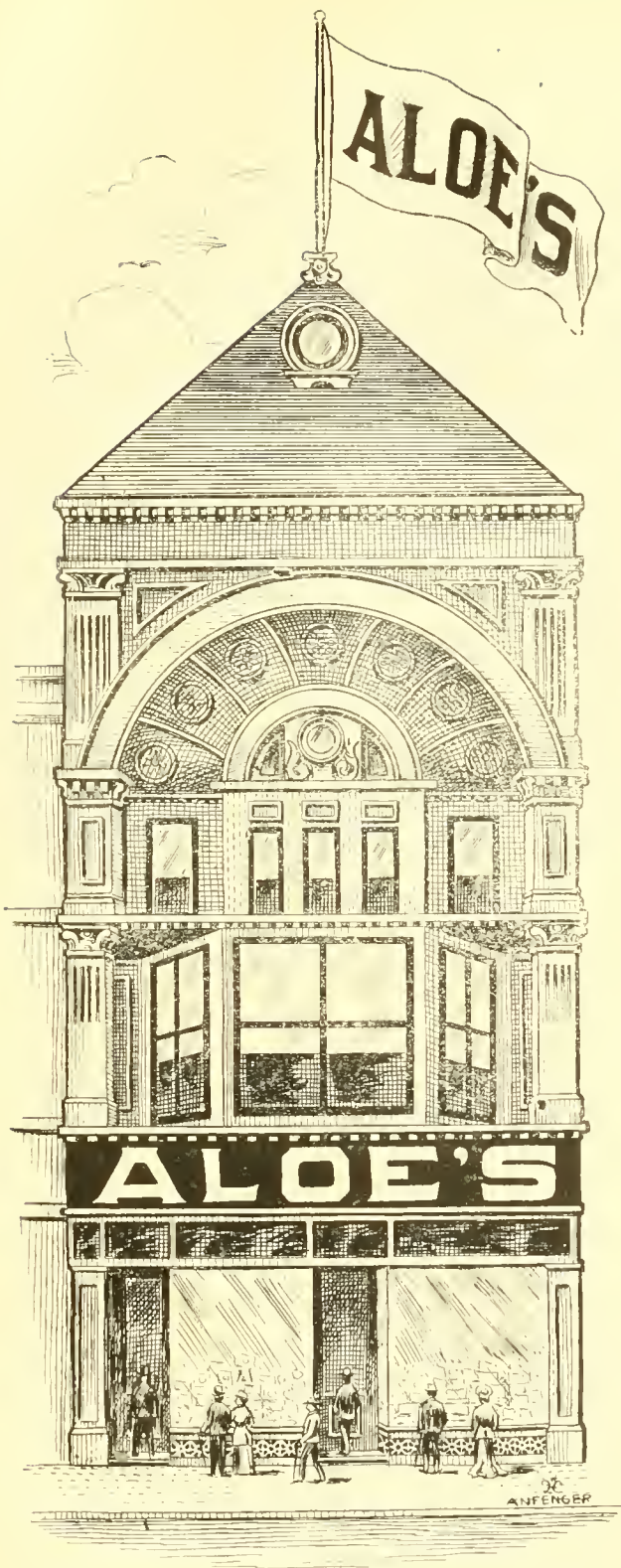
To succeed in a short time in what was considered an undesirable location for a Men's Clothing and Furnishing establishment, might be a difficult feat, but that is exactly what "The Model Clothing Co.," 7th and Washington Ave., has done, and this in one year's time, having come from Kansas City, where a similar establishment, also known as "The Model," is conducted by the same company.



Max Weil, Esq.,  
President Model Clothing Co

Mr. Max Weil, who is president of both stores, came to this country in 1880 from Dijon, France, where he was born forty-three years ago. Five years after arriving here, he established his first store, "The Model," in Kansas City.

Mr. C. N. Boley, of the firm, is manager.



## A. S. Aloe Co.

The above firm is as well known to the average St. Louisian as the Globe-Democrat or Post-Dispatch. Established in 1860, this Company of Opticians, Manufacturers of Surgical and Scientific Instruments continued to strive until it reached present position of Leader in its Line in the city of St. Louis, as well as foremost of optical manufacturers in the West.

The firm consists of Louis P. Aloe, President, and David Aloe, Vice-President.

Mr. Louis P. Aloe, whose photograph appears in another section of this book, is especially known for his identity with the Republican party, acting on numerous occasions as its representative entrusted with positions of the utmost importance. He is the representative of the Aloe family, all of whom are liberal patrons of the arts and sciences, as well as social leaders of prominence. Mr. Aloe is a worthy example of honesty, thrift and American patriotism.

# Morris A. Heimann Manufacturing Co.

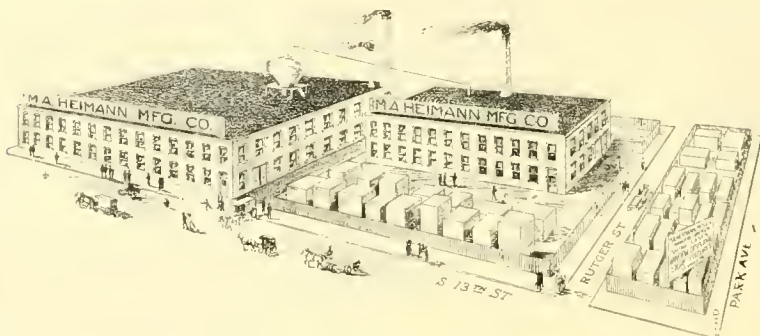


Morris A Heimann

A more striking example of thrift and energy would be hard to find in the Jewish community of St. Louis or anywhere else, than that which embraces the history of Morris A. Heimann, founder of the Morris A. Heimann Manufacturing Co.

Within a comparatively short time this massive business establishment has been built up to its present amazing proportion. It is certainly one of the largest establishments of its kind in the United States and the largest in the west.

The above is a good likeness of the founder, who is, as will be seen, yet a very young man. So much more remarkable are his successful achievements.

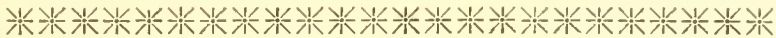


The M. A. Heimann Factory.



## BRY & BRO. CLOAK CO.

This engraving does but partial justice to the imposing structure of the largest cloak house in St. Louis, and one of the largest in the West. Bry & Brother came to St. Louis some thirty years ago from Camden, Ark., where they still own a retail and wholesale cloak establishment. Mr. Nathan Bry is President and Louis Bry Vice-President, Secretary and Treasurer. Both gentlemen are conspicuous members of our community, and subscribers to numerous charities and benevolent purposes.



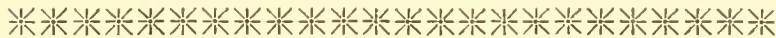
## MORRIS WOOLF & CO.

The above firm, consisting of Morris Woolf and Alfred E. Woolf, is one of the largest silk specialty houses in the country, and the only exclusive silk and velvet house west of New York.

The phenomenal growth of this firm since its organization 1899, is everywhere commented on in the business circles of St. Louis.

Mr. Woolf is not only a successful merchant, but also a society man of prominence, being a member of numerous social, benevolent and charitable institutions and clubs. He is a leading member of the Bnai Brith, the Missouri Athletic Club and Hebrew Benevolent Society; also a member of the Shaare Emeth Temple.

His brother and partner Alfred E. Woolf is also charitably inclined, and both are frequent contributors to every good cause, Jewish or non-Jewish.



# J. H. CRANE FURNITURE CO.,

---

---

**LEADERS IN  
UP-TO-DATE  
STYLES.**

**416 and 418 N. 4th St.**

---

---



**Very** LATEST PRODUCTIONS FROM  
THE MOST PROGRESSIVE  
MANUFACTURERS.

Your Cousins, Uncles  
and Aunts

Are coming to St. Louis to see  
the World's Fair and will doubtless  
enjoy your home. Would you not be  
happier by presenting your home with  
some new and pleasing Novelties in  
the way of Furnishings?

Our specially selected stock for the  
very purpose of beautifying and render-  
ing St. Louis homes particularly novel  
this World's Fair year, is worthy your  
inspection.

We want your patronage, and feel  
you will be appreciative of our great  
effort in presenting such

**A Splendid Collection of  
NEW FEATURES IN**

**FURNITURE**

---

---



# JEWISH DIRECTORY.

## List of Subscribers to the Jewish Charitable and Educational Union of St. Louis.

FROM THE "MODERN VIEW."

Abramsky, B. C., 1446 N. 11th St .....	\$ 5 00	Bauman, L. Jewelry Co., Equitable Bldg. .....	\$250 00
Aal, A. A., 515 Locust St .....	20 00	Baumoel, Marcus, 901 Washington Ave. ....	5 00
Abraham, I., 112 N. Main St .....	15 00	Baskowitz, Sam, 1202 N. 7th St .....	5 00
Abrahams, Mrs. C., 1812 Morgan St.....	2 00	Bass, S. S., 1109 Clark Ave .....	25 00
Abrams, Harry, 1607 Market St.....	5 00	Black, D., 819 Washington Ave.....	3 00
Abramsky, Daniel, 4122 Peck St.....	10 00	Blank Bros., 714 Carr St .....	5 00
Aberson, Philip, 3851 Olive St.....	5 00	Braham, Mrs. B., 4437 Delmar Ave .....	25 00
Abeles, J., 415 N. 8th .....	20 00	Braham, D. G., Grand Leader .....	25 00
Achim Lodge .....	10 00	Braun, L. M., 610 N. Garrison Ave.....	5 00
Ackerman, Louis, 3963 West Pine St...	25 00	Barack, S., 1021 Market St .....	5 00
Ackerman, Leopold, 419 North B'dway..	25 00	Baum, A., Kurlander Bros .....	25 00
Adler, Sol, Southern Hotel .....	100 00	Blanstein, J., 914 N. 7th St .....	3 00
Adler, Martin, Chemical Bldg .....	5 00	Barg, S., 6122 Bartmer Ave .....	10 00
Adler, Max, Madison, Ill .....	10 00	Blass, Dr. B., Fraternal Bldg. ....	15 00
Alzheimer, Ben, 217 North Fourth St .....	600 00	Barnholtz, A., 809 Morgan St.....	2 50
Alzheimer, Maurice, Lincoln Tr. Bldg...	10 00	Bruchstein, Max, 1118 N. 18th St .....	5 00
Aloe, Mrs. I., Westminister & K's II .....	100 00	Block, Walter L., 3332 Lawton Ave .....	5 00
Alpiru, A., 8th & Gratiot St .....	10 00	Brunswick, Louis, 4617 Delmar Ave .....	5 00
Altman, S., 2257 S. Jefferson Ave .....	5 00	Benj. Franklin Lodge, 1403 Monroe St ...	5 00
Altman, Mrs. A. R., Hotel Normandie...	20 00	Benas, Mrs. Joanna, 4051 Pine St .....	5 00
Anfenger, Louis E., Holland Bldg .....	5 00	Berger, Ben, 201 N. Broadway .....	10 00
Apple, B., 1207 Carr St .....	15 00	Berger, Jos., 905 Lucas ave .....	25 00
Arbetter & Richman, 804 N. 7th St .....	5 00	Berk, Morris, 1208 K. Highway .....	20 00
Arenstein, I., 806 Franklin Ave .....	5 00	Berkson, Mrs. B., 4818 Fountain Ave ....	8 00
Arnold, Fred W., 1128 Olive St .....	30 00	Berkson, B., 1001 Lucas Ave .....	10 00
Arnstein, A., Commonwealth Tr. Bldg .....	100 00	Berlinger, Jos., 823 Washington Ave ...	5 00
Arnstein, Mrs. A., 4410 Westminister Pl.	15 00	Bernd, Adolph, 1100 Washington Ave ...	25 00
Aaron, Lew, 104 N. Broadway.....	5 00	Bernitz, Jos., 916 N. 8th St .....	5 00
Art W.P. Mills Co., B'd'y & Frank. Ave.	25 00	Bernd, J. W., Wertheimer Swarts .....	10 00
Aloe, A. S., 520 Olive St .....	100 00	Block, Theodore, Equitable Bldg .....	25 00
Adler, S. W., 200 North 4th St .....	100 00	Bloch, Jonas, 7622 S. Broadway .....	5 00
Abrahams, Sol., & Son .....	5 00	Block, Albert S. 1007 N. 3rd St.....	5 00
Amsterdam, Max., 900 Morgan St .....	5 00	Block, Maurice, 934 N. 3rd St .....	5 00
Auer, Isidore, Globe-Democrat Bldg .....	5 00	Block, Mrs. H., 2040 Victor St .....	5 00
Alzheimer, Beno, Lincoln Tr. Bldg .....	3 00	Block, Leon, Rice-Stix .....	5 00
		Block, Jules, 1015 Washington Ave .....	8 00
Bach, I, 4142 Morgan St .....	60 00	Bloom & Wise 523 Locust St .....	25 00
Bach, F. S., 1106 Washington Ave.....	25 00	Bodenheimer, Max, 10th & Clark Ave ...	50 00
Bacharach, Max E., Rice-Stix D. G. Co.	10 00	Boehm, Sol, 800 Morgan St .....	75 00
Baer, Bros., Belleville, Ill .....	50 00	Boekers-Isaacs & Co., 318 N. Leffingwell	
Baer, Bernard, 1416 N. Broadway.....	50 00	Ave .....	35 00
Baer, Adolph, 4310 Pine St .....	250 00	Bohm, Alfred, 1228 Washington Ave.....	30 00
Baer, Julius A., Grand Leader .....	300 00	Bohm, H. J., 1228 Washington Ave.....	60 00
Baer, Sigmund, Grand Leader .....	300 00	Bohm, E., 1228 Washington Ave.....	60 00
Baer, Mrs. Mary, 614 N. Broadway .....	5 00	Bondi, S., 2623 S. 13th St .....	50 00
Baer, Chas., 1106 Washington Ave .....	5 00	Bowman, Sam, 701 Chestnut St .....	50 00
Bakrow, F., 11 North Boyle .....	5 00	Bendheim, M. H., 407 N. 3rd St .....	25 00
Bamberger, Geo., c/o Rice-Stix D.G. Co.	5 00	Bearman, Samuel, 1415 Market St .....	5 00
Banner Lodge, 93 I.O.B.A., 1003½ N. 14.	5 00	Bernd, J. W., Wertheimer Swarts .....	10 00
Baum, Mrs. Lizette, 4116 Delmar Ave ....	30 00	Bierman, E., 1001 Lucas Ave .....	5 00
Bauman, S. H., Commercial Bldg .....	100 00	Bienenstok, Montefiore, 901 Carr St.....	25 00

Bienenstok, Mrs. Sarah, 3852 W. Pine St. \$ 30 00	Dick, J. B., 1310 N. Main St. .... \$ 10 00
Bieber, M., 605 Lucas Ave ..... 20 00	Dobriner, Charles, Granite Bldg..... 10 00
Bernheimer, Marcus, 208 N. 4th St. .... 150 00	Dornitzer, Jos., 104 N. 9th St..... 10 00
Bregstone, H. H. 1818 N. 9th St ..... 5 00	Daust, Harry, Washington Nat'l Bank... 3 00
Bry, Nathan, 1001 Lucas Ave..... 250 00	Daust, Herbert, " " " " .. 3 00
Bry, Louis, 1001 Lucas Ave ..... 250 00	Davis, Ansley S., 404 Burlington Bldg..... 25 00
Blumberg, M., 4239 Page Ave ..... 5 00	Dreidel, Mrs. F., 3023 Laclede Ave..... 10 00
Blumenkranz, L., 1602 Market St..... 25 00	Danie S., Atoka, I. T..... 20 00
Blumenfeld, M., & Bros., 819 Washing- ton Ave ..... 50 00	Drey, Mrs. Marie, Grand Ave. Hotel..... 150 00
Busch, Adolphus, Anheuser-Busch Brew- ery Co ..... 100 00	Drey, Adolph, St. Chas., cor. 11th St ... 200 00
Burensteiu, Ben, 208 S. Broadway ..... 30 00	Drey, Leo, St. Chas., cor. 11th St ..... 250 00
Bruswick, David, 11th & Lucas Ave ..... 5 00	Dreyfus, Sol S., 1900 Franklin Ave..... 5 00
Burgheim, Mr. & Mrs., 3031 Eads Ave.... 5 00	Dreidel, Ben, 1310 Olive St..... 5 00
Blumberg, H., c/o Schwabs Factory ..... 5 00	Davidson, Ed., 1802 Hickory St ..... 5 00
Blum, M., 829 Franklin Ave ..... 5 00	Ebn Ezra Lodge, S. Eliel, 715 Locust St 50 00
Bothman, M., 1240 Franklin Ave ..... 5 00	Ellman, John, Lucas, near 6th St ..... 10 00
Broude, S., 900 Carr St..... 5 00	Emanuel, H., 1015 Washington Ave ..... 25 00
Cahn, Charles, 3919 W. Pine St..... 75 00	Emanuel, E. R., 419 N. Broadway..... 25 00
Caplan, Dr. L., 3104 Washington Ave..... 10 00	Ebert & Freed, 3200 Easton Ave..... 5 00
Carnovsky, H., 1010 N. 11th St ..... 5 00	Ebert, Mrs. I., 4161 McPherson Ave..... 5 00
Cohn, I. H., 408 N. 4th St ..... 5 00	Ebert, Mrs. Helena, 4036 Cook Ave..... 4 00
Cohn, Albert, 9 N. Broadway..... 25 00	Emmer, W. B., 1904 S. 18th St ..... 3 00
Cohn, Alex, 1010 N. 13th St ..... 5 00	Elsas, Dave, 613 S. 7th St..... 5 00
Cohn, Mrs. Bertha, 4046 Page Ave ..... 9 00	Elkas, Ike, 4269 Finney Ave..... 5 00
Cronbach, L., 723 Olive St ..... 2 50	Eliel S., 715 Locust ..... 5 00
Cohen, H., 1024 N. 9th St ..... 5 00	Ettmanu, Samuel L., 1112 Pine St..... 5 00
Cook, Mrs. Chas., 1025 W. Whittier St.. 10 00	Ettmann, Henry L., 1112 Pine St..... 10 00
Carnovsky, I., 1110 N. 13th St..... 1 00	Ettmann, J. A., Mermod-Jaccard Bldg... 5 00
Cuttner, Mrs. H., 1221 Mississippi Ave.. 10 00	Eskeles, M., 5067 Fairmount Ave..... 5 00
Crouse, David, 1132 Washington Ave ..... 5 00	Epstein, A., 722 Morgan St..... 5 00
Cremieux Lodge No. 90, Fraternal Bldg. 36 00	Epstein, Eugene J., 3719 Olive St..... 5 00
Coploshinsky, Abel, 1110 N. 8th St ..... 3 00	Epstein & Whiser, 916 N 7th St ..... 12 00
Constam, Ph., 1308 Washington Ave ..... 40 00	Epstein, Jacob I., 612 Chestnut St..... 50 00
Cook, Mrs. Moses, 3043 Morgan St..... 5 00	Ehrlich, M., 820 N. 6th St ..... 5 00
Cook, Mrs. Clara, 1023 Grattan St ..... 15 00	Ehrlich, Leo, D. Sommers & Co..... 5 00
Cole Mr. & Mrs. N., 722, Mer. Jac. Bldg 100 00	Eliel, S., 715 Locust St..... 5 00
Cohn Abe, Nat. Stk. Yd., E. St. L..... 100 00	Ehrlich Bros. & Co., 719 Lucas Ave..... 25 00
Cohen, Louis, 1012 N. 7th St..... 10 00	Ehrlich, Moses, c/o May Stern & Co.... 100 00
Cohen Jacob, 823 N. 7th St ..... 5 00	Eiseustadt Bros., Holland Bldg..... 100 00
Cohen, H., N. Market and Main Sts..... 25 00	Eberson, A. A., 901 N. 2nd St..... 100 00
Cohen, Mrs. M., 4205 Page Ave ..... 5 00	Emmer, Isaac, 3141 School St..... 10 00
Cohen, Goodman, 1634 Franklin Ave..... 5 00	Epstein, Karl, 519 St. Charles St..... 10 00
Cohen, A., 919 Wash St ..... 5 00	Epstein, Simon, 3623 N. Broadway..... 10 00
Cole, David, 2746 Clark Ave..... 60 00	Epstein, Ignatz, 620 N. 7th St..... 25 00
Colonna, Adolph, 1726 Franklin Ave ..... 10 00	Epstein, Samuel, 208 S. Broadway..... 20 00
Cook, Abe, 4500 N. 2nd St ..... 20 00	Epstein, L., 2739 Franklin Ave..... 2 00
Cerf, Sam P., 115 N. 6th St..... 10 00	Epstein, I., Union Market..... 10 00
Daust, A., 807 Washington Ave..... 50 00	Epstein, Dr. M. J., 4060 McPherson Ave. 40 00
Davidson, J., 918 Wash St ..... 2 00	Epstein, Abe I., 23rd & Locust St ..... 50 00
Day, John Q., c/o Moses Fraley & Co ... 5 00	Epstein, Marcus, 23rd & Locust St ..... 50 00
Deutsch, Dr. Wm. S., 3135 Wash'ton Ave 25 00	Epstein, Herman, 23rd & Locust ..... 50 00
DeVorkin, Dr. M. I., 912 Carr St ..... 15 00	Einstein, A. C., Market & 16th St..... 100 00
Desberger, S., 810 Lucas Ave ..... 50 00	Einstein, Wm., Security Bldg..... 25 00
Diamant, Mrs. B., Oliver & Whittier Sts 10 00	Eiseman, Adolph, c/o Rice-Stix..... 5 00
Diamant, H. A., 215 N. Main St ..... 10 00	Eiseman, David, c/o Rice-Stix ..... 650 00
Diamant, B., 1421 Market St..... 30 00	Eiseman, Benj., c/o Rice-Stix ..... 350 00
	Eiseman, Simon, Chemical Bldg..... 50 00
	Eiseman, Max., 1001 Lucas Ave.,..... 5 00
	Ejseman, W. B., Chemical Bldg..... 5 00
	Emile Zola Lodge..... 10 00





# BARNES' BUSINESS COLLEGE,

Board of Education Building

911 Locust Street = St. Louis, Mo.

The school that makes a specialty of each student. Individual instruction produces the best results. A course in BARNES' BUSINESS COLLEGE will prepare you to do first-class work, either as book-keeper or stenographer. Eight regular instructors are employed and the facilities throughout are the best. Write for catalogue. Instruction either personal or by mail. Address,

**BARNES' BUSINESS COLLEGE,**

Board of Education Building,

ST. LOUIS.

**Established 22 Years.**

Falk, Max, 7th St. & Washington Ave	\$ 50 00	Frohlichstein, I.W., 4231 McPherson Ave.	\$ 10 00
Fallek, S., 2215 N. Broadway	10 00	Frohlichstein, Ben, 20 S. Main St	10 00
Fraley, Jacob & Co., 707 Washington Ave	50 00	Frolichstein, S. H., 813 Spruce St	25 00
Fraley, Moses, 910 Century Bldg	100 00	Frolich, Victor, 104 N. 10th St	25 00
Frank, August, St. Louis Star	100 00	Fox, Jacob, 615 Pine St	10 00
Frank, Henry, 1416 N. Broadway	25 00	Freedman, Louis, 510 N. 6th St	\$ 5 00
Frank, Abe., 212 S. Main St	25 00	Forth Henry	10 00
Frankenthal, Mrs. Alex, 4330 Pine St	100 00	Gardner, Louis, 701 Morgan St	25 00
Frank, Mrs. M., 5555 Clemens Ave	35 00	Gates, Jacob, 810 N. 7th St	20 00
Frank, Nathan, Century Bldg	200 00	Glaser, Morris, Laclede Bldg	600 00
Frankel, A., 5807 Sburban	5 00	Glaser, Joseph, 317 Olive St	500 00
Frankenthal, A., Frankenthal Ins. Co	150 00	Glaser, Julius, 414 N. 11th St	250 00
Frankel, Jos., c/o May Stern Co	5 00	Glaser, Carl, 1933 Cherokee St	5 00
Falk, D., 1025 N. 18th St	5 00	Glaser, Hugo, 3968 Finney Ave	5 00
Feist, Julius, 800 Washington Ave	2 00	Goldman, Sidney, 1106 Olive St	10 00
Feinstein, S., 1203 N. 8th St	5 00	Goldman, Jos., 2918 Thomas St	5 00
Freflich, S., 619 Franklin Ave	5 00	Glauber, Al. W., 4102 N. Grand Ave	10 00
Frennd, L. & Bros., 915 Souldard St	150 00	Glauber, M., 4102 N. Grand Ave	5 00
Freund, Mrs. S. E., 1622 Mississippi Ave.	25 00	Glik, Jos., 2221 N. Broadway	25 00
Freund, Eugene S., 1622 Mississippi Ave.	10 00	Greenhut, Henry, 2702 Henrietta St	5 00
Freund, Leopold, Grand-Leader	25 00	Gershon, A., K. H. near Morgan St	5 00
Freund, J. L., 816 Franklin Ave	5 00	Getz, Mrs. E. M. 3rd & Chesnut Sts	15 00
Frey, M., 2743 Franklin Ave	2 50	Glaser, Louis, 4404 Washington Ave	200 00
Friedman, Jacob, 901 Washington Ave	250 00	Glaser, Adolph, Washington, near 8th St	200 00
Friedman, Nathan, 801 Lucas Ave	150 00	Glaser, Sig., Washington, near 8th St	100 00
Friedman, A., 901 Washington Ave	100 00	Glaser, Carl, 317 Olive St	20 00
Friedman, Isaac, 901 Washington Ave	100 00	Glaser, Louis, 1300 Washington Ave	10 00
Friedman, Lester, 901 Washington Ave	25 00	Glassberg, Isaac, 905 Lucas Ave	25 00
Friedman, Robt. V., 801 Lucas Ave	25 00	Glauber, Elkan, c/o Colonial Laundry Co	5 00
Friedman, Henry A., 801 Lucas Ave	25 00	Glauber Bros., 4832 N. Broadway	5 00
Friedman, Dr. Jacob, Carleton Bldg	50 00	Grabinsky, S., 717 N. 7th St	25 00
Friedman, Mrs. Helena, 2804 Clark Ave.	20 00	Gram & Glass, 9th and Lucas Ave	5 00
Friedman, Henry J., 1132 Wash'ton Ave.	5 00	Graber, A., 712 Carr St	12 00
Friedman, M., 1324 Market St	5 00	Greensfelder, J. B., Clayton, Mo.	50 00
Friedman, A. Shoe Co	25 00	Greensfelder, B., 70 Com. Trust Bldg	30 00
Friedman, B., 722 Chestnut St	15 00	Green, L. E. & Son, 408 N. Broadway	50 00
Finkelstein, H., 4259a Cook Ave	3 00	Gleick, H. A., c/o Rice-Stix D. G. Co	25 00
Finkelstein, Charles, 910 N. 7th St	5 00	Geist, Z., Mermod Jaccard Bldg	25 00
Fischel, Dr. W. E., 2647 Wash'ton Ave.	20 00	Gray, H. H., 1622 Olive St	5 00
Fishel, Henry, Rice-Stix	5 00	Gamm, Philip, 713 Morgan	5 00
Fishel, Mrs. Lizzie, 1119 Dolman St	5 00	Galnick, I., 2115 Franklin Ave	5 00
Fischlowitz, Henry, 1123 Wash'ton Ave.	20 00	Godlove, Lewis, Strauss' Studio	25 00
Freund, Albert, 1722 Mississippi Ave	5 00	Goldman, J. D., 112 S. Main St	500 00
Freund, Jos., 4439 Page Ave	5 00	Goldman, Morris, 1104 Olive St	100 00
Freund, M. E. 1444 S. 18th St	10 00	Goldman, Sam, 1104 Olive St	50 00
Fox, Jacob P., 615 Pine St	5 00	Goldman, Louis, 1104 Olive St	50 00
Feldman, B., 1026 N. 7th St	5 00	Goldsmith, David, Missouri Trust Bldg.	100 00
Freedman, J. & Co., 413 N. 11th St	10 00	Goldsmith, Mrs. Meyer, Century Bldg	25 00
Freund, Harry, 1622 Mississippi Ave	10 00	Goldsmith, Mrs. David, Hotel Berlin	25 00
Freund, B., 1440 S. 18th St	5 00	Goldstein, Wm., Wainwright Bldg	300 00
Freund, L. L., c/o May, Stern & Co	10 00	Goldstein, Dr. M. A., 3858 Westminster	50 00
Furth, Frank, Buffalo, Mo.	10 00	Goldstein, Wm., 713 N. 8th St	5 00
Fuld, Adolph, 1001 Lucas Ave	5 00	Goldstein, Sol., 1616 S. Compton Ave	30 00
Fuld, Wm., 704 N. 2nd St	5 00	Goldstein, Robt., Waiwright Bldg	250 00
Fuller, Aaron, Grand Leader	300 00	Goldwasser, M., 715 Morgan St	25 00
Frumberg, A. M., Mermod & Jaccard Bldg	10 00	Golland, Dr. M., 1712 Carr St	20 00
Frumson, Dr. H., 904 N. Broadway	10 00	Goodman, Mrs. R., 1245 Franklin Ave	6 00
Florsheim, M., 404 S. 7th St	10 00	Goodman, Herman, 703 Locust St	15 00
		Gregor, Mrs. Caroline, 4260A Finney	5 00

Greenspon, Jos., 806 Biddle St.....	\$ 5 00	Hoeber, Gus, Board of Education.....	\$ 10 00
Guckenheim, Emil, 25 N. 3rd St.....	10 00	Hollander, Bruno, c/o Rice-Stix .....	5 00
Guggenheim, Mrs. L., 5224 Delmar Ave.....	5 00	Hornstein, J. H., Laclede Bldg.....	5 00
Gutfreund, Louis, Holland Bldg.....	25 00	Horwitz, K. N., 805 Lucas Ave.....	25 00
Gutfreund Bros., 2430 S. Broadway.....	25 00	Horwitz, Robt., 11th & Wash St.....	5 00
Guntzler, Theo. L., 4 S. Main St.....	25 00	Hotchner, A., 804 N. 7th St.....	5 00
Gneck, Samuel, 710 N. 8th St.....	5 00	Hurst, Ben, 9th & Washington Ave.....	25 00
Gross, Ed. M., c/o Ed. Schiele & Co.....	2 50	Hysinger, Henry, 3814 Pine St.....	50 00
Goldstein, Wm. H., 6122 Bartmer Ave.....	5 00	Hyman, H. C., 4251 Delmar Ave.....	15 00
Goldstein, J., 813 Morgan St.....	3 00	Isaacs, Edward, 703 Lucas Ave.....	20 00
Gordon, Samuel, 806 Morgan St.....	5 00	Isaacs, Mrs. J. L., 5655 Cates Ave.....	25 00
Haas, B., 1300 Washington Ave.....	15 00	Israel, M., 18th & Olive.....	5 00
Haas & Co., 909 N. 7th St.....	10 00	Ittleson, Hy., Laclede Bldg.....	100 00
Haas, Aaron, 1106 Washington Ave.....	100 00	Iralson, Dr. Abe 5384 O. Manchester Rd.....	5 00
Haber, P, 1326 Franklin Ave.....	5 00	Jacobs, J. J., c/o Rice Stix D. G. Co.....	15 00
Haas, Julius, Atoka, I. T.....	15 00	Jacobs, Morris, 805 Washington Ave.....	25 00
Hays, Fred, 4316 Lindell B.....	25 00	Jacobs, E., 2352 Chouteau Ave.....	5 00
Haas, Aaron, 4239 Page Ave.....	5 00	Jacobs, Mrs. Julia, 1411 Market St.....	3 00
Harrison, Rev. Leon, 5083 Morgan St.....	100 00	Jacobus, J. R., Col, Theatre Bldg.....	10 00
Harris, F., 1303 N. Garrison Ave.....	5 00	Jacobson, Hugo, 202 S. Main St.....	20 00
Harris, Marcus, 2nd & Walnut St.....	25 00	Jacobson, Dr. H., 4392 Laclede Ave.....	10 00
Harris, David M., 1128 Washington Ave.....	150 00	Jackson, Chas. S., c/o Famous.....	5 00
Harris, Berney, 1128 Washington Ave.....	150 00	Jarret, J.R., Marianna, Ark.....	10 00
Harris, Louis, 2nd & Walnut St.....	50 00	Joachim, Jos., 1212 S. Broadway.....	5 00
Hirschfeld, B., 4163 Maryland Ave.....	100 00	Jonas, Dr. Ernst, 2329 Locust St.....	25 00
Hirschl, Mrs. A., 42 Nicholson Pl.....	25 00	Jonas, M. B., Roe Bldg.....	75 00
Hirsch, Ralph, Rice-Stix D.-G. Co.....	10 00	Jones, Mrs. T., 3843 Olive St.....	24 00
Hirsch, Jos., Mermod-Jaccard Bldg.....	25 00	Joseph, Simon, Missouri Tr. Bldg.....	50 00
Hirsch, L. B., Wells Bldg.....	15 00	Joseph, S. L., 9 Hortense Pl.....	100 00
Hirsch, Cal., Wells Bldg.....	100 00	Judd, Max, 3944 Westminster Pl.....	100 00
Hirsch, Isaac, Wells Bldg.....	50 00	Jungman, A., 1001 Lucas Ave.....	5 00
Himmelbaum, M., 728 Franklin Ave.....	5 00	Kahn, Mat, Union Market.....	5 00
Hilb, Henry, Vine near 3rd St.....	5 00	Kahn, Max, 12th & Walnut Sts.....	500 00
Hecht, Jacob, 905 Lucas Ave.....	10 00	Kahn, Mrs. R., 3906 Delmar Ave.....	25 00
Hesse, L., 1000 Washington Ave.....	5 00	Klein, Joseph, 2125 Carr St.....	5 00
Herzog, Louis, 719 Washington Ave.....	10 00	Klein, Edmund, Enid, O. T.....	5 00
Hahn, Isaac N., 705 Washington Ave.....	50 00	Kitanik, Harris, 821 O'Fallon St.....	5 00
Hahn, Mrs. Henrietta, 4362 W. Belle Pl.....	25 00	Kriegshaber, Mrs. D., 49th & Wash. Ave.....	15 00
Hammerschlag, J., 908 Rutger St.....	10 00	Krieger, L. J., 294 N. 4th St.....	25 00
Haffner, Wm., 1900 Whittier St.....	5 00	Knights of Joseph Lodge, Fra. Bldg.....	10 00
Harburger, D. & Family, 111 N. B'way.....	50 00	Kline, M., 721 Franklin Ave.....	5 00
Harris, H. C., 4010 Forest Park Bl.....	5 00	Kline, E. B., 415 North Broadway.....	25 00
Harris, Julius, Equitable Bldg.....	25 00	Kline, Julius, 415 North Broadway.....	10 00
Harris, I., 1128 Washington Ave.....	30 00	Kastor H. W. & Sons, Laclede Bldg.....	100 00
Harris, Ben., Walnut & 2nd Sts.....	50 00	Kalter, A., 818 S. Theresa Ave.....	25 00
Hecht, Bros. & Co., 1014 Lucas Ave.....	40 00	Kaminer, Joseph, 1123 Washington Ave.....	25 00
Heisiger, Julius M., 915 Morgan St.....	5 00	Kann, G. S., 805 Lucas Ave.....	5 00
Heimann, Morris A., Lucas Cor. 8th St.....	5 00	Kantorwitz, Julius, 2621 Gamble St.....	5 00
Heller, Mrs. Hattie, 4011 Olive St.....	10 00	Kantorwitz, Max, 2621 Gamble St.....	5 00
Hellman, Charles, 14 N. Main St.....	15 00	Katz, A., 1121 Washington Ave.....	50 00
Hellman, A. M., 508 N. 2nd St.....	100 00	Kaufman, Jacob, Col. Theater Bldg.....	10 00
Hellman, Max, 714 St. Charles St.....	35 00	Kaufman, Nathan, Odd Fellows' Bldg.....	50 00
Hellman, Mrs. C., 4633 Lindell Bl.....	100 00	Klaw, I. W., Lindell Hotel.....	5 00
Herman, M., 419 S. 7th St.....	10 00	Kraus, L. M., Stromberg Kraus.....	100 00
Herzog, M., 509 N. Broadway.....	25 00	Krause, Jacob, 6th and Market Sts.....	10 00
Herzog, Herman, 719 Washington Ave.....	75 00	Kramer, B. R., 107 N. Main St.....	5 00
Herzog, Fred, 719 Washington Ave.....	25 00	Klotz, Eli, 4323 Pine St.....	50 00



IT IS a well-known fact that the present generation is more particular as well as tasty in the matter of dress and general appearance than its predecessors. The requirements for this superiority have of necessity made the tailoring business one of art as well as utility. Notwithstanding this condition, however, there are few tailoring establishments that can lay claim to more than the average skill in creating stylish and well-fitting garments. It is therefore a pleasure to recommend such splendid work as that furnished to its patrons by the **Bieber Tailoring Co.**, among whom are numbered some of the best dressed men in the city.



Mr. Jacob Bieber.

Mr. Jacob Bieber's life long experience and devoted attention to his well chosen profession enables him to provide superior garments, well fitted and well made. When we consider the fact that he is also a "**Wholesale Manufacturer**" as well as a "**Custom Tailor**," therefore buying his cloth in large quantities direct from the **leading woolen mills**, we realize his advantages which enable him to make correspondingly **low prices** on **high grade** productions.

Mr. Bieber uses the same foresight in his mechanical department, employing none but highly experienced and **skilled labor** and his establishment is therefore one of the most popular in the city. He was certainly fortunate in securing a long lease at a very low rental on the most popular thoroughfare, **1302 Olive Street**, directly opposite the Exposition Building.

Koenigsberg, Max, c/o Famous .....	\$ 5 00	Lasky, J., 1017 Franklin Ave. ....	\$ 5 00
Kohn, Mrs. Wm., 3525 Pine St .....	100 00	Lederer, A., 3931 McPherson Ave .....	25 00
Kohn, A., 205 N. Broadway .....	50 00	Lederer, Sam, 411 N. Broadway .....	5 00
Kohn, Louis, 217 S. Broadway .....	20 00	Lederer, Sam M., Pickel Stone Co. ....	50 00
Kohn, Henry (bequest) .....	100 00	Lehman, G., Market near 4th .....	20 00
Kohn, Henry, Mrs., 2221 N. Broadway ..	25 00	Leichtman Goodman, 609 N. 9th St .....	25 00
Kohn, Louis, 4206 Easton Ave .....	5 00	Lemp, Wm. J. Brewery Co., Leimps Bry.	50 00
Kohner, Louis, 3860 Olive St .....	10 00	Lesser, Julius, 112 Main St. ....	400 00
Koninsky, Sig., 408 N. Broadway .....	75 00	Lesser, Wm., 506 Olive St .....	50 00
Koperlik, I., 901 Lucas Ave. ....	30 00	Levi, J. M., 814 Chestnut St. ....	50 00
Kopitzky, Sam J., 2220 Franklin Ave. ....	5 00	Levis, George, 1113 Washington .....	25 00
Koplar, B., 1524 N. 7th St .....	5 00	Levis, Simon, 1113 Washington .....	50 00
Koppel, Joe, 1107 Washington Ave .....	5 00	Levis, Leo, 1113 Washington .....	250 00
Kornick, C. E., c/o Famous .....	2 50	Levis, Walter, 1113 Washington .....	20 00
Kahn, Jos., Century Bldg .....	5 00	Levis, Edgar, 1113 Washington .....	20 00
Kramer, Herman, Chemical Bldg .....	25 00	Loeb, Dr. H. W., 3559 Olive St .....	100 00
Kurlander Bros., 9th & Washington		Loeb, Carl M., Security Bldg .....	50 00
Ave .....	40 00	Loeb, Alex, 1300 Washington Ave .....	25 00
Kornblum, J. J., 1307 Franklin Ave .....	5 00	Loebner, B., 2720 S. Broadway .....	5 00
Kotner, J., 1629 Market St .....	5 00	Loewen, David, 17 N. Main St .....	50 00
Krone, H. O., Rice-Stix D. G. Co .....	5 00	Loewen, E. J., 3860 Olive St .....	5 00
Kory, M., 816 Lucas Ave .....	44 00	Loewenstein, J. & Bro., 1204 S. B'dway	15 00
Korngold, J. B., Col. Theatre Bldg .....	10 00	Loewenstein, Ralph, 602 N. 7th St. ....	25 00
		Loewenstein, M. J., c/o St. Louis Star.	20 00
		Loewenstein, M. B., 713 N. 11th St .....	10 00
		Loewenstein, Sol, Columbia Theatre Bld.	20 00
		Loewenstein, Morris, 3925 Westminster Pl.	75 00
		Loewenstein, Hy., 1231 S. Broadway .....	5 00
		Loewenstein, S. C., 1107 Olive St .....	10 00
		Loth, Jeans Cloth Co., 914 Pine St .....	100 00
		Loth, Albert, Schwab Factory .....	10 00
		Lowenberg, Mrs. Minnie, 2532 N. Grand.	5 00
		Luban, A., c/o Rosenthal-Sloan .....	5 00
		Luban, F., c/o Rosenthal-Sloan .....	5 00
		Lieber, Isaac, 4342 W. Belle Pl .....	50 00
		Lieberstein, Mrs. M., 1435 Biddle St .....	5 00
		Linz, M., 3117 Eads Ave .....	10 00
		Lipman, Edward, 512 Locust St .....	25 00
		Lippmann, J. M., 919 N. 7th St .....	40 00
		Lippmann, Dr. G., 3738 Olive St .....	5 00
		Lippe, Jacob, 1226 Washington Ave .....	5 00
		Lippelt, Lewis A., 824 Chestnut St .....	10 00
		Lipschitz, Morris, 1009 Lucas Ave .....	35 00
		Lipschitz, Max, 616 N. 7th St .....	25 00
		Lipschitz, Morris, 1521 S. Broadway .....	5 00
		Lipstadt, M., 615 N. 4th St .....	5 00
		Littman, Max, 900 Howard St .....	100 00
		Littman, Paul, 724 Olive St .....	5 00
		Linz, M., Dallas, Texas .....	10 00
		Lipschitz, Max, c/o Mandel's Restaurant,	
		716 Olive St .....	5 00
		Mahler, Jacob, 3545 Olive St .....	25 00
		Madansky, B. M., Fairfield, Ill .....	5 00
		Maizner, Max, 408 N. 4th St .....	10 00
		Manheimer, Abe, 615 N. 8th St .....	10 00
		Manheimer, Mrs. R., 2623 Olive St .....	4 00
		Marx, Henry, 210 N. Main St .....	100 00
		Marx, W. N., 1300 Washington Ave .....	25 00

# WELTNER



## Conservatory of Music



3544 Page Boulevard  
ST. LOUIS, MO.

Established in 1897. Eminent faculty of 24 instructors of all branches of music. **GREATEST PIANO DEPARTMENT IN AMERICA.** Conservatory open to scholars the entire year, day and evening. Class of June, 1903, consisted of 24 graduates and post-graduates. Diplomas awarded graduates. Diplomas and gold medals awarded post-graduates. Applications for 75 free and partial scholarships (awarded to talented and deserving scholars) received from now on. For information and elegantly illustrated catalogue and supplement (32 pages), address

**FRANK WELTNER, Director,**  
3544 Page Boulevard.

THE \_\_\_\_\_

# Noonan- Kocian Co.



✻ FINE ARTS ✻

ARTISTIC WEDDING AND  
HOLIDAY GIFTS  
REGILDING

617 Locust Street  
ST. LOUIS

# WORLD'S FAIR

A COURSE IN

## Hayward's Business College

219, 220, 221, 223, 329 and 330  
ODD FELLOWS' BUILDING,  
ST. LOUIS, MO.

Can be secured at a reasonable rate, and you will be a graduate, and working, in time to attend the World's Fair.

Individual Instruction in All Departments.

WRITE US FOR PARTICULARS.

**L. F. HAYWARD, Principal.**

P. H. FELKER, President  
J. A. STANION, Vice-President  
K. M. FELKER, Secretary



## SHULTZ PRINTING COMPANY

1017 Morgan Street



MAIN 1983

ST. LOUIS

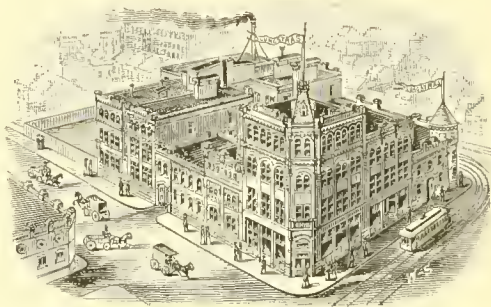
Marx, E. J., 1300 Washington Ave .....	100 00	Nathan Frank Lodge, Fraternal Bldg.....	20 00
Marx, B. F., 1300 Washington Ave .....	50 00	Neustetter, Max D. Grand Leader .....	10 00
Marx, J. J., 1300 Washington Ave .....	25 00	Newman, M. M., 1000 Washington Ave ..	40 00
Marx, H. N., 1300 Washington Ave .....	100 00	Nudelman, Wm., 1216 N. 3d St .....	10 00
Marx & Jones, 308 N. 6th St .....	5 00	Newman, A., 1303 N. Jefferson Ave .....	5 00
Marx, Samuel, 3709 N. 9th St .....	35 00	Normorofsky, A. G., 1030 N. 8th St .....	2 50
Marks, E. A., c/o Famons .....	5 00	N. St. Louis Business Assn .....	5 00
Margulius, I. M., 1536 S. Broadway.....	5 00	Nathan Wallace, 3137 Pine St .....	3 00
Mathes, Jos., 4711 Page Blvd .....	10 00		
May, Charles, 512 Locnst St .....	25 00	Obermeyer, S., Rice-Stix D. G. Co.....	5 00
Mayer, Emil, Holland Bldg .....	30 00	Olian Bros, 719 Lucas Ave .....	25 00
Mayer, Isaac, Mermod-Jaccard Bldg .....	10 00	Ornstein & Rice, 9th & Washington Ave	20 00
Mayer Fertilizer Co., 5400 Bulwer Ave ...	15 00	Oppenheimer, Jacob, Commercial Bldg..	10 00
Mayer, Max A., c/o Ely-Walker .....	25 00	Olschovoy, Pessach, 902 Carr St .....	6 00
Marks, Henry, c/o May Stern.....	5 00		
Manheimer L. Co., 210 N. 4th St.....	10 00	Parrish, D. L., 3128 Olive St .....	10 00
Maizner, Moritz, 1115 Franklin Ave .....	5 00	Peckham, S. L., 409 N. Broadway.....	5 00
Mandel, I., 3943 Pine St .....	20 00	Peltason, Mrs. P., 4000 Cook Ave .....	15 00
Mann, R. I., 101 S. Broadway.....	5 00	Peterson, Julius H., 1137 N. 3rd St .....	5 00
Markel, L., Hol. H., 6th & Frank. Ave.	10 00	Pfeiffer, Mrs. Sadie, 4908 Berlin Ave.....	25 00
Madansky, Max Granite City, Ill.....	2 50	Phoenix Furniture Co., 1111 Olive St... ..	50 00
Mendel, Wm., 213 S. 2nd St .....	50 00	Plessner, A., 4301 W. Belle Pl .....	50 00
Merinbaum, Max, 811 N. 7th St.....	5 00	Posnansky, M., 1814 S. Broadway .....	10 00
Mesritz Bros., 215 N. 8th St .....	10 00	Potashnick, M., 1137 N. Broadway.....	5 00
Messing, Dr. H. J., 4439 Delmar Blvd ..	25 00	Powers, Fred A., c/o I. Harris & Co .....	25 00
Meyer, Jacob, 6th & Lucas Ave .....	350 00	Prince-Evans & Co., 709 Lucas Ave .....	50 00
Mayer, Isaac, 6th & Lucas Ave .....	350 00	Prewer, D., 1030 N. 3rd St .....	10 00
Meyer, M., 2704 Franklin Ave .....	7 50	Progressive Order of the West .....	50 00
Mayer, Louis, Century Bldg .....	10 00	Pruschansky, S. B., 4135 Olive St .....	5 00
Mayer, Morris S., 4435 Page Ave.....	10 00	Pufeles, M. P., 520 Washington Ave.....	50 00
Meyer, Jos. W. ....	5 00	Putzel, Henry V., 914 Pine St .....	5 00
Meyer, Jos., Bartlesville, I. T. ....	10 00	Palan, A., 805 Morgan St .....	5 00
McKinley Lodge, Sec., 1110 Frank. Ave.	5 00	Portner, M., 708 Market St .....	5 00
Michael, Elias, 1000 Washington Ave ...	1000 00		
Michaels, Morris, 900 Franklin Ave., re-		Ragovin, Louis, 4636 Cook Ave .....	5 00
cently deceased .....	100 00	Rosenheim, D. E., 3636 Shaw Ave .....	3 00
Milius, George W., 922 Washington ave.	150 00	Russack, Martin, 814 Lucas Ave .....	10 00
Milner, John, 1439 N. 8th St.....	5 00	Rabbi Itchok, Elchonon Lodge, No. 132.	10 00
Milius, Alex. G., 922 Washington ave. .	10 00	Raphael, M., 6th & Olive St .....	25 00
Missonri Lodge No. 24, I. O. B. B. ....	25 00	Rauh, Charles A., Rice-Stix D. G. Co..	35 00
Miller, Phillip, 4510 Page Ave .....	10 00	Ranh, Aaron A., Rice-Stix E. G. Co .....	20 00
Modern View, The, 810 Lucas Ave .....	5 00	Rauh, M. M., 1001 Lucas Ave .....	5 00
Mohr, Mrs. Clara, 4520 McPherson Ave.	25 00	Reichsthaler, L., 4560 McMillan Ave.....	25 00
Morrison, Ben F., 1009 Olive St .....	10 00	Rebstock, Charles & Co., 200 S. Main St.	50 00
Morris, Louis M., 914 Pine St .....	5 00	Renard, Louis, Washington Cor. 4th St.	200 00
Moses Montefiore Lodge .....	10 00	Rice, Jonathan, (Deceased) .....	\$750 00
Moss, Alcon, Chemical Bldg .....	25 00	Rice, Arthur, Rice-Stix D.-G. Co .....	25 00
Moss, W. P., Chemical Bldg .....	5 00	Rich, Morris, Roe Bldg. ....	50 00
Munchweiler, B., 1409 Market St .....	10 00	Rider, S. A., 705 Washington Ave .....	100 00
Mossler, Isidore, c/o May, Stern.....	5 00	Roth, J., 318 Missouri Ave., E. St. S. ....	5 00
Molasky, J., 2323 N. Broadway .....	1 00	Rosamond Dairy Co., 1303 Ohio Ave.....	10 00
Mount Sinai Cem. Assn .....	16 73	Roth, Gabriel, 4317 Pine St. ....	5 00
Myers, Emanuel, Clark Ave., cor. 3rd ...	300 00	Robi, Adolph, 901 Carr St .....	15 0
Myers, M. M., 805 Lucas Ave.....	20 00	Riverside Shoe Co., 811 Lucas Ave., .....	25 00
Myers, Heury, San Francisco, Cal .....	5 00	Roos, Sol, Security Bldg .....	25 00
		Rosen, Louis, 813 Spruce St .....	20 00
Nagel, Frank A., St Charles, cor. 6th..	10 00	Rosenberg, G., 5021 McPherson Ave ...	150 00
Nathan, H. J., 1121 Olive St .....	100 00	Rosenberg, A., 2304 S. Broadway .....	5 00
Nathan, Mrs. Henrietta, 3024 Wash'nav	10 00	Rosenbach, M., Rice-Stix .....	10 00

# Lunstras

Dyeing  
and  
Cleaning  
Co.

HAVE THE LARGEST ESTABLISHMENT OF ITS KIND IN THE COUNTRY.

**MAIN OFFICE:**  
Park Avenue, 13th  
to 14th St  
Phones: Main 66.  
Kinloch, B. 761.



**STORES:**  
717 Locust Street.  
1044 N. Vandeventer  
Ave.  
726 N. Taylor Ave.

ALL BUILDINGS FIRE PROOF.

Any work entrusted to them, in dyeing or cleaning, will be perfectly satisfactory. Orders by Mail or Telephone have our most careful attention.

ST. LOUIS DAIRY CO.



2008 PINE STREET.



## Eye Troubles CURED

At the least possible expense to my patients, by the most scientific methods. Dr. Moritz cures blindness, cataracts, scums, films, white or black spots before the eyes, granulated lids, weak and sore eyes by **MILD MEDICINES.** Crossed eyes straightened without pain. 600 St. Louis references. Consultation and examination **FREE.**

### CLASSES

are prescribed only when absolutely necessary, and are made in my own shop, under my personal supervision, and an absolute guarantee that they are correct, at prices ranging from **\$1.00 per pair.**

G. MORITZ, M. D. OCCULIST  
AND OPTICIAN.  
612 FRANKLIN AVE.



Rosenbaum, L., 905 N. 11th St. ....	5 00	Sale, Morris, 1019 Washington Ave ..	25 00
Rosenfeld, Sam, 922 Washington Ave ..	10 00	Sale, M. N., 520 Olive St .....	25 00
Rosenheim, Otto, 715 Locust St .....	15 00	Sale, Dr. Samuel, 4344 Book Ave .....	75 00
Rosenheim, M., 3806 Westminster Pl ..	200 00	Samish, A., 801 Washington Ave.....	75 00
Rosenheim, Sam, 3806 Westminster Pl ..	5 00	Sayers, Henry, 1310 N. Main St.....	100 00
Rosenfeld, A. & Co., 819 Washington Ave ..	40 00	Scharff, Nicholas, 704 N. 2nd St.....	250 00
Rosenstein, Wm., Brunswick, Mo .....	5 00	Scharff, Lazarus, 20 N. Main St .....	100 00
Rosenthal, S. J., 910 Franklin Ave .....	10 00	Scharff, Adolph, 20 N. Main St .....	100 00
Rosenthal, I. B., 1015 Washington Ave ..	150 00	Scharff, S. E., 4155 Washington Ave.....	5 00
Rosenthal, Aaron, 810 Lucas Ave .....	50 00	Schwab, Leon J., Schwab Clo. Co .....	250 00
Rosenthal, M., 817 N. 10th St.....	5 00	Schwab, Max, Schwab Clo. Co.....	500 00
Rosenthal, Abe, 810 Lucas Ave .....	5 00	Schwab, Mrs. Ella, 4393 Westminster Pl ..	750 00
Rosenthal Paper & Sta. Co., Main near Olive St ..	25 00	Schwab, Mrs. A., 4522 Lindell Bld., (deceased) ..	200 00
Rosentreter, M., 415 N. 8th St .....	60 00	Schwab, Isaac N., 1132 Washington Ave..	150 00
Rosentreter, D., Washington Nat'l Bank.	40 00	Schlessinger, Ad, 15 N. 7th St.....	10 00
Rosentreter, Rev. A., 30th & Lawton Ave.	30 00	Schweich, Henry L.....	25 00
Ross, Jacob, 2116 S. 2nd St.....	50 00	Schweich, Jos. II., 116 Olive St .....	25 00
Roth, Philip, 1216 S. Broadway .....	10 00	Seaman, J. C., 614 Pine St .....	60 00
Rothschild, L., 7th near Washington Ave ..	40 00	Seasonsgood, Mrs. S., 4339 Wash'n Ave ..	60 00
Rothschild, Albert, 1100 Washington Ave ..	200 00	Selig, Leon, Broadway and Morgan St ..	5 00
Rothschild, Mrs. Rose, 4477 Washington Ave ..	100 00	Seltzer, Henry, 705 Wash St .....	5 00
Rothschild, Jacob, 1100 Washington Ave ..	25 00	Seligman, H., 715 Washington Ave.....	50 00
Rosinsky, Pauline, 4317 Pine St .....	5 00	Serkes, Morris, 4967 Suburban.....	5 00
Rubinstein, T. L., 905 Lucas Ave .....	100 00	Specter, A., 1008 N. 10th St .....	5 00
Rubinstein, Bros., 21st & Chouteau Ave.	50 00	Srenco, Sol, 9 N. Broadway.....	10 00
Rubinstein, Max, 701 Lucas Ave .....	20 00	Stein, Jos., Rice-Stix .....	20 00
Rubinstein, M. M., 905 Lucas Ave.....	10 00	Steiner, S., 2504 Cass Ave .....	25 00
Ruby, S., 6th, near Washington Ave.....	5 00	Steiner, David, 104 N. Broadway.....	5 00
Russack, J. & Sons, 814 Lucas Ave .....	150 00	Steiner, S., 308 Victor St .....	5 00
Strauss, D. M., Broadway & St. Chas. St. ....	25 00	Steiner, Charles F., 1608 S. Broadway ...	10 00
Strauss, Herman, 309 N. Broadway.....	50 00	Steiner, Simon, 114 N. Broadway.....	25 00
Strauss, Joseph, 1208 Washington Ave ..	5 00	Steiner, Silas, Weatherford, Okla.....	5 00
Straus, Louis, 1101 Olive St .....	200 00	Steinberger, L., 511 N. Whittier St.....	15 00
Skrainka, Mrs. Mary, West End Hotel...	25 00	Stern, Max, 100 Washington Ave.....	25 00
Skrainka, Fred., Security Bldg .....	25 00	Stern, Meyer, 813 Spruce St .....	100 00
Skrainka, Morris, Security Bldg .....	25 00	Stern, Gus L., Missonri Trust Co.....	50 00
Skrainka, Louis, Security Bldg .....	25 00	Schweig, M., 1717 Franklin Ave.....	5 00
Shapiro, E., 912 N. 9th St .....	5 00	Sternberg, Mrs. Rosalie, 3646 Flad Ave ..	10 00
Shapiro, H., 1114 Franklin Ave .....	3 00	Strkes, H., 1635 Franklin Ave .....	5 00
Schwartzberg, Mrs. Sam, 1923 Frank Ave ..	5 00	Serwinsky, Abraham, 1111 N. 9th St .....	5 00
Schwartz, Wm., 1409 N. 11th St .....	5 00	Seeinberg, Mrs. Fannie, New York.....	15 00
Schwartz, Julius, 7th & Franklin Ave ..	5 00	Schiele, Sidney, R. E. Exchange .....	10 00
Schwartz, Isidore, 905 Lucas Ave .....	10 00	Schiele Ed., 204 S. 4th St .....	50 00
Schwartz, S., Main & Mound Sts.....	25 00	Schild, Wm., c/o E. Myers.....	25 00
Schwartz & Wild, 715 N. 11th St.....	25 00	Schild, Mrs. Sophie, 2707 Eads Ave .....	10 00
Swarts, C. L., c/o Wertheimer-Swartz ..	200 00	Schimmel, Morris, 929 N. 7th St .....	2 00
Strauss, Emil, 601 N. Broadway .....	100 00	Schwimmer, Jos., 4035 Pinney Ave.....	5 00
Strauss, Ben J., 801 Washington Ave .....	75 00	Sicher, William, 1216 S. Broadway.....	25 00
Strauss, Simon, 4252 Lindell Bl .....	50 00	Sicher, Morris, 711 Lucas Ave .....	50 00
Strauss, Carl, 1001 Lucas Ave .....	5 00	Sigaloff Bros., 812 Franklin Ave .....	10 00
Strauss, J. C., 3514 Franklin Ave .....	100 00	Sigfried, Jos, 821 Lucas Ave .....	5 00
Strauss, I., 5861 Manchester Ave.....	2 00	Sigfried, H., 714 Lucas Ave .....	20 00
Stahl Bros. Olive near 8th St .....	25 00	Silver, Wolf, 607 Morgan St .....	2 00
Stameisen, H. L., 2308 Olive St .....	10 00	Schuster, S. J., 1208 Washington Ave ..	25 00
Stampfer, Jos., Century Bldg .....	10 00	Schultz, Max, Lucas near 9th St .....	20 00
Stampfer, Sigmund, 1216 S. B'dway ..	20 00	Silverberg, Ben, 1238 Bidde St .....	7 50
Swarts, S. L., Missouri Trust Bldg.....	25 00	Silverman, E., 817 Franklin Ave.....	5 00
Stadler, Fred, 704 N. 2nd St .....	5 00	Silverman, M. E., 817 Franklin Ave.....	10 00
Sachs, Mrs. Sol, 4054 McPherson Ave ..	10 00	Silverstein, J., 1012 N. 11th St .....	5 00
Sachs, Isaac, 100 N. Main St .....	10 00	Silverstein, H. E., 800 Franklin Ave. ....	5 00
Sachs, Gustave, 815 Market St .....	10 00	Simon, Harry, 415 North Sixth St.....	25 00
Sacks & Greenberg, 1115 Franklin Ave ..	5 00	Simon, D. G. Co., 717 N. 7th St .....	25 00
Sacks, Wm., Post-office .....	15 00	Simon, J & Son, 917 Franklin Ave .....	15 00
Sachs, Albert, 905 Lucas Ave .....	15 00	Simon, I. M., 313 N. 4th St .....	300 00
Sadler, M. B., 4404 Delmar Bld .....	5 00	Simpkin, H., 4130 Olive St .....	5 00
Sale, Lee, 520 Olive St .....	30 00	Singer, Richard, Security Bldg.....	100 00
		Singer, Adolph, 901 Lucas Ave .....	100 00
		Singer, J. W., 901 Lucas Ave .....	100 00
		Singer, Rudolph M., c/o Henry Marx & Co.....	10 00
		Schloss, T. D., 100½ N. 4th St .....	5 00
		Schoeman, M., 4036 McPherson Ave .....	25 00

# NO WINTER AT CITRONELLE

◊  
 H  
 E  
 A  
 L  
 T  
 H  
 F  
 U  
 L  
 ◊

MOBILE AND OHIO R.R.  
 ST. LOUIS  
 CAIRO  
 ARTESIA  
 MONTGOMERY  
 MERIDIAN  
 CITRONELLE  
 MOBILE  
 NEW ORLEANS  
 JACKSONVILLE  
**Citronelle**  
 Alabama.  
 ON THE GREAT PINE BELT PLATEAU OF THE SUNNY SOUTH.  
 WORLD FAMED AS AN ALL-THE-YEAR HEALTH RESORT

◊  
 R  
 E  
 S  
 T  
 F  
 U  
 L  
 ◊

For beautifully illustrated booklet write Jno.  
 M. Beall, Ass't Gen'l Pass. Agent, M. & O. R. R.,  
 St. Louis.

Schoen, Jacob, 12 S. Commercial St. 10 00  
 Schoen, L. L., 908 Olive St. 10 00  
 Schoen, Meyer, 4615 McMillan Ave. 25 00  
 Schoen, Mrs. I. A., Monticello Hotel. 25 00  
 Schott, Al, 113 S. Main St. 75 00  
 Schott, Jos., 210 S. Main St. 25 00  
 Schroder, S. W., St. Charles corner 6th St. 100 00  
 Schroers, John & Ed Pretorius, Broadway & Market St. 100 00  
 Solomon, Henry & Alex, 901 Lucas Ave. 10 00  
 Solomon, S. H., 903 Lucas Ave. 30 00  
 Skobel, Joan, 3945 Olive St. 10 00  
 Shoenberg, Moses, Famous 500 00  
 Solomon, Fred Z., Famous 20 00  
 Solomon, Isaac, c/o Barrs. 10 00  
 Susman, Ben, 713 N. 7th St. 5 00  
 Susman Bros., 718 Lucas Ave. 30 00  
 Summerfield, Simon, 202 S. Main St. 40 00  
 Summerfield, Moses, 320 N. Main St. 30 00  
 Suss, Alex., 12th & Walnut St. 10 00  
 Straus, J. D., 1308 Washington Ave. 25 00  
 Scharff, Aaron C., 3444 Washington Ave. 5 00  
 Saifer, Harry, 805 Morgan St. 5 00  
 Strausser, Frank, 1005 Washington Ave. 100 00  
 Schorr, Julius, 1000 N. Broadway 5 00  
 Singer, Theodore I., 2714 Lucas Ave. 5 00  
 Scharff, Jake, 3444 Pine St. 3 00  
 Stix, A. I., c/o Frieshman Bros. Shoe Co. 25 00  
 Stix, Mrs. Hannah, 4383 Westminster Pl. 65 00  
 Stix, C. A., c/o Grand Leader 300 00  
 Stix, Wm., Rice-Stix D. G. Co. 850 00  
 Stix, E. W., Rice-Stix D. G. Co. 20 00  
 Stillman, Isaac, 1013 N. 11th St. 5 00  
 Spitz, Rev. M., Pine, cor. 10th Sts. 25 00  
 Spiro, Mrs. Rosa, 4337 Finney Ave. 5 00  
 Spieldoch, I., 1100 Washington Ave. 35 00  
 Spiegel, A., 725 Chouteau Ave. 50 00  
 Singer, L. J., 4425 Olive St. 10 00  
 Singer, Louis B., Wash'n Av. near 11th 100 00  
 Siskin, E., 8 N. 16th St. 6 00  
 Siegel, M., 1812 Carr. 5 00  
 Singer, Leopold, 2714 Lucas Ave. 5 00  
 St. Louis Israel Lodge 10 00  
 St. Louis Lodge No. 62 10 00  
 Solomon, David, 315 Olive St. 15 00  
 Solomon, Mrs. F., 4187 Washington Ave. 20 00  
 Swope, Gerard, 810 Spruce St. 25 00  
 Swope, Mrs. Joel, Grand Ave. Hotel 25 00  
 Swope, Meier, 311 N. Broadway 75 00  
 Stromberg, B. P., 418 N. 6th St. 100 00  
 Sommers, David, 1128 Olive St. 250 00  
 Sommers, Sam, 1128 Olive St. 25 00  
 Schuurmacher, Ben, Am. Cent Trust Co. 10 00  
 Schnyler, Mrs. M., 2611 Lafayette Ave. 5 00

Tiger, A., 717 Lucas Ave. 5 00  
 Tilles, C. A., 200 N. 4th St. 100 00  
 Tuholkske, Dr. H., 410 N. Jefferson Ave. 150 00  
 Tannerbaum, M., 1324 Franklin Ave. 5 00  
 Taussig, Wm., 3447 Lafayette Ave. 100 00  
 Taussig, James, Rialto Bldg. 40 00  
 Thal, Robert, 204 S. Main St. 50 00  
 Thal, Gus, 204 S. Main St. 25 00  
 Thorn, M., 608 Franklin Ave. 5 00  
 Trauer, Jos., 4317 Belle Pl. 5 00  
 Treichlinger, D., 813 Spruce St. 100 00  
 Trepp, Samuel, Mallinkrodt Chem. Wks. 5 00  
 Trepp, A., Columbia Bldg. 5 00  
 Trepp, Isaac, 715 Locust St. 5 00  
 Treumann, Paul, Rice-Stix 5 00

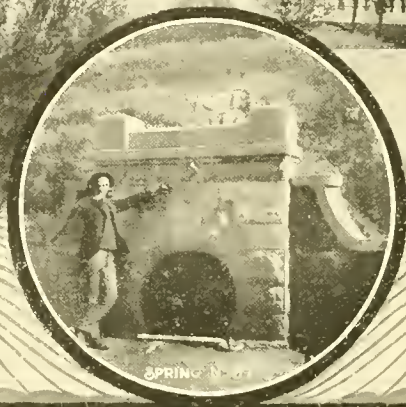
Unger, Mrs. C., 204 Victor St. 5 00  
 Ut. Michel, 2304 N. Broadway. 5 00  
 Unterberger, M., 1132 Washington Ave. 15 00  
 Victor, Harry, 3852 Windsor Pl. 3 00  
 Van Raalte, S., 413 N. 6th St. 100 00  
 Van Raalte, J., 413 N. 6th St. 50 00  
 Wachtel, Max, 3811 Shenandoah Ave. 50 00  
 Wachtel, Jos, 1815 LaSalle St. 50 00  
 Wall, J. M., 1324 Biddle St. 5 00  
 Waldheim, Aaron, May-Stern 600 00  
 Waldman, Chas., 810 Lucas Ave. 5 00  
 Waldman, A., 1441 Chouteau Ave. 10 00  
 Wedel, Ed., 1121 Washington Ave. 50 00  
 Weil, Jacob, 1608 Franklin Ave. 25 00  
 Weil, Maurice, 413 N. 11th St. 25 00  
 Weil, Harry, 1004 Olive St. 10 00  
 Weil, Maurice, 901 Lucas Ave. 10 00  
 Weil, Sam, 1320 Olive St. 30 00  
 Weil, Henry, 620 Olive St. 25 00  
 Weil, Julius, 11 N. Broadway. 25 00  
 Weil, Mrs. Julius, 4142 Delmar Bl. 25 00  
 Weil, Jacob P., 1416 N. Broadway. 100 00  
 Wasserman, Bennett, Olive near 4th St. 50 00  
 Washauer, Louis, Rice-Stix D. G. Co., 5 00  
 Wartensleben, David, Grand Leader. 10 00  
 Weiss, Emil J., 1817 Kennett Pl. 5 00  
 Weir, Nathan, 2030 Franklin Ave. 5 00  
 Weil, Wm., c/o Bollmans. 10 00  
 Weil, Max, The Model. 100 00  
 Weyl, Henry, Col. Dist. Co. 50 00  
 West End Bazaar, Vandeventer & Finney Aves. 100 00  
 Wertheimer, J. J., 922 Washington Ave. 200 00  
 Werner Bros., 708 Olive St. 150 00  
 Weiss, Jacob, 1606 Market St. 5 00  
 Weiss, Emil, 620 N. 7th St. 25 00  
 Weiss, Max, Globe Democrat Bldg. 10 00  
 Wieder, M. L., 1601 N. Broadway. 30 00  
 Wieder, Marcus S., 1601 N. Broadway. 40 00  
 Wiener, Adolph, Wainwright Bldg. 50 00  
 Wiener, L. M., Wainwright Bldg. 50 00  
 Winters, Ben, 421 N. 6th St. 5 00  
 Witt, J. A., c/o The Famous. 5 00  
 Wittels, M., 813 Wash St. 5 00  
 Wittenberg, Charles, 709 Lucas Ave. 25 00  
 Wohl, F. M., 811 Washington Ave. 25 00  
 Wohlgenuth, L., E. St. Louis. 10 00  
 Wolfe, Nathan, c/o The Famous. 5 00  
 Wolfheim, M., 526 N. Main St. 30 00  
 Wolfort, Dr. L. J., Pine near 8th St. 25 00  
 Weiner, J., Washington & Euclid Aves. 25 00  
 Weinstein, Sam, 1300 Washington Ave. 25 00  
 Weisels, H. R., 707 Chestnut St. 10 00  
 Wolfort, Mrs. Lenore, Westmoreland II 100 00  
 Wolfort, Sig., Grand Leader. 10 00  
 Wolfort, David H., 1500 North Broadway 10 00  
 Wolford, Dr. Henry, Carleton Bldg. 50 00  
 Wolff, Mrs. S., 5095 Westminster Pl. 50 00  
 Wolff, Ed. H., 6th & Washington Ave. 100 00  
 Wolff, J. S., 105 N. Broadway. 25 00  
 Wolf, H., 1214 N. 12th St. 5 00  
 Woolf, Alfred, 7th & Washington Ave. 25 00  
 Woolf, George, 7th & Washington Ave. 25 00  
 Woolf, Morris, 7th & Washington Ave. 50 00  
 Wormser, Max, New York City, N. Y. 10 00  
 Zelnicker, Walter, 408 N. 4th St. 100 00  
 Zuckerman, S., 908 N. 8th St., 5 00  
 Ziegler, J., 5025 Fairmount Ave. 5 00  
 Zuckerman, Mrs. A., New York City. 10 00

# HOT SPRINGS

## ARKANSAS

REACHED DIRECT  
FROM ST. LOUIS  
AND MEMPHIS IN  
ELECTRIC LIGHTED  
SOLID THROUGH  
TRAINS

VIA THE



QUACHITA RIVER  
HOT SPRINGS, ARK.

SPRING HOUSE

# IRON MOUNTAIN ROUTE



GOVERNMENT RESERVATION



OSTRICH FARM

## JEWISH CALENDAR.

5664-1904

New Moon Shebat .....	Monday, January 18
*New Moon Adar .....	Wednesday, February 17
Purim .....	Tuesday, March 1
New Moon Nissan .....	Thursday, March 17
1st day Passover .....	Thursday, March 21
7th day Passover.....	Wednesday, April 6
*New Moon Iyar .....	Saturday, April 16
New Moon Sivan.....	Sunday, May 15
1st day Shabuoth Pentecost .....	Friday, May 20
*New Moon Tammuz.....	Tuesday, June 14
Fast of Tammuz .....	Thursday, June 30
*New Moon Ab .....	Wednesday, July 13
Fast of Ab .....	Thursday, July 21
*New Moon Ellul .....	Friday, August 12

5665-1904

Rosh Hashonah (New Year).....	Saturday, September 10
Yom Kippur (Day of Atonement).....	Monday, September 19
1st day Feast of Tabernacles .....	Saturday, September 24
Shemini Atzereth (Feast of Conclusion) .....	Saturday, October 1
Simchath Torah Rejoicing of the Law.....	Sunday, October 2
*New Moon Cheshvan .....	Monday, October 10
*New Moon Kislay.....	Wednesday, November 9
1st day Chanukah (Feast of Lights) .....	Saturday, December 3
*New Moon Tebeth .....	Friday, December 9
Fast of Tebeth .....	Sunday, December 18

5665-1905

New Moon Shebat .....	Saturday, January 7
*New Moon Adar .....	Monday, February 6
*New Moon Ve-Adar .....	Wednesday, March 8
Purim .....	Wednesday, March 22
New Moon Nissan.....	Thursday, April 6
1st day Passover .....	Thursday, April 20
7th day Passover .....	Wednesday, April 26
*New Moon Iyar .....	Saturday, May 6
New Moon Sivan.....	Sunday, June 4
1st day Shabuoth .....	Friday, June 9
*New Moon Tammuz.....	Tuesday, July 4
Fast of Tammuz.....	Thursday, July 20
*New Moon Ab .....	Wednesday, August 2
Fast of Ab .....	Thursday, August 10
New Moon Ellul .....	Friday, September 1

5666-1905

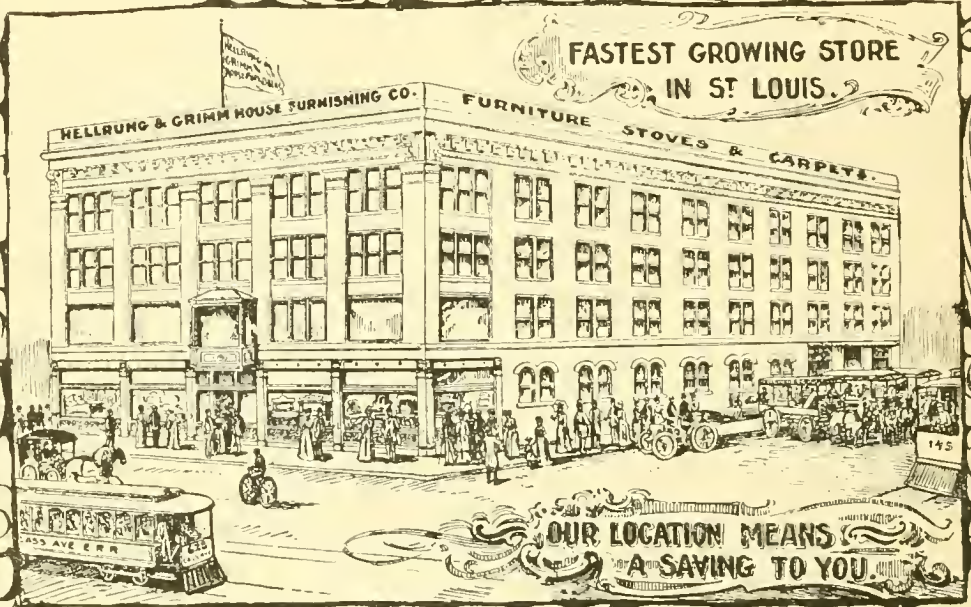
Rosh Hashonah .....	Saturday, September 30
Yom Kippur .....	Monday, October 9
1st day Feast of Tabernacles .....	Saturday, October 14
Shemini Atzereth .....	Saturday, October 21
Simchath Torah.....	Sunday, October 22
*New Moon Cheshvan .....	Monday, October 30
*New Moon Kislev .....	Wednesday, November 29
1st day Chanukah .....	Saturday, December 23
*New Moon Tebeth .....	Friday, December 29

5666-1906

Fast of Tebeth .....	Sunday, January 7
New Moon Shebat .....	Saturday, January 27
*New Moon Adar.....	Monday, February 26
Purim .....	Sunday, March 11
New Moon Nissan .....	Tuesday, March 27
1st day Passover .....	Tuesday, April 15
7th day Passover .....	Monday, April 10
*New Moon Iyar .....	Thursday, April 26
New Moon Sivan .....	Friday, May 25
1st day Pentecost .....	Wednesday, May 30
*New Moon Tammuz.....	Sunday, June 24
Fast of Tammuz .....	Tuesday, July 10
*New Moon Ab .....	Monday, July 23
Fast of Ab .....	Tuesday, July 31
*New Moon Ellul .....	Wednesday, August 22

\*Also observed the day previous as New Moon.

Over 50,000 Homes Furnished By Us.



1903

Fifty Cents a Week Buys Anything In Our Store.

**HELLRUNG & GRIMM**

16th and Cass Ave.

FURNITURE, STOVES, RANGES, CARPETS, AND OTHER HOUSEHOLD NECESSITIES.

Progressive  
CARPET AND DRAPERY HOUSE  
IN THE ENTIRE WEST.

*Wm. Duncker & General*


**CARPET CO.**

S. E. Cor. Fourth and Washington,  
ST. LOUIS, MO.

---

---

**CARPETS**  
AND  
**DRAPERIES**

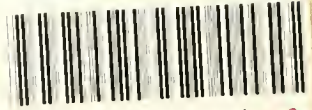
Of dependable qualities, in the handsomest  
and most up-to-date designs and styles. 

=====**AT PRICES**=====

THAT ARE

**ALWAYS RIGHT.**

LIBRARY OF CONGRESS



0 014 570 369 4



THE

**"METEOR"**

TO TEXAS

AND THE GREAT SOUTHWEST

IS

**"THE WAY OF THE WISE."**

AN ELEGANTLY APPOINTED LIMITED TRAIN, EQUIPPED  
WITH ELECTRIC LIGHTS,

**LEAVES ST. LOUIS AT 2.30 P. M. DAILY.**

CITY TICKET OFFICE

**Eighth and Olive Streets.**

