

157

CHINESE GOVERNMENT RAILWAYS,

CANTON-HANKOW LINE,

(HUPEI-HUNAN SECTION.)

Sub-Rules

**Applicable to Local
Passenger & Goods Traffic**

WITH

FARE TABLES. . . .
FREIGHT TABLES. .
DISTANCE TABLES.

1st January, 1921.

No. 2.

BC
32.9
2/3

CONTENTS

Coaching Traffic.

	<i>Pages</i>
1.—Payment of Charges.	1
2.—Passengers Refused for Transportation.	1
3.—Interruption of Passenger Traffic.	1
4.—Baggage Held by the Railway for Security.	2
5.—Passengers Compelled to Quit the Train.	2
6.—Tickets Null and Void.	2
7.—Examinations of Baggage.	2
8.—Disposal of Baggage when Passenger Traffic Interrupted. ...	3
9.—Free Baggage Allowance to Passengers Taking Higher Class.	3

Carriage of Goods by Goods Trains

1.—Car Load Consignment.	1
2.—Loading and Unloading of Goods.	1
3.—Incorrect Statement.	1
4.—Goods Refused for Transportation.	1
5.—Extension of Time for Loading and Unloading.	1
6.—Reweighing of Goods that has been Weighed.	1
7.—Reweighing of Goods that has not been Weighed.	2
8.—Cars Supplied & not being Used.	2
9.—Cars Supplied being Transferred.	2
10.—Goods not Properly Packed.	2
11.—Order of Consignments.	2
12.—Sudden Interruption of Goods Traffic.	2
13.—Goods Transported to a Farther Destination.	3
14.—Withdrawal of Consignment.	3
15.—Delaying Taking Delivery.	4
16.—Withholding Delivery of Goods.	4
17.—Goods not taken Delivery of.	4
18.—Coffin with Corpse.	4
19.—Table I. Loading & Unloading Charges.	5
20.—Table II. Storage.	6
21.—Table III. Demurrage.	7
22.—Table IV. Shunting Charges.	7
23.—Table V. Car-load Freight for Livestock.	7
24.—Freight Table Per 50 Kilogram Rate.	1—10
25.—Freight Table Per Metric Ton Rate.	1—10
26.—Freight Table Car-Load Rate Per Metric Ton.	1—10
27.—Fare Table	1—35
28.—Distance between Stations in Kilometers.	1—18

MG
F532.9
222
3

● 目 錄 ●

粵漢鐵路湘鄂線客車運輸附則

- 第一條 收費辦法 一頁
- 第三條 客車猝停之處理 一頁
- 第五條 旅客違章促令下車之事 二頁
- 第七條 行李之查驗 三頁
- 第九條 改換坐位後之行李免費重量 三頁

粵漢鐵路湘鄂線貨車運輸附則

- 第一條 整車裝運 一頁
- 第三條 聲明不實 一頁
- 第五條 展期裝卸 二頁
- 第七條 未權度之整車貨物覆出逾量 二頁
- 第九條 轉讓車輛 二頁
- 第十一條 貨物起運次序 三頁
- 第十三條 貨物改運較遠路程 四頁
- 第十五條 貨物到站延期不卸 四頁
- 第十七條 貨物到站無人領取 五頁

- (一) 裝卸費表
- (二) 延期費表
- (三) 整車牲畜運費表

粵漢鐵路湘鄂線客車運輸附則目錄

- 第二條 拒絕裝運事項 一頁
- 第四條 扣留行李辦法 二頁
- 第六條 旅客被逐客票無效 二頁
- 第八條 運輸停止時處置行李辦法 三頁

- 第二條 裝卸貨物 一頁
- 第四條 拒絕裝運 一頁
- 第六條 既權度之貨物覆出逾量 二頁
- 第八條 取車不裝或多要車輛 二頁
- 第十條 細求不妥之貨物 三頁
- 第十二條 貨車猝停之處理 三頁
- 第十四條 貨物裝車後因事停運 四頁
- 第十六條 貨物到站聲明停止交貨 四頁
- 第十八條 裝運靈柩 五頁

- (一) 國存費表
- (四) 調車費表



CANTON-HANKOW RAILWAY

HUPEI-HUNAN SECTION

SUPPLEMENTARY REGULATIONS RELATING TO COACHING TRAFFIC

- 1.—**Payment of Charges.**—Local clean silver dollars or bank notes of equivalent value shall be accepted for charges (fares, freights and all other charges). Charges from 10 to 50 cents inclusive may be accepted in small silver plus premium in coppers, or in coppers alone, but over 50 cents a clean dollar is asked for. Republican silver coins, viz: two 50 cent pieces or five 20 cent pieces or ten 10 cent pieces may be accepted as one dollar. In exchange, premium for small silver coins is calculated according to local rate as specified by the Railway from time to time.
- 2.—**Passengers Refused for Transportation.**—The Railway may refuse to carry passengers in any of the undermentioned cases:—
 - (1) In case passengers do not conform to the provisions of Laws or Ordinances of the Government or to the Railway's Regulations or when they disturb the public order;
 - (2) In case there is interruption in traffic due to unforeseen circumstances.
- 3.—**Interruption of Passenger Traffic.**—If traffic be totally or partially interrupted by some unexpected cause, passengers, having bought tickets but not having taken the train, may return their tickets to the Railway and their fares shall be refunded. If interruption occurs on the journey, and passengers are willing to alight at the spot, the fare less that for the portion of the journey already travelled shall be refunded. If, however, passengers wish to be carried back to any of the stations over which the train has passed, the Railway shall undertake to do so, free of charge, and the fares shall be refunded in full. In the above case, if the Railway has not sufficient money at the place to refund all the fares, the Railway may suspend

refunding at the time, but must refund them within three days. If the passengers cannot wait for so long, they may bring or send the original tickets to the Traffic Department of the Railway to be refunded, but the tickets shall become null and void if they are not returned within one month.

- 4.—**Baggage Held by the Railway for Security.**—In the cases as mentioned in Articles 8 and 15 of the General Regulations, should passengers refuse or fail to make immediate payment, the Railway reserves the right to compel them to quit the train and to retain their baggage as security. In the latter case, if the passengers do not redeem their baggage within one month, the Railway has the right to sell such baggage and forfeit the money thus realized.
- 5.—**Passengers Compelled to Quit the Train.**—Passengers committing any of the following acts may be compelled to quit the train:—
- (1) Violating any of the Railway's Regulations, disobeying any directions given by the Officers in charge on train, disturbing the order in the train, or conducting himself (or herself) in such a manner that it would cause danger to other passengers or himself (or herself);
 - (2) Conducting himself (or herself) as to endanger the safety of train working, disregarding the warning of the Officers in charge on train;
 - (3) Obstructing by violence any Officer of the Railway in performing his duties;
 - (4) Having infectious disease or other serious disease or illness.
- 6.—**Tickets Null and Void.**—When the passenger is compelled to quit the train on account of having committed acts mentioned in Article 5 of this Supplementary Regulations, the ticket held by him (or her) shall become null and void and the Railway is not responsible for any damage or loss caused thereby.
- 7.—**Examinations of Baggage.**—A passenger must, when asked, declare the contents of his or her baggage, and if his or her declaration is under suspicion, the Officer in charge may examine such baggage in the presence of the owner.

8.—Disposal of Baggage when Passenger Traffic Interrupted.—If traffic be interrupted totally, the baggage and the full charges paid shall be returned; but, if traffic be interrupted partially, the passenger, who is willing to leave the train at the station where the train halts, may ask the Railway to send his or her baggage to his or her starting station or to take delivery of the baggage at the station where he or she alights. In the latter case, the charge paid for the portion of journey not travelled shall be refunded.

In the case of the passenger being compelled to quit the train for causes mentioned in Article 5 of this Supplementary Regulations the charges of baggage paid shall not be refunded; but the baggage may be sent back, free of charge, to the station whereat the passenger has quitted.

9.—Free Baggage Allowance to Passengers Taking Higher Class.—Passengers, who take lower class car and change to a higher class car, cannot claim for additional allowance for free weight of baggage.

CANTON-HANKOW RAILWAY
HUPEI-HUNAN SECTION

SUPPLEMENTARY REGULATIONS FOR
GENERAL REGULATIONS
RELATING TO
CARRIAGE OF GOODS BY GOODS TRAINS

- 1.—**Car Load Consignment.**—The freight of car-load goods (excluding light and bulky goods) shall be charged according to car capacity.
- 2.—**Loading and Unloading of Goods.**—The loading and unloading of goods shall be undertaken by the Railway, except where there is special agreement, or special permission obtained from the Traffic Department of the Railway.
- 3.—**Incorrect Statement.**—The consignor shall give a correct statement in the Consignor's Note and be responsible for any damage which may arise from any incorrect statement.
- 4.—**Goods Refused for Transportation.**—The Railway may refuse to accept goods for transport under the following conditions:—
 - (1) In case the loading and unloading of goods require special means of conveyance which the Railway has not provided;
 - (2) In case the goods by their nature, weight, volume, manner of packing, etc., are unfit for transportation or liable to endanger other goods.
- 5.—**Extension of Time for Loading and Unloading.**—In case of storm, or heavy rain, or other causes which prevent the possibility of loading and unloading of goods within the time limit in accordance with Article 30 of the General Regulations, the consignor or consignee may apply for an extension of time. But such application must give the actual state of affairs and shall be communicated to the Traffic Superintendent by telegram through the Station Master or the Traffic Inspector for approval.
- 6.—**Reweighing of Goods that has been Weighed.**—If the weight or volume of car-load or not car-load goods (goods by kilogram or

goods by tonne) which having been weighed at the starting station be found, when reweighed at intermediate or destinate station, in excess of the invoice weight not exceeding two per cent, such excess weight may be free of charge. But when the amount of overloading exceeds the above limit, ordinary rate shall be charged for.

- 7.—**Reweighing of Goods that has not been Weighed.**—If the weight of car-load goods which has not been weighed at the starting station, but booked according to the Consignor's Note be found, at intermediate or destinate station, in excess of what is declared in the Consignor's Note but under the car capacity, such excess (under 2% free of charge) shall be charged at the ordinary freight plus a fine equal to the same; should such excess weight be over the car capacity, then Article 37 of the General Regulations shall be applied.
- 8.—**Cars Supplied & not being Used.**—If a consignor demands empty car or cars and is supplied but has no goods to load or finds he has over-estimated his requirement, the Railway may withdraw such cars and shall charge, as a fine, the consignor 5 cents per tonne capacity per hour from the time when the car or cars are handed to him.
- 9.—**Cars Supplied being Transferred.**—Car or cars allotted to the consignor are not transferable. Should transfers be found, the consignor shall be charged double the amount as specified in Article 8 of this Supplementary Regulations.
- 10.—**Goods not Properly Packed.**—The Railway may refuse to accept goods not properly packed, unless it is so mentioned in the Consignor's Note that the consignor himself will be solely responsible for any damage to or loss of such goods.
- 11.—**Order of Consignments.**—The Railway shall despatch goods in the order as received but in special cases (such as military transportaton, relief goods, or cases wherein public welfare is concerned) or the special nature of the goods has to be taken into consideration, preference may be given at the discretion of the Railway.
- 12.—**Sudden Interruption of Goods Traffic.**—If Goods Train be totally or partially interrupted by some unexpected cause, consignors, having booked invoices but their goods having not been loaded, may return

their Goods Receipts to the Railway and their freights shall be refunded. If interruption occurs on the journey, consignors or consignees are willing to unload their goods at the spot and surrender their Goods Receipts, the freight less that for the portion of the journey already travelled shall be refunded. If, however, consignors wish to carry back their goods to the sending station, the Railway shall undertake to do so, and their freight shall be refunded in full. In the above cases, if the Railway has not sufficient money at the place to refund all the freights, the Railway may suspend refunding at the time, but must refund them within 5 days. If consignors fail to surrender their Goods Receipts to the station or to the Traffic Department after the expiration of one month, the freight and sundry charges will not be refunded, although the goods may be taken back at the surrender of the Goods Receipts.

- 13.—**Goods Transported to a Farther Destination.**—Consignors, after having consigned their goods but before such consignments having been delivered to the consignees, may request the Railway to change the station of destination to any station beyond by paying the freight and sundry charges from the original station of destination to the new station of destination, if time permits.
- 14.—**Withdrawal of Consignment.**—If the consignor of car-load goods wishes to withdraw the Consignment after such Consignment having been loaded, but before being transported, the Railway may do so and refund the freight in full, but the consignor must pay demurrage and sundry charges from the time the car or cars handed to him. In case of goods tendered at kilogram or tonne rate the consignor may also withdraw the consignment before such having been transported, a refund of freight may be made subject to a deduction of ten per cent, but the consignor must pay the loading and unloading and all other sundry charges according to Regulation. If such aforementioned goods that have been consigned but have to be refunded and such refund is caused by circumstances in which the Railway is at fault, the Railway shall refund the freight in full without deduction of 10% as well as all loading, unloading and other sundry charges.

- 15.—**Delaying Taking Delivery.**—Consignees must take delivery of car-load goods within six working hours whether or not being notified of their arrival. Failing to do so the consignee must pay demurrage according to the Regulation. The Railway may also unload the goods and charge for storage and other charges thus incurred. The Railway takes no responsibility for any damage to, or loss of the goods thus unloaded. If consignees of goods at kilogram or tonne rate failed to take delivery of them the same rule shall be applied but no demurrage to be charged.
- 16.—**Withholding Delivery of Goods.**—Before delivery, if consignor so requests by letter or telegram the Railway may withhold delivery of goods to the consignee.
- 17.—**Goods not taken Delivery of.**—Should the goods be not taken delivery of on expiration of 30 days after arrival, the Railway may carry the goods to any other station for storage. The freight and all other charges in connection therewith shall be borne by the consignor. The Railway shall in no way be held responsible for any loss of or damage to such goods.
- 18.—**Coffin with Corpse.**—Coffins with corpses for transportation must be consigned 24 hours before the time of departure of the train. They must be taken delivery of immediately on arrival, and in the event of their not being taken delivery of within 12 hours after arrival, the Railway may take any convenient measure to deal with them. Coffins with corpses, if not strongly nailed and attended by an escort, shall not be accepted for transportation.

TABLE I
LOADING AND UNLOADING CHARGES

DESCRIPTION	WEIGHT, VEHICLE, ETC, LIVESTOCK	FROM STATION PLATFORM OR GODOWN TO TRAIN. FROM TRAIN TO STATION PLATFORM OR GODOWN.		NOTES
		Loading	Unloading	
Baggage	Per piece	2 cents	2 cents	
Ordinary Goods	Goods per 50 kilogrammes	1 cent	1 cent	
	Goods per tonne	15 cents	15 cents	
	Car-load goods per tonne	12½ cents	12½ cents	
Hazardous Goods	Goods per 50 kilogrammes	3 cents	3 cents	
	Goods per tonne	20 cents	20 cents	
	Car-load goods per tonne	15 cents	15 cents	
Vehicles, etc.	4-wheel automobile, coffin (with corpse), Sampan, small boat	25 cents	25 cents	
	Wedding sedan chair, big sedan chair, 4-wheel carriage and buggies	20 cents	20 cents	
	2-wheel carriage and buggies, Chinese carts	15 cents	15 cents	
	Sedan chair, basket or wickware, empty coffin, 2-wheel barrow, jinriksha, wheel barrow	10 cents	10 cents	
	Perambulator, Bicycle, tricycle, motorcycle	5 cents	5 cents	
Livestock	Camel, ox, horse, mule, ass and such like	10 cents	10 cents	When carried by car-load the charges for loading or unloading are:— \$3 per 40 ton car \$2 " 30 " " \$1.80 per 25 ton car \$1.80 " 15 ton pig-wagon \$1.60 " 20 " car \$1.20 " 15 " "
	Dog, pig, sheep, calves, and such like	3 cents	3 cents	
	Chicken, duck, rabbit (in coop) and other living birds or animals. The coop cannot be over 500 cubic centimetres	per coop 5 cents	per coop 5 cents	
	Wild animals	by special arrangement		
Combersome Goods	Each piece weighing from 1 tonne to 2 tonnes per tonne	30 cents	30 cents	
	Each piece weighing from 2 tonnes to 3 tonnes per tonne	40 cents	40 cents	
	Each piece weighing from 3 tonnes to 4 tonnes per tonne	50 cents	50 cents	
	Each piece weighing from 4 tonnes to 5 tonnes per tonne	60 cents	60 cents	
	Each piece weighing over 5 tonnes	by special arrangement		
Valuables	Every \$1,000 worth of value or less	2 cents	2 cents	

Note:—

- (1) Loading and unloading charges for goods per kilograms shall be charged at units of 50 kilograms, weight less than 50 kilograms shall also be computed as 50 kilograms. Those for tonne or car-load goods shall be charged at unit of 1 tonne. Fractions of one tonne shall be computed as one tonne.
- (2) Of light and bulky goods 250 cubic centimetres (8.33 cubic feet) shall be taken as 50 kilograms and 2.5 cubic meters (80 cubic feet) shall be taken as one tonne.
- (3) The loading and unloading charges for car-load goods shall be charged according to the capacity of the car except under special arrangement.
- (4) The loading and unloading charges for hazardous goods of which the freight is charged at 1st class rate plus 50% is charged according to the above table. Other hazardous goods shall be treated as ordinary goods.

**TABLE II
STORAGE.**

Ordinary goods	Goods by kilograms	2 cents per 50 kilograms
	Goods by tonne	25 cents per tonne
	Car-load goods	20 cents per tonne
Vehicles, etc.	4-wheel automobile, coffin (with corpse), Sampan, small boat	50 cents per piece
	Wedding sedan chair, big sedan chair, 4-wheel carriages and buggies	40 cents per piece
	2-wheel light cart; Chinese carts	30 cents per piece
	Sedan chair, basket or wickware, empty coffin, 2-wheel harrow	20 cents per piece
	Jinriksha, wheel-barrow, perambulator, bicycle, tricycle, motorcycle	10 cents per piece
Light and Bulky goods	2.5 cubic meters or 80 cubic feet to be taken as one tonne	rate as per ordinary goods
Hazardous goods	Goods by kilograms	4 cents per 50 kilograms
	Goods by tonne	50 cents per tonne
	Car-load goods	40 cents per tonne
Livestock	Camel, ox, horse, mule, ass, and such like	20 cents per head
	Dog, sheep, pig, calves, and such like	5 cents per head
	Chicken, duck, and rabbit (in coop) and other living birds or animals	rate as per ordinary goods at units of 50 kilograms

Note:—

- (1) Storage stated above is charged for every 24 hours. Time less than 24 hours is taken as 24 hours.
- (2) Consignees must take delivery of goods within 6 hours on arrival at station; otherwise, the Railway may unload and store the goods. If consignees take delivery of their goods within 24 hours from the time the goods is unloaded and stored, no storage will be charged, but after 24 hours storage will be charged for according to the Table.
- (3) For goods tendered for transportation but being delayed at forwarding station, owing to lack of wagons for transport may be exempt from being charged storage. But when consignors request to have their goods to be stored in the Railway store temporarily, waiting for the arrival of all his goods or in case of like nature, 24 hours may be allowed free of charge, but after 24 hours storage shall be charged according to the Table.
- (4) Quarter of a tonne is taken as units for calculating storage for light and bulky goods, measured weight not up to $\frac{1}{4}$ of a tonne is computed as $\frac{1}{4}$ tonne.
- (5) Consignees after taking delivery of goods wishing to have a whole or part of their goods stored in the Railway store must inform the officer in charge beforehand the number of days for storage and obtain his consent. A separate storage receipt shall be given.
- (6) If valuable, priced goods, hazardous goods, combustible articles, or livestock (not responsible for feeding) are tendered for storage at station or in godown, the permission of the Traffic Superintendent shall be obtained through the officer in charge.
- (7) Goods are not accepted for storage at stations where godowns have not been built; consignees shall take delivery immediately on arrival; otherwise the Railway will not be responsible for any loss of or damage to the goods.

**TABLE III
DEMURRAGE**

KIND OF WAGON	DEMURRAGE FOR EVERY 24 HOURS
One 40-ton car	\$20.00
One 30-ton car	\$15.00
One 25-ton car	\$12.50
One 20-ton car	\$10.00
One 15-ton car or pig-wagon	\$7.50

**TABLE IV
SHUNTING CHARGES**

KIND OF WAGON	SHUNTING CHARGES	NOTE
One 40-ton car	\$1.20	"Shunting" denotes the sending from any siding car or cars empty
One 30-ton car	90 cents	
One 25-ton car	75 cents	
One 20-ton car	60 cents	
One 15-ton car or pig wagon	45 cents	

**TABLE V
CAR-LOAD FREIGHT FOR LIVESTOCK**

ARTICLES	PER CAR-LOAD PER MILE					
	15 ton pig W.	15 ton H. S. W.	20 ton H. S. W.	25 ton C. W.	30 ton C. W.	30 ton H. S. W.
pigs Sheep	28 cents	18 cents	18 cents			
oxen, horses, asses, mules		20 cents	20 cents	30 cents	30 cents	30 c

**TABLE II
STORAGE.**

Iron	2 cents per 50 kilograms
	25 cents per tonne
	20 cents per tonne
Coffin (with corpse), casket	50 cents per piece
Chair, big sedan chair, and buggies	40 cents per piece
Chinese carts	30 cents per piece
Mat or wickwate, empty tray	20 cents per piece
Barrow, perambulator, motorcycle	10 cents per piece
For 80 cubic feet to be taken	rate as per ordinary goods:
	4 cents per 50 kilograms
	50 cents per tonne
	40 cents per tonne
Mule, ass, and such like	20 cents per head
Cow, pig, and such like	5 cents per head
Rabbit (in coop) and other animals	rate as per ordinary goods at units of 50 kilograms

charged for every 24 hours. Time less than 24 hours is taken as 24 hours.

of goods within 6 hours on arrival at station; otherwise, the Railway may
If consignees take delivery of their goods within 24 hours from the time the
no storage will be charged, but after 24 hours storage will be charged for

at station but being delayed at forwarding station, owing to lack of wagons for
being charged storage. But when consignors request to have their goods
temporarily waiting for the arrival of all his goods or in case of like
be charged free of charge, but after 24 hours storage shall be charged according to

units for calculating storage for light and bulky goods, measured weight
taken as 1 tonne.

of goods wishing to have a whole or part of their goods stored in the
office in charge to ascertain the number of days for storage and obtain his
receipt shall be given:

of flammable goods; combustible articles, or livestock (not responsible for feeding):

**TABLE III
DEMURRAGE**

KIND OF WAGON	DEMURRAGE FOR EVERY 24 HOURS OR LESS
One 40-ton car	\$20.00
One 30-ton car	\$15.00
One 25-ton car	\$12.50
One 20-ton car	\$10.00
One 15-ton car or pig-wagon	\$7.50

**TABLE IV
SHUNTING CHARGES**

KIND OF WAGON	SHUNTING CHARGES	NOTE
One 40-ton car	\$1.20	"Shunting" denotes the sending to and hauling from any siding car or cars either loaded or empty
One 30-ton car	90 cents	
One 25-ton car	75 cents	
One 20-ton car	60 cents	
One 15-ton car or pig wagon	45 cents	

**TABLE V
CAR-LOAD FREIGHT FOR LIVESTOCK**

ARTICLES	PER CAR-LOAD PER MILE						
	15 ton pig W.	15 ton H. S. W.	20 ton H. S. W.	25 ton C. W.	30 ton C. W.	30 ton H. S. W.	40 ton H. S. W.
pigs Sheep	28 cents	18 cents	18 cents				
oxen, horses, asses, mules		20 cents	20 cents	30 cents	30 cents	30 cents	35 cents

普
通
貨
物
運
費
表

每
五
十
公
斤
運
費
率

Freight Table

Per 50 Kilogram Rate

每五十公斤運費率 Per 50 Kilogram Rate						
等級 Class 公里 Kilometers	一 I	二 II	三 III	四 IV	五 V	六 VI
1-20	0.07	0.05	0.04	0.04	0.03	0.02
21	0.07	0.05	0.05	0.04	0.03	0.02
22	0.08	0.06	0.05	0.04	0.03	0.02
23	0.08	0.06	0.05	0.04	0.03	0.02
24	0.09	0.06	0.05	0.04	0.03	0.02
25	0.09	0.06	0.05	0.04	0.03	0.02
26	0.09	0.07	0.06	0.05	0.04	0.03
27	0.10	0.07	0.06	0.05	0.04	0.03
28	0.10	0.07	0.06	0.05	0.04	0.03
29	0.10	0.07	0.06	0.05	0.04	0.03
30	0.11	0.08	0.07	0.05	0.04	0.03
31	0.11	0.08	0.07	0.06	0.04	0.03
32	0.11	0.08	0.07	0.06	0.04	0.03
33	0.12	0.08	0.07	0.06	0.05	0.03
34	0.12	0.09	0.07	0.06	0.05	0.03
35	0.12	0.09	0.08	0.06	0.05	0.03
36	0.13	0.09	0.08	0.06	0.05	0.04
37	0.13	0.10	0.08	0.07	0.05	0.04
38	0.14	0.10	0.08	0.07	0.05	0.04
39	0.14	0.10	0.08	0.07	0.05	0.04
40	0.14	0.10	0.09	0.07	0.06	0.04
41	0.15	0.11	0.09	0.07	0.06	0.04
42	0.15	0.11	0.09	0.07	0.06	0.04
43	0.15	0.11	0.09	0.08	0.06	0.04
44	0.16	0.11	0.10	0.08	0.06	0.04
45	0.16	0.12	0.10	0.08	0.06	0.04
46	0.16	0.12	0.10	0.08	0.06	0.05
47	0.17	0.12	0.10	0.08	0.07	0.05
48	0.17	0.12	0.10	0.09	0.07	0.05
49	0.17	0.13	0.11	0.09	0.07	0.05
50	0.18	0.13	0.11	0.09	0.07	0.05
51	0.18	0.13	0.11	0.09	0.07	0.05
52	0.19	0.13	0.11	0.09	0.07	0.05
53	0.19	0.14	0.12	0.09	0.07	0.05
54	0.19	0.14	0.12	0.10	0.08	0.05
55	0.20	0.14	0.12	0.10	0.08	0.05
56	0.20	0.14	0.12	0.10	0.08	0.06
57	0.20	0.15	0.12	0.10	0.08	0.06
58	0.21	0.15	0.13	0.10	0.08	0.06
59	0.21	0.15	0.13	0.11	0.08	0.06
60	0.21	0.15	0.13	0.11	0.08	0.06

每五十公斤運費率
Per 50 Kilogram Rate

等級 Class 公里 Kilometres	一 I	二 II	三 III	四 IV	五 V	六 VI
61	0.22	0.16	0.13	0.11	0.08	0.06
62	0.22	0.16	0.13	0.11	0.09	0.06
63	0.22	0.16	0.14	0.11	0.09	0.09
64	0.23	0.16	0.14	0.11	0.09	0.06
65	0.23	0.17	0.14	0.12	0.09	0.06
66	0.23	0.17	0.14	0.12	0.09	0.07
67	0.24	0.17	0.15	0.12	0.09	0.07
68	0.24	0.17	0.15	0.12	0.09	0.07
69	0.25	0.18	0.15	0.12	0.10	0.07
70	0.25	0.18	0.15	0.12	0.10	0.07
71	0.25	0.18	0.15	0.13	0.10	0.07
72	0.26	0.19	0.16	0.13	0.10	0.07
73	0.26	0.19	0.16	0.13	0.10	0.07
74	0.26	0.19	0.16	0.13	0.10	0.07
75	0.27	0.19	0.16	0.13	0.10	0.07
76	0.27	0.20	0.16	0.14	0.11	0.08
77	0.27	0.20	0.17	0.14	0.11	0.08
78	0.28	0.20	0.17	0.14	0.11	0.08
79	0.28	0.20	0.17	0.14	0.11	0.08
80	0.28	0.21	0.17	0.14	0.11	0.08
81	0.29	0.21	0.18	0.15	0.11	0.08
82	0.29	0.21	0.18	0.15	0.11	0.08
83	0.30	0.21	0.18	0.15	0.12	0.08
84	0.30	0.22	0.18	0.15	0.12	0.08
85	0.30	0.22	0.18	0.15	0.12	0.08
86	0.31	0.22	0.19	0.15	0.12	0.09
87	0.31	0.22	0.19	0.15	0.12	0.09
88	0.31	0.23	0.19	0.15	0.12	0.09
89	0.32	0.23	0.19	0.16	0.12	0.09
90	0.32	0.23	0.20	0.16	0.13	0.09
91	0.32	0.23	0.20	0.16	0.13	0.09
92	0.33	0.24	0.20	0.16	0.13	0.09
93	0.33	0.24	0.20	0.17	0.13	0.09
94	0.33	0.24	0.20	0.17	0.13	0.09
95	0.34	0.24	0.21	0.17	0.13	0.09
96	0.34	0.25	0.21	0.17	0.13	0.10
97	0.35	0.25	0.21	0.17	0.13	0.10
98	0.35	0.25	0.21	0.17	0.14	0.10
99	0.35	0.25	0.21	0.18	0.14	0.10
100	0.36	0.26	0.22	0.18	0.14	0.10

每五十公斤運費率
Per 50 Kilogram Rate

等級 Class 公尺 Metres	一 I	二 II	三 III	四 IV	五 V	六 VI
101	0.36	0.26	0.22	0.18	0.14	0.10
102	0.36	0.26	0.22	0.18	0.14	0.10
103	0.37	0.26	0.22	0.18	0.14	0.10
104	0.37	0.27	0.23	0.19	0.14	0.10
105	0.37	0.27	0.23	0.19	0.15	0.10
106	0.38	0.27	0.23	0.19	0.15	0.10
107	0.38	0.27	0.23	0.19	0.15	0.11
108	0.38	0.28	0.23	0.19	0.15	0.11
109	0.39	0.28	0.24	0.19	0.15	0.11
110	0.39	0.28	0.24	0.20	0.15	0.11
111	0.39	0.28	0.24	0.20	0.15	0.11
112	0.40	0.29	0.24	0.20	0.15	0.11
113	0.40	0.29	0.24	0.20	0.16	0.11
114	0.40	0.29	0.25	0.20	0.16	0.11
115	0.41	0.29	0.25	0.20	0.16	0.11
116	0.41	0.30	0.25	0.21	0.16	0.11
117	0.41	0.30	0.25	0.21	0.16	0.12
118	0.42	0.30	0.25	0.21	0.16	0.12
119	0.42	0.30	0.26	0.21	0.16	0.12
120	0.42	0.31	0.26	0.21	0.17	0.12
121	0.43	0.31	0.26	0.21	0.17	0.12
122	0.43	0.31	0.26	0.22	0.17	0.12
123	0.43	0.31	0.27	0.22	0.17	0.12
124	0.44	0.32	0.27	0.22	0.17	0.12
125	0.44	0.32	0.27	0.22	0.17	0.12
126	0.45	0.32	0.27	0.22	0.17	0.12
127	0.45	0.32	0.27	0.22	0.17	0.12
128	0.45	0.33	0.28	0.23	0.18	0.13
129	0.46	0.33	0.28	0.23	0.18	0.13
130	0.46	0.33	0.28	0.23	0.18	0.13
131	0.46	0.33	0.28	0.23	0.18	0.13
132	0.47	0.34	0.28	0.23	0.18	0.13
133	0.47	0.34	0.29	0.23	0.18	0.13
134	0.47	0.34	0.29	0.24	0.18	0.13
135	0.48	0.34	0.29	0.24	0.19	0.13
136	0.48	0.35	0.29	0.24	0.19	0.13
137	0.48	0.35	0.29	0.24	0.19	0.13
138	0.49	0.35	0.30	0.24	0.19	0.14
139	0.49	0.35	0.30	0.25	0.19	0.14
140	0.49	0.35	0.30	0.25	0.19	0.14

每五十公斤運費率 Per 50 Kilogram Rate						
等級 Class 公里 Kilometres	一 I	二 II	三 III	四 IV	五 V	六 VI
141	0.50	0.36	0.30	0.25	0.19	0.14
142	0.50	0.36	0.30	0.25	0.19	0.14
143	0.50	0.36	0.31	0.25	0.20	0.14
144	0.51	0.37	0.31	0.25	0.20	0.14
145	0.51	0.37	0.31	0.25	0.20	0.14
146	0.51	0.37	0.31	0.25	0.20	0.14
147	0.52	0.37	0.32	0.25	0.20	0.14
148	0.52	0.38	0.32	0.25	0.20	0.14
149	0.52	0.38	0.32	0.25	0.20	0.15
150	0.53	0.38	0.32	0.25	0.21	0.15
151	0.53	0.38	0.32	0.27	0.21	0.15
152	0.53	0.39	0.33	0.27	0.21	0.15
153	0.54	0.39	0.33	0.27	0.21	0.15
154	0.54	0.39	0.33	0.27	0.21	0.15
155	0.54	0.39	0.33	0.27	0.21	0.15
156	0.55	0.40	0.33	0.27	0.21	0.15
157	0.55	0.40	0.34	0.28	0.21	0.15
158	0.55	0.40	0.34	0.28	0.22	0.15
159	0.56	0.40	0.34	0.28	0.22	0.16
160	0.56	0.41	0.34	0.28	0.22	0.16
161	0.57	0.41	0.34	0.28	0.22	0.16
162	0.57	0.41	0.35	0.28	0.22	0.16
163	0.57	0.41	0.35	0.29	0.22	0.16
164	0.58	0.42	0.35	0.29	0.22	0.16
165	0.58	0.42	0.35	0.29	0.23	0.16
166	0.58	0.42	0.35	0.29	0.23	0.16
167	0.59	0.42	0.36	0.29	0.23	0.16
168	0.59	0.42	0.36	0.29	0.23	0.16
169	0.59	0.43	0.36	0.30	0.23	0.16
170	0.60	0.43	0.36	0.30	0.23	0.17
171	0.60	0.43	0.37	0.30	0.23	0.17
172	0.60	0.43	0.37	0.30	0.23	0.17
173	0.61	0.44	0.37	0.30	0.24	0.17
174	0.61	0.44	0.37	0.31	0.24	0.17
175	0.61	0.44	0.37	0.31	0.24	0.17
176	0.62	0.44	0.38	0.31	0.24	0.17
177	0.62	0.45	0.38	0.31	0.24	0.17
178	0.62	0.45	0.38	0.31	0.24	0.17
179	0.63	0.45	0.38	0.31	0.24	0.17
180	0.63	0.45	0.38	0.32	0.25	0.17

每五十公斤運費率
Per 50 Kilogram Rate

等級 Class 公里 Kilometers	一 I	二 II	三 III	四 IV	五 V	六 VI
181	0.63	0.46	0.39	0.32	0.25	0.18
182	0.64	0.46	0.39	0.32	0.25	0.18
183	0.64	0.46	0.39	0.32	0.25	0.18
184	0.64	0.46	0.39	0.32	0.25	0.18
185	0.65	0.47	0.39	0.32	0.25	0.18
186	0.65	0.47	0.40	0.33	0.25	0.18
187	0.65	0.47	0.40	0.33	0.25	0.18
188	0.66	0.47	0.40	0.33	0.26	0.18
189	0.66	0.48	0.40	0.33	0.26	0.18
190	0.66	0.48	0.41	0.33	0.26	0.18
191	0.67	0.48	0.41	0.33	0.26	0.19
192	0.67	0.48	0.41	0.34	0.26	0.19
193	0.67	0.49	0.41	0.34	0.26	0.19
194	0.68	0.49	0.41	0.34	0.26	0.19
195	0.68	0.49	0.42	0.34	0.27	0.19
196	0.69	0.49	0.42	0.34	0.27	0.19
197	0.69	0.50	0.42	0.34	0.27	0.19
198	0.69	0.50	0.42	0.35	0.27	0.19
199	0.70	0.50	0.42	0.35	0.27	0.19
200	0.70	0.50	0.43	0.35	0.27	0.19
201	0.70	0.51	0.43	0.35	0.27	0.19
202	0.71	0.51	0.43	0.35	0.27	0.20
203	0.71	0.51	0.43	0.35	0.28	0.20
204	0.71	0.51	0.43	0.36	0.28	0.20
205	0.72	0.52	0.44	0.36	0.28	0.20
206	0.72	0.52	0.44	0.36	0.28	0.20
207	0.72	0.52	0.44	0.36	0.28	0.20
208	0.73	0.52	0.44	0.36	0.28	0.20
209	0.73	0.53	0.44	0.36	0.28	0.20
210	0.73	0.53	0.45	0.37	0.28	0.20
211	0.74	0.53	0.45	0.37	0.29	0.20
212	0.74	0.53	0.45	0.37	0.29	0.20
213	0.74	0.53	0.45	0.37	0.29	0.21
214	0.75	0.54	0.45	0.37	0.29	0.21
215	0.75	0.54	0.46	0.37	0.29	0.21
216	0.75	0.54	0.46	0.38	0.29	0.21
217	0.75	0.54	0.46	0.38	0.29	0.21
218	0.76	0.55	0.46	0.38	0.30	0.21
219	0.76	0.55	0.46	0.38	0.30	0.21
220	0.76	0.55	0.47	0.38	0.30	0.21

每五十公斤運費率
Per 50 Kilogram Rate

等級 Class 公里 Kilometres	一 I	二 II	三 III	四 IV	五 V	六 VI
221	0.77	0.55	0.47	0.38	0.30	0.21
222	0.77	0.56	0.47	0.39	0.30	0.21
223	0.77	0.56	0.47	0.39	0.30	0.21
224	0.78	0.56	0.47	0.39	0.30	0.22
225	0.78	0.56	0.48	0.39	0.30	0.22
226	0.78	0.57	0.48	0.39	0.31	0.22
227	0.79	0.57	0.48	0.39	0.31	0.22
228	0.79	0.57	0.48	0.40	0.31	0.22
229	0.79	0.57	0.48	0.40	0.31	0.22
230	0.80	0.58	0.49	0.40	0.31	0.22
231	0.80	0.58	0.49	0.40	0.31	0.22
232	0.80	0.58	0.49	0.40	0.31	0.22
233	0.81	0.58	0.49	0.40	0.31	0.22
234	0.81	0.58	0.49	0.41	0.32	0.22
235	0.81	0.59	0.50	0.41	0.32	0.23
236	0.82	0.59	0.50	0.41	0.32	0.23
237	0.82	0.59	0.50	0.41	0.32	0.23
238	0.82	0.59	0.50	0.41	0.32	0.23
239	0.83	0.60	0.50	0.41	0.32	0.23
240	0.83	0.60	0.51	0.42	0.32	0.23
241	0.83	0.60	0.51	0.42	0.32	0.23
242	0.84	0.60	0.51	0.42	0.33	0.23
243	0.84	0.61	0.51	0.42	0.33	0.23
244	0.84	0.61	0.51	0.42	0.33	0.23
245	0.85	0.61	0.52	0.42	0.33	0.23
246	0.85	0.61	0.52	0.43	0.33	0.24
247	0.85	0.62	0.52	0.43	0.33	0.24
248	0.86	0.62	0.52	0.43	0.33	0.24
249	0.86	0.62	0.52	0.43	0.33	0.24
250	0.86	0.62	0.53	0.43	0.34	0.24
251	0.87	0.63	0.53	0.43	0.34	0.24
252	0.87	0.63	0.53	0.44	0.34	0.24
253	0.87	0.63	0.53	0.44	0.34	0.24
254	0.88	0.63	0.53	0.44	0.34	0.24
255	0.88	0.63	0.54	0.44	0.34	0.24
256	0.88	0.64	0.54	0.44	0.34	0.24
257	0.89	0.64	0.54	0.44	0.34	0.25
258	0.89	0.64	0.54	0.45	0.35	0.25
259	0.89	0.64	0.54	0.45	0.35	0.25
260	0.90	0.65	0.55	0.55	0.36	0.25

每五十公斤運費率
Per 50 Kilogram Rate

等級 Class 公里 Kilometres	一 I	二 II	三 III	四 IV	五 V	六 VI
261	0.90	0.65	0.55	0.45	0.35	0.25
262	0.90	0.65	0.55	0.45	0.35	0.25
263	0.91	0.65	0.55	0.45	0.35	0.25
264	0.91	0.66	0.55	0.46	0.35	0.25
265	0.91	0.66	0.56	0.46	0.36	0.25
266	0.92	0.66	0.56	0.46	0.36	0.25
267	0.92	0.66	0.56	0.46	0.36	0.25
268	0.92	0.67	0.56	0.46	0.36	0.26
269	0.93	0.67	0.56	0.46	0.36	0.26
270	0.93	0.67	0.57	0.47	0.36	0.26
271	0.93	0.67	0.57	0.47	0.36	0.26
272	0.94	0.68	0.57	0.47	0.36	0.26
273	0.94	0.68	0.57	0.47	0.37	0.26
274	0.94	0.68	0.57	0.47	0.37	0.26
275	0.95	0.68	0.58	0.47	0.37	0.26
276	0.95	0.68	0.58	0.48	0.37	0.26
277	0.95	0.69	0.58	0.48	0.37	0.26
278	0.96	0.69	0.58	0.48	0.37	0.26
279	0.96	0.69	0.58	0.48	0.37	0.27
280	0.96	0.69	0.59	0.48	0.37	0.27
281	0.97	0.70	0.59	0.48	0.38	0.27
282	0.97	0.70	0.59	0.49	0.38	0.27
283	0.97	0.70	0.59	0.49	0.38	0.27
284	0.98	0.70	0.59	0.49	0.38	0.27
285	0.98	0.71	0.60	0.49	0.38	0.27
286	0.98	0.71	0.60	0.49	0.38	0.27
287	0.99	0.71	0.60	0.49	0.38	0.27
288	0.99	0.71	0.60	0.50	0.38	0.27
289	0.99	0.72	0.60	0.50	0.39	0.27
290	1.00	0.72	0.61	0.50	0.39	0.28
291	1.00	0.72	0.61	0.50	0.39	0.28
292	1.00	0.72	0.61	0.50	0.39	0.28
293	1.00	0.73	0.61	0.50	0.39	0.28
294	1.01	0.73	0.61	0.51	0.39	0.28
295	1.01	0.73	0.62	0.51	0.39	0.28
296	1.01	0.73	0.62	0.51	0.39	0.28
297	1.02	0.73	0.62	0.51	0.40	0.28
298	1.02	0.74	0.62	0.51	0.40	0.28
299	1.02	0.74	0.62	0.51	0.40	0.28
300	1.03	0.74	0.63	0.51	0.40	0.28

每五十公斤運費率
Per 50 Kilogram Rate

等 公里 Class Kilometers	一 I	二 II	三 III	四 IV	五 V	六 VI
301	1.03	0.74	0.63	0.52	0.40	0.29
302	1.03	0.75	0.63	0.52	0.40	0.29
303	1.04	0.75	0.63	0.52	0.40	0.29
304	1.04	0.75	0.63	0.52	0.40	0.29
305	1.04	0.75	0.64	0.52	0.41	0.29
306	1.05	0.76	0.64	0.52	0.41	0.29
307	1.05	0.76	0.64	0.53	0.41	0.29
308	1.05	0.76	0.64	0.53	0.41	0.29
309	1.06	0.76	0.64	0.53	0.41	0.29
310	1.06	0.77	0.65	0.53	0.41	0.29
311	1.06	0.77	0.65	0.53	0.41	0.29
312	1.07	0.77	0.65	0.53	0.41	0.30
313	1.07	0.77	0.65	0.54	0.42	0.30
314	1.07	0.77	0.65	0.54	0.42	0.30
315	1.08	0.78	0.66	0.54	0.42	0.30
316	1.08	0.78	0.66	0.54	0.42	0.30
317	1.08	0.78	0.66	0.54	0.42	0.30
318	1.09	0.78	0.66	0.54	0.42	0.30
319	1.09	0.79	0.66	0.55	0.42	0.30
320	1.09	0.79	0.67	0.55	0.42	0.30
321	1.09	0.79	0.67	0.55	0.43	0.30
322	1.10	0.79	0.67	0.55	0.43	0.30
323	1.10	0.79	0.67	0.55	0.43	0.31
324	1.10	0.80	0.67	0.55	0.43	0.31
325	1.11	0.80	0.68	0.55	0.43	0.31
326	1.11	0.80	0.68	0.56	0.43	0.31
327	1.11	0.80	0.68	0.56	0.43	0.31
328	1.12	0.81	0.68	0.56	0.43	0.31
329	1.12	0.81	0.68	0.56	0.44	0.31
330	1.12	0.81	0.69	0.56	0.44	0.31
331	1.13	0.81	0.69	0.56	0.44	0.31
332	1.13	0.82	0.69	0.57	0.44	0.31
333	1.13	0.82	0.69	0.57	0.44	0.31
334	1.14	0.82	0.69	0.57	0.44	0.31
335	1.14	0.82	0.70	0.57	0.44	0.32
336	1.14	0.82	0.70	0.57	0.44	0.32
337	1.15	0.83	0.70	0.57	0.45	0.32
338	1.15	0.83	0.70	0.58	0.45	0.32
339	1.15	0.83	0.70	0.58	0.45	0.32
340	1.16	0.83	0.70	0.58	0.45	0.32

每五十公斤運費率
Per 50 Kilogram Rate

等級 Class 公里 Kilometers	一 I	二 II	三 III	四 IV	五 V	六 VI
341	1.16	0.84	0.71	0.58	0.45	0.32
342	1.16	0.84	0.71	0.58	0.45	0.32
343	1.17	0.84	0.71	0.58	0.45	0.32
344	1.17	0.84	0.71	0.58	0.45	0.32
345	1.17	0.85	0.71	0.59	0.46	0.32
346	1.17	0.85	0.72	0.59	0.46	0.33
347	1.18	0.85	0.72	0.59	0.46	0.33
348	1.18	0.85	0.72	0.59	0.46	0.33
349	1.18	0.85	0.72	0.59	0.46	0.33
350	1.19	0.86	0.72	0.59	0.46	0.33
351	1.19	0.86	0.73	0.60	0.46	0.33
352	1.19	0.86	0.73	0.60	0.46	0.33
353	1.20	0.86	0.73	0.60	0.47	0.33
354	1.20	0.87	0.73	0.60	0.47	0.33
355	1.20	0.87	0.73	0.60	0.47	0.33
356	1.21	0.87	0.74	0.60	0.47	0.33
357	1.21	0.87	0.74	0.61	0.47	0.34
358	1.21	0.88	0.74	0.61	0.47	0.34
359	1.22	0.88	0.74	0.61	0.47	0.34
360	1.22	0.88	0.74	0.61	0.47	0.34
361	1.22	0.88	0.75	0.61	0.48	0.34
362	1.23	0.88	0.75	0.61	0.48	0.34
363	1.23	0.89	0.75	0.62	0.48	0.34
364	1.23	0.89	0.75	0.62	0.48	0.34
365	1.24	0.89	0.75	0.62	0.48	0.34
366	1.24	0.89	0.76	0.62	0.48	0.34
367	1.24	0.90	0.76	0.62	0.48	0.34
368	1.24	0.90	0.76	0.62	0.48	0.34
369	1.25	0.90	0.76	0.62	0.49	0.35
370	1.25	0.90	0.76	0.63	0.49	0.35
371	1.25	0.91	0.77	0.63	0.49	0.35
372	1.26	0.91	0.77	0.63	0.49	0.35
373	1.26	0.91	0.77	0.63	0.49	0.35
374	1.26	0.91	0.77	0.63	0.49	0.35
375	1.27	0.91	0.77	0.63	0.49	0.35
376	1.27	0.92	0.78	0.64	0.49	0.35
377	1.27	0.92	0.78	0.64	0.50	0.35
378	1.28	0.92	0.78	0.64	0.50	0.35
379	1.28	0.92	0.78	0.64	0.50	0.35
380	1.28	0.93	0.78	0.64	0.50	0.35

每五十公斤運費率
Per 50 Kilogram Rate

等級 公里 Class Kilometers	一 I	二 II	三 III	四 IV	五 V	六 VI
381	1.29	0.93	0.78	0.64	0.50	0.36
382	1.29	0.93	0.79	0.65	0.50	0.36
383	1.29	0.93	0.79	0.65	0.50	0.36
384	1.30	0.94	0.79	0.65	0.50	0.36
385	1.30	0.94	0.79	0.65	0.51	0.36
386	1.30	0.94	0.79	0.65	0.51	0.36
387	1.31	0.94	0.80	0.65	0.51	0.36
388	1.31	0.94	0.80	0.65	0.51	0.36
389	1.31	0.95	0.80	0.66	0.51	0.36
390	1.32	0.95	0.80	0.66	0.51	0.36
391	1.32	0.95	0.80	0.66	0.51	0.37
392	1.32	0.95	0.81	0.66	0.51	0.37
393	1.32	0.96	0.81	0.66	0.52	0.37
394	1.33	0.96	0.81	0.66	0.52	0.37
395	1.33	0.96	0.81	0.67	0.52	0.37
396	1.33	0.96	0.81	0.67	0.52	0.37
397	1.34	0.97	0.82	0.67	0.52	0.37
398	1.34	0.97	0.82	0.67	0.52	0.37
399	1.34	0.97	0.82	0.67	0.52	0.37
400	1.35	0.97	0.82	0.67	0.52	0.37
401	1.35	0.97	0.82	0.68	0.53	0.37
402	1.35	0.98	0.83	0.68	0.53	0.37
403	1.36	0.98	0.83	0.68	0.53	0.38
404	1.36	0.98	0.83	0.68	0.53	0.38
405	1.36	0.98	0.83	0.68	0.53	0.38
406	1.37	0.99	0.83	0.68	0.53	0.38
407	1.37	0.99	0.84	0.68	0.53	0.38
408	1.37	0.99	0.84	0.69	0.53	0.38
409	1.37	0.99	0.84	0.69	0.53	0.38
410	1.38	0.99	0.84	0.69	0.54	0.38
411	1.38	1.00	0.84	0.69	0.54	0.38
412	1.38	1.00	0.84	0.69	0.54	0.38
413	1.39	1.00	0.85	0.69	0.54	0.38
414	1.39	1.00	0.85	0.70	0.54	0.38
415	1.39	1.00	0.85	0.70	0.54	0.39
416	1.40	1.01	0.85	0.70	0.54	0.39
417	1.40	1.01	0.85	0.70	0.54	0.39
418	1.40	1.01	0.86	0.70	0.55	0.39
419	1.40	1.01	0.86	0.70	0.55	0.39
420	1.41	1.02	0.86	0.70	0.55	0.39

普
通
貨
物
運
費
表

公 零
鐵 鐵
運 裝
費 運
率 每

Freight Table
Per Metric Ton Rate

零鐵裝運每公鐵運費率
Per Metric Ton Rate

等級 Class 公里 Kilometers	一 I	二 II	三 III	四 IV	五 V	六 VI
1-20	1.2340	0.8920	0.7540	0.6180	0.4800	0.3440
21	1.2957	0.9366	0.7917	0.6489	0.5040	0.3612
22	1.3574	0.9812	0.8294	0.6798	0.5280	0.3784
23	1.4191	1.0258	0.8671	0.7107	0.5520	0.3956
24	1.4808	1.0704	0.9048	0.7416	0.5760	0.4128
25	1.5425	1.1150	0.9425	0.7725	0.6000	0.4300
26	1.6042	1.1596	0.9802	0.8034	0.6240	0.4472
27	1.6659	1.2042	1.0179	0.8343	0.6480	0.4644
28	1.7276	1.2488	1.0556	0.8652	0.6720	0.4816
29	1.7893	1.2934	1.0933	0.8961	0.6960	0.4988
30	1.8510	1.3380	1.1310	0.9270	0.7200	0.5160
31	1.9127	1.3826	1.1687	0.9579	0.7440	0.5332
32	1.9744	1.4272	1.2064	0.9888	0.7680	0.5504
33	2.0361	1.4718	1.2441	1.0197	0.7920	0.5676
34	2.0978	1.5164	1.2818	1.0506	0.8160	0.5848
35	2.1595	1.5610	1.3195	1.0815	0.8400	0.6020
36	2.2212	1.6056	1.3572	1.1124	0.8640	0.6192
37	2.2829	1.6502	1.3949	1.1433	0.8880	0.6364
38	2.3446	1.6948	1.4326	1.1742	0.9120	0.6536
39	2.4063	1.7394	1.4703	1.2051	0.9360	0.6708
40	2.4680	1.7840	1.5080	1.2360	0.9600	0.6880
41	2.5297	1.8286	1.5457	1.2669	0.9840	0.7052
42	2.5914	1.8732	1.5834	1.2978	1.0080	0.7224
43	2.6531	1.9178	1.6211	1.3287	1.0320	0.7396
44	2.7148	1.9624	1.6588	1.3596	1.0560	0.7568
45	2.7765	2.0070	1.6965	1.3905	1.0800	0.7740
46	2.8382	2.0516	1.7342	1.4214	1.1040	0.7912
47	2.8999	2.0962	1.7719	1.4523	1.1280	0.8084
48	2.9616	2.1408	1.8096	1.4832	1.1520	0.8256
49	3.0233	2.1854	1.8473	1.5141	1.1760	0.8428
50	3.0850	2.2300	1.8850	1.5450	1.2000	0.8600
51	3.1467	2.2746	1.9227	1.5759	1.2240	0.8772
52	3.2084	2.3192	1.9604	1.6068	1.2480	0.8944
53	3.2701	2.3638	1.9981	1.6377	1.2720	0.9116
54	3.3318	2.4084	2.0358	1.6686	1.2960	0.9288
55	3.3935	2.4530	2.0735	1.6995	1.3200	0.9460
56	3.4552	2.4976	2.1112	1.7304	1.3440	0.9632
57	3.5169	2.5422	2.1489	1.7613	1.3680	0.9804
58	3.5786	2.5868	2.1866	1.7922	1.3920	0.9976
59	3.6403	2.6314	2.2243	1.8231	1.4160	1.0148
60	3.7020	2.6760	2.2620	1.8540	1.4400	1.0320

零担裝運每公噸運費率
Per Metric Ton Rate

等級 Class 公里 Kilometers	一 I	二 II	三 III	四 IV	五 V	六 VI
61	3.7637	2.7205	2.2997	1.8840	1.4640	1.0492
62	3.8254	2.7652	2.3374	1.9168	1.4880	1.0664
63	3.8871	2.8098	2.3751	1.9497	1.5120	1.0836
64	3.9488	2.8544	2.4128	1.9776	1.5360	1.1008
65	4.0105	2.8990	2.4506	2.0086	1.5600	1.1180
66	4.0722	2.9436	2.4882	2.0394	1.5840	1.1352
67	4.1339	2.9882	2.5259	2.0703	1.6080	1.1524
68	4.1956	3.0328	2.5636	2.1012	1.6320	1.1696
69	4.2573	3.0774	2.6013	2.1321	1.6560	1.1868
70	4.3190	3.1220	2.6390	2.1630	1.6800	1.2040
71	4.3807	3.1666	2.6767	2.1938	1.7040	1.2212
72	4.4424	3.2112	2.7144	2.2246	1.7280	1.2384
73	4.5041	3.2558	2.7521	2.2557	1.7520	1.2556
74	4.5658	3.3004	2.7898	2.2866	1.7760	1.2728
75	4.6275	3.3450	2.8275	2.3175	1.8000	1.2900
76	4.6892	3.3896	2.8652	2.3484	1.8240	1.3072
77	4.7509	3.4342	2.9029	2.3793	1.8480	1.3244
78	4.8126	3.4788	2.9406	2.4102	1.8720	1.3416
79	4.8743	3.5234	2.9783	2.4411	1.8960	1.3588
80	4.9360	3.5680	3.0160	2.4720	1.9200	1.3760
81	4.9977	3.6126	3.0537	2.5029	1.9440	1.3932
82	5.0594	3.6572	3.0914	2.5338	1.9680	1.4104
83	5.1211	3.7018	3.1291	2.5647	1.9920	1.4276
84	5.1828	3.7464	3.1668	2.5956	2.0160	1.4448
85	5.2445	3.7910	3.2045	2.6265	2.0400	1.4620
86	5.3062	3.8356	3.2422	2.6574	2.0640	1.4792
87	5.3679	3.8802	3.2799	2.6883	2.0880	1.4964
88	5.4296	3.9248	3.3176	2.7192	2.1120	1.5136
89	5.4913	3.9694	3.3553	2.7501	2.1360	1.5308
90	5.5530	4.0140	3.3930	2.7810	2.1600	1.5480
91	5.6147	4.0586	3.4307	2.8119	2.1840	1.5652
92	5.6764	4.1032	3.4684	2.8428	2.2080	1.5824
93	5.7381	4.1478	3.5061	2.8737	2.2320	1.5996
94	5.7998	4.1924	3.5438	2.9046	2.2560	1.6168
95	5.8615	4.2370	3.5815	2.9355	2.2800	1.6340
96	5.9232	4.2816	3.6192	2.9664	2.3040	1.6512
97	5.9849	4.3262	3.6569	2.9973	2.3280	1.6684
98	6.0466	4.3708	3.6946	3.0282	2.3520	1.6856
99	6.1083	4.4154	3.7323	3.0591	2.3760	1.7028
100	6.1700	4.4600	3.7700	3.0900	2.4000	1.7200

零鐵裝運每公鐵運費率
Per-Metric Ton Rate

等級 公里 Class Miles	一 I	二 II	三 III	四 IV	五 V	六 VI
101	6.2204	4.6020	3.8000	3.1108	2.4231	1.7806
102	6.2888	4.6408	3.8420	3.1460	2.4402	1.7880
103	6.3482	4.6807	3.8780	3.1794	2.4600	1.7965
104	6.4076	4.7216	3.9152	3.2092	2.4824	1.7860
105	6.4670	4.7745	3.9515	3.2390	2.5165	1.8025
106	6.5264	4.7774	3.9878	3.2688	2.5585	1.8190
107	6.5858	4.7603	4.0241	3.2986	2.6017	1.8355
108	6.6452	4.8032	4.0604	3.3284	2.6418	1.8520
109	6.7046	4.8461	4.0967	3.3582	2.6879	1.8685
110	6.7640	4.8890	4.1330	3.3880	2.7310	1.8850
111	6.8234	4.9319	4.1693	3.4178	2.7741	1.9015
112	6.8828	4.9748	4.2056	3.4476	2.8172	1.9180
113	6.9422	5.0177	4.2419	3.4774	2.8603	1.9345
114	7.0016	5.0606	4.2782	3.5072	2.9034	1.9510
115	7.0610	5.1035	4.3145	3.5370	2.9465	1.9675
116	7.1204	5.1464	4.3508	3.5668	2.9896	1.9840
117	7.1798	5.1893	4.3871	3.5966	3.0327	2.0005
118	7.2392	5.2322	4.4234	3.6264	3.0758	2.0170
119	7.2986	5.2751	4.4597	3.6562	3.1189	2.0335
120	7.3580	5.3180	4.4960	3.6860	3.1620	2.0500
121	7.4174	5.3609	4.5323	3.7158	3.2051	2.0665
122	7.4768	5.4038	4.5686	3.7456	3.2482	2.0830
123	7.5362	5.4467	4.6049	3.7754	3.2913	2.0995
124	7.5956	5.4896	4.6412	3.8052	3.3344	2.1160
125	7.6550	5.5325	4.6775	3.8350	3.3775	2.1325
126	7.7144	5.5754	4.7138	3.8648	3.4206	2.1490
127	7.7738	5.6183	4.7501	3.8946	3.4637	2.1655
128	7.8332	5.6612	4.7864	3.9244	3.5068	2.1820
129	7.8926	5.7041	4.8227	3.9542	3.5499	2.1985
130	7.9520	5.7470	4.8590	3.9840	3.5930	2.2150
131	8.0114	5.7899	4.8953	4.0138	3.6361	2.2315
132	8.0708	5.8328	4.9316	4.0436	3.6792	2.2480
133	8.1302	5.8757	4.9679	4.0734	3.7223	2.2645
134	8.1896	5.9186	5.0042	4.1032	3.7654	2.2810
135	8.2490	5.9615	5.0405	4.1330	3.8085	2.2975
136	8.3084	6.0044	5.0768	4.1628	3.8516	2.3140
137	8.3678	6.0473	5.1131	4.1926	3.8947	2.3305
138	8.4272	6.0902	5.1494	4.2224	3.9378	2.3470
139	8.4866	6.1331	5.1857	4.2522	3.9809	2.3635
140	8.5460	6.1760	5.2220	4.2820	4.0240	2.3800

零 鐵 裝 運 每 公 鐵 運 費 率
Per Metric Ton Rate

等 級 Class 公里 Kilometers	一 I	二 II	三 III	四 IV	五 V	六 VI
141	8.6054	6.2189	5.2583	4.3118	3.3471	2.3965
142	8.6648	6.2618	5.2946	4.3416	3.3702	2.4130
143	8.7242	6.3047	5.3309	4.3714	3.3933	2.4295
144	8.7836	6.3476	5.3672	4.4012	3.4164	2.4460
145	8.8430	6.3905	5.4035	4.4310	3.4395	2.4625
146	8.9024	6.4334	5.4398	4.4608	3.4626	2.4790
147	8.9618	6.4763	5.4761	4.4906	3.4857	2.4955
148	9.0212	6.5192	5.5124	4.5204	3.5088	2.5120
149	9.0806	6.5621	5.5487	4.5502	3.5319	2.5285
150	9.1400	6.6050	5.5850	4.5800	3.5550	2.5450
151	9.1994	6.6479	5.6213	4.6098	3.5781	2.5615
152	9.2588	6.6908	5.6576	4.6396	3.6012	2.5780
153	9.3182	6.7337	5.6939	4.6694	3.6243	2.5945
154	9.3776	6.7766	5.7302	4.6992	3.6474	2.6110
155	9.4370	6.8195	5.7665	4.7290	3.6705	2.6275
156	9.4964	6.8624	5.8028	4.7588	3.6936	2.6440
157	9.5558	6.9053	5.8391	4.7886	3.7167	2.6605
158	9.6152	6.9482	5.8754	4.8184	3.7398	2.6770
159	9.6746	6.9911	5.9117	4.8482	3.7629	2.6935
160	9.7340	7.0340	5.9480	4.8780	3.7860	2.7100
161	9.7934	7.0769	5.9843	4.9078	3.8091	2.7265
162	9.8528	7.1198	6.0206	4.9376	3.8322	2.7430
163	9.9122	7.1627	6.0569	4.9674	3.8553	2.7595
164	9.9716	7.2056	6.0932	4.9972	3.8784	2.7760
165	10.0310	7.2485	6.1295	5.0270	3.9015	2.7925
166	10.0904	7.2914	6.1658	5.0568	3.9246	2.8090
167	10.1498	7.3343	6.2021	5.0866	3.9477	2.8255
168	10.2092	7.3772	6.2384	5.1164	3.9708	2.8420
169	10.2686	7.4201	6.2747	5.1462	3.9939	2.8585
170	10.3280	7.4630	6.3110	5.1760	4.0170	2.8750
171	10.3874	7.5059	6.3473	5.2058	4.0401	2.8915
172	10.4468	7.5488	6.3836	5.2356	4.0632	2.9080
173	10.5062	7.5917	6.4199	5.2654	4.0863	2.9245
174	10.5656	7.6346	6.4562	5.2952	4.1094	2.9410
175	10.6250	7.6775	6.4925	5.3250	4.1325	2.9575
176	10.6844	7.7204	6.5288	5.3548	4.1556	2.9740
177	10.7438	7.7633	6.5651	5.3846	4.1787	2.9905
178	10.8032	7.8062	6.6014	5.4144	4.2018	3.0070
179	10.8626	7.8491	6.6377	5.4442	4.2249	3.0235
180	10.9220	7.8920	6.6740	5.4740	4.2480	3.0400

普通裝運每公噸運費率
Per Metric Ton Rate

等級 公里 Class Kilometers	一 I	二 II	三 III	四 IV	五 V	六 VI
181	10.9814	7.9349	6.7103	5.5038	4.2711	3.0565
182	11.0408	7.9778	6.7466	5.5336	4.2942	3.0730
183	11.1002	8.0207	6.7829	5.5634	4.3173	3.0895
184	11.1596	8.0636	6.8192	5.5932	4.3404	3.1060
185	11.2190	8.1065	6.8555	5.6230	4.3635	3.1225
186	11.2784	8.1494	6.8918	5.6528	4.3866	3.1390
187	11.3378	8.1923	6.9281	5.6826	4.4097	3.1555
188	11.3972	8.2352	6.9644	5.7124	4.4328	3.1720
189	11.4566	8.2781	7.0007	5.7422	4.4559	3.1885
190	11.5160	8.3210	7.0370	5.7720	4.4790	3.2050
191	11.5754	8.3639	7.0733	5.8018	4.5021	3.2215
192	11.6348	8.4068	7.1096	5.8316	4.5252	3.2380
193	11.6942	8.4497	7.1459	5.8614	4.5483	3.2545
194	11.7536	8.4926	7.1822	5.8912	4.5714	3.2710
195	11.8130	8.5355	7.2185	5.9210	4.5945	3.2875
196	11.8724	8.5784	7.2548	5.9508	4.6176	3.3040
197	11.9318	8.6213	7.2911	5.9806	4.6407	3.3205
198	11.9912	8.6642	7.3274	6.0104	4.6638	3.3370
199	12.0506	8.7071	7.3637	6.0402	4.6869	3.3535
200	12.1100	8.7500	7.4000	6.0700	4.7100	3.3700
201	12.1671	8.7912	7.4348	6.0986	4.7322	3.3859
202	12.2242	8.8324	7.4696	6.1272	4.7544	3.4018
203	12.2813	8.8736	7.5044	6.1558	4.7766	3.4177
204	12.3384	8.9148	7.5392	6.1844	4.7988	3.4336
205	12.3955	8.9560	7.5740	6.2130	4.8210	3.4495
206	12.4526	8.9972	7.6088	6.2416	4.8432	3.4654
207	12.5097	9.0384	7.6436	6.2702	4.8654	3.4813
208	12.5668	9.0796	7.6784	6.2988	4.8876	3.4972
209	12.6239	9.1208	7.7132	6.3274	4.9098	3.5131
210	12.6810	9.1620	7.7480	6.3560	4.9320	3.5290
211	12.7381	9.2032	7.7828	6.3846	4.9542	3.5449
212	12.7952	9.2444	7.8176	6.4132	4.9764	3.5608
213	12.8523	9.2856	7.8524	6.4418	4.9986	3.5767
214	12.9094	9.3268	7.8872	6.4704	5.0208	3.5926
215	12.9665	9.3680	7.9220	6.4990	5.0430	3.6085
216	13.0236	9.4092	7.9568	6.5276	5.0652	3.6244
217	13.0807	9.4504	7.9916	6.5562	5.0874	3.6403
218	13.1378	9.4916	8.0264	6.5848	5.1096	3.6562
219	13.1949	9.5328	8.0612	6.6134	5.1318	3.6721
220	13.2520	9.5740	8.0960	6.6420	5.1540	3.6880

零鐵裝運每公鐵運費率
Per Metric Ton Rate

等級 Class 公里 Kilometers	一 I	二 II	三 III	四 IV	五 V	六 VI
221	13.3091	9.6152	8.1308	6.6706	5.1762	3.7039
222	13.3662	9.6564	8.1656	6.6992	5.1984	3.7198
223	13.4233	9.6976	8.2004	6.7278	5.2206	3.7357
224	13.4804	9.7388	8.2352	6.7564	5.2428	3.7516
225	13.5375	9.7800	8.2700	6.7850	5.2650	3.7675
226	13.5946	9.8212	8.3048	6.8136	5.2872	3.7834
227	13.6517	9.8624	8.3396	6.8422	5.3094	3.7993
228	13.7088	9.9036	8.3744	6.8708	5.3316	3.8152
229	13.7659	9.9448	8.4092	6.8994	5.3538	3.8311
230	13.8230	9.9860	8.4440	6.9280	5.3760	3.8470
231	13.8801	10.0272	8.4788	6.9566	5.3982	3.8629
232	13.9372	10.0684	8.5136	6.9852	5.4204	3.8788
233	13.9943	10.1096	8.5484	7.0138	5.4426	3.8947
234	14.0514	10.1508	8.5832	7.0424	5.4648	3.9106
235	14.1085	10.1920	8.6180	7.0710	5.4870	3.9265
236	14.1656	10.2332	8.6528	7.0996	5.5092	3.9424
237	14.2227	10.2744	8.6876	7.1282	5.5314	3.9583
238	14.2798	10.3156	8.7224	7.1568	5.5536	3.9742
239	14.3369	10.3568	8.7572	7.1854	5.5758	3.9901
240	14.3940	10.3980	8.7920	7.2140	5.5980	4.0060
241	14.4511	10.4392	8.8268	7.2426	5.6202	4.0219
242	14.5082	10.4804	8.8616	7.2712	5.6424	4.0378
243	14.5653	10.5216	8.8964	7.2998	5.6646	4.0537
244	14.6224	10.5628	8.9312	7.3284	5.6868	4.0696
245	14.6795	10.6040	8.9660	7.3570	5.7090	4.0855
246	14.7366	10.6452	9.0008	7.3856	5.7312	4.1014
247	14.7937	10.6864	9.0356	7.4142	5.7534	4.1173
248	14.8508	10.7276	9.0704	7.4428	5.7756	4.1332
249	14.9079	10.7688	9.1052	7.4714	5.7978	4.1491
250	14.9650	10.8100	9.1400	7.5000	5.8200	4.1650
251	15.0221	10.8512	9.1748	7.5286	5.8422	4.1809
252	15.0792	10.8924	9.2096	7.5572	5.8644	4.1968
253	15.1363	10.9336	9.2444	7.5858	5.8866	4.2127
254	15.1934	10.9748	9.2792	7.6144	5.9088	4.2286
255	15.2505	11.0160	9.3140	7.6430	5.9310	4.2445
256	15.3076	11.0572	9.3488	7.6716	5.9532	4.2604
257	15.3647	11.0984	9.3836	7.7002	5.9754	4.2763
258	15.4218	11.1396	9.4184	7.7288	5.9976	4.2922
259	15.4789	11.1808	9.4532	7.7574	6.0198	4.3081
260	15.5360	11.2220	9.4880	7.7860	6.0420	4.3240

零鐵裝運每公鐵運費率
Per Metric Ton Rate

等級 Class 公里 Kilometers	一 I	二 II	三 III	四 IV	五 V	六 VI
261	15.5931	11.2632	9.5228	7.8146	6.0642	4.3399
262	15.6502	11.3044	9.5576	7.8432	6.0864	4.3558
263	15.7073	11.3456	9.5924	7.8718	6.1086	4.3717
264	15.7644	11.3868	9.6272	7.9004	6.1308	4.3876
265	15.8215	11.4280	9.6620	7.9290	6.1530	4.4035
266	15.8786	11.4692	9.6968	7.9576	6.1752	4.4194
267	15.9357	11.5104	9.7316	7.9862	6.1974	4.4353
268	15.9928	11.5516	9.7664	8.0148	6.2196	4.4512
269	16.0499	11.5928	9.8012	8.0434	6.2418	4.4671
270	16.1070	11.6340	9.8360	8.0720	6.2640	4.4830
271	16.1641	11.6752	9.8708	8.1006	6.2862	4.4989
272	16.2212	11.7164	9.9056	8.1292	6.3084	4.5148
273	16.2783	11.7576	9.9404	8.1578	6.3306	4.5307
274	16.3354	11.7988	9.9752	8.1864	6.3528	4.5466
275	16.3925	11.8400	10.0100	8.2150	6.3750	4.5625
276	16.4496	11.8812	10.0448	8.2436	6.3972	4.5784
277	16.5067	11.9224	10.0796	8.2722	6.4194	4.5943
278	16.5638	11.9636	10.1144	8.3008	6.4416	4.6102
279	16.6209	12.0048	10.1492	8.3294	6.4638	4.6261
280	16.6780	12.0460	10.1840	8.3580	6.4860	4.6420
281	16.7351	12.0872	10.2188	8.3866	6.5082	4.6579
282	16.7922	12.1284	10.2536	8.4152	6.5304	4.6738
283	16.8493	12.1696	10.2884	8.4438	6.5526	4.6897
284	16.9064	12.2108	10.3232	8.4724	6.5748	4.7056
285	16.9635	12.2520	10.3580	8.5010	6.5970	4.7215
286	17.0206	12.2932	10.3928	8.5296	6.6192	4.7374
287	17.0777	12.3344	10.4276	8.5582	6.6414	4.7533
288	17.1348	12.3756	10.4624	8.5868	6.6636	4.7692
289	17.1919	12.4168	10.4972	8.6154	6.6858	4.7851
290	17.2490	12.4580	10.5320	8.6440	6.7080	4.8010
291	17.3061	12.4992	10.5668	8.6726	6.7302	4.8169
292	17.3632	12.5404	10.6016	8.7012	6.7524	4.8328
293	17.4203	12.5816	10.6364	8.7298	6.7746	4.8487
294	17.4774	12.6228	10.6712	8.7584	6.7968	4.8646
295	17.5345	12.6640	10.7060	8.7870	6.8190	4.8805
296	17.5916	12.7052	10.7408	8.8156	6.8412	4.8964
297	17.6487	12.7464	10.7756	8.8442	6.8634	4.9123
298	17.7058	12.7876	10.8104	8.8728	6.8856	4.9282
299	17.7629	12.8288	10.8452	8.9014	6.9078	4.9441
300	17.8200	12.8700	10.8800	8.9300	6.9300	4.9600

等 級 Per Metric Ton Rate 公里 Kilometers						
Class	I	II	III	IV	V	VI
301	17.8752	12.9099	10.9138	8.9576	6.9514	4.9753
302	17.9304	12.9498	10.9476	8.9852	6.9728	4.9906
303	17.9856	12.9897	10.9814	9.0128	6.9942	5.0059
304	18.0408	13.0296	11.0162	9.0404	7.0156	5.0212
305	18.0960	13.0695	11.0490	9.0680	7.0370	5.0365
306	18.1512	13.1094	11.0828	9.0956	7.0584	5.0518
307	18.2064	13.1493	11.1166	9.1232	7.0798	5.0671
308	18.2616	13.1892	11.1504	9.1508	7.1012	5.0824
309	18.3168	13.2291	11.1842	9.1784	7.1226	5.0977
310	18.3720	13.2690	11.2180	9.2060	7.1440	5.1130
311	18.4272	13.3089	11.2518	9.2336	7.1654	5.1283
312	18.4824	13.3488	11.2856	9.2612	7.1868	5.1436
313	18.5376	13.3887	11.3194	9.2888	7.2082	5.1589
314	18.5928	13.4286	11.3532	9.3164	7.2296	5.1742
315	18.6480	13.4685	11.3870	9.3440	7.2510	5.1895
316	18.7032	13.5084	11.4208	9.3716	7.2724	5.2048
317	18.7584	13.5483	11.4546	9.3992	7.2938	5.2201
318	18.8136	13.5882	11.4884	9.4268	7.3152	5.2354
319	18.8688	13.6281	11.5222	9.4544	7.3366	5.2507
320	18.9240	13.6680	11.5560	9.4820	7.3580	5.2660
321	18.9792	13.7079	11.5898	9.5096	7.3794	5.2813
322	19.0344	13.7478	11.6236	9.5372	7.4008	5.2966
323	19.0896	13.7877	11.6574	9.5648	7.4222	5.3119
324	19.1448	13.8276	11.6912	9.5924	7.4436	5.3272
325	19.2000	13.8675	11.7250	9.6200	7.4650	5.3425
326	19.2552	13.9074	11.7588	9.6476	7.4864	5.3578
327	19.3104	13.9473	11.7926	9.6752	7.5078	5.3731
328	19.3656	13.9872	11.8264	9.7028	7.5292	5.3884
329	19.4208	14.0271	11.8602	9.7304	7.5506	5.4037
330	19.4760	14.0670	11.8940	9.7580	7.5720	5.4190
331	19.5312	14.1069	11.9278	9.7856	7.5934	5.4343
332	19.5864	14.1468	11.9616	9.8132	7.6148	5.4496
333	19.6416	14.1867	11.9954	9.8408	7.6362	5.4649
334	19.6968	14.2266	12.0292	9.8684	7.6576	5.4802
335	19.7520	14.2665	12.0630	9.8960	7.6790	5.4955
336	19.8072	14.3064	12.0968	9.9236	7.7004	5.5108
337	19.8624	14.3463	12.1306	9.9512	7.7218	5.5261
338	19.9176	14.3862	12.1644	9.9788	7.7432	5.5414
339	19.9728	14.4261	12.1982	10.0064	7.7646	5.5567
340	20.0280	14.4660	12.2320	10.0340	7.7860	5.5720

零 鐵 裝 運 每 公 鐵 運 費 率
Per Metric Ton Rate

等級 Class 公里 Kilometers	一 I	二 II	三 III	四 IV	五 V	六 VI
341	20.0832	14.5059	12.2658	10.0616	7.8074	5.5873
342	20.1384	14.5458	12.2996	10.0892	7.8288	5.6026
343	20.1936	14.5857	12.3334	10.1168	7.8502	5.6179
344	20.2488	14.6256	12.3672	10.1444	7.8716	5.6332
345	20.3040	14.6655	12.4010	10.1720	7.8930	5.6485
346	20.3592	14.7054	12.4348	10.1996	7.9144	5.6638
347	20.4144	14.7453	12.4686	10.2272	7.9358	5.6791
348	20.4696	14.7852	12.5024	10.2548	7.9572	5.6944
349	20.5248	14.8251	12.5362	10.2824	7.9786	5.7097
350	20.5800	14.8650	12.5700	10.3100	8.0000	5.7250
351	20.6352	14.9049	12.6038	10.3376	8.0214	5.7403
352	20.6904	14.9448	12.6376	10.3652	8.0428	5.7556
353	20.7456	14.9847	12.6714	10.3928	8.0642	5.7709
354	20.8008	15.0246	12.7052	10.4204	8.0856	5.7862
355	20.8560	15.0645	12.7390	10.4480	8.1070	5.8015
356	20.9112	15.1044	12.7728	10.4756	8.1284	5.8168
357	20.9664	15.1443	12.8066	10.5032	8.1498	5.8321
358	21.0216	15.1842	12.8404	10.5308	8.1712	5.8474
359	21.0768	15.2241	12.8742	10.5584	8.1926	5.8627
360	21.1320	15.2640	12.9080	10.5860	8.2140	5.8780
361	21.1872	15.3039	12.9418	10.6136	8.2354	5.8933
362	21.2424	15.3438	12.9756	10.6412	8.2568	5.9086
363	21.2976	15.3837	13.0094	10.6688	8.2782	5.9239
364	21.3528	15.4236	13.0432	10.6964	8.2996	5.9392
365	21.4080	15.4635	13.0770	10.7240	8.3210	5.9545
366	21.4632	15.5034	13.1108	10.7516	8.3424	5.9698
367	21.5184	15.5433	13.1446	10.7792	8.3638	5.9851
368	21.5736	15.5832	13.1784	10.8068	8.3852	6.0004
369	21.6288	15.6231	13.2122	10.8344	8.4066	6.0157
370	21.6840	15.6630	13.2460	10.8620	8.4280	6.0310
371	21.7392	15.7029	13.2798	10.8896	8.4494	6.0463
372	21.7944	15.7428	13.3136	10.9172	8.4708	6.0616
373	21.8496	15.7827	13.3474	10.9448	8.4922	6.0769
374	21.9048	15.8226	13.3812	10.9724	8.5136	6.0922
375	21.9600	15.8625	13.4150	11.0000	8.5350	6.1075
376	22.0152	15.9024	13.4488	11.0276	8.5564	6.1228
377	22.0704	15.9423	13.4826	11.0552	8.5778	6.1381
378	22.1256	15.9822	13.5164	11.0828	8.5992	6.1534
379	22.1808	16.0221	13.5502	11.1104	8.6206	6.1687
380	22.2360	16.0620	13.5840	11.1380	8.6420	6.1840

零鐵裝運每公鐵運費率
Per Metric Ton Rate

等級 Class 公里 Kilometers	一 I	二 II	三 III	四 IV	伍 V	六 VI
381	22.2912	16.1019	13.6178	11.1656	8.6434	6.1993
382	22.3464	16.1418	13.6516	11.1932	8.6848	6.2146
383	22.4016	16.1817	13.6854	11.2208	8.7062	6.2299
384	22.4568	16.2216	13.7192	11.2484	8.7276	6.2452
385	22.5120	16.2615	13.7530	11.2760	8.7490	6.2605
386	22.5672	16.3014	13.7868	11.3036	8.7704	6.2758
387	22.6224	16.3413	13.8206	11.3312	8.7918	6.2911
388	22.6776	16.3812	13.8544	11.3588	8.8132	6.3064
389	22.7328	16.4211	13.8882	11.3864	8.8346	6.3217
390	22.7880	16.4610	13.9220	11.4140	8.8560	6.3370
391	22.8432	16.5009	13.9558	11.4416	8.8774	6.3523
392	22.8984	16.5408	13.9896	11.4692	8.8988	6.3676
393	22.9536	16.5807	14.0234	11.4968	8.9202	6.3829
394	23.0088	16.6206	14.0572	11.5244	8.9416	6.3982
395	23.0640	16.6605	14.0910	11.5520	8.9630	6.4135
396	23.1192	16.7004	14.1248	11.5796	8.9844	6.4288
397	23.1744	16.7403	14.1586	11.6072	9.0058	6.4441
398	23.2296	16.7802	14.1924	11.6348	9.0272	6.4594
399	23.2848	16.8201	14.2262	11.6624	9.0486	6.4747
400	23.3400	16.8600	14.2600	11.6900	9.0700	6.4900
401	23.3929	16.8982	14.2924	11.7164	9.0905	6.5047
402	23.4458	16.9364	14.3248	11.7428	9.1110	6.5194
403	23.4987	16.9746	14.3572	11.7692	9.1315	6.5341
404	23.5516	17.0128	14.3896	11.7956	9.1520	6.5488
405	23.6045	17.0510	14.4220	11.8220	9.1725	6.5635
406	23.6574	17.0892	14.4544	11.8484	9.1930	6.5782
407	23.7103	17.1274	14.4868	11.8748	9.2135	6.5929
408	23.7632	17.1656	14.5192	11.9012	9.2340	6.6076
409	23.8161	17.2038	14.5516	11.9276	9.2545	6.6223
410	23.8690	17.2420	14.5840	11.9540	9.2750	6.6370
411	23.9219	17.2802	14.6164	11.9804	9.2955	6.6517
412	23.9748	17.3184	14.6488	12.0068	9.3160	6.6664
413	24.0277	17.3566	14.6812	12.0332	9.3365	6.6811
414	24.0806	17.3948	14.7136	12.0596	9.3570	6.6958
415	24.1335	17.4330	14.7460	12.0860	9.3775	6.7105
416	24.1864	17.4712	14.7784	12.1124	9.3980	6.7252
417	24.2393	17.5094	14.8108	12.1388	9.4185	6.7399
418	24.2922	17.5476	14.8432	12.1652	9.4390	6.7546
419	24.3451	17.5858	14.8756	12.1916	9.4595	6.7693
420	24.3980	17.6240	14.9080	12.2180	9.4800	6.7840

普
通
貨
物
運
費
表

整車裝運每
公噸運費率

Freight Table
Car-Load Rate Per Metric Ton

電車製運每公里運費率 Car-load Rate per Electric Ton						
等級 Class 公里 Kilometers	一 I	二 II	三 III	四 IV	五 V	六 VI
1-20	0.9500	0.6860	0.6000	0.4700	0.3700	0.2640
21	0.9975	0.7203	0.6000	0.4993	0.3886	0.2772
22	1.0450	0.7546	0.6000	0.5286	0.4070	0.2904
23	1.0925	0.7889	0.6000	0.5579	0.4254	0.3036
24	1.1400	0.8232	0.6000	0.5872	0.4438	0.3168
25	1.1875	0.8575	0.6000	0.6165	0.4622	0.3300
26	1.2350	0.8918	0.6000	0.6458	0.4806	0.3432
27	1.2825	0.9261	0.6000	0.6751	0.4990	0.3564
28	1.3300	0.9604	0.6000	0.7044	0.5174	0.3696
29	1.3775	0.9947	0.6000	0.7337	0.5358	0.3828
30	1.4250	1.0290	0.6000	0.7630	0.5542	0.3960
31	1.4725	1.0633	0.6000	0.7923	0.5726	0.4092
32	1.5200	1.0976	0.6000	0.8216	0.5910	0.4224
33	1.5675	1.1319	0.6000	0.8509	0.6094	0.4356
34	1.6150	1.1662	0.6000	0.8802	0.6278	0.4488
35	1.6625	1.2005	0.6000	0.9095	0.6462	0.4620
36	1.7100	1.2348	0.6000	0.9388	0.6646	0.4752
37	1.7575	1.2691	0.6000	0.9681	0.6830	0.4884
38	1.8050	1.3034	0.6000	0.9974	0.7014	0.5016
39	1.8525	1.3377	0.6000	1.0267	0.7198	0.5148
40	1.9000	1.3720	0.6000	1.0560	0.7382	0.5280
41	1.9475	1.4063	0.6000	1.0853	0.7566	0.5412
42	1.9950	1.4406	0.6000	1.1146	0.7750	0.5544
43	2.0425	1.4749	0.6000	1.1439	0.7934	0.5676
44	2.0900	1.5092	0.6000	1.1732	0.8118	0.5808
45	2.1375	1.5435	0.6000	1.2025	0.8302	0.5940
46	2.1850	1.5778	0.6000	1.2318	0.8486	0.6072
47	2.2325	1.6121	0.6000	1.2611	0.8670	0.6204
48	2.2800	1.6464	0.6000	1.2904	0.8854	0.6336
49	2.3275	1.6807	0.6000	1.3197	0.9038	0.6468
50	2.3750	1.7150	0.6000	1.3490	0.9222	0.6600
51	2.4225	1.7493	0.6000	1.3783	0.9406	0.6732
52	2.4700	1.7836	0.6000	1.4076	0.9590	0.6864
53	2.5175	1.8179	0.6000	1.4369	0.9774	0.6996
54	2.5650	1.8522	0.6000	1.4662	0.9958	0.7128
55	2.6125	1.8865	0.6000	1.4955	1.0142	0.7260
56	2.6600	1.9208	0.6000	1.5248	1.0326	0.7392
57	2.7075	1.9551	0.6000	1.5541	1.0510	0.7524
58	2.7550	1.9894	0.6000	1.5834	1.0694	0.7656
59	2.8025	2.0237	0.6000	1.6127	1.0878	0.7788
60	2.8500	2.0580	0.6000	1.6420	1.1062	0.7920

整車裝運每公鐵運費率						
Car-load Rate per Metric Ton						
等次 Class 公里 Kilometers	一 I	二 II	三 III	四 IV	五 V	六 VI
61	2.8975	2.0923	1.7690	1.4618	1.1285	0.8052
62	2.9450	2.1266	1.7980	1.4756	1.1470	0.8184
63	2.9925	2.1609	1.8270	1.4994	1.1655	0.8316
64	3.0400	2.1952	1.8560	1.5232	1.1840	0.8448
65	3.0875	2.2295	1.8850	1.5470	1.2025	0.8580
66	3.1350	2.2638	1.9140	1.5708	1.2210	0.8712
67	3.1825	2.2981	1.9430	1.5946	1.2395	0.8844
68	3.2300	2.3324	1.9720	1.6184	1.2580	0.8976
69	3.2775	2.3667	2.0010	1.6422	1.2765	0.9108
70	3.3250	2.4010	2.0300	1.6660	1.2950	0.9240
71	3.3725	2.4353	2.0590	1.6898	1.3135	0.9372
72	3.4200	2.4696	2.0880	1.7136	1.3320	0.9504
73	3.4675	2.5039	2.1170	1.7374	1.3505	0.9636
74	3.5150	2.5382	2.1460	1.7612	1.3690	0.9768
75	3.5625	2.5725	2.1750	1.7850	1.3875	0.9900
76	3.6100	2.6068	2.2040	1.8088	1.4060	1.0032
77	3.6575	2.6411	2.2330	1.8326	1.4245	1.0164
78	3.7050	2.6754	2.2620	1.8564	1.4430	1.0296
79	3.7525	2.7097	2.2910	1.8802	1.4615	1.0428
80	3.8000	2.7440	2.3200	1.9040	1.4800	1.0560
81	3.8475	2.7783	2.3490	1.9278	1.4985	1.0692
82	3.8950	2.8126	2.3780	1.9516	1.5170	1.0824
83	3.9425	2.8469	2.4070	1.9754	1.5355	1.0956
84	3.9900	2.8812	2.4360	1.9992	1.5540	1.1088
85	4.0375	2.9155	2.4650	2.0230	1.5725	1.1220
86	4.0850	2.9498	2.4940	2.0468	1.5910	1.1352
87	4.1325	2.9841	2.5230	2.0706	1.6095	1.1484
88	4.1800	3.0184	2.5520	2.0944	1.6280	1.1616
89	4.2275	3.0527	2.5810	2.1182	1.6465	1.1748
90	4.2750	3.0870	2.6100	2.1420	1.6650	1.1880
91	4.3225	3.1213	2.6390	2.1658	1.6835	1.2012
92	4.3700	3.1556	2.6680	2.1896	1.7020	1.2144
93	4.4175	3.1899	2.6970	2.2134	1.7205	1.2276
94	4.4650	3.2242	2.7260	2.2372	1.7390	1.2408
95	4.5125	3.2585	2.7550	2.2610	1.7575	1.2540
96	4.5600	3.2928	2.7840	2.2848	1.7760	1.2672
97	4.6075	3.3271	2.8130	2.3086	1.7945	1.2804
98	4.6550	3.3614	2.8420	2.3324	1.8130	1.2936
99	4.7025	3.3957	2.8710	2.3562	1.8315	1.3068
100	4.7500	3.4300	2.9000	2.3800	1.8500	1.3200

整車裝運每公噸運費率
Car-load Rate per Metric Ton

等級 Class 公里 Kilometers	一 I	二 II	三 III	四 IV	五 V	六 VI
101	4.7957	3.4630	2.9279	2.4029	1.8678	1.3327
102	4.8414	3.4960	2.9558	2.4258	1.8856	1.3454
103	4.8871	3.5290	2.9837	2.4487	1.9034	1.3581
104	4.9328	3.5620	3.0116	2.4716	1.9212	1.3708
105	4.9785	3.5950	3.0395	2.4945	1.9390	1.3835
106	5.0242	3.6280	3.0674	2.5174	1.9568	1.3962
107	5.0699	3.6610	3.0953	2.5403	1.9746	1.4089
108	5.1156	3.6940	3.1232	2.5632	1.9924	1.4216
109	5.1613	3.7270	3.1511	2.5861	2.0102	1.4343
110	5.2070	3.7600	3.1790	2.6090	2.0280	1.4470
111	5.2527	3.7930	3.2069	2.6319	2.0458	1.4597
112	5.2984	3.8260	3.2348	2.6548	2.0636	1.4724
113	5.3441	3.8590	3.2627	2.6777	2.0814	1.4851
114	5.3898	3.8920	3.2906	2.7006	2.0992	1.4978
115	5.4355	3.9250	3.3185	2.7235	2.1170	1.5105
116	5.4812	3.9580	3.3464	2.7464	2.1348	1.5232
117	5.5269	3.9910	3.3743	2.7693	2.1526	1.5359
118	5.5726	4.0240	3.4022	2.7922	2.1704	1.5486
119	5.6183	4.0570	3.4301	2.8151	2.1882	1.5613
120	5.6640	4.0900	3.4580	2.8380	2.2060	1.5740
121	5.7097	4.1230	3.4859	2.8609	2.2238	1.5867
122	5.7554	4.1560	3.5138	2.8838	2.2416	1.5994
123	5.8011	4.1890	3.5417	2.9067	2.2594	1.6121
124	5.8468	4.2220	3.5696	2.9296	2.2772	1.6248
125	5.8925	4.2550	3.5975	2.9525	2.2950	1.6375
126	5.9382	4.2880	3.6254	2.9754	2.3128	1.6502
127	5.9839	4.3210	3.6533	2.9983	2.3306	1.6629
128	6.0296	4.3540	3.6812	3.0212	2.3484	1.6756
129	6.0753	4.3870	3.7091	3.0441	2.3662	1.6883
130	6.1210	4.4200	3.7370	3.0670	2.3840	1.7010
131	6.1667	4.4530	3.7649	3.0899	2.4018	1.7137
132	6.2124	4.4860	3.7928	3.1128	2.4196	1.7264
133	6.2581	4.5190	3.8207	3.1357	2.4374	1.7391
134	6.3038	4.5520	3.8486	3.1586	2.4552	1.7518
135	6.3495	4.5850	3.8765	3.1815	2.4730	1.7645
136	6.3952	4.6180	3.9044	3.2044	2.4908	1.7772
137	6.4409	4.6510	3.9323	3.2273	2.5086	1.7899
138	6.4866	4.6840	3.9602	3.2502	2.5264	1.8026
139	6.5323	4.7170	3.9881	3.2731	2.5442	1.8153
140	6.5780	4.7500	4.0160	3.2960	2.5620	1.8280

整車裝運每公鐵運費率
Car-load Rate per Metric Ton

等級 Class 公里 Kilometers	一 I	二 II	三 III	四 IV	五 V	六 VI
141	6.6237	4.7830	4.0439	3.3189	2.5798	1.8407
142	6.6694	4.8160	4.0718	3.3418	2.5976	1.8534
143	6.7151	4.8490	4.0997	3.3647	2.6154	1.8661
144	6.7608	4.8820	4.1276	3.3876	2.6332	1.8788
145	4.8066	4.9150	4.1555	3.4105	2.6510	1.8915
146	6.8522	4.9480	4.1834	3.4334	2.6688	1.9042
147	6.8979	4.9810	4.2113	3.4563	2.6866	1.9169
148	6.9436	5.0140	4.2392	3.4792	2.7044	1.9296
149	6.9893	5.0470	4.2671	3.5021	2.7222	1.9423
150	7.0350	5.0800	4.2950	3.5250	2.7400	1.9550
151	7.0807	5.1130	4.3229	3.5479	2.7578	1.9677
152	7.1264	5.1460	4.3508	3.5708	2.7756	1.9804
153	7.1721	5.1790	4.3787	3.5937	2.7934	1.9931
154	7.2178	5.2120	4.4066	3.6166	2.8112	2.0058
155	7.2635	5.2450	4.4345	3.6395	2.8290	2.0185
156	7.3092	5.2780	4.4624	3.6624	2.8468	2.0312
157	7.3549	5.3110	4.4903	3.6853	2.8646	2.0439
158	7.4006	5.3440	4.5182	3.7082	2.8824	2.0566
159	7.4463	5.3770	4.5461	3.7311	2.9002	2.0693
160	7.4920	5.4100	4.5740	3.7540	2.9180	2.0820
161	7.5377	5.4430	4.6019	3.7769	2.9358	2.0947
162	7.5834	5.4760	4.6298	3.7998	2.9536	2.1074
163	7.6291	5.5090	4.6577	3.8227	2.9714	2.1201
164	7.6748	5.5420	4.6856	3.8456	2.9892	2.1328
165	7.7205	5.5750	4.7135	3.8685	3.0070	2.1455
166	7.7662	5.6080	4.7414	3.8914	3.0248	2.1582
167	7.8119	5.6410	4.7693	3.9143	3.0426	2.1709
168	7.8576	5.6740	4.7972	3.9372	3.0604	2.1836
169	7.9033	5.7070	4.8251	3.9601	3.0782	2.1963
170	7.9490	5.7400	4.8530	3.9830	3.0960	2.2090
171	7.9947	5.7730	4.8809	4.0059	3.1138	2.2217
172	8.0404	5.8060	4.9088	4.0288	3.1316	2.2344
173	8.0861	5.8390	4.9367	4.0517	3.1494	2.2471
174	8.1318	5.8720	4.9646	4.0746	3.1672	2.2598
175	8.1775	5.9050	4.9925	4.0975	3.1850	2.2725
176	8.2232	5.9380	5.0204	4.1204	3.2028	2.2852
177	8.2689	5.9710	5.0483	4.1433	3.2206	2.2979
178	8.3146	6.0040	5.0762	4.1662	3.2384	2.3106
179	8.3603	6.0370	5.1041	4.1891	3.2562	2.3233
180	8.4060	6.0700	5.1320	4.2120	3.2740	2.3360

整車裝運每公鐵運費率						
Car-load Rate per Metric Ton						
等級 Class 公里 Kilometers	一 I	二 II	三 III	四 IV	五 V	六 VI
181	8.4517	6.1030	5.1599	4.2349	3.2918	2.3487
182	8.4974	6.1360	5.1878	4.2578	3.3096	2.3614
183	8.5431	6.1690	5.2157	4.2807	3.3274	2.3741
184	8.5888	6.2020	5.2436	4.3036	3.3452	2.3868
185	8.6345	6.2350	5.2715	4.3265	3.3630	2.3995
186	8.6802	6.2680	5.2994	4.3494	3.3808	2.4122
187	8.7259	6.3010	5.3273	4.3723	3.3986	2.4249
188	8.7716	6.3340	5.3552	4.3952	2.4164	2.4376
189	8.8173	6.3670	5.3831	4.4181	3.4342	2.4503
190	8.8630	6.4000	5.4110	4.4410	3.4520	2.4630
191	8.9087	6.4330	5.4389	4.4639	3.4698	2.4757
192	8.9544	6.4660	5.4668	4.4868	3.4876	2.4884
193	9.0001	6.4990	5.4947	4.5097	3.5054	2.5011
194	9.0458	6.5320	5.5226	4.5326	3.5232	2.5138
195	9.0915	6.5650	5.5505	4.5555	3.5410	2.5265
196	9.1372	6.5980	5.5784	4.5784	3.5588	2.5392
197	9.1829	6.6310	5.6063	4.6013	3.5766	2.5519
198	9.2286	6.6640	5.6342	4.6242	3.5944	2.5646
199	9.2743	6.6970	5.6621	4.6471	3.6122	2.5773
200	9.3200	6.7300	5.6900	4.6700	3.6300	2.5900
201	9.3639	6.7617	5.7168	4.6920	3.6471	2.6022
202	9.4078	6.7934	5.7436	4.7140	3.6642	2.6144
203	9.4517	6.8251	5.7704	4.7360	3.6813	2.6266
204	9.4956	6.8568	5.7972	4.7580	3.6984	2.6388
205	9.5395	6.8885	5.8240	4.7800	3.7155	2.6510
206	9.5834	6.9202	5.8508	4.8020	3.7326	2.6632
207	9.6273	6.9519	5.8776	4.8240	3.7497	2.6754
208	9.6712	6.9836	5.9044	4.8460	3.7668	2.6876
209	9.7151	7.0153	5.9312	4.8680	3.7839	2.6998
210	9.7590	7.0470	5.9580	4.8900	3.8010	2.7120
211	9.8029	7.0787	5.9848	4.9120	3.8181	2.7242
212	9.8468	7.1104	6.0116	4.9340	3.8352	2.7364
213	9.8907	7.1421	6.0384	4.9560	3.8523	2.7486
214	9.9346	7.1738	6.0652	4.9780	3.8694	2.7608
215	9.9785	7.2055	6.0920	5.0000	3.8865	2.7730
216	10.0224	7.2372	6.1188	5.0220	3.9036	2.7852
217	10.0663	7.2689	6.1456	5.0440	3.9207	2.7974
218	10.1102	7.3006	6.1724	5.0660	3.9378	2.8096
219	10.1541	7.3323	6.1992	5.0880	3.9549	2.8218
220	10.1980	7.3640	6.2260	5.1100	3.9720	2.8340

整車裝運每公鐵運費率						
Car-load Rate per Metric Ton						
等級 Class 公里 Kilometers	一 I	二 II	三 III	四 IV	五 V	六 VI
221	10.2419	7.3957	6.2528	5.1320	3.9891	2.8462
222	10.2858	7.4274	6.2796	5.1540	4.0062	2.8584
223	10.3297	7.4591	6.3064	5.1760	4.0233	2.8706
224	10.3736	7.4908	6.3332	5.1980	4.0404	2.8828
225	10.4175	7.5225	6.3600	5.2200	4.0575	2.8950
226	10.4614	7.5542	6.3868	5.2420	4.0746	2.9072
227	10.5053	7.5859	6.4136	5.2640	4.0917	2.9194
228	10.5492	7.6176	6.4404	5.2860	4.1088	2.9316
229	10.5931	7.6493	6.4672	5.3080	4.1259	2.9438
230	10.6370	7.6810	6.4940	5.3300	4.1430	2.9560
231	10.6809	7.7127	6.5208	5.3520	4.1601	2.9682
232	10.7248	7.7444	6.5476	5.3740	4.1772	2.9804
233	10.7687	7.7761	6.5744	5.3960	4.1943	2.9926
234	10.8126	7.8078	6.6012	5.4180	4.2114	3.0048
235	10.8565	7.8395	6.6280	5.4400	4.2285	3.0170
236	10.9004	7.8712	6.6548	5.4620	4.2456	3.0292
237	10.9443	7.9029	6.6816	5.4840	4.2627	3.0414
238	10.9882	7.9346	6.7084	5.5060	4.2798	3.0536
239	11.0321	7.9663	6.7352	5.5280	4.2969	3.0658
240	11.0760	7.9980	6.7620	5.5500	4.3140	3.0780
241	11.1199	8.0297	6.7888	5.5720	4.3311	3.0902
242	11.1638	8.0614	6.8156	5.5940	4.3482	3.1024
243	11.2077	8.0931	6.8424	5.6160	4.3653	3.1146
244	11.2516	8.1248	6.8692	5.6380	4.3824	3.1268
245	11.2955	8.1565	6.8960	5.6600	4.3995	3.1390
246	11.3394	8.1882	6.9228	5.6820	4.4166	3.1512
247	11.3833	8.2199	6.9496	5.7040	4.4337	3.1634
248	11.4272	8.2516	6.9764	5.7260	4.4508	3.1756
249	11.4711	8.2833	7.0032	5.7480	4.4679	3.1878
250	11.5150	8.3150	7.0300	5.7700	4.4850	3.2000
251	11.5589	8.3467	7.0568	5.7920	4.5021	3.2122
252	11.6028	8.3784	7.0836	5.8140	4.5192	3.2244
253	11.6467	8.4101	7.1104	5.8360	4.5363	3.2366
254	11.6906	8.4418	7.1372	5.8580	4.5534	3.2488
255	11.7345	8.4735	7.1640	5.8800	4.5705	3.2610
256	11.7784	8.5052	7.1908	5.9020	4.5876	3.2732
257	11.8223	8.5369	7.2176	5.9240	4.6047	3.2854
258	11.8662	8.5686	7.2444	5.9460	4.6218	3.2976
259	11.9101	8.6003	7.2712	5.9680	4.6389	3.3098
260	11.9540	8.6320	7.2980	5.9900	4.6560	3.3220

整車裝運每公噸運費率
Car-load Rate per Metric Ton

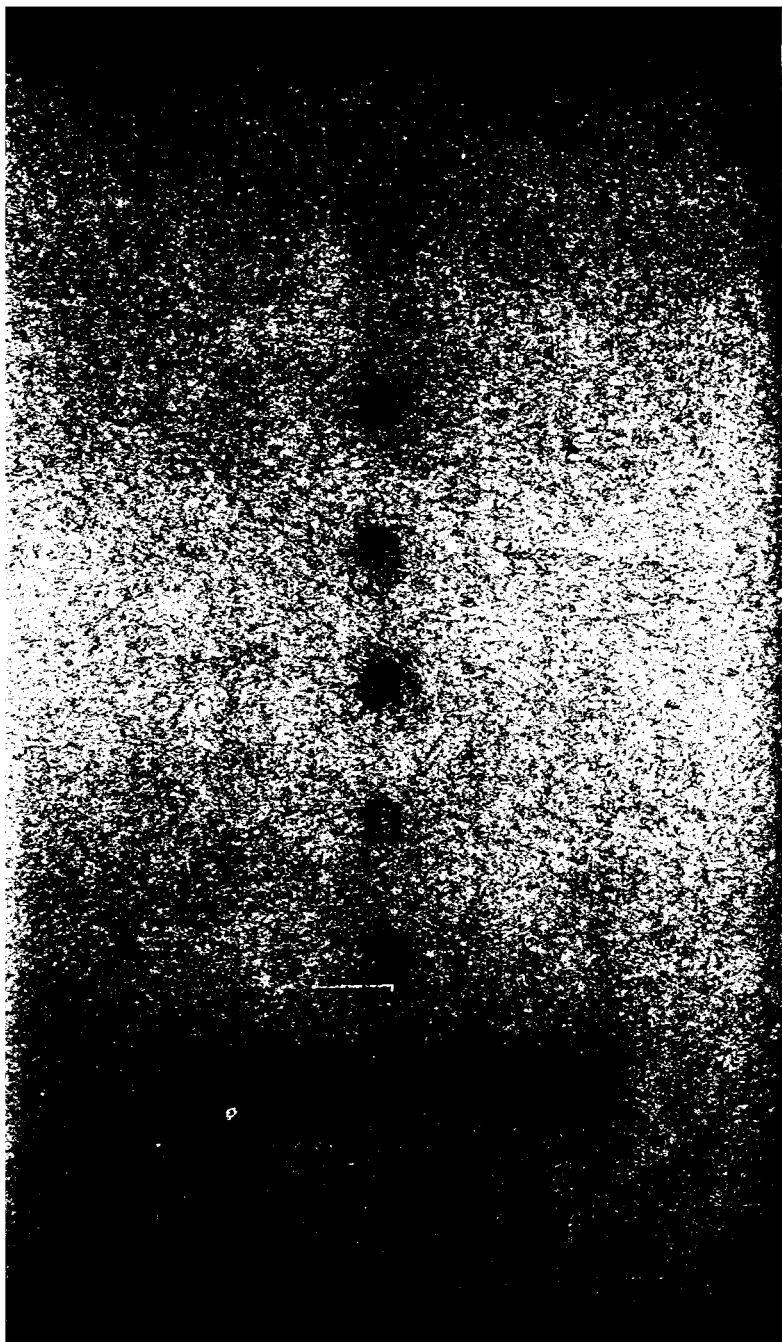
等級 Class 公里 Kilometers	一 I	二 II	三 III	四 IV	五 V	六 VI
261	11.9979	8.6637	7.3248	6.0120	4.6731	3.3342
262	12.0418	8.6354	7.3516	6.0310	4.6902	3.3464
263	12.0857	8.7271	7.3784	6.0560	4.7073	3.3586
264	12.1296	8.7588	7.4052	6.0780	4.7244	3.3708
265	12.1735	8.7905	7.4320	6.1000	4.7415	3.3830
266	12.2174	8.8222	7.4588	6.1220	4.7586	3.3952
267	12.2613	8.8539	7.4856	6.1440	4.7757	3.4074
268	12.3052	8.8856	7.5124	6.1660	4.7928	3.4196
269	12.3491	8.9173	7.5392	6.1880	4.8099	3.4318
270	12.3931	8.9490	7.5660	6.2100	4.8270	3.4440
271	12.4369	8.9807	7.5928	6.2320	4.8441	3.4562
272	12.4808	9.0124	7.6196	6.2540	4.8612	3.4684
273	12.5247	9.0441	7.6464	6.2760	4.8783	3.4806
274	12.5686	9.0758	7.6732	6.2980	4.8954	3.4928
275	12.6125	9.1075	7.7000	6.3200	4.9125	3.5050
276	12.6564	9.1392	7.7268	6.3420	4.9296	3.5172
277	12.7003	9.1709	7.7536	6.3640	4.9467	3.5294
278	12.7442	9.2026	7.7804	6.3860	4.9638	3.5416
279	12.7881	9.2343	7.8072	6.4080	4.9809	3.5538
280	12.8320	9.2660	7.8340	6.4300	4.9980	3.5660
281	12.8759	9.2977	7.8608	6.4520	5.0151	3.5782
282	12.9198	9.3294	7.8876	6.4740	5.0322	3.5904
283	12.9637	9.3611	7.9144	6.4960	5.0493	3.6026
284	13.0076	9.3928	7.9412	6.5180	5.0664	3.6148
285	13.0515	9.4245	7.9680	6.5400	5.0835	3.6270
286	13.0954	9.4562	7.9948	6.5620	5.1006	3.6392
287	13.1393	9.4879	8.0216	6.5840	5.1177	3.6514
288	13.1832	9.5196	8.0484	6.6060	5.1348	3.6636
289	13.2271	9.5513	8.0752	6.6280	5.1519	3.6758
290	13.2710	9.5830	8.1020	6.6500	5.1690	3.6880
291	13.3149	9.6147	8.1288	6.6720	5.1861	3.7002
292	13.3588	9.6464	8.1556	6.6940	5.2032	3.7124
293	13.4027	9.6781	8.1824	6.7160	5.2203	3.7246
294	13.4466	9.7098	8.2092	6.7380	5.2374	3.7368
295	13.4905	9.7415	8.2360	6.7600	5.2545	3.7490
296	13.5344	9.7732	8.2628	6.7820	5.2716	3.7612
297	13.5783	9.8049	8.2896	6.8040	5.2887	3.7734
298	13.6222	9.8366	8.3164	6.8260	5.3058	3.7856
299	13.6661	9.8683	8.3432	6.8480	5.3229	3.7978
300	13.7100	9.9000	8.3700	6.8700	5.3400	3.8100

整車裝運每公鐵運費率						
Car-load Rate per Metric Ton						
等 Class 公里 Kilometers	一 I	二 II	三 III	四 IV	五 V	六 VI
301	13.7525	9.9307	8.3960	6.8912	5.3565	3.8218
302	13.7950	9.9614	8.4220	6.9124	5.3730	3.8336
303	13.8375	9.9921	8.4480	6.9336	5.3895	3.8454
304	13.8800	10.0228	8.4740	6.9548	5.4060	3.8572
305	13.9225	10.0535	8.5000	6.9760	5.4225	3.8690
306	13.9650	10.0842	8.5260	6.9972	5.4390	3.8808
307	14.0075	10.1149	8.5520	7.0184	5.4555	3.8926
308	14.0500	10.1456	8.5780	7.0396	5.4720	3.9044
309	14.0925	10.1763	8.6040	7.0608	5.4885	3.9162
310	14.1350	10.2070	8.6300	7.0820	5.5050	3.9280
311	14.1775	10.2377	8.6560	7.1032	5.5215	3.9398
312	14.2200	10.2684	8.6820	7.1244	5.5380	3.9516
313	14.2625	10.2991	8.7080	7.1456	5.5545	3.9634
314	14.3050	10.3298	8.7340	7.1668	5.5710	3.9752
315	14.3475	10.3605	8.7600	7.1880	5.5875	3.9870
316	14.3900	10.3912	8.7860	7.2092	5.6040	3.9988
317	14.4325	10.4219	8.8120	7.2304	5.6205	4.0106
318	14.4750	10.4526	8.8380	7.2516	5.6370	4.0224
319	14.5175	10.4833	8.8640	7.2728	5.6535	4.0342
320	14.5600	10.5140	8.8900	7.2940	5.6700	4.0460
321	14.6025	10.5447	8.9160	7.3152	5.6865	4.0578
322	14.6450	10.5754	8.9420	7.3364	5.7030	4.0696
323	14.6875	10.6061	8.9680	7.3576	5.7195	4.0814
324	14.7300	10.6368	8.9940	7.3788	5.7360	4.0932
325	14.7725	10.6675	9.0200	7.4000	5.7525	4.1050
326	14.8150	10.6982	9.0460	7.4212	5.7690	4.1168
327	14.8575	10.7289	9.0720	7.4424	5.7855	4.1286
328	14.9000	10.7596	9.0980	7.4636	5.8020	4.1404
329	14.9425	10.7903	9.1240	7.4848	5.8185	4.1522
330	14.9850	10.8210	9.1500	7.5060	5.8350	4.1640
331	15.0275	10.8517	9.1760	7.5272	5.8515	4.1758
332	15.0700	10.8824	9.2020	7.5484	5.8680	4.1876
333	15.1125	10.9131	9.2280	7.5696	5.8845	4.1994
334	15.1550	10.9438	9.2540	7.5908	5.9010	4.2112
335	15.1975	10.9745	9.2800	7.6120	5.9175	4.2230
336	15.2400	11.0052	9.3060	7.6332	5.9340	4.2348
337	15.2825	11.0359	9.3320	7.6544	5.9505	4.2466
338	15.3250	11.0666	9.3580	7.6756	5.9670	4.2584
339	15.3675	11.0973	9.3840	7.6968	5.9835	4.2702
340	15.4100	11.1280	9.4100	7.7180	6.0000	4.2820

整車裝運每公鐵運費率
Car-load Rate per Metric Ton

等級 Class 公里 Kilometers	一 I	二 II	三 III	四 IV	五 V	六 VI
341	15.4525	11.1587	9.4860	7.7392	6.0164	4.2938
342	15.4950	11.1894	9.4620	7.7604	6.0330	4.3056
343	15.5375	11.2201	9.4880	7.7816	6.0496	4.3174
344	15.5800	11.2508	9.5140	7.8028	6.0660	4.3292
345	15.6225	11.2815	9.5400	7.8240	6.0825	4.3410
346	15.6650	11.3122	9.5660	7.8452	6.0990	4.3528
347	15.7075	11.3429	9.5920	7.8664	6.1155	4.3646
348	15.7500	11.3736	9.6180	7.8876	6.1320	4.3764
349	15.7925	11.4043	9.6440	7.9088	6.1485	4.3882
350	15.8350	11.4350	9.6700	7.9300	6.1650	4.4000
351	15.8775	11.4657	9.6960	7.9512	6.1815	4.4118
352	15.9200	11.4964	9.7220	7.9724	6.1980	4.4236
353	15.9625	11.5271	9.7480	7.9936	6.2145	4.4354
354	16.0050	11.5578	9.7740	8.0148	6.2310	4.4472
355	16.0475	11.5885	9.8000	8.0360	6.2475	4.4590
356	16.0900	11.6192	9.8260	8.0572	6.2640	4.4708
357	16.1325	11.6499	9.8520	8.0784	6.2805	4.4826
358	16.1750	11.6806	9.8780	8.0996	6.2970	4.4944
359	16.2175	11.7113	9.9040	8.1208	6.3135	4.5062
360	16.2600	11.7420	9.9300	8.1420	6.3300	4.5180
361	16.3025	11.7727	9.9560	8.1632	6.3465	4.5298
362	16.3450	11.8034	9.9820	8.1844	6.3630	4.5416
363	16.3875	11.8341	10.0080	8.2056	6.3795	4.5534
364	16.4300	11.8648	10.0340	8.2268	6.3960	4.5652
365	16.4725	11.8955	10.0600	8.2480	6.4125	4.5770
366	16.5150	11.9262	10.0860	8.2692	6.4290	4.5888
367	16.5575	11.9569	10.1120	8.2904	6.4455	4.6006
368	16.6000	11.9876	10.1380	8.3116	6.4620	4.6124
369	16.6425	12.0183	10.1640	8.3328	6.4785	4.6242
370	16.6850	12.0490	10.1900	8.3540	6.4950	4.6360
371	16.7275	12.0797	10.2160	8.3752	6.5115	4.6478
372	16.7700	12.1104	10.2420	8.3964	6.5280	4.6596
373	16.8125	12.1411	10.2680	8.4176	6.5445	4.6714
374	16.8550	12.1718	10.2940	8.4388	6.5610	4.6832
375	16.8975	12.2025	10.3200	8.4600	6.5775	4.6950
376	16.9400	12.2332	10.3460	8.4812	6.5940	4.7068
377	16.9825	12.2639	10.3720	8.5024	6.6105	4.7186
378	17.0250	12.2946	10.3980	8.5236	6.6270	4.7304
379	17.0675	12.3253	10.4240	8.5448	6.6435	4.7422
380	17.1100	12.3560	10.4500	8.5660	6.6600	4.7540

整車裝運每公鐵運費率 Car-load Rate per Metric Ton						
等級 Class 公里 Kilometers	I	II	III	IV	V	VI
381	17.1525	12.3867	10.4760	8.5872	6.6765	4.7658
382	17.1950	12.4174	10.5020	8.6084	6.6930	4.7776
383	17.2375	12.4481	10.5280	8.6296	6.7095	4.7894
384	17.2800	12.4788	10.5540	8.6508	6.7260	4.8012
385	17.3225	12.5095	10.5800	8.6720	6.7425	4.8130
386	17.3650	12.5402	10.6060	8.6932	6.7590	4.8248
387	17.4075	12.5.09	10.6320	8.7144	6.7755	4.8366
388	17.4500	12.6016	10.6580	8.7356	6.7920	4.8484
389	17.4925	12.6323	10.6840	8.7568	6.8085	4.8602
390	17.5350	12.6630	10.7100	8.7780	6.8250	4.8720
391	17.5775	12.6937	10.7360	8.7992	6.8415	4.8838
392	17.6200	12.7244	10.7620	8.8204	6.8580	4.8956
393	17.6625	12.7551	10.7880	8.8416	6.8745	4.9074
394	17.7050	12.7858	10.8140	8.8628	6.8910	4.9192
395	17.7475	12.8165	10.8400	8.8840	6.9075	4.9310
396	17.7900	12.8472	10.8660	8.9052	6.9240	4.9428
397	17.8325	12.8779	10.8920	8.9264	6.9405	4.9546
398	17.8750	12.9086	10.9180	8.9476	6.9570	4.9664
399	17.9175	12.9393	10.9440	8.9688	6.9735	4.9782
400	17.9600	12.9700	10.9700	8.9900	6.9900	4.9900
401	18.0007	12.9994	10.9949	9.0103	7.0058	5.0013
402	18.0414	13.0288	11.0198	9.0306	7.0216	5.0126
403	18.0821	13.0582	11.0447	9.0509	7.0374	5.0239
404	18.1228	13.0876	11.0696	9.0712	7.0532	5.0352
405	18.1635	13.1170	11.0945	9.0915	7.0690	5.0465
406	18.2042	13.1464	11.1194	9.1118	7.0848	5.0578
407	18.2449	13.1758	11.1443	9.1321	7.1006	5.0691
408	18.2856	13.2052	11.1692	9.1524	7.1164	5.0804
409	18.3263	13.2346	11.1941	9.1727	7.1322	5.0917
410	18.3670	13.2640	11.2190	9.1930	7.1480	5.1030
411	18.4077	13.2934	11.2439	9.2133	7.1638	5.1143
412	18.4484	13.3228	11.2688	9.2336	7.1796	5.1256
413	18.4891	13.3522	11.2937	9.2539	7.1954	5.1369
414	18.5298	13.3816	11.3186	9.2742	7.2112	5.1482
415	18.5705	13.4110	11.3435	9.2945	7.2270	5.1595
416	18.6112	13.4404	11.3684	9.3148	7.2428	5.1708
417	18.6519	13.4698	11.3933	9.3351	7.2586	5.1821
418	18.6926	13.4992	11.4182	9.3554	7.2744	5.1934
419	18.7333	13.5286	11.4431	9.3757	7.2902	5.2047
420	18.7740	13.5580	11.4680	9.3960	7.3060	5.2160



由咸寧
From H. N.

至各站 To Station	頭等 I	二等 II	三等 III	四等 IV	至各站 To Station	頭等 I	二等 II	三等 III	四等 IV
徐家湖 H. P.	0.00	2.20	1.10	0.70	城陵磯 C. I.	4.05	3.30	1.05	1.00
通湘門 W. Y.	0.00	2.00	1.00	0.60	岳州 Y. C.	5.25	3.50	1.75	1.05
鮑魚灣 N. O.	0.00	2.00	1.00	0.60	蒲塘 M. F.	5.75	3.45	1.05	1.15
紙坊 G. F.	2.25	1.50	0.75	0.45	榮家灣 Y. N.	6.25	4.15	2.10	1.25
土地堂 L. G.	1.65	1.10	0.55	0.35	黃沙街 H. A.	6.80	4.55	2.30	1.40
山坡 S. P.	1.10	0.75	0.40	0.25	桃林寺 T. L.	7.15	4.75	2.40	1.45
板勝橋 B. S.	0.85	0.55	0.30	0.20	涓羅 J. L.	7.70	5.15	2.60	1.55
官埠橋 G. B.	0.20	0.15	0.10	0.05	自水 Z. S.	8.35	5.55	2.80	1.70
打泗橋 D. S.	0.50	0.35	0.20	0.10	沙河 S. H.	9.05	6.05	3.05	1.85
中伙舖 C. H.	1.20	0.80	0.40	0.25	橋頭驛 Q. T.	9.55	6.35	3.20	1.95
蘆折 L. Z.	1.70	1.15	0.60	0.35	寶凝 B. N.	9.85	6.55	3.30	2.00
茶善嶺 C. S.	2.15	1.45	0.75	0.45	袁沙北 Y. S.	10.40	6.95	3.50	2.10
趙李橋 Z. L.	2.55	1.70	0.85	0.55	新河 X. H.	10.50	7.00	3.50	2.10
羊樓司 Y. L.	3.00	2.00	1.00	0.60	長沙東 C. S.	10.60	7.00	3.50	2.10
五里牌 W. L.	3.55	2.35	1.20	0.75	大港舖 D. P.	11.10	7.40	3.70	2.25
磨口舖 M. K.	4.00	2.65	1.35	0.80	易家灣 Y. J.	11.65	7.75	3.90	2.35
雲溪 Y. X.	4.40	2.95	1.50	0.90	株洲 Z. Z.	12.40	8.25	4.15	2.50

由 麻 落
From M. T.

至各站 To Station	頭等 I	二等 II	三等 III	四等 IV	至各站 To Station	頭等 I	二等 II	三等 III	四等 IV
徐家棚 H. P.	9.00	6.00	3.00	1.80	雲 溪 Y. I.	1.35	0.90	0.45	0.30
通湘門 W. Y.	8.70	5.80	2.90	1.75	城陵磯 C. I.	0.90	0.60	0.30	0.20
鮑魚灣 N. O.	8.70	5.80	2.90	1.75	岳 州 Y. C.	0.55	0.35	0.20	0.15
紙 坊 C. F.	7.95	5.30	2.65	1.60	榮家灣 Y. N.	0.50	0.35	0.20	0.10
土地堂 T. G.	7.35	4.90	2.45	1.50	黃沙街 H. A.	1.05	0.70	0.35	0.25
山 坡 S. P.	6.85	4.55	2.30	1.40	桃林寺 T. L.	1.40	0.95	0.50	0.30
賀勝橋 H. S.	6.60	4.40	2.20	1.35	汨 羅 M. L.	1.95	1.30	0.65	0.40
官埠橋 K. O.	5.95	3.95	2.00	1.20	白 水 P. S.	2.60	1.75	0.90	0.55
咸 甯 H. N.	5.75	3.85	1.95	1.15	沙 河 S. O.	3.30	2.20	1.10	0.70
汀泗橋 T. Ch.	5.25	3.50	1.75	1.05	橋頭驛 C. Y.	3.85	2.55	1.30	0.80
中伙鋪 C. P.	4.65	3.10	1.55	0.95	靈 凝 H. G.	4.15	2.75	1.40	0.85
蒲 圻 P. G.	4.05	2.70	1.35	0.85	長沙北 Ch. N.	4.65	3.10	1.55	0.95
茶菴嶺 C. L.	3.60	2.40	1.20	0.75	新 河 H. H.	4.75	3.15	1.60	0.95
趙李橋 C. O.	3.25	2.15	1.10	0.65	長沙東 Ch. E.	4.80	3.20	1.60	1.00
羊樓司 Y. S.	2.80	1.85	0.95	0.60	大沔鋪 T. P.	5.40	3.60	1.80	1.10
五里牌 W. I.	2.25	1.50	0.75	0.45	易家灣 I. W.	5.90	3.95	2.00	1.20
路口鋪 L. K.	1.80	1.20	0.60	0.40	株 洲 C. C.	6.65	4.45	2.25	1.35

各
站
距
離
公
里
表

**Distance between Stations in
Kilometers**

由徐家棚至 From H. P. to				由通湘門至 From W. Y. to			
站名 Station	公里 Kilometers	站名 Station	公里 Kilometers	站名 Station	公里 Kilometers	站名 Station	公里 Kilometers
通湘門 W. Y.	7.04	城隍磯 C. I.	216.66	徐家棚 H. P.	7.94	城隍磯 C. I.	208.74
余家灣 Y. W.	10.59	岳州 Y. U.	225.26	余家灣 Y. W.	2.56	岳州 Y. U.	217.62
鮎魚磯 N. O.	13.89	蔣塘 M. T.	238.80	鮎魚磯 N. O.	5.45	蔣塘 M. T.	220.86
紙坊 C. F.	27.99	榮家灣 Y. N.	251.61	紙坊 C. F.	20.16	榮家灣 Y. N.	243.87
土地堂 T. G.	44.15	黃沙街 H. A.	266.72	土地堂 T. G.	36.21	黃沙街 H. A.	258.84
山坡 S. P.	57.26	柳林寺 L. L.	275.26	山坡 S. P.	49.34	柳林寺 L. L.	267.32
賀勝橋 H. S.	64.36	汨羅 M. L.	290.51	賀勝橋 H. S.	56.42	汨羅 M. L.	282.57
官埠橋 K. O.	81.39	白水 P. S.	307.69	官埠橋 K. O.	73.46	白水 P. S.	299.75
咸甯 H. N.	86.22	沙河 S. O.	324.59	咸甯 H. N.	78.28	沙河 S. O.	318.65
汀泗橋 T. Ch.	99.14	橋頭驛 C. Y.	340.20	汀泗橋 T. Ch.	91.10	橋頭驛 C. Y.	332.26
中伙鋪 C. P.	116.54	霞凝 H. G.	347.96	中伙鋪 C. P.	108.60	霞凝 H. G.	340.02
蕭家坡 P. G.	130.87	長沙北 Ch. N.	362.73	蕭家坡 P. G.	122.93	長沙北 Ch. N.	354.79
蔡巷嶺 C. L.	143.03	新河 H. H.	364.65	蔡巷嶺 C. L.	135.69	新河 H. H.	359.71
趙李橋 C. O.	153.31	長沙東 Ch. E.	365.00	趙李橋 C. O.	145.37	長沙東 Ch. E.	357.66
羊樓司 Y. S.	165.44	大江鋪 T. P.	382.01	羊樓司 Y. S.	157.50	大江鋪 T. P.	374.97
五里牌 W. P.	179.86	易家灣 Y. W.	395.34	五里牌 W. P.	171.42	易家灣 Y. W.	387.40
磨日鋪 L. K.	191.40	株洲 C. C.	415.98	磨日鋪 L. K.	183.46	株洲 C. C.	407.74
雲漢 Y. H.	202.94			雲漢 Y. H.	195.00		

由桃林寺至 From T. L. to				由汨羅至 From M. L. to			
站名 Station	公里 Kilometers	站名 Station	公里 Kilometers	站名 Station	公里 Kilometers	站名 Station	公里 Kilometers
徐家棚 H. P.	275.26	城陵磯 C. I.	58.58	徐家棚 H. P.	290.51	雲溪 Y. I.	87.57
通湘門 W. Y.	267.32	岳州 Y. C.	50.00	通湘門 W. Y.	282.57	城陵磯 C. I.	73.83
余家灣 Y. W.	264.76	藤塘 M. T.	36.46	余家灣 Y. W.	280.01	岳州 Y. C.	65.25
鮎魚港 N. O.	267.65	榮家灣 Y. N.	23.65	鮎魚港 N. O.	282.90	藤塘 M. T.	51.71
紙坊 C. F.	247.27	黃沙街 H. A.	8.48	紙坊 C. F.	262.52	榮家灣 Y. N.	38.90
土地堂 T. G.	231.11	汨羅 M. L.	15.25	土地堂 T. G.	246.36	黃沙街 H. A.	23.73
山坡 S. P.	217.98	白水 P. S.	32.43	山坡 S. P.	233.23	桃林寺 T. L.	15.25
賀勝橋 H. S.	210.90	沙河 S. O.	51.33	賀勝橋 H. S.	226.15	白水 P. S.	17.18
官埠橋 K. O.	193.87	橋頭驛 C. Y.	64.94	官埠橋 K. O.	209.12	沙河 S. O.	36.08
咸甯 H. N.	189.04	霞凝 H. G.	72.70	咸甯 H. N.	204.29	橋頭驛 C. Y.	49.69
汀泗橋 T. Ch.	176.22	長沙北 Ch. N.	87.47	汀泗橋 T. Ch.	191.47	霞凝 H. G.	57.45
中伙鋪 C. P.	158.72	新河 H. H.	89.39	中伙鋪 C. P.	173.97	長沙北 Ch. N.	72.22
蒲圻 P. C.	144.39	長沙東 Ch. E.	89.74	蒲圻 P. C.	159.64	新河 H. H.	74.14
茶菴嶺 C. L.	132.23	大沔鋪 T. P.	106.75	茶菴嶺 C. L.	147.48	長沙東 Ch. E.	74.49
趙李橋 C. Q.	121.95	易家灣 I. W.	120.08	趙李橋 C. Q.	137.20	大沔鋪 T. P.	91.50
羊樓司 Y. S.	109.82	株洲 C. C.	140.42	羊樓司 Y. S.	125.07	易家灣 I. W.	104.82
五里牌 W. I.	95.90			五里牌 W. I.	111.15	株洲 C. C.	125.17
路口鋪 L. K.	83.86			路口鋪 L. K.	99.11		
雲溪 Y. I.	72.32						

由長沙北至 From Ch. N. to				由新河至 From H. H. to			
站名 Station	公里 Kilometers	站名 Station	公里 Kilometers	站名 Station	公里 Kilometers	站名 Station	公里 Kilometers
徐家棚 H. P.	362.73	雲溪 Y. I.	159.79	徐家棚 H. P.	364.65	雲溪 Y. I.	161.71
通湘門 W. Y.	354.79	城陵磯 C. I.	146.05	通湘門 W. Y.	356.71	城陵磯 C. I.	147.97
余家灣 Y. W.	352.23	岳州 Y. C.	137.47	余家灣 Y. W.	354.15	岳州 Y. C.	139.39
鮎魚漆 N. O.	355.12	蔴塘 M. T.	123.93	鮎魚漆 N. O.	357.04	蔴塘 M. T.	125.85
紙坊 C. F.	334.74	榮家灣 Y. N.	111.12	紙坊 C. F.	336.66	榮家灣 Y. N.	113.04
土地堂 T. G.	318.58	黃沙街 H. A.	95.95	土地堂 T. G.	320.50	黃沙街 H. A.	97.87
山坡 S. P.	305.45	桃林寺 T. L.	87.47	山坡 S. P.	307.37	桃林寺 T. L.	89.39
賀勝橋 H. S.	298.37	汨羅 M. L.	72.22	賀勝橋 H. S.	300.29	汨羅 M. L.	74.14
官埠橋 K. O.	281.34	白水 P. S.	55.04	官埠橋 K. O.	283.26	白水 P. S.	56.96
威甯 H. N.	276.51	沙河 S. O.	36.14	威甯 H. N.	278.43	沙河 S. O.	38.06
汀泗橋 T. Ch.	263.69	橋頭驛 C. Y.	22.53	汀泗橋 T. Ch.	265.61	橋頭驛 C. Y.	24.45
中伙舖 C. P.	246.19	霞凝 H. G.	14.77	中伙舖 C. P.	248.11	霞凝 H. G.	16.69
蒲圻 P. C.	231.86	新河 H. H.	1.92	蒲圻 P. C.	233.78	長沙北 Ch. N.	1.92
茶菴嶺 C. L.	219.70	長沙東 Ch. E.	2.27	茶菴嶺 C. L.	221.62	長沙東 Ch. E.	4.19
趙李橋 C. O.	209.42	大沅舖 T. P.	19.28	趙李橋 C. O.	211.34	大沅舖 T. P.	21.20
羊樓司 Y. S.	197.29	易家灣 I. W.	32.61	羊樓司 Y. S.	199.21	易家灣 I. W.	34.53
五里牌 W. I.	183.37	株洲 C. C.	52.95	五里牌 W. I.	185.29	株洲 C. C.	54.87
路口舖 L. K.	171.33			路口舖 L. K.	173.25		

(三) 延期費表

每四十鐵車	每三十鐵車	每廿五鐵車	每二十鐵車	每十五鐵車	每十鐵車
二十元	十五元	十二元五角	十元	七元五角	五元
每輛每二十四點鐘或不及二十四點鐘均按二十四點鐘核算					
明註					

(四) 調車費表

每四十鐵車	每三十鐵車	每廿五鐵車	每二十鐵車	每十五鐵車	每十鐵車
一元二角九分	一元一角七分	一元一角五分	一元一角六分	一元一角四分	一元一角五分
調車係指無論空重車輛一送一拖之謂					
明註					

(五) 整車牲畜運費表

等驢馬牛	牲畜別		別
	羊	豬	
	二分	一角	十五噸豬 每輛 每公里
二角	八分	一角	十五噸高 邊車 每輛 每公里
二角	八分	一角	二十噸高 邊車 每輛 每公里
三角			二十五噸 有蓋車 每輛 每公里
三角			三十噸有 蓋車 每輛 每公里
三角			三十噸高 邊車 每輛 每公里
三角五分			四十噸高 邊車 每輛 每公里

(一) 國存費表

普通貨物		貨物		件數		輕貨		爆炸		危險物品		牲畜		
每五十公斤	二分	每零公鐵	二分五分	整車	每公鐵	二角	以二立方公尺五或八立方英尺作一公鐵按照普通貨物計算收費	每五十公斤	四分	每零公鐵	五角	駱駝牛馬騾驢及其他大小相若者	每公鐵	四角
摩托車 靈樞 小舟 小艇	五角	摩托車 靈樞 小舟 小艇	五角	摩托車 靈樞 小舟 小艇	五角	摩托車 靈樞 小舟 小艇	摩托車 靈樞 小舟 小艇	摩托車 靈樞 小舟 小艇	摩托車 靈樞 小舟 小艇	摩托車 靈樞 小舟 小艇	摩托車 靈樞 小舟 小艇	狗羊豬小牛及其他大小相若者	每頭	二角
彩輿 大轎 四輪輕車	四角	彩輿 大轎 四輪輕車	四角	彩輿 大轎 四輪輕車	四角	彩輿 大轎 四輪輕車	彩輿 大轎 四輪輕車	彩輿 大轎 四輪輕車	彩輿 大轎 四輪輕車	彩輿 大轎 四輪輕車	彩輿 大轎 四輪輕車	裝籠之活鷄鴨兔及獵獲活禽獸	每頭	五分
二輪輕車 中國大車 轎車	三角	二輪輕車 中國大車 轎車	三角	二輪輕車 中國大車 轎車	三角	二輪輕車 中國大車 轎車	二輪輕車 中國大車 轎車	二輪輕車 中國大車 轎車	二輪輕車 中國大車 轎車	二輪輕車 中國大車 轎車	二輪輕車 中國大車 轎車		按照普通貨物	
籐製涼蓆 空棺 雙輪手推車	二角	籐製涼蓆 空棺 雙輪手推車	二角	籐製涼蓆 空棺 雙輪手推車	二角	籐製涼蓆 空棺 雙輪手推車	籐製涼蓆 空棺 雙輪手推車	籐製涼蓆 空棺 雙輪手推車	籐製涼蓆 空棺 雙輪手推車	籐製涼蓆 空棺 雙輪手推車	籐製涼蓆 空棺 雙輪手推車		每五十公斤核收	
東洋車 單輪手推車 小孩車 雙輪或三輪腳踏車 摩托自行車	一角	東洋車 單輪手推車 小孩車 雙輪或三輪腳踏車 摩托自行車	一角	東洋車 單輪手推車 小孩車 雙輪或三輪腳踏車 摩托自行車	一角	東洋車 單輪手推車 小孩車 雙輪或三輪腳踏車 摩托自行車	東洋車 單輪手推車 小孩車 雙輪或三輪腳踏車 摩托自行車	東洋車 單輪手推車 小孩車 雙輪或三輪腳踏車 摩托自行車	東洋車 單輪手推車 小孩車 雙輪或三輪腳踏車 摩托自行車	東洋車 單輪手推車 小孩車 雙輪或三輪腳踏車 摩托自行車	東洋車 單輪手推車 小孩車 雙輪或三輪腳踏車 摩托自行車			

注意

- (一) 上表所列之國存費係每二十四小時應收之數不及二十四小時者亦作二十四小時算
- (二) 凡奉貨到者站六小時後收貨人向不來領取者本路得代卸下國存之如收貨人在貨卸下後二十四小時內即行領取不收國存費逾時照表核收
- (三) 凡去貨到發站除因本路無車裝運暫時免費國存外如寄貨人欲暫存候貨到齊然後起運或類此事故者二十四小時以內不收國存費逾時照表核收
- (四) 輕浮貨物之國存費至少以一公鐵之四分之一為單位即重量不及此數亦仍照一鐵之四分之一計算收費餘類推
- (五) 收貨人領取貨物後如欲將全部或一部分國存者應先報明日數並得站上管理人員認可方能國存另填給國存收據
- (六) 凡金銀珍寶有價証券及爆炸危險等貨與引易火之品物及牲畜(不任喂養)如欲國存站上或貨棧內應先由管理人員請示車務處核奪
- (七) 本路未建設貨棧之站概不國存貨物收貨人於貨到時須即行領取否則如有損失本路概不負責

(三) 延期費表

每四十鐵車	每三十鐵車	每廿五鐵車	每二十鐵車	每十五鐵車	每十鐵車
元十	元五	元十二	元五	元七	元五
元十	元五	元十二	元五	元七	元五

每輛每二十四點鐘或不及二十四點鐘均按二十四點鐘核算

(四) 調車費表

每四十鐵車	每三十鐵車	每廿五鐵車	每二十鐵車	每十五鐵車	每十鐵車
-------	-------	-------	-------	-------	------

(一) 裝卸費表

類別	重量件數或頭數	裝費		卸費		注
		由站台或貨棧至車上	或由車上至站台或貨棧			
行李	每件	二分	二分	二分	二分	
普通	按公斤計算運費者	一分	一分	一分	一分	
	按零公鐵計算運費者	一角五分	一角五分	一角五分	一角五分	
貨物	按整車計算運費者	一角二五	一角二五	一角二五	一角二五	
	按公斤計算運費者	三分	三分	三分	三分	
爆炸	按零公鐵計算運費者	二角	二角	二角	二角	
危險	按整車計算運費者	一角五分	一角五分	一角五分	一角五分	
物品	按整車計算運費者	二角五分	二角五分	二角五分	二角五分	
	摩托車 靈樞 小舟 小艇	二角	二角	二角	二角	
	彩輿 大輦 四輪輕車	一角五分	一角五分	一角五分	一角五分	
	二輪輕車 中國大車 轎車	一角	一角	一角	一角	
	籐製涼椅 空棺 雙輪手推車 東洋車	一角	一角	一角	一角	
	單輪手推車	五分	五分	五分	五分	
	小孩車 腳踏車(雙輪三輪同) 摩托自行車	一角	一角	一角	一角	
	駱駝牛馬騾驢及其他大小相若者	三分	三分	三分	三分	
牲畜	狗猪羊小牛及其他大小相若者	每籠五分	每籠五分	每籠五分	每籠五分	
	裝籠之活鷄鴨兔及獵獲活禽獸等(籠之體積額不過五百立方公分)	每籠五分	每籠五分	每籠五分	每籠五分	
畜	野獸	另議	另議	另議	另議	
笨重	自一公鐵至二公鐵者	三角	三角	三角	三角	
	自二公鐵以上至三公鐵者	四角	四角	四角	四角	
或過	自三公鐵以上至四公鐵者	五角	五角	五角	五角	
長貨	自四公鐵以上至五公鐵者	六角	六角	六角	六角	
物	五公鐵以上者	另議	另議	另議	另議	
貴重物品	每值千元者	二分	二分	二分	二分	

注意

- (一) 按公斤計算運費之貨物其重量不及五十公斤者亦作五十公斤算按零公鐵或整車計算運費之貨物其重量不及一公鐵者亦作一公鐵算收裝卸費
- (二) 輕浮貨物以二百五十立方公分(八立方英尺三三)為五十公斤又二立方公尺五(八十立方英尺)為一公鐵
- (三) 除有特別規定外整車貨物之裝卸費應按車輛之載重量算收
- (四) 凡爆炸危險物品運價表內係照一等加半倍核收運費者其裝卸費照上表核收除均照普通貨物核收

第十七條 貨物到站無人領取 貨物到站一個月後無人領取本路得隨意運往他站存放因此所生之一切運費并雜費皆由寄貨人担任如有損失本路概不賠償

第十八條 裝運靈柩 託運靈柩須於列車未開前二十四小時託運靈柩到站須即時領取如逾十二小時尙無人領取者本路得隨意處置

靈柩如非釘裝堅固并有押運人護送者本路得不承運

運者得知照本路停運并取回運費但自本路交車時起無論時間久暫寄貨人須照章繳納延
期費并其他費用

按公斤或公噸裝運之貨物如因事故於未起運前不克輸運者寄貨人亦得知照本路停運并
取回運費但須將該運費扣去百分之十裝卸等費仍須照章繳納

上開整車或按公斤公噸裝運之貨物如寄貨人已繳運費惟於未起運前不克輸運其營保在
本路方面者一切運費裝卸延期等費并扣去百分之十之數均得免除之

第十五條 貨物到站延期不卸 整車貨物到站超過六小時工作時間受貨人尙不到站領取
者無論已否通知該受貨人本路概按照超過時間起收取延期費并得將該貨卸下暫爲囤存
照章收取囤存等費或其他費用

前項代卸及暫代囤存之貨物如發生損失本路概不賠償按公斤公噸裝運之貨物如到站後
受貨人尙不到站領取者本路亦照上開辦法辦理惟不收延期費

第十六條 貨物到站聲請停止交貨 貨物到站以後未領取以前如寄貨人註明理由正式
函或電請求本路停止交貨者本路亦可照辦

情形(例如因軍事或救災賑濟公益等項)或貨物之性質須提前辦理者本路得提前裝運之

第十二條 貨車猝停之處理 凡因猝遇意外事故本路停止貨車或客貨車全部或一部分時寄貨人已繳運費並取得貨物收據但其貨物(無論整車或按公斤公繳零運)尙未裝車者可將該收據繳還本路退回運費若貨車或客貨車係在中途停止而寄貨人或收貨人自願就地卸貨並繳回貨物收據者應將已經過各站之運費扣出餘數退回若願運回發貨原站者本路亦可免費運回並將運費全部退回

上開退回運費辦法如本路一時不能預備充足現款未克將全數退回時本路得暫時停交難允於五日內全數交清如寄貨人不將貨物收據交回車站或繳寄車務處或逾期一月尙未辦理者除俟貨物收據繳到仍將該貨退回寄貨人外一切運費并其他雜費概不退回

第十三條 貨物改運較遠路程 寄貨人自將貨物託運後至受貨人未領取前如欲將其貨物改運至較遠之站知照本路辦理者本路如考察時間尙能辦到亦可照辦惟須自原定卸貨站起至改運較遠之站止從新照章交納運費并其他費用

第十四條 貨物裝車後因事停運 寄貨人如因事故於整車貨物既裝車後未起運前不克輪

積不符時除逾原開之數不過百分之二者免算運費外其超過百分之二者應補交運費

第七條 未權度之整車貨物覆出逾量 凡整車裝運之貨物如未經發站權度証據寄貨人聲明書所開之數核算運價起運者貨物運至分站或到達站時必須重行權度倘查有超過該聲明書所開之數而未逾車輛之載重量者(例如輕浮貨物)其所逾之數(百分之二)免算除應補運價外加一倍處罰如超過該聲明書所開之數兼逾車輛之載重量者查照貨車運輸通則

第三十七條辦理處罰

第八條 取車不裝或多要車輛 寄貨人請給車輛後無貨可裝或請給之車輛過於所需者本路得將該車輛撤回並自該車輛交給寄貨人之時起每噸每點鐘科罰銀圓五分

第九條 轉讓車輛 寄貨人請給之車輛不得讓給別人如查有讓借等事按照本附則第八條之規定加二倍科罰

第十條 細束不妥之貨物 凡貨物之細束裝載並不妥當者本路得拒絕裝運但於寄貨人聲明書內註明(若有損壞失漏概歸寄貨人負責)等字則本路亦可代運

第十一條 貨物起運次序 裝運貨物均按託運之先後列明次序以便分別辦理但遇有特別

粵漢鐵路湘鄂線貨車運輸附則

- 第一條 整車裝運 凡整車裝運之貨物(除實體笨貨物外)應按車輛之載重圖計算運費
- 第二條 裝卸貨物 凡裝卸貨物除與本路定有合同或經車務處特別許可外均由本路經理
- 第三條 聲明不實 寄貨人聲明書所開各件務須確實倘有由捏報而發生一切損失寄貨人須負賠償之責

第四條 拒絕裝運 本路如遇後開事項得拒絕裝運

(甲)貨物裝卸需用特別設備而此種設備本路未曾預備者

(乙)貨物之性質重量體積細束等不便裝運或有損及其他貨物之虞者

第五條 展期裝卸 凡因大風雨雪或特種阻碍以至不能按照貨車運輸規則第三十條規定之時間內將貨物裝卸完竣者寄貨人或收貨人得將情形告明站長或段長轉電車務處長請求展限

第六條 既權度之貨物覆出逾量 凡裝運整車或非整車(按公斤或零公噸計算者為非整車)之貨物雖曾經發站權度然後起運如在分站或到達站將貨物重行權度查出重量或體

第七條 行李之查驗 行李內容係屬何物如本路有所詢問旅客必須據實答復倘管理人以爲有可疑之處得請該客會同啓驗

第八條 運輸停止時處置行李辦法 本路若因事故停止運輸全部即將行李並其運費全數退回但僅停止運輸之一部分而旅客自願就地下車者得請求將行李運回原站或於下車之站點交並將未運送路程之運費退回如旅客因犯第五條事項致被促令下車者其行李運費概不退回但得將該行李免費運回該客下車之站

第九條 改換坐位後之行李免費重量 車上次等客座之旅客如在中途欲改坐上等客座者所帶行李不得因此請求加增免費重量

日內全數交清如旅客不能久候得於一月內將原客票持至或寄交本路車務處亦可將票價退回但一月後即作爲無效

第四條 扣留行李辦法 旅客違背客車運輸通則第八及第十五兩條之規定而不允或不能即交票價罰金者本路除促令下車外並得將其行李暫行扣留以作保證但既扣留行李後如一個月內該客仍不來站贖取本路得將行李變賣充公

第五條 旅客違章促令下車之事 旅客如犯左列各項之一者本路得促令該客下車

(一)不遵守本路章程或不服從管理人之勸告或紊亂車內秩序及其他舉動致危及他人或

本人者

(二)舉動有碍行車安全又不服從管理人之警告者

(三)癩暴力阻止管理人執行職務者

(四)患傳染病或其他惡疾者

第六條 旅客被逐客票無效 旅客因犯前條致被促令下車者其所持之客票即作爲無效該客因被促下車之故致生損失本路概不負責

粵漢鐵路湘鄂線客車運輸附則

第一條 收費辦法 凡交納票價運費並其他各費均以通用銀圓或與銀圓有同等價值之鈔票核收上列票價及各費其數在五角以上者均收銀圓惟五角或五角以下者得兼收銀角或銅元除新輔幣之中元二角一角者概作銀圓出入均不貼水外其折合銀圓辦法按照市價進出一律由本路隨時通告

第二條 拒絕裝運事項 本路如遇下列事項得拒絕裝運

(甲) 旅客如有違背本國法律或本路章程或擾亂公安秩序者

(乙) 遇有不測事變防碍本路運輸者

第三條 客車猝停之處理 凡因猝遇意外事故本路停止客車全部或一部分時旅客已購客票而尚未登車者可將客票繳還車站退回票價若客車係在中途停止而旅客自願就地下車者應將已經過各站之票價扣出餘數退回又若其時旅客有願回已經過各站中之任何一站者本路亦可免費送回並將其票價全數退回

上開退回票價之辦法如本路一時不能預備充足現款未克全數退回得暫時停交惟尤於三

各站距離公里表

青紙面

客票價目表

深紅紙面

普通貨物運費表

整車裝運每
公噸運費率

藍紙面

普通貨物運費表

零裝運每
公噸運費率

黃紙面

普通貨物運運表

每五十公
斤運費率

水紅紙面

民國十年一月一日實行(從前客貨價章一概作廢)

第二號

中華國有鐵路粵漢綫(湘鄂段)客車貨車運輸附則

附
普通貨物運費表
客票價目表
各站距離公里表

