

Historic, Archive Document

Do not assume content reflects current scientific knowledge, policies, or practices.

62,123

MAY 4 - 1929

See page 10, 13 and 22



H. R. Lawrence

ELMHURST, ILLINOIS



ORNAMENTAL NURSERY

11th Annual Catalog



LOCATION—

On Church Road, North of Lake Street.
Take Lake Street (Route 5) from Chicago,
just 17 miles from State Street to Church
Road. Near WMAQ Broadcasting Station.
Phone Elmhurst 3113-M-1

TO OUR CUSTOMERS

TERMS AND GUARANTEE

STOCK—

Our stock is selected for the finest trade, and all plants or roots are well grown and we use every precaution to have goods true to name and well packed so as to arrive in first class condition. Unpack at once upon arrival and report any errors immediately, for we cannot allow complaints after 10 days from receipt of goods.

SHIPPING—

Please state how goods are to be shipped, and if no shipping instructions are received, we will send what we think is the cheapest way, all goods are shipped Express Collect (at buyer's expense). Goods damaged in transit, you should enter complaint with Express Co. immediately.

GUARANTEE—

Our seeds are the finest products of American and European Hybridizers and Seedsmen, and we raise many of our finest seeds on our grounds, and as we cannot be responsible for poor weather conditions, poor soil or for any cause that is beyond our control, we cannot guarantee the crop.

TERMS—

We are a cash house and cannot quote lower prices than listed. We carry no accounts so our prices are not loaded with accounts of long standing. All purchasers must accept these terms and conditions.

Address all communications, orders and remittances to

H. R. LAWRENCE

ELMHURST, ILLINOIS

Telephone Elmhurst 3113-M-1



Delphinium—Mrs. James Kelway.

Seeds are quite hard to obtain and therefore still costly, and seeds will germinate a per centage of darker shades. 50 seeds....\$2.00

VISITORS

Come out any time and inspect our nursery. There is nothing so satisfactory as to see plants in bloom that you wish to purchase. You know just what you are buying. We sell as many plants in blooms as we do dormant roots or young plants.

SOIL

Our soil is ideal for growing Perennials. It is black loam, the kind that is found in the famed corn belt, and Peonies, perennials and general Nursery stock is adaptable to this soil.

We have 10 acres, and have lived here 17 years, and our references are: First National Bank, Elmhurst, Ill.
First State Bank, Bensenville, Ill.

ELEVENTH ANNUAL CATALOG

This catalog cancels all prices quoted in previous catalogs.
Add 15c per dozen on plants for Parcel Post.

HARDY GARDEN LILIES

No garden should be without hardy lilies, of easy culture and very striking in appearance. Planted among Delphiniums they are at their best.

	Each	12
Auratum —Gold banded lily of Japan. Large white lily with red spots and gold band through center of each petal	bulbs \$.50	\$5.00
5 inch pots, green plants	.75	8.00
Rubrum —Speciosum Magnificum. White ground, heavily pink spotted	bulbs .50	5.00
5 inch pots, green plants	.75	8.00
Regal —White with yellow throat. Very hardy and fragrant., Regal bulbs are smaller than other bulbs, 2 inch bulb is very large	bulbs .50	5.00
4 inch pots, green plants	.75	8.00
Tiger —Old fashioned yellow with black spots.....	bulbs .35	3.50
4 inch pots, green plants	.50	5.00
Thunbergii-Elegans —Very attractive red lilies, 4 in pots, green plants50	5.00
Madonna-Candidum —Large white, carry up to 26 lillies on a stem. 5 inch pots, green plants.....	.50	5.00

Dormant **Madonna** bulbs are ready in fall.

All lily bulbs should be planted at least 6 inches or more deep, except the **Madonna** which should be planted about 3 inches below the crown, and should be planted as early as possible in fall so as to form a green rosette or leaves before winter.

PERENNIAL PLANTS

Perennials are those plants which come up year after year, and as the plants thrive and grow into large clumps their profusion of bloom for nearly eight months of the year soon repays one for the care lavished upon them. Well kept grounds promote real estate values.

All plants are lifted from soil while you wait, or day shipped, and are cold frame grown or from field, strong one and 2 year stock.

	each	12
Aconitum-Monkshood —Tall blue spikes of hood like flowers, very attractive in July-Aug.....	\$.35	\$3.50
Anthemis-Margaurite —Finely cut foliage, yellow flowers	.25	2.50
Aqueligia-Columbine —Mrs. Scott Elliott hybrids. These long spurred columbines are worthy of any garden and have immense cups and spurs up to 5 inches long on well established plants, Orchid shades, June.....	1 year 2 year	3.50 5.00
Artimisia-Lactiflora —Tall growing plants with immense spikes of cream colored spicy flowers in Aug.....	.50	5.00
Astilbes-Spireas —Hardy fern like foliage with feathery spikes 2 feet in June.		
Queen Alexandria, Pink: Gloria, deep pink; Rubra, light red; Gladstone, white	1 year 2 year	3.50 5.00
Bleeding Heart —Spectabilis, old fashioned red.....	.75	
Bleeding Heart Formosa —Dwarf, with rose hearts, 15 inches35	3.50
Carnations —Hardy for out door cultivation, resembles the green house varieties, double and continuous bloom from June till frost, will stand zero weather and come up smiling next spring, very fragrant.		
Carnations-Margaret —Mixed colors25	2.50
Carnations-Grenadin —Scarlet compact habit.....	.25	2.50
Carnations-Allwoodi —Half Sweet William and Carnation, double fragrant, new and scarce.....	.35	3.50
Campanula-Persicifolia —Canterberry bells, peach leaf, hardy spikes of graceful bells, June-July 30 inch single white or blue25	2.50
double white35	3.50
Chrysanthemum —Hardy out door type, fall blooms.		
Chrysanthemum-Autumn Glow —Carmine-red35	3.50
Chrysanthemum-Excelsa —Orange yellow35	3.50
Chrysanthemum-Eugene Langaulet —Coppery salmon50	5.00
Chrysanthemum-Rose Travena —Deep rose pink.....	.35	3.50
Chrysanthemum-Rose Travena —Deep rose pink.....	.35	3.50
Chrysanthemum-Winetka White35	3.50
Delphiniums —Wrexham hollyhock flowered hybrids, or Kelway hybrids. These new double Delphiniums are magnificent with their tall 5 to 8 foot spikes in all shades of blue with mauve pink centers. Flowers are 2 to 3 inches across and make fine cut flowers.		
Delphiniums —Wrexham or Kelway	1 year 2 year	5.00 7.50
2 year, extra choice plants	1.00	10.00
Delphiniums —Mrs. James Kelway—Illustrated on page		

1, blue outer petals, with mauve pink inner petals, and light shaded bee, 7 foot spike, 30 inch flower heads, extra choice 2 year plants.....	5.00	50.00
Delphiniums —Selected light blue doubles. These plants were selected in bloom and are select stock, 2 year.....	2.50	25.00
Selected dark blue doubles, 2 year.....	2.50	25.00
Delphinium seeds listed under seeds.		
Dictamnus —Gas plant, shrubby growth, rose shade.....	.35	3.50
Cone Flower —Echinacea, purpura, reddish purple cone shaped flowers, July to Oct. 3 ft.....	.25	2.50
Globe Thistle —Echinop. Shrubby plant with large steel blue ball shaped flowers in Aug., fine for cutting and winter bouquets25	2.50
Gaillardias —Blanket flower. Daisy like flowers, red centers tipped orange25	2.50
Geum —Mrs. Bradshaw. New, dainty double flowers of fiery red blooming nearly all summer25	2.50
Geum —Lady Stratheden. Yellow Geum25	2.50
Gypsophila —Baby breath. Billowy sprays of white, grand filler for bouquets, Aug.-Sept.25	2.50
Helenium —Fall blooming bushy plants, 4 feet, Sept.		
Helenium-Autumnal —Broad heads of yellow.....	.25	2.50
Helenium-Autumnale Rubrum —Bronze red.....	.35	3.50
Helenium-Bigelow —Yellow25	2.50
Helenium-Riverton Gem —Yellow suffused terra cotta.....	.35	3.50
Hemorocallis —Day Lily, tall spikes of lily like blooms, do not spread, June-July bloom.		
Hemorocallis-Citrina —Pale yellow	1 year .35	3.50
Hemorocallis-Sovereign —Orange	1 year .35	3.50
Either variety 2 year50	5.00
Hollyhocks-Chatters doubles —Ideal for background, and very showy, doubles25	2.50
Hollyhocks-Imperator —New strain of doubles, large fringed outer petals with massive rosette center, light pink to salmon shade	2 year .50	5.00
Iris —See iris page.		
Linum —Flax. Dainty blue, all summer blooms 1 year25	2.50
2 year35	3.50
Liatis-Blazing star —Tall lavender blue spikes in summer and last till fall. 4 feet	2 year .25	2.50
Lilies —See lilies.		
Lupins —Harkness Regal. Long spikes of pea shaped flowers, 2 feet in June	2 year .25	2.50
Lychnis —Haageans, Jerusalem Cross. Orange red, cross shaped flowers 1 foot high	2 year .25	2.50
Lythrum —Roseum. Tall rose colored spikes very effective and showy, 4 ft.	1 year .25	2.50
2 year35	3.50
Lysimachia —See rock plants.		
Poppy —Oriental poppy. Orange with huge dark blotches at base, June, 30 inches25	2.50
Peonies —See peony list.		
Phlox —See phlox.		
Polemonium —See rock plants.		

	Each	12
Pyrethrum —Painted daisy, red, pink and white, excellent for cut flower or border, June25	2.50
2 year35	3.50
Sedum-Stone crop —Spectabilis, deep pink, fleshy leaves, flat flower heads 1 foot across, 1 year.....	.25	2.50
Sedum-Acre —See rock plants.		
Statice-Latifolia —Sea Lavender, leathery leaves and large flower heads of blue 18 inches across, 2 feet high, Aug.25	2.50
Trollius —Globe flower. Buttercup like flowers of deep yellow, blooms spring and fall, 2 feet.....	.35	3.50
Veronica. Subsessilis —Handsome blue flowers that attract humming birds, 2 foot, July-Sept.1 year	.25	2.50
Yucca —Adams needle. Filamentosa. Sword like leaves with an immense spike of cream colored bells rising to a height of 5 feet, splendid for terraces, or specimen plant. They bloom the 4th year from seed.....4year		1.00
Rhododendron —Maximum. Hardy and acclimated stock, large foliage, -with pinkish white flowers in June	2-3	2.00
Young stock 12 to 18		1.00
Mountain Laurel —Broad leaved, with rosy white flowers in great clusters in July, bloom young	2-3	2.00
Young stock 12 to 18		1.00

Rhododendron and Mountain Laurel require a lot of attention and care. We do not guarantee these plants.

ANNUAL PLANTS

We carry many annual plants for spring trade, cold frame grown and plants are about 4 inches high, ready to plant out.

	Each	12
Aster plants —All colors50
Ageratum —Lavender blue for border50
Calendula —Orange king, fine cut flowers.....		.50
Larkspur —Annual delphinium, all colors50
Lobelia —Blue flowers50
Marigold —African orange, exceptionally fine for cutting50
Petunias —All colors, large ruffled and Rosy morn.....		.50
Petunias —All colors in 2½ inch pots		1.00
Phlox Drummond —Scarlet about 15 inches.....		.50
Salvia —Red75
Salvia —In 2½ inch pots	1.00	1.50
Verbena —In pots		1.00
Pansy plants —By the thousand for cemetery and edging, pansy per 100, \$5.00.....		.75
Geraniums —All colors, nice stock.....	.25	2.75

PERENNIAL SEEDS

Many gardeners prefer to grow their plants and it is a very good way if a number of plants are wanted, but if the number of plants is limited it is cheaper to select the plants. There is a vast amount of satisfaction in germinating one's own seeds.

Prepare the ground, and sow seeds shallow or scatter on top of soil. Then put fine soil, sand, or peat moss or the three combined over the seeds (one-eighth inch thick). Place burlap over seeds and water.

Seeds, especially hybrid seeds, must never be allowed to dry out. Hybrid seeds will keep germinating for 10 days after the first one germinates. Remove burlap after seeds show green or germinate.

Each

Aqueligia —Columbine, Mrs. Scott Elliott hybrid. Beautiful and useful, large cups and spurs in many orchid shades. We have measured spurs 5 inches long on older plants	200 seeds	1.00
Carnation —Hardy out door type. New and must not be confused with greenhouse or perishable carnations. We have wintered them at 10 degrees below zero. An ordinary frost does not affect the bloom. All summer bloomer, seeds imported from Europe.		
Carnation-Margaret —Mixed doubles, per pkt.....		.75
Carnation-Margaret —Crimson doubles	per pkt.	1.00
Carnation-Margaret —Rose doubles	per pkt	1.00
Carnation-Grenadin —Scarlet, compact habit.....	per pkt	1.00
CarnationOne pkt of each 4 varieties (4 pkts).....		3.00
Delphinium —We have imported the famous Wrexham hollyhock flowered and Kelways hybrids, and they are the finest in existence today. There is very little difference between the two Delphiniums; Wrexham has the ear marks of a hollyhock in the way the blooms are placed on the spike. They come in all shades of blue with mauve pink centers, and pink dots which give them a regal appearance. They grow 5 to 8 feet in height and have 30 to 36 inch flower heads. Seeds come 80 per cent doubles, but what few singles there are are of such loveliness that many prefer them. There are many imitations on the market, but Europe is cool enough to grow better and finer seeds than warm climates.		
The Delphiniums are too new for all seeds to come true to type.		
Delphinium —Wrexham or Kelway, mixed colors,	100 seeds	1.00
Delphinium —Dark blue doubles, selected seed,	100 seeds	1.50
Delphinium —Light blue doubles, selected seeds,	100 seeds	1.50
	dark or light 500 seeds	5.00
Delphinium —Mrs. James Kelway, light blue outer petals, with mauve pink inner petals and light bee flowers 3 inches across	50 seeds	2.00
Hollyhocks —Chatters double, mixed colors.		
Hollyhocks —The oldfashioned hollyhocks are still dear to garden lovers and are excellent for massing,	pkt	.35
Hollyhocks —Large and single, salmon or red.....	pkt	.25
Helenium-Riverton Gem —A wonderful fall flower, 3 to 4 feet, from Aug. to Oct. Orange clusters of daisy like flowers with cone shaped centers.....	pkt	.25
Helenium-Bigelow —Yellow, dark center.....	pkt	.25
Pyrethrum — Helen Lawrence —A new double painted daisy, flowers are of the Anemone type, and resemble a large out door fall Chrysanthemum. This is a new		

pyrethrum and like all new species will have some semi-doubles among the plants. Seeds are scarce.

100 seeds

1.00

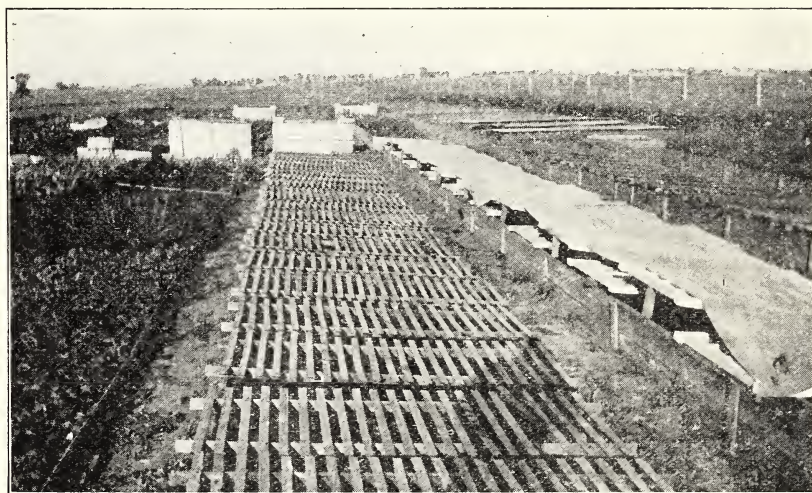
ANNUAL SEEDS

Most annuals should be sown in the open ground during April or May, and they germinate very readily. They should keep the table supplied all season with cut flowers.

Asters —Early flowering Hohenzollern, similar to Ostrich plume in shades of red, rose and salmon.....	pkt	.25
Asters —American beauty, purple, red or pink.....	pkt	.25
Asters —Mixed, all shades	pkt	.25
	5 pkts of above varieties	1.00
Alyssum —Little Gem, nothing finer for borders, snow white 3 inches high, completely covers ground, makes fine carpet. European seeds.....	large pkt	.35
	3 large pkts	1.00
Candytuft —Giant white hyacinth flowered, flowers freely from seed sown in April.....	large pkt	.25
Calendula —Orange king, vivid orange, always attract attention, make excellent cut flowers.....	per pkt	.35
	3 pkts	1.00
Clarkia —Salmon Queen, easily grown from seed, sown in April and the top pinched out when about 3 inches high, will make a grand cut flower, the flowers resembling a rose at intervals on a spike, salmon shade,....	pkt	.35
	3 pkts	1.00
Chrysanthemum —Annual double golden, a double, attractive, long stemmed European novelty, fine cut flower	per pkt	.35
Cosmos —Mixed colors, blooms from July till frost....	pkt	.25
Gypsophila —Elegans, grandiflora, white, graceful fairy like flowers and nice to combine with roses or to act as filler for any flowers or bouquets.....	large pkt	.25
Helichrysum —Straw flowers, fine for winter bouquets,	per pkt	.25
Larkspur —Annual Delphinium, stock flowered, one of the finest cut flowers, tall full spikes of blue or pink, blooms in June, sow often for continuous cut....	per pkt	.25
	1/8 oz	.50
Marigold —African orange, a selected strain, large tall doubles, deep orange shade.....	per pkt	.25
Nasturtium —All shades, this grand flower is still popular and easy to grow, mixed colors.....	per pkt	.25
Pansy —Plant in boxes in doors and transplant out in May for early bloom, or sow seed in September for spring plants.		
Pansy —Langport, finest English strain, nothing finer	per pkt	.35
Pansy —Vulcan, dark brownish red, blotched black, pkt		.35
Pansy —Excelent mixture	per pkt	.25
Phlox —Drummondii, a mass of bloom from July till frost, about 12 inches high. brilliant scarlet.....	per pkt	.25
Salpiglossis —A glorified petunia, has lovely mahogany.		

Each

red, blue and gold shades, blooms in July on till frost, 2 ft.	per pkt	.25
Snapdragon —Antirrhinum, easily grown from seed, 3 feet high.		
Snapdragon —Golden queen, yellow.....	per pkt	.25
Snapdragon —Rose Dore, salmon rose.....	per pkt	.25
Snapdragon —Majestic sunset, terracotta shade....	per pkt	.35
Snapdragon —Black Prince, dark crimson.....	per pkt	.35
Snapdragon —Mixed all shades.....	per pkt	.25
Stocks —10 weeks, fiery scarlet.....	per pkt	.25
Stocks —10 weeks, canary yellow	per pkt	.25
Stocks —10 weeks, Beauty of Nice, white.....	per pkt	.25
Stocks —10 weeks, rose	per pkt	.25
Stocks —10 weeks, Heatham beauty, terra cotta....	per pkt	.35
Statice, Sinuata ,—annual for cutting, rose shade, several sowings should be made during the summer.....	per pkt	.25
	3 pkts	.50
Zinnias —Fall flowering, fine cut flowers.		
Crimson double dahlia flowered.....	per pkt	.25
Orange double dahlia flowered	per pkt	.25



Right. Seed frame shaded and ventilated. Center slats on seedlings.
Left. Plants for sale.

ROCK PLANTS

A Rockery does not necessarily have to be on a large scale to give satisfaction. It places your garden above the ordinary. It is a pleasure to plan a rockery whether you have a pool or not. The ordinary garden assumes dignity at small expense with a rockery.

How to start a rockery: Pile soil high on the place selected, allow soil to settle, then place rocks (not too close together) on the pile, and press firmly into soil. Place rocks on an angle upward so as to allow water to drain into soil, not away from soil. Plant into the soil and keep watered until plants are well established.

There are many kinds of plants needed for a rockery, and we have

specialized in a few choice plants and good creepers. Your rockery should be a blaze of color all summer, and green most of winter.

	each	12
Aconitum —Monkshood, deep blue, 2 feet in July-Aug.		
1 year	.35	3.50
Aqueligia —Columbine, Mrs. Scott Elliott hybrids. This is one of the largest and most beautiful of the columbines, mammoth cups and spurs, in many combinations of colors, blue, lavender, rose, yellow etc. an asset in any rockery, 2 feet, in June.....	1 year	.35 3.50
2 year	.50	5.00
Anthemis —Margarite, yellow daisy, like flowers in bloom all summer, 2 feet	1 year	.25 2.50
Bleeding Heart —Formosa, dwarf rose shaded hearts, blooms all summer, fern leaf, 15 inches.....	1 year	.35 3.50
2 year	.50	5.00
Carnation —Grenadin, dwarf compact plants in crimson shades, fine for rockery, 12 inch.....	1 year	.35 3.50
Centaurea —Montana, perennial bachelor button, dark blue, 12 inches, bushy plants.....	1 year	.25 2.50
Cotoneaster —Horizontalis, an ever green, low growing shrub with deep pink flowers set on branches, 3 year	3.50	
Dianthus —Clove pink, old fashioned pinks.....	1 year	.25 2.50
Euonymus —Radicans, evergreen creeper, large leaves		
2 year	.50	
Funkia —Day lily, low growing with lavender blue lily spikes, blooms spring and fall.....	2 year	.25 2.50
Geum —Mrs. Bradshaw, double orange flowers resembling roses, 18 inch, all summer bloom.....	2 year	.25 2.50
Gypsophila —Baby breath, white billowy sprays in July perennial variety, 3 feet.....	2 year	.25 2.50
Iris —Japanese, fine rockery plants, blooms in July, flowers measure 8 to 10 inches across. Catherine Perry, blue; Fascination, blue; purple and gold; all doubles,		
1 year	.35	3.50
2 year	.50	5.00
Iris-Siberica —Siberian iris, early dark blue, forms dense clumps, 2 feet high.....	2 year	.25 2.50
Iris-Pumila —Dwarf German type, dark blue flowers, very early, fine for edging and rockery.....	3 year	.25 2.50
Other Iris, see Iris page.		
Linum —Flax, pale blue all summer bloomer.....	1 year	.25 2.50
2 year	.35	3.50
Lychnis —Haageans, 1 foot high of orange scarlet, 2 year	.25	2.50
Lysamachia —Trailing creeper, very showy yellow blooms		
2 year	.25	2.50
Myrtle —Trailing evergreen, spreads rapidly.....	1 year	.25 2.50
Polemonium —Evergreen, blue flowers, 8 to 10 inches,		
1 year	.25	2.50
Phlox —Subulata, rapid spreader, 2 inches, a mass of pink in June	1 year	.25 2.50
Sedum —Acre, golden moss, covers rapidly.....	1 year	.25 2.50
Sedum —Spectabilis, 15 inch fleshy plants, with flat heads of deep pink bloom, Aug., till frost.....	1 year	.25 2.50

ROSES

We have listed a number of roses that will give abundant bloom all summer. They are mostly everblooming, 2 year field grown roots, and will make fine cut flowers

	each	12
Columbia —H. T. rose pink, fragrant with vigorous habits	\$1.00	\$10.00
Claudius Pernet —H. T. sunflower yellow, deeper in center, long pointed buds.....	1.25	13.00
Los Angeles —H. T. flame pink, toned with coral shade, long stems and an abundant bloomer.....	1.00	10.00
Louise Catherine Breslau —H. T. coppery orange, coral colored buds, very fragrant	1.50	15.00
Padre —H. T. coppery scarlet, yellow base	1.50	15.00
Radiance —H. T. carmine shaded pink, with salmon shading	1.00	10.00
Red Radiance —H. T. cerise red, similar to Radiance.....	1.00	10.00
General Jacqueminot —H. P., crimson and velvety.....	1.00	10.00
Gruss an Teplitz —H. P. red velvety, and always in bloom	1.00	10.00
Harrison Yeollow —H. P. semi double yellow, the finest yellow Briar, the bush is one mass of bloom.....	1.00	10.00
F. J. Grootendorst —H. Rugosa crimson clusters, everblooming clusters like crimson rambler, fine for hedges	1.00	10.00
Hansa —Rugosa, red and very hardy.....	1.00	10.00
Crimson Rambler —Climber, large clusters of crimson, fine for porches	1.00	10.00
Dorothy Perkins —Dark pink climber, large clusters.....	1.00	10.00
Emily Gray —Climber, yellow, semidouble and new.....	1.50	15.00
Excelsa —Red, has 30 to 40 blooms in a cluster, climber	1.00	10.00
Dr. Van Fleet —Flesh pink climber, flowers are 4 inches across, very showy	1.00	10.00
Pauls Scarlet —Vivid scarlet climber, double roses.....	1.00	10.00
Silver Moon —White climber, large cupped flowers.....	1.00	10.00
Velchenblau —Blue climber, opens reddish violet and changes to violet blue, very odd shade.....	1.25	13.00

ROSE BARGAIN

Excelsa —Red climber, has 30 to 40 blooms at one time open in a cluster, rapid climber.....	3 two year roots	2.00
	12 two year roots	7.00

TREE ROSES

Tree roses are among our most beautiful shrubs, and like all lovely plants require care, especially winter care. They should be mulched at all times, and given no cultivation whatever. Northern grown stock, they are H. P. grafted on hardy Rugosa, and are in full bloom all summer. Directions for their care sent with roses.

Frau Karl Druschke —Tree rose, white 3 feet.....	each	5.00
General Jacqueminot —Tree rose, white 3 feet.....	each	5.00
Gruss an Teplitz —Tree rose, velvety red, 3 feet.....	each	5.00
Mrs. John Laing —Tree rose, pink 3 feet.....	each	5.00
Marshall P. Wilder —Tree rose, deep red 3 feet.....	each	5.00

These roses are 3 foot specimen plants when you buy them, and are one crown of bloom in summer.

Roses are shipped by express on account of their weight and bulk.

HARDY PHLOX

Select your phlox in bloom. We sell more phlox in bloom than dormant plants, as it does not harm phlox to be moved while in bloom.

	each	12
Bridesmaid....White with crimson eye.....	\$.25	\$2.75
B. Comte....French purple25	2.75
Eclairer....Rose carmine, fine for massing.....	.25	2.75
Elizabeth Campbell—Salmon with lighter halo.....	.50	5.00
Ethel Pritchard—Rose mauve, new and scarce.....	.50	5.00
Europa—White with pink eye.....	.25	2.75
Ferdinand Cortez—Deep rose pink, shaded bronze.....	.50	5.00
Hindenberg—Bright red, not very tall.....	.25	2.75
Jules Sandeau—Dwarf pink of very large petals.....	.25	2.75
Mrs. Chas. Dorr—Blue mauve25	2.75
Mrs. Jenkins—Early white, large heads25	2.75
Miss Linaard—Early white, good cut flower.....	.25	2.75
Mrs. Milly Von Hoboken—Pink of exceptional size flowers25	2.75
Mrs. Ruys—Dwarf white, new and scarce.....	.50	5.00
Prof. Virchow—Bright carmine overlaid with orange.....	.50	5.00
Rheinlander—Salmon pink, red eye.....	.25	5.00
Rhynstrom—Clear pink, like Paul Neyron rose.....	.25	2.75
R. P. Struthers—Watermelon red, fine for massing.....	.25	2.75
Rosenberg—Red, new and a comer.....	.25	2.75
Special French—Pink with salmon eye, heavy heads.....	.25	2.75
Thor—Salmon pink, one of the finest phlox grown.....	.25	2.75
Von Hockberg—Brilliant red overlaid purple.....	.25	2.75
Von Heutz—Salmon red, good color, always in demand25	2.75
W. C. Egan—Delicate lilac pink.....	.25	2.75

Subulata Phlox—See Rock plants.

These phlox are the new hybrid phlox and have immense flower heads and do not grow over 24 to 30 inches tall. We divide roots and all our phlox are true to color and name. We never grow from seed. All 2 year stock.

IRIS

Iris are the earliest flowers in spring and are always a welcome sight.

9.4—Ballerine, 48 inch, early, light violet blue, immense flowers		1.00
7.5—Caprice-S, reddish purple F, deeper color.....	.25	
field clumps	.50	
7.3—Her Majesty, Excellent pink25	
8.1—Juanita, tall clear blue, fragrant.....	.35	
field clumps	.50	
9.0—Lent A. Williamson, 42 inch, very early, violet and velvety purple50	
7.3—Loreley,-S, light yellow, F, blue.....	.25	
field clumps	.50	
8.4—Monsignor-S, lavender F, violet, tall and large.....	.25	
field clumps	.50	
8.4—Mother of Pearl, 48 inches, blush lavender.....	.25	
8.2—Opera, 28 inch, bishop red.....	.50	
8.8—Palida Delmatica, Lavender blue, free blooming....	.25	
8.6—Prosper Laugier-S, fiery bronze, F, velvety purple...	.25	
field clumps	.50	

8.8—Queen Catrina, 40 inch, lavender violet.....			each	.75
7.1—Queen of May-S, lilac pink F, lilac white.....				.25
8.2—Rhein Nixe-S, white F, violet purple with blue edge,				.25
field clumps				.50
8.3—Seminole, 30 inch, S, violet rose, F, velvety crimson				.50
8.4—Shekinah, 36 inch, soft yellow, deeper at base.....				.25
7.6—Sherwin Wright, All yellow.....				.25
9.3—Souv, de Mad, Gaudichau, Rich deep purple, early				1.00
7.6—Stormcloud, Slate gray, large leaves and flowers....				.25
field clumps				.50
Pumila —Dwarf for edging, 6 inches, dark blue and				.50
early50
field clumps				.50
Japanese Iris —Kaempferi, blooms in July, immense				
flowers 8 to 10 inches across, fine foliage.....	each	12		
Catherine Perry —Double, blue overlaid rosy red,				
1 year	.35	3.50		
Fascination —Double, blue veined white, pink				
tinted	1 year	.35	3.50	
2 year	.50	5.00		
Gold Bound —Double, white with gold banded				
center	1 year	.35	3.50	
2 year	.50	5.00		
Mrs. Harding —Double, blue with deeper edge,				
fluted and ruffled, high tufted center, scarce, 1 year	.50	5.00		
2 year	.75	7.50		
Mahogany —Double, mahogany red, scarce....	1 year	.35	3.50	
2 year	.50	5.00		
Purple and Gold —Double, rich purple, gold throat				
1 year	.35	3.50		
2 year	.50	5.00		
Siberian Iris —Deep Yale blue, excellent for cutting				
2 year	.25	2.50		
Siberian Iris —Snow Queen, white, similar to blue				
1 year	.25	2.50		



Iris in bloom

PEONIES

Peonies are one of our most beautiful flowers, and give a garden a regal appearance. Their foliage all summer and late in the fall act as a filler in the border, for it takes a certain amount of foliage or small shrubs to really show flowers to good advantage.

We have tried to select Peonies that are free bloomers, these peonies should give a certain amount of bloom the next spring after planting the roots, and will continue to bloom and grow into large clumps and be satisfactory from the start. All peonies do not bloom freely the first year, but have to get well established before blooming, but one has the satisfaction of knowing that these plants produce immense flowers and it pays one to have a little patience and wait for them to bloom.

Peonies should be planted about 2 or 3 inches below the crown, this depth produces bloom. Do not place manure around peony roots, it may burn the roots, a little bone meal worked into the ground in spring is very beneficial.

The American Peony Society has discarded all peonies that rate below 8.0. Perfection is 10. Their aim is to have peonies that stand up well and retain their bloom, for there is very little satisfaction in wasting years raising peonies that lose their blooms in a day or two, the better varieties bloom long and consistently.

This list is approved by the American Peony Society of which we are members. We are also members of Commercial Peony Growers Association.

REDS

Standard 3 to 5 eye divisions. 2 eye division at half price (each rate)

	each
8.5— Adolph Rosseau (D & M 1890) Double dark lustrous red	\$ 2.00
8.7— Auguste Dessert (Dessert 1920) Double; midseason. Round petals with loose center, a velvety crimson-carmine with silvery border, a new shade of red, and one of the most free blooming peo- nies from young stock, a winner in the display grounds	7.00
8.2— Brand's Magnificent (Brand 1918) Double; late midseason; Crimson with purple cast, prolific, strong stems and good foliage	3.00
8.1— Ben Franklin (Brand 1907) Double; early midseason. Dark crimson, good stems, excellent for cut or landscaping.....	1.50
8.6— Cherry Hill (Thurlo 1915) Double; early midseason. Crimson with yellow stam- inodes, a good garden variety	3.50
8.5— Clemenceau (Dessert 1920) Double; late midseason. Fragrant, free bloomer.....	5.00
8.4— David Harum (Brand 1920) Double; large, midseason. Light crimson, good stems and foliage	5.00
8.2— Francois Rosseau (Dessert 1909) Double; large, early. Rich crimson with silky sheen, free blooming	2.00

	each
8.8— Grace Ott (Gumm 1923) Double; midseason. A compact brilliant dark crimson, tall and free bloomer, a good new red, and stands well under all weather	\$10.00
8.2— Grover Cleveland (Terry 1904) Double; late midseason; bright crimson, a very desirable late peony	1.50
8.5— Inspecteur Lavergne (Doriat 1924) Double; early. Globular crimson with center petals frilled, a new red, wit hlong stems	12.00
8.4— Lora Dexheimer (Brand 1913) Double; large, midseason. Bright crimson, strong stems	3.00
9.0— Longfellow (Brand 1907) Double; early midseason. Cherry red, one of the best	2.50
8.7— Mary Brand (Brand 1907) Large midseason. Clear crimson, incurved ball form, crinkled fringed petals, great exhibition peony	2.00
New Mr. L. Van Leeuwen (Nieuwenhuyzen 1916) Not rated as yet, double; large, midseason, large outer petals with rose bud center, a very large red and attracts attention when in bloom, free bloomer from small divisions. Awarded several certificates of merit in Holland	4.00
8.2— Mme. Gaudichau (Millett 1902) Double; late crimson, noted for its beautiful dark red foliage and stems	3.00
8.8— M. Martin Cahuzac (Dessert 1899) Double; early midseason. A dark silky maroon, a good landscape variety	2.00
9.2— Phillipe Reviore (Riviere 1911) The most remarkable red peony today, double; early rose scented and a free bloomer, stands out boldly among other peonies	9.00
8.8— Richard Carvel (Brand 1913) Early; a large bomb type, strong upright grower and free bloomer, good cut flower variety	3.00
8.2— Victory de la Marne (Dessert 1915) Double; large, midseason. Dark crimson with darker sheen, good garden decoration	2.00
8.4— William Turner (Shaylor 1916) Double; early midseason. Crimson, good garden decoration	2.50

PINKS

9.1— Cornelia Shaylor (Shaylor 1917) Double; large, late. High built with pale rose outer petals, rose center of flesh white	10.00
9.1— Edwin C. Shaw (Thurlow 1919) Double; large, late midseason. Light old-rose with occasional red edges on outer petals, fragrant, a	

	new pink of great merit	each 15.00
8.7—	Elwood Pleas (Pleas 1900) Double; large late. Flat flowers with crinkled petals, pale rose-pink	2.00
8.5—	Exquisite (Kelway 1912) Double; large, midseason. Free blooming and a grand rose-pink, much like Judge Berry	2.50
9.2—	Florence MacBath (Sass 1924) Double; very large late midseason. Shell pink, darker toward center, with a crinkled effect that makes it a beautiful peony. Awarded a certificate of merit by American Peony Society at DesMoines 1924	15.00
8.9—	Georgiana Shaylor (Shaylor 1908) Double; large, late midseason. Rose pink with vivid crimson marks on a ring of shorter petals around center, fragrant, good stems, a good exhibition flower	3.00
8.9—	James Boyd (Thurlow 1919) Double; large late. Flesh pink with cream center, very fragrant, upright habit, good stems and foliage	7.00
9.2—	Jeannot (Dessert 1918) Double; large late. Rose-pink deepening to old-rose in center, with a distinct overcast of violet, free flowering. Fragrant and a remarkable show peony	5.00
8.6—	Judge Berry (Brand 1907) Double; large, early. Rose-pink with lighter tones in center, with vivid yellow stamens, a wonderful early pink	3.50
9.0—	Katherine Havemeyer (Thurlow 1921) Double; large midseason. Rose-pink with a tint of old rose, rose-bud center and very fragrant. In a class with Pres. Wilson and Edwin C. Shaw	12.00
8.8—	Kelway's Queen (Kelway 1909) Double; late midseason. Rose-pink with red flakes in center, strong rose fragrance, free bloomer	9.00
9.0—	La France (Lemoine 1901) Double; large, very late. Light pink with crimson splashes on outer petals, fragrant, excellent show flower	3.50
9.2	La Fee (Lemoine 1906) Double; large, early. Light old-rose of compact globular flowers with incurved petals like Le Cygne	8.00
8.8—	Lillian Gumm (Gumm 1921) Double; large, late midseason. Rose-pink with large ruffled petals, very fragrant, a grand show peony, and a new pink	6.00
8.7—	Luetta Pfeiffer (Brand 1919) Double; large, early. Pale pink with crimson flakes in center petals. Yellow stamens, and frangrant	5.00
9.0—	Mabel L. Franklin (Franklin 1920) Double; large, midseason. Guards and center of brilliant rose-pink, collar pale salmon, will make an excellent cut flower when a little more plentiful	5.00

	each
8.9— Marie Crousse (Crousse 1892) Double; large, midseason. Pale pink with rose shaded center, an immense globular bloom, fine show variety	\$ 1.50
9.1— Martha Bullock (Brand 1907) Double; large late. Bright old rose pink, rose fragrance; an immense flower on strong stems, a show winner	5.00
8.7— Mary P. King (Franklin 1920) Double; large, midseason. Rich flesh pink, fragrant.....	4.00
9.0— Mary Woodbury Shaylor (Shaylor 1916) Double; large, late midseason. Flesh pink with crimson blotches on collar, fragrant, and stiff stems	5.00
9.0— Milton Hill (Richardson 1891) Double; large, late. Shell pink with red blotches on central petals, excellent show flowers, a beautiful peony	3.00
9.2— Mrs. C. S. Minot (Minot 1914) Double; large, late. Flesh-pink with coppery tints, center incurved; new and rare	20.00
9.1— Nancy Dolman (Vories 1924) Double; late, pale rose-pink of conical form, with fluted ruffled petals. Awarded medals at Des-Moines show	12.00
8.8— Phoebe Carey (Brand 1907) Double; very late. Pale rose-pink darkening toward center, a very uncommon color	5.00
9.0— Phyllis Kelway (Kelway 1908) Semi-double; midseason. Rose-pink cupped form.....	5.00
9.3— President Wilson (Thurow 1918) Double; large late. Bright rose-pink, darker in the deep cupped center, spicy fragrance. Awarded certificate of honorable mention at London, Ont., 1922.....	20.00
9.0— Raoul Dessert (Dessert 1910) Double; large, late. Brilliant shell-pink, rose scented. Similar to Walter Faxon, a high class peony.....	5.00
9.0— Rosa Bonheur (Dessert 1905) Double; large, late. Old rose-pink with a few marks of red, rose scented, in a class with Therese	3.00
9.1— Rose Shaylor (Shaylor 1920) Double; midseason. Flesh pink tinted rose pink, center petals marked crimson, Shaylor's best and latest variety	12.00
8.8— Rosette (Dessert 1918) Double; early. Light shell pink with a ring of short petals near center tipped crimson, an attractive pink	3.00
9.0— Sarah Bernhardt (Lemoine 1916) Double; late. Dark rose pink. We consider this one of the most beautiful pinks in cultivation. A show winner	1.50
9.1— Souv. de Louis Bigot (Dessert 1913) Double; midseason. Vivid rose-pink, another pink in a class with Walter Faxon.....	4.00

	each
9.8— Therese (Desser 1904)	
Double; midseason. Enormous flowers, with long petals of old rose pink, the highest rated pink on the market	2.50
9.3— Walter Faxon (Richardson 1904)	
Double; medium size. Midseason. A grand salmon pink, good bloomer, fragrant, an outstanding pink peony	2.50

WHITE

8.8— Alsace Loraine (Lemoine 1906)	
Double; late midseason. Petals round and of waxy texture, pure white with cream center	1.50
9.2— E. B. Browning (Brand 1907)	
Double; late. Creamy blush with prominent red marks	3.00
9.1— Frances Willard (Brand 1907)	
Double; late midseason. Good white for general purposes, similar to E. B. Browning	2.00
9.3— Frankie Curtis (Vories 1924)	
Double; midseason. Delicate flesh changing to pure white, broad guard petals with high center of incurved petals. Awarded certificate of merit by American Peony Society at DesMoines. A white Mons Jules Elie	18.00
9.2— Grace Loomis (Saunders 1920)	
Double; late. White with faint lemon tints, free bloomer and awarded certificates of merit Detroit and Philadelphia	15.00
8.7— James Kelway (Kelway 1900)	
Double; early. White shading to pale pink, free bloomer	1.50
8.6— Jessie Shaylor (Shaylor 1916)	
Double; midseason. Blush white, cupped guards, good foliage	4.00
8.9— Jubilee (Pleas 1908)	
Double; midseason. Long narrow petals arranged about a star-like center, requires staking to keep the immense blooms off the ground	2.50
9.8— Kelways Glorious (Kelway 1909)	
Double; large, midseason. White with a cream center, crimson streaks on outside of guard petals, rose fragrance	9.00
9.1— Lady Alex. Duff (Kelway 1902)	
Double; midseason. Blooms in clusters, a great show peony. Opens single the first year	2.50
9.9— Le Cygne (Lemoine 1907)	
White tinged ivory, broad overlapping petals and is the highest rated peony on the market	6.00
9.4— Mme. Jules Dessert (Dessert 1909)	
Double; late, midseason. Smooth petals of flesh	

	white with a hollow funnel like center, with a few crimson marks. Tall splendid habits	Each \$ 2.50
9.3—	Mrs. Edward Harding (Shaylor 1918) Double; midseason. Large white illumined with golden stamens, free flowering. Awarded prize of \$100 at National show at Cleveland, 1918.....	9.00
8.8—	Nymphaea (Thurlow 1919) Double; midseason. Creamy white flushed rose pink, spoken of as the water lily type	3.00
8.3—	Perrette (Dessert 1921) Double; late midseason. Outer petals large and cupped, faint pink center with crimson flakes, fragrant	2.50
9.1—	Sara K. Thurlow (Thurlow 1921) Double; late. Globular shape with a whorled collar and incurved petals, very fragrant, similar to Tourangelle	15.00
9.1—	Thomas C. Thurlow (Thurlowa 1919) Double; midseason. Wide cupped guard petals of flesh pink, cupped center of yellow petaloids, surrounded by a band of broader petals edged with red, spicy fragrance	15.00
9.4—	Tourangelle (Dessert 1910) Double; large, late. A bomb-like flower of irregular petals, cream white with a decided dark rose heart	2.50
8.8—	W. F. Christman (Franklin 1921) Double; midseason. Large outer petals of blush white shaded with pink, center petals incurved, free blooming	5.00

YELLOW

		each
8.6—	Golden Dawn (Gumm 1923) Anemone type; midseason. High yellow center with broad round guard petals of white, erect habit.....	6.00
8.8—	Henry Avery (Brand 1907) Double; late. Guards a light pink with a collar of short creamy petals tinted yellow, a handsome peony	3.00
8.3—	Isoline (Lemoine 1916) Anemone type; midseason. Cream white cup-like guards. Center canary-yellow marked with crimson spots	5.00
8.8—	Laura Dessert (Dessert 1913) Anemone type; early midseason. Guards opening a pale yellow, center a compact tuft of light yellow petaloids, one of the best yellows to date.....	5.00
8.6—	Primivere (Lemoine 1907) Anemone type; midseason. Flat flower with creamy white guards, center narrow petals of canary-yellow, fragrant	2.00
9.7—	Solange (Lemoine 1907) Double; large, late. Compact globular form, opens slowly, a wonderful creamy copper color overlaid	

with a faint salmon tint. Excellent keeping qualities. We have had Solange in full flower for a month. A great prize winner

each
2.50

JAPANESE RED

- 8.6—**King of England** (Kelway 1902)
Japanese type; early. Cupped guards of dark crimson, center of incurved buff staminodes streaked with dark rose-pink, Carpels green, tall and wiry stems 3.50
- 8.5—**Flamboyant** (origin unknown)
Japanese type; midseason; cupped guards of light crimson, with yellow staminodes, Carpels green-yellow. A free bloomer and later than King of England 2.00
- 8.2—**Flashlight** (Hollis 1906)
Japanese type; midseason. Dark rosy-red cupped guards, with tuft of pink staminodes tipped yellow 3.00
- 9.2—**Fuyajo** (origin unknown)
Japanese type; midseason. Dark purplish crimson, with center a cluster of dark old-rose petaloids heavily tipped cream. Carpels green tipped pink..... 6.00
- 8.6—**Mikado** (Japan 1893)
Japanese type; midseason. Waved cupped petals of dark crimson, center of thick staminodes of dark rose-red edged yellow, Carpels green with yellow tips. Introduced in this country by Japan at the Chicago World's Fair in 1893 2.00
- 8.7—**Rashoomon** (Japanese origin)
Japanese type; midseason. Rose red guard petals, center staminodes with incurved tips of rose-red edged yellow, Carpels green with orange tips..... 5.00
- 9.0—**Some Ganoke** (origin unknown)
Japanese type; midseason. Broad waved and cupped guard petals of dark crimson, center crinkled buff staminodes tinted with rose, carpels yellow..... 4.00

JAPANESE PINK

- 9.2—**Ama no Sode** (Japan) each
Japanese type; midseason. Single row of wide cupped petals of rose-pink, immense center of yellow stamens with fluted crinkled tips stained rose, green carpels with yellow tips. Has the appearance of an immense ruffled wild rose.....7.00
- 8.1—**Cathedral** (origin unknown) 2.0
Japanese type; midseason. Dark rose pink guards with lighter edges, compact center of pale pink petaloids, free blooming
- 8.2—**Goldmine** (Hollis 1907) 2.00
Japanese type; midseason. Dark rose-pink of irregular cupped form, white petaloids stained pink and tipped yellow, free bloomer and good grower.....
- 8.7—**Princess Duleep** (Kelway)

	Japanese type; early. Double guard petals of dark old-rose, center of buff yellow staminodes stained rose-pink, free bloomer	Each \$ 4.00
8.9—	Tokio (origin unknown)	
	Japanese type; midseason. Cupped waving guard petals of rose-pink, center of large loose staminodes with yellow tips stained pink on upper half, green carpels with pink tips. A grand pink Jap.....	6.00

JAPANESE WHITE

9.3—	Isani Gidui (origin unknown)	
	Japanese type; midseason. Two rows of broad rounded guards of pure white, center a mass of yellow staminodes, a beautiful white Jap, correct name is supposed to be Isani Jishi which means "Smiling Lion"	8.00
8.7—	Margaret Atwood (Origin unknown)	
	Japanese type; midseason. Pure white cupped flowers, center a ball of golden stamens, carpels green, very similar to Isani Gidui	5.00
9.0—	Toro No Maki (origin unknown)	
	Japanese type; midseason. Long guard petals of blush white, center of white stamens edged yellow. Carpels green with pink and yellow tips	5.00

SINGLE RED

8.8—	Vera (Gumm 1923)	each
	Single early midseason. Cupped guards of dark crimson with silky sheen. Compact center of golden stamens. Carpels yellow tipped red	10.00
8.5—	Black Prince (Thurlow 1915)	
	Single; midseason. Long cupped petals of deep satiny crimson. Center stamens red at base tipped yellow, free bloomer and fragrant	2.50

SINGLE PINK

9.0—	Helen (Thurlow 1922)	
	Single; early. Double row of shell-pink petals with mass of golden stamens, highest rated pink single.....	12.00
8.4—	Letincelante (Dessert 1905)	
	Single; midseason. Large cupped flowers of bright pink margined with silver, stamens bright yellow.....	2.50
8.6—	Nellie (Kelway)	
	Single. Rose pink, tufted yellow stamens, dwarf. Fine for landscaping	3.00
8.9—	Pride of Langport (Kelway 1909)	
	Single; midseason. Cupped petals of pale rose-pink center of golden stamens, blooms in large clusters.....	5.00

SINGLE WHITE

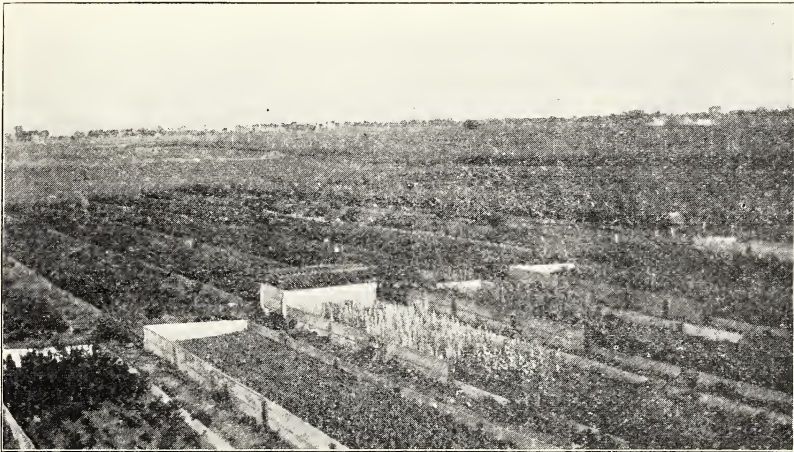
<p>8.6—La Jeur (Shaylor 1915) Single; early. White with two rows of overlapping petals, center broad ring of golden stamens, very large, and a fine white single.....</p>	<p>each 4.00</p>
<p>8.5—Margarite Dessert (Dessert 1913) Single; midseason. White powdered with rose dots, golden yellow stamens, carpels tipped red.....</p>	<p>2.50</p>

All peonies listed are standard divisions of 3 to 5 eyes. We sell 2 eye divisions of any of the above peonies at half price, but all 2 eye divisions are charged at one-half the Each rate.

PEONY COLLECTION

9.2— Mon. Jules Elie , Silver pink.....	\$ 1.00
8.8— Karl Rosenfield , Brilliant red.....	1.50
8.7— Reine Hortense , Hydrangea pink.....	1.50
\$4.00 value—Collection of these Peonies (1 each).....	3.00

No 2 eye divisions of this collection sold.



View of our 800 cold frames

Member of:
 Commercial Peony and Iris Growers Association
 and American Peony Society.
 Phone Elmhurst 3113-M-1

HYBRID LILACS

This collection of Lilacs represents the cream of the Lilac family. Every Lilac listed has exceptional merit, and many of these varieties have flowers an inch or more in diameter and have enormous trusses of bloom. They bloom on young stock 18 to 24 inches high, and come in light blue, pink, red, lavender, rose and white, with variations of lilac shades. Many are early bloomers, bush form.

	each	3
Aline Moqueris —Double, dark purplish red, large panicles and a scarce variety	18-24	\$3.50 \$ 9.00
Alphonse Lavelle —Double, early Lilac.....	18-24	2.00 5.00
Belle de Nancy —Double, satiny rose	2-3	2.50
Berryer —Semi-double, Purple and early	18-24	2.00 5.00
Chas. Joly —Double, Bright crimson, rich red buds and large trusses	18-24	2.00 5.00
Claude Bernard —Double, early bright mauve.....	3-4	4.00
Condorset —Double, pale blue, very large flowers and immense panicles	18-24	5.00 13.50
Decaisne —Single, pale azure blue, nothing finer.....	18-24	4.00 11.00
Diderot —Single, Claret red, one of the largest red singles, huge panicles	2-3	2.50 7.00
Doyen Keteleer —Double, bluish lilac, one of the best blue lilac shades	18-24	2.00 5.00
Dr. Chas. Jacobs —Single, dark wine red, large.....	18-24	2.50 7.00
Dr. Masters —Double, clear lilac, large.....	18-24	2.00 5.00
Edouard Andre —Double, clear rose, large trusses and scarce	18-24	5.00
Emil Gentil —Double, cobalt blue.....	18-24	3.00
General Pershing —Double, deep lilac blue, very large flowers, new and late	18-24	2.00 5.00
Jacques Calot —Double, reddish violet, free bloomer, fine large trusses	18-24	2.50 7.00
Jan Van Tol —Single, white, largest and most free blooming white, gigantic flowers	18-24	2.50 7.00
	2-3	3.00
Jean Mace —Double, early mauve, free bloomer.....	18-24	2.50 7.00
Le Gaulois —Double, dark pink, large massive pink	18-24	3.00 8.50
Lucie Baltet —Single, Coppery-rose-salmon, billowy trusses of an unusual shade of old-rose.....	18-24	4.00
Marechal Lannes —Double, violet, mammoth flowers	18-24	2.50 7.00
Mireabeau —Single, pink, early and very large.....	2-3	2.00 5.00
Mme Casimir Periner —Double, white, fragrant.....	18-24	2.00 5.00
Montaigne —Double, pinkish purple	18-24	2.50 7.00
Mont Blanc —Single, white, one of the best.....	2-3	3.00
Pascal —Single, Lilac shade, large blooms	18-24	2.50 7.00
President Loubet —Double, purplish red, immense panicles and one of the best reds 12 to 18 inch	2.00, 3 for 5.00	18-24 3.00 8.00
President Viger —Doubles, red, long slender trusses 2 to 3 ft.	2.50, 3 for 7.00	18-24 2.00 5.00
Princess Alexander —Single, white, large.....	2-3	2.50
Reaumur —Single, dark violet red.....	18-24	2.00 5.00
Rene Jarry-Desloges —Double, azure blue lilac, dwarf habit, immense panicles	18-24	3.00

Vauban —Double, pink, an unusual shade of blue pink	18-24	2.00	5.00
Vestale —Single, white, compact hyacinth shaped trusses	18-24	2.00	5.00
Waldeck Rosseau —Double, pink, billowy trusses of pale pink, late	18-24	2.50	7.00

YOUNG HYBRID LILACS

This is young stock and enables one to get the finest hybrid lilacs in small sizes and grow them on at small cost. They are the same quality as the larger sizes listed above and the description of plants are the same. Plants will average 12 inches high, many of them will bloom next year.
\$1.00 each. Six for \$5.50. Twelve for \$10.00

Berryer —Double purple	LeGaulois —Double pink
Chas. Joly —Double crimson	Mme Casimir Perier —Double white
Claude Bernard —Double mauve	President Loubet —Double red
Doyen Keteleer —Double blue lilac	Vauban —Double pink
Jacques Calot —Double violet	Vestale —Single white
Jean Mace —Double mauve	Waldeck Rosseau —Double pink

OLDER VARIETIES OF LILACS each 3

These are the best of the older varieties and are worthy of any garden.

Chinese —Rose pink, slender graceful panicles.....	24-30	1.00	2.50
Charles —Darkest purple, free bloomer.....	24-30	1.00	2.50
Bertha Dammann —White, large trusses	18-24	1.00	2.50
Marie LeGray —Dwarf white, extra good.....	18-24	1.00	2.50
Michel Buckner —Dwarf double pink	18-24	1.00	2.50
Persian —White, Persians are fine bloomers.....	18-24	1.00	2.50
Persian —Purple	24-30	1.00	2.50
Ludwig Spaeth —Darkest lilac	18-24	1.00	2.50
Victor Lemoine —Double red	18-24	1.00	2.50
Madame Lemoine —Double white	18-24	1.00	2.50

Lilacs are too heavy to send by P. P., so will be shipped by express.

SHRUBS

Amalanchier — Canadensis, Juneberry. Tall, upright growing shrub, white blossoms, followed by purplish fruit in June	2-3	1.00	2.75
Aronia —Red chokecherry, Arbutifolia. Upright, shrub, leaves whitish gray, white flowers with red fruit	2-3	1.00	2.75
Almond —Double flowering, pink or white. An elegant shrub covered with bloom in June.....	2-3	.75	2.00
Barberry —Red leaved, Japanese. Leaves turn orange scarlet in fall	12"	.85	2.00
Barberry —Thunbergii, green leaved barberry Makes fine hedges, red fruit in fall	2 year	.30	.75
	per 100	\$20.00	
Butterfly Bush —Buddlea, Magnificent. Lilac colored flowers in June, pineapple fragrance, 4-5 feet.....	18-24	.75	2.00
Caraganas —Pea shrub, Arborescens. A shrub or low tree with pea shaped yellow flowers in May.....	2-3	.75	2.00
Cotoneaster —Horizontalis. Low growing shrub with dark fruit and crimson leaves in fall, fine for rockeries, 4 yr.		3.00	
Cornus —Dogwood, Florida. New and attractive white flowers 3 to 3½ inches across, crimson foliage in			

autumn	2-3	1.25	3.50
Cornus —Dogwood, Red branches, tall with silver foliage	2-3	1.00	2.75
Cydonia —Japanese Quince. Brilliant crimson flowers, the first thing in spring to bloom, 4 to 5 ft.....	18-24	.75	2.00
Euonymus —Strawberry bush, or burning bush. Compact habit with corky bark, red fruit, beautiful in autumn when foliage turns strawberry red	3-4	1.50	4.00
Exochorda —Pearl bush. White flowers borne on slender stems that bend beneath their load of bloom, May, 8 to 10 ft.	2-3	.75	2.00
Forsythia —Golden bell, Intermedia. Slender and loaded with golden bells in April, extra heavy.....	4-5	1.00	2.75
Hydrangea —Arborescens, Hill of snow. Fine for shady places, white snow ball flowers.....	2-3	.75	2.00
Hydrangea —Paniculata Grandiflora. Immense panicles of bloom a foot long, white turning pink in autumn, 6 feet	2-3	.75	2.00
	2-4	1.00	2.75
Honeysuckle —Lonicera, bush Tartarian Rubra. Handsome shrub with showy flowers and red berries....	2-3	.60	1.50
Lilacs —See Lilacs.			
Philadelphus —Syringa, Mock orange. Grandiflora, large white flowers, free flowering, fragrant, a tall shrub, 3-4	3-4	.75	2.00
Potentilla —Cinquefoil, Fruticosa. Low growing shrub with yellow flowers all summer.....	12-18	.80	1.50
Privet —Amoor River. Hedge plants, bushy	3	.30	3.00
Prunus —Flowering plum, Pissardi. Purple leaved plum, tree shrub, branches dark purple, young leaves are crimson, white flowers	2-3	1.00	2.75
Prunus —Cistena, Purple leaved plum, new variety, 8 feet	3-4	1.25	3.50
Prunus —Chokecherry. See Aronia.			
Rhus-Cotinus —Smoketree. A tall shrub bearing masses of smoky, misty flowers in June, 8 to 10 feet	2-3	1.00	2.75
	3-4	1.50	4.00
Roses —See roses.			
Spirea —Anthony Waterer. Low growing red spirea, flat clusters from June on	2	.60	1.50
	3 year	.75	2.00
Spirea Frobeli —Red flowers like Anthony Waterer, tall 2	2	.60	1.50
	3 year	.75	2.00
Spirea —Thunbergii. Dwarf, early white flowers....	2-3	.75	2.00
Spirea —Douglasi. Rose colored flowers in July, new, 2-3	2-3	.60	2.00
Spirea —Van Houtti. Bridal wreath. White flowers in masses in June, 6 feet	3-4	1.00	2.75
Snowberry —A good hardy shrub with white berries in fall	3-4	.75	1.50
Sweet Pepper —Shrub. Clethra, Anifolia. A grand shrub for the north side, creamy panicles, sweet scented, 4 to 5 feet	18-24	.60	1.50
Sumac —Dwarf cut leaf. Fern like leaves, turn autumn shade of red in fall	2-3	1.25	3.50

Witch Hazel —Hammanelliis. Winter blooming, yellow flowers after leaves drop, and will bloom mostly all winter	2-3	1.00	
Tamarix —Hespida. Blue foliage, carmine flowers in fall, 4 to 5 feet	2-3	1.00	2.75
Viburnum —Carlesi. Pink snowball, new compact Snowball in a delicate pink, fragrant	18-24		3.00
Viburnum —Opulus, High bush cranberry. Tall, large flat bloom in spring with clusters of red berries all winter, 5 to 6 feet	3-4	1.00	
Viburnum —Opulus Sterile. Common snowball, white balls of flowers in June, large shrub.....	2-3	.75	
Viburnum —Plicatum double Japanese snowball. A new double and very hardy, extra fine shrub	2-3	1.75	
Viburnum —Tomentosum Single Japanese. Large white flowers, forms large bushes	2-3	1.00	
Weigelia —Diervilla. Rosea. Very showy and very hardy, 5 to 6 feet, with trumpet shaped flowers in June	4-5	1.00	
Weigelia —Eva Rathke. Crimson	18-24	.75	2.00
Willow —Pussy willow. Early blooms, pretty catkins always welcome in spring for table decorations, 4 year extra heavy		1.00	
	3 year, extra heavy	.75	

ORNAMENTAL FLOWERING TREES

Flowering trees add more to a home than anything we know of for the amount expended. They double real estate values, and give that regal splendor and dignity that is hard to express.

Ash —Mountain ash, European Sorbus. Very desirable shade tree, attains height of 25 feet, bloom in spring is followed with coral red berries	5-6	1.25	3.00
	8-10	2.50	7.00
Ash —Weeping Mountain Ash. Have flowers and berries like European, good weepers, 6 foot stems, 2 year heads		3.00	8.00
Crataegus —Flowering thorn. Paul's double flowering, scarlet flowers and showy fruit.....	4-5	3.00	
	6-7	4.00	
Cherry —Japanese weeping. Trees are completely covered with double pink rose bud blooms in early spring. 6 foot stems, 1 year heads		5.00	
	6 foot stems, 2 year heads	6.00	
Cherry —Sieboldi. Upright tree growing to 15 feet, very ornamental, with pink double rose flowers, last of cherry family to bloom.	5-6	3.00	
Crab —Becktel's double flowering. Deep pink flowers in June, attain height of 15 feet, very fragrant	4-5	2.50	
Crab —Sargent. Improved Becktel's, double pink flowering	4-5	2.50	
Elms —Moline. Finest street or garden elms, rapid grower	6-8	2.50	7.00
	8-10	3.00	8.00
Judas Tree —Red Bud. Small tree with heart shaped leaves, pink blooms	2-3	1.00	
	3-4	1.25	

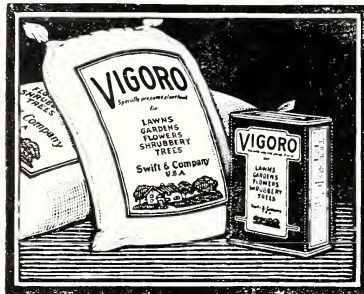
Magnolia —Glauca. The large waxy white flower cups are very fragrant from June through the summer, almost evergreen, will attain 25 to 30 feet or can be left untrimmed for a shrub.....	B & B	3-4	5.50
Maple —Schwedler. Purple Norway. Red leaves changing to purplish green in summer and golden in fall, will attain a height of 50 ft. These trees are well balanced, pruned and branched and are 15 ft. high with 3 inch caliper			15.00
Maple —Wiers cut leaf. Silver droopy cut leaves, rapid grower, and will attain a height of 50 ft.		6-8	2.25
Olive —Russian. Silver willow like leaves, yellow flowers followed by green fruit, or will make a wonderful large shrub if not pruned		5-6	1.25
Peach —Double red flowering peach, grows about 20 ft. double red blooms in May		3-4	2.00
		4-5	2.75
Tulip tree —Whitewood. A grand native tree, tall with gossy leaves turning yellow in fall, tulip-like flowers 2 inches long of yellow marked orange, May-June 8-10			3.00

CLIMBING VINES

Ampelopsis —Engleman Ivy. Clings to brick or stucco,			
		2 year	.50 1.40
Clematis —Paniculata. White flowers		2 year	.50 1.40
Clematis —Jackmani purple. Velvety purple		2 year	1.50
Euonymus —See rock plants.			
Honeysuckle —Halls Japanese. White flowers changing to yellow, fragrant		2 year	.50 1.40
Polygonom —Silver lace vine. Rapid grower, billowy sprays of white		3 year	1.00 2.50
Roses —See roses.			
Wisteria —Purple grafts. Pea shaped flowers, long racemes		2 year	1.00

FERTILIZER

Clean
 Odorless
 Sown like
 grass seed
 Endorsed by
 Landscapers and
 Nurserymen every-
 where.



100 lbs.	\$5.00
50 lbs	3.00
25 lbs.	1.75
5 lbs.	.50

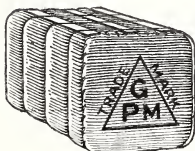
A Swift & Co. product, and used by us in our Nursery.

IMPORTED GRANULATED
PEAT MOSS
 TORF MULL

It pays to buy Fertilizer locally on account of its weight.

PEAT MOSS

Peat Moss and Vigoro are two of the fertilizers we use in our Nursery, and we can highly recommend them to our customers. Peat moss holds moisture and keeps the ground mellow.



Large bales, enough for a large garden.....	\$6.00
Small bales, enough for a small garden.....	1.50

We do not pay parcel post or freight on Fertilizers .