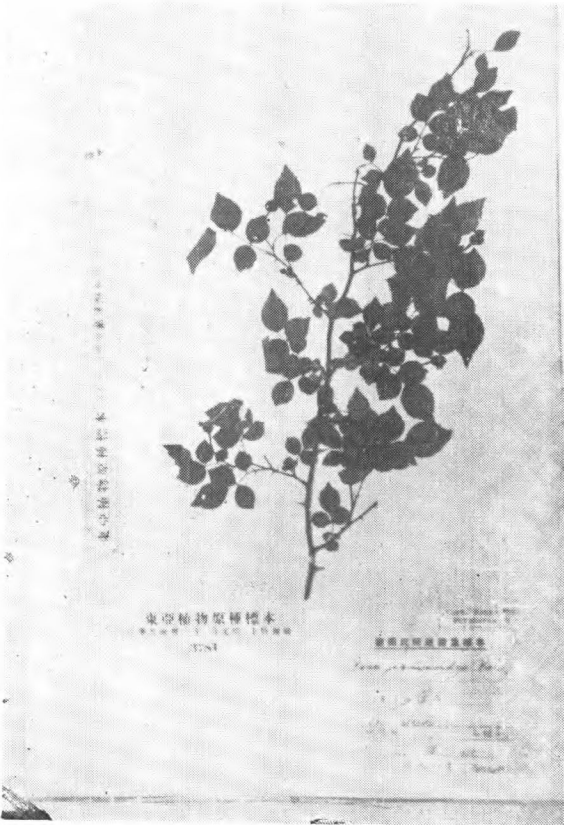




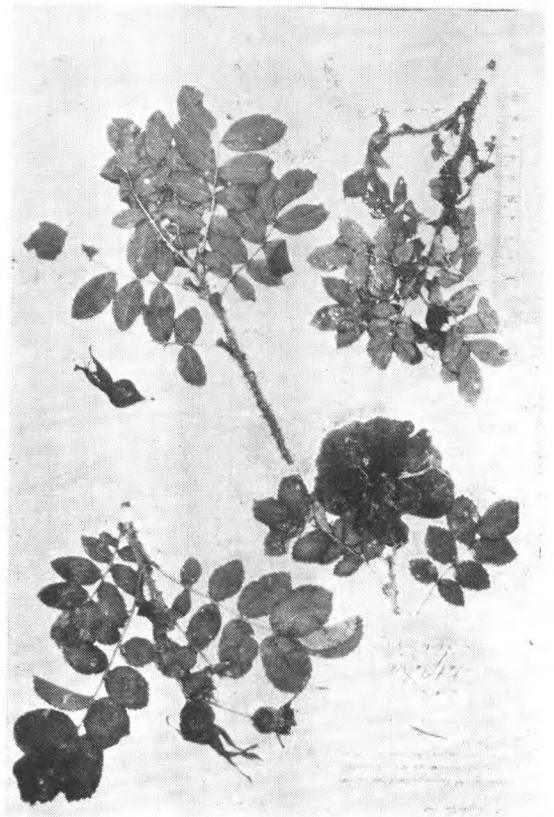
*Rosa Henryi* var. *australis* (Rehd. et Wils.) Metcalf.  
Hgkg. Herb. 2641 (type) 福建



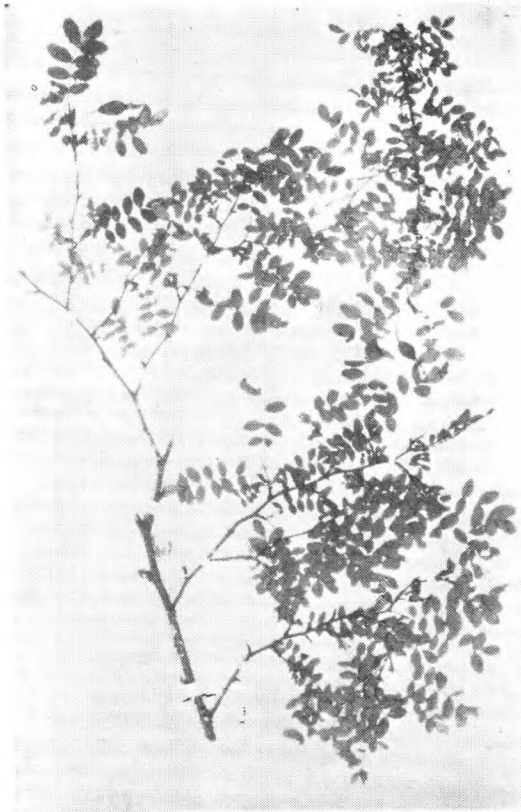
*Rosa Hugonis* Hemsl.  
Hugh (type)



*Rosa jasminoides* Koidzumi  
Yogo Ikkaku 9514 日本



*Rosa kamtchatica* Vent.  
Hooker (type)



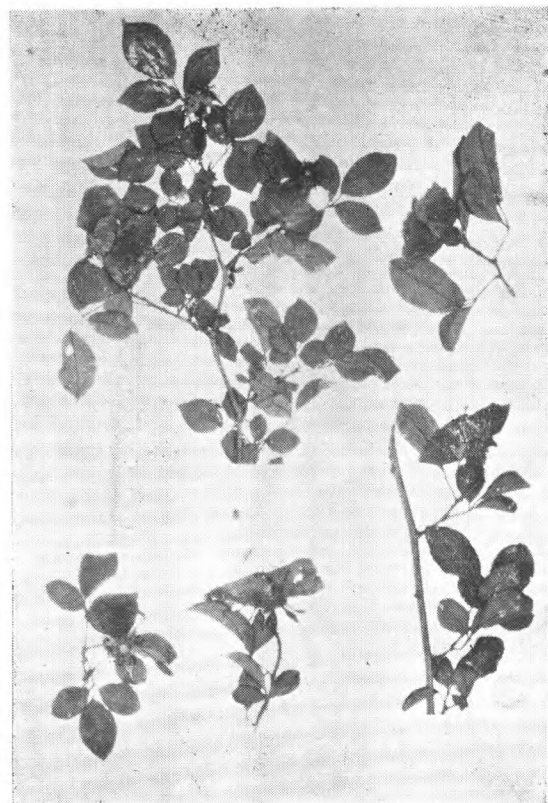
*Rosa koreana* Komarov  
Wils. 9008 朝鮮



*Rosa kwangsiensis* Li  
Tsoong 81540 (type) 广西

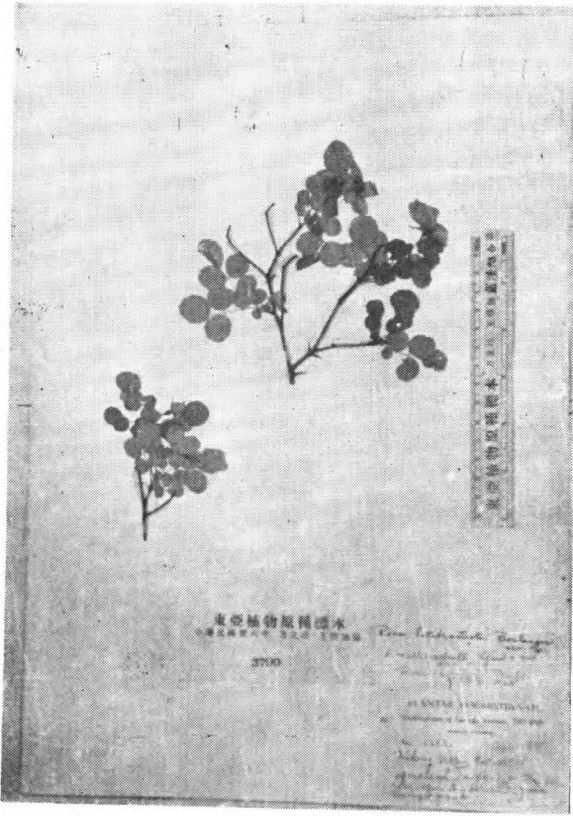


*Rosa kwangtungensis* Yu et Tsai  
Chun 6293 广东



*Rosa laevigata* Michx.  
Hance 805, Fortune A36 福建廈門





*Rosa latibracteata* Boulenger  
Forr. 16383 (isotype) 云南



*Rosa longicuspis* A. Bertoloni  
Wils. 1098 四川峨眉



*Rosa luciae* Franch. et Rochebr.  
Chun 6214 广东



*Rosa lucens* Rolfe  
H.-M. 8584 云南



*Rosa Mairei* Lévl.  
Maire 293 (type)



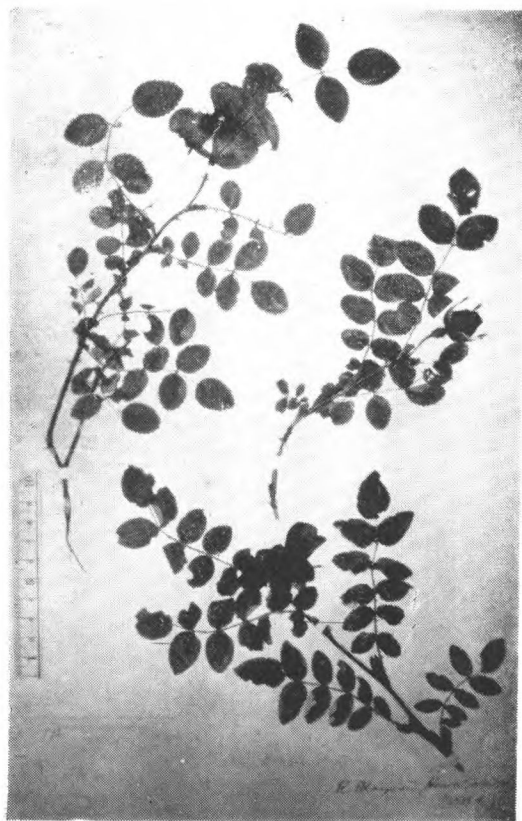
*Rosa Mairei* Lévl. var. *plurijuga*  
Schneider Fang 1491. 四川汶川县



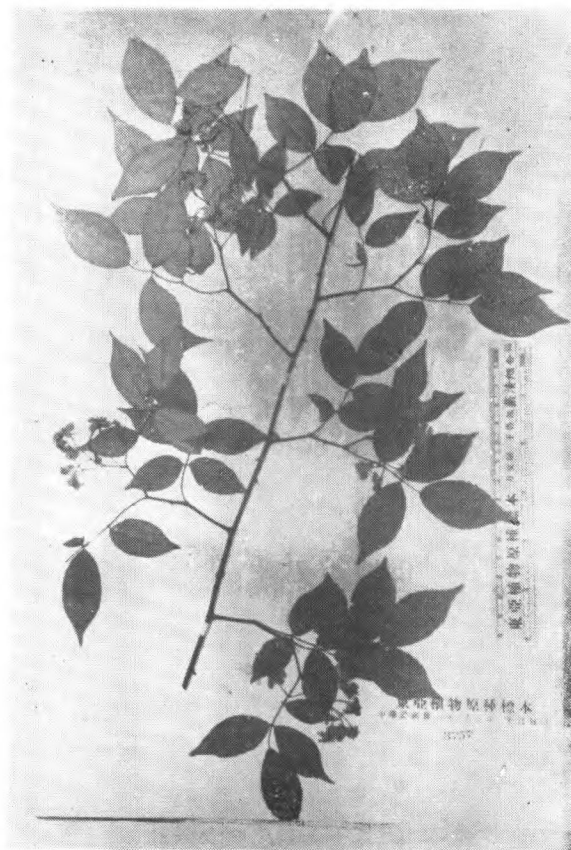
*Rosa Maximowicziana* Regel  
Wils. 8639 朝鮮



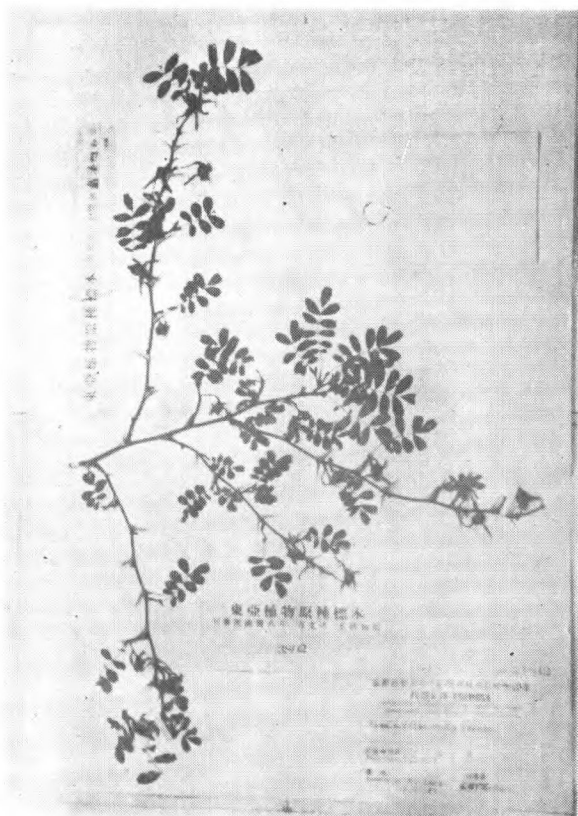
*Rosa Maximowicziana* var. *Jackii* Rehd.  
Cult. (type)



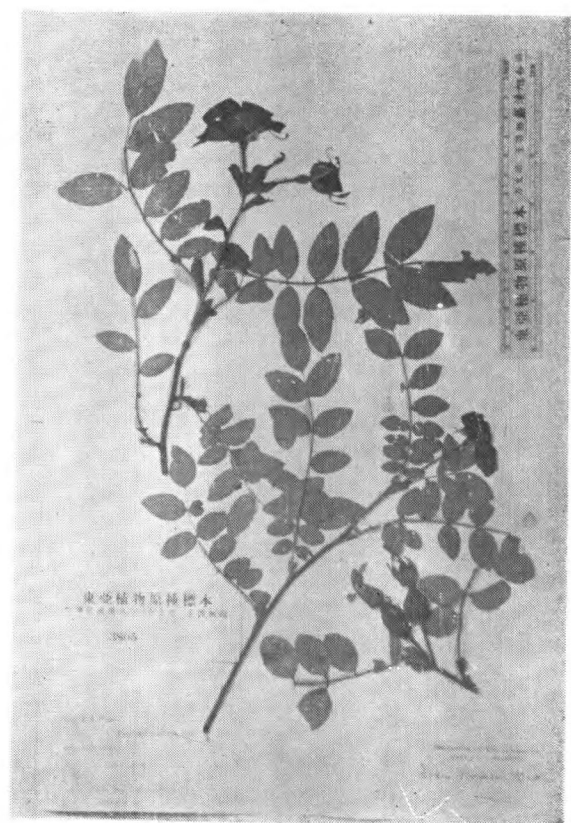
*Rosa Moyesii* Hemsl. et Wils.  
A. E. Pratt 172 (type) 西康打箭炉



*Rosa microcarpa* Lindl.  
Wils. 4877 四川峨眉



*Rosa morrisonensis* Hay.  
Kanehira et Sasaki 21842 台湾



*Rosa Moyesii* Hemsl. et Wils.  
Wils. 3643 (type) 中国西部





*Rosa Moyesii* f. *rosea* Rehd. et Wils.  
Wils. 1123 (type) 四川穆坪



*Rosa multibracteata* Hemsl. et Wils.  
Wils. (Veitch) 1683 (type) 四川岷江谷



*Rosa multiflora* Thbg. var. *brachycantha* (Focke) Rehd. et Wils.  
H.-M. 1776 四川



*Rosa multiflora* var. *cathayensis*  
Rehd. et Wils.  
Wils. 616 (type) 湖北



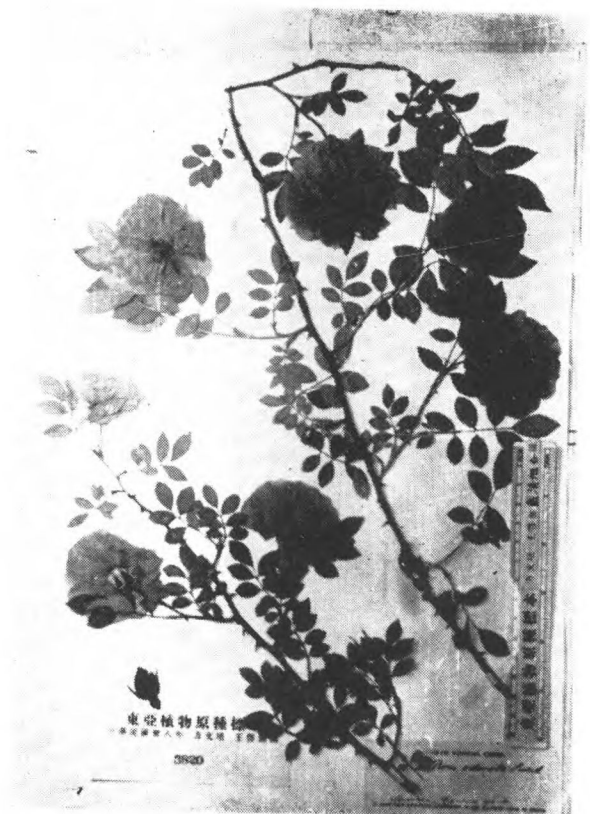
*Rosa multiflora* var. *carnea* f. *platyphylla* Rehd. et Wils.  
Wils. 3610 (type) 四川



*Rosa multiflora quelpaertensis* (Lévl.)  
Rehd. et Wils.  
Taquet 3870 (type) 朝鮮



*Rosa Murielae* Rehd. et Wils.  
Wils. 1134 (type) 四川穆坪



*Rosa odorata* Sweet  
Rock 8411 云南



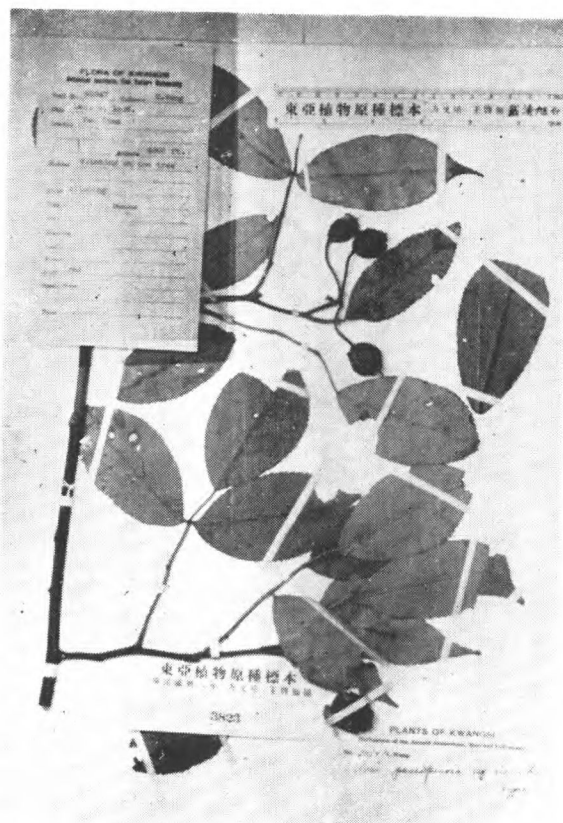
*Rosa odorata* var. *gigantea* Rehd. et Wils.  
Forrest 7458 云南



*Rosa omeiensis* Rolfe  
Wils. (Veitch) 5546 四川西部



*Rosa orbicularis* Baker  
Monbeig (type) 中国西南部



*Rosa paucispinosa* Li  
C. Wang 40547 (type) 广西





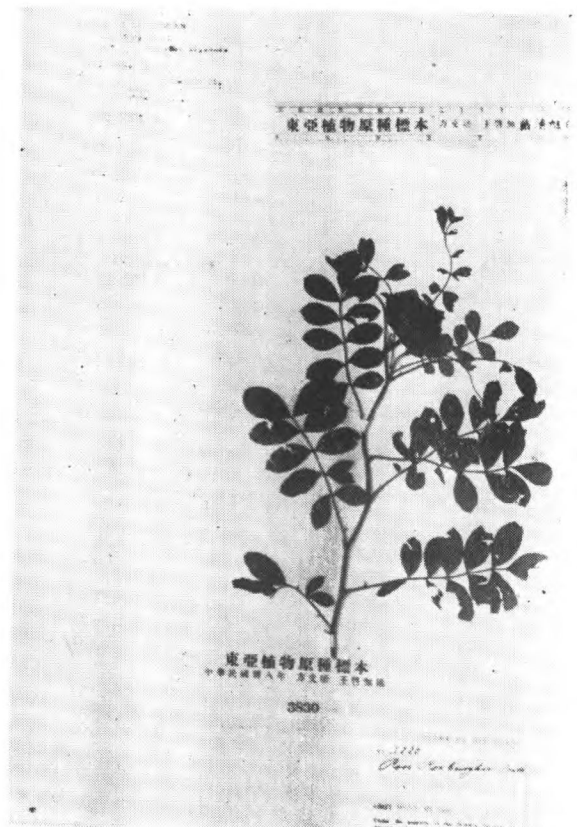
*Rosa persetosa* Rolfe  
(type)



*Rosa praelucens* Byhouwer  
Forr. 16936 (type) 云南中甸



*Rosa Pratti* Hemsl.  
A. E. Pratt (type) 西康打箭炉



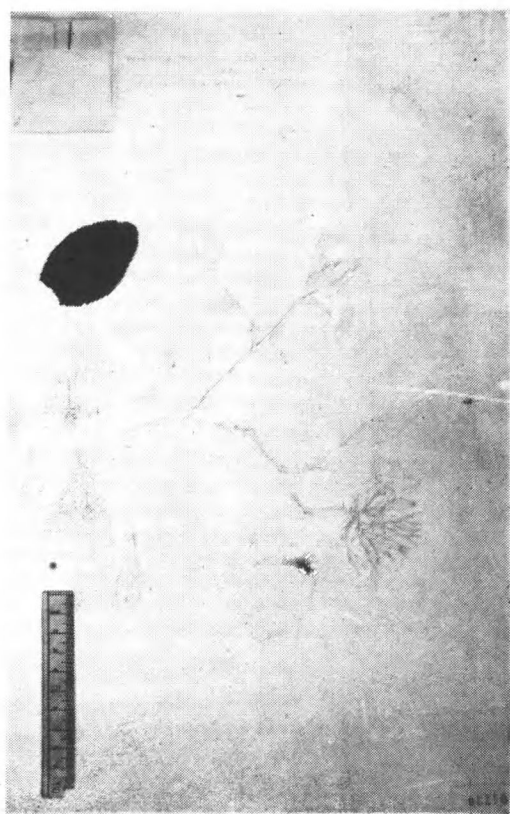
*Rosa Roxburghii* Tratt.  
Fang 3220 四川峨眉



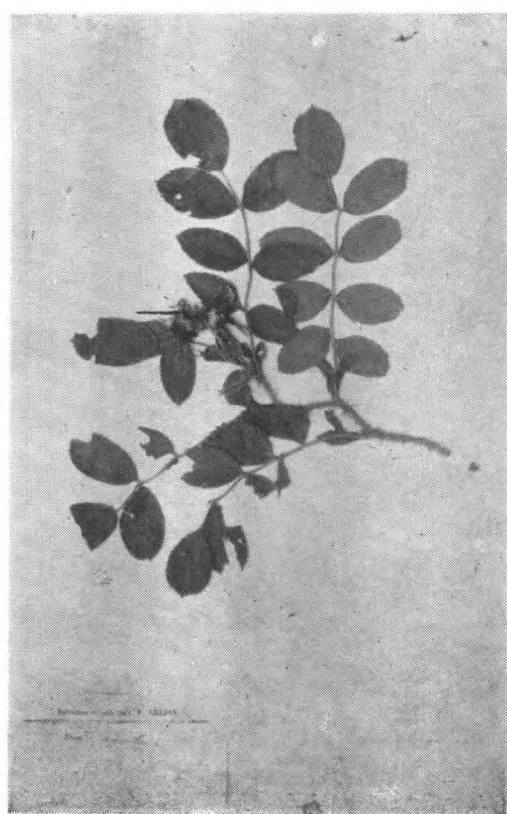
*Rosa Roxburghii* Tratt. f. *normalis*  
Rehd. et Wils.  
Fang 1357 四川南川县



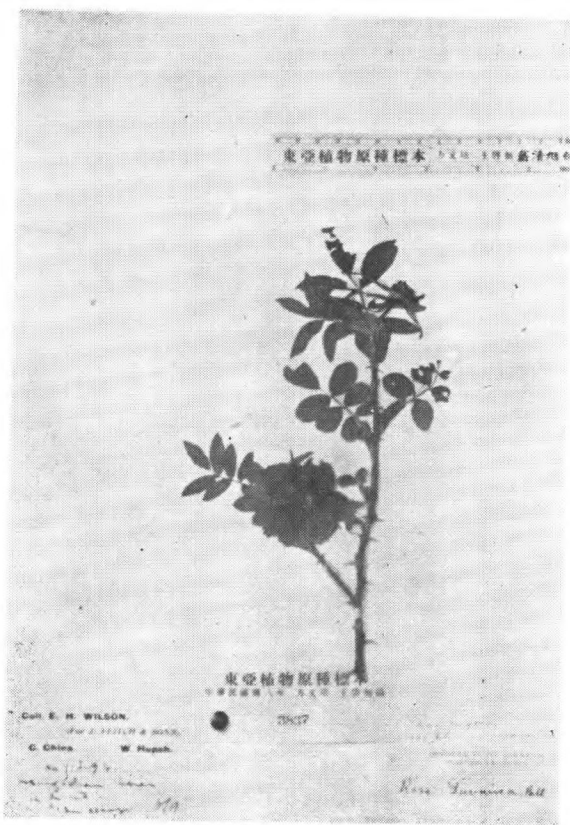
*Rosa Rubus* Lévl. et Van.  
T. T. Yu 552 四川峨眉



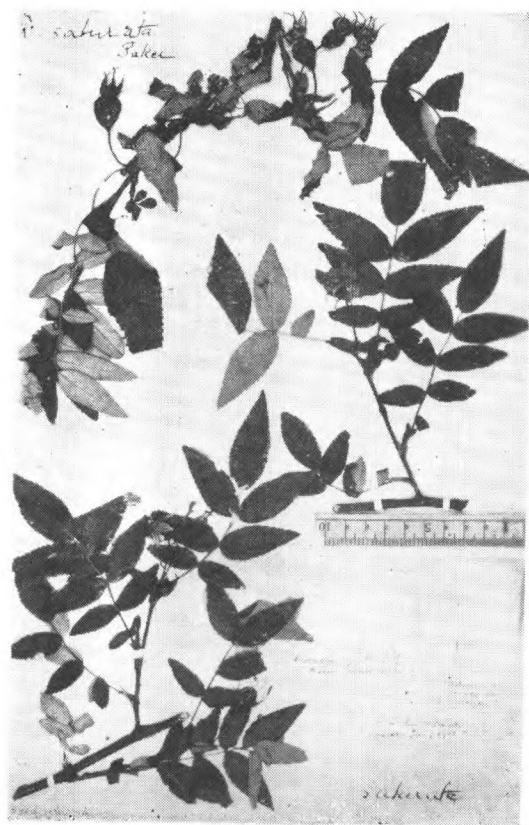
*Rosa Rubus* Lévl. et Van.  
L. Martin 2603 (merotype) 贵州



*Rosa rugosa* Thbg.  
Thbg. (type) 日本



*Rosa rugosa* var. *Chamissoniana*  
C. A. Mayer  
Wils. 1294 湖北



*Rosa saturata* Baker  
W. I. G. Baker (type)



*Rosa sericea* Lindl.  
Tsai 52217 云南



*Rosa sertata* Rolfe  
Yu 1026 四川越嶲县





*Rosa setipoda* Hemsl. & Wils.  
Wils. 2409 isotype. 湖北



*Rosa sertata* Rolfe  
Wils. (Seeds) (type.)



*Rosa sinowilsoni* Hemsl.  
Wils. (Veitch) 4875 四川峨眉



*Rosa setipoda* Hemsl. et Wils.  
Wils. 272 湖北房县



*Rosa Soulieana* Crepin  
Bot. Mag. 8158 (type)



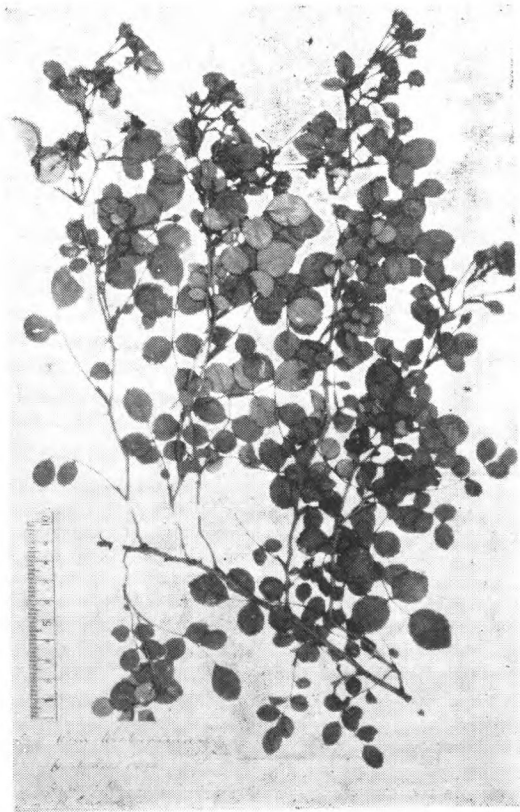
*Rosa suaveis* Willd.  
Wils. 10451 朝鮮



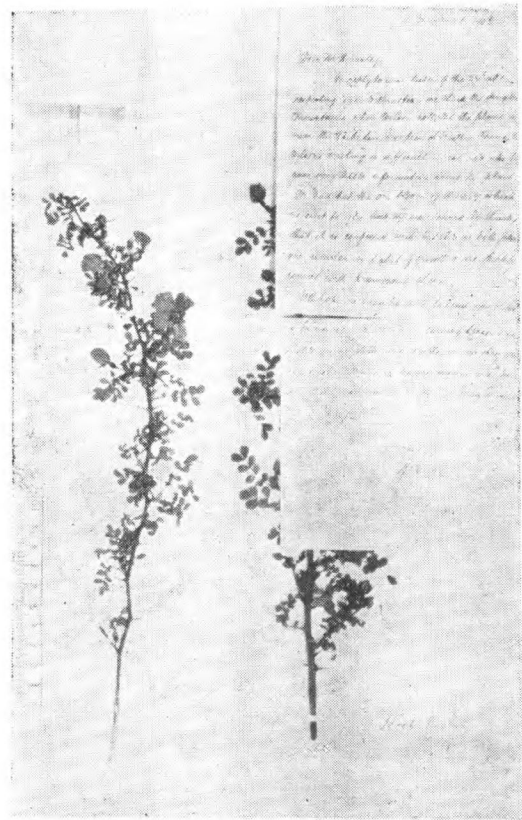
*Rosa Sweginzowii* Koehne  
W. Purdom 1059 甘肃岷州



*Rosa taiwanensis* Nakai  
Takeo Ito 无号 Mt. Gosi, Sintiku, 台湾



*Rosa Wichuraiana* Crepin  
Bot. Mag. t. 7421 (type)



*Rosa Willmottiae* Hemsl.  
Wils. (Veitch) 1459 (type) 四川潘松



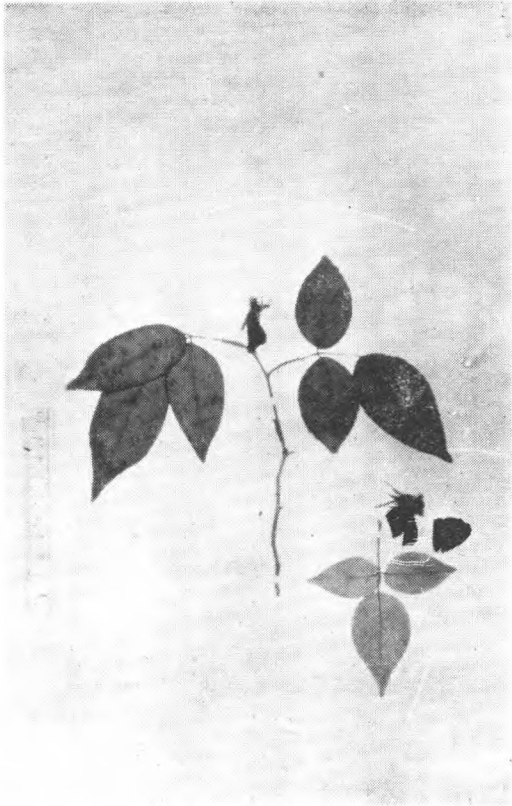
*Rosa Xanthina* Lindl.  
Bancock 1, Bunge 北京



*Rosa Banksiae* R. Brown var.  
*normalis* Regel  
Wils. 619 湖北宜昌



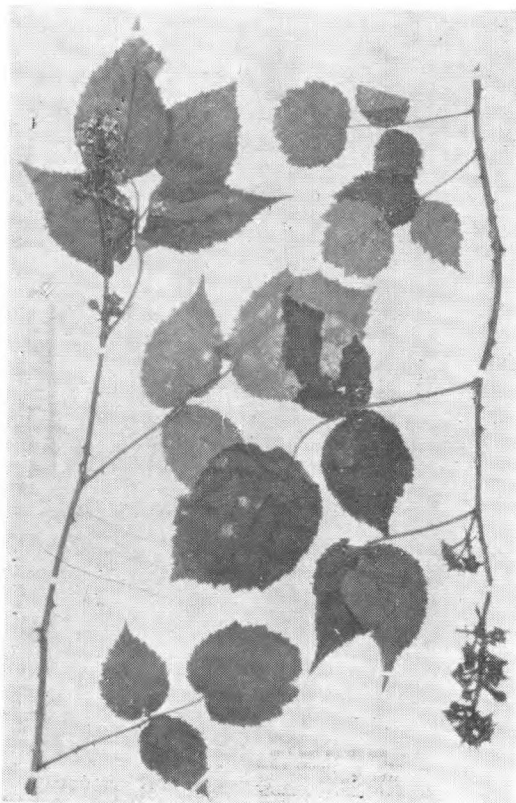
悬钩子属 *Rubus* Linn.



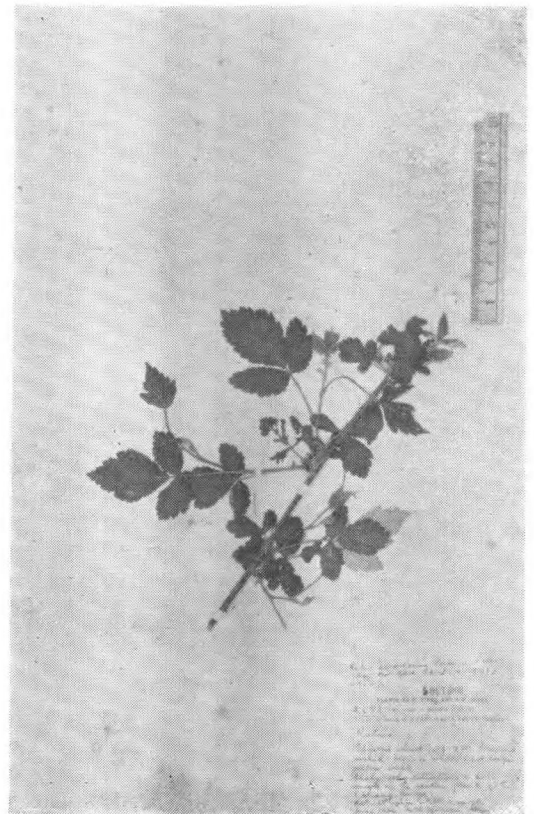
*Rosa Boisii* Card.  
Farges 2667 (cotype) 四川城口



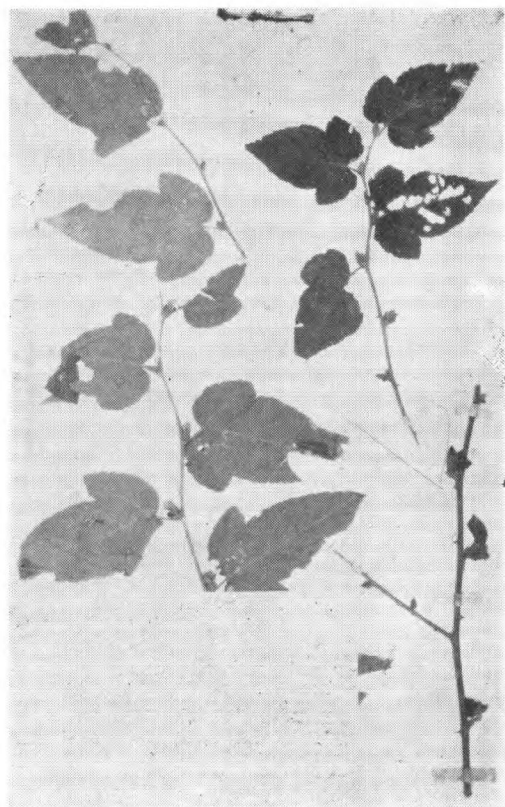
*Rubus adenochlamys* Focke var. *orientalis* Metcalf  
Chun 1968 江苏



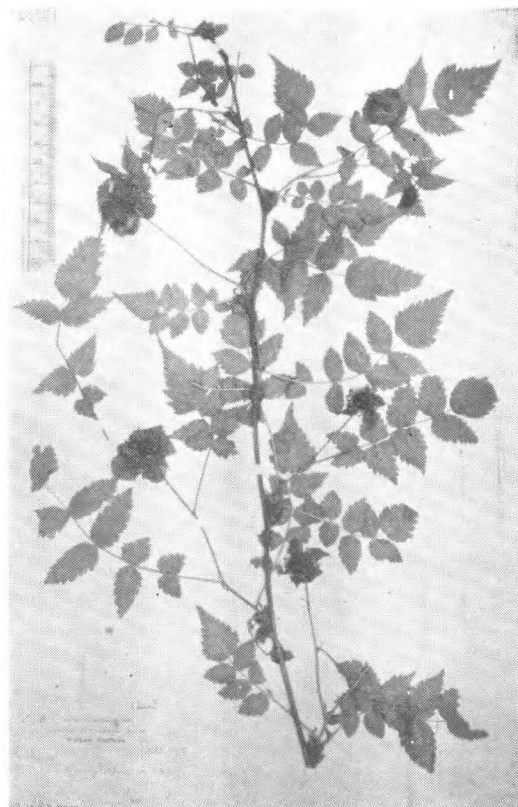
*Rubus adenophorus* Rolfe  
Wils. 81 (type?) 湖北长乐县



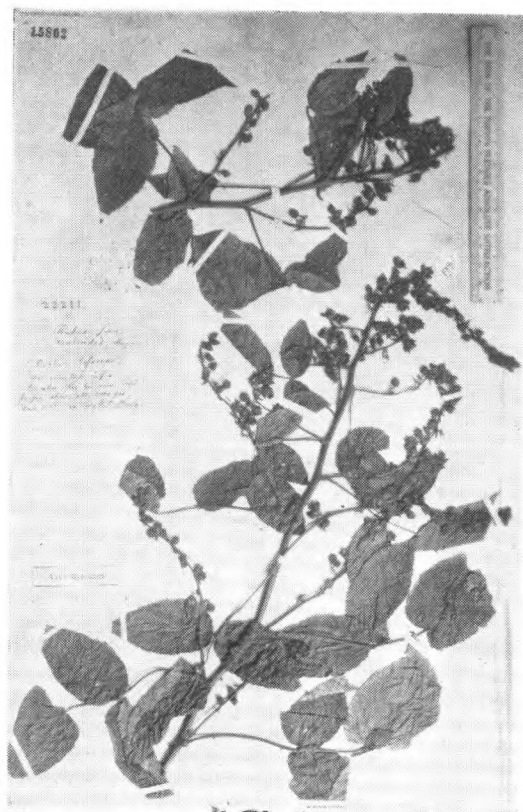
*Rubus alexeterius* Focke  
Forrest 2452 (type) 云南



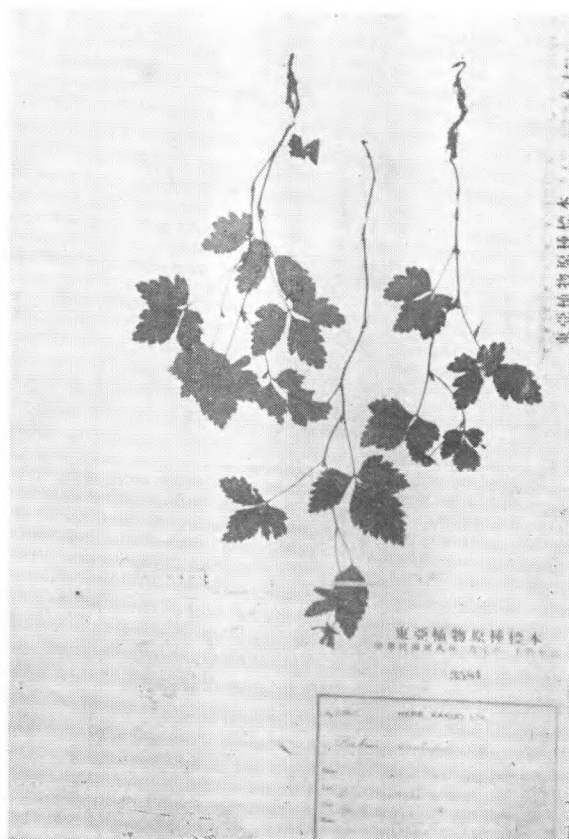
*Rubus althaeoides* Hance  
De Grijs in Herb. Hance 6698 (type)福建



*Rubus amabilis* Focke  
Wils. 830 西康打箭炉



*Rubus aralioides* Hance  
B. C. Henry in Herb. Hance 22211 (type)  
广东罗浮山

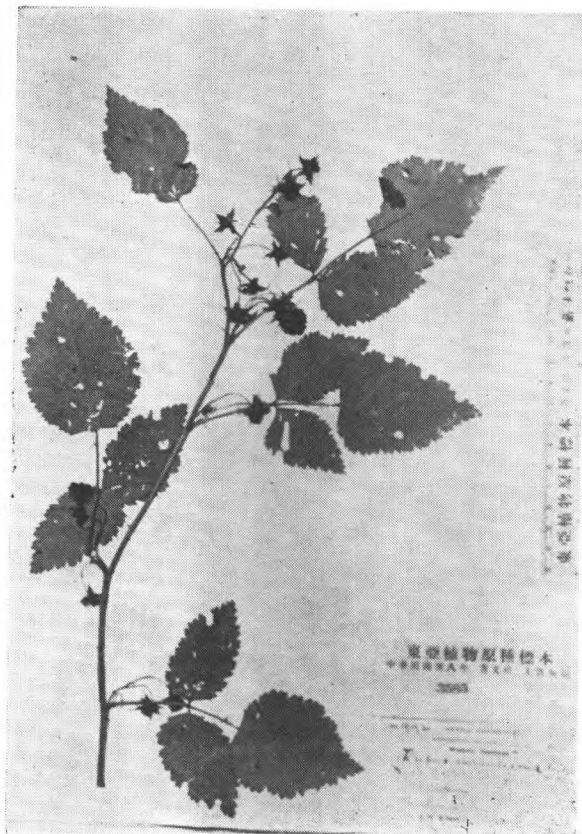


*Rubus arcticus* Linn.  
Uno K. 20425 日本





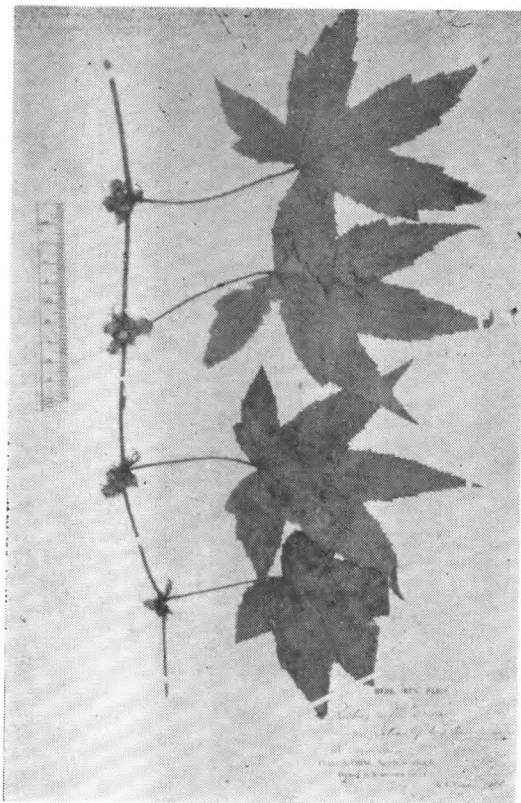
*Rubus asper* D. Don  
Hu 444 浙江龙泉



*Rubus aurantiacus* Focke  
Wils. 992 西康打箭炉

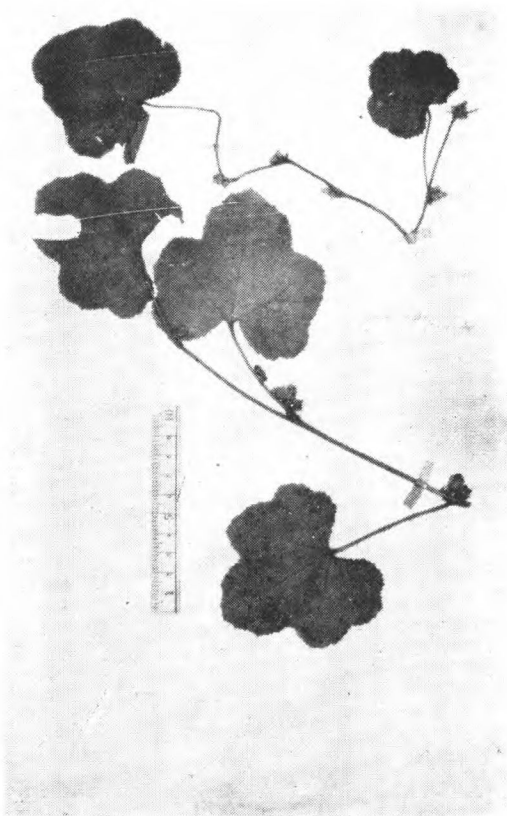


*Rubus biflorus* Hamilton var.  
*quinqueflorus* Focke  
Wils. 832 西康打箭炉

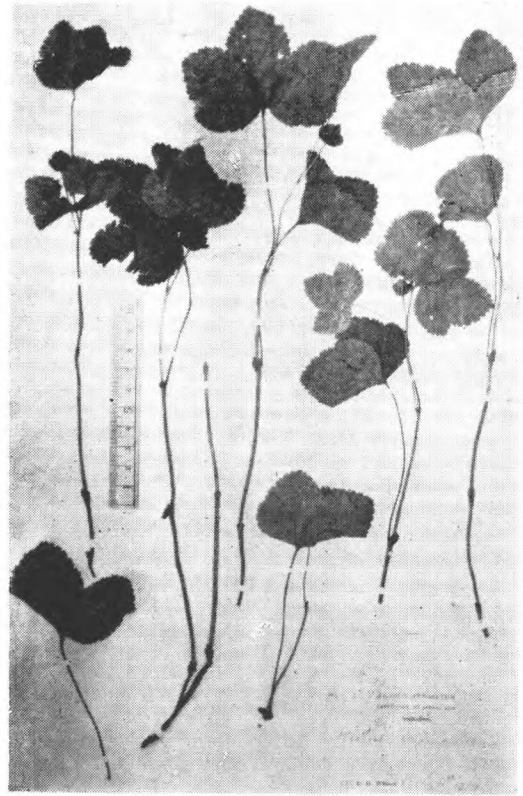


*Rubus Blinii* Lévl.  
Farges 1456 (type) 四川城口





*Rubus buergeri* Miq.  
Buerger (cotype) 日本 04392



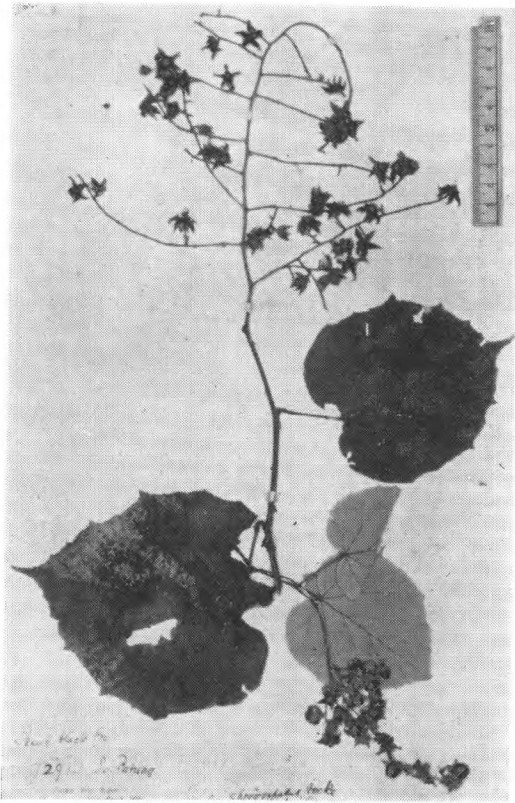
*Rubus chamaemorus* L.  
Wils. 7327.



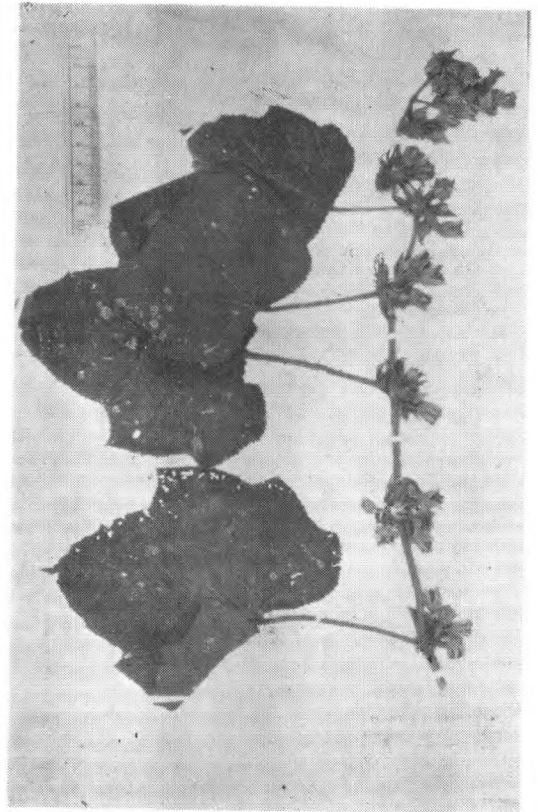
*Rubus chiliadenus* Focke  
Wils. 3020 湖北



*Rubus chingii* Hu  
E. Faber 193 浙江天台



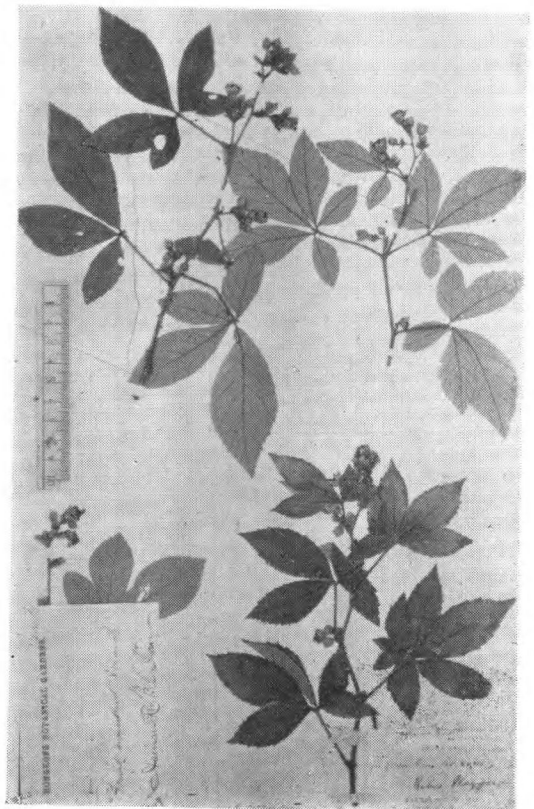
*Rubus chroosepalus* Focke  
Henry 7291 (type) 湖北巴东



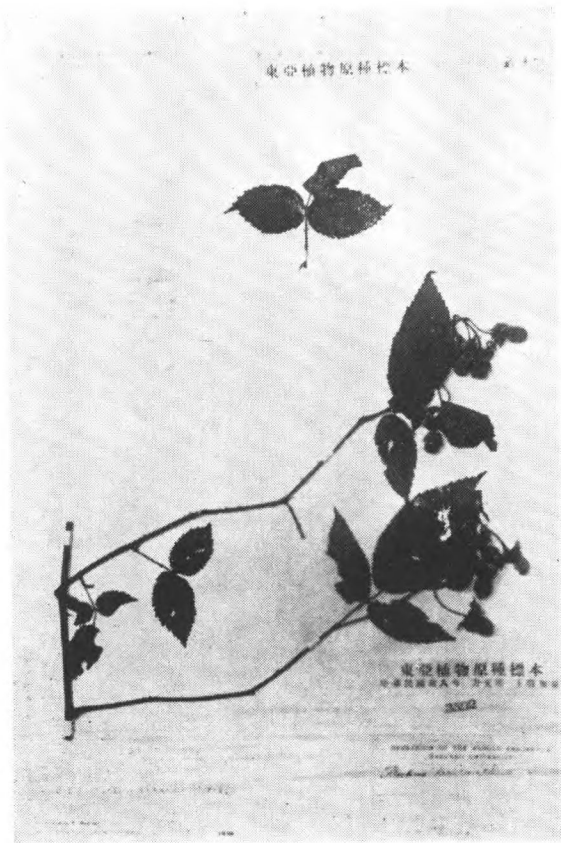
*Rubus chrysobotrys* H.-M.  
Forr. 17618 (type) 云南



*Rubus clinocephalus* Focke  
Henry 10293 (isotype) 云南蒙自



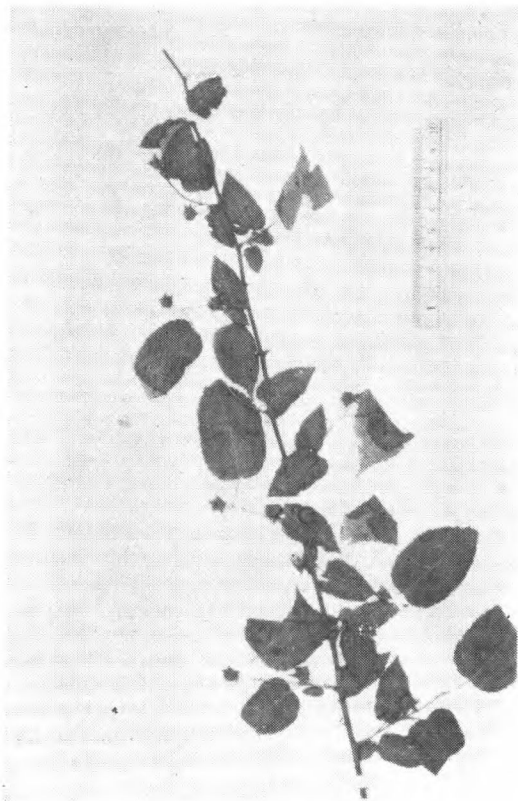
*Rubus cochinchinensis* Tratt.  
Playfair 12 (type) 广东北海



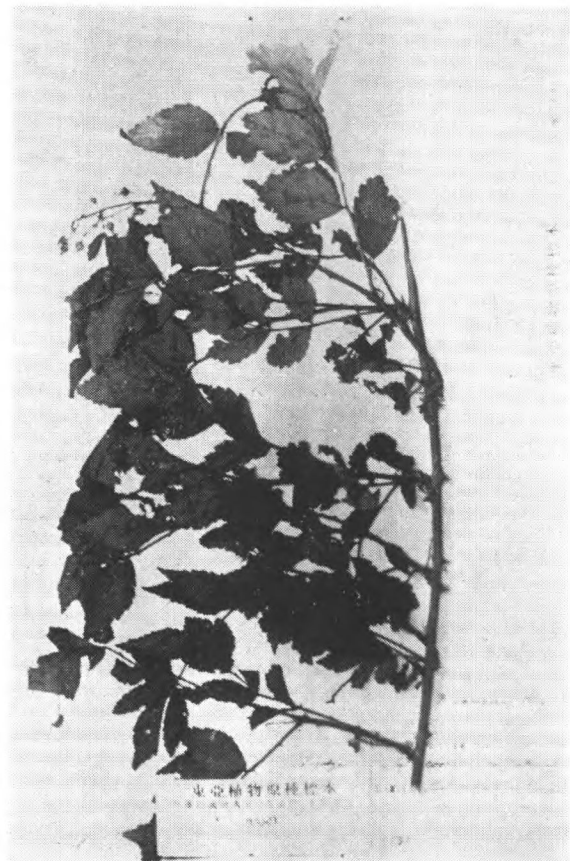
*Rubus columellaris* Tutcher  
Chung 3592 福建



*Rubus columellaris* Tutcher, var.  
*etropicus* (H.-M.) Metcalf  
H.-M. 11162 (type) 湖南

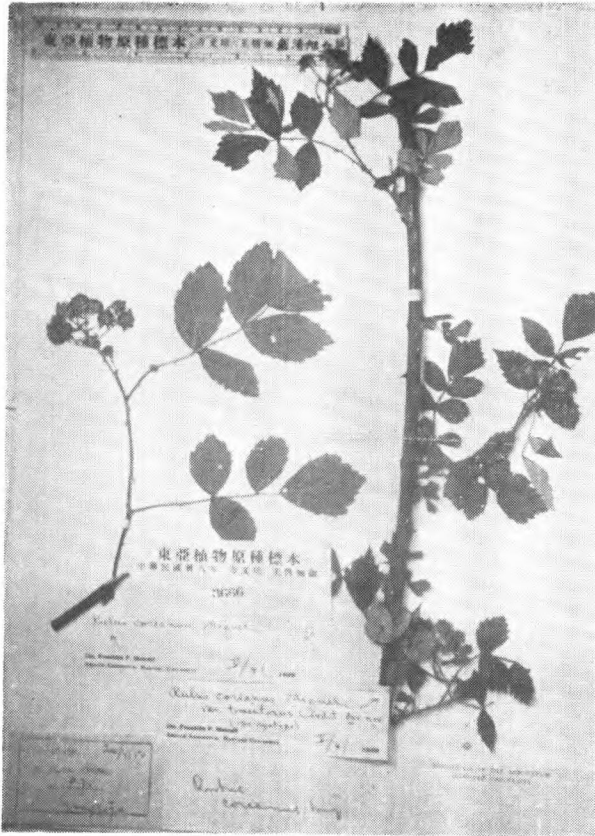


*Rubus corchorifolius* L. f.  
R. C. Ching 2710 安徽九华山



*Rubus coreanus* Miquel  
Taquet 2834 (isotype) 朝鮮

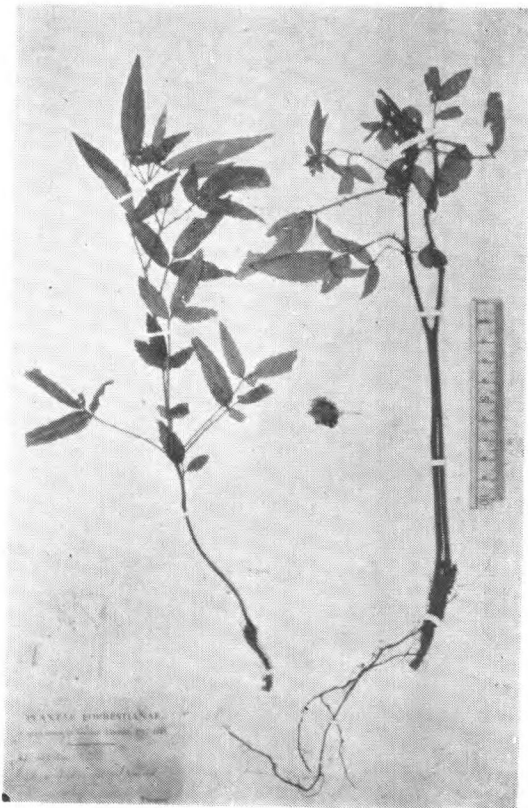




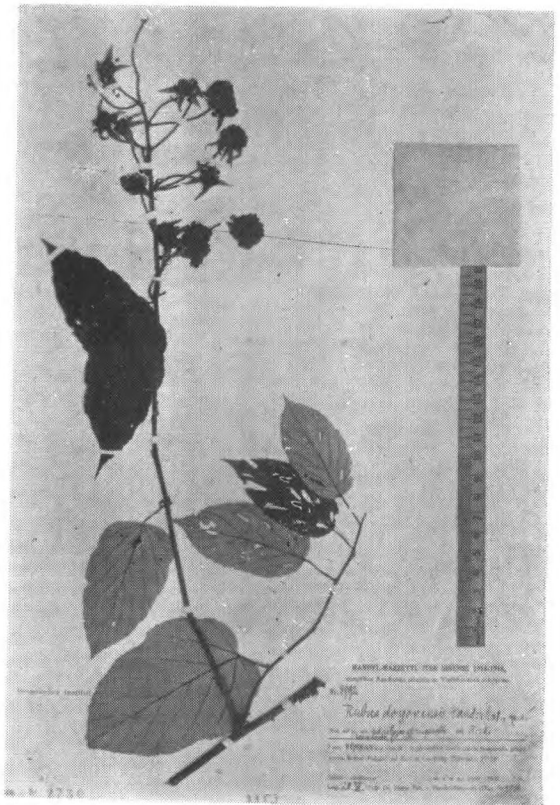
*Rubus coreanus* Miquel var. *tomentosus*  
Cardot  
Wils. 87 (isotype) 湖北巴东



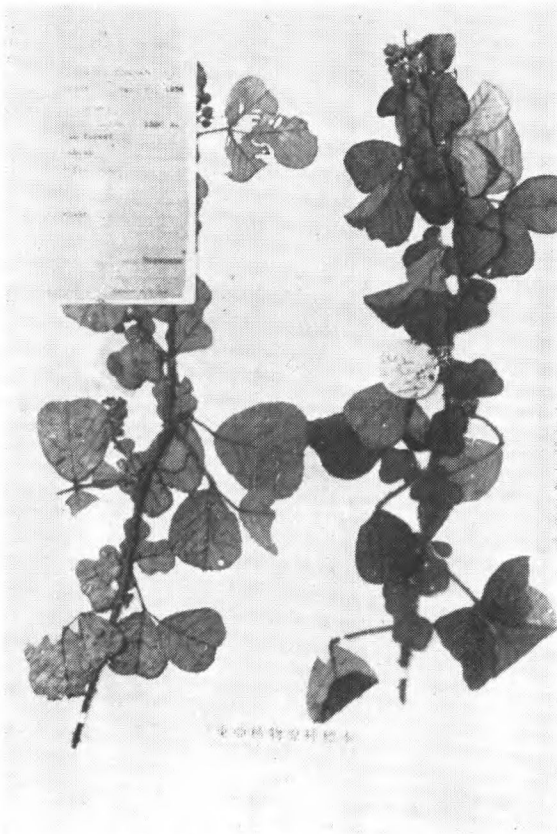
*Rubus crataegifolius* Bunge  
Ex Herb. Hers 1928 山东泰山



*Rubus Delavayi* Fr.  
Forr. 15532 云南



*Rubus doyonensis* H.-M.  
H.-M. 8992 (type) 云南



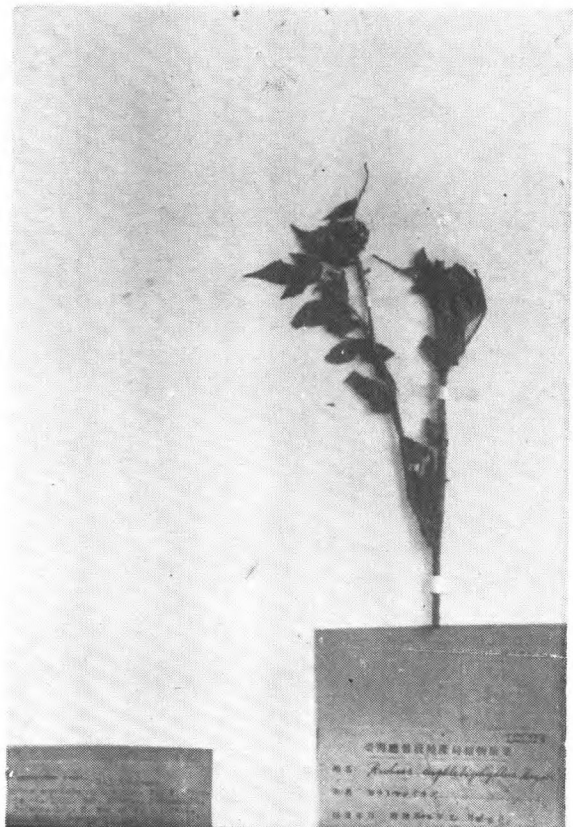
*Rubus ellipticus* Smith  
Tsai 56357 云南



*Rubus erythrolasius* Focke  
Henry 10583a (type) 云南(逢春岭)



*Rubus eucalyptus* Focke  
Wils. 4849 四川峨眉

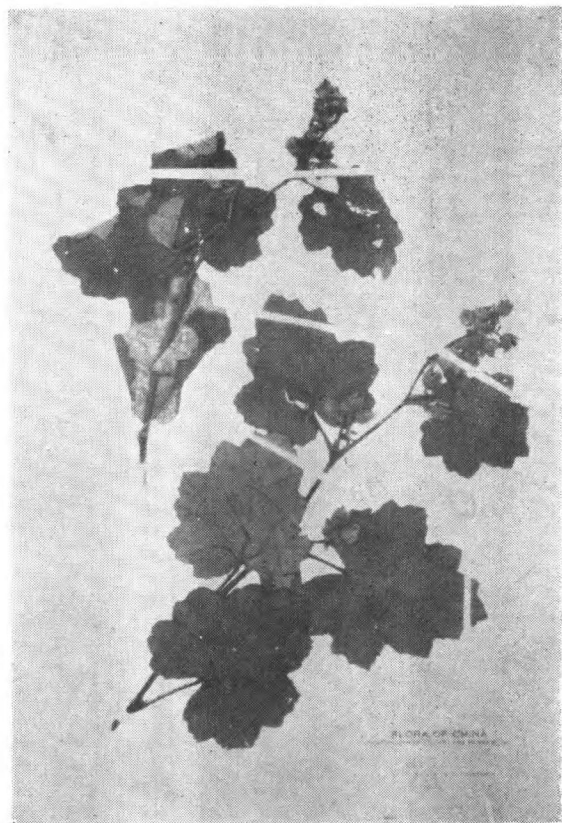


*Rubus euplebophyllus* Hay.  
S. Sasaki 无号 (isotype) Akocho,  
Konanausha, 台湾

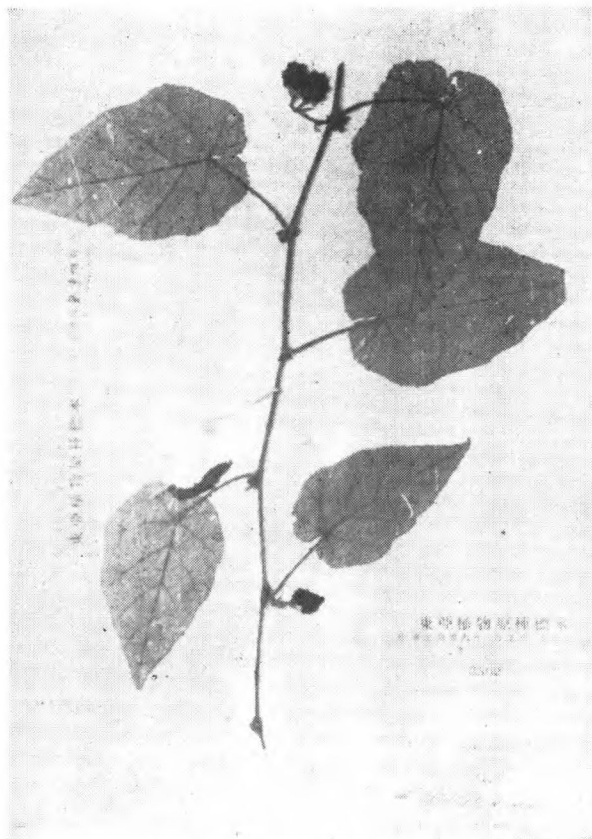




*Rubus eustaphanos* Focke  
Henry 5237d (type) 湖北长阳



*Rubus fimbriiferus* Focke  
Levine 广东罗浮山



*Rubus flagelliflorus* Focke  
Henry 5416 (isotype) 四川巫山

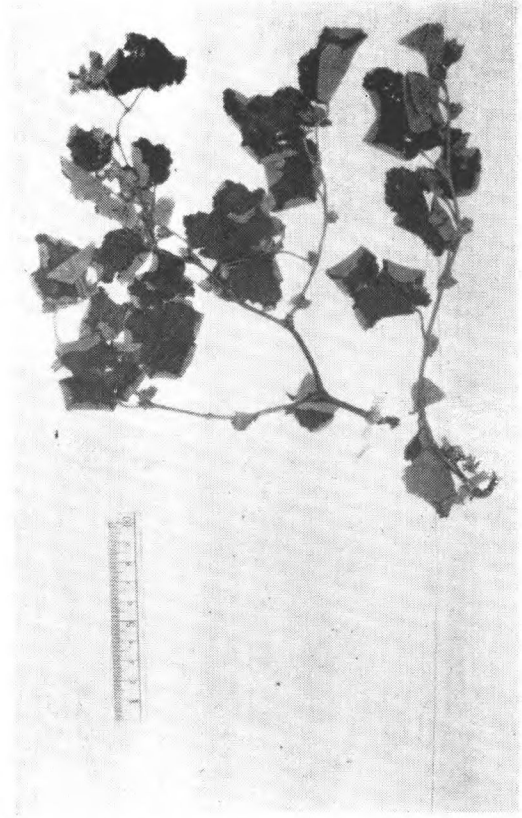


*Rubus floribundo-paniculatus* Hay.  
Y. Shimada 无号(isotype) Shintikucho,  
Taihelshe, 台湾

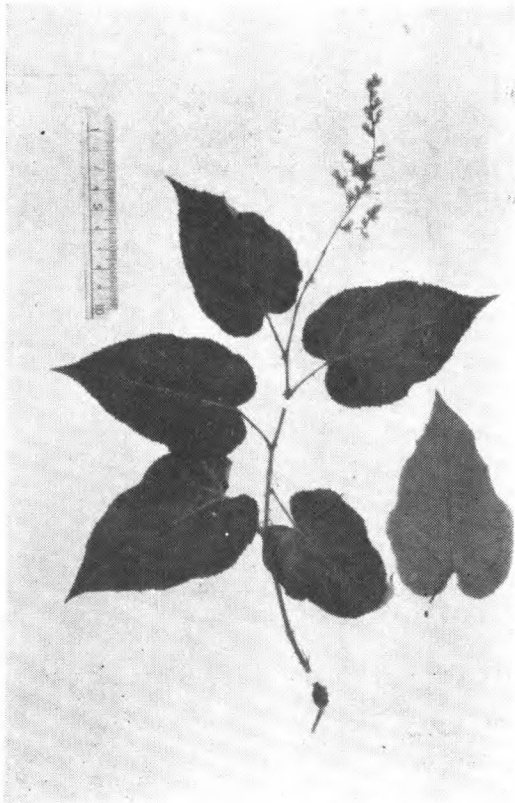




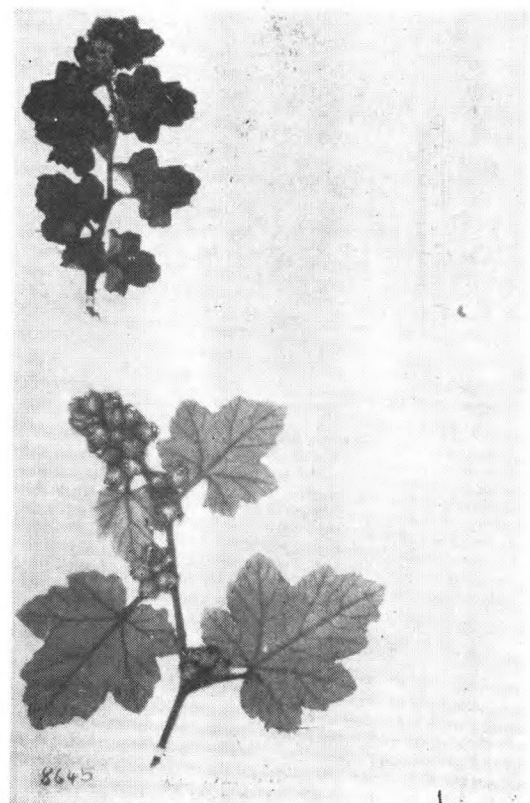
*Rubus Fordii* Hance  
H.-M. 11991 (eyntype) 湖南



*Rubus formosensis* O. Ktze.  
Oldham 931 (type) 台湾



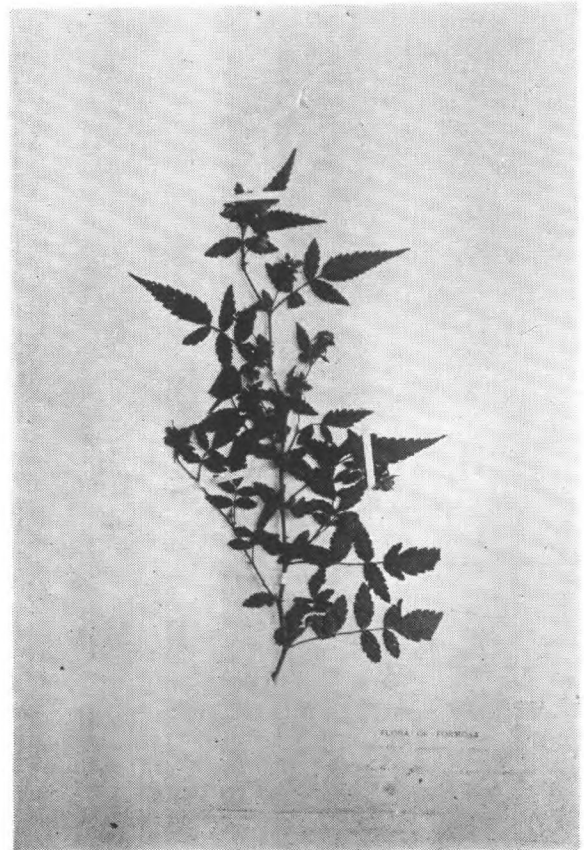
*Rubus fuscorubens* Focke  
Wils. 3025 (type) 湖北长阳



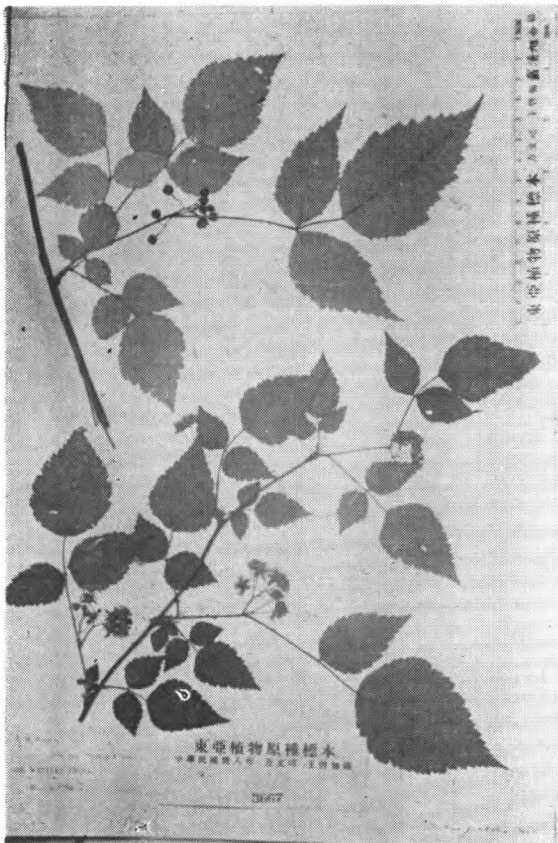
*Rubus gilvus* Focke  
Henry 8645 (cotype) 海南



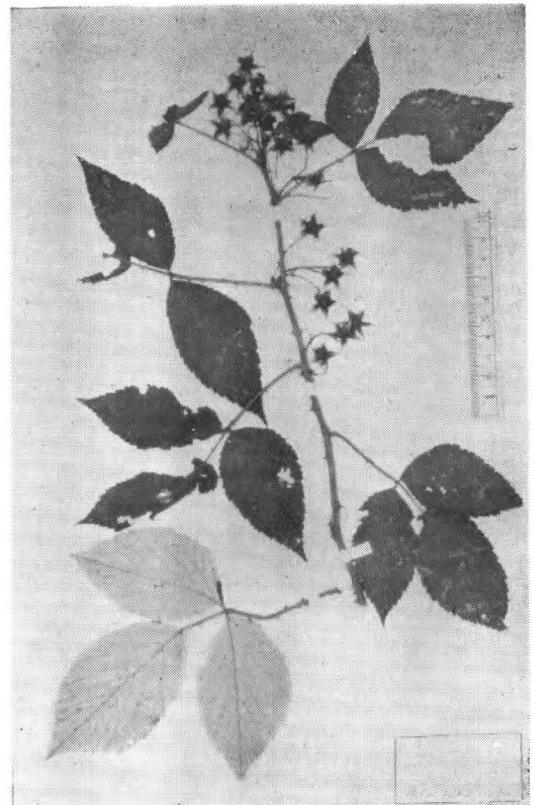
*Rubus glabricarpus* Cheng  
Hongkong Herb. 2618 福建



*Rubus glanduloso-punctatus* Hay.  
T. Kawakami 无号 (isotype) Ritozan,  
台湾

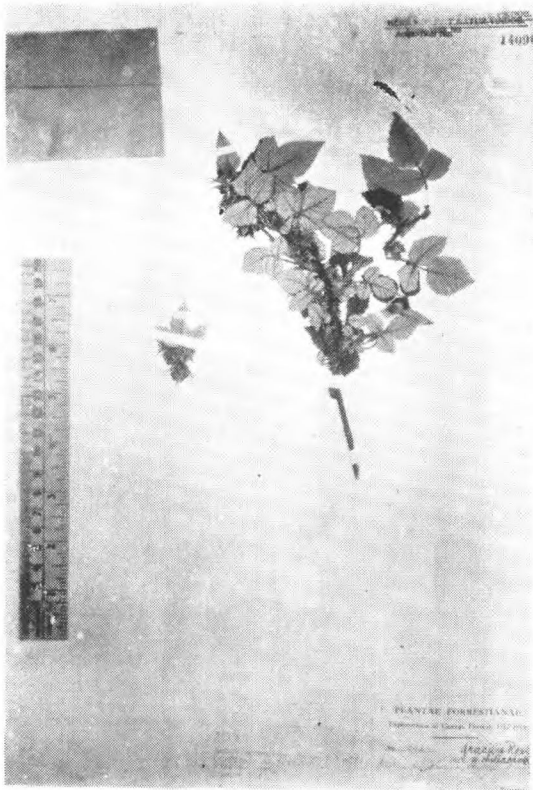


*Rubus gracilis* Focke  
Wils. 4847 四川峨眉

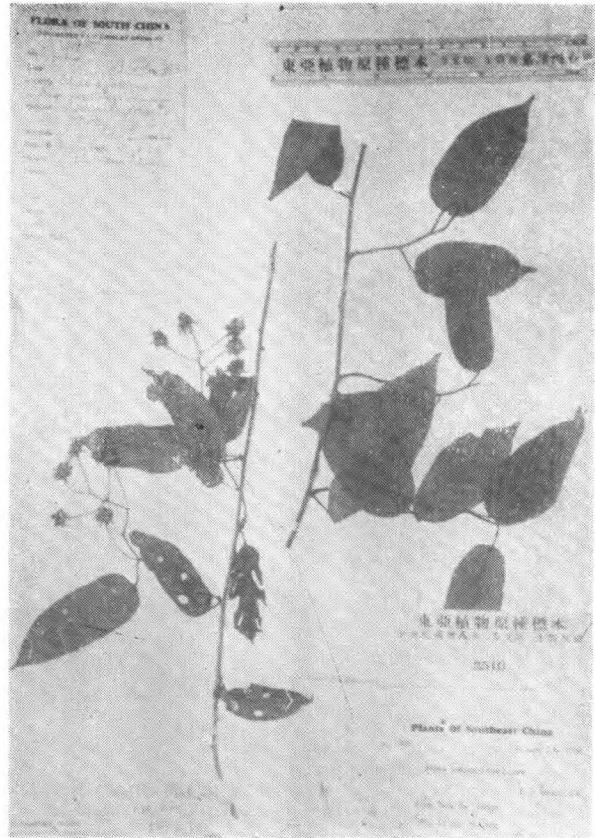


*Rubus gracilis* Roxb. var. *hypargyrus*  
Edgew.  
Henry 10198 云南蒙自北山

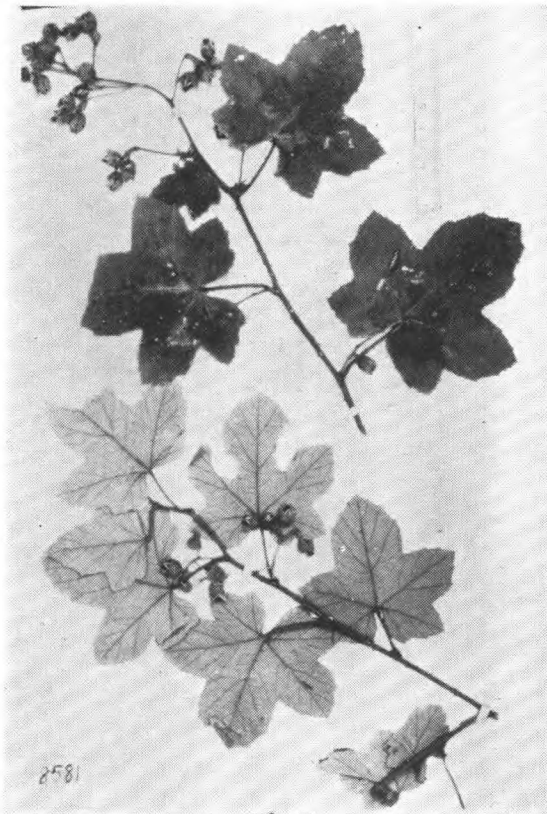




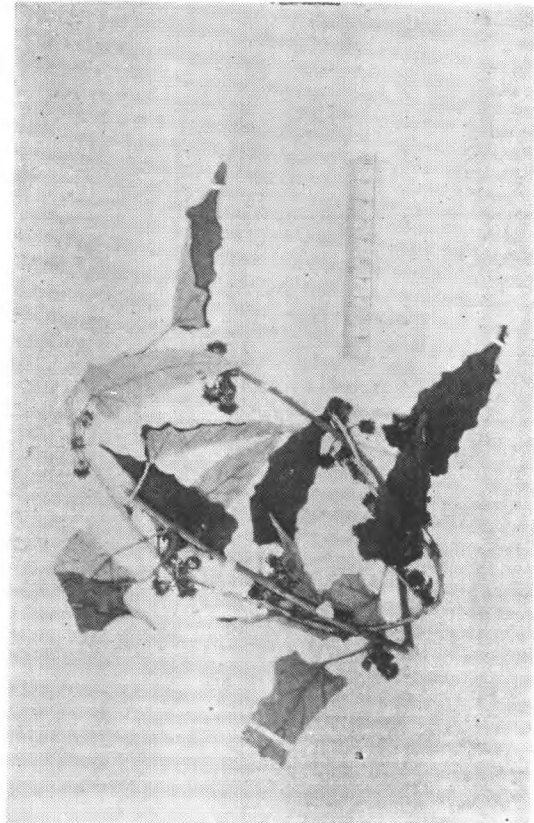
*Rubus gracilis* Roxb. var. *chiliacantha*  
H.-M.  
Forr. 1593 (type) 云南



*Rubus Gressittii* Metcalf  
Gressitt 1435 (type) 江西南部

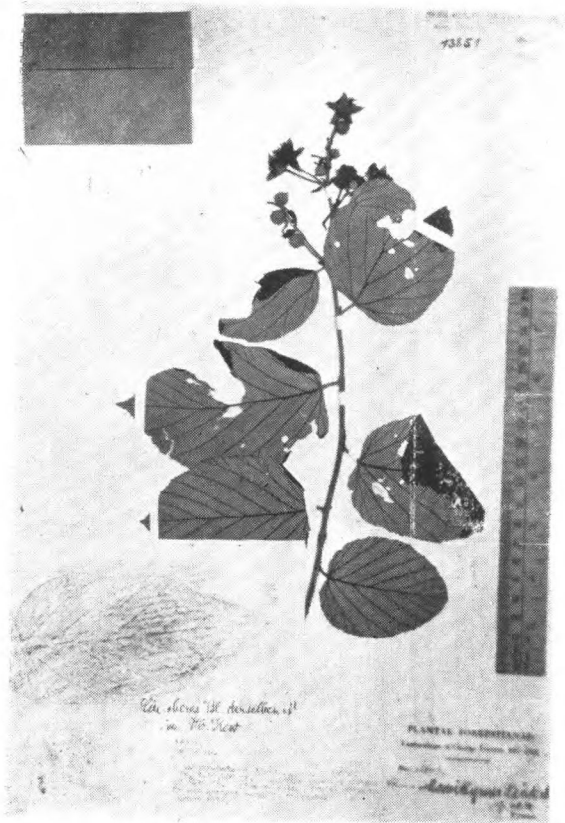


*Rubus hainanensis* Focke  
Henry 8581 (type) 海南



*Rubus hastifolius* Lévl. et Vant.  
Cavalerie 8133 (type?)

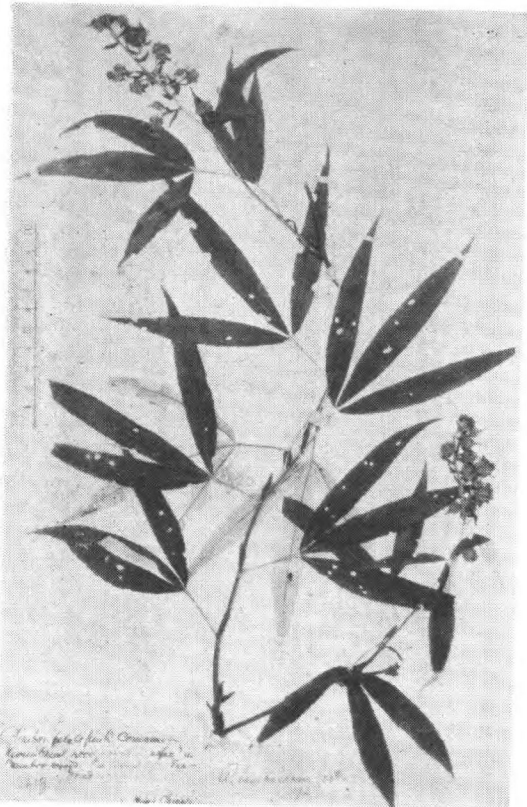




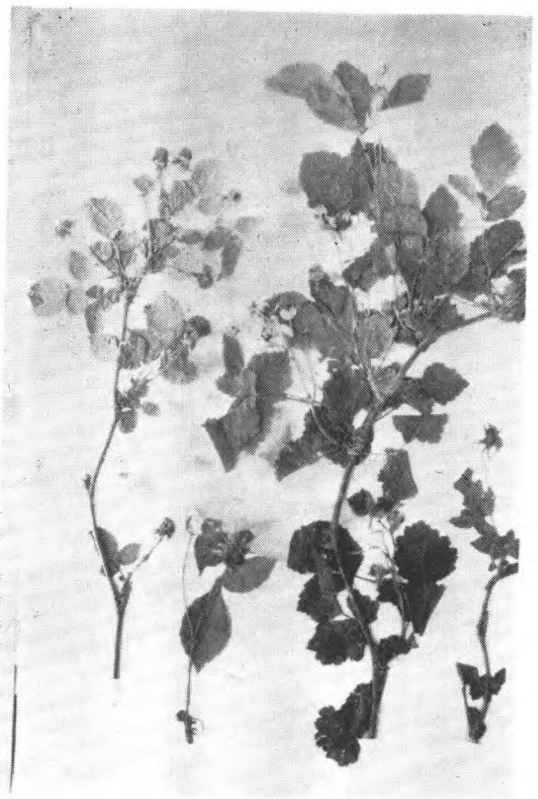
*Rubus hemithyrus* H.-M.  
Forr. 18348 (type) 云南



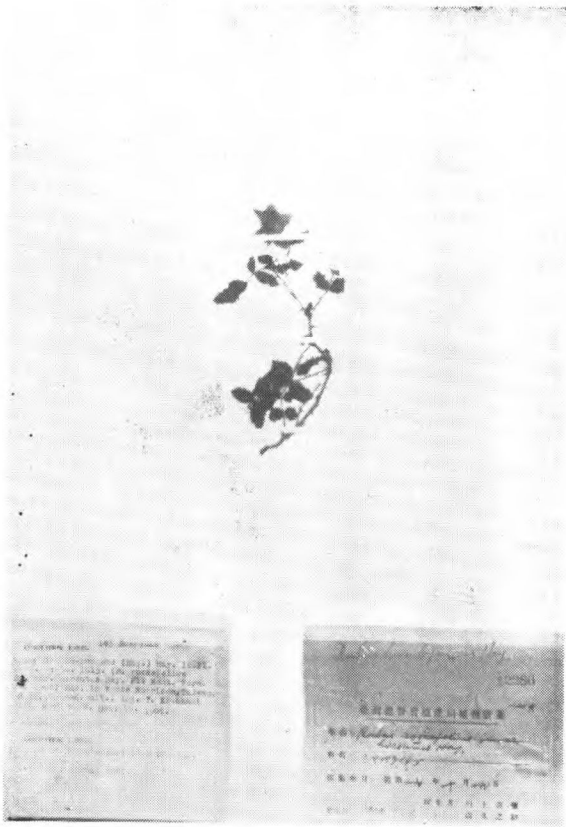
*Rubus Henryi* Hemsl. et Ktze.  
Wils. 76 湖北西部



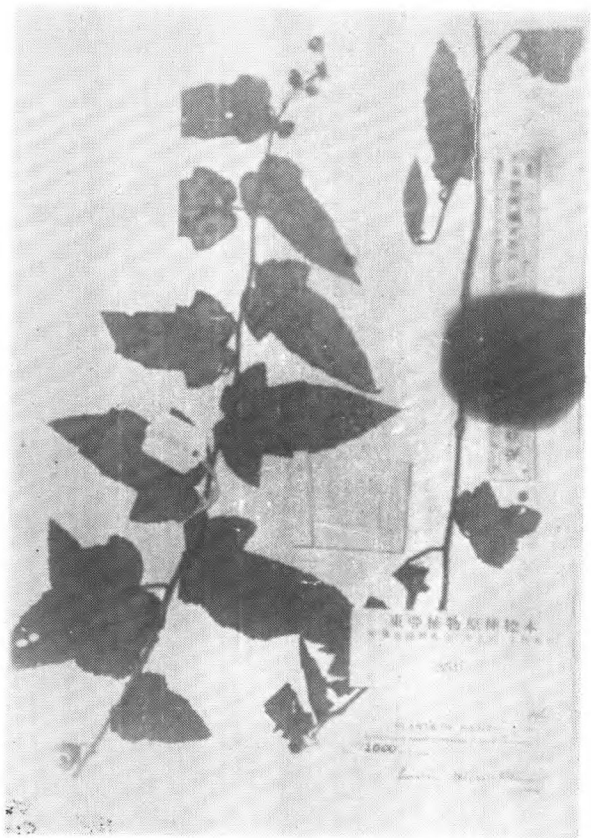
*Rubus Henryi* Hemsl. et O. Ktze. var.  
*bambusarum* (Focke) Rehd.  
Henry 5618 (type) 四川巫山



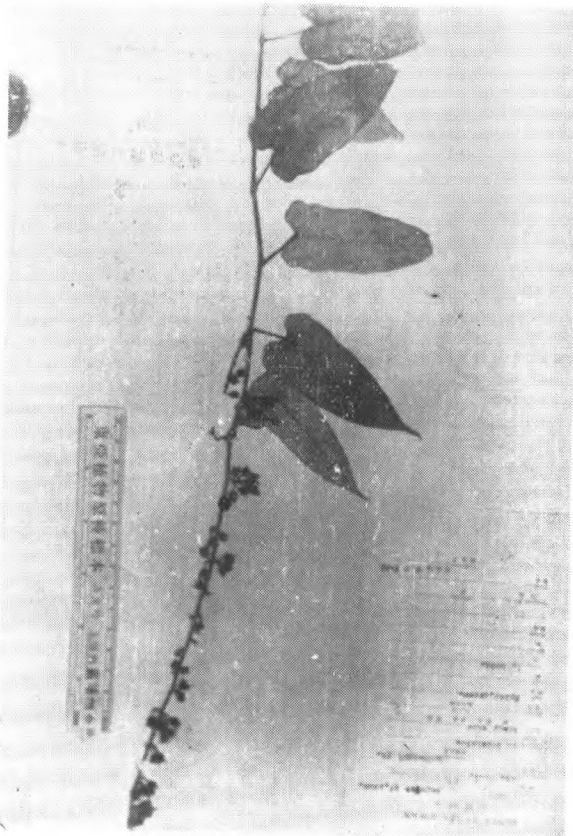
*Rubus hirsutus* Thbg.  
Thbg. type. 日本



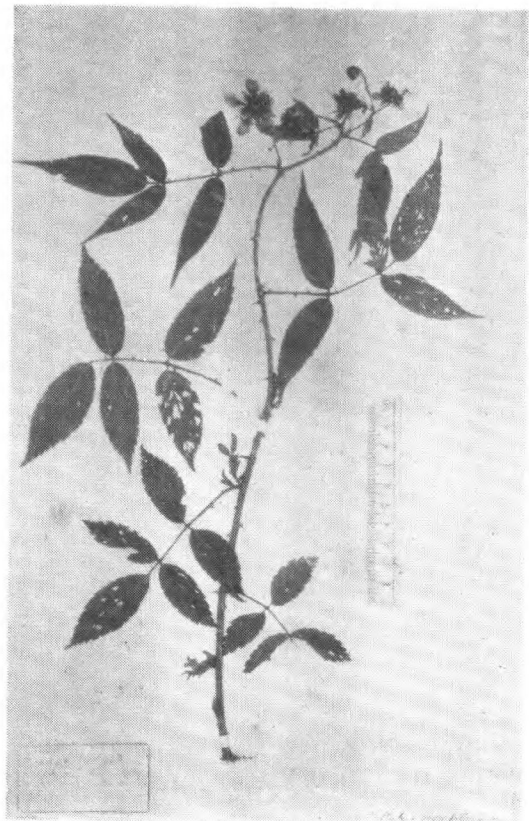
*Rubus hirsuto-pungens* (Hay.) Hay.  
T. Kawakami et C. Mori 2264  
台湾摩利嵩山



*Rubus Howii* Merrill et Chun  
How 72000 (type) 海南

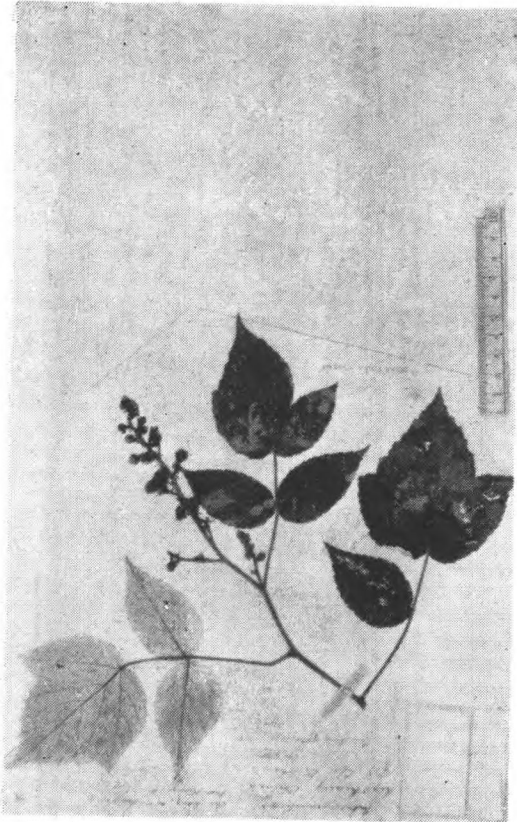


*Rubus ichangensis* Hemsley  
Fang 3103 四川峨眉

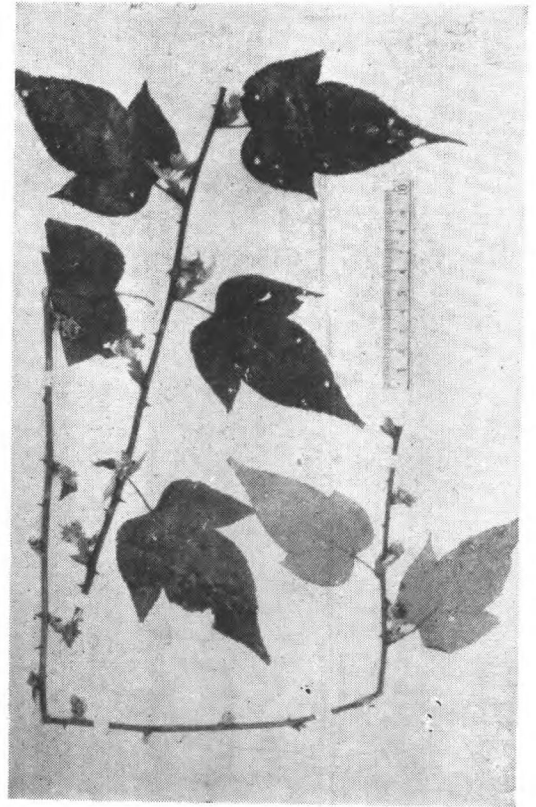


*Rubus indotibetanus* Koidz.  
Henry 10842A 云南逢春岭





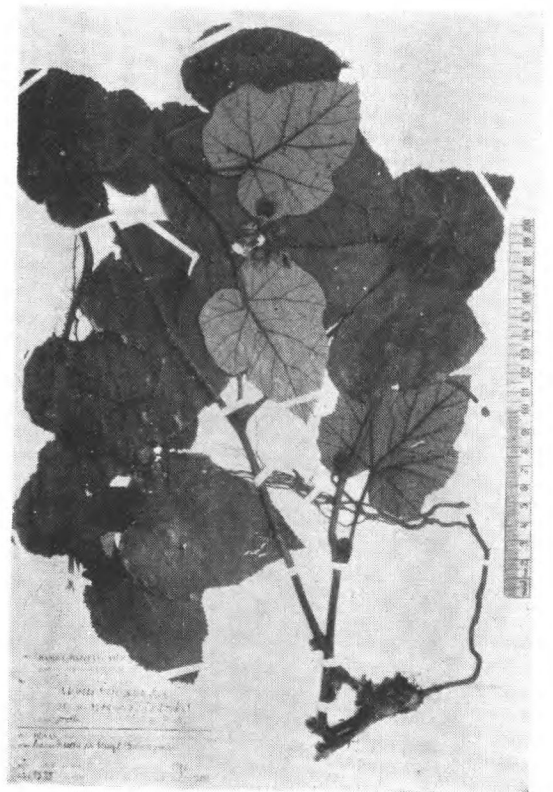
*Rubus innominatus* Moore  
Shearer (type) 江西九江



*Rubus involucratus* Focke  
Henry 10358A 云南思茅东山



*Rubus irenaeus* Focke  
Fang 449 四川忠县

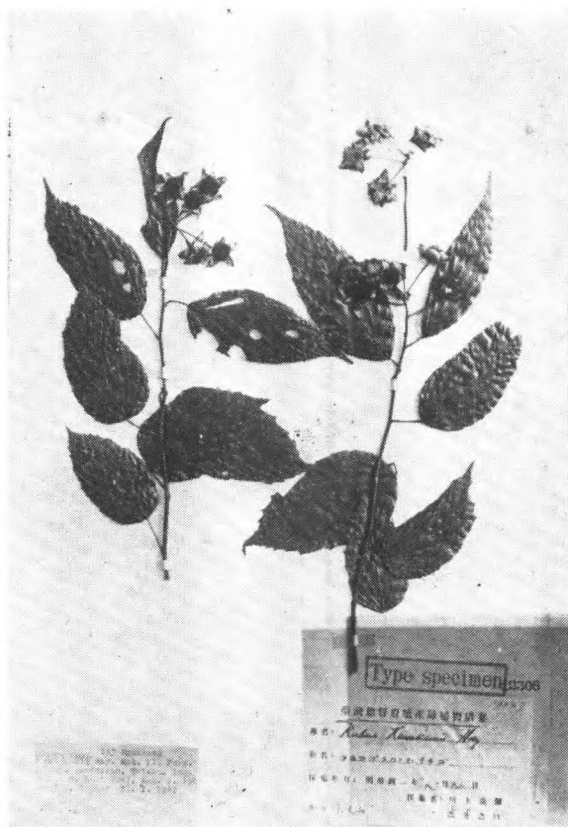


*Rubus irenaeus* Focke var. *orogenes*  
(H.-M.) Metcalf  
H.-M. 12288 (type) 湖南武崗

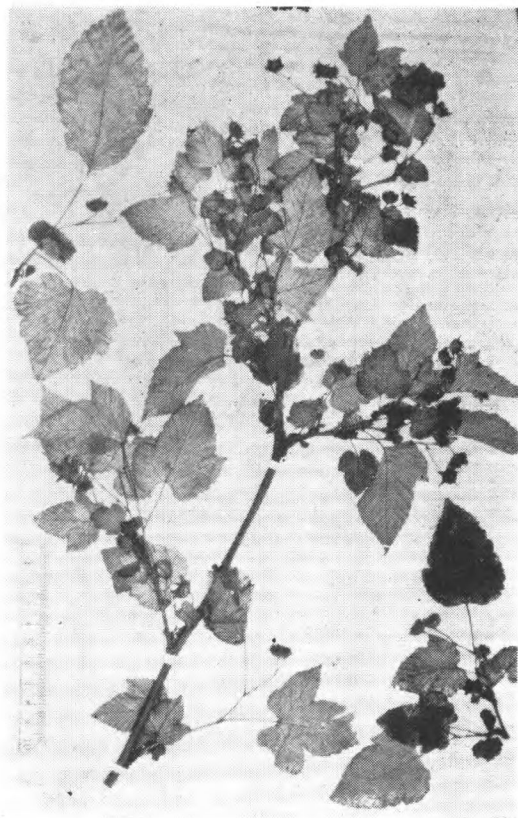




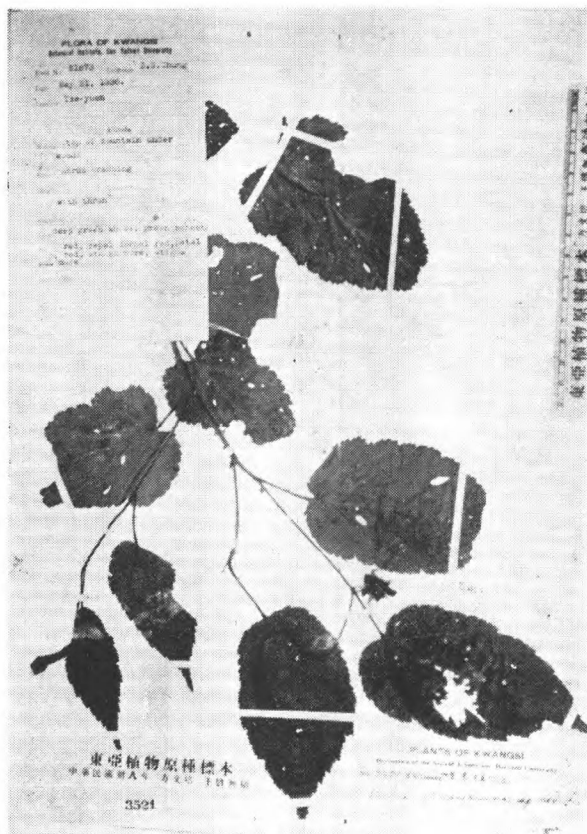
*Rubus jambosioides* Hance  
Grijs, in Herb. Hance 6690 (type) 福建



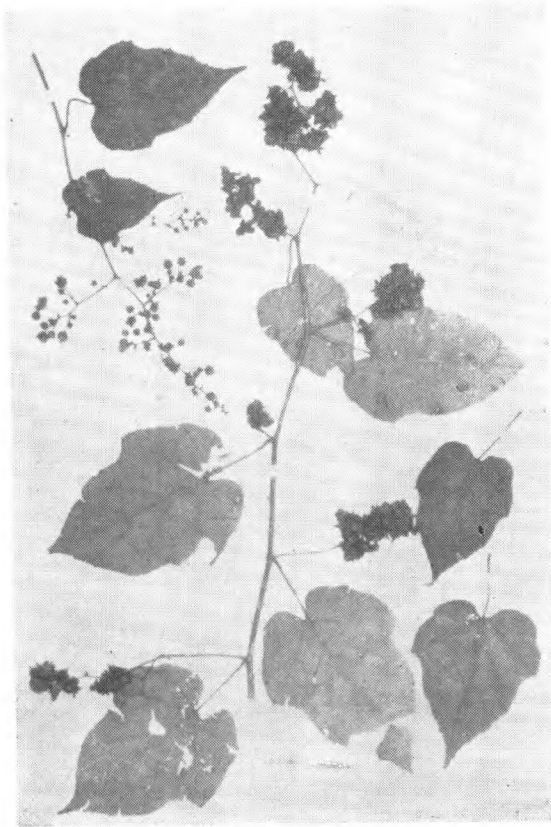
*Rubus Kawakamii* Hay.  
B. Hay. et U. Mori 7074, (isotype)  
Randaizan, 台湾



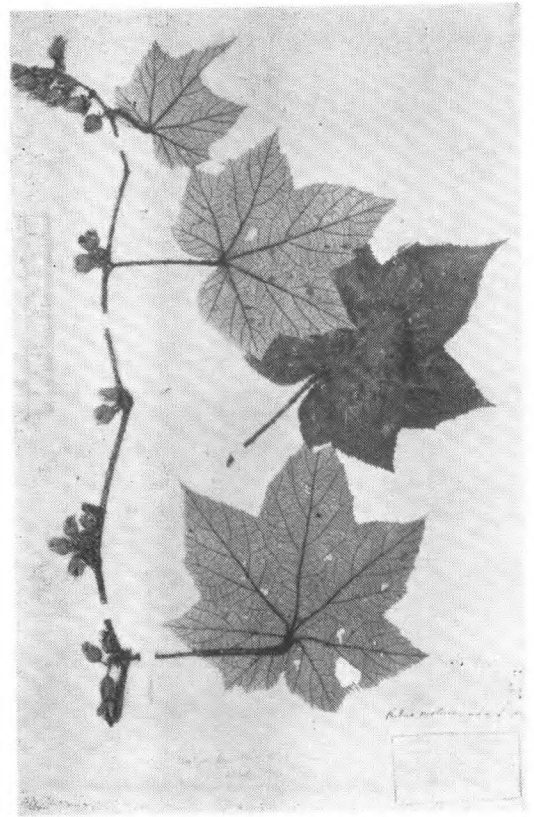
*Rubus Koehneanus* Focke  
Ex. Hort. Kew. (type)



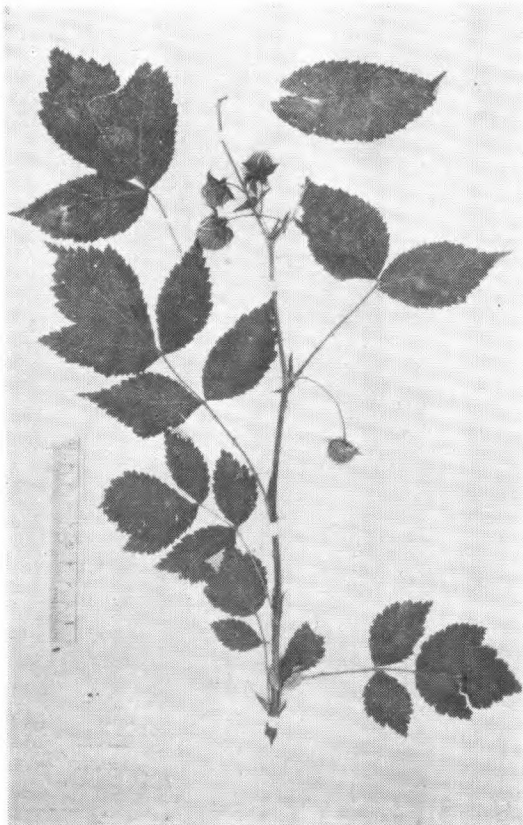
*Rubus kwangsiensis* Li  
T. S. Tsoong 81673 (type) 广西



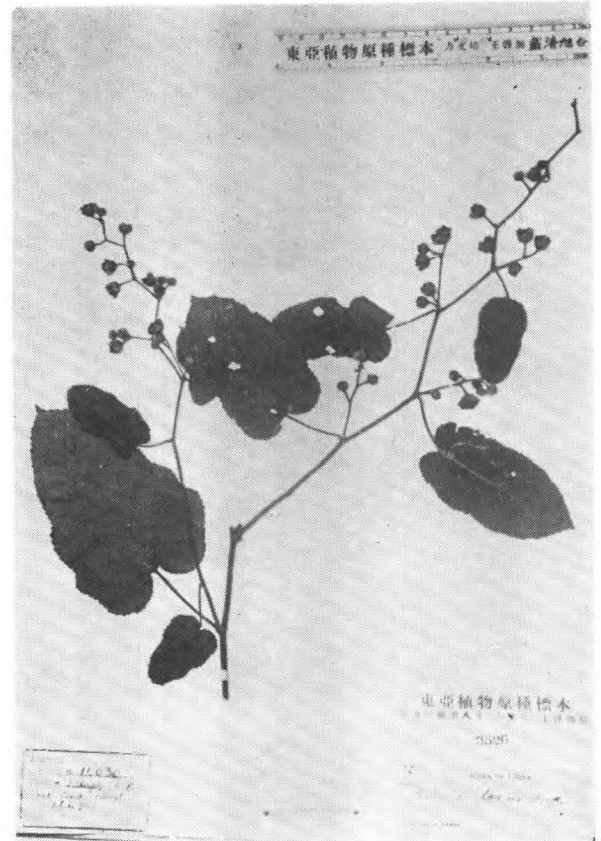
*Rubus Lambertianus* Seringe  
Wils. 482 湖北宜昌



*Rubus lasiotrichos* Focke  
Henry 9175 (type) 云南蒙自

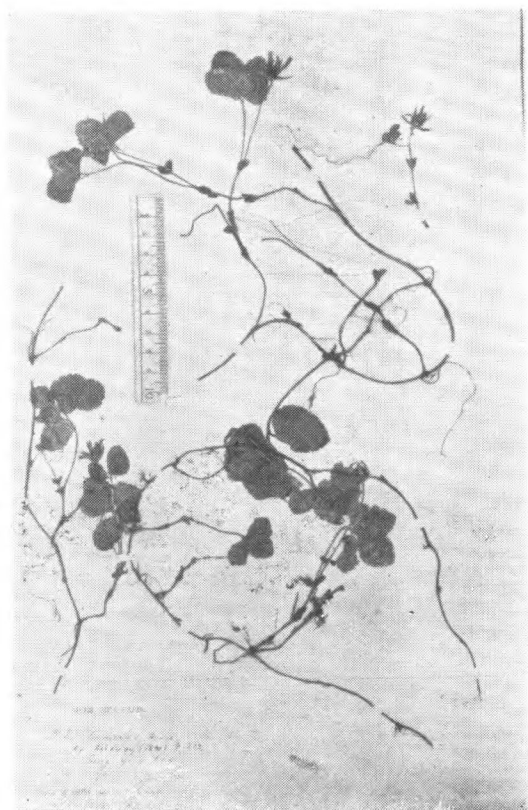


*Rubus lasiostylus* Focke var. *dizygos*  
Focke  
Wils. 279 (type) 湖北房县

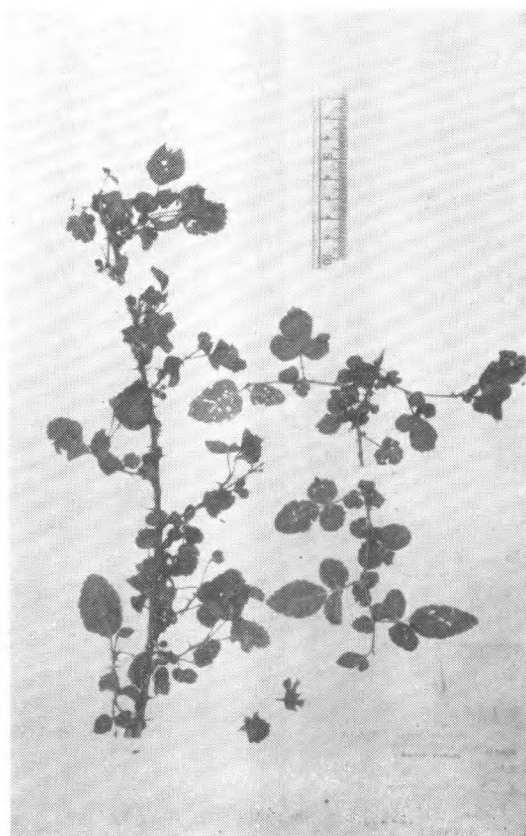


*Rubus laxus* Focke  
Henry 11030 (isotype) 云南蒙自





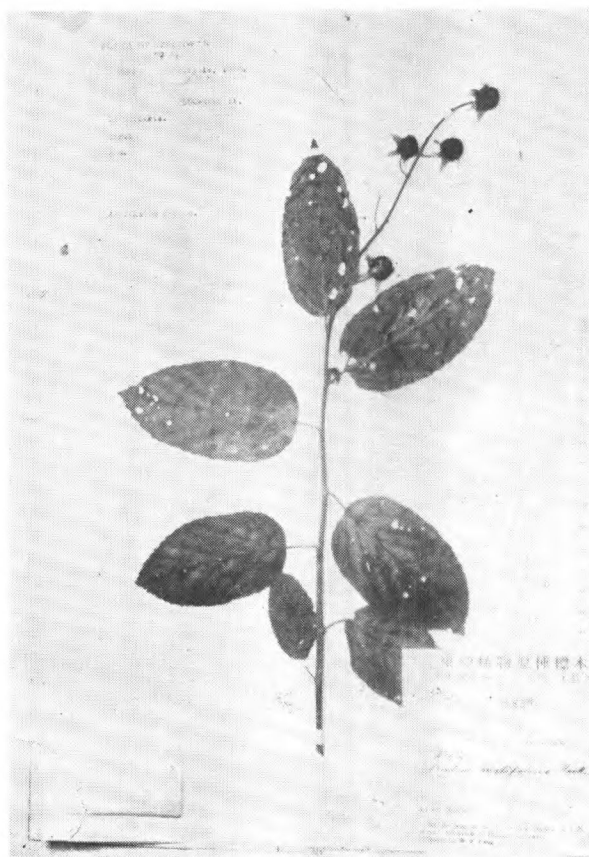
*Rubus loropetalus* Fr.  
Delavay 2837 (type) 云南



*Rubus macilentus* Cambess  
Wils. 850 四川穆坪



*Rubus major* Focke  
Forr. 10235 云南



*Rubus malifolius* Focke  
Fang 2352 四川灌县

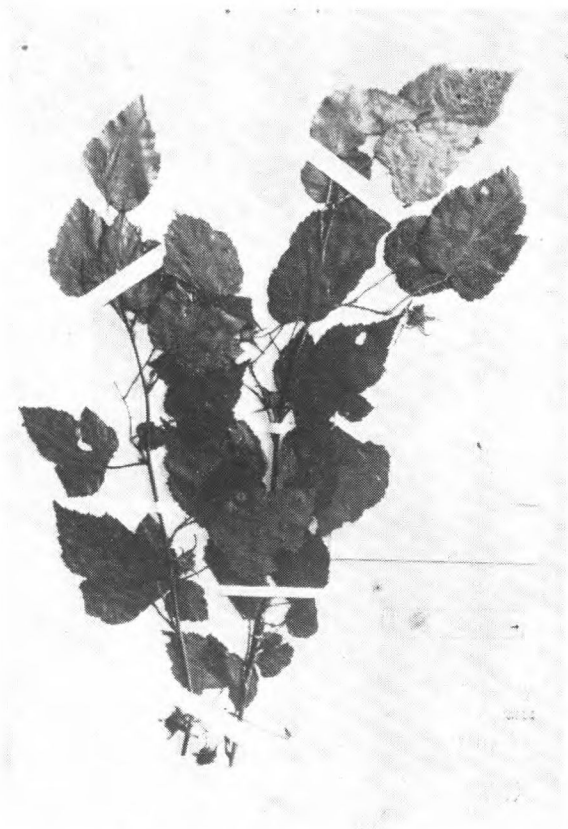




*Rubus Maximowiczii* Nakai  
Wils. 朝鮮



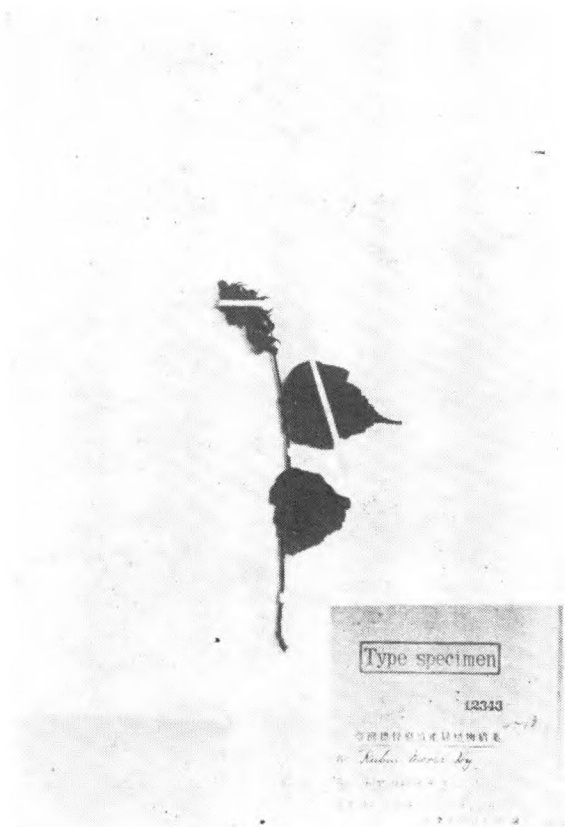
*Rubus mesogaeus* Focke  
Fang 897 四川南川



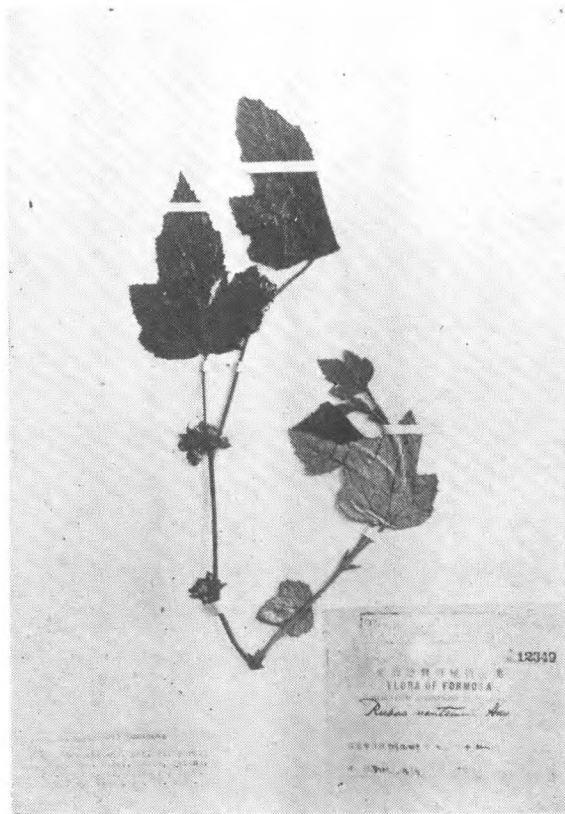
*Rubus mingtzensis* Hay.  
B. Hay. 无号 (topotype) 台湾阿里山



*Rubus minor* Makino  
Uno 14479 日本



*Rubus Morii* Hay.  
T. Kawakami et U. Mori 4518,  
(Merotype) Taito, Chakankei, 台湾



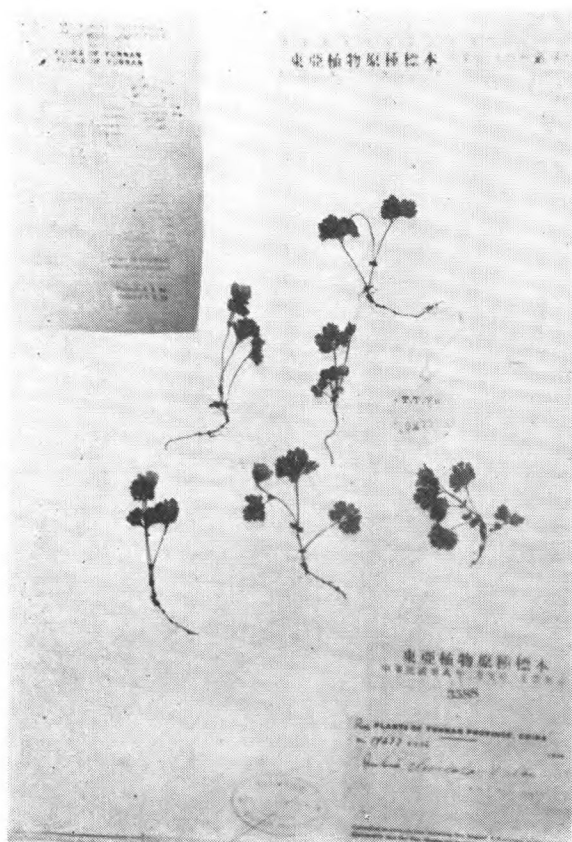
*Rubus nantoensis* Hay.  
U. Mori 无号 (topotype) Bikei,  
Nanto, 台湾



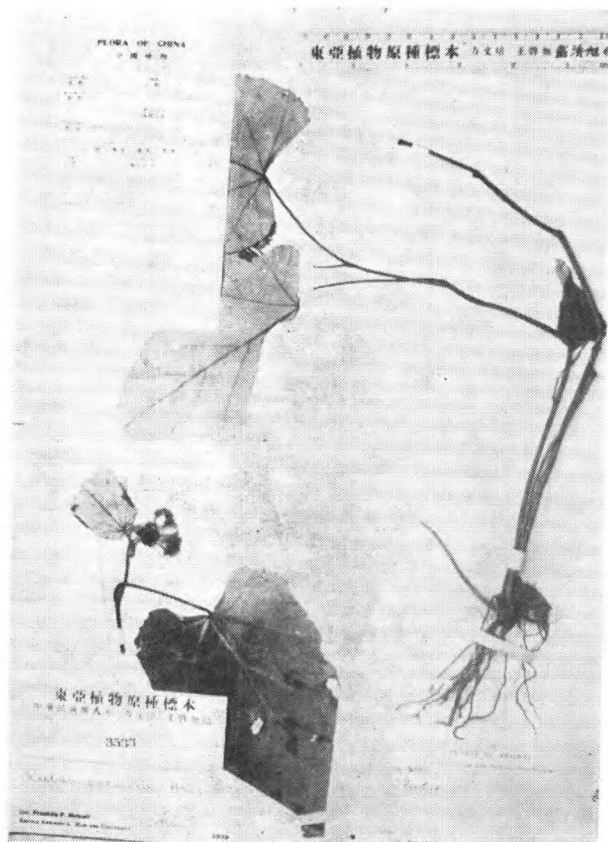
*Rubus niveus* Thbg.  
Rock 5359 云南



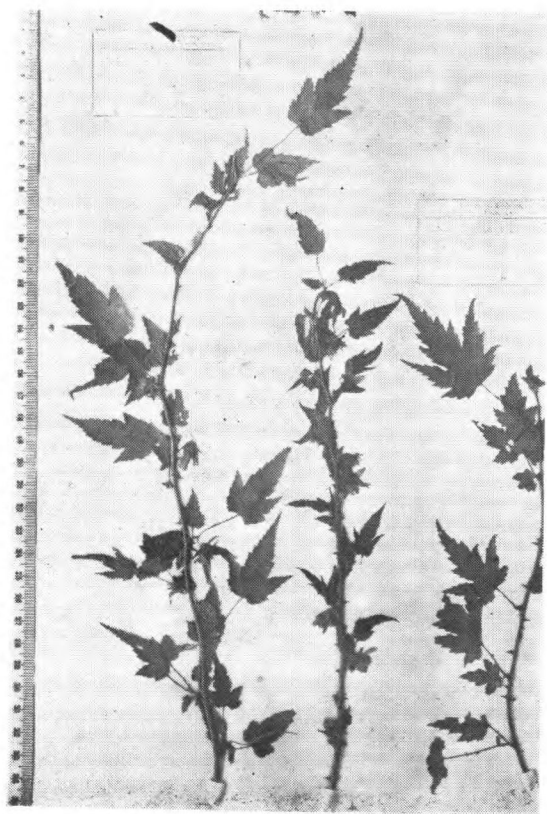
*Rubus Oldhami* Miq.  
Oldham 213, 993 (type) 朝鲜



*Rubus olivicola* Walker  
T. T. Yu 19277 (cotype) 云南



*Rubus pacificus* Hance  
Ching 3095 安徽

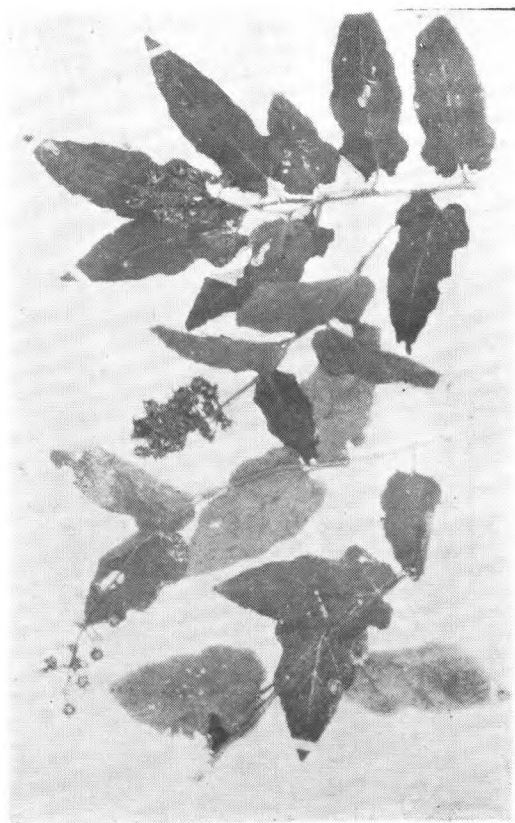


*Rubus palmatus* Thbg.

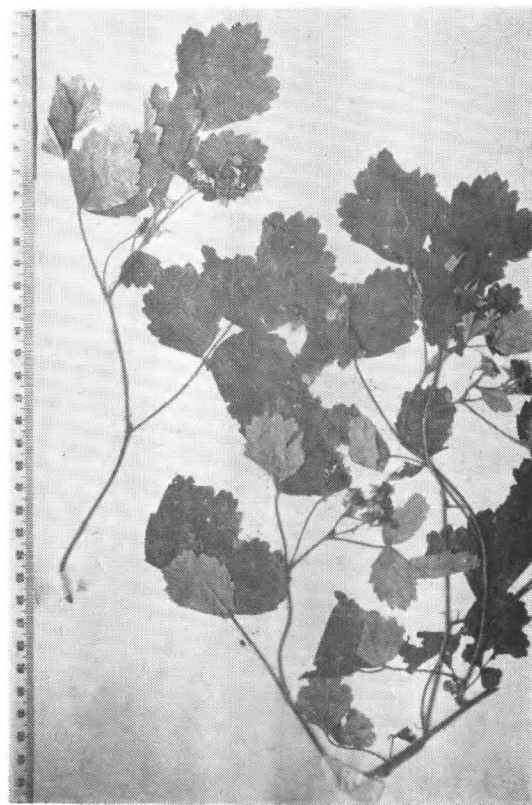


*Rubus pararosaefolius* Metcalf  
Chung 3284 (type) 福建

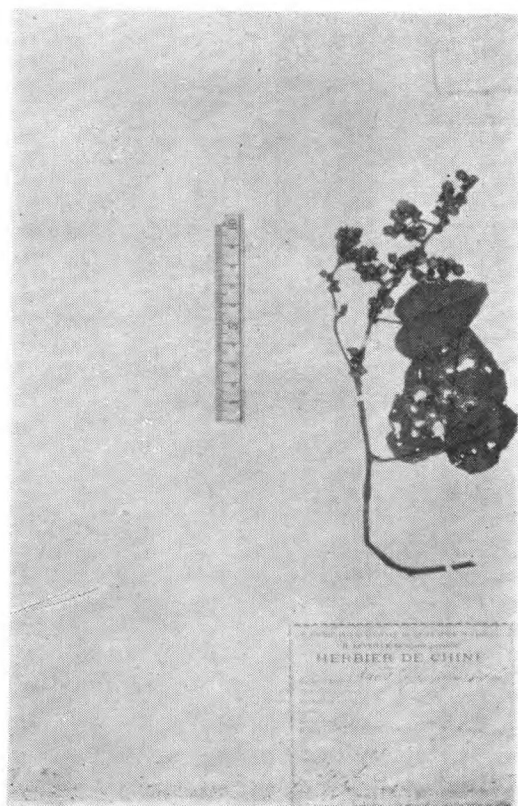




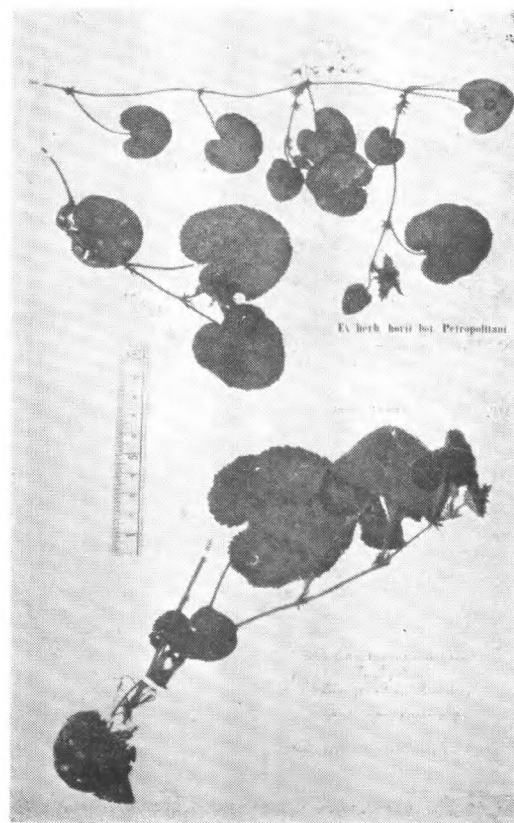
*Rubus Parkeri* Hance  
Henry 576 湖北宜昌



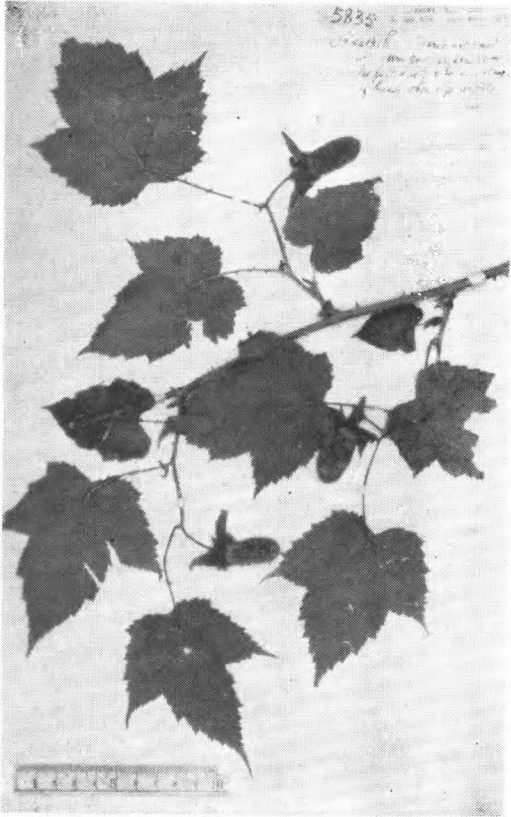
*Rubus parvifolius* L.  
Thbg. (type) 日本



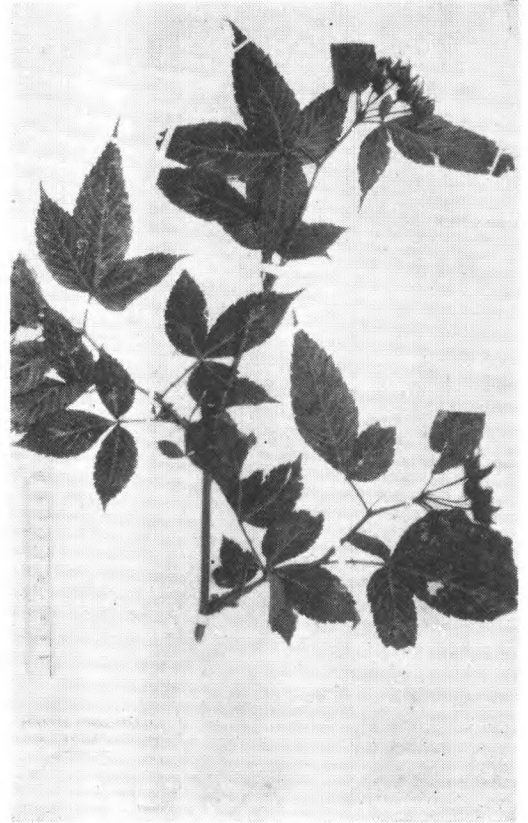
*Rubus paykouangensis* Lévl.  
Esquirol 221 (type) 貴州



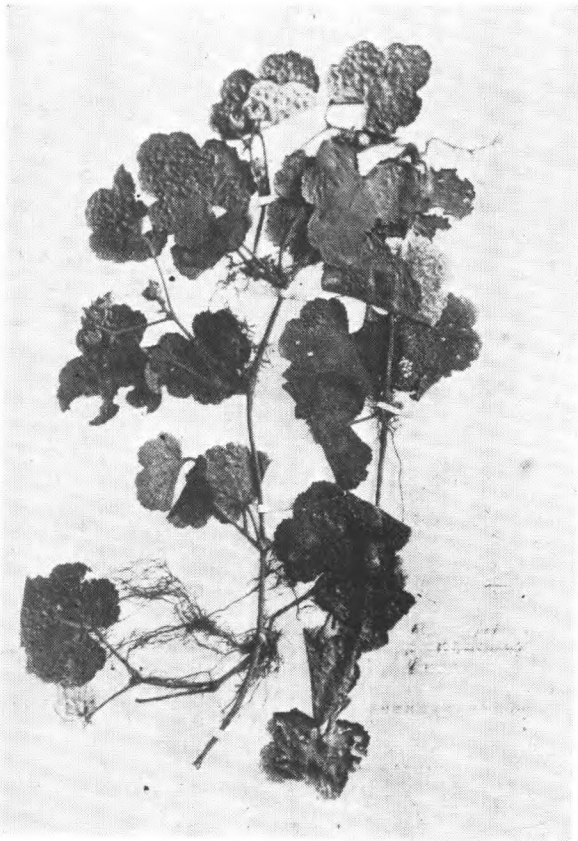
*Rubus pectinellus* Maxim.  
Maxim. (cotype) 日本长崎



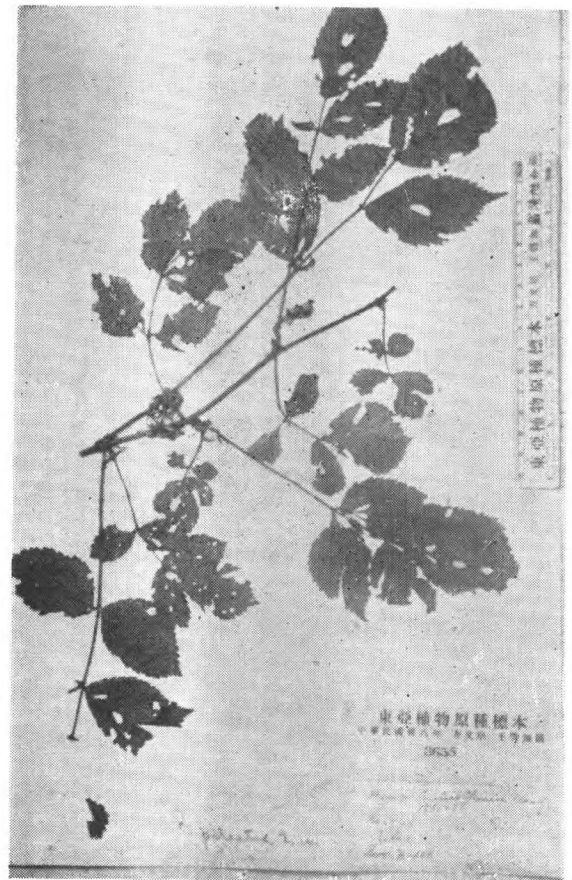
*Rubus peltatus* Maxim.  
Henry 5835.



*Rubus pentagonus* Wall.  
Forr. 17913 云南思茅

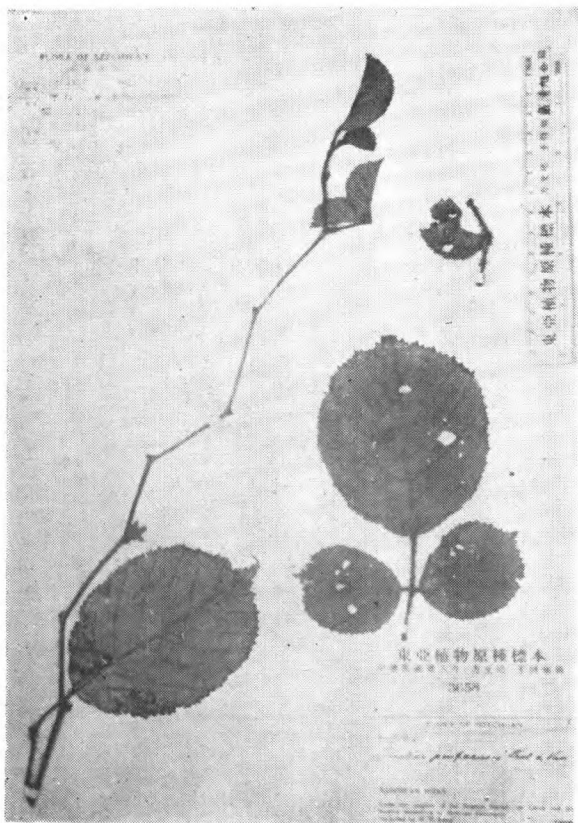


*Rubus pentalobus* Hay.  
T. Kawakami et U. Mori 1096  
(iso-syntype) Bioritsu, Hakkeirin, 台湾

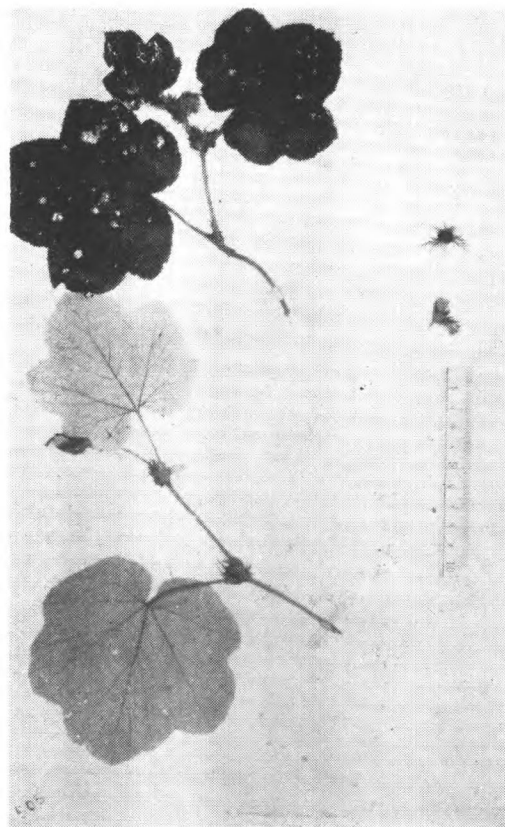


*Rubus pileatus* Focke  
Henry 6849 (isotype) 湖北





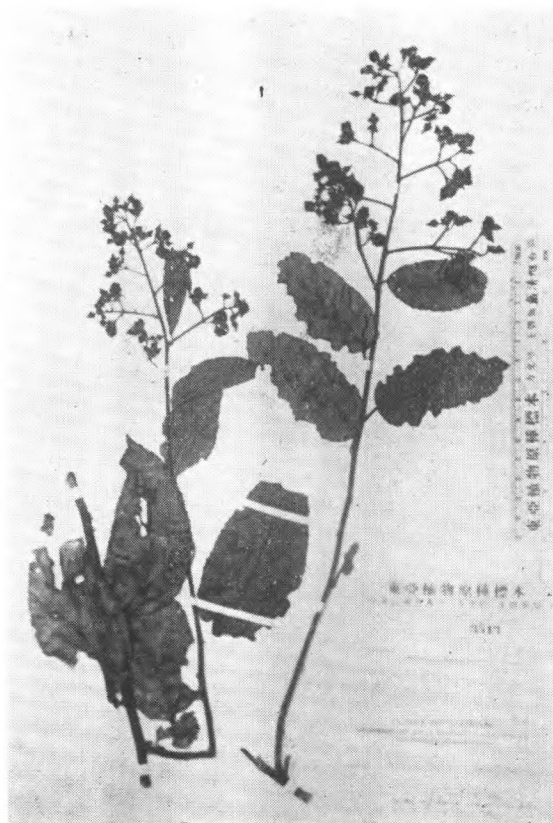
*Rubus pinfaensis* Lévl. et Van.  
Fang 1106 四川南川



*Rubus pinnatisepalus* Hemsl.  
Faber 505 (type) 四川峨眉



*Rubus pirifolius* Smith  
Steward et Cheo 957 广西

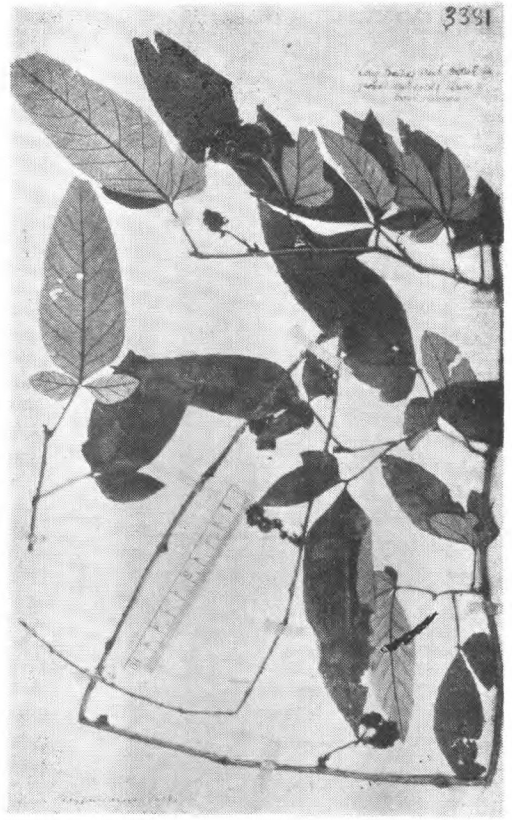


*Rubus pirifolius* Smith var. *permollis* Merr.  
Tsang et Fung 389 (isotype) 海南

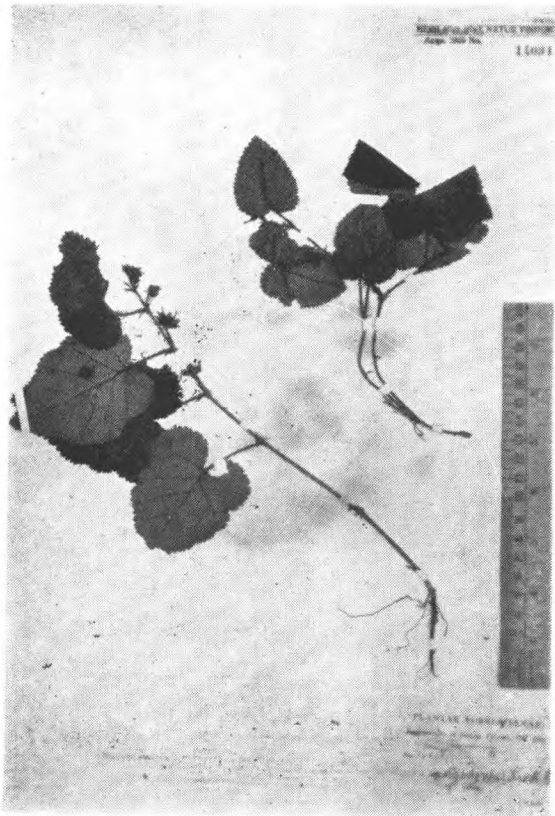




*Rubus platysepalus* H.-M.  
H.-M. 426-11302 (isotype) 湖南



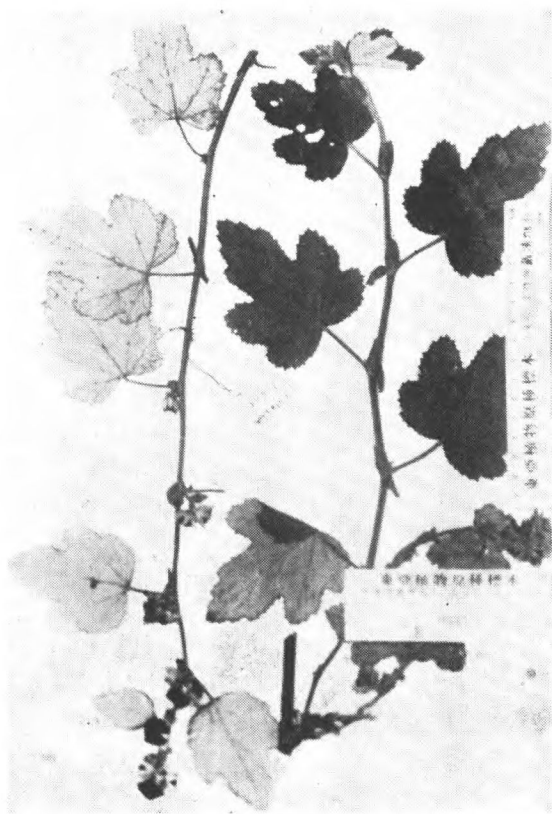
*Rubus Playfairianus* Focke  
Henry 3381 (type)



*Rubus polyodontus* H.-M.  
Forr. 15838 (type) 云南



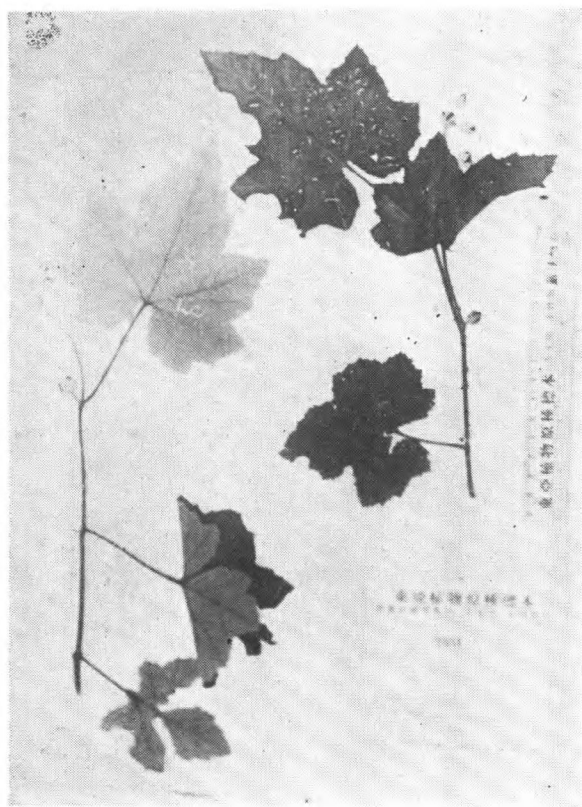
*Rubus pungens* Camb.  
Wils. 834 四川灌县西



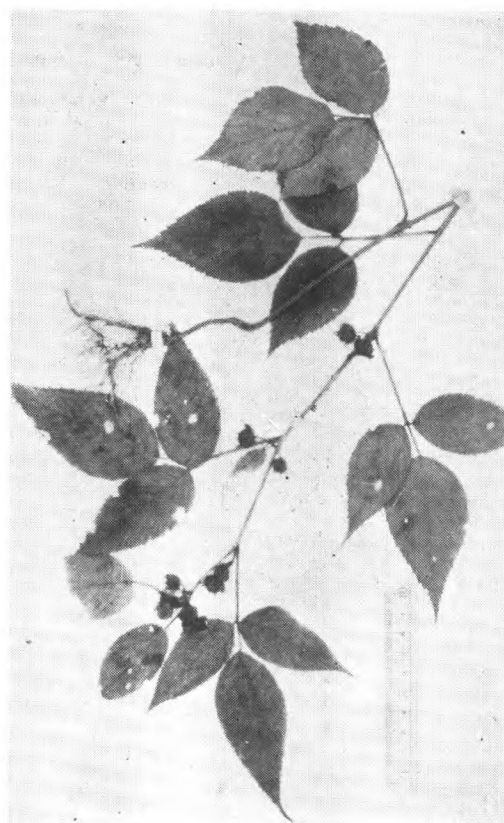
*Rubus randaiensis* Hay.  
Wils. 10831 台湾



*Rubus reflexus* Ker. var. *lanceolata*  
Metcalf  
Chun 6865 (type) 广东

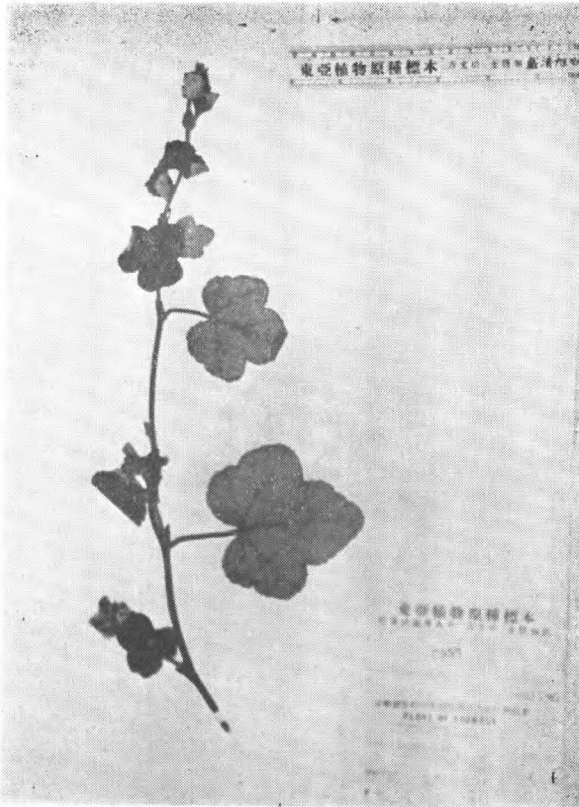


*Rubus reticulatus* Wallich  
Forrest 8721 云南

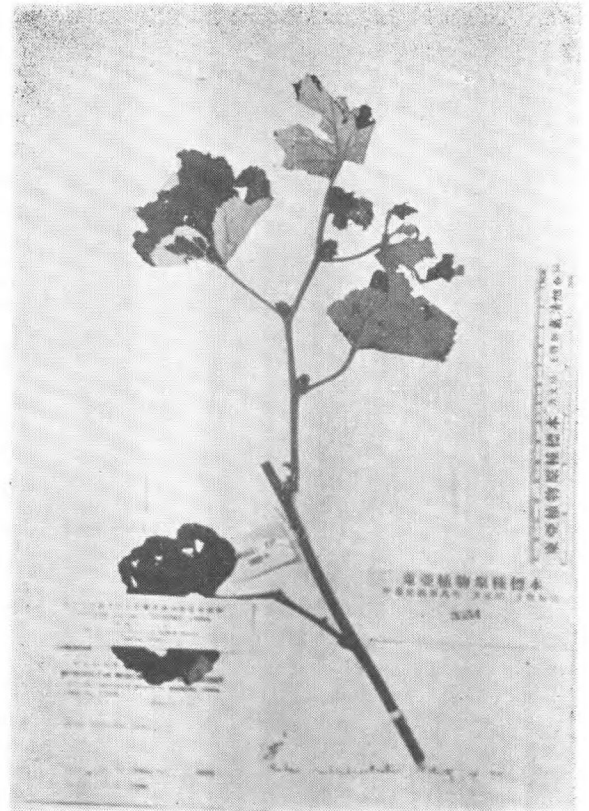


*Rubus simplex* Focke  
Henry 5982B (type) 湖北房县

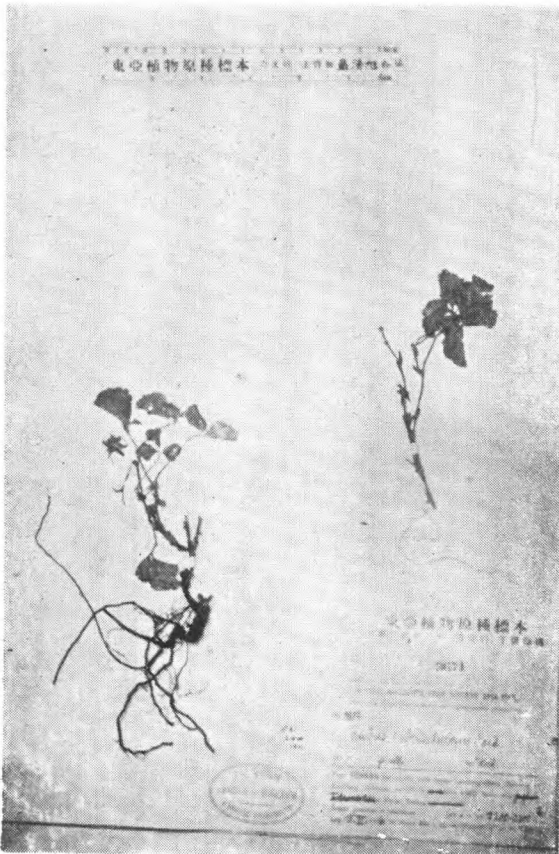




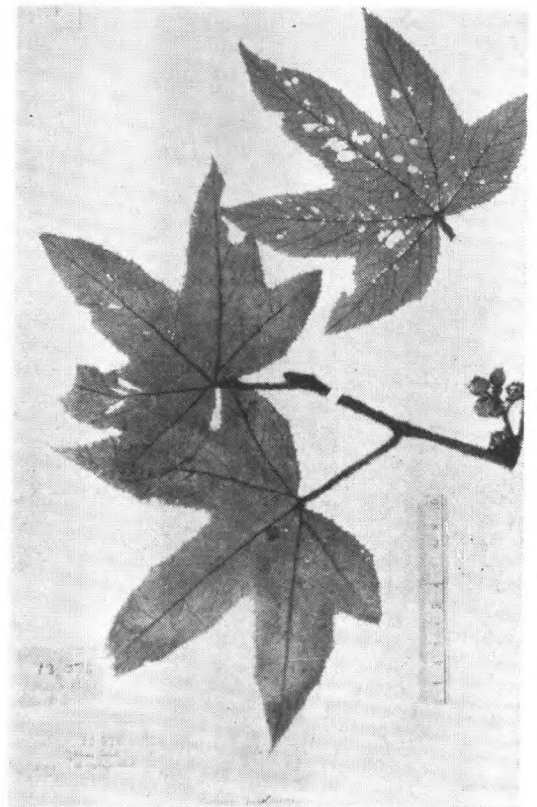
*Rubus Rolfei* Vidal.  
Kanehira et Sasaki 21786 台湾



*Rubus rubibracteatus* Metcalf  
Ching 5859 (type) 广西

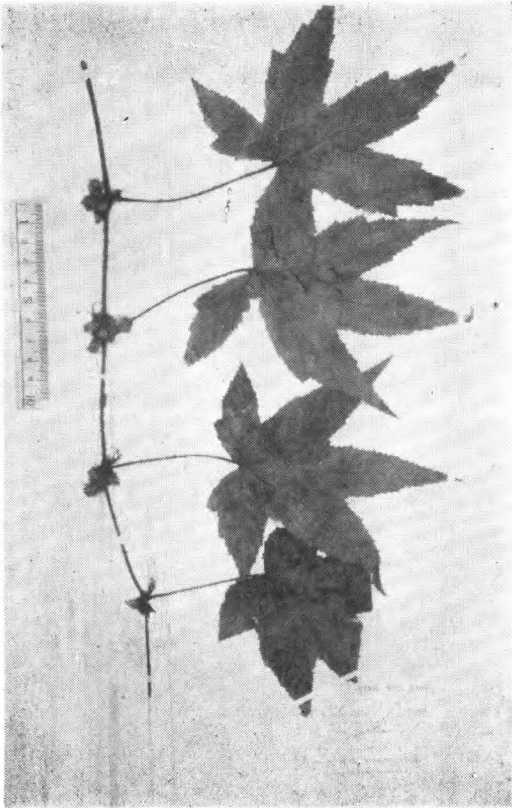


*Rubus rubrisetulosus* Card.  
H.-M. 8887 云南

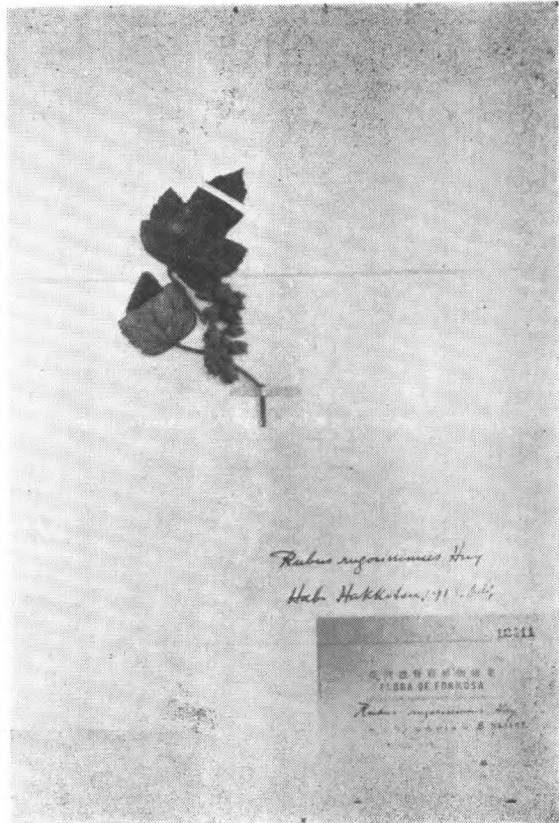


*Rubus rufus* Focke  
Henry 13076 (type) 云南思茅

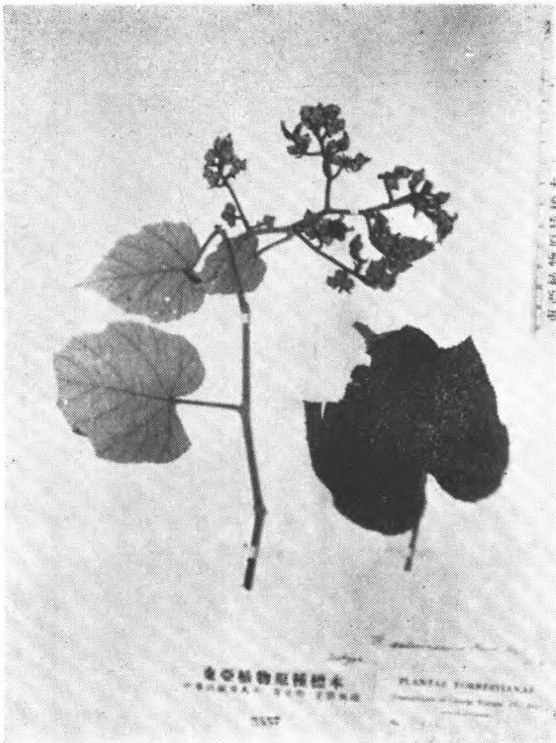




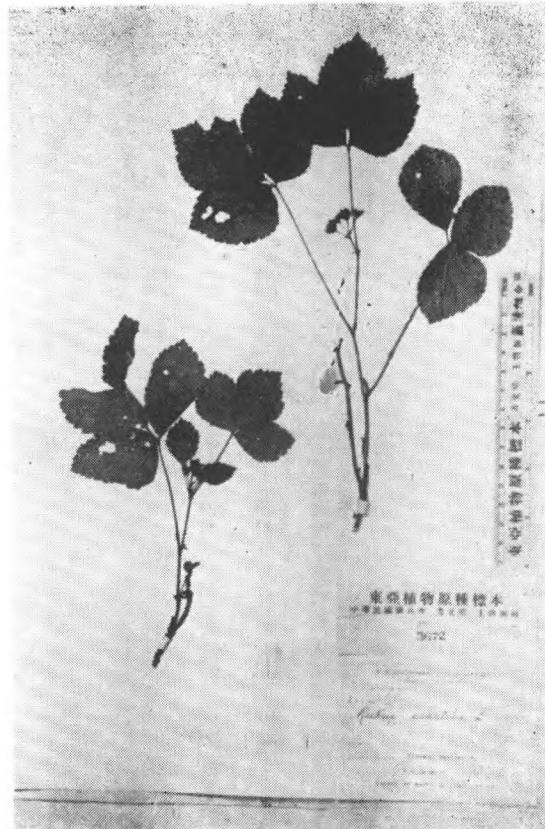
*Rubus rufus* Focke var.  
*palmatifidus* Card.  
Farges (type) 四川城口



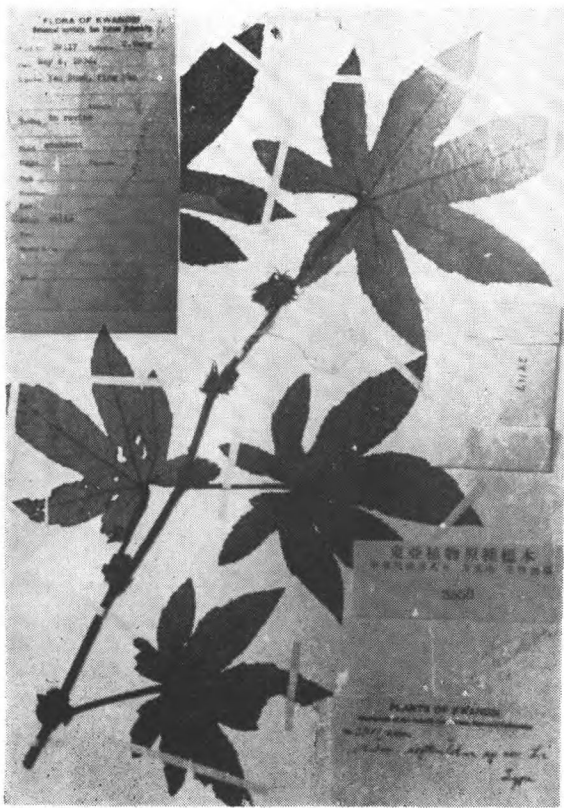
*Rubus rugosissimus* Hay.  
S. Sasaki et B. Hay. 无号 (Merotype)  
Hakkitsu, 台湾



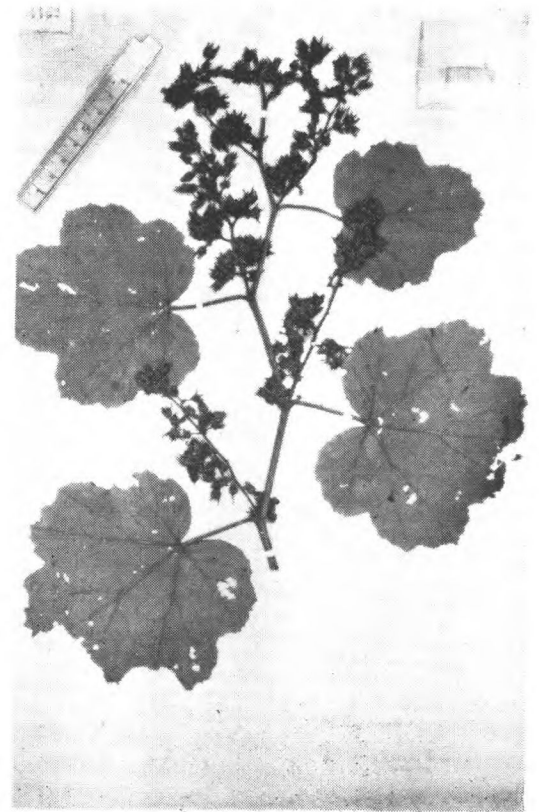
*Rubus salwinensis* H.-M.  
Forr. 15925 (isotype) 云南



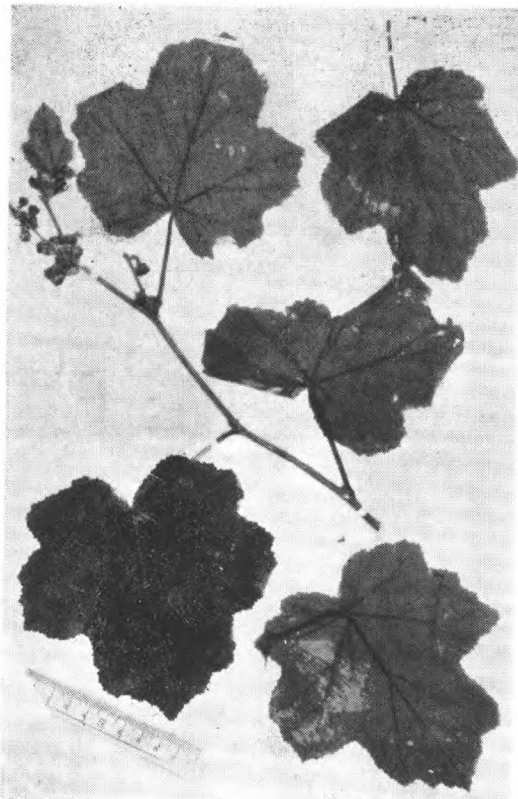
*Rubus saxatilis* Linn.  
P. H. Borsett 3579 东北满州里



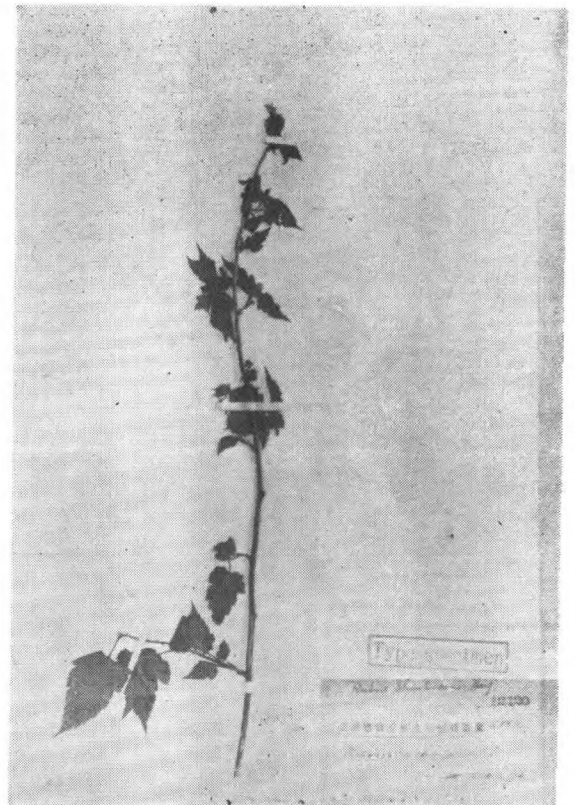
*Rubus septemlobus* Li  
C. Wang 39117 (type) 广西



*Rubus setchuenensis* Bur. et Fr.  
Cavalerie 1125 云南

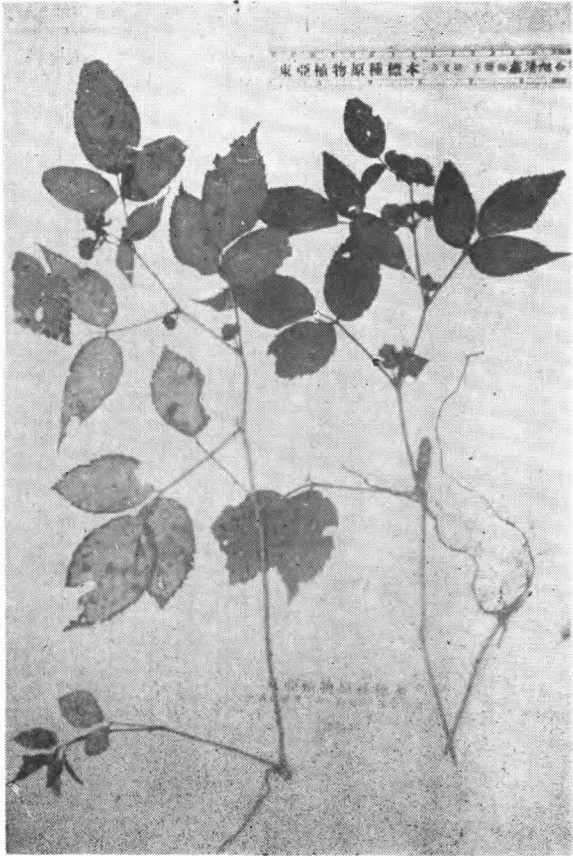


*Rubus setchuenensis* Bur. et Fr. var.  
*omeiensis* (Rolfe) H.-M.  
Wils. 1421 (type)



*Rubus shinkoensis* Hay.  
T. Kawakami et U. Mori 2652, (isotype)  
Shinko, Kakurei, 台湾





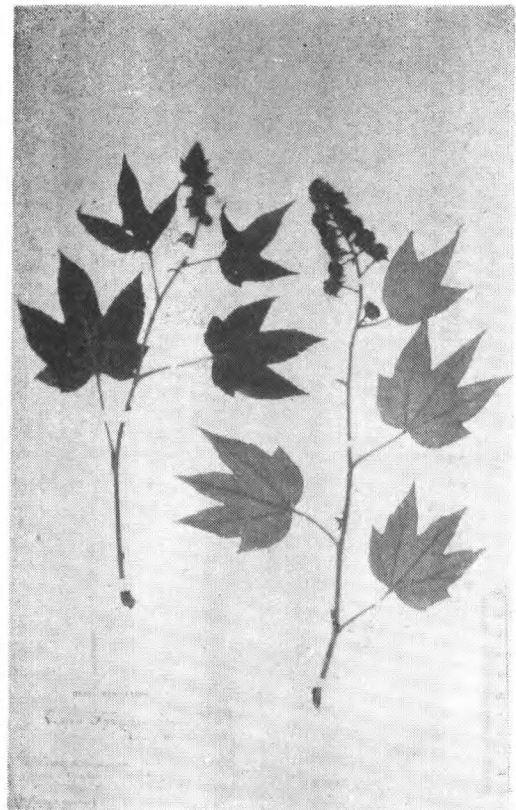
*Rubus simplex* Focke  
Henry 5982 (isotype) 湖北



*Rubus singulifolius* Focke  
Henry 10926 (isotype) 云南蒙自



*Rubus sozostylus* Focke  
Henry 5665A (type) 湖北建始

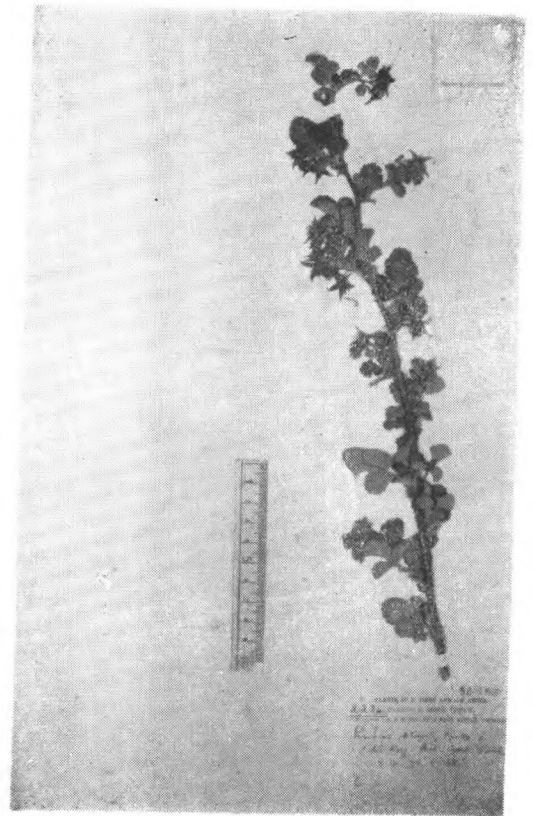


*Rubus sozostylus* Focke var. *Fargesii*  
(Fr.) Cardot  
Farges (cotype) 四川城口

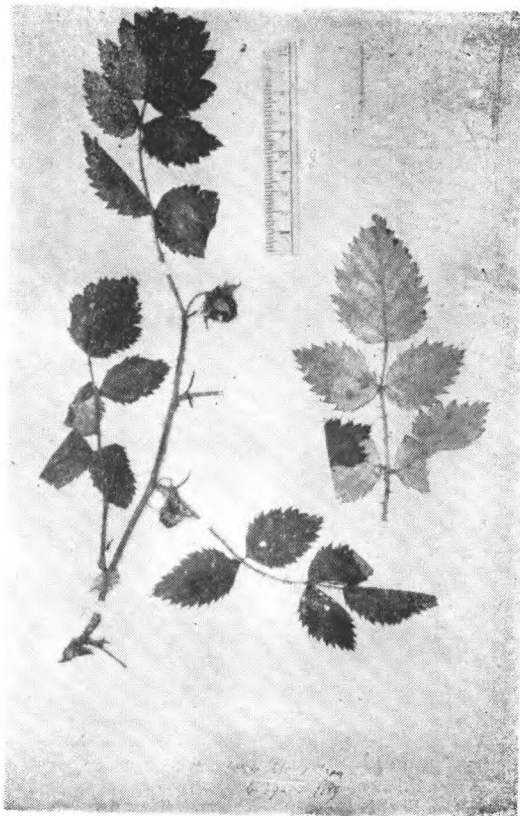




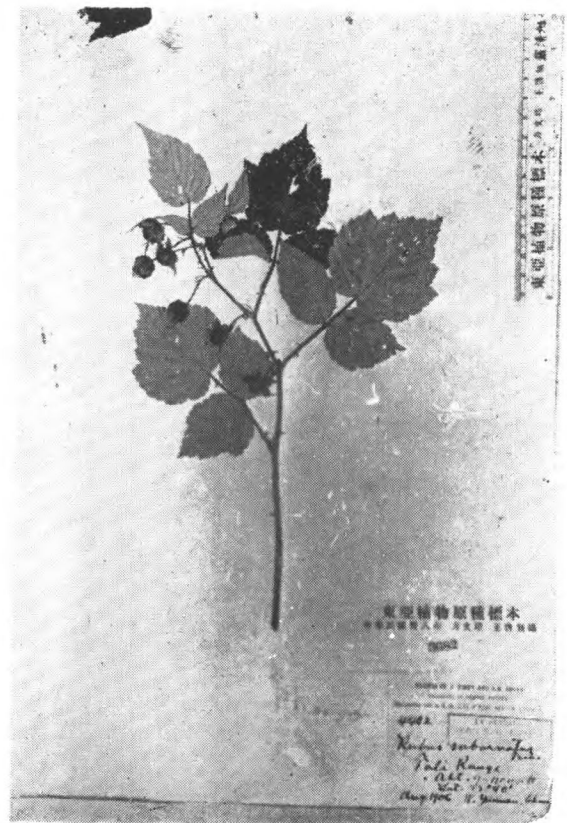
*Rubus spinulosoides* Metcalf  
Wils. 42 (type) 湖北



*Rubus stans* Focke  
Forr. 2286 (type) 云南丽江



*Rubus stimulans* Focke  
Delavay 742 (type) 云南大理苍山



*Rubus subornatus* Focke  
Forr. 4402 (isotype) 云南