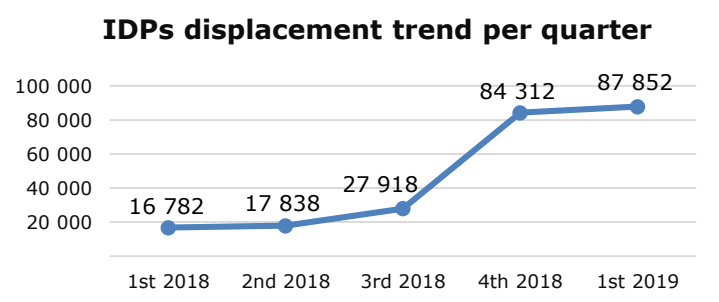


# Mali | Humanitarian Crisis

The humanitarian crisis in Mali continues to worsen, seven years after the armed conflict started in the north of the country. Since 2018, violence and insecurity keeps spreading to the centre and border areas with Niger and Burkina Faso resulting in new forced displacements and exacerbating food and nutrition needs.

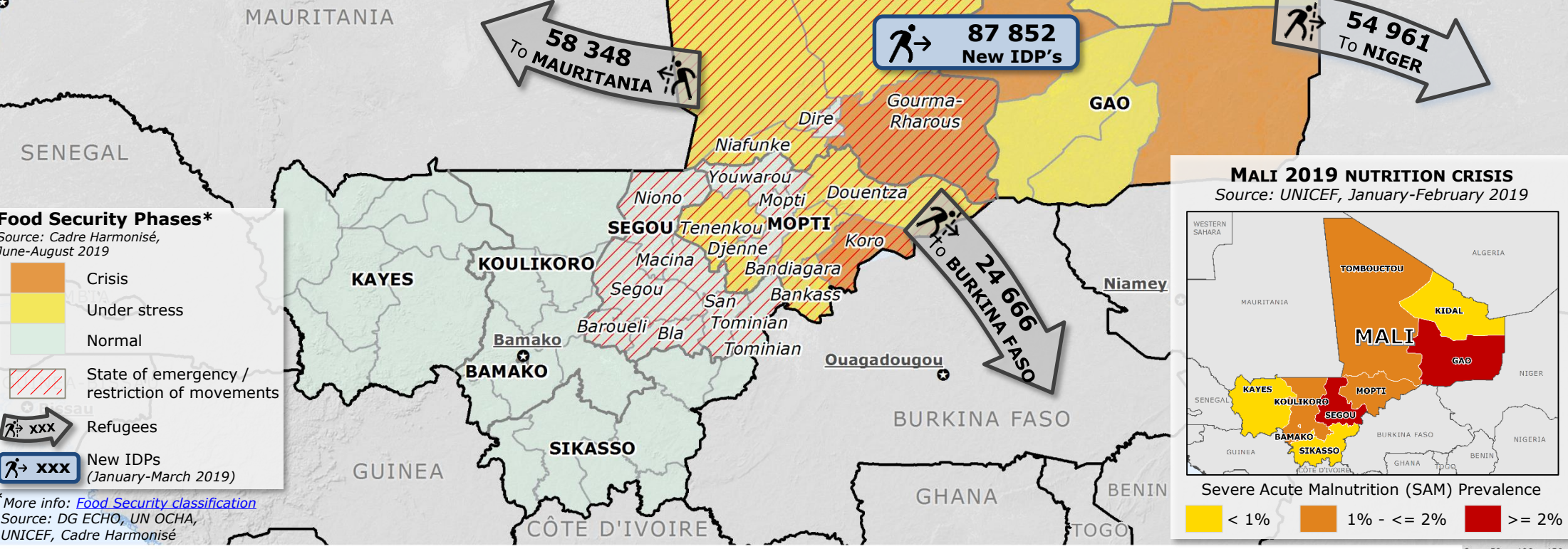
<b>553 770</b>	People at risk of food crisis (phase 3-5, <i>Cadre Harmonisé</i> )*
<b>156 461</b>	Children at risk of Severe Acute Malnutrition (SAM)
<b>137 975</b>	Total number of Malian refugees, as of 31 March 2019
<b>234 702</b>	Total number of Internally Displaced People (IDPs), as of 31 March 2019



**866 school closed** (affecting 258 000 children)

**17% health centers closed** in the north and centre many others **only partially functional** due to insecurity and lack of health staff

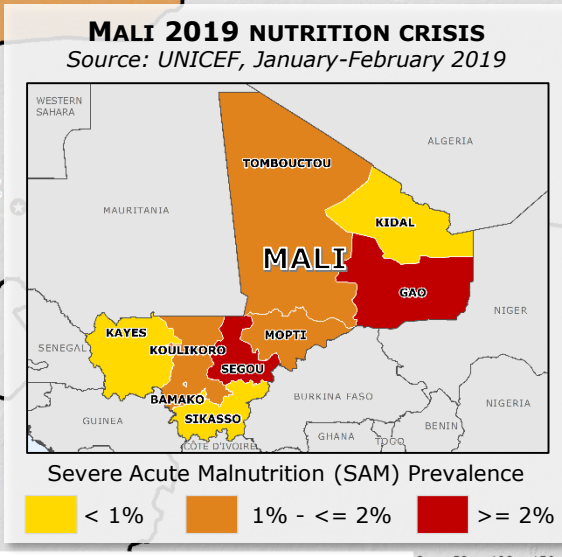
Nouakchott



### Food Security Phases\*

Source: *Cadre Harmonisé*, June-August 2019

- Crisis
- Under stress
- Normal
- State of emergency / restriction of movements
- XXX Refugees
- XXX New IDPs (January-March 2019)



\* More info: [Food Security classification](#)  
 Source: DG ECHO, UN OCHA, UNICEF, *Cadre Harmonisé*