



PRAGUE 2019

Wikimedia Hackathon 2019 Prague

INFOKIT



WIKIMEDIA
HACKATHON



TIME

23:59
CEST

In the Czech Republic the current time is determined according to the Central European Standard Time (+1 Hour Ahead of the Greenwich Mean Time (GMT)), or the Central European Summer Time. And it is usually displayed in the 24-hour format.

CURRENCY

CZK

The local currency is the Czech koruna (Crown, CZK or Kč). 25CZK \cong 1EUR. EUR is also accepted in many places but be aware that the exchange rate might not be great. If you plan to use exchange office, please make sure that there is no commission fee included.

ELECTRICITY ACCESS



Czechia uses CEE 7/5 (Type E - French) electricity sockets.

INTRO

TICKETS

Single tickets (regular prices: 24CZK for 30 minutes, 32CZK for 90 minutes, 110CZK for 24hours, 310CZK for 72 hours) can be purchased at vending machines, at newsagents and tobacconists (buy the ticket before you get on the bus/tram/metro) or in some of trams. **Single tickets need to be validated in a validator!**

HOW TO GET AROUND

CHECK THE CONNECTION

Find your connection at idos.cz

Use your Use-It map (part of infokit) :)

CASH MACHINE

Česká spořitelna ATM – inside the venue, in the foyer

Komerční banka ATM – Thákurova 2077/7

VENUE



PUBLIC TRANSPORT IN THE AREA

VENUE



CAMPUS

Located in the north western suburbs of Prague, next to Dejvická metro station.

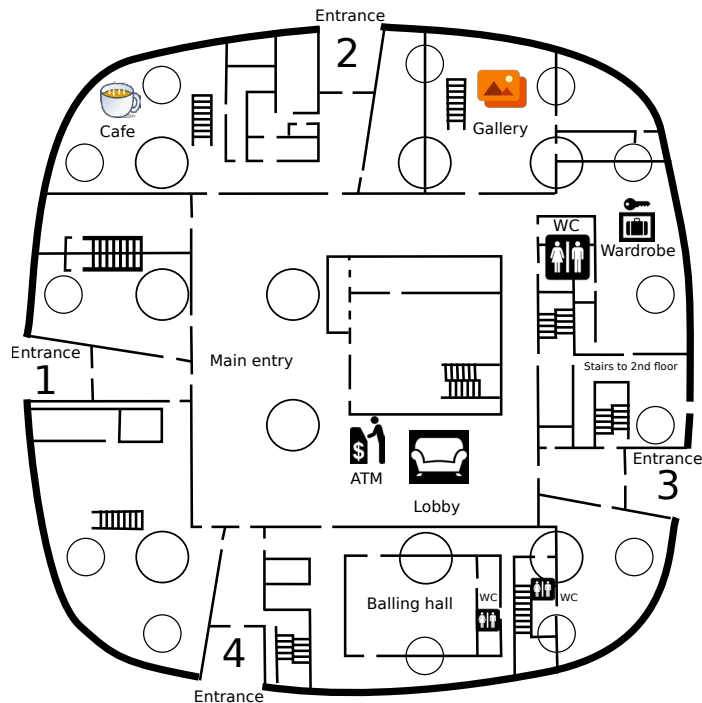
NTK

The event will take place at the National Library of Technology (Národní technická knihovna, NTK). During WMHack 2019 Prague we will use the Gallery NTK space as the main venue, but also Cafe and workshop spaces inside the library.

ADDRESS OF THE VENUE:

Technická 2710/6
160 80 Praha 6 - Dejvice

PLAN OF NTK SPACES



WORTH TO KNOW

INTERNET ACCESS

For the Wikimedia Hackathon 2019 Prague purposes free wireless network will be provided. SSID: **NTK-Wikimedia-Hackaton**
Password: Wikimedia

HELP DESK SERVICES

Open from 30 minutes before and 30 minutes after the Wikimedia Hackathon 2019 Prague program.

EMERGENCY

Int. Calling Code for the Czech Republic
+420
Emergency Call Number
(Ambulance/Police/Fire)
112
Klára Joklová (WMCZ team):
+420 773 155 687

CLOSEST HOSPITAL

Ústřední vojenská nemocnice
Address: U Vojenské nemocnice 1200
tel: +420 973 208 333 (24/7)

IMPORTANT

Please wear your name badge at all times, otherwise we can't grant the access to hacking space and workshop rooms.



FUN FACTS ABOUT PRAGUE

It has the largest castle in the world - Prague Castle spans an impressive 18 acres and is home to stunning cathedrals, chapels, royal palaces and gorgeous ornamental gardens

The Charles Bridge has some rather mathematical significance. Former Czech king Charles IV laid the first stone of the bridge at precisely 5.31am on July 9, 1357. A superstitious man, the king was so into astrology and numerology that he chose this date because of its written form: 1-3-5-7-9-7-5-3-1 (year, day, month, time).

The city's famous Dancing House was inspired by Fred Astaire and Ginger Rogers, it symbolises yin and yang

A portrait of of John Lennon was drawn on the wall opposite the French Embassy in Prague now called Lennon Wall. Since then it has been repainted numerous times and is laced in graffiti.

USEFUL WORDS IN CZECH

Yes - Ano [ano]

No - Ne [ne]

Please - Prosim [proseem]

Thank you - Děkuji vám [dyekooyi vam]

Good morning - Dobré ráno [dobrye rano]

Goodbye - Na shledanou [nas-khledanow]